

# **Historic, Archive Document**

Do not assume content reflects current scientific knowledge, policies, or practices.

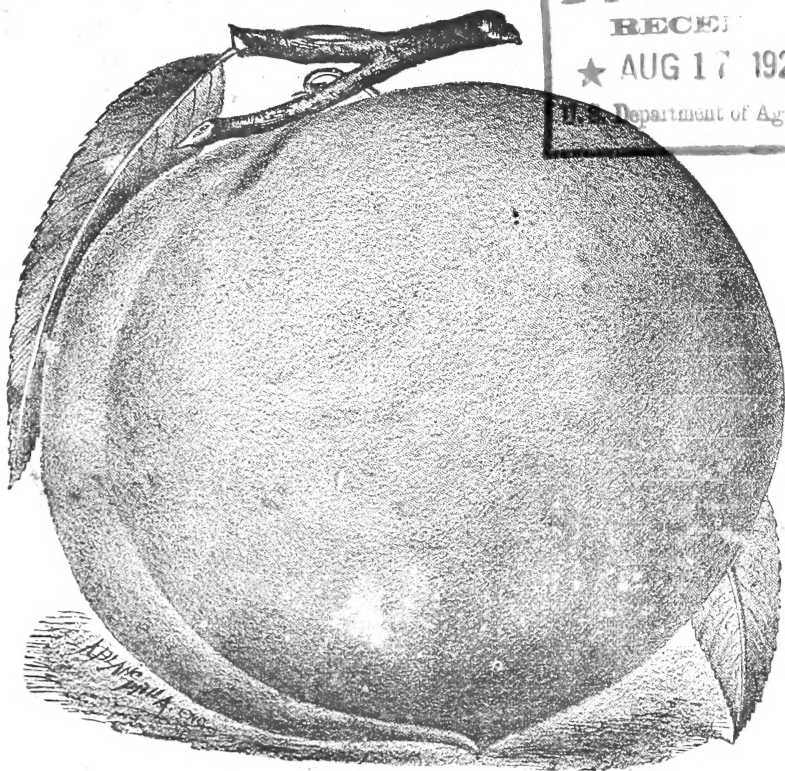


—: THE:—  
**Easterly \* Nurseries,**

CLEVELAND, TENN., & HUNTSVILLE, ALA.

— 0 —  
W. A. EASTERLY, Mgr.. = Cleveland, Tenn.

RECEIVED  
★ AUG 17 1920  
U. S. Department of Agriculture



Triumph Peach.

**SPECIALTIES.**

PEACH TREES, PEAR TREES, PLUM TREES, APPLE  
TREES, MAGNOLIA GRANDIFLORA, SMI-  
LAX LANCEOLATA.

Perry & Hearn, Nurserymen's Printers, Salisbury, Md.



# This is Our Salesman.

He solicits your order when you are at leisure. Does not bore you with unreasonable statements or exaggerated pictures. He is a hustler. He works hard day and night, for low wages. His railroad fare costs us but one cent a trip, his hotel and bar bills nothing. He gives you the opportunity to save from 25 to 40 per cent. on your purchases. Do you appreciate his visits? If so, give him your order.

## INFORMATION FOR PLANTERS.

### DISTANCE APART TO PLANT.

Standard Apple.....	30 feet apart each way.
Standard Pear.....	18 to 20 " "
Cherry, Plum and Peach.....	16 to 18 " "
Quinces.....	10 to 12 " "
Dwarf Pears.....	8 to 10 " "
Currants and Gooseberries.....	3 to 4 " "
Blackberries.....	4 to 6 " "
Strawberries.....	1 to 3 " "

### NUMBER ON AN ACRE WHEN PLANTED AT STATED DISTANCES.

30 feet apart each way,	49	10 feet apart each way	437
25 " "	70	6 " "	1,210
20 " "	108	4 " "	2,722
18 " "	135	3 " "	4,840
15 " "	194	2 " "	10,890
12 " "	302	1 foot " "	43,560

**OUR SILENT SOLICITOR**—This catalogue is our only salesman, and is a personal invitation to you to buy your trees and plants of us. We do not exhort or insist, but lay before you simple, honest statements and descriptions of the stock we grow. Our prices speak volumes. Consider well our claims for your patronage; if we deserve it, send us your order. Use good, sound, common sense in making your conclusions; we have no fear of the result. What to buy and where to buy it, is valuable knowledge.



# To Our Patrons.

In presenting this Catalogue and price list to you, it is our aim to bring to your notice, an extensive stock of trees and plants that have been grown under a thorough system of cultivation, especially adapted to the middle and Southern States.

We strive for superiority of quality, and genuineness of variety in all our productions. Knowing that with the majority of tree planters life is too short to be wasted in nursing trees or plants, of a sickly delicate growth, or to be deceived with poor worthless varieties, when for a little, if any, additional cost, strong, healthy and reliable ones may be obtained. Therefore our prices will be found as low, and in many instances, lower than the same grade can be purchased elsewhere.

We call especial attention to our location, being in the very center of the South. The best nursery producing section of the South, with the best of shipping facilities, which enables us to get the products of our nurseries to our customers within the shortest time, in a fresh healthy condition, thereby making our facilities for serving you in the best possible manner unsurpassed.

Our aim is to excel in quality, and in every case give an equal value for your money, and by this method we shall hope to be favored with your patronage.

**References.**—That you may learn as to our *responsibility, reliability promptness*, and if we *understand our business*; We refer you to the Cleveland National Bank, The Express and Railway agents, and the Post-master.

## THE EASTERLY NURSERIES.

W. A. EASTERLY, Manager, Cleveland, Tenn.

**Plants by Mail.**—We send trees, plants and vines, postpaid by mail, at the prices quoted in this Catalogue. This brings them to your very door without trouble or expense. The trees and shrubs that go by mail, are of course smaller than those offered by freight or express, but are first-class of their size with plenty of fibrous roots, and guaranteed to be satisfactory. If you live a long distance from our nurseries, or have no express facilities, do not forget that we can serve you just as well as if you lived near by. It is not a question whether we can serve you well by mail or not. The plants are packed by experienced workmen, and are guaranteed to reach you in good condition.

## HOW TO ORDER.

**Write your orders plainly** upon the order sheet attached to this Catalogue. A lady should always sign herself Miss or Mrs. to enable us to direct our answers properly.

**When Best to Order.**—Order now. Do not wait until you are ready to plant. Your order will not be shipped until the proper time or until you wish it.

**Shipping Directions.**—Give plain directions for marking and shipping. When no directions are given, we will use our best judgment in forwarding.

**Packing.**—No charge for boxing or packing. The prices quoted are for trees and plants packed and delivered to the railroad or express companies for shipment.

**Express.**—Trees and plants are now received by the express companies at special rates, 20 per cent. off the regular rates for merchandise.

**We Pay Freight or Express.**—On all orders amounting to \$5.00 or more.

**Terms.**—Invariably Cash in advance, or satisfactory security. Orders of \$5.00 or over, will be shipped C. O. D. only when one fourth the amount accompanies the order.

**How to Send Money.**—By bank draft; post-office order on Cleveland, Tenn., express money order, or registered letter.

**Guarantee.**—We guarantee all trees and plants true to name, and to reach you in good condition, and will refund purchase price or replace free of charge all that prove otherwise.

**Substitution.**—We do not substitute unless requested to do so, in ordering please say whether we shall send next best or something similar, in case we should be sold out of what you order.

**Errors.**—We make them, so do others, but we cheerfully correct them when notified.

**Prices and Quantities.**—Six trees will be furnished at dozen rates, 50 at hundred rates, 500 at thousand rates, if larger quantities are wanted than quoted write us for prices on same.

**Shipping Season.**—We begin shipping for fall, October 1st, and can ship any time during winter and spring until April 5th.

**Attention to Customers.**—It is our earnest desire that all the requirements and directions of our customers be scrupulously attended to, and we practice the utmost care to have this done. We would respectfully request that we be informed, if at any time, there is cause for dissatisfaction, that we may have it rectified at the earliest possible moment.

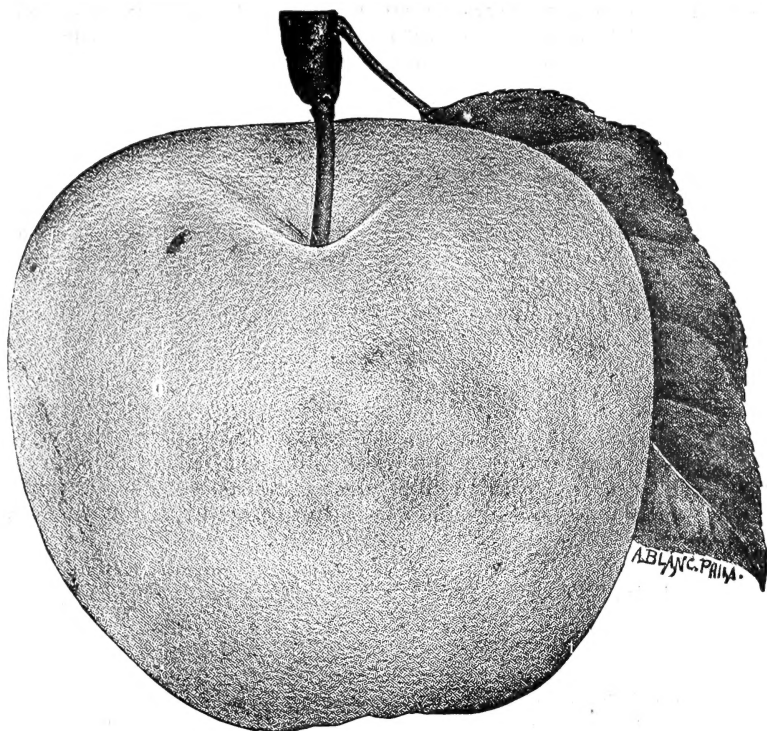
**Address** all orders or correspondence to

THE EASTERLY NURSERIES.

W. A. EASTERLY, Manager, Cleveland, Tenn.

## APPLES SPECIALS.

**YELLOW TRANSPARENT.**—This is decidedly the best early apple for the south. It is remarkably early, of the largest size, and beautiful. But the feature that makes it particularly desirable is, it is excessively hardy. Can be safely planted in the extreme parts of the south, with the best of results, as well as in the middle and northern states. It is also exceedingly productive, and bears at an early age. Taken all in all, it is one of the most desirable early apples in cultivation. It has gained steadily in favor since its introduction, often bears at two years old in the nursery row, and orchard trees bear abundantly every season. One of the largest growers in writing of it says: "On account of earliness, size, beauty, quality, hardiness, productiveness and early bearing, it is one of the most desirable early apples." A fruit grower of large experience says: "I know of no horticultural enterprise so promising as to plant a large orchard of Yellow Transparent, in the south, to supply Chicago and other northern markets." It is without doubt the best paying early apple to plant in the south.



YELLOW TRANSPARENT.

**HORTON.**—The new southern winter apple, originated at Cleveland, Tenn., and is without doubt the most valuable winter apple for the middle and lower south. It is not affected by the heat of autumn, and holds its fruit until cold weather, when it can be gathered perfectly firm and sound, and kept until the following May or June, in good condition. Large, of good shape, color yellow, nearly overspread with bright red; and crimson stripes. Core very small, flesh fine, juicy, rich, with a sprightly sub-acid flavor, of good quality. Tree a strong vigorous grower, with a spreading habit, forming a beautiful, robust, healthy tree. Keeping qualities unexcelled, has been kept with ordinary care until June. Taking all its qualities into consideration, we unhesitatingly pronounce it the best winter apple for the south, that has yet been brought to notice. We offer this new and valuable winter apple to the orchardists of the south, after watching and testing it for the past three years, feeling confident that it will prove to be the most valuable acquisition to the list of winter apples for the southern states. We feel proud indeed to be the introducers of such a magnificent apple. *Its large size, showy appearance, long keeping and splendid eating qualities, together with early bearing, hardiness and productiveness,* make it the most valuable variety for market and family use. Don't fail to give it a trial, and remember you cannot get it from any other parties. Price, first size, 5 to 7 feet, 50 cents each, \$5.00 per dozen; medium 4 to 5 feet, 40 cents each, \$4.00 per dozen; by mail or express, 35 cents each, \$3.50 per dozen.

Mr. Horton, the originator, an extensive and experienced fruit grower says

of Horton apple: It is decidedly the best winter apple I have in my orchard, where all the most popular and profitable varieties I have been able to obtain are growing. I believe *Horton* will prove to be the greatest acquisition for the apple growers of the south, that has yet been brought to their notice.

What the Experiment Station says of Horton apple. The Agricultural Experiment Station of The University of Tennessee. Knoxville, November 18, 1897. Mr. W. A. Easterly, Cleveland, Tenn. Dear Sir:—We have carefully examined the specimen of *Horton* apple which you have kindly furnished our experiment station, and are pleased to state that it is a very desirable variety in many respects. The fruit is large, of good shape, and quite well colored for a late apple in section where originated. The core is very small which is not common in large apples, flesh fine, juicy, rich, sprightly sub-acid. The apple is of good quality, and should prove valuable for cultivation over a broad extent of territory. Very truly yours,  
R. L. WATTS, Horticulturist.

## GENERAL LIST SELECT VARIETIES OF APPLES.

We offer an excellent list of apples, comprising the best varieties known for the middle and southern states, but we describe only a few of special merit. Planters of orchards would do well to confine themselves to three or four varieties that are known to be reliable, instead of planting a few of every variety catalogued.

### Price of Apple Trees.—(Except Horton.)

	Each.	Per dozen.	Per 100.
2-year-old, fine, 5 to 6 feet.....	\$0 20	\$2 00	\$12 00
Medium, 4 to 5 feet. ....	0 15	1 50	10 00
Small, by mail or express.....	0 12	1 20	7 50

#### SUMMER VARIETIES.

Early Harvest,	Horse,	Early Red Marguerite,
Red June,	Haas,	Red Astrakhan,
	Yellow Transparent.	

#### AUTUMN VARIETIES.

Carters Blue.	Fall Pippin.	Duch of Oldenburg.
Maidens Blush,	Fall Queen, (Buckingham)	Lady Finger.

#### WINTER VARIETIES.

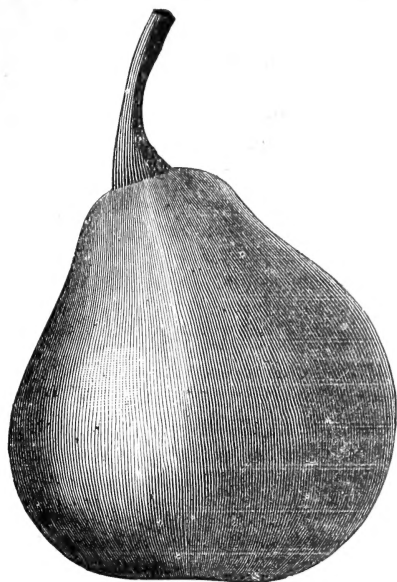
Ben Davis,	Red Limbertwig,	Black Twig.
Royal Limbertwig	Hall's Seedling,	Rome Beauty,
Kinnards Choice.	Shockley.	Winesap,
L. S. W. Pearmain,	Nickajack.	Yates.

*On account of their long keeping, large size, attractive appearance, and unequalled productiveness, Horton apple trees are eagerly sought after. Be sure to send your order early before our stock is exhausted.*



# PEARS.

**KOONCE.**—The coming early pear for the south. It is a chance seedling found on an old farm in Illinois. The original tree was very old when discovered and showed evidence of having produced heavy crops of fruit. The introducer began propagating it and soon had a large orchard bearing, and it has now been thoroughly tested in orchard and proven the very best early pear. Tree is very vigorous, free from blight, upright and claimed to be a better grower than Keiffer. Fruit medium to large, skin yellow, and one side covered with bright red, rendering it strikingly handsome. Ripens two weeks earlier than Harvest Belle or Jefferson. Does not rot at the core, and is decidedly the best *early pear*. Very productive and of fair quality, seldom found in an early pear. The fruit *growers of the south* should hail the introduction of the *Koonce* as a treasure. Its vigorous growth, with heavy foliage will enable it to endure the hot climate, while its *late blooming* will insure for it abundant crops, while the Keiffer and Leconte are frequently killed in bloom by late frosts, and its *extreme earliness*, with firmness of flesh and good shipping qualities, will place it in northern markets without competition, and command for it *very high prices*, while its great beauty and spicy juicy quality, will make it sought after by all lovers of fine fruits.



KOONCE.

Geo. W. Endicott, of Ill., State Horticultural Society, states: "I have seen the *Koonce Pear* in fruiting for the past ten years, and must say it has no competition as an early pear, good bearer, good keeper, good shipper, and the best in quality of any of the early pears.

Price, large size, 5 to 6 feet, 60 cents each, \$6 00 per dozen; medium, 4 to 5 feet, 50 cents each, \$5.00 per dozen; small, by mail or express, 40 cents each, \$4.50 per dozen.

## The Great Southern Winter Pear.

**LINCOLN CORELESS.**—This wonderful and remarkable late winter pear is supposed to be a chance seedling. It originated in Lincoln county, Tenn. The original tree can be traced back for sixty years, during which time it has seldom failed to bear. The original tree, though scarcely more than a shell, has remained free from blight, and annually bore fruit, notwithstanding the fact that 1890 was a bad fruit year, the old tree bore some fruit. The young trees are good growers, wood dark, foliage large, healthy, free from blight, leaf rust or mildew. The fruit is very large and matures late in the season, at which time it is hard and green, but when put away and kept during winter, it gradually mellows, becomes very highly colored, juicy, rich, and of a delicate aromatic flavor. It keeps longer than any grown or tested where it originated, having

been kept in good condition until March. The flesh is of a rich yellow tint. It has neither seed nor core. Occasionally a specimen will have a rudimentary seed or two, which are merely specks, and rudimentary core lines; but these are exceptions, and the core lines are never hard and leathery. Some of its good features are briefly stated, *freedom from blight or other disease, a regular heavy bearer, strong healthy grower, a good shipper, the best of keepers, largest size*, single specimens often weighing one to one and a half pounds, *high color* rendering it attractive as a market fruit, absence of seeds and core, there being an uninterrupted solid mass of melting, juicy, luscious flesh, found in no other variety, making it very desirable as a dessert or canning fruit. *Quality the best of its season, decidedly the largest, the handsomest, the best keeper, the best shipper; tree entirely hardy and a magnificent grower.*

Price, large size, 5 to 6 feet, 75 cents each, \$6.00 per dozen; medium, 4 to 5 feet, 50 cents each, \$5.00 per dozen; small, by mail or express, 40 cents each, \$4.00 per dozen.

#### GENERAL LIST OF PEARS.

	Each.	Per dozen.	Per 100
Price 2 years, extra, 5 to 6 feet.....	\$0 40	\$4 00	\$25 00
Medium, 4 to 5 feet, .....	0 30	3 00	20 00
Small, by mail or express.....	0 25	2 50	16 00
Bartlett,	Clapps Favorite.	Lawsons, (Comet)	
Leconte.	Osbands Summer,	Flemish Beauty.	

#### AUTUMN VARIETIES.

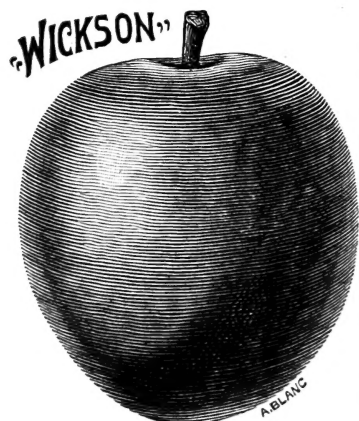
B. DeAnjou,	Duch D. Angouleme,	Idaho,
B. Clairgo,	Lawrence,	Keiffer,
Seckel,	Japan Golden Russett,	Sheldon

#### SELECT LIST OF DWARF PEARS.

	Each.	Per dozen	Per 100.
Price, extra, 3 to 4 feet,.....	\$0 25	\$2 50	\$18 00
Medium, 2 to 3 feet.....	0 20	2 00	15 00
Small, by mail or express.....	0 18	1 50	10 00
Bartlett,	Clapps Favorite,	B. D. Anjou,	
	Duch D. Angouleme.	Vicar of Winkfield.	

## PLUMS.

**WICKSON.**—The new cross bred plum, *Kelsey crossed with Burbank*. Mr. Burbank, of California, the originator of this wonderful plum, says: "Among



the many thousand Japan plums which I have fruited, this one so far, stands pre-eminent in its rare combination of good qualities. The tree grows in vase form, sturdy and upright, yet as gracefully branching as could be desired, and is productive almost to a fault. The fruit is evenly distributed all over the tree, and from the time it is half grown until a few days before ripening is of a pearly white color, but all at once soft pink shadings creep over it, and in a few days it has changed to a glowing carmine with a heavy white bloom; the stone is small and the flesh is of fine texture, firm, sugary and delicious, and will keep two weeks or more after ripening, or can be picked when hard and white, and will color and ripen almost

as well as if left on the tree." Truly a wonderful plum, hardier and more valuable than any of the Japan plums, ripens after Burbank and before Satsuma. Price, large size, 4 to 5 feet, 60 cents each, \$6.00 per dozen; medium 3 to 4 feet, 50 cents each, \$5.00 per dozen; by mail or express, 40 cents each, \$4.00 per dozen.

**RED JUNE.**—Large, pointed, skin thick, purplish red, with blue bloom, flesh yellow, solid, slightly coarse grained, juicy, sub-acid with Damson flavor; clingstone, quality good, maturity middle to end of June. Very prolific, showy and attractive in color. It ripens fully a week earlier than Abundance, and is the earliest large fruited market variety, a good keeper and brings high prices. Very productive and hardy. The most valuable early market variety. Price, large size, 4 to 5 feet, 50 cents each, \$5.00 per dozen; medium, 3 to 4 feet. 40 cents each, \$4.00 per dozen; small, by mail or express, 35 cents each. \$3.50 per dozen.

**GENERAL LIST OF PLUMS.**

	Each.	Per dozen.	Per 100
Price, large size, 4 to 5 feet, .....	\$0 30	\$3 00	\$18 00
Medium, 3 to 4 feet,.....	0 25	2 50	16 00
Small, by mail or express.....	0 20	2 00	12 50
Abundance,	Kelsey,	Chabot,	
Mariana.	Burbank,	Ogon,	
Damson,	Pattawattamie,	De Soto,	
Shropshire Damson,	Golden Beauty,	Shippers Pride,	
Hawkeye,	Sweet Botam,	Satsuma,	
Willards,	Wild Goose,		

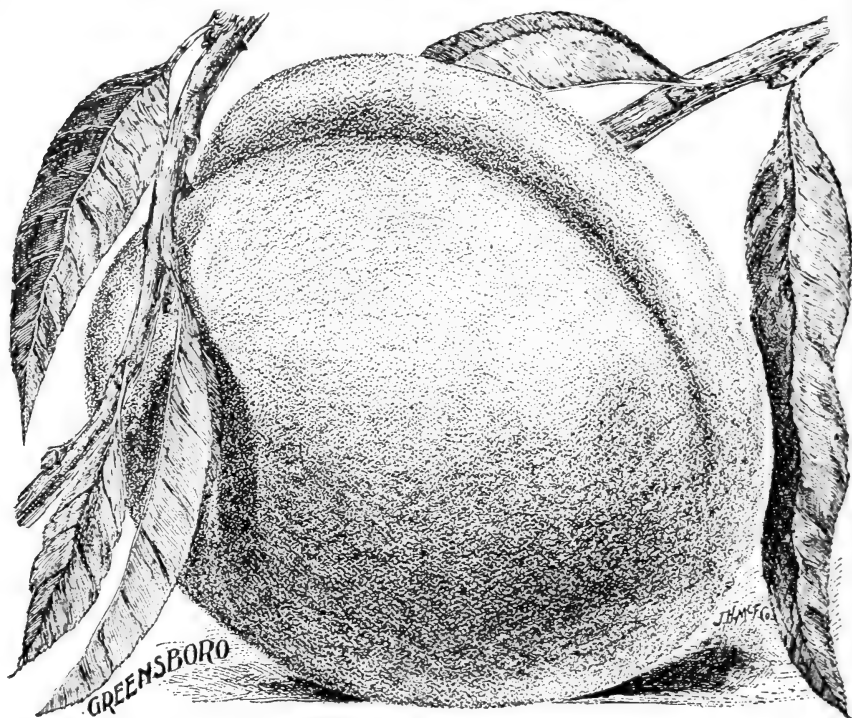
# PEACHES.

We make the growing of peach trees a specialty, and all our peach trees are budded upon peach seedlings grown from seed obtained in Tennessee, where the yellows and other diseases so fatal to the peach are unknown. We do not grow any trees on Mariana plum stalks, as some nurserymen do, which it is well proven that trees so propagated are very short lived and worthless. The following varieties have been selected after an examination of more than a hundred varieties in bearing, the best only being chosen, they furnish in succession for more than four months, commencing the last of May:

**SNEED, the earliest peach known**—Probably a seedling of Chinese Cling, which it resembles very much in appearance of tree and fruit. Originated near Memphis, Tenn. Has been fruited for years in West Tennessee, and proved to be the most valuable for that section, is a good shipper, ripens thoroughly to the pit. A week to ten days earlier than Alexander; clingstone. Fruit growers cannot fail to appreciate the desirable and early qualities of the Sneed. Price by mail or express, 40c. each, \$3.50 per dozen; \$18.00 per 100.

**TRIUMPH**—Fruit growers have for years been looking for a good early yellow freestone peach. The late Chas. Downing, once stated: "A freestone as large, handsome and early and as good in quality as Alexander would be worth a million dollars to the public. I think in time, with careful breeding, you will obtain the early yellow peach desired." The *Triumph* certainly supplies the want. It ripens with Alexander, blooms very late, has large flowers; a sure and abundant bearer and the tree makes a very strong growth, two-year-old trees

from buds have produced over a half bushel of fruit per tree. The fruit is of large size, with a very small pit, surface yellow, nearly covered with red, and dark crimson in the sun. Flesh bright yellow; freestone when fully ripe, of excellent flavor. Surely the coming early market peach. Price by mail or express, 40c. each, \$3.50 per dozen; \$18.00 per 100.



**GREENSBORO**, (New.)—Originated at Greensboro, N. C. The largest of all the early peaches: flesh white, very juicy, fine flavor, far excels any of the early varieties in appearance, highly colored, bright red over yellow. An excellent early peach. Price by mail, or express, 40c. each, \$3.50 per dozen; \$18.00 per 100.

**MATHEWS BEAUTY**.—Originated by J. G. Mathews, of Cuthbert, Ga., stands without a parallel. Its size is of the largest, many specimens weighing from 16 to 18 ounces each. Its color, texture, and shipping qualities are of *the best, none better*. Skin golden yellow, streaked with red, flesh yellow, very fine texture, firm and rich, with excellent flavor, a perfect free-stone. Tree a thrifty grower, sure and abundant bearer. Ripens one month later than Elberta, which it somewhat resembles, though it is larger and superior in every point of excellence to that well-known and valuable variety. It is a well-known fact that after the Elberta is gone, our southern markets have been and are still supplied with peaches shipped in from other sections and sold at high prices. Therefore it is seen that *Mathews Beauty* fills one of the most important of the missing links, and being superior in size and quality to any other peach so far originated in the south, it is sure to prove a very valuable production for market. Read the opinions of some of the leading fruit growers and Horticulturists who saw the peach exhibited at the Georgia State Horticultural meeting, held at Griffin in August, 1896.

Report of Georgia State Horticultural Society, held at Griffin, in August, 1896.—Mathews Beauty, peach from J. G. Matthews, Cuthbert, Ga., of the Smock strain; quality best, large, vinous, juicy, maturity August 5th to 15th, color yellow, with a few red streaks, free.

L. A. BERCKMANS,  
H. N. STARNES,  
J. C. MILLER,  
L. A. RUMPH,  
J. H. WATKINS,  
Committee.

Georgia Experiment Station, Experiment Station, Ga., June 3, 1897. Mr. J. G. Mathews Cuthbert, Ga. Dear Sir:—I was very much pleased with your new peach, "Mathews Beauty" specimens of which I saw and tasted at the Horticultural exhibit in Griffin last year. I consider it a handsomer and much more highly flavored fruit than "Elberta." Very truly,

R. J. REDDING, Director.

Rome, Ga., April 29, 1897. Mr. J. G. Mathews, Cuthbert, Ga., Dear Sir:—It affords us pleasure to state that the Mathews Beauty peach, as exhibited by you at the Georgia State Horticultural Society meeting at Griffin last August, and there tested by us was a very fine peach, large, vinous, the best of quality, beautiful yellow colored, free, and in our judgment, one that will be valuable for marketing. Respectfully,

G. H. MILLER & SON.

Vineyard, Ga., June 1, 1897. Mr. J. G. Mathews, Cuthbert, Ga. Dear Sir—I saw and tasted your new peach, Mathews Beauty, on exhibition at the Georgia State Horticultural Fair, held in Griffin last August, 1896. I took home several specimens and sampled them for several days. The fruit is of the largest size and of magnificent appearance, just what is wanted for a market peach. Flesh is yellow, perfectly free, and of good quality, and indicates a valuable acquisition to the late yellow peach. Yours truly,

I. D. HUSTED.

Augusta, Ga., April 28, 1897; Mr. J. G. Mathews, Cuthbert, Ga. Dear Sir: Yours of the 27th, received. I saw your peach which you call "Beauty," at the Griffin meeting of the Horticultural Society, and what I could then see of that fruit I thought it was very promising. Yours very truly,

P. J. BERCKMANS.

Marshallville, Ga., May 31, 1897. Jas. G. Mathews, Esq., Cuthbert, Ga. Dear Sir:—Yours received, asking my opinion of Mathews Beauty, which I saw on exhibition at Griffin last August, and I take pleasure in stating that it is one of the finest peaches I ever saw, and coming as it does, after Elberta are all gone, it is destined to become one of our leading shippers. It is a superior peach to the Elberta, both as to size and quality. Yours truly,

E. B. BALDWIN.

Agricultural Experiment Station. Auburn, Ala., June 4, 1897. Mr. J. G. Mathews, Cuthbert, Ga. Dear Sir:—Replying to your favor of June 1st, I remember your new peach very well, as I saw it exhibited at Griffin last summer. It impressed me as having all the requisites for a successful market peach, and its season of ripening following Elberta, would make it particularly desirable for the Middle and Southern fruit sections. Of course I can say nothing of the fruitfulness or vigor of the tree. Yours truly,

F. S. EARLE, Horticulturist and Mycologist.

Fort Valley, Ga., May 26, 1897. Mr. W. M. Grissinger, Cuthbert, Ga. Dear Sir:—I saw the Mathews Beauty peach at the Horticultural meeting held in Griffin, Ga., in August, 1896, and consider it a valuable peach to follow Elberta.

Yours truly, JOHN KELLER.

Griffin, Ga., June 1, 1897.—At the exhibition of the Georgia Horticultural Society, held at Griffin, Ga., in 1896, there was shown a most attractive new peach called Mathews Beauty, the finest of all new productions that have come to my notice, up to the present time. Its size and color are magnificent, and its flavor rich and fine. It is simply another unrivaled production of Georgia, and in my opinion it will pay to largely cultivate. Very respectfully,

H. W. HASSELKUS.

Cuthbert, Ga., June 1, 1897. Mr. J. G. Mathews. Dear Sir.—I saw your new peach, Mathews Beauty, exhibited at the State Horticultural meeting, held in Griffin last year. I consider it far superior to the Elberta, both in size and quality, and those securing the first orchards will certainly reap a harvest, as its ripening time is 30 days later than Elberta, comes when there are no good peaches in the southern markets. Very respectfully,

V. L. HUGHES.

Our stock of this wonderful new peach was obtained direct from the introducer, from whom we have authority to offer it for sale. Price, June buds only. By mail or express, \$1.00 each, \$6.00 per dozen.

**THE WEST PEACH, the latest yellow peach in the south.**—Originated by W. C. West, of Cuthbert, Ga., ripening October 1st, blooms late, about the time of Alexander, which is very unusual with late peaches, makes it a sure bearer. The tree is a thrifty grower, fruit large size, pit small, yellow surface, with rosy cheek, flesh golden yellow, perfect freestone, flavor unequaled by any. The originator says: "The tree has fruited for two years, has a good crop on now, and will show more fruit to the tree than any other variety this season. This peach made me more money last season than any other variety. I consider it the best late peach grown."

Fruit growers have for many years seen the necessity for a late freestone yellow peach, which would ripen October 1st, that would take the place of the California peaches that are shipped to our markets at that time. *The West* certainly supplies their wants.

#### WHAT THE LEADING FRUIT GROWERS SAY OF WEST PEACH.

I have seen the peach grown by W. C. West. It is quite a late, and the most perfect late peach I ever saw. Fine flavor, good size, attractive looking and evidently a good shipper. It is the best late peach I ever saw in this community.

ARTHUR HOOD.

June 18, 1897.

I have seen the new peach originated by W. C. West. It is a fine late peach, ripens about October 1st, has fine flavor, equal to Elberta in size. I consider it the best late peach we have.

L. M. MOYE.

June 25, 1897.

W. C. West, Cuthbert, Ga.:—The new peach "West" you sent me last October, is superior in quality to any variety we grow. Is a perfect freestone; yellow skin and flesh, with rosy cheek, larger than Elberta, and ripening at the time it does, will make it one of the most valuable market and home peaches in the south.

W. W. DEWS, Cuthbert, Ga.

I have known the *West* peach, originated by W. C. West, for three years. This is the third year it has fruited, and will say the people ought to be proud to have such a peach offered them. This peach ripens about October 1st, and is a large yellow peach with rosy cheek, perfect freestone and the finest flavored peach on the market.

A. M. RENFROE.

Cuthbert, Ga., June 20, 1897.

I have seen the late peach "West" for two years, and in my opinion it is the finest peach I ever saw. The tree is a thrifty grower, and the peach is a beautiful yellow, clear seed. It is different from anything I ever saw in the peach line. In the fall of 1896, during a severe drouth the tree did extremely well.

June 19, 1897.

N. M. WEAVER.

Ft. Gaines, Ga., June 16, 1897. Mr. W. C. West, Cuthbert, Ga. Dear Sir—I saw your new peach "West" last year, and sampled the same. It ripens October 1st, is a large yellow peach, with rosy cheek, and perfect freestone. Is superior to Elberta. This will make one of the best market peaches I know of, and every home should have a few trees. Yours truly,

J. I. ENGRAM.

This is to certify that I have seen the "West" peach growing. It ripens in October, I consider it to be the finest late peach I ever saw or eat. It is of fine size and a good shipper.

J. T. STANDLEY, Cuthbert, Ga.

June 17, 1897.

Cuthbert, Ga., June 18, 1897. Gentlemen:—The "West" peach originated by W. C. West, of Cuthbert, Ga., is a late peach, of much promise, resembling the Elberta in size and appearance. It is of fine quality and flavor. I have known of the peach for two years, and consider it the best late peach on the market. Truly yours,

W. E. EDDY.

Price of West peach, June buds only, \$1.00 each, \$6.00 per dozen. By mail or express.

**GENERAL LIST OF SELECT PEACHES.**

Prices, (except where noted.)

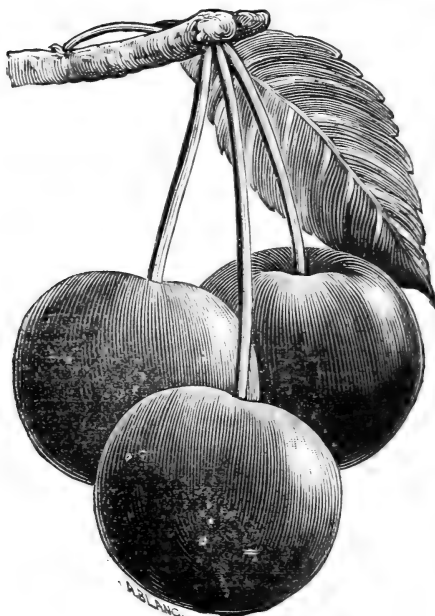
	Each.	Per Doz.	Per 100	Per 1000
Large size, 4 to 6 feet.....	\$0 20	\$1 75	\$12 00	\$75 00
Medium size, 3 to 5 feet.....	15	1 50	10 00	60 00
Small by mail or express.....	12	1 25	8 00	50 00

Alexander,	Columbia,	Globe,	Reeves Favorite,
Amsdem,	Chair's Choice,	Hale's Early.	Stump the World,
Belle of Ga.,	Early Rivers,	Heath's Cling,	Susquehanna,
Blood Cling,	Early Tilloston,	Jessie Kerr,	Stinson's Oct,
Crawford Early,	Elberta,	Lady Ingold,	Thurber,
Crawford's Late,	F. St. John,	Lemon Cling,	Wager,
Champion,	Foster,	Mt. Rose,	Wheatland,
Chinese Cling,	Gen. Lee,	Old Mixon Free,	

Plant Sneed, Triumph, Mathew's Beauty, and West peaches if you desire a lot of good, large, fine peaches that will please your wife, the children, or the dealer.

*If intending to plant a large orchard of peaches, don't fail to write us for special prices on them before buying, we can save you money.*

## CHERRIES.



EARLY RICHMOND.

Price large size, 5 to 6 feet, 30c. each; \$3.00 per dozen; \$18.00 per 100.

Price medium size, 3 to 5 feet 25c. each; \$2.40 per dozen; \$16.00 per 100.

English Morello, L. Montmorency,  
Early Richmond, Ostheim.  
May Duke, Olivet,

### SWEET VARIETIES.

Black Tartarian, Gov. Wood,  
Early Lamaurie, Yellow Spanish,

## QUINCES.

Price, large size, 2-year, 4 feet, 30c. each; \$3.00 per dozen; \$20.00 per 100.

Price, medium size, 2-year, 3 feet, 25c. each; \$2.40 per dozen; \$15.00 per 100.

Price, one-year, by mail or Express 20c. each; \$2.00 per dozen; \$12.50 per 100.

Apple or Orange,  
Champion,

Meeches Prolific,  
Rhea's Mammoth.

Plant Horton, Apple, Lincoln Coreless Pear, Early Diamond Cherry, Wickson Plum, Mathews Beauty and West peaches; they are sure to please you.

*Note our low prices on high grade stock, guaranteed true to name and as represented.*

## APRICOTS.

	Each	Doz.
Price, large size, 4 to 5 feet.....	\$0 25	\$2 50
“ medium size 3 to 4 feet.....	20	2 00
Alexis,	Breda,	Alexander,
Gibb,	J. L. Budd,	Moorpark,
Nicholas,	Royal	

## MULBERRIES.

	Each	Doz.
Price, large size, 5 to 7 feet.....	\$0 30	\$3 00
“ medium size, 4 to 5 feet.....	25	2 50
Hicks Everbearing,	Downing,	


## JAPAN PERSIMONS.

	Each	Doz.
Price, extra size, 4 to 5 feet..	\$0 40	\$4 00
“ medium size. 2 to 3 feet.....	30	3 00
Among or Yenon,	Zenji,	Hyakume.



## FIGS.

	Each	Doz.
Price, Large size, 2 to 3 feet.....	\$0 25	\$2 50
“ medium size, 1 to 2 feet.....	20	2 00
Brown Turkey,	Celestial,	White Marseilles,

 **Plant Southern Grown trees if you want the best, the healthiest, the freest from disease. No San Jose Scale, Yellows or other injurious diseases in the South.**

## NUT TREES.

### PRICE OF NUT TREES.

	Each.	Dozen.
Chestnut, American, sweet, 5 to 6 feet.....	\$0 30	\$3 00
“ “ “ 3 to 4 feet.....	25	2 50
“ 1 year, by mail,.....	15	1 50
“ Spanish, 3 to 4 feet.....	30	3 00
“ “ 1 to 2 feet.....	25	2 50
Walnuts, English, 3 to 4 feet.....	30	3 00
“ “ 2 to 3 feet.....	25	2 50
“ Japan, 3 to 4 feet,.....	40	4 00
“ “ 2 to 3 feet,.....	30	3 00
Pecan, 2 to 3 feet, (per 100, \$18.00).....	35	3 00

## GRAPES.

### PRICE GOOD STRONG WELL ROOTED VINES.

	Each.	Per dozen.	Per 100
Brighton.....	\$0 15	\$1 50	\$8 00
Concord.....	10	1 00	5 00
Catawba.....	10	1 00	5 00
Champion.....	10	1 00	5 00
Delaware.....	15	1 50	8 00
Ives Seedling.....	10	1 00	5 00
Martha.....	10	1 00	5 00
Moores Early.....	15	1 25	8 00
Moores Diamond.....	20	2 00	10 00
Niagara.....	15	1 50	8 00
Norton's Va.....	30	2 50	15 00
Perkins.....	25	2 50	15 00
Scuppernong.....	30	2 50	15 00
Worden.....	15	1 00	5 00

## CURRANTS.

Price.....	Each, 15 cents;	Dozen, \$1.50.	100, \$8.00
Cherry,	Fay's Prolific,	White Grape,	

## GOOSEBERRIES.

Price.....	Each, 15 cents.	Dozen, \$1.50.	100, \$8.00
Downing,	Houghton,	Smith's Improved,	

**We Pay the Postage** on all mail orders, and express on all orders amounting to \$5.00 and upwards. Their safe arrival guaranteed.

**BLACKBERRIES.**

Price, by mail or express, per dozen.....	80 75
“ “ “ express, 100.....	2 00
“ “ “ “ 1000.....	15 00
Early Harvest,	Wilson, Jr.,
Snyder,	Lucretia.

**RASPBERRIES.**

Price, by mail or express, per dozen.....	80 75
“ “ “ express, 100.....	2 00
“ “ “ “ 1000.....	15 00
Cuthbert, (red)	Mammoth Cluster, (bl'k)
Shaffers Colossal, (red)	Gregg, (black)



EARLY HARVEST.

**STRAWBERRIES.****PRICE OF STRAWBERRY PLANTS.**

By mail 30c per dozen 75c per 100.

By express \$4 per 1000, \$25 per 10,000.

Bedar Wood,	Bubach,	Crescent,
Cumberland,	Lady Thompson,	Mitchel's Early.
Sharpless,	Parker Earle,	

**RHUBARB.**

Price 15c each, \$1.50 per dozen, \$8 per 100.

Mynath Sinneas,

Early Scarlet.

**ASPARAGUS.**

Price one year old roots, 75c per 100, \$3 per 1000.

Price two year old roots, \$1 per 100, \$4 per 1000.

Variety—Conoyer's Colossal.

Remember that we are the only nursery in the South that sends trees and plants by mail. We deal directly and exclusively with the Planter. Send us the names of your friends who are interested in fruits and flowers.

**Ornamental Department.**

Our ornamental trees and shrubs have been grown under a thorough system of cultivation, and are in a vigorous and healthy condition, and are first class in every respect. Our stock of Magnolia Grandiflora is the largest in the country, and we call especial attention to our low prices on same. Reduced rates will be given on Magnolia and other ornamental trees and shrubs, to improvement companions for park planting, college grounds and other enterprises needing a large number of large sized trees for quick effect.

**MAGNOLIA GRANDIFLORA, (Southern Magnolia)**—A magnificent evergreen tree, the most beautiful of all the magnolias, its large, rich green, glossy leaves, rich yield of fragrant flowers, and superior stateliness of form and splendor of growth. all tend to place it in the foremost rank among the ornamental trees. Truly the king of southern broad leaved evergreen trees. Price one year-old by mail, 50c. each; 2 feet, by express, 50c. each; 3 feet, 75c; 4 feet, \$1.00; 5 feet, \$1.25; 6 feet, \$1.50; 7 feet \$1.75.

**PRICES AND SIZES OF ORNAMENTAL TREES.**

	Each.
Maple (Sugar or Rock), 6 to 8 feet.....	\$ 50
“ “ 8 to 10 feet.....	60
“ Silver, 6 to 8 feet .....	50
“ “ 8 to 10 feet.....	60
Magnolia (Acumata,) 3 to 4 feet.....	50
“ Tripetella, 3 to 4 feet.....	50
Prunus Pissardi, 3 to 4 feet.....	35
Peach, Double flowering, Red and White, 2 to 3 feet.....	25
Umbrella, (China), 3 feet.....	25
“ “ 4 to 5 feet.....	30
White Fringe, (3 for \$1.00,).....	35

**FLOWERING SHRUBS.**

Price large size, 2-year old or more by freight or express, 25c. each; \$2.50 per dozen. Small, by mail, 20c. each; \$2.00 per dozen.

Althea, (Rose of Sharon,) “ Double Rouge,	Snowball,
“ Alba Plena, “ Leopaldie,	Spirea-Billardi,
“ Ardeus Purple, “ Pulcherrima,	“ Van Houtten,
“ Amplissima, Burning Bush,	“ Reevesii,
“ Bouel De Feu, Dentzia Gracillis,	California Privet,
“ Carnea Plena, “ Pride of Rochester,	Hydrangea, P. G.
“ Double Variegated, Mock Orange (Syringa,)	

**HARDY CLIMBERS.**

**SILAX LANCEOLATA, (Jackson vine)** Hardy Smilax, or Green Net Vine. An evergreen, hardy climber, retaining its glossy green foliage from year to year. No vine can compare to this superb climber, beautiful in summer or bleakest winter. Admirable for porch shading or for hiding unsightly fences or outbuildings, or draping columns, posts or arbors, perfectly hardy south of New York. The most beautiful and desirable hardy climber in existence. Price, 2 year plants, by mail or express, 50 cents each, \$4.00 per dozen.

Price of general collection of climbers. By mail, 15 cents each; \$1.50 per dozen. Large 2 year old plants by express. 25 cents each, \$2.00 per dozen.

**Akebia Quinata, (Chocolate Vine.)**

**Ampelopsis, Veitchei, (Boston Ivy.)**

**Ampelopsis, Variegated.**

**Honeysuckle.**—Monthly Fragrant or Dutch, Japan Golden Leaved, Chinese Twining.

**Wistaria.**—Chinese Purple, Chinese White.

**HEDGE PLANTS.**

	Each	Dozen	Per 100	Per 1000
California Privet.....		\$0 60	\$4 00	\$30 00
Box, Broad Leaf.....	\$0 25	2 00	12 00	
Dwarf Box, for borders or edging.....	10	80	4 00	

**EVERGREENS.**

	Each.	Dozen
Arbor Vitae, American, 1 to 1½ feet.....	\$0 25	\$2 00
“ “ “ 2 to 3 feet.....	35	3 00
“ Golden, 2 feet.....	50	5 00
Irish Juniper, 1 to 2 feet.....	30	3 00
“ “ 2 to 3 feet.....	40	3 50
Norway Spruce, 1 to 2 feet.....	25	2 50
“ “ 2 to 3 feet.....	35	3 50
Pine White, 2 to 3 feet.....	40	3 50

**ROSES.**

The roses we send out are strong, healthy, well rooted plants, ready for immediate blooming. Prices, general collection, large size, 35 cents each; \$3.50 per dozen. Small, by mail, 25 cents each, \$2.50 per dozen.

**HYBRID PERPETUAL.**

Baroness Rothschild,	Her Majesty,	Mad. Plantier,
Coquette De Alps,	Harrisons Yellow,	Mabel Morrison,
Dinsmore,	John Hopper,	Mrs. John Laing,
Gen. Jacqueminot,	Mad. Gabriel Luizet,	Paul Neyron.

**HARDY EVERBLOOMING ROSES.**

Anna DeDeisbach,	Gen. Washington,	Southern Beauty.
American Beauty,	La France,	Queen of Queens,
Captain Christy,	Madam Morean,	Silver Queen,
Coquette DeBlancher,	Merville De Lyon,	Vicks Caprice,
Clothilde Soupert,	Red La France,	White La France.
Duchess of Albany,		

**TEA ROSES.**

Bride,	Etvile De Lyon,	Marie Van Houtte,
Catharine Mermet,	Reve De Or,	Papa Gontier,
Celine Forester,	Marechal Neil,	Perle Des Jardins,
Coquette De Lyon,	Marie Guillot,	Sanginnea.

**CLIMBING ROSES.**

Baltimore Belle,	Queen of Prairie;	Crimson Rambler,
Greville, or Seven Sisters,	Tennessee Belle.	

**MOSS ROSES.**

Alice Leroy,	Blanche Robert,	Crested,
Perpetual White,	Salet,	White Bath.

**Do not compare** our roses with the small penny pot grown plants, sent out by florists. Our roses are all grown in open ground, are large, healthy, well rooted, hardy, and ready for immediate blooming.

# A Few Special Collections at Special Prices.

## COLLECTION NO. 1.

1 Yellow Transparent Apple.....	\$0 20
1 Horton Apple.....	50
1 Koonce Early Pear.....	60
1 Lincoln Coreless Pear.....	75
1 Wickson Plum.....	60
1 Sneed Peach.....	40
1 Triumph Peach.....	40
1 Mathews Beauty Peach.....	1 00
1 West Peach.....	1 00
1 Perkins Grape.....	25
1 Early Richmond Cherry.....	30
For \$5.00 by express prepaid.	<hr/> \$5 95

## COLLECTION NO. 2.

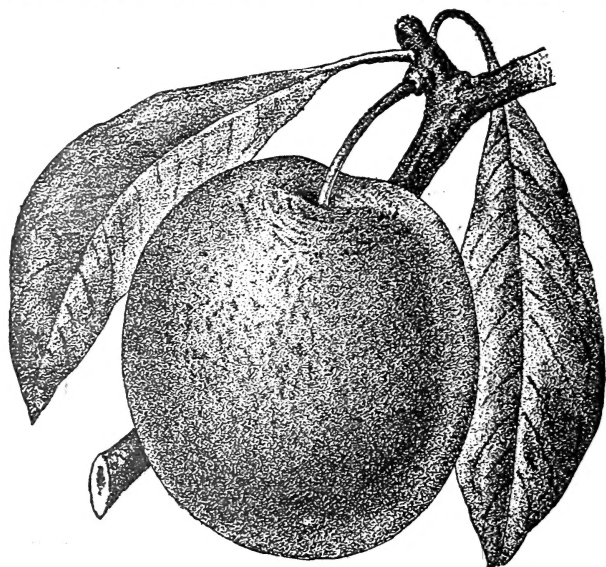
1 Early Harvest Apple.....	\$0 20
1 Horton Apple.....	50
1 Lincoln Coreless Pear.....	75
1 Red June Plum.....	50
1 Greensboro Peach.....	40
1 Mathews Beauty Peach.....	1 00
1 Martha Grape.....	10
By express, purchaser to pay charges, for \$2.50.	<hr/> \$3 45

## COLLECTION NO. 3.

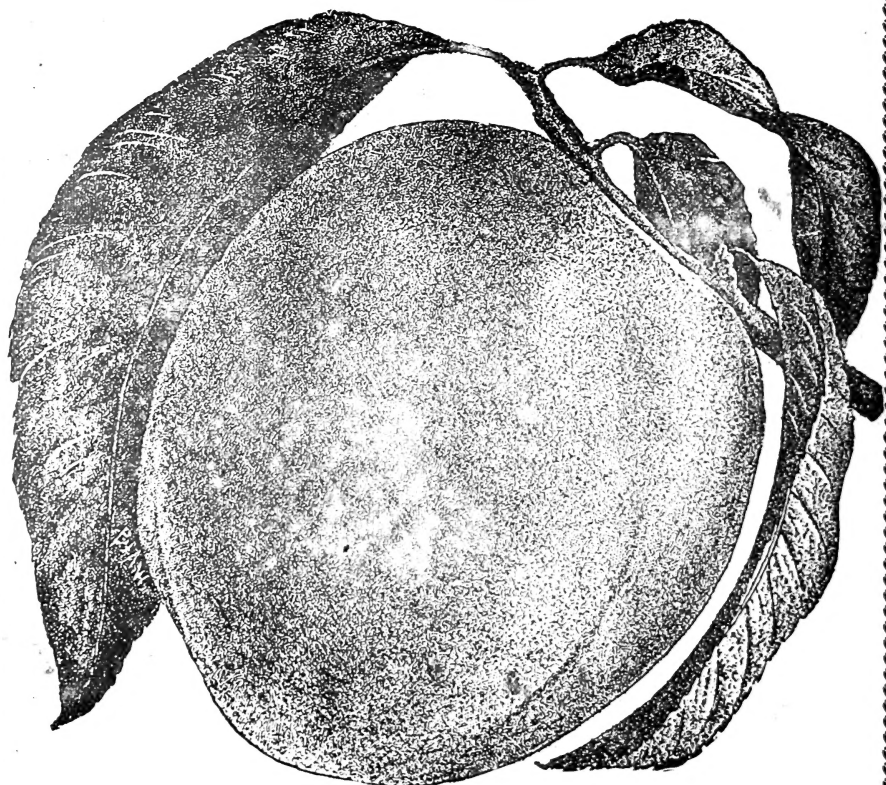
1 dozen Cuthbert Raspberry.....	\$0 75
1 dozen Early Harvest Blackberry.....	75
2 Fays Currant.....	30
2 Cherry Currant.....	30
2 Houghton Gooseberry.....	30
1 dozen Bubach Strawberry.....	30
1 dozen Bederwood.....	30
1 Moores Early Grape.....	15
1 Worden Grape.....	10
1 Catawba Grape.....	10
By express prepaid for \$2.50.	<hr/> \$3 35

## COLLECTION NO. 4.

1 Magnolia Grandiflora, 2 feet.....	\$0 50
1 Norway Spruce.....	35
1 White Fringe.....	35
1 Althea, double.....	25
1 Deutzia Groeitler.....	25
1 Hydrangea P. G.....	25
1 Smilax, Lanceolata.....	50
1 Ampelopsia Veitcheri.....	25
1 American Beauty Rose.....	35
1 Crimson Rambler Rose.....	35
1 Clothilde Soupert Rose.....	35
By express prepaid for \$3.00.	<hr/> \$3 75



Burbank Plum.



Elberta Peach