

## **Historic, Archive Document**

Do not assume content reflects current scientific knowledge, policies, or practices.



6261

1911

**PEONIES**  
FOR FALL PLANTING

— ALSO —

**IRISES  
PHLOXES  
BULBS**



**ELLWANGER & BARRY**

111 MOUNT HOPE NURSERIES

ROCHESTER, NEW YORK

ESTABLISHED 1840

LIBRARY,  
U.S. Department of Agriculture  
Washington, D. C.



## *Important to Intending Purchasers*



WE take pleasure in submitting to our patrons and the public a choice selection of Peonies, Phloxes, Irises, which may be planted with best results in September, although if it be inconvenient to plant so early, the planting may be deferred until October without detriment.

So much interest has been manifested in these plants the last few years, that we have greatly enlarged our collections by securing at home and abroad the choicest varieties, and we can recommend them, assuring our patrons that they will give satisfaction.

This season we have such a large stock that we are able to offer many varieties at greatly reduced prices and at the same time furnish first-class plants.

In addition to our general list of Roses, we offer many new kinds which are described in this booklet. The New Climbing Roses are particularly valuable.

We are also able this season to reduce the price of many varieties of Roses, particularly of the newer kinds, as we now have a good stock of strong field-grown plants.

In both the Fruit and Ornamental, as well as in the Rose Departments, our Nurseries are kept fully up to the times. We procure as soon as introduced every novelty that promises to be worthy of dissemination and carefully test it in our trial grounds, sending out only such introductions as prove meritorious.

Intending purchasers are requested to send for our General Catalogue of Fruit and Ornamental Trees, Flowering Shrubs, Hardy Roses, Perennials (104 pp.), beautifully illustrated and containing planting directions.

Grateful for the liberal patronage which we have enjoyed for upwards of seventy years, we solicit a continuance of the same.

ELLWANGER & BARRY,

August, 1911.

Rochester, N. Y.

## HERBACEOUS PEONIES

**T**HE PEONY is a noble flower, almost rivaling the Rose in brilliancy of color and perfection of bloom, and the Rhododendron in stately growth. The first point in its favor is hardiness. It may be truly said to be "hardy as an oak." In the severest climate the plants require no other protection than that which they afford themselves. Then their vigorous habit and healthy growth, freedom from all diseases and insects are important arguments in favor of their cultivation. Each succeeding year adds to their size and beauty. The foliage is rich and glossy and of a beautiful deep green color, thus rendering the plants very ornamental even when out of flower. The newer varieties produce very large, handsome, regularly formed cupped blooms, resembling large roses. No other flower is so well adapted for large, showy bouquets. The Peony may be planted either singly on the lawn or in borders. Where the lawn is extensive a large bed makes a grand show, surpassing a bed of Rhododendrons. It is really a flower for the million. It flowers early in June. Our collection has been made with great care and includes the best and most distinct varieties.

Varieties priced per each only, are net and can be furnished in limited quantities only. Not less than six of a variety will be sold at dozen rate.

*Adolph Rousseau.* Very large; deep brilliant purple, extra. \$1.50.

*Albert Crousse.* Very large and full, flesh pink. \$1.00.

*Alexandriana.* Light pink; fragrant; early. 50c.

*Amazone.* Creamy white, yellowish center. \$1.50.

*Ambroise Verschaffelt.* Purplish crimson; very full, fragrant. 25c each; \$2.50 doz.

*Arthemise.* Rose of several tints; good form. 30c each; \$3.00 doz.

*Atrosanguinea.* Purplish red, tinted with violet. 50c each; \$5.00 doz.

*Auguste Lemonnier.* Velvety red; large, full and beautiful. 30c each; \$3.00 doz.

*Augustin D'Hour.* Very full, scarlet purple. \$1.00.

*Baroness Schroeder.* Flesh, changing to white; very full. Very rare. \$2.00.

*Beaute Francais.* Light flesh pink, fragrant; early. \$1.00.

*Bernard Palissy.* Flesh white; well formed, fragrant. 75c each; \$6.00 doz.

*Charles Binder.* Bright deep pink; fragrant. 25c each; \$2.50 doz.

*Charles Verdier.* Light lilac rose; very large, perfect form; late. 25c each; \$2.50 doz.

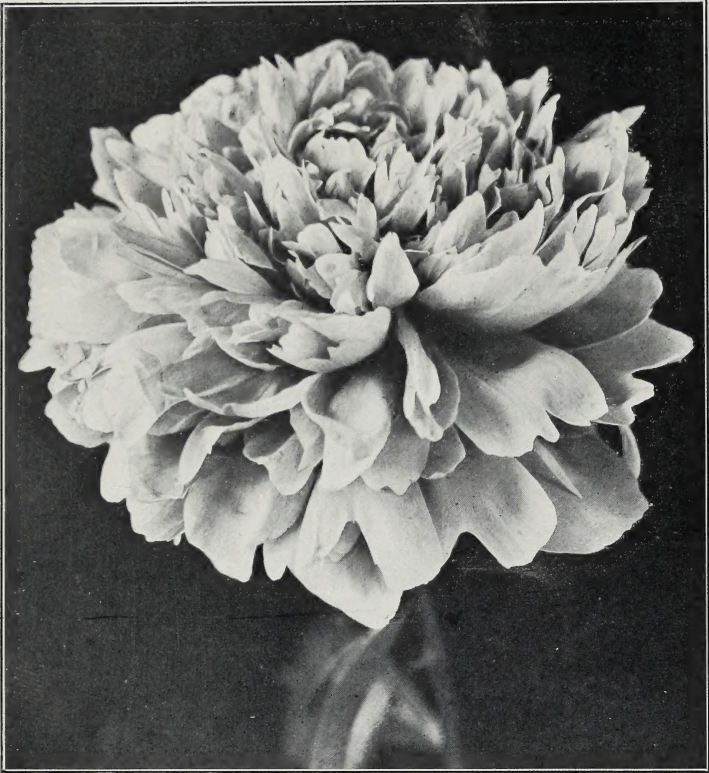
*Charlemagne.* Flesh white, center tinted lilac; fragrant; late. 50c each; \$5.00 doz.

*Claire Dubois.* Light rosy pink; late; extra. \$1.50.

*Constant Devred.* Soft clear purple, imbricated like a rose; fragrant; superb. 50c each; \$5.00 doz.

*Couronne d'Or.* Very double, yellowish white; superb; very late. \$1.00.

*Daniel d'Albert.* Deep rose, shaded purple; large globular flower. 50c each; \$5.00 doz.



**HERBACEOUS PEONY**

- De Candolle.* Currant red, tinged amaranth; extra. 50c.  
*Delacheii.* Dark purplish crimson; fine. 25c each; \$2.50 doz.  
*Delicatissima.* Delicate fine rose; very large; early. 50c each;  
\$5.00 doz.  
*Denis Helye.* Dazzling red. \$1.00.  
*Dr. Bretonneau.* Rosy pink; very large and fine; fragrant. 50c  
each; \$5.00 doz.  
*Duchesse de Nemours.* Sulphur white. \$1.00.  
*Duke of Wellington.* Sulphur white; very fragrant. \$1.00.  
*Dorchester.* (*Richardson.*) Cream, tinged pink; fragrant. \$1.00.  
*Edulis, or fragrans.* Violet rose; full and sweet. 25c each;  
\$2.50 doz.  
*Eugene Verdier.* Salmon pink, nearly white; fine form; large;  
fragrant; late; extra. \$2.00.  
*Felix Crousse.* Brilliant red; large ball-shaped flower. \$1.00.  
*Festiva.* Pure white, with a few marks of carmine in the center. 50c.

- Festiva maxima*. Resembles the preceding, but flowers are much larger, and in clusters; fragrant. The finest early white Peony. 50c each; \$5.00 doz.
- Francois Ortegat*. Purplish crimson; fine. \$1.00.
- Fulgida*. Crimson; profuse flowering; extra. 25c each; \$2.50 doz.
- Gen. Bertrand*. Rosy violet, center salmon; very fine. 50c.
- Globosa grandiflora*. White, large, globular; sweet. 50c each; \$5.00 per doz.
- Grandiflora carnea plena*. Outside petals delicate blush; center fringed yellowish; early. 50c each; \$5.00 doz.
- Golden Harvest*. Very large, blush; creamy white center, carmine tipped, free bloomer. \$1.00.
- Gigantea*. Delicate rose pink, fragrant. \$1.00.
- Henri Demay*. Violet purple; large and full; fragrant; late. 50c each; \$5.00 doz.
- Henri Laurent*. Rosy pink; large and fine; fragrant; late. 50c.
- Humei*. Purplish rose; very large and showy; late. 25c each; \$2.50 doz.
- Insignis*. Carmine rose; fine form; fragrant; good; 50c each; \$5.00 doz.
- Jeanne d'Arc*. Outside petals rose colored, inside straw colored, with crimson spots; extra. 50c each; \$5.00 doz.
- Jussieu*. Deep crimson; semi-double. 25c each; \$2.50 doz.
- Lady Leonora Bramwell*. Silvery rose. \$1.00.
- La Tulipe*. White, pink center, striped carmine. \$1.00.
- Latipetela*. Outside petals flesh color; center yellowish white. 50c each; \$5.00 per doz.
- Livingstone*. Very double, pale pink; free flowering and late; extra. \$1.00.
- Louis Van Houtte*. Dark crimson; very compact. 50c each; \$5.00 doz.
- Louis Van Houtte*. (*Calot*.) Bright purple cherry; large, globular and full; fragrant; superb. 50c each; \$5.00 doz.
- Madame Bucquet*. Very dark maroon purple. \$1.00.
- Mme. Crousse*. Open flower, pure white center, occasionally marked with carmine; fine. 50c each; \$5.00 doz.
- Mme. de Galhau*. Large, flesh pink, shaded salmon. \$1.00.
- Mme. de Verneville*. Compact, beautiful blooms, sulphur white, with some carmine; fragrant; very fine. 75c.
- Mme. Ducl*. Very large; salmon rose; beautiful. \$1.00.
- Mme. Emile Galle*. Clear shell pink. \$1.00.
- Mme. Emile Lemoine*. Very full, imbricated, pinkish white; extra fine. \$2.00.
- Mme. Geissler*. Silvery rose; very large and full; one of the best. \$1.00 each; \$9.00 doz.
- Mme. Lebon*. Very large; bright cherry, some petals white; fragrant; good. 50c each; \$5.00 doz.
- Mme. Victor Verdier*. Crimson rose, with light violet; very large and full; very fine; late. 50c each; \$5.00 doz.
- Mlle. Leonie Calot*. Soft salmon flesh, some petals tipped carmine; very fragrant; late. \$1.00.





HERBACEOUS PEONIES

- Mlle. R. Dessert.* Lilac, changing to silvery white. \$1.00.
- Marechal de MacMahon.* Rich violet red; fine. \$1.00.
- Marguerite Gerard.* Very large; flesh pink. \$1.00.
- Marie Deroux.* Rose, shaded pink. \$1.00.
- Marie Lemoine.* (*Calot.*) Large; sulphur white; massive flower; strong stems; one of the finest; very late. \$1.00.
- Modeste Guerin.* Deep rose; bright, showy; very large, distinct and fine shaped; fragrant; one of the best. 50c each; \$5.00 doz.
- Monsieur Boucharlat.* Bright rosy lilac; large and full flower, imbricated like a rose; very late; fragrant; superb. 50c each; \$5.00 doz.
- Monsieur Dupont.* Sulphur white, carmine at center. \$1.00.
- Monsieur J. Elie.* Large, globular, glossy pink; extra. \$1.00.
- Monsieur Martin Cahuzac.* Black maroon; rare. \$3.00.
- Nec Plus Ultra.* Bright rose; very fragrant. 50c.
- Norfolk.* (*Richardson.*) Rose pink, changing to white. \$1.00.
- Papaveriflora.* White, lightly tinged with yellow. 50c each; \$5.00 doz.
- Papillionacea.* Outside petals rose, center yellow. 50c each; \$5.00 doz.
- Perfection.* (*Richardson.*) Pink; fragrant; late. \$1.50.
- Pottsi Alba.* Pale flesh pink, nearly white. \$1.00.
- Purpurea superba.* Very large purplish-crimson flower; tall and showy; late. 50c each; \$5.00 doz.
- President Wilder.* (*E. & B.*) Large and double; color delicate blush, with an occasional red spot; dwarf; fine. 50c.
- Rubra superba.* (*Richardson.*) Dark crimson; late; extra. \$1.00.
- Rubra triumphans.* Dark purplish crimson; petals large; very sweet; semi-double; fine; early. 25c each; \$2.50 doz.
- Solfaterre.* Sulphur yellow; globular; one of the best. 50c each; \$5.00 doz.
- Souvenir de l'Exposition Universelle.* Clear rose color; fragrant. \$1.00.
- Stanley.* Flesh pink; large, full, imbricated; fragrant. 50c each; \$5.00 doz.
- Therese.* Flesh, shaded pink; extra. \$2.00.
- Triomphe de l'Exposition de Lille.* Delicate rose; dwarf; fine. 75c each; \$6.00 doz.
- Triomphe du Nord.* Violet rose; 25c each; \$2.50 doz.
- Vicomtesse Belleval.* Blush; fragrant. 50c each; \$5.00 doz.
- Ville de Nancy.* Deep brilliant crimson; late; fine. 50c each; \$5.00 doz.
- Violacea.* Deep violet purple; very large and full; beautiful. 50c each; \$5.00 doz.
- Zoe Calot.* Delicate rose. \$1.00.

For convenience in selecting, we have grouped the colors as follows:

**PINK and LIGHT PINK**

<i>Albert Crousse</i>	<i>Mme. Emile Lemoine</i>
<i>Alexandriana</i>	<i>Mlle. Leonie Calot</i>
<i>Arthemise</i>	<i>Mlle. R. Dessert</i>
<i>Beaute Francais</i>	<i>Marguerite Gerard</i>
<i>Charlemagne</i>	<i>Marie Deroux</i>
<i>Claire Dubois</i>	<i>Marie Lemoine</i>
<i>Delicatissima</i>	<i>Mons. Jules Elie</i>
<i>Dorchester</i>	<i>Nec Plus Ultra</i>
<i>Eugene Verdier</i>	<i>Norfolk</i>
<i>Grandiflora carnea plena</i>	<i>Perfection</i>
<i>Golden Harvest</i>	<i>President Wilder</i>
<i>Gigantea</i>	<i>Stanley</i>
<i>Jeanne d'Arc</i>	<i>Therese</i>
<i>Livingstone</i>	<i>Triomphe de l'Exposition de</i>
<i>Mme. de Galhau</i>	<i>Lille</i>
<i>Mme. Ducel</i>	<i>Vicomtesse Belleval</i>
<i>Mme. Emile Galle</i>	<i>Zoe Calot</i>

**DEEP PINK and ROSE**

<i>Charles Binder</i>	<i>Louis Van Houtte (Calot)</i>
<i>Charles Verdier</i>	<i>Mme. Geissler</i>
<i>Constant Devred</i>	<i>Mme. Lebon</i>
<i>Daniel d'Albert</i>	<i>Mme. Victor Verdier</i>
<i>Dr. Bretonneau</i>	<i>Modeste Guerin</i>
<i>Edulis</i>	<i>Mon. Boucharlat</i>
<i>Gen. Bertrand</i>	<i>Souv. de l'Exposition Univer-</i>
<i>Henri Demay</i>	<i>selle</i>
<i>Henri Laurent</i>	<i>Triomphe du Nord</i>
<i>Humei</i>	<i>Viola</i>
<i>Insignis</i>	

**RED**

<i>Adolph Rousseau</i>	<i>Fulgida</i>
<i>Ambroise Verschaffelt</i>	<i>Jussieu</i>
<i>Atrosanguinea</i>	<i>Louis Van Houtte</i>
<i>Auguste Lemonnier</i>	<i>Mme. Bucquet</i>
<i>Augustin D'Hour</i>	<i>Marechal MacMahon</i>
<i>De Candolle</i>	<i>Mon. Martin Cahuzac</i>
<i>Delacheii</i>	<i>Purpurea superba</i>
<i>Denis Helye</i>	<i>Rubra superba</i>
<i>Felix Crousse</i>	<i>Rubra triumphans</i>
<i>Francois Ortegat</i>	<i>Ville de Nancy</i>

**WHITE**

<i>Amazona</i>	<i>La Tulipe</i>
<i>Baroness Schroeder</i>	<i>Latipetela</i>
<i>Bernard Palissy</i>	<i>Mme. Crousse</i>
<i>Couronne d'Or</i>	<i>Mme. de Verneville</i>
<i>Duchesse de Nemours</i>	<i>Mon. Dupont</i>
<i>Duke of Wellington</i>	<i>Papaveriflora</i>
<i>Festiva</i>	<i>Papillionacea</i>
<i>Festiva Maxima</i>	<i>Pottsi Alba</i>
<i>Globosa Grandiflora</i>	<i>Solfaterre</i>

**OFFICINALIS VARIETIES (Earliest to Flower)**

- Rubra.** Double crimson; of large size; fragrant, the old-fashioned early Red Peony. One of the best. 30c each; \$3.00 doz.
- Tenuifolia flore pleno.** Double, fennel-leaved; flowers of a bright scarlet crimson, and quite double and globular; rare and fine. 50c.
- Rosea.** Rose colored. 50c.

**SINGLE HERBACEOUS PEONIES**

We have a fine collection, embracing the choicest varieties to be obtained in this country and Europe. Now that single flowers are so popular these will be found invaluable; they cover a wide range of color, and blossom early.

**Japan Single White.** A magnificent variety from Japan with large, single white flowers, yellow stamens. \$1.00.

**Single Assorted.** Unique and beautiful, fine assortment of colors. 50c.

**Special offer of Chinese Peonies for Fall, 1911**

12 plants, our selection, 12 varieties	- - -	\$4.00
25 " " " " " "	- - -	7.50
50 " " " " " "	- - -	12.50
100 " " " 25 varieties	-	20.00

The above will be selected, distinct varieties and good plants.

## HARDY PHLOXES

**A**RE of vigorous habit, easy culture, and produce in great profusion during a long season, flowers of fine form and substance and of bright and varied colors. As regards their culture, it may be briefly stated that they succeed in any good garden soil, but they are greatly improved by being liberally manured, and an occasional supply of liquid manure during the growing season will greatly increase the size of their trusses. When in flower they should be watered freely every evening. The Phlox usually flowers in July and August, and in order to render it autumnal flowering, it is necessary to pinch the shoots about the first of June and again in July. The plants will then flower in September. For early flowers some of the plants may be left unpinched. When two years old the finest trusses are produced. The third year the plants flower tolerably well; but they will not keep thrifty and healthy after that. The old plants should then be lifted in the fall, divided and transplanted. But the better plan is to keep up a succession of young plants from cuttings by securing a fresh collection every year. We annually introduce all new and desirable varieties of home and foreign production. The best time to plant them is in the autumn. Our plants are large and fine.

*Price, 15 cents each; \$1.50 per dozen.*

Not less than six of a variety will be sold at dozen rates.

- Amazone.* Large flower; pure white; fine.
- Anatole Le Braz.* Large panicle, carmine, white center.
- Belvidere.* Salmon pink; a choice sort.
- Caran d'Ache.* Bright carmine rose; distinct.
- Coquelicot.* Large, fiery red; distinct.
- Eiffel Tower.* A beautiful pink, tall, superb.
- Fernand Cortez.* Large, coppery red, extra.
- Frau Bosch Bader.* Alabaster white, with large rosy red eye.
- Henri Murger.* Large; pure white, carmine center; extra.
- La Vague.* Large; silvery rose.
- Le Siecle.* Dwarf; large flower, compact panicle; salmon rose; fine.
- Le Vengeur.* Large flower; bright carmine amaranth; fine.
- Lothair.* Rich salmon color, crimson eye.
- Louis Blanc.* Flowers large, round, violet with white eye, fine.
- Madagascar.* Large flowers, mauve, with white star at center.
- Mariette.* Violet purple, beautiful.
- Pantheon.* Flowers large, beautiful; pink or salmon rose; fine.
- Parachute.* Purple; blooms late.
- Pharaon.* Light purple, white star-shaped center; distinct.
- Queen.* Pure white; fine.
- Richard Wallace.* White with violet center; a good sort.
- Rubis.* Large panicles, ruby color, extra.
- William Robinson.* Pale salmon with rose center; fine.

*The above collection, 1 each for \$3.00.*



PHLOX

**A COLLECTION OF THE BEST OF THE  
NEWER PHLOXES**

*Price, 25 cents each. The collection, 1 each, for \$9.00.*

*Aglæ Adanson.* Large, pure white, red eye.

*Albion.* Pure white, pale red eye.

*B. Comte.* Purple, one of the best dark flowered varieties.

*Bridesmaid.* White, dark red eye.

- Czarina.* Pure white, large spike.  
*Clara Benz.* Brilliant, carmine rose, lilac eye.  
*Colibri.* Late blooming, white, crimson eye.  
*Dawn.* Soft pink, red eye.  
*Eclairer.* Bright rose carmine with light halo.  
*Edmond Rostand.* Violet rose, large white center.  
*Etna.* Crimson, cherry-red eye.  
*Eugene Danzanvillier.* Lilac, white center.  
*F. G. Von Lassburg.* Pure white, very large.  
*General Chanzy.* Bright scarlet, tinted salmon.  
*General Giovaninelli.* Bright rose, red eye; dwarf.  
*General Von Heutzs.* Brilliant salmon red, white center.  
*George A. Strohleln.* Scarlet-orange, bright crimson eye.  
*Helene Vacaresco.* White; dwarf.  
*H. O. Wijers.* Pure white, crimson carmine eye.  
*Iris.* Deep purplish magenta.  
*Jeanne d'Arc.* Pure white, late flowering.  
*Jules Cambon.* Reddish purple, white center.  
*Le Prophete.* Violet rose.  
*Mme. Paul Dutrie.* Soft pink, suffused with white; large.  
*Mrs. Jenkins.* Pure white, enormous flowers; early.  
*Obergartner Wittig.* Bright magenta, crimson carmine eye.  
*Pecheur d'Islande.* Crimson red, carmine red eye.  
*Professor Schliemann.* Rose, with carmine eye.  
*Professor Virchow.* Bright carmine.  
*Pyramidalis.* Pure white, large panicles.  
*R. P. Struthers.* Bright rosy red, crimson eye.  
*Selma.* Very large pink flowers, cherry red eye.  
*Siebold.* Orange-scarlet, large spike.  
*Tapis Blanc.* Pure white, very dwarf.  
*Vesuvius.* Pure red, bright purple eye.  
*Von Goethe.* Rose color, carmine red eye.  
*Von Hochberg.* Dark crimson, large flowers; fine.

*EARLY FLOWERING PHLOXES (suffruticosa)*

These flower early in July.

**25 cents each.**

- Circle.* White, deep salmon center.  
*Dr. Hornby.* White, shaded light lilac.  
*Indian Chief.* Deep magenta, crimson eye.  
*Lady Musgrove.* White, striped light magenta.  
*Miss Lingard.* White, light lilac eye, very free flowering.  
*Walter Grey.* Pink.



GERMAN IRIS

## SELECT GERMAN IRIS

*15 cents each, \$1.50 per doz., except noted.*

Not less than six of a variety will be sold at the dozen rate.

*Albert Victor.* Deep blue lavender, fragrant, distinct. 25c.

*Atropurpurea.* Purple. One of the best.

*Augustina.* Deep yellow, marked with maroon.



- Black Prince.* Very dark purple. 25c.  
*Darius.* Lemon yellow and purple. 25c.  
*Fairy.* Ivory white, pale violet veins, fragrant. 25c.  
*Flavescens.* Soft yellow, fragrant, early. 25c.  
*Florentina.* White, tinged with blue and yellow, fragrant; one of the earliest.  
*Gertrude.* Violet blue, fragrant, fine. 25c.  
*Gracchus.* Lemon yellow and purple. 25c.  
*Harlequin Milanais.* White and violet blue.  
*Hector.* Light bronze, stained with purple. Fine.  
*Her Majesty.* Lilac pink. 25c.  
*King of Iris.* Yellow and brown. 25c.  
*L'Avenir.* Lavender, a beautiful shade. 25c.  
*Liabaud.* Yellow and maroon, fine.  
*Mme. Chereau.* Clear white, handsomely feathered and bordered with blue; undulated edge. Tall grower.  
*Madame Pacquette.* Bright rosy claret. 25c.  
*Mme. Patti.* Yellow and purple, extra fine. 25c.  
*Maori King.* Rich golden yellow. 25c.  
*Mrs. H. Darwin.* Pure white. 25c.  
*Mrs. Neubronner.* Deep golden yellow; very fine. 25c.  
*Purple King.* Very dark purple. 25c.  
*Queen of May.* Lilac pink. 25c.  
*Reticulata Superba.* Center lavender, outer purple; fine.  
*Roseberry.* Plum purple. 25c.  
*Sampson.* Rich golden yellow; crimson-maroon, veined with white, fine.  
*Speciosa.* Lavender purple, very fragrant. 25c.  
*Silver King.* Flowers silvery white; distinct and fine. Early.  
*Tamerlan.* Very large flower, violet, fragrant. 25c.  
*Victorine.* White mottled blue. 25c.

### JAPAN IRIS

- Laevigata.* (Kämpferi.) Flowers differ from the German Iris in being broad and flat. They exhibit a wonderful variety of colors and shades and appear later than the others. They rank among the most desirable of hardy plants; succeed best in a moist soil. July. 25c.

### OTHER SPECIES AND VARIETIES OF IRIS

- Pallida dalmatica.* Light blue; flowers large and beautiful, tall and fragrant. One of the best. 25c.  
*Pumila.* Bluish-purple; first to flower; 3 to 6 inches. April and May. 25c.  
*Siberica.* Deep blue flowers in clusters on long stems. 25c.

## HARDY ROSES

*Plant Hardy Roses in October and have an abundance of Flowers the following June*

**I**N this and similar climates the best time to plant all *Hardy Roses* is in the month of October, say after the 10th, when the plants will be ripened and in first-class condition to ship with safety.

We shall have for the coming season an unusually large supply, embracing all the choice older varieties and the newer sorts which have been tested the past season and can now be offered with confidence. Conspicuous among the later introductions are the—

### REMARKABLE NEW ROSES

#### NEW GOLD MEDAL ROSE

*Orleans.* One of the most valuable of the Dwarf Polyantha section. The plant is vigorous, very free flowering, and the trusses are very large; color, geranium red suffused with rose. It flowers all summer. It is said to be the best Polyantha ever raised. We regard it as a most important acquisition for bedding. 50c.

“The Orleans Rose is, without a doubt, the best of the Dwarf Polyantha varieties. The pyramidal trusses of bloom are of immense size, making a highly decorative pot plant.”—*London Garden.*

#### NEW BABY RAMBLERS

*Joan of Arc.* A new and distinct variety with large white flowers; very promising. 50c.

*Vaughan's White Baby Rambler.* Flowers are borne in clusters of 50 to 75 individual flowers; foliage glossy and finely cut; vigorous, hardy and free blooming. A fine bedding variety. 50c.

*Phyllis.* Dwarf Bedding Polyantha. One of the best Polyanthas for bedding; a vigorous grower and good bloomer till frost sets in; flowers bright carmine pink, shading to white in the center. 50c.

*Jessie.* Dwarf Bedding Polyantha. Another charming novelty. Blooms constantly until killed by frost. Flowers disposed in huge clusters and of a bright cherry crimson color, which does not fade or develop the objectionable purple tints. It is by far the best crimson variety yet placed upon the market and an ideal rose for pot culture, massing or bedding. 50c.

*Mrs. Taft.* An improved Crimson “Baby Rambler.” Color rosy crimson; a good shade. 50c.

*Mrs. W. H. Cutbush.* Flowers in large trusses and of a beautiful pink color. Habit of Baby Rambler; a charming perpetual flowering Polyantha. 50c.

#### NEW EVERBLOOMING CRIMSON ROSE

*President Taft.* Flowers double, well formed, bright red; plant vigorous and free blooming. A most promising bedding rose. It is a cross between Gruss an Teplitz and Cramoisie Superieur, and considering its parentage much may be expected from it. 75c.



THE VIOLET BLUE ROSE

**THE VIOLET BLUE RAMBLER**

*Veilchenblau (Violet Blue)*. The new rambler, "Veilchenblau" (Violet Blue), which is hailed by the German rose growers as the forerunner of a genuinely cornflower blue rose, is a seedling of Crimson Rambler. The blossoms, massed in large umbels, are semi-double, of medium size. The color on first unfolding, is either reddish pink or purplish pink, then turns amethyst, and finally steel blue as the flower fades. The general color impression is that of the March violet. The yellow stamens appear in sharp contrast to the blue petals. The plant is vigorous in growth, with shining green foliage and few but sharp thorns. So far it has not suffered from mildew, and is considered one of the most hardy ramblers. There is now no question concerning the merit of this unique novelty. We had it in bloom on our grounds this summer and the great masses of violet blue flowers produced a wonderful effect. 50c.

### THE LYON ROSE

Interesting cross of the Yellow Rose with a Hybrid Tea, constituting a new race of Roses.

**The Lyon Rose.** Is the result of a cross between Madame Melanie Soupert, Hybrid Tea, and an unnamed variety, the direct offspring of Soleil d'Or. The flowers are of large size, moderately full, globular in form, of a superb shrimp pink color and fragrant; the buds are large, long, and coral red. This is unquestionably a very promising new rose, novel and entirely distinct. \$1.00.

### EVERBLOOMING CRIMSON RAMBLERS

**Flower of Fairfield.** For many years it has been the aim of every rose grower to raise a Rambler that would be ever-blooming, and now we are able to offer such a rose. This new variety is a sport from the famous and beautiful Crimson Rambler, similar in color, but more brilliant and more lasting than the old favorite. It possesses a further advantage over any other Rambler in the fact that it flowers profusely on the young wood in its first year. The new "Flower of Fairfield" is of vigorous growth, and when in bloom supersedes anything else by the wonderful display of its brilliant crimson clusters of blossoms. It starts blooming in the early spring, and continues to flower till late in autumn, thus it is rightly termed "Perpetual Blooming." This new climber is not only most effective for covering walls or trellises, arches, etc., but most attractive for table decorations and other cut purposes. 50c.

**Miss G. Mesman (Everblooming Climbing Baby Rambler).** Bears large, compact panicles of bright carmine flowers and blooms continually from June until frost. As strong a grower as Crimson Rambler but not as thorny and free from mildew. \$1.00.

### TRIER, EVERBLOOMING RAMBLER

**Trier.** Flowers pale salmon pink with yellow anthers; flowers small, almost single, produced in large clusters. The first of a new race of roses. Constantly in bloom and as good in September and October as in the height of the season. Moreover, its dark green leathery foliage and red wood are mildew proof; makes a fine bush requiring no pruning, and will soon be in everybody's garden.—*J. H. Pemberton in the National (English) Rose Society's Annual of 1908.* 50c.

**NEW HYBRID WICHURAIANA ROSES**  
**(CLIMBERS)**

The following are valuable additions to this rapidly growing and popular class of Climbing Roses:

- Bonnie Belle.** Single, pink, in large clusters. \$1.00.  
**Carissima.** Very double, delicate flesh color. \$1.00.  
**Cinderella.** Double deep pink, last of the type to flower. \$1.50.  
**Delight.** Single carmine flowers. Fine. 50c.  
**White Dorothy Perkins.** As its name indicates, is a white flowering form of the well known and much prized Dorothy Perkins. This we believe will prove to be the best white Rambler. \$1.00.  
**Evangeline.** Single white flowers in clusters, tips of petals pink. \$1.00.  
**Excelsa.** Very double crimson maroon, flowers in large trusses. \$1.50.  
**Milky Way.** An improved form of the common Wichuraiana. Fine. \$1.00.  
**Minnehaha.** Beautiful bright pink, very double, like rosettes. 50c.  
**Newport Fairy.** Single pink. 50c.  
**Paradise.** Single pink and white. One of the best. 50c.  
**Ruby Queen.** Brilliant crimson or ruby red. \$1.00.  
**Snowdrift.** Double pure white. Extra. \$1.00.  
**Coquina.** A new Rose, having leathery almost evergreen, foliage; flowers shell pink, base of petals creamy white. \$1.00.  
**Babette.** Flowers double, dark crimson, tinged with white. \$1.00.  
**Dorothy Dennison.** A sport of Dorothy Perkins; delicate shade of shell pink. \$1.00.  
**La Fiamma.** This new Rose, as its name denotes, is flame-colored; flowers single, large and borne in clusters. It is a lighter shade than Hiawatha. Very valuable and one of the best. 50c.

**NEW RAMBLERS OF EXTRAORDINARY**  
**MERIT**

- Mrs. Flight.** Beautiful pink, semi-double. A strong grower and a very free bloomer. One of the best. 50c.  
**Tausendschon, or Thousand Beauties.** Cannot be too highly recommended on account of its free flowering qualities and beautiful white and delicate pink blossoms. It has already been recognized by the leading florists, and is grown in large quantities now for winter forcing, and for garden decoration it cannot be surpassed. 50c.



AMERICAN PILLAR ROSE

## AMERICAN PILLAR

*BEST NEW CLIMBING ROSE*

Flowers large, single,  $2\frac{1}{2}$  to 3 inches in diameter, of a lovely, rich shade of pink with large white centers and produced in immense clusters, being very showy and attractive. The growth is remarkably strong, vigorous and rapid, and foliage is round, dark green, tough, shiny and insect proof. In autumn the clusters of seed heps are an additional attraction. Unquestionably one of the finest single climbing roses known, and it will be prized for its hardiness, strong, rapid growth, healthy foliage and wealth of beautiful flowers. 50c.

## SPECIAL OFFER OF HARDY ROSES FOR FALL, 1911

In order to stimulate fall planting of Hardy Roses, which we are convinced by actual experience is the best season to plant, we make the following low priced offer:

12	plants, our selection, for	-	-	\$ 3.00
25	" " " "	-	-	6.00
50	" " " "	-	-	11.00
100	" " " "	-	-	20.00

The assortments offered at these low prices will be made up of distinct varieties and first-class plants. *Prices for purchasers' selection will be same as heretofore, viz., 50 cents each, \$3.50 per 10, \$25.00 per 100.*

---

## EARLY SPRING FLOWERING BULBS

We can offer our patrons this season these charming and popular early spring flowers at very reasonable prices.

### TULIPS

Single Red	. . . . .	\$1.25 per 100
Single Yellow	. . . . .	1.25 per 100
Single White	. . . . .	1.25 per 100

We can also furnish *all colors mixed*, as follows:

Single flowered	. . . . .	\$ .85 per 100
Double flowered	. . . . .	1.00 per 100

### HYACINTHS

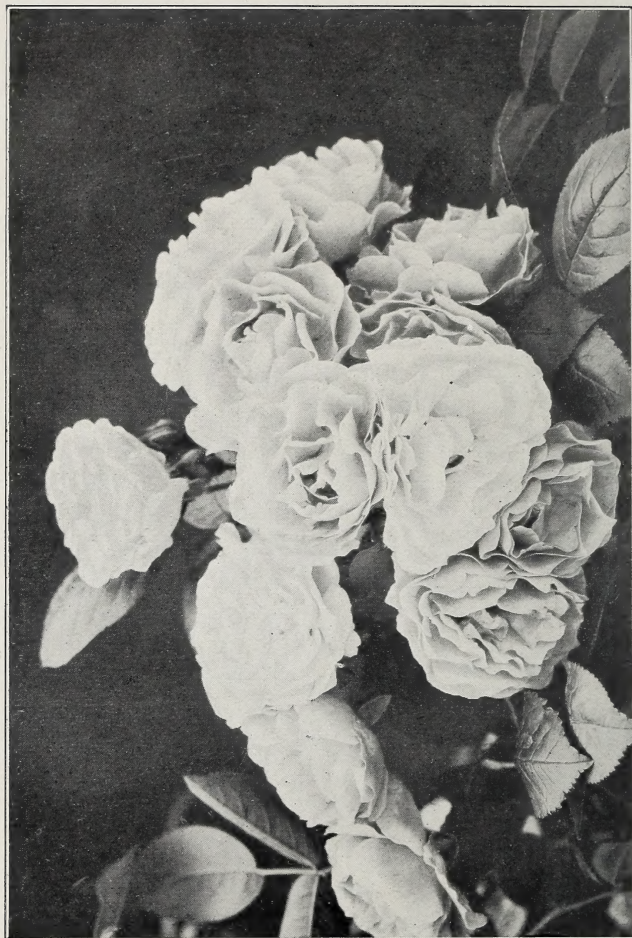
Single unnamed, colors separate	. . . . .	\$ .40 per 10, \$3.00 per 100
Double unnamed, colors separate	. . . . .	.50 per 10, 3.25 per 100

### CROCUS

Blue	. . . . .	\$ .50 per 100
White	. . . . .	.50 per 100
Yellow	. . . . .	.50 per 100

### DAFFODILS

Mixed trumpet flowered	. . . . .	\$ .25 per 10, \$1.25 per 100
------------------------	-----------	-------------------------------



REMARKABLE NEW CLIMBING ROSE—TAUSENDSCHON  
A Thousand Beauties





THE GENESSEE PRESS  
OF THE POST EXPRESS  
PRINTING COMPANY  
ROCHESTER, N. Y.