

Historic, Archive Document

Do not assume content reflects current scientific knowledge, policies, or practices.

Wholesale Price-List

BULBS

and other Fall Stock



GOLD MEDAL

Awarded us for *Nephrolepis Piersoni*
The only Gold Medal ever awarded by the Society of American Florists

Fall 1911



GOLD MEDAL

Louisiana Purchase Exposition, St. Louis, 1904
Awarded us for *Nephrolepis Piersoni elegantissima*

TERMS

To customers of approved credit 60 days' credit will be given, unless otherwise agreed upon, or 3 per cent. discount for cash within 15 days from date of invoice, or 5 per cent. discount where cash is remitted with order.

All accounts remaining unpaid when due are subject to sight draft without further notice. New customers desirous of opening accounts with us must give satisfactory references as to their responsibility. Prices subject to change without notice.



GOLD MEDAL

Highest Award, Pan-American Exposition, 1901
Awarded us for **LARGEST** and **BEST** COLLECTION OF BULBS

F. R. Pierson Co.

Tarrytown-on-Hudson, N. Y.

Cable Address: Pierson, Tarrytown (A B C Code used)

Long Distance Telephone, Tarrytown, 48



View of One of Our Fields of Liliun Harrisii in Bermuda

Liliun Harrisii (The Bermuda Easter Lily)

We offer a selected stock of the original true Harrisii for early forcing. These bulbs have been grown from the original pure Harrisii, and will be found to be splendid stock for early forcing, for which purpose Harrisii is so valuable. We have had the stock inspected, and are assured that it is almost absolutely pure and almost entirely free from disease. This is not stock picked up indiscriminately from different sources, but is grown from one stock, and will be found very superior to the ordinary Harrisii usually offered, both in regard to freedom from disease, and purity, and is not the late type now so often furnished.

For Christmas flowering, bulbs should be potted as early in August as they can be procured. For this purpose our 6 to 7-inch size is preferable, as this size can be brought into bloom much earlier than the larger bulbs. When forced for Christmas, they require a temperature of at least 65 degrees at night.

Note—We desire to call particular attention to the fact that we do not offer 5 to 7-inch bulbs as usually sold, but selected bulbs, measuring 6 to 7 inches, thus giving a much better grade of bulbs than is offered by other houses.

6 to 7-inch bulbs,	\$5.00 per 100;	\$15.00 per case	335 bulbs;	full thousand lots,	\$40.00 per 1,000
7 to 9 " " "	8.50 " "	16.00 " "	200 " "	" "	75.00 " "
9 to 11 " " "	20.00 " "	18.00 " "	100 " "	" "	" "

Liliun Candidum (The Annunciation Lily)

Now ready for delivery

Mammoth bulbs, \$6.00 per 100, \$50.00 per 1,000.

Formosa Liliun Longiflorum

Ready in September

A new, early type of Liliun Longiflorum, grown on the island of Formosa. Not quite so early as Harrisii, but much earlier than the regular Longiflorum. Claimed to be free from disease. Highly recommended by those who have tried it. The bulbs ripen very early, and can be delivered early in September.

6 to 8-inch bulbs,	400 to the case,	\$4.50 per 100,	\$35.00 per 1,000.
7 to 9 " " "	300 " " "	6.50 " "	55.00 " "
9 to 10 " " "	200 " " "	9.50 " "	85.00 " "

Full case lots at thousand rates.

Liliun Longiflorum Giganteum

Ready in October

This flowers much more freely than *Multiflorum*, and the flowers are larger and longer and have more substance, but it blooms a little later, and requires a little more time to bloom. It is distinguished by its dark brownish stem. It should be grown cool until the buds are set, after which it will stand any amount of forcing.

7 to 9-inch bulbs,	300 to the case,	\$6.50 per 100,	\$55.00 per 1,000.
9 to 10- " " "	200 " " "	10.00 " "	90.00 " "

Full case lots at thousand rates.

Liliun Longiflorum Multiflorum

Ready in October

This is a selected type of Longiflorum. It is only a little more expensive than the ordinary Longiflorum, but is more than worth the slight difference in cost, as it blooms much more evenly and flowers much more abundantly.

7 to 9-inch bulbs,	300 to the case,	\$5.50 per 100,	\$45.00 per 1,000.
9 to 10 " " "	200 " " "	9.00 " "	80.00 " "

Full case lots at thousand rates.

Japan Lilies Ready in November

Auratum.—White, with crimson spots and yellow stripe. 8 to 9-inch bulbs, \$6.00 per 100, \$50.00 per 1,000; 9 to 11-inch bulbs, \$9.50 per 100, \$85.00 per 1,000.

Album.—Pure white. 8 to 9-inch bulbs, \$9.00 per 100, \$80.00 per 1,000; 9 to 11-inch bulbs, \$12.00 per 100.

Melpomene.—White, very heavily spotted dark crimson. 8 to 9-inch bulbs, \$5.50 per 100, \$45.00 per 1,000.

Rubrum.—White, shaded deep rose and spotted red. 8 to 9-inch bulbs, \$5.50 per 100, \$45.00 per 1,000; 9 to 11-inch bulbs, \$8.50 per 100, \$75.00 per 1,000.



View of One of Our Calla Lily Fields in California



Callas Now ready

Our bulbs are grown for us by one of the most careful and experienced growers on the Pacific coast. They are very carefully cured, and are perfectly sound, with good, strong centers—an important consideration. Florists will find that these dormant bulbs produce much finer flowers and in greater abundance than plants that have been flowered from year to year—the difference in results being so great that it well repays the seeming expense of an outlay for bulbs each year.

Extra sized bulbs, 1½-inch in diameter,	\$8.00 per 100
Selected bulbs, 1¾	10.00 "
Mammoth bulbs, 2 "	12.00 "
Exhibition bulbs, 2½	16.00 "

Freesia Refracta Alba Now ready

Very large quantities of these bulbs are now grown for winter-flowering, as they are very useful and profitable, especially for small florists who sell their own flowers. The earlier this stock is planted, the better results will be obtained.

French-grown.—Mammoth bulbs, ¾-inch in diameter, \$1.50 per 100, \$12.00 per 1,000.

Purity.—The finest of all freesias. \$3.00 per 100, \$25.00 per 1,000.

Astilbe, or Spirea Ready in November

Gladstone.—This is by far the best of all the spireas for winter-flowering. No other spirea compares with it in any way. It flowers in immense feathery snow-white plumes, which are very freely produced. Large clumps. Case of 100 clumps for \$10.00; less quantities, \$1.50 per dozen.

Japonica.—Large imported clumps, grown especially for forcing. Case of 100 clumps for \$5.00; less quantities, 75c. per dozen.

Compacta multiflora.—More compact than Japonica; fine variety for forcing. Case of 100 clumps for \$6.00; less quantities, 90c. per dozen.

Astilboides floribunda.—A very strong grower, and quite distinct from Japonica or Compacta multiflora, and preferred by many for Easter forcing. Flowers are pure white, very large and feathery. Case of 100 clumps for \$6.00; less quantities, 90c. per dozen.

Queen Alexandra.—A new pink spirea. Similar to Gladstone in habit, but flowers are a delicate rose-pink. Case of 100 clumps for \$12.00; less quantities, \$1.80 per dozen.

Lily of the Valley

Ready in November

Pierson's Perfection.—This is an extra selected grade for those who desire the finest Valley grown, and is the grade that should be used for very early forcing. Price of Valley has been driven down so low that it has been at the expense of quality, and growers are realizing that a really first-class article can not be furnished at prices at which Valley has been selling. The very best German Valley grown has been sent to London and St. Petersburg to growers who have been willing to pay the price for a very superior article, and very few, if any, of the finest pips grown have reached this country; but there is beginning to be a demand here for a better grade of Valley than is generally offered, and in order to meet this demand, we are importing this grade of pips, which we have had selected for us with great care, and which are the very finest pips grown. They will produce the largest spikes, with the largest number of bells, and will give the very largest percentage of first-quality flowers. We can recommend it without hesitation, knowing that it will give perfect satisfaction.

\$1.75 per 100, \$15.00 per 1,000; \$28.00 per case 2,000 pips.

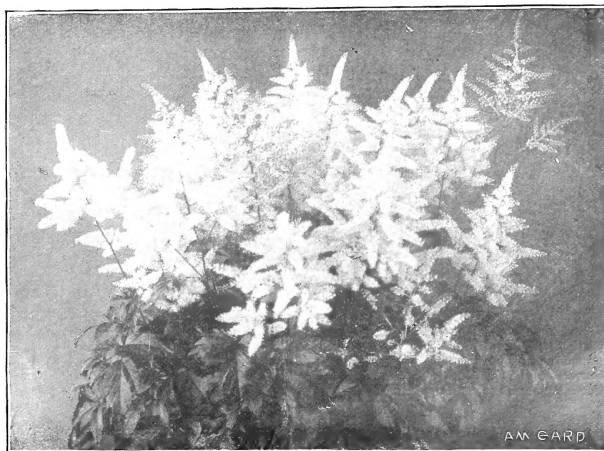
Cold-storage Lily of the Valley Now ready

We have a fine stock of cold-storage Lily of the Valley of our choicest grades for summer and fall forcing. While the new importations of high grade can be forced for Christmas flowering, buyers will find the cold-storage Valley very much more satisfactory for very early forcing than newly-imported pips, as newly-imported stock will not give the requisite amount of foliage until January.

January to April May to August Sept. to Dec.

Perfection. —\$4.25 per case 250	\$4.50 per case 250	\$4.75 per case 250
8.00 " " 500	8.50 " " 500	9.00 " " 500
15.00 " " 1,000	16.00 " " 1,000	17.00 " " 1,000

Clumps for Outdoor Planting.—Large clumps, \$2.50 per dozen, \$15.00 per 100.



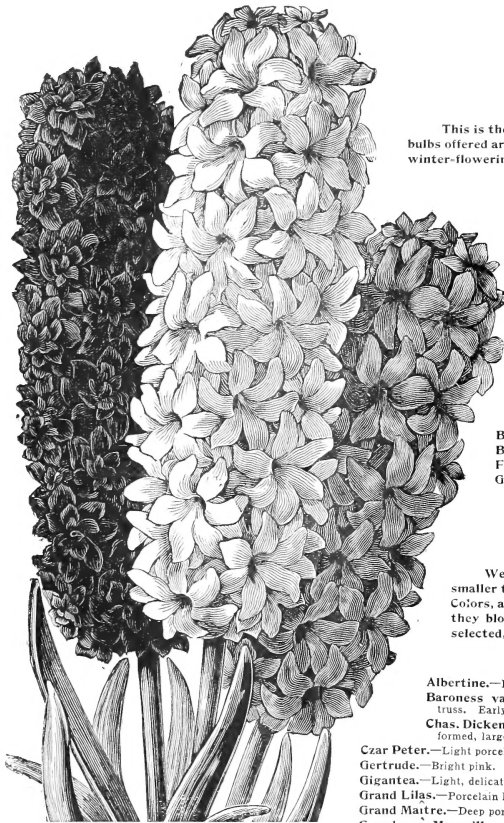
Spirea—Gladstone

Dutch Hyacinths

Ready in September

SELECTED NAMED

This is the grade that should be used for pot culture or for growing in pans where flowers of highest quality are desired. The bulbs offered are of the largest size and finest quality obtainable. The varieties offered are the finest and those best adapted for winter-flowering or bedding, producing the largest and most perfect spikes and the most beautiful flowers.



SINGLE

	Per 100
Albertine.—Pure white. Large spike. Early.....	\$5.50
Baroness van Tuyll.—Pure white. Large truss. Early.....	5.00
Chas. Dickens, pink.—Beautiful pink. Finely formed, large spike.....	5.50
Czar Peter.—Light porcelain blue.....	5.00
Gertrude.—Bright pink. Fine, compact spike.....	5.00
Gigantea.—Light delicate flesh-pink. Compact spike.....	5.00
Grand Lilas.—Porcelain lilac. Fine truss and bells.....	5.50
Grand Maître.—Deep porcelain blue. Large truss. Extra.....	5.00
Grandeur à Merveille.—Blush white, or light flesh.....	5.00
King of the Blues.—Dark blue. Extra large spike.....	5.00

DOUBLE

	Per 100
Bloksberg.—Light blue.....	\$5.00
Bouquet Tendre.—Carmine rose.....	5.50
Flevo.—Pure white. Large bells. Fine truss.....	5.50
Garrick.—Azure blue. Large, compact spike.....	5.00

SINGLE

	Per 100
King of the Yellows.—Pure yellow. Large bells and fine spike.....	\$6.00
La Grandesse.—Pure white. Splendid bells. Large spike.....	6.50
L'Innocence.—Pure white. Fine, massive spike.....	6.00
La Peyrouse.—Fine porcelain blue.....	5.00
Marie.—Dark blue with purple shade.....	5.00
Mme. Van der Hoop.—Pure white. Large bells.....	5.50
Moreno.—Waxy pink. Large bells.....	5.50
Robert Steiger.—Deep bright pink. Small, compact truss.....	5.00
Schotel.—Light blue. Fine.....	5.00
Sonora.—Nankeen yellow. Fine, close spike.....	5.50

DOUBLE

	Per 100
La Tour d'Auvergne.—Pure white.....	\$5.00
La Virginité.—Blush white. Extra fine for forcing or bedding.....	5.00
Othello.—Very dark purple, almost black.....	5.50
Prince of Orange.—Blush rose. Fine spike.....	5.50

OUR SELECTION of varieties, \$5.00 per 100, \$45.00 per 1,000.

FINE NAMED

We recommend this grade particularly for bedding, and it is also very satisfactory for forcing. The bulbs are a size smaller than the Selected Named, but can be offered at only a slight advance over the price of Mixed Hyacinths in Separate Colors, and, consequently, are much more desirable; for when bedded out or used for forcing, they bloom evenly and at one time, while the mixed hyacinths, no matter how carefully selected, bloom more or less irregularly and unevenly.

SINGLE

	Per 100
Albertine.—Pure white. Large spike. Early.....	\$4.50
Baroness van Tuyll.—Pure white. Large truss. Early.....	4.00
Chas. Dickens, pink.—Beautiful pink. Finely formed, large spike.....	4.50
Czar Peter.—Light porcelain blue.....	5.50
Gertrude.—Bright pink. Fine, compact truss.....	4.00
Gigantea.—Light, delicate flesh-pink. Compact truss.....	4.00
Grand Lilas.—Porcelain lilac. Fine truss and bells.....	4.50
Grand Maître.—Deep porcelain blue. Large truss. Extra.....	4.00
Grandeur à Merveille.—Blush white, or light flesh. Large truss.....	4.00
King of the Blues.—Dark blue. Extra large spike.....	4.00

SINGLE

	Per 100
King of the Yellows.—Pure yellow. Large bells and fine spike.....	\$5.00
La Grandesse.—Pure white. Splendid bells. Large spike.....	5.50
L'Innocence.—Pure white. Extra large truss.....	5.00
La Peyrouse.—Fine porcelain blue.....	4.00
Marie.—Dark blue with purple shade.....	4.00
Mme. Van der Hoop.—Pure white. Large bells.....	4.50
Moreno.—Waxy pink. Large bells. Very fine.....	4.50
Robert Steiger.—Deep bright pink. Small, compact truss.....	4.00
Schotel.—Light blue. Fine.....	4.00
Sonora.—Nankeen yellow. Fine, close spike.....	4.50



DOUBLE

	Per 100
Bloksberg.—Light blue. Good truss.....	\$4.00
Bouquet Tendre.—Carmine rose.....	4.50
Flevo.—Pure white. Large bells. Fine truss.....	4.50
Garrick.—Azure blue. Large, compact spike.....	4.00

DOUBLE

	Per 100
La Tour d'Auvergne.—Pure white.....	\$4.00
La Virginité.—Blush white. Extra fine for forcing or bedding.....	4.00
Othello.—Very dark purple, almost black.....	4.50
Prince of Orange.—Blush rose. Fine spike.....	4.50

OUR SELECTION of varieties, \$4.00 per 100, \$35.00 per 1,000.

Dutch Hyacinths

Ready in September

SEPARATE COLORS

These are largely used for bedding, and by many growers are used for forcing, but we do not recommend them for forcing, as nothing but named varieties should be used for that purpose. We offer the very best quality of these and not the inferior grades which are sometimes offered for less money.

SINGLE			DOUBLE		
	Per 100	Per 1,000		Per 100	Per 1,000
Rose.....	\$2.75	\$25.00	Rose.....	\$2.75	\$26.00
Dark red.....	2.75	25.00	Dark red.....	2.75	26.00
Blush white.....	2.75	25.00	Blush white.....	2.75	26.00
Pure white.....	2.75	25.00	Pure white.....	2.75	26.00
Light blue.....	2.75	25.00	Light blue.....	2.75	26.00
Dark blue.....	2.75	25.00	Dark blue.....	2.75	26.00
Yellow.....	2.75	25.00	Yellow.....	2.75	26.00



We were awarded GOLD MEDAL, Highest Award,
For our Exhibit of Bulbs at the Pan-American Exposition,
Buffalo, 1901

MINIATURE HYACINTHS, OR DUTCH ROMANS

Ready in September

These **Dutch Romans** are valuable not only for cutting, but also for growing in pans. They can even be used for bedding where a cheap hyacinth is desired, producing surprisingly large spikes of bloom, considering the size of the bulbs. We offer only the finest named sorts, which bloom evenly and at one time—those that have been found most satisfactory for forcing, and those that produce the largest spikes of bloom and of the most desirable colors. The bulbs are of the largest size and of first-class quality, and the prices at which they are offered should not be compared with the prices of inferior grades or of mixtures in separate colors usually offered, which bloom more or less irregularly, while our named sorts bloom evenly and at one time, making them very much more desirable and valuable.

EXTRA-SIZED BULBS, 12 TO 14 C/M IN CIRCUMFERENCE

	Per 100	Per 1,000		Per 100	Per 1,000
Baroness van Tuyll.—Pure white.....	\$2.00	\$16.00	King of the Blues.—Dark blue.....	\$1.75	\$14.00
Chas. Dickens.—Pink.....	2.25	18.00	L'Innocence.—Pure white; extra fine.....	2.25	18.00
Czar Peter.—Light porcelain blue.....	2.50	20.00	La Peyrouse.—Porcelain blue.....	1.75	14.00
Gertrude.—Bright pink.....	2.00	16.00	La Grandesse.—Pure white.....	2.50	20.00
Gigantea.—Delicate flesh-pink.....	2.00	16.00	Mme. Van der Hoop.—Pure white.....	2.25	16.00
Grand Maitre.—Dark blue.....	2.00	16.00			

FOR GRAPE AND FEATHERED HYACINTHS, SEE PAGE 9

Roman Hyacinths

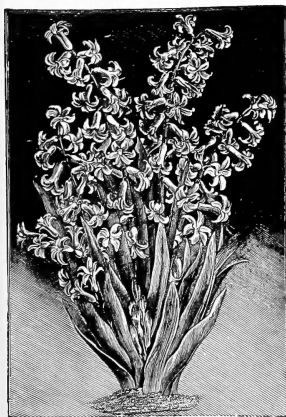
Now ready

The bulbs that we offer are of the very finest quality, obtained from the very best sources, carefully packed and graded, so that they cannot fail to give the very best satisfaction.

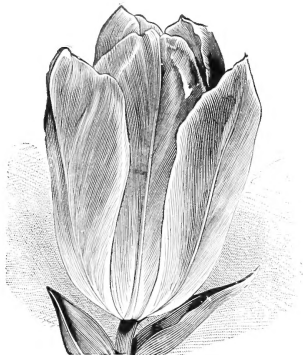
White Romans.—Extra quality bulbs, 12 to 15 c/m in circumference, \$2.75 per 100, \$24.00 per 1,000. Selected bulbs, 13 to 15 c/m in circumference, \$3.00 per 100, \$28.00 per 1,000.

Pink Romans.—These are somewhat later than **White Romans**. They are very popular on account of their beautiful color—light flesh-pink. Flowers are semi-double. Extra quality bulbs, 12 to 15 c/m in circumference, \$2.50 per 100, \$21.00 per 1,000.

White Italian or Red-skinned Romans.—Very desirable for late forcing, with much heavier flower spikes than **White Romans**. Extra quality bulbs, 12 to 15 c/m in circumference, \$2.50 per 100, \$20.00 per 1,000.



White Roman Hyacinths



Tulips

Ready in September

FINEST VARIETIES FOR FORCING AND BEDDING

Gold Medal, Highest Award, Pan-American Exposition, May, 1901

The use of tulips for bedding for early spring-flowering is increasing from year to year, for nothing that can be planted gives such satisfactory returns for the outlay. The use of named varieties is constantly on the increase, as they are much more effective when planted in solid blocks, in separate colors, than when planted indiscriminately. We offer a large variety of the very finest sorts for bedding, and at prices which will permit the use of named varieties, as a great many of the kinds offered cost only a little more than mixed tulips, for which reason and the fact that they are much more effective when planted separately, we invariably advise their use, especially when planted in quantity. All the varieties offered are desirable for bedding, but all are not desirable for forcing. The descriptions indicate those best adapted and most valuable for forcing for winter.

Single Early Tulips

Artus.—A fine scarlet for bedding; also very good for forcing. A little later than *Crimson King* or *Belle Alliance*. \$1.25 per 100, \$9.00 per 1,000.

Belle Alliance (Waterloo).—Brilliant scarlet. An extra fine forcing variety. \$1.75 per 100, \$15.00 per 1,000.

Bizard Verdict.—Bright red, feathered, striped and bordered with bright yellow. A fine variegated tulip. 75c. per 100, \$6.00 per 1,000.

Cardinal's Hat.—Dark brownish red—somewhat like *Brutus*, but darker—edge of petals shading to orange. A little later than *Crimson King* or *Belle Alliance*. \$1.00 per 100, \$7.00 per 1,000.

Chrysolora.—Pure golden yellow; extra large. Finest yellow tulip for bedding. 75c. per 100, \$6.50 per 1,000.

Cottage Maid.—An exquisite color—lovely bright pink, heavily marked with white at center and base of petals. The finest pink tulip for bedding, also an extra fine late forcing variety; can not be forced early. Extra. \$1.00 per 100, \$8.00 per 1,000.

Couleur Cardinal.—Dark scarlet-crimson—about the color of a *Meteor* rose. Flower is large, long, and pointed. Extra fine for forcing. \$1.75 per 100, \$15.00 per 1,000.

Couleur Ponceau.—Bright cherry, base of petals pure white—an exquisite color. A fine bedder. \$1.00 per 100, \$7.50 per 1,000.

Cramoise Brilliant.—Brilliant scarlet. Very large. Splendid for forcing or bedding. \$1.25 per 100, \$9.00 per 1,000.

Crimson King.—Crimson-scarlet; very brilliant. Fine bedder, also good for late forcing. \$1.00 per 100, \$8.00 per 1,000.

Duc van Tholl, Scarlet.—Intense dazzling scarlet. Very desirable for early forcing. \$1.50 per 100, \$12.00 per 1,000.

Duchesse de Parma.—Orange-red, with yellow edge. Very showy. A good forcer and a fine bedder. \$1.00 per 100, \$8.50 per 1,000.

Joost van Vondel.—Wine color, feathered with white—an unusually striking and distinct color. Flower very large, with very long stem. Grand. \$1.50 per 100, \$12.50 per 1,000.

Keizerskroon (Grand Duc).—Red, heavily bordered golden yellow. Extra large flower. One of the very finest tulips for forcing or bedding. \$1.25 per 100, \$10.00 per 1,000.

La Reine (Queen Victoria).—White, slightly shaded pink. A favorite forcing variety, and fine for bedding. \$1.00 per 100, \$7.00 per 1,000.

Mon Trésor.—Pure yellow; an extra fine large flower. A little deeper yellow and a little larger flower than *Chrysolora*. \$1.25 per 100, \$10.00 per 1,000.

Pottbakker White.—Finest white forcing tulip; also extra fine for bedding. Extra large flower. Very early. \$1.25 per 100, \$11.00 per 1,000.

Prince of Austria.—Bright orange-scarlet. Strong grower and very large flower. Extra fine for forcing or bedding. \$1.25 per 100, \$11.00 per 1,000.

Proserpine.—Violet-rose—a lovely color. Extra large and extra fine for early forcing especially, and also extra fine for bedding. \$2.00 per 100, \$17.00 per 1,000.

Rosamundi Huykman.—Rose-pink, with broad white stripe in center of each petal. Large flower, with fine stem. Lighter than *Rose Grisdelin*, and also later than that variety. \$1.00 per 100, \$7.50 per 1,000.

Rose Grisdelin.—Best pink tulip for early forcing. Lovely delicate pink—a little lighter than *Cottage Maid*. \$1.00 per 100, \$7.00 per 1,000.

Rose Luisante.—Superb rose. Very large and extra fine. \$1.75 per 100, \$16.00 per 1,000.

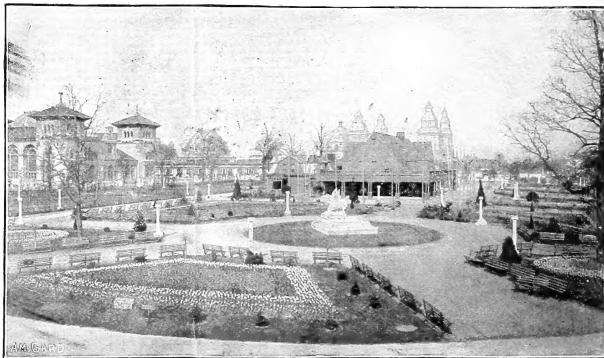
Thomas Moore.—Apricot-orange or terra-cotta color; very early. The finest orange tulip for forcing. \$1.00 per 100, \$7.00 per 1,000.

Vermilion Brilliant.—Finest of all scarlets for forcing, and the most brilliant of all scarlets. Very large flower. An extra choice variety. \$2.00 per 100, \$16.00 per 1,000.

White Hawk.—Pure white. Early. One of the finest whites for forcing or bedding. \$1.50 per 100, \$13.00 per 1,000.

Yellow Prince.—The standard yellow forcing tulip; also fine for bedding. When bedded shows faint lines and markings of red. \$1.00 per 100, \$7.50 per 1,000.

Finest Mixed.—The mixed tulips offered by us are much superior to ordinary mixtures, being made up of very fine named varieties and containing a good proportion of the different colors. We can recommend this mixture to any one wanting mixed tulips. \$1.00 per 100, \$7.50 per 1,000.



Single Late Tulips

These late-flowering tulips are very desirable on account of their late season of blooming and their showy flowers. They bloom after the early-flowering tulips are gone, and the flowers are exceedingly showy. They are borne on long stems—growing nearly three feet in height,—and continue in flower from about the middle to the end of May, depending on the season and locality. In some localities they are in bloom as late as Decoration Day. As they bloom year after year, they should be planted where they will not be disturbed. They are particularly fine for planting in herbaceous borders and on the borders of shrubbery. They are also fine for cutting. This class of tulips is coming into great favor, and they should be planted more largely than they have been.

Darwin

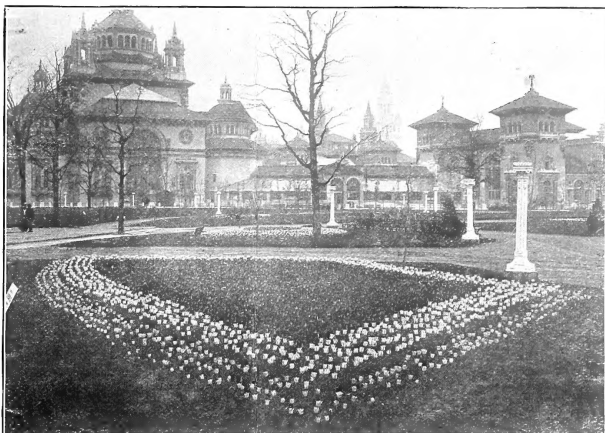
- Baronne de la Tonnay**—Vivid rose. Very large. One of the finest, of the Darwins. \$2.50 per 100.
- Bartigon**—Bright red, shaded rose. \$3.00 per 100.
- Clara Butt**—Beautiful clear salmon-pink. \$3.50 per 100.
- Dream**—Dark lilac-lavender. \$2.50 per 100.
- Europe**—Salmon-scarlet, outer petals shaded carmine. \$2.50 per 100.
- Flambeau**—Dark carmine-rose. \$2.50 per 100.
- Gretchen (Margaret)**—Silvery pink. \$2.00 per 100.
- May Queen**—Soft rose. \$2.50 per 100.
- Mme. Krelage**—Bright rose, changing to silvery rose. \$2.50 per 100.
- Mr. Farncombe Sanders**—Bright carmine-scarlet. Tall grower. Very fine large flower. \$3.50 per 100.
- Mrs. Stanley**—Violet-rose. \$2.50 per 100.
- Pres. Roosevelt**—Bright crimson-scarlet, with black center. Much darker than *Gesneriana*. \$2.50 per 100.
- Prof. Francis Darwin**—Bright carmine rose. \$2.50 per 100.
- The Sultan**—Blackish maroon. \$1.50 per 100.
- White Queen (La Candeur)**—White, tinged lavender. \$2.50 per 100.
- Finest Mixed**—All colors. \$1.50 per 100, \$11.00 per 1,000.

May-flowering, or Cottage

- Bizards**—Flowers beautifully blotched, striped, and feathered with crimson, pink, scarlet, rose, lilac, and purple on yellow ground. All colors mixed. \$1.00 per 100, \$7.50 per 1,000.
- Byblooms**—Flowers beautifully blotched, striped, and feathered with crimson pink, scarlet, rose, lilac, and purple on white ground. All colors mixed. \$1.00 per 100, \$8.00 per 1,000.
- Bouton d'Or**—Pure golden yellow. Very showy. Extra fine. Very tall. \$1.25 per 100, \$9.00 per 1,000.
- Elegans lutea**—Straw color. Pointed petals. Very distinct. \$3.00 per 100.
- Gesneriana lutea**—Bright golden yellow. Very late. \$2.00 per 100.
- Gesneriana Spathulata**—The true *Gesneriana*. Finest of all late tulips. Dark brilliant scarlet, with black center. Very large. \$1.50 per 100, \$11.00 per 1,000.
- Golden Crown**—Yellow, edged scarlet. Very showy. Sometimes called the *Yellow Gesneriana*. \$1.00 per 100, \$7.50 per 1,000.
- Inglescombe Pink**—Violet-rose. \$2.50 per 100.
- Isabella**—Bright carmine-pink, white toward base of petals. A beautiful variegated flower. \$1.50 per 100.
- Parisian Yellow**—Golden-yellow; outside of petals buff. Pointed flower. \$2.00 per 100.
- Picotée (Maiden's Blush)**—White, delicately edged rose. A very beautiful tulip. \$1.25 per 100, \$9.50 per 1,000.
- Summer Beauty (Striped Beauty)**—Bright carmine-rose, feathered white. A beautiful variegated tulip. \$2.50 per 100.

Parrot

- Admiral of Constantinople**—Orange-scarlet. \$1.00 per 100, \$8.00 per 1,000.
- Lutea Major**—Golden yellow. \$1.00 per 100, \$8.00 per 1,000.
- Markgraff van Baden**—Orange-yellow, outside of petals striped scarlet. \$1.25 per 100, \$9.00 per 1,000.
- Perfecta**—Yellow, striped scarlet. \$1.00 per 100, \$8.00 per 1,000.
- Finest Mixed**—All colors. \$1.00 per 100, \$7.00 per 1,000.



Double Tulips

- Count of Leicester**—Orange-yellow. Earlier than *Yellow Rose*. \$1.00 per 100, \$8.00 per 1,000.
- Couronne d'Or**—Yellow, shaded orange. Extra fine for forcing. \$1.75 per 100, \$14.00 per 1,000.
- Duke of York**—Carmine, edged white. Good for forcing. \$1.00 per 100, \$8.50 per 1,000.
- Gloria Solis**—Crimson, with yellow margin. Fine bedder; one of the showiest *Yellow* tulips for this purpose; also a fine forcing variety. Very similar to *Tournesol Red* and *Yellow* in color. Cannot be forced so early. \$1.25 per 100, \$10.50 per 1,000.
- Imperator Rubrorum**—Very fine bright scarlet. Finest of all double scarlets for forcing. \$1.50 per 100, \$13.50 per 1,000.
- La Candeur**—Pure white. Fine for bedding, and also for Easter forcing. \$1.25 per 100, \$10.00 per 1,000.
- Murillo**—A magnificent flower, bluish white, shaded rose. Large fine flower. Extra for forcing. \$1.00 per 100, \$8.50 per 1,000.
- Rose Blanche**—Pure white. Very early; earlier than *La Candeur*. \$1.00 per 100, \$8.50 per 1,000.
- Rubra Maxima**—Fine scarlet, darker than *Rex Rubrorum*. Extra for forcing or bedding. \$1.25 per 100, \$10.00 per 1,000.
- Salvator Rosa**—Deep rose, flamed white. Highly recommended for very early forcing. \$1.50 per 100, \$11.50 per 1,000.
- Tournesol Red and Yellow**—Scarlet, bordered yellow. Extra fine for forcing. Exceedingly showy. \$2.00 per 100, \$17.00 per 1,000.
- Yellow Rose**—Bright yellow. Late. \$1.00 per 100, \$7.50 per 1,000.
- Finest Mixed**—Extra choice mixture from named varieties. All colors. \$1.00 per 100, \$8.00 per 1,000.

Narcissus Ready in September

LARGE SINGLE TRUMPETS

Victoria.—Grand new bicolor. A variety of great merit. Petals broad and flat, with bold yellow trumpet. An extra large, fine flower. First sized bulbs, \$1.50 per 100, \$12.00 per 1000. Selected double-nosed bulbs, \$1.75 per 100, \$16.00 per 1000.

Empress.—A magnificent variety, white perianth with rich yellow trumpet. Flowers large and of great substance. Similar to *Havfaldt*, but larger and a stronger grower. First sized bulbs, \$1.50 per 100, \$12.00 per 1000. Selected double-nosed bulbs, \$1.75 per 100, \$15.00 per 1000.

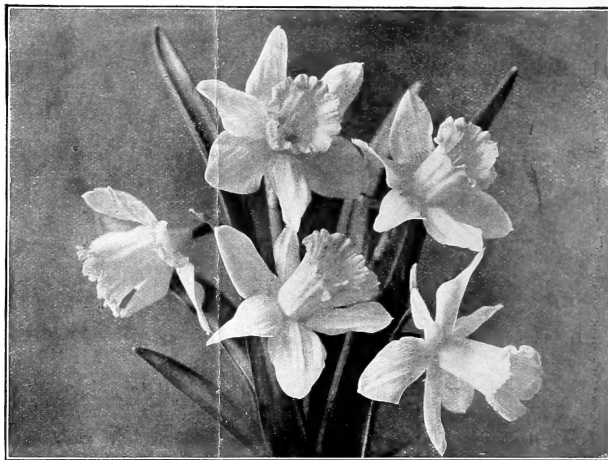
Emperor.—Deep yellow trumpet, sulphur perianth. Immense. The finest of this section. First sized bulbs, \$1.50 per 100, \$12.00 per 1000. Selected double-nosed bulbs, \$1.75 per 100, \$15.00 per 1000.

Golden Spur.—A magnificent single trumpet narcissus, with enormous flowers of deep golden yellow. Very early. First sized bulbs, \$1.50 per 100, \$13.00 per 1000. Selected double-nosed bulbs, \$2.25 per 100, \$19.00 per 1000.

Princes (*The large Irish Single Yellow Trumpet Daffodil*).—Magnificent large blooms: light sulphur-yellow trumpet, with lighter perianth. Can be forced very early. A very profitable variety for florists on account of its earliness and the low price at which the bulbs can be offered. Selected mammoth double-nosed, or top-root, bulbs, \$1.25 per 100, \$9.50 per 1000.

Single Von Sion.—We recommend this strongly in place of *Trumpet Major*, especially for early forcing. Very early—much earlier than *Trumpet Major*—deeper yellow, larger flower, and a much better bloomer. The best pure yellow moderate-priced single trumpet narcissus. \$1.25 per 100, \$9.50 per 1,000.

Trumpet Major (French Ground) for Christmas-flowering. Now ready.—Desirable, as it can be had in bloom by Christmas, before other varieties are in the market. For this purpose it should be started very early, in August or early in September. Extra sized bulbs, 12 c/m in circumference, \$1.50 per 100, \$12.50 per 1000.



Empress Narcissus

DOUBLE-FLOWERED

Double Von Sion, or Double Yellow Daffodil.—This is one of the most useful and profitable of winter-flowering bulbs, and is forced in large quantities. There is nothing in which quality is so important as in Von Sion—color and form of flower, size of bulb, etc. The flower of the stock we offer is the pure golden yellow. Those who have been troubled with "Green Von Sions" should try our stock. Growers will find it will pay to buy the best Von Sions obtainable.

Extra sized bulbs, \$1.75 per 100, \$15.00 per 1,000.
Selected mammoth double-nosed, or top root, bulbs, \$2.25 per 100, \$20.00 per 1,000.

Alba Plena Odorata.—Double: pure white gardenia-like flowers, exquisitely scented. \$1.00 per 100, \$7.50 per 1,000.

Orange Phoenix (*Eggs and Bacon*).—Double white flowers with orange nectary. \$1.25 per 100, \$10.00 per 1,000.

Silver(Sulphur)Phoenix (*Cadins and Cream*).—Sulphur white. Extra fine. \$1.50 per 100, \$12.00 per 1,000.

CHINESE SACRED LILY

(*Narcissus orientalis*)

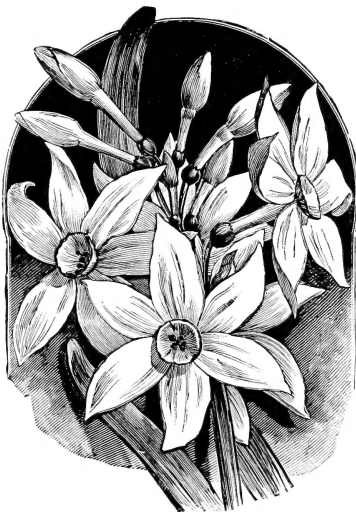
A favorite bulb for retailing, as it makes a fine house-plant, and is one of the best selling bulbs for this purpose. We offer the finest quality bulbs, grown in China, insuring a luxuriant growth and a remarkable profusion of flowers. Single basket (30 bulbs), \$1.20. original bundle, containing four baskets (120 bulbs), \$4.20.

PAPER-WHITE GRANDIFLORA

Now ready

Much larger and better than the ordinary variety, blooming in larger clusters and coming into flower earlier. The bulbs that we offer are of the very finest quality obtainable.

Extra quality bulbs, 13 c/m and up in circumference, \$1.25 per 100, \$9.00 per 1,000. Selected quality bulbs, 14 c/m and up in circumference, \$1.50 per 100, \$11.00 per 1,000.



Paper-white Grandiflora Narcissus

MISCELLANEOUS SORTS

Mrs. Langtry.—The finest of the *Laditi* type. Broad white petals, with large white cup, edged yellow. Exceedingly beautiful. A very strong grower and abundant bloomer. Magnificent for late forcing, or for outdoor planting. Exceedingly valuable for cutting. 75c. per 100, \$6.50 per 1,000.

Barri Conspicuous.—Beautiful canary-yellow, with deep golden cup, richly edged orange-scarlet. Flowers three to three and a half inches in diameter, borne on long stems. Fine for forcing or outdoor planting. 90c. per 100, \$7.00 per 1,000.

Poeticus (*Phasant's-eye*).—Pure white, with red cup. Very useful for cutting in spring, and it can be planted in borders cut-off doors, where it is perfectly hardy and will bloom year after year. 75c. per 100, \$5.00 per 1,000.

Poeticus Ornatus.—*The Improved Poeticus*. Pure white, with scarlet ring. Much finer in form and much earlier than *Poeticus*. A magnificent cut flower. This is becoming more and more largely used for forcing. Double-nosed bulbs, \$1.00 per 100, \$7.50 per 1,000.

JONQUILS

Giant Campernelle Jonquil Rugulosus.—Much larger than the old favorite *Campernelle Jonquil*, a much freer bloomer, and much more desirable, especially for forcing. Beautiful single yellow star-shaped flower, beautifully imbricated, borne in clusters of four to six on a stem, delightfully fragrant. Also very hardy, and invaluable for outdoor planting. 80c. per 100, \$6.50 per 1,000.

Double Jonquil.—Bears clusters of small, very double, deep golden yellow flowers, very sweetly perfumed. A favorite for forcing and outside planting. \$2.00 per 100, \$16.00 per 1,000.

ALLIUM NEAPOLITANUM

65c. per 100, \$4.50 per 1,000.

ANEMONES

The *Bride*.—Single. Pure white. 65c. per 100, \$5.00 per 1,000.
 Single.—All colors mixed. 65c. per 100, \$5.00 per 1,000.
 Double.—All colors mixed. 75c. per 100, \$6.00 per 1,000.

CHIONODOXA LUCILIAE

(Gley of the Sun)

Deep blue, with white center. 80c. per 100, \$6.50 per 1,000.

DIELYTRA SPECTABILIS

Ready in November

Strong clumps. \$1.00 per dozen, \$6.00 per 100.

GRAPE AND FEATHERED HYACINTHS

Blue Grape.—50c. per 100, \$4.00 per 1,000.
 White Grape.—80c. per 100, \$6.50 per 1,000.
 Feathered.—80c. per 100, \$6.50 per 1,000.

SPANISH IRIS

Fine for late forcing; can be had in flower early in April. Also good for outdoor culture, flowering in the open ground in June, requiring only a slight covering in winter. Claimed by many to be entirely hardy. They are so beautiful they should be extensively planted.

Belle Chimise.—Bright golden yellow. Early. Best early sort.
British Queen.—Early. White. Finest white.
Darling.—Dark blue. Early.

50c. per 100, \$4.00 per 1,000.

Extra fine mixed varieties. All colors. 40c. per 100, \$2.50 per 1,000.

IXIAS

Finest Mixed.—Very showy and brilliant; well adapted for cut flowers and pot culture. Splendid new large flowering varieties. 50c. per 100, \$3.50 per 1,000.

OXALIS

Bermuda Buttercup.—This has met with a very large sale, as it is an ideal house-plant. Blooms all winter long. Flowers are of good size; bright golden yellow. We offer extra sized Bermuda-grown stock. \$1.00 per 100, \$7.50 per 1,000.

Alba.—White. \$1.00 per 100.
 Bowell.—Pink, large. \$1.00 per 100.
 Versicolor.—Red and white. 75c. per 100.

DOUBLE RANUNCULUS

French.—All colors mixed. 60c. per 100, \$4.00 per 1,000.
 Persian.—All colors mixed. 60c. per 100, \$4.00 per 1,000.
 Turban.—All colors mixed. 65c. per 100, \$4.50 per 1,000.

SCILLA

Siberica.—Bright blue; early. 75c. per 100, \$6.00 per 1,000.
Campanulata cerulea.—Blue; tall. 65c. per 100, \$5.00 per 1,000.

SNOWDROPS

(Galanthus)

Single.—65c. per 100, \$4.50 per 1,000.
 Double.—\$1.25 per 100, \$9.00 per 1,000.
 Giant (*Galanthus Elzevirii*).—65c. per 100, \$4.50 per 1,000.

SPARAXIS

50c. per 100, \$3.50 per 1,000.

Crocus

Ready in September

MAMMOTH BULBS

These are extra large selected bulbs, averaging 1½-in. and up in diameter. Varieties offered are also of the very finest quality. They are very desirable for forcing, and these large bulbs are much finer for bedding than smaller bulbs, as they throw an unusually large number of flowers.

Baron von Brunow.—Dark purple.**David Rizzio**.—Dark blue.**La Majestueuse**.—Violet, striped white.**Mont Blanc**.—Snowy white.**Mammoth Yellow**.—Deep golden yellow.**Purpurea Grandiflora**.—Dark purple; very largest size. Magnificent.**Queen of the Netherlands**.—Pure white, fine large flower. Extra fine. Flowers very freely.**Sir Walter Scott**.—Violet, striped white.

75c. per 100, \$5.00 per 1,000.

SEPARATE COLORS.—Blue, White, Yellow, Striped. 50c. per 100, \$3.50 per 1,000.



Large flowered Mammoth Crocus

Forcing Gladiolus Ready in November

Colvilli alba "The Bride".—Pure white flowers. Dwarf habit. This is being more and more largely planted, as it is one of the most useful cut flowers that can be grown. Invaluable for forcing and for outdoor blooming. 75c. per 100, \$5.00 per 1,000.

Blushing Bride.—A splendid new forcing variety. Blooms earlier than *Colvilli alba*. Flowers large, pure white, with pink markings. Very desirable and valuable. 75c. per 100, \$5.00 per 1,000.

Peach Blossom.—Flowers a beautiful shade of pink. Belongs to the same class as *Blushing Bride*, and blooms six weeks before *Colvilli alba*. \$1.25 per 100, \$9.00 per 1,000.

America.—The peer of all gladiolus. It forces easily, and is the most profitable variety for that purpose. Flowers are an exquisite soft lavender pink—about the same color as a cattleya. Its fine color makes it a ready seller at big prices. For florists' use for summer flowers it is without a rival. \$4.00 per 100, \$35.00 per 1,000.

Augusta.—Another favorite forcing variety. Lovely pure white with blue anthers. \$2.50 per 100, \$20.00 per 1,000.

GLADIOLUS FOR OUTDOOR PLANTING

Ready in December

White and Light.—\$1.75 per 100, \$15.00 per 1,000.

Scarlet and Red.—\$1.25 per 100, \$10.00 per 1,000.

Yellow and Orange.—\$4.00 per 100.

Pink and Rose.—\$1.50 per 100, \$12.00 per 1,000.

Striped and Variegated.—\$2.00 per 100, \$18.00 per 1,000.

Groff's Hybrid Seedlings.—All colors mixed; the most popular strain in America. \$1.50 per 100, \$12.00 per 1,000.

Childs.—Giant hybrids, mixed. \$1.75 per 100, \$15.00 per 1,000.

Lemoine's Hybrids.—Finest mixed. \$1.50 per 100, \$12.00 per 1,000.

Extra Superfine Mixed.—\$1.25 per 100, \$10.00 per 1,000.

TUBEROUS-ROOTED BEGONIAS

Ready in December

We offer these at unusually low prices. Bulbs are first-class, running 1½-in. in diameter and up. The quality of the flower, notwithstanding the low price, is unusually fine. There is no finer stock to be had in Europe. Buyers will find it cheaper to buy here at our prices than to import their own stock direct.

Separate colors.—White, pink, scarlet, yellow, and crimson.

Double.—\$4.00 per 100, \$35.00 per 1,000.

Single.—\$2.50 per 100, \$22.50 per 1,000.

GLOXINIAS

Ready in December

We handle these very largely, and our strain of *Hybrida Crassifolia erecta Grandiflora* is unequalled, embracing an unusual proportion of spotted, white, pink, and other choice colors. Bulbs are of large size.

Finest Mixed.—\$3.00 per 100, \$25.00 per 1,000.

Separate colors.—White; red; blue; blue, bordered white. \$3.50 per 100.

CALADIUM ESCULENTUM

Ready in December

Bulbs 6 to 9-in. in circumference, \$3.00 per 100, \$25.00 per 1,000.

Bulbs 9 to 12-in. in circumference, \$6.00 per 100, \$50.00 per 1,000.

TUBEROSE PEARL

Ready in December

Our bulbs are grown in the South, where the climate and soil are peculiarly adapted for their perfect development, and the stock we offer is the finest to be had anywhere.

Extra quality bulbs, \$1.00 per 100, \$7.50 per 1,000.

Azaleas Ready in October

Next to the Easter lily these are the most important plants for Easter decoration. We shall have to offer in October and November a fine assortment of plants, with fine crowns, well shaped and well budded. *Orders will be looked at these special low import prices for delivery in October and November.* Orders should be placed at once so that advantage can be taken of these low import prices before prices advance later in the season, and while the plants can be shipped by freight, as early in the season plants travel as safely by freight as by express, and at a great saving in cost of transportation. These prices will hold good only for early shipment, as we can not afford to sell at these prices later on, after plants have been potted and put into winter quarters for spring sale. We handle only the very finest varieties, and our selection will be found to contain the very finest sorts, either for commercial purposes or private conservatories.

Apollo.—Orange-scarlet. Can be forced for Christmas.

Bernhard Andrea alba.—Double. Pure white. Late.

Deutsche Perle.—Double. Pure white. Very early.

Empress of India.—Double. Variegated white and salmon-rose. One of the best late sorts.

Mme. Joseph Vervaene.—Similar in color to *Vervaeana*. Especially good in large sizes. Finest of all in this color for Easter.

Mme. Van der Cruyssen.—Double. Bright rose; a very desirable and popular color.

Strong plants, 10 to 12 inches in diameter, \$6.00 per dozen, \$40.00 per 100.

"	12 to 14	"	"	7.20	"	50.00	"
"	14 to 16	"	"	9.00	"	60.00	"
"	16 to 18	"	"	15.00	"	100.00	"
"	18 to 20	"	"	24.00	"	175.00	"
"	20 to 22	"	"	30.00	"		"

Mme. Petrick.—Double. Bright rose. Very early.

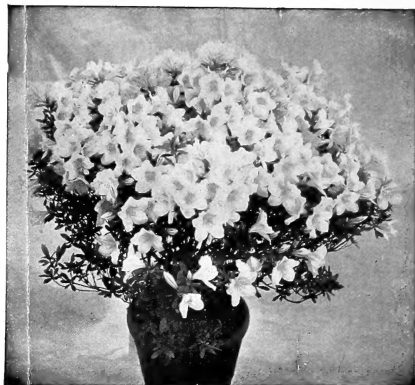
Niobe.—Double. Pure white, with finely crinkled edges. A fine flower.

Paul Weber.—Very double. Similar to *Vervaeana*, but brighter. Late. Fine for Easter, especially in the small sizes.

Prof. Wolters.—Single. Magnificent color; light pink, with very deep carmine blotch and shadings, with white border. Very bright.

Simon Mardner.—Very double. Bright silvery rose; a very pleasing shade and very desirable. Very early.

Vervaeana.—Double. White, salmon center, with deep carmine markings in center of flower. Very early.



Pot-grown Lilacs

Ready in November

We offer the best varieties for forcing for winter flowers, as follows:

Marie Legraye.—Single white. Very free bloomer.

Mme. Lemoine.—Double white. Truss very large and compact.

Charles X.—Reddish purple. Large truss.

Extra fine plants, well budded, \$9.00 per dozen, \$65.00 per 100.

Dwarf, or Miniature, Azaleas

These dwarf azaleas, which have been grown as novelties for the past year or two, are rapidly coming into favor, and are now in great demand.

Firefly, or Hexe.—Very brilliant crimson. Splendid.

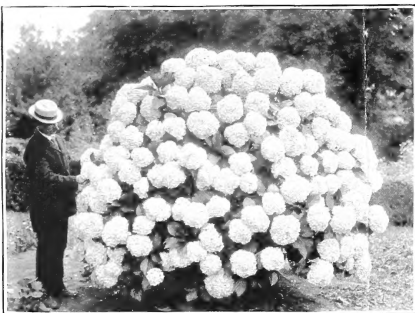
\$3.60 per dozen, \$25.00 per 100.

Chas. Encke.—Beautiful shade of pink and white.

Azalea Mollis

This is largely used in Europe, and is being more largely used in this country for forcing. The colors are entirely different from the Chinese azaleas; colors ranging through yellow, orange, and red.

Fine bushy plants, well budded, 12 to 15 inches high, \$4.80 per dozen, \$35.00 per 100.



Hydrangea Otaksa

For Easter-flowering

Strong dormant plants, ready in November. 4-inch pots, \$10.00 per 100; 6-inch, \$35.00 per 100; 7-inch, \$50.00 per 100.

Palms and Decorative Plants

Crotons

Very desirable on account of their highly colored foliage. Largely used in ornamental baskets at the holiday season. Strong plants, 5-inch pots, \$6.00 and \$9.00 per dozen; 6-inch, \$12.00, \$18.00 and \$24.00 per dozen.

Pandanus Veitchii

Strong plants, 6-inch pots, \$12.00 per dozen; 7-inch, \$18.00 per dozen; 8-inch, \$24.00 per dozen; large specimens, \$3.00 to 5.00 each.

Phoenix Roeblenii

One of the most graceful and beautiful of all palms. Very hardy. Fine large plants, 12-inch tubs, \$5.00 and \$7.50 each.

Aspidistra

Fine strong plants, 6-inch pots, \$18.00 per dozen; extra large plants, 8-inch pots, \$2.50 and \$3.00 each.

Kentia Belmoreana

Strong plants, 4-inch pots, 12 inches high, 5 leaves, \$6.00 per dozen; 6-inch pots, 24 inches high, 6 leaves, \$12.00 per dozen; 6-inch pots 20 to 25 inches high, 6 to 7 leaves, \$18.00 per dozen; 8-inch pots, 30 inches high, 6 to 7 leaves, \$20.00 each; 8-inch pots, 36-inches high, 6 to 7 leaves, \$3.00 each.

Ficus elastica (Rubber Plant)

Strong plants, 6-inch pots, \$6.00 and \$9.00 per dozen.

Asparagus

Plumosus nanus.—2¼-inch pots, \$4.00 per 100.

Sprengeri.—2¼-inch pots, \$3.00 per 100.

Small Ferns for Fern Pans

Assorted Varieties.—2¼-inch pots, \$3.50 per 100.

Nephrolepis elegantissima compacta

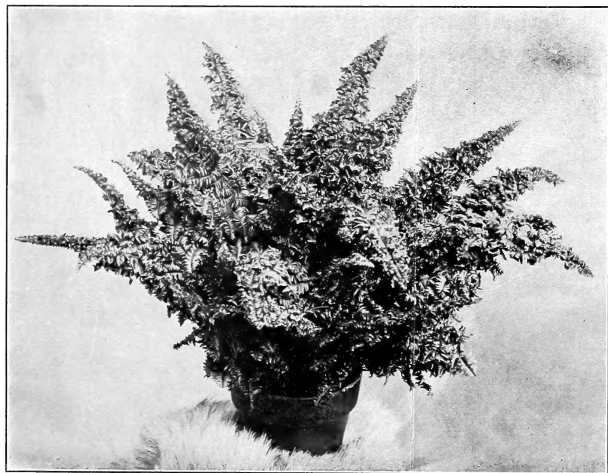
This dwarf, compact form of *elegantissima*, introduced by us in 1909, bears the same relation to that variety that *Scottii* does to *Bostoniensis*. The fronds are considerably shorter than those of *elegantissima*, and it throws a great many more crowns, making it a very bushy, compact, symmetrical plant. It has an ideal habit, and occupies a place by itself, being as distinct from *elegantissima* as that variety is from the original *Piersoni*. While it occasionally throws a few Boston fronds, when growth is checked, its dwarf, compact habit makes it particularly desirable. It is especially valuable for growing in small-sized pots, making particularly fine, perfect specimens even in a 4-inch pot.

Plants from 2¼-inch pots, **\$1.00 per dozen, \$6.00 per 100**; 4-inch, **\$3.50 per dozen, \$25.00 per 100**; 6-inch, **\$6.00 per dozen**; 8-inch, **\$12.00 per dozen**.

Nephrolepis Magnifica

This is the daintiest of all the Nephrolepis. The fronds are very fine and filmy, on which account it has been called *The Lace Fern*. It is an improved variety and the best of this type. It makes a most beautiful plant, especially in the smaller sizes. Nothing is daintier or more exquisite than well-grown specimens in small pots up to 6-inch. Very perfect little specimens can be grown even in 2½-inch pots. Fine for table decoration.

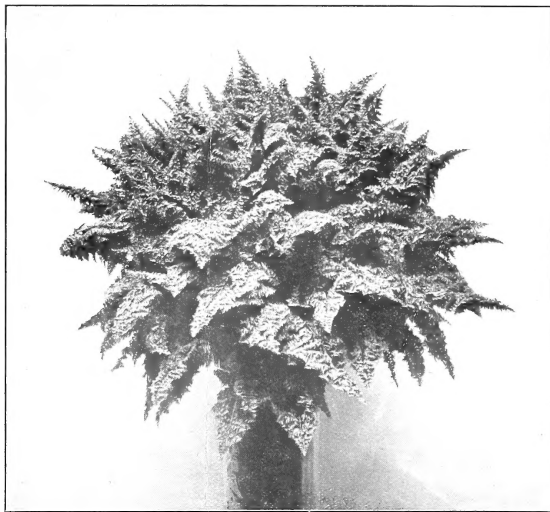
Plants from 2¼-inch pots, **\$1.25 per dozen, \$8.00 per 100**; 4-inch, **\$3.50 per dozen, \$25.00 per 100**; 6-inch, **\$9.00 per dozen**.



Nephrolepis superbissima

overlapping, making the fronds very dense and compact. It has a very sturdy habit, and the fronds are very firm and rigid. It is absolutely distinct, not only in formation of its fronds and color of foliage, but also in its habit of growth and general characteristics. It is well named *superbissima*, as it is one of the most *superb* ferns. It was awarded a first-class certificate by the Royal Horticultural Society of London—its highest award—in 1908, the plants exhibited having been shipped from New York two weeks before that time. The same plants were then shipped to Edinburgh, Scotland, where they were again awarded a certificate by the Scottish Horticultural Association. This indicates not alone the value of the plant, but also demonstrates in a very conclusive manner its fine keeping and shipping qualities.

Plants from 2¼-inch pots, **\$1.25 per dozen, \$8.00 per 100**; 4-inch, **\$3.50 per dozen, \$25.00 per 100**; 6-inch, **\$6.00 and \$9.00 per dozen**.



Nephrolepis elegantissima compacta

Nephrolepis Harrisii

This is a very superior and distinct type of *Bostoniensis*, being similar to that popular variety, except that the fronds are convoluted, or wavy, and, also, broader and more sharply pointed. The pinnae are beautifully fluted, making it very distinct and beautiful.

Plants from 2¼ inch pots, **\$1.25 per dozen, \$8.00 per 100**; 6-inch, **\$6.00 and \$9.00 per dozen**; 10-inch, **\$3.00 each**.

Nephrolepis Scottii

This has always been a favorite variety. It makes a very fine dwarf, compact plant.

Plants from 2¼-inch pots, **75c. per dozen, \$5.00 per 100**; 4-inch, **\$2.50 per dozen, \$15.00 per 100**; 6-inch, **\$6.00 per dozen**; 8-inch, **\$12.00 per dozen**.

Nephrolepis Bostoniensis

We always carry a fine stock of this variety, which is too well known to need any description.

Plants from 2¼-inch pots, **75c. per dozen, \$5.00 per 100**; 6-inch, **\$6.00 per dozen**; 8-inch, **\$12.00 per dozen**.

Nephrolepis superbissima

A remarkable fern, originating with us and introduced in 1908. It is one of the most unique and distinct varieties ever introduced. Its distinguishing characteristics are its dense growth and dark green foliage. Fronds are very heavily imbricated, the pinnae are absolutely distinct, not only in formation of its fronds and color of foliage, but also in its habit of growth and general characteristics. It is well named *superbissima*, as it is one of the most *superb* ferns. It was awarded a first-class certificate by the Royal Horticultural Society of London—its highest award—in 1908, the plants exhibited having been shipped from New York two weeks before that time. The same plants were then shipped to Edinburgh, Scotland, where they were again awarded a certificate by the Scottish Horticultural Association. This indicates not alone the value of the plant, but also demonstrates in a very conclusive manner its fine keeping and shipping qualities.



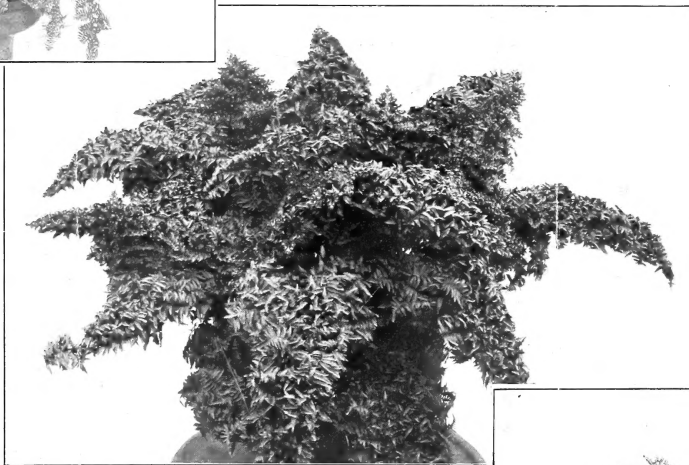
Elegantissima

Nephrolepis muscosa

(The Moss Fern)

This new Nephrolepis, introduced by us in 1911, is a sport from *superbissima*, and has the same rich dark color, but the foliage is very fine and moss-like, which suggested the name, as this is the distinctive characteristic of the plant. It makes a very beautiful, distinct, and refined plant. Its distinctiveness and beauty commend it to all plant lovers.

Plants from 2¼-inch pots, \$5.00 per dozen, \$35.00 per 100; 4-inch, \$7.50 per dozen, \$50.00 per 100; 6-inch, \$15.00 per dozen.



Muscosa

Nephrolepis viridissima

This also is a new variety originating with us, introduced in 1911, and is also a sport from *superbissima*. It has a plain frond, like *Bostoniensis*, but has the beautiful dark green foliage of *superbissima*, which suggested the name. The fronds are much shorter, broader, and stockier than those of *Bostoniensis*—in fact, it bears no resemblance to that variety except that it has a plain frond of that character. In habit of growth it is very much more dwarf and compact than *Bostoniensis*—in fact, its particular value is in small and medium sized plants. It makes most beautiful specimens in from 3½ to 6-inch pots. It is a quick grower, and is a splendid plant to handle, on account of its sturdy, compact habit. It is a variety that commends itself to commercial florists for growing in quantity. Several expert horticulturists consider it one of the most valuable introductions.

Plants from 2¼-inch pots, \$3.50 per dozen, \$25.00 per 100; 4-inch, \$5.00 per dozen, \$35.00 per 100; 6-inch, \$9.00 and \$12.00 per dozen; 8-inch, \$18.00 and \$24.00 per dozen.

Nephrolepis Piersoni elegantissima

Of the many varieties of *Nephrolepis*, beginning with *Piersoni*, introduced by us in 1903, we consider this new and improved form of *elegantissima* by far the most valuable of all. By selection, we have succeeded in fixing a perfect form, which shows no tendency whatever to revert to the original type, it never having thrown a single Boston frond in the five years that we have grown it; and for this reason it is much superior to the original *elegantissima*, *Whitmani*, *Todeaoides*, etc. Many firms would have introduced this new and improved form under another name and at a high price, but we have a pride in perpetuating it under its original name. It outsells any other variety, and we have no hesitation in pronouncing it the most beautiful and most salable of all the varieties of *Nephrolepis* yet introduced.

Plants from 2¼-inch pots, \$1.25 per dozen, \$8.00 per 100; 4-inch, \$3.00 per dozen, \$20.00 per 100; 6-inch, \$6.00 per dozen; 8-inch, \$12.00 per dozen; extra large specimens, 12-inch, \$3.00 to \$10.00 each.

Nephrolepis Giatrasii

This makes one of the most refined and perfect specimens it is possible to imagine. It is somewhat similar to *Scottii*, but the pinnae are fluted, or waved, and the fronds are more slender and graceful, drooping over the pot, making a compact, perfect ball-shaped plant. It not only makes fine large specimen plants up to 10-inch, but also makes particularly fine specimens when grown in small sizes.

Plants from 2¼-inch pots, \$1.25 per dozen, \$8.00 per 100; 4-inch, \$3.50 per dozen, \$25.00 per 100; 6-inch, \$9.00 and \$12.00 per dozen; 8-inch, \$18.00 and \$24.00 per dozen; extra large specimens, 10-inch, \$3.00 and \$5.00 each.



Giatrasii