

Historic, Archive Document

Do not assume content reflects current scientific knowledge, policies, or practices.





Answered.....
RECEIVED
FEB 25 1908

An
Autumn Reminder

of the

**BEST THINGS
FOR HEDGING**
To be Planted Now

PETER'S NURSERY COMPANY

Knoxville, Tennessee

We cannot prepay charges on orders
for less than ten dollars.

ROSES

THE beauty of the roadside covered with wild roses has often been sung, and nature provides not a more charming sight. With their beauty enhanced to the superlative degree, we have many kinds of these same "wild" roses, all of which are invaluable for producing beautiful effects in garden work, and some of which can be used to grow hedges; while others show their loveliness best when clambering over a stone wall or an old fence, or used to hide unsightly objects. They grow with the slightest care



Rosa Wichuraiana clambering over a stone wall

and in ground where nothing else will thrive. We have a splendid lot of Roses for Hedge purposes, which are bound to give the greatest satisfaction. No more beautiful Hedge can be made than one composed of the following Roses, and they all stand pruning well, although they are not intended to be grown as a stiff, formal Hedge. We also grow the best sorts of Garden Roses, Ramblers and Climbers.

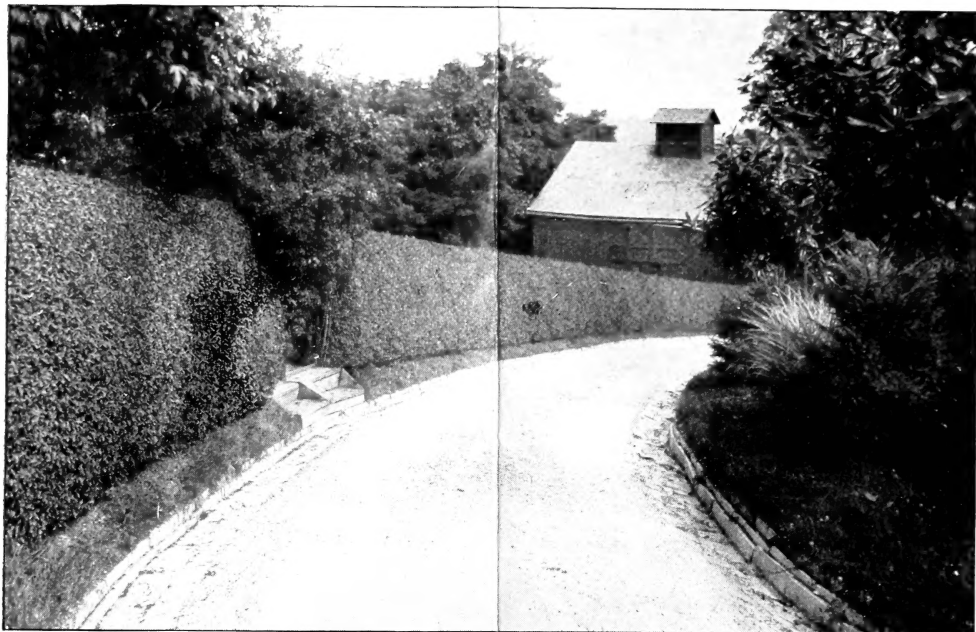
All prices include carriage charges, which are prepaid by us

ROSA RUGOSA. The great Japanese Rose, with the odd-looking rugose foliage is fast becoming a favorite for hedge-planting. It bears in the fall a profusion of large red hips as large as some crab-apples. Two colors—red and white. \$15 per 100.

ROSA WICHURAIANA. A trailing rose from Japan, with thick, lustrous foliage and great clusters of creamy white, tea-scented flowers, blooming after most Roses are over. \$20 per 100.

CRIMSON RAMBLER. Though naturally a climber, it can be trained into a practical Hedge, and is covered in June with great clusters of small crimson roses. \$10 per 100.

If you have an old fence or other unsightly thing about your house, or factory, or warehouse, or barn, and wish to hide it by means of vin-s, we can supply the most satisfactory kinds, such as *Clematis paniculata* and *Hall's Japan Honey-suckle*, both of which are strong and vigorous, are beautiful in flower and exquisite in fragrance, and will soon hide anything around which they are planted. For this purpose we offer good, sturdy plants of either vine at \$15 per 100.



AMoor River PRIVET HEDGE

EVERY ONE knows the beauty and utility of a Privet hedge. Nothing in the whole realm of growing things lends itself so well to the practical side of hedge-making; and of the Privets, while the California (*Ligustrum ovalifolium*) has many merits of its own, and where the winters are not too severe, is in every way satisfactory, the **Amoor River Privet** (*Ligustrum Amuense*) is the ideal for a strong, sturdy hedge which will withstand all sorts of low temperature—in fact, it is impossible to winter-kill it. We have made a specialty of the Amoor River Privet for some time, and have sold thousands of plants without receiving a complaint as to size, quality or growth after setting. No nurseryman will guarantee his stock, as, after it leaves his hands, it is subject to so many conditions over which he has no control; but we are so well convinced of the great superiority of our Privet that we are almost willing to guarantee every plant we send out, no matter what conditions it meets. In the South the Amoor River Privet is evergreen, and further north it retains its foliage so late in winter that at times the old foliage drops only when the new foliage of spring starts. In June and July it is covered with dainty white flowers in erect panicles. Our present stock of this great hedge plant is the best we have ever grown, and we have thousands of plants, ready for transplanting, at the following price, which includes **carriage charges prepaid by us**. Large, stocky plants, 2 to 3 feet, which will make a good-sized hedge in two years, **\$5 a hundred, \$45 per thousand.**

Directions for Setting a Privet Hedge.—Allow six feet in width for the hedge, and in the center dig a trench, setting the plants about six inches deeper than they were in the nursery, and 8 to 10 inches apart. The roots must be well separated, covered with fine soil and pressed down firmly. This deep planting insures heavy growth at the bottom, which can be increased by keeping the lower part of the hedge wider than the top. After planting, the tops are to be cut off almost one-half. The following spring the shaping can be commenced, shearing the hedge into any desired form, and by judicious pruning the lower growth can be encouraged, that the hedge may be solid and compact to the ground. Nitrate of soda is very beneficial and stimulating.

DECIDUOUS HEDGE PLANTS

MANY of the flowering shrubs, ordinarily grown singly or in mass plantings, can be used with artistic effect as hedges. Those we list below are only a few of the many kinds we have, and we shall be glad to send fuller information upon request. The prices attached are for good, sturdy, vigorous plants, and in all cases include carriage charges paid by us. By using medium-sized plants, a hedge does not cost much more than a good board fence, and becomes more beautiful year by year.

BARBERRY. All of the Barberries make good hedges, as they grow close to the ground, and are distinctly ornamental in winter.

Japanese Barberry (*Berberis Thunbergi*). Has glossy green foliage and bright scarlet berries in the fall. 1 to 1½ ft., \$6 per 100, \$40 per 1,000; 1¼ to 1½ ft., \$8 per 100, \$55 per 1,000; 1½ to 2 ft., \$15 per 100, \$110 per 1,000.

Purple-leaved Barberry (*Berberis purpurea*). Young shoots are red and the foliage is purple, with small yellow flowers in spring. 1½ to 2 ft., \$10 per 100, \$85 per 1,000; 2 to 3 ft., \$12 per 100, \$110 per 1,000.

Common Barberry (*Berberis vulgaris*). Grows the highest of the lot, and is covered in autumn with red berries. 1½ to 2 ft., \$10 per 100, \$85 per 1,000; 2 to 3 ft., \$12 per 100, \$110 per 1,000.

HONEY LOCUST (*Gleditsia triacanthos*). Sometimes called three-thorned acacia. Makes an impenetrable hedge if severely sheared. One of the best for turning stock. 1 yr. plants, \$1 per 100, \$8 per 1,000.

UPRIGHT HONEYSUCKLE (*Lonicera Tatarica*). Makes an attractive screen covered by a profusion of small white or red flowers in spring and translucent red berries in fall. We can supply either color. 1¼ to 1½ ft., \$10 per 100, \$70 per 1,000; 2 to 3 ft., \$12 per 100, \$100 per 1,000.

SPIREA VAN HOUTTEI. In early summer it is a mass of white bloom, and makes one of the handsomest hedges. 1½ to 2 ft., \$10 per 100, \$80 per 1,000; 2 to 3 ft., \$12 per 100, \$100 per 1,000.

BUCKTHORN (*Rhamnus catharticus*). Extremely hardy and good for hedges, as it is full of spines. Dark green foliage changing to yellow in autumn, when the plant is full of big black berries. In summer it is covered with white flowers. 1½ to 2 ft., \$8 per 100, \$60 per 1,000; 3 to 4 ft., \$12 per 100, \$80 per 1,000.

JAPANESE QUINCE (*Cydonia Japonica*). Some people call it *Pyrus*, and others "Fire-bush." A hedge of this in early spring looks like a glowing strip of fire, so brilliant are the showy red flowers. The plant is full of spines, which makes it extra good for hedge purposes, and it will stand any amount of shearing. 1¼ to 1½ ft., \$7 per 100, \$60 per 1,000; 1½ to 2 ft., \$10 per 100, \$90 per 1,000.

CALIFORNIA PRIVET (*Ligustrum ovalifolium*). We have a superior lot of this deservedly popular hedge plant, and where the mercury in the thermometer does not try to crawl into the bulb, it is strongly recommended. \$4 per 100, \$35 per 1,000.

OSAGE ORANGE (*Maclura aurantiaca*). Mostly used on farms, as it is the least ornamental of any of the hedges, but is attractive when closely trimmed. Bears odd-looking "oranges" in the fall. For farm work needs to be "plashed." 1-year size 60 cts. per 100, \$2.50 per 1,000.

EVERGREEN HEDGE PLANTS

MANY people prefer Evergreen Hedges, and, indeed, there is a charm about them which a deciduous hedge does not possess—that of relieving the cold, bare somberness of winter by a touch of living green. In many ways an Evergreen hedge is also more practical than a deciduous one, for it will act as a windbreak or shield at a time when such protection is most needed. We have a vast variety of all the various kinds of Evergreen Hedge plants and can supply them in unlimited quantities. Below will be found a partial list of our stock, the prices of which include carriage charges, which are in all cases prepaid by us.

NORWAY SPRUCE (*Picea excelsa*). Valuable for high hedges or windbreaks, and stands any amount of shearing. Perfectly hardy, handsome in effect and of a beautiful shade of green. Its large cones, 5 to 7 inches long, are distinctly ornamental. 1 to 1¼ ft., \$3 per 50, \$6 per 100, \$50 per 1,000; 1½ to 2 ft., \$6 per 50, \$10 per 100, \$90 per 1,000.

AMERICAN ARBORVITAE (*Thuja occidentalis*). For low, compact screens, this is one of the best evergreens to use. Its foliage is a handsome shade of bright green, turning to brown and bronze in winter. The spring effect, as the young foliage comes out, is most beautiful. 1 to 1¼ ft., \$3 per 50, \$6 per 100; 3 to 4 ft., \$15 per 50, \$25 per 100.

HEMLOCK (*Tsuga Canadensis*). A tall, untrimmed Hemlock hedge is most effective when the size of the grounds permits it. The fine, feathery foliage is gracefully elegant and the general effect of the hedge very artistic. Will also stand clipping and shearing to any effect, making a close, compact hedge. 10 to 12 in., \$6 per 50, \$10 per 100.

DWARF BOXWOOD (*Buxus suffruticosa*). An absolute necessity if one wishes to re-create the old-time gardens. \$6 per 100.

OREGON GRAPE (*Mahonia aquifolium*). Much like holly in general effect, but turns bronzy in autumn. Bright yellow flowers in spring, and blue-black berries in fall. \$10 per 100.



BAMBOO

IF you wish a touch of the Japanesque in your garden, nothing will give it to you better than the Bamboos, especially if grown in connection with something already partaking of the same effect. For instance, we saw a low, one-story house built on a nature-lover's place, and the owner, in order to produce a Japanesey effect, covered it with a tile roof of peculiar construction. This was the keynote to the scheme, and, in order to carry it out fully, several distinctively Japanese plants were massed about it, the most important of which was Golden Bamboo (*Phyllostachys aurea*), which grows 10 to 15 feet tall, with bright golden stems and soft green leaves drooping from many fine branches. The Bamboos require a rich, deep soil in a somewhat protected situation, preferably where they can get plenty of moisture. Excellent for screens, and soon spreads into a veritable "brake."

We can supply fine strong clumps at \$1 each, \$10 a dozen, or \$80 a hundred, *carriage charges in all cases prepaid by us.*

PETER'S NURSERY COMPANY
KNOXVILLE, TENNESSEE