

Historic, Archive Document

Do not assume content reflects current scientific knowledge, policies, or practices.



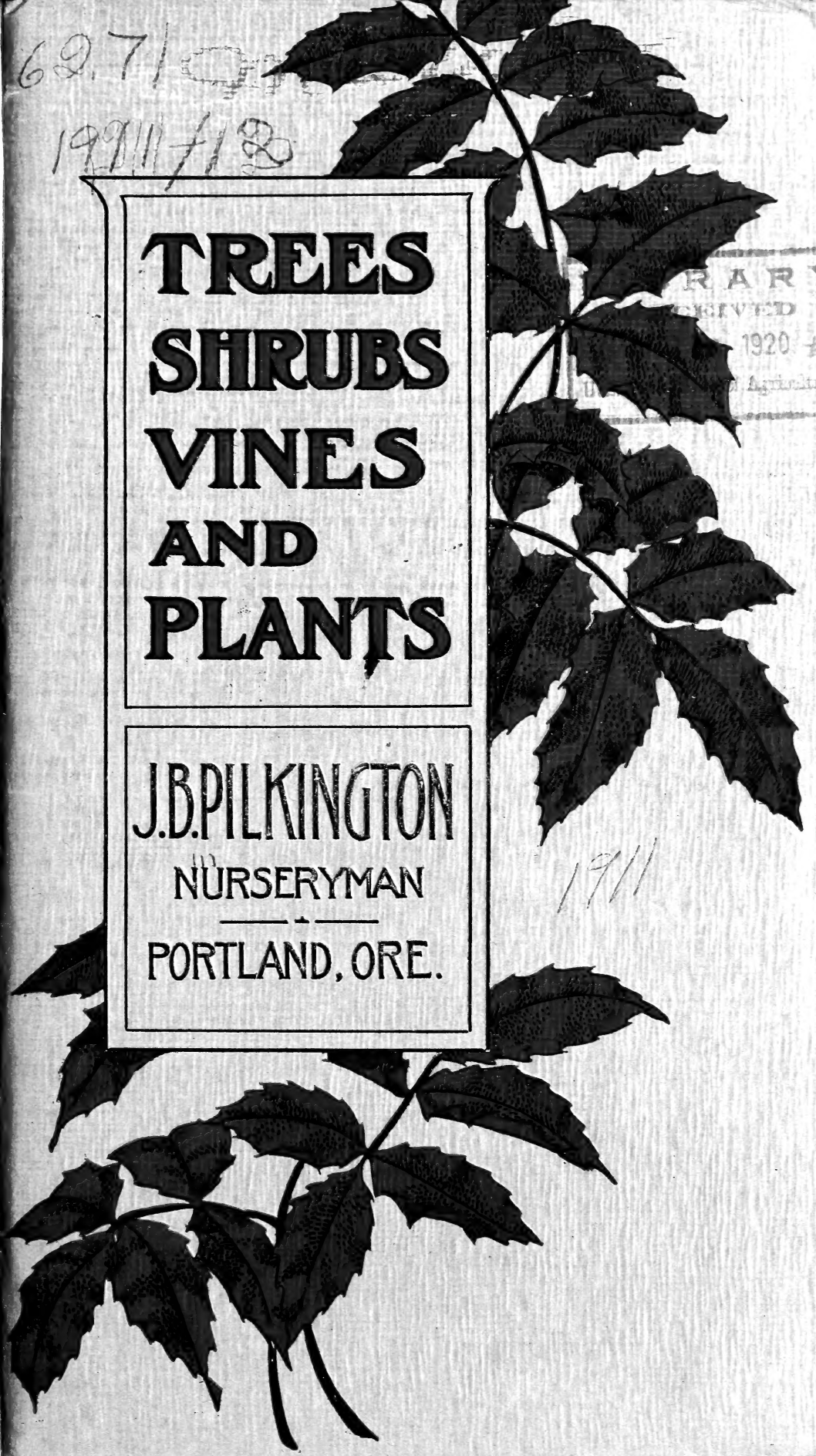
62.7/10
1911/12

**TREES
SHRUBS
VINES
AND
PLANTS**

J.B. PILKINGTON
NURSERYMAN
— + —
PORTLAND, ORE.

1911

LIBRARY
RECEIVED
1920





TREES
SHRUBS
VINES
AND
PLANTS

WILL KINGTON
NURSERMAN
FORD AND ORT



FLOWERING
CRAB APPLE

Fine Nursery Stock

J. B. PILKINGTON
NURSEYMAN

PORTLAND OREGON



COPYRIGHT
SEPT. 1911
J. B. PILKINGTON

READY FOR DELIVERY



American Elms
Broadway from Seventeenth East

Greeting



IN presenting this Catalog for the season of 1911-12 to my customers, many of whom I have supplied almost every season during the 25 years I have been engaged in nursery growing in Portland, I take pleasure in stating that the stock offered herein from my several nurseries is the largest, most complete and varied in the Northwest, and is offered to the discriminating buyers of Portland and the Pacific Northwest with the assurance that the quality will be of the highest, and that each and every order received will have the same careful attention heretofore given, and which has merited the appreciation of the planting public to such an extent that the ground devoted to the growing of high-grade ornamental stock has increased from a limited area to the present extensive acreage at Durham and near Tualatin, on the Oregon Electric Railway and Southern Pacific Railway, 12 miles south of Portland. These new nurseries are in addition to the old planting near the Vancouver car line, on Columbia Boulevard, which I still continue, and where stock can be seen at all times or seasons.

I am making a specialty of hardy, high grade, field grown stock suitable to our climatic conditions, propagating not only all of the older well known plants, trees and shrubs, but many new things as well. For years past I have annually imported the best novelties from the nursery centers of Europe and Japan, trying them out and, if of merit, adding them to my stock or discarding them if not up to my standard of requirements. Hence the collection of stock listed herein is past the experimental stage and can be safely accepted as entirely suitable for general planting.

The demand for this class of stock is growing so rapidly that the supply barely keeps equal to the demand, and taking

advantage of this many Eastern and outside nurseries not familiar with our special needs and conditions, itinerant salesmen or agents simply working for their commission, and dealers, often unreliable and growing no stock themselves, buying anything they can obtain cheaply, have been and are today supplying all over the country stock that will never be entirely satisfactory to the planter.

The best safeguard against this is to buy from the GROWER or from some well known, long established firm whose standing is beyond all question. Whenever possible visit the nursery in person and see the stock for yourself. Otherwise the inexperienced buyers or planters run the risk of planting and caring for stock for some years only to find it worthless or unsuited to their needs or conditions.

In addition to ornamental stock, I have always been a heavy grower of fruit trees for home and for commercial orchard planting, and annually supply several hundred thousand fruit trees to small planters and to the wholesale trade. I can supply any demand from planting a city lot to a 1500-acre orchard, such as I furnished last year. Particular attention is given to furnishing large lists and quantities of both ornamental and fruit stock for large estates, city parks, recreation, public and school grounds, orchard tracts, etc., and special quotations will be made when such lists are submitted. If varieties and sizes not mentioned herein are desired kindly inquire for them.

LOCATION—The general office, packing and sales departments are in Portland, corner of Second and Main Streets, where during the planting season a general assortment of fine Shrubbery, Roses, Vines, Shade and Fruit Trees, etc., are on hand for prompt delivery.

The principal nursery for display of ornamental stock is on Columbia Boulevard, just east of Vancouver car line. (Take Vancouver car at Second and Washington Streets to Columbia Boulevard; fare, 5 cents; time, 20 minutes.) The stock here is fine and varied. Visitors are always welcome. Personal selection is best, and all specimens chosen will be tagged with purchaser's name and reserved for delivery at the proper time.

PLANTING SEASON—The proper time for transplanting nursery stock is often a disputed point, but the result of my many years' experience in planting all kinds of stock has been, generally speaking, that it is proper to transplant at any time from the falling of the leaves of deciduous trees in the autumn until the buds start in the spring.

During severe winter weather it is not advisable to handle stock, but our winters generally permit planting right through from November until March. Early fall planting is preferable as a rule, as roots form all winter and stock is ready to grow as soon as warm weather begins. But if unable to plant early do not give it up or wait for a year, but plant any time up to the middle of April if good dormant stock can be obtained.

IT IS ADVISABLE TO ORDER EARLY, AS A BETTER SELECTION AND MORE COMPLETE ASSORTMENT CAN BE HAD. ORDERS PLACED EARLY ARE GENERALLY PLANTED EARLY. Orders can be placed early with instructions to ship at a given time when you are ready to plant.

PRICES AND DELIVERY—The prices quoted herein are approximate, but will not necessarily prevail where personal selection of SPECIMEN plants is made at the nursery. Where

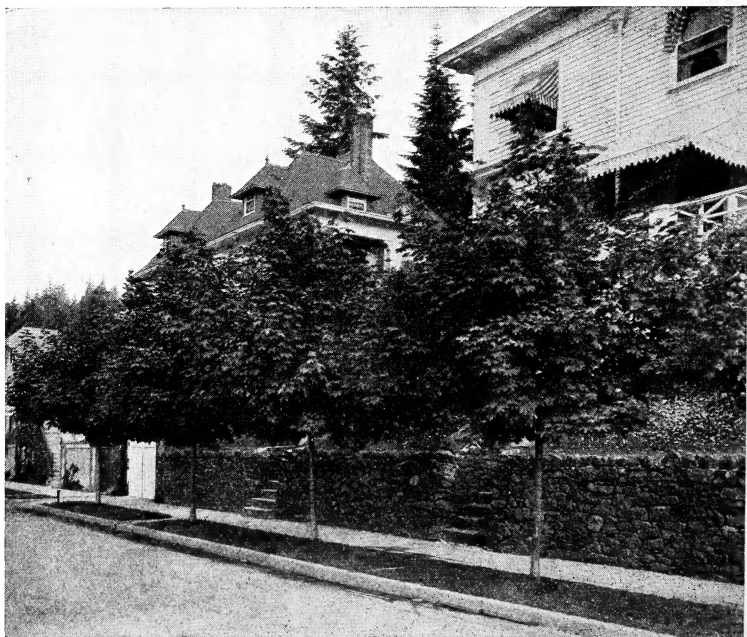
prices vary for a given article, customers are requested to state amount they wish to pay, and plants of corresponding size and grade will be carefully selected. It is my aim and intention to give good value to all purchasers. Mail orders receive personal attention in selecting and packing, and will be shipped in accordance with instructions. If no shipping instructions are given orders will be sent by Express or Freight, as I may judge most convenient and satisfactory, but our responsibility ceases in all cases with delivery to the Transportation Company. There is no charge for packing or delivery to Transportation Company on outside orders, and Portland orders are delivered free within city limits.

TERMS OF PAYMENT—Net Cash. Unknown correspondents should send cash with their order, or usual commercial references.

GUARANTEE—The living of trees and shrubbery is largely dependent upon conditions of weather and after-care beyond the nurseryman's control; therefore, I do not guarantee any stock to live after leaving the nursery in good condition. If there is any cause for complaint please advise promptly on receipt of stock. After it is received and planted the purchaser can have no reason for complaint to the grower.

I do, however, warrant stock true to name and will replace any that may prove otherwise, or will refund the original purchase price, but will not be responsible for more than price paid for stock, and all sales are made with this understanding.

The nurseries are examined by the County Inspector of Horticulture, and a copy of certificate showing freedom from scale or other injurious insect or fungus disease is supplied with all shipments.



Norway Maples, Madison and Ford



Apple Blossoms in Oregon

GIFFORD PHOTO

FRUIT DEPARTMENT

Land for orchard purposes should be well drained, so that it retains no stagnant moisture, then deeply plowed and well prepared as for any garden crop. Extra care in soil preparation before planting will be well repaid in extra growth of trees and ease of caring for them. When ready to plant, have the ground staked in straight lines and dig good large holes to allow the roots being planted straight and naturally.

Before planting, see that roots are properly pruned and all broken or injured parts cut off smoothly. Plant carefully, holding the tree upright and working loose soil in and around the roots, tramping it in firmly until hole is three-quarters filled, then fill in rest of soil without tramping. The tree should be planted about three to four inches deeper than it stood in the nursery row. After planting they should be cut back to a uniform height, ranging from 16 to 30 inches in one-year trees. Two-year or branched trees should be headed back, taking off a little more than half of the preceding season's growth. After planting, a good mulch of manure extending beyond the roots, is of great benefit and it insures more uniform moisture and prevents drying out. Keep the ground about trees cultivated and open, not allowing grass or crops to grow close about them.

The number of plants required for an acre, at any given distance apart, may be ascertained by dividing the number of square feet in an acre (43,560) by the number of square feet given to each plant, which is obtained by multiplying the distance between the rows by the distance between the plants. Thus pear trees 25 feet apart each way take 625 square feet each, or 70 to the acre. Loganberries planted in rows 8 feet apart, 5 feet in the row, take 40 square feet to the plant, or 1090 plants to the acre.

Prices herein quoted are for first class selected stock of the sizes specified. Experienced horticulturists and orchard-

ists universally prefer the one-year 4 to 6-foot tree for extensive planting, though in certain sections a smaller grade, known as 3 to 4-foot, is extensively planted. This grade is not listed, but will be furnished when wanted at a lower price.

Two-year-old or larger trees for quick results are desired for city planting or where only a few trees are desired and uniformity in the orchard is of no importance.

Dwarf trees, home grown, can now be supplied in leading Western varieties. They offer many advantages to suburban planters and are being more and more extensively used as fillers in standard commercial orchards. I invite correspondence upon any point in fruit growing on commercial scale.

APPLES

The following list of Apples embraces varieties which have proven best, and can be recommended as most satisfactory for general home and commercial planting. A few others are grown in limited quantities. Inquire for anything not listed here.

One year, 4 to 6 feet, each 20c, per hundred \$15.00
Two year, 5 to 7 feet, branched trees, select, each 35c



SUMMER APPLES

RED ASTRACHAN. Deep crimson, medium size, juicy, rather acid, good. Tree hardy and vigorous. Ripens in August.

YELLOW TRANSPARENT. Pale yellow, medium size, roundish, oblate, slightly conical. Tender, juicy, sub-acid. Best of early apples. July.

AUTUMN APPLES

GRAVENSTEIN. Yellow, red striped, very large. Tender, crisp, juicy, sub-acid. Tree vigorous and productive. One of the best. September.

KING OF TOMPKINS COUNTY. Red striped, very large. Excellent quality, juicy, vinous. Vigorous and productive. September to October.

WINTER APPLES

ARKANSAS BLACK. Yellow covered with handsome dark maroon, nearly black. Medium size, round, with firm, fine grained, juicy flesh.

BALDWIN. Deep bright red. Large, rounded; excellent quality, very productive and vigorous grower. One of the best and most popular winter varieties in many localities.

DELICIOUS. Still comparatively scarce, is becoming well known as a market variety. Brilliant dark red, with gold near blossom end; large size, fine quality. Tree hardy and good grower. Price per hundred trees, 4 to 6 grade, \$20.

GRIMES' GOLDEN. Transparent golden yellow. Medium, round, conical, quality extra good. Fine keeper and a market favorite. Tree hardy, vigorous and good, constant bearer.

JONATHAN. Red and yellow, tender, juicy and rich. Very productive; one of the best for table and market. Extensively planted.

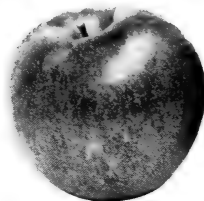
Portland · Oregon

NEWTOWN PIPPIN. Greenish yellow, large, juicy, crisp and aromatic. Moderate growth, good bearer. Very profitable and extensively planted in all sections. A market favorite everywhere.

NORTHERN SPY. Striped red, large, sub-acid, tender and juicy. Best dessert apple known. Tree hardy and vigorous.

ORTLEY. Pale yellow of Bellflower type; excellent quality, medium large, regular bearer and good keeper.

ROME BEAUTY. Dark red striped, large, excellent quality; a market favorite, bringing good prices. Tree hardy, regular bearer, late bloomer. My trees are propagated from the famous Wallace orchard at McMinnville. Will be planted very extensively.



Gravenstein

SPITZENBERG (Esopus). Brilliant red with gray dots, large, round, conical. High quality, firm, rich, spicy and delicious. Tree rather a slow grower, but with high culture a good bearer and a popular variety. Ripens November to January.

STAYMAN WINESAP. Beautiful, medium size, smooth, greenish yellow with red stripes. Flesh yellow, firm, fine and rich. Tree vigorous, hardy, early bearer and productive.

WAGENER. Brilliant red and light yellow, medium size, good quality; comes into bearing very early. A high altitude favorite.

WINTER BANANA. Yellow, blush cheek; very handsome, bringing high prices. Medium to large. Has pronounced flavor. Vigorous, hardy.

WINESAP. A favorite in the higher altitudes and dryer sections, but not so good in the lower valleys; medium size, dark red, crisp and rich. Brings good prices.

YELLOW BELLFLOWER. Large, round conical shape; yellow, sometimes with blush. Mealy and dry, but excellent quality. An old-time favorite, and especially so in California. Tree a good grower, hardy, healthy and long lived.

CRAB APPLES

HYSLOP. Good size, dark crimson with bloom, tart; very showy and most beautiful of all the class.

RED SIBERIAN. Small, bright red, covered with light bloom; fine flavor; excellent for preserving. Ripens September.

TRANSCENDENT. Largest of the crabs; striped red, showy, excellent and very handsome. Hardy and strong grower.



Young Apple Orchard

APRICOTS

One year, 4 to 6 feet, 25c each; per hundred \$20.
Large selected trees, 35c each.

MOORPARK. Very large; orange with reddish cheek; flesh orange, sweet, juicy with a fine flavor; very valuable. The best and the most extensively planted apricot. Ripens early August.

TILTON. Large, flesh firm, yellow; decidedly freestone. Tree vigorous, regular and heavy bearer.

CHERRIES



Branch of
Cherries

Oregon is famous for its cherries, as shown by the heavy demand for them in Eastern centers. All the cherry sections, East and West of the Cascades, have made excellent returns this year, and in many districts there will be heavy cherry planting. It is one of our best fruits and should be planted extensively. My trees are extra choice, budded stock that will give highest satisfaction to the planter.

One year, 4 to 6 feet, 30c each; \$25 per 100.
Two year, branched, 50c each; \$35 per 100.
Extra large select trees 75c each.

BING. Originated near Portland, Oregon. Fruit immense; black, firm and very fine. Ripens July, just before Royal Ann. One of the best table and market varieties; fine shipper and very profitable.

BLACK TARTARIAN. Large, black, half tender; sweet, rather rich, good flavor. Ripens medium early; tree strong upright grower and good bearer.

KENTISH (Early Richmond). Medium size, dark red; juicy, rich acid flavor; productive, hardy and reliable. Early. The best sour pie cherry.

LAMBERT. Also originated near Portland. Large size and fine quality; deep rich red, almost black; flesh firm and flavor unsurpassed. Best shipping variety; regular and heavy bearer. Ripens late July, two weeks after Royal Ann.

LATE DUKE. Best late cherry; large, red and sub-acid. Good.

MAY DUKE. Large, dark red; juicy, rich, tart; vigorous and productive. Ripens medium early in June. An old favorite variety.

ROYAL ANN (Napoleon Bigarreau). The best known Pacific Coast cherry, and probably the most profitable, all things considered. Very large, firm; rich red and white; good for table, canning and shipping, and the best of all the red varieties.

FIGS

Hardy kinds that fruit here. Strong rooted trees 50c each.

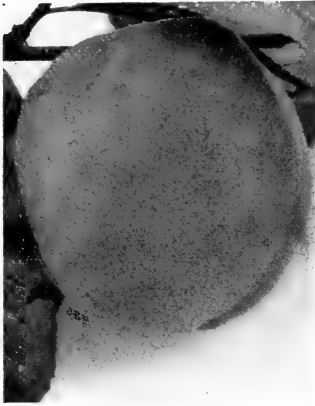
BLACK ISCHIA. Medium, blue-black; good. Hardy and good bearer.

CELESTIAL. Small, pale violet with bloom; very sweet, prolific and hardy.

PEACHES

One year, 4 to 6 feet, 20c to 25c each; \$15 per hundred.

Large selected trees 35c each.



Crawford Peach

ALEXANDER. Early; medium size; flesh greenish white, very juicy, vinous and good quality; adheres to the stone. Trees very prolific and bear young. One of the best extra early sorts.

CRAWFORDS EARLY. A magnificent, large yellow peach of excellent quality. Its size, beauty and productiveness make it one of the most popular varieties.

CRAWFORDS LATE. Fruit very large, roundish; skin yellow with dark red cheeks; flesh deep yellow, juicy and melting, with a very rich and excellent vinous flavor.

ELBERTA. Large; yellow with red cheek; juicy and good flavor; flesh yellow, freestone. Mid-season. Probably best shipping variety and is planted more extensively than any other peach.

FOSTER. Very large, yellow; resembles Early Crawford, but is a few days earlier and of better quality.

LEMON CLING. Large, lemon shaped handsome fruit; light yellow; flesh firm, rich, sub-acid; fine for preserving. Hardy, productive.

MUIR. A California favorite; fine shipper and unsurpassed for canning and drying. Excellent bearer; large, yellow, firm flesh.

SALWAY. Large; yellow with crimson cheek; flesh deep yellow, melting and rich. Ripens October; is best late variety.

PERSIMMONS

AMERICAN. Small fruits, orange yellow with whitish bloom; very astringent until fully ripe or after early frosts. Tree is very handsome; dark, dense green foliage; fine for lawns. 50c.

JAPANESE. Fruit is larger and better than the American, not so astringent, but tree is not so ornamental. 50c.



Peach Orchard

PEARS



Bartlett Pear

Pears thrive best on rich, heavy soils, clay or clay loams preferred. They are very profitable under favorable conditions and are being more and more extensively planted. The Rogue River Valley leads in pear acreage, but other districts are planting extensively as well. My stock of pears is exceptionally good and grades are the very best. I have supplied many of the best Medford orchardists for a number of years past and my trees have given general satisfaction everywhere.

One year, 4 to 6 feet, 35c each;
\$30 per hundred.

Two year selected trees 50c each.

BARTLETT. Large; clear yellow skin; buttery, very juicy and high flavored. Heavy bearer; vigorous. Ripens August-September. Profitable, and the most extensively planted for home and market.

BOSC. Handsome deep yellow, slightly russet; very highest quality, tender and aromatic. Tree rather weak grower.

SECKEL. Small; dull yellow with russet and colored cheek; very juicy, rich and melting; high flavored and a favorite for home and close by markets. Tree slow grower, but productive and profitable. September-October.

COMICE. Yellow, faintly blushed crimson; handsome, fine quality and good keeper. A famous Medford variety.

ANJOU. Large; yellow, somewhat russeted, red cheek; fine grained, buttery, melting, excellent. October-December. Next to Bartlett the most profitable and extensively planted commercial variety.

WINTER NELIS. Medium size; dull russet, melting, juicy, aromatic; very highest quality. A favorite table fruit, but weak grower and does not bear regularly in some sections. December-January.

CLAPP'S FAVORITE. Good for home orchards and close by markets, but not a shipper like Bartlett and others. Large; resembles Bartlett, but ripens a few days earlier. Yellow, juicy and good.

CLAIRGEAU. Large; deep yellow with blush russet specks. Flesh high quality, aromatic, juicy and pleasing. Tree inclined to be weak and poor grower.

PLUMS

One year, 4 to 6 feet, strong, 25c each; \$20 per hundred.
Heavy selected trees 35c each.

ABUNDANCE. Japanese. Early, bright cherry red with bloom; flesh yellow, sweet, tender, excellent. Large, very productive; tree vigorous.

BURBANK. A favorite Japanese Plum ripening in August. Large, round, mottled red and yellow; productive and profitable. Tree hardy and vigorous.

BRADSHAW. Very large, oval; dark violet red; juicy, sweet and good. A valuable market variety. August-September.

COLUMBIA. Very large; round, dark red; rich vinous flavor; hangs on tree long time. October.

DAMSON. Small, roundish oval; dark purple; favorite for preserves. September.

PEACH. Large, roundish; brownish red; coarse grained, but juicy, pleasant, sprightly flavor. Freestone. Ripens July. Ranks first in popularity.

YELLOW EGG. A very large and beautiful egg-shaped plum; a little coarse, but excellent for cooking. Late October. Free grower, productive and hardy.



Peach Plum

PRUNES

Are being very extensively planted. Price is very high for the choice Oregon prunes (Italian), and will probably continue so for a long time to come. There is no orchard more profitable in the long run than a good Italian prune planted properly on suitable soil. I supply many of the best Yamhill and Clarke County growers, and my trees can be relied upon absolutely. My scions are cut from a famous bearing orchard near Newberg, and grafted upon seedling peach roots. My stock this year is large and of exceptionally good quality.

One year, strong, 4 to 6 feet, 20c each; \$17.50 per hundred.
Heavy selected trees 25c to 35c each.



Italian Prune

FRENCH or PETITE. The well known California favorite for drying. Medium to small, egg-shaped; violet purple; juicy, very sweet, rich and sugary. Prolific, heavy bearer.

HUNGARIAN (Grosse Prune, Pond's Seedling). Very large, dark red, juicy and sweet. Its large size, bright color, productiveness and shipping qualities make it a profitable variety for home or distant markets.

ITALIAN. The famous Oregon Prune of commerce. Planted more extensively in the Northwest than all other varieties combined. Large, oval shape, rich dark purple with whitish bloom. Flesh solid, fine flavor; delicious either fresh or dried. Easy to handle; best for drying. Tree vigorous, productive and constant bearer. I make a specialty of these and have supplied hundreds of thousands of trees to the best Willamette Valley prune orchards, often selling to customers who bought their first trees from me twenty-five years ago.

SILVER. A seedling of Coe's Golden Drop, with which it is almost identical. Bears heavily; large, handsome and is ranked as one of the best.

QUINCES

Heavy branched trees 35c to 50c each.

CHAMPION. The most popular variety. Large, roundish with short neck; color light yellow. Good quality, very productive.

BOURGEAT. A comparatively new variety of great size, rich golden color; extra good quality. A great keeper; tree free, vigorous and free from leaf blight.

ORANGE or APPLE. Large, golden yellow; productive and profitable.

SMALL FRUITS



Mammoth Blackberry

Low prices can be made on all small fruits when wanted in large quantities for commercial plantings. Write for special prices on your list of wants.

BLACKBERRIES

EVERGREEN. An Oregon introduction, with beautiful cut-leaf foliage, which it retains during winter. Berries large, black, sweet, rich and delicious; bears from July to November, making it one of the best for family use. Fine for covering fences. Dozen \$1; per hundred \$7.50.

KITTATINNY. Fruit large, roundish, conical, rich glossy black, sweet and excellent. A market favorite here. Strong plants, dozen 75c; per hundred \$6.

LAWTON. Another favorite variety; large, good quality, productive and profitable. Dozen 75c; per hundred \$6.

NEW MAMMOTH. No longer a novelty, but a proven success; the best family and market variety known. Strong grower of trailing habit, enormously productive; very early, bringing highest prices; fruit enormous, cores soft and small, seeds small, soft; flavor unsurpassed. Heavy plants 15c each; \$1.50 per dozen; \$10 per hundred.

HIMALAYA GIANT. A strong rampant trailing plant; very productive. Hardy and thrives even under severe conditions. Fruit large, handsome and fine quality. Strong plants 15c each; \$1.50 per dozen; \$10 per hundred.

DEWBERRIES

LUCRETIA. A trailing variety of the blackberry, producing an abundance of large, glossy black, handsome fruit of excellent quality. Fruit ripens early and the plant does not sucker. 15c each; \$1.50 per dozen.

PHENOMENAL BERRY

Originated by Luther Burbank; a cross between red raspberry and dewberry. Called an improved form of Loganberry; larger, more productive and sweeter, but softer and not as good for shipping. Dozen \$1.50.

LOGANBERRY, BLACKBERRY-RASPBERRY

Now well known everywhere as a standard fruit for home and market garden, it is being more extensively planted than any other small fruit. A strong trailing grower; fruit large, with shape of the blackberry, the color of the raspberry and the flavor a combination of both.

Strong transplants, dozen \$1; hundred \$7.50.

Tip plants in February, \$5 per hundred; \$35 per thousand.



Loganberry

RASPBERRIES

Strong heavy plants 75c dozen; \$6 per hundred.

CUMBERLAND

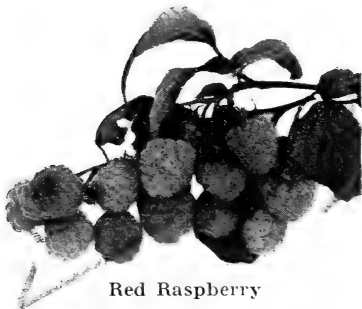
(Black). Very large, firm, high quality, hardy and the best mid-season market varieties, giving the utmost of satisfaction to both grower and shipper.

GREGG (Black). Best late blackcap, market favorite. Canes strong, productive; berries large, covered with bloom; firm, meaty and fine flavor.

CUTHBERT, or QUEEN OF THE MARKET. A remarkably strong, hardy red variety. Berries large, conical, rich crimson; flavor sweet, rich and delicious.

MARLBORO. Fruit of largest size, bright scarlet, excellent flavor. Good shipper, heavy canes, early and hardy.

GOLDEN QUEEN. A handsome yellow fruited raspberry; the best of its class; excellent quality, productive, hardy.

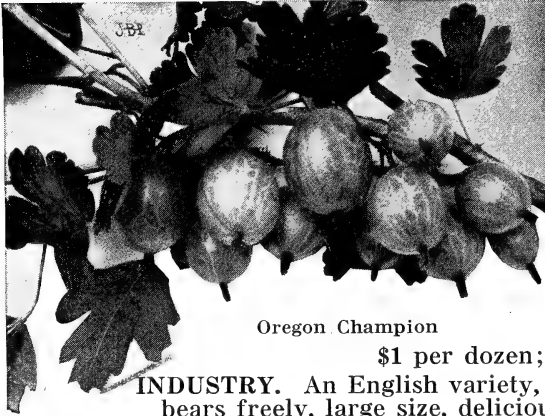


Red Raspberry

SUPERLATIVE. A comparatively new RED berry, probably the largest and best grown. Fruit large and solid, core small, quality extra; very productive. Dozen \$1.50.

I can also supply other varieties, such as KANSAS, SOUHEGAN, RED ANTWERP, etc.

GOOSEBERRIES



Oregon Champion

CHAMPION.

An Oregon production, entirely free from mildew. Fruit large, light green, round; heavy bearer. Best for table or canning. The only variety extensively planted.

Heavy plants,
\$1 per dozen; \$6 per hundred.

INDUSTRY. An English variety, best of the reds; bears freely, large size, delicious quality. Each 25c; dozen \$2.50.

CURRANTS

Strong plants \$1 per doz.; \$6 per hundred.

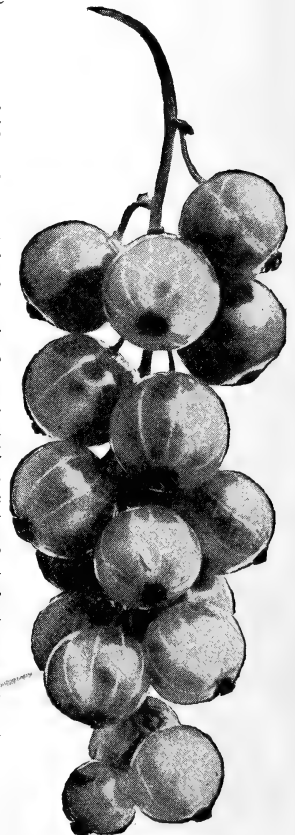
BLACK NAPLES. Very large, bunches medium length. Valued for jelly. Strong grower with coarse leaves. Hardy.

CHERRY. Fruit large, deep red, rather acid. Favorite.

FAY'S PROLIFIC. One of the best red currants, extensively planted for market and very profitable. Fruit large, bright red, excellent flavor, sub-acid.

WHITE GRAPE. Very large, yellowish-white, productive; less acid than most, excellent for table.

PERFECTION. Originated by Chas. G. Hooker of Rochester, N. Y., has been tried everywhere and proven the best currant known for home or market. Beautiful bright red, largest size, fine bunches on long stems, permitting easy picking without crushing. Quality rich, mild, sub-acid with plenty of pulp and few seeds. Very productive, vigorous and hardy. My plants are genuine and each carries the originators' label. Heavy two-year plants 25c each; \$2.50 per dozen. I can also supply RED CROSS, LONDON MARKET, NORTH STAR, POMONA, RED DUTCH and other varieties.



Perfection

GRAPES

Strong two-year plants, 15c each;
\$1.50 dozen.

Low prices in hundred and thousand lots.

CONCORD. The most extensively planted grape in America. Bunch and berries large; black, fair quality, good keeper. Vine hardy, healthy and productive.

DELAWARE. Bunches small, compact; berries rather small, round, thin skin, light red; flesh juicy, sweet, good.

Portland · Oregon

MOORE'S EARLY. Bunch large; fruit large, round, black with heavy bloom. Best early variety, hardy and productive.

NIAGARA. Vine hardy, strong grower; bunches large, compact. Berries large, round, light greenish white, semi-transparent. Skin tough, does not crack, quality good, melting and sweet.

WORDEN. An improved Concord and next to it in popularity. Earlier, better quality and larger than Concord, equally hardy and healthy, but not as good a shipper. Really our best black grape for home use and nearby markets.

These varieties have been found best for Western Oregon and Washington. I can supply **FLAME TOKAY**, **MALAGA**, **MUSCAT** and **ROSE OF PERU** in quantities at low rates to the planters in the drier sections East and South, where the European varieties are successfully raised.



STRAWBERRIES

Selected plants, 60c hundred; \$4 thousand. Carefully packed for shipment.

Very low prices in large quantities for extensive plantings.

GOLD DOLLAR. Earliest market berry; good medium size, dark red all through; good flavor, rather tart; fine for canning or table. Productive and profitable variety.

HOOD RIVER, or CLARKE'S SEEDLING. A wonderful shipping berry; firm, fine quality, dark red all through.

MAGOON. Originated near Portland by Mr. Magoon; the best berry for Western Oregon and Washington. Large, fine, dark crimson; fine quality, hardy, healthy and productive.

MARSHALL. A fine all-around berry; large, crimson, fine flavor; ranks next to the popular Magoon.

OREGON. Comparatively new variety; highly recommended, with many good qualities. Under favorable circumstances it bears a second crop in the fall, making it a valuable variety for home planting.



New Oregon

GARDEN ROOTS

ASPARAGUS. For garden culture, plant in beds two feet apart each way; for field culture make rows five feet apart, planting two feet apart in row. Set roots in trench six to eight inches below the surface, covering but two inches at first and filling in by degrees after plant is established and growing. They require no special care other than a liberal application of manure annually. Two year, strong plants, in best varieties, dozen 25c; per hundred \$1; per thousand \$8.

RHUBARB or PIEPLANT. This should be in every garden and on every city lot. Strong two-year roots, 75c per dozen; \$5 per hundred.



Nursery View Conifers and Tree Roses

NUT TREES

ALMONDS

The almond is a success in the Willamette Valley, but for commercial planting the higher and drier sections East of the Cascades and the valleys of Southern Oregon are preferable. Every home orchard, however, should have one or more almonds. The following varieties can be supplied: TEXAS PROLIFIC, PEERLESS, JORDAN, DRAKE'S SEEDLING, I. X. L., NE PLUS ULTRA and NONPAREIL.

One year, 4 to 6 feet, 25c each; \$20 per hundred.

Extra large select trees 35c each.

CHESTNUTS

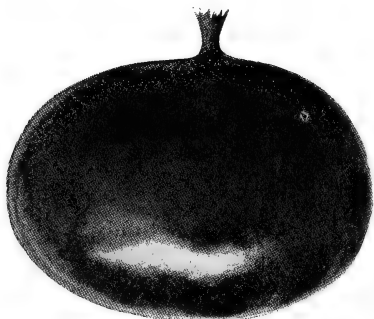
Thousands of acres on the Pacific Coast are admirably adapted to chestnuts, which have proven very profitable wherever tried commercially. They are also fine as shade or avenue trees. No disease has affected trees in the Northwest up to this time.

AMERICAN SWEET. The fruit is very sweet and fine flavor, rather small, but prolific and profitable. 35c to 50c.

ITALIAN, or SPANISH. Large, good flavored nut; tree strong grower and productive; valuable for ornament and fruit. Strong trees 35c to 50c; large specimens \$1.

JAPANESE. Dwarfish tree; bears young, often in nursery row. Nuts fair size, good quality. Very productive and profitable. Grafted trees 35c to 50c each.

MARRON de LYON. A grafted French variety that has fruited with us; one of the largest and best of market kinds; exported from France in large quantities as a desert nut. Nut large, round, fine quality. Large grafted trees \$1.50 each.



Marron Nouzillard

MARRON NOUZILLARD. Another grafted French variety; very large, fine flavor, productive; generally two or three nuts in each burr. Tree very handsome. Large grafted trees \$1.50 each.

FILBERTS

The only nut that is indigenous to the North Pacific Coast. The filbert or common hazel grows everywhere. There are a number of young filbert orchards now bearing which promise very profitable results. Filberts should be trained as trees, not as bushes, and all sprouts removed as they appear. Low prices in quantity.

Select, 4 to 6 feet, 50c each; 3 to 4 feet, 35c each.

BARCELONA. A magnificent variety of Spanish origin; nut large, round, first quality. Very productive; trained as a low standard tree or as a bush.

DU CHILLY. The largest filbert fruited on the Pacific Coast. Elongated oval, very broad; often more than an inch long by three-quarters of an inch wide. Nuts uniformly large, well formed, full fleshed and sweet.

HICKORY (Carya)

SHELL BARK HICKORY. This favorite of the Eastern and Middle States has not been extensively planted in Oregon, but where planted has done well, and it will be more generally planted henceforth. Deep, well drained, fertile loams, either of clayey or sandy nature, are best adapted for the rapid development of the tree, with a humid, moderately warm climate during the summer. The nuts have a peculiar rich flavor equaled by no other nut. Strong trees 50c and 75c each.

WALNUT

Walnuts are being planted in the Pacific Northwest by hundreds of acres. It has been fully proven that we can grow walnuts superior in flavor to all other sections, without exception. This applies to the hardy, late-blooming French varieties—nuts which have always commanded the highest prices in the markets of the world.

No nut yields larger or more profitable returns than the walnut; the tree is practically free from all insect pests, and when once established requires little care so far as pruning and spraying are concerned. While it usually takes eight to ten years to come into bearing, they are long lived, and a good orchard can be classed as a solid, long-time dividend-paying investment.

My grafted trees are on California black walnut roots, the scions are from selected trees that are annual bearers of large, fine, true to type nuts.

Grafted trees commence to bear earlier than seedling trees, and the product is more uniform in size, but their cost and scarcity discriminate against them, especially in extensive plantings.

One year second generation seedlings \$20 per hundred.

Same stock transplanted, two to four years old:

2 to 3 feet, 35c each; 3 to 4 feet, 50c each; 4 to 5 feet 60c each; 5 feet up, 75c each.



Mayette

MAYETTE. The nut imported from France as the true Grenoble, one of the finest dessert and market nuts known; large and even in size, well shaped with light colored, medium thin but tightly closed shell; kernel is full fleshed, sweet and delicious with no excess of oil, hence easy to digest, nutritious and never grows rancid. Very hardy; blooms late in spring after danger of frost is over.

FRANQUETTE.

Equally good as Mayette, blooming late after danger of spring frosts is past; perfectly hardy and an abundant bearer. Nut is quite large, elongated oval shape, very handsome, with heavy well sealed shell. Kernel full fleshed, sweet and rich. very desirable as a market variety.



Franquette

WALNUT, BLACK

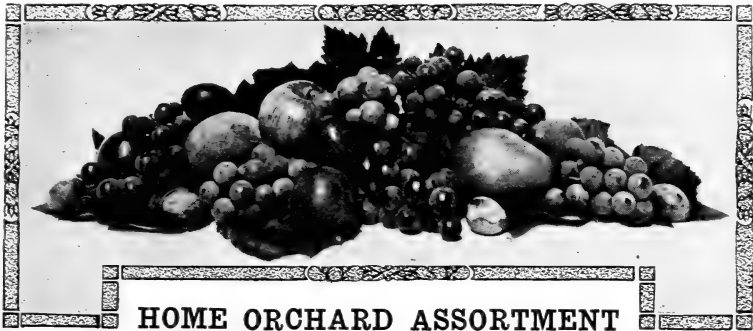
AMERICAN BLACK. A very large, spreading tree, with pinnate foliage. Well known and valuable both for its nuts and timber. Large trees 50c and 75c each.

BUTTERNUT (White Walnut)

A beautiful growing tree, with wide spreading head, reddish dark foliage; very hardy. Nuts large, rough, hard shell, with sweet, rich white kernels; oily but delicate flavor. Large trees 50c and 75c each.



Black Walnuts, East Third and Wasco



For many years customers have requested me to furnish assortments for home orchards. As a result of this experience I offer the following assortment of 35 trees, which will cover all needs. Planted 25 feet apart each way they take one-half an acre of ground. The varieties are assorted to cover the entire season:

- 10 Apples, assorted
- 6 Cherries, assorted
- 6 Pears, assorted
- 4 Plums, assorted
- 4 Peaches, assorted
- 1 Apricot
- 1 Quince
- 1 Walnut
- 1 Chestnut
- 1 Almond

These 35 trees, in selected one-year stock, best sizes for planting, will be delivered freight paid, at any Railroad Station or Express Office in Oregon or Washington for \$10.

SMALL FRUIT ASSORTMENT

This assortment will supply the needs of the average family for table use and for canning.

- 12 Rhubarb
- 12 Red Raspberry
- 6 Black Raspberry
- 6 Lawton Blackberry
- 6 Mammoth Blackberry
- 6 Loganberry
- 12 Champion Gooseberry
- 12 Red Currants

The entire assortment in good, strong one and two year stock delivered at any Railroad Station or Express Office in Oregon or Washington for \$5.

Strawberry plants can be added at prices listed on page 15. For \$15 the two assortments will be sent, and I will add six fine, strong grape vines.

This is not cull or surplus stock offered cheap, but selected grades of standard commercial varieties.

DWARF FRUIT TREES

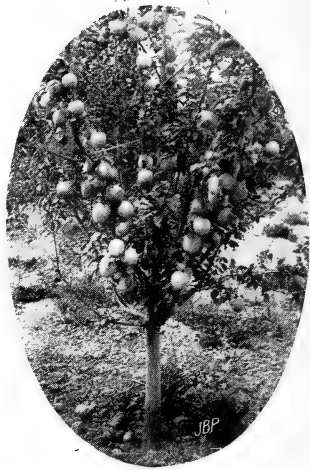
Dwarf fruit trees have been used in Europe for generations and in Japan for centuries, but up to the last few years comparatively little attention has been given them in the United States, though their use is constantly growing, and will increase even more rapidly as their adaptability and advantages become better known.

Dwarf trees do not attain the size of standard stock, therefore are better suited for suburban plantings, where space is limited; they can be planted closely, enabling the grower to have more of them, and consequently greater variety than when large standard trees are used.

The trees are easily taken care of, as their growth can be kept within reach, and pruning, spraying and picking can be done from the ground without using ladders. They come into bearing in two or three years, while standards require double this time. Two-year trees in the nursery rows often bear appreciable quantities of fruit.

Commercial planters are beginning to use them extensively as "fillers" between rows of nut or fruit trees that do not come into early bearing. I supplied several thousand pear and apple for this purpose last year, and the demand is rapidly increasing, as the results so far appear very satisfactory.

I am now able to supply home grown dwarf apple and pear one and two year stock in our well known Coast varieties, and plums and prunes in one year stock. I recommend planting of this dwarf stock on city lots, where space is an object, or by those who desire quick results.



DWARF APPLES



Dwarf Apple in Nursery Row

Heavy two year branched trees
50c each.

Select one year 35c each

YELLOW TRANSPARENT. Very early, hardy Russian variety; best quality early apple; sub-acid, crisp and fragrant. Large, pale waxen, transparent yellow.

RED ASTRACHAN. A beautiful apple, general favorite. Yellow base, covered with red. Medium size, good quality.

SWEET BOUGH. Large, pale yellow apple; early, tender, sweet and very good for all purposes.

RED JUNE. Attractive little apple, nearly covered with brilliant red. Sub-acid, tender and very juicy.

Portland · Oregon

- TETOFSKY.** Medium size, yellow, handsomely striped red with whitish bloom; flesh juicy, sprightly, acid and agreeable. Russian variety, early, hardy and productive.
- GRAVENSTEIN.** Large, handsome, deep yellow streaked and splashed with deep red. Quality very best, fruit tender, crisp and pleasantly acid. Vigorous; constant bearer.
- ORTLEY.** A coming Hood River favorite. Pale yellow, of the Bellflower type, but less acid and a better apple.
- DELICIOUS.** Brilliant dark red, with yellow; large size and excellent quality. A market favorite.
- WINTER BANANA.** Large, clear pale yellow with delicate pink blush; very attractive. Brings best market price.
- JONATHAN.** Beautiful red apple, highly flavored; excellent quality, rich, juicy and tender. One of the best apples.
- SPITZENBERG.** Medium large, dark red, or faint striped dark red and pale yellow; firm, crisp and aromatic. Good keeper.
- YELLOW NEWTOWN.** Bright yellow with pink blush; richly flavored, firm, crisp and juicy; good quality and best of keepers. Hood River's most famous and profitable apple.

DWARF PEARS

Heavy two year branched trees 50c each.
Select one year 35c each; \$25 per hundred.

- ANJOU.** One of the best late fall pears; large, handsome greenish yellow with dull red and russet. Excellent.
- BARTLETT.** Rich golden yellow, often with blush. Ripens in August; highest quality, thin skinned, buttery and melting; very rich. Best dessert and canning pear known.
- BOSC.** Handsome deep yellow, slightly russet; best dessert fruit, aromatic, tender, juicy and highest quality. Fall.
- COMICE.** Yellow, faintly blushed crimson; fine quality, good keeper. Brings highest price of any market pear.
- SECKEL.** Very small, yellowish-brown pear of highest quality; tender, juicy, melting. Ripens September.
- WINTER NELIS.** Small russet pear; not handsome, but most delicious when properly ripened. Should be picked just before frosts and packed away in dark cellar until ripe. Flesh fine grained, very spicy, melting and very rich.



DWARF PLUMS AND PRUNES

Select one-year trees, 35c each.

- PEACH PLUM.** The best plum; early, sub-acid, round, handsome dark red. Free-stoned, pleasant flavor. Very productive.
- ITALIAN PRUNE.** Large, fine, dark purple, oval fruit; rich and delicious. Ripens late; hardy, vigorous and productive.
- SILVER PRUNE.** Handsome, very large, late golden prune; rich and delicious; fine for dessert, drying and canning.

Pilkington Nursery





LANDSCAPE DESIGNING

This new department, commenced one year ago to meet the many calls being received for high class Landscape Architecture, has met with instant success, and its scope is being enlarged to enable it to handle properly the many demands upon it.

This branch of my business is in charge of Mr. Arthur L. Peck, late of the Faculty of the Oregon Agricultural College, and a Landscape Architect and Engineer of high training and wide experience. The department is in one sense independent of the regular nursery business, though a branch of it. Mr. Peck's professional services, in consultation only, or in designing, planning, preparing maps and planting lists, also the execution or laying out of these same plans, can be had without being required to purchase nursery stock.

A number of excellent bits of work have been done during the past year with a still larger number under way for the coming season, for as the need of a competent engineer and designer is being more and more realized by those contemplating improving old home grounds and laying out of new grounds, estates, public and private parks, etc., the demands upon the department will rapidly increase.

Investors and speculative builders, as well as home makers, find one of the most important points in enlisting the services of the Landscape Department is the great increase in property value which accrues to the home grounds by reason of its work. No other investment in connection with a home will yield as great returns. It has often happened that an expenditure of a few hundred dollars in the outdoor embellishment of the home grounds has resulted in many thousands of increased value to the property.



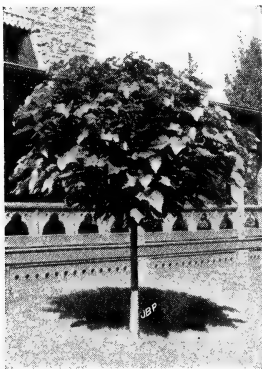
Lawson's Cypress
Entrance Riverview Cemetery

Portland and all the other cities of the Pacific Northwest are growing rapidly and hundreds of handsome residences are being erected by people of taste and refinement, who will gladly avail themselves of our services. Many of the older home grounds can be likewise benefited by this department, which is prepared fully to draw plans for planting, design general effects, furnish estimates and, if desired, supervise

and plant the proper things to create the landscape picture, which all home grounds should be.

We will be very glad to confer with cities and towns that desire park plans or designs for making the "City Beautiful," and with associations or individuals contemplating laying out of cemeteries, public and private grounds or parks, school grounds, amusement parks and play grounds, railway stations, etc. We will gladly send to anyone interested further matter upon the subject with outline of fees, cost and general charges.

ORNAMENTAL TREES



Catalpa Bungei

The following list of deciduous trees (those that lose their leaves in autumn) embraces a selection for all purposes. For street planting, Birch, Catalpa, Elm, Hawthorne, Horse Chestnuts, Maples of several varieties, Mountain Ash, Tulips and others are all favorites; while for garden and landscape this varied list covers trees of every characteristic in outline and habit, color of foliage and floral diversity.

These trees have been grown from seedlings in my nurseries, have been transplanted each a number of times according to size, will transplant readily and take vigorous hold and grow well when transplanted to new locations. Prices are for different sized trees, and in all cases good value will be given, according to price charged.

ASH (*Fraxinus*)

AMERICAN WHITE (*Fraxinus Americana*). A rapid growing, medium sized tree; fine proportions and long lived; suitable for streets or lawns. 4 to 6 feet, 50c; 6 to 8 feet, 75c; 8 to 10 feet, \$1; 12 feet, specimens, \$1.50.

BEECH (*Fagus*)

EUROPEAN (*Fagus Sylvatica*). A large and beautiful tree with ovate or elliptic dark green and glossy leaves. Price 50c, \$1 and \$1.50 each.



Copper Beech

CUT LEAF BEECH (*Fern Leaf, Fagus Sylvatica Asplenifolia*). Leaves deeply divided, cut almost into the midrib in numerous narrow segments. A graceful variety, forming a dense, low growing tree. Price \$1, \$1.50 and \$2 each.

COPPER, or PURPLE LEAF BEECH (*Fagus Sylvatica Purpurea*). A strong and vigorous tree of elegant habit, with most beautiful foliage, changing from dark purple in early spring to red, and then to a purplish green. A graceful and handsome specimen tree. Price \$1, \$1.50 and \$2 each.



Copper Beech
Entrance City Park



Shrubbery Planting, Hawthorne and East Twenty-sixth

WEeping COPPER BEECH (*Fagus Sylvatica Purpurea Pendula*). A weeping form of Beech, likewise striking, distinct and handsome. A few fine specimen trees, \$3 to \$5 each.

BIRCH (*Betula*)

EUROPEAN WHITE BIRCH (*Betula Alba*). Handsome, rather slender tree; silver-white bark, branches spray-like. Rapid grower; very effective for lawn or curb. 75c, \$1 and \$1.50 each.

CUT-LEAF WEeping BIRCH (*Betula Alba Laciniosa Pendula*). Bark and branches silvery-white; graceful, slender, drooping branches and finely cut leaves. Beautiful and effective for all purposes. Large trees, \$1.50, \$2 and \$2.50 each.

PURPLE LEAVED BIRCH (*Betula Purpurea*). Light colored bark; foliage beautiful shade of purple when young, changing to green in mid-season. Very distinct for lawn or specimen planting. \$1 and \$1.50 each.

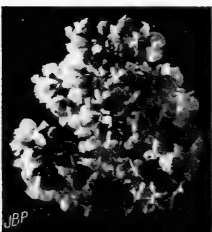


Cut Leaf Weeping Birch

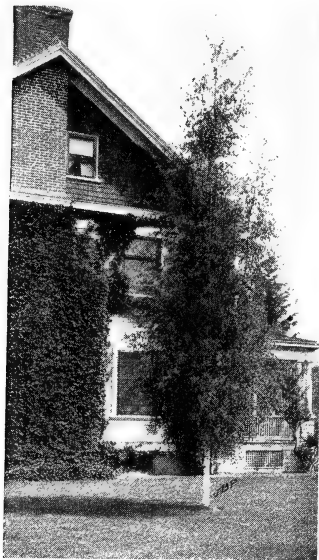
CATALPA (*Indian Bean*)

Rather rapid growing, large leaved trees, with handsome flowers in July. Hardy, medium sized, fine uniform heads. Should be extensively planted as a street tree.

CHINESE (*Catalpa Bungei*). A dwarf variety—native of China—branching to the ground without stem. When top-grafted at about six feet from ground on strong stems of other Catalpas it forms a fine head, covered with a dense mass of large heart-shaped, light green leaves. Extensively used in formal and semi-formal gardens, as it has the outlines of the popular standard Bay Trees and, being hardy, is better adapted for permanent gardens. Is also being



Western Catalpa



Boston Ivy and White Birch
Mallory and Ainsworth

planted as a street tree. Bears panicles of white flowers, but is a shy bloomer. Good specimens \$1.50, \$2 and \$3.

JAPANESE (*Catalpa Kaempferi*). Rapid grower with deep green, glossy foliage. Flowers fragrant, cream-colored with yellow and purple spots. Trees 8 feet, \$1 each.

CATALPA (*C. Syringaefolia*). A showy, rapid growing, spreading, irregular tree, with pyramidal clusters a foot long of white and purple fragrant flowers. Blooms in latter part of July, when few trees are in bloom, hence desirable. Trees 8 feet, \$1.

WESTERN CATALPA (*Catalpa Speciosa*). A medium sized tree; very hardy. Foliage is large, oval, light green in color. Flowers white with yellow spots, born in large panicles in July, when few trees are in bloom. Forms a round, com-

compact head, not too high, making it especially suitable for curb planting. While it prefers a moist soil it will thrive anywhere. This tree is planted extensively in the Middle West for fence posts and timber purposes. A handsome and valuable tree worthy of general planting for all purposes. 4 to 6 feet, 50c; 6 to 8 feet, 75c; 8 to 10 feet, \$1; large specimens, \$1.50.

CHESTNUTS. See Nut Trees and Horse Chestnuts.

FLOWERING CHERRY (*Cerasus*)

I have a fine collection of imported Japanese single and double-flowering cherries in stock, also a few weeping varieties. Japanese names are impossible; can supply them by color and description. Large trees, with flower buds, \$1, \$1.50 and \$2 each. A few large specimens \$4 and \$5.

EUROPEAN DOUBLE WHITE FLOWERING CHERRY (*Cerasus Avium Alba Flora Plena*). Covered in May with very double white blossoms resembling small roses. A fine round-headed dwarf tree, valuable in any situation. \$1, \$1.50 and \$2.

JAPANESE DOUBLE PINK FLOWERING CHERRY (*Cerasus Japonica Rosea Flora Plena*). Upright good growing tree; one of the best of double-flowering cherries. \$1, \$1.50 and \$2.



Western Catalpa
Williams and Stanton

FLOWERING CRAB APPLE (*Malus*)

Handsome small trees that thrive in almost all soils. They are covered in early spring with very fragrant, showy, yet dainty flowers. No call of early spring is more enticing than the beauty and perfume of the flowering crabs. Beautiful from the first glimpse of color until the petals fall. This small tree should have a place on every lawn; their beauty and value seem to have been overlooked and not appreciated fully, but as they become better known they will be found in all collections. Attention is called to the spray of these flowers on the title page of this Catalog.

Strong trees 5 to 6 feet, with flower buds, \$1 each.

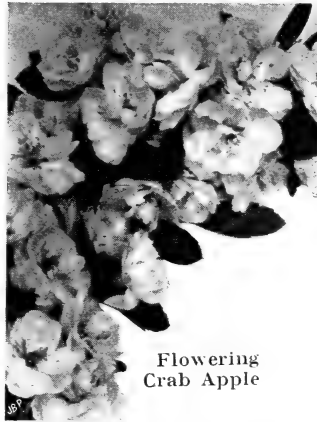
BECHTEL'S DOUBLE FLOWERING CRAB (*Malus Angustifolia*). Bears masses of double rose-like flowers of delicate pink color and delightful fragrance. Blooms when quite young.

FLOWERING CRAB (*Malus Floribunda*). Single flowers; buds carmine and white when open. Full of small red fruit in autumn.

PARKMAN'S FLOWERING CRAB (*Malus Halleana*). Beautiful semi-double rose-colored flowers; very attractive.

DOUBLE FLOWERING CRAB (*Malus Floribunda Scheideckeri*). Double flowers, bright rose color, lasting and good substance. Fine for cut flowers.

WILD CRAB APPLE (*Malus Coronaria*). A well known native of the eastern part of the United States. A small tree with spiny spreading branches, with an abundance of pink or rose colored fragrant flowers, in fine clusters, in the spring. Fruit waxy greenish-yellow; often used for preserves.



Flowering
Crab Apple

DOGWOOD (*Cornus*)

OREGON DOGWOOD (*Cornus Nuttalli*). This is the dogwood of our Pacific Northwest woods—the handsomest of our Deciduous Trees. Its immense white flowers open in April, and it often flowers again in September, when the white flowers, red fruits and gorgeous foliage intermingle, producing a beautiful effect. The grayish, splotchy bark makes it an ornament to the winter landscape. Should be in every collection. See illustration flowers, page 49. Strong trees, 6 to 8 feet, 75c; 8 to 10 feet, \$1; 10 to 12 feet, \$1.50; larger specimens, \$2.50.

RED FLOWERED DOGWOOD (*Cornus Florida Rubra*). Very handsome in flower and foliage, the leaves turning magnificent crimson in autumn. Flowers of a bright rosy-red color, shading to a lighter hue toward edge of petals. A small, choice ornamental tree. \$1.50 and \$2 each.

WHITE FLOWERING DOGWOOD (*Cornus Florida*). Very beautiful and ornamental. Native of Eastern States, bearing white flowers in spring before the leaves appear. 75c and \$1 each.



American Elms, East Twenty-first and Halsey

ELM (*Ulmus*)

One of the best known and favorite shade trees, closely associated with American historical events, as well as with home or childhood recollections of the greater part of us. It thrives equally well everywhere, in cool, shady parks or in crowded and smoky city streets. The magnificent elms in this city on Sixth Street from Yamhill south, and elsewhere, prove its suitability for city planting in the Northwest.

Trees 4 to 6 feet 50c; 6 to 8 feet, 75c; 8 to 10 feet, \$1; 10 to 12 feet, \$1.50; a few specimens 15 feet up at \$3.50 to \$5 each.

AMERICAN WHITE ELM (*Ulmus Americana*). Lofty and spreading, with drooping branchlets. The favorite and best known elm.

CORK ELM (*Ulmus Alatus*). A medium sized tree with corky winged branches. Leaves ovate, coarsely serrate, dark green at maturity, turning yellow in autumn. An attractive tree with a narrow, round-topped crown.

ENGLISH ELM (*Ulmus Campestris*). More erect in growth than the American elm, compact with smaller foliage and twiggy trunk and branches. A hardy, valuable tree.

CAMPERDOWN WEEPING ELM (*Ulmus Campestris Camperdowni Pendula*). A remarkably picturesque weeping tree, which extends its branches horizontally until it forms a complete arbor, its outer branches touching the ground. There is no other weeping tree quite like it. It does not grow over 15 feet high, while it will spread or cover 40 feet or more. Strong heads, \$1.50, \$2 and \$2.50 each.

EMPRESS TREE (*Paulonia Imperialis*)

A magnificent tropical looking tree from Japan; of extremely rapid growth and surpassing all others in the size of its leaves, which are 12 to 18 inches in diameter. Its flowers are blue, trumpet-shaped and borne in great panicles in May. Few trees are more noticeable than this. 5 to 6 feet, \$1.

HAWTHORN (*Crataegus*)

These small trees are hardy and very ornamental, showy in both flowers and fruit, and are used very effectively for curb, lawn or massed landscape or combination planting.

CARRIER'S WHITE THORN (*Crataegus Azarolus Carrieri*).

A comparatively new variety, introduced by this nursery several years ago. It does exceptionally well here and is the best of the Hawthorns. Tree upright and vigorous, with light yellowish bark, deep green foliage that remains late. Flowers are large and white; fruit scarlet, size of cherries, abundant; they hang on the tree well through the winter, making it very attractive. See illustration taken in nursery. Trees 5 to 6 feet, \$1; 6 to 8 feet, \$1.50; 10 feet up, \$2.



Scarlet Hawthorn
Flanders near Twenty-third

COMMON HAWTHORN, or QUICK (*Crataegus Oxyacantha*).

The well known Hawthorn with glossy foliage and pure white flowers, extensively used in England as a hedge. It does equally well here, as shown by illustration on page 68. Sturdy trees 4 to 5 feet, 50c. (See also Hedge Plants, page 64.)

DOUBLE SCARLET HAWTHORN (*Crataegus Oxyacantha Coccinea Flora Plena*). Paul's Thorn, a tree of fine habit, with rich luxuriant foliage; flowers bright scarlet, large, full and very double, in heavy clusters on long sprays. A charming variety; best of the scarlets. Strong trees, \$1, \$1.50 and \$2 each.

DOUBLE WHITE HAWTHORN (*Crataegus Oxyacantha Alba Plena*). A small tree with fine foliage and double white flowers; makes a fine contrast with the Double Scarlet Hawthorn. Strong trees, \$1, \$1.50 and \$2 each.

HERCULES CLUB (*Aralia Spinosa*)

Also known as Devil's Walking Stick, due to its stout prickly branches. Valuable for making fine semi-tropical effects, as it is a low-growing tree, or high shrub—with compound leaves two to four feet long—with quantities of creamy-white flowers borne in large panicles, followed by purple berries. Good trees, 3 sizes, 75c, \$1 and \$1.50 each.

HORSE CHESTNUT (*Aesculus*)

These vigorous, hardy, symmetrical trees are among the best for street and lawn planting, adapting themselves to all conditions, flowering freely in early May and carrying rich, deep green foliage throughout the season.

EUROPEAN, or WHITE FLOWERING HORSE CHESTNUT (*Aesculus Hippocastanum*). Our well known white variety, of large growth in deep soils. Flowers white, tinged with red, in loose panicles 8 to 12 inches long. The burrs, half-opened and showing the large seeds, are very attractive in the fall. Heavy trees 6 to 8 feet, 75c; 8 to 10 feet, \$1.25; 12 feet, \$1.50.



Horse Chestnut

RED FLOWERING HORSE CHESTNUT (*Aesculus Hippocastanum Rubicuda Briotti*). My trees are all grafted the true Briotti strain, far superior to the common seedlings generally offered. A very ornamental tree; leaves are deeper green than the White, blooms a little later. Flowers showy red, in short, heavy panicles. A valuable variety, though rather scarce. 4 to 6 feet, 75c; 6 to 8 feet, \$1.25; a few specimens, 15

feet up, recently transplanted, \$5 each.

LABURNUM OR GOLDEN CHAIN (Cytisus)

GOLDEN CHAIN (*Cytisus Vulgare*). A small tree with erect or ascending branches, forming a narrow head. Flowers yellow, in long, silky, drooping racemes. Very few, indeed, of the flowering trees can surpass this Laburnum when, in early spring, it is a mass of graceful pendant blossoms. Fine trees, 3 sizes, 75c, \$1 and \$1.50 each.

LARCH (Larix)

EUROPEAN LARCH (*Larix Europaea*). A deciduous conifer, similar to the well known American Tamarack. A tall, conical tree, very graceful in park and landscape; remarkable for its soft, light green foliage, which expands with the first warm days of early spring; fades in autumn with beautiful yellow shades. Can be highly recommended for general planting, being very hardy, with handsome form, foliage and cones. As they start very early in spring, they should be transplanted in fall or very early in spring. Fine sturdy trees, 4 feet, 75c; 5 to 7 feet, \$1.50 each.

LINDEN OR LIME (Tilia)

EUROPEAN LINDEN (*Tilia Platyphyllos*). A large and stately tree, with handsome, pyramidal crown; or in age, round-topped and massive. Leaves heart-shaped, relatively large; dark green, turning yellow in autumn. Flowers large, yellowish-white, fragrant. 75c, \$1, \$1.50 and \$2 each.

SILVER-LEAVED LINDEN (*Tilia Argentea*). A large sized tree, forming a compact, round head. It is of rapid growth and useful for street and ornamental planting. The leaves are green above and silver beneath, and hold their color late in the fall. Large trees, \$1 and \$1.50 each.

LOCUST (Robinia)

BLACK LOCUST (*Robinia Pseudacacia*). A large irregular shaped tree, with small compound bright green leaves. Flowers white, very fragrant, in drooping racemes in May. 3 sizes, 50c, 75c and \$1 each.

HONEY LOCUST (*Gleditschia Triacanthos*). A large, spiny tree, with spreading branches forming a broad top. Leaves dark and glossy, fading to yellow in autumn. Long, dark brown pods filled with seeds and sweetish pulp in autumn. Nice trees, 75c and \$1 each.

MAIDENHAIR TREE (Ginkgo)

GINKGO BILOBA (*Salisburia Adiantifolia*). Different from other trees; a broad-leaved deciduous conifer, the only representative of its genus. Foliage spray thick and glossy, resembling the fern, for which it is named. It is largely used abroad for street planting and as an individual specimen on small grounds; it is always handsome. 8 to 10 feet, \$1.



Shrubbery Screen, Twenty-second and Everett

MAGNOLIA

In many respects the Magnolias have no rivals among flowering trees. They are characterized by a wealth of large, showy flowers, many of them blossoming early in the spring before the leaves appear, others when the foliage is fully formed. Hardy and durable, thriving best in rich, loamy soil. They are the very choicest subjects for lawn planting, where they show to fine advantage in contrast to the green; or they may be planted effectively on the borders of lawns with an evergreen in the background to heighten the contrast.



White Magnolia

CHINESE WHITE, or YULAN (*Magnolia Conspicua*). Makes a low round tree, covered in April with masses of large, snow-white, lily-like flowers. Flowers before the leaves appear. A beautiful object; one of the best. \$1, \$1.50 and \$2; large specimens, with flower buds, \$3, \$4 and \$5 each.

CUCUMBER TREE (*Magnolia Acuminata*). One of the largest Magnolias, of rapid growth, forming a pyramidal tree of much beauty; flowers yellowish-white, expanding in latter May. Good, strong trees \$1 each.

PINK MAGNOLIA (*Magnolia Soulangeana*). Probably the most popular of the class, hardy and a vigorous grower, blooming profusely even when quite young. Flowers are large, pink on the outside and white inside; leaves obovate, appearing after the flowers have fallen. It can be grown as a small tree or as a large shrub—as a single specimen or in masses. \$1, \$1.50 and \$2 each; a few large specimens, with flower buds, \$3.50 and \$5 each.



Nursery View Weir's Cut Leaf Silver Maple

- PURPLE MAGNOLIA** (*Magnolia Obovata*). A late bloomer; holds its large purplish flowers persistently. A useful variety. Good specimens, \$1, \$1.50 and \$2 each.
- STARRY MAGNOLIA** (*Magnolia Stellata*, or *Halleana*). A charming dwarf variety. Early, abundant bloomer, with rather small, white or rosy flush; petals long and narrow. Fragrance is very delicate. \$1.50, \$2 and \$2.50 each.
- SOUTHERN MAGNOLIA** (*Grandiflora*). See Evergreens, page 45.

MAPLES (*Acer*)

The Maples are unquestionably among the best and most satisfactory shade trees we have. They afford great variety and range of size, form, density, foliage and color, making it possible, by judicious selection, to use them in almost any place with pleasing results.

- ASH-LEAVED MAPLE** (*Acer Negundo*). Also called Box Elder. Fine rapid growing tree; spreading habit. Desirable for shade. 8 to 10 feet, \$1; 10 to 12 feet, \$1.25 each.
- ASH-LEAVED SILVER MAPLE** (*Acer Negundo Argenteum*). Often called Variegated Silver Maple. A weak, irregular grower when small, eventually becomes a handsome, striking tree, very satisfactory for massing effects or specimen planting. Sturdy trees 4 to 6 feet, \$1; 6 to 8 feet, \$1.50.
- NORWAY MAPLE** (*Acer Platanoides*). One of the most valuable ornamental trees for street and lawn. A large, handsome tree with spreading head; broad, dark green foliage. Very compact growth; free from insect or other pests; makes a most excellent shade tree. See illustration page 4. I offer extra choice trees 5 to 6 feet, 50c; 6 to 8 feet, 75c; 8 to 10 feet, \$1; 12 feet, \$1.50.



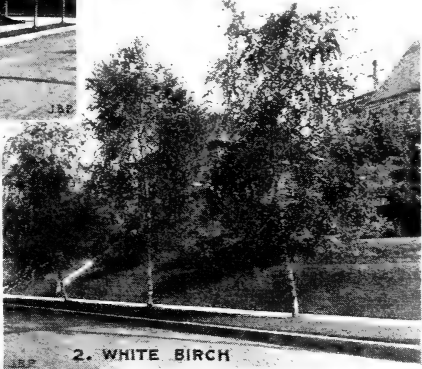
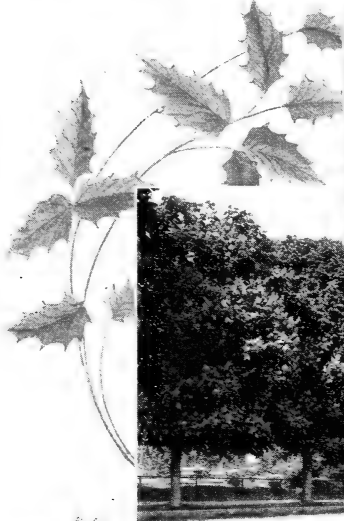
Norway Maple

Portland - Oregon



1. MOUNTAIN ASH

J.B.P.



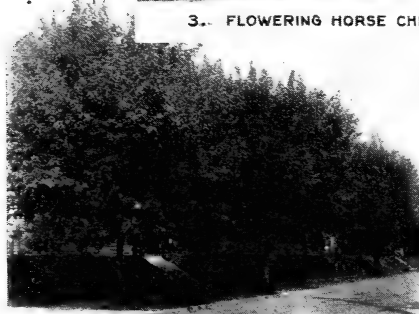
2. WHITE BIRCH

J.B.P.



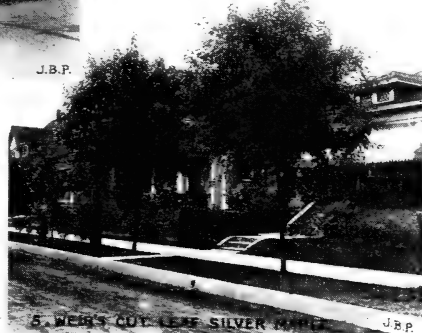
3. FLOWERING HORSE CHESTNUT

J.B.P.



4. SILVER MAPLE

J.B.P.



5. WEIB'S CUT-LEAF SILVER MAPLE

J.B.P.

1, Nineteenth and Halsey; 2, Twentieth and Jackson; 3, Curry and Kelly; 4, Seventeenth and Schuyler; 5, Fargo and Union Avenue.



Weir's
Cut Leaf
Silver Maple

PURPLE NORWAY MAPLE (*Acer Platanoides Reitenbachii*). A magnificent and beautiful tree, remarkable for the changing colors of its leaves. Foliage beautiful reddish green in spring, changing to dark purple toward mid-summer and fading with red and purple tints in autumn. 5 to 6 feet, \$1; 6 to 8 feet, \$1.50.

SILVER MAPLE (*Acer Dasycarpum*). A rapid growing, large sized tree with wide spreading limbs and pendulous branchlets. Foliage medium large, bright green above and silvery-white underneath. Exceptionally suitable for street planting; it is widely cultivated and a grand tree. Strong, heavy trees, 8 to 10 feet, \$1.



Silver Maple

WEIR'S CUT-LEAF SILVER MAPLE (*Acer Dasycarpum Laciniatum Weiri*). A graceful, weeping silver maple, with deeply cleft and divided leaves that appear almost feathery. Long pendulous branches, often sweeping to the ground. This species lacks the density of head that usually characterizes the maples. A great favorite and of deserved popularity. There are some fine specimens bordering street curbs in Irvington district, this city. Fine, well shaped trees, 8 to 10 feet, \$1; 10 to 12 feet, \$1.50; 12 to 15 feet, \$2.

SYCAMORE MAPLE (*Acer Pseudo-platanus*). Very quick growing tree, of handsome spreading form. Bold, dark green foliage. An excellent lawn and shade tree. Also exceptionally suitable and fine for seashore planting. Strong, sturdy trees, 6 to 8 feet, 75c; 8 to 10 feet, \$1; 12 feet, \$1.50.

JAPAN MAPLES (*Acer Japonicum*)

These beautiful, small trees have been one of my specialties for many years. Though classed as trees, their dwarf habit makes them more effective when grouped or massed in borders and treated as hardy shrubs. For permanent beds of color and delicate foliage, they are unsurpassed. When grown in groups, planted three to five feet apart, they give one of the most beautiful results in foliage effect possible in the use of hardy stock.

The varieties described below have proved the most satisfactory among several dozens experimented with during past ten years. They are perfectly hardy and are easily grown, all coming out with exceptionally fine crimson-red foliage in early spring, and holding the color during the summer sun much better than most of the other varieties commonly imported from Japan. My stock is home grown.

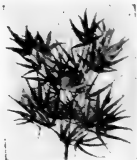


Broad Leaf
Japanese Maple

Fine shrubs, choice and heavy, at 75c, \$1 and \$1.50 each; a few extra large specimens at \$3, \$4 and \$5 each.

BROAD LEAF RED JAPAN MAPLE (*Acer Jap. Atropurpureum*). Leaves of beautiful dark purplish red or claret color; compact growth. One of the best for a heavy mass effect. A very beautiful small tree or shrub.

CUT-LEAF RED JAPAN MAPLE (*Acer Jap. Atropurpureum Dissectum*). The foliage is a rich crimson claret color, thin, graceful and as delicately cut as the finest fern.



Ribbon Leaf Japanese Maple

Dwarf and spreading, fairly compact, of a distinct weeping habit. One of the finest and most distinct and effective varieties.

RIBBON LEAF RED JAPAN MAPLE (*Acer Jap. Scolopendiflorum Rubrum*). Scalloped purple-red leaved variety. Leaves are deeply cut, narrow, medium long ribbed; very graceful. Rather upright habit.



Cut Leaf Japanese Maple

MOUNTAIN ASH (*Sorbus Aucuparia*)

EUROPEAN MOUNTAIN ASH. Handsome small tree with pinnate foliage and bearing corymbs of small white flowers in late spring, followed by large clusters of bright red berries during late summer and fall. A beautiful tree for lawn or street curb planting. (See illustration page 33.) 6 to 8 feet, 75c; 8 to 10 feet, \$1; 12 feet, \$1.50.

MULBERRY (*Morus*)

NEW AMERICAN MULBERRY. A hardy ornamental tree, with leaves larger than other varieties, and especially valuable for its large, black, edible fruit, which ripens from June to September. Strong, sturdy trees, 75c each.

TEA'S WEEPING MULBERRY (*Morus Alba Pendula*). A weeping form, grafted on straight stems. The branches are long and slender, drooping to the ground; foliage handsome and distinctive; quantities of handsome black berries. One of the most vigorous and hardy of weeping trees. Strong, well shaped trees, \$1.50, \$2 and \$3 each.

OAK (*Quercus*)

SCARLET (*Quercus Coccinea*). There are no better oaks than this variety. It forms a large tree of fine proportions, the large, leathery leaves turning a beautiful fiery scarlet in autumn and hanging a long time. A magnificent specimen tree. 3 sizes, \$1, \$1.50 and \$2 each.

PIN OAK (*Quercus Palustris*). A handsome tree with drooping branches, forming a broad pyramidal crown; very shapely and graceful, the branches sweeping the ground. Small, sturdy well-rooted trees, 75c each.

FLOWERING PLUM (*Prunus*)



Purple Leaf Plum Riverview Cemetery

PURPLE - LEAVED (*Prunus Pissardi*). Handsome form with rich purple leaves, which retain their color the best of all purple-leaved trees. Covered profusely in early spring with beautiful white flowers and later with wine-red fruits. Beautiful and hardy wherever the common plum will stand. There are many beautiful specimens in Portland, the large one near the entrance to River View Cemetery being notable. Strong trees, 5 feet, 75c; large trees, \$1.50 and \$2 each.



A Popular Treatment for Street Parkings
Wasco Street between Seventeenth and Eighteenth

POPLAR (*Populus*)

These well known trees need little comment. They are rapid growing, very hardy, thrive in almost all soils and are especially suitable for windbreaks and country planting, but are not recommended for general city planting on account of their roots, which disturb pavements and penetrate basements. For country planting, even in the arid sections, they are unsurpassed on account of their hardiness, stately form and attractive foliage during the entire season.

CAROLINA POPLAR (*Populus Carolinensis*). A symmetrical and very rapid growing tree, making an upright or pyramidal head. The most popular and widely planted species. 6 to 8 feet, 50c; 8 to 10 feet, 75c; 10 to 12 feet, \$1.

LOMBARDY POPLAR (*Populus Fastigiata*). The well known pyramidal Italian variety; upright, slender and of wonderfully rapid growth. Fine for landscape effects. Strong trees, 6 to 8 feet, 50c; 8 to 10 feet, 75c; 10 to 12 feet, \$1.

BOLLE'S SILVER POPLAR (*Populus Alba Bolleana*). A tall columnar tree, very compact grower. Resembles the Lombardy Poplar, with leaves glossy green above and silvery beneath. Strong trees, 6 to 8 feet, \$1; 8 to 10 feet, \$1.50.

RED BUD (*Cercis*)

AMERICAN RED BUD (*Cercis Canadensis*). Also called American Judas Tree. A choice, low-growing, round-shaped tree. Before the foliage appears the stems are clothed with a profusion of reddish-purple flowers, quite unique in color and appearance. The leaves are heart-shaped, with glossy surface, and the tree in all respects is one of the best for lawns. 50c.

JAPANESE RED BUD (*Cercis Japonica*). A Japan variety; similar to the American, but with larger flowers. 75c.

SASSAFRAS (*Sassafras Officinalis*)

An aromatic tree, hardy and ornamental, attaining good size in rich soil. Prefers sunny location. Bright green leaves, turning to orange and red in fall. Flowers yellow with dark blue fruit in autumn. The bark of the roots is prized as a mild aromatic stimulant. 75c, \$1 and \$1.50 each.



Shrubby Planting

SWEET GUM

(*Liquidambar Styraciflua*)

One of the best of our native Eastern trees. Its star-shaped leaves, glossy and green in summer, take on in fall the most intense shades of purple, orange and crimson, and for this autumn effect alone it should be grown on every lawn. A stately tree with corky bark. \$1, \$1.50 and \$2.

SYCAMORE (*Platanus*)

ORIENTAL PLANE, or SYCAMORE (*Platanus Orientalis*).

One of the finest trees for street or lawn, with fine straight trunk, handsome symmetrical head and beautiful foliage. Strong trees, 3 sizes, \$1, \$1.50 and \$2 each.

TULIP TREE (*Liriodendron*)

TULIP POPLAR (*Liriodendron Tulipifera*). A large and stately, rapid-growing tree, with narrow pyramidal crown. Leaves four-lobed, bright green and lustrous, turning yellow in autumn. Flowers cup-shaped, greenish-yellow blotched with orange. A handsome tree, deserving the highest esteem of planters. Fine, large trees, 75c, \$1 and \$1.50 each.

VARNISH TREE (*Koelreuteria Paniculata*)

An ornamental tree from China. Forms a flat, spreading head, has large pinnate leaves and in July produces immense pannicles of orange-yellow flowers. Desirable for its bloom and autumnal coloring. 75c each.

WALNUTS

WALNUTS. See Nut Trees, page 17.

WILLOW (*Salix*)

WEeping Willow (*Salix Babylonica*). A well known and particularly graceful pendulous tree; indispensable in all plantations. Sturdy trees, 6 to 8 feet, 50c.

KILMARNOCK WEeping Willow (*Salix Caprea Pendula*). Top-grafted on six to eight-foot stems of common willow, forming perfect umbrella heads with glossy foliage. Strong trees, \$1 each.



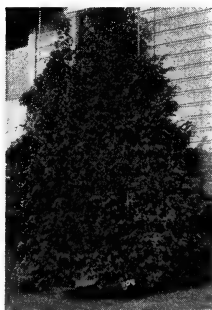
Colorado Blue and Norway Spruces, Volunteer Park, Seattle

CONIFERS — EVERGREENS

The Pacific Coast is rich in its Conifers. Probably no section is more favored in regard to the size, variety and quality of its evergreen trees. Climatic conditions are responsible for this; therefore, it is no wonder that varieties brought from other localities likewise flourish.

Transplanting of evergreens is necessary as long as they remain in the nursery in order to promote the growth of fibrous roots; and no stock sent out has rested more than two years in one place. This frequent transplanting is expensive and figures in the cost of large-sized trees, but it insures success of stock growing after being planted in its permanent location.

Evergreens are always dug with a ball of earth, and securely wrapped in burlap. Previous to final planting, this ball of earth should be thoroughly soaked before the burlap is removed. Many prefer planting without removing the burlap, to lessen danger of breaking the small fibrous roots; simply loosening the strings and cutting away top portion of burlap after the plant is placed in the hole dug to receive it.



Arbor Vitae

ARBOR VITAE (Thuja)

PYRAMIDAL ARBOR VITAE (Thuja Pyramidalis). A most valuable upright evergreen of dense compact habit. Foliage light green. Naturally pyramidal growth, rapid grower and hardy. Fine specimens, 3 to 4 feet, \$3.

GOLDEN ORIENTAL ARBOR VITAE (Thuja Orientalis Elegantissima). A low, compact shrub in which the foliage assumes a beautiful gold-yellow color at the beginning of the growing season. 75c, \$1 and \$1.50.

CEDAR (Cedrus)



Chile Pine "Monkey Puzzle"
Nursery view

MT. ATLAS CEDAR (*Cedrus Atlantica*). Of vigorous growth, pyramidal form; dense, light silvery foliage, very thick on upper side of the branches. Hardy and valuable. One of the finest evergreens. \$1, \$1.50 and \$2; extra specimens, \$3 to \$5.

CEDRUS ATLANTICA VAR. GLAUCA. One of the most beautiful evergreens yet sent out. Upright grower, but low-branched and of compact habit, with solid foliage entirely covering the branches. Leaves very fine and of a delicate steel-blue tint, equal to the finest of the glaucous Colorado Blue Spruces. A great acquisition to the list of choice conifers. Very rare. \$1, \$1.50 and \$2; specimens, \$5 to \$10.

HIMALAYA, or INDIAN CEDAR (*Cedrus Deodora*). Of vigorous growth, pyramidal form; graceful foliage of a light silvery or glaucous green. One of the most beautiful of evergreens. \$1, \$1.50 and \$2; extra specimens, prices on application.

CEDRUS-DEODORA VAR. GLAUCA. A fine novelty, beautiful foliage and habit of the species, but leaves of this variety are richly tinted with bluish-white. \$1.50, \$2 and \$2.50.

CEDAR OF LEBANON (*Cedrus Libani*). Vigorous, spreading branches with large, dark green foliage. Very choice and rare. \$1, \$1.50 and \$2.

CHILI PINE (*Araucaria*)

CHILI PINE, MONKEY PUZZLE (*Araucaria Imbricata*). A distinct and remarkable tree, strangely imposing as an isolated specimen and extremely impressive and effective when planted in avenues. Native of the western slope of the Chilean Andes. Leaves broadly lanceolate, rigid and bristling, bright shining green, densely

clothing branches. \$1, \$1.50, \$2; large specimens, \$3 to \$5.

CYPRESS OR PORT ORFORD CEDAR (*Cupressus*)

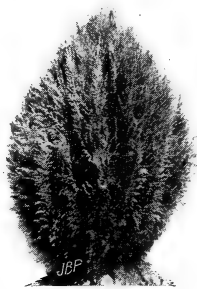
LAWSON'S CYPRESS (*Cupressus Lawsoniana*). A handsome tree of graceful habit; delicate feathery, bluish-green foliage. A native of the coast region of Southern Oregon and Northern California. 75c, \$1, \$1.50 and \$2.



Chilian Pine
Flanders near North
Twenty-third



Lawson's Cypress, City Park



Erect Lawson Cypress

ERECT LAWSON'S CYPRESS (C. Var. *Erecta Viridis*). A fine upright grower. Soft green and stately. One of our best native cedars, attractive in every planting or yard, be it large or small. See back cover illustration. \$1, \$1.50, \$2 and \$2.50.

JAPAN CYPRESS (*Retinospora*)

THREAD-BRANCHED JAPAN CYPRESS (*Retinospora Filifera*). Perfectly upright leader and main branches quite horizontal, yet the slender smaller branches are of a peculiarly graceful and weeping habit, giving a very choice effect to the whole. Foliage of a pleasing light green shade. One of the showiest of hardy evergreens. Large, \$2, \$2.50 and \$3.

GOLD THREAD-BRANCHED JAPAN CYPRESS (*Retinospora Filifera Aurea*). This promises to be one of the handsomest of the family, very graceful and with branches of a beautiful golden color. A great acquisition. Large, \$2, \$2.50, \$3.

RETINOSPORA OBTUSA. A tall-growing variety with spreading, graceful foliage of bright green, glaucous beneath; valuable. The miniature trees of Japan, produced by clipping and contorting, are largely of this species. This evergreen should be first choice where only one specimen tree is needed in small grounds. \$1.50, \$2 and \$2.50.



Retinospora Obtusa

RETINOSPORA OBTUSA VAR. AU-REA. Of lower growth, and foliage decidedly golden; rare. \$2, \$2.50 and \$3.

RETINOSPORA PISIFERA. Fine feathery green foliage, pendulous and good form. \$1.50 and \$2.

RETINOSPORA PISIFERA AUREA. Fine feathery golden foliage, pendulous and good color. \$1.50, \$2 and \$2.50.

PLUMED RETINOSPORA (*Retinospora Plumosa*). One of the best of Japanese introductions, being hardy and graceful, with delicate glaucous foliage. \$1, \$1.50 and \$2.

GOLDEN PLUMED RETINOSPORA (*R. Plumosa Aurea*). Beautiful and valuable variety. Its shoots are golden tinted through the year, and brighter in the winter. It is unsurpassed for massing. \$1, \$1.50 and \$2.



Group of Conifers, City Park

JAPAN RETINOSPORA (*Retinospora Squarrosa Veitchii*). A most distinct and valuable sort. Foliage of compact tufted character; color steel-gray. Grows quite large, but in common with all *Retinosporas* bears shearing in almost any size or form. \$1, \$1.50 and \$2.50.

CRYPTOMERIA

CRYPTOMERIA ELEGANS. A beautiful evergreen with delicate green foliage and graceful habit. The color changes to a reddish-brown in winter. A very satisfactory evergreen for this latitude. \$1.50, \$2 and \$3.

FIR (Abies)

See also *Picea* and *Spruce*.

COLORADO FIR (Abies Concolor). One of the choicest evergreens, of distinct habit and color, which is a silvery-green and attractive. Rare. \$1, \$1.50 and \$2.50.

NORDMANN'S FIR (Abies Nordmanniana). A rare and noble tree with leaves of a dark green color, maintained throughout the year. \$1, \$1.50 and \$2.

SPANISH FIR (Abies Pinsapo). A medium sized, tapering tree from the mountains of Central and Southern Spain. One of the most ornamental of European Firs. Leaves spreading from all sides of the stiff branches; bright green above, whitened beneath. \$1 and \$1.50.



Thread-Branched Japan Cypress

Leaves spreading from all sides of the stiff branches; bright green above, whitened beneath. \$1 and \$1.50.

HEMLOCK (Tsuga)

TSUGA SIEBOLDI. A fine compact feathery variety from Japan. \$1 and \$1.50.

JUNIPER (Juniperus)

JUNIPERUS COMMUNIS. Our common Juniper; light glaucous foliage. 75c and \$1.

IRISH JUNIPER (Juniper Hibernica). Of dense pillar-like growth. Glaucous green foliage. 75c, \$1 and \$1.50.

GOLDEN JAPAN JUNIPER (Juniperus Aurea). A splendid dwarf, golden form. Always bright and a feature in any planting. Quite distinct and valuable. \$1.50, \$2 and \$2.50.



Spanish Fir

Twenty-sixth and Hawthorne

JUNIPERUS VIRGINIANA. Medium growth, tapering form; bright, rich green foliage. Useful for ornamental planting. 75c, \$1 and \$1.50.

PINE (Pinus)

AUSTRIAN BLACK PINE (Pinus Austriaca Nigra). A remarkably robust, hardy tree; leaves long, stiff and dark green; highly ornamental. Valuable for this country; growth rapid. \$1, \$1.50 and \$2.

WHITE PINE (Pinus Strobus). The most ornamental of all our native pines. Foliage light, delicate silvery green. Flourishes in the poorest soils. \$1, \$1.50 and \$2.

REDWOOD (Wellingtonia Sequoia)

BIG TREE, MAMMOTH TREE (Wellingtonia Gigantea). The largest and oldest of all trees. Native of the Sierra Nevada range of California. Foliage green or bluish-green, completely clothing the branchlets. This is the hardiest species and the one most often seen in cultivation. \$1, \$1.50 and \$2.50.



Norway Spruce

SPRUCE (Picea)

NORWAY SPRUCE (Picea Excelsa). The most generally used of evergreen trees. Useful for screens and wind-breaks on account of its rapid growth. It makes a tall tree, and as an individual tree with room to develop is of pyramidal, symmetrical growth, its lower branches sweeping the ground. 50c and \$1; specimens, \$2 to \$3.

COLORADO BLUE SPRUCE (Picea Pungens). Few trees are as much sought for as this. Large quantities are sold, but the really silver-blue varieties are not plentiful. The tree forms a dense

pyramidal specimen with stiff, pungent foliage and clusters of cones. Hardy.

No evergreen tree can excel it, as it has the advantage of growing vigorously where many evergreens fail; withstands the coldest seasons, and in appearance surpasses any of the taller coniferous trees, with the possible exception of *Abies concolor*. I grow an enormous stock of this spruce, my trees being grafted from the finest colored specimens in the country, and I can offer it in many sizes from one foot up. Prices of highly colored trees, 12 to 18 inches, \$1.50; 18 to 24 inches, \$2.50; specimens, \$5 to \$10.

UMBRELLA PINE (Sciadopitys)

UMBRELLA PINE (Sciadopitys Verticillata). A remarkable and beautiful Japanese tree with compact, ascending branches, forming a narrow pyramidal head, or in age the branches spreading or pendulous. Foliage in whorls of fifteen to thirty stiff, broad needles of a lustrous deep green color; three to five inches long. A gem for any garden. \$2 and \$2.50.

YEW (Taxus)

ENGLISH YEW (Taxus Baccata). Large bush form, having numerous branches, slightly spreading, covered with fine dark green foliage. Makes a handsome tree for landscape planting, and owing to the depth of color is very useful for contrasting with other sorts. 75c, \$1, \$1.50 and \$2.

IRISH YEW, FASTIGIATA (Taxus Hibernica). Remarkably upright in form, very distinct; foliage is of the deepest green, very compact habit. \$1, \$1.50, \$2 and \$3.

GOLDEN IRISH YEW (T. Var. Aurea). The leaves are green in the center and margined with yellow. \$1, \$1.50, \$2 and \$3.



Nursery View Retinospora Obtusa

BROAD LEAVED EVERGREEN TREES

BAY TREES (*Laurus Nobilis*)

This beautiful tree is commonly cultivated as a tub-plant and is used universally for decorating. It will stand considerable frost without injury and is hardy out of doors here in Portland all the year, excepting the few days of freezing weather when tub-plants should be taken in. Open ground plants flourish without protection. A rich, porous soil with good drainage and ample water makes a congenial medium. Handsome ornamental trees usually trained to formal lines. Standard and pyramid forms imported from Belgium. In 1904 this nursery imported thirty trees, which were placed in

the Hotel Portland. Since that time nearly 2,000 more have been sold. Visitors to Spokane, Washington, have noticed the Bay Trees at Davenport's. The Fairmount, Palace and other hotels in San Francisco, hostleries in Portland, Seattle, Tacoma and elsewhere have used these trees with satisfaction, and most of them were supplied by us.

Standards and Pyramids, in tubs ready for placing, \$10 to \$20 each, and up, according to size. Write for special quotations and sizes. Small field-grown plants, 2 to 4 feet high, untrimmed, \$1 to \$2.50.



Bay Trees



Nursery View of Berried Hollies

HOLLY (Ilex)



English Holly

ENGLISH HOLLY (Ilex Aquifolium)

A native of England and Continental Europe. Too well known to need description. The hundreds of fine specimens growing in the City of Portland and throughout the Pacific Northwest attest to its success and popularity. The crisp, spiny foliage is always bright, and when loaded with berries it is the cynosure of the Christmas landscape. Fine berry-bearing plants, ranging from \$1.50 to \$5. A few specimens usually on hand from \$5 to \$10. Small plants in quantity at low rates per hundred and thousand.



English Holly
(Dutch Form)

VARIEGATED ENGLISH HOLLY (Ilex Aquifolium Variegatum). A good assortment of these in stock, including gold, silver and other marginal tints. \$1.50 to \$5.



Evergreen Magnolia Grandiflora

ILEX PYRAMIDALIS. A Dutch variety of English Holly. Leaves not so spiny, but bears bright red berries in quantity. \$1.50 to \$5.



Variegated
Holly

MAGNOLIA, EVERGREEN

SOUTHERN MAGNOLIA (M. Grandiflora). A stately, pyramidal tree with short, spreading or ascending branches. Leaves evergreen, thick and firm, bright green and glossy on the upper surface, coated below with rusty hairs. Flowers fragrant, opening in spring and summer, six to eight inches across; pure waxy white. Fruit rusty brown, three to four inches long; the seeds scarlet. \$1 and \$1.50; specimens, \$3.



Oregon Grape Border, East Twenty-sixth and Hawthorne

FLOWERING DECIDUOUS SHRUBS

It is my aim to produce everything in Flowering Shrubbery that is useful, hardy and worthy of cultivation in this climate. Flowering shrubs take predominance in all plans for landscape decoration be the grounds large enough to be termed an "estate," or be they only a home garden or "yard." Without shrubbery no landscape effect can be created; but with a judicious selection, properly planted, any property can be enhanced in beauty and value. Properly arranged shrubbery does not encroach on the lawn; it rather gives it an appearance of increased size. As screens to hide fences or unsightly objects, and for giving an air of privacy, its use is indispensable. If care is given in selecting, flowers can be had from early spring until late fall.

ACACIA ROSE

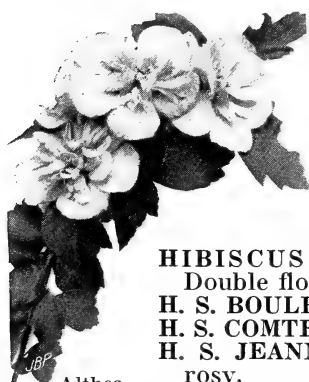
MOSS LOCUST (Robinia Hispida). A small, hardy shrub with bristly branches. Flowers, rose color, very showy in loose nodding racemes. Strong shrubs, 75c.

FLOWERING ALMOND (*Amygdalus*)

One of the early blooming shrubs, producing handsome little flowers in great profusion. It is one of the most beautiful little shrubs we have. 50c and 75c.

DOUBLE RED-FLOWERING ALMOND (*Amygdalus Chinensis Rubra Flora Plena*).

DOUBLE WHITE-FLOWERING ALMOND (*Amygdalus Chinensis Alba Flora Plena*).



Althea

ALTHEA (*Hibiscus Syriacus*)

Commonly known as Rose of Sharon.

Strong, erect-growing shrub of symmetrical habit. Very desirable for flowering in late summer, when color is especially desirable. The beautiful colors of the different varieties contrast admirably with each other. 50c, 75c and \$1.

HIBISCUS SYRIACUS ANEMONÆFLORUS.

Double flowers, dark vinous red.

H. S. BOULE DE FEU. Very double, bright red.

H. S. COMTE DE FLANDRE. Double, rosy-white.

H. S. JEANNE D'ARC. Double white, exterior

rosy.

H. S. LADY STANLEY. Semi-double, rosy-white.

H. S. PURPUREUS FOLIS

FOLIS VARIEGATIS. Dark red; leaves variegated.

AZALEAS

Azaleas are the most showy and gorgeous of dwarf flowering shrubs. Effective when planted with other shrubs, they are more so when massed. The Ghent and Mollis forms combine innumerable shades of yellow, orange, salmon, red and pink. The following named varieties are grown in quantities, and in the blooming season are a dazzling sight.

Well budded stocks, which will bloom the first season, \$1, \$1.50 and \$2 each; \$10, \$15 and \$20 per dozen.



Native Southern Oregon Azalea
Seventh and Main

AZALEA MOLLIS

BARON EDMUND ROTHSCHILD. Red.

COMTE DE KERCHOVE. Rosy-pink.

COMTE DE PAPADOPOLI. Salmon-red.

COMTE DE QUINCY. Fine yellow.

ISABELLE VAN HOUTTE. Light yellow.

QUEEN SOPHIA. Orange-red.

AZALEA MOLLIS (Var. Sinensis)

ANTHONY KOSTER. Finest golden-yellow.

N. BEETS. Deep orange.

DR. REITENBACH. Salmon.



Azalea Mollis

HARDY GHENT AZALEAS

(*Azalea Pontica*)

AUORE DE ROYGHEM. Soft rose.

BOUQUET DE FLORE. Soft rose.

GENERAL TRAUFF. Soft violet-red.

GLORIA MUNDI. Bright orange.

PALLAS. Bright red.

SANG DE GENTBRUGGE. Bright carmine.

AZALEA OCCIDENTALIS

SOUTHERN OREGON AZALEA (*Rhododendron Occidentalis*, Gray). A beautiful large shrub, native of Southern Oregon. Bright green deciduous foliage; profuse bloomer, flowers large and fragrant, white or light rose color; in numerous umbels in May. A rare and beautiful native plant that should be in every yard. \$2 and \$2.50.

BARBERRY (*Berberis*)

COMMON BARBERRY (*Berberis Vulgaris*). Of erect growth and with prickly stems, bearing pretty yellow flowers in May. Fruit purplish-red; adherent nearly all winter. One of the very best shrubs extant. Makes an excellent ornamental hedge. 50c.

JAPANESE BARBERRY (*Berberis Thunbergii*). Of very dense dwarf, spreading habit. Foliage neat and abundant, coloring gorgeously in autumn. Makes a good hedge. 50c.

PURPLE BARBERRY (*Berberis Vulgaris Purpurea*). A desirable purple-leaved shrub of upright habit and prickly stem, bearing an abundance of yellow flowers in May; reddish-purple fruit in autumn, adherent nearly all winter. 50c. Low price in quantity. (See also Hedge Plants.)

BROOM (*Genista*)

ANDREANA (*Genista Andreana*). A fine hybrid. Flowers are deep yellow with a velvety maroon splash. New and attractive. \$1 and \$1.50.

SCOTCH BROOM (*Genista Scoparia*). Rapid growing shrub; trusses of bright yellow flowers in early spring. 50c.

SPANISH BROOM (*Genista Juncea*). A most beautiful erect-growing shrub, almost leafless; stems of vivid green, and when laden with its profusion of golden-yellow flowers forms a conspicuous object. It blooms all summer, when color is most desirable. Introduced by this nursery. 75c and \$1.

WHITE BROOM (*Genista Alba*). A fine, hardy variety, attaining good size. Blooms profusely in early spring. 50c, 75c and \$1.



Spanish Broom
Vista Avenue

BUSH HONEYSUCKLE (Chamaecerasus—Lonicera)

FRAGRANT UPRIGHT HONEYSUCKLE (Chamaecerasus Fragrantissima). A beautiful, almost evergreen shrub, with dark green foliage and very fragrant white flowers, which appear before the leaves. One of the most desirable flowering shrubs. 50c.

BLUE SPIRAEA (Caryopteris)

BLUE SPIRAEA (Caryopteris Mastacanthus). A neat little shrub with fragrant, blue, verbenalike flowers. Valued for the lateness of its bloom. If killed back in winter new shoots will spring up and flower the first season. Much admired. 50c.

CORALBERRY

See Snowberry, page 55.

COTONEASTER

See Broad Leaved Evergreens, page 58.

FALSE INDIGO (Amorpha Fruticosa)

A strong growing shrub, six to ten feet high, with finger-like spikes of indigo-colored flowers; three or more spikes in a bunch; blooms early in June. 75c.

FLOWERING CURRANTS (Ribes)

RED-FLOWERING CURRANT (Ribes Sanguineum). Blooms abundantly in May, bearing bright pink, almost carmine, flowers. Native of Oregon. 50c.

DEUTZIA



Lemoine's Deutzia

DOUBLE PINK (Deutzia Crenata Fl. Pl. Rosea). Similar to the Double White, but with one or more of the outer petals rosy-purple. Very showy. 50c.

DOUBLE WHITE (Deutzia Crenata Fl. Pl. Alba). Flowers double pinkish-white, in spikes five inches long; tall and of rapid growth. 50c.

LEMOINE'S DEUTZIA (Deutzia Lemoinei). A small shrub with spreading branches, usually about three feet tall, of garden

origin. Leaves bright green, two to three inches long. Flowers white, in large compound clusters of panicles. Very vigorous and floriferous. 50c.

DOGWOOD (Cornus)

The Dogwoods range in size from small shrubs to large trees like our native Oregon Dogwood (*Cornus Nuttali*). Nearly all of them are valuable, but there is so much variation that it is sometimes hard to specify the most desirable for a given purpose or effect. In some varieties the flower ranks first, in others the foliage, and in still others the chief value is in its colored bark or fruits. The following are shrubs. For trees see page 27.

JAPANESE DOGWOOD (Cornus Kousa). A small ornamental tree or shrub, with small flowers in summer. Strong shrubs, 75c.



Oregon Dogwood

RED SIBERIAN (*Cornus Siberica*). Clusters of creamy-white flowers in spring. Has bright, blood-red bark in winter and early spring, making it very effective. 75c.

ELDER (*Sambucus*)

Hardy, vigorous shrubs with showy flowers and profusion of berries. They thrive best in moist loamy soils, and are well adapted for water-side and border planting.

AMERICAN ELDER (*Sambucus Canadensis*). Hardy shrub with numerous stout stems filled with pith; compound foliage of five to ten bright green leaflets, above which is borne large flat clusters of white fragrant flowers in early summer. Berries purplish-black, in great profusion; often used for home-made, old-fashioned elderberry wine. A showy shrub worthy of extensive cultivation. 50c and \$1.

GOLDEN-LEAVED ELDER (*Sambucus Foliis Aureis*). The finest in rich coloring of all the hardy shrubs; the entire foliage remaining a bright, beautiful golden color throughout the summer. Growth and habit slower and more compact than other *Sambucus*. A shrub that should be in every collection. 75c.

RED-BERRIED ELDER (*Sambucus Racemosus*). White flowers, followed by bright red berries; very showy in early summer. A good companion to American Elder, and often has ripe berries when latter is in bloom. 75c, \$1 and \$1.50.

DECIDUOUS OLEASTERS. OLIVES (*Elaeagnus*)

SILVER THORN (*Elaeagnus Longipes*). A beautiful shrub from Japan, of a dense bushy growth, belonging to the olive family of plants, attaining a height of five to six feet. The foliage is bright green above and silvery-white beneath. The blossoms are very abundant, hanging in wreaths along the branches, and are followed by fruits as plentiful. They are pale yellow in color and appear in May. The berries ripen in July, are olive-shaped, about the size of large currants, and bright scarlet. The fruit can be cooked like cranberries. This is a most useful and ornamental shrub, attractive at all seasons of the year. 75c.

ENKIANTHUS

ENKIANTHUS JAPONICA. A fine lawn and open ground shrub, ramifying in horizontal layers; white pendulous flowers. Autumn foliage is gorgeous. From Japan. New. \$1.

BURNING BUSH (Euonymus)

CORK BARK EUONYMUS (Euonymus Alatus). A fine specimen plant; very handsome, with corky winged branches. Gorgeous scarlet foliage in autumn. 75c.

BROAD-LEAVED EUONYMUS (Euonymus Latifolius). Broad glossy foliage and bright carmine-red fruit. 50c.

EUROPEAN EUONYMUS (E. Europaeus). A large shrub or tree, bearing rose-colored fruit in autumn. Fine. 75c.

FILBERT (Corylus)

See also Nut Trees, page 16.

PURPLE-LEAVED FILBERT (Corylus Avellana Folia Atropurpurea). A very conspicuous shrub with large, dark purple leaves; distinct and fine. 75c.

FRENCH MULBERRY (Callicarpa)

See also Trees, page 35.

FRENCH MULBERRY (Callicarpa Americana). With purple berries, produced in clusters; very effective in fall and early winter. This beautiful native plant is not sufficiently appreciated. 50c.

GLOBE FLOWER. KERRIA (Corchorus)

GLOBE FLOWER (Kerria Japonica Flora Pleno). Double flowering Corchorus. A medium sized shrub, having double yellow flowers. 50c.

GOLDEN BELL (Forsythia)

One of the first plants to flower in early spring, blooming before the leaf buds burst on other plants in exquisite splendor and brilliancy. They thrive in almost any fertile soil, but should be planted where they will receive the full benefit of early spring sunshine.

DARK GREEN GOLDEN BELL (Forsythia Viridissima). Blooms early in spring before the leaves appear, when it is covered with golden bell-like flowers. 50c.

DROOPING GOLDEN BELL (Forsythia Suspensa). Like Forsythia Fortunei, but somewhat drooping in habit. 50c.

FORTUNE'S GOLDEN BELL (Forsythia Fortunei). Bark bright yellow; blooms in dense masses of golden flowers in April. 50c.

HYBRID GOLDEN BELL (Forsythia Intermedia). Flowers bright golden; foliage glossy green like Viridissima, but hardier than that variety. Valuable. 50c.



Japan Snowball, Riverview Cemetery

HARDY ORANGE (Citrus)



Tree Hydrangea, Paniculata

CITRUS TRIFOLIATA. A hardy variety of orange. As an ornamental flowering plant few are more desirable. The plant grows to a height of ten to fifteen feet, is very bushy and thorny; foliage trifoliate, retained quite late, but not an evergreen here; however, the vivid green wood gives it an evergreen appearance. Flowers appear in great profusion in early March, and a second and third crop are produced during the summer. The bright golden fruit is retained during winter, which makes it a showy garden feature. 75c.

ST. JOHNS WORT (Hypericum)

Ornamental free-flowering shrubs—with orange-yellow flowers blossoming in summer. They thrive in any well drained soil either in full sun or partial shade; are low growing and particularly valuable for borders or low mass effects on hillsides. They should be cut back severely in late winter. Low price in quantities.

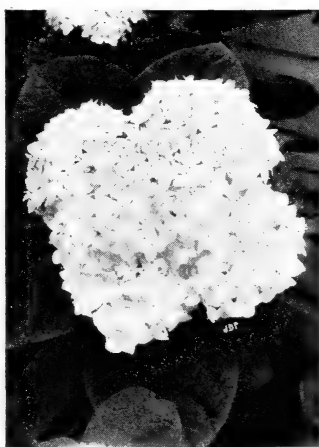
AARON'S BEARD (Hypericum Calycinum). A low shrub about a foot high; flowers large and showy. A capital ground covering. Thrives best in partial shade. 50c.

GOLD FLOWERS (Hypericum Moserianum). Grows one to two feet high; numerous branches with dark green foliage. Valued for its persistent and beautiful bloom. Flowers are large, rich yellow from July to fall. 50c.

HYDRANGEA

HYDRANGEA ARBORESCENS STERILIS (Hills of Snow). A hardy, handsome, upright shrub, loaded with flowers like snowballs, that continue in blossom a large part of the summer. 75c.

HYDRANGEA PANICULATA GRANDIFLORA. This is a grand plant, showy and attractive, lasting in bloom for months. Without question the finest hardy blooming shrub. Grows several feet high. It blooms in July, at a time when flowers are scarce, and holds them until October. This alone would place it in the foremost rank as a desirable shrub for home grounds. The specimen illustrated was photographed at 994 Williams avenue on August 28th. The flowers are pure white, afterward changing to pink, and are borne in immense clusters. Will bloom same season as planted. 50c; tree form, \$1.



Japanese Hydrangea

H. HORTENSIA JAPONICA ROSEA (Japanese). Globular rose flower. 50c, 75c and \$1.

H. OTAKSA (Japanese). Immense trusses of pink or blue flowers. 50c, 75c and \$1.

H. THOMAS HOGG. Flowers pure white. 50c, 75c and \$1.

JAPAN QUINCE (*Cydonia*)

SCARLET JAPAN QUINCE (*Cydonia Japonica*). Bright scarlet-crimson flowers in great profusion in the early spring. One of the best hardy shrubs, thorny and of compact growth. Also one of the best deciduous hedge plants. (See Hedge Plants.) 50c, 75c and \$1.



Japanese Hydrangea

WHITE JAPAN QUINCE (*Cydonia Japonica Nivalis*). A very beautiful variety, with delicate white and blush flowers. 50c, 75c and \$1.

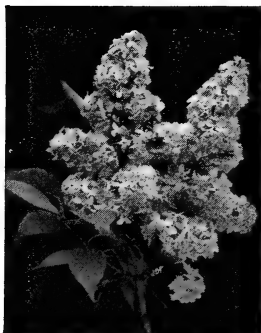
LILACS (*Syringa*)

No place is complete without some of these—a class of shrubs embracing many beautiful colors. Many kinds are hardly dissimilar, and I omit those which are not sufficiently distinct. Over thirty varieties in stock; patrons, please ask for any not mentioned.

PURPLE LILAC (*Syringa Vulgaris*). Common lilac. An old favorite. Purple, fragrant flowers; large clusters. 50c.

WHITE LILAC (*Syringa Vulgaris Alba*). The common white lilac. One of the best. 50c.

Grafted Single Varieties



Single Grafted Lilac

CHARLES X. Magnificent clusters of dark red flowers, produced in the greatest profusion. A splendid variety and one of the best to bloom. 75c.

JACQUES CALOT. Very large spikes of delicate rosy-pink flowers. 75c.

MARIE LEGRAYE. Beautiful creamy-white flowers of immense size; bush of dwarf habit. One of the most popular white varieties. 75c.

Grafted Double Varieties

LA TOUR D'AUVERGNE. Violet-purple color, very large trusses. 75c.

MAD. LEMOINE. A grand double white variety. Vigorous habit and immense foliage. 75c.

MAD. ABEL CHATENAY. Fine white flowers borne in compact clusters. 75c.

MAD. CASIMIR-PERIER. One of the finest whites; individual flowers and the trusses very large and deliciously scented. 75c.



Double Grafted Lilac

PRESIDENT CARNOT. Flowers erect, very prettily formed, delicate tint of pale lilac, marked with white in the center. Season of flowering very late. The most floriferous of all double lilacs and valuable for forcing. 75c.

PRESIDENT GREVY. Magnificent spikes, attaining more than a foot in length with proportionate width; individual flowers over an inch, petals of cobalt blue, with the center more brilliant and the edges rosy. The buds are enormous and of a vinous violet-blue. 75c.

MOCK ORANGE (Philadelphus—Syringa)

Hardy, fragrant flowering shrubs that add grace, beauty and perfume to gardens and homes. Do well in any well drained soil.

GORDON'S MOCK ORANGE (Philadelphus Gordonianus).

A very late bloomer, valuable for this quality. Large, fragrant white flowers. 50c.

LARGE FLOWERED MOCK ORANGE (Philadelphus Grandiflorous). A large flowered, strong-growing sort; very desirable. 50c.

PEARL BUSH (Exochorda)

PEARL BUSH (Exochorda Grandiflora). Leaves bright green, pale or whitened beneath, fading with yellow tones. Flowers dazzling white, produced in numerous terminal racemes. Very showy. 75c.

SIBERIAN PEA TREE (Caragana)

A large shrub—becoming a small tree eventually—with delicate green foliage, bearing a wealth of clusters of yellow sweet-pea-like flowers in late spring. Very handsome and showy.

SIBERIAN PEA TREE (Caragana Arborescens). Strong plants, 50c and 75c.

WEeping FORM (Caragana Arborescens Pendula). Weeping form of above. 75c and \$1.

SILVER BELL (Halesia)

COMMON SNOWDROP TREE (Halesia Tetraptera). A small native tree, bearing most beautiful bell-shaped flowers similar to Snowdrop, but much larger. Blooms in May. Grown in shrub form it is exquisite. 50c.

SMOKE TREE (Rhus or Sumac)

PURPLE FRINGE (Rhus Cotinus). The well known Smoke Tree. Of small size, round, glossy foliage. The seed vessels are of a reddish-purple, borne in great profusion. 50c.



Smoke Tree

PURPLE FRINGE (*Rhus Cotinus Atropurpurea*). Similar to the preceding, except in the deeper color of the seed vessels. A decided novelty. \$1.

SMOOTH SUMAC (*Rhus Glabra*). Shrub or low tree with an open crown. Leaves dark green above, light below, that turn brilliant scarlet in autumn. Flowers in large terminal clusters, followed by crimson fruits, which hang on all winter. Beautiful for mass effects. 50c.

CUT-LEAVED SUMAC (*Rhus Glabra Laciniata*). A beautiful shrub with large leaves deeply and finely cut and drooping, graceful habit. Leaves assume a gorgeous crimson color in autumn. 75c and \$1.



Common Snowballs, Leschi Park, Seattle

SNOWBALL (*Viburnum*)

COMMON SNOWBALL (*Viburnum Opulus Sterilis*). The old-fashioned Snowball that grows almost anywhere and always flowers so abundantly. In appearance it closely resembles *Viburnum Opulus*, but does not have the ornamental fruits. 35c, 50c and 75c.

HIGH-BUSH CRANBERRY (*Viburnum Opulus*; Syn., *Oxy-coccus*). Spreading habit. Single white flowers borne in flat imperfect clusters. Highly valued for the brilliant red berries that cling to the leafless branches all winter, unmolested by birds. 50c, 75c and \$1.



Japan Snowball

JAPAN SNOWBALL (*Viburnum Plicatum*). One of the best ornamental shrubs, upright and vigorous growing. It bears abundant white balls of bloom that have a beautiful setting in the deep green leaves. 50c, 75c and \$1.



Van Houtte's Spirea

SINGLE JAPAN SNOWBALL (*Viburnum Tomentosum*). An elegant shrub with beautiful dark green leaves. The white flowers, borne in flat clusters, are followed by decorative red berries that later change to black. Valuable in shrubberies. 75c.

SNOWBERRY (*Symphoricarpos*)

SNOWBERRY (*Symphoricarpos Racemosus*). Much valued for its white berries, borne abundantly in autumn. Especially conspicuous in masses. 35c and 50c.

SNOWBERRY, RED-FRUITED (*Symphoricarpos Vulgaris Rubra*). Red fruit, not so large as the preceding but more abundant. Habit of plant graceful. 35c and 50c.

SPIREA (*Spiraea*)

The Spireas are elegant, low-growing shrubs, free-flowering and of the easiest culture. Commonly known as "Meadow Sweet," they form a group of inestimable value for garden and landscape planting, either as single specimens or, preferably, in massed effects. They are all hardy, flowering in great profusion over a period of many weeks from earliest spring. They thrive best in moist, fertile soils.

SPIREA ARGUTA. Can be called the Hybrid Snow-Garland, but best known by its botanical name. A dwarf growing bush three to four feet high, very hardy with a great profusion of beautiful, small, clear white flowers in the very earliest spring. Narrow, bright green foliage that fades in the autumn with yellow and orange shades. 50c.

ANTHONY WATERER (*Spiraea Bumalda*). Identical with Anthony Waterer except the flowers, which are bright rosy-crimson, showy and attractive. Observation satisfies us that this is the best all-summer blooming dwarf shrub in cultivation. 50c.

BRIDAL WREATH (*Spiraea Prunifolia*). Bears handsome double white flowers all along the branches in early spring before the leaves are expanded. Foliage colors finely in autumn. 50c.

THUNBERG'S SPIREA (*Spiraea Thunbergii*). Low - growing rounded form; delicate, drooping, yellowish-green lanceolate foliage, which takes and retains late the most lovely tints in autumn. Small, abundant white flowers in March. The most charming of all low-growing shrubs. 50c, 75c and \$1.



Thunberg's Spirea

VAN HOUTTE'S (*Spiraea Van Houttei*). Habit of plant graceful, bearing white flowers in great abundance in latter May. One of the best. 50c and 75c.

SUMAC

See Smoke Tree, page 53.

SWEET SHRUB (*Calycanthus*)

SWEET SHRUB (*Calycanthus Floridus*). Spice Bush, or Allspice. Remember the "shrub" we carried in our pockets in childhood days? This is the plant that bears them. An old-fashioned shrub of strong, upright habit. Grows well in almost any soil, and in shaded or open places. Valuable for its aromatic fragrance and chocolate-colored flowers of a peculiarly agreeable odor. 50c.

TAMARISK (*Tamarix*)

TAMARISK (*Tamarix Africana*). Strong, slender growing, irregular shrubs with feathery foliage and small, delicate flowers, borne profusely on gracefully bending branches in early spring. These pink flowers are very attractive. 50c.

JAPANESE TAMARISK (*Tamarix Plumosa*, or *Japonica*). Of medium height; foliage very graceful and feathery. A fine plant. Flowers late. 75c.

WEIGELA (*Diervilla*)

A valuable genus from Japan; spreading and drooping shrubs, producing beautiful trumpet-shaped flowers of many colors from pure white to red in great abundance.

EVA RATHKE (*Diervilla Eva Rathke*). A quite new, dark red variety; very floriferous. Rare. 75c.

PINK (*Diervilla Rosea*). An elegant shrub with fine rose-colored flowers, introduced from China. Of erect, compact growth; blossoms in June. 50c.

VARIEGATED (*Diervilla Rosea Variegata*). A neat dwarf shrub, valuable for the clearly defined variegation in its leaves of green, yellow and pink. Very effective and useful. Flowers similar to rosea—delicate rose and pink. This is one of the finest variegated-leaved shrubs known and is greatly esteemed. 50c.

WHITE (*Diervilla Candida*). This is the hardiest and best of all the family. Vigorous and fine in habit; the long, tubular white flowers are produced from June on, all through the summer. 50c.

WHITE FRINGE (*Chionanthus*)

CHIONANTHUS VIRGINICA. Another very desirable large-growing shrub, bearing racemes of fringe-like white flowers in latter May. Its purple fruit, too, is highly ornamental, as is also its deep lustrous green foliage. \$1.



Nursery View Rhododendrons

BROAD LEAVED EVERGREEN SHRUBS

After shade trees the broad-leaved evergreen demand first attention in preparing planting plans, be it only a small bit of lawn that you wish to make attractive during the entire year or for a broad estate, taking hundreds of shrubs. They can supply both background and foreground for the somber winter picture or for the summer floral display. They thrive in shady or partially shaded places, giving finest foliage effects when so grown—with better flowers perhaps when grown in the sun.

Our climatic conditions in the Pacific Northwest are particularly congenial to this class of shrubbery and aid in obtaining wonderfully pleasing effects in foliage and flowers. Our Oregon State Flower, Oregon Grape and the State of Washington's choice of the native Rhododendron, prove conclusively the esteem in which they are held. My stock in these is particularly fine, home-grown or thoroughly acclimated, and good results can be depended upon.

JAPANESE LAUREL (*Aucuba*)

JAPANESE LAUREL (*Aucuba Japonica*). A medium sized shrub; dark glossy leaves, unaffected by smoke or dust; scarlet berries in showy contrast with the foliage. Excellent for city planting. Fine plants, \$1.50 and \$2.

GOLD DUST LAUREL (*Aucuba Japonica Aureomaculata*). A form with yellow spotted leaves and red berries. A strikingly attractive plant and one that is much used for jardinieres and window boxes. Fine plants with berries, \$1.50 to \$3.



Aucuba

AZALEAS

CRIMSON AZALEA (*Azalea Asahi*). From Japan. Flowers a dazzling crimson; small evergreen foliage light delicate green in spring, darkening as summer season advances, and becoming rich purplish-brown during winter season. Better than *Azalea Amoena*, the Eastern Crimson Azalea. Introduced by this nursery a few years ago, beginning with but ten plants, it has now grown so into popular favor that sales during last season amounted to several hundred plants. It is fine either as single specimens or for mass effects, and is destined to become a general favorite, and no grounds should be without it. \$1.25 and \$1.50 each; \$12 and \$15 per dozen.

BOXWOOD (*Buxus*)

COMMON BOXWOOD (*Buxus Sempervirens*). For open-ground planting or in tubs for decorative purposes. Tubs are additional.

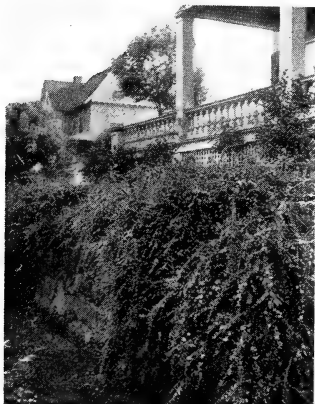
Pyramids, 1½ to 2 feet, \$1.25; Pyramids, 2½ to 3 feet, \$2.50; Pyramids, 3½ feet, \$3; Pyramids, 4 to 5 feet, \$5; Standard form, 15 to 18 inches diameter, \$2.50; Standard form, 18 to 24 inches, \$4.

DWARF (*Buxus Suffruticosa*). Small, round specimens, 12 to 24 inches high, 75c to \$1.50; small size for borders, 5 to 8 inches, \$2.50 per dozen.

CAMELLIA

Evergreen shrubs with handsome foliage and showy flowers. Cultivated in the open air in Portland. They thrive in fertile porous soils, either in sun or partial shade.

CAMELLIA JAPONICA. A shrub with shining dark green leaves and beautiful waxy flowers of great substance and durability. Native of China and Japan. I offer a choice assortment of varieties, embracing double-flowered forms, white, pink and variegated. 75c, \$1 and \$1.50. A limited number of large specimens, 4 feet up, at \$3 and \$4 each.



Trailing Cotoneaster
Flanders near Twenty-third

COTONEASTER

TRAILING COTONEASTER (*Cotoneaster Horizontalis*). A low shrub with almost horizontal branches. Leaves dark green, flowers pinkish-white, solitary or in pairs; fruit bright red. Good for rockeries. 50c.

SMALL-LEAVED (*Cotoneaster Microphylla*). Smaller shrub than *C. Horizontalis*, minute evergreen leaves; flowers white, usually solitary, blooming in late spring. Has bright red berries, well distributed along branches, lasting greater part of winter. Very pretty and unique among rock work, tops of retaining walls, etc. 50c.

SHINING-LEAVED (*Cotoneaster Simoni*). Pretty shrub with small bright leaves, semi-persistent or at times wholly evergreen. Prized for the white, slightly pinking flowers and bright red fruits. 75c.

DAPHNE

PINK DAPHNE (*Daphne Odora*). Fine evergreen shrub, blooming very early. Pink flowers that are wonderfully fragrant. \$1 and \$1.50.

WHITE DAPHNE (*Daphne Odora*). Same as above. \$1 and \$1.50.

EUONYMUS

GOLDEN EUONYMUS (*Euonymus Aurea Variegata*). A beautiful variety of this popular plant with leaves variegated green and gold. A very striking plant. 75c and \$1.

EVERGREEN EUONYMUS (*Euonymus Japonica*). Leaves dark shining green. A fine plant for the lawn. 75c and \$1.

HEATHER (*Calluna*)

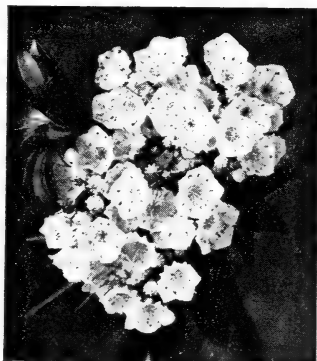
Famous in literature, beloved of all true Scots, this little evergreen shrub, resembling a dwarf cedar, hardy, vigorous and free flowering, is one that should be more generally planted, and will be once it becomes better known. Fine as a single specimen plant, and very effective in groups or for massing in front of conifers or other tall evergreens.

SCOTCH HEATHER (*Calluna Vulgaris*). Low compact shrub densely leaved. Little pink flowers in abundance. Very handsome and invariably admired. 75c and \$1.

WHITE-FLOWERED (*Calluna Vulgaris Alba*). Like above, but with white flowers. Makes pleasing contrast when planted with typical variety. 75c and \$1.

MOUNTAIN LAUREL (*Kalmia*)

The Mountain Laurel is one of the most ornamental shrubs in cultivation, and its liberal use makes possible some of the most enchanting results. *Kalmias* thrive in porous or loamy soils, especially those containing leaf-mold or woods-earth. A mulch of forest leaves or pine needles is beneficial, preventing the rapid evaporation of moisture and sudden changes of temperature from affecting the roots. Either massed, in groups, or as single specimens, the floral effects are most beautiful, and I confidently recommend this valuable hardy plant.



Kalmia

MOUNTAIN LAUREL (*Kalmia Latifolia*). Also known as Calico Bush. One of the most attractive of broad-leaved evergreens, both on account of its wide, dark green and glossy leaves and for its masses of snowy pink or rose-colored flowers, which appear in greatest profusion in early summer. \$1.50 and \$2.

LAURELS (*Laurus*)

ENGLISH, or CHERRY LAUREL (*Laurus Laurocerasus*). A small tree, or bush, with handsome shining foliage. Native of Europe. Flowers are white, in numerous short racemes, expanding in April or May. Justly popular in Europe and destined to be widely planted in the Pacific States, where it thrives exceptionally well. Its glossy evergreen foliage

makes it equally beautiful both summer and winter. It can be planted as a single specimen plant or in pairs at gates or entrances, as illustrated on page 61, taken on East Burnside and Thirtieth Streets, Portland, in July this year. Fine for hedging. See illustration page 63. 50c, 75c, \$1 and \$1.50; extra, \$3.

HARDY ENGLISH LAUREL (*Laurus Laurocerasus* Schipkaensis). A form of the above, noted for its hardiness. This variety is recommended where hardiness is necessary. 75c, \$1 and \$1.50.

LAURESTINUS (*Laurus Tinus*). An evergreen shrub with dark green shining leaves. Flowers white or tinted with pink, in clusters, blooming in winter and early spring. 50c, 75c and \$1.

PORTUGAL LAUREL (*Laurus Lusitanica*). A small, intricately branched tree with glossy leaves. Native of Spain and Portugal. Flowers white, disposed in slender racemes, appearing in late spring or early summer. 75c, \$1 and \$1.50.

NANDINA

JAPANESE NANDINA. A hardy evergreen; compound foliage with numerous small leaflets, rich red at first and dark green at maturity, turning beautiful coppery red in winter. Numerous white flowers in clusters. 50c and \$1.



OREGON GRAPE (Mahonia)

**OREGON
GRAPE, or
MAHONIA
(Berberis
Aquifolium,
Mahonia
Aquifolium).**
Oregon State
Flower.

A handsome ornamental shrub with dark lustrous green, spiny-toothed leaves in dense clusters, appearing in spring. Berries blue or nearly black. Distributed naturally from British Columbia to Oregon. Fine as single specimens or in groups, and becoming deservedly popular as hedge or border. Nursery grown, 50c and 75c. Low prices in quantity. See Hedge Plants.

MAHONIA JAPONICA (*Berberis Japonica*, Japanese Mahonia). Japanese Mahonia. Leaves large, bright, shining green and yellow. Flowers yellow, in long racemes, opening in early spring. 75c.

Oregon Grape
Our State Flower



English Laurel, East Thirtieth and Burnside

RHODODENDRONS

These, the showiest of all evergreen shrubs, find a congenial home in the Pacific Northwest. The native sorts are to be found in the mountains and along the coast of Oregon and Washington, and the latter state has wisely named the Rhododendron its State Flower. They require good, rich, deep soil and a somewhat shaded location for fine foliage; but open locations produce more and better flowers. Their handsome foliage and showy flowers make possible some of the most beautiful results and interest that cannot be obtained by any other plants. They succeed admirably when planted alone, but for magnificent effects mass planting is desirable.



Nursery View Rhododendron Album Elegans

Pilkington Nursery

The following varieties have been found hardy and satisfactory:

ALBUM ELEGANS. White, large flowers.

BOULE DE NEIGE. Pure white.

CARACTACUS. Rich purplish-crimson.

CYNTHIA. Bright red.

FASTUOSUM FLORA PLENA. Lavender, double flower.

LADY CLERMONT. Rosy-scarlet.

MAD. CARVALHO. White.

PARSON'S GLORIOSA. Large, soft rose; fine foliage.

PURPUREUM ELEGANS. Fine purple.

ROSEUM ELEGANS. Fine rose.

WM. AUSTIN. Scarlet.

SIR HENRY HAVELOCK. Fine scarlet.

THE WARRIOR. Bright dark red.

MAD. MASSON. Pure white, yellow-throated.

Fine plants set with flower-buds, \$1.50, \$2 and \$2.50 each; \$15, \$20 and \$25 per dozen.



- Rhododendron



Privet Hedge, Twentieth and Jackson



English Laurel Hedge, Nineteenth and Kearney

HEDGES—LIVE FENCES

The garden craftsman, if he is a true artist, will let nature make his fences. Old dead walls and stiff fences are becoming obsolete among people of good taste. Anyone who has seen a rightly kept hedge of Privet, Japanese Quince, English Laurel, Oregon Grape, English Hawthorn, Holly or Roses, knows what an important feature it is in making truly beautiful grounds. Low-growing hedges, useful and ornamental, can be made of a number of plants, while by using other plants high hedges that will serve as wind breaks, screens to hide unsightly objects and sun shields can be had.

The shape of the hedge is important, the round-top or conical being best as a rule, as trimming in this way the growth of the lower branches is favored, keeping the wall of green solid and even from top to bottom. A flat-top hedge holds the snow, which might spread and break the branches, and straight-sided and flat-top hedges are more apt to become ragged and open at the base than those trained in conical or rounded form, narrowing to a pointed top.

For medium size formal hedge the Privet is probably the most satisfactory—a good grower, responds readily to the pruning knife; is practically an evergreen with us, perfectly hardy and most economical in cost. English Laurel, Japanese Quince and Lawson's Cypress are also fine for formal sheared hedges. For the high hedge Norway Spruce, Lawson Cypress and the Hemlocks are all desirable; the Norway Spruce especially being sturdy, fast growing and very handsome.

For the untrimmed helges—those allowed to grow naturally with but little or no pruning, and which in many localities are now a favorite means of enclosing flower and vegetable gardens, edging terraces and defining roads and walks, covering unsightly defensive barb wire or picket fences—nearly any free-growing shrub can be used, such as Spiraea Thunbergii, Purple Barberry, English Holly, Oregon Grape, Roses, Deutzias and numerous others.

HEDGE PLANTS

- Planting distances are approximate and vary according to size of plants, condition of soil, object of hedge, etc.
- BARBERRY, JAPAN.** 12 to 18 inches. \$7.50 per hundred.
- BARBERRY, COMMON GREEN.** 18 inches. \$6 per hundred.
- BARBERRY, PURPLE.** 18 inches. \$6 per hundred.
- Average planting distance for all 15 inches in single row.
- HAWTHORN, ENGLISH.** Single white, 18 to 30 inches. \$6 per hundred. Low prices in thousand lots. Average planting 15 inches apart in double row, alternate spacing.
- JAPANESE QUINCE.** 18 to 24 inches. \$10 per hundred. Average planting 18 inches apart in single row.
- LAUREL, ENGLISH.** 12 to 18 inches, \$25 per hundred; 18 to 30 inches, \$40 per hundred. Average planting 24 inches in single row. Evergreen, and particularly good.
- LAWSON'S CYPRESS.** 10 to 12 inches, \$10 per hundred. Average planting distance from 2 to 4 feet in single row.
- NORWAY SPRUCE.** Nursery grown. 12 to 18 inches, \$20; 18 to 30 inches, \$30 per hundred. Average planting distance from 2 to 5 feet in single row.
- OREGON GRAPE.** Nursery grown. Bushy plants 10 to 15 inches, \$20 per hundred; 15 to 20 inches, \$30 per hundred. Average planting distance 15 to 18 inches in single row.
- PRIVET, ENGLISH.** Good heavy stock. 12 inches \$3, 18 inches \$4, 24 inches \$5 per hundred. I have a large stock of this, the best general purpose hedge plant for the Northwest. Generally planted 8 inches apart in double row spaced 8 inches, alternately planted. This spacing requires 3 plants to the lineal foot, 300 plants to the hundred feet.
- SPIREA, THUNGBERGS.** Fine for borders. Bushy, small. \$10 for 100. Average planting 18 to 24 inches in single row.
- ENGLISH HOLLY.** Can be supplied in several small sizes for hedging at from \$10 to \$25 per hundred, and higher. Planting distance, according to size, from 18 to 36 inches.



English Holly Hedge, Twentieth and Jackson



Boston Ivy on Good Samaritan Hospital

HARDY VINES AND CREEPERS

The need of vines and creepers for home embellishment is well known, as nothing adds more grace and beauty to the exterior of the house than well placed and appropriate vines. They cover porches and pergolas, giving shade, comfort, perfume and flowers. Also invaluable for converting offensive looking fences or other unsightly features into things of beauty. Churches, depots, factories, outbuildings and all brick and stone edifices can be covered by clinging vines, without trellis work, that will relieve their harshness or lack of architectural beauty and make them things of beauty and joys forever.

ACTINIDIA

SILVER VINE (*Actinidia Arguta*). A strong growing vine with dark, lustrous heart-shaped leaves, well adapted for training against pillars and for covering arbors and trellises. White flowers in clusters in early summer. Yellow berries. 75c and \$1.

AKEBIA

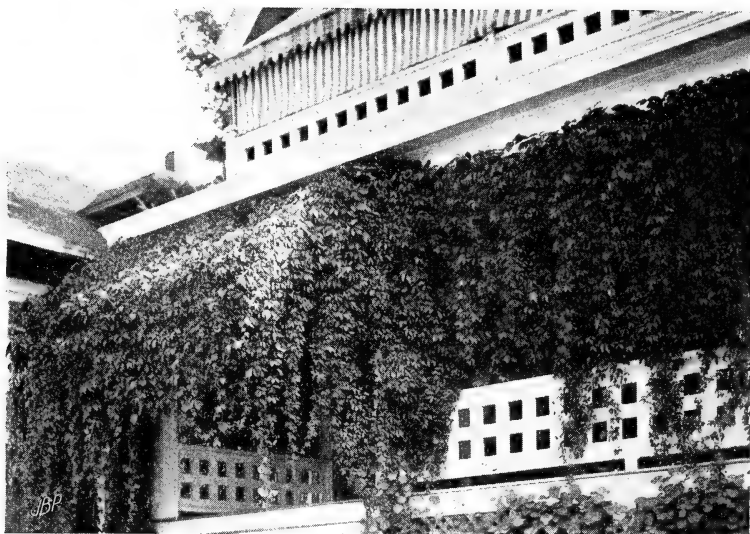
AKEBIA QUINATA. Five-leaved, ornamental Japanese Climber; hardy; racemes of rosy-purple flowers in late spring. Thrives best in moist loamy soil with sunny exposure. 75c.

BITTERSWEET (*Celastrus*)

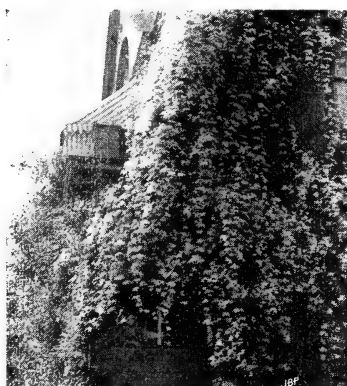
CELASTRUS SCANDENS. Also known as Staff Vine. A very vigorous grower. Its scarlet fruit, adherent nearly all winter, is an object of much beauty. 50c.



Boston Ivy



Virginia Creeper



Clematis Montana
North Thirty-second and Savier

CLEMATIS

CLEMATIS, DUCHESS OF EDINBURG. Vigorous habit and free bloomer. Double white flower. 75c.

CLEMATIS, HENRYI. The finest of all large white flowering. 75c.

CLEMATIS, JACKMANII. The most popular variety. Large, velvety, dark purple flower. 75c.

CLEMATIS, MADAME EDUARD ANDRE. New single crimson flower of good size and borne in great profusion. 75c.

CLEMATIS, PANICULATA. From Japan. Panicles of small, pure white, fragrant flowers borne in great profusion. Very desirable and entirely hardy. Blooms in late summer. 50c.

CLEMATIS, RAMONA. A very large, single-flowering lavender. 75c.

CLEMATIS, MONTANA. A Mountain Clematis from the Himalayas. Vigorous grower, clusters of sweet-scented Anemone-like white flowers in late spring. 75c.

DUTCHMAN'S PIPE (Aristolochia)

DUTCHMAN'S PIPE (Aristolochia Siph.) A strong, rapid-growing, tropical-looking vine, with handsome light green leaves 8 to 12 inches across. It will give a quick, dense shade, and is much used on arbors and trellises. The corolla of the brown flowers is shaped like the bowl of a pipe. 75c and \$1.



Large Flowered Clematis

HONEYSUCKLE (Lonicera)

MONTHLY FRAGRANT, or DUTCH HONEYSUCKLE (Lonicera Belgica). The old-fashioned sweet perfumed honeysuckle that blooms all summer long. Red and yellow, fragrant handsome flowers. 35c and 50c.

HALL'S JAPAN EVERGREEN HONEYSUCKLE (Lonicera Halleana). One of the most popular and valuable of all. Blooms perpetually from July to December, covered with a profusion of fragrant white and yellow flowers; has rich dark green foliage, which remains on most of the winter. 35c and 50c.



Clematis Henryii

IVY



Virginia Creeper

VIRGINIA CREEPER, or AMERICAN IVY (Ampelopsis Quinquefolia).

One of the finest vines for covering walls, verandas or trunks of trees. Like all the Ivys it throws out tendrils and roots at the joints by which it fastens itself to anything it touches. Turns bright red in autumn.

A valuable climber. 35c, 50c, 75c.

BOSTON, or JAPANESE IVY (Ampelopsis Veitchii; Syn., Tricuspidata). The tendrils hold tenaciously to any support and the roots find nourishment in the poorest soils. It is handsome, quite hardy and a rapid grower. It is the most popular ivy for the covering of buildings and walls, and grows well in the smoky atmosphere of cities. A small amount invested in these plants will so beautify unsightly buildings as to add greatly to their attractiveness. 35c and 50c.



Boston Ivy

PURPLE-LEAVED (Ampelopsis Veitchii Purpurea). A new form of the above with purple foliage. A very fine variety. 50c and 75c.



English Ivy

ENGLISH IVY (Hedera Hibernica). Leaves a dark, shiny green. Used in England for covering old trees, etc. A very close-growing variety. 25c, 35c and 50c.

VARIEGATED IVY (Hedera Maderiensis). A white variegated variety. 50c.

JASMINE (Jasminum)

YELLOW JASMINE (Jasminum Nudiflorum). A high-twining vine with dark green persistent leaves and fragrant golden flowers. 50c.

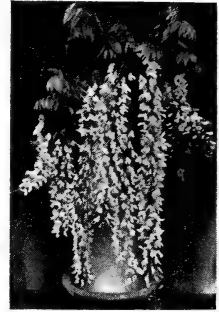
WHITE JASMINE (Jasminum Officinalis). Very fragrant white flowers. 50c.

KUDZU VINE (Pueraria)

PUERARIA THUNBERGIANA. A hardy and remarkably vigorous vine of Japanese origin, often growing forty feet in single season. Fine for covering large areas. Large, bright green leaves; flowers pea-shaped, purple, in racemes from old stems appearing in late summer. 75c.

POLYGONUM BALDSCHUANICUM

A new climber introduced recently by a famous French nursery, where I saw it and obtained a stock. Vigorous and hardy, clinging well to walls, tree trunks, porches or trellises, decorative and handsome. Resists sea breezes well. White flowers in panicles—fine for decorative purposes—continuous from May to October. Rare. Strong plants, \$1.50.



Grafted White
Wistaria
18-inch plant from
nursery row

SILK VINE (Periploca)

SILK VINE (Periploca Graeca). Stems twining, 20 to 30 feet long, clothed with numerous dark and glossy leaves of broadly lanceolot outline. Flowers brownish-purple inside, the margins and reverse side greenish; an inch or more across, borne in loose, long-stemmed cymes. 50c.

TRUMPET VINE (Tecoma)

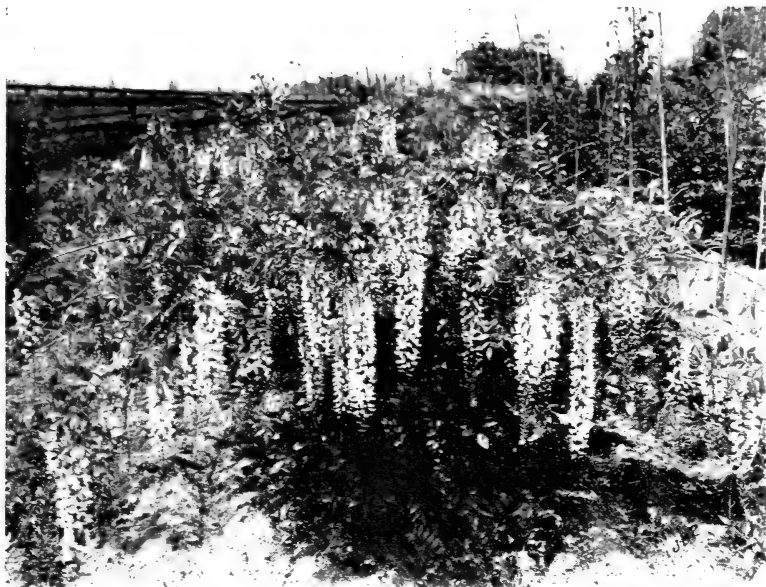
TRUMPET VINE (Tecoma Grandiflora). The orange-red flowers are larger and earlier than *T. Radicans*, and it is a more bushy grower. Leaves compound, consisting of 7 to 9 ovate, bright green leaflets, which persist until killed by frost. 50c.

THE SCARLET TRUMPET FLOWER (Tecoma Radicans, or Bignonia Radicans). Long and handsome dark green foliage and quite showy clusters of orange and scarlet flowers during the summer. 50c.

CROSS VINE (Tecoma, or Bignonia Capreolata). A strong vine, climbing to great heights. Handsome climber for outside use and covering walls. Flowers yellowish-red. 75c.



English Hawthorn as Hedge or Screen
Holy Rosary Church, East Third and Clackamas



Nursery View Grafted Wisteria

WISTARIA

CHINESE WISTARIA (*Wistaria Chinensis*). A rapid-growing tall vine with handsome foliage and flowers. Flowers pea-shaped, purplish, profusely borne in dense drooping clusters 7 to 12 inches long, opening in mid-spring. 50c.

CHINESE WHITE WISTARIA (*Wistaria* Var. *Alba*). A form of the above with pure white flowers. 75c.

JAPANESE WISTARIA (*Wistaria* Var. *Multi-juga*). A vigorous, tall-growing vine with bright green foliage. Flowers light purple or white, in loose-drooping racemes one to three feet long. A remarkably distinct and showy species. The long clusters of flowers are very effective for pergola work, the immense racemes producing most stunning effects. Fine grafted specimens, either purple or white, that will bloom first season, \$1; extra specimens, \$2 and \$3. Specify color wanted.



ORNAMENTAL GRASSES AND BAMBOOS

Because catalogued as "Grasses" many are apt to lightly pass over this important group of plants, valuable in gardening of the right sort. Their showiness, inimitable grace of motion, cool, silvery, neutral tints are restful to the eye and add beauty and harmony to the landscape. If you wish something easy and unusual in garden features grow some of this group.



Yucca

ADAM'S NEEDLE (Yucca)

ADAM'S NEEDLE (*Yucca Filamentosa*—Spanish Bayonet). Very odd and beautiful, long spear-like evergreen foliage and magnificent spikes or pyramids of waxy, drooping, creamy-white bell-shaped flowers. Fine for rockeries, in groups on lawn, in front of shrubbery and for borders. 50c, 75c and \$1.

BAMBOOS

TALL CHINESE CANE (*Arundinaria Simoni*). This, the tallest of the canes, frequently reaches a height of 12 to 20 feet. Native of China. Leaves 8 to 12 inches long, about an inch wide, rich, lustrous green, the apex very long and slender. Clumps, 75c.

GOLDEN BAMBOO (*Phyllostachys Aurea*). A graceful species with numerous yellowish stems 10 to 15 feet tall. Leaves soft green, spreading or drooping from the numerous dainty branches. One of the hardiest of its genus. Clumps, 75c.

TALL BAMBOO (*Phyllostachys Mitis*). A tall species with wand-like arching stems 15 to 20 feet tall, or even more in favorable situations. Leaves light green, gracefully disposed along the yellow-green stems and branches. Clumps, 75c.

BLACK-STEMMED BAMBOO (*P. Nigra*). A remarkably attractive species with stems 10 to 15 feet tall, which are green in their first year, but change to black during the second year. Clumps, 75c.

EULALIA

NARROW-LEAVED EULALIA (*E. Gracillima Univittata*). A beautiful hardy grass, densely tufted, 3 to 6 feet tall; numerous narrow drooping leaves. Flowers in panicles toward end of season. Clumps, 75c.

GIANT REED (Arundo)

GIANT REED (*Arundo Donax*). A hardy, vigorous perennial, attaining a height of 10 to 15 feet. Native of Europe and Asia. Leaves very long and broad, glaucous green, produced from the base almost to the top of the stems. Plumes reddish-brown, changing to silvery gray, a foot or more in length; long persistent and quite showy. Clumps, 75c.



Giant Reed

PAMPAS (Gynerium)

PAMPAS GRASS (*Gynerium Argenteum*). Stems 5 to 8 feet tall, forming a dense clump. Leaves long and narrow, chiefly from the base, gracefully spreading and drooping. Plumes silvery white, very showy, sometimes two feet or more in length. Clumps, 75c.

PEONY (Paeonia)

The coming flower. Absolutely hardy, having no insect pests, and ever increasing in size and beauty. The flowers are large and of great brilliancy of color, ranging from pure white and pale blush shades to the deep crimson. Magnificent for cut-flowers. The foliage is ornamental, the autumn coloring being very fine.

Plants that will produce flowers first season, 35c, 50c and 75c each; \$4 to \$7 per dozen. Extra plants, \$1, \$1.50 and \$2 each.

This nursery has thousands of plants, strong and thrifty, and does not send out the microscopic specimens frequently sent to the West from Eastern nurseries. Over sixty varieties undergoing trial in addition to the following, which are recommended:

- ALBA PLENA.** A fine, pure white.
- BARON JAMES DE ROTHSCHILD.** Silvery rose.
- CYTHAREE.** Flesh, to white.
- DELACHEI.** Deep purplish-crimson.
- DOYEN D'ENGHIEN.** Dark violet-rose.
- FAUST.** Soft lilaceous flesh color.



Peony, Festiva Maxima
In nursery row

FESTIVA MAXIMA. Enormous, very full, shell-formed. Bloom often 7 to 8 inches in diameter on strong 3½-foot stems; color snow-white, shading to delicate creamy-white at base of petals, with an occasional clear purple spot on edges of center petals; very fragrant. Undoubtedly the finest early white in existence. Special, 75c to \$2.

ISABELLE KARLITSKY. Satiny rose.
JEANNE D'ARC. Large, soft pink, sulphur-white center. One of the best varieties in cultivation.

LAIS. Light rose, sulphur-yellow center.

MAD. BREON. Rosy flesh with yellow center.

MAD. DE VERNEVILLE. Flesh color with carmine spots, edge of broad light rose petals.

MAGNIFICA. Pink.

POTTSI ROSEA ALBA. Pink with white center.

PRINCESS GALITZIN. Soft flesh to sulphur-white.

QUEEN'S PERFECTION. Flesh white; very free-flowering.

QUEEN VICTORIA. Flesh white.

REINE DES ROSES. Lilac rose, center light rose with yellow.

ROSEA ELEGANS. Soft pink with light center.

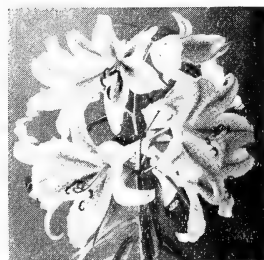
THYRNE. Yellowish-white.

ZOE CALOT. Tender rose, shaded with lilac.

OLD-FASHIONED (Officinalis Rubra). Double crimson; large size; fragrant; the Old-Fashioned Early Red Peony. Blooms two to three weeks before the Chinese varieties.



Peony, Madame Breon
In nursery row



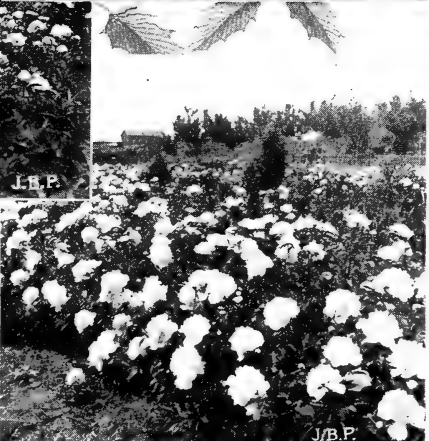
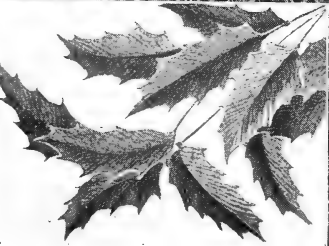
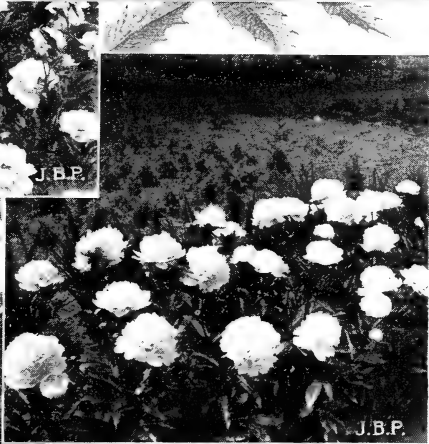
Gold Banded Lily

LILIES

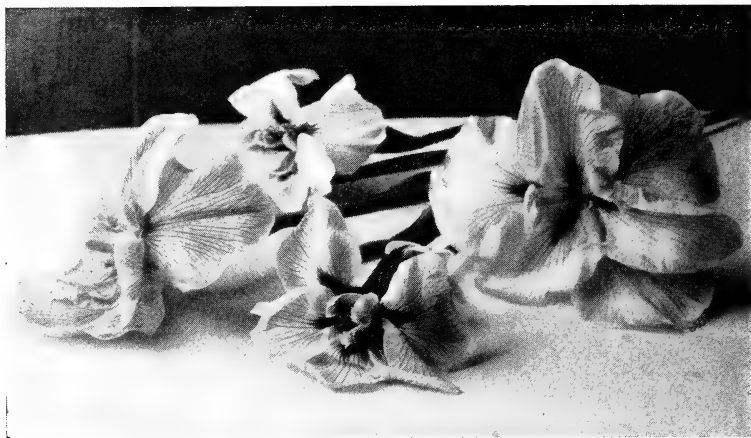
The beauty of the Lilies appeals to everyone. A really beautiful garden without them is unimaginable; they are needed in quantity and variety to complete it—among the Rhododendrons, against the evergreens of formal gardens, in groups or lines in the shrubbery or borders—wherever serene, stately, faultless beauty of outline is required. Autumn is by far the best time to plant all the hardy Lilies, and their culture is simple. Give them good, well drained soil with no fresh manures in it, a cushion of sharp sand about their roots and a mulch in winter, with no disturbance of the roots for at least several years. Planted in groups of three to six, or more, of a kind the effect is much better than when planted singly. Plant deeply—eight inches is good unless bulbs are very small.

Mammoth size bulbs, 25c each; \$2.50 per dozen.

Portland · Oregon



Peonies in Our Nursery



Japan Iris

GOLD BANDED (*Lilium Auratum*). The finest of all Lilies when well grown from good bulbs. Great flowers of ivory-white and gold-flecked with crimson dots and delightfully fragrant crowd the stout stems.

JAPANESE RECURVED, PURE WHITE (*Lilium Speciosum Album*).

JAPANESE RECURVED, DEEP PINK SPOTTED (*Lilium Speciosum Rubrum*). Two of the hardiest and most satisfactory varieties. Dainty waxen flowers with heavy glittering fringe as a corona for the center. Profuse bloomers.

HARDY BERMUDA (*Lilium Longiflorum Gigantum*). Large Flower.

HARDY BERMUDA (*Lilium Longiflorum Multiflorum*). Many flowered. These two varieties are similar to the well known Easter Lily. Beautiful pure white, very fragrant.

TIGER LILIES (*Lilium Tigrinum*). Hardy, robust, permanent. Large flowers, orange-salmon color with black spots.

MT. HOOD LILY (*Lilium Washingtonianum*). A beautiful Lily, white with pinkish tinge, stems 3 to 4 feet long, giving a number of handsome fragrant flowers. Native of Oregon.

JAPAN IRIS (*Iris Kaempferi*)

The Japanese species are the finest of the hardy Irises. Flowers are very large, in various tints of purple, lavender, blue, white and other light shades, many of them veined with darker rich colors, making most effective combinations. A sunny situation in moist rich loam is best adapted to their requirements, and as the clumps increase in size liberal enriching of the ground, or even replanting is attended by a great gain in the size and number of the flowers. I have a superb collection and offer strong clumps (not small divided roots) that will flower first season at 50c each; \$5 per dozen.



Japan Iris

Send list of wants of fine colors. The Japanese names are unpronounceable, and it will be necessary to Americanize them in order to standardize varieties.



Climbing Rose Dorothy Perkins
Twenty-fourth and Lovejoy (See description)

ROSES

The QUEEN of FLOWERS has been first favorite in garden planting since the Middle Ages, everywhere holding undisputed supremacy in floral adornment, but in no place or country is it finer than in the Pacific Northwest. Climatic conditions, aided by an enormous class of people devoted to its highest culture, have made our entire section famous for its superb and abundant roses and given to Portland its well deserved name of the "ROSE CITY."

Given, then, proper soil, unexcelled climatic conditions and a heavy demand for rose bushes by an enthusiastic and discriminating host of planters—each a Rosarian of experience, who demands the very best quality in plant and flower—and the nurseryman has every incentive to produce high grade **DEPENDABLE** stock. I started my nursery business 24 years ago, and for years have supplied annually many thousands of high grade rose bushes (and other stock) to planters in Portland and the entire Northwest.

Roses are not a single specialty with me; I grow or supply them in quantity, just as I handle many other lines of nursery stock, enabling me to grow the best and at the same time offer fine, large, healthy plants at fair remunerative prices. No better stock than mine is offered anywhere; a simple comparison will show my prices to be as low as any on first class, heavy, field-grown stock.

Years of experience enables me to offer the following desirable varieties. In addition to the 125 listed herein I have over 100 others in nursery, many of them undergoing trial, others in but small quantity or little demand, hence my wish to suppress sale of them and promote the planting of only the best. With but few exceptions all my roses are budded stock, even the lowest priced being strong, two-year-old, field-grown plants, which, if planted early and given proper cultivation and care, will flower abundantly the first season. I do not supply weak, hothouse-grown, low-priced plants that require several seasons to reach free-flowering condition, but only fine, dependable stock that will flower early and lavishly, and tend to promote general interest in rose culture.

Abbreviations used: H. P., Hybrid Perpetuals—vigorous, hardy roses, flowering in spring and fall—require less care and attention than other classes; H. T., Hybrid Teas—more vigorous growers, free-flowering and fine colors; T., Tea or Ever-blooming Roses, less vigorous and more tender, but giving finest of flowers; Poly., Polyantha, fine class of climbing or pillar roses; Noi., Noisette, rather tender, fine foliage and flowers usually in clusters. Gold Medal, the highest award of merit, given by the National Rose Society of England.

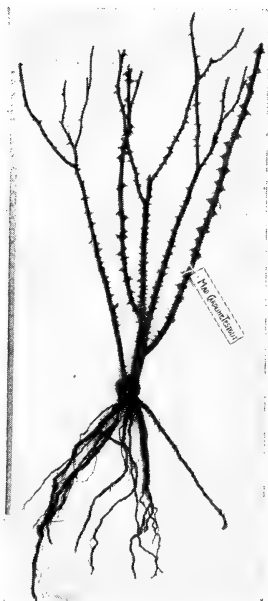
STRONG PLANTS THAT GIVE IMMEDIATE RESULTS AT POPULAR PRICES. 25c Roses at \$3 per dozen; 35c plants at \$4 per dozen.

These plants are too large for mailing unless very severely cut back. We pack securely for safe shipment by express anywhere without extra charge, purchaser paying express charges, which, however, are very light on nursery stock of all kinds.

Mail orders for roses, as for other nursery stock, are given special and prompt attention, and filled with best stock of grade or size ordered. All varieties listed are in stock for fall shipments; if any variety should be sold out we substitute varieties as nearly similar as possible unless orders are marked "No Substitution." This is rarely necessary until late in season.



Maman Cochet



Select Grade

Portland · Oregon

	Two Year Plants	Extra Large Select
AMERICAN BEAUTY, H. P. Rosy crimson, large, fragrant25
ANNA de DIESBACH, H. P. Brilliant carmine-rose25
ARD'S PILLAR, H. T. Climbing. Rich, velvety-crimson, full flower. Comparatively new; very good35
ARD'S ROVER, H. T. Climbing. Crimson, shaded maroon, fine foliage. Excellent for button-holes35
AUGUSTINE GUINOISSEAU, H. T. Color white, slightly tinged blush (White La France).....	.25
AVOCA, H. T. Gold Medal. Vigorous. Crimson-scarlet; buds long and pointed. Superb. Fragrant50
BARBAROSSA, H. P. Pure carmine-red, flowers large and full. Called Red Frau Karl Druschki. New60
BARON de BONSTETTIN, H. P. Dark crimson, large, full25	.35
BARONESS ROTHSCHILD, H. P. Beautiful clear pink25
BEAUTY OF GLAZENWOOD, Noi. Climbing (Fortune's Yellow). Orange-yellow, shaded carmine. Vigorous25	.35
BELLE SIEBRECHT, H. T. Brilliant, rich, deep pink25
BESSIE BROWN, H. T. Large, full flower, creamy-white, free-flowering and vigorous. Gold Medal. Good.....	.25	.35
BETTY, H. T. Gold Medal. Coppery rose with golden-yellow; large, fairly full, long buds. Fragrant35	.50
BLACK PRINCE, H. P. Deep, dark crimson, richly shaded, vigorous, richly perfumed. An old favorite.....	.25	.35
BON SILENE, T. Deep rose, good buds.....	.25
BRIDE, THE, T. Delicate ivory-white.....	.25
BRIDESMAID, T. Clear pink, nice buds.....	.25
CAPTAIN CHRISTY, H. P. Crimson-carmine, large, fragrant.....	.25	.35
CARDINAL PATRIZZI, H. P. Medium size, full flower, dazzling red, shaded with purplish-brown. Vigorous.....	.35
CATHERINE MARMET, T. Pale flesh color. Free bloomer25
CELINE FORESTIER, Noi. Climbing. Bright yellow with deeper center, full, well formed..	.25
CHERRY RIPE, H. T. Cherry-crimson, fragrant; medium size; full, floriferous. Still scarce50
COLONEL LECLERC, H. T. Cherry-red, large, fairly full; upright growth, free and perpetual. New	1.00

Wilkington Nursery

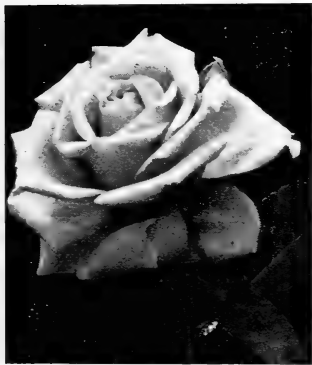
	Two Year Plants	Extra Large Select
COMTESSE de FRIGNEUSE, T. Large, full; fine elongated bud; color fine, bright canary-yellow. Good50
COMTESSE RIZA du PARC, T. Coppery-yellow, purged crimson35
CORNELIA COOK, T. Creamy-white; fine buds	.25
CRIMSON RAMBLER, Poly. Climbing. Free growing with large clusters of crimson flowers. Favorite25	.35
CLIMBING BELLE SIEBRECHT, H. T. Brilliant deep pink; one of the best large flowering climbers25	.35
CLIMBING DEVONIENSIS, T. Creamy-white, large, full25	.35
CLIMBING GLORIE de DIJON, T. Buff, orange center; hardiest of Tea Roses; long blooming season. Very fragrant; good as climbers or bush25	.35
CLIMBING METEOR, H. T. Deep, rich red; fine variety35
CLIMBING PERLE des JARDINES, T. Fine golden-yellow25
CLIMBING SAFRANO, Noi. Deep yellow, sometimes coppery; vigorous; earliest to blossom. Favorite25	.35
CLIMBING MAD. CAROLINE TESTOUT, H. T. Bright satiny-rose35
DR. GRILL, T. Coppery-yellow, tinged China pink25
DORA H. T. Comparatively new; has been greatly admired in nursery. Peach blossom to silvery blush. Large, full, free-flowering..	.60
DOROTHY PAGE ROBERTS, H. T. Coppery-pink, suffused apricot-yellow; petals very large. Vigorous and of wonderful charm. Gold Medal50	.75
DOROTHY PERKINS, Wich. Climbing. Probably our best climber; vigorous; foliage small, glossy green, hanging very late. Flowers beautiful shell-pink in large clusters. It is often erroneously called for as Pink Rambler. The fine specimen illustrated (page 75) is on the residence of Mr. B. F. Stevens, corner 24th and Lovejoy Streets, this city. A two-year-old bush when planted in November, 1907. Photograph taken June 14, 1911. Height to eaves of house 25 feet, width at top 28 feet. Flowers estimated at about 30,000. My stock of this is large and extra fine25	.35



A Rose Covered Porch

Portland · Oregon

	Two Year Plants	Extra Large Select
EMPERUER du MAROC, H. P. Very large, full flower, deep red, shaded purple. Hardy, vigorous, fine25	.35
ETOILE de FRANCE, H. T. One of the best red roses introduced for many years. Blooms are large, petals good substance and cupped form; very full and opening freely. Superb color, velvety-crimson, center vivid cerise; very fragrant. Heretofore priced as a novelty, now at regular rate.....	.25	.35
FISHER HOLMES, H. P. Old-time favorite. Lively crimson25
FLORENCE PEMBERTON, H. T. Gold Medal. Large, full flowers, perfectly formed, creamy-white with suffused pink. Free blooming35	.50
FRANCESKA KRUGER, T. Copery-yellow, shaded with peach25
FRANCOIS CROUSSE, T. Climbing. Fills a long-felt want in fine red climbers. Large, full flowers, well formed; bright crimson, sometimes fiery red; produced in abundance50
FRAU KARL DRUSCHKI, H. P. Often called Snow Queen; it is the best pure white rose grown. Flowers very large, beautiful pure silvery-white with very deep bud. Universally admired25	.35
FRANZ DEEGAN, H. T. One of the best yellow roses. A moderate grower, erect habit. Flowers medium, fragrant, of very effective pale yellow with center golden-yellow. Favorite..	.25	.35
FREIHERR von MARSCHALL, T. Red Tea Roses of real merit are scarce at best, but this seems to satisfy every demand. Color dark carmine, with long pointed buds, opening to large, full blooms of great substance. Strong plants50	.60
GEN. JACQUEMINOT, H. P. Glowing scarlet-crimson; large and fine. An old favorite....	.25	.35
GEN. McARTHUR, H. T. Large, full flower, well formed; dark velvety-crimson. Vigorous and floriferous.....	.25	.35



Frau Karl Druschki



Freiheer von Marschall

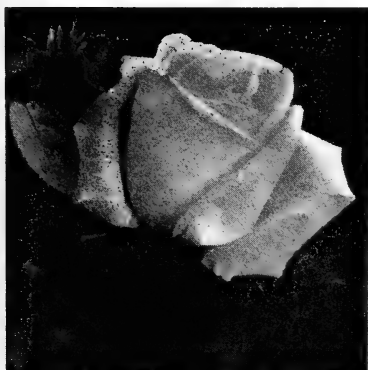
Pilkington Nursery

	Two Year Plants	Extra Large Select
GLOIRE de MARGOTTIN, H. P. Red, almost scarlet; full, perfect form. Vigorous as bush or pillar25
GLOIRE LYONNAISE, H. T. Pale lemon-yellow, tinted with pure white. Moderate, but beautiful25
GOLDEN GATE, T. Creamy-white, center soft yellow shaded. Long pointed buds. A fine rose25	.35
GOLD OF OPHIR, N. Climbing. Apricot-yellow. Good25	.35
GRACE DARLING, H. T. Large, full flower, well formed; color creamy-white, tinted and shaded with peach. Free blooming and vigorous. Valuable..	.35
GRUSS an TEPLITZ, H. T. Probably the best red garden rose. Richest crimson-scarlet; very free-flowering throughout the spring and summer; very fragrant, with fine foliage; also very strong grower, making it especially valuable for massing and hedges..	.25	.35
GUSTAVE REGIS, H. T. Canary-yellow with deeper center and beautiful long buds.....	.50
HARRY KIRK, T. Gold Medal. Deep sulphur-yellow; full, fine buds. Exceptionally fine...	.75
HON. INA BINGHAM, H. T. A fine rose of Killarney type. Distinct color, pure pink, deeply veinated; flowers semi-double, enormous petals50
HUGH DICKSON, H. P. Gold Medal. Also named as best red rose in existence; large flowers, very full and well formed, opening well in all weathers; color brilliant crimson, shaded scarlet, very free-flowering and vigorous. A rose of great beauty and utility.....	.25	.35
J. B. CLARK, H. T. Gold Medal. Another exceptionally good red rose; very large flower, finely formed; full, with high pointed center; color intense deep scarlet, heavily shaded with blackish crimson. Both these fine red roses have always sold at higher prices, but my stock is large and fine, and I list them at low popular prices25	.35
JEAN NOTE, H. T. A new rose of great merit. Beautiful chrome-yellow, changing to pale creamy-yellow; flowers large, well formed...	1.00
JULES MARGOTTIN, H. P. Superb cerise-red. Hardy. Good25	.35



Gruss an Teplitz

Two
Year
Plants Extra
Large
Select



Killarney

KAISERIN AUGUSTA VICTORIA, H. T. One of the best. Vigorous, free bloomer, good form, fragrant; color beautiful clear white, tinted yellow25 .35

KILLARNEY, H. T. The great Irish Rose and a favorite wherever planted. Robust grower, extremely long buds, large petals of great substance, making it lasting and fine for cut flowers; color bright carmine-pink, marbled in creamy-white. A favorite with florists.25 .35

LADY ASHTOWN, H. T. Fine long pointed buds, very large full flower, carried on good stiff stems; large petals; color pale rose, shaded with yellow, reflexed silvery. A valuable rose50

LADY BATTERSEA, H. T. Deep cherry-crimson, fine buds.35

LA FRANCE, H. T. Delicate silvery rose; large, fine25

LAURENT CARLE, H. T. Deep clear red, beautifully formed, large and full. Splendid habit; vigorous50

LIBERTY, H. T. Rich velvety crimson; free-flowering25

LYON ROSE, R. P. One of the greatest roses ever introduced. A vigorous upright bush with fine foliage; buds large and long, round shape; coral-red color. Blooms very large, broad petals, full globular form, superb color; petals shrimp-pink at end, salmon-red center, yellow base. No collection is complete without this variety75 1.00



Lyon Rose
Tacoma's Official Rose

Pilkington Nursery

	Two Year Plants	Extra Large Select
MABEL MORRISON, H. P. Pure white; an old favorite25	.35
MAD. ABEL CHATENAY, H. T. Bright rosy carmine-salmon, shaded vermilion. An extra good rose25	.35



Madame Alfred Carrier

MAD. ALFRED CARRIER, Noi. Climbing. White flesh, tinted and cream; free grower; floriferous....	.25
--	-----	------

MAD. CAROLINE TESTOUT, H. T. The official PORTLAND ROSE. Very large, globular flower; color bright satiny-pink, darker center, edges of petals bordered with soft carmine-pink; exceedingly free-flowering and vigorous. A favorite and valuable variety; does well everywhere; equally good as a single specimen bush, for massing or for hedges. My stock is exceptionally good of these.....	.25	.35
---	-----	-----

MAD. GABRIEL LUIZET, H. P. Light silvery-pink; good25	.35
MAD. HOSTE, T. Long buds; pale lemon-yellow, deeper center.....	.25	.35



Madame Leon Pain

MAD. LEON PAIN, H. T. Silvery-salmon, center orange-yellow; large, full, well formed. Very free-flowering and extra good in all ways.....	.35	.50
--	-----	-----

MAD. MELANIE SOUPERT, H. T. One of best exhibition or garden roses; vigorous, free-flowering; salmon-yellow, suffused carmine; large, full and fine. Beautiful and distinct (see page 85)....	.50	.60
MAD. RAVARY, H. T. Beautiful orange-yellow, medium size, fine buds; vigorous. A fine rose35
MAGNA CHARTA, H. P. Bright pink, suffused with carmine25	.35
MARIE VAN HOUTTE, T. Canary-yellow, tipped with bright rose. A general favorite; always good.....	.25	.35

Portland · Oregon

Two
Year
Plants Extra
Large
Select



Madame Segond Weber

**MAD. SEGOND
WEBER, H. T.**
Rosy salmon,
large, perfect
form, with an
ideal pointed bud
which expands to
a perfect flower
of immense size.
Its color is very
distinct and fine.
Can be recom-
mended as one of
best roses of re-
cent introduction

.75

MAMAN COCHET, Pink. T. Clear pink, chang-
ing to silvery rose. Large, full flower, free
blooming. A favorite and very beautiful rose .25 .35

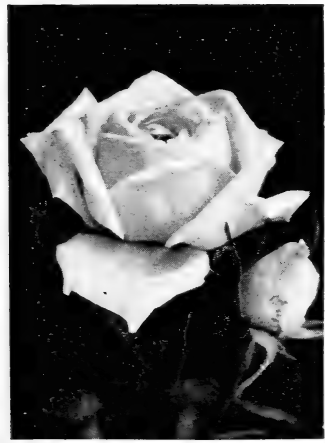
MAMAN COCHET, White T. A large, fine full
flower; creamy-white, tinged with soft blush.
One of our best roses; satisfactory in every
respect25 .35

MAMAN COCHET, Red T. Bright cherry-red.. .25 .35

MARECHAL NEIL, T. Climber. Rich golden-
yellow35

**MILDRED GRANT,
H. T.** Gold Med-
al. Ivory - white
with a faint flush
of pale rose;
highly pointed
center with large
petals, opening to
perfectly formed
flowers of enor-
mous size and
substance. A
splendid exhibi-
tion rose.25 .35

.35



Mildred Grant

**MARQUIS de
QUERHONT, T.**
High colors of
copper-salmon
and golden-yel-
low, beautifully
blended. Nice
buds, which de-
velop in exquisite wavy blooms. Foliage and
growth good50 .60

.60

METEOR, H. T. Velvety, glowing crimson, free-
flowering35

.35

MISS KATE MOULTON, H. T. Lovely salmon-
pink, delicately shaded dark pink. Fine buds.
Extra good35

.35

MOSS, CRIMSON. Dark carmine-red Moss Rose .35

. . . .


MOSS, PINK. Clear cherry-pink Moss Rose... .35

. . . .

MOSS, WHITE. White flowers in clusters.... .35

. . . .

Wilkington Nursery

	Two Year Plants	Extra Large Select
MRS. AARON WARD, H. T. Deep rich Indian-yellow, often tinted salmon. A constant bloomer with buds and blooms of refined form and finish. A new and sterling variety.....	.60	.75
	<p>MRS. ARTHUR ROBERT WADDELL, H. T. Rosy scarlet bud, opening reddish-salmon, reverse of petals rosy scarlet, semi-double, very lovely.....</p> <p>MRS. B. R. CANT, T. Gold Medal. A beautiful, free-flowering rose; rich pink, reverse petals darker....</p>	
	.50	.60
Mrs. A. R. Waddell		
MRS. DAVID JARDINE, H. T. A superb English introduction; flowers large, perfect form; bright rosy pink, shading in outer petals to salmon-pink; highly perfumed.....	1.00
MRS. HAROLD BROCKLEBANK, H. T. A superb rose, greatly admired by those who have seen it in the nursery. Creamy-white, center buff. Petals orange at base, reverse tinted salmon. Good size, full, perfect form, fragrant	1.00
MRS. JOHN LAING, H. P. Soft pink, large and fine form; free bloomer; fragrant; hardy. Favorite25	.35
MRS. R. G. S. CRAWFORD, H. P. Rosy pink; fine, satisfactory.....	.25	.35
MRS. STEWART CLARKE, H. T. Gold Medal. Cherry-pink, white base. A satisfactory rose of good size and substance.....	.75
PAPA GONTIER, T. Brilliant carmine, changing to rose; fine long buds; very attractive.....	.25
PAUL NEYRON, H. P. An old-time favorite. Deep rose, enormous size, vigorous grower. Good25	.35
PERLE des JARDINS, T. Golden-yellow; one of the best.....	.25	.35
PHARISAER, T. Rosy white, beautiful buds and flowers50
PRINCE CAMILLE de ROHAN, H. P. Very dark velvety-crimson, large full flower; fragrant. I have a fine stock of this well known and beautiful old-time favorite.....	.25	.35
QUEEN OF SPAIN, H. T. Deep flesh-white, large, good50
RAINBOW, IMPROVED, T. A sport from Papa Gontier, which it resembles in all except color, which is clear pink, striped with carmine.	.25
REINE MARIE HENRIETTA, H. T. Climber. A vigorous, good climber, deep cherry-red...	.25

Portland · Oregon

	Two Year Plants	Extra Large Select
REV. DAVID R. WILLIAMSON, H. T. Dark velvety-crimson, shaded maroon. Flowers large, good substance.....	.50
REVE d'OR. See Climbing Safrano.		
RICHMOND, H. T. Deep scarlet-red, constant bloomer25
SAFRANO, T. Apricot-yellow, free bloomer, long buds25
SHIRLEY HIBBERT, T. Medium size, full flower, nankeen salmon-yellow and buff. Vigorous. Good35	.50
SOLIEL d'OR. Aust. Briar. Flowers large globular, varying in color from gold to reddish-gold, shaded with nasturtium-red. Striking..	.25	.35
SOUVENIR CATHERINE GUILLOT, T. Long pointed buds, full, well formed flower; color ranging from carmine nasturtium-red on deep orange to coppery-red. Vigorous and free. Recommended by its superb coloring.....	.35
SOU. PIERRE NOTTING, T. Apricot-yellow, suffused orange25
SOU. PRES. CARNOT, H. T. Delicate rosy-flesh, shaded deeper at center. A fine rose...	.25
SUNSET, T. Deep apricot-yellow; vigorous, free25
ULRICH BRUN- NER, H. P. Extra strong grower, almost thornless. Cherry-red, flamed scarlet, long stems. A very satisfactory and good rose...	.25	.35
WILLIAM SHEAN, H. T. Gold Medal. Pink with ochre veins50
WM. ALLEN RICHARDSON, Noi. Climber. Coppery-yellow, flushed with carmine. Beautiful, distinct35
WM. R. SMYTHE, T. White, tinged blush, large, full, very free. A good rose, recently introduced75
W. E. LIPPIAT, H. T. A vigorous, attractive rose of brilliant velvety-crimson, shaded maroon....	.75



Madame Melanie Soupert

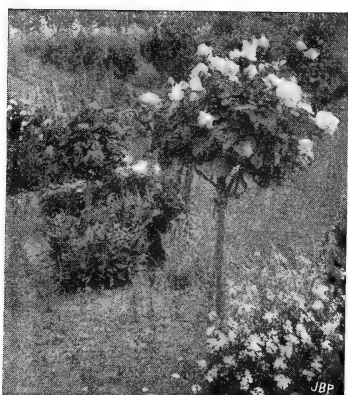
	Two Year Plants	Extra Large Select
WHITE DOROTHY, Wich. Climbing. A new introduction, described as "a pure white sport from Dorothy Perkins, having all the fine qualities of that charming variety"60	.75
WHITE RAMBLER, Poly. Pure white; flowers in clusters25	.35
XAVIER OLIBO, H. P. Dark maroon-red, velvety and rich. The blackest rose known..	.25	.35
YELLOW RAMBLER, Poly. A clear yellow...	.25	.35

UNNAMED VARIETIES

In handling large quantities of rose bushes labels are occasionally lost or broken, making it impossible to offer them under their proper names and classes. They are all good plants, none under two years, field grown, that will flower the first season, and are of good varieties; oftentimes new or high priced kinds are among them. We can combine them so that each dozen will contain not less than four different varieties, usually more. There is nothing cull about them, simply unnamed. For those who are not particular about having their roses named, but simply want some good roses for their own pleasure this collection is recommended.

The quantity of these roses is not large usually, but as long as stock lasts they will be sold at \$2 per dozen, securely packed for express shipment.

STANDARD OR TREE ROSES



Frau Karl Druschki Tree

Many planters prefer roses grown in tree form. Not all varieties are successful, but I offer the following, which have given good results. A number of other varieties can be supplied in small quantity. If variety desired is not listed kindly inquire.

Strong trees with two year heads, \$1 each; \$10 per dozen.

ALFRED COLOMB. Bright cherry-red.

BABY RAMBLER. Bright crimson, in clusters.

BARONESS ROTHSCHILD, Deep flesh-color.

CAPTAIN HAYWARD. Crimson-carmine.

CRIMSON RAMBLER. Crimson, flowers in clusters. Weeping.

ETOILE de FRANCE. Bright velvety-crimson.

FRAU KARL DRUSCHKI. Beautiful pure white. Best.

GENERAL JACQUEMINOT. Glowing scarlet-crimson.

GLOIRE d'DIJON. Creamy-white and blush. Weeping.

GRUSS an TEPLITZ. Rich crimson-scarlet.

HUGH DICKSON. Brilliant scarlet.

J. B. CLARK. Rich dark crimson.

LYON ROSE. Coral-red and yellow tones. \$2 each.

MAD. ABEL CHATENAY. Bright rosy carmine-salmon.

MAD. CAROLINE TESTOUT. Bright satiny-pink. Best.
MAD. JULES GROLEZ. Bright beautiful pink.
MAGNA CHARTA. Bright pink, suffused carmine.
MRS. JOHN LAING. Soft pink.
PRINCE CAMILLE de ROHAN. Very dark crimson.
ULRICH BRUNNER. Bright cherry-red, flamed scarlet. Best.

INDEX

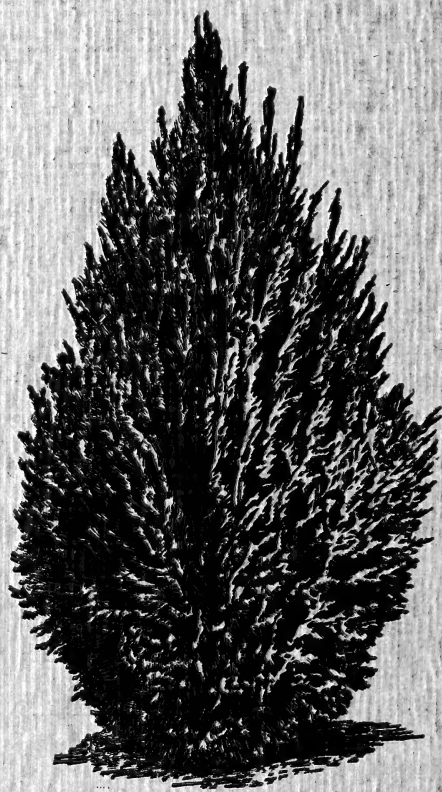
	Page		Page
Abies	41	Conifers	38
Acer	32-34	Corchorus	50
Actinidia	65	Cornus	27-48
Aesculus	29	Corylus	50
Akebia	65	Cotoneaster	58
Almond	16-46	Crataegus	29
Althea	46	Cryptomeria	41
Ampelopsis	67	Cupressus	39
Amorpha	48	Currants	14-48
Amygdalus	46	Cydonia	52
Apples	6-7-20-27	Cypress	39-40
Apricots	8	Cytisus	30
Aralia Spinosa	29	Daphne	59
Araucaria	39	Deutzia	48
Arbor Vitae	38	Dewberries	12
Aristolochia	66	Diervilla	56
Arundo	70-71	Dogwood	27-48
Asparagus	15	Dutchman's Pipe	66
Ash	24-35	Dwarf Fruit Trees	20
Aucuba	57	Elder	49
Azaleas	46-47-58	Eleagnus	49
Bamboos	70	Elm	28
Barberry	47	Empress Tree	28
Bay Trees	43	Enkianthus	50
Beech	24	Euonymus	50-59
Berberis	46-60	Eulalia	71
Betula	25	Evergreen Conifers	38
Birch	25	Evergreen Trees	43
Bittersweet	65	Evergreen Shrubs	57
Blackberries	12	Exochorda	53
Boxwood	58	Fagus	24
Broom	47	Forsythia	50
Burning Bush	50	Figs	8
Butternut	18	Filberts	17-50
Buxus	58	Fir	41
Callicarpa	50	Fraxinus	24
Calluna	59	Fringe	54-56
Calycanthus	56	Fruit Department	5
Camellia	58	Fruit Trees, Dwarf	20
Caragana	53	Garden Roots	15
Caryopteris	48	Genista	47
Catalpa	25	Giant Reed	71
Cerasus	26	Ginkgo	30
Cercis	36	Gleditsia, Triacanthos	30
Cedar	39	Globe Flower	50
Cedrus	39	Golden Bell	50
Celastrus	65	Golden Chain	30
Chamoecerasus	48	Gooseberries	14
Cherries	8-26	Grape, Oregon	60
Chestnuts	16-29	Grapes	14
Chionanthus	56	Grasses and Bamboos	70
Chili Pine	39	Guarantee	4
Citrus	51	Gyneryum	71
Clematis	66		

Pilkington Nursery

	Page		Page
Halesia	53	Pinus	41
Hawthorn	29	Planting Season	3
Heather	59	Platanus	37
Hedera	67	Plums	10-21-35
Hedges	63-64	Polygonum	68
Hemlock	41	Poplar	36
Hercules' Club	29	Populus	36
Hibiscus, Syriacus	46	Prunes	11-21
Hickory	17	Prunus	35
Holly	44	Pueraria	67
Home Orchard Assortment.....	19	Quercus	35
Honeysuckle	48-67	Quinces	12
Hydrangea	51	Quince, Japan	52
Hypericum	51	Raspberries	13
Ilex	44	Robinia	30-45
Indigo, False	48	Roses	75-86
Iris, Japan	74	Red Bud	36
Ivy	67	Redwood	42
Jasmine	67	Retinospora	40
Jasminum	67	Rhododendrons	47-61
Juniper	41	Rhubarb	15
Kalmia	59	Rhus	53
Kerria	50	Ribes	48
Koelreuteria	37	Shrubs, Evergreen	57
Kudzu Vine	67	Silk Vine	68
Laburnum	30	Silver Bell	53
Landscape Designing	23	Salix	37
Larch	30	Sambucus	49
Laurus	43-59	Sassafras	37
Laurels	57-59	Sciadopitys	42
Liriodendron	37	Shrubs, Deciduous	45
Lilacs	52	Small Fruits	12-19
Lilies	72	Smoke Tree	53
Lime	30	Snowball	55
Linden	30	Snowberry	55
Liquidambar	37	Sorbus Acuparia	35
Locust	30-45	Spirea	48-55
Loganberry	13	Spruce	42
Lonicera	67	Strawberries	15
Magnolia	31-45	St. John's Wort	51
Mahonia	60	Sumac	53
Maidenhair Tree	30	Sweet Gum	37
Malus	27	Sweet Shrub	56
Maples	32-34	Sycamore	37
Morus	35	Syringa	52-53
Mulberry	35-50	Symphoricarpos	55
Nandina	60	Tamarisk	56
Nut Trees	16	Tamarix	56
Oak	35	Taxus	42
Orange	51-53	Tecoma	68
Ornamental Trees	24	Thuja	38
Paeonia	71	Tilia	30
Pampas	71	Trumpet Vine	68
Paulownia Imperialis	28	Tsuga	41
Pea Tree, Siberian	53	Tulip Tree	37
Peaches	9	Ulmus	28
Pearl Bush	53	Umbrella Pine	42
Pears	10-21	Varnish Tree	37
Peony	71	Viburnum	54
Periploca	68	Vines and Creepers	65
Persimmons	9	Walnut	17-18
Phenomenal Berry	12	Weigela	56
Philadelphus	53	Wellingtonia Sequoia	42
Phyllostachys	70	Willows	37
Picea	42	Wistaria	69
Pine	41-42	Yew	42
		Yucca	70

MADE IN OREGON

Photographs . . . PRINCIPALLY IN PORTLAND
Halftones . . . HICKS-CHATTEN ENGRAVING CO.
Printing . . . F. W. BALTES AND COMPANY



ERECT LAWSON CYPRESS