

## **Historic, Archive Document**

Do not assume content reflects current scientific knowledge, policies, or practices.



Field Investigations in Pomology  
RECEIVED

MAR 19 1913

ANS.

Andorra

LIBRARY,

Department of Agriculture  
Washington, D.C.

Nurseries

PRICE LIST OF

SPECIMEN TREES

SHRUBS, ROSES

AND FRUIT

Fall, 1912

CANCELING ALL PREVIOUS LISTS



WHOLESALE  
PRICES

ON QUANTITIES OF TEN  
TO ONE THOUSAND



SPECIAL :

SEE NOTES ON  
PAGES 20, 64  
AND BACK  
COVER



# SUPERIOR FERTILIZERS

## For the Lawn, Garden or Farm

PRICES NET F. O. B. SHIPPING POINT

### CANADA UNLEACHED HARD-WOOD ASHES

(ANDORRA BRAND)

Are a complete fertilizer, replenishing worn-out soils, and, for the lawn or pasture, are economical and valuable. For the lawn, they are easy to handle, produce no offensive odors, are not unsightly, and, quickly leaching into the soil, the chemical properties are at once available for plant food.

Our ashes are selected only from the hard-wood districts of Canada, are carefully screened, and put in convenient packages. Apply at the rate of 1,000 to 1,500 lbs. per acre for top-dressing, or 2,000 to 2,500 lbs. for new lawns.

50-lb. bag	100-lb. bag	200-lb. bbl.	Ton (10 bbls.)	Cars, 15 to 20 tons
\$1 00	\$1 50	\$2 50	\$20 00	At special prices.

### PREPARED LIME

Where soils, from constant applications of manure, are sour and need a fertilizer to sweeten them, lime is a valuable agent. It quickly puts the soil in condition to assimilate plant-food. It frees the potash, phosphoric acid and nitrogen already in the soil, and turns the nitrogen into the rich nitrates valuable for plant use.

Our prepared lime is fresh from the kilns, clean, well burnt, thoroughly decarbonized and especially prepared, so that it will go three times as far as the lump lime generally used, and is fine enough to run through a drill. Use 500 lbs. per acre.

100-lb. bag	Ton	Cars, 12 to 25 tons
\$1 25	\$12 00	\$10 per ton.

### POTASH AND PREPARED LIME

Where potash is needed in addition to lime, this preparation will be found valuable. It contains 4% actual potash, equal to 8% of sulphate of potash, the prepared lime being used as a filler, and makes a valuable top-dresser for lawn, pasture, or grass lands. Apply at the rate of 500 lbs. per acre.

100-lb. bag	Ton	Cars, 12 to 25 tons
\$1 50	\$14 00	\$12 00 per ton

### PEAT

We have on hand a stock of carefully selected peat, suitable for potting or planting Rhododendrons and shrubs that need such soil. Sack of about 100 lbs., 75 cents. In sacks, \$13.50 per ton.

### PURE GROUND BONE

A brand of excellent quality. Analysis on request.

200-lb. bag	Ton	Cars, 15 to 30 tons
\$3 50	\$32 00	Special price.

# Andorra Nurseries

CHESTNUT HILL, PHILADELPHIA, PA.

**OUR NURSERIES** are extensive, covering six hundred acres, of which over three hundred are planted with trees and shrubs. They are easy of access, as Chestnut Hill is the terminus of branches of the Pennsylvania and the Philadelphia & Reading railroads, and the Chestnut Hill (City Line) trolley runs from the stations to within three minutes' walk of the Nurseries.

**QUALITY.**—The trees and shrubs offered are grown in open, unsheltered ground, in a very exposed situation, which insures their hardiness, and on soil admirably adapted for forming robust plants having an abundance of roots. Special attention is called to the fact that our stock is grown a good distance apart in the rows, insuring heavier trees and shrubs than are generally offered.

**SHIPPING SEASON** opens about March 1 in the spring and August 15 in the fall.

**INSPECTION AND FUMIGATION.**—Our stock is regularly inspected and certificate will be sent with each shipment. Stock will be fumigated when requested or when the State laws require it.

## TERMS AND CONDITIONS

**ORDERS.**—All orders are accepted subject to the following terms and conditions. Write plainly and give explicit directions as to address and mode of shipment.

**STOCK SELECTED** by customers at the Nurseries will be charged according to the value of the trees chosen.

**QUANTITY.**—Lots of 5 and 50 will be furnished at the 10 and 100 rates respectively.

**PACKING.**—All goods are thoroughly packed, thus avoiding risk, if delayed in transit. **Packing charges are made at actual cost.**

**FORWARDING.**—Shipments will be forwarded exactly as directed; but when without instructions, we will use our best judgment and forward by shortest and safest route. We recommend all herbaceous plants be shipped by express.

**RISK.**—All goods are at purchaser's risk after they are delivered to the forwarding companies and we receive their receipt for the shipment in good condition.

**CLAIMS for damage while in transit** must be made to the delivering company. Have delivering agent note the damaged condition on the freight bill and present your claim through him promptly.

**GUARANTEE AND CLAIMS.**—All goods are guaranteed true to name, full count, up to grade, and in good condition when shipped. Any plant proving untrue to name will be replaced. Claims to receive consideration must be made within **five days** after receipt of goods. **We give no guarantee of the life of stock.**

**TERMS, CASH WITH ORDER**, except to persons who satisfy us as to their responsibility.

Address all orders to

## ANDORRA NURSERIES

WM. WARNER HARPER, Prop.

CHESTNUT HILL, PHILADELPHIA, PA.

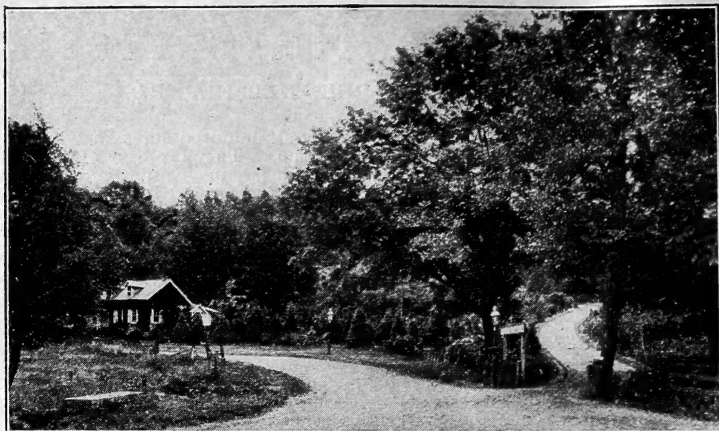
Local and Long  
Distance Telephone

Telegraphic Address

CHESTNUT HILL, PHILADELPHIA

Cable Address

"ANDORRA," PHILADELPHIA



Nursery Entrance and Office.

## EVERGREEN TREES

	Each	10
<b>ABIES balsamea.</b> Balsam Fir. 3 to 4 ft.....	♦. \$2 00	
4 to 5 ft. ....	♦. 2 50	
5 to 7 ft. ....	♦. \$3 to 4 00	
<b>Canadensis.</b> See <i>Tsuga Canadensis</i> .		
<b>concolor.</b> White Fir. 2½ to 3 ft.....	3 50	
3½ to 4 ft. ....	5 00	
4 to 4½ ft. ....	6 00	
4½ to 5 ft. ....	♦. 7 50	
5 to 6 ft. ....	♦. \$10 to 12 50	
6 to 10 ft. ....	♦. \$12.50 to 35 00	
<b>nobilis, var. glauca.</b> Noble Silver Fir. 4 to 4½ ft....	5 00	
4½ to 5 ft. ....	6 00	
5 to 7 ft. ....	\$7.50 to 15 00	
<b>Nordmanniana.</b> Nordmann's Fir. 3 ft.....	3 50	
3 to 3½ ft. ....	4 50	\$42 50
3½ to 4 ft. ....	6 00	57 50
4 to 4½ ft. Specimens ....	♦. 7 50	70 00
4½ to 5 ft. Specimens ....	♦. 10 00	85 00
5 to 5½ ft. Specimens ....	♦. \$10 to 15 00	
6 to 12 ft. Fine specimens. Prices on application.		
<b>pectinata.</b> European Silver Fir.		
6 to 7 ft.....	4 00	
7 to 8 ft.....	5 00	
8 to 10 ft.....	7 50	
<b>BIOTA orientalis.</b> Oriental Arborvitæ. 5 to 6 ft.....	3 00	27 50
6 to 7 ft. ....	4 00	37 50
6 to 7 ft. Very heavy ....	6 00	55 00
7 to 9 ft. ....	7 50	65 00
8 to 10 ft. Very broad and heavy....	\$8.50 to 12 50	

PRICE LIST FOR FALL OF 1912

	Each	10
<b>BIOTA orientalis, var. aurea nana.</b> 15 to 18 in.....	\$1 75	\$15 00
18 to 20 in.....	2 00	17 50
20 to 24 in.....	2 75	25 00
24 to 30 in.....	3 50	32 50
<b>orientalis, var. aurea pyramidalis.</b>		
3 to 4 ft.....	3 50	
4 to 5 ft.....	5 00	
<b>orientalis, var. compacta.</b> Compact Chinese Arborvitæ. 3 to 3½ ft.....	3 50	
3½ to 4 ft.....	4 00	35 00
4 to 5 ft.....	5 00	45 00
5 to 6 ft.....	7 50	70 00
<b>orientalis, var. conspicua.</b> 3 to 3½ ft.....	3 50	32 50
4 to 4½ ft.....	4 00	37 50
5 to 6 ft.....	5 00	
6 to 7 ft.....	7 50	70 00
7 to 12 ft.....	♦ \$7.50 to 15 00	
<b>orientalis, var. elegantissima.</b> Rollinson's Golden Arborvitæ. 3 to 3½ ft.....	3 50	
3½ to 4 ft.....	4 00	
4 to 5 ft.....	5 00	47 50
5 to 8 ft.....	♦ \$6 to 15 00	
<b>orientalis, var. filiformis; syn., Japonica.</b> Thread-branched Arborvitæ. 3 to 3½ ft.....	3 50	32 50
5 to 5½ ft.....	5 00	
<b>orientalis, var. sempaurescens.</b> Ever-golden Arborvitæ. 4 to 5 ft.....	♦ \$5 to 7 50	
5 to 7 ft.....	♦ \$7.50 to 15 00	
<b>CEDRUS Atlantica, var. glauca.</b> Mt. Atlas Silver Cedar—		
2½ to 3 ft. ....	3 00	27 50
5 to 6 ft. ....	4 00	37 50
6 to 8 ft. ....	\$5 to 7 50	
8 to 10 ft. ....	\$10 to 15 00	
<b>CEPHALOTAXUS Fortunei.</b> Fortune's Yew. 4 to 4½ ft.....	3 50	
5 to 6 ft. Very broad and heavy.....	5 00	
6 to 7 ft. ....	7 50	
<b>CRYPTOMERIA Japonica.</b> 2½ to 3 ft.....	2 50	22 50
3 to 3½ ft.....	3 00	27 50
<b>Japonica, var. Lobbi compacta.</b> 2½ to 3 ft.....	3 50	32 50
3½ to 4 ft.....	4 00	37 50
5 to 6 ft. ....	5 00	47 50
<b>ILEX opaca.</b> American Holly. 2½ to 3 ft.....	3 50	32 50
3 to 4 ft. ....	♦ \$3.50 to 5 00	
4 to 5 ft. ....	♦ \$7.50 to 10 00	
<b>JUNIPERUS Canadensis.</b> Spreading Canadian Juniper—		
12 to 15 in. spread .....per 100, \$60..	1 00	9 00
15 to 18 in. spread .....	1 50	12 50
18 to 24 in. spread .....	2 00	17 50
24 to 30 in. spread .....	3 50	32 50
<b>Canadensis, var. aurea; syn., Douglasi.</b> Douglas' Golden Juniper. 12 to 15 in. spread...	1 00	8 50
15 to 18 in. spread .....	1 50	12 50
18 to 24 in. spread. Heavy .....	2 00	15 00

## ANDORRA NURSERIES

	Each	10
<b>JUNIPERUS Chinensis.</b> Chinese Juniper. 3 ft.....	\$2 00	\$17 50
3½ to 4 ft. ....	3 50	32 50
4½ to 5 ft. ....	4 00	37 50
5 to 6 ft. ....	5 00	45 00
6 to 8 ft. ....	\$6 to 10 00	
<b>Chinensis, var. argentea marginata.</b> A grand		
hardy variety. 2½ to 3 ft.....	3 50	32 50
3½ to 4 ft. ....	4 50	42 50
4 to 4½ ft. ....	5 00	47 50
5 to 6 ft. ....	\$6 to 7 50	
7 to 8 ft. Specimens .....	\$10 to 15 00	
<b>Chinensis, var. aurea.</b> Golden Chinese Juniper—		
4 to 5 ft.....	5 00	
5 to 6 ft.....	7 50	
<b>Chinensis, var. Pfitzeriana.</b> 18 to 20 in.....	2 00	17 50
22 to 24 in.....	2 50	20 00
24 to 30 in.....	3 50	32 50
<b>Chinensis, var. femina Reevesii.</b> 3 to 3½ ft.....	3 00	27 50
5 to 6 ft.....	5 00	47 50
<b>communis.</b> Common Upright Juniper—		
3 to 3½ ft.....	2 50	
4½ to 5 ft.....	3 50	
<b>communis, var. oblonga.</b> 6 to 8 ft.....	\$5 to 7 50	
<b>communis, var. Suecica.</b> Swedish Juniper—		
2½ to 3 ft.....	2 00	15 00
<b>excelsa stricta.</b> 4 to 6 ft.....	\$5 to 10 00	
<b>Fortunei.</b> 6 to 8 ft.....	\$5 to 7 50	
<b>Japonica, var. aurea.</b> Golden Japan Juniper—		
1½ to 2 ft. ....	1 50	13 50
2 to 2½ ft. ....	2 50	22 50
2½ to 3 ft. ....	3 50	32 50
3 to 3½ ft. ....	4 00	
3½ to 4 ft. ....	5 00	47 50
4 to 4½ ft. ....	6 00	55 00
5 to 5½ ft. ....	\$10 to 12 50	
<b>Japonica, var. nana aurea.</b> Dwarf, 10 to 12 in.		
x 15 to 18 in. broad.....	1 75	15 00
<b>recurva, var. squamata.</b> Scaly-leaved —		
8 to 10 in. x 10 to 12 in. spread.....	1 50	13 50
8 to 10 in. x 15 to 18 in. spread.....	2 00	17 50
<b>rigida.</b> 9 to 12 ft.....	\$10 to 25 00	
<b>Sabina.</b> Savin Juniper. 12 to 15 in.....	1 00	9 00
2 to 2½ ft.....	2 50	22 50
3 to 3½ ft.....	3 50	32 50
<b>Sabina, var. aurea variegata.</b> Savin's Golden		
Juniper. 1½ to 2 ft.....	1 50	
2 to 2½ ft.....	3 50	
<b>Sabina, var. tamariscifolia.</b> 10 to 12 in. x 12 to		
15 in. spread .....	1 25	10 00
12 to 15 in. x 15 to 18 in. spread.....	1 75	15 00
<b>Virginiana.</b> Red, or Virginia Cedar. 3 to 3½		
ft. ....	2 50	22 50
3½ to 4 ft. ....	3 50	32 50
4½ to 5 ft. ....	4 00	37 50
5 to 6 ft. ....	5 00	47 50
7 to 8 ft. Specimens .....	\$6 to 10 00	



PRICE LIST FOR FALL OF 1912

		Each	10
<b>JUNIPERUS</b>	<b>Virginiana, alba spieta.</b> ♦. 3 to 4 ft.....	\$3 00	\$27 50
	<b>Virginiana, var. Cannartii.</b> 2½ to 3 ft.....	2 50	22 50
	<b>Virginiana, var. glauca.</b> Blue Virginia Cedar—		
	3 to 3½ ft. ....♦.	3 00	27 50
	4 to 4½ ft. ....♦.	3 50	32 50
	5 to 6 ft. ....♦.	4 00	37 50
	7 to 8 ft. ....♦.	\$7.50 to 10 00	
	<b>Virginiana, var. Kosteri.</b> Spreading—		
	12 to 15 in. ....♦.	1 50	13 50
	18 to 24 in. ....♦.	2 00	17 50
	2 to 2½ ft. ....♦.	2 50	22 50
	<b>Virginiana, var. Leei elegantissima.</b> Golden Vir- ginian Cedar—		
	3 to 3½ ft. Extra heavy ....♦.	2 50	22 50
	4½ to 5 ft. Extra heavy ....♦.	3 50	32 50
	5 to 7 ft. Extra heavy ....♦.	\$4 to 6 00	
	8 to 9 ft. ....♦.	\$7.50 to 10 00	
	<b>Virginiana, var. pendula.</b> 3 to 3½ ft.....♦.	2 50	22 50
	4 to 4½ ft. ....♦.	3 50	32 50
	5 to 6 ft. ....♦.	5 00	47 50
	<b>Virginiana, var. Schotti.</b> 3 to 3½ ft.....♦.	2 50	22 50
	4 to 5 ft. ....♦.	4 00	37 50
	5 to 6 ft. ....♦.	5 00	47 50
	7 to 8 ft. ....♦.	\$6 to 10 00	
<b>PICEA alba.</b>	<b>White Spruce.</b> 2½ to 3 ft.....	2 00	17 50
	3 to 3½ ft. ....♦.	2 50	20 00
	4 to 5 ft. ....♦.	3 50	30 00
	5 to 6 ft. ....♦.	5 00	
	6 to 7 ft. ....♦.	6 00	
	7 to 8 ft. Very fine specimens...♦.	\$7.50 to 10 00	
	<b>Alcockiana.</b> Alcock's Spruce. 2½ to 3 ft.....♦.	3 50	
	5 to 8 ft. Specimens.....	\$4 to 15 00	
	<b>Engelmanni.</b> Engelmann's Spruce—		
	4 to 7 ft. ....♦.	\$5 to 10 00	
	<b>excelsa.</b> Norway Spruce. 3 to 3½ ft.....♦.	1 50	12 50
	3½ to 4 ft. ....♦.	2 00	17 50
	4 to 4½ ft. ....♦.	3 00	27 50
	5 to 6 ft. Specimens ....♦.	5 00	45 00
	7 to 9 ft. Specimens ....♦.	7 50	60 00
	9 to 12 ft. ....♦.	\$10 to 25 00	
	<b>excelsa, var. aurea.</b> Golden Norway Spruce—		
	2 to 2½ ft. ....♦.	2 50	
	<b>excelsa, var. inverta.</b> Weeping Norway Spruce—		
	5 to 6 ft. ....♦.	\$6 to 7 50	
	7 to 9 ft. ....♦.	\$7.50 to 15 00	
	<b>orientalis.</b> Eastern Spruce. 2 to 2½ ft.....♦.	2 50	22 50
	3 to 3½ ft. ....♦.	3 50	32 50
	3½ to 4 ft. Specimens ....♦.	5 00	45 00
	4½ to 5 ft. Specimens ....♦.	\$6 to 7 50	
	6 to 9 ft. Specimens ....♦.	\$10 to 25 00	
	<b>pinsapo.</b> Spanish Fir. 3½ to 4 ft.....♦.	3 50	32 50
	4 to 5 ft. ....♦.	\$4 to 7 50	
	<b>polita.</b> Tiger's Tail Spruce. 2½ ft.....♦.	2 50	22 50
	2½ to 3 ft. ....♦.	3 50	32 50
	9 to 12 ft. ....♦.	\$15 to 25 00	



### Loading White Pines.

		Each	10
<b>PICEA pungens.</b>	Colorado Spruce. 4 to 5 ft.....♦	\$5 00	\$45 00
	5 to 6 ft. ....♦	7 50	
	7 to 10 ft. ....♦	\$7.50 to 25 00	
<b>pungens, var. glauca.</b>	Blue Colorado Spruce—		
	2½ to 3 ft. Selected color .....♦	3 50	32 50
	3 to 3½ ft. Selected color .....♦	\$5 to 7 50	
	3½ to 4 ft. Selected color .....♦	\$7.50 to 10 00	
☞	5 to 10 ft. Selected color .....♦	\$12.50 to 35 00	
<b>pungens, var. Kosteriana.</b>	Koster's Blue Colorado Spruce.		
	1½ to 2 ft.....♦	2 50	22 50
	2 to 2½ ft .....♦	3 50	32 50
	2½ to 3 ft. Specimens .....♦	\$5 to 7 50	
	3 to 3½ ft. Specimens .....♦	\$7.50 to 10 00	
	3½ to 4 ft. Specimens .....♦	\$10 to 12 50	
☞	4 to 5 ft. Specimens .....♦	\$12.50 to 15 00	
☞	6 to 10 ft. Grand specimens .....♦	\$15 to 35 00	
<b>pungens, var. pendula.</b>	Weeping Blue Colorado Spruce—		
	3 to 4 ft. Specimens.....♦	7 50	
	4 to 4½ ft. Specimens.....♦	10 00	
<b>PINUS Austriaca.</b>	Austrian Pine. 2 to 2½ ft.....♦	1 50	13 50
	2½ to 3 ft. ....♦	2 50	22 50
	3½ to 4 ft. ....♦	3 50	32 50
	4 to 4½ ft. ....♦	4 00	37 50
	4½ to 5 ft. ....♦	5 00	47 50
	5 to 8 ft. ....♦	\$6 to 12 50	
<b>Cembra.</b>	Swiss Stone Pine. 2 to 2½ ft.....♦	2 50	22 50
	2½ to 3 ft. ....♦	3 00	27 50
	3 to 3½ ft. ....♦	3 50	32 50
	3½ to 4 ft. ....♦	4 00	37 50
☞	4 to 4½ ft. ....♦	5 00	47 50
	5 to 7 ft. ....♦	\$7.50 to 15 00	

PRICE LIST FOR FALL OF 1912

	Each	10
<b>PINUS excelsa.</b> Bhotan Pine. 2½ to 3 ft.....	\$2 50	\$22 50
3 to 4½ ft. ....	3 00	27 50
6 to 7 ft. ....	5 00	47 50
8 to 10 ft. ....	\$7.50 to 12 50	
<b>Koraiensis.</b> Korean Pine. 3 to 3½ ft.....	3 00	27 50
<b>Mughus.</b> Dwarf Mountain Pine. 10 to 12 in.....	1 00	9 00
12 to 15 in. ....	◆ 1 50	12 50
15 to 18 in. ....	◆ 2 00	17 50
18 in. ....	◆ 2 50	
24 in. ....	◆ 3 50	
<b>ponderosa.</b> Bull Pine. 5 to 6 ft.....	◆ 3 50	32 50
7 to 10 ft. ....	◆ \$5 to 10 00	
<b>rigida.</b> Pitch Pine. 10 to 12 ft.....	\$10 to 15 00	
<b>Strobus.</b> White Pine. 8 to 10 in.....per 100, \$20		
1½ to 2 ft. ....	◆ .per 100, \$50	75 6 00
2 to 2½ ft. ....	◆ .per 100, \$65	1 00 8 00
2½ to 3 ft. ....	◆ .per 100, \$90	1 25 10 00
3 to 3½ ft. ....	◆ .per 100, \$110	1 50 12 50
3½ to 4 ft. ....		2 00 17 50
4 to 4½ ft. ....		2 50 20 00
4½ to 5 ft. ....		3 50 27 50
5 to 6 ft. ....		4 00 32 00
6 to 7 ft. ....		5 00
7 to 9 ft. ....	\$7.50 to 15 00	

The finest and best rooted stock in this country.

<b>sylvestris.</b> Scotch Pine. 3 to 3½ ft.....	◆ 2 00	18 50
3½ to 4 ft. ....	◆ 3 00	27 50
4 to 5 ft. ....	◆ 3 50	32 50
<b>Tanyosho.</b> Japanese Table Pine—		
15 to 18 in.....	◆ 2 00	18 50
18 to 24 in.....	◆ 3 50	32 50
<b>PODOCARPUS Japonica.</b> Japanese Yew. 15 to 18 in.....	1 50	
<b>PSEUDOTSUGA Douglasi.</b> Douglas' Spruce. 2½ to 3 ft.....	2 00	18 50
3 to 3½ ft. ....	2 50	22 50
5 to 6 ft. ....	\$4 to 5 00	
7 to 10 ft. ....	\$7.50 to 10 00	
<b>RETINOSPORA ericoides.</b> Heath-like Japan Cypress—		
15 to 18 in. ....	75	6 00
1½ to 2 ft. ....	◆ 1 00	8 50
2 to 2½ ft. ....	◆ 1 50	13 50
3 to 3½ ft. ....	◆ 2 00	17 50
3½ to 4 ft. ....	◆ 3 00	27 50
<b>filifera.</b> Thread-branched Japan Cypress—		
1½ to 2 ft. ....	1 50	13 50
2½ to 3 ft. ....	3 50	32 50
3 to 3½ ft. ....	4 00	37 50
3½ to 4 ft. Specimens	◆ \$6 to 7 50	
5 to 6 ft. Specimens	◆ \$10 to 12 50	
7 to 8 ft. Specimens	◆ \$15 to 25 00	
<b>filifera, var. aurea.</b> Golden Thread-branched Japan Cypress. 10 to 12 in.....	1 50	13 50
12 to 15 in.....	2 00	18 50
18 to 20 in.....	2 50	22 50

	Each	10
<b>RETINOSPORA leptoclada.</b> Thuya-like Japan Cypress—		
3½ to 4 ft. ....	\$2 50	
4 to 4½ ft. ....	♦ 3 00	
4½ to 5 ft. ....	♦ 3 50	\$32 50
5 to 6 ft. ....	♦ 4 00	35 00
<b>lycopodioides.</b> Club-moss Japan Cypress—		
2½ ft. ....	♦ 2 50	
3 to 4 ft. ....	♦ \$3.50 to 5 00	
4 to 5 ft. ....	♦ \$5 to 7 50	
<b>obtusa.</b> Obtuse-leaved Japan Cypress—		
1½ to 2 ft. ....	2 00	18 50
2 to 2½ ft. ....	2 50	22 50
3 to 4 ft. ....	♦ 3 50	32 50
4½ to 5 ft. ....	♦ 4 00	37 50
6 to 8 ft. ....	♦ \$7.50 to 15 00	
<b>obtusa, var. compacta.</b> Compact Obtuse-leaved Japan Cypress. 18 to 24 in..	2 00	18 50
5 to 5½ ft. ....	\$5 to 7 50	
<b>obtusa, var. gracilis.</b> Graceful Obtuse-leaved Japan Cypress. 15 to 18 in. ....	2 00	
<b>obtusa, var. magnifica.</b> 3 to 3½ ft. ....	♦ 5 00	
<b>obtusa, var. nana.</b> Dwarf Obtuse-leaved Japan Cypress. 1 ft. ....	♦ 1 25	10 00
1½ ft. ....	♦ 2 50	22 50
2 ft. ....	♦ 3 00	27 50
2½ ft. ....	♦ 4 00	37 50
3 ft. ....	♦ \$5 to 7 50	
3½ ft. ....	♦ \$7.50 to 10 00	
4 to 6 ft. Specimens. ....	♦ \$15 to 20 00	
<b>obtusa, var. nana aurea.</b> Dwarf Golden Obtuse-leaved Japan Cypress—		
1½ ft. ....	♦ 2 50	22 50
2 ft. ....	♦ 3 00	27 50
2½ ft. ....	3 50	32 50
3 to 3½ ft. Specimens. ....	♦ \$5 to 10 00	
4 to 6 ft. ....	\$12.50 to 20 00	
<b>pisifera.</b> Pea-fruited Japan Cypress. 2½ to 3 ft. ....	2 50	22 50
4 to 5 ft. ....	3 50	32 50
5 to 5½ ft. ....	♦ 4 00	37 50
6 to 10 ft. Specimens. ....	♦ \$7.50 to 25 00	
<b>pisifera, var. aurea.</b> Golden Pea-fruited Japan Cypress. 2 to 2½ ft. ....	2 00	17 50
2½ to 3 ft. ....	2 50	22 50
3 to 3½ ft. ....	3 00	27 50
3½ to 4 ft. ....	3 50	32 50
4 to 4½ ft. ....	4 00	37 50
5 to 6 ft. Specimens. ....	\$5 to 7 50	
7 to 14 ft. Specimens. ....	♦ \$10 to 35 00	
<b>plumosa.</b> Plume-like Japan Cypress—		
1½ to 2 ft. ....	1 50	13 50
2 to 2½ ft. ....	2 00	17 50
2½ to 3 ft. ....	2 50	22 50
3 to 3½ ft. ....	♦ 3 00	27 50
3½ to 4 ft. Specimens. ....	♦ 3 50	32 50
4 to 5 ft. ....	♦ 4 00	37 50
6 to 10 ft. Specimens. ....	♦ \$5 to 25 00	

		Each	10
<b>RETINOSPORA plumosa, var. argentea.</b>	2 to 2½ ft.	\$1 50	\$12 50
	2½ to 3 ft.	2 50	22 50
	3 to 4 ft.	3 50	32 50
	4 to 5 ft.	4 00	37 50
	5 to 7 ft.	\$5 to	7 50

**plumosa, var. aurea. Golden Plume-like**

Japan Cypress—			
	1½ to 2 ft. Bushy	♦ 1 00	8 50
	2 to 2½ ft. Bushy	2 00	17 50
	2½ to 3 ft. Bushy	2 50	22 50
	3 to 3½ ft. Bushy	3 00	27 50
	3½ to 4 ft. Specimens	♦ 3 50	32 50
	4 to 4½ ft. Specimens	♦ 4 00	37 50
	5 to 12 ft. Specimens	♦ \$5 to	35 00

This variety is one of the best for general planting. Its habit and coloring are excellent, it stands shearing readily and its hardiness is unquestioned.

<b>plumosa, var. flavescens.</b>	12 to 15 in.	♦ 1 00	8 50
	4 to 5 ft.	♦ \$7.50 to	10 00

<b>plumosa, var. sulphurea.</b>	1½ to 2 ft.	1 75	15 00
	2 to 2½ ft.	♦ 3 50	
	3½ to 4 ft. Very heavy	♦ 6 00	
	4 to 5 ft. Very heavy	\$7.50 to	10 00

**squarrosa. Squarrose-leaved Japan Cypress—**

	2 to 2½ ft.	2 50	22 50
	2½ to 3 ft.	3 00	27 50
	3 to 3½ ft.	3 50	30 00
	4 to 4½ ft. Specimens	5 00	
	4½ to 5 ft. Specimens	\$6 to	7 50
	6 to 14 ft. Heavy specimens	\$10 to	75 00

This is excellent stock; exceptionally broad, bushy and low-branched.

<b>SCIADOPITYS verticillata. Umbrella Pine.</b>	2 to 2½ ft.	♦ 3 50	32 50
	2½ to 3 ft.	♦ 5 00	45 00
	3½ to 4 ft.	♦ 7 50	72 50
	4½ to 5 ft.	♦ 10 00	
	6 to 7 ft.	♦ \$15 to	25 00

<b>TAXUS baccata. English Yew.</b>	2 to 2½ ft.	♦ 2 00	
	2½ to 3 ft.	♦ 2 50	
	3 to 3½ ft.	♦ 3 50	
	3½ to 4 ft. Specimens	♦ 5 00	
	4 to 4½ ft. Specimens	♦ 7 50	

<b>baccata, var. adpressa.</b>	2 to 2½ ft.	♦ 2 50	22 50
	2½ to 3 ft.	♦ 3 50	32 50

**baccata, var. Dovastoni. Dovaston's Yew—**

	2 to 2½ ft.	♦ 2 75	
	2½ to 3 ft.	♦ 3 50	
	3 to 4 ft.	♦ 5 00	

<b>baccata, var. Dovastoni aurea. Dovaston's Golden Yew.</b>	5 to 7 ft. Specimens	♦ \$10 to	25 00
--	----------------------	-----------	-------

<b>baccata, var. elegantissima. Elegant English Yew—</b>			
	3½ to 4 ft.	♦ \$5 to	7 50
	4 to 6 ft.	♦ \$7.50 to	20 00

	Each	10
<b>TAXUS baccata, var. erecta.</b> Erect English Yew—		
2 to 2½ ft. ....	♦ \$2 50	
2½ to 3 ft. ....	♦ 3 50	\$32 50
3 to 3½ ft. ....	♦ \$4 to 5 00	
<b>baccata, var. erecta aurea.</b> Erect Golden English Yew.		
2 to 2½ ft. ....	♦ 2 50	
2½ to 3 ft. ....	♦ 3 50	
3 to 3½ ft. ....	♦ 4 00	
4 to 4½ ft. ....	♦ 6 00	
<b>baccata, var. fastigiata.</b> Irish Yew. 2½ ft. ....	♦ 2 50	22 50
3 ft. ....	♦ 3 50	82 50
3½ ft. ....	♦ 7 50	60 00
4 to 5 ft. Specimens. ....	♦ \$10 to 15 00	
<b>baccata, var. fastigiata aurea.</b> Golden Irish Yew—		
2 ft. ....	♦ 2 50	
2½ ft. ....	♦ 3 50	
3½ to 4 ft. ....	♦ \$7.50 to 10 00	
4 to 6 ft. ....	♦ \$10 to 15 00	
<b>baccata, var. gracilis pendula.</b> 3 to 3½ ft. ....	♦ 3 50	
4 to 5 ft. ....	♦ 5 00	
5 to 6 ft. ....	♦ \$7.50 to 10 00	
6 to 8 ft. ....	♦ \$12.50 to 20 00	
<b>baccata, var. repandens.</b> Spreading English Yew—		
10 to 12 in. ....	♦ 1 50	
12 to 15 in. ....	♦ 2 00	
<b>baccata, var. Washingtoni aurea.</b> Washington's Golden English Yew. 2½ ft. ....	♦ 3 50	
3 to 3½ ft. ....	♦ \$5 to 7 50	
3½ to 4 ft. ....	♦ \$7.50 to 10 00	
4 to 5 ft. ....	♦ 15 00	
<b>Canadensis</b> (Canadian Yew). 15 to 18 in. ....	♦ 2 00	17 50
<b>Canadensis, var. aurea.</b> Golden Canadian Yew—		
2 to 2½ ft. ....	♦ 3 50	32 50
3 ft. ....	♦ \$6 to 7 50	
3½ to 5 ft. ....	♦ \$10 to 20 00	
<b>cuspidata.</b> Abrupt-leaved Japan Yew. 12 to 15 in. ....	♦ 1 50	13 50
1½ ft. ....	♦ 2 00	
2 ft. ....	♦ 3 00	
<b>cuspidata, var. brevifolia.</b> 12 to 15 in. ....	♦ 2 00	18 50
1½ ft. ....	♦ 2 50	
2 ft. ....	♦ 3 50	
<b>cuspidata, var. capitata.</b> 1½ ft. ....	♦ 2 50	
2½ ft. ....	♦ 5 00	
<b>THUJOPSIS borealis;</b> syn., <i>Cupressus Nutkænsis.</i> Yellow or Sitka Cypress. 4 to 4½ ft. ....	5 00	45 00
5 to 5½ ft. ....	7 50	70 00
<b>borealis, var. latifolia glauca.</b> Glaucaous Sitka Cypress. 3½ to 4 ft. ....	♦ 3 50	32 50
4 to 4½ ft. Specimens. ....	♦ 5 00	45 00
5 to 7 ft. Specimens. ....	♦ \$6 to \$7 50	

PRICE LIST FOR FALL OF 1912

THUYA occidentalis. American Arborvitæ—		Each	10	
2	to 2½ ft.	♦ per 100, \$50..	\$0 75	\$7 00
2½	to 3 ft.	♦ per 100, \$75..	1 00	8 50
3	to 3½ ft.	♦	1 25	10 00
3½	to 4 ft.	♦ per 100, \$100..	1 50	12 50
4	to 4½ ft.	Very heavy ♦ per 100, \$175..	2 00	19 00
4½	to 5 ft.	Very heavy	2 50	22 50
5	to 5½ ft.	Very heavy	3 00	27 50
5½	to 6 ft.	Very heavy	3 50	32 50
6	to 7 ft.	Very heavy	4 00	37 50
7	to 8 ft.	Very heavy	5 00	47 50
8	to 9 ft.	Specimens ♦	\$6 to 7 50	
10	to 12 ft.	Specimens	\$8 to 12 50	
<b>occidentalis, var. aurea. George Peabody's Arborvitæ—</b>				
2½	to 3 ft.	♦	1 50	12 50
3	to 3½ ft.	♦	2 50	20 00
4	to 5 ft.	♦	3 50	32 50
5	to 6 ft.	♦	4 00	42 50
7	to 12 ft.	Specimens ♦	\$5 to 15 00	
<b>occidentalis, var. compacta (Compact Arborvitæ)—</b>				
2½	to 3 ft.	♦	1 75	16 50
3	to 3½ ft.	♦	2 50	22 50
<b>occidentalis, var. Douglasi. 2 to 2½ ft.</b>				
		♦	2 00	18 50
8	to 9 ft.		15 00	
<b>occidentalis, var. erecta viridis. 3½ to 4 ft.</b>				
		♦	3 50	
<b>occidentalis, var. globosa. Globe Arborvitæ—</b>				
2	ft.	♦	2 00	17 50
2½	ft.	♦	2 50	22 50
<b>occidentalis, var. Hoveyi. Hovey's Golden Arborvitæ—</b>				
2	ft.	♦	1 50	
2½	ft.	Very heavy ♦	2 50	22 50
3	ft.	Very heavy ♦	3 00	
<b>occidentalis, var. plicata pyramidalis. 2 to 2½ ft.</b>				
		♦	2 00	
4	to 5 ft.	♦	4 00	
<b>occidentalis, var. pyramidalis. Pyramidal Arborvitæ—</b>				
6	to 8 ft.	♦	\$5 to 7 50	
<b>occidentalis, var. recurva nana. 2½ to 3 ft.</b>				
		♦	\$3.50 to 4 00	
3	to 4½ ft.	♦	\$5 to 7 50	
<b>occidentalis, var. Rosenthalis. 2 to 2½ ft.</b>				
		♦	2 50	
3½	to 4 ft.		3 50	
<b>occidentalis, var. Vervæneana. Vervæne's Arborvitæ—</b>				
3½	to 4 ft.		3 50	32 50
4½	to 5 ft.		4 00	37 50
5	to 6 ft.	♦	4 50	42 50
6	to 7 ft.	Heavy specimens ♦	6 00	57 50
7	to 8 ft.	Heavy specimens ♦	\$7.50 to 12 50	
9	to 10 ft.	Heavy specimens ♦	\$15 to 20 00	
<b>occidentalis, var. Wareana. Siberian Arborvitæ—</b>				
2	to 2½ ft.	Heavy	1 50	13 50
2½	to 3 ft.	Very bushy	2 50	22 50
3	to 3½ ft.	Very bushy ♦ per 100, \$300..	3 50	32 50
4	ft.	Very bushy	4 00	
5	ft.	Very bushy ♦	5 00	
5	to 5½ ft.	Very bushy ♦	7 50	70 00
5½	to 6 ft.	Very bushy ♦	10 00	

		Each	10
<b>THUYA occidentalis</b> , var. <b>Wareana aurea</b> .	2½ ft.	\$2 50	\$22 50
	3 to 3½ ft.	3 00	28 00
	4½ to 5 ft.	4 00	37 50
	5 to 6 ft.	\$5 to 7 50	
<b>TSUGA Canadensis</b> , Hemlock.	1½ to 2 ft.	♦..per 100, \$50..	75 6 00
	2 to 2½ ft.	♦..per 100, \$65..	1 00 7 50
	2½ to 3 ft.	♦..per 100, \$100..	1 50 12 50
	3 to 3½ ft.	♦..per 100, \$135..	1 75 15 00
	3½ to 4 ft.	♦..per 100, \$150..	2 00 18 50
	4 to 4½ ft.		2 50 22 50
	4½ to 5 ft.		3 00 27 50
	5 to 5½ ft.		3 50 32 50
	5½ to 6 ft.		4 00 37 50
	7 to 12 ft.	Heavy specimens.	♦..\$7 to 20 00
<b>Canadensis</b> , var. <b>gracilis</b> .	3½ to 4 ft.	♦..	3 50
<b>Canadensis</b> , var. <b>Sargentii pendula</b> .	Weeping Hemlock—		
	3 to 4 ft.	Specimens.	♦..\$7.50 to 15 00
<b>Caroliniana</b> .	Southern Hemlock.—		
	4 to 6 ft.	Specimens.	♦..\$5 to 12 50
<b>Hookeriana</b> .	Alpine Hemlock. 4 to 4½ ft. 4 00		
	5 to 6 ft.		\$5 to 7 50
<b>Sieboldi</b> .	Japanese Hemlock. 2 to 2½ ft. 2 50		
	3 to 3½ ft.		♦.. 3 50
	4 to 5 ft.		♦.. 5 00
	5 to 6 ft.		♦.. 6 00
	6 to 7 ft.		♦..\$7.50 to 20 00



Showing Fibrous Roots of Hemlock.





A Block of Box Bush and Evergreens.

## EVERGREEN SHRUBS

<b>ANDROMEDA</b>	<i>Catesbæi</i> . See <i>Leucothoë</i> .	Each	10
	<i>floribunda</i> . 12 in. Broad and heavy.....◆	\$1 50	\$13 50
	12 to 15 in. Broad and heavy.....◆	1 75	16 00
	15 to 18 in. Broad and heavy.....◆	2 00	18 50
	<i>Japonica</i> . 12 to 15 in.....◆	1 25	10 00
	15 to 18 in.....◆	1 50	12 50
	18 to 20 in.....◆	2 00	18 50
	24 to 30 in.....◆	\$2.50 to 3 50	
<b>AZALEA</b>	<i>amœna</i> . 12 to 15 in.....◆	1 00	8 50
	15 to 18 in. Bushy.....◆	1 50	12 50
	1½ ft. Bushy.....◆	2 00	17 50
	2½ ft. Specimens.....◆	\$3.50 to 5 00	
	<i>amœna</i> , var. <i>Hinondigiro</i> . Bright carmine—		
	10 to 12 in.....◆	1 00	7 50
	12 to 15 in.....◆	1 50	13 50
	15 to 18 in.....◆	2 00	18 50
	18 to 20 in.....◆	2 50	22 50
	<i>indica alba</i> . Pure white. 18 to 20 in.....◆	2 50	22 50
	20 to 22 in. ....◆	3 00	27 50
	22 to 24 in. ....◆	4 00	37 50
<b>BUXUS</b>	<i>Japonica</i> ; syn., <i>Fortunei</i> Japanese Box—		
	3½ to 4 ft. ....◆	5 00	
	4 to 5 ft. ....◆	\$7.50 to 12 50	
	<i>Japonica</i> , var. <i>aurea</i> . Golden Japanese Box—		
	12 to 15 in. ....◆	1 00	9 00
	15 to 18 in. ....◆	1 50	12 50
	1½ ft. ....◆	1 75	15 00
	2 ft. ....◆	2 50	22 50
	2½ ft. ....◆	3 50	32 50
	<i>Japonica</i> , var. <i>rotundifolia</i> . Round-leaved—		
	2½ to 3 ft. Very broad and bushy.....◆	7 50	
	4 to 5 ft. Bush shape.....◆	\$7.50 to 10 00	
	5 to 6 ft. Pyramids.....◆	\$10.00 to 15 00	

		Each	10
<b>BUXUS Japonica, var. rotundifolia glauca.</b>	1½ ft.....	◆ \$1 50	
	3½ to 4 ft. ....	◆ 6 00	
<b>sempervirens. Andorra-grown—</b>			
	1 ft. ....	per 100, \$30..	50 \$4 00
	1 ft. Extra bushy .....	per 100, \$40..	75 6 00
	1½ ft. Extra bushy .....	per 100, \$80..	1 25 10 00
	2 ft. Extra bushy .....	◆ 1 75	16 50
	2½ ft. Extra bushy .....	◆ 3 00	27 50
	3 ft. Extra bushy. Specimens .....	◆ 4 50	40 00
	3½ ft. Extra bushy. Specimens .....	◆ 6 00	55 00
	4 to 4½ ft. Extra bushy. Specimens. ◆	\$7.50 to 10 00	
	5 to 6½ ft. Extra bushy .....	◆ \$12.50 to 40 00	
<b>sempervirens. Pyramids. Andorra-grown—</b>			
	2½ ft. Extra bushy. Specimens .....	◆ 3 50	30 00
	3 ft. Extra bushy. Specimens .....	◆ 4 50	40 00
	3½ ft. Extra bushy. Specimens .....	◆ 6 00	55 00
	4 to 4½ ft. Extra bushy. Specimens.	\$7.50 to 10 00	
	5 to 7 ft. Extra bushy. Specimens.	\$12.50 to 25 00	
<b>sempervirens. "Globe-shaped"—</b>			
	12 in. x 12 in. ....	◆ 1 75	16 50
	15 in. x 15 in. ....	◆ 2 00	18 50
<b>sempervirens. Standards. Andorra-grown—</b>			
	1½ ft. stems, 10 to 12 in. heads .....	◆ 1 75	16 50
	2 ft. stems, 12 to 15 in. heads .....	◆ 2 00	18 50
	2 ft. stems, 18 to 20 in. heads .....	◆ 4 00	37 50
	2 ft. stems, 22 to 26 in. heads .....	◆ \$5 to 7 50	
	2½ ft. stems, 26 to 28 in. heads .....	◆ \$7.50 to 15 00	
<b>sempervirens, var. angustifolia. 2 ft.</b>		◆ 1 75	16 50
<b>sempervirens, var. arborescens. Tall Tree Box—</b>			
	2 to 2½ ft. ....	◆ 2 50	22 50
	2½ to 3 ft. ....	◆ 3 50	32 50
	3 to 3½ ft. ....	◆ 5 00	47 50
	4½ to 5 ft. ....	\$7.50 to 10 00	
<b>sempervirens, var. argentea marginata. Silver-tipped</b>			
	Box. 1½ to 2 ft. ....	◆ 1 50	13 50
	2 to 2½ ft. ....	◆ 2 50	22 50
<b>sempervirens, var. Handsworthi. 3 to 3½ ft.</b>		◆ 4 00	37 50
	4 to 4½ ft. ....	◆ 5 00	42 50
<b>sempervirens, var. myrtifolia. Myrtle Leaf—</b>			
	2 ft. ....	1 75	16 50
	2½ ft. ....	3 50	32 50
	3 to 5 ft. ....	◆ \$5 to 10 00	
<b>sempervirens, var. salicifolia. 2 ft.</b>		1 75	16 50
	2½ ft. ....	3 00	27 50
	3 to 3½ ft. ....	\$4 to 5 00	
<b>sempervirens, var. suffruticosa. Dwarf Box Edging—</b>			
	3 to 4 in. ....	◆ per 100, \$5.00; per 1,000, \$40	75
	4 to 5 in. ....	◆ per 100, \$10.00; per 1,000, \$60	25 1 50
	5 to 6 in. ....	◆ per 100, \$12.50; per 1,000, \$90	35 2 00
<b>CHAMÆDAPHNE calyculata. Leather Leaf—</b>			
	1½ to 2 ft. ....	per 100, \$60..	1 00 8 50
	2 to 2½ ft. ....	per 100, \$75..	1 50 12 50
<b>COTONEASTER buxifolia. 12 in.</b>			75 6 00
	15 to 18 in. ....		1 00 8 50
	horizontalis. 1 ft. ....		75 6 00
	microphylla. 1 ft. ....		75 6 00

PRICE LIST FOR FALL OF 1912

17

	Each	10
<b>CRATÆGUS</b> <i>Pyracantha</i> , var. <i>Lelandi</i> . Leland's Evergreen Thorn. 2 ft. ....	\$1 00	\$7 50
<b>DAPHNE</b> <i>Cneorum</i> . 3-year.....	75	6 00
<b>EUONYMUS</b> <i>radicans</i> and <i>variegata</i> . See Trailing Plants.		
<i>Japonica</i> . Japan <i>Euonymus</i> . 1½ ft.....	75	
<i>Japonica</i> , var. <i>argentea</i> . Silver-leaved—		
15 to 18 in. ....	75	6 00
<i>Japonica</i> , var. <i>aurea</i> . Golden-leaved. 12 in....	75	6 00
<b>ILEX</b> <i>crenata</i> . Japanese Holly. 1 ft.....per 100, \$60..	1 00	8 50
1½ ft. ....	1 50	12 50
2 ft. ....	2 00	17 50
2½ ft. ....	3 50	32 50
<i>crenata</i> , var. <i>buxifolia</i> . Box-leaved—		
2½ ft. ....	2 50	
3 ft. ....	3 50	
3½ to 5 ft. Specimens .....	\$5 to 10 00	
<i>crenata</i> , var. <i>Fortunei</i> . Fortune's Holly—		
2 to 2½ ft. ....	2 50	
2½ to 3 ft. ....	3 50	
3½ to 4 ft. ....	5 00	
4 to 5 ft. ....	\$5 to 10 00	
<i>crenata</i> , var. <i>latifolia</i> . Broad-leaved Japanese Holly—		
3 to 3½ ft. ....	2 50	
3½ to 4 ft. ....	3 50	
4 ft. ....	\$4 to 7 50	
<i>crenata</i> , var. <i>microphylla</i> . Small-leaved Japanese Holly—		
12 to 15 in. Bushy .....	per 100, \$50.. 1 00	8 50
15 to 18 in. Bushy .....	per 100, \$75.. 1 25	10 00
1½ to 2 ft. Bushy .....	1 75	15 00
2 to 2½ ft. ....	2 50	22 50
3 to 3½ ft. Heavy specimens .....	\$3.50 to 5 00	
4 to 5½ ft. Heavy specimens .....	\$7.50 to 12 00	
<b>KALMIA</b> <i>latifolia</i> . Mountain Laurel—		
1½ ft. Heavy clumps.....	per 100, \$100.. 1 50	12 50
2 ft. Heavy clumps.....	per 100, \$160.. 2 00	17 50
2½ ft. Heavy clumps.....	2 50	22 50
2½ to 3 ft. Heavy clumps.....	3 00	28 50
3 to 3½ ft. Heavy clumps.....	3 50	32 50
3½ to 4 ft. Heavy clumps.....	5 00	47 50
<b>LAURELS</b> . See <i>Cerasus Laurocerasus</i> .		
<b>LEUCOTHOE</b> <i>Catesbaei</i> . Drooping <i>Andromeda</i> —		
12 to 15 in. Clumps.....	per 100, \$60.. 1 00	8 50
15 to 18 in. Clumps.....	per 100, \$75.. 1 50	12 50
18 to 24 in. Clumps.....	per 100, \$100.. 1 75	15 00
<b>MAHONIA</b> <i>Aquifolium</i> . Holly-leaved—		
18 to 24 in. ....	per 100, \$60.. 1 00	9 00
24 to 30 in. ....	per 100, \$115.. 1 50	13 50
<i>Japonica</i> . Japanese Mahonia—		
1½ to 2 ft. ....	1 50	12 50
2 to 2½ ft. ....	2 50	18 50
2½ to 3 ft. ....	3 50	32 50
<b>OSMANTHUS</b> <i>ilicifolia</i> . 3 to 5 ft.....	\$2.50 to 5 00	



Rhododendrons at Andorra.

# RHODODENDRONS

## HYBRID VARIETIES — ANDORRA-GROWN

Our fall offering of Rhododendrons consists of many thousand plants, in fifty varieties, and in a range of sizes from one to five feet. These are acclimated—*Andorra-grown* stock—in the hardiest varieties. They are grown in open, unsheltered ground, with northern exposure, and the wind-swept hills of Andorra are not kind to anything of a tender nature, so that you may depend upon Andorra-grown Rhododendrons being of the hardiest, and supplied with excellent balls of fibrous roots.

	Each	10
<b>RHODODENDRONS, Catawbiense Hybrids Assorted.</b> Our selection of varieties—		
15 to 18 in. ....♦..per 100, \$90..	\$1 25	\$10 00
1½ to 2 ft. ....♦..per 100, \$125..	1 50	13 50
2 to 2½ ft. ....♦..per 100, \$150..	2 00	17 50
☛ A large stock of standard varieties, fine, heavy plants, 3 to 5 ft.		
<b>Abraham Lincoln.</b> Rosy crimson—		
1½ to 2 ft. ....	1 75	15 00
<b>Album elegans.</b> White—		
1½ to 2 ft. ....	1 75	15 00
2 to 2½ ft. ....	2 25	20 00
3 to 5 ft. Specimens....	\$3.50 to 10 00	
<b>Album grandiflorum.</b> White—		
1½ to 2 ft. ....	1 75	15 00
2 to 2½ ft. ....	2 25	20 00
<b>Alex. Dancer.</b> Light scarlet—		
2 to 2½ ft. ....	2 50	22 50
<b>Anna Parsons.</b> Red. 1½ to 2 ft.....	1 75	15 00
<b>Atrosanguineum.</b> Dark scarlet—		
2 to 2½ ft. ....	2 50	22 50
1½ to 2 ft. ....	2 00	17 50
<b>Blandyanum.</b> Rosy crimson. 1½ to 2 ft..	1 75	15 00
2 to 2½ ft. ....	2 25	20 00
2½ to 3 ft. ....	\$3.50 to 7 50	
3 to 4 ft. Specimens.....	\$5 to 15 00	

ANDORRA-GROWN

PRICE LIST FOR FALL OF 1912

	Each	10
<b>RHODODENDRONS, Boule de Neige.</b> White. 18 to 20 in....	\$2 00	\$18 50
20 to 24 in. ....	2 50	22 50
24 to 28 in. ....	3 50	32 50
<b>Candidissimum.</b> White. 1½ ft.....	1 75	15 00
2 ft. ....	2 00	17 50
2½ to 3 ft. ....	\$.3.50 to	5 00
<b>Caractacus.</b> Purplish crimson—		
1½ to 2 ft. ....	1 75	15 00
2 to 2½ ft. ....	2 25	20 00
2½ to 3 ft. Specimens....	\$.3.50 to	7 50
<b>Charles Bagley.</b> Bright red. 1½ to 2 ft..	2 00	17 50
2 to 2½ ft. ....	2 50	22 50
2½ to 3 ft. ....	\$.3.50 to	7 50
<b>Charles Dickens.</b> Scarlet. 1½ ft.....	2 00	17 50
2 ft. ....	2 50	22 50
2½ ft. ....	3 50	
<b>C. S. Sargent.</b> Crimson. 18 to 24 in....	2 50	22 50
<b>Delicatissimum.</b> White. 1½ to 2 ft.....	1 75	15 00
2 ft. ....	2 25	20 00
2½ ft. ....	3 00	
<b>Everestianum.</b> Rosy lilac. 15 to 18 in..	1 75	15 00
18 to 20 in. ....	2 25	20 00
20 to 24 in. ....	2 50	22 50
2½ to 3 ft. ....	\$.3.50 to	7 50
<b>General Grant.</b> Red. 1½ ft.....	2 00	17 50
2 ft. ....	2 50	22 50
2½ ft. ....	3 50	32 50
<b>Giganteum.</b> Rosy crimson. 1½ to 2 ft....	1 75	15 00
2 to 2½ ft. ....	2 25	20 00
<b>Hannah Felix.</b> Light red. 24 in. ....	2 50	22 50
<b>Herbert Parsons.</b> Lilac. 18 in.....	1 75	15 00
<b>H. W. Sargent.</b> Scarlet. 1½ ft.....	2 00	17 50
2 ft. ....	2 50	22 50
<b>H. H. Hunnewell.</b> Dark crimson. 18 in..	2 00	17 50
2 ft. ....	2 50	22 50
<b>J. Marshall Brooks.</b> Scarlet. 1½ to 2 ft..	1 75	15 00
<b>John Spencer.</b> Rose. 2 ft.....	1 50	13 50
2½ ft. ....	2 00	17 50
3 ft. ....	3 50	32 50
<b>Kettledrum.</b> Deep red. 18 in.....	2 50	22 50
24 in. ....	3 00	27 50
<b>Lady Armstrong.</b> Pale rose. 1½ to 2 ft..	1 75	15 00
2 to 2½ ft. ....	2 25	20 00
<b>Lady Clermont.</b> Rosy scarlet. 2 to 2½ ft..	2 25	20 00
<b>Lady Gray Egerton.</b> Bluish white. 1½ ft..	2 50	22 50
<b>Luciferum.</b> Clear white. 1½ to 2 ft.....	2 00	17 50
2½ to 4 ft. ....	\$.2.50 to	10 00
<b>Mad. Carvalho.</b> White. 2 to 2½ ft.....	2 25	20 00
<b>Mad. Masson.</b> White. 2 ft.....	2 25	20 00
<b>Mrs. H. Ingersoll.</b> Deep rose-lilac—		
18 in. ....	2 50	22 50
<b>Mrs. Jno. Clutton.</b> White. 1½ ft.....	1 50	13 50
2 ft. ....	1 75	15 00
2½ ft. ....	2 50	22 50
<b>Mrs. Milner.</b> Crimson. 1½ ft.....	1 75	15 00
2 ft. ....	2 00	17 50

A  
N  
D  
O  
R  
R  
A  
I  
G  
R  
O  
W  
N

		Each	10
A N D O R R A - G R O W N	<b>RHODODENDRONS, Old Port.</b> Plum. 1½ ft.....	\$2 00	\$17 50
	2 ft. ....	2 50	22 50
	<b>Parson's gloriosum.</b> Blush. 2 ft.....	1 50	12 50
	2½ to 3 ft. ....	3 00	27 50
	3½ to 4 ft. ....	\$5 to 7 50	
	<b>Parson's grandiflorum rubrum.</b> Bright pink—		
	1½ ft. ....	2 00	17 50
	2 ft. ....	2 50	22 50
	2½ to 3 ft. ....	\$3.50 to 7 50	
	<b>President Lincoln.</b> Crimson. 1½ ft.....	2 00	17 50
	2 ft. ....	2 50	22 50
	2½ to 3 ft. ....	\$3.50 to 5 00	
	<b>purpureum crispum.</b> Purple, crimped—		
	1½ ft. ....	1 50	13 50
	<b>purpureum elegans.</b> Purple. 1½ to 2 ft..	2 00	17 50
	2½ ft. ....	3 50	32 50
	3 to 5 ft. ....	\$5 to 7 50	
	<b>purpureum grandiflorum.</b> Purple—		
	2 to 2½ ft. ....	2 00	17 50
	<b>roseum elegans.</b> Good rose. 1½ ft.....	1 50	13 50
2 ft. ....	2 00	17 50	
2½ ft. ....	3 50	32 50	
3 to 5 ft. Specimens....	\$7.50 to 25 00		
<b>roseum superbum.</b> Clear rose. 2 ft.....	2 00	17 50	
2½ ft. ....	3 50	32 50	
3 to 3½ ft. ....	\$5 to 10 00		
<b>Sefton.</b> Dark maroon. 1½ ft.....	2 50	22 50	
2 ft. ....	3 00	28 50	

## NATIVE VARIETIES—ANDORRA-GROWN

		Each	10
<b>Catawbiense.</b> 1½ to 2 ft.... per 100, \$80..	\$1 25	\$10 00	
2 ft. .... per 100, \$115..	1 75	16 50	
2½ ft. .... per 100, \$175..	2 25	20 00	
3 to 5 ft. Specimens .....	\$5 to 20 00		
<b>maximum.</b> Great Laurel—			
2 to 2½ ft. ....	2 00	17 50	
2½ to 3 ft. ....	3 50	25 00	
3 to 3½ ft. ....	4 00	37 50	
3½ to 4 ft. ....	5 00	47 50	
4 to 5 ft. ....	7 50	60 00	
<b>maximum.</b> Collected plants by the carload at special prices.			

## DWARF VARIETIES—ANDORRA-GROWN

		Each	10
<b>RHODODENDRON</b> <b>Hirsutum.</b> 12 to 15 in.....	◆ \$1 50	\$13 50	
<b>imbricata.</b> 15 to 18 in.....	◆ 2 50	23 50	
<b>myrtifolium.</b> 1½ to 2 ft.....	2 50	20 00	
<b>odoratum.</b> Fragrant. 12 to 15 in.....	2 00	17 50	
15 to 18 in. ....	2 50	20 00	
<b>punctatum.</b> Dotted. 15 to 18 in.....	◆ 1 50	13 50	
18 to 24 in. ....	◆ 2 50	20 00	
<b>Wilsonianum.</b> 12 to 15 in.....	1 50	13 50	
<b>YUCCA filamentosa.</b> Adam's Needle. 3-year.....	35	2 00	
Heavy clumps .....	\$1.50 to 2 50		



Specimen Norway Maples in Wide Rows.

## DECIDUOUS TREES

Measurements are given as follows: Height is taken before digging, from the surface of the ground to the top branches, where they round off to form the top; diameter of stem, or caliper, is taken 6 inches above the ground above the collar.

	Each	10	100
<b>ACER campestri.</b> European Cork Maple. 5 to 6 ft.	\$1 00	\$8 50	
7 to 8 ft. Bushy .....	1 50	12 50	
8 to 10 ft. Bushy .....	1 75	15 00	
<b>colchicum, var. rubrum.</b> Red Colchicum Maple—			
14 to 16 ft.; 3 to 6 in. cal.	\$3.50 to 15 00		
<b>dasycarpum.</b> Silver Maple—			
8 to 10 ft. ....	75	6 00	
10 to 12 ft.; 1 to 1½ in. ....	1 00	8 50	
4 to 6 in. Specimens .....	\$5 to 25 00		
A rapid grower for immediate effects.			
<b>dasycarpum, var. Wierii laciniatum.</b> Wier's Cut-leaved Silver Maple—			
7 to 9 ft. Very Stocky.....	◆ 1 50	13 50	
<b>Negundo.</b> Ash-leaved Maple—			
6 to 7 ft. ....	75	5 00	
10 to 12 ft.; 2 to 2½ in. Bushy ....	1 50	10 00	
12 to 14 ft.; 3 to 4 in. ....	\$3.50 to 5 00		
<b>Pennsylvanicum.</b> 5 to 6 ft.....	◆ 1 50		

ACER platanoides.	Norway Maple—	Each	10	100
8 to 10 ft.;	1 to 1 $\frac{1}{4}$ in. ....	\$1 00	\$9 00	\$85 00
8 to 10 ft.;	1 $\frac{1}{4}$ to 1 $\frac{1}{2}$ in. ....	1 50	13 50	115 00
10 to 12 ft.;	1 $\frac{1}{4}$ to 2 in. ....	1 75	16 50	140 00
10 to 12 ft.;	2 to 2 $\frac{1}{4}$ in. ....	2 00	18 50	165 00
12 ft.;	2 $\frac{1}{4}$ to 2 $\frac{3}{4}$ in. ....	2 50	22 50	200 00
12 to 14 ft.;	2 $\frac{3}{4}$ to 2 $\frac{3}{4}$ in. ....	3 50	30 00	
12 to 14 ft.;	2 $\frac{3}{4}$ to 3 in. ....	4 00	37 50	
14 to 16 ft.;	3 $\frac{1}{4}$ to 3 $\frac{1}{2}$ in. ....	4 50	42 50	
14 to 16 ft.;	3 $\frac{1}{2}$ to 3 $\frac{3}{4}$ in. ....	6 00	50 00	
14 to 16 ft.;	3 $\frac{3}{4}$ to 4 in. ....	7 50	60 00	
14 to 16 ft.;	4 to 5 in. ....	\$10 to 20 00		
14 to 20 ft.;	5 $\frac{1}{2}$ to 7 in. ....	\$25 to 50 00		
<b>platanoides, var. purpurea.</b> Schwedler's Purple				
Maple.	8 to 10 ft.;	1 $\frac{1}{2}$ in. ....	1 75	15 00
8 to 10 ft.;	1 $\frac{3}{4}$ to 2 in. ....	2 50	22 50	
10 to 12 ft.;	2 $\frac{1}{4}$ to 2 $\frac{3}{4}$ in. ....	3 50		
12 to 14 ft.;	2 $\frac{3}{4}$ to 3 in. ....	4 00		
14 to 16 ft.;	3 $\frac{1}{2}$ to 4 in. ....	\$6 to 10 00		
16 to 20 ft.;	5 to 10 in. ....	\$25 to 75 00		
<b>platanoides, var. Reitenbachi.</b> Reitenbach's				
Purple Maple—				
8 to 10 ft.;	2 to 2 $\frac{1}{4}$ in. ....	2 50		
10 to 12 ft.;	2 $\frac{1}{2}$ to 2 $\frac{3}{4}$ in. ....	3 50		
<b>pseudo-platanus.</b> European Sycamore Maple—				
8 to 10 ft.;	1 $\frac{1}{2}$ to 1 $\frac{3}{4}$ in. ....	1 50	12 50	
10 to 12 ft.;	2 to 2 $\frac{1}{2}$ in. ....	2 00	17 50	
12 to 14 ft.;	2 $\frac{1}{2}$ to 3 in. ....	2 50	22 50	
14 to 16 ft.	Specimens	\$5 to 25 00		
<b>pseudo-platanus, var. purpurea.</b> Purple Sycamore Maple—				
8 to 10 ft.;	1 $\frac{1}{2}$ to 1 $\frac{3}{4}$ in. ....	2 00	17 50	
10 to 12 ft.;	2 to 2 $\frac{1}{2}$ in. ....	2 50	22 50	
12 to 16 ft.;	3 to 6 in. ....	\$7.50 to 35 00		
Broad-headed specimen trees.				
<b>rubrum.</b> Red or Scarlet Maple—				
8 to 10 ft.;	1 $\frac{3}{4}$ to 2 in. ....	1 50	12 50	
10 to 12 ft.;	2 to 2 $\frac{1}{4}$ in. ....	2 00	17 50	
12 to 14 ft.;	2 $\frac{1}{2}$ to 3 $\frac{1}{2}$ in. ....	\$2.50 to 5 00		
<b>saccharinum.</b> Sugar Maple—				
10 to 12 ft.;	1 $\frac{1}{4}$ to 1 $\frac{1}{2}$ in. ....	1 50	13 50	125 00
10 to 12 ft.;	1 $\frac{1}{2}$ to 1 $\frac{3}{4}$ in. ....	2 00	17 50	150 00
12 to 14 ft.;	2 to 2 $\frac{1}{4}$ in. ....	2 50	22 50	200 00
12 to 14 ft.;	2 $\frac{1}{2}$ to 2 $\frac{3}{4}$ in. ....	3 50	32 50	275 00
12 to 14 ft.;	2 $\frac{3}{4}$ to 3 in. ....	5 00	45 00	
14 to 16 ft.;	3 to 3 $\frac{1}{4}$ in. ....	\$5 to 7 50		
14 to 16 ft.;	3 $\frac{1}{2}$ to 5 in. ....	\$10 to 25 00		
<b>spicatum.</b> Mountain Maple.	2 $\frac{1}{2}$ to 3 ft. ....	75	5 00	35 00
<b>Tataricum, var. Ginnala.</b> Tartarian Maple—				
3 to 4 ft. Bushy...	{ FINE }	75	6 50	35 00
4 to 5 ft. Bushy...		1 00	9 00	50 00
6 to 8 ft. Bushy...		1 25	10 00	75 00

Most brilliant of the fall coloring trees.  
Superb for mass planting.



JAPANESE MAPLE

	Each	10	100
<b>ACER polymorphum.</b> 3 to 6 ft. Heavy..	\$2.50 to	\$5 00	
<b>polymorphum, var. atropurpureum.</b> Blood-leaved Japan Maple. 1½ ft. ....♦..	1 50	\$13 50	
2 ft. ....♦..	2 00	18 00	
2½ ft. ....♦..	3 50	32 50	
3 to 5 ft. Specimens. Bushy and well furnished .....	\$7.50 to	15 00	
<b>polymorphum, var. atropurpureum dissectum.</b> Weeping Cut-leaf Blood-leaved—			
1½ ft. ....♦..	2 50	22 50	
2 to 2½ ft. Specimens....♦..	\$3.50 to	10 00	
Tall standards, 4 to 5 ft. stem and broad heads .....	\$15 to	25 00	
<b>polymorphum, var. atropurpureum nigrum—</b> 5 to 8 ft. Specimens .....	\$20 to	35 00	
<b>polymorphum, var. aureum.</b> Golden Japan Maple. 1½ to 2 ft. ....♦..	2 50	22 50	
2 to 3 ft. ....♦..	\$3.50 to	7 50	
<b>polymorphum, var. dissectum.</b> Cut-leaf Weeping Japan Maple. 1½ ft. ....♦..	2 50	22 50	
2 to 2½ ft. ....♦..	\$3.50 to	7 50	
2½ to 3 ft. by 2½ to 4 ft. ....	\$7.50 to	15 00	
<b>polymorphum, var. scopendifolium rubrum.</b> 3 to 5 ft. ....	\$3.50 to	15 00	
<b>ÆSCULUS Hippocastanum.</b> European Horse-chestnut. 7 to 8 ft.; 2 in. ....	1 75	15 00	\$135 00
8 to 10 ft.; 2½ in. ....	2 50	22 50	200 00
10 to 16 ft.; 3 to 7 in. ....	\$5 to	35 00	
<b>Hippocastanum, var. alba flore pleno.</b> Double White-flowered Horse-Chestnut. 8 to 9 ft.; 1¾ to 2 in. ....	2 00	18 50	175 00
9 to 10 ft.; 2½ in. ....	2 75	25 00	225 00
11 to 12 ft.; 3 to 6 in. ....	\$5 to	25 00	
<b>Hippocastanum, var. Bujotii—</b> 10 to 12 ft.; 3 to 3½ in. ....♦..	\$5 to	7 50	
<b>Hippocastanum, var. rubicunda.</b> Red-flowered Horse-chestnut—			
10 ft.; 2¼ to 2½ in. ....	3 00	27 50	
10 ft.; 2½ to 2¾ in. ....	3 50	32 50	
12 ft.; 3 to 4 in. ....♦..	\$5 to	15 00	
<b>parviflora.</b> See <i>Shrubs.</i>			
<b>AILANTHUS glandulosa.</b> Ailanthus, or Tree of Heaven—			
8 to 10 ft.; 1½ to 2 in. ....	1 00	8 50	50 00
10 to 12 ft.; 2 to 2½ in. ....	1 25	10 00	65 00
<b>ALNUS glutinosa.</b> European, or Black Alder—			
8 to 10 ft.; 1½ to 2 in. ....	1 00	5 00	35 00
10 to 12 ft.; 2 to 2½ in. ....	1 50	12 50	75 00
<b>incana.</b> 10 to 12 ft.; 2 to 2½ in. ....	1 50	10 00	75 00
<b>incana, var. laciniata.</b> 8 to 9 ft. ....	1 50	12 50	
<b>AMELANCHIER Canadensis.</b> Shad Bush—			
2 to 3 ft. ....	50	3 50	25 00

	Each	10	100
<b>ANDROMEDA.</b> See <i>Oxydendron</i> .			
<b>ARALIA.</b> Chinese Angelica Tree—			
<i>elata</i> , var. <i>foliis argentea marginata</i> .			
8 to 10 ft. ....	\$1 50		
<i>Japanica</i> . 4 to 5 ft. ....	50	\$4 00	
5 to 6 ft. ....	75	6 00	
10 to 12 ft. ....	2 50		
<i>pentaphylla</i> . See <i>Acanthopanax spinosa</i> —			
<i>spinosa</i> . 3 to 4 ft. ....	50	4 00	
<b>BETULA alba.</b> European White Weeping Birch—			
6 to 8 ft. ....	1 25		
8 to 10 ft. ....	2 00		
10 to 12 ft.; 1½ to 2 in. ....	2 50		
12 to 14 ft.; 2 to 2½ in. ....	3 50		
<i>alba</i> , var. <i>laciniata pendula</i> . Weeping Cut-leaved White Birch. 6 to 7 ft. ....	1 50		
<i>lenta</i> . Sweet Birch. 6 to 7 ft. ....	1 00		
8 to 10 ft. ....	1 50	12 50	
<i>lutea</i> . Yellow Birch—			
8 ft.; 2 in. ....	1 50	12 50	
12 to 14 ft.; 2½ to 3 in. ....	2 00	15 00	
<i>papyrifera</i> . Paper, or Canoe Birch—			
7 to 8 ft. ....	1 25		
<i>nigra</i> ; syn., <i>rubra</i> . Red Birch. 7 to 8 ft. ....	1 00	8 50	
8 to 10 ft. ....	1 50	13 50	\$85 00
10 to 12 ft.; 2½ to 3 in. ....	2 50	22 50	150 00
<b>BROUSSONETIA papyrifera.</b> Paper Mulberry—			
8 to 10 ft. ....	1 50	12 50	
<b>CARAGANA.</b> (Siberian Pea Tree.) Standards in varieties. 4 to 5 ft. ....	2 50	20 00	
<b>CARPINUS Americana</b> ; syn., <b>Caroliniana.</b> American Hornbeam—			
6 to 7 ft. Bushy ....	2 00	13 50	
7 to 9 ft. Bushy. ....	2 50	20 00	
9 to 10 ft. Bushy. ....	3 50	27 50	150 00
<i>Betulus.</i> European Hornbeam—			
5 to 6 ft. Bushy ....	1 50	13 50	
6 to 7 ft. Bushy. ....	2 00	18 50	
8 to 10 ft. Bushy. ....	3 50	30 00	150 00
<b>CARYA alba.</b> (Hickory.) 1½ to 2 ft. ....	75	5 00	
<i>tomentosa</i> . 2½ to 3 ft. ....	75	5 00	
4 to 5 ft. ....	1 00	7 50	
<b>CASTANEA Japonica.</b> Japan Chestnut. 4 to 5 ft. ....	1 00	7 50	
<i>vesca</i> . Spanish Chestnut. 4 to 5 ft. ....	1 00	7 50	
<b>CATALPA bignonioides.</b> 14 to 16 ft.; 3½ in. ....	3 50		
<i>Bungei.</i> Bunge's Catalpa. Standards—			
7 ft. ....	\$3.50 to 5 00		
<i>speciosa.</i> Western Catalpa. 8 to 10 ft. ....	1 00	8 50	
<b>CEDRELA Sinensis.</b> Chinese Cedrela—			
8 to 10 ft. ....	1 50		

PRICE LIST FOR FALL OF 1912

25

	Each	10	100
<b>CELTIS occidentalis.</b> Nettle Tree. 7 to 8 ft.....	1 25	\$10 00	\$75 00
9 to 10 ft. ....	1 50	12 50	90 00
10 to 12 ft. ....	2 00	17 50	
<b>CERASUS Padus.</b> European Bird Cherry—			
6 to 8 ft. ....	1 00	6 50	
<b>serotina.</b> Wild Black Cherry—			
14 to 16 ft. ....	2 00		
<b>Avium, var. alba plena.</b> Double White-flowering Cherry. 6 to 7 ft....	1 50	13 50	
<b>Avium, var. rosea plena.</b> Double Pink-flowering Cherry. 4 to 5 ft....	1 50	13 50	
<b>Avium, var. rosea pendula.</b> Pink Weeping Japan Cherry. 4 to 5 ft.....	2 50		
<b>Sieboldi, var. rubra plena.</b> 3½ to 4 ft....	1 50		
<b>CERCIS Canadensis.</b> Red Bud, American Judas—			
2 to 3 ft. ....	35	3 00	20 00
3 to 4 ft. ....	50	4 00	
4 to 5 ft. ....	75	6 00	
5 to 6 ft. ....	1 00	7 50	
6 to 7 ft. ....	1 50	10 00	
<b>Japonica.</b> See <i>Shrubs</i> .			
<b>CERCIDIPHYLLUM Japonicum.</b> 3½ to 4 ft.....	1 00	8 50	
5 to 6 ft. ....	1 50	12 50	100 00
7 to 8 ft. ....	2 00	17 50	
8 to 9 ft. ....	2 50	22 50	
<b>CLADRASTIS tinctoria</b> ( <i>Virgilia lutea</i> ). Yellow Wood. 6 to 8 ft.....	1 50	13 50	100 00
8 to 10 ft. ....	2 00	17 50	150 00
10 to 14 ft. ....	\$2.50 to 3 50		
<b>CORNUS.</b> See, also, <i>Shrubs</i> .			
<b>florida.</b> White Dogwood—			
3½ to 4 ft.; very fine .....	1 00	7 50	
4 to 5 ft.; very fine .....	1 25	10 00	60 00
5 to 6 ft.; very fine .....	1 50	12 50	75 00
6 to 7 ft.; very fine .....	1 75	15 00	100 00
7 to 8 ft.; very fine .....	2 50	22 50	
8 to 10 ft.; very fine .....	3 00	27 50	
<b>florida, var. flore rubro.</b> Red-flowered Dogwood. 2½ to 3 ft.....	1 75	15 00	
3 to 4 ft. ....	2 50	20 00	
4 to 5 ft. Bushy .....	3 00		
5 to 6 ft. Bushy .....	3 50		
One of the most beautiful of ornamental trees.			
<b>florida, var. pendula.</b> Weeping Dogwood—			
7 to 10 ft. Rare .....	5 to 10 00		
<b>CRATÆGUS Carrieri.</b> 4 to 5 ft.....	1 00	7 50	
5 to 6 ft. ....	1 25	10 00	
6 to 7 ft. ....	1 50	12 50	
7 to 8 ft. ....	2 50	22 50	
<b>coccinea.</b> 3 to 4 ft.....	1 00		
4 to 5 ft. ....	1 50		
<b>cordata.</b> Washington Thorn—			
3 to 4 ft. ....	1 00	8 50	
4 to 5 ft. ....	1 50	12 50	
5 to 6 ft. ....	2 50	22 50	

<b>CRATÆGUS Crus-galli.</b> Cocksbur Thorn—	Each.	10	100
2 to 3 ft. ....	\$0 50	\$4 00	\$35 00
3 to 4 ft. ....	75	6 00	50 00
4 to 5 ft. ....	1 00	8 50	
<b>mollis.</b> Scarlet Haw. 7 to 8 ft. ....	3 50		
<b>Oxyacantha.</b> English Hawthorn—			
4 to 6 ft. ....	1 00	8 50	
<b>Oxyacantha,</b> var. <b>alba flore pleno.</b> Double White Hawthorn—			
4 to 5 ft. ....	1 00	8 50	
5 to 6 ft. ....	1 50	12 50	
<b>Oxyacantha,</b> var. <b>coccinea flore pleno.</b> Paul's Double Scarlet—			
4 to 5 ft. ....	1 00	9 00	
8 ft. Standards ....	3 50	30 00	
10 ft. Standards ....	5 00		
12 to 14 ft. Standards ....	7 50		
<b>Oxyacantha,</b> var. <b>rosea flore pleno.</b> Double Pink Hawthorn—			
4 to 5 ft. ....	1 50		
<b>CYTISUS Laburnum pendula.</b> Weeping Golden Chain—			
7 to 8 ft. Specimen .....	\$3.50 to 7 50		
<b>DIOSPYROS Virginica.</b> Persimmon. 1½ to 2 ft. ....	50	4 00	
<b>FAGUS ferruginea.</b> American Beech—			
3 ft. ....	1 50	13 50	
4 ft. ....	2 00	18 50	
<b>sylvatica.</b> European Beech. 3 to 4 ft. ....	1 50	12 50	
4 to 5 ft. ....	2 00	17 50	
5 to 6 ft. ....	2 50	22 50	
6 to 7 ft. ....	3 50	32 50	
7 to 8 ft. ....	\$3.50 to 7 50		
9 to 12 ft. Specimens .....	\$10 to 15 00		
<b>sylvatica,</b> var. <b>asplenifolia.</b> Fern-like Beech—			
3 to 4 ft. ....	1 50		
4 to 5 ft. ....	2 50		
<b>sylvatica,</b> var. <b>pendula.</b> Weeping Beech—			
4 to 5 ft. ....	3 50		
6 to 7 ft. ....	5 00		
14 to 16 ft. Specimens .....	\$25 to 50 00		
All recently transplanted.			
<b>sylvatica,</b> var. <b>purpurea.</b> Purple Beech—			
4 to 5 ft. ....	1 50	12 50	
5 to 6 ft. ....	2 50	22 50	
6 to 7 ft. ....	3 50	32 50	
7 to 8 ft. ....	\$5 to 7 50		
9 to 10 ft. ....	\$7.50 to 10 00		
11 to 12 ft. ....	\$10 to 25 00		
12 to 18 ft. Specimens .....	\$15 to 75 00		
<b>sylvatica,</b> var. <b>purpurea pendula.</b> Weeping Purple Beech—			
5½ to 6 ft. ....	3 50		
<b>sylvatica,</b> var. <b>purpurea major.</b> Large leaf—			
6 to 7 ft. ....	3 50		
7 to 8 ft. ....	\$5 to \$7.50		
<b>sylvatica,</b> var. <b>Riversi.</b> Rivers' Blood-leaved Beech. 3 to 4 ft. ....	2 50		
7 to 8 ft. ....	\$5 to 7 50		
8 to 12 ft. ....	\$7.50 to 15 00		



An Avenue of Sweet Gums (Liquidambar), at Andorra.

	Each	10	100
<b>FRAXINUS Americana.</b> White Ash. 8 to 10 ft. . . . .	\$1 25	\$10 00	
10 to 12 ft.; 1½ to 2 in. . . . .	1 50	12 50	\$100 00
12 to 14 ft.; 2½ to 2¾ in. . . . .	2 50	22 50	
14 to 16 ft.; 2¾ to 3 in. . . . .	3 00	27 50	
14 to 16 ft.; 3 to 4 in. . . . .	\$4 to 5 00		
<b>excelsior.</b> European Ash—			
6 to 8 ft. . . . .	1 00		
8 to 10 ft. . . . .	1 50		
<b>viridis.</b> Green Ash. 6 to 8 ft. . . . .	75	4 00	30 00
<b>GLEDITSCHIA aquatica.</b> Water Locust. 7 to 8 ft. . . . .	1 00	8 50	
8 to 10 ft. . . . .	1 50	12 50	
<b>triacanthos.</b> Honey Locust—			
7 to 8 ft. . . . .	1 00	8 50	
8 to 10 ft. . . . .	1 25	10 00	
10 to 12 ft. . . . .	1 50	12 50	
<b>GLYPTOSTROBUS.</b> See <i>Taxodium</i> .			
<b>GYMNOCLADUS Canadensis.</b> Kentucky Coffee Tree			
8 to 10 ft. . . . .	1 50	12 50	
10 to 12 ft. . . . .	2 00	17 50	
12 to 14 ft. . . . .	2 50		
<b>JUGLANS nigra.</b> Black Walnut. 4 to 5 ft. . . . .	1 00	7 50	
<b>regia.</b> English Walnut—			
8 to 10 ft.; 1½ to 2 in. . . . .	2 50		
10 to 12 ft.; 2 to 2½ in. . . . .	3 50		
<b>KÆLREUTERIA paniculata.</b> Varnish Tree—			
6 to 8 ft. . . . .	2 00	18 50	
8 to 10 ft. . . . .	3 00		
10 to 12 ft. Heavy . . . . .	\$4 to 5 00		

	Each	10	100
<b>LARIX Europæa.</b> European Larch. 6 to 8 ft....	\$1 25	\$10 00	
8 to 10 ft. ....	1 50	13 50	\$85 00
10 to 12 ft. ....	2 50	22 50	
<b>leptolepis.</b> Japanese Larch. 5 to 7 ft..	1 50	12 50	
14 to 16 ft. ....	3 00	27 50	
<b>LIQUIDAMBAR.</b> Sweet Gum. 6 to 7 ft. Fine....	1 50	12 50	85 00
7 to 8 ft.; 2½ in. Fine....	♦ 2 50	22 50	
8 to 9 ft.; 2½ to 2¾ in. Fine♦...	3 50	32 50	
10 to 12 ft.; 3 to 3½ in. ....	4 00		
<b>LIRIODENDRON Tulipifera.</b> Tulip Tree. 7 to 8 ft..	1 00	7 50	60 00
8 to 9 ft. ....	1 50	10 00	90 00
10 to 12 ft. ....	1 75	16 50	150 00
<b>MAGNOLIA. Native Sorts—</b>			
<b>acuminata.</b> Cucumber Tree—			
5 to 6 ft. ....	1 00	7 50	
<b>glauca.</b> Sweet or Swamp Magnolia—			
2 to 2½ ft. ....	♦ 1 50		
<b>grandiflora.</b> Evergreen Magnolia—			
2 to 2½ ft. ....	2 50		
<b>macrophylla.</b> Great-leaved Magnolia—			
2½ to 3 ft. ....	♦ 3 50		
5 to 6 ft. ....	♦ 5 00		
<b>tripetala.</b> Umbrella Tree. 6 to 8 ft..	1 25	9 00	
8 to 10 ft. ....	1 50	12 50	100 00
10 to 12 ft. ....	2 00		
<b>Chinese Sorts—</b>			
<b>alba superba.</b> White—			
3 to 3½ ft. ....	♦ 2 50		
<b>Alexandriana.</b> 4 to 5 ft. ....	♦ 3 50		
5 to 6 ft. ....	♦ 7 50		
8 to 10 ft. ....	♦ 10 00		
<b>conspicua.</b> White—			
3½ to 4 ft. ....	♦ 3 50		
5 to 6 ft. ....	♦ 5 00	45 00	
7 to 8 ft. ....	♦ \$7.50 to 10 00		
<b>Kobus.</b> 2 to 2½ ft. ....	1 50		
3 to 5 ft. ....	\$3.50 to 4 50		
<b>Lennei Hybrid.</b> Lenne's Magnolia—			
3½ to 4 ft. ....	♦ 3 50		
5 to 6 ft. ....	\$5 to 7 50		
7 to 9 ft. Specimens ....	♦ 15 00		
<b>Norbertiana Hybrid.</b> Norbert's Magnolia—			
3 to 4 ft. ....	♦ 3 50		
5 to 6 ft. ....	♦ \$5 to 7 50		
<b>purpurea; syn., obovata.</b> Purple Magnolia—			
4 to 5 ft. ....	♦ 2 50		
5 to 6 ft. ....	♦ 3 50		
<b>Soulangeana Hybrid.</b> Soulange's Magnolia—			
3 to 4 ft. ....	♦ 3 50		
<b>speciosa.</b> 4½ to 5 ft. ....	♦ \$3.50 to 5 00		
<b>stellata; syn., Halleana.</b> Hall's Japanese Magnolia. 1½ ft. ....	♦ 1 50	13 50	
2 ft. ....	♦ 2 50	22 50	
2½ ft. ....	♦ 3 50	32 50	
3 to 3½ ft. ....	\$5 to 7 50		
4 to 7 ft. ....	\$10 to 15 00		



An Avenue of "Andorra-grown" Oriental Planes. (See page 30).

	Each	10
<b>MORUS</b> alba. White Mulberry. 5 to 6 ft.....	\$1 00	\$6 00
alba, var. <b>Tatarica alba</b> . White Russian. 7 to 8 ft..	1 00	
alba, var. <b>Tatarica rubra</b> . Red Russian. 6 ft.....	1 00	
alba, var. <b>Tatarica pendula</b> . Teas' Weeping Mulberry. 5 to 5½ ft.; 3-yr. heads.....	◆ 3 50	32 50
<b>NEGUNDO</b> . See <i>Acer</i> .		
<b>NYSSA sylvatica</b> . Sour Gum. 3 to 4 ft.....	1 00	9 00
4 to 5 ft. ....	1 50	13 50
<b>OXYDENDRUM arboreum</b> ; syn., <b>Andromeda arborea</b> . Sorrel Tree. 2 to 3 ft. ....	1 00	9 00
3 to 4 ft. ....	1 50	13 50
4 to 5 ft. ....	2 00	18 50
5 to 6 ft. ....	2 50	22 50
6 to 7 ft. ....	3 00	
7 to 8 ft. ....	3 50	
<b>PARROTIA Persica</b> . Persian Iron Tree. 4 to 5 ft.....	1 50	13 50
5 to 6 ft. ....	2 50	22 50
6 to 7 ft. ....	3 50	32 50
<b>PAULOWNIA Imperialis</b> . Empress Tree. 2½ to 3 ft.....	1 50	13 50
<b>PERSICA vulgaris</b> , var. <b>alba plena</b> . Double White-flowering Peach. 4 to 5 ft. ....	1 00	7 50
var. <b>sanguinea plena</b> . Double Red-flowering Peach. 4 to 5 ft. ....	1 00	7 50

	Each	10	100
<b>PLATANUS occidentalis.</b> American Buttonwood—			
8 to 10 ft. ....	\$1 00	\$8 50	
10 to 12 ft.; 1 $\frac{3}{4}$ to 2 in. ....	1 50	12 50	
<b>orientalis.</b> Oriental Plane, or European			
Buttonwood, 6 to 8 ft. ....	1 00	7 50	\$50 00
8 to 10 ft.; 1 $\frac{1}{4}$ to 1 $\frac{1}{2}$ in. ....	1 25	10 00	85 00
10 to 12 ft.; 1 $\frac{3}{8}$ to 1 $\frac{3}{4}$ in. ....	1 50	12 50	115 00
10 to 12 ft.; 1 $\frac{3}{8}$ to 2 in. ....	1 75	16 00	150 00
10 to 12 ft.; 2 to 2 $\frac{1}{4}$ in. ....	2 50	22 50	200 00
12 to 14 ft.; 2 $\frac{1}{2}$ to 3 in. ....	3 50	32 50	300 00
14 ft.; 3 to 4 in. Specimens. ....	\$5 to 10 00		
<b>POPULUS alba,</b> var. <b>Bolleana.</b> Bolle's Poplar—			
10 to 12 ft. ....	1 75	16 50	
12 to 14 ft. ....	2 50	22 50	
<b>monilifera;</b> syn., <b>Carolinensis.</b> Carolina			
Poplar, 8 to 10 ft. ....	1 00	7 50	60 00
10 to 12 ft. ....	1 50	10 00	
12 to 14 ft. ....	1 75	15 00	100 00
<b>nigra,</b> var. <b>fastigiata.</b> Lombardy Poplar—			
10 to 12 ft.; 1 $\frac{1}{2}$ to 1 $\frac{3}{4}$ in. ....	1 25	10 00	90 00
12 to 14 ft.; 2 to 2 $\frac{1}{4}$ in. ....	1 50	13 50	125 00
12 to 14 ft.; 2 $\frac{1}{2}$ in. ....	2 50	18 50	150 00
14 to 16 ft.; 3 to 3 $\frac{1}{4}$ in. ....	3 50	32 50	300 00
<b>PRUNUS.</b> See, also, <i>Cerasus.</i>			
<b>Pissardii.</b> Purple Plum, 4 to 5 ft. ....	1 00	8 50	
<b>triloba.</b> Flowering Plum, 2 to 2 $\frac{1}{2}$ ft. ....	50	3 50	
<b>PTELEA trifoliata.</b> Hop Tree, 5 to 6 ft. ....	35	3 00	25 00
6 to 7 ft. ....	50	4 50	35 00
<b>PTEROSTYRAX hispidum</b> ( <i>Halesia hispida</i> ).			
10 to 12 ft. ....	1 50	12 50	
<b>PYRUS.</b> See, also, <i>Shrubs.</i>			
<b>baccata.</b> Siberian Flowering Crab Apple—			
5 to 6 ft. ....	1 50	12 50	
<b>coronaria.</b> Sweet-scented Crab—			
2 $\frac{1}{2}$ to 3 ft. ....	1 00	7 50	
<b>floribunda.</b> Flowering Crab, 5 to 6 ft. ....	1 50	12 50	
<b>floribunda,</b> var. <b>atrosanguinea.</b> 5 to 6 ft. ....	1 50	12 50	
<b>lœnsis,</b> var. <b>Bechtel.</b> Bechtel's Double-			
flowering Crab, 3 $\frac{1}{2}$ to 4 ft. ....	1 75	16 50	
<b>Parkmani;</b> syn., <b>Halliana.</b> Parkman's Crab—			
3 to 3 $\frac{1}{2}$ ft. ....	1 00		
<b>Scheideckeri</b> (Double-flowered)—			
5 to 6 ft. ....	1 50	12 50	
<b>Toringo</b> (Dwarf Crab), 5 to 6 ft. ....	1 50	12 50	
<b>QUERCUS alba.</b> White Oak, 6 to 7 ft. ....	1 50		
7 to 8 ft.; 1 $\frac{3}{4}$ to 2 in. ....	1 75	16 00	
8 to 10 ft.; 2 to 2 $\frac{1}{4}$ in. ....	2 50	22 50	
10 to 14 ft.; 2 $\frac{1}{2}$ to 3 in. ....	\$3.50 to 5 00		
<b>bicolor.</b> Swamp White Oak—			
8 to 9 ft.; 1 $\frac{3}{4}$ to 2 in. ....	2 50	22 50	
10 to 12 ft.; 2 $\frac{1}{2}$ to 2 $\frac{3}{4}$ in. ....	3 50	32 50	
12 to 14 ft.; 3 to 3 $\frac{1}{2}$ in. ....	\$5 to 7 50		
12 to 16 ft.; 3 $\frac{3}{4}$ to 5 in. ....	\$10 to 15 00		
<b>Cerris.</b> Turkey Oak—			
6 to 8 ft.; 2 $\frac{1}{2}$ to 3 $\frac{1}{2}$ in. ....	\$3.50 to 5 00		



PRICE LIST FOR FALL OF 1912

	Each	10	
<b>QUERCUS coccinea.</b> Scarlet Oak. 6 to 7 ft.....	\$1 50	\$13 50	
7 to 8 ft. ....	2 00	18 50	
8 to 9 ft.; 1 $\frac{3}{4}$ to 2 in. ....	2 50	22 50	
9 to 10 ft.; 2 to 2 $\frac{1}{4}$ in. ....	3 00	27 50	
10 to 12 ft.; 2 $\frac{1}{2}$ to 2 $\frac{3}{4}$ in..	\$3.50 to 5 00		
12 to 14 ft. Specimens ....	\$10 to 25 00		
<b>macrocarpa.</b> Mossy Cup Oak—			
8 to 9 ft.; 1 $\frac{1}{2}$ to 1 $\frac{3}{4}$ in. ....	2 00		
10 to 12 ft.; 2 to 2 $\frac{1}{2}$ in. ....	2 50		
<b>palustris.</b> Pin Oak—			
6 to 7 ft. Low-branched .....	1 50	13 50	
7 to 8 ft.; 1 $\frac{1}{2}$ to 1 $\frac{3}{4}$ in. Low-branched	2 00	17 50	
8 to 9 ft.; 1 $\frac{3}{4}$ to 2 in. Low-branched	2 50	22 50	
9 to 10 ft.; 2 to 2 $\frac{1}{2}$ in. Low-branched	3 25	30 00	
10 to 12 ft.; 2 $\frac{3}{4}$ to 3 in. Low-branched	3 50	32 50	
12 to 14 ft.; 3 to 3 $\frac{1}{2}$ in. ....	\$5.00 to 7 50		
Excellent for street planting.			
<b>Extra heavy specimens. 3<math>\frac{1}{2}</math> to 4<math>\frac{1}{2}</math> in.,</b> <b>well-rooted and good tops.</b>	\$10.00 to 25 00		
<b>pedunculata, var. Concordia.</b> Golden Oak—			
8 to 10 ft.....	\$3.50 to 5 00		
<b>Prinus.</b> Rock Chestnut Oak. 7 to 8 ft..	1 25		
8 to 10 ft. ....	1 50		
10 to 12 ft.; 1 $\frac{1}{2}$ to 2 in. ....	2 00	18 50	
10 to 12 ft.; 2 $\frac{1}{4}$ to 2 $\frac{1}{2}$ in. ....	2 50	22 50	
12 to 14 ft.; 3 to 3 $\frac{1}{2}$ in..	\$3.50 to 5 00		
<b>Robur.</b> English Oak—			
8 to 10 ft.; 2 to 2 $\frac{1}{4}$ in. ....	1 50	12 50	
10 to 12 ft.; 2 $\frac{1}{2}$ to 3 in. ....	2 50	20 00	
12 to 14 ft.; 3 to 3 $\frac{1}{2}$ in. ....	3 50	32 50	
3 $\frac{1}{2}$ to 4 $\frac{1}{2}$ in. cal. Specimens..	\$5 to 10 00		
<b>Robur, var. fastigiata.</b> Pyramidal English Oak. 10 to 12 ft.....	3 50		
12 to 14 ft.....	5 00		
<b>rubra.</b> Red Oak. 7 to 8 ft.....	1 50	13 50	
8 to 10 ft.; 1 $\frac{1}{2}$ to 1 $\frac{3}{4}$ in. ....	2 00	17 50	
10 to 12 ft.; 2 to 2 $\frac{1}{4}$ in. ....	2 50	22 50	
12 to 14 ft.; 2 $\frac{3}{4}$ to 3 in..	\$5.00 to 7 50		
14 to 16 ft.; 3 $\frac{1}{4}$ to 4 in..	\$10 to 25 00		
<b>velutina, var. tinctoria.</b> Black Oak—			
6 to 8 ft. ....	1 25		
8 to 10 ft.; 1 $\frac{3}{4}$ to 2 in. ....	1 75	15 00	
10 to 12 ft.; 2 to 2 $\frac{1}{4}$ in. ....	2 00	18 50	
12 to 14 ft.; 2 $\frac{1}{2}$ to 2 $\frac{3}{4}$ in. ....	2 50	22 50	
3 to 3 $\frac{1}{2}$ in. Specimens ..	\$3.50 to 7 50		
<b>RHUS glabra.</b> Smooth Sumac. 4 to 5 ft.....	50	4 00	\$35 00
5 to 6 ft. ....	75	6 00	50 00
7 to 8 ft. ....	1 00	8 50	75 00
<b>glabra, var. laciniata.</b> Cut-leaved Sumac—			
2 $\frac{1}{2}$ to 3 ft. ....	75	5 00	40 00
3 to 4 ft. ....	1 00	7 50	60 00
<b>Osbecki.</b> 4 to 5 ft.....	75	4 00	
5 to 6 ft. ....	1 00	8 50	

## ANDORRA NURSERIES

	Each	10	100
<b>RHUS typhina.</b> Staghorn Sumac. 3 to 3½ ft.....	\$0 35	\$3 00	\$25 00
5 to 6 ft. ....	50	4 00	
6 to 8 ft. ....	1 00	8 50	
<b>typhina, var. laciniata.</b> (Cut-leaved)—			
2 to 2½ ft.....	50	4 00	35 00
<b>ROBINIA Pseudacacia.</b> Black Locust. 6 to 8 ft...	75	6 00	50 00
8 to 10 ft. ....	1 00	8 50	60 00
<b>SALISBURIA adiantifolia.</b> Ginkgo, or Maidenhair			
Tree. 7 to 8 ft. ....	1 25	10 00	
8 to 9 ft.; 1¾ to 2 in. ....	1 50	12 50	
10 to 12 ft.; 2 to 2¼ in. ....	1 75	16 50	150 00
12 to 14 ft.; 2¼ to 2½ in. ....	2 50	22 50	
12 to 14 ft.; 2½ in. ....	3 00	27 50	
<b>SALIX alba.</b> White Willow. 6 to 8 ft.....	1 00	6 50	
10 to 12 ft. ....	1 50	12 50	
<b>Babylonica.</b> Weeping Willow. 8 to 10 ft..	1 00	8 50	
10 to 12 ft. ....	1 50	12 50	
12 to 14 ft. ....	2 00		
<b>caprea.</b> Pussy Willow. 7 to 8 ft.....	1 00	7 50	
8 to 10 ft. ....	1 50	12 50	60 00
<b>incana.</b> Rosemary Willow. 4 to 5 ft.....	50	4 50	35 00
5 to 6 ft. ....	1 00	6 50	50 00
<b>lutea.</b> Golden Willow. 6 to 7 ft.....	1 00	6 50	40 00
<b>lutea, var. pendula.</b> Golden Weeping—			
7 to 8 ft. ....	1 50	10 00	75 00
<b>pentandra.</b> Laurel Leaf Willow. 6 to 7 ft.♦..	1 00	7 50	50 00
7 to 8 ft. ....♦..	1 50	12 50	75 00
<b>vitellina, var. Britzensis.</b> Salmon-barked			
Willow. 8 to 10 ft. ....	1 50	10 00	
<b>Wentworth.</b> 10 to 12 ft.....	1 50	12 50	
12 to 14 ft. ....	2 00	17 50	
<b>SASSAFRAS officinale</b> (Sassafras). 5 to 6 ft....	1 00	5 00	
<b>SOPHORA Japonica, var. pendula.</b> Weeping			
Sophora. 6 to 8 ft..\$3.50 to	7 50		
<b>SRBUS Americana.</b> American Mountain Ash—			
7 to 8 ft. ....	1 50		
<b>aucuparia.</b> European Mountain Ash—			
7 to 8 ft. ....	1 50	10 00	
10 to 12 ft. ....	2 00	12 50	
<b>aucuparia, var. quercifolia.</b> Oak-leaved			
Mountain Ash. 6 to 7 ft. ....	1 50		
<b>TAXODIUM distichum.</b> Deciduous Cypress—			
3 to 4 ft. ....♦..	1 00	8 50	
5 to 6 ft. ....♦..	1 50	12 50	
<b>TILIA Americana.</b> American Linden or Bass-			
wood—			
7 to 9 ft.; 1½ to 2 in. ....	1 50	12 50	100 00
8 to 10 ft.; 2 to 2¼ in. ....	2 00	17 50	150 00
10 to 12 ft.; 2¼ to 2½ in. ....	2 50	22 50	175 00
10 to 12 ft.; 2½ to 3 ft. ....\$3 to	4 00		
12 to 14 ft.; 3¼ to 4 in. ..♦..\$5 to	10 00		

	Each	10
<b>TILIA argentea; syn., tomentosa.</b> Silver-leaved Linden—		
8 to 10 ft.; 2 to 2 $\frac{1}{4}$ in. ....	\$2 50	\$22 50
10 to 12 ft.; 2 $\frac{1}{2}$ to 2 $\frac{3}{4}$ in. ....	3 50	32 50
10 to 12 ft.; 2 $\frac{3}{4}$ to 3 in. Specimens.....	5 00	40 00
12 to 14 ft.; 3 $\frac{1}{4}$ to 4 in. Specimens....	\$6 to 10 00	
<b>platyphyllos.</b> Large-leaved Linden—		
7 to 8 ft.; 1 $\frac{3}{4}$ to 2 in. ....	1 50	12 50
<b>vulgaris; syn., Europæa.</b> European Linden—		
8 to 10 ft.; 2 to 2 $\frac{1}{4}$ in. ....per 100, \$150...	1 75	16 50
10 to 12 ft.; 2 $\frac{1}{2}$ to 2 $\frac{3}{4}$ in. ....per 100, \$200...	2 50	22 50
12 to 16 ft.; 3 to 4 in. Specimens....	\$4 to 10 00	
<b>vulgaris, var. pyramidalis laciniata.</b> Pyramidal Cut- leaf. 12 to 14 ft.; 3 in. ....		
	3 50	32 50
<b>ULMUS Americana.</b> American Elm—		
8 to 10 ft.; 1 $\frac{1}{4}$ to 1 $\frac{1}{2}$ in. ....per 100, \$90...+	1 25	10 00
10 to 12 ft.; 1 $\frac{1}{2}$ to 2 in. ....per 100, \$125...+	1 50	13 50
12 to 14 ft.; 2 to 2 $\frac{1}{4}$ in. ....per 100, \$160...+	2 00	17 50
12 to 14 ft.; 2 $\frac{1}{4}$ to 2 $\frac{1}{2}$ in. ....per 100, \$200...+	2 50	22 50
12 to 14 ft.; 2 $\frac{1}{2}$ to 2 $\frac{3}{4}$ in. ....	3 00	27 50
12 to 14 ft.; 2 $\frac{3}{4}$ to 3 in. ....	3 50	32 50
14 to 15 ft.; 3 to 6 in. Specimens....	\$5 to 25 00	
<b>campestris.</b> English Elm. 8 to 10 ft.; 2 to 2 $\frac{1}{4}$ in..		
	1 50	13 50
10 to 12 ft.; 2 $\frac{1}{2}$ to 2 $\frac{3}{4}$ in. ....	2 75	25 00
12 to 14 ft.; 2 $\frac{3}{4}$ to 3 in. ....	3 50	32 50
Specimens. 3 to 4 in. ....	\$5 to 10 00	
<b>campestris, var. latifolia; syn., major.</b> Broad-leaved English Elm—		
12 to 14 ft.; 2 $\frac{1}{2}$ to 2 $\frac{3}{4}$ in. ....	2 75	
12 to 14 ft.; 2 $\frac{3}{4}$ to 3 in. ....	3 50	
16 to 18 ft.; 3 to 5 in. ....	\$5 to 15 00	
<b>campestris, var. Wheatley's (Cornish) Elm—</b>		
12 to 14 ft. ....	2 50	22 50
14 to 16 ft. ....	3 50	32 50
<b>scabra; syn., Dampieri; fastigiate form—</b>		
12 to 14 ft.; 3 in. ....	3 50	32 50
<b>scabra, var. Huntingdoni.</b> Huntingdon Elm—		
12 to 14 ft.; 3 to 3 $\frac{1}{4}$ in. ....	3 50	32 50
14 to 16 ft.; 3 $\frac{1}{4}$ to 3 $\frac{1}{2}$ in. ....	4 50	42 50
14 to 16 ft.; 3 $\frac{1}{2}$ to 5 in. ....	\$5 to 15 00	
<b>scabra, var. pendula.</b> Camperdown Elm—		
6 ft. ....	1 50	
<b>scabra, var. purpurea.</b> Purple Wych Elm—		
10 to 12 ft.; 2 to 2 $\frac{1}{4}$ in. ....	2 00	17 50
12 to 14 ft.; 3 to 3 $\frac{1}{2}$ in. ....	3 50	32 50



Partial View of Nursery Grounds from Top of Main Nursery.

## AZALEAS, ANDORRA-GROWN

	Each	10	100
<b>AZALEA arborescens.</b> Fragrant White Azalea—			
12 to 15 in. Bushy clumps .....	\$1 00	\$9 00	\$80 00
15 to 18 in. Bushy clumps .....	1 50	13 50	125 00
1½ to 2 ft. Bushy clumps .....	2 00	18 50	150 00
2 to 2½ ft. Bushy clumps .....	2 50	22 50	175 00
2½ to 3 ft. Bushy clumps .....	3 50	30 00	250 00
<b>calendulacea.</b> Flame Azalea. 12 to 15 in..	1 00	9 00	80 00
15 to 18 in. Bushy clumps .....	1 50	13 50	125 00
18 to 24 in. Bushy clumps .....	1 75	15 00	135 00
2 to 2½ ft. Bushy clumps .....	2 50	22 50	200 00
2½ to 3 ft. Bushy clumps.	\$3.50 to 5 00		
<b>Canadensis (Rhodora).</b> 1 ft. Bushy....	1 00	8 50	75 00
1½ to 2 ft. Bushy .....	1 50	13 50	110 00
<b>mollis.</b> 1½ ft. Named sorts.....	1 25	10 00	90 00
2 ft. Bushy. Named sorts .....	1 50	13 50	125 00
2½ ft. Bushy. Named sorts .....	2 00	17 50	
<b>nudiflora.</b> 12 to 15 in.....	1 00	9 00	
15 to 18 in. Clumps .....	1 50	13 50	115 00
1½ ft. Bushy clumps .....	1 75	15 00	125 00
2 ft. Bushy clumps .....	2 50	20 00	175 00
<b>Pontica (Ghent).</b> 1½ ft. Named sorts....	1 25	10 00	90 00
2 ft. Bushy. Named sorts.....	1 50	12 50	120 00
2½ to 3 ft. Bushy .....	2 50	22 50	
3 to 3½ ft. Bushy .....	\$2.50 to 3 50		
<b>Vaseyi.</b> Southern Azalea. 12 to 15 in..	1 00	9 00	
15 to 18 in. ....	1 50	13 50	
1½ ft. Bushy clumps .....	2 00	18 50	150 00
2 ft. Bushy clumps .....	2 50	22 50	200 00
<b>viscosa.</b> White Azalea—			
15 to 18 in. Bushy clumps .....	1 50	13 50	115 00
1½ ft. Bushy clumps .....	2 00	18 50	150 00
2 ft. Bushy clumps .....	2 50	22 50	175 00
<b>Yodogama.</b> 15 to 18 in.....	1 75	15 00	
24 in. ....	2 50	20 00	

# DECIDUOUS SHRUBS

	Each	10	100
<b>ABELIA rupestris.</b> 1 ft.....	\$0 50	\$4 50	
<b>ACANTHOPANAX spinosa</b> ( <i>Aralia pentaphylla</i> )—			
2½ to 3 ft.....	25	2 00	\$20 00
4 to 5 ft.....	35	3 00	25 00
<b>ÆSCULUS parviflora</b> ; syn. <i>Pavia macrostachya</i> —			
2 ft.....	◆ 1 00	8 50	60 00
2½ ft.....	◆ 1 25	10 00	85 00
3 ft.....	◆ 2 00	17 50	150 00
<b>ALTHEA.</b> See <i>Hibiscus</i> .			
<b>AMELANCHIER Botryapium.</b> 2 to 2½ ft.....	35	3 00	25 00
<b>AMORPHA canescens.</b> 2 to 2½ ft.....	35	2 50	15 00
<i>fruticosa.</i> 4½ to 5 ft.....	35	3 00	20 00
<b>AMYGDALUS</b> (Almond). See <i>Prunus</i> .			
<b>BACCHARIS halimifolia.</b> Groundsel Shrub—			
3 to 3½ ft.....	50	3 50	25 00
<b>BENZOIN odoriferum.</b> Spice Bush. 2 to 2½ ft....	35	3 00	20 00
3 to 3½ ft.....	50	4 00	30 00
3½ to 4 ft.....	75	6 00	35 00
4 to 5 ft.....	1 00	7 50	
<b>BERBERIS</b> (Barberry). <i>Dulcis.</i> 1 ft.....	50	4 00	35 00
<i>ilicifolia.</i> Holly-leaved. 2 to 2½ ft....	35	3 00	27 50
2½ to 3 ft.....	50	4 00	35 00
3 to 3½ ft.....	75	6 00	40 00
<i>Thunbergii.</i> 12 to 15 in.....	25	1 75	12 50
15 to 18 in.....	35	2 50	15 00
1½ ft.; broad and very heavy ....	50	3 50	20 00
2 ft.; broad and very heavy ....	60	4 50	35 00
2½ ft.; broad and very heavy ....	75	6 00	50 00
3 to 3½ ft.; broad and very heavy. 1 00		9 00	75 00
<i>vulgaris.</i> Common Barberry—			
2 to 2½ ft.....	50	3 50	20 00
2½ to 3 ft.....	60	5 00	25 00
3 to 3½ ft.....	75	6 00	35 00
<i>vulgaris</i> , var. <i>Amurensis.</i> 2 to 2½ ft....	75	6 00	
<i>vulgaris</i> , var. <i>purpurea.</i> 2½ to 3 ft....	35	3 00	17 50
3 to 3½ ft.....	50	3 50	25 00
3½ to 4 ft.....	60	4 00	30 00
4 to 5 ft.....	75	6 00	35 00
<b>CALLICARPA purpurea.</b> Beauty Fruit—			
3 to 4 ft.....	75	6 00	40 00
<b>CALYCANTHUS floridus.</b> Allspice, or Sweet Shrub—			
2 to 2½ ft.....	50	4 00	30 00
3 to 3½ ft.....	75	6 00	35 00
<b>CARAGANA arborescens.</b> Siberian Pea—			
4 to 5 ft.....	75	6 00	40 00

	Each	10	100
<b>CEANOTHUS Americanus.</b> Jersey Tea. 1½ ft. ....	\$0 25	\$2 00	\$15 00
<b>CEPHALANTHUS occidentalis—</b>			
2½ to 3 ft. ....	35	2 50	20 00
3½ to 4 ft. ....	50	3 00	25 00
4 to 5 ft. ....	75	4 00	30 00
<b>CERCIS.</b> See, also, <i>Deciduous Trees.</i>			
<b>Japonica.</b> Japan Judas—			
2 to 2½ ft. ....	50	4 00	35 00
2½ to 3 ft. ....	75	6 00	50 00
<b>CHIONANTHUS Virginica.</b> White Fringe—			
2½ to 3 ft. Bushy .....	50	4 50	
3 to 4 ft. Bushy .....	75	7 00	50 00
4 to 5 ft. Bushy .....	1 00	8 50	60 00
5 to 6 ft. ....	1 25	10 00	75 00
7 to 8 ft. ....	1 75	15 00	
<b>CLETHRA alnifolia.</b> Sweet Pepperbush. 1½ to 2 ft..			
2 to 2½ ft. ....	35	2 50	20 00
2½ to 3 ft. Broad and bushy....	50	3 50	25 00
	75	5 00	35 00
<b>COLUTEA arborescens.</b> Bladder Senna—			
2 to 2½ ft. ....	35	3 00	20 00
5 to 6 ft. ....	50	4 00	25 00
<b>COMPTONIA asplenifolia.</b> Sweet Fern. 2 to 2½ ft.			
	35	3 00	25 00
<b>CORCHORUS Japonicus.</b> Single Globe Flower—			
2 to 2½ ft. ....	50		
2½ to 3 ft. ....	75		
<b>Japonicus, fl. pl.</b> (Double Kerria)—			
2 to 2½ ft. ....	50		
<b>Japonicus, var. variegata.</b> (Variegated Leaves). 2 ft. ....			
	50		
<b>CORNUS.</b> See, also, <i>Trees.</i>			
<b>alba.</b> Siberian Red-twigged Dogwood—			
1½ to 2 ft. ....	25	2 00	
2½ to 3 ft.; very heavy .....	35	3 00	20 00
3 to 3½ ft.; very heavy .....	50	4 00	25 00
3½ to 4 ft.; very heavy .....	75	6 00	30 00
4 to 5 ft.; very heavy .....	1 00	7 50	
<b>alba; syn., Siberica, var. aurea variegata—</b>			
2 to 2½ ft. ....	50		
<b>alba, var. elegantissima.</b> Golden-leaved—			
2 to 2½ ft. ....	50	4 00	
2½ to 3 ft. ....	75	6 00	
<b>alternifolia.</b> 4 to 5 ft. ....			
	50	4 00	
5 to 6 ft. ....	75	5 00	
6 to 7 ft. ....	1 00	6 00	
<b>Kousa</b> (Benthamia Japonica)—			
2 to 2½ ft. ....	1 00	8 50	
3½ to 4 ft. ....	1 50	12 50	
<b>Mas.</b> Cornelian Cherry. 2½ to 3 ft. ....			
	50		
4½ to 5 ft.; very heavy .....	75	6 00	35 00
5 to 6 ft. ....	1 00	7 50	50 00
6 to 10 ft. Specimens. ♦, \$1.50 to	2 50		

	Each	10	100
<b>CORNUS</b> <i>paniculata</i> . 3 to 3½ ft.....	\$0 50	\$4 00	\$35 00
4 to 5 ft. ....	75	5 00	45 00
5 to 6 ft. ....	1 00	7 50	60 00
<i>sanguinea</i> . European Osier Dogwood—			
2 to 2½ ft. Heavy .....	25		
4 to 5 ft. Heavy .....	50	4 00	30 00
5 to 6 ft. Heavy .....	75	5 00	35 00
<i>sericea</i> . Silky Dogwood. 2 to 2½ ft....	35	3 00	
3½ to 4 ft. ....	50	4 00	
4 to 5 ft. ....	75	6 00	35 00
6 to 7 ft. ....	1 00	7 50	40 00
<i>stolonifera</i> . Native Red Osier—			
2½ to 3 ft. ....	35	3 00	
3 to 3½ ft. ....	50	4 00	25 00
3½ to 4 ft. ....	60	5 00	30 00
4 to 5 ft. ....	75	6 00	35 00
6 to 7 ft. ....	1 00	7 50	40 00
<i>stolonifera</i> , var. <i>aurea</i> . Golden-barked—			
2 to 2½ ft. ....	35	3 00	20 00
2½ to 3 ft. ....	50	3 50	25 00
3 to 3½ ft. ....	75	5 00	35 00
3½ to 4 ft. ....	1 00	6 00	50 00
<b>CORYLUS</b> <i>Americana</i> . American Hazel—			
18 to 24 in. ....	50		
<i>Avellana</i> , var. <i>laciniata</i> . Cut-leaved Hazel—			
2 to 2½ ft. ....	50	4 00	
<i>maxima</i> , var. <i>purpurea</i> . Purple Hazel—			
2½ to 3 ft. ....	35	3 00	
3 to 3½ ft. ....	50	4 50	30 00
4 to 5 ft. ....	75	6 00	40 00
5½ to 6 ft. ....	1 00		
<b>COTONEASTER</b> <i>Frigida</i> . 1½ to 2 ft.....	35	3 00	25 00
<b>CRATÆGUS</b> . See <i>Trees</i> .			
<b>CYDONIA</b> <i>Japonica</i> . Japan Quince. 1½ ft.....	50	3 00	
<b>DESMODIUM</b> <i>penduliflorum</i> . See <i>Lespedeza Sieboldi</i> .			
<b>DEUTZIA</b> <i>candidissima</i> (Double White). 2½ to 3 ft.	35	3 00	20 00
3½ to 4 ft. ....	50	4 00	30 00
4 to 5 ft. ....	75	6 00	40 00
5 to 6 ft. ....	1 00		
<i>crenata</i> . 2½ to 3 ft.....	35	3 00	
<i>crenata</i> , var. <i>Pride of Rochester</i> —			
3 to 4 ft. ....	50	3 50	
4 to 5 ft. ....	75	5 00	40 00
<i>crenata</i> , var. <i>rosea plena</i> (Double Pink)—			
3 to 3½ ft. ....	35	3 00	25 00
5 to 6 ft. ....	75	5 00	
<i>crenata</i> , var. <i>Waterer</i> . 2 to 3 ft.....	35	3 00	20 00
3 to 4 ft. ....	50	4 00	25 00
6 to 7 ft. ....	75	6 00	50 00
<i>crenata</i> , var. <i>Wellsi</i> . 4 to 5 ft.....	50	3 00	25 00
5 to 6 ft. ....	75	5 00	35 00
<i>gracilis</i> . Dwarf Deutzia—			
1 ft. ....	50	3 00	20 00
1½ ft. ....	75	4 00	25 00
<i>gracilis</i> , var. <i>carminea</i> . 1½ ft.....	50	4 00	25 00
2 ft. ....	75	5 00	30 00

	Each	10	100
<b>DEUTZIA</b> <i>gracilis</i> , var. <i>rosea</i> . 18 to 24 in.....	\$0 75	\$6 00	\$35 00
<b>Lemoinei</b> . 2 to 2½ ft; very heavy.....	35	3 00	20 00
3 to 3½ ft.; heavy .....	50	4 00	30 00
3½ to 4 ft. ....	75	5 00	35 00
4 to 5 ft. ....	1 00	7 50	40 00
<b>Lemoinei</b> , var. <i>compacta</i> . 2 to 2½ ft....	35	3 00	20 00
3 to 3½ ft.....	50	4 00	25 00
<b>parviflora</b> . 2½ to 3 ft.....	50	3 50	
<b>scabra</b> . 2 to 3 ft.....	35	3 00	20 00
3 to 4 ft. ....	50	4 00	25 00
5 to 6 ft. ....	75	6 00	
<b>DIERVILLA</b> ( <i>Weigela</i> ) <i>florida</i> , var. <i>amabilis</i> —			
3 to 4 ft. ....	50	3 50	
<i>florida</i> ; syn., <i>rosea</i> . 3 to 4 ft.....	50	4 00	25 00
4 to 5 ft. ....	75	5 00	
<i>florida</i> , var. <i>candida</i> . 2 to 3 ft.....	35	3 00	
3 to 4 ft. ....	50	4 00	
<i>florida nana</i> , var. <i>aurea variegata</i> —			
2 to 3 ft. ....	50	4 00	
3 to 4 ft. ....	75	6 00	
<i>florida</i> , var. <i>Sieboldi alba</i> . 4 to 5 ft....	75		
<b>floribunda Lavallei</b> . 3 to 4 ft.....	35	3 00	25 00
5 to 6 ft. ....	50	4 00	
<b>Japonica</b> (syn., <i>hortensis</i> ), var. <i>floribunda</i> . 2 to 3 ft.....	50	4 00	
<b>Japonica</b> , var. <i>Eva Rathke</i> . 2 to 2½ ft. ♦..	35	3 00	20 00
2½ to 3 ft. .... ♦..	50	3 50	25 00
3 to 4 ft. .... ♦..	75	5 00	30 00
<b>Japonica</b> , var. <i>nivea</i> . White. 2 to 3 ft.	50	4 00	
3 to 4 ft. ....	75	5 00	
<b>Japonica</b> , var. <i>rubra</i> . 2 to 3 ft.....	35	3 00	20 00
3 to 4 ft. ....	50	4 00	25 00
<b>Grœnewegeni</b> . 3 to 4 ft.....	50	4 00	30 00
4 to 5 ft. ....	75	6 00	
<b>Grœnewegeni</b> , var. <i>Mad. Contourier</i> .			
(Hybrid). 3 to 4 ft.....	35	3 00	
4 to 5 ft. ....	50	4 00	
<b>Grœnewegeni</b> , var. <i>Steltzneri</i> . 2 to 3 ft.	35	3 00	20 00
3 to 4 ft. ....	60	5 00	30 00
5 to 6 ft. ....	75		
<b>Grœnewegeni</b> , var. <i>Van Houttei</i> —			
2½ to 3 ft. ....	35	3 00	
3 to 4 ft. ....	50	4 00	
5 to 6 ft. ....	75	6 00	
<b>Verschaffelti</b> . 2½ to 3 ft.....	35	3 00	20 00
3 to 4 ft. ....	50	4 00	25 00
4 to 5 ft. ....	75	6 00	30 00
<b>sessilifolia</b> . 2½ to 3 ft.....	25	2 00	
3 to 3½ ft. ....	50	3 50	25 00
4 to 5 ft. ....	75	5 00	35 00
<b>trifida</b> . 1½ to 2 ft.....	35	2 00	15 00
2 to 2½ ft. ....	35	3 00	20 00
2½ to 3 ft. ....	50	4 00	



PRICE LIST FOR FALL OF 1912

39

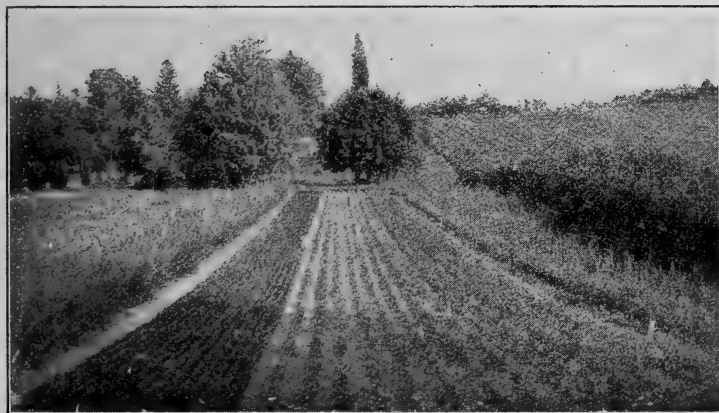
	Each	10	100
<b>ELÆAGNUS angustifolia.</b> Oleaster. 4 to 5 ft. ....	\$0 50	\$4 00	
5 to 6 ft. ....	75	6 00	
<b>longipes;</b> syn., <b>edulis.</b> Japanese Oleaster. 4 to 5 ft. Bushy .....	75	5 00	\$35 00
5 to 6 ft. Bushy .....	1 00	8 50	50 00
6 to 7 ft. ....	1 25	10 00	60 00
<b>parvifolia.</b> 6 to 7 ft. ....	1 00	7 50	
<b>EUONYMUS alatus.</b> Cork-barked. 2½ to 3 ft. ♦ ..	1 50	13 50	
3 to 3½ ft. .... ♦ ..	2 00	18 50	
3½ to 4 ft. .... ♦ ..	2 50	22 50	
4 to 5 ft. .... ♦ ..	3 00	27 50	
5 to 6 ft. .... ♦ ..	3 50	32 50	
One of the most ornamental of flowering and fruiting shrubs.			
<b>Americana.</b> Strawberry Bush—			
3 to 4 ft. ....	35	3 00	20 00
4 to 5 ft. ....	50	3 50	25 00
<b>Europæus.</b> Spindle Tree. 5 to 6 ft. ...	50	3 50	
<b>EXOCHORDA grandiflora.</b> Pearl Bush. 2 to 3 ft. ..	50	3 50	
4 to 5 ft. ....	75	4 00	
6 to 8 ft.; with ball .....	1 50	12 50	
<b>FORSYTHIA (Golden Bell) Fortunei.</b> 3 to 4 ft. ....	35	3 00	
4 to 5 ft.; very heavy .....	50	3 50	
5 to 6 ft.; very heavy .....	75	4 00	30 00
6 to 7 ft.; very heavy .. ♦ ..	1 00	5 00	35 00
<b>Fortunei, var. aurea variegata.</b> 4 to 5 ft. ....	75	6 00	50 00
<b>intermedia.</b> 2 to 3 ft. ....	25	2 00	15 00
3 to 4 ft.; very heavy .....	35	3 00	20 00
4 to 5 ft. ....	50	4 50	30 00
5 to 6 ft. ....	75	6 00	35 00
<b>suspensa.</b> 2 to 3 ft. ....	25	2 00	15 00
3 to 4 ft. ....	50	4 00	
4 to 5 ft. ....	75	6 00	
5 to 7 ft.; very heavy .....	1 00	7 50	
<b>viridissima.</b> 2 to 3 ft. ....	25	2 00	15 00
3 to 4 ft.; very heavy; extra ...	35	3 00	25 00
4 to 5 ft.; very heavy; extra ...	50	4 00	30 00
5 to 6 ft.; very heavy; extra ...	75	6 00	50 00
<b>HALESIA tetraptera.</b> 5 to 6 ft. ....	75	6 00	
<b>HAMAMELIS Japonica.</b> Japanese Witch Hazel—			
2 to 2½ ft. ....	75	6 50	50 00
2½ to 3 ft. ....	1 00	8 50	
<b>Virginiana.</b> Witch Hazel. 4 to 5 ft. ....	50	4 00	
5 to 6 ft.; heavy .....	75	6 00	50 00
6 to 7 ft.; heavy .....	1 00	7 50	60 00
<b>HIBISCUS Syriacus.</b> Althæa; Rose of Sharon—			
<b>atropurpurea plena.</b> 5 to 6 ft. ....	75	5 00	35 00
<b>Boule de Feu.</b> 5 to 6 ft. ....	75	5 00	
<b>cœrulea plena.</b> 5 to 6 ft. ....	75	5 00	
<b>Comte de Flandre.</b> 4 to 5 ft. ....	50	4 00	25 00
5 to 6 ft. ....	75	5 00	35 00
<b>grandiflora superba.</b> 4 to 5 ft. ....	50	4 00	30 00
<b>Jeanne d'Arc.</b> 3 to 4 ft. ....	50	4 00	25 00
4 to 5 ft. ....	75	5 00	40 00
5 to 6 ft. ....	1 00	6 00	50 00
<b>Lady Stanley.</b> 4 to 5 ft. ....	50	4 00	30 00
5 to 6 ft. ....	75	6 00	35 00

	Each	10	100
<b>HIBISCUS purpureus folis argenta marginata—</b>			
4 to 5 ft. ....	\$0 35	\$3 00	\$20 00
5 to 6 ft. ....	50	4 00	30 00
<b>totusalbus. 3 to 3½ ft. ....</b>	50	4 00	25 00
3½ to 4 ft. ....	75	5 00	30 00
<b>violacea (semi-plena). 5 to 6 ft. ....</b>	75	6 00	46 00
<b>HIPPOPHAE rhamnoides. See Buckthorn.</b>			
2½ to 3 ft. ....	50	2 50	20 00
<b>HYDRANGEA arborescens. 2 to 2½ ft. ....</b>	35	3 00	
2½ to 3 ft. ....	50	3 50	25 00
<b>arborescens, var. grandiflora—</b>			
3 to 4 ft. ....	50	4 50	35 00
<b>Hortensis, var. Imperatrice Eugenie—</b>			
1½ ft.; 4-in. pot ....	75		
<b>Hortensis, var. Otaska. 3-year. ....</b>	75		
<b>Hortensis, var. Japonica. 1 ft. ....</b>	75		
<b>paniculata. 2 to 2½ ft. ....</b>	35	3 00	25 00
4 to 5 ft. ....	50	4 00	
<b>paniculata grandiflora. 3 to 3½ ft. ....</b>	50	4 00	25 00
3½ to 4 ft. ....	75	6 00	35 00
4 to 4½ ft.; extra heavy ....	1 00	7 50	50 00
4½ to 5 ft.; extra heavy ....	1 50	12 50	60 00
<b>quercifolia. Oak-leaved—</b>			
2 to 2½ ft. ....	75	6 00	
3 to 3½ ft. ....	1 00	7 50	
<b>HYPERICUM aureum. 2½ to 3 ft. ....</b>	35	3 00	20 00
3 to 4 ft. ....	50	4 00	25 00
<b>calcinum. Aaron's Beard. 1 ft. ....</b>	50		
<b>hircinum. 1½ to 2 ft. ....</b>	50	3 50	20 00
<b>Moserianum hybridum. Gold-Flower—</b>			
15 to 18 in. ....	50	2 50	20 00
<b>patulum. 12 to 15 in. ....</b>	35		
<b>prolificum. 15 to 18 in. ....</b>	50		
<b>ILEX Sieboldi. Red-fruited. 2½ to 3 ft. ....</b>	1 50	13 50	
<b>Sieboldi. White-fruited. 2 to 2½ ft. ....</b>	1 50	13 50	
<b>verticillata. Winter Berry. 1½ to 2 ft. ....</b>	25	2 00	
2 to 2½ ft. ....	35	3 00	25 00
2½ to 3 ft. ....	50	4 00	35 00
<b>ITEA Virginica. 1½ to 2 ft. ....</b>	35	3 00	20 00
2 to 2½ ft. ....	50	3 50	25 00
<b>JASMINUM nudiflorum. Yellow Jasmine—</b>			
1½ ft. ....	50	3 50	25 00
<b>KERRIA. See Corchorus.</b>			
<b>LESPEDEZA bicolor. 4 to 5 ft. ....</b>	35	2 50	
5 to 6 ft. ....	50	3 50	
<b>Sieboldi; syn. Desmodium Japonicum—</b>			
Heavy clumps ....	35		
<b>Sieboldi, var. alba. Heavy clumps. ....</b>	50		
<b>LIGUSTRUM Amurense. Amoor Privet. 2 to 2½ ft. ....</b>	35	3 00	15 00
2½ to 3 ft. ....	50	4 00	20 00
<b>ciliatum. Sold by many for Ibotá—</b>			
3 to 3½ ft. Broad and heavy... ..	50	3 50	15 00
3½ to 4 ft. Broad and heavy... ..	60	4 00	20 00
4 to 5 ft. Broad and heavy... ..	75	5 00	25 00
5 to 6 ft. Broad and heavy... ..	1 00	7 50	30 00

PRICE LIST FOR FALL OF 1912

41

	Each	10	100
<b>LIGUSTRUM</b> <i>ibota</i> . The true upright form—			
2 to 2½ ft. ....	\$0 25	\$2 00	\$10 00
2½ to 3 ft. ....	35	3 00	12 50
3 to 3½ ft. ....	50	3 50	15 00
4 to 5 ft.; heavy .....	60	4 00	20 00
5 to 6 ft. ....	75	6 00	35 00
6 to 7 ft. ....	1 00	8 50	60 00
<i>ibota</i> . var. <i>Regelianum</i> . Regel's—			
1½ to 2 ft.; heavy .....	35	3 00	20 00
2½ to 3 ft.; heavy .....	50	3 50	25 00
3 to 4 ft. ....	75	5 00	30 00
4 to 5 ft. ....	1 00	7 50	35 00
<i>media</i> . 2½ to 3 ft. ....	50	3 50	20 00
<i>ovalifolium</i> . <i>Californina</i> Privet—			
2 to 2½ ft.; bushy { 1000, \$35 } .....	25	1 00	5 00
2½ to 3 ft.; bushy { 1000, \$50 } .....	35	1 50	7 50
3 to 3½ ft.; bushy { 1000, \$60 } .....	50	2 50	10 00
3½ to 4 ft.; bushy { 1000, \$75 } .....	60	4 00	15 00
4 to 5 ft.; bushy .....	75	5 00	25 00
5 to 6 ft.; bushy .....	1 00		
<i>ovalifolium</i> . var. <i>aureum</i> . Golden Privet—			
2½ to 3 ft. ....	75	6 00	
Grand stock. Transplanted Privet, extra heavy. Will give immediate hedge.			
<i>Sinensis</i> . Chinese Privet. 2½ to 3 ft. ....	50	3 50	
3½ to 4 ft. ....	75	4 00	
<i>vulgaris</i> . Common Privet. 2 to 3 ft. ....	35	2 50	15 00
3 to 4 ft. ....	50	3 00	25 00
4 to 5 ft. ....	75	4 00	30 00
<b>LONICERA</b> <i>fragrantissima</i> . Chinese Fragrant Bush Honeysuckle. 2 to 3 ft. ....	25	2 25	20 00
3 to 4 ft. ....	35	3 25	30 00
4 to 5 ft.; heavy .....	50	4 50	40 00
5 to 6 ft.; heavy .....	75	6 00	50 00



A Portion of the Propagating Grounds at Andorra.

	Each	10	100
<b>LYCICERA Morrowi.</b> Japanese Bush Honeysuckle—			
3 to 4 ft. ....	\$0 50	\$3 00	\$25 00
4 to 5 ft. ....	75	5 00	35 00
5 to 6 ft. ....	1 00	6 00	40 00
<b>Ruprechtiana.</b> 2 to 3 ft. ....	35	3 00	20 00
3 to 4 ft. ....	50	3 50	25 00
4 to 5 ft. ....	75	5 00	35 00
<b>Standishi.</b> Standish's Honeysuckle—			
2 to 2½ ft. .... ♦	75	6 00	
<b>Tatarica.</b> Mixed sorts. 3½ to 4 ft. ....	35	2 50	
5 to 6 ft. ....	50	3 00	25 00
6 to 8 ft.; heavy ....	75	5 00	30 00
<b>Tatarica (rubra).</b> 3 to 4 ft. ....	50	3 50	30 00
4 to 5 ft. ....	75	5 00	35 00
<b>Tatarica, var. alba.</b> 2½ to 3 ft. ....	35	3 00	
3 to 4 ft. ....	50	3 50	
4 to 5 ft.; heavy ....	75	6 00	40 00
5 to 6 ft. ....	1 00	7 50	50 00
<b>Tatarica, var. bella albida.</b> 2 to 3 ft. ....	35	3 00	25 00
3 to 4 ft. ....	50	4 00	
4 to 5 ft. ....	75	5 00	
5 to 6 ft. ....	1 00	7 50	
<b>Tatarica, var. gracilis.</b> 2 to 3 ft. ....	35	3 00	25 00
3 to 4 ft. ....	75	6 00	
5 to 6 ft. ....	1 00	7 50	
<b>Tatarica, var. Chrysanthera.</b> 4 to 5 ft. ....	50	3 50	30 00
5 to 6 ft. ....	75	5 00	40 00
<b>Tatarica, var. splendens.</b> 2 to 3 ft. ....	35	3 00	20 00
4 to 5 ft. ....	50	4 00	35 00
5 to 6 ft. ....	1 00	7 50	50 00
<b>LYCIUM Chinense.</b> Matrimony Vine. 2 to 2½ ft. ....	35	2 50	15 00
<b>MYRICA cerifera.</b> Wax Myrtle. 1½ to 2 ft. ....	50	4 00	35 00
2 to 2½ ft. ....	75	6 00	40 00
<b>PAVIA parviflora.</b> See <i>Aesculus</i> , under Shrubs.			
<b>PHILADELPHUS coronarius.</b> Mock Orange—			
2 to 3 ft. ....	35	3 00	15 00
3 to 4 ft. ....	50	4 00	25 00
5 to 6 ft. ....	75	6 00	35 00
<b>coronarius, var. aureus.</b> Golden Mock Orange. 1½ to 2 ft. ....	50	4 00	
<b>coronarius, var. Avalanche—</b>			
3 to 4 ft. ....	75	6 00	
<b>coronarius, var. primulae florus—</b>			
2½ to 3 ft. ....	50	4 00	
<b>grandiflorus.</b> 3 to 4 ft. ....	35	3 00	25 00
4 to 5 ft. ....	50	4 00	30 00
5 to 6 ft. ....	75	5 00	35 00
6 to 8 ft. ....	1 00	7 50	
<b>Lemoinei.</b> (Hybrid.) 3 to 4 ft. ....	50	4 00	30 00
<b>Lemoinei, var. erectus.</b> 2 to 3 ft. ....	35	3 00	20 00
3 to 4 ft. ....	50	4 00	25 00
4 to 5 ft. ....	75	5 00	30 00
<b>Mt. Blanc.</b> 1½ to 2 ft. ....	35	3 00	20 00
3 to 4 ft. ....	75	5 00	35 00
<b>Zeyheri, var. speciosissimus—</b>			
2½ to 3 ft. ....	35	3 00	20 00
3 to 4 ft. ....	50	4 00	25 00
5 to 6 ft. ....	75	6 00	35 00

PRICE LIST FOR FALL OF 1912

	Each	10	100
<b>POTENTILLA fruticosa.</b> Shrubby Cinquefoil—			
2 to 2½ ft. ....	\$0 35	\$3 00	\$20 00
3 to 3½ ft. ....	50	3 50	25 00
3½ to 4 ft. ....	75	4 00	30 00
<b>PRUNUS amygdalus communis.</b> Flowering Almond—			
1½ to 2 ft. ....	75	5 00	
<b>amygdalus communis, var. rosea—</b>			
1½ to 2 ft. ....	75	5 00	
<b>PYRUS arbutifolia.</b> Chokeberry. 3 to 4 ft. ....	50	3 50	
<b>arbutifolia, var. brilliantissima.</b> 2 to 3 ft. ..	50	3 50	25 00
3 to 4 ft. ....	75	5 00	35 00
<b>floribunda, var. nigra.</b> 3 to 3½ ft. ....	35	3 00	20 00
3½ to 4 ft. ....	50	3 50	25 00
<b>RHAMNUS cathartica.</b> Buckthorn. 3 to 4 ft. ....	35	3 00	
4 to 5 ft. ....	50	3 50	
6 to 8 ft. ....	75	5 00	40 00
<b>RHODOTYPUS kerrioides.</b> White Kerria—			
2½ to 3 ft. ....	35	3 00	20 00
3½ to 4 ft. ....	50	4 00	25 00
4 to 5 ft. Very heavy ....	75	6 00	
<b>RHUS aromatica.</b> Fragrant Sumac. 1½ to 2 ft. ....	25	2 00	15 00
2½ to 3 ft. ....	50	4 00	25 00
3 to 3½ ft. ....	75	5 00	30 00
<b>copallina.</b> Shining Sumac. 2 to 3 ft. ....	35	3 00	25 00
3 to 4 ft. ....	50	4 00	30 00
4 to 5 ft. ....	75	6 00	40 00
6 to 7 ft. ....	1 00	8 50	
<b>Cotinus.</b> Mist, or Smoke Tree. 3 to 4 ft. ....	35	3 00	
4 to 5 ft. ....	50	4 00	30 00
5 to 6 ft. ....	75		
6 to 8 ft. ....	1 00		
<b>Cotinus, var. atropurpurea.</b> Purple Mist—			
2 to 3 ft. ....	50	4 00	
3 to 4 ft. ....	75	6 00	
4 to 5 ft. ....	1 00		
<b>RIBES aureum.</b> Golden Currant. 3 to 4. ....	50	3 50	
<b>Gordonianum.</b> 3 to 3½ ft. ....	35	3 00	25 00
<b>ROBINIA hispida.</b> Rose Acacia. 2 to 2½ ft. ....	35	2 50	20 00
<b>RUBUS Canadensis.</b> 2 to 3 ft. ....	35	2 00	
<b>odoratus.</b> 2 to 3 ft. ....	25	2 00	
<b>SAMBUCUS Canadensis.</b> 2 to 3 ft. ....	35	3 00	20 00
<b>Melanocarpus.</b> 3 to 4 ft. ....	75	6 00	
5 to 6 ft. ....	1 00	7 50	
<b>nigra, var. aurea.</b> Golden Elder—			
2 to 3 ft. ....	35	3 00	20 00
3 to 4 ft. Very heavy ....	50	4 00	25 00
5 to 6 ft. Very heavy ....	75	5 00	40 00
<b>nigra, var. laciniata.</b> Cut-leaved Elder—			
2 to 2½ ft. ....	35		
3 to 4 ft. ....	50		
<b>racemosa.</b> Red-fruited—			
2 to 2½ ft. ....	50		
3 to 4 ft. ....	75	6 00	35 00
4 to 5 ft. ....	1 00	8 50	50 00

## ANDORRA NURSERIES

	Each	10	100
<b>SPIRÆA arguta.</b> 2 to 3 ft.....	\$0 35	\$2 50	\$20 00
4 to 5 ft. Heavy.....	50	3 50	
<b>Billardii.</b> 3 to 4 ft.....	35	3 00	
4 to 5 ft.....	50	3 50	25 00
<b>Bumalda.</b> 2 ft.....	35	3 00	
2½ ft. Heavy .....	50	4 00	
3 ft. ....	75	6 00	
<b>Bumalda, var. Anthony Waterer.</b> 1½ to 2 ft..	35	2 50	
2 to 2½ ft. Heavy .....	50	4 00	
2½ to 3 ft. Heavy .....	75	5 00	
<b>callosa.</b> Fortune's Spirea. 2 to 3 ft....	35	3 00	20 00
<b>callosa, var. alba.</b> 2 to 3 ft.....	35	3 00	20 00
<b>Hyb. Margarite.</b> 3 to 3½ ft.....	35	3 00	25 00
3½ to 4 ft.....	50	4 00	30 00
<b>Japonica, var. Fortunei rosea.</b> 2 to 3 ft..	50	3 50	
<b>Lindleyana.</b> 3 to 4 ft.....	50	4 00	25 00
<b>opulifolia.</b> 3 to 4 ft.....	35	3 00	
4 to 5 ft. ....	50	4 00	25 00
6 to 7 ft. Heavy .....	75	6 00	40 00
7 to 9 ft. ....	1 00	8 50	75 00
<b>opulifolia, var. aurea.</b> Golden-leaved—			
2 to 3 ft. ....	35	3 00	20 00
4 to 5 ft. ....	50	4 00	25 00
6 to 7 ft. Heavy .....	75	6 00	40 00
<b>prunifolia flore pleno.</b> Bridal Wreath—			
4 to 5 ft. ....	50	3 00	25 00
<b>Reevesiana.</b> 2 to 3 ft.....	35	3 00	20 00
3 to 4 ft. ....	50	4 00	25 00
4 to 5 ft. ....	75	6 00	35 00
<b>salisifolia.</b> 2 to 3 ft.....	35	2 50	20 00
<b>Sorbifolia.</b> 2½ to 3 ft.....	50	3 50	20 00
<b>Thunbergii.</b> Thunberg's Spirea—			
1½ to 2 ft. ....	35	3 00	20 00
2½ to 3 ft. Very heavy .....	50	3 50	
3 to 3½ ft. Very heavy .....	75	4 00	
<b>Van Houttei.</b> 2½ to 3 ft.....	35		
3 to 3½ ft. ....	50	4 00	
4 to 5 ft. ....	75	5 00	35 00
5 to 6 ft. ....	1 00	8 50	50 00
6 to 7 ft. ....	1 50	12 50	75 00
<b>STAPHYLEA Bumalda.</b> 3 to 3½ ft.....	50	4 00	
<b>STEPHANANDRA flexuosa.</b> 2 to 2½ ft.....	35	3 00	20 00
2½ to 3 ft. Heavy .....	50	4 00	25 00
4 to 5 ft. Heavy .....	75	6 00	40 00
<b>STYRAX Japonica.</b> 4 to 5 ft.....	75	6 00	
5 to 6 ft.....	1 00	7 50	50 00

PRICE LIST FOR FALL OF 1912

45

<b>SYMPHORICARPUS racemosus.</b> Snowberry—	Each	10	100
2 to 2½ ft. ....	\$0 35	\$2 50	\$20 00
3 to 3½ ft. ....	75	5 00	
<b>vulgaris.</b> Coral Berry—			
2 to 3 ft. ....	35	3 00	12 50
3 to 3½ ft. ....	50	4 00	15 00
3½ to 4 ft. Heavy ....	75	6 00	20 00
4 to 5 ft. Heavy ....	1 00	7 00	25 00
<b>SYRINGA Chinensis:</b> syn. <b>Rothomagensis.</b> Rouen			
Lilac. 2 to 2½ ft. ....	50	3 50	25 00
4 to 5 ft. ....	75	5 00	35 00
<b>Japonica.</b> 6 to 7 ft. ....	1 50	12 50	
<b>Josikæa.</b> 2 to 2½ ft. ....	50	4 00	
3 to 4 ft. ....	1 00	7 50	
<b>Josikæa, var. H. Zabel.</b> 3 to 4 ft. ....	1 50		
<b>Persica.</b> 3 to 4 ft. ....	50		
<b>Persica, var. alba.</b> 4 to 5 ft. ....	75	6 00	30 00
<b>villosa.</b> 3 to 3½ ft. ....	50	4 00	
4 to 5 ft. Specimens. ....	1 00	7 50	
<b>villosa, var. Emodi.</b> 2 to 2½ ft. ....	50	4 00	30 00
<b>vulgaris.</b> Common Lilac. 1½ to 2 ft. ....	35	3 00	25 00
3 to 3½ ft. ....	50	4 00	35 00
4 to 5 ft. ....	75	6 00	40 00
5 to 6 ft. ....	♦. \$1.50 to	3 50	
<b>vulgaris alba.</b> 2 to 2½ ft. ....	50	4 00	35 00
3 to 3½ ft. ....	75	6 00	40 00
4 to 6 ft. ....	♦. \$1.00 to	2 50	
<b>vulgaris, named varieties—</b>			
<b>alba grandiflora</b> (Single, white)—			
3 to 4 ft. ....	75	6 00	
<b>Charles X.</b> Single, reddish purple—			
2 to 2½ ft. ....	50	3 50	30 00
3 to 3½ ft. ....	75	6 00	
4 to 4½ ft. ....	1 25	10 00	
<b>La Tour d'Auvergne.</b> Double, violet-purple. 4 to 5 ft. ....	1 50	12 50	
<b>Mad. Lemoine.</b> Double, White—			
3 to 4 ft. ....	1 00	7 50	
<b>Marie LeGraye.</b> Single, white—			
2½ to 3 ft. ....	75	6 00	
3 to 3½ ft. ....	1 00	8 50	
4 to 4½ ft. ....	1 50	12 50	
<b>Marc Micheli.</b> Double, lilac-blue—			
4 to 5 ft. ....	1 50	12 50	
<b>Michael Buchner.</b> Double, pale lilac—			
3 to 4 ft. ....	1 00	8 50	
4 to 5 ft. ....	1 50	12 50	
<b>President Carnot.</b> Double, light lilac—			
4 to 5 ft. ....	1 50		
<b>President Grevy.</b> Double, blue—			
3 to 4 ft. ....	1 00	7 50	
<b>President Loubet.</b> Double, reddish carmine. 3 to 4 ft. ....	1 00	7 50	
<b>Rubra de Marley.</b> Single, reddish purple—			
2 to 2½ ft. ....	50	4 00	30 00
4 to 4½ ft. ....	1 00	7 50	
5 to 6 ft. ....	2 50		

	Each	10	100
<b>SYRINGA Souvenir de Ludwig Spæth.</b> Single red—			
3 to 3½ ft. ....	80	50	
3½ to 4 ft. ....		75	
4 to 4½ ft. ....		1 00	
<b>Verschaffelti.</b> Single Dark Red. 4 to 5 ft.	1 00		
<b>TAMARIX Africana;</b> syn., <b>parviflora</b> —			
4 to 5 ft. ....	50	\$4 00	
5 to 6 ft. ....	75	5 00	
<b>Gallica.</b> 2 to 3 ft. ....	35	3 00	\$20 00
3 to 4 ft. ....	50	4 00	25 00
<b>Gallica, var. Indica.</b> 4 to 5 ft. ....	75	5 00	35 00
<b>Japonica plumosa.</b> 3 to 4 ft. ....	50	4 00	25 00
<b>VACCINIUM corymbosum.</b> Swamp Huckleberry—			
1½ to 2 ft. ....	35	3 25	30 00
2 to 2½ ft. ....	50	4 50	40 00
<b>VIBURNUM acerifolium.</b> 1½ to 2 ft. ....	35	3 00	25 00
2 to 2½ ft. ....	50	3 50	30 00
<b>cassanoides.</b> White Rod. 2 to 2½ ft. ....	35	3 00	25 00
3 to 3½ ft. Very heavy. ....	75	6 00	
4 to 4½ ft. Very heavy. ....	1 00	7 50	
6 to 7 ft. Very heavy. ....	2 00	17 50	
<b>dentatum.</b> Arrow-wood. 3½ to 4 ft. ....	75	6 00	30 00
4 to 5 ft.; heavy. ....	1 00	8 50	40 00
5 to 6 ft.; heavy. ....	1 25	10 00	60 00
6 to 7 ft.; heavy. ....	1 50	12 50	80 00
<b>dilatatum.</b> Japan Bush Cranberry—			
1½ to 2 ft. ....	50	3 00	
3½ to 4 ft. ....	75	6 00	
<b>Lantana.</b> Wayfaring Tree—			
3½ to 4 ft.; heavy. ....	50	4 00	
4 to 5 ft.; heavy. ....	75	6 00	
5 to 6 ft.; very heavy. ....	1 00	8 50	
<b>Lentago.</b> Sheep-berry. 2 to 3 ft. ....	50	4 00	30 00
4 to 5 ft. ....	75	6 00	40 00
5 to 6 ft. ....	1 00	8 50	
7 to 8 ft. ....	1 50	12 50	
<b>molle.</b> 3 to 4 ft. ....	50	4 00	
4 to 5 ft. ....	75	6 00	
5 to 6 ft. ....	1 00	8 50	75 00
6 to 7 ft. ....	1 50	12 50	100 00
<b>Opulus.</b> High Cranberry Bush—			
2 to 2½ ft. ....	50	3 50	30 00
3 to 4 ft. Fine. ....	60	4 00	35 00
4 to 5 ft. Fine. ....	75	6 00	50 00
5 to 6 ft. Fine. ....	1 00	8 50	75 00
6 to 7 ft. ....	1 25	10 00	90 00
<b>Opulus, var. sterile.</b> Guelder Rose—			
3 to 3½ ft. ....	50	4 00	
4 to 5 ft. ....	75	6 00	40 00
5 to 6 ft. ....	1 00	7 50	50 00
<b>plicatum.</b> Japanese Snowball—			
2 to 3 ft. ....	50	4 00	35 00
3 to 4 ft. ....	75	5 00	40 00



PRICE LIST FOR FALL OF 1912

47

	Each	10	100
<b>VIBURNUM plicatum, var. tomentosum.</b> Single Japan			
Snowball. 2½ to 3 ft.....	\$0 35	\$3 00	\$25 00
3 to 3½ ft. ....	50	4 00	35 00
4 to 5 ft; extra fine .....	75	5 00	45 00
5 to 6 ft. Specimens. Fine ...	1 00	7 50	
7 to 8 ft. Specimens. Fine ...	2 50	20 00	150 00
A beautiful shrub, deserving extensive planting.			
<b>prunifolium.</b> Black Haw—			
2½ to 3 ft. ....	50		
3½ to 4 ft. ....	1 00		
4 to 6 ft. ....	\$1.50 to 3 50		
<b>Sieboldi.</b> 3½ to 4 ft.....	1 00	8 50	65 00
5 to 6 ft.....	1 50	12 50	100 00
<b>VITEX Agnus-castus.</b> Chaste Tree. 3 to 4 ft....	50	3 00	20 00
Agnus-castus, var. <i>alba</i> . 2½ to 3 ft.....	50	3 00	20 00
<b>XANTHOCERAS sorbifolia.</b> 3 to 4 ft.....	75	6 00	
4 to 5 ft.....	1 00	7 50	
<b>XANTHORRHIZA apiifolia.</b> Shrub Yellow Root—			
5 to 6 in. In clumps ....	25	2 00	10 00
6 to 8 in. In clumps ....	35	2 75	12 50
10 to 12 in. In clumps ....	50	3 50	15 00
12 to 18 in. In clumps ....	75	5 00	20 00

REEDS and GRASSES

	Each	10
<b>ARUNDO Donax.</b> Clumps .....	\$0 50	\$3 50
<b>BAMBUSA Metake</b> .....	50	3 50
<b>ELYMUS glaucus</b> .....	25	1 50
<b>ERIANTHUS Ravenæ</b> .....	50	3 50
<b>EULALIA Japonica,</b> and vars. <i>variegata</i> , <i>gracillima univittata</i> , <i>zebrina.</i> Clumps .....	50	3 50
<b>FESTUCA glauca</b> .....	25	1 50
<b>PHALARIS arundinacea,</b> var. <i>variegata.</i> Ribbon Grass.....	25	1 50
<b>UNIOLA latifolia</b> .....	25	1 50

VINES, CLIMBING and TRAILING PLANTS

	Each	10
<b>ACTINIDIA polygama.</b> 6-in. pots.....	\$0 50	\$3 50
<b>AKEBIA quinata.</b> From 4-in. pots.....	50	3 50
<b>AMPELOPSIS quinquefolia.</b> Virginia Creeper. 4-in. pots..	50	3 50
3-year, field-grown; heavy .....	25	2 00
<b>quinquefolia,</b> var. <i>Engelmanni.</i> 5-in. pots; heavy..	35	3 00
3-year, field-grown; heavy .....	25	2 00
<b>tricuspidata;</b> syn. <i>Veitchi.</i> Japan or Boston Ivy; 5-in. pots; heavy.....	35	3 00
2-year, field-grown; heavy... per 100, \$15..	25	2 00
<b>ARISTOLOCHIA Siph.</b> Dutchman's Pipe Vine. 5-in. pots..	75	6 00
6-in. pots .....	1 00	
<b>BIGNONIA grandiflora.</b> 1½ to 2 ft.; field-grown.....	35	2 00
<b>radicans.</b> Scarlet Trumpet Vine. 6-in. pots.....	50	4 00
2 to 3 ft.; field-grown .....	25	2 00

	Each	10
<b>CELASTRUS scandens.</b> False Bitter-sweet—		
2 to 3 ft. ....per 100, \$20..	\$0 50	\$3 50
3 to 5 ft.; heavy; field-grown .....	75	5 00
<b>CLEMATIS coccinea.</b> 4-in. pots.....	35	3 00
<b>Flammula.</b> Sweet Clematis. 5-in. pots.....	1 00	7 50
<b>Large-flowering varieties.</b> —Fairy Queen, Gem, Henry, Jackmani, Jackmani var. alba, Jeanne d'Arc, Duchess of Edinburgh, Ker- mesina, Lady Neville, Lilacina floribunda, Madame Van Houtte, Miss Bateman, Presi- dent .....	50	4 00
<b>paniculata.</b> 2-year; heavy.....per 100, \$15..	30	2 50
5-in. pots; fine.....per 100, \$25..	50	3 50
<b>Virginiana.</b> Wild Clematis .....	50	4 00
<b>DCLICHOS</b> See <i>Pueraria</i> .		
<b>EJONYMUS radicans.</b> 1 ft.; field-grown.....per 100, \$15..	25	1 75
1½ to 2 ft.; field-grown.....per 100, \$20..	35	2 50
<b>radicans, var. variegata.</b> 1 ft.; field-grown.....	25	2 00
<b>radicans, var. Carrieri</b> (large leaf)— 1½ to 2 ft.....per 100, \$35..	50	4 00
<b>HEDERA Helix.</b> English Ivy. 4-in. pots.....per 100, \$20..	35	3 00
<b>LATHYRUS latifolius.</b> Everlasting Pea.....	35	2 50
<b>LONICERA Japonica.</b> Honeysuckle. 4-in. pots..per 100, \$20..	35	2 50
3-year; field-grown .....	35	3 00
<b>Japonica, var. brachypoda;</b> syn., <i>flexuosa.</i> Field- grown; 4-in. pots ..per 100, \$20..	35	3 00
<b>Japonica, var. aurea reticulata.</b> 4-in. pots.....	35	3 00
<b>Japonica, var. Chinensis.</b> Purplish green foliage— 4-in. pots .....	35	3 00
Heavy, field-grown .....	35	3 00
<b>Japonica, var. Halleana.</b> 4-in. pots..per 100, \$20..	35	3 00
3-year old, field-grown.....per 100, \$15..	25	2 00
<b>sempervirens, var. fuchsoides.</b> Scarlet Trumpet— 6-in pots .....	50	4 00
<b>PERIPLOCA Græca.</b> Silk Vine. Field-grown.....	35	3 00
6-in. pots .....	50	4 00
<b>PUERARIA Thunbergiana.</b> Kudzu Vine.....	1 00	7 50
<b>VITIS æstivalis.</b> Summer Grape .....	50	3 50
<b>heterophylla, var. variegata</b> .....	50	3 50
<b>Labrusca.</b> Fox Grape .....	50	3 50
<b>riparia.</b> Frost Grape .....	50	3 50
<b>WISTARIA Chinensis.</b> Chinese Wistaria— 2 to 3 ft.; in large pots .....	1 50	12 50
3 to 4 ft.; field-grown .....	2 00	15 00
<b>Chinensis</b> (Standards). 4 to 5 ft. ....	3 50	30 00
<b>Chinensis, var. alba.</b> Field-grown. 4 to 6 ft.....	2 50	22 50
6 to 7 ft. ....	3 50	30 00
<b>frutescens.</b> 4 to 5 ft.....	2 50	
5 to 7 ft. ....	2 50	22 50
<b>magnifica.</b> 5 to 6 ft.; field-grown.....\$1.50 to	2 50	
<b>multijuga.</b> 3 to 4 ft.; field-grown.....	1 50	12 50
4 to 6 ft.; field-grown.....\$1.50 to	3 50	
<b>multijuga, var. alba.</b> Field-grown. 3 to 4 ft....	1 00	
4 to 6 ft.....\$1 50 to	3 50	

# FRUIT DEPARTMENT

	Each	19
<b>APPLES, Summer</b> —Early Harvest, Golden Sweet, Red Astrachan, Summer Rambo, Sweet Bough, Benoin, Yellow Transparent.		
<b>Autumn</b> —Fall Pippin, Gravenstein, Maiden's Blush, Smokehouse, Wealthy.		
<b>Winter</b> —Baldwin, Belle-fleur, Fallawater, King of Tompkins County, Northern Spy, Rhode Island Greening, Styman's Winesap, York Imperial.		
5 to 7 ft.; $\frac{3}{4}$ to 1 in. cal. ....	\$1 00	\$6 00
<b>Crab</b> —Hyslop, Large Red Siberian, Large Yellow Siberian, Transcendent. 5 to 7 ft. ....	1 00	6 00
<b>CHERRIES, Sour (Dukes and Morellos)</b> —Early Richmond, Empress Eugenie, May Duke, Late Duke, Montmorency. 5 to 6 ft. ....	1 50	10 00
<b>Large Sweet (Hearts and Bigarreaus)</b> —Black Tartarian. Governor Wood, Napoleon Bigarreau, Schmidt's Bigarreau, Windsor. 5 to 6 ft. ....	1 50	10 00
<b>NUTS, American Sweet Chestnut.</b> See under <i>Deciduous Trees.</i>		
<b>Spanish Chestnut.</b> See under <i>Deciduous Trees.</i>		
<b>Hybrid Chestnut.</b> Paragon, Numbo. 4 to 5 ft. ....	1 50	12 50
<b>Japan Chestnut.</b> 3 to 4 ft. ....	1 00	
<b>Walnut, Black.</b> See <i>Juglans nigra</i> , under <i>Deciduous Trees.</i>		
<b>PEACHES</b> —Belle of Georgia, Fitzgerald, Fox's Seedling, Crawford's Late, Elberta, Mountain Rose, Morris White, Oldmixon Free, Stump the World, Susquehanna, Troth's Early, Wheatland. 5 to 6 ft. ....per 100, \$30..	50	3 50
<b>PEARS, Summer</b> —Bartlett, Clapp's Favorite, Doyenne d'Ete.		
<b>Autumn and Winter</b> —Beurre d'Anjou, Buffum, Duchesse d'Angouleme, Howell, Kieffer's Hybrid, Lawrence, Rutter, Seekel, Sheldon, Worden-Seckel. 5 to 6 ft. ....	1 50	10 00
A few varieties, 6 to 8 ft. ....	2 00	15 00
<b>PLUMS, Japanese</b> —Abundance, Burbank, Chabot, Satsuma. 5 to 6 ft. ....	1 00	7 50
<b>European</b> —Giant Prune, Imperial Gage, Lombard.		
<b>QUINCES</b> —Champion, Orange. 3 to 4 ft. ....	75	6 00

## SMALL FRUITS

	Each	10
<b>BLACKBERRIES</b> —Eldorado, Erie, Kittatinny, Rathbun, Snyder, Wilson Junior. ....per 100, \$3..		\$0 50
<b>CURRENTS, Red</b> —Cherry, Fay's Prolific; <b>White</b> —White Grape; <b>Black</b> —Lee's Prolific. ....	\$0 25	2 00
<b>GOOSEBERRIES, Red</b> —Houghton, Industry; <b>Green</b> —Downing, Smith's Improved. ....	25	2 00
<b>GRAPES, Black</b> —Concord, Moore's Early, Worden; <b>Red</b> —Brighton, Catawba, Delaware; <b>White</b> —Green Mountain, Niagara, Pocklington. 2-year. ....	25	2 00
A few varieties, extra heavy. ....	50	3 00
<b>RASPBERRIES, Black</b> —Gregg; <b>Red</b> —Cuthbert, Columbian Ruby; <b>Yellow</b> —Golden Queen, per 100, \$3		50

**STRAWBERRIES, Early**—Bederwood, Marshall; **Medium**—Bubach, Glen Mary, Sharpless, **Late**—Brandywine, Gandy, Runners, per 100, \$2; per 1,000, \$7.50. Potted plants, per 100, \$3 to \$4.

## ESCULENT ROOTS

**ASPARAGUS**—Barr's Mammoth. Per 100, \$1.50; per 1,000, \$7.50.

**RHUBARB**—Best varieties. Per 10, \$1.50; per 100, \$10.

## ROSES

N. B.—Potted unless noted. Special prices per hundred.

	Each	10
<b>AUSTRIAN BRIERS</b> —Harrison's Yellow and Persian Yellow	\$0 40	\$3 50
<b>SWEETBRIER</b> — <i>Rosa rubignosa</i>	40	3 50
<b>HYBRIDS Penzance Briers</b> —Amy Robsart, Anne of Geierstein, Brenda, Flora McIvor, Lady Penzance, Lord Penzance, Meg Merrilies, Minna	50	4 50
<b>BUSH</b> —Blanda, Carolina, canina, lucida, lucida var. alba, multiflora, nitida, rubrifolia, field-grown	35	3 00
<b>CLIMBING</b> —Baltimore Belle, The Dawson, Dorothy Perkins, Lady Gay, Prairie Queen	50	3 50
Setigera. Prairie Rose, 2 to 2½ ft.; field grown	35	3 00
<b>Ramblers</b> —Crimson, White, Pink and Yellow, The Dawson (carmine)	40	3 50
<b>EVERBLOOMING Hybrid Teas</b> —Bessie Brown, creamy white; Betty, ruddy gold; Captain Christy, flesh; Caroline Testout, rose; Countess of Caledon, carmine; Duchesse of Albany, deep pink; Gladys Harkness, salmon-pink; Gruss an Teplitz, crimson; Kaiserine Auguste Victoria, primrose; Killarney, pink; La France, rose; Madame Ravary, yellow; Souvenir du President Carnot, flesh-rose; Viscountess Folkestone, creamy pink	50	4 50
<b>EVERBLOOMING, Miscellaneous</b> —Clothilde Soupert (Polyantha), rosy white; etoile de Lyon (Tea), yellow; Francisca Kruger (Tea), yellow-peach; Francis Dubreuil (Tea), crimson; Harry Kirk, deep sulphur yellow; Maman Cochet (Tea), rosy white; Souvenir de la Malmaison (Bourbon), flesh; White Maman Cochet (Tea), white	50	4 50
<b>HYBRID Perpetual</b> —Alfred K. Williams, carmine-red; Baroness Rothschild, rose; Captain Hayward, carmine-crimson; Clio, flesh; Eugene Verdier, rose-flesh; Frau Karl Druschki, white; General Jacqueminot, scarlet; Lady Helen Stewart, crimson-scarlet; Louis Van Houtte, red-crimson; Magna Charta, rose; Madame Gabriel Luizet, silvery pink; Margaret Dickson, white; Mrs. R. G. Sharman-Crawford, rose-pink; Mrs. John Laing, pink; Paul Neyron, deep rose; Prince Camille de Rohan, deep crimson; Ulrich Brunner, cherry crimson	50	4 00
<b>MOSS</b> —Blanche Moreau, white; Crimson Globe, deep crimson; Zenobia, rose	50	4 00

**RUGOSA ROSES**

	Each	10	100
<b>ROSA rugosa.</b> 2 to 2½ ft. ....	\$0 35	\$3 00	\$20 00
2½ to 3 ft. ....	50	4 00	35 00
3 to 3½ ft. ....	75	6 00	50 00
<b>rugosa, var. alba.</b> 2 to 2½ ft. ....	50	4 00	25 00
2½ to 3 ft. ....	75	6 00	50 00
<b>rugosa hybrids atropurpurea</b> —Atropurpurea, Blanc Double de Coubert, Conrad F. Meyer, Madame Georges Bruant, Madam Charles Worth, Mrs. A. Waterer. Pot- grown .....♦	50	4 00	

**WICHURAIANA ROSES**

<b>ROSA Wichuraiana.</b> The Trailing Rose. 2 to 3 ft..	\$0 25	\$2 00	
2 to 3 ft. In 4-in. pots .....	35	3 00	\$25 00
<b>hybrids</b> —Evergreen Gem, Gardenia, Manda's Triumph, Pink Roamer, South Orange Perfection, Universal Favorite. In pots.	50	3 50	
<b>SINGLE ROSES, Dickson's Hybrids</b> —New Irish Beauty, Irish Glory, Irish Modesty, Irish Bright- ness .....♦	75	6 00	

**HARDY HERBACEOUS PLANTS**

	Each	10	100
<b>ACHILLEA filipendulina</b> (Noble Yarrow). July. Golden Yellow. 2 ft.....	\$0 15	\$1 25	\$10 00
<b>millefolium roseum</b> (Rosy Milfoil). July to September. Pink. 1½ ft..	15	1 25	
<b>ptarmica</b> (The Pearl). All summer. White. 2 ft. ....	15	1 25	10 00
<b>tomentosum</b> (Woolly Yarrow). June. Yellow. 1 ft. ....	25	2 00	
<b>ACONITUM Fischeri</b> (Monkshood). September and October. Blue. 3 ft. ....	35	2 50	15 00
<b>Lycototum</b> (Wolf's Bane). June to September. Yellow. 3 ft. ....	35	2 50	
<b>ACANTHUS mollis</b> (Bear's Breech). August and September. Rose. 3 ft. ....	35	2 50	
<b>AJUGA Genevensis.</b> May. Bright Blue. 6 in.....	25	1 50	12 50
<b>reptans rubra</b> (Bugle). May. Purplish blue. 6 in. ....	25	1 50	12 50
<b>ALTHÆA rosea</b> (Hollyhock). July. Various colors. 4 to 6 ft. ....	25	1 50	12 50
<b>rosea, var. Allegheny Fringed</b> .....	25	1 50	12 50
<b>ALYSSUM rostratum,</b> June and July. Golden Yel- low. 1 ft. ....	35	2 50	
<b>saxatile compactum</b> (Golden Tuft). May and June. Yellow. 1 ft. ....	25	1 50	12 50
<b>ANCHUSA Italica, var. Dropmore.</b> New (Alkanet). May and June. Blue. 3 to 4 ft..	35	2 50	
<b>ANEMONE</b> (Windflower) <b>Japonica.</b> September Red. 2 to 3 ft. ....	25	1 50	12 50
<b>Japonica, var. alba.</b> Fall. White. 2 to 3 ft.	25	1 50	12 50
<b>Japonica, var. Queen Charlotte.</b> Fall. Rose. 2 to 3 ft. ....	25	2 00	15 00
<b>Japonica, var. Lady Ardilaun.</b> Fall. White. 2 to 3 ft. ....	25	2 00	15 00



Partial view of Herbaceous Plantations

	Each	10	100
<b>ANEMONE Japonica</b> , var. Whirlwind. Fall. Pure white. 2 to 3 ft. ....	\$0 25	\$2 00	\$15 00
<b>Pennsylvanicum</b> . June and July. White. 1 to 2 ft.	25	1 50	12 50
<b>Pulsatilla</b> (Pasque Flower). May. Violet-purple. 9 in. ....	25	1 50	12 50
<b>sylvestris</b> . May. Pure white. 1 to 1½ ft. ....	25	1 50	12 50
<b>ANTHEMIS tinctoria</b> (Chamomile). June to September. Golden Yellow. 2 ft. ....	25	1 50	10 00
<b>AQUILEGIA baicalense</b> . May to July. Blue and white. 18 in. ....	25	1 50	12 50
<b>Canadensis</b> . (Common Columbine). May to July. Scarlet and Yellow. 1 to 2 ft. ....	25	1 50	10 00
<b>Chrysantha</b> . May to August. Golden Yellow. 3 ft. ....	25	2 00	12 50
<b>cærulea</b> (Rocky Mountain Columbine). May to July. Blue. 18 in. ....	25	2 00	12 50
<b>flabellata</b> , var. <b>nana alba</b> . April to June. White. 1 ft. ....	25	2 00	
<b>nivea grandiflora</b> . April to June. White. 2 to 3 ft. ....	25	2 00	12 50
<b>vulgaris fl. pl.</b> May to July. White to blue. 1½ to 2 ft. ....	25	2 00	12 50
<b>truncata</b> . May and June. Scarlet, yellow-tipped. 2 ft. ....	25	2 00	12 50
<b>ARABIS alpina</b> (Rock Cress). April and May. White. 4 in. ....	25	1 50	10 00
<b>alpina fl. pl.</b> Double. ....	35	2 50	
<b>ARENARIA montana</b> , var. <b>grandiflora</b> (Sandwort). May and June. White. 6 in. ....	25	1 50	12 50

PRICE LIST FOR FALL OF 1912

53

	Each	10	100
<b>ARMERIA maritima</b> , var. <i>alba</i> (Thrift). Summer. White. 9 in.....	\$0 25	\$1 50	\$10 00
<i>maritima</i> , var. <i>splendens</i> . Summer Rose. 9 in.....	25	1 50	12 50
<b>ARTEMISIA abrotanum</b> (Old Man). Silvery white foliage. 2 ft.....	25	1 50	10 00
<i>Stelleriana</i> (Old Woman). Silvery foliage. 2 ft.....	25	1 50	10 00
<b>ASCLEPIAS tuberosa</b> (Butterfly Weed). July and August. Orange. 2 ft.....	25	1 50	10 00
<b>ASTER alpinus</b> . June and July. Purple. 9 in....	25	1 50	10 00
<i>Amellus elegans</i> . September and October. Blue. 1½ ft.....	25	1 50	10 00
<b>ASTER</b> (Michaelmas Daisy) <i>amethystinus</i> . September and October. Amethyst. 3 to 4 ft.....	25	1 50	10 00
<i>grandiflorus</i> . October and November. Violet-blue. 2 ft.....	35	2 50	20 00
<b>Lady Trevelyan</b> . September and October. White. 3 ft.....	25	1 50	10 00
<b>Madonna</b> . September and October. White. 4 ft.....	25	1 50	10 00
<b>Novæ Angliæ</b> . September and October. Purple. 4 ft.....	25	1 50	10 00
<b>Novæ Angliæ</b> , var. <i>rubra</i> . September and October. Bright rose. 4 ft.....	25	1 50	10 00
<i>ptarmicoides</i> . August and September. White. 1½ ft.....	25	1 50	10 00
<b>Robert Parker</b> . September and October. Lavender. 4 ft.....	25	1 50	10 00
<b>Tataricus</b> . October and November. Purple. 5 ft.....	25	1 50	10 00
<b>Trinervius</b> . October and November. Violet-purple. 2½ ft.....	25	1 50	10 00
<b>White Queen</b> September and October. White. 4 ft.....	25	1 50	10 00
<b>ASTILBE Japonica</b> (Spirea). June. White. 1½ ft.....	25	1 50	10 00
<b>ASTRANTIA major</b> (Masterwort). June and July. Pale pink. 1 ft.....	25	2 50	20 00
<b>AUBRETIA Hendersoni</b> (False Wall Cress). April. Purplish violet. 4 in.....	25	1 50	12 50
<b>BAPTISIA australis</b> (False Indigo). June and July. Dark blue. 2 ft.....	25	1 50	10 00
<i>tinctoria</i> . June and July. Bright yellow. 2 to 3 ft.....	25	1 50	10 00
<b>BELEMOCANDA Chinensis</b> ; syn., <i>Pardanthus</i> . June. Orange-red. 4 ft.....	25	1 50	10 00
<b>BELLIS perennis</b> (English Daisy) May. White and pink. 6 to 8 in.....	25	1 50	10 00
<b>BETONICA</b> . See <i>Stachys</i> .			
<b>BOCCONIA cordata</b> (Plume Poppy). July and August. White. 5 ft.....	25	1 50	12 50
<b>BOLTONIA asterioides</b> (False Chamomile). August and September. White. 4 ft.....	25	1 50	10 00
<i>latisquama</i> . August and September. Light lilac. 4 ft.....	25	1 50	10 00
<b>CALIMERIS incisa</b> (Starwort). July to September. Light blue. 18 in.....	25	1 50	10 00

	Each	10	100
<b>CALLIRHOË involucrata</b> (Poppy Mallow). All summer. Rosy crimson. 1 ft.....	\$0 25	\$1 50	\$10 00
<b>CAMPANULA Carpatica</b> (Carpathian Harebell). June to September. Blue. 9 in.....	25	1 50	10 00
<b>Carpatica, var. alba.</b> June to September. White. 9 in.....	25	1 50	10 00
<b>Mørheimi.</b> May to July. White. 2 to 2½ ft..	35	2 50	
<b>persicifolia</b> (Peach Bells). June and July. Blue. 18 in.....	25	1 50	10 00
<b>persicifolia alba.</b> June and July. White. 18 in..	25	1 50	10 00
<b>pyramidalis</b> (Chimney Bellflower). August and September. Blue. 2 ft.....	25	1 50	10 00
<b>CENTAUREA montana</b> (Perennial Cornflower). June and July. Dark purple. 1½ ft.....	25	1 50	
<b>CERASTIUM tomentosum.</b> June and July. White. 6 in.....	25	1 50	12 50
<b>CERATOSTIGMA plumbaginoides</b> (Plumbago). October and November. Blue. 6 in.....	25	2 00	15 00
<b>CHELONE Lyoni</b> (Turtlehead). August and September. Rose-purple. 2 ft.....	35	2 50	
<b>obliqua, var. alba</b> (Shell-flower). August and September. White. 2 ft.....	35	2 50	
<b>CHRYSANTHEMUM leucanthemum hybridum</b> (Shasta Daisies). Alaska, California, Westralia. All summer. White. 2 ft.....	35	2 50	15 00
<b>maximum, var. Triumph</b> (Moonpenny Daisy). July to October. White. 2 ft.....	25	1 50	12 50
<b>Nipponicum.</b> September and October. White. 2 ft.....	35	2 50	
<b>Pompon Varieties.</b> Fall. All colors. 1½ to 2 ft.	25	1 50	10 00
<b>Pompon Varieties, Heavy Stock.</b>	25	2 00	15 00
<b>uliginosum.</b> September. White. 2½ ft.....	25	1 50	10 00
<b>CHRYSOGONUM Virginianum</b> (Golden Joint). June. Yellow. 1 ft.....	25	1 50	12 50
<b>CHRYSOPSIS villosa</b> (Golden Aster). September. Yellow. 2 ft.....	25	2 00	15 00
<b>CIMICIFUGA acerinum.</b> August and September. White. 2½ ft.....	35	2 50	
<b>Dahurica</b> (Bugbane). August and September. White. 2 to 3 ft.....	35	2 50	15 00
<b>racemosa</b> (Snakeroot). July. White. 3 to 5 ft.	25	1 50	12 50
<b>CINERARIA.</b> See <i>Artemisia</i> .			
<b>CLEMATIS crispa</b> (Leather-flower). June to September. Lavender. 3 to 4 ft.....	25	1 50	12 50
<b>Davidiana.</b> August and September. Blue. Fragrant. 3 ft.....	25	1 50	12 50
<b>recta.</b> June to August. White. Fragrant. 2 to 3 ft.....	25	1 50	12 50
<b>CONOCLINIUM cœlestinum</b> (Mist-flower). September and October. Deep blue. 18 in.....	25	1 50	12 50
<b>CONVALLARIA majalis</b> (Lily-of-the-Valley). May and June. White. 6 to 9 in.....	25	2 00	15 00
<b>COREOPSIS lanceolata</b> (Tickseed). June to October. Golden yellow. 2 ft.....	15	1 25	10 00
<b>CORONILLA varia</b> (Crown Vetch). June and October. Pink. 1 to 2 ft.....	25	1 50	12 50



PRICE LIST FOR FALL OF 1912

55

	Each	10	100
<b>DELPHINIUM Chinense</b> (Larkspur). July to September. Blue. 1½ ft.....	\$0 25	\$1 50	\$10 00
<b>Chinense, var. album.</b> July to September. White. 1½ ft. ....	25	1 50	10 00
<b>elatium</b> (Bee Larkspur). June to August. Blue. 4 ft.....	25	1 50	10 00
<b>formosum</b> (Larkspur). June to September. Deep blue. 4 ft.....	25	1 50	10 00
<b>DIANTHUS barbatus</b> (Sweet William). May to July. Mixed colors. 1½ ft. ....	25	1 50	10 00
<b>deltoides</b> (Maiden Pink). June. Pink. 4 in..	25	1 50	10 00
<b>latifolius.</b> June. Red. 1 ft.....	25	1 50	10 00
<b>plumarius</b> (Hardy Pinks). May and June. 1 ft.	25	2 00	15 00
VARIETIES :			
<b>Delicata.</b> Rose, with fringed petals.			
<b>Laura Wilmer.</b> White, with maroon center.			
<b>Her Majesty.</b> White.			
<b>Mrs. Sinkins.</b> White.			
<b>Stanislaus.</b> Violet-rose, with crimson center.			
<b>DICENTRA eximia</b> (Seal-flower). June to August. Pink. 1 ft.....	25	1 50	10 00
<b>spectabilis</b> (Bleeding-heart). May and June. Pink. 2 to 3 ft.....	25	2 00	12 50
<b>DICTAMNUS fraxinella</b> (Gas Plant). June. Purple. 3 ft.....	35	2 50	15 00
<b>fraxinella, var. alba.</b> June. White. 3 ft....	35	2 50	15 00
<b>DIGITALIS ambigua</b> (Foxglove). July and August. Pale yellow. 3 ft. ....	25	2 00	15 00
<b>purpurea</b> (Common Foxglove). June and July. Mixed colors. 4 to 5 ft.....	25	1 50	10 00
<b>purpurea, var. gloxiniaeflora.</b> June and July. Mixed colors. 4 to 5 ft.....	25	1 50	10 00
<b>DORONICUM Austriacum.</b> April and May. Yellow. 2 ft.....	35	2 50	15 00
<b>plantagineum, var. excelsum.</b> April to June. Yellow. 2 ft. ....	35	2 50	15 00
<b>ECHINACEA purpurea</b> (Purple Cone-flower). July to September. Rosy purple. 3 ft.....	25	2 00	15 00
<b>ERIGERON speciosus</b> (Eleabane). June to August. Violet-blue. 1½ to 2 ft.....	25	2 00	15 00
<b>ERYNGIUM amethystinum</b> (Sea Holly). July to September. Amethyst-blue. 2 ft.....	35	2 50	
<b>EUPATORIUM ageratoides</b> (White Snakeroot). September and October. White. 3 ft.....	25	1 50	12 50
<b>cœlestinum.</b> Fall. Light blue. 2 ft.....	25	1 50	
<b>EUPHORBIA corollata</b> (Spurge). July to September. White. 1½ ft.....	25	1 50	12 50
<b>FEVERFEW, Little Gem.</b> June to October. White. 15 in.....	25	1 50	10 00
<b>FUNKIA Fortunei</b> (Day Lily). July to August. Blue. 1½ to 2 ft.....	25	1 50	12 50
<b>ovata.</b> July to August. Deep blue. 1½ to 2 ft.	25	1 50	12 50
<b>subcordata, var. grandiflora.</b> September. White. Fragrant. 2 ft.....	25	2 00	15 00
<b>undulata, var. media picta variegata.</b> July and August. Lilac. 1 ft.....	25	1 50	12 50

	Each	10	100
<b>GAILLARDIA grandiflora</b> (Blanket-flower). June to November. Yellow. 1½ ft.....	\$0 25	\$1 50	\$10 00
<b>GALEGA officinalis</b> (Goat's Rue). July and August. Blue. 2 ft.....	25	1 50	10 00
<b>officinalis</b> , var. <b>alba</b> . July and August. White. 2 ft.....	25	1 50	10 00
<b>GERANIUM sanguineum</b> (Cranesbill). June to September. Red. 1½ ft.....	25	1 50	
<b>GEUM coccineum</b> (Avens). June and July. Scarlet. 1½ ft.....	25	2 00	15 00
<b>Heldreichi</b> . June. Orange. 18 in.....	25	2 00	15 00
<b>montanum</b> . June and July. Yellow. 18 in...	25	2 00	15 00
<b>GILLENIA trifoliata</b> (Bowman's Root). Rose and white. July. 3 ft.....	35	2 50	
<b>GYPSOPHILA paniculata</b> (Baby's Breath). July. White. 2 to 3 ft.....	25	1 50	12 50
<b>HELENIUM pumilum</b> (Sneezewort). July to October. Yellow. 1½ ft.....	25	1 50	10 00
<b>autumnale</b> , var. <b>superbum</b> . July to October. Yellow. 4 ft.....	25	1 50	10 00
<b>grandicephalum</b> , var. <b>striatum</b> . August to October. Orange. 3 ft.....	25	2 00	15 00
<b>Hoopesi</b> . All summer. Orange-yellow. 2 ft..	25	2 00	15 00
<b>HELIANTHUS</b> (Perennial Sunflowers) <b>giganteus</b> . August to October. Pale yellow. 6 to 10 ft.	25	1 50	10 00
<b>Maximiliana</b> . September. Deep yellow. 6 to 8 ft.	25	1 50	10 00
<b>mollis</b> . September and October. Golden yellow. 4 ft.....	25	1 50	10 00
<b>multiflorus fl. pl.</b> July and August. Golden yellow. 4 ft.....	25	1 50	10 00
<b>orgyalis</b> . September and October. Golden yellow. 6 ft.....	25	1 50	10 00
<b>rigidus</b> . July to October. Golden yellow. 3 ft.	25	1 50	10 00
<b>rigidus</b> , var. <b>Miss Mellish</b> . September and October. Golden yellow. 6 ft.....	25	1 50	10 00
<b>rigidus</b> , var. <b>Wolly Dodd</b> . September. Deep yellow. 3 ft.....	25	1 50	10 00
<b>HELIOPSIS Pitcheriana</b> . June to October. Orange-yellow. 3 ft.....	25	1 50	10 00
<b>HELLEBORUS niger</b> (Christmas Rose). March. White. 6 in.....	35	3 00	
<b>niger</b> , var. <b>atrorubens</b> . March. Purple. 9 in..	35	3 00	
<b>HEMEROCALLIS Dumortieri</b> (Yellow Day Lily). June and July. Orange-yellow. 2 ft.....	25	1 50	12 50
<b>flava</b> . June. Yellow. 2 ft.....	25	1 50	12 50
<b>fulva</b> (Tawny Day Lily). July and August. A tawny yellow. 2½ ft.....	25	1 50	12 50
<b>fulva</b> , var. <b>Kwanso fl. pl.</b> (Double Orange Lily). July and August. Coppery yellow. 2½ ft....	25	1 50	12 50
<b>fulva</b> , var. <b>Thunbergii</b> . August and September. Lemon-yellow. 2½ ft.....	25	1 50	12 50
<b>HEPATIC A triloba</b> (Liverleaf). April. White and blue. 6 in.....	25	1 25	10 00
<b>HEUCHERA sanguinea</b> (Alumroot). June to September. Coral-red. 18 in.....	25	2 00	15 00
<b>sanguinea</b> , var. <b>alba</b> . June to September. White. 18 in.....	25	2 00	



A field of Japanese Iris at Andorra

	Each	10	100
<b>HIBISCUS</b> <i>militaris</i> . June to September. Buff-yellow.			
18 in. ....	\$0 25	\$2 00	
<b>Moscheutos</b> (Mallow). July to September.			
Rose, 5 ft. ....	25	1 50	\$10 00
<b>Moscheutos</b> , var. <b>Crimson Eye</b> . July to September. White. 5 ft. ....	25	1 50	10 00
<b>HOLLYHOCKS</b> . See <i>Althæa rosea</i> .			
<b>IBERIS</b> <i>sempervirens</i> (Candytuft). April and May.			
White, 6 in. ....	25	1 50	10 00
<i>corifolia</i> . April and May. White. 9 in. ....	25	1 50	10 00
<b>INULA</b> <i>Britannica</i> (Fleabane). July to September.			
Light yellow. 2 ft. ....	25	1 50	12 50
<b>IRIS</b> . For Special Descriptive Lists, consult Calendar of Hardy Perennials.			
<i>atrovioleacea</i> . May. Dark violet. 2 to 2½ ft. .	35	3 00	
<i>cristata</i> . April and May. Light blue. 6 in. .	25	1 50	12 50
<i>Florentina</i> . May. Tinted white. Fragrant. 1½ ft. .	25	2 00	
<i>Germanica</i> . May. Named varieties. 1½ to 2½ ft. .	25	1 50	10 00
<i>lævigata</i> ; syn., <i>Kämpferi</i> (Japanese Iris). June and July. Our selection, all colors. 2½ to 4 ft. .	25	2 00	15 00
Customer's selection .....	35	3 00	
<i>Pallida</i> , var. <i>Dalmatica</i> . June. Light blue. 3 ft. .	35	3 00	25 00
<i>Pallida</i> , var. <i>speciosa</i> . June. Indigo-blue. 2 to 3 ft. ....	35	3 00	25 00
<i>Pseudacorus</i> . June. Yellow. 2 to 3 ft. ....	25	2 00	15 00
<i>pumila nova</i> . May. Various colors. 8 to 10 in. .	25	1 50	12 50
<i>Sibirica</i> . May and June. Bright blue. 1½ ft. .	25	1 50	10 00
<i>Sibirica</i> , var. <i>alba</i> . June. White. 2 ft. Rare. ♦ .	35	3 00	25 00
<i>Sibirica</i> , var. <i>orientalis</i> . May. Deep blue. 1½ ft. .	25	1 50	10 00
<i>tectorum</i> . May. Bright lilac. 1 ft. ....	25	2 00	15 00

	Each	10	100
<b>KNIPHOFIA aloides</b> (Red-hot Poker). August and September. Crimson. 3 ft.....	\$0 25	\$1 50	\$12 50
<b>obelisque.</b> July and August. Saffron-yellow. 3 to 4 ft.....	35	2 50	15 00
<b>Pfitzerii</b> (Flame Flower). July to October. Orange-scarlet. 3 to 4 ft.....	35	2 50	15 00
<b>LATHYRUS latifolius</b> , var. <b>albus</b> (Hardy White Pea). Summer. Climbing.....	25	2 00	
<b>latifolius</b> , var. <b>roseus</b> . Summer. Rose. Climbing.....	25	2 00	
<b>latifolius</b> , var. <b>splendens</b> . Summer. Climbing.....	25	2 00	15 00
<b>latifolius</b> , var. <b>Pink Beauty</b> . Summer. Bright pink. Climbing.....	25	2 00	15 00
<b>LAVENDULA spica</b> (Lavender). 15 to 18 in.....	25	1 50	12 50
<b>vera</b> (Lavender). 15 to 18 in.....	25	1 50	12 50
<b>LIATRIS graminifolia</b> (Blazing Star). August and September. Rosy purple. 2 ft.....	25	1 50	12 50
<b>pycnostachya</b> (Kansas Gay Feather). September. Rosy purple. 4 to 5 ft.....	25	1 50	12 50
<b>spicata</b> (Gay Feather). August and September. Deep purple. 3 to 4 ft.....	25	1 50	12 50
<b>LILIUM Canadense</b> (Meadow Lily). July. Shades of yellow. 2 to 4 ft.....	25	1 50	12 50
<b>Philadelphicum</b> (Wood Lily). July and August. Orange-scarlet. 2 to 4 ft.....	25	2 00	15 00
<b>speciosum</b> , var. <b>roseum</b> (Japan Lily). July and August. Rosy white. 2 to 4 ft.....	25	2 00	15 00
<b>tigrinum</b> (Tiger Lily). August. Salmon-red. 3 to 4 ft.....	25	1 50	12 50
<b>LINUM Austriacum</b> (Austrian Flax). June to August. Bluish purple. 18 in.....	25	1 75	
<b>perenne</b> (Perennial Flax). June to September. Clear blue. 18 in.....	25	1 75	
<b>LOBELIA cardinalis</b> (Cardinal Flower). August and September. Scarlet. 2 to 3 ft.....	25	1 50	12 50
<b>syphilitica</b> (Blue Lobelia). August and September. Deep blue. 2 ft.....	25	1 50	
<b>LYCHNIS Chalcedonica</b> (London Pride). July to September. Vermilion. 2 to 3 ft.....	25	1 50	12 50
<b>coronaria</b> (Rose Campion). June and July. Crimson. 1½ to 2 ft.....	25	1 25	10 00
<b>coronaria</b> , var. <b>alba</b> . June and July. White. 1½ to 2 ft.....	25	1 25	10 00
<b>Haageana</b> . June and July. Orange-scarlet. 1½ ft.	25	1 50	
<b>vespertina</b> , var. <b>alba plena</b> (White Campion). May to September. White. 1 ft.....	25	1 50	12 50
<b>viscaria</b> (Catchfly). June and July. Red. 1½ ft.	25	1 50	12 50
<b>viscaria</b> , var. <b>splendens</b> . (German Catchfly). June and July. Pink. 15 in.....	25	1 50	12 50
<b>LYSIMACHIA clethroides</b> (Loosestrife). July to September. White. 1½ ft.....	25	1 25	10 00
<b>nummularia</b> (Moneywort). June to August. Yellow. Creeping.....	25	1 50	10 00
<b>LYTHRUM roseum superbum</b> (Rose Loosestrife). July to September. Rose. 3 ft.....	25	1 50	12 50
<b>MERTENSIA pulmonarioides</b> (Virginia Cowslip). May and June. Blue. 2 ft.....	25	1 50	10 00

PRICE LIST FOR FALL OF 1912

59

	Each	10	100
<b>MUNARDA didyma</b> (Oswego Tea). July and August. Scarlet. 2½ ft.....	\$0 25	\$1 50	\$10 00
<b>didyma</b> , var. <b>Cambridge Scarlet</b> . July and August. Scarlet. 2 ft.....	25	1 50	10 00
<b>didyma</b> var. <b>splendens</b> . July and August. Crimson-scarlet. 2 ft.....	25	1 50	10 00
<b>MYOSOTIS alpestris</b> , var. <b>Victoria</b> . May and June. Light blue. 6 to 9 in.....	25	1 50	10 00
<b>palustris</b> (Forget-me-not). May and June. Light blue. Spreading.....	25	1 50	10 00
<b>NEPETA glecoma</b> , var. <b>variegata</b> (Ground Ivy). May. Purple. 6 in.....	25	1 50	10 00
<b>GENOTHERA fruticosa</b> , var. <b>major</b> (Sundrops). July. Yellow. 1½ ft.....	25	2 00	15 00
<b>fruticosa</b> , var. <b>Youngi</b> (Young's Primrose). June. Lemon. 1½ to 2 ft.....	25	1 50	12 50
<b>Frazeri</b> . June. Rich yellow. 1½ ft.....	25	2 00	15 00
<b>Missouriensis</b> (Large Evening Primrose). June and July. Yellow. 1 ft.....	25	2 00	15 00
<b>speciosa</b> (White Primrose). June and July. White. 1½ ft.....	25	1 50	10 00
<b>OPHIPOGON Jaburan</b> , var. <b>aureus variegatus</b> (Snake's Beard). September. Blue. 6 in..	50	3 50	
<b>PACHYSANDRA procumbens</b> (Mountain Spurge). March to May. White or purple. Spreading.	25	1 50	12 50
<b>terminalis</b> . May and June. White. 8 in.....	25	1 50	12 50
<b>PÆONIA</b> . See our Calendar of Hardy Perennials for Special List.			
<b>Chinensis, Double Varieties</b> . Our selection. May and June .....			25 00
<b>Chinensis, Heavy Clumps</b> . Our selection.....	1 50	12 50	
<b>Chinensis, Single Varieties</b> . Our selection.....	35	3 00	25 00
<b>corallina</b> . May. Single. Reddish purple.....	35	3 00	25 00
<b>Moutan</b> (Tree Peony). May and June. Different colors .....	1 00	9 00	
<b>officinalis</b> , var. <b>rubra plena</b> . Early April. Double; deep crimson.....	50	4 00	35 00
<b>officinalis</b> , var. <b>rosea plena</b> . Early April. Double; pink.....	1 00	9 00	
<b>tenuifolia</b> . Early April. Single; deep maroon.	50	4 00	
<b>tenuifolia</b> , var. <b>plena</b> . Early April. Double; maroon .....	50	4 00	
<b>triternata</b> . April. Single. Bright red.....	35	3 00	25 00
<b>PAPAVER bracteatum</b> . June. Blood-red. 4 ft....	25	2 00	12 50
<b>nudicaule</b> (Iceland Poppy). All summer. Many colors. 1 ft. ....	25	1 50	10 00
<b>orientale</b> (Oriental Poppy). June. Orange-scarlet. 2 ft. ....	25	2 00	12 50
<b>PARDANTHUS</b> . See <i>Belemcanda</i> .			
<b>PENTSTEMON barbatus</b> , var. <b>Torreyi</b> (Torrey's Beard Tongue). June to August. Scarlet. 3 to 4 ft.....	25	1 50	10 00
<b>grandiflorus</b> . June to August. Purplish blue. 2 to 2½ ft.....	25	2 00	15 00
<b>lævigatus</b> , var. <b>Digitalis</b> . July and August. White. 3 ft.....	25	2 00	
<b>ovatus</b> . July and August. Purplish blue. 2 to 3 ft.....	25	2 00	

	Each	10	100
<b>PHLOX</b> <i>amœna</i> . May. Bright pink. 3 to 4 in. ....	\$0 25	\$1 50	\$10 00
<i>Carolina</i> . May and June. Rosy red. 1 ft. ....	25	1 50	
<i>divaricata</i> (Wild Sweet William). May and June. Lavender. 1 ft. ....	25	1 50	12 50
<i>paniculata</i> ; syn., <i>decussata</i> (Perennial Phlox). See the Calendar of Hardy Perennials for Special List. All colors. ....	25	2 00	15 00
<i>subulata</i> (Mountain Pink). May and June. Rose. Creeping. ....	25	1 50	10 00
<i>subulata</i> , var. <i>alba</i> . May and June. White. Creeping. ....	25	1 50	10 00
<i>subulata</i> , var. <i>atropurpurea</i> . May and June. Purple. Creeping. ....	25	1 50	
<i>subulata</i> , var. <i>lilacina</i> . May. Lilac. Creeping. ..	25	1 50	12 50
<i>subulata</i> , var. <i>Nelsoni</i> . May and June. Pure white. Creeping. ....	25	1 50	10 00
<i>subulata</i> , var. <i>Model</i> . May and June. Rosy white. Creeping. ....	25	1 50	10 00
<b>PHYSOSTEGIA</b> <i>Virginiana</i> (False Dragonhead). August. Deep rose. 3 ft. ....	25	1 50	
<i>Virginiana</i> , var. <i>alba</i> . August. White. 3 ft. ..	25	1 50	10 00
<i>Virginiana</i> , var. <i>speciosa</i> . August. Pink. 3 ft. ..	25	1 50	10 00
<b>PLATYCODON</b> <i>grandiflorum</i> (Balloon-flower). July. Blue. 1½ ft. ....	25	1 50	
<i>grandiflorum</i> , var. <i>album</i> . July. White. 1½ ft. ..	25	1 50	
<i>grandiflorum</i> , var. <i>Mariesi</i> . June to October. Blue. 1 ft. ....	25	1 50	12 50
<b>POLEMONIUM</b> <i>cœruleum</i> (Jacob's Ladder). May to July. Deep blue. 1½ ft. ....	25	2 00	15 00
<i>cœruleum</i> , var. <i>album</i> . May to July. White. 1½ to 2 ft. ....	25	2 00	
<b>PRIMULA</b> <i>acaulis</i> (Primrose). May. Yellow. 6 to 9 in. ....	25	1 50	12 50
<i>capitata</i> (Primrose). Deep lilac. 9 in. ....	25	1 50	12 50
<i>suaveolens</i> (Cowslip). May. Yellow and orange. 1 ft. ....	25	1 50	12 50
<i>veris</i> (Polyanthus). May. Yellow and orange-crimson. 6 to 9 in. ....	25	1 50	12 50
<i>vulgaris</i> (English Primrose). May. Yellow. 6 to 9 in. ....	25	1 50	12 50
<b>PYRETHRUM</b> <i>roseum</i> (Feverfew). June and July. White, pink and red. 1½ to 2 ft. ....	25	1 50	10 00
<i>roseum</i> fl. pl. Named varieties. 1½ to 2 ft. ....	35	3 00	
<b>RANUNCULUS</b> <i>aconitifolius</i> fl. pl. (Crow's-foot). June. White. 1½ to 2 ft. ....	25	1 50	
<i>acris</i> fl. pl. (Yellow Bachelor's Buttons). June. Yellow. 2 ft. ....	25	1 50	
<i>repens</i> (Double Buttercup). May to July. Yellow. 1 ft. ....	25	1 50	10 00
<b>ROSMARINUS</b> <i>officinalis</i> (Rosemary). Scented foliage. ....	25	1 50	
<b>RUDEBECKIA</b> <i>laciniata</i> , var. <b>Golden Glow</b> . July to September. Yellow. 8 ft. ....	25	1 25	10 00
<i>Newmani</i> . August and September. Yellow. 1½ ft. ..	25	1 50	10 00
<i>nitida</i> (Cone-flower). August and September. Pale yellow, 5 ft. ....	25	1 50	10 00

PRICE LIST FOR FALL OF 1912

61

	Each	10	100
<b>SALVIA argentea.</b> June. White, white foliage. 2 ft.	\$0 25	\$1 50	\$10 00
<b>Caucasicum.</b> July and August. Reddish purple.			
3 ft. ....	25	1 50	10 00
<b>pratensis</b> (Meadow-sage). June to September.			
Deep blue. 2 to 3 ft. ....	25	1 50	10 00
<b>SANGUINARIA Canadensis</b> (Bloodroot). White.			
April. 6 in. ....	25	1 50	10 00
<b>SANTOLINA incana</b> (Lavender Cotton). July.			
Deep yellow. 1 ft. ....	25	1 50	10 00
<b>SAXIFRAGA cordifolia</b> (Rockfoil). April to June.			
Rosy purple. 15 in. ....	25	2 00	15 00
<b>SCABIOSA Caucasica</b> (Mourning Bride). Lavender-blue.			
June. 15 to 18 in. ....	35	2 50	15 00
<b>SEDUM acre</b> (Golden Moss). May and June. Yellow.			
Spreading ....	25	1 25	10 00
<b>album.</b> July. White. 4 to 6 in. ....	25	1 25	10 00
<b>Rhodiola.</b> August. Light pink. 1 ft. ....	25	1 25	10 00
<b>sexangulare</b> (Stonecrop). June and July. Yellow.			
6 in. ....	25	1 25	10 00
<b>spectabile</b> (Brilliant Stonecrop). September and October.			
Rose. 12 to 15 in. ....	25	2 00	15 00
<b>spectabile, var. atropurpurea.</b> September and October.			
Purplish crimson. 15 in. ....	25	2 00	15 00
<b>telephoides.</b> July and August. Pink. 1 ft. ....	25	2 00	15 00
<b>SENECIO clivorum.</b> Summer. Yellow. 3 ft. ....	35	2 50	15 00
<b>pulcher</b> (Groundsel). July to October. Rosy purple. 1½ to 2 ft. ....	25	1 50	
<b>SILENE Pennsylvanicum</b> (Wild Pink). April and May.			
Rose or white. 9 in. ....	25	1 25	10 00
<b>SMILACINA racemosa</b> (False Solomon's Seal). April.			
White. 1½ ft. ....	25	1 50	
<b>SPIRÆA</b> (Goat's Beard, or Meadowsweet) <b>aruncus.</b>			
June and July. White. 4 to 5 ft. ....	35	2 50	15 00
<b>filipendula fl. pl.</b> June and July. White. 2 ft. ....	25	1 50	12 50
<b>lobata.</b> July. Pink. 3 to 4 ft. ....	25	2 00	15 00
<b>palmata.</b> June and July. Deep crimson. 2 ft. ....	25	2 00	15 00
<b>palmata, var. elegans.</b> June and July. White; crimson anthers. 3 ft. ....	25	2 00	
<b>Ulmaria.</b> June and July. White. 3 ft. ....	25	2 00	
<b>venusta.</b> June and July. Deep pink. Fragrant. 3 ft. ....	25	2 00	
<b>STACHYS Betonica; syn., Betonica rosea.</b> July and August.			
Rose. 1 ft. ....	25	1 50	12 50
<b>STATICE Tatarica</b> (Sea Lavender). June to August.			
Red. 15 to 18 in. ....	25	1 50	10 00
<b>latifolia</b> (Great Sea Lavender). July and August.			
Deep blue. 2 ft. ....	25	1 50	10 00
<b>STOKESIA cyanea</b> (Stokes' Aster). July to October.			
Lavender. 1½ ft. ....	25	2 00	15 00
<b>cyanea, var. alba.</b> July to October. White. 1½ ft. ....	50	3 50	
<b>TANACETUM globiferum</b> (Tansy). August. Golden yellow. 3 ft. ....	25	1 50	10 00

	Each	10	100
<b>THALICTRUM adiantifolium</b> (Meadow Rue). June. Yellow. 18 in. ....	\$0 25	\$1 50	\$10 00
<b>aquilegifolium</b> (Feathered Columbine). June. White. 2 to 4 ft. ....	25	1 50	
<b>polygamum</b> (Tall Rue). June. White. 3 to 4 ft.	25	1 50	
<b>purpurascens</b> . June to August. Purple. 3 to 4 ft. ....	25	1 50	
<b>THERMOPSIS Caroliniana</b> . June. Yellow. 3 to 4 ft. ....	25	1 50	
<b>mollis</b> . May to July. Yellow. 2 to 3 ft. ....	25	1 50	
<b>THYMUS montanus</b> , var. <b>coccineus</b> (Scarlet Thyme). May. Bright red. 4 in. ....	25	1 50	
<b>vulgaris</b> (Common Thyme). May. Lilac. 1 to 2 ft. ....	25	1 25	
<b>TRADESCANTIA Virginiana</b> (Spiderwort). June to October. Purple. 2 ft. ....	25	1 50	12 50
<b>Virginiana</b> , var. <b>alba</b> . June and July. White. 2 ft. ....	25	1 50	12 50
<b>TRILLIUM erectum</b> (Wake Robin). March and April. Purple. 9 to 12 in. ....	25	1 50	
<b>grandiflorum</b> (Wood Lily). March and April. White. 9 to 12 in. ....	25	1 50	
<b>TROLLIUS Europæus</b> (Globe-flower). May to August. Yellow. 2 ft. ....	25	1 50	12 50
<b>VALERIANA coccinea</b> (Valerian). June to October. Reddish. 2 ft. ....	25	1 50	10 00
<b>officinalis</b> (Hardy Heliotrope). June and July. Rose-pink. 2 ft. ....	25	1 50	10 00
<b>rubra</b> . June to October. Red. 2 ft. ....	25	1 50	10 00
<b>VERBASCUM Olympticum</b> (Mullein). July to Sep- tember. Yellow. 6 ft. ....	25	1 50	12 50
<b>VERNONIA Arkansana</b> (Ironweed). August to Octo- ber. Red. 5 ft. ....	25	2 00	
<b>Baldwini</b> . August to October. Purple. 4 ft. ..	25	2 00	
<b>VERONICA longifolia</b> , var. <b>rosea</b> (Speedwell). July to October. Rose. 1½ ft. ....	25	1 50	
<b>longifolia</b> , var. <b>subsessilis</b> . August to Novem- ber. Deep blue. 1½ to 2 ft. ....	25	2 00	15 00
<b>rupestris</b> (Rock Speedwell). June and July. Blue Spreading .....	25	1 50	10 00
<b>spicata</b> . June to September. Bright blue. 1½ ft. ....	25	1 50	10 00
<b>Virginica</b> . August to September. White. 4 ft.	25	1 50	10 00
<b>VINCA minor</b> (Periwinkle). May. Bright blue. Spreading .....	25	1 50	10 00
<b>VIOLA pedata</b> , var. <b>bicolor</b> (Bird's-foot Violet). May. Purple and White. 4 in. ....	25	1 50	12 50
<b>Mixed</b> .....	25	1 25	10 00

## A CALENDAR OF PERENNIALS

This booklet, in a revised edition, with monthly lists, and special lists of Phlox, Iris, Peonies and Chrysanthemums, will be found valuable in arranging hardy gardens.



## FERNS

- ADIANTUM pedatum** (Maidenhair Fern). 1 to 2 ft. Moist, shaded positions.  
**ASPIDIUM acrostichoides** (Christmas Fern). 1 to 2 ft. Evergreen. Dry or moist soils in shady places.  
**Felix-mas** (Male Fern). 2 ft. Semi-shaded positions, dry or moist soils.  
**Goldianum**. 2 to 4 ft. Semi-shaded positions, dry or moist soils.  
**marginale**. Evergreen. 1 to 2 ft. Shaded positions, dry or moist soils.  
**ASPLENIUM Filix-fœmina** (Lady Fern). 2 to 3 ft. Open or shaded positions, in moist or dry soils.  
**BOTRYCHIUM Virginianum** (Moonwort). 6 to 12 in. Shaded positions, moist or dry soils.  
**DICKSONIA punctilobula** (Boulder Fern). 2 to 3 ft. For open positions; forms large plantations.  
**ONOCLEA sensibilis** (Sensitive Fern). 1 to 2 ft. For open planting and wet soils.  
**Struthiopteris** (Ostrich Fern). 2 to 4 ft. For open positions, dry or moist soils.  
**OSMUNDA gracilis** (Flowering Fern). 2 to 4 ft. Open or shaded positions, and moist soils.  
**Claytoniana**. 2 to 5 ft. For open plantings, dry or moist soils.  
**cinnamomea** (Cinnamon Fern). 2 to 5 ft. For open or shaded positions, in wet soils.  
**WOODSIA obtusa**. 6 to 12 in. Shady places, in moist soil.  
**WOODWARDIA angustifolia** (Chain Fern). 1 ft. Open or shaded positions, in moist soils.  
 The above varieties, 25 cts. each, \$2 per 10, \$15 per 100.  
 The above collection, 15 varieties, \$3.  
 100 in 5 varieties, our selection, \$12.50.

## HEDGE PLANTS

We shall be pleased to name special prices for plants in quantity for hedging purposes.

### EVERGREEN TREES

SEE PAGE	SEE PAGE
<b>Biota orientalis</b> .....	<b>Thuja occidentalis</b> .....
<b>Picea excelsa</b> .....	<b>occidentalis Wareana</b> .....
<b>Retinospora plumosa</b> .....	<b>Tsuga Canadensis</b> .....
<b>Retinospora plumosa aurea</b> .....	4
	7
	10
	11
	13
	14
	14

### DECIDUOUS TREES

<b>Carpinus Americana</b> .....	<b>Cratægus Oxyacantha</b> .....
<b>Betulus</b> .....	<b>Fagus sylvatica</b> .....
<b>Cratægus Crus-galli</b> .....	24
	24
	26
	26

### EVERGREEN SHRUBS

<b>Azalea amœna</b> .....	<b>Ilex crenata microphylla</b> .....
<b>Buxus sempervirens</b> .....	<b>Mahonia aquifolia</b> .....
<b>sempervirens suffruticosa</b> ...	<b>Japonica</b> .....
	15
	15
	16
	17
	17
	17

### DECIDUOUS SHRUBS

<b>Acanthopanax spinosa</b> .....	<b>Hippophae rhamnoides</b> .....
<b>Berberis Thunbergi and vulgaris</b> .....	<b>Ligustrum Iboata, Regelianum,</b>
<b>Elæagnus longipes</b> .....	<b>ovalifolium, vulgare</b> .....
<b>Forsythia viridissima</b> .....	<b>Lonicera Tatarica</b> .....
<b>Hibiscus Syriacus</b> .....	<b>Rhamnus cathartica</b> .....
	33
	35
	39
	39
	39
	40
	41
	42
	43

## OUR CATALOGS

**THE ANDORRA HANDBOOK.** Planters who desire a complete descriptive list will be supplied with our Handbook of Trees and Plants for 50 cents, which will be credited upon their first purchase amounting to \$5.

**ANDORRA'S HANDBOOK** will serve as a standard guide, being up-to-date in nomenclature, and containing conservative descriptions of a vast list of trees and plants, with hints on planting, pruning and caring for them. It is illustrated and fully indexed.

**PRICE-LISTS** are issued semi-annually. Owing to our large output, and the changes in sizes of stock by reason of each season's growth, frequent revisions of the **PRICE-LIST** are necessary, to keep customers thoroughly posted on the stock we offer. You are always sure your order will be filled if you find the items in the current season's **PRICE-LIST**.

**MORE SPECIALTIES**, a booklet of 32 pages, describing and illustrating a large number of very choice things for the country home. A great help in deciding upon just the right thing to plant.

**BEAUTIFUL LAWNS, BOOKLET No. 27.** This little pamphlet treats of Lawn Fertilizing, and its eight pages should be carefully read by all interested in having a good lawn.

**BOXWOOD, BOOKLET No. 28.** For formal gardens and in connection with architectural effects, **BOXWOOD** is now absolutely necessary. This booklet shows the different forms we offer.

**HINTS FOR SUCCESSFUL PLANTING, BOOKLET No. 30.** Does not aim to cover every point that may arise, but it gives the principles in such a way that any one, by following its directions, can secure the best results.

**A CALENDAR OF HARDY PERENNIALS, BOOKLET No. 33-26, with special lists of Iris, Phlox, Peonies and Chrysanthemums.** This little booklet gives a complete list of Perennials, and shows in tabulated form their height, color, and months of bloom; invaluable to those planning herbaceous gardens.

## MEASURING TREES AND SHRUBS

All trees and shrubs are measured as they stand in the Nursery before digging. In evergreen trees and in evergreen and deciduous shrubs the height is taken from the ground to the top of the plant.

Deciduous trees are measured from the ground to the top of the head, and the caliper or diameter of the trunk is taken above the collar. Measurements are expressed thus: 10 to 12 ft. (height), 2½ to 2¾ in. (caliper).

# DEPARTMENTS

	PAGE		PAGE
Fertilizers .....	2	Vines and Climbing Plants .....	47
General Instructions and Terms .....	3	Fruit and Small Fruits .....	49, 50
Evergreen Trees .....	4	Roses .....	50
Evergreen Shrubs .....	15	Herbaceous Plants .....	51
Deciduous Trees .....	21	Ferns .....	63
Deciduous Shrubs .....	35	Hedge Plants .....	63
Reeds and Grasses .....	47	Catalogs .....	64

# INDEX

	PAGE		PAGE
Aaron's Beard .....	40	Baby's Breath .....	56
Abelia .....	35	Baccharis .....	35
Abies .....	4	Bambusa .....	47
Acanthus .....	51	Baptisia .....	53
Acanthopanax .....	35	Barberry .....	35
Acer .....	23	Basswood .....	32-33
Achillea .....	51	Beard Tongue .....	59
Aconitum .....	51	Bear's Breech .....	51
Actinidia .....	47	Beauty-fruit .....	35
Adam's Needle .....	20	Beech .....	26
Adiantum .....	63	Belemcanda .....	53
Aesculus .....	23, 35	Bell-flower .....	54
Ailanthus .....	23	Bellis .....	53
Ajuga .....	51	Benzoin .....	35
Akebia .....	47	Berberis .....	35
Alder .....	24	Betonica. See Stachys.	
Allspice, or Sweet Shrub .....	35	Betula .....	24
Alnus .....	23	Bignonia .....	47
Althaea (see, also, Hi- biscus) .....	35, 51	Balloon-flower .....	60
Alum Root .....	56	Biota .....	4-5
Alyssum .....	51	Birch .....	24
Amelanchier .....	23, 35	Bittersweet .....	47
Amorpha .....	35	Black Alder .....	23
Ampelopsis .....	47	Blackberries .....	49
Amygdalus. See Prunus.		Black Haw .....	47
Anchusa .....	51	Black Walnut .....	27
Andromeda (see, also, Oxydendrum) .....	15, 24	Bladder Senna .....	36
Anemone .....	51, 52	Blanket-Flower .....	55
Anthemis .....	52	Blazing Star .....	58
Apples .....	49	Bleeding Heart .....	55
Aquilegia .....	52	Blue Spirea .....	35
Arabis .....	52	Bocconia .....	53
Aralia .....	24	Boltonia .....	53
Arborvitae .....	4, 5, 13	Botrychium .....	63
Arenaria .....	52	Box .....	15-16
Aristolochia .....	47	Bridal Wreath .....	44
Armeria .....	53	Broussonetia .....	24
Aronia. See Pyrus.		Buckthorn .....	43
Arrow-wood .....	46	Butterfly Weed .....	53
Artemesia .....	53	Buttonwood .....	30
Arundo .....	47	Buxus .....	15-16
Asclepias .....	53	Calimeris .....	53
Ash .....	27, 32	Callicarpa .....	35
Asparagus .....	50	Callirhoe .....	54
Aspidium .....	63	Calycanthus .....	35
Asplenium .....	63	Campanula .....	54
Aster .....	53	Candytuft .....	57
Astilbe .....	53	Caragana .....	35
Astrantia .....	53	Cardinal-flower .....	58
Aubretia .....	53	Carpinus .....	24
Azalea .....	15, 34	Carya .....	24
		Castanea .....	24
		Catalpa .....	24
		Ceanothus .....	36
		Cedar .....	5, 7
		Cedrela .....	24
		Cedrus .....	5
		Celastrus .....	48
		Celtis .....	25
		Centaurea .....	54
		Cephalanthus .....	36
		Cephalotaxus .....	5
		Cerastium .....	54
		Cerasus .....	25
		Ceratostigma .....	54
		Cercidiphyllum .....	25
		Cercis .....	25, 36
		Chamaedaphne .....	16
		Chamomile .....	52
		Chaste Tree .....	47
		Chelone .....	54
		Cherries .....	49
		Cherry .....	25
		Chestnut .....	24, 49
		Chinese Angelica Tree .....	24
		Chinese Arbovitae .....	5
		Chinese Cork Tree .....	29
		Chionanthus .....	36
		Chokeberry .....	43
		Christmas Rose .....	56
		Chrysanthemum .....	54
		Chrysogonum .....	54
		Chrysopsis .....	54
		Cimicifuga .....	54
		Cineraria. See Arte- misia.	
		Cinquefoil .....	42
		Cladrastris .....	25
		Clematis .....	48, 54
		Clethra .....	36
		Columbine .....	52, 62
		Colutea .....	36
		Comptonia .....	36
		Cone-flower .....	55, 60
		Conoclinium .....	54
		Convallaria .....	54
		Coral Berry .....	44
		Corchorus .....	36
		Coreopsis .....	54
		Cornus .....	25, 36, 37
		Coronilla .....	54
		Corylus .....	37
		Cotoneaster .....	16, 37
		Crab Apples .....	30
		Cranberry Bush .....	46
		Crataegus .....	17, 25, 26
		Cryptomeria .....	5
		Cucumber Tree .....	28

PAGE		PAGE		PAGE	
Cupressus	12	Ginkgo	32	Kentucky Coffee Tree	27
Currant	49	Gleditschia	27	Kerria. See Corchorus	40
Cydonia	37	Globe-flower	36	Kniphofia	58
Cypress	9, 12, 32	Goat's Beard	61	Kœlreuteria	27
Cytisu	26, 37	Gold-flower	40	Kudzu Vine	48
Daisy	53	Golden Bell	39	Larch	27
Day Lily	55-56	Golden Chain	26	Larix	28
Daphne	17	Golden Tuft	51	Larkspur	55
Deciduous Shrubs	35	Glyptostrobus. See Tax-		Lathyrus	48, 58
Deciduous Trees	21, 33	odium.		Laurel	17
Delphinium	55	Gooseberries	49	Lavandula	58
Desmodium. See Les-		Grapes	49	Lavender	58
pedeza	37	Groundsel Shrub	35, 61	Lavender-cotton	61
Deutzia	37, 38	Guelder Rose	46	Lespedeza	40
Dianthus	55	Gymnocladus	27	Leucothœ	17
Dicentra	55	Gypsophila	56	Liatris	58
Dicksonia	63	Halesia	39	Ligustrum	40-41
Dictamnus	55	Hamamelis	39	Lilac	44
Diervilla	38	Hardy Roses	50-51	Lilium	58
Digitalis	55	Hawthorn	26	Lily-of-the-valley	54
Diospyros	26	Hazel	37-39	Linden	32-53
Dogwood	25, 36-37	Hedera	48	Linum	58
Dolichos. See Pueraria.		Hedge Plants	63	Liquidambar	28
Doronicum	55	Helanium	56	Liriodendron	28
Dutchman's Pipe	47	Helianthus	56	Liver Leaf	56
Echinacea	55	Heliopsis	56	Lobelia	58
Elaeagnus	39	Helleborus	56	Locust	27, 32
Elder	43	Hemerocallis, or Day		London Pride	58
Elm	53	Lily	56	Lonicera	41, 42, 48
Elymus	47	Hemlock	14	Loosestrife	58
English Primrose	60	Hepatica	56	Lychnis	58
English Ivy	48	Herbaceous Plants	51-62	Lycium	42
Erianthus	47	Heuchera	56	Lysimachia	58
Erigeron	55	Hibiscus	39, 40, 57	Lythrum	58
Eryngium	55	High Cranberry Bush	46	Maclura	28
Esculent Roots	50	Hippophae	40	Magnolia	28
Eulalia	47	Holly	17	Mahonia	17
Euonymus	17, 39, 48	Hollyhocks (see, also,		Maidenhair Tree	32
Eupatorium	55	Althœa)	51	Maple	21-23
Euphorbia	55	Honey Locust	27	Matrimony Vine	42
Evening Primrose	59	Honeysuckle	41, 48	Meadow Rue	61
Evergreen Shrubs	15-20	Hop Tree	30	Meadow Sweet	61
Evergreen Thorn	17	Hornbeam	24	Mertensia	58
Evergreen Trees	4-15	Horse-chestnut	23	Mint-flower	54
Everlasting Pea	48	Hydrangea	40	Mist, or Smoke Tree	43
Exochorda	39	Hypericum	40	Mock Orange	42
Fagus	26	Iberis	57	Monarda	59
Ferns	63	Ilex	5, 17, 40	Moneywort	58
Festuca	47	Inula	57	Monkshood	51
Feverfew	55, 60	Iris	57	Morus	29
Fir	4	Iron Weed	62	Mountain Ash	32
Flame-flower	58	Itea	40	Mourning Bride	61
Flowering Almond	43	Jacob's Ladder	60	Mulberry	24, 29
Flowering Crab	30	Japan, or Boston Ivy	27	Myosotis	59
Forget-me-not	59	Japan Cypress	9	Myrica	42
Forsythia	39	Japan Judas	36	Negundo. See Acer Ne-	
Foxgloves	55	Japan Quince	37	gundo.	
Fox Grape	48	Japanese Maples	23	Nepeta	59
Fraxinus	27	Japanese Snowball	46	Nettle Tree	25
Fruit	49	Jasmine	40	Nuts	49
Funkia	55	Jasminum	40	Nyassa	29
Gaillardia	56	Jersey Tea	36	Oak	30-31
Galega	56	Judas Tree	25	Oenothera	59
Gas Plant	55	Juglans	27	Old Man	53
Geranium	56	Juneberry	23	Old Woman	53
Geum	56	Juniperus	5-6-7	Oleaster	39
Gillenia	56	Kalmia	17	Onoclea	63

PRICE LIST FOR FALL OF 1912

67

	PAGE		PAGE		PAGE
Ophiopogon	59	Ribbon Grass	47	Sweetbriar	50
Oriental Plane	30	Ribes	43	Sycamore	30
Oriental Poppy	59	Robinia	32, 43	Symphoricarpus	45
Osage Orange	28	Rock Cress	52	Syringa	45, 46
Osmanthus	17	Rockfoil	61	Tanacetum	61
Osunda	63	Rose Acacia	43	Tamarix	46
Oswego Tea, or Fra-		Rose Campion	58	Taxodium	32
grant Balm	59	Rosemary	60	Taxus	11-12
Oxydendrum	29	Rose of Sharon	39, 40	Tecoma. See Bigelovia.	
Pæonia	59	Roses	50-51	Thalictrum	62
Pachysandra	59	Rosmarinus	60	Thermopsis	62
Papaver	59	Rosy Milfoil	51	Thorn	25-26
Pardanthus. See Bel-		Rubus	43	Thorn Evergreen	17
percanda.		Rudbeckia	60	Thrift	53
Parrotia	29	Rugosa Roses	51	Thuya	13-14
Paulownia	29	Salisburia	32	Thujaopsis	12
Pavia. See Æsculus.		Salix	32	Thymus	62
Peaches	49	Salvia	61	Tickseed	54
Pearl Bush	39	Sambucus	43	Tiger Lily	58
Pears	49	Sandwort	52	Tilia	32-33
Penstemon	59	Sanguinaria	61	Tradescantia	62
Periploca	48	Santolina	61	Tree of Heaven	23
Periwinkle	62	Sassafrass	32	Trillium	62
Persian Iron Tree	29	Saxifraga	61	Trolius	62
Persica	29	Scotch Broom	37	Trumpet Vine	47
Persimmon	26	Scabiosa	61	Tsuga	14
Phalaris	47	Sciadopitys	11	Tulip Tree	28
Phellodendron	29	Sea Buckthorn	40	Ulmus	33
Phylladelphus	42	Sea Holly	55	Umbrella Tree	28
Phillyrea	17	Sea Lavender	61	Uniola	47
Phlox	60	Senecio	61	Vaccinium	46
Physostegia	60	Sedum	61	Valeriana	62
Picea	7-8	Sheepsberry	46	Valerian	62
Pinks	60	Shrub Yellow Root	47	Varnish Tree	27
Pinus	8-9	Shrubby Cinquefoil	42	Verbascum	62
Platanus	30	Silene	61	Vernonia	62
Platycodon	60	Silk Vine	48	Veronica	62
Plumbago	54	Small Fruits	49	Viburnum	46-47
Plums	49	Smilacina	61	Vinca	62
Podocarpus	9	Snakeroot	55	Vines and Climbing	
Polemonium	60	Snowball	46	Plants	47, 48
Populus	30	Snowberry	44	Viola	62
Poppy	53, 59	Sophora	32	Virgilia	25
Potentilla	42	Sorbus	32	Virginia Creeper	47
Primrose	59-60	Speedwell	62	Vitex	47
Primula	60	Spice Bush	35	Vitis	48
Privet	40-41	Soiderwort	62	Walnut	27-49
Prunus. See, also,		Spindle Tree	39	Wax Myrtle	42
Cerasus	30, 43	Spiræa	44, 53, 61	Wayfaring Tree	46
Pseudotsuga	9	Spruce	7, 8, 9	Weigela	38
Ptelea	30	Stachys	61	White Fringe	36
Pterostyrax	30	Staphylea	44	White Rod	46
Pueraria	48	Statice	61	Wolf's-bane	51
Purple Mist	43	Stephanandra	44	Willow	32
Pyrethrum	60	Stokesia	61	Windflower	51-52
Pyrus	30, 43	Stokes' Aster	61	Winola	47
Quercus	30, 31	Stoncrop	61	Winter Berry	40
Quinces	49	Strawberries	50	Wistaria	48
Ranunculus	60	Strawberry Bush	39	Witch Hazel	39
Raspberries	49	Styrax	44	Woodsia	63
Red Bud, or Judas	25	Sumac	31-32, 43	Woodwardia	63
Reeds and Grasses	47	Sunflower	56	Xanthoceras	47
Retinospora	9-11	Swamp Huckleberry	46	Xanthorrhiza	47
Rhamnus	43	Sweet Fern	36	Yarrow	51
Rhododendron	18-20	Sweet Gum	28	Yellow Wood	25
Rhodotypos	43	Sweet William	54, 60	Yew	5, 9, 11, 12
Rhubarb	50	Sweet Pepper Bush	36	Yucca	21
Rhus	31-32, 43	Sweet Shrub	35		

# Plant for Immediate Effect

## Not for Future Generations

Start with large stock—it has taken years of special preparation to grow such Trees and Shrubs as we offer you.

We have done the long waiting—you can secure at once specimens that will give immediate and permanent results.

## AS AN EXAMPLE

Note in this Price List, page 21, Norway Maples, 14 to 20 ft. in height with trunks 4 to 10 in. in diameter. Specimen trees with broad tops and a system of fibrous roots that makes transplanting successful—trees that are sure to grow. Such trees simply “make your place.”

## AN IMPORTANT POINT

These specimen Trees and Shrubs are Andorra-Grown—they are here at our Nurseries where you may inspect them and reserve such as suit your purpose.

ANDORRA-GROWN MEANS QUALITY  
QUALITY IN TREES MEANS SUCCESSFUL PLANTING