

Historic, Archive Document

Do not assume content reflects current scientific knowledge, policies, or practices.

62.39

MAX PRANDER

Catalog and Cultural Guide for
1912
The Eastern Dahlia King

J. K. Alexander,

East Bridgewater, Mass.

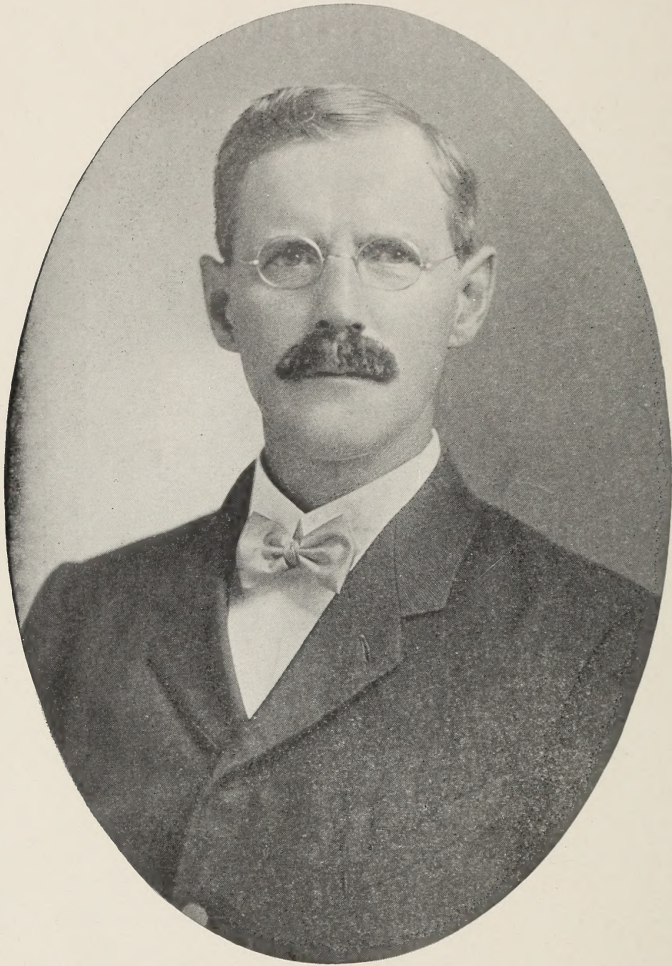


VASE OF SINGLE DAHLIAS

The Ladies' Favorite

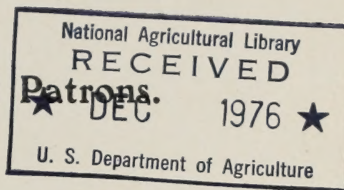
The East Bridgewater Dahlia Gardens are the
Largest in the World

BE SURE YOUR FRIENDS GET MY CATALOG



THIS IS THE MAN YOU DO YOUR BUSINESS WITH
J. K. ALEXANDER
THE EASTERN DAHLIA KING

A Greeting to My Friends and Patrons.



I take great pleasure in presenting you with a copy of my new 1912 Catalogue which I feel is a great improvement over my last issue, with new cultural notes which, if followed, will assist the amateur in getting better results in the future. I also take this opportunity of thanking my many friends and patrons who have recommended and favored me with their orders in the past, and to express gratification that my determination to furnish none but the best stock is so widely recognized.

I have been acknowledged the largest Dahlia grower in the world. The last season I grew over 4,000,000 Dahlia plants, nearly 35 acres. I feel that this will be one of great interest to the general public who have in past years come long distances to visit my fields in the flowering season through the months of August and September. My fields are kept open at all times for the inspection of the public. Visitors are always welcome at all times. I am pleased at any time to assist the public with any information possible provided they will send return stamp.

I had the honor of selling the St. Louis Purchase Exposition their entire stock, which was grown in the beds and borders at the Fair Grounds in 1904. I also grew an exhibit that covered an area of 2728 square feet at the World's Fair, winning the silver medal, one of the highest honors. I supplied the City of Boston the large lot which was grown on the Public Gardens in 1905 and 1906. I also supplied the Concord State Fair grounds at Concord, N. H., the large lot which was grown in their park on the Fair Grounds. In 1910 I supplied many other large lots. One of these lots contained 95,750 bulbs to one firm.

The past season I made more exhibits than ever before in the different states and won first prizes in all of them. I dare say I won more prizes than any other firm in America the past season.

It is not necessary to say anything about the exhibits I have made at the different horticultural and agricultural societies in the past. Every person knows that ever saw my exhibit that it was fully as good if not the best that was ever made in the place where I exhibited.

If you are looking for some first-class up-to-date Dahlias, do not hesitate in placing your order in the hands of a firm who have been doing business for 17 years, and will give you good satisfaction for your money. My stock is strong, separated, field grown clumps, with one or two eyes on a bulb, and guaranteed true to name. Although my stock is not overgrown it is considered much the better for amateur growers, as the stock has not been forced to any overgrowth, which is very apt to take out of the stock rather than add anything to its value. While many large firms recommend and sell mostly Dahlia plants, and charge as much for them as strong roots, they are all right for a professional who understands the handling of them and wishes to build up a stock quickly, but I would not recommend them to the amateur. If cut off by any insect the plant is lost, but it is not so with bulbs. The sprout from a bulb if cut off by any insect will come again with two sprouts, so one does not feel as if they had paid out good money for stock and at the end of the season had nothing to show for it. In many cases I find that strong bulbs, with good eyes or sprouts, do not always grow; so if any of my customers, after purchasing any of my stock, should have any of them fail to grow, after planting them dig them up and mail them back with the label on them and I will remail you one in place of them; but do not remail stock you have purchased elsewhere, as this has happened in some cases.

I would recommend that customers order early as my orders are booked in rotation and shipped accordingly. My stock is tested before being shipped to our customers. I shall take as much pains in the future as in the past to send out nothing but **FIRST-CLASS STOCK**, and to continue the same by prompt, liberal and conscientious dealings. Hoping to receive a share of your patronage this coming season, I remain,

Respectfully yours,

THE EASTERN DAHLIA KING, (Copyrighted),

J. K. ALEXANDER, East Bridgewater, Mass.

January 1, 1912.

Telephone Connection.

THE METHODS OF GROWING THE DAHLIA. READ THEM.

The principal requirement of the Dahlia is a sunny location with ordinary soil, but we find that many varieties will do well with partial shade, and produce fully as good flowers as they do in the hot sun, especially for exhibition uses. In preparing the soil the ground should be thoroughly cultivated to the depth of eight to ten inches deep with plow or spade. The Dahlia then should be laid flat down, with the crown where the sprout is fully six inches deep; before using your fertilizer or dressing it is well to cover the crown where the sprout is an inch or so. This will keep the sprout from getting injured. Dahlias when grown should either be staked or the single branching method used. When the plant gets two sets of leaves then pinch the top of the plant off with your thumb and forefinger, this will leave two sets of leaves and four branches will then start, one at each leaf, and this saves staking. When the plant is grown it will have a short, strong, single stem, which comes only an inch or two above ground, giving the plant a neat branching appearance. If you are to use this method do not pinch your plants off but once, for this system will delay you about two weeks longer in getting blooms, without you plant two weeks earlier. Many of the amateur growers prefer using stakes when planting, this will in most cases insure earlier blooms, but if stakes are used they should be set before the Dahlia is planted. When planting bulbs it is well to have them three feet apart in the rows, and five feet between the rows, if you are looking for first-class results. But in case you wish to mass them for hedging or borders they can be set 18 inches apart, but it is not wise to set only one tuber in a hill with one or two sprouts on same, and in most cases they will flower fully as well as if planted in hills. Our system we use in our fields for planting is the massing system, but we do not plant our bulbs till late. The first Monday in June is the time when we begin to plant our immense fields, and we do not generally finish till the latter part of the month, or the first of July. In this case we do not use the single branching method or the staking system. We find that late planting will do away with both, and our plants flower nearly as early, and if you will notice the photos of our fields on Pages 20 and 21 you will see our plants flower well under this system. The Dahlia is one of the easiest plants to grow, and will produce more flowers than any other plant in the garden if properly cared for. The principal requirement of the Dahlia is cultivation. Do not be afraid to use your hoe or cultivator around your plants after they get out of the ground, as this will do more to assist you in getting better results than any other system, but do not hoe or cultivate any after your plant begins to flower, as this is very apt to cut off the new tubers and weaken the growth of the plant.

In this section of the country the Dahlia can be planted any time after April 15th., and if planted by May 30th they will flower by the middle of July to the first of August.

HOW TO KEEP CUT BLOOMS OF DAHLIAS.

Cut the flowers in the early part of the day if possible, especially Cactus, Decorative and Single varieties, and plunge the stems at once, nearly their entire length, into water as hot as can be borne by one's hand. Let them remain in the water until it cools, after which they may be placed in cold water in the usual manner but with the addition of a quarter-teaspoonful of salt to a quart of water. When the stems are particularly hard and wiry, water near the boiling point may be safely used with good results. Freshly cut flowers, treated as above will keep considerably longer in good condition than when treated in the ordinary manner. Flowers that may have become wilted are always greatly revived, and when their condition is not too serious, are often entirely restored in appearance by this treatment. Try it and be convinced, but do not make the mistake of submerging the flowers nor the foliage, but regulate the depth of water to the length of the stems.

READ THIS.

I find many of my friends and customers, who after reading my Catalogue, find it very difficult and complexing to select from the large list of varieties, kinds that are most suitable for their purpose. In this case I would be pleased to assist you to the best of my ability, and while I cannot guarantee first-class results on account of poor locations, and the indifferance in cultivation which may exist through the inexperience of any customer, I will exercise my best judgment giving you the benefit of my experience in selecting varieties that I consider the very best, although I should like to have the customer *state plainly the type preferred.*

INSECT PESTS.

I find that many of the Dahlia lovers are troubled with insect pests at the present time, and the two insects which seem to affect the Dahlia mostly are the Chintz Fly and the small green Fly or Lice. These green flies seem to work wholly on the under side of the leaf, and a light spraying of tobacco water or whale oil soap solution will check them from working. In most cases we find that if wood ashes are shaken on the plants when the dew is on them, it will check both kinds of pests from working. Wood ashes are also very effective to use around your plants when they first come through the ground, it will prevent cut worms, also borers, from working on your plants. These two pests first mentioned do most of their work just before the plant gets large enough to flower, and in many cases if not attended to will destroy the first buds and check the plants from flowering in the early part of the season.

IN THE INTEREST OF THE GENERAL PUBLIC.

I have made quite a thorough canvass in past years to find out the way the general public have been planting their Dahlias. I find that only about 20 per cent. of the public understand how to grow the Dahlia. The other 80 per cent. do just the opposite to what is most necessary for the growth and the production of the plant. In the first place I find that most people plant too many bulbs in a hill and expect by so doing they will get the best results, but this is directly opposite from what should be done. One bulb with an eye or sprout is far better than any more. If you grow over two sprouts you are getting too much plant and not enough flowers. The general amateurs in planting Dahlia bulbs, stand their bulbs up straight in the ground in place of laying them flat six inches under ground so the sprout when grown will be fully six inches deep. At the base of the crown where the sprout starts is where all the new bulbs form and make growth. If you plant them not more than an inch or two deep, as soon as it becomes dry weather the plants become blighted and are not apt to flower the rest of the season. If planted six inches deep in most any soil there will be moisture enough to keep the plant continually growing without artificial watering.

They should be kept thoroughly cultivated, as the principal requirement of the Dahlia is cultivation. In order to harvest the bulbs for winter they should not be dug until three days after frosts have cut the foliage. They should then be dug with plough or spade. The tops should be cut off within two inches of the crown of the clump. They should be left out two hours if the weather is good, just long enough to free the soil from the clumps, then packed away upside down in cellars where the temperature will not go below 40 degrees. If the cellar is heated it is well to put them as far as possible from the heat, then cover with paper or heavy burlap. In many cases dry sand or sawdust can be used. This will keep them from drying up.

TERMS:--Cash with Orders.

Remittance can be made by P. O. or Express Money Order, Bank Draft, or Registered Letter at my risk. All orders will be shipped by Express, Mail or Freight whichever way we deem advisable, prepaid to all parts of the United States and Canada, unless otherwise stated. I guarantee their safe arrival in good condition. No extra charges for packing; one-half dozen at dozen rates.

Always address,

THE EASTERN DAHLIA KING,

J. K. ALEXANDER, East Bridgewater, Mass.

Long distance telephone connection.

CLASSIFICATION OF DAHLIAS.

Dahlias are divided into two divisions, double and single; and each division is again divided into classes according to size, form of flowers and arrangement of colors.

Double Dahlias are divided into the following classes:—Show, Fancy, Pompon, Decorative, and Cactus.

Show Dahlias. These are large, round, compact and full to the centre. The flowers are either solid, edged, tipped or shaded darker.

Fancy Dahlias. In form and habit they are identical with the Show Dahlia, but are quite different in arrangement of colors. The flowers are tipped or edged lighter than the ground color, or splashed, striped, mottled and variegated in every conceivable manner. They often throw a solid flower on the same plant.

Pompon Dahlias. In form this class is identical with the Show and Fancy, the only difference being the size of the flowers, as they are much smaller; better known as "bouquet dahlias," and flower much freer than any other class.

Cactus Dahlias. In form this class is much different than any other, and are of recent introduction. The flowers are loosely arranged and very irregular, resembling the Chrysanthemum. Petals long, twisted, and terminating in a point. The Cactus Dahlias are becoming very popular.

Decorative Dahlias. These have a broad, flat petal, and quite irregular, being very useful for decorative purposes.

Single Dahlias. These have but one row of petals, generally eight, resembling the Cosmos, and are very free flowering.

Cactus Dahlias.

New Up-to-Date Varieties for 1912

This grand set of up-to-date Cactus Dahlias I am offering this season are the finest set of Cactus Dahlias that was ever offered in this country; they are introductions from all over the world. They were grown in our fields last season, and considered by us, and other experts, to be the finest set ever offered in this country. I will send this grand set of 8 up-to-date Cactus Dahlias, prepaid, to any part of North America for \$7. cash.

Frau Hermine Marx. This is one of the *best* cut flower varieties. The flowers are of medium size, and when fully developed, almost identical in color with the *La France Rose*; that is, a silvery rose, a most pleasing color. 50 cents each.

H. W. Sillem. This is one of the largest and freest flowering varieties of this set. The color is vivid vermilion-scarlet with orange-yellow shadings toward center. Very early and most suitable for exhibition. 50 cents each.

Henri Cayeux. A variety of immense size and perfect form; color an old gold, shading to golden yellow; plants very vigorous. Stock limited. 75 cents each.

Marguerite Bouchon. One of the finest pink exhibition dahlias to date. The color is a brilliant rose-pink with a delicate white center. The large flowers are borne on stiff stems quite well above the foliage. This is one of the most pleasing Cactus dahlias I have ever been able to offer, and is sure to be the first to attract attention in your garden. Stock limited of this novelty. \$3.00 each.

Mme. Henri Cayeux. A reliable exhibition variety, which is one of the finest *Cactus Dahlias* yet introduced. The flowers are of the largest size, with long narrow florets, which incurve gracefully, forming a bloom of magnificent form. The most pleasing feature of this novelty is its charming color, which is a beautiful rich pink, daintily tipped white. I highly recommend this grand variety as one of the best in existence. Stock limited of this acquisition. Price 75 cents each.

Ruth Forbes. A massive, beautiful, clear pink flower which has no equal as a garden variety or for table decoration. It is a strong, vigorous grower, producing its mammoth flowers in great abundance. 50 cents each. Stock limited.

Reine Cayeux. An exceptionally free-flowering variety of great substance. The plants are literally covered with flowers from July until frost, which makes it a magnificent garden variety. The flowers are medium size, of a beautiful ruby-crimson and are borne on long graceful stems; excellent for exhibition purposes. One of the best. Price, 75 cents each. Stock limited.

Yonne Cayeux. A most beautiful form, a perfect star shape; petals being located with most exact regularity; color an immaculate white; a large flower and an acquisition of first order among the white Cactus. Stock limited. \$1.00 each.

Cactus Dahlias.

GRAND SUPERB CACTUS DAHLIAS.

This grand set of recent introduction are all exhibition varieties under ordinary cultivation. I am offering this grand set at a very low price. 75 cents each, \$7.50 per dozen, prepaid, to any part of North America, or the entire set of 26 for \$15.00 cash. I will also send the Up-to-Date set of 8 with this one for \$21.00.

(New Up-to-Date Cactus Dahlias.)

- Brigadier.** Bright crimson, base and outer petals scarlet-crimson; petals long and numerous; large full flowers of extra fine form.
- C. E. Wilkins.** This Dahlia won the President's Silver Medal, and can be recommended as first-class in every way. It is a magnificent flower of large size and fine form. The colorings are perfectly exquisite, being a bright, clear salmon-pink, overlaying with yellow, making it very attractive. The petals are long and well arranged, being slightly incurved. Very bold flower, with good stems.
- Diavolo.** In this the coloring is absolutely unique, the base of the florets being yellow to white. The upper portion of petals are suffused with rose, each petal is then splashed, speckled and striped with chocolate and crimson, giving the flower a most extraordinary appearance. Very free.
- Dr. G. G. Gray.** This is by far the best introduction I have ever been able to offer of its color, being a fiery crimson-scarlet with the finest needle-pointed petals, not often seen. The flowers are good size and was much admired by all who visited our fields the past season.
- Debutante.** This is a proper name for this most interesting dahlia. The colorings are very beautiful, being a light tint of soft pink at the base. The upper portion of the florets are white, which gives it an exceedingly pretty effect. The flowers are exhibition size, very large, extra fine form, and can be recommended as first-class.
- Diadem.** This is another telling exhibition variety, with very narrow incurved petals to such an extent as to almost meet in the center. Very large and graceful. One of the best.
- Dorothy.** This variety is a lovely silvery-pink color. The flowers are of good size, very deep and well formed. Fine for exhibition.
- Glorify of Wilts.** All who saw this grand exhibition flower considered it far the best bright, clear, yellow ever offered. It is a strong grower and extra fine form.
- Great Western.** A noble flower of excellent quality. The color is a bright purple and one of the most continuous bloomers ever offered. Very large, fit for any use.
- Harold Peerman.** Deep pure yellow, very large fine form flowers, slightly incurved. Was much admired by all who visited our fields last season. Very free.
- Ivernia.** Is rightly named, as it lights up well, as the color is an art shade of bright salmon-fawn, with light center. The flowers are very large and blooms freely.
- Killarney.** A flower of "Thomas Parkin" type. Color bright golden-bronze, with long, graceful incurved petals, producing its massive flowers in great abundance. A front rank flower.
- Mrs. T. W. Willis.** Another very large and beautifully colored flower, with very narrow florets its entire length. It is white in the center with edgings of lilac on the younger florets, the greater part of the bloom being rose-lilac. Very dainty in appearance and can be recommended as first-class.
- Marathon.** This is one of the most attractive of this set, the color being yellow at the center shading off to rose-carmine and distinctly tipped with white, making it one of the most striking varieties we have been able to offer. The flowers are of largest size, fine for exhibition.
- Nisi Prius.** Bright orange-scarlet, with a well-defined yellow center. The florets are long, narrow and straight. Flowers early and abundantly.
- Referee.** The blooms of this are very large size. They are borne freely on long stems. It was admired by all wherever we exhibited this grand flower last season. It is of a bright, clear, terra-cotta color, with long needle-shaped petals, well incurved, making it a grand exhibition variety.
- Rev. Arthur Bridge.** Another grand exhibition Cactus; without doubt this is one of the grandest large varieties we have yet seen. The coloring in this is exceedingly beautiful, being a bright, clear yellow, heavily tipped and suffused with deep rose-pink. The petals are long and very much incurved, making it very attractive and can be recommended as first-class.

- Rosa Starr.** This is one of the grandest cut flower varieties to date. It will stand fully as long after being cut as any other variety in existence. The flowers are large and full. The color is a bright lilac-pink; the form is of the true Cactus type, making it one of the most useful yet out. Very free.
- Royal Scarlet.** This, as its name denotes, is a pure scarlet. The florets are very narrow, good length, and a strong grower. Is the best of its color for an exhibition flower.
- Rev. T. W. Jamieson.** This is one of the best dahlias I have ever sent out, and whether for first-class exhibition or any other purpose, it will be in the front rank. It is a strong grower, producing flowers of the largest size, on stiff wiry stems. The blooms are moderately incurved in form and the florets fluted right to the center. The coloring is also of the best. The central younger and unopened petals being yellow, but this quickly changes to lilac-rose; the older florets having edgings of deeper color, and the extreme tips are yellow.
- Satisfaction.** This is a real acquisition, especially for its color, which is a beautiful rose-pink shade, approaching to white in the center, giving the flower a delicate appearance.
- Snowdon.** A grand flower of the purest white, possessing great quality, and producing large flowers on graceful stems. Very free.
- Saxonia.** In this we have a splendid deep crimson, very large, with fine florets carried well above the foliage. This variety won many prizes last season.
- Snowstorm.** This is a large, bold, white flower of the finest form, which is moderately incurved. The plant is of dwarf habit, producing flowers in great profusion. Very distinct. Fine for exhibition.
- T. G. Baker.** Is one of the grandest, clear yellow cactus ever introduced. It is a very large, bold flower, with good stems. One of the best to date.
- White Swan.** This variety has been aptly named. The flowers are pure white, and borne on long graceful stems, well above the foliage. Extra fine form. Very large.

GENERAL LIST OF SUPERB CACTUS DAHLIAS.

50 cents each, \$5.00 per dozen, prepaid, to any part of North America. I will send this set of 18 Superb Dahlias for \$7.00, or I will send the two above sets including this set for \$27.00 cash.

- Alight.** Rich, deep orange, with a much brighter center. Extra fine form.
- Countess of Malmesbury.** Delicate peach color pink; very narrow petals. Fine exhibition flower. One of the best grown.
- Crepuscule.** This is a very pleasing variety, of good size, and can be recommended as first-class in every way. This variety, with many of our novelties, has won many first prizes as an exhibition flower; pale orange-yellow, shaded fawn, very full. Extra free.
- Etruria.** The formation of this variety is all that can be desired. It is an excellent exhibition dahlia, the color, which is a very pleasing shade of reddish apricot. The stems are long, and flowers well above the foliage.
- Edward Drurey.** A very variable dahlia, as regards the color. Many of the flowers are of delicate shade of yellow, tipped white, whilst others are clear yellow. The florets are very narrow and finely formed, well incurved. A very pleasing variety.
- Flag of Truce.** A pure white variety of the finest form. Petals are very long, borne on long, graceful stems. One of the best.
- Golden Gem.** One of the best golden-yellow cactus we have been able to offer. It is first-class in every way, and attracted much attention the last season. The flowers are good size, the petals are good length and slightly incurved, making it very pretty.
- Kathlee Bryant.** Deep, rich, velvety crimson. One of the finest of its color; very striking. Can be recommended as first-class.
- Lady Fair.** This is one of the grandest novelties of this set. The florets are very long and divided as Progenator. The color is primrose, tinged with soft pink. There is a great profusion of very narrow, thread-like filaments, or secondary florets, which are usually white, making the flower very attractive.
- Laurania.** Large, bold flower of fine incurve form. This is, without doubt, one of the best of its color we have yet been able to offer. Orange terra-cotta, with cinnamon center. Very free flowering.
- Mrs. Stranach Gaskill.** This variety can be recommended as first-class in every way. The flowers are good size. Color is a delicate and exceedingly beautiful shade of pink. Flowers a little later than the rest.
- Mrs. MacMullan.** This is one of the most pleasing varieties yet offered. It is a deep pink at the tips, whilst the base of the florets are a pure white. Very much admired.
- Mrs. Walter Baxter.** Is one of the grandest varieties we have ever exhibited. The flowers are large and much refined, as the petals are long. The color is a very dark crimson. Extra free flowering. Can be recommended as first-class.

- Sir A. Lamb.** A flower of good form, petals very pointed; in color it is a crimson tinged with purple. Large. Free flowering.
- Thomas Challis.** A very rich tone of salmon-red, a most orange shade. A bold flower, having florets arranged with the utmost regularity. Very good, strong grower.
- Thomas Wilson.** A flower of great merit, and was considered one of the finest exhibited last season. Color is a soft reddish-fawn, suffused with amber, outer petals being salmon-pink with long, narrow petals.
- Wm. Marshall.** This is a grand variety, one of the best of its color, a rich orange with a yellow center. Extra fine form.
- Whirlwind.** This is properly named, as the flowers are loosely arranged, with petals almost straight, quite long, very large flowers, and attracted much attention at all the exhibitions last season. The color is clear crimson. Very useful.

GENERAL LIST OF EXTRA SELECT CACTUS DAHLIAS.

35 cents each, \$3.50 per dozen, prepaid, to any part of North America. The 20 for \$5.00, or the three above sets of Cactus, including this set, for \$31.00.

- Ambassador.** Pure white. A flower of the best quality and blooms well above the foliage; long, graceful stems.
- Cockatoo.** One of the best novelties yet offered. The color is a clear, canary-yellow, whilst the tips of the florets are pure white. The under surface is a pale, brown tint.
- Dreadnaught.** Is one of the largest dahlias grown. The color is a glowing crimson, deepening to maroon in the center. Fine for exhibition, and won many first prizes.
- Eureka.** This has all the good qualities of a dahlia, and is properly named, as it surely is first as an exhibition variety; color a deep purple, and is one of the very best cut flower sorts ever offered.
- Effective.** This is properly named. It is one of the best garden decorative dahlias yet out. The color is a soft amber shade. The center is illuminated with a pale rose. Extra free.
- H. J. Jones.** Delicate primrose center, shading off to a sweetest rose-pink. The petals are long and narrow. Very fine form.
- Ivanhoe.** This is a bright straw color of extra fine form and habit. Much admired.
- Jeanette.** This is the finest buttercup yellow dahlia ever introduced. The flowers are of extra fine form, good size, very free and showy.
- Master Carl.** Bright amber; very large, bold flower. One of the best exhibition varieties. Very free.
- Miss Dorothy Oliver.** Primrose at base, tipped pure white, very narrow florets. Very delicate and attractive. Free flowering.
- Marjorie Caselton.** The outer florets are of a pleasing shade of rose-pink, whilst the tips and the central florets are pure white, making the flower a striking contrast.
- Mrs. W. H. Raby.** The flowers of this variety are extra fine form. The color is a cream throughout, and show up well under artificial light.
- Meteor.** A fancy Cactus Dahlia, with white ground, splashed, striped and spotted with violet-purple. Very pretty.
- Mrs. S. T. Wright.** This is one of the most attractive of this set. The color is a delicate soft lavender-pink, with a much lighter center. Very pleasing variety, and extra free flowering.
- Mrs. Geo. Caselton.** This is one of the finest dark shades ever introduced. The color is a blackish maroon, shaded with purple; extra fine form. Free.
- Ruby Grinsted.** The center is a soft tone of yellow, which is gradually suffused until it becomes a rich shade of rose-fawn, the outer incurving petals being a very light salmon-pink, making it very attractive.
- Sunshine.** In color this is one of the most beautiful, being a deep rose-carmine, the center composed of the unopened florets distinctly tipped white. Exceedingly pretty.
- The King.** The richest of velvety crimson. Fine for exhibition.
- Thomas Parkins.** Is one of the largest in this set. It is a bright, clear terra-cotta shade. Very striking and showy. Free.
- Victorian.** This is a fancy Cactus Dahlia, with blush ground, freely striped and splashed red and purple. A great novelty.

**This Grand, Superb Set of
18 Cactus Dahlias, pre-
paid for \$2.50**

- No. 1 Mary Service.
- " 2 Emperor.
- " 3 Britannia.
- " 4 Prince of Yellow.
- " 5 Brightness.
- " 6 Capstain.
- " 7 Bornemann's Liebling
- " 8 Floradora.
- " 9 J. H. Jackson.
- " 10 Stella.
- " 11 Ring-Dove.
- " 12 Harbor Light.
- " 13 Iceberg.
- " 14 Octopus.
- " 15 Gabriel.
- " 16 Dainty.
- " 17 Genista.
- " 18 Primrose Dame.

**This List of 15 Superb Cac-
tus Dahlias for \$2.00,
prepaid.**

- No. 1 Capstain.
- " 2 Mrs. E. Mauley.
- " 3 General Buller.
- " 4 J. W. Wilkinson.
- " 5 Mrs. Chas. Turner.
- " 6 Dr. Jameson.
- " 7 Standard Bearer.
- " 8 Octopus.
- " 9 Lovely Ensford.
- " 10 Uncle Tom
- " 11 Countess of Lonsdale.
- " 12 Kriemhilda.
- " 13 Beatrice.
- " 14 Winsome.
- " 15 Libelle.



SET OF EIGHTEEN CACTUS DAHLIAS, \$2.50



SET OF FIFTEEN CACTUS DAHLIAS, \$2.00

GENERAL LIST OF SELECT STANDARD CACTUS DAHLIAS.

25 cents each, \$2.50 per dozen, prepaid, to any part of North America. This fine set of 20 Cactus Dahlias for \$3.50. I will also send the four above sets of Cactus including this set for \$34.00 cash.

- Ella Kramer.** Rose-pink with a much brighter center. One of the best.
- Ethel.** This is a very pleasing shade of sulphur-yellow, good size, strong grower, and can be recommended as first-class in every way.
- Forbes Robertson.** Light orange, with quite long, straight petals. Can be recommended for all uses.
- Fred Cobbold.** Bright crimson. One of the best. Large and bold. Very free.
- F. H. Chapman.** A deep orange-yellow of extra fine form. Large and free.
- Hereward.** White striped and sprinkled with crimson. Fine form. Much admired.
- Lady Colin Campbell.** Yellow at base of florets, tipped with deep orange. This was considered by most experts as one of the best.
- Mrs. Winchester.** Deep coral-pink, very attractive. Extra fine form.
- Mrs. Geo. Stevenson.** This is the grandest, clear, yellow Cactus Dahlia to date. The petals are very long and narrow and stand well above the foliage. Extra free.
- Mrs. F. Grinstead.** A grand exhibition flower. Deep rich crimson, faintly veined with purple. Extra fine.
- Manxman.** Rich orange center, shading to soft scarlet with purple tips. A distinct, bold and striking flower.
- Princess Mary.** Which has proved to be one of the best of its color, being a pale terracotta, and can be recommended as first-class.
- Oliver Twist.** This is properly named, as it is one of the largest varieties yet out. In color it is a coral-red shade. Fine form.
- Prince of Orange.** This is one of the most attractive varieties in this set. It is a rich shade of old gold at the outer petals with a bright yellow center; very showy; good size.
- Primrose.** The color is a clear primrose, with large flowers of the finest form. Free.
- Rainbow.** A very pleasing variety, of delicate shade, being a light pink color. The flowers are well arranged and fit for exhibition purposes. Very free.
- T. A. Havemeyer.** This is a novice to color, being a clear yellow at base, deepening to bronze. The greater portion of the bloom being deep red, with a decidedly lighter tinge at the points. Very attractive.
- Violetta.** Very large, full, fine shaped cactus flowers of the best form, with long, nearly straight petals of a violet-rose color. Very attractive.
- W. F. Baldwin.** Deep yellow center with salmon tips; extra fine form. One of the best.
- W. B. Childs.** Blackish maroon, with purple shadings. An extra large flower. Exclusive form.

GENERAL LIST OF SELECT STANDARD CACTUS DAHLIAS.

20 cents each, \$2.00 per dozen, prepaid, to any part of North America. This fine set of 46 select Cactus for \$7.00 cash, or the five above sets of Cactus including this set, for \$40.00.

- Alpha.** White striped and splashed purple-crimson. Fine form.
- Ajax.** Orange, suffused salmon and buff. Large.
- Alexander.** Dark crimson, flaked maroon. Extra fine form.
- Antelope.** Deep rich yellow, suffused with bronzy-rose. Very attractive.
- Alfred Vasey.** Reddish amber, edged pink. One of the best.
- Amos Perry.** Bright scarlet. This is the finest garden decorative Dahlia to date.
- Amos Morgan.** Rich, deep purple-crimson. Large and fine.
- Ballet Girl.** Soft red, tipped white, perfectly distinct from any other. Was much admired.
- Columbia.** Vermilion, tipped white. Fine shape.
- Clara G. Stedwick.** Clear, bright salmon, shaded yellow. Large, fine flower.
- Dainty.** Lemon-yellow at base, tipped rose-pink. Very delicate
- Delight.** This is one of the finest of this set: color a pale pink, with yellow center. Very large true cactus.
- Eva.** Purest white. Very free.
- Etna.** Lilac, veined violet. Very attractive. Large.
- Floradora.** Wine crimson. One of the best out.
- Gabriel.** Soft, bright crimson, tipped pure white. Free.
- Gen. Buller.** Rich velvety crimson, nearly black at the base, tipped white. Sometimes a solid flower on the same stalk. Quite free.

- Genista.** Deep amber, shading gold. Extra.
- Goliath.** Yellow, tinged with salmon; broad petals; distinct.
- Harbor Light.** The most attractive of this set. Vivid orange-red, overlaid with flame color. Very free.
- H. F. Robinson.** Clear yellow; fine petals.
- Ianthe.** A lively shade of buff, edged salmon-rose; very large, fine flower. Excellent for exhibition.
- Iceberg.** Ivory white; extra fine form. Good size.
- Imperator.** Ruby crimson. One of the best. Extra.
- J. H. Jackson.** This is the best black standard Cactus Dahlia yet out. The color is a blackish maroon. Very large.
- Kriemhilda.** Pleasing shade of pink, center almost white. Much admired.
- Lord of the Manor.** Intense fiery scarlet with a greenish yellow center. Very attractive. One of the best. Large.
- Mrs. E. Mauley.** A clear, light yellow. Extra fine form.
- Mary Farnsworth.** Yellow at base, the upper half pure white.
- Mrs. Mortimer.** Rich terra-cotta. This is one of the finest dahlias we are offering.
- Mrs. De Luca.** Golden yellow, tipped orange. Fine form. Very free.
- Mrs. J. P. Mace.** The most delicate and refined blush pink. Good size. Free.
- Mrs. Hobart.** Pale orange and delicate shades of yellow. Extra large. Fine form.
- Mrs. H. L. Brouson.** Delicate salmon, or pale yellow, with long petals. Fine.
- Mrs. J. W. Wilkinson.** Deep pink, with very long petals.
- Mrs. Daniel Cornish.** This variety was much admired for its novel color, being a deep rose-red shade, with a yellow cast in the center. Very fine and free.
- Pink Perfection.** This is a much deeper pink than any other variety.
- Princess.** Pinkish-lilac. This is a novel shade, and much admired. Flowers are of medium size and perfect form.
- P. W. Tullock.** Deep reddish-salmon, free.
- Reliable.** A novel flower, with three distinct shades—yellow, brick-red and salmon. This surely is properly named, as it is very reliable in every way.
- Spitfire.** Bright scarlet, back of petals deep orange. Very free.
- Stella.** Rich, vivid scarlet; deep, bold flower. Fine.
- Sirus.** Bright golden-yellow, heavily striped with scarlet. Large, bold flower.
- Up-to-Date.** Soft carmine, or coral-pink, veined yellow. Petals long and narrow. Fine shape flowers. Very free. Much admired.
- Volker.** A soft, clear yellow, of medium size. Extra fine form. Very free, and flowers well above the foliage.
- Winsome.** Pure cream white; large, fine flowers. Good stems.

GENERAL LIST OF STANDARD CACTUS DAHLIAS.

15 cents each, \$1.50 per dozen, prepaid, to any part of North America. I will send this set of 30 Standard Cactus for \$3.50 cash. I will send the six above sets including this for \$43.00 cash.

- A. Lumiere.** This is a deep orange-scarlet shade, of the true cactus shape; quite bold.
- Brumhilda.** Rich plum color. Fine form.
- Brightness.** Bright fiery scarlet, with yellow cast in center. Fine shape.
- Bornemann's Liebling.** Delicate, soft rose-pink. Extra.
- Britannia.** Soft salmon-pink; large; extra fine. Very free.
- Countess of Lonsdale.** Deep salmon-red. One of the best. Very free.
- Chas. Woodbridge.** Bright crimson. Extra fine form. One of the best.
- Capstain.** Soft red, tinted apricot. Very free.
- Flamingo.** Clear flame color. Extra free. Very fine.
- J. Weir Fife.** Very dark maroon, sometimes a purple flower on same plant. Very free. Extra fine.
- Jealousy.** Clear yellow. Extra fine form. Very free. Much admired.
- J. W. Wilkinson.** Deep rose-crimson. Strong grower.
- King of Stam.** Deep purplish-maroon, edged darker. Fine form.
- Lytic.** Fiery red, shading yellow. Fine.
- Laverstock Beauty.** Soft red; very free flowering.
- Mrs. Murray Ind.** Bright rose. Very large, fine form.
- Mrs. Scrase Dickens.** Rich golden yellow. Very free. One of the best.
- Mars.** Deep orange-scarlet. Fine form. Very free.
- Mary Service.** Pinkish apricot, or heliotrope. Extra fine. One of the best grown. Very free. (See cut on Page 37.)

- Mr. Seagrave.** This is a very pleasing color of purple-rose. Very fine form.
Major Tuppeny. Orange and fawn, center chrome yellow. Very free.
Night. Almost black. Very free. Much admired.
Octopus. Nearly white, veined lavender. Very large and free.
Primrose Dame. Clear yellow. Fine.
Prince of the Yellows. Soft shade of yellow; bold and free.
Queen Alexandra. Deep orange, distinct. Much admired.
Ringdove. Pinkish-fawn or dove color, veined white, attractive.
Standard Bearer. Fiery scarlet. Extra fine form. Very free.
Star Fish. Clear scarlet; bold flower. Much admired.
Uncle Tom. Improvement over *Night*; almost black. Very free

GENERAL LIST OF CACTUS DAELIAS.

10 cents each, \$1.00 per dozen, prepaid, to any part of North America. This set of 18 for \$1.50, or I will send my entire collection, 116 Cactus, for \$44.00 cash.

- Austin Cannell.** Rose-magenta. Fine form
Arab. Rich, velvety maroon. Free.
Dr. Jameson. Deep crimson. Very free.
Emperor. Pure, plumb yellow at base. Fine form
Ebony. Very dark maroon, almost black. Free.
Earl of Pembroke. Bright plum color. Large, bold flower.
Fusilier. Deep salmon. Fine.
Fighting Mack. Crimson, shaded darker.
Island Queen. Light mauve. Very free. Fine form.
Innovation. Rich crimson, tipped pure white.
Irene Cannell. Light reddish-salmon.
Libelle. Clear, deep rose-magenta. Very much admired. Extra free.
Mrs. Dickson. Soft rose. Very fine and free.
Mrs. Jowett. Deep salmon. Quite free.
Mrs. Chas. Turner. Clear, soft yellow. Very large, bold flower. Free.
Mrs. J. J. Crowe. Clear, canary yellow. Very showy.
Ophir. Soft apricot, tinted lighter in center.
Wm. Jowett. Bright scarlet, shading yellow at base of petals. Fine form.

New Decorative Dahlias.

New Up-to-Date varieties for 1912. I will send this Up-to-Date set of 11 for \$10.00 prepaid, to any part of North America.

- Delice.** This is the best pink colored Decorative ever introduced. The flowers are good size, standing well above the foliage. This variety will always appeal to every flower lover, the color being a bright pink suffused with lavender-pink, very effective. 50 cents each. \$5.00 per dozen.
- Gigantea.** Its name suggests the size; truly one of the largest dahlias I am offering. It is a soft sulphur-yellow; very distinct; flowers well above the plant. 50 cents each. \$5.00 per dozen.
- Giant Purple or Royal Purple.** This *New* variety is a seedling from *Le Closse*, being identical in form, shape and size. The color is a lively shade of royal purple. The flowers are of perfect formation, very double and borne on long, wiry stems. This giant is destined to be one of the finest for exhibition purposes. The unusual heavy demand for this variety leaves our stock extremely limited. \$1.00 each.
- J. K. Alexander.** One of my *New Seedlings* of special merit which can be highly recommended. It will have a world-wide reputation in a short time because of its excellence and size. This grand *Decorative* is a seedling from the well-known *Le Closse*, and has the exact form of petals and same shape as that famous variety. The color of this beautiful flower is a royal shade of clear, rich, violet-purple, which deepens to an exquisite deep purple. The gigantic flowers are borne on long, wiry stems well above the foliage, giving perfect contrast with the dark green foliage. This acquisition produces its mammoth flowers freely and is a great advance in the class of exhibition varieties. Stock extremely limited. \$3.00 each.

List of French Decoratives for 1912, \$2.50 Prepaid.

- No. 1 Oban.
- " 2 Mme. Helen Charvet.
- " 3 Mrs. Winters.
- " 4 Papa Treyve.
- " 5 Papa Charmet.
- " 6 and 9 Maid of Kent.
- " 7 Amphion.
- " 8 Mme. Van den Deal.
- " 10 Jeanne Charmet.
- " 11, 12, and 13 Prince of Orange.
- " 14 Dolly or Sylvia.
- " 15 Clifford W. Bruton.
- " 16 Perle de la tete D'or.
- " 17 Mme. Victor Vassey.
- " 18 Souvenir de Gustave Douzon.

This Set of 15 Superb Decorative Dahlias for \$3.00 Prepaid

- No. 1 Mrs. Roosevelt.
- " 2 Progress.
- " 3 Minos.
- " 4 Souvenir de Gustave Douzon.
- " 5 Maid of Kent.
- " 6 Jeanne Charmet.
- " 7 Mme. Victor Vassey.
- " 8 Mme. A. Lumiere.
- " 9 Perle de la tete D'or.
- " 10 Mme. Van den Dael.
- " 11 Source de Feu.
- " 12 Grand Duke Alexis
- " 13 Mrs. Winters.
- " 14 Red and Black
- " 15 Himmlische.



THIS GRAND SUPERB SET OF FIFTEEN DIFFERENT FRENCH DECORATIVES FOR \$2.50 PREPAID.



THIS SET OF FIFTEEN SUPERB DECORATIVE DAHLIAS FOR \$3.00, PREPAID

- Le Geant.** One of the largest dahlias grown, with a rich crimson-scarlet color. Good stems and flowers well above the foliage. 35 cents.
- Le Grand Manito.** This wonderful *New Fancy Decorative* is the largest and grandest Dahlia in existence. It is a most sensational variety, being the showiest and most attractive to-date. The flowers are renowned for their excellent qualities; being beautiful in color, perfect in form, grand in appearance, and of immense size. The color of this superb variety is pure white exquisitely striped, splashed and blotched deep reddish-violet. The plants occasionally bear a solid violet colored flower. The effect of these phenomenal flowers is most pleasing giving the variety a supreme place in this class. Stock limited of this acquisition. \$2.00 each.
- Le Closse.** Deep orange-red. One of the largest grown; long stems, very free, fine form. One of the best. 50 cents each.
- Pythias.** A *New Decorative Seedling* from the famous *Grand Duke Alexis*. The petals are cup-shaped and quilled in the center similar to the parent variety. The color is pure white daintily overlaid rose-lilac, deepening to lavender-purple in the center. This beautiful combination gives it the appearance of a deep lavender with white tips. In form, habit and appearance, it is like the parent variety. 50 cents each.
- Pearl de Lyon.** A pure, white exhibition variety of great value. The petals are fringed or nitched, giving a unique appearance. The flowers are perfect in form, and produced on long stiff stems. 50 cents each.
- W. W. Rawson.** The popularity which this novelty has acquired in this short time speaks in itself for the superior feature of this flower. The petals towards the center are quilled similar to *Grand Duke Alexis*, toward the outer part, they are more open and flat. The color is pure white, overlaid with amethyst-blue. This wonderful combination gives it the appearance of a delicate lavender. The flowers measure from 7 to 9 inches in diameter. It is very free with good stems. One of the best grown. 50 cents each. \$5.00 per dozen. See cut.
- Yellow Closse.** An ideal Dahlia that appeals to everyone on account of its distinct color, gigantic size and beautiful appearance. This magnificent variety is the best exhibition yellow in existence, being rich, refined and delicate. Large showy flowers of pure primrose-yellow are produced very freely on long, graceful stems. Its golden cup-shaped petals are daintily arranged completing this beautiful, perfect flower. \$1.00 each.

DECORATIVE DAHLIAS.

Some of the best Decoratives, of recent introduction. This extra fine set 35 cents each, \$3.50 per dozen, or the 9 for \$2.09, prepaid, to any part of North America. I will also send this set and the new set of 11, for \$12.00.

- A. E. Johnson.** A delicate shade of pink. Very large and bold.
- Mme. Helene Charvet.** The flowers are very large, pure white; fine for church decorations. Strong grower.
- Mme. A. Lumiere.** A very attractive variety, pure white, with violet-red tips. Medium size. Should be in all collections.
- Mme. Augusta Nonin.** Clear lilac, very large. One of the best.
- Mme. Victor Vassier.** This is the grandest, clear, sulphur-yellow decorative dahlia yet out. The flowers are very large and bold, quite free. Fine form. Grand exhibition flower.
- Mrs. Roosevelt.** This new dahlia is acknowledged to be far superior to the celebrated Dahlia, *Grand Duke Alexis*. It is of larger size, with much longer stems, while the color is of delicate pink, shading to soft pink. Very free. Much admired.
- Progress.** This is one of the finest fancy decoratives we have been able to offer. It is of medium size, good form, and very long stems. The color is a clear lavender with stripes and blotches of soft crimson through each petal, always covered with blooms, standing well above the foliage.
- Papa Charmet.** Brilliant coral-red, overlaid with a darker shade of velvety maroon. Large, bold flower of the finest form. Very free and showy.
- Reggie.** Cerise color, or cherry red, veined orange. Very large, fine flower. One of the best.

DECORATIVE DAHLIAS.

This grand set of 19 Superb Decorative Dahlias for 20 cents each, \$2.00 per dozen, prepaid, or the three sets of 36 for \$14.00 cash.

- Augusta Nonin.** Clear scarlet; very large, fine flower, of good form. Can be recommended as first-class.
- Blue Oban.** Deep lavender-blue. Very pretty.



W. W. RAWSON DAHLIA. (See page 15.)



HIMMLISCHE, A GERMAN DECORATIVE DAHLIA. (See page 17.)

- Emily Habgood.** The plant is a strong grower of medium height, always covered with white flowers of perfect form.
- Gettysburg.** Deep, glowing scarlet. Very large and bold.
- Grand Duke Alexis.** A magnificent flower of large size and distinctly unique form, as the petals are ruffled up so that the edges overlap each other. Color is a pure white, distinctly tinged pinkish-lavender. Fine form. Very free.
- Himmliche.** This variety was considered in Germany as one of the finest yet out, as the color is a bluish-lavender. See cut.
- Jack Rose.** This is an ideal comparison to the celebrated *Jack Rose*. In form resembles the rose, and in color identical. Was much admired in our field the past season. Very free. Fine for decorative work.
- Jeanne Charmet.** One of the most beautiful dahlias ever produced. The flowers measure from seven to ten inches in diameter. The exquisite colors are needed very much. They are pink-lilac at the edges, pure white towards the center, and a tinge of light yellow at the margins. Stems 18 to 24 inches long. Fine form.
- Juno.** Deep crimson striped maroon. Very large. Fine form.
- L. Mandarin.** This is a very attractive variety, with a light cream center, shaded to a yellow, tipped deep pink, and each petal is then striped with crimson, making it very showy.
- Les Alliees.** Pinkish-white, striped rose and purple. Very pretty. The petals are quite broad.
- Mrs. Hartong.** Deep orange, tipped pink. Large, bold flower of fine form.
- Minos.** This is one of the finest dahlias in this set. The flowers are very large, borne on long, graceful stems. The color is intense velvety maroon, almost black. Fine for all uses.
- Mrs. Winters.** Pure snow white. This is without doubt the best pure white decorative dahlia yet cut. Extra fine for decorative purposes. Very large and showy.
- Mme. Van Den Dael.** A grand decorative variety, of good size, white, deeply edged lively pink. Later in the season the flowers are much lighter. Fine for florists.
- Perle de la tete D'or.** One of the best, white decorative, faintly veined lavender, resembling a Paeony. Is much admired. Strong grower. Quite free.
- Papa Treve.** Deep orange-red, tinted scarlet. Quite bold. Good form.
- Source de Feu.** Deep orange, splashed and streaked with vermilion. Stands well above the foliage. Good size. A very dazzling variety.
- Souvenir de Gustave Douzon.** This variety is a good comparison to the "Sunflower." It is the largest dahlia yet out. The color is a pleasing shade of orange-red. Very bold and free. Good stems. Strong grower.

GENERAL LIST OF DECORATIVE DAHLIAS.

10 cents each, \$1.00 per dozen, prepaid. This fine set of 16 for \$1.50, or the entire four sets (55), for \$15.00 cash.

- Beauty of Brentwood.** Plum, striped darker.
- Black Prince.** This is surely properly named, for it is the nearest black of any dahlia yet out. Is large and fine form.
- Cora Gleason.** Deep purple color. Very large. Fine form. Strong grower.
- Claribel.** Rich, rosy purple. Large.
- Clifford W. Bruton.** Bright yellow.
- Deacon.** Deep crimson-scarlet. Quite distinct from any other.
- Dolly or Silvia.** Flesh color, tipped darker.
- Garibaldi.** Deep crimson, with notched petals. Very different from any other.
- Lyndhurst.** Deep glowing scarlet; cleft petals.
- Miss Barry.** A deep magenta. Free.
- Maid of Kent.** Cherry red, tipped white.
- Oban.** Mauve. Extra fine form. Very free.
- Prof. Mansfield.** Grand flower of the fancy type. The color is a rich yellow, tipped white, rose-red centers; sometimes three solid flowers of the different shades on the same bush.
- Wm. Agnew.** Red, large.
- Wilhelm Miller.** Very brilliant purple. Very large and free.
- Zulu.** Dark maroon.

This Grand, Superb Set of 17 Show and Fancy Dahlias, \$3.00 prepaid
This is the best set of large flowering Show and Fancy Dahlias ever offered in this country for the money. All prize-winners.

- No. 1 Thomas Pendred.
- " 2 Willie Garrett.
- " 3 Mme. Hein Fratado.
- " 4 Fascination.
- " 5 Standard.
- " 6 White Queen.
- " 7 Alice Emily.
- " 8 Muriel.
- " 9 Thomas Austiss.
- " 10 William Neats.
- " 11 W. P. Laird.
- " 12 Frank Smith.
- " 13 Lucy Faucett
- " 14 Mrs. Kendal.
- " 15 Pioneer.
- " 16 Norma.
- " 17 John Bennett.

This Set of 12 Superb Show and Fancy Dahlias, \$1.00 prepaid.

- No. 1 Arabella.
- " 2 Dr. J. P. Kirkland.
- " 3 Lucy Faucett.
- " 4 Queen Victoria.
- " 5 A. D. Livoni.
- " 6 Meteor.
- " 7 Wm. Neats.
- " 8 Emily.
- " 9 Robert Broomfield.
- " 10 Bride.
- " 11 Pioneer.
- " 12 Black Prince, or John Sladden



THIS SET OF SEVENTEEN SHOW AND FANCY DAHLIAS, \$3.00, PREPAID



THIS SET OF TWELVE SHOW AND FANCY DAHLIAS, \$1.00, PREPAID

Peony Flowered Dahlias.

New Up-to-Date varieties for 1912. This new type of the Holland Peony Dahlia is becoming very popular as they flower so profusely, and are fully as graceful when cut as any other type. This Grand Superb Set of 12 Peony Dahlias prepaid, to any part of North America, for \$7.00.

Bertha Von Suttner. This magnificent variety is the pride of the Peony type, producing its gigantic flowers freely on stiff, wiry stems, many of them measuring nine inches and over in diameter. It is a very beautiful shade of salmon-pink, overlaid with yellow. This charming variety was considered by us and other experts as one of the best grown. \$1.00 each.

Goddess of Fame. This is one of my *New Seedlings*, and can be highly recommended. It will be known to the world in a short time because of its delicacy and size. The upper side of the petals are a soft shade of yellow faintly veined orange, while the underside of the petals are a light cast of orange veined soft scarlet. The flower is of the Peony type, always showing a large deep yellow center, while the stems are very long, and it is very free flowering. I can only supply a limited amount of stock at \$1.50 each.

Geisha. The pride of the *Peony-flowered* Dahlias. This most sensational variety is the showiest and most attractive of this type in existence. The wonderful flowers are renowned for their excellent qualities; being exceptionally beautiful in color, perfect in form, grand in appearance, and immense in size. The color of this acquisition is remarkable and attracts everybody's attention. It is a superb combination of brilliant scarlet and gold with an exquisite ring of rich, clear, yellow at the center. Occasionally the first flower comes fully double, but all that follow show that beautiful golden center which combines to make this flower the most charming. Its form is very original, consisting of peculiarly twisted and curled petals. The effect of these phenomenal flowers is most pleasing, giving this variety the supreme place in the *Peony-flowered* class. Stock limited of this acquisition. \$1.00 each.

Germania. A beautifully formed flower of wine color, and bright, glowing crimson, shaded with yellow. Very attractive. Stock limited. 35 cents each.

King Leopold. One of the finest of this collection, having large flowers of beautiful form. The color of this dainty variety is very pleasing, varying from cream-yellow to white. The well-formed flowers are produced on long, wiry stems, giving a unique appearance. 35 cents each. \$3.50 per doz.

La Riente. An excellent variety producing delicate flowers in great abundance. The flowers are deep lavender-pink in color and are borne on long, graceful stems. This pleasing variety can be recommended as one of the best. 35 cents. \$3.50 per dozen.

Miss Gladys Dawson. Magnificent flowers of delicate, soft yellow-rose; very free and erect. Stock limited. 35 cents each.

Priscilla. This is one of my *Seedlings* from the well-known dahlia *Souvenir de Gustave Douzon*, and is a grand introduction. The gorgeous flowers are borne on long, graceful stems while the color is a light orange-scarlet. The plant is a strong grower. 50 cents each. Stock limited.

Queen Emma. A delightful sort that appears almost artificial. It is of a charming shade of Hollyhock pink, the inner petals banded with gold. One of the most beautiful. Stock limited of this acquisition. 50 cents each.

Queen Wilhelmina. The largest of the pure white sorts being excellent for decorative work. Flowers well above the foliage. Very free. 50 cents each. \$5.00 per dozen.

Queen Augusta Victoria. A pleasing variety, having large, white flowers with a clear, yellow center, resembling the single dahlia. 35 cents each. \$3.50 per dozen.

Snow Queen or Sneeuwvriete. A pure white Peony-flowered variety. One of the most free introduced. Good size. 50 cents each. \$5.00 per dozen.

Show Dahlias.

New and recent introduction of large, flowering varieties for 1912. This set of 13 extra superb Dahlias, prepaid, to any part of North America for \$5.00.

Acme of Perfection. Deep yellow, very compact flower, of perfect form, with long, stiff, wiry stems. Good size. 35 cents each.

Chieftain. Purplish-lilac. Fine, large flowers. 35 cents each.



Partial View of One of Our Fields of Show and Cactus Dahlias.



Field of Dr. J. P. Kirkland Dahlias on the left, and Lucy Faucett on the right.



Partial View of Field of Show Dahlias.



Field of Pompon Dahlias.

- Emperor.** This is one of the grandest exhibition Dahlias ever offered. It is very large and full to the center, with good stems. The color is a deep crimson, and won many first prizes. 50 cents each.
- George Howard.** One of our *Seedlings* of splendid habit, from the *Fancy* Dahlia, "*Eric Fisher*." A pleasing variety with large cup-shaped petals. The color is a clear, soft salmon-buff. The well-built flowers are produced freely on long, wiry stems, giving a marked contrast with the heavy, green foliage. A first-class exhibition variety. Stock limited. \$1.00 each.
- Harrison Weir.** This variety has attracted fully as much attention as any in this set. It is a model in form, fine ball-shaped flowers, quite large. Can be used for exhibition by disbudding, and get grand results. Color is a rich, lemon-yellow, veined with crimson, good stems. Very free. 35 cents each.
- John Downie.** Light yellow, heavily tipped deep garnet-red; large, perfect flowers on long, graceful stems, very free. 50 cents each.
- Mrs. Susan Wilson.** Introduced by me for the first time. This is a grand acquisition to the exhibition class. The color is a deep, burnt orange, veined with bright orange. Very large. Full to the center. 50 cents each.
- Mme. Hein Furtado.** This is the grandest White Show Dahlia ever offered. It is of perfect shape, full, high center. The first flowers measure six inches in diameter. It is a very strong grower, with good stems. It excels any other White we have ever offered. It won many first prizes last season. 35 cents.
- Old Gold.** A very fine, old gold color, of good size, flowers well above the foliage. 35 cents each.
- Reliance.** A grand variety of very deep, bold flowers, of large size, white at base, deeply edged purple-crimson, veined cream. Fine exhibition dahlia. 35 cents each.
- Stradella.** This is one of our *Seedlings* gotten out by us in 1908, and was shown in Horticultural Hall, Boston, Sept. 17 to 19, 1909, and caused more comment than any other vase of dahlias in the show. The color being deep purple-crimson and quite loosely arranged, with deep, cup-shaped petals. The flowers are perfectly round when in full bloom, borne on long, graceful stems, well above the foliage. 35 cents each.
- Victor.** Dark maroon. A first-class flower, very compact, and one that will always give good satisfaction. 50 cents each.
- Wm. Dodds.** This is without doubt the grandest, clear, yellow exhibition dahlia ever offered. It is very large, full to the center, and won many first prizes last season. 50 cents each.

GENERAL LIST OF SUPERB SHOW DAHLIAS.

20 cents each, \$2.00 per dozen, prepaid, to any part of North America. This fine set of 21 Superb Dahlias for \$3.25, or the two sets for \$8.00.

- Acquisition.** This is properly named, and is one of the grandest dahlias of its color ever offered. Very large with cup-like petals, borne on long, graceful stems, and can be recommended as first-class in every way.
- Daniel Cornish.** Large terra-cotta red shade. Extra fine form.
- Gracchus.** Bright orange-buff. Fine form, long stems. This is one of the best of its color, always reliable. Large, bold flowers.
- J. N. Keynes.** Yellow, tinted amber. Very free to flower.
- Miss Fox.** Blush, edged with lake. Large, fine flower. Free.
- Merlin.** Bright orange-scarlet. This is one of the best dahlias we have ever offered. Deep, bold flower.
- Mme. Maureau.** This is one of the finest pink show dahlias yet out. Good stems. Fine form.
- Muriel.** Deep orange. Very free.
- Norma.** Bright orange. One of the best grown. Extra fine shape.
- Nugget.** Orange, tipped scarlet. Extra fine exhibition flower. Always good.
- Prince Bismarck.** Deep purple. Very large, bold flower of fine form.
- Perfection.** Orange-buff shades. This is properly named as it is of perfect form. A true model in every respect.
- Primrose.** Very soft rose-lilac; fine, compact flower. A very pleasing variety of medium size. Free.
- Primrose Dame.** A lovely shade of primrose. Medium size.
- Standard.** Dark chocolate, high center. Very large. One of the best grown.
- Thomas Austiss.** Deep lilac. Good form.
- Thomas Pendred.** Clear yellow. This is without doubt the finest yellow show Dahlia ever offered in this country. It has all of the good qualities that can be found in a Dahlia.

Thelma. Purplish-maroon. Full and fine.

White Queen. Is a very strong grower of medium size, very free, of a pure white with often a soft lilac flower on the same plants, making it very pretty.

Wm. Rawlings. Crimson-purple. Noble, back-row flower. Good stems.

W. P. Laird. Lilac, veined lighter. Very fine form.

GENERAL LIST OF SELECT SHOW DAHLIAS.

15 cents each, \$1.50 per dozen. This fine set of 17 select Dahlias for \$2.00, prepaid, or the three sets of 51 for \$10.00.

Arian. Crimson-scarlet. A very deep flower. Fine form.

Alice Emily. Buff-yellow. Large and fine. Free.

A. M. Burnie. Dark orange ground, lightening to yellow towards the edges. Large, bold flower.

Countess. Blush white, shaded rosy-purple towards the edges; high center flowers very deep. Fine form.

Fascination. Rose-pink, sometimes striped white. Fine. Free.

Imperial. Deep purplish-maroon. Free and fine.

John Bennett. Yellow, deeply edged scarlet. Free.

Leander. Deep orange. This is one of the best of this set. The flowers are large, fine shape, borne on good stems.

Mariner. Yellow ground, with rich crimson edges and dark center. A well-built flower, full to the center. Extra fine form.

Mrs. Kendal. White, heavily edged purple.

Mrs. W. Slack. Blush, edged purple. Free and fine.

Pioneer. This is the nearest to black of any of the Show Dahlias yet out. Of medium size. Good stems.

Robert Myers. Is a deep crimson, the reverse color of *Duchess of Albany*. A very large exhibition flower, six to eight inches in diameter. Can be recommended as first-class. Free.

Roboni. This is a very odd-colored dahlia, and borders on the deep copper and amber shades. Good size, of fine form.

Storm King. Pure white. Free.

Wm. Neate. Soft reddish-fawn. Fine.

Willie Garret. Cardinal red. Fine and free.

GENERAL LIST OF SHOW DAHLIAS.

10 cents each, \$1.00 per dozen. This fine set of 18 for \$1.50, prepaid, or I will send the entire four sets of 69 for \$11.00.

A. D. Livoni. Soft pink.

Arabella. Sulphur, tipped pinkish white.

Bride. Blush, edged deep rose.

Dr. J. P. Kirkland, or Cuban Giant. Dark crimson. Large.

Florence Trenter. Blush white, edged rose-purple.

Gold Sphere. Bright crimson, gold back.

Mrs. J. Laing. French white, quite distinct. Good form. Free.

Maud Fellows. French white, shaded purple.

Meteor. Bright red. Very large.

Orator. Salmon-buff.

Purple Gem. Deep purple, distinct.

Queen Victoria. (or Mary D. Hallock). Canary-yellow.

Robin Adair. Terra-cotta.

Robert Broomfield. Pure white.

Southern Queen. A deep lilac, pencilled deep pink. Fine.

White Bedder. White. Fine for borders and lawns.

White Swan. Pearly white.

Willie Austin. Fawn. Large.



FIELD OF SHOW AND CACTUS DAHLIAS.

Fancy Dahlias.

New and recent varieties for 1912. I will send this Superb Set of 15 for 20 cents each, \$2.00 per dozen, or the set for \$2.50, prepaid, to any part of North America.

- Dazzler.** Deep yellow, striped scarlet. Very bold flower. Fine exhibition variety. One of the best.
- Duchess of Albany.** A very large fancy, orange, striped crimson. Extra fine form. One of the best for exhibition.
- English Dandy.** Deep orange, striped crimson. Very large, useful flowers.
- Eric Fisher.** Buff, veined and striped scarlet. Large and very free.
- Frank Smith.** Dark maroon, tipped pinkish white. Very striking.
- Frederick Smith.** Lilac, striped purple. Very showy.
- Goldsmith.** Yellow, striped and tipped deep crimson. Fine form.
- Gen. Grant.** Deep orange, striped chocolate. Sometimes the flowers will come a solid chocolate shade, and even then the flowers are extra fine shape.
- Geo. Barnes.** A Fancy Dahlia of refined form, lilac, striped crimson.
- Gold Medal.** Canary-yellow, striped and flaked red. This is one of the best Fancy yet out. Extra fine for any use.
- Hercules.** Yellow, striped crimson. Very large and striking.
- Lucy Faucett.** Pale yellow, striped deep pink, or light magenta. One of the best of this set. Very large and free.
- Polly Sandall.** This is one of the best Fancy Dahlias ever introduced. It is a novel combination of bronze-yellow, veined and blotched pinkish-white, making it very pleasing and showy. Flowers are of good size.
- Rev. J. B. McCamm.** Deep yellow, striped and flaked light red. Very free. Good size.
- Wizard.** A Fancy Dahlia with many combinations of colors—fawn, striped with maroon and tipped white. Very odd.

Pompon Dahlias.

These Dahlias are the finest for cut flowers, as they bloom more freely than any of the other classes. The flowers are small, compact, with long, graceful stems, extra fine for bouquets. I have the largest and finest collection of any firm in America, and won more first prizes on this class of Dahlias, than any other competitor in the U. S. A.

New and recent introduction for 1912. This Superb Set of two new varieties for \$1.00, prepaid, to any part of North America.

- Darksome.** A *Seedling* introduced by me, and offered for the first time. A fine acquisition in every way. The color is a deep wine-crimson, almost maroon. Fine form, with long, graceful stems. 75 cents each. Stock limited.
- Marliene.** A new *Seedling* of 1909 of our introduction. This is a grand addition to the Pompon class, with dwarf branching habit, with fine compact flowers, full to the center. It is a deep purple color, with good stems, and was recommended by experts as first-class. 50 cents each.

RECENT INTRODUCTION

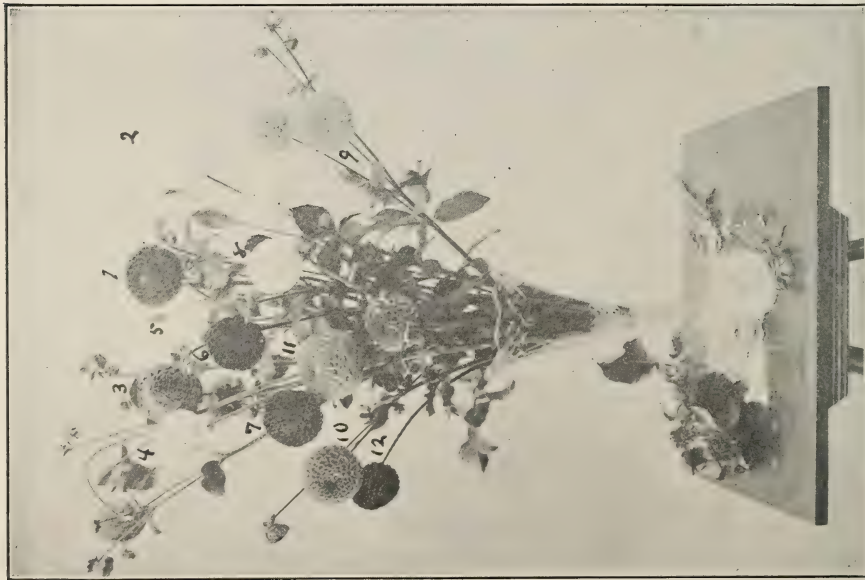
Of some of the Newest and Finest Varieties Offered to Date.

This Extra Select Set of 9 for 15 cents each, \$1.50 per dozen, or the set, prepaid, for \$1.25, or the two sets including the 2 new ones for \$2.00.

- Amber Queen.** Rich, clear amber, shaded apricot.
- Brick Top.** A lively shade of brick color. Quite large. Extra.
- Donovan.** White with lavender tips. Very fine.
- Gannymede.** Amber or fawn, shaded pale lavender.
- Grauss am Wein.** Crushed strawberry. A very compact flower of extra fine quality.
- Little Mary.** Dark crimson. A perfect model in every way.
- Rosebud.** White, edged bright rosy pink. Very pretty and free.
- Raphael.** Very dark maroon of extra fine form.
- Shalli.** A lively shade of pink, edged pure white. Very attractive.

**This Grand, Superb Set
of 12 Pompon Dahlias,
prepaid for \$1.00**

- | | | |
|-----|----|------------------|
| No. | 1 | Red Indian. |
| " | 2 | Catherine. |
| " | 3 | Prince Charming. |
| " | 4 | Virginal. |
| " | 5 | Little Jennie. |
| " | 6 | Raphael. |
| " | 7 | Bobby. |
| " | 8 | Alewine. |
| " | 9 | Winfred. |
| " | 10 | Amber Queen. |
| " | 11 | Fashion. |
| " | 12 | Sunbeam. |



**THIS SET OF TWELVE POMPON DAHLIAS,
\$1.00 PREPAID.**



**This Set of 18 Superb
Pompon Dahlias, pre-
paid for \$1.50.**

- | | | |
|-----|----|-------------------|
| No. | 1 | Pure Love. |
| " | 2 | Darkness. |
| " | 3 | Ariel. |
| " | 4 | Star of the East. |
| " | 5 | Bobby. |
| " | 6 | Darkest of All. |
| " | 7 | Sunbeam. |
| " | 8 | Little Bessie. |
| " | 9 | Highland Mary. |
| " | 10 | Hilda Searl. |
| " | 11 | Fairy Queen. |
| " | 12 | Madeline. |
| " | 13 | Fascination. |
| " | 14 | Mabel. |
| " | 15 | Snow-Clad. |
| " | 16 | Little Herman. |
| " | 17 | Brunette. |
| " | 18 | Vivid. |

**THIS SET OF EIGHTEEN POMPON DAHLIAS,
\$1.50 PREPAID.**

GENERAL LIST OF POMPON DAHLIAS.

This set of 32 Select Pompon Dahlias 10 cents each, \$1.00 per dozen, or the set, prepaid, for \$2.50, or I will send the two above sets including this for \$4.00.

- Achilles.** Base of petals flesh, tipped pink.
Ariel. Orange-buff.
Alewine. Delicate pink, tinted lilac. Fine.
Bobby. Plum color. Fine.
Brunette. Crimson, blotched white.
Challenge. Deep crimson, tipped and blotched white.
Catherine. Bright yellow. Fine.
Darkness. Dark maroon.
Darkest of All. Nearly black. Best dark yet out.
Fairy Queen. Sulphur-yellow, edged pink.
Fascination. Pink and lavender, blotched white.
H. C. Winters. Pale fawn.
Henrietta. Yellow, tipped crimson. Fine.
Hilda Searl. Orange-scarlet. Fine.
Highland Mary. Pink and white. Quite large.
La Petite Barbara. White, nitched petals.
Little Jennie. Primrose yellow.
Little Bessie. Creamy white. Fine.
Madeline. Pale primrose, edged with rose-purple. Very free.
Mabel. Salmon-pink. Very fine.
Phoebe. Orange, tipped crimson.
Pure Love. Lilac.
Prince Charming. Cream, tipped purple.
Rosalie. Pale primrose, tipped pinkish-red.
Red Indian. Deep coral-red.
Sunbeam. Crimson. Fine.
Snow Clad. Small white. Free.
Star of the East. Clear white, distinct.
Virginal. Very white; neatly quilled; small.
Viridi Flora. The Green Dahlia.
Vivid (or "Mars"). Bright scarlet. Fine.
Winfred. White, tipped lavender.

Single Dahlias.

These have become extremely popular, and we really think they deserve it, for they are pleasing and most graceful. Every variety is very free-flowering and most beautiful for the garden. These effective varieties are making wonderful progress among the flower-loving public, because they have grace, simplicity and beauty to make their form liked. Their flowers appear early and late in a miraculous profusion: this makes it an ideal garden Dahlia. Their colors are all rich, refined and delicate, and as a decorative flower for the garden or home they have no rival.

These novelties we are offering are the choicest specimens we have been able to introduce.

NEW SINGLE DAHLIAS.

Up-to-Date Novelties.

Superb New Single Dahlias for 1912, 50 cents each, prepaid, to any part of North America, or this grand set of 6 Novelties for \$3.00.

- Bell.** A perfect beauty of special merit. This sublime variety is one of the most attractive. In color it is an exquisite soft rose-pink, suffused yellow and lightly speckled dark rose-pink, giving it a delicate and fascinating appearance. The flowers are borne on long, graceful stems and literally cover the plants. This variety attracted fully as much attention in my fields the past season as any variety I grew. 50 cents each.
- Blanche.** An exquisite New Single Dahlia of perfect form and beautiful color. The flowers are large and very attractive, being a pale yellow at the base, faintly tipped pink, with a cast of pure white over the whole flower, making it one of the most delicate varieties yet out. Very free, producing its flowers well above the foliage. 50 cents each.



MRS. DeLUCA, Golden Yellow, tipped Orange.
20 Cents Each, 3 for 50 Cents, Prepaid.



This Set of Five Superb CACTUS DAHLIAS for 75 Cents, Prepaid.
No. 1.—Octopus. No. 2.—Beatrice. No. 3.—J. H. Jackson.
No. 4.—Gen. Buller. No. 5.—Countess of Lonsdale.

- Jack.** This is the most fascinating Single ever introduced, and will attract more attention in your garden than any other variety ever offered. The color is a brilliant fiery scarlet; the back of the petals are shaded with golden yellow, making it one of the most showy varieties to-date. 50 cents each.
- Lord Goff.** A *Single Cactus Dahlia* of the most refined form, resembling a butterfly in appearance. The base of the petals are delicate cream, heavily tipped rose-pink. The flowers are borne on long, graceful stems, well above the foliage. This variety won many prizes for its grace and delicate effect at all the leading shows. 50 cents each.
- Mildred.** One of the most charming of the Single type. The color is a bright, clear yellow, and exceptionally showy. The flowers are large, borne freely on long, graceful stems. One of the most pleasing of this set. 50 cents each.
- Sadie.** A pleasing novelty which is very striking and effective. In color it is a beautiful pink, neatly striped and speckled maroon. This New variety of excellent form, abounds in beautiful flowers, and possesses a most charming individuality in beauty and grace, that is almost incomparable. 50 cents each.

SINGLE DAHLIAS.

RECENT INTRODUCTIONS.

Grand Single Varieties of Recent Introduction for 1912. This Superb Set of 6 new ones for 75 cents, prepaid, or I will send the above set of 6 First-Class New Novelties and this set of 6 Recent Introductions for \$3.50, prepaid.

- G. E. Varnum.** Deep red, tipped lighter. Very large, showy flower. 15 cents each.
- Lysander.** Crimson, striped maroon. 15 cents each.
- Miss Barton.** This is a bright pink shade. Quite good size, extra long stems. 15 cents each.
- President Viger.** Reddish-carmine, with a smaller collar of pure white petals on the inside, making it very attractive. 15 cents each.
- 20th Century.** It is of purest white at both base and tips, and the center of petals are a delicate blush rose. Very large, 5 to 7 inches in diameter. 15 cents each.
- Rose Pink Century.** Very large, orchid-flowered Dahlia of the rose-pink shade, borne on long stems well above the foliage. 25 cents each. \$2.50 per dozen.

GENERAL LIST OF SINGLE DAHLIAS.

10 cents each, \$1.00 per dozen, or the set of 6 for 50 cents, or I will send the two above sets and this set of 6 Standard Singles for \$4.00, prepaid, to any part of North America.

- Annie Hughes.** Bright sulphur, tipped cerise.
- Duke of York.** Brilliant scarlet, deeply nitched petals.
- Man Friday.** Deep maroon.
- Snow Queen.** Purest white.
- Thomas Becket.** Crimson lake, with bright yellow ring in center.
- Violette.** Lively shade of crimson.

Gladioli.

The new Gladioli are without an equal either for bedding or borders. As a cut flower they are far superior to any other summer bloomer, either for lasting qualities or for the various uses for which they can be employed. If planted by the last of May they will bloom by the first to the middle of August, if properly cared for.

The Way to Plant.—Dig the row or bed from eight to ten inches deep, then spread a liberal amount of good fertilizer in the bottom of the row or bed, then rake it in thoroughly before planting your bulbs; but if stable dressing is used it should be spaded in when the bed is first dug over. I find that hen dressing can be used and get first-class results if applied properly, but this must be put in the bottom of the drill or bed, then covered with fully an inch of soil before the bulbs are planted. The bulbs after being planted should then be covered about four to six inches deep; just as soon as they show their heads through the ground, they should then be cultivated. If this is kept up for once a week till they begin to flower, one will be sure of first-class results.

MY SPECIAL MIXTURES

Of some of the very best strains ever offered, also some of the best and grandest named varieties introduced in this country.

ALEXANDER'S SPECIAL SELECT MIXTURE.

This strain comprises a large range of some of the very best colors and varieties ever offered at these prices. This strain runs strong to light shades.

First size, \$1.00 per dozen prepaid, or \$7.50 per 100, prepaid; \$7.00 per 100, express collect.

Second size, 75 cents per dozen, prepaid; \$6.00 per 100, prepaid; \$5.50 per 100, express collect.

MY SPECIAL SELECT MIXTURE OF SOME OF THE BEST BLUES, VIOLET, LAVENDER AND SMOKY SHADES.

These are new and rare colors, \$1.00 per dozen, \$7.00 per hundred, prepaid; \$50.00 per thousand. Express collect.

MY SPECIAL MIXTURE OF GROFFS.

This strain comprises a large range of colors of some of the best Groffs grown, but runs strong to red, crimson and darker shades.

First size, 50 cents per dozen, prepaid; \$3.00 per 100, prepaid, or \$15.00 per 1,000, prepaid; \$2.00 per 100, express collect, or \$12.00 per 1,000, express collect.

MY GRAND MIXTURE.

This strain comprises a large range of colors of some of the older types, and a number of new varieties have been added to this strain, which make it perfectly satisfactory, and is far the best obtainable for the prices.

First size, 30 cents per dozen, prepaid; \$1.75 per 100, prepaid; \$1.50 per 100, express collect; \$12.00 per 1,000, prepaid; \$9.00 per 1,000, express collect.

Second size, 25 cents per dozen, prepaid; \$1.50 per 100, prepaid; \$1.00 per 100, express collect; \$8.00 per 1,000, prepaid; \$6.00 per 1,000, express collect.

THIS GRAND SUPERB SET OF NEW UP-TO-DATE GLADIOLI FOR 1912.

I will send this Grand Superb Set of 9 New Gladioli, prepaid, for \$3.00, to any part of North America.

Alice Carey. This is a *New Seedling* Gladiolus, and is one of the finest whites ever introduced. The whole flower is a pure white at first glance, but you will find by close examination a very faint stripe of delicate light violet on the inside of the lower petals. The flowers are much larger than *Augusta*, and a stronger grower; the flowering spike is not quite so long, but is a much earlier bloomer. We can only supply a limited amount of stock in No. 1 size at 35 cents each. \$3.50 per dozen.

- Eureka.** This is one of the most showy gladioli, ever introduced by us. It is a deep crimson, with a clear white throat, well open; the spikes are good size, very long, very striking. 25 cents each, \$2.50 per dozen.
- Golden Queen.** An exquisite bright golden-yellow, with a prominent rich carmine blotch in the throat; very strong spike of perfect form. 35 cents each, \$3.50 per dozen.
- King Humbert.** A superb Gladioli of immense size. The magnificent flowers are a very showy, brilliant scarlet, with a pure, white stripe through the center of each petal. A very attractive variety of perfect form and large excellent flowers. 35 cents each, \$3.50 per dozen.
- Niagara.** A wonderful new Gladioli of sterling quality. A most exquisite variety of excellent form and possessing a charming individuality in grace and beauty, that is almost incomparable. In color the flowers are a delightful cream shade, with the two lower petals daintily marked canary-yellow. The throat is attractively splashed with rich carmine. The stamens are purple, and the stigmas pale carmine. The flower spike is very erect and strong, and is wrapped with dark green foliage. In shape it resembles *America*, but the flowers are much larger and more showy. This variety is sure to lead all of its color. 50 cents each, \$5.00 per dozen.
- Princes.** The Amaryllis Flowered Gladioli; color, rich crimson, with intense shadings in the throat and broad white blotches across the lower petals. This is the largest Gladioli ever offered, and one of the most showy ever grown. 35 cents each, \$3.50 per dozen.
- President Taft.** An exquisite new variety of delicate salmon-pink, shaded darker at edge with deep crimson blotch in throat, and an attractive white line through each petal. A grand variety which evokes words of praise wherever exhibited. The spikes and flowers are of the largest size. I can recommend this novelty as one of the best. 50 cents each, \$5.00 per dozen.
- Rosella.** One of the best and most beautiful of this set. The magnificent, gigantic flowers are borne on large stalks, and the colors are perfectly exquisite. The upper petals are lavender-pink, while the lower ones are a lively shade of rose-purple, with a clear, white throat, making it one of the most attractive yet out. 50 cents each, \$5.00 per doz.
- Scarsdale.** A grand Gladioli, with large lavender colored flowers, shaded beautiful dark rose; extra large spikes growing very erect. Much admired. 35 cents each, \$3.50 per dozen.

THIS GRAND SET OF RECENT INTRODUCTION OF SOME OF THE BEST GLADIOLI.

I will send this Grand Set of 9 to any part of North America for 20 cents each,
\$2.00 per dozen, or the entire set for \$1.50.

- Blue Jay.** This is the finest blue yet out. It is a rich, deep color of indigo blue, just what the public have been looking for a long time.
- Canary Bird.** One of the finest yellows, and it is properly named. It is as clear a shade of yellow as can be produced. Extra fine form, and won many first prizes last season.
- Governor McCormack.** Extra large flowers and trusses, beautiful rose color, mottled with silver gray, and with violet and white mottled throat.
- Giant Pink.** One of the largest and grandest Gladioli to date. The beautiful flowers are rich, clear, deep pink, with throat markings of dark red. A very tall and strong grower of great substance. The flowers are well arranged with many open at the same time.
- Harvard.** This was named after the Harvards, which surely is the proper name for this glowing Gladioli. The color is bright solfreno with white throat, bordered with a deeper color. Very fine.
- Klondyke.** Strong, vigorous plant, blooming early; flowers round, well opened, of clear primrose yellow with blotches and vivid crimson, maion on the three lower petals.
- Pactole.** Bright, canary-yellow, with maroon blotch on lower petals; very striking.
- "1900."** A deep shade of scarlet, with a bold, pure white throat; flowers quite late in the season.
- The King.** A light shade of blue, with a small, white throat. The lower petals veined white. This is one of the most attractive we have ever been able to offer. The flowers are from 4 to 6 inches in diameter, borne on long spikes. Very large and showy. A grand flower.

THIS FINE SUPERB SET OF 18 GLADIOLI, 10 CENTS EACH.

\$1.00 per dozen. I will send this Fine Set, prepaid, for \$1.50.

- America.** Without doubt this is the largest pure flesh pink Gladiolus yet out. It is one of the strongest growers ever produced. The flowers are of the largest size.
- Africa.** Dark amaranth, shaded black, with large, green, tinted white center. Very distinct.
- Brilliant.** Beautiful orange-red, with carmine and white throats. The best scarlet yet out.
- Burlington.** Bright pink, beautifully tinged with orange-scarlet, carmine and white throats. Very fine.
- Beverly.** Large, light red, clouded and shaded smoky blue; quite distinct.
- Boston.** Flaming orange-scarlet, with large, white throats. Very attractive.
- Deborah.** Dark red, tinged with amaranth; very large, pure, white throats and blotches, white band through petals.
- Eva.** Beautiful rose, shaded and marked with slate, throats finely mottled with various colors.
- Eugene Scribe.** Flowers very large and wide; perfect soft rose, blazed carmine-red. Extra fine.
- Gracilis.** Slender, graceful spikes with large flowers of a dull-red color, margined and pencilled with slate.
- Keokuk.** Deep, bright pink, clouded, tinted and spotted slate-blue. Very odd.
- Mohonk.** A strong, rank grower. Flowers of large size and great substance; deep dark, pink, with spotted throats, shaded orange and flaked with maroon. Extra fine flowers.
- Mrs. Francis King.** Light scarlet of a pleasing shade; flowers are large, well arranged on a strong spike, there being four to six open at one time.
- Nazinscott.** Bright, blood scarlet, with deep, velvety crimson-black blotches and white mottlings in throats.
- Oddity.** Deep amaranth red, deeply suffused with purple-blue; large, distinct white marks through the petals, with red and white mottled throats. Much admired.
- Shakespeare.** White, very slightly suffused with crimson-rose, large rose blotches. Fine form.
- Waukesha.** Salmon-pink, shaded lighter inside; large, beautiful primrose throat, thickly mottled crimson. Much admired.
- Wm. Falconer.** Spikes of great length and flowers of enormous size. Beautiful, clear light pink. One of the best grown.

This Set of 12 Standard Gladioli 5 cents each. The Set of 12, prepaid, for 50 cents.

- Augusta.** Lovely, pure white, with blue anthers.
- Brenchleyensis.** Vermilion-scarlet. Fine variety.
- Columbia.** Light orange-scarlet, freely blotched and pencilled with bluish-purple, throat freely mottled.
- Cerese.** Pure white, spotted with purplish-rose.
- Florida.** Dark crimson. Very early to flower.
- Gen. Phil Sheridan.** Fiery red, white line running through each petal and a large, pure, white blotch on the lower division.
- Henry Gilman.** Deep salmon-scarlet, with pure, white bands, the throat showing peculiar mottling. Very fine.
- Lamarack.** (De) Cherry, slightly tinted with orange, blazed with red, center is very well lighted with large, pure white stains.
- Marie Lemoine.** Large spike of fine expanded flowers, upper divisions of a pale cream color flushed salmon-lilac, the lower divisions spotted violet and yellow.
- May.** A lovely, pure, white flower, finely flaked with rose-carmine.
- Madame Monneret.** Delicate rose. Fine.
- Napoleon III.** Bright scarlet, white lines through each petal.

Cannas.

I am offering this season, some of the best orchid-flowered Cannas of recent introduction.

The Way to Plant Cannas.—Set them about 18 inches apart each way, and about four to six inches deep. If you wish to plant a bed 7 feet in diameter it will take 20 roots or plants. If you wish to plant a bed 10 feet in diameter it will take 40 roots or plants; a bed 13 feet in diameter will take 65 roots. Always plant the tall varieties in the center. If you are to make a round bed plant the short ones on the outside of the bed.

NEW CANNAS OF SPECIAL MERIT.

- Burbank.** A very vigorous Canna of lemon-yellow color, thickly spotted in the throat with bright scarlet; foliage green; 6 feet high. 25 cents each, prepaid.
- Flamingo.** Flowers of carmine-crimson, with darker sheen, shading lighter toward center; rounding shaped petals, slightly recurved. A very satisfactory Canna, with green foliage 3 to 4 feet high. 25 cents each, prepaid.

SELECT LIST OF CANNAS OF RECENT INTRODUCTION.

I will send this Select Set of 12 Cannas, 15 cents each, \$1.50 per dozen, prepaid, to any part of North America; if wanted in larger lots, \$8.00 per 100 by Express, collect.

- Allemania.** Beautiful orchid-flowered Canna. The outer petals are scarlet with a broad, yellow border. The inside is scarlet and dark red, making it very effective; green foliage 4 to 5 feet high.
- America.** Large orchid-flowered Canna. The color is dark orange-scarlet, flamed and streaked with shades of rich red; foliage bronze, richly veined and marbled, with dark, green leaves, appear as if varnished, 5 feet high.
- Austria.** Immense orchid flowers, 6 inches across, pure sulphur-yellow, with fine brownish red dots in center; foliage green, 5 feet high.
- Dec. Chebain.** A lovely shade of deep orange-scarlet, very fascinating variety, with bright green foliage, 4 to 5 feet high.
- Florence Vaughan.** Large orchid flowers of special merit. Bright, rich, golden-yellow, spotted with bright red. One of the best offered. The foliage is a bright green, 4 feet high.
- Indiana.** Giant flowers of the Orchid type, of orange-yellow overlaid with flame color. Very rich and attractive, entirely different from any other Canna. One of the best, with dark, green foliage.
- Louisiana.** Soft, glowing scarlet, with orange throat markings. Darker than *Pennsylvania*, the giant orchid-flowering variety. 6 feet high, green foliage.
- Lohengrin.** Lively shade of bright red; strong grower; fine for bedding; deep green foliage, 3 to 4 feet high.
- President Cleveland.** Scarlet, with a deep, bronze foliage. Very strong grower. Extra fine for the center of a bed, 6 to 7 feet high.
- Pennsylvania.** Flowers of rich, bright scarlet, overlaid with shades of dark orange. Giant Orchid type flowers, with green foliage. Very strong growers, 6 feet high.
- Partenope.** Large Orchid flowers of dark orange, overlaid with flame color; edges of petals are dark scarlet, beautifully crinkled; bright green foliage. Good grower, 5 feet high.
- Shenandoah.** Good size flowers of rich pink, flamed with carmine-pink, a beautiful contrast to the dark bronze foliage. Was much admired; 3 1-2 feet high.

MONTBRETIA.

Hardy border plants, with elegant and graceful Gladiolus-like flowers, which are much admired. Color, orange-scarlet. Fine for cutting during summer. Plant in April or May. Price, 25 cents per dozen, prepaid.

SAUROMATUM SIMLENSE.

A rare and curious garden bulb, with odd flower and luxuriant palm-like foliage. The spathe of this Calla-shaped flower is two feet in length, with tapering point, and is of very large size. Color of bloom, green on outside, inside yellow, spotted with purple. Foliage very large, luxuriant like a Palm. A rare and curious plant which will create a genuine sensation.

20 cents each, \$2.00 per dozen. If by mail, add 5 cents per bulb.

GOLDEN GLOW.

One of the greatest novelties in years. A hardy perennial plant growing from six to eight feet high, very vigorous and will grow in most any soil. It resembles the *Chrysanthemum*. A bright, golden color. Very free, blooms in August. Strong plants 10 cents each, \$1.00 per dozen, prepaid.

HARDY ROSES.

50 Cents Each, \$5.00 per Dozen.

Shipped by Express at Purchaser's Expense.

Baltimore Belle. White, with blush center; full, double flowers.

Crimson Rambler. Very fine, heavy clusters of bright crimson.

Dorothy Perkins. A lovely shade of shell-pink.

HARDY PERENNIAL PHLOX.

Among hardy herbaceous plants, none are more gorgeous, and more easily grown than the Phlox. They are perfectly hardy, and will grow in any soil, and produce magnificent spikes of the most gorgeous flowers, lasting weeks, and year after year, with but little care. These plants will produce an abundance of flowers, which are very fragrant.

Price 20 cents each, \$2.00 per dozen, \$10.00 per 100. If wanted in large lots send for 1,000 rates; if by mail, add 25 cents per dozen.

Deliverance. A very pleasing variety, deep pink, with crimson eye, large florets; very fragrant.

Isaby. Very strong grower, with large heads of fiery salmon-red. Very showy. Fine for borders or hedging.

Mary Louise. This is one of the most attractive varieties we are offering. The color is a pure white with deep pink eye.

Snow Queen. This is without doubt the finest pure white variety yet out. The plant is a strong grower, of medium height. The heads are the largest of any we have ever been able to offer. One of the grandest for hedging or for massing in cemeteries.

HARDY PLANTS.

Baltonia. Asteroides (False Chamomile) This is an excellent decorative flower. The bushy plants grow 5 feet high, covered with small, white flowers of the Aster-type. Very effective for vases. Strong plants, 20 cents each, \$2.00 per dozen.

Helenium (Bigelowii.) Flowers borne in heads of bright yellow, with a much darker center. Fine for backgrounds, as it grows 5 feet high, and is very showy. Strong plants, 20 cents each, \$2.00 per dozen.

FERTILIZER.

I am offering a prepared Fertilizer solely for the growing of Dahlias and Glacioli. One pound will be sufficient for one dozen Gladioli bulbs or three pounds for one dozen Dahlia bulbs.

5 cents per pound, 25 pounds \$1.00, 50 pounds, \$2.00. Shipped at purchaser's expense.

VARIETIES NOT CATALOGUED.

If you are looking for kinds that are not in this list it will pay you to send to me before ordering elsewhere, as I carry a large list of uncatalogued varieties, my stock being limited on these kinds.

WOODEN PLANT LABELS.

For any kind of plants these are plain labels to be used either in pots or out doors with one end pointed. I am also offering Dahlia Labels, which are suitable for labelling all kinds of Dahlias.

Plant Labels.—4 in. plain, 20 cents per 100, prepaid, \$1.00 per 1,000 express collect; 5 in. plain, 25 cents per 100 prepaid, \$1.20 per 1,000 express collect; 6 in. plain, 30 cents per 100 prepaid, \$1.35 per 1,000 express collect.

Dahlia Labels, Plain With Wires.—3 1-2 in. Iron Wire, 25 cents per 100 prepaid, \$1.25 per 1,000 express collect; 3 1-2 Copper Wire, 30 cents per 100 prepaid, \$1.35 per 1,000 express collect.

Painted With Wires.—3 1-2 in. Iron Wire, 30 cents per 100 prepaid, \$1.35 per 1,000 express collect; 3 1-2 in. Copper Wire, 35 cents per 100 prepaid, \$1.75 per 1,000 express collect.

SPECIAL OFFERS.

To my Friends and Patrons who are deeply interested in the love and culture of the Dahlia, I make the following offer:

WILL YOU GET UP A CLUB

Of five for \$1.00 each for My Special Offer of 14 named varieties, no two alike to contain some of all classes, prepaid? I will give as a premium one of my \$1.00 Special Offers, prepaid

To anyone getting up a Club for \$10.00 I will give as a premium \$2.50 worth of any thing in my 1912 Catalogue.

To anyone getting up a Club for \$20.00, not including any of my Special Offers, I will give as a premium \$5.00 worth of anything in my Catalogue.

To anyone sending me \$1.00 and leaving the selection to me, I will send 14 named varieties, to contain some of all classes, no two alike, delivery charges prepaid to any part of the United States.

To anyone sending me \$2.00 and leaving the selection to me, I will send 28 named varieties, to contain some of all classes, no two alike, delivery charges prepaid to any part of the United States.

To anyone sending me \$3.00 and leaving the selection to me, I will send 45 named varieties, to contain some of all classes, no two alike, delivery charges prepaid to any part of the United States.

These Are To Be Express Collect.

To anyone sending \$1.00 and leaving the selection to me, I will send 20 named varieties, no two alike.

To anyone sending \$2.00 and leaving the selection to me, I will send 40 named varieties, no two alike.

To anyone sending \$3.00 and leaving the selection to me, I will send 60 named varieties, no two alike.

To anyone sending \$5.00 and leaving the selection to me, I will send 15 Show and Fancy 15 Cactus, 15 Decorative, 15 Pompons.

CUSTOMERS accepting these offers must receive them without the guarantee of us replacing any of the stock shipped under these offers, as there is but little, if any, profit made on any of them. The stock shipped in these offers is the same as in our regular lists.

TESTIMONIALS

I hold in my possession testimonials enough to make a book six times as large as my Catalogue, from customers all over the world.

Galveston, Texas, Oct. 10th, 1908.

J. K. Alexander,

Dear Sir:—I thought I must write and let you know the success we find we had with the fine lot of Dahlias you sent us this spring. They were perfectly immense, some of them measured over ten inches in diameter. They were somewhat different in size from the Pompon Dahlias we got of you last season. Mr. Nichols was also very much pleased with the lot you sent him, and wishes me to thank you for them. We are planning to make a trip through the East some time next fall, and if convenient, we will make a visit to your fields of Paradise. Wishing you a most successful season, with many thanks for all favors.

I remain,

Yours very truly,

J. P. M.

Accord, Mass., Sept. 29, 1910.

Mr. Alexander, The Eastern Dahlia King:—

The Gladioli we got of you proved perfectly satisfactory. We shall surely make an effort to visit your gardens this fall. Thanking you for such a grand mixture.

With best wishes, I am,

Truly yours,

MRS. FRED A. STODDARD.

Pasadena, Calif., Sept.

THE EASTERN DAHLIA KING.

My Dear Sir:—I wish hereby to let you know the marvellous success I have had with your Dahlias. I cannot praise the Dahlias you sent me enough. They were grand and beyond all expectation. I have had specimen blooms ranging from 5 inches to 9 inches in diameter. The Grand Duke Alexis was one of the largest, but Le Closse excelled them all, and Mrs. Roosevelt was of exquisite shade and immense size; and the gardeners around here were astonished by my Dahlias and wondered where I ever got them, and I shall be prepared to give them a bigger surprise next season, as I shall want a much larger lot next spring.

Sincerely yours, H. F. H.

Seattle, Wash., May 18th, 1909.

J. K. . Axander, East Bridgewater, Mass.:

Dear Sir and Friend.—I received the last lot of Dahlias all O. K., and I can frankly say your stock is far superior to any I have received this season. I have bought Dahlias of most of the large dealers, and your stock gives the best satisfaction of any. I shall be able to use a lot another year. Thanking you and wishing you a busy season, I am,

Very truly, C. W. BOVEE.

Honolulu, Hawaii, Sept. 9th., 1909.

Mr. J. K. Alexander:

Sir:—I promised to report to you what success I had with the Dahlias you sent me in the early part of the spring. I am pleased to notify you the extra success we had with the small lot sent. They blossomed very fine and caused a great sensation in this section, and many of my friends will place orders with you the coming season. Hoping you will be repaid for sending so nice a lot, and thanking you, I remain,

Respectfully yours, MRS. J. E. D.

Bridgeport, Conn., Oct. 5th, 1910.

Mr. J. K. Alexander:

Dear Sir:—Your Dahlias are all right, much better than I ever expected to have. There is no end to the blossoms. They have been in blossom for six weeks and I am sure they would last six weeks more if the frost will only hold off. We have supplied all our neighbors and friends with blossoms and the supply is still inexhaustible. I shall want a few of your high-priced ones another year. Here is a list of names of my friends who wish your Catalogue. Thanking you for such a fine lot,

I am yours respectfully,
CHARLES P. GILBERT.

Milbury, Mass., Oct. 15th, 1910.

THE DAHLIA KING.

My Dear Sir:—I was pleased to meet you at the Rochester Fair again. This is where I have selected many of my Dahlias from your exhibit, more than 90 per cent. of my stock came from your place, and they always give us grand satisfaction. Another year I will try to visit your place and select from nature which must certainly be grand. Thanking you sincerely for the way I always have been treated.

Very truly yours,
HORACE S. STOCKWELL.

Orleans, Mass., Nov. 1st, 1910.

J. K. Alexander, (The Dahlia King)

Dear Sir:—I now feel a desire to add another testimonial to your already large list, inasmuch as I have ever been satisfied each season with the results gained from your bulbs you have sent me, always true to name, and almost never missing one. This last season, in particular, have had some of the most beautiful specimens pronounced by the large number of people who saw them. To those who love a beautiful Dahlia, and square deal, I can cheerfully and gladly recommend J. K. Alexander and his stock.

And believe me ever sincerely yours, JOHN M. SMITH Baker.

Carmel, N. Y., March 23rd, 1910.

Mr. John K. Alexander, East Bridgewater, Mass.

Dear Sir:—Enclose find my order for the spring delivery. I must compliment you on the large lot I purchased from you last year. They were perfectly satisfactory in every way, and the principal part of it is they were true to name. I have tried your stock for a number of years and it is certainly all O. K. Thanking you for such kind treatment, trusting I shall get the same results, I remain,

Respectfully yours, W. A. M.

Ontario, Canada, Nov. 7, 1908.

Mr. J. K. Alexander:

Dear Sir:—I ought to have written some time ago in regard to my Dahlias, as I promised. They were perfectly magnificent, and I am only too pleased to mention your name to my friends as a very reliable dealer. Hoping you will excuse the delay, with best wishes, I am,

Very truly,

MISS S. C. M.



MARY SERVICE CACTUS DAHLIAS.

Detroit, Mich., 10-29-1908.

Dear Mr. Alexander:—

The bulbs we got of you last spring proved to be just what you represented them. We had some of the most exquisite blossoms of every conceivable color ever seen in this section. They were far beyond our expectations in every way, and we surely will want something new another season. Wishing you prosperity and thanking you for the nice lot of flowers I remain,

Sincerely yours,

MRS. T. S. S.



DIPLOMA AWARDED US BY THE WORLD'S FAIR AT ST. LOUIS IN 1904.



SILVER MEDAL AWARDED US IN OPEN COMPETITION
WITH THE WORLD.

Our Growing Exhibit competed against over six hundred growers to win this medal.



THIS MEDAL WAS AWARDED ME FOR THE BEST DISPLAY OF
CACTUS AND DECORATIVE DAHLIAS EXHIBITED AT
HORTICULTURAL HALL, BOSTON,
SEPTEMBER 17, 1909.

J. K. ALEXANDER

1912 DAHLIA CATALOG

EAST BRIDGEWATER, MASS.



BOUQUET OF STRADELLA SHOW DAHLIAS.

(See page 22.)

BE SURE YOUR FRIENDS GET MY CATALOG