

Historic, Archive Document

Do not assume content reflects current scientific knowledge, policies, or practices.



H. J. Champion

Cham.

INDEXED

FEB 6 - 1915

1912

62.67

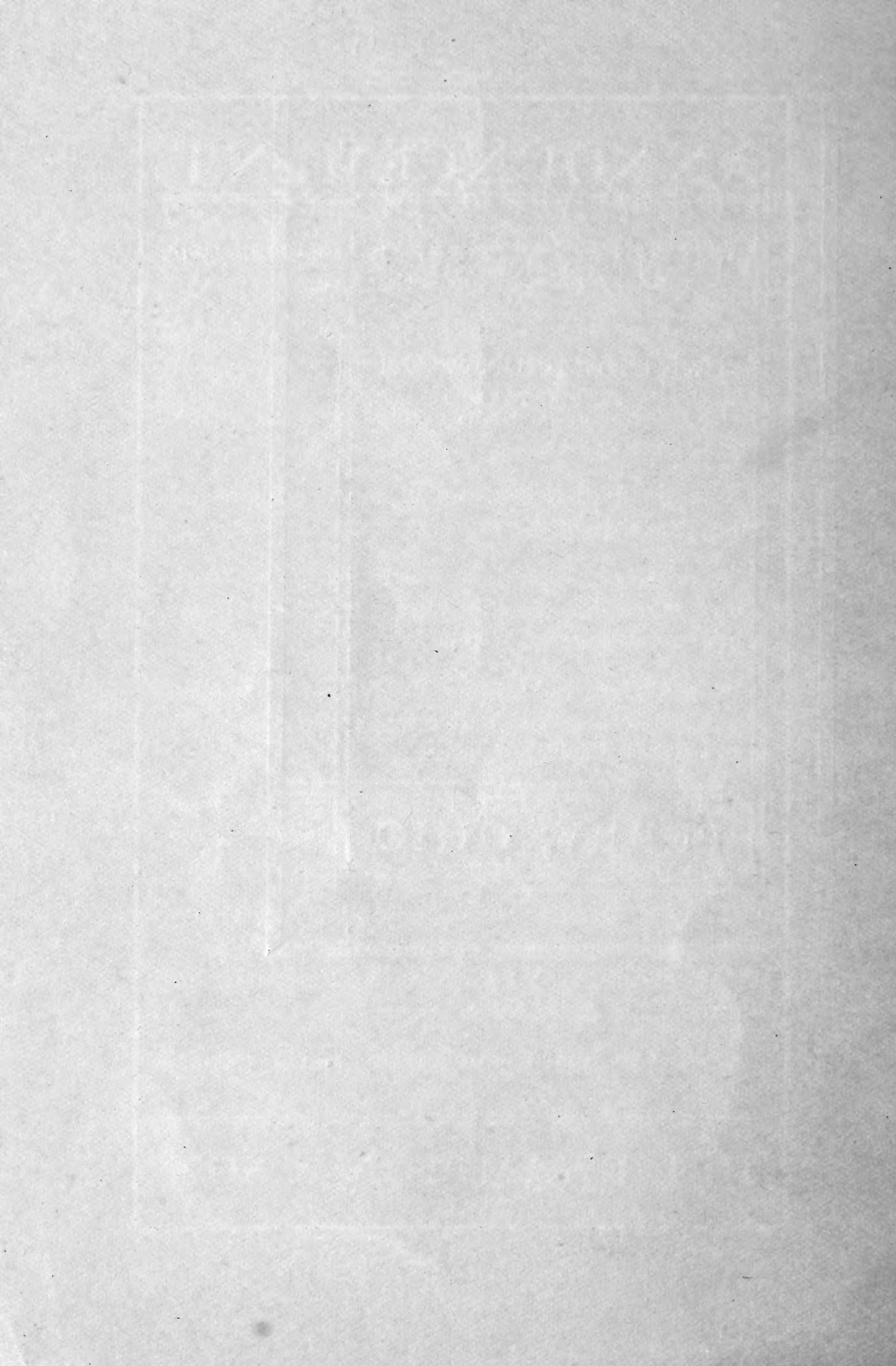
**CHAMPION
NURSERIES**

**H. J. CHAMPION & SON
PROPRIETORS**

PERRY, OHIO

INDEXED
LIBRARY
RECORDED
★ JUL 7 1920
U. S. Department of Agriculture

INDEXED



ANNOUNCEMENT

WE TAKE PLEASURE in presenting our Annual Catalogue and Price List.

Extending our thanks for past favors, we respectfully solicit your future orders.

To those who are unacquainted with us, we ask you to give us a trial.

Get up a club order among your neighbors and take advantage of the low rate.

Remittances should be made by New York Draft, Postoffice Money Order, Express Money Order or Registered Letter.

Can ship on Lake Shore or Nickel Plate Railways, American or National Express Company and Electric Package Company.

Those wanting a large amount of stock should send list of their wants for special prices, stating plainly the size and number of each variety.

Perry is situated thirty-five miles east of Cleveland and six miles east of Painesville on the L. S. & M. S. and N. Y., C. & St. L. Railways; also on the C. P. & A. Electric line.

Cars every hour from Cleveland and Ashtabula.

H. J. CHAMPION & SON

CONDITIONS OF SALE



IN FILLING orders from this list we reserve the right in case that we are out of a variety, to substitute another of equal merit when it can be done (always labeling with the correct name), unless the party ordering says "no substituting," in which case we will fill the order so far as we can and return the balance. Always give full and explicit shipping directions, as our responsibility ends on delivery of trees in good condition to the freight office.

We shall be pleased to quote prices to any one desiring different sizes or stock in larger quantities than offered herein. In sending list state definitely the number of each size and variety wanted.

We guarantee all stock to be up to size and grade specified in list, to be in good condition and carefully packed; this guarantee holds good only when prompt notification on arrival of stock is sent us, stating plainly any errors or cause for complaint.

While we exercise the greatest diligence and care to have all our trees, etc., true to label, and hold ourselves in readiness, on proper proof, to replace all trees, etc., that may prove untrue to label, free of charge, or refund the amount paid, it is mutually understood and agreed to between the purchaser and our selves, that our guarantee of genuineness shall in no case make us liable to any sum greater than that originally received for said trees, etc., that prove untrue.

TERMS—Cash, unless otherwise agreed upon—5 at 10 rates, 50 at 100 rates; but if remittance amounts to \$10 and up, everything at lowest rate quoted in this price list, both fruit and ornamental. No charge for delivery at express office or railway station here.

CERTIFICATE OF NURSERY INSPECTION.

No. 164

Columbus, Ohio, September 19, 1911.

This is to certify that the nursery stock for sale by H. J. Champion & Son, of Perry, County of Lake, State of Ohio, has been inspected by a duly authorized inspector in compliance with Section 1111 of the General Code of Ohio, and has been found apparently free from dangerously injurious insects and plant diseases.

Valid until September 15, 1912, unless revoked.

Signed, THE OHIO STATE BOARD OF AGRICULTURE,
N. E. SHAW, Chief Inspector.

APPLE TREES.

	Each	Per 10	Per 100
Standard, 5 to 7 feet.....	\$0.40	\$3.50	\$30.00
Standard, 4 to 5 feet.....	.30	3.00	25.00

SUMMER VARIETIES.

Early Harvest—Medium to large, yellow with white flesh.

Red Astrachan—Large, deep crimson; valuable for early market and home use.

Yellow Transparent—Medium to large; fine quality; an early and prolific bearer.

Golden Sweet—Large; one of the best sweet apples grown. August.

Sweet Bough—Large, yellow; annual bearer; of finest quality.

AUTUMN VARIETIES.

Maiden's Blush—Good size; yellow with red blush; productive.

Duchess of Oldenburg—Large, striped with red and yellow; profitable market variety. Very hardy.

Fall Rambo—Yellow, striped with red, medium size and excellent flavor.

Pumpkin Sweet—Large, yellow russet; very sweet and rich. September and October.

WINTER VARIETIES.

Baldwin—One of the best market varieties; red. December to April.

Grimes Golden—Medium to large; beautiful yellow; excellent quality; abundant bearer.

King—(Tompkins Co.) very large; red; an abundant bearer.

Northwest Greening—Large, yellow; good quality; long keeper and an annual abundant bearer.

Northern Spy—Large, striped, delicious flavor; tree hardy.

Paradise Winter Sweet—Medium to large; good for either home or market; very productive.

R. I. Greening—Large, greenish yellow; a fine cooking apple; subacid; very productive.

Sutton Beauty—Resembles Baldwin, but of better quality.

Wealthy—Red; white fleshed; juicy. One of the handsomest apples grown.

Talman Sweet—Medium size, pale yellow, slightly tinged with red; fine for baking.

Banara—Large pale yellow with red blush, flesh is very tender and sweet, excellent for dessert. Tree is a thrifty grower and bears early.

Stayman Winesap; Rome Beauty; McIntosh Red.

Very hardy and productive.

We also have in winter apples: Ben Davis, Winter Rambo, Fameuse or Snow, Gano, Golden Russet, Hubbardstons Nonesuch, Jonathan, Winesap, Wagner, Wolf River and York Imp.

CRAB APPLES.

Hyslop—Large, dark, rich, red fruit; very handsome. October.

Transcendent—Yellow, with rich crimson cheek; very productive. September.

Whitney—Large, greenish, striped with red; firm and juicy. August.

PEAR TREES.

	Each	Per 10	Per 100
Standard, 5 to 7 feet.....	\$0.35	\$3.00	\$25.00
Standard, 4 to 5 feet.....	.30	2.50	20.00
Dwarf, 4 to 5 feet.....	.25	1.80	15.00
Dwarf, 3 to 4 feet.....	.20	1.50	12.00

Varieties marked with a star can supply either dwarf or standard.

***Anjou**—Large, greenish yellow, rich vinous, a good autumn pear. October to December.

***Bartlett**—Large size, rich melting, delicious. Succeeds everywhere; good for home or market. September.

***Clapp's Favorite**—Very large golden yellow with red cheek; very productive. Ripens a week before Bartlett.

***Duchess**—Very large, greenish yellow, excellent for canning. Succeeds best as a dwarf. One of the leading market sorts. Very productive. October and November.

Flemish Beauty—Large, sweet; very productive and hardy. September and October.

Howell—One of the finest fall pears; yellow; excellent quality. September.

***Kieffer**—Very large, deep yellow; tree very hardy; strong grower; a heavy annual bearer. October to December.

***Lawrence**—Medium size, golden yellow; very rich; the finest early winter pear; very productive. November and December.

Mary—Greenish yellow with red cheek; tree vigorous and bears very young. We think this the most profitable of the early pears. First of August.

Rosney—Large size, handsome; very sweet and juicy; a fine new variety; ripens ten days after Bartlett.

Sheldon—Medium to large; russet; of the very best quality; a good bearer. October.

***Seckel**—A small pear of excellent flavor; fine for pickling and dessert. Very productive. September and October.

***Worden Seckel**—A seedling of the Seckel, of as fine quality and larger. Golden yellow with red cheek. October to December.

***Wilder**—Early, of medium size and good quality, does well as a dwarf.

***Louise Bonne De Jersey**—Good size, pale yellow with red cheek. One of the best dwarf sorts—September and October.

QUINCES.

Champion—A large, late sort, producing good crops.

	Each	Per 10	Per 100
3 to 4 feet.....	\$0.30	\$3.00	\$25.00
2 to 3 feet.....	.25	2.50	20.00

Orange—The best of the older sorts. Ripens in October.

	Each	Per 10	Per 100
3 to 4 feet.....	\$0.40	\$3.50	\$30.00
2 to 3 feet.....	.35	3.00	25.00



ALLEN

CHERRY TREES.

	Each	Per 10	Per 100
Sweet, 5 to 7.....	\$0.35	\$3.00	\$25.00
Sweet, 4 to 5.....	.30	2.50	20.00
Sour, 4 to 5.....	.35	3.00	25.00
Sour, 3½ to 4.....	.30	2.50	20.00

SWEET.

- Allen**—Large glossy black; firm and sweet. Last of July.
- Black Tartarian**—Large dark purplish black; tender and rich. June and July.
- Gov. Wood**—Large light red; very early and productive; hangs well on tree. June.
- Napoleon**—Largest size; yellow with red cheek; firm, juicy and sweet; valuable for shipping; very productive. July.
- Rockport**—Large light red. Last of June.
- Windsor**—Very large; liver colored; finest quality; firm and excellent for shipping. July.
- Yellow Spanish**—Large yellow with red cheek. Late June.

SOUR CHERRIES.

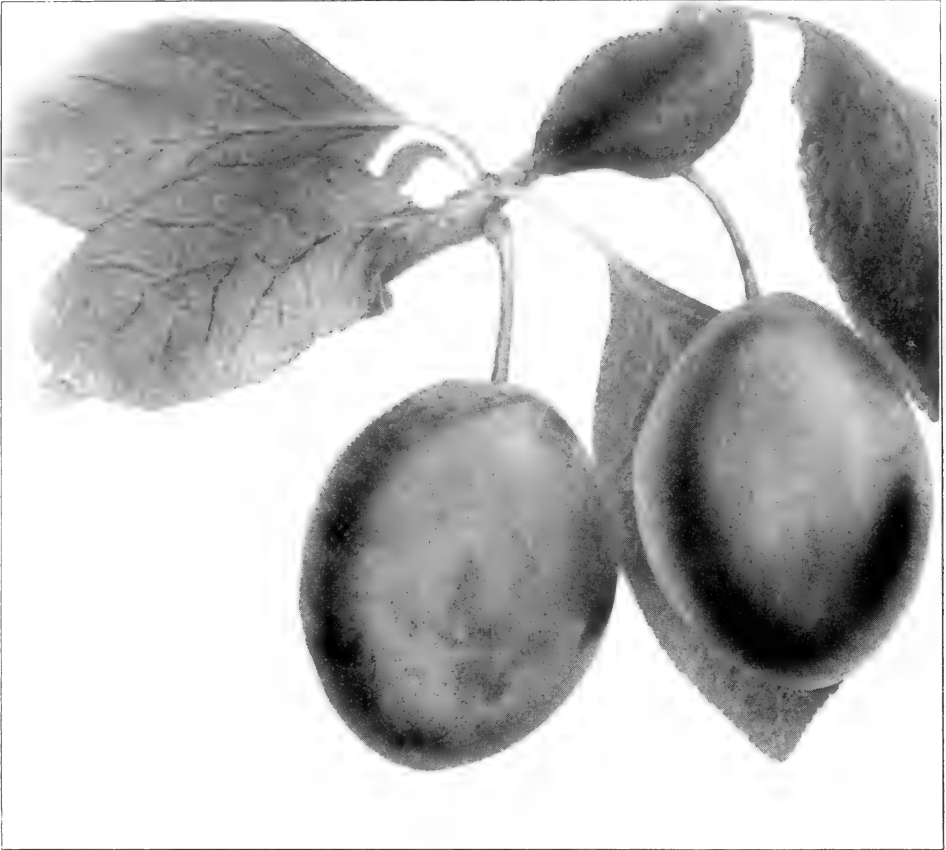
- Dyehouse**—Medium size; like Early Richmond, but earlier; fruit hangs well on tree.
- Early Richmond**—One of the leading cherries for market; hardy and productive. June.
- English Morello**—Dark red; acid; very hardy; early bearer. July.
- Montmorency**—Fruit large and red; fine flavor; very hardy and immense bearer. July.
- May Duke**—Large dark red; tender, subacid and very hardy; early. Middle of June.

PLUM TREES.

(Budded on plum.)

	Each	Per 10	Per 100
5 to 6 feet.....	\$0.25	\$2.50	\$25.00
4 to 5 feet.....	.20	2.00	20.00

- Bradshaw**—Very large; dark violet red; good market sort. August.
- German Prune**—A valuable plum for preserving and drying; dark blue; juicy and rich. September.
- Geuii**—Large bluish purple with deep bloom; tree rapid grower; one of the best marked varieties. September.
- Grand Duke**—Very large; dark; fine quality; productive. Last of September.
- Lombard**—Medium to large; dark red; hardy and very productive; a leading market sort. Last of August.
- Reine Claude (Bavey's Green Gage)**—Large round; greenish yellow; excellent for canning; one of the best varieties; very productive. September.
- Shipper's Pride**—Large; deep purple; fine; a good shipper. September.
- Shropshire Damson**—Larger and better than common damson; very productive. September.
- Niagara**—Similar to Bradshaw.



ITALIAN PRUNE OR FELLENBURG

PLUM.

Italian Prune—(Fellenburg). A fine purple plum with thick flesh which frees from the stone, very delicious. September.

JAPANESE PLUMS.

Abundance—Medium size; amber, turning to a bright red; flesh yellow; juicy and tender. August.

Burbank—Large size; red; tree hardy and vigorous; very productive. Late August.

Wickson—Large red; covered with a light bloom; flesh yellow and rich; tree upright grower. September.

Red June—Medium size; red; one of the most productive and best of the early Japanese plums.

PEACH TREES.

Peach trees are one of our leading specialties, our location and soil being well adapted to their culture. We grow them from southern natural seed, which is free from yellows and other diseases. They are fine, well ripened stock. Those varieties starred are clingstones; those not so marked are freestones.

	Each	Per 10	Per 100
4 to 5 feet.....	\$0.25	\$1.50	\$12.00
3 to 4 feet.....	.15	1.20	9.00
2½ to 3 feet.....	.10	.75	5.00

Belle of Georgia—Very large; white with red cheek, firm; of excellent flavor; tree very thrifty and productive. August.

***Heath's Cling**—Large, creamy white with faint blush, good quality; valuable for preserving and canning. October.

Stearns—A new peach originated in Michigan. Large yellow freestone with large red cheek; follows Elberta. As a shipper it can not be surpassed. Tree a very strong, upright grower. September.

***Wm. Favorite**—Large, late yellow clingstone.

***Alexander**—Medium; white covered with red. July.

***Triumph**—Medium; yellow with red cheek. July.

Champion—Large; white with red cheek; sweet, rich and juicy; hardy and productive. August.

Mt. Rose—Medium to large; white flesh; sweet and good. Early August.

Carman—Quite large; creamy white with deep blush; tree hardy in bud. August.

Foster—Large yellow and red; a few days earlier than Early Crawford.

Crawford's Early—A fine old variety; very large, yellow, rich and juicy. Last of August.

Fitzgerald—As large as Crawford; very best quality; a heavy bearer; tree fruits very young; ripens just after Early Crawford.

Yellow St. John—A fine early yellow peach with red cheek; good bearer. August

Mathew's Beauty—Large yellow with red cheek; a little later than Elberta; a good market variety.

Niagara—One of the largest yellow peaches; fine quality; good shipper. Ripens just after Elberta.

Crosby—Medium to large; yellow flesh; small pit; good quality and productive. Ripens about September 15th.

Engel's Mammoth—Large yellow with red cheek; a good market variety. September.

Elberta—Very large yellow with red cheek; good shipper; succeeds everywhere. September.

Stump of the World—Large and handsome; white with red cheek; high quality. Late September.

Reeve's Favorite—Large yellow with red cheek; fine flavor. September.

New Prolific—A fine yellow peach; hardy; productive. Ripens just before Elberta.

Crawford's Late—Large yellow; sweet; rich. September.

Lemon Free—Large; resembles a lemon in shape and color; excellent for canning; very productive. Last of September.



STEARNS



WOOSTER

PEACHES—Continued

Banner—Large; yellow, with red cheek; flesh firm and rich; an excellent shipper. Tree bears young and is very hardy. We believe this to be one of the most profitable market varieties. October.

Salway—Very large; yellow, firm, rich and juicy. Very late October.

Wooster—This excellent new variety originated on the fruit farm of Mr. Wooster, about twenty miles from Pittsburgh. It is a large yellow free-stone, with red cheek. Handsome, of highest quality, and the tree very hardy in wood and bud. It bears large crops annually when others fail. Ripens about September 20th. We think this the best of the new varieties. Trees, 4 to 5 feet, 50c each; \$3 for 10.

Time of ripening as given is based on the season in northern Ohio.

Marshall's Late—Very large yellow; a fine peach. Ripens after Smock and before Salway.

Beer Smock—Large yellow; better than smock free; a very profitable market sort. Early October.



STRAWBERRIES.

One of the finest fruits grown. Everyone having any room for fruit should have a strawberry bed. We have made the growing of strawberries one of our specialties. We grow them on rich, loose gravelly soil that produces strong, vigorous plants which are second to none.

Price 75c per hundred of \$4.00 per thousand except as otherwise noted.

Those varieties marked (p) are perfect bloomers and those marked (i) are imperfect, and require that every fourth or fifth row be planted with some perfect blooming variety.

Excelsior (p)—Dark red; vigorous grower; very productive. Early.

Climax (p)—A fine grower bearing large crops of rich, red, round berries of fine quality. Excellent for market or home use. We believe this to be one of the most profitable berries grown. Medium early.

Brandywine (p)—Medium late; fruit large and firm; of good quality.

Bubach (i)—Medium early. An old variety, large and of fair quality.

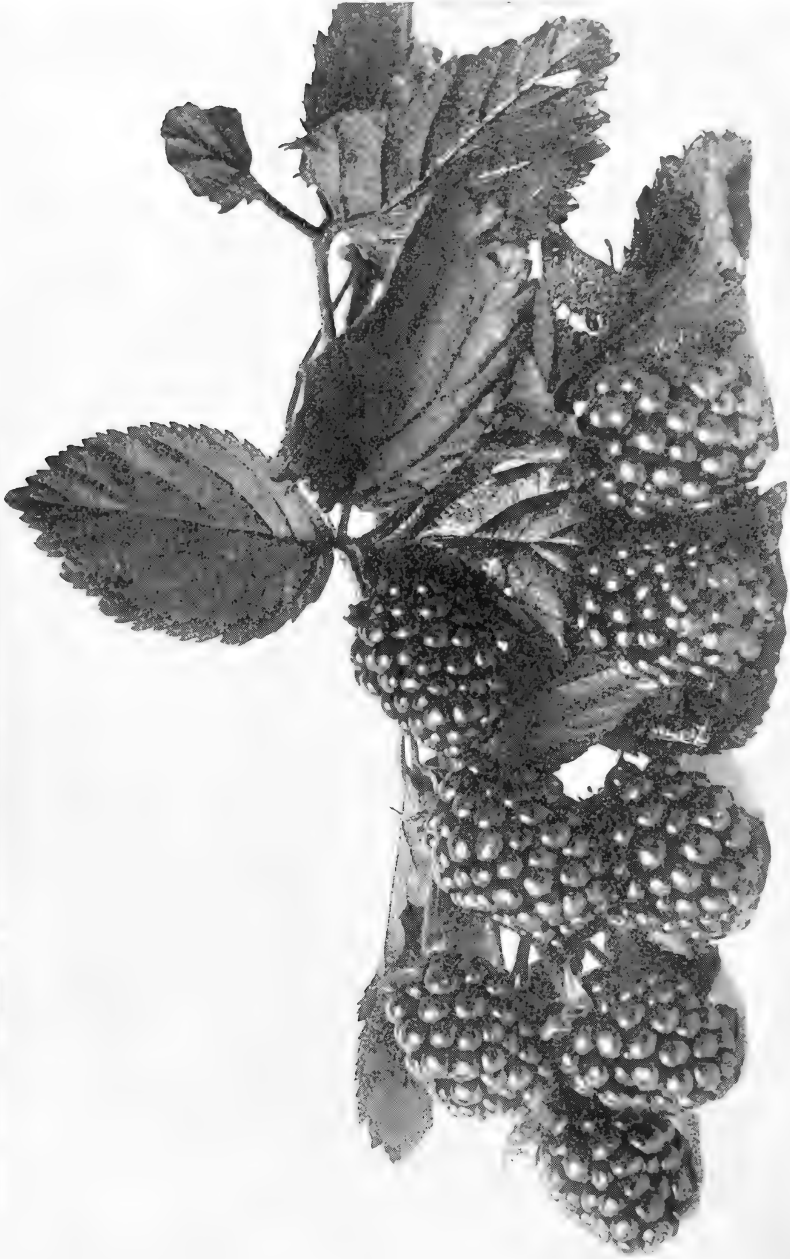
Dunlap (p)—Medium early and continues in bearing a long time; fruit medium to large; deep rich red; flesh red; very productive; a grand berry.

Glen Mary (p)—Medium early; large, firm and good shipper.

Gandy (p)—Late; fruit is large, regular in shape and firm; good market sort.

Haverland (i)—An old reliable sort; bright red, moderately firm; early.

Marshall (p)—Medium early, makes a large stalky plant; berries of great size; very dark, red and glossy; of delicious flavor; not very heavy bearer.



BLOWER

STRAWBERRIES—Continued

- Parson's Beauty (p)**—Midseason. Vigorous grower and very productive; fruit is large, bright red and firm. A very popular sort.
- Sample (i)**—Late. Plant is large and healthy, making plenty of runners; fruit large, roundish and dark red; succeeds everywhere.
- Warfield (i)**—Midseason. Bears large crops of fair sized dark red berries.
- Wm. Belt (p)**—Midseason. Large size; bright red color; a good plant maker.
- Jessie (p)**—Midseason. Berries long and very sweet; succeeds well in some localities.
- Uncle Jim (p)**—Midseason. Large size and of excellent quality.
- Pride of Michigan (p)**—Medium early. Plants vigorous and healthy; good plant maker; enormously productive; large and of oblong shape; color dark red; a good shipper. Price, \$1.00 per hundred; \$5.00 per thousand.
- Stevens Late Champion (p)**—Late. This variety makes strong, vigorous plants, which yield heavy crops of fruit, and throws out lots of runners; fruit large bright red; flesh is also red but lighter and of good flavor. An excellent keeper after being picked. The best late variety in this section. Far superior to either Latest or Nettie; having fruited all three on our own grounds.
- Rickman (p)** (or Hathaway's Hundred Dollar Berry)—Midseason. A large berry of good quality; resembles Uncle Jim.

BLACKBERRIES.

	Per 10	Per 100		Per 10	Per 100
Taylor	\$0.30	\$1.50	Snyder40	1.60
Mersereau50	1.75	Eldorado50	1.75
Lucretia Dewberry . .	.50	1.75	Blower75	3.00
Early King	\$0.30	\$1.50			

- Early King**—Early; hardy; good size and of fine quality; productive.
- Snyder**—Most vigorous; hardy; productive; berries good size; valuable for cold climates.
- Taylor**—A little later than Snyder, equally hardy and productive; sweet and of high quality.
- Eldorado**—The leading standard market variety; berries are large, black and very sweet, having no hard core; very hardy and productive.
- Mersereau**—Stong grower; very hardy; very productive; ripens early.
- Lucretia Dewberry**—Large berry of trailing habits, ripens before raspberries are all gone.
- Blower**—Claimed to be the hardest, most productive and finest quality and commands the highest market price. Large size; jet black; excellent shipper; a fine new sort.
- For blackberries by the thousand write for prices.

NUTS.

- Butternuts**—3 to 4 feet, 30c each; \$2.50 per 10.
- Chestnut**—American Sweet, 4 to 5 feet, 25c each; \$2.00 per 10.
- Chestnut**—Spanish. Tree produces nuts of immense size, but not as sweet as American, 4 to 5 feet, 50c each; \$5.00 per 10.

GRAPE VINES.

	Each	One Year		Two Year		
		Per 10	Per 100	Each	Per 10	Per 100
White						
Pocklington	\$0.07	\$0.50	\$4.00	\$0.10	\$0.80	\$5.00
Niagara07	.50	4.00	.10	.80	5.00
Red						
Delaware10	.70	4.00	.15	.80	6.00
Catawba08	.50	3.00	.10	.70	4.00
Brighton10	.80	4.50	.15	1.00	6.00
Black						
Concord05	.30	2.50	.07	.40	3.50
Worden06	.70	3.50	.12	.80	5.50
Moore's Early10	.80	4.00	.15	1.00	6.00

Pocklington—Large, yellow, sweet and tender, ripens after Concord.

Niagara—Clusters are large and handsome, when fully ripe they are a fine pale yellow. The vine is vigorous and productive; ripens with Concord. The best white grape for home or market.

Delaware—Light, red, sweet and delicious. A favorite dessert grape.

Catawba—Large when fully ripe they are a dark copper-color. Requires a long season.

Brighton—Large and of good flavor. A fine early grape.

Moore's Early—Clusters of medium size berries, large and black, very hardy and ripens early.

Worden—Large and of fine flavor, ripens a few days before Concord.

Concord—A fine market grape, large and handsome. The most extensively For grapes by the thousand send for prices.

ASPARAGUS.

	Per 10	Per 100	Per 1,000
Conover's Colossal, 1 year	\$0.15	\$0.75	\$4.00
Conover's Colossal, 2 year20	.85	6.00
Columbian, 1 year25	.80	5.00
Columbian, 2 year30	1.00	6.50
Palmetto, 1 year15	.60	4.00
Palmetto, 2 year20	.70	6.00

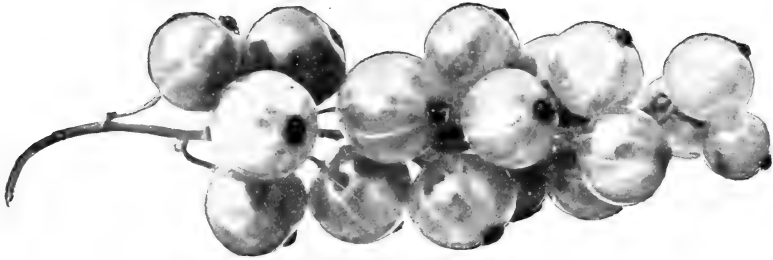
RASPBERRIES.

	Per 10	Per 100	Per 1,000
Cumberland, black, large and productive	\$0.30	\$1.50	\$10.00
Kansas, black, earlier than Cumberland25	1.50	10.00
Gregg, black, late, and good size30	1.50	10.00
Columbian, Red, large, very productive35	1.75	12.00
Cuthbert, red, sweet, rich, high flavored, late30	1.50	10.00
Louders Red, Seedling of Cuthbert, good market sort30	1.50	12.00

Plum Farmer—One of the best black caps grown; produces immense crop of large black berries; firm and of high quality. The most profitable berry for home or market. Price, per ten, 50c; per hundred, \$1.50; per thousand, \$12.00.

RHUBARB.

Linnaens, per ten	\$0.75
Linnaen's, per hundred	5.00



PERFECTION

CURRENTS.

	One Year			Two Year		
	Each	Per 10	Per 100	Each	Per 10	Per 100
Cherry	\$0.08	\$0.60	\$5.00	\$0.10	\$0.75	\$6.50
Fay's08	.60	5.00	.10	.75	6.50
White Grape10	.70	5.50	.12	.85	7.00
Wilder08	.60	5.00	.10	.70	6.00
Black Champion08	.60	5.00	.10	.75	6.50
Perfection17	1.50	12.00	.20	1.75	15.00

Cherry—Very large red berries on short stems

Fay's—One of the leading red market currants; as good as the best.

White Grape—Medium size; white, sweet, of excellent quality.

Wilder—Large red, with long bunches; strong grower.

Black Champion—Fine black currant; good bearer.

Perfection—Beautiful bright red; large size; rich, mild, subacid very productive.

GOOSEBERRIES.

	Each	Per 10	Per 100
Downing, pale green, 1 year	\$0.10	\$0.75	\$ 8.00
Downing, pale green, 2 year15	1.25	10.00
Houghton, pale red, 1 year08	.70	6.00
Houghton, pale red, 2 year12	1.00	8.00
Smith's Improved, pale yellow, 1 year.....	.12	1.00	9.00
Smith's Improved, pale yellow, 2 year.....	.15	1.25	12.00
Industry, dark red, 2 year25	2.00	15.00

MULBERRIES.

New American—5 to 6 feet, 40c each; \$3.50 per 10. The best variety for fruit, being very large, vigorous and productive; ripens June to September.

Russian—5 to 6 feet, 30c each; \$2.50 per 10. Very hardy, vigorous growing tree; desirable for its hardiness.

DECIDUOUS TREES.

	Each
Beech, purple leaved, 3 to 4 feet	\$1.00
Catalpa, Bungii, 6 to 7 feet, 2 year heads	1.00
Catalpa Speciosa, 8 to 10 feet.....	.50
Catalpa Speciosa, 6 to 8 feet.....	.30
Catalpa Speciosa, 5 to 6 feet.....	.20

Catalpas are a tree of very rapid growth with heart shaped leaves and flowers of rare fragrance.

Horse Chestnut, 6 to 8 feet	\$1.00
-----------------------------------	--------

DECIDUOUS TREES—Continued

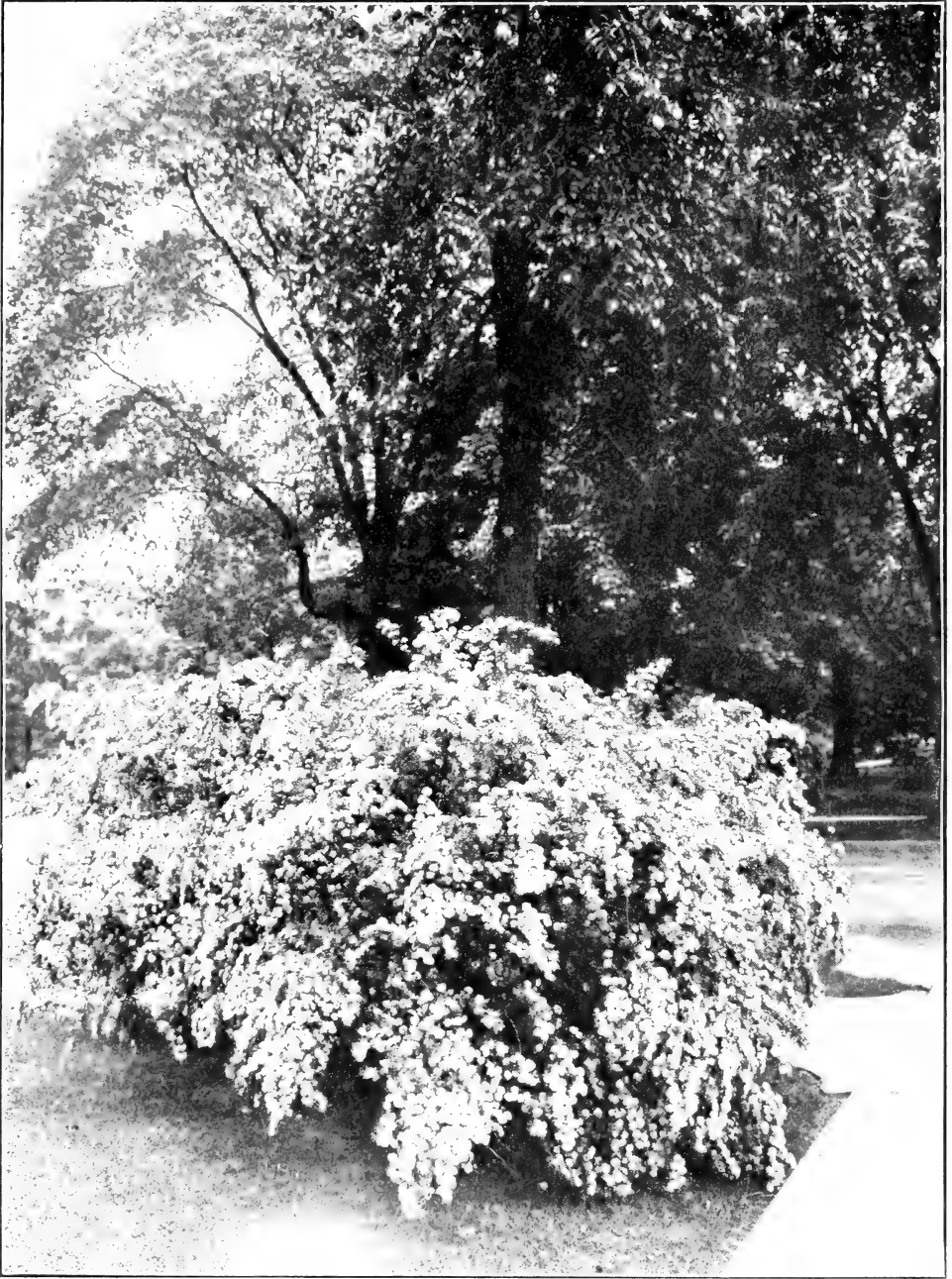
	Each
Linden, European, 6 to 8 feet.....	.50
Linden, American, 6 to 8 feet.....	.50
Mountain Ash, 6 to 8 feet.....	.40
Mountain Ash; oak leaved, 4 to 6 feet.....	.40
Magnolia Accuminata, 5 to 8 feet.....	.75
Magnolia Soulangeana, 2 to 3 feet.....	1.00
Poplar, Carolina, 8 to 10 feet.....	.30
Poplar Carolina, 10 to 12 feet.....	.40
Poplar, Lombardy, 8 to 10 feet.....	.30
Poplar, Aurea (golden), 8 to 10 feet.....	.40
Tulip trees, 8 to 10 feet.....	.60
Thorn, double white, pink and Paul's scarlet, 3½ to 5 feet.....	.50
Maple, Weir's cut leaf, 8 to 10 feet.....	.50
Maple, Weir's cut leaf, 6 to 8 feet.....	.35
Norway Maple, 8 to 10 feet.....	.75
Norway Maple, 6 to 8 feet.....	.60
Sugar or Rock Maple, 6 to 8 feet.....	.60
Silver Maple, 10 to 12 feet.....	.45
Silver Maple, 8 to 10 feet.....	.35

WEEPING TREES.

	Each
Birch, cut leaved, 8 feet.....	\$1.00
Birch, cut leaved, 4 to 5 feet.....	.60
Willow, Kilmornock.....	.50
Willow, American.....	.75
Mountain Ash, weeping, 2-year heads.....	.75
Mulberry, Teas, weeping, 2-year heads.....	1.00
Camperdown Elm.....	1.00

DECIDUOUS SHRUBS.

	Each
Althea, 2 to 3 feet.....	\$0.30
Calycanthus, 2 to 3 feet.....	.25
Azaleas.....	.60
Dutzia, Pride of Rochester.....	.25
Fringe, white, 2 to 3 feet.....	.40
Fringe, purple, 3 to 4 feet.....	.40
Filbert, purple leaved, 2 to 3 feet.....	.50
Hydrangea, Paniculata Grandi Flora.....	.25
Honeysuckle, 2 to 3 feet.....	.25
Honeysuckle, red and white Tartaria, 2 to 3 feet.....	.30
Lilac, purple and white, 3 feet.....	.25
Syringa, golden.....	.25
Snowball, Japan and American.....	.30
Wygelia, Rosea.....	.30
Wygelia, Assorted.....	.30
Spiræa, Bumalda and Fortuni.....	.30
Spiræa, Anthony Waterer, flowers deep pink, showy and attractive, the best all summer blooming variety.....	.25
Spiræa, Van Hontii, probably the best and most generally planted spirea, blossoms the last of May and first of June. The whole plant is one mass of white flowers, very hardy, fine for ornamental hedges.....	.25



SPIRÆA VAN HOUTII

ROSES.

- Hybrid Perpetuals, each\$0.35
 Hybrid Perpetuals, per 10 3.00
Eugene Furst—Dark red rose; free bloomer; very handsome.
Persian Yellow—A hardy yellow rose; one of the best.
Frau Karl Druschki—Large white; one of the finest.
Anna Diesbach—Large; brilliant rose color; one of the hardiest; very fragrant.
Coquet de Blanchés—Fine white rose; stems very free from thorns.
Marshall P. Wilder—Bright red; of good size; perfectly double and very fragrant.
Paul Neyron—The largest rose known; plants make very strong growth; free bloomer; a very popular sort.
Clio—A rose of perfect form and finish; flower large and borne in clusters; flesh color, with shaded rose pink in center; plant is strong; free bloomer, with plenty of foliage; one of the best.
Prince Camille de Rohan—A velvety crimson rose of deep shade; very handsome.
Tom Wood—Cherry red flowers of fine size; makes a strong, clean growth; very free, late bloomer.
Gen. Jacqueminot—Brilliant crimson; fragrant and free bloomer; very effective; hardy.
 Climbing varieties, 30c each; \$2.50 for 10.
 Crimson Rambler, White Rambler, Yellow Rambler, Seven Sisters, Queen of Prairie, Baltimore Bell, Dorothy Perkins.
Baby Rambler—A hardy dwarf rose; blooms from June until frost; very handsome and desirable. Price, 50c each.

PEONIES.

- Offeierialis Rubra**—Deep Crimson; first to bloom.....\$0.20
Dorchester—Pink, one of the latest to bloom..... .40
Festiva Maxima—White, large and most popular of them all..... .30
Queen Victoria—Bluish white20
Modiste Guerin—Rose color30
Marie Lemoine—Lemon color, changing to pure white..... .75

CLIMBING VINES.

- | | Each |
|---|--------|
| Wisteria | \$0.25 |
| Honey Suckle, Hall's Japan | .25 |
| Honeysuckle, Variegated | .30 |
| Amphelopsis, Veitchii | .25 |
| Clematis, Paniculata | .30 |
| Clematis, Jackmani, Henryii and Madam Edouard Andre | .50 |

PLANTS FOR HEDGES.

- California Privet**—Dense growing; vigorous; bright, glossy, green foliage; very handsome; 2 to 3 feet, \$1.00 per 10; \$7.00 per hundred; 18 to 24 inches, 75c per 10; \$5 00 per hundred.
Barberry—Purple leaved; showy and effective; fine purple leaves. Price, 18 to 24 in., \$1.50 per 10; \$12 per hundred; 15 to 18 in., \$1.20 per 10; \$10 per hundred.

PLANTS FOR HEDGES—Continued

- Barberry Thunbergii**—Dense grower; yellow flowers, followed by scarlet fruit; foliage turning to scarlet in autumn; 18 to 24 inch, \$2.00 per 10; \$15 per 100; 15 to 18 inch, \$1.50 per 10; \$12 per 100.
- Osage Orange**—2 year, \$4.50 per 1,000.
- Norway Spruce and Arborvitae**, which are also much used for hedges, are listed under Evergreens.

EVERGREENS.

	Each	Per 10	Per 100
Arborvitae, American, 2 to 3 feet	\$0.30	\$2.50	\$20.00
Arborvitae, American, 18 to 24 inches25	2.00	15.00
Arborvitae, American, 15 to 18 inches20	1.50	10.00
Arborvitae, Pyramidalis, 2 to 3 feet60	5.50
Juniper, Irish, 3 to 4 feet60	5.00
Juniper, Irish, 2 to 3 feet50	4.00
Juniper Irish, 1½ to 2 feet40	3.00
Pine, Austrian, 2 to 3 feet40	3.00
Pine, Austrian, 1½ to 2 ft.30	2.50
Pine, Scotch, 1½ to 2 feet35	3.00
Pine, Scotch, 1½ to 2 feet35	3.00
Pine, White, 2 to 3 feet40	3.50
Pine, White, 1½ to 2 feet35	3.00
Fir, Balsam, 2 to 3 feet50	4.00
Fir, Balsam, 1½ to 2 feet40	3.00
Spruce, Norway, 3 to 4 feet45	4.00	25.00
Spruce, Norway, 2 to 3 feet35	3.00	15.00
Spruce, Norway, 1½ to 2 feet25	2.00	12.00
Spruce, Norway, 12 to 18 inches15	1.00	8.00

Spruce, Norway, makes a very fine hedge for wind break.

It should be planted about 3 to 4 feet apart. It grows rapidly, reaching 75 to 100 feet, and thrives on all soils.

SUGGESTIONS FOR TRANSPLANTING.

Care of stock on arrival. Upon the arrival of a package, remove stock, wet down with water, and heal in, in mellow soil, packing dirt firmly upon roots. If soil is dry moisten well with water. Trees are then ready for planting and should be taken out only as needed, being very careful not to expose roots to sun or wind as stock so exposed is not liable to grow. In small fruit plants bunches should be opened and roots spread out when healed in.

Soil for planting should be well drained either naturally or artificially by means of tile. Prune all bruised or broken roots with a sharp knife. Trim the tree up to four or five branches suitable for forming a top; cut these branches back to within four or five buds of the body.

Planting: Make holes large so as not to crowd the roots, use surface soil for filling in and plant as firmly as possible, pressing soil well down with the feet. After planting mulch may be applied as desired. Never put manure in the hole with the roots.

Information regarding spraying will be cheerfully given upon application.

DISTANCE FOR PLANTING.

Apple, Standard	30 to 40 feet
Apple, Dwarf	6 to 10 feet
Plums	12 to 18 feet
Cherries	16 to 20 feet
Pears, Standard	18 to 20 feet
Pears, Dwarf	10 to 12 feet
Peaches	15 to 18 feet
Strawberries	1½ by 3½ feet
Gooseberries	3 to 4 feet
Quinces	8 to 12 feet
Apricots	18 to 20 feet
Raspberries	3 by 6 feet
Blackberries	2 by 6 feet
Currants	3 by 4 feet
Grapes	8 to 9 feet

NUMBER OF TREES OR PLANTS ON AN ACRE.

The number of Trees or Plants required for an acre may be ascertained by dividing the number of square feet in an acre (43,560) by the number of square feet given each tree or plant.

For example if you desire to plant Peach Trees 16 x 16 feet would give each tree 256 square feet or 170 trees to the acre.

HANDLING AND CARE OF STOCK.

All trees and stock are very carefully handled from time of digging until shipping. Stock for Spring sales is carefully healed in in dirt and all tender kinds are put inside our cellars which are fitted for just this purpose and insure a good wintering of stock.

Our soil and climate is especially adapted for growing nursery stock, which ripens well here and goes into the winter in fine condition. We do not grow as large an amount of stock as some nurseries and are able to give the entire business our personal supervision. We aim to grow not the largest quantity but the best quality.

Those desiring a large quantity of stock should send list for special prices.

Marshall Co., Ind., May 2, 1911.
H. J. Champion & Son,
Perry, Ohio.

Gentlemen:
Trees arrived in good condition. Am very much pleased with them. As fine a bunch of trees as I ever received. Please accept thanks.
Yours respectfully,
E. E. JONES.

San Diego Co., Cal., Nov. 24, 1911.
H. J. Champion & Son,
Perry, Ohio.

Dear Sirs:
Trees came through in fine condition. Just a month on the road. Looked as fresh as though they had just come out of ground.
Yours truly,
C. S. PADEN.

Stock not listed in this catalog we probably have in smaller quantities. Prices cheerfully given upon application.

CHAMPION NURSERIES

H. J. CHAMPION & SON
PROPRIETORS

Narrow's Road, One Mile West of Depot
Perry Telephone, No. 34

PERRY

LAKE COUNTY

OHIO

