

## **Historic, Archive Document**

Do not assume content reflects current scientific knowledge, policies, or practices.



6201  
1912

RECEIVED  
FEB 23 1926

THE STORY OF  
**BEAUTIFUL HOME  
GROUNDS**



Flushing Nursery

TOLD BY PICTURES



CATALOGUE NO. 10

---

Issued by the Landscape Department of

**FLUSHING NURSERIES, INC.** *-Landscape de*

Offices and Nurseries, North Hempstead Turnpike

Flushing, New York City

---

TELEPHONE CONNECTION

Three Minutes' Walk From Jamaica Trolley



Get the man who knows  
*Theodore P. Lawlor, President of Flushing Nurseries, Inc.*  
*Mgr. Landscape Dept.*



Then the plants that grow  
*Plant of Euonymus Alatus, being brought to our Packing Sheds—Note the fine root system*



It is necessary to have plants grown far enough apart in the nursery to let them fully develop

*View in Nursery looking south*





The constant cultivation of plants give a root system, that is absolutely necessary for proper transplanting

*View in Nursery looking west*



If goods are to be shipped any distance, have them packed properly

*A corner of our Packing Sheds*



It is much better to pack a loose load when possible, than to have Nursery Stock crowded in boxes or cars

*A loose load leaving the Nurseries*

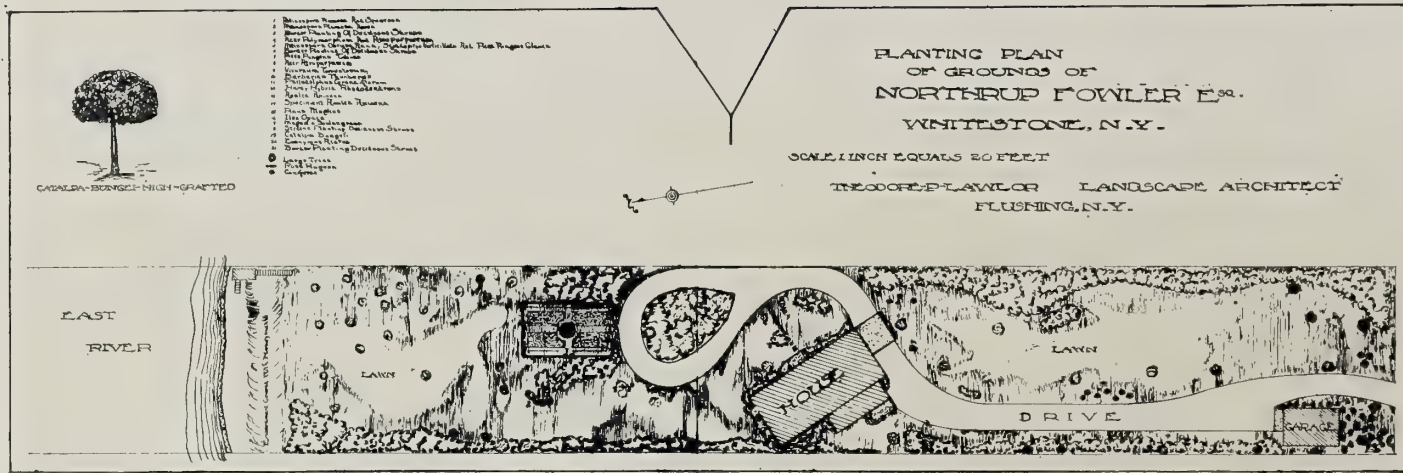


Oftentimes formal effects are desired

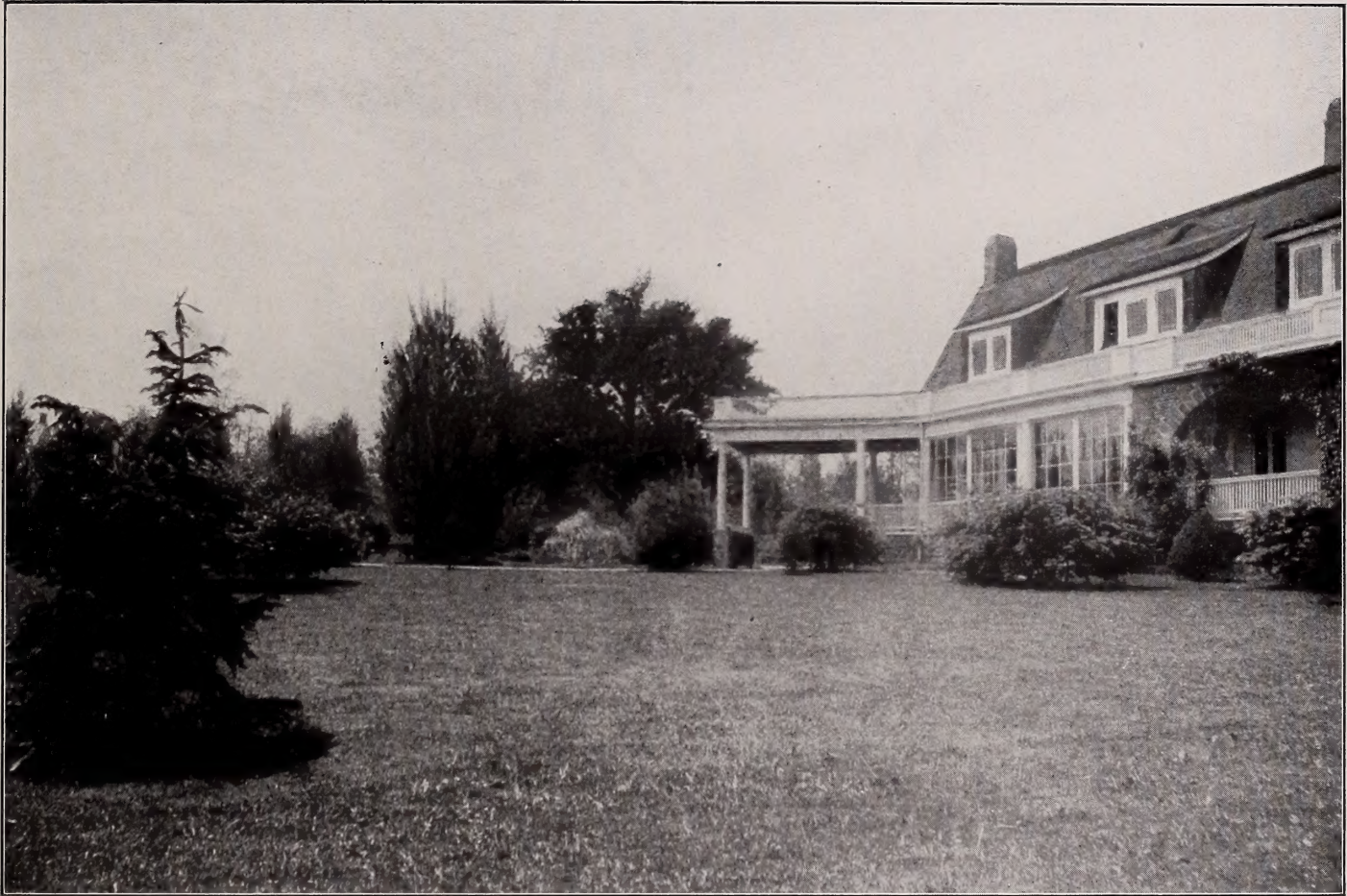
*Rose Garden newly planted*



Or an unique effect like this  
*Japanese Garden*



It is wise to have a plan that the individual effects may be worked out into a harmonious whole



Then one may be sure that the grounds will grow into greater beauty each year  
*Grounds of J. H. Ridenour, Esq., Bayside, N. Y.*



Treatment of drive  
*Grounds of J. H. Ridenour, Esq., Bayside, N. Y.*





