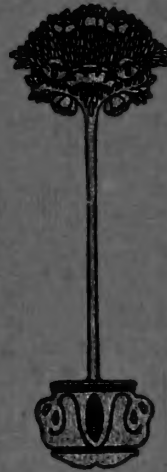


Historic, Archive Document

Do not assume content reflects current scientific knowledge, policies, or practices.

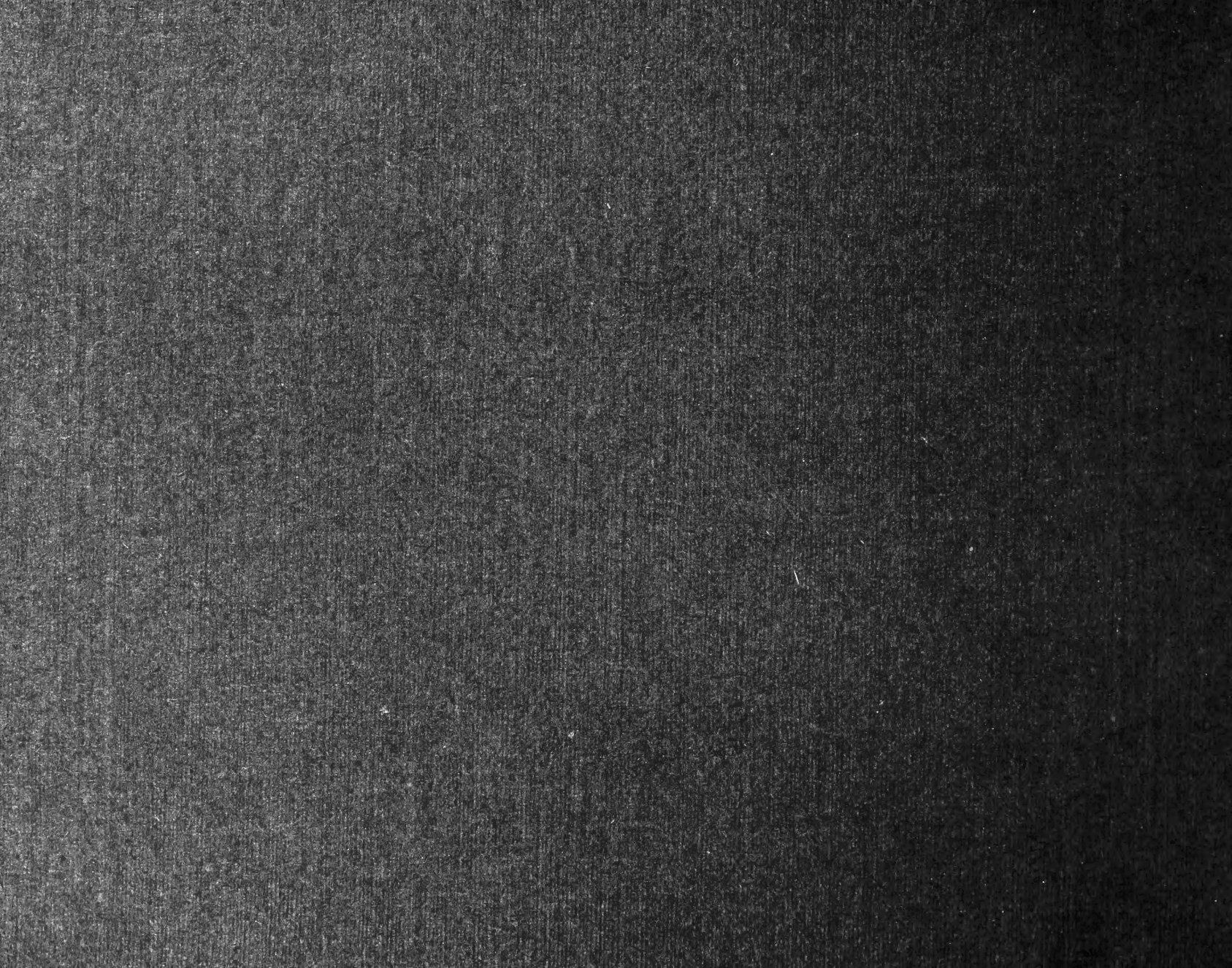
THE STORY OF
BEAUTIFUL HOME
GROUNDS



Flushing Nursery
..

TOLD BY PICTURES

RECEIVED
FEB 23 1926



CATALOGUE NO. 10

Issued by the Landscape Department of

FLUSHING NURSERIES, INC.

Offices and Nurseries, North Hempstead Turnpike

Flushing, New York City

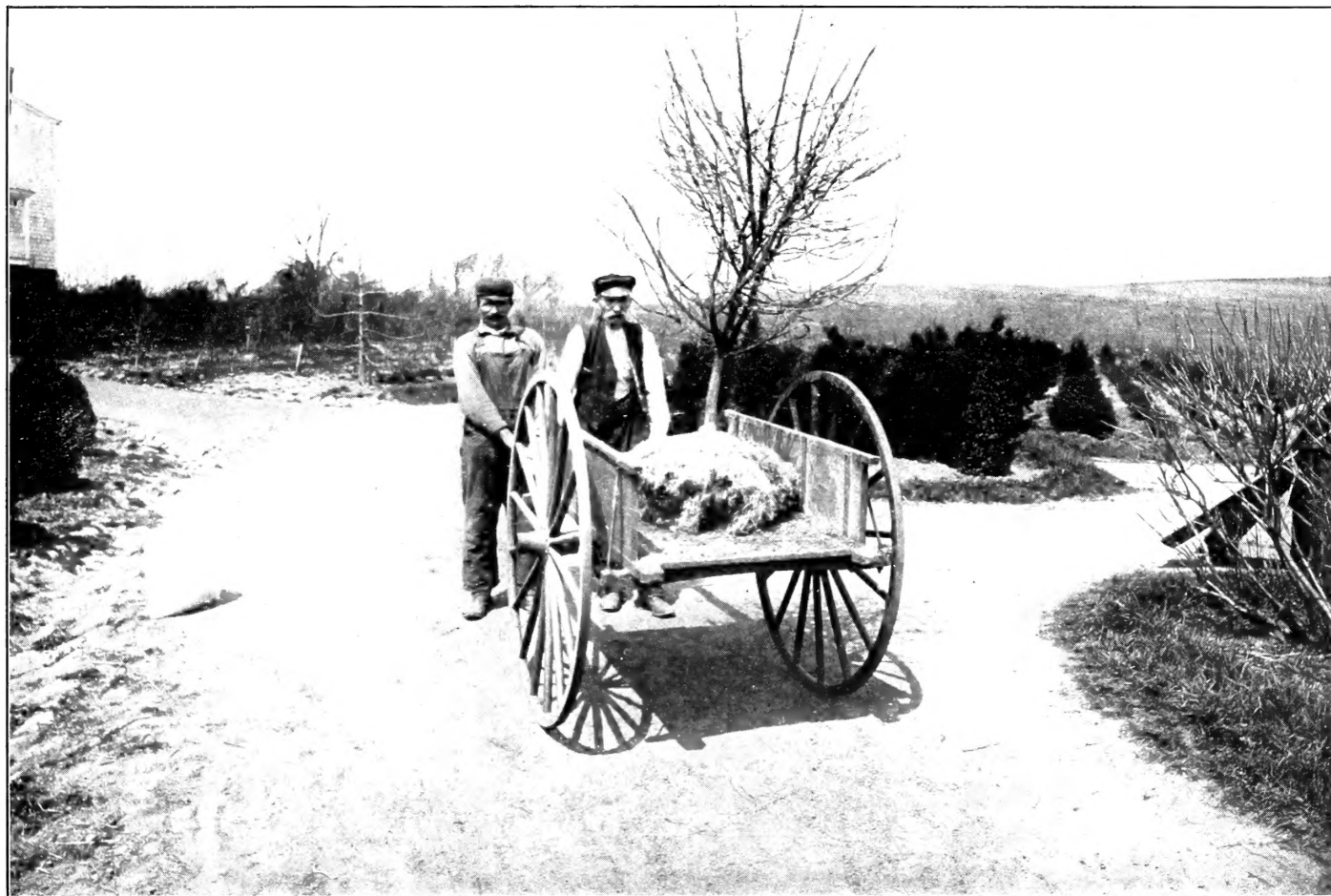
TELEPHONE CONNECTION

Three Minutes' Walk From Jamaica Trolley



Get the man who knows

*Theodore P. Lawlor, President of Flushing Nurseries, Inc.
Mgr. Landscape Dept.*



Then the plants that grow
Plant of Euonymus Alatus, being brought to our Packing Sheds—Note the fine root system



It is necessary to have plants grown far enough apart in the nursery to let them fully develop

View in Nursery looking south



The constant cultivation of plants give a root system, that is absolutely necessary for proper transplanting

View in Nursery looking west

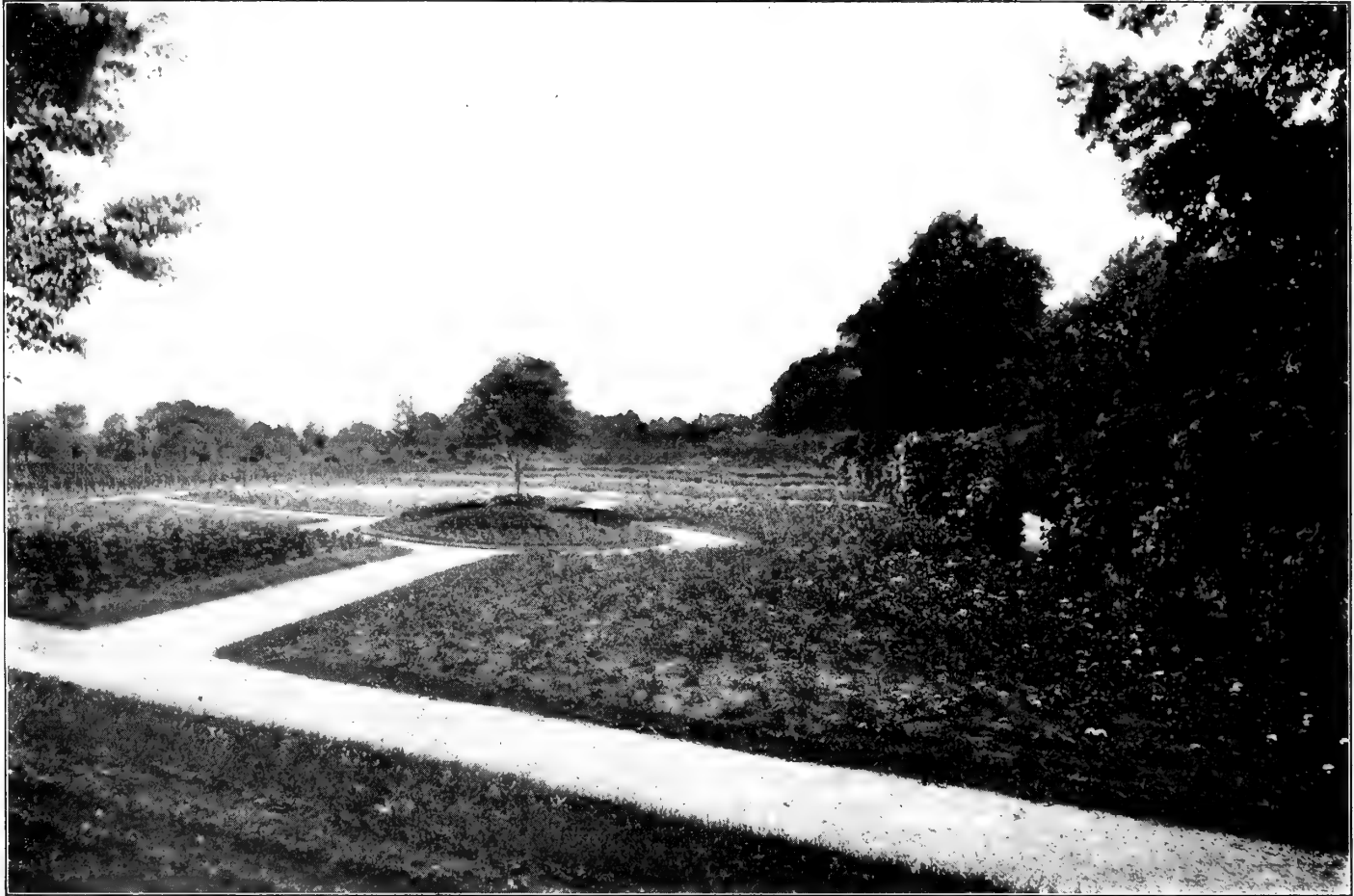


If goods are to be shipped any distance, have them packed properly
A corner of our Packing Sheds



It is much better to pack a loose load when possible, than to have Nursery Stock crowded in boxes or cars

A loose load leaving the Nurseries

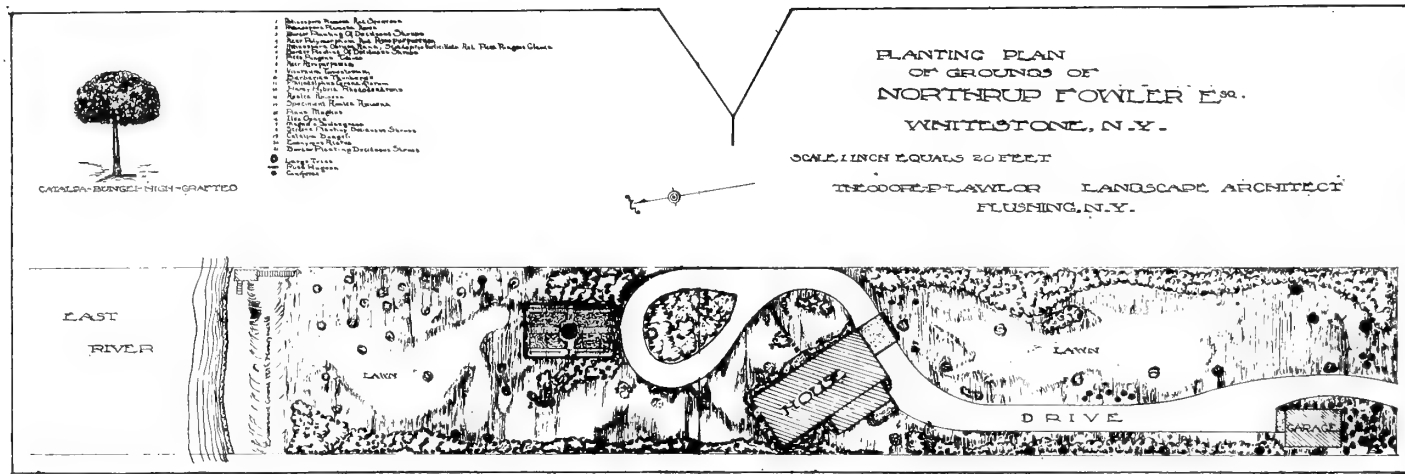


Oftentimes formal effects are desired

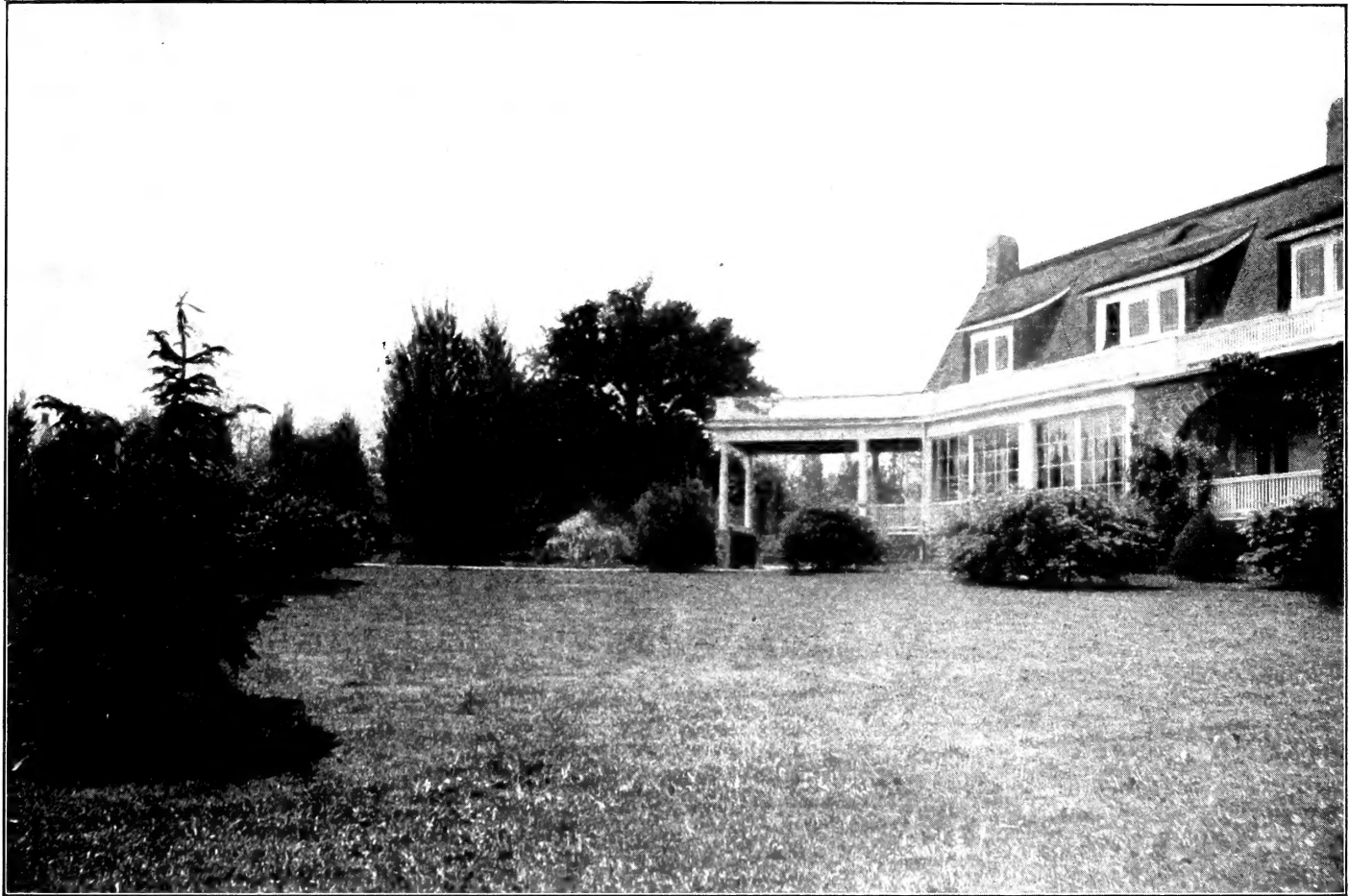
Rose Garden newly planted



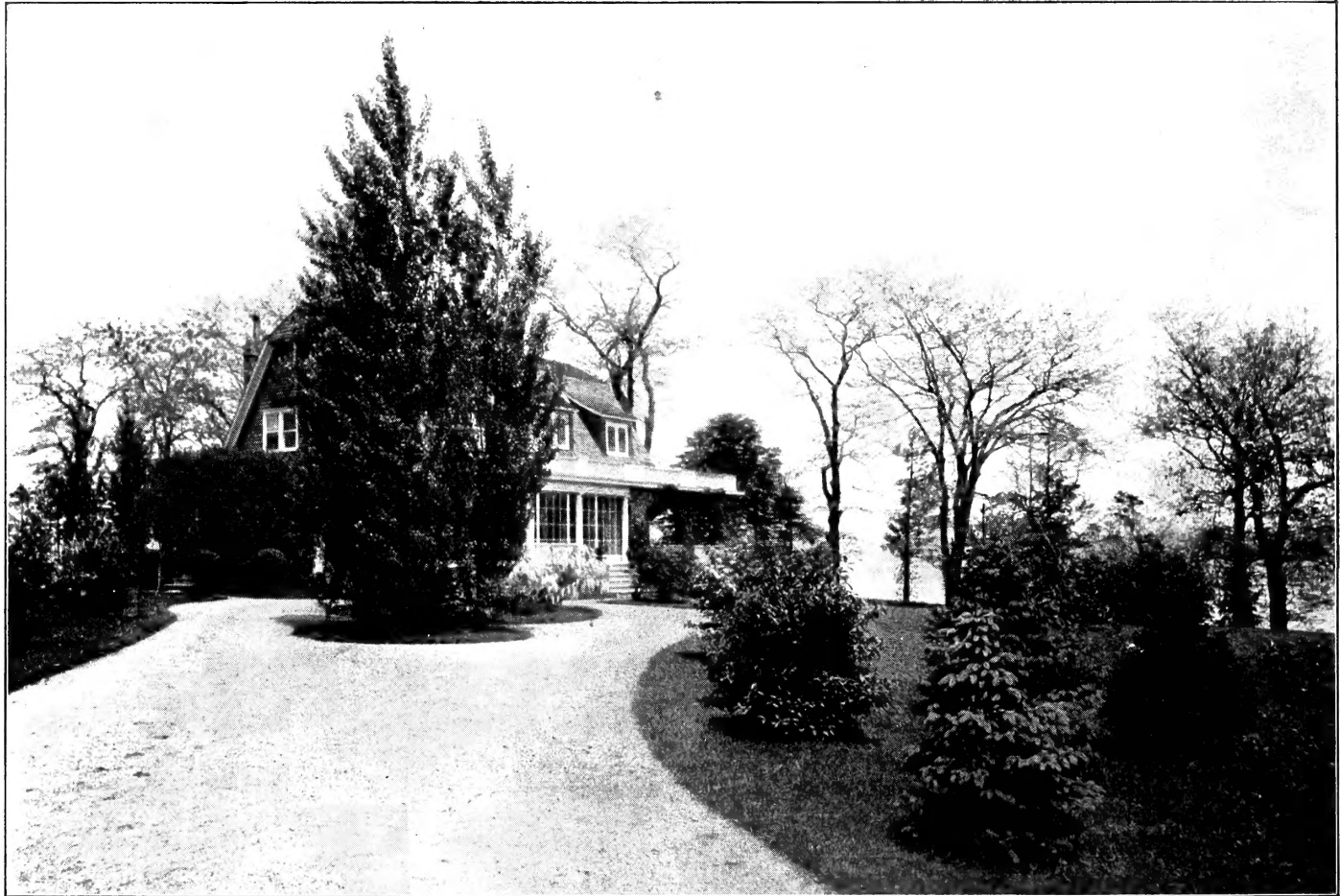
Or an unique effect like this
Japanese Garden



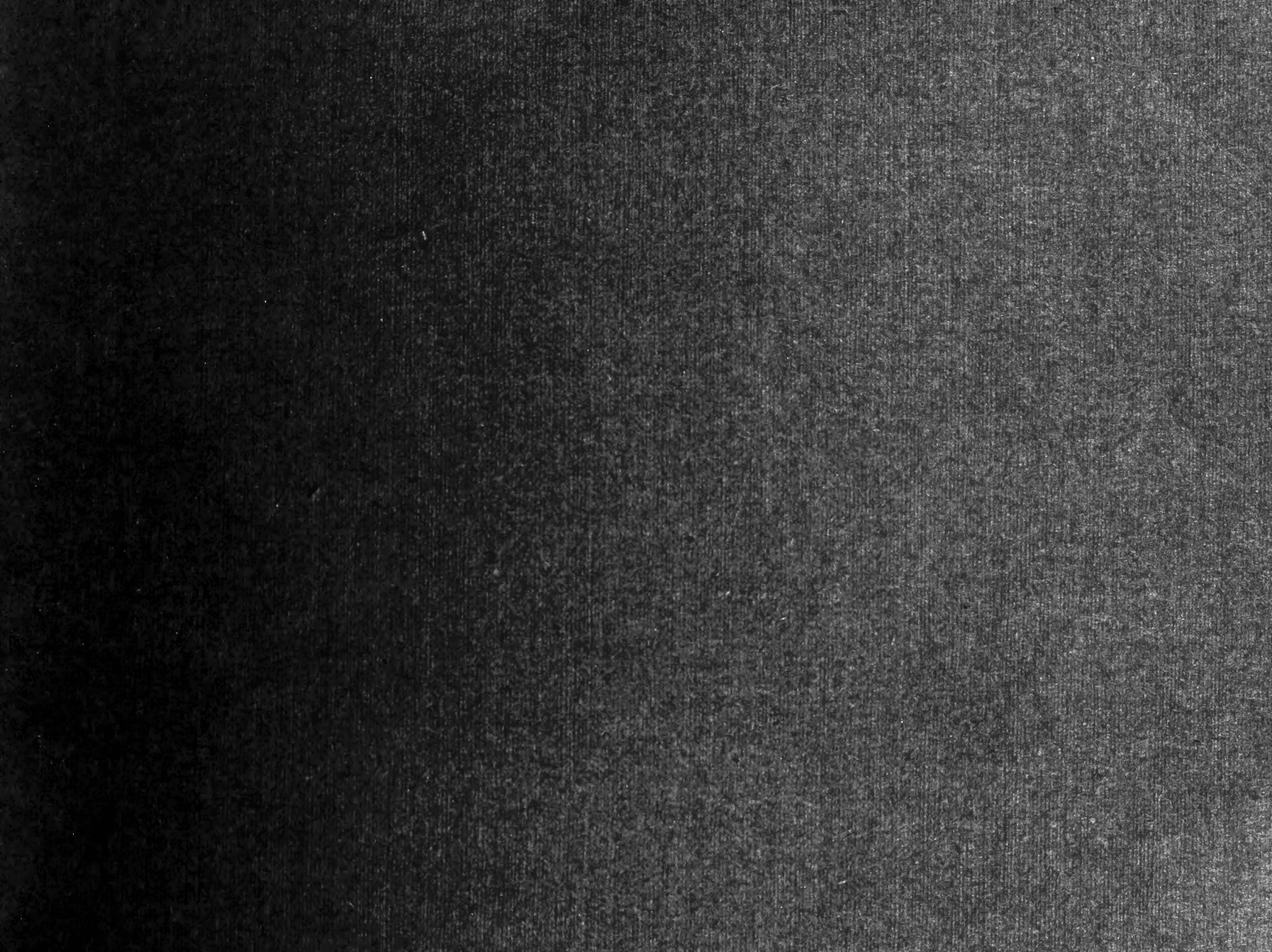
It is wise to have a plan that the individual effects may be worked out into a harmonious whole



Then one may be sure that the grounds will grow into greater beauty each year
Grounds of J. H. Ridenour, Esq., Bayside, N. Y.



Treatment of drive
Grounds of J. H. Ridenour, Esq., Bayside, N.Y.



Flushing Journal Print
1912