

Historic, Archive Document

Do not assume content reflects current scientific knowledge, policies, or practices.



Fairfax Roses



MY MARYLAND

FAIRFAX ROSES

The Aristocrats of Rosedom

Fairfax County, Virginia, has been famous for nearly two centuries. The famous Fairfax family were prominent long before the Revolution, and the name has since been associated with many an historical fact and pretty bit of fiction.

But the name of Fairfax has never been used to more appropriately convey a sense of exclusive elegance than when applied to its Roses—the soil, the climate, and every condition seem so favorable that our Roses are a truly superb strain.

My Rose Nurseries are right here in the heart of the best Rose-growing section of the United States. Our seasons are long and mild, yet cold enough to provide the essential "dormant" period when the plant can rest and gather energy. Because our growing period is so long, one of my plants at two years is much stronger than one of the same age grown further north.

But always bear in mind that my plants are **as hardy as any need be**—growers in Canada are using them with entire satisfaction. One reason for this is that I keep my plants "fit" by growing them right out in the open, with no protection. Plants grown under glass are nearly sure to be "soft" and not hardy.

The **vitality** of the Rose plants you buy is another exceedingly important matter. Some unscrupulous growers will force Roses for blooms all winter, and then sell the exhausted plant in the spring. **My Fairfax Roses are not that sort.** My plants are all heavy, stocky and vigorous, grown on their own roots, except where noted.

My mailing-size plants are larger this year than I have ever sent out before; nearly all are in 3-inch pots, ready to begin blooming at once. It is best, when possible, to have plants sent by express, as I can often send larger plants and put in extra plants gratis—which I do whenever possible.

Terms. Cash with order. Requests for credit must be refused, as they have to be looked up, which takes time, especially in the busy season, delaying packing, shipping, etc. In fairness to all of my customers, I make this request.

Remit by Post-office money-order at Oakton, Va.; by express money-order, draft or personal check. If currency is enclosed, the letter must be registered; otherwise I cannot be responsible for it. **Please do not send stamps.**

Guarantee. I guarantee all plants to reach the customer in good growing condition; otherwise I will replace them free, if notified immediately.

Shipments. Two and three-year plants must go by express at customer's expense, but will be packed as light as possible. They will go at the special plant rate, which is about 20 per cent less than merchandise rate.

Shipments should, when possible, go over only one express company's line, as otherwise the charge is likely to be greatly increased. If you can reach the lines of the Adams or Southern companies, therefore, I can save you a good deal in express charges. However, a new rule which went into effect in July, 1911, by order of the Interstate Commerce Commission, greatly reduces the charges where shipments must travel over two or more lines, and will probably save my customers considerable sums in the future.

I pay postage on all plants by mail, and guarantee that all plants sent out will reach you in perfect condition. Express shipments, of course, go at customer's expense.

Errors. We use every precaution to guard against errors, but in the press of business they will sometimes occur. I always wish to know of anything not satisfactory, so I may correct the error.

Always use order sheet, as it enables me to fill orders with despatch and accuracy.

No orders for plants received for less than 25 cents unless 10 cents be added to pay for packing.

I am only twelve miles from Washington, D. C. and have direct connection with all railroad lines leading from there.

When sending your order, if you will send the names of **a few of your friends who are plant buyers**, I will send you something extra for your trouble. **I will send you many fine plants extra** if you will get your friends' orders and send them with yours, so that all may go by express to you.

Large Roses for Immediate Effect. I call special attention to the two-year-old plants offered, as they are very heavy, fine plants, and the prices are low. I keep them in cold houses during winter—entirely dormant, so they are in best condition for immediate blooming. They must be sent by express at purchaser's expense, unless the order be a small one, when I will send by mail if 5 cents per plant be added for postage.

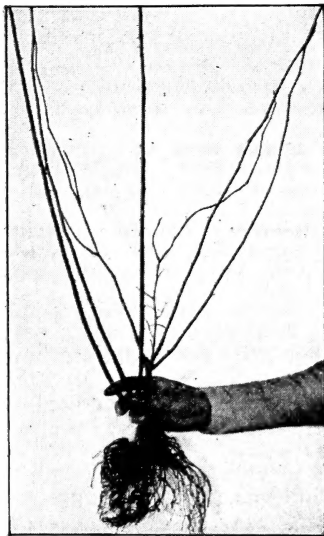
Visitors Always Welcome. I am right at Oakton station, on the Washington, Arlington and Falls Church Electric Road. Cars leave Washington every hour from Penn avenue and Twelfth street; Oakton is a twelve-mile ride.

I want to make **you** a customer this year if you are not already growing some of my plants. If you are, then you will still be interested in my attractive offerings. In either case, let me hear from you with an order—I will make every effort to merit your further patronage by supplying such plants as will produce thoroughly satisfactory results for you. I guarantee my own personal efforts in that direction.

NEW ROSES OF SPECIAL MERIT

Suggestions for Growing Roses

Roses may be grown in any good garden soil, but will do much better in a rather heavy clay loam than in a light or sandy soil. They should not be planted near large trees or in a shady location. The soil should be plowed, or spaded deeply, and a good quantity of well-rotted stable manure well mixed with it, but do not use any sand, chip dirt or other light material. An application of five pounds to the square yard of fine-ground raw bone is very beneficial, and may be added each year if the soil is not very rich.



This is a specimen of the 2-year-old Rose bushes I supply. My 3-year size is much larger.

Be sure to keep the soil stirred with a hoe **constantly**; every week is not too often; and let no weeds or grass grow nearer the plant than 2 feet. In planting see that the soil is firm about the roots. Keep well watered, and if the plants are the smaller sizes, shade from sun for a few days. Mailing-size plants should not be planted till danger of frost is over, but the two-year size should be planted as early in spring as the ground can be prepared.

Hybrid Perpetual Roses are perfectly hardy in any part of the country. Hybrid Tea Roses are next in hardiness, being hardy with slight protection in any part of the country, and as they are all constant bloomers, are the most useful of all Roses. Tea Roses, with the exception of Cochet's and a few others, are quite tender and require protection in winter. Pine or any evergreen boughs make the best covering, but should be laid on rather loosely so that the Roses may have plenty of air.

The following list of Roses contains the finest varieties in existence. The plants are strong and stocky, and will be carefully packed and sent by

mail at the price given, except the two-year-old plants, which will be sent by express at purchaser's expense, or by mail, if 5 cents per plant be added for postage.

My Maryland. A new peach-pink Rose which has proved to be of great value as a garden Rose. Growth is robust. Flowers large, full and double; perfectly formed, lovely bright pink with delicate pleasing fragrance. Price, strong, mailing size, from 3-in. pots, 15 cts.; larger size, 20 cts.; heavy 2-yr. plants, 30 cts.

White Killarney. New Hybrid Tea Rose. This new variety possesses all the good points of, and is identical in every way with, its parent, except in color, which is of a clear white. Its parent, Killarney, though only introduced ten years ago, has for several years been one of the most popular Roses. White Killarney has great freedom of bloom, beautiful form, and perfect hardiness, which, together with its purity of color, assures for it the same popularity. In naming a select list of leaders for general planting, I should certainly include White Killarney—because I know its merits so well. Price, strong mailing size, 15 cts.; 2-yr. plants, 35 cts.



White Killarney

NEW ROSES OF SPECIAL MERIT, continued

Climbing Killarney. An exact counterpart of Killarney, in every respect, except that it is a vigorous climber. This will prove a great garden Rose. Price, 3-in., 20 cts.; 2-yr., 50 cts.

Lyon Rose. (H. T.) An offspring of Soleil d'Or. The form is full and globular, with large, broad petals of good texture. The flowers are remarkably rich in color; shrimp-pink at ends of petals, center coral-red or salmon-pink, shaded with chrome-yellow. It is very fragrant and above all a perpetual bloomer. Wherever shown in Europe it has been enthusiastically praised and given the highest awards. At Lyons it received the Prize of Honor, and at the National Rose Show held at Paris last summer, where 88 leading varieties were submitted, Lyon Rose scored the maximum

100 points with the judges and was the only one to receive the full number. Price, strong 2-yr. plants, 50 cts.; extra 3-yr.-old plants, 75 cts.

Flower of Fairfield. Perpetual-blooming Crimson Rambler. This is a sport from the famous Crimson Rambler. It is of similar, if not a shade more brilliant, color and of better resistance to the sun. A strong climber. Price, fine mailing size, from 3-in. pots, 15 cts.; strong 2-yr.-old., 35 cts.

The Blue Rose, "Veilchenblau" (Violet-Blue). The newest climbing Rose. A distinct novelty; a violet-blue seedling from the Crimson Rambler. Flowers in large clusters like Crimson Rambler; semi-double, medium size. Price, mailing size from 3-in. pots, 15 cts.; strong 2-yr. plants, 35 cts.

NOTE.—I have not tested the "Fairfield," nor the "Blue Rose." The above descriptions are supplied by the originator, and are, so far as I know, correct; but I cannot guarantee them.

Rhea Reid. (Hill, 1908.) A free-flowering variety, with brilliant crimson-scarlet, full, double flowers of good form. It is of American origin and was exhibited in the Bagatelle Gardens, Paris, during the season of 1908, where, in competition with eighty-four varieties submitted by growers from all parts of the world, it was awarded the grand prize,



Lyon Roses

a gold medal. Price, mailing size, from 3-in. pots, 15 cts.; strong, 2-yr. plants, 30 cts.

Madame Constance Soubert. H. T. A wonderfully handsome bush Rose with dark foliage. The flowers are deep golden yellow, daintily tinted with peachy pink. They are produced on long, stiff stems. Price, strong mailing size, 15 cts.; fine 2-yr. plants, 35 cts.

Queen Beatrice. H. T. When the buds first open they are pleasing dark pink, gradually shading with peach to a glorious silver-pink. The flowers are large and double, with a delicate fragrance. Price, mailing size, 15 cts.; strong 2-yr. plants, 35 cts.

Mrs. Waddell. A sturdy, vigorous-growing bush. The buds open a clean, rosy salmon deepening to scarlet; outside of petals a little lighter. Flowers very large, splendidly formed and of excellent keeping qualities. Price, strong mailing size, 15 cts.; heavy 2-yr. plants, 35 cts.

Mrs. Aaron Ward. Indian-yellow, lemon and cream; variable in the arrangement of its colors; very large, very full, of exquisitely refined form. Of vigorous branching habit. One of the most beautiful Roses in existence. I have only one size of this wonderful Rose to offer this year. Price, extra-heavy, 3-yr. plants, 75 cts.

Duke of Wellington. An ideal color in golden yellow and salmon. Shape like Killarney. Price, strong mailing size, 15 cts.; fine 2-yr. plants, 35 cts.



J. B. Clarke

NEW ROSES OF SPECIAL MERIT, *continued*

Wm. R. Smith. New, hardy, everblooming Rose; one that deserves the confidence of discriminating growers. Very handsome in bud and flower; the color is deep ivory-white, overlaid with clear, bright pink—a lovely combination, truly. This variety is fully as hardy as Kaiserin Augusta Victoria, and is a tremendously vigorous and rampant grower; flowers excellent for cutting. I have an unusually fine, large stock of this Rose and offer the plants at a very reasonable price, as follows: Guaranteed to bloom this year, 10 cts.; heavy mailing size, from 3-in. pots, 15 cts. each, \$1.50 per doz.; splendid, strong 2-yr. plants, 30 cts.; extra-fine 3-yr. plants, on their own roots, 50 cts.

Magnafrano. It is a strong, upright grower and a constant and profuse bloomer, with extra-large flowers; full, deep and double, and deliciously tea-scented. The color is bright, deep, shining rose, rich and handsome. Price, strong mailing size, 15 cts.; fine 2-yr. plants, 30 cts.

J. B. Clarke. H. P. Without doubt the largest Rose ever grown. The growth is strong and upright, very vigorous, making a large, handsome bush; the foliage is broad and stout; bronzy green in the young state, changing to dark green. The blooms are very large and beautifully formed; flowers very full and long; color unique, being intense scarlet, shaded crimson-maroon, very dark and rich; strongly fragrant. Awarded gold medal of the National Rose Society. 7½ inches in diameter by 5 inches deep. Dickson classes this rose as a Hybrid Tea; we class it as a Hybrid Perpetual. Price, heavy mailing size, 20 cts.; 2-yr. plants, 50 cts.; all on their own roots; extra-heavy 3-yr. budded plants, 65 cts.

NEW ROSES OF SPECIAL MERIT, continued

Catherine Zeimet (White Baby Rambler). Quite similar to the other well-known Baby Rambler Roses. The flowers are, however, pure white; the fragrance is delightful. These are borne in the customary large trusses and are very showy, and as desirable as the crimson Baby Rambler for potting or borders. Price, mailing size, 15 cts.; 2-yr. plants, 35 cts.

Killarney. A phenomenal new Hybrid Tea Rose, especially as to the coloring, which is an exquisite shade of deep shell-pink. The flowers are enormous, the petals frequently measuring $2\frac{1}{2}$ inches deep. Wonderfully strong, throwing up heavy shoots crowned with long and heavy buds. Free-flowering and perfectly hardy. Price, strong 1-yr. plants, by mail, 15 cts.; heavy, 2-yr. plants, 30 cts.; extra-heavy, 3-yr. plants, 60 cts.

Frau Karl Druschki. Sometimes called White American Beauty. This new hardy Rose is of German origin, and has won many prizes and made many friends. It is unquestionably the ideal hardy white Rose. Its flowers, which are very large, are perfect in form and snow-white, with large, shell-shaped petals. A strong, vigorous, healthy grower and remarkably free-flowering. Price, fine mailing size plants, from 3-in. pots., 15 cts.; strong 2-yr. plants, 40 cts.; extra-heavy 3-yr. plants, 60 cts.

Richmond. Free-blooming as Bridesmaid or Golden Gate; scarlet-crimson flowers are borne on fine, long stems, which make it specially valuable for cutting purposes. It is a strong competitor of Liberty and Meteor for forcing. We recommend it as a sterling novelty of unusual merit. Price, 3-in., 15 cts.; 2-yr. plants, 25 cts.

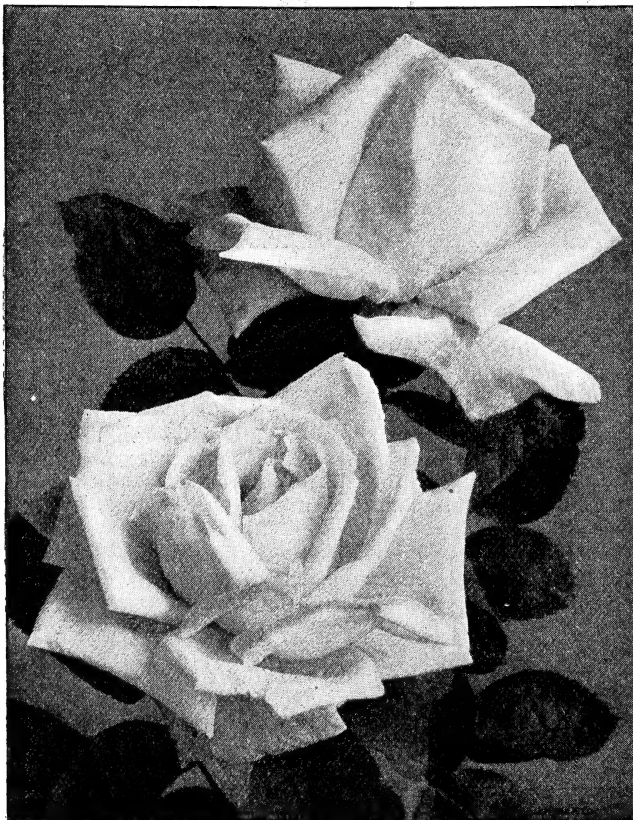
Blumenschmidt. Tea. Deep golden yellow of the richest and purest shade. Price, mailing size, 10 cts.; 2-yr. plants, 25 cts.

Dean Hole. An intense, salmon-pink, with bud of extraordinary length opening

into a mammoth bloom of splendid substance. An English gold medal Rose that is bound to rank with the very best. Price, 10 cts.; 2-yr. plants, 25 cts.

Hybrid Tea Rose, Chas. Dingee. This Rose was first named W. R. Smith, for Mr. W. R. Smith, Superintendent of the United States Botanical Gardens at Washington, D. C., from whom I procured a stock before it was ever offered by any catalogue. Since then several catalogues have carefully renamed it and have claimed that they were the originators and sole owners of the Rose and that it "cannot be had elsewhere." None of these statements are true.

Cardinal. New Hybrid Tea Rose. For forcing recommended as being better than Liberty and in the open ground superior to Liberty or Meteor. A strong, robust grower, with large, massive crimson flowers; deliciously fragrant, full and double to the center. Extremely free-flowering and of easy culture. A



Frau Karl Druschki

NEW ROSES OF SPECIAL MERIT, continued

Rose that is destined to become a leading crimson Hybrid Tea, as the flower is of magnificent form and color. This variety is an American introduction; the plant is a rugged and healthy grower, and will thrive in almost any location. Price, 3-in. pots, 15 cts.; 2-yr. plants, 30 cts.

Kaiserin Augusta Victoria. H. T. One of the most beautiful of all Roses for open-ground culture; it is a strong, healthy grower, and as hardy as any of the Hybrid Perpetual Roses. Blooms steadily from early spring until severe frosts; in fact, it is as free-blooming as any Tea Rose. Elegant, large, pointed buds and large, full double flowers; color delicate creamy white; deliciously fragrant. As a cut-flower it stands without a peer. Price, strong mailing-size plants, 15 cts.; 2-yr. plants, 30 cts.; extra 3-yr. plants, 50 cts.

Betty. H. T. Color a coppery rose, overspread with golden yellow. Its blooms are extremely large, fairly full, and of glorious form. Vigorous, erect and free-branching habit; flowers all season and is deliciously perfumed. Price, 3-in. pots, 15 cts.; 2-yr. plants, 35 cts.; extra-size 3-yr. plants, 60 cts.

Cherry Ripe. Hardy Everblooming Rose. An extraordinarily free-flowering Hybrid Tea Rose, branching, vigorous and hardy. Flowers medium size, well-formed, globular, light rosy crimson. Every shoot produces a bloom; one of the most promising new Roses. Price, 10 cts.; 3-in. pots, 15 cts.; 2-yr. plants, 25 cts.

Soleil d'Or (Golden Sun). The most unique Rose in cultivation; the first of a new race, both in habit of growth and color of flower. A strong, robust grower, with straight branches, and heavy, deep green foliage. Very full, the expanded flowers large and globular, the center petals well incurved, forming a double flower. The fully expanded flower is a blending of reddish gold, orange-yellow, nasturtium-red and pink, forming a combination well described when the Rose was named Golden Sun. Price, 2-yr. plants, only 50 cts.

Mme. Caroline Testout. H. T. Planted in the nursery rows with all the other good Roses, you can pick it out across a ten-acre field on account of its immense size and brilliant color. Probably no Rose stands higher in public estimation today than La France, and when we say this elegant new Rose is a far better Rose than La France we have said about all that can be said. It is decidedly deeper and more brilliant in color and a larger flower, and is as good in other ways. The petals are large, and of elegant La France form, exquisitely edged and bordered with clear, silver-rose. Both flowers and buds are extra large; color brilliant satiny rose. Price, strong mailing-size plants, 15 cts.; fine 2-yr. plants, 30 cts.; extra 3-yr. plants, 50 cts.

Madame Jennie Guillemot. Buds long and pointed, deep saffron-yellow, opening canary with dark golden shadings; blooms large, petals immense; opens very freely; a fine, upright grower of branching habit; exquisite; large, long and pointed. Price, 15c.; 3-in. pots, 25 cts.; 2-yr. plants, 40 cts.



Betty

Any plants listed at 25 cts. each, at \$2.50 per doz.; 30 cts., \$3 per doz.; 40 cts., \$4 per doz.; 50 cts., \$5 per doz.; 60 cts., \$6 per doz.



Rhea Reid (see page 2)

NEW ROSES OF SPECIAL MERIT, continued

Golden Cochet (or **Helen Good**). Tea. The only true Cochet Rose known except the old, well-known Pink and White Cochet. The color is a delicate yellow, suffused with pink, each petal edged deeper, very chaste and beautiful. The color, with its immense size and exquisite form, makes it without question the greatest Tea Rose ever introduced. Price, strong mailing-size plants from 3-in. pots, 15 cts.; fine 2-yr. plants, 30 cts. (See cut, p. 10.)

Clara Watson. The flowers are very graceful, and are produced in remarkable profusion. The buds are very beautiful, and are supported on long stems, making it desirable for cutting. The color is salmon-pink, very difficult to describe. Price, fine mailing-size plants, 10 cts.; 2-yr. strong plants, 25 cts.; heavy, 3-yr. plants on own roots, 50 cts.

Wm. Shean. H. T. A fine grower, throwing up long, stiff canes, crowned with large, pointed flowers of Killarney-pink; full, free and perpetual; one of the very largest of Roses. Price, 15 cts.; 3-in. pots, 25 cts.; 2-yr. plants, 40 cts.

Freiherr von Marschall. The flowers are large, beautifully shaped, double and full, borne in wonderful profusion all through the growing season. It is a bright red, one of the brightest red Tea Roses in existence. Price, mailing size, 3-in. pots, 15 cts.; heavy, 2-yr. plants, 30 cts.

American Beauty. Largest, sweetest and best of all hardy Roses. It is a genuine, hardy everblooming Rose. For immensity in size, rich color, exquisite form and delicious fragrance it stands without an equal. It is a quick and bushy grower and a continuous bloomer, makes magnificent buds and large, deep, double flowers, and is valuable both for house and garden culture. Color a rich, rosy crimson, shaded and veined in the most charming fashion; very fragrant. Price, 15 cts.; 3-in. pots, 25 cts.; 2-yr. plants, 35 cts.

NEW ROSES OF SPECIAL MERIT, continued

Prince de Bulgarie. Handsome, large and full buds; flowers splendidly formed. Outer petals light rosy salmon-pink, inner petals somewhat light. The plant itself is exceptionally handsome. Mailing size plants, 3-in. pots, 15 cts.; 2-yr. plants, 30 cts.

American Pillar. A very desirable new climbing variety of vigorous growth and attractive appearance, both in plant and flower. The foliage is showy bright green from early spring until late fall. The flowers are a clear, pretty pink, quite large—3 or 4 inches across. They are borne so profusely as to almost completely cover the bush. After these follow showy clusters of bright red fruits. A very desirable Rose for planting as a specimen or in groups about the grounds. Strong mailing size, 3-in. pots, 15 cts.; 2-yr. plants, 40 cts.

Hiawatha. Brilliant scarlet; bears large clusters of single flowers; bright and effective. Price, mailing size, from 3-in. pots, 15 cts.; strong 2-yr. plants, 30 cts.

Pink Maman Cochet. Tea. The queen of all pink garden Roses. Clear rich pink, changing to silvery rose. The buds are beautiful, large, full and firm and elegantly pointed; as they expand they show great depth and richness, sometimes measuring 2½ inches from base to tip. Small pot-plants will, in the open ground, quickly make large, strong bushes, and produce on long, stiff stems, great numbers of perfect flowers. Perfectly hardy in all sections. Such beauty and exquisite form as is possessed by this variety is well nigh marvelous, and cannot be seen in any other Rose we know. Strong mailing size 3-in. pots, 10 cts.; heavy 2-yr. plants, 25 cts. each, \$2.50 per doz; 2-yr. plants, by mail, 30 cts.

Prices of the following varieties, mailing size, from 3-in. pots, 10c. ea.; 2-yr. plants, 25c. ea.

White Maman Cochet, or Priscilla. The charming new white Tea Rose. A child of that grandest of bedding or outdoor Roses, Maman Cochet; identical with that variety except in color. Hardy in northern Ohio, with slight protection in winter. The flowers are enormous, remarkably round and full; white and delightfully tea-scented. Large, 3-yr., extra-size, 50 cts.

Triomphe de Pernet Pere. H. T. The flowers are extra-large, having broad, thick petals and long, tapering buds, with delicious tea fragrance. Color a fine, clear magenta-red sometimes passing to a bright crimson. Striking and beautiful.

Bon Silene. A grand old Tea Rose. Large, beautiful buds, fine for bouquets and decorative purposes. The color of this variety is deep rose, sometimes bright, rosy crimson.

Countess Eva Starhemberg. Tea. Large bud, opening a fine double flower of great beauty and heavy texture. Creamy pink, borders of petals touched with rose.

Papa Gontier. Tea. A fine forcing Rose, also fine for field planting. We sell immense quantities of this fine Rose. It has a fine bud, open flower, semi-double. Color dark carmine, flushed crimson.



Frau Karl Druschki. Succeeds as a pot rose as well as outdoors



Baby Rambler

NEW ROSES OF SPECIAL MERIT, con.

Queen's Scarlet. (China.) A grand old red bedding variety. It can be planted anywhere; entirely hardy. The flowers are large and fiery scarlet, a color seldom seen in Roses.

Safrano. A fine old Tea Rose. It is a variety of great value, particularly for outdoor planting. It grows vigorously and has the vitality necessary to produce a continuous crop of flowers from early summer until late in autumn; quite hardy. The color is bright apricot-yellow, changing to orange and fawn, sometimes tinted with rose. Very fragrant.

White Bougere. Tea. Blooms of great substance; pure white; strong stems and a great bloomer.

Hermosa. China. An old favorite. It is always in bloom and always beautiful. The flowers are cupped, finely formed and full. Color the most pleasing shade of pink, soft but deep. The best market Rose grown.

Marie Van Houtte. Tea. Magnificent in the open ground. Extra-large, full, double flowers. Canary-yellow, passing to creamy white; shaded rose.

Mrs. B. R. Cant. Tea. A most beautiful and worthy variety, somewhat re-

sembling the famous Papa Gontier. The plant is a very free grower and bloomer; the flowers are large, full and double; dark carmine, shaded and flushed with lighter rose. This is a good, worthy sort, and will soon become one of the real standards.

Champion of the World. China. It is quite hardy and possesses that delicious old-fashioned Rose fragrance so much sought after in an everblooming variety.

The Rainbow. Tea. Color a lovely shade of deep coral-pink, striped and mottled in most unique manner with intense carmine, elegantly colored with rich golden amber at the center of base of petals. Makes beautiful buds; flowers extra large, sweet, and of great depth and substance.

La Princess Vera. Tea. Without doubt this is a grand Rose for general planting, particularly for bedding in the open ground. The color is rich ivory-white, shaded and veined with coppery yellow, and delicately penciled with pale blush.

Clothilde Soupert. A strong, vigorous grower. The flowers are large, double and beautiful in form, with style of the beautiful Rose.

Ball of Snow. They are borne in sprays and the color blends from a soft shell-pink to a pure satiny white. Roses with both these colors are borne on the same plant at the same time. Unequaled in flowering qualities.

Mad. Francisca Kruger. A strikingly handsome Rose, one of the very best for open-ground culture. It is especially adapted to bedding or massing. Holds its foliage under all sorts of adverse conditions. The flowers are deeply shaded coppery yellow in color, and are of large size. A strong and vigorous grower and a good and constant bloomer.

Madame de Vatry. Tea. Big, clean buds of great beauty; fine flowers; rich crimson-scarlet.

Snowflake. Tea. Pure white; not pink.

Coquette de Lyon. Tea. One of the best yellow Roses. This exquisite variety is so well and favorably known that a detailed description is hardly required. It is unquestionably one of the finest canary-yellow Tea Roses in cultivation for open ground culture.

Duchesse de Brabant. A bright China Rose, with coppery yellow center, ends of petals suffused with carmine. A charming beautiful combination of coloring, as

Price of all plants on this page, strong mailing size, from 3-in. pots, 10 cts.; heavy 2-yr. plants, by express, 25 cts. each, \$2.50 per doz.; 2-yr.-old in small numbers, by mail, 30 cts.

NEW ROSES OF SPECIAL MERIT, continued

each color blends nicely with the other. This variety ranks with the best and is a Rose of decided merit.

Viridiflora. Green China Rose. Moderately large, quite double; pure deep green. Valuable as a curiosity.

Burbank. A perfect, hardy, everblooming Tea Rose. The color is cherry-crimson; it is, in other words, the very deepest and brightest pink Rose in cultivation. It is peculiarly adapted for both outdoor planting or for blooming indoors.

La Pactole. Tea. Light yellow, changing to almost white.

Princess Sagan. Very strong-growing

plant, with small, dark, close-set leaves and large, very dark crimson flowers. Decidedly handsome and striking.

Marquise de Querhoent. Tea. Long-pointed bud, stiff, upright stem; color a beautiful China Rose, copper, salmon and golden yellow; extremely free.

Baby Rambler. Quite a wonderful little Rose. It is equally fine for bedding or for growing in pots. The plants grow only about 18 inches tall, but bloom constantly. The flowers are small, bright red, in clusters similar to the famous and popular Crimson Rambler. The plant is vigorous, hardy, and the foliage is apparently very free from the attacks of insects.

Price all plants on this page, strong mailing size, from 3-in. pots, 10 cts.; heavy 2-yr. plants, by express, 25 cts. each, \$2.50 per doz.; 2-yr.-old, in small numbers, by mail, 30 cts.

Dear Sir: Just a line to tell you how perfectly delighted I was with my order from you last spring. I purchased some 20 roses of mailing size and every one grew and bloomed last summer.—Miss L. L., Du Bois, Idaho.

Dear Sir: The Dahlia plants sent me last year arrived here in good condition. I set them out at once and every one is growing. I am very much pleased with them. They are the finest plants that I ever saw.—A. R. R., Beaver Dam, Wis.

Dear Sir: When looking over your catalogue I am reminded that the two small orders placed with you in past years were received in excellent condition and that the roses in particular have done remarkably well.—Mrs. F. C., Everett, Wash.

Dear Sir: Box of roses and plants received yesterday and they were in fine condition. I have been buying plants for the past 18 years and have purchased from North and West and I never had plants sent packed as well as those you sent me.—Dr. E. M. K., Delta, Pa.



Planting of Baby Rambler Roses

HARDY HYBRID PERPETUAL ROSES

Hybrid Perpetuals are considered the most valuable of all hardy plants. They are distinguished by their vigorous, upright growth and large, bold flowers, frequently measuring five to six inches in diameter. They thrive and succeed in all localities and are entirely hardy in any part of the country.

Price, except where noted, strong mailing size, 10 cts. each; larger size, 15 cts. each; heavy 2-yr.-old plants, 30 cts. each

Margaret Dickson. The flower is of magnificent form, very large in size, almost as large as Paul Neyron. The color is of pure waxy white; petals very large, well shaped and of great substance. They are prettily curled back or reflexed. The buds are large and globular, particularly handsome. It is a strong, vigorous grower, with fine foliage, a free bloomer. Strong mailing size plants, 15 cts.; larger plants, 25 cts.; heavy, 2-yr. plants, 40 cts.; extra-heavy, 3-yr. plants, 65 cts.

Giant of Battles. This is still esteemed as the very best rich red Rose. Very large, double, full and sweet. Excellent.

General Jacqueminot. A rich, velvety crimson, changing to scarlet-crimson. A magnificent Rose, equally beautiful in the bud state or open. This is the best known of all Hybrid Perpetuals, and is without a rival in fragrance and richness of color. It is, moreover, as easy of cultivation as many of the more common varieties, and perfectly hardy in most situations.

Mrs. John Laing. A splendid, constant-blooming Hybrid Perpetual, perfectly hardy, with immense full and doubled flowers, borne in great profusion on long, stiff stems, and exceedingly sweet. The color is a clear, bright, shining pink, exquisitely shaded. The buds are long and pointed. Extra-size, 3-yr. plants, 50 cts.

Dinsmore. A vigorous healthy Rose of dwarf, branching habit. The flowers are large, perfectly double, and of a dazzling scarlet-crimson color, and have the rich, spicy fragrance peculiar to the best Hybrid Roses.

Ulrich Brunner. Flowers bright cherry-red; large and full; a good strong grower. Extra-size, 3-yr. plants, 50c.

President Lincoln. A bright red Rose of the richest hues. Large, full and fragrant; excellent.

Anne de Diesbach (Glory of Paris). Long, pointed buds and large, finely-formed, compact flowers; very full and double, and delightfully sweet. A vigorous grower and a fine bloomer.

Cheshunt Hybrid. This Rose is growing in favor as it becomes known. A most beautiful deep rose or red.

Countess of Roseberry. The color is satinpink in the center and deepens to the outer petals to a bright rose. The feather shading gives it the appearance of two distinct colors. Very free-flowering and a good grower. Extra size, 3-yr. plants, 50 cts.



Golden Cochet (see page 6)

HARDY HYBRID PERPETUAL ROSES, continued

Jubilee. This grand Rose was awarded the Gold medal by the Massachusetts Horticultural Society, the only Rose to obtain the honor. A pure red in its deepest, shading to deep crimson-red and velvety maroon-red in the depths of the petals. It fairly glows in its rich warmth of coloring, and has a rich, velvety finish of its own. It is a hardy ever-bloomer, and an acquisition to any collection of Roses.

Henri Martin. A magnificent Moss Rose. Extra large and perfectly double. Color a deep, rosy carmine, shaded a bright crimson; very mossy and fragrant.

Gloire de Margottin. The flowers are very large and of symmetrical form, somewhat globular, very full, and deliciously scented. The color is a clear, dazzling red. Certainly one of the most brilliant Roses ever seen. It is a free bloomer and vigorous grower, and is recommended for its great beauty and wonderful color.

Black Prince. Much sought after because of its splendid dark crimson flowers, which are shaded so deeply as to be almost black. Cupped, large, full, fine shape. Very hardy. Price, 15 cts.; 3-in. pots, 25 cts.; 2-yr. plants, 40 cts.

Paul Neyron. We ask special attention to this grand Rose; the flowers are immense, bright shining pink, clear and beautiful; very double and full; finely scented; blooms the first season and all summer; no collection is complete without this magnificent variety.

Coquette des Alpes. A lovely, pure white Rose. Very full and free in flower; delicious fragrance.

Mad. Charles Wood. Begins to bloom almost as soon as planted, and continues all through the season; the flowers are extra large, double, full and quite fragrant; color bright, fiery scarlet, passing to fine, rosy crimson, shaded with maroon; showy and handsome; and one of the best Roses for general planting.

Gloire de Lyonnaise. This grand Rose is the only yellow Hybrid Perpetual we have. It cannot be called deep yellow, but rather a pale shade of chamois or salmon-yellow, deepest at the center, sometimes passing to a rich creamy white, finely tinted orange and fawn.

Vick's Caprice. This is the only hardy Rose that has any variegation. It is a vigorous grower, and bears large and fragrant flowers of bright rose, distinctly striped with a rich crimson. It is altogether a most unique and pretty variety. A Rose that is sure to attract attention. We always have a large sale for it.

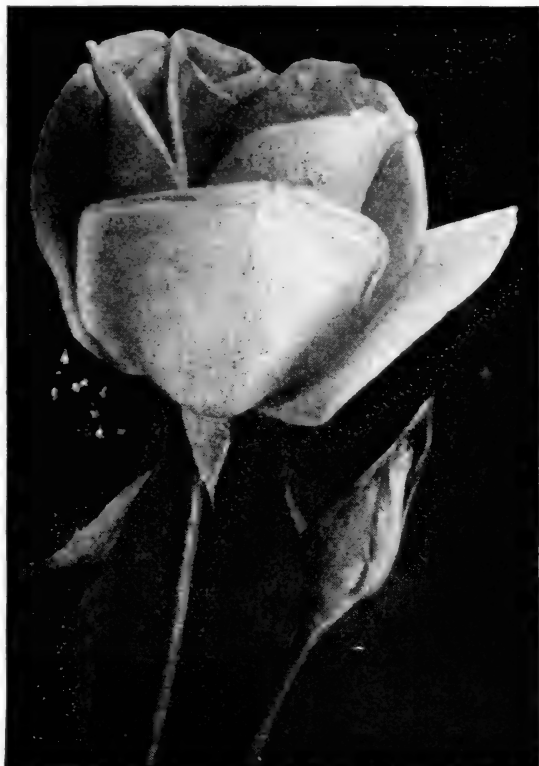
Clio. Two first-class certificates award of merit, Royal Horticultural Society. This variety is of very vigorous growth, and has large, handsome foliage. The flowers are flesh-color, shaded to the center with rosy pink. They are very large, of fine globular

form, and freely produced. A grand addition in the style of Baroness, and unquestionably the finest of all Roses for flowering in pots and forcing.

Mme. Masson. It may not be generally known among our customers that this is one of the really superb Roses, and fully the equal of any variety in this collection. We think it one of the very finest Roses in existence for garden cultivation; it is entirely hardy, blooms nearly all the time, bearing in profusion numbers of large, full, double flowers of unusual beauty and wonderful fragrance; color clear, bright rose; distinct and charming. Price, 15 cts.; larger size, 20 cts.; 2-yr. plants, 40 cts.

Prince Camille de Rohan. This is a magnificent Rose, celebrated the world over for its large, handsome, fragrant flowers and the freedom with which they are produced. The color is a deep, rich, velvety crimson, passing to intense maroon, shaded black; at a short distance they appear really black. This is one of the most handsome Roses we have ever seen.

Frau Karl Druschki. This new hardy Rose is of German origin, and has won many prizes and made many friends. It is unquestionably the ideal hardy white Rose. Its flowers, which are very large, are perfect in form and snow-white in color, with large shell-shaped petals, forming a beautiful flower. Plant a strong, vigorous,



Mme. Constance Soupert Rose (see page 2)

HARDY HYBRID PERPETUAL ROSES, continued

healthy grower and remarkably free-flowering. Price, strong mailing-size from 3-in. pots, 15c.; heavy 2-yr. plants, 40c.; extra-size, 3-yr. plants, 60c. (See illustration, p. 4.)

Conrad F. Meyer. Rugosa Hybrid Rose. A most valuable addition to the list of hardy free-blooming Roses. It surpasses all others of the type in fullness of flowers. The color is beautiful, a pure silvery pink. It is of ironclad hardiness. Its beautiful foliage alone would recommend it as an ornamental shrub for the garden. For a flower-

ing hedge it should eventually take front rank. The fragrance of the flowers is spicy and delightful. Price, strong mailing-size, 3-in. pots, 15 cts.; heavy 2-yr. plants, 40 cts.; extra-heavy, 3-yr. plants, 60 cts.

Magna Charta. A splendid Rose; extra-large, full, very double flowers of fine form, and sweet; color, clear rosy-red, beautifully flushed with violet-crimson; a sure and profuse bloomer; one of the hardiest and best for general planting; not been surpassed by any of the newer varieties.

GENERAL LIST OF EVERBLOOMING ROSES

Price, mailing size from 3-in. pots, 10 cts., heavy 2-yr. by express, 25 cts.

The Queen. The pure white and most charming Tea Rose. Makes good, finely formed buds, is quite full, showing the center but slightly when fully open.

Princess Bonnie. One of the brightest, sweetest, freest-blooming Roses in existence. The color is a rich, solid crimson, the inside being streaked with white. The odor is a delicate, very delicious tea scent.

Ivory. Tea. This exquisite new Rose resembles Golden Gate in form, but is pure ivory-white. It is an exceedingly free bloomer, sure to be covered with lovely buds and flowers the whole growing season.

Virginia R. Coxe, or Gruss an Teplitz. H. T. Sweetest and most vivid crimson

Rose in the world, and without question the best Hybrid Tea Rose of its color in existence. It grows to perfection in almost any situation, while its flowers in fragrance rival the finest Hybrid Perpetuals. For this Rose we will say that we doubt if there is a Rose of its color of any class that can surpass it. Perfectly hardy and always in bloom.

Bridesmaid. Tea. Color, a bright, clear pink, a lovely shade; flowers very large, perfectly double. The buds are large and solid, with long, stiff stems and glossy foliage.

Striped La France. H. T. This variety combines all the good qualities of La France in growth, fragrance, shape of bud and flower. It is nicely striped, the markings being plain and distinct, the variegations a beautiful bright rose on a satin-pink ground. In the North, with a little protection, it will stand zero weather.

Etoile de Lyon (Star of Lyon). Tea. This magnificent Tea Rose is a rich golden yellow; a strong, healthy and vigorous grower, immense bloomer, bearing flowers and buds early and late. The flowers are very deep, rich and full, of excellent substance, and very sweet.

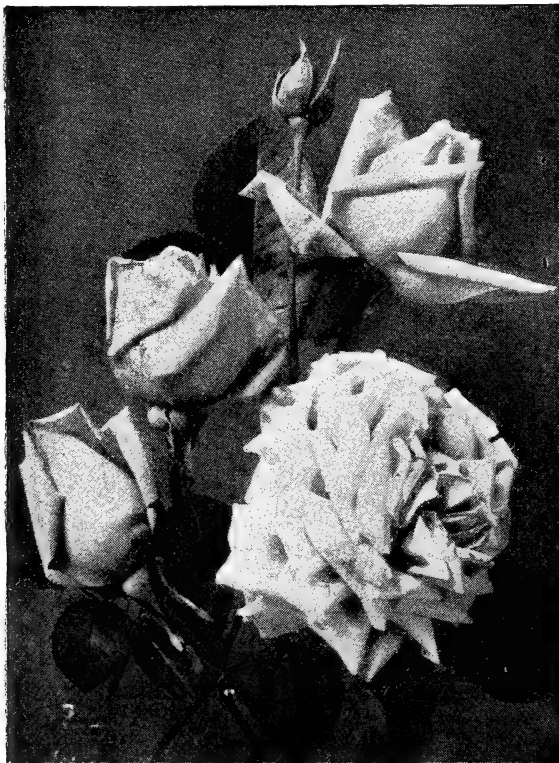
Souvenir d'un Ami. Extra-large, globular flowers, like Queen, except in color; very full and deliciously sweet; its color is a deep rosy flesh.

Comtesse Riza du Parc. Coppery rose, tinged and shaded with soft blush. This beautiful Rose has many admirers.

La Tosca. Beautiful silvery pink, with deeper center; a very vigorous grower, with large, double flowers, and very free-flowering.

Madame Joseph Schwartz. Flowers very full and sweet; pure white, tinged and shaded with pale yellow and rosy blush.

Madame Leon Pain. H. T. Robust growth; smooth wood; handsome plum-colored foliage; flowers large, full and free in opening; silvery salmon, center orange-yellow, reverse bright red and yellow. In our gardens, the past summer, it has at all times been a



La France



Mrs. Waddell (see page 2)

EVERBLOOMING ROSES, continued

grand sight, bearing a great profusion of exceedingly large brilliant Roses.

Wellesley. H. T. A seedling from Liberty crossed with Bridesmaid; the flowers are extra large and full; color bright, clear rose-pink, reverse of petals silver-rose; a vigorous grower, bearing its flowers on tall, stiff canes, which are very free blooming, of excellent substance and durability. 3-yr. plants, extra size, 50 cts.

Bessie Brown. Flowers profusely in the open ground all through the summer. The color is pure white, sometimes faintly flushed pink; petals enormous and well shaped.

Madame Schwaller. Large clusters; large globular flowers; salmon-rose, edged carmine.

Golden Gate. Tea. A magnificent Rose with large, full, finely formed flowers; buds

long and beautiful. Color rich creamy white, exquisitely tinged with golden yellow and clear rose, making a flower of indescribable beauty. Blooms freely.

Helen Gould. Tea. One of most beautiful and satisfactory Roses for general planting ever introduced in America. The flowers are full and perfectly double, the buds beautifully made, long and pointed. The color of a ripe, red watermelon. It is as hardy as La France. Price mailing-size plants, 3-in. pots, 15 cts.; 2-yr. plants, 30 cts.; 3-yr. extra size, 50 cts.

La Detroit. H. T. The new Detroit Rose, which has been so largely exhibited and advertised. Shell-pink, shading to soft rose, reverse of outer petals cream colored; fragrance like that of old Bon Silene. In form it is large, cup-shaped; petals shell-like. Rich, glossy foliage; a rampant, vigorous grower, producing long shoots. We do not think this Rose has been rated high enough. Price, mailing-size, 3-in. pots, 15 cts.; strong 2-yr. plants, 30 cts.

La France. H. T. Accounts come to us from all quarters every year describing the great profusion of its bloom from June until frost, and extolling its fragrance and immense size. It is of superb form, and double as a Rose can be. No variety can surpass it in delicate coloring—silvery rose shades, with pink. It has a satin sheen over all its petals. Entirely hardy.

Red La France (Duchess of Albany). H. T. A fine Rose of unusual merit, one that can survive, with slight protection, the winters of any locality. It is identical in every respect to La France, except in color, which is a pretty red when in bud form, but when open it changes to a carmine. A fine bedder.

Etoile de France. New Hybrid Tea Rose. In this new French variety we have a most valuable addition to our collection of Hardy Hybrid Tea bedding Roses and a fitting companion to such high-grade varieties as Killarney and La France. It is a strong, vigorous grower, with good dark foliage and flowers which are full and double, and as beautiful in the bud as in the full-blown flower, and borne on strong, upright shoots in the greatest profusion. In color it is distinct from all Roses in this class, being of a rich, velvety crimson with vivid cerise-red center.

Pearl of the Gardens. (Perle des Jardins). The beautiful yellow Tea Rose. The one Tea Rose which you cannot possibly do without. It has absolutely no weak point, but it is a perfect and popular Rose. The color is faultless, whether the waxy petals show the rich cream tint of cool weather or take richer golden shades which a warmer sun gives them. The form of the bud is rounded and luxuriant. Of vigorous growth; foliage abundant and handsome. Delightful fragrance; very fine for cutting.

Price, mailing size, 3-in. pots, 10 cts. each; 2-yr. plants, by express, 25 cts.

EVERBLOOMING ROSES, continued

Antoine Rivoire. H. T. It is a vigorous grower, with fine-shaped buds and flowers, color salmon-flesh in center to the edge of its petals, shading to a creamy white, with a delicate pink tinge.

White La France (Augustine Guinoisseau) H. T. Here we have a beauty indeed, one we recommend to all, whether for outdoor culture or for pots in the house in winter. If you were to ask us to select six of the very finest Roses for you we would be sure to include it in the six. It is identical with La France, except the color. It is pearly white, sometimes tinted with fawn.

Catherine Mermet. Tea. A beautiful, clear, rich color, with the same silvery luster seen in La France. Large, well-formed; very beautiful in bud. One of the most popular Roses for cut-flowers.

Helen Gambier. H. T. Deep orange-yellow, shading to coppery yellow and then to almost white on the outside row of petals. Fragrance as strong and penetrating as a Sweetbriar. Very distinct and beautiful.

Souvenir de la Malmaison. China. Blooms well in hot weather. Its rich, flesh-colored flowers are of large size, double to the center, are produced in abundance.

Madame Jules Grolez. Called by some "Red Kaiserin." One of the brightest and most pleasing Roses we have ever seen. An exceedingly free-blooming variety, with very large, bright, finely formed flowers. Color a distinct and charming shade of cherry-red.

Meteor. H. T. A velvety red everblooming Rose, of the deepest glowing crimson. As fine as a Hybrid; flower of medium size, very double, and petals slightly recurving. A beautiful open Rose, a free-bloomer, and promising well as a pot Rose. It promises to be a reliable everblooming Rose.

Winnie Davis. H. T. The color is apricot-pink, shading to a flesh tint at the base of petals; buds oblong and well formed. Vigorous and robust, free-blooming; foliage leathery, reddish green, glossy and very large. For the Middle and Southern states we claim

Price of above, strong mailing size, 1-yr.-old from 3-in. pots, 10 cts. each; 2-yr.-old plants, 25 cts.

the Winnie Davis to be an acquisition second to none introduced in recent years.

Aurora. H. T. Vigorous growth; splendid foliage, free from disease. Grand flowers, large, full and "crimped." Center rich, bright pink, pale on the outside. Petals finely formed; flower of splendid shape. A wonderful bloomer.

Souv. du President Carnot. H. T. The flowers are large, full and double, exquisitely shaped, with heavy, thick, shell-like petals. The buds are wonderfully beautiful—long and pointed—perfection in every line. The color is delicate rosy blush, shaded a trifle deeper at center of flower. Fragrance delicious. Strong grower and free bloomer.

Souv. de Pierre Notting. This beautiful new Tea Rose is an introduction of one of the foremost firms of France, and has not been exceeded in merit by any Rose yet sent out from that country. Blooms very large, well filled and open easily; beautiful elongated bud. Color apricot-yellow tinged with golden; mixed with orange-yellow, edge of petals shaded beautiful carmine-rose; open flower is full and double and of good substance. Extremely free and one of the most beautiful blooms grown.

General McArthur. A new Hybrid Tea Rose. One of the brightest vivid crimson-scarlet Roses in existence. Of free branching habit of growth; very vigorous and healthy. Every shoot produces a large, double, well-formed flower, which, combined with its fragrance and hardiness, makes this essentially one of the greatest red Roses for outdoor planting. The fragrance cannot be excelled by any Rose in existence. Very strong, yet delicate and entirely distinct, being different from any other.

Marigold. Beautiful yellow Tea Rose, with dark feathery foliage, resembles Kaiserin in growth and bloom.

Perle von Godesburg. H. T. Sent out from Germany as a yellow Kaiserin Augusta Victoria. It is a splendid Rose and well worthy of a trial. The color is rich canary-yellow, with light saffron shadings.



Aurora

CLIMBING ROSES

Allister Stella Gray. Color light yellow; flowers of medium size, produced in clusters; fragrance very sweet. Price, strong mailing-size, 3-in. pots, 10c.; strong 2-yr. plants, 25 cts.

Climbing Marie Guillot. Color pure snow-white, sometimes faintly tinged with pale yellow. Price, strong mailing-size, 3-in. pots, 10 cts.; strong 2-yr. plants, 25 cts.

Reine Marie Henriette. Cherry-crimson. By many this fine Rose is known as the Red Gloire de Dijon. Price, strong mailing-size, 3-in. pots, 10 cts.; strong 2-yr. plants, 25 cts.

Climbing Meteor. Grand new velvety red Rose. Climbing Meteor is the acme of all red Climbing Roses. It is a free, persistent bloomer, and will make a growth from 10 to 15 feet in a season. We do not hesitate to place it at the head of the list of all Roses for summer blooming, as it will make a strong growth, and is literally loaded with its deep, rich red flowers all the time. Price, strong plants, 3-in. pots, 15 cts.; fine 2-yr. plants, 35 cts.; extra-fine 3-yr. plants, 60 cts.

Mary Washington. Its flowers are of medium size, pure white, perfectly double to the center, sweet and borne in endless numbers in large clusters all summer. Vigorous and rapid grower. One plant of Mary Washington will produce more flowers and buds than a dozen ordinary Roses. Its fragrance is tinged with the old-fashioned musky flavor so much admired in olden times. My stock is propagated direct from the old plant at Mt. Vernon, which is famous as having been planted by George Washington and named in honor of his mother. It is still a strong, vigorous bush, blooming profusely and demonstrating that the soil and climate of Fairfax are especially adapted to rose-growing. Price, strong mailing-size from 3-in. pots, 10 cts.; fine 2-yr. plants, 30 cts.

Climbing Paul Neyron. One of the very best of all Climbing Roses. An extremely free and continuous bloomer, of very large size and fine pink color. Much more like La France than Paul Neyron in color, shape and blooming qualities. Would have been better named Climbing La France. Price, strong mailing-size plants, 15c.; heavy 2-yr. plants, 30 cts.

Reve d'Or. Golden Chain, or Climbing Safrano. A beautiful pillar Rose, being a strong climber. Color orange-yellow or deep saffron; good size, full and sweet. I have a fine stock of this splendid Rose and recommend it highly. Price, strong mailing-size, 3-in. pots, 10 cts.; fine 2-yr. plants, 25c.



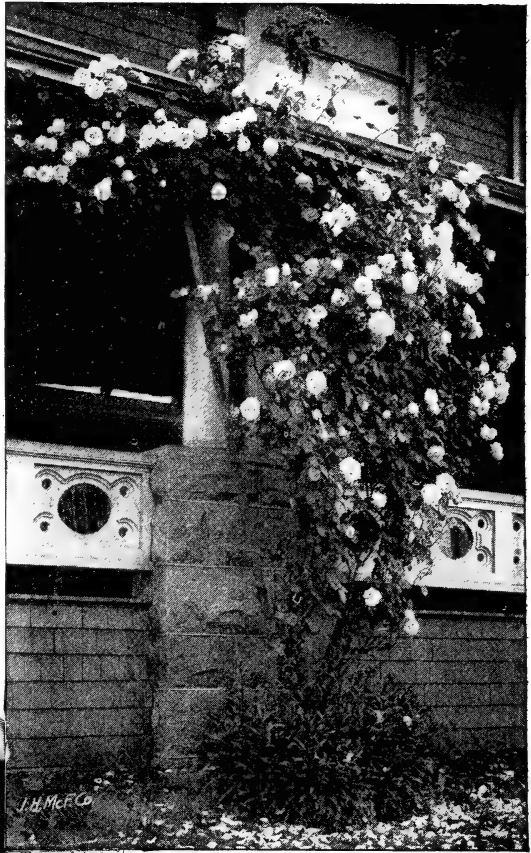
Dorothy Perkins

CLIMBING ROSES, continued

Climbing Clothilde Soupert. In this climbing variety we have the vigorous constitution of Clothilde Soupert combined with the same wonderful freedom of bloom and extreme hardiness. This new variety in a single season, even in small plants, will grow 15 to 25 feet, producing cluster after cluster of the finest-formed flowers. In form they are distinct, large, round and flat, with beautifully imbricated petals; perfectly full and double and deliciously sweet. The color effect is magnificent — ivory-white, shading toward the center to silvery rose. Throughout the entire growing season it is literally loaded down with its large handsome flowers. Price, strong mailing-size, 3-in. pots, 10 cts.; heavy 2-yr. plants, 30 cts.

Gloire de Dijon. This magnificent Rose is always scarce and difficult to obtain true. The flowers are large, perfectly double and delightfully tea-scented; color rich, creamy amber tinted with blush. One of the most beautiful Roses we know. Price, strong mailing-size plants, 15 cts.; 2-yr. plants, 40 cts.

Mrs. Robert Peary. (Climbing Kaiserin). This is, without doubt, the grandest



Climbing Clothilde Soupert

of all white Climbing Roses. It is the first and only white, hardy, ever-blooming Climbing Rose, and as such meets a demand that has never before been supplied. Small plants bloom continually the first season, just as the parent, Kaiserin Augusta Victoria, does. The flowers are something grand. They are the equal of the finest and most beautiful cut-flower Roses. Of splendid substance. They are extra large, full, deep and double, and are produced on long, stiff stems like a forcing or cut-flower Rose. The buds are long and pointed, exquisitely modeled and gracefully finished. Both in bud and flower it is truly beautiful. Always a wonderfully vigorous grower and very hardy. Price, strong mailing-size plants, 10 cts.; fine 2-yr. plants, 30 cts.; extra-fine 3-yr. plants, 50 cts.

Empress of China. The Apple-Blossom Rose. This is a new hardy climber that possesses great merit. It is a strong, rampant grower, and a very free bloomer. Flowers of good size from pointed buds; soft red, turning lighter as it opens. It blooms from May to December in the open ground. Introduced from China. Price, strong mailing-size, 10 cts.; 2-yr. plants, 25c.



Crimson Rambler

CLIMBING ROSES, continued

Marechal Niel. The world-renowned Rose. A beautiful deep sulphur-yellow; very full, very large and exceedingly fragrant. It is the finest yellow Rose in existence. It has a climbing habit, and where it is permitted to grow until it has attained a large size, as it will in a few years, it yields thousands of beautiful golden yellow flowers. Especially desirable in the South. Price, mailing-size, from 3-in. pots, 10 cts.; fine 2-yr. plants that made three to four feet growth last summer, 35 cts.



Mary Washington (see page 15)

Climbing Wootton. The superb new scarlet Rose. This elegant new Climbing Tea Rose is one which promises to be a prime favorite wherever introduced. Everything good that can be said of the grand Rose, Souvenir de Wootton can be said of this Rose, and more, too. The flowers are large, full, deep and double, and of a beautiful velvety red color, and the perfume is unusually rich and elegant. Price, 10 cts.; 3-in. pots 15 cts.; 2-yr. plants, 25 cts.

THE RAMBLER ROSES

Philadelphia. Crimson Rambler. This splendid new variety differs from the old Crimson Rambler in having a brighter, deeper and more intense color, and flowers that are perfectly double to the center; very durable and of excellent substance. It is a very profuse bloomer and a good, healthy grower, producing splendid clusters of perfectly double and intensely brilliant flowers, absolutely free from the faded appearance so frequently seen in flowers of the ordinary Crimson Rambler.

Strong plants. Price, 10 cts.; 3-in. pots, 15 cts.; 2-yr. plants, 25 cts.

Crimson Rambler. Too well known to need elaborate description. Often grows 8 to 10 feet in a season. Magnificent in bush form, and for covering buildings, trellises, etc. Brightest crimson, undimmed to the end. The flowers are produced in great pyramidal panicles or trusses of thirty to forty blooms each. Price, 3-in. pots, 10 cts.; 2-yr. plants, 25 cts.; 3-yr. plants, heavy, 50 cts.

Tausendschon. New Rambler Rose. Truly called "Thousand Beauties"—one of the really reliable novelties. It bears its flowers in immense clusters; in color a soft pink when first opening, changing to a carmine-rose on the reverse as they fully expand. Price, 10 cts.; 3-in. pots, 15 cts.; 2-yr. plants, 25 cts.

Helene. The new Pink Rambler. A seedling from Crimson Rambler. Flowers larger than those of Crimson Rambler, nearly double, and borne in clusters of twenty to fifty. Color soft violet-rose. Price, 10 cts.; 2-yr. plants, 25 cts.

Lady Gay. Flowers delicate cerise-pink, passing to soft white. The effect of the combination of soft white flowers, pink buds, and green foliage is indeed charming. 10 cts.; 3-in. pots, 15 cts.; 2-yr. plants, 30 cts.

Thalia. White Rambler. Charming new Rose of the Rambler variety. It climbs rapidly, is entirely hardy,

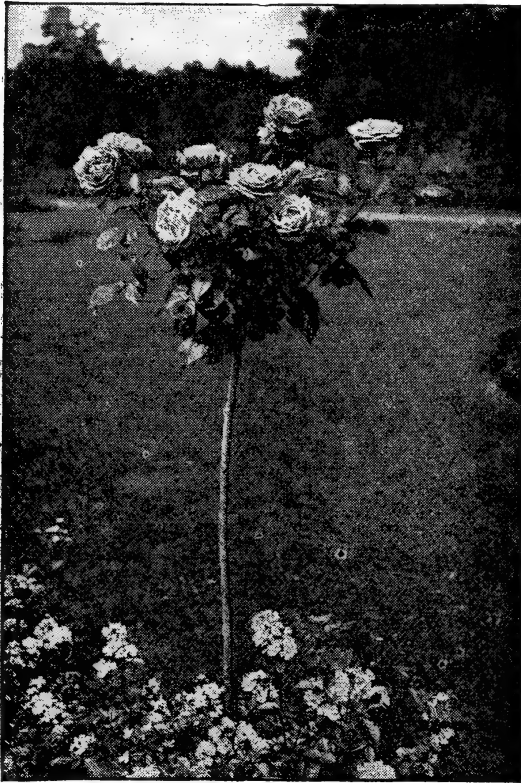
produces immense clusters of pure white. Price, 10 cts., 2-yr. plants, 25 cts.

Aglaia. Yellow Rambler. The color is a decided yellow. Price, 10c.; 2-yr. plants, 25c.

Dorothy Perkins. The flowers are clear shell-pink, with lovely, oddly wrinkled petals. Buds pointed, well-formed, borne in great clusters. A fine climber and a profuse bloomer; flowers very durable. Price, strong mailing-size, 3-in. pots, 10 cts.; 2-yr. plants, fine, 30 cts.

STANDARD, or TREE ROSES

This class includes Roses of many of the regular varieties grafted upon an upright stem in tree form. The flowers are the same as those borne by bush or climbing Roses of the same varieties. For planting along walks or drives, for use among other and lower-growing Roses, and as a background for low shrubs, herbaceous perennials, etc., these Tree Roses are certainly very desirable and I recommend the following varieties highly. The flowers are exactly the same as those borne by the bush varieties described elsewhere in this book.



Tree Roses

J. B. Clark. Price, \$1.
Frau Karl Druschki, or White American Beauty. Price, \$1.
Conrad Meyer. Price, \$1.
Countess Roseberry. Price, 75c.
Ulrich Brunner. Price, 75 cts.
Mrs. John Laing. Price, 75 cts.
Mad. Caroline Testout. Price, 75c.
Killarney. Price, 75 cts.

Special Collections

To go by express at purchaser's expense. The selection of varieties to be left entirely to us, but we will put in only everblooming or monthly Roses, no climbers. **All guaranteed to bloom this year.**

COLLECTION C

Twenty Roses, all different, and all labeled, from 3-inch pots, for \$1.

COLLECTION D

One dozen 2-year plants, all different, all labeled, for \$2.

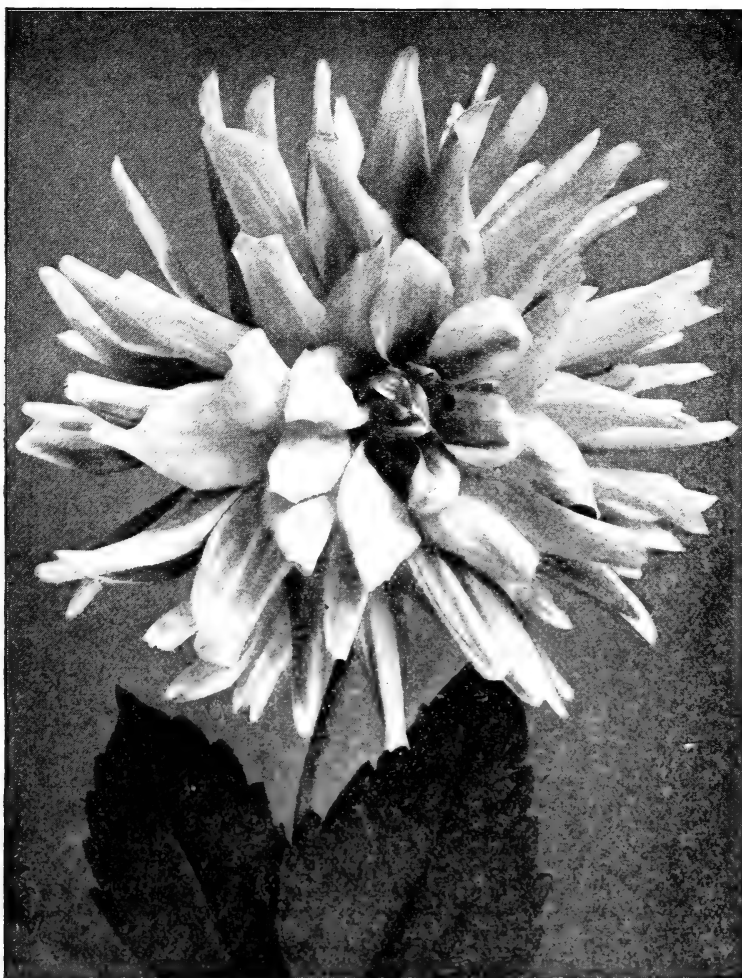
Many high-priced Roses are included in these orders.

Dear Sir: I write to thank you for the elegant plants you sent us on our recent order. I can all the better appreciate them now, having sent trial orders to several eastern and northern florists with disappointing results. You get all my orders after this.—S. A. C., Ballston, Va., April 24, 1911.

Dear Sir: Thank you for your promptness in sending plants. They reached me last night in fine condition. Owing to careful packing, not a leaf was broken.—MRS. C. H. M., Nashua, N. H.



Planting of Wm. R. Smith Roses



Dahlia, Master Carl, averages 6 or 7 inches in diameter

DAHLIAS

The Dahlia is the people's flower. It makes a more gorgeous, dazzling display than any other outdoor-grown flower. Immense bloom can be had from our improved varieties, which in size, beauty and style rival the finest house-grown, single stem chrysanthemums. We have a magnificent collection of the best sorts grown.

The Dahlia is of the easiest possible culture. Plant in good soil in the full sunlight, and keep the ground well worked or mulched, and you will be repaid by showers of bloom. When the frost kills the top, lift the roots and place in any cellar where they will not freeze. We offer strong, pot-grown plants that will bloom early and continuously, and be far more satisfactory than roots, which we do not sell.

Four New Giant Dahlias

For size, coloring, form and vigor of growth, these varieties are in a class by themselves.

Price, 25 cts. each; the four for 75 cts.

SOUVENIR DE GUSTAVE DOUZON. A decorative variety of mammoth proportions; will produce flowers 6 to 9 inches across. Of free growth, remarkably profuse-flowering, and pure scarlet.

CUBAN GIANT. An immense full double-quilled Dahlia, 6 to 7 inches in diameter. Color dark, glowing crimson.

MRS. ROOSEVELT. Even larger than Cuban Giant. Decorative form, full and double. Color a delicate shade of soft pink.

PENDANT. A very large bright crimson-maroon with overlapping petals.

Superb New Cactus Dahlias

MASTER CARL. Perfect form and bright golden amber color. Immense petals of graceful curve. Price, 25 cts.

LAURETTA. Yellow ground, deeply edged rosy red; quite distinct in color. Flowers of good size and fine habit. Price, 15 cts.

KRIEMHILDE. Brilliant pink, gradually shading lighter to the center, which is at first a creamy white, changing to pure white. Produces freely and continuously its exquisite blooms on long stems. Ideal for cutting. Price, 15 cts.

VICTOR VON SCHEFFEL. Fresh delicate pink, shading to deep rose-pink. Strong, vigorous grower, extremely profuse bloomer; flowers on erect stems. Price, 15 cts.

JEALOUSY. The finest pure yellow Cactus Dahlia. Price, 15 cts.

CORONATION. A brilliant crimson Dahlia of fine form. Price, 15 cts.

HARBOR LIGHT. Brilliant cochineal-red with a stripe of reddish apricot through the center of each petal. Price, 25 cts.

CLARA J. STREDWICK. Long, narrow-pointed petals; flowers sometimes measuring 7 inches across. Salmon-flesh, shaded darker. Price, 15 cts.

FLORADORA. Dark, velvety crimson. Medium height, branching; an extremely early and profuse bloomer, plants continually covered with blooms. Best dark crimson for cutting. Price, 25 cts.



Cactus Dahlia

MORNING GLOW. Deep golden primrose. Price, 25 cts.

MINNIE WEST. Yellow, passing to white at the tips; a large flower with long florets curved inward. 4 feet. Price, 15 cts.

WALTHARI. Flowers of good size, graceful; light sulphur-yellow in center, shading to white at edges. Price, 15 cts.

CHARM. Yellow at base of petal, then red, with heavy white tips at edges; long petals; blooms freely. Price, 15 cts.

The 13 by mail, \$2; by express, \$1.75.

New Peony-flowered Dahlias

Originated in Holland and promises to become very popular. Flowers 6 to 8 inches across; best compared to semi-double Peonies in general form. Flowers very freely; blooms borne on long, strong stems, making excellent material for cutting and garden decoration.

GERMANIA. Brilliant strawberry-red; very fluffy and artistic flower, standing well above the foliage, producing a gay effect.

GLORY OF BAARN. Very large, loosely arranged flower of soft hortensia-rose color.

QUEEN EMMA. A charming shade of mallow or hollyhock-pink, inner petals banded with gold.

QUEEN WILHELMINA. Immense, fluffy flower; pure white, with yellow center.

Price, 25 cts. each; the set of four for 80 cts.

New Single Dahlias

TWENTIETH CENTURY. An intense rosy crimson, tipped with white, and having a white band around the disc. As the season advances they become lighter, until they are almost a pure white, suffused with soft pink. Price, 10 cts.

CRIMSON CENTURY. Deep, glowing crimson, shaded darker. Price, 10 cts.

CRIMSON BEAUTY. This dahlia is a seedling of Twentieth Century. It is literally covered with immense, brilliant crimson flowers the entire season. Price, 10 cts.

PRESIDENT VIGER. French Collarette Dahlia. Rich, deep blood-red, shading darker toward base of petals; with white color, occasionally suffused with rosy crimson. An extremely early and profuse bloomer. Price, 15 cts.

Dear Sir: The Dahlias came through in splendid condition this time, and I want to thank you for your kindness in replacing the plants. My experience with other florists has not led me to expect such generosity, and you may be sure that hereafter you will be given my small trade, and that I will also do what I can to have my friends send you their orders.—Mrs. R. T. H., Seattle, Wash., March 6, 1909.

Dear Sir: I received the Dahlias a few days ago. They reached here in perfect condition and are more than up to my expectations.—M. B. H., St. Paul, Minn.

Fifteen Select Standard Cactus Dahlias

Keyne's White. A finely formed pure white Cactus Dahlia. Price, 10 cts.

Standard Bearer. Brightest scarlet. Plant dwarf, branching; profuse bloomer. Price, 10 cts.

Ballet Girl. Soft red, tipped white; distinct. Price, 10 cts.

Britannia. Deep salmon-flesh. Very large, early and free. Price, 10 cts.

Winsome. Flowers are very large; beautiful Cactus form, with twisted, incurved petals and borne on long, erect stems. Price, 10 cts.

Country Girl. New. Deep golden-yellow, bright amber tips, the bold flowers appear very early and remain large right up until frost. Price, 15 cts.

Lyndhurst. One of the best bright scarlets; invaluable for cutting; large, perfectly full centers; long stems. Price, 10 cts.

Blanche Keith. Rich canary-yellow; very large; long petals; a most beautiful variety. Price, 15 cts.

Strahlein Krone. Intense cardinal-red, rich and glowing, with long, twisted petals; early and profuse bloomer. Price, 10 cts.

Galliard. The best scarlet-crimson Cactus Dahlia. Flowers large, of most perfect Cactus form. Price, 10 cts.

Brunhilde. Rich plum-color; loosely arranged, long petals; an exceptionally fine flower and very free. Price, 10 cts.

Earnest Cheal. One of the best crimson Cactus Dahlias; free bloomer. Price, 10 cts.

Exquisite. Pure orange-scarlet, with salmon shadings; truly lovely. Remarkably free-bloomer. Price, 15 cts.

Countess of Lonsdale. A peculiar but pleasing blending of salmon-pink and amber; flowers freely under all conditions. Price, 15 cts.

Mary Service. Apricot, shaded orange, shading to purplish rose at the tips; a well-formed flower, and a free and continuous bloomer. Price, 10 cts.

The above fifteen kinds by mail, \$1.40; by express, \$1.25

Fifteen Superb Double Quilled Dahlias

Grand Duke Alexis. The petals are rolled up so that the edges overlap each other. The color is pure white, distinctly tinged delicate pink. Price, 15 cts each, 25 cts. for two.

Black Diamond. Flowers immense; full, regular form, high, round center; rich, velvety maroon, jet-black. The plant is strong and vigorous, with dark, glossy foliage. An early and free bloomer. Price, 15 cts.

Apple Blossoms. A very pretty variety that combines all the shades found in apple-blossoms. Price, 10 cts.

Ethel. Extremely large pure yellow, tipped with white. Price, 15 cts.

Lady Maude Herbert. Pale yellow, shaded peach, tipped crimson. Price, 10 cts.

Queen Victoria. A quilled Dahlia, making a compact, round ball of the deepest golden yellow. Price, 10 cts.

Emily. Rosy lavender to white, suffused lavender. Large, beautiful and striking. Price, 10 cts.

Golden Age. The largest and best yellow. Price, 10 cts.

A. D. Livoni. Beautiful clear pink; of perfect form and very fine. Price, 10 cts.

Olympia. Flowers are immense, measuring 6 to 7 inches across, with full, high center. The color is deep rose-pink, striped and penciled with rich crimson. Price, 15 cts.

Lucy Fawcett. A very large quilled bloom; sulphur-yellow, lightly striped and blotched carmine, sometimes clear yellow. Price, 10 cts.

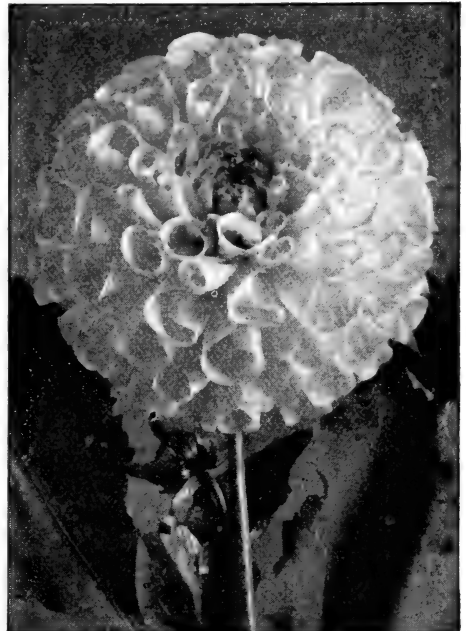
White Swan. Splendid pure white; of good size and very free bloomer. Price, 10 cts.

Souv. de Mme. Moreau. Magnificent pink; free bloomer, strong; vigorous habit. Price, 10 cts.

George Smith. Fine, large, of perfect form; crimson. Price, 10 cts.

Storm King. Very free; pure white. Price, 10 cts.

One each of the above fifteen varieties by mail, \$1.40; by express, \$1.75



Decorative Dahlia

Thirteen Choicest Decorative Dahlias

Catherine Duer. Flowers measure 6 to 7 inches in diameter; open out flat, showing no center. The petals are broad and well formed; color beautiful glowing red. The plant is a strong, robust grower. Price, 15c.

Fire Rain. A very free-blooming brilliant red. Price, 15 cts.

King of Cactus. Not a Cactus Dahlia, but belongs to the decorative class. Color rich crimson, much like Catherine Duer. Price, 10 cts.

Henry Patrick. A superb, large, pure white variety, borne on long, stiff stems. Price, 10 cts.

Clifford W. Bruton. The best yellow. Immense size, perfect form, finest canary-yellow. A tall, vigorous grower and extremely free-bloomer. Price, 10 cts.

Frank L. Bassett. Bright royal-purple, shading to blue; it is the nearest approach to a blue Dahlia of any yet introduced. Price, 10 cts.

Henry Mitchell. Extra large; golden amber. Price, 15 cts.

Matchless. Dwarf and branching, strong and vigorous. Flowers large; rich crimson overlaid dark velvety maroon; early and profuse bloomer. Price, 10 cts.

Nymphaea. Clear, light shrimp-pink, tinting lighter toward center. Price, 10c.

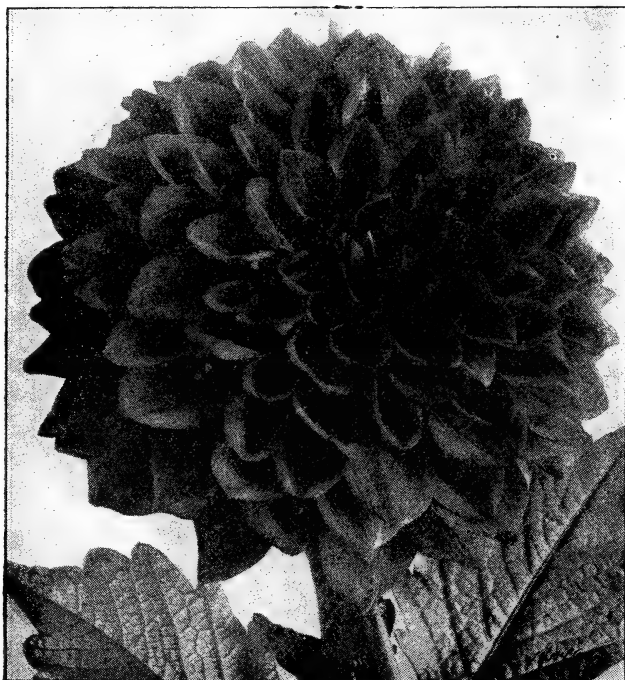
Hohenzollern. Rich gold and bronzy orange-red. Price, 10 cts.

John Bragg. Six feet high; will produce more blooms than any other variety grown; flowers large, dark red — almost black. Price, 10 cts.

Striped Banner. Cardinal-red, striped white. Price, 10 cts.

Eloise. Medium to large, full and regular; ground color blush-pink shading to white; each petal margined deep, glowing crimson. Price, 10 cts.

The above thirteen kinds by mail, \$1.15; by express, \$1.



Fire Rain Dahlia

Plant Department

GERANIUMS

New Double Geraniums

- Fleuve Blanc.** White.
Alliance. Lilac-white.
Dagata. Rose-pink.
Jean Oberle. Peach, shaded white.
Col. Thomas. Cardinal.
E. H. Trego. Scarlet.
 15 cents each. One of each, 75 cents.

New Single Geraniums

- Eugene Sue.** Bright orange.
Princess Alex. Rose-pink.
Juste Oliver. Carmine-red.
Lord Curzon. Fiery red. 20 cts.
Beaute Poitevine. Rich scarlet. 20 cts.
Telegraph. Very large; red.
 15 cts. each, except where noted; one of each, 85 cts.

The Choicest Standard Varieties

Price, 10 cts. each. 75 cts. per doz.
 Varieties marked *, by express, \$5 per 100

DOUBLE KINDS

- ***S. A. Nutt.** Deep scarlet.
 ***Madam Jaulin.** Soft pink.
 ***Madam Buchner.** Pure white.
 ***Francis Perkins.** Bright pink.
 ***Alphonse Ricard.** Scarlet; best.
Beaute Poitevine. Light salmon.
Jean Viaud. Rosy pink; large.
Montmart. Carmine-pink.
Bruanti. Vermilion.

SINGLE KINDS

- Granville.** Light rose.
Jacquerii. Crimson.
Snowdrop. White.



Asparagus plumosus

Ivy Geraniums

- Cæsar Franc.** Largest. 15 cts.
Garden's Glory. Bright scarlet. 10 cts.
Joan of Arc. Snow-white. 10 cts.
Charles Turner. Deep pink. 10 cts.
Raycroft's Surprise. Finest pink. 15 cts.

Sweet-scented Geraniums

- Skeleton-leaf Rose-scented, Rose, Nutmeg, Oak-leaved, Balm, Lemon-scented, Shrubland Pet.** 8 cts. each.
Apple Geraniums. 10 cts.

Pelargoniums

- Mrs. Carnegie.** This new variety is the most beautiful Pelargonium ever introduced. Really grand. Soft pink, shaded rose-white. 25 cts.
Herzog. Cherry-red. 20 cts.
Victor. Pansy Geranium. Cherry. 10 cts.
Cap. Raikes. Crimson. 10 cts.
Mrs. Robt. Sandiford. Snow-white. 15c.

FUCHSIAS

10 cts. each

- Phenomenal.** Double; crimson and purple.
Rosaine Patrie. Double; scarlet and pure white.
Gloire des Maches. Deep scarlet and white.
Black Prince. Carmine and pink.
Trophee. Purple; large.
Speciosa. Scarlet and white.
Minster Baucher. Rose-purple.
Trailing Queen. Fine for baskets. 15 cts.

CARNATIONS

- Enchantress.** Largest; light pink. 15 cts.
Guardian Angel. Clear pink. 10 cts.
Mrs. Lawson. Largest; dark pink. 15 cts.
Queen Louise. Pure white. 10 cts.
Roosevelt. Dark crimson. 15 cts.
G. H. Crane. Bright scarlet. 10 cts.
Variegated Lawson. Striped. 15 cts.

CHRYSANTHEMUMS

Queen of Autumn Flowers

In May or June prepare boxes 4 or 5 inches deep, leaving ample cracks for drainage. Fill the box with a compost, three parts decomposed sod or garden soil and one part cow manure, well rotted. Add one pint each of bone meal and wood ashes to each bushel of compost and mix well. Plant young plants, in two rows of 8 or 10 inches apart; train to single stem and stake. Place the box in sunny position; water as needed.

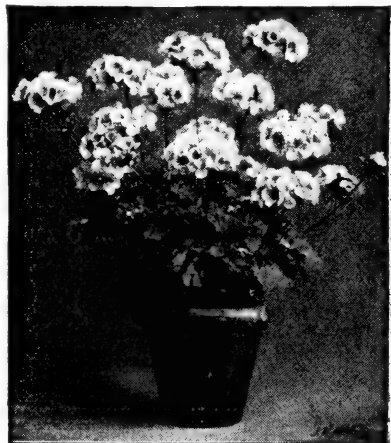
Disbud all but one to plant, leaving the best specimen. Mulch with well-rotted manure. Keep plants growing vigorously. Toward frost, place in sunny window in cool room with night temperature of 45 degrees.

Three Extra Early Chrysanthemums

- Golden Glow.** 5½ inches; beautifully incurved, bright, golden yellow. September 1 to 10. 25 cts.
Monrovia. A few days later; color about same; petals narrower. 25 cts.
October Frost. Large, incurved; nearly white, tinged lemon-yellow. 25 cts.
 One each of above, three for 60 cts.

Nine Latest Introductions

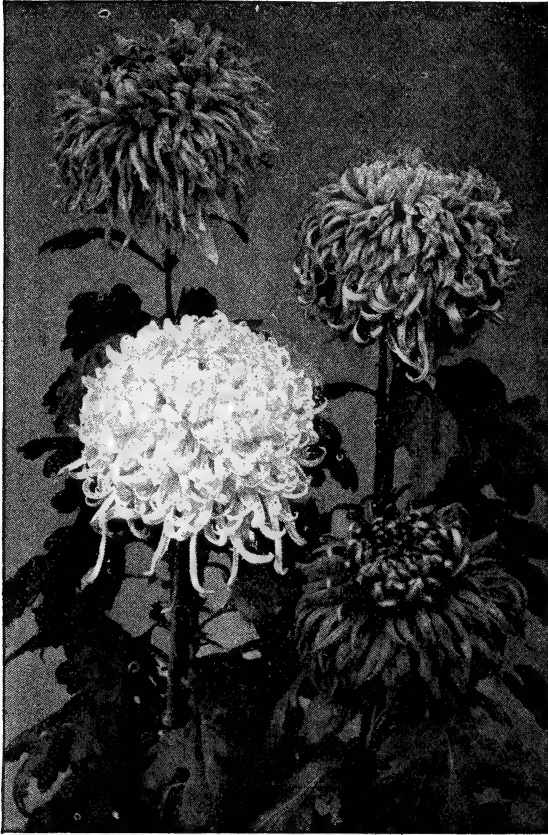
- Sunburst.** Petals deep yellow, shading paler at tips; enormous. 25 cts.
White Bonafion. Waxy white. 15 cts.



Single Geraniums

**CHRYSANTHEMUMS, NINE LATEST
INTRODUCTIONS, continued**

- Yellow Eaton.** Bright yellow; stem strong enough to hold up the monster blooms. 15 cts.
- Dr. Enguehard.** Awarded highest honors. True pink, without purple. Stem and foliage perfect; perfectly double. Mid-season. 6½ inches. 15 cts.
- Mrs. W. B. Chamberlain.** Pink; valuable for cutting. 15 cts.



Chrysanthemums

- Brutus.** Orange and red; half-globular. 15 cts.
- Clementine Touset** (The "Early Chadwick.") Largest white for its date—October 12. Lasting; splendid stem and foliage. 15 cts.
- Gen. Hutton.** 4½ feet high; midseason. Yellow and orange. 15 cts.
- Wm. Duckham.** Deep, dark, clear pink. Flower 9 inches in diameter; long, stiff stems with good foliage. November. 15 cts.
- One each of these 9 giant kinds, \$1.20

Dear Sir: The flowers I ordered from you for myself and friends in the past week were received in good condition, and all were delighted with the nice large plants.—Mrs. G. C. G., Smith's Grove, Ky.

Varieties of Special Merit

10 cts. each

- Timothy Eaton.** Pure white. A great prize-winner.
- Mrs. Coombs.** Enormous reflexed flower, broad petals; light rose.
- Marie Liger.** Extra-large, globular, Japanese; broad petals; pearl-pink, deepening to rosy lavender.
- Golden Wedding.** Great globular flowers; bold, majestic.

Lavender Queen. Immense, solid, full, compact; outer petals reflexed, center petals erect. Silvery lavender-pink.

Major Bonafon. Clear yellow, full in center, 8 inches diameter; nearly as deep.

Nellie Pockett. Great beauty; elegant white form, incurving and reflexing; narrow petals.

Alice Byron. Purest white; clear, smooth florets. Fine exhibition.

F. J. Taggart. Perfectly double; light yellow. Flowers 8 inches in diameter. Fine exhibition variety.

Ministre Olanesco (Bruant). Very large, rosy-violet, heavily plumed; French.

One each of above ten splendid kinds, 80c.

Cullingfordii. Reflexed; brilliant crimson, shaded scarlet.

Mrs. Weeks. Incurving petals; purest white.

Robert Halliday. Large yellow Japanese; perfect stem and foliage; dwarf.

Glory of the Pacific. Magnificent size and depth; broad petals, showing clear pink.

Ivory. Pure white; globular.

Mrs. O. P. Bassett. Fine canary-yellow; soft texture. Large, flat, incurved, broad petals; outer petals drooping slightly.

Pullman. Large; incurved; yellow.

Minerva. Large yellow.

Murdock. Deep pink.

Pink-Ivory. Pink sport from Ivory.

Mrs. H. Robinson. Best white; October 15 to November 1.

Polly Rose. Pure white; fine for pots.

Col. D. Appleton. Golden yellow, 4 ft.

Price of the preceding 13 varieties. 8c. each

**Pompon Varieties, Perfectly
Hardy. 5 cents each**

Tisre. Medium size; pink.

Lebanah. Pink.

Prince of Wales. Pure white; fine.

Bertha. Large, white open center.

Boston. Golden bronze.

King Henry. Straw-white.

Fair Haven. Pearl-pink.

Oban. Silvery pink.

Success. Silver-rose

Matilda. White.



Bed of Cannas bordered with Salvias

CANNAS

Strong three-inch pot-plants ready to bloom.
The choicest Orchid-flowering varieties.

Pennsylvania. Flowers $6\frac{1}{2}$ inches in diameter, in panicles; vermilion overlaid with orange; 6 to 7 feet. 10 cts.

Alemannia. Enormous flowers; broad, golden border; scarlet and dark red. 5 to 6 feet. 10 cts.

Mrs. Kate Gray. 6 to 7 feet. Massive foliage; flowers orange-scarlet, overlaid gold, 6 to 7 inches across. 10 cts.

Austria. 5 to 6 inches across; large, bold, erect; deep golden, dotted carmine. 5 to 6 ft. 10 cts.

King Humbert. 6 inches diameter, gigantic trusses; orange-scarlet, red markings. 5 feet. 15 cts.

Louisiana. Strong, vigorous; 7 feet. Vivid scarlet flowers. 10 cts.

One each of the six, by mail, 50 cts.
By express, 40 cts.

Selected List of Good Cannas

Richard Wallace. Canary-yellow; large flowers, well-branched, upright trusses. 15 cts.

Mme. Crozy. Golden, edged bright scarlet. 10 cts.

Edna Coreoran. Dazzling scarlet; profuse bloomer. 10 cts.

Buttercup. Buttercup-yellow; large; flower in open trusses. 10 cts.

Cinnabar. Red, edged yellow. $4\frac{1}{2}$ feet. 10 cts.

Robusta. A giant; immense tropical foliage. 8 feet. Small blooms. 10 cts.

Charles Henderson. Standard dwarf crimson. 3 feet. 10 cts.

Pres. Meyer. Rich cherry flowers, immense trusses; 4 feet. 15 cts.

Jean Tissot. Intense brilliant vermilion, shaded orange; 5 feet. 15 cts.

Boffinger. Bright orange-scarlet; heavy truss. 4 ft. 10 cts.

E. G. Hill. Clear scarlet, marbled carmine; vigorous. 10 cts.

J. D. Elsele. Vermilion, overlaid orange. 4 feet. 10 cts.

Explorateur Crampbell. Light crimson, darker markings. $4\frac{1}{2}$ feet. 10 cts.

Childsii. Golden yellow, spotted red. 10 cts.

Secretaire Chabanne. Salmon. 4 feet. 10c.

Cannas For Bedding

By express only, 75 cts. per doz., \$5 per 100
Buttercup, Robusta, E. G. Hill, Austria, Alemannia, Boffinger.

BEGONIAS

Carallina Lucerne. Large, bright red flowers. 15 cts.

Foliosa. Delicate and graceful; pink flowers. 10 cts.

Metallica. Clear pink. 10 cts.

Thurstoni. Smooth foliage; deep pink. 10 cts.

McBuhi. Fern-like foliage; white flowers. 10 cts.

Vernon. Good bedder; bright red. 10 cts.

Argentea rutata. White. 10 cts.

Rubra. Scarlet. 10 cts.

Pres. Carnot. Coral-red. 10 cts.

Rex Begonias

Louise Erdody. Silvery foliage, growing spiral. 15 cts.

Lesandsii. Strong grower; one of best Rex Begonias. 10 cts.

Feastii. Smooth foliage; pink blooms. 10 cts.

Louise Classon. Magnificate. Bronze, silver, rose, purple. 15 cts.

Magnifica. Immense leaf; dark green and silver. 10 cts.

Queen Hanover. Soft velvety foliage. 15c.

Speculata. Deep green foliage. 10 cts.

Tuberous-rooted Begonias

Single Pink, Scarlet, Yellow, Orange, White. 10 cts. each.

Double, same colors. 15 cts. each.

HARDY SHRUBS

Azalea

Azalea lutea (Calendulacea). Great Flame Azalea. The most regal of all the species, and a noble representative of our rich Carolina Mountain flora. Bartram, speaking of it in his "Travels," calls it the "fiery Azalea," and says: "Its flowers are of the color of the finest red lead, orange and bright gold, yellow and cream color. This is certainly the most gay and brilliant flowering shrub yet known." Strong plants, 12 to 18 inches, 40 cts. each, by express.

Silver Maple. Young and thrifty; three years from seed; 8 to 10 feet. 40 cts. \$4 per doz., by express.

Althæa (Rose of Sharon). Blooms August to October.

alba plena. Double white, crimson center. 25 cts.

Rose de Feu. Double red. 25 cts.

Lady Stanley. Double pink. 25 cts.

Forsythia suspensa (Weeping Golden Bell). Branches gracefully arching, covered with golden bells in early spring. 25 cts.

viridissima. Strong, erect; flowers yellow; early. 25 cts.

Deutzias. Spring or early summer; dwarf; desirable forcers.

Pride of Rochester. Tall; double white. 2-year, by express, 25 cts.

Crenata rosea plena (Double-flowering Deutzia). Double white, tinged pink; desirable; tall. 2-year, by express, 25 cts.

Rudbeckia Golden Glow. 5 to 6 feet; masses of double golden flowers, July to September. By mail, 15 cts.

Spiræa Anthony Waterer. Bright crimson; dwarf; dense; blooms all summer and fall. By mail, 15c.; 2-year, by express, 30c.

Van Houttei. A fountain of white bloom. By mail, 15 cts.; 2-yr., by express, 30c.

Calycanthus floridus (Sweet, or Strawberry Shrub). Double chocolate-colored strawberry-scented flowers. By mail, 15 cts.; 2-yr., by express, 25 cts.

Yucca filamentosa (Spanish Bayonet). Creamy white, bell-shaped flowers on a tall stalk. Two-year, by express, 25 cts.

Lilacs, Common (*Syringa vulgaris*). Common purple Lilac. By mail, 15 cts.; 2-yr., by express, 35 cts.

Common White. (*S. vulgaris alba*). Flowers white. By mail, 15 cts.; 2-yr., by express, 35 cts.

Cydonia Japonicus (Japan Quince). Dazzling scarlet. Price, by mail, 15 cts.; 2-yr., by express, 35 cts.

Viburnum plicatum (Japan Snowball). Pure white flowers in profusion. By mail, 15 cts.; 2-yr., by express, 35 cts.

Philadelphus, Boule d'Argent (Silver Ball Mock Orange). Double white flowers in June. 25 cts.

coronarius (Garland Mock Orange). Fragrant and early. Heavy 2-yr., 25 cts.

Weigela candida. 2-yr., 25 cts.

Magnolia grandiflora. Handsome evergreen; immense white, fragrant flowers. Pot-grown plants, 12 to 18 inches high. 50 cts.

Kobus. 4 to 5 inches. Pot-plants, 35 cts.

Rhododendron Catawbiense

The true Rhododendron Catawbiense of the Carolina Mountains. The hardiest Rhododendron known. The finest of Rhododendrons for general use, withstanding exposure and extremes of temperature where other Rhododendrons fail. The trusses are bright red-purple, in marked contrast to the muddy purple of the semi-hardy half-breed imported variety. Strong, nursery grown, bushy plants, 12 inches high, 40 cts. each by express.

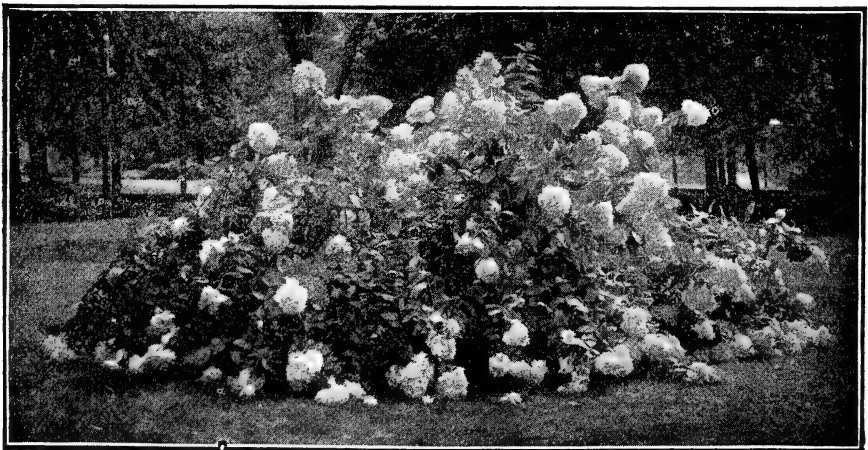
A FEW OF THE BEST EVERGREENS

Picea pungens glauca Kosteriana. True Blue Spruce, grafted plants. 18 in., \$2.

Englemanni glauca. 12 in. 50 cts.

Cedrus Atlantica glauca. 2 to 3 ft., \$2.

Abies Nordmanniana. Most beautiful Fir. 18 in., 60 cts.



Hydrangea paniculata grandiflora



Pungens glauca

BEST EVERGREENS, continued

- Juniperus Canadensis aurea.**
communis aurea. Most beautiful dwarf,
golden-tipped Cedars. 18 in., \$1.50.
Virginiana glauca. Blue form of Vir-
ginia Red Cedar. 2 ft. \$1.
Retinospora plumosa.
plumosa aurea.
squarrosa.
18 in., 50 cts.

**MISCELLANEOUS
PLANTS**

- Caladium esculentum.** Leaves often 3
feet by 20 inches. Extra-large bulbs, 20c.;
by express, 10 cts. Medium, by mail, 10c.,
by express, 5 cts.
Coleus. Crimson, gold, bronze and green
leaves, blotched, veined or margined. By
mail, 5 cts. each, 50 cts. per doz.; by ex-
press, \$1.50 per 100.
Calla (The White Calla). Large, pure white
flowers. 10 cts. and 20 cts.
Aloysia citriodora (Lemon Verbena). For
bouquets, etc. 10 cts.
Hibiscus, Peachblow. Flowers double,
4 to 5 inches diameter; rich clear pink;
deep crimson center. 10 cts.
rubra. Deep cherry-red; large and double.
10 cts.

New Coleus, Doctor Ross. Enormous
leaves, rich, dark velvety crimson, shaded
and marbled with black; broad creamy
white and green wedge in center. 10 cts.
each, 25 cts. for 3.

Pontederia Crassipes major (The Water
Hyacinth). Flowers delicate lilac-rose, in
trusses like Hyacinth. 10 cts.

California Privet. Foliage rich, dark green,
remaining on the plant until midwinter.
Forms a dense hedge. Strong plants, 18
inches, \$4 per 100, by express only.

American Wonder, or Ponderosa Lemon.
Flowers as large as tuberoses and as
fragrant as orange blossoms; fruit useful.
Good young plants, 10 cts.

Weeping Lantana. Graceful, drooping;
grows rapidly, blooms continually. Flow-
ers lilac or rosy pink. Strong plants, 10 cts.

Pansies. Royal Exhibition. Our own choi-
cest strain, produced by Pansy specialist.
Strong plants, 50 cts per doz., 5 cts. each.

Asparagus Sprengeri. For ferneries and
baskets. 10 cts.

plumosus nanus. Leaves bright green
and silky. Nice plants. 10 cts.

Heliotrope. For bedding in summer or
pot-plants in winter. 10 cts. each.

Florence Nightingale. Bright lavender,
in good truss.

Picciola. Rosy violet, almost red; distinct
white center, in immense heads.

Madame de Blonay. Pure white. 10 cts.

Madame Bruant. Purple; white eye.

Czar. Deep purple; free; fragrant. 10 cts.

Hydrangea, Otaksa. Flowers large, bright
pink, tinted blue. 10 cts.

New Jasmine, Grand Duke. Double
creamy flowers, deliciously perfumed. 10c.

**OTHER MISCELLANEOUS
PLANTS**

New Impatiens Holstii. Flowers 1 to 2
inches across; brilliant vermilion. 15 cts.

Sultani (Sultan's Balsam). Flowers
rosy scarlet, distinct; effective hue.
1½ inches diameter. 10 cts.

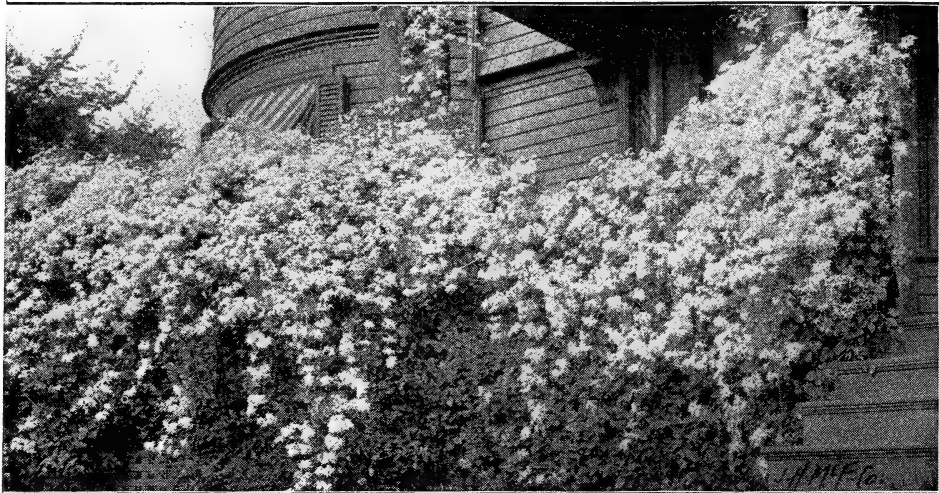
The Night-blooming Cereus. Flowers
large, satiny white; outside petals tinged
reddish brown. Fragrant. 15 cts.

Salvia splendens, or Flowering Sage.

One of the finest of fall-blooming plants,
being completely covered in autumn with
long spikes of scarlet flowers, remaining in
bloom until cut down by the frost. Some
of the finest beds in the White House
grounds in Washington are from this plant.
Kept sheared down to make it thick, it is
a wonderful sight. By mail, 8 cts. each,
60 cts. per doz.; by express, \$4 per 100.

Groff's Newest Hybrid Gladiolus. In
grand mixture. Flowers extra large, per-
fect; splendid substance; red, scarlet,
crimson, garnet, white, cream, yellow,
rose, pink, salmon, orange, etc. Large
blooming size, 5 cts. each, 50 cts. per doz.

Mixed. Magnificent variety. All colors,
10 cts. for 3, 30 cts. per doz. Blooming
size.



Clematis paniculata

OTHER MISCELLANEOUS PLANTS. con.

Tuberose, New Double Pearl. Nearly twice as large as old variety. Very fragrant. Dry bulbs; 4 inches and upward in circumference; perfectly sound centers. 3 cts. each, 25 cts. for 9, 30 cts. per doz., by express.

Vinca major variegata. Trailing plant; leaves glossy green, margined creamy white; flowers blue. 10 cts.

Wandering Jew. Leaves purple, scarlet and white. 5 cts.

Double Hollyhock. One-year-old plants, ready to bloom, separate colors, red, white, yellow, pink. 10 cts., by mail.

FLOWER SEEDS

Purchased direct from W. Atlee Burpee & Co., of Philadelphia.

Sweet Peas

Blanche Burpee. (Eckford's.) Three large flowers on each stem; Blooms profusely. Pkt. 5 cts.

Coquette. Deep primrose and lavender; large. Pkt. 5 cts.

Burpee's Brilliant. Bright crimson-scarlet. Pkt. 5 cts.

Eckford's Up-to-Date. Pkt. 5 cts.

Burpee's "Best Mixed" New Giant. Improved Eckford varieties; many choice varieties of other strains. Pkt. 5 cts.

Fifty Cupids in Mixture. White and light pink to dark red; lavender to purple. Pkt. 10 cts.

TALL NASTURTIUMS.

Favorite Mixture. Brilliant colorings including best varieties. Pkt. 5 cts., oz. 15c.

Mixed Tom Thumb. Wide range of flowers, beautiful colorings. Pkt. 5 cts., oz. 15 cts.

SUNFLOWERS, Many-flowered Double.

The handsome flowers at base of leaf. Pkt. 5 cts.

Mignonette. A quick-growing annual; delicate fragrance. Pkt. 5 cts.

ASTERS, New Japanese. Flowers 5 to 6 inches across; long petals waved and curled; 14 inches high; produces a number of flowers. Flesh-colored and rose, mixed. Pkt. 10 cts.

Simple's New Branching. All colors mixed. Pkt. 10 cts.

New Giant Comet, Mixed. Flowers frequently 4 inches across. Pkt. 10 cts., 3 for 25 cts.

Stock, Ten Weeks, Giant Perfection. A splendid race; two and a half feet high. Large spikes perfectly double. All colors. Pkt. 10 cts.

Pansies, Royal Prize. Large flowers, richest colorings, distinct markings. Pkt. 10c.

Portulaca. Finest double flowers; varied colors and markings. Double rose-flowered, mixed, pkt. 10 cts.; finest single mixed, pkt. 5 cts.

Hollyhock. Finest double flowers. Pkt. 10c.

Marigolds. Strong; produce larger flowers. Pkt., mixed, 5 cts.

Cosmos. (New Early Blooming). Lovely large flowers; pure white, pink, crimson. July to November. Pkt. 10 cts.

All seeds are fresh and tested for germination.



Royal Prize Pansy



Palm, *Kentia Belmoreana* (see page 30)

CLIMBING VINES

Wistaria Sinensis. Pendulous clusters delicate violet-blue, richly perfumed. Strong plants, by mail, 25 cts.

alba. Pure white. By mail, 35 cts.

American Blue (*Frutescens*). Blooms later; violet-purple, compact clusters; fragrant. By mail, 15 cts.

Ivy, Hardy English. Hardy evergreen; dark, glossy leaves. Strong plants, 10 cts.

German, or Parlor. (*Mikania scandens*). Suitable for baskets. 5 cts.

Ipomœa maxima. The great New Giant Moonflower. A wonderful grower and bloomer; splendid for covering porches, arbors, etc., where quick shade or shelter is wanted. The flowers are large—sometimes 6 or 7 inches across—pure white, handsome, and borne in great abundance.

Ipomœa maxima, continued

They open in the evening or on dark days and are at their loveliest during the night. 10 cts.; 3-in. pots, 15 cts.

Ampelopsis Veitchii (Boston, or Japanese Ivy). Dark green foliage, changing in autumn to brilliant crimson. 10 cts.; 2-yr., field-grown, 25 cts.

Clematis paniculata. Pure white, in panicles; fragrance delicious. August or early September. 10 cts.; 2-yr., by express, 25 cts.; by mail, 30 cts.

Best Hardy English Clematis. Plant deep in rich ground, partially shaded.

Jackmani. Immense flowers in masses; deep royal purple. 2-yr., 40c., postpaid.

Anderson Henryi. Extra-large, creamy white. 2-yr., 40 cts.

Dear Sir: The plants came yesterday—so much sooner than I thought they would—and to say I am delighted is putting it very feebly, indeed. Never before have I had such quality and quantity for my money and I thank you for the extras. Everything was as fresh as possible.—Mrs. B. R. M., Dawson, Iowa.

Dear Sir: The plants came in prime condition. They are decidedly the finest plants I ever saw, and I have been buying plants for 20 years from noted growers from the North, East and South, but never received such fine plants or so many extra plants. Please accept thanks for them.—Mrs. S. H., Clarksburg, W. Va.

Dear Sir: The Dollar Collection of Dahlias which I sent for arrived safely and I was very much pleased when I opened the package to find such lovely, thrifty plants. It was the best dollar's worth I ever received. I was afraid that coming such a long distance there would be nothing to tell what they were, as Dahlias are rather tender to send so far, but all looked very fresh.—N. M. B., Alhambra, Cal.

Dear Sir: The plants arrived this morning in fine condition. They are the healthiest and largest ones I ever received. I have bought plants from some of the largest growers but they cannot compare with yours. In the future my plant orders will come to you. You can use my name in your catalogue if you wish, as I am more pleased with your plants than any I ever received from any florist. Thank you for quick delivery.—Mrs. L. GREER, Baltimore, Md.

"FLUFFY RUFFLES" FERN*Nephrolepis superbissima*

One of the grandest Fern novelties of many years.

This is an average plant from my collection.



PALMS AND OTHER DECORATIVE PLANTS

Latania Borbonica (Chinese Fan Palm). 15 cts., 3-in. 25 cts.; 4-in., by express, 50 cts.

Kentia Belmoreana. Leaves deep green, fan-shaped. One of the hardiest Palms I know of. Strong young plants, 15 and 25 cts.; larger, by express, 35 cts., 50 cts., and \$1.

Forsteriana. Graceful, bright green foliage. Small plants, 15 cts.; 3-in. 35 cts.; large size, 50 cts. to \$1.

Ficus elastica (Rubber Tree). Thick glossy foliage; free from insect pests. Strong plants, by mail, 35 cts.; by express, 25 cts.; extra size, 50 cts.

Dracena indivisa. Graceful, rapid grower. Palm-like. Strong plants, 15 cts.; from 3-in. pots, 25 cts.

Ferns

Nephrolepis elegantissima. The new Tarrytown Fern. Plumy leaves, compact habit, rather dwarf, growing only with very fine, wide leaves. 15 cts.; larger size, by express, 50 cts., \$1 and \$1.50.

Boston Fern. Graceful, drooping fronds. 2 to 5 feet, arching in every direction. By mail, 10 and 15 cts.; by express, 25 cts. 50 cts. and \$1, according to size.

Nephrolepis superbissima, or "Fluffy Ruffles" Fern. (See illustration from photograph showing one of my average-sized plants.) The leaves are wonderfully

Nephrolepis superbissima, continued

"fluffed" and cut, curled and fluted. They are dark green and exceedingly handsome and the plant is of clean, vigorous growth. The leaves are unusually stiff and rigid—note this in the illustration—enabling the plant to stand much rough handling. I feel that it can scarcely be recommended too highly. Strong young plants, 25 cts.; larger sizes, 3- to 4-in. pots, 50 cts., by mail.

Adiantum Cuneatum (Maidenhair). The light, graceful fronds. 10 cts.

VIOLETS

Swanley White. Most free-flowering, fragrant; purest white. 10 cts.

New Single Violet, Princess of Wales.

Grand single flowers, violet-blue color; will not fade. 10 cts. each, 75 cts. per doz.

Marie Louise. Bold, fine flowers; fragrant, prolific. Dark blue, double. 10 cts., 75 cts. per doz.

HARDY PINKS

10 cents.

The New Double White Pink, Her Majesty. Remains a leader. Grown by the acre.

May Gray. Bright pink.

Homer. Rosy red; dark center.

Sulpho Tobacco Soap

Perfectly safe; sure extermination to all insects. 3-oz. package sufficient for one and one-half gallon solution. Postpaid, 13 cts.

8-oz. package sufficient for four gallon solution, postpaid, 28 cts.

Bulbs For Fall Planting

Preserve this Catalogue for your Bulb or Plant order next fall. Bulbs listed on this page will be ready for shipment September 15 and should always be planted in the fall

FINEST HOLLAND-GROWN BULBS

NAMED HYACINTHS

Price, either Single or Double, 10 cts. each, 50 cts. for 7, \$1 for 15, by mail, postpaid

SINGLE

Alba superbissima. Pure white; very large; fine.

Baron van Thuyll, White. Large; early.

Baron van Thuyll, Blue. Very fine; early and large.

Grandeur a Merveille. Blush-white; large; one of the very best.

Amy. Bright scarlet; large and early.

Queen Victoria. Dark red.

Norma. Beautiful rosy pink.

Gigantea. Fine pink. Extra large.

Herman. Orange-yellow.

DOUBLE

Blocksberg. Finest light blue.

Chas. Dickens. Dark blue; extra fine.

Bouquet Royal. Bright rose; red center.

Bouquet Tendre. Dark red.

La Tour d'Auvergne. The earliest and finest pure white.

La Virginite. Blush-white; large.

Gothe. Large; pure yellow.

Ophir d'Or. Deep yellow; red center.

UNNAMED HYACINTHS

Single or double, in the following colors.

Pure White, Red and Pink, Blue Shades,

Yellow Shades, All Colors Mixed. By mail, 6 cts. each, 60 cts. per doz.; by express, 50 cts. per doz.

ROMAN HYACINTHS

Fine house plants for winter-blooming. In separate colors, as follows: Pure White, Blue, and Rose. 6 cts. each, 60 cts. per doz.

CROCUS

The earliest flowers of spring. Blue, Purple, White, Striped, Yellow. All Colors Mixed. 8 cts. per doz., 50 cts. per 100.

FREESIA REFRACTA ALBA

One of the best bulbs; it is sure to succeed and bloom for any one in any situation. The flowers are pure white, with lower petals touched with yellow. The fragrance is delightful. Four to six bulbs can be planted in a 5-inch pot, box or pan, and grown like other bulbs. By planting at intervals from September to November, a succession of flowers can be had throughout the winter. 3 cts. each, 15 cts. for 6, 25c. per doz., 50c. for 25.

NARCISSUS, or DAFFODILS

Single and double. Finest varieties, mixed, 30 cts. per doz., \$2 per 100, by express.

POLYANTHUS, or PAPER-WHITE NARCISSUS

Extensively used by florists for cut-flowers. Easily-grown in the house as a winter bloomer. 5 cts. each, 40 cts. per doz.

TULIPS

Choice early Single and Double varieties, by mail, 4 cts. each, 25 cts. for 9, 50 cts. for 20, \$1 for 45.

SINGLE

Artus. Bright scarlet; early; fine.

Chrysolora. The best of all golden yellows.

Cottage Maid. Superb carmine-pink; center feathered white.

Cardinal's Hat. Scarlet and yellow.

Crimson King. Fine clear scarlet.

Kaiserkroon. Bright red with brown; yellow edge; very large.

La Reine. Pure white; one of the best.

Standard Royal Silver. White, with cherry-crimson; extra-fine.

Yellow Prince of Orange. Fine yellow.

DOUBLE

Gloria Solis. Red; yellow border.

Tournesol. Red and yellow.

Rex rubrorum. Fine scarlet.

La Candeur. Pure white.

MIXED EARLY TULIPS

Either single or double. A complete mixture of the best varieties of single and double Tulips. By mail, 25 cts. per doz., \$1.50 per 100; by express, \$1.30 per 100.

PARROT TULIPS

A very distinct species, producing brilliantly colored flowers of great size and grotesque shape; larger than others; all colors mixed. Price same as early mixed Tulips.

LATE-FLOWERING TULIPS

Mixed, either single or double. Price same as early mixed.

LILIES

Lilium auratum (The Golden-banded Lily). The flowers are of immense size, pure white; each petal banded golden yellow. 15 cts. each.

Lilium candidum. A fine, hardy, white Lily. 10 cts. each.

Lilium Harrisii (The Bermuda Easter Lily). Has pure waxy white flowers. 15 cts.

Lilium speciosum rubrum. Very large and fragrant. Color lovely rose and white, spotted crimson. 15 cts. each.

CHINESE SACRED LILY

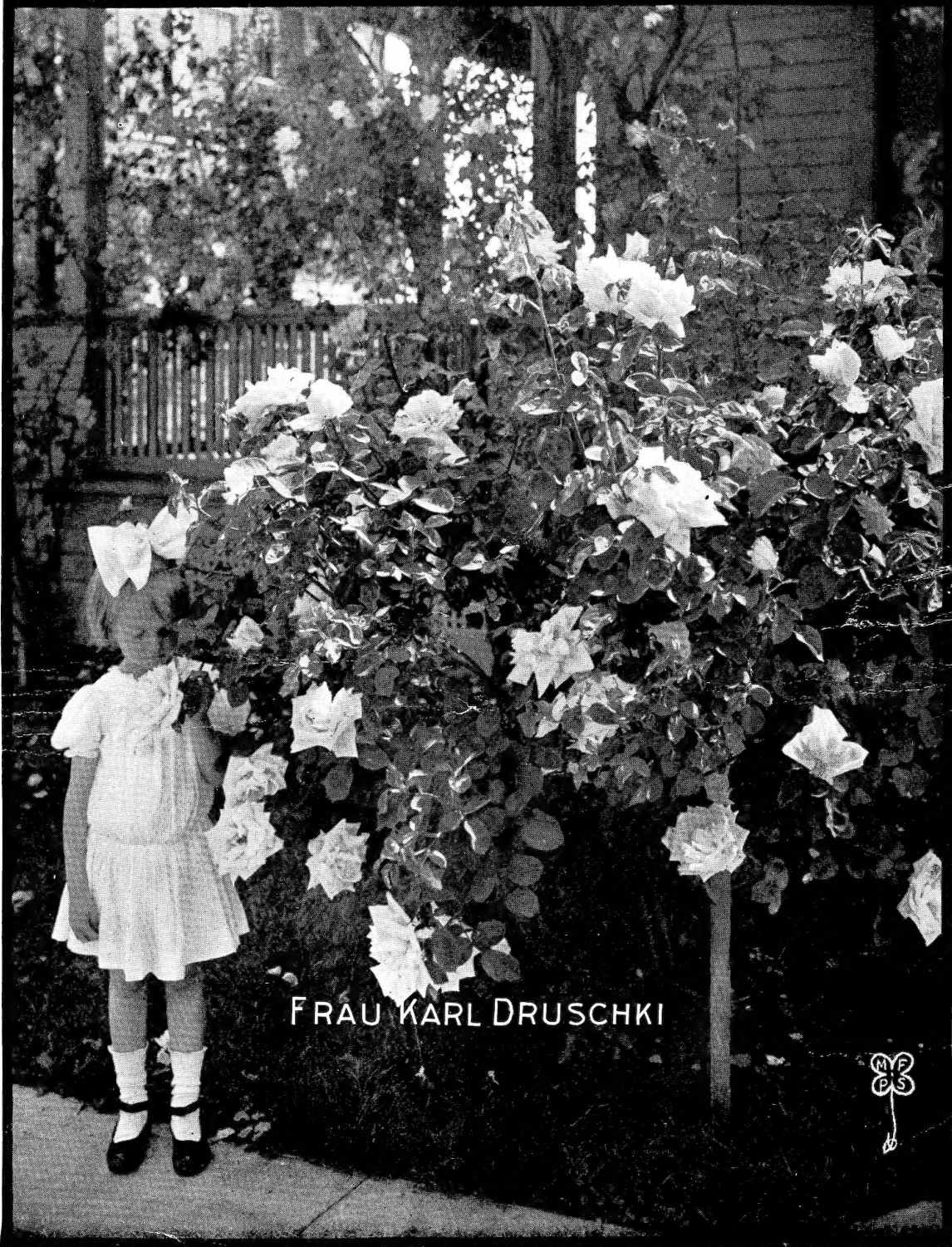
Imported direct from China. This is one of the most popular winter-flowering bulbs; can be grown in soil or vessels of water with a little coarse sand at the bottom. Extra-large bulbs, 12 cts. each, 45 cts. for 4, \$1 for 10.

OXALIS

Bermuda Buttercup. Bright golden yellow. 25 cts. per doz.

Grande Duchesse. The flowers of this variety are double the size of the ordinary grade. Bloom profusely; foliage bright green. In separate colors—White, Pink, Red and Yellow. 30 cts. per doz.

Fairfax Roses



FRAU KARL DRUSCHKI

