

## **Historic, Archive Document**

Do not assume content reflects current scientific knowledge, policies, or practices.





EVERYTHING WORTH PLANTING

E. W. KELSEY NURSERY COMPANY

150 BROADWAY NEW YORK



# FOREWORD

---

---

When dealing with this Company you are in touch with the WORLD'S SELECTED NURSERY STOCK — from the large Specimen Trees to the lowly, but none the less beautiful Perennial Plants. We have manifold selections and facilities for furnishing complete lists of "EVERYTHING WORTH PLANTING."

**THIS COMPANY IS** amply responsible and pays cash for all its supplies.

**It Contracts** for its nursery stock with a large number of expert and reliable growers and has stock especially grown for its own business. In this way, it furnishes the best stock in specimens and in all sizes and varieties obtainable in the United States and in Europe and largely from our personal selection.

**It thus sells** to its patrons this almost unlimited selection of inspected stock, the best the domestic and foreign markets afford, at lowest nursery prices.

**As well established merchants and importers**, acting as principal always — never as agents or brokers — it has the facilities for furnishing reliable stock at first hands and for maintaining accuracy, reliability and dispatch in the conduct of its business which many years of experience commands.

**THIS COMPANY IS NOT** in any sense, the agent of any nursery whatsoever.

**It is not** a local nursery claiming to have everything, when, as now, the varied demand for fine trees and hardy plants makes it necessary to have selections the world over in order to fill to the best advantage the present requirements for good stock.

**It does not** speak disparagingly of others.

**But it does** make a specialty of furnishing large planting lists complete; of furnishing its specialties — such as hardy Rhododendrons, Rhododendron Maximum and Kalmia Latifolia in car lots, Specimen Trees, Bay Trees, Trained Fruit Trees, and Foreign Grape Vines, Forestry Material per 100,000 and many other specialties on the most favorable terms; and always endeavors to extend to its patrons courteous and prompt service.

---

## BUSINESS TERMS

**Early orders** are advantageous, securing first selection and special prices.

**Quality** we consider of first importance; and of equal importance reasonable prices.

**Prices** unless otherwise noted or specially quoted are f. o. b. delivery New York, not including the actual cost of cases or bales used in packing.

**Samples** afford an effective and inexpensive way for selecting satisfactory stock up to any required standard. These samples we submit under specific guarantee that the entire stock will be equal in quality and condition. Inspection in nursery can, however, be arranged for when required.

**Substitution**—When varieties are exhausted we shall, in the absence of advices, exercise our best judgment as to sending equally good substitutes.

**Errors**—Should any errors occur, we should be advised promptly and any claims reported within ten days after receipt of goods.

**Gardeners**—There is little pleasure in a country place without an efficient and satisfactory superintendent or gardener in charge. We have a list of the men available and a system of confidential information we use before recommending anyone for these positions. There is no charge for this service.

**Landscape Plans**—We consider a carefully worked out planting design for a new country place or park before the work on the grounds is begun, as important as suitable architectural plans for the buildings. Errors of this kind are costly and difficult to rectify afterwards, always visible and a constant offense. We are conversant with much of the best landscaping in this country and in Europe and can arrange for expert service by competent landscape architects on reasonable terms. We invite consultation and no obligation is incurred without an order or contract.

---

---

# F. W. Kelsey Nursery Company

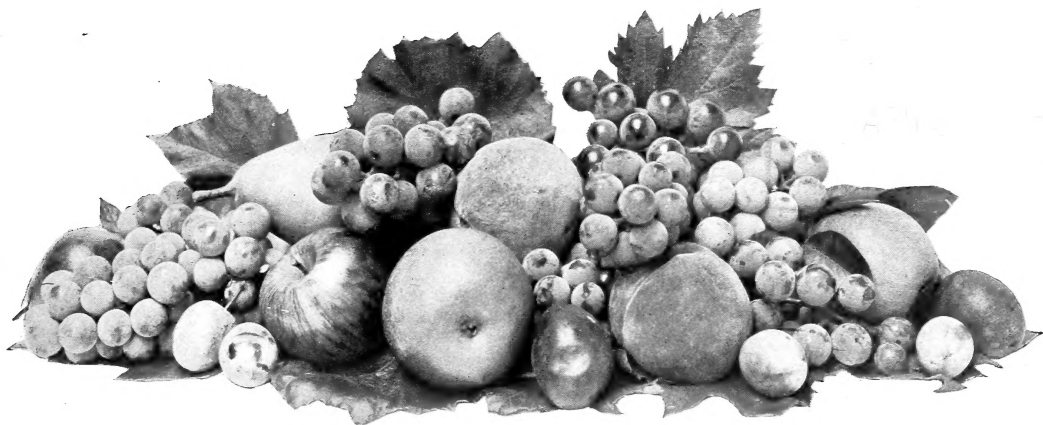
## 150 Broadway, New York

TELEPHONE 2123 CORTLANDT

CABLES, KELNURCO, NEW YORK

**THIS CATALOGUE** contains our leading varieties and Specialties only, but we furnish in best quality stock EVERYTHING WORTH PLANTING in TREES, SHRUBS and ALL HARDY PLANTS.

AS IT IS QUITE IMPOSSIBLE, OWING TO THE MANY DIFFERENT SIZES AND VERY GREAT NUMBER OF VARIETIES TO QUOTE IN DETAIL PRICES OF EACH, WE THEREFORE SUBMIT ON REQUEST SPECIAL PRICES ON THE QUANTITIES, VARIETIES AND SIZES DESIRED, AND SEMI-ANNUALLY ISSUE A SPECIAL PRICE LIST FOR THE SEASON.



## FRUIT TREES

**FRUIT GROWING** is becoming more and more popular, as it is now recognized that skillful handling of this work is a profitable occupation and that the demand for good fruit is ever on the increase in the home market, not to mention the constantly increasing export trade of the product of our orchards at highly remunerative prices.

**ORCHARD PLANTING** is surely an investment worth while.  
Low prices quoted for trees in large quantities.

## APPLES

**STANDARD APPLES.** Recommended for orchard planting. The leading kinds in best quality stock. \$4.00 to \$6.00 per doz.; extra size trees \$7.50 to \$12.00 per doz.

**DWARF APPLES.** These trees are small, bear young, and are quite prolific. Very desirable for small gardens where space is limited but not recommended for commercial orchards. A few varieties \$5.00 to \$9.00 per doz.

Limited space does not permit the full description many of the varieties deserve, neither can we list all of the many good sorts, but the following are some of the leading kinds:

### SUMMER VARIETIES

**Early Harvest.** (Yellow Harvest.) Medium size, round, yellow. Tender, juicy, fine fruit. Vigorous and productive. July and August.

**Early Strawberry.** Medium, round; handsomely striped with red; excellent variety. July and August.

**Golden Sweet.** Large, pale yellow; sweet and good to eat. Very productive for orchard culture. August and September.

**Keswick Codlin.** Large, oblong, pale yellow; bears young and productively; good cooking variety. July to October.

**Red Astrachan.** Large and round, nearly covered with deep crimson. Fine, crisp, juicy; good bearer. July and August.

**Yellow Transparent.** Extremely hardy and of great merit. Good size fruit; pale yellow. Aug. Other varieties of merit in this class are:

EARLY RIPE, SWEET BOUGH, PRIMATE, TOWNSEND, TETOFSKY and WILLIAM'S FAVORITE.

### AUTUMN VARIETIES

**Fall Pippin.** A valuable variety. Very large yellow fruit, tender, juicy and delicious. Free grower and fine bearer. September to November.

**Duchess of Oldenburg.** Medium to large size; yellow skin streaked with red. Vigorous and hardy tree, bearing young and abundantly. September.

**Gravenstein.** Handsome, large round apple, yellow and red striped. Tender, juicy and of excellent flavor. Productive. Sept. and Oct.

**Maiden's Blush.** Medium size, flat, quite smooth. Pale yellow with beautiful red cheek. Tender and with pleasant acid flavor. Aug. to Oct.

Among other good Autumn Apples are: JERSEY SWEET, ALEXANDER, GLADSTONE, MUNSON'S SWEET, PUMPKIN SWEET, RAMBO.

## WINTER VARIETIES

- Baldwin.** Large bright red, juicy, crisp and of good flavor. Popular and profitable market variety. Vigorous and upright grower, very productive. December to March.
- Ben Davis.** (NEW YORK PIPPIN.) Large round fruit, striped, of good quality, tender, juicy, mild sub-acid and pleasant flavor. Very hardy variety and abundantly prolific. Late keeper. December to March.
- Golden Russet.** Medium size, dull russet with a tinge of red; crisp, juicy and highly flavored. Hardy variety and good bearer. Nov. to April.
- Grimes' Golden.** Medium to large; golden yellow skin. Crisp, tender and juicy. Excellent in quality. January to April.
- Hubbardston Nonsuch.** One of the best. Largely striped yellow and red. Rich and delicious, juicy and tender. Strong grower and great bearer. November to January.
- Jonathan.** A splendid variety either for table or market. Medium size, pale yellow, striped red; tender, juicy. Very productive. Nov. to Mar.
- King of Tompkins County.** Large globular yellow, striped and shaded with crimson. Juicy and possessing a rich aromatic flavor. Vigorous and productive. December to March.
- McIntosh Red.** Large; skin yellow, nearly covered with bright red, handsome. Flesh white, tender and juicy. Hardy. Nov. to Feb.
- Newtown Pippin.** On account of its long keeping and excellent qualities this apple is very popular. Medium to large. Very firm, crisp, juicy and of an agreeably delicious flavor. Slow grower. Requires high cultivation for the best fruit. November to May.
- Northern Spy.** Large, striped, conical, somewhat ribbed, almost covered with dark crimson on the sunny side; delicately coated with bloom. Flesh white, tender, fine grained, slightly sub-

- acid with delicious flavor. Rapid grower and great bearer. Good late keeper. Jan. to June.
- North Western Greening.** Large, smooth, yellowish green. Juicy, sub-acid, good quality. Remarkable keeping properties. Extremely hardy. December to April.
- Stark.** Long keeper and valuable market fruit. Large, greenish yellow, shaded with dark and light red; juicy, productive. January to May.
- Wealthy.** Hardy, vigorous and very productive. Fruit medium, roundish oblate, yellow, shaded and striped almost completely with dark red. Flesh white, tender, sub-acid, very good. Free grower. December to January.
- York Imperial.** Medium size, greenish yellow; flesh tender, crisp, aromatic. Very productive and extensively grown in Pennsylvania. November to February.

Other valuable Winter sorts are: BISMARCK, GANO, ONTARIO, RHODE ISLAND GREENING, RIBSTON PIPPIN, ROME BEAUTY, SPITZENBURG, WOLF RIVER, ETC.

## CRAB APPLES

- Gen. Grant.** Large, round, yellow, striped very dark red on the sunny side. Flesh white, mild sub-acid. October.
- Martha.** Immensely vigorous, hardy, and great bearer of beautiful fruit. Glossy yellow shaded with bright red. Mild and tart. October.
- Transcendent.** Fine bearing, producing excellent crops by the fourth season. Red and yellow, juicy and crisp. Splendid variety for cider. September to October.
- Whitney.** Large, green, glossy, splashed with carmine. Firm, juicy. Great bearer and hardy. August.
- Other sterling varieties among the Crabs are: HYSLOP, EXCELSIOR, RED SIBERIAN, YELLOW SIBERIAN.

## PEARS

**STANDARD PEARS.** Recommended for both garden and orchard planting. The best sorts in fine quality stock, \$5.00 to \$6.00 per doz. Extra, \$7.50 to \$15.00 per doz.

**DWARF PEARS.** Desirable for gardens. All the leading kinds, \$4.00 to \$9.00 per doz.

## SUMMER VARIETIES

- Bartlett.** A very popular variety of extra fine musky flavor. Large, buttery and melting. Bears young and abundantly. September.
- Clapp's Favorite.** Large size; pale lemon yellow; flesh juicy, rich and buttery. Good grower and very productive.

*Care should be taken to pick the fruit at least ten days before same would ripen on the tree.*

August and September.

Other good Summer kinds are: MARGARET, KOONCE, MANNING'S ELIZABETH, WILDER, ETC.

## AUTUMN VARIETIES

- Beurre d'Anjou.** Large, greenish russet, sometimes shaded with crimson; melting, juicy, rich and delicious. Very vigorous, hardy and productive. Keeps until winter holidays when it commands a high price in the market. October to December.
- Beurre Clairgeau.** Large, yellow, inclining to fawn-color, shaded with orange and crimson. Flesh juicy and buttery. Its beauty and productivity render it a profitable market variety. November to January.
- Flemish Beauty.** Large, obovate, pyriform; pale yellow, brownish cheek. Juicy, melting, sweet and rich. September and October.

- Kieffer.** Rich, golden yellow, with patches of russet; flesh slightly coarse, juicy, sweet and melting. Early and great yielder. October and November.

- Seckel.** Of the highest excellence; small, but of fine flavor. Yellowish russet with red cheek. Buttery, very juicy, with a delicate, rich, spicy flavor. September and October.

- Worden-Seckel.** Medium size, borne in clusters. Has the rich, spicy flavor of the Seckel.

Other good Fall varieties are: BOSCH, HOWELL, DUCHESS D'ANGOULEME, SHELDON, VERMONT BEAUTY, ETC.

## WINTER VARIETIES

- Lawrence.** Medium size, unsurpassed as an early winter Pear. Fine golden yellow; melting, sugary and aromatic. Hardy and good bearer. December.

DUCHESS DE BORDEAUX, LINCOLN CORELESS and PRESIDENT DROUARD are also fine Winter varieties.

**FRUIT TREES.** One of our many specialties. On large lists for orchard planting we can make very FAVORABLE QUOTATIONS.

## PEACHES

Fine selected trees for garden or orchard planting in all the leading varieties. \$2.00 to \$5.00 per doz. Extra, \$6.00 per doz.

Out of the hundreds of varieties of peaches we have selected the following as among the most popular. We can, however, furnish in any other desired kinds.

**Alexander.** Ripens very early. Large, color deep maroon, handsomely shaded; flesh firm, rich and good. July and August.

**Crawford's Early.** Very large, yellow with fine red cheek; luscious fruit; exceedingly vigorous and prolific. August and early September.

**Crawford's Late.** One of the finest kinds for all purposes. Large, roundish, yellow with dark red cheek. Rich and delicious. Profitable market variety. September.

**Carman.** A new hardy and rot-proof variety. Large, yellowish white with bright red cheek. Juicy and possesses a most pleasant flavor. Aug.

**Champion.** Reliable and hardy. Large, creamy white with red cheek. A perfect freestone, a rare thing in the early peaches. Very hardy. July and August.

**Crosby.** Freestone, medium, splashed and striped with red. Flesh firm, yellow, sweet and juicy. Early September.

**Elberta.** Yellow with red cheek, flesh yellow, firm, juicy and of good quality. Valuable for market and as a general variety for all sections, following Early Crawford. September.

**Hale's Early.** Medium size; white with red cheek; flesh white, juicy and good. Early August.

**Mountain Rose.** Medium to large; whitish, nearly covered with a pretty red; good to eat, productive. First of August.

**Niagara.** Originating in Niagara County, N. Y., it has proven a remarkably hardy variety bearing heavy crops. Ripens just after Elberta to which variety it bears a resemblance, but is of better quality. Has resisted all attacks of leaf-curl and other diseases thus far; NEW, but destined to prove a most valuable variety.

**Belle of Georgia, Early York, Early Rivers, Greensboro, Iron Mountain, Old Mixon, Reeves' Favorite.** All valuable peaches possessing excellent qualities. Productive and worthy varieties for an orchard. Fruits of good quality.

**PLUMS.** Fine stock of leading kinds, including the fine Japanese Plums. \$4.00 to \$6.00 per doz. Extra \$7.50 to \$12.00 per doz.

**CHERRIES.** Fine trees of the best standard kinds; large, early sweet and late sour varieties. \$6.00 per doz. Extra \$9.00 to \$15.00 per doz.

**APRICOTS.** ALEXIS, BLENHEIM, BRED, EARLY GOLDEN, EARLY MOORPARK, PEACH, and other leading sorts. \$4.00 to \$9.00 per doz.

**NECTARINES.** BOSTON, EARLY VIOLET, ELRUGE, STANWICK, VICTORIA, etc. Best quality stock, \$4.00 to \$9.00 per doz.

**QUINCES.** The best varieties for garden and market purposes. \$4.00 to \$6.00 per doz.

**MULBERRIES.** These trees are as valuable for shade as for their fruit producing qualities. Wonderfully rapid in growth, often growing from 6 to 8 ft. in one season. Perfectly hardy. Downing and New American \$5.00 to \$7.50 per doz. Russian \$4.00 to \$6.00 per doz.

**FIGS.** Can be successfully grown by covering the trees in winter or removing them with ball of earth to a cold cellar and replanting in spring. Best varieties \$6.00 to \$10.00 per doz.

**Orange, Grape Fruit and Lemon Trees.** Southern grown; fine trees from open ground; best kinds. \$5 to \$15 per doz.

# TRAINED FRUIT TREES



FRUIT FROM TRAINED PEACHES

Choice fruits for fruit houses are now largely in demand; and one of the features of all leading European gardens, the practice of planting Trained Fruit Trees, is becoming popular in this country. The advantages of the trained fruits are manifold, among which may be mentioned—the bearing of fine fruits soon after planting; the quicker ripening of the fruit; better flavor of fruit; unaffected by the winds; they do not shade any part of the garden.

Trained Fruit Trees can be planted against terrace and dividing walls, fences, out-buildings, for garden borders, etc.

Our stock is the best obtainable. We make direct importations and furnish in full selection the best the foreign and domestic market affords. With excellent stock and exceptional facilities, we furnish this material as required for fruit houses and for garden planting complete.

Espaliers, Cordons, Pyramids, Fan Trained or Horizontal Trained trees are supplied of the best kinds, and of different sizes from two year trees up to extra sizes and XX grades for immediate fruiting.

For forcing and for covering walls, trellises, etc., Apricots, Cherries, Peaches, Nectarines in fan trained form. Apples, Pears and Plums, Horizontal Trained.

Prices of these trained trees from \$18.00 to \$50.00 per dozen, according to kinds, sizes, etc.

## VINES FOR GRAPERIES

This stock is one of our specialties, our fine imported English vines giving the best of satisfaction. We recommend, in all cases, well rooted vines with well ripened wood.

The following are the principal varieties, "C. G." for cold graperies, "H. G." for hot graperies.

**Black or Purple Varieties.** Barbarosa, H. G.; Black Hamburg, H. or C. G.; Gros Colman, H. or C. G.; Gros Maroc, H. or C. G.; Lady Downs, C. or H. G.; Muscat, Hamburg, H. or C. G.

**Red Varieties.** Frontignan, C. G.; Red Chassels, C. G.

**White Varieties.** Buckland Sweetwater, C. G.; Foster's Seedling, C. G.; Golden Champion, H. G.; Golden Hamburg, C. G.; Muscat of Alexandria, H. G.; Royal Muscadine, C. G.; Syrian, H. G., and others.

Strong planting canes, \$2.00 to \$3.00. Extra fruiting vines \$5.00; \$40.00 to \$50.00 per dozen.

## FINE HARDY GRAPES

Full assortment of leading kinds:

**Black Grapes.** CAMPBELL'S EARLY, CONCORD, EATON, DIAMOND, MOORE'S EARLY, WORDEN.

**Red Grapes.** AGAWAM, BRIGHTON, CATAWBA, DELAWARE, MOYER.

**White Grapes.** DIAMOND, DUCHESS, GREEN MOUNTAIN, NIAGARA.

Well rooted two and three year vines. \$3.00 to \$5.00 per doz. Special prices per 100.



## SMALL FRUITS

We furnish fine stock of all the following small fruits at reasonable prices:

**Blackberries.** EARLY HARVEST, ELDORADO, KITTATINNY, LAWTON, RATHBUN, SNYDER, WILSON'S EARLY, and others. Strong well rooted canes. \$5.00 to \$10.00 per 100.

**Currants.** BLACK CHAMPION, CHERRY, FAY'S PROLIFIC—largest and best red currant; LA VERSAILLES, PERFECTION, RED DUTCH, VICTORIA, WILDER, WHITE GRAPE.

Selected 2 years, 3 years, and Extra \$1.00 to \$2.00 per doz. \$8.00 to \$15.00 per 100.

**English Varieties.** CROWN BOB, INDUSTRY, WHITESMITH. \$2.50 per doz.

**Gooseberries.** Best American varieties: CHAUTAUQUA, COLUMBUS, DOWNING, HOUGHTON, RED JACKET, SMITH'S IMPROVED. \$1.00 to \$2.00 per doz.

**Raspberries.** Black varieties: BLACK DIAMOND, COLUMBIAN, GREGG, MAMMOTH CLUSTER, MARLBORO, ETC. Red varieties: CUMBERLAND, CUTHBERT, MARLBORO, ETC.

**Yellow Raspberry.** GOLDEN QUEEN. Strong canes, \$5.00 to \$10.00 per 100.

## STRAWBERRY PLANTS

We recommend the following as the best strawberries for the home garden.

Pot grown plants set in Summer or early Autumn, bear well, with ordinary treatment the following season.

**Early Sorts.** CLIMAX, EXCELSIOR, FAIRFIELD, MARSHALL, MICHEL'S EARLY, SUCCESS, ETC.

**Mid-Season Sorts.** ABINGTON, BUBACH, GLEN MARY, KEVITT'S WONDER, NEW YORK, NICK OHMER, SHARPLESS, WM. BELT, ETC.

**Late Sorts.** BRANDYWINE, CARDINAL, COMMONWEALTH, GANDY, MCKINLEY, OOM PAUL, ETC. Layer Plants \$1.00 to \$2.00 per 100. Well established pot plants \$3.00 and \$4.00 per 100.

## ESCULENT ROOTS

**Asparagus.** A good Asparagus bed is a garden luxury. When once well established, a well made bed lasts for years. Plants for best results should not be more than 2 or 3 years, and Spring is the best time for transplanting. The best varieties: CONOVER'S COLOSSAL, COLUMBIAN, MAMMOTH WHITE, GIANT, PALMETTO. Strong 2 and 3 year roots \$2.00 to \$3.00 per 100.

**Rhubarb.** This "American Pie Plant" is as easily grown as weeds. Leading varieties: EARLY CRIMSON, LINNÆUS, QUEEN VICTORIA. Strong roots 2.00 per dozen.

## NUTS

**Almond, Hard Shell.** A fine, hardy variety, with a large, plump, sweet kernel. The tree is very ornamental, producing pale rose-colored flowers in abundance.

**Almond, Soft-Shell.** Although preferable to the former, is not quite so hardy. The shell is very tender and the kernel sweet and rich.

**Chestnut, American.** Forms a large ornamental tree, producing freely, rather small, but very sweet, fine-flavored nuts. Although inferior to the others in size, it is decidedly the best in quality.

**Chestnut, Japan.** An introduction of recent years, bearing early and abundantly. Nuts of very large size, three or four in a bur.

**Chestnut, Paragon.** Another of the Spanish class, yielding heavy crops of large nuts of excellent flavor; quite hardy; bears at an early age. Very profitable.

**Chestnut, Spanish.** *Castanea vesca.* This is the ordinary European species, forming a beautiful large tree, with mostly heavy crops of large nuts, sweet and excellent when roasted. A rapid grower.

**Filbert, American.** *Wild Hazelnut.* This forms a large, branching shrub, from 6 to 8 feet high,

producing good crops of nuts, which are inferior in quality to the English, but the plants are hardier.

**Filbert, English.** The fruit of this is larger and of better quality than that of our native species. Nuts with thin shell and fine flavored.

**Pecan.** A large slender-growing tree found generally in the southern states, valuable for its oblong thin-shelled smooth nuts, with delicious kernel.

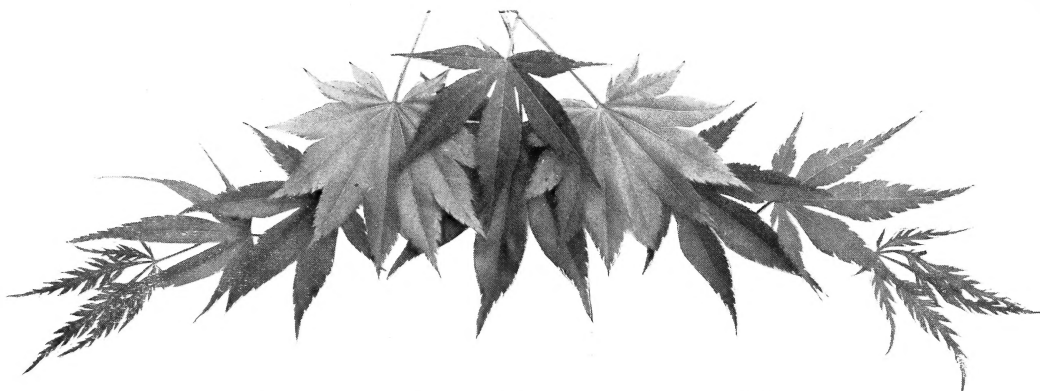
**Shellbark Hickory.** *Carya alba, or Hicoria ovata.* A handsome, tall, native tree, producing large crops of excellent nuts. It is partial to rich, moist localities, but will succeed in any good soil.

**Walnut, Black.** *Juglans nigra.* A valuable large native tree, yielding roundish, rough dark nuts of excellent flavor. It is a rapid grower, and the timber is greatly in demand.

**Walnut, English.** *Juglans regia.* Not entirely hardy here except in sheltered locations. It forms a tree of the largest size and bears good crops of delicious, thin-shelled nuts.

**Walnut, White or Butternut.** *Juglans cinerea.* A medium-sized tree, with oblong, pointed nuts; rough shell and rich, agreeable flesh. Grows rapidly.

These and other varieties of Nuts in first-class stock. Write for prices, indicating size and quantity desired.



### LEAVES OF THE BEAUTIFUL JAPANESE MAPLES

We furnish exceptionally fine stock in both the green and the many exquisite shaded red and crimson-leaved varieties.

## DECIDUOUS TREES

The planting of Trees is a good investment. The initial outlay is small. The added value to property in a few years' time is sometimes almost indeterminate, from the vast difference in appearances resulting. The cost of maintenance too, is practically *nil*, owing to the fact that trees require so little attention and care, when properly planted at the start. The beauty, pleasure and personal gratification alone, doubly repay the wise planter of trees.

We have the right stock for PRIVATE COUNTRY ESTATES, CIVIC IMPROVEMENTS, AVENUE and STREET PLANTING, PARK and CEMETERY PLANTING, LAWNS and DRIVEWAYS. We shall be pleased to recommend the best varieties in accordance with the purpose for which the trees are required and give any other information desired.

FOR FORESTRY STOCK, SEE PAGES 31 TO 34.

AS IT IS QUITE IMPOSSIBLE, OWING TO THE MANY DIFFERENT SIZES AND VERY GREAT NUMBER OF VARIETIES TO QUOTE IN DETAIL PRICES OF EACH, WE THEREFORE SUBMIT ON REQUEST, SPECIAL PRICES ON THE QUANTITIES, VARIETIES AND SIZES DESIRED, AND PUBLISH SEMI-ANNUALLY A SPECIAL PRICE LIST FOR THE SEASON. IT IS ALSO TO BE REMEMBERED THAT WE FURNISH EVERYTHING WORTH PLANTING, AND IF ANY VARIETY REQUIRED IS NOT ENUMERATED IN THIS CATALOGUE WE SHALL BE PLEASED TO SUBMIT PRICES FOR SAME ON REQUEST.

**ACER DASycARPUM.** SILVER-LEAVED MAPLE.

A fine variety of rapid growth with pendulous and graceful foliage. Advantageous where quick effects are desired. All sizes 50c to \$2.50.

**Wierii Laciniatum.** WIER'S CUT-LEAVED

MAPLE. A variety of the Silver-leaf and a beautiful tree with cut or dissected foliage. Rapid grower. Desirable for street, park or garden. \$1.00 to \$2.00.

**Ginnale.** SIBERIAN MAPLE. 50c. to \$1.00.

**Japonicum.** JAPANESE MAPLE. Small, beautifully foliated trees. Invaluable for landscape effects and for specimen plantings in groups or borders. All the choice hardy red and crimson leaved varieties. SEE CUT TOP OF PAGE. The choicest varieties are:

**Atropurpureum.** Blood red, deeply cut, fine.  
 " **novum.** Dark red color, scarce.

**Hikygasana.** Silver veined. New and unique.

**Roseum.** Purplish color, fading to rose.

**Roseo-marginatum.** Striped with rose-pink.

**Reticulatum.** Silver and golden variegated.

**Oshio-Beni.** Purplish-red, distinct and fine.

**Scolopendriifolium.** Bright glossy green.

" **viride.** Purplish claret color.

**Septemlobum.** Glossy clear green.

" **elegans.** Glossy purple.

**Versicolor.** White variegated, unique.

**Aureum.** Beautiful golden yellow.

**Filicifolium.** Green, large deep fringed leaves.

**Purpureum.** Purplish red and clear crimson.

" **variegatum.** Red variegated.

**Dissectum.** Green, deep fringed.

" **variegatum.** Deep fringed, white variegated leaves.

" **rubrifolium.** Deep fringed of a fine purple color.

" **atropurpureum.** Deep fringed, dark red, fine.

Both pot grown and plants from open ground, \$1.00 to \$2.50 each. Special prices per 100.

Write for prices of Assorted Collections of the beautiful Japanese Maples. Our stock is extra fine, and all plants 2 to 5 feet are furnished with ball.

**ACER Negundo.** ASH-LEAVED MAPLE. Rapid growing tree, suited to all soils. 75c. to \$2.00. Low prices per 100.

**Pensylvanicum.** STRIPED MAPLE. Greenish bark striped with dark lines. 35c. to \$1.00.

**Platanoides.** NORWAY MAPLE. The popular lawn and street tree of perfect outline with deep green foliage. Hardy, compact, desirable. All sizes 50c. to \$5.00. Send for quotation.

**Platanoides, schwedlerii.** RED or PURPLE LEAVES. A beautiful variety of the Norway with leaves of bright purple or crimson color. \$1.00 to \$2.50.

**Platanoides, purpurea.** PURPLE-LEAVED MAPLE. Purplish tinted leaves. \$1.00 to \$1.50.

**Pseudo Platanus.** SYCAMORE MAPLE. Desirable for street and park planting. 75c. to \$1.50.

**Rubrum.** SCARLET MAPLE. Bears red blossoms, and the leaves in Autumn are of the most gorgeous tints. \$1.00 to \$2.00.

**Spicatum.** MOUNTAIN MAPLE. A small fine tree. 50c. to \$1.00.

**Saccharinum.** SUGAR MAPLE. Otherwise known as Rock or Hard Maple. Fine for lawn or avenue planting. Of stately form with fine foliage. 60c. to \$2.00.

**AESCULUS HIPPOCASTANUM.** WHITE FLOWERING HORSE CHESTNUT. A large tree with symmetrical head, large leaves and panicles of white spotted flowers. Fine for avenues. \$1.00 to \$2.50.

**Rubicunda.** RED FLOWERING HORSE CHESTNUT. Showy red flowers; a beautiful tree. \$1.00 to \$2.00.

**AILANTHUS GLANDULOSA.** TREE OF HEAVEN. Extremely quick-growing, with pinnate palm-like leaves. Valuable because it thrives in smoky cities and in soils where other trees perish. 50c. to \$1.00.

**ALNUS GLUTINOSUS.** COMMON ALDER. Good tree of rapid growth for upland or moist places; also fine for sea-shore planting. 50c. to \$1.00.

**Laciniata Imperialis.** IMPERIAL CUT-LEAVED ALDER. Deeply cut leaves. \$1.00.

**AMELANCHIER BOTRYAPIUM.** SHADBLOW OR JUNE BERRY. White flowers in April; purplish fruit. 75c.; \$20.00 to \$40.00 per 100.

**ANDROMEDA ARBOREA.** SORREL TREE. A lovely small tree with shining, peach-like leaves which assume brilliant autumn tints; flowers in long, terminal clusters, pure white and bell-shaped. 50c.; \$25.00 to \$40.00 per 100.

**ARALIA.** Fine trees of this beautiful species: **Japonica, Pentaphylla and Spinosa.** 50c. to \$1.00. Low prices per 100.

**BETULA ALBA.** EUROPEAN WHITE BIRCH. Its white bark makes it prominent as well as attractive. Its small, smooth leaves and drooping habit make it very effective in groups. 50c. to \$1.00. Low prices in quantity.

**Alba Pendula.** CUT-LEAVED WEEPING BIRCH. Fine cut foliage. 50c. to \$1.00.

**Lutea,** YELLOW BIRCH. 12 to 14 feet, \$60.00 per 100, special; **Lenta,** SWEET BIRCH, **Populifolia.** Fine trees, different sizes, special prices in quantity.

**Papyracea.** PAPER OR CANOE BIRCH. Clear white bark; one of the finest of the birches. 75c.; 4 to 6 feet and up, \$20.00 to \$60.00 per 100.

**CARPINUS AMERICANA.** AMERICAN HORNBEAM. Similar in growth to the Beech, but inclined to be shrub-like in form. Valuable for hedge-work. \$1.00 to \$2.00.

**Betulus.** EUROPEAN HORNBEAM. Compact grower. Holds its leaves for a long period. 50c. to \$1.25.

**CASTANEA AMERICANA.** AMERICAN CHESTNUT. A large beautiful tree bearing fine nuts and a useful shade variety. All sizes. \$15.00 per 100 up

**Paragon, Japonica.** Both varieties have large sweet fruit and bear early. \$1.00 to \$2.00.

**CATALPA BUNGEI.** CHINESE CATALPA, THE UMBRELLA TREE. The trees grow 10 to 12 feet high and the heads when grown are about 12 feet across. They grow into shape without any trimming. The foliage is deep green, forming a beautiful roof of leaves, umbrella-like. Used for formal planting where Bay Trees are not sufficiently hardy. \$1.00 to \$1.50. Specimens \$2.00 to \$5.00.

**Speciosa.** WESTERN CATALPA. Hardy and of very rapid growth. 50c. to \$1.00. Low prices in quantity.

**CERASUS ALBA PLENA.** DOUBLE FLOWERING CHERRY. Beautiful white flowers in May. 75c.

**Japonica Rosea.** JAPAN ROSE-FLOWERING CHERRY. One of the most beautiful of the small-flowering trees. The flowers are large and double, tinted with exquisite shades of rose and pink, borne profusely in May. 75c. to \$1.00.

**Japonica Rosea Pendula.** JAPAN WEEPING ROSE-FLOWERING CHERRY. One of the finest pendulous trees for lawns or small grounds. The flowers are a beautiful rose color and produced in great abundance. \$1.00 to \$2.00.

**CERCIS CANADENSIS.** JUDAS TREE OR RED BUD. 50c. Low prices per 100.

**Japonica.** JAPAN JUDAS TREE. One of the finest of the small flowering trees. 50c.

**CORNUS FLORIDA.** WHITE DOGWOOD. The flowers are produced in the Spring before the leaves appear, and are from 3 to 3½ inches in diameter, white and very showy; the foliage in the Autumn turns to a deep red, rendering the tree one of the most showy and beautiful at that season. 35c. to \$1.00.

**Florida Rubra.** RED-FLOWERING DOGWOOD. Producing deep, rosy-pink flowers in great abundance in the early Spring; like the preceding only more rare. \$1.00 to \$2.00.

**Kousa.** JAPANESE DOGWOOD. A rare oriental variety. Creamy white flowers. \$2.50 and up.



CORNUS FLORIDA—WHITE DOGWOOD

- CRATAEGUS COCCINEA.** HAWTHORN. **Crus-galli, Oxycantha, Tomentosa** and other leading varieties: 3 to 5 feet, 60c. to \$1.00. Low prices per 100.
- CYTISUS LABURNUM.** GOLDEN CHAIN. A small tree bearing long, pendent racemes of yellow flowers in June; very attractive. 50c. to \$1.00.
- FAGUS FERRUGINEA.** AMERICAN BEECH. Compact tree. Light colored, smooth bark; foliage glossy and attractive. Prices on application.
- Sylvatica.** EUROPEAN BEECH. Round, compact head and deep green foliage; excellent for screen purposes, hedges, etc. Also to grow as specimens. Very low prices per 100.
- Sylvatica Heterophylla.** FERN-LEAVED BEECH. A tree of elegant appearance and with delicately cut fern-like foliage. \$1.00 to \$2.00.
- Sylvatica Pendula.** WEEPING BEECH. Vigorous, picturesque and of large size; the trunk is generally straight with spreading branches; of wonderful grace and beauty when covered with its rich, luxuriant foliage. 85c. to \$2.50.
- Sylvatica Purpurea.** PURPLE-LEAVED BEECH. A fine vigorous tree. The foliage in Spring is deep purple. Very effective. Low prices.
- Sylvatica Purpurea Pendula.** WEEPING PURPLE BEECH. A pronounced weeping form of the purple-leaved Beech. A rare and beautiful tree, with same dark rich foliage of the purple-leaved variety. \$2.00 and up.
- Sylvatica Purpurea Riversii.** RIVERS' PURPLE-LEAVED BEECH. The finest dark-leaved tree cultivated, with a dense, round, symmetrical head and leaves almost black in good specimens, holding their color throughout the season. Unquestionably one of the most beautiful ornamental trees. Favorable prices.
- FRAXINUS AMERICANA.** AMERICAN WHITE ASH. A well-known tree, rapid growth with spreading branches. Suitable for street or avenue planting. 50c. to \$1.75. Low prices per 100.
- Excelsior.** EUROPEAN ASH. Tree of rapid growth and spreading habit. Bark gray, foliage pinnate and buds black. 60c. to \$1.50.
- Ornus.** EUROPEAN-FLOWERING ASH. Bears greenish-white, fringe-like flowers, in May or June, in large clusters on the ends of the branches. \$1.00 to \$2.00.
- GLEDITSIA TRIACANTHOS.** THE HONEY LOCUST. Beautiful foliage; a fine tree; also used largely as a hedge plant for line planting. 50c. to \$1.00. Low prices in quantity.
- GYMNOCLADUS CANADENSIS.** KENTUCKY COFFEE TREE. A fine tree of rapid, upright growth, with rough bark; feathery foliage of bluish-green color. In June bears large panicles of green flowers. 75c. to \$1.50.
- JUGLANS NIGRA.** BLACK WALNUT. 50c. to \$1.00.
- Japanica.** The large early fruiting Japanese Walnut; fine quality. \$1.00 to \$2.00.
- KOELREUTERIA paniculata.** A hardy, small, round-headed tree; conspicuous on account of its brilliant, golden blossoms, which appear in July, when few other trees are in bloom; leaves turn to fine yellow in Autumn. 75c. to \$1.25.
- LARIX EUROPEA.** EUROPEAN LARCH. A beautiful tree with light green foliage. Useful as a lawn species, its pendulous branchlets adding a charm to its perfect conical outline. 50c. to \$1.00.
- Kaempferi.** JAPAN LARCH. A tree with horizontal branches, forming a pyramidal head; foliage light green when young, changing to golden-yellow in Fall. \$1.00 to \$1.75.
- Leptolepis.** MONEY PINE OF JAPAN. Slender, dark yellowish ash-colored branches; rich green foliage. \$1.50 to \$2.50.
- LAURUS NOBILIS.** BAY TREE. We make a specialty of BAY TREES. See page 23.
- LIQUIDAMBAR STYRACIFLUA.** SWEET GUM. Star-shaped leaves turning to a brilliant red or crimson in Autumn. One of the finest American trees. Most ornamental. \$1.00 and up.
- LIRIODENDRON TULIPIFERA.** TULIP TREE. Glossy red foliage; tulip shaped flowers; should be transplanted small. 75c. to \$1.50. Special prices by the 100 or more.
- MAGNOLIA.** American Varieties—**Acuminata, Glauca, Tripetala**, and others. 50c. to \$1.50.
- MAGNOLIA.** Chinese Varieties—Fine trees of all the most effective kinds. Large white, purple and crimson tinted flowers. **Alexandria, Conspicua, Lennei, Soulangeana, Speciosa, Stellata, Halleana.** Well furnished, well rooted trees with ball; 2 to 6 feet. \$1.00 to \$2.50 each.
- MORUS PENDULA.** WEEPING MULBERRY. Grafted on stem 5 to 7 feet, this unique variety forms a perfect umbrella head with branches drooping directly to the ground. \$1.00; specimens \$2.00 to \$5.00.
- NYSSA multiflora.** SOUR GUM. A large native tree with its lower branches pendulous as it grows old; foliage small and glossy. Beautiful and distinct, especially in the Fall when the foliage turns to a brilliant crimson. 35c. to \$1.00.
- PAULOWNIA imperialis.** PAULOWNIA. A very showy and valuable ornamental tree of large size and rapid growth. The flowers are blue, or rather bluish lilac, and in shape not unlike those of the glloxinia. Blooms in early Summer. 75c. to \$2.00.
- PERSICA vulgaris flore alba plena.** DOUBLE WHITE-FLOWERING PEACH. A superb flowering dwarf tree covered in May with a profusion of double white flowers, producing a most charming effect when grouped with the two following varieties. 50c. to \$1.00.
- Vulg. fl. rosea plena.** DOUBLE ROSE-FLOWERING PEACH. Of dwarf habit; beautiful rose-pink flowers resembling small roses. Handsome and attractive. 50c. to \$1.00.
- Vulg. fl. sanguinea plena.** DOUBLE RED-FLOWERING PEACH. A fine dwarf flowering tree producing an abundance of semi-double bright red flowers in early Spring. 50c. to \$1.
- PLATANUS occidentalis.** AMERICAN PLANE, SYCAMORE, OR BUTTONWOOD. One of the most massive, and perhaps the tallest of all deciduous trees in North America. Rapid growth. Large, heart shaped leaves. \$1.00 to \$2.00.
- Orientalis.** ORIENTAL PLANE. A well-known tree of rapid growth, valuable on account of its immunity from injurious insects and diseases; handsome foliage, deeply cut. Desirable for lawns, street and park planting; quick growth. 50c. to \$2.00.
- POPULUS ALBA.** White or Silver Poplar, or Silver Abele. Large-lobed leaves, glossy green above and snow white beneath. 50c. to \$1.00.
- Bolleana.** Of upright growth, in form resembling the Lombardy Poplar; bluish colored bark; glossy green foliage. A valuable variety. 75c. to \$1.50.

- Balsamifera.** BALSAM POPLAR. BALM OF GILEAD. Very rapid growth, large glossy foliage. 50c. to \$1.00.
- Fastigiata.** LOMBARDY POPLAR. Narrow upright growth; very effective in landscapes. 50c. to \$1.00.
- Monilifera.** CAROLINA POPLAR. A vigorous tree of rapid growth, often attaining a height of 70 feet or more. Valuable for street planting. Very desirable where immediate effect is required. Large foliage, transplants easily. 50c. to \$1.50.
- PTELEA, trifoliata.** HOP TREE. A low, handsome tree of rapid growth and robust habit; glossy, trifoliolate leaves; flowers in June. 50c. to \$1.00.
- Trifoliata aurea.** Similar to the preceding but having beautiful, glossy, golden foliage which retains its color until frost. Striking and brilliant. 50c. to \$1.00.
- PYRUS, angustifolia.** BECHTEL'S DOUBLE-FLOWERING CRAB. Considered the best flowering Crab Apple yet introduced, with beautiful pink flowers of immense size and very fragrant; double, resembling roses. 75c. to \$1.00.
- Malus floribunda.** A distinct and very pretty variety. Flowers are produced in abundance, and change from carmine to white when open. Fruit small and ornamental. 75c. up.
- M. Parkmani.** It flowers the whole length of the past season's growth as well as from the older spurs; rich carmine in color, very double. 75c. to \$1.00.
- QUERCUS alba.** WHITE OAK. One of the largest of our native deciduous trees. Although common in our forests, it is certainly unsurpassed for lawns where it can develop its proportions. Leaves smooth, bright green above, glaucous beneath. 50c. to \$3.00.
- Cerris.** TURKEY OAK. Of rapid symmetrical growth; finely lobed foliage deeply cut, holding on till late in Fall. Fine for lawn. \$1.00 to \$3.00.
- Coccinea.** SCARLET OAK. A large tree, native of the United States, with deeply lobed leaves of shining green, changing in Autumn to brilliant scarlet. A valuable ornamental variety. \$1.00 to \$3.00. See cut.
- Ilex var. Fordii fastigiata.** PYRAMIDAL EVER-GREEN OAK. Of very upright growth, like a Lombardy Poplar. A beautiful tree. Pyramidal habit; leaves very variable, dark green above, yellowish white beneath. Prices on application.
- Macrocarpa.** BUR OAK. A western tree of medium size. The branches are usually covered with corky bark, and the large leaves are distinctly marked, being very deeply lobed, pale beneath. 75c. to \$2.00.
- Palustris.** PIN OAK. Perhaps the most popular species for ornamental planting. Generally of medium size, with drooping branches and bright green, shining leaves. For either lawn or avenue planting it is an exceedingly handsome tree. \$1.00 to \$3.50.
- Robur.** ENGLISH OAK. The Royal Oak of England. A well-known tree of spreading, rapid growth, entirely distinct from American varieties; leaves are long and divided, retaining their green color very late. \$1.00 to \$2.50.
- Robur, concordia.** GOLDEN-LEAVED OAK. An elegant ornamental tree, with notable rich yellow foliage, rarely, if ever, scorching in the full sun. Good healthy grower; the

best golden-leaved form in the entire list of deciduous trees. \$1.00 to \$3.50.

**Rubra.** RED OAK. Another estimable native species of large size, with cut, smooth, shining leaves, turning brilliant red in Autumn. It is a moderately rapid grower when established, and is always a marked type among the Oaks. \$1.00 to \$2.00.



QUERCUS COCCINEA

- ROBINIA Hispida.** ROSE ACACIA. Large foliage; spreading habit of growth; dainty rose-colored flowers. 50c. to \$1.00.
- Pseud-acacia.** BLACK OR YELLOW LOCUST. A well-known native tree of rapid growth and large size with rough bark; exceedingly fragrant flowers in June. A fine lawn tree and valuable for timber. 50c. to \$1.00.
- SALISBURIA, Adiantifolia.** MAIDEN HAIR OR GINKGO. A handsome tree of medium size and rapid, pyramidal growth; beautiful fern-like foliage, thick and glossy. Hardy, very effective. \$1.00 to \$2.00.
- SALIX ALBA.** WHITE WILLOW. Very effective white foliage. 50c. \$10.00 to \$20.00 per 100.
- Babylonica.** COMMON WEEPING WILLOW. This old Asiatic species is the perfection of a pendulous tree; is perfectly hardy, and a rapid grower. In the near vicinity of bodies of water, the Weeping Willow succeeds admirably, making a large tree. 50c. Low prices per 100.
- Caprea.** COMMON GOAT WILLOW. Like Pussy Willow, large flowers appearing before the leaves. 50c. and up. Low prices per 100.
- Caprea Pendula.** KILMARNOCK WILLOW. A creeping form of the Goat Willow, which, when grafted on upright stems, makes very attractive little trees. 50c. and up. Low prices per 100.



AMERICAN ELM.

### LARGE TREES FOR IMMEDIATE EFFECT

While everyone recognizes the desirability of securing planting and foliage effects without loss of time, yet, from an extended observation and experience, we do not recommend moving exceptionally large trees unless the work can be accomplished with proper appliances and efficiently done, with full ball of earth. Otherwise, the results are not likely to prove as satisfactory as in the use of trees of sizes more readily moved and successfully transplanted.

We can, however, furnish some of the varieties of larger size trees, from 3 to 4 inch up to 6 and 7 inch caliper trees, that can be safely moved without balls and successfully transplanted, including **Silver, Norway, Sugar and Sycamore Maples, White Birch, Canoe Birch, Western Catalpa, American Ash, Tulip Tree, Planes, Oaks, Lindens, Elms, etc.** Write for special quotation on your requirements.

### SMALL TREES FOR NURSERY PLANTING

Where future planting is required, these small trees are desirable in point of economy, increasing rapidly in value each year.

We furnish this stock in the leading varieties of Deciduous Trees, 2 to 6 feet high, and of Evergreens, principal varieties 1 to 2 feet, \$8.00 to \$20.00 per hundred, \$75.00 to \$150.00 per thousand, according to sizes and varieties. All transplanted healthy vigorous stock.

With rows 4 to 6 feet apart, from 4,000 to 6,000 of these trees can be advantageously planted per acre. **LOOK AHEAD!** The purchasing of young trees for planting in Nursery Rows is being adopted by the leading Parks, Public Institutions, Cemeteries, Shade Tree Commissions and the best private estates. It is economical and advantageous, as the trees are practically doubling in value each year and the expense in freight and cartage over long distances of the larger trees is obviated.

### COLLECTED NATIVE STOCK

For *best results* we always recommend NURSERY GROWN STOCK, but the above material is often in demand for extensive planting schemes where barren places are to be given a landscape effect and where economy is necessary.

We have unsurpassed facilities for supplying all the principal varieties of collected indigenous trees, evergreen shrubs and hardy perennials. This stock is far less costly than nursery grown stock, and if not of too large size when transplanted, is usually satisfactory.

In deciduous stock, the leading varieties—**Acers, Azaleas, Betulas, Berberis, Cercis, Clethra, Cornus, Corylus, Crataegus, Dirca, Diervilla, Fraxinus, Ilex, Quercus, Myrica, Rhus, Ribes, Rosa, Rubus, Salix, Spirea, Viburnum, Xanthoriza, etc.**, of different sizes and varieties.

Of the hardy evergreens—**Abies Canadensis, Hemlock, Andromeda, Juniperus, Kalmia, Leucothoe, Pinus Strobus**, all sizes very fine with ball, **Rhododendron, Taxus Canadensis, CANADIAN YEW.**

And of native VINES and hardy PERENNIALS, all the varieties used for ornamental purposes. Quotations on any variety or quantity of this native stock submitted on application.

**FORESTRY STOCK.** The furnishing of Forestry Material, viz.: Deciduous Trees in 1 year and 2 year Seedlings, and Evergreen Trees in 1 year, 2 year and 3 year Seedlings, and 2 year, 3 year and 4 year old Transplants is one of our specialties. See page 31.

- Laurifolia.** LAUREL-LEAVED WILLOW. A fine ornamental tree. 50c. Low prices per 100.
- Vitellina.** GOLDEN-BARKED WILLOW. A showy variety, with golden bark. 50c. and up.
- SORBUS Americana.** AMERICAN MOUNTAIN ASH. A small tree, with smooth bark and bright green, pinnate leaves. 50c. to \$1.00.
- Aucuparia.** EUROPEAN MOUNTAIN ASH. Pubescent leaves and clusters of orange-colored fruit. It is a valuable tree for planting near the seacoast. 50c. to \$1.00.
- TILIA Americana.** AMERICAN LINDEN OR BASSWOOD. Stately tree, with large, shining, dark green, heart-shaped leaves. 75c. to \$2.00.
- Argentea.** SILVER OR WHITE LINDEN. A rapid grower, medium size, pyramidal form; leaves large, pale green on upper side and downy white beneath. \$1.00 to \$2.00.
- Dasytyla.** CRIMEAN LINDEN. Foliage dark rich glossy green above, reverse side pale green. Vigorous tree. \$1.00 to \$2.00.
- Europæa.** EUROPEAN LINDEN. Pyramidal tree. Foliage plentiful, forming a dense shade; fragrant when in bloom. 75c. to \$2.00.
- Platyphyllos.** BROAD-LEAVED EUROPEAN LINDEN. Superb tree, with immense foliage; very majestic. \$1.00 to \$2.00.
- ULMUS Americana.** AMERICAN WHITE ELM. One of the grand native forest trees; lofty and spreading, with branches drooping; exceedingly picturesque. All sizes including trees of large caliper. Prices on application.
- Campestris.** ENGLISH ELM. Erect in growth. compact; A hardy, valuable tree; 75c. to \$5.00.



FORMAL GARDEN PLANTING

## EVERGREEN AND CONIFEROUS TREES

The following are some of our leading varieties all properly transplanted. Many remove with ball. We recommend Spring and August as the most favorable time in ordinary seasons for transplanting evergreens, and that roots of trees, for August planting especially, be put up with ball and burlap. This service is charged for at cost, usually from 5c. to 15c. per tree, according to size.

We can furnish EXTRA SPECIMENS of many varieties, several times transplanted, each with ball and very valuable for immediate effect. Particulars and quotations on request.

FOR FORESTRY EVERGREENS, see pages 31 to 34.

**ABIES (Picea), alba.** WHITE SPRUCE. One of the best ornamental trees for general use. Light silvery green foliage, of dense pyramidal growth. \$1.00 to \$2.00 and up.

**Balsamea.** BALSAM FIR, BALM OF GILEAD. A well-known native species, beautiful when young. It is deep green in color, rapid in growth and unquestionably hardy. \$1.00 up.

**Canadensis.** COMMON HEMLOCK. Hedge plants; 1 foot to 5 feet. Also specimens in all sizes. Low prices.

**Concolor.** WHITE SILVER FIR. A native of the western states, and, unlike many of the Pacific slope conifers, is quite reliable in the eastern states. It eventually forms a very large tree, with leaves long, pale glaucous green, and very attractive.

**Douglasi.** DOUGLAS SPRUCE. A fine, long-lived tree from the Rocky Mountains, with soft brilliant green foliage which has a bluish tint when young. It is of vigorous and symmetrical growth and should be more generally planted on account of its graceful, elegant habit. 50c. to \$5.00.

**Excelsa.** NORWAY SPRUCE. This popular evergreen is so well known that it scarcely needs description. It is a general favorite with all planters on account of its hardiness, rich green color, graceful habit and adaptation to all well-drained soils. It forms a large-sized specimen, of pyramidal form, branched to the ground. Fine stock from 1 to 6 feet. Extra specimens up to 15 feet. Low prices. See Forestry Stock.

**Excelsa inverta.** WEEPING NORWAY SPRUCE. A remarkable drooping form of Norway Spruce.

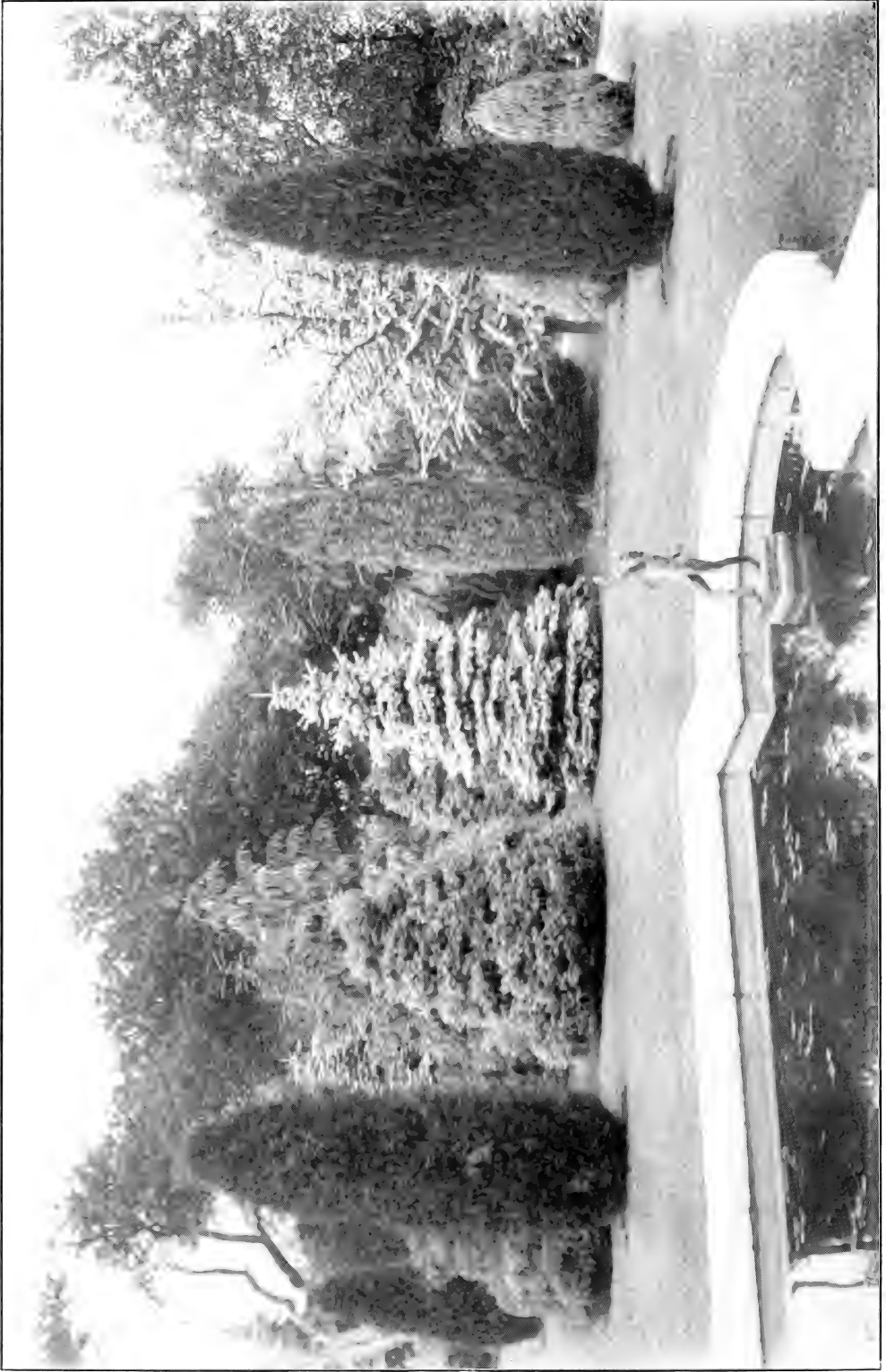
**Nordmanniana.** NORDMANN'S FIR. The foliage is massive, dark green, shining above and slightly glaucous below, rendering it a very handsome tree. Considered one of the finest of the Silver Firs; no lawn should be without it.

**Orientalis.** EASTERN SPRUCE. From the shores of the Black Sea. A handsome tree, tall and compact, and remarkable for its graceful habit and slender foliage. Needs protection while young.

**Pungens Glauca.** COLORADO BLUE SPRUCE. The "true blues" of this variety are generally admitted to be the most strikingly beautiful of all the Coniferæ. The trees are easily grown, transplant successfully, and are hardy everywhere. The steel blue color gives this variety its peculiar charm. Always a marked object in lawns or landscape. Fine, transplanted specimen trees of real blue color, 18 inches to 6 feet, \$1.50 to \$15.00 each. Fine trees, not selected color, \$1.50 to \$5.00.

**Picea Pungens Glauca Kosteriana.** KOSTER'S BLUE SPRUCE. Beautiful steel blue color. An improved variety of the Blue Spruce and much superior to the Glauca, being of a far more intense blue color. Its bright silvery foliage make it distinctive as a lawn specimen.

Write for our favorable prices on all sizes of this variety including extra sizes and XXX specimens.



LAWN PLANTING OF SPECIMEN EVERGREENS



- Kosteriana Pendula.** KOSTER'S WEEPING BLUE SPRUCE. The type of the former but with drooping branches. Very rare. \$5.00 to \$10.00.
- CEDRUS ATLANTICA.** MT. ATLAS CEDAR. The hardest of the true Cedars; delicate leaves of steel blue tint. \$1.50 to \$2.50.
- Atlantica Glauca.** One of the most rare and beautiful evergreens; silvery foliage. \$2.00 to \$5.00.
- Deodora.** Majestic, pyramidal form. A beautiful tree for lawns. Not entirely hardy north of New York. \$2.00 to \$3.00.
- Libani.** CEDAR OF LEBANON. Very choice; lustrous dark green foliage. \$2.00 to \$3.00.
- JUNIPERUS AUREA.** GOLDEN JUNIPER. Beautifully gold-marked foliage; dwarf spreading habit. \$1.00 to \$2.00.
- Communis Hibernica.** IRISH JUNIPER. Now becoming one of the most popular forms of our common Juniper; foliage a silvery bright green; of uniform rapid growth, requiring but little trimming.
- Prostrata Sabina.** TRAILING JUNIPER. Fine for massing; low spreading growth. 50c. to \$1.00. Low prices per 100.
- Virginiana.** RED CEDAR. Upright columnar habit and beautiful in color of foliage. All sizes from 2 feet to 20 feet, including large specimens that remove with ball for immediate effect. Prices on application.
- Virginiana glauca.** The compact, conical habit of this variety and its silvery foliage, render it very distinct and prominent among other evergreens. Very hardy; fine for seashore planting. Prices on application.
- PINUS AUSTRIACA.** A remarkably hardy tree of spreading form, with long leaves, dark green; of rapid growth.
- Cembra.** SWISS STONE PINE. A handsome, hardy tree; regular conical outline, deep green foliage. Unlike many other Pines, it retains its branches to the ground.
- Mughus.** A dwarf tree of the highest value where a low, dense, spreading growth is desired. Very dark foliage; extremely hardy.
- Strobus.** WHITE PINE. This is the most imposing of all the Pines native to the eastern states. It forms a large, straight tree with long, slender, slightly glaucous leaves. The most popular Pine for general planting, making a majestic tree when full grown. In all sizes. Low prices per 100. See Forestry Stock, pages 31 to 34.
- Sylvestris.** SCOTCH PINE. A rapid-growing, very hardy evergreen, especially adapted for windbreaks and grouping. It is a native of central and northern Europe, forming large trees with pleasing glaucous green leaves. See Forestry Stock, pages 31 to 34.
- The above and other Pines in fine healthy stock in various sizes. 50c. to \$1.00 and up, according to grade. Low prices in quantity. EXTRA specimens of WHITE PINE, 5 feet to 10 feet, each with ball and burlap. Special prices per 100.*
- RETINOSPORA FILIFERA.** THREAD-LIKE JAPAN CYPRESS. Beautiful tree of elegant form. Bright green foliage; drooping branches. 75c. to \$2.00.
- Pisifera.** Delicate branches; fine feathery foliage. \$1.00 to \$2.00. Specimens \$3.00 to \$5.00.
- Plumosa.** PLUME-LIKE CYPRESS. Very graceful habit. 50c. to \$2.00. Specimens. \$3.00 to \$5.00.
- Plumosa Aurea.** GOLDEN JAPAN CYPRESS. Foliage tipped golden yellow; compact, symmetrical form. 50c. to \$2.00. Specimens \$3.00 to \$5.00.
- Squarrosa.** Foliage possesses a silvery green tint. Very effective. 50c. to \$2.00. Specimens \$3.00 to \$5.00.
- SEQUOIA WELLINGTONIA.** Big Tree of California. The hardy species; compact habit. \$2.00 to \$5.00.
- SCIADOPITYS VERTICILLATA.** UMBRELLA PINE. Unique and unlike any other variety. Very long and wide leaves which grow in parasol-like whorls and give the tree a distinct individuality; perfectly hardy. \$2.00 to \$10.00.
- TAXUS BACCATA.** COMMON, or ENGLISH YEW. A popular evergreen seen in all English gardens. Of slow growth; in time attaining a small tree. Very rich, dark glossy green foliage. Fine trees of various sizes at low prices. A few XXX Pyramid Specimens about 15 feet high by 4½ feet to 5 feet diameter at base. Send for quotation.
- Canadensis.** CANADIAN YEW. A native variety. Low prices per 100.
- Cuspidata.** JAPANESE YEW. A small tree from Japan that has proven entirely hardy with us. It has large, dark glossy green leaves and a compact habit of growth. Scarce. Write for prices.
- THUYA OCCIDENTALIS.** AMERICAN ARBORVITÆ. This well known tree is a native of the northern portion of our continent, is entirely hardy in all situations, and not particular in regard to soils. It forms a dense tree, from 25 to 50 feet high, growing in an erect conical form, and is of rapid growth. No evergreen bears the shears with less injury than this. The best hardy evergreen for hedge. All sizes, including large specimens, at low prices.
- George Peabody.** This is the most conspicuous and elegant of variegated or golden-tinted conifers. It is a rapid grower, having foliage plentifully marked with deep golden yellow. As in all of this class of trees, the early Summer growth is much more beautiful and quite hardy, combining all the elements of success.
- Globosa.** GLOBE HEADED ARBORVITÆ. Another of the popular dwarf forms, globular in outline and dense in construction. It is a very pretty shade of green, needs no clipping, and is always reliable.
- Pyramidalis.** PYRAMIDAL ARBORVITÆ. A remarkably columnar form, with all the branches rigidly erect; dark green, compact, very desirable. As conspicuous as the Irish Yew and much harder than that popular English evergreen. Low prices.
- Siberica.** A low growing dense form, with regular conical outline and peculiar bluish-green foliage, rendering it quite distinct. Remarkably hardy. Low prices per 100.
- (Biota), Orientalis.** CHINESE ARBORVITÆ. Dense pyramidal little trees with fresh green foliage.
- Orientalis aurea.** Bright golden, green foliage.
- TSUGA.** HEMLOCK. See ABIES.

# SHRUBS

Particular attention is called to our extensive collection of fine hardy ornamental shrubs. This stock we furnish in almost any size and variety, of excellent quality and at very low prices per hundred and per thousand. Extra sizes and large specimens of many varieties are also supplied at low prices.

A suitable selection and arrangement of hardy evergreen and deciduous shrubs put the finishing touches on the landscape and planting adornment of every well-laid-out park, garden or country place.

The following are the more desirable varieties. Special prices by the hundred and per thousand.



A TASTEFUL ARRANGEMENT OF SHRUBBERY WITH PERENNIALS

**ABELIA Rupestris.** A choice dwarf shrub of graceful habit. It bears profusely during the entire Summer and Fall months white, tinted lilac, heather-like flowers, so as to completely cover the plant; very fragrant.

**ALNUS.** ALDER. See under Deciduous Trees.

**ALTHEA.** See Hibiscus, page 18.

**AMELANCHIER Botryapium.** JUNE BERRY. Of graceful, slender, fastigate form; bears snowy-white flowers in great profusion in April. Early flowering.

**AMORPHA fruticosa.** COMMON FALSE INDIGO. A tall native shrub of very easy cultivation, blooming freely in June. The violet flowers are crowded in terminal spikes. Of rapid growth. 35c to 50c.

**ANDROMEDA Floribunda.** Choice evergreen shrub, dwarf habit, with short stiff branches densely clothed with small dark green foliage. Flowers Lily-of-Valley like in appearance. \$10.00 to \$20.00 per doz.

**Leucothoe.** Bright red twigs; bell shape; Lily-of-Valley like flowers. 50c. Low prices per 100.

**ARALIA Japonica.** Of spreading form, with great spikes of white flowers in Summer; large foliage. Very ornamental. 50c. to \$1.00.

**Pentaphylla.** A pretty, medium-sized shrub of rapid growth; shining, deep green leaves. 35c. to 75c.

**Spinosa.** Stout, prickly branches; broad, handsomely cut leaves, and large clusters of

small, greenish-white flowers in July. 50c to \$1.00. Low prices per 100.

**AZALEA Amoena.** Very hardy evergreen Azalea of dwarf, compact bushy habit, with green leaves which turn reddish brown in Autumn and remain over winter. In May bears a profusion of rosy red flowers. Very fine. All sizes. Beautiful plants. 50c. to \$1.50. Special prices per 100.

**Arborescens.** SMOOTH AZALEA. A tall native shrub, often attaining 10 feet in height. Flowers rose colored and highly fragrant. Found in mountains of Virginia, North Carolina, etc. \$5.00 to \$7.50 per dozen.

**Ghent or Pontica.** The best collection of these attractive shrubs obtainable, comprising the finest hardy varieties of brilliant colored flowers. Selected, well-budded plants. \$9.00 to \$18.00 per doz. Extra specimens \$25.00 per dozen.

**Hinodigiri.** A grand NEW variety somewhat resembling Azalea Amoena, but having much larger foliage and far more brilliant flowers, the color a striking shade of bright red or carmine pink covering the plant with a solid mass of the most brilliant colored flowers in May. This with the effective evergreen foliage and compact habit makes this a superb variety and one of the very finest hardy shrubs recently introduced. Specimen plants full of buds 18 x 18 inches broad, \$6.00 per pair, \$35.00 per dozen. Fine bushy plants 12 to 14 x 12 inches well budded, \$18.00 per dozen.

- Kosteri.** One of the most showy and effective hardy shrubs of recent introduction. The flowers are an intensely bright yellow and appear in wonderful profusion when in bloom, covering the entire plant with a solid golden color. Fine, well budded plants, \$18.00 per doz.
- Lutea.** (Syn., *A. calendulacea*.) FLAME AZALEA. Found wild in the mountains of Pennsylvania, Virginia, and southward. It is perhaps the most elegant of all our native species when covered with brilliant orange-red flowers, which open simultaneously with the leaves; forms a large shrub. 50c. to \$1.00.
- Mollis.** Hardy in most situations; also useful for forcing. Many varieties, the flowers of which are in various colors, of red, orange, primrose and yellow. Very effective in beds and masses and in borders. \$6.00 to \$15.00 per doz. Special prices per 100. Extra specimens \$20.00 per doz. XXX specimens, 2½ to 3 feet, 150 to 200 buds, \$30.00 per doz.
- Nudiflora.** WILD HONEYSUCKLE. One of the most brilliantly colored of all our native Azaleas. During April it is covered with a profusion of beautiful flesh-colored or pink flowers. 50c. to \$1.00.
- Vaseyi.** VASEY'S AZALEA. Hardy and attractive. The flowers appear before the foliage and are a pretty shade of pink with mottled throats. It is quite a rapid grower. 50c. to \$1.00.
- Viscosa.** SWAMP HONEYSUCKLE. This neat species is found throughout the North, usually in low, swampy places, but succeeds on high ground under proper conditions. The flowers are pure white, very fragrant. 50c. to \$1.00.
- BACCHARIS Halimifolia.** GROUNDSEL SHRUB. Its dark green foliage and white fluffy clusters of seed vessels, which appear in September and last until after frost, make it valuable for Autumn effects. Grows well at the seashore. 35c. to 75c.
- BAY TREE.** See "Bay Trees," page 23.
- BERBERIS Aquifolium.** (Syn., *Mohonia aquifolium*.) A small, spreading shrub, with smooth, spiny, holly-like leaves and racemes of rich golden yellow flowers, succeeded by roundish purple berries in Autumn. \$4.00 per dozen.
- Canadensis.** AMERICAN BARBERRY. Yellow flowers; red berries in Autumn; leaves bristly serrate; fine plants. \$3.00 per dozen.
- Thunbergii.** A graceful shrub of low dense habit. Bright foliage, red berries. Very fine plants, all sizes. \$2.50 to \$5.00 per dozen. Low prices per 100 and per 1,000.
- Vulgaris.** EUROPEAN BARBERRY. Useful for hedges. \$3.00 per dozen.
- Vulgaris Purpurea.** PURPLE-LEAVED BARBERRY. An interesting and beautiful variety with violet-purple leaves and fruit. \$4.00 per dozen.
- BUXUS Sempervirens.** BUSH BOXWOOD. Common TREE BOX. We supply this valuable evergreen shrub in all sizes from 6 inches to 8 inches, for hedge purposes, to grand specimens 4 feet to 5 feet in height and 3 feet to 4 feet in diameter. Quotations and particulars on application.
- Suffruticosa or Nana.** DWARF EDGING BOX. This old and useful variety maintains its popularity for dwarf edging purposes. Fine well-rooted plants, 3 inches to 4 inches and larger, per thousand and ten thousand, \$40.00 to \$75.00 per thousand.
- CALYCANTHUS Floridus.** SWEET SHRUB. An interesting shrub, having a rare and peculiar fragrance of wood and flowers; its blooms are abundant and a peculiar chocolate color. Fine plants. \$2.50 to \$5.00 per dozen. Low prices per 100.
- CARAGANA Arborescens.** SIBERIAN PEA TREE. An erect shrub or low tree, bearing a profusion of pea-shaped yellow flowers in May. 25c. to \$1.00.
- CARYOPTERIS Mastacanthus.** BLUE SPIRÆA. An elegant little plant, with verberna-like bloom and flowering freely until late in Autumn; flowers pale blue or lavender, and exceedingly attractive. 35c.
- CEANOTHUS Americanus.** NEW JERSEY TEA. Generally grows about 3 or 4 feet high, bushy and spreading, with an abundance of pure white flower-clusters in June and July. 35c. to 50c.
- CEPHALANTHUS Occidentalis.** BUTTON BUSH. A tall-growing native shrub with globular heads of white flowers borne on long stems in July which hang on all Summer as brown seed balls; curious and picturesque. 25c. to 50c.
- CHIONANTHUS Virginica.** WHITE FRINGE TREE. Blooms abundantly, bearing curious snow-white, fringe-like flowers. 50c.
- CLETHRA Alnifolia.** A most useful shrub, bearing a profuse number of upright spikes of yellowish white, sweet-scented flowers about the first of August. 30c. to 50c.
- COMPTONIA Asplenifolia.** Fern-like dark green, scented foliage and brownish heads of flowers. Useful for massing on rockery or barren places. 35c.
- CORNUS Alba.** RED BRANCHED DOGWOOD. Erect stems and bright blood-red branches. Makes a striking effect in Winter. Very useful in mixed borders of shrubs. Low prices per 1,000.
- Alternifolia.** BLUE DOGWOOD. A native plant which forms a large shrub. The peculiar arrangement of the branches gives the shrub a flattened aspect. Low prices per 100.
- Paniculata.** PANICLED DOGWOOD. A medium-sized rapid-growing shrub with numerous panicles of pure white flowers; branches smooth and gray, with ovate-lanceolate foliage, whitish beneath. Fruit abundant and pure white. Low prices per 100.
- Sericea.** SILKY DOGWOOD. A native shrub succeeding well on high ground. Bark purplish; leaves have a silky pubescence on the under side. Fruit pale blue. Low prices per 100.
- Mascula.** CORNELIAN CHERRY. Handsome shrub of dense growth; showy yellow flowers; large, shining, scarlet berries in the Fall. 35c.
- CORYLUS Atropurpurea.** PURPLE-LEAVED FILBERT. Fine shrub, very showy, with dark bronzy purple leaves. Hardy. \$5.00 per doz.
- COTONEASTER Microphylla.** SMALL LEAVED COTONEASTER. Trailing habit. Dark glossy foliage. Bright berries in Autumn. \$5.00 per dozen.
- CRATAEGUS Pyracantha.** EVERGREEN THORN. Compact shrub, spreading habit. White or pink flowers in Spring; bright colored berries in Autumn. Good plants; and for hedges. 50c.
- CYDONIA Japonica.** JAPANESE QUINCE. **Scarlet** and **White.** Bushy plants in various sizes for hedge or lawn planting. \$2.50 to \$5.00 per dozen. Special prices per 100.

- DAPHNE Cneorum.** DWARF DAPHNE. This dainty little species has persistent leaves. It rarely exceeds 12 inches in height, but is spreading in character. The pretty clusters of pink flowers are very fragrant. Very low prices per 100.
- MEZEREUM.** Flowers lilac-purple, very fragrant, appearing before the leaves, almost hiding the naked branches. 50c.
- DESMODIUM Penduliflorum.** LESPEDEZA. Literally loaded in Autumn with drooping branches of rose-purple flowers, creating a beautiful effect. \$2.50 to \$3.00 per dozen.
- DEUTZIA Crenata.** CRENATE-LEAVED DEUTZIA. One of the best hardy shrubs; profusion of single white flowers on long, slender branches. Preferred by some to the several double-flowering kinds. 35c. Low prices per 100.
- Var. fl. pl.** DOUBLE-FLOWERING PINK DEUTZIA. So named on account of the distinct pink or reddish stripes on the petals of the flowers; perfectly double, resembling little rosettes; certainly most distinct. 35c. Low prices per 100.
- Var. Candidissima.** DOUBLE WHITE-FLOWERING DEUTZIA. This extremely beautiful double form has snow-white flowers. 35c. Low prices per 100.
- Var. Pride of Rochester.** One of the finest varieties, producing large, double white flowers; the back of the petals slightly tinted with rose. It excels all of the older sorts in size of flowers; vigorous habit; blooms early in June. 35c. Low prices per 100.
- Gracilis.** Of a dwarf, bushy habit; the racemes of white flowers completely cover the plant, making it one of the most attractive shrubs of the season, blossoming in June. 35c. Low prices per 100.
- Gracilis Rosea.** Medium size, compact; profusely covered with light rose flowers, shading to deeper rose in center. 35c.
- Lemoinei.** The branches are entirely covered with erect panicles of large, snow-white flowers, quite distinct from all other Deutzias; one of the best dwarf varieties; fine for forcing. 35c.
- Scabra.** Flowers bell-shaped, in small bunches; foliage very rough underneath. 35c.
- DIERVILLA, "Eva Rathke."** (Syn., *Weigela, Eva Rathke.*) Showy variety, with bright red flowers borne freely during early Summer. It is very distinct and decidedly the best of its color. Rather slender in growth. \$3.00 to \$5.00 per dozen. Low prices per 100.
- Candida.** (Syn., *Weigela Candida.*) WHITE FLOWERING WEIGELA. This is a distinct and valuable plant, much superior to most of the white Weigelas. \$3.00 to \$5.00 per dozen. Low prices per 100.
- Nana Variegata.** VARIEGATED WEIGELA. The leaves are variegated with white. 35c.
- Rosea.** A beautiful and hardy shrub, with rose-colored flowers; very hardy; blooms in June. \$3.00 to \$5.00 per dozen. Low prices per 100.
- ELAEAGNUS Longipes.** JAPANESE OLEASTER. One of the most ornamental of the genus, bearing a profusion of large, bright red fruits. Flowers yellowish white. \$3.00 to \$5.00 per dozen.
- EUONYMUS Alatus.** CORK-BARKED EUONYMUS. A dwarf, compact variety, attractive during Autumn when full of bright-colored fruit and brilliant crimson foliage. Bark very corky. 75c. to \$1.00.
- Americanus.** STRAWBERRY BUSH. A slender-growing shrub with yellowish flowers followed by rough crimson pods that burst and show the bright scarlet seeds. 25c. to 50c.
- Atropurpureus.** BURNING BUSH. A very ornamental shrub, whose chief beauty consists in its brilliant berries, which hang in clusters until Midwinter; berries rose-colored. 50c. to 75c.
- Europaeus.** EUROPEAN BURNING BUSH. Forms a tree sometimes 30 feet in height. Fruit rose-colored. Fine. Low prices per 100.
- EXOCHORDA Grandiflora.** PEARL BUSH. Large compact shrub. Flowers a dazzling white about May. \$3.00 to \$5.00 per dozen.
- FORSYTHIA Fortuneii.** Growth upright, foliage deep green, flowers bright yellow. One of the best EARLY flowering shrubs, the flowers appearing before the leaves. Very hardy. \$3.00 to \$4.00 per dozen.
- Intermedia.** Flowers bright golden; foliage glossy green like viridissima but hardier. \$4.00 per dozen.
- Suspensa.** WEEPING FORSYTHIA. Resembles the Fortuneii in its flowers, but the plant has a drooping habit. \$3.00 to \$4.00 per dozen.
- Viridissima.** A fine shrub, with bright yellow flowers, very early in Spring. \$3.00 to \$4.00 per dozen.
- GENISTA Scoparia.** SCOTCH BROOM. One of the best hardy shrubs for seashore planting; small yellow pea-shaped flowers; rich green foliage. \$10.00 to \$20.00 per 100.
- HALESIA Tetraptera.** SILVER BELL. Large shrub with bell shaped white flowers in May. \$3.00 to \$5.00 per dozen.
- HAMAMELIS Virginiana.** WITCH HAZEL. Flowers yellow in the late Autumn. \$4.00 per dozen. Special price per 100.
- HIBISCUS Althea, or Rose of Sharon. Boule de Feu, Flore Plena, Totus Albus, Variegata,** and other varieties. All sizes, 2 feet to 6 feet. \$2.50 per dozen and up. Very low prices in quantity.
- HYDRANGEA Arborescens Grandiflora Alba.** NEW EVERBLOOMING HYDRANGEA. One of the best shrubs ever introduced. It is easily grown, perfectly hardy, the blooms are white, and are produced in amazing profusion, and last a long time. The true, everblooming habit of this shrub is sure to win for it many admirers.
- Hortensis.** Valuable for tubs or boxes. Large globular heads of rose or light blue flowers. Summer flowering. Not entirely hardy. \$5.00 to \$10.00 per dozen.
- Paniculata Grandiflora.** The popular hardy Hydrangea now so extensively grown. White flowers in July and August, turning later to a rose tint. Very fine plants. All sizes. \$2.50 to \$6.00 per dozen. Low prices per 100.
- HYPERICUM Aureum.** ST. JOHN'S WORT. Yellow flowers from July to October. \$4.00 per dozen. Low prices per 100.
- Moserianum.** Golden yellow flowers, blooming the entire season. Low growing shrub; very effective in masses. \$2.50 to \$5.00 per dozen. Low prices in quantity.
- Densiflorum.** 25c., \$10.00 to \$20.00 per 100.
- ILEX Baccata.** ENGLISH HOLLY. 50c. to \$1.00.
- Crenata.** JAPANESE HOLLY. Hardy evergreen shrub; distinct myrtle-like leaves. Fine. \$6.00 to \$10.00 per dozen.
- Glabra.** PRINOS GLABRA. INKBERRY. Shining foliage with black berries in Autumn. \$5.00 per dozen. Very low prices in quantity.
- Opaca.** AMERICAN HOLLY. \$5.00 to \$10.00 doz.



LILACS IN FLOWER

- Verticillata.** BLACK ALDER. White flowers, red fruit. \$2.50 to \$5.00 per dozen.
- ITEA Virginica.** VIRGINIA WILLOW. Vigorous; white flowers. \$4.00 per dozen.
- KALMIA Latifolia.** MOUNTAIN LAUREL. Very desirable for massing and grouping. Well budded nursery plants; frequently transplanted with ball. 1 to 3 feet, \$6.00 to \$30.00 per dozen. Special prices per 100.
- Our hardy native plants are the finest obtainable. Sizes 2 feet to 4 feet; compact and well formed; nearly as broad as high and each put up with ball. Special prices per 100 and per car on application.
- KERRIA Japonica.** GLOBE FLOWER. Leaves bright green, turning to yellow in the Autumn; bright yellow flowers. 35c. to 50c.
- Jap. fl. pl.** DOUBLE-FLOWERING CORCHORUS. Double globular flowers. 35c. to 50c.
- Jap. Variegata.** VARIEGATED-LEAVED CORCHORUS. 35c. to 50c.
- LEUCOTHOE.** See Andromeda.
- LIGUSTRUM Globosa.** GLOBE PRIVET. Specimen compact plants cut to shape of a perfect globe. Very effective specimens, 2 feet to 4 feet in diameter. Send for quotation.
- Ibota.** CHINESE PRIVET. Very vigorous, and has distinct, deep green leaves; excellent for hedging purposes and forms a beautiful specimen. Low prices in quantity.
- Regelianum.** REGEL'S PRIVET. Low prices in quantity.
- Ovalifolium.** CALIFORNIA PRIVET. The most popular hedge plant with deciduous leaves. Growth strong, with beautiful glossy foliage. From \$3.00 per 100. Special prices on all sizes per 100 and 1,000.
- LONICERA Fragrantissima.** FRAGRANT BUSH HONEYSUCKLE. Deep green foliage and very fragrant, small flowers. 35c.
- Morrowii.** MORROW'S HONEYSUCKLE. A vig-

- orous shrub; yellow flowers, showy crimson fruit. 35c. Low prices per 100.
- Tartarica Rubra.** RED TARTARIAN HONEYSUCKLE. Blooms in May. Bright red flowers. 35c. to 50c.
- Tartarica Rosea.** PINK TARTARIAN HONEYSUCKLE. Bright pink flowers striped with white, in June. 35c. Low prices per 100.
- MYRICA cerifera.** BAYBERRY. A native shrub, with an aromatic odor, common along the coast in sandy soil. 35c. Low prices per 100.
- Gale.** SWEET GALE. 35c.
- PHILADELPHUS aurea.** GOLDEN-LEAVED SYRINGA. A dwarf grower, with golden-yellow foliage. \$3.00 to \$5.00 per doz.
- Coronarius.** FRAGRANT SYRINGA. A hardy shrub with pure white flowers. \$3.00 to \$5.00 per doz.
- Grandiflora.** LARGE-FLOWERING SYRINGA. A conspicuous, showy plant; flowers white. \$3.00 to \$5.00 per doz.
- Lemoinei.** Upright growth; small, fragrant, yellowish-white flowers. \$3.00 to \$5.00 per doz.
- Nanus.** A dwarf variety, not exceeding 2 feet in height; creamy-white fragrant flowers. \$3.00 to \$5.00 per doz.
- PRUNUS triloba.** DOUBLE FLOWERING PLUM. A hardy and beautiful tree form shrub; double pink flowers an inch in diameter. 35c. to 50c.
- Pissardi.** PURPLE LEAVED PLUM. A beautiful purple leaved shrub. 35c. to 75c.
- PTELIA trifoliata.** GREEN LEAVED HOP TREE. A large shrub of rapid growth. 50c.
- Var. aurea.** GOLDEN HOP TREE. Bright golden foliage. 50c.
- PRUNUS arbutifolia.** CHOKO BERRY. White flowers. Scarlet berries. \$3.50 per doz.
- Japonica, Jap. Quince.** See Cydonia Japonica.
- RHAMNUS catharticus.** BUCKTHORN. Dense, twiggy shrub with white flowers in June and July. Excellent for hedges. Each 35c. Low prices per 100.

# RHODODENDRONS

The furnishing of Rhododendrons has been a specialty with us for many years. We have frequent commendations for the quality of the plants we supply and the satisfaction they give to the owners of country estates. Such fine planting effects as these beautiful shrubs produce are most pleasing and quickly obtained.

**RHODODENDRON CATAWBIENSE.** A fine hardy native species; glossy foliage; large rosy purple and lilac colored flowers in June. One of the very hardiest as well as most striking and highly colored of all the native varieties. \$1.00 to \$2.00. Low prices per 100.

**Rhododendron Punctatum.** A Southern species; pale rose spotted flowers very early in Spring. \$5.00 to \$10.00 per dozen.

**Rhododendron Hardy Seedlings.** Assorted colors; good bushy transplanted plants from \$50.00 to \$100.00 per 100.



HARDY HYBRID RHODODENDRONS IN BORDERS

**RHODODENDRON CATAWBIENSE, Hardy Hybrids.** These superb plants are indispensable in giving effectiveness and character to the planting of ornamental grounds. In solid masses and borders they are incomparably fine. They are easily grown. Although adapted to a shaded situation, they will flourish in any good loamy soil, moderately enriched with well-rotted leaf mould, cow manure or well-rotted sod. The plants should be arranged in good sized beds or masses, and, when first planted, set closely together. The beds or borders should be deep, and the plants mulched or otherwise kept in moist condition at the roots. It is DROUGHT in most cases that injures the plants not so much the cold weather, as is generally supposed. The seed pods should always be removed after flowering. Our plants this season are unusually fine, and of the *strictly hardy varieties for this climate*. We offer them, in CASE COLLECTIONS OF 25, 50 AND 100 PLANTS TO THE CASE. *These cases contain a choice selection of the best hardy named varieties of assorted colors for group or mass planting, for immediate effect.* Particular varieties can be supplied by the hundred or thousand at lowest prices for well-budded reliable plants. These are the cheapest and best. There is no experiment in trying them. They bloom nicely the first season. Many foreign plants sold in this country, owing to lack of hardiness, are almost worthless. Thousands of such plants are sent out every season. They are wholly useless for planting in the Central, Middle or New England States. This accentuates the importance of obtaining from responsible, reliable houses the really hardy Catawbiense varieties, such as are here offered, and which always give satisfaction.

The case collections referred to above will be furnished at the hundred price.

**LEADING VARIETIES.** Abraham Lincoln, Album Elegans, Atroranguineum, Blandyanum, Boule de Neige, Caractacus, Charles Dickens, Charles Bagley, Delicatissimum, Everestianum, General Grant, Giganteum, Gloriosum, H. H. Hunnewell, Kettledrum, Lady Armstrong, Michael Waterer, Mrs. Milner, President Lincoln, President Roosevelt, new, intense red, fine. **Purpureum Elegans, Roseum Elegans.**

Bushy budded plants, several times transplanted, each with ball, 12 inches to 18 inches, \$10.00 per dozen. \$75.00 per 100.

18 inches to 24 inches, \$15.00 and \$18.00 per dozen. \$100.00 and \$125.00 per 100.

2 feet to 3 feet, \$20.00 to \$30.00 per dozen. Specimens \$3.00 to \$10.00 and upwards.

**RHODODENDRON MAXIMUM.** GREAT BAY. The large bold foliage of this **hardy native species** with the pinkish white flowers in large clusters in early Summer, make this one of the most useful and satisfactory of all hardy shrubs. We have very fine bushy plants of all sizes, nearly as broad as high from 2 feet up to grand specimens 10 feet or more, and each put up with ball. Assorted sizes we furnish **in car lots or per ten car lots at special prices.**

Send for quotation for sizes and quantities required.



## FINE BLOCK OF OUR HARDY HYBRID RHODODENDRONS IN NURSERY

Extra fine Plants producing immediate effects where planted.

- RHODOTYPUS kerrioides.** WHITE KERRIA. The flowers are pure white and make their appearance late in summer. Growth upright. 25c. to 50c.
- RHUS aromatica.** FRAGRANT SUMACH. A low-growing bush with handsome, fragrant foliage which turns scarlet in the Fall; small yellow flowers in clusters on short spikes. Will grow on poor soil and among rocks. 35c.
- Copallina.** DWARF, or MOUNTAIN SUMACH. Shining, lustrous foliage, changing to rich crimson in the Fall, heads of greenish-yellow flowers in August. 35c.
- Cotinus.** PURPLE FRINGE. Much admired for its curious fringe or hair-like flowers that cover the whole surface of the plant at Midsummer. 35c.
- Glabra.** SMOOTH SUMACH. A well-known shrub, with brilliant crimson foliage, topped with prominent clusters of showy seeds in Autumn. Particularly useful for rocky or poor soil. 35c.
- Glabra laciniata.** CUT LEAVED SUMACH. A very striking plant of medium size, with finely divided fern-like leaves, dark green above and glaucous beneath, changing to a rich red in Autumn. 35c.
- Typhina.** STAGHORN SUMACH. A large shrub or low tree with brilliant foliage and fruit in Autumn. 35c.
- Typhina laciniata.** CUT LEAVED STAGHORN SUMACH. A tall-growing, bold and effective variety with delicate fern-like foliage; brilliant scarlet fruit in Autumn. 35c.
- RIBES aureum.** YELLOW-FLOWERING CURRANT. Flowering about the middle of May. The blossoms are yellow with pink stamens, sweet-scented, in drooping racemes. \$4.00 doz.
- Sanguineum.** RED FLOWERING CURRANT. A very pretty species; bright pink flowers; a beautiful sight when in bloom. \$4.00 per doz.
- ROBINIA, hispida.** ACACIA, or MOSS LOCUST. A native species of spreading irregular growth, with elegant clusters of rose-colored flowers in June, and at intervals all the season. 50c. to \$1.00
- ROSA.** See Roses.
- RUBUS odorata.** FLOWERING RASPBERRY. A strong, dense-growing shrub; showy, fragrant, rosy-purple flowers resembling a single rose, all Summer. Excellent for massing and valuable for planting steep banks, where it takes root and spreads rapidly. Prefers partial shade. \$3.00 to \$5.00 per dozen.
- SAMBUCUS aurea.** GOLDEN ELDER. One of the most showy shrubs grown, on account of its golden foliage. Very desirable for ornamenting lawns. \$3.00 to \$5.00 per dozen.
- Canadensis.** COMMON ELDER. A well-known shrub with light green foliage and flat heads of snow-white flowers in June; reddish-purple berries in Autumn. Very hardy. \$3.00 to \$5.00 per dozen.
- Nigra.** EUROPEAN, or BLACK-BERRIED ELDER. A spreading shrub of medium size with rough bark; purple-black berries in September. \$3.00 to \$5.00 per dozen.
- SPIRAEA, Anthony Waterer.** A dwarf variety of great merit. Covered all Summer with large corymbs of rosy-crimson flowers. One of the finest of recent introductions. \$4.00 per dozen.
- Arguta.** Of dwarf habit, slender and elegant; branches are a mass of clear white flowers in early May. \$4.50 per dozen.
- Billardi.** A rather tall-growing variety; bright with dense panicles of rich pink flowers in July and August and again in Fall. \$4.50 to \$6.00 per dozen.
- Bumalda.** Dwarf but vigorous; narrow foliage and a profusion of rose-colored flowers in Midsummer and Autumn. \$4.00 to \$6.00 per doz.
- Callosa.** FORTUNE'S SPIREA. Has large panicles of deep, rosy blossoms; grows freely and blooms nearly all Summer. \$4.00 per dozen.
- Callosa alba.** A white-flowering variety; dwarf; very fine. \$4.00 to \$5.00 per dozen.
- Opulifolia.** A large, vigorous growing shrub that bears an abundance of fragrant, white flowers along the stem in June. Very desirable for mass planting. \$4.00 per dozen. Low prices per 100.
- Opulifolia aurea.** GOLDEN LEAVED SPIREA. An interesting variety, with golden-yellow tinted foliage, and double white flowers in June; very conspicuous. \$4.00 to \$5.00 per doz.
- Prunifolia, fl. pl.** BRIDAL WREATH. A beautiful shrub, with pure white flowers like double white daisies in May. Keeps in flower a long time. \$4.00 to \$6.00 per dozen.

- Reevesii fl. pl.** Flowers white and double. Fine. \$4.00 to \$5.00 per dozen.
- Salicifolia.** WILLOW LEAVED SPIREA. A free-growing native species of medium size, with crowded panicles of white flowers in July. \$4.00 to \$5.00 per dozen.
- Thunbergii.** THUNBERG'S SPIREA. A medium-sized bush, with numerous slender branches, narrow linear leaves, and a great profusion of small snow-white flowers in early Spring. \$4.00 to \$5.00 per dozen.
- Van Houttei.** VAN HOUTTE'S SPIREA. This is perhaps the most popular Spirea at the present time. Flowers pure white, profuse, and exceedingly beautiful. \$4.00 to \$5.00 per doz.
- STEPHANANDRA Flexuosa.** Graceful hardy shrub. White flowers. \$2.50 to \$5.00 per dozen.
- STYRAX Japonica.** Bright green foliage. White fragrant flowers along the branches. \$5.00 per doz.
- SYMPHORICARPUS Racemosus.** WHITE SNOW-BERRY. A well-known shrub with small pink flowers, large white berries that hang on the plant through part of the Winter. \$3.00 to \$4.00 per dozen.
- Vulgaris.** RED FRUITED SNOWBERRY OR INDIAN CURRANT. A shrub of very pretty habit. Foliage, flowers and fruit small purple and hangs all Winter. \$2.50 to \$4.00 per dozen.
- SYRINGA Japonica.** GIANT JAPAN TREE LILAC. A species from Japan. Leaves thick, pointed, leathery and dark; flowers in very large panicles, creamy white and privet like. Makes a small tree and is desirable because of its distinct foliage and late blooming. 75c. to \$1.00.
- Josikaea.** Thick shining leaves and clusters of purple flowers; much later than common lilacs. Very desirable. 50c. to 75c.
- Persica.** PERSIAN PURPLE LILAC. Native of Persia. Leaves small, dark green; flowers abundant, delicate and purple. 50c.
- Persica Alba.** PERSIAN WHITE LILAC. Same habit of growth as foregoing. Blossoms in long panicles, white tinged with purple. 50c. to 75c.
- Rubra de Marley.** A very free bloomer; flowers reddish-purple; one of the best varieties for winter forcing. \$6.00 to \$10.00 per dozen.
- Rothamagensis.** ROUEN OR RED LILAC. A distinct hybrid variety with reddish flowers; panicles of great size and very abundant. \$6.00 to \$10.00 per dozen.
- Villosa.** A new Japanese variety; flowers large, light purple in bud, white when open; fragrant; very late bloomer and most desirable. \$5.00 to \$10.00 per dozen.
- Vulgaris.** COMMON PURPLE LILAC. Blossoms early, reddish purple. \$4.00 to \$5.00 per dozen. Low prices per 100.
- Var. Alba.** COMMON WHITE LILAC. Blossoms early, pure white and very fragrant. \$5.00 to \$6.00 per dozen.
- Var. Charles X.** A strong growing sort; large, loose clusters of purple flowers and Other Named Lilacs of Merit. \$6.00 to \$10.00 per doz.
- TAMARIX Africana.** A beautiful shrub with small feathery foliage; delicate small pink flowers in spikes. \$4.00 to \$6.00 per dozen.
- Gallica.** Foliage exceedingly fine and feathery in appearance; branches long and slender; numerous pink flowers. \$4.00 to \$6.00 per doz.
- Indica.** Beautiful deep green foliage and pink flowers, in longer, more wand-like sprays. \$4.00 to \$6.00 per dozen.
- VIBURNUM Cassinoides.** WHITE ROD. An upright grower. It has creamy-white flowers in June, followed by black fruit in Autumn. 35c. to 50c.
- Dentatum.** A bushy sort, which is very pretty when its white flowers expand in early June, followed by berries which change to black when ripe. 50c.
- Lantana.** WAYFARING TREE. Native of Europe. Forms a tall shrub, 10 to 15 feet high. Its large cymes of white flowers are succeeded by black berries. 35c. to 50c.
- Lentago.** SHEEPBERRY, NANNYBERRY. A native species, usually a large shrub. Cymes of flowers large, pure white and showy, followed by clusters of round bluish black, sweet, edible fruit.
- Opulus.** HIGH BUSH CRANBERRY. Flowers in large flat heads in the latter part of May. In the Fall it is full of bright red berries. 35c. to 50c.
- Opulus Sterile.** SNOWBALL. A form of the preceding, with large, globular heads of pure white sterile flowers, hence the term Common Snowball. 35c. to 50c.
- Plicatum.** JAPANESE SNOWBALL. Of moderate growth, compact habit; leaves of a rich dark green color; flowers whiter than the common variety, some weeks later and remain on much longer. One of the choicest and most desirable shrubs grown. 50c.
- Prunifolium.** BLACK HAW, SLOE. A large native shrub. Cymes of flowers very attractive, snow-white, appearing in May. The compressed bluish black drupes are sweet and edible. 50c.
- Tomentosum.** HAIRY JAPAN VIBURNUM. It forms a large shrub, with beautiful cymes of flowers, the outer inflorescence being sterile and very showy. A very valuable plant. 50c.
- WEIGELA.** See Diervilla.
- XANTHOCERAS Sorbifolia.** Magnificent hardy shrub. White flowers; crimson centre. \$5.00 to \$9.00 per dozen.
- XANTHORIZA Apifolia.** A low shrub with handsome foliage, assuming a beautiful golden color in Autumn. Flowers brownish purple in drooping racemes. Very fine. \$2.50 per dozen; \$10.00 to \$20.00 per 100.
- YUCCA Filamentosa.** ADAM'S NEEDLE. A stately plant attaining a height of 4 to 5 feet. Heads of drooping creamy white flowers on long straight stems. \$3.00 and \$4.00 per dozen; \$10.00 to \$20.00 per 100.

**COLLECTIONS comprising the best of the flowering and foliage Shrubs, just right for mass border, and assorted so as to give a most effective variation in bloom from May to October. Selected size \$20.00, extra \$25.00 per 100.**

We furnish EVERYTHING WORTH PLANTING and will gladly submit prices on any nursery stock required. Inquiries should state quantities and sizes of varieties desired or we will confer regarding stock most suitable for the purposes wanted. Correspondence is invited and incurs no obligation to purchase.



# BAY TREES



An attractive garden with **STANDARD BAY TREES** in prominence.

**BAY TREES.** Very fine evenly matched specimens of both **Standards** from 2 feet to 6 feet diameter of head, and **Pyramids** from 4 feet to 14 feet in height and other sizes, including a few pairs of **Grand Specimens**, the largest and finest yet sent out in this country. All our Bay Trees are specially selected for our own direct importations. Low prices per pair and per dozen. If interested write for quotation.

**STANDARD, or TREE-SHAPED BAYS**

Height of stems 4 to 5 feet.

Extra fine trees, . . . . .	2	feet diameter of head
" " " " " " " " " " " "	2¼	" " " " " " " " " "
" " " " " " " " " " " "	2½	" " " " " " " " " "
" " " " " " " " " " " "	2¾	" " " " " " " " " "
" " " " " " " " " " " "	3	" " " " " " " " " "
" " " " " " " " " " " "	3½	" " " " " " " " " "
" " " " " " " " " " " "	4	" " " " " " " " " "
" " " " " " " " " " " "	5	" " " " " " " " " "
" " " " " " " " " " " "	6	" " " " " " " " " "

And XXX Specimens, with heads broad as high.

**STANDARD BAYS with SQUARE HEADS**

Height of stems about 4 feet. 3½ to 4 feet diameter of heads; also other sizes in these unique specimen trees.

**PYRAMID-SHAPED BAYS**

Height with Tub.

Diameter at base

40 to 45 inches, Extra fine trees . . . . .	14	inches
50 " " " " " " " " " " " "	16	" "
60 " " " " " " " " " " " "	18	" "
70 " " " " " " " " " " " "	24	" "
80 " " " " " " " " " " " "	26	" "
90 " " " " " " " " " " " "	30	" "
100 " " " " " " " " " " " "	34	" "
110 " " " " " " " " " " " "	40	" "
120 " " " " " " " " " " " "	45	" "
130 " " " " " " " " " " " "	50	" "
140 " " " " " " " " " " " "	55	" "

Also XXX Specimens as above.

**PYRAMIDS IN POTS**

36 to 40 inches high.

Fine stock also of **Baby Standards**, **Imperial Pyramids** and **Column-Shaped Bays**.

## STANDARD SHRUBS

We cannot too highly recommend the planting of shrubs grown in standard or tree form, especially to obtain formal effects. They can also be planted as single specimens on the lawn, and for centers of beds, groups, etc.; or for straight lines bordering walks, they are especially adapted.

A good assortment of varieties **Hibiscus**, **ALTHEA**; **Forsythia**, **Hydrangeas**, **Philadelphus**, **Spirea Van Houttei**; **Syringa**, **LILAC**; **Ligustrum**, **PRIVET**; **Viburnum**, **SNOWBALL**. Well grown plants, straight stems with flowering heads, 2 and 3 years or more, \$7.50 to \$20.00 per dozen.

**BOX STANDARDS**, also **Pyramid** and **Globe Shaped**; specimens of different sizes.

# ROSES

The popularity of the Rose as a flower is universal. The very word brings to our thoughts the simple beauty and charm of its magnificent outline in its delightfully varied forms and its pleasant, inimitable fragrance which together combine to make this the Queen of Flowers. What is indeed "sweeter than the rose?" Who can gainsay that this "Queen" has been the inspiration to many a noble work by the artist and the poet? Surely the Rose is nature's greatest achievement as an unsurpassed form of loveliness, and no garden would be complete without the wonders of its versatile forms which have moved and thrilled the human race for centuries.

Great progress has been made within the last few years in rose culture and the best list of roses of today would not contain many varieties that were considered the best not many years ago. From the ends of the earth new varieties and new species are gathered and new hybrids are produced, and it is truly wonderful what the results have been. About all that is desirable in a rose has been obtained in color, size, fragrance and hardiness.

A very rich soil is of the first importance, and it may be made so by thoroughly working into it plenty of old composted stable manure in which leaf mold has been decomposed.

Hardy varieties of roses may be planted in the Fall or Spring. *All roses should be severely cut back at the time of planting, and thereafter every Spring.*

Hybrid Perpetual Roses may be cut back immediately after flowering to ensure new growth and increased blooming the same season.

We have abridged our list to include the very finest varieties in each class.

For outside planting the Hybrid Perpetuals are, as a rule, the more satisfactory.



ROSE KILLARNEY

## HYBRID PERPETUALS

Prices—Strong, well rooted plants, \$3.00 to \$5.00 per dozen, \$25.00 to \$30.00 per 100, according to size and variety. Extra large plants grown in pots for immediate effect. \$9.00 to \$12.00 per dozen.

**Abel Carriere.** Purple crimson; very double; of medium size.

**Alfred Colomb.** Bright red; very large, full and globular; free-blooming and fragrant.

**American Beauty.** Rich, rosy crimson, exquisitely shaded; a superb Rose.

**Anne de Diesbach.** Beautiful carmine; very large and fragrant. One of the best.

**Baron de Bonstettin.** Dark velvety crimson; fragrant, large and full.

**Baroness de Rothschild.** Very beautiful pale rose; superb form.

**Captain Christy.** Delicate flesh, rosy center; very fine.

**Captain Hayward.** Bright scarlet-crimson; flowers large and fine form.

**Clio.** Flesh, shaded in center with rosy pink; large and globular in form; rich foliage.

**Duke of Edinburgh.** Crimson, shaded carmine; exquisitely perfumed.

**Earl of Dufferin.** Rich, brilliant velvety crimson, shaded with dark maroon; very large.

**Eugene Furst.** Velvety crimson; very fragrant.

**Fisher Holmes.** Deep crimson; full and perfect form.

**Frau Karl Druschki.** Snow-white; very good for cutting purposes; buds perfectly formed, lasting well.

**General Jacqueminot.** Brilliant crimson-scarlet; superb flowers; useful for all purposes.

**J. B. Clark.** Intense deep scarlet; heavily shaded blackish crimson; very vigorous.

**John Hopper.** Bright rose; very large and double; free bloomer.

**Jules Margottin.** Bright carmine; free bloomer; sweetly scented.

**Mabel Morrison.** Pure white, sometimes edged pink; large and beautiful.

**Madam Gabriel Luizet.** Light silvery pink; grand flower; best early.

**Madam Victor Verdier.** Rich cherry-red; very large and full; sweetly perfumed.

**Magna Charta.** Bright rose; very large; good early in season.

**Marchioness of Londonderry.** Pure ivory white; flowers very large.

**Margaret Dickson.** One of the finest white hybrids.

**Marie Bauman.** Bright carmine; large; perfectly formed.

**Mrs. John Laing.** Delicate pink; large; full.

**Mrs. R. G. Sherman-Crawford.** Deep rosy pink; outer petals shaded to pale flesh.

**Paul Neyron.** Very large; deep rose; full and double; a favorite.

**Prince Camille de Rohan.** Deep velvety crimson, with black shadings.

**Ulrich Brunner.** Bright cerise-red; large and full.

**Victor Verdier.** Rosy carmine; large, showy.

## EVERBLOOMING AND FORCING ROSES

Prices—\$3.00 to \$5.00 per dozen, \$25.00 to \$35.00 per 100. Small pot plants for forcing, \$10.00 to \$15.00 per 100.

**Bessie Brown.** Creamy white; flowers very large and full; highly perfumed.

**Betty.** Ruddy gold; its blooms are very large, of good form and bloom constantly from June until cut off by frost; very fragrant; without doubt one of the finest varieties ever produced.

**Countess of Gosford.** Clear salmon-pink; base saffron-yellow; large and full; free bloomer. 50c. each, \$5.00 per dozen.

**Dean Hole.** Silvery carmine, shaded salmon; flowers large; variety of great excellence; useful for any purpose.

**Etoile de France.** Velvety crimson, center vivid cerise-red; carried on long, erect stems; beautiful foliage; very useful for cutting.

**General McArthur.** Bright crimson; large, free flowering; highly perfumed; very hardy.

**Gloire Lyonnaise.** White shaded to pale yellow in the center.

**Gruss an Teplitz.** Brightest scarlet-crimson; very free-flowering; similar to Liberty, but much more vigorous in habit; very useful.

**Kaiserin Augusta Victoria.** White, shading to primrose. This is a fine Rose, either for outside or under glass; very vigorous; in every way an excellent variety.

**Killarney.** Flesh, shaded white, suffused with pale pink; blooms large, buds long and pointed; fine for massing and forcing.

**La Detroit.** Shell-pink, shaded soft rose, outer petals cream. Very fragrant.

**Lady Ashtown.** Very pale rose, shading to yellow at base of petals; reflexes of petals silvery pink; large flowers; useful rose for any purpose.

**La France.** Delicate, silvery rose; large, double, and flowers continually throughout the season; very fragrant.

**Liberty.** Without an equal for cut flower or decorative work. A brilliant, velvety crimson, of even shade throughout; very double and fragrant.

**Madam Abel Chatenay.** Carmine-rose, shaded with salmon; very free-flowering; flowers well formed; excellent for bedding.

**Madam Caroline Testout.** Bright satiny rose, with brighter center; free flowering; sweetly perfumed.

**Maman Cochet.** The color is rich, pearly pink, changing to silvery rose; it blooms nearly all the time. We recommend it as a grand rose in every particular.

**Maman Cochet, White.** A sport from the original Maman Cochet. The buds are long and pointed, extremely large, rounded and full. Highly perfumed.

**Perle des Jardins.** Deep straw-yellow; large and very double; most beautiful, especially under glass.

## CLIMBING ROSES

Prices—\$2.50 to \$5.00 per dozen, \$15.00 to \$25.00 per 100.

**Baltimore Belle.** Flowers very distinct, almost white, with a faint pink tint; a strong grower.

**Crimson Rambler.** No introduction of later years has so permanently become so popular as this superb variety. It is a prodigious bloomer, vigorous climber, with lovely little double crimson flowers, borne in enormous clusters.

**Dawson.** Its long shoots are covered during the blooming season with pretty clusters of fragrant, bright pink, semi-double flowers.

**Dorothy Perkins.** Origin, Wichuriana crossed with Gabriel Luizet. Flowers borne in clusters; color clear shell-pink and fragrant.

**Lady Gay.** Flowers cherry-pink, fading to white; vigorous grower; hardy.

**Philadelphia Rambler.** An improvement on Crimson Rambler. The flowers are larger, more double and of a darker crimson color.

**Queen of the Prairies.** A very vigorous grower; produces large trusses of bright red flowers, with occasional white stripes on the petals.

**Tausendschon.** Pink shading to rosy carmine; strong clean grower.

**White Rambler.** Strong, rampant grower, producing large clusters of small, double white flowers in great profusion.

**Yellow Rambler.** Aglaia of former lists. The large bloom clusters are composed of white flowers with yellow centers, opening pure white.

### NEW RAMBLERS

**Flower of Fairfield.** A sport from the famous and beautiful Crimson Rambler, similar in color, but more brilliant and more lasting than the old favorite. It possesses an advantage over other Ramblers in that it flowers profusely on the young wood in its first year. Its brilliant crimson clusters of blossoms are magnificent.

**Trier.** Flowers pale salmon pink with yellow anthers; flowers small, almost single, produced in large clusters; dark green leathery foliage.

**Veilchenblau.** VIOLET BLUE. This new Rambler, claimed by rose growers as the forerunner of a genuine blue rose, is a seedling of Crimson Rambler. The blossoms are semi-double, of medium size. The color on first unfolding is either reddish pink or purplish pink, then turns amethyst, and finally steel blue as the flower fades; vigorous in growth, with shining green foliage. Very hardy.

ALL OUR ROSES ARE STRONG, HEALTHY,  
WELL-ROOTED STOCK

**NEW CLIMBING AMERICAN BEAUTY.** This novelty is a valuable acquisition. Of rapid growth; large rosy crimson, exquisitely fragrant flowers. Fine plants \$2.00 to \$3.00 each.

## OTHER DESIRABLE ROSES

**Trailing Roses.** *Evergreen Gem, Gardenia, Jersey Beauty, Pink Roamer, Wichuriana.*  
\$2.50 to \$5.00 per dozen. Special prices per 100.

**Standard Roses.** Good assortment of the best varieties, 75c. to \$1.00. Special prices per 100. Started in pots for immediate effect, \$25.00 per dozen.

**Moss Roses.** Best kinds, distinct colored flowers. 50c., \$3.00 to \$5.00 per dozen.

**Rosa Rubiginosa.** HARDY SWEET BRIAR. \$3.00 to \$5.00 per dozen. Low prices per 100.

**Lord Penzance Sweet Briar.** Best varieties, \$4.00 to \$6.00 per dozen. Low prices per 100.

**Rosa Rugosa.** Very fine plants of both *Alba* and *Rubra*, \$3.00 to \$6.00 per dozen. Special prices per 100 and per 1000. Send for quotations.

**Good Plants of the Following Roses:** *Blanda, Carolina, Humilis, Lucida, Multiflora, Nitida, Rubifolia, Setigera, Spinosissima.* Low prices per 100.

## HEDGE PLANTS

### DECIDUOUS

**Berberis Thunbergii.** JAPANESE BARBERRY. Red berries; conspicuous in the Fall.

**Berberis Vulgaris.** COMMON BARBERRY. Very dark green and dense foliage.

**Cydonia Japonica.** JAPAN QUINCE. Useful thorny hedge for a boundary.

**Deutzia Gracilis.** SLENDER DEUTZIA. Showiest of dwarf flowering hedges.

**Gleditschia Triacanthos.** HONEY LOCUST. Makes an almost impregnable hedge.

**Hibiscus.** ALTHEA. An attractive hedge for screen.

**Hippophae Rhamnoides.** SEA BUCKTHORN. For screen purposes.

**Hydrangea Paniculata Grandiflora.** LARGE-FLOWERED HYDRANGEA. Blooms showy.

**Ligustrum Vulgare.** ENGLISH PRIVET OR PRIM. Makes good clipped hedge.

**Ligustrum Ovalifolium.** CALIFORNIA PRIVET. The most popular hedge plant.

**Lonicera Tartarica.** TARTARIAN HONEYSUCKLE. Dense foliage. Showy flowers.

**Maclura.** OSAGE ORANGE. Fine defensive screen.

**Rhamnus Catharticus.** BUCKTHORN. Valuable for hedge purposes.

**Rosa Rugosa.** JAPANESE BRIAR. The only rose suitable for boundary.

**Spiraea Van Houttei.** SINGLE BRIDAL WREATH. Showy and economical.

**Syringa Vulgaris.** LILAC. Very fine for screening.

**Ulmus Plicatum.** JAPANESE SNOWBALL. Attractive for screen or boundary.



HEDGE OF NORWAY SPRUCE

### EVERGREEN

**Abies Canadensis.** HEMLOCK.

**Abies Excelsa.** NORWAY SPRUCE.

**Buxus Nana.** DWARF BOX EDGING.

**Buxus Sempervirens.** BUSH BOXWOOD.

**Crataegus Pyracantha.** EVERGREEN THORN.

**Thuja Occidentalis.** ARBOR VITÆA.

ALL ABOVE HEDGE PLANTS IN NO. 1 GRADE PLANTS SUPPLIED AT LOW PRICES PER 100 AND PER 1,000.

SEND FOR QUOTATION ON SIZES AND QUANTITIES DESIRED.

## VINES AND CLIMBING PLANTS

ALL THE LEADING VARIETIES SUPPLIED IN QUANTITY AT LOW PRICES. WRITE FOR QUOTATION.

- AMPELOPSIS Engelmanni.** Foliage a glossy light green in Summer, turning to brilliant crimson in Autumn. \$3.00 to \$5.00 per dozen.
- Quinquefolia.** VIRGINIA CREEPER OR AMERICAN IVY. Strong plants. \$2.50 per dozen; \$10.00 to \$20.00 per 100.
- Veitchii.** Perhaps the most useful and popular hardy climber. Both pot grown and open ground plants. \$2.00 to \$5.00 per dozen. Low prices per 100 and per 1,000.
- ARISTOLOCHIA Siph.** DUTCHMAN'S PIPE. A rapid growing vine; very large; light green leaves until late Fall. Strong plants. \$5.00 per dozen.
- CELASTRUS Scandens.** BITTER-SWEET. Attractive, rapid growing climber. \$3.00 per dozen, \$10.00 per 100.
- CLEMATIS Henryi,** white; **Jackmanni,** purple; **Madam Edouard Andre,** bright velvety red; free flowering. \$5.00 to \$9.00 per dozen.
- Paniculata.** Handsome hardy climber of rapid growth; small, dense green foliage. Beautiful fragrant white flowers in mass panicles in August, followed by feathery seed-pods. Popular and very fine. \$2.00 and \$3.00 per dozen. Special prices per 100.
- Virginiana.** AMERICAN WHITE CLEMATIS. \$2.50 to \$5.00 per dozen.
- Dolichos Japonica.** KUDZU VINE. Exceedingly rapid in growth; purplish violet, pea-shaped flowers, in late summer. \$4.00 to \$6.00 per dozen.
- Hedera Helix.** ENGLISH IVY. Strong pot grown plants. \$4.00 to \$6.00 per dozen.
- Jasminum Officinale,** WHITE JASMINE; **Nudiflorum,** YELLOW JASMINE. \$3.50 per dozen; \$10.00 to \$20.00 per 100.
- Lonicera Halleana.** HALL'S EVERGREEN HONEYSUCKLE. Hardy, flowering profusely all Summer; almost evergreen. Fine. \$3.00 per dozen. Special prices per 100.
- Belgica, Periclymenum, Woodbine, Reticulata Aurea,** golden leaved. **Sempervirens, Sinensis** and other climbing Honeysuckles. \$3.00 to \$5.00 per dozen. Low prices per 100.
- Lycium Sinensis.** MATRIMONY VINE. Light pink flowers; scarlet fruit. \$3.00 per dozen. Low prices per 100.
- Periploca Graeca.** SILK VINE. Good for covering trees. \$4.00 per dozen.
- Tecoma, Bignonia Radicans, and Grandiflora.** The well-known Trumpet Vines. \$2.50 to \$5.00 per dozen. Special prices per 100.
- Vitis Cordifolia.** WILD GRAPE. \$3.00 per dozen.
- Wistaria.** The best varieties. **Magnifica, Multi-juga, Sinensis, Alba**—CHINESE WHITE WISTARIA. Strong plants. \$5.00 per dozen.

### TRAILING VINES FOR COVERING SHADED PLACES

For the covering of bare spots under trees, etc., the following vines of creeping habit are to be recommended. All easily grown.

Special low prices per 100 and per 1,000 on application.

- EPIGÆA REPENS.** TRAILING ARBUTUS. **Euonymus Radicans, Euonymus Radicans Variegata, Lysimachia Nummularia, Mitchellia Repens, Nepeta Glechoma, Veronica** and **Vinca Minor,** PERIWINKLE.

### POT GROWN VINES FOR IMMEDIATE EFFECT

These develop growth and flower more rapidly than plants from the open ground. Leading varieties from 4 to 7 inch pots, from \$5.00 to \$15.00 per dozen, according to size.

# HARDY PERENNIAL PLANTS

OR "OLD-FASHIONED" FLOWERS



VIEW OF GARDEN SHOWING BORDERS OF HARDY PERENNIAL PLANTS

Hardy Perennials are most intensely interesting, and the same plants endure from year to year, growing larger and blooming more profusely as time passes by.

Aside from lasting endurance, hardy perennials succeed in almost all soils. They may be planted with profit in grounds of the most limited extent. The flowers of a large number of kinds remain in good condition for a long time after being gathered and their long stems, together with their fragrance, render them very useful for decorating the home and tables.

These indispensable flowers for every garden we furnish in very complete assortments of the best and showiest varieties that can be recommended for satisfactory results. Our plants are either nursery grown or well established in pots for effective blooming the first season.

The following are but a few varieties of the very extensive collection we furnish.

Special prices in quantity, and for furnishing for the best effect at reasonable cost an entire new garden or the re-planting of an old garden.

Prices, except where noted, for good clumps or strong flowering roots from the open ground, \$2.50 and \$3.00 per dozen; \$10.00, \$15.00 and \$20.00 per hundred, according to size and variety.

**ANCHUSA Italica.** A new and very fine hardy perennial. Bushy compact growth, 3 to 4 feet. Literally covered during June and July with a mass of clear blue flowers from  $\frac{1}{2}$  to 1 inch in diameter. \$4.00 per dozen.

**ACHILLEA, YARROW.** Best varieties; fine. Low rates per 100.

**ANEMONE, Japonica Alba, Rosea, Whirlwind.** Bloom from August to November. Beautiful white or rose flowers in profusion, with large golden-yellow centers. Very fine.

**ARUNDO Donax, and Variegata.** \$3.00 to \$5.00 per dozen. Low rates per 100 and 1,000.

**ASTERS.** Fine plants of the large, splendid varieties. Low rates per 100.

**AQUILEGIA, COLUMBINE.** Beautiful varieties; fine plants.

**ASTILBE Japonica, JAPAN SPIREA.** Fine.

**BEGONIAS, Tuberous-rooted.** Best single and double.

**CAMPANULA, BLUE BELLS OR BELL FLOWER.** Best varieties. \$2.00 and \$3.00 per dozen.

- CHRYSANTHEMUM.** A very fine assortment of the best hardy ANEMONE and POMPON varieties, including the Giant Shasta Daisies; distinct colors.
- CONVALLARIA.** LILY OF THE VALLEY. Clumps. \$4.00 per dozen; \$15.00 to \$25.00 per 100. Forcing pips, \$2.00 per 100.
- DAHLIAS.** Special collections of the finest single and double varieties; very fine. \$3.00 and \$4.00 per dozen. Low rates per 100.
- DELPHINIUM.** LARKSPUR. Leading kinds. Fine.
- DICENTRA.** BLEEDING HEART. Low rates per 100.
- DIGITALIS.** FOX GLOVE. Flowers in long spikes.
- DIANTHUS.** HARDY PINK. Delightful fragrance.
- ERIANTHUS** Ravenna. GRASS. Hardy and fine. One of the best grasses.
- EULALIA, Japonica and Zebrina.** Fine.
- FUNKIA.** PLANTAIN LILY. Leading varieties.
- GAILLARDIA.** BLANKET FLOWER. Very showy.
- HELIANTHUS.** SUNFLOWER. Showy kinds.
- HIBISCUS, Moscheutos,** and other best sorts.
- HOLLYHOCKS.** Choice selection of the FINEST DOUBLE VARIETIES. Strong flowering roots. Low prices per 100.
- HEMEROCALLIS.** DAY LILY. Best kinds.
- IRIS, Germanica.** Strong flowering roots. Fine. Special prices in quantity.
- IRIS, Kaempferi.** BEAUTIFUL JAPAN IRIS. Perfectly hardy and easily grown. Flowers extra large, 6 to 8 inches in diameter, in various tints of purple, lavender, blue, shaded with yellow and straw color, etc. In beds or borders these plants give a mass of bloom in Summer. The finest stock obtainable. Premium collection of the best named varieties; also choice mixed. Clumps of strong flowering roots. \$2.00 to \$5.00 per dozen. Low prices per 100.
- LIATRIS.** BLAZING STAR. \$2.50 per dozen.
- LILIUM.** LILIES. All varieties.
- LOBELIA.** CARDINAL FLOWER. Scarlet flowers.
- MALVA.** MALLOW. Fine. \$2.50 per dozen.
- PAPAVER.** POPPY. Very showy. Best kinds. Scarlet flowers.
- PAEONIES.** Fine flowering roots of the best hardy kinds—White, Red, Scarlet, Pink, including the large flowering Chinese varieties and finest new kinds. Special prices for both the named and mixed collections.
- Paeony Tenuifolium.** Large carmine crimson; single flower; fine feathery foliage; very fine. \$5.00 per dozen.
- PHLOX.** Beautiful free-blooming upright varieties. Fine.
- Subulata, or Moss Pink.** Forms a beautiful carpet of verdure. **Alba** and **Rosa.** Fine plants. Low prices in quantity.
- PRIMULA.** PRIMROSE. Leading varieties.
- POLYGONUM Cuspidatum.** One of the most effective hardy plants from China. Very hardy; rapid spreading growth; long racemes or panicles of yellowish white flowers in August and September.
- PYRETHRUM.** FEVERFEW. Best varieties.
- RANUNCULUS.** BUTTERCUP. Fine cut flowers.
- RUDBECKIA Laciniata.** GOLDEN GLOW. The best hardy Rudbeckia; rich foliage and mass of beautiful golden-yellow flowers in late Summer, on stems 4 to 6 feet long. Fine stock. \$5.00 to \$10.00 per 100.
- SOLIDAGO.** GOLDEN ROD. Very showy.
- SPIREA.** MEADOW SWEET. Very beautiful; all the leading varieties.
- SEDUM.** STONE CROP. Low spreading habit.
- TRITOMA.** POKER PLANT. **Uvaria** and **Pfitzeri.** Immense spikes of crimson flowers.
- VINCA.** PERIWINKLE. A most useful trailing vine.
- VIOLA.** SWEET VIOLET. Best varieties. Fine.

Other desirable Hardy Perennials—**Aconitum, Adonis, Aethionema Grandiflora, Allium Tricoccum, Alstromeria, Alyssum** in variety, **Anchusa** in variety, **Anthericum, Arabis, Armeria, Artemisia** in variety, **Baptisia, Bellis, Betonica, Bocconia Cordata, Boltonia, Cassia, Cedronella, Cephalaria** in variety, **Centaurea, Cimicifuga, Coreopsis, Coronilla, Dictamnus, Eomecon, Eryngium, Genista, Gypsophila, Gynerium Argenteum** PAMPAS GRASS, **Helleborus, Hepatica, Herniaria, Iberis, Incarvillea, Lupinus, Lysimachia, Lychnis** in variety, **Martensia, Monarda, Myosotis, Oenothera, Pachysandra Terminalis, Pentstemon, Petasites, Platycodon** in variety, **Polemonium, Polygonum Paldschuanicum, Potentilla, Rhexia Virginica, Rudbeckia** in variety, **Salvia, Saxifraga, Shortia, Spirea** in variety, **Statice, Stokesia, Thalictrum, Veronica, Viola, Vinca, Eulalia Gracillima, Phalaris, Bambusa**—BAMBOO.

THESE AND MANY OTHER VARIETIES ARE SUPPLIED PER DOZEN AND PER 100 IN FLOWERING ROOTS OR CLUMPS. LOW PRICES IN QUANTITY.

All Alpine Plants, Ornamental Grasses, Hardy Ferns, etc., for permanent planting in Rockeries and Gardens, supplied at low prices per 100 and per 1,000. Quotations and particulars on request.

**Water Lilies and Aquatics.** We are able to supply in quantity in all the finest kinds. We shall be pleased to accept orders for plants for Spring or early Summer delivery. Everything true to name and at reasonable prices.

## LAWN GRASS SEED

It is of the utmost importance that all grass seed should be fresh seed and of the very best quality and condition. The use of so-called "cheap mixtures" usually proves an expensive experiment.

**KELSEY'S XXX Lawn Mixture.** The best for general use. Of very fine quality, producing fine effects the first season. \$5.00 per bushel. Other mixtures of good quality at \$3.50 and \$4.00 per bushel.

**KELSEY'S XXX Lawn Restoring Mixture.** A mixture of grasses peculiarly suited to take firm hold and grow quickly on hard, worn out or burned spots. \$5.00 per bushel.

**KELSEY'S XXX Golf Link Mixture.** For the grounds of golf links. \$4.00 per bushel.

**KELSEY'S XXX Putting Green Mixture.** Containing the finest low growing grasses, producing a lasting green turf which withstands hard wear and tear. \$5.00 per bushel.

**KELSEY'S XXX Tennis Court Mixture.** Adapted for tennis courts, making a firm and lasting green turf of finest texture, improving with tramping. \$6.00 per bushel. XX at \$5.00 per bushel.

**KELSEY'S XXX Shady Lawn Mixture.** For shady lawns and under trees. \$5.00 per bushel.

**KELSEY'S XXX Terrace Mixture.** Contains strong, deep-rooted grasses for banks and terraces that will prevent washing away during heavy rains. \$5.00 per bushel.

**KELSEY'S XXX Seashore Mixture.** Peculiarly suited to seaside lawns. \$5.00 per bushel.

**KELSEY'S XXX Southern Lawn Mixture.** Withstands extreme heat and drought. Suitable for Southern lawns. \$6.00 per bushel.

**NEW LAWNS** require from 5 to 6 bushels per acre. Renovating old lawns 1 to 2 bushels per acre.

**FARM GRASS SEEDS**, re-cleaned, of best quality; Red and White Clover, Bent Grass, Kentucky Grass, Fescue, Orchard Grass, Red Top, Timothy, etc., per bushel and per hundred lbs. at current prices. Send for quotation.

## BULBS AND TUBERS FOR SPRING PLANTING

**Apios Tuberosa.** Dark red flowers. \$3.00 per dozen.

**Amaryllis.** Leading varieties. \$3.00 per dozen.

**Cannas.** A large assortment of both the tall and dwarf growing varieties; strong flowering roots or started in pots. \$10.00 to \$20.00 per 100.

**Dahlias.** The finest double and single show varieties, including the Cactus and Pompon varieties. \$20.00 to \$30.00 per 100.

**Gladiolus.** A superb assortment of the finest named varieties. \$5.00 to \$10.00 per 100. Extra fine mixed \$2.00 to \$5.00 per 100.

**Lilies.** We recommend Spring planting for many varieties of the hardy Lilies, especially of the **Auratum** type. See Lilies under "Bulbs for Autumn Planting."

**Tuberose.** The best single and double varieties including the PEARL. \$5.00 to \$10.00 per 100.

Also JAPANESE and GERMAN IRIS, BESSERA ELEGANS, CALADIUMS, CINNAMON VINES, CALLAS, COOPERIA DRUMMONDI, CRINUMS, EMERALD VINES, HYACINTHUS CANDICANS, ISMENE CALATHENA, MADEIRA VINES, MILLA BIFLORA, MONTBRETIAS, OXALIS, TIGRIDAS, ZEPHYRANTHES, LYCORIS SQAMIGERA, ARUNDO DONAX, DICENTRA SPECTABILIS, FUNKIAS, TRITOMAS, etc. Low prices per 100.

## BULBS FOR AUTUMN PLANTING

**ANEMONES.** Fine double and single varieties \$3.00 to \$5.00 per 100.

**CROCUS.** Very effective in lawns in early Spring, best named \$1.00 per 100. Choice mixed 75c. per 100.

**HYACINTHS.** Selections of very fine named varieties \$2.00 to \$3.00 per dozen. Choice mixed for bedding, selected to color \$5.00 to \$10.00 per 100. Hyacinths for forcing also supplied at reasonable prices.

**LILIUMS. LILIES.** For mid-summer blooming good hardy Lilies are unsurpassed. Owing to their stately form, variety of color, agreeable fragrance and graceful habit, they are most effective, whether in flower garden or in beds of Rhododendrons or other hardy shrubs.

The following we consider the best of the hardy varieties, flowering bulbs. \$2.50 to \$5.00 per dozen. Special prices per 100.



**Auratum**, BEAUTIFUL GOLDEN BANDED LILY; **Candidum**, "ANNUNCIATION LILY;" **Canadense Flavum** and **Rubrum**, yellow and crimson varieties with red spots; **Hansonii**, bright golden star-shaped flowers, purple dots, very fine, \$10.00 per dozen; **Longiflorum**, large pure white flowers; **Speciosum Album**, **Rubrum**, the beautiful white, rose and red flowering Lancifolium Lilies; **Speciosum Magnificum**, immense size, rich red dark spots; **Superbum**, TURK'S CAP LILY; **Tenuifolium**, INTENSE SCARLET; **Tigrinum**, TIGER LILY; **Umbellatum**, showy flowers in cluster.

Also SNOWDROPS, SPANISH and ENGLISH IRIS, IXIAS, LILY OF THE VALLEY PIPS AND CLUMPS, PAEONY CLUMPS, SPARAXIS, SCILLAS, SPIREA CLUMPS, etc. Low prices per 100 and 1,000.

LILY OF THE VALLEY. See *Convallaria*, page 29.

**NARCISSUS, Von Sion**. Double yellow; selected bulbs for outside planting \$3.00 to \$5.00 per 100. FORCING VARIETIES, YELLOW TRUMPET, PAPER WHITE, etc. at reasonable price.

**JONQUILS**. Fine bulbs of this type of *Narcissus*. \$1.50 to \$2.50 per 100.

**TULIPS**. Finest named single and double selected bulbs. \$5.00 per 100. Special prices per 1,000. PARROT TULIPS, fine named, \$3.00 per 100.

## FORESTRY MATERIAL



FORESTRY GROWTH OF WHITE PINES. Photograph taken 18 years after planting.

Altogether outside of our commercial interests in the furnishing of Forestry Stock, we have for many years taken a personal interest in Forestry matters tending to the advancement of the movement for Forest Conservation.

Since the able leadership of many worthy men, whose names in connection with this movement are too well known to need repetition, the question has been placed in such a light as to become recognized as a vital one to future generations; and practical remedies for future forest wastes are being adopted by the Federal and many of our State Governments, Railroad, Paper Pulp, Lumber and other interests, and by numerous private land owners interested in forest preservation and the maintenance and extension of timber lands.

The work of the American Forestry Association in furthering the progress of successful forestry in every possible direction is to be commended and appreciated by every thoughtful American. It has in the past influenced much of the useful legislation favorable to forestry interests and is today a more active force than ever in promulgating measures and supporting efforts from every source—North, South, East and West alike—which lead to the ultimate accomplishment of its policies to the permanent benefit of the nation.

The movement is, however, but fairly inaugurated; there is much yet to be done, and it behooves all interested to work in co-operation with increasing enthusiasm for the objects sought. If we can in these pages, therefore, bring out briefly a few facts showing the necessity of continued and increasing effort to preserve our present forests from destruction by forest fires, devastation by disease and blight—as for instance the Chestnut Tree Blight, which is now so prevalent and being warred against by the powers of expert investigation—and by wasteful lumbering methods, the leaving of merchantable timber in the woods either cut or in dead trees, breakage in felling, and the use of good timber for temporary construction in logging, etc., also the necessity of reforestation and the planting of new forest lands, the cause may have been to some small extent at least, advanced.

To the excellent article of Mr. F. R. Meier, Forestry and Timber expert of New York City, in the Financial Review, we are indebted for much information bearing on this subject, to which we would call attention. He aptly states the present situation in this country as follows:

“History clearly shows that in countries with abundant natural resources and sparse population there is no thought of the future, and all energy is directed to the exploitation and often reckless use of what nature has abundantly provided. As the population increases and industry grows, the demand for raw material of all kinds increases, and then there is a gradual awakening of public opinion to the need of a more careful husbanding of natural resources. Practically all nations have traveled the same road. Some have reached this point sooner than others. The United States being younger than European countries and endowed with great timber wealth, is no exception, but unfortunately backward in realizing the true situation of her timber resources.”

As regards waste in logging, his words should be duly weighed by thoughtful men, especially those who have the power to prevent such destruction:

“The average waste in the woods is 1,000 board feet to every 4,000 feet logged. This is due to a variety of causes, many of which could be wholly removed with both present and permanent profit, and all of which could be greatly reduced with the same result. Chief among them are plans for logging poorly made or poorly carried out; the leaving of merchantable timber in the woods either actually cut or in dead trees, trees partly unsound, or trees of the less valuable kinds; the waste of timber in high stumps and long tops, and in the failure to cut logs to such lengths that the tree is most profitably used; breakage in felling, loss in lodged trees, and in driving; and the use of good timber for temporary construction in logging, for which inferior timber would serve equally well.”

This expert also estimates the present annual cut from our forests as greatly in excess of the year's growth, the annual cut per acre being 42 cubic feet, whereas the growth is only 12 cubic feet per acre, more than three times less. As Europe's export of wood is less than her importations of this material, it is not very convincing that we can ever look for our timber shortage to foreign countries. Canada's supply of pulp-wood, of which we use 900,000 cords annually, we are told, will soon be in demand by the rest of the world.

With regard to **our home supply of timber**, Mr. Meier tells us that “With a total amount of standing timber of 2,800 billion board feet and a present annual drain upon the supply of saw timber of 50 billion feet, discarding allowance for the decay and growth, the timber **now standing would last 55 years.**”

From an investment point of view, the following should be encouraging:

In the official publication of the Commissioner of Corporations of the United States Government, published February 13, 1911, a comparison is made of the increase in the value of timber lands that has taken place in 40 years; most of the advance it states has taken place in the past 20 years and gives the following examples:

\$5.00 per acre to \$30.00 per acre.	\$1.00 per acre to \$13.00 per acre.
\$7.00 per acre to \$40.00 per acre.	\$4.00 per acre to \$140.00 per acre.
\$20.00 per acre to \$150.00 per acre.	\$1.00 per acre to \$50.00 per acre.

In Mississippi 7,000 acres was offered to a lumber company in 1900 for \$5.00 an acre, and the offer was refused. In 1907 the same company bought it at \$30.00 an acre. In Louisiana, in 1882, a firm bought a tract of about 19,000 acres of yellow pine for \$19,000. In 1909 the same tract was sold for \$1,125,000.00. In Wisconsin a company owned a tract of timber land that could have been bought in 1898 for 50c. an acre. In 1906 the company was offered \$16.00 an acre for it, and in 1908 sold it for \$30.00 an acre. In Oregon a tract of about 5,500 acres was bought in 1892 for \$24,000. In 1909 it was sold for \$1,000,000. In Oregon, again, a tract was bought in 1900 for \$36,000 and in 1908 an offer of \$425,000 was refused for the same tract.

Large fortunes have been made and still larger ones will be made by men or corporations with desirable timber holdings. Timber is a staple commodity, the demand for which steadily increases, and the value of which rises and will continue to rise. This is so well understood by men familiar with the situation that they have bought or are buying all they can pay for or afford to carry.

From the above and other authorities, who might be quoted at length, it is manifest that

## EXTENSIVE FOREST PLANTING AND REFORESTATION

is a primal necessity.

The cut of a White Pine Plantation in Warren County, N. Y., on page 31, for the photograph of which we are indebted to the N. Y. State Conservation Commission, will no doubt be of interest.

---



---

## THE SUPPLY OF FORESTRY MATERIAL



### RAISING FORESTRY STOCK FOR COMMERCE

The increasing demand for forestry material has led to commercial enterprise in the furnishing of **FORESTRY STOCK**, and this Company has spared no effort, and we believe successfully, to become **HEADQUARTERS** for every variety of both **Deciduous and Evergreen seedlings and transplants**. As a result, we are in closest touch with the entire market, both in the United States and abroad, and have, therefore, exceptional facilities for furnishing all sizes and quantities required, and **at most favorable prices**.

The above illustration shows part of Nursery where the culture of Forestry Stock is a specialty. From the sowing of the seeds to the shipping of the plants, the stock is in charge of experts, as a result of which, in combination with the suitability of the soil, the plants produced are healthy, hardy and well rooted.

Well grown seedlings are suitable for many kinds of plantations, but transplants are stronger and more enduring, as by transplanting they receive an abundance of fibrous roots and improve in general stockiness. By **Seedlings** is meant plants raised from seed remaining in the seed-bed where sown, whilst the term **Transplants** means plants which have been taken from the seed-beds and replanted one or more times in nursery rows.

It is of course not wise to plant seedlings where it is essential that transplants be used, especially where the land is rough, stony or otherwise detrimental and in places where the plants are open to exceptional exposure.

Before planting Forestry Stock, the roots should be dipped in "puddled soil," a mixture of good fine earth and water about the consistency of paint. Avoid exposure of the roots to the sun or wind and when planting, pack fine soil around the roots closely and firmly, making perfectly airtight.

**DECIDUOUS STOCK.** Seedlings, of first-class quality, all strong, healthy and well-rooted; and free from fungus or other injurious insect diseases.

ACER DASYCARPUM, SILVER MAPLE  
 CATALPA SPECIOSA, WESTERN CATALPA  
 FAGUS FERRUGINEA, AMERICAN BEECH  
 FRAXINUS ALBA, WHITE ASH  
 FRAXINUS VIRIDIS, GREEN ASH  
 GLEDITSCHIA TRIACANTHOS, HONEY LOCUST  
 JUGLANS NIGRA, BLACK WALNUT

POPULUS DELTOIDES, COTTONWOOD  
 QUERCUS PALUSTRIS, PIN OAK  
 QUERCUS RUBRA, RED OAK  
 QUERCUS COCCINEA, SCARLET OAK  
 ROBINIA PSEUDO-ACACIA, BLACK LOCUST  
 TILIA EUROPAEA, EUROPEAN LINDEN.  
 ULMUS AMERICANA, AMERICAN ELM

ETC., ETC., ETC.

CUTTINGS OF POPLARS, WILLOWS, ETC. IN VARIETY

The ever-changing conditions of supply and demand of this class of planting material makes it impossible to give staple prices, but we promptly give quotations on your requirements. When sending inquiries, please state quantity, age, and size of each variety wanted.

**EVERGREEN STOCK.** Seedlings and Transplants of first-class quality, strong, healthy, well rooted and free from fungus or other injurious insect diseases.

ABIES ALBA, WHITE SPRUCE  
 ABIES BALSAMEA, BALSAM FIR  
 ABIES CANADENSIS, HEMLOCK  
 ABIES EXCELSA, NORWAY SPRUCE  
 LARIX EUROPAEA, LARCH

PINUS AUSTRIACA, AUSTRIAN PINE  
 PINUS RESINOSA, RED PINE  
 PINUS RIGIDA, PITCH PINE  
 PINUS STROBUS, WHITE PINE  
 PINUS SYLVESTRIS, SCOTCH PINE

THUYA OCCIDENTALIS, ARBORVITÆ, ETC., ETC.

As we make a specialty of Forestry Stock, we have facilities for furnishing this material in large quantities, and can thus offer varieties per 1,000, 10,000, 100,000, 500,000, etc., according to requirements.

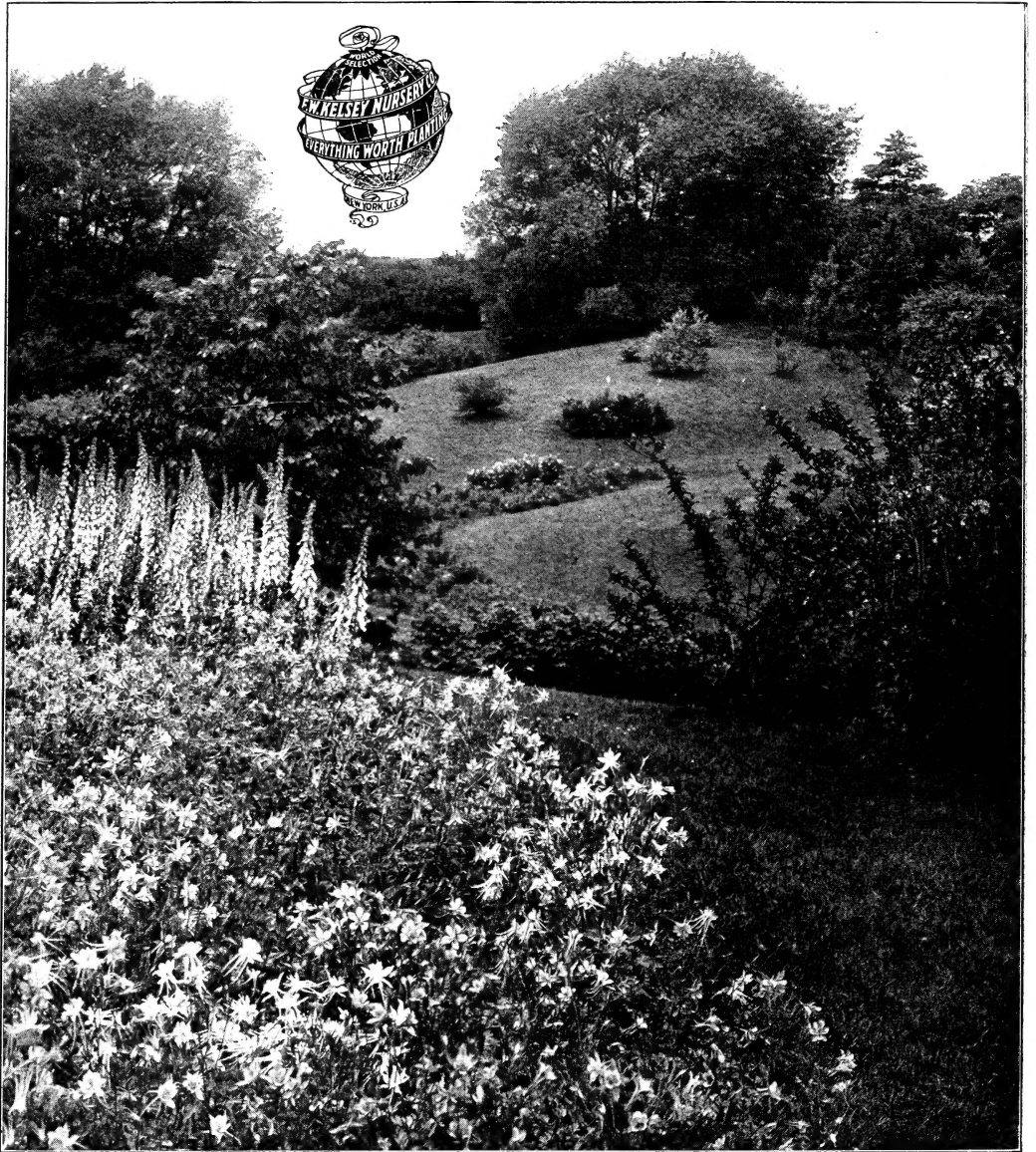
To insure the selection and quantities of forestry material required, orders should be entered as far in advance of the shipping season as possible before varieties are exhausted, which occasionally occurs in cases of unusual demand.

**TREE SEEDS** The seeds we furnish are of the best quality and of high germination. All the leading varieties can be supplied and our prices are the lowest consistent with the quality furnished.

## INDEX OF CONTENTS

---

Asparagus and Rhubarb . . . . .	7
Bay Trees . . . . .	23
Bulbs and Tubers for Spring Planting . . . . .	30
Bulbs for Autumn Planting . . . . .	30
Collected Native Stock . . . . .	12
Deciduous Trees . . . . .	8
Evergreen and Coniferous Trees . . . . .	13
Foreword . . . . .	2
Forestry Material . . . . .	31-34
Fruit Trees . . . . .	3
Hardy Perennial Plants . . . . .	28
Hedge Plants . . . . .	26
Large Trees for Immediate Effect . . . . .	12
Lawn Grass Seed . . . . .	30
Nuts . . . . .	7
Pot Grown Vines for Immediate Effect . . . . .	27
Rhododendrons . . . . .	20
Roses . . . . .	24
Shrubs . . . . .	16
Small Fruits . . . . .	7
Small Trees for Nursery Planting . . . . .	12
Standard Shrubs . . . . .	23
Strawberries . . . . .	7
Trailing Vines for Covering Shaded Places . . . . .	27
Trained Fruit Trees . . . . .	6
Vines for Graperies . . . . .	6
Vines and Climbing Plants . . . . .	27



AN ATTRACTIVE HILLSIDE—THE RESULT OF JUDICIOUS PLANTING

## F. W. Kelsey Nursery Company

“Everything Worth Planting”

150 Broadway

NEW YORK

Telephone 2123 Cortlandt

Cables, Kelnurco, New York