

# **Historic, Archive Document**

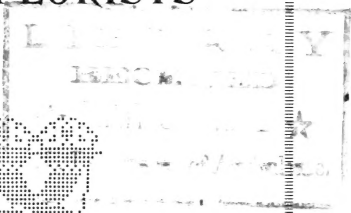
**Do not assume content reflects current scientific  
knowledge, policies, or practices**



63,32

c 1912.5

# SUITABLE PLANTS FOR FLORISTS



**KALLEN & LÜNNEMANN**

**BOSKOOP - HOLLAND**

**Cable-Address: KALLEN BOSKOOP**

A B C Code 5th Ed.

## TERMS OF SALE

Unknown parties, should accompany orders with bank or trade references, or cash for which 5 % may be deducted.

Goods in this catalogues are offered subject to being unsold upon receipt of order, also to shortage or failure of crop or other causes beyond control.

Canselations are not allowed and parties wishing to have orders once placed cancelled agree to pay any damage or loss in profit etc.

All goods travel at purchaser's risk and are covered by marine insurance.

Prices are understood to be at nurseries, cases and packing materials are to be charged extra at cost.

Please note that our trees, shrubs, plants, bulbs and other similar goods are insured until arrival at destination with the condition: **free from particular average under 3 % etc., series of one collo.**

In case of claim to apply to the nearest Lloyds Agent, or in absence of Lloyds Agency to a competent surveyor to have the nature and extent of the damage ascertained.

We give no warranty express or implied, and will in no way be responsible for the results of planting, or forcing of any plants, shrubs, roots, etc. sent out.

**KALLEN & LÜNNEMANN**

**BOSKOOP - HOLLAND**

## AZALEAS.

### AZALEA INDICA VARIETIES.

Apollo, *early semi double dark scarlet.*

**De Schryveriana**, *rich rose, shaded red, with dark red blotch, late.*

Deutsche Perle, *double pure white.*

**Dr. Moore**, *late, double deep rose.*

**Emperor of Brazil**, *late, double soft rose, white edged.*

**Empress of India**, *late, rich rosy salmon.*

**Ernest Eeckhaute**, *fiery red, very double, ruffled flowers.*

Helene Thelemann, *early, large light pink.*

Hexe (Fire-Fly), *fiery red.*

**John Llewelyn**, *very soft double pink, extra. Easter.*

**Julius Roehrs.**

**Mme Cam. van Langenhove**, *dbl. white striped red.*

**Mme C. Petrick**, *very early, double rose.*

Mme Jos. Vervaene, *somewhat similar to Vervaeneana.*

Mme Moreux, *double salmon, white edged.*

Mme Romain de Smet, *double pink, white striped, early.*

Mme van der Cruyssen, *semi double rose free. Easter.*

John Peeters, *late double red.*

Mem. de L. van Houtte, *early, double brilliant crimson.*

Niobe, *Easter, double cream white, free.*

Pres. Oswald de Kerckhove. *Easter, double intense brilliant crimson.*

Paul Weber, *very double pink, white edged. Easter.*

**Pharailde Mathilde**, *extra fine white, yellow blotched, rosy stripes.*

**Prof. Wolters**, *variegated pink, extra.*

Raphael, *semi double, snow white. Easter.*

Sacuntala, *double white, extra forcer, free.*

**Simon Mardner**, *double bright rose, extra.*

Talisman, *double delicate pink, early.*

**Vervaeneana**, *double rosy salmon, white margin, early.*

**Vervaeneana alba**, *double milky white, extra.*

For prices see page 4.

## 4 SUITABLE PLANTS FOR FLORISTS

---

10—11 inch. diam.	p. 100 \$ 18	20—21 inch. diam.	p. 100 \$ 75
12 " " "	20	22—24 " " "	100
13 " " "	25	24—26 " " "	125
14—15 " " "	30	26—28 " " "	150
15—16 " " "	35	28—31 " " "	200
16—17 " " "	40	32—35 " " "	250
18 " " "	50	36—39 " " "	300
19 " " "	60	40—44 " " "	400-500

### Dwarf Azaleas.

Charles Encke, Marie Louise, Hexe (Fire-Fly), Vuylstekeana (red), Mme Petrick.

8 inch. diam.	p. 100	\$ 10
10 " " "	" " "	15
12 " " "	" " "	20

The variety Mme Petrick only in 8 and 10 inch. sizes.

## NOVELTIES IN AZALEAS.

Gaining popularity wherever seen; pushing to the front are the nurserygrown Japanese Azaleas. Evergreen small foliage as the *Azalea indica*, they are surer to flower and can stand any amount of handling.

**Azalea amoena**, the well known hardy evergreen, with purple flowers, 12 inch. . . p. 100 \$ 30  
15 " . . . " " " 40

**Azalea amoena Forsteriana**, a great improvement over the *amoena*. Growths better, lighter foliage, clear soft pink flowers.

Small plants for 4½ inch. pots, very suitable for jardiniere and basket work p. 100 \$ 20, p. 1000 \$ 180  
12 inch. . . . . p. 100 \$ 30  
15 " . . . . . " " " 45

**Azalea Hatsu-giri**, a beautiful, tender charming lila, generally admired for its unique color, single flowers, literally covering the plant.

Small plants for 4½ inch. pots, very suitable for jardiniere and basket work p. 100 \$ 20, p. 1000 \$ 180  
10 cM. diam. . . . . p. 100 \$ 60—70

**Azalea Hinodegiri**, clear carmine, with flowers of a lasting quality. Very beautiful.

Small plants for 4½ inch. pots, very suitable for jardiniere and basket work p. 100 \$ 20, p. 1000 \$ 180

10 inch. diam. . . . . p. 100 \$ 30

10—11 " " . . . . . " " " 40

12 " " . . . . . " " " 50

Extra . . . . . " " " 60

15—16 inch. diam. . . . . " " " 75

Specimen . . . . . p. 100 \$ 100—300

**Azalea Kirishima**, orange-red, flowers size of Hinodegiri.

Small plants for 4½ inch. pots, very suitable for jardiniere and basket work p. 100 \$ 20, p. 1000 \$ 180

12 inch. diam. . . . . p. 100 \$ 75

**Azalea leucantha (ledifolia)**, pure white, evergreen.

Small plants for 4½ inch. pots, very suitable for jardiniere and basket work p. 100 \$ 20, p. 1000 \$ 180

15 in. diam. p. 100 \$ 60 20 in. diam. p. 100 \$ 90

24 " " . . . . . each \$ 1.25—1.50

**Azalea macrantha**, large dark salmon flowers. A very valuable forcer, producing a mass of flowers, which attract attention both through their color as well as their large quantity.

Small plants for 3½ inch. pots, very suitable for jardiniere and basket work p. 100 \$ 20, p. 1000 \$ 180

12 inch. diam. . . . . p. 100 \$ 75

16—18 " " . . . . . " " " 100

**Azalea rhombica**, large clear purple flowers of a pleasing shade.

Small plants for 4½ inch. pots, very suitable for jardiniere and basket work p. 100 \$ 20, p. 1000 \$ 180

24 inch. . . . . p. 100 \$ 100

**Azalea Yodogawa**, of gracefull, loose growing habit, producing a very double, pretty lavender flower on each of its tender but selfsupporting stems. A wonderfull effect, arresting the attention and admiration of all flower lovers. A sure seller, a grand Azalea! We supply this variety with buds, something not everybody will do.

Very bushy, 12 inch. p. 100 \$ 60, 24 inch. \$ 90, 30 inch. \$ 120.

## 6 SUITABLE PLANTS FOR FLORISTS

**AZALEA ANTHONY KOSTER**, the only hardy Azalea of the deciduous kind, really worth forcing. A beautiful golden yellow, flower on tall, erect stems. Keeps well and has made a name with leading florists, which speaks well for its popularity with the buying public.

Plants, well budded, 12—15 inch. . .	p. 100	\$ 45
"    "    "    15    "    "    "    "	"    "	50
"    "    "    18    "    "    "    "	"    "	55
Specimen, providing they set buds . . .	each	\$ 2.50

**AUCUBA japonica**, golden variegated evergreen shrubs, making excellent material for decoration.

with rootballs, 12 inch. high p. 100	\$ 10,	p. 1000	\$ 80
"    "    15    "    "    "    "    "	12,	"    "	90
"    "    18    "    "    "    "    "	15,	"    "	135
"    "    24    "    "    "    "    "	25		

specimen 3 ft. and more in tubs each \$ 1.50—2

**Aucuba (type)**, the red berry bearing variety. If shipped early and placed in a slightly increased temperature the berries color nicely for Christmas, showing off very distinctly on the dark shiny foliage.

with rootballs, 12 inch. . . . .	p. 100	\$ 25
"    "    15    "    "    "    "    "	"    "	30
"    "    18    "    "    "    "    "	"    "	40
"    "    24    "    "    "    "    "	"    "	60

**ACER Negundo fol. arg.=var.**, a potgrown maple tree, pyramidal shaped, about 3—4 ft. high, easily forced, producing delicate, light green foliage, distinctly variegated with white or silvercolor,

p. 100 \$ 30—40

## BOXWOOD.

For pots or window decorating.

**Untrimmed bushes,**

8—10 inch. high	p. 1000	\$ 60	p. 100	\$ 7
10    "    "	"    "	70	"    "	8
12    "    "	"    "	80	"    "	9
15    "    "	"    "	120	"    "	14
18    "    "	"    "	160	"    "	18



24	inch. high	.	.	.	.	.	.	p. 100	\$ 35
30	"	"	.	.	.	.	.	" "	75
36	"	"	.	.	.	.	.	" "	100
3½	feet	"	specimen	.	.	.	.	" "	150
4	"	"	"	.	.	.	.	" "	250

**Pyramidal shaped,**

2½	feet high	.	.	.	.	.	.	" "	40
3	"	"	.	.	.	.	.	" "	60
3½	"	"	.	.	.	.	.	" "	80
4	"	"	.	.	.	.	.	" "	110
4½	"	"	.	.	.	.	.	" "	135
5	"	"	.	.	.	.	.	" "	180
5½	"	"	.	.	.	.	.	" "	250
6	"	"	.	.	.	.	.	" "	350

**Standards,** short stems, small crowns fit for table decorating, can be put in 5 inch. pots.

about	1	ft. stem	.	.	.	.	.	p. 100	\$ 25
"	1½—2	"	"	9-12	inch. crown	"	"	" "	45
"	1½—2	"	"	12	"	"	"	" "	55
"	1½—2	"	"	15	"	"	"	" "	65
"	1½—2	"	"	18	"	"	"	" "	80
"	2	"	"	12	"	"	"	" "	60
"	2	"	"	15	"	"	"	" "	75
"	2	"	"	18	"	"	"	" "	90

**Obelisk shaped,**

about	4	ft. stem	.	.	.	.	.	p. pair	\$ 8
"	5	"	"	.	.	.	.	" "	9
"	5½—6	"	"	.	.	.	.	" "	10

**Square shaped Boxwood,**

16	inch. high	.	.	.	.	.	.	" "	150
2	ft.	"	.	.	.	.	.	" "	3
2½	"	"	.	.	.	.	.	" "	4
3	"	"	.	.	.	.	.	" "	5

**Globe shaped, (TRIMMED)**

globular (natural),	12	inch. diameter	p. 100	\$ 30
"	15	"	"	40
"	18	"	"	50
"	21	"	"	80
1	inch. diameter	.	.	80
15	"	.	.	100
18	"	.	.	150

## 8 SUITABLE PLANTS FOR FLORISTS

21 inch. diameter . . . . .	p. 100	\$ 250
24 " " . . . . .	" "	" 350
<b>Edging Box <i>suffruticosa</i>,</b>		
4—5 inch. high . . . . .	p. 1000	\$ 25
6—8 " " . . . . .	" "	" 35
	p. 100	
<b>Ceanothus</b> Gloire de Versailles, miniature blue lilac-like flowers . . . . . \$ 20		
<b>Cerasus</b> (Cherry), pink and white, potgrown . . . . . " 30		
" <b>J. H. Veitch</b> , potgrown . . . . . " 35		
<b>Clematis</b> , potgrown stock, extra p. 1000 \$ 100 " 12		
<b>Conifers</b> for pots and tubs or window boxing.		
10—12 inch. . . . .	p. 1000	\$ 75 " 10
12—15 " . . . . .	" "	" 85 " 12
2½ feet . . . . .	" "	" 180 " 20
3 " . . . . .		" 30
4 " . . . . .		" 50
5 " . . . . .		" 70
<b>Cratægus</b> oxyac. Paul's scarlet, potgrown . . . . . " 35		
<b>Cytisus</b> nigricans, yellow, 18—24 inch., potgr. . . . . " 25		
" <i>purpureus</i> , dark red, 12—15 " " " 25		
<b>Deutzia</b> <i>gracilis</i> , potgrown, 10—16 shoots " 6		
" <i>Lemoinei</i> hybr., " 10—16 " " 9		
<b>Evonymus</b> ( <i>Euonymus</i> ) <i>radicans</i> , common green,		
1—2 feet . . . . .		\$ 10—18
2—3 " . . . . .		" 20—30
golden variegated, 1—2 feet . . . . .		" 10—20
" " 2—3 " . . . . .		" 20—40
Silver variegated, same price as golden var.		
<b>Funkia</b> und. med.-var., strong clumps, 3—5 eyes \$ 6		
<b>Genista</b> <i>Andreana</i> , yellow, red spotted flowers " 18		
" <i>alba</i> , white, 10—12 inch., potgrown " 16		
" " <i>præcox</i> , white, 12-15 inch., potgr. " 16		
<b>Hydrangea</b> <i>paniculata grandiflora</i> ,		
potgrown, 6½ inch. pots . . . . . " 14		
1 year old layers for lining out p. 1000	\$ 18	" 2
1 " " bushes " " " " " "	" 22	" 3
2nd size, 2 ft., 2 strong shoots " " " "	" 40	" 5
1st " 2—3 ft., 3—6 " " " "	" 70	" 8
extra, 5—7 shoots, 3—3½ ft. . . . .		" 10
2 —2½ ft. stem . . . . .	" "	" 150 " 16
2½—3 " " . . . . .	" "	" 180 " 20

## New French Hydrangeas,

potgrown for forcing, 6 inch. pots.

per doz. \$ 4.25, per 50 plants \$ 15, per 100 \$ 25

**Avalanche**, a splendid large white, which made a reputation for itself, a variety which forces easily and flowers very freely.

**Bouquet Rose**, large trusses of well formed flowers, rosy amber turning to bright pink, a splendid favorite in the New-York market.

**Fraîcheur**, large, regularly shaped flowers, white, delicately suffused with rose, very free.

**General de Vibraye**, gaining favor wherever seen, splendid early forcer, with very large heads of bright rose colored flowers.

**La Lorraine**, very large flowers of pale pink, turning to bright pink. One of the best and a leader amongst the favorites.

**Souv. de Mme E. Chautard**, one of the very best, of splendid erect habit, very robust, with medium sized heads of bright colored flowers, of Bouquet Rose type.

**Mme Emile Mouillière**, the white colored favorite of the New-York market, in fact the favorite of all markets. Awarded silver medal at National Flower Show at Boston.

**Mme Maurice Hamar**, a delicate flesh rose of pleasing shade. In some kinds of soil of the deepest blue. Vigorous habit, early forcer.

**Mlle Renée Gaillard**, very large panicles of milky white, flowers irregularly dentated. A good many florists with recognized judgment, prefer this to Mme Mouillière, and consider it the very best white.

**Mons. G. Renault**, very large flowers of bright rose, with carmine reflex. Very promising, easily forced and very free.

---

**Tree=Peonies for Florists.**

Shipped in pots they keep easily and are perfectly hardy  
They are liked by the public and make good sellers.

**Ask our complete descriptive list of some 50 varieties.**

**Double flowering Peonies, our list marking those kinds recognized as first class cut-flowers, is interesting.**

p. 100

<b>Kalmia</b> latifolia, well budded for pots, . . . . .		
12—15 inch. . . . .	\$	18
15—18 " . . . . .	"	22
18—20 " . . . . .	"	28
20—24 " . . . . .	"	35
<b>Laburnum</b> vulgare, potgrown pyramids or bush shape . . . . .	"	25
standards . . . . .	"	35
<b>Laurocerasus</b> , bushes, 12—15 inch. . . . .	"	10
" " 15—18 " . . . . .	"	15
" pyramids in tubs, very decorative		
height 3 ft. at base 1½ ft. each	\$	0.45
" 4 " " " 2 " " "	"	1.00
" 4½ " " " 2½ " " "	"	1.25
" 5 " " " 3 " " "	"	1.50
" 6 " " " 3½ " " "	"	2.00
" 7 " " " 3½ " " "	"	3.00
" 8 " " " 3—4 " " "	"	3.50—4.00
<b>Lilacs</b> , potgrown, good quality . . . . .	\$	25
" " selected . . . . .	"	35
" " extra selected . . . . .	"	40
" extra strong, fieldgrown, specially cultivated for forcing, splendid results . . . . .	"	65-100
Varieties: Charles X, <i>single blue</i> ; Marie Legraye, <i>single white</i> ; Mme Lemoine, <i>double white</i> .		
<b>Malus</b> floribunda, double pink, potgrown . . . . .	"	25—35
" spectabilis, rosy red, " . . . . .	"	25—35
" Scheideckeri, dble pink, extra, potgr. . . . .	"	30—40
" Parkmannii, extra rosy red, potgr. . . . .	"	30—40
<b>Peach</b> , double flow. var. Cl. Meyer, potgr. . . . .	"	30—50
<b>Prunus</b> triloba, double pink, potgrown . . . . .	"	20

## RHODODENDRONS,

**extra for forcing.**

There is such an enormous variety of color in these, that any possible effect may be obtained by careful selection of varieties. In order that good results may be had, it takes a little care and attention in forcing them.

1. Unpack at once after arrival.

2. Soak the rootballs thoroughly, take off the burlap and unty the heads.

3. Pot in suitable pots and do not cut the roots if ball on plant proofs too large, but shake off the soil not wanted. Fill up with leaf mould if possible and do not fasten the soil too much in the pots. Also take care that the water will be able to get out.

4. Place pots, in cold frame and do not put them into heat before the roots have started action. In severe freezing weather cover your frames. Do not place them too close to each other, but let light and air circulate. Brake out superfluous buds.

5. Common sense will tell you that the earliest varieties can be forced early and so on. About the beginning of January they can be placed inside and a temperature of 50—60° F. and about a month after that they can be put into more heat not to exceed 70—75° F. When the Sun gets hot, about the latter part of March, the glass should be shaded in order to prevent the leaves from getting burned. Give plenty of water.

6. Spray at least twice daily, but do not use the hose in full force, let it be spraying and no more.

4— 6 buds	. . . . .	p. 100	\$ 20
5— 8	" . . . . .	" "	" 25
8—12	" . . . . .	" "	" 35
10—15	" . . . . .	" "	" 45
15—20	" . . . . .	" "	" 65
20—25	" . . . . .	" "	" 80
25—30	" . . . . .	" "	" 100
extra fine specimen	3—4 ft. and up	. each	\$ 2—6

GENERAL LIST OF FORCING KINDS:

- Alarm, *cerise, white centre early.*  
 Alexandre Adie, *bright cerise, good trusses.*  
 Braynum, *crimson.*  
 Bysianum, *red, white margine.*  
 Cynthia, *rosy crimson.*  
**Chevalier Felix de Sauvage**, *fine crimson.*  
 Doncaster, *brilliant crimson.*  
 Dr. Carl Mette, *delicate red.*  
**Fastuosum fl. pleno**, *double lavender.*  
 Frederick Waterer, *fiery crimson.*  
 Everestianum, *pale lilac rose.*  
 Frau Rosalie Seidel, *white.*  
 F. D. Godman, *carmine red.*  
**Gomer Waterer**, *pure white, large flower.*  
 Helen Waterer, *white marg. scarlet.*  
 John Waterer, *dark crimson.*  
**John Walter**, *fine crimson.*  
 Julius Schäme, *white, rosy reflex.*  
**Kate Waterer**, *clear soft rose.*  
 Lady Annette de Trafford, *soft rose.*  
 Lady Clermont, *soft red.*  
 Lady Grey Egerton, *bluish white, large bouquet.*  
 Lady C. Walsh, *fine tender rose.*  
 Lady Stangford, *crimson.*  
 Lady Rookh, *fine dark purple.*  
**L. L. Liebig**, *cherry red.*  
**Mme Carvalho**, *pure white.*  
 Mme Masson, *pure white.*  
**Mme Wagner**, *soft pink.*  
 Mrs John Clutton, *white.*  
**Mrs John Waterer**, *soft red.*  
 Minnie, *white.*  
**Mons. Thiers**, *clear carmine red.*  
 Pelopidas, *carmine red.*  
**Prince C. de Rohan**, *white, rose spotted.*  
 Princess Louise, *white.*  
 Prometheus, *carmine red.*  
**Sir Henry Havelock**, *cherry red, lighter centre.*  
 The Warrior, *soft red.*  
 Vesuvius, *fine red.*  
**Wm. Austin**, *red.*

**PINK PEARL,**

strong plants, 4— 5 buds . . . . .	each \$ 0.80
"      "      5— 7 " . . . . .	"      "      1.00
"      "      7— 8 " . . . . .	"      "      1.20
"      "      8—10 " . . . . .	"      "      1.50
"      "      10—12 " . . . . .	"      "      2.00
"      "      12—15 " . . . . .	"      "      2.50
Specimen, extra . . . . .	each \$ 3.50—10

**Catawbiense grandiflorum,**

about 1 ft. high, 6— 8 buds . p. 100	\$ 20
" 1 —1½ " " 8—12 " . " "	"      "      25
" 1½—2 " " 10—15 " . " "	"      "      30
" 2 —2½ " " 18—24 " . " "	"      "      40
" 2 —2½ " " 20—30 " . " "	"      "      50
" 2½ " " 30—40 " p. 100	\$ 65-75
Specimen . . . . .	each \$ 1—2

**Cunninghamii White and Ponticum,**

1 ft. high, 10—12 buds . . . . .	p. 100 \$ 12
1½ " " 12—20 " . . . . .	" " " 18
1½—2 " " 20—30 " . . . . .	" " " 25

**Rosamundi, pink (Christmas Cheer),**

6—10 buds . . . . .	p. 100 \$ 18
10—15 " . . . . .	" " " 25
15—25 " . . . . .	" " " 35

**Roses.**

We issue a separate list, describing and quoting varieties from **Britishqueen** down to Magna Charta etc.

*Our book on roses, free for the asking.*

**Skimmia japonica**, berried plants. A plant deserving the attention of every florist.

A popular, abuse ignoring, favorite.	p. 100
12—15 inch. . . . .	\$ 30
15—18 " . . . . .	" 40

## 14 SUITABLE PLANTS FOR FLORISTS

	p. 100	p. 1000
<b>Spiræa</b> van Houttei, double white, potgr.	\$ 12	
" (Astilbe) japonica, strong clumps	" 4	\$ 22
" japonica compacta, " "	" 4	" 28
" Gladstone, white, " "	" 6	" 35
" Washingtonii, " "	" 6	" 35
" Queen Alexandra, pink " "	" 8	" 60
" Peach Blossom, " "	" 6	" 40
	p. 100	
<b>Staphylea</b> colchica, white flowers, potgr.	\$ 25	—30
<b>Viburnum Carlesi</b> , strongly perfumed Viburnum of very agreeable odor. Perfectly hardy, both valuable for forcing and outdoors, plants . . . . .	"	40-100
<b>Viburnum</b> Opulus (Snowball), potgr.	" 20	—25
" " extra strong . . . . .	" 30	—40
" plicatum (Japanese Snowball)	" 25	—30
<b>Wistaria</b> sinensis, extra fine bushes, sure to bloom, in pots for two years . . . . .	" 80	—100
halfstandards, extra . . . . .	" 100	—125

## GLADIOLUS.

America, <i>soft lavender pink</i> , extra.	
13—16 cM. circumference	p. 100 \$ 1.20, p. 1000 \$ 10
16 cM. and up " " " "	1.60, " " " 14
Augusta, <i>white</i> .	
13 cM. and up . . . . .	p. 100 \$ 1.80, p. 1000 \$ 17
Badenia, <i>soft beautiful lavender, blue</i> . First prize at Nat. Glad. Soc. London, for the best blue.	each \$ 1.00
Baron J. Hulot, <i>dark velvety purple</i> . First class certifi- cate Nat. Glad. Soc. London.	
12—14 cM. circumference	p. 100 \$ 1.50, p. 1000 \$ 14
Brenchleyensis, <i>vivid scarlet</i> .	
14—16 cM. circumference	p. 100 \$ 1.00, p. 1000 \$ 9
16—18 " " " " " "	1.80, " " " 15
Childsii, <i>mixed</i> .	
1st size . . . . .	p. 100 \$ 1.20, p. 1000 \$ 10
Electra, <i>extra good red</i> , award of merit, Nat. Glad. Soc. London.	
1st size . . . . .	each \$ 0.80



Europe, *pure white*, first class certificate Nat. Glad. Soc. London.

1st size . . . p. 100 \$ 25, p. 1000 \$ 225

Empress of India, *dark brownish red*.

1st size . . . p. 100 \$ 8, p. 1000 \$ 70

Faust, *rich crimson, lighter on lower petals, slightly suffused, large open flowers*.

1st size . . . p. 100 \$ 3, p. 1000 \$ 20

Gandavensis, mixed.

1st size . . . p. 100 \$ 1, p. 1000 \$ 8.50

Glory of Holland, *beautiful white, with a few light rose spots towards its centre, large and open*. Certificate of merit 1912 Nat. Glad. Soc. of London.

1st size . . . p. 100 \$ 8, p. 1000 \$ 70

Glory of Noordwijk, *delicate soft yellow, pure clear color*, first class certificate Nat. Glad. Soc. London.  
each \$ 0.20

Golden West (syn. Pacha). Certificate of merit Nat. Glad. Soc. London, *orange yellow centre rose spotted*.

1st size . . . p. 100 \$ 12, p. 1000 \$ 100

Halley, *light red, carmine purple spotted*, award of merit Nat. Glad. Soc. London.

12 cM. circumference and up p. 100 \$ 4, p. 1000 \$ 30

Lily Lehman, certificate first class at Haarlem in 1910. *Soft pink, changing to white*. The largest flowering gladioli, with flowers placed around the stem.

12 cM. circumference and up p. 100 \$ 8, p. 1000 \$ 70

Lemoinei mixed, 1st size . p. 100 \$ 0.60, p. 1000 \$ 8

Liebesfeuer, award of merit Nat. Glad. Soc. London.

1st size . . . . . each \$ 0.60

Niagara, *soft primrose yellow, slightly tinged with rose pink in throat*. Certificate of merit at Boston and Baltimore.

Panama, Nat. Glad. Soc. London Award of merit, a seedling of America, resembling it in shape and growth but of a *salmon rose color*. Cert. 1st class at Newport in 1911 . each \$ 1.00, p. 100 \$ 80

Pink Perfection, *apple blossom color*, award of Merit at Haarlem 1910; Nat. Glad. Soc. London 1912, a gladiolus of great value . . . . each \$ 1.50

Princeps, *deep scarlet, white stripe*, well known favorite.

12-14 cM. circumference p. 100 \$ 1.80, p. 1000 \$ 16

14 cM. and up " " " 2.50, " " " 22

## 16 SUITABLE PLANTS FOR FLORISTS

---

Red Emperor (syn. Meteor-Bos), *scarlet, somewhat brownish reflex* award of merit at Haarlem 1911 each \$ 2

Queen of the Yellows . . . . . each \$ 1.80

White Excelsior (Reine Blanche).

12 cM. circumference and up p. 100 \$ 5, p. 1000 \$ 40

Willy Wigman, *creamy white, scarlet blotch.*

12 cM. circumference and up p. 100 \$ 5, p. 1000 \$ 40

---

## NYMPHAEA'S (Hardy Water-Lilies).

A great success, no trouble in transit, ship well.

Only strong plants are sent out.

**Arethusa**, carmine pink . . . . . each \$ 1.80

**Atropurpurea**, very large, brilliant carmine  
each \$ 1.85

**Aurore**, large, very floriferous, color first day yellow  
with pink, second day reddish orange, third day red  
each \$ 1.00, p. 10 \$ 6, p. 100 \$ 50

**Carisbrooki**, very large, sweet scented light pink  
flowers . . . each \$ 1, p. 10 \$ 9, p. 100 \$ 75

**Collossea**, free flowering, large light flesh colored  
flowers . . . . . each \$ 1.50

**Ellisiana**, large brilliant carmine  
each \$ 1.50, p. 10 \$ 12

**Froebeli**, large, dark, claret color  
each \$ 1.20, p. 10 \$ 10

**Gladstoniana**, enormous large pure white flowers  
each \$ 1.00

**Gloriosa**, very large, brilliant currant red „ „ 1.80

**Graziella**, orange red, red striped each \$ 1, p. 10 \$ 7

**James Brydon**, large, very double, rose carmine,  
beautiful form . . . . . each \$ 1.50

**Laydeckeri purpurata**, medium sized, clear carmine  
each \$ 0.80, p. 10 \$ 6, p. 100 \$ 50

**Laydeckeri rosea**, free flowering, sweet scented,  
extra fine flesh colored pink, darker afterwards,  
orange stamen . . . . . each \$ 2

**Laydeckeri rosea prolifera**, very free flowering,  
sweet scented the best for basins, flesh color when  
open, otherwise, dark carmine each \$ 1.80, p. 10 \$ 15

- Lucida**, large pink vermillion, darker centre  
each \$ 1.00, p. 10 \$ 8.50
- Marliacea albida**, enormous large flower of pure  
white color each \$ 0.75, p. 10 \$ 6, p. 100 \$ 45
- Marliacea chromatella**, enormous flower, beautiful  
yellow, dark brown marmorated leaves  
each \$ 0.40, p. 10 \$ 3, p. 100 \$ 25
- Marliacea rosea**, very large, light pink each \$ 1.20
- Paul Harlot**, large clear yellow, with coppery reflex.  
Very free flowering.
- Robinsonii**, very large, dark red, orange colored stamens  
each \$ 1.50, p. 10 \$ 12
- Seignouretii**, medium size flower, yellow, with red  
and carmine . . . . . each \$ 0.80
- Sioux**, coppery yellow, petals long, with red colored  
edges, stamen dark yellow, brownish marmorated  
foliage . . . . . each \$ 2.00
- Vesuvius**, very large amaranth red, clear red stamen,  
very free flowering . . . . . each \$ 2
- W. B. Shaw**, extra fine, large flowering variety  
sweet scented, light rose . . . . . each \$ 2
- William Doogue**, large, round flesh colored flowers  
each \$ 1.25
- The common **White Water Lily** (*Nymphaea  
alba*) we supply . . . each \$ 0.20, p. 10 \$ 1.50

For PEONIES, HARDY PHLOX, CONIFERS, etc.  
ask our prices and catalogues.



- BOSKOOPSCHE -  
HANDELSDRUKKERIJ