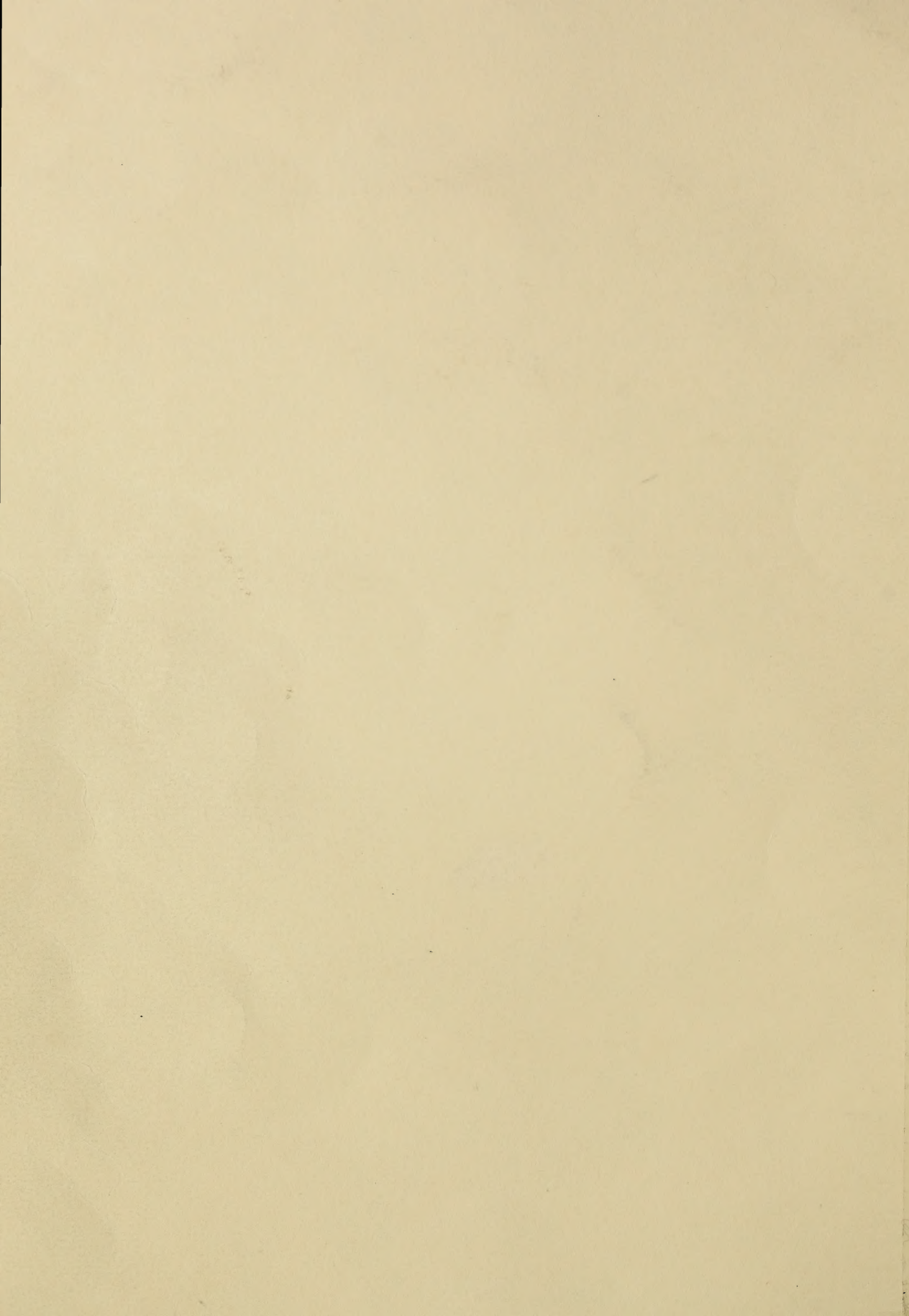


## **Historic, Archive Document**

Do not assume content reflects current scientific knowledge, policies, or practices.



62.43

1912.

LIBRARY  
RECEIVED  
★ SEP 10 1920 ★  
U. S. Department of Agriculture

# The Mankato Nursery

L. Z. SMITH, Proprietor

Mankato, - Minnesota

---

---

## TENTH ANNUAL CATALOGUE

---

---



---

---

## OUR SPECIALTIES

*Trees that bear*

*Flowers that bloom*

*Seeds that grow*

*Prize winning Poultry*

# INTRODUCTION

In issuing this, our Tenth Annual Catalogue, we desire to thank those who have so kindly patronized us in the past, and to assure all who are interested in the planting of Nursery Stock, farm and garden seeds, and the breeding of Thoroughbred Poultry, that we shall continue as in the past, to furnish first class goods at reasonable prices, and guarantee satisfaction.

## QUALITY AND PRICE OF STOCK

We grow and ship only the very hardiest of the IRON CLAD VARIETIES, knowing that the very best is none too good for the rigid climate of the Northwest. We personally inspect all goods before shipping and do not allow any stock to go out unless it is strictly first class, perfectly fresh and in a good growing condition. Every bale of Nursery Stock we send out bears the certificate of inspection from our State Etymologist. Please remember we guarantee safe arrival and goods to be as advertised in every way or your money refunded.

## OUR GUARANTEE

We will replace all Nursery Stock that fails to grow with good care the first season at one-half price, if we are notified by August first of the year stock was purchased, price of stock to be forwarded with list.

## TERMS AND SHIPPING DIRECTIONS

Cash must accompany all orders; send money by P. O. Order, Express or Bank Draft. State plainly whether you wish your goods shipped by express or freight and give the line of railroad you live on.

## OUR HOME REFERENCE

First National Bank, American Express Company, Thomas W. Hart, County Treasurer, Citizens National Bank, Mankato Fruit Commission Company, Edgar Weaver, County Auditor.

In writing to our reference, please inclose stamp for reply.

## PLANTING INSTRUCTIONS

Time and space will not permit us to give the necessary instructions for the planting and care of trees and shrubbery in this catalogue, so we have issued a complete instruction book of 32 pages, taking up each separate variety and giving a full description of just how to plant and care for it from the time it is planted until it produces fruit; in fact, all through its natural life. It tells how to plant, how to cultivate, how and when to trim, how and when to spray if attacked by insects, also how to care for them in the hot summer and cold winter. In fact, it is so complete that failure is impossible if you get our trees and follow its instruction. A copy will be sent every one ordering from us, or we will send a copy to any one sending us 10 cents.

# APPLES

Price—all varieties—3-year-old, 5-6 ft. each, 25 cents, \$2.00 per 10, \$9.00 per 50; 2-year-old, 4-5 ft. each, 20 cents, \$1.80 per 10, \$8.00 per 50.

**Apples**—Has long been considered the staple fruit, and to grow a sufficient quantity for family use should be the desire of every property owner. And since a great many varieties have long since passed the experimental stage. They can be grown in almost any old place with very little care and with as much assurance as corn or potatoes. We have only listed the hardy iron clad varieties, such as we know will grow and produce fruit anywhere in the northwest.



## SUMMER APPLES.

**Duchess**—Very hardy, free from blight, upright grower, early and prolific bearer. Fruit large, handsome, fine for cooking and eating. Season, September.

**Charlamoff**—About as hardy as the Duchess, but not as prolific. Thrifty, spreading grower, early and regular bearer. Fruit similar to Duchess, only longer, hangs to tree better. Tree in fruit is very aromatic. Season, September.

**Tetofsky**—Hardy, slow, upright grower, blights somewhat. Fruit medium sized, striped with red; choice eating. Season, August.

## FALL AND WINTER.

**Patten's Greening**—Very hardy, free from blight, vigorous, spreading grower, bears early and abundantly. Fruit large, yellow. Good eating and cooking apple. One of the best all around varieties. Season, October to January.

**Hibernal**—Without doubt the hardest; spreading grower, early and regular bearer, blights but little. Fruit large, striped, excellent for cooking but rather tart for eating until fully ripe. Season, October to December. It is one of the best stocks to plant for top-working with more tender sorts.

**Peerless**—Vigorous, upright, hardy tree. Fairly productive, good quality, size and color. Season, October to January.

**Wealthy**—This variety is without doubt the best quality and most popular apple grown in the state. Hardy, but subject to blight and sunscald. Upright grower, abundant and early bearer. Fruit large, red. Season, October to January.

**Peter**—Very similar to the above, only the tree is somewhat harder and has lighter foliage.

**Anism**—Free from blight, very hardy and prolific. Upright grower, fruit dark red, medium size and of good quality. Season, October to January.

**Longfield**—Hardy, blights somewhat; strong spreading grower. Very early and very prolific bearer. Fruit medium sized, yellowish, with blush; choice for eating and home use. Season, October to January. If you want apples soon, try this.

**Kaump**—An early and constant bearer, hardy and vigorous. Fruit yellow, medium sized and of good quality. Season, November to February.

**Plum Cider**—Vigorous, very productive, spreading grower quite hardy. Fruit good quality and fine appearance. Season, October to January.

**Wolf River**—A strong and vigorous grower, producing fruit of the largest size and highly colored. Not very productive. Season, January. Fair quality, but essentially a show apple.

**Okabena**—Very hardy and productive. Fruit of fine quality, size and color. Tree is good grower and very free from blight. Similar to Duchess, but later. Season, September to December.

### WINTER APPLES.

**Malinda**—Of crab-like growth, hardy, free from blight; very productive. Fruit yellow, "sheep-nose" shape, mild acid and the best of keepers. Season, February to May.

**Northwestern Greening**—Vigorous, spreading growth; fruit large, pale green, sub-acid, good quality. Becoming very popular as a winter variety. Season, November to April.

**Repka Malenka**—Very hardy, but blights somewhat; upright grower, early and prolific bearer. Fruit medium size, red striped, mild, sub-acid. Season, December to April.

**Pewaukee**—Vigorous, productive and quite hardy in favorable locations. Fruit large, dark red; fine quality and a good keeper. Season December to April.

**Scott's Winter**—Hardy, productive, strong, spreading grower. Fruit medium size, dark red, good quality. Season, December to April.

**Florence**—This is one of the best all-around crabs. Hardy, productive, medium size, acid and finely colored.

**Lyman's Prolific**—Hardy, spreading grower, free from blight. Fruit is large, acid, juicy, keeps well. A good new variety.

**Minnesota**—Hardy spreading grower. Prolific with age. Fruit large; yellow, splashed with red; acid, and a good keeper. Really a small apple.

**Martha**—Hardy, upright, thrifty grower; fruit fine, color and quality. Trees are shy bearers and liable to leaf rust.

**Transcendent**—One of the best all around varieties we have, but very subject to blight.

**Early Strawberry**—Hardy, spreading grower; liable to blight. Earliest of all to ripen and very productive, but perishable. Season, August.

**Whitney**—Hardy, thrifty, upright grower. Fruit large, handsome and of good quality for eating. Season, September.

**Sweet Russet**—Very hardy, spreading grower, early and prolific bearer. Fruit large, conical, russeted, yellowish. Fine for eating or as a pickling crab.

Milroy, Minn., Aug. 6, 1906.

L. Z. Smith, Mankato, Minn. Dear Sir: Enclosed find check for \$25.00 for the pigs. I received them in good condition and am well pleased with them. Respectfully,

Charles Sawyer.

Cottonwood, Minn., March 31, 1904.

L. Z. Smith, Manakto, Minn. Dear Sir: Will drop you a few lines about the orchard. It grew fine; am well pleased with it.

Very truly,  
C. Oftedal.

Astoria N. Y.  
May 1909.

Mankato Nursery,  
Mankato, Minn.  
Gentlemen:—

The trees and shrubery we ordered from you got here in good condition, and am well pleased with it.

Very Respfly,  
John Sasich

Sanford, Ind.,  
June 12th, 1909.

Mankato Nursery,  
Mankato, Minn.  
Gentlemen:—

The shrubery I got of you all grew nicely although it was very late when we received it, am well pleased with it.

Very truly,  
Mrs. Mary McCullough,

Culberson Mont.,  
May 1909.

Mankato Nursery,  
Mankato, Minn.  
Gentlemen:—

The Nursery stock we ordered from you, was held up for inspection which caused some delay, but after receiving same we found it in good condition and am well pleased with everything, several of my neighbors have been here to see the stock and are so well pleased with it that they say they will order from you next season,

Respectfully,  
C. F. Parker.

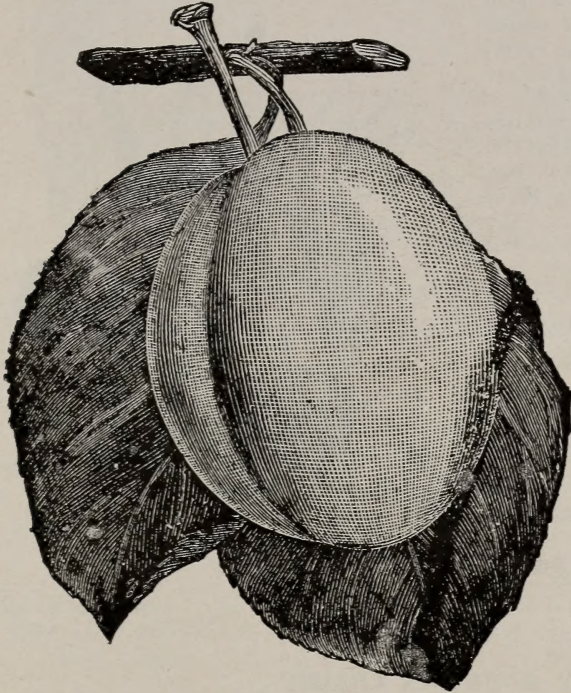
Lake Preston, S. D., 5-7-09.

Mankato Nursery,  
Mankato, Minn.  
Gentlemen:—

Plants arrived in good condition.

# PLUMS

All varieties—four years old, 5-6 ft., 50 cents each, \$5.00 per dozen; three years old, 4-5 ft., 40 cents each, \$4.00 per dozen; two years old, 3-4 ft., 30 cents each, \$3.00 per dozen.



There is no fruit that we can grow with greater assurance of success, and derive more pleasure and profit from, than our improved native plums. When on their own roots or worked on native roots, they are perfectly hardy and thrive anywhere throughout the northwest. They invariably produce fruit the second or third season after planting, are subject to but few diseases and require but little care to produce bountifully.

## Varieties.

**Forest Garden**—Very vigorous grower and profuse bearer of good sized, reddish-yellow fruit of good quality. Ripens about two weeks before De Soto. On their own roots.

**Wolf**—Very thrifty grower. fruit large, good quality, freestone, and ripens the last of August. A very good market variety.

**Surprise**—Upright, vigorous grower. Fruit dark red, very large and attractive; finest quality; ripens about a week before the De Soto. A new variety that promises to be one of the best for general planting.

**Wyant**—Spreading thrifty grower, adapted to all soils. Fruit large, oblong, purplish red, good quality and handles well. Nearly a freestone. The leader in some sections.

**De Soto**—Spreading grower; does well on most all soils. Fruit good size and quality; yellow, turning to red. Very liable to overbear, and fruit must be thinned. A very popular variety.

# GRAPES

All varieties—Price: Heavy three year old vines, 10 cents each, \$1.00 per dozen, \$6.00 per 100; two year old vines, 8 cents each, 75 cents per dozen, \$5.00 per 100; one year old vines, 5 cents each, 50 cents per dozen, \$4.00 per 100.

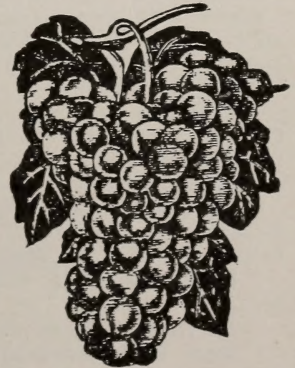
A few of the hardiest varieties should at least be planted by every lover of a home. They can be trained alongside of a building or fence, occupy but little space and be ornamental as well as useful.

**Concord**—The hardiest and best adapted for the northwest.

**Moore's Early**—One of the very best early black grapes. Cluster medium size, berry very large. Ripen nearly two weeks before Concord.

**Diamond**—Fine, white, very hardy variety, ripening a few days after Moore's Early. Vigorous and productive; of fine quality.

**Delaware**—Medium size, red; ripening a few days before Concord. Best in quality and brings good price. Hardy and productive; requires rich soil.



# CHERRIES

Cherries delight in elevated or well drained soils and gentle southern slopes. If not on their own roots they should be planted deep and allowed to grow in bush form. Plant about the same distance apart as plums. The varieties given below are giving the best satisfaction and deserve more extensive planting.

**Ostheim**—One of the best Russian varieties that is proving quite hardy and productive. Very desirable. Fruit nearly black, juicy and of good size. Four to five feet, 35 cents; three to four feet, 25 cents.

**Homer**—The only cherry grown and marketed in any quantity in the state. Very hardy and productive. An annual bearer, which ripens its good-sized dark red fruit very evenly. All offered are on their own roots, and we confidently believe will thrive and prove very satisfactory and profitable in all favorable locations. Four to five feet, 35 cents; three to four feet, 25 cents.

## COMPASS CHERRY.

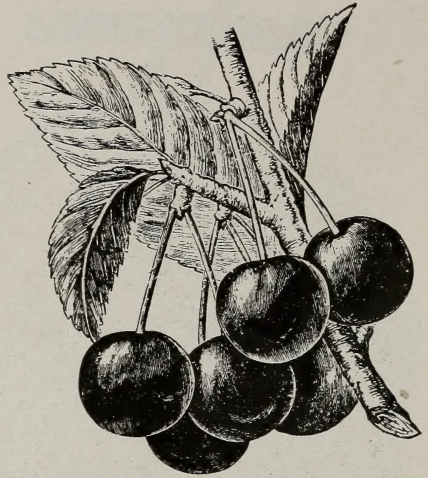
Each 40 cents.

This is a new fruit that is attracting considerable attention at present. It is a hybrid, and is in reality more of a plum than a cherry. It is perfectly hardy; an early and abundant bearer; trees bearing in nursery rows before being sent out. Fruit dark red, good flavor, both for eating and canning. Well worthy of a place as either an ornamental or in orchard.

## SAND OR ROCKY MOUNTAIN CHERRY.

Each 20 cents.

Perfectly hardy anywhere in the northwest and valuable for variety in severe locations. As sure to grow as a current bush. It forms a very ornamental bush about five feet high; is a very early and prolific bearer. Fruit black, of a rather sweet taste; nearly as large as standards.



---

## MISCELLANEOUS

**Improved Dwarf June Berry**—25 Cents Each—The June berry is one of the most valuable berries. The fruit is borne in clusters, like the currant, and ripens in June. Its size equals the Wild Gooseberry; shape, round; color, reddish purple at first and becomes a bluish black when fully ripened. Its flavor approaches the Huckleberry, a mild, very rich sub-acid. Perfectly hardy, not being injured by wet, cold or dry weather, and needs no special treatment.

**Buffalo Berries**—25 Cents Each—These trees grow about eight feet high, bearing quite young, and when full of fruit are very ornamental. The fruit ripens about the first of August and hangs on until in the winter, the branches bend, some with red, and some with yellow fruit, about the size of currants and about as sour, excellent for jelly or sauce, perfectly hardy.

**Rhubarb or Pie Plant**—15 Cents—Deep, rich soil is necessary to secure large stalks; it cannot be too rich. Plant four feet apart and so that crowns are about two inches below the surface; apply manure in the fall as a mulch and fork it in in the spring.

**Linnaeus**—Early, large, productive and tender; not as acid as others. One of the best.

**Horse Radish**—15 Cents Each—Will thrive in any soil and is a useful condiment.

**High Bush Cranberry**—25 Cents Each—Very similar in habit and appearance to the Snowball. Hardy, does well in reasonably retentive soils, and is very beautiful in the fall, when covered with its large clusters of red berries. They are acid, valuable for jelly.





## ASPARAGUS

25 Cents Per Dozen.

This desirable early vegetable should be more extensively planted. Beds last indefinitely when once established and require very little care.

## CURRANTS

2-Year Old 10c each, or \$1.00 per Doz.

No fruit will better repay for generous treatment than currants. They do best in rich, cool soils. Mulching and cultivating between is a good plan. Currant worms can be destroyed by spraying with a solution of white hellebore one ounce to three gallons of water. Spray as soon as they appear.

**White Grape**—Best white variety. Should be more extensively planted, as no variety is sweeter and better for table use.

**North Star**—A native of Minnesota one of the hardiest and most prolific of the red varieties. Should be in every garden. Does well throughout the Northwest.

**Red Dutch**—A strong grower. Free bearer, easy to cultivate and a good all around bush.

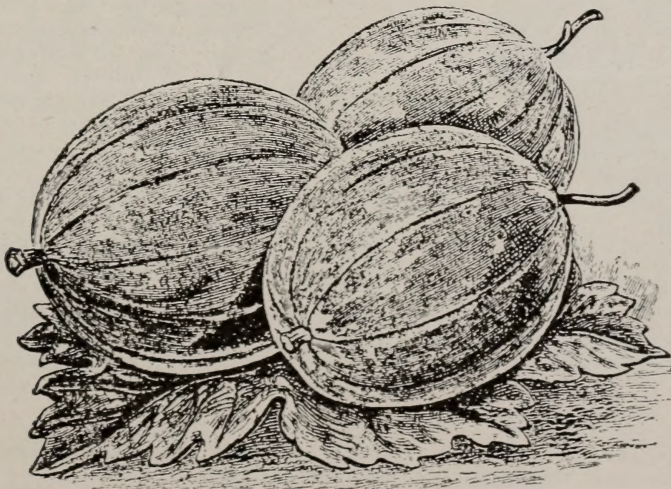


## GOOSEBERRIES

15c each

**Downing**—15 Cents Each—Bush vigorous and very productive. Fruit medium to large, skin whitish green; flesh soft, juicy. Excellent for family use and very profitable for market.

**Houghton**—Bush a vigorous grower, with rather slender branches; very productive, fruit medium size, pale red, tender and good. An old, reliable variety.



## BLACKBERRIES

50c per doz., \$3.00 per 100

**Snyder**—Valuable for the North by reason of its extreme hardiness. Wonderfully productive, and though the berries are but medium in size, they are of sweet, juicy flavor, and when fully ripe without the hard core of many other sorts. This is the standard early sort for the North and Northwest and is very popular.

**Ancient Briton**—This is regarded as one of the hardiest blackberries and especially adapted to Iowa, Wisconsin and Minnesota.



## RASPBERRIES

Price—Red Varieties: 50 cents per dozen, \$2.00 per 100; black varieties, 75 cents per dozen; \$3.00 per 100.



**Black Varieties**—These varieties should receive more attention for home use. They give a pleasing variety and are much preferred by many in flavor, when canned. They do not sprout and with reasonable care, are very productive.

**Gregg (Black)**—The leading market berry, grown largely for canning and drying. There is more of this variety grown than all the other varieties together; it is too well known to give description. We have a large stock, and plants are large and well rooted.

**Older**—A very hardy medium early and reliable bearer. Fruit large, having very small seeds, and of fine quality. Rather soft for shipping, but otherwise is the best all-around variety we have ever fruited.

**Red Loudon**—The superior points of this excellent red raspberry are vigor of growth, large fruit, beautiful, rich, dark crimson color, good quality and marvelous productiveness and hardiness. It stands shipping the best of any variety, and will remain on the bushes the longest without injury. Seems to succeed wherever red sorts will do well and is the leading variety. Season medium to late.

**Red Cuthbert**—This is a valuable variety well tested throughout the country; it has given good results both for home use and for market.

# STRAWBERRIES

Price—20 cents per dozen; 60 cents per 100; \$5.00 per 1,000.

This is the first fruit of the season, and, coming at a time when old fruit is gone, makes it peculiarly grateful to all. To have this delicious and healthful fruit in all its freshness and beauty, grow it yourself. It will make you healthier, happier and better satisfied with this world generally.

**Warfield (Per.)**—There is probably no better or more profitable berry grown for market. It is in greater demand than any other berry for canning purposes, which also creates a good market for it.

**Senator Dunlap**—Is of the Warfield type, but a much stronger grower, larger fruit, and being a staminate variety, every berry comes to maturity, and much larger than the Warfield. This we consider the best and easiest grown berry for this Northwest field.

**Crescent (Per.)**—This old variety yet holds first place as a standard of plant growth and productiveness. Drouth or cold weather does it the least injury. The crop of Crescent was about as good as anything on our ground the last season. Its only fault is that the berry is a little too soft for shipping. It is surely a lazy man's berry producing berries when all others fail.

**Bedcrwood (S.)**—This is one of our best standard berries for market. It is early, a very strong yielder and continues a long time in bearing. The fruit is good size and as firm as the Crescent. A very strong staminate, the very best fertilizer for Warfield Crescent or Haverland.



## Ornamental Shrubbery



Prices—Four years old, 3-4 ft., 25 cents each; three years old, 2-3 ft., 20 cents each; two years old, 1-2 ft., 15 cents each.

**Spirea (Van Houttii)**—One of the most attractive and graceful hardy shrubs we have, sure to please. Produces an abundance of drooping sprays of white flowers early in June. Sometimes called "Bridal Wreath."

**Spirea Billardi and Douglasii**—Are very desirable rose-colored varieties. Flowers in terminal spikes from July until frost. Douglasii is not as vigorous a grower as Billardi, but foliage is very downy.

**Snow Ball**—A well-known favorite shrub of large size, with globular clusters of white flowers in June.

**Double Lilac**—A new and choice variety of the Lilac; producing long racemes of double purple flowers, lasting longer than the single sorts. A valuable acquisition.

**Large Flowering White**—A beautiful variety; has very large, pure white panicles of flowers. Considered the best.

**Bush Honeysuckle (pink and white varieties)**—Very hardy, strong growing and attractive shrubs which bear a profusion of bloom in early spring, followed by bright red berries. Fine also as a hedge plant.

**Mock Orange or Syringa**—Hardy, popular shrubs, blooming during June and July. They produce a profusion of pure white orange-scented flowers.

**Hydrangea (Paniculata)**—A perfectly hardy shrub, producing an abundance of immense clusters of bloom in August. Should have a place in all home grounds. Blossoms the same season they are planted. If they are cut back nearly to the ground each spring, larger and fine clusters of flowers will be obtained.

**Double Flowering Plum**—Makes a very beautiful hardy shrub that is superior in every way to the Flowering Almond. Flowers very double, rosy pink and closely set on the branches coming before the foliage.

**Bechtel's Double Flowering Crab**—A very handsome, desirable shrub or small tree that is proving hardy. Flowers are fragrant, very double and look like small pink roses.

**Weigela, Eva Rathke**—This new variety is proving very hardy and being also the choicest of its class, will be quite a desirable acquisition. Dark red, thrifty, prolific bloomers, June and July.

## CLIMBING VINES

Three years old, 25 cents each; two years old, 20 cents each.

**Virginia Creeper or American Ivy**—Hardy, native, vigorous grower. One of the best for covering porches, walls or unsightly spots. Foliage colors very brilliantly in fall; purple berries.

**Ampelopsis Engelmani**—Similar to above, only clings to stone, etc., with great tenacity. A rapid grower and hardy.

**Bitter Sweet**—A strong-growing, native vine, of twining habit. Very attractive when covered with its orange-colored seed pods, which open late in the fall, exposing the dark red berries.

**Honeysuckle, Scarlet Trumpet**—Produces a constant supply of red trumpet-shaped flowers during the entire summer; very desirable. A strong and rapid grower; quite hardy, but should receive winter protection.

**Clematis Virginia or Virgin's Bower**—A beautiful native climber; hardy and strong growers. Flowers white, small and fragrant; produced in August in abundance.

## PEONIES

Price 20 cents each.

Are rapidly becoming the most popular of all perennial flowers. They are perfectly hardy, very showy and easily grown. Many of the newer sorts are very fragrant and they can truly be called "the rose for the north." Plant in September or early in the spring in rich soil.

## GLADIOLUS

Price 5 cents each.

The ease of culture, great variety of colors succession of bloom, and many other points in their favor, make the Gladiolus one of the most desirable of our summer blooming plants. They may be planted in succession any time from May 1st up to June, with the assurance of blossoming that season. They will do well anywhere except on wet, cold and very heavy soils. Dig in the fall before severe freezing weather and keep in a dry place. Choice mixed.

## DAHLIAS

Price 20 cents each.

This well known fall-blooming plant is deservedly becoming very popular. They are in single double and cactus types, ranging from white to purple and darkest red. Best results in blooms will be obtained if dormant roots are set out the middle of May in not too rich soil. When plants are of blooming size, apply fertilizer as a mulch or in liquid form. Take up in fall and store in cellar same as other root crops, leaving some of the earth adhering to roots. Separate in spring before planting, leaving one good bud with each clump.

## LILIES

Price 5 cents each.

Plant deep from six to eight inches in well-drained soil, sandy loam preferred. Best to plant in October, but may be planted in early spring. Do very well when planted near shrubbery and give pleasing variety.

**Aulatum**—Mammoth, fragrant, pure white flowers, studded with crimson spots and having a golden band in center of each petal.

**Speciosum Roseum**—White flowers shaded with deep rose color and red spots. Not fragrant, but hardy and very beautiful.

**Tiger Lily** (both double and single)—Bears large clusters of orange red flowers, spotted with black; both are very desirable and succeed well everywhere.

---

# Ornamental Department

All varieties 5-6 ft., 20 cents each; \$2.25 per dozen.

**White Elm**—One of the best and most popular of trees for any purpose. Hardy; rapid grower; resists drouth well and is long lived.

**Box Elder**—A hardy, rapid grower (particularly when young) making a desirable shade tree and also useful in timber planting to mix with more valuable kinds.

**Ash (Green or White)**—One of our most valuable trees for ornamental or timber planting. Resists drouth well. Rapid, upright grower.

**Catalpa Speciosa**—A variety originating in the West; more upright and symmetrical in its growth than the common Catalpa, and blossoms two or three weeks earlier. Very valuable for timber, fence posts, railroad ties, etc., possessing wonderful durability. A very ornamental and valuable tree.

**Basswood (Am. Linden)**—Hardy; drouth-resisting, and one of the best of all for shade or ornamental purposes. Blossoms are very fragrant. Should be more generally planted.

**Larch European**—An excellent, rapid growing pyramidal shaped tree, drooping, slender branches; foliage light green, soft and graceful. Perfectly hardy and thrives in nearly all situations. Makes handsome specimens for ornamental planting.

**Russian Golden Willow**—A very hardy and beautiful variety. A very rapid grower, making a fine, medium-sized, round-topped tree. Bark is of rich golden color in winter and spring. Desirable for windbreak planting, as a lawn tree or for variety in ornamental planting.

**Mountain Ash, European**—A fine, hardy tree; head dense and regular, covered from July till winter with large clusters of bright scarlet berries.

## WEEPING TREES.

Price, 5-6 ft., 75 cents each.

**Mulberry, Teas' Weeping Russian**—A weeping variety of the now well-known Russian Mulberry; perfectly hardy in summer and winter; withstands extreme heat and cold, and grows naturally in a very graceful form.

**Birch, Cut Leaved Weeping**—An elegant erect tree, with slender, drooping branches and fine-cut leaves. A magnificent variety and worthy of a place on every lawn.

**Ash, European Weeping**—The common well known sort; one of the finest lawn and arbor trees, covering a great space and growing rapidly.

**Willow, Weeping**—An exceedingly graceful tree, with large, glossy leaves; one of the finest of this class of trees.

# Roses

**Bush Roses**, three years old, 20 cents each.

**Madam Plantier**—Pure white, double, early and very free bloomer. Nearly thornless; very hardy and vigorous. Sure to please.

**Harrison's Yellow**—A freer bloomer than the Persian, but hardly as double. Light yellow.

**Minnesota**—The best hardy, dark red rose of its class; vigorous grower, fragrant and prolific.

**Crested Moss**—Deep pink, very hardy and a free bloomer. Buds are deeply mossed and very beautiful.

**Magna Charta**—Pink suffused carmine. A choice and vigorous growing variety.

## Hybrid Roses

Three years old, 25 cents each.

**Coquette des Alps**—The best white perpetual bloomer. A vigorous grower and free bloomer. White tinged with pink very fine.

**Paul Neyron**—Deep pink, very double, fragrant; blooms all summer. Flowers are the largest of any variety in cultivation.

**Gen. Jacqueminot**—Dark crimson, double, fragrant, perpetual rose. Very popular and desirable.

**Alfred Colomb**—A large, full, fragrant, globular, bright crimson rose. A grand variety.

**Ulrich Brunner**—A large, cherry red variety of fine form and great substance. Vigorous and healthy.

## Climbing Roses

Three years old, 20 cents each.

**Yellow Rambler**—Too well known to need any description. It is a very popular, hardy climber with yellow flowers.

**White Rambler**—This charming new rose of the Rambler variety is a wonder. It climbs rapidly, is entirely hardy; produces immense clusters of pure white roses, perfectly double, of delightful fragrance, and of an immaculate white. It is, without question, the very best climbing rose extant.

**Crimson Rambler**—Very vigorous grower. Produces its flowers in pyramidal clusters of large numbers. Remains in bloom for a long time and retains its color unfaded. The profusion of bloom is marvelous, and the variety deserves the popularity and praise it receives.



# Evergreens



## PRICE

Transplanted, 2 to 3 feet	30c each, \$3.00 per doz.
“ 18 to 24 inches	20c each, \$2.25 per doz.
“ 12 to 18 inches	12c each, \$1.25 per doz.

Of all classes of Nursery Stock the Evergreen is the most perishable, and special care must be used in transplanting them. However, if the following rules are observed, it can be as successfully accomplished as with any other class.

First. Do not expose the roots to wind or sun and never let the roots dry out.

Second. When ready to plant make a thin mud and dip the roots. See that the tree is planted two or three inches deeper than it stood in the nursery row. Work fine, moist dirt in and around the roots, packing it firmly so that it will prevent the air from getting down to the roots. If trees are very large give them a partial shade from the southwest and keep well cultivated. We can furnish seedlings Evergreens from 12 to 30 inches high—fine stalky trees, well rooted, and with a little extra care will grow just as readily as transplanted stock. Look our prices over, and give us a trial order.

**White Pine**—The most beautiful of all the Pines, grows rapidly; adapted to almost any location and is easy to transplant.

**Norway Pine**—One of our finest native Pines, hardy, drouth resisting, grows very rapid and straight—fine for shade trees.

**Jack Pine**—Very hardy, does well on light, poor soil. Easy to transplant and requires very little care.

**Balsam Fir**—Upright and rapid. Grows fine in color and shape. Very pretty tree for lawn or park.

## FARM AND GARDEN SEEDS

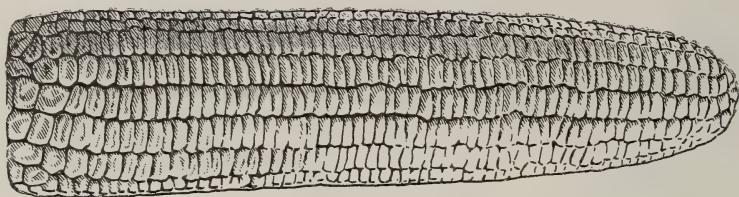
Having had so many calls for seeds the past few years induced us to arrange for the growing of a few of the commoner varieties of farm and garden seeds. We shall make no attempt to compete with the old seed houses in manner of advertising and describing the wonderful qualities of the various kinds of seeds. If it is beautiful pictures and glowing accounts of wonderful plants you are after, you will have to look elsewhere but if you are looking for pure, fresh seeds that will give satisfactory results at about half the price you have been paying, you will find it in the following list.

### FIELD CORN

The price of all our field corn is the same and is as follows: Large pk., 5 cents; qt., 25 cents, post paid; pk. 65 cents; half bu., \$1.10; bu. \$1.90.

Our seed corn was grown on a sandy soil, and was ripe and thoroughly dry before the heavy freeze in the latter part of October, which ruined so much of the seed corn in

the Northwest. Our seed will be tested from time to time before shipping and none will be sent out unless it is thoroughly pure and of high germinating power. We carefully select the very best types of each variety, following certain definite lines, such as length of ear, depth of kernel and color. We are also careful in grading so it will insure a uniform stand when planted. We have only a limited quantity and would advise placing orders early.



### MINNESOTA NO. 13.

The earliest variety of yellow dent, will ripen in 80 or 90 days; medium sized ear, filled from tip to tip, often yielding 75 bushels per acres with just ordinary care.

### MINNESOTA YELLOW DENT.

A little larger than Minnesota 13 and ripens about ten days later.

### MINNESOTA WHITE DENT.

A large white corn, ripening about September 10th; ears from 10 to 14 inches long, always well filled.

### KING PHILLIP.

The earliest of flint corn; long red ear often 15 to 18 inches; splendid for early hog feed.

### SWEET AND POP CORN.

Price—all kinds—large pkt. 15 cents; qt. 25 cents; four qts., 65.

**Stowells Evergreen**—The best late sweet corn ever grown.

**White Cob Corn**—The best and earliest.

**Pop Corn**—White rice and white pearl, a smooth corn.

### POTATOES.

Price, all kinds, peck, 50 cents; bushel, \$1.50; 100 eyes by mail, 80 cents.

**Early Ohio, Early Rose, Carman No. 3 and Early Triumph.**

**Cabbage**—Early Winnigstadt, Late Drumhead and Flat Dutch, half ounce, 7 cents.

**Carrot**—Oxhart and long orange, large package 4 cents, ounce 8 cents.

**Cucumber**—Boston pickling and Early Green Cluster, large package 4 cents, ounce 10 cents.

**Lettuce**—May king, and Iceberg, large package 4 cents, ounce 10 cents.

**Muskmelon**—Rockford and Hackensack, large package 4 cents, ounce 10 cents.

**Onions**—Seed—Red Wethersfield, Red Globe, Yellow Globe, and White Quene, large package 4 cents, ounce 10 cents.

**Peas**—Little Gen, Telephone, and Abundance, large package 3 cents, quart 15 cents.

**Radish**—Early Turnip, L. S. S. Top and Winter Rose, large package four cents, ounce 8 cents.

**Squash**—Hubbard, W B. Scallop, and G. S. C. neck, large package 4 cents, ounce 10 cents.

**Tomato**—Ponderosa, Dwarf Champion, and Early Jewel, package 10 cents.

**Turnips**—Early White and Flat Duch, large package 4 cents, ounce 8 cents.

**Beets**—D. D. Red, H. L. Blood, Sugar Beet, and Mangel Wurtzel, package 4 cents, ounce 8 cents.

**Pumpkin**—Pie, and Large Yellow, large package 5 cents, ounce 10 cents.

**Pepper**—Red Cherry, large package 10 cents.



FOREST TREE SEEDS.

Box Elder—50 cents per pound, 30,000 seeds to the pound.

Ash—50 cents per pound, 30,000 seeds to the pound.

Catalapa—(Hardy) \$1.50 per pound.

Locust Black—\$1.00 per pound.

TERMS AND SHIPPING DIRECTIONS FOR SEEDS.

All seeds shipped free if ordered with Nursery Stock. If ordered separate add 10 cents extra for each \$1.00 worth of seeds ordered.

*Read these Testimonials*

Pierre, So. Dakota,  
April 24th, 1909.

Mankato Nursery,  
Mankato, Minn.  
Dear Sir:—

Yours of recent date enclosing bill together with goods shipped is at hand, and same came in good order. I enclose here-with draft for payment.

Yours respectfully,  
C. C. Bennett.

Fergus Falls,  
Apr. 24, '09.

L. Z. Smith,  
Mankato, Minn.,  
Dear Sir:—

I received the plant the 21st of Apr. in a good condition. We are very much oblige for it.

Yours truly,  
Mrs. Kukacka.

Madelia, Minn.,  
Sept. 2, 1909.

L. Z. Smith,  
Mankato, Minn.,  
Dear Sir:—

Those trees and shrubs that I got of you last spring all growing fine never lost one; think I will give you quite an order next spring I think I will have some place to put them. How are the chickens? When you get out a premium list send me one.

Yours truly,  
Peter Bean.

Kadoka, S. Dak.  
May 5, '09.

Mankato Nursery Co.,  
Mankato, Minn.,  
Gentlemen:—

Received the nursery stock May 1, which arrived in fine condition. Am well pleased.

Please send me your catalogue.  
Respectfully Yours,  
W. W. Brunais.

Hector, Minn.,  
May 8, '09

Mankato Nursery Co.  
Sirs:

Received the nursery stock ordered from you in due time, and in good condition.

Yours truly,  
Henry Rieke.

Gromngen, Minn.,  
May 3, 1909.

Mankato Nursery Co.:

I received the goods April 26th, they were in fine shape.

Yours truly,  
John A. Nelson.

Cologne, Minn.,  
April 21, 1909

Mankato, Nursey,  
Mankato, Minn.,  
Gentlemen:—

I got the trees etc. yesterday, must say I am well pleased with everything.

Yours,  
Otto F. Neuman.

R. R. 3, Box 41.

Noble, Minn.,  
May 8, 1909.

Mankato Nursery,  
Dear Sir:—

The goods you shipped Apr. 27 just arrived at Radium May 7th. And I am just thru planting it. It was in good shape when considering the long time it had been in transit and I expect all the plants will live.

Respectfully,  
L. Hoff.

Nebish Minn., 5-10-09

L. Z. Smith,

Received nursery stock all right.  
Richard Oberg.

Sanborn, Minn.,  
May 2-09.

L. Z. Smith,  
Dear Sir:—

I received the nursery stock in fine condition.

Yours,  
Fred Trapp.

Milbank, S. Dak.

L. Z. Smith:

Just got my trees, more than pleased, better than expected.

Very respectfully yours,  
S. Havens.

Cottonwood, Minn.

L. Z. Smith,  
Mankato, Minn.,  
Dear Sir:—

I will drop you a few lines about the orchard. Everything grew fine, and I am well pleased with it.

Very truly,  
C. Oftedahl.

# Forest Trees

Our forest trees are extra strong and healthy and well grown, and will give the best of satisfaction.

Catalpa Speciosa, 12 to 18 inches, price per 1,000, \$6.00; per 500, \$3.50; per 100, \$1.00.

Catalpa Speciosa, 8 to 12 inches, price per 1,000, \$4.00; per 500, \$2.75; per 100, 75 cents.

Locust Black, 12 to 18 inches, price per 1,000, \$10.00; per 500, \$6.00; per 100, \$1.50.

Maple, Soft, 12 to 18 inches, price per 1,000, \$5.00; per 500, \$3.00; per 100, 75 cents.

Maple, Soft, 8 to 12 inches, price per 1,000, \$3.50; per 500, \$2.00; per 100, 50 cents.

Elm, White, 12 to 18 inches, price per 1,000, \$6.00; per 500, \$3.50; per 100, \$1.00.

Elm, White, 8 to 12 inches, per 1,000, \$4.00; per 500, \$2.50; per 100, 75 cents.

Box Elder, 12 to 18 inches, price per 1,000, 7.00; per 500, \$4.00; per 100, \$1.00.

Norway Poplar, 2 to 3 feet, price per 1,000, \$20.00; per 500, 12.00; per 100, \$2.00.

Norway Poplar, 4 to 5 feet, price per 1,000, \$30.00; per 500, \$18.00; per 100, \$4.00.

Norway Poplar, 5 to 6 feet, price per 100, \$7.50.

Black Walnut, 12 to 18 inches, per 1,000, \$15.00; per 500, \$8.00; per 100, \$2.00.

Cottonwood, 12 to 20 inches, per 1,000, \$4.00; per 500, \$2.50; per 100, 50 cents.

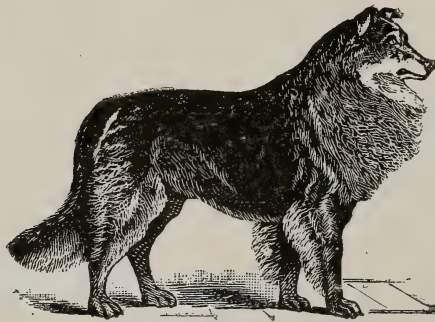
Ash, White, 12 to 18 inches, per 1,000, \$7.50; per 500, \$4.00; per 100, \$1.00.

Norway Poplar, cuttings, per 1,000, \$6.00; per 500, \$3.50; per 100, 75 cents.

Russian Golden Willow, cuttings, per 1,000, \$3.50; per 500, \$2.00; per 100, 50 cents.

Gray Willow, cuttings, per 1,000, \$3.50; per 500, \$2.00; per 100, 50 cents.

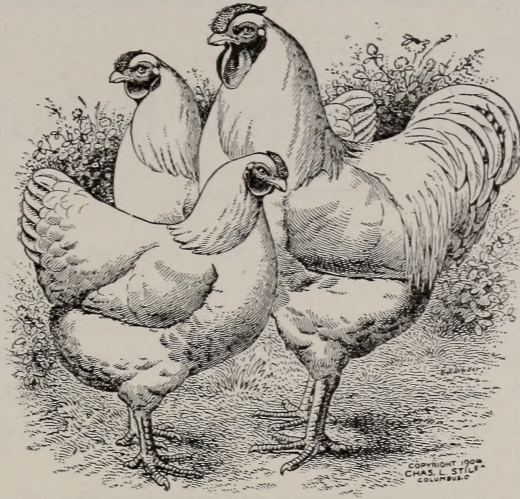
Laurel Leafed Willow, cuttings, per 1,000, \$3.50; per 500, \$2.00; per 100, 50 cents.



## Scotch Collies

From Imported stock, our Kennels contain the best blood of two continents. Sables or Tri-colors, natural heel drivers. Pups \$10.00 each. Bred females a matter of correspondence.

# Poultry Department



For the past fifteen years we have given much time and money in the breeding of thoroughbred poultry, and while we haven't the largest poultry plant in the Northwest, our yards contain more prize winners than any plant of its size in this part of the state. We have not only bred for size and quality, but for egg production as well, and there isn't a day in the year but what we get eggs. It is not our intention in this catalogue to go into details regarding the many good qualities of our fowls, as we have a special poultry catalogue for that purpose which will be sent to any one writing for it. We will add, however, that at our late show held in Mankato, Holden, judge, we made thirty-seven entries against strong competition and won thirty-one prizes. If you want big, healthy, hardy chickens that will lay the year around, write your wants to us and we will guarantee to satisfy you in quality and price.

## Price of Eggs.

Barred Plymouth Rocks, per 13, \$1.25; per 26, \$2.00; per 50, \$3.50; per 100, \$5.00.  
Buff Plymouth Rocks, per 13, \$1.50; per 26, \$2.50; per 50, \$4.00; per 100, \$7.00.  
White Plymouth Rocks, per 13, \$1.50; per 26, \$2.50; per 50, \$4.00; per 100, \$7.00.  
White Wyandottes, per 13, \$1.25; per 26, \$2.00; per 50, \$3.50; per 100, \$5.00.  
S. L. Wyandottes, per 13, \$1.25; per 26, \$2.00; per 50, \$3.50; per 100, \$5.00.  
Buff Wyandottes, per 13, \$1.50; per 26, \$2.50; per 50, \$4.00; per 100, \$7.00.  
White Leghorns, per 13, \$1.25; per 26, \$2.00; per 50, \$3.50; per 100, \$5.00.  
Brown Leghorns, per 13, \$1.25; per 26, \$2.00; per 50, \$3.50; per 100, 5.00.  
Buff Orpingtons, per 13, \$1.50; per 26, \$2.50; per 50, \$4.00; per 100, \$7.00.  
Black Orpingtons, per 13, \$2.00; per 26, \$3.50.  
S. G. Dorkins, per 13, \$1.50; per 26, \$2.50; per 50, \$4.00.  
S. S. Hamburgs, per 13, \$1.50; per 26, \$2.50; per 50, \$4.00.  
Black Langshans, per 13, \$1.50; per 26, \$2.50; per 50, \$4.00.  
Black Minorcas, per 13, \$1.50; per 26, \$2.50; per 50, \$4.00.  
Rose Comb R. I. Reds, per 13, \$1.50; per 26, \$2.50; per 50, \$4.00.  
Single Comb R. I. Reds, per 13, \$1.50; per 26, \$2.50; per 50, \$4.00.  
Light Brahmas, per 13, \$1.50; per 26, \$2.50; per 50, \$4.00.

All the above eggs guaranteed fresh and fertile and packed in the most improved manner, and any shipment of eggs failing to arrive in good condition at your express station will be replaced free. Give us a trial order.

---

# Premiums and Rebates

---

---

For \$ 5.00, cash with order, \$ 5.50 in Nursery stock and seeds may be selected.  
For 7.50, cash with order, 8.50 in Nursery stock and seeds may be selected.  
For 10.00, cash with order, 11.50 in Nursery stock and seeds may be selected.  
For 15.00, cash with order, 17.00 in Nursery stock and seeds may be selected.  
For 20.00, cash with order, 22.50 in Nursery stock and seeds may be selected.  
For 25.00, cash with order, 30.00 in Nursery stock and seeds may be selected.

---

---

## In Addition to the above Rebates

---

---

We will give one setting of thoroughbred eggs at half price with a \$10.00 order, one setting free with a \$15.00 order, two settings free with a \$20.00 order, we will also allow the freight on all orders of \$15.00 and over within 100 miles of Mankato, over that distance we will allow the amount of freight in stock extra.

## Get up a Club

---

---

In addition to all above premiums and rebates we will allow, 15 per cent discount on all orders for \$30.00 or more and freight paid. We will also give a thoroughbred Poland China Boar Pig valued at \$30.00, to any one sending us \$75.00 cash with orders to be shipped at one time to one place. We will also give a Scotch Collie Pup valued at \$10.00, for \$50.00 in orders as above described. To get any of these premiums, rebates or discounts the orders must be at the regular catalogue price and cash must accompany the orders unless otherwise agreed on.

---

# HURST COMPRESSED AIR SPRAYERS.

## Description Hurst Compressed Air Sprayers.

As shown by the illustration, this sprayer is carried under the arm, and can be easily used in orchard or field. It is suitable for spraying potatoes, fruit trees, vegetables, etc. For washing wagons, windows; for putting out small fires; for whitewashing hen houses, cellars, and other places; for disinfecting, etc.

Hose couplings are solid brass. Hose is high-grade, three-ply, supported by a coil spring. It is furnished with a Never-Clog Nozzle. This nozzle can be cleaned without stopping the spray or removing the nozzle from the tree. You can make a flat, round or solid spray. A slight pressure of the thumb starts the spray—remove it, and the spray stops instantly. The sprayer holds between four and five gallons, and can be carried by either strap or air pump handle.

**How to Work It**—This is charged with air, same as you would a bicycle pump. It also agitates the solution at the same time. When the correct pressure has been gained, there is a safety valve which "blows off," showing you that there is no need for further pumping. After this you need to stop for nothing, just walk along from row to row until your machine is empty of liquid. The liquid comes out either as a fine spray or a solid, continuous stream, just as you choose.

**Prices**—Outfit No. 10. With galvanized steel body, as shown in illustration, \$5.50. With polished brass body, \$7.00. Cash with order. Money refunded if not satisfactory.



Photo No. 32  
(Outfit No. 10)

# Hurst Patent Spray and Force Pump

## Description of Hurst Patent Spray and Force Pump.

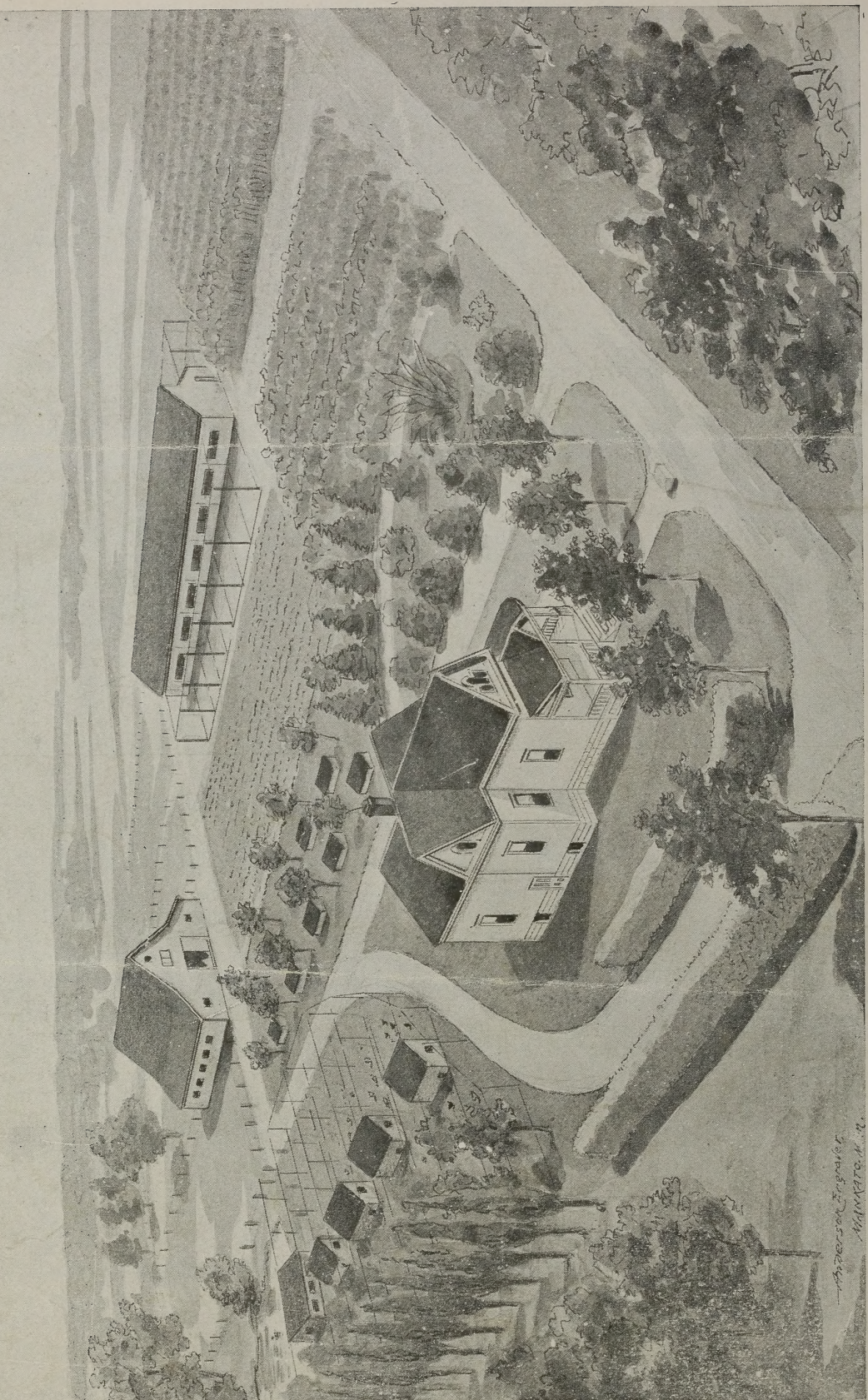


Photo No. 14  
Bucket Sprayer  
Outfit No. 9

This handy device will fit over any pail fourteen inches tall. It has a stroke six inches long and develops a strong, fine spray. It is a marvel of simplicity. All parts can be easily removed. The plunger is simple, provided with a wrapping that can be renewed in a few minutes without any cost. The body of the pump is of special quality, heavy galvanized steel and cannot rust. By removing brass cap, other ball valves can be seen also. There is a passage called the Patent Overflow which allows all surplus liquid to run back into the vessel and not splash out at the top. This is very important, for if chemicals get on the skin or in the face, they will act as caustics and cause many days of discomfort. Therefore, we warn you against the cheaply made spray pumps, which are always out of order, and are dangerous to operate.

With this pump you can spray trees, bushes, garden truck, hen houses, barns, etc. You can even clean the windows (or outhouse) in a third story building with it, as the following testimonial proves. Mr. J. A. Cassel, Bloomdale, Ohio, writes: Yesterday we cleaned the windows on the third story of a brick building. I have had one of your pumps in use for over nine years."

**Price**—Outfit No. 9. Pump complete with Combination "Trio" Nozzles, making three different sprays for all kinds of work, all ready to use, \$3.50, cash with order. Money refunded if not satisfactory.



—Architect, Engineer,  
MANKATO, MINN.

Birds-eye view of a part of Mankato Nursery and Poultry Yards, Located one and one-half mile Southeast of Mankato, Minn