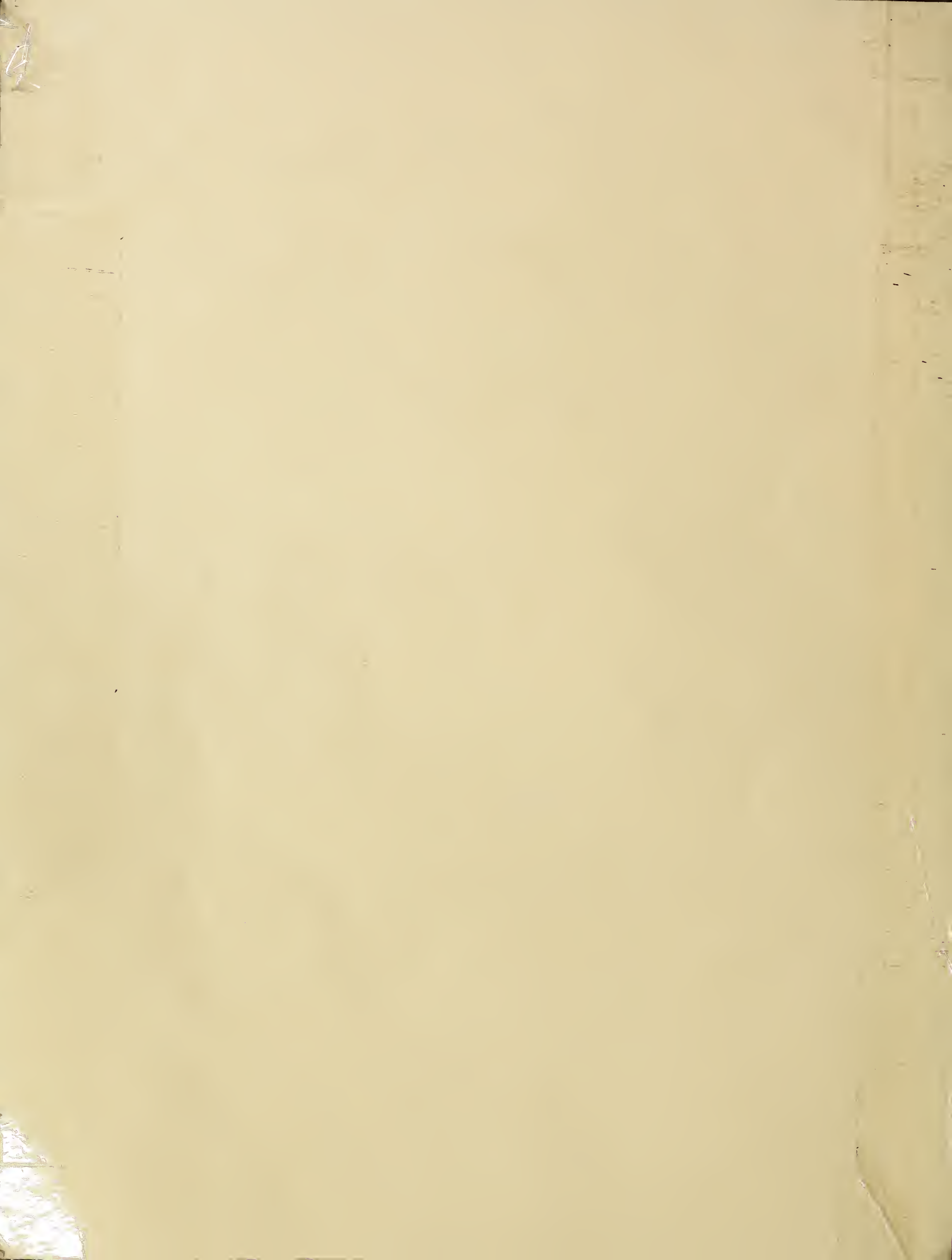


Historic, Archive Document

Do not assume content reflects current scientific knowledge, policies, or practices.



Will H. Jones

50

1912

MARKET GARDENERS'

1912

Wholesale Price List

OFFERED BY

U. S. Department of Agriculture,
Washington, D. C.

LIBRARY,

I. N. SIMON & SON

Growers and Importers of

Seed Specialties for Market Gardeners

6 North Front Street

::

Philadelphia, Pa.



SIMON'S CABBAGE HEAD LETTUCE

(For Description and Prices see Page 15)

SPECIAL NOTICE

WE make a specialty of supplying Market Gardeners with the best strains of seeds that can be produced. We are always on the alert for a better strain, and if we find it we spare no expense in securing seed stock of it.

We handle absolutely nothing that we do not believe to be the best obtainable. We do not claim to compete in prices with irresponsible parties, whose sole effort is to secure the lowest priced seeds, regardless of quality; such seeds are not cheap, but dear at any price. The first cost of seeds is insignificant, compared with time and labor that must be expended upon a growing crop. Quality is our first consideration, and the prices we offer are as low as first-class seeds can be sold for. All goods will be delivered at freight depots or express offices in Philadelphia, free of charge, but we do not pay the charges of transportation. If seeds are ordered by mail, postage must be added to these prices at the rate of 8 cents per pound and 15 cents per quart. Remittances should be made by Postal Money Order, Express Co.'s Money Order or by Registered Letter. Parties buying large quantities of any one variety will be quoted special prices on application.

NON-WARRANTY I. N. Simon & Son give no warranty, express or implied, as to description, purity, productiveness, or any other matter of any seeds they send out and they will not be in any way responsible for the crop. If the purchaser does not accept the goods on these terms they are to be returned at once.

I. N. SIMON & SON.

Quantity

Names of Seeds, &c., Wanted

\$ Price cts.

Amount Brought Forward

Total Amount of Order,

WHOLESALE PRICE LIST

ASPARAGUS

Starkey's Mammoth Prolific.—Originated at Bustleton, Philadelphia, and is well known in the Philadelphia market. Produces heavy green shoots of fine quality and always brings the highest market price. Oz. 10c., $\frac{1}{4}$ lb., 30c., lb. \$1.00, 10 lbs. \$9.50.

Early Giant French Argenteuil.—A variety imported from France which is claimed to resist rust better than some American sorts. It produces an abundance of heavy dark green shoots and is very early. Oz. 10c., $\frac{1}{4}$ lb. 25c., lb. 75c., 10 lbs. \$7.00.

Palmetto.—A very early maturing and prolific variety, producing numerous deep green shoots of excellent quality. One of the most popular varieties. Oz. 5c., $\frac{1}{4}$ lb. 15c., lb. 40c., 10 lbs. \$3.50.

Conover's Colossal.—A mammoth green sort of the largest size and good quality. Oz. 5c., $\frac{1}{4}$ lb. 15c., lb. 40c., 10 lbs. \$3.50.

Barr's Mammoth.—A popular variety, producing heavy green shoots. Oz. 5c., $\frac{1}{4}$ lb. 15c., lb. 40c., 10 lbs. \$3.50.

Columbia Mammoth White.—Shoots of largest size and clear white until four to six inches above the surface. Oz. 7c., $\frac{1}{4}$ lb. 20c., lb. 60c., 10 lbs. \$5.50.

ASPARAGUS ROOTS

We can supply strong two-year-old roots of the following varieties:

Starkey's Mammoth Prolific. \$5.00 per 1,000.

Early Giant French Argenteuil. \$5.00 per 1,000.

Palmetto. \$4.50 per 1,000.

Barr's Mammoth. \$4.50 per 1,000.

Conover's Colossal. \$4.50 per 1,000.

Columbia Mammoth White. \$5.00 per 1,000.

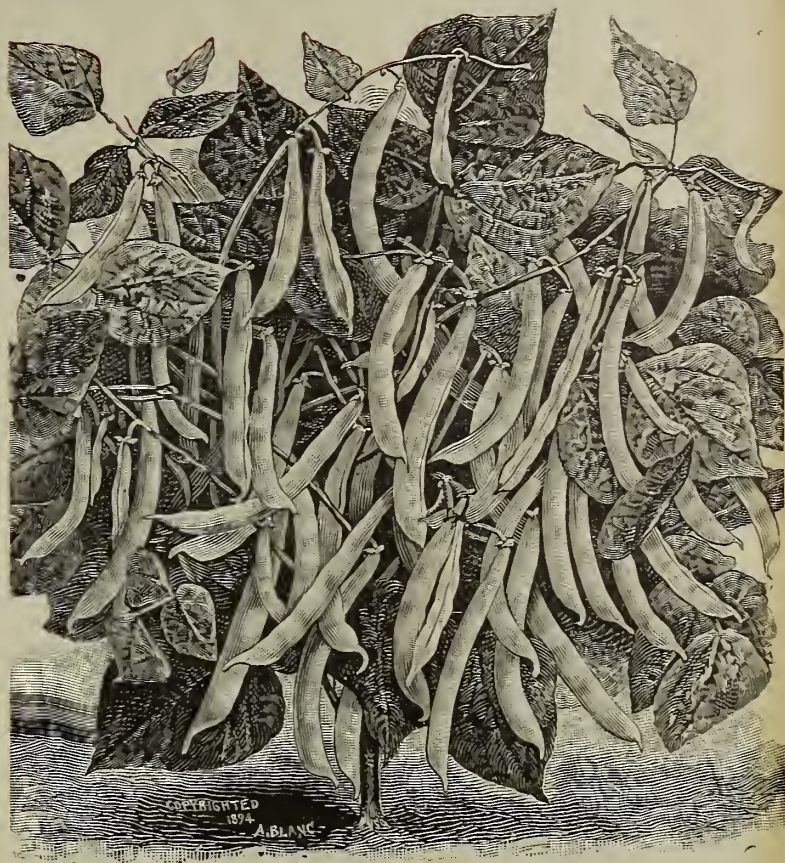
BEANS

DWARF OR BUSH—Wax Podded Varieties

Cracker Jack.—An entirely new wax bean of distinct character, and superior to any of the wax varieties as a market bean. It is extremely early, exceedingly productive and of excellent quality. It is a very strong grower, and up to the present time has not been known to blight or spot. The pods are flat, very fleshy and have a handsome golden yellow color. They will surely please any one wanting a bean of this description. Qt. 30c., 4 qts. \$1.00, pk. \$1.75, bus. \$6.00.

California Rust Proof.—An extra early, extremely hardy variety, producing an abundance of handsome, long, yellow flat pods. Qt. 25c., 4 qts. 85c., pk. \$1.50, bus. \$5.00.

Simon's New White-Seeded Wax.—An extra early, white-seeded variety, producing numerous handsome, long, yellow, flat pods of excellent quality. A great advantage this bean has is if it is not used in the green state, it can be allowed to dry and used as a winter shell bean. Qt. 35c., 4 qts. \$1.25, pk. \$2.00, bus. \$7.00.



Cracker Jack Bean

Wardwell's Kidney Wax.—One of the most popular, flat podded wax beans. Long handsome yellow pods of fine quality. Qt. 25c., 4 qts. 85c., pk. \$1.50, bus. \$5.00.

Curries Rust Proof.—Hardy, early and prolific; long flat yellow pods. Qt. 25c., 4 qts. 75c., pk. \$1.25, bus. \$4.75.

Davis Kidney Wax.—A white-seeded, flat-podded variety of good appearance, but inclined to get tough quickly. Qt. 25c., 4 qts. 75c., pk. \$1.25, bus. \$4.75.

Rust-Proof Golden Wax.—Early and prolific, pods flat. Qt. 25c., 4 qts. 85c., pk. \$1.50, bus. \$5.00.

Hodson Wax.—Matures ten days to two weeks later than the early varieties. Pods are long and flat and of a light yellow or creamy-white color. Very strong grower and prolific. Qt., 25c., 4 qts. 85c., pk. \$1.50, bus. \$5.00.

Webber Wax.—Extra early; very prolific sort; pods almost round; good deep color and fine quality. Qt. 25c., 4 qts. 90c., pk. \$1.75, bus. \$6.00.

New Golden Queen.—An excellent second early or main crop sort, producing an abundance of very long flat pods of a creamy-white color. It is a very strong grower and should be sown thinner than most varieties. Two weeks later than the extra earlies, and will continue to bear longer. Qt. 25c., 4 qts. 90c., pk. \$1.60, bus. \$6.00.

Michigan White Wax.—A new white-seeded variety, resembling Golden Wax. Pods long, flat and of an attractive appearance. Can be used either as a snap bean or a winter shelled bean. Qt. 35c., 4 qts. \$1.25, pk. \$2.00, bus. \$7.00.

BEANS—Continued

DWARF OR BUSH—Wax Podded Varieties

Brittle Wax.—The best of the round podded sorts; early, prolific; pods long, handsome shape and color; entirely stringless; quality excellent. Qt. 30c., 4 qts. \$1.00, pk. \$1.75, bus. \$6.00.

Challenge Dwarf Black Wax.—The earliest of any wax bean. Pods medium length, round, clear waxy white and of excellent quality, tender and stringless. It is quite prolific. Qt. 25c., 4 qts. 85c., pk. \$1.50, bus. \$5.00.

Round Pod Kidney Wax.—Early and very prolific, producing long, handsome round pods. Good color and excellent quality; entirely stringless. Qt. 30c., 4 qts. \$1.00, pk. \$1.75, bus. \$6.00.

Refugee Wax.—Similar to Refugee Thousand to One, except the pods are yellow. Qt. 25c., 4 qts. 85c., pk. \$1.50, bus. \$5.50.

Valentine Wax.—Pods round and quite prolific; medium early. Qt. 25c., 4 qts. 85c., pk. \$1.50, bus. \$5.00.

Golden Eye Wax.—Medium early; pods flat. The most valuable feature about this variety is that it is less liable to spot than most wax-podded sorts. Qt. 25c., 4 qts. 85c., pk. \$1.50, bus. \$5.00.

Burpee's New Kidney Wax.—A stronger grower and more prolific than Wardwell's. The pods are more fleshy, being thicker through and are entirely stringless. Season about the same. Qt. 30c., 4 qts. \$1.00, pk. \$1.75, bus. \$6.00.

Perfection Wax.—Pods six inches long and one-half inch broad, but not very fleshy, early and quite prolific. Qt. 30c., 4 qts. \$1.00, pk. \$1.75, bus. \$6.00.

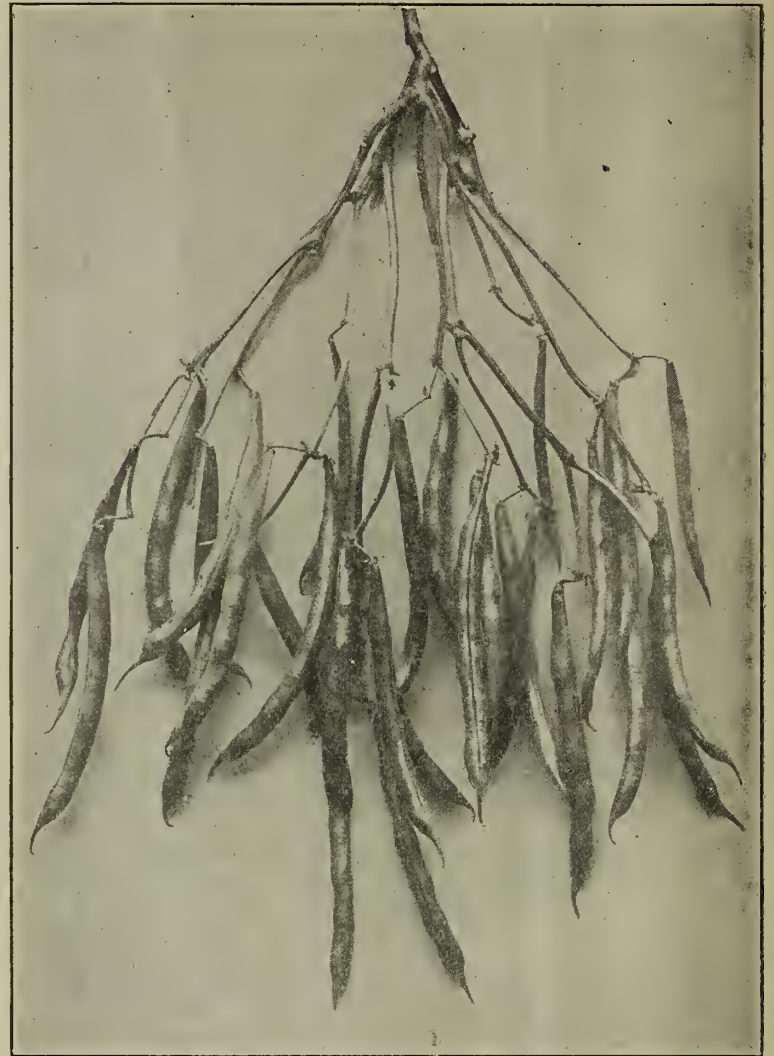
DWARF OR BUSH—Green Podded Varieties

King of the Earlys.—The hardiest and earliest of any of the green podded sorts. The pods are long, smooth, straight and of a handsome bright green color. It is very prolific and is sure to please those who want an extra early, round, green bean. Quality not as good as Simon's Stringless Round Pod, but much earlier. Qt. 25c., 4 qts. 85c., pk. \$1.50, bus. \$5.00.

Burpee's Stringless Green Pod.—An extra early, round podded, prolific sort, bearing numerous long, bright green, stringless pods of excellent quality. Qt. 25c., 4 qts. 85c., pk. \$1.50, bus. \$5.50.

Simon's Stringless Round Pod.—A new second early variety, producing an abundance of long, stringless, round pods of excellent quality. No matter how old, there is no sign of a string. We recommend it for second or late planting. Qt. 25c., 4 qts., 85c., pk. \$1.60, bus. \$6.00.

French Stringless.—An early and prolific, extra long, round, green podded sort. Pods straight, smooth and of a beautiful green color; stringless while young. One of the best main crop beans. Qt. 25c., 4 qts 85c., pk. \$1.50, bus. \$5.00.



French Stringless

German Stringless.—The earliest flat podded green bean, producing a heavy crop of long, straight, flat pods which are entirely stringless and of excellent quality. Qt. 25c., 4 qts. 90c., pk. \$1.60, bus. \$6.00.

Giant Stringless Green Pod.—A very productive, long, round podded sort, maturing a little later than Burpee's Stringless. Qt. 25c., 4 qts. 85c., pk. \$1.50, bus. \$5.00.

Newington Wonder or English Stringless.—Early and very prolific; pods long, straight, round, stringless, and of excellent quality. Qt. 25c., 4 qts. 85c., pk. \$1.60, bus. \$6.00.

Extra Early Red Valentine.—One of the most popular green podded sorts. The pods are only medium length but are very prolific. Our stock is the true round podded. Qt. 25c., 4 qts. 75c., pk. \$1.25, bus. \$4.25.

Early Refugee.—Early and prolific; pods medium length, round, and of bright green color. Qt. 25c., 4 qts. 75c., pk. \$1.25, bus. \$4.50.

Late Refuge or Thousand-to-One.—This variety is usually sown for a fall crop. It is two weeks later than Early Refugee. The pods are medium length, round, and of a light green color. Very prolific. On account of its dense foliage it will stand a light frost without injury to the pods, as they are well protected by the foliage. Qt. 25c., 4 qts. 75c., pk. \$1.25, bus. \$4.25.

BEANS—Continued

DWARF OR BUSH—Green-Podded Varieties

Longfellow.—Extra long, round, straight pods; early and prolific. Qt. 25c., 4 qts. 85c., pk. \$1.50, bus. \$5.00.

Black Valentine.—Very popular on account of its extreme hardness and earliness. The pods are long, smooth, straight, round and of a bright green color. They must be picked as soon as ready, as they toughen quickly. Qt. 25c., 4 qts. 85c., pk. \$1.25, bus. \$4.50.

Bountiful.—Extra early, stringless flat pods of excellent quality; very prolific. Qt. 25c., 4 qts. 75c., pk. \$1.25, bus. \$4.50.

Best of all Early Market.—Extra early, round, smooth pods of bright green color and medium length; very prolific. Qt. 25c., 4 qts. 85c., pk. \$1.50, bus. \$5.00.

Full Measure.—A second early round-podded stringless variety of recent introduction. The pods are good length, bright green in color and entirely stringless, but are inclined to grow a little crooked. Very prolific and of excellent quality. Qt. 25c., 4 qts. 85c., pk. \$1.50, bus. \$5.00.

Keeney's Stringless Refugee.—Precisely the same as Refugee Thousand-to-One, except that it is absolutely stringless. This is a valuable acquisition for canners or those who want a bean of this class without strings. Qt. 30c., 4 qts. \$1.25, pk. \$2.00, bus. \$7.00.

Dwarf Horticultural.—(Also called Italian Bean.) Large green pods, splashed with carmine. Excellent either as snaps in the green state, shelled green or dry. They become fit for use as green shelled beans very early, and in this condition the beans are very large, easily shelled and about equal to the lima in quality. Qt. 25c., 4 qts. 85c., pk. \$1.50, bus. \$5.00.

LIMA BEANS—Dwarf or Bush

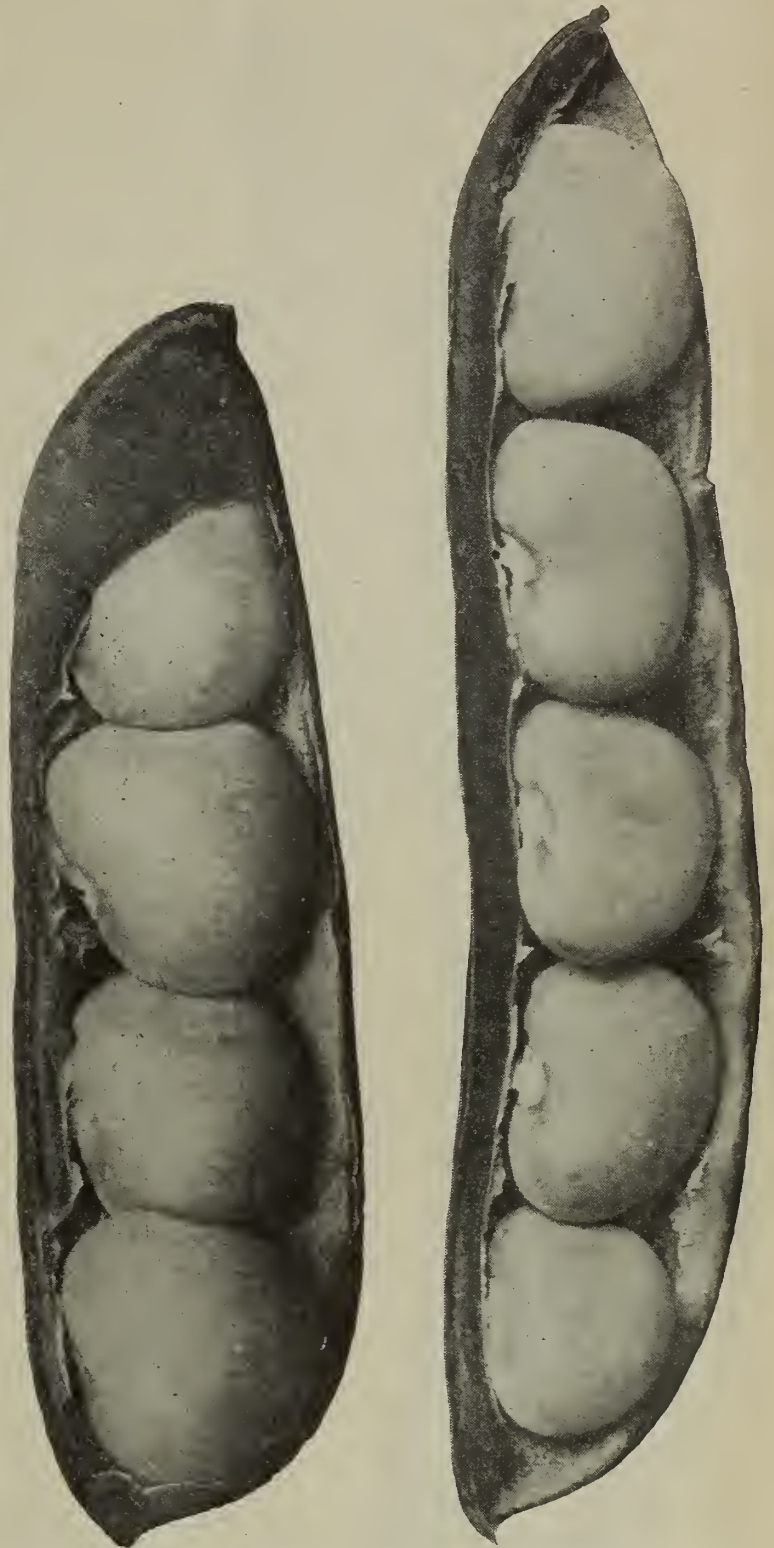
Giant-Podded Bush Lima.—The earliest and largest Bush Lima. Pods contain four to five large beans set close together in the pods. It is very prolific, and the beans are of excellent quality. Qt. 35c., 4 qts. \$1.25, pk. \$2.25, bus. \$8.00.

Improved Large Early Bush Lima.—Extra early and wonderfully prolific. Pods average four large beans. Qt. 35c., 4 qts. \$1.25, pk. \$2.00, bus. \$7.00.

Burpee's Bush Lima.—Well-known, popular Bush Lima, producing numerous pods of large beans. Qt. 30c., 4 qts. \$1.00, pk. \$1.75, bus. \$6.50.

Burpee's Improved Bush Lima.—Larger pod and a few days earlier than Burpee's Bush Lima; beans thicker and of good quality. Qt. 40c., 4 qts. \$1.25, pk. \$2.25, bus. \$8.00.

Wonderful Bush Lima.—A selected strain of Fordhook Bush, producing broader and larger pods with larger beans. Pods average four large beans set one against the other, and are borne well up off the ground, thus preventing rotting during wet weather. The beans when shelled are green. It is early and very prolific, and we pronounce it one of the best Bush Limas. Qt. 35c., 4 qts. \$1.25, pk. \$2.25, bus. \$8.00.



Wonderful Bush Lima,
Natural Size

Giant Podded Bush Lima,
Natural Size

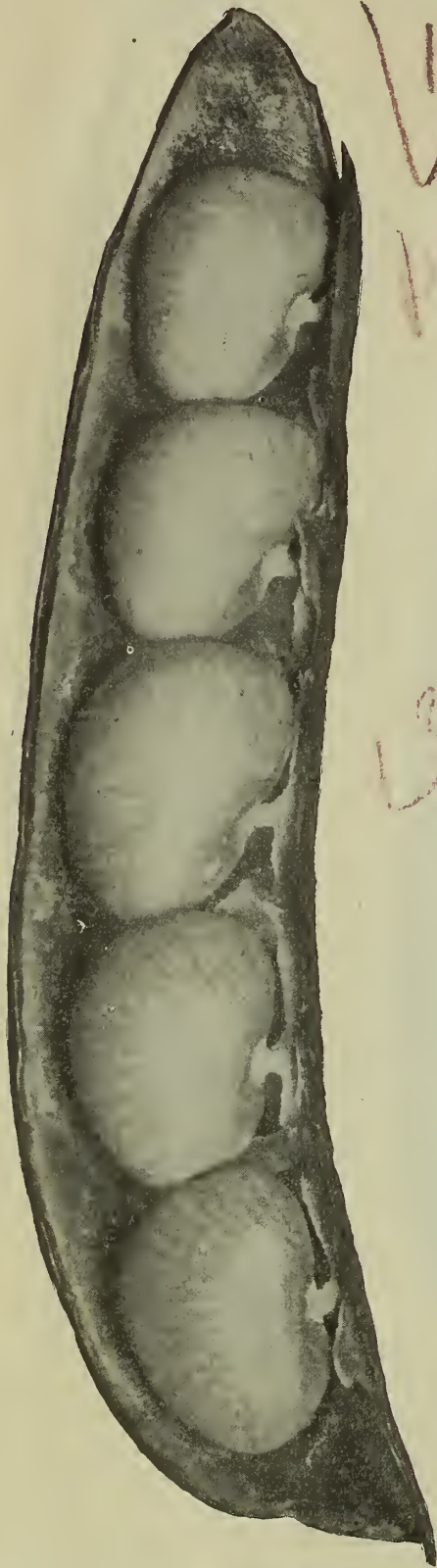
Fordhook Bush Lima.—An improved Dreer's Bush Lima. Both pods and beans are larger and the bushes are more erect. The beans are thick through, of good size, and are close together in the pod. Very prolific. Qt. 35c., 4 qts. \$1.25, pk. \$2.00, bus. \$7.50.

Dreer's or Kummerle Bush Lima.—Similar to the Potato, or Challenger Pole Lima, except in bush form. Pods average three thick beans set close together in the pod. Qt. 30c., 4 qts. \$1.00, pk. \$1.75, bus. \$6.50.

Henderson's Improved Bush Lima.—An extra early, exceedingly prolific lima of true bush form. Both pods and beans are quite small but of excellent quality. Qt. 30c., 4 qts. \$1.00, pk. \$1.75, bus. \$6.50.

BEANS—Continued

LIMA BEANS—Pole Varieties



Chris. Simon's Large-Podded Green Pole Lima, Natural Size

other limas, with an average of four thick beans set one against the other in the pod so closely that the ends of the beans are indented. It is early and continues to produce large clusters until frost. It will shell out more than the flat-podded sorts. Also known as Potato Lima. Qt. 30c., 4 qts. \$1.00, pk. \$1.75, bus. \$6.00.

Ideal.—Produces a tremendous crop of pods averaging seven inches long filled with five to six extra large beans of excellent quality. Season medium late. Qt. 35c., 4 qts. \$1.25, pk. \$2.00, bus. \$7.00.

Chris. Simon's Large-Podded Green.—Originated with Mr. Christopher Simon, a well-known Philadelphia market gardener, whose name it bears.

The pods are borne in great profusion and contain five large, rather thick beans set close together in the pod.

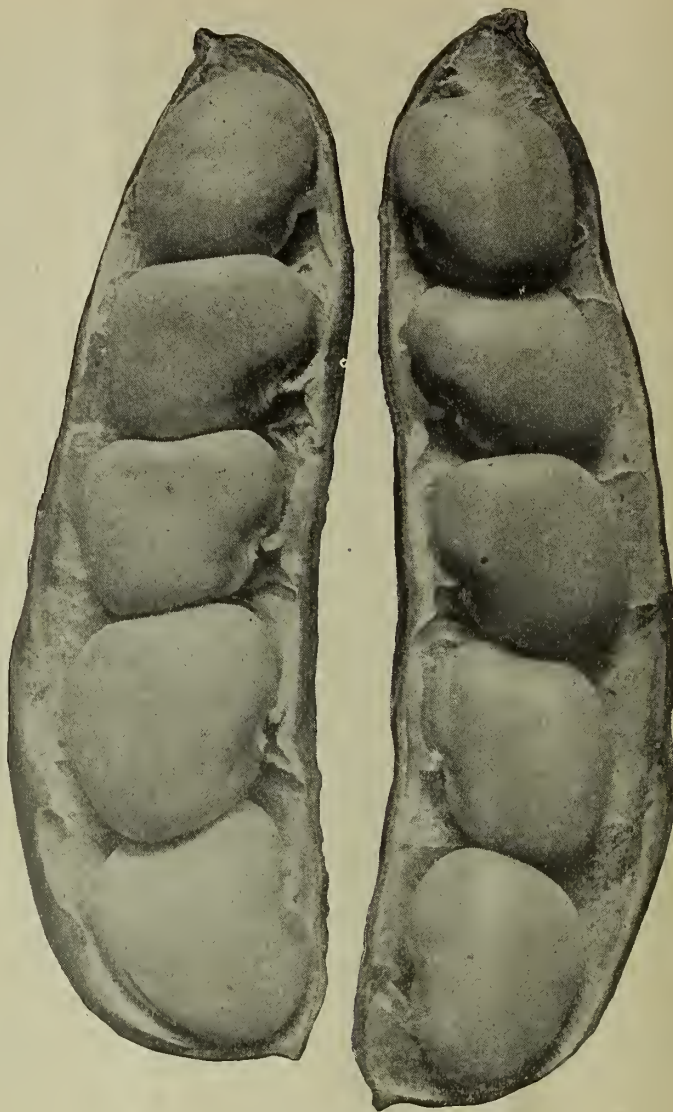
A valuable feature is that every bean is green when shelled, and the quality is unexcelled. It is a medium early variety and continues to bear until frost. Qt. 40c., 4 qts. \$1.25, pk. \$2.25, bus. \$8.00.

Wilkey's Perfection Prize.—Originated with Mr. Thomas Wilkey, one of Philadelphia's oldest market gardeners.

The pods are borne in large clusters and contain an average of five large flat beans of excellent quality. It is a heavy producer and continues to bear until frost; medium early, Qt. 40c., 4 qts. \$1.25, pk. \$2.25, bus. \$8.00.

Early Leviathan.—A week earlier than any of the large podded sorts. Pods borne in large clusters and contain four good-sized green beans. Very productive. Qt. 35c., 4 qts. \$1.25, pk. \$2.00, bus. \$7.00.

Challenger, or Dreer's Improved.—Vines very stout, vigorous and productive. The pods are much thicker than those of



Walter's Prolific Thick Pole Lima Natural Size

Walter's Prolific Thick.—An improvement on Challenger. Both pods and beans are larger and it is more prolific. The shelled beans are deeper green. Decidedly the best of the thick chunky or Potato Pole Limas. Qt. 35c., 4 qts. \$1.25, pk. \$2.00, bus. \$7.00.

Shotwell's Improved.—Similar to Challenger. The beans are a trifle larger. Qt. 30c., 4 qts. \$1.00, pk. \$1.75, bus. \$6.50.

Seibert's Large Early.—Extra early and very productive. Pods are thin and contain four large green beans of the finest quality. Continues to bear until frost. Qt. 30c., 4 qts. \$1.00, pk. \$1.75, bus. \$6.00.

Ford's Mammoth Podded.—One of the largest and most productive lima beans, bearing large clusters of broad pods, six to eight inches long, containing four to six large beans of excellent quality. Medium early. Qt. 35c., 4 qts. \$1.25, pk. \$2.00, bus. \$7.00.

King of the Garden.—Vines vigorous and productive. The pods are long and contain four to five immense white beans of excellent quality. Medium early. Qt. 30c., 4 qts. \$1.00, pk. \$1.75, bus. \$6.00.

Carpinteria Green Seeded.—The vine is very strong, of vigorous growth, with many large branches or runners, and produce a great many pods, which are closely filled with very large, broad-seeded and plump, thick, green, perfect beans. Qt. 40c., 4 qts. \$1.25, pk. \$2.25, bus. \$8.00.

BEANS—Continued

Various Pole Varieties

Kentucky Wonder, or Old Homestead.—An early and prolific sort, producing green pods seven or eight inches long; an excellent snap bean. Qt. 30c., 4 qts. \$1.00, pk. \$1.75, bus. \$6.00.

Burger's Green Pod Stringless, or White Seeded Kentucky Wonder.—A new pole variety of great merit. Bears long, green brittle, stringless pods of excellent flavor. It rivals all other pole beans and is destined to become the most popular of all. Qt. 35c., 4 qts. \$1.25, pk. \$2.00, bus. \$7.50.

Horticultural, or Speckled Cranberry.—Pods short, broad, pale green, becoming streaked with bright red as they mature. Good quality, either green or dried. Qt. 30c., 4 qts. \$1.00, pk. \$1.75, bus. \$6.00.

Lazy Wife.—One of the later green-podded pole beans for snaps. The pods, borne in large clusters, are five to seven inches long, broad, thick, fleshy and entirely stringless. The dry beans are excellent for winter use. Seed White. Qt. 30c., 4 qts. \$1.00, pk. \$1.75, bus. \$6.50.

Early Golden Cluster Wax.—One of the best wax-podded pole beans. Pods six to eight inches long, broad, thick, fleshy and of the very best quality. They remain in condition for use for a long time. Qt. 35c., 4 qts. \$1.25, pk. \$2.00, bus. \$7.50.

Kentucky Wonder Wax.—An excellent variety, and one of the very best pole beans. The pods are long, very thick, meaty, deeply saddle-backed, entirely stringless, and bright yellow in color. The vine is thrifty and very prolific. Seed deep brown. Qt. 35c., 4 qts. \$1.25, pk. \$2.00, bus. \$7.50.

Scarlet Runner.—Produces scarlet flowers, followed by large podded beans which are used both as a snap and shelled bean. Qt. 30c., 4 qts. \$1.00, pk. \$1.75, bus. \$6.50.

Bush Varieties for Winter Shell Beans

Early Marrow Pea, or White Navy.—Early and very prolific. Qt. 20c., 4 qts. 70c., pk. \$1.25, bus. \$4.50.

Large White Marrow.—Qt. 20c., 4 qts. 70c., pk. \$1.25, bus. \$4.50.

Dwarf White Kidney.—Qt. 20c., 4 qts. 70c., pk. \$1.25, bus. \$4.50.

BEET

Crosby's Egyptian.—One of the most popular early varieties of fine shape and good quality. It matures very quickly, is smooth and of a dark color. Top medium size, and while some gardeners claim it has too much for growing under glass, others use it exclusively. Our stock of this valuable variety is unsurpassed. Oz. 10c., $\frac{1}{4}$ lb. 35c., lb. \$1.35, 10 lbs. \$12.50.

Arlington Favorite.—An early maturing sort with medium-sized top and globular-shaped root of medium-dark color. Quality excellent, especially when young. Oz. 10c., $\frac{1}{4}$ lb. 30c., lb. \$1.00, 10 lb. \$9.00.

Crimson Globe.—A second-early sort with roots almost globe-shaped and of a deep crimson color. The flesh is tender and of fine quality. Top small. Oz. 10c., $\frac{1}{4}$ lb. 35c., lb. \$1.35, 10 lbs. \$12.50.

Early Eclipse.—Very early, root nearly globular, flesh bright red, zoned with white. Medium-sized top, quality excellent. Oz. 10c., $\frac{1}{4}$ lb. 30c., lb. \$1.00, 10 lbs., \$9.00.

Electric.—Very early, root slightly flattened, dark color, medium-sized top, small tap root and excellent quality. Oz. 10c., $\frac{1}{4}$ lb. 35c., lb. \$1.35, 10 lbs. \$12.50.

Edmand's Early.—An early dark red turnip-shaped sort of excellent quality, with a strong top which makes it especially valuable for trenching. Oz. 10c., $\frac{1}{4}$ lb. 30c., lb. \$1.00, 10 lbs. \$9.00.



Nutting's Early Gem

Nutting's Early Gem.—The finest early beet, either for growing under sash or outside. It is perfectly smooth, handsome shape, dark color and of excellent quality. It is as early as any and will clean off the ground in two pullings. An excellent all-the-year-round beet, except for trenching. We do not recommend it for trenching as the top is rather small and light for this purpose. Oz. 15c., $\frac{1}{4}$ lb. 40c., lb. \$1.50, 10 lbs. \$14.00.

Detroit Dark Red.—One of the most popular second early, or main crop sorts. Roots round, smooth, dark blood red, and of fine quality. Our stock of this important variety is unexcelled. Oz. 10c., $\frac{1}{4}$ lb. 35c., lb. \$1.35, 10 lbs. \$12.50.

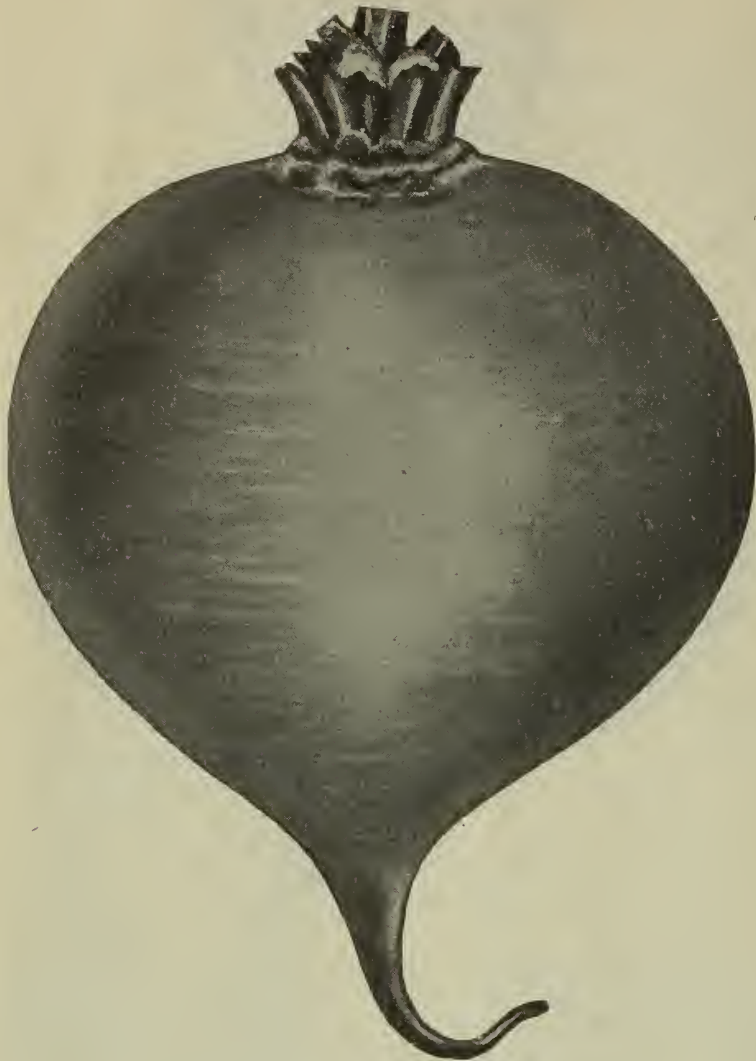
Extra Early Egyptian.—Very early, root flattened and dark blood red, with a small top and tap root, which makes it suitable for growing under glass, also for transplanting. It is good quality when young, but gets woody quickly. One of the best for forcing. Oz. 10c., $\frac{1}{4}$ lb. 30c., lb. \$1.00, 10 lbs. \$9.00.

Simon's Dark-Leaved Blood Ball.—A new second early round sort, with deep blood red flesh, almost black. The leaves are also dark red. The darkest blood beet. Oz. 10c., $\frac{1}{4}$ lb. 35c., lb. \$1.35, 10 lbs. \$12.50.

Lentz's Extra Early.—An extra early, light-colored, turnip-shaped beet, originating in Philadelphia. The flesh is light red, zoned with white. The top is light green and small, which makes it suitable for growing under sash. The quality is excellent, being extremely sugary and remaining tender longer than any other variety. As a buttered beet it is excellent. It is a very fast grower. Our stock is pure and can be depended on to give the finest results. Oz. 10c., $\frac{1}{4}$ lb. 35c., lb. \$1.00, 10 lbs. \$9.00, bus. \$12.00.

Bastian's Extra Early.—Top medium sized, root turnip shaped, of a light red color zoned with white. Quite early and of good quality. Oz. 10c., $\frac{1}{4}$ lb., 35c., lb. \$1.00, 10 lbs. \$9.00.

Dewing's Blood Turnip.—A medium early, dark blood, turnip-shaped sort, with a medium-sized top. It is grown quite extensively for a pit beet to sell through the winter months, as it is a good keeper. Oz. 10c., $\frac{1}{4}$ lb. 35c., lb. \$1.00, 10 lbs. \$9.00.



Incomparable Second Early

BEEET—Continued

Incomparable Second Early.—The best second early or main crop beet. Roots almost globe-shaped, very dark red, smooth and of excellent quality, remaining crisp, sweet and tender for a long time. It is handsome in shape and color. The skin is of a dark red color with flesh still darker. Top medium-sized. Sown with Crosby's Egyptian, it will mature a few days later. Sure to please any market gardener who wants a blood red beet. Oz. 15c., $\frac{1}{4}$ lb. 40c. lb., \$1.50, 10 lbs. \$14.00.

Wesley's Early Market.—An early blood red sort, of excellent quality. The root is smooth, nearly round and of handsome appearance. Top medium-sized. Matures a few days after the Extra Earlies. Oz. 10c., $\frac{1}{4}$ lb. 35c., lb. \$1.35, 10 lbs. \$12.50.

Bassano Extra Early.—Top large and light green. Root turnip-shaped, pink zoned with white. The quality is excellent, very sweet and tender. Very fast grower. Oz. 10c., $\frac{1}{4}$ lb. 35c., lb. \$1.00, 10 lbs. \$9.00.

Philadelphia, or Perfection Half Long.—A distinct variety used principally as a winter beet to sell by the bushel. The root is twice as long as thick, flesh rich dark red, and of excellent quality, which it retains throughout the winter, never becoming woody. Seed should be sown July 1st to 15th for a winter crop, as it is a rather slow grower. Oz. 10c., $\frac{1}{4}$ lb. 35c., lb. \$1.00, bus. \$12.00.

Bastian's Half Long.—Similar to Philadelphia Half Long, but not as deep red. Oz. 10c., $\frac{1}{4}$ lb. 35c., lb. \$1.00, bus. \$12.00.

Long Dark Blood.—A standard late variety, keeping well through the winter. The root is long and smooth, skin very dark, almost black, flesh very dark red, sweet and tender. Oz. 10c., $\frac{1}{4}$ lb. 35c., lb. \$1.00, 10 lbs., \$9.00.

Swiss Chard or Spinach Beet.—Used for the tops only, which are superior to other beet tops. The tops are cooked the same as spinach and the leaf stalks like asparagus.

Large Ribbed White. Oz. 10c., $\frac{1}{4}$ lb. 35c., lb. \$1.00.

Lucullus.—Broad, thick stalks. Oz. 10c., $\frac{1}{4}$ lb. 35c., lb. \$1.25.

Mangel Wurzel

Giant Half Sugar.—The best for feeding stock, as it contains more nutritive value. Grows half out of the ground. Color of skin pink above the ground, white below. Oz. 5c., $\frac{1}{4}$ lb. 15c., lb. .45c., 10 lbs. and over 40c.

Mammoth Long Red.—A mammoth growing variety which gives great bulk. Skin red. Oz. 5c., $\frac{1}{4}$ lb. 15c., lb. 50c., 10 lbs. and over 45c.

Golden Tankard.—Root large, flesh yellow zoned with white, Oz. 5c., $\frac{1}{4}$ lb. 15c., lb. 45c., 10 lbs. and over 40c.

BROCCOLI

Early Large White French.—The best variety. Large white compact heads which continue firm for a long time. Will stand greater extremes of temperature than cauliflower, to which it is similar. Oz. 40c., $\frac{1}{4}$ lb. \$1.25, lb. \$4.00.

BRUSSEL SPROUTS

Long Island Improved.—The best sort, producing numerous good-sized compact sprouts, which are cooked similar to cabbage. If boiled with bacon they are superior to cabbage. Oz. 25c., $\frac{1}{4}$ lb. 75c., lb. \$2.50.

Paris Market.—A half-dwarf strain producing fine hard sprouts. Oz. 15c., $\frac{1}{4}$ lb. 40c., lb. \$1.50.

CABBAGE

First Early Varieties

All our American varieties of cabbage are grown in Long Island from carefully selected heads, and are far superior to the imported seed offered at lower prices.

Extra-Early Wakefield.—The earliest hard heading cabbage. Heads pointed and hard, and can be grown very close together. Oz. 25c., $\frac{1}{4}$ lb. 85c., lb. \$3.00, 5 lbs. \$13.75.

Early Jersey Wakefield.—The most popular pointed head cabbage. Heads medium size, compact, solid and of excellent quality. The thick, stout leaves and compact habit of the variety makes it the best sort for very early setting. Our stock is strictly Long Island grown, and there is absolutely none better. Oz. 25c., $\frac{1}{4}$ lb. 75c., lb. \$2.50, 5 lbs. \$11.25.

Charleston, or Large Wakefield.—From five days to a week later than Early Jersey Wakefield. Heads are larger, fully as solid, a little less pointed. An excellent variety to closely follow Early Jersey. Our seed is Long Island grown and will give excellent satisfaction. Oz. 25c., $\frac{1}{4}$ lb. 75c., lb. \$2.50, 5 lbs. \$11.25.

CABBAGE—Continued**First Early Varieties****Early Round Head**

Early Round Head.—The best early round or flat-head cabbage. The heads are nearly round, slightly flattened, good size, as large as Early Summer and will cut with the Charleston Wakefield. Heads are very hard; compact, of excellent quality, and remain a long time without bursting. Oz. 25c., $\frac{1}{4}$ lb. 85c., 1b. \$3.00, 5 lbs. \$13.75.

Extra Early Gem.—Very early, small hard-pointed heads. Can be set close, as it makes few outer leaves. Oz. 25c., $\frac{1}{4}$ lb. 85c., 1b. \$3.00, 5 lbs. \$13.75.

Large Early Ox-Heart.—A large-sized, early, very solid heading sort. Heads conical shaped, not as pointed as the Wakefields. Oz. 25c., $\frac{1}{4}$ lb. 75c., 1b. \$2.50, 5 lbs. \$11.25.

Early Spring.—A good-sized flat heading sort, producing hard heads of a light green color. It follows in close succession to the Wakefields. Oz. 20c., $\frac{1}{4}$ lb. 60c., 1b. \$2.00, 5 lbs. \$8.75.

Extra Early Eureka.—An extra-early small flat heading sort, with very hard, compact heads. It will cut with the Wakefields and can be set close, as it has few outer leaves. Oz. 20c., $\frac{1}{4}$ lb. 60c., 1b. \$2.00, 5 lbs. \$8.75.

Enkhuizen Glory.—An excellent round headed sort maturing with the Large Wakefield. It remains a long time after heading without bursting. Oz. 25c., $\frac{1}{4}$ lb. 75c., 1b. \$2.50, 5 lbs. \$11.25.

Fottler's Early Drumhead, or Short Stem.—One of the best second early varieties. Head large, flat, compact, solid and of fine quality. It has a short stalk and keeps well both under the sun and during the winter. Oz. 20c., $\frac{1}{4}$ lb. 60c., 1b. \$2.00, 5 lbs. \$8.75.

Model Summer.—An exceedingly fine second early sort, producing large solid somewhat flattish heads, resembling Danish Summer Ballhead, but with larger and flatter heads. Oz. 25c., $\frac{1}{4}$ lb. 85c., 1b. \$3.00, 5 lbs. \$13.75.

Market Gardeners' No. 2.—Plant more compact, leaf smoother and thicker; head larger and a little more round than Early Summer. It is a long-standing variety with large solid heads, and we recommend it as one of the best second early sorts. Also excellent for a late crop. Oz. 25c., $\frac{1}{4}$ lb. 75c., 1b. \$2.50, 5 lbs. \$11.25.

Early Summer.—An early large heading sort, with large spreading outer leaves. Heads flat, slightly rounded. Oz. 20c., $\frac{1}{4}$ lb. 60c., 1b. \$2.00, 5 lbs. \$8.75.

Early Dwarf Flat Dutch.—An excellent large early flat sort, producing solid heads that mature with Early Summer. The stem is short and it has comparatively few outer leaves. Much earlier than Late Flat Dutch. Oz. 20c., $\frac{1}{4}$ lb. 60c., 1b. \$2.00, 5 lbs. \$8.75.

Second Early or Summer Varieties**Perfection Second Early**

Perfection Second Early.—A sure heading, hardy, large, solid, flat, long-keeping sort similar to Succession, but deeper through. It will stand the hot sun and dry weather better than most sorts. One of the best second early varieties. Oz. 25c., $\frac{1}{4}$ lb. 75c., 1b. \$2.50, 5 lbs. \$11.25.

All Head Early.—Heads large and solid, flat, slightly rounded and of very compact growth which makes it nearly all head. The quality is excellent and it will remain in good condition longer than most varieties. Oz. 20c., $\frac{1}{4}$ lb. 60c., 1b. \$2.00, 5 lbs. \$8.75.

All Seasons.—A good all season variety. Heads large, round and mature early. Oz. 20c., $\frac{1}{4}$ lb. 60c., 1b. \$2.00, 5 lbs. \$8.75.

Succession.—A popular second early sort, producing large solid flat heads, which remain in good condition for a long time. Oz. 25c., $\frac{1}{4}$ lb. 75c., 1b. \$2.50, 5 lbs. \$11.25.

Crown Jewel.—A large-sized, compact, hard heading sort. Heads almost round, slightly flattened. Remains in good condition a long time. Oz. 25c., $\frac{1}{4}$ lb. 75c., 1b. \$2.50, 5 lbs. \$11.25.

Long Island Second Early.—Compact growth, uniform header. Heads hard, flat, rather thick through and of excellent quality. Oz. 25c., $\frac{1}{4}$ lb. 75c., 1b. \$2.50, 5 lbs. \$11.25.

Danish Summer Ball Head.—A medium-sized, very hard, compact heading sort, similar to Danish Winter Ball Head, except that it is earlier. Oz. 25c., $\frac{1}{4}$ lb. 85c., 1b. \$3.00, 5 lbs. \$13.75.

Boston Hard Head.—Very hard, good-sized, conical-shaped heads of fine quality. It is hardy, standing extreme frosts and heat. Oz. 25c., $\frac{1}{4}$ lb. 75c., 1b. \$2.50, 5 lbs. \$11.25.

Early Winningstadt.—A popular sort for the garden, as it remains in good condition for a long time. Heads pointed, medium size, hard and of a dark green color. Oz. 15c., $\frac{1}{4}$ lb. 50c., 1b. \$1.75, 5 lbs. \$7.50.

Early Round Dark Red.—A new medium-sized early variety, producing very solid heads of exceedingly dark red color, with very few outer leaves. The best early red cabbage. Oz. 25c., $\frac{1}{4}$ lb. 85c., 1b. \$3.00, 5 lbs. \$13.75.

Early Fine Curled Savoy.—An early sort, with round heads. Leaves small, thick, fleshy and of a fine deep green color; excellent quality. Oz. 25c., $\frac{1}{4}$ lb. 75c., 1b. \$2.50, 5 lbs. \$11.25.

CABBAGE—Continued

Autumn and Winter Varieties

Premium Late Flat Dutch.—One of the most popular late sorts where a large head is desired. Heads are large, oval shaped, solid and of splendid quality, which will keep for a long time in good condition. Oz. 20c., $\frac{1}{4}$ lb. 60c., lb. \$2.00, 5 lbs. \$8.75.

Houser Late Flat Dutch.—A large, very solid heading, late sort, thicker through than other strains of Flat Dutch. Oz. 25c., $\frac{1}{4}$ lb. 75c., lb. \$2.50, 5 lbs. \$11.25.

Excelsior Late Flat Dutch.—Similar to Premium Late Flat Dutch, except that it is lighter in color. Oz. 20c., $\frac{1}{4}$ lb. 60c., lb. \$2.00, 5 lbs. \$8.75.

Premium Late Drumhead.—Large, deep, solid heads very compact and of excellent flavor. Oz. 20c., $\frac{1}{4}$ lb. 60c., lb. \$2.00, 5 lbs. \$8.75.

Danish Winter Ball Head.—A medium-sized, very solid heading sort, which will remain in good condition longer than most varieties. Plant compact and very hardy. One of the best to ship to distant markets. Our stock is direct from Denmark. Oz. 25c., $\frac{1}{4}$ lb. 75c., lb. \$2.50, 5 lbs. \$11.25.

Danish Roundhead.—Superior to Danish Winter Ball Head. The heads are larger and they grow closer to the ground, having a shorter stem. It is from ten to fifteen days earlier. Oz. 25c., $\frac{1}{4}$ lb. 75c., lb. \$2.50, 5 lbs. \$11.25.

White Globe.—A very hardy and compact growing sort, producing very solid round heads, of medium to large size. Excellent shipper and good keeper. Oz. 25c., $\frac{1}{4}$ lb. 85c., lb. \$3.00, 5 lbs. \$13.75.

Louisville Drumhead.—Plants short stemmed and compact, with broad, well-rounded, large leaves, very full at the base. Oz. 20c., $\frac{1}{4}$ lb. 60c., lb. \$2.00, 5 lbs. \$8.75.

Surehead.—A compact growing general crop sort, with medium-sized, thick heads and many outer leaves. Oz. 20c., $\frac{1}{4}$ lb. 60c., lb. \$2.00, 5 lbs. \$8.75.

The Warren, or Improved Stone Mason.—One of the most desirable for fall and winter use. Head medium size to large, flattened, but very deep, very solid, crisp, tender and well flavored. Oz. 25c., $\frac{1}{4}$ lb. 75c., lb. \$2.50, 5 lbs. \$11.25.

Autumn King, or Worldbeater.—A very large late sort, heads flat, slightly rounded. It requires very rich soil to make it head hard. Oz. 20c., $\frac{1}{4}$ lb. 60c., lb. \$2.00, 5 lbs. \$8.75.

Volga, or Russian.—A new medium-sized sort, with round, solid heads, which are deep through. It is extremely hardy. Oz. 25c., $\frac{1}{4}$ lb. 75c., lb. \$2.50, 5 lbs. \$11.25.

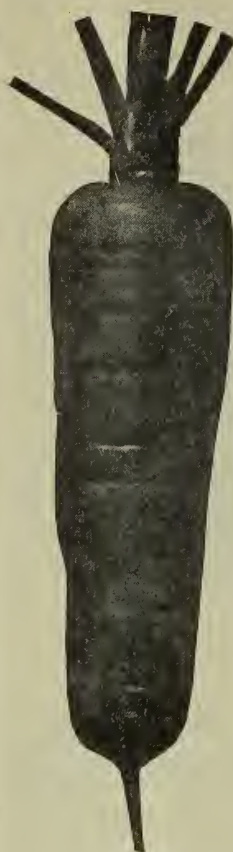
Perfection Hard Heading Savoy.—The best large Savoy. Heads large, solid, almost round; leaves densely crumpled. It is surer to head than many other sorts and is the best for main crop. Oz. 25c., $\frac{1}{4}$ lb. 75c., lb. \$2.50, 5 lbs. \$11.25.

Simon's Wonderful Mammoth Dark Red.—The best large dark red cabbage. Heads are round, large, very solid, and of a dark red color, which is very desirable. The best for main crop. Oz. 25c., $\frac{1}{4}$ lb. 85c., lb. \$3.00, 5 lbs. \$13.75.

Mammoth Red Rock.—Large round solid heads, slightly flattened. Plant large with numerous spreading leaves. Oz. 20c., $\frac{1}{4}$ lb. 65c., lb. \$2.25, 5 lbs. \$10.00.

Early Round Head Cabbage is the finest early round headed sort offered today. It will cut with Charleston, Wakefield, is of large size, extremely hard, and does not burst open.

CARROT



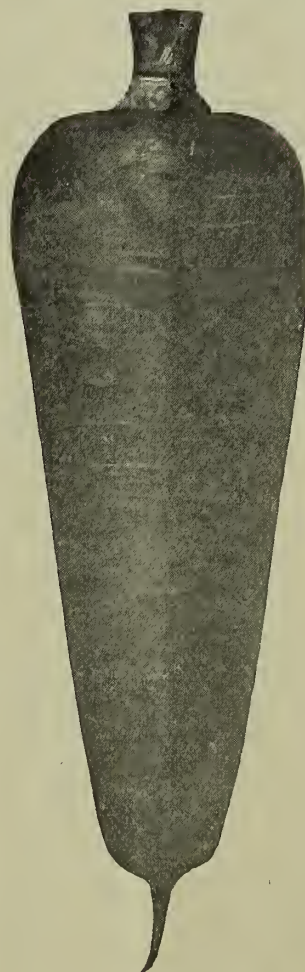
Early Short Top Forcing

Early Short Top Forcing.—The best for growing under glass or for first outdoor crop. It is a half-long stump-rooted sort, of a deep orange color. A quick grower, and the top being small, makes it ideal for growing under glass. It has its deep color when quite young. Not recommended for summer as it will not hold its top. Oz. 15c., $\frac{1}{4}$ lb. 55c., lb. \$2.00.

Rubicon Half Long.—Half-long stump rooted, smooth and good color, top medium size. It is a quick grower, and many gardeners use it for their sash carrot. One of the best bunch carrots. Oz. 15c., $\frac{1}{4}$ lb. 55c., lb. \$2.00.

Improved Long Orange.—Large, long, smooth-pointed sort of a deep orange color. Requires deep soil and the whole season for it to mature. Excellent bushel sort if a large carrot is desired. Oz. 15c., $\frac{1}{4}$ lb. 50c., lb. \$1.75.

Danvers Pointed.—A long, smooth, deep orange-colored late sort, with a strong top. It requires the whole season for it to mature. Grown principally to sell through the winter as a bushel or barrel carrot. Oz. 15c., $\frac{1}{4}$ lb. 50c., lb. \$1.75.



Danvers Half Long

Danvers Half Long.—Half long, smooth and good color. It grows longer than Rubicon and does not make as quickly. Generally grown for late or main crop. It makes an excellent barrel carrot to sell through the winter. Oz. 15c., $\frac{1}{4}$ lb. 55c., lb. \$2.00.

New York Market.—Half long, stump rooted, medium early, with medium-sized top. Color deep orange. Grown principally for a bunch carrot. Oz. 15c., $\frac{1}{4}$ lb. 55c., lb. \$2.00.

Guerande, or Ox-Heart.—A short, chunky, early variety, as thick through as it is long. Especially adapted for hard, stiff soil where longer varieties would not thrive. Oz. 15c., $\frac{1}{4}$ lb. 50c., lb. \$1.75.

Saint Vallery.—Roots long pointed, deep orange color. Requires the whole season for it to make. Good bushel sort, or excellent for stock. Oz. 15c., $\frac{1}{4}$ lb. 50c., lb. \$1.75.

Half Long Scarlet Pointed.—A quick growing half long pointed sort, with medium-sized top. Makes a nice bunch carrot where a pointed-rooted variety is wanted. Oz. 15c., $\frac{1}{4}$ lb. 50c., lb. \$1.75.

CARROT—Continued

Chantenay, or Model.—One of the most popular carrots. Half long, stump rooted, smooth and good color. Medium-size top and medium early. Grown principally for bunching, but can also be used for a bushel carrot. Oz. 15c., $\frac{1}{4}$ lb. 55c., lb. \$2.00.

Nantes Half Long Stump Rooted.—Deep orange color, smooth with small top. Makes a good bunch carrot. Oz. 15c., $\frac{1}{4}$ lb. 50c., lb. \$1.75.

Improved Short White.—The best stock carrot. Roots half long, very heavy at the shoulder, tapering regular to the point. Light green crown, white below, flesh white. Oz. 10c., $\frac{1}{4}$ lb. 35c., lb. \$1.25.

Large White Belgium.—A very large white sort used for feeding stock. Oz. 10c., $\frac{1}{4}$ lb. 35c., lb. \$1.25.

CAULIFLOWER

Simon's Early Perfection.—The best variety, either for forcing or an early outdoor crop. Heads are large and compact. Habit of growth dwarf. Leaves short and narrow, but sufficient to cover. $\frac{1}{4}$ oz. \$1.25, oz. \$4.00, $\frac{1}{4}$ lb. \$15.00.

Early Snowball.—One of the most popular sorts for growing outside. Heads good size and compact. Our strain of this important variety is unsurpassed. $\frac{1}{4}$ oz. 60c., oz. \$2.00, $\frac{1}{4}$ lb. \$7.00, lb. \$25.00.

Extra Early Dwarf Erfurt.—Excellent variety, either for forcing or an early outdoor crop. Heads large and compact. $\frac{1}{4}$ oz. 75c., oz. \$2.50, $\frac{1}{4}$ lb. \$8.00, lb. \$28.00.

Early Italian Giant Surehead.—An early dwarf variety, with large compact heads; good for either forcing or an outdoor crop. $\frac{1}{4}$ oz. 75c., oz. \$2.50, $\frac{1}{4}$ lb. \$8.00, lb. \$28.00.

Superior Extra Early.—Excellent early outdoor variety, heads large and compact. $\frac{1}{4}$ oz. 75c., oz. \$2.50, $\frac{1}{4}$ lb. \$8.00.

Earliest Snowstorm.—Large white heads. Does best as an outdoor crop. $\frac{1}{4}$ oz. 75c., oz. \$2.50, $\frac{1}{4}$ lb. \$8.00, lb. \$28.00.

Early Alabaster.—An early outdoor sort, with large compact heads. $\frac{1}{4}$ oz. 75c., oz. \$2.50, $\frac{1}{4}$ lb. \$8.00, lb. \$28.00.

Simon's Dry Weather.—A very large second early variety, producing extra large compact heads, standing the heat remarkably well. Does excellent when grown for a fall crop. $\frac{1}{4}$ oz. \$1.00, oz. \$3.00, $\frac{1}{4}$ lb. \$10.00, lb. \$35.00.

Columbian Mammoth White.—An excellent fall variety, producing mammoth heads of snowy whiteness. $\frac{1}{4}$ oz. \$1.00, oz. \$3.00, $\frac{1}{4}$ lb. \$10.00, lb. \$35.00.

Veitch's Autumn Giant.—A very large late sort. $\frac{1}{4}$ oz. 15c., oz. 50c., $\frac{1}{4}$ lb. \$1.50, lb. \$5.00.

CELERY

Self-Blanching Early Varieties

Perfection Golden Self-Blanching.—The most popular and best of the early varieties. Our stock of this most important variety is perfection in every respect. The ribs are broad, the plant very stocky and full hearted. It is free from the objectionable green sorts. Plants of a yellowish-green color, but as they mature they turn to a beautiful golden yellow color. Critical growers will find our strain of this important variety unsurpassed. Oz. 85c., $\frac{1}{4}$ lb. \$3.25, lb. \$12.00.

California Mammoth Golden Self-Blanching.—The seed of this variety germinates more freely than the French, the plants are more robust and grow faster. There has been considerable trouble with the California seed being mixed with green and growing hollow stalked, but we have sold this strain which is grown exclusively for us by an experienced grower of Celery for the three past seasons without a single complaint. It has given excellent satisfaction. Oz. 75c., $\frac{1}{4}$ lb. \$2.75, lb. \$10.00.

French Golden Self-Blanching.—Plant very stocky and full hearted, with broad ribs. Our strain is the best obtainable. Oz. 85c., $\frac{1}{4}$ lb. \$3.25, lb. \$12.00.

Perfection White Plume.—The earliest celery, but not compared in quality or appearance with Golden Self-Blanching. Leaves pale green with tips almost white. As the plant matures the inner stems and leaves turn white, and require but a short time to be earthed up before it is in condition for use. Can be bleached with boards. Ribs broad and rather tall. Our stock is free from the green sorts and will give excellent satisfaction. Oz. 25c., $\frac{1}{4}$ lb. 85c., lb. \$3.00.

Boston Mammoth White Plume.—Similar to our Perfection strain, except that it grows taller. Oz. 25c., $\frac{1}{4}$ lb. 75c., lb. \$2.50.

Silver Self-Blanching.—Resembles Golden Self-Blanching in habit with the White Plume coloring. The quality is superior to White Plume, as it is more brittle and free from stringiness. Oz. 30c., $\frac{1}{4}$ lb. \$1.00, lb. \$3.50.

Winter Varieties

Giant White Arezzo.—Very strong grower and rather tall. The ribs are broad, thick and very solid; heart shy. Quite green while growing, but when bleached for market it is white. An excellent late winter sort. Quality excellent, being equal to Giant Pascal. Not adapted for muck lands. Oz. 30c., $\frac{1}{4}$ lb. \$1.00, lb. \$3.00.

Dwarf White Arezzo.—Similar to Giant White Arezzo, except that it is of dwarfer habit, being more compact. We consider this superior to the Giant on account of its dwarf habit. Oz. 30c., $\frac{1}{4}$ lb. \$1.00, lb. \$3.00.

Winter Queen.—A popular late-keeping green sort. Very stout, medium height and full hearted. Oz. 25c., $\frac{1}{4}$ lb. 75c., lb. \$2.50.

CELERY—Continued

Winter Varieties



Winter King

Simon's Winter King.—Plant medium height, exceedingly stocky, with thick heavy ribs. The quality is exceptionally fine, being almost equal to Giant Paschal, and it contains more heart stalks than this variety. It can be marketed by November 15th, and by keeping it cold can be marketed as late as April 1st in the vicinity of Philadelphia. We pronounce it the best late-keeping sort. Oz. 40c., $\frac{1}{4}$ lb. \$1.50, lb. \$5.00.

Simon's Magnificent.—This as the name implies is a magnificent sort. The plant is quite dwarf and stocky with a large full golden yellow heart. The foliage is of a distinct light shade of green. In season it closely follows Golden Self Blanching and resembles that variety when ready for sale. The quality is excellent being far superior to Golden Self Blanching. Oz. 40c., $\frac{1}{4}$ lb. \$1.50, lb. \$5.00.

Columbia.—A recent introduction. Plant medium height, with thick ribs and quite well hearted. In season it is quite early and the quality is unsurpassed. Oz. 25c., $\frac{1}{4}$ lb. 85c., lb. \$3.00.

Broad Ribbed Sweet Nut.—A rank-growing, stout, late sort, with thick, heavy ribs. The quality is excellent, being very brittle and tender. Oz. 25c., $\frac{1}{4}$ lb. 85c., lb. \$3.00.

Evan's Triumph.—A long-keeping green sort, rather slender but of excellent quality. Oz. 20c., $\frac{1}{4}$ lb. 60c., lb. \$2.00.

Schumacher.—A long-keeping stout variety of medium height, with a full heart. Originated in Long Island. Oz. 25c., $\frac{1}{4}$ lb. 75c., lb. \$2.50.

Giant Paschal.—For quality this is one of the best. Plant vigorous, stout, but rather shy hearted, and requires careful handling as it is very brittle. A good late keeper. Used extensively around Boston. Our stock is true and will give excellent satisfaction. Oz. 25c., $\frac{1}{4}$ lb. 75c., lb. \$2.50.

Kalamazoo Large Ribbed.—Medium height, stocky, large ribbed, good heart. Quality excellent, good keeper. Oz. 20c., $\frac{1}{4}$ lb. 60c., lb. \$2.00.

Giant White Solid.—Similar to Kalamazoo, except that it is more robust and grows taller. Oz. 20c., $\frac{1}{4}$ lb. 60c., lb. \$2.00.

Dwarf Golden Heart.—A dwarf, stocky sort, with a full yellow heart. It is of excellent quality and a good keeper. Oz. 25c., $\frac{1}{4}$ lb. 75c., lb. \$2.50.

Boston Market.—A well known variety of excellent quality, used extensively around Boston. Oz. 25c., $\frac{1}{4}$ lb., 75c., lb. \$2.50.

Soup, or Cutting Celery.—Used to cut while young for flavoring. Sold as soup greens. Oz. 15c., $\frac{1}{4}$ lb. 40c., lb. \$1.50.

Celeriac or Turnip-Rooted Celery

Ne Plus Ultra.—An improved form of turnip-rooted celery, producing large, round roots, with very few side roots. Oz. 20c., $\frac{1}{4}$ lb. 60c., lb. \$2.00.

Large Smooth Prague.—Very large, round roots, quite smooth. Oz. 20c., $\frac{1}{4}$ lb. 50c., lb. \$1.50.

CHERVIL

Curled.—The leaves are used in soups and salads. Oz. 15c., $\frac{1}{4}$ lb. 35c., lb. \$1.00.

CHICORY

Large Rooted, or Coffee.—The young leaves are used as a salad, the dried roots as a substitute for coffee. Oz. 15c., $\frac{1}{4}$ lb. 35c., lb. \$1.00.

COLLARDS

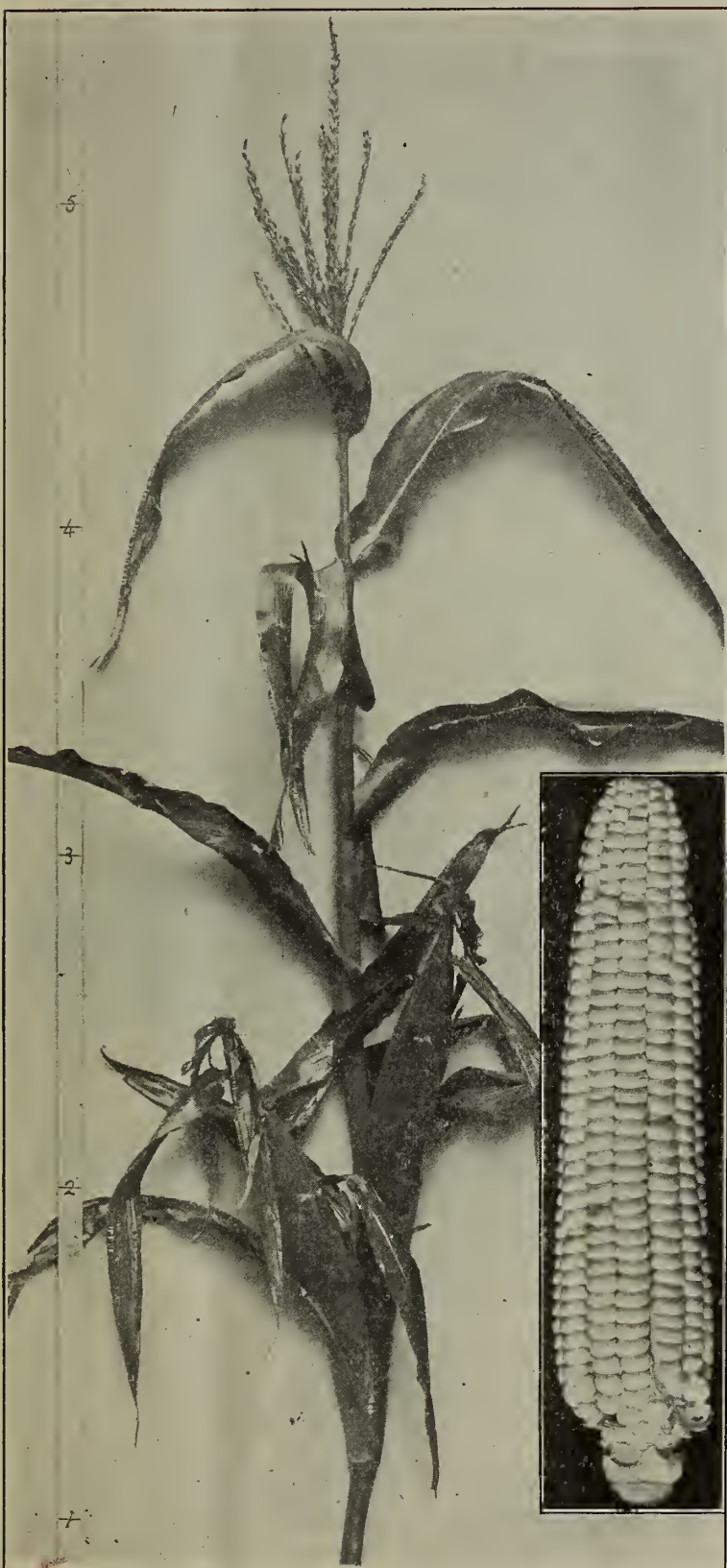
Georgia, Southern, or Creole.—Extensively used in the South as greens. Similar to cabbage, but does not make a head. We offer the true white or green-stemmed variety. Oz. 10c., $\frac{1}{4}$ lb. 30c., lb. \$1.00.

CORN SALAD

Large Seeded Broad Leaf.—Leaves large and broad. The best sort. Oz. 7c., $\frac{1}{4}$ lb. 20c., lb. 60c.

CORN—Table Varieties

Extra Early Varieties



Simon's Early Wonder

Simon's Early Wonder.—This new sweet corn is truly a wonder. It is three to five days earlier than White Cory, with a larger and much better shaped ear. The quality is far superior, being better than any of the early varieties. The ears when husked are eight inches long with ten to twelve rows. It is a strong grower for such an early corn, the fodder reaching a height of six feet under good conditions. It is a valuable acquisition and we thoroughly recommend it as the best extra-early sweet corn. Pt. 15c., qt. 30c., 4 qts. \$1.00, pk. \$1.75, bus. \$6.00.

First Early Table.—The first table corn with a decent sized ear to come into the market. It is not a strictly sugar corn, the grain being white and smooth, but if pulled at the proper time it is fairly sweet and sells remarkably well. Can be planted earlier than the shriveled grain sorts, as it will stand more cold wet weather. Qt. 25c., 4 qts. 85c., pk. \$1.50, bus. \$5.50.

Adams Extra Early.—A very early white corn, with a small ear. Can be planted early. Qt. 20c., 4 qts. 60c., pk. \$1.00, bus. \$3.50.

Improved Adams Early.—Similar to Adams Early, except that the ear is larger and it is a few days later. Qt. 20c., 4 qts. 60c., pk. \$1.00, bus. \$3.50.

Burlington Hybrid.—A very early white corn with a medium-sized ear. Popular in Burlington County, New Jersey. Qt. 20c., 4 qts. 60c., pk. \$1.00, bus. \$3.50.

Extra-Early Express.—One of the first early, strictly sugar corns. Ear medium size and good quality. Qt. 25c., 4 qts., 80c., pk. \$1.50, bus. \$5.00.

Crosby's Early.—Very early and excellent quality, ear small. Qt. 20c., 4 qts. 75c., pk. \$1.25, bus. \$4.00.

Premo.—An extra early medium-sized ear of good quality. Qt. 20c., 4 qts. 75c., pk. \$1.25, bus. \$4.00.

Mammoth White Cory.—One of the earliest sugar corns. Both ear and fodder are small and requires good cultivation in order for it to produce satisfactory results. Quality fair to medium. Qt. 20c., 4 qts. 75c., pk. \$1.25, bus. \$4.00.

Early Metropolitan.—An extra-early sweet corn of good quality, ear medium size. Qt. 20c., 4 qts. 75c., pk. \$1.25, bus. \$4.50.

Early Minnesota.—Matures a little later than Crosby, and produces a larger ear filled with eight rows of large sweet grains. Qt. 20c., 4 qts. 75c., pk. \$1.25, bus. \$4.00.

Early Cosmopolitan.—A grand new variety producing fine large ears only a few days later than Cory. The ears are handsome and contain 10 to 12 rows of grain of good quality. Height 5 to 6 feet. Qt. 20c., 4 qts. 75c., pk. \$1.25, bus. \$4.00.

Peep O'Day.—An extra early sort producing a medium sized ear of fine quality. Qt. 20c., 4 qts. 75c., pk. \$1.25, bus. \$4.00.

Nordheim Early.—An extra early, strictly sugar corn, with a fairly decent sized ear. Fodder is taller than White Cory, ear is larger and of better quality. Qt. 25c., 4 qts. 85c., pk. \$1.50, bus. \$5.00.

Golden Bantam.—Very early and of excellent quality. Ear small and grain yellow. Fodder dwarf. Qt. 25c., 4 qts. 85c., pk. \$1.50, bus. \$5.00.

CORN—Continued

Extra Early Varieties

Morse's Golden Cream.—A cross between Country Gentlemen and Golden Bantam with the irregular shoepeg kernels of the former and the golden color and early habit of the latter. It combines the delicious sweet flavor of both. Pkt. 10c., pt. 30c., qt. 50c.

Medium Early Varieties

Simon's Second Early.—The best medium early to follow the extra earlies. Ear good size and of excellent quality. Gives excellent satisfaction wherever planted. Qt. 25c., 4 qts. 85c. pk. \$1.50, bus. \$5.00.

Early Champion.—Follows in close succession with the extra earlies, bearing good-sized, fine-shaped ears with twelve rows of plump deep grain. Very productive and good quality. Qt. 20c., 4 qts. 75c., pk. \$1.25, bus. \$4.00.

Stabler's Early.—Ear good size, quality excellent. One of the best medium early sorts. Qt. 20c., 4 qts. 75c., pk. \$1.25, bus. \$4.00.

Kendel's Early Giant.—Remarkably large ear for a second early corn. Grain rather broad and shallow. Quality very good. Qt. 20c., 4 qts., 75c., pk. \$1.25, bus. \$4.00.

Perry's Hybrid.—Follows closely the first early sorts. Ear good size and fair quality. Qt. 20c., 4 qts. 75c., pk. \$1.25, bus. \$4.00.

Early Mammoth.—A popular large-eared second early sort, which sells readily on account of its large size and fine shape. Grain rather shallow, but of good quality. Qt. 20c., 4 qts. 75c., pk. \$1.25, bus. \$4.00.

Honey Sweet.—Matures just after the first early sorts. Stalks about six feet high, bearing two good-sized twelve or fourteen rowed ears, often having a pink cob. Grain medium sized, cooking very white and tender. Qt. 25c., 4 qts 85c., pk. \$1.50, bus. \$4.50.

Early Evergreen.—Fit for market one week earlier than Stowell's Evergreen and remains in condition quite as long. The ears are large, with fourteen or more rows of deep grain of the finest quality. Qt. 20c., 4 qts. 75c., pk. \$1.25, bus. \$4.00.

Black Mexican.—When in condition for the table it cooks white, but the grain when ripe is black. Ear rather small, grain very sweet and tender. Qt. 25c., 4 qts. 75c., pk. \$1.25., bus. \$4.50.

White Mexican.—Similar to Black Mexican with the exception that it is of dwarfer habit and the seed is white. Qt. 25c., 4 qts. 75c., pk. \$1.25, bus. \$4.50.

Main Crop and Late Varieties

Moonarchie.—One of the best main crop sorts. Ears large and of fine quality, remains in good condition for a long time. Grain medium deep and broad. Originated in a section called Moonarchie, Essex County, New Jersey, and is grown extensively for the New York market. Excellent market variety. Qt. 25c., 4 qts. 85c., pk. \$1.50, bus. \$4.50.

Long Island Beauty.—A cross between Evergreen and Late Mammoth. Ear large, grain deep and of the finest quality. One of the best late sorts where a large ear is wanted. Qt. 25c., 4 qts. 85c., pk. \$1.50, bus. \$4.50.

Stowell's Evergreen.—The standard main crop variety. Ears large and thick; grain very deep and tender, remaining in eatable condition for a long time. One of the best main crop sorts. Qt. 20c., 4 qts. 65c., pk. \$1.00, bus. \$3.50.

Stowell's Evergreen Extra Selected.—The same as Stowell's Evergreen, except that it has been selected for large ears and extra deep grain. Qt. 20c., 4 qts. 75c., pk. \$1.25, bus. \$4.00.

White Evergreen.—The most valuable feature of this variety is that the grains instead of having the yellow tinge like Stowell's are of a paper white color, which makes it more attractive when served on the table and especially valuable for canning. The ear is just as large and grain just as deep as Stowell's. Qt. 20c., 4 qts. 75c., pk. \$1.25, bus. \$4.00.

Zig-Zag Evergreen.—A strain of Evergreen with irregular rows. Ear not as large as Stowell's. Qt. 20c., 4 qts. 75c., pk. \$1.25, bus. \$4.00.

Country Gentlemen.—This variety has a small white cob, densely covered with irregular rows of very long slender white grains of the very finest quality. Ear medium size. Qt. 20c., 4 qts. 75c., pk. \$1.25, bus \$4.00.

Late Mammoth.—Produces ears the largest of any which are sweet and tender. Fodder seven to eight feet. Rather late. Qt. 20c., 4 qts. 75c., pk. \$1.25, bus. \$4.00.

Hickox Improved.—A well known late variety producing a large ear of excellent quality. An excellent market garden sort. Qt. 20c., 4 qts. 75c., pk. \$1.25, bus. \$4.00.

Field Varieties

Blunts Prolific.—White. Qt. 15c., pk. 65c., bus. \$2.00.

Chester County Mammoth.—Qt. 15c., pk. 65c., bus. \$2.00.

Early Mastodon.—Qt. 15c., pk. 65c., bus. \$2.00.

Early Yellow Canada.—Qt. 15c., pk. 65c., bus. \$2.00.

Golden Beauty.—Qt. 15c., pk. 65c., bus. \$2.00.

Golden Dent.—Qt. 15c., pk. 65c., bus. \$2.00.

Hickory King.—White, broad grain. Qt. 15c., pk. 65c., bus. \$2.00.

Leaming.—Qt. 15c., pk. 65c., bus. \$2.00.

One Hundred Day Bristol.—Qt. 15c., pk. 65c., bus. \$2.00.

Fodder Sugar Corn.—(For Sowing). Bus. \$2.00.

CUCUMBER



Simon's Famous White Spine

Simon's Famous White Spine.—The longest and handsomest of all White Spines. The fruits average twelve to fourteen inches in length, are straight, well formed and of a dark green color. It is a strong grower the vines remaining green when other White Spines are blighted and dried up. Season a little later than Arlington, quality the very best, having very few seeds. Oz. 10c., $\frac{1}{4}$ lb. 25c., lb. 85c., 10 lbs. \$7.50.



Jersey Pride

Jersey Pride.—An entirely new strain of White Spine, originating in New Jersey. It is as early as any of the White Spine strains and outyields them all. The color is dark glossy green, shape very uniform with an average length of eight to ten inches. They hold their color and brittleness long after being cut, which makes it an excellent shipper for distant markets. We recommend it as the best all round variety. Oz. 10c., $\frac{1}{4}$ lb. 25c., lb. 85c., 10 lbs. \$7.50.

Matchless White Spine.—An extra long dark green White Spine of handsome shape and appearance. Season a little later than Arlington. Fruits average ten to twelve inches. Oz. 10c., $\frac{1}{4}$ lb. 25c., lb. 85c., 10 lbs. \$7.50.

Arlington White Spine.—One of the most popular White Spine sorts. The fruits are very uniform, averaging seven to eight inches. It is extra early and very prolific, and is grown extensively around the Norfolk, Va., section and at Charleston, S. C. Oz. 8c., $\frac{1}{4}$ lb. 20c., lb. 65c., 10 lbs. \$5.50.

Extra Long, or Evergreen White Spine.—A long second early dark green White Spine, fruits averaging ten to twelve inches. Oz. 10c., $\frac{1}{4}$ lb. 25c., lb. 75c., 10 lbs. \$6.50.

Davis Perfect.—A long slim dark green White Spine strain, early and prolific. It is a stronger grower and will resist blight better than some of the older sorts. Oz. 10c., $\frac{1}{4}$ lb. 25c., lb. 85c., 10 lbs. \$7.50.

Green Founier.—Second early, very dark green sort, producing perfectly smooth fruits ten to twelve inches long, which are of very crisp and of excellent quality. Oz. 10c., $\frac{1}{4}$ lb. 30c., lb. \$1.00, 10 lbs. \$9.00.

Cumberland.—A distinct variety, producing large symmetrical, dark green fruits, densely covered with small warts. The vine is vigorous, wonderfully prolific, and continues in bearing much longer than most sorts. Excellent variety for pickling. Oz. 8c., $\frac{1}{4}$ lb. 20c., lb. 65c., 10 lbs. \$5.50.

Extra Early Prolific, or Boston Pickling.—A very productive variety extensively grown for pickles. Fruits medium size, quite smooth and of a bright green color. Oz. 8c., $\frac{1}{4}$ lb. 20c., lb. 65c., 10 lbs. \$5.50.

Snow's Pickling.—An early maturing, very small, dark green cucumber; cylindrical, square ended, and very popular with many growers who want an ideal bottle pickle. The seed we offer was grown from a very fine lot of stock seed procured from the originator. Oz. 10c., $\frac{1}{4}$ lb. 25c., lb. 75c., 10 lbs. \$6.50.

Cool and Crisp.—An extra-early, prolific, dark green cucumber, with fruits of good length and fine quality. Oz. 10c., $\frac{1}{4}$ lb. 25c., lb. 80c., 10 lbs. \$7.00.

London, or Improved Long Green.—Second early, long dark green; fruits measure twelve to fourteen inches. Quality firm and crisp. Oz. 10c., $\frac{1}{4}$ lb. 25c., lb. 80c., 10 lbs. \$7.00.

Emerald.—Fruit smooth and of a dark green color, sometimes growing to a length of fourteen inches. Quite late. Oz. 10c., $\frac{1}{4}$ lb. 30c., lb. \$1.00, 10 lbs. \$9.00.

Simon's Hot House.—Perfect shape and color, producing long, straight, handsome fruits of the very finest quality. Excellent sort for growing under glass. Oz. 50c., $\frac{1}{4}$ lb. \$1.50, lb. \$5.00.

CUCUMBER—Continued

Klondike.—An early dark green strain, producing nicely shaped fruit about nine inches long. Oz. 10c., $\frac{1}{4}$ lb. 25c., lb. 75c., 10 lbs. \$6.50.

West India Gherkin, or Burr.—A very small, oval, prickly fruited sort, quite distinct from all others and grown exclusively for pickles. Seed slow to germinate. Oz. 15c., $\frac{1}{4}$ lb. 40c., lb. \$1.50.

CRESS

Fine Curled, or Pepper Grass.—Grows rapidly, dwarf and compact. Oz. 7c., $\frac{1}{4}$ lb. 15c., lb. 40c.

True Water.—Will grow either in water or on moist land. Oz. 30c., $\frac{1}{4}$ lb. 85c., lb. \$3.00.

DANDELION

French Cultivated.—Considered the best by many as it is not nearly as coarse as Broad Leaf. The leaves are broader than the Wild Dandelion, and it is quite an improvement over it. Oz. 15c., $\frac{1}{4}$ lb. 40c., lb. \$1.50, 5 lbs. \$7.00.

Improved Broad Leaf.—Very early, with deep cut broad leaves. Oz. 35c., $\frac{1}{4}$ lb. \$1.25, lb. \$4.50.

Thick Leaved Cabbaging.—Large, broad, thick, deeply cut leaves. This variety has a very full heart. Oz. 35c., $\frac{1}{4}$ lb. \$1.25, lb. \$4.50.

ENDIVE

Philadelphia Large Green Curled.—A very strong-growing mammoth sort, used extensively around Philadelphia. Oz. 10c., $\frac{1}{4}$ lb. 35c., lb. \$1.10, 5 lbs. \$5.00.

New York Large Green Curled.—A large green curled sort which is quite hardy. One of the best winter varieties. Grown largely in the vicinity of New York. Oz. 10c., $\frac{1}{4}$ lb. 35c., lb. \$1.10, 5 lbs. \$5.00.

French Large Green Curled.—A mammoth sort which stands the hot weather remarkably well. Oz. 10c., $\frac{1}{4}$ lb. 35c., lb. \$1.10, 5 lbs. \$5.00.

Simon's Bordeaux.—A mammoth green curled sort, grown largely around Philadelphia. Oz. 10c., $\frac{1}{4}$ lb. 35c., lb. \$1.10, 5 lbs. \$5.00.

Giant Fringed, or Oyster.—Very large and grows remarkably well in hot weather. Grown largely in New York State to be shipped to the New York market. Oz. 10c., $\frac{1}{4}$ lb. 35c., lb. \$1.10, 5 lbs. \$5.00.

Broad-Leaved Batavian, or Escarolle.—Broad, thick ribs, with slightly wrinkled leaves. The best broad-leaved variety. Oz. 10c., $\frac{1}{4}$ lb. 35c., lb. \$1.10, 5 lbs. \$5.00.

EGG PLANT



Black Beauty

Black Beauty.—The best of all. Fruits large, handsome shape and of a rich glossy black color. It is as early as any, very productive and thornless. Our stock is true and is as good as can be grown. Oz. 35c., $\frac{1}{4}$ lb. \$1.00, lb. \$3.50.

New York Improved Large Purple.—Fruits large, good shape and of a dark purple color, very productive and spineless. Oz. 35c., $\frac{1}{4}$ lb. \$1.00, lb. \$3.50.

Florida High Bush.—Plants are large and high, usually bearing the fruits off the ground. Fruits medium size, pear shaped and of a purple color. Very productive. Oz. 35c., $\frac{1}{4}$ lb. \$1.00, lb. \$3.50.

HORSE RADISH ROOTS

Maliner-Kren, or Bohemian.—A new variety from Bohemia, producing very large pure white roots. Strong sets. 100 85c., 1,000 \$6.50.

Standard Variety.—Strong sets. 100 50c., 1,000 \$4.00. If wanted by mail add 10 cents per 100 on both varieties.

KALE

Long Standing Curled Siberian.—The green leaves are very large and comparatively plain in the center, but heavily curled on the edge. It is a fast grower, extremely hardy and will stand longer in the spring without bolting than any other variety. Oz. 8c., $\frac{1}{4}$ lb. 20c., lb. 60c., 10 lbs. \$5.00.

Dwarf Green Curled Scotch.—The plant is low and compact, with large bright green leaves, curled, cut and crimped so that the whole plant resembles a bunch of moss. This variety is quite hardy but will not stand in a temperature below zero. Grown extensively in the South for the northern markets. Oz. 8c., $\frac{1}{4}$ lb. 20c., lb. 60c., 10 lbs. \$5.00.

KOHL RABI

Short Leaved Early White Vienna.—Extremely early, with very small tops, thus allowing it to be planted very close. The best either for forcing or an outdoor crop. Oz. 20c., $\frac{1}{4}$ lb. 60c., lb. \$2.00, 5 lbs. \$8.75.

Early Purple Vienna.—Very early, with small top, skin purple. Oz. 25c., $\frac{1}{4}$ lb. 75c., lb. \$2.50.

LEEK

Long Standing Hardy Winter.—Large, thick, short stems, with very broad leaves. It is extremely hardy and will stand longer in the spring without bolting to seed than any other variety. Oz. 15c., $\frac{1}{4}$ lb. 50c., lb. \$1.50.

Giant Italian.—Very large, short, thick stems, with broad dark green leaves; quite hardy. One of the best sorts. Oz. 10c., $\frac{1}{4}$ lb. 35c., lb. \$1.25, 5 lbs. \$5.75.

American Flag.—Stems ten inches long by two inches thick. It is a strong quick grower and has a mild flavor. One of the best for fall and early winter use. Oz. 10c., $\frac{1}{4}$ lb. 35c., lb. \$1.10, 5 lbs. \$5.00.

Monstrous Carentan.—Of dwarf habit, stem short, but very thick. Oz. 10c., $\frac{1}{4}$ lb. 35c., lb. \$1.25, 5 lbs. \$5.75.

Large Rouen.—Stem short but thick, leaves broad. Oz. 10c., $\frac{1}{4}$ lb. 35c., lb. \$1.25, 5 lbs. \$5.75.

LETTUCE

Simon's Cabbage Head.—This is one of the finest varieties of lettuce ever offered, and is superior to Big Boston in many ways. It does not scald in the heart and does not turn red from cold. It is just as large and as firm as Big Boston and has a lighter color. It will hold up better and is an excellent shipping sort. Some market gardeners grow it throughout the season, but we especially recommend it for spring and fall use. If you have been using Big Boston, try this, for it will surely please you.

For illustration see front cover.

Extra stock grown in New Jersey. Oz. 30c., $\frac{1}{4}$ lb. 75c., lb. \$2.50, 10 lbs. \$22.50.

Good stock grown in California. Oz. 15c., $\frac{1}{4}$ lb. 50c., lb. \$1.50.

Boston Glass House.—A medium-sized firm heading sort of a bright green color. One of the best heading sorts for forcing. Used largely around Boston. Extra selected stock. Oz. 40c., $\frac{1}{4}$ lb. \$1.50, lb. \$5.00.

Boston Market, or White Seeded Tennisball.—A small, compact, heading sort, used for forcing. Oz. 15c., $\frac{1}{4}$ lb. 35c., lb. \$1.00, 10 lbs. \$9.00.

Black Seeded Tennisball.—Heads firm and medium size. A good variety throughout the season, but especially adapted for early sowing outdoors. Oz. 15c., $\frac{1}{4}$ lb. 35c., lb. \$1.00, 10 lbs. \$9.00.

Big Boston.—One of the most popular varieties. Heads large and very solid. The leaves are tough, which enables it to stand handling better than most sorts. One of the best for shipping long distances. While this variety does exceedingly well in the spring and fall, we do not recommend it for summer as it is apt to burn in the heart. Cold weather will also turn outer leaves red. Oz. 15c., $\frac{1}{4}$ lb. 35c., lb. \$1.00, 10 lbs. \$9.00.

Hopkins' Big Boston.—An improved very fine large pure strain, superior to any we have ever seen. Oz. 20c., $\frac{1}{4}$ lb. 50c., lb. \$1.50, 10 lbs. \$13.50.

French Big Boston Without Red Edge.—This is an excellent type. It heads very uniformly and is extremely hardy, never turning red from cold. Oz. 25c., $\frac{1}{4}$ lb. 75c., lb. \$2.50, 10 lbs. \$22.50.

Black Seeded Simpson.—One of the best loose-leaved curled sorts for sowing outdoors. Can be grown all through the season. Very tender and remains in condition for use for a long time. Oz. 15c., $\frac{1}{4}$ lb. 35c., lb. \$1.00, 10 lbs. \$9.00.

Giant California White.—A hard heading sort similar to Big Boston, except that it does not burn as easily and is a little lighter in color. Oz. 15c., $\frac{1}{4}$ lb. 40c., lb. \$1.25, 10 lbs. \$11.50.

California Cream Butter.—A large, very solid heading sort which will stand extreme heat or cold. Leaves thick and will stand shipping remarkably well. Outer leaves tinged bronze. Oz. 15c., $\frac{1}{4}$ lb. 35c., lb. \$1.00, 10 lbs. \$9.00.

Champion of All.—A large hard heading sort which somewhat resembles Big Boston. It is lighter in color and a surer header in some vicinities. Oz. 15c., $\frac{1}{4}$ lb. 40c., lb. \$1.25, 10 lbs. \$11.50.

Deacon.—A medium-sized bright green sort which stands hot weather remarkably well. Usually the heads are not very firm, but it will not burn. Oz. 15c., $\frac{1}{4}$ lb. 35c., lb. \$1.00, 10 lbs. \$9.00.

Simon's Early Frame.—A medium-sized compact, hard heading sort, suitable for growing under sash. It heads up very fast. Color light green. One of the best sash varieties. Oz. 40c., $\frac{1}{4}$ lb. \$1.25, lb. \$4.00.

Grand Rapids.—The best loose-leaved curled variety for forcing. It is a very rapid grower and will stand high temperature. It does not wilt quickly after cutting, and will therefore stand shipping. Oz. 15c., $\frac{1}{4}$ lb. 35c., lb. \$1.00, 10 lbs. \$9.00.

Hittinger's Belmont Forcing.—A medium-sized compact growing sort which stands forcing exceedingly well. Can be planted close together. Heads are bright green and quite firm. Oz. 20c., $\frac{1}{4}$ lb. 50c., lb. \$1.50, 10 lbs. \$14.00.

Iceberg.—A large hard heading curled variety, very crisp, but rather coarse. Oz. 15c., $\frac{1}{4}$ lb. 40c., lb. \$1.25, 10 lbs. \$11.50.

Improved Salamander.—One of the most popular and best all-season heading sorts. The leaves are thin, tender and buttery. The quality is all that could be desired. Heads medium to large size and quite firm. One of the best to use throughout the season. Our strain of this popular variety is unsurpassed. Oz. 15c., $\frac{1}{4}$ lb. 35c., lb. \$1.00, 10 lbs. \$9.00.

King of the Garden.—If you are looking for something strictly fancy in a large head lettuce, this is it. The heads are extra large and quite firm, leaves thin and of the finest quality. It is too tender to stand rough handling. It is only good for spring and fall, as it will not stand extreme hot weather. Does its best when transplanted from the frames to outside in the spring. Does remarkably well for a late crop in the frames, providing the sash are taken off about the time it begins to form a head, and has plenty of room. Should be planted 15 x 15. Oz. 15c., $\frac{1}{4}$ lb. 40c., lb. \$1.25, 10 lbs. \$11.50.

Hanson.—A large hard heading curled sort; very crisp, but rather coarse. Oz. 15c., $\frac{1}{4}$ lb. 40c., lb. \$1.25, 10 lbs. \$11.50.

Long Island.—Heads good size and quite firm. Does best when transplanted outside from the frames, or sown early outside. Oz. 15c., $\frac{1}{4}$ lb. 40c., lb. \$1.25, 10 lbs. \$11.50.

Mammoth Black Seeded Butter.—A very large tender heading sort with smooth light green leaves. A good variety for spring and autumn. Oz. 15c., $\frac{1}{4}$ lb. 35c., lb. \$1.00, 10 lbs. \$9.00.

LETTUCE—Continued



Simon's Hot Weather Lettuce.

Simon's Hot Weather.—We have found this to be absolutely the best firm heading lettuce to grow through the summer months. It will not scald or burn and will make a head when other varieties fail. It somewhat resembles Salamander in character of leaf color and size, but the head is more compact. It is practically all head, having very few outer leaves. It heads up quickly making it valuable for an early crop. After repeated trials we have found it to be the best smooth leaved firm heading all season variety. We could print hundreds of testimonials if space would permit. **Oz. 15c., ¼ lb. 50c., lb. \$1.50, 10 lbs. \$14.00.**

The following is part of a letter from one of our customers, dated Irvington, N. J., September 6, 1909. "We are sending you to-day by express six heads of Hot Weather Lettuce. We had Big Boston and Salamander in the same field, but found this variety to make heads quicker and harder than the others. We are much pleased with it and will recommend it to others."

T. W. & W. A. Wills.

Burpee's Wayahead.—A very early, medium-sized, firm, heading sort of excellent quality. Leaves quite smooth. **Oz. 15c., ¼ lb. 50c., lb. \$1.50, 10 lbs. \$14.00.**

LETTUCE—Continued

May King.—A large light green very early heading sort, which does exceedingly well either for an early outdoor crop or for forcing under glass. Oz. 15c., $\frac{1}{4}$ lb. 40c., lb. \$1.25, 10 lbs. \$11.50.

Magnum Bonum.—An excellent all-season variety. Resembles Salamander in size and appearance. Oz. 15c., $\frac{1}{4}$ lb. 40c., lb. \$1.25, 10 lbs. \$11.50.

Market Gardeners' Private Stock.—A very fine strain of the Salamander type. Does remarkably well through the summer months. Oz. 15c., $\frac{1}{4}$ lb. 40c., lb. \$1.25, 10 lbs. \$11.50.

Oak Leaf.—Produces leaves similar in shape to an oak leaf. A good summer sort. Oz. 15c., $\frac{1}{4}$ lb. 40c., lb. \$1.25.

Philadelphia Dutch Butter.—A medium-sized heading butter lettuce, used extensively around Philadelphia for growing under sash for an early spring crop, also for an early outdoor crop. Should be transplanted from the frames when grown outdoors. The bottom leaves have small brown spots on them. Oz. 20c., $\frac{1}{4}$ lb. 50c., lb. \$1.50.

Simon's Dutch Butter.—A selection from Philadelphia Dutch Butter. Heads are larger and it heads up more uniform. The leaves have fewer spots on them. We have taken extra pains to have this important variety bred up to its present standing and feel confident that the strain we offer is as good as can be produced. Oz. 25c., $\frac{1}{4}$ lb. 75c., lb. \$2.50.

Summer Gem.—Similar to Deacon, except that it makes a larger and firmer head. It does best on high land. On moist land the leaves turn yellow and it does not seem to thrive. Will stand extreme hot weather and will not burn. Oz. 15c., $\frac{1}{4}$ lb. 40c., lb. \$1.25, 10 lbs. \$11.50.

Sensation.—A good all-season variety, resembling Salamander in size and appearance. Some gardeners claim it will stand the hot weather better. Oz. 15c., $\frac{1}{4}$ lb. 35c., lb. \$1.00, 10 lbs. \$9.00.

Silver Ball.—An old-time popular variety. Heads medium size, firm and of a beautiful light green color. Does best when sown or planted in the spring. Oz. 15c., $\frac{1}{4}$ lb. 40c., lb. \$1.25, 10 lbs. \$11.50.

St. Louis Market.—A medium-sized firm heading sort, which is grown extensively around St. Louis during the summer months. Oz. 15c., $\frac{1}{4}$ lb. 35c., lb. \$1.00, 10 lbs. \$9.00.

St. Louis Black Seeded Forcing.—Resembles Salamander in size, character of leaf and color, but will stand forcing. It is grown extensively by the St. Louis Market Gardeners, both under sash and for an early outdoor crop. Oz. 15c., $\frac{1}{4}$ lb. 40c., lb. \$1.25, 10 lbs. \$11.50.

Twentieth Century.—One of the best all-season varieties. Does excellent in spring and autumn and remarkably well through the summer months. Heads from medium to large size, leaves slightly crumpled and of a light green color. Oz. 15c., $\frac{1}{4}$ lb. 40c., lb. \$1.25, 10 lbs. \$11.50.

Turkish Butter.—A large sort somewhat resembling Mammoth Butter, but more heat resisting. The quality is excellent. Oz. 15c., $\frac{1}{4}$ lb. 50c., lb. \$1.50.

Unrivaled.—Similar to Big Boston, but lighter in color. The type is not fixed yet and it still contains quite a few sports, or what the gardener would call "wild ones." Oz. 15c., $\frac{1}{4}$ lb. 35c., lb. \$1.00, 10 lbs \$9.00.

Wonderful, or New York.—Very large and solid. The inner portion is a beautiful white, the outer leaves dark green. Does remarkably well through the summer months. Oz. 15c., $\frac{1}{4}$ lb. 40c., lb. \$1.25, 10 lbs. \$11.50.

White Butter, or Hardy Ridge.—An old-time variety used to plant on the warm side of a ridge about October 1st and stand out all winter to cut early in the spring. Should be protected by covering with salt hay. Heads medium size, firm, and matures very early. Very hardy; stands zero weather. Oz. 20c., $\frac{1}{4}$ lb. 50c., lb. \$1.50.

White Summer Cabbage.—Heads firm, bright green, with thick tender leaves, the inner ones blanched a beautiful creamy yellow. Oz. 15c., $\frac{1}{4}$ lb. 40c., lb. \$1.25, 10 lbs. \$11.50.

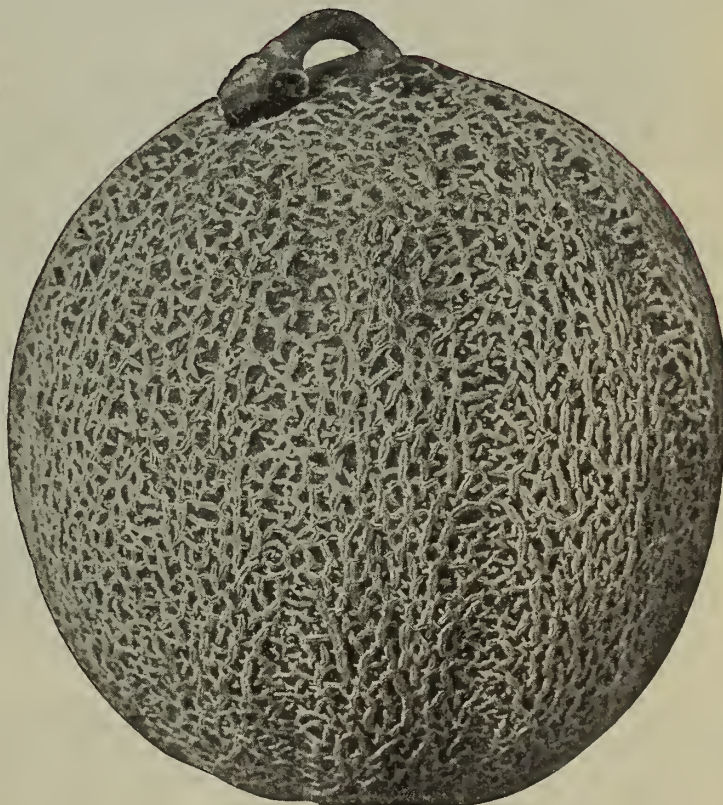
Hubbard's Market.—A thick leaved, bright green heading variety, forming a large, very compact head similar in type to Salamander, slightly larger, but a little later maturing. Oz. 15c., $\frac{1}{4}$ lb. 35c., lb. \$1.00, 10 lbs. \$9.00.

Yellow Seeded Butter.—A medium-sized firm heading sort. Very tender and of a light yellowish color. Does best in the spring, but also does remarkably well through the summer. Oz. 15c., $\frac{1}{4}$ lb. 40c., lb. \$1.25, 10 lbs. \$11.50.

Romain, or Cos Lettuce. **Early White Self Folding.**—An upright quick growing sort, self-blanching, large, very crisp and of superior flavor. This is the best of the Cos varieties. Oz. 15c., $\frac{1}{4}$ lb. 35c., lb. \$1.00, 10 lbs. \$9.00.

MUSK MELON

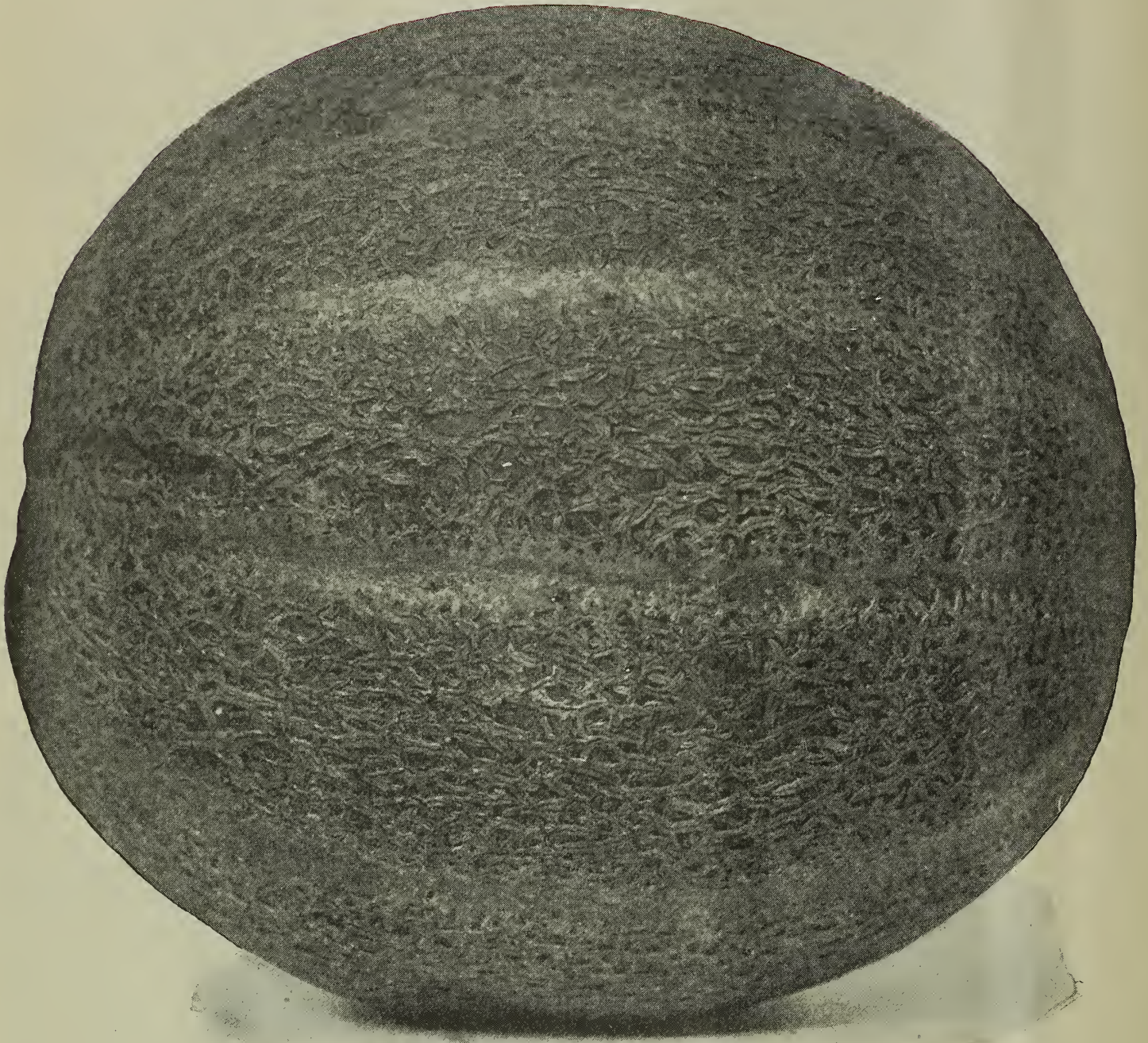
Green Fleshed Varieties



Netted Rock, or Eden Gem.

Netted Rock, or Eden Gem.—This is the leading muskmelon today of the Rocky Ford type. It is a medium-sized melon, nearly round in shape, very heavily netted and very slightly ribbed, the netting covering over the grooved portion. The flesh is extremely thick, the seed cavity very small, making it very heavy for a melon of its size. In quality it compares with the best strain of Rocky Ford. It is medium early and very prolific. The vine is vigorous and will resist blight better than most varieties. Oz. 10c., $\frac{1}{4}$ lb. 25c., lb. 75c., 10 lbs. \$6.50.

MUSK MELON—Continued



Knight Musk Melon

One of the recent introductions of the Rocky Ford Type

Knight, or Maryland.—Ten days earlier than the Rocky Ford, twice as productive and larger in size. The vines are of a stronger, healthy growth, branch freely, setting a large number of fruits close to the hill. The Melons are fine and regular in size and form, nearly round or slightly oval, and very closely netted. The skin is of a light golden hue when fully ripened.

Flesh bright green, luscious in flavor and ripens close to the skin. Originated near Baltimore. For the past two seasons it has brought the highest price in both New York and Boston of any melon shipped from the Norfolk district. The seed we offer is grown from originator's stock. **Oz. 10c., ¼ lb. 30c., 1b. \$1.10, 10 lbs. \$10.00.**

MUSK MELON—Continued

Green Fleshed Varieties

Burrell's Thoroughbred Rocky Ford.—This melon has ten distinct ribs covered with a closely laced and interlaced gray netting. The space between the netting is light green, changing to a pale slate green when ready to pick. The space between the ribs is very narrow and does not in any way weaken the melon. There is a slight tendency to net across this space but about 90 per cent. have the space well defined from stem to blossom button. The flesh is light green, changing very slightly toward yellow at the center. Seed cavity small. The size is very uniform. Oz. 10c., $\frac{1}{4}$ lb. 25c., lb. 75c., 10 lbs. \$6.50.

Watter's Extra Early Solid Net Rocky Ford.—This Solid Net Cantaloupe is the earliest strain of Rocky Ford Cantaloupes. It sets a very heavy first crop so that in a few days after the first crop begins to ripen large pickings are getting ripe. The netting is well developed, gray, and closely laced. The flesh is light green and of excellent quality. The seed is some larger than any of the previous strains listed. Oz. 10c., $\frac{1}{4}$ lb. 25c., lb. 75c., 10 lbs. \$6.50.

Rocky Ford, or Netted Gem.—Fruit oval, slightly ribbed, densely covered with fine netting. Flesh thick and very sweet. Medium-size and an excellent shipper. We offer an exceptionally fine strain of this valuable variety. Oz. 7c., $\frac{1}{4}$ lb. 20c., lb. 60c., 10 lbs. \$5.00.

Large Jenny Lind.—Fruit medium size to large, somewhat flattened, deeply ribbed and heavily netted. It ripens early and the quality is excellent. We offer a very fine strain grown in New Jersey. Oz. 10c., $\frac{1}{4}$ lb. 25c., lb. 75c., 10 lbs. \$6.50.

Norfolk Button, or Small Jenny Lind.—The earliest of all; fruits small, somewhat flattened, heavily netted and very sweet. It is extremely early and very prolific. The most of the fruits have a bump on the blossom end from which it derives its name. Oz. 10c., $\frac{1}{4}$ lb. 25c., lb. 75c., 10 lbs. \$6.50.

Long Island Beauty.—Fruits large, well flattened and well covered with fine netting. It ripens quite early and the quality is excellent. Oz. 10c., $\frac{1}{4}$ lb. 25c., lb. 75c., 10 lbs. \$6.50.

Improved Shippers' Delight.—Similar to Large Jenny Lind, except that the netting is heavier, being coarse and rougher. Oz. 10c., $\frac{1}{4}$ lb. 25c., lb. 75c., 10 lbs. \$6.50.

Hackensack, or Turk's Cap.—Fruit very large, nearly round, sometimes a little flattened; ribs large and of irregular width, densely covered with coarse netting; flesh green, thick, coarse but very sweet and finely flavored. Oz. 10c., $\frac{1}{4}$ lb. 25c., lb. 75c., 10 lbs. \$6.50.

Extra Early Hackensack.—The fruit is medium size, nearly round, deeply ribbed, with very coarse netting. Oz. 10c., $\frac{1}{4}$ lb. 25c., lb. 75c., 10 lbs. \$6.50.

Champion Market.—Fruit large, slightly oval with very shallow depressions and covered with dense netting. Flesh thick and sweet; medium early, Oz. 10c., $\frac{1}{4}$ lb. 25c., lb. 85c., 10 lbs. \$7.50.

Large Sweet Nutmeg, or Montreal.—Fruits very large, round slightly flattened, covered with coarse netting. Flesh thick and of good flavor. Oz. 10c., $\frac{1}{4}$ lb. 30c., lb. \$1.10, 10 lbs. \$10.00.

Acme or Baltimore.—Fruits medium to large, oblong, pointed, well netted and good quality. Oz. 10c., $\frac{1}{4}$ lb. 25c., lb. 85c., 10 lbs. \$7.50.

Anne Arundel.—Similar to Acme but considerably larger. Oz. 10c., $\frac{1}{4}$ lb. 25c., lb. 85c., 10 lbs. \$7.50.

Orange Fleshed Varieties



Hoodoo

Hoodoo.—A new orange fleshed variety ideal as a shipping melon and of the very finest quality. Vine vigorous, remarkably blight resisting and very productive. Fruits of medium and very uniform size. Netting exceptionally fine and dense, extending practically over the entire surface. Rind thin, yet very firm, so that the melons arrive in perfect condition in distant markets. Flesh very thick, firm, highly colored, of fine texture and delicious flavor. One of the best market melons offered today. Oz. 10c., $\frac{1}{4}$ lb. 30c., lb. 90c., 10 lbs. \$8.00.

Scarlet Masterpiece.—Fruit medium size, almost round; rind smooth, dark green. The flesh is thick, of a deep salmon color and of the finest quality. About twice the size of Emerald Gem. Oz. 10c., $\frac{1}{4}$ lb. 30c., lb. \$1.00, 10 lbs. \$9.00.

Emerald Gem.—Fruit small, slightly flattened, skin deep green, almost smooth. The flesh is thick and exceedingly highly flavored. Oz. 10c., $\frac{1}{4}$ lb. 25c., lb. 85c., 10 lbs. \$7.50.

Tip-Top.—Fruit large size, nearly round, slightly ribbed and covered lightly with shallow netting. Skin cream colored, flesh thick, deep yellow and very luscious. Oz. 10c., $\frac{1}{4}$ lb. 25c., lb. 85c., 10 lbs. \$7.50.

Osage, or Miller's Cream.—Fruit medium size to large, nearly round, slightly ribbed, dark green, almost smooth. Flesh very thick, deep salmon color and of the finest quality. Oz. 10c., $\frac{1}{4}$ lb. 25c., lb. 85c., 10 lbs. \$7.50.

Improved Christiana.—A medium-sized sort with smooth dark green skin and yellow flesh. Shape nearly round. Oz. 15c., $\frac{1}{4}$ lb. 35c., lb. \$1.00, 10 lbs. \$9.00.

Golden Gem.—This is an orange fleshed Netted Gem or Rocky Ford. We have developed in the Golden Gem a small musk melon with the very thick orange flesh and splendid quality of the Burrell Gem and possessing the characteristic netting, shape, size and shipping quality of Netted Gem or Rocky Ford. Combining all the good qualities of these two fine varieties we believe the Golden Gem is an ideal table and basket melon. For illustration see back cover. Oz. 15c., $\frac{1}{4}$ lb. 50c., lb. \$1.50, 10 lbs. \$14.00.

Burrell Gem, or Defender.—The fruit is of a medium size, oval in shape, slightly ribbed and well netted. The flesh is thick, exceptionally fine grained, highly colored and highly flavored. Seed cavity very small. Vine robust and being a strong grower resists blight to a remarkable degree. Oz. 10c., $\frac{1}{4}$ lb. 25c., lb. 75c., 10 lbs. \$6.50.

MUSK MELON—Continued

Orange Fleshed Varieties

Fordhook, or Yellow Fleshed Jenny Lind.—Very similar to Jenny Lind, except that the flesh is orange instead of green. The flesh is deep and of the finest flavor. It is well ribbed and heavily netted; seed cavity small. Oz. 10c., $\frac{1}{4}$ lb. 35c., lb. \$1.00, 10 lbs. \$9.00.

Banana.—Fruits fifteen to twenty inches long by four to six inches thick. Skin light yellow and smooth. Flesh deep yellow. Has an odor similar to a banana. Oz. 10c., $\frac{1}{4}$ lb. 30c., lb. \$1.00.

Nearly all of our Musk Melons are grown in New Jersey, and the crops are carefully inspected by us. We could print numerous unsolicited testimonials from customers praising the seed they purchased from us.

WATER MELON

Kleckley's Sweet, or Monte Cristo.—This very popular melon is one of the best for nearby markets. Fruits are medium size, oblong, of a dark green color and have very thin rind. Flesh bright scarlet with solid heart, crisp, sugary and melting, and entirely free from stringiness. Oz. 5c., $\frac{1}{4}$ lb. 15c., lb. 55c., 10 lbs. \$5.00, 100 lbs. \$45.00.

Burrell's Hard Shell Kleckley Sweet.—An improved strain, producing very uniform melons with a tougher rind than the preceding, thus making it better adapted for shipping. Oz. 7c., $\frac{1}{4}$ lb. 20c., lb. 65c., 10 lbs \$6.00.

Select Alabama Sweet.—This excellent shipping melon is the leading sort grown by Texas and other Southern melon growers, growers' associations and extensive individual growers. The rind is dark green marked with a still darker green mottled stripe and while thin it is very tough, making the melon a first-class shipper. The flesh is bright red, fine grained, sweet and luscious, entirely stringless and very firm. The seeds are white, slightly tipped with brown, and are firmly set in small cavities near the rind. Oz. 5c., $\frac{1}{4}$ lb., 15c., lb. 55c., 10 lbs. \$5.00.

Halbert's Honey.—Fully equal in quality to Kleckley's Sweet which it resembles. It is more even in outline, is blunter at the end and the skin is of a richer, darker color. Oz. 5c., $\frac{1}{4}$ lb. 15c., lb. 55c., 10 lbs. \$5.00.

Chilian.—A new variety from the Pacific Coast which is bound to be a winner. Fruits nearly round or slightly oblong, skin rich deep green, mottled and striped with a still darker shade, fresh bright vermilion red, fine grained but very firm and sweet. Oz. 8c., $\frac{1}{4}$ lb. 20c., lb. 60c., 10 lbs. \$5.50.

Blue Gem, or Iceberg.—Fruit large, thick oval form; skin dark green, faintly striped with a light shade. Fine shipper, as the rind is tough. Oz. 5c., $\frac{1}{4}$ lb. 15c., lb. 50c., 10 lbs. \$4.50.

Bradford.—Fruit long, dark green color, with darker [wavy bands. Oz. 5c., $\frac{1}{4}$ lb. 15c., lb. 55c., 10 lbs. \$5.00.

Dixie.—Fruit long, skin dark green striped with a lighter shade. Flesh bright scarlet, rind thin but tough. Oz. 5c., $\frac{1}{4}$ lb. 15c., lb. 50c., 10 lbs. \$4.50, 100 lbs. \$40.00.

Dark Icing.—Skin dark green indistinctly veined with a lighter shade. Fruit almost round. Oz. 5c., $\frac{1}{4}$ lb. 15c., lb. 55c., 10 lbs. \$5.00.

Florida Favorite.—Fruit long, dark green, mottled and striped with a lighter shade. Rind thin but firm. Oz. 5c., $\frac{1}{4}$ lb. 15c., lb. 50c., 10 lbs. \$4.50, 100 lbs. \$40.00.

Gray Monarch, or Light Icing.—Skin mottled very light green. Fruit long and of excellent quality. Oz. 5c., $\frac{1}{4}$ lb. 15c., lb. 50c., 10 lbs. \$4.50.

Kolb's Gem.—Fruit nearly round, medium size; skin marked with irregular stripes of light and dark green. A good shipper, but of poor quality. Oz. 5c., $\frac{1}{4}$ lb. 15c., lb. 45c., 10 lb. \$4.00. 100 lbs. \$35.00.

Peerless, or Ice Cream.—Fruit oval shaped, skin bright green finely veined or mottled. Rind thin, flesh bright scarlet, solid, crisp and very sweet. Oz. 5c., $\frac{1}{4}$ lb. 15c., lb. 50c., 10 lbs. \$4.50.

Round Light Icing.—Medium size, round, very light green, veined and mottled with slightly darker green. Rind thin, flesh very sweet and of the finest quality. Oz. 5c., $\frac{1}{4}$ lb. 15c., lb. 55c., 10 lbs. \$5.00.

Tom Watson.—A large long melon with dark green rind and light crimson flesh of excellent quality. It is a splendid shipper and is being grown extensively in the South for Northern markets. Oz. 5c., $\frac{1}{4}$ lb. 15c., lb. 55c., 10 lbs. \$5.00, 100 lbs. \$45.00.



Tom Watson

WATER MELON—Continued

Sweet Heart.—Fruits oval shaped, skin pale green distinctly veined with a slightly darker shade. Flesh deep red and of the finest quality. Oz. 5c., $\frac{1}{4}$ lb. 15c., lb. 50c., 10 lbs. \$4.50.

Striped Gipsy, or Georgia Rattlesnake.—Fruit oblong, skin light green, distinctly striped and blotched with a darker shade. Flesh bright scarlet and very sweet. Oz. 5c., $\frac{1}{4}$ lb. 15c., lb. 50c., 10 lbs. \$4.50, 100 lbs. \$40.00.

Triumph.—Fruit large, nearly round; skin dark green sometimes indistinctly striped with a lighter shade. The rind is thin but firm, making it an excellent shipper. Flesh bright red and of good quality. Oz. 5c., $\frac{1}{4}$ lb. 15c., lb. 50c., 10 lbs. \$4.50.

Citron for Preserving.—Fruits small and round. Flesh white and solid. Not used for eating in the raw state, but for preserving, pickling, etc. Oz. 7c., $\frac{1}{4}$ lb. 20c., lb. 60c.

MUSTARD

White English.—Leaves smooth and deeply cut, color dark green. Oz. 5c., $\frac{1}{4}$ lb. 10c., lb. 25c.

Southern Giant Curled.—Leaves light green, frilled and much crimped at the edge. Oz. 5c., $\frac{1}{4}$ lb. 15c., lb. 40c.

Chinese.—Leaves twice the size of White English, sweet and pungent. Oz. 5c., $\frac{1}{4}$ lb. 15c., lb. 40c.

Mushroom Spawn.—Pure culture direct. Proven the best by test. Bricks weighing about $1\frac{1}{2}$ lbs. each. Each 15c., 10 \$1.25, 100 11c., 500 and over 10c. English, less than 50 lbs. 8c., 100 lbs. \$6.00.

OKRA OR GUMBO

Perkin's Mammoth Podded.—Height three to four feet. Pods deep green, long and slender. Very productive. Oz. 5c., $\frac{1}{4}$ lb. 15c., lb. 40c., 10 lbs. \$3.50.

Dwarf Prolific.—Plants two feet high of stocky growth and very prolific. Pods long greenish white and mature early. Oz. 5c., $\frac{1}{4}$ lb. 15c., lb. 40c., 10 lbs. \$3.50.

White Velvet.—Plant of rather tall growth, bearing a large crop of white smooth pods. Oz. 5c., $\frac{1}{4}$ lb. 15c., lb. 40c., 10 lbs. \$3.50.

Kleckley's Favorite.—Height two and a half feet. Pods five inches long, smooth, white, tender and quite fleshy. Oz. 5c., $\frac{1}{4}$ lb. 15c., lb. 45c., 10 lbs. \$4.00.

ONION

All of our onion seed is grown from selected bulbs and will give excellent results.

Large Red Wethersfield.—Bulb large, flattened, yet quite thick, skin deep purplish red. Good keeper. Oz. 10c., $\frac{1}{4}$ lb. 35c., lb. \$1.10, 10 lbs. \$10.00.

Southport Red Globe.—Large globe-shaped bulbs, small neck and of a rich deep red color. Oz. 10c., $\frac{1}{4}$ lb. 35c., lb. \$1.10, 10 lbs. \$10.00.

Southport Yellow Globe.—Large globe-shaped bulbs of a rich yellow color. Oz. 10c., $\frac{1}{4}$ lb. 35c., lb. \$1.00, 10 lbs. \$9.00.

Southport White Globe.—Large globe-shaped bulbs of a pearly white color. The flesh is firm, fine grained and of mild flavor. Used extensively for a green bunch onion, for which it is admirably adapted on account of its strong top and handsome shape. One of the best and most popular sorts. Oz. 20c., $\frac{1}{4}$ lb. 65c., lb. \$2.25, 10 lbs. \$21.00.



Prizetaker

Prizetaker, or Mammoth Yellow Spanish.—A very handsome onion of the largest size and nearly globular form. Skin yellow, flesh white and very mild. To grow them to the largest size, seed should be sown in March in hotbeds and transplanted outside as soon as weather will permit. Oz. 15c., $\frac{1}{4}$ lb. 35c., lb. \$1.10, 10 lbs. \$10.00.

Michigan, or Ohio Yellow Globe.—Finest shape, best color and yields the largest crop of any yellow onion. The bulbs are large, almost globe-shaped, the largest diameter below the center of the bulb. Neck very small, color rich orange yellow. It is an enormous yielder and a splendid keeper. Oz. 10c., $\frac{1}{4}$ lb. 35c., lb. \$1.00, 10 lbs. \$9.00.

Yellow Globe Danvers.—Nearly globe-shaped, yellow skin, small neck. Good keeper. Oz. 10c., $\frac{1}{4}$ lb. 35c., lb. \$1.00, 10 lbs. \$9.00.

Yellow Strasburg.—Bulb flat, medium thick through, skin yellow. It is grown extensively for raising sets and is the best yellow sort for this purpose. Excellent keeper. Oz. 10c., $\frac{1}{4}$ lb. 30c., lb. \$1.00, 10 lbs. \$9.00.

Australian Brown.—Bulb flattened, but thick through, skin reddish brown. It is very early and an excellent keeper. Oz. 10c., $\frac{1}{4}$ lb. 35c., lb. \$1.00, 10 lbs. \$9.00.

White Portugal, or Silver Skin.—Bulb flattened, thick through, skin clear white, flesh mild and of fine flavor. It is grown extensively for sets and pickling onions and is the best white sort for this purpose. The sets are used extensively in the spring for green bunch onions. Oz. 15c., $\frac{1}{4}$ lb. 50c., lb. \$1.85, 10 lbs. \$17.50.

Giant White Italian Tripoli.—Large, flat, pure white bulbs of a mild flavor. Should be planted early as it requires the whole season and good cultivation for it to mature. Oz. 15c., $\frac{1}{4}$ lb. 50c., lb. \$1.50.

Mammoth Silver King.—A very large pure white onion, with flattened form but quite thick through. Skin silvery white, flesh pure white, mild and fine flavor. Should be planted early, as it requires the whole season for it to mature. Oz. 15c., $\frac{1}{4}$ lb. 50c., lb. \$1.50.

Hardy White Welsh Onion.—A very hardy sort which is used as a bunch onion. Seed should be sown in spring or early summer. They will then make fine thick stalks for the following spring. Seed can be sown in August, but it is not as satisfactory. It produces a large white stalk but does not make a bulb. It is extremely hardy and makes an excellent bunch onion or scallion. Oz. 20c., $\frac{1}{4}$ lb. 60c., lb. \$2.00.

ONION—Continued



Philadelphia Early White Bunch

Philadelphia Early White Bunch.—The earliest and best-shaped sort for early bunch onions. Bulb rather small, flattened; skin clear white. On account of its shape it can be pulled quite young. We only recommend this for early, as the top is rather weak and is apt to lie down as soon as real hot weather arrives. Oz. 15c., $\frac{1}{4}$ lb. 50c., lb. \$1.75, 10 lbs. \$16.50.

Queen.—An extra-early white-skinned sort of especial value for pickling. Oz. 15c., $\frac{1}{4}$ lb. 50c., lb. \$1.50, 10 lbs. \$14.00.

Extra-Early Pearl.—Bulb small, skin white, flesh mild. It matures very early. Oz. 15c., $\frac{1}{4}$ lb. 50c., lb. \$1.75, 10 lbs. \$16.50.

White Bermuda.—A very early variety, used largely in the South as an early market onion, when the seed is sown in the fall and the onions harvested in the spring. It is mild and of particularly fine flavor. The color is a pinkish-straw color, and the shape is flat. The seed we offer is grown in Teneriffe, Canary Islands, and is a fine pure strain. This is the principal variety shipped in crates from Texas and Imperial Valley early in the spring. Oz. 20c., $\frac{1}{4}$ lb. 60c., lb. \$2.00., 10 lbs. \$19.00.

Red Bermuda.—A very early, flat variety, used largely in the South for planting in the fall and marketing in the spring. Is of mild flavor and a good shipper, but not a winter-keeping variety. The color is a pale red. The best stock is imported from Teneriffe, Canary Islands, and we offer only this stock. Oz. 15c., $\frac{1}{4}$ lb. 50c., lb. \$1.85, 10 lbs. \$17.50.

Crystal White Wax.—A pure white variety, very flat and extremely early. Is of the Bermuda type and the best strains come from Teneriffe, Canary Islands, where we receive our supply. The beautiful clear white onion seen in our markets in crates, early in the spring, is this variety. Oz. 25c., $\frac{1}{4}$ lb. 75c., lb. \$2.50, 10 lbs. \$24.00.

ONION SETS

White Portugal or Silver Skin.—Qt. 15c., 4 qts. 55c., pk. \$1.00, bus. \$3.00.

Yellow Strasburg.—Qt. 15c., 4 qts. 40c., pk. 75c., bus. \$2.50.

Yellow Danvers.—Qt., 15c., 4 qts. 40c., pk. 75c., bus. \$2.50.

Red Wethersfield.—Qt. 15c., 4 qts. 55c., pk. \$1.00, bus. \$3.00.

Egyptian, or Perennial.—Qt. 15c., 4 qts. 40c., pk. 75c., bus. \$2.50.

PARSLEY

Market Gardener's Perfection.—The best double-curved parsley. Extra curled, very dark green color, strong grower and quite hardy. Oz. 10c., $\frac{1}{4}$ lb. 30c., lb. \$1.00, 10 lbs. \$9.00.

Summer Green.—A half-curved dark green sort which grows rapidly through the summer months and does not turn yellow. The best summer variety. Oz. 10c., $\frac{1}{4}$ lb. 30c., lb. \$1.00, 10 lbs. \$9.00.

Champion Moss Curled.—A compact growing variety. Leaves well curled and of a dark green color. Oz. 10c., $\frac{1}{4}$ lb. 25c., lb. 90c., 10 lbs. \$8.00.

Extra Double Curled.—Leaves extra curled, dark green color. Oz. 10c., $\frac{1}{4}$ lb. 25c., lb. 90c., 10 lbs. \$8.00.

Plain, or Single.—Leaves flat, deeply cut but not curled, and very dark green. Plant very hardy. Oz. 7c., $\frac{1}{4}$ lb. 20c., lb. 75c., 10 lbs. \$6.50.

Parsnip Rooted, or Hamburg.—Grown for the root, which resembles a parsnip in shape and color, although smaller. Foliage nearly the same as plain parsley. Oz. 10c., $\frac{1}{4}$ lb. 30c., lb. \$1.00, 10 lbs. \$9.00.

PARSNIP

Perfection Hollow Crown.—This is the handsomest parsnip grown. Roots half long, thick through, perfectly smooth clean skin and of a pure white color. Oz. 7c., $\frac{1}{4}$ lb. 20c., lb. 75c., 10 lbs. \$7.00.

Long Smooth Hollow Crown.—Larger than our Perfection strain and not as thick through. Oz. 7c., $\frac{1}{4}$ lb. 20c., lb. 75c., 10 lbs. \$7.00.

Guernsey Hollow Crown, or Student.—Medium length, smooth and white. Oz. 7c., $\frac{1}{4}$ lb. 20c., lb. 75c., 10 lbs. \$7.00.

PEAS

Early Varieties

The pea crop is the shortest that we have ever known; some crops turning out entire failures. This accounts for the prices being extremely high and our reason for offering some varieties by the peck only.

Alaska, or Earliest of All.—A very popular variety extensively grown for canning. It is the first sort to mature; pods short but well filled, height two and a half feet; very prolific. Qt. 30c., 4 qts. \$1.00, pk. \$1.85, bus. \$7.00.

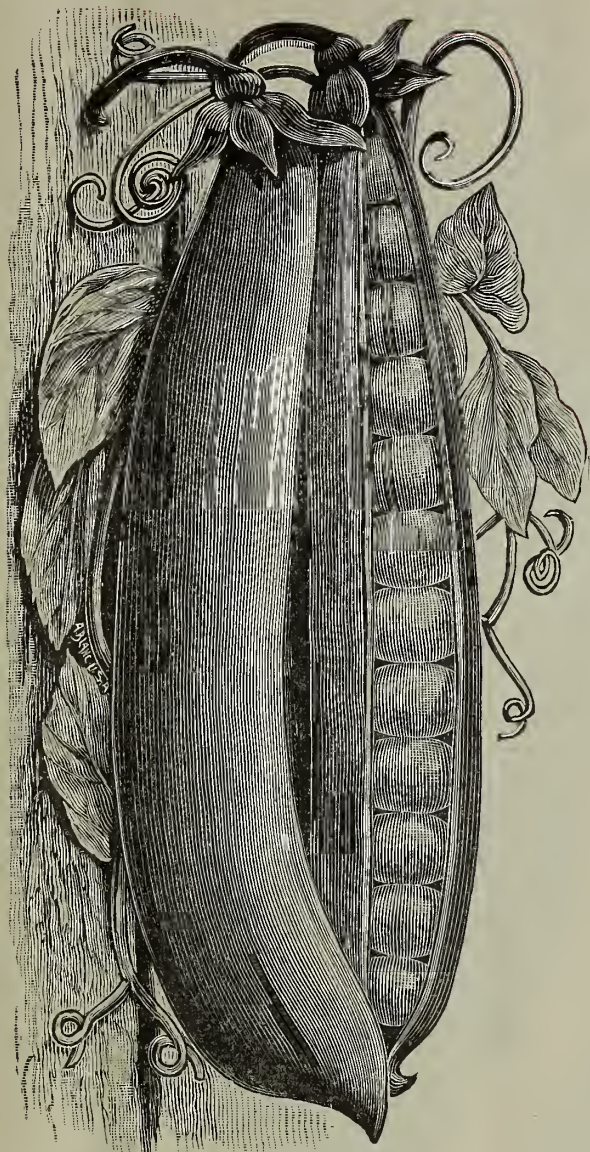
Alaska Large Podded.—Pods are broader and longer than Alaska, vines a little taller. Qt. 35c., 4 qts. \$1.35, pk. \$2.60, bus. \$10.00.

Ameer.—A very prolific extra early sort, producing medium-sized dark green pods. Height three feet. Qt. 35c., 4 qts. \$1.35, pk. \$2.60, bus. \$10.00.

American Wonder.—A dwarf early wrinkled sort; pods short but well filled, quality excellent. Height one foot. Qt. 35c., 4 qts. \$1.25, pk. \$2.35, bus. \$9.00.

Claudit.—Resembles the Alaska except that the pod is broader and a trifle longer. Qt. 35c., 4 qts. \$1.35, pk. \$2.60, bus. \$10.00.

Simon's Selected Extra Early.—The best of the white-seeded, extra-early sorts. For earliness and purity it is without a rival. Vines vigorous; pods medium size and good shape, containing five to six peas of good quality. Height two and a half feet. Qt. 30c., 4 qts. \$1.00, pk. \$1.85, bus. \$7.00.

PEAS—Continued**Early Varieties****Grand Monarch**

Grand Monarch.—This is without question the best extra early pea for market gardeners. It is only five days later than Alaska and the pods are almost as large as Gradus. The seed being smooth it can be planted as early as any of the extra earlys. It is very prolific; pods of a rich dark green color. Height three feet. Qt. 35c., 4 qts. \$1.35, pk. \$2.60, bus. \$10.00.

First and Best.—An extra-early, very productive sort, pods short but well filled. Height two and a half feet. Qt. 30c., 4 qts., \$1.00, pk. \$1.85, bus. \$7.00.

Gradus, or Prosperity.—The most popular large-podded wrinkled sort. It matures just after the extra-early varieties, and produces a good crop of pods four inches long, providing it is planted on light, warm, rich soil, but very disappointing under adverse conditions. The quality is excellent. Height three feet. Qt. 55c., 4 qts. \$2.00, pk. \$3.85, bus. \$15.00.

McLean's Little Gem.—Similar to Premium Gem, but not as good. Vines more straggling in growth, pods not quite so well filled. Qt. 35c., 4 qts. \$1.25, pk. \$2.25, bus. \$8.00.

McLean's Advancer.—A green wrinkled variety producing pods in great profusion, which are quite long and well filled to the ends with peas of excellent quality. Height two and one-half feet.

Qt. 35c., 4 qts. \$1.25, pk. \$2.25, bus. \$8.00.

Nott's Excelsior.—A medium-early wrinkled sort of dwarf habit. Pods are numerous and well filled, being quite broad. The quality is pronounced the best of any. Height fourteen inches. Qt. 35c., 4 qts. \$1.35, pk. \$2.60, bus. \$10.00.

Nott's Excelsior Improved.—Similar to Nott's Excelsior in habit, but producing much larger, broader pods filled with larger peas of the very finest quality. We pronounce this the best dwarf early wrinkled pea. Height eighteen inches. Qt. 50c., 4 qts. \$1.85, pk. \$3.60, bus. \$14.00.

Philadelphia Extra Early.—Very similar to First and Best. Qt. 30c., 4 qts. \$1.00, pk. \$1.85, bus. \$7.00.

Premium Gem.—Hardy, prolific, uniform in habit of growth. Pods medium size and well filled. Medium early; height eighteen inches. Qt. 35c., 4 qts. \$1.25, pk. \$2.25, bus. \$8.00.

Thomas Laxton.—Closely resembles Gradus in habit, earliness and rapidity of growth. The pod is a trifle shorter, but of a darker green color. It will outcrop Gradus. While it is claimed that it is three to five days later, some gardeners who used it in the past season claim it is equally as early, and others even earlier. Height three feet. Qt. 55c., 4 qts. \$2.00, pk. \$3.85, bus. \$15.00.

Sutton's Excelsior.—Pods three inches long, broad, straight, well filled to the point. Quite prolific, medium early, height fifteen inches. Qt. 50c., 4 qts. \$1.85, pk. \$3.60, bus. \$14.00.

Surprise.—The earliest of all wrinkled sorts. Pods short but well filled with peas of excellent quality. Height two feet. Qt. 35c., 4 qts. \$1.25, pk. \$2.25, bus. \$8.00.

Second Early and Late Varieties

Alderman.—Pods very large and of a dark green color. Height four feet. Quite late. Qt. 35c., 4 qts. \$1.35, pk. \$2.60, bus. \$10.00.

Admiral Dewey.—Vines vigorous, pods very large and of a dark green color. Height three and a half feet. Qt. 35c., 4 qts. \$1.35, pk. \$2.60, bus. \$10.00.

Boston Unrivalled.—Pods very large and dark green, quite prolific. Height three and a half feet. Qt. 35c., 4 qts. \$1.35, pk. \$2.60, bus. \$10.00.

Bliss' Everbearing.—Height two and one-half feet. The pods are broad and borne at the top of the vine. The peas are large and of a superior flavor. Qt. 35c., 4 qts. \$1.25, pk. \$2.25, bus. \$8.00.

Champion of England.—An old sort, still popular on account of the large, sweet, tender peas. Pods three inches long and quite broad, vine vigorous, growing from four to five feet high. Qt. 35c., 4 qts. \$1.25, pk. \$2.35, bus. \$9.00.

Carter's Daisy, or Dwarf Telephone.—A most desirable sort on account of its size, beautiful shape and fine quality. Pods broad and of a pale green color. Height twenty inches. Qt. 35c., 4 qts. \$1.35, pk. \$2.60, bus. \$10.00.

Dwarf Champion.—A vigorous growing sort, bearing broad pods three inches long, blunt at the ends. Height two and a half feet. Qt. 35c., 4 qts. \$1.25, pk. \$2.35, bus. \$9.00.

PEAS—Continued

Second Early and Late Varieties

Duke of Albany, or American Champion.—Resembles Telephone in appearance; the vine is not quite so long, while the pods are a little larger and produced more abundantly. Height two and a half to three feet. Qt. 35c., 4 qts. \$1.35, pk. \$2.60, bus. \$10.00.

Heroine.—Pods large, filled with large peas of fine quality. Height two feet. Qt. 35c., 4 qts. \$1.25, pk. \$2.35, bus. \$9.00.

Horsford's Market Garden.—Resembles Premium Gem to a certain degree; vines taller and ten days later. Pods are of medium size and produced in great profusion. Height two feet. Used extensively by canners. Qt. 30c., 4 qts. \$1.10, pk. \$2.10, bus. \$8.00.

Telephone.—An old popular variety, producing very large pods of a light green color filled with large peas of the very finest quality. Height three and a half feet. Qt. 35c., 4 qts. \$1.35, pk. \$2.60, bus. \$10.00.

Improved Stratagem.—Pods large and peas of excellent quality. Height twenty inches. Qt. 35c., 4 qts. \$1.35, pk. \$2.60, bus. \$10.00.

Long Island Mammoth, or Telegraph.—Resembling in all respects as to vine, leaf and pods the Telephone, except that they are a deeper shade of green, and peas of only fair quality. A favorite with some market gardeners on account of the fine appearance of the pods, which are large and dark green. Height three and a half feet. Qt. 35c., 4 qts. \$1.35, pk. \$2.60, bus. \$10.00.

Pride of the Market.—Pods of a deep green color, long broad and straight; quality fair, height eighteen inches. Qt. 35c., 4 qts. \$1.35, pk. \$2.60, bus. \$10.00.

Prince Edward.—A grand new late sort, producing very large handsome, dark green pods, filled with eight to ten large luscious peas. Pods frequently measure six inches long. Height five feet. Qt. 35c., 4 qts. \$1.35, pk. \$2.60, bus. \$10.00.

Potlatch or Big Dinner.—One of the best second early, large-podded, dwarf, wrinkled sorts. The pods are large, of a rich dark green color and the quality is excellent. Very prolific. Height two feet. Qt. 45c., 4 qts. \$1.60, pk. \$3.10, bus. \$12.00.

Yankee Prince.—The king of the second early large-podded wrinkled sorts of the Telephone type. Remarkably healthy, vigorous and productive. Pods of the largest size, frequently six inches in length, straight, round at the point, deep green in color and most beautifully shaped, well filled with large peas that are deep green in color and of the richest flavor. Height three and a half feet. We claim this to be the best of its class. Qt. 35c., 4 qts. \$1.35, pk. \$2.60, bus. \$10.00.

Sutton's Dwarf Defiance.—The vines are about twenty inches high, producing large pods filled with large peas which are of excellent quality. Qt. 35c., 4 qts. \$1.35, pk. \$2.60, bus. \$10.00.

Simon's Fillbasket.—Distinguished from the old Fillbasket in having pods that are broader, longer and larger in every way. The pods are very large and broad and of a dark green color, which make it very popular with market gardeners. It is a tremendous cropper but the quality is only fair. It is a second early sort, but can be planted very early as the seed is almost smooth. Height three and a half feet; vine very robust. Our strain of this valuable variety is free from the small-podded sorts. Qt. 35c., 4 qts. \$1.35, pk. \$2.60, bus. \$10.00.

Yorkshire Hero.—Pods broad but short, borne near the top of the vine. Quality good, season late, height two and a half feet. Qt. 35c., 4 qts. \$1.25, pk. \$2.25, bus. \$8.00.

Black Eye Marrowfat.—Hardy, strong and vigorous, bearing broad, but rather short, thick, leathery pods near the top of the vine, containing four to five large peas of very poor quality for the table and seldom used for that purpose since the introduction of the more desirable wrinkled sorts. Height four feet. Qt. 25c., 4 qts. 90c., pk. \$1.75, bus. \$6.50.

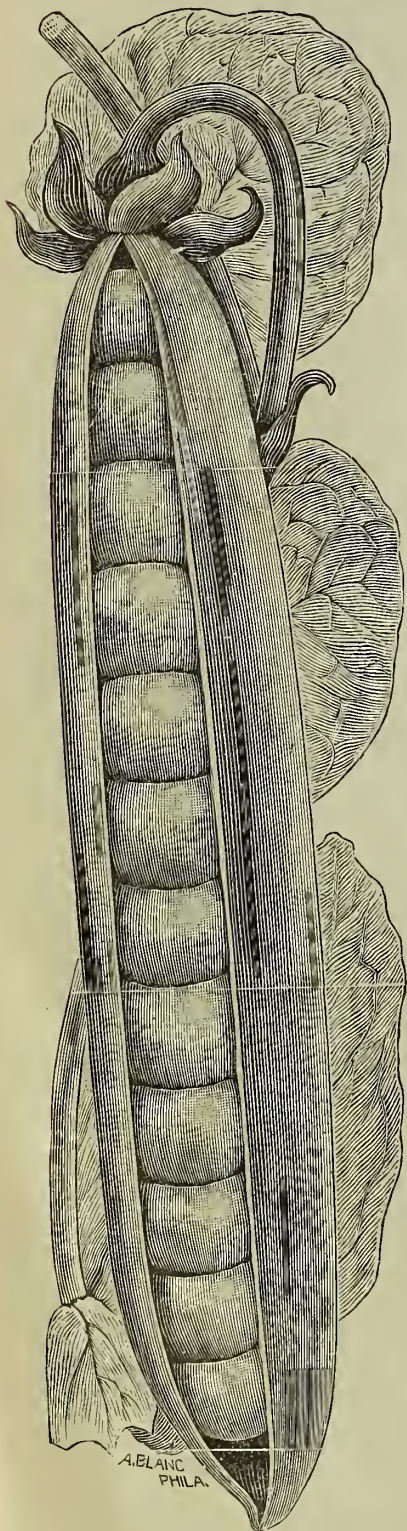
Dwarf White Marrowfat.—Very similar to the Black Eye, except the seed is all white, having no black eye and the vine is a little shorter. Height three and a half feet. Qt. 25c., 4 qts. 90c., pk. \$1.75, bus. \$6.50.

Melting Sugar.—This variety is used the same as a snap bean, the pod and pea being both eaten, and is the best of the edible podded sorts. The pods are large, extremely tender while young, finely flavored and borne in great profusion. Height four to five feet. Crop Failed.

Giant Luscious Sugar.—A new edible pod sort producing large pods of excellent quality. Seed brown, blossoms purple. Qt. 40c., 4 qts. \$1.50, pk. \$2.75.

Dwarf Gray Sugar.—A dwarf edible pod sort. Height about two feet. Qt. 35c., 4 qts. \$1.25, pk. \$2.25.

We could print hundreds of testimonials regarding our Yankee Prince Pea if space would permit. It is one of the finest late sorts ever introduced. You should not fail to include this in your order if you grow late peas.



Yankee Prince

PEPPER



Worldbeater

All of our pepper seed is grown in New Jersey and saved from carefully selected fruits. It will be found pure and true to name, an exceptionally hard thing to control in growing pepper seed.

Worldbeater.—This is without doubt the finest introduction in peppers in ages. It is a cross between Chinese Giant and Ruby King, having the shape of the Ruby King except that it is broader, and the size of the Chinese Giant. It is a much heavier yielder than Chinese Giant, some plants producing as high as sixteen to eighteen large peppers and it is two weeks earlier. It is exceedingly mild and can be sliced and eaten like an apple. We fortunately have a good supply of seed this season, and can offer it at a more reasonable price than last year. Oz. 30c., $\frac{1}{4}$ lb. \$1.00, lb. \$3.50, 5 lbs. \$16.25.

Chinese Giant.—Plant dwarf, fruit of mammoth size, very broad but rather short. It is very late and a rather shy yielder. Popular on account of its large size and mild flavor. Our stock is pure and is as good as can be obtained. Oz. 30c., $\frac{1}{4}$ lb. \$1.00, lb. \$3.50, 5 lbs. \$16.25.

Ruby Giant.—Similar to Ruby King. The fruits grow somewhat larger and are a little broader at the base. Oz. 25c., $\frac{1}{4}$ lb. 75c., lb. \$2.75, 5 lbs. \$12.50.

Large Bell, or Bull Nose.—Sometimes called Sweet Mountain. Plant vigorous, compact, very productive, ripening its fruit uniformly and early. Fruit large of blocky form, with thick flesh, supposed to be mild but usually quite hot. Oz. 15c., $\frac{1}{4}$ lb. 55c., lb. \$2.00, 5 lbs. \$8.75.

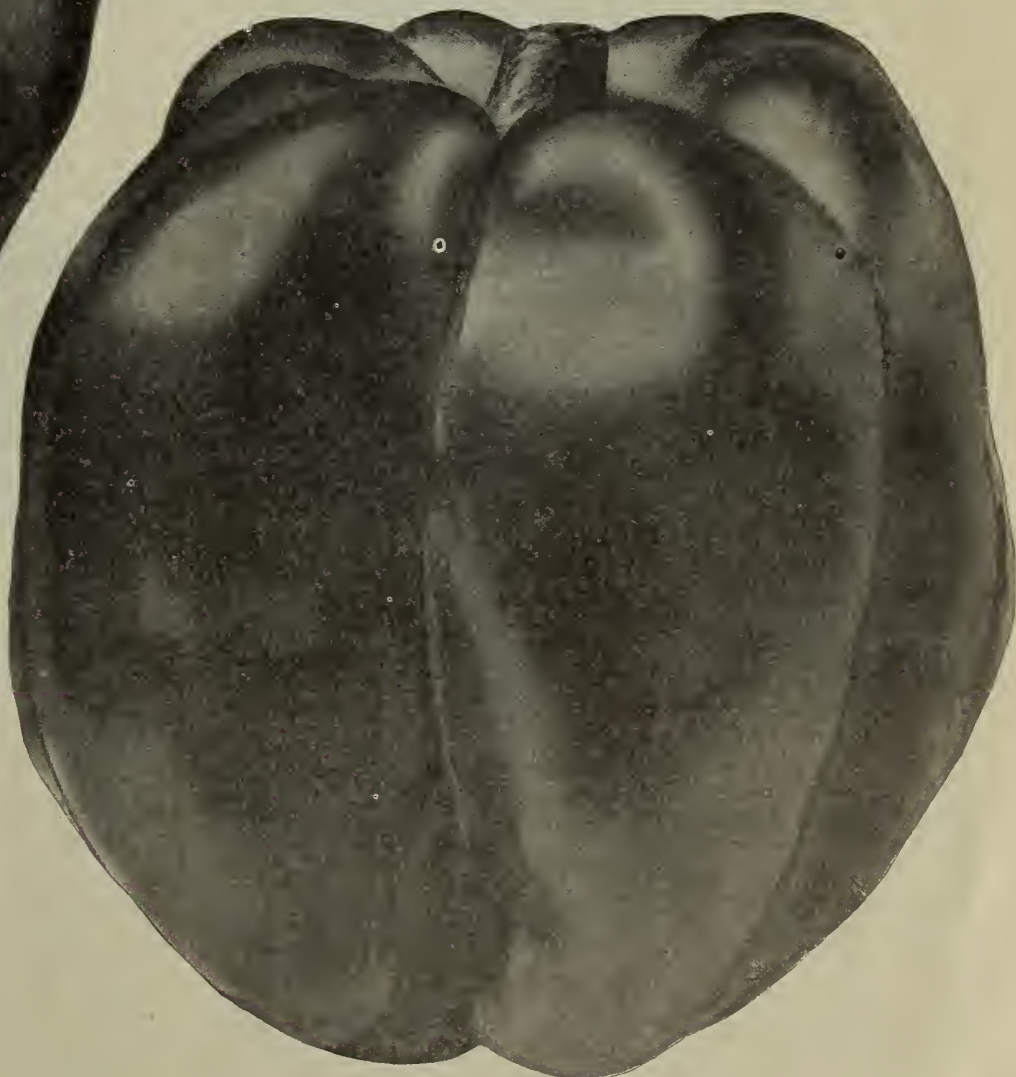
Sweet Mountain.—Fruit large and long, often five inches or more in length by three in diameter; very smooth and handsome, being, when fully matured, of a rich red color. Flesh very thick, sweet and mildly flavored. Oz. 15c., $\frac{1}{4}$ lb. 55c., lb. \$2.00, 5 lbs. \$8.75.

Neapolitan Early.—The earliest large sort. Fruits medium size, similar to Ruby King in shape, very prolific and quite early. Oz. 15c., $\frac{1}{4}$ lb. 55c., lb. \$2.00, 5 lbs. \$8.75.

Golden Dawn.—Fruit medium size, of inverted bell shape, rich golden yellow color, with sweet, thick flesh of fine flavor. Oz. 30c., $\frac{1}{4}$ lb. 85c., lb. \$3.00.

Early Red Squash, or Tomato Shaped.—Fruit small, flat, shaped like a tomato; skin smooth, glossy red; flesh thick, mild, somewhat pungent; early and very productive. Oz. 25c., $\frac{1}{4}$ lb. 85c., lb. \$3.00.

Half Long Narrow Cayenne, or Pot Herb.—Fruits three to four inches long by one-half inch thick at the stem end, tapering to a point. It is very productive and red hot. Used extensively for bunching with pot herbs. Oz. 25c., $\frac{1}{4}$ lb. 85c., lb. \$3.00.



Chinese Giant

PEPPER—Continued



Ruby King.

Large Long Red Cayenne.—Similar to half Long Narrow Cayenne, except that it is three to four times as large and does not crop as heavy. Oz. 25c., $\frac{1}{4}$ lb. 75c., lb. \$2.50.

Ruby King.—A large mild sort, with fruits often measuring four to six inches in length and quite symmetrical in shape. We offer an exceptional fine strain. Oz. 20c., $\frac{1}{4}$ lb. 60c., lb. \$2.25, 5 lbs. \$10.00.

POTATOES

We carry all the leading varieties of Maine-grown potatoes and will quote prices on application.

PUMPKIN

Quaker Pie.—Oval shaped, somewhat resembling a pear. Skin creamy yellow, flesh fine grained and of excellent quality. Good keeper. Oz. 10c., $\frac{1}{4}$ lb. 25c., lb. 75c.

Golden Oblong.—Oblong in shape, averaging about 20 x 10 inches. Skin golden yellow and tough, making it an excellent keeper. Flesh light yellow and of fine quality. Oz. 8c., $\frac{1}{4}$ lb. 20c., lb. 60c.

New England Pie, or Sugar.—A small round sort, very sweet, fine grained and of the very best quality. Skin deep orange, flesh rich yellow. Oz. 7c., $\frac{1}{4}$ lb. 15c., lb. 50c.

Winter Luxury, or Pie.—Medium size, nearly round, skin smooth, yellow, covered with a fine gray netting. Flesh light yellow, sweet and finely flavored. Oz. 8c., $\frac{1}{4}$ lb. 20c., lb. 60c.

Japanese Pie.—A large crook-necked sort; skin green, striped yellow. Flesh yellow and of fine quality. Oz. 10c., $\frac{1}{4}$ lb. 25c., lb. 75c.

Mammoth Golden Cushaw.—One of the best stock-feeding varieties. Is a solid, yellow crook-necked sort, and is nearly all flesh, having a very small seed cavity. Oz. 10c., $\frac{1}{4}$ lb. 25c., lb. 75c.

White Cushaw or Jonathan.—A crook-necked sort. Shell creamy-white and hard. The neck is long, flesh thick and of fine quality. Oz. 10c., $\frac{1}{4}$ lb. 25c., lb. 75c.

Green Striped Cushaw.—A crook-necked variety. Skin striped green and white, flesh rich yellow, solid, fine grained, very thick and sweet. Oz. 10c., $\frac{1}{4}$ lb. 25c., lb. 75c.

Tennessee Sweet Potato.—Shape similar to a bell, skin and flesh white, very thick and sweet. Oz. 10c., $\frac{1}{4}$ lb. 25c., lb. 75c.

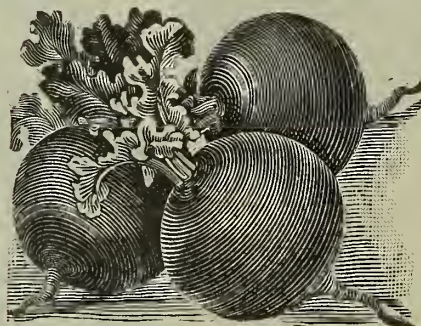
Large Cheese, or Kentucky Field.—Fruit flattened, usually twice as long as it is thick, skin cream color when matured, flesh yellow and of excellent quality. Oz. 5c., $\frac{1}{4}$ lb. 15c., lb. 40c., 10 lbs. \$3.50, 100 lbs. \$30.00.

Large Yellow, or Connecticut Field.—Used principally for feeding stock. Shape almost round, medium size, skin deep yellow and smooth, flesh yellow. Oz. 5c., $\frac{1}{4}$ lb. 10c., lb. 35c., 10 lbs. \$3.00, 100 lbs. \$25.00.

King of the Mammoth, or Jumbo.—The largest of all pumpkins. Fruits grow to enormous size, shape almost round, skin orange colored, slightly rough. Flesh deep and of a bright yellow color, quality excellent. Oz. 10c., $\frac{1}{4}$ lb. 25c., lb. 75c.

RADISH

Our radish seed is all grown from transplanted roots and is sure to give excellent satisfaction.



Bright Red Forcing Globe. 10 lbs. \$5.50.

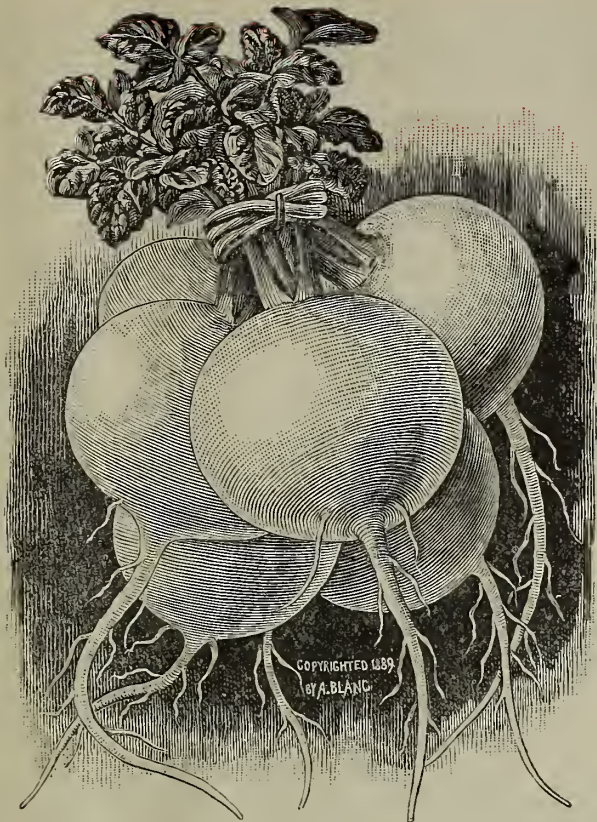
Bright Red Forcing Globe.—Slightly olive shaped and of a bright scarlet color, with a remarkably short top which makes it especially adapted for forcing. Matures in thirty days and remains solid longer than most extra-early sorts. Oz. 7c., $\frac{1}{4}$ lb. 20c., lb. 60c.,

Bright Red Forcing Turnip.—Similar to Bright Red Forcing Globe, except that it is turnip-shaped or a little flatter. Oz. 7c., $\frac{1}{4}$ lb. 20c., lb. 60c., 10 lbs. \$5.50.

Early Scarlet Globe.—Round in shape, color bright red, suitable for forcing or growing outside. Oz. 7c., $\frac{1}{4}$ lb. 15c., lb. 50c., 10 lbs. \$4.50.

Cardinal Globe.—Early, round, bright red, suitable for forcing or growing outside. Oz. 7c., $\frac{1}{4}$ lb. 15c., lb. 50c., 10 lbs. \$4.50.

Crimson Giant.—A large early round sort of the Scarlet Globe type. Grows twice the size but is a little later and has more top, which makes it undesirable for forcing but an excellent outdoor sort. It remains solid longer than any of the early round red sorts. Color bright red. Oz. 7c., $\frac{1}{4}$ lb. 20c., lb. 60c., 10 lbs. \$5.50.

RADISH—Continued

Simon's Special Stock White Box

Simon's Special Stock White Box.—Top short, root round with a small tap root, and of a clear waxy white color. Excellent for growing under sash. Oz. 10c., $\frac{1}{4}$ lb. 25c., lb. 75c., 10 lbs. \$7.00.

Round Solid Ivory.—A round early variety suitable for growing under sash or outdoors. Oz. 7c., $\frac{1}{4}$ lb. 20c., lb. 60c., 10 lbs. \$5.50.

Philadelphia White Box.—A popular variety in the vicinity of Philadelphia, and used more extensively than any other sort. It matures early, root round, slightly flattened, color white, top medium. It is grown both under sash and outdoors. Oz. 7c., $\frac{1}{4}$ lb. 20c., lb. 60c., 10 lbs. \$5.50.

Felton's White Box.—Similar to Philadelphia White Box, except that it is a little more oblong. Oz. 7c., $\frac{1}{4}$ lb. 15c., lb. 50c., 10 lbs. \$4.50.

White Icicle.—One of the best early long white sorts, suitable either for forcing or growing outside. Roots somewhat shorter and tops smaller than White Vienna. Very crisp and tender and of a beautiful waxy white color. Oz. 7c., $\frac{1}{4}$ lb. 15c., lb. 50c., 10 lbs. \$4.50.

Long White Vienna, or Lady Finger.—Long white, medium early. Oz. 7c., $\frac{1}{4}$ lb. 15c., lb. 50c., 10 lbs. \$4.50.

White Strasburg.—One of the most popular summer sorts. Roots long, quite thick through, color white. It remains solid for a long time after reaching maturity. Oz. 7c., $\frac{1}{4}$ lb. 15c., lb. 50c., 10 lbs. \$4.50.

Livingston's Pearl Forcing.—Long white with short top, suitable either for forcing or outdoor use. Matures early. Oz. 7c., $\frac{1}{4}$ lb. 15c., lb. 50c., 10 lbs. \$4.50.

Early Scarlet Turnip.—Round red. Lb. 40c., 10 lbs. \$3.50.

Early Scarlet Turnip White Tipped. (French grown.)—One of the handsomest and most popular of the early turnip sorts. Roots slightly flattened. Two-thirds of the upper portion deep scarlet, and one-third of the under portion white, which makes a beautiful contrast. Our stock of this important variety is true and can be relied on to be the best of its class. Oz. 5c., $\frac{1}{4}$ lb. 15c., lb. 45c., 10 lbs. \$4.00, 25 lbs. and over 35c.

Early Scarlet Turnip White Tipped. (American.)—Similar to the above, but the type is not as true and does not show as much of the white tip. Oz. 5c., $\frac{1}{4}$ lb. 15c., lb. 40c., 10 lbs. \$3.50, 25 lbs. and over 30c.

Early Golden Yellow Oval.—Matures quickly, has small top and resists the summer heat remarkably well. Root oval, smooth and of a bright light yellow color. Excellent quality. Suitable for forcing or growing outside. Oz. 7c., $\frac{1}{4}$ lb. 15c., lb. 50c., 10 lbs. \$4.50.

French Breakfast.—Similar to Scarlet Turnip White Tipped, except that it is oblong in shape. Oz. 7c., $\frac{1}{4}$ lb. 15c., lb. 50c., 10 lbs. \$4.50.

White Hot House.—Positively the finest strain of round white radish for growing in the green house or under sash. It is a very rapid grower, top extremely short, tap root short and very slender. In shape it is slightly flattened, which allows it to be pulled when quite small. The color is clear waxy white and it is of excellent quality. The illustration below is a reproduction of a bunch grown in the green house by S. H. Waram, of Thoro-fare, N. J., who pronounces it the best strain of its type that he has ever grown. Oz. 10c., $\frac{1}{4}$ lb. 30c., lb. \$1.00.



White Hot House

RADISH—Continued

Large White Summer Turnip.—Root round, color white. Does not get pithy as soon as the White Box sorts. Good summer variety. Oz. 7c., $\frac{1}{4}$ lb. 15c., lb. 50c., 10 lbs. \$4.50.

Yellow Summer Turnip.—A yellow turnip-rooted sort which stands the hot weather better than any of the yellow varieties. Excellent quality. Oz. 7c., $\frac{1}{4}$ lb. 15c., lb. 50c., 10 lbs. \$4.50.

Early Long Scarlet Short Top.—A popular long red variety grown extensively in the South and Ontario. Oz. 5c., $\frac{1}{4}$ lb. 15c., lb. 40c., 10 lbs. \$3.50.

Half Long Deep Scarlet.—Roots half long and of a beautiful deep scarlet color. Remains in good condition longer than some of the long scarlet sorts. Oz. 7c., $\frac{1}{4}$ lb. 15c., lb. 50c., 10 lbs. \$4.50.

Long Brightest Scarlet White Tipped.—One of the brightest and handsomest colored scarlet radishes. Matures very early, top short, color bright red with the tail tipped white, which makes it very attractive. Suitable for forcing or early outdoor use. Must be pulled as soon as ready. Oz. 7c., $\frac{1}{4}$ lb. 15c., lb. 50c., 10 lbs. \$4.50.

Cincinnati Market.—Similar to Long Scarlet Short Top, but is deeper red in color and remains a little longer in condition for use. Oz. 7c., $\frac{1}{4}$ lb. 15c., lb. 50c., 10 lbs. \$4.50.

Long Red Chartier, or Shepherd.—A very long good summer sort. Color scarlet rose shading to white at the tip. Remains in condition for use for a long time. Oz. 7c., $\frac{1}{4}$ lb. 15c., lb. 50c., 10 lbs. \$4.50.

Winter Varieties

Half Long Coal Black Winter.—Skin black. Roots about five inches long and three inches thick at the top, tapering gradually to a point. Oz. 10c., $\frac{1}{4}$ lb. 25c., lb. 75c., 10 lbs. \$7.00.

Half Long Gray Black Winter.—Same as Half Long Coal Black, except the skin is grayish black. Oz. 7c., $\frac{1}{4}$ lb. 20c., lb. 65c., 10 lbs. \$6.00.

Early Round Black.—A round black sort, maturing earlier than any of the black varieties. Oz. 7c., $\frac{1}{4}$ lb. 20c., lb. 60c., 10 lbs. \$5.50.

Round Black Spanish.—Roots round, sometimes top shaped. Good keeper. Oz. 7c., $\frac{1}{4}$ lb. 15c., lb. 50c., 10 lbs. \$4.50.

Long Black Spanish.—One of the latest and hardiest radishes. Oz. 7c., $\frac{1}{4}$ lb. 15c., lb. 50c., 10 lbs. \$4.50.

Long Coal Black Stump Rooted.—Skin coal black. Roots long and stumpy at the end. Good keeper. Oz. 7c., $\frac{1}{4}$ lb. 20c., lb. 60c., 10 lbs. \$5.50.

China Rose, or Scarlet China.—One of the most popular fall and winter sorts. Roots about six inches long. Skin smooth and of a bright rose color. Flesh very firm and crisp. Oz. 7c., $\frac{1}{4}$ lb. 20c., lb. 60c., 10 lbs. \$5.50.

White Chinese, or Celestial.—A comparatively new variety which is popular wherever known. The root is long and thick through with beautiful white skin and flesh so white as to attract attention even among other white varieties. Flesh very crisp, tender and of excellent quality. Oz. 7c., $\frac{1}{4}$ lb. 20c., lb. 65c., 10 lbs. \$6.00.

California Mammoth White Winter.—First introduced into this country by the Chinese in California. Roots about one foot long and three inches thick, rather irregular. Skin white; good keeper. Oz. 7c., $\frac{1}{4}$ lb. 20c., lb. 60c., 10 lbs. \$5.50.

RHUBARB

We can supply a standard variety of rhubarb roots from a leading market gardener. 100, \$4.00; 1,000, \$35.00.

Seed. Oz. 15c., $\frac{1}{4}$ lb. 40c., lb. \$1.25.

SALSIFY

Giant White French.—A large growing smooth white sort almost free from branching roots. Oz. 15c., $\frac{1}{4}$ lb. 40c., lb. \$1.25, 10 lbs. \$11.50.

Mammoth Sandwich Island.—A popular market garden sort, producing good size roots; comparatively smooth. Oz. 10c., $\frac{1}{4}$ lb. 35c., lb. \$1.10, 10 lbs. \$10.00.

SORREL

Large Leaved French.—The best garden variety, having large pale green leaves of fine quality. Oz. 10c., $\frac{1}{4}$ lb. 30c., lb. \$1.00, 10 lbs. \$9.00.

SPINACH

Early Giant Thick Leaf.—The quickest growing sort. Leaves very large, pointed and almost smooth. Recommended for an early spring or early fall crop. Lb. 20c., 10 lbs. \$1.50, 100 lbs. \$14.00.

Round Thick Leaf Winter.—Leaves round and almost smooth. Will stand extreme cold weather, as the leaves are thick and lie close to the ground. Lb. 20c., 10 lbs. \$1.50, 100 lbs. \$14.00.

Monstrous Viroflay.—A very large quick growing sort, suitable for an early spring crop. Lb. 20c., 10 lbs. \$1.50, 100 lbs. \$14.00.

Savoy Leaved, or Bloomsdale.—A large, quick growing, sort adapted for sowing in the autumn for early spring use. It is of an upright growth with thick dark green crumpled leaves. Bolts to seed quickly in warm weather. Lb. 20c., 10 lbs. \$1.50, 100 lbs. \$14.00.

Giant Norfolk Savoy.—Similar to Bloomsdale, except that it is of larger growth and the leaves are more heavily crumpled or blistered. Lb. 25c., 10 lbs. \$2.00, 100 lbs. \$16.00.

Summer Green Long Standing.—The finest sort to sow for a second crop or through the summer months, as it stands hot weather remarkably well. The plant is large, leaves thick and very dark green; pretty well crumpled. Lb. 25c., 10 lbs. \$2.00, 100 lbs. \$16.00.

Mammoth Italian Long Standing.—The largest growing variety. Leaves very broad and of mammoth size, of dark green color, slightly crumpled. Plant of rather upright growth. Will stand a long time without bolting to seed. One of the best second early sorts. Lb. 25c., 10 lbs. \$2.00, 100 lbs. \$16.00.

Belgium Evergreen Long Standing.—Leaves very dark green, almost smooth. Plant of low habit, growing close to the ground. Excellent variety for late spring or summer use, as it is one of the best to stand hot weather without bolting to seed. Crop failed.

Long Season.—An excellent second early sort with thick dark green crumpled leaves. Grows to a large size, and will stand for a long time after maturing. Lb. 25c., 10 lbs. \$1.75, 100 lbs. \$15.00.

SPINACH—Continued

Victoria.—A second early, dark green, round-leaved sort, growing close to the ground. Leaves slightly crumpled in the centre. Will stand some time without bolting to seed. **Lb. 20c., 10 lbs. \$1.50, 100 lbs. \$14.00.**

New Zealand.—Entirely different from the true spinach in type in that it thrives during the hot weather in any soil rich or poor. The tender shoots are of good quality and may be cut throughout the summer. Plant three or four seeds in a hill two feet apart each way. **Oz. 8c., ¼ lb. 20c., 1 lb. 60c., 10 lbs. \$5.50.**

SQUASH

Extra Early White Bush Scalloped (White Patty Pan).—A well-known variety of dwarf habit and upright growth. Surface comparatively smooth; color greenish white while young, then changing to creamy white. One of the best and most popular sorts. **Oz. 7c., ¼ lb. 20c., 1 lb. 60c. 10 lbs. \$5.50.**

Mammoth White Bush Scallop.—Similar to the preceding except that they are larger and about five days later. **Oz. 10c., ¼ lb. 25c., 1 lb. 70c., 10 lbs. \$6.50.**

Early Yellow Bush Scallop.—Similar to Mammoth White Bush, except that the skin is yellow and it is earlier. **Oz. 7c., ¼ lb. 20c., 1 lb. 60c.**

Giant Yellow Summer Crookneck.—Fruit larger and deeper yellow than Summer Crookneck. Skin rough with a warty surface. **Oz. 10c., ¼ lb. 25c., 1 lb. 75c., 10 lbs. \$7.00.**

Boston Marrow.—A fall and winter variety of oval form, skin thin, when ripe bright orange; flesh rich salmon yellow, fine grained and of excellent flavor. **Oz. 7c., ¼ lb. 20c., 1 lb. 55c., 10 lbs. \$5.00.**

Orange Marrow.—Similar to Boston Marrow, except that the skin is of a deeper orange and it matures a little earlier. **Oz. 10c., ¼ lb. 25c., 1 lb. 75c., 10 lbs. \$7.00.**

True Hubbard.—One of the best winter squashes; flesh bright orange yellow, fine grained, very dry, sweet and richly flavored. Fruit large oval shaped, skin green, rough, covered with warts. Excellent keeper. **Oz. 10c., ¼ lb. 25c., 1 lb. 75c., 10 lbs. \$7.00.**

Chicago Warted Hubbard.—A selection from True Hubbard. Fruits are a trifle larger and more heavily warted. **Oz. 10c., ¼ lb. 25c., 1 lb. 85c., 10 lbs. \$8.00.**

Golden Hubbard.—Similar to Hubbard except, that it is smaller, matures earlier and is of an orange-red color except for a bit of olive green on the blossom end. **Oz. 10c., ¼ lb. 30c., 1 lb. \$1.00.**

Delicious.—A very early winter variety of medium size; shell moderately hard, very thin, flesh thick, fine grained and of a yellow color. It varies somewhat in color and form, usually oval shaped with green smooth skin, sometimes slightly mottled. **Oz. 10c., ¼ lb. 25c., 1 lb. 75c.**

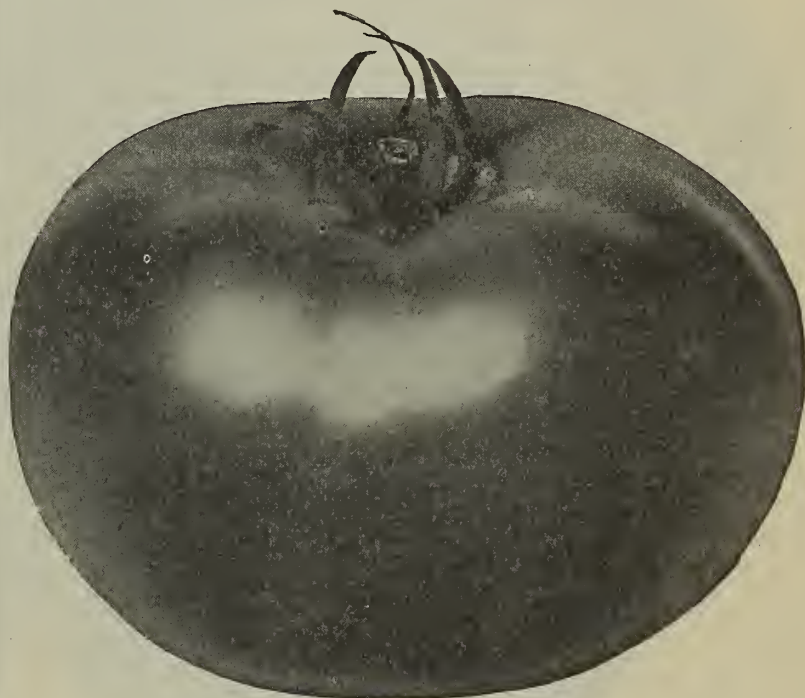
Delicata.—Fruits small, oblong, skin yellow striped with green. Used both for autumn and winter. **Oz. 10c., ¼ lb. 25c., 1 lb. \$1.00.**

Livingston's Pie.—Fruit medium size, nearly round, skin smooth, yellow covered with a fine gray netting. Flesh light yellow, thick, sweet and finely flavored. **Oz. 7c., ¼ lb. 20c., 1 lb. 60c., 10 lbs. \$5.50.**

Fordhook.—Oblong shaped, with cream colored skin. Flesh light yellow, very thick and of excellent quality. Keeps well if allowed to ripen. **Oz. 25c., ¼ lb. 25c., 1 lb. 85c.**

Cocozella di Napoli (Italian Vegetable Marrow).—Fruits large, oblong shaped, dark green at first but as they mature become marbled with yellow and lighter green stripes. The young fruits when sliced and fried in oil constitutes a vegetable delicacy superior to eggplant. **Oz. 10c., ¼ lb. 30c., 1 lb. \$1.00, 10 lbs. \$9.00.**

Mammoth Chili.—Grows to a mammoth size. Flesh very thick, color rich yellow, fine grained and sweet. **Oz. 10c., ¼ lb. 30c., 1 lb. \$1.00.**



Simon's Columbia

TOMATO

Nearly all of our tomato seed is grown in New Jersey especially for seed, and can be depended on to be the best of its class. We do not handle seed saved by canning factories which can be bought for one-third of what ours costs to produce.

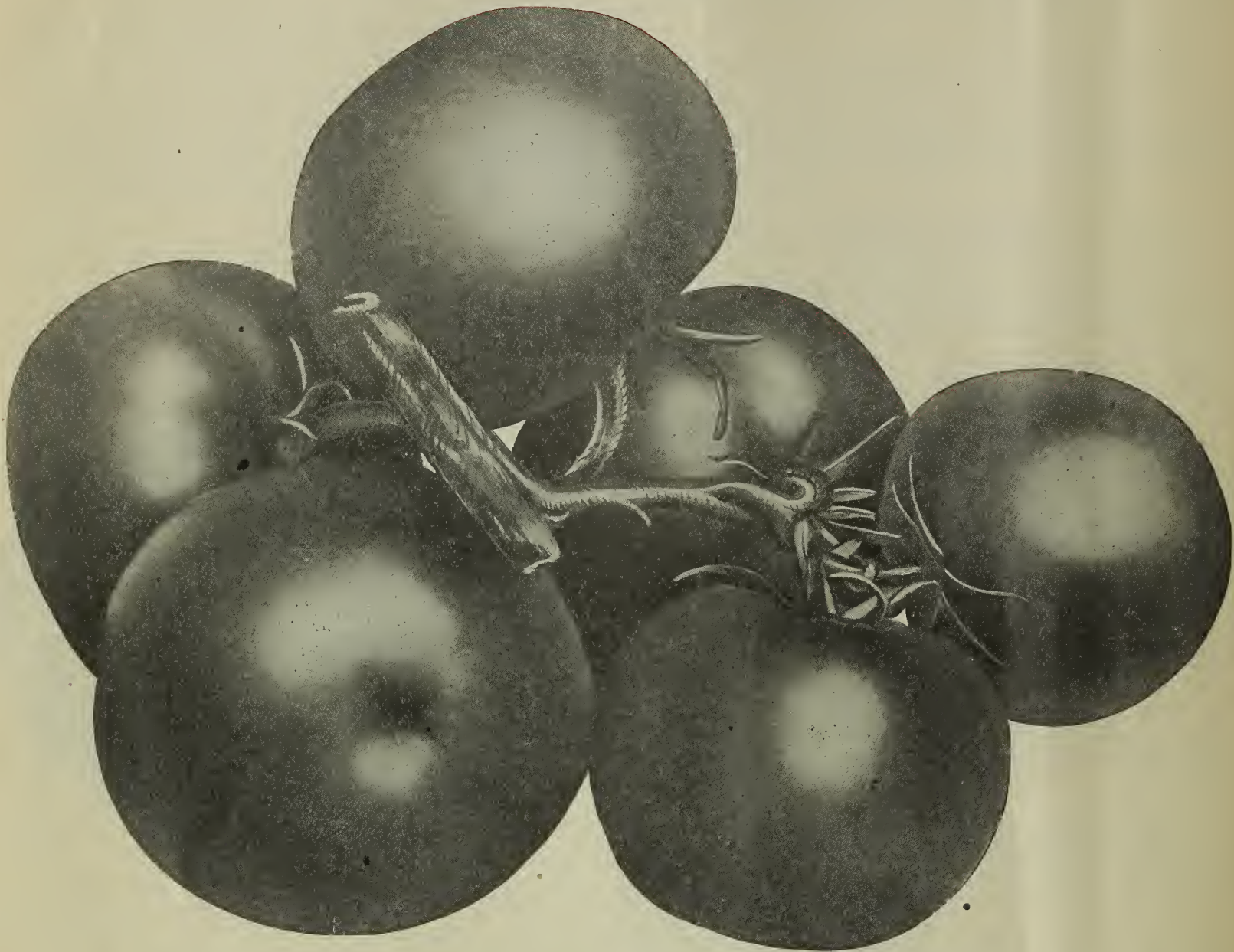
Simon's Columbia.—We pronounce this the best main crop red sort. It is about ten days later than Stone, fully one-third larger, just as smooth and solid. It is nearly solid flesh, having very few seeds, is of a good red color and ripens up to the stem. It is a wonderful cropper, out-yielding Stone. Any one wanting a strictly large fancy red tomato will get it by planting this sort. **Oz. 40c., ¼ lb. \$1.25, 1 lb. \$4.00.**

King of the Earlies.—An extra-early, medium-sized, red sort; very prolific and quite smooth. **Oz. 25c., ¼ lb. 85c., 1 lb. 3.00, 5 lbs. \$13.75.**

I. X. L.—An extra-early, medium-sized, red sort, very similar to Earliana. **Oz. 25c., ¼ lb. 85c., 1 lb. \$3.00, 5 lbs. \$13.75.**

Acme.—A popular early, purple-fruited sort of medium size. **Oz. 20c., ¼ lb. 60c., 1 lb. \$2.00, 5 lbs. \$8.75.**

TOMATO—Continued



Tomato Extra Early Mascot

Exceedingly Prolific, Extremely Early, Smooth, Solid, Good Shape and Large Size for an extra early variety are the features of this valuable acquisition

Extra Early Mascot.—We pronounce this new tomato the best extra early we have seen. It is a cross between Earliana and King of the Earlies. Compared with Earliana it is five days earlier, a heavier cropper, fruits fully as large but thicker through from stem to blossom end, more solid and of a deeper red color. It ripens close up to the stem, In habit it resembles Earliana, being quite dwarf with little foliage, but is more compact. It is the greatest yielder we have ever seen. We have counted fifteen marketable fruits on a single crown setting. We do not mean to say that half the patch will do this, but we can honestly say that we saw a great many plants with seven, eight and nine fruits on a crown setting. Being a small-vined sort it requires high cultivation to bring out all its good qualities. Oz. 40c., $\frac{1}{4}$ lb. \$1.25, lb. \$4.00, 5 lbs. \$18.75.

Chalk's Early Jewel.—For a crop to come in between Earliana and Stone there is none to compare with this if you get the original stock. The fruits are of a bright scarlet color, ripening close up to the stem, are smooth and very solid. They hold up in size longer than most sorts, and for that fact alone it is a very valuable sort. Our seed is grown from the originator's stock, carefully selected, and can be depended on to give the best of satisfaction. Oz. 25c., $\frac{1}{4}$ lb. 85c., lb. \$3.00, 5 lbs. \$13.75.

Chalk's Early Jewel.—Good stock saved from the run of the crop. Oz. 20c., $\frac{1}{4}$ lb. 60c., lb. \$2.25, 5 lbs. \$10.00.

Early Detroit.—An early, medium-sized smooth, purple-fruited sort, maturing with Acme but fruits larger, more solid, more globular in shape and superior in every way. Oz. 25c., $\frac{1}{4}$ lb. 85c., lb. \$3.00, 5 lbs. \$13.75.

TOMATO—Continued



Langdon's Earliana

Langdon's Earliana.—We find this strain to be larger, thicker through, more meaty and of a deeper red color than other strains of Earliana. It is equally as early, exceedingly productive and holds its size well throughout the season. The seed we offer was grown in New Jersey by one of our private growers. The crop was inspected by us and we found it excellent. Oz. 40c., $\frac{1}{4}$ lb. \$1.25, lb. \$4.00, 5 lbs. \$18.75.

Sparks' Earliana.—One of the best and most popular extra-early sorts. The fruits are good size, red in color, quite smooth and are produced in great profusion. The vine is quite dwarf with little foliage. Our seed is grown from carefully selected stock and can be depended on to give excellent results. Oz. 25c., $\frac{1}{4}$ lb. 85c., lb. \$3.00, 5 lbs. \$13.75.

June Pink, or Pink Earliana.—Similar in all respects to Spark's Earliana, except the fruit is purple instead of scarlet, and the bulk of the crop ripens a little later. One of the best extra-early, purple-fruited sorts. Oz. 25c., $\frac{1}{4}$ lb. 85c., lb. \$3.00, 5 lbs. \$13.75.

Bonny Best.—An early variety maturing between Earliana and Chalk's Early Jewel. Fruits medium size, color bright scarlet, exceedingly smooth, handsome shape, ripens evenly close up to the stem. An excellent sort for growing under glass.

It is very prolific and we recommend it as a first-class sort. Oz. 25c., $\frac{1}{4}$ lb. 85c., lb. \$3.00, 5 lbs. \$13.75.

Bonny Best.—Seed saved from Crown Settings only, from selected plants and selected specimens. Oz. \$1.00, 2 oz. \$1.75, $\frac{1}{4}$ lb. \$3.00.



June Pink

TOMATO—Continued



Royal Pink

Royal Pink.—We pronounce this as the best main-crop, purple-fruited sort. It matures with Stone. The fruits are very large, exceedingly solid, having but very few seeds, are smooth, ripen close up to the stem and are of a handsome pink color. It is a very heavy yielder. The shape of the fruit is well illustrated in the photograph above, it being quite thick through. The vine is vigorous and seems to resist blight better than most purple-fruited sorts. It is the best long distance shipper, as it will hold up longer than any sort we know of. Extra chioce stock grown in New Jersey. Oz. 40c., $\frac{1}{4}$ lb. \$1.25, 1b. \$4.00, 5 lbs. \$17.50.

Early Royal Pink.—A decided improvement over Acme, as the fruits are much larger, more solid and it is a much heavier yielder. The vine is more vigorous and the fruits average nearly globe shape. It is fully as early as Acme and we pronounce it the best large, early, purple-fruited sort. Oz. 40c., $\frac{1}{4}$ lb. \$1.25, 1b. \$4.00, 5 lbs. \$17.50.

Livingston's Globe.—A new large, purple-fruited sort of excellent quality. Fruits rather uneven in size but very smooth and mature earlier than most main-crop sorts. The average tomato is very deep, almost globe shaped and very solid. It is one of the leading varieties grown throughout Florida to ship North. Our stock of this important variety is of excellent quality. Oz. 25c., $\frac{1}{4}$ lb. 75c., 1b. \$2.50, 5 lbs. \$11.25.

Livingston's Coreless.—This might be called a Red Globe, as it is practically the same shape as Livingston's Globe. The fruits are smaller in size and most of them have no core. Oz. 25c. $\frac{1}{4}$ lb. 85c., 1b. \$3.00, 5 lbs. \$13.75.

Livingston's Beauty.—A second-early, large, smooth, purple-fruited sort of good quality. Oz. 20c., $\frac{1}{4}$ lb. 60c., 1b. \$2.00, 5 lbs. \$8.75.

Livingston's Perfection.—A well known medium to large sized, second early, red-fruited sort. Oz. 20c., $\frac{1}{4}$ lb. 60c., 1b. \$2.00, 5 lbs., \$8.75.

Brinton's Best.—A large, smooth, scarlet-fruited, main-crop sort. Oz. 20c., $\frac{1}{4}$ lb. 60c., 1b. \$2.00, 5 lbs. \$8.75.

Buckeye State.—A large, late, purple-fruited sort, very solid and smooth. Oz. 20c., $\frac{1}{4}$ lb. 60c., 1b. \$2.00, 5 lbs. \$8.75.

Crimson Cushion.—A large late red sort. Oz. 25c., $\frac{1}{4}$ lb. 85c., 1b. \$3.00.

Cumberland Red.—An old variety formerly quite popular in Cumberland County, New Jersey. Fruits large, red in color, slightly ridgy. Matures late. Oz. 30c., $\frac{1}{4}$ lb. 85c., 1b. \$3.00, 5 lbs. \$12.50.

Duke of York.—One of the best late, purple-fruited sorts. Fruits large, very solid, smooth, ripening close to the stem. It is claimed by some to be blightproof, but we know of no tomato that will not blight under very unfavorable conditions. It is grown extensively throughout Florida to ship North, and is claimed by some of the growers there to be the best for this purpose. Our stock is true and can be depended on. Oz. 20c., $\frac{1}{4}$ lb. 65c., 1b. \$2.25, 5 lbs. \$10.00.

Dwarf Stone.—Vine dwarf but vigorous and productive. While maturing with the later sorts the bright red fruit is of good color, exceedingly smooth, very solid and the largest of any of the dwarf varieties. Oz. 25c., $\frac{1}{4}$ lb. 75c., 1b. \$2.50, 5 lbs. \$11.25.

Dwarf Champion.—An early purple-fruited variety, forming strong, erect, bushy plants. Fruit medium size, smooth and fairly solid. Grown extensively for plants as it makes a handsome sturdy bush. Oz. 25c., $\frac{1}{4}$ lb. 75c., 1b. \$2.50, 5 lbs. \$11.25.

Enormous.—Large, late, red. Oz. 30c., $\frac{1}{4}$ lb. 85c., 1b. \$3.00.

Gold Mine.—One of the best second early or main-crop, purple-fruited sorts. Fruits large, solid, smooth and of a bright pink color. It is very prolific. Oz. 25c., $\frac{1}{4}$ lb. 85c., 1b. \$3.00, 5 lbs. \$13.75.



Livingston's Globe

TOMATO—Continued

Golden Queen.—Fruit large and smooth, color a beautiful golden yellow, sometimes with a slight blush of red. It is as smooth and well shaped as the best of the red varieties and much sweeter, containing very little acid. Oz. 25c., $\frac{1}{4}$ lb. 75c., 1b. \$2.50.

Red Rock.—A large late red variety. Larger than stone and very solid; almost solid meat. Oz. 25c., $\frac{1}{4}$ lb. 75c., 1b. \$2.50, 5 lbs. \$11.75.

Improved Stone.—One of the heaviest and most solid fruited of the large tomatoes of good quality. Our stock is distinctly superior to most that is offered under this name, being larger, smoother, more uniform and better colored. Vines vigorous and productive. Fruit round slightly flattened, very large and astonishingly heavy. The quality is unexcelled. Oz. 25c., $\frac{1}{4}$ lb. 75c., 1b. \$2.50, 5 lbs. \$11.25.

Stone.—A good stock of Stone tomato sold by the majority of seed houses, but it will not compare with our Improved Stone. Oz. 20c., $\frac{1}{4}$ lb. 60c., 1b. \$2.00, 5 lbs. \$8.75.

Success.—A bright scarlet second-early sort, maturing about the same time as Chalk's Early Jewel. Fruits good size, smooth, solid and very prolific. Oz. 25c., $\frac{1}{4}$ lb. 75c., 1b. \$2.50, 5 lbs. \$11.25.

Magnificent.—A large, late, red sort. Oz. 30c., $\frac{1}{4}$ lb. 85c., 1b. \$3.00.

Magnus.—A recent introduction, producing purple fruit of the largest size; much smoother than most of the large-fruited sorts and matures earlier. Foliage of the potato-leaf type. Oz. 25c., $\frac{1}{4}$ lb. 75c., 1b. \$2.50.

Matchless.—One of the best main crop sorts. Fruits very large, smooth, exceedingly solid and of a good red color. It is quite prolific and matures a little later than Stone. Oz. 25c., $\frac{1}{4}$ lb. 75c., 1b. \$2.50, 5 lbs. \$11.25.

Paragon.—A well-known sort, producing large red fruits, slightly elongated. Oz. 20c., $\frac{1}{4}$ lb. 60c., 1b. \$2.00, 5 lbs. \$8.75.

Ponderosa.—A purple-fruited tomato of largest size. Vine vigorous. Fruit very solid, fairly smooth and considered very good quality, especially by those who prefer a tomato quite free from acid. This variety is more suitable for home use than for the market. Oz. 35c., $\frac{1}{4}$ lb. \$1.00, 1b. \$3.50.

Triumph.—Matures about ten days later than Stone. Fruits larger, just as prolific and solid, smooth and of a bright red color. The variety is well known in South Jersey and is used extensively both for a main crop and for canning and has given excellent results for the past eight years. It is a very strong grower. Oz. 25c., $\frac{1}{4}$ lb. 85c., 1b. \$3.00, 5 lbs. \$13.75.

Trucker's Favorite.—A late variety, producing large, smooth, solid fruits of a purplish-red color. It is quite prolific and resists blight to a remarkable degree. Oz. 20c., $\frac{1}{4}$ lb. 65c., 1b. \$2.25, 5 lbs. \$10.00.

Trophy.—A large, late, red variety; fruit slightly ridged. Oz. 20c., $\frac{1}{4}$ lb. 60c., 1b. \$2.00, 5 lbs. \$8.75.

Small Fruited Varieties

Yellow Plum.—Fruit plum shaped, of a clear deep-yellow color; flesh yellow and finely flavored. Oz. 25c., $\frac{1}{4}$ lb. 75c., 1b. \$2.50.

Yellow Pear.—Same as Yellow Plum, except that it is the shape of a pear and a trifle smaller. Oz. 25c., $\frac{1}{4}$ lb. 75c., 1b. \$2.50.

Red Pear.—Fruit bright red; distinctly pear-shaped. Used for preserving. Oz. 25c., $\frac{1}{4}$ lb. 75c., 1b. \$2.50.

Peach.—Fruit resembles a small peach in size and shape. The color is a light terra cotta red. Skin and flesh thick. Used principally for preserving and table decoration. Oz. 25c., $\frac{1}{4}$ lb. 75c., 1b. \$2.50.

Red Cherry.—Fruit the size of a large cherry, perfectly round and smooth. Used for preserving. Oz. 25c., $\frac{1}{4}$ lb. 75c., 1b. \$2.50.

Yellow Cherry.—This variety differs from Red Cherry in color only. Oz. 25c., $\frac{1}{4}$ lb. 75c., 1b. \$2.50.

Yellow Husk, or Ground Cherry.—Used for preserving and eating from the hand. The seed we offer is that of the true Yellow Ground Cherry, not the purple-fruited sort which is scarcely edible. Excellent for making pies. Oz. 25c., $\frac{1}{4}$ lb. 75c., 1b. \$2.50.

TURNIP

Perfection Purple Top White Globe.—A large globular variety very even in shape and of handsome appearance. The crown is purplish red and the remaining portion clear white. The flesh is white, of excellent quality and desirable for table or stock. The variety is a good keeper and a fine market sort. The seed is grown by a Pennsylvania farmer who takes great pains in selecting it and keeping it true to shape. Oz. 7c., $\frac{1}{4}$ lb. 20c., 1b. 60c., 5 lbs. \$2.75.

Purple Top White Globe.—Seed grown in Europe and, while it is very good stock, it is not selected with the care that our Perfection strain is. Oz. 5c., $\frac{1}{4}$ lb. 15c., 1b. 40c., 5 lbs. \$1.75.

Green Top Golden Gem.—One of the best yellow-fleshed sorts, either for market or stock. The skin is yellow with a green crown. Flesh yellow, fine grained and sweet. Grows to a large size and is somewhat more flattened than Purple Top Globe. It is hardy and a good keeper. Oz. 7c., $\frac{1}{4}$ lb. 20c., 1b. 60c., 5 lbs. \$2.75.

Extra-Early White Milan.—Variety remarkably early; top very small, upright and compact, so that rows can be planted close together. Roots clear white, very smooth, flat and symmetrical; flesh white, sweet and tender. The best sort for growing under sash. Oz. 8c., $\frac{1}{4}$ lb. 20c., 1b. 70c., 5 lbs. \$3.25.

Extra-Early Purple Top Milan.—Similar to White Milan, except roots are a little flatter and purple-red on upper portion. All in all, the Milan turnips leave nothing more to be desired in the way of an extra-early garden turnip. Oz. 8c., $\frac{1}{4}$ lb. 20c., 1b. 70c., 5 lbs. \$3.25.

Purple Top Flat Strap Leaf.—An early flat sort; crown purplish-red, white below, flesh white. Will make a crop sown among corn. Used principally for stock. Oz. 5c., $\frac{1}{4}$ lb. 15c., 1b. 40c., 5 lbs. \$1.75.

Yellow Globe.—A round, smooth, medium-sized, light yellow turnip, with crisp, firm flesh of fine quality; a very attractive and beautiful sort. Oz. 5c., $\frac{1}{4}$ lb. 15c., 1b. 40c., 5 lbs. \$1.75.

TURNIP—Continued

Large White Norfolk.—Usually grown for feeding stock, but although a little coarse in texture it is of very good quality for the table. Roots large, spherical or slightly flattened and very white. It is allowed to stand out during the winter in the South where the tops are used for greens. Oz. 5c., $\frac{1}{4}$ lb. 15c., lb. 40c., 5 lbs. \$1.75.

Pomeranean White Globe.—One of the most productive kinds, and in good rich soil roots will frequently grow to twelve pounds in weight. It is globe-shaped, skin white and smooth. Used for stock feeding; also excellent for table use. Oz. 5c., $\frac{1}{4}$ lb. 15c., lb. 40c., 5 lbs. \$1.75.

Golden Ball, or Orange Jelly.—One of the most delicate and sweet yellow-fleshed turnips yet introduced. Not of large size, but firm, hard and most excellent flavor. Keeps well and is a fine table variety. Skin deeper yellow than most of this class. Oz. 5c., $\frac{1}{4}$ lb. 15c., lb. 40c., 5 lbs. \$1.75.

White Egg.—A quick-growing, egg-shaped, smooth, pure white variety with small top and rough leaves. The root grows half out of the ground. Flesh very sweet, firm and mild. Oz. 5c., $\frac{1}{4}$ lb. 15c., lb. 50c., 5 lbs. \$2.25.

Large Amber Globe.—Grows to a large size, skin yellow, with green crown. Flesh yellow. Oz. 5c., $\frac{1}{4}$ lb. 15c., lb. 40c., 5 lbs. \$1.75.

Yellow Stone.—Roots medium size, of globular shape, skin smooth and of a pale yellow color. Flesh yellow and of good quality. Oz. 5c., $\frac{1}{4}$ lb. 15c., lb. 40c., 5 lbs. \$1.75.

Cow Horn, or Long White.—Clear white except a little shade of green at the top; long, slightly crooked and growing nearly half out of the ground; delicate and well flavored, of very rapid growth, and has obtained considerable favor as a market sort for fall and early winter use. Also grown for stock. Oz. 5c., $\frac{1}{4}$ lb. 15c., lb. 45c., 5 lbs. \$2.00.

Seven Top.—Cultivated extensively in the South for tops, which are used for greens. It is very hardy and will grow all winter, but does not produce a good root and is only recommended for the tops. Oz. 5c., $\frac{1}{4}$ lb. 15c., lb. 40c., 5 lbs. \$1.75.

Southern Prize.—Similar to Seven Top, but the tops are more abundant while the roots are of considerable size, more symmetrical in shape and better in quality; also used for feeding. A favorite forage plant in the Virginias and Carolinas, where it grows during winter without protection. Oz. 5c., $\frac{1}{4}$ lb. 15c., lb. 40c., 5 lbs. \$1.75.

RUTA BAGA—Swedish or Russian Turnips

Perfection Purple Top Globe.—Grows the same shape and size as Purple Top Globe Turnip. Color of skin yellow with purple crown. Flesh deep yellow, fine grained and of excellent quality. It is an excellent keeper. The top is much shorter than most Rutabagas; it has absolutely no neck and is a rapid grower. Can be planted as late as August 1st in the vicinity of Philadelphia. By far the best sort for market. Oz. 10c., $\frac{1}{4}$ lb. 30c., lb. \$1.00, 5 lbs. \$4.50.

Long Island Improved.—Grows to a large size, round in shape, purple top, yellow below; flesh yellow. Excellent sort for stock feeding or table use where a large Rutabaga is wanted. Oz. 5c., $\frac{1}{4}$ lb. 15c., lb. 40c., 5 lbs. \$1.75.

Perfection White.—Absolutely neckless. Top strap leaf, flesh white and unusually fine grained. Grows to a large size. Excellent sort either for stock feeding or table use. Oz. 7c., $\frac{1}{4}$ lb. 20c., lb. 60c., 5 lbs., \$2.75.

HERBS

Basil Sweet.—Large, green. Oz. 15c., $\frac{1}{4}$ lb. 40c., lb. \$1.25.

Borage.—Oz. 10c., $\frac{1}{4}$ lb. 35c., lb. \$1.00.

Caraway.—Oz. 8c., $\frac{1}{4}$ lb. 20c., lb. 60c.

Coriander.—Oz. 8c., $\frac{1}{4}$ lb. 20c., lb. 60c.

Dill.—Oz. 8c., $\frac{1}{4}$ lb. 20c., lb. 60c.

Fennel, Florence.—Oz. 15c., $\frac{1}{4}$ lb. 40c., lb. \$1.25.

Lavender.—Oz. 15c., $\frac{1}{4}$ lb. 45c., lb. \$1.50.

Marjoram (Sweet American).—Oz. 35c., $\frac{1}{4}$ lb. \$1.15, lb. \$4.00.

Rosemary.—Oz. 35c., $\frac{1}{4}$ lb. \$1.00, lb. \$3.50.

Sage.—Oz. 15c., $\frac{1}{4}$ lb. 40c., lb. \$1.25.

Savory, Summer.—Oz. 10c., $\frac{1}{4}$ lb. 35c., lb. \$1.00.

Thyme, Broad-Leaf Winter.—Hardy. Oz. 35c., $\frac{1}{4}$ lb. \$1.15, lb. \$4.00.

COW PEAS

Invaluable for plowing under for green manure, or they can be cut green for feeding or can be cured like clover and fed through the winter. We can supply the following varieties at \$3.00 per bushel, including bags: **Black Giant, New Era and Whip-poor-will.**

DWARF ESSEX RAPE

There is no plant that will give as heavy a yield of forage at such a small cost as this, and its general cultivation would add largely to the profits of American farms. Especially valuable for green manuring and pasture. When fed off by sheep it will probably do more to restore and make profitable exhausted soils than any other plant. Biennial.

Ground should be prepared same as for turnips. Sow in June or July with a turnip drill, in rows two and one-half feet apart, at the rate of two and one-half pounds of seed per acre. It may be sown broadcast, either with other fall forage crops or by itself, using from one to five pounds of seed per acre. Lb. 12c., 10 to 25 lbs. 10c., 25 to 100 lbs. 8c.

VETCH

Hairy, or Sand Vetch (*vicia villosa*).—An excellent plant for a winter cover crop to prevent leaching, also for forage and fertilizing. If sown in August or September it will make a good crop of forage the following spring. It is quite hardy and very seldom winter kills in the vicinity of Philadelphia, unless planted on wet, heavy soil. It is being used extensively in this vicinity for plowing under, also for dairy stock and poultry pasture. Sow 1 to 1 $\frac{1}{2}$ bushel per acre. If sown with rye use $\frac{3}{4}$ to 1 bushel of Vetch with $\frac{1}{2}$ bushel of rye. Qt. 25c., 4 qts. 85c., pk. \$1.65, bus. \$6.00, 100 lbs. \$10.00.

Price subject to change.

NITRATE OF SODA

Invaluable to hustle crops along where a quick growth is desired. Price F. O. B. Philadelphia, 200-lb. bags \$6.00, ton \$53.00. One-half ton at ton price. Price subject to change. This is a strictly cash article and we will not ship it at this price unless cash is sent with the order.

GRASS SEED

Prices subject to market changes

All our Grass Seed can be depended on to be first quality and true to name

Perfection Lawn Grass Seed.—Composed of eleven of the best varieties of grasses adapted for lawn purposes, and is sure to give excellent satisfaction. Lb. 30c., 5 lbs. \$1.25, 1 qt. 15c., 4 qts. 50c., pk. \$1.00, bus. 16 lbs. \$4.00.

Fairmount Park Lawn Seed.—A good mixture of grasses that are less expensive than our Perfection mixture. Lb. 25c., 5 lbs. \$1.00, 1 qt. 12c., 4 qts. 40c., pk. 75c., bus. 16 lbs. \$3.00.

English Lawn Grass Seed.—Composed of the very finest high priced varieties. Extra re-cleaned seed. Lb. 35c., 5 lbs. \$1.50, qt. 20c., 4 qts. 75c., pk. \$1.25, bus. 20 lbs. \$5.00.

Shady Nook Lawn Grass Seed.—For shady places. Lb. 40c., 10 lbs. and over 35c., bus. \$6.00.

Grass Mixture for Permanent Pastures.—Lb. 30c., 10 lbs. and over 25c., bus. \$3.50.

Grass Mixture for Golf Links.—Lb. 40c., 10 lbs. and over 35c., bus. \$6.00.

Fancy Cleaned Kentucky Blue.—14 lbs. to the bushel. Lb. 35c., bus. \$4.50.

Fancy Cleaned Herd, or Red Top.—32 lbs. to the bushel. Lb. 27c., bus. \$7.50.

Herd, or Red Top Ordinary.—14 lbs. to the bushel. Lb. 15c., bus. \$1.50.

Wood Meadow.—14 lbs. to the bushel. Lb. 50c., bus. \$6.50.

Sweet Vernal.—Perennial. Lb. 50c., 10 lbs. and over 45c.

Creeping Bent.—20 lbs to the bushel. Lb. 40c., bus. \$7.00.

Sheep's Fescue.—12 lbs. to the bushel. Lb. 30c., bus. \$3.00.
Meadow Fescue.—22 lbs. to the bushel. Lb. 25c., bus. \$5.00.

Hard Fescue.—12 lbs. to the bushel. Lb. 25c., bus. \$2.75.
Crested Dogtail.—21 lbs. to the bushel. Lb. 30c., bus. \$5.50.

Orchard Grass.—14 lbs to the bushel. Lb. 20c., bus. \$2.50.
English Rye.—24 lbs to the bushel. Lb. 12c., bus. \$2.25.
Italian Rye.—20 lbs. to the bushel. Lb. 12c., bus. \$2.00.
Bromus Inermis.—14 lbs to the bushel. Lb. 20c., bus. \$2.50.

Johnson Grass.—25 lbs. to the bushel. Lb. 15c., bus. \$3.25.
Meadow Foxtail.—7 lbs. to the bushel. Lb. 40c., bus. \$2.60.

Timothy.—45 lbs. to the bushel. Lb. 22c. (about); bus. \$9.00 (about).

Hungarian Millet.—48 lbs. to the bushel Lb. 5c., (about); bus. \$1.75 (about).

Golden, or German Millet.—50 lbs. to the bushel. Lb. 5c. (about); bus. \$2.00 (about).

East India, or Pearl Millet.—Lb. 10c., 10 lbs. and over, 8c.

CLOVER SEED

Prices subject to market changes

Best to write for prices

Red Medium.—60 lbs. to the bushel. Lb. 25c., bus. \$13.00.

Red Mammoth, or Pea Vine.—60 lbs. to the bushel. Lb. 25c., bus. \$13.50.

Scarlet, or Crimson.—60 lbs. to the bushel. Lb. 15c., bus. \$7.00.

Lucerne, or Alfalfa.—60 lbs. to the bushel. Lb. 25c., bus. \$12.50.

Alsike, or Hybrid.—60 lbs. to the bushel. Lb. 20c., bus. \$11.00.

White Dutch.—60 lbs. to the bushel. First quality. Lb. 45c., bus. \$22.50.

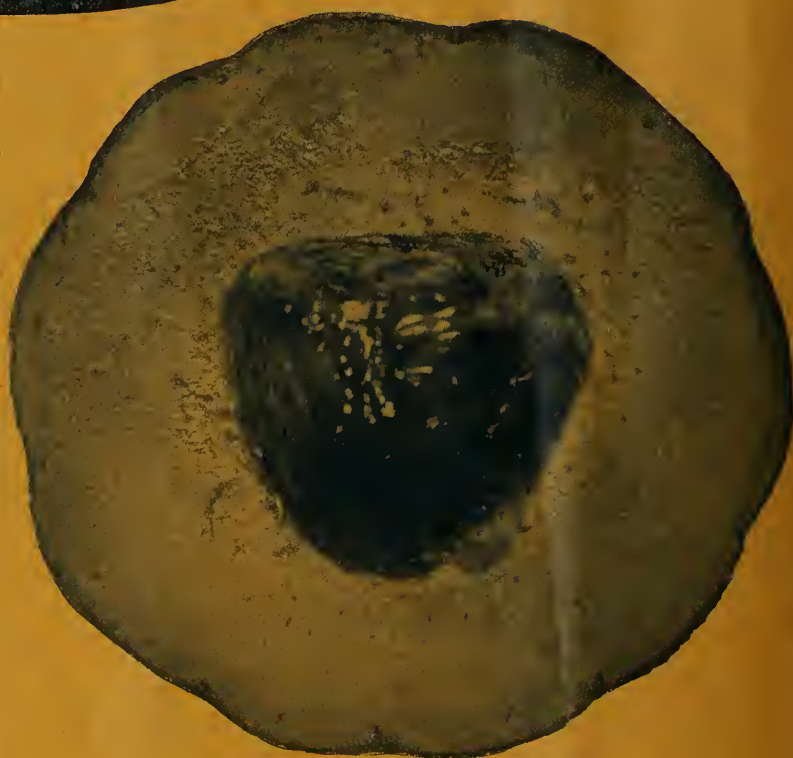
FARM IMPLEMENTS

We handle a full line of Planet, Jr., and Iron Age farm and garden implements and will mail complete catalogue on application.

MUSK MELON—GOLDEN GEM

The Ideal Yellow-Fleshed Shipping Melon

(For Description and Prices See Page 20)



I. N. SIMON & SON

Growers and Importers of Seed Specialties for Market Gardeners

No. 6 North Front Street

:: ::

Philadelphia, Pa.