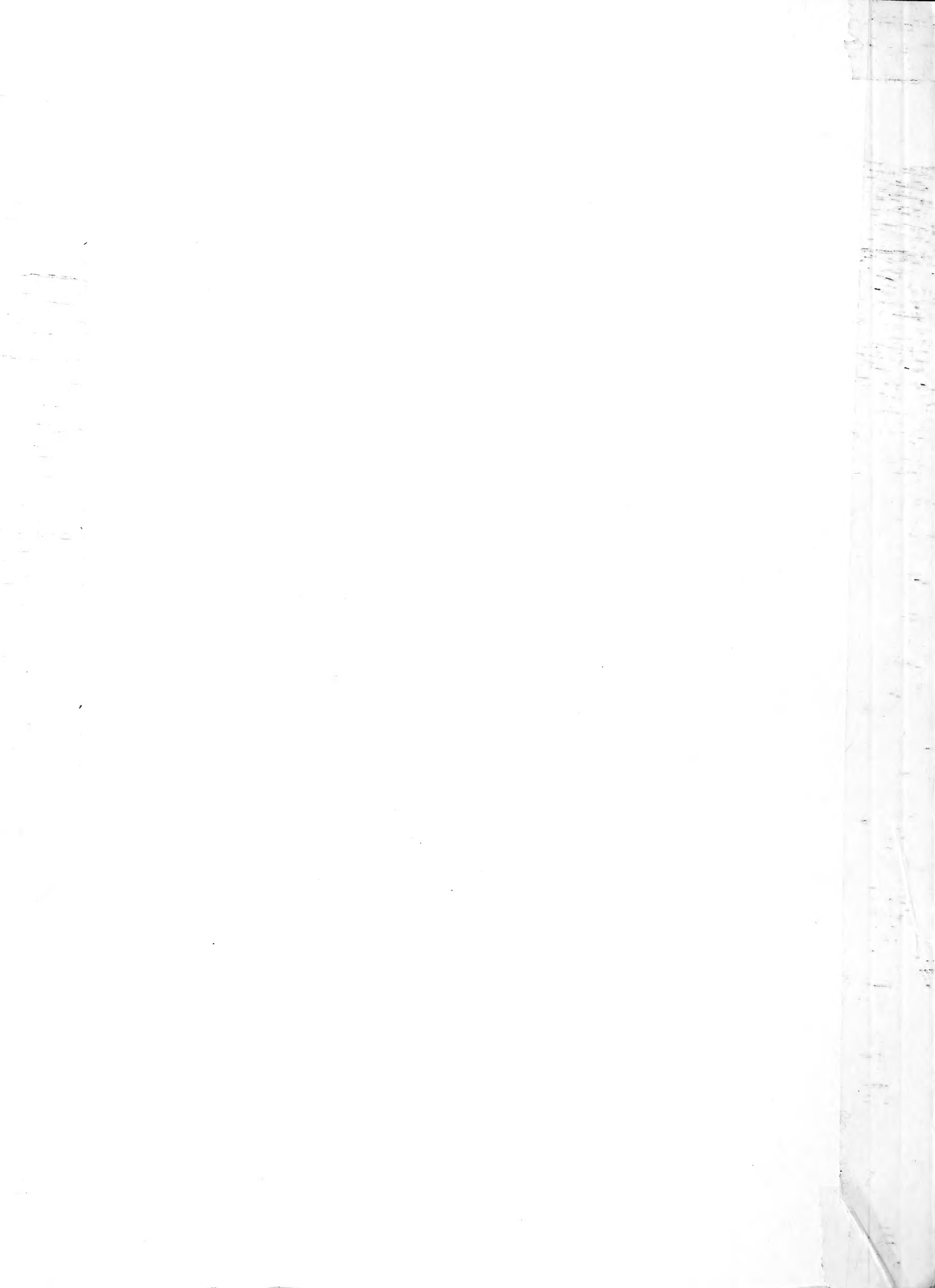


Historic, Archive Document

Do not assume content reflects current scientific knowledge, policies, or practices.

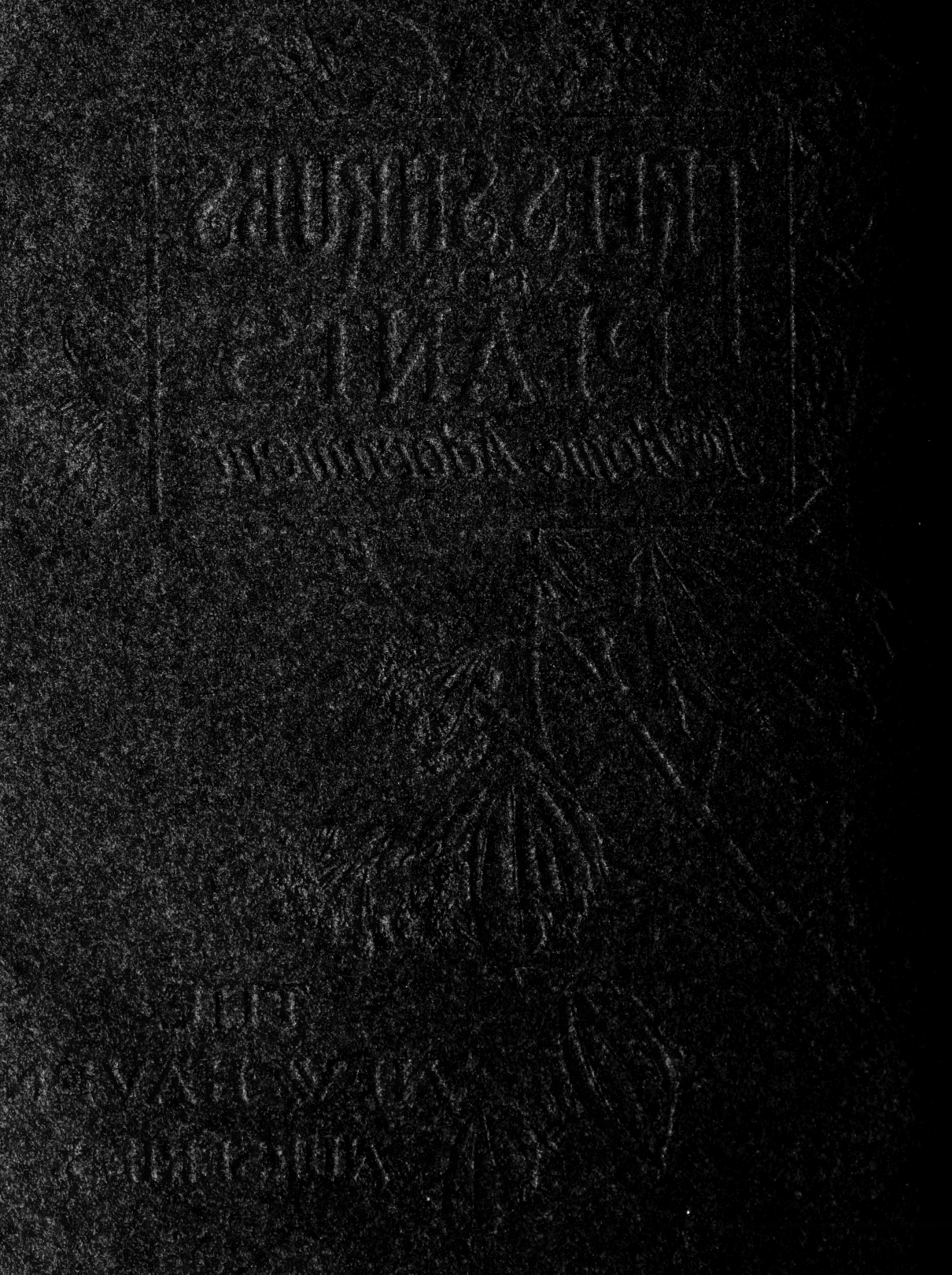




TREES, SHRUBS
AND
PLANTS

for Home Adornment

THE
NEW HAVEN
NURSERIES



62.47

51 120

ILLUSTRATED

Garden Book *and* Price List



THE NEW HAVEN NURSERIES

ADDRESS: P. O. BOX 1226

NEW HAVEN, CONNECTICUT

L. A. SOLDAN
MANAGER

MAIN GROUNDS

TELEPHONE 5399

GOFFE STREET—ELLSWORTH AVENUE

Copyright, 1912
by
The New Haven Nurseries
New Haven, Conn.



FOREWORD



OUR Catalogue contains a carefully selected list of such varieties of Evergreens, Trees, Shrubs, Vines and Plants as are hardy and best suited to our Eastern climate.

Our belief is that the advantage of having a good nursery, conducted on a strictly honest basis, is of great importance to the many home builders, and everyone who is interested in improving his surroundings by planting some of our carefully selected nursery stock.

Our rates and prices quoted in this Catalogue are net; half a dozen at single rate of five; one dozen at single rate of ten.

Our terms are cash in advance from unknown parties or satisfactory reference.

Notice to Customers

Should our Catalogue not mention any tree or plant particularly desired, please write to us, and we will give any information we can, and may be able to furnish the same, as we are continually adding new varieties which come well recommended.

Orders should be sent in as early as possible, that there may be plenty of time for shipping long distances, when necessary.

Buyers ordering by letter, should write out their order plainly, on a separate list, and not in the body of the letter. It will prevent mistakes in the hurry of the packing season.

Give plain and explicit shipping directions. When none are given, we forward according to our best judgment; but in no case do we assume any responsibility after the delivery of the stock in good condition to the forwarder.

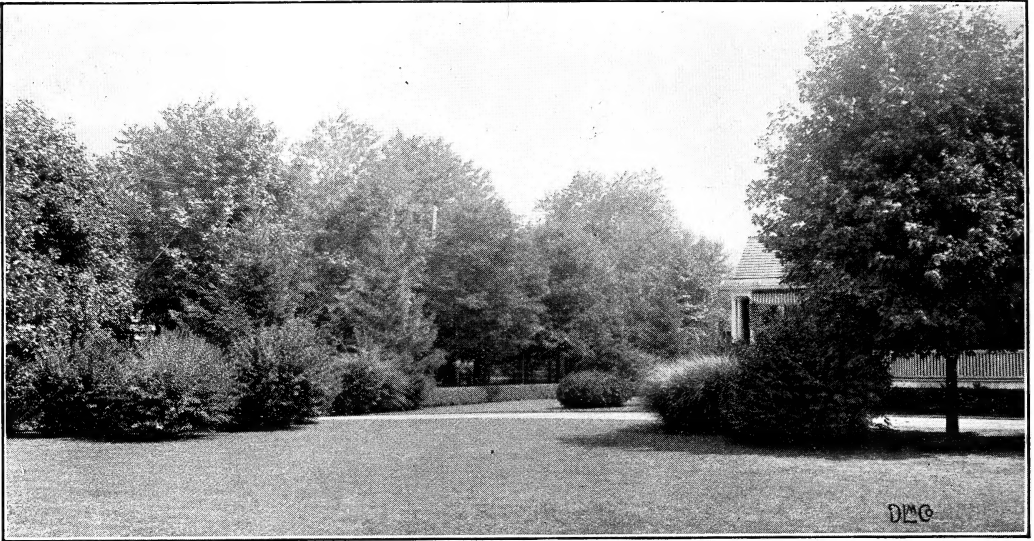
Immediate notice should be given to us of any error in filling out an order so that we may at once rectify the mistake or give a satisfactory explanation.

Guarantee. While we exercise the greatest care to have all trees, shrubs and plants sold by us true to name and free from disease, and hold ourselves prepared to replace, on proper proof, all that may prove to be otherwise, we do not give any warranty, express or implied, with respect to them. Any and all such goods are sold upon the express condition and understanding that in case any of them prove to be untrue to name, unhealthy or otherwise defective, we shall not be held responsible for a greater amount than the original price of the goods.

THE NEW HAVEN NURSERIES

L. A. SOLDAN, *Manager*

NEW HAVEN, CONN.



Landscape Department



IN laying out a new garden or remodelling an old one, or in grading, planting and seeding lawns and grounds around a new residence, the best and most economical plan is to secure the assistance of an expert who will produce attractive and effective results.

Let us, who have had many years experience in Landscape Gardening and Horticulture, give you the right kind of advice as to the improving of your grounds.

By our method of planting and improving, very artistic and pleasant effects are obtained at a minimum cost.

We guarantee our stock to live if planted by us and reasonable care is accorded it, or we will replace it at one-half our regular retail price.

Our services in giving advice, estimates of cost and drawing plans for attractive gardens can be had to any extent if arranged for in advance of the planting season, which usually commences about April 1st and continues to May 25th, and in the Fall from September 15th to December 1st.

We request, once more, the opportunity of estimating on your present or future needs, and will guarantee you satisfaction at rock-bottom prices.

Respectfully,

THE NEW HAVEN NURSERIES

NEW HAVEN, CONN.

L. A. SOLDAN, *Manager*
Address, P. O. Box 1226, City
Phone, 5399



ORNAMENTAL TREES

The prices for trees of suitable size for street and lawn planting are variable.

All the trees offered have been one or more times transplanted, are of good commercial grade and well rooted.

The prices quoted are for trees of the usual commercial size, but of many sorts large specimen trees of 2- to 5-inch caliber can be supplied at proportionate rates.

VARIETIES

Ash, American White. *Fraxinus Americana*. A rapid growing tree of fine proportions; good shade tree. 7 to 9 feet, \$1.25.

Ash, European Mountain. *Sorbus aucuparia*. A small tree with pinnate leaves; produces clusters of brilliant berries in the Fall. 8 feet, \$1.00.

Beech, American. *Fagus Americana*. Our well-known light-barked tree. 5 to 7 feet, \$1.00.

Beech Riversii, Blood-leaved. *F. sylvatica Riversii*. The best dark red-leaved tree for large specimen and groups. 4 to 5 feet, \$2.00.

Beech, Fern-leaved. *F. sylvatica asplenifolia*. A pretty tree, with delicately cut leaves. 4 to 5 feet, \$2.00.

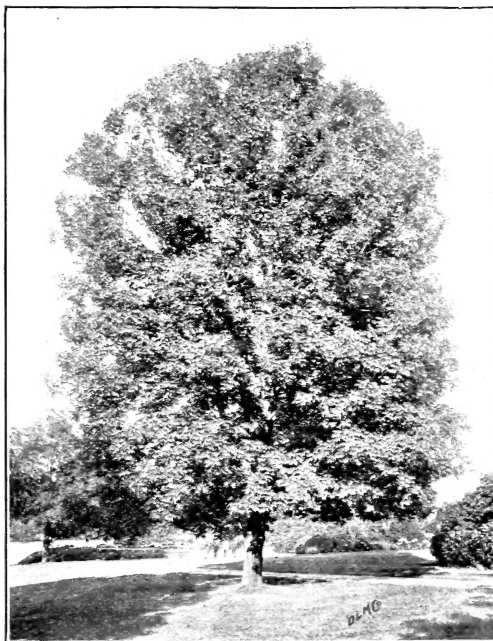
Birch, Cut-leaved Weeping. *Betula alba laciniata*. A tree of very handsome growth; slender yet vigorous; drooping gracefully. 8 to 10 feet, \$2.00.

Birch, Canoe or Paper. *B. papyrifera*. An exceptionally fine tree of our Northern woods; bark brilliant white. 7 to 9 feet, \$1.00.

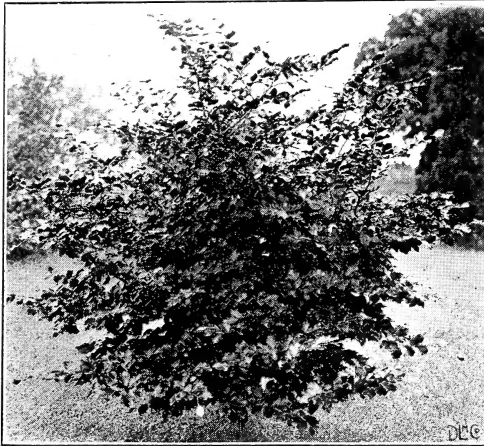
Birch, European White. *B. alba*. Very rapid grower of symmetrical proportions. 8 to 10 feet, \$1.50.

Catalpa Bungei. Grafted about 6 feet high; makes a nice, round-headed tree; much used for formal effect. \$2.00.

Catalpa speciosa (Western Catalpa). A very rapid-growing tree; large leaves, with tropical appearance. 7 to 9 feet, 75c.



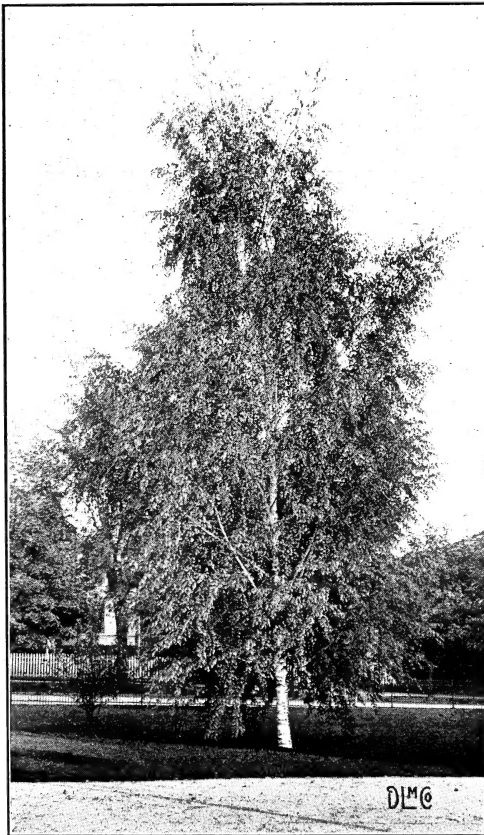
American White Ash



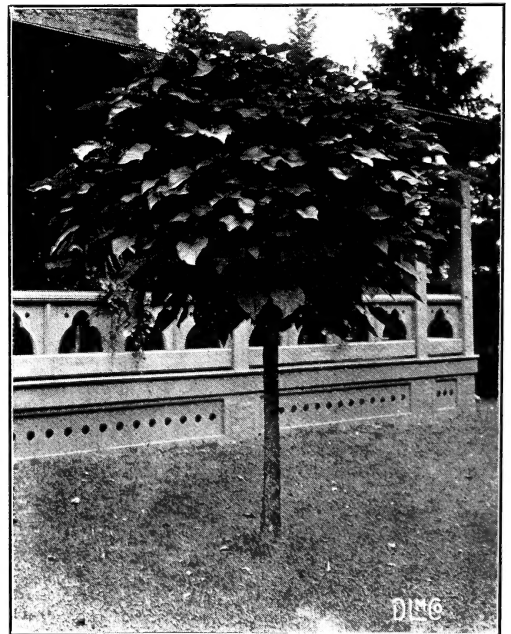
Blood-leaved Beech—See page 5



Fruit of Mountain Ash—See page 5



Cut-leaved Weeping Birch—See page 5



Catalpa Bungei—See page 5

ORNAMENTAL TREES—Continued

Cherry, Japan Weeping. *Cerasus pendula.*

One of the finest pendulous trees for lawns and small grounds. 5 to 6 feet, \$2.00.

Crab Apple, Bechtel's Double-flowering.

Malus angustifolia Bechteli. One of our most handsome flowering Crabs. A tree of medium size, completely covered in the early Spring with large, double, fragrant flowers of delicate pink color. 5 to 6 feet, \$1.25.

Crab Apple, Parkman's. *M. floribunda*

Parkmani. A splendid, compact grower; flowers double, dark rose, on drooping branches; foliage dark green, which stays on the tree until late in the Fall. 5 to 6 feet, \$1.25.

Dogwood, White-flowering. *Cornus florida.*

A very beautiful tree, with plenty of white flowers in the Spring and glowing red berries in the Fall. 5 to 7 feet, \$1.00.

Dogwood, Red-flowering. *C. florida rubra.*

Just as early and effective as the Magnolias; the flowers are a nice rose. 4 to 5 feet, \$1.50 to \$2.00.

Elm, American. *Ulmus Americana.*

Rapid-growing tree; graceful and vigorous. A splendid avenue tree. 7 to 9 feet, 85c.; 9 to 12 feet, \$1.25.

Fringe, White. *Chionanthus Virginica.*

A small native tree with pure white flowers that droop in long racemes. Blossoms in May and June. 4 to 5 feet, 75c. to \$1.00.

Golden Chain. *Laburnum vulgare.*

A nice, ornamental, low-growing tree with a lot of small golden blooms in early June. 4 to 5 feet, 75c.



Double-flowering Crab Apple



Red-flowering Dogwood

Hazlenut (Purple-leaved Filbert).

Corylus maxima purpurea. Handsome shrub with dark purple leaves.

Horse-Chestnut, White-flowering.

Aesculus Hippocastanum alba. A large tree of handsome proportions; flowers white, in nice upright panicles. A desirable tree. 7 to 9 feet, \$1.25.

Horse-Chestnut, Double Red-flowering.

Ae. rubicunda. Bears magnificent red flowers. 8 to 9 feet, \$2.00.

Horse-Chestnut, Double White-flowering.

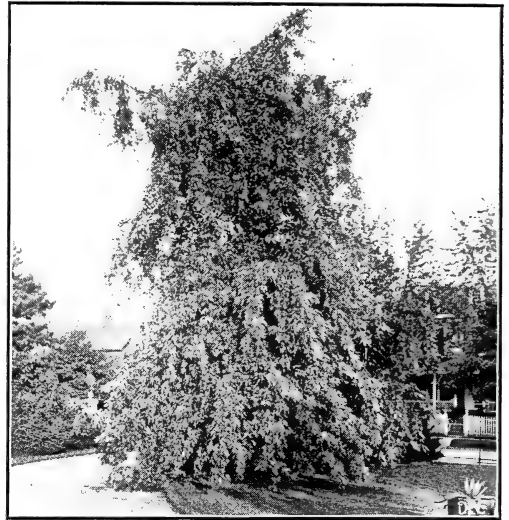
Just like the double red-flowering Horse-Chestnut. One of our most ornamental trees. 8 to 9 feet, \$2.00.

Horse-Chestnut, Dwarf.

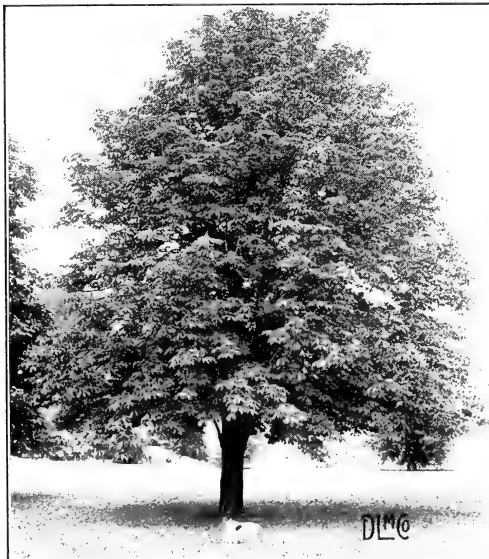
Grows more like a shrub. Its blossoms and dense foliage make it very desirable for massing and single specimen. 2½ to 3 feet, \$1.00.



Golden Chain—See page 7



Cut-leaved Maple—See page 9



White-flowering Horse-Chestnut—See page 7



European Larch

ORNAMENTAL TREES—Continued

Judas Tree or Redbud. *Cercis Canadensis*. A small round-headed tree with an abundance of rosy pink flowers in early May before the leaves appear. Splendid for single specimen. 4 to 6 feet, 35c.

Larch, European. *Larix Europaea*. Handsome half evergreen. Makes nice specimen on a large lawn. 5 to 6 feet, \$1.00.

Linden, American. *Tilia Americana*. A very rapid-growing tree of large size; suited for parks and avenues; gives dense shade. 7 to 9 feet, \$1.00; 9 to 12 feet, \$1.50.

Linden, European. *T. Europaea*. Makes a compact, erect growth; not quite as rapid-growing tree as the above, but just as useful and handsome. 9 to 12 feet, \$2.00.

Magnolia (Cucumber Tree). *Magnolia acuminata*. A tall, pyramidal-growing tree, with creamy white blossom. 5 to 6 feet, \$1.00.

Magnolia Yulan. *Magnolia conspicua*. Very showy in early Spring, when it is covered with large, sweet-scented, pure white blossoms. 3 to 4 feet, \$2.50.

Magnolia, Lenne's. *Magnolia Lennei*. Flowers dark red without and nearly white within; one of the latest to blossom. 2 to 3 feet, \$1.50; 3 to 4 feet, \$2.00.

Magnolia, Soulange's. *Magnolia Soulangeana*. One of our finest and hardiest Magnolias; extensively used in New England; has scented pink, cup-shaped flowers. 2 to 3 feet, \$1.50; 3 to 4 feet, \$2.00.



American Linden



Lenne's Magnolia

Magnolia Star. *Magnolia stellata*. Flowers pure white; very early in the Spring; fragrant; a splendid sort for lawn and garden. 2 to 3 feet, \$1.50; 3 to 4 feet, \$2.50.

Maple, Sugar or Rock. *Acer saccharum*. A symmetrical, handsome tree, and well known; good for all purposes. 7 to 9 feet, \$1.00; 9 to 12 feet, \$1.50.

Maple, Norway. *A. platanoides*. A large, round-headed tree, shapely and compact, splendid for lawns and avenues. 7 to 9 feet, \$1.00; 9 to 12 feet, \$2.00.

Maple, Wier's Cut-leaved. *A. Wieri laciniatum*. Has a pendulous habit; fine cut leaves; a very attractive and desirable tree. 8 to 10 feet, \$2.00.

Maple, Schwedler's Purple-leaved. *A. platanoides Schwedleri*. Young shoots and leaves of a bright purplish color, which changes later to a dark purplish green, make this a most valuable tree. 8 to 10 feet, \$2.00.

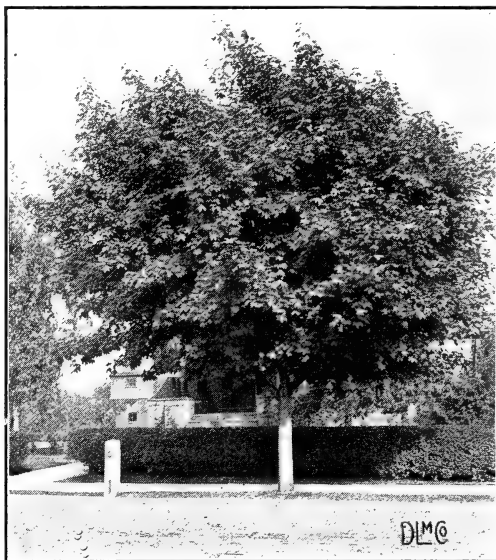
ORNAMENTAL TREES—Continued

Maple, Japan. *A. Japonicum*. Of rather dwarf habit, with deeply lobed foliage. We have these Maples in several good varieties—cut-leaved purple, dark purple leaved, etc. 2½ to 3½ feet, \$3.00 to \$5.00.

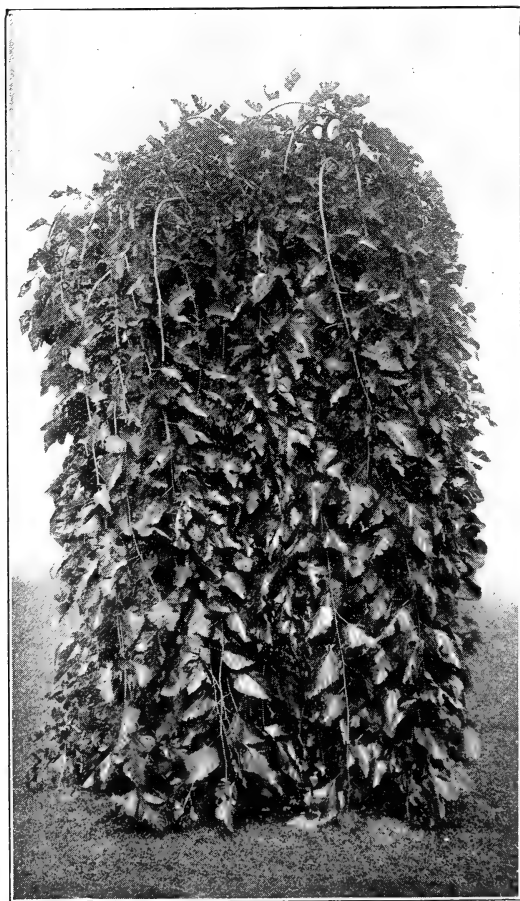
Mulberry, Teas' Weeping. *Morus pendula*. Has a handsome, drooping habit; is fast growing and very desirable for lawns and gardens. 5 to 6 feet, \$2.00.

Oak, Pin. *Quercus palustris*. One of our most beautiful Oaks. Leaves finely divided, and of pleasant green; makes a splendid tall specimen. 8 to 10 feet, \$1.50.

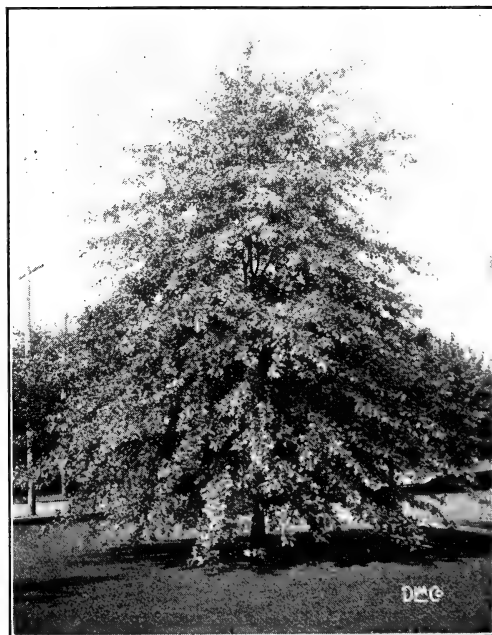
Plane Tree, Oriental. *Platanus Orientalis*. Well-known tree; leaves deeply heart-shaped at base. Extensively used for street and park planting. 10 to 12 feet, \$1.50.



Norway Maple—See page 9



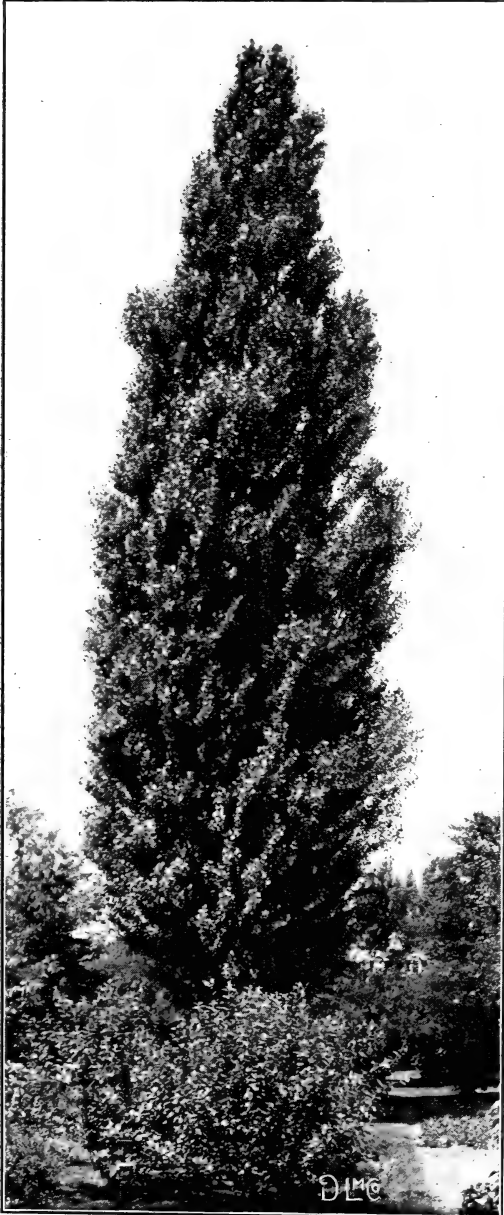
Teas' Weeping Mulberry



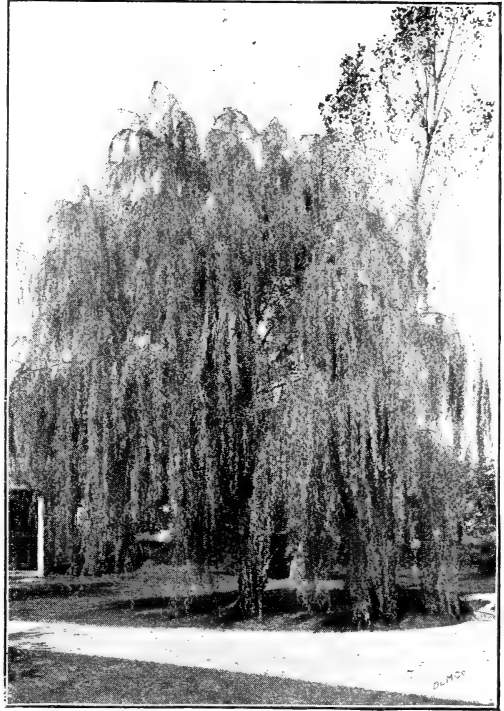
Pin Oak

ORNAMENTAL TREES—Continued

Plum, Purple-leaved. *Prunus Pissardi*. Wood and leaves are bright scarlet when young, changing to a rich, vivid dark purple. Good for planting with shrubs 5 to 7 feet, 75c.



Lombardy Poplar



Babylonian or Weeping Willow

Poplar, Pyramidal Lombardy. *Populus fastigiata*. A well-known tree of handsome appearance; splendid as a tall hedge to screen objectionable views; grows quickly. 7 to 9 feet, 75c.; 9 to 12 feet, \$1.25.

Poplar, Carolina. *P. Carolinensis*. A very rapid-growing tree; large green foliage; good habit; is often planted for very quick effects. 7 to 9 feet, 75c.; 9 to 12 feet, \$1.25.

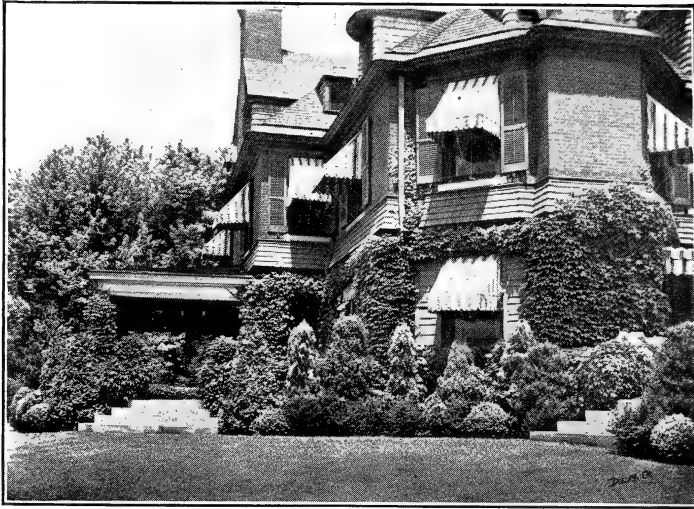
Thorn (English Double Crimson Hawthorn). *Crataegus Oxycantha*. A tree of very fine habit, with rich, luxuriant foliage and large, double, deep crimson flowers; very ornamental. 5 to 6 feet, \$1.00.

Walnut, Black. *Juglans nigra*. Native tree. Very dark, deeply furrowed bark, with beautiful foliage; round nuts. 6 to 8 feet, \$1.00.

Willow, Babylonian or Weeping. *Salix Babylonica*. A well-known, graceful tree; the first to green out in the Spring. 7 to 9 feet, 75c.; 9 to 12 feet, \$1.25.

Willow, Thurlow's. *S. elegantissima*. Hardier and more upright-growing than the above. 7 to 9 feet, 75c.; 9 to 12 feet, \$1.25.

Willow, Golden and Red-barked. Very attractive in the Winter. 5 to 7 feet, 50c.



Evergreens Bordering a Mansion

EVERGREENS

Prices quoted are for Evergreens of usual size, 1 to 2 feet for dwarf and 2 to 5 feet for the larger growing sorts. Larger specimens will be supplied at proportionate rates.

Special quotations will be given on larger amounts, or collections for group plantings.

Arborvitae, American. *Thuja occidentalis*. A very useful Evergreen, either for single specimen or hedges; tall growing. 25c. to \$1.00.

Arborvitae, Pyramidal. *T. o. pyramidalis*. Handsomer than the above; has light green foliage and is column-shaped; splendid as single specimen or in groups; also used for hedges. 50c. to \$1.50.

Arborvitae, Hovey. *T. Hoveyi*. Small-growing, round-headed Evergreen of compact form; yellowish green. 75c. to \$1.00.

Arborvitae, Golden (George Peabody). *T. o. aurea*. Splendid to use in a group of different Evergreens; tall grower. \$1.00 to \$2.00.

Arborvitae, Siberian. *T. Sibirica*. Medium, tall-growing; very hardy, with dark green and dense foliage; good for small hedges. 50c. to \$1.00.

Azalea amoena. Bushy, small Evergreens with small leaves that turn to a lustrous copper hue in the Winter. In April and May the whole plant is covered with a mass of brilliant claret-colored blossoms. 1 to 2 feet high, \$1.00 to \$2.00.

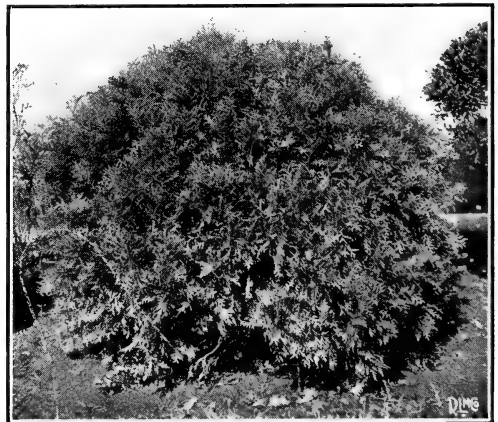
Bay Trees. *Laurus*. Standard and pyramidal. Low prices on application.

Biota (Rollinson's Chinese Golden Arborvitae). *Biota orientalis elegantissima*. Foliage the handsomest brilliant golden in the Summer, turning to deep bronze with golden tips in the Winter. \$1.50 to \$3.00.

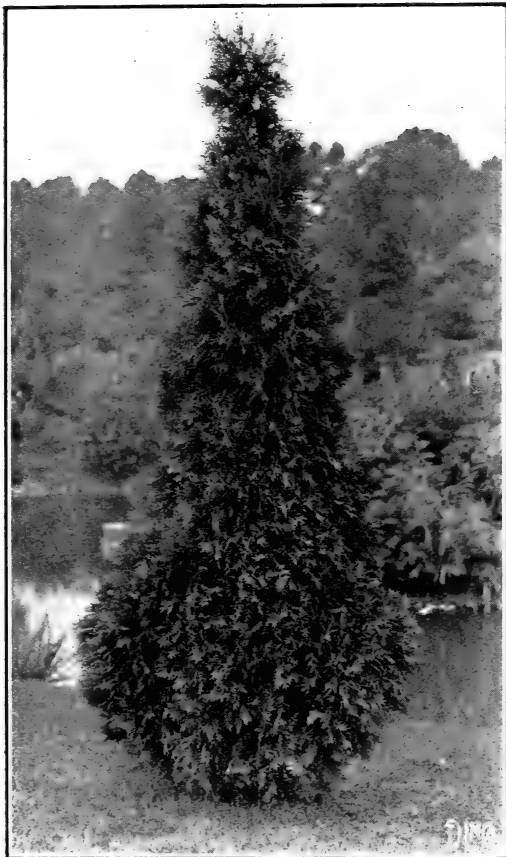
Boxwood, Pyramidal. *Buxus*. Specimens for planting in tubs or on lawn. 3 ft. high, \$2.50.

Boxwood. For edging or borders. 4 to 6 inches high, \$7.00 per 100; \$45.00 per 1000.

Cypress, Japan Wire. *Retinispora filifera*. Pyramidal; has drooping green horizontal branches and foliage. Splendid as a single specimen or in grouping. 75c. to \$3.00.



Arborvitae, Hovey



Pyramidal Arborvitae

EVERGREENS—Continued

Cypress, Sawara. Green and Golden. *Retinispora pisifera* and *pisifera aurea*. Small tree from Japan. Very graceful and open in growth. Both the green and the golden varieties are very valuable for Evergreen plantings. 75c. to \$3.00.

Cypress, Fern-leaved. Green and Golden. *Retinispora plumosa* and *plumosa aurea*. Both form dense, small-sized, graceful trees. The young growth of the Golden Cypress, with its bright golden yellow, forms a strong contrast with other Evergreens. It is very extensively used in with other Evergreen groupings. 75c. to \$3.00.

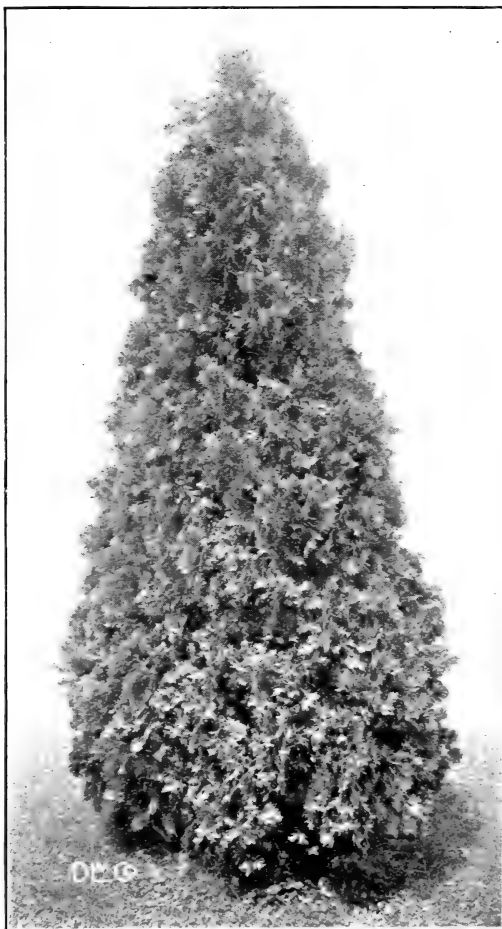
Cypress, Silver and Sulphur Silver Feather-leaved. *Retinispora squarrosa Veitchii* and *squarrosa sulphurea*. These two Cypresses have the same merits as the Fern-leaved Cypresses, and are in every way just as useful. The foliage contrasts well with the other varieties and is usually the most showy in a planting. \$1.00 to \$3.00.

Daphne, Sweet. A very fragrant, low-growing plant, with narrow, glossy leaves and bright pink flowers. 50c. to \$1.00.

Euonymus variegata, Silver. A small, handsome Evergreen bush, with beautifully variegated leaves that make it very valuable for edging. 6 inches to 1 foot high, 25c.

Fir, Nordmann's. *Abies Nordmanniana*. A splendid, noble tree, with wide, dark green, lustrous needles. \$2.00 to \$5.00.

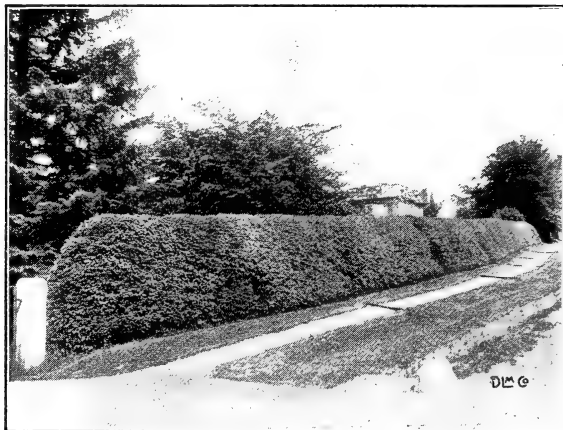
Fir, White or Concolor. *A. concolor*. A very hardy, magnificent tree; foliage glaucous green and almost as beautiful as our Blue Spruce. \$2.00 to \$5.00.



American Arborvitae



Pyramidal Boxwood—See page 12



Hedge of Arborvitae

EVERGREENS—Continued

Hemlock. *Tsuga*. A splendid tree of our native forests; very ornamental, with its nice green foliage and extremely graceful habit of growth. Well recommended for single specimen, groups and hedges. 35c. to \$1.00.

Juniper, Red. *Juniperus Virginiana*. Our native red Cedar; has a handsome pyramidal habit and thrives in almost any place. 50c. to \$1.00.

Juniper, Irish. *J. Hibernica*. With its slender, glaucous, columnar growth, has proved very useful in grouping of Evergreens. 75c. to \$1.50.

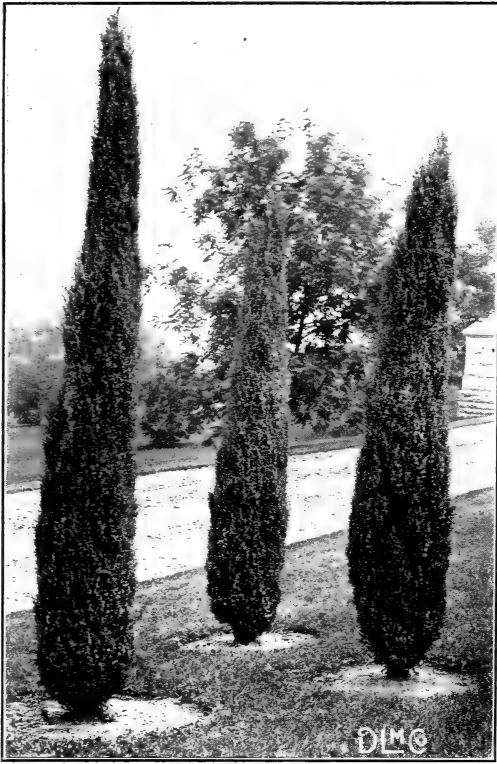
Juniperus prostrata Sabina. Has very dark green foliage; good for grouping or rockwork. 1 to 2½ feet, \$1.00 to \$2.00.

Juniperus stricta variegata. A good variety, of conical form; grayish green foliage, dotted with creamy white branchlets. 1½ to 2 feet, \$1.50 to \$2.00.

Juniperus tamarixifolia. A very handsome, interesting, trailing plant. Useful for rockwork.



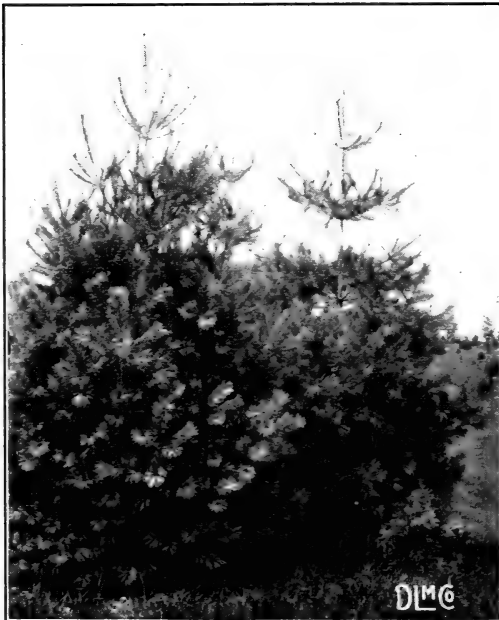
Fern-leaved Cypress—See page 13



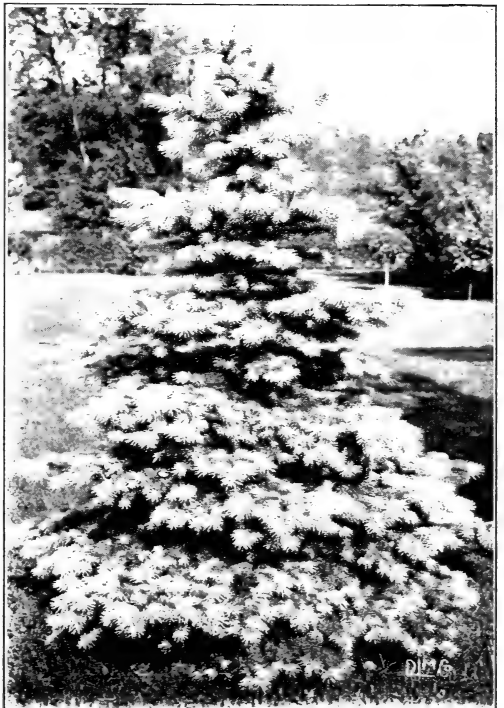
Irish Juniper—See page 14



Austrian Pine—See page 16



White Pine—See page 16



Koster's Blue Spruce—See page 17

EVERGREENS—Continued

Laurel, Mountain. *Kalmia latifolia*. One of our most handsome native hardy Evergreen shrubs. In the early Spring the plants are profusely covered with pink and white flowers. Very useful for massing, either alone or with Rhododendrons. 2 to 3 feet, \$1.00 to \$1.75.

Mahonia aquifolium. Resembles very much our Holly, with little yellow flowers that hang all over its branches; has prickly, deep, glossy green foliage that turns to a shiny bronze color in the Fall. 1 to 2 feet, 25c. to 50c.

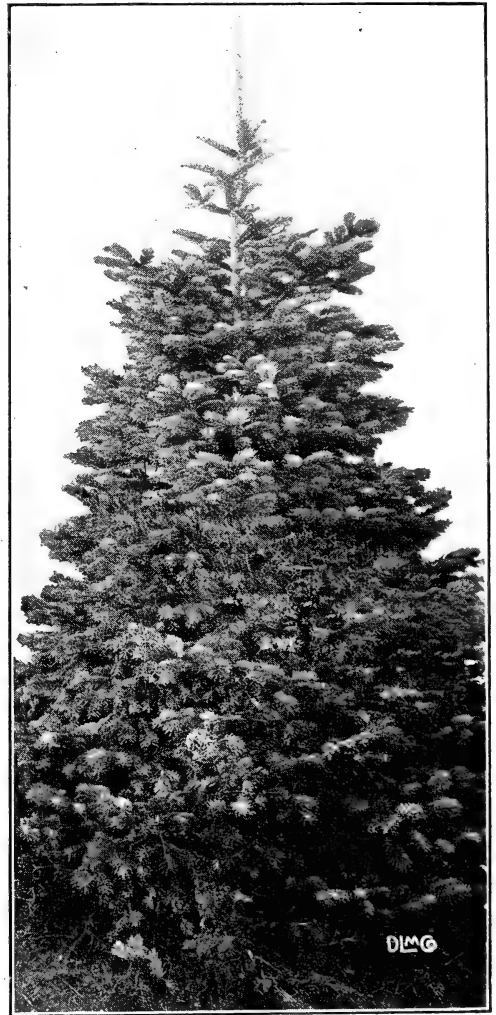
Pine, Austrian. *Pinus Austriaca*. A tall, massive tree, with long, stiff, green needles; splendid for grouping or as a specimen. 3 to 5 feet, 75c. to \$1.50.

Pine, White. *P. Strobus*. Very common and quick-growing Pine; will develop to a handsome large tree in almost any place. 3 to 5 feet, 75c. to \$1.50.

Pine, Dwarf Mountain. *P. Mugbus*. Low and spreading broader than its height; valuable for lawns and terraces, single or in groups. 1 to 1½ feet, 75c. to \$1.50.



Norway Spruce—See page 17



Nordmann's Fir—See page 13

Pine, Scotch. *P. Sylvestris*. Very rapid, strong grower, with spreading branches and bluish green needles; valuable for windbreaks and quick effect. 3 to 5 feet, 75c. to \$1.50.

Pine, Japanese Umbrella. *Sciadopitys verticillata*. A very rare, quite hardy Japanese tree of pyramidal growth. The branches and shoots are terminated by whorls of umbrella-like tufts of bright green, long, glossy needles. 2 to 4 feet, \$3.00 to \$6.00.

Rose, Bay. *Rhododendron maximum*. A native of our woods; quite hardy; splendid for covering banks, for groups or for masses. 2 to 5 feet, \$1.00 to \$2.50.



Rhododendron

EVERGREENS—Continued

Rhododendrons, Hardy Hybrids. Large assortment of the best varieties. $1\frac{1}{2}$ to 3 feet, \$1.50 to \$5.00.

Spruce, Colorado Blue. *Picea pungens*. Resembles, with its bluish green foliage, the Koster True Blue Spruce; is in many instances used in place of the True Blue. It is less expensive and just as hardy. \$2.00 to \$5.00.

Spruce, Koster's True Blue. *P. pungens Kosteriana*. Intense steel blue color makes it one of the finest Evergreens in cultivation; nothing equals it for color effect. \$2.50 to \$10.00.

Spruce, Douglas'. *P. Douglasii*. A splendid and desirable tree for either specimen or groups; foliage delicate green. \$1.00 to \$3.00.

Spruce, Norway. *P. excelsa*. A very familiar tree, generally used for windbreaks and hedges. A rapid grower and handsome if planted singly. 50c. to \$1.50.



Hemlock—See page 14

We guarantee our stock to live if planted by us and reasonable care is accorded them, or we will replace them at one-half the Retail Price.

Every order, whether large or small, receives our personal attention. May we have the opportunity of serving you?

FLOWERING SHRUBS

The shrubs in this class are very easy to grow, as they thrive in almost any soil and require but very little care, except for a little pruning in the Spring to balance and maintain a strong growth. The shrubs we offer are all of good size, strong and well-rooted, 2 to 7 feet high.

Price: Each 35c., larger 50c., extra large 75c., unless otherwise noted. Special quotations given on large quantities.

Almond, Pink-flowering. *Prunus Japonica.* A most handsome shrub. Its beautiful, double, rose colored blossoms in May look like small roses. Very desirable and well known.

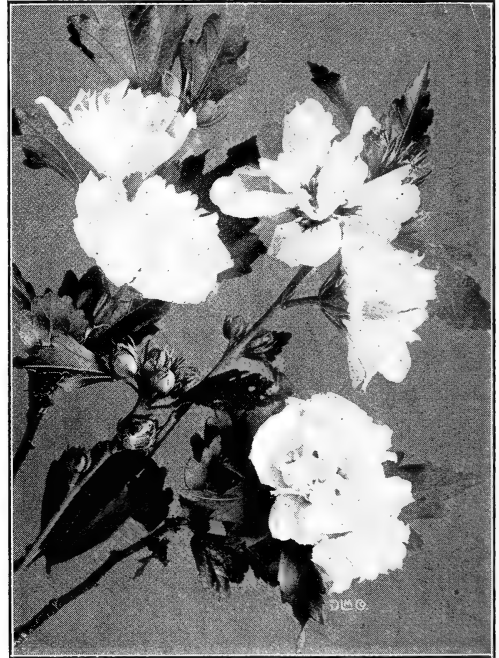
Althaea, or Rose of Sharon. *Hibiscus Syriacus.* A splendid shrub; blossoms freely in late Summer; very much admired. Double white, single white, double red, double pink, red and white, variegated leaf, double purple.

Aralia, or Hercules' Club. *Aralia spinosa.* Prickly, tall-growing shrub; produces white flowers in large terminal heads. Useful for screening when planted in masses.

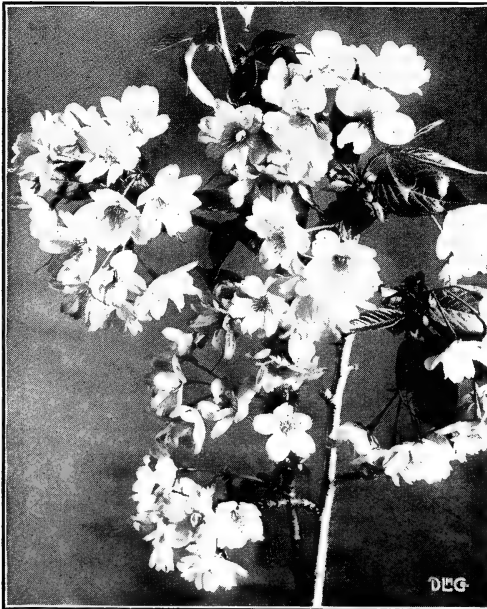
Aralia pentaphylla. A nice, graceful shrub, with glossy leaves and prickly branches. Ornamental in a group and useful for hedges.

Azalea amoena (Hardy Evergreen Azalea). In Spring, for about three weeks, the plant is a mass of claret purple color. \$1.00 to \$2.00.

Azalea mollis Hybrids. Colors ranging from yellow orange to red; a handsome plant. 75c. to \$1.50.



Althaea or Rose of Sharon



Flowering Almond

Apple, Bechtel's Double-flowering Crab. *Malus angustifolia Bechteli.* Its large and double flowers resemble little roses; blush pink; fragrant. 75c. to \$1.25.

Apple, Parkman's Crab. *M. floribunda Parkmani.* Semi-double rose colored flowers, in great profusion; splendid shrub. 75c. to \$1.25.

Berberis Thunbergii (Thunberg's Barberry). A splendid shrub of dense horizontal growth, with fresh, bright red fruit during the whole Winter. Splendid as a single specimen or in groups. Berberis is also very extensively used as hedge plants; will thrive in almost any ground. Price for hedges, 1½ to 2 feet, \$14.00 per 100.

Berberis vulgaris purpurea. A graceful, upright-growing shrub, with violet purple leaves; handsome on a lawn or in groups.

*Deutzia gracilis*

FLOWERING SHRUBS—Continued

Burning Bush (Strawberry Tree). *Euonymus atropurpureus*. A tall-growing shrub; highly ornamental when covered with its showy, brilliant, pendant fruits in the Autumn.

Bush Clover. *Lespedeza*. Splendid, late-blooming shrub, with abundant rose colored flowers; very showy and desirable.

Currant, Flowering. *Ribes aureum*. Has bright yellow, fragrant, showy blossoms in May. An erect-growing shrub with bright Autumn foliage. Much used in shrubberies.

Currant, Indian. A low-growing, graceful shrub; bears long wreath of coral bells; does very well in shade.

Deutzia crenata candidissima (Double White). An upright, tall-growing shrub, with numerous branches; flowers double, pure white, in dense clusters. Splendid shrub.

Deutzia crenata fl. pl. rosea (Double Pink). The same as above, except in color; just as handsome.

Deutzia gracilis (Slender Deutzia). Small shrub, with slender arching branches; bears in early Spring racemes of single pure white blossoms; very showy.

Dogwood, Siberian. *Cornus Sibirica*. A well-known shrub. With its striking, blood red twigs during the Winter months, it makes a splendid shrub for contrast.

Dogwood, Red and White-flowering. See Ornamental Trees.

Dogwood, Silver-margined-leaved Siberian. Handsome, low-growing shrub as a foreground plant.

Elder, Golden-leaved. A handsome variety with golden yellow foliage. A valuable shrub for enlivening shrubbery plantings.

Forsythia Fortunei (Golden Bell). Upright, vigorous-growing shrub; produces its little yellow blossoms profusely in early Spring.

*Berberis Thunbergii*

FLOWERING SHRUBS—Continued

Forsythia intermedia. Most common; slender, erect, with some arching branches.

Forsythia suspensa (Weeping Forsythia). Hardy, delicate, slender and pendant; free blooming.

Hawthorn. *Crataegus.* Hardy and very ornamental; very showy both in flower and fruit. Double white, double pink and scarlet. 50c. to \$1.00.

Honeysuckle, Bush. *Lonicera fragrantissima.* A large shrub, with bright green leaves that seldom fall before Midwinter; flowers creamy white and very fragrant. Ought to be in every garden.

Honeysuckle, Tartarian. *L. Tartarica.* A vigorous shrub, with pink or white flowers; fragrant; blossoms in great profusion in the Spring. Very fine shrub.



Forsythia suspensa



Kerria Japonica

Honeysuckle. *L. Morrowi.* A shrub of graceful habit; dark green foliage; small white flowers and long, lasting, ornamental red fruit in the Fall.

Hydrangea paniculata grandiflora. There is no shrub more showy than this favorite Hydrangea, whose branches bend beneath the large white blossoms. Splendid as a specimen; handsome and valuable in groups.

Hydrangea paniculata grandiflora. Tree-shaped; trained into a tree form. Handsome as single specimen on lawns. 50c. to \$1.00.

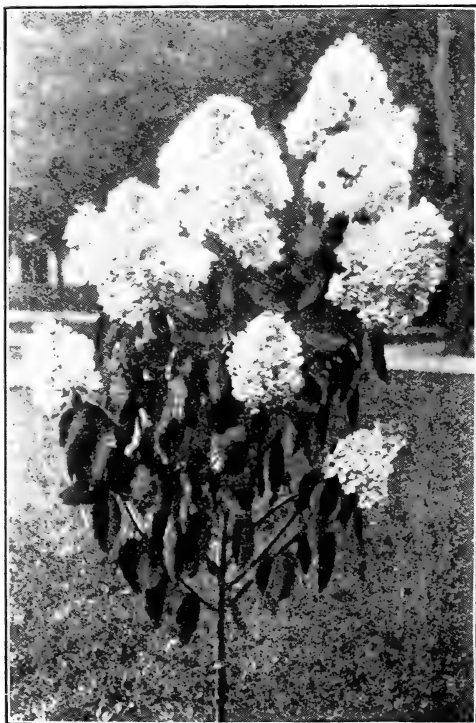
Kerria Japonica. Shrub with bright green, tender branches; very attractive with its single orange yellow flowers in May.

Kerria Japonica, Double-flowering. In appearance the same as the single, but has double rosette-like flowers.

Kerria Japonica variegata. Dwarf-growing; golden variegated foliage. Splendid as a foreground plant.

Kerria, White-flowering. Very handsome shrub, with single, white blossoms through the Summer. Black berries in the Fall.

Lilacs. Common purple, common white, Persian purple, Persian white, double deep red, double pure white, double light blue. The Lilac is a shrub indispensable wherever planting is done; it blooms with a fragrance unsurpassed by other shrubs; flowers abundantly with little care.



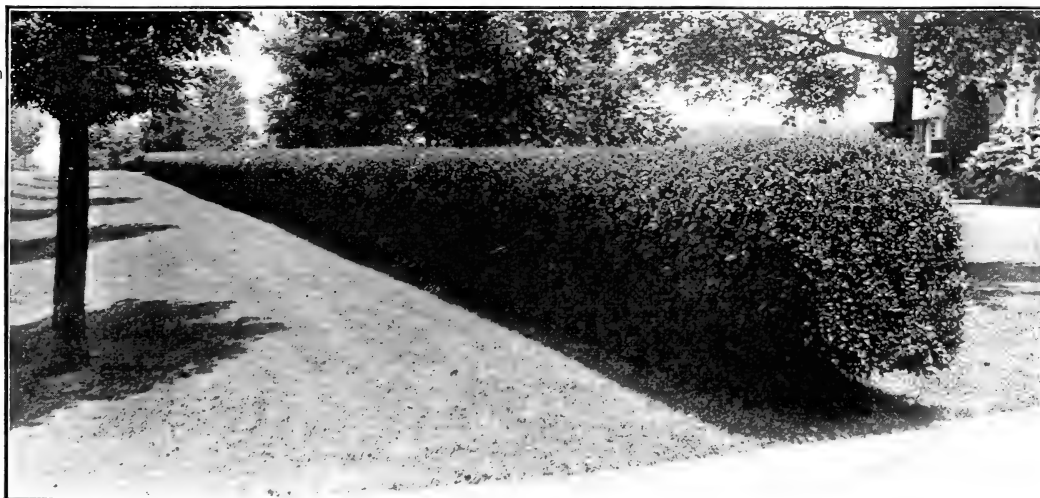
Hydrangea paniculata grandiflora



Bush Honeysuckle

We sell all kinds of Nursery Stock.
We do grading, seeding, planting, etc.

We have had many years of practical
experience in Landscape Gardening
and all kinds of Horticultural Work
in this country as well as abroad.



California Privet—See page 22

FLOWERING SHRUBS—Continued

Privet, California. *Ligustrum ovalifolium*. The well-known and extensively used variety for hedges. Prices for Hedge Grades: 1½ to 2 feet, \$5.00 per 100; \$40.00 per 1000; 2 to 2½ feet, \$6.50 per 100, \$55.00 per 1000; 2½ to 3 feet, \$8.00 per 100, \$70.00 per 1000.

Privet, Japanese. *L. Regelianum*. A horizontal, spreading shrub of low and dense growth; well recommended where California Privet will not grow.

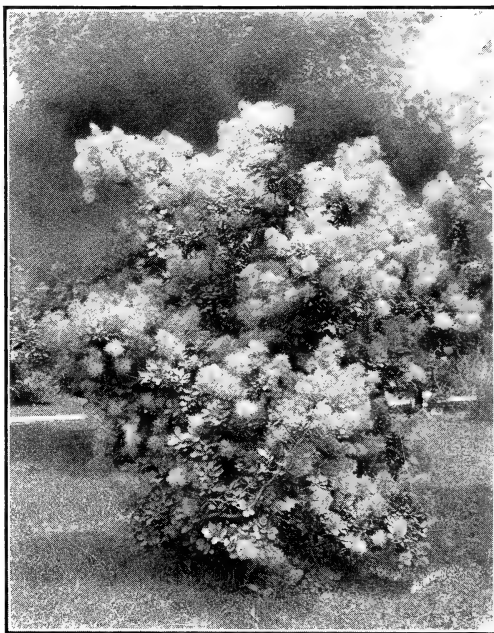
Quince, Japanese Scarlet. *Pyrus Japonica*. In the early Spring has bright scarlet crimson flowers in great profusion. Really one of our best hardy shrubs.

St. John's Wort. *Hypericum*. A low shrub with very nice yellow flowers; it usually continues in bloom from July to October.

Silver Thorn. *Elaeagnus*. Silvery leaves; yellow flowers and a lot of brilliant berries in the Fall. A very valuable shrub in plantings.

Smoke Tree. *Rhus Cotinus*. Favorite old-fashioned shrub. In Midsummer its curious flowers envelop the whole plant in a mist of feathery blooms. The small leaves turn to red and brown in the Autumn.

Snowball. *Viburnum*. A popular old-fashioned shrub; ornamental and useful; also called Bush Cranberry.



Smoke Tree



Japanese Snowball

Snowball, Lantana-leaved. A very robust, strong-growing shrub with heavy, soft leaves and clusters of white flowers in the middle of May, which are followed by red fruit.

Snowball, Japanese. *V. tomentosum plicatum*. One of the best ornamental shrubs, as single specimens or in groups. Bears in May abundant balls of white blooms which have a very nice setting in the deep gray leaves.

Snowball, Japanese Single. *V. tomentosum*. An elegant, dark green-leaved shrub; flowers in flat white clusters, followed by nice red berries. Very valuable for shrubbery borders.

Spiraea Bumalda var. Anthony Waterer. A low-growing shrub, bearing flat heads of brilliant rosy blossoms in the latter part of the Summer. Splendid shrub.

Spiraea prunifolia fl. pl. (Bridal Wreath). Strong-growing shrub, with small leaves, irregular form and abundance of little white blossoms in May.

Spiraea Thunbergii (Japan Small-leaved Spiraea). Medium tall-growing; yellowish green lanceolate foliage; graceful, drooping branches, which are enveloped in a mass of small white blossoms in May. A shrub that cannot be overlooked.

Spiraea Van Houttei. As a single specimen or in groups, this is one of the most satisfactory Spiraeas; makes a graceful bush with arching branches, which during the month of June are profusely covered with beautiful white blossoms.

FLOWERING SHRUBS—Continued

Stephanandra flexuosa. A very attractive shrub, with graceful, pendant branches and deeply cut foliage. Splendid as a foreground plant.

Sumach, Cut-leaved *Rhus glabra laciniata*. A striking plant of medium size, with leaves resembling Ferns, that turn to a rich red in the Fall. Good for shrubbery borders.

Sweet Shrub, or Allspice. *Calicanthus floridus*. A very desirable native shrub, with rich, glossy foliage, fragrant wood, and chocolate colored blossoms that have a most peculiar, agreeable odor.

Snowberry. *Symphoricarpus vulgaris*. A very hardy native shrub, much used for shady places; highly ornamental with its small red flowers in July and its white berries in the Fall.

Syringa (Mock Orange). *Philadelphus coronarius*. The Coronarius is one of the best known Sweet Syringas. The pure white, fragrant flowers in June have made it an old garden favorite. Its hardiness, vigorous growth and beauty combine to make it one of our most useful shrubs.

Syringa, Golden-leaved. *Philadelphus aurea*. A good, medium tall-growing shrub for contrast effect.

Tamarisk, African. *Tamarix Africana*. A beautiful shrub with Juniper-like leaves and delicate small pink flowers in spikes that bloom in May.

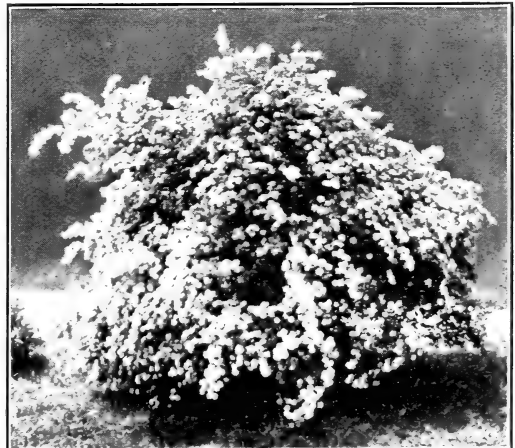


Lilac Bush—See page 20

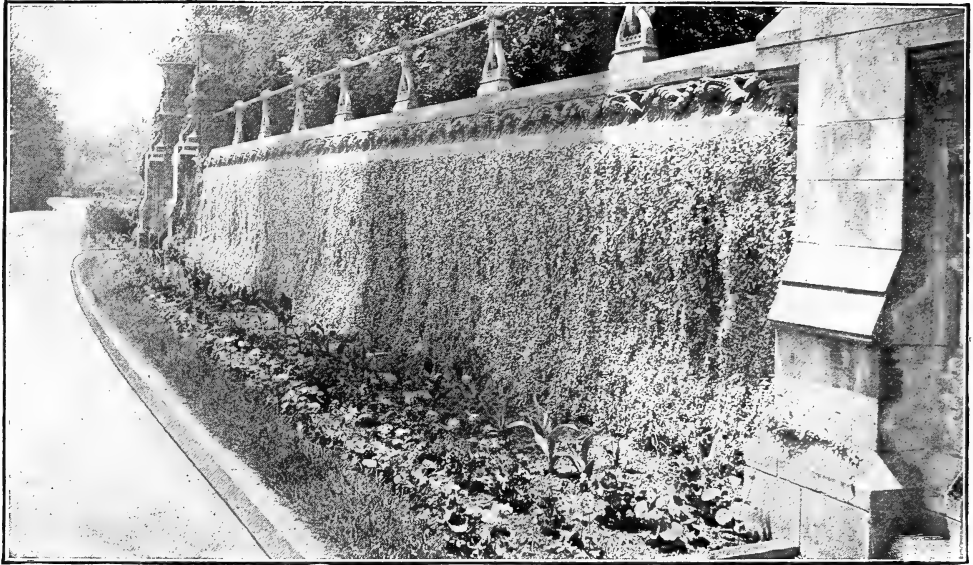
Weigela (Diervilla). A splendid Japan-flowering shrub, symmetrical and drooping; during June and July profusely covered with trumpet-shaped flowers. A very attractive shrub. We have white, red, pink and variegated varieties.



Syringa



Spiraea Van Houttei—See page 22



Wall Covered with Variegated Euonymus

HARDY CLIMBING VINES

Graceful habit and variety of flowers and foliage make Climbing Vines indispensable for covering verandas, terraces, buildings, walls, fences and unsightly objects.

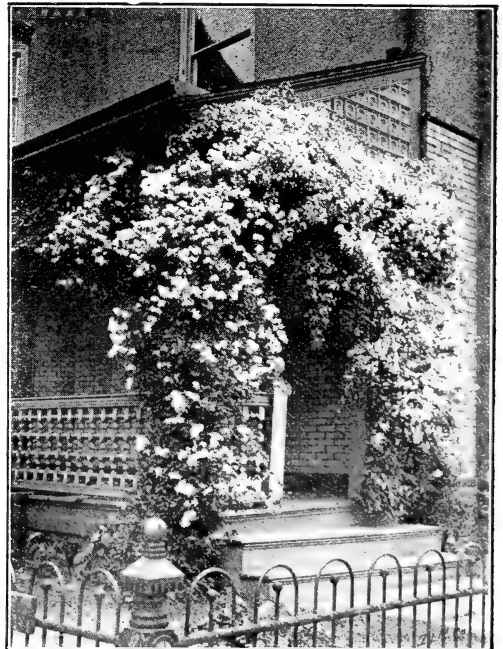
Akebia. A rapid-growing, climbing shrub, with small, handsome foliage, chocolate colored flowers and ornamental fruits. 3 years old, 35c. to 75c.

Boston Ivy. *Ampelopsis Veitchii*. Used very extensively to cover walls; will even grow on wood. Well known and well recommended. 3 years old, 25c. to 50c.

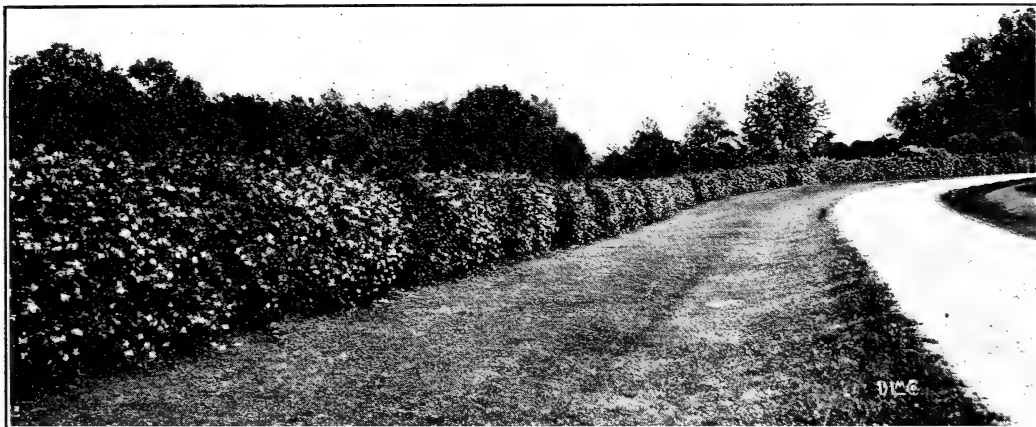
Clematis paniculata (Virgin's Bower). Our most beautiful and effective hardy flowering vine. In great demand for covering porches, trellises, pillars, fences and rockwork. Rapid, strong grower, with light green foliage. The latter part of August and in September a mass of small, star-like flowers cover the whole vine. 3 years old, 25c. to 50c.

Dutchman's Pipe. *Aristolochia Sipho*. A rapid, strong-growing vine, with light green foliage, 8 to 10 inches in diameter. It gives a dense shade and is extensively used on arbors and trellises. 2 to 4 feet long, 50c. to \$1.00.

English Ivy. *Hedera Helix*. A well-known Evergreen vine, with very dark green leaves; fond of shady places. Its immature young shoots are usually Winter-killed, not so much owing to the cold as to the bright Winter suns. Splendid vines for covering. 2 to 4 feet, strong vines, 25c. to 50c.



Clematis paniculata



Hedge of Honeysuckle

HARDY CLIMBING VINES—Continued

Euonymus, Creeping. An Evergreen vine with glossy, small leaves; has a trailing habit and clings to the walls in the same way as the English Ivy. 1 to 2 feet long, 25c. to 50c.

Euonymus, Variegated. A variety of the above, with the same habit and used in the same way. Valued for color contrast. 1 to 2 feet, 25c. to 50c.



White Chinese Wistaria

Euonymus Carrieri. Splendid, hardy, broad-leaved Evergreen vine; large, glossy, dark green foliage. In great demand for covering walls, etc. 1 to 2 feet, 35c. to 50c.

Honeysuckle, Hall's White. *Lonicera Halleana.* A well-known, strong-growing, climbing vine, almost Evergreen. Bears creamy white, fragrant blossoms from July to September. Also splendid for retaining purposes on slopes and banks; withstands shade well and will cover the ground where grass will not grow. 2 to 3 years old, 25c. to 50c.

Honeysuckle, Golden. *L. aurea.* Has the same habit as the above and is used in the same way. A very desirable variety, with golden yellow, variegated leaves. 2 to 3 years old, 25c. to 50c.

Matrimony Vine. *Lycium.* Slender, drooping branches with grayish green leaves, small purplish flowers that continue on the vine from June to September. A very good plant for covering fences and trellises. 2 to 3 years old, 35c. to 50c.

Wistaria, Chinese. A rapid, strong-growing vine from Japan. An elegant climbing plant; bears long, pendulous clusters of pale blue flowers in May. Often grows 20 to 30 feet in one season. 3 years old, 50c. to \$1.00.

Wistaria, White Chinese. Has the same habit as the preceding and is used for nearly the same purpose. Especially pretty when planted with the pale blue Wistaria. 3 years old, 50c. to \$1.00.

Woodbine, or Virginia Creeper. Very rapid grower, with large, green, glossy foliage, turning to a brilliant scarlet in the Fall. An excellent vine for quickly covering fences, walls and trellises. 2 to 3 years old, 25c. to 50c.



ROSES

The following varieties are usually hardy in the open ground if they are slightly covered in the winter. The growth each year should be cut back to two-thirds, and the soil properly enriched, to get the maximum results.

Our splendid collection of Roses are all very strong, 2 to 3 year old, field grown plants, low budded. 35c. each, \$3.50 per doz., unless otherwise noted.

HYBRID PERPETUAL AND HYBRID TEA ROSES

American Beauty. Deep pink, shaded with carmine.

Anna de Diesbach. Carmine, a beautiful shade; fragrant; very large flowers.

Captain Hayward. Bright carmine-crimson; large, vigorous and free blooming.

Clio. Fine, large, globular form; flesh color, shaded towards the center with rosy pink.

Frau Karl Druschki. A most handsome Rose; pure, silvery white.

Kaiserin Augusta Victoria. A delicate creamy-white Rose.

Earl of Dufferin. Brilliant, velvety crimson, shaded with very dark maroon; large, full and well formed; very fragrant.

General Jacqueminot. Brilliant crimson; half full, large and fragrant. Very effective.

Killarney. Flesh, shaded with white and pale pink. A very beautiful and popular Rose.

La France. Delicate, silvery pink; exceedingly fragrant.

Margaret Dickson. White, with pale flesh center; large, magnificent form, shell-shaped and fragrant.

Marshall P. Wilder. Cherry carmine; full and well formed. Resembles Alfred Colomb.

Mrs. John Laing. Soft pink; fine form; fragrant

Mrs. R. G. Sharman-Crawford. Deep rose pink; outer petals shaded with pale flesh, changing to white at base of the petals.

Magna Charta. Bright pink, with carmine; full; globular.

Maman Cochet, White. Pure white, tinged with blush.

Maman Cochet. Rich pearly pink, changing to rose.

Soleil d' Or. Deep bright yellow.



Rose Frau Karl Druschki



Rosa Rugosa

MISCELLANEOUS ROSES

RAMBLERS and CLIMBING ROSES

Baltimore Belle. Pale blush, nearly white.

Crimson Rambler. Bright crimson.

Dorothy Perkins. Clear shell pink.

Multiflora. Single white flowers, showy red fruits.

Memorial Rose. Single, pure white flowers; of a trailing habit.

Tausendschoen. A splendid new climbing Rose; graceful in form, with elegant soft pink semi-double blooms, changing to carmine when fully developed; flowers in large trusses about 12 inches in diameter. Strong plants, 50c. each.

Baby Rambler. Low-growing bush with crimson flowers. A constant bloomer during the Summer and Fall. We also have the Baby Ramblers in white and pink. All strong, field-grown plants.

Rosa Rugosa. A lovely Rose with single, glossy, crimson, fragrant blossoms.

Rosa Rugosa alba. Same as above, but pure white.

STANDARD or TREE SHAPE ROSES

In choice varieties, 3½ to 5 feet high, 75c. to \$1.00 each.



Rambler Rose

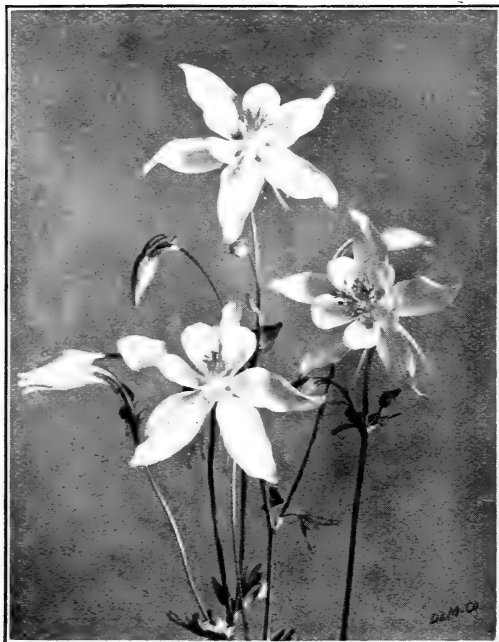


HARDY HERBACEOUS PLANTS

Hardy Herbaceous Plants comprise such plants as may be allowed to stay outside in the open ground permanently, that die down to the ground every Fall, and come up again with increased vigor in the following Spring. They give attractive results in hardy flowering border or in formal gardens. Our splendid collection will afford great pleasure to all garden lovers. We sell only strong, well-grown plants.

Price: 20c. each, \$2.00 per doz., \$15.00 per 100.

- Achillea millefolium rubrum** (Red Yarrow). Handsome fern-like foliage, flat corymbs of bright red flowers.
- Achillea Ptarmica** (The Pearl, or White Yarrow). Dense clusters of double pure white blossoms.
- Aconitum autumnale** (Monkshood). Very showy deep blue flowers. June to July. 3 feet.
- Aconitum Napellus**. Pale blue flowers; the best of the Monkshoods. June to July. 3 feet.
- Aegopodium podagraria variegata** (Goutweed). A variegated foliage plant; good for covering bare and waste grounds. 8 inches to 12 inches.
- Alyssum saxatile compacta** (Gold Dust). Bright yellow flowers, in broad, flat heads, with silvery foliage. April to May. 12 inches.
- Anemone** (Windflower). Large, pure white, semi-double, flowering. June to September. 12 inches to 18 inches.
- Anthemis Kelwayi** (Marguerite). Deep yellow, large flowers. Whole Summer. 1½ feet.
- Arabis albida** (Rock Cress). White flowering, dwarf plant; forms a dense carpet. April to May. 12 inches.
- Aquilegia coerulea** (Columbine). Violet-blue flowers, with white petals. April to July. 1 foot.

*Aquilegia coerulea*

HARDY HERBACEOUS PLANTS—Continued

Aquilegia vulgaris alba. Large, pure white flowers. May to June. 2 feet.

Asclepias tuberosa (Silkweed). Large, brilliant colored flowers of showy appearance. June to July. 2 feet.

Aster Tataricus. Late blooming variety, with splendid blue flowers. October. 2 feet.

Bocconia cordata (Plume Poppy). Tall grower, broad and glaucous foliage; panicles of creamy white flowers. August to September. 6 feet.

Boltonia latisquama (False Chamomile). Beautiful pink, starry flowers. August to September. 4 feet.

Campanula media fl. pl. (Canterbury Bell). Gorgeous spikes of bell-shaped flowers in three colors: blue, white and rose. July. 2 to 3 feet.

Campanula persicifolia. Large, deep blue flowers. July to August. 1½ feet.

Campanula persicifolia alba. Large, white flowers. July to August. 1½ feet.

Campanula rotundifolia (Bells of Scotland). Small, blue flowers; pretty. June to August. 1 foot.

Cerastium tomentosum (Silver Chickweed). White flowers; silvery foliage; good for edging. June to July. 6 inches to 8 inches.

Chrysanthemum Hardy Pompon in Varieties. Late; prolific bloomers. October to November. 2 feet. White, pink, yellow, rose, bronze, maroon.

Chrysanthemum Leucanthemum (Shasta Daisy). Extremely large, white flowers on stiff, wiry stems. June to July. 2 feet.

Convallaria majalis (Lily of the Valley). White. May. 6 inches.

Coreopsis lanceolata (Tickseed). Showy and valuable, with its deep, golden yellow flowers on long stems. May to June. 2½ feet.

Delphinium elatum (Larkspur). Handsome spikes of bright blue flowers. June to August. 3½ feet.

Delphinium formosum. Azure blue flowers, with white center. June to July. 2½ feet.

Dianthus barbatus (Sweet William). Well-known and popular; comes in various colors. June. 1½ feet.

Dianthus plumarius (Hardy Garden Pink). A fragrant, double white flowering plant. June. 10 inches.

Dianthus (Napoleon III). Double, blood crimson brilliant flowers. June. 1½ feet.

Dicentra spectabilis (Bleeding Heart). Heart-shaped pink flowers; well known. July. 2 feet.

Dictamnus fraxinella (Gas Plant). White and red; popular fragrant plant. July. 2 feet.

*Campanula persicifolia alba*



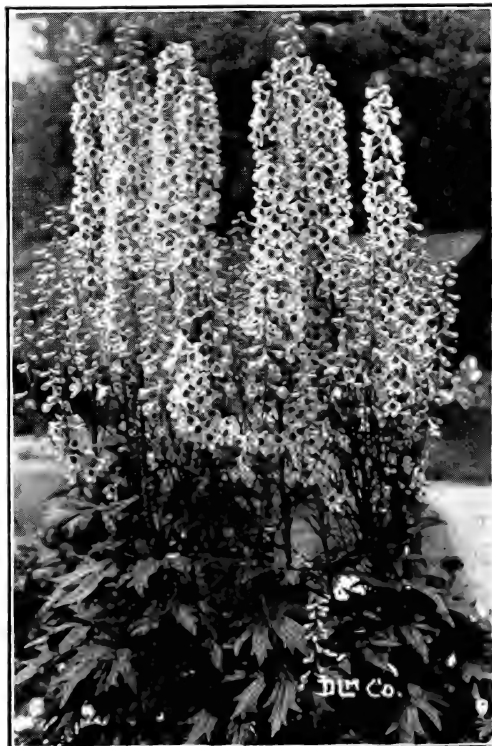
Coreopsis lanceolata—See page 29



Dicentra spectabilis—See page 29



Dianthus barbatus—See page 29



Delphinium—See page 29

*Digitalis purpurea gloxinioides*

HARDY HERBACEOUS PLANTS—Continued

Digitalis purpurea gloxinioides (Foxglove). Vigorous habit; long racemes of large spotted flowers in shades of rose and white. June to September. 2½ feet.

Gaillardia grandiflora (Blanket Flower). Gorgeous coloring of dark reddish brown, with variously marked orange and crimson. June to October. 1½ feet.

Geum Heldreichii. Showy, bright orange colored flowers. June to October. 1½ feet.

Gypsophila paniculata (Baby's Breath). Small, pure white flowers, giving a gauze-like appearance. August to September. 2 feet.

Grass, Ornamental (*Eulalia variegata*). Long, narrow green leaves striped, with white and feathery plumes. 7 feet.

Helenium autumnale superba (Sneezewort). Golden yellow flowers; large. September to October. 6 feet.

Helenium grandicephalum rubrum. Low-growing reddish copper yellow flower. September. 2 feet.

Helianthus multiflora fl. pl. (Sunflower). Double, deep yellow flowers in great profusion on wiry stems. July to August. 5 feet.

Helianthus orgyalis. Single yellow flowers on graceful, bending stalks. September to October. 7 feet.

Hemerocallis flava (Lemon Lily). Fragrant, pale, lemon yellow flowers. July to August. 2 feet.

Hemerocallis Kwanso (Double Orange Lily). Copper shaded. August to September. 2½ feet.

Helleborus niger (Christmas Rose). Almost white. October to November. 8 inches. 40c. each.

Hibiscus Moscheutos (Marshmallow). White, rose or crimson eye; handsome foliage; large flowers; splendid; grows like Hollyhocks. July to September. 5 feet.

*Gaillardia grandiflora*

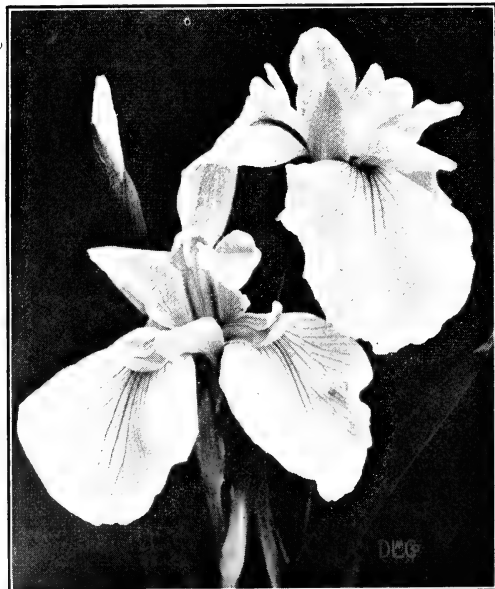


German Iris

HARDY HARBACEOUS PLANTS—Continued

Hollyhock (*Althaea*). Well-known favorite; double crimson, white, red and yellow. July to September. 3 feet.

Heuchera sanguinea (Coral Bells). Has spikes loaded with bright, coral red flowers, and a compact tuft of foliage. July to August. 2 feet.



Japan Iris

Iberis sempervirens (Hardy Candytuft). Dwarf plants; evergreen foliage; pure white flowers. April to May. 6 inches.

Iris, German (*Fleur de Lis*). Popular plant; embraces a variety of colors, and innumerable tints of yellow, white and blue; blossoms late in May and June.

Six good varieties:

Auriole. Yellow penciled; velvety purple.

Canary Bird. Clear yellow.

Mme. Chereau. Light blue, penciled dark blue.

Pond-Point. Deep blue.

Queen of Gypsies. Chocolate brown, mixed with bluish yellow.

Silver King. Pale blue, turning to a silvery white; one of the earliest to blossom.

Many other good varieties.

Iris, Japan. When the German Iris is just over, the Japan Iris begins to bloom—the latter part of June to July. The flowers are just as delicately colored, larger and more brilliant. Both are needed for continuous effect.

Six good varieties:

Blue Jay. Light azure blue, with yellow.

Francella. White, with deep rose at margins.

Oshokum. Rich deep blue.

Pyramid. Light blue.

Purity. Waxy white.

Snow Bound. Pure white.

Many other good varieties.



Hollyhocks

HARDY HERBACEOUS PLANTS—Continued

Liatis pycnostachya (Kansas Gay Feather). Rosy purple flowers on long spikes. September. 3 feet.

Linum perenne (Flax). Flowers pale blue on terminals. May to July. 1½ feet.

Lychnis viscaria splendens fl. pl. (Campion). Bright double crimson flowers on erect stems. June to July. 1 foot.

Monarda didyma (Horse Mint). Bright red flowers in rich profusion. July to August. 2 feet.

Myosotis Nixenauge (Forget-Me-Not). Popular; splendid variety. April to June. 8 inches.

Oenothera serrulata (Evening Primrose). Showy, clear yellow flowers. May to June. 1 foot.

Papaver orientale (Oriental Poppy). Showy, brilliant scarlet; large. June to July. 2½ feet.

Peonies, Herbaceous. Old garden favorites, too well known to need description. June. 3 feet. 35c. to 75c. each, \$3.50 to \$7.50 per doz.

Six good varieties:

Festiva maxima. The purest white.

Francois Ortegal. Deep, rich purple.

Humei rosea. Beautiful pink.

Officinalis fl. pl. Early double pink; an old favorite.

Mme. Crousse. Pure white, edged with carmine.

Golden Harvest. Nearest to yellow; splendid. Many other good varieties.



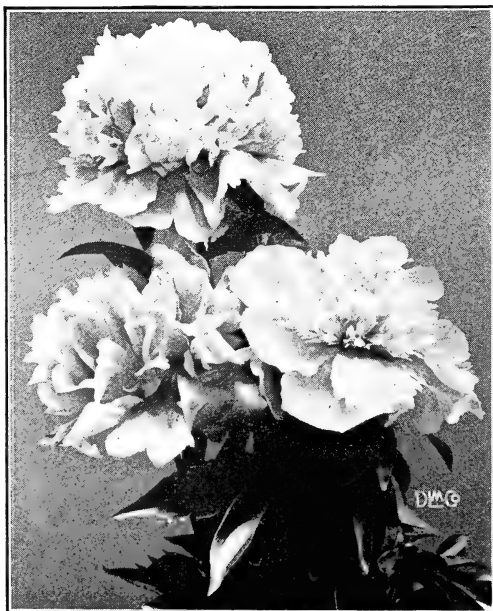
Liatis



Papaver orientale—See page 33



Phlox



Herbaceous Peonies—See page 33



Peony Festiva maxima—See page 33

*Phlox subulata*

HARDY HERBACEOUS PLANTS—Continued

Phlox amoena (Dwarf Phlox). Dense heads of bright pink flowers. April to May. $\frac{1}{2}$ foot.

Phlox suffruticosa (Miss Lingard). Early, large-growing; immense trusses of pure white flowers, with pale pink center.

Phlox subulata (Moss Pink). White and red; moss-like evergreen leaves; while in bloom a solid mass of flowers. April to May. 6 inches.

Phlox decussata. Hardy, tall-growing Phlox; showiest and most valuable plant. July to October. 2 feet.

Six good varieties:

Bouquet Fleuri. White with crimson center.

Caran d'Ache. Rosy carmine.

Coquelicot. Fiery red.

Independence. Pure white.

Isaby. Fiery salmon red.

Placida. Rosy lilac.

Many other good varieties.

Physostegia Virginica alba (False Dragon Head). Dense spikes, with beautiful pink flowers. June to August. 2 feet.

Platycodon grandiflora (Bell Flower). Handsome, bell-shaped star-like flowers. July to September. 2 feet.

Polemonium coeruleum (Jacob's Ladder). Fern-like foliage; flowers blue, on spikes. June. 2 feet.

Polemonium reptans. Lower growing, but otherwise just like the preceding; very showy. May to June. 1 foot.

Pyrethrum roseum fl. pl. (Feverfew). Fern-like foliage; very handsome, with its double white, pink, red and purple flowers, resembling the Aster or Chrysanthemum. June. 2 feet.

*Platycodon grandiflora*

HARDY HERBACEOUS PLANTS—Continued

Ranunculus fl. pl. (Buttercup). Double, golden yellow. May to June. 2 feet.

Rudbeckia (Golden Glow). Well known. July to September. 6 feet.

Spiraea Chinensis (Meadowsweet). Handsome leaves; pretty pink flowers. June to July. 2 to 3 feet.

Spiraea Japonica. Same as preceding, only white. June to July. 2 feet.

Statice latifolia (Sea Lavender). Forms an immense head of small, bright blue flowers. August. 1½ feet.

Stokesia cyanea (Stokes' Aster). Strikingly handsome, large, blue flowers. June to September. 1½ feet.

Tritoma Uvaria grandiflora (Red-Hot Poker. Also called Torch Lily). Rich, crimson flower, shading to orange. September to November. 3 feet.

Trollius Caucasicus (Globe Flower). Large, globular, deep orange-colored flowers. May to June. 2 feet.

Veronica longifolia subsessilis (Speedwell). Has spikes of deep blue in the Fall. July to September. 1½ feet.

Viola odorata fl. pl. (Sweet Double English Violet). ½ May. 6 inches.

Viola cornuta (Hardy Violet). Blue, white and yellow, pansy-like Violets. May. 6 inches.



Stokesia cyanea

Viola tricolor (Garden Pansy). May to June. 6 inches. 4c. each, 40c. per doz.

Yucca filamentosa (Adam's Needle). Sword-like evergreen foliage and tall branching spikes, with panicles of bell-shaped, creamy white flowers. July to August. 4 to 6 feet.





FRUIT DEPARTMENT

There are many varieties of fruits that are not mentioned here. We have listed only a few of such varieties as are well recommended for the State of Connecticut by the United States Department of Agriculture.

APPLES

Clean, strong and healthy; 5 to 6 feet; $\frac{3}{4}$ to 1-inch caliber. 50c. each, \$5.00 per doz.

Summer Varieties

Early Harvest. Large; pale yellow; sweet; good bearers; very productive.

Red Astrachan. Large; deep crimson; juicy, acid flavor; productive.

Yellow Transparent. Pale yellow; flesh tender; juicy; sub-acid; pleasant.

Fall Varieties

Gravenstein. Large; red striped; first quality; very productive.

Maiden's Blush. Large; pale yellow with red cheeks; splendid; good bearer.

Snow Apple, or Fameuse. Deep crimson; flesh snowy white, tender, melting and delicious.

Winter Varieties

Baldwin. Large; bright red; juicy; productive.

McIntosh Red. Roundish, large, covered with bright red; white flesh, sub-acid, tender.

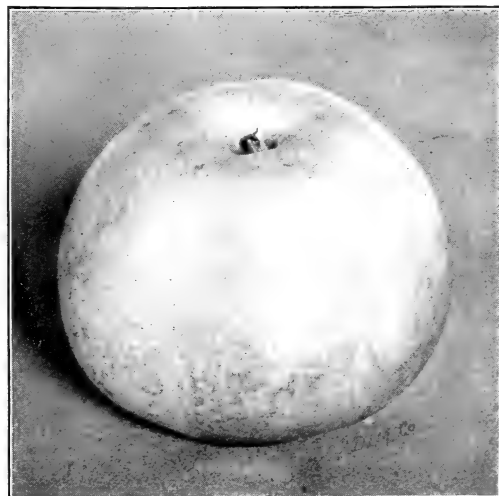
Northern Spy. Large; striped, covered with dark crimson; juicy, high flavor; good bearer.

Rhode Island Greening. Large, light greenish yellow, firm and rich; good flavor; excellent bearer.

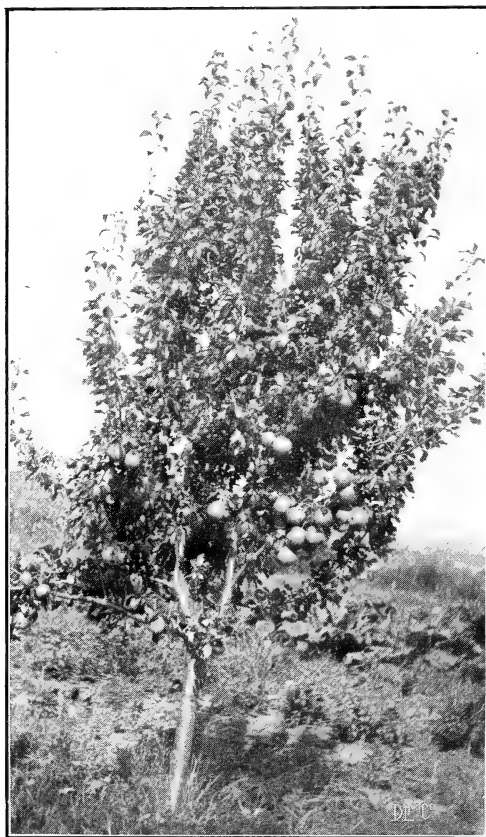
CRAB APPLE

Clean, strong and healthy; 5 to 6 feet, 50c. each, \$5.00 per doz.

Transcendent. Large; yellow and red; showy; very productive.



Red Astrachan Apple



Clapp's Favorite Pear

PEARS

Clean, strong and healthy; 5 to 6 feet, $\frac{3}{4}$ to 1 inch caliber, 55c. each, \$5.50 per doz.

Summer Varieties

Bartlett. Large; yellow skin; buttery, juicy and high flavored; great bearer.

Clapp's Favorite. Resembles Bartlett, but ripens earlier; productive.

Fall Varieties

Duchesse d'Angouleme. Very large; dull yellow; buttery; juicy; excellent; productive.

Flemish Beauty. Large, beautiful, melting, sweet Pear; very hardy and fruitful.

Seckel. Small, excellent Pear, of highest flavor.

Sheldon. Large, round, of fine quality; russet and red; melting and delicious.

Kieffer's Hybrid. Large; showy; rich yellow color, tinged with red; great yielder. Very good for canning purposes.

Winter Varieties

Clairgeau. Very large; yellow and red, with yellowish melting flesh.

Beurre d'Anjou. Large, yellowish, sprinkled with russet; fine grained; buttery, melting; excellent.

Lawrence. Light yellow, sprinkled with dots; buttery, rich, aromatic; reliable and productive.

CHERRIES

Clean, strong and healthy; 5 to 6 feet, $\frac{3}{4}$ to 1-inch caliber, 55c. each, \$5.50 per doz.

Sweet

Black Tartarian. Large; dark red; splendid flavor.

Gov. Wood. Large; white with red; delicious.

Napoleon Bigarreau. A splendid Cherry of the largest size; pale yellow, with bright red cheek; very firm, juicy and sweet.

Tart

Early Richmond. Rich acid flavor; very productive; highly prized.

Early May Duke. Red fruit; slightly acid, juicy and rich; very valuable.

PEACHES

Strong, healthy and clean; 5 to 6 feet, 35c. each, \$3.50 per doz.

Champion. Large; sweet; juicy; ripening very early; creamy white with red cheek; productive; good.

Crawford's Early. Large; yellow with red cheek; yellow flesh; juicy; excellent.

Crawford's Late. Large; yellow, with red cheek; yellow flesh; excellent; free stone.

Elberta. Large; yellow with red cheek; juicy; high flavor; flesh yellow; prolific; excellent; free stone.

Chair's Choice. Yellow; free stone; rich color; good flavor; productive.

Stump the World. Large; free stone; white with red cheek; firm and juicy; excellent.

PLUMS

Strong, healthy and clean; 5 to 6 feet, 50c. each, \$5.00 per doz.

German Prune. Large; oblong; purple; juicy and rich; very productive. September.

Abundance. Large, showy and beautiful; amber color; flesh light yellow; juicy; tender and sweet. Early.

Red June. Vigorous; good quality. August.

Lombard. Rather medium size; oval; violet red; flesh yellow; juicy and pleasant.

Burbank. Beautiful; large; clear cherry red. An abundant bearer.

October Purple. A very large Plum; purple; splendid quality.

QUINCES

Strong, healthy and clean; 3 to 4 feet, 40c. each, \$4.00 per doz.

Champion. Good bearer; fruit larger than the Orange; just as fine and good keeper.

Orange. Large; bright golden fruit; productive; good keeper.

GRAPES

Strong, healthy and clean; strong plants. 25c. to 50c. each; \$2.50 to \$5.00 per doz.

Concord (Black). Very popular variety; bunches and berries large; juicy; excellent; early.

Niagara (White). Also very popular. Large bunches and berries; very good quality.

Diamond (White). Large, compact bunches; berries of medium size; very good and early.

Worden (Black). Handsome, compact, large berries and bunches; ripens early; superior flavor.

Brighton (Red). Rich, sweet flesh; large, coppery red berries; best quality.

Catawba (Red). Resembles in every respect the Brighton, but it does not ripen as early. One of the finest of our red Grapes.

BLACKBERRIES

80c. per doz., \$4.00 per 100.

Snyder. Hardy and very productive; the very best medium berry; no hard core; canes not very thorny.

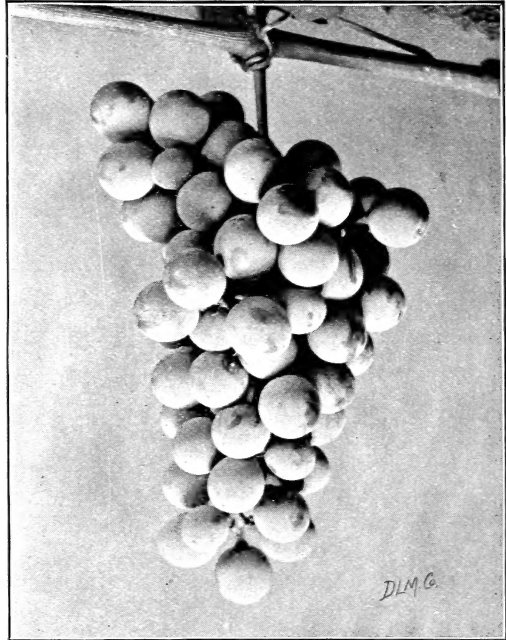
CURRANTS

25c. each, \$2.50 per doz.

Fay's Prolific. Fruit large, red and handsome; very productive.



Gooseberries



Grapes

GOOSEBERRIES

25c. each, \$2.50 per doz.

Red Jacket (Jocelin). Very fruitful and desirable; splendid bearer; very vigorous.

RASPBERRIES

80c. per doz., \$4.00 per 100

Cuthbert. Strong; very hardy variety; berries large; crimson; excellent flavor. The best in the market.

Columbian. Very large; splendid; purple; strong and productive.

STRAWBERRIES

Best standard varieties of Strawberries, \$1.00 per 100 plants.

ASPARAGUS

\$2.00 per 100

Barr's Mammoth. Large and productive; very tender; splendid market sort.

RHUBARB

25c. to 35c. per clump

Linnaeus. One of our best large stalks; very tender, juicy and early.

Garden Herbs and Roots at popular prices.

Beaver Hills Lawn Grass Mixture. For sunny and shady places. A combination of various best grades of grasses which will produce a perfect, enduring lawn. 30c. per lb., \$25.00 per 100 lbs.

INDEX

	Page		Page		Page		Page
Abies	13	Cornus	7, 19	Jacob's Ladder	35	Quercus	10
Acer	9	Corylus	7	Judas Tree	9	Quince, Flowering	22
Achillea	28	Crataegus	11, 20	Juglans	11	Quinces	39
Aconitum	28	Currant, Flowering	19	Juniper	14	Ranunculus	36
Adam's Needle	36	Currants	39	Kalmia	16	Raspberries	39
Aegopodium	28	Cypress	12, 13	Kansas Gay Feather	33	Red-Hot Poker	36
Aesculus	7	Daisy, Shasta	29	Kerria	20	Retinispora	12, 13
Akebia	24	Daphne	13	Laburnum	7	Rhododendrons	16, 17
Allspice	23	Delphinium	29	Larch	9	Rhubarb	39
Almond	18	Deutzia	19	Larix	9	Rhus	22, 23
Althaea	18, 32	Dianthus	29	Larkspur	29	Ribes	19
Alyssum	28	Dicentra	29	Laurel	16	Rock Cress	28
Ampelopsis	24	Dictamnus	29	Laurus	12	Rose, Bay	16
Anemone	28	Digitalis	31	Lemon Lily	31	Roses	26, 27
Anthemis	28	Dogwood	7, 19	Lespedeza	19	Rudbeckia	36
Apple, Flowering		Dragonhead, False	35	Liatris	33	St. John's Wort	22
Crab	7, 18	Dutchman's Pipe	24	Lilac	20	Salix	11
Apples	37	Elaeagnus	22	Lily of the Valley	29	Sea Lavender	36
Aquilegia	28, 29	Elder	19	Linden	9	Silkweed	29
Arabis	28	Elm	7	Linum	33	Silver Thorn	22
Aralia	18	Eulalia	31	Lonicera	25	Smoke Tree	22
Arborvitae	12	Euonymous	13, 19, 25	Lychnis	33	Sneezewort	31
Aristolochia	24	Fagus	5	Lycium	25	Snowball	22
Asclepias	29	Feverfew	35	Magnolia	9	Snowberry	23
Ash	5	Filbert	7	Mahonia	16	Sorbus	5
Asparagus	39	Fir	13	Malus	7, 18	Speedwell	36
Aster	26	Flax	33	Maple	9	Spiraea	22, 36
Aster, Stokes'	39	Forget-me-not	33	Marguerite	28	Spruce	17
Azalea	12, 18	Forsythia	19, 20	Marshmallow	31	Statice	36
Baby's Breath	31	Foxglove	31	Matrimony Vine	25	Stephanandra	23
Bay Tree	12	Fraxinus	5	Meadowsweet	36	Stokea	36
Beech	5	Fraxinus, White	7	Mock Orange	23	Strawberries	39
Bell Flower	35	Gaillardia	31	Monarda	33	Strawberry Tree	19
Bells of Scotland	29	Gas Plant	29	Monkshood	28	Sumach	23
Berberis	18	Geum	31	Morus	10	Sunflower	31
Betula	5	Globe Flower	36	Mulberry	10	Sweet Shrub	23
Biota	12	Gold Dust	28	Myosotis	33	Sweet William	29
Birch	5	Golden Bell	19, 20	Oak	10	Symphoricarpos	23
Blackberries	39	Golden Chain	7	Oenothera	33	Syringa	23
Blanket Flower	31	Golden Glow	36	Orange Lily	31	Tamarisk	23
Bleeding Heart	29	Gooseberries	39	Pansy, Garden	36	Tamarix	23
Bocconia	29	Goutweed	28	Papaver	33	Thorn	11
Boltonia	29	Grapes	39	Peaches	38	Thuja	12
Boxwood	12	Grass Mixture	39	Pears	38	Tickseed	29
Burning Bush	19	Grass, Ornamental	31	Peonies	33	Tilia	9
Buttercup	36	Gypsophila	31	Philadelphus	23	Tritoma	36
Buxus	12	Hawthorn	11, 20	Phlox	35	Trollius	36
Calycanthus	23	Hazelnut	7	Physostegia	35	Tsuga	14
Campanula	29	Hedera	24	Picea	17	Ulmus	7
Campion	33	Helenium	31	Pine	16	Veronica	36
Candytuft	32	Helianthus	31	Pink	29	Viburnum	22
Canterbury Bells	29	Helleborus	31	Pinus	16	Viola	36
Catalpa	5	Hemerocallis	31	Plane Tree	10	Violet	36
Cerastium	29	Hemlock	14	Platanus	10	Virginia Creeper	25
Cerasus	7	Hercules' Club	18	Platycodon	35	Virgin's Bower	24
Cercis	9	Heuchera	32	Plum, Flowering	11	Walnut	11
Chamomile	29	Hibiscus	18, 31	Plums	38	Weigela	23
Cherry, Flowering	7	Hollyhock	32	Polemonium	35	Willow	11
Cherries	38	Honeysuckle	20, 25	Poplar	11	Windflower	28
Chestnut	7	Horse Mint	33	Poppy, Plume	29	Wistaria	25
Chickweed, Silver	29	Hydrangea	20	Poppy	33	Woodbine	25
Chionanthus	7	Hypericum	22	Populus	11	Yarrow	28
Christmas Rose	31	Iberis	32	Primrose, Evening	33	Yucca	36
Chrysanthemum	29	Iris	32	Privet	22		
Clematis	24	Ivy, Boston	24	Prunus	11, 18		
Clover, Bush	19	Ivy, English	24	Pyrethrum	35		
Columbine	28, 29			Pyrus	22		
Convallaria	29						
Coral Bells	32						
Coreopsis	29						

