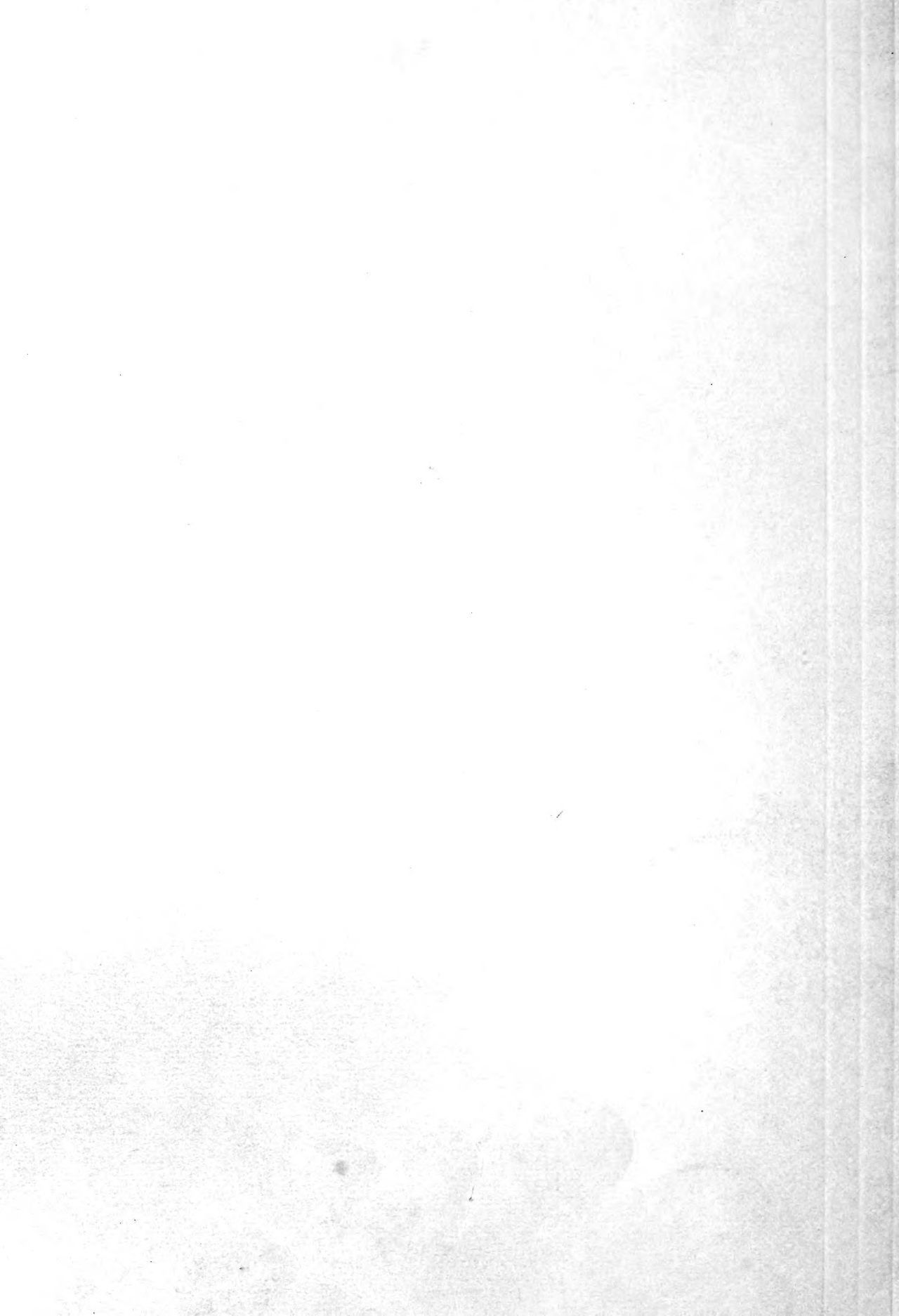


Historic, Archive Document

Do not assume content reflects current scientific knowledge, policies, or practices.



6213

Wholesale Trade List 1912

ROSES

CARNATIONS

CHRYSANTHEMUMS

LIBRARY,
U. S. Department of Agriculture,
Washington, D. C.



W. PIERCE
CRO
DAIRY

“ There is an honor in business that is the fine gold of it; that reckons with every man justly; that loves light; that regards kindness and fairness more highly than goods or prices or profits. It becomes a man more than his furnishings or his house. It speaks for him in the heart of everyone. His friendships are serene and secure. His strength is like a young tree by a river.”



THIS List cancels all previous quotations.

All orders will receive the best care and attention.

Orders sent by mail should enclose full shipping directions.

All claims of whatsoever nature must be reported on receipt of goods, otherwise they will not be considered.

Orders will be filled strictly in rotation.

Visitors are always welcome to inspect our stock.

Shipments by freight are solely at purchaser's risk.

We deliver to the Express Companies in A No. 1 condition. These companies are responsible for damage in transit.

Customers should give, **on every order**, full name, post-office, freight or express station, County and State, and also advise whether goods are wanted by express or freight.

TERMS

Customers who have not established a credit must send cash with order, on which a discount of two per cent. will be allowed.

To customers of approved credit, when payment is made within ten days from the date of the invoice, a discount of two per cent. will be allowed on plants or cuttings, but this rule does not apply to customers carrying open accounts.

We will send goods C. O. D. only when cash to the amount of half the value of the shipment accompanies the order.

To aid in avoiding misunderstandings, customers, in ordering, will observe the following rules:

Orders for three or more plants of a variety will be charged at the dozen rate.

Orders for 25 or more plants of a variety will be charged at the 100 rate.

Orders for 250 or more plants of a variety will be charged at the 1000 rate.

These rules apply unless exceptions are made in this catalogue.

NON-WARRANTY

We aim to give the best possible service and to ship stock that will be up to our high standard of excellence. We endeavor to keep varieties true to name but do not guarantee in any way, express or implied, the success of the grower purchasing stock.



Double White Killarney

DOUBLE WHITE KILLARNEY

(Budlong)

In offering this new Rose we believe we are disseminating the best new Rose that has ever been offered, the introduction of Killarney and White Killarney being the stepping stone by which Double White Killarney has been made possible, as it is a sport from the Waban strain of White Killarney, and the name is fully descriptive of the variety. In petalage it is perfectly double, and in color pure white. The bud is long, and well formed. As this variety is strong in the points wherein its parent is weak, coming free from the tinge of pink in warm weather, and with excellent size and substance in Midsummer, its introduction will mean good Roses during the Summer, and extra fine quality during the rest of the year. In habit it is stronger than its parent, and fully as free. The foliage in general characteristics is the same, but is larger and deeper in color. A Rose that no commercial Rose grower can afford to miss, and no collection should be without Double White Killarney. It reigns supreme as the most valuable forcing white Rose ever offered.

PRICES

| Grafted Plants | | Own Root Plants | |
|----------------|---------|-----------------|--------|
| Each | \$0.75 | Each | \$0.75 |
| 12 | 7.50 | 12 | 6.00 |
| 25 | 12.50 | 25 | 10.00 |
| 50 | 18.00 | 50 | 16.00 |
| 100 | 30.00 | 100 | 25.00 |
| 250 | 70.00 | 250 | 60.00 |
| 1000 | 250.00 | 1000 | 200.00 |
| 2500 | 600.00 | | |
| 5000 | 1100.00 | | |

No special prices on larger quantities than 1000 on their own roots.

KILLARNEY QUEEN

(Budlong)

A cerise pink sport of Killarney that for clearness and brightness of color has not been equalled. Exceptionally strong in growth, with foliage that is perfect, being larger than Killarney and more glossy. In size of petals Killarney Queen is larger than its parent, and for high-grade bloom it is a very superior variety. (See illustration, front cover.) Killarney Queen stands in a class by itself as the grandest Rose that has ever been offered. From the standpoint of production it is nearly the equal of Killarney, and individual plants have carried at one time six blooms of exhibition quality with three foot stems on single growths.

We are giving Killarney Queen the front cover of our catalogue, and believe it worthy of first consideration by the Rose lovers of the country.

PRICES

| Grafted Plants | | Own Root Plants | |
|----------------|---------|-----------------|--------|
| Each | \$0.75 | Each | \$0.75 |
| 12 | 7.50 | 12 | 6.00 |
| 25 | 12.50 | 25 | 10.00 |
| 50 | 18.00 | 50 | 16.00 |
| 100 | 30.00 | 100 | 25.00 |
| 250 | 70.00 | 250 | 60.00 |
| 1000 | 250.00 | 1000 | 200.00 |
| 2500 | 600.00 | | |
| 5000 | 1100.00 | | |

No special prices on larger quantities than 1000 on their own roots.

SUNBURST (Pernet Duchee)

By arrangement with the introducers of this new Rose we are in a position to offer select grafted plants of our own growing. We give the introducers' description.

This magnificent, giant yellow Rose has been tested for three years in our benches; it stands head and shoulders above all other sorts of its color, and will rank with American Beauty and the Killarneys in value and grandeur—because

It has a long, pointed bud, which can be cut tight for market.

It is pre-eminently a long stemmed Rose and the stem is always stiff.

It is free in bottom breaks and is extraordinarily vigorous and healthy.

Belongs in the class of BIG ROSES.

Its keeping qualities rank with the best.

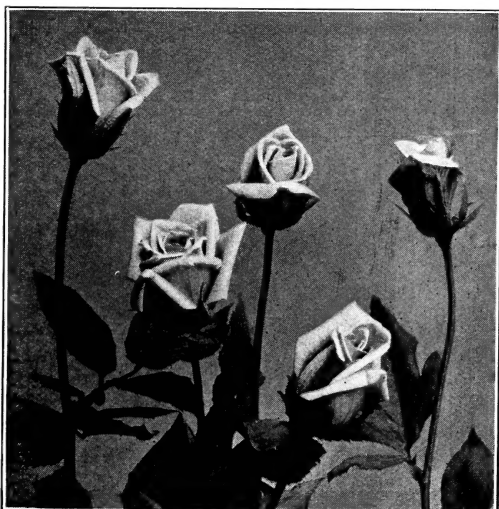
The color is orange-copper or golden orange and golden yellow, all intense shades; extremely brilliant in effect.

Does splendidly out of doors; will rank high as a bedder.

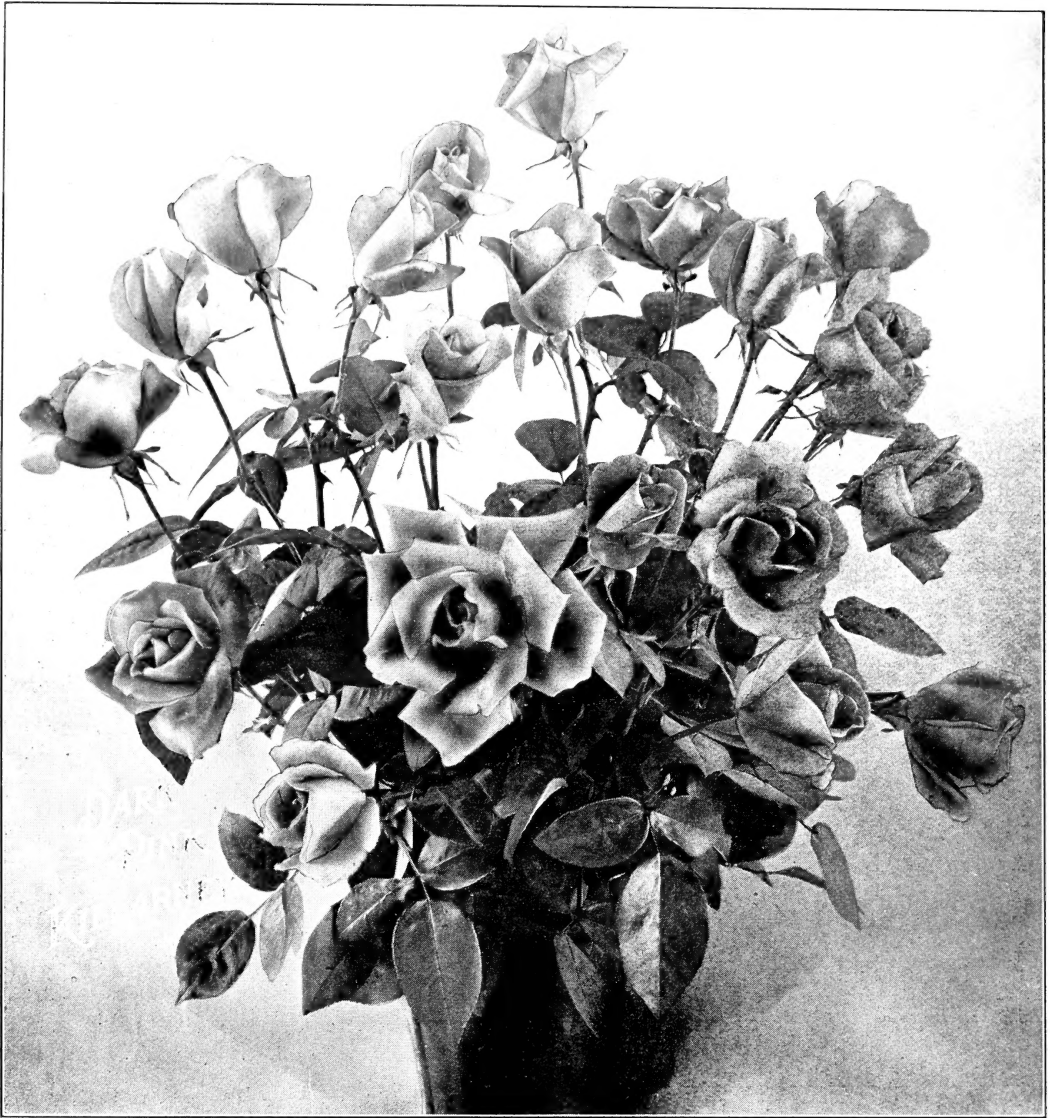
PRICES

| | |
|------------|--------|
| Each | \$0.75 |
| 12 | 7.50 |
| 25 | 12.50 |
| 50 | 20.00 |
| 100 | 35.00 |
| 1000 | 300.00 |

No own root plants and no discount for quantity over 1000.



Sunburst



DARK PINK KILLARNEY

A clear dark pink color that is bright through the dark days of Fall and Winter when Killarney is pale and unattractive. A variety that is more productive than Killarney, but one that needs careful handling to be brought to perfection: such is Dark Pink Killarney. The foliage is smaller than Killarney with a tendency to scald in hot weather. To be properly handled it should be grown cool to obtain size of bloom and number of petals. It will not thrive under conditions of heavy feeding and too high temperature. It is a variety that should be counted on for a money maker in Winter, but not in hot weather.

We have this last season built a new house holding 12,000 plants which has been planted to this variety, and in addition a house containing 3,000 plants carried over from last season. We would be pleased to have our customers inspect these houses.

PRICES (Grafted Plants only): 20c. each, \$2.00 per dozen, \$15.00 per 100, \$120.00 per 1000.

MRS. AARON WARD

A general favorite. As a bud a rich yellow which changes to an exquisite shade of pink as the flower opens. The variety is free growing and easy of culture. As an outside Rose, as well as a forcing Rose, it is one of the best.

PRICES

| Grafted Plants | | Own Root Plants | |
|----------------|--------|-----------------|--------|
| Each | \$0.40 | Each | \$0.25 |
| 12 | 4.00 | 12 | 2.50 |
| 100 | 20.00 | 100 | 10.00 |
| 1000 | 150.00 | 1000 | 90.00 |

MELODY

This very free blooming yellow was brought out last season, and is making good. The bud is a rich golden yellow which changes to a creamy yellow in the open bloom. It is at its best as a Winter bloomer.

PRICES

| | | Own Root Plants Only | |
|------------|--------|----------------------|---------|
| Each | \$0.25 | 100 | \$12.00 |
| 12 | 2.50 | 1000 | 100.00 |



Melody

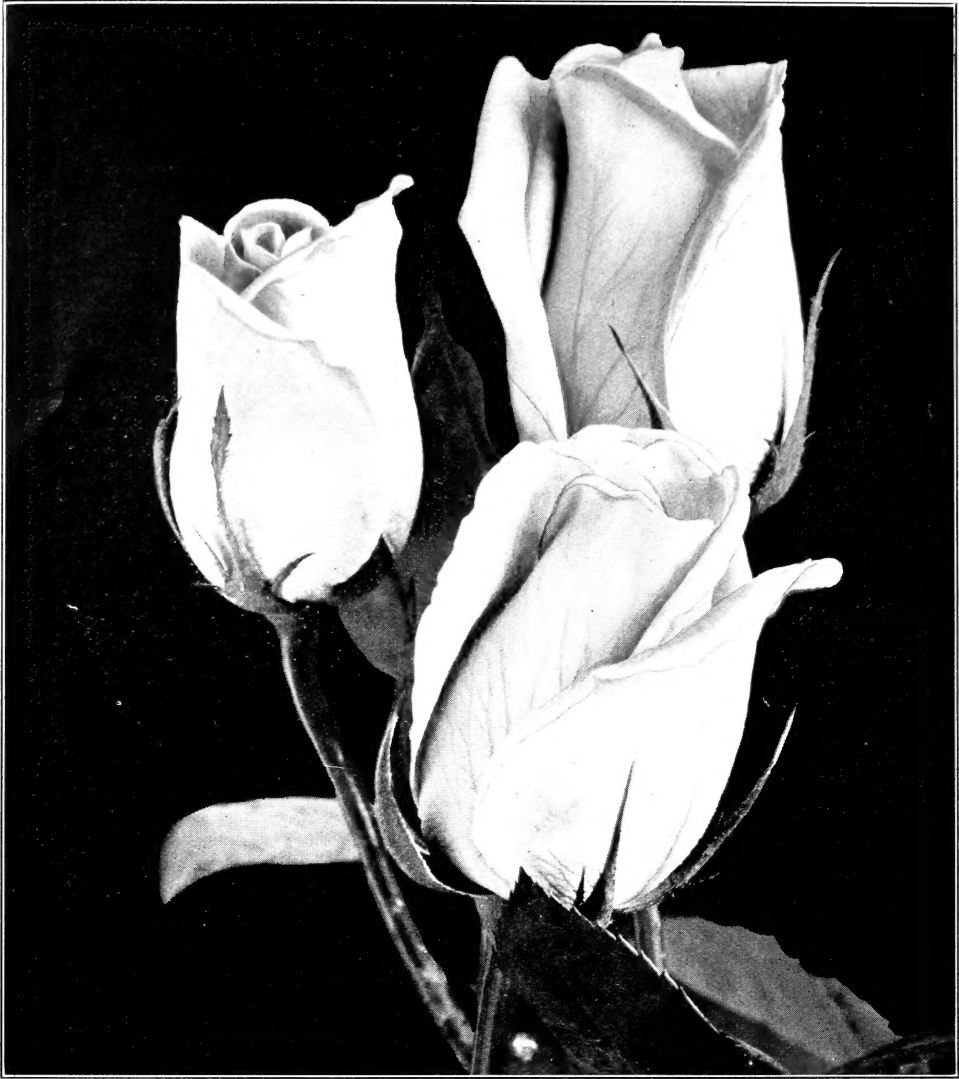
LADY HILLINGDON

A very free blooming variety, and very distinct as to color. It might be called a deep copper yellow. The buds are long and pointed but not heavy. The flower opens beautifully, and is far more attractive open than in the bud, owing to the rich color at the heart of the bloom. An excellent variety for forcing.

PRICES

| Grafted Plants | |
|----------------|--------|
| Each | \$0.40 |
| 12 | 4.00 |
| 100 | 25.00 |
| 1000 | 200.00 |

| Own Root Plants | |
|-----------------|--------|
| Each | \$0.40 |
| 12 | 3.00 |
| 100 | 20.00 |
| 1000 | 150.00 |



My Maryland

MY MARYLAND

As a Summer forcing Rose My Maryland reigns supreme. Clear pink in color. Pointed buds combine with wonderful producing qualities to make this Rose deservedly popular.

PRICES—Grafted Plants

| | |
|------------|--------|
| Each | \$0.20 |
| 12 | 2.00 |
| 100 | 15.00 |
| 1000 | 120.00 |

Own Root Plants

| | |
|------------|--------|
| Each | \$0.15 |
| 12 | 1.50 |
| 100 | 10.00 |
| 1000 | 90.00 |

ROSE QUEEN

(E. G. Hill Co.)

A seedling of American origin. Parents, Killarney and Richmond. Long, pointed buds of the Killarney type. Clear pink in color. Habit of the plant and foliage resemble Richmond.

PRICES (Grafted Plants Only): 40c. each, \$4.00 per doz., \$25.00 per 100.



Mrs. Taft

MRS. TAFT (Antoine Rivoire)

For Summer blooming this variety is a general favorite wherever grown. Its beautifully formed shell-pink bloom, backed by handsome glossy foliage, make it very popular as the variety becomes known. Under a misapprehension, owing to a mistaken identification, this variety was sold last year as Prince de Bulgarie. Our stock is larger, and our predictions have been fulfilled, for the Rose has become one of the most called for varieties of commerce.

| Grafted Plants | | PRICES | | Own Root Plants | |
|----------------|--------|------------|--------|-----------------|--|
| Each | \$0.20 | Each | \$0.15 | | |
| 12 | 2.00 | 12 | 1.50 | | |
| 100 | 15.00 | 100 | 7.50 | | |
| 1000 | 120.00 | 1000 | 60.00 | | |

RADIANCE

Variety in the Rose market is a paying investment, and Radiance is very popular with the trade. Deep cerise pink in color. Strong in growth, and a good producer. One of the finest Roses for outdoor growing.

| Grafted Plants | | PRICES | | Own Root Plants | |
|----------------|--------|------------|--------|-----------------|--|
| Each | \$0.20 | Each | \$0.15 | | |
| 12 | 2.00 | 12 | 1.50 | | |
| 100 | 15.00 | 100 | 7.50 | | |
| 1000 | 120.00 | 1000 | 60.00 | | |



Double Pink Killarney

DOUBLE PINK KILLARNEY

Similar to Killarney in habit of growth and blooming qualities, but differing in having increase of petalage. Light, even shade of pink in color.

PRICES

Grafted Plants

| | |
|------------|--------|
| Each | \$0.40 |
| 12 | 3.00 |
| 100 | 20.00 |
| 1000 | 150.00 |

Own Root Plants

| | |
|------------|--------|
| Each | \$0.25 |
| 12 | 2.50 |
| 100 | 12.00 |
| 1000 | 100.00 |

HARRY KIRK

A hybrid Tea of excellent habits; strong and vigorous in growth, with heavy glossy foliage. The bud is long and well formed, and in color a rich, coppery yellow. This Rose is strongly recommended for outdoor planting.

PRICES (Grafted Stock Only): 20c. each, \$2.00 per doz., \$15.00 per 100.

KILLARNEY

The most popular forcing Rose that has ever been introduced, and without doubt the most profitable Rose ever grown. It is too well known to need description.

WHITE KILLARNEY

(Waban Strain)

White Killarney has most successfully advertised itself. Like its parent, the pink Killarney, it has become one of the most popular Roses grown to-day. As an all the year round white it has no equal. It has proved all that its best friends ever claimed for it, both in quality and productiveness. It was a standard from the first.

RICHMOND

Clean and strong grower, free bloomer, requiring the same care and temperature as Bride and Bridesmaid; fine shaped buds, borne on stiff stems; color bright rich scarlet crimson. We believe this the best red Rose under cultivation.

PRICES
Grafted Plants

| | |
|------------|--------|
| Each | \$0.20 |
| 12 | 2.00 |
| 100 | 15.00 |
| 1000 | 120.00 |

3-inch at \$1.00 per doz., \$4.00 per 100 in advance on the prices quoted.

250 of a variety at the 1000 rate.

OLDER VARIETIES

In offering the following list we wish to state that our stock of these varieties is not large and if a quantity is called for the order must be placed early.

Bride

Bridesmaid

Bon Silene

Cardinal

Golden Gate

Ivory

Mme. Hoste

Mrs. Jardine

Uncle John

Mrs. Pierpont Morgan

Kaiserin Augusta Victoria

PRICES

Grafted Plants

| | |
|------------|--------|
| Each | \$0.20 |
| 12 | 2.00 |
| 100 | 15.00 |
| 1000 | 120.00 |

250 of a variety at the 1000 rate.

3-inch at \$1.00 per doz., \$4.00 per 100 in advance on the prices quoted.



White Killarney (See Page 8)

ROSES ON THEIR OWN ROOTS

(In Addition to Own Root Roses Previously Mentioned)

Killarney

- White Killarney
- Richmond
- Bride
- Bridesmaid

Ivory

- Sunrise
- Golden Gate
- Uncle John
- Perle des Jardins

| | |
|---------------------------------|--------|
| 2 1/4-inch | |
| Each..... | \$0.15 |
| 12..... | 1.50 |
| 100..... | 7.50 |
| 1000..... | 60.00 |
| 3-inch | |
| Each..... | \$0.20 |
| 12..... | 2.00 |
| 100..... | 10.00 |
| 1000..... | 90.00 |
| 4-inch | |
| (This size grown to order only) | |
| Each..... | \$0.25 |
| 12..... | 2.50 |
| 100..... | 15.00 |
| 1000..... | 120.00 |

25 plants of a variety at the 100 rate.
 250 plants of a variety at the 1000 rate.



Mrs. Aaron Ward



Killarney

AMERICAN BEAUTY

| | |
|-------------------|--------|
| 2 1/2-inch | |
| Each..... | \$0.15 |
| 12..... | 1.50 |
| 100..... | 8.00 |
| 1000..... | 75.00 |
| 3-inch | |
| Each..... | \$0.20 |
| 12..... | 2.00 |
| 100..... | 12.00 |
| 1000..... | 100.00 |
| 4-inch | |
| Each..... | \$0.25 |
| 12..... | 2.50 |
| 100..... | 20.00 |
| 1000..... | 150.00 |

25 plants at the 100 rate.
 250 plants at the 1000 rate.



Annie Muller

GARDEN ROSES FOR SPRING PLANTING

Philadelphia Rambler, Crimson Rambler, Dorothy Perkins and Tausendschon.

Established plants, 6-inch pots.

PRICES

50 cents each, \$5.00 per doz., \$35.00 per 100.

HYBRID TEAS

Mrs. Aaron Ward
Killarney

My Maryland
White Killarney

Mrs. Taft (Antoine Rivoire)
Richmond

The above varieties are excellent bedding Roses. The stock we shall have to offer will be two year old plants from 5-inch pots that are ready to bloom in the garden.

PRICES

50 cents each, \$5.00 per doz., \$35.00 per 100.

Young Stock of the Following Varieties

Annie Muller, Hermosa, Gruss an Teplitz, Caroline Testout, Clothilde Soupert. Grown for outdoor bedding from 3-inch pots.

PRICES

20 cents each, \$2.00 per doz., \$10.00 per 100.

We can safely recommend Radiance and My Maryland as high-class bedding Roses.

CARNATIONS

WODENETHE (Totty)

Called by experts the most perfect white Carnation ever raised. The flowers are large and perfect in form, delightfully fragrant and with a calyx that does not burst.

\$15.00 per 100, \$125.00 per 1000.

BROOKLYN (Weber)

This is a medium-sized variety, but the quantity of flowers it will produce will more than make up for any deficiency in size. The color is very much like the old Wm. Scott and the flower is quite deeply fringed. It is a first-class keeper and shipper and can be strongly recommended as being in every sense of the word "a bread and butter" Carnation.

\$15.00 per 100, \$125.00 per 1000.

BENORA (Fisher)

The best variegated ever introduced. It is also extremely free. Flower large, full and of perfect form. Color cream white, beautifully pencilled with bright red; stem long and wiry with narrow foliage. This Carnation stands head and shoulders above anything else in its class.

From 2¼-inch pots only: \$2.00 per doz., \$16.00 per 100.

GLORIOSA

Pure glistening pink in color with excellent habit, this new variety gives promise of becoming one of our leading varieties.

Rooted Cuttings: \$6.00 per 100, \$50.00 per 1000.

WHITE WONDER

In character of bloom White Wonder is similar to White Perfection, but the plant shows greater strength and freedom of growth. Large pure white bloom, and well worthy of thorough trial.

Rooted Cuttings: \$6.00 per 100, \$50.00 per 1000.

WHITE WINSOR

A pure white sport of Winsor.

Rooted Cuttings: \$4.00 per 100, \$35.00 per 1000.

BONFIRE

Large scarlet bloom. Plant strong and vigorous.

Rooted Cuttings: \$6.00 per 100.

CARNATIONS—Continued**MRS. C. W. WARD**

In color a very pleasing shade of pink; slightly lighter than Mrs. Lawson. In growth and habit it is all that could be desired, being thrifty and clean, and making an abundance of flowering shoots. It is a variety that we can highly recommend.

Rooted Cuttings: \$4.00 per 100, \$30.00 per 1000.

DOROTHY GORDON

In habit and general characteristics, including color, this variety is similar to Rose Pink Enchantress, differing in that it has better keeping qualities, and the color is more even.

Rooted Cuttings: \$3.00 per 100, \$25.00 per 1000.

MAY DAY

An excellent commercial variety. It is very free, and its even shade of pink is much desired.

Rooted Cuttings: \$3.00 per 100, \$25.00 per 1000.

PINK DELIGHT

Clear shell pink with perfect calyx; excellent commercial bloom; free and productive. It makes very few cuttings, and is not easy to propagate.

Rooted Cuttings: \$5.00 per 100, \$40.00 per 1000.

WINSOR

Clear silvery pink in color; excellent commercial variety, but for best results should be grown inside, or planted very early.

Rooted Cuttings: \$3.00 per 100, \$25.00 per 1000.

ENCHANTRESS

Our stock of this old standard shell pink is in excellent condition.

Rooted Cuttings: \$3.00 per 100, \$25.00 per 1000.

WHITE ENCHANTRESS

The pure white strain. For general use there is none better than White Enchantress.

Rooted Cuttings: \$3.00 per 100, \$25.00 per 1000.

WHITE PERFECTION

A worthy companion to White Enchantress, and a well-known variety. Perfection of bloom, combined with other good qualities assure it a place.

Rooted Cuttings: \$3.00 per 100, \$25.00 per 1000.

BEACON

The best scarlet variety. Our stock is clean and vigorous, perfectly free from stem rot.

Rooted Cuttings: \$3.50 per 100, \$30.00 per 1000.

OCTOROON

Bright crimson in color; habit excellent; very free. Our best crimson variety.

Rooted Cuttings: \$3.50 per 100, \$30.00 per 1000.

Kindly note that 250 of a variety are sold at 1000 rate.



Chadwick Supreme

CHRYSANTHEMUMS

Chadwick Supreme. In offering Chadwick Supreme we are certain that we are bringing into commerce a variety that will fill a place in the list of commercial varieties. It comes into bloom from Nov. 20th to Dec. 1st. and a good late pink variety has been much needed. In color it is similar to Pacific Supreme, our best early pink variety, in form reflexed on Vivian Morel type, and in habit it is a duplicate of W. H. Chadwick, the variety from which it is a sport. It is being grown by us for the third year and the type is fixed.

PRICES

Plants from 2¼ inch pots: 20c. each, \$2.00 per doz., \$10.00 per 100, \$90.00 per 1000.

Rooted Cuttings: 20c. each, \$2.00 per doz., \$7.00 per 100, \$60.00 per 1000.



Smith's Advance

CHRYSANTHEMUMS

Smith's Advance. The early white sent out by E. D. Smith & Co. Pure white in color and of excellent form; blooming from June plantings from Sept. 20th to Oct. 1st, it will be welcomed by all.

PRICES

Plants from 2¼-inch pots: 15c. each, \$1.50 per doz., \$10.00 per 100, \$90.00 per 1000.
 Rooted Cuttings: 15c. each, \$1.50 per dozen, \$7.00 per 100, \$60.00 per 1000.

Roman Gold. (E. D. Smith Co.) A promising variety of last season. Foliage and stem of excellent character for commercial use. The flower is finely formed, and a deep, rich yellow in color.

PRICES

Plants from 2¼-inch pots: 15c each, \$1.50 per doz., \$10.00 per 100, \$90.00 per 1000.
 Rooted Cuttings: 15c. each, \$1.50 per doz., \$7.00 per 100, \$60.00 per 1000.

CHRYSANTHEMUMS

Beatrice May. Usually classed as an exhibition variety, it is however a good commercial variety. Pure white in the earlier buds, it shows pink when the later buds are taken.

PRICES

Plants from 2¼-inch pots: \$1.00 per doz., \$4.00 per 100, \$30.00 per 1000.
Routed Cuttings: \$1.00 per doz., \$3.00 per 100, \$20.00 per 1000.

Lynnwood Hall. A late white noted for its purity of color.

PRICES

Plants from 2¼-inch pots: \$1.00 per doz., \$4.00 per 100, \$30.00 per 1000.
Routed Cuttings: \$1.00 per doz., \$3.00 per 100, \$20.00 per 1000.

Merza. Pure white in color, and of excellent size and substance. Good exhibition variety, and good as a high-grade commercial.

PRICES

Plants from 2¼-inch pots: \$1.00 per doz., \$5.00 per 100, \$40.00 per 1000.
Routed Cuttings: \$1.00 per doz., \$4.00 per 100, \$30.00 per 1000.

Mrs. Wm. Duckham. A large bronze yellow of excellent type for both exhibition and commercial purposes.

PRICES

Plants from 2¼-inch pots: \$1.00 per doz., \$4.00 per 100, \$30.00 per 1000.
Routed Cuttings: \$1.00 per doz., \$3.00 per 100, \$20.00 per 1000.

Wells' Late Pink. One of the best of the large pink varieties. Splendid habit with excellent foliage.

PRICES

Plants from 2¼-inch pots: \$1.50 per doz., \$8.00 per 100.
Routed Cuttings: \$1.50 per doz., \$6.00 per 100.



Chrysanthemum Lynnwood Hall



Early Snow

CHOICE STANDARD VARIETIES

In offering the following list of choice standard varieties we feel safe in assuring our customers that there is not a single variety among them that we do not plant heavily, and which we cannot safely recommend to our customers.

Early Snow. Pure white in color, with perfect form and foliage, it is easily the best early white Chrysanthemum on the market.

Virginia Poehlmann. Following Early Snow this variety is excellent. It has excellent stem and foliage and well-formed flowers. Grown cool it shows a pinkish tinge to the bloom, but in a warmer house it comes pure white.

CHOICE STANDARD VARIETIES—Continued

Alice Byron. The best midseason white. A general favorite owing to its purity of color. The variety that it pays to grow in quantity.

Elise Papworth. Coming in at about the same date as Alice Byron, but in general characteristics it is stronger and heavier. In many characteristics it resembles Timothy Eaton. It is an easy variety to grow, and gives general satisfaction.

Timothy Eaton. The standard by which white Chrysanthemums are judged. Strong and vigorous, with large white blooms, it has been the leader in its class for years.

W. H. Chadwick. For the markets that want select stock, and for something that is better than the ordinary, this variety stands alone. Pinkish to a slight extent, when grown cool it is even more charming than when pure white. It can be had as late as December, and can be made a paying proposition planted as late as July

Chadwick Improved. Alike in all respects to W. H. Chadwick except in color. Absolutely pure white, and where purity of color is essential, this variety is necessary.

White Bonnaffon. A pure white sport of Major Bonnaffon.

Jeanne Nonin. The last of the fancy Chrysanthemums are gone when this variety is ready. Massive white bloom of excellent type.



Elise Papworth

YELLOW VARIETIES

Comoleta. Owing to its clear, bright color, and its perfect form, Comoleta has become a favorite. Its foliage is not heavy, and it can be planted somewhat closer than the heavier varieties.

Yellow Ivory. A clear bright yellow sport of Ivory.

Mrs. W. E. Kelley. A clear yellow maturing Oct. 25th to Nov. 1st. A clean grower, and a favorite with the trade.

Golden King. A sturdy grower of semi-dwarf habits that comes to perfection about Nov. 1st. Deep golden yellow in color, with perfect form, stem and foliage. An excellent hiping variety.



Comoleta



Merry Jane

Merry Jane. The best yellow variety in its season. Clean and vigorous in growth with a perfection of bloom that makes it a favorite. We do not hesitate to recommend planting this variety in quantity.

Yellow Eaton. Owing to its strong growth and large bloom, Yellow Eaton has been and still is a general favorite.

Nagoya. Perfect stem and foliage combined with richness of color in the bloom and ease of culture make Nagoya a safe variety to grow in quantity. It matures with us Nov. 20th.

Dolly Dimple. Clear yellow, large flower, excellent variety.

Golden Chadwick. When high-class bloom are the object this variety reigns supreme. Its rich yellow color, combined with the good characteristics of the Chadwicks, place it as the best late yellow.

PINK VARIETIES

Winter Cheer. A deep cerise pink in color; incurved compact bloom. Excellent stem and foliage. Matures Oct. 25th to Nov. 1st.

Patty. Just before Thanksgiving this variety comes to maturity following the old favorite Maud Dean. The variety is remarkable for its excellent habit and its handsome foliage. These good qualities, combined with excellent bloom, a pleasing shade of pink in color, make it in our opinion one of the best commercial varieties grown.

Helen Frick. A medium sized bloom that is valuable because of its lateness, this variety being the last of its color to come to maturity.

PRICES

From 2¼-inch pots: 10c. each, \$1.00 per doz., \$4.00 per 100, \$30.00 per 1000.

Rooted Cuttings: 10c. each, \$1.00 per doz., \$3.00 per 100, \$20.00 per 1000.



Patty

STANDARD COMMERCIAL VARIETIES

General Collection

RED VARIETIES

Owing to the limited amount of this color which we plant, we do not carry a large stock of these varieties. The selection we have to offer is the best of the commercial sorts in this color, and we reserve the right to substitute unless instructions are given to the contrary.

J. H. Shrimpton
Merstham's Red
Intensity
Cullingfordii

PRICES

Plants from 2¼-inch pots, 10c. each, \$1.00 per doz., \$4.00 per 100, \$30.00 per 1000.

Rooted Cuttings: 10c. each, \$1.00 per doz., \$3.00 per 100, \$20.00 per 1000.

WHITE VARIETIES

EARLY

Geo. S. Kalb. An old favorite, pure white in color.

Polly Rose. An early variety; pure white; dwarf habit.

C. Touset. One of the best of its season, but under certain conditions shows considerable pink, making it shell pink in color rather than pure white.



Nagoya (See Page 19)

MIDSEASON

Mrs. H. Robinson. Pure white. An excellent variety. Oct. 20th to 25th.

Mrs. Clay Frick. Pure white, good size, with excellent stem and foliage.

White Cloud. Easy of culture, good stem and foliage. Cream white in color.

LATE

Miss Minnie Wanamaker. An old favorite, and still an excellent commercial.

Moneymaker. For a later than Wanamaker white this variety is excellent. Pure white in color. Bloom very uniform in quality.

Mrs. Jerome Jones. An old standard. Pure white in color. Blooms the middle of November.

PINK VARIETIES

EARLY

Pacific Supreme. The best early pink for commercial purposes. A general favorite.

Glory of the Pacific. Dwarf habit. Flowers good. Valuable where head room is lacking.

Gloria. Tall growing variety; a trifle earlier than Pacific Supreme.

CHRYSANTHEMUMS—PINK

(Continued)

MIDSEASON

Pink Ivory. The pink sport of Ivory that can be handled in quantity where the smaller bloom are desirable.

W. H. Duckham. Large, well-formed bloom maturing Oct. 25th to Nov. 1st.

Mayor Weaver. Clear pink in color; easy of culture; blooming before Enguehard; bloom similar to Maud Dean.

Dr. Enguehard. A variety that is always safe to plant. The habit of the plant is excellent, and the flower all that could be desired.

Maud Dean. This old favorite with us follows Enguehard, and our planting of the variety is always heavy.



C. Touse

YELLOW VARIETIES**EARLY**

Golden Glow. This variety, owing to the ease with which it can be brought into bloom at a desired date, has become very popular. Clear yellow in color.

Monrovia. Blooms Oct. 5th to 10th; color a clear yellow; stem and foliage excellent.

Robert Halliday. Following Monrovia this well-known variety is always in demand.

MIDSEASON

Miss Georgiana Pitcher. Flowers of the Bonnaffon type and color. Valuable variety in its season.

Colonel Appleton. A well-known standard commercial variety.

LATE

Major Bonnaffon. The variety that is the standard for commercials. Safe to plant in quantity, and probably more widely grown than any other Chrysanthemums. We have excellent stock, and expect to be able to fill all orders, large or small.

PRICES

Plants from 2¼-inch pots: 5c. each, 50c. per doz., \$3.00 per 100, \$25.00 per 1000.

Rooted Cuttings: 5c. each, 50c. per doz., \$2.00 per 100, \$17.50 per 1000.

Please note: 250 of a variety at the 1000 rate. We shall be pleased to quote prices on 5000 or more rooted cuttings.

CHRYSANTHEMUM POMPON SECTION

Minta. (E. D. Smith & Co., 1911.) Clear pink, blooming Oct. 25th to Nov. 1st.

Susquehanna. (C. H. Totty.) Yellow, blooming in November.

PRICES:

Plants from 2-inch pots: \$1.00 per doz., \$5.00 per 100.

STANDARD POMPONS

We can safely recommend all the Pompons in the following list. Customers in ordering will please note that these prices are for plants from pots; no orders for rooted cuttings of Pompons will be accepted.

WHITE

Nio
Queen of Whites
Baby Margaret
Lula
Diana

PINK

Eleganta
Alena
Acto
Little Pet

YELLOW

Klondike
Zenobia
Baby
Quinola
Souvenir d'Or

BRONZE YELLOW

Lodi
Miss Julia
Allentown

RED

Rufus
Julia Lagravere
Lyndhurst

PRICES

Plants from 2-inch pots: 5c. each, 50c. per doz., \$3.00 per 100, \$25.00 per 1000.

Not more than five varieties at the 100 rate; 250 in assortment at the 1000 rate our selection.

POMPON ANEMONES AND SINGLES

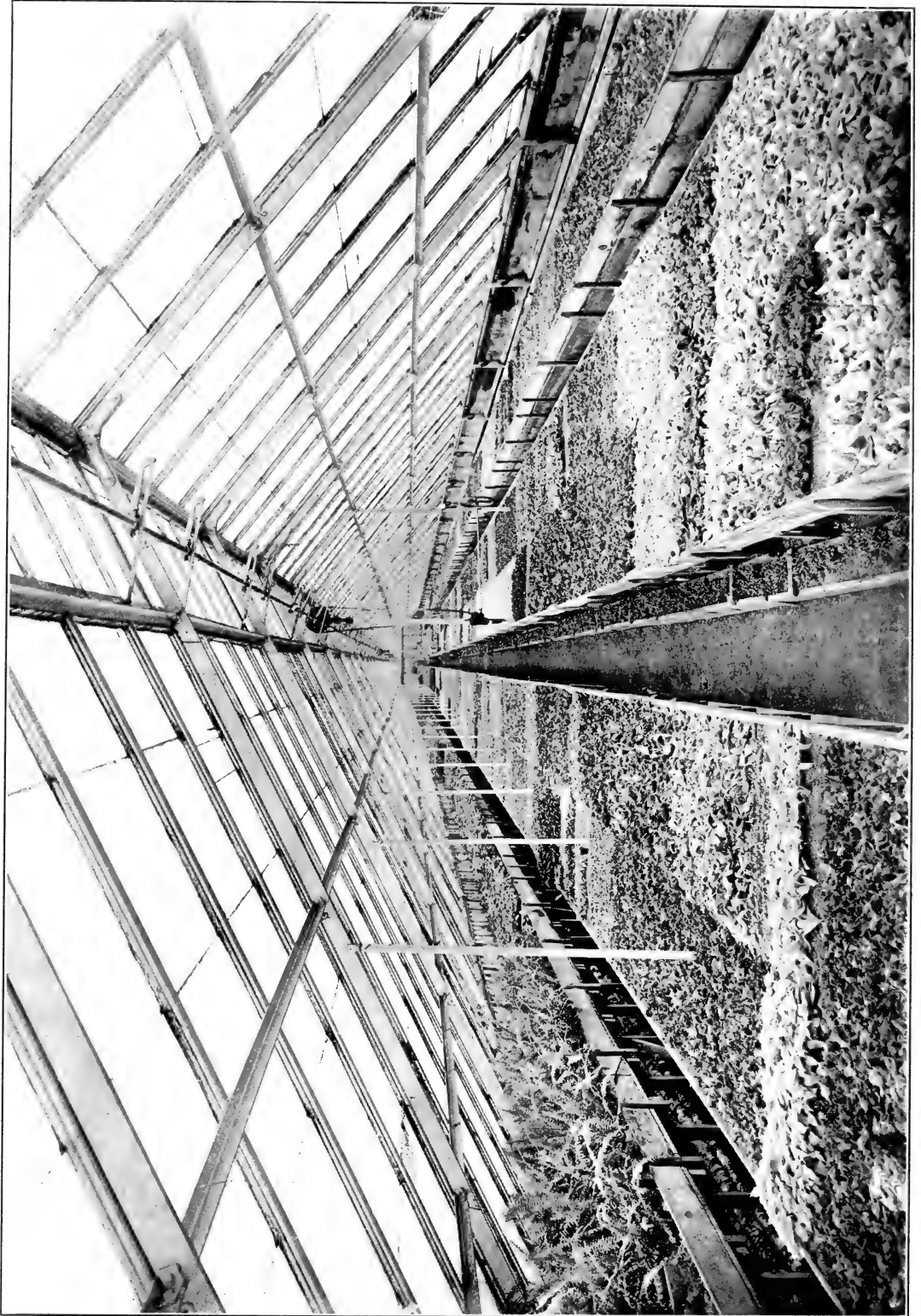
Garza. The well-known white variety; considered the best variety in its class.

Pretoria. Clear bright yellow. The best of the single varieties for commercial cut bloom.

Ladysmith. The best pink single variety.

PRICES

Plants from 2-inch pots: 5c. each, 50c. per doz., \$3.00 per 100, \$25.00 per 1000.



Bedding Stock Propagating House

BEDDING PLANTS

COLEUS

Verschaffeltii. Standard crimson.

Firebrand. Bright maroon.

Golden Queen. Standard yellow.

Lord Palmerston. Dark maroon.

Queen Victoria. Cardinal red, with distinct golden border.

Beckwith's Gem. Center velvety maroon bordered with red; the edge green changing to a creamy yellow at the point of the leaf.

PRICES

Rooted Cuttings by express: 75 cents per 100, \$7.00 per 1000.

Out of 2¼-inch pots in May: \$2.50 per 100, \$20.00 per 1000.

Golden Bedder. Golden yellow, the old original, true to name.

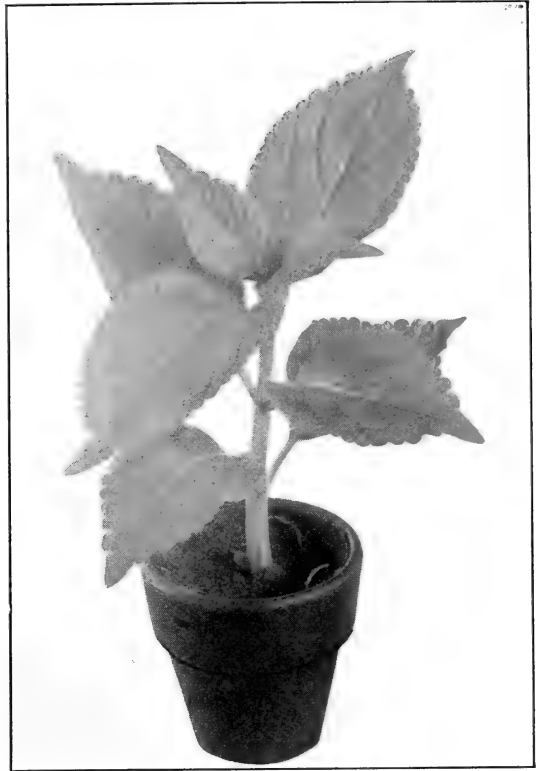
Hero. Very dark maroon.

Duneira. A magnificent Coleus. A fine showy bedder, standing the sun as well as *Verschaffeltii*. In color it is a combination of various shades of crimson.

Beauty of Lyon. A combination of yellow and red. A very beautiful bedding variety.

Messey. Dwarf, pearl white and silver green.

Brilliancy. A combination of red and gold.



Coleus

PRICES

Rooted Cuttings by express: \$1.00 per 100, \$8.00 per 1000.

Out of 2¼-inch pots: \$2.50 per 100, \$20.00 per 1000.

Less than 250 of a variety will be charged at the 100 rate.

FANCY VARIETIES

Fancy Varieties. A very fine assortment of twelve kinds not listed above. Either rooted cuttings or plants from 2¼-inch pots, our selection, 250 at the 1000 rate.

PRICES

Rooted Cuttings: \$1.00 per 100, \$8.00 per 1000.

Out of 2¼-inch pots: \$2.50 per 100, \$20.00 per 1000.



Coleus

AGERATUM

Stella Gurney. Dwarf blue. Rooted Cuttings: 75 cents per 100, \$7.00 per 1000.

Princess Pauline. A combination of blue and white in same flower. 75 cents per 100, \$7.00 per 1000.

ALTERNANTHERA

Red and Yellow. Rooted Cuttings: 75 cents per 100, \$6.00 per 1000. From 2¼-inch pots, \$2.00 per 100.

Jewell. Bright in color and very popular. Rooted Cuttings: \$1.25 per 100, \$10.00 per 1000. From 2¼-inch pots: \$2.50 per 100.

Brilliantissima. A valuable new Alternanthera, red and yellow in color, with broad leaf. Strong grower. Rooted Cuttings: \$1.00 per 100, \$10.00 per 1000. From 2¼-inch pots: \$2.50 per 100

SALVIA

Boule de Feu. A grand dwarf bedding variety. Profuse bloomer; having extra heavy scarlet trusses. Rooted Cuttings: \$1.50 per 100, \$12.00 per 1000.

S. Splendens. Tall standard, one of the best. Rooted Cuttings: 75 cents per 100, \$7.00 per 1000.

S. Bonfire. Medium dwarf; very good. Rooted Cuttings: 75 cents per 100, \$7.00 per 1000.

S. Zurich. Dwarf; an excellent variety. Rooted Cuttings: 75 cents per 100, \$7.00 per 1000.

S. Schenley. Medium dwarf; very highly colored. One of the best. Rooted Cuttings: 75 cents per 100, \$7.00 per 1000.

Salvia of these varieties from 2¼-inch pots, April and later delivery, \$2.50 per 100, \$20.00 per 1000.

250 of a variety, or in assortment as ordered, at the 1000 rate.

King of the Carpet. Very bright large trusses; medium dwarf in habit. Rooted Cuttings: \$1.50 per 100; \$12.50 per 1000. From 2¼-inch pots: \$3.50 per 100.

HELIOTROPE

Dark Blue Bedder. We are sending out only the best varieties of Heliotrope for bedding purposes. Rooted Cuttings: \$1.00 per 100, \$9.00 per 1000. From 2¼-inch pots: \$2.50 per 100, \$20.00 per 1000.

250, either plants or cuttings, at the 1000 rate.

Centefleur. Large flower type. Very showy. Excellent grower, and an extra fine variety. Rooted Cuttings: \$1.25 per 100, \$10.00 per 1000. From 2¼-inch pots: \$3.00 per 100, \$25.00 per 1000.



Poinsettias

DWARF LANTANAS

Radiation. Plant semi-dwarf; brilliant red with orange yellow center.

Reve Poitevine. A semi-dwarf variety; rose colored flowers with white center.

Eole. Yellow, shading to bright Rose.

Snow Queen. A dwarf variety with snow white bloom.

Ultima. Pure golden yellow.

PRICES

Plants from 2¼-inch pots: \$3.00 per 100. One variety, or assortment, if desired.

MISCELLANEOUS PLANTS

STEVIA. The dwarf variety only, this being the most profitable for commercial purposes. Rooted Cuttings, February and later: 75 cents per 100, \$7.00 per 1000. From 2-inch pots: \$2.50 per 100, \$20.00 per 1000.

BOUVARDIA. For Winter flowering. Single white. From 2¼-inch pots: \$4.00 per 100, \$35.00 per 1000. 250 at the 1000 rate.

SMILAX. 2¼-inch pots: \$3.50 per 100, \$30.00 per 1000.

GERMAN IVY. Rooted Cuttings: 75 cents per 100, \$7.00 per 1000. From 2¼-inch pots: \$2.50 per 100.

POINSETTIAS. Excellent plants from 2¼-inch pots: \$7.00 per 100, \$60.00 per 1000. July and later delivery.

SWAINSONIA. Rooted Cuttings: \$2.00 per 100. From 2¼-inch pots: \$3.00 per 100.



Glory of Cincinnati

Gloire de Lorraine

BEGONIAS

GLOIRE DE LORRAINE

Strong healthy plants, ready for May and later delivery.

2¼-inch pots, \$15.00 per 100, \$135.00 per 1000.

3-inch pots, 25.00 per 100, 200.00 per 1000.

4-inch pots, 35.00 per 100, 300.00 per 1000.

GLORY OF CINCINNATI

A new Begonia with large, heavy foliage. Flowers in abundance. An excellent Christmas plant.

Strong healthy plants for June and later delivery, 2¼-inch pots: \$20.00 per 100, \$150.00 per 1000.

BETTY ANDERSON

This new Begonia is of the Lorraine type being a sport from that variety. It is a more profuse bloomer and its compact foliage makes it an easy variety to ship. It is in many ways an improvement on Lorraine and is well worthy of trial.

From 2¼-inch pots: \$4.00 per dozen, \$25.00 per 100, \$210.00 per 1000.

GARDENIAS

Our stock of Gardenias is in excellent condition. We can ship clean healthy stock of excellent quality.

2¼-inch pots, \$7.00 per 100; 3-inch pots, \$12.00 per 100; 3-inch pots, selected, \$15.00 per 100.

Prices on larger sizes will be quoted on application.



Gardenia Veitchii in 2¼-in. pot



King Humbert

CANNAS

For bedding, Cannas are very ornamental and we have selected to offer only the best varieties. These plants offered are for Spring shipment from 3-inch pots and will be well established growing plants ready for immediate planting.

SCARLET FLOWERS WITH BRONZE FOLIAGE

King Humbert

Wyoming

SCARLET FLOWERS WITH GREEN FOLIAGE

Pres. McKinley

Mme. Crozy

Pennsylvania

YELLOW FLOWERS WITH GREEN FOLIAGE

Buttercup

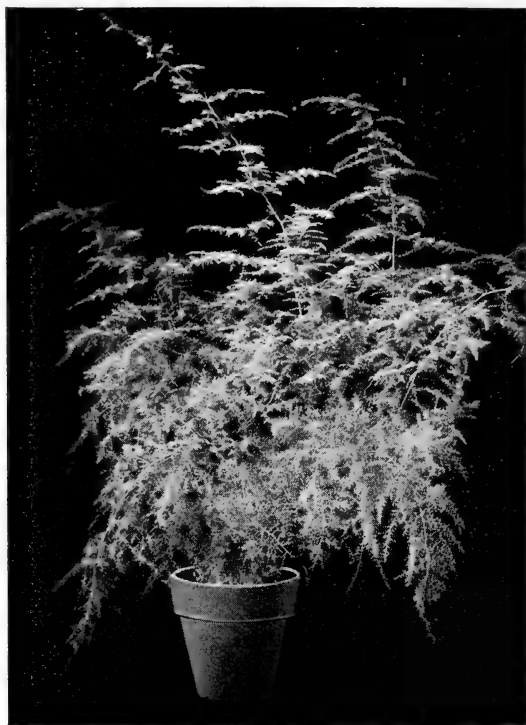
Florence Vaughan

Queen Charlotte (scarlet flower with yellow border)

Gladiator (yellow flower with scarlet border)

PRICES

Growing stock from 3-inch pots: \$1.00 per dozen, \$8.00 per 100.



Asparagus Hatcheri

ASPARAGUS

Asparagus Hatcheri. As a grower Asparagus Hatcheri is coming up to our last season's prediction in making more green to the square foot than any other variety you can grow. Its dainty foliage and lasting qualities make it a general favorite.

Plants from 2¼-inch pots: \$10.00 per 100, \$75.00 per 1000.

Plants from 3-inch pots: \$1.50 per dozen, \$12.00 per 100, \$100.00 per 1000.

Asparagus Plumosus Nanus. Our stock of this well-grown variety is always large. Our plants are nicely grown, well colored, and suitable for all kinds of uses.

Plants from 2¼-inch pots: \$3.50 per 100, \$30.00 per 1000.

Plants from 3-inch pots: \$6.00 per 100, \$50.00 per 1000.

Plants from 4-inch pots: \$10.00 per 100.

Asparagus Sprengeri. Excellent plants with well developed crowns.

Plants from 2¼-inch pots: \$3.50 per 100, \$30.00 per 1000.

Plants from 3-inch pots: \$6.00 per 100, \$50.00 per 1000.

SEEDLINGS

We make a specialty of Seedlings of both Asparagus Plumosus Nanus and Asparagus Sprengeri, and can fill orders for large quantities.

Asparagus Plumosus Nanus. \$1.00 per 100, \$10.00 per 1000.

Asparagus Sprengeri. 75 cents per 100, \$5.00 per 1000.



Kentia Belmoreana (made-up plants)



Kentia Belmoreana (6-inch pots)

PALMS AND FERNS

ARAUCARIA EXCELSA

5-inch pots, 60 cents each, \$7.00 per dozen.

ARAUCARIA GLAUCA

5-inch pots, 75 cents each, \$9.00 per dozen.

6-inch pots, \$1.50 each, \$18.00 per dozen.

ARAUCARIA COMPACTA

5-inch pots, \$1.00 each, \$12.00 per dozen.

6-inch pots, \$1.50 each, \$18.00 per dozen.

ARECA LUTESCENS

5-inch pots, 3 plants in pot, 50 cents each, \$6.00 per dozen.

8-inch pots, nice bushy plants, 44 inches high, \$3.00 each.

KENTIA BELMOREANA

5-inch pots, 5 leaves, 15 inches high, 50 cents each, \$6.00 per dozen.

5-inch pots, 6 leaves, 20 inches high, 75 cents each, \$9.00 per dozen.

6-inch pots, 6-7 leaves, 22 inches high, \$1.00 each, \$12.00 per dozen.

7-inch pots, 6-7 leaves, 26 inches high, \$1.50 each, \$18.00 per dozen.

7-inch pots, 6-7 leaves, 32 inches high, \$2.00 each, \$24.00 per dozen.

8-inch pots, 6-7 leaves, 38 inches high, \$3.00 each, \$36.00 per dozen.

8-inch pots, made up plants, \$3.00 each, \$36.00 per dozen.

Prices for large specimens on application.

KENTIA FORSTERIANA

5-inch pots, 20 inches high, 75 cents each, \$9.00 per dozen.

6-inch pots, 28 inches high, \$1.00 each, \$12.00 per dozen.

7-inch pots, 34 inches high, \$1.50 each, \$18.00 per dozen.

8-inch pots, made up plants, 3 in a pot, 36 inches high, \$3.00 each, \$36.00 per dozen.

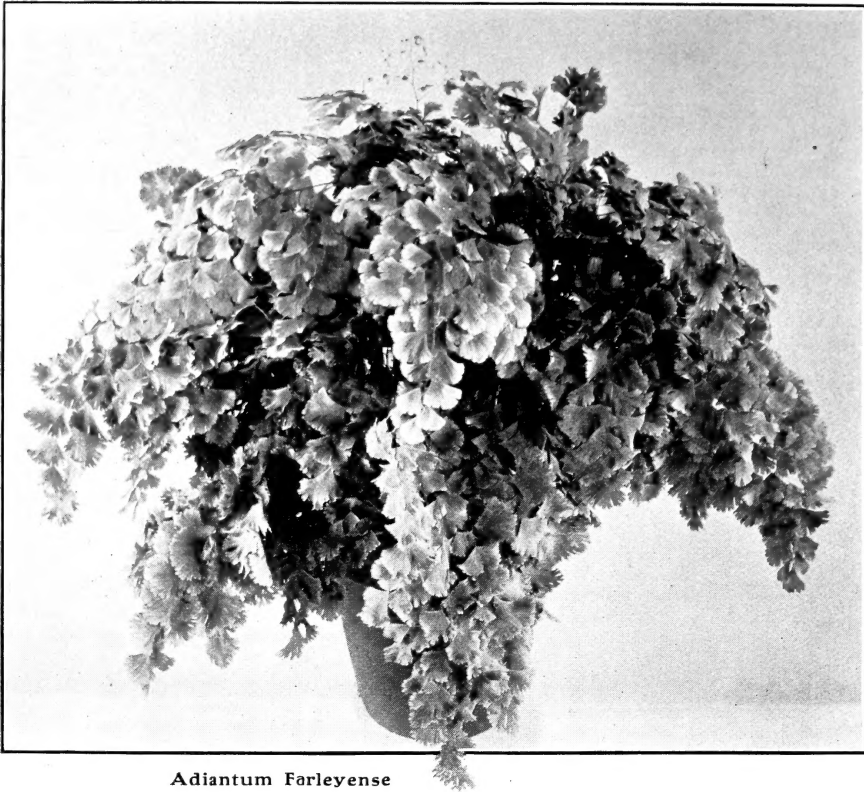
PHOENIX ROEBELENI

7-inch pots, 20 inches high, 24 inch spread, \$2.50 each.

8-inch pots, 24 inches high, 30 inch spread, \$4.00 each.

9-inch pots, 28 inches high, 32 inch spread, \$5.00 each.

Selected plants, \$6.00 each.



Adiantum Farleyense

PALMS AND FERNS - Continued

COCOS WEDDELIANA

3-inch pots, 15 cents each, \$1.80 per dozen.

FIGUS ELASTICA

(August and later delivery)

5-inch pots, 40 cents each, \$4.50 per dozen, \$35.00 per 100.

6-inch pots, 50 cents each, \$6.00 per dozen.

FIGUS PANDURATA

From \$1.00 to \$4.00 each.

PANDANUS VEITCHII

5-inch pots, 75 cents each, \$9.00 per dozen.

6-inch pots, \$1.00 each, \$12.00 per dozen.

CIBOTIUM SCHEIDEI

7-inch pots, \$2.00 each.

8-inch pots, \$2.50 each.

ADIANTUM FARLEYENSE

4-inch pots, 50 cents each, \$6.00 per dozen.

5-inch pots, 75 cents each, \$9.00 per dozen.

6-inch pots, \$1.00 each, \$12.00 per dozen.

6-inch pots, selected, \$1.50 each, \$18.00 per dozen.

6-inch pots, extra selected, \$2.00 each, \$24.00 per dozen.

ADIANTUM CROWEANUM

3-inch pots, \$10.00 per 100.

4-inch pots, 15 cents each, \$1.80 per doz.

6-inch pots, 35 cents each, \$4.00 per dozen.

7-inch pots, 50 cents each, \$6.00 per dozen.

ADIANTUM CUNEATUM

3-inch pots, 75 cents per dozen, \$6.00 per 100.

NEPHROLEPIS WHITMANI

6-inch pans, 50 cents each, \$6.00 per dozen.

BOSTON FERNS

5-inch pots, 35 cents each, \$4.00 per dozen.

6-inch pans, 50 cents each, \$6.00 per dozen.

7-inch pans, 75 cents each, \$9.00 per dozen.

8-inch pans, \$1.00 each, \$12.00 per dozen.



First Prize Display of Cut Roses at the National Flower Show, Boston, 1911

