

Historic, Archive Document

Do not assume content reflects current scientific knowledge, policies, or practices.

6261

1911

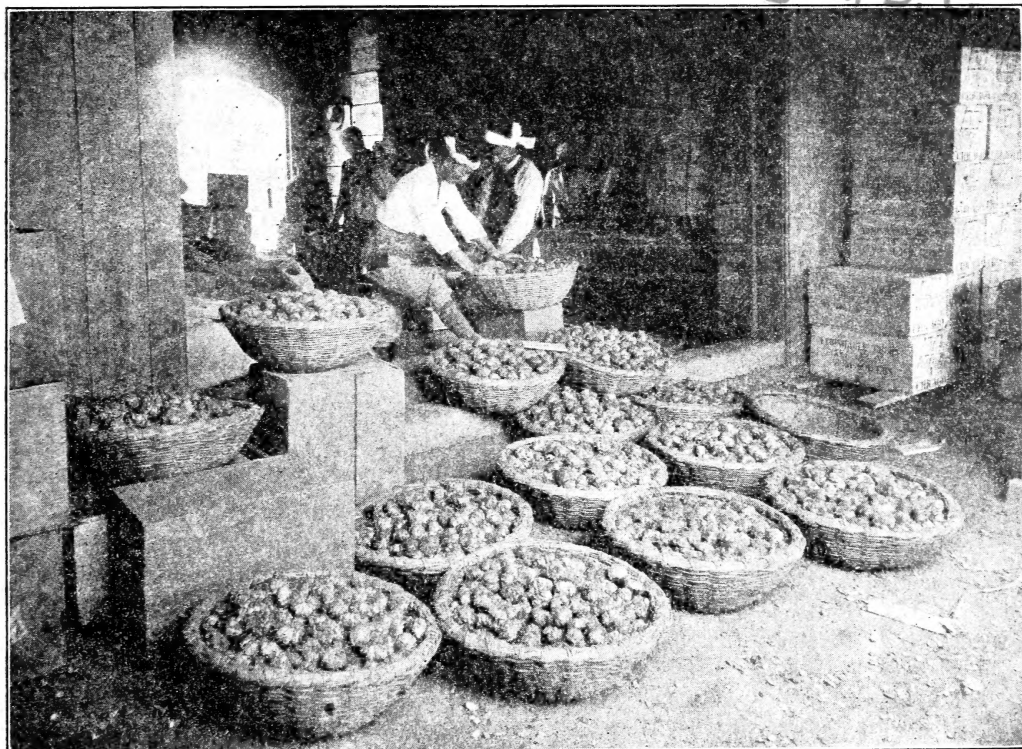
1912

JAPANESE LILY BULBS

NURSERY STOCK & SEEDS

FOR THE WHOLESALE TRADE ONLY

LIBRARY,
 U.S. Department of Agriculture
 Washington, D. C.



THE YOKOHAMA NURSERY CO., Ltd.

31 BARCLAY STREET, NEW YORK

MAIN OFFICE:

21-35 Nakamura
YOKOHAMA, JAPAN

BRANCH OFFICE:

Craven House, Kingsway
LONDON, W. C., ENGLAND

CABLE ADDRESS

Suzuki, New York

Uyekigumi, Yokohama

Tigrinum, London

A. B. C. CODE—4th and 5th Editions and Western Union Code Used

NEW YORK, *April 1, 1911.*



THE present list, which represents only an **extract** of the **General Illustrated Catalogue** of our Yokohama House, contains only plants which we consider **perfectly hardy** in this climate, except a few items marked *, which require to be kept indoors during winter. On application the General Catalogue will be mailed free of cost, and we are prepared to quote prices to the trade on any item it contains.

Orders will be shipped either late in the fall or spring, and **should be placed as soon as possible.** We prefer spring shipments, as we avoid the risk of freezing while the shipments are on their way overland. Orders accepted subject to crop, and provided stock is unsold in Japan. It is understood, however, that we assume no responsibility for accidents or delays beyond our control.

Claims for errors and deficiencies must be made within ten days after delivery of goods. In case of any error on our part, it is mutually agreed between the purchaser and ourselves that we shall not, at any time, be held responsible for a greater amount than the original price of invoice.

San Jose Scale. All of our nursery stock is thoroughly fumigated in our own fumigator, which was built according to instructions received from the late Mr. Craw, State Entomologist of California.

Prices are for Import orders only or surplus stocks. Free New York duty included.

TERMS

Terms, 50 per cent net cash on delivery, balance against three months' draft, or 2½ per cent discount on balance for cash within ten days. Orders from unknown customers accepted only when accompanied by cash for half the amount of order, or satisfactory reference.

LILY BULBS

	Per 100	Per 1,000
LILIUM auratum. 8 to 9 in. circum.....	\$5 00	\$37 50
9 to 11 in. circum.....	7 50	70 00
11 to 13 in. circum.....	15 00	110 00
13 to 15 in. circum.....	20 00	
auratum platyphyllum (macranthum). 8 to 9 in. circum.....	7 00	62 50
9 to 11 in. circum.....	10 00	90 00
11 to 13 in. circum.....	17 50	120 00
13 to 15 in. circum.....	30 00	
auratum pictum. 8 to 10 in. circum.....	10 00	70 00
auratum rubro-vittatum. 8 to 9 in. circum.....	17 00	
9 to 11 in. circum.....	25 00	
auratum Wittei. 8 to 9 in. circum.....	22 50	
auratum virginale album. 8 to 10 in. circum.....	12 00	
longiflorum. 6 to 8 in. circum.....	2 50	22 00
7 to 9 in. circum.....	5 00	39 00
9 to 10 in. circum.....	7 50	67 50
10 to 11 in. circum.....	10 00	
longiflorum multiflorum. 6 to 8 in. circum.....	2 75	25 00
7 to 9 in. circum.....	5 50	40 00
9 to 10 in. circum.....	8 00	75 00
10 to 11 in. circum.....	12 50	100 00
longiflorum giganteum. Dark-colored stem. 6 to 8 in. circum.....	3 50	30 00
7 to 9 in. circum.....	7 00	55 00
9 to 10 in. circum.....	10 00	90 00
10 to 11 in. circum.....	20 00	
longiflorum formosa varieties. The bulbs ripen about two months before the other Japanese Longiflorums, and, consequently, can be forced earlier, but they cannot stand a high tempera- ture before they show buds; about 50 degrees night tem- perature is all they need. 6 to 8 in. circum.....	3 50	30 00
7 to 9 in. circum.....	6 50	55 00
9 to 10 in. circum.....	9 50	83 00
longiflorum foliis albo marginalis.	10 00	
speciosum rubrum. 8 to 9 in. circum.....	5 00	40 00
9 to 11 in. circum.....	7 00	62 50
11 to 13 in. circum.....	10 50	90 00
13 to 15 in. circum.....	17 50	140 00
speciosum magnificum. 8 to 9 in. circum.....	5 00	40 00
9 to 11 in. circum.....	7 00	62 50
11 to 13 in. circum.....	12 00	92 50
13 to 15 in. circum.....	17 50	140 00
speciosum Melpomene, 8 to 9 in. circum.....	5 00	40 00
9 to 11 in. circum.....	7 00	62 50
11 to 13 in. circum.....	12 00	92 50
13 to 15 in. circum.....	17 50	140 00
speciosum album. 7 to 9 in. circum.....	7 50	70 00
9 to 11 in. circum.....	11 00	100 00
11 to 12 in. circum.....	20 00	140 00

Prices are Free New York, Duty Included

LILY BULBS, continued

	Per 100	1,000
<i>Lilium speciosum album novum</i> (Kretzeri). 7 to 9 in. circum.....	\$9 00	\$72 00
9 to 11 in. circum.....	15 00	110 00
<i>tigrinum Fortunei giganteum</i> . 8 to 9 in. circum.....	4 00	32 50
9 to 11 in. circum.....	6 00	50 00
11 to 13 in. circum.....	11 00	90 00
<i>tigrinum Fortunei flore pleno</i> . 7 to 9 in. circum.....	5 00	40 00
<i>tigrinum Sinensis</i>	5 00	40 00
<i>Batemannae</i>	4 50	40 00
<i>concolor</i>	3 00	25 00
<i>concolor</i> , var. <i>Ohime</i>	4 00	
<i>Coridion</i>	4 50	40 00
<i>Coridion</i> , var. <i>Okihime</i>	5 50	
<i>cordifolium</i>	5 50	
<i>Glehni</i>	10 00	
<i>elegans</i> , Extra Red.....	3 50	
<i>elegans</i> , Orange.....	4 00	
<i>elegans atrosanguineum</i>	5 00	
<i>elegans semi-pleno</i>	7 50	
<i>elegans incomparabile</i>	3 50	
<i>elegans flore pleno</i>	30 00	
<i>elegans</i> , Alice Wilson.....	30 00	
<i>elegans</i> , Peter Barr.....	40 00	
<i>Davuricum</i>	7 50	
<i>Hansonii</i>	15 50	
<i>Krameri</i> . First size.....	6 00	
Second size.....	4 00	
<i>rubellum</i> . First size.....	6 00	
Second size.....	4 00	
<i>Browni</i> , var. <i>odorum</i> . First size.....	30 00	
Second size.....	20 00	
<i>Leichtlini</i> , Canary-Yellow.....	12 00	
<i>Leichtlini</i> , Orange-Red.....	4 00	
<i>Leichtlini Fujihirado</i>	4 00	
<i>Ukeyuri</i> (L. <i>Japonicum Alexandræ</i>).....	15 00	
<i>Callosum</i>	8 00	
<i>Henryi</i>	30 00	
<i>Medeoloides</i>	5 00	

MISCELLANEOUS BULBS AND TUBERS

FRITILLARIA <i>Kamschatensis</i>	\$6 00	\$50 00
<i>Thunbergii</i>	3 50	25 00
LYCORIS <i>radiata</i>	2 00	15 00
<i>radiata alba</i>	9 00	
<i>aurea</i>	6 00	
<i>sanguinea</i>	3 00	22 50
<i>squamigera</i> (<i>Amaryllis Hallii</i>). Light pink.....	5 00	40 00
<i>squamigera purpurea</i>	10 00	80 00
.NARCISSUS <i>Tagetta</i> (Japanese Sacred Lily).....	2 00	12 00
*CRINUM <i>Asiaticum</i>	20 00	150 00

Prices are Free New York, Duty Included

MISCELLANEOUS BULBS AND TUBERS, continued.

	Per 100	1,000
HEMEROCALLIS aurantiaca major.....	\$15 00	\$120 00
fulva	10 00	
flava	10 00	
Minor	20 00	
ERYTHRONIUM dens-canis	3 00	25 00
*COLOCASIA multifolia	8 00	70 00
DIOSCOREA Batatas (Cinnamon Vine).....	4 00	30 00
Sativa (Cinnamon Vine).....	4 00	30 00
PUERARIA Thunbergiana. Kudzu Vine. Strong roots	5 00	40 00
CONOPHALLUS Konjak. Very ornamental spotted leaves, resembling Monarch of the East. Hardy and grows well in any soil.....	5 00	40 00
*CALLA LILY. Japan-grown. Perfectly free from disease.		
1 $\frac{3}{8}$ to 2 in. diam.....		45 00
1 $\frac{5}{8}$ to 2 $\frac{1}{4}$ in. diam.....		60 00
FREESIA. Japan-grown, healthy bulbs, $\frac{1}{2}$ to $\frac{3}{4}$ in. circum.....		3 00
mammoth size		5 00
BARNADIA JAPONICA		6 00
AMARYLLIS EQUESTRIS	55 00	
MONTBRETIA CROCOSMIAEFLORA		5 00

ORCHIDS

	Per 100
*AERIDES Japonica	\$20 00
*ANGRAECUM falcatum	15 00
BLATILLA Hyacinthina. Hardy ground Orchid; white flower borne on strong, erect stem	20 00
Hyacinthina. Same with purplish red flower	20 00
Hyacinthina. Same with white-margined leaves.	20 00
CYPRIPEDIUM Japonicum.....	8 00
Macranthum	10 00
CALANTHE discolor. Pink flower on erect stem.....	18 00
discolor. Same, with yellow flowers.....	30 00
*Japonica, Pink.....	30 00
*Japonica, White.....	30 00
*PHAIUS grandiflorus. Large crimson-lipped flower.....	80 00
*maculatus. Fine yellow flower, with yellow spots on leaves.....	70 00
*Wallichii. Same, with plain green leaves.....	70 00

PEONIES

	Per 100	1,000
Moutan. Tree Peony. Fifty choice named varieties.....	\$30 00	\$280 00
Officialis. Herbaceous Peony. 27 choice named varieties	15 00	130 00
" " " Well mixed	10 00	80 00
Obovata. Japan Wild Herbaceous Peony	6 00	

IRIS

Kaempferi. 18 new varieties	20 00	150 00
50 choice varieties	10 00	80 00
Well mixed	8 00	70 00
Albo purpurea	18 00	150 00
Albo purpurea caerulea	20 00	180 00
Japonica	10 00	80 00

Prices are Free New York, Duty Included

IRIS, continued

	Per 100	1,000
Gracilipes	\$20 00	
Laevigata	15 00	\$140 00
Laevigata semperflorens, Everblooming	20 00	180 00
Laevigata alba	25 00	
Minuta	20 00	
Tectorum	5 00	40 00
Japonica. White-striped leaves.....	15 00	
Pardanthus Chinensis	10 00	75 00
Iris siberica var. orientalis. White.....	10 00	
“ “ “ “ Blue	10 00	

CAMELLIA

	Per 100
*Japonica grandiflora. Pot-grown, 1½ to 2 feet	\$50 00
*Japonica, Double, well-assorted collection. Pot-grown, with buds, 1½ to 2 feet..	35 00
*Japonica, Single and semi-double, assorted, pot-grown. 1½ to 2 feet.....	35 00
*Sasanqua, “Mineno Yuki.” Double, white flower at Christmas time.....	30 00
*Sasanqua, “Mineno Yuki.” Single and semi-double assorted. Flower November and December	30 00
*Theifera. Tea Plant.....	15 00
*Theifera. With rose-colored flowers.....	35 00
*Theifera, var. Macrophylla. Large-leaved Tea Plant.....	40 00

AZALEA

Indicum, Hakatashiro. Evergreen, large, single, white flower in June	\$30 00
Mollis, Yellow	28 00
Mollis, Salmon	28 00
Mollis, Red	28 00
Schlippenbachii. Large single light lilac; very showy.....	75 00
Yodogawa. Double, light purple	35 00
Ledifolium. var. Leucanthum (Indica alba). Pure white; single; splendid for forcing	30 00
Murasaki riukiu. White, shaded purple	35 00
Oriukiu-shibori. White, pink-striped	35 00
Akebono. White slightly shaded pink	35 00
Sarasashibori. Purple variegated with white	35 00
Omurasaki. Large purple; good sort for forcing.....	35 00
Tebotan. Large, double, purple.....	50 00
Serpyrillifolium. Small, lilac; a prolific bloomer	40 00
*Sublanceolatum. Evergreen; large, scarlet; one of the best varieties.....	50 00
Linearifolium. Small, star-like flower; light purple	40 00
Hinodegiri. More brilliant color than the well-known Firefly; splendid variety for forcing. 1 to 1½ feet	\$300 per 1,000.. 35 00
Azumashibori. Red and white striped. 1 to 1½ feet	35 00
Shiragiri. Small, greenish white. 1 to 1½ feet	35 00
Fujimanyo. Double, light purple. 1 to 1½ feet	35 00
Amoena. 1 to 1½ feet.....	\$300 per 1,000.. 35 00
Indicum, var. Macranthum. Large, salmon-red, late-flowering sort. 1 foot	30 00
Indicum Tanimano Yuki. Single, salmon-red, white at the base. 10 feet.....	35 00
Indicum “Matsushima.” White and red striped. 10 feet	35 00
Indicum “Kinnozai.” Double salmon-red	35 00
Indicum “Komanyo.” Large, double salmon-red.....	30 00
Benigiri. Bright red; profuse bloomer.....	30 00

Prices are Free New York, Duty Included

AZALEA, continued

	Per 100
Yayegiri. Salmon-red; semi-double	\$35 00
Kirishima. Pretty, deep red, star-like flower; one of the popular varieties	35 00
Hosokawa. Single, purple; variegated leaves	40 00
Acuminata (Korean Azalea).....	35 00

JAPANESE ROSES

<i>Rosa laevigata</i> . Cherokee Rose; beautiful, glossy foliage. Single flowers, white	\$25 00
<i>laevigata</i> . Single flowers, pink.....	25 00
<i>microphylla</i> . Full, double; rose-color	30 00
<i>Banksiae</i> . Climber; fine, small, double yellow flowers; come out in cluster.	25 00
<i>Banksiae</i> . Same, with white flower	25 00
<i>multiflora</i> . See Seed Section.	
<i>Wichuraiana</i> . See Seed Section.	
Japanese Pigmy Rose. Very small, double, pink flower; suitable for pot culture	20 00
Rugosa, pink	25 00
Rugosa, white	30 00

DECIDUOUS ORNAMENTAL TREES AND SHRUBS

ACER, MAPLE

Well-assorted Colored Leaves, 1 to 2 feet	\$17 50
2 to 3 feet	25 00
Well-Assorted Specimen Plants. 3 to 5 feet	80 00
Grafted Maple, Dantsugi. Four to five different kinds grafted on single stem, 1 foot	25 00
Grafted Maple, Megane. Two stems twisted and grown together in a form of 8 of Arabic figure and four to five kinds grafted on them	35 00
AESCULUS <i>turbinata</i> . Japanese Horse-Chestnut. 2 to 3 feet	10 00
3 to 4 feet	25 00
ALBIZZIA <i>julibrissin</i> . Tuft-like, pretty pink flowers in summer; good for planting along walks. 1½ to 2 feet	35 00
ANDROMEDA <i>campanulata</i> . Lovely bell-shaped flowers, hang in clusters, and foliage turns red in autumn. 2 to 3 feet.....	40 00
Japonica. Hardy shrub, producing pendulous, clustered flowers. 1 to 1½ feet	30 00
Japonica. Same, with white, marginal leaves. 1 to 1½ feet	30 00
Cernua <i>rubens</i>	30 00
AMELANCHIER <i>Asiatica</i> . Ornamental, deciduous tree, in late spring producing white flowers in panicles. 1½ to 2 feet.....	30 00
ARALIA <i>spinosa</i> . 2 to 3 feet	25 00
CERCIS <i>Chinensis</i> . Japanese Judas Tree. Flowering-size plants, 2 to 3 feet....	30 00
CEDRELA <i>Chinensis</i> . A deciduous, fast-growing tree, attaining a considerable height. 1 to 2 feet.....	25 00
CERCIDIDIPHYLLUM <i>Japonicum</i> . Very ornamental, deciduous tree, thriving well in cold climate. 2 to 3 feet.....	30 00
*CLERODENDRON <i>squamatum</i> . 1 to 1½ feet	20 00
CORNUS <i>macrophylla</i> . Ornamental, deciduous tree of quick growth, producing fine white flowers in summer. 2 to 3 feet	30 00
Macrophylla. With pretty pinkish white variegated leaves. 1 to 2 feet	35 00
Kousa. Japanese Dogwood. White-flowering. 2 to 3 feet.....	30 00

Prices are Free New York, Duty Included

DECIDUOUS AND ORNAMENTAL TREES AND SHRUBS, continued.

	Per 100
CORYLOPSIS <i>spicata</i> . Hardy shrub, producing long, drooping, yellow flowers in early spring	\$30 00
<i>pauciflora</i> . Very similar to the above, but with smaller flowers, covering nearly the whole bush	25 00
CRATAEGUS <i>cuneata</i> . Japanese Hawthorn. Single white. Well-trimmed; will flower the first year. 1 to 1½ feet	30 00
ENKIANTHUS <i>Japonica</i> . Fine ornamental shrub, of erect-growing habit, with pretty Lily-of-the-Valley like flower, hanging underneath the foliage, which turns bright red in fall. 2 to 3 feet.....	35 00
EUONYMUS <i>alatus</i> . Cork-barked Euonymus. Leaves turn brilliant red in fall. 2½ to 3 feet	25 00
FORSYTHIA <i>suspensa</i> . Yellow, jasmine-like flowers come out very early in spring before the leaves appear. 2 to 3 feet	35 00
FRAXINUS <i>pubinervis</i> . Rapid-growing, hardy, ornamental tree, suitable for avenue planting. 2 to 3 feet.....	25 00
<i>pubinervis</i> . White, with variegated leaves. 2 to 3 feet	50 00
<i>Mandchurica</i> . 2 to 3 feet.....	50 00
HAMAMELIS <i>Japonica</i> . Japanese Witch Hazel. 2 to 3 feet	30 00
HIBISCUS <i>Syriacus</i> . Deciduous shrub, growing to the height of 6 to 7 feet; plant being of bushy nature is well adapted for hedge. 2 to 3 feet....	25 00
ILEX <i>Sieboldii</i> . Hardy plant, bearing red berries, lasting nearly whole winter..	30 00
<i>Sieboldii</i> . Same as above, with white berries	30 00
Kerria <i>Japonica</i> . Pretty yellow-flowering shrub, making a graceful appearance.	25 00
<i>Japonica</i> . Same as above, with double flowers	25 00

HYDRANGEA

Hortensis . Pink, with four to five flowering shoots on one plant	28 00
Pink. Standard, 1½ to 2 feet.....	35 00
Hortensis <i>Algaku</i> . Indigo-blue, star-like flowers	30 00
Hortensis <i>Benigaku</i> . Rose-pink, turning to almost red as the flower expands..	30 00
Hortensis <i>rosea</i> . A new pink Hydrangea, with very thick pink petal, as if artificially made with wax	30 00
Scandens . Climbing Hydrangea. Grows 40 to 50 feet, covering walls, old trees, etc., like <i>Ampelopsis Veitchii</i> , the white flowers appear in great abundance and present a beautiful sight. Strong plants.....	25 00
Involucrata flore pleno . Pinkish double white; of perfect ball-shape	30 00
Paniculata . Strong growth, with four to five flowering shoots. 2 to 3 feet....	30 00
Schizophragma <i>Hydrangeoides</i> . Very similar to <i>H. scandens</i> , with climbing habit; only differs in flower, which has less petals	25 00
Acuminata , blue flowering	50 00
Stellata rubra	30 00
Arborescens	27 50
LAGERSTROEMIA <i>Indica</i> . Pink, white, and light claret colors. 1 foot	25 00
LESPEDEZA <i>bicolor</i> . One of the well-known Japanese autumnal flowers, growing 5 to 6 feet high, and forming a fine bush. Light lilac color. By root	25 00
<i>bicolor</i> . Same as above, with white flowers. By root.....	30 00
LINDERA <i>Sericea</i> . Ornamental plant, having peculiar aromatic odor from all parts of the wood; most of the Japanese toothpicks are made from this wood. 2 to 3 feet.....	30 00

Prices are Free New York, Duty Included

MAGNOLIA

	Per 100
Compressa. One of the evergreen Magnolias, with small, lovely white flowers, 2 to 3 feet.....	\$35 00
Conspicua. Fine white flowers; free bloomers. 2 to 3 feet.....	35 00
3 to 4 feet.....	60 00
Grandiflora. Being grafted plants and grown in pots for one year, most of them flower the first year, even when of very small size. 2 to 3 feet.....	30 00
Hypoleuca. A very ornamental garden tree, growing to an immense size, and producing very large, white flowers. 1 to 2 feet.....	15 00
Kobus. Medium-sized white flowers, shaded with pale pink at tip of the petal; it also grows to an immense size. 2 to 3 feet.....	25 00
*Longifolia. Persistent foliage, with sweet-scented, white flowers, 1½ to 2 feet	35 00
*Champaca. Same as above, with creamy yellow flowers. 1½ to 2 feet.....	50 00
Obovata. Purple flowers before the leaves; forms a nice bush. 2 to 3 feet....	35 00
Watsoni. Very fragrant white flowers of good size, coming out at same time as the leaves. 2 to 3 feet	32 00
Parviflora. White flowers of medium size; a peculiarity of this variety is that the flowers open downward instead of upward, as is the case with nearly all other Magnolias. 2 to 3 feet.....	35 00
Parviflora flore pleno. Same as above, with double flowers. 2 to 3 feet.....	40 00
Stellata. Light pink; profuse bloomer. 1½ to 2 feet.....	28 00
Sallicifolia. The latest and best addition to the Magnolia class in recent years. It is one of the hardiest kinds, coming from the northern part of Japan. The flowers are white and resemble those of <i>M. Kobus</i> , but are produced in greater profusion. The most striking quality of this new species, and one that distinguishes it from all others is its sweet scent, which it emits not only from the flowers, but from the bark and leaves as well, retaining this fragrance even in dry condition. This Magnolia should not be omitted from any collection. 1½ to 2 feet	35 00

PRUNUS

Mume. Flowering plum. One of the earliest spring flowers in Japan. Blooms in mid-winter and lasts for nearly a month. Owing to the fragrance of its flowers it is highly esteemed as New Year's decoration. A good assortment of our choice varieties of young, grafted plants. 3 to 4 feet..	25 00
Pseudo-cerasus. Japanese Flowering Cherry. Best collection of twelve different varieties, double and semi-double. 3 to 4 feet	15 00
Pseudo-cerasus. Single-flowering varieties. 3 to 4 feet.....	15 00
Pseudo-cerasus. Dwarf Cherry for forcing purposes; pot-grown, twisted branches; with buds. 1½ to 2 feet.....	45 00
Pseudo-cerasus. Same, with straight branches. ½ to 2 feet.....	40 00
Persica. Japanese Flowering Peach. Double, deep red, pure white, and variegated flowers; strong plants, with buds. 2 ft. Pot-grown.....	35 00
Persica. Open ground. 3 to 4 feet.....	20 00
PAULOWNIA imperialis. A noble deciduous tree; rapid grower, with large leaves; good for shading; the flowers are light lilac, appearing in large bunches. The wood is light and one of the important kinds for furniture. 2 to 3 feet	20 00
PYRUS Japonica (cydonia). Pretty, bright scarlet flowers are produced in abundant profusion on this shrubby bush. Most suitable for forcing purposes. 1½ to 2 feet.....	30 00
Japonica. The same, with white flowers. 1½ to 2 feet.....	30 00
Japonica. A winter-flowering variety; pretty, deep scarlet flower, opening as early as December in open air without any protection. New and rare. 1 to 2 feet.....	50 00
spectabilis. Flowering Quince. Lovely pink flowers like those of the crab apple cover the whole plant; must suitable for forcing. Plant, with buds, 2 to 2½ feet.....	35 00

DECIDUOUS AND ORNAMENTAL TREES AND SHRUBS, Continued.

	Per 100
RIBES fasciculatum. Japan Garden Currant. Pretty currant-like red berries, appearing in umbel form, nearly covering the branches, and remaining after the leaves fall off. Good plant. 2 ft.....	\$50 00
STERCULIA platanifolia. Noble tree; luxuriant foliage and smooth green trunk; very quick grower; suitable for avenue planting. 3 to 4 feet....	25 00
STUARTIA Pseudo-Camellia. Deciduous tree; single, white, camellia-like flowers in midsummer. 2 to 3 feet.....	30 00
STYRAX Japonica. A popular tree, with handsome, bell-like, white flowers hanging underneath the leaves, making a most beautiful appearance when in full bloom. 1½ to 2 feet.....	30 00
Obassia. Long, white flower-spikes, resembling wistaria, appear in May; flowers very sweet-scented; tree grows 20 to 30 feet high, and has large, showy, leaves. 2 to 3 feet.....	30 00
VIBURNUM tomentosum plicatum. Japanese Snowball. 2 to 2½ feet	30 00
Carlesii. A new variety of recent discovery; pink shaded white flowers, resembling a large Bouvardia, appear on almost every point of strong growth; very hardy. 1½ to 2 feet.....	75 00
WISTARIA. See Climbers	
ZELKOWA keaki. One of the very important timber trees in Japan because of its hardness of wood and durability; as a garden tree, it is also very ornamental. 2 to 3 feet.....	15 00

CONIFERS

ABIES firma. 1½ to 2 feet.....	30 00
Tomomi. Somewhat resembling <i>Picea pungens</i> , but having thinner foliage; when started to grow, it grows very much more quickly. One of the showiest kinds among the conifers. 2 to 3 feet	75 00
CEPHALOTAXUS drupacea. 2 to 2½ ft.....	35 00
CRYPTOMERIA Japonica. 2 to 2½ ft.....	25 00
CUNNINGHAMIA Sinensis. Japanese Araucaria. 1½ to 2 ft.....	35 00
GINKGO biloba. Maidenhair Tree. 2 to 3 ft.....	25 00
JUNIPERUS Chinensis procumbens. Creeping Juniper. Well-shaped runner, 1 to 2 ft. long.....	30 00
Chinensis procumbens. Runner trained upright, 2 to 3 ft., then drooping..	75 00
virginialis globosa (Ibuki). Either green or golden yellow. Diameter of crown, 10 to 12 inches.....	35 00
12 to 15 inches.....	75 00
PICEA polita. Well-shaped bushy plants, 1 to 1½ ft.....	28 00
PINUS Massoniana. 1 to 2 ft.....	20 00
densiflora. 1 to 2 ft.....	20 00
pendula. Weeping Pine. 2 to 3 ft.....	80 00
Koraiensis. Long-needled Korean Pine. 1 to 2 ft.....	30 00
Tanyosho. Japanese Table Pine, Dwarf. Diameter of crown— 1 to 1½ ft.	30 00
1½ to 2 ft.	60 00
2 to 3 ft.	200 00
RETINOSPORA filifera. Green. 2 to 2½ ft.....	30 00
filifera aurea. Golden yellow. 2 to 2½ ft.....	30 00
obtusa gracilis (Kamakura). 2 to 2½ ft.....	35 00

CONIFERS, Continued.

	Per 100
SCIADOPITYS verticillata. Japanese Umbrella Pine. 10 to 12 inches.....	\$25 00
1 to 2 ft.	45 00
2 to 3 ft.	80 00
3 to 4 ft.	200 00
4 to 6 ft.	350 00
TAXUS tardiva globosa. 1 to 1½ ft.....	28 00
tardiva globosa aurea. Golden. 1 ft.....	28 00
cuspidata. 2 to 3 ft.....	40 00
Koraiensis. Thick, erect bush. 2 to 3 ft.....	30 00
TSUGA Sieboldii. 1½ to 2 ft.....	40 00
THUJA obtusa compacta. Either green or golden yellow; pyramidal shape; well trimmed. 2 to 3 ft.....	70 00
3 to 4 ft.	160 00
4 to 6 ft.	500 00
dolabrata. Nice bushy plant. 1½ to 2 ft.....	35 00
dolabrata. White variegated foliage. 1½ to 2 ft.....	35 00
TORREYA Nucifera. 2 to 3 ft.....	40 00

YOUNG CUTTINGS OF CONIFERS.

2-year-old cuttings, per 1,000

THUJA obtusa nana	\$40 00
nana aurea	40 00
obtusa, var. Kamakura.....	40 00
obtusa, var. lycopodiædes.....	50 00
pendula aurea	35 00
pendula, green	35 00
THUJOPSIS dolabrata	40 00
dolabrata variegata	40 00
RETINOSPORA plumosa aurea	25 00
plumosa, green	25 00
JUNIPERUS Chinensis procumbens	50 00
Chinensis variegata	40 00
virginialis globosa	40 00
TAXUS Koraensis	30 00
tardiva	35 00

ORNAMENTAL EVERGREEN TREES AND SHRUBS

Per 100

*ARDISIA crispa. Bears pretty red berry, which is commonly called Christmas Berry, as it usually ripens toward Christmas. Good plant. with berries on. 1 ft.	\$35 00
AUCUBA Japonica. Speckled leaves. 1 to 2 ft.....	30 00
Japonica. Plain green leaves. 1 to 2 ft.....	28 00
BERBERIS Fortunei. Thorny, long, narrow leaves, producing long, yellow- flowering spikes in clusters. 2 to 3 ft.....	35 00
BUXUS Japonica. Box Tree. Well-trimmed bush. 2 to 2½ ft.....	50 00
*CHLORANTHUS brachystachys. Bears very ornamental red berry, growing about 2 feet in height and forms a nice bush. Five to six shoots to a plant..	45 00
*CINNAMOMUM camphora. Camphor Tree. Four to six plants in a pot. 1 to 2 ft. By pot.....	25 00

ORNAMENTAL EVERGREEN TREES AND SHRUBS, Continued.

Per 100

DAPHNE Genkwa. Pretty, small flowers, resembling the lilac, cover and branches before the leaves appear; very showy. 1 to 1½ ft.....	\$20 00
* odora. Pink flower, with white-margined leaves. 1½ to 2 ft.....	40 00
* odora. White flower, with plain green leaves. 1½ to 2 ft.....	40 00
FATSIA Japonica (Aralia Sieboldii). Fine garden plant, with its large, luxuriant foliage, resembling fig leaves; produces large bunches of white flowers in autumn; is also nice decorative house-plant. 2 to 3 ft..	50 00
Japonica variegata. The same with leaves variegated with white. 1 to 1½ ft.	75 00
* GARDENIA grandiflora. Very fragrant, single, star-shaped white flowers are borne in profusion. 1½ to 2 ft.....	35 00
* grandiflora. The same, with double flowers. 1½ to 2 ft.....	40 00
* radicans. Double white dwarf; suitable for pot culture. 10 to 12 in.....	28 00
* ILEX crenata. A hardy shrub, forming a fine bush, and is highly recommended for hedge or border. 1½ to 2 ft.....	25 00
2 to 3 ft.....	50 00
* LARIX leptolepis. Japanese Larch. 1 to 2 ft.....	10 00
2 to 4 ft.....	30 00
LIGUSTRUM medium. Resembles California Privet, has larger flowers; most suitable for hedges. 1½ to 2 ft.....	20 00
NANDINA domestica. Beautiful, ornamental shrub; very graceful; coral-like berries in panicles, ripening at Christmas. 2 to 2½ ft.....	30 00
domestica. The same with white berries. 2 to 2½ ft.....	35 00
* OPHIOPOGON Jaburan. White-striped Ribbon Grass, suitable for table decoration. Strong pot-grown plants.....	35 00
* PHOTINIA glabra rubens. A beautiful evergreen garden shrub, having bright red foliage, which is retained in the spring and gives the shrub the appearance of being in flower. As the foliage gets older, it becomes green, but new growth keeps its red color throughout the entire year, although not so brilliant as in the spring. A few specimens of this shrub among the green-leaved kinds forms an attractive bit of color in the shrubbery. 1 to 2 ft..	28 00
RAPHIOLEPIS Japonica. Ornamental evergreen shrub, suitable for rockwork; pretty white flower in summer, 1 to 2 ft.....	25 00
OLEA aquifolium. Hardy thorny evergreen plant, resembling Holly. 1 to 1½ ft.	28 00
aquifolium. White-variegated leaves. 1 to 1½ ft.....	28 00
aquifolium aurea. Golden-variegated leaves. 1 ft.....	28 00
fragrans. Orange-yellow flower; very sweet-scented plant, resembling camellia bush. 2 to 3 ft.....	40 00
Small size, 1 to 2 ft.....	30 00
fragrans. The same with white flower. 1 to 2 ft.....	30 00
2 to 3 ft.....	40 00
QUERCUS dentata. Large-leaved Japanese Oak. 1 to 2 ft.....	25 00
dentata aurea. Golden yellow leaves. 2 to 3 ft.....	50 00
TERNSTROEMIA Japonica. Beautiful evergreen; glossy foliage; very ornamental for the garden. 2 ft.....	50 00
VIBURNUM odoratissimum. Ornamental evergreen tree, with pretty white flowers in panicles followed by bright coral-like berries, which are retained on plant for a long time. Splendid plant for hedge. 1½ to 2 ft.....	28 00

Prices are Free New York, Duty Included

FRUIT TREES

	Per 100
*CITRUS, Satsuma Orange, on true trifoliata stock. 1 year old.	\$70 per 1,000.. \$7 50
2 years old	\$125 per 1,000.. 15 00
3 years old	\$225 per 1,000.. 25 00
*Japonica. Kumquat Orange. Elliptical fruit. 1 to 1½ ft.....	20 00
Round fruit, 1 to 1½ ft.....	20 00
*Var. Omi. Large, oblong fruit. 1 to 1½ ft.....	25 00
Any of the above four kinds, pot-grown, with fruit, 1 to 1½ ft.....	50 00
CASTANEA vulgaris Tamba. Mammoth Chestnut. Grafted plants. 2½ to 3½ ft.	5 00
Koraiensis. Korean Chestnut. Seedling, 2 to 3 ft.....	5 00
DIOSPYROS Kaki. Persimmon, Sweet varieties assorted. Grafted trees, 2½	
to 3 ft.....	6 00
Kaki, Twentieth Century. New variety of recent discovery, large fruit very	
sweet and delicious.....	15 00
ELAEAGNUS longipes. 1 to 2 ft.....	15 00
ERIOBOTRYA JAPONICA (Japanese giant Loquat).....	25 00
JUGLANS cordiformis. Japan Walnut. 2 to 3 ft.....	5 50
Sieboldii. Japan Walnut. 2 to 3 ft.....	5 50
Regia. 2 to 3 ft.....	8 00
Myrica rubra. 1 to 1½ ft.....	20 00
RUBUS incisus. Japanese Mayberry. Delicious yellow berry. 2 to 3 ft.....	15 00

**YOUNG SEEDLINGS FOR GRAFTING
OR BUDDING PURPOSES**

	Per 1,000
GASTANEA vulgaris. Japanese Hardy Wild Chestnut. Seedlings of pencil	
thickness. 2 to 3 ft.....	\$20 00
CHERRY. Seedlings 2 years old, of pencil thickness, for grafting purposes.	
1 to 2 ft.....	20 00
CITRUS trifoliata. For grafting orange trees; seedling one year old, thickness	
4 to 5 mm. 1 ft.....	\$57.50 per 10,000..
2 to 3 years old, thickness ¼ to ⅜ in.; 2 to 2½ ft.....	\$225 per 10,000..
DIOSPYROS Kaki. Persimmon. Seedlings of pencil thickness. 1 to 2 ft.....	25 00
MAGNOLIA hypoleuca. Seedlings of pencil thickness, 6 to 18 in.....	35 00
Kobus. Seedlings of pencil thickness, for grafting Magnolia. 1½ to 2 ft....	30 00
PYRUS Ussuriensis. Japan Pear. Seedlings of pencil thickness. 1 ft.....	15 00
PRUNUS Persica. Japan Peach. Seedlings of pencil thickness. 1 to 2 ft.....	20 00
PYRUS Toringo. Cuttings of pencil thickness, for grafting apple. 1½ to 2 ft..	10 00
MAPLE (Acer polymorphum). Seedlings of pencil thickness. 1½ to 2 ft.....	15 00

ASPIDISTRAS

Per 1,000 Leaves

*Lurida. Green leaves. Well-established pot-grown plants.....	\$30 00
" green by Rhizom, leaves cut off.....	15 00
" Variegated leaves. Well-established pot plant.....	50 00
" Variegated by Rhizom, leaves cut off	30 00

PALMS, BAMBOOS AND GRASSES

	Per 100
* CYCAS <i>revoluta</i> . Dormant stem above 6 in.....	Per 1,000 lbs., \$50..
Under 6 in.	Per 1,000 lbs., \$55..
* CHAMAEROPS <i>excelsa</i> . Rapid-growing Palm of easy culture.	
Pot-grown plant, 1 to 1½ ft.....	\$40 00
Pot-grown plant, 1½ to 2 ft.....	100 00
* Fortunei . Similar to the above, but is dwarf and has stiff leaves. 1 to 1½ ft.	40 00
1½ to 2 ft.....	100 00
* RHAPIS <i>humilis</i> . Fine ornamental palm, with very graceful leaves; one of the best kinds for house decoration. Five to ten shoots to a pot. 6 in. to 3 ft.....	Per 100 shoots, \$32..
* flabelliformis . Similar in character to the above, but having broader and stiffer leaflets. Five to fifteen shoots to a pot. 6 in. to 2 ft.	
Per 100 shoots, \$27.50..	
* LIVISTONIA <i>Chinensis</i> . Handsome Japanese Fan Palm, suitable for house decoration; plant with three to four characteristic leaves; 6-in. pot.....	40 00

BAMBOOS

ARUNDINARIA <i>Hindsii</i> . Very bushy and graceful variety; height 15 to 20 feet. 2 to 3 ft.....	30 00
Hindsii , var. <i>graminea</i> . Similar in character to the above, but with more delicate foliage, 1 to 2 ft.....	25 00
Japonica . Japanese Arrow Bamboo. Very showy, with large leaves; forms a good bush, growing 10 to 15 feet in height. 2 to 3 ft.....	27 50
Simoni (A Metake). One of the hardiest kinds; height, 10 to 20 feet; grows well on river banks, having creeping root-stocks, which spread very freely. 2 to 3 ft.....	25 00
* BAMBUSA <i>vulgaris</i> . Very ornamental kind, growing to immense size in warm climates, and, being a native of Japan, is good for greenhouse decoration. 2 to 3 ft.....	100 00
<i>pygmæa</i> . Ornamental dwarf grassy Bamboo, suitable for planting in rockery. 6 in.....	20 00
* Taihochiku . Good ornamental kind, forming a nice bush. 2 to 3 ft.....	25 00
* Alphonse-Karri . The same as yellow and green striped Bamboo. 2 to 3 ft..	30 00
* Marmorea . Slender stem, growing 4 to 5 feet. 1½ to 2 ft.....	25 00
Veitchii . Large, dark green, white-margined leaves, growing 2 to 4 feet, and thriving well in shady places. 1 ft.....	25 00
argentea-striata . Dwarf ornamental grassy kind, with pretty, white-striped leaves. 6 to 10 in.....	20 00
aureo-striata . The same, with yellow-striped leaves. 6 to 10 in.....	20 00
* nana . Dwarf, compact bush, suitable for pots. 6 to 10 in.....	25 00
fastuosa . Ornamental, erect-growing variety, attaining a height of 10 to 15 feet, and forming a good bush. 2 to 3 ft.....	30 00
PHRAGMITES <i>communis</i> (Japanese Rush). Grows to the height of about 10 ft.; its stems are extensively used for supporting chrysanthemums, and also as the best material for making mats for shading. Strong clumps....	20 00

Prices are Free New York, Duty Included

BAMBOOS, Continued.

	Per 100
PHYLLOSTACHYS Castillonis. Green and yellow striped Bamboo, growing to the height of 15 to 25 ft. 2 to 3 ft.....	\$30 00
Maliacea. Wrinkled Bamboo, one of the rare sorts, growing 15 to 20 feet. 2 to 3 ft.....	30 00
urea. Ornamental variety of easy culture, growing 10 to 15 feet; forms a good grove. 2 ft.....	25 00
*quadrangularis. Four-cornered bamboo, growing 10 to 15 feet; delicate nature. 2 to 3 ft.....	35 00
Quillioi. Most useful giant Bamboo; general garden plant; easy to grow, and remarkable for its height—often 40 feet. 2 to 3 ft.....	25 00
Henonis. Close ally of P. Quillioi; stem 2 inches across, and attains the height of 15 feet. 2 to 3 ft.....	25 00
mitis. Feathery Bamboo. One of the largest sorts; 6 inches across, and 28 to 38 feet high; its young shoots are eaten as a vegetable. 2 to 3 ft.	30 00
nigra. Black Bamboo. Very ornamental kind, growing about 20 feet; dark stem. 2 to 3 ft.....	30 00
heterocycle. Tortoise-shell, knotted species, with fine feathery leaves. 2 to 3 ft.....	50 00
ruscifolia. Slender, grassy Bamboo; good for planting along banks in shady places. Three to five shoots to a pot. 1 to 1½ ft.....	25 00

ORNAMENTAL GRASSES

EULALIA Japonica. Japanese Pampas Grass. Very graceful, ornamental grass, producing ostrich-feather-like panicles used for dried bouquets. Strong clumps	10 00
Natsubo. The same, but a summer-flowering variety, growing little taller than the above. Strong clump.....	10 00
Japonica Zebrina. White-hooped variegation on the leaves; very showy. Strong root	18 00
MISCANTHUS Japonica. Evergreen Eulalia. Foliage remains green all the year round and grows much larger than the common Eulalia.....	15 00
Sacchariflorus. Close ally of Eulalia Japonica, growing 5 to 6 feet, with large, glossy panicles. Strong, creeping root.....	10 00
Condensatus	18 00

SOME ALPINES AND HARDY PERENNIALS

ADONIS Davurica. Lovely canary-yellow flowers, as early as January; highly esteemed for New Year's decorations. Five to ten shoots to a clump..	Per 100 shoots, \$4.50..
Davurica. Full double, with greenish yellow center. Two to five shoots to a clump.....	Per 100 shoots, \$20..
ASPARAGUS Schoberioides. Somewhat similar to A. Sprengeri, but with much finer leaves, and grows longer. Strong roots.....	20 00
Colemani. Dwarf, thick, feathery kind; splendid for pot plants. Strong roots	20 00
DICENTRA spectabilis. Bleeding-heart	15 00
FUNKIA ovata. Large, round, spoon-shaped leaves, with long stipules.....	15 00
ovata. Smaller leaves, with white variegation.....	15 00
ovata. Large, oval leaves, white-margined.....	15 00
INDIGOFERA decora. Lovely purplish red flowers are borne in racemes among dense, pinnate leaves; splendid pot plant.....	20 00
PETASITES Japonica gigantea. This giant variety grows its petioles to the height of 6 feet; the large, round leaves expanded at the top of the petioles, form umbrella-shaped plants which are very attractive when fully grown..	15 00

SOME ALPINES AND HARDY PERENNIALS, Continued.

	Per 100
POLYGONUM Sachalinense. Very ornamental for outdoor growing; 8 to 10 ft. in height; forms a good bush with immense leaves. Strong roots.....	\$15 00
ROSA ACICULARIS var. <i>nipponensis</i> . A hardy alpine rose growing to the height of about 1 foot with lovely single pink fragrant flower of 1½ to 2 in. across	25 00
SEDUM Sieboldii. Pretty pink-clustered flowers on pendulous sprays, suitable for hanging baskets as well as pot-plants.....	20 00
Sieboldii. Same as above, with variegated leaves.....	20 00
SENECIO Kämpferi. Ornamental evergreen perennial, producing yellow, daisy-like flowers suitable for bed or for border.....	15 00
Kämpferi. The same, with variegated leaves.....	20 00
CIMICIFUGA simplex. Hardy perennial, growing 3 to 4 feet high, and producing long, white-spiked flowers in racemes.....	12 00

CLIMBERS AND CREEPERS

ACTINIDIA arguta. Hardy ornamental climber, with white flowers in summer, and bearing edible fruit. 1 ft.....	30 00
Kolomikta. Beautiful hardy climber. Its young leaves are usually white at the tip, appearing as if flowering. Strong vine, cut back, 1 to 2 ft..	35 00
AKEBIA quinata. Ornamental climber, yielding edible fruit.....	20 00
lobata. Closely resembling the preceding, with three-parted leaves instead of five of the former; flower is fragrant.....	20 00
BERCHEMIA racemosa. Flexible woody vine, producing white flowers in panicles. 1 to 1½ ft.....	25 00
CELASTRUS articulatus. Highly ornamental woody vine, bearing yellow berries, gradually expanding to red as the seeds ripen, thus retaining the same appearance for a long time, even after the leaves fall off. 1 to 1½ ft..	22 00
CLEMATIS paniculata. Fine hardy variety; covered with a mass of pretty white flowers; grows freely in any soil. Most suitable for covering the arbor or walls. Strong roots.....	6 00
HYDRANGEA scandens. See Hydrangea section.	
EUONYMUS radicans, hardy small leaved Euonymus most suitable for covering wall	20 00
Ditto, variegated leaves	25 00
SCHIZOPHRAGMA hydrangeoides. See Hydrangea section.	
KADSURA Japonica. Ornamental woody vine, bearing pretty red ball-shaped berries, suitable for trellises and walls. 1 to 1½ ft.....	30 00
LYGODIUM Japonicum. See Fern section.	
MILLETIA Japonica. Elegant climber, with pretty wistaria-like flowers in summer. 1 to 1½ ft.....	28 00
PUERARIA Thunbergiana. Kuduz Vine. Strong root.....	5 00
RUBUS rosæfolius, var. <i>coronarius</i> . Full, double, regular, climbing rose; scentless flower of medium size. 1 to 1½ ft.....	20 00
STAUNTONIA hexaphylla. Splendid evergreen climber, with dark green, lustrous leaves; bears edible fruit; rapid grower and suitable for covering trellises or arbors. 1½ to 2 ft.....	30 00
TECOMA grandiflora. Commonly known as Trumpet Flower. Beautiful orange-red trumpet-like flowers; very attractive when in full bloom. 1 to 2 ft....	30 00
TRICHOSANTHES cucumeroides. Handsome climber, with beautiful velvety dark green leaves and pretty white ragged petaled flowers; blooms from evening till morning; when the flowering period is over, it bears in abundance pretty lantern-like red fruits about the size of a hen's egg.....	15 00
VITIS inconstans. Hardy deciduous creeper; leaves turn bright red in autumn; splendid thing for covering stone walls. 1 to 2 ft.....	15 00

CLIMBERS AND CREEPERS, Continued.

	Per 100
WISTARIA Chinensis. Large, purple flower; short spike. Flowering size, 2 to 3 ft.....	\$35 00
Chinensis. Double purple. 2 to 3 ft.....	40 00
brachybotrys. Large, white flower; short spike. 2 to 3 ft.....	35 00
multijuga. Purple; very long flower-spike, often over 3 feet. 2 to 3 ft.....	35 00
multijuga. The same with white flower. 2 to 3 ft.....	35 00
multijuga. Pale lilac. 2 to 3 ft.....	40 00
Fragrant. Dull white; very fragrant. 2 to 3 ft.....	35 00
Fine Dwarf Specimens in pot, either white or purple, well-branched. 4 to 6 ft....	\$5 to \$20 each..

FERNS, FERN BALLS AND DESIGNS

* NEPHROLEPIS tuberosa. Sword Fern. Well-grown plant. In 5 to 6-inch pots	15 00
* CYATHEA spinulosa. Japanese Tree Fern. Stem 10 to 12 inches long.....	50 00
LYGODIUM Japonicum. Hardy climbing Fern.....	10 00
ADIANTUM pedatum. Five-finger Fern. By root.....	15 00
ASPIDIUM viridescens. Hardy Fern. Splendid for rockery as well as for pot. by root	15 00

FERN BALLS.

7 to 9 inches diameter	\$160 00
5 to 6 inches diameter	95 00
Extra size, 10 inches diameter.....	250 00
7 to 9 inches diameter, 2 years old.....	200 00

FERN DESIGNS.

Monkey	\$30 00
House, Junk, Lantern and Fish Globe Holder	40 00
Bird, Raft, Boy on Swing and Boy with Drum	30 00
Ring, Cross, Turtle and other simple designs	17 50
Rabbit	50 00

AQUATIC PLANTS

NELUMBIUM speciosum. Lotus. The famous water-plant grown in Japan for its beautiful flower in summer.	
Pure White. Rhizomes in pots.....	\$5 for 10..
Light Rose. Rhizomes/in pots.....	\$5 for 10..
SAGITTARIA sagittæfolia. Edible tuber growing in watery places; produces lovely white flowers; it grows well in hyacinth glasses by simply putting the tubers into water without any soil.....	5 00
SCIRPUS lacustris. Ornamental aquatic perennial; round, singular, stick-like leaves grow from the root in great profusion, often reaching a height of 5 to 6 feet; elegant for planting along the edges of ponds.....	20 00
lacustris, var. Zebrina. The same, with yellow-hooped variegation: very attractive	25 00
CAREX Gaudichaudiana. Handsome aquatic plant, with long, narrow, graceful leaves; most suitable for pots. Large clump in dormant state.....	30 00
JUNCAS communis, var. Zebrina. As a pot plant it is very handsome, growing about 2 feet high, with abundant stems coming out close together.....	25 00
LYSICHITON Camtschatcense. Hardy; very ornamental, large, broad leaves, thriving well in marshy ground; has handsome pale yellow calla-lily-like flowers in spring.....	75 00

DWARFED TREE.

THUJA obtusa nana. Either Green or Golden. In fancy porcelain pot, from \$2 up to \$50 each, according to size and age. Fine old specimen trees, from \$20 up to \$50 each.

Tiny Dwarf Tree, with pot; well assorted kinds, \$20 per 100, \$150 per 1,000.

Many other different species of dwarf trees, such as Maples, Larch, Oak, Pines, etc., from \$1 up to \$50 each, depending on age, size, etc.

LARCH TREE DESIGNS.

	Per 100
Stork. Small size	\$50 00
Large size	80 00
Turtle	40 00
Chicken, House, etc.....	125 00

FLOWER SEEDS

	Per lb.	10 lbs.	100 lbs.
Anemone Japonica	\$4 00		
cernua	3 00		
Arabis serrata. White.....	10 00		
Aster Tataricus	4 00		
Achillæa Sibirica	2 00		
Asparagus Schoberioides.....	per 1,000 seeds, \$7.50..		
Clematis paniculata	2 50	\$20 00	
Caryopteris mastacanthus	3 00		
Chinese Bottle Gourd	1 00	8 00	\$60 00
Chrysanthemum	5 00		
Dianthus laciniatus mirabilis.....	5 00		
Dolichos lablab, White.....	75	5 00	45 00
lablab, Scarlet	75	5 00	45 00
Hibiscus mutabilis	5 00		
Iris Kæmpferi	2 50	18 00	
Lespedeza bicolor	1 50	12 00	
Leucanthemum Nipponicum	4 00		
Lysimachia clethroides	2 50		
Lotus (Nelumbium speciosum). White.....	1 00	7 50	
Pink	1 00	7 50	
Morning-Glory, Best Single Mixed.....	50	4 50	40 00
Best Single Fringed Petal, Mixed.....	1 00	8 00	75 00
Giant Variety, Mixed, Immense size.....	2 00	17 50	150 00
Dwarf Pigmy	3 50	30 00	
Yellow colour, single.....	4 00		
Best Double, Mixed.....	5 00	40 00	
Day Star. New star-shaped.....	4 00	30 00	
Mirabilis Japala	50	4 00	
Platycodon grandiflora	15 00	120 00	
Primula Japonica	10 00	80 00	
Polygonum filiforme	1 50	10 00	

Prices are Free New York, Duty Included

FLOWER SEEDS, Continued.

	Per lb.	10 lbs.	100 lbs.
<i>Pardanthus Chinensis</i>	\$1 00	\$8 00	
<i>Patrinia scabiosæfolia</i>	1 00	8 00	
<i>Physalis Franchetti</i>	4 00	30 00	
Poppy. Large, single, white.....	1 50	10 00	
<i>Pæonia Moutan.</i> Tree Peony.....	2 50	20 00	
<i>officinalis.</i> Herbaceous Peony.....	2 50	20 00	
<i>Pueraria Thunbergiana.</i> Kudzu Vine.....	3 50	30 00	\$250 00
<i>Rosa multiflora</i>	1 50	12 00	
<i>Wichuraiana</i>	1 50	12 00	
<i>rugosa</i>	2 50	20 00	
<i>Scabiosa Japonica</i>	2 00	17 50	
<i>Sanguisorba officinalis</i>	1 50	10 00	
<i>Tricosanthes cucumeroides</i>	50	4 00	
<i>Thermopsis fabacea</i>	2 50	20 00	
<i>Vinca rosea</i>	2 50	20 00	

CONIFER SEEDS

<i>Abie Brachyphylla</i>	\$2 50		
<i>Firma</i>	1 50		
<i>Mariesii</i>	3 50		
<i>Umbellata</i>	2 50		
<i>Sachalinensis</i>	3 75		
<i>Veitchii</i>	3 00		
<i>Biota Orientalis</i>	1 50		
<i>Cephalotaxus Drupacea</i>	75		
<i>Chamaecyparis Obtusa</i>	1 50		
<i>Chamaecyparis picifera</i>	1 50		
<i>Cryptomeria Japonica</i>	80	\$7 50	\$60 00
<i>Ginkgo Biloba</i> (Maiden hair tree).....	25	1 50	12 00
<i>Juniperus Rigida</i>	2 50		
<i>Larix Leptolepis</i>	2 50	17 00	150 00
<i>Picea Ajanensis</i>	3 50		
<i>Alcockiana</i>	3 50		
<i>Bicolor</i>	3 50		
<i>Picea Glehnii</i>	5 00		
<i>Polita</i>	3 00		
<i>Pinus Densiflora</i>	80	7 00	50 00
<i>Massoniana</i>	80	7 00	50 00
<i>Koraiensis</i>	1 50	12 00	
<i>Pumila</i>	2 75		
<i>Pentaphylla</i>	2 75		
<i>Podocarpus Macrophylla</i>	80		
<i>Sciadopitys Verticillata</i>	2 50	20 00	
<i>Taxus Cuspidata</i>	2 50	20 00	
<i>Thujaops s Dolabrata</i>	5 00		
<i>Standissi</i>	6 00		
<i>Torreya Nucifera</i>	80		
<i>Tsuga Sieboldi</i>	3 50		
<i>Diversifolia</i>	3 50		

TREE AND SHRUB SEEDS

<i>Acer Polymorphum.</i> Japanese Maple.....	\$1 20	\$10 00
<i>carpinifolium.</i> Japanese Maple	1 50	12 00
<i>Japonicum.</i> Japanese Maple.....	1 20	10 00
<i>Osakazuki.</i> Japanese Maple.....	1 20	10 00
<i>Pictum.</i> Japanese Maple.....	1 50	12 00
<i>Nikoensis.</i> Japanese Maple.....	2 00	15 00

Prices are Free New York, Duty Included

TREE AND SHRUB SEEDS, Continued.

	Per lb.	10 lbs.	100 lbs.
<i>Aesculus turbinata</i> . Japanese Horse-chestnut.....	20	1 50	13 00
<i>Akebia quinata</i>	2 00		
<i>Aralia Sieboldi</i>	1 50	10 00	
<i>spinosa</i>	2 00	15 00	
<i>Ardisia crispa</i>	2 00		
<i>Japonica</i>	2 00		
<i>Camellia Japonica</i>	75	4 50	40 00
<i>Sasanqua</i>	1 00	7 50	70 00
<i>Castanea vulgaris</i> Tamba. Mammoth Chestnut.....		3 00	25 00
<i>vulgaris</i> . Japan Hardy Wild Chestnut.....		2 00	17 50
<i>Koraiensis</i> . Korean Chestnut.....		3 00	25 00
<i>Cinnamomum Camphora</i> . Camphor seeds.....	1 00	8 00	70 00
<i>Citrus trifoliata</i>	75	5 50	50 00
<i>medica</i> , var. <i>acida</i>	1 00	7 50	65 00
<i>Diospyros Kaki</i> . Persimmon.....	75	6 00	50 00
<i>Edgeworthia papyrifera</i> . Paper manufacturing plant.....	1 00	8 00	70 00
<i>Euonymus alatus</i> . Cork Bark Euonymus.....	1 75	12 00	100 00
<i>Ilex crenata</i>	2 00	15 00	
<i>Juglans cordiformis</i> . Japan Walnut.....		2 50	16 00
<i>Sieboldiana</i> . Japan Walnut		2 25	15 00
<i>regia</i> . Japan Walnut.....		3 50	25 00
<i>Mandchurica</i> . Manchurian Walnut.....		3 50	25 00
<i>Magnolia hypoleuca</i>	1 50	12 00	
<i>Kobus</i>	1 50	12 00	
<i>Nandina domestica</i>	2 00	15 00	
<i>Panax quinquefolia</i> . Korean Ginseng.....	2 00	15 00	100 00
<i>Prunus pseudo-cerasus</i> . Japan Wild Cherry.....	1 20	10 00	75 00
<i>Pyrus Ussuriensis</i> . Japanese Pear.....		17 50	150 00
<i>Quercus acuta</i>	30	2 50	20 00
<i>dentata</i> . Large-leaved Japanese Oak.....	40	3 00	
<i>cuspidata</i>	40	3 00	
<i>Rhus succedanea</i>	1 00	8 00	
<i>vernifera</i>	1 00	8 00	
<i>Sterculia platanifolia</i>	1 20	10 00	
<i>Styrax Japonica</i>	80	7 00	
<i>Obassia</i>	1 50	12 00	
<i>Thea viridis</i> . Japanese Tea Plant.....	50	4 00	30 00
<i>Vitis coignetiae</i> . Japanese Wild Grape.....	2 00	15 00	
<i>Wistaria Chinensis</i> . Purple Wistaria Seed.....	1 20	10 00	
<i>Zelkova Keaki</i>	1 00	8 00	

PALM SEEDS

	Per 1,000 seeds
<i>Chamaerops excelsa</i>	Per lb., \$1.20; 10 lbs., \$10..
<i>Fortunei</i>	Per lb., \$1.20; 10 lbs., \$10..
<i>Cycas revoluta</i>	\$10 00
<i>Livistonia Chinensis</i>	10 00

Prices are Free New York, Duty Included

SOME VEGETABLE SEEDS

	Per lb.	10 lbs.	100 lbs.
Japanese Climbing Cucumber	\$1 50	\$12 00	\$100 00
Sakurajima Mammoth Radish. (Pure strain).....	1 25	10 00	75 00
Nerlma Long Radish	75	5 00	
New Long String Radish	1 25	10 00	75 00
Tennoji Turnip. Flat; very large.....	1 25	10 00	75 00
Shogoin Turnip. Flat; very large	75	5 00	40 00
Late Mammoth Turnip. Largest of all the Turnips produced in Japan	1 00	7 50	50 00
Japanese Long Carrot. 2 to 3 feet long.....	1 25	10 00	75 00
New Long Runner Bean. Seed-pod attains a length of 3 to 4 feet	1 00	7 50	60 00
Chinese Bottle Gourd. See Flower Seeds Section.			
Udo Salad. Aralia cordata	1 50	10 00	85 00
Chinese White Cabbage	1 00		75 00
Korean White Cabbage	1 00		75 00
Sword Bean	80		70 00

FORAGE PLANT SEEDS, ETC.

Pueraria Thunbergiana. Kudzu Vine. See Flower Seeds Section.			
Polygonum Sachalinense. Well-cleaned seeds	2 50	20 00	150 00
Astragus Sinicus	1 00	7 00	50 00
Sinicus, Late Giant.....	1 00	7 00	50 00
Lespedeza striata. Japanese clover	1 00	7 00	50 00
Miscanthus condensatus	2 00	15 00	120 00
Japanese Lawn Grass (Zoysia pungens).....	1 00	7 50	50 00
Japanese Millet, Soy Bean, Rice and all other agricultural seeds, lowest market price shall be sent on application.			

BAMBOO STAKES

	Per 1,000
Bamboo Stakes, "Shimizu." Bleached, for support of plants.	
3 feet long	\$3 25
4 feet long	4 00
5 feet long	4 50
6 feet long	5 50
7 feet long	7 25
8 feet long	10 00
Bamboo Stakes. Unbleached; strong stakes.	
4 feet long	3 00
5 feet long	3 50
6 feet long	4 25
7 feet long	6 00
8 feet long	7 50
Bamboo Stakes. Unbleached; thin pencil thickness.	
4 to 5 feet	2 00
5 to 6 feet	3 00
Bamboo Stakes. Green-colored, for support of lilies, roses, carnations etc. Far superior to painted wooden stakes.	
1½ feet	1 50
2 feet	2 00
2½ feet	2 50
3 feet	3 50
4 feet	5 00
Bamboo Poles, "Madake." For staking dahlias and trees; strong thick kind.	
6 feet, ¾ to 1 inch diameter	40 00
8 feet, ¾ to 1 inch diameter	65 00
10 feet, ¾ to 1 inch diameter	90 00

Colored Hand-Paintings on Rice Paper

Azaleas. 11 by 15 inches	36 varieties,	\$5 00
Bamboo Plants. 11 by 15 inches	27	" 3 00
Camellia Flowers. 11 by 15 inches	34	" 2 50
Cherry Flowers. 11 by 15 inches	13	" 2 00
Diospyros Kaki Fruits. 11 by 15 inches	10	" 1 00
Hydrangea Flowers. 11 by 15 inches.....	12	" 2 25
Iris Flowers. 11 by 15 inches	50	" 5 00
Lotus Flowers. 11 by 15 inches	11	" 1 25
Lycoris Flowers. 11 by 15 inches	6	" 1 50
Magnolia Flowers. 11 by 15 inches	16	" 2 00
Orchids, Japanese. 11 by 15 inches	33	" 4 50
Plum Fruits (Prunus communis). 11 by 15 inches	8	" 50
Peony Flowers (Pæonia Moutan). 11 by 15 inches	50	" 6 00
Herbaceous Peony Flowers. 11 by 15 inches	27	" 3 00

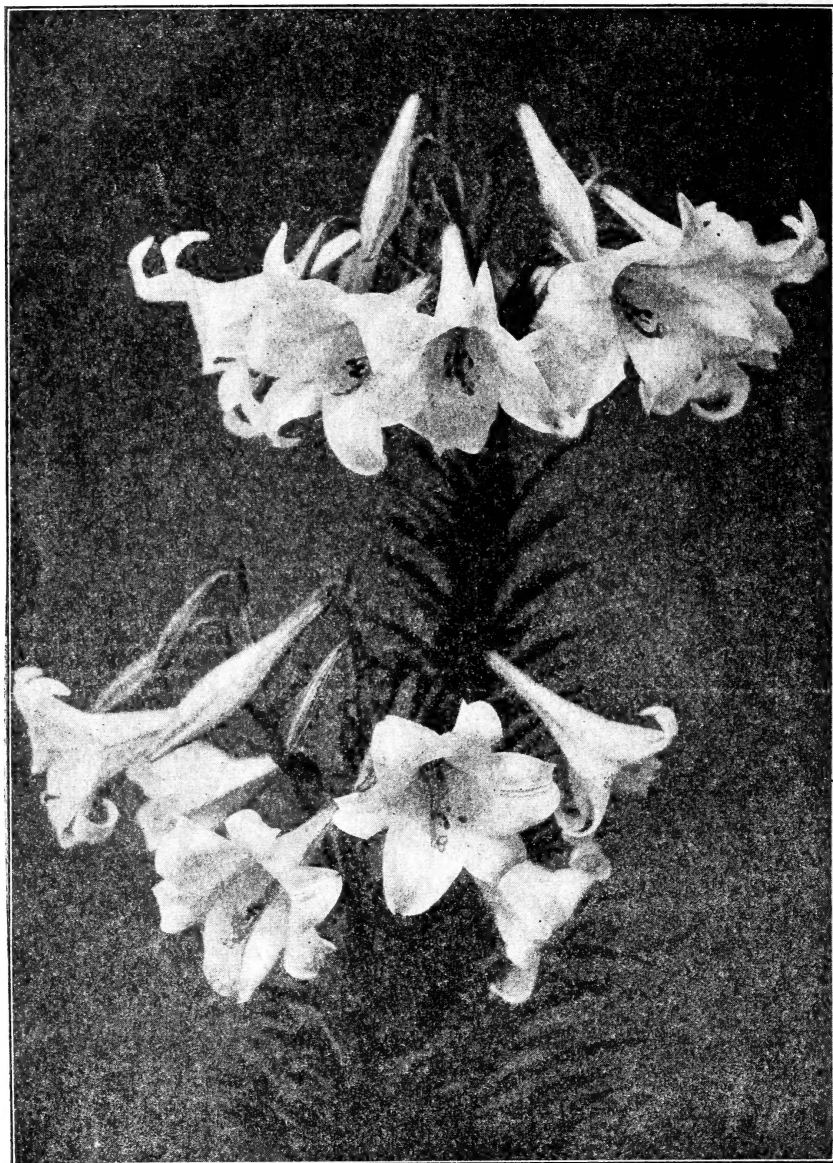
LITHOGRAPHS.

Lily Flower Book. 7 by 10 inches	40	" 1 00
Maple Leaves. 10 by 15 inches.....	39	" 75

Books

- The Cultivation of Bamboos in Japan.** By Sir Ernest Satow, K.C.M.G., with colored illustrations. \$3.50.
- Useful Plants in Japan.** By Y. Tanaka. Fully illustrated and described. Illustrations with Japanese and Latin names, 3 vols.; English description, 1 vol.; indices and contents in English, 1 vol.—5 vols. in all. \$3.75.
- Alpine Plants of Japan.** Pocket Atlas by Prof. M. Miyoshi & T. Makino. Vol. No. I with 200 colored illustrations, scientific name, region, flowering season, in English and Japanese. No. II in course of printing. Each, \$1.75.
- Landscape Gardening in Japan.** By Josiah Conder. Two vols., 11 by 14 inches, \$15; first volume only, 11 by 14 inches, \$12.50; supplement only, 11 by 14 inches, \$5.50.
- The Floral Art of Japan.** By Josiah Conder. \$13.

JAPANESE STOCK ONLY



YOUR ORDERS FOR FALL DELIVERY
SHOULD BE PLACED NOW

THE YOKOHAMA NURSERY CO., Ltd.

YOKOHAMA : NEW YORK : LONDON