

# **Historic, Archive Document**

**Do not assume content reflects current scientific  
knowledge, policies, or practices**



62,73

FHM

# Andorra Nurseries

U. S. DEPARTMENT OF AGRICULTURE  
LIBRARY,  
Washington, D. C.

PRICE LIST OF

SPECIMEN TREES

SHRUBS, ROSES

AND FRUIT

Spring, 1913

CANCELING ALL PREVIOUS LISTS

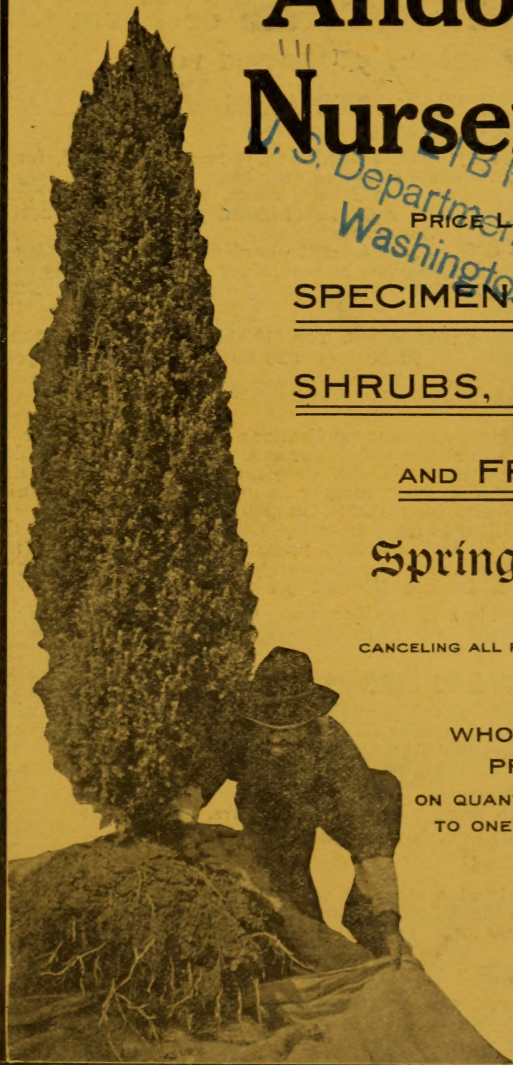


WHOLESALE  
PRICES

ON QUANTITIES OF TEN  
TO ONE THOUSAND



SPECIAL:  
SEE NOTES ON  
PAGES 20, 64  
AND BACK  
COVER



# SUPERIOR FERTILIZERS

For the Lawn, Garden or Farm

PRICES NET F. O. B. SHIPPING POINT

## CANADA UNLEACHED HARD-WOOD ASHES

(ANDORRA BRAND)

Are a complete fertilizer, replenishing worn-out soils, and, for the lawn or pasture, are economical and valuable. For the lawn, they are easy to handle, produce no offensive odors, are not unsightly, and, quickly leaching into the soil, the chemical properties are at once available for plant food.

Our ashes are selected only from the hard-wood districts of Canada, are carefully screened, and put in convenient packages. Apply at the rate of 1,000 to 1,500 lbs. per acre for top-dressing, or 2,000 to 2,500 lbs. for new lawns.

50-lb. bag	100-lb. bag	200-lb. bbl.	Ton (10 bbls.)	Cars, 15 to 20 tons
\$1 00	\$1 50	\$2 50	\$20 00	At special prices.

## PREPARED LIME

Where soils, from constant applications of manure, are sour and need a fertilizer to sweeten them, lime is a valuable agent. It quickly puts the soil in condition to assimilate plant-food. It frees the potash, phosphoric acid and nitrogen already in the soil, and turns the nitrogen into the rich nitrates valuable for plant use.

Our prepared lime is fresh from the kilns, clean, well burnt, thoroughly decarbonized and especially prepared, so that it will go three times as far as the lump lime generally used, and is fine enough to run through a drill. Use 500 lbs. per acre.

100-lb. bag	Ton	Cars, 12 to 25 tons
\$1 25	\$12 00	\$10 per ton.

## POTASH AND PREPARED LIME

Where potash is needed in addition to lime, this preparation will be found valuable. It contains 4% actual potash, equal to 8% of sulphate of potash, the prepared lime being used as a filler, and makes a valuable top-dresser for lawn, pasture, or grass lands. Apply at the rate of 500 lbs. per acre.

100-lb. bag	Ton	Cars, 12 to 25 tons
\$1 50	\$14 00	\$12 00 per ton

## PEAT

We have on hand a stock of carefully selected peat, suitable for potting or planting Rhododendrons and shrubs that need such soil. Sack of about 100 lbs., 75 cents. In sacks, \$13.50 per ton.

## PURE GROUND BONE

A brand of excellent quality. Analysis on request.

200-lb. bag	Ton	Cars, 15 to 30 tons
\$3 50	\$32 00	Special price.

# Andorra Nurseries

CHESTNUT HILL, PHILADELPHIA, PA.

**OUR NURSERIES** are extensive, covering six hundred acres, of which over three hundred are planted with trees and shrubs. They are easy of access, as Chestnut Hill is the terminus of branches of the Pennsylvania and the Philadelphia & Reading railroads, and the Chestnut Hill (City Line) trolley runs from the stations to within three minutes' walk of the Nurseries.

**QUALITY.**—The trees and shrubs offered are grown in open, unsheltered ground, in a very exposed situation, which insures their hardiness, and on soil admirably adapted for forming robust plants having an abundance of roots. Special attention is called to the fact that our stock is grown a good distance apart in the rows, insuring heavier trees and shrubs than are generally offered.

**SHIPPING SEASON** opens about March 1 in the spring and August 15 in the fall.

**INSPECTION AND FUMIGATION.**—Our stock is regularly inspected and certificate will be sent with each shipment. Stock will be fumigated when requested or when the State laws require it.

## TERMS AND CONDITIONS

**ORDERS.**—All orders are accepted subject to the following terms and conditions. Write plainly and give explicit directions as to address and mode of shipment.

**STOCK SELECTED** by customers at the Nurseries will be charged according to the value of the trees chosen.

**QUANTITY.**—Lots of 5 and 50 will be furnished at the 10 and 100 rates respectively.

**PACKING.**—All goods are thoroughly packed, thus avoiding risk, if delayed in transit. **Packing charges are made at actual cost.**

**FORWARDING.**—Shipments will be forwarded exactly as directed; but when without instructions, we will use our best judgment and forward by shortest and safest route. We recommend all herbaceous plants be shipped by express.

**RISK.**—All goods are at purchaser's risk after they are delivered to the forwarding companies and we receive their receipt for the shipment in good condition.

**CLAIMS for damage while in transit** must be made to the delivering company. Have delivering agent note the damaged condition on the freight bill and present your claim through him promptly.

**GUARANTEE AND CLAIMS.**—All goods are guaranteed true to name, full count, up to grade, and in good condition when shipped. Any plant proving untrue to name will be replaced. Claims to receive consideration must be made within **five days** after receipt of goods. **We give no guarantee of the life of stock.**

**TERMS, CASH WITH ORDER**, except to persons who satisfy us as to their responsibility.

Address all orders to

## ANDORRA NURSERIES

WM. WARNER HARPER, Prop.

CHESTNUT HILL, PHILADELPHIA, PA.

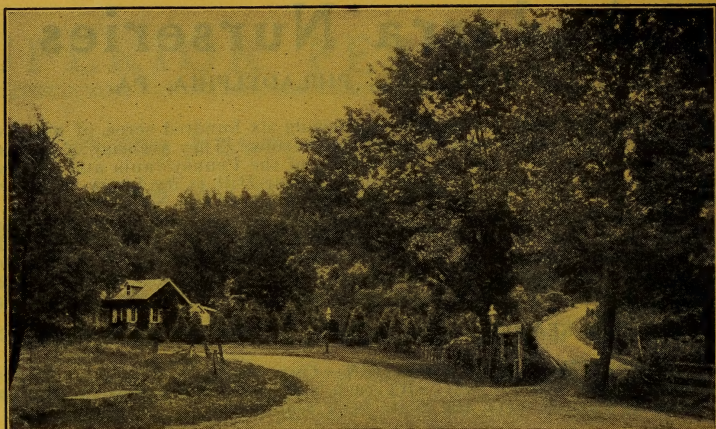
Local and Long  
Distance Telephone

Telegraphic Address

CHESTNUT HILL, PHILADELPHIA

Cable Address

"ANDORRA," PHILADELPHIA



Nursery Entrance and Office.

## EVERGREEN TREES

	Each	10
<b>ABIES balsamea.</b> Balsam Fir. 3 to 4 ft.....	♦ \$2 00	
4 to 5 ft. ....	♦ 2 50	
5 to 7 ft. ....	♦ \$3 to 4 00	
<b>Canadensis.</b> See <i>Tsuga Canadensis</i> .		
<b>concolor.</b> White Fir. 2½ to 3 ft.....	3 50	
3½ to 4 ft. ....	5 00	
4 to 4½ ft. ....	6 00	
4½ to 5 ft. ....	♦ 7 50	
5 to 6 ft. ....	♦ \$10 to 12 50	
6 to 10 ft. ....	♦ \$12.50 to 35 00	
<b>nobilis, var. glauca.</b> Noble Silver Fir. 4 to 4½ ft....	5 00	
4½ to 5 ft. ....	6 00	
5 to 7 ft. ....	\$7.50 to 15 00	
<b>Nordmanniana.</b> Nordmann's Fir. 3 ft.....	3 50	
3 to 3½ ft. ....	4 50	\$42 50
3½ to 4 ft. ....	6 00	57 50
4 to 4½ ft. Specimens .....	♦ 7 50	70 00
4½ to 5 ft. Specimens .....	♦ 10 00	85 00
5 to 5½ ft. Specimens .....	♦ \$10 to 15 00	
6 to 12 ft. Fine specimens. Prices on application.		
<b>pectinata.</b> European Silver Fir.		
6 to 7 ft.....	4 00	
7 to 8 ft.....	5 00	
8 to 10 ft.....	7 50	
<b>BIOTA orientalis.</b> Oriental Arborvitæ. 5 to 6 ft.....	3 00	27 50
6 to 7 ft. ....	4 00	37 50
6 to 7 ft. Very heavy .....	6 00	55 00
7 to 9 ft. ....	7 50	65 00
8 to 10 ft. Very broad and heavy.....	\$8.50 to 12 50	

	Each	10
<b>BIOTA orientalis, var. aurea nana.</b> 15 to 18 in.....	\$1 75	\$15 00
18 to 20 in.....	2 00	17 50
20 to 24 in.....	2 75	25 00
24 to 30 in.....	3 50	32 50
<b>orientalis, var. aurea pyramidalis.</b>		
3 to 4 ft.....	3 50	
4 to 5 ft.....	5 00	
<b>orientalis, var. compacta.</b> Compact Chinese Arborvitæ. 3 to 3½ ft.....	3 50	
3½ to 4 ft.....	4 00	35 00
4 to 5 ft.....	5 00	45 00
5 to 6 ft.....	7 50	70 00
<b>orientalis, var. conspicua.</b> 3 to 3½ ft.....	3 50	32 50
4 to 4½ ft.....	4 00	37 50
5 to 6 ft.....	5 00	
6 to 7 ft.....	7 50	70 00
7 to 12 ft.....	\$7.50 to 15 00	
<b>orientalis, var. elegantissima.</b> Rollinson's Golden Arborvitæ. 3 to 3½ ft.....	3 50	
3½ to 4 ft.....	4 00	
4 to 5 ft.....	5 00	47 50
5 to 8 ft.....	\$6 to 15 00	
<b>orientalis, var. filiformis; syn., Japonica.</b> Thread-branched Arborvitæ. 3 to 3½ ft.....	3 50	32 50
5 to 5½ ft.....	5 00	
<b>orientalis, var. semperaurescens.</b> Ever-golden Arborvitæ. 4 to 5 ft.....	\$5 to 7 50	
5 to 7 ft.....	\$7.50 to 15 00	
<b>CEDRUS Atlantica, var. glauca.</b> Mt. Atlas Silver Cedar—		
2½ to 3 ft. ....	3 00	27 50
5 to 6 ft. ....	4 00	37 50
6 to 8 ft. ....	\$5 to 7 50	
8 to 10 ft. ....	\$10 to 15 00	
<b>CEPHALOTAXUS Fortunei.</b> Fortune's Yew. 4 to 4½ ft.....	3 50	
5 to 6 ft. Very broad and heavy.....	5 00	
6 to 7 ft. ....	7 50	
<b>CRYPTOMERIA Japonica.</b> 2½ to 3 ft.....	2 50	22 50
3 to 3½ ft. ....	3 00	27 50
<b>Japonica, var. Lobbi compacta.</b> 2½ to 3 ft. ....	3 50	32 50
3½ to 4 ft. ....	4 00	37 50
5 to 6 ft. ....	5 00	47 50
<b>ILEX opaca.</b> American Holly. 2½ to 3 ft.....	3 50	
3 to 4 ft. ....	\$3.50 to 5 00	
4 to 5 ft. ....	\$7.50 to 10 00	
<b>JUNIPERUS Canadensis.</b> Spreading Canadian Juniper—		
12 to 15 in. spread .....per 100, \$60..	1 00	9 00
15 to 18 in. spread .....	1 50	12 50
18 to 24 in. spread .....	2 00	17 50
24 to 30 in. spread .....	3 50	32 50
<b>Canadensis, var. aurea; syn., Douglasi.</b> Douglas' Golden Juniper. 12 to 15 in. spread...	1 00	8 50
15 to 18 in. spread .....	1 50	12 50
18 to 24 in. spread. Heavy .....	2 00	15 00

## ANDORRA NURSERIES

	Each	10
<b>JUNIPERUS Chinensis.</b> Chinese Juniper. 3 ft.....	\$2 00	\$17 50
3½ to 4 ft. ....	3 50	32 50
4½ to 5 ft. ....	4 00	37 50
5 to 6 ft. ....	5 00	45 00
6 to 8 ft. ....	\$6 to 10 00	
<b>Chinensis, var. argentea marginata.</b> A grand		
hardy variety. 2½ to 3 ft.....	3 50	32 50
3½ to 4 ft. ....	4 50	42 50
4 to 4½ ft. ....	5 00	47 50
5 to 6 ft. ....	\$6 to 7 50	
7 to 8 ft. Specimens .....	\$10 to 15 00	
<b>Chinensis, var. aurea.</b> Golden Chinese Juniper—		
4 to 5 ft.....	5 00	
5 to 6 ft.....	7 50	
<b>Chinensis, var. Pfitzeriana.</b> 18 to 20 in.....	2 00	17 50
22 to 24 in.....	2 50	20 00
24 to 30 in.....	3 50	32 50
<b>Chinensis, var. femina Reevesii.</b> 3 to 3½ ft.....	3 00	27 50
5 to 6 ft.....	5 00	47 50
<b>communis.</b> Common Upright Juniper—		
3 to 3½ ft.....	2 50	
4½ to 5 ft.....	3 50	
<b>communis, var. oblonga.</b> 6 to 8 ft.....	\$5 to 7 50	
<b>communis, var. Suecica.</b> Swedish Juniper—		
2½ to 3 ft.....	2 00	15 00
<b>excelsa stricta.</b> 4 to 6 ft.....	\$5 to 10 00	
<b>Fortunei.</b> 6 to 8 ft.....	\$5 to 7 50	
<b>Japonica, var. aurea.</b> Golden Japan Juniper—		
1½ to 2 ft. ....	1 50	13 50
2 to 2½ ft. ....	2 50	22 50
2½ to 3 ft. ....	3 50	32 50
3 to 3½ ft. ....	4 00	
3½ to 4 ft. ....	5 00	47 50
4 to 4½ ft. ....	6 00	55 00
5 to 5½ ft. ....	\$10 to 12 50	
<b>Japonica, var. nana aurea.</b> Dwarf, 10 to 12 in.		
x 15 to 18 in. broad.....	1 75	15 00
<b>recurva, var. squamata.</b> Scaly-leaved —		
8 to 10 in. x 10 to 12 in. spread.....	1 50	13 50
8 to 10 in. x 15 to 18 in. spread.....	2 00	17 50
<b>rigida.</b> 9 to 12 ft.....	\$10 to 25 00	
<b>Sabina.</b> Savin Juniper. 12 to 15 in.....	1 00	9 00
2 to 2½ ft.....	2 50	22 50
3 to 3½ ft.....	3 50	32 50
<b>Sabina, var. aurea variegata.</b> Savin's Golden		
Juniper. 1½ to 2 ft.....	1 50	
2 to 2½ ft.....	3 50	
<b>Sabina, var. tamariscifolia.</b> 10 to 12 in. x 12 to		
15 in. spread .....	1 25	10 00
12 to 15 in. x 15 to 18 in. spread.....	1 75	15 00
<b>Virginiana.</b> Red, or Virginia Cedar. 3 to 3½		
ft. Nursery grown .....	2 50	22 50
3½ to 4 ft. Nursery grown .....	3 50	32 50
4½ to 5 ft. Nursery grown .....	4 00	37 50
5 to 6 ft. Nursery grown .....	5 00	47 50
7 to 8 ft. Specimens .....	\$6 to 10 00	



PRICE LIST FOR SPRING OF 1913

		Each	10
<b>JUNIPERUS</b>	<b>Virginiana, alba spicta.</b> †. 3 to 4 ft.....	\$3 00	\$27 50
	<b>Virginiana, var. Cannartii.</b> 2½ to 3 ft.....	2 50	22 50
	<b>Virginiana, var. glauca.</b> Blue Virginia Cedar—		
	3 to 3½ ft. ....	†.. 3 00	27 50
	4 to 4½ ft. ....	†.. 3 50	32 50
	5 to 6 ft. ....	5 00	47 50
	7 to 8 ft. ....	†..\$7.50 to 10 00	
	<b>Virginiana, var. Kosteri.</b> Spreading—		
	12 to 15 in. ....	†.. 1 50	13 50
	18 to 24 in. ....	†.. 2 00	17 50
	2 to 2½ ft. ....	†.. 2 50	22 50
	<b>Virginiana, var. Leei elegantissima.</b> Golden Vir- ginian Cedar—		
	3 to 3½ ft. Extra heavy ....	†.. 2 50	22 50
	4½ to 5 ft. Extra heavy ....	†.. 3 50	32 50
	5 to 7 ft. Extra heavy ....	†..\$4 to 6 00	
	8 to 9 ft. ....	†..\$7.50 to 10 00	
	<b>Virginiana, var. pendula.</b> 3 to 3½ ft.....	†.. 2 50	22 50
	4 to 4½ ft. ....	†.. 3 50	32 50
	5 to 6 ft. ....	†.. 5 00	47 50
	<b>Virginiana, var. Schotti.</b> 3 to 3½ ft.....	†.. 2 50	22 50
	4 to 5 ft. ....	†.. 4 00	37 50
	5 to 6 ft. ....	†.. 5 00	47 50
	7 to 8 ft. ....	†..\$6 to 10 00	
<b>PICEA alba.</b>	<b>White Spruce.</b> 2½ to 3 ft.....	2 00	17 50
	3 to 3½ ft. ....	2 50	20 00
	4 to 5 ft. ....	3 50	30 00
	5 to 6 ft. ....	†.. 5 00	
	6 to 7 ft. ....	†.. 6 00	
	7 to 8 ft. Very fine specimens... †..	\$7.50 to 10 00	
	<b>Alcockiana.</b> Alcock's Spruce. 2½ to 3 ft.....	†.. 3 50	
	5 to 8 ft. Specimens.....	\$4 to 15 00	
	<b>Engelmanni.</b> Engelmann's Spruce—		
	4 to 7 ft.....	†..\$5 to 10 00	
	<b>excelsa.</b> Norway Spruce. 3 to 3½ ft.....	†.. 1 50	12 50
	3½ to 4 ft. ....	†.. 2 00	17 50
	4 to 4½ ft. ....	†.. 3 00	27 50
	5 to 6 ft. Specimens ....	5 00	45 00
	7 to 9 ft. Specimens ....	7 50	60 00
	9 to 12 ft. ....	\$10 to 25 00	
	<b>excelsa, var. aurea.</b> Golden Norway Spruce—		
	2 to 2½ ft.....	†.. 2 50	
	<b>excelsa, var. inverta.</b> Weeping Norway Spruce—		
	5 to 6 ft. ....	†..\$6 to 7 50	
	7 to 9 ft. ....	†..\$7.50 to 15 00	
	<b>orientalis.</b> Eastern Spruce. 2 to 2½ ft.....	†.. 2 50	22 50
	3 to 3½ ft. ....	†.. 3 50	32 50
	3½ to 4 ft. Specimens ....	†.. 5 00	45 00
	4½ to 5 ft. Specimens ....	†..\$6 to 7 50	
	6 to 9 ft. Specimens ....	†..\$10 to 25 00	
	<b>pinsapo.</b> Spanish Fir. 3½ to 4 ft.....	†.. 3 50	32 50
	4 to 5 ft.....	†..\$4 to 7 50	
	<b>polita.</b> Tiger's Tail Spruce. 2½ ft.....	†.. 2 50	22 50
	2½ to 3 ft. ....	†.. 3 50	32 50
	9 to 12 ft. ....	†..\$15 to 25 00	



### Loading White Pines.

	Each	10
<b>PICEA pungens.</b> Colorado Spruce. 4 to 5 ft.....♦	\$5 00	\$45 00
5 to 6 ft. ....♦	7 50	
7 to 10 ft. ....♦	\$7.50 to 25 00	
<b>pungens, var. glauca.</b> Blue Colorado Spruce—		
2½ to 3 ft. Selected color .....♦	3 50	32 50
3 to 3½ ft. Selected color .....♦	\$5 to 7 50	
3½ to 4 ft. Selected color .....♦	\$7.50 to 10 00	
5 to 10 ft. Selected color .....♦	\$12.50 to 35 00	
<b>pungens, var. Kosteriana.</b> Koster's Blue Colorado Spruce. 1½ to 2 ft.....	2 50	22 50
2 to 2½ ft. ....♦	3 50	32 50
2½ to 3 ft. Specimens .....♦	\$5 to 7 50	
3 to 3½ ft. Specimens .....♦	\$7.50 to 10 00	
3½ to 4 ft. Specimens .....♦	\$10 to 12 50	
4 to 5 ft. Specimens .....♦	\$12.50 to 15 00	
6 to 10 ft. Grand specimens .....♦	\$15 to 35 00	
<b>pungens, var. pendula.</b> Weeping Blue Colorado Spruce—		
3 to 4 ft. Specimens.....♦	7 50	
4 to 4½ ft. Specimens.....♦	10 00	
<b>PINUS Austriaca.</b> Austrian Pine. 2 to 2½ ft.....♦	1 50	13 50
2½ to 3 ft. ....♦	2 50	22 50
3½ to 4 ft. ....♦	3 50	32 50
4 to 4½ ft. Very Heavy .....♦	4 00	37 50
4½ to 5 ft. Very Heavy .....♦	5 00	47 50
<b>Cembra.</b> Swiss Stone Pine. 2 to 2½ ft.....	2 50	22 50
2½ to 3 ft. ....♦	3 00	27 50
3 to 3½ ft. ....♦	3 50	32 50
3½ to 4 ft. ....♦	4 00	37 50
4 to 4½ ft. ....♦	5 00	47 50
5 to 7 ft. ....♦	\$7.50 to 15 00	

PRICE LIST FOR SPRING OF 1913

	Each	10
<b>PINUS excelsa.</b> Bhotan Pine. 2½ to 3 ft.....	\$2 50	\$22 50
3 to 4½ ft. ....	3 00	27 50
6 to 7 ft. ....	5 00	47 50
8 to 10 ft. ....	\$7.50 to 12 50	
<b>Koraïensis.</b> Corean Pine. 3 to 3½ ft.....	3 00	27 50
<b>Mughus.</b> Dwarf Mountain Pine. 10 to 12 in.....	1 00	9 00
12 to 15 in. ....	1 50	12 50
15 to 18 in. ....	2 00	17 50
18 in. ....	2 50	
24 in. ....	3 50	
<b>ponderosa.</b> Bull Pine. 5 to 6 ft.....	3 50	
7 to 10 ft.....	♦. \$5 to 10 00	
<b>rigida.</b> Pitch Pine. 10 to 12 ft.....	\$10 to 15 00	
<b>Strobus.</b> White Pine. 8 to 10 in.....per 100, \$20		
1½ to 2 ft. ....	♦. per 100, \$50	6 00
2 to 2½ ft. ....	♦. per 100, \$65	8 00
2½ to 3 ft. ....	♦. per 100, \$90	10 00
3 to 3½ ft. ....	♦. per 100, \$110	12 50
3½ to 4 ft. ....		17 50
4 to 4½ ft. ....		20 00
4½ to 5 ft. ....		27 50
5 to 6 ft. ....		32 00
6 to 7 ft. ....		45 00
7 to 9 ft. ....	\$7.50 to 15 00	
The finest and best rooted stock in this country.		
<b>sylvestris.</b> Scotch Pine. 3 to 3½ ft.....	♦. 2 00	18 50
3½ to 4 ft. ....	♦. 3 00	27 50
4 to 5 ft. ....	♦. 3 50	32 50
<b>Tanyosho.</b> Japanese Table Pine—		
15 to 18 in.....	♦. 2 00	18 50
18 to 24 in.....	♦. 3 50	32 50
<b>PODOCARPUS Japonica.</b> Japanese Yew. 15 to 18 in.....	1 50	
<b>PSEUDOTSUGA Douglasi.</b> Douglas' Spruce. 2½ to 3 ft.....	2 00	18 50
3 to 3½ ft. ....	2 50	22 50
5 to 6 ft. ....	\$4 to 5 00	
7 to 10 ft. ....	\$7.50 to 10 00	
<b>RETINOSPORA ericoides.</b> Heath-like Japan Cypress—		
15 to 18 in. ....	75	6 00
1½ to 2 ft. ....	♦. 1 00	8 50
2 to 2½ ft. ....	♦. 1 50	13 50
3 to 3½ ft. ....	♦. 2 00	17 50
3½ to 4 ft. ....	♦. 3 00	27 50
<b>filifera.</b> Thread-branched Japan Cypress—		
1½ to 2 ft. ....	1 50	13 50
2½ to 3 ft. ....	3 50	32 50
3 to 3½ ft. ....	4 00	37 50
3½ to 4 ft. Specimens ....	♦. \$6 to 7 50	
5 to 6 ft. Specimens ....	♦. \$10 to 12 50	
7 to 8 ft. Specimens ....	♦. \$15 to 25 00	
<b>filifera, var. aurea.</b> Golden Thread-branched Japan Cypress. 10 to 12 in.....	1 50	13 50
12 to 15 in.....	2 00	18 50
18 to 20 in.....	2 50	22 50

<b>RETINOSPORA leptoclada.</b> Thuya-like Japan Cypress—			
3½ to 4 ft.	.....	\$2 50	
4 to 4½ ft.	.....♦	3 00	
4½ to 5 ft.	.....♦	3 50	\$32 50
5 to 6 ft.	.....♦	4 00	35 00
<b>lycopodioides.</b> Club-moss Japan Cypress—			
2½ ft.	.....♦	2 50	
3 to 4 ft.	.....♦	\$3.50 to 5 00	
4 to 5 ft.	.....♦	5 to 7 50	
<b>obtusa.</b> Obtuse-leaved Japan Cypress—			
1½ to 2 ft.	.....	2 00	18 50
2 to 2½ ft.	.....	2 50	22 50
3 to 4 ft.	.....♦	3 50	32 50
4½ to 5 ft.	.....♦	4 00	37 50
6 to 8 ft.	.....♦	\$7.50 to 15 00	
<b>obtusa, var. compacta.</b> Compact Obtuse-leaved Japan Cypress. 18 to 24 in..		2 00	18 50
5 to 5½ ft.	.....	\$5 to 7 50	
<b>obtusa, var. gracilis.</b> Graceful Obtuse-leaved Japan Cypress. 15 to 18 in.....		2 00	
<b>obtusa, var. magnifica.</b> 3 to 3½ ft.....♦		5 00	
<b>obtusa, var. nana.</b> Dwarf Obtuse-leaved Japan Cypress. 1 ft.....♦		1 25	10 00
1½ ft.	.....♦	2 50	22 50
2 ft.	.....♦	3 00	27 50
2½ ft.	.....♦	4 00	37 50
3 ft.	.....♦	\$5 to 7 50	
3½ ft.	.....♦	\$7.50 to 10 00	
4 to 6 ft. Specimens.....♦		\$15 to 20 00	
<b>obtusa, var. nana aurea.</b> Dwarf Golden Obtuse-leaved Japan Cypress—			
1½ ft.	.....♦	2 50	22 50
2 ft.	.....♦	3 00	27 50
2½ ft.	.....	3 50	32 50
3 to 3½ ft. Specimens.....♦		\$5 to 10 00	
4 to 6 ft.	.....	\$12.50 to 20 00	
<b>pisifera.</b> Pea-fruited Japan Cypress. 2½ to 3 ft.		2 50	22 50
4 to 5 ft.	.....	3 50	32 50
5 to 5½ ft.	.....♦	4 00	37 50
6 to 10 ft. Specimens.....♦		\$7.50 to 25 00	
<b>pisifera, var. aurea.</b> Golden Pea-fruited Japan Cypress. 2 to 2½ ft.....		2 00	17 50
2½ to 3 ft.	.....	2 50	22 50
3 to 3½ ft.	.....	3 00	27 50
3½ to 4 ft.	.....	3 50	32 50
4 to 4½ ft.	.....	4 00	37 50
5 to 6 ft. Specimens.....		\$5 to 7 50	
7 to 14 ft. Specimens.....♦		\$10 to 35 00	
<b>plumosa.</b> Plume-like Japan Cypress—			
1½ to 2 ft.	.....	1 50	13 50
2 to 2½ ft.	.....	2 00	17 50
2½ to 3 ft.	.....	2 50	22 50
3 to 3½ ft.	.....♦	3 00	27 50
3½ to 4 ft. Specimens.....♦		3 50	32 50
4 to 5 ft.	.....♦	4 00	37 50
6 to 10 ft. Specimens.....♦		\$5 to 25 00	

PRICE LIST FOR SPRING OF 1913

11

		Each	10
<b>RETINOSPORA</b>	<b>plumosa, var. argentea.</b> 2 to 2½ ft.....	\$1 50	\$12 50
	2½ to 3 ft. ....	2 50	22 50
	3 to 4 ft. ....	3 50	32 50
	4 to 5 ft. ....	4 00	37 50
	5 to 7 ft. ....	\$5 to 7 50	
	<b>plumosa, var. aurea.</b> Golden Plume-like		
	Japan Cypress—		
	1½ to 2 ft. Bushy .....	1 00	8 50
	2 to 2½ ft. Bushy .....	2 00	17 50
	2½ to 3 ft. Bushy .....	2 50	22 50
	3 to 3½ ft. Bushy .....	3 00	27 50
	3½ to 4 ft. Specimens .....	3 50	32 50
	4 to 4½ ft. Specimens .....	4 00	37 50
	5 to 12 ft. Specimens .....	\$5 to 35 00	
	This variety is one of the best for general planting. Its habit and coloring are excellent, it stands shearing readily and its hardiness is unquestioned.		
	<b>plumosa, var. flavescens.</b> 12 to 15 in.....	1 00	8 50
	4 to 5 ft.....	\$7.50 to 10 00	
	<b>plumosa, var. sulphurea.</b> 1½ to 2 ft.....	1 75	15 00
	2 to 2½ ft. ....	3 50	
	3½ to 4 ft. Very heavy .....	6 00	
	4 to 5 ft. Very heavy .....	\$7.50 to 10 00	
	<b>squarrosa.</b> Squarrose-leaved Japan Cypress—		
	2 to 2½ ft. ....	2 50	22 50
	2½ to 3 ft. ....	3 00	27 50
	3 to 3½ ft. ....	3 50	30 00
	4 to 4½ ft. Specimens .....	5 00	
	4½ to 5 ft. Specimens .....	\$6 to 7 50	
	6 to 14 ft. Heavy specimens...\$10 to 75 00		
	This is excellent stock; exceptionally broad, bushy and low-branched.		
<b>SCIADOPITYS</b>	<b>verticillata.</b> Umbrella Pine. 2 to 2½ ft...+	3 50	32 50
	2½ to 3 ft. ....	5 00	45 00
	3½ to 4 ft. ....	7 50	72 50
	4½ to 5 ft. ....	10 00	
	6 to 7 ft. ....	\$15 to 25 00	
<b>TAXUS</b>	<b>baccata.</b> English Yew. 2 to 2½ ft.....+	2 00	
	2½ to 3 ft. ....	2 50	
	3 to 3½ ft. ....	3 50	
	3½ to 4 ft. Specimens .....	5 00	
	4 to 4½ ft. Specimens .....	7 50	
	<b>baccata, var. adpressa.</b> 2 to 2½ ft.....+	2 50	22 50
	2½ to 3 ft. ....	3 50	32 50
	<b>baccata, var. Dovostoni.</b> Dovaston's Yew—		
	2 to 2½ ft. ....	2 75	
	2½ to 3 ft. ....	3 50	
	3 to 4 ft. ....	5 00	
	<b>baccata, var. Dovostoni aurea.</b> Dovaston's Golden Yew. 5 to 7 ft. Specimens.....+	\$10 to 25 00	
	<b>baccata, var. elegantissima.</b> Elegant English Yew—		
	3½ to 4 ft. ....	\$5 to 7 50	
	4 to 6 ft. ....	\$7.50 to 20 00	

	Each	10
<b>TAXUS baccata, var. erecta. Erect English Yew—</b>		
2 to 2½ ft. ....♦	\$2 50	
2½ to 3 ft. ....♦	3 50	\$32 50
3 to 3½ ft. ....♦	\$4 to 5 00	
<b>baccata, var. erecta aurea. Erect Golden English Yew. 2 to 2½ ft. ....♦</b>	2 50	
2½ to 3 ft. ....♦	3 50	
3 to 3½ ft. ....♦	4 00	
4 to 4½ ft. ....♦	6 00	
<b>baccata, var. fastigiata. Irish Yew. 2½ ft. ....♦</b>	2 50	22 50
3 ft. ....♦	3 50	32 50
3½ ft. ....♦	7 50	60 00
4 to 5 ft. Specimens. ....♦	\$10 to 15 00	
<b>baccata, var. fastigiata aurea. Golden Irish Yew—</b>		
2 ft. ....♦	2 50	
2½ ft. ....♦	3 50	
3½ to 4 ft. ....♦	\$7.50 to 10 00	
4 to 6 ft. ....♦	\$10 to 15 00	
<b>baccata, var. gracilis pendula. 3 to 3½ ft. ....♦</b>	3 50	
4 to 5 ft. ....♦	5 00	
5 to 6 ft. ....♦	\$7.50 to 10 00	
6 to 8 ft. ....♦	\$12.50 to 20 00	
<b>baccata, var. repandens. Spreading English Yew—</b>		
10 to 12 in. ....♦	1 50	
12 to 15 in. ....♦	2 00	
<b>baccata, var. Washingtoni aurea. Washington's Golden English Yew. 2½ ft. ....♦</b>	3 50	
3 to 3½ ft. ....♦	\$5 to 7 50	
3½ to 4 ft. ....♦	\$7.50 to 10 00	
4 to 5 ft. ....♦	15 00	
<b>Canadensis (Canadian Yew). 15 to 18 in. ....♦</b>	2 00	17 50
<b>Canadensis, var. aurea. Golden Canadian Yew—</b>		
2 to 2½ ft. ....♦	3 50	32 50
3 ft. ....♦	\$6 to 7 50	
3½ to 5 ft. ....♦	\$10 to 20 00	
<b>cuspidata. Abrupt-leaved Japan Yew. 12 to 15 in. ....♦</b>	1 50	13 50
1½ ft. ....♦	2 00	
2 ft. ....♦	3 00	
<b>cuspidata, var. brevifolia. 12 to 15 in. ....♦</b>	2 00	18 50
1½ ft. ....♦	2 50	
2 ft. ....♦	3 50	
<b>cuspidata, var. capitata. 1½ ft. ....♦</b>	2 50	
2½ ft. ....♦	5 00	
<b>THUJOPSIS borealis; syn., Cupressus Nutkænsis. Yellow or Sitka Cypress. 4 to 4½ ft. ....♦</b>	5 00	45 00
5 to 5½ ft. ....♦	7 50	70 00
<b>borealis, var. latifolia glauca. Glauous Sitka Cypress. 3½ to 4 ft. ....♦</b>	3 50	32 50
4 to 4½ ft. Specimens ....♦	5 00	45 00
5 to 7 ft. Specimens ....♦	\$6 to \$7 50	

PRICE LIST FOR SPRING OF 1913

THUYA occidentalis. American Arborvitæ—		Each	10	
2	to 2½ ft. ....	♦ per 100, \$50..	\$0 75	\$7 00
2½	to 3 ft. ....	♦ per 100, \$75..	1 00	8 50
3	to 3½ ft. ....	♦	1 25	10 00
3½	to 4 ft. ....	♦ per 100, \$100..	1 50	12 50
4	to 4½ ft. Very heavy	♦ per 100, \$175..	2 00	19 00
4½	to 5 ft. Very heavy		2 50	22 50
5	to 5½ ft. Very heavy		3 00	27 50
5½	to 6 ft. Very heavy		3 50	32 50
6	to 7 ft. Very heavy		4 00	37 50
7	to 8 ft. Very heavy	♦	5 00	47 50
8	to 9 ft. Specimens	♦ \$6 to	7 50	
10	to 12 ft. Specimens	\$8 to	12 50	
<b>occidentalis, var. aurea. George Peabody's Arborvitæ—</b>				
2½	to 3 ft. ....	♦	1 50	12 50
3	to 3½ ft. ....	♦	2 50	20 00
4	to 5 ft. ....	♦	3 50	32 50
5	to 6 ft. ....	♦	4 00	37 50
7	to 12 ft. Specimens	♦ \$5 to	15 00	
<b>occidentalis, var. compacta (Compact Arborvitæ)—</b>				
2½	to 3 ft. ....	♦	1 75	16 50
3	to 3½ ft. ....	♦	2 50	22 50
<b>occidentalis, var. Douglasi. 2 to 2½ ft. .... ♦ 2 00 18 50</b>				
8 to 9 ft. .... ♦ 15 00				
<b>occidentalis, var. erecta viridis. 3½ to 4 ft. .... ♦ 3 50</b>				
<b>occidentalis, var. globosa. Globe Arborvitæ—</b>				
2	ft. ....	♦	2 00	17 50
2½	ft. ....	♦	2 50	
<b>occidentalis, var. Hoveyi. Hovey's Golden Arborvitæ—</b>				
2	ft. ....	♦	1 50	
2½	ft. Very heavy	♦	2 50	
3	ft. Very heavy	♦	3 00	
<b>occidentalis, var. plicata pyramidalis. 2 to 2½ ft. .... ♦ 2 00</b>				
4 to 5 ft. .... ♦ 4 00				
<b>occidentalis, var. pyramidalis. Pyramidal Arborvitæ—</b>				
6 to 8 ft. .... ♦ \$5 to 7 50				
<b>occidentalis, var. recurva nana. 2½ to 3 ft. .... ♦ \$3.50 to 4 00</b>				
3 to 4½ ft. .... ♦ \$5 to 7 50				
<b>occidentalis, var. Rosenthalis. 2 to 2½ ft. .... ♦ 2 50</b>				
3½ to 4 ft. .... ♦ 3 50				
<b>occidentalis, var. Vervæneana. Vervæne's Arborvitæ—</b>				
3½	to 4 ft. ....		3 50	32 50
4½	to 5 ft. ....		4 00	37 50
5	to 6 ft. ....	♦	4 50	42 50
6	to 7 ft. Heavy specimens	♦	6 00	57 50
7	to 8 ft. Heavy specimens	♦ \$7.50 to	12 50	
9	to 10 ft. Heavy specimens	\$15 to	20 00	
<b>occidentalis, var. Wareana. Siberian Arborvitæ—</b>				
2	to 2½ ft. Heavy		1 50	13 50
2½	to 3 ft. Very bushy		2 50	22 50
3	to 3½ ft. Very bushy	♦ per 100, \$300..	3 50	32 50
4	ft. Very bushy		4 00	
5	ft. Very bushy	♦	5 00	
5	to 5½ ft. Very bushy	♦	7 50	70 00
5½	to 6 ft. Very bushy	♦	10 00	

		Each	10
<b>THUYA occidentalis, var. Wareana aurea.</b>	2½ ft.	\$2 50	\$22 50
	3 to 3½ ft.	3 00	28 00
	4½ to 5 ft.	4 00	37 50
	5 to 6 ft.	\$5 to 7 50	
<b>TSUGA Canadensis.</b>	Hemlock. 1½ to 2 ft.	♦..per 100, \$50.. 75	6 00
	2 to 2½ ft.	♦..per 100, \$65.. 1 00	7 50
	2½ to 3 ft.	♦..per 100, \$100.. 1 50	12 50
	3 to 3½ ft.	♦..per 100, \$135.. 1 75	15 00
	3½ to 4 ft.	♦..per 100, \$150.. 2 00	18 50
	4 to 4½ ft.	..... 2 50	22 50
	4½ to 5 ft.	..... 3 00	27 50
	5 to 5½ ft.	..... 3 50	32 50
	5½ to 6 ft.	..... 4 00	37 50
	7 to 12 ft.	Heavy specimens.....♦..\$7 to 20 00	
<b>Canadensis, var. gracilis.</b>	3½ to 4 ft.	♦.. 3 50	
<b>Canadensis, var. Sargentii pendula.</b>	Weeping Hemlock—		
	3 to 4 ft. Specimens.....♦..\$7.50 to 15 00		
<b>Caroliniana.</b>	Southern Hemlock.—		
	4 to 6 ft. Specimens.....♦..\$5 to 12 50		
<b>Hookeriana.</b>	Alpine Hemlock. 4 to 4½ ft.	..... 4 00	
	5 to 6 ft.	.....\$5 to 7 50	
<b>Sieboldi.</b>	Japanese Hemlock. 2 to 2½ ft.	♦.. 2 50	
	3 to 3½ ft.	♦.. 3 50	
	4 to 5 ft.	♦.. 5 00	
	5 to 6 ft.	♦.. 6 00	
	6 to 7 ft.	♦..\$7.50 to 20 00	







A Block of Box Bush and Evergreens.

## EVERGREEN SHRUBS

<b>ANDROMEDA</b>	<i>Catesbæi.</i>	See <i>Leucothoë.</i>	Each	10
	<i>floribunda.</i>	12 in. Broad and heavy.....	◆..\$1 50	\$13 50
		12 to 15 in. Broad and heavy.....	◆..	1 75 16 00
		15 to 18 in. Broad and heavy.....	◆..	2 00 18 50
	<i>Japonica.</i>	12 to 15 in.....	◆..	1 25 10 00
		15 to 18 in.....	◆..	1 50 12 50
		18 to 20 in.....	◆..	2 00 18 50
		24 to 30 in.....	◆..\$2.50 to	3 50
<b>AZALEA</b>	<i>amœna.</i>	12 to 15 in.....		1 00 8 50
		15 to 18 in. Bushy.....		1 50 12 50
		1½ ft. Bushy.....		2 00 17 50
		2½ ft. Specimens.....	◆..\$3.50 to	5 00
	<i>amœna,</i>	var. <i>Hinondigiro.</i>	Bright carmine—	
		10 to 12 in.....	◆..	1 00 7 50
		12 to 15 in.....	◆..	1 50 13 50
		15 to 18 in.....	◆..	2 00 18 50
		18 to 20 in.....	◆..	2 50 22 50
	<i>indica alba.</i>	Pure white. 18 to 20 in.....	◆..	2 50 22 50
		20 to 22 in.....	◆..	3 00 27 50
		22 to 24 in.....	◆..	4 00 37 50
<b>BUXUS</b>	<i>Japonica;</i>	syn. <i>Fortunei</i>	Japanese Box—	
		3½ to 4 ft.....	◆..	5 00
		4 to 5 ft.....	◆..\$7.50 to	12 50
	<i>Japonica,</i>	var. <i>aurea.</i>	Golden Japanese Box—	
		12 to 15 in.....		1 00 9 00
		15 to 18 in.....		1 50 12 50
		1½ ft.....	} <b>SPECIAL</b> }	1 75 15 00
		2 ft.....		2 50 22 50
		2½ ft.....		3 50 32 50
	<i>Japonica,</i>	var. <i>rotundifolia.</i>	Round-leaved—	
		2½ to 3 ft. Very broad and bushy.....	◆..	7 50
		4 to 5 ft. Bush shape.....	◆..\$7.50 to	10 00
		5 to 6 ft. Pyramids.....	◆..\$10.00 to	15 00

<b>BUXUS Japonica, var. rotundifolia glauca.</b>	1½ ft.....	♦..	\$1 50	
	3½ to 4 ft. ....	♦..	6 00	
<b>sempervirens.</b>	10 to 12 in. Imported.	per 100,	\$17.50..	35 \$2 50
	1 ft. Andorra-grown...	per 100,	\$30..	50 4 00
	1 ft. Extra bushy .....	per 100,	\$40..	75 6 00
	1½ ft. Extra bushy .....	per 100,	\$80..	1 25 10 00
	2 ft. Extra bushy .....			1 75 16 50
	2½ ft. Extra bushy .....	♦..	3 00	27 50
	3 ft. Extra bushy. Specimens .....	♦..	4 50	40 00
	3½ ft. Extra bushy. Specimens .....	♦..	6 00	55 00
	4 to 4½ ft. Extra bushy. Specimens. ♦..		\$7.50 to 10 00	
	5 to 6½ ft. Extra bushy .....	♦..	\$12.50 to 40 00	
<b>sempervirens.</b>	Pyramids. Andorra-grown—			
	2½ ft. Extra bushy. Specimens .....	♦..	3 50	30 00
	3 ft. Extra bushy. Specimens .....	♦..	4 50	40 00
	3½ ft. Extra bushy. Specimens .....	♦..	6 00	55 00
	4 to 4½ ft. Extra bushy. Specimens.		\$7.50 to 10 00	
	5 to 7 ft. Extra bushy. Specimens.		\$12.50 to 25 00	
<b>sempervirens.</b>	“Globe-shaped”—			
	12 in. x 12 in. ....	♦..	1 75	16 50
	15 in. x 15 in. ....	♦..	2 00	18 50
<b>sempervirens.</b>	Standards. Andorra-grown—			
	1½ ft. stems, 10 to 12 in. heads .....	♦..	1 75	16 50
	2 ft. stems, 12 to 15 in. heads .....	♦..	2 00	18 50
	2 ft. stems, 18 to 20 in. heads .....	♦..	4 00	37 50
	2 ft. stems, 22 to 26 in. heads .....	♦..	\$5 to 7 50	
	2½ ft. stems, 26 to 28 in. heads .....	♦..	\$7.50 to 15 00	
<b>sempervirens, var. angustifolia.</b>	2 ft.....	♦..	1 75	16 50
<b>sempervirens, var. arborescens.</b>	Tall Tree Box—			
	2 to 2½ ft. ....	♦..	2 50	22 50
	2½ to 3 ft. ....	♦..	3 50	32 50
	3 to 3½ ft. ....	♦..	5 00	47 50
	4½ to 5 ft. ....		\$7.50 to 10 00	
<b>sempervirens, var. argentea marginata.</b>	Silver-tipped			
	Box. 1½ to 2 ft. ....	♦..	1 50	13 50
	2 to 2½ ft. ....	♦..	2 50	22 50
<b>sempervirens, var. Handsworthi.</b>	3 to 3½ ft.....	♦..	4 00	37 50
	4 to 4½ ft. ....	♦..	5 00	42 50
<b>sempervirens, var. myrtifolia.</b>	Myrtle Leaf—			
	2 ft. ....		1 75	16 50
	2½ ft. ....		3 50	32 50
	3 to 5 ft. ....	♦..	\$5 to 10 00	
<b>sempervirens, var. salicifolia.</b>	2 ft.....		1 75	16 50
	2½ ft. ....		3 00	27 50
	3 to 3½ ft. ....		\$4 to 5 00	
<b>sempervirens, var. suffruticosa.</b>	Dwarf Box Edging—			
	3 to 4 in... ♦..	per 100,	\$5.00; per 1,000, \$40	75
	4 to 5 in... ♦..	per 100,	\$10.00; per 1,000, \$60	25 1 50
	5 to 6 in... ♦..	per 100,	\$12.50; per 1,000, \$90	35 2 00
<b>CHAMÆDAPHNE calyculata.</b>	Leather Leaf—			
	1½ to 2 ft. ....	per 100,	\$60..	1 00 8 50
	2 to 2½ ft. ....	per 100,	\$75..	1 50 12 50
<b>COTONEASTER buxifolia.</b>	12 in.....		75	6 00
	15 to 18 in. ....		1 00	8 50
	horizontalis. 1 ft.....		75	6 00
	microphylla. 1 ft.....		75	6 00

PRICE LIST FOR SPRING OF 1913

17

	Each	10
<b>CRATÆGUS</b> <i>Pyracantha</i> , var. <i>Lelandi</i> . Leland's Evergreen Thorn. 2 ft. ....	\$1 00	\$7 50
<b>DAPHNE</b> <i>Cneorum</i> . 2-year .....	75	6 00
<b>EUONYMUS</b> <i>radicans</i> and <i>variegata</i> . See Trailing Plants.		
<i>Japonica</i> . Japan <i>Euonymus</i> . 1½ ft. ....	75	
<i>Japonica</i> , var. <i>argentea</i> . Silver-leaved—		
15 to 18 in. ....	75	6 00
<i>Japonica</i> , var. <i>aurea</i> . Golden-leaved. 12 in. ....	75	6 00
<b>ILEX</b> <i>crenata</i> . Japanese Holly. 1 ft. .... per 100, \$60..	1 00	8 50
1½ ft. ....	1 50	12 50
2 ft. ....	2 50	22 50
2½ ft. ....	◆ \$3.50 to 5 00	
<i>crenata</i> , var. <i>buxifolia</i> . Box-leaved—		
2½ ft. Bushy .....	◆ 3 50	32 50
3 ft. Bushy .....	◆ \$5 to 7 50	
3½ to 4 ft. Specimens .....	◆ \$8 to 10 00	
<i>crenata</i> , var. <i>Fortunei</i> . Fortune's Holly—		
2 ft. ....	◆ 2 50	
2½ ft. ....	◆ \$3.50 to 5 00	
3 ft. ....	◆ \$5 to 7 50	
3½ to 5 ft. ....	◆ \$8 to 15 00	
<i>crenata</i> , var. <i>latifolia</i> . Broad-leaved Japanese Holly—		
3 to 3½ ft. ....	◆ 2 50	
3½ to 4 ft. ....	◆ 3 50	
4 ft. ....	◆ \$4 to 7 50	
<i>crenata</i> , var. <i>microphylla</i> . Small-leaved Japanese Holly—		
12 to 15 in. Bushy .....	◆ per 100, \$50..	1 00 8 50
15 to 18 in. Bushy .....	◆ per 100, \$75..	1 25 10 00
1½ to 2 ft. Bushy .....	◆ 1 75	15 00
2 to 2½ ft. ....	◆ 2 50	22 50
3 to 3½ ft. Heavy specimens .....	◆ \$5 to 7 50	
4 to 5½ ft. Heavy specimens .....	◆ \$10 to 15 00	
<b>KALMIA</b> <i>latifolia</i> . Mountain Laurel—		
1½ ft. Heavy clumps .....	◆ per 100, \$100..	1 50 12 50
2 ft. Heavy clumps .....	◆ per 100, \$160..	2 00 17 50
2½ ft. Heavy clumps .....	◆ 2 50	22 50
2½ to 3 ft. Heavy clumps .....	◆ 3 00	28 50
3 to 3½ ft. Heavy clumps .....	◆ 3 50	32 50
3½ to 4 ft. Heavy clumps .....	◆ 5 00	47 50
<b>LAURELS.</b> See <i>Cerasus Laurocerasus</i> .		
<b>LEUCOTHOE</b> <i>Catesbæi</i> . Drooping Andromeda—		
12 to 15 in. Clumps .....	◆ per 100, \$60..	1 00 8 50
15 to 18 in. Clumps .....	◆ per 100, \$75..	1 50 12 50
18 to 24 in. Heavy clumps .....	◆ per 100, \$125..	2 00 15 00
2 ft. Extra heavy clumps .....	◆ 3 50	32 50
<b>MAHONIA</b> <i>Aquifolium</i> . Holly-leaved—		
18 to 24 in. ....	per 100, \$60..	1 00 9 00
24 to 30 in. Heavy .....	2 00	18 50
<i>Japonica</i> . Japanese Mahonia—		
1½ to 2 ft. ....	◆ 1 50	12 50
2 to 2½ ft. ....	◆ 2 50	18 50
2½ to 3 ft. ....	◆ 3 50	32 50



Rhododendrons at Andorra.

# RHODODENDRONS

## HYBRID VARIETIES — ANDORRA-GROWN

Our fall offering of Rhododendrons consists of many thousand plants, in fifty varieties, and in a range of sizes from one to five feet. These are acclimated—*Andorra-grown* stock—in the hardiest varieties. They are grown in open, unsheltered ground, with northern exposure, and the wind-swept hills of Andorra are not kind to anything of a tender nature, so that you may depend upon Andorra-grown Rhododendrons being of the hardiest, and supplied with excellent balls of fibrous roots.

	Each	10
<b>RHODODENDRONS, Catawbiense Hybrids Assorted.</b> Our selection of varieties—		
15 to 18 in. ....♦..per 100, \$90..	\$1 25	\$10 00
1½ to 2 ft. ....♦..per 100, \$125..	1 50	13 50
2 to 2½ ft. ....♦..per 100, \$150..	2 00	17 50
☛ A large stock of standard varieties, fine, heavy plants, 3 to 5 ft.		
<b>Abraham Lincoln.</b> Rosy crimson—		
1½ to 2 ft. ....	1 75	15 00
<b>Album elegans.</b> White—		
1½ to 2 ft. ....	1 75	15 00
2 to 2½ ft. ....	2 25	20 00
3 to 4 ft. Specimens....	\$3.50 to 10 00	
<b>Album grandiflorum.</b> White—		
1½ to 2 ft. ....	1 75	15 00
2 to 2½ ft. ....	2 25	20 00
<b>Alex. Dancer.</b> Light scarlet—		
2 to 2½ ft. ....	2 50	22 50
<b>Anna Parsons.</b> Red. 1½ to 2 ft.....	1 75	15 00
<b>Atrosanguineum.</b> Dark scarlet—		
2 to 2½ ft. ....	2 50	22 50
1½ to 2 ft. ....	2 00	17 50
<b>Blandyanum.</b> Rosy crimson. 1½ to 2 ft..	1 75	15 00
2 to 2½ ft. ....	2 25	20 00
2½ to 3 ft. ....	\$3.50 to 7 50	
3 to 4 ft. Specimens.....	\$5 to 15 00	

ANDORRA-GROWN

PRICE LIST FOR SPRING OF 1913

19

	Each	10
<b>RHODODENDRONS, Boule de Neige. White. 18 to 20 in.</b> ....	\$2 00	\$18 50
20 to 24 in. ....	2 50	22 50
24 to 28 in. ....	3 50	32 50
<b>Candidissimum. White. 1½ ft.</b> .....	1 75	15 00
2 ft. ....	2 00	17 50
2½ to 3 ft. ....	\$3.50 to 7 50	
<b>Caratacus. Purplish crimson—</b>		
1½ to 2 ft. ....	1 75	15 00
2 to 2½ ft. ....	2 25	20 00
2½ to 3 ft. Specimens. ....	\$3.50 to 7 50	
<b>Charles Bagley. Bright red. 1½ to 2 ft.</b> ..	2 00	17 50
2 to 2½ ft. ....	2 50	22 50
2½ to 3 ft. ....	\$3.50 to 7 50	
<b>Charles Dickens. Scarlet. 1½ ft.</b> .....	2 00	17 50
2 ft. ....	2 50	22 50
2½ ft. ....	3 50	
<b>C. S. Sargent. Crimson. 18 to 24 in.</b> ....	2 50	22 50
<b>Delicatissimum. White. 1½ to 2 ft.</b> .....	1 75	15 00
2 ft. ....	2 25	20 00
2½ ft. ....	3 00	
<b>Everestianum. Rosy lilac. 15 to 18 in.</b> ..	1 75	15 00
18 to 20 in. ....	2 25	20 00
20 to 24 in. ....	2 50	22 50
2½ to 3 ft. ....	\$3.50 to 7 50	
<b>General Grant. Red. 1½ ft.</b> .....	2 00	17 50
2 ft. ....	2 50	22 50
2½ ft. ....	3 50	32 50
<b>Giganteum. Rosy crimson. 1½ to 2 ft.</b> ....	1 75	15 00
2 to 2½ ft. ....	2 25	20 00
<b>Hannah Felix. Light red. 24 in.</b> .....	2 50	22 50
<b>Herbert Parsons. Lilac. 18 in.</b> .....	1 75	15 00
<b>H. W. Sargent. Scarlet. 1½ ft.</b> .....	2 00	17 50
2 ft. ....	2 50	22 50
<b>H. H. Hunnewell. Dark crimson. 18 in.</b> ..	2 00	17 50
2 ft. ....	2 50	22 50
<b>J. Marshall Brooks. Scarlet. 1½ to 2 ft.</b> ..	1 75	15 00
<b>John Spencer. Rose. 2 ft.</b> .....	1 50	13 50
2½ ft. ....	2 00	17 50
3 ft. ....	3 50	32 50
<b>Kettledrum. Deep red. 18 in.</b> .....	2 50	22 50
24 in. ....	3 00	27 50
<b>Lady Armstrong. Pale rose. 1½ to 2 ft.</b> ..	1 75	15 00
2 to 2½ ft. ....	2 25	20 00
<b>Lady Clermont. Rosy scarlet. 2 to 2½ ft.</b> ..	2 25	20 00
<b>Lady Gray Egerton. Bluish white. 1½ ft.</b> ..	2 50	22 50
<b>Luciferum. Clear white. 1½ to 2 ft.</b> .....	2 00	17 50
2½ to 4 ft. ....	\$2.50 to 10 00	
<b>Mad. Carvalho. White. 2 to 2½ ft.</b> .....	2 25	20 00
<b>Mad. Masson. White. 2 ft.</b> .....	2 25	20 00
<b>Mrs. H. Ingersoll. Deep rose-lilac—</b>		
18 in. ....	2 50	22 50
<b>Mrs. Jno. Clutton. White. 1½ ft.</b> .....	1 50	13 50
2 ft. ....	1 75	15 00
2½ ft. ....	2 50	22 50
<b>Mrs. Milner. Crimson. 1½ ft.</b> .....	1 75	15 00
2 ft. ....	2 00	17 50

A  
N  
D  
O  
R  
R  
A  
I  
G  
R  
O  
W  
N

		Each	10
A N D O R R A , G R O W N	<b>RHODODENDRONS, Old Port.</b> Plum. 1½ ft. ....	\$2 00	\$17 50
	2 ft. ....	2 50	22 50
	<b>Parson's gloriosum.</b> Blush. 2 ft. ....	1 50	12 50
	2½ to 3 ft. ....	3 00	27 50
	3½ to 4 ft. ....	\$.5 to 7 50	
	<b>Parson's grandiflorum rubrum.</b> Bright pink—		
	1½ ft. ....	2 00	17 50
	2 ft. ....	2 50	22 50
	2½ to 3 ft. ....	\$.35 to 7 50	
	<b>President Lincoln.</b> Crimson. 1½ ft. ....	2 00	17 50
	2 ft. ....	2 50	22 50
	2½ to 3 ft. ....	\$.35 to 5 00	
	<b>purpureum crispum.</b> Purple, crimped—		
	1½ ft. ....	1 50	13 50
	<b>purpureum elegans.</b> Purple. 1½ to 2 ft. .	2 00	17 50
	2½ ft. ....	3 50	32 50
	3 to 5 ft. ....	\$.5 to 12 50	
	<b>purpureum grandiflorum.</b> Purple—		
	2 to 2½ ft. ....	2 00	17 50
<b>roseum elegans.</b> Good rose. 1½ ft. ....	1 50	13 50	
2 ft. ....	2 00	17 50	
2½ ft. ....	3 50	32 50	
3 to 5 ft. Specimens. ....	\$.75 to 25 00		
<b>roseum superbum.</b> Clear rose. 2 ft. ....	2 00	17 50	
2½ ft. ....	3 50	32 50	
3 to 3½ ft. ....	\$.5 to 10 00		
<b>Sefton.</b> Dark maroon. 1½ ft. ....	2 50	22 50	
2 ft. ....	3 00	28 50	

#### NATIVE VARIETIES—ANDORRA-GROWN

		Each	10
<b>Catawbiense.</b> 1½ to 2 ft. .... per 100, \$80..	\$1 25	\$10 00	
2 ft. .... per 100, \$115..	1 75	16 50	
2½ ft. .... per 100, \$175..	2 25	20 00	
3 to 5 ft. Specimens. ....	\$.5 to 20 00		
<b>maximum.</b> Great Laurel—			
2 to 2½ ft. Nursery grown. ....	2 00	17 50	
2½ to 3 ft. Nursery grown. ....	3 50	25 00	
3 to 3½ ft. Nursery grown. ....	4 00	37 50	
3½ to 4 ft. Nursery grown. ....	5 00	47 50	
4 to 5 ft. Nursery grown. ....	7 50	60 00	
<b>maximum. Collected.</b> Special Prices on carload lots. Sizes, 2 to 6 ft.			

#### DWARF VARIETIES—ANDORRA-GROWN

		Each	10
<b>RHODODENDRON Hirsutum.</b> 12 to 15 in. ....	♦ \$1 50	\$13 50	
<b>imbricata.</b> 15 to 18 in. ....	♦ 2 50	23 50	
<b>myrtifolium.</b> 1½ to 2 ft. ....	2 50	20 00	
<b>odoratum.</b> Fragrant. 12 to 15 in. ....	2 00	17 50	
15 to 18 in. ....	2 50	20 00	
<b>punctatum.</b> Dotted. 15 to 18 in. ....	♦ 1 50	13 50	
18 to 24 in. ....	♦ 2 50	20 00	
<b>Wilsonianum.</b> 12 to 15 in. ....	♦ 1 50	13 50	
<b>YUCCA filamentosa.</b> Adam's Needle. 3-year. ....	35	2 00	
Heavy clumps. ....	\$.150 to 2 50		



Specimen Norway Maples in Wide Rows.

## DECIDUOUS TREES

Measurements are given as follows: Height is taken before digging, from the surface of the ground to the top branches, where they round off to form the top; diameter of stem, or caliper, is taken 6 inches above the ground above the collar. Measurements are expressed thus: 10 to 12 ft. (height),  $2\frac{1}{2}$  to  $2\frac{3}{4}$  in. (caliper).

	Each	10	100
<b>ACER campestris.</b> European Cork Maple—			
7 to 8 ft. Bushy .....	\$1 50	\$12 50	
8 to 10 ft. Bushy .....	1 75	15 00	
<b>colchicum, var. rubrum.</b> Red Colchicum Maple—			
14 to 16 ft.; 3 to 6 in. cal..	\$3.50 to 15 00		
<b>dasycarpum.</b> Silver Maple—			
8 to 10 ft. ....	75	6 00	
10 to 12 ft.; $1\frac{3}{4}$ to 2 in.....	1 50	12 50	
4 to 10 in. Specimens .....	\$7.50 to 40 00		
A rapid grower for immediate effects.			
<b>dasycarpum, var. Wierii laciniatum.</b> Wier's Cut-leaved Silver Maple—			
7 to 9 ft. Very Stocky.....	+.. 1 50	13 50	
<b>Negundo.</b> Ash-leaved Maple—			
10 to 12 ft.; 2 to $2\frac{1}{2}$ in. Bushy ....	1 50		
12 to 14 ft.; 3 to 4 in. ....	\$3.50 to 5 00		
<b>Pennsylvanicum.</b> 5 to 6 ft.....	+.. 1 50		

ACER	platanooides.	Norway Maple—	Each	10	100
	8 to 10 ft.;	1 to 1½ in. ....	\$1 00	\$9 00	\$85 00
	8 to 10 ft.;	1½ to 1¾ in. ....	♦ 1 50	13 50	115 00
	10 to 12 ft.;	1¾ to 2 in. ....	♦ 1 75	16 50	140 00
	10 to 12 ft.;	2 to 2¼ in. ....	♦ 2 00	18 50	165 00
	12 ft.;	2¼ to 2½ in. ....	♦ 2 50	22 50	
	12 to 14 ft.;	2½ to 2¾ in. ....	♦ 3 50	30 00	
	12 to 14 ft.;	2¾ to 3 in. ....	♦ 4 00	37 50	
	14 to 16 ft.;	3¼ to 3½ in. ....	♦ 4 50	42 50	
	14 to 16 ft.;	3½ to 3¾ in. ....	♦ 6 00	50 00	
	14 to 16 ft.;	3¾ to 4 in. ....	♦ 7 50	60 00	
☞	14 to 16 ft.;	4 to 5 in. ....	\$10 to	20 00	
	14 to 20 ft.;	5½ to 7 in. ....	\$25 to	50 00	
	<b>platanooides, var. purpurea.</b> Schwedler's Purple				
	Maple. 8 to 10 ft.;	1½ in. ....	1 75	15 00	
	8 to 10 ft.;	1¾ to 2 in. ....	2 50	22 50	
	10 to 12 ft.;	2¼ to 2¾ in. ....	3 50		
	12 to 14 ft.;	2¾ to 3 in. ....	4 00		
	14 to 16 ft.;	3¼ to 4 in. ....	\$6 to	10 00	
☞	16 to 20 ft.;	5 to 10 in. ....	\$25 to	75 00	
	<b>platanooides, var. Reitenbachi.</b> Reitenbach's				
	Purple Maple—				
	8 to 10 ft.;	2 to 2¼ in. ....	2 50		
	10 to 12 ft.;	2½ to 2¾ in. ....	3 50		
	<b>pseudo-platanus.</b> European Sycamore Maple—				
	8 to 10 ft.;	1½ to 1¾ in. ....	1 50	12 50	
	10 to 12 ft.;	2 to 2½ in. ....	2 00	17 50	
	12 to 14 ft.;	2½ to 3 in. ....	2 50	22 50	
	14 to 16 ft.	Specimens .....	\$5 to	25 00	
	<b>pseudo-platanus, var. purpurea.</b> Purple Sycamore Maple—				
	8 to 10 ft.;	1½ to 1¾ in. ....	2 00	17 50	
	10 to 12 ft.;	2 to 2½ in. ....	2 50	22 50	
	12 to 16 ft.;	3 to 6 in. ....	\$7.50 to	35 00	
	Broad-headed specimen trees.				
	<b>rubrum.</b> Red or Scarlet Maple—				
	8 to 10 ft.;	1¾ to 2 in. ....	1 50	12 50	
	10 to 12 ft.;	2 to 2¼ in. ....	2 00	17 50	
	12 to 14 ft.;	2½ to 3½ in. ....	\$2.50 to	5 00	
	<b>saccharinum.</b> Sugar Maple—				
	10 to 12 ft.;	1¼ to 1½ in. ....	1 50	12 50	100 00
	10 to 12 ft.;	1½ to 1¾ in. ....	2 00	17 50	150 00
	12 to 14 ft.;	2 to 2¼ in. ....	2 50	22 50	200 00
	12 to 14 ft.;	2¼ to 2½ in. ....	3 50	32 50	275 00
	12 to 14 ft.;	2½ to 3 in. ....	5 00	45 00	
☞	14 to 16 ft.;	3 to 3¼ in. ....	\$5 to	7 50	
	14 to 16 ft.;	3½ to 6 in. ....	\$10 to	50 00	
	<b>spicatum.</b> Mountain Maple.	2½ to 3 ft. ....	75	5 00	35 00
	<b>Tataricum, var. Ginnala.</b> Tartarian Maple—				
	3 to 4 ft. Bushy....	} <b>FINE</b> {	75	6 50	35 00
	4 to 5 ft. Bushy....		1 00	9 00	50 00
	5 to 6 ft. Bushy....		1 25	10 00	
☞	Most brilliant of the fall coloring trees. Superb for mass planting.				



JAPANESE MAPLE

	Each	10	100
<b>ACER polymorphum.</b> 3 to 6 ft. Heavy..	\$2.50 to \$5 00		
<b>polymorphum, var. atropurpureum.</b> Blood-leaved Japan Maple. 1½ ft. ....	♦ 1 50	\$13 50	
2 ft. ....	♦ 2 00	18 00	
2½ ft. ....	♦ 3 50	32 50	
☞ 3 to 5 ft. Specimens. Bushy and well furnished .....	\$7.50 to 15 00		
<b>polymorphum, var. atropurpureum dissectum.</b> Weeping Cut-leaf Blood-leaved—			
1½ ft. ....	♦ 2 50	22 50	
2 to 2½ ft. Specimens....	♦ \$3.50 to 10 00		
Tall standards, 4 to 5 ft. stem and broad heads .....	\$15 to 25 00		
<b>polymorphum, var. atropurpureum nigrum—</b>			
5 to 8 ft. Specimens .....	\$20 to 35 00		
<b>polymorphum, var. aureum.</b> Golden Japan Maple. 1½ to 2 ft. ....	♦ 2 50	22 50	
2 to 3 ft. ....	♦ \$3.50 to 7 50		
<b>polymorphum, var. dissectum.</b> Cut-leaf Weeping Japan Maple. 1½ ft. ....	♦ 2 50	22 50	
2 to 2½ ft. ....	♦ \$3.50 to 7 50		
☞ 2½ to 3 ft. by 2½ to 4 ft. ....	\$7.50 to 15 00		
<b>polymorphum, var. scopendifolium rubrum.</b>			
3 to 5 ft. ....	\$3.50 to 15 00		
<b>ÆSCULUS Hippocastanum.</b> European Horse-chestnut. 7 to 8 ft.; 2 in. ....	1 75	15 00	\$135 00
8 to 10 ft.; 2½ in. ....	2 50	22 50	200 00
10 to 16 ft.; 3 to 7 in. ....	\$5 to 35 00		
<b>Hippocastanum, var. alba flore pleno.</b> Double White-flowered Horse-Chestnut. 8 to 9 ft.; 1¾ to 2 in. ....	2 00	18 50	175 00
9 to 10 ft.; 2¾ in. ....	2 75	25 00	225 00
11 to 12 ft.; 3 to 6 in. ....	\$5 to 25 00		
<b>Hippocastanum, var. Bujotii—</b>			
10 to 12 ft.; 3 to 3½ in. ....	♦ \$5 to 7 50		
<b>Hippocastanum, var. rubicunda.</b> Red-flowered Horse-chestnut—			
10 ft.; 2¼ to 2¾ in. ....	3 00	27 50	
10 ft.; 2½ to 2¾ in. ....	3 50	32 50	
12 ft.; 3 to 4 in. ....	♦ \$5 to 15 00		
<b>parviflora.</b> See <i>Shrubs.</i>			
<b>AILANTHUS glandulosa.</b> Tree of Heaven—			
8 to 10 ft; 1½ to 2 in. ....	1 00	8 50	50 00
10 to 12 ft; 2 to 2½ in. ....	1 25	10 00	65 00
<b>ALNUS glutinosa.</b> European, or Black Alder—			
8 to 10 ft.; 1½ to 2 in. ....	1 00	5 00	35 00
10 to 12 ft.; 2 to 2½ in. ....	1 50	12 50	75 00
<b>incana.</b> 10 to 12 ft.; 2 to 2½ in. ....	1 50	10 00	75 00
<b>incana, var. laciniata.</b> 8 to 9 ft. ....	1 50	12 50	
<b>AMELANCHIER Canadensis.</b> Shad Bush—			
2 to 3 ft. ....	50	3 50	25 00
10 to 12 ft. ....	1 50	12 50	

**ANDROMEDA.** See *Oxydendron*.

**ARALIA.** Chinese Angelica Tree—

*elata*, var. *foliis argentea marginata*.

8 to 10 ft. .... \$1 50

**Japonica.** 4 to 5 ft. .... 50 \$4 00

5 to 6 ft. .... 75 6 00

10 to 12 ft. .... 2 50

*pentaphylla*. See *Acanthopanax spinosa*—

*spinosa*. 3 to 4 ft. .... 50 4 00

**BETULA alba.** European White Weeping Birch—

6 to 8 ft. .... 1 00 7 50

8 to 10 ft. .... 1 50 10 00

10 to 12 ft.; 1 $\frac{3}{4}$  to 2 in. .... 2 50

12 to 14 ft.; 2 to 2 $\frac{1}{2}$  in. .... 3 50

*alba*, var. *laciniata pendula*. Weeping Cut-leaved White Birch. 6 to 7 ft. ... 1 50

*lenta*. Sweet Birch. 6 to 7 ft. .... 1 00

8 to 10 ft. .... 1 00 7 50

*lutea*. Yellow Birch—

8 ft.; 2 in. .... 1 50 12 50

12 to 14 ft.; 2 $\frac{1}{2}$  to 3 in. .... 2 00 15 00

*papyrifera*. Paper, or Canoe Birch—

7 to 8 ft. .... 1 25 8 50

*nigra*; syn., *rubra*. Red Birch. 7 to 8 ft. ... 1 00 8 50

8 to 10 ft. .... 1 50 13 50 \$85 00

10 to 12 ft.; 2 $\frac{1}{2}$  to 3 in. .... 2 50 22 50 150 00

**BROUSSONETIA papyrifera.** Paper Mulberry—

8 to 10 ft. .... 1 50

**CARAGANA.** (Siberian Pea Tree.) Standards in

varieties. 4 to 5 ft. .... \* 2 50 20 00

**CARPINUS Americana;** syn., **Caroliniana.** American

Hornbeam—

6 to 7 ft. Bushy .... 2 00 13 50

7 to 9 ft. Bushy. .... 2 50 20 00

9 to 10 ft. Bushy .... 3 50 27 50 150 00

*Betulus.* European Hornbeam—

5 to 6 ft. Bushy .... 1 50 13 50

6 to 7 ft. Bushy .... 2 00 18 50

8 to 10 ft. Bushy .... 3 50 30 00

**CARYA alba.** (Hickory.) 1 $\frac{1}{2}$  to 2 ft. .... 75 5 00

*tomentosa*. 2 $\frac{1}{2}$  to 3 ft. .... 75 5 00

4 to 5 ft. .... 1 00 7 50

**CASTANEA Japonica.** Japan Chestnut. 4 to 5 ft. ... 1 00 7 50

*vesca*. Spanish Chestnut. 4 to 5 ft. ... 1 00 7 50

**CATALPA bignonioides.** 14 to 16 ft.; 3 $\frac{1}{2}$  in. .... 3 50

*Bungei*. Bunge's Catalpa. Standards—

7 ft. .... \$3.50 to 5 00

*speciosa*. Western Catalpa. 8 to 10 ft. ... 1 00 8 50

**CEDRELA Sinensis.** Chinese Cedrela—

8 to 10 ft. .... \* 1 50 10 00

PRICE LIST FOR SPRING OF 1913

25

	Each	10	100
<b>CELTIS occidentalis.</b> Nettle Tree. 7 to 8 ft.....	1 25	\$10 00	\$75 00
9 to 10 ft. ....	1 50	12 50	90 00
10 to 12 ft. ....	2 00	17 50	
<b>CERASUS Padus.</b> European Bird Cherry—			
6 to 8 ft. ....	1 00	6 50	
<b>serotina.</b> Wild Black Cherry—			
14 to 16 ft. ....	2 00		
<b>Avium, var. alba plena.</b> Double White-flowering Cherry. 3 to 4 ft....	1 00		
<b>Avium, var. rosea plena.</b> Double Pink-flowering Cherry. 3 to 4 ft....	1 00		
<b>Avium, var. rosea pendula.</b> Pink Weeping Japan Cherry. 4 to 5 ft.....	2 50		
<b>Sieboldi, var. rubra plena.</b> 3½ to 4 ft....	1 50		
<b>CERCIS Canadensis.</b> Red Bud, American Judas—			
2 to 3 ft. ....	35	3 00	20 00
3 to 4 ft. ....	50	4 00	
4 to 5 ft. ....	75	6 00	
5 to 6 ft. ....	1 00	7 50	
6 to 7 ft. ....	1 50	10 00	
<b>Japonica.</b> See <i>Shrubs</i> .			
<b>CERCIDIPHYLLUM Japonicum.</b> 3½ to 4 ft.....	1 00	8 50	
5 to 6 ft. ....	1 50	12 50	100 00
7 to 8 ft. Specimens ...	3 00	27 50	
8 to 9 ft. Specimens ...	3 50	32 50	
<b>CLADRASTIS tinctoria</b> ( <i>Virgilia lutea</i> ). Yellow Wood. 6 to 8 ft.....	1 50	13 50	100 00
8 to 10 ft. ....	2 00	17 50	150 00
10 to 14 ft. ....	\$2.50 to 3 50		
<b>CORNUS.</b> See, also, <i>Shrubs</i> .			
<b>florida.</b> White Dogwood—			
3½ to 4 ft.; very fine .....	1 00	7 50	
4 to 5 ft.; very fine .....	1 25	10 00	60 00
5 to 6 ft.; very fine .....	1 50	12 50	75 00
6 to 7 ft.; very fine .....	1 75	15 00	125 00
7 to 8 ft.; very fine .....	2 50	22 50	
8 to 10 ft.; very fine .....	3 00	27 50	
<b>florida, var. flore rubro.</b> Red-flowered Dogwood. 2½ to 3 ft.....	1 75	15 00	
3 to 4 ft. ....	2 50	20 00	
4 to 5 ft. Bushy .....	3 00		
5 to 6 ft. Bushy .....	3 50		
One of the most beautiful of ornamental trees.			
<b>florida, var. pendula.</b> Weeping Dogwood—			
7 to 10 ft. Rare .....	\$5 to 10 00		
<b>CRATÆGUS Carrieri.</b> 4 to 5 ft.....	1 00	7 50	
5 to 6 ft. ....	1 25	10 00	
6 to 7 ft. ....	1 50	12 50	
7 to 8 ft. ....	2 50	22 50	
<b>coccinea.</b> 3 to 4 ft.....	1 00		
4 to 5 ft. ....	1 50		
<b>cordata.</b> Washington Thorn—			
3 to 4 ft. ....	1 00	8 50	
4 to 5 ft. ....	1 50	12 50	
5 to 6 ft. ....	2 50		

<b>CRATÆGUS Crus-galli.</b>	Cockspur Thorn—	Each	10	100
	2 to 3 ft. ....	\$0 50	\$4 00	\$35 00
	3 to 4 ft. ....	75	6 00	50 00
	4 to 5 ft. ....	1 00	8 50	
	Excellent for hedging.			
<b>Oxyacantha.</b>	English Hawthorn—			
	4 to 6 ft. ....	1 00	8 50	
<b>Oxyacantha,</b>	var. <b>alba flore pleno.</b>			
	Double White Hawthorn—			
	4 to 5 ft. ....	1 00	8 50	
	5 to 6 ft. ....	1 50	12 50	
<b>Oxyacantha,</b>	var. <b>coccinea flore pleno.</b>			
	Paul's Double Scarlet—			
	4 to 5 ft. ....	1 00	9 00	
	8 ft. Standards .....	3 50	30 00	
	10 ft. Standards .....	5 00		
	12 to 14 ft. Standards .....	12 50		
<b>Oxyacantha,</b>	var. <b>rosea flore pleno.</b>			
	Double Pink Hawthorn—			
	4 to 5 ft. ....	1 50		
<b>CYTISUS Laburnum pendula.</b>	Weeping Golden Chain—			
	7 to 8 ft. Specimen .....	\$3.50 to	7 50	
<b>DIOSPYROS Virginica.</b>	Persimmon. 1½ to 2 ft....	50	4 00	
<b>FAGUS ferruginea.</b>	American Beech—			
	3 ft. ....	1 50	13 50	
	4 ft. ....	2 00	18 50	
<b>sylvatica.</b>	European Beech. 3 to 4 ft....	1 50	12 50	
	4 to 5 ft. ....	2 00	17 50	
	5 to 6 ft. ....	2 50	22 50	
	6 to 7 ft. ....	3 50	32 50	
	7 to 8 ft. ....	3 50	32 50	
	9 to 12 ft. Specimens .....	\$10 to	15 00	
<b>sylvatica,</b>	var. <b>asplenifolia.</b> Fern-like Beech—			
	3 to 4 ft. ....	1 50		
	4 to 5 ft. ....	2 50		
<b>sylvatica,</b>	var. <b>pendula.</b> Weeping Beech—			
	4 to 5 ft. ....	3 50		
	6 to 7 ft. ....	5 00		
	14 to 16 ft. Specimens .....	\$25 to	50 00	
	All recently transplanted.			
<b>sylvatica,</b>	var. <b>purpurea.</b> Purple Beech—			
	4 to 5 ft. ....	1 50	12 50	
	5 to 6 ft. ....	2 50	22 50	
	6 to 7 ft. ....	3 50	32 50	
	7 to 8 ft. ....	\$5 to	7 50	
	9 to 10 ft. ....	\$7.50 to	10 00	
	11 to 12 ft. ....	\$10 to	25 00	
	12 to 18 ft. Specimens .....	\$15 to	75 00	
<b>sylvatica,</b>	var. <b>purpurpea pendula.</b> Weeping Purple Beech—			
	5½ to 6 ft. ....	3 50		
<b>sylvatica,</b>	var. <b>purpurea major.</b> Large leaf—			
	6 to 7 ft. ....	3 50		
	7 to 8 ft. ....	\$5 to	\$7.50	
<b>sylvatica,</b>	var. <b>Riversi.</b> Rivers' Blood-leaved Beech. 3 to 4 ft. ....	2 50		
	7 to 8 ft. ....	\$5 to	7 50	
	8 to 12 ft. ....	\$7.50 to	15 00	



An Avenue of Sweet Gums (Liquidambar), at Andorra.

	Each	10	100
<b>FRAXINUS Americana.</b> White Ash. 8 to 10 ft....	\$1 25	\$10 00	
10 to 12 ft.; 1½ to 2 in. ....	1 50	12 50	\$100 00
12 to 14 ft.; 2½ to 2¾ in. ....	2 50	22 50	
14 to 16 ft.; 2¾ to 3 in. ....	3 00		
14 to 16 ft.; 3 to 4 in. ....	\$4 to 5 00		
<b>excelsior.</b> European Ash—			
6 to 8 ft. ....	1 00		
8 to 10 ft. ....	1 50		
<b>viridis.</b> Green Ash. 6 to 8 ft.....	75	4 00	30 00
<b>GLEDITSCHIA aquatica.</b> Water Locust. 7 to 8 ft..	1 00	8 50	
8 to 10 ft. ....	1 50	12 50	
<b>triacanthos.</b> Honey Locust—			
7 to 8 ft. ....	1 00	8 50	
8 to 10 ft. ....	1 25	10 00	
10 to 12 ft. ....	1 50	12 50	
<b>GLYPTOSTROBUS.</b> See <i>Taxodium</i> .			
<b>GYMNOCLADUS Canadensis.</b> Kentucky Coffee Tree			
8 to 10 ft. ....	1 50	12 50	
10 to 12 ft. ....	2 00	17 50	
12 to 14 ft. ....	2 50		
<b>JUGLANS nigra.</b> Black Walnut. 4 to 5 ft.....	1 00	7 50	
<b>regia.</b> English Walnut—			
8 to 10 ft.; 1½ to 2 in. ....	2 50		
10 to 12 ft.; 2 to 2½ in. ....	3 50		
<b>KÆLREUTERIA paniculata.</b> Varnish Tree—			
6 to 8 ft. ....	2 00	18 50	
8 to 10 ft. ....	3 00	25 00	
10 to 12 ft. Heavy ....	\$4 to 5 00		

	Each	10	100
<b>LARIX Europæa.</b> European Larch. 6 to 8 ft....	\$1 25	\$10 00	
8 to 10 ft. ....	1 50	13 50	\$85 00
10 to 12 ft. ....	2 50	22 50	
<b>leptolepis.</b> Japanese Larch. 5 to 7 ft...	1 50	12 50	
14 to 16 ft.....	3 00	27 50	
<b>LIQUIDAMBAR.</b> Sweet Gum. 6 to 7 ft. Fine....	1 50	12 50	85 00
7 to 8 ft.; 2½ in. Fine. ....	2 50	22 50	
8 to 9 ft.; 2½ to 2¾ in. Fine. ....	3 50	32 50	
10 to 12 ft.; 3 to 3½ in. ....	4 00		
<b>LIRIODENDRON Tulipifera.</b> Tulip Tree. 7 to 8 ft..	1 00	7 50	60 00
8 to 9 ft. ....	1 50	10 00	90 00
10 to 12 ft. ....	1 75	16 50	150 00
<b>MAGNOLIA.</b> Native Sorts—			
<b>acuminata.</b> Cucumber Tree—			
5 to 6 ft. ....	1 00	7 50	
<b>glauca.</b> Sweet or Swamp Magnolia—			
2 to 2½ ft. ....	1 50		
<b>grandiflora.</b> Evergreen Magnolia—			
2 to 2½ ft. ....	2 50		
<b>macrophylla.</b> Great-leaved Magnolia—			
2½ to 3 ft. ....	3 50		
5 to 6 ft. ....	5 00		
<b>tripetala.</b> Umbrella Tree. 6 to 8 ft..	1 25	9 00	
8 to 10 ft. ....	1 50	12 50	100 00
10 to 12 ft. ....	2 00		
<b>Chinese Sorts—</b>			
<b>alba superba.</b> White—			
3 to 3½ ft. ....	2 50		
<b>Alexandriana.</b> 4 to 5 ft.....	3 50		
5 to 6 ft. ....	7 50		
8 to 10 ft. ....	10 00		
<b>conspicua.</b> White—			
3½ to 4 ft. ....	3 50		
5 to 6 ft. ....	5 00	45 00	
7 to 8 ft. ....	\$7.50 to 10 00		
<b>Kobus.</b> 2 to 2½ ft.....	1 50		
3 to 5 ft. ....	\$3.50 to 4 50		
<b>Lennel Hybrid.</b> Lenne's Magnolia—			
3½ to 4 ft. ....	3 50	32 50	
5 to 6 ft. ....	\$5 to 7 50		
7 to 9 ft. Specimens ....	15 00		
<b>Norbertiana Hybrid.</b> Norbert's Magnolia—			
3 to 4 ft. ....	3 50		
5 to 6 ft. ....	\$5 to 7 50		
<b>purpurea; syn., obovata.</b> Purple Magnolia—			
4 to 5 ft. ....	2 50		
5 to 6 ft. ....	3 50		
<b>Soulangeana Hybrid.</b> Soulange's Magnolia—			
3 to 4 ft. ....	3 50	32 50	
4 to 5 ft. Imported ....	3 50	32 50	
<b>speciosa.</b> 4½ to 5 ft. ....	\$3.50 to 5 00		
<b>stellata; syn., Halleana.</b> Hall's Japanese Magnolia. 1½ ft.....	1 50	13 50	
2 ft. ....	2 50	22 50	
2½ ft. ....	3 50	32 50	
3 to 4 ft. ....	\$5 to 15 00		





An Avenue of "Andorra-grown" Oriental Planes. (See page 30).

	Each	10
<b>MORUS</b> alba. White Mulberry. 5 to 6 ft.....	\$1 00	\$6 00
alba, var. Tatarica alba. White Russian. 7 to 8 ft..	1 00	
alba, var. Tatarica rubra. Red Russian. 6 ft.....	1 00	
alba, var. Tatarica pendula. Teas' Weeping Mulberry. 5 to 5½ ft.; 3-yr. heads.....	3 50	32 50
<b>NEGUNDO.</b> See <i>Acer</i> .		
<b>NYSSA</b> sylvatica. Sour Gum. 3 to 4 ft.....	1 00	9 00
4 to 5 ft. ....	1 50	13 50
<b>OXYDENDRUM</b> arboreum; syn., <i>Andromeda</i> arborea. Sorrel		
Tree. 2 to 3 ft. ....	1 00	9 00
3 to 4 ft. ....	1 50	13 50
4 to 5 ft. ....	2 00	18 50
5 to 6 ft. ....	2 50	22 50
6 to 7 ft. ....	3 00	
7 to 8 ft. ....	3 50	
<b>PARROTIA</b> Persica. Persian Iron Tree. 4 to 5 ft.....	1 50	13 50
5 to 6 ft. ....	2 50	22 50
6 to 7 ft. ....	3 50	32 50
<b>PAULOWNIA</b> Imperialis. Empress Tree. 2½ to 3 ft.....	1 50	13 50
<b>PERSICA</b> vulgaris, var. alba plena. Double White-flowering Peach. 4 to 5 ft. ....	1 00	7 50
vulgaris, var. sanguinea plena. Double Red-flowering Peach. 4 to 5 ft. ....	1 00	7 50

	Each	10	100
<b>PLATANUS occidentalis.</b> American Buttonwood—			
8 to 10 ft. ....	\$1 00	\$8 50	
10 to 12 ft.; 1 $\frac{1}{4}$ to 2 in. ....	1 50	12 50	
<b>orientalis.</b> Oriental Plane, or European			
Buttonwood. 6 to 8 ft. ....	1 00	7 50	\$50 00
8 to 10 ft.; 1 $\frac{1}{4}$ to 1 $\frac{3}{4}$ in. ....	1 25	10 00	85 00
10 to 12 ft.; 1 $\frac{1}{2}$ to 1 $\frac{3}{4}$ in. ....	1 50	12 50	115 00
10 to 12 ft.; 1 $\frac{3}{4}$ to 2 in. ....	1 75	16 00	150 00
10 to 12 ft.; 2 to 2 $\frac{1}{4}$ in. ....	2 50	22 50	200 00
12 to 14 ft.; 2 $\frac{1}{2}$ to 3 in. ....	3 50	32 50	300 00
14 ft.; 3 to 4 in. Specimens.	\$5 to 10 00		
<b>POPULUS alba,</b> var. <b>Bolleana.</b> Bolle's Poplar—			
10 to 12 ft. ....	1 75	16 50	
12 to 14 ft. ....	2 50	22 50	
<b>monilifera;</b> syn., <b>Carolinensis.</b> Carolina			
Poplar. 8 to 10 ft. ....	1 00	7 50	60 00
10 to 12 ft. ....	1 50	10 00	
12 to 14 ft. ....	1 75	15 00	100 00
<b>nigra,</b> var. <b>fastigiata.</b> Lombardy Poplar—			
10 to 12 ft.; 1 $\frac{1}{2}$ to 1 $\frac{3}{4}$ in. ....	1 25	10 00	90 00
12 to 14 ft.; 2 to 2 $\frac{1}{4}$ in. ....	1 50	13 50	125 00
12 to 14 ft.; 2 $\frac{1}{2}$ in. ....	2 50	18 50	150 00
14 to 16 ft.; 3 to 3 $\frac{1}{4}$ in. ....	3 50	32 50	300 00
<b>PRUNUS.</b> See, also, <i>Cerasus.</i>			
<b>Pissardii.</b> Purple Plum. 4 to 5 ft. ....	1 00		
<b>triloba.</b> Flowering Plum. 2 to 2 $\frac{1}{2}$ ft. ....	50	3 50	
<b>PTELEA trifoliata.</b> Hop Tree. 5 to 6 ft. ....	35	3 00	25 00
6 to 7 ft. ....	50	4 50	35 00
<b>PTEROSTYRAX hispidum</b> ( <i>Halesia hispida</i> ).			
10 to 12 ft. ....	1 50	12 50	
<b>PYRUS.</b> See, also, <i>Shrubs.</i>			
<b>baccata.</b> Siberian Flowering Crab Apple—			
5 to 6 ft. Specimens. ....	3 50	32 50	
<b>coronaria.</b> Sweet-scented Crab—			
2 $\frac{1}{2}$ to 3 ft. ....	1 00	7 50	
<b>floribunda.</b> Flowering Crab. 5 to 6 ft. ....	3 50	32 50	
<b>floribunda,</b> var. <b>atrosanguinea.</b> 5 to 6 ft. ....	3 50	32 50	
<b>laensis,</b> var. <b>Bechtel.</b> Bechtel's Double			
flowering Crab. 3 $\frac{1}{2}$ to 4 ft. ....	1 75	16 50	
<b>Parkmani;</b> syn., <b>Halliana.</b> Parkman's Crab—			
3 to 3 $\frac{1}{2}$ ft. ....	1 00		
<b>Scheideckeri</b> (Double-flowered)—			
5 to 6 ft. "Specimens" ....	3 50	32 50	
<b>Toringo</b> (Dwarf Crab). 5 to 6 ft. ....	3 50	32 50	
<b>QUERCUS alba.</b> White Oak. 6 to 7 ft. ....	2 00		
7 to 8 ft.; 1 $\frac{3}{4}$ to 2 in. ....	2 50	22 50	
8 to 10 ft.; 2 to 2 $\frac{1}{4}$ in. ....	3 50		
10 to 14 ft.; 2 $\frac{1}{2}$ to 3 in. ....	\$3.50 to 7 50		
<b>bicolor.</b> Swamp White Oak—			
8 to 9 ft.; 1 $\frac{3}{4}$ to 2 in. ....	2 50		
10 to 12 ft.; 2 $\frac{1}{2}$ to 2 $\frac{3}{4}$ in. ....	3 50		
12 to 14 ft.; 3 to 3 $\frac{1}{2}$ in. ....	\$5 to 7 50		
12 to 16 ft.; 3 $\frac{3}{4}$ to 5 in. ....	\$10 to 25 00		
<b>Cerris.</b> Turkey Oak—			
6 to 8 ft.; 2 $\frac{1}{2}$ to 3 $\frac{1}{2}$ in. ....	\$3.50 to 5 00		



PRICE LIST FOR SPRING OF 1913

	Each	10	100
<b>QUERCUS coccinea.</b> Scarlet Oak. 6 to 7 ft.....	\$1 50	\$13 50	
7 to 8 ft. ....	2 00	18 50	
8 to 9 ft.; 1 $\frac{3}{4}$ to 2 in. ....	2 50	22 50	
9 to 10 ft.; 2 to 2 $\frac{1}{4}$ in. ....	3 50	30 00	
10 to 12 ft.; 2 $\frac{1}{2}$ to 2 $\frac{3}{4}$ in. ....	\$5 to 7 50		
12 to 14 ft.; 3 to 4 in. ....	..\$10 to 15 00		
<b>macrocarpa.</b> Mossy Cup Oak—			
8 to 9 ft.; 1 $\frac{1}{2}$ to 1 $\frac{3}{4}$ in. ....	2 00		
10 to 12 ft.; 2 to 2 $\frac{1}{2}$ in. ....	2 50		
<b>palustris.</b> Pin Oak—			
6 to 7 ft. Low-branched .....	1 50	13 50	
7 to 8 ft.; 1 $\frac{1}{2}$ to 1 $\frac{3}{4}$ in. Low-branched .....	2 00	17 50	
8 to 9 ft.; 1 $\frac{3}{4}$ to 2 in. Low-branched .....	2 50	22 50	
10 to 12 ft.; 2 to 2 $\frac{1}{4}$ in. Low-branched .....	3 00	28 50	
10 to 12 ft.; 2 $\frac{1}{2}$ to 2 $\frac{3}{4}$ in. Low-branched .....	3 50	32 50	
3 to 3 $\frac{1}{2}$ in. ....	..\$5 to 10 00		
Excellent for street planting.			
 <b>Extra heavy specimens.</b> 4 to 8 in., well-rooted and good tops. \$15.00 to 50 00			
<b>pedunculata,</b> var. <b>Concordia.</b> Golden Oak—			
8 to 10 ft.....	..\$3.50 to 5 00		
<b>Prinus.</b> Rock Chestnut Oak. 7 to 8 ft..	1 25		
8 to 10 ft. ....	1 50		
10 to 12 ft.; 1 $\frac{1}{2}$ to 2 in. ....	2 00	18 50	
10 to 12 ft.; 2 $\frac{1}{4}$ to 2 $\frac{1}{2}$ in. ....	2 50	22 50	
12 to 14 ft.; 3 to 3 $\frac{1}{2}$ in....	..\$3.50 to 5 00		
<b>Robur.</b> English Oak—			
8 to 10 ft.; 2 to 2 $\frac{1}{4}$ in. ....	1 50	12 50	
10 to 12 ft.; 2 $\frac{1}{2}$ to 3 in. ....	2 50	20 00	
12 to 14 ft.; 3 to 3 $\frac{1}{2}$ in. ....	3 50	32 50	
3 $\frac{1}{2}$ to 4 $\frac{1}{2}$ in. cal. Specimens. ....	..\$5 to 15 00		
<b>Robur,</b> var. <b>fastigiata.</b> Pyramidal English Oak. 10 to 12 ft.....	3 50		
12 to 14 ft.....	5 00		
<b>rubra.</b> Red Oak. 7 to 8 ft.....	1 25	10 00	\$90 00
8 to 10 ft.; 1 $\frac{1}{2}$ to 1 $\frac{3}{4}$ in. ....	2 00	17 50	
10 to 12 ft.; 2 to 2 $\frac{1}{4}$ in. ....	3 00	28 50	
 12 to 14 ft.; 2 $\frac{3}{4}$ to 3 in....	..\$5.00 to 7 50		
14 to 16 ft.; 3 $\frac{1}{4}$ to 4 in....	..\$10 to 25 00		
<b>velutina,</b> var. <b>tinctoria.</b> Black Oak—			
6 to 8 ft. ....	1 25		
8 to 10 ft.; 1 $\frac{3}{4}$ to 2 in. ....	1 75	15 00	
10 to 12 ft.; 2 to 2 $\frac{1}{4}$ in. ....	2 00	18 50	
12 to 14 ft.; 2 $\frac{1}{2}$ to 2 $\frac{3}{4}$ in. ....	2 50	22 50	
3 to 3 $\frac{1}{2}$ in. Specimens ....	..\$3.50 to 7 50		
<b>RHUS glabra.</b> Smooth Sumac. 4 to 5 ft.....	50	4 00	35 00
5 to 6 ft. ....	75	6 00	50 00
7 to 8 ft. ....	1 00	8 50	75 00
<b>glabra,</b> var. <b>laciniata.</b> Cut-leaved Sumac—			
2 $\frac{1}{2}$ to 3 ft. ....	75	5 00	40 00
3 to 4 ft. ....	1 00	7 50	60 00
<b>Osbecki.</b> 4 to 5 ft.....	75	4 00	
5 to 6 ft. ....	1 00	8 50	

	Each	10	100
<b>RHUS typhina.</b> Staghorn Sumac. 3 to 3½ ft. ....	\$0 35	\$3 00	\$25 00
5 to 6 ft. ....	50	4 00	
6 to 8 ft. ....	1 00	8 50	
<b>typhina, var. laciniata.</b> (Cut-leaved)—			
2 to 2½ ft. ....	50	4 00	35 00
<b>ROBINIA Pseudacacia.</b> Black Locust. 6 to 8 ft. ...	75	6 00	50 00
8 to 10 ft. ....	1 00	8 50	60 00
<b>SALISBURIA adiantifolia.</b> Ginkgo, or Maidenhair			
Tree. 7 to 8 ft. ....	1 25	10 00	
8 to 9 ft.; 1½ to 2 in. ....	1 50	12 50	
10 to 12 ft.; 2 to 2½ in. ....	1 75	16 50	150 00
12 to 14 ft.; 2½ to 2¾ in. ....	2 50	22 50	
12 to 14 ft.; 2¾ to 3 in. ....	3 50	32 50	
<b>SALIX alba.</b> White Willow. 6 to 8 ft. ....	1 00	6 50	
10 to 12 ft. ....	1 50	12 50	
<b>Babylonica.</b> Weeping Willow. 8 to 10 ft. ..	1 00	8 50	
10 to 12 ft. ....	1 50	12 50	
12 to 14 ft. ....	2 00		
<b>caprea.</b> Pussy Willow. 7 to 8 ft. ....	1 00	7 50	
8 to 10 ft. ....	1 50	12 50	60 00
<b>incana.</b> Rosemary Willow. 4 to 5 ft. ....	50	4 50	35 00
5 to 6 ft. ....	1 00	6 50	50 00
<b>lutea.</b> Golden Willow. 6 to 7 ft. ....	1 00	6 50	40 00
<b>lutea, var. pendula.</b> Golden Weeping—			
7 to 8 ft. ....	1 50	10 00	75 00
<b>pentandra.</b> Laurel Leaf Willow. 6 to 7 ft. ♦ ..	1 00	7 50	50 00
7 to 8 ft. .... ♦ ..	1 50	12 50	75 00
<b>vitellina, var. Britzensis.</b> Salmon-barked			
Willow. 8 to 10 ft. ....	1 50	10 00	
<b>Wentworth.</b> 10 to 12 ft. ....	1 50	12 50	
12 to 14 ft. ....	2 00	17 50	
<b>SASSAFRAS officinale</b> (Sassafras). 5 to 6 ft. ...	1 00	5 00	
<b>SOPHORA Japonica, var. pendula.</b> Weeping			
Sophora. 6 to 8 ft. \$3.50 to	7 50		
<b>SORBUS Americana.</b> American Mountain Ash—			
7 to 8 ft. ....	1 50		
<b>aucuparia.</b> European Mountain Ash—			
7 to 8 ft. ....	1 50	10 00	
10 to 12 ft. ....	2 00	12 50	
<b>aucuparia, var. quercifolia.</b> Oak-leaved			
Mountain Ash. 6 to 7 ft. ....	1 50		
<b>TAXODIUM distichum.</b> Deciduous Cypress—			
3 to 4 ft. .... ♦ ..	1 00	8 50	
5 to 6 ft. .... ♦ ..	1 50	12 50	
<b>TILIA Americana.</b> American Linden or Bass-			
wood—			
7 to 9 ft.; 1½ to 2 in. ....	1 50	12 50	100 00
8 to 10 ft.; 2 to 2½ in. ....	2 00	17 50	150 00
10 to 12 ft.; 2½ to 2¾ in. ....	2 50	22 50	175 00
10 to 12 ft.; 2¾ to 3 ft. ....	\$3 to 4 00		
12 to 14 ft.; 3¼ to 4 in. .. ♦ ..	\$5 to 10 00		

PRICE LIST FOR SPRING OF 1913

33

	Each	10
<b>TILIA argentea; syn., tomentosa.</b> Silver-leaved Linden—		
8 to 10 ft.; 2 to 2½ in. ....	\$2 50	\$22 50
10 to 12 ft.; 2½ to 2¾ in. ....	3 50	32 50
10 to 12 ft.; 2¾ to 3 in. Specimens.....	5 00	40 00
12 to 14 ft.; 3¼ to 4 in. Specimens....	\$6 to 10 00	
<b>platyphyllos.</b> Large-leaved Linden—		
7 to 8 ft.; 1¾ to 2 in. ....	1 50	12 50
<b>vulgaris; syn., Europæa.</b> European Linden—		
8 to 10 ft.; 2 to 2½ in. ....per 100, \$150..	1 75	16 50
10 to 12 ft.; 2½ to 2¾ in. ....per 100, \$200..	2 50	22 50
12 to 16 ft.; 3 to 4 in. Specimens....	\$4 to 10 00	
These specimens are an unusual lot of strictly perfect trees.		
<b>vulgaris, var. pyramidalis laciniata.</b> Pyramidal Cut-leaf. 12 to 14 ft.; 3 in.....	♦.. 3 50	32 50
<b>ULMUS Americana.</b> American Elm—		
8 to 10 ft.; 1¼ to 1½ in. ....per 100, \$90..	♦.. 1 25	10 00
10 to 12 ft.; 1½ to 2 in. ....per 100, \$125..	♦.. 1 50	13 50
12 to 14 ft.; 2 to 2½ in. ..per 100, \$160..	♦.. 2 00	17 50
12 to 14 ft.; 2½ to 2¾ in. ..per 100, \$200..	♦.. 2 50	22 50
12 to 14 ft.; 2¾ to 2¾ in. ....	♦.. 3 00	27 50
12 to 14 ft.; 2¾ to 3 in. ....	♦.. 3 50	32 50
14 to 15 ft.; 3 to 6 in. Specimens....	\$5 to 25 00	
<b>campestris.</b> English Elm. 8 to 10 ft.; 2 to 2½ in. ....	1 50	13 50
10 to 12 ft.; 2½ to 2¾ in. ....	2 75	25 00
12 to 14 ft.; 2¾ to 3 in. ....	3 50	32 50
Specimens. 3 to 4 in.....	\$5 to 10 00	
<b>campestris, var. latifolia; syn., major.</b> Broad-leaved English Elm—		
12 to 14 ft.; 2½ to 2¾ in. ....	2 75	
12 to 14 ft.; 2¾ to 3 in. ....	3 50	
16 to 18 ft.; 3 to 5 in. ....	\$5 to 15 00	
<b>campestris, var. Wheatley's (Cornish) Elm—</b>		
6 to 8 ft. ....	1 50	12 50
8 to 10 ft. ....	2 00	15 00
12 to 14 ft. ....	2 50	22 50
14 to 16 ft. ....	3 50	32 50
<b>scabra; syn., Dampieri; fastigiate form—</b>		
12 to 14 ft.; 3 in. ....	♦.. 3 50	32 50
<b>scabra; var. Huntingdoni.</b> Huntingdon Elm—		
12 to 14 ft.; 3 to 3¼ in. ....	♦.. 3 50	32 50
14 to 16 ft.; 3¼ to 3½ in. ....	♦.. 4 50	42 50
14 to 16 ft.; 3½ to 5 in. ....	\$5 to 15 00	
<b>scabra, var. pendula.</b> Camperdown Elm—		
6 ft. ....	1 50	
<b>scabra, var. purpurea.</b> Purple Wych Elm—		
10 to 12 ft.; 2 to 2½ in. ....	2 00	17 50
12 to 14 ft.; 3 to 3½ in. ....	3 50	32 50



Partial View of Nursery Grounds from Top of Main Nursery.

## AZALEAS, ANDORRA-GROWN

	Each	10	100
<b>AZALEA</b> <i>arborescens</i> . Fragrant White Azalea—			
12 to 15 in. Bushy clumps .....	\$1 00	\$9 00	\$80 00
15 to 18 in. Bushy clumps .....	1 50	13 50	125 00
1½ to 2 ft. Bushy clumps .....	2 00	18 50	150 00
2 to 2½ ft. Bushy clumps .....	2 50	22 50	175 00
2½ to 3 ft. Bushy clumps .....	3 50	30 00	250 00
<i>calendulacea</i> . Flame Azalea. 12 to 15 in..	1 00	9 00	80 00
15 to 18 in. Bushy clumps .....	1 50	13 50	125 00
18 to 24 in. Bushy clumps .....	1 75	15 00	135 00
2 to 2½ ft. Bushy clumps .....	2 50	22 50	200 00
2½ to 3 ft. Bushy clumps.	\$3.50 to 5 00		
<i>Canadensis</i> (Rhodora). 1 ft. Bushy....	1 00	8 50	75 00
1½ to 2 ft. Bushy .....	1 50	13 50	110 00
<i>mollis</i> . 1½ ft. Named sorts.....	1 25	10 00	90 00
2 ft. Bushy. Named sorts .....	1 50	13 50	125 00
2½ ft. Bushy. Named sorts .....	2 00	17 50	
<i>nudiflora</i> . 12 to 15 in.....	1 00	9 00	
15 to 18 in. Clumps .....	1 50	13 50	115 00
1½ ft. Bushy clumps .....	1 75	15 00	125 00
2 ft. Bushy clumps .....	2 50	20 00	175 00
<i>Pontica</i> (Ghent). 1½ ft. Named sorts....	1 25	10 00	90 00
2 ft. Bushy. Named sorts.....	1 50	12 50	120 00
2½ to 3 ft. Bushy .....	2 50	22 50	
3 to 3½ ft. Bushy .....	\$2.50 to 3 50		
<i>Vaseyi</i> . Southern Azalea. 12 to 15 in..	1 00	9 00	
15 to 18 in. ....	1 50	13 50	
1½ ft. Bushy clumps .....	2 00	18 50	150 00
2 ft. Bushy clumps .....	2 50	22 50	200 00
<i>viscosa</i> . White Azalea—			
15 to 18 in. Bushy clumps .....	1 50	13 50	115 00
1½ ft. Bushy clumps .....	2 00	18 50	150 00
2 ft. Bushy clumps .....	2 50	22 50	175 00
<i>Yodogama</i> . 15 to 18 in.....	1 75	15 00	
24 in. ....	2 50	20 00	

DECIDUOUS SHRUBS

	Each	10	100
ABELIA rupestris. 1 ft.....	\$0 50	\$4 50	
ACANTHOPANAX spinosa (Aralia pentaphylla)—			
2½ to 3 ft. ....	25	2 00	\$20 00
4 to 5 ft. ....	35	3 00	25 00
ÆSCULUS parviflora; syn., Pavia macrostachya—			
2 ft. ....♦	1 00	8 50	60 00
2½ ft. ....♦	1 25	10 00	85 00
3 ft. ....♦	2 00	17 50	150 00
ALTHEA. See Hibiscus.			
AMELANCHIER Botryapium. 2 to 2½ ft.....	35	3 00	25 00
AMORPHA canescens. 2 to 2½ ft.....	35	2 50	15 00
fruticosa. 4½ to 5 ft.....	35	3 00	20 00
AMYGDALUS (Almond). See Prunus.			
BACCHARIS halimifolia. Groundsel Shrub—			
3 to 3½ ft.....	50	3 50	25 00
BENZOIN odoriferum. Spice Bush. 2 to 2½ ft....	35	3 00	20 00
3 to 3½ ft. ....	50	4 00	30 00
3½ to 4 ft. ....	75	6 00	35 00
4 to 5 ft. ....	1 00	7 50	
BERBERIS (Barberry). Dulcis. 1 ft.....	50	4 00	35 00
ilicifolia. Holly-leaved. 2 to 2½ ft....	35	3 00	27 50
2½ to 3 ft. ....	50	4 00	35 00
3 to 3½ ft. ....	75	6 00	40 00
Sieboldi. 3½ to 4 ft. Heavy.....♦	75	6 50	
Thunbergii. 12 to 15 in.....	25	1 75	12 50
15 to 18 in. ....	35	2 50	15 00
1½ ft.; broad and very heavy ...	50	3 50	20 00
2 ft.; broad and very heavy ...	60	4 50	35 00
2½ ft.; broad and very heavy ...	75	6 00	50 00
3 to 3½ ft.; broad and very heavy. 1 00	9 00	75 00	
vulgaris. Common Barberry—			
2½ to 3 ft. ....	50	3 50	25 00
3 to 3½ ft. ....	60	5 00	30 00
vulgaris, var. Amurensis. 2 to 2½ ft....	75	6 00	
vulgaris, var. purpurea. 2½ to 3 ft....	35	3 00	17 50
3 to 3½ ft. ....	50	3 50	25 00
3½ to 4 ft. ....	60	4 00	30 00
4 to 5 ft. ....	75	6 00	35 00
CALLICARPA purpurea. Beauty Fruit—			
3 to 4 ft.....	75	6 00	40 00
CALYCANTHUS floridus. Allspice, or Sweet Shrub—			
2 to 2½ ft.....	50	4 00	30 00
3 to 3½ ft.....	75	6 00	35 00
CARAGANA arborescens. Siberian Pea—			
4 to 5 ft.....	75	6 00	40 00

	Each	10	100
<b>CEANOTHUS Americanus.</b> Jersey Tea. 1½ ft. ....	\$0 25	\$2 00	
<b>CEPHALANTHUS occidentalis</b> —			
2½ to 3 ft. ....	35	2 50	
3½ to 4 ft. ....	50	3 00	\$25 00
4 to 5 ft. ....	75	4 00	30 00
<b>CERCIS.</b> See, also, <i>Deciduous Trees.</i>			
<b>Japonica.</b> Japan Judas—			
2 to 2½ ft. ....	50	4 00	35 00
2½ to 3 ft. ....	75	6 00	50 00
<b>CHIONANTHUS Virginica.</b> White Fringe—			
2½ to 3 ft. Bushy .....	50		
3 to 4 ft. Bushy .....	75	7 00	50 00
4 to 5 ft. Bushy .....	1 00	8 50	60 00
5 to 6 ft. ....	1 25	10 00	75 00
7 to 8 ft. ....	1 75	15 00	
<b>CLETHRA alnifolia.</b> Sweet Pepperbush. 1½ to 2 ft. ..	35	2 50	20 00
2 to 2½ ft. ....	50	3 50	25 00
2½ to 3 ft. Broad and bushy....	75	5 00	35 00
<b>COLUTEA arborescens.</b> Bladder Senna—			
2 to 2½ ft. ....	35	3 00	20 00
5 to 6 ft. ....	50	4 00	25 00
<b>COMPTONIA asplenifolia.</b> Sweet Fern. 2 to 2½ ft. ....	35	3 00	
<b>CORCHORUS Japonicus.</b> Single Globe Flower—			
18 to 24 in. ....	35	2 50	15 00
3 to 4 ft. ....	50	4 00	20 00
<b>Japonicus, fl. pl.</b> (Double Kerria)—			
2 to 2½ ft. ....	50	4 00	20 00
<b>Japonicus, var. variegata.</b> (Variegated Leaves). 2 ft. ....	50	4 00	20 00
<b>CORNUS.</b> See, also, <i>Trees.</i>			
<b>alba.</b> Siberian Red-twigged Dogwood—			
1½ to 2 ft. ....	25	2 00	
2½ to 3 ft.; very heavy .....	35	3 00	20 00
3 to 3½ ft.; very heavy .....	50	4 00	25 00
3½ to 4 ft.; very heavy .....	75	6 00	30 00
4 to 5 ft.; very heavy .....	1 00	7 50	
<b>alba; syn., Siberica, var. aurea variegata</b> —			
2 to 2½ ft. ....	50		
<b>alba, var. elegantissima.</b> Golden-leaved—			
2 to 2½ ft. ....	50		
2½ to 3 ft. ....	75		
<b>alternifolia.</b> 4 to 5 ft. ....	50	4 00	
5 to 6 ft. ....	75	5 00	
6 to 7 ft. ....	1 00	6 00	
<b>Kousa</b> ( <i>Benthamia Japonica</i> )—			
2 to 2½ ft. ....	1 50	12 50	
3½ to 4 ft. ....	2 00	18 50	
<b>Mas.</b> Cornelian Cherry. 2½ to 3 ft. ....	50		
4½ to 5 ft.; very heavy .....	75	6 00	35 00
5 to 6 ft. ....	1 00	7 50	50 00
6 to 10 ft. Specimens. ....	\$1.50 to 2 50		

PRICE LIST FOR SPRING OF 1913

37

	Each	10	100
<b>CORNUS</b> <i>paniculata</i> . 3 to 3½ ft.....	\$0 50	\$4 00	\$35 00
4 to 5 ft. ....	75	5 00	45 00
5 to 6 ft. ....	1 00	7 50	60 00
<i>sanguinea</i> . European Osier Dogwood—			
2 to 2½ ft. Heavy .....	25	2 00	15 00
4 to 5 ft. Heavy .....	50	4 00	30 00
5 to 6 ft. Heavy .....	75	5 00	35 00
<i>sericea</i> . Silky Dogwood. 2 to 2½ ft....	35	3 00	
3½ to 4 ft. ....	50	4 00	
4 to 5 ft. ....	75	6 00	35 00
6 to 7 ft. ....	1 00	7 50	40 00
<i>stolonifera</i> . Native Red Osier—			
2½ to 3 ft. ....	35	3 00	
3 to 3½ ft. ....	50	4 00	25 00
3½ to 4 ft. ....	60	5 00	30 00
4 to 5 ft. ....	75	6 00	35 00
6 to 7 ft. ....	1 00	7 50	40 00
<i>stolonifera</i> , var. <i>aurea</i> . Golden-barked—			
2 to 2½ ft. ....	35	3 00	20 00
2½ to 3 ft. ....	50	3 50	25 00
3 to 3½ ft. ....	75	5 00	35 00
3½ to 4 ft. ....	1 00	6 00	50 00
<b>CORYLUS</b> <i>Americana</i> . American Hazel—			
18 to 24 in. ....	50		
<i>Avellana</i> , var. <i>laciniata</i> . Cut-leaved Hazel—			
2 to 2½ ft. ....	50		
<i>maxima</i> , var. <i>purpurea</i> . Purple Hazel—			
2½ to 3 ft. ....	35	3 00	
3 to 3½ ft. ....	50	4 50	30 00
4 to 5 ft. ....	75	6 00	40 00
5½ to 6 ft. ....	1 00		
<b>COTONEASTER</b> <i>Frigida</i> . 1½ to 2 ft.....	35	3 00	25 00
<b>CRATÆGUS</b> . See <i>Trees</i> .			
<b>CYDONIA</b> <i>Japonica</i> . Japan Quince. 1½ ft.....	50	3 00	
<b>DESMODIUM</b> <i>penduliflorum</i> . See <i>Lespedeza Sieboldi</i> .			
<b>DEUTZIA</b> <i>candidissima</i> (Double White). 2½ to 3 ft.	35	3 00	20 00
3½ to 4 ft. ....	50	4 00	30 00
4 to 5 ft. ....	75	6 00	40 00
5 to 6 ft. ....	1 00		
<i>crenata</i> . 2½ to 3 ft.....	35	3 00	
<i>crenata</i> , var. <i>Pride of Rochester</i> —			
3 to 4 ft. ....	50	3 50	
4 to 5 ft. ....	75	5 00	40 00
<i>crenata</i> , var. <i>rosea plena</i> (Double Pink)—			
3 to 3½ ft. ....	35	3 00	25 00
5 to 6 ft. ....	75	5 00	
<i>crenata</i> , var. <i>Waterer</i> . 2 to 3 ft.....	35	3 00	20 00
3 to 4 ft. ....	50	4 00	25 00
6 to 7 ft. ....	75	6 00	50 00
<i>crenata</i> , var. <i>Wellsi</i> . 4 to 5 ft.....	50	3 00	25 00
5 to 6 ft. ....	75	5 00	35 00
<i>gracilis</i> . Dwarf Deutzia—			
1 ft. ....	50	3 00	20 00
1½ ft. ..	75	4 00	25 00
<i>gracilis</i> , var. <i>carminea</i> . 1½ ft.....	50	4 00	25 00
2 ft. ....	75	5 00	30 00

	Each	10	100
<b>DEUTZIA</b> <i>gracilis</i> , var. <i>rosea</i> . 18 to 24 in.....	\$0 75	\$6 00	\$35 00
<i>Lemoinei</i> . 2 to 2½ ft.; very heavy.....	35	3 00	20 00
3 to 3½ ft.; heavy .....	50	4 00	30 00
3½ to 4 ft. ....	75	5 00	35 00
4 to 5 ft. ....	1 00	7 50	40 00
<i>Lemoinei</i> , var. <i>compacta</i> . 2 to 2½ ft.....	35	3 00	20 00
3 to 3½ ft.....	50	4 00	25 00
<i>parviflora</i> . 2½ to 3 ft.....	50		
<i>scabra</i> . 2 to 3 ft.....	35	3 00	20 00
3 to 4 ft. ....	50	4 00	25 00
5 to 6 ft. ....	75	6 00	
<b>DIERVILLA</b> ( <i>Weigela</i> ) <i>florida</i> , var. <i>amabilis</i> —			
3 to 4 ft. ....	50	3 50	
<i>florida</i> ; syn., <i>rosea</i> . 2 to 3 ft.....	50	4 00	25 00
4 to 5 ft. ....	75	5 00	
<i>florida</i> , var. <i>candida</i> . 2 to 3 ft.....	35	3 00	
3 to 4 ft. ....	50	4 00	
<i>florida nana</i> , var. <i>aurea variegata</i> —			
2 to 3 ft. ....	50		
3 to 4 ft. ....	75	6 00	
<i>florida</i> , var. <i>Sieboldi alba</i> . 4 to 5 ft....	75		
<i>floribunda Lavalleyi</i> . 2 to 2½ ft.....	35	3 00	25 00
5 to 6 ft. ....	50		
<i>Japonica</i> (syn., <i>hortensis</i> ), var. <i>flori-</i> <i>bunda</i> . 2 to 3 ft.....	50	4 00	
<i>Japonica</i> , var. <i>Eva Rathke</i> . 2 to 2½ ft. ♦..	35	3 00	20 00
2½ to 3 ft. .... ♦..	50	3 50	25 00
3 to 4 ft. .... ♦..	75	5 00	30 00
<i>Japonica</i> , var. <i>nivea</i> . White. 2 to 3 ft.	50	4 00	
3 to 4 ft. ....	75	5 00	
<i>Japonica</i> , var. <i>rubra</i> . 2 to 3 ft.....	35	3 00	20 00
3 to 4 ft. ....	50	4 00	
<i>Grœnewegeni</i> . 2 to 3 ft.....	50	4 00	30 00
4 to 5 ft. ....	75	6 00	
<i>Grœnewegeni</i> , var. <i>Mad. Contourier</i> . (Hybrid). 2 to 3 ft.....	35	3 00	
4 to 5 ft. ....	50	4 00	
<i>Grœnewegeni</i> , var. <i>Steltzneri</i> . 2 to 3 ft.	35	3 00	
3 to 4 ft. ....	60	5 00	
5 to 6 ft. ....	75		
<i>Grœnewegeni</i> , var. <i>Van Houttei</i> —			
2½ to 3 ft. ....	35	3 00	
3 to 4 ft. ....	50	4 00	
5 to 6 ft. ....	75	6 00	
<i>Verschaffelti</i> . 2½ to 3 ft.....	35	3 00	20 00
3 to 4 ft. ....	50	4 00	25 00
4 to 5 ft. ....	75	6 00	
<i>sessilifolia</i> . 2½ to 3 ft.....	25	2 00	
3 to 3½ ft. ....	50	3 50	
4 to 5 ft. ....	75	5 00	
<i>trifida</i> . 1½ to 2 ft.....	35	2 00	15 00
2 to 2½ ft. ....	35	3 00	20 00
2½ to 3 ft. ....	50	4 00	



PRICE LIST FOR SPRING OF 1913

39

	Each	10	100
<b>ELÆAGNUS angustifolia.</b> Oleaster. 4 to 5 ft....	\$0 50	\$4 00	
5 to 6 ft. ....	75	6 00	
<b>longipes;</b> syn., <b>edulis.</b> Japanese Oleaster. 4 to 5 ft. Bushy .....	75	5 00	\$30 00
5 to 6 ft. Bushy .....	1 00	8 50	40 00
6 to 7 ft. ....	1 25	10 00	
<b>parvifolia.</b> 6 to 7 ft.....	1 00	7 50	
<b>EUONYMUS alatus.</b> Cork-barked. 2½ to 3 ft...♦	1 50	13 50	
3 to 3½ ft. ....♦	2 00	18 50	
3½ to 4 ft. ....♦	2 50	22 50	
4 to 5 ft. ....♦	3 00	27 50	
5 to 6 ft. ....♦	3 50	32 50	
☞ One of the most ornamental of flowering and fruiting shrubs.			
<b>Americana.</b> Strawberry Bush—			
2 to 3 ft. ....	35	3 00	
3 to 4 ft. ....	50	3 50	
<b>Europæus.</b> Spindle Tree. 3 to 4 ft...	35	2 50	15 00
<b>EXOCHORDA grandiflora.</b> Pearl Bush. 2 to 3 ft..	50	3 50	
4 to 5 ft. ....	75	4 00	
6 to 8 ft.; with ball .....	1 50	12 50	
<b>FORSYTHIA (Golden Bell) Fortunei.</b> 3 to 4 ft....	35	3 00	20 00
4 to 5 ft.; very heavy .....	50	3 50	25 00
5 to 6 ft.; very heavy .....	75	4 00	30 00
6 to 7 ft.; very heavy .....	1 00	5 00	35 00
<b>Fortunei, var. aurea variegata.</b> 4 to 5 ft.	75	6 00	50 00
<b>intermedia.</b> 2 to 3 ft.....	25	2 00	15 00
3 to 4 ft.; very heavy .....	35	3 00	20 00
4 to 5 ft. ....	50	4 50	30 00
5 to 6 ft. ....	75	6 00	35 00
<b>suspensa.</b> 2 to 3 ft.....	25	2 00	15 00
3 to 4 ft. ....	50	4 00	
4 to 5 ft. ....	75	6 00	
5 to 7 ft.; very heavy .....	1 00	7 50	
<b>viridissima.</b> 2 to 3 ft.....	25	2 00	15 00
☞ 3 to 4 ft.; very heavy; extra ...	35	3 00	25 00
4 to 5 ft.; very heavy; extra ...	50	4 00	30 00
5 to 6 ft.; very heavy; extra ...	75	6 00	50 00
<b>HALESIA tetraptera.</b> 5 to 6 ft.....	75	6 00	
<b>HAMAMELIS Japonica.</b> Japanese Witch Hazel—			
2 to 2½ ft. ....♦	1 00	8 50	75 00
2½ to 3 ft. ....♦	1 50	12 50	100 00
<b>Virginiana.</b> Witch Hazel. 4 to 5 ft.	50	4 00	
5 to 6 ft.; heavy .....	75	6 00	50 00
6 to 7 ft.; heavy .....	1 00	7 50	60 00
<b>HIBISCUS Syriacus.</b> Althæa; Rose of Sharon—			
<b>atropurpurea plena.</b> 5 to 6 ft.....	75	5 00	35 00
<b>Boule de Feu.</b> 5 to 6 ft.....	75	5 00	
<b>cœrulea plena.</b> 5 to 6 ft.....	75	5 00	
<b>Comte de Flandre.</b> 4 to 5 ft.....	50	4 00	
5 to 6 ft. ....	75	5 00	
<b>grandiflora superba.</b> 4 to 5 ft.....	50	4 00	30 00
<b>Jeanne d'Arc.</b> 3 to 4 ft.....	50	4 00	25 00
4 to 5 ft. ....	75	5 00	40 00
5 to 6 ft. ....	1 00	6 00	50 00
<b>Lady Stanley.</b> 4 to 5 ft.....	50	4 00	
5 to 6 ft. ....	75	6 00	

	Each	10	100
<b>HIBISCUS purpureus folis argenta marginata—</b>			
4 to 5 ft. ....	\$0 35	\$3 00	\$20 00
5 to 6 ft. ....	50	4 00	30 00
<b>totalbus. 3 to 3½ ft.....</b>	50	4 00	25 00
3½ to 4 ft. ....	75	5 00	30 00
<b>violacea (semi-plena). 5 to 6 ft.....</b>	75	6 00	40 00
<b>HIPPOPHAE rhamnoides.</b> See <i>Buckthorn.</i>			
2½ to 3 ft. ....	50	2 50	20 00
<b>HYDRANGEA arborescens. 2 to 2½ ft.....</b>	35	3 00	
2½ to 3 ft. ....	50	3 50	25 00
<b>arborescens, var. grandiflora—</b>			
3 to 4 ft. ....	50	4 50	35 00
<b>Hortensis, var. Imperatrice Eugenie—</b>			
1½ ft.; 4-in. pot .....	75		
<b>Hortensis, var. Otaska. 3-year.....</b>	75		
<b>Hortensis, var. Japonica. 1 ft.....</b>	75		
<b>paniculata. 2 to 2½ ft.....</b>	35	3 00	
4 to 5 ft. ....	50	4 00	
<b>paniculata grandiflora. 3 to 3½ ft....</b>	50	4 00	25 00
3½ to 4 ft. ....	75	6 00	35 00
4 to 4½ ft.; extra heavy .....	1 00	7 50	
4½ to 5 ft.; extra heavy .....	1 50	12 50	60 00
<b>quercifolia. Oak-leaved—</b>			
2 to 2½ ft. ....	75	6 00	
3 to 3½ ft. ....	1 00	7 50	
<b>HYPERICUM aureum. 2½ to 3 ft.....</b>	35	3 00	20 00
3 to 4 ft. ....	50	4 00	25 00
<b>calcium. Aaron's Beard. 1 ft.....</b>	50		
<b>hircinum. 1½ to 2 ft.....</b>	50	3 50	20 00
<b>Moserianum hybridum. Gold-Flower—</b>			
15 to 18 in. ....	50	2 50	20 00
<b>patulum. 12 to 15 in.....</b>	35		
<b>prolificum. 15 to 18 in.....</b>	50		
<b>ILEX Sieboldi. Red-fruited. 2½ to 3 ft.....</b> ♦	2 50	22 50	
<b>Sieboldi. White-fruited. 2 to 2½ ft.....</b> ♦	2 50	22 50	
<b>verticillata. Winter Berry. 1½ to 2 ft.....</b>	25	2 00	
2 to 2½ ft. ....	35	3 00	25 00
2½ to 3 ft. ....	50	4 00	35 00
<b>ITEA Virginica. 1½ to 2 ft.....</b>	35	3 00	20 00
2 to 2½ ft. ....	50	3 50	25 00
<b>JASMINUM nudiflorum. Yellow Jasmine—</b>			
1½ ft. ....	50	3 50	
<b>KERRIA. See Corchorus.</b>			
<b>LESPEDEZA bicolor. 4 to 5 ft.....</b>	35	2 50	
5 to 6 ft. ....	50	3 50	
<b>Sieboldi; syn., Desmodium Japonicum—</b>			
Heavy clumps .....	35	3 00	
<b>Sieboldi, var. alba. Heavy clumps....</b>	50		
<b>LIGUSTRUM Amurense. Amoor Privet. 2 to 2½ ft..</b>	35	3 00	15 00
2½ to 3 ft. ....	50	4 00	20 00
<b>ciliatum. Sold by many for Ibota—</b>			
3 to 3½ ft. Broad and heavy... ..	50	3 50	15 00
3½ to 4 ft. Broad and heavy... ..	60	4 00	20 00
4 to 5 ft. Broad and heavy... ..	75	5 00	25 00
5 to 6 ft. Broad and heavy... ..	1 00	7 50	30 00

PRICE LIST FOR SPRING OF 1913

	Each	10	100		
<b>LIGUSTRUM</b> <i>lbota</i> . The true upright form—					
2 to 2½ ft. ....	\$0 25	\$2 00	\$10 00		
2½ to 3 ft. ....	35	3 00	12 50		
3 to 3½ ft. ....	50	3 50	15 00		
4 to 5 ft.; heavy ....	60	4 00	20 00		
5 to 6 ft. ....	75	6 00	35 00		
6 to 7 ft. ....	1 00	8 50	60 00		
<i>lbota</i> , var. <i>Regelianum</i> . Regel's—					
1½ to 2 ft.; heavy ....	35	3 00	20 00		
2½ to 3 ft.; heavy ....	50	3 50	25 00		
3 to 4 ft. ....	75	5 00	30 00		
4 to 5 ft. ....	1 00	7 50	35 00		
<i>media</i> . 2½ to 3 ft. ....	50	3 50	20 00		
<i>ovalifolium</i> . California Privet—					
2 to 2½ ft.; bushy	1000, \$35	} 25	1 00	5 00	
2½ to 3 ft.; bushy	1000, \$50		35	1 50	7 50
3 to 3½ ft.; bushy	1000, \$60		50	2 50	10 00
3½ to 4 ft.; bushy	1000, \$75		60	4 00	15 00
4 to 5 ft.; bushy	75		5 00	25 00	
5 to 6 ft.; bushy	1 00				
<i>ovalifolium</i> , var. <i>aureum</i> . Golden Privet—					
2½ to 3 ft. ....	75	6 00			
Grand stock. Transplanted Privet, extra heavy. Will give immediate hedge.					
<i>Sinensis</i> . Chinese Privet. 2½ to 3 ft..	50				
3½ to 4 ft. ....	75				
<i>vulgaris</i> . Common Privet. 2 to 3 ft..	35	2 50	15 00		
3 to 4 ft. ....	50	3 00	25 00		
4 to 5 ft. ....	75	4 00	30 00		
<b>LONICERA</b> <i>fragrantissima</i> . Chinese Fragrant Bush Honeysuckle. 2 to 3 ft. ....	25	2 25	20 00		
3 to 4 ft. ....	35	3 25	30 00		
4 to 5 ft.; heavy ....	50	4 50	40 00		
5 to 6 ft.; heavy ....	75	6 00	50 00		



A Portion of the Propagating Grounds at Andorra.

## ANDORRA NURSERIES

	Each	10	100
<b>LONICERA Morrowi.</b> Japanese Bush Honeysuckle—			
3 to 4 ft. ....	\$0 50	\$3 00	\$25 00
4 to 5 ft. ....	75	5 00	35 00
5 to 6 ft. ....	1 00	6 00	40 00
<b>Ruprechtiana.</b> 2 to 3 ft. ....	35	3 00	20 00
3 to 4 ft. ....	50	3 50	25 00
4 to 5 ft. ....	75	5 00	35 00
<b>Standishi.</b> Standish's Honeysuckle—			
2 to 2½ ft. ....♦	75	6 00	
<b>Tatarica.</b> Mixed sorts. 3½ to 4 ft. ....	35	2 50	
5 to 6 ft. ....	50	3 00	25 00
6 to 8 ft.; heavy ....	75	5 00	30 00
<b>Tatarica (rubra).</b> 3 to 4 ft. ....	50	3 50	
4 to 5 ft. ....	75	5 00	
<b>Tatarica, var. alba.</b> 2½ to 3 ft. ....	35	3 00	
3 to 4 ft. ....	50	3 50	
4 to 5 ft.; heavy ....	75	6 00	
5 to 6 ft. ....	1 00	7 50	
<b>Tatarica, var. bella albida.</b> 2 to 3 ft. ....	35	3 00	25 00
3 to 4 ft. ....	50	4 00	
4 to 5 ft. ....	75	5 00	
5 to 6 ft. ....	1 00	7 50	
<b>Tatarica, var. gracilis.</b> 2 to 3 ft. ....	35	3 00	25 00
3 to 4 ft. ....	75	6 00	
5 to 6 ft. ....	1 00	7 50	
<b>Tatarica, var. Chrysanthera.</b> 4 to 5 ft. ..	50	3 50	30 00
5 to 6 ft. ....	75	5 00	40 00
<b>Tatarica, var. splendens.</b> 2 to 3 ft. ....	35	3 00	20 00
4 to 5 ft. ....	50	4 00	35 00
5 to 6 ft. ....	1 00	7 50	50 00
<b>LYCIUM Chinense.</b> Matrimony Vine. 2 to 2½ ft. ..	35	2 50	15 00
<b>MYRICA cerifera.</b> Wax Myrtle. 12 to 15 in. ....	50	4 00	35 00
15 to 18 in. Bushy. ....	75	6 00	40 00
<b>PAVIA parviflora.</b> See <i>Æsculus</i> , under Shrubs.			
<b>PHILADELPHUS coronarius.</b> Mock Orange—			
2 to 3 ft. ....	35	3 00	15 00
3 to 4 ft. ....	50	4 00	25 00
5 to 6 ft. ....	75	6 00	35 00
<b>coronarius, var. aureus.</b> Golden Mock Orange. 1½ to 2 ft. ....	50	4 00	
<b>coronarius, var. Avalanche—</b>			
3 to 4 ft. ....	75	6 00	
<b>coronarius, var. primulae florus—</b>			
2½ to 3 ft. ....	50	4 00	
<b>grandiflorus.</b> 3 to 4 ft. ....	35	3 00	25 00
4 to 5 ft. ....	50	4 00	30 00
5 to 6 ft. ....	75	5 00	35 00
6 to 8 ft. ....	1 00	7 50	
<b>Lemoinei.</b> (Hybrid.) 3 to 4 ft. ....	50	4 00	30 00
<b>Lemoinei, var. erectus.</b> 2 to 3 ft. ..	35	3 00	20 00
3 to 4 ft. ....	50	4 00	25 00
4 to 5 ft. ....	75	5 00	30 00
<b>Mt. Blanc.</b> 1½ to 2 ft. ....	35	3 00	20 00
3 to 4 ft. ....	75	5 00	35 00
<b>Zeyheri, var. speciosissimus—</b>			
2½ to 3 ft. ....	35	3 00	20 00
3 to 4 ft. ....	50	4 00	25 00
5 to 6 ft. ....	75	6 00	35 00

PRICE LIST FOR SPRING OF 1913

43

	Each	10	100
<b>POTENTILLA fruticosa.</b> Shrubby Cinquefoil—			
2 to 2½ ft. ....	\$0 35	\$3 00	\$20 00
3 to 3½ ft. ....	50	3 50	25 00
3½ to 4 ft. ....	75	4 00	30 00
<b>PRUNUS amygdalus communis.</b> Flowering Almond—			
1½ to 2 ft. ....	75	5 00	
<b>amygdalus communis, var. rosea—</b>			
1½ to 2 ft. ....	75	5 00	
<b>PYRUS arbutifolia.</b> Chokeberry. 3 to 4 ft. ....	50	3 50	
<b>arbutifolia, var. brilliantissima.</b> 2 to 3 ft. ..	50	3 50	25 00
3 to 4 ft. ....	75	5 00	35 00
<b>floribunda, var. nigra.</b> 3 to 3½ ft. ....	35	3 00	20 00
3½ to 4 ft. ....	50	3 50	25 00
<b>RHAMNUS cathartica.</b> Buckthorn. 3 to 4 ft. ....	35	3 00	
4 to 5 ft. ....	50	3 50	
6 to 8 ft. ....	75	5 00	40 00
<b>RHODOTYPUS kerrioides.</b> White Kerria—			
2½ to 3 ft. ....	35	3 00	20 00
3½ to 4 ft. ....	50	4 00	25 00
4 to 5 ft. Very heavy ....	75	6 00	
<b>RHUS aromatica.</b> Fragrant Sumac. 1½ to 2 ft. ...	25	2 00	15 00
2½ to 3 ft. ....	50	4 00	25 00
3 to 3½ ft. ....	75	5 00	
<b>copallina.</b> Shining Sumac. 2 to 3 ft. ....	35	3 00	25 00
3 to 4 ft. ....	50	4 00	30 00
4 to 5 ft. ....	75	6 00	40 00
6 to 7 ft. ....	1 00	8 50	
<b>Cotinus.</b> Mist, or Smoke Tree. 3 to 4 ft. ....	35	3 00	
4 to 5 ft. ....	50	4 00	30 00
5 to 6 ft. ....	75		
6 to 8 ft. ....	1 00		
<b>Cotinus, var. atropurpurea.</b> Purple Mist—			
2 to 3 ft. ....	50		
3 to 4 ft. ....	75		
4 to 5 ft. ....	1 00		
<b>RIBES aureum.</b> Golden Currant. 3 to 4. ....	50	3 50	
<b>Gordonianum.</b> 3 to 3½ ft. ....	35	3 00	25 00
<b>ROBINIA hispida.</b> Rose Acacia. 2 to 2½ ft. ....	35	2 50	20 00
<b>RUBUS Canadensis.</b> 2 to 3 ft. ....	35		
<b>odoratus.</b> 2 to 3 ft. ....	25	2 00	
<b>SAMBUCUS Canadensis.</b> 2 to 3 ft. ....	35	3 00	20 00
<b>Melanocarpus.</b> 3 to 4 ft. ....	75	6 00	
5 to 6 ft. ....	1 00	7 50	
<b>nigra, var. aurea.</b> Golden Elder—			
2 to 3 ft. ....	35	3 00	20 00
3 to 4 ft. Very heavy ....	50	4 00	25 00
5 to 6 ft. Very heavy ....	75	5 00	40 00
<b>nigra, var. laciniata.</b> Cut-leaved Elder—			
1½ to 2 ft. ....	35		
2 to 3 ft. ....	50		
<b>racemosa.</b> Red-fruited—			
2 to 2½ ft. ....	50		
3 to 4 ft. ....	75	6 00	
4 to 5 ft. ....	1 00	8 50	50 00

	Each	10	100
<b>SPIRÆA arguta.</b> 2 to 3 ft.....	\$0 35	\$2 50	\$20 00
4 to 5 ft. Heavy.....	50		
<b>Billardii.</b> 3 to 4 ft.....	35	3 00	
4 to 5 ft.....	50	3 50	25 00
<b>Bumalda.</b> 2 ft.....	35	3 00	
2½ ft. Heavy .....	50	4 00	
3 ft. ....	75	6 00	
<b>Bumalda, var. Anthony Waterer—</b>			
12 to 18 in. ....	35	2 50	15 00
18 to 24 in. Heavy .....	50	4 00	
2½ to 3 ft. Heavy .....	75		
<b>callosa.</b> Fortune's Spirea. 2 to 3 ft....	35	3 00	
<b>callosa, var. alba.</b> 2 to 3 ft.....	35	3 00	20 00
<b>Hyb. Margarite.</b> 3 to 3½ ft.....	35	3 00	25 00
3½ to 4 ft.....	50	4 00	30 00
<b>Japonica, var. Fortunei rosea.</b> 2 to 3 ft..	50	3 50	
<b>Lindleyana.</b> 3 to 4 ft. ....	50	4 00	25 00
<b>opulifolia.</b> 3 to 4 ft.....	35	3 00	
4 to 5 ft. ....	50	4 00	25 00
5 to 6 ft. Heavy .....	75	6 00	35 00
6 to 7 ft. ....	1 00	8 50	50 00
<b>opulifolia, var. aurea.</b> Golden-leaved—			
2 to 3 ft. ....	35	3 00	20 00
4 to 5 ft. ....	50	4 00	
6 to 7 ft. Heavy .....	75	6 00	
<b>prunifolia flore pleno.</b> Bridal Wreath—			
3 to 4 ft. ....	50	3 00	25 00
<b>Reevesiana.</b> 2 to 3 ft. ....	35	3 00	20 00
3 to 4 ft. ....	50	4 00	25 00
4 to 5 ft. ....	75	6 00	35 00
<b>salisifolia.</b> 2 to 3 ft.....	35	2 50	20 00
3 to 4 ft. ....	50	3 50	25 00
<b>Sorbifolia.</b> 2½ to 3 ft. ....	50	3 50	
<b>Thunbergii.</b> Thunberg's Spirea—			
1½ to 2 ft. ....	35	3 00	20 00
2½ to 3 ft. Very heavy .....	50	3 50	
3 to 3½ ft. Very heavy .....	75	4 00	
<b>Van Houttei.</b> 2½ to 3 ft.....	35		
3 to 3½ ft. ....	50	4 00	
4 to 5 ft. ....	75	5 00	35 00
5 to 6 ft. ....	1 00	8 50	50 00
6 to 7 ft. ....	1 50	12 50	75 00
<b>STAPHYLEA Bumalda.</b> 3 to 3½ ft.....	50	4 00	
<b>STEPHANANDRA flexuosa.</b> 2 to 2½ ft.....	35	3 00	20 00
2½ to 3 ft. Heavy .....	50	4 00	25 00
4 to 5 ft. Heavy .....	75	6 00	40 00
<b>STYRAX Japonica.</b> 4 to 5 ft.....	75	6 00	
5 to 6 ft.....	1 00	7 50	50 00

PRICE LIST FOR SPRING OF 1913

45

	Each	10	100
<b>SYMPHORICARPUS racemosus.</b> Snowberry—			
2 to 2½ ft. ....	\$0 35	\$2 50	\$20 00
3 to 3½ ft. ....	75	5 00	
<b>vulgaris.</b> Coral Berry—			
2 to 3 ft. ....	35	3 00	12 50
3 to 3½ ft. ....	50	4 00	15 00
3½ to 4 ft. Heavy ....	75	6 00	20 00
4 to 5 ft. Heavy ....	1 00	7 00	25 00
<b>SYRINGA Chinensis; syn. Rothomagensis.</b> Rouen			
Lilac. 2 to 2½ ft. ....	35	3 00	20 00
3 to 4 ft. ....	50	4 00	25 00
Japonica. 6 to 7 ft. ....	1 50	12 50	
Josikæa. 2 to 2½ ft. ....	50	4 00	
3 to 4 ft. ....	1 00	7 50	
Josikæa, var. H. Zabel. 3 to 4 ft. ....	1 50		
Persica. 3 to 4 ft. ....	50		
Persica, var. alba. 3 to 4 ft. ....	75	6 00	30 00
villosa. 3 to 3½ ft. ....	50	4 00	
4 to 5 ft. Specimens. ....	1 00	7 50	
villosa, var. Emodi. 2 to 2½ ft. ....	50	4 00	30 00
vulgaris. Common Lilac. 1½ to 2 ft. ....	35	3 00	25 00
3 to 3½ ft. ....	50	4 00	35 00
4 to 5 ft. ....	75	6 00	40 00
5 to 6 ft. ....	♦. \$1.50 to 3 50		
vulgaris alba. 2 to 2½ ft. ....	50	4 00	35 00
3 to 3½ ft. ....	75	6 00	40 00
4 to 6 ft. ....	♦. \$1.00 to 2 50		
<b>vulgaris, named varieties—</b>			
<b>alba grandiflora</b> (Single, white)—			
3 to 4 ft. ....	75		
<b>Charles X.</b> Single, reddish purple—			
2 to 2½ ft. ....	50	3 50	
3 to 3½ ft. ....	75	6 00	
4 to 4½ ft. ....	1 25	10 00	
<b>La Tour d'Auvergne.</b> Double, violet-purple. 4 to 5 ft. ....	1 50		
<b>Mad. Lemoine.</b> Double, White—			
3 to 4 ft. ....	1 00		
<b>Marie LeGraye.</b> Single, white—			
2½ to 3 ft. ....	75	6 00	
3 to 3½ ft. ....	1 00	8 50	
4 to 4½ ft. ....	1 50	12 50	
<b>Marc Micheli.</b> Double, lilac-blue—			
4 to 5 ft. ....	1 50		
<b>Michael Buchner.</b> Double, pale lilac—			
3 to 4 ft. ....	1 00		
4 to 5 ft. ....	1 50		
<b>President Carnot.</b> Double, light lilac—			
4 to 5 ft. ....	1 50		
<b>President Grevy.</b> Double, blue—			
3 to 4 ft. ....	1 00		
<b>President Loubet.</b> Double, reddish carmine. 3 to 4 ft. ....	1 00		
<b>Rubra de Marley.</b> Single, reddish purple—			
2 to 2½ ft. ....	50	4 00	30 00
4 to 4½ ft. ....	1 00	7 50	
5 to 6 ft. ....	2 50		

	Each	10	100
<b>SYRINGA</b> Souvenir de Ludwig Spæth. Single red—			
3 to 3½ ft. ....	\$0 50		
3½ to 4 ft. ....	75		
4 to 4½ ft. ....	1 00		
Verschaffelti. Single Dark Red. 4 to 5 ft.	2 00		
<b>TAMARIX</b> Africana; syn., parviflora—			
4 to 5 ft. ....	50	\$4 00	
5 to 6 ft. ....	75	5 00	
Gallica. 2 to 3 ft. ....	35	3 00	
3 to 4 ft. ....	50	4 00	
Gallica, var. Indica. 4 to 5 ft. ....	75	5 00	
Japonica plumosa. 3 to 4 ft. ....	50	4 00	
<b>VACCINIUM</b> corymbosum. Swamp Huckleberry—			
1½ to 2 ft. ....	75	7 00	60 00
2 to 2½ ft. ....	1 00	9 00	85 00
<b>VIBURNUM</b> acerifolium. 1½ to 2 ft. ....	35	3 00	25 00
2 to 2½ ft. ....	50	4 00	35 00
2½ to 3 ft. ....	75	6 00	50 00
cassanoides. White Rod. 2 to 2½ ft. ♦..	50	4 50	35 00
3 to 3½ ft. Very heavy ♦..	75	6 00	50 00
4 to 4½ ft. Very heavy ..	1 00	7 50	
dentatum. Arrow-wood. 3½ to 4 ft. ....	75	6 00	
4 to 5 ft.; heavy ..	1 00	8 50	40 00
5 to 6 ft.; heavy ..	1 25	10 00	60 00
6 to 7 ft.; heavy ..	1 50	12 50	80 00
dilatatum. Japan Bush Cranberry—			
1½ to 2 ft. ....	75	5 00	
2½ to 4 ft. ....	1 00	7 50	
<b>Lantana</b> . Wayfaring Tree—			
3½ to 4 ft. ....	50	4 00	35 00
4 to 5 ft.; heavy ..	75	6 00	50 00
5 to 6 ft.; very heavy ..	1 00	8 50	
<b>Lentago</b> . Sheep-berry. 2 to 3 ft. ....	50	4 00	30 00
4 to 5 ft. ....	75	6 00	
5 to 6 ft. ....	1 00	8 50	
7 to 8 ft. ....	1 50	12 50	
molle. 3 to 4 ft. ....	50	4 00	
4 to 5 ft. ....	75	6 00	
5 to 6 ft. ....	1 00	8 50	75 00
6 to 7 ft. ....	1 50	12 50	100 00
<b>Opulus</b> . High Cranberry Bush—			
2 to 2½ ft. ....	50	3 50	30 00
3 to 4 ft. Fine ..	60	4 00	35 00
4 to 5 ft. Fine ..	75	6 00	50 00
5 to 6 ft. Fine ..	1 00	8 50	75 00
6 to 7 ft. ....	1 25	10 00	90 00
<b>Opulus</b> , var. sterile. Guelder Rose—			
3 to 3½ ft. ....	50	4 00	
4 to 5 ft. ....	75	6 00	40 00
5 to 6 ft. ....	1 00	7 50	50 00
plicatum. Japanese Snowball—			
2 to 3 ft. ....	50	4 00	35 00
3 to 4 ft. ....	75	5 00	40 00



PRICE LIST FOR SPRING OF 1913

47

	Each	10	100
<b>VIBURNUM plicatum</b> , var. <b>tomentosum</b> . Single Japan			
Snowball. 2½ to 3 ft.....	\$0 35	\$3 00	\$25 00
3 to 3½ ft. ....	50	4 00	35 00
4 to 5 ft.; extra fine .....	75	5 00	45 00
5 to 6 ft. Specimens. Fine....	1 00		
7 to 8 ft. Specimens. Fine....	2 50		
A beautiful shrub, deserving extensive planting.			
<b>prunifolium</b> . Black Haw—			
3 to 3½ ft. ....	75	7 00	60 00
3½ to 4 ft. ....	1 00	9 00	85 00
4 to 6 ft. ....	\$1.50 to \$3 50		
<b>Sieboldi</b> . 3½ to 4 ft.....	1 00	8 50	65 00
5 to 6 ft.....	1 50	12 50	100 00
<b>VITEX Agnus-castus</b> . Chaste Tree. 3 to 4 ft....	50	3 00	20 00
<b>Agnus-castus</b> , var. <b>alba</b> . 2½ to 3 ft.....	50	3 00	20 00
<b>XANTHOCERAS sorbifolia</b> . 3 to 4 ft.....	75	6 00	
4 to 5 ft.....	1 00	7 50	
<b>XANTHORRHIZA apiifolia</b> . Shrub Yellow Root—			
5 to 6 in. In clumps ....	25	2 00	10 00
6 to 8 in. In clumps ....	35	2 75	12 50
10 to 12 in. In clumps ....	50	3 50	15 00
12 to 18 in. In clumps ....	75	5 00	20 00

REEDS and GRASSES

	Each	10
<b>ARUNDO Donax</b> . Clumps .....	\$0 50	\$3 50
<b>BAMBUSA Metake</b> .....	50	3 50
<b>ELYMUS glaucus</b> .....	25	1 50
<b>ERIANTHUS Ravennæ</b> .....	50	3 50
<b>EULALIA Japonica</b> , and vars. <b>variegata</b> , <b>gracillima univittata</b> , <b>zebrina</b> . Clumps .....	50	3 50
<b>FESTUCA glauca</b> .....	25	1 50
<b>PHALARIS arundinacea</b> , var. <b>variegata</b> . Ribbon Grass.....	25	1 50
<b>UNIOLA latifolia</b> .....	25	1 50

VINES, CLIMBING and TRAILING PLANTS

	Each	10
<b>ACTINIDIA polygama</b> . 6-in. pots.....	\$0 50	\$3 50
<b>AKEBIA quinata</b> . From 4-in. pots.....	50	3 50
<b>AMPELOPSIS quinquefolia</b> . Virginia Creeper. 4-in. pots..	50	3 50
3-year, field-grown; heavy .....	25	2 00
<b>quinquefolia</b> , var. <b>Engelmanni</b> . 5-in. pots; heavy..	35	3 00
3-year, field-grown; heavy .....	25	2 00
<b>tricuspidata</b> ; syn., <b>Veitchi</b> . Japan or Boston Ivy; 4-in. pots; heavy.....	35	3 00
2-year, field-grown; heavy... per 100, \$15..	25	2 00
<b>ARISTOLOCHIA Sipho</b> . Dutchman's Pipe Vine. 5-in. pots..	75	6 00
6-in. pots .....	1 00	
<b>BIGNONIA grandiflora</b> . 1½ to 2 ft.; field-grown.....	35	2 00
<b>radicans</b> . Scarlet Trumpet Vine. 6-in. pots.....	50	4 00
2 to 3 ft.; field-grown .....	25	2 00

	Each	10
<b>CELASTRUS scandens.</b> False Bitter-sweet—		
2 to 3 ft. .... per 100, \$20..	\$0 50	\$3 50
3 to 5 ft.; heavy; field-grown .....	75	5 00
<b>CLEMATIS coccinea.</b> 4-in. pots.....	35	3 00
<b>Flammula.</b> Sweet Clematis. 5-in. pots.....	1 00	7 50
<b>Large-flowering varieties.</b> —Fairy Queen, Gem, Henryi, Jackmani, Jackmani var. alba, Jeanne d'Arc, Duchess of Edinburgh, Ker- mesina, Lady Neville, Lilacina floribunda, Madame Van Houtte, Miss Bateman, Presi- dent .....	50	4 00
<b>paniculata.</b> 2-year; heavy..... per 100, \$15..	30	2 50
5-in. pots; fine..... per 100, \$25..	50	3 50
<b>Virginiana.</b> Wild Clematis .....	50	4 00
<b>DOLICHOS</b> See <i>Pueraria</i> .		
<b>EUONYMUS radicans.</b> 1 ft.; field-grown..... per 100, \$15..	25	1 75
1½ to 2 ft.; field-grown..... per 100, \$20..	35	2 50
<b>radicans, var. variegata.</b> 1 ft.; field-grown.....	25	2 00
<b>radicans, var. Carrieri</b> (large leaf)— 1½ to 2 ft..... per 100, \$35..	50	4 00
<b>HEDERA Helix.</b> English Ivy. 4-in. pots..... per 100, \$20..	35	3 00
<b>LATHYRUS latifolius.</b> Everlasting Pea.....	35	2 50
<b>LONICERA Japonica.</b> Honeysuckle. 4-in. pots. per 100, \$20..	35	2 50
3-year; field-grown .....	35	3 00
<b>Japonica, var. brachypoda;</b> syn., <b>flexuosa.</b> Field- grown; 4-in. pots .....	35	3 00
<b>Japonica, var. aurea reticulata.</b> 4-in. pots.....	35	3 00
<b>Japonica, var. Chinensis.</b> Purplish green foliage— 4-in. pots .....	35	3 00
Heavy, field-grown .....	35	3 00
<b>Japonica, var. Halleana.</b> 4-in. pots. per 100, \$20..	35	3 00
3-year old, field-grown..... per 100, \$15..	25	2 00
<b>sempervirens, var. fuchsioides.</b> Scarlet Trumpet— 6-in pots .....	50	4 00
<b>PERIPLUCA Græca.</b> Silk Vine. Field-grown.....	35	3 00
6-in. pots .....	50	4 00
<b>PUERARIA Thunbergiana.</b> Kudzu Vine.....	1 00	7 50
<b>VITIS æstivalis.</b> Summer Grape .....	50	3 50
<b>heterophylla, var. variegata</b> .....	50	3 50
<b>Labrusca.</b> Fox Grape .....	50	3 50
<b>riparia.</b> Frost Grape .....	50	3 50
<b>WISTARIA Chinensis.</b> Chinese Wistaria— 2 to 3 ft.; in large pots .....	1 50	12 50
6 to 8 ft.; field-grown .....	2 50	22 50
<b>Chinensis</b> (Standards). 4 to 5 ft. ....	5 00	40 00
<b>Chinensis, var. alba.</b> Field-grown. 4 to 6 ft.....	2 50	22 50
6 to 7 ft. ....	3 50	
<b>frutescens.</b> 4 to 5 ft.....	1 50	2 50
5 to 7 ft. ....	2 50	22 50
<b>magnifica.</b> 5 to 6 ft.; field-grown..... \$1.50 to	2 50	
<b>multijuga.</b> 3 to 4 ft.; field-grown.....	1 50	12 50
4 to 6 ft.; field-grown..... \$1.50 to	3 50	
<b>multijuga, var. alba.</b> Field-grown. 3 to 4 ft.....	1 00	
4 to 6 ft..... \$1 50 to	3 50	

# FRUIT DEPARTMENT

	Each	10
<b>APPLES, Summer</b> —Early Harvest, Golden Sweet, Red Astrachan, Summer Rambo, Sweet Bough, Benoin, Yellow Transparent.		
<b>Autumn</b> —Fall Pippin, Gravenstein, Maiden's Blush, Smokehouse, Wealthy.		
<b>Winter</b> —Baldwin, Belle-fleur, Fallwater, King of Tompkins County, Northern Spy, Rhode Island Greening, Styman's Winesap, York Imperial.		
5 to 7 ft.; $\frac{3}{4}$ to 1 in. cal. ....	\$1 00	\$6 00
<b>Crab</b> —Hyslop, Large Red Siberian, Large Yelow Siberian, Transcendent. 5 to 7 ft. ....	1 00	6 00
<b>CHERRIES, Sour (Dukes and Morellos)</b> —Early Richmond, Empress Eugenie, May Duke, Late Duke, Montmorency. 5 to 6 ft. ....	1 50	10 00
<b>Large Sweet (Hearts and Bigarreaus)</b> —Black Tartarian, Governor Wood, Napoleon Bigarreau, Schmidt's Bigarreau, Windsor. 5 to 6 ft. ....	1 50	10 00
<b>NUTS, American Sweet Chestnut.</b> See under <i>Deciduous Trees</i> .		
<b>Spanish Chestnut.</b> See under <i>Deciduous Trees</i> .		
<b>Hybrid Chestnut.</b> Paragon, Numbo. 4 to 5 ft. ....	1 50	12 50
<b>Japan Chestnut.</b> 3 to 4 ft. ....	1 00	
<b>Walnut, Black.</b> See <i>Juglans nigra</i> , under <i>Deciduous Trees</i> .		
<b>PEACHES</b> —Belle of Georgia, Fitzgerald, Fox's Seedling, Crawford's Late, Elberta, Mountain Rose, Morris White, Oldmixon Free, Stump the World, Susquehanna, Troth's Early, Wheatland. 5 to 6 ft. .... per 100, \$30..	50	3 50
<b>PEARS, Summer</b> —Bartlett, Clapp's Favorite, Doyenne d'Ete.		
<b>Autumn and Winter</b> —Beurre d'Anjou, Buffum, Duchesse d'Angouleme, Howell, Kieffer's Hybrid, Lawrence, Rutter, Seckel, Sheldon, Worden-Seckel. 5 to 6 ft. ....	1 50	10 00
A few varieties, 6 to 8 ft. ....	2 00	15 00
<b>PLUMS, Japanese</b> —Abundance, Burbank, Chabot, Satsuma. 5 to 6 ft. ....	1 00	7 50
<b>European</b> —Giant Prune, Imperial Gage, Lombard.		
<b>QUINCES</b> —Champion, Orange. 3 to 4 ft. ....	75	6 00

## SMALL FRUITS

	Each	10
<b>BLACKBERRIES</b> —Eldorado, Erie, Kittatinny, Rathbun, Snyder, Wilson Junior. .... per 100, \$3..		\$0 50
<b>CURRENTS, Red</b> —Cherry, Fay's Prolific; <b>White</b> —White Grape; <b>Black</b> —Lee's Prolific. ....	\$0 25	2 00
<b>GOOSEBERRIES, Red</b> —Houghton, Industry; <b>Green</b> —Downing, Smith's Improved. ....	25	2 00
<b>GRAPES, Black</b> —Concord, Moore's Early, Worden; <b>Red</b> —Brighton, Catawba, Delaware; <b>White</b> —Green Mountain, Niagara, Pocklington. 2-year. ....	25	2 00
A few varieties, extra heavy. ....	50	3 00
<b>RASPBERRIES, Black</b> —Gregg; <b>Red</b> —Cuthbert, Columbian Ruby; <b>Yellow</b> —Golden Queen, per 100, \$3		50

<b>STRAWBERRIES, Early</b> —Bederwood, Marshall;	<b>Medium</b> —	Each	10
	Bubach, Glen Mary, Sharpless,		
	<b>Late</b> —Brandywine, Gandy, Run-		
	ners, per 100, \$2; per 1,000, \$7.50.		
	Potted plants, per 100, \$3 to \$4.		

## ESCULENT ROOTS

**ASPARAGUS**—Barr's Mammoth. Per 100, \$1.50; per 1,000, \$7.50.  
**RHUBARB**—Best varieties. Per 10, \$1.50; per 100, \$10.

## ROSES

N. B.—Potted unless noted. Special prices per hundred.

	Each	10
<b>AUSTRIAN BRIERS</b> —Harrison's Yellow and Persian Yellow..	\$0 40	\$3 50
<b>SWEETBRIER</b> — <i>Rosa rubignosa</i> .....	40	3 50
<b>HYBRIDS Penzance Briers</b> —Amy Robsart, Anne of Geierstein, Brenda, Flora McIvor, Lady Penzance, Lord Penzance, Meg Merrilies, Minna .....	50	4 50
<b>BUSH</b> —Blanda, Carolina, canina, lucida, lucida var, alba, multi- tiflora, nitida, rubrifolia, field-grown .....	35	3 00
<b>CLIMBING</b> —Crimson Rambler, crimson; Dawson, bright pink; Dorothy Perkins, shell pink; Hiawatha, ruby carmine; Lady Gay, cerise pink; Tau- sendschon soft pink; White Dorothy, white.	50	4 00
Setigera, Prairie Rose, 2 to 2½ ft.; field grown	35	3 00
<b>EVERBLOOMING Hybrid Teas</b> —Bessie Brown, creamy white; Betty, ruddy gold; Captain Christy, flesh; Caroline Testout, rose; Countess of Caledon, carmine; Duchesse of Albany, deep pink; Gladys Harkness, salmon-pink; Gruss an Teplitz, crimson; Kaiserine Au- guste Victoria, primrose; Killarney, pink; La France, rose; Madame Ravary, yellow; Souvenir du President Carnot, flesh-rose; Viscountess Folkestone, creamy pink..	50	4 50
<b>EVERBLOOMING, Miscellaneous</b> —Clothilde Soupert (Poly- antha), rosy white; etoile de Lyon (Tea), yellow; Francisca Kruger (Tea), yellow- peach; Francis Dubreuil (Tea), crimson; Harry Kirk, deep sulphur yellow; Maman Cochet (Tea), rosy white; Souvenir de la Malmaison (Bourbon), flesh; White Ma- man Cochet (Tea), white.....	50	4 50
<b>HYBRID Perpetual</b> —Alfred K. Williams, carmine-red; Baroness Rothschild, rose; Captain Hayward, carmine-crim- son; Clio, flesh; Eugene Verdier, rose-flesh; Frau Karl Druschki, white; General Jacqueminot, scar- let; Lady Helen Stewart, crimson-scarlet; Louis Van Houtte, red-crimson; Magna Charta, rose; Madame Gabriel Luizet, silvery pink; Margaret Dickson, white; Mrs. R. G. Sharman-Crawford, rose-pink; Mrs. John Laing, pink; Paul Neyron, deep rose; Prince Camille de Rohan, deep crimson; Ulrich Brunner, cherry crimson.....	50	4 00
<b>MOSS</b> —Blanche Moreau, white; Crimson Globe, deep crim- son; Zenobia, rose.....	50	4 00

RUGOSA ROSES

<b>ROSA rugosa.</b> 2 to 2½ ft.....	\$0 35	\$3 00	\$20 00
2½ to 3 ft. ....	50	4 00	35 00
3 to 3½ ft. ....	75	6 00	50 00
<b>rugosa, var. alba.</b> 2 to 2½ ft. ....	50	4 00	25 00
2½ to 3 ft. ....	75	6 00	50 00
<b>rugosa hybrids atropurpurea</b> —Atropurpurea, Blanc Double de Coubert, Conrad F. Meyer, Madame Georges Bruant, Madam Charles Worth, Mrs. A. Waterer. Pot- grown .....	50	4 00	
<b>WICHURAIANA ROSES</b>			
<b>ROSA Wichuraiana.</b> The Trailing Rose. 2 to 3 ft..	\$0 25	\$2 00	
2 to 3 ft. In 4-in. pots.....	35	3 00	\$25 00
<b>hybrids</b> —Evergreen Gem, Gardenia, Manda's Triumph, Pink Roamer, South Orange Perfection, Universal Favorite. In pots.	50	3 50	
<b>SINGLE ROSES, Dickson's Hybrids</b> —New Irish Beauty, Irish Glory, Irish Modesty, Irish Bright- ness .....	75	6 00	

HARDY HERBACEOUS PLANTS

<b>ACHILLEA eupatorium</b> (Fern-leaved Yarrow). All summer. 4 to 5 ft.....	\$0 15	\$1.25	
<b>filipendulina</b> (Noble Yarrow). July. Golden Yellow. 2 ft.....	15	1 25	\$10 00
<b>millefolium roseum</b> (Rosy Milfoil). July to September. Pink. 1½ ft.	15	1 25	
<b>millefolium roseum</b> var. <b>Cerise Queen</b> . June to September. Amaranth- red. 1½ ft.....	25	2 00	
<b>ptarmica</b> (The Pearl). All summer. White. 2 ft.....	15	1 25	10 00
<b>ptarmica</b> var. <b>Boule de Neige</b> (Ball of Snow). July to September. White. 2 ft. ....	25	2 00	
<b>tomentesum</b> (Wooly Yarrow). June. Yellow. 1 ft.....	25	2 00	
<b>ACONITUM Bicolor.</b> July to September. Blue and white. 2 ft.....	35	2 50	
<b>Fischeri</b> (Monkshood). September and October. Blue. 3 ft.....	35	2 50	15 00
<b>Lycotctonum</b> (Wolf's Bane). June to September. Yellow. 3 ft.....	35	2 50	
<b>Napellus albus.</b> August to September. White. 2 ft.....	35	2 50	
<b>ACANTHUS mollis</b> (Bear's Breech). August and September. Rose. 3 ft.....	35	2 50	
<b>ADONIS Amurensis</b> fl. pl. April and May. Yellow. 1 ft. ....	65	5 00	
<b>AJUGA Genevensis.</b> May. Bright blue. 6 in.....	25	1 50	12 50
<b>reptans rubra</b> (Bugle). May. Purplish blue. 6 in.....	25	1 50	12 50



Partial view of Herbaceous Plantations

<b>ALTHÆA</b>	<b>rosea</b> (Hollyhock). July. Various colors. 4 to 6 ft. ....	\$0 25	\$1 50	\$12 50
	<b>rosea</b> , var. <b>Allegheny Fringed</b> .....	25	1 50	12 50
<b>ALYSSUM</b>	<b>rostratum</b> , June and July. Golden Yellow. 1 ft.....	35	2 50	
	<b>saxatile compactum</b> (Golden Tuft). May and June. Yellow. 1 ft.....	25	1 50	12 50
<b>ANCHUSA</b>	<b>Italica</b> , var. <b>Dropmore</b> . (Alkanet.) New May and June. Blue. 3 to 4 ft..	25	2 00	
<b>ANEMONE</b>	(Windflower) <b>Japonica</b> . September Red. 2 to 3 ft.....	25	1 50	12 50
	<b>Japonica</b> , var. <b>alba</b> . Fall. White. 2 to 3 ft.	25	1 50	12 50
	<b>Japonica</b> , var. <b>Queen Charlotte</b> . Fall. Rose. 2 to 3 ft.....	25	2 00	15 00
	<b>Japonica</b> , var. <b>Lady Ardilaun</b> . Fall. White. 2 to 3 ft.....	25	2 00	15 00
	<b>Japonica</b> , var. <b>Prince Henry</b> . Fall. Rich deep pink. 2 to 3 ft.....	25	2 00	
	<b>Japonica</b> , var. <b>rosea superba</b> . Fall. Silvery rose. 2 to 3 ft.....	25	2 00	
<b>ANEMONE</b>	<b>Japonica</b> , var. <b>Whirlwind</b> . Fall. Pure white. 2 to 3 ft. ....	25	2 00	15 00
	<b>Pennsylvanicum</b> . June and July. White. 1 to 2 ft.	25	1 50	12 50
	<b>Pulsatilla</b> (Pasque Flower). May. Violet-purple. 9 in.....	25	1 50	12 50
	<b>sylvestris</b> . May. Pure white. 1 to 1½ ft....	25	1 50	12 50
<b>ANTHEMIS</b>	<b>tinctoria</b> (Chamomile). June to September. Golden Yellow. 2 ft.....	25	1 50	10 00
<b>AQUILEGIA</b>	<b>baicalense</b> . May to July. Blue and white. 18 in.....	25	1 50	12 50
	<b>Canadensis</b> . (Common Columbine). May to July. Scarlet and Yellow. 1 to 2 ft.....	25	1 50	10 00

PRICE LIST FOR SPRING OF 1913

53

	Each	10	100
<b>AQUILEGIA Chrysantha.</b> May to August. Golden Yellow 3 ft. ....	\$0 25	\$2 00	\$12 50
<i>cærulea</i> (Rocky Mountain Columbine). May to July. Blue. 18 in. ....	25	2 00	12 50
<i>flabellata</i> , var. <i>nana alba</i> . April to June. White. 1 ft. ....	25	2 00	
<i>nivea grandiflora</i> . April to June. White. 2 to 3 ft. ....	25	2 00	12 50
<i>vulgaris fl. pl.</i> May to July. White to blue. 1½ to 2 ft. ....	25	2 00	12 50
<i>truncata</i> . May and June. Scarlet, yellow-tipped. 2 ft. ....	25	2 00	12 50
<b>ARABIS alpina</b> (Rock Cress). April and May. White. 4 in. ....	25	1 50	10 00
<i>alpina fl. pl.</i> Double. ....	35	2 50	
<b>ARENARIA montana</b> , var. <i>grandiflora</i> (Sandwort). May and June. White. 6 in. ....	25	1 50	12 50
<b>ARMERIA maritima</b> , var. <i>alba</i> (Thrift). Summer. White. 9 in. ....	25	1 50	10 00
<i>maritima</i> , var. <i>splendens</i> . Summer Rose. 9 in. ....	25	1 50	12 50
<b>ARTEMISIA abrotanum</b> (Old Man). Silvery white foliage. 2 ft. ....	25	1 50	10 00
<i>Stelleriana</i> (Old Woman). Silvery foliage. 2 ft. ....	25	1 50	10 00
<b>ASCLEPIAS tuberosa</b> (Butterfly Weed). July and August. Orange. 2 ft. ....	25	1 50	10 00
<b>ASTER alpinus</b> . June and July. Purple. 9 in. ...	25	1 50	10 00
<i>Amellus elegans</i> . September and October. Blue. 1½ ft. ....	25	1 50	10 00
<b>ASTER</b> (Michaelmas Daisy) <i>amethystinus</i> . September and October. Amethyst. 3 to 4 ft. ....	25	1 50	10 00
<i>grandiflorus</i> . October and November. Violet-blue. 2 ft. ....	35	2 50	20 00
<i>Lady Trevelyan</i> . September and October. White. 3 ft. ....	25	1 50	10 00
<i>laevis</i> . September. Blue. 4 ft. ....	25	1 50	10 00
<i>Madonna</i> . September and October. White. 4 ft. ....	25	1 50	10 00
<i>Novæ Angliæ</i> . September and October. Purple. 4 ft. ....	25	1 50	10 00
<i>Novæ Angliæ</i> , var. <i>rubra</i> . September and October. Bright rose. 4 ft. ....	25	1 50	10 00
<i>ptarmicoides</i> . August and September. White. 1½ ft. ....	25	1 50	10 00
<i>Robert Parker</i> . September and October. Lavender. 4 ft. ....	25	1 50	10 00
<i>Snowflake</i> . September and October. Pure white; very free. 1½ ft. ....	25	1 50	10 00
<i>Tataricus</i> . October and November. Purple. 5 ft. ....	25	1 50	10 00
<i>Trinervius</i> . October and November. Violet-purple. 2½ ft. ....	25	1 50	10 00
<i>White Queen</i> . September and October. White. 4 ft. ....	25	1 50	10 00
<b>ASTILBE Japonica</b> (Spirea). June. White. 1½ ft. ....	25	1 50	10 00

	Each	10	100
<b>ASTRANTIA major</b> (Masterwort). June and July. Pale pink. 1 ft.....	\$0 25	\$2 50	\$20 00
<b>AUBRETIA Hendersoni</b> (False Wall Cress). April. Purplish violet. 4 in.....	25	1 50	12 50
<b>BAPTISIA australis</b> (False Indigo). June and July. Dark blue. 2 ft.....	25	1 50	10 00
<b>tinctoria</b> . June and July. Bright yellow. 2 to 3 ft.....	25	1 50	10 00
<b>BELEMCANDA Chinensis</b> ; syn., <b>Pardanthus</b> . June. Orange-red. 4 ft.....	25	1 50	10 00
<b>BELLIS perennis</b> (English Daisy). May. White and pink. 6 to 8 in.....	25	1 50	10 00
<b>BETONICA</b> . See <i>Stachys</i> .			
<b>BOCCONIA cordata</b> (Plume Poppy). July and August. White. 5 ft.....	25	1 50	12 50
<b>BOLTONIA asterioides</b> (False Chamomile). August and September. White. 4 ft.....	25	1 50	10 00
<b>latisquama</b> . August and September. Light lilac. 4 ft.....	25	1 50	10 00
<b>CALIMERIS incisa</b> (Starwort). July to September Light blue. 18 in.....	25	1 50	10 00
<b>CALLIRHOË involucrata</b> (Poppy Mallow). All summer. Rosy crimson. 1 ft.....	25	1 50	10 00
<b>CAMPANULA Carpatica</b> (Carpathian Harebell). June to September. Blue. 9 in.....	25	1 50	10 00
<b>Carpatica</b> , var. <b>alba</b> . June to September. White. 9 in. ....	25	1 50	10 00
<b>Mørheimi</b> . May to July. White. 2 to 2½ ft..	35	2 50	
<b>persicifolia</b> (Peach Bells). June and July. Blue. 18 in.....	25	1 50	10 00
<b>persicifolia alba</b> . June and July. White. 18 in.	25	1 50	10 00
<b>pyramidalis</b> (Chimney Bellflower). August and September. Blue. 2 ft.....	25	1 50	10 00
<b>trachelium</b> (Coventry Bells). Purple. June and July. 3 ft.....	25	1 50	10 00
<b>CENTAUREA montana</b> (Perennial Cornflower). June and July. Dark purple. 1½ ft.....	25	1 50	
<b>montana</b> , var. <b>alba</b> . White form of the above.	25	1 50	10 00
<b>CERASTIUM tomentosum</b> . June and July. White. 6 in. ....	25	1 50	12 50
<b>CERATOSTIGMA plumbaginoides</b> (Plumbago). Octo- ber and November. Blue. 6 in.....	25	2 00	15 00
<b>CHELONE Lyoni</b> (Turtlehead). August and Septem- ber. Rose-purple. 2 ft.....	35	2 50	
<b>CHRYSANTHEMUM leucanthemum hybridum</b> (Shasta Daisies). Alaska, California, Wes- tralia. All summer. White. 2 ft.....	35	2 50	15 00
<b>maximum</b> , var. <b>Triumph</b> (Moonpenny Daisy). July to October. White. 2 ft.....	25	1 50	12 50
<b>Nipponicum</b> . September and October. White. 2 ft. ....	35	2 50	



PRICE LIST FOR SPRING OF 1913

55

	Each	10	100
<b>CHRYSANTHEMUM Pompon Varieties.</b> Fall. All colors. 1½ to 2 ft.....	\$0 25	\$1 50	\$10 00
<b>Pompon Varieties, Heavy Stock</b> .....	25	2 00	15 00
<b>uliginosum.</b> September. White. 2½ ft.....	25	1 50	10 00
<b>CHRYSOGONUM Virginianum</b> (Golden Joint). June. Yellow. 1 ft.....	25	1 50	12 50
<b>CHRYSOPSIS villosa</b> (Golden Aster). September. Yellow. 2 ft.....	25	2 00	15 00
<b>CIMICIFUGA acerinum.</b> August and September. White. 2½ ft.....	35	2 50	
<b>Dahurica</b> (Bugbane). August and September. White. 2 to 3 ft.....	35	2 50	15 00
<b>racemosa</b> (Snakeroot). July White. 3 to 5 ft.	25	1 50	12 50
<b>CINERARIA.</b> See <i>Artemisia</i> .			
<b>CLEMATIS crispa</b> (Leather-flower). June to September. Lavender. 3 to 4 ft.....	25	1 50	12 50
<b>Davidiana.</b> August and September. Blue. Fragrant. 3 ft.....	25	1 50	12 50
<b>recta.</b> June to August. White. Fragrant. 2 to 3 ft.....	25	1 50	12 50
<b>CONOCLINIUM caelestinum</b> (Mist-flower). September and October. Deep blue. 18 in.....	25	1 50	12 50
<b>CONVALLARIA majalis</b> (Lily-of-the-Valley). May and June. White. 6 to 9 in.....	25	2 00	15 00
<b>COREOPSIS lanceolata</b> (Tickseed). June to October. Golden yellow. 2 ft.....	15	1 25	10 00
<b>Rosea.</b> June to September. Pink. 8 to 10 in...	15	1 25	10 00
<b>CORONILLA varia</b> (Crown Vetch). June and October. Pink. 1 to 2 ft.....	25	1 50	12 50
<b>DELPHINIUM Chinense</b> (Larkspur). July to September. Blue. 1½ ft.....	25	1 50	10 00
<b>Chinense, var. album.</b> July to September. White. 1½ ft. ....	25	1 50	10 00
<b>elatum</b> (Bee Larkspur). June to August. Blue. 4 ft. ....	25	1 50	10 00
<b>formosum</b> (Larkspur). June to September. Deep blue. 4 ft.....	25	1 50	10 00
<b>Belladonna</b> (Hybrid). June to September. Turquoise blue; very free. 3 ft.....	35	3 00	25 00
<b>DIANTHUS barbatus</b> (Sweet William). May to July. Mixed colors. 1½ ft.....	25	1 50	10 00
<b>deltoides</b> (Maiden Pink). June. Pink. 4 in.	25	1 50	10 00
<b>latifolius.</b> June to September. Red. 1 ft....	25	1 50	10 00
<b>plumarius</b> (Hardy Pinks.). May and June. 1 ft.	25	2 00	15 00
<b>Delicata.</b> Rose, with fringed petals.			
<b>Laura Wilmer.</b> White, with maroon center.			
<b>Her Majesty.</b> White.			
<b>Stanislaus.</b> Violet-rose, with crimson center.			
<b>DICENTRA eximia</b> (Seal-flower). June to August. Pink. 1 ft.....	25	1 50	10 00
<b>spectabilis</b> (Bleeding-heart). May and June. Pink. 2 to 3 ft.....	25	2 00	12 50
<b>DIGITALIS ambigua</b> (Foxglove). July and August. Pale yellow. 3 ft.....	25	2 00	15 00
<b>purpurea</b> (Common Foxglove). June and July. Mixed colors. 4 to 5 ft.....	25	1 50	10 00
<b>purpurea, var. gloxiniaeflora.</b> June and July. Mixed colors. 4 to 5 ft.....	25	1 50	10 00

	Each	10	100
<b>DORONICUM Austriacum.</b> April and May. Yellow.			
2 ft. ....	\$0 35	\$2 50	\$15 00
<b>plantagineum</b> , var. <b>excelsum.</b> April to June.			
Yellow. 2 ft. ....	35	2 50	15 00
<b>ECHINACEA purpurea</b> (Purple Cone-flower). July			
to September. Rosy purple. 3 ft. ....	25	2 00	15 00
<b>EPIMEDIUM coccineum</b> (Barren-wart). May and			
June. Red. 9 in. ....	25	2 00	
<b>lilacea.</b> May and June. Lilac. 9 in. ....	25	2 00	
<b>macranthum.</b> May and June. Red. 9 in. ....	25	2 00	
<b>sulphureum.</b> May and June. Yellow. 9 in. ....	25	2 00	
<b>ERIGERON speciosus</b> (Fléabane). June to August.			
Violet-blue. 1½ to 2 ft. ....	25	2 00	15 00
<b>ERYNGIUM amethystinum</b> (Sea Holly). July to			
September. Amethyst-blue. 2 ft. ....	35	2 50	
<b>EUPATORIUM ageratoides</b> (White Snakeroot). Sep-			
tember and October. White. 3 ft. ....	25	1 50	12 50
<b>cælestinum.</b> Fall. Light blue. 2 ft. ....	25	1 50	
<b>EUPHORBIA corollata</b> (Spurge). July to Septem-			
ber. White. 1½ ft. ....	25	1 50	12 50
<b>FEVERFEW, Little Gem.</b> June to October. White.			
15 in. ....	25	1 50	10 00
<b>FUNKIA Fortunei</b> (Day Lily). July to August. Blue.			
1½ to 2 ft. ....	25	1 50	12 50
<b>ovata.</b> July to August. Deep blue. 1½ to 2 ft.	25	1 50	12 50
<b>subcordata</b> , var. <b>gradiflora.</b> September. White.			
Fragrant. 2 ft. ....	25	2 00	15 00
<b>undulata</b> , var. <b>media picta variegata.</b> July and			
August. Lilac. 1 ft. ....	25	1 50	12 50
<b>GAILLARDIA grandiflora</b> (Blanket-flower). June to			
November. Yellow. 1½ ft. ....	25	1 50	10 00
<b>GALEGA officinalis</b> (Goat's Rue). July and August.			
Blue. 2 ft. ....	25	1 50	10 00
<b>officinalis</b> , var. <b>alba.</b> July and August. White.			
2 ft. ....	25	1 50	10 00
<b>GENTIANA Andrewsii</b> (Closed Gentian). Septem-			
ber. Blue. 2 ft. ....	35	2 50	
<b>GERANIUM sanguineum</b> (Cranesbill). June to Sep-			
tember. Red. 1½ ft. ....	25	1 50	
<b>GEUM coccineum</b> (Avens). June and July. Scarlet.			
1½ ft. ....	25	2 00	15 00
<b>Heldreichii.</b> June. Orange. 18 in. ....	25	2 00	15 00
<b>montanum.</b> June and July. Yellow. 18 in. ....	25	2 00	15 00
<b>GILLENIA trifoliata</b> (Bowman's Root). Rose and			
white. July. 3 ft. ....	35	2 50	
<b>GYPSOPHILA paniculata</b> (Baby's Breath). July.			
White. 2 to 3 ft. ....	25	1 50	12 50
<b>HELENIUM, pumilum magnificum</b> (Sneezewort).			
July to October. Yellow. 1½ ft. ....	25	1 50	10 00
<b>autumnale</b> , var. <b>superbum.</b> July to October.			
Yellow. 4 ft. ....	25	1 50	10 00
<b>autumnale</b> , var. <b>rubrum</b> (New). July to Octo-			
ber. Red. 4 ft. ....	25	2 00	
<b>grandicephalum</b> , var. <b>striatum.</b> August to Octo-			
ber. Orange. 3 ft. ....	25	2 00	15 00
<b>Hoopesii.</b> All summer. Orange-yellow. 2 ft. ....	25	2 00	15 00

PRICE LIST FOR SPRING OF 1913

57

	Each	10	100
<b>HELIANTHUS</b> (Perennial Sunflowers) <b>giganteus</b> . August to October. Pale yellow. 6 to 10 ft. . . . .	\$0 25	\$1 50	\$10 00
<b>Maximiliana</b> . September. Deep yellow. 6 to 8 ft. . . . .	25	1 50	10 00
<b>mollis</b> . September and October. Golden yellow. 4 ft. . . . .	25	1 50	10 00
<b>multiflorus fl. pl.</b> July and August. Golden yellow. 4 ft. . . . .	25	1 50	10 00
<b>multiflorus</b> , var. <b>Soliel d'Or</b> . August to Septem- ber. Deep yellow; quilled petals. 4 ft. . . . .	25	2 00	
<b>orgyalis</b> . September and October. Golden yellow. 6 ft. . . . .	25	1 50	10 00
<b>rigidus</b> . July to October. Golden yellow. 3 ft. . . . .	25	1 50	10 00
<b>rigidus</b> , var. <b>Miss Mellish</b> . September and Oc- tober. Golden yellow. 6 ft. . . . .	25	1 50	10 00
<b>rigidus</b> , var. <b>Wolly Dodd</b> . September. Deep yellow. 3 ft. . . . .	25	1 50	10 00
<b>HELIOPSIS Pitcheriana</b> . June to October. Orange- yellow. 3 ft. . . . .	25	1 50	10 00
<b>HELLEBORUS niger</b> (Christmas Rose). March. White. 6 in. . . . .	35	3 00	
<b>niger</b> , var. <b>atrorubens</b> . March. Purple. 9 in. . . . .	35	3 00	
<b>HEMEROCALLIS Aurantiaca</b> . June and July. Bright Indian yellow. 3 to 4 ft. . . . .	35	3 00	
<b>Dumortieri</b> (Yellow Day Lily). June and July. Orange-yellow. 2 ft. . . . .	25	1 50	12 50
<b>flava</b> . June. Yellow. 2 ft. . . . .	25	1 50	12 50
<b>fulva</b> (Tawny Day Lily). July and August. A tawny yellow. 2½ ft. . . . .	25	1 50	12 50
<b>fulva</b> , var. <b>Kwanso fl. pl.</b> (Double Orange Lily). July and August. Coppery yellow. 2½ ft. . . . .	25	1 50	12 50
<b>fulva</b> , var. <b>Thunbergii</b> . August and September. Lemon-yellow. 2½ ft. . . . .	25	1 50	12 50
<b>HEPATICA triloba</b> (Liverleaf). April. White and blue. 6 in. . . . .	25	1 25	10 00
<b>HEUCHERA sanguinea</b> (Alumroot). June to Sep- tember. Coral-red. 18 in. . . . .	25	2 00	15 00
<b>sanguinea</b> , var. <b>alba</b> . June to September. White. 18 in. . . . .	25	2 00	
<b>HIBISCUS militaris</b> . June to September. Buff-yellow. 18 in. . . . .	25	2 00	
<b>Moscheutos</b> (Mallow). July to September. Rose. 5 ft. . . . .	25	1 50	\$10 00
<b>Moscheutos</b> , var. <b>Crimson Eye</b> . July to Sep- tember. White. 5 ft. . . . .	25	1 50	10 00
<b>Moscheutos</b> (Mallow Marvels). July to Sep- tember. 5 to 6 ft.— White and pink. . . . .	35	3 00	20 00
Red . . . . .	50	5 00	
<b>HOLLYHOCKS</b> . See <i>Althæa rosea</i> .			
<b>IBERIS sempervirens</b> (Candytuft). April and May. White. 6 in. . . . .	25	1 50	10 00
<b>corifolia</b> . April and May. White. 9 in. . . . .	25	1 50	10 00
<b>INULA ensifolia</b> (Fleabane). June to August. 18 in. oculis-Christi. Yellow. June to August. 2 ft. . . . .	35	3 00	
Light yellow. 2 ft. . . . .	25	1 50	12 50
<b>INCARVILLEA Delavaji</b> (Hardy Gloxinia). June to July. Rosepink. 18 in. . . . .	35	3 00	



A field of Japanese Iris at Andorra

	Each	10	100
<b>IRIS.</b> For Special Descriptive Lists, consult Calendar of Hardy Perennials.			
<b>atrovioleacea.</b> May. Dark violet. 2 to 2½ ft.	\$0 35	\$3 00	
<b>cristata.</b> April and May. Light blue. 6 in.	25	1 50	\$12 50
<b>Florentina.</b> May. Tinted white. Fragrant. 1½ ft.	25	2 00	
<b>Germanica.</b> May. Named varieties. 1½ to 2½ ft.	25	1 50	10 00
<b>lævigata;</b> syn., <b>Kämpferi</b> (Japanese Iris). June and July. Our selection, all colors. 2½ to 4 ft.	25	2 00	15 00
Customer's selection .....	35	3 00	
<b>Pallida,</b> var. <b>Dalmatica.</b> June. Light blue. 3 ft.	35	3 00	25 00
<b>Pallida,</b> var. <b>speciosa.</b> June. Indigo-blue. 2 to 3 ft.....	35	3 00	25 00
<b>Pseudacorus.</b> June. Yellow. 2 to 3 ft.....	25	2 00	15 00
<b>pumila,</b> var. <b>aurea.</b> Yellow. May. 8 to 10 in.	25	1 50	12 50
<b>pumila,</b> var. <b>cyanea.</b> Royal purple. May. 8 to 10 in.....	25	1 50	12 50
<b>pumila,</b> var. <b>eburna.</b> Cream. May. 8 to 10 in.	25	1 50	12 50
<b>pumila,</b> var. <b>florida.</b> White. May. 8 to 10 in.	25	1 50	12 50
<b>Sibirica.</b> May and June. Bright blue. 1½ ft.	25	1 50	10 00
<b>Sibirica,</b> var. <b>alba.</b> June. White. 2 ft. Rare. ♦..	35	3 00	25 00
<b>Sibirica,</b> var. <b>orientalis.</b> May. Deep blue. 1½ ft.	25	1 50	10 00
<b>tectorum.</b> May. Bright lilac. 1 ft.....	25	2 00	15 00
<b>KNIPHOFIA aloides</b> (Red-hot Poker). August and September. Crimson. 3 ft.....			
<b>obelisque.</b> July and August. Saffron-yellow. 3 to 4 ft.....	35	2 50	15 00
<b>Pfitzerii</b> (Flame Flower). July to October. Orange-scarlet. 3 to 4 ft.....	35	2 50	15 00

PRICE LIST FOR SPRING OF 1913

59

	Each	10	100
<b>LATHYRUS latifolius</b> , var. <b>albus</b> (Hardy White Pea). Summer. Climbing.....	\$0 25	\$2 00	
<b>latifolius</b> , var. <b>roseus</b> . Summer. Rose. Climbing..	25	2 00	
<b>latifolius</b> , var. <b>splendens</b> . Summer. Climbing..	25	2 00	\$15 00
<b>latifolius</b> , var. <b>Pink Beauty</b> . Summer. Bright pink. Climbing .....	25	2 00	15 00
<b>LAVENDULA spica</b> (Lavender). 15 to 18 in.....	25	1 50	12 50
<b>vera</b> (Lavender). 15 to 18 in.....	25	1 50	12 50
<b>LIATRIS graminifolia</b> (Blazing Star). August and September. Rosy purple. 2 ft.....	25	1 50	12 50
<b>pycnostachya</b> (Kansas Gay Feather). September. Rosy purple. 4 to 5 ft.....	25	1 50	12 50
<b>spicata</b> (Gay Feather). August and September. Deep purple. 3 to 4 ft.....	25	1 50	12 50
<b>LILIUM Canadense</b> (Meadow Lily). July. Shades of yellow. 2 to 4 ft.....	25	1 50	12 50
<b>Philadelphicum</b> (Wood Lily). July and August. Orange-scarlet. 2 to 4 ft.....	25	2 00	15 00
<b>speciosum</b> , var. <b>roseum</b> (Japan Lily). July and August. Rosy white. 2 to 4 ft.....	25	2 00	15 00
<b>tigrinum</b> (Tiger Lily). August. Salmon-red. 3 to 4 ft.....	25	1 50	12 50
<b>LINUM Austriacum</b> (Austrian Flax). June to August. Bluish purple. 18 in.....	25	1 75	
<b>perenne</b> (Perennial Flax). June to September. Clear blue. 18 in.....	25	1 75	
<b>LOBELIA cardinalis</b> (Cardinal Flower). August and September. Scarlet. 2 to 3 ft.....	25	1 50	12 50
<b>syphilitica</b> (Blue Lobelia). August and September. Deep blue. 2 ft.....	25	1 50	
<b>LYCHNIS Chalcedonica</b> (London Pride). July to September. Vermilion. 2 to 3 ft.....	25	1 50	12 50
<b>coronaria</b> (Rose Campion). June and July. Crimson. 1½ to 2 ft.....	25	1 25	10 00
<b>coronaria</b> , var. <b>alba</b> . June and July. White. 1½ to 2 ft.....	25	1 25	10 00
<b>Haageana</b> . June and July. Orange-scarlet. 1½ ft.	25	1 50	
<b>vespertina</b> , var. <b>alba plena</b> (White Campion). May to September. White. 1 ft.....	25	1 50	12 50
<b>viscaria</b> (Catchfly). June and July. Red. 1½ ft.	25	1 50	12 50
<b>viscaria</b> , var. <b>splendens</b> . (German Catchfly). June and July. Pink. 15 in.....	25	1 50	12 50
<b>LYSIMACHIA clethroides</b> (Loosestrife). July to September. White. 1½ ft.....	25	1 25	10 00
<b>nummularia</b> (Moneywort). June to August. Yellow. Creeping.....	25	1 50	10 00
<b>LYTHRUM roseum superbum</b> (Rose Loosestrife). July to September. Rose. 3 ft.....	25	1 50	12 50
<b>MERTENSIA pulmonarioides</b> (Virginia Cowslip). May and June. Blue. 2 ft.....	25	1 50	10 00
<b>MONARDA didyma</b> (Oswego Tea). July and August. Scarlet. 2½ ft. ....	25	1 50	10 00
<b>didyma</b> , var. <b>Cambridge Scarlet</b> . July and August. Scarlet. 2 ft. ....	25	1 50	10 00
<b>didyma</b> , var. <b>splendens</b> . July and August. Crimson-scarlet. 2 ft. ....	25	1 50	10 00

	Each	10	100
<b>MYOSOTIS alpestris</b> , var. <b>Victoria</b> . May and June.			
Light blue. 6 to 9 in.....	\$0 25	\$1 50	\$10 00
<b>palustris</b> (Forget-me-not). May and June.			
Light blue. Spreading.....	25	1 50	10 00
<b>NEPETA glecoma</b> , var. <b>variegata</b> (Ground Ivy).			
May. Purple. 6 in.....	25	1 50	10 00
<b>GENOTHERA fruticosa</b> , var. <b>major</b> (Sundrops).			
July. Yellow. 1½ ft.....	25	2 00	15 00
<b>fruticosa</b> , var. <b>Youngi</b> (Young's Primrose).			
June. Lemon. 1½ to 2 ft.....	25	1 50	12 50
<b>Frazeri</b> . June. Rich yellow. 1½ ft.....	25	2 00	15 00
<b>Missouriensis</b> (Large Evening Primrose). June and July. Yellow. 1 ft.....	25	2 00	15 00
<b>speciosa</b> (White Primrose). June and July. White. 1½ ft.....	25	1 50	10 00
<b>OPHIOPOGON Jaburan</b> , var. <b>aureus variegatus</b> (Snake's Beard). September. Blue. 6 in..	50	3 50	
<b>Japanese Spurge</b> (Evergreen). May and June. White. 8 in.....	50	3 50	25 00
<b>PACHYSANDRA terminalis</b> (Japanese Spurge). Evergreen. May and June. White 8 in..	50	3 50	25 00
<b>PÆONIA</b> . See our Calendar of Hardy Perennials for Special List.			
<b>Chinensis, Double Varieties</b> . Our selection. May and June.....	35	3 00	25 00
<b>Chinensis, Heavy Clumps</b> . Our selection.....	1 50	12 50	
<b>Chinensis, Single Varieties</b> . Our selection....	35	3 00	25 00
<b>Chinensis, Single Varieties, Heavy Clumps</b> . Our selection.....	1 50	12 50	
<b>corallina</b> . May. Single. Reddish purple.....	35	3 00	25 00
<b>Moutan</b> (Tree Peony). May and June. Different colors.....	1 00	9 00	
<b>officinalis</b> , var. <b>rubra plena</b> . Early April. Double; deep crimson.....	50	4 00	35 00
<b>officinalis</b> , var. <b>rosea plena</b> . Early April. Double; pink.....	1 00	9 00	
<b>tenuifolia</b> . Early April. Single; deep maroon.	50	4 00	
<b>tenuifolia</b> , var. <b>plena</b> . Early April. Double; maroon.....	50	4 00	
<b>triternata</b> . April. Single. Bright red.....	35	3 00	25 00
<b>PAPAVER bracteatum</b> . June. Blood-red. 4 ft....	25	2 00	12 50
<b>nudicaule</b> (Iceland Poppy). All summer. Many colors. 1 ft.....	25	1 50	10 00
<b>orientale</b> (Oriental Poppy). June. Orange-scarlet. 2 ft.....	25	2 00	12 50
<b>PARDANETHUS</b> . See <i>Belemcanda</i> .			
<b>PENTSTEMON barbatus</b> , var. <b>Torreyi</b> (Torrey's Beard Tongue). June to August. Scarlet. 3 to 4 ft.....	25	1 50	10 00
<b>diffusus</b> . May to July. Blue. 1 ft.....	25	2 00	15 00
<b>grandiflorus</b> . June to August. Purplish blue. 2 to 2½ ft.....	25	2 00	15 00
<b>lævigatus</b> , var. <b>Digitalis</b> . July and August. White. 3 ft.....	25	2 00	
<b>ovatus</b> . July and August. Purplish blue. 2 to 3 ft.....	25	2 00	

PRICE LIST FOR SPRING OF 1913

61

	Each	10	100
<b>PHLOX amœna.</b> May. Bright pink. 3 to 4 in.....	\$0 25	\$1 50	\$10 00
<b>Carolina.</b> May and June. Rosy red. 1 ft....	25	1 50	
<b>divaricata</b> (Wild Sweet William). May and June. Lavender. 1 ft.....	25	1 50	12 50
<b>paniculata</b> ; syn., <b>decussata</b> (Perennial Phlox). See the Calendar of Hardy Perennials for Special List. All colors.....	25	2 00	15 00
<b>subulata</b> (Mountain Pink). May and June. Rose. Creeping .....	25	1 50	10 00
<b>subulata, var. alba.</b> May and June. White. Creeping .....	25	1 50	10 00
<b>subulata, var. atropurpurea.</b> May and June. Purple. Creeping .....	25	1 50	
<b>subulata, var. lilacina.</b> May. Lilac. Creeping..	25	1 50	12 50
<b>subulata, var. Nelsoni.</b> May and June. Pure white. Creeping .....	25	1 50	10 00
<b>subulata, var. Model.</b> May and June. Rosy white. Creeping .....	25	1 50	10 00
<b>PHYSOSTEGIA Virginiana</b> (False Dragonhead). August. Deep rose. 3 ft.....	25	1 50	
<b>Virginiana, var. alba.</b> August. White. 3 ft..	25	1 50	10 00
<b>Virginiana, var. speciosa.</b> August. Pink. 3 ft.	25	1 50	10 00
<b>PLATYCODON grandiflorum</b> (Balloon-flower). July. Blue. 1½ ft.....	25	1 50	
<b>grandiflorum, var. album.</b> July. White. 1½ ft.	25	1 50	
<b>POLEMONIUM cœruleum</b> (Jacob's Ladder). May to July. Deep blue. 1½ ft.....	25	2 00	15 00
<b>cœruleum, var. album.</b> May to July. White. 1½ to 2 ft.....	25	2 00	
<b>PRIMULA acaulis</b> (Primrose). May. Yellow. 6 to 9 in.....	25	1 50	12 50
<b>capitata</b> (Primrose). Deep lilac. 9 in.....	25	1 50	12 50
<b>suaveolens</b> (Cowslip). May. Yellow and orange. 1 ft.....	25	1 50	12 50
<b>veris</b> (Polyanthus). May. Yellow and orange-crimson. 6 to 9 in.....	25	1 50	12 50
<b>vulgaris</b> (English Primrose). May. Yellow. 6 to 9 in.....	25	1 50	12 50
<b>PYRETHRUM roseum</b> (Feverfew). June and July. White, pink and red. 1½ to 2 ft.....	25	1 50	10 00
<b>roseum fl. pl.</b> Named varieties. 1½ to 2 ft....	35	3 00	
<b>RANUNCULUS aconitifolius fl. pl.</b> (Crow's-foot). June. White. 1½ to 2 ft.....	25	1 50	
<b>acris fl. pl.</b> (Yellow Bachelor's Buttons). June. Yellow. 2 ft.....	25	1 50	
<b>repens</b> (Double Buttercup). May to July. Yellow. 1 ft.....	25	1 50	10 00
<b>ROSMARINUS officinalis</b> (Rosemary). Scented foliage .....	25	1 50	
<b>RUDBECKIA laciniata, var. Golden Glow.</b> July to September. Yellow. 8 ft.....	25	1 25	10 00
<b>Newmani.</b> August and September. Yellow. 1½ ft.	25	1 50	10 00
<b>nitida</b> (Cone-flower). August and September. Pale yellow. 5 ft.....	25	1 50	10 00
<b>triloba</b> (Yellow, black cone). August and September. 3 ft. ....	25	1 50	10 00

	Each	10	100
<b>SALVIA argentea.</b> June. White, white foliage. 2 ft..	\$0 25	\$1 50	\$10 00
<b>Caucasicum.</b> July and August. Reddish purple.			
3 ft. ....	25	1 50	10 00
<b>pratensis</b> (Meadow-sage). June to September.			
Deep blue. 2 to 3 ft.....	25	1 50	10 00
<b>SANGUINARIA Canadensis</b> (Bloodroot). White.			
April. 6 in.....	25	1 50	10 00
<b>SANTOLINA incana</b> (Lavender Cotton). July.			
Deep yellow. 1 ft.....	25	1 50	10 00
<b>SAXIFRAGA cordifolia</b> (Rockfoil). April to June.			
Rosy purple. 15 in.....	25	2 00	15 00
<b>SCABIOSA Caucasica</b> (Mourning Bride). Lavender-blue.			
June. 15 to 18 in.....	35	2 50	15 00
<b>SEDUM acre</b> (Golden Moss). May and June. Yellow.			
Spreading .....	25	1 25	10 00
<b>album.</b> July. White. 4 to 6 in.....	25	1 25	10 00
<b>Rhodiola.</b> August. Light pink. 1 ft.....	25	1 25	10 00
<b>sexangulare</b> (Stonecrop). June and July. Yellow.			
6 in. ....	25	1 25	10 00
<b>Sieboldi.</b> August and September. Pink. 6 to 8 in.			
.....	25	1 25	10 00
<b>spectabile</b> (Brilliant Stonecrop). September and October.			
Rose. 12 to 15 in.....	25	2 00	15 00
<b>spectabile</b> , var. <b>atropurpurea.</b> September and October.			
Purplish crimson. 15 in.....	25	2 00	15 00
<b>telephoides.</b> July and August. Pink. 1 ft...	25	2 00	15 00
<b>SENECIO clivorum.</b> Summer. Yellow. 3 ft.....	35	2 50	15 00
<b>pulcher</b> (Groundsel). July to October. Rosy purple. 1½ to 2 ft.....	25	1 50	
<b>SILENE Pennsylvanicum</b> (Wild Pink). April and May.			
Rose or white. 9 in.....	25	1 25	10 00
<b>SMILACINA racemosa</b> (False Solomon's Seal). April.			
White. 1½ ft.....	25	1 50	
<b>SPIRÆA</b> (Goat's Beard, or Meadowsweet) <b>aruncus.</b>			
June and July. White. 4 to 5 ft.....	35	2 50	15 00
<b>filipendula fl. pl.</b> June and July. White. 2 ft.	25	1 50	12 50
<b>lobata.</b> July. Pink. 3 to 4 ft.....	25	2 00	15 00
<b>palmata.</b> June and July. Deep crimson. 2 ft.	25	2 00	15 00
<b>palmata</b> , var. <b>elegans.</b> June and July. White; crimson anthers. 3 ft.....	25	2 00	
<b>Ulmaria fl. pl.</b> June and July. White. 3 ft.	25	2 00	
<b>venusta.</b> June and July. Deep pink. Fragrant. 3 ft. ....	25	2 00	
<b>STACHYS Betonica</b> ; syn., <b>Betonica rosea.</b> July and August.			
Rose. 1 ft. ....	25	1 50	12 50
<b>lanata.</b> June and July. Purple. 12 in.....	25	1 50	12 50
<b>STATICE Tatarica</b> (Sea Lavender). June to August.			
Red. 15 to 18 in. ....	25	1 50	10 00
<b>latifolia</b> (Great Sea Lavender). July and August.			
Deep blue. 2 ft. ....	25	1 50	10 00
<b>STOKESIA cyanea</b> (Stokes' Aster). July to October.			
Lavender. 1½ ft. ....	25	2 00	15 00
<b>cyanea</b> , var. <b>alba.</b> July to October. White. 1½ ft. ....	50	3 50	



PRICE LIST FOR SPRING OF 1913

63

<b>TANACETUM globiferum</b> (Tansy), August. Golden yellow. 3 ft. ....	Each \$0 25	10 \$1 50	100 \$10 00
<b>THALICTRUM adiantifolium</b> (Meadow Rue). June. Yellow. 18 in. ....	25	1 50	10 00
<b>aquilegifolium</b> (Feathered Columbine) . June. White. 2 to 4 ft. ....	25	1 50	
<b>polyganum</b> (Tall Rue). June. White. 3 to 4 ft. ....	25	1 50	
<b>purpurascens</b> . June to August. Purple. 3 to 4 ft. ....	25	1 50	
<b>THERMOPSIS Caroliniana</b> . June. Yellow. 3 to 4 ft. ....	25	1 50	
<b>mollis</b> . May to July. Yellow. 2 to 3 ft. ....	25	1 50	
<b>THYMUS montanus</b> , var. <b>coccineus</b> (Scarlet Thyme). May. Bright red. 4 in. ....	25	1 50	
<b>vulgaris</b> (Common Thyme). May. Lilac. 1 to 2 ft. ....	25	1 25	
<b>TRADESCANTIA Virginiana</b> (Spiderwort). June to October. Purple. 2 ft. ....	25	1 50	12 50
<b>Virginiana</b> , var. <b>alba</b> . June and July. White. 2 ft. ....	25	1 50	12 50
<b>TRILLIUM erectum</b> (Wake Robin). March and April. Purple. 9 to 12 in. ....	25	1 50	
<b>grandiflorum</b> (Wood Lily). March and April. White. 9 to 12 in. ....	25	1 50	
<b>TROLLIUS Europæus</b> (Globe-flower). May to August. Yellow. 2 ft. ....	25	1 50	12 50
<b>Japonicus "Excelsior."</b> May to August. Deep orange 1½ to 2 ft. ....	35	2 50	
<b>VALERIANA coccinea</b> (Valerian). June to October. Reddish. 2 ft. ....	25	1 50	10 00
<b>officinalis</b> (Hardy Heliotrope). June and July. Rose-pink. 2 ft. ....	25	1 50	10 00
<b>rubra</b> . June to October. Red. 2 ft. ....	25	1 50	10 00
<b>VERBASCUM Olympicum</b> (Mullein). July to September. Yellow. 6 ft. ....	25	1 50	12 50
<b>VERNONIA Arkansana</b> (Ironweed). August to October. Red. 5 ft. ....	25	2 00	
<b>Baldwini</b> . August to October. Purple. 4 ft. .	25	2 00	
<b>VERONICA longifolia</b> , var. <b>rosea</b> (Speedwell). July to October. Rose. 1½ ft. ....	25	1 50	
<b>longifolia</b> , var. <b>subsessilis</b> . August to November. Deep blue. 1½ to 2 ft. ....	25	2 00	15 00
<b>rupestris</b> (Rock Speedwell). June and July. Blue Spreading . . . . .	25	1 50	10 00
<b>spicata</b> . June to September. Bright blue. 1½ ft. ....	25	1 50	10 00
<b>Virginica</b> . August to September. White. 4 ft. .	25	1 50	10 00
<b>VINCA minor</b> (Periwinkle). May. Bright blue. Spreading . . . . .	25	1 50	10 00
<b>VIOLA pedata</b> , var. <b>bicolor</b> (Bird's-foot Violet). May. Purple and White. 4 in. ....	25	1 50	12 50
<b>Cornuta</b> , var. <b>Admiration</b> . May to October. Purple. 10 in. ....	25	1 25	
<b>Cornuta</b> , var. <b>Lutea splendens</b> . Rich yellow. May to October. 10 in. ....	25	1 25	
<b>Cornuta</b> , var. <b>Papilio</b> . Violet blue. May to October. 10 in. ....	25	1 25	
<b>Cornuta</b> , var. <b>White Perfection</b> . Pure white. May to October. 10 in. ....	25	1 25	

## FERNS

- ADIANTUM pedatum** (Maidenhair Fern). 1 to 2 ft. Moist, shaded positions.  
**ASPIDIUM acrostichoides** (Christmas Fern). 1 to 2 ft. Evergreen. Dry or moist soils in shady places.  
**Felix-mas** (Male Fern). 2 ft. Semi-shaded positions, dry or moist soils.  
**Goldianum**. 2 to 4 ft. Semi-shaded positions, dry or moist soils.  
**marginale**. Evergreen. 1 to 2 ft. Shaded positions, dry or moist soils.  
**ASPLENIUM Filix-fœmina** (Lady Fern). 2 to 3 ft. Open or shaded positions, in moist or dry soils.  
**BOTRYCHIUM Virginianum** (Moonwort). 6 to 12 in. Shaded positions, moist or dry soils.  
**DICKSONIA punctilobula** (Boulder Fern). 2 to 3 ft. For open positions; forms large plantations.  
**ONOCLEA sensibilis** (Sensitive Fern). 1 to 2 ft. For open planting and wet soils.  
**Struthiopteris** (Ostrich Fern). 2 to 4 ft. For open positions, dry or moist soils.  
**OSMUNDA gracilis** (Flowering Fern). 2 to 4 ft. Open or shaded positions, and moist soils.  
**Claytoniana**. 2 to 5 ft. For open plantings, dry or moist soils.  
**cinnamomea** (Cinnamon Fern). 2 to 5 ft. For open or shaded positions, in wet soils.  
**WOODSIA obtusa**. 6 to 12 in. Shady places, in moist soil.  
**WOODWARDIA angustifolia** (Chain Fern). 1 ft. Open or shaded positions, in moist soils.  
 The above varieties, 25 cts. each, \$2 per 10, \$15 per 100.  
 The above collection, 15 varieties, \$3.  
 100 in 5 varieties, our selection, \$12.50.

## HEDGE PLANTS

We shall be pleased to name special prices for plants in quantity for hedging purposes.

### EVERGREEN TREES

	SEE PAGE		SEE PAGE
<b>Biota orientalis</b> .....	4	<b>Thuja occidentalis</b> .....	13
<b>Picea excelsa</b> .....	7	<b>occidentalis Wareana</b> .....	14
<b>Retinospora plumosa</b> .....	10	<b>Tsuga Canadensis</b> .....	14
<b>Retinospora plumosa aurea</b> .....	11		

### DECIDUOUS TREES

<b>Carpinus Americana</b> .....	24	<b>Cratægus Oxyacantha</b> .....	26
<b>Betulus</b> .....	24	<b>Fagus sylvatica</b> .....	26
<b>Cratægus Crus-galli</b> .....	26		

### EVERGREEN SHRUBS

<b>Azalea amœna</b> .....	15	<b>Ilex crenata microphylla</b> .....	17
<b>Buxus sempervirens</b> .....	15	<b>Mahonia aquifolia</b> .....	17
<b>sempervirens suffruticosa</b> ...	16	<b>Japonica</b> .....	17

### DECIDUOUS SHRUBS

<b>Acanthopanax spinosa</b> .....	33	<b>Hippophae rhamnoides</b> .....	40
<b>Berberis Thunbergi and vulgaris</b> .	35	<b>Ligustrum Ibotâ, Regelianum,</b>	
<b>Elægagnus longipes</b> .....	39	<b>ovalifolium, vulgare</b> .....	41
<b>Forsythia viridissima</b> .....	39	<b>Lonicera Tatarica</b> .....	42
<b>Hibiscus Syriacus</b> .....	39	<b>Rhamnus cathartica</b> .....	43

# DEPARTMENTS

	PAGE		PAGE
Fertilizers .....	2	Vines and Climbing Plants .....	47
General Instructions and Terms .....	3	Fruit and Small Fruits .....	49, 50
Evergreen Trees .....	4	Roses .....	50
Evergreen Shrubs .....	15	Herbaceous Plants .....	51
Deciduous Trees .....	21	Ferns .....	63
Deciduous Shrubs .....	35	Hedge Plants .....	63
Reeds and Grasses .....	47	Catalogs .....	64

# INDEX

	PAGE		PAGE
Aaron's Beard .....	40	Baby's Breath .....	56
Abelia .....	55	Baccharis .....	35
Abies .....	4	Bambusa .....	47
Acanthus .....	51	Baptisia .....	54
Acanthopanax .....	35	Barberry .....	35
Acer .....	23	Basswood .....	32-33
Achillea .....	51	Bear Tongue .....	60
Aconitum .....	51	Bear's Breech .....	51
Actinidia .....	47	Beauty-fruit .....	35
Adam's Needle .....	20	Beech .....	26
Adiantum .....	64	Belemcanda .....	54
Adonis .....	51	Bell-flower .....	54
Æsculus .....	23, 55	Bellis .....	54
Ailanthus .....	23	Benzoin .....	35
Ajuga .....	51	Berberis .....	35
Akebia .....	47	Betonica. See Stachys.	
Alder .....	24	Betula .....	24
Allspice, or Sweet Shrub .....	35	Bignonia .....	47
Alnus .....	23	Balloon-flower .....	60
Althæa (see, also, Hi- biscus) .....	35, 51	Biota .....	4-5
Alum Root .....	57	Birch .....	24
Alyssum .....	52	Bittersweet .....	47
Amelanchier .....	23, 35	Black Alder .....	23
Amorpha .....	35	Blackberries .....	49
Ampelopsis .....	47	Black Haw .....	47
Amygdalus. See Prunus.		Black Walnut .....	27
Anchusa .....	52	Bladder Senna .....	36
Andromeda (see, also, Oxydendrum) .....	15, 24	Blanket-Flower .....	55
Anemone .....	51, 52	Blazing Star .....	59
Anthemis .....	52	Bleeding Heart .....	55
Apples .....	49	Blue Spirea .....	35
Aquilegia .....	52 & 53	Boconia .....	54
Arabis .....	53	Boltonia .....	54
Aralia .....	24	Botrychium .....	64
Arborvitæ .....	4, 5, 13	Box .....	15-16
Arenaria .....	53	Bridal Wreath .....	44
Aristolochia .....	47	Broussonetia .....	24
Armeria .....	53	Buckthorn .....	43
Aronia. See Pyrus.		Butterfly Weed .....	53
Arrow-wood .....	46	Buttonwood .....	30
Artemesia .....	53	Buxus .....	15-16
Arundo .....	47	Callieris .....	54
Asclepias .....	53	Calli-carpa .....	35
Ash .....	27, 32	Callirhoe .....	54
Asparagus .....	50	Calycanthus .....	35
Aspidium .....	64	Campanula .....	54
Asplenium .....	64	Candytuft .....	57
Aster .....	53	Caragana .....	35
Astilbe .....	53	Cardinal-flower .....	59
Astrantia .....	54	Carpinus .....	24
Aubretia .....	54	Carya .....	24
Azalea .....	15, 34	Castanea .....	24
		Catalpa .....	24
		Ceanothus .....	36
		Cedar .....	5, 7
		Cedrela .....	24
		Cedrus .....	5
		Celastrus .....	48
		Celtis .....	25
		Centaurea .....	54
		Cephalanthus .....	36
		Cephalotaxus .....	5
		Cerastium .....	54
		Cerasus .....	25
		Ceratostigma .....	54
		Cercidiphyllum .....	25
		Cercis .....	25, 36
		Chamædaphne .....	16
		Chamomile .....	52
		Chaste Tree .....	47
		Chelone .....	54
		Cherries .....	49
		Cherry .....	25
		Chestnut .....	24, 49
		Chinese Angelica Tree .....	24
		Chinese Arborvitæ .....	5
		Chinese Cork Tree .....	29
		Chionanthus .....	36
		Chokeberry .....	43
		Christmas Rose .....	57
		Chrysanthemum .....	55
		Chrysoygonum .....	55
		Cnrysopis .....	55
		Cimicifuga .....	55
		Cineraria. See Arte- misia.	
		Cinquefoil .....	42
		Cladrastris .....	25
		Clematis .....	48 & 55
		Clethra .....	36
		Columbine .....	53 & 63
		Colutea .....	36
		Comptonia .....	36
		Cone-flower .....	56 & 61
		Conoclinium .....	55
		Convallaria .....	55
		Coral Berry .....	44
		Corchorus .....	36
		Coreopsis .....	55
		Cornus .....	25, 36, 37
		Coronilla .....	55
		Corylus .....	37
		Cotoneaster .....	16, 37
		Crab Apples .....	30
		Cranberry Bush .....	46
		Cratægus .....	17, 25, 26
		Cryptomeria .....	5
		Cucumber Tree .....	28

	PAGE		PAGE		PAGE
Cupressus	12	Geum	56	Juniperus	5-6-7
Currant	49	Gillenia	56	Kalmia	17
Cydonia	37	Ginkgo	32	Kentucky Coffee Tree	27
Cypress	9, 12, 32	Gleditschia	27	Kerria. See Corchorus	40
Cytisu	26, 37	Globe-flower	36	Kniphofia	58
Daisy	53	Goat's Beard	61	Kœlreuteria	27
Day Lily	56 & 57	Gold-flower	40	Kudzu Vine	48
Daphne	17	Golden Bell	39	Larch	27
Deciduous Shrubs	35	Golden Chain	26	Larix	28
Deciduous Trees	21, 33	Golden Tuft	52	Larkspur	55
Delphinium	55	Glyptostrobis	See Taxodium.	Lathyrus	48 & 59
Desmodium	55	Gooseberries	49	Laurel	17
Desmodium. See Lespedeza	37	Grapes	49	Lavandula	59
Deutzia	37, 38	Groundsel Shrub	35, 61	Lavender	59
Dianthus	55	Guelder Rose	46	Lavender-cotton	62
Dicentra	55	Gymnocladus	27	Lespedeza	40
Dicksonia	64	Gypsophila	56	Leucothœ	17
Dictamnus	55	Halesia	39	Liatis	59
Diervilla	38	Hamamelis	39	Ligustrum	40-41
Digitalis	55	Hardy Roses	50-51	Lilac	44
Diospyros	26	Hawthorn	26	Lilium	59
Dogwood	25, 36-37	Hazel	37-39	Lily-of-the-valley	55
Dolichos. See Pueraria		Hedera	48	Linden	32-33
Doronicum	56	Hedge Plants	63	Linum	59
Dutchman's Pipe	47	Helenium	56	Liquidambar	28
Echinacea	56	Hellianthus	57	Liriodendron	28
Elaeagnus	39	Heliopsis	57	Liver Leaf	57
Elder	43	Heleborus	57	Lobelia	59
Elm	33	Hemerocallis. or Day Lily	57	Locust	27, 32
Elymus	47	Hemlock	14	London Pride	59
English Primrose	60	Hepatica	57	Lonicera	41, 42, 48
English Ivy	48	Herbaceous Plants	51-62	Loosestrife	59
Epidemium	56	Hibiscus	39, 40, 57	Lychnis	59
Erianthus	47	High Cranberry Bush	46	Lycium	42
Erigeron	56	Hippophae	40	Lysimachia	59
Eryngium	56	Holly	17	Lythrum	59
Esculent Roots	50	Hollyhocks (see, also, Althœa)	51	Maclura	28
Eulalia	47	Honey Locust	27	Magnolia	28
Euonymus	17, 39, 48	Honeysuckle	41, 48	Mahonia	17
Eupatorium	56	Hop Tree	30	Maidenhair Tree	32
Euphorbia	55	Hornbeam	24	Maple	21-23
Evening Primrose	59	Horse-Chestnut	23	Matrimony Vine	42
Evergreen Shrubs	15-20	Hydrangea	40	Meadow Rue	63
Evergreen Thorn	17	Hypericum	40	Meadow Sweet	62
Evergreen Trees	4-15	Iberis	57	Mertensia	59
Everlasting Pea	48	Ilex	5, 17, 40	Mint-flower	54
Exochorda	39	Incarvillea	57	Mist, or Smoke Tree	43
Fagus	26	Inula	57	Mock Orange	42
Ferns	63	Iris	58	Monarda	59
Festuca	47	Iron Weed	63	Moneywort	59
Feverfew	56 & 61	Itea	40	Monkshood	51
Fir	4	Jacob's Ladder	61	Morus	29
Flame-flower	58	Japan, or Boston Ivy	27	Mountain Ash	32
Flowering Almond	43	Japan Cypress	9	Mourning Bride	62
Flowering Crab	30	Japan Judas	36	Mulberry	24, 29
Forget-me-not	60	Japan Quince	37	Myosotis	60
Forsythia	39	Japanese Maples	23	Myrica	42
Foxgloves	55	Japanese Snowball	46	Negundo. See Acer Negundo.	
Fox Grape	48	Jasmine	40	Nepeta	60
Fraxinus	27	Jasminum	40	Nettle Tree	25
Fruit	49	Jersey Tea	36	Nuts	49
Funkia	56	Judas Tree	25	Nyassa	29
Gaillardia	56	Juglans	27	Oak	30-31
Galega	56	Juneberry	23	Oenothera	60
Gas Plant	55			Old Man	53
Gentiana	56			Old Woman	53
Geranium	56			Oleaster	39
				Onoclea	64

PRICE LIST FOR SPRING OF 1913

PAGE		PAGE		PAGE	
Ophiopogon	60	Rhus	31-32, 43	Sweet Shrub	35
Oriental Plane	30	Ribbon Grass	41	Sweetbriar	50
Oriental Poppy	60	Ribes	43	Sycamore	30
Osage Orange	28	Robinia	32, 43	Symphoricarpus	45
Osmanthus	17	Rock Cress	53	Syringa	45, 46
Osmunda	64	Rockfoil	62	Tanacetum	63
Oswego Tea, or Fra-		Rose Acacia	43	Tamarix	46
grant Balm	59	Rose Campion	59	Taxodium	32
Oxydendrum	29	Rosemary	61	Taxus	11-12
Pæonia	60	Rose of Sharon	39, 40	Tecoma. See Bignonia.	
Pachysandra	60	Roses	50-51	Thalictrum	63
Papaver	60	Rosmarinus	61	Thermopsis	63
Pardanthus. See Bel-		Rosy Milfoil	51	Thorn	25-26
emcanda.		Rubus	43	Thorn Evergreen	17
Parrotia	29	Rudbeckia	61	Thrift	53
Paulownia	29	Rugosa Roses	51	Thuya	13-14
Pavia. See Æsculus.		Salisburya	32	Thujaopsis	12
Peaches	49	Salix	32	Thymus	63
Pearl Bush	39	Salvia	62	Tickseed	55
Pears	49	Sambucus	43	Tiger Lily	59
Penstemon	60	Sandwort	53	Tilia	32-33
Periploca	48	Sanguinaria	62	Tradescantia	63
Periwinkle	63	Santolina	62	Tree of Heaven	23
Persian Iron Tree.	29	Sassafras	32	Trillium	63
Persica	29	Saxifraga	62	Troliius	63
Persimmon	26	Scotch Broom	37	Trumpet Vine	47
Phalaris	47	Scabiosa	62	Tsuga	14
Phellodendron	29	Sciadopitys	11	Tulip Tree	28
Philadelphus	42	Sea Buckthorn	40	Ulmus	33
Phillyrea	17	Sea Holly	56	Umbrella Tree	28
Phlox	61	Sea Lavender	62	Uniola	47
Physostegia	61	Senecio	62	Vaccinium	46
Picea	7-8	Sedum	62	Valeriana	63
Pinks	61	Sheepsberry	46	Valerian	63
Pinus	8-9	Shrub Yellow Root	47	Varnish Tree	27
Platanus	30	Shrubby Cinquefoil	42	Verbascum	63
Platycodon	61	Silene	62	Vernonia	63
Plumbago	54	Silk Vine	48	Veronica	63
Plums	49	Small Fruits	49	Viburnum	46-47
Podocarpus	9	Smilacina	62	Vinca	63
Polemonium	61	Snakeroot	55	Vines and Climbing	
Populus	30	Snowball	46	Plants	47, 48
Poppy	53, 60	Snowberry	44	Viola	63
Potentilla	42	Sophora	32	Virgilia	25
Primrose	60, 61	Sorbus	32	Virginia Creeper	47
Primula	61	Speedwell	63	Vitex	47
Privet	40-41	Spice Bush	35	Vitis	48
Prunus. See, also.		Spiderwort	63	Walnut	27-49
Cerasus	30, 43	Spindle Tree	39	Wax Myrtle	42
Pseudotsuga	9	Spiræa	44, 53, 62	Wayfaring Tree	46
Ptelea	30	Spruce	7, 8, 9	Weigela	38
Pterostyrax	30	Stachys	62	White Fringe	36
Pueraria	48	Staphylea	44	White Rod	46
Purple Mist	43	Statice	62	Wolf's-bane	51
Pyrethrum	61	Stephanandra	44	Willow	32
Pyrus	30, 43	Stokesia	62	Windflower	52
Quercus	30, 31	Stokes' Aster	62	Winola	47
Quinces	49	Stonecrop	62	Winter Berry	40
Ranunculus	61	Strawberries	50	Wistaria	48
Raspberries	49	Strawberry Bush	39	Witch Hazel	39
Red Bud, or Judas.	25	Styrax	44	Woodsia	64
Reeds and Grasses.	47	Sumac	31-32, 43	Woodwardia	64
Retinospora	9-11	Sunflower	57	Xanthoceras	47
Rhamnus	43	Swamp Huckleberry.	46	Xanthorrhiza	47
Rhododendron	18-20	Sweet Fern	36	Yarrow	51
Rhodotyus	43	Sweet Gum	28	Yellow Wood	25
Rhubarb	50	Sweet William	59, 61	Yew	5, 9, 11, 12
		Sweet Pepper Bush.	36	Yucca	21

# Our Catalogs

**THE ANDORRA HANDBOOK.** Planters who desire a complete descriptive list will be supplied with our Handbook of Trees and Plants for 50 cents, which will be credited upon their first purchase amounting to \$5.

**ANDORRA'S HANDBOOK** will serve as a standard guide, being up-to-date in nomenclature, and containing conservative descriptions of a vast list of trees and plants, with hints of planting, pruning and caring for them. It is illustrated and fully indexed.

**PRICE LISTS** are issued semi-annually. Owing to our large output, and the changes in sizes of stock by reason of each season's growth, frequent revisions of the **PRICE-LIST** are necessary, to keep customers thoroughly posted on the stock we offer. You are always sure your order will be filled if you find the items in the **CURRENT SEASON'S PRICE-LIST**.

**PLANTING INSTRUCTIONS.** This booklet does not aim to cover every point that may arise, but it gives the principles in such a way that any one, by following its directions, can secure the best results.

**A CALENDAR OF HARDY PERENNIALS, BOOKLET No. 33-26,** with special lists of Iris, Phlox, Peonies and Chrysanthemums. This little booklet gives a complete list of Perennials, and shows in tabulated form their height, color, and months of bloom; invaluable to those planning herbaceous gardens.

---

## OUR STANDARD FOR MEASURING TREES AND SHRUBS

All trees and shrubs are measured as they stand in the Nursery before digging. In evergreen trees and in evergreen and deciduous shrubs the height is taken from the ground to the top of the plant.

Deciduous trees are measured from the ground to the top of the head, and the caliper or diameter of the trunk is taken above the collar. Measurements are expressed thus: 10 to 12 ft. (height), 2½ to 2¾ in. (caliper).