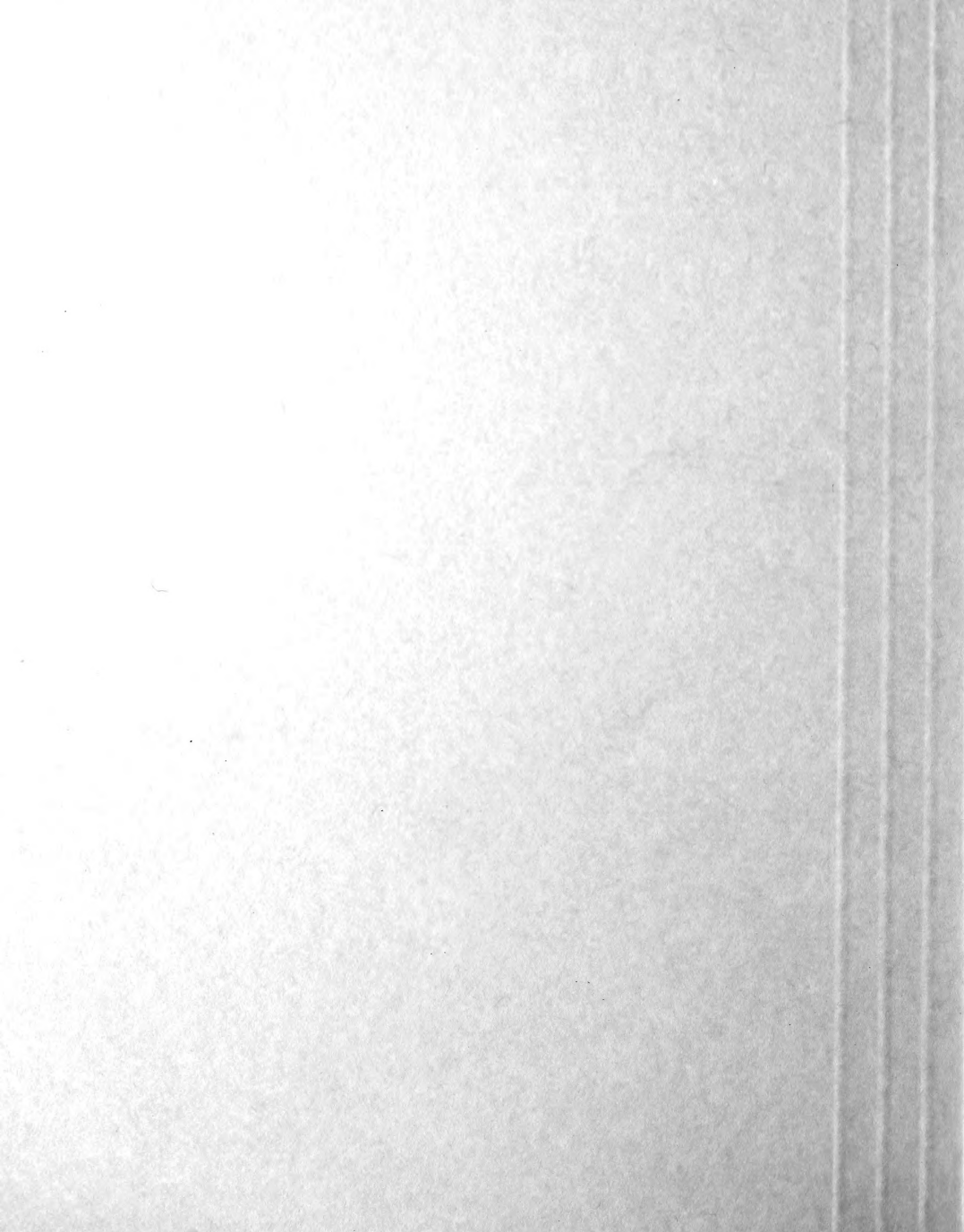


Historic, Archive Document

Do not assume content reflects current scientific
knowledge, policies, or practices



6273

F.L.M.

Andorra Nurseries

U.S. DEPARTMENT OF AGRICULTURE
LIBRARY
WASHINGTON, D. C.

SPECIMEN TREES

SHRUBS, ROSES

AND FRUIT

Spring, 1913

CANCELING ALL PREVIOUS LISTS



WHOLESALE
PRICES

ON QUANTITIES OF TEN
TO ONE THOUSAND



SPECIAL:
SEE NOTES ON
PAGES 20, 64
AND BACK
COVER



SUPERIOR FERTILIZERS

For the Lawn, Garden or Farm

PRICES NET F. O. B. SHIPPING POINT

CANADA UNLEACHED HARD-WOOD ASHES

(ANDORRA BRAND)

Are a complete fertilizer, replenishing worn-out soils, and, for the lawn or pasture, are economical and valuable. For the lawn, they are easy to handle, produce no offensive odors, are not unsightly, and, quickly leaching into the soil, the chemical properties are at once available for plant food.

Our ashes are selected only from the hard-wood districts of Canada, are carefully screened, and put in convenient packages. Apply at the rate of 1,000 to 1,500 lbs. per acre for top-dressing, or 2,000 to 2,500 lbs. for new lawns.

50-lb. bag	100-lb. bag	200-lb. bbl.	Ton (10 bbls.)	Cars, 15 to 20 tons
\$1 00	\$1 50	\$2 50	\$20 00	At special prices.

PREPARED LIME

Where soils, from constant applications of manure, are sour and need a fertilizer to sweeten them, lime is a valuable agent. It quickly puts the soil in condition to assimilate plant-food. It frees the potash, phosphoric acid and nitrogen already in the soil, and turns the nitrogen into the rich nitrates valuable for plant use.

Our prepared lime is fresh from the kilns, clean, well burnt, thoroughly decarbonized and especially prepared, so that it will go three times as far as the lump lime generally used, and is fine enough to run through a drill. Use 500 lbs. per acre.

100-lb. bag	Ton	Cars, 12 to 25 tons
\$1 25	\$12 00	\$10 per ton.

POTASH AND PREPARED LIME

Where potash is needed in addition to lime, this preparation will be found valuable. It contains 4% actual potash, equal to 8% of sulphate of potash, the prepared lime being used as a filler, and makes a valuable top-dresser for lawn, pasture, or grass lands. Apply at the rate of 500 lbs. per acre.

100-lb. bag	Ton	Cars, 12 to 25 tons
\$1 50	\$14 00	\$12 00 per ton

PEAT

We have on hand a stock of carefully selected peat, suitable for potting or planting Rhododendrons and shrubs that need such soil. Sack of about 100 lbs., 75 cents. In sacks, \$13.50 per ton.

PURE GROUND BONE

A brand of excellent quality. Analysis on request.

200-lb. bag	Ton	Cars, 15 to 30 tons
\$3 50	\$32 00	Special price.

Andorra Nurseries

CHESTNUT HILL, PHILADELPHIA, PA.

OUR NURSERIES are extensive, covering six hundred acres, of which over three hundred are planted with trees and shrubs. They are easy of access, as Chestnut Hill is the terminus of branches of the Pennsylvania and the Philadelphia & Reading railroads, and the Chestnut Hill (City Line) trolley runs from the stations to within three minutes' walk of the Nurseries.

QUALITY.—The trees and shrubs offered are grown in open, unsheltered ground, in a very exposed situation, which insures their hardiness, and on soil admirably adapted for forming robust plants having an abundance of roots. Special attention is called to the fact that our stock is grown a good distance apart in the rows, insuring heavier trees and shrubs than are generally offered.

SHIPPING SEASON opens about March 1 in the spring and August 15 in the fall.

INSPECTION AND FUMIGATION.—Our stock is regularly inspected and certificate will be sent with each shipment. Stock will be fumigated when requested or when the State laws require it.

TERMS AND CONDITIONS

ORDERS.—All orders are accepted subject to the following terms and conditions. Write plainly and give explicit directions as to address and mode of shipment.

STOCK SELECTED by customers at the Nurseries will be charged according to the value of the trees chosen.

QUANTITY.—Lots of 5 and 50 will be furnished at the 10 and 100 rates respectively.

PACKING.—All goods are thoroughly packed, thus avoiding risk, if delayed in transit. **Packing charges are made at actual cost.**

FORWARDING.—Shipments will be forwarded exactly as directed; but when without instructions, we will use our best judgment and forward by shortest and safest route. We recommend all herbaceous plants be shipped by express.

RISK.—All goods are at purchaser's risk after they are delivered to the forwarding companies and we receive their receipt for the shipment in good condition.

CLAIMS for damage while in transit must be made to the delivering company. Have delivering agent note the damaged condition on the freight bill and present your claim through him promptly.

GUARANTEE AND CLAIMS.—All goods are guaranteed true to name, full count, up to grade, and in good condition when shipped. Any plant proving untrue to name will be replaced. Claims to receive consideration must be made within **five days** after receipt of goods. **We give no guarantee of the life of stock.**

TERMS, CASH WITH ORDER, except to persons who satisfy us as to their responsibility.

Address all orders to

ANDORRA NURSERIES

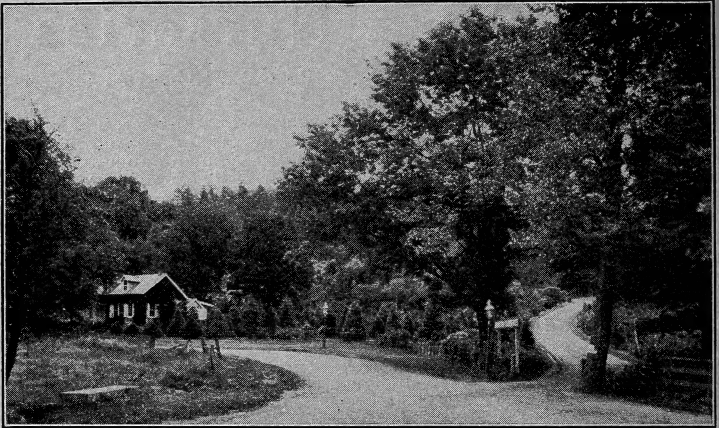
WM. WARNER HARPER, Prop.

Local and Long
Distance Telephone

CHESTNUT HILL, PHILADELPHIA, PA.

Telegraphic Address
CHESTNUT HILL, PHILADELPHIA

Cable Address
"ANDORRA," PHILADELPHIA



Nursery Entrance and Office.

EVERGREEN TREES

	Each	10
ABIES balsamea. Balsam Fir. 3 to 4 ft.....♦	\$2 00	
4 to 5 ft.♦	2 50	
5 to 7 ft.♦	\$3 to 4 00	
Canadensis. See <i>Tsuga Canadensis</i> .		
concolor. White Fir. 2½ to 3 ft.....	3 50	
3½ to 4 ft.	5 00	
4 to 4½ ft.	6 00	
4½ to 5 ft.♦	7 50	
5 to 6 ft.♦	\$10 to 12 50	
6 to 10 ft.♦	\$12.50 to 35 00	
nobilis, var. glauca. Noble Silver Fir. 4 to 4½ ft....	5 00	
4½ to 5 ft.	6 00	
5 to 7 ft.	\$7.50 to 15 00	
Nordmanniana. Nordmann's Fir. 3 ft.....	3 50	
3 to 3½ ft.	4 50	\$42 50
3½ to 4 ft.	6 00	57 50
4 to 4½ ft. Specimens♦	7 50	70 00
4½ to 5 ft. Specimens♦	10 00	85 00
5 to 5½ ft. Specimens♦	\$10 to 15 00	
6 to 12 ft. Fine specimens. Prices on application.		
pectinata. European Silver Fir.		
6 to 7 ft.....	4 00	
7 to 8 ft.....	5 00	
8 to 10 ft.....	7 50	
BIOTA orientalis. Oriental Arborvitæ. 5 to 6 ft.....	3 00	27 50
6 to 7 ft.	4 00	37 50
6 to 7 ft. Very heavy	6 00	55 00
7 to 9 ft.	7 50	65 00
8 to 10 ft. Very broad and heavy....	\$8.50 to 12 50	

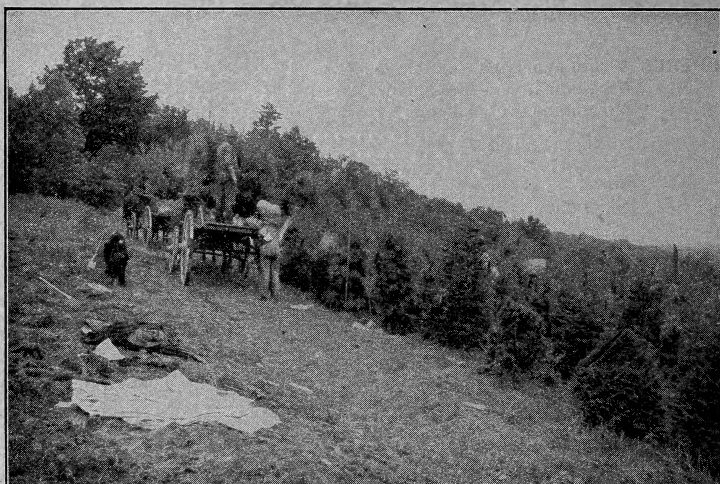
PRICE LIST FOR SPRING OF 1913

	Each	10
BIOTA orientalis, var. aurea nana. 15 to 18 in.....	\$1 75	\$15 00
18 to 20 in.....	2 00	17 50
20 to 24 in.....	2 75	25 00
24 to 30 in.....	3 50	32 50
orientalis, var. aurea pyramidalis.		
3 to 4 ft.....	3 50	
4 to 5 ft.....	5 00	
orientalis, var. compacta. Compact Chinese Arborvitæ. 3 to 3½ ft.....	3 50	
3½ to 4 ft.....	4 00	35 00
4 to 5 ft.....	5 00	45 00
5 to 6 ft.....	7 50	70 00
orientalis, var. conspicua. 3 to 3½ ft.....	3 50	32 50
4 to 4½ ft.....	4 00	37 50
5 to 6 ft.....	5 00	
6 to 7 ft.....	7 50	70 00
7 to 12 ft.....	\$7.50 to 15 00	
orientalis, var. elegantissima. Rollinson's Golden Arborvitæ. 3 to 3½ ft.....	3 50	
3½ to 4 ft.....	4 00	
4 to 5 ft.....	5 00	47 50
5 to 8 ft.....	\$.6 to 15 00	
orientalis, var. filiformis; syn., Japonica. Thread-branched Arborvitæ. 3 to 3½ ft.....	3 50	32 50
5 to 5½ ft.....	5 00	
orientalis, var. semperaurescens. Ever-golden Arborvitæ. 4 to 5 ft.....	\$.5 to 7 50	
5 to 7 ft.....	\$.75 to 15 00	
CEDRUS Atlantica, var. glauca. Mt. Atlas Silver Cedar—		
2½ to 3 ft.	3 00	27 50
5 to 6 ft.	4 00	37 50
6 to 8 ft.	\$.5 to 7 50	
8 to 10 ft.	\$.10 to 15 00	
CEPHALOTAXUS Fortunei. Fortune's Yew. 4 to 4½ ft.....	3 50	
5 to 6 ft. Very broad and heavy.....	5 00	
6 to 7 ft.	7 50	
CRYPTOMERIA Japonica. 2½ to 3 ft.....	2 50	22 50
3 to 3½ ft.	3 00	27 50
Japonica, var. Lobbi compacta. 2½ to 3 ft.....	3 50	32 50
3½ to 4 ft.	4 00	37 50
5 to 6 ft.	5 00	47 50
ILEX opaca. American Holly. 2½ to 3 ft.....	3 50	
3 to 4 ft.	\$.35 to 5 00	
4 to 5 ft.	\$.75 to 10 00	
JUNIPERUS Canadensis. Spreading Canadian Juniper—		
12 to 15 in. spreadper 100, \$60..	1 00	9 00
15 to 18 in. spread	1 50	12 50
18 to 24 in. spread	2 00	17 50
24 to 30 in. spread	3 50	32 50
Canadensis, var. aurea; syn., Douglasi. Douglas' Golden Juniper. 12 to 15 in. spread...	1 00	8 50
15 to 18 in. spread	1 50	12 50
18 to 24 in. spread. Heavy	2 00	15 00

	Each	10
JUNIPERUS Chinensis. Chinese Juniper. 3 ft.....	\$2 00	\$17 50
3½ to 4 ft.	3 50	32 50
4½ to 5 ft.	4 00	37 50
5 to 6 ft.	5 00	45 00
6 to 8 ft.	\$6 to 10 00	
Chinensis, var. argentea marginata. A grand hardy variety. 2½ to 3 ft.....	3 50	32 50
3½ to 4 ft.	4 50	42 50
4 to 4½ ft.	5 00	47 50
5 to 6 ft.	\$6 to 7 50	
7 to 8 ft. Specimens	\$10 to 15 00	
Chinensis, var. aurea. Golden Chinese Juniper—		
4 to 5 ft.....	5 00	
5 to 6 ft.....	7 50	
Chinensis, var. Pfitzeriana. 18 to 20 in.....	2 00	17 50
22 to 24 in.....	2 50	20 00
24 to 30 in.....	3 50	32 50
Chinensis, var. femina Reevesii. 3 to 3½ ft.....	3 00	27 50
5 to 6 ft.....	5 00	47 50
communis. Common Upright Juniper—		
3 to 3½ ft.....	2 50	
4½ to 5 ft.....	3 50	
communis, var. oblonga. 6 to 8 ft.....	\$5 to 7 50	
communis, var. Suecica. Swedish Juniper—		
2½ to 3 ft.....	2 00	15 00
excelsa stricta. 4 to 6 ft.....	\$5 to 10 00	
Fortunei. 6 to 8 ft.....	\$5 to 7 50	
Japonica, var. aurea. Golden Japan Juniper—		
1½ to 2 ft.	1 50	13 50
2 to 2½ ft.	2 50	22 50
2½ to 3 ft.	3 50	32 50
3 to 3½ ft.	4 00	
3½ to 4 ft.	5 00	47 50
4 to 4½ ft.	6 00	55 00
5 to 5½ ft.	\$10 to 12 50	
Japonica, var. nana aurea. Dwarf, 10 to 12 in. x 15 to 18 in. broad.....	1 75	15 00
recurva, var. squamata. Scaly-leaved —		
8 to 10 in. x 10 to 12 in. spread.....	1 50	13 50
8 to 10 in. x 15 to 18 in. spread.....	2 00	17 50
rigida. 9 to 12 ft.....	\$10 to 25 00	
Sabina. Savin Juniper. 12 to 15 in.....	1 00	9 00
2 to 2½ ft.....	2 50	22 50
3 to 3½ ft.....	3 50	32 50
Sabina, var. aurea variegata. Savin's Golden Juniper. 1½ to 2 ft.....	1 50	
2 to 2½ ft.....	3 50	
Sabina, var. tamariscifolia. 10 to 12 in. x 12 to 15 in. spread	1 25	10 00
12 to 15 in. x 15 to 18 in. spread.....	1 75	15 00
Virginiana. Red, or Virginia Cedar. 3 to 3½ ft. Nursery grown	2 50	22 50
3½ to 4 ft. Nursery grown	3 50	32 50
4½ to 5 ft. Nursery grown	4 00	37 50
5 to 6 ft. Nursery grown	5 00	47 50
7 to 8 ft. Specimens	\$6 to 10 00	

PRICE LIST FOR SPRING OF 1913

	Each	10
JUNIPERUS <i>Virginiana, alba spicta.</i> †. 3 to 4 ft.....	\$3 00	\$27 50
<i>Virginiana, var. Cannartii.</i> 2½ to 3 ft.....	2 50	22 50
<i>Virginiana, var. glauca.</i> Blue Virginia Cedar—		
3 to 3½ ft.	†. 3 00	27 50
4 to 4½ ft.	†. 3 50	32 50
5 to 6 ft.	5 00	47 50
7 to 8 ft.	†. \$7.50 to 10 00	
<i>Virginiana, var. Kosteri.</i> Spreading—		
12 to 15 in.	†. 1 50	13 50
18 to 24 in.	†. 2 00	17 50
2 to 2½ ft.	†. 2 50	22 50
<i>Virginiana, var. Leei elegantissima.</i> Golden Vir- ginian Cedar—		
3 to 3½ ft. Extra heavy	†. 2 50	22 50
4½ to 5 ft. Extra heavy	†. 3 50	32 50
5 to 7 ft. Extra heavy	†. \$4 to 6 00	
8 to 9 ft.	†. \$7.50 to 10 00	
<i>Virginiana, var. pendula.</i> 3 to 3½ ft.....	†. 2 50	22 50
4 to 4½ ft.	†. 3 50	32 50
5 to 6 ft.	†. 5 00	47 50
<i>Virginiana, var. Schotti.</i> 3 to 3½ ft.....	†. 2 50	22 50
4 to 5 ft.	†. 4 00	37 50
5 to 6 ft.	†. 5 00	47 50
7 to 8 ft.	†. \$6 to 10 00	
PICEA <i>alba.</i> White Spruce. 2½ to 3 ft.....	2 00	17 50
3 to 3½ ft.	2 50	20 00
4 to 5 ft.	3 50	30 00
5 to 6 ft.	†. 5 00	
6 to 7 ft.	†. 6 00	
7 to 8 ft. Very fine specimens... †.	\$7.50 to 10 00	
<i>Alcockiana.</i> Alcock's Spruce. 2½ to 3 ft.....	†. 3 50	
5 to 8 ft. Specimens.....	\$4 to 15 00	
<i>Engelmanni.</i> Engelmann's Spruce—		
4 to 7 ft.....	†. \$5 to 10 00	
<i>excelsa.</i> Norway Spruce. 3 to 3½ ft.....	†. 1 50	12 50
3½ to 4 ft.	†. 2 00	17 50
4 to 4½ ft.	†. 3 00	27 50
5 to 6 ft. Specimens	5 00	45 00
7 to 9 ft. Specimens	7 50	60 00
9 to 12 ft.	\$10 to 25 00	
<i>excelsa, var. aurea.</i> Golden Norway Spruce—		
2 to 2½ ft.....	†. 2 50	
<i>excelsa, var. inverta.</i> Weeping Norway Spruce—		
5 to 6 ft.	†. \$6 to 7 50	
7 to 9 ft.	†. \$7.50 to 15 00	
<i>orientalis.</i> Eastern Spruce. 2 to 2½ ft.....	†. 2 50	22 50
3 to 3½ ft.	†. 3 50	32 50
3½ to 4 ft. Specimens	5 00	45 00
4½ to 5 ft. Specimens	†. \$6 to 7 50	
6 to 9 ft. Specimens	†. \$10 to 25 00	
<i>pinsapo.</i> Spanish Fir. 3½ to 4 ft.....	†. 3 50	32 50
4 to 5 ft.....	†. \$4 to 7 50	
<i>polita.</i> Tiger's Tail Spruce. 2½ ft.....	†. 2 50	22 50
2½ to 3 ft.	3 50	32 50
9 to 12 ft.	†. \$15 to 25 00	



Loading White Pines.

	Each	10
PICEA pungens. Colorado Spruce. 4 to 5 ft.....♦	\$5 00	\$45 00
5 to 6 ft.♦	7 50	
7 to 10 ft.♦	\$7.50 to 25 00	
pungens, var. glauca. Blue Colorado Spruce—		
2½ to 3 ft. Selected color♦	3 50	32 50
3 to 3½ ft. Selected color♦	\$5 to 7 50	
3½ to 4 ft. Selected color♦	\$7.50 to 10 00	
5 to 10 ft. Selected color♦	\$12.50 to 35 00	
pungens, var. Kosteriana. Koster's Blue Colorado Spruce. 1½ to 2 ft.....	2 50	22 50
2 to 2½ ft.♦	3 50	32 50
2½ to 3 ft. Specimens♦	\$5 to 7 50	
3 to 3½ ft. Specimens♦	\$7.50 to 10 00	
3½ to 4 ft. Specimens♦	\$10 to 12 50	
4 to 5 ft. Specimens♦	\$12.50 to 15 00	
6 to 10 ft. Grand specimens♦	\$15 to 35 00	
pungens, var. pendula. Weeping Blue Colorado Spruce—		
3 to 4 ft. Specimens.....♦	7 50	
4 to 4½ ft. Specimens.....♦	10 00	
PINUS Austriaca. Austrian Pine. 2 to 2½ ft.....♦	1 50	13 50
2½ to 3 ft.♦	2 50	22 50
3½ to 4 ft.♦	3 50	32 50
4 to 4½ ft. Very Heavy♦	4 00	37 50
4½ to 5 ft. Very Heavy♦	5 00	47 50
Cembra. Swiss Stone Pine. 2 to 2½ ft.....	2 50	22 50
2½ to 3 ft.♦	3 00	27 50
3 to 3½ ft.♦	3 50	32 50
3½ to 4 ft.♦	4 00	37 50
4 to 4½ ft.♦	5 00	47 50
5 to 7 ft.♦	\$7.50 to 15 00	

PRICE LIST FOR SPRING OF 1913

	Each	10
PINUS excelsa. Bhotan Pine. 2½ to 3 ft.....	\$2 50	\$22 50
3 to 4½ ft.	3 00	27 50
6 to 7 ft.	5 00	47 50
8 to 10 ft.	\$7.50 to 12 50	
Koraiensis. Corean Pine. 3 to 3½ ft.....	3 00	27 50
Mughus. Dwarf Mountain Pine. 10 to 12 in.....	1 00	9 00
12 to 15 in.	1 50	12 50
15 to 18 in.	2 00	17 50
18 in.	2 50	
24 in.	3 50	
ponderosa. Bull Pine. 5 to 6 ft.....	3 50	
7 to 10 ft.....	◆ \$5 to 10 00	
rigida. Pitch Pine. 10 to 12 ft.....	\$10 to 15 00	
Strobus. White Pine. 8 to 10 in.....per 100, \$20		
1½ to 2 ft.	◆ per 100, \$50	6 00
2 to 2½ ft.	◆ per 100, \$65	8 00
2½ to 3 ft.	◆ per 100, \$90	10 00
3 to 3½ ft.	◆ per 100, \$110	12 50
3½ to 4 ft.		17 50
4 to 4½ ft.		20 00
4½ to 5 ft.		27 50
5 to 6 ft.		32 00
6 to 7 ft.		45 00
7 to 9 ft.	\$7.50 to 15 00	
The finest and best rooted stock in this country.		
sylvestris. Scotch Pine. 3 to 3½ ft.....	◆ 2 00	18 50
3½ to 4 ft.	◆ 3 00	27 50
4 to 5 ft.	◆ 3 50	32 50
Tanyosho. Japanese Table Pine—		
15 to 18 in.....	◆ 2 00	18 50
18 to 24 in.....	◆ 3 50	32 50
PODOCARPUS Japonica. Japanese Yew. 15 to 18 in.....	1 50	
PSEUDOTSUGA Douglasi. Douglas' Spruce. 2½ to 3 ft.....	2 00	18 50
3 to 3½ ft.	2 50	22 50
5 to 6 ft.	\$4 to 5 00	
7 to 10 ft.	\$7.50 to 10 00	
RETINOSPORA ericoides. Heath-like Japan Cypress—		
15 to 18 in.	75	6 00
1½ to 2 ft.	◆ 1 00	8 50
2 to 2½ ft.	◆ 1 50	13 50
3 to 3½ ft.	◆ 2 00	17 50
3½ to 4 ft.	◆ 3 00	27 50
filifera. Thread-branched Japan Cypress—		
1½ to 2 ft.	1 50	13 50
2½ to 3 ft.	3 50	32 50
3 to 3½ ft.	4 00	37 50
3½ to 4 ft. Specimens	◆ \$6 to 7 50	
5 to 6 ft. Specimens	◆ \$10 to 12 50	
7 to 8 ft. Specimens	◆ \$15 to 25 00	
filifera, var. aurea. Golden Thread-branched		
Japan Cypress. 10 to 12 in.....	1 50	13 50
12 to 15 in.....	2 00	18 50
18 to 20 in.....	2 50	22 50

	Each	10
RETINOSPORA leptoclada. Thuya-like Japan Cypress—		
3½ to 4 ft.	\$2 50	
4 to 4½ ft.	3 00	
4½ to 5 ft.	3 50	\$32 50
5 to 6 ft.	4 00	35 00
lycopodioides. Club-moss Japan Cypress—		
2½ ft.	2 50	
3 to 4 ft.	\$3.50 to 5 00	
4 to 5 ft.	5 to 7 50	
obtusa. Obtuse-leaved Japan Cypress—		
1½ to 2 ft.	2 00	18 50
2 to 2½ ft.	2 50	22 50
3 to 4 ft.	3 50	32 50
4½ to 5 ft.	4 00	37 50
6 to 8 ft.	\$7.50 to 15 00	
obtusa, var. compacta. Compact Obtuse-leaved Japan Cypress. 18 to 24 in..	2 00	18 50
5 to 5½ ft.	5 to 7 50	
obtusa, var. gracilis. Graceful Obtuse-leaved Japan Cypress. 15 to 18 in.	2 00	
obtusa, var. magnifica. 3 to 3½ ft.	5 00	
obtusa, var. nana. Dwarf Obtuse-leaved Japan Cypress. 1 ft.	1 25	10 00
1½ ft.	2 50	22 50
2 ft.	3 00	27 50
2½ ft.	4 00	37 50
3 ft.	5 to 7 50	
3½ ft.	\$7.50 to 10 00	
4 to 6 ft. Specimens.	15 to 20 00	
obtusa, var. nana aurea. Dwarf Golden Obtuse-leaved Japan Cypress—		
1½ ft.	2 50	22 50
2 ft.	3 00	27 50
2½ ft.	3 50	32 50
3 to 3½ ft. Specimens.	5 to 10 00	
4 to 6 ft.	\$12.50 to 20 00	
pisifera. Pea-fruited Japan Cypress. 2½ to 3 ft.	2 50	22 50
4 to 5 ft.	3 50	32 50
5 to 5½ ft.	4 00	37 50
6 to 10 ft. Specimens.	\$7.50 to 25 00	
pisifera, var. aurea. Golden Pea-fruited Japan Cypress. 2 to 2½ ft.	2 00	17 50
2½ to 3 ft.	2 50	22 50
3 to 3½ ft.	3 00	27 50
3½ to 4 ft.	3 50	32 50
4 to 4½ ft.	4 00	37 50
5 to 6 ft. Specimens.	5 to 7 50	
7 to 14 ft. Specimens.	\$10 to 35 00	
plumosa. Plume-like Japan Cypress—		
1½ to 2 ft.	1 50	13 50
2 to 2½ ft.	2 00	17 50
2½ to 3 ft.	2 50	22 50
3 to 3½ ft.	3 00	27 50
3½ to 4 ft. Specimens.	3 50	32 50
4 to 5 ft.	4 00	37 50
6 to 10 ft. Specimens.	5 to 25 00	

PRICE LIST FOR SPRING OF 1913

11

	Each	10
RETINOSPORA plumosa, var. argentea. 2 to 2½ ft.....	\$1 50	\$12 50
2½ to 3 ft.	2 50	22 50
3 to 4 ft.	3 50	32 50
4 to 5 ft.	4 00	37 50
5 to 7 ft.	\$5 to 7 50	
plumosa, var. aurea. Golden Plume-like Japan Cypress—		
1½ to 2 ft. Bushy	♦ 1 00	8 50
2 to 2½ ft. Bushy	♦ 2 00	17 50
2½ to 3 ft. Bushy	♦ 2 50	22 50
3 to 3½ ft. Bushy	♦ 3 00	27 50
3½ to 4 ft. Specimens	♦ 3 50	32 50
4 to 4½ ft. Specimens	♦ 4 00	37 50
5 to 12 ft. Specimens	♦ \$5 to 35 00	
This variety is one of the best for general planting. Its habit and coloring are excellent, it stands shearing readily and its hardiness is unquestioned.		
plumosa, var. flavescens. 12 to 15 in.....	♦ 1 00	8 50
4 to 5 ft.....	♦ \$7.50 to 10 00	
plumosa, var. sulphurea. 1½ to 2 ft.....	1 75	15 00
2 to 2½ ft.	♦ 3 50	
3½ to 4 ft. Very heavy	♦ 6 00	
4 to 5 ft. Very heavy	♦ \$7.50 to 10 00	
squarrosa. Squarrose-leaved Japan Cypress—		
2 to 2½ ft.	2 50	22 50
2½ to 3 ft.	3 00	27 50
3 to 3½ ft.	3 50	30 00
4 to 4½ ft. Specimens	5 00	
4½ to 5 ft. Specimens	\$6 to 7 50	
6 to 14 ft. Heavy specimens...	\$10 to 75 00	
This is excellent stock; exceptionally broad, bushy and low-branched.		
SCIADOPITYS verticillata. Umbrella Pine. 2 to 2½ ft...♦	3 50	32 50
2½ to 3 ft.♦	5 00	45 00
3½ to 4 ft.♦	7 50	72 50
4½ to 5 ft.♦	10 00	
6 to 7 ft.♦	\$15 to 25 00	
TAXUS baccata. English Yew. 2 to 2½ ft.....♦	2 00	
2½ to 3 ft.♦	2 50	
3 to 3½ ft.♦	3 50	
3½ to 4 ft. Specimens	♦ 5 00	
4 to 4½ ft. Specimens	♦ 7 50	
baccata, var. adpressa. 2 to 2½ ft.....♦	2 50	22 50
2½ to 3 ft.♦	3 50	32 50
baccata, var. Dovastoni. Dovaston's Yew—		
2 to 2½ ft.♦	2 75	
2½ to 3 ft.♦	3 50	
3 to 4 ft.♦	5 00	
baccata, var. Dovastoni aurea. Dovaston's Golden Yew. 5 to 7 ft. Specimens.....♦	\$10 to 25 00	
baccata, var. elegantissima. Elegant English Yew—		
3½ to 4 ft.♦	\$5 to 7 50	
4 to 6 ft.♦	\$7.50 to 20 00	

Each 10

TAXUS baccata, var. erecta. Erect English Yew—			
2	to 2½ ft.	♦	\$2 50
2½	to 3 ft.	♦	3 50
3	to 3½ ft.	♦	\$4 to 5 00
baccata, var. erecta aurea. Erect Golden English Yew. 2 to 2½ ft.		♦	2 50
2½	to 3 ft.	♦	3 50
3	to 3½ ft.	♦	4 00
4	to 4½ ft.	♦	6 00
baccata, var. fastigiata. Irish Yew. 2½ ft.		♦	2 50
3	ft.	♦	3 50
3½	ft.	♦	7 50
4	to 5 ft. Specimens.	♦	\$10 to 15 00
baccata, var. fastigiata aurea. Golden Irish Yew—			
2	ft.	♦	2 50
2½	ft.	♦	3 50
3½	to 4 ft.	♦	\$7.50 to 10 00
4	to 6 ft.	♦	\$10 to 15 00
baccata, var. gracilis pendula. 3 to 3½ ft.		♦	3 50
4	to 5 ft.	♦	5 00
5	to 6 ft.	♦	\$7.50 to 10 00
6	to 8 ft.	♦	\$12.50 to 20 00
baccata, var. repandens. Spreading English Yew—			
10	to 12 in.	♦	1 50
12	to 15 in.	♦	2 00
baccata, var. Washingtoni aurea. Washington's Golden English Yew. 2½ ft.		♦	3 50
3	to 3½ ft.	♦	\$5 to 7 50
3½	to 4 ft.	♦	\$7.50 to 10 00
4	to 5 ft.	♦	15 00
Canadensis (Canadian Yew). 15 to 18 in.		♦	2 00
Canadensis, var. aurea. Golden Canadian Yew—			
2	to 2½ ft.	♦	3 50
3	ft.	♦	\$6 to 7 50
3½	to 5 ft.	♦	\$10 to 20 00
cuspidata. Abrupt-leaved Japan Yew. 12 to 15 in.		♦	1 50
1½	ft.	♦	2 00
2	ft.	♦	3 00
cuspidata, var. brevifolia. 12 to 15 in.		♦	2 00
1½	ft.	♦	2 50
2	ft.	♦	3 50
cuspidata, var. capitata. 1½ ft.		♦	2 50
2½	ft.	♦	5 00
THUJOPSIS borealis; syn., Cupressus Nutkænsis. Yellow or Sitka Cypress. 4 to 4½ ft.			5 00
5	to 5½ ft.		7 50
borealis, var. latifolia glauca. Glaucoous Sitka Cypress. 3½ to 4 ft.		♦	3 50
4	to 4½ ft. Specimens	♦	5 00
5	to 7 ft. Specimens	♦	\$6 to \$7 50

\$32 50

22 50

82 50

60 00

17 50

32 50

13 50

18 50

45 00

70 00

32 50

45 00

PRICE LIST FOR SPRING OF 1913

THUYA occidentalis. American Arborvitæ—		Each	10	
2	to 2½ ft.	♦ per 100, \$50..	\$0 75	\$7 00
2½	to 3 ft.	♦ per 100, \$75..	1 00	8 50
3	to 3½ ft.	♦	1 25	10 00
3½	to 4 ft.	♦ per 100, \$100..	1 50	12 50
4	to 4½ ft.	Very heavy ♦ per 100, \$175..	2 00	19 00
4½	to 5 ft.	Very heavy	2 50	22 50
5	to 5½ ft.	Very heavy	3 00	27 50
5½	to 6 ft.	Very heavy	3 50	32 50
6	to 7 ft.	Very heavy	4 00	37 50
7	to 8 ft.	Very heavy	5 00	47 50
8	to 9 ft.	Specimens ♦	\$6 to	7 50
10	to 12 ft.	Specimens	\$8 to	12 50
occidentalis, var. aurea. George Peabody's Arborvitæ—				
2½	to 3 ft.	♦	1 50	12 50
3	to 3½ ft.	♦	2 50	20 00
4	to 5 ft.	♦	3 50	32 50
5	to 6 ft.	♦	4 00	37 50
7	to 12 ft.	Specimens ♦	\$5 to	15 00
occidentalis, var. compacta (Compact Arborvitæ)—				
2½	to 3 ft.	♦	1 75	16 50
3	to 3½ ft.	♦	2 50	22 50
occidentalis, var. Douglasi. 2 to 2½ ft. ♦ 2 00 18 50				
8	to 9 ft.		15 00	
occidentalis, var. erecta viridis. 3½ to 4 ft. ♦ 3 50				
occidentalis, var. globosa. Globe Arborvitæ—				
2	ft.	♦	2 00	17 50
2½	ft.	♦	2 50	
occidentalis, var. Hoveyi. Hovey's Golden Arborvitæ—				
2	ft.	♦	1 50	
2½	ft.	Very heavy ♦	2 50	
3	ft.	Very heavy ♦	3 00	
occidentalis, var. plicata pyramidalis. 2 to 2½ ft. ♦ 2 00				
4	to 5 ft.	♦	4 00	
occidentalis, var. pyramidalis. Pyramidal Arborvitæ—				
6	to 8 ft.	♦	\$5 to	7 50
occidentalis, var. recurva nana. 2½ to 3 ft. ♦ \$3.50 to 4 00				
3	to 4½ ft.	♦	\$5 to	7 50
occidentalis, var. Rosenthalis. 2 to 2½ ft. ♦ 2 50				
3½	to 4 ft.	♦	3 50	
occidentalis, var. Vervæneana. Vervæne's Arborvitæ—				
3½	to 4 ft.	♦	3 50	32 50
4½	to 5 ft.	♦	4 00	37 50
5	to 6 ft.	♦	4 50	42 50
6	to 7 ft.	Heavy specimens ♦	6 00	57 50
7	to 8 ft.	Heavy specimens ♦	\$7.50 to	12 50
9	to 10 ft.	Heavy specimens	\$15 to	20 00
occidentalis, var. Wareana. Siberian Arborvitæ—				
2	to 2½ ft.	Heavy ♦	1 50	13 50
2½	to 3 ft.	Very bushy ♦	2 50	22 50
3	to 3½ ft.	Very bushy ♦ per 100, \$300..	3 50	32 50
4	ft.	Very bushy ♦	4 00	
5	ft.	Very bushy ♦	5 00	
5	to 5½ ft.	Very bushy ♦	7 50	70 00
5½	to 6 ft.	Very bushy ♦	10 00	

		Each	10
THUYA occidentalis , var. Wareana aurea . 2½ ft.....		\$2 50	\$22 50
3 to 3½ ft.		3 00	28 00
4½ to 5 ft.		4 00	37 50
5 to 6 ft.		\$5 to 7 50	
TSUGA Canadensis . Hemlock. 1½ to 2 ft. ♦..per 100, \$50..		75	6 00
2 to 2½ ft.		♦..per 100, \$65..	1 00
2½ to 3 ft.		♦..per 100, \$100..	1 50
3 to 3½ ft.	} GRAND STOCK }	♦..per 100, \$135..	1 75
3½ to 4 ft.		♦..per 100, \$150..	2 00
4 to 4½ ft.			2 50
4½ to 5 ft.			3 00
5 to 5½ ft.			3 50
5½ to 6 ft.			4 00
7 to 12 ft. Heavy specimens.....		♦..\$7 to 20 00	
Canadensis , var. gracilis . 3½ to 4 ft.		♦..	3 50
Canadensis , var. Sargenti pendula . Weeping Hemlock—			
3 to 4 ft. Specimens.....		♦..\$7.50 to 15 00	
Caroliniana . Southern Hemlock.—			
4 to 6 ft. Specimens.....		♦..\$5 to 12 50	
Hookeriana . Alpine Hemlock. 4 to 4½ ft.			4 00
5 to 6 ft.		\$5 to 7 50	
Sieboldi . Japanese Hemlock. 2 to 2½ ft.		♦..	2 50
3 to 3½ ft.		♦..	3 50
4 to 5 ft.		♦..	5 00
5 to 6 ft.		♦..	6 00
6 to 7 ft.		♦..\$7.50 to 20 00	





A Block of Box Bush and Evergreens.

EVERGREEN SHRUBS

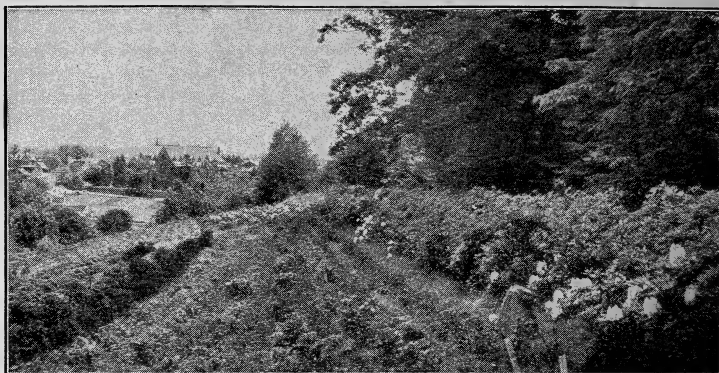
ANDROMEDA	Catesbæi.	See <i>Leucothoë</i> .	Each	10
	floribunda.	12 in. Broad and heavy.....	◆..\$1 50	\$13 50
		12 to 15 in. Broad and heavy.....	◆..	1 75 16 00
		15 to 18 in. Broad and heavy.....	◆..	2 00 18 50
	Japonica.	12 to 15 in.....	◆..	1 25 10 00
		15 to 18 in.....	◆..	1 50 12 50
		18 to 20 in.....	◆..	2 00 18 50
		24 to 30 in.....	◆..\$2.50 to	3 50
AZALEA	amœna.	12 to 15 in.....		1 00 8 50
		15 to 18 in. Bushy.....		1 50 12 50
		1½ ft. Bushy.....		2 00 17 50
		2½ ft. Specimens.....	◆..\$3.50 to	5 00
	amœna, var.	Hinondigiro. Bright carmine—		
		10 to 12 in.....	◆..	1 00 7 50
		12 to 15 in.....	◆..	1 50 13 50
		15 to 18 in.....	◆..	2 00 18 50
		18 to 20 in.....	◆..	2 50 22 50
	indica alba.	Pure white. 18 to 20 in.....	◆..	2 50 22 50
		20 to 22 in.....	◆..	3 00 27 50
		22 to 24 in.....	◆..	4 00 37 50
BUXUS	Japonica; syn.	Fortunei Japanese Box—		
		3½ to 4 ft.....	◆..	5 00
		4 to 5 ft.....	◆..\$7.50 to	12 50
	Japonica, var.	aurea. Golden Japanese Box—		
		12 to 15 in.....		1 00 9 00
		15 to 18 in.....		1 50 12 50
		1½ ft.....		1 75 15 00
		2 ft.....		2 50 22 50
		2½ ft.....		3 50 32 50
	Japonica, var.	rotundifolia. Round-leaved—		
		2½ to 3 ft. Very broad and bushy.....	◆..	7 50
		4 to 5 ft. Bush shape.....	◆..\$7.50 to	10 00
		5 to 6 ft. Pyramids.....	◆..\$10.00 to	15 00

BUXUS Japonica, var. rotundifolia glauca.	1½ ft.	♦	\$1 50	
	3½ to 4 ft.	♦	6 00	
sempervirens.	10 to 12 in. Imported. per 100.		\$17.50	35 \$2 50
	1 ft. Andorra-grown. per 100.		\$30.	50 4 00
	1 ft. Extra bushy per 100.		\$40.	75 6 00
	1½ ft. Extra bushy per 100.		\$80.	1 25 10 00
	2 ft. Extra bushy		1 75	16 50
	2½ ft. Extra bushy	♦	3 00	27 50
	3 ft. Extra bushy. Specimens	♦	4 50	40 00
	3½ ft. Extra bushy. Specimens	♦	6 00	55 00
	4 to 4½ ft. Extra bushy. Specimens. ♦.		\$7.50 to 10 00	
	5 to 6½ ft. Extra bushy ♦.		\$12.50 to 40 00	
sempervirens.	Pyramids. Andorra-grown—			
	2½ ft. Extra bushy. Specimens	♦	3 50	30 00
	3 ft. Extra bushy. Specimens	♦	4 50	40 00
	3½ ft. Extra bushy. Specimens	♦	6 00	55 00
	4 to 4½ ft. Extra bushy. Specimens.		\$7.50 to 10 00	
	5 to 7 ft. Extra bushy. Specimens.		\$12.50 to 25 00	
sempervirens.	“Globe-shaped”—			
	12 in. x 12 in.	♦	1 75	16 50
	15 in. x 15 in.	♦	2 00	18 50
sempervirens.	Standards. Andorra-grown—			
	1½ ft. stems, 10 to 12 in. heads	♦	1 75	16 50
	2 ft. stems, 12 to 15 in. heads	♦	2 00	18 50
	2 ft. stems, 18 to 20 in. heads	♦	4 00	37 50
	2 ft. stems, 22 to 26 in. heads	♦	\$5 to 7 50	
	2½ ft. stems, 26 to 28 in. heads ..	♦	\$7.50 to 15 00	
sempervirens, var. angustifolia.	2 ft.	♦	1 75	16 50
sempervirens, var. arborescens.	Tall Tree Box—			
	2 to 2½ ft.	♦	2 50	22 50
	2½ to 3 ft.	♦	3 50	32 50
	3 to 3½ ft.	♦	5 00	47 50
	4½ to 5 ft.		\$7.50 to 10 00	
sempervirens, var. argentea marginata.	Silver-tipped			
	Box. 1½ to 2 ft.	♦	1 50	13 50
	2 to 2½ ft.	♦	2 50	22 50
sempervirens, var. Handsworthi.	3 to 3½ ft.	♦	4 00	37 50
	4 to 4½ ft.	♦	5 00	42 50
sempervirens, var. myrtifolia.	Myrtle Leaf—			
	2 ft.		1 75	16 50
	2½ ft.		3 50	32 50
	3 to 5 ft.	♦	\$5 to 10 00	
sempervirens, var. salicifolia.	2 ft.		1 75	16 50
	2½ ft.		3 00	27 50
	3 to 3½ ft.		\$4 to 5 00	
sempervirens, var. suffruticosa.	Dwarf Box Edging—			
	3 to 4 in. ♦. per 100.		\$5.00; per 1,000, \$40	75
	4 to 5 in. ♦. per 100.		\$10.00; per 1,000, \$60	25 1 50
	5 to 6 in. ♦. per 100.		\$12.50; per 1,000, \$90	35 2 00
CHAMÆDAPHNE calyculata.	Leather Leaf—			
	1½ to 2 ft. per 100.		\$60.	1 00 8 50
	2 to 2½ ft. per 100.		\$75.	1 50 12 50
COTONEASTER buxifolia.	12 in.		75	6 00
	15 to 18 in.		1 00	8 50
	horizontalis. 1 ft.		75	6 00
	microphylla. 1 ft.		75	6 00

PRICE LIST FOR SPRING OF 1913

17

	Each	10
CRATÆGUS <i>Pyracantha</i> , var. <i>Lelandi</i> . Leland's Evergreen Thorn. 2 ft.	\$1 00	\$7 50
DAPHNE <i>Cneorum</i> . 2-year	75	6 00
EUONYMUS <i>radicans</i> and <i>variegata</i> . See Trailing Plants.		
<i>Japonica</i> . Japan <i>Euonymus</i> . 1½ ft.	75	
<i>Japonica</i> , var. <i>argentea</i> . Silver-leaved—		
15 to 18 in.	75	6 00
<i>Japonica</i> , var. <i>aurea</i> . Golden-leaved. 12 in.	75	6 00
ILEX <i>crenata</i> . Japanese Holly. 1 ft. per 100, \$60..	1 00	8 50
1½ ft.	1 50	12 50
2 ft.	2 50	22 50
2½ ft.	◆ \$3.50 to	5 00
crenata , var. <i>buxifolia</i> . Box-leaved—		
2½ ft. Bushy	◆ 3 50	32 50
3 ft. Bushy	◆ \$5 to	7 50
3½ to 4 ft. Specimens	◆ \$8 to	10 00
crenata , var. <i>Fortunei</i> . Fortune's Holly—		
2 ft.	◆ 2 50	
2½ ft.	◆ \$3.50 to	5 00
3 ft.	◆ \$5 to	7 50
3½ to 5 ft.	◆ \$8 to	15 00
crenata , var. <i>latifolia</i> . Broad-leaved Japanese Holly—		
3 to 3½ ft.	◆ 2 50	
3½ to 4 ft.	◆ 3 50	
4 ft.	◆ \$4 to	7 50
crenata , var. <i>microphylla</i> . Small-leaved Japanese Holly—		
12 to 15 in. Bushy	◆ per 100, \$50..	1 00
15 to 18 in. Bushy	◆ per 100, \$75..	1 25
1½ to 2 ft. Bushy	◆ 1 75	15 00
2 to 2½ ft.	◆ 2 50	22 50
3 to 3½ ft. Heavy specimens	◆ \$5 to	7 50
4 to 5½ ft. Heavy specimens	◆ \$10 to	15 00
KALMIA <i>latifolia</i> . Mountain Laurel—		
1½ ft. Heavy clumps	◆ per 100, \$100..	1 50
2 ft. Heavy clumps	◆ per 100, \$160..	2 00
2½ ft. Heavy clumps	◆ 2 50	22 50
2½ to 3 ft. Heavy clumps	◆ 3 00	28 50
3 to 3½ ft. Heavy clumps	◆ 3 50	32 50
3½ to 4 ft. Heavy clumps	◆ 5 00	47 50
LAURELS. See <i>Cerasus Laurocerasus</i> .		
LEUCOTHOE <i>Catesbæi</i> . Drooping Andromeda—		
12 to 15 in. Clumps	◆ per 100, \$60..	1 00
15 to 18 in. Clumps	◆ per 100, \$75..	1 50
18 to 24 in. Heavy clumps	◆ per 100, \$125..	2 00
2 ft. Extra heavy clumps	◆ 3 50	32 50
MAHONIA <i>Aquifolium</i> . Holly-leaved—		
18 to 24 in.	◆ per 100, \$60..	1 00
24 to 30 in. Heavy	2 00	18 50
<i>Japonica</i> . Japanese Mahonia—		
1½ to 2 ft.	◆ 1 50	12 50
2 to 2½ ft.	◆ 2 50	18 50
2½ to 3 ft.	◆ 3 50	32 50



Rhododendrons at Andorra.

RHODODENDRONS

HYBRID VARIETIES — ANDORRA-GROWN

Our fall offering of Rhododendrons consists of many thousand plants, in fifty varieties, and in a range of sizes from one to five feet. These are acclimated—*Andorra-grown* stock—in the hardest varieties. They are grown in open, unsheltered ground, with northern exposure, and the wind-swept hills of Andorra are not kind to anything of a tender nature, so that you may depend upon Andorra-grown Rhododendrons being of the hardest, and supplied with excellent balls of fibrous roots.

Each 10

RHODODENDRONS, Catawbiense Hybrids Assorted. Our selection of varieties—

15 to 18 in.♦..	per 100, \$90..	\$1 25	\$10 00
1½ to 2 ft.♦..	per 100, \$125..	1 50	13 50
2 to 2½ ft.♦..	per 100, \$150..	2 00	17 50

▶ A large stock of standard varieties, fine, heavy plants, 3 to 5 ft.

Abraham Lincoln. Rosy crimson—			
1½ to 2 ft.	1 75	15 00	
Album elegans. White—			
1½ to 2 ft.	1 75	15 00	
2 to 2½ ft.	2 25	20 00	
3 to 4 ft. Specimens....	\$3.50 to 10 00		
Album grandiflorum. White—			
1½ to 2 ft.	1 75	15 00	
2 to 2½ ft.	2 25	20 00	
Alex. Dancer. Light scarlet—			
2 to 2½ ft.	2 50	22 50	
Anna Parsons. Red. 1½ to 2 ft.	1 75	15 00	
Atrosanguineum. Dark scarlet—			
2 to 2½ ft.	2 50	22 50	
1½ to 2 ft.	2 00	17 50	
Blandyanum. Rosy crimson. 1½ to 2 ft..	1 75	15 00	
2 to 2½ ft.	2 25	20 00	
2½ to 3 ft.	\$3.50 to 7 50		
3 to 4 ft. Specimens....	\$5 to 15 00		

ANDORRA-GROWN

PRICE LIST FOR SPRING OF 1913

19

	Each	10
RHODODENDRONS, Boule de Neige. White. 18 to 20 in....	\$2 00	\$18 50
20 to 24 in.	2 50	22 50
24 to 28 in.	3 50	32 50
Candidissimum. White. 1½ ft.....	1 75	15 00
2 ft.	2 00	17 50
2½ to 3 ft.	\$3.50 to	7 50
Caractacus. Purplish crimson—		
1½ to 2 ft.	1 75	15 00
2 to 2½ ft.	2 25	20 00
2½ to 3 ft. Specimens....	\$3.50 to	7 50
Charles Bagley. Bright red. 1½ to 2 ft..	2 00	17 50
2 to 2½ ft.	2 50	22 50
2½ to 3 ft.	\$3.50 to	7 50
Charles Dickens. Scarlet. 1½ ft.....	2 00	17 50
2 ft.	2 50	22 50
2½ ft.	3 50	
C. S. Sargent. Crimson. 18 to 24 in....	2 50	22 50
Delicatissimum. White. 1½ to 2 ft.....	1 75	15 00
2 ft.	2 25	20 00
2½ ft.	3 00	
Everestianum. Rosy lilac. 15 to 18 in..	1 75	15 00
18 to 20 in.	2 25	20 00
20 to 24 in.	2 50	22 50
2½ to 3 ft.	\$3.50 to	7 50
General Grant. Red. 1½ ft.....	2 00	17 50
2 ft.	2 50	22 50
2½ ft.	3 50	32 50
Giganteum. Rosy crimson. 1½ to 2 ft....	1 75	15 00
2 to 2½ ft.	2 25	20 00
Hannah Felix. Light red. 24 in.	2 50	22 50
Herbert Parsons. Lilac. 18 in.....	1 75	15 00
H. W. Sargent. Scarlet. 1½ ft.....	2 00	17 50
2 ft.	2 50	22 50
H. H. Hunnewell. Dark crimson. 18 in..	2 00	17 50
2 ft.	2 50	22 50
J. Marshall Brooks. Scarlet. 1½ to 2 ft..	1 75	15 00
John Spencer. Rose. 2 ft.....	1 50	13 50
2½ ft.	2 00	17 50
3 ft.	3 50	32 50
Kettledrum. Deep red. 18 in.....	2 50	22 50
24 in.	3 00	27 50
Lady Armstrong. Pale rose. 1½ to 2 ft..	1 75	15 00
2 to 2½ ft.	2 25	20 00
Lady Clermont. Rosy scarlet. 2 to 2½ ft..	2 25	20 00
Lady Gray Egerton. Bluish white. 1½ ft..	2 50	22 50
Luciferum. Clear white. 1½ to 2 ft.....	2 00	17 50
2½ to 4 ft.	\$2.50 to	10 00
Mad. Carvalho. White. 2 to 2½ ft.....	2 25	20 00
Mad. Masson. White. 2 ft.....	2 25	20 00
Mrs. H. Ingersoll. Deep rose-lilac—		
18 in.	2 50	22 50
Mrs. Jno. Clutton. White. 1½ ft.....	1 50	13 50
2 ft.	1 75	15 00
2½ ft.	2 50	22 50
Mrs. Milner. Crimson. 1½ ft.....	1 75	15 00
2 ft.	2 00	17 50

A
N
D
O
R
R
A
I
G
R
O
W
N

ANDORRA NURSERIES

ANDORRA-GROWN

	Each	10
RHODODENDRONS, Old Port. Plum. 1½ ft.....	\$2 00	\$17 50
2 ft.	2 50	22 50
Parson's gloriosum. Blush. 2 ft.....	1 50	12 50
2½ to 3 ft.	3 00	27 50
3½ to 4 ft.	\$5 to 7 50	
Parson's grandiflorum rubrum. Bright pink—		
1½ ft.	2 00	17 50
2 ft.	2 50	22 50
2½ to 3 ft.	\$3.50 to 7 50	
President Lincoln. Crimson. 1½ ft.....	2 00	17 50
2 ft.	2 50	22 50
2½ to 3 ft.	\$3.50 to 5 00	
purpureum crispum. Purple, crimped—		
1½ ft.	1 50	13 50
purpureum elegans. Purple. 1½ to 2 ft..	2 00	17 50
2½ ft.	3 50	32 50
3 to 5 ft.	\$5 to 12 50	
purpureum grandiflorum. Purple—		
2 to 2½ ft.	2 00	17 50
roseum elegans. Good rose. 1½ ft.....	1 50	13 50
2 ft.	2 00	17 50
2½ ft.	3 50	32 50
3 to 5 ft. Specimens....	\$7.50 to 25 00	
roseum superbum. Clear rose. 2 ft.....	2 00	17 50
2½ ft.	3 50	32 50
3 to 3½ ft.	\$5 to 10 00	
Sefton. Dark maroon. 1½ ft.....	2 50	22 50
2 ft.	3 00	28 50

NATIVE VARIETIES—ANDORRA-GROWN

	Each	10
Catawbiense. 1½ to 2 ft.... per 100, \$80..	\$1 25	\$10 00
2 ft. per 100, \$115..	1 75	16 50
2½ ft. per 100, \$175..	2 25	20 00
3 to 5 ft. Specimens	\$5 to 20 00	
maximum. Great Laurel—		
2 to 2½ ft. Nursery grown	2 00	17 50
2½ to 3 ft. Nursery grown	3 50	25 00
3 to 3½ ft. Nursery grown	4 00	37 50
3½ to 4 ft. Nursery grown	5 00	47 50
4 to 5 ft. Nursery grown	7 50	60 00
maximum. Collected. Special Prices on carload lots. Sizes, 2 to 6 ft.		

DWARF VARIETIES—ANDORRA-GROWN

	Each	10
RHODODENDRON Hirsutum. 12 to 15 in.....	\$1 50	\$13 50
imbricata. 15 to 18 in.....	2 50	23 50
myrtifolium. 1½ to 2 ft.....	2 50	20 00
odoratum. Fragrant. 12 to 15 in.....	2 00	17 50
15 to 18 in.	2 50	20 00
punctatum. Dotted. 15 to 18 in.....	1 50	13 50
18 to 24 in.	2 50	20 00
Wilsonianum. 12 to 15 in.....	1 50	13 50
YUCCA filamentosa. Adam's Needle. 3-year.....	35	2 00
Heavy clumps	\$1.50 to 2 50	



Specimen Norway Maples in Wide Rows.

DECIDUOUS TREES

Measurements are given as follows: Height is taken before digging, from the surface of the ground to the top branches, where they round off to form the top; diameter of stem, or caliper, is taken 6 inches above the ground above the collar. Measurements are expressed thus: 10 to 12 ft. (height), $2\frac{1}{2}$ to $2\frac{3}{4}$ in. (caliper).

	Each	10	100
ACER campestris. European Cork Maple—			
7 to 8 ft. Bushy	\$1 50	\$12 50	
8 to 10 ft. Bushy	1 75	15 00	
colchicum, var. rubrum. Red Colchicum Maple—			
14 to 16 ft.; 3 to 6 in. cal..	\$3.50 to 15 00		
dasycarpum. Silver Maple—			
8 to 10 ft.	75	6 00	
10 to 12 ft.; $1\frac{3}{4}$ to 2 in.....	1 50	12 50	
4 to 10 in. Specimens	\$7.50 to 40 00		
A rapid grower for immediate effects.			
dasycarpum, var. Wierii laciniatum. Wier's Cut-leaved Silver Maple—			
7 to 9 ft. Very Stocky.....	♦ 1 50	13 50	
Negundo. Ash-leaved Maple—			
10 to 12 ft.; 2 to $2\frac{1}{2}$ in. Bushy	1 50		
12 to 14 ft.; 3 to 4 in.	\$3.50 to 5 00		
Pennsylvanicum. 5 to 6 ft.....	♦ 1 50		

ACER platanoides.	Norway Maple—	Each	10	100
8 to 10 ft.;	1 to 1½ in.	\$1 00	\$9 00	\$85 00
8 to 10 ft.;	1½ to 1¾ in.	◆ 1 50	13 50	115 00
10 to 12 ft.;	1¾ to 2 in.	◆ 1 75	16 50	140 00
10 to 12 ft.;	2 to 2¼ in.	◆ 2 00	18 50	165 00
12 ft.;	2¼ to 2½ in.	◆ 2 50	22 50	
12 to 14 ft.;	2½ to 2¾ in.	◆ 3 50	30 00	
12 to 14 ft.;	2¾ to 3 in.	◆ 4 00	37 50	
14 to 16 ft.;	3¼ to 3½ in.	◆ 4 50	42 50	
14 to 16 ft.;	3½ to 3¾ in.	◆ 6 00	50 00	
14 to 16 ft.;	3¾ to 4 in.	◆ 7 50	60 00	
14 to 16 ft.;	4 to 5 in.	\$10 to 20 00		
14 to 20 ft.;	5½ to 7 in.	\$25 to 50 00		
platanoides, var. purpurea. Schwedler's Purple				
Maple. 8 to 10 ft.;	1½ in.	1 75	15 00	
8 to 10 ft.;	1¾ to 2 in.	2 50	22 50	
10 to 12 ft.;	2¼ to 2¾ in.	3 50		
12 to 14 ft.;	2¾ to 3 in.	4 00		
14 to 16 ft.;	3¼ to 4 in.	\$6 to 10 00		
16 to 20 ft.;	5 to 10 in.	\$25 to 75 00		
platanoides, var. Reitenbachi. Reitenbach's				
Purple Maple—				
8 to 10 ft.;	2 to 2¼ in.	2 50		
10 to 12 ft.;	2½ to 2¾ in.	3 50		
pseudo-platanus. European Sycamore Maple—				
8 to 10 ft.;	1½ to 1¾ in.	1 50	12 50	
10 to 12 ft.;	2 to 2½ in.	2 00	17 50	
12 to 14 ft.;	2½ to 3 in.	2 50	22 50	
14 to 16 ft.	Specimens	\$5 to 25 00		
pseudo-platanus, var. purpurea. Purple Sycamore Maple—				
8 to 10 ft.;	1½ to 1¾ in.	2 00	17 50	
10 to 12 ft.;	2 to 2½ in.	2 50	22 50	
12 to 16 ft.;	3 to 6 in.	\$7.50 to 35 00		
Broad-headed specimen trees.				
rubrum. Red or Scarlet Maple—				
8 to 10 ft.;	1¾ to 2 in.	1 50	12 50	
10 to 12 ft.;	2 to 2¼ in.	2 00	17 50	
12 to 14 ft.;	2½ to 3½ in.	\$2.50 to 5 00		
saccharinum. Sugar Maple—				
10 to 12 ft.;	1¼ to 1½ in.	1 50	12 50	100 00
10 to 12 ft.;	1½ to 1¾ in.	2 00	17 50	150 00
12 to 14 ft.;	2 to 2¼ in.	2 50	22 50	200 00
12 to 14 ft.;	2¼ to 2½ in.	3 50	32 50	275 00
12 to 14 ft.;	2½ to 3 in.	5 00	45 00	
14 to 16 ft.;	3 to 3¼ in.	\$5 to 7 50		
14 to 16 ft.;	3½ to 6 in.	\$10 to 50 00		
spicatum. Mountain Maple. 2½ to 3 ft....				
		75	5 00	35 00
Tataricum, var. Ginnala. Tartarian Maple—				
3 to 4 ft. Bushy....	FINE	75	6 50	35 00
4 to 5 ft. Bushy....		1 00	9 00	50 00
5 to 6 ft. Bushy....		1 25	10 00	

Most brilliant of the fall coloring trees.
 Superb for mass planting.

JAPANESE MAPLE

	Each	10	100
ACER polymorphum. 3 to 6 ft. Heavy..	\$2.50 to \$5 00		
polymorphum, var. atropurpureum. Blood-leaved Japan Maple. 1½ ft.	◆ 1 50	\$13 50	
2 ft.	◆ 2 00	18 00	
2½ ft.	◆ 3 50	32 50	
3 to 5 ft. Specimens. Bushy and well furnished	\$7.50 to 15 00		
polymorphum, var. atropurpureum dissectum. Weeping Cut-leaf Blood-leaved—			
1½ ft.	◆ 2 50	22 50	
2 to 2½ ft. Specimens....	◆ \$3.50 to 10 00		
Tall standards, 4 to 5 ft. stem and broad heads	\$15 to 25 00		
polymorphum, var. atropurpureum nigrum—			
5 to 8 ft. Specimens	\$20 to 35 00		
polymorphum, var. aureum. Golden Japan Maple. 1½ to 2 ft.	◆ 2 50	22 50	
2 to 3 ft.	◆ \$3.50 to 7 50		
polymorphum, var. dissectum. Cut-leaf Weeping Japan Maple. 1½ ft.	◆ 2 50	22 50	
2 to 2½ ft.	◆ \$3.50 to 7 50		
2½ to 3 ft. by 2½ to 4 ft.	\$7.50 to 15 00		
polymorphum, var. scopendifolium rubrum.			
3 to 5 ft.	\$3.50 to 15 00		
ÆSCULUS Hippocastanum. European Horse-chestnut. 7 to 8 ft.; 2 in.	1 75	15 00	\$135 00
8 to 10 ft.; 2½ in.	2 50	22 50	200 00
10 to 16 ft.; 3 to 7 in.	\$5 to 35 00		
Hippocastanum, var. alba flore pleno. Double White-flowered Horse-Chestnut. 8 to 9 ft.; 1¾ to 2 in.	2 00	18 50	175 00
9 to 10 ft.; 2½ in.	2 75	25 00	225 00
11 to 12 ft.; 3 to 6 in.	\$5 to 25 00		
Hippocastanum, var. Bujotii—			
10 to 12 ft.; 3 to 3½ in.	◆ \$5 to 7 50		
Hippocastanum, var. rubicunda. Red-flowered Horse-chestnut—			
10 ft.; 2¼ to 2½ in.	3 00	27 50	
10 ft.; 2½ to 2¾ in.	3 50	32 50	
12 ft.; 3 to 4 in.	◆ \$5 to 15 00		
parviflora. See <i>Shrubs.</i>			
AILANTHUS glandulosa. Tree of Heaven—			
8 to 10 ft.; 1½ to 2 in.	1 00	8 50	50 00
10 to 12 ft.; 2 to 2½ in.	1 25	10 00	65 00
ALNUS glutinosa. European, or Black Alder—			
8 to 10 ft.; 1½ to 2 in.	1 00	5 00	35 00
10 to 12 ft.; 2 to 2½ in.	1 50	12 50	75 00
incana. 10 to 12 ft.; 2 to 2½ in.	1 50	10 00	75 00
incana, var. laciniata. 8 to 9 ft.	1 50	12 50	
AMELANCHIER Canadensis. Shad Bush—			
2 to 3 ft.	50	3 50	25 00
10 to 12 ft.	1 50	12 50	

ANDROMEDA. See *Oxydendron*.

ARALIA. Chinese Angelica Tree—

elata , var. foliis argentea marginata .		
8 to 10 ft.....	\$1 50	
Japonica . 4 to 5 ft.....	50	\$4 00
5 to 6 ft.....	75	6 00
10 to 12 ft.....	2 50	

pentaphylla. See *Acanthopanax spinosa*—

spinosa . 3 to 4 ft.....	50	4 00
---------------------------------	----	------

BETULA alba. European White Weeping Birch—

6 to 8 ft.....	1 00	7 50
8 to 10 ft.....	1 50	10 00
10 to 12 ft.; 1½ to 2 in.....	2 50	
12 to 14 ft.; 2 to 2½ in.....	3 50	

alba, var. **laciniata pendula.** Weeping Cut-leaved White Birch. 6 to 7 ft... 1 50

lenta. Sweet Birch. 6 to 7 ft.....	1 00	
8 to 10 ft.....	1 00	7 50

lutea. Yellow Birch—

8 ft.; 2 in.....	1 50	12 50
12 to 14 ft.; 2½ to 3 in.....	2 00	15 00

papyrifera. Paper, or Canoe Birch—

7 to 8 ft.....	1 25	8 50
----------------	------	------

nigra; syn., **rubra.** Red Birch. 7 to 8 ft... 1 00 8 50

8 to 10 ft.....	1 50	13 50	\$85 00
10 to 12 ft.; 2½ to 3 in.....	2 50	22 50	150 00

BROUSSONETIA papyrifera. Paper Mulberry—

8 to 10 ft.....	1 50	
-----------------	------	--

CARAGANA. (Siberian Pea Tree.) Standards in varieties. 4 to 5 ft.....♦ 2 50 20 00

CARPINUS Americana; syn., **Caroliniana.** American Hornbeam—

6 to 7 ft. Bushy.....	2 00	13 50	
7 to 9 ft. Bushy.....	2 50	20 00	
9 to 10 ft. Bushy.....	3 50	27 50	150 00

Betulus. European Hornbeam—

5 to 6 ft. Bushy.....	1 50	13 50
6 to 7 ft. Bushy.....	2 00	18 50
8 to 10 ft. Bushy.....	3 50	30 00

CARYA alba. (Hickory.) 1½ to 2 ft..... 75 5 00

tomentosa. 2½ to 3 ft.....	75	5 00
4 to 5 ft.....	1 00	7 50

CASTANEA Japonica. Japan Chestnut. 4 to 5 ft.. 1 00 7 50

vesca. Spanish Chestnut. 4 to 5 ft.. 1 00 7 50

CATALPA bignonioides. 14 to 16 ft.; 3½ in..... 3 50

Bungei. Bunge's Catalpa. Standards—

7 ft.....	\$3.50 to 5 00
-----------	----------------

speciosa. Western Catalpa. 8 to 10 ft... 1 00 8 50

CEDRELA Sinensis. Chinese Cedrela—

8 to 10 ft.....♦	1 50	10 00
------------------	------	-------

PRICE LIST FOR SPRING OF 1913

	Each	10	100
CELTIS occidentalis. Nettle Tree. 7 to 8 ft.....	1 25	\$10 00	\$75 00
9 to 10 ft.	1 50	12 50	90 00
10 to 12 ft.	2 00	17 50	
CERASUS Padus. European Bird Cherry—			
6 to 8 ft.	1 00	6 50	
serotina. Wild Black Cherry—			
14 to 16 ft.	2 00		
Avium, var. alba plena. Double White-flowering Cherry. 3 to 4 ft....	1 00		
Avium, var. rosea plena. Double Pink-flowering Cherry. 3 to 4 ft....	1 00		
Avium, var. rosea pendula. Pink Weeping Japan Cherry. 4 to 5 ft.....	2 50		
Sieboldi, var. rubra plena. 3½ to 4 ft....	1 50		
CERCIS Canadensis. Red Bud, American Judas—			
2 to 3 ft.	35	3 00	20 00
3 to 4 ft.	50	4 00	
4 to 5 ft.	75	6 00	
5 to 6 ft.	1 00	7 50	
6 to 7 ft.	1 50	10 00	
Japonica. See <i>Shrubs.</i>			
CERCIDIPHYLLUM Japonicum. 3½ to 4 ft.....	1 00	8 50	
5 to 6 ft.	1 50	12 50	100 00
7 to 8 ft. Specimens ...	3 00	27 50	
8 to 9 ft. Specimens ...	3 50	32 50	
CLADRASTIS tinctoria (<i>Virgilia lutea</i>). Yellow Wood. 6 to 8 ft.....	1 50	13 50	100 00
8 to 10 ft.	2 00	17 50	150 00
10 to 14 ft.	\$2.50 to 3 50		
CORNUS. See, also, <i>Shrubs.</i>			
florida. White Dogwood—			
3½ to 4 ft.; very fine	1 00	7 50	
4 to 5 ft.; very fine	1 25	10 00	60 00
5 to 6 ft.; very fine	1 50	12 50	75 00
6 to 7 ft.; very fine	1 75	15 00	125 00
7 to 8 ft.; very fine	2 50	22 50	
8 to 10 ft.; very fine	3 00	27 50	
florida, var. flore rubro. Red-flowered Dogwood. 2½ to 3 ft.....	1 75	15 00	
3 to 4 ft.	2 50	20 00	
4 to 5 ft. Bushy	3 00		
5 to 6 ft. Bushy	3 50		
One of the most beautiful of ornamental trees.			
florida, var. pendula. Weeping Dogwood—			
7 to 10 ft. Rare	\$5 to 10 00		
CRATÆGUS Carrieri. 4 to 5 ft.....	1 00	7 50	
5 to 6 ft.	1 25	10 00	
6 to 7 ft.	1 50	12 50	
7 to 8 ft.	2 50	22 50	
coccinea. 3 to 4 ft.....	1 00		
4 to 5 ft.	1 50		
cordata. Washington Thorn—			
3 to 4 ft.	1 00	8 50	
4 to 5 ft.	1 50	12 50	
5 to 6 ft.	2 50		

CRATÆGUS Crus-galli.	Cockspur Thorn—	Each	10	100
	2 to 3 ft.	\$0 50	\$4 00	\$35 00
	3 to 4 ft.	75	6 00	50 00
	4 to 5 ft.	1 00	8 50	
	Excellent for hedging.			
Oxyacantha.	English Hawthorn—			
	4 to 6 ft.	1 00	8 50	
Oxyacantha,	var. alba flore pleno.			
	Double White Hawthorn—			
	4 to 5 ft.	1 00	8 50	
	5 to 6 ft.	1 50	12 50	
Oxyacantha,	var. coccinea flore pleno.			
	Paul's Double Scarlet—			
	4 to 5 ft.	1 00	9 00	
	8 ft. Standards	3 50	30 00	
	10 ft. Standards	5 00		
	12 to 14 ft. Standards	12 50		
Oxyacantha,	var. rosea flore pleno.			
	Double Pink Hawthorn—			
	4 to 5 ft.	1 50		
CYTISUS Laburnum pendula.	Weeping Golden Chain—			
	7 to 8 ft. Specimen	\$3.50 to 7 50		
DIOSPYROS Virginica.	Persimmon. 1½ to 2 ft....	50	4 00	
FAGUS ferruginea.	American Beech—			
	3 ft.	1 50	13 50	
	4 ft.	2 00	18 50	
sylvatica.	European Beech. 3 to 4 ft....	1 50	12 50	
	4 to 5 ft.	2 00	17 50	
	5 to 6 ft.	2 50	22 50	
	6 to 7 ft.	3 50	32 50	
	7 to 8 ft.	3 50	32 50	
	9 to 12 ft. Specimens	\$10 to 15 00		
sylvatica,	var. asplenifolia. Fern-like Beech—			
	3 to 4 ft.	1 50		
	4 to 5 ft.	2 50		
sylvatica,	var. pendula. Weeping Beech—			
	4 to 5 ft.	3 50		
	6 to 7 ft.	5 00		
	14 to 16 ft. Specimens	\$25 to 50 00		
	All recently transplanted.			
sylvatica,	var. purpurea. Purple Beech—			
	4 to 5 ft.	1 50	12 50	
	5 to 6 ft.	2 50	22 50	
	6 to 7 ft.	3 50	32 50	
	7 to 8 ft.	\$5 to 7 50		
	9 to 10 ft.	\$7.50 to 10 00		
	11 to 12 ft.	\$10 to 25 00		
	12 to 18 ft. Specimens	\$15 to 75 00		
sylvatica,	var. purpurpea pendula. Weeping Purple Beech—			
	5½ to 6 ft.	3 50		
sylvatica,	var. purpurea major. Large leaf—			
	6 to 7 ft.	3 50		
	7 to 8 ft.	\$5 to \$7.50		
sylvatica,	var. Riversi. Rivers' Blood-leaved Beech. 3 to 4 ft.	2 50		
	7 to 8 ft.	\$5 to 7 50		
	8 to 12 ft.	\$7.50 to 15 00		



An Avenue of Sweet Gums (Liquidambar), at Andorra.

	Each	10	100
FRAXINUS Americana. White Ash. 8 to 10 ft....	\$1 25	\$10 00	
10 to 12 ft.; 1½ to 2 in.	1 50	12 50	\$100 00
12 to 14 ft.; 2½ to 2¾ in.	2 50	22 50	
14 to 16 ft.; 2¾ to 3 in.	3 00		
14 to 16 ft.; 3 to 4 in.	\$4 to 5 00		
excelsior. European Ash—			
6 to 8 ft.	1 00		
8 to 10 ft.	1 50		
viridis. Green Ash. 6 to 8 ft.....	75	4 00	30 00
GLEDITSCHIA aquatica. Water Locust. 7 to 8 ft..	1 00	8 50	
8 to 10 ft.	1 50	12 50	
triacanthos. Honey Locust—			
7 to 8 ft.	1 00	8 50	
8 to 10 ft.	1 25	10 00	
10 to 12 ft.	1 50	12 50	
GLYPTOSTROBUS. See <i>Taxodium</i> .			
GYMNOCLADUS Canadensis. Kentucky Coffee Tree			
8 to 10 ft.	1 50	12 50	
10 to 12 ft.	2 00	17 50	
12 to 14 ft.	2 50		
JUGLANS nigra. Black Walnut. 4 to 5 ft.....	1 00	7 50	
regia. English Walnut—			
8 to 10 ft.; 1½ to 2 in.	2 50		
10 to 12 ft.; 2 to 2½ in.	3 50		
KÆLREUTERIA paniculata. Varnish Tree—			
6 to 8 ft.	2 00	18 50	
8 to 10 ft.	3 00	25 00	
10 to 12 ft. Heavy	\$4 to 5 00		

	Each	10	100
LARIX Europæa. European Larch, 6 to 8 ft....	\$1 25	\$10 00	
8 to 10 ft.	1 50	13 50	\$85 00
10 to 12 ft.	2 50	22 50	
leptolepis. Japanese Larch, 5 to 7 ft...	1 50	12 50	
14 to 16 ft.	3 00	27 50	
LIQUIDAMBAR. Sweet Gum, 6 to 7 ft. Fine....	1 50	12 50	85 00
7 to 8 ft.; 2½ in. Fine....	2 50	22 50	
8 to 9 ft.; 2½ to 2¾ in. Fine....	3 50	32 50	
10 to 12 ft.; 3 to 3½ in.	4 00		
LIRIODENDRON Tulipifera. Tulip Tree, 7 to 8 ft..	1 00	7 50	60 00
8 to 9 ft.	1 50	10 00	90 00
10 to 12 ft.	1 75	16 50	150 00
MAGNOLIA. Native Sorts—			
acuminata. Cucumber Tree—			
5 to 6 ft.	1 00	7 50	
glauca. Sweet or Swamp Magnolia—			
2 to 2½ ft.	1 50		
grandiflora. Evergreen Magnolia—			
2 to 2½ ft.	2 50		
macrophylla. Great-leaved Magnolia—			
2½ to 3 ft.	3 50		
5 to 6 ft.	5 00		
tripetala. Umbrella Tree, 6 to 8 ft..	1 25	9 00	
8 to 10 ft.	1 50	12 50	100 00
10 to 12 ft.	2 00		
Chinese Sorts—			
alba superba. White—			
3 to 3½ ft.	2 50		
Alexandriana. 4 to 5 ft.	3 50		
5 to 6 ft.	7 50		
8 to 10 ft.	10 00		
conspicua. White—			
3½ to 4 ft.	3 50		
5 to 6 ft.	5 00	45 00	
7 to 8 ft.	\$7.50 to 10 00		
Kobus. 2 to 2½ ft.	1 50		
3 to 5 ft.	\$3.50 to 4 50		
Lennel Hybrid. Lenne's Magnolia—			
3½ to 4 ft.	3 50	32 50	
5 to 6 ft.	\$5 to 7 50		
7 to 9 ft. Specimens	15 00		
Norbertiana Hybrid. Norbert's Magnolia—			
3 to 4 ft.	3 50		
5 to 6 ft.	\$5 to 7 50		
purpurea; syn., obovata. Purple Magnolia—			
4 to 5 ft.	2 50		
5 to 6 ft.	3 50		
Soulangeana Hybrid. Soulange's Magnolia—			
3 to 4 ft.	3 50	32 50	
4 to 5 ft. Imported	3 50	32 50	
speciosa. 4½ to 5 ft.	\$3.50 to 5 00		
stellata; syn., Halleana. Hall's Japanese Magnolia, 1½ ft.	1 50	13 50	
2 ft.	2 50	22 50	
2½ ft.	3 50	32 50	
3 to 4 ft.	\$5 to 15 00		





An Avenue of "Andorra-grown" Oriental Planes. (See page 30).

	Each	10
MORUS alba. White Mulberry. 5 to 6 ft.....	\$1 00	\$6 00
alba, var. Tatarica alba. White Russian. 7 to 8 ft..	1 00	
alba, var. Tatarica rubra. Red Russian. 6 ft.....	1 00	
alba, var. Tatarica pendula. Teas' Weeping Mulberry. 5 to 5½ ft.; 3-yr. heads.....	3 50	32 50
NEGUNDO. See <i>Acer</i> .		
NYSSA sylvatica. Sour Gum. 3 to 4 ft.....	1 00	9 00
4 to 5 ft.	1 50	13 50
OXYDENDRUM arboreum; syn., Andromeda arborea. Sorrel		
Tree. 2 to 3 ft.	1 00	9 00
3 to 4 ft.	1 50	13 50
4 to 5 ft.	2 00	18 50
5 to 6 ft.	2 50	22 50
6 to 7 ft.	3 00	
7 to 8 ft.	3 50	
PARROTIA Persica. Persian Iron Tree. 4 to 5 ft.....	1 50	13 50
5 to 6 ft.	2 50	22 50
6 to 7 ft.	3 50	32 50
PAULOWNIA Imperialis. Empress Tree. 2½ to 3 ft.....	1 50	13 50
PERSICA vulgaris, var. alba plena. Double White-flowering Peach. 4 to 5 ft.	1 00	7 50
vulgaris, var. sanguinea plena. Double Red-flowering Peach. 4 to 5 ft.	1 00	7 50

	Each	10	100
PLATANUS occidentalis. American Buttonwood—			
8 to 10 ft.	\$1 00	\$8 50	
10 to 12 ft.; 1 $\frac{1}{4}$ to 2 in.	1 50	12 50	
orientalis. Oriental Plane, or European			
Buttonwood. 6 to 8 ft.	1 00	7 50	\$50 00
8 to 10 ft.; 1 $\frac{1}{4}$ to 1 $\frac{3}{4}$ in.	1 25	10 00	85 00
10 to 12 ft.; 1 $\frac{3}{4}$ to 1 $\frac{3}{4}$ in.	1 50	12 50	115 00
10 to 12 ft.; 1 $\frac{3}{4}$ to 2 in.	1 75	16 00	150 00
10 to 12 ft.; 2 to 2 $\frac{1}{4}$ in.	2 50	22 50	200 00
12 to 14 ft.; 2 $\frac{1}{2}$ to 3 in.	3 50	32 50	300 00
14 ft.; 3 to 4 in. Specimens.	\$5 to 10 00		
POPULUS alba, var. Bolleana. Bolle's Poplar—			
10 to 12 ft.	1 75	16 50	
12 to 14 ft.	2 50	22 50	
monilifera; syn., Carolinensis. Carolina			
Poplar. 8 to 10 ft.	1 00	7 50	60 00
10 to 12 ft.	1 50	10 00	
12 to 14 ft.	1 75	15 00	100 00
nigra, var. fastigiata. Lombardy Poplar—			
10 to 12 ft.; 1 $\frac{1}{2}$ to 1 $\frac{3}{4}$ in.	1 25	10 00	90 00
12 to 14 ft.; 2 to 2 $\frac{1}{4}$ in.	1 50	13 50	125 00
12 to 14 ft.; 2 $\frac{1}{2}$ in.	2 50	18 50	150 00
14 to 16 ft.; 3 to 3 $\frac{1}{4}$ in.	3 50	32 50	300 00
PRUNUS. See, also, <i>Cerasus.</i>			
Pissardii. Purple Plum. 4 to 5 ft.	1 00		
triloba. Flowering Plum. 2 to 2 $\frac{1}{2}$ ft.	50	3 50	
PTELEA trifoliata. Hop Tree. 5 to 6 ft.	35	3 00	25 00
6 to 7 ft.	50	4 50	35 00
PTEROSTYRAX hispidum (<i>Halesia hispida</i>).			
10 to 12 ft.	1 50	12 50	
PYRUS. See, also, <i>Shrubs.</i>			
baccata. Siberian Flowering Crab Apple—			
5 to 6 ft. Specimens.	3 50	32 50	
coronaria. Sweet-scented Crab—			
2 $\frac{1}{2}$ to 3 ft.	1 00	7 50	
floribunda. Flowering Crab. 5 to 6 ft.	3 50	32 50	
floribunda, var. atrosanguinea. 5 to 6 ft.	3 50	32 50	
laensis, var. Bechtel. Bechtel's Double			
flowering Crab. 3 $\frac{1}{2}$ to 4 ft.	1 75	16 50	
Parkmani; syn., Halliana. Parkman's Crab—			
3 to 3 $\frac{1}{2}$ ft.	1 00		
Scheideckeri (Double-flowered)—			
5 to 6 ft. "Specimens"	3 50	32 50	
Toringo (Dwarf Crab). 5 to 6 ft.	3 50	32 50	
QUERCUS alba. White Oak. 6 to 7 ft.	2 00		
7 to 8 ft.; 1 $\frac{3}{4}$ to 2 in.	2 50	22 50	
8 to 10 ft.; 2 to 2 $\frac{1}{4}$ in.	3 50		
10 to 14 ft.; 2 $\frac{1}{2}$ to 3 in.	\$3.50 to 7 50		
bicolor. Swamp White Oak—			
8 to 9 ft.; 1 $\frac{3}{4}$ to 2 in.	2 50		
10 to 12 ft.; 2 $\frac{1}{2}$ to 2 $\frac{3}{4}$ in.	3 50		
12 to 14 ft.; 3 to 3 $\frac{1}{2}$ in.	\$5 to 7 50		
12 to 16 ft.; 3 $\frac{3}{4}$ to 5 in.	\$10 to 25 00		
Cerris. Turkey Oak—			
6 to 8 ft.; 2 $\frac{1}{2}$ to 3 $\frac{1}{2}$ in.	\$3.50 to 5 00		

PRICE LIST FOR SPRING OF 1913

	Each	10	100
QUERCUS coccinea. Scarlet Oak. 6 to 7 ft.....	\$1 50	\$13 50	
8 to 8 ft.	2 00	18 50	
8 to 9 ft.; 1 $\frac{3}{4}$ to 2 in.	2 50	22 50	
9 to 10 ft.; 2 to 2 $\frac{1}{4}$ in.	3 50	30 00	
10 to 12 ft.; 2 $\frac{1}{2}$ to 2 $\frac{3}{4}$ in. ...	\$5 to 7 50		
12 to 14 ft.; 3 to 4 in. ...	\$10 to 15 00		
macrocarpa. Mossy Cup Oak—			
8 to 9 ft.; 1 $\frac{1}{2}$ to 1 $\frac{3}{4}$ in.	2 00		
10 to 12 ft.; 2 to 2 $\frac{1}{2}$ in.	2 50		
palustris. Pin Oak—			
6 to 7 ft. Low-branched	1 50	13 50	
7 to 8 ft.; 1 $\frac{1}{2}$ to 1 $\frac{3}{4}$ in. Low-branched	2 00	17 50	
8 to 9 ft.; 1 $\frac{3}{4}$ to 2 in. Low-branched	2 50	22 50	
10 to 12 ft.; 2 to 2 $\frac{1}{4}$ in. Low-branched	3 00	28 50	
10 to 12 ft.; 2 $\frac{1}{2}$ to 2 $\frac{3}{4}$ in. Low-branched	3 50	32 50	
3 to 3 $\frac{1}{2}$ in.	\$5 to 10 00		
Excellent for street planting.			
 Extra heavy specimens. 4 to 8 in., well-rooted and good tops.	\$15.00 to 50 00		
pedunculata, var. Concordia. Golden Oak—			
8 to 10 ft.....	\$3.50 to 5 00		
Prinus. Rock Chestnut Oak. 7 to 8 ft..	1 25		
8 to 10 ft.	1 50		
10 to 12 ft.; 1 $\frac{1}{2}$ to 2 in.	2 00	18 50	
10 to 12 ft.; 2 $\frac{1}{4}$ to 2 $\frac{1}{2}$ in.	2 50	22 50	
12 to 14 ft.; 3 to 3 $\frac{1}{2}$ in...	\$3.50 to 5 00		
Robur. English Oak—			
8 to 10 ft.; 2 to 2 $\frac{1}{4}$ in.	1 50	12 50	
10 to 12 ft.; 2 $\frac{1}{2}$ to 3 in.	2 50	20 00	
12 to 14 ft.; 3 to 3 $\frac{1}{2}$ in.	3 50	32 50	
3 $\frac{1}{2}$ to 4 $\frac{1}{2}$ in. cal. Specimens..	\$5 to 15 00		
Robur, var. fastigiata. Pyramidal English Oak. 10 to 12 ft.....	3 50		
12 to 14 ft.....	5 00		
rubra. Red Oak. 7 to 8 ft.....	1 25	10 00	\$90 00
8 to 10 ft.; 1 $\frac{1}{2}$ to 1 $\frac{3}{4}$ in.	2 00	17 50	
10 to 12 ft.; 2 to 2 $\frac{1}{4}$ in.	3 00	28 50	
 12 to 14 ft.; 2 $\frac{3}{4}$ to 3 in...	\$5.00 to 7 50		
14 to 16 ft.; 3 $\frac{1}{4}$ to 4 in...	\$10 to 25 00		
velutina, var. tinctoria. Black Oak—			
6 to 8 ft.	1 25		
8 to 10 ft.; 1 $\frac{3}{4}$ to 2 in.	1 75	15 00	
10 to 12 ft.; 2 to 2 $\frac{1}{4}$ in.	2 00	18 50	
12 to 14 ft.; 2 $\frac{1}{2}$ to 2 $\frac{3}{4}$ in.	2 50	22 50	
3 to 3 $\frac{1}{2}$ in. Specimens ...	\$3.50 to 7 50		
RHUS glabra. Smooth Sumac. 4 to 5 ft.....	50	4 00	35 00
5 to 6 ft.	75	6 00	50 00
7 to 8 ft.	1 00	8 50	75 00
glabra, var. laciniata. Cut-leaved Sumac—			
2 $\frac{1}{2}$ to 3 ft.	75	5 00	40 00
3 to 4 ft.	1 00	7 50	60 00
Osbecki. 4 to 5 ft.....	75	4 00	
5 to 6 ft.	1 00	8 50	

	Each	10	100
RHUS typhina. Staghorn Sumac. 3 to 3½ ft.....	\$0 35	\$3 00	\$25 00
5 to 6 ft.	50	4 00	
6 to 8 ft.	1 00	8 50	
typhina, var. laciniata. (Cut-leaved)—			
2 to 2½ ft.....	50	4 00	35 00
ROBINIA Pseudacacia. Black Locust. 6 to 8 ft...	75	6 00	50 00
8 to 10 ft.	1 00	8 50	60 00
SALISBURIA adiantifolia. Ginkgo, or Maidenhair			
Tree. 7 to 8 ft.	1 25	10 00	
8 to 9 ft.; 1¾ to 2 in.	1 50	12 50	
10 to 12 ft.; 2 to 2¼ in.	1 75	16 50	150 00
12 to 14 ft.; 2¼ to 2½ in.	2 50	22 50	
12 to 14 ft.; 2½ to 3 in.	3 50	32 50	
SALIX alba. White Willow. 6 to 8 ft.....	1 00	6 50	
10 to 12 ft.	1 50	12 50	
Babylonica. Weeping Willow. 8 to 10 ft..	1 00	8 50	
10 to 12 ft.	1 50	12 50	
12 to 14 ft.	2 00		
caprea. Pussy Willow. 7 to 8 ft.....	1 00	7 50	
8 to 10 ft.	1 50	12 50	60 00
incana. Rosemary Willow. 4 to 5 ft.....	50	4 50	35 00
5 to 6 ft.	1 00	6 50	50 00
lutea. Golden Willow. 6 to 7 ft.....	1 00	6 50	40 00
lutea, var. pendula. Golden Weeping—			
7 to 8 ft.	1 50	10 00	75 00
pentandra. Laurel Leaf Willow. 6 to 7 ft.♦..	1 00	7 50	50 00
7 to 8 ft.♦..	1 50	12 50	75 00
vitellina, var. Britzensis. Salmon-barked			
Willow. 8 to 10 ft.	1 50	10 00	
Wentworth. 10 to 12 ft.....	1 50	12 50	
12 to 14 ft.	2 00	17 50	
SASSAFRAS officinale (Sassafras). 5 to 6 ft... 1 00 5 00			
SOPHORA Japonica, var. pendula. Weeping			
Sophora. 6 to 8 ft..\$3.50 to 7 50			
SORBUS Americana. American Mountain Ash—			
7 to 8 ft.	1 50		
aucuparia. European Mountain Ash—			
7 to 8 ft.	1 50	10 00	
10 to 12 ft.	2 00	12 50	
aucuparia, var. quercifolia. Oak-leaved			
Mountain Ash. 6 to 7 ft.	1 50		
TAXODIUM distichum. Deciduous Cypress—			
3 to 4 ft.♦..	1 00	8 50	
5 to 6 ft.♦..	1 50	12 50	
TILIA Americana. American Linden or Bass-			
wood—			
7 to 9 ft.; 1½ to 2 in.	1 50	12 50	100 00
8 to 10 ft.; 2 to 2¼ in.	2 00	17 50	150 00
10 to 12 ft.; 2¼ to 2½ in.	2 50	22 50	175 00
10 to 12 ft.; 2½ to 3 ft.	\$3 to 4 00		
12 to 14 ft.; 3¼ to 4 in. ..♦..	\$5 to 10 00		

PRICE LIST FOR SPRING OF 1913

33

	Each	10
TILIA argentea; syn., tomentosa. Silver-leaved Linden—		
8 to 10 ft.; 2 to 2 $\frac{1}{4}$ in.	\$2 50	\$22 50
10 to 12 ft.; 2 $\frac{1}{2}$ to 2 $\frac{3}{4}$ in.	3 50	32 50
10 to 12 ft.; 2 $\frac{3}{4}$ to 3 in. Specimens.....	5 00	40 00
12 to 14 ft.; 3 $\frac{1}{4}$ to 4 in. Specimens....	\$6 to 10 00	
platyphyllos. Large-leaved Linden—		
7 to 8 ft.; 1 $\frac{3}{4}$ to 2 in.	1 50	12 50
vulgaris; syn., Europæa. European Linden—		
8 to 10 ft.; 2 to 2 $\frac{1}{4}$ in.per 100, \$150..	1 75	16 50
10 to 12 ft.; 2 $\frac{1}{2}$ to 2 $\frac{3}{4}$ in.per 100, \$200..	2 50	22 50
12 to 16 ft.; 3 to 4 in. Specimens....	\$4 to 10 00	
These specimens are an unusual lot of strictly perfect trees.		
vulgaris, var. pyramidalis laciniata. Pyramidal Cut-leaf. 12 to 14 ft.; 3 in.....	3 50	32 50
ULMUS Americana. American Elm—		
8 to 10 ft.; 1 $\frac{1}{4}$ to 1 $\frac{1}{2}$ in.per 100, \$90..	1 25	10 00
10 to 12 ft.; 1 $\frac{1}{2}$ to 2 in.per 100, \$125..	1 50	13 50
12 to 14 ft.; 2 to 2 $\frac{1}{4}$ in. ..per 100, \$160..	2 00	17 50
12 to 14 ft.; 2 $\frac{1}{4}$ to 2 $\frac{1}{2}$ in. ..per 100, \$200..	2 50	22 50
12 to 14 ft.; 2 $\frac{3}{4}$ to 2 $\frac{3}{4}$ in.	3 00	27 50
12 to 14 ft.; 2 $\frac{3}{4}$ to 3 in.	3 50	32 50
14 to 15 ft.; 3 to 6 in. Specimens....	\$5 to 25 00	
campestris. English Elm. 8 to 10 ft.; 2 to 2 $\frac{1}{4}$ in.	1 50	13 50
10 to 12 ft.; 2 $\frac{1}{2}$ to 2 $\frac{3}{4}$ in.	2 75	25 00
12 to 14 ft.; 2 $\frac{3}{4}$ to 3 in.	3 50	32 50
Specimens. 3 to 4 in.....	\$5 to 10 00	
campestris, var. latifolia; syn., major. Broad-leaved English Elm—		
12 to 14 ft.; 2 $\frac{1}{2}$ to 2 $\frac{3}{4}$ in.	2 75	
12 to 14 ft.; 2 $\frac{3}{4}$ to 3 in.	3 50	
16 to 18 ft.; 3 to 5 in.	\$5 to 15 00	
campestris, var. Wheatley's (Cornish) Elm—		
6 to 8 ft.	1 50	12 50
8 to 10 ft.	2 00	15 00
12 to 14 ft.	2 50	22 50
14 to 16 ft.	3 50	32 50
scabra; syn., Dampieri; fastigiate form—		
12 to 14 ft.; 3 in.	3 50	32 50
scabra; var. Huntingdoni. Huntingdon Elm—		
12 to 14 ft.; 3 to 3 $\frac{1}{4}$ in.	3 50	32 50
14 to 16 ft.; 3 $\frac{1}{4}$ to 3 $\frac{1}{2}$ in.	4 50	42 50
14 to 16 ft.; 3 $\frac{1}{2}$ to 5 in.	\$5 to 15 00	
scabra, var. pendula. Camperdown Elm—		
6 ft.	1 50	
scabra, var. purpurea. Purple Wych Elm—		
10 to 12 ft.; 2 to 2 $\frac{1}{4}$ in.	2 00	17 50
12 to 14 ft.; 3 to 3 $\frac{1}{2}$ in.	3 50	32 50



Partial View of Nursery Grounds from Top of Main Nursery.

AZALEAS, ANDORRA-GROWN

		Each	10	100
AZALEA	arborescens. Fragrant White Azalea—			
	12 to 15 in. Bushy clumps	\$1 00	\$9 00	\$80 00
	15 to 18 in. Bushy clumps	1 50	13 50	125 00
	1½ to 2 ft. Bushy clumps	2 00	18 50	150 00
	2 to 2½ ft. Bushy clumps	2 50	22 50	175 00
	2½ to 3 ft. Bushy clumps	3 50	30 00	250 00
	calendulacea. Flame Azalea. 12 to 15 in..	1 00	9 00	80 00
	15 to 18 in. Bushy clumps	1 50	13 50	125 00
	18 to 24 in. Bushy clumps	1 75	15 00	135 00
	2 to 2½ ft. Bushy clumps	2 50	22 50	200 00
	2½ to 3 ft. Bushy clumps.	\$3.50 to 5 00		
	Canadensis (Rhodora). 1 ft. Bushy....	1 00	8 50	75 00
	1½ to 2 ft. Bushy	1 50	13 50	110 00
	mollis. 1½ ft. Named sorts.....	1 25	10 00	90 00
	2 ft. Bushy. Named sorts	1 50	13 50	125 00
	2½ ft. Bushy. Named sorts	2 00	17 50	
	nudiflora. 12 to 15 in.....	1 00	9 00	
	15 to 18 in. Clumps	1 50	13 50	115 00
	1½ ft. Bushy clumps	1 75	15 00	125 00
	2 ft. Bushy clumps	2 50	20 00	175 00
	Pontica (Ghent). 1½ ft. Named sorts....	1 25	10 00	90 00
	2 ft. Bushy. Named sorts.....	1 50	12 50	120 00
	2½ to 3 ft. Bushy	2 50	22 50	
	3 to 3½ ft. Bushy	\$2.50 to 3 50		
	Vaseyi. Southern Azalea. 12 to 15 in..	1 00	9 00	
	15 to 18 in.	1 50	13 50	
	1½ ft. Bushy clumps	2 00	18 50	150 00
	2 ft. Bushy clumps	2 50	22 50	200 00
	viscosa. White Azalea—			
	15 to 18 in. Bushy clumps	1 50	13 50	115 00
	1½ ft. Bushy clumps	2 00	18 50	150 00
	2 ft. Bushy clumps	2 50	22 50	175 00
	Yodogama. 15 to 18 in.....	1 75	15 00	
	24 in.	2 50	20 00	

DECIDUOUS SHRUBS

	Each	10	100
ABELIA rupestris. 1 ft.....	\$0 50	\$4 50	
ACANTHOPANAX spinosa (<i>Aralia pentaphylla</i>)—			
2½ to 3 ft.	25	2 00	\$20 00
4 to 5 ft.	35	3 00	25 00
ÆSCULUS parviflora ; syn., <i>Pavia macrostachya</i> —			
2 ft.◆	1 00	8 50	60 00
2½ ft.◆	1 25	10 00	85 00
3 ft.◆	2 00	17 50	150 00
ALTHEA. See <i>Hibiscus</i> .			
AMELANCHIER Botryapium. 2 to 2½ ft.....	35	3 00	25 00
AMORPHA canescens. 2 to 2½ ft.....	35	2 50	15 00
<i>fruticosa.</i> 4½ to 5 ft.....	35	3 00	20 00
AMYGDALUS (Almond). See <i>Prunus</i> .			
BACCHARIS halimifolia. Groundsel Shrub—			
3 to 3½ ft.....	50	3 50	25 00
BENZOIN odoriferum. Spice Bush. 2 to 2½ ft....	35	3 00	20 00
3 to 3½ ft.	50	4 00	30 00
3½ to 4 ft.	75	6 00	35 00
4 to 5 ft.	1 00	7 50	
BERBERIS (Barberry). <i>Dulcis.</i> 1 ft.....	50	4 00	35 00
<i>ilicifolia.</i> Holly-leaved. 2 to 2½ ft....	35	3 00	27 50
2½ to 3 ft.	50	4 00	35 00
3 to 3½ ft.	75	6 00	40 00
<i>Sieboldi.</i> 3½ to 4 ft. Heavy.....◆	75	6 50	
<i>Thunbergii.</i> 12 to 15 in.....	25	1 75	12 50
15 to 18 in.	35	2 50	15 00
1½ ft.; broad and very heavy ...	50	3 50	20 00
2 ft.; broad and very heavy ...	60	4 50	35 00
2½ ft.; broad and very heavy ...	75	6 00	50 00
3 to 3½ ft.; broad and very heavy. 1	1 00	9 00	75 00
<i>vulgaris.</i> Common Barberry—			
2½ to 3 ft.	50	3 50	25 00
3 to 3½ ft.	60	5 00	30 00
<i>vulgaris</i> , var. <i>Amurensis.</i> 2 to 2½ ft....	75	6 00	
<i>vulgaris</i> , var. <i>purpurea.</i> 2½ to 3 ft....	35	3 00	17 50
3 to 3½ ft.	50	3 50	25 00
3½ to 4 ft.	60	4 00	30 00
4 to 5 ft.	75	6 00	35 00
CALLICARPA purpurea. Beauty Fruit—			
3 to 4 ft.....	75	6 00	40 00
CALYCANTHUS floridus. Allspice, or Sweet Shrub—			
2 to 2½ ft.....	50	4 00	30 00
3 to 3½ ft.....	75	6 00	35 00
CARAGANA arborescens. Siberian Pea—			
4 to 5 ft.....	75	6 00	40 00

	Each	- 10	100
CEANOTHUS Americanus. Jersey Tea. 1½ ft.....	\$0 25	\$2 00	
CEPHALANTHUS occidentalis —			
2½ to 3 ft.	35	2 50	
3½ to 4 ft.	50	3 00	\$25 00
4 to 5 ft.	75	4 00	30 00
CERCIS. See, also, <i>Deciduous Trees.</i>			
Japanica. Japan Judas—			
2 to 2½ ft.	50	4 00	35 00
2½ to 3 ft.	75	6 00	50 00
CHIONANTHUS Virginica. White Fringe—			
2½ to 3 ft. Bushy	50		
3 to 4 ft. Bushy	75	7 00	50 00
4 to 5 ft. Bushy	1 00	8 50	60 00
5 to 6 ft.	1 25	10 00	75 00
7 to 8 ft.	1 75	15 00	
CLETHRA alnifolia. Sweet Pepperbush. 1½ to 2 ft..			
2 to 2½ ft.	35	2 50	20 00
2½ to 3 ft. Broad and bushy....	50	3 50	25 00
	75	5 00	35 00
COLUTEA arborescens. Bladder Senna—			
2 to 2½ ft.	35	3 00	20 00
5 to 6 ft.	50	4 00	25 00
COMPTONIA asplenifolia. Sweet Fern. 2 to 2½ ft,			
	35	3 00	
CORCHORUS Japonicus. Single Globe Flower—			
18 to 24 in.	35	2 50	15 00
3 to 4 ft.	50	4 00	20 00
Japonicus, fl. pl. (Double Kerria) —			
2 to 2½ ft.	50	4 00	20 00
Japonicus, var. variegata. (Variegated Leaves). 2 ft.			
	50	4 00	20 00
CORNUS. See, also, <i>Trees.</i>			
alba. Siberian Red-twigged Dogwood—			
1½ to 2 ft.	25	2 00	
2½ to 3 ft.; very heavy	35	3 00	20 00
3 to 3½ ft.; very heavy	50	4 00	25 00
3½ to 4 ft.; very heavy	75	6 00	30 00
4 to 5 ft.; very heavy	1 00	7 50	
alba; syn., Siberica, var. aurea variegata —			
2 to 2½ ft.	50		
alba, var. elegantissima. Golden-leaved—			
2 to 2½ ft.	50		
2½ to 3 ft.	75		
alternifolia. 4 to 5 ft.			
	50	4 00	
5 to 6 ft.	75	5 00	
6 to 7 ft.	1 00	6 00	
Kousa (Benthamia Japonica) —			
2 to 2½ ft.	1 50	12 50	
3½ to 4 ft.	2 00	18 50	
Mas. Cornelian Cherry. 2½ to 3 ft.			
	50		
4½ to 5 ft.; very heavy	75	6 00	35 00
5 to 6 ft.	1 00	7 50	50 00
6 to 10 ft. Specimens.	\$1.50 to 2 50		

PRICE LIST FOR SPRING OF 1913

37

	Each	10	100
CORNUS paniculata. 3 to 3½ ft.....	\$0 50	\$4 00	\$35 00
4 to 5 ft.	75	5 00	45 00
5 to 6 ft.	1 00	7 50	60 00
sanguinea. European Osier Dogwood—			
2 to 2½ ft. Heavy	25	2 00	15 00
4 to 5 ft. Heavy	50	4 00	30 00
5 to 6 ft. Heavy	75	5 00	35 00
sericea. Silky Dogwood. 2 to 2½ ft....	35	3 00	
3½ to 4 ft.	50	4 00	
4 to 5 ft.	75	6 00	35 00
6 to 7 ft.	1 00	7 50	40 00
stolonifera. Native Red Osier—			
2½ to 3 ft.	35	3 00	
3 to 3½ ft.	50	4 00	25 00
3½ to 4 ft.	60	5 00	30 00
4 to 5 ft.	75	6 00	35 00
6 to 7 ft.	1 00	7 50	40 00
stolonifera, var. aurea. Golden-barked—			
2 to 2½ ft.	35	3 00	20 00
2½ to 3 ft.	50	3 50	25 00
3 to 3½ ft.	75	5 00	35 00
3½ to 4 ft.	1 00	6 00	50 00
CORYLUS Americana. American Hazel—			
18 to 24 in.	50		
Avellana, var. laciniata. Cut-leaved Hazel—			
2 to 2½ ft.	50		
maxima, var. purpurea. Purple Hazel—			
2½ to 3 ft.	35	3 00	
3 to 3½ ft.	50	4 50	30 00
4 to 5 ft.	75	6 00	40 00
5½ to 6 ft.	1 00		
COTONEASTER Frigida. 1½ to 2 ft.....	35	3 00	25 00
CRATÆGUS. See <i>Trees.</i>			
CYDONIA Japonica. Japan Quince. 1½ ft.....	50	3 00	
DESMODIUM penduliflorum. See <i>Lespedeza Sieboldi.</i>			
DEUTZIA candidissima (Double White). 2½ to 3 ft.	35	3 00	20 00
3½ to 4 ft.	50	4 00	30 00
4 to 5 ft.	75	6 00	40 00
5 to 6 ft.	1 00		
crenata. 2½ to 3 ft.....	35	3 00	
crenata, var. Pride of Rochester—			
3 to 4 ft.	50	3 50	
4 to 5 ft.	75	5 00	40 00
crenata, var. rosea plena (Double Pink)—			
3 to 3½ ft.	35	3 00	25 00
5 to 6 ft.	75	5 00	
crenata, var. Waterer. 2 to 3 ft.....	35	3 00	20 00
3 to 4 ft.	50	4 00	25 00
6 to 7 ft.	75	6 00	50 00
crenata, var. Wellsi. 4 to 5 ft.....	50	3 00	25 00
5 to 6 ft.	75	5 00	35 00
gracilis. Dwarf Deutzia—			
1 ft.	50	3 00	20 00
1½ ft.	75	4 00	25 00
gracilis, var. carminea. 1½ ft.....	50	4 00	25 00
2 ft.	75	5 00	30 00

	Each	10	100
DEUTZIA <i>gracilis</i> , var. <i>rosea</i> . 18 to 24 in.	\$0 75	\$6 00	\$35 00
<i>Lemoinei</i> . 2 to 2½ ft.; very heavy.	35	3 00	20 00
3 to 3½ ft.; heavy.	50	4 00	30 00
3½ to 4 ft.	75	5 00	35 00
4 to 5 ft.	1 00	7 50	40 00
<i>Lemoinei</i> , var. <i>compacta</i> . 2 to 2½ ft.	35	3 00	20 00
3 to 3½ ft.	50	4 00	25 00
<i>parviflora</i> . 2½ to 3 ft.	50		
<i>scabra</i> . 2 to 3 ft.	35	3 00	20 00
3 to 4 ft.	50	4 00	25 00
5 to 6 ft.	75	6 00	
DIERVILLA (<i>Weigela</i>) <i>florida</i> , var. <i>amabilis</i> —			
3 to 4 ft.	50	3 50	
<i>florida</i> ; syn., <i>rosea</i> . 2 to 3 ft.	50	4 00	25 00
4 to 5 ft.	75	5 00	
<i>florida</i> , var. <i>candida</i> . 2 to 3 ft.	35	3 00	
3 to 4 ft.	50	4 00	
<i>florida nana</i> , var. <i>aurea variegata</i> —			
2 to 3 ft.	50		
3 to 4 ft.	75	6 00	
<i>florida</i> , var. <i>Sieboldi alba</i> . 4 to 5 ft.	75		
<i>floribunda Lavalleyi</i> . 2 to 2½ ft.	35	3 00	25 00
5 to 6 ft.	50		
<i>Japonica</i> (syn., <i>hortensis</i>), var. <i>floribunda</i> . 2 to 3 ft.	50	4 00	
<i>Japonica</i> , var. <i>Eva Rathke</i> . 2 to 2½ ft. ♦. . .	35	3 00	20 00
2½ to 3 ft. ♦. . .	50	3 50	25 00
3 to 4 ft. ♦. . .	75	5 00	30 00
<i>Japonica</i> , var. <i>nivea</i> . White. 2 to 3 ft. . .	50	4 00	
3 to 4 ft.	75	5 00	
<i>Japonica</i> , var. <i>rubra</i> . 2 to 3 ft.	35	3 00	20 00
3 to 4 ft.	50	4 00	
<i>Grœnewegeni</i> . 2 to 3 ft.	50	4 00	30 00
4 to 5 ft.	75	6 00	
<i>Grœnewegeni</i> , var. <i>Mad. Contourier</i> . (Hybrid). 2 to 3 ft.	35	3 00	
4 to 5 ft.	50	4 00	
<i>Grœnewegeni</i> , var. <i>Steltzneri</i> . 2 to 3 ft. . .	35	3 00	
3 to 4 ft.	60	5 00	
5 to 6 ft.	75		
<i>Grœnewegeni</i> , var. <i>Van Houttei</i> —			
2½ to 3 ft.	35	3 00	
3 to 4 ft.	50	4 00	
5 to 6 ft.	75	6 00	
<i>Verschaffelti</i> . 2½ to 3 ft.	35	3 00	20 00
3 to 4 ft.	50	4 00	25 00
4 to 5 ft.	75	6 00	
<i>sessilifolia</i> . 2½ to 3 ft.	25	2 00	
3 to 3½ ft.	50	3 50	
4 to 5 ft.	75	5 00	
<i>trifida</i> . 1½ to 2 ft.	35	2 00	15 00
2 to 2½ ft.	35	3 00	20 00
2½ to 3 ft.	50	4 00	

PRICE LIST FOR SPRING OF 1913

39

	Each	10	100
ELÆAGNUS angustifolia. Oleaster. 4 to 5 ft.....	\$0 50	\$4 00	
5 to 6 ft.	75	6 00	
longipes; syn., edulis. Japanese Oleaster. 4 to 5 ft. Bushy	75	5 00	\$30 00
5 to 6 ft. Bushy	1 00	8 50	40 00
6 to 7 ft.	1 25	10 00	
parvifolia. 6 to 7 ft.....	1 00	7 50	
EUONYMUS alatus. Cork-barked. 2½ to 3 ft...♦	1 50	13 50	
3 to 3½ ft.♦	2 00	18 50	
3½ to 4 ft.♦	2 50	22 50	
4 to 5 ft.♦	3 00	27 50	
5 to 6 ft.♦	3 50	32 50	
☛ One of the most ornamental of flowering and fruiting shrubs.			
Americana. Strawberry Bush—			
2 to 3 ft.	35	3 00	
3 to 4 ft.	50	3 50	
Europæus. Spindle Tree. 3 to 4 ft...	35	2 50	15 00
EXOCHORDA grandiflora. Pearl Bush. 2 to 3 ft..	50	3 50	
4 to 5 ft.	75	4 00	
6 to 8 ft.; with ball	1 50	12 50	
FORSYTHIA (Golden Bell) Fortunei. 3 to 4 ft.....	35	3 00	20 00
4 to 5 ft.; very heavy	50	3 50	25 00
5 to 6 ft.; very heavy	75	4 00	30 00
6 to 7 ft.; very heavy	1 00	5 00	35 00
Fortunei, var. aurea variegata. 4 to 5 ft.	75	6 00	50 00
intermedia. 2 to 3 ft.....	25	2 00	15 00
3 to 4 ft.; very heavy	35	3 00	20 00
4 to 5 ft.	50	4 50	30 00
5 to 6 ft.	75	6 00	35 00
suspensa. 2 to 3 ft.....	25	2 00	15 00
3 to 4 ft.	50	4 00	
4 to 5 ft.	75	6 00	
5 to 7 ft.; very heavy	1 00	7 50	
viridissima. 2 to 3 ft.....	25	2 00	15 00
☛ 3 to 4 ft.; very heavy; extra ...	35	3 00	25 00
4 to 5 ft.; very heavy; extra ...	50	4 00	30 00
5 to 6 ft.; very heavy; extra ...	75	6 00	50 00
HALESIA tetraptera. 5 to 6 ft.....	75	6 00	
HAMAMELIS Japonica. Japanese Witch Hazel—			
2 to 2½ ft.♦	1 00	8 50	75 00
2½ to 3 ft.♦	1 50	12 50	100 00
Virginiana. Witch Hazel. 4 to 5 ft.	50	4 00	
5 to 6 ft.; heavy	75	6 00	50 00
6 to 7 ft.; heavy	1 00	7 50	60 00
HIBISCUS Syriacus. Althæa; Rose of Sharon—			
atropurpurea plena. 5 to 6 ft.....	75	5 00	35 00
Boule de Feu. 5 to 6 ft.....	75	5 00	
cœrulea plena. 5 to 6 ft.....	75	5 00	
Comte de Flandre. 4 to 5 ft.....	50	4 00	
5 to 6 ft.	75	5 00	
grandiflora superba. 4 to 5 ft.....	50	4 00	30 00
Jeanne d'Arc. 3 to 4 ft.....	50	4 00	25 00
4 to 5 ft.	75	5 00	40 00
5 to 6 ft.	1 00	6 00	50 00
Lady Stanley. 4 to 5 ft.....	50	4 00	
5 to 6 ft.	75	6 00	

Each 10 100

HIBISCUS purpureus folis argenta marginata—			
4 to 5 ft.	\$0 35	\$3 00	\$20 00
5 to 6 ft.	50	4 00	30 00
totalbus. 3 to 3½ ft.	50	4 00	25 00
3½ to 4 ft.	75	5 00	30 00
violacea (semi-plena). 5 to 6 ft.	75	6 00	40 00
HIPPOPHAE rhamnoides. See <i>Buckthorn</i> .			
2½ to 3 ft.	50	2 50	20 00
HYDRANGEA arborescens. 2 to 2½ ft.			
2½ to 3 ft.	35	3 00	
2½ to 3 ft.	50	3 50	25 00
arborescens, var. grandiflora—			
3 to 4 ft.	50	4 50	35 00
Hortensis, var. Imperatrice Eugenie—			
1½ ft.; 4-in. pot	75		
Hortensis, var. Otaska. 3-year.			
	75		
Hortensis, var. Japonica. 1 ft.			
	75		
paniculata. 2 to 2½ ft.			
4 to 5 ft.	35	3 00	
4 to 5 ft.	50	4 00	
paniculata grandiflora. 3 to 3½ ft.			
3½ to 4 ft.	50	4 00	25 00
3½ to 4 ft.	75	6 00	35 00
4 to 4½ ft.; extra heavy	1 00	7 50	
4½ to 5 ft.; extra heavy	1 50	12 50	60 00
quercifolia. Oak-leaved—			
2 to 2½ ft.	75	6 00	
3 to 3½ ft.	1 00	7 50	
HYPERICUM aureum. 2½ to 3 ft.			
3 to 4 ft.	35	3 00	20 00
3 to 4 ft.	50	4 00	25 00
calcium. Aaron's Beard. 1 ft.			
	50		
hircinum. 1½ to 2 ft.			
	50	3 50	20 00
Moserianum hybridum. Gold-Flower—			
15 to 18 in.	50	2 50	20 00
patulum. 12 to 15 in.			
	35		
prolificum. 15 to 18 in.			
	50		
ILEX Sieboldi. Red-fruited. 2½ to 3 ft. ♦			
	2 50	22 50	
Sieboldi. White-fruited. 2 to 2½ ft. ♦			
	2 50	22 50	
verticillata. Winter Berry. 1½ to 2 ft.			
	25	2 00	
2 to 2½ ft.	35	3 00	25 00
2½ to 3 ft.	50	4 00	35 00
ITEA Virginica. 1½ to 2 ft.			
	35	3 00	20 00
2 to 2½ ft.	50	3 50	25 00
JASMINUM nudiflorum. Yellow Jasmine—			
1½ ft.	50	3 50	
KERRIA. See <i>Corchorus</i> .			
LESPEDEZA bicolor. 4 to 5 ft.			
5 to 6 ft.	35	2 50	
5 to 6 ft.	50	3 50	
Sieboldi; syn., Desmodium Japonicum—			
Heavy clumps	35	3 00	
Sieboldi, var. alba. Heavy clumps.			
	50		
LIGUSTRUM Amurense. Amoor Privet. 2 to 2½ ft.			
2½ to 3 ft.	35	3 00	15 00
2½ to 3 ft.	50	4 00	20 00
ciliatum. Sold by many for <i>Ibota</i> —			
3 to 3½ ft. Broad and heavy.	50	3 50	15 00
3½ to 4 ft. Broad and heavy.	60	4 00	20 00
4 to 5 ft. Broad and heavy.	75	5 00	25 00
5 to 6 ft. Broad and heavy.	1 00	7 50	30 00

PRICE LIST FOR SPRING OF 1913

	Each	10	100
LIGUSTRUM Ibot. The true upright form—			
2 to 2½ ft.	\$0 25	\$2 00	\$10 00
2½ to 3 ft.	35	3 00	12 50
3 to 3½ ft.	50	3 50	15 00
4 to 5 ft.; heavy	60	4 00	20 00
5 to 6 ft.	75	6 00	35 00
6 to 7 ft.	1 00	8 50	60 00
Ibota, var. Regelianum. Regel's—			
1½ to 2 ft.; heavy	35	3 00	20 00
2½ to 3 ft.; heavy	50	3 50	25 00
3 to 4 ft.	75	5 00	30 00
4 to 5 ft.	1 00	7 50	35 00
media. 2½ to 3 ft.	50	3 50	20 00
ovalifolium. California Privet—			
2 to 2½ ft.; bushy	1000, \$35	25	1 00
2½ to 3 ft.; bushy	{ 1000, \$50	35	1 50
3 to 3½ ft.; bushy	{ 1000, \$60	50	2 50
3½ to 4 ft.; bushy	{ 1000, \$75	60	4 00
4 to 5 ft.; bushy	75	5 00	25 00
5 to 6 ft.; bushy	1 00		
ovalifolium, var. aureum. Golden Privet—			
2½ to 3 ft.	75	6 00	
Grand stock. Transplanted Privet, extra heavy. Will give immediate hedge.			
Sinensis. Chinese Privet. 2½ to 3 ft..	50		
3½ to 4 ft.	75		
vulgaris. Common Privet. 2 to 3 ft..	35	2 50	15 00
3 to 4 ft.	50	3 00	25 00
4 to 5 ft.	75	4 00	30 00
LONICERA fragrantissima. Chinese Fragrant Bush Honeysuckle. 2 to 3 ft.	25	2 25	20 00
3 to 4 ft.	35	3 25	30 00
4 to 5 ft.; heavy	59	4 50	40 00
5 to 6 ft.; heavy	75	6 00	50 00



A Portion of the Propagating Grounds at Andorra.

	Each	10	100
LONICERA Morrowi. Japanese Bush Honeysuckle—			
3 to 4 ft.	\$0 50	\$3 00	\$25 00
4 to 5 ft.	75	5 00	35 00
5 to 6 ft.	1 00	6 00	40 00
Ruprechtiana. 2 to 3 ft.	35	3 00	20 00
3 to 4 ft.	50	3 50	25 00
4 to 5 ft.	75	5 00	35 00
Standishi. Standish's Honeysuckle—			
2 to 2½ ft.♦	75	6 00	
Tatarica. Mixed sorts. 3½ to 4 ft.	35	2 50	
5 to 6 ft.	50	3 00	25 00
6 to 8 ft.; heavy	75	5 00	30 00
Tatarica (rubra). 3 to 4 ft.	50	3 50	
4 to 5 ft.	75	5 00	
Tatarica, var. alba. 2½ to 3 ft.	35	3 00	
3 to 4 ft.	50	3 50	
4 to 5 ft.; heavy	75	6 00	
5 to 6 ft.	1 00	7 50	
Tatarica, var. bella albida. 2 to 3 ft.	35	3 00	25 00
3 to 4 ft.	50	4 00	
4 to 5 ft.	75	5 00	
5 to 6 ft.	1 00	7 50	
Tatarica, var. gracilis. 2 to 3 ft.	35	3 00	25 00
3 to 4 ft.	75	6 00	
5 to 6 ft.	1 00	7 50	
Tatarica, var. Chrysanthera. 4 to 5 ft.	50	3 50	30 00
5 to 6 ft.	75	5 00	40 00
Tatarica, var. splendens. 2 to 3 ft.	35	3 00	20 00
4 to 5 ft.	50	4 00	35 00
5 to 6 ft.	1 00	7 50	50 00
LYCIUM Chinense. Matrimony Vine. 2 to 2½ ft.	35	2 50	15 00
MYRICA cerifera. Wax Myrtle. 12 to 15 in.	50	4 00	35 00
15 to 18 in. Bushy.	75	6 00	40 00
PAVIA parviflora. See <i>Æsculus</i> , under Shrubs.			
PHILADELPHUS coronarius. Mock Orange—			
2 to 3 ft.	35	3 00	15 00
3 to 4 ft.	50	4 00	25 00
5 to 6 ft.	75	6 00	35 00
coronarius, var. aureus. Golden Mock Orange. 1½ to 2 ft.	50	4 00	
coronarius, var. Avalanche—			
3 to 4 ft.	75	6 00	
coronarius, var. primulae florus—			
2½ to 3 ft.	50	4 00	
grandiflorus. 3 to 4 ft.	35	3 00	25 00
4 to 5 ft.	50	4 00	30 00
5 to 6 ft.	75	5 00	35 00
6 to 8 ft.	1 00	7 50	
Lemoinei. (Hybrid.) 3 to 4 ft.	50	4 00	30 00
Lemoinei, var. erectus. 2 to 3 ft.	35	3 00	20 00
3 to 4 ft.	50	4 00	25 00
4 to 5 ft.	75	5 00	30 00
Mt. Blanc. 1½ to 2 ft.	35	3 00	20 00
3 to 4 ft.	75	5 00	35 00
Zeyheri, var. speciosissimus—			
2½ to 3 ft.	35	3 00	20 00
3 to 4 ft.	50	4 00	25 00
5 to 6 ft.	75	6 00	35 00

PRICE LIST FOR SPRING OF 1913

43

	Each	10	100
POTENTILLA fruticosa. Shrubby Cinquefoil—			
2 to 2½ ft.	\$0 35	\$3 00	\$20 00
3 to 3½ ft.	50	3 50	25 00
3½ to 4 ft.	75	4 00	30 00
PRUNUS amygdalus communis. Flowering Almond—			
1½ to 2 ft.	75	5 00	
amygdalus communis, var. rosea—			
1½ to 2 ft.	75	5 00	
PYRUS arbutifolia. Chokeberry. 3 to 4 ft.	50	3 50	
arbutifolia, var. brilliantissima. 2 to 3 ft. ..	50	3 50	25 00
3 to 4 ft.	75	5 00	35 00
floribunda, var. nigra. 3 to 3½ ft.	35	3 00	20 00
3½ to 4 ft.	50	3 50	25 00
RHAMNUS cathartica. Buckthorn. 3 to 4 ft.	35	3 00	
4 to 5 ft.	50	3 50	
6 to 8 ft.	75	5 00	40 00
RHODOTYPUS kerrioides. White Kerria—			
2½ to 3 ft.	35	3 00	20 00
3½ to 4 ft.	50	4 00	25 00
4 to 5 ft. Very heavy	75	6 00	
RHUS aromatica. Fragrant Sumac. 1½ to 2 ft.	25	2 00	15 00
2½ to 3 ft.	50	4 00	25 00
3 to 3½ ft.	75	5 00	
copallina. Shining Sumac. 2 to 3 ft.	35	3 00	25 00
3 to 4 ft.	50	4 00	30 00
4 to 5 ft.	75	6 00	40 00
6 to 7 ft.	1 00	8 50	
Cotinus. Mist, or Smoke Tree. 3 to 4 ft.	35	3 00	
4 to 5 ft.	50	4 00	30 00
5 to 6 ft.	75		
6 to 8 ft.	1 00		
Cotinus, var. atropurpurea. Purple Mist—			
2 to 3 ft.	50		
3 to 4 ft.	75		
4 to 5 ft.	1 00		
RIBES aureum. Golden Currant. 3 to 4.	50	3 50	
Gordonianum. 3 to 3½ ft.	35	3 00	25 00
ROBINIA hispida. Rose Acacia. 2 to 2½ ft.	35	2 50	20 00
RUBUS Canadensis. 2 to 3 ft.	35		
odoratus. 2 to 3 ft.	25	2 00	
SAMBUCUS Canadensis. 2 to 3 ft.	35	3 00	20 00
Melanocarpus. 3 to 4 ft.	75	6 00	
5 to 6 ft.	1 00	7 50	
nigra, var. aurea. Golden Elder—			
2 to 3 ft.	35	3 00	20 00
3 to 4 ft. Very heavy	50	4 00	25 00
5 to 6 ft. Very heavy	75	5 00	40 00
nigra, var. laciniata. Cut-leaved Elder—			
1½ to 2 ft.	35		
2 to 3 ft.	50		
racemosa. Red-fruited—			
2 to 2½ ft.	50		
3 to 4 ft.	75	6 00	
4 to 5 ft.	1 00	8 50	50 00

	Each	10	100
SPIRÆA arguta. 2 to 3 ft.....	\$0 35	\$2 50	\$20 00
4 to 5 ft. Heavy.....	50		
Billardii. 3 to 4 ft.....	35	3 00	
4 to 5 ft.....	50	3 50	25 00
Bumalda. 2 ft.....	35	3 00	
2½ ft. Heavy	50	4 00	
3 ft.	75	6 00	
Bumalda, var. Anthony Waterer—			
12 to 18 in.	35	2 50	15 00
18 to 24 in. Heavy	50	4 00	
2½ to 3 ft. Heavy	75		
callosa. Fortune's Spirea. 2 to 3 ft....	35	3 00	
callosa, var. alba. 2 to 3 ft.....	35	3 00	20 00
Hyb. Margarite. 3 to 3½ ft.....	35	3 00	25 00
3½ to 4 ft.....	50	4 00	30 00
Japonica, var. Fortunei rosea. 2 to 3 ft..	50	3 50	
Lindleyana. 3 to 4 ft.....	50	4 00	25 00
opulifolia. 3 to 4 ft.....	35	3 00	
4 to 5 ft.	50	4 00	25 00
5 to 6 ft. Heavy	75	6 00	35 00
6 to 7 ft.	1 00	8 50	50 00
opulifolia, var. aurea. Golden-leaved—			
2 to 3 ft.	35	3 00	20 00
4 to 5 ft.	50	4 00	
6 to 7 ft. Heavy	75	6 00	
prunifolia flore pleno. Bridal Wreath—			
3 to 4 ft.	50	3 00	25 00
Reevesiana. 2 to 3 ft.	35	3 00	20 00
3 to 4 ft.	50	4 00	25 00
4 to 5 ft.	75	6 00	35 00
salisifolia. 2 to 3 ft.....	35	2 50	20 00
3 to 4 ft.	50	3 50	25 00
Sorbifolia. 2½ to 3 ft.	50	3 50	
Thunbergii. Thunberg's Spirea—			
1½ to 2 ft.	35	3 00	20 00
2½ to 3 ft. Very heavy	50	3 50	
3 to 3½ ft. Very heavy	75	4 00	
Van Houttei. 2½ to 3 ft.....	35		
3 to 3½ ft.	50	4 00	
4 to 5 ft.	75	5 00	35 00
5 to 6 ft.	1 00	8 50	50 00
6 to 7 ft.	1 50	12 50	75 00
STAPHYLEA Bumalda. 3 to 3½ ft.....	50	4 00	
STEPHANANDRA flexuosa. 2 to 2½ ft.....	35	3 00	20 00
2½ to 3 ft. Heavy	50	4 00	25 00
4 to 5 ft. Heavy	75	6 00	40 00
STYRAX Japonica. 4 to 5 ft.....	75	6 00	
5 to 6 ft.....	1 00	7 50	50 00

PRICE LIST FOR SPRING OF 1913

45

	Each	10	100
SYMPHORICARPUS racemosus. Snowberry—			
2 to 2½ ft.	\$0 35	\$2 50	\$20 00
3 to 3½ ft.	75	5 00	
vulgaris. Coral Berry—			
2 to 3 ft.	35	3 00	12 50
3 to 3½ ft.	50	4 00	15 00
3½ to 4 ft. Heavy	75	6 00	20 00
4 to 5 ft. Heavy	1 00	7 00	25 00
SYRINGA Chinensis; syn. Rothomagensis. Rouen			
Lilac. 2 to 2½ ft.	35	3 00	20 00
3 to 4 ft.	50	4 00	25 00
Japonica. 6 to 7 ft.	1 50	12 50	
Josikæa. 2 to 2½ ft.	50	4 00	
3 to 4 ft.	1 00	7 50	
Josikæa, var. H. Zabel. 3 to 4 ft.	1 50		
Persica. 3 to 4 ft.	50		
Persica, var. alba. 3 to 4 ft.	75	6 00	30 00
villosa. 3 to 3½ ft.	50	4 00	
4 to 5 ft. Specimens.	1 00	7 50	
villosa, var. Emodi. 2 to 2½ ft.	50	4 00	30 00
vulgaris. Common Lilac. 1½ to 2 ft.	35	3 00	25 00
3 to 3½ ft.	50	4 00	35 00
4 to 5 ft.	75	6 00	40 00
5 to 6 ft.	♦ \$1.50 to 3 50		
vulgaris alba. 2 to 2½ ft.	50	4 00	35 00
3 to 3½ ft.	75	6 00	40 00
4 to 6 ft.	♦ \$1.00 to 2 50		
vulgaris, named varieties—			
alba grandiflora (Single, white)—			
3 to 4 ft.	75		
Charles X. Single, reddish purple—			
2 to 2½ ft.	50	3 50	
3 to 3½ ft.	75	6 00	
4 to 4½ ft.	1 25	10 00	
La Tour d'Auvergne. Double, violet-purple. 4 to 5 ft.	1 50		
Mad. Lemoine. Double, White—			
3 to 4 ft.	1 00		
Marie LeGraye. Single, white—			
2½ to 3 ft.	75	6 00	
3 to 3½ ft.	1 00	8 50	
4 to 4½ ft.	1 50	12 50	
Marc Micheli. Double, lilac-blue—			
4 to 5 ft.	1 50		
Michael Buchner. Double, pale lilac—			
3 to 4 ft.	1 00		
4 to 5 ft.	1 50		
President Carnot. Double, light lilac—			
4 to 5 ft.	1 50		
President Grevy. Double, blue—			
3 to 4 ft.	1 00		
President Loubet. Double, reddish carmine. 3 to 4 ft.	1 00		
Rubra de Marley. Single, reddish purple—			
2 to 2½ ft.	50	4 00	30 00
4 to 4½ ft.	1 00	7 50	
5 to 6 ft.	2 50		

	Each	10	100
SYRINGA Souvenir de Ludwig Spæth. Single red—			
3 to 3½ ft.	\$0 50		
3½ to 4 ft.	75		
4 to 4½ ft.	1 00		
Verschaffelti. Single Dark Red. 4 to 5 ft.	2 00		
TAMARIX Africana; syn., parviflora —			
4 to 5 ft.	50	\$4 00	
5 to 6 ft.	75	5 00	
Gallica. 2 to 3 ft.	35	3 00	
3 to 4 ft.	50	4 00	
Gallica, var. Indica. 4 to 5 ft.	75	5 00	
Japonica plumosa. 3 to 4 ft.	50	4 00	
VACCINIUM corymbosum. Swamp Huckleberry—			
1½ to 2 ft.	75	7 00	60 00
2 to 2½ ft.	1 00	9 00	85 00
VIBURNUM acerifolium. 1½ to 2 ft.	35	3 00	25 00
2 to 2½ ft.	50	4 00	35 00
2½ to 3 ft.	75	6 00	50 00
cassanoides. White Rod. 2 to 2½ ft. ♦ ..	50	4 50	35 00
3 to 3½ ft. Very heavy ♦ ..	75	6 00	50 00
4 to 4½ ft. Very heavy ..	1 00	7 50	
dentatum. Arrow-wood. 3½ to 4 ft.	75	6 00	
4 to 5 ft.; heavy ..	1 00	8 50	40 00
5 to 6 ft.; heavy ..	1 25	10 00	60 00
6 to 7 ft.; heavy ..	1 50	12 50	80 00
dilatatum. Japan Bush Cranberry—			
1½ to 2 ft.	75	5 00	
2½ to 4 ft.	1 00	7 50	
Lantana. Wayfaring Tree—			
3½ to 4 ft.	50	4 00	35 00
4 to 5 ft.; heavy ..	75	6 00	50 00
5 to 6 ft.; very heavy ..	1 00	8 50	
Lentago. Sheep-berry. 2 to 3 ft.	50	4 00	30 00
4 to 5 ft.	75	6 00	
5 to 6 ft.	1 00	8 50	
7 to 8 ft.	1 50	12 50	
molle. 3 to 4 ft.	50	4 00	
4 to 5 ft.	75	6 00	
5 to 6 ft.	1 00	8 50	75 00
6 to 7 ft.	1 50	12 50	100 00
Opulus. High Cranberry Bush—			
2 to 2½ ft.	50	3 50	30 00
3 to 4 ft. Fine ..	60	4 00	35 00
4 to 5 ft. Fine ..	75	6 00	50 00
5 to 6 ft. Fine ..	1 00	8 50	75 00
6 to 7 ft.	1 25	10 00	90 00
Opulus, var. sterile. Guelder Rose—			
3 to 3½ ft.	50	4 00	
4 to 5 ft.	75	6 00	40 00
5 to 6 ft.	1 00	7 50	50 00
plicatum. Japanese Snowball—			
2 to 3 ft.	50	4 00	35 00
3 to 4 ft.	75	5 00	40 00

PRICE LIST FOR SPRING OF 1913

47

	Each	10	100
VIBURNUM plicatum , var. tomentosum . Single Japan			
Snowball. 2½ to 3 ft.....	\$0 35	\$3 00	\$25 00
3 to 3½ ft.	50	4 00	35 00
4 to 5 ft.; extra fine	75	5 00	45 00
5 to 6 ft. Specimens. Fine....	1 00		
7 to 8 ft. Specimens. Fine....	2 50		
A beautiful shrub, deserving extensive planting.			
prunifolium . Black Haw—			
3 to 3½ ft.	75	7 00	60 00
3½ to 4 ft.	1 00	9 00	85 00
4 to 6 ft.	\$1.50 to \$3 50		
Sieboldi . 3½ to 4 ft.	1 00	8 50	65 00
5 to 6 ft.	1 50	12 50	100 00
VITEX Agnus-castus . Chaste Tree. 3 to 4 ft.	50	3 00	20 00
Agnus-castus , var. alba . 2½ to 3 ft.	50	3 00	20 00
XANTHOCERAS sorbifolia . 3 to 4 ft.	75	6 00	
4 to 5 ft.	1 00	7 50	
XANTHORRHIZA apiifolia . Shrub Yellow Root—			
5 to 6 in. In clumps	25	2 00	10 00
6 to 8 in. In clumps	35	2 75	12 50
10 to 12 in. In clumps	50	3 50	15 00
12 to 18 in. In clumps	75	5 00	20 00

REEDS and GRASSES

	Each	10
ARUNDO Donax . Clumps	\$0 50	\$3 50
BAMBUSA Metake	50	3 50
ELYMUS glaucus	25	1 50
ERIANTHUS Ravennæ	50	3 50
EULALIA Japonica , and vars. variegata , gracillima univittata , zebrina . Clumps	50	3 50
FESTUCA glauca	25	1 50
PHALARIS arundinacea , var. variegata . Ribbon Grass.....	25	1 50
UNIOLA latifolia	25	1 50

VINES, CLIMBING and TRAILING PLANTS

	Each	10
ACTINIDIA polygama . 6-in. pots.....	\$0 50	\$3 50
AKEBIA quinata . From 4-in. pots.....	50	3 50
AMPELOPSIS quinquefolia . Virginia Creeper. 4-in. pots..	50	3 50
3-year, field-grown; heavy	25	2 00
quinquefolia , var. Engelmanni . 5-in. pots; heavy..	35	3 00
3-year, field-grown; heavy	25	2 00
tricuspidata ; syn., Veitchi . Japan or Boston Ivy; 4-in. pots; heavy.....	35	3 00
2-year, field-grown; heavy... per 100, \$15..	25	2 00
ARISTOLOCHIA Sipho . Dutchman's Pipe Vine. 5-in. pots..	75	6 00
6-in. pots	1 00	
BIGNONIA grandiflora . 1½ to 2 ft.; field-grown.....	35	2 00
radicans . Scarlet Trumpet Vine. 6-in. pots.....	50	4 00
2 to 3 ft.; field-grown	25	2 00

	Each	10
CELASTRUS scandens. False Bitter-sweet—		
2 to 3 ft. per 100, \$20..	\$0 50	\$3 50
3 to 5 ft.; heavy; field-grown	75	5 00
CLEMATIS coccinea. 4-in. pots.....	35	3 00
Flammula. Sweet Clematis. 5-in. pots.....	1 00	7 50
Large-flowering varieties. —Fairy Queen, Gem, Henryi, Jackmani, Jackmani var. alba, Jeanne d'Arc, Duchess of Edinburgh, Ker- mesina, Lady Neville, Lilacina floribunda, Madame Van Houtte, Miss Bateman, Presi- dent	50	4 00
paniculata. 2-year; heavy..... per 100, \$15..	30	2 50
5-in. pots; fine..... per 100, \$25..	50	3 50
Virginiana. Wild Clematis	50	4 00
DOLICHOS See <i>Pueraria</i> .		
EUONYMUS radicans. 1 ft.; field-grown..... per 100, \$15..	25	1 75
1½ to 2 ft.; field-grown..... per 100, \$20..	35	2 50
radicans, var. variegata. 1 ft.; field-grown.....	25	2 00
radicans, var. Carrieri (large leaf)— 1½ to 2 ft..... per 100, \$35..	50	4 00
HEDERA Helix. English Ivy. 4-in. pots..... per 100, \$20..	35	3 00
LATHYRUS latifolius. Everlasting Pea.....	35	2 50
LONICERA Japonica. Honeysuckle. 4-in. pots. per 100, \$20..	35	2 50
3-year; field-grown	35	3 00
Japonica, var. brachypoda; syn., flexuosa. Field- grown; 4-in. pots	35	3 00
Japonica, var. aurea reticulata. 4-in. pots.....	35	3 00
Japonica, var. Chinensis. Purplish green foliage— 4-in. pots	35	3 00
Heavy, field-grown	35	3 00
Japonica, var. Halleana. 4-in. pots. per 100, \$20..	35	3 00
3-year old, field-grown..... per 100, \$15..	25	2 00
sempervirens, var. fuchsioides. Scarlet Trumpet— 6-in pots	50	4 00
PERIPLUCA Græca. Silk Vine. Field-grown.....	35	3 00
6-in. pots	50	4 00
PUERARIA Thunbergiana. Kudzu Vine.....	1 00	7 50
VITIS æstivalis. Summer Grape	50	3 50
heterophylla, var. variegata	50	3 50
Labrusca. Fox Grape	50	3 50
riparia. Frost Grape	50	3 50
WISTARIA Chinensis. Chinese Wistaria— 2 to 3 ft.; in large pots	1 50	12 50
6 to 8 ft.; field-grown	2 50	22 50
Chinensis (Standards). 4 to 5 ft.	5 00	40 00
Chinensis, var. alba. Field-grown. 4 to 6 ft.....	2 50	22 50
6 to 7 ft.	3 50	
frutescens. 4 to 5 ft.....	1 50	2 50
5 to 7 ft.	2 50	22 50
magnifica. 5 to 6 ft.; field-grown..... \$1.50 to	2 50	
multijuga. 3 to 4 ft.; field-grown.....	1 50	12 50
4 to 6 ft.; field-grown..... \$1.50 to	3 50	
multijuga, var. alba. Field-grown. 3 to 4 ft.....	1 00	
4 to 6 ft..... \$1 50 to	3 50	

FRUIT DEPARTMENT

	Each	10
APPLES, Summer —Early Harvest, Golden Sweet, Red Astrachan, Summer Rambo, Sweet Bough, Benoin, Yellow Transparent.		
Autumn —Fall Pippin, Gravenstein, Maiden's Blush, Smokehouse, Wealthy.		
Winter —Baldwin, Belle-fleur, Fallwater, King of Tompkins County, Northern Spy, Rhode Island Greening, Styman's Winesap, York Imperial.		
5 to 7 ft.; $\frac{3}{4}$ to 1 in. cal.	\$1 00	\$6 00
Crab —Hyslop, Large Red Siberian, Large Yelow Siberian, Transcendent. 5 to 7 ft.	1 00	6 00
CHERRIES, Sour (Dukes and Morellos) —Early Richmond, Empress Eugenie, May Duke, Late Duke, Montmorency. 5 to 6 ft.	1 50	10 00
Large Sweet (Hearts and Bigarreus) —Black Tartarian, Governor Wood, Napoleon Bigarreau, Schmidt's Bigarreau, Windsor. 5 to 6 ft.	1 50	10 00
NUTS, American Sweet Chestnut. See under <i>Deciduous Trees.</i>		
Spanish Chestnut. See under <i>Deciduous Trees.</i>		
Hybrid Chestnut. Paragon, Numbo. 4 to 5 ft.	1 50	12 50
Japan Chestnut. 3 to 4 ft.	1 00	
Walnut, Black. See <i>Juglans nigra</i> , under <i>Deciduous Trees.</i>		
PEACHES —Belle of Georgia, Fitzgerald, Fox's Seedling, Crawford's Late, Elberta, Mountain Rose, Morris White, Oldmixon Free, Stump the World, Susquehanna, Troth's Early, Wheatland. 5 to 6 ft. per 100, \$30..	50	3 50
PEARS, Summer —Bartlett, Clapp's Favorite, Doyenne d'Ete.		
Autumn and Winter —Beurre d'Anjou, Buffon, Duchesse d'Angouleme, Howell, Kieffer's Hybrid, Lawrence, Rutter, Seckel, Sheldon, Worden-Seckel. 5 to 6 ft.	1 50	10 00
A few varieties, 6 to 8 ft.	2 00	15 00
PLUMS, Japanese —Abundance, Burbank, Chabot, Satsuma. 5 to 6 ft.	1 00	7 50
European —Giant Prune, Imperial Gage, Lombard.		
QUINCES —Champion, Orange. 3 to 4 ft.	75	6 00

SMALL FRUITS

	Each	10
BLACKBERRIES —Eldorado, Erie, Kittatinny, Rathbun, Snyder, Wilson Junior. per 100, \$3..		\$0 50
CURRENTS, Red —Cherry, Fay's Prolific; White —White Grape; Black —Lee's Prolific.	\$0 25	2 00
GOOSEBERRIES, Red —Houghton, Industry; Green —Downing, Smith's Improved.	25	2 00
GRAPES, Black —Concord, Moore's Early, Worden; Red —Brighton, Catawba, Delaware; White —Green Mountain, Niagara, Pocklington. 2-year.	25	2 00
A few varieties, extra heavy.	50	3 00
RASPBERRIES, Black —Gregg; Red —Cuthbert, Columbian Ruby; Yellow —Golden Queen, per 100, \$3		50

STRAWBERRIES, Early —Bederwood, Marshall;	Each	10
Medium —Bubach, Glen Mary, Sharpless,		
Late —Brandywine, Gandy, Runners, per 100, \$2; per 1,000, \$7.50.		
Potted plants, per 100, \$3 to \$4.		

ESCULENT ROOTS

ASPARAGUS —Barr's Mammoth. Per 100, \$1.50; per 1,000, \$7.50.
RHUBARB —Best varieties. Per 10, \$1.50; per 100, \$10.

ROSES

N. B.—Potted unless noted. Special prices per hundred.

	Each	10
AUSTRIAN BRIERS —Harrison's Yellow and Persian Yellow..	\$0 40	\$3 50
SWEETBRIER — <i>Rosa rubignosa</i>	40	3 50
HYBRIDS Penzance Briers —Amy Robsart, Anne of Geierstein, Brenda, Flora McIvor, Lady Penzance, Lord Penzance, Meg Merrilies, Minna	50	4 50
BUSH —Blanda, Carolina, canina, lucida, lucida var, alba, multiflora, nitida, rubrifolia, field-grown	35	3 00
CLIMBING —Crimson Rambler, crimson; Dawson, bright pink; Dorothy Perkins, shell pink; Hiawatha, ruby carmine; Lady Gay, cerise pink; Tausendschon soft pink; White Dorothy, white. Setigera. Prairie Rose. 2 to 2½ ft.; field grown	50 35	4 00 3 00
EVERBLOOMING Hybrid Teas —Bessie Brown, creamy white; Betty, ruddy gold; Captain Christy, flesh; Caroline Testout, rose; Countess of Caledon, carmine; Duchesse of Albany, deep pink; Gladys Harkness, salmon-pink; Gruss an Teplitz, crimson; Kaiserine Auguste Victoria, primrose; Killarney, pink; La France, rose; Madame Ravary, yellow; Souvenir du President Carnot, flesh-rose; Viscountess Folkestone, creamy pink..	50	4 50
EVERBLOOMING, Miscellaneous —Clothilde Soupert (<i>Polyantha</i>), rosy white; etoile de Lyon (Tea), yellow; Francisca Kruger (Tea), yellow-peach; Francis Dubreuil (Tea), crimson; Harry Kirk, deep sulphur yellow; Maman Cochet (Tea), rosy white; Souvenir de la Malmaison (Bourbon), flesh; White Maman Cochet (Tea), white.....	50	4 50
HYBRID Perpetual —Alfred K. Williams, carmine-red; Baroness Rothschild, rose; Captain Hayward, carmine-crimson; Clio, flesh; Eugene Verdier, rose-flesh; Frau Karl Druschki, white; General Jacqueminot, scarlet; Lady Helen Stewart, crimson-scarlet; Louis Van Houtte, red-crimson; Magna Charta, rose; Madame Gabriel Luizet, silvery pink; Margaret Dickson, white; Mrs. R. G. Sharman-Crawford, rose-pink; Mrs. John Laing, pink; Paul Neyron, deep rose; Prince Camille de Rohan, deep crimson; Ulrich Brunner, cherry crimson.....	50	4 00
MOSS —Blanche Moreau, white; Crimson Globe, deep crimson; Zenobia, rose.....	50	4 00

RUGOSA ROSES

ROSA rugosa. 2 to 2½ ft.	\$0 35	\$3 00	\$20 00
2½ to 3 ft.	50	4 00	35 00
3 to 3½ ft.	75	6 00	50 00
rugosa, var. alba. 2 to 2½ ft.	50	4 00	25 00
2½ to 3 ft.	75	6 00	50 00
rugosa hybrids atropurpurea —Atropurpurea, Blanc Double de Coubert, Conrad F. Meyer, Madame Georges Bruant, Madam Charles Worth, Mrs. A. Waterer. Pot- grown	50	4 00	
WICHURAIANA ROSES			
ROSA Wichuraiana. The Trailing Rose. 2 to 3 ft. ..	\$0 25	\$2 00	
2 to 3 ft. In 4-in. pots	35	3 00	\$25 00
hybrids —Evergreen Gem, Gardenia, Manda's Triumph, Pink Roamer, South Orange Perfection, Universal Favorite. In pots.	50	3 50	
SINGLE ROSES, Dickson's Hybrids —New Irish Beauty, Irish Glory, Irish Modesty, Irish Bright- ness	75	6 00	

HARDY HERBACEOUS PLANTS

ACHILLEA eupatorium (Fern-leaved Yarrow). All summer. 4 to 5 ft.	\$0 15	\$1.25	
filipendulina (Noble Yarrow). July. Golden Yellow. 2 ft.	15	1 25	\$10 00
millefolium roseum (Rosy Milfoil). July to September. Pink. 1½ ft.	15	1 25	
millefolium roseum var. Cerise Queen . June to September. Amaranth- red. 1½ ft.	25	2 00	
ptarmica (The Pearl). All summer. White. 2 ft.	15	1 25	10 00
ptarmica var. Boule de Neige (Ball of Snow). July to September. White. 2 ft.	25	2 00	
tomentesum (Wooly Yarrow). June. Yellow. 1 ft.	25	2 00	
ACONITUM Bicolor. July to September. Blue and white. 2 ft.	35	2 50	
Fischeri (Monkshood). September and October. Blue. 3 ft.	35	2 50	15 00
Lycotconum (Wolf's Bane). June to September. Yellow. 3 ft.	35	2 50	
Napellus albus. August to September. White. 2 ft.	35	2 50	
ACANTHUS mollis (Bear's Breech). August and September. Rose. 3 ft.	35	2 50	
ADONIS Amurensis fl. pl. April and May. Yellow. 1 ft.	65	5 00	
AJUGA Genevensis. May. Bright blue. 6 in.	25	1 50	12 50
reptans rubra (Bugle). May. Purplish blue. 6 in.	25	1 50	12 50



Partial view of Herbaceous Plantations

ALTHÆA	rosea (Hollyhock). July. Various colors. 4 to 6 ft.	\$0 25	\$1 50	\$12 50
	rosea , var. Allegheny Fringed	25	1 50	12 50
ALYSSUM	rostratum , June and July. Golden Yellow. 1 ft.	35	2 50	
	saxatile compactum (Golden Tuft). May and June. Yellow. 1 ft.	25	1 50	12 50
ANCHUSA	Italica , var. Dropmore . (Alkanet.) New May and June. Blue. 3 to 4 ft..	25	2 00	
ANEMONE	(Windflower) Japonica . September Red. 2 to 3 ft.	25	1 50	12 50
	Japonica , var. alba . Fall. White. 2 to 3 ft.	25	1 50	12 50
	Japonica , var. Queen Charlotte . Fall. Rose. 2 to 3 ft.	25	2 00	15 00
	Japonica , var. Lady Ardilaun . Fall. White. 2 to 3 ft.	25	2 00	15 00
	Japonica , var. Prince Henry . Fall. Rich deep pink. 2 to 3 ft.	25	2 00	
	Japonica , var. rosea superba . Fall. Silvery rose. 2 to 3 ft.	25	2 00	
ANEMONE	Japonica , var. Whirlwind . Fall. Pure white. 2 to 3 ft.	25	2 00	15 00
	Pennsylvanicum . June and July. White. 1 to 2 ft.	25	1 50	12 50
	Pulsatilla (Pasque Flower). May. Violet-purple. 9 in.	25	1 50	12 50
	sylvestris . May. Pure white. 1 to 1½ ft.	25	1 50	12 50
ANTHEMIS	tinctoria (Chamomile). June to September. Golden Yellow. 2 ft.	25	1 50	10 00
AQUILEGIA	baicalense . May to July. Blue and white. 18 in.	25	1 50	12 50
	Canadensis . (Common Columbine). May to July. Scarlet and Yellow. 1 to 2 ft.	25	1 50	10 00

PRICE LIST FOR SPRING OF 1913

53

	Each	10	100
AQUILEGIA Chrysantha. May to August. Golden Yellow 3 ft.	\$0 25	\$2 00	\$12 50
cærulea (Rocky Mountain Columbine). May to July. Blue. 18 in.	25	2 00	12 50
flabellata , var. nana alba . April to June. White. 1 ft.	25	2 00	
nivea grandiflora . April to June. White. 2 to 3 ft.	25	2 00	12 50
vulgaris fl. pl. May to July. White to blue. 1½ to 2 ft.	25	2 00	12 50
truncata . May and June. Scarlet, yellow-tipped. 2 ft.	25	2 00	12 50
ARABIS alpina (Rock Cress). April and May. White. 4 in.	25	1 50	10 00
alpina fl. pl. Double.	35	2 50	
ARENARIA montana , var. grandiflora (Sandwort). May and June. White. 6 in.	25	1 50	12 50
ARMERIA maritima , var. alba (Thrift). Summer. White. 9 in.	25	1 50	10 00
maritima , var. splendens . Summer Rose. 9 in.	25	1 50	12 50
ARTEMISIA abrotanum (Old Man). Silvery white foliage. 2 ft.	25	1 50	10 00
Stelleriana (Old Woman). Silvery foliage. 2 ft.	25	1 50	10 00
ASCLEPIAS tuberosa (Butterfly Weed). July and August. Orange. 2 ft.	25	1 50	10 00
ASTER alpinus . June and July. Purple. 9 in. ...	25	1 50	10 00
Amellus elegans . September and October. Blue. 1½ ft.	25	1 50	10 00
ASTER (Michælmass Daisy) amethystinus . September and October. Amethyst. 3 to 4 ft.	25	1 50	10 00
grandiflorus . October and November. Violet-blue. 2 ft.	35	2 50	20 00
Lady Trevelyan . September and October. White. 3 ft.	25	1 50	10 00
laevis . September. Blue. 4 ft.	25	1 50	10 00
Madonna . September and October. White. 4 ft.	25	1 50	10 00
Novæ Angliæ . September and October. Purple. 4 ft.	25	1 50	10 00
Novæ Angliæ , var. rubra . September and October. Bright rose. 4 ft.	25	1 50	10 00
ptarmicoides . August and September. White. 1½ ft.	25	1 50	10 00
Robert Parker . September and October. Lavender. 4 ft.	25	1 50	10 00
Snowflake . September and October. Pure white; very free. 1½ ft.	25	1 50	10 00
Tataricus . October and November. Purple. 5 ft.	25	1 50	10 00
Trinervius . October and November. Violet-purple. 2½ ft.	25	1 50	10 00
White Queen . September and October. White. 4 ft.	25	1 50	10 00
ASTILBE Japonica (Spirea). June. White. 1½ ft.	25	1 50	10 00

	Each	10	100
ASTRANTIA major (Masterwort). June and July. Pale pink. 1 ft.....	\$0 25	\$2 50	\$20 00
AUBRETIA Hendersoni (False Wall Cress). April. Purplish violet. 4 in.....	25	1 50	12 50
BAPTISIA australis (False Indigo). June and July. Dark blue. 2 ft.....	25	1 50	10 00
tinctoria . June and July. Bright yellow. 2 to 3 ft.....	25	1 50	10 00
BELEMCANDA Chinensis ; syn., Pardanthus . June. Orange-red. 4 ft.....	25	1 50	10 00
BELLIS perennis (English Daisy). May. White and pink. 6 to 8 in.....	25	1 50	10 00
BETONICA . See <i>Stachys</i> .			
BOCCONIA cordata (Plume Poppy). July and August. White. 5 ft.....	25	1 50	12 50
BOLTONIA asterioides (False Chamomile). August and September. White. 4 ft.....	25	1 50	10 00
latisquama . August and September. Light lilac. 4 ft.....	25	1 50	10 00
CALIMERIS incisa (Starwort). July to September Light blue. 18 in.....	25	1 50	10 00
CALLIRHOË involucrata (Poppy Mallow). All summer. Rosy crimson. 1 ft.....	25	1 50	10 00
CAMPANULA Carpatica (Carpathian Harebell). June to September. Blue. 9 in.....	25	1 50	10 00
Carpatica , var. alba . June to September. White. 9 in.	25	1 50	10 00
Mørheimi . May to July. White. 2 to 2½ ft..	35	2 50	
persicifolia (Peach Bells). June and July. Blue. 18 in.....	25	1 50	10 00
persicifolia alba . June and July. White. 18 in.	25	1 50	10 00
pyramidalis (Chimney Bellflower). August and September. Blue. 2 ft.....	25	1 50	10 00
trachelium (Coventry Bells). Purple. June and July. 3 ft.....	25	1 50	10 00
CENTAUREA montana (Perennial Cornflower). June and July. Dark purple. 1½ ft.....	25	1 50	
montana , var. alba . White form of the above.	25	1 50	10 00
CERASTIUM tomentosum . June and July. White. 6 in.	25	1 50	12 50
CERATOSTIGMA plumbaginoides (Plumbago). Octo- ber and November. Blue. 6 in.....	25	2 00	15 00
CHELONE Lyoni (Turtlehead). August and Septem- ber. Rose-purple. 2 ft.....	35	2 50	
CHRYSANTHEMUM leucanthemum hybridum (Shasta Daisies). Alaska, California, Wes- tralia. All summer. White. 2 ft.....	35	2 50	15 00
maximum , var. Triumph (Moonpenny Daisy). July to October. White. 2 ft.....	25	1 50	12 50
Nipponicum . September and October. White. 2 ft.	35	2 50	

PRICE LIST FOR SPRING OF 1913

55

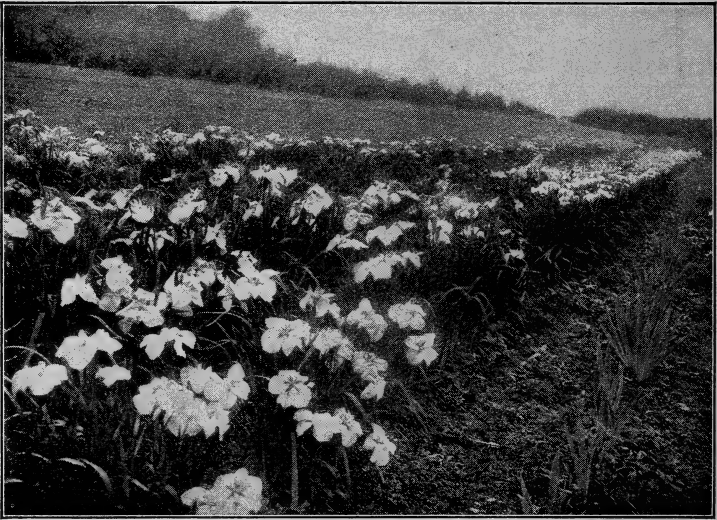
	Each	10	100
CHRYSANTHEMUM Pompon Varieties. Fall. All colors. 1½ to 2 ft.....	\$0 25	\$1 50	\$10 00
Pompon Varieties, Heavy Stock	25	2 00	15 00
uliginosum. September. White. 2½ ft.....	25	1 50	10 00
CHRYSOGONUM Virginianum (Golden Joint), June. Yellow. 1 ft.....	25	1 50	12 50
CHRYSOPSIS villosa (Golden Aster). September. Yellow. 2 ft.....	25	2 00	15 00
CIMICIFUGA acerinum. August and September. White. 2½ ft.....	35	2 50	
Dahurica (Bugbane). August and September. White. 2 to 3 ft.....	35	2 50	15 00
racemosa (Snakeroot). July White. 3 to 5 ft.	25	1 50	12 50
CINERARIA. See <i>Artemisia</i> .			
CLEMATIS crispa (Leather-flower). June to September. Lavender. 3 to 4 ft.....	25	1 50	12 50
Davidiana. August and September. Blue. Fragrant. 3 ft.....	25	1 50	12 50
recta. June to August. White. Fragrant. 2 to 3 ft.....	25	1 50	12 50
CONOCLINIUM caelestinum (Mist-flower). September and October. Deep blue. 18 in.....	25	1 50	12 50
CONVALLARIA majalis (Lily-of-the-Valley). May and June. White. 6 to 9 in.....	25	2 00	15 00
COREOPSIS lanceolata (Tickseed). June to October. Golden yellow. 2 ft.....	15	1 25	10 00
Rosea. June to September. Pink. 8 to 10 in...	15	1 25	10 00
CORONILLA varia (Crown Vetch). June and October. Pink. 1 to 2 ft.....	25	1 50	12 50
DELPHINIUM Chinense (Larkspur). July to September. Blue. 1½ ft.....	25	1 50	10 00
Chinense, var. album. July to September. White. 1½ ft.	25	1 50	10 00
elatum (Bee Larkspur). June to August. Blue. 4 ft.	25	1 50	10 00
formosum (Larkspur). June to September. Deep blue. 4 ft.....	25	1 50	10 00
Belladonna (Hybrid). June to September. Turquoise blue; very free. 3 ft.....	35	3 00	25 00
DIANTHUS barbatus (Sweet William). May to July. Mixed colors. 1½ ft.....	25	1 50	10 00
deltoides (Maiden Pink). June. Pink. 4 in.	25	1 50	10 00
latifolius. June to September. Red. 1 ft....	25	1 50	10 00
plumarius (Hardy Pinks.). May and June. 1 ft.	25	2 00	15 00
Delicata. Rose, with fringed petals.			
Laura Wilmer. White, with maroon center.			
Her Majesty. White.			
Stanislaus. Violet-rose, with crimson center.			
DICENTRA eximia (Seal-flower). June to August. Pink. 1 ft.....	25	1 50	10 00
spectabilis (Bleeding-heart). May and June. Pink. 2 to 3 ft.....	25	2 00	12 50
DIGITALIS ambigua (Foxglove). July and August. Pale yellow. 3 ft.....	25	2 00	15 00
purpurea (Common Foxglove). June and July. Mixed colors. 4 to 5 ft.....	25	1 50	10 00
purpurea, var. gloxiniaeflora. June and July. Mixed colors. 4 to 5 ft.....	25	1 50	10 00

	Each	10	100
DORONICUM Austriacum. April and May. Yellow. 2 ft.	\$0 35	\$2 50	\$15 00
plantagineum , var. excelsum. April to June. Yellow. 2 ft.	35	2 50	15 00
ECHINACEA purpurea (Purple Cone-flower). July to September. Rosy purple. 3 ft.	25	2 00	15 00
EPIMEDIUM coccineum (Barren-wart). May and June. Red. 9 in.	25	2 00	
lilacea. May and June. Lilac. 9 in.	25	2 00	
macranthum. May and June. Red. 9 in.	25	2 00	
sulphureum. May and June. Yellow. 9 in.	25	2 00	
ERIGERON speciosus (Flgabane). June to August. Violet-blue. 1½ to 2 ft.	25	2 00	15 00
ERYNGIUM amethystinum (Sea Holly). July to September. Amethyst-blue. 2 ft.	35	2 50	
EUPATORIUM ageratoides (White Snakeroot). Sep- tember and October. White. 3 ft.	25	1 50	12 50
caelestinum. Fall. Light blue. 2 ft.	25	1 50	
EUPHORBIA corollata (Spurge). July to Septem- ber. White. 1½ ft.	25	1 50	12 50
FEVERFEW, Little Gem. June to October. White. 15 in.	25	1 50	10 00
FUNKIA Fortunei (Day Lily). July to August. Blue. 1½ to 2 ft.	25	1 50	12 50
ovata. July to August. Deep blue. 1½ to 2 ft. subcordata , var. gradiflora. September. White. Fragrant. 2 ft.	25	1 50	12 50
undulata , var. media picta variegata. July and August. Lilac. 1 ft.	25	2 00	15 00
25 1 50 12 50			
GAILLARDIA grandiflora (Blanket-flower). June to November. Yellow. 1½ ft.	25	1 50	10 00
GALEGA officinalis (Goat's Rue). July and August. Blue. 2 ft.	25	1 50	10 00
officinalis , var. alba. July and August. White. 2 ft.	25	1 50	10 00
GENTIANA Andrewsii (Closed Gentian). Septem- ber. Blue. 2 ft.	35	2 50	
GERANIUM sanguineum (Cranesbill). June to Sep- tember. Red. 1½ ft.	25	1 50	
GEUM coccineum (Avens). June and July. Scarlet. 1½ ft.	25	2 00	15 00
Heldreichii. June. Orange. 18 in.	25	2 00	15 00
montanum. June and July. Yellow. 18 in.	25	2 00	15 00
GILLENIA trifoliata (Bowman's Root). Rose and white. July. 3 ft.	35	2 50	
GYPSOPHILA paniculata (Baby's Breath). July. White. 2 to 3 ft.	25	1 50	12 50
HELENIUM, pumilum magnificum (Sneezewort). July to October. Yellow. 1½ ft.	25	1 50	10 00
autumnale , var. superbum. July to October. Yellow. 4 ft.	25	1 50	10 00
autumnale , var. rubrum (New). July to Octo- ber. Red. 4 ft.	25	2 00	
grandicephalum , var. striatum. August to Octo- ber. Orange. 3 ft.	25	2 00	15 00
Hoopesii. All summer. Orange-yellow. 2 ft.	25	2 00	15 00

PRICE LIST FOR SPRING OF 1913

57

	Each	10	100
HELIANTHUS (Perennial Sunflowers) giganteus . August to October. Pale yellow. 6 to 10 ft.	\$0 25	\$1 50	\$10 00
Maximiliana . September. Deep yellow. 6 to 8 ft.	25	1 50	10 00
mollis . September and October. Golden yellow. 4 ft.	25	1 50	10 00
multiflorus fl. pl. July and August. Golden yellow. 4 ft.	25	1 50	10 00
multiflorus , var. Soliel d'Or . August to Septem- ber. Deep yellow; quilled petals. 4 ft.	25	2 00	
orgyalis . September and October. Golden yellow. 6 ft.	25	1 50	10 00
rigidus . July to October. Golden yellow. 3 ft.	25	1 50	10 00
rigidus , var. Miss Mellish . September and Oc- tober. Golden yellow. 6 ft.	25	1 50	10 00
rigidus , var. Wolly Dodd . September. Deep yellow. 3 ft.	25	1 50	10 00
HELIOPSIS Pitcheriana . June to October. Orange- yellow. 3 ft.	25	1 50	10 00
HELLEBORUS niger (Christmas Rose). March. White. 6 in.	35	3 00	
niger , var. atrorubens . March. Purple. 9 in.	35	3 00	
HEMEROCALLIS Aurantiaca . June and July. Bright Indian yellow. 3 to 4 ft.	35	3 00	
Dumortieri (Yellow Day Lily). June and July. Orange-yellow. 2 ft.	25	1 50	12 50
flava . June. Yellow. 2 ft.	25	1 50	12 50
fulva (Tawny Day Lily). July and August. A tawny yellow. 2½ ft.	25	1 50	12 50
fulva , var. Kwanso fl. pl. (Double Orange Lily). July and August. Coppery yellow. 2½ ft.	25	1 50	12 50
fulva , var. Thunbergii . August and September. Lemon-yellow. 2½ ft.	25	1 50	12 50
HEPATIC A triloba (Liverleaf). April. White and blue. 6 in.	25	1 25	10 00
HEUCHERA sanguinea (Alumroot). June to Sep- tember. Coral-red. 18 in.	25	2 00	15 00
sanguinea , var. alba . June to September. White. 18 in.	25	2 00	
HIBISCUS militaris . June to September. Buff-yellow. 18 in.	25	2 00	
Moscheutos (Mallow). July to September. Rose. 5 ft.	25	1 50	\$10 00
Moscheutos , var. Crimson Eye . July to Sep- tember. White. 5 ft.	25	1 50	10 00
Moscheutos (Mallow Marvels). July to Sep- tember. 5 to 6 ft.— White and pink.	35	3 00	20 00
Red	50	5 00	
HOLLYHOCKS . See <i>Althæa rosea</i> .			
IBERIS sempervirens (Candytuft). April and May. White. 6 in.	25	1 50	10 00
corifolia . April and May. White. 9 in.	25	1 50	10 00
INULA ensifolia (Fleabane). June to August. 18 in.	35	3 00	
oculis-Christi . Yellow. June to August. 2 ft.	35	3 00	
Light yellow. 2 ft.	25	1 50	12 50
INCARVILLEA Delavaji (Hardy Gloxinia). June to July. Rosepink. 18 in.	35	3 00	



A field of Japanese Iris at Andorra

	Each	10	100
IRIS. For Special Descriptive Lists, consult Calendar of Hardy Perennials.			
atrovioleacea. May. Dark violet. 2 to 2½ ft.	\$0 35	\$3 00	
cristata. April and May. Light blue. 6 in.	25	1 50	\$12 50
Florentina. May. Tinted white. Fragrant. 1½ ft.	25	2 00	
Germanica. May. Named varieties. 1½ to 2½ ft.	25	1 50	10 00
lævigata; syn., Kämpferi (Japanese Iris). June and July. Our selection, all colors. 2½ to 4 ft.	25	2 00	15 00
Customer's selection	35	3 00	
Pallida, var. Dalmatica. June. Light blue. 3 ft.	35	3 00	25 00
Pallida, var. speciosa. June. Indigo-blue. 2 to 3 ft.....	35	3 00	25 00
Pseudacorus. June. Yellow. 2 to 3 ft.....	25	2 00	15 00
pumila, var. aurea. Yellow. May. 8 to 10 in.	25	1 50	12 50
pumila, var. cyanea. Royal purple. May. 8 to 10 in.....	25	1 50	12 50
pumila, var. eburna. Cream. May. 8 to 10 in.	25	1 50	12 50
pumila, var. florida. White. May. 8 to 10 in.	25	1 50	12 50
Sibirica. May and June. Bright blue. 1½ ft.	25	1 50	10 00
Sibirica, var. alba. June. White. 2 ft. Rare. ♦..	35	3 00	25 00
Sibirica, var. orientalis. May. Deep blue. 1½ ft.	25	1 50	10 00
tectorum. May. Bright lilac. 1 ft.....	25	2 00	15 00
KNIPHOFIA aloides (Red-hot Poker). August and September. Crimson. 3 ft.....	25	1 50	12 50
obelisque. July and August. Saffron-yellow. 3 to 4 ft.....	35	2 50	15 00
Pfitzerii (Flame Flower). July to October. Orange-scarlet. 3 to 4 ft.....	35	2 50	15 00

PRICE LIST FOR SPRING OF 1913

59

	Each	10	100
LATHYRUS latifolius , var. albus (Hardy White Pea). Summer. Climbing.....	\$0 25	\$2 00	
latifolius , var. roseus . Summer. Rose. Climbing.	25	2 00	
latifolius , var. splendens . Summer. Climbing..	25	2 00	\$15 00
latifolius , var. Pink Beauty . Summer. Bright pink. Climbing	25	2 00	15 00
LAVENDULA spica (Lavender). 15 to 18 in.....	25	1 50	12 50
vera (Lavender). 15 to 18 in.....	25	1 50	12 50
LIATRIS graminifolia (Blazing Star). August and September. Rosy purple. 2 ft.....	25	1 50	12 50
pycnostachya (Kansas Gay Feather). September. Rosy purple. 4 to 5 ft.....	25	1 50	12 50
spicata (Gay Feather). August and September. Deep purple. 3 to 4 ft.....	25	1 50	12 50
LILIUM Canadense (Meadow Lily). July. Shades of yellow. 2 to 4 ft.....	25	1 50	12 50
Philadelphicum (Wood Lily). July and August. Orange-scarlet. 2 to 4 ft.....	25	2 00	15 00
speciosum , var. roseum (Japan Lily). July and August. Rosy white. 2 to 4 ft.....	25	2 00	15 00
tigrinum (Tiger Lily). August. Salmon-red. 3 to 4 ft.....	25	1 50	12 50
LINUM Austriacum (Austrian Flax). June to August. Bluish purple. 18 in.....	25	1 75	
perenne (Perennial Flax). June to September. Clear blue. 18 in.....	25	1 75	
LOBELIA cardinalis (Cardinal Flower). August and September. Scarlet. 2 to 3 ft.....	25	1 50	12 50
syphilitica (Blue Lobelia). August and September. Deep blue. 2 ft.....	25	1 50	
LYCHNIS Chalcedonica (London Pride). July to September. Vermilion. 2 to 3 ft.....	25	1 50	12 50
coronaria (Rose Campion). June and July. Crimson. 1½ to 2 ft.....	25	1 25	10 00
coronaria , var. alba . June and July. White. 1½ to 2 ft.....	25	1 25	10 00
Haageana . June and July. Orange-scarlet. 1½ ft.	25	1 50	
vespertina , var. alba plena (White Campion). May to September. White. 1 ft.....	25	1 50	12 50
viscaria (Catchfly). June and July. Red. 1½ ft.	25	1 50	12 50
viscaria , var. splendens . (German Catchfly). June and July. Pink. 15 in.....	25	1 50	12 50
LYSIMACHIA clethroides (Loosestrife). July to September. White. 1½ ft.....	25	1 25	10 00
nummularia (Moneywort): June to August. Yellow. Creeping.....	25	1 50	10 00
LYTHRUM roseum superbum (Rose Loosestrife). July to September. Rose. 3 ft.....	25	1 50	12 50
MERTENSIA pulmonarioides (Virginia Cowslip). May and June. Blue. 2 ft.....	25	1 50	10 00
MONARDA didyma (Oswego Tea). July and August. Scarlet. 2½ ft.	25	1 50	10 00
didyma , var. Cambridge Scarlet . July and August. Scarlet. 2 ft.	25	1 50	10 00
didyma , var. splendens . July and August. Crimson-scarlet. 2 ft.	25	1 50	10 00

	Each	10	100
MYOSOTIS alpestris , var. Victoria . May and June.			
Light blue. 6 to 9 in.....	\$0 25	\$1 50	\$10 00
palustris (Forget-me-not). May and June.			
Light blue. Spreading.....	25	1 50	10 00
NEPETA glecoma , var. variegata (Ground Ivy).			
May. Purple. 6 in.....	25	1 50	10 00
GENOTHERA fruticosa , var. major (Sundrops).			
July. Yellow. 1½ ft.....	25	2 00	15 00
fruticosa , var. Youngi (Young's Primrose).			
June. Lemon. 1½ to 2 ft.....	25	1 50	12 50
Frazeri . June. Rich yellow. 1½ ft.....	25	2 00	15 00
Missouriensis (Large Evening Primrose). June and July. Yellow. 1 ft.....	25	2 00	15 00
speciosa (White Primrose). June and July. White. 1½ ft.....	25	1 50	10 00
OPHIOPOGON Jaburan , var. aureus variegatus (Snake's Beard). September. Blue. 6 in..	50	3 50	
Japanese Spurge (Evergreen). May and June. White. 8 in.....	50	3 50	25 00
PACHYSANDRA terminalis (Japanese Spurge). Evergreen. May and June. White 8 in..	50	3 50	25 00
PÆONIA . See our Calendar of Hardy Perennials for Special List.			
Chinensis, Double Varieties . Our selection. May and June.....	35	3 00	25 00
Chinensis, Heavy Clumps . Our selection.....	1 50	12 50	
Chinensis, Single Varieties . Our selection.....	35	3 00	25 00
Chinensis, Single Varieties, Heavy Clumps . Our selection.....	1 50	12 50	
corallina . May. Single. Reddish purple.....	35	3 00	25 00
Moutan (Tree Peony). May and June. Different colors.....	1 00	9 00	
officinalis , var. rubra plena . Early April. Double; deep crimson.....	50	4 00	35 00
officinalis , var. rosea plena . Early April. Double; pink.....	1 00	9 00	
tenuifolia . Early April. Single; deep maroon.	50	4 00	
tenuifolia , var. plena . Early April. Double; maroon.....	50	4 00	
triternata . April. Single. Bright red.....	35	3 00	25 00
PAPAVER bracteatum . June. Blood-red. 4 ft....	25	2 00	12 50
nudicaule (Iceland Poppy). All summer. Many colors. 1 ft.....	25	1 50	10 00
orientale (Oriental Poppy). June. Orange-scarlet. 2 ft.....	25	2 00	12 50
PARDANTHUS . See <i>Belemcanda</i> .			
PENTSTEMON barbatus , var. Torreyi (Torrey's Beard Tongue). June to August. Scarlet. 3 to 4 ft.....	25	1 50	10 00
diffusus . May to July. Blue. 1 ft.....	25	2 00	15 00
grandiflorus . June to August. Purplish blue. 2 to 2½ ft.....	25	2 00	15 00
lævigatus , var. Digitalis . July and August. White. 3 ft.....	25	2 00	
ovatus . July and August. Purplish blue. 2 to 3 ft.....	25	2 00	

PRICE LIST FOR SPRING OF 1913

61

	Each	10	100
PHLOX amœna. May. Bright pink. 3 to 4 in.	\$0 25	\$1 50	\$10 00
Carolina. May and June. Rosy red. 1 ft.	25	1 50	
divaricata (Wild Sweet William). May and June. Lavender. 1 ft.	25	1 50	12 50
paniculata; syn., decussata (Perennial Phlox). See the Calendar of Hardy Perennials for Special List. All colors.	25	2 00	15 00
subulata (Mountain Pink). May and June. Rose. Creeping.	25	1 50	10 00
subulata, var. alba. May and June. White. Creeping.	25	1 50	10 00
subulata, var. atropurpurea. May and June. Purple. Creeping.	25	1 50	
subulata, var. lilacina. May. Lilac. Creeping. ..	25	1 50	12 50
subulata, var. Nelsoni. May and June. Pure white. Creeping.	25	1 50	10 00
subulata, var. Model. May and June. Rosy white. Creeping.	25	1 50	10 00
PHYSOSTEGIA Virginiana (False Dragonhead). August. Deep rose. 3 ft.	25	1 50	
Virginiana, var. alba. August. White. 3 ft. ..	25	1 50	10 00
Virginiana, var. speciosa. August. Pink. 3 ft. ..	25	1 50	10 00
PLATYCODON grandiflorum (Balloon-flower). July. Blue. 1½ ft.	25	1 50	
grandiflorum, var. album. July. White. 1½ ft. ..	25	1 50	
POLEMONIUM cœruleum (Jacob's Ladder). May to July. Deep blue. 1½ ft.	25	2 00	15 00
cœruleum, var. album. May to July. White. 1½ to 2 ft.	25	2 00	
PRIMULA acaulis (Primrose). May. Yellow. 6 to 9 in.	25	1 50	12 50
capitata (Primrose). Deep lilac. 9 in.	25	1 50	12 50
suaveolens (Cowslip). May. Yellow and orange. 1 ft.	25	1 50	12 50
veris (Polyanthus). May. Yellow and orange-crimson. 6 to 9 in.	25	1 50	12 50
vulgaris (English Primrose). May. Yellow. 6 to 9 in.	25	1 50	12 50
PYRETHRUM roseum (Feverfew). June and July. White, pink and red. 1½ to 2 ft.	25	1 50	10 00
roseum fl. pl. Named varieties. 1½ to 2 ft.	35	3 00	
RANUNCULUS aconitifolius fl. pl. (Crow's-foot). June. White. 1½ to 2 ft.	25	1 50	
acris fl. pl. (Yellow Bachelor's Buttons). June. Yellow. 2 ft.	25	1 50	
repens (Double Buttercup). May to July. Yellow. 1 ft.	25	1 50	10 00
ROSMARINUS officinalis (Rosemary). Scented foliage.	25	1 50	
RUDBECKIA laciniata, var. Golden Glow. July to September. Yellow. 8 ft.	25	1 25	10 00
Newmani. August and September. Yellow. 1½ ft. ..	25	1 50	10 00
nitida (Cone-flower). August and September. Pale yellow. 5 ft.	25	1 50	10 00
triloba (Yellow, black cone). August and September. 3 ft.	25	1 50	10 00

	Each	10	100
SALVIA argentea. June. White, white foliage. 2 ft..	\$0 25	\$1 50	\$10 00
Caucasicum. July and August. Reddish purple.			
3 ft.	25	1 50	10 00
pratensis (Meadow-sage). June to September.			
Deep blue. 2 to 3 ft.....	25	1 50	10 00
SANGUINARIA Canadensis (Bloodroot). White.			
April. 6 in.....	25	1 50	10 00
SANTOLINA incana (Lavender Cotton). July.			
Deep yellow. 1 ft.....	25	1 50	10 00
SAXIFRAGA cordifolia (Rockfoil). April to June.			
Rosy purple. 15 in.....	25	2 00	15 00
SCABIOSA Caucasica (Mourning Bride). Lavender-blue.			
June. 15 to 18 in.....	35	2 50	15 00
SEDUM acre (Golden Moss). May and June. Yellow.			
Spreading	25	1 25	10 00
album. July. White. 4 to 6 in.....	25	1 25	10 00
Rhodiola. August. Light pink. 1 ft.....	25	1 25	10 00
sexangulare (Stonecrop). June and July. Yellow.			
6 in.	25	1 25	10 00
Sieboldi. August and September. Pink. 6 to 8 in.	25	1 25	10 00
spectabile (Brilliant Stonecrop). September and October. Rose. 12 to 15 in.....	25	2 00	15 00
spectabile , var. atropurpurea. September and October. Purplish crimson. 15 in.....	25	2 00	15 00
telephoides. July and August. Pink. 1 ft...	25	2 00	15 00
SENECIO clivorum. Summer. Yellow. 3 ft.....	35	2 50	15 00
pulcher (Groundsel). July to October. Rosy purple. 1½ to 2 ft.....	25	1 50	
SILENE Pennsylvanicum (Wild Pink). April and May. Rose or white. 9 in.....	25	1 25	10 00
SMILACINA racemosa (False Solomon's Seal). April. White. 1½ ft.....	25	1 50	
SPIRÆA (Goat's Beard, or Meadowsweet) aruncus. June and July. White. 4 to 5 ft.....	35	2 50	15 00
filipendula fl. pl. June and July. White. 2 ft.	25	1 50	12 50
lobata. July. Pink. 3 to 4 ft.....	25	2 00	15 00
palmata. June and July. Deep crimson. 2 ft.	25	2 00	15 00
palmata , var. elegans. June and July. White; crimson anthers. 3 ft.....	25	2 00	
Ulmaria fl. pl. June and July. White. 3 ft..	25	2 00	
venusta. June and July. Deep pink. Fragrant. 3 ft.	25	2 00	
STACHYS Betonica ; syn., Betonica rosea. July and August. Rose. 1 ft.	25	1 50	12 50
lanata. June and July. Purple. 12 in.....	25	1 50	12 50
STATICE Tatarica (Sea Lavender). June to August. Red. 15 to 18 in.	25	1 50	10 00
latifolia (Great Sea Lavender). July and August. Deep blue. 2 ft.	25	1 50	10 00
STOKESIA cyanea (Stokes' Aster). July to October. Lavender. 1½ ft.	25	2 00	15 00
cyanea , var. alba. July to October. White. 1½ ft.	50	3 50	

PRICE LIST FOR SPRING OF 1913

63

TANACETUM globiferum (Tansy), August. Golden	Each	10	100
yellow, 3 ft.	\$0 25	\$1 50	\$10 00
THALICTRUM adiantifolium (Meadow Rue). June.			
Yellow, 18 in.	25	1 50	10 00
aquilegifolium (Feathered Columbine) . June.			
White, 2 to 4 ft.	25	1 50	
polyganum (Tall Rue). June. White, 3 to 4 ft.	25	1 50	
purpurascens . June to August. Purple, 3 to 4 ft.	25	1 50	
THERMOPSIS Caroliniana . June. Yellow, 3 to 4 ft.	25	1 50	
mollis . May to July. Yellow, 2 to 3 ft.	25	1 50	
THYMUS montanus , var. coccineus (Scarlet Thyme).			
May. Bright red, 4 in.	25	1 50	
vulgaris (Common Thyme). May. Lilac, 1 to 2 ft.	25	1 25	
TRADESCANTIA Virginiana (Spiderwort). June to October. Purple, 2 ft.	25	1 50	12 50
Virginiana , var. alba . June and July. White, 2 ft.	25	1 50	12 50
TRILLIUM erectum (Wake Robin). March and April. Purple, 9 to 12 in.	25	1 50	
grandiflorum (Wood Lily). March and April. White, 9 to 12 in.	25	1 50	
TROLLIUS Europæus (Globe-flower). May to August. Yellow, 2 ft.	25	1 50	12 50
Japonicus "Excelsior." May to August. Deep orange 1½ to 2 ft.	35	2 50	
VALERIANA coccinea (Valerian). June to October. Reddish, 2 ft.	25	1 50	10 00
officinalis (Hardy Heliotrope). June and July. Rose-pink, 2 ft.	25	1 50	10 00
rubra . June to October. Red, 2 ft.	25	1 50	10 00
VERBASCUM Olympicum (Mullein). July to September. Yellow, 6 ft.	25	1 50	12 50
VERNONIA Arkansana (Ironweed). August to October. Red, 5 ft.	25	2 00	
Baldwini . August to October. Purple, 4 ft.	25	2 00	
VERONICA longifolia , var. rosea (Speedwell). July to October. Rose, 1½ ft.	25	1 50	
longifolia , var. subsessilis . August to November. Deep blue, 1½ to 2 ft.	25	2 00	15 00
rupestris (Rock Speedwell). June and July. Blue Spreading	25	1 50	10 00
spicata . June to September. Bright blue, 1½ ft.	25	1 50	10 00
Virginica . August to September. White, 4 ft.	25	1 50	10 00
VINCA minor (Periwinkle). May. Bright blue. Spreading	25	1 50	10 00
VIOLA pedata , var. bicolor (Bird's-foot Violet). May. Purple and White, 4 in.	25	1 50	12 50
Cornuta , var. Admiration . May to October. Purple, 10 in.	25	1 25	
Cornuta , var. Lutea splendens . Rich yellow. May to October, 10 in.	25	1 25	
Cornuta , var. Papilio . Violet blue. May to October, 10 in.	25	1 25	
Cornuta , var. White Perfection . Pure white. May to October, 10 in.	25	1 25	

FERNS

- ADIANTUM pedatum** (Maidenhair Fern). 1 to 2 ft. Moist, shaded positions.
- ASPIDIUM acrostichoides** (Christmas Fern). 1 to 2 ft. Evergreen. Dry or moist soils in shady places.
- Felix-mas** (Male Fern). 2 ft. Semi-shaded positions, dry or moist soils.
- Goldianum**. 2 to 4 ft. Semi-shaded positions, dry or moist soils.
- marginale**. Evergreen. 1 to 2 ft. Shaded positions, dry or moist soils.
- ASPLENIUM Filix-fœmina** (Lady Fern). 2 to 3 ft. Open or shaded positions, in moist or dry soils.
- BOTRYCHIUM Virginianum** (Moonwort). 6 to 12 in. Shaded positions, moist or dry soils.
- DICKSONIA punctilobula** (Boulder Fern). 2 to 3 ft. For open positions; forms large plantations.
- ONOCLEA sensibilis** (Sensitive Fern). 1 to 2 ft. For open planting and wet soils.
- Struthiopteris** (Ostrich Fern). 2 to 4 ft. For open positions, dry or moist soils.
- OSMUNDA gracilis** (Flowering Fern). 2 to 4 ft. Open or shaded positions, and moist soils.
- Claytoniana**. 2 to 5 ft. For open plantings, dry or moist soils.
- cinnamomea** (Cinnamon Fern). 2 to 5 ft. For open or shaded positions, in wet soils.
- WOODSIA obtusa**. 6 to 12 in. Shady places, in moist soil.
- WOODWARDIA angustifolia** (Chain Fern). 1 ft. Open or shaded positions, in moist soils.
- The above varieties, 25 cts. each, \$2 per 10, \$15 per 100.
The above collection, 15 varieties, \$3.
100 in 5 varieties, our selection, \$12.50.

HEDGE PLANTS

We shall be pleased to name special prices for plants in quantity for hedging purposes.

EVERGREEN TREES

	SEE PAGE		SEE PAGE
Biota orientalis	4	Thuja occidentalis	13
Picea excelsa	7	occidentalis Wareana	14
Retinospora plumosa	10	Tsuga Canadensis	14
Retinospora plumosa aurea	11		

DECIDUOUS TREES

Carpinus Americana	24	Cratægus Oxyacantha	26
Betulus	24	Fagus sylvatica	26
Cratægus Crus-galli	26		

EVERGREEN SHRUBS

Azalea amœna	15	Ilex crenata microphylla	17
Buxus sempervirens	15	Mahonia aquifolia	17
sempervirens suffruticosa ...	16	Japonica	17

DECIDUOUS SHRUBS

Acanthopanax spinosa	33	Hippophae rhamnoides	40
Berberis Thunbergi and vulgaris .	35	Ligustrum Ibotata, Regelianum,	
Elæagnus longipes	39	ovalifolium, vulgare	41
Forsythia viridissima	39	Lonicera Tatarica	42
Hibiscus Syriacus	39	Rhamnus cathartica	43

DEPARTMENTS

	PAGE		PAGE
Fertilizers	2	Vines and Climbing Plants	47
General Instructions and Terms	3	Fruit and Small Fruits	49, 50
Evergreen Trees	4	Roses	50
Evergreen Shrubs	15	Herbaceous Plants	51
Deciduous Trees	21	Ferns	63
Deciduous Shrubs	35	Hedge Plants	63
Reeds and Grasses	47	Catalogs	64

INDEX

	PAGE		PAGE
Aaron's Beard	40	Baby's Breath	56
Abelia	55	Baccharis	35
Abies	4	Bambusa	47
Acanthus	51	Baptisia	54
Acanthopanax	35	Barberry	35
Acer	23	Basswood	32-33
Achillea	51	Bear Tongue	60
Aconitum	51	Bear's Breech	51
Actinidia	47	Beauty-fruit	35
Adam's Needle	20	Beech	26
Adiantum	64	Belemcanda	54
Adonis	51	Bell-flower	54
Aesculus	23, 55	Bellis	54
Ailanthus	23	Benzoin	35
Ajuga	51	Berberis	35
Akebia	47	Betonica. See Stachys.	
Alder	24	Betula	24
Allspice, or Sweet Shrub	35	Bignonia	47
Alnus	23	Balloon-flower	60
Althæa (see, also, Hi- biscus)	35, 51	Biota	4-5
Alum Root	57	Birch	24
Alyssum	52	Bittersweet	47
Amelanchier	23, 55	Black Alder	23
Amorpha	35	Blackberries	49
Ampelopsis	47	Black Haw	47
Amygdalus. See Prunus.		Black Walnut	27
Anchusa	52	Bladder Senna	36
Andromeda (see, also, Oxydendrum)	15, 24	Blanket-Flower	55
Anemone	51, 52	Blazing Star	59
Anthemis	52	Bleeding Heart	55
Apples	49	Blue Spirea	35
Aquilegia	52 & 53	Bocconia	54
Arabis	53	Boltonia	54
Aralia	24	Botrychium	64
Arborvita	4, 5, 13	Box	15-16
Arenaria	53	Bridal Wreath	44
Aristolochia	47	Broussonetia	24
Armeria	53	Buckthorn	43
Aronia. See Pyrus.		Butterfly Weed	53
Arrow-wood	46	Buttonwood	30
Artemesia	53	Buxus	15-16
Arundo	47	Calamiris	54
Asclepias	53	Callicarpa	35
Ash	27, 32	Callirhoe	54
Asparagus	50	Calycanthus	35
Aspidium	64	Campanula	54
Asplenium	64	Candytuft	57
Aster	53	Caragana	35
Astilbe	53	Cardinal-flower	59
Astrantia	54	Carpinus	24
Aubretia	54	Carya	24
Azalea	15, 34	Castanea	24
		Catalpa	24
		Ceanothus	36
		Cedar	5, 7
		Cedrela	24
		Cedrus	5
		Celastrus	48
		Celtis	25
		Centaurea	54
		Cephalanthus	36
		Cephalotaxus	5
		Cerastium	54
		Cerasus	25
		Ceratostigma	54
		Cercidiphyllum	25
		Cercis	25, 36
		Chamædaphne	16
		Chamomile	52
		Chaste Tree	47
		Chelone	54
		Cherries	49
		Cherry	25
		Chestnut	24, 49
		Chinese Angelica Tree	24
		Chinese Arborvita	5
		Chinese Cork Tree	29
		Chionanthus	36
		Chokeberry	43
		Christmas Rose	57
		Chrysanthemum	55
		Chrysoygonum	55
		Cnryopsis	55
		Cimicifuga	55
		Cineraria. See Arte- misia.	
		Cinquefoil	42
		Cladrastis	25
		Clematis	48 & 55
		Clethra	36
		Columbine	53 & 63
		Colutea	36
		Comptonia	36
		Cone-flower	56 & 61
		Conoclinium	55
		Convallaria	55
		Coral Berry	44
		Corchorus	36
		Coreopsis	55
		Cornus	25, 36, 37
		Coronilla	55
		Corylus	37
		Cotoneaster	16, 37
		Crab Apples	30
		Cranberry Bush	46
		Crataegus	17, 25, 26
		Crotonmeria	5
		Cucumber Tree	28

	PAGE		PAGE		PAGE
Cupressus	12	Geum	56	Juniperus	5-6-7
Currant	49	Gillenia	56	Kalmia	17
Cydonia	37	Ginkgo	32	Kentucky Coffee Tree	27
Cypress	9, 12, 32	Gleditschia	27	Kerria. See Corchorus	40
Cytisu	26, 37	Globe-flower	36	Kniphofia	58
Daisy	53	Goat's Beard	61	Koeleruteria	27
Day Lily	56 & 57	Gold-flower	40	Kudzu Vine	48
Daphne	17	Golden Bell	39	Larch	27
Deciduous Shrubs	35	Golden Chain	26	Larix	28
Deciduous Trees	21, 33	Golden Tuft	52	Larkspur	55
Delphinium	55	Glyptostrobis See Tax-		Lathyrus	48 & 59
Desmodium	55	odum.		Laurel	17
Desmodium. See Les-		Gooseberries	49	Lavandula	59
pedeza	37	Grapes	49	Lavender	50
Deutzia	37, 38	Groundsel Shrub	35, 61	Lavender-cotton	62
Dianthus	55	Guelder Rose	46	Lespedeza	40
Dicentra	55	Gymnocladus	27	Leucothoe	17
Dicksonia	64	Gypsophila	56	Liatis	59
Dictamnus	55	Halesia	39	Ligustrum	40-41
Diervilla	38	Hamamelis	39	Lilac	44
Digitalis	55	Hardy Roses	50-51	Lilium	59
Diospyros	26	Hawthorn	26	Lily-of-the-valley	55
Dogwood	25, 36-37	Hazel	37-39	Linden	32-33
Dolichos. See Pueraria.		Hedera	48	Linum	59
Doronicum	56	Hedge Plants	63	Liquidambar	28
Dutchman's Pipe	47	Helenium	56	Liriodendron	28
Echinacea	56	Helianthus	57	Liver Leaf	57
Eleagnus	39	Heliopsis	57	Lobelia	59
Elder	43	Heleborus	57	Locust	27, 32
Elm	33	Hemerocallis or Day		London Pride	59
Elymus	47	Lily	57	Lonicera	41, 42, 48
English Primrose	60	Hemlock	14	Loosestrife	59
English Ivy	48	Hepatica	57	Lychnis	59
Epimedium	56	Herbaceous Plants	51-62	Lycium	42
Erianthus	47	Hibiscus	39, 40, 57	Lysimachia	59
Erigeron	56	High Cranberry Bush	46	Lythrum	59
Eryngium	56	Hippophae	40	Maclura	28
Esculent Roots	50	Holly	17	Magnolia	28
Eulalia	47	Hollyhocks (see, also,		Mahonia	17
Euonymus	17, 39, 48	Althæa	51	Maidenhair Tree	32
Eupatorium	56	Honey Locust	27	Maple	21-23
Euphorbia	55	Honeysuckle	41, 48	Matrimony Vine	42
Evening Primrose	59	Hop Tree	30	Meadow Rue	63
Evergreen Shrubs	15-20	Hornbeam	24	Meadow Sweet	62
Evergreen Thorn	17	Horse-Chestnut	23	Mertensia	59
Evergreen Trees	4-15	Hydrangea	40	Mint-flower	54
Everlasting Pea	48	Hypericum	40	Mist or Smoke Tree	43
Exochorda	39	Iberis	57	Mock Orange	42
Fagus	26	Ilex	5, 17, 40	Monarda	59
Ferns	63	Incarvillea	57	Moneywort	59
Festuca	47	Inula	57	Monkshood	51
Feverfew	56 & 61	Iris	58	Morus	29
Fir	4	Iron Weed	63	Mountain Ash	32
Flame-flower	58	Itea	40	Mourning Bride	62
Flowering Almond	43	Jacob's Ladder	61	Mulberry	24, 29
Flowering Crab	30	Japan, or Boston Ivy	27	Myosotis	60
Forget-me-not	60	Japan Cypress	9	Myrica	42
Forsythia	39	Japan Judas	36	Negundo. See <i>Acer Ne-</i>	
Foxgloves	55	Japan Quince	37	<i>gundo</i> .	
Fox Grape	48	Japanese Maples	23	Nepeta	60
Fraxinus	27	Japanese Snowball	46	Nettle Tree	25
Fruit	49	Jasmine	40	Nuts	49
Funkia	56	Jasminum	40	Nyssa	29
Gaillardia	56	Jersey Tea	36	Oak	30-31
Galega	56	Judas Tree	25	Oenothera	60
Gas Plant	55	Juglans	27	Old Man	53
Gentiana	56	Juneberry	23	Old Woman	53
Geranium	56			Oleaster	39
				Onoclea	64

PRICE LIST FOR SPRING OF 1913

67

PAGE		PAGE		PAGE	
Ophiopogon	60	Rhus	31-32, 43	Sweet Shrub	35
Oriental Plane	30	Ribbon Grass	41	Sweetbriar	50
Oriental Poppy	60	Ribes	43	Sycamore	30
Osage Orange	28	Robinia	32, 43	Symphoricarpos	45
Osmanthus	17	Rock Cress	53	Syringa	45, 46
Osmunda	64	Rockfoil	62	Tanacetum	63
Oswego Tea, or Fra-		Rose Acacia	43	Tamarix	46
grant Balm	59	Rose Campion	59	Taxodium	32
Oxydendrum	29	Rosemary	61	Taxus	11-12
Pæonia	60	Rose of Sharon	39, 40	Tecoma. See Bignonia.	
Pachysandra	60	Roses	50-51	Thalictrum	63
Papaver	60	Rosmarinus	61	Thermopsis	63
Pardanthus. See Bel-		Rosy Milfoil	51	Thorn	25-26
emcanda.		Rubus	43	Thorn Evergreen	17
Parrotia	29	Rudbeckia	61	Thrift	53
Paulownia	29	Rugosa Roses	51	Thuya	13-14
Pavia. See Æsculus.		Salisburia	32	Thujaopsis	12
Peaches	49	Salix	32	Thymus	63
Pearl Bush	39	Salvia	62	Tickseed	55
Pears	49	Sambucus	43	Tiger Lily	59
Penstemon	60	Sandwort	53	Tilia	32-33
Periploca	48	Sanguinaria	62	Tradescantia	63
Periwinkle	63	Santolina	62	Tree of Heaven	23
Persian Iron Tree.	29	Sassafrass	32	Trillium	63
Persica	29	Saxifraga	62	Troliius	63
Persimmon	26	Scotch Broom	37	Trumpet Vine	47
Phalaris	47	Scabiosa	62	Tsuga	14
Phellodendron	29	Sciadopitys	11	Tulip Tree	28
Philadelphus	42	Sea Buckthorn	40	Ulmus	33
Phillyrea	17	Sea Holly	56	Umbrella Tree	28
Phlox	61	Sea Lavender	62	Uniola	47
Physostegia	61	Senecio	62	Vaccinium	46
Picea	7-8	Sedum	62	Valeriana	63
Pinks	61	Sheepsberry	46	Valerian	63
Pinus	8-9	Shrub Yellow Root.	47	Varnish Tree	27
Platanus	30	Shrubby Cinquefoil	42	Verbascum	63
Platycodon	61	Silene	62	Vernonia	63
Plumbago	54	Silk Vine	48	Veronica	63
Plums	49	Small Fruits	49	Viburnum	46-47
Podocarpus	9	Smilacina	62	Vinca	63
Polemonium	61	Snakeroot	55	Vines and Climbing	
Populus	30	Snowball	46	Plants	47, 48
Poppy	53, 60	Snowberry	44	Viola	63
Potentilla	42	Sophora	32	Virgilia	25
Primrose	60, 61	Sorbus	32	Virginia Creeper	47
Primula	61	Speedwell	63	Vitex	47
Privet	40-41	Spice Bush	35	Vitis	48
Prunus. See, also.		Spiderwort	63	Walnut	27-49
Cerasus	30, 43	Spindle Tree	39	Wax Myrtle	42
Pseudotsuga	9	Spiræa	44, 53, 62	Wayfaring Tree	46
Ptelea	30	Spruce	7, 8, 9	Weigela	38
Pterostyrax	30	Stachys	62	White Fringe	36
Pueraria	48	Staphylea	44	White Rod	46
Purple Mist	43	Statice	62	Wolf's-bane	51
Pyrethrum	61	Stephanandra	44	Willow	32
Pyrus	30, 43	Stokesia	62	Windflower	52
Quercus	30, 31	Stokes' Aster	62	Winola	47
Quinces	49	Stonecrop	62	Winter Berry	40
Ranunculus	61	Strawberries	50	Wistaria	48
Raspberries	49	Strawberry Bush	39	Witch Hazel	39
Red Bud, or Judas.	25	Styrax	44	Woodsia	64
Reeds and Grasses.	47	Sumac	31-32, 43	Woodwardia	64
Retinospora	9-11	Sunflower	57	Xanthoceras	47
Rhamnus	43	Swamp Huckleberry.	46	Xanthorrhiza	47
Rhododendron	18-20	Sweet Fern	36	Yarrow	51
Rhodotyus	42	Sweet Gum	28	Yellow Wood	25
Rhubarb	50	Sweet William	59, 61	Yew	5, 9, 11, 12
		Sweet Pepper Bush.	36	Yucca	21

Our Catalogs

THE ANDORRA HANDBOOK. Planters who desire a complete descriptive list will be supplied with our Handbook of Trees and Plants for 50 cents, which will be credited upon their first purchase amounting to \$5.

ANDORRA'S HANDBOOK will serve as a standard guide, being up-to-date in nomenclature, and containing conservative descriptions of a vast list of trees and plants, with hints of planting, pruning and caring for them. It is illustrated and fully indexed.

PRICE LISTS are issued semi-annually. Owing to our large output, and the changes in sizes of stock by reason of each season's growth, frequent revisions of the **PRICE-LIST** are necessary, to keep customers thoroughly posted on the stock we offer. You are always sure your order will be filled if you find the items in the **CURRENT SEASON'S PRICE-LIST**.

PLANTING INSTRUCTIONS. This booklet does not aim to cover every point that may arise, but it gives the principles in such a way that any one, by following its directions, can secure the best results.

A CALENDAR OF HARDY PERENNIALS, BOOKLET No. 33-26, with special lists of Iris, Phlox, Peonies and Chrysanthemums. This little booklet gives a complete list of Perennials, and shows in tabulated form their height, color, and months of bloom; invaluable to those planning herbaceous gardens.

OUR STANDARD FOR MEASURING TREES AND SHRUBS

All trees and shrubs are measured as they stand in the Nursery before digging. In evergreen trees and in evergreen and deciduous shrubs the height is taken from the ground to the top of the plant.

Deciduous trees are measured from the ground to the top of the head, and the caliper or diameter of the trunk is taken above the collar. Measurements are expressed thus: 10 to 12 ft. (height), 2½ to 2¾ in. (caliper).