

Historic, Archive Document

Do not assume content reflects current scientific knowledge, policies, or practices

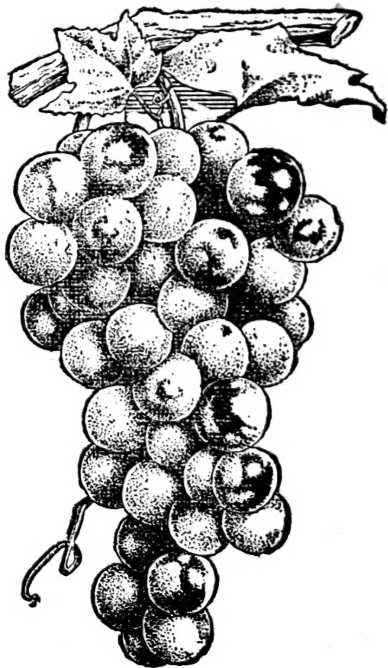
6721
FEB 10 1913

ANS.

CATALOG & PRICE LIST

U.S. Department of Agriculture
Caldwell Nursery Co.

INCORPORATED
CALDWELL, IDAHO



SUCCESSOR TO
HAWKES NURSERIES,
PARMA AND COUNCIL, IDAHO
AND
H. H. CUMMINS & SONS,
BERNARDI, OKLAHOMA

A FEW SUGGESTIONS.

When going after your trees to the nursery or some other delivery point always take something to cover them with. Wet straw is best, or burlap or canvas will do. It will always pay you to take the best possible care of them. In heeling-in, which should be done at once, always undo the package so that the dirt will come in direct contact with the roots. Do not leave any large bunches tied together as they cannot be properly protected in that manner. Heel in in good loose ground. Put them much deeper than you would plant as the trees are not to grow in the trench but are only put there for protection. If they are to remain over winter they should be covered two-thirds of the way up the bodies. In preparing the ground for planting plow deep and thoroughly and pulverize as fine as possible, you can not do this job too well. In setting, dig the holes large enough to accommodate all the roots in their natural shape. A short root is better than a crooked one. Dig the holes a little deeper than the tree is intended to be set. Put the tree in the hole and fill up with fine soil until you have sufficient to hold the tree in position, then put in some water and allow it to stand a while so as not to be muddy, next take hold of the top of the tree and gently pull it up to the desired position which will cause the roots to point slightly downward, put in some dry dirt and tramp firmly. If roots are extremely long or are broken they should be properly trimmed. If the trees are set in the fall, do not trim the tops until spring, as they will have a tendency to kill back from the cut and you may have to cut them again in the spring. Cherry trees need little or no cutting back. Apples and Pears are usually cut back one-half the last year's growth. Peaches, Plums, Apricots and Nectarines are usually trimmed to a single stock and the tree cut off at the point where the top is desired to start.

CATALOG AND PRICE LIST

OF THE

Caldwell Nursery Co., Inc.

CALDWELL, IDAHO

ANNOUNCEMENT.

In presenting this, our first annual catalogue, we wish to thank all our old friends and patrons for their liberal patronage the past season and hope by fair treatment to deserve and hold the same in future.

From those who have never dealt with us we would be pleased to have a trial order to demonstrate our ability to serve them. Members of our firm have been in the business for over 27 years and we claim to thoroughly understand our business. We aim to produce the kind of tree our customers demand. Our land is clean and new, never having had a tree on it before, and there are no old orchards near, so we run the least possible risk of disease of any kind.

OUR LOCATION.

We are nicely located on the Boise & Interurban, three miles from Caldwell and two miles west of Middleton, 10 cents fare from either place. Car each way every hour. Half hour between cars if you wish to make a short call. We have a nice pleasant office just across the road from the station where we will be pleased to see any one interested at any time and will endeavor to treat you right.

Very truly,

CALDWELL NURSERY CO., INC.

Office, Room 7, P. O. Block Caldwell, Idaho.

OFFICERS.

Winfield S. Hawkes	President
Henry H. Cummins	Vice President
Chas. T. Hawkes	Secretary
Wm. R. Wilkerson	Treasurer
Albert S. Hawkes	Director
John L. Cummins	Nursery Foreman

APPLES

	per Each 10	per 100	per 1000
Apples, 1 and 2			
yr., 4 to 6 ft.25c	\$2.25	\$20.00
1 yr., 3 to 4 ft.25c	2.00	18.00
1 yr., 2 to 3 ft.20c	1.75	15.00

SUMMER VARIETIES.

Red June—Small or medium, deep red; good; productive; hardy; August.

Red Astrachan—Large, roundish, nearly covered with red; very handsome, juicy, good, though rather acid. Tree hardy, good grower and good bearer. August.

Yellow Transparent—A hardy Russian variety. Medium size, pale yellow, flesh white, juicy, sub-acid, good. August.

Early Harvest—Medium to large size; pale yellow; tender, with a mild, fine flavor. Tree a moderate erect grower and a good bearer, being one of the first to ripen. Middle to end of August.

Golden Sweet—Large; yellow; a very fair, fine sweet apple. Tree a free grower, spreading, irregular, and productive. August and September.

FALL VARIETIES.

Duchess of Oldenberg—A large beautiful Russian variety, streaked red and yellow. A kitchen apple of the best quality. August and September.

Maiden Blush—Large, flat; pale yellow with red cheek, beautiful, tender and pleasant. Valuable market sort. Sept. and Oct.

Wealthy—Large, striped, nearly covered with red. Fine quality, hardy and productive, flavor excellent. Late fall and early winter.

STANDARD WINTER SORTS.

Jonathan—Medium size, yellow, nearly covered with red, flesh tender, juicy and rich, good bearer, very hardy tree. One of the best for the table or market. Early winter.

Rome Beauty—Large, yellow striped with red, handsome, medium quality; good bearer. December to May.

Wine Sap—Medium size. Dark red, good bearer and keeper. Very popular sort.

Stayman Winesap—Large dull red, not quite so dark as Winesap, fine quality, good keeper and heavy cropper.

Mammoth Black Twig—A popular apple from Arkansas. Tree strong grower and good bearer, one-fourth larger than Winesap and equal in flavor and keeping qualities.

Grimes Golden—Medium to large; skin golden yellow, sprinkled with gray dots, flesh crisp, tender, juicy, very good to best; tree hardy and productive.

Banana (Winter Banana)—Large, light yellow, blushed; slight banana flavor, high quality, superb for home orchard, strong grower; beautiful.

Tolman's Sweet—Medium size; pale, whitish yellow, slightly tinged with red; flesh firm, rich and very sweet; excellent for cooking. Tree a free grower, upright and very productive. November to April.

King—A superb red apple of the largest size and finest quality. Tree a vigorous grower and a good bearer; hardy. November to March.

Arkansas Black—Large, round or slightly conical; dark red, almost black; flesh yellow; a long keeper; standard market variety, tree very hardy and thrifty.

Gano—Form conical; good size; resembles Jonathan in color; flesh snow white, sub-acid; tree healthy, hardy. An annual and prolific bearer and long keeper. Popular on eastern market.

White Winter Pearmain—Medium to large; pale yellow, often blushed; extra high flavor. One of the best. December to February.

Delicious—Quality expressed by name. Flesh fine grained; dull red, large. A favorite dessert apple; not yet well tested in Idaho.

Yellow Newton Pippin—Bright yellow, often with pink blush; richly flavored, crisp, juicy and one of the best keepers. Fruit medium to large; tree slow grower and often a light bearer.

Spitzenberg—Medium to large; deep red, with white flecks, flesh yellow, crisp, sub-acid, high flavored; great Oregon favorite. Moderate bearer.

Wolf River—Tree very hardy and productive. Fruit very large and handsome; color red; flesh white; sub-acid.

CRAB APPLES.

Florence—Mottled crimson and yellow. Tree very hardy; heavy bearer, fruit medium in size; good quality; profitable.

Transcendent (Crab)—A beautiful variety of the Siberian Crab; red and yellow. Tree a remarkable grower.

Whitney No. 20 (Crab)—Large, beautiful striped crab; one of the best; season last of August.

PEARS

	Each	per 10	per 100	per 1000
Pears 1 and 2 yrs.,				
4 to 6 ft.	50c	\$4.50	\$35.00	\$300.00
1 yr., 3 to 4 ft.	35c	3.00	25.00	200.00
1 yr., 2 to 3 ft.	25c	2.00	18.00	150.00

SUMMER SORTS.

Bartlett—One of the most popular pears; large, buttery and melting, with a rich, musky flavor. A vigorous, erect grower, bears young and abundantly. Middle to last of September.

AUTUMN PEARS.

Duchess d'Angouleme—One of the largest of all our good pears. Succeeds best as a dwarf. One of our best market sorts. Oct. and Nov.

Flemish Beauty—A rare, beautiful, melting sweet pear. Tree very hardy and productive. September and October.

Seckel—The standard of excellence in the pear; small, but of the highest flavor. Tree a stout, slow, erect grower. September and October.

WINTER PEARS.

Buerre d'Anjou—A large, handsome pear, buttery and melting, with sprightly vinous flavor; keeps into winter. Tree a vigorous grower and good bearer.

Winter Nelis—One of the best winter pears, medium size; dull russet; melting, juicy, and of the highest flavor. December to January.

CHEERRIES.

	per Each	per 10	per 100	per 1000
Cherries, 1 and 2				
yr., 4 to 6 ft.	50c	\$4.50	\$35.00	\$300.00
1 yr., 3 to 4 ft.	40c	3.50	30.00	250.00
1 yr., 2 to 3 ft.	25c	2.00	18.00	150.00

Black Republican—Supposed to be a cross between the Napoleon Bigarreau and Black Tartarian, having the solid flesh of the former and color of the latter. Very late and good.

Napoleon or Royal Ann—A magnificent cherry of the largest size; pale yellow with a bright red cheek; flesh very firm, juicy and sweet. Tree a vigorous, erect grower and bears enormous crops.

Bing, (Sweet)—Dark brown, or black; large, very fine. Tree a thrifty and upright grower—when well started. First of July.

Lambert, (Sweet)—Very large, dark, purplish red. Flesh firm, rich and juicy. Tree a strong grower after it is once established.

Gov. Wood—Clear, light red; tender and delicious. Tree a vigorous grower. End of June. Hangs well on the tree. Sweet.

May Duke—An old, well known excellent variety; large, dark red, juicy, sub-acid, rich. Tree hardy,, vigorous and fruitful. Middle of June.

Late Duke—Large, light red; late and excellent. Tree robust and healthy. End of July.

Knudson—A new cherry from Utah. Said to be a cross between the Bigarreau and one of the Dukes. Large, red, rich, sub-acid. Tree very hardy and has borne a crop every year since old enough. Ripens about July 15th. Probably the most profitable cherry ever introduced.

Early Richmond—An early, red, acid cherry, very valuable for cooking. Ripens through June. Tree a free grower, hardy and productive.

Large Montmorency—Large, red, productive, ten days later than Early Richmond.

Eng. Morrello—Large, dark red, nearly black, tender, juicy, acid, rich. Tree dwarf and slender; makes a fine tree on Mahaleb. Valuable. August.

PLUMS.

	Each	10 per	100 per	1000 per
Plums, 1 and 2				
yr., 4 to 6 ft. . .	50c	4.50	35.00	300.00
1 yr., 3 to 4 ft. . .	40c	3.50	30.00	250.00
1 yr., 2 to 3 ft. . .	25c	2.00	18.00	150.00

Bradshaw—A very large and fine early plum; dark violet red; juicy and good. Tree erect and vigorous; very productive; valuable for market.

Burbank—A large beautiful red plum. Very vigorous and productive. One of the best canning plums. End of August.

Satsuma—One of the finest of the Japan sorts. Also known as Japan Blood on account of its beautiful dark red flesh. Very large, of a dull red color on the outside and blood red inside. Very small pit. Fine for culinary purposes. September.

Peach—Tree upright and vigorous, branches smooth. Fruit very large, shaped more like a peach than a plum, skin light brownish red, juicy and pleasant. Free stone. Last of July.

Green Gage—One of the best foreign varieties; fine flavor; roundish oval; greenish, marked with red in the sun. Tree a free grower and remarkably productive. Middle to end of September. Hangs long on the tree.

Columbia—Tree vigorous and productive; fruit large, with dark purple skin, deep yellow flesh, not very juicy but very rich and sugary. Keeps well. September.

PRUNES.

	Each	per 10	per 100	per 1000
Prunes, 1 and 2				
yr., 4 to 6 ft. . .	25c	\$2.25	\$20.00	\$180.00
1 yr., 3 to 4 ft. . .	20c	1.80	15.00	125.00
1 yr., 2 to 3 ft. . .	15c	1.25	11.00	100.00

Fellenberg—(Italian Prune) Medium size, oval, dark purple, flesh juicy and delicious; parts from the stone; fine for drying. Tree a free grower and very productive.

Hungarian—Very large, dark red, sweet and juicy. Fine.

French Prune—The well known little sweet prune. Fine for eating and drying.

Silver—Large size and sweet. A good dryer. Skin pale yellow. Tree vigorous. October.

Sugar Prune—A production of Luther Burbank. Tree hardy and productive. Bears young. Large purple, very sweet, almost one-fourth sugar. August.

Giant—One of the largest prunes known. Unequaled in size, of handsome appearance. Productive; good keeper; sweet. September.

PEACHES.

	Each	per 10	per 100	per 1000
Peaches 1 and 2 yr.				
4 to 6 ft.	25c	\$2.25	\$20.00	180.00
1 yr., 3 to 4 ft. . .	20c	1.80	15.00	125.00
1 yr., 2 to 3 ft. . .	15c	1.25	11.00	100.00

Alexander—Medium to large size; skin greenish-white, nearly covered with rich red. One of the best extra early sorts.

Greensboro—Ripens with Alexander, but much larger. Flesh white, free stone, very juicy, good. Bright red over yellow.

Carman—Large white peach with red cheek. Hardy and productive. Second early. Good. Free stone.

Champion—One of the best flavored of all peaches. Looks much like Carman but a month later. White fleshed free stone. August.

Elberta—Very large yellow free stone. The great market peach. Fine canner and shipper. September 15.

Crawfords Early—A magnificent large yellow free stone. Good canner. A good family sort. Sept.

Crawford's Late—A superb yellow peach; very large, productive and good; ripens here about the close of the peach season. Last of September.

Muir—Favorite California, canning and drying peach. Very sweet and firm, yellow with faint blush. Large, very free, small pit. August.

Triumph—Earliest yellow flesh freestone. Ripens soon after Alexander. Blooms late. Fruit large, yellow with red cheek. Sure and abundant bearer. strong grower.

Salway—Large yellow English peach with deep yellow flesh; very juicy, melting and

rich. A valuable late market variety.

Heath Cling—Delicious, very large, creamy white, faint red blush; flesh white, slightly red at pit, tender, juicy, sweet. Valuable for canning. Early September.

APRICOTS.

	Each	per 10	per 100	per 1000
Apricots, 1 and 2				
yr., 4 to 6 ft.	50c	4.50	\$35.00	\$300.00
1 yr., 3 to 4 ft.	40c	3.50	30.00	250.00
1 yr., 2 to 3 ft.	25c	2.00	18.00	150.00

Moorpark—One of the largest and finest apricots. Yellow with red cheek. Sweet, juicy and rich; parts easily from the pit. Season, end of July.

Royal—Fine large French variety; fruit roundish, slightly compressed; dull yellow, with orange cheek. Flesh pale orange, firm and juicy; good flavor. Last of July.

NECTARINES.

	Each	per 10	per 100
Nectarines, 1 and 2 yr.,			
5 to 6 ft.	50c	\$4.50	\$35.00
1 yr., 3 to 4 ft.	40c	3.50	30.00
1 yr., 2 to 3 ft.	25c	2.00	18.00

Early Violet—A fine early sort, dark purple, free stone, juicy and good.

Boston—Lighter colored and later than above, fine, free stone.

QUINCES.

	Each	per 10	per 100
Quinces, 1 and 2 yr.,			
3 to 4 ft.	50c	\$4.50	
1 yr., 2 and 3 ft.	40c	3.50	

Orange—Large, roundish, with a short neck; of a bright, golden yellow color, productive. This is the variety most commonly grown for fruit. October.

Champion—A new variety. The tree is an early and abundant bearer.

CURRANTS.

	Each	per 10	per 100
Currants	15c	\$1.50	\$8.00

White Grape—Berries very large, whiteish yellow, sweet and good; very productive.

Fay's Prolific, (Red)—Large size, fine fla-

vor and exceedingly prolific—stems long; fruit hangs on well; profitable.

Black Champion—Very productive, bunch and berry both large; excellent quality; a strong grower.

GOOSEBERRIES.

	Each	per 10	per 100
Gooseberries	15c	\$1.50	\$8.00
(Except Industry.)			

Houghton — Vigorous grower; abundant bearer; fruit of medium size, pale red, sweet and juicy.

Downing—Fruit much larger than Houghton; roundish, light green with distinct veins, flesh soft, juicy, fine flavored; vigorous and productive.

Industry—Special. Each 30c; per 10, \$2.50; per 100, \$18.00. A very vigorous upright grower, bearing large crops. Berries very large, dark red, hairy, flavor rich and agreeable. A very fine English variety.

GRAPES.

	Each	per 10	per 100
Grapes, 1 or 2 yr.,	15c	\$1.50	\$10.00
Common sorts—Extra where noted.			

Concord—The old reliable black grape, succeeds over a great amount of country. "The people's grape."

Moore's Early—Bunch medium, berry large, round, black with heavy blue bloom, flesh pulpy and of medium quality, early and productive.

Worden—Earlier, larger, and better quality than Concord of which it is a seedling, becoming very popular.

Brighton—A fine red sort. A little earlier than Concord. Quality of the best.

Moore's Diamond—A fine white sort, a little earlier than Concord, bunches very fine and compact, quality much better than Concord and more productive.

White Sweetwater—One of the best of the foreign varieties. Color greenish-yellow, tender and sweet.

Niagara—Bunch medium size, berry large, roundish, uniform, skin thin but tough, pale yellow when fully ripe, tender, sweet, not quite equal to the Concord. Vine remark-

ably vigorous, healthy, and productive; ripens with the Concord.

Delaware—This variety has fully maintained its reputation as one of the finest of our native grapes. The vine is comparatively slender, but grows freely. Bunch small and compact; berries small, light red, beautiful. Sweet, sugary, and vinous.

Campbell's Early—A hardy grower, early ripener, and abundant bearer. Clusters large and of excellent quality. Fruit large and glossy black; sweet and juicy. Remarkable keeper and good shipper. Price 25c each; \$2.00 for ten; \$15.00 per 100.

Agawam—Vine very vigorous; fine for arbors; bunch large, berries dark red and of good size; flesh tender, juicy, aromatic. One of the best. Ripens fairly early.

BLACKBERRIES, RASPBERRIES AND DEWBERRIES.

	Each	per 10	per 100	per 1000
Blackberries15c	\$1.50	\$7.00	\$35.00
Dewberries15c	1.50	7.00	35.00
Raspberries15c	1.50	7.00	35.00

Dewberries.

Lucretia—A low growing trailing blackberry, very hardy and productive, fruit very large, sweet and luscious, with no hard core; ripens before raspberries are gone.

Austin—A new variety from Texas. Surpasses the Lucretia in productiveness and is fully as hardy. Sweet and good. Earliest to ripen.

Blackberries.

Early Harvest—Very early to ripen; an enormous bearer, sweet and good quality; canes strong, upright and hardy.

Erie—An early, large, productive, absolutely hardy blackberry; free from disease; fruit uniform in size and shape; excellent.

Texas—A fine new sort, productive and hardy. Very sweet.

Raspberries.

Cuthbert—Large deep red, firm of excellent quality; hardy; very desirable.

Gregg, (black)—A very large and prolific blackcap. Fine quality, very productive and hardy.

STRAWBERRIES.

Strawberries, leading sorts, \$1.00 per 100;
\$7.50 per 1000.

Senator Dunlap, Aroma, William Belt, Ex-
celsior.

MISCELLANEOUS.

	Each	per 10	per 100
Loganberries	25c	\$2.00	\$10.00
Rhubarb15	1.50	
Asparagus75	1.50

**FOREST AND ORNAMENT-
AL TREES.**

Ash, White, 4 to 6 ft...	.35	3.50	
Ash, White, 6 to 8 ft. ..	.40	4.00	
Box Elder, 6 to 8 ft....	.25	2.50	17.00
Box Elder, 8 to 10 ft. ..	.40	4.00	30.00
Birch, European, 6 to 8 ft	.50	5.00	
Catalpa, 4 to 6 ft25	2.50	
Catalpa, 6 to 8 ft40	4.00	
Elm, Am., 4 to 6. ft ..	.25	2.50	
Elm, Am., 6 to 8 ft40	4.00	
Elm, Am., 8 to 10 ft. ..	.50	5.00	
Elm, Cork Bark, 4 to 6 ft	.75	7.50	
Elm, Cork Bark, 6 to 8 ft	1.25	12.50	
Elm, Cork Bark, 8 to 10 ft	1.50	15.00	
Linden, Am., 6 to 8 ft..	.60	6.00	
Locust, Black, 4 to 6 ft.	.25	2.50	10.00
Locust, Black, 6 to 8 ft.	.40	3.50	20.00
Locust, Black, 8 to 10 ft	.50	5.00	35.00
Maple, Soft, 4 to 6 ft..	.35	3.50	20.00
Maple, Soft, 6 to 8 ft..	.40	4.00	30.00
Maple, Soft, 8 to 10 ft ..	.75	7.50	
Maple, Sycamore, 6 to 8 ft50	5.00	
Maple, Sugar, 6 to 8 ft.	.75	7.50	
Maple, Norway, 6 to 8 ft	.50	5.00	
Mulberry, Russian, 4 to 6 ft25	2.50	
Poplar Carolina, 4 to 6 ft30	2.50	15.00
Poplar Carolina, 6 to 8 ft40	4.00	25.00
Poplar Carolina, 8 to 10 ft50	5.00	35.00
Tulip Trees, 6 to 8 ft ..	.75	7.50	
Mt. Ash, 4 to 6 ft50	5.00	
Mt. Ash, 6 to 8 ft75	7.50	

NUT TREES.

	Each	per 10	per 100
Black Walnut50	4.00	30.00
English Walnut50	4.00	30.00
Chestnut, American, Span- ish, Japan50	4.00	30.00
Almonds, etc.50	4.00	30.00

FLOWERING SHRUBS.

	Each	per 12	per 100
Spirea Revesi50	5.00	
Althea, Red50	5.00	
Althea, White50	5.00	
Althea, Purple50	5.00	
Almond, Flowering50	5.00	
Honey Suckle, Upright..	.50	5.00	
Hydrangea, P. G.50		
Lilac, Common Purple..	.50		
Lilac, Common White ..	.50		
Snowball, 2 to 3 ft50		
Syringia50		
Paeonies, Herbaciam Red, White, Pink50	5.00	

CLIMBING PLANTS.

Clematis Paniculata50		
Clematis, Jackmanii (purple)75		
Wisteria, White, Purple.	.75		
Boston Ivy75		
Virginia Creeper50		
Trumpet Vine (Bignonia)	.50		
Honey Suckle, assorted..	.50		
Crimson Rambler75		

ROSES—HARDY, PERPETUAL.

Red, White, Pink, best varieties 50c and 75c

HEDGE PLANTS.

	Each	12 per	100 per
Arborvitae, American ..		2.00	15.00
Privet, Common		1.50	10.00
Privet, California		1.50	10.00
Russian Olive15	1.00	8.00
Cannas15	1.00	8.00

NUMBER OF TREES ON AN ACRE AT DIFFERENT DISTANCES.

At 4 feet apart each way	2,720
At 5 feet apart each way	1,744
At 6 feet apart each way	1,210
At 8 feet apart each way	680
At 10 feet apart each way	435
At 12 feet apart each way	305
At 15 feet apart each way	195
At 16 feet apart each way	170
At 18 feet apart each way	135
At 20 feet apart each way	110
At 25 feet apart each way	70
At 30 feet apart each way	50

USUAL DISTANCES FOR PLANTING.

Apples, 20 to 30 feet; Pears and Cherries, 16 to 20 feet; Plums, Peaches, Apricots and Nectarines, 16 to 18 feet; Currants, Gooseberries and Raspberries 4 to 5 feet; Blackberries, 6 to 7 feet.

We aim to carry the varieties best adapted to this section of the country and are constantly adding new varieties of proven worth.

Our packing and shipping facilities are the best and the most careful attention is given to bailing and boxing to assure satisfactory delivery of goods.

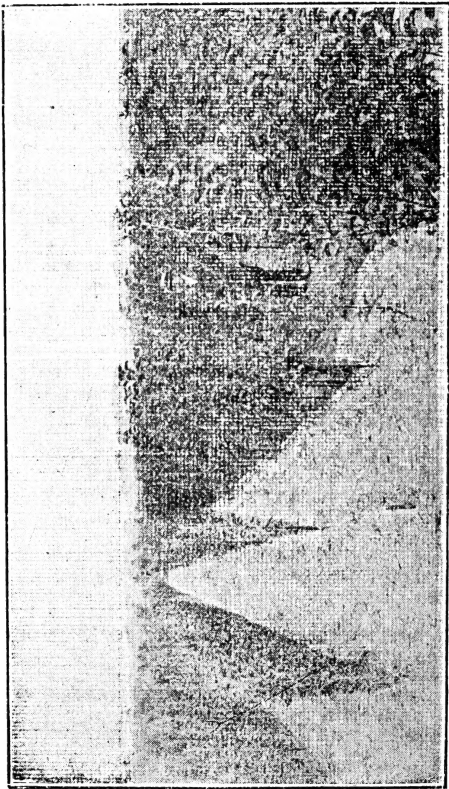
Parties mailing us orders will receive the same careful attention given to one on the grounds

Cash must accompany order or satisfactory reference given.

Our trees are clean, straight and well grown, and with proper care can not help but please.

The prices herein are for strictly first class trees. Fifty will be sold at the hundred rate and 500 at the thousand rate.

A personal inspection is solicited. Send us a list of your wants and let us figure on them.



**Yearling and Two-year-old Apple Trees Grown at Roswell, Idaho, for the Caldwell Nursery Company, Inc.—
Nursery Three Miles Out on Interurban Car Line. Town Office, Room 7 P. O. Block. Both Phones, Caldwell, Ida.**