

## **Historic, Archive Document**

Do not assume content reflects current scientific knowledge, policies, or practices.



67.01 9. 1913.

# Colmant Nurseries

LIBRARY  
RECEIVED  
U. S. Department of Agriculture



CEDRUS DEODARA





# Colmant Nurseries

Established 1865

Forty-six years ago the Rosedale Nurseries were established in Columbus, Mississippi, by the late J. J. Colmant. In connection with the nurseries large orchards and vineyards were maintained, choice fruits being shipped to the principal cities of the South. Eighteen years ago the nurseries were removed to the Birmingham district, since which time a successful business has been carried on

Owing to the large increase in our business we have recently purchased a tract of acreage at Westover, on the Atlanta, Birmingham and Atlantic railroad, on which all varieties of hardy trees, plants, shrubs, etc., will be grown and shipped in car load lots to our nurseries at West End, Birmingham, Ala. Our nurseries at Colmant Station, West End, will be maintained in the capacity of a show ground. Hundreds of varieties of ornamental trees, plants, etc., will be grown (necessarily in small quantities, owing to lack of space) for the benefit of customers who visit our place at all seasons and wish to see the different varieties of plants, etc., growing and in blossom.

This season we have one of the largest and most complete assortments of nursery stock that we have ever offered to the trade and cordially invite our patrons to make an inspection of our nurseries. Address all communications to

## Colmant Nurseries

West End, Birmingham, Ala.

West End and Powderly Electric Car Line and Macadamized Road, Colmant Station.

Bell Phone 54, West End.

## Hints on Planting

November and December are the best months in which to plant all hardy trees and plants, such as fruit trees, shade trees, evergreens, grapevines, strawberry plants; all hardy bulbs, such as hyacinths, tulips, narcissus, lilies, etc; all hardy shrubs, roses included, though the latter should have a mulch of about two inches of well-rotted manure or some other light material put over their roots to prevent severe freezing from penetrating the ground.

A tree or hardy shrub or vine planted during the above months will make roots during the winter in our climate, and is ready to grow off even in a dry spring, and will make far better growth than if planted in February and March. If all who intend to plant could be convinced of this, there would be less failure, provided a suitable preparation of the ground has been made. Deep plowing or spading and liberal manuring are the basis of success.

We give the following short hints on planting, which we have advocated for many years, and if followed, failure will be rare and must be attributed to some other cause, such as insects, soggy soil or mechanical injury:

Enrich the land; poor land will produce poor fruit and poor flowers.

Always choose the highest ground for the orchard. If the land is rolling, give peaches the highest part of it.

Dig a hole two or more feet wide and one or more feet deep, mixing with the soil, which is to be returned in planting, a bushel of woodsmold, or one-half bushel of well-decomposed manure.

Plant standard trees, so that the top roots are about three inches below the level of the ground.

A tree planted too deep will not thrive.

Cut back one-year-old standard apple, pear and peach trees to two and one-half feet, and cut off every side limb, and when the shoots have grown an inch or two in the spring, rub off all except the three upper ones; these will form the head of the future tree.

All bruised or broken roots should be cut smooth.

Two or three-year-old trees should have their branches cut back to about one-half of their length.

To face the stem of the tree in the same direction as it stood in the nursery is of no value whatever.

Though we can plant from November to March, November and December planting will give the trees a better start in the spring.

Always bear in mind that an orchard requires good care and attention, but when that is given, the orchard is one of the most valuable additions to the farm.

Pigs and poultry will thrive in an orchard; they will eat the fallen fruit and thus destroy the curculio and coddling moth.

Plant standard apple, pear and peach trees twenty feet apart each way in the orchard; cherry and plum trees, fifteen feet; grape-vines, ten feet.

Strawberries are planted for family use in the garden, in rows two feet apart, and about one foot in the row; for market purposes, plant in rows three to four feet apart, and fifteen to eighteen inches in the rows. Always keep free from grass and weeds.

### Number of Trees and Plants to the Acre at Given Distances.

Distance apart.	No. plants.
3 feet by 1 foot.....	14,520
3 feet by 2 feet.....	7,260
3 feet.....	4,840
4 feet.....	2,722
5 feet.....	1,042
6 feet.....	1,210
8 feet.....	680
9 feet.....	537
10 feet.....	435
12 feet.....	302
15 feet.....	193
20 feet.....	108

We add to the above hints the following:

See to it that the trees or plants which you receive from the nursery have their roots in a moist condition; if they are dry, refuse to receive them, but if you find they are in the proper condition keep them so, and do not blame the nurseryman if the roots become dry when in your possession. Remember that a plant is a living body, and if out of the ground is like a fish out of water, and it is then a question of time as to the amount of injury it will receive. Hence the holes in which to plant should be made ready when the order for the plants is sent; but this is not all. As soon as the trees or shrubs arrive their roots must be put in trenches in the ground and watered, and only taken out one by one as they are wanted, or if there are but few plants, their roots should be watered and covered with wet bagging, and only taken out one by one as they are wanted for planting. If, when the trees arrive, the soil is too wet for planting, they can be kept in the trench until the ground is in good condition.

Always surround the roots with friable soil, and after the tree or bush is in position, press the soil firmly around the roots and give a good watering.

#### Injurious Insects and Fungus Diseases.

Insects and fungi are destructive to trees and fruits. Every fruit grower should have a spraying apparatus.

---

## Read the Following Terms and Conditions Before Ordering

Correspondents should sign their names in full, giving also names of postoffice, county and state.

State also if trees are to be shipped by freight or express.

Packages not exceeding fifty pounds are best sent by express.

We charge for packing just enough to cover cost of material used, which is, say 25 cents for every \$5.00 worth of trees and plants.

We guarantee that all our stock shall leave the nurseries in the best condition; but after the goods have been delivered to the forwarding agents, they are at the risk of the purchaser, and forwarders alone must be held responsible for delay or loss of goods.

We do not ship plants and trees by mail.

Send orders in early; it will facilitate our business and enable us to furnish all varieties contained in the catalogue before they are exhausted. We do not substitute unless instructed to do so.

We commence shipping early in November.

We have made it a rule not to ship nursery stock until the money for the same has been received, and to avoid unnecessary delay, the amount for trees and plants, including charges for packing, should be sent by postoffice money order or express money order on Birmingham, Ala. When orders cannot be procured, send money in registered letter. We cannot conduct our business on a credit system.

It is our interest and our pride to have all trees and plants leave our nurseries true to name and in the best condition, but we assume no responsibility whatever if failures arise from defective planting or from subsequent faulty treatment and cultivation.

If, in spite of our care and precaution, any tree should prove untrue to label, we will, on proof, either return the money paid to us for them, or replace the trees free of charge. And it is hereby mutually agreed and understood between the purchaser and ourselves that in no case can we be held liable for any greater amount of money than originally paid to us by the purchaser.

---

Our out-door grown roses this year are fine; this is one of our specialties. You have our experience in the varieties that do well in our climate.

# FRUIT DEPARTMENT

## APPLES

The summer and fall varieties in the catalogue seldom fail to produce a paying crop if planted in good soil. The winter varieties are mostly of southern origin, and will, in suitable localities, produce good keeping apples. Time and money are wasted if winter apples of northern or European origin are planted south of 34 degrees latitude.

### Price of Trees

	Each.	Per 10.	Per 100
Two and three-year old, 5 to 6 feet strong trees.....	40c	\$3.50	
Two-year-old, 4 to 5 feet.....	25c	2.25	18.50
One-year-old, 3 to 5 feet.....	20c	1.75	15.00

#### YELLOW TRANSPARENT

The earliest of all the apples, medium size; ripening as early as May 15th.

#### EARLY HARVEST

Ripens about June 1st; medium size, yellow; first apple of good shipping qualities.

#### RED JUNE

Above medium, deep crimson, excellent flavor; best commercial apple grown in the South.

#### SUMMER GOLDEN PIPPEN

Ripens July 1st to 15th; medium, yellow; good shipper.

#### HORSE

Very large, rich golden; ripens about July 15th; very prolific.

#### HACKWORTH

Ripens middle of July; contains all the qualities desired in an apple; deep red, yellow striped; excellent for shipping and making cider.

#### PINE STUMP

Originated in this State; deep crimson; good shipper; ripens September 1st to 10th.

#### CAROLINA GREENING

Large green; good cooking apple; ripening about middle of October.

The following list contains varieties best suited for keeping purposes during the winter:

#### BEN DAVIS

Yellowish red with crimson cheek; excellent keeper.

#### BLACK WARRIOR

Green, above medium.

#### LIMBERTWIG

Large red.

#### SHOCKLEY

Yellow, crimson cheek; very productive.

#### WINESAP

Above medium, red; abundant bearer.

#### PARAGON

Medium, red; good shipper.

#### YORK IMPERIAL

Red, medium.

#### YATES

Small, red.

## Crab Apples

Trees and blossoms very ornamental.

#### GOLDEN BEAUTY.

#### RED SIBERIAN.

#### TRANSCENDENT.



## PEACHES

	Each	Per 100	Per 1,000
One-year .....	15c	\$11.00	\$80.00
Two-year .....	25c	20.00	

An extra fine lot of two-year-old trees, 6 to 8 feet high; very stocky, at 40c each: \$30 per 100.

### SNEED

Medium, creamy white, with carmine cheek; semi-cling; May 10th to 15th.

### MAYFLOWER

A sure bearer, blooms late; semi-cling; ripens May 5th to 10th.

### ALEXANDER

Above medium, flesh greenish white; firm, good shipper; June 1st to 5th.

### BELLE OF GEORGIA

Very large, white skin, with red cheek; very prolific; good shipper; July 10th to 15th.

### EMMA

A good peach for home use; very large, yellow skin and flesh; fine flavor; July 15th to 20th.

### ELBERTA

Large yellow, very showy; good for canning purposes; best shipper on the market; July 15th to 25th.

### CHINESE CLING

Large, pure white flesh; fine for preserving; July 20th to 25th.

### GENERAL LEE

Improved Chinese cling, above medium; flesh white; fine grained, high flavor; July 15th to 20th.

### GREENSBORO

Best early freestone; excellent for home use; June 5th to 10th.

### CARMAN

An unusual peach, large size; creamy white flesh, juicy and tender; very prolific; an excellent shipper; June 15th to 20th.

### WADDELL

Very similar to Carman; ripens about a week later.

### MOUNTAIN ROSE

An excellent freestone variety; flesh white, skin carmine; June 25th to 30th.

### EARLY CRAWFORD

Yellow freestone, a very popular variety, medium size; July 5th to 10th.

### O. M. CLING

Flesh white, with red streaks, medium size; August 1st to 10th.

### CHAMPION

Very large, flesh pure white; excellent flavor; August 10th to 15th.

### BLOOD CLING

Medium, flesh deep red; very acid; August 10th to 15th.

### LEMON CLING

Large, flesh deep yellow; excellent for canning; highly flavored; August 15th to 20th.

### HEATH CLING

Old English Heath, very large; flesh white, very sweet; September 1st to 5th.

### SUNRISE

Clingstone, medium size, not over-juicy; good for preserving; September 10th to 15th.

## PLUMS

Price:	Each	Per 100
One-year .....	35c	\$25.00
Two-year .....	50c	35.00

## Japanese Varieties

### BURBANK

Large, firm, yellow flesh; skin red, mottled with yellow; July 20th to 25th.

### ABUNDANCE

Very prolific, yellow flesh, very juicy, pit small; good shipper, heavy bearer; fruit should be trimmed to procure best results; June 20th to 25th.

## PLUMS—Concluded

### RED JUNE

An excellent market variety; firm flesh, deep yellow; skin thick, purplish red, with blue bloom; June 5th to 10th.

### CHABOT

Very large, deep yellow flesh; skin yellowish red; July 25th to 30th.

## Native Varieties

(Improved)

### CUMBERLAND

Yellow, sweet, juicy; August 20th to 25th.

### WILD GOOSE

Very large, vermillion red, mottled with yellow; very sweet, juicy; July 15th to 20th.

## European Varieties

### SHROPSHIRE DAMSON

Dark purple, medium size.

### GERMAN PRUNE

Very large, blue.

## PEARS

Standard 3-year-old, 6 to 8 feet—Each, 60c; per 10, \$5.00.  
 Standard 2-year-old, 5 to 6 feet—Each, 50c; per 10, \$4.00.  
 Standard 2-year-old, 4 to 5 feet—Each, 30c; per 10, \$3.00; per 100, \$20.00.

Nearly all varieties in this list have fruited in our orchards during more than twenty years. All trees are grafted on French stocks. Wilder, small to medium, June; Bartlett, July; Duchess D'Angouleme, large, August and September; Seckel, small, August; Gar-

ber, large, September; Beurre D'Anjou, large, October and November; Kieffer, large, ripens in October, but is at its best during November and December if ripened in a cool, dark room or cellar.

## CHERRIES

Price:	Each.	Per 10
One-year .....	.35c	\$3.00
Two-year .....	.50c	4.00

### EARLY RICHMOND

Red, medium semi-acid; tree grows about 16 to 20 feet high; very ornamental.

### MAY DUKE

Red; a little earlier than Early Richmond; fruits over longer period; tree not as attractive.

### LARGE MONTGOMERY

Black, semi-acid.

### GOVERNOR WOOD

Large, sweet; bears early; fruit red.

### WINDSOR

Similar to Governor Wood.

## QUINCES

Price:	Each.	Per 10
Two-year .....	.50c	\$3.50

### MEECH

Early, medium.

### CHAMPION

The best for this locality; fruit cooks very tender; good market variety.

### ORANGE

Large, round; very prolific.

## MULBERRIES

Price:	Each.	Per 10.	Per 100
One-year	.....25c	\$2.00	\$17.50
Two-year	.....40c	3.00	25.00

### HICK'S EVERBEARING

Very prolific; bears over period of three months; nothing better for chicken yards.

### DOWNING

Large, black, very juicy; very thick foliage.

## POMEGRANATE

One-year, each	.....25c
Two-year, each	.....50c

### SPANISH RUBY

Very large, deep crimson; purple seed; pulp juicy; semi-acid.

## STRAWBERRIES

### Perfect Flowering Varieties.

Per 100	.....\$ .50
Per 1,000	.....3.50

### MICHEL'S EARLY

Very early, medium size; berries always command high price on the market.

### LADY THOMPSON

Large, oblong berry; later than Michel's Early. The two varieties cover the strawberry season from beginning to end.

### KLONDYKE

Considered the most profitable berry grown in this locality; ripens from five days to a week later than Michel's Early, but bears for about three weeks; berries large, highly colored.

## RASPBERRIES

Per dozen	.....\$ .50
Per 100	.....3.00
Per 1,000	.....20.00

### CUTHBERT

An abundant bearer; fruit red, juicy; seed small; often produces second crop.

### LOUDON

Large, deep crimson when fully ripe.

### BLACK-CAP

Firm; larger than either of above varieties.

## GRAPES

City and suburban home grounds may be greatly improved at small expense by planting a few grapevines. Grapes are an almost never-failing crop, for if the first crop should be killed, new shoots immediately begin to grow which will bear an average crop of medium-size bunches.

The greatest fault that can be found with grapevines is that they will over-bear. This results from not pruning each year.

Prune vines well each year during December or the early part of January. Cut each runner of the previous season's growth back to three or four "eyes" or "joints."

A simple and inexpensive trellis can be made by stretching two wires on posts twelve to fifteen feet apart.

Price:	Each	Per 10	Per 100
Two-year	.....20c	\$1.50	\$12.00
One-year	.....10c	.80	7.00

### AGAWAM

Red; berries grow loose on the bunches; skin thick, meaty pulp; rich aromatic flavor; vine strong, hardy grower.

### BRIGHTON

Red; medium size bunch, compact; shouldered berries; medium, thin skin; very little pulp; sweet, juicy.

## GRAPES—Concluded

### CATAWBA

Dark red, somewhat compact; berries medium to large; skin thick; flesh pulpy; rich, vinous flavor.

### CONCORD

Black; bunch large, compact; berries very large; covered with a rich bloom; tender skin; flesh sweet, juicy; good shipper.

### DELAWARE

Red; bunch small, compact; berries small, but firm; very sweet; of the best quality for both table and wine.

### IVES

Black; bunches long, medium, compact; berries medium, with flavor somewhat of the wild grape; skin thick and tough; colors early, but does not mature for ten days or two weeks later.

### LUTIE

Dark red; bunches and berries medium; flesh pulpy and sweet; a fine table grape.

### MOORE'S DIAMOND

Bunch large, compact; berries large, round; skin thin and tough; very little pulp; thick foliage; hardy and productive.

### NIAGARA

White; bunch handsome and attractive; berries large, round; tough, thin skin; does not crack; very little pulp; sweet, of fine flavor. The best white grape grown for market or family uses.

### WORDEN

Black; bunch large, compact; berries very large; skin thin; ripens five to ten days earlier than Concord, and is considered a better grape for home use.

### SCUPPERNONG

Amber colored; skin tender; pulp juicy. Price, 25c each.

## PECANS

Price:	Each	Per 10	Per 100
Two to 3 feet.....	\$.75	\$7.00	\$60.00
Three to 4 feet....	1.00	8.50	75.00
Five to 6 feet.....	1.50	12.50	

Pecan planting in late years has come to the front in leaps and bounds until this year indications are that all records will be broken. We have booked orders for a large per cent, of our stock, but still have a few hundred trees of the two best varieties left.

### VAN DEMAN

Originated in Louisiana; nuts large, thin shell; ripens early.

### STUART

A fine commercial variety; very prolific; thin shell; fine flavor.

## CHESTNUTS

Price:	Each	Per 10
Three to 4 feet.....	\$.35	\$3.00
Five to 6 feet.....	.50	4.00
Seven to 8 feet.....	1.00	8.00

### AMERICAN

Rapid growth; makes a beautiful shade tree, but will not do for street planting.

### SPANISH

Tree bears very young, nuts maturing on

trees only three or four feet high; very ornamental.

### JAPAN

Nuts of immense size; very abundant.

## BLACKBERRIES

Price:	
Per dozen .....	\$ .50
Per 100 .....	3.00

### EARLY HARVEST

Very productive, medium; glossy black of excellent quality; ripens early; compact dwarf grower; good shipper.

### ERIE

Very large, round; of fine quality when fully ripe; later than Early Harvest; vigorous and productive.

## WALNUTS

Price:	Each	Per 10	Per 100
Two to 3 feet.....	.25c	\$2.00	\$18.00
Five to 6 feet.....	.50c	4.00	35.00

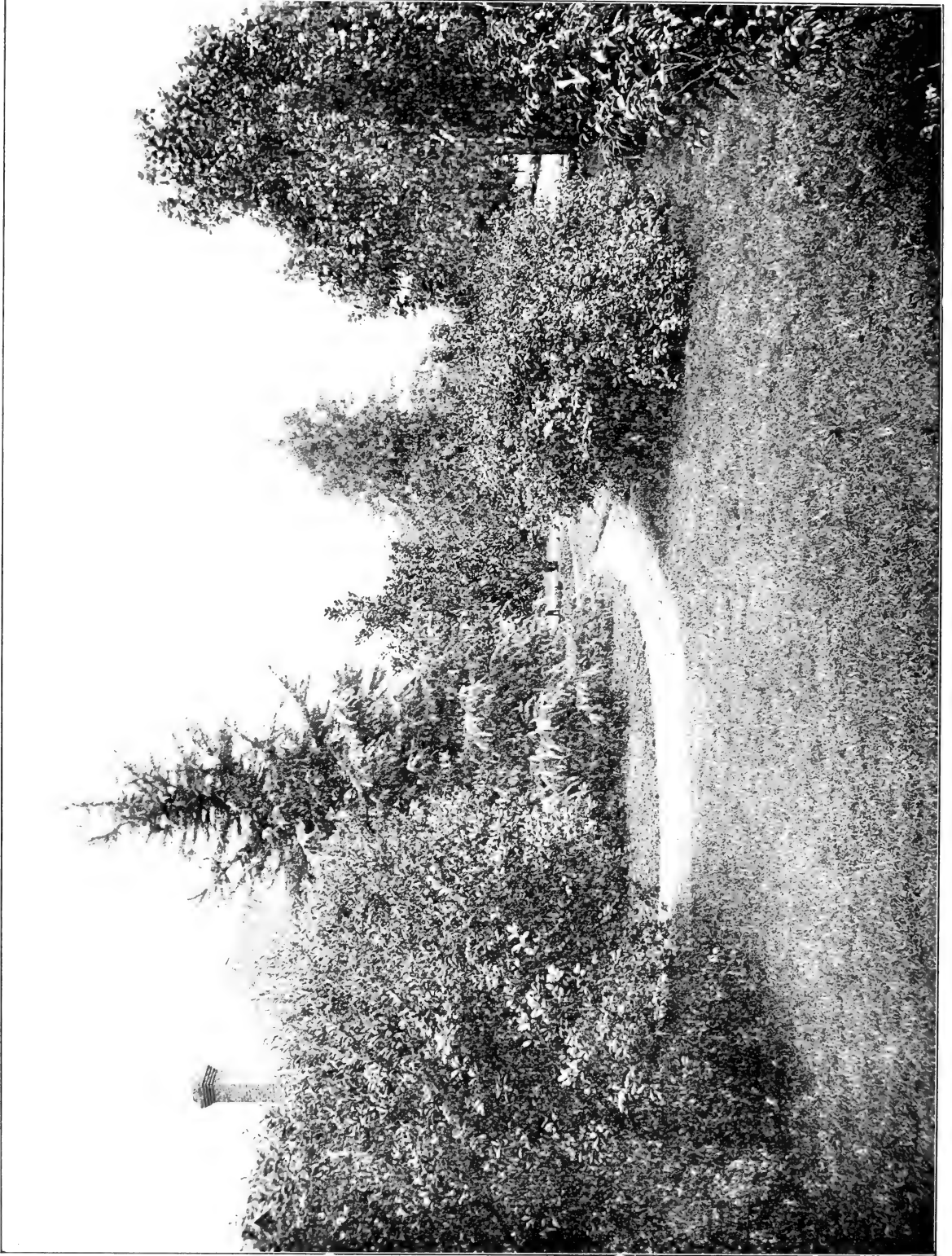
The following varieties bear when trees are from 4 to 6 years old. Nuts of rich flavor; shell of medium thickness. The kernel may

be extracted whole by dropping the nuts in hot water about one minute.  
Cordiformis, Praeparturiensis, Seiboldiana.

## FIGS

Price:	Each	Per 10	Per 100
Two-year-old .....	.50c	\$4.50	\$40.00
One-year-old .....	.25c	2.00	20.00

Brown Turkey, Lemon, Celestial.



INFORMAL DESIGN

# LANDSCAPE ARCHITECTURE

The "City Beautiful" figures prominently in the country today, but it cannot be perfected without the co-operation of the citizen, in beautifying his own part of the city.

A home is not complete or attractive without the surrounding grounds or yard arranged in artistic order, in comparison with the house, location and size of property.

It is, therefore, necessary to have one's grounds improved, either to suit his own taste or to the knowledge and ability of the landscape architect.

One of the branch departments of our business is the landscape department, in which we furnish plans and estimates on any size job.

All trees, plants, shrubbery, etc., used in any of our work are carefully selected which are best adapted to that climate and soil in which they are to be used.

## ORNAMENTAL TREES AND SHRUBS

### Broad Leafed Evergreens

#### ABELLA GRANDIFLORA

A most satisfactory dwarf shrub; long, drooping branches, with thick clusters of white flowers; blossoms the greater part of the summer. Price: \$1.00 each, \$8.00 per 10.

#### AUCUBA

**Gold Dust Tree.** When planted in groups of flowering shrubs and conifers the Aucuba succeeds best; the large, glossy, variegated and solid green leaves of the plant showing up to great advantage. Also of great value for porch boxes and jardinières.

#### AUCUBA HIMALAICA

Broad dark green leaves.

#### AUCUBA AUREA MACULATA

Variegated leaves.

#### AUCUBA VIRIDIS

Narrow, dark green leaves.

Price: Very large, bushy plants, \$1.50 each; per 10, \$12.50.

Smaller plants, bushy, \$1 each; per 10, \$8; extra large specimen plants, \$3 each; per 10, \$25.

#### AZALEA

**Hinodegeri Amoena.** The dwarf Azaleas planted in group or in front of taller growing shrubs gives a most pleasing effect in early spring. The bright carmine flowers of the Azalea Hinodegeri cover the plant almost en-

tirely. Strong, bushy plants, 60c each; \$5 per 10.

#### BERBERIS JAPONICA

(**Mahonia Japonica.**) A beautiful plant with glossy, dark green leaves somewhat resembling the holly. Spikes of yellow flowers produced in early spring. Very heavy specimen plants, \$1.50 each; per 10, \$12; smaller plants, with thick foliage, \$1 each; per 10, \$8.

#### BUXUS SEMPERVIRENS

Beautiful pyramid trimmed specimens, 2 1-2 to 3 feet, \$3 each; untrimmed plants, very bushy, 2 feet, \$1.50 each; 1 foot, at \$1 each; \$7 per 10.

#### ELAEAGNUS

(**Japan Oleaster.**) An evergreen of great value, used as a background in massing shrubbery, or as specimen plants from the ground.

#### E. SIMONII

Of compact growth, foliage silvery on underside.

#### E. AUREA MACULATA

Broad leaves with bright yellow blotches; plants several years old bear an abundant crop of elongated, maroon-colored berries, which are very attractive.

Price: Plants from open ground transplanted with ball of earth, \$1 each.



ENGLISH LAUREL



## Broad Leafed Evergreens—Continued

### AMERICAN HOLLY

*Ilex Opaca.* Strong, well branched from open ground; 2 1-2 to 3 feet, \$1 each. All leaves should be removed when transplanted.

### ENGLISH LAUREL

(*Laurocerasus.*) The English Laurel as a single specimen for the lawn or for massing is unexcelled; planted in good soil and with the average amount of attention it grows vigorously. See cut.

Price: Extra heavy specimens, \$3 each; \$25 per 10; plants very bushy, 2 to 3 feet high, \$2 each; \$18 per 10; smaller plants, 18 to 24 inches, \$1 each; \$7.50 per 10.

### CAPE JASMINE

*Gardenia.* Large, bushy plants, 2 to 3 feet, \$1.25 each; per 10, \$10; large, bushy plants, 1 to 2 feet, 75c each; per 10, \$6; pot plants, 2 to 3 branches, 60c; per 10, \$5.

### EUONYMUS

(*E. Japonica.*) Leaves dark green, growing close; plant of stately, upright growth; produces profusion of orange-colored berries in the fall, which last all winter.

Price: Plants, 3 to 4 feet high, compact, \$2.50 each; plants, 2 to 3 feet high, compact, \$1.25 each; per 10, \$10; 1 to 2 feet, bushy, 75c each; \$5 per 10; \$35 per 100.

### E. AUREA VARIEGATA

A hardy, variegated leaved plant of *E. Japonica* type; grows about 4 feet high, but is of exceedingly slow growth; very effectively used in window and porch boxes.

Price: Bushy, compact plants, 20 to 24 inches, \$1 each; \$8 per 10; 8 to 10 inches, 50c each; \$4 per 10; \$30 per 100.

### E. PULCHERELUS

A dwarf plant with small leaves of compact growth; a valuable plant used for edging walks, outlining walks, etc.; very seldom grows over 10 inches high.

Price: Plants, 6 inches, very bushy, 25c each; \$2 per 10; \$18 per 100.

## Ligustrum

### AMURENSE

Trimmed specimens, vigorous, compact, very bushy; a valuable plant for the lawn or for planting on the sidewalk between shade trees.

Price: Perfect shaped plants, 3 feet, \$2.50 each.

### L. EXCELSUM SUPERBUM

Perfectly hardy, tall-growing plant, with beautiful variegated leaves; most attractive when used in massing.

### L. MACROPHYLLUM

A variety of the Japanese Privet; very large dark green leaves; a rare and attractive plant.

Price: Thick bushy plant; 1 1-2 to 2 feet high, \$1.50 each; \$12.50 per 10.

### L. MARGINATUM-AUREUM

A beautiful plant of graceful spreading growth; leaves beautifully margined with yellow.

Price: Plants, fine specimens, 2 1-2 to 3 feet, \$1.25 each; \$10 per 10; 2 to 2 1-2 feet, \$1 each; \$8 per 10.

### L. NEPALENSE

Of upright, spreading growth; leaves small, dark green; very effective for massing around houses that are high from the ground.

Price: Five-foot specimen plants, \$2.50 each; per 10, \$22.50; 3 1-2-foot specimen plants, \$1.50 each; per 10, \$12.50; 2-foot bushy plants, 75c each; per 10, \$6; per 100, \$50.

### MAGNOLIA GRANDIFLORA

The hardiness of this tree is underestimated. Well established trees will stand weather several degrees below zero without injury. In severe climates, if protection is given the young trees the first few years after planting, they will become hardened when established. Trees in this latitude grow from 40 to 60 feet high and produce immense quantities of large white blossoms of a rich, peculiar fragrance. All foliage should be removed when trees are transplanted.

Price: Five to 6-foot straight-branched trees, \$1.50 each; per 10, \$12; 3 to 4-foot, \$1 each; per 10, \$8; 1 to 2-foot straight, single stems, 75c each; 1 cr 10, \$0

## Magnolia Fuscata

### BANANA SHRUB

A beautiful evergreen shrub, with waxy green leaves, creamy white flowers of delightful fragrance. Price: Bushy plants with flower buds, each \$1.25; per 10, \$10.00.



BIOTA JAPONICA FILIFORMIS

## Broad Leafed Evergreens—Concluded

### Thea-Bohea

#### CHINESE TEA PLANT

A very desirable low-growing evergreen for open ground or pot culture. If planted in pots will produce during the winter a profusion of large white flowers. Price: Strong plants from open ground, 75c each.

### Yucca

#### Y. FILAMENTOSA

A striking plant with stiff sharp-pointed evergreen foliage. Immense spikes of creamy

white flowers produced in late summer. Price: Four-year-old plants, each 75c; per 10, \$5.00.

#### Y. TRECULEANA

A very rare species of Northern Mexico; leaves thick and rigid; flowers white, produced in April; very attractive. Price: Four-year-old plants, each \$1.00; per 10, \$8.00.

## CONIFEROUS EVERGREENS

This season we offer to our patrons a large and beautiful stock of Coniferous Evergreens. We have this year a larger assortment of specimen plants than we have ever before handled. All evergreens are taken up with a ball of earth around the roots and then packed in moss and burlap, for which no additional charges from catalog prices are made.

### Thuya, America Arborvitae

#### T. REIDII

A dwarf variety of compact growth. Price: 30-36-inch, \$2.00 each.

#### BIOTA AUREA NANA

An attractive variety of dwarf habit; very compact, perfect rounded heads. Price: 30-inch beautiful compact specimens, \$3.00 each; per 10, \$25.00. 24-inch beautiful compact specimens, \$2.00 each; per 10, \$18.00. 12-15-inch beautiful compact specimens, \$1.00 each; per 10, \$8.00.

#### BIOTA AUREA PYRAMIDALIS

Golden-tinted; erect, symmetrical growth; attains a height of 18-20 feet. Price: 6-foot compact specimens, \$4.00 each; 4-foot compact specimens, \$2.50 each; per 10, \$22.50; 3-foot compact specimens, \$1.50

each; \$12.50 per 10. 2-foot compact specimens, 75c each; per 10, \$6.00.

#### BIOTA JAPONICA FILIFORMIS

A Japanese variety with thread-like foliage; a very beautiful plant. (See cut.) Price: 30-inch compact specimens, \$2.50 each; 18-20-inch, heavy, \$1.00 each; per 10, \$8.00.

#### BIOTA ROSEDALE

A handsome variety, with symmetrical rounded head; fine, feathery foliage of dark bluish green cast. Price: 30-inch, \$1.50 each; per 10, \$12.50. 20-inch, \$1.50 each; per 10, \$8.00.

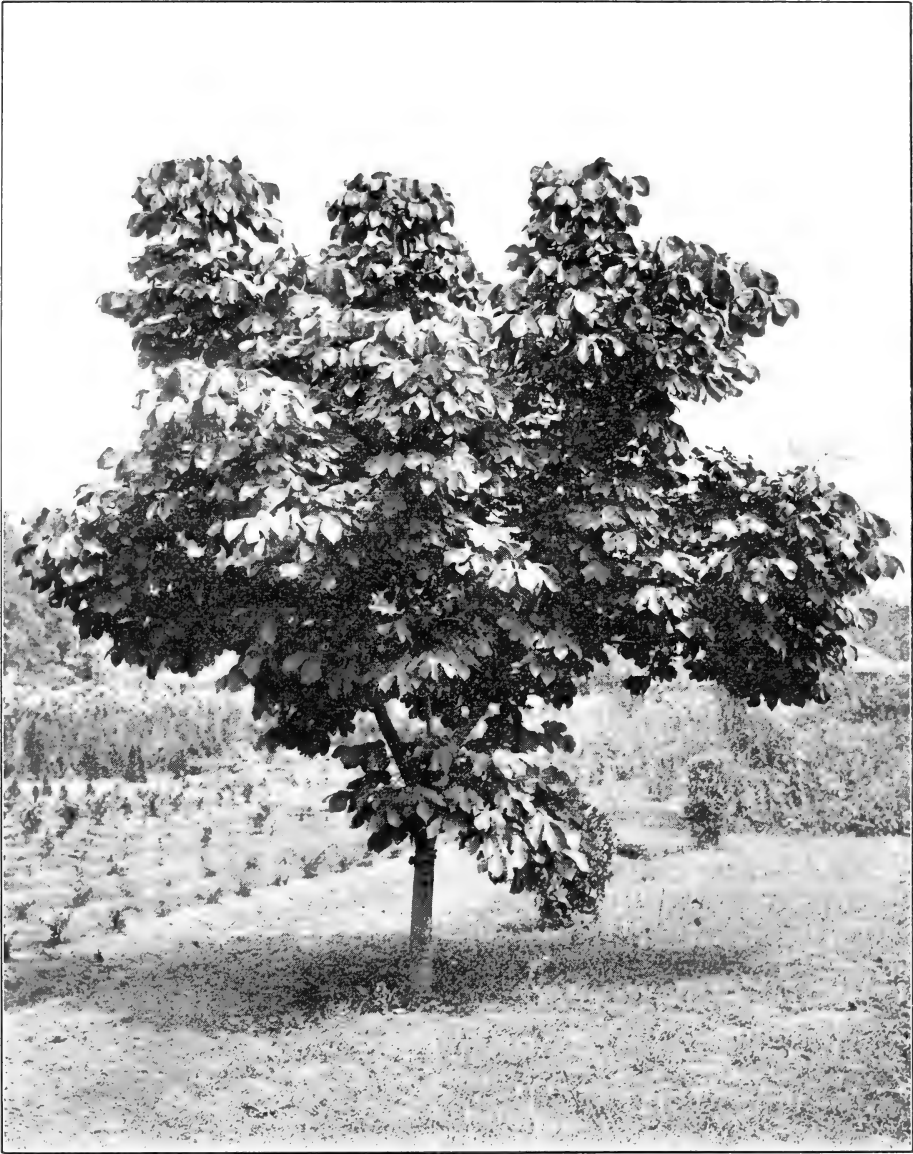
#### CEDRUS DEODARA

A beautiful and stately tree, growing from 50-60 feet high. (See cut.) Price: 4-foot perfect-shaped trees, \$3.00 each. 3-foot perfect-shaped trees, \$2.50 each; per 10, \$20.00. 2-foot perfect-shaped trees, \$1.25 each; per 10, \$10.00.

### Juniperus

#### IRISH JUNIPER

Beautiful erect column-shaped column; attains height of 10-12 feet. Price: 5-6 feet, \$2.50 each. 3-4 feet, \$1.50 each; per 10, \$12.50. 2-3 feet, \$1.00 each; per 10, \$8.00. 10-12 inch, 50c each; per 10, \$4.00.



STERCULIA PLATANIFOLIA

# DECIDUOUS TREES

## Elm

### AMERICAN WHITE ELM

This tree is rapidly becoming the most popular tree for street planting; of vigorous, sturdy growth, combined with a tendency to outgrow any injury from injurious insects or scarred trunk and branches. A tree of exceptional beauty. Thick, dark green foliage, which lasts until after heavy frosts.

Price: Beautiful well-shaped trees, extra heavy trees, 12 to 14 feet, \$2 each; \$17.50 per 10; \$125 per 100. Heavy trees, 10 to 12 feet, \$1.50 each; \$12.50 per 10; \$100 per 100. Straight, well-branched trees, 8 to 10 feet, 75c each; \$6 per 10; \$50 per 100.

### CATALPA BUNGHII

Grafted on stems 3 to 4 feet high; a very attractive, glossy foliage; round heads.

Price: Five to 6 feet, perfect shaped heads, \$2.50 each.

### CATALPA SPECIOSA

Makes a beautiful shade tree for the lawn or street; large, dense foliage; attains height of 30 to 40 feet.

Price: Trees, 8 to 10 feet, heavy, \$1 each; \$8 per 10.

## Maple

### SILVER-LEAVED MAPLE

This tree must not be confused with the Silver Poplar. Trees attain height of 35 to 50 feet. A native species of rapid growth.

Price:	Each.	Per 10.	Per 100
14 to 16 feet....	\$2.00	<del>\$12.50</del>	\$17.50
12 to 14 feet....	1.50	12.50	
10 to 12 feet....	1.25	10.00	80.00
8 to 10 feet....	.75	6.00	50.00

### WIER'S CUT LEAF SILVER MAPLE

A variety of the Silver Maple; leaves deeply cut and divided; branches touch the ground; grows from 30 to 40 feet high.

Price:	Each.	Per 10
10 to 12-foot trees.....	\$1.50	\$12.50
8 to 10-foot trees.....	1.00	8.00

### NORWAY MAPLE

European species of compact growth; foliage thick; height, 40 to 50 feet.

Price:	Each.	Per 10
10-foot trees .....	\$1.00	\$8.00
8-foot trees .....	.75	6.00

### SUGAR OR ROCK MAPLE

Tree of pyramidal form; foliage, dark green, turning to scarlet and yellow in autumn.

## Mulberries

(See under Fruit Trees).

## Oriental Plane

### EUROPEAN SYCAMORE

Makes a large, spreading tree of good appearance; grows well on either high or low ground.

Price: 8 to 10-foot trees, \$1 each; 6 to 8-foot trees, 75c each.

## Poplar

### CAROLINA POPLAR

A rapid growing native tree of upright growth. Probably the most rapid growing tree planted. An objectionable feature to planting in the city being the surface roots the tree sends out, which often do great damage to sidewalk and sewers.

Price: Two-year trees, 14 to 16 feet, each, 35c; per 10, \$3; per 100, \$20; 1-year trees, 8 to 10 feet, each, 15c; per 10, \$1; per 100, \$8.

### LOMBARDY POPLAR

For a screen against unsightly landscape this tree is particularly valuable; of tall, pyramidal growth, branching a few feet from the ground.

Price:

Extra heavy trees, 14 to 16 feet—	
Each, \$1.00; per 10, \$8.00; per 100	\$75.00
Well-branched trees, 10 to 12 feet—	
Each, 65c; per 10, \$5.00; per 100,	\$40.00
Well-branched trees, 8 to 10 feet—	
Each, 45c; per 10, \$4.00; per 100,	\$25.00
Well-branched trees, 6 to 8 feet—	
Each, 25c; per 10, \$2.00; per 100,	\$15.00

## DECIDUOUS TREES—Concluded

### Sterculia Platanfolia

**VARNISH TREE**

A beautiful shade tree for the lawn. (See cut.) To bring out the full beauty of the tree, branches should not be permitted to grow lower than 10 feet from the ground. The smooth, bright green bark of the body and lower branches, with the dense, dark green foliage above produces a most striking effect.

Price: Very stocky trees, 8 to 10 feet, each, \$1.50; per 10, \$12.50; very stocky trees, 6 to 8 feet, each, \$1; per 10, \$8.

### Umbrella China

**TEXAS UMBRELLA TREE**

A rapid growing tree, straight body with immense spreading top in the shape of an umbrella.

Price: Trees with well-formed heads:

	Each.	Per 100
7 to 8 feet.....	\$1.50	\$12.00
6 to 7 feet.....	1.25	10.00
4 to 5 feet.....	.75	6.00

### Willow

**SALIX BABYLONICA**

The well-known variety of the Weeping Willow. Price: Eight to 10-foot trees, 75c each; \$6 per 10.

# DECIDUOUS SHRUBS

## Althea

### ARDENS

Rose of Sharon, double violet; strong, vigorous grower.

### RUBRAPLENA

Double red, tall bush.

### JEANNE D'ARC

Double, white, tall, medium size blossoms.

### LUCY

Double, tall grower, rose-red.

### BANNER

Double, clear pink.

### TOTUS ALBUS.

Single, pure white, dwarf; 2 to 3 feet, only 25c each; \$20 per 100.

### PULCHERRIMA

Semi-double pink and white. During August and September when other flowers are beginning to get scarce the Altheas are at their best, the many colors when planted in groups or in hedges creating an effect that is hard to surpass. This season we have an extra fine lot of large specimen plants, some grown in bush form and some trimmed up in tree shape. Also a large quantity of plants 3 to 4 feet, well branched for hedges.

Price, except where noted:

4 to 5 feet, bush or tree form—

Each 50c; per 10, \$4.00

3 to 4 feet, strong, bushy plants—

Each, 25c; per 10, \$2.00; per 100, \$15.00

2 to 3 feet, strong, bushy plants—

Each, 15c; per 10, \$1.25; per 100, \$10.00

## Barberry

### BERBERIS THUNBERGII

A dwarf shrub for hedges or massing; small green leaves which change in the fall to scarlet and orange; red berries produced in great profusion, which last all winter.

### BERBERIS VULGARIS

A taller growing shrub than the above variety, with larger leaves; berries brown, growing in clusters.

## Calycanthus

### C. FLORIDUS

Sweet shrub, the native variety; very fragrant; chocolate colored flowers in early spring.

### C. PRAECOX

Blossoms in January and February; flowers, rich yellow; delightfully fragrant. Price: 2 to 3 feet, bushy plants, 50c each; \$3.50 per 10.

## Citrus

### CITRUS TRIFOLIATA

Hardy orange flowers, similar to orange blossoms; fruit size of small lemon; solid, very fragrant. Price; Each, 35c; per 10, \$3.

## Cydonia Japonica

### JAPAN QUINCE

Flowers, red (clear pink and flesh colored); cover the plants in early spring before the leaves come out. Price: Each, 30c; per 10, \$2.50; per 100, \$18.

## Deutzia

### D. CRENATA-FLORE-PLENO

Flowers, double, pure white; April; tall grower.

### D. LEMOINEI

White flowers cover the branches during April; dwarf.

### D. PRIDE OF ROCHESTER

A very attractive variety, panicles of white flowers with outer petals pink; tall, vigorous grower.

Price: Extra heavy flowering size specimens, each 75c, \$6 per 10, \$50 per 100. Heavy flowering, 2 to 3-foot plants, each 35c, \$3 per 10, \$20 per 100.

## DECIDUOUS SHRUBS—Continued

### EUONYMUS AMERICANA

An attractive shrub, with bright green stems and dark green, leathery foliage. Price: Each, 25c; per 10, \$2.

### EXOCHORDIA GRANDIFLORA

(*Pearl Bush*.) A beautiful spring flowering shrub; flowers about size of silver dollar; pure white, with green center.

Price: Large plants, 4 feet high, bushy, 60c each, \$5 per 10, \$40 per 100; 3-year-old, flowering size, 50c each, \$4 per 10, \$30 per 100.

### FORSYTHIA

Golden Bell. Clear yellow, bell-shaped flowers produced in great profusion before leaves appear on the plant. A hardy, desirable shrub; will grow under trees or out in the hot sun equally as well.

Price: Three-foot vigorous plants, 30c each, \$2.50 per 10, \$18 per 100.

## Hydrangea

### H. ABORESCENS GRANDIFLORA ALBA

Flowers of immense size; pure, dazzling white; foliage rich, glossy green; blossoms all summer.

Price: Two-year-old flowering plants, 35c each, \$3 per 10, \$25 per 100.

### H. PANICULATA GRANDIFLORA

The well known variety of the hardy white Hydrangea; flowers very large in panicles; blossoms in July and lasts for several weeks, turning pink before dying.

Price: Three-year-old, 2 1-2 to 3 feet, heavy, 40c each, \$3.50 per 10, \$30 per 100; 2-year-old, 1 1-2 to 2 feet, heavy, 30c each, \$2.50 per 10, \$20 per 100.

### HYPERICUM MOSERIANUM

A dwarf bushy plant, with large, deep yellow single flowers; blossoms from June to September.

Price: Two-year plants, 30c each, \$2.50 per 10.

## Lagerstroemia Indica

### CRAPE MYRTLE

Too well known to describe; colors, white, crimson and clear pink.

Price: Extra heavy, 3-year plants, 60c each, \$5 per 10; 2-year plants, 35c each, \$3 per 10, \$25 per 100.

## Lonicera

### L. FRAGRANTISSIMA

Very fragrant, profuse flowering variety; almost an evergreen; bush form; blossoms during February and March.

### L. MORROWII

Bush; flowers pure white, followed with red berries.

Price: Three-year plants, bushy, 35c each, \$3 per 10; \$25 per 100.

## Philadelphus

### P. CORONARIUS

Flowers single, pure white with yellow center; a very desirable shrub.

### P. GRANDIFLORUS

Flowers larger than above variety; very showy.

Price: Five to 6-foot specimen plants, 50c each, \$4 per 10; 3 to 4-foot specimen plants, 30c each, \$2.50 per 10, \$20 per 100.

## Rhodotypos Kerrioides

### WHITE GERRIA

A Japanese shrub; very attractive; large flowers, followed by black berries, which are retained all winter; foliage thick, glossy green.

Price: Two-year plants, bushy, 25c each, \$2 per 10.

## Spiraea

### S. OPULIFOLIA AUREA

Golden-leaved Spiraea; white flowers.

### S. PRUNIFOLIA FLORE PLENO

Bridal Wreath; small double white flowers; very early.

### S. THUNBERGII

Snow Garland; profuse bloomer; flower covers entire plant; dwarf; beautiful foliage.

### S. VAN HOULTEI

Tall growing; a mass of white when in blossom.

### S. ANTHONY WATERER

One of the ever-blooming Spiraeas; crimson leaves, variegated; one of the best flowering plants for a low-growing hedge that can be used.



## DECIDUOUS SHRUBS—Concluded

### S. BILLARDII

Bright pink; grows tall.

### S. CALLOSA ALBA

Dwarf growth; flowers white; among taller growing shrubs plant *Spiraea Callosa Alba* and *S. Anthony Waterer*.

### S. FROEBELI

Flowers, rose colored.

Price: Three-year, extra heavy, 40c each, \$3.50 per 10, \$30 per 100; 2-year, heavy, 30c each, \$2.50 per 10, \$20 per 100.

## Syringa

### LILAC

Budded and grafted plants. If larger sizes are planted in November and December will blossom the following spring. A fine lot of named varieties, both single and double. Dark purple, light blue, white, pink, violet.

Price: Strong flowering plants, 75c each, \$6 per 10; 2-year-old, 50c each, \$4 per 10.

## Viburnum

### JAPAN SNOWBALL V. PLICATUM

A beautiful flowering plant, producing balls of white flowers in May.

### COMMON SNOWBALL

A well-known variety.

Price: Three-year-old, 75c each, \$7 per 10, \$60 per 100; 2-year-old, 50c each, \$4 per 10, \$30 per 100.

## Wegelia

These shrubs are vigorous growers and of easy cultivation; extremely handsome in appearance; broad, dense foliage on graceful spreading branches; flowers produced in great profusion during April. If season is favorable will flower again in early September.

### W. CANDIDA

Pure white; very showy.

### W. ROSEA

Deep clear pink; excellent free bloomer.

### W. EVA RATHKE

Carmine-red; branches drooping slightly.

Price: Three-year-old, large plants for immediate effect, each, 50c, per 10, \$4.50, per 100; 2-year-old, 2 to 3 feet, bushy, each 30c; per 10, \$2.50; per 100, \$20.

# HEDGE PLANTS

The growing demand for hardy hedge plants year after year is enormous, both for the evergreen varieties and the deciduous flowering plants as the ALTHEA. But after taking everything in consideration the most popular and satisfactory hedge for the South is the Ligustrum Amurense or Amoor River Privet, as it is called. This hedge is a perfect evergreen, standing our most severe winters without the least injury to the foliage.

Both the Amoor River and California Privet, when transplanted, should be cut back within 12 to 18 inches of the ground. This insures a thick, leafy growth near the ground, so essential in evenly trimmed hedges. This season we have as fine a lot of hedge plants as could be desired. Write or 'phone for prices on larger quantities than quoted in catalog.

## ALTHEA

(Rose of Sharon.) See description and prices under deciduous shrubs.

## BARBERRY

(Berberis Thumbergii.) (Berberis Vulgaris.) Description and prices under head of deciduous shrubs.

## LIGUSTRUM AMURENSE

(Amoor River Privet.) All one and two-year plants trimmed back unless requested to the contrary. A perfect evergreen, with small, dense-growing bright green leaves. This hedge can be kept trimmed down as low as two feet or permitted to grow ten or twelve feet high, and will appear equally as well.

Price: One-year branched (cut back to 12 inches), per 10, 50c; per 100, \$4; per 1,000, \$30; 2-year, thick, bushy plants, 3 to 4 feet high, the best size for planting (cut back to 18 inches), per 10, \$1; per 100, \$7.50; per 1,000, \$60; 3-year, 5 to 6 feet, heavy plants, for immediate effect, trimmed several times, per 10, \$2.50; per 100, \$18; per 1,000, \$150.

For specimen plants, see Ligustrum Amurense, under head of Broad-Leaved Evergreens.

## CALIFORNIA PRIVET

(Ligustrum Ovalfolium.) A broader and thicker leaf than the Amoor River Privet. Not an evergreen, losing its leaves during February and putting out again the latter part of March. Price, 3 to 4 feet, \$6.00 per 100.



HELEN GOULD

# ROSES

To all who are familiar with hardy, open ground roses the following list speaks for itself. Each year we try new varieties that are introduced, and sell only plants on our own recommendation; therefore, saving our customers the time and cost of experimenting.

This season our roses have made finer growth than ever before, and are not to be compared with northern-grown two-year-old plants. Our best advertisement is for our customers to see the stock for themselves. The rules governing the culture of roses, though simple, must be strictly adhered to if choice flowers are to be expected. Only the new wood on roses produce flowers; therefore, close pruning during December and January is very essential; though moderate pruning may be done the year round. Dead wood or small, sickly branches should be removed whenever found. Mulching with leaf and mold or stable manure during November is of great value to the plants.

## TEAS AND HYBRID TEAS

All plants bloomed in our nurseries during the past season.

Price (except where noted): Vigorous 2-year-old plants, each, 25c; per 100, \$20; 50 at 100 rates.

### ANTOINE RIVOIRE (H. T.)

Rosy pink on salmon ground, shaded; long-pointed buds.

### BESSIE BROWN (H. T.)

One of the best roses in our nurseries; equal to the La France for blooming during severe dry periods. Deep, flesh-colored center shaded to silvery white in the outer petals. Will last longer on the bush in good condition than the majority of roses. A beautiful flower when full blown.

### BLUMENSCHMIDT (T.)

Citron yellow, outer petals rosy pink; strong, vigorous grower.

### BON SILENE (T.)

Semi-double; color, soft, rosy crimson; jointed buds; delightfully fragrant.

### BRIDE (T.)

Ivory white; outer petals in open ground; sometimes pink.

### BRIDESMAID (T.)

Pink; large jointed buds; good grower.

### CATHERINE MERMET

Silvery rose; buds full and globular; beautiful rose when fully opened.

### CAROLINE TESTOUT (H. T.)

Clear shell pink; buds long and delicately pointed; very fragrant.

### CHRISTINE DE NOUE (T.)

(Double Papa Gontier.) Buds rich red, shaded with maroon; semi-double.

### CLOTHILDA SOUPERT

(Polyantha.) Outer petals pearly white; center pink; flowers in clusters.

### DEVONIENSIS (T.)

White, with flesh center; very fragrant; an old favorite.

### DUCHESS DE BRABANT (T.)

Light rose, shaded to carmine; semi-double; very fragrant.

### DUCHESS OF ALBANY (H. T.)

(Red La France.) Brilliant rose pink; deeper in color than La France; an average grower.

### ETOILE DE FRANCE (H. T.)

This splendid rose has taken a place with us that has never before been occupied, but of long duration it bids to be the most popular rose in cultivation. Among red roses it has no equal. Long pointed buds, rich red-crimson in color. The open blossoms are near perfection; inner petals of a clear wine red. Flowers are borne on stiff, erect stems; very few thorns; foliage large and luxuriant.

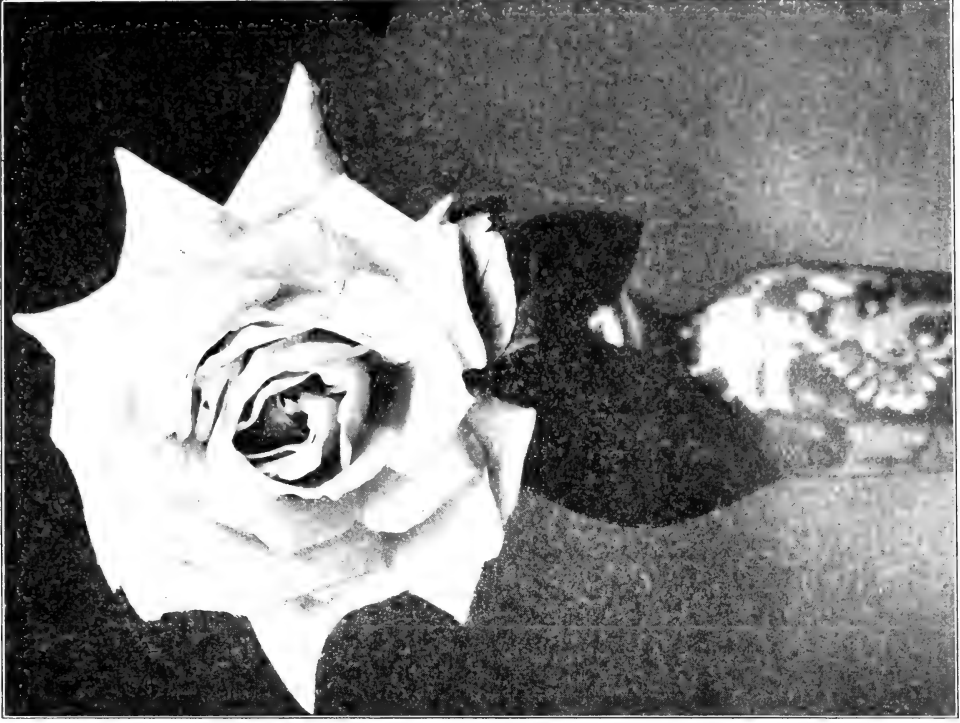
Price: Each, 50c; per dozen, \$5.

### ETOILE DE LYON (T.)

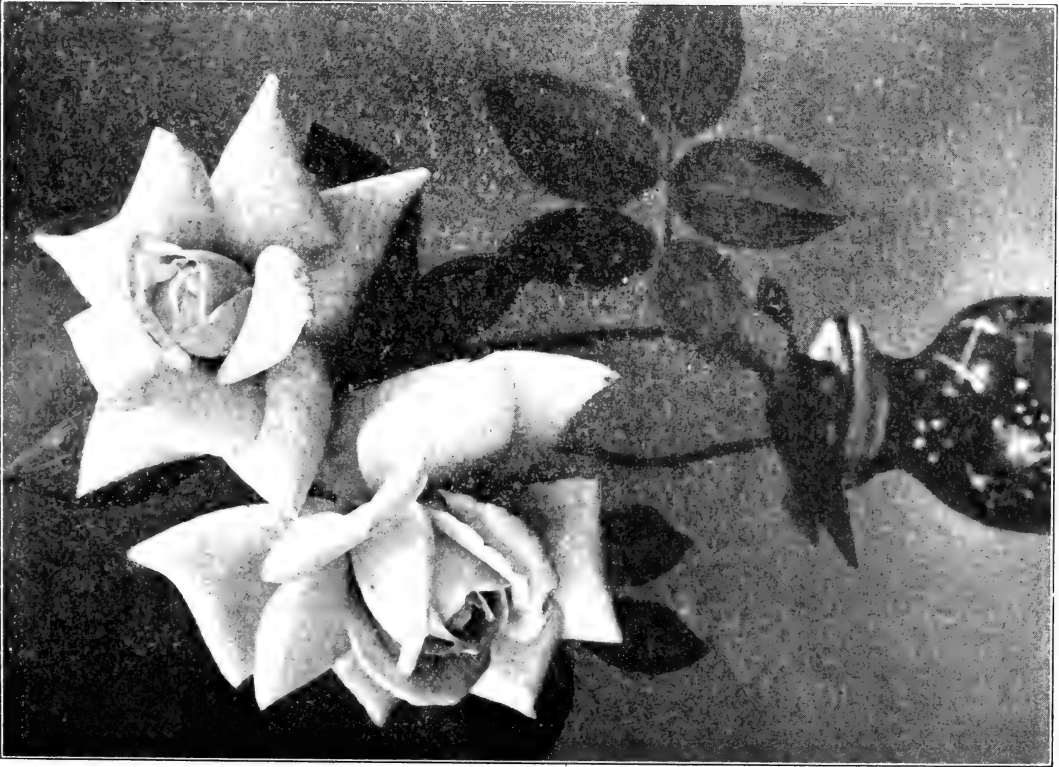
Bright sulphur yellow flowers, large size; foliage thick; a good rose.

### FRIEHEER VON MARECHAL (T.)

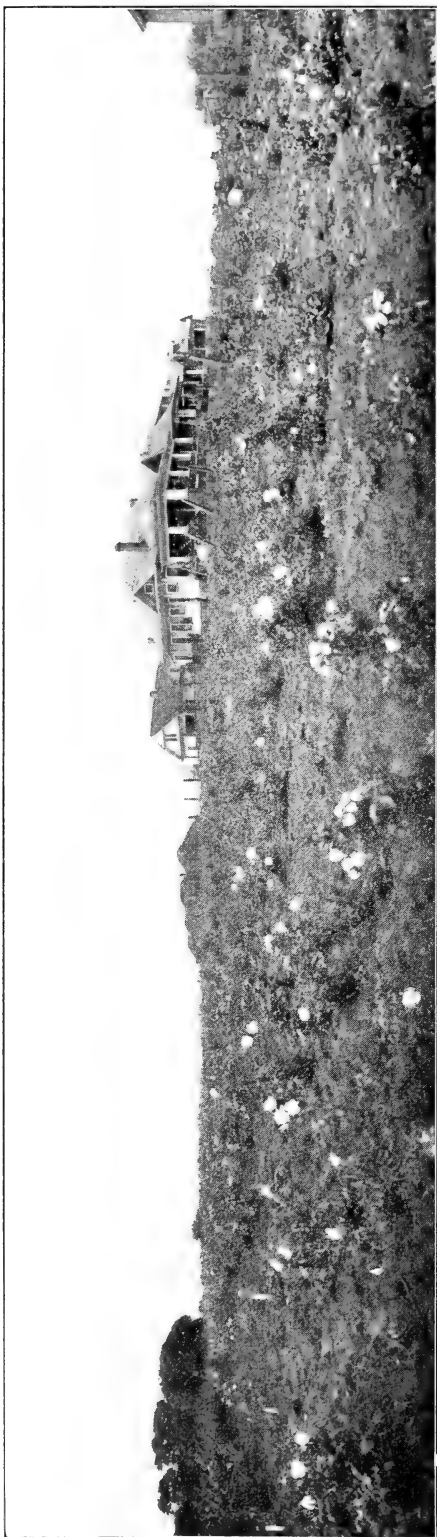
A bright red rose; fine buds and foliage.



BESSIE BROWN



KAISERIN AUGUSTA VICTORIA



A PORTION OF OUR ROSE FIELD

## ROSES—Continued

### FRANZISKA KRUGER (H. T.)

An old rose of excellent qualities; very free and continuous bloomer; salmon, shaded to pink.

### GENERAL McARTHUR (H. T.)

Bright scarlet; plants of upright growth; good foliage. Do not leave out of your collection.

### GOLDEN GATE

A beautiful rose at certain seasons; creamy white, with center and base of petals soft yellow; often shaded to soft rose.

### GRUSS AN TREPLITZ

(China.) Bright crimson, shaded deeper red in the center; flowers in such profusion as to present a blaze of scarlet.

### HELEN GOOD (T.)

A true Cochet type; delicate yellow, suffused with pink; each petal edged deeper; flowers of immense size.

### HELEN GOULD OR BALDWIN (H. T.)

Clear watermelon red; full pointed buds opening to large, well-formed flowers; very free bloomer. The season is unusual, indeed, when the bushes of the Helen Gould rose are not found in blossom.

### KAISERIN AUGUSTA VICTORIA (H. T.)

Creamy white; beautiful pointed buds; flowers very double; lasts for several days on the bush; an excellent rose.

### KILLARNEY (H. T.)

A bright sparkling pink. Though a new rose, it has attracted much attention. Buds full and pointed on erect stems; plenty of foliage.

### LA FRANCE (H. T.)

An old favorite; a brilliant satiny pink, very fragrant; buds and flowers of large size; continuously in bloom; standing droughts, as few other roses will. Include this in your selection.

### MADAME CAMILLE (T.)

Rosy salmon; beautiful in open flower; very large.

### MME. JULES GROLEZ (H. T.)

(The Red Kaiserin.) Finely formed flowers and buds of cherry red; an attractive and distinct variety.

## ROSES—Continued

### MME. WELCHE (T.)

Creamy salmon, shaded to pink; fine in bud and open flower, of large size.

### MAMAN COCHET (T.)

An all-round good pink rose; clear, rich pink, changing to silvery rose in the open flower; buds and flowers of immense size produced on long, stiff stems. We highly recommend it.

### MARIE GUILLOT (T.)

Creamy white, tinted with very light lemon; does not change color; open blossoms very double.

### MARIE VAN HOUTTE (T.)

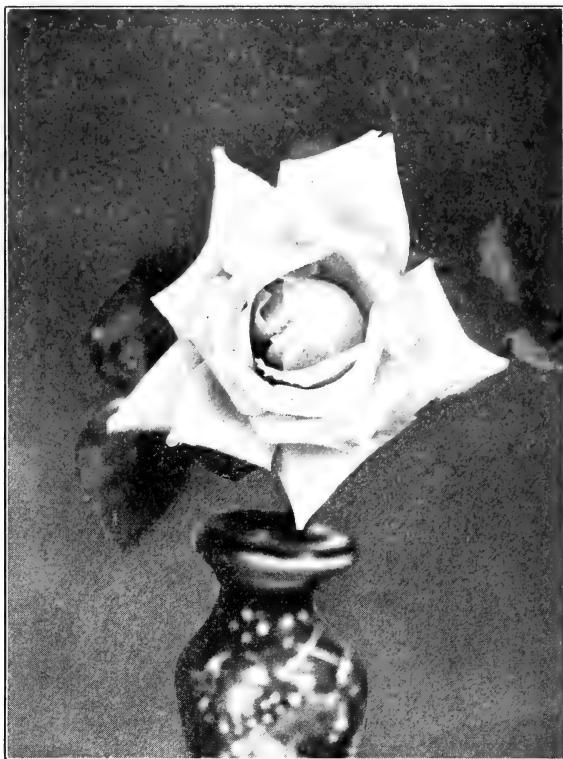
Canary-yellow, with outer petals washed and outlined with a bright, rosy pink.

### METEOR (H. T.)

Rich, velvety crimson; sometimes maroon; thick glossy foliage; deeply veined; a very free bloomer.

### MRS. ROBT. GARRETT (H. T.)

Shell pink, changing to silvery rose; free bloomer.



LA FRANCE



KILLARNEY

### MILDRED VESTAL

A new introduction in the rose line. Plant a vigorous grower; flowers large, of a new and clear shade of scarlet.

Price: Two-year old plants, 50c each, \$5 per 10.

### PERLE DES JARDINS (T.)

Straw yellow, sometimes deep golden yellow; large bud and full double flowers.

### PRINCESS DE SAGAN (T.)

Cherry red in spring and summer, changing in the fall to a deep, velvety crimson, almost black; unusually thick foliage; an excellent rose for massing; very free bloomer.

### RHEA REID (T.)

Rich, dark velvety red; free bloomer; flowers large and double; an average grower.

### RICHMOND (H. T.)

Rich crimson, full pointed buds; flowers semi-double; good foliage.

### SOUVENIR DE PRESIDENT CARNOT (H. T.)

Delicate flesh pink, with sheen of fawn overspreading entire flower.



WHITE MAMAN COCHET



## ROSES—Concluded

### SOUVENIR DE LA MALMAISON

(Bourbon.) Blush white shaded flesh; large and very double; sweetly scented; very free bloomer.

### WHITE LA FRANCE (H. T.)

White tinted, with rose petals; large; very fragrant.

### WHITE MAMAN COCHET (T.)

Creamy white; outer petals faintly tinged with blush buds and flowers of immense size; an excellent rose.

### WM. R. SMITH (T.)

Color, a soft blending of salmon pink and rose pink.

### YELLOW COCHET (T.)

Sulphur yellow; very double; not an equal of the other two Cochets.

## Climbing Roses

Price (except where noted), 35c each, \$30 per 100.

### CLIMBING MARIE GUILLOT

Creamy white; vigorous, thick foliage.

### CLIMBING DEVONIENSES

White shaded flesh; free bloomer.

### CLIMBING KAISERIN AUGUSTA VICTORIA

Creamy white; a continuous bloomer; very vigorous.

### CLIMBING SOUVENIR DE LA MALMAISON

A little deeper in color than the bush form; beautiful, luxuriant foliage; an average bloomer.

### CLIMBING METEOR

Rich, velvety crimson; not very vigorous as a climber, but a free bloomer.

### MARECHAL NIEL

Too well known to describe.

Price: Two-year plants, 50c each; 3-year plants, 75c each.

### CLIMBING GAINSBORO

Silvery flesh; a beautiful rose; semi-climber.

### REINE MARIE HENRIETTE

A strong climber; flowers well formed; rich, brilliant crimson.

### WM. ALLEN RICHARDSON

Orange yellow; free bloomer; very fragrant.

### CRIMSON RAMBLER

Immense clusters of deep crimson blossoms. (Spring bloomer.)

### DOROTHY PERKINS

A beautiful pink rose, growing in clusters; foliage good; an excellent rose for fences, brick or stone wall, earth mounds, etc.

Price: Each, 25c; per 100, \$18.

### WICHURAIANA

Single pure white blossoms; an evergreen; vigorous spreading climber.

Price: Each, 20c; per 100, \$15.

## Hybrid Perpetual Roses

Price (except where noted): Two-year-old, 3 to 5 feet, 50c each, \$5 per dozen, \$40 per 100.

### AMERICAN BEAUTY

Rich, brilliant red, shaded to carmine.

### CLIO

Silvery pink, shaded to deep rose.

### FRAU KARL DRUCKHII

Flowers pure white; petals large and full; grandest white rose in cultivation.

Price: Extra size, 75c each, \$6 per dozen, \$50 per 100; 2-year-old, strong plants, 50c each, \$5 per dozen, \$40 per 100.

### GEN. JACQUEMINOT

Crimson; one of the first roses to blossom in early spring.

### MME. CHAS. WOOD

Bright cherry red; an excellent garden rose; very free bloomer.

### MME. MASSON

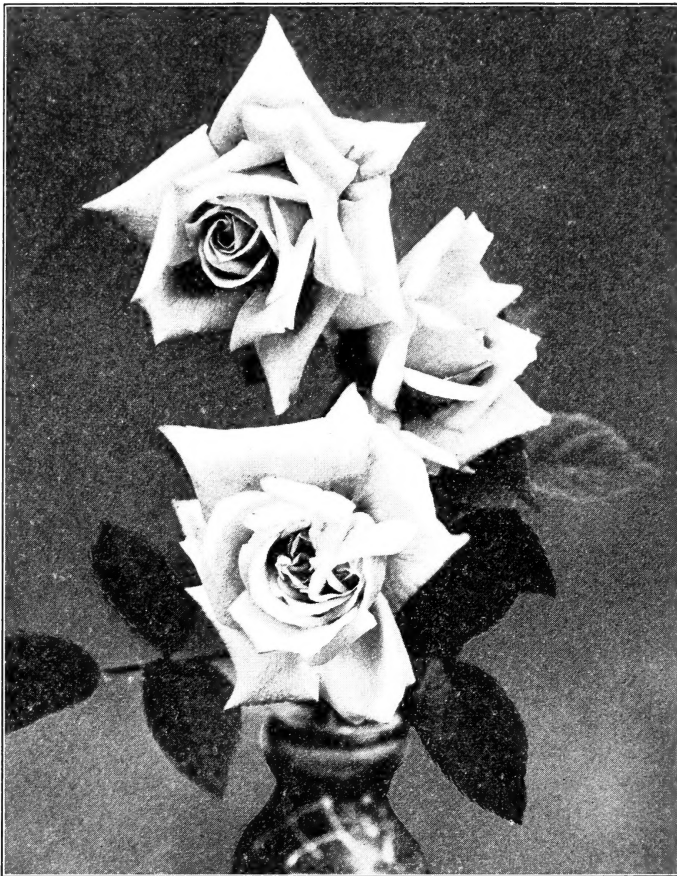
Brilliant red; flowers very large; sweet scented.

### PAUL NEYRON

Deep rose; flowers of immense size; claimed to be the largest rose grown.

### ULRICH BRUNNER

Cherry red; flower large; very attractive.



ETOILE DE LYON

**NOTICE**

We take pleasure in recommending our customers  
when in need of outdoor plants, trees, and o  
thers, and for the winter months, we have a  
large stock of indoor plants, ferns, and  
floral arrangements. 317 N. 19th St., City Hall  
Both Phones 686 Main

**Colmant Nurseries**

