

## **Historic, Archive Document**

Do not assume content reflects current scientific knowledge, policies, or practices.





Flowers  
steeds  
62.39

1878 - 1913  
**GILLETTS**  
HARDY FERN  
*and*  
FLOWER  
FARM  
Southwick,  
Mass.



# Preliminary Notes



PEOPLE planting for the first time often have trouble in selecting plants suitable for the conditions under which they wish to plant. In my catalogue I have endeavored to give descriptions as clearly as possible; but even after thirty years of experience I find that a descriptive catalogue cannot give information that will be clear to all. I solicit the correspondence of all who find it difficult to make their selections, and assure you that I will be pleased to be of assistance.

**THE WILD FLOWERS** have been my specialty, and after years of selection I have now established only such kinds as are most desirable. People who wish to beautify ravines, shady corners by the house, or banks by the brook, will find selection of wild flowers just what is needed. Sometimes people have woods in which they wish natural planting—the wild flowers are the sorts that can produce the purely natural effect. Trilliums, Jack-in-the-pulpits, Snake-roots, Blood-roots, Hepaticas, and wood lilies are the kinds that grow around the old homestead, and if planted on that new estate will bring back the memories which are so dear.

**FOR THE VERY DRY PLACES** in the open sun we have a collection of sedums which will give the best of satisfaction. These plants will grow in hot, dry places where other plant life has a hard struggle for existence. The low growing kinds, in some cases, cover the ground in a short time, and form a mat of green.

**HARDY ORCHIDS** are among the choicest of our native flora. As a rule these plants need moist ground; some of the *Cypripediums* will, however, do well in common garden soil, if given shade. Don't fail to have some of these on your list when you order.

**HARDY FERNS** are becoming an important factor in our modern planting. These plants are easily grown; an amateur can have fine success in growing them. They can be planted in the spring or early fall. Hardy ferns are being used in quantity for mass planting, and selections can be made that will suit almost any location. Many times they are corners by the house where the sun does not strike; such places as a rule will not foster ordinary plants. **FERNS** can be selected that will give perfect satisfaction. Our fern trade is extensive, and we are in a position to furnish them in quantity. I will be glad to make special quotations on large amounts.

**POSTPAID.** We will deliver at any post-office in the United States, the **Ferns, Hardy Perennials, Bog and Aquatic Plants and Orchids** given in this Catalogue, at prices named for single plants and dozen rate, but does not apply to 100 rates, **but this offer does not include Trees, Shrubs and Roses.**

**Have numbered** all plants in catalogue this year and they can be ordered by number.

Parties often desire somewhat heavier stock than can easily go by mail. We can usually accommodate them, and shall be glad to do so when our stock will warrant it, if they will pay the express charges. We can often make selections of **extra-strong clumps** when such are desired at a reasonable advance in price from Catalogue rates.

I can not fill orders at dozen rates when twelve separate kinds are ordered for a dozen. Six of one variety will be sold at the dozen rate.

**TREES, SHRUBS and ROSES.** These are too heavy for the mail, but they will be delivered at the express or freight office here, the purchaser paying transportation charges when goods are received. When stock can be packed in small boxes, no charge is made, but, when larger boxes or bales are used, a charge will be made to cover actual cost.

**AZALEAS.** I wish to call your attention to my stock of Azaleas; especially the native white. I can make prices on this variety in large quantities. I also have a large stock of the Hardy Barberry (the unexcelled hedge shrub). I can make prices on this in large quantity. Fragrant Sumach, Native Roses for large mass plantings.

**Have plants shipped by express when practicable.**

**EXPRESS RATES.** The express company here (Adams) offers to carry nursery stock at a reduction of **20 per cent discount from the regular rate.** Thirty-five pounds can be sent to Boston or New York for 35 cents, and 1 cent for each additional pound 100 pounds goes for 80 cents. Eleven pounds can be sent to Chicago for 35 cents, and 1 cent for each additional pound. See that **the red tag** is on all express packages; this is a reminder that it is entitled to a discount of 20 per cent from the regular express rates.

**REMITTANCES** may be made by Registered Letter, by Post-Office Money Order on Southwick, Mass., or by draft.

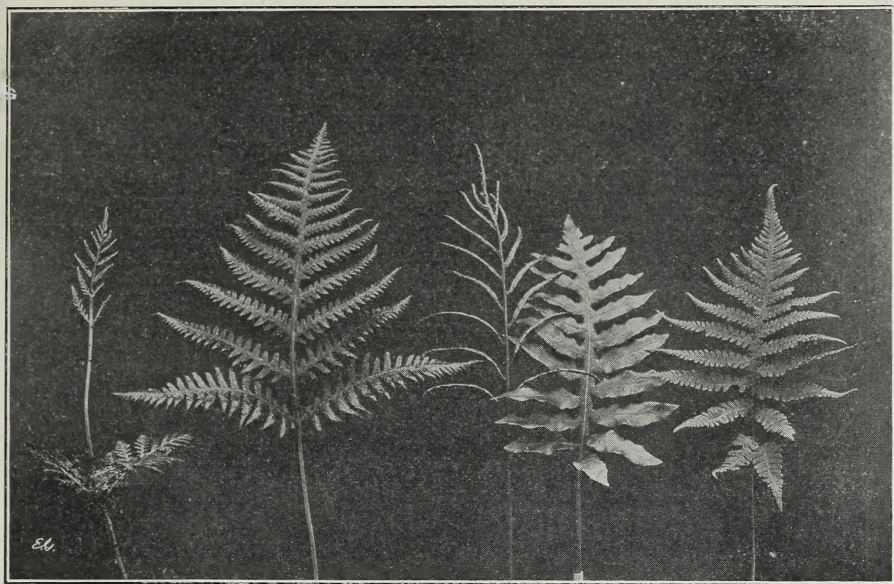
**CERTIFICATE OF INSPECTION.** A copy will be sent with each shipment.

See third cover page for Collection of Flowering Plants.

Address all communications to—

**EDWARD GILLET, Southwick, Mass**





- |                                       |   |   |   |
|---------------------------------------|---|---|---|
| 1                                     | 2   | 3 | 4 |
| 1. <i>Botrychium Virginicum</i> .     | 3. <i>Woodwardia angustifolia</i> , fertile and sterile fronds. |   |   |
| 2. <i>Phegopteris hexagonoptera</i> . | 4. <i>Phegopteris polypodioides</i>                             |   |   |

# Hardy Fern and Flower Farm

EDWARD GILLETT, Proprietor

## SOUTHWICK, MASSACHUSETTS

There is so much inquiry for plants to grow in certain positions, like dark, shady, wet, or dry places, or open sun, that we have so marked the several kinds in this Catalogue, designating each kind by a special sign. This will enable our customers to make their selections without reading pages of descriptions.

☒ All plants desirable for growing in dark, shady places, shut out from the sunlight, are marked with this sign, ☒. Very few of the old garden plants will thrive in such a place, but most of the Hardy Ferns of New England, and several of the best wild flowers are at home here; the little nook by the porch, shut away from the sunlight, the deep shade of the great lawn tree, where even grass will not grow, the wooded bank, are all places to beautify with this class of plants.

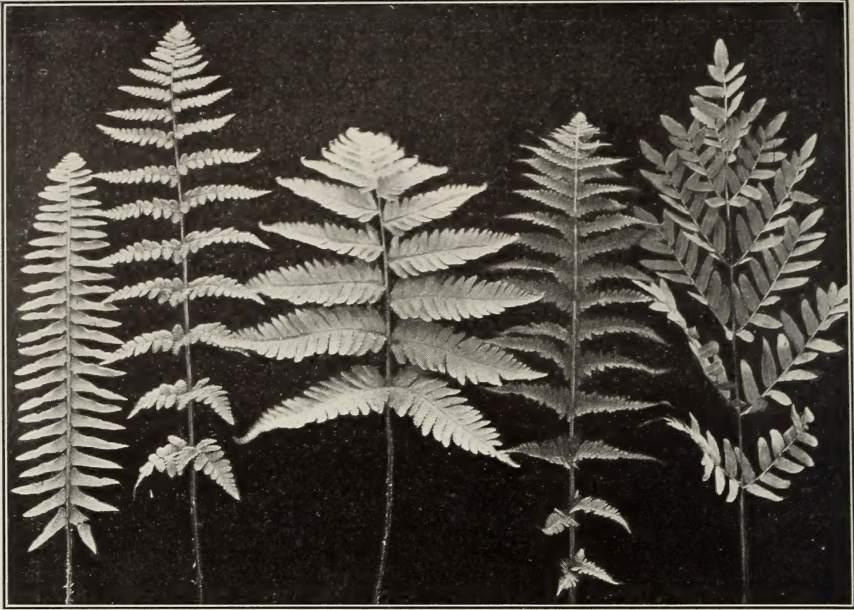
⊗ This sign means that the plant is adapted for the low, wet places where sedges crowd out the grasses, and bulrushes thrive; *Lobelias*, *Marsh Marigolds*, *Iris*, *Sarracenas*, *Mentha*, *Lythrum*, etc., find here a congenial home.

◆ All the old garden plants, those to grow in beds or borders, like *Campanulas*, *Aquilegias*, those best suited for open, sunny places, desiring, for the most part, a moist, yet well-drained soil in the open sun, are marked ◆.

★ Plants marked with a ★ are adapted for dry woods. Many of the *Asters* and *Golden-rods* will thrive here. Most of them come in late summer, when other flowers are passed; they do quite well, also, in dry, open places.

Occasionally will be seen two of the signs against the same plant; this means that the plant seems to do equally well in both positions.





1

2

3

4

5

1. *Aspidium aerostichoides*  
 2. *Aspidium cristatum* Clintonianum  
 3. *Aspidium Goldianum*

4. *Asplenium thelypteroides*  
 5. *Osmunda regalis*

## Hardy Ferns

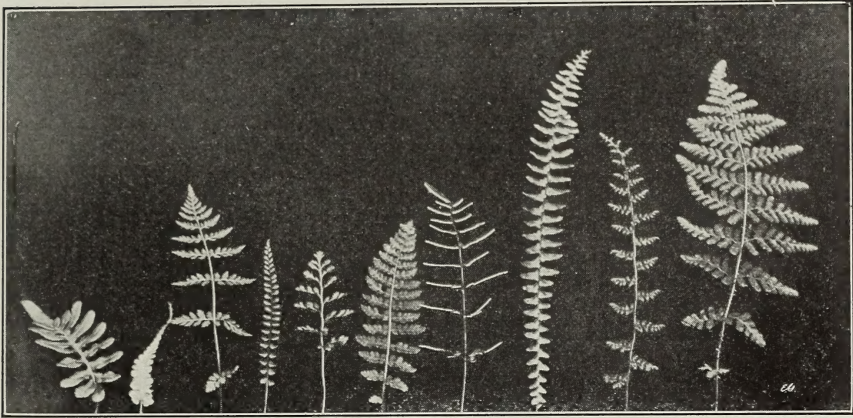
The Ferns of New England (about forty kinds) take as readily to cultivation as the common garden flowers. While flowers require a sunny place, Ferns delight in some shaded nook shut out from the bright sunlight by buildings or trees; they can also be grown in boxes or pans on the porch, in the house or under trees, any place that is shaded; **but are not suitable for house culture in winter, for that is their time of rest; they will not respond to any attention given in winter unless it be near springtime.**



*Dicksonia punctilobula* growing under our fern bower

**Soils.** We grow the greater share of these Ferns in a moist and sandy loam soil, well drained, under a covering of boughs, high enough to work under and get among the beds. In making the beds, we use for the smaller Ferns a good sprinkling of leaf-mold and a little well-decayed manure made very fine; this is thoroughly mixed with the soil, and after the Ferns are planted, a little leaf-mold sprinkled around the plants tends to keep the soil light and porous. Raising the beds 2 or 3 inches, a little higher in the center, gives better drainage and allows the surplus water to drain off. The larger and stronger kinds thrive in almost any soil, shaded and not too wet; they require no special care or soil, yet will respond to cultivation readily. **Order by number if you wish.**





- |                                 |                                       |                                |
|---------------------------------|---------------------------------------|--------------------------------|
| 1. <i>Polypodium falcatum</i>   | 2. <i>Asplenium pinnatifidum</i>      | 3. <i>Cystopteris fragilis</i> |
| 4. <i>Asplenium Trichomanes</i> | 5. <i>Cryptogramme acrostichoides</i> | 6. <i>Woodsia Ilvensis</i>     |
| 7. <i>Pellaea atropurpurea</i>  | 8. <i>Asplenium ebeneum</i>           | 9. <i>Cheilanthes vestata</i>  |
|                                 |                                       | 10. <i>Woodsia obtusa</i>      |

Give a good mulching of leaves in winter. Our hardy Ferns can be planted at any time when not in full growth, in early spring as soon as the frost is gone, and any time in autumn until the ground is frozen.

**Unless noted**, plant an inch or so deep. A few of the evergreens need to be planted with the crowns or new buds just at the surface or above. Note is made of all such.

**Plants in quantity.** We offer some sorts that are desirable for massing by the hundred, but at prices given, the purchaser is to pay transportation charges.

**1 ADIANTUM pedatum** (Maidenhair Fern). ☒ The most graceful of all our New Eng-

land Ferns and very easily grown in rich, moist, shady places; about a foot high. This, like nearly all the Ferns, needs good drainage. It will establish itself in one season, and increase in strength year after year. Plant an inch deep and about 1 foot apart for massing. Clumps, 25 cts. each, \$2.00 per dozen. See illustration.



*Adiantum pedatum*

**2 ASPIDIUM acrostichoides**

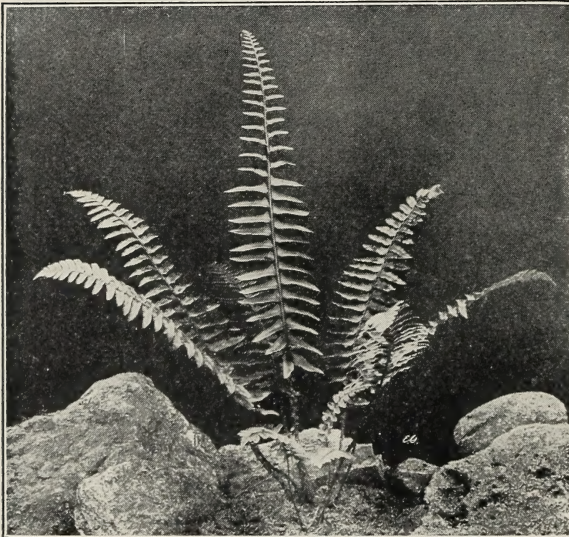
(Christmas Fern). ☒ An evergreen species, about a foot high, with deep green fronds simply divided. Although it is one of our common species, it is a pretty one, and easily grown in shade, in good garden soil, well drained. A good Fern for planting with other sorts. Plant with the new crowns or buds just at the surface. 20 cts. each, \$1.50 per doz. \$7.00 per 100.





Clump of *Aspidium Goldianum* and *Asplenium angustifolium* (see pages 5 and 6)

- 3 *Aspidium aculeatum*, var. *Braunii*** (Prickly Shield Fern). ☒ ★ The leaves are evergreen and shining, and when well grown it is one of the finest of our native Ferns. It is found along the mountain brooks, but takes quite readily to cultivation in the shaded corner where the drainage is good; benefited by a little leaf-mold. Grows about 12 to 18 inches high; plant 1 foot apart, with the new crowns just at the surface. 25 cts. each, \$2.00 per doz.



*Aspidium acrostichoides* (see page 3)

- 4 *A. cristatum*** (Crested Wood Fern). ☒ This is a more common evergreen Fern, found in wet, springy places; about a foot high. A moist, shaded place is suited to its growth. Gives a decided coloring to the Fern-bed; plant about 8 inches apart in front of the tall sorts. Responds to cultivation with the new crowns not covered. 20 cts. each, \$1.50 per doz.

- 5 *A. cristatum*, var. *Clintonianum***. ☒ In every way larger than the preceding. A showy Fern and easy to grow in any shaded spot; it will thrive in quite wet places.



*Aspidium cristatum*, var. *Clintonianum*, continued.

2 to 3 feet high. Plant 18 inches apart. 25 cts. each, \$2.00 per doz.

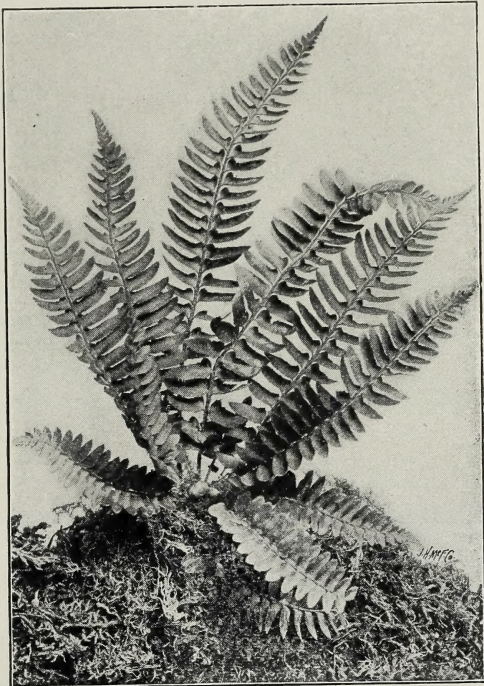
6 *A. Felix-mas* (Male Fern). ☒ A very beautiful and hardy Fern, green all the year. Rare. 1 to 1½ feet. Plant in a rich, shady place, 1 foot apart, new growth or crowns just at the surface. 30 cts. each.

7 *A. Goldianum* (Goldie's Wood Fern). ☒ This species often grows 4 feet high, with fronds a foot or more wide. Broadly ovate in outline. Where a single specimen is desired that has grace and beauty in its bearing, we would recommend Goldie's Wood Fern. This fern is not often seen in New England. It is easily grown, and is perfectly hardy. Plant an inch deep and 18 inches apart for massing. 25 cts. each \$2.00 per doz. See cut of this growing with *A. angustifolium*.

8 *A. marginale* (Evergreen Wood Fern). ☒ ★ One of our prettiest evergreen species. Fronds 1 to 2 feet in length, 3 to 5 inches wide, thickish, and of a deep green color. It delights in rich shady, rocky hillsides, yet it thrives in my garden with Maidenhair and other kinds. Plant this fern with the crown an inch above the surface, and a foot apart. 20 cts. each, \$1.50 per doz. \$7.00 per 100.

9 *A. munitum*. ☒ An evergreen Fern from Oregon, resembling *A. acrostichoides*, but finer; desirable for rock-work in shade. Plant with the crown just at the surface and about 9 inches apart. 25 cts. each.

10 *A. Noveboracense*. (New York Shield Fern). ☒ A slender species,



*Aspidium munitum*



*Aspidium aculeatum*, var. *Braunii*, as it grows under our fern bower (see page 4)



**Aspidium Noveboracense**, continued.

about a foot high, in moist, shady woods, with fronds 3 to 4 inches wide. Pale green. Fine for massing. Plant 9 inches apart. Cover an inch or so. 15 cts. each. \$1.25 per doz. \$6.00 per 100.



*Aspidium cristatum* var. *Clintonianum*  
(see page 4)

it is quite wet, in open, sunny places. It can be cultivated in moist, open places, and is benefited by adding leaf-mold. 20 cts. each, \$1.50 per doz. \$7.00 per 100.

- 14 **ASPLENium angustifolium** (Narrow-leaved Splenwort). ☒ A charming Fern, with light green, graceful fronds. Do not miss it in making up your list. Grows 1 to 3 feet high, with simply divided fronds; these divisions are 3 to 4 inches long. Its home is in rich, shaded places, where it is quite moist. It takes quite kindly to cultivation in the Fern-bed. Set well back, about 18 inches apart. 25 cts. each, \$2.00 per doz. See cut.

- 11 **A. spinulosum** (Spinulose Wood Fern). ☒ A very pretty evergreen species, about 15 inches high, with finely dissected fronds about 4 inches wide. Quite a prominent Fern in moist woods and on shaded banks, where it becomes easily established when planted. It does quite well in the Fern-bed planted well back. Plant 18 inches apart, with the new buds above ground. 20 cts. each, \$1.50 per doz. \$7.00 per 100.

- 12 **A. spinulosum**, var. *dilatatum*. ☒ Similar to *A. spinulosum*, but with broader fronds. This is usually found in moist, cool, shaded places in beds of leaf-mold well toward the top of our higher mountains. Give it an abundance of this black wood dirt in planting in the bed. 18 inches apart; same as above. 20 cts. each, \$1.50 per doz.

- 13 **A. Thelypteris** (Marsh Shield Fern). ☉ A foot high, with fronds about 2½ inches wide. We see this growing wild in large beds where



- |                                     |                                 |                              |                                   |                                  |                                  |
|-------------------------------------|---------------------------------|------------------------------|-----------------------------------|----------------------------------|----------------------------------|
| 1                                   | 2                               | 3                            | 4                                 | 5                                | 6                                |
| 1. <i>Phegopteris hexagonoptera</i> | 2. <i>Cystopteris bulbifera</i> | 3. <i>Aspidium cristatum</i> | 4. <i>Asplenium angustifolium</i> | 5. <i>Dicksonia punctilobula</i> | 6. <i>Aspidium Noveboracense</i> |

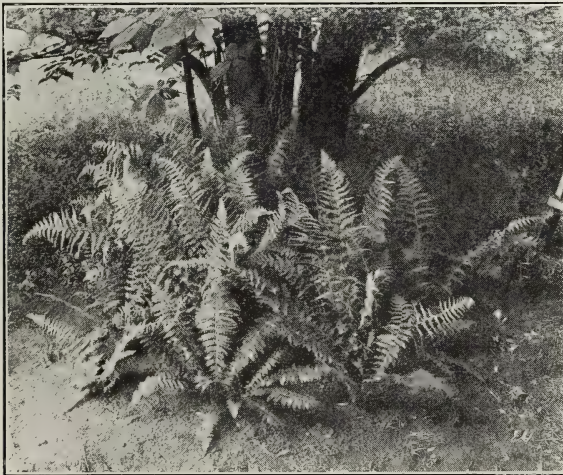
See page one for explanation of signs before description of plants.





1. *Aspidium marginale*                      2. *Adiantum pedatum*  
 3. *Asplenium Felix-fœmina*            4. *Onoclea sensibilis*

- 15 *Asplenium ebeneum* (Ebony Spleenwort). ✱ Usually 6 to 15 inches high. Found growing among the rocks and along cliffs in dry, rather sunny places. Suited for rockwork. In planting in the front border of Fern-beds, give it a little leaf-mold, and plant about 8 inches apart; don't cover the new buds. 15 cts. each, \$1.25 per doz.



Group of ferns under a tree. *Dicksonia* with *A. Braunii* in front.

- 16 *A. Felix-fœmina* (Lady Fern). ♦ ☒ A large, handsome Fern, 2 to 3 feet high, with finely cut foliage. Plant in a moist place, in sun or shade, good, rich soil. This is a good Fern to grow as single specimens, or it can be set 18 to 24 inches apart at back of Fern-bed. **One of the very best for general culture.** 15 cts. each, \$1.25 per doz. \$6.00 per 100.

See page one for explanation of signs before description of plants.



17 **Asplenium Trichomanes**

(Maiden-hair Spleenwort). ☒ A delicate little Fern, with narrow fronds 3 to 6 inches long. This, although found up among the cliffs, adapts itself to the small rockery, where it does exceedingly well; also in the Fern border. This is one of the small evergreen Ferns benefited by a good allowance of leaf-mold. Plant about 8 inches apart, with the crowns brought to the surface. Clumps, 25 cts. each, \$2.00 per doz.



*Asplenium angustifolium* (see page 6)

- 18 **A. Thelypteroides** (Silvery Spleenwort). ☒ Fronds 2 to 3 feet high, by 6 inches wide. In moist shades. A good, thrifty Fern, well deserving a place in the Fern-bed, well back. Any good garden soil. Plant 1 foot apart. 20 cts. each, \$1.50 per doz. \$7.00 per 100.



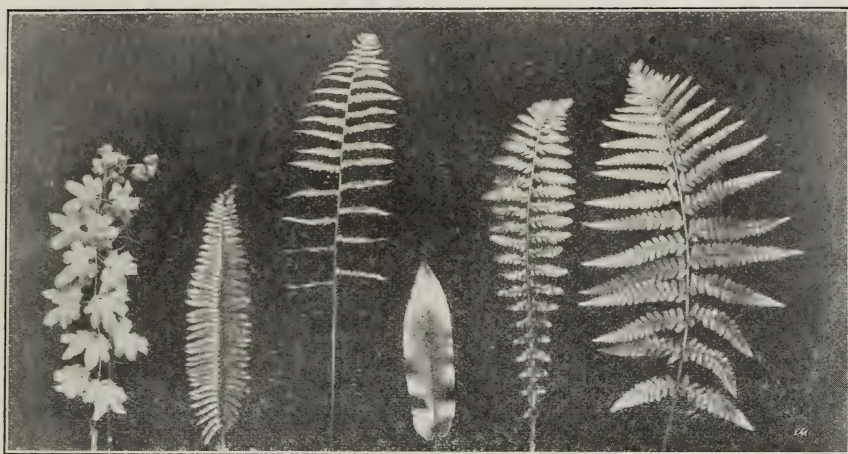
*Botrychium ternatum* (see page 9)



*Asplenium Trichomanes*

- 19 **BOTRYCHIUM Virginiticum** (Moonwort). ☒ About 1 foot, divided into two segments above the middle, one of which is erect, bearing the fruit, the other spreading, triangular, membranous and much divided. Plant 8 inches apart. 15 cts. each, \$1.25 per doz.





- |                                 |  |                                |   |   |   |
|---------------------------------|--|--------------------------------|---|---|---|
| 1                               | 2  | 3                              | 4 | 5 | 6 |
| 1. <i>Lygodium palmatum</i>     | 2. <i>Aspidium munitum</i>                       | 3. <i>Aspidium thelypteris</i> |   |   |   |
| 4. <i>Scolopendrium vulgare</i> | 5. <i>Aspidium aculeatum</i> var. <i>Braunii</i> | 6. <i>Aspidium Felix-mas</i>   |   |   |   |

20 **Botrychium ternatum**. ♦ Six to 12 inches high. Fronds evergreen, somewhat resembling the preceding, but smaller and less divided. Found in moist, open fields, often in mowlands and is quite conspicuous in late autumn by the yellowish fruit, and finely cut green or variously tinted leaves which give it a distinctive beauty. Plant 6 inches apart, with the new bud about an inch below the surface. 15 cts. each, \$1.25 per doz.

21 **CAMPTOSORUS rhizophyllus** (Walking-leaf). ☒ A little, low-creeping Fern, with evergreen fronds, 4 to 9 inches long, growing in tufts. The ends of these fronds rest on the ground and take root, forming new plants at each "step" thus taken. This curious habit has given the Fern its popular name. Found growing naturally on shaded, calcareous rocks. Interesting and quite easy to grow in the rock-garden. If to be grown in the Fern-bed, use a good sprinkling of leaf-mold, raising the bed 2 or 3 inches, and plant on front edge about 6 inches apart. Don't cover the leaves. 15 cts. each, \$1.25 per doz.

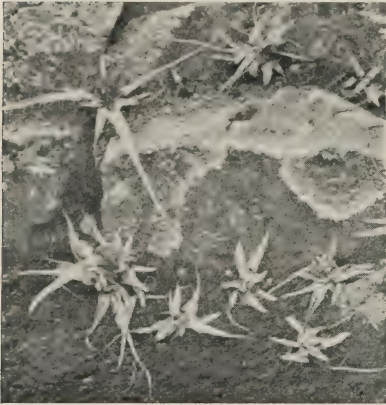
22 **CRYPTOGRAMMA acrostichoides** (American Rock-Brake). ☒ A small, evergreen Fern, 6 inches high, forming nice little clumps. A native of the Pacific coast, in crevices of rocks; thrives in the rock-garden. It also takes kindly to a Fern-bed to which leaf-mold has been added. It makes a good border. 20 cts. each, \$1.50 per doz.



*Cryptogramma acrostichoides*



- 23 **CYSTOPTERIS bulbifera** (Bladder Fern) ☒ Fronds 1 to 2 feet long, narrow and slender. Light green in color, and quite graceful. Grows best in a moist, shady place. This makes a good plant for the Fern basket. It can be planted 8 to 12 inches apart and is quite desirable for planting in front of stronger Ferns like *Aspidium spinulosum*, *A. marginale*, etc. 15 cts. each, \$1.25 per doz. \$6.00 per 100.
24. **C. fragilis.** ☒ Smaller; 4 to 8 inches high; fronds two or three times divided. Forms nice little clumps in shady, well-drained soil. It takes kindly to the rock-garden or can be planted 6 inches apart in beds with larger sorts. 15 cts. each, \$1.25 per doz.



*Camptosorus rhizophyllus* on rocks (see page 9)

- 25 **DICKSONIA punctilobula** (Hay-scented, or Gossamer Fern). ⬠ ☒ ✱ Grows 1 or 2 feet high. Fronds pale green, very thin, with strong stalks from a slender, creeping root-stock. A prominent feature in mountain scenery, often seen in great patches in open places. One of the very best for massing either in open sun or partial shade, and will thrive in quite dry or moist soil if the drainage is good. Plant 8 inches apart. 15 cts. each, \$1.25 per doz. \$6.00 per 100.
- 26 **LYCOPodium clavatum** (Club Moss). ✱ Running extensively, 6 feet long or more, the stems are round and covered with small, light green, pointed leaves, quite a showy evergreen in dry woods; flowers inconspicuous. 20 cts. each, \$1.50 per doz.
- 27 **L. complanatum.** ✱ This is the evergreen vine so extensively used in decorating rooms. Short stems, 3 to 6 inches high, have flat-topped, leafy branches; brown, running stems often 8 feet long. 20 cts. each, \$1.50 per doz.
- 28 **L. dendroidium** (Ground Pine). ☒ ✱ This is the plant used so much for Christmas greens. It grows about 6 inches high, in moist, shady places; is an evergreen, quite showy, and does quite well under cultivation. It can be grown in the Fern-dish indoors, or in any moist, shady place. 20 cts. each, \$1.50 per doz.
- 29 **L. lucidulum** (Shining Club Moss.) ☒ Pretty evergreen. 3 to 8 inches high. Leaves  $\frac{1}{2}$  inch long, growing thickly along the stalk. Moist shady soil. Plant rather thickly for massing. 3 to 4 inches apart. 20 cts. each, \$1.50 per doz.
- 30 **LYGODIUM palmatum** (Climbing Fern). ☒ Grows 1 to 3 feet high. Stalk slender and twining from a slender, running root-stock. A choice and rare kind, needing some support in a moist, shady spot. Plant 1 foot apart and keep the soil well mulched with leaves for one or two years, adding a little leaf-mold to the soil. A colony of this seen growing in the wild, climbing the low bushes, is a beautiful sight, and not often seen, as the plant is rather rare or local. 25 cts. each, \$2.00 per doz.
- 31 **ONOCLEA sensibilis** (Sensitive Fern). ⬠ ☒ A foot high. Wet places, open sun or shade. It can be planted in quite wet places, too wet for most other sorts, 1 foot apart, or it will thrive in moist soils. 10 cts. each, \$1.00 per doz. \$5.00 per 100.
- 32 **O. Struthiopteris** (Ostrich Fern). ☒ Fertile fronds about a foot high; sterile fronds much larger, 2 to 4 feet high, 6 to 10 inches wide; erect. A very handsome species; graceful as a palm. One of the most satisfactory to grow; its long, graceful fronds make a most effective background for smaller Ferns.



*Lycopodium dendroidium*



**Onoclea Struthiopteris**, continued.

Can be grown as single plants in open sun or shaded nook. Use lots of manure, as it is a great feeder. Plant about 2 feet apart if several are needed. It is one of the very tallest of our Ferns, and should be planted well back. 25 cts. each. \$2.00 per doz. \$7.00 per 100.

33 **OPHIOGLOSSUM vulgatum** (Adder's-Tongue Fern). ☒ A single leaf from the fibrous roots, bearing at the top a singular spike of fruit or spores. Wet, open places, usually in low, grassy meadows, rather inconspicuous and more desirable for botanical study than general culture. 10 cts. each, \$1.00 per doz.

34 **OSMUNDA regalis** (Flowering Fern). ☒ Two or 3 feet high. Pale green. One of the prettiest of the large Ferns. Can be grown in still water, 2 or 3 inches deep, setting the plants so that the crowns shall be just above the water. It can also be grown in moist soils, sun or shade. Plant 2 or 3 feet apart, where several are to be grown. Large roots, 30 cts. each, \$2.00 per doz.; extra heavy, 50 cts. each, \$4.00 per doz. Last grade too heavy for the mail.

35 **O. Claytoniana**. ★ ☒ Is clothed with loose wool when unfolding its fronds in spring, soon becoming perfectly smooth. This Fern, 2 to 3 feet high, is found in rather dry, shaded places, and does quite well under cultivation and quite well in boxes. Plant about 2 feet apart if several are needed. 25 cts. each, \$2.00 per doz., \$7.00 per 100; extra-heavy, 50 cts. each, \$4.00 per doz.

36 **O. Cinnamomea** (Cinnamon Fern). ☒ Is usually larger than the preceding, often 5 feet high and 8 inches wide. Clothed with rusty wool when young, but the sterile fronds are smooth when full grown. Very beautiful. This will thrive in quite wet soil, in open sun or moist, shady places; usually found in mucky soil. 25 cts. each, \$2.00 per doz., \$7.00 per 100; extra-heavy, 50 cts. each, \$4.00 per doz.

37 **PELLÆA atropurpurea** (Clayton's Cliff Brake). ☒ A low evergreen Fern, 8 to 12 inches high, usually found on limestone cliffs. We got good results last season with this Fern in clear leaf-mold, raising the bed about 6 inches in a shaded place, using small flat stones between the plants; this kept the soil from drying out. We got plants a foot high in this way. Choice, 25 cts.



*Osmunda regalis*, huge clumps



- 38 *Pellaea densa* (Oregon Cliff Brake). ☒ A little, low Fern, 4 to 6 inches high, found on the rocks on the mountains of the western coast. It does quite well in a raised bed of leaf-mold in a shady place. Plant 4 to 6 inches apart. 20 cts.
- 39 *P. gracilis* (Slender Cliff Brake). ☒ A delicate little Fern, 3 to 6 inches high, found on moist, shaded banks. Does quite well in a raised bed of leaf-mold with the other *Pellæas*. Should be planted rather thickly, 2 to 3 inches apart. Rather rare. 25 cts. each, \$2.00 per doz.

**PHEGPTERIS** (Beech Fern).

- 40 *P. Dryopteris*. ☒ Has triangular fronds 3 to 5 inches wide, once or twice divided. A delicate and pretty Fern. One foot high



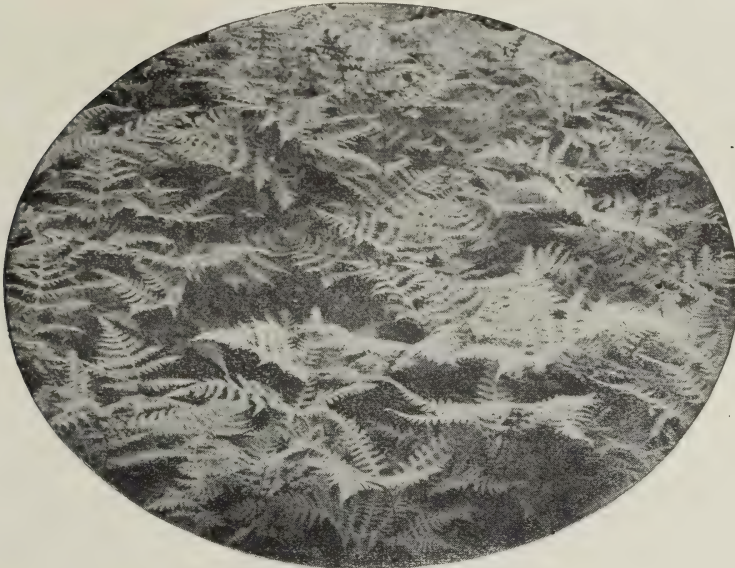
*Onoclea Struthiopteris* (see page 10)



*Lygodium palmatum* (see page 10)

in moist, rich shaded places. often near a mountain brook; it is benefited by adding a little leaf-mold to the soil. Quite desirable for growing with other small Ferns, or in front of larger sorts. Plant 8 inches apart for permanent bed. 15 cts. each, \$1.25 per doz. \$6.00 per 100.





Phegopteris hexagonoptera

- 41 **Phegopteris hexagonoptera.** ☒ A good Fern for the shady corner, 7 to 12 inches wide, broader than long; quite showy and easily grown in almost any garden soil. One foot high; desirable for growing in front of the taller and larger kinds. Plant 8 inches apart. 15 cts. each, \$1.25 per doz. \$6.00 per 100.
- 42 **P. polypodioides.** ☒ Fronds smaller and darker green than in the last. Eight inches high, often found on mossy banks just above the water of a mountain brook, and often with *Dryopteris*, but not so particular as to soil when cultivated. It makes a good Fern for the front border of a Fern bed, and, if planted 6 inches apart, should, in two years, make a solid clump. 15 cts. each, \$1.25 per doz. \$6.00 per 100.
- 43 **POLYPODIUM vulgare** (Common Polypody). ☒ One of the best evergreen species for rockwork. Grows 4 to 10 inches high, forming dense mats. Generally found on half-shaded rocks, often covering them. It is desirable for front edge of Fern bed, and will adapt itself to almost any kind of soil not too wet; plant it about 4 to 6 inches apart for quick results. Cover the new buds slightly. 15 cts. each, \$1.25 per doz. \$6.00 per 100.



Phegopteris dryopteris (see page 12)

- 44 **P. falcatum** (Kellogg's Polypody). ☒ Six to 12 inches high, found in Washington and Oregon, growing on trees and in clefts of rocks. Does well here in New England if given a bed of leaf-mold well drained. 15 cts. each, \$1.25 per doz.
- 45 **SELAGINELLA rupestris.** ♦ A little, low, moss-like plant, 1 to 3 inches high, growing in little tufts; the color is grayish green. It grows on exposed rocks. 15 cts. each, \$1.25 per doz.





Woodwardia angustifolia

Holyoke, Mass., 1,200 feet above the sea. It will also thrive in moist soils in shade, but give it good drainage. It grows about 6 inches high and is at home in front part of Fern-bed; plant about 8 inches apart. 20 cts. each, \$1.50 per doz.



Scolopendrium vulgare

46 *Selaginella apus*. ♦ A pretty little creeper, with fine, scale-like leaves. Desirable for a moist situation, and makes a fine groundwork for small flowering plants. Will grow in open sun; any wet or moist place will do. 10 cts. each, \$1.00 per doz.

47 *SCOLOPENDRIUM vulgare* (Hart's Tongue). ☒ A very rare Fern in the United States, with simple fronds, 6 to 12 inches high; very easily cultivated. Fine for rockwork in moist leaf-mold. 25 cts.

48 *WOODSIA ilvensis* (Rus-ty Woodsia). ♦ ☒ This little Fern often chooses for its home the exposed rocks on tops of mountains, forming little tufts and forcing its roots down into the crevices. Twenty years ago I saw it in masses on the grounds where Mt. Tom House now stands, in

49 *W. obtusa* (Obtuse-leaved Woodsia). ☒ Six to 12 inches high; found on rocky banks. An easy Fern to grow, and one quite desirable for rockwork. This will thrive in almost any shaded place not too wet. It can be planted 8 inches apart in front of larger Ferns, and is benefited by the addition of a little leaf-mold. 20 cts. each. \$1.50 per doz.

#### WOODWARDIA (Chain Fern).

50 *W. angustifolia*. ⊗ 12 inches high by 3 to 4 inches wide. Grows in wet bogs, but takes kindly to cultivation in moist garden soil and will thrive even if put in highest rock-gardens. 25 cts. each, \$2.00 per doz.

51 *W. Virginica*. ⊗ Is larger, 2 feet high by 3 to 5 inches broad. Wet swamps or bogs. Can be grown in any garden soil. Plant 12 to 14 inches apart if a permanent bed is desired. 15 cts. each, \$1.25 per doz. \$6.00 per 100.





Planting of Ferns in woods with rhododendrons in the background

## Hardy Ferns

The following collections are made up to help in selecting for special needs, and should be sent by express or freight

If to be planted in beds, the height as given after each kind would indicate where it should go; if in beds where they are to be seen from all sides, the tall kinds in the center; but if in an angle of the house or wall, plant the taller kinds the farthest back, 8 inches or a foot from the wall, and the smaller kinds in front.

### *No. 1, \$5.00. For Open Sun Culture*

This collection is desirable for the open border, and all the Ferns, being rather tall, can be grown as single specimens or for massing, with or without flowers.

- |  |   |
|--|---|
| 6 <i>Onoclea Struthiopteris</i> , 2 to 4 ft. | 24 <i>Dicksonia punctilobula</i> , 1 to 2 ft. |
| 6 <i>Osmunda Claytoniana</i> , 2 to 3 ft.    | 6 <i>Asplenium Felix-fœmina</i> , 2 to 3 ft.  |

### *No. 2, \$5.00. For Dry, Shady Places*

These Ferns will grow in a dry, shady place. Plant them where flowers, as a rule, do not thrive.

- |   |   |
|---|---|
| 12 <i>Aspidium acrostichoides</i> , 1 ft. | 12 <i>Dicksonia punctilobula</i> , 1 to 2 ft. |
| 12 <i>Aspidium marginale</i> , 1 to 2 ft. | 6 <i>Osmunda Claytoniana</i> , 2 to 3 ft.     |

*No. 3, \$5.00. For Moist, Shady Places*

This collection is fine and easily handled in moist, shady places; also for large rockery.

- |  |  |
|--|--|
| 6 <i>Adiantum pedatum</i> , 1 ft.          | 6 <i>Asplenium thelypteroides</i> , 2 to 3 ft. |
| 6 <i>Aspidium cristatum</i> , 1 ft.        | 6 <i>Asplenium Felix-fœmina</i> , 2 to 3 ft.   |
| 6 <i>Aspidium acrostichoides</i> , 1 ft.   | 6 <i>Phegopteris hexagonoptera</i> , 1 ft.     |
| 6 <i>Aspidium spinulosum</i> , 1 to 1½ ft. | 6 <i>Woodwardia Virginica</i> , 2 ft.          |
| 6 <i>Aspidium marginale</i> , 1 to 2 ft.   |  |

*No. 4, \$5.00. For Wet, Open Ground*

These Ferns are very useful for border of a lake or low, wet ground.

- |  |  |
|--|--|
| 12 <i>Aspidium Thelypteris</i> , 1 ft. | 12 <i>Osmunda regalis</i> , 2 to 3 ft. |
| 12 <i>Onoclea sensibilis</i> , 1 ft.   | 12 <i>Woodwardia Virginica</i> , 2 ft. |

*No. 5, \$5.00. Low Evergreen Ferns for Rockery in Shade*

This is a beautiful collection of low-growing Ferns and easily managed.

- |   |  |
|---|--|
| 12 <i>Asplenium ebeneum</i> , 6 to 15 in.       | 12 <i>Polypodium vulgare</i> , 4 to 10 in. |
| 12 <i>Asplenium Trichomanes</i> , 3 to 6 in.    | 6 <i>Woodsia obtusa</i> , 6 to 12 in.      |
| 12 <i>Camptosorus rhizophyllus</i> , 4 to 9 in. |  |

*No. 6, \$5.00. Low Evergreen Ferns for Dry, Rocky Ledge*

- |  |  |
|--|--|
| 12 <i>Asplenium Trichomanes</i> , 3 to 6 in. | 12 <i>Polypodium vulgare</i> , 4 to 10 in. |
| 12 <i>Woodsia obtusa</i> , 6 to 12 in.       | 12 <i>Woodsia Ilvensis</i> , 6 in.         |

ONE-HALF OF ANY ONE OF THE ABOVE COLLECTIONS FOR \$3

You will notice that some kinds are named in more than one collection. Such seem to thrive equally well in the localities named.



*Polypodium vulgare* (see page 13)



## Hardy Perennials

### FLOWERS THAT LIVE YEAR AFTER YEAR

We will deliver any of these **Hardy Herbaceous Perennials**, of mailable size, at any postoffice in the United States at prices given for single plants and by the dozen. If ordered at the 100 rate, purchaser must pay transportation charges. Can usually supply somewhat heavier stock than can easily go by mail, and shall be glad to do so when our stock will warrant it and the party is willing to pay express charges. Where **extra-strong stock** is desired, we can often make such selections at a reasonable advance in price from catalogue rates. Postage on these plants to Canada is much higher than in this country; parties ordering plants sent there by mail will please add 3 cents per plant to above catalogue prices.

#### ORDER BY NUMBER IF YOU WISH



Anthemis Montana (see page 18)

52 **ACHILLEA filipendula**. ♦ One to 2 feet high; leaves finely cut as a fern; flowers small bright yellow in flat heads. Blooms all summer. 20 cts. each.

53 **A. Millefolium roseum** (Rose-colored Yarrow). ♦ This is a fine, hardy plant, with rose-colored flowers. Plant in a sunny place. 10 cts. each.



Aster multiflorus (see page 20)

54 **A. The Pearl**. ♦ Very double, pure white flowers in dense, broad heads all summer. Very choice for cutting. 10 cts. each, \$1.00 per doz.

55 **ACTÆA alba** (White Baneberry). ☒ In racemes of white flowers, followed by white fruit. Fine for rockwork or the shady corner. 20 cts. each, \$1.50 per doz.

56 **A. rubra** (Red Baneberry). ☒ Rather taller than the last; very ornamental in fruit, which is bright red. Plant in a rich, shady place. 20 cts. each, \$1.50 per doz.

57 **ALYSSUM argenteum**. ♦ Plant about a foot high, with clusters of small yellow flowers in summer. Open border plants 15 cts. each, \$1.50 per doz.

58 **A. saxatile compactum** (Madwort). ♦ Showy perennials, with bright yellow flowers in spring. One foot high. Plant in a sunny place. 15 cts. each, \$1.50 per doz.; seed, 5 cts.

- 59 **ANCHUSA Italica**, var. **Dropanose** (Italian Arkanet). ♦ A thrifty plant. with large, broad leaves at the base; flower-stalks 3 feet high, bearing purple flowers in heads. Plant among shrubbery or well back in border. 25 cts. each.
- 60 **ANEMONE nemorosa** (Wind-flower). ☒ Grows 2 to 4 inches high. Flowers white, tinged with purple; partial shade. 10 cts. each, \$1.00 per doz.
- 61 **A. sylvestris**. ♦ A border plant of good form; very much like Japonica, but quite hardy. The flowers are large, waxy white, with yellow stamens, on stems 6 to 10 inches long, forming good clumps; flowers in spring to July and often until frost; plant in a sunny place. 15 cts. each, \$1.25 per doz.
- 62 **A. Pennsylvanica**. ♦ Twelve to 18 inches high, with large, single, pure white flowers. Plant in the moist border in a sunny place. Quite hardy. 10 cts. each, \$1.00 per doz.
- 63 **A. Pulsatilla** (Pasque flower). ♦ A choice, hardy border plant from Europe, with large, purple flowers in spring; it delights in a well-drained, sunny place, forming good clumps. Flower-stalks 6 inches high. 20 cts. each.
- 64 **ANTENNARIA Margaritacea** (Pearly Everlasting). ✦ A plant of our dry fields and open woods, growing about a foot high, with white woolly leaves; flowers in broad heads, pearly white. Can be kept a long time if cut before maturing and dried; Quite fragrant. 10 cts. each, \$1.00 per doz.
- 65 **ANTHEMIS tinctoria** (Golden Marguerite) ♦ Quite a showy border plant, with a profusion of rather large, daisy-like yellow flowers and finely cut leaves; easily grown. 15 cts.



*Armeria Lauchiana*  
(see page 19)

- 66 **A. Kelwayi**, large, light lemon colored flowers and dark yellow center. 20 cts. each.
- 67 **A. Montana**. Similar in growth to tinctoria but the flowers are pure white. 20 cts. each.
- 68 **AQUILEGIA** (Columbine). ♦ Quite showy plants, with many varieties of color; some have been grown for years and are well known in old gardens. They may be used to splendid advantage in the border or rock-garden.
- 69 **A. alpina**. ♦ From Switzerland. Flowers blue, large and quite showy. May and June. One foot. 15 cts. each, \$1.50 per doz.; seed, 5 cts.
- 70 **A. alpina alba**. ♦ Pure waxy white. A good strong grower. Selected plants, 20 cts.; seed, 5 cts.
- 71 **A. Canadensis**. ♦ One of our prettiest wild flowers; 8 to 20 inches high, with yellow and red flowers an inch long. Very desirable for rockeries. Many desire this for the nation! flower. 10 cts. each, \$1.00 per doz.
- 72 **A. chrysantha** (Golden-spurred Columbine). ♦ Flowers large, golden yellow, with long spurs. 15 cts. each, \$1.25 per doz.; seed, 8 cts.
- 73 **A. Skinneri**. ♦ Eighteen inches high, with orange-red flowers. 20 cts. each.
- 74 **A. vulgaris**. ♦ From Europe. Flowers violet. 15 cts. each, \$1.25 per doz.; seed, 5 cts.
- 75 **ARABIS alba** (White Rock Cress). ♦ A low plant no more than 3 or 4 inches high, yet forming nice clumps, with quantities of small, white flowers in early spring; will adapt itself to almost any situation not too wet; quite hardy. 15 cts.; seed, 5 cts.



- 76 **Arabis mollis**. Similar to above in masses of pure white flowers. The little rosette of small shining oblong leaves is a great improvement on the old sort. It forms good clumps and the soil is carpeted with the small shining leaves. 20 cts.
- 77 **ARENARIA Groenlandica**. A little low alpine with large white flowers; leaves, small and moss-like; it delights in a moist, shady place. 15 cts. each.
- 78 **A. Montana**. ♦ Low perennials, forming mats; suitable for rockwork; flowers rather large, white. 20 cts. each.
- 79 **ARISÆMA triphyllum** (Indian, or Wild Turnip). ☒ A peculiar-shaped flower; greenish or often variegated; found in low, moist, rich woodlands. 10 cts. each, \$1.00 per doz.
- 80 **ARMERIA** (Sea Pink). ♦ Low plants, with narrow, grass-like leaves clustered at the base. Makes a good border plant, and is quite easy of culture.
- 81 **A. Lauchiana**. ♦ One foot. Numerous narrow leaves at the base; flowerstalks about 1 foot; flowers purple, in little clusters at the top. A good border plant. Clumps, 20 cts.
- 82 **ASARUM Canadense** (Wild Ginger, or Canada Snakeroot). ☒ A low perennial, with kidney-shaped leaves, 3 to 5 inches wide, and a single purplish flower close to the ground. Plant in the shady scornor, with your ferns. The roots, dried are aromatic and pleasant to the taste. 10 cts. each, \$1.00 per doz. \$5.00 per 100.
- 83 **A. Virginicum** (Virginia Snakeroot). ☒ Smaller than the above, with shining, round leaves, green to bronze color, mottled with white; rich, shady hillsides, North Carolina. Quite hardy in New England. 20 cts. each, \$1.50 per doz.
- 84 **ASCLEPIAS incarnata** (Swamp Milkweed). ⊗ ♦ Two to 3 feet high, with showy, rose-purple flowers. Grows in wet places and along the banks of streams and ponds. 20 cts. each, \$1.25 per doz. Seeds 5 cts.



Asarum Canadense

See page one for explanation of signs before description of plants.

*Asclepias incarnata* continued.

85 *A. tuberosa* (Butterfly Weed, or Pleurisy Root). ♦ One of the most beautiful and easily grown of wild flowers. It grows from 1 to 2 feet high, and has numerous umbels of bright orange flowers. Plant in open sun, in well-drained soil. Hardy. 15 cts. each; seeds, 5 cts.

**ASTER.** The wild Asters are among our prettiest native flowers. They come late in the season, when most other plants are past their bloom, and last until killed by frost. They are easily grown, and deserve more attention from lovers of wild flowers. Those named are among the most showy of the genus.

86 *A. alpinus*. ♦ About 6 inches high, forming little clumps. Flowers large, violet; quite pretty; open border. 20 cts. each; seeds, 5 cts.

87 *A. cordifolia*. ✱ One to 2 feet, with pale blue flowers in autumn. A common Aster of our New England wood, quite showy and easily grown. 15 cts. each, \$1.25 per doz.; \$6.00 per 100; seeds, 5 cts.



*Aster ericoides*

88 *A. corymbosus*. ✱ One to 2 feet, with white flowers; a prominent Aster of our dry New England woods in late autumn. 15 cts. each, \$1.25 per doz.; \$6.00 per 100; seeds, 5 cts.

89 *A. ericoides*. ☒ ♦ Extra fine in cultivation. These graceful, wand-like, spreading branches are literally covered with fine green or purple leaves, and dotted here and there with large, white flowers. Plant in dry, sandy soil. 20 cts. each, \$1.50 per doz.; seeds, 5 cts.

90 *A. lævis*. ☒ ♦ ✱ A beautiful species, with sky-blue flowers. Grows in dry woodland. 15 cts. each, \$1.25 per doz.; \$6.00 per 100; seeds, 5 cts.

91 *A. multiflorus*. ♦ One to 2 feet high; branches covered with small, white flowers. Fine for dry, open places. 10 cts. each, \$1.00 per doz.; \$5.00 per 100; seeds, 5 cts.

92 *A. Novæ-Angliæ*. ♦ Stout, 3 to 8 feet high. Flowers violet and purple. Moist ground. 20 cts. each, \$1.50 per doz.; \$7.00 per 100; seeds, 5 cts.

93 *A. Novi-Belgii*. ☉ Two to 3 feet high, with large, pale blue flowers. A wet, open bank is best suited for its growth. 20 cts. each; seeds, 5 cts.

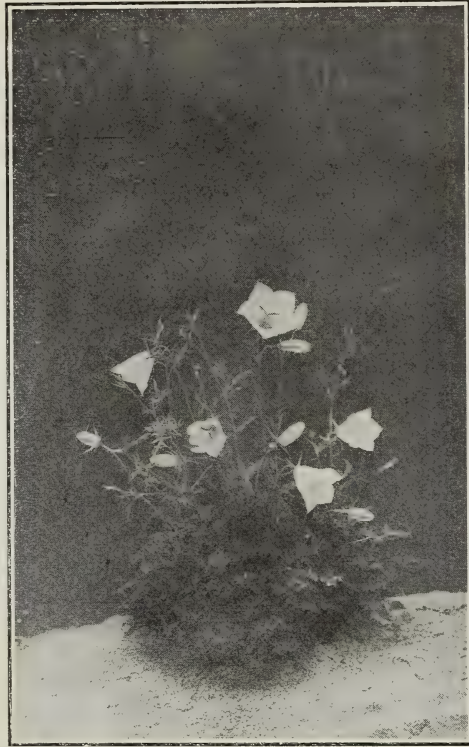
94 *A. patens*. ✱ ♦ A foot high, with rough, clasping leaves and large, showy, deep purple flowers in autumn, found on dry banks, both in open sun and shade. 20 cts. each, \$1.50 per doz.; \$7.00 per 100; seeds, 5 cts.

95 *A. undulatus*. ✱ One of the most showy of our wild Asters, growing about 2 feet high, with bright blue flowers; delights in dry, shady place; flowers in late autumn. 15 cts. each, \$1.25 per doz.; \$6.00 per 100; seeds, 5 cts.

Asters in varieties for shady places, \$5.00 per 100. Asters in varieties for open sunny places, \$5.00 per 100.



- 96 **ASTILBE Japonica** (False Goat's Beard). ♦ Sometimes called *Spiræa Japonica*. One to 2 feet. From Japan. Quite hardy here, forming large clumps. Flowers small, but in white masses in June. At home in the open borders. Strong clumps, 25 cts. each.
- 97 **BAPTISIA tinctoria** (Wild Indigo). ♦ One to 2 feet. A native plant found in dry soils, sun or shade, especially near the sea. Flowers yellow. Forms good clumps in the open border. 20 cts. each; seeds, 5 cts.
- 98 **BOLTONIA asteroides**. ♦ A tall plant, 4 to 6 feet high, with large, showy white flowers in autumn, resembling asters, and largely used in massing; easily grown in a sunny place. 20 cts. each, \$1.50 per doz.
- 99 **CALLIRRHÖE involucrata** (Crimson Callirrhoe). ♦ A very beautiful prostrate, spreading perennial from Texas, with large, showy, crimson flowers all summer. Fine for open borders, or for planting in dry barren soil. 20 cts. each, \$1.50 per doz.; seeds, 5 cts.
- 100 **CAMPANULA**. ♦ Plant with showy flowers, mostly in blue; easy to grow, and in bloom a long time. For full description, see Bailey's "Cyclopediä of American Horticulture," pages 226 to 233.
- 101 **C. Carpatica**. ♦ Low plants, forming nice clumps, with large, blue flowers in summer. Sunny border. 20 cts. each, seeds, 5 cts.
- 102 **C. Carpatica alba**. ♦ Like the above, only the flowers are pure white. 20 cts. each; seeds, 5 cts.
- 103 **C. Medium** (Canterbury Bells). ♦ One to 2 feet. Flowers large, open, bell-shaped, in a variety of colors. Biennial. 15 cts. each, \$1.50 per doz.; seeds, 5 cts.
- 104 **C. persicifolia**. ♦ A strong, vigorous *Campanula*. Grows 2 to 3 feet high with large, open, bell-shaped, blue flowers; very showy and one of the first to bloom; early June. 20 cts. each, \$1.50 per doz.; seeds, 5 cts.
- 105 **C. persicifolia alba**. ♦ Similar to the above, only the flowers are waxy white. 25 cts. each, \$2.00 per doz.; seeds, 5 cts.
- 106 **C. rotundifolia** (Harebell or Blue Bells of Scotland). ☒ This pretty little native will adapt itself to almost any situation. We see it in crevices of rocks many feet above our reach or along the path at the base of the mountains. Give it good drainage in open sun or partial shade. 25 cts. each, \$2.00 per doz.
- 107 **C. Van Houttei**. ♦ Plants 18 to 24 inches high, with large leaves and quite large, open bell-shaped blue flowers. It needs open sun for its best development. 25 cts. each.
- 108 **CARDAMINE pratensis** (Cuckoo Flower). ♦ Plants quite slender, yet with pretty heads of small, white or rose-colored flowers. It does quite well in wet places, or even in the border or rock-garden. 10 cts. each, \$1.00 per doz.
- 109 **CASSIA Marylandica** (American Senna). ♦ A thrifty plant, 2 to 5 feet high, forming large and showy clumps. Flowers yellow, with a dark center. Fine for moist, open places. 20 cts. each, \$1.50 per doz.



*Campanula carpatica alba*

- 110 **CATNIP** (*Nepeta Cataria*). ♦ An aromatic herb, found near dwellings. Cats are fond of it. 10 cts.
- 111 **CAULOPHYLLUM thalictroides** (Blue Cohosh). ☒ A thrifty plant of our New England hillsides. Flowers greenish, followed by the large blue berries. 20 cts.
- 112 **CENTAUREA montana** (Mountain Bluets). ♦ A useful border plant, sometimes called Hardy Cornflower, with showy white, cottony leaves and large, bright blue flowers in early summer; valuable for cutting. 25 cts. each.
- 113 **CERASTIUM Biebersteinii**. ♦ 4 to 6 inches high; leaves silvery white; masses of pure white flowers in early summer; used for edging and mixed borders. 15 cts. each.



*Campanula medium* (see page 21)

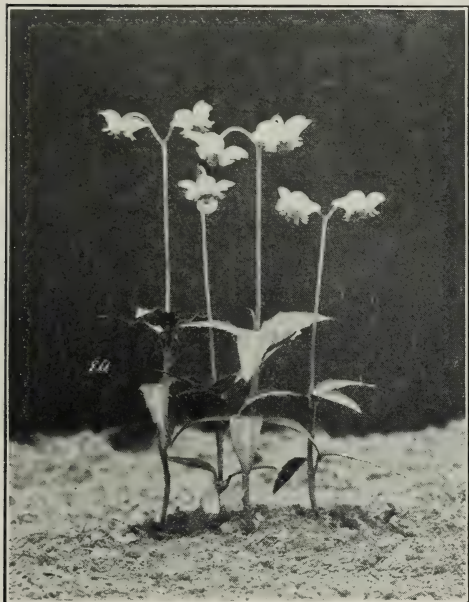


*Campanula persicifolia alba*  
(see page 21)

- 114 **CHELONE glabra** (Snake Head). ☉ One to 2 feet; flowers white to rose-color, in late autumn; grows in wet places. 15 cts. each, \$1.25 per doz.
- CHIMAPHILA Maculata** ☒ Low with spotted leaves and rather showy white or pink nodding flowers. Found usually under evergreen trees. Plant it with the Partridge Berry. 15 cts. each.
- 115 **CHRYSOPSIS** (Golden Aster). Eight or 10 inches high, with smooth, dark green, narrow leaves, and large bright yellow flowers in summer. Delights in a dry soil, in open sun. Clumps, 25 cts. each, \$2.00 per doz.; seeds, 5 cts.
- 116 **CIMICIFUGA racemosa** (Black Snakeroot). ☒ ♦ Tall, 4 to 6 feet, with white flowers in elongated racemes. Desirable for a moist, shady corner. Clumps, 25 cts. each, \$2.00 per doz., \$8.00 per 100. Seeds 5 cts.
- 117 **CLAYTONIA Virginica** (Spring Beauty). ☒ Has large, rose-colored flowers in early spring. Shady place. 10 cts. each, \$1.00 per doz., \$5.00 per 100.
- 118 **C. Caroliniana**. Similar to above but with wider leaves. 10 cts. each, \$1.00 per doz.



- 119 **CLINTONIA borealis**. ☒ A little, low perennial, with two or three dark green, shiny leaves from the ground, the flower-stalks about 6 inches high, bearing at the tops a few, rather large, greenish yellow lily-like flowers in early spring; a cool, shady place. 10 cts. each, \$1.00 per doz. \$5.00 per 100.
- 120 **CONVALLARIA majalis** (Common Lily-of-the-Valley of the garden). ◆ Well known in cultivation. Flowers small, white, bell-shaped. 20 cts. in clumps, \$1.50 per doz.
- 121 C., var. "Miellez's Revelation" in Lily-of-the-Valley. ◆ It is of extraordinary size and vigor, of the most exquisite fragrance and does well under all conditions and in all sorts of soils growing just as well in full sun as in partial shade. Extremely hardy, and, while not increasing quite so fast as the common kinds, is still of good increase. It is well to cover it in December with a good coat of barnyard manure; green is just as good as old. Leave it in the spring to serve as mulch. The Massachusetts Horticultural Society awarded it a "First-class Certificate of Merit," May 22, 1897. 25 cts. each, \$2.00 per doz.



Chimaphila Maculata (see page 22)

- 122 **COPTIS trifolia** (Gold-thread). ☒ A little, low evergreen, with bright, shiny leaves and white flowers. Plant in a moist, shady place. 10 cts. each, \$1.00 per doz. \$5.00 per 100.
- 123 **COREOPSIS lanceolata**. ◆ Grows 1 to 2 feet high; large, showy yellow flowers. Rich, damp soil in the open border. 10 cts. each.
- 124 **C. grandiflora**. ◆ A showy border plant about 2 feet high with large handsome orange yellow flowers, blooms through the season. 15 cts. each.



Coreopsis lanceolata

- 125 **CORNUS Canadensis** (Dwarf Cornel). ☒ Plant 6 inches high, with four broad leaves at the top. Flowers greenish, surrounded by a showy white involucre, followed by bright red berries. Desirable for a shady corner. Fine for massing. Clumps, 25 cts. each, \$2.00 per doz. \$8.00 per 100.



*Campanula rotundifolia* (Blue Bells of Scotland)  
(see page 21)

- 126 **DALIBARDIA repens.** ☒ A little low plant with roundish leaves, and small white flowers, delights in a cool, moist, shady spot, blooms through the summer from June until August. 20 cts. each.
- 127 **DENTARIA diphylla** (Toothwort, or Pepper-Root). ☒ Six to 15 inches high, with a single corymb of pretty white flowers. May. Rich, shady places. 10 cts. each, \$1.00 per doz. \$5.00 per 100.
- 128 **DELPHINIUM** (Larkspur). The Larkspurs, when well grown, are among the choicest of our garden plants. They require a light and well-drained soil, and respond to good cultivation. The tall varieties can be grown 6 to 8 feet, and make fine back-grounds for the lower-growing sorts.
- 129 **D. Kelway's Hybrids.** A select strain of the taller growing sorts, with large finely tinted flowers, 25 cts.; seeds, 5 cts.



*Cimicifuga racemosa* (see page 22)

- 130 **D. grandiflorum.** ♦ Low-growing, with finely cut leaves, the large and graceful flowers in almost endless variety of blue, from almost pure white to finest tints of dark blue, all summer. Should be planted in a sunny spot, where it can have good drainage. 10 cts. each, \$1.00 per doz.; seeds, 5 cts
- 131 **D. grandiflorum album.** ♦ Pure white. 15 cts each; seeds, 5 cts.
- 132 **D. grandiflorum, var.** ♦ With beautiful light blue tints. 15 cts.; seeds, 5 cts.
- DIANTHUS** (Pink). The garden sorts of easy culture in rich, well-drained soil. In the open border they are, for the most part, low-growing; some are very fragrant. The family contains nearly all the desirable colors.
- 133 **D. barbatus** (Sweet William). ♦ These are among the brightest of our hardy plants, growing about a foot high, with long, green leaves and bearing on top the large heads of bright flowers in great variety of color. 15 cts. each, \$1.25 per doz.; seeds, 5 cts.



- 134 **Dianthus deltoides** (Maiden Pink). ♦ A dwarf, creeping sort, with small, deep red flowers and crimson center; used for borders and covering the soil with tufts of green. 10 cts. each, \$1.00 per doz.
- 135 **D. plumarius** (Grass or Garden Pink). ♦ A very hardy single and double Pink that flowers in many colors. Plant in light soil. Very effective. 15 cts. each; seeds, 5 cts.
- 136 **D. plumarius, Cyclops**. ♦ Beautiful, large, single flowers, very fragrant, often 2 inches in diameter. The edges of the flowers are cut or ragged, with darker center. Color from pure white to pink, red and purple. Plant in a sunny spot. 20 cts. each. \$1.50 per doz.; seeds, 5 cts.
- 137 **DICENTRA cucullaria** (Dutchman's Breeches). ♦ A very early spring flower, with delicate divided leaves. Grows about 8 inches high. Greenish white flowers, tinged with rose. 10 cts. each, \$1.00 per doz.
- 138 **D. eximia**. ♦ A beautiful, hardy perennial, forming fine clumps of beautiful,



Delphinium, (Kelway's Hybrid) (see page 24)



Delphinium grandiflorum album (see page 24)

- border in a sunny position, or can be grown in a shaded place, forming fine clumps, and blooming throughout the season. 25 cts. each.
- 140 **DIGITALIS Gloxinioides** (Foxglove). ♦ In mixed colors. Two feet, with large, showy flowers. June or July. A good border plant in front of shrubbery. 15 cts. each, \$1.50 per doz.; seeds, 5 cts.
- 141 **D. grandiflora**. Vigorous and of good form; 2 to 3 feet high; flowers, yellow with brown markings in the throat. 20 cts. each.
- 142 **D. lanata**. One to 2 feet, leaves smooth; flowers rather small, creamy white in color, flowering in June and July. A choice sort for the open border. 20 cts. each, \$1.50 per doz.; seeds, 5 cts.

- 139 **DIELYTRA spectabilis** (Bleeding Heart). ♦ An old garden plant, well known in cultivation. It is well adapted for the

finely cut leaves and graceful, dark purple flowers all summer. 25 cts. each; seeds, 5 cts.



*Dicentra cucullaria* (see page 25)

- 143 **DIPLOPAPPUS linariifolius** (Double-bristled Aster). ★ Eight to 12 inches, forming fine clumps, with short, linear leaves and large, showy violet flowers in late autumn, resembling an aster. Plant in dry, open places or woods. 20 cts. each, \$1.50 per doz.; seeds, 5 cts.
- 144 **DODECATHEON Meadia** (Shooting Star). ☒ A very pretty, smooth perennial, with rose-colored or sometimes white flowers in May or June. This is sometimes called American Cyclamen. It thrives in rich, moist woods, or in the open border. 25 cts. each, \$2.00 per doz.
- 145 **EPIGÆA repens** (Trailing Arbutus). ★ ☒ A pretty little trailing evergreen, with very fragrant, white or rose-colored flowers in early spring. To succeed with this beautiful little plant, select a shady spot where there is perfect drainage (a dry, sandy soil is preferable), cover the plants with about an inch of leaves or enough to keep the soil cool and moist and let them remain for a whole season, as it takes that time to get the Arbutus well established and rooted. We grow it in a frame for a season, but the leaves answer the same purpose. 25 cts. each, \$2.00 per doz.
- 146 **EPILOBIUM angustifolium** (Great Willow Herb). ◆ Grows 3 to 5 feet, bearing pink-purple flowers in upper part of stalk; quite showy. 20 cts.; seeds, 5 cts.
- 147 **ERIGERON alpinus** (Fleabane). ◆ A dwarf species, suitable for rockwork, with heads of purplish flowers. 15 cts. each, \$1.25 per doz.
- 148 **ERYSIMUM pulchellum**. ◆ A fine little rock plant, with yellow flowers in spring. Forms little clumps. 20 cts. each.
- 149 **ERYTHRONIUM Americanum** (Dog's-tooth Violet). ☒ This plant is often called Adder's Tongue. It grows about 10 inches high, bearing in early spring bright yellow lily-like flowers about an inch broad. Plant 6 inches below the surface. A beautiful plant. 10 cts. each, \$1.00 per doz.
- 150 **E. grandiflorum**. From the western coast. Flowers yellow. 15 cts. each, \$1.25 per doz.



*Dianthus barbatus* (see page 24)



- 151 *Erythronium albidum* (White Dog's-tooth Violet). ☒ Flowers bluish white. (See illustration on page 28.) 15 cts. each, \$1.25 per doz.
- 152 *EUPATORIUM ageratoides* (White Snakeroot). ◆ Two to 3 feet high, with a profusion of small, white flowers, in heads in late summer. Very desirable for cutting. 10 cts. each, \$1.00 per doz.; \$5.00 per 1000; seeds, 5 cts.
- 153 *E. perfoliatum* (Thoroughwort). ☉ Two to 3 feet; opposite leaves and flat heads of white flowers; moist places. 15 cts. each, \$1.25 per doz.

154 *E. purpureum* (Trumpet Weed; Joe Pye Weed). ☉ Four to 10 feet high. with smooth, purple stalks; leaves in whorls; large, showy, purple heads of flowers, borne on top. Found in wet meadows and along streams. 25 cts.

155 *EUPHORBIA corollata* (Flowering Spurge). ☒ A hardy, branching perennial, 1 to 2 feet high, with pure white, petal-like bracts around the true flower. Fine for cutting. 15 cts. each, \$1.25 per doz.



*Dianthus plumarius* (see page 25)

- 156 *FUNKIA aurea variegata* (Variegated-leaved Day Lily). ◆ The leaves of this variety are beautifully variegated with white. Very hardy. Clumps, 25 cts.
- 157 *F. Thomas Hogg*. ◆ Foliage banded with clear white. A very choice variety, with large, purplish lilac flowers. 25 cts. each; seeds, 5 cts.
- 158 *GALAX aphylla*. ☒ A pretty little evergreen, with shining red or green leaves. From mountains of North Carolina. Stalks a foot high, bearing many small, white flowers. Clumps, 25 cts. each, \$2.00 per doz.
- 159 *GAILLARDIA grandiflora*. ◆ Large, yellow and red flowers on stems a foot high, shaped like an ox-eye daisy; showy. 15 cts. each; seeds, 5 cts.



*Digitalis gloxinioides* (see page 25)

- 160 **GAULTHERIA procumbens** (Aromatic Wintergreen). ★ A low evergreen, with bright green leaves. Flowers white followed by the bright red berries, which remain until the next season. Give the bed a covering of leaves. It takes a whole season to establish this plant; should be treated the same as *Epigæa*, which see. Clumps, 20 cts. each, \$1.50 per doz.
- 161 **GENTIANA Andrewsii** (Closed Gentian). ☒ A pretty and strong-growing northern species, with clusters of blue flowers an inch or more in length. Plant in rich, moist soil. At home along the banks of a brook in shady places. 15 cts. each, \$1.25 per doz.; seeds, 5 cts.



*Erythronium albidum* (see page 26)

- 162 **G. linearis**. ♦ A choice Gentian growing in moist places; quite hardy in New England; the flowers are similar to the above, nearly closed, but are of the brightest blue, tipped with white. Have seen great fields of it north with twenty flower-stalks on a single plant. 25 cts. each.
- G. crinita** (Fringed Gentian). ☒ Seed only. Pkt. 10 cts.
- 163 **GERANIUM Robertianum** (Herb Robert). ☒ This little biennial is pretty for rockeries. It begins blooming in June and continues until October. Leaves strong-scented; flowers small, red-purple. Moist soil. 10 cts. each, \$1.00 per doz.
- 164 **G. maculatum** (Wild Crane's Bill). ♦ The wild Geranium of our woods and fields. Flowers rather large, light purple. From April to August. 15 cts. each, \$1.25 per doz.



- 165 **Geranium sanguineum.** ♦ A foot high, with large crimson flowers; does quite well in the open border or even among rocks. 20 cts.
- 166 **GYPSOPHILA paniculata** (Infant's Breath). ♦ Flowers very small, in open panicles, with stiff, wiry stems. Beautiful, and much used in all flower work where white flowers are needed. 2 feet. 25 cts. each; seeds, 5 cts.
- 167 **HELENIUM autumnale** (Sneezeweed). ♦ One to 2 feet high, with quite large, bright yellow flowers in July and August. 15 cts. each; seeds, 5 cts.
- 168 **H. Riverton Gem.** Of strong vigorous growth, 2 to 3 feet high, covered from August to October with brilliant old gold and splashes of darker shades, changing later to a wall-flower red. 25 cts.
- 169 **HELIANTHUS giganteus.** ♦ Six to 10 feet high with light yellow flowers. Quite showy; should be planted in dry, open places. 25 cts. each.
- 170 **HEMEROCALIS flava.** ♦ Flowers large, open, bell-shaped, clear yellow. Very fragrant; forms large clumps. 2 feet. 25 cts. each.
- 171 **H. fulva.** (Brown Day Lily). ♦ This, although an old garden plant, is a good one, growing about 2 feet high, bearing reddish yellow flowers; forms good clumps on dry or moist banks. 15 cts. each, \$1.25 per doz.
- 172 **HEPATICA triloba** (Round-lobed Hepatica). ☒ One of the earliest of our wildwood flowers. Leaves three-lobed; the flowers are pink and dark purple. Fine for massing in the shady corner or open woods. 15 cts. each, \$1.25 per doz., \$6.00 per 100.
- 173 **HEUCHERA sanguinea** (Coral Bell). ♦ Leaves evergreen, scalloped and marbled. Flowers borne on long stems, small, but of the most brilliant scarlet. From Siberia. Perfectly hardy. Give it a rich, moist place in the border. Clumps, 25 cts. each, \$2.00 per doz.
- 174 **H. Americana.** ☒ An American species, with beautifully marbled leaves. A good border plant where a nice edging is desired. 25 cts. each.
- 175 **HIBISCUS Moscheutos rosea** (Swamp Rose Mallow). ♦ A tall, thrifty plant, desirable for a moist, sunny place. Flowers large, rose-colored and very showy. 20 cts. each, \$1.50 per doz.; seeds, 5 cts.
- 176 **H. Crimson Eye.** ♦ Flowers large, pure white, with deep crimson eye. Very choice and new. Perfectly hardy, either in common garden soil or very wet place. 20 cts. each, \$1.50 per doz.; seeds, 5 cts.
- HOLLYHOCKS. Double.**
- 177 Crimson.
- 178 White.
- 179 Pink.
- 180 Yellow.  
10 cts. each; \$1.00 per doz.
- 181 **HOUSTONIA cærulea** (Bluets). ♦ A little low biennial, 2 to 4 inches high, sparingly branched from the base. Flowers small, delicate light blue, sometimes pale lilac or white, with a yellowish eye. Grows in tufts in open, moist, or grassy places. May. 10 cts. each, \$1.00 per doz.; \$5.00 per 100.
- 182 **H. purpurea.** ♦ Two to 6 inches high, with waxy white flowers all summer. At home in the rock-garden. 15 cts. each, \$1.25 per doz.
- 183 **HYDRASTIS Canadensis** (Orange Root). ☒ Four to 10 inches high, sending up in early spring a stem, two-leaved at the top, terminated by greenish white flowers, followed by red berries. Moist shades. Rare. 15 cts. each, \$1.25 per doz.
- 184 **HYPOXIS erecta** (Star Grass). ♦ A little wood plant, with grass-like leaves and rather large yellow flowers. 10 cts. each, \$1.00 per doz.
- 185 **IBERIS sempervirens** (Candytuft). ♦ From Canada. Quantities of pure white flowers. One of the choicest for cutting. Hardy. 15 cts. each, \$1.25 per doz.; seeds, 5 cts.

**GERMAN IRIS (I. Germanica)**

**German Iris.** This beautiful and varied Iris will thrive in almost any situation, yet it delights in a moist soil. Just above the water in a lake, it sets off other plants to advantage.

- 186 **Charlotte Patti.** Lemon-yellow, with reddish brown veins in the center.
- 187 **Comte de St. Claire.** Tall and stately. White with well-defined blue border, one-half an inch wide.
- 188 **Donna Maria.** White, shaded lilac.
- 189 **Florentine.** White, sweet-scented.
- 190 **Herant.** Flowers bright blue.
- 191 **Lilacina.** Outer segments white, bordered and flecked with lilac; inner segments white, edge of limb flecked lilac, base veined and dotted violet.
- 192 **Mlle. Almira.** Flowers sky-blue, very large, twice the size of any other variety; very tall, with broad foliage. A grand sort.



*Eupatorium ageratoides* (see page 27)



*Funkia Thomas Hogg* (see page 27)

- 193 **Mrs. Newbronner.** Deep yellow.
- 194 **Queen of May.** Standards and falls tender rose, veined yellow.
- 195 **Reine des Pays.** Outer segments pale yellow, with reddish brown center.
- 196 **Agamemnon.** Standards pale lavender, flecked and veined blue. Falls white, flecked and penciled blue on the border, more heavily on lower half.
- 197 **President Thiers.** Standards mauve, penciled brown at base. Falls purple, base striped brown and white. Tall, vigorous grower.
- 198 **Germanica, Spectabilis.** Deep purple; early.
- 199 **Victory.** Outer petals bronze. Falls deep violet, striped white and bordered yellow at base. Tall and profuse bloomer.

20 cts. each, \$1.50 per doz.

**JAPAN IRIS (I. Kaempferi) ♦**

Have your Japan Iris shipped by express when possible, as many of the clumps are too large for the mail.

**DOUBLE VARIETIES**

- 200 **Blue Jay.** Fine, large, deep blue flowers, mottled and veined with white.



- 201 **Beth Hallock.** Very large, delicate lavender, freely suffused with white. Dwarf habit; beautifully wavy petals; a very choice and desirable sort.
- 202 **Eclair.** Pure white; very large and fine; one of the handsomest white Irises.
- 203 **Gold Bound.** Tall and showy, with flowers very large; pure snow-white, with a large, gold-banded center.
- 204 **Mahogany.** Very large flowers; deep mahogany-red.
- 205 **Mr. Fell.** White, with blue veins and center, and splashes of yellow.
- 206 **Orion.** Very tall; pure white, each petal having a wide border of lilac-red; makes a brilliant effect.
- 207 **Romeo.** Very large, deep maroon flowers.
- 25 cts. each, \$2.00 per doz.

**SINGLE VARIETIES**

- 208 **Apple Blossom.** Light colors, beautifully tinted and flaked.
- 209 **Helen von Siebold.** Reddish amaranth, large white center, freely veined.
- 210 **Red Riding Hood.** Bright purplish red, yellow center, freely striped with white.
- 25 cts. each, \$2.00 per doz.



Gaillardia grandiflora (see page 27)

- 211 **IRIS cristata** (Crested Iris). ♦ A little low species, no more than 2 or 3 inches high, found wild in the southern states. Flowers light blue, marked with white. Forms nice clumps. Open border. Hardy. 15 cts. each, \$1.25 per doz.



Houstonia cœrulea (see page 29)

- 212 **I. pumila** (Dwarf Iris). ♦ Deep purple flowers; very hardy. 10 cts. each, \$1.00 per doz.
- 213 **I. pumila alba.** ♦ A white variety. 10 cts. each, \$1.00 per doz.
- 214 **I. pumila sulphurea.** ♦ Yellow. 10 cts. each, \$1.00 per doz.
- 215 **I. Pseudacorus.** ⊗ See Bog Plants.
- 216 **I. Sibirica.** ♦ A tall species, with small blue flowers; fine. 10 cts. each, \$1.00 per doz.; seeds, 5 cts.
- 217 **I. verna.** A little low Iris with blue flowers, yellow center. 20 cts. each.
- 218 **I. versicolor.** ⊗ About 20 inches high with pretty blue and white flowers. Grows in wet places and along brooksides. 10 cts. each, \$1.00 per doz.
- LIATRIS** (Blazing Star). ♦ Very pretty border plants, thriving in light, well-drained soil. They have long, grass-like foliage and showy purple flowers in heads or spikes, sometimes 3 feet long.

See page one for explanation of signs before description of plants.

- 219 *Liatris pycnostachya* (Kansas Gay-Feather). ♦ A beautiful species from the western prairies. Spike of flowers often 3 feet long. Desirable for the open border. 15 cts. each, \$1.50 per doz.; seeds, 5 cts.
- 220 *L. scariosa* (Button Snakeroot). ♦ Two to 4 feet high, with large heads of rose-purple flowers in late summer. Rich soil. 10 cts. each, \$1.00 per doz.; seeds, 5 cts.



*Gentiana Andrewsii* (see page 28)



*Hibiscus Crimson Eye* (see page 29)

## Lilies

Lilies are among the finest of our garden flowers, and take quite kindly to cultivation. They like a moist, yet well-drained soil; although some kinds will thrive in soils heavy in texture, the greater number do much better in a light soil. Lilies are, as a rule, planted in autumn, and no doubt that is the better time for planting a large number, especially if they be imported bulbs or kept long out of soil. But for strong bulbs, taken direct from the nursery and planted without being allowed to dry, they can be planted in spring with good results—as we have proved many times. The soil for the Lily bed should be deep and well worked over with fine, well-decayed manure. The bulbs should be set about 4 inches deep, but not allowed to come in contact with the rich soil. Place either sand or leaf-mold around each bulb; this will help protect the bulbs, and the roots can easily reach the rich soil beneath.

- 221 *LILIUM auratum* (Golden-rayed Lily of Japan). ♦ A large and beautiful species with a white ground-work, little points of crimson all over the inner face and a narrow band of gold painted along the center of each petal. Very fragrant and hardy. Nice large bulbs, 25 cts. each, \$2.00 per doz.



222 **Lilium Brownii.** A grand, large, trumpet-shaped Lily, 5 inches long, creamy white inside, chocolate-purple outside. 50 cts. each.

223 **L. Canadense** (Wild Meadow Lily). ♦ Grows 2 to 4 feet high, with one to many yellow or yellowish red flowers. Moist clay or sandy soil, well enriched. 15 cts. each, \$1.25 per doz., \$6.00 per 100.

224 **L., var. flavum.** ♦ Has yellow flowers. 20 cts. each, \$1.50 per doz.

225 **L. candidum** (Madonna Lily). ♦ Large, pure white, fragrant flowers. This Lily should be planted in early autumn. 15 cts. each, \$1.50 per doz.

226 **L. Chalcedonicum** (Scarlet Martagon). ♦ A tall Lily, with small, nodding, bright red flowers. A good garden sort and should be used more generally. 50 cts. each.

227 **L. elegans.** Flowers red; three or four on top of stalk. 20 cts. each, \$1.50 per doz.

228 **L. Henryi.** ♦ A new and rare Lily of superior merit. It is of strong, vigorous growth, with flowers resembling *Speciosum* in shape, but the color is a deep orange-yellow, with green bands. 50 cts.

229 **L. Philadelphicum** (Wild Orange-Red Lily). ♦ One to 2 feet high, with one to two upright, open, bell-shaped flowers, reddish orange, spotted with purple. Plant in a well-drained soil. Sun or shade. 15 cts. each, \$1.25 per doz.; seeds, 5 cts.

230 **L. speciosum album.** ♦ A fine Lily, 2 feet high, with white flowers. 25 cts. each, \$2.00 per doz.

231 **L. speciosum rubrum.** ♦ Is similar to the above, but the flowers are red. 25 cts. each, \$2.00 per doz. (See cut on page 34.)

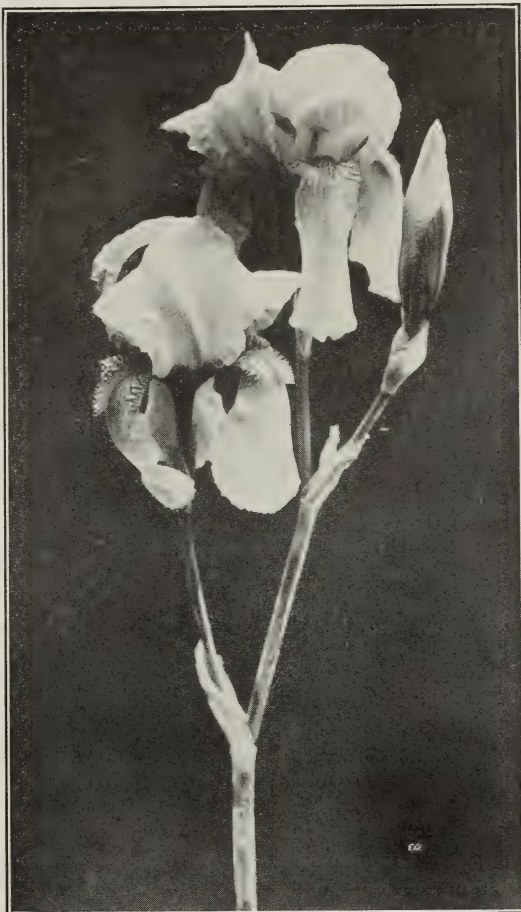
232 **L. superbum** (The Superb Orange Lily). ♦ A very fine native Lily, from 4 to 8 feet high, with flowers from five to fifty on a stalk. It is a great feeder and requires lots of fine manure in a soil 2 to 4 feet deep. Large bulbs, 20 cts. each, \$1.50 per doz.

233 **L. tenuifolium** (Siberian Coral Lily). ♦ Plants 12 to 18 inches high; flowers rich scarlet. A beauty. 20 cts. each, \$1.50 per doz.

234 **L. tigrinum, var. splendens.** ♦ A large vigorous form of the Tiger Lily. 20 cts. each, \$1.50 per doz. (See cut on page 37.)

235 **L. tigrinum fl. pl.** A double form of the above. 20 cts. each.

236 **LINUM Austriacum** (Austrian Flax). ♦ Flowers pale blue, blooming very profusely through the summer. 15 cts. each, \$1.25 per doz.; seeds, 5 cts.



German Iris (see page 30)



Iris pumila (see page 31)



*Liatris pycnostachya* (see page 32)

- 237 **LOBELIA cardinalis** (Cardinal-flower). ♦ One of the showiest of our wild flowers; 2 to 4 feet high, with large, deep red blossoms along the upper part of the stalk; will thrive in any garden soil or along the border of a lily pond or brook in water 2 or 3 inches deep. 15 cts. each, \$1.25 per doz., \$7.00 per 100; seeds, 5 cts.
- 238 **L. syphilitica** (Great Blue Lobelia). ♦ Similar in growth to the last, but the flowers are blue, streaked with white. Plant in a moist place. Desirable for border of brook or lake. 15 cts. each, \$1.25 per doz.; seeds, 5 cts.
- 239 **LUPINUS perennis** (Wild Lupine). A native, growing in dry soils, with large spikes of blue flowers in spring. 20 cts. each, \$1.50 per doz.; seeds, 5 cts.
- 240 **LYCHNIS**. A class of hardy plants, well deserving a place in the garden. Not tall, but quite showy.
- 241 **L. alpina**. Leaves clustered, forming little tufts; flower-stalks a foot high, bearing pretty pink flowers. Rocks or well-drained border. 10 cts. each, \$1.00 per doz.; seeds, 5 cts.
- 242 **L. Chalcedonica**. ♦ Flowers scarlet; plant in rich soil. June. Two feet. 20 cts. each, \$1.50 per doz.; seeds, 5 cts.
- 243 **L. Flos-cuculi** (Cuckoo-flower). ♦ A slender perennial, 1 to 2 feet high, with rather small red or pink double flowers in clusters; a good bloomer, mostly through the season. 20 cts. each.
- 244 **L. viscaria splendens** (Ragged Robin). ♦ A low-growing, pink-flowered plant, quite desirable for edgings. 20 cts. each, \$1.50 per doz.
- 245 **LYSIMACHIA nummularia** (Creeping Charlie). Creeping leafy herb, with large yellow flowers; quite hardy and desirable for covering shady banks and used for rustic vases and baskets. 10 cts. each, \$1.00 per doz., \$5.00 per 100.
- 246 **LYTHRUM roseum superbum**. ♦ ♦ Rose-purple flowers; grows along margins of streams. Quite showy. 20 cts. each, \$1.50 per doz., \$6.00 per 100.
- 247 **MALVA Moschata** (Musk Mallow). ♦ A charming plant, with many large, rose-colored flowers borne on a spreading bush, 2 feet high; quite hardy and easily grown in a sunny place. 15 cts. each, \$1.50 per doz.; seeds, 5 cts.
- 248 **M. Moschata alba**. ♦ With white flowers. 20 cts.
- 249 **MERTENSIA Virginica** (Virginia Cowslip). ☒ This plant grows from 1 to 2 feet high, bearing a panicle of beautiful purple or sometimes white flowers in early spring; plant in a moist, shady place. 20 cts. each, \$1.50 per doz.



*Lilium speciosum rubrum* (See page 33)



- 250 **MENTHA piperita** (Peppermint).  
 ♦♦ An aromatic plant found in moist places and springy banks; it is grown in considerable quantity for the oil, which is sold in the market as "Peppermint." Grows in any moist garden soil. 10 cts. each, \$1.00 per doz., \$4.00 per 100.
- 251 **M. viridis** (Spearmint). ♦ A native of Europe. This is often met with in old gardens, and can be grown in almost any soil. 10 cts. each, \$1.00 per doz., \$4.00 per 100.
- 252 **MIMULUS ringens** (Monkey-flower). ♦ About a foot high; grows in wet places and bears violet-purple flowers. 15 cts. each.
- 253 **MITCHELLA repens** (Partridge Berry). ☒ A little trailing evergreen. It forms fine mats under evergreens, and when once established, is sure to please. It does exceedingly well in winter, grown in a bell-glass. Clumps, 25 cts. each, \$2.00 per doz.
- 254 **MITELLA diphylla** (Bishop's Cap). ☒ Grows 1 to 2 feet high, producing in early spring racemes 6 to 8 inches long of delicate white flowers. Pretty for rockeries. 15 cts. each, \$1.25 per doz.



*Lilium speciosum album* (see page 33)



*Lilium Philadelphicum* (see page 33)

- 255 **MONARDA didyma** (Oswego Tea). ♦ Two to 3 feet high with bright red flowers borne in profusion. Forms very fine clumps. Plant in moist, open border. 15 cts. each, \$1.25 per doz.
- 256 **MYOSOTIS palustris** (Forget-me-not). ♦♦ Lovely light blue flowers, with yellow center. 10 cts. each, \$1.00 per doz. \$5.00 per 100.
- 257 **NEPETA Glechoma** (Ground Ivy or Gill). A little low plant with light blue flowers in early spring creeping extensively, desirable for covering moist banks. 10 cts. each, \$1.00 per doz.
- ONOTHERA** (Evening Primrose).
- 258 **O. fruticosa major**. ♦ A dwarf form about a foot high, with large yellow flowers; a great bloomer. Plant in a sunny place. 20 cts. each, \$1.50 per doz.; seeds, 5 cts.
- 259 **O. speciosa**. ♦ Grows 1 foot high. Flowers large, white and beautiful. Dry soil. 20 cts. each; seeds, 5 cts.
- 260 **O. Missouriensis**. ♦ A low plant, with very large yellow flowers. Quite showy and interesting; blooms profusely and is always admired. 20 cts. each; seeds, 5 cts.

- 261 **E. rosea**. ♦ A good-sized bush, well covered in summer with small, rose-colored flowers. 10 cts. each, \$1.00 per doz.
- 262 **E. YOUNGII**. A strong vigorous plant 2 to 3 feet high, well branched and bearing a profusion of large bright yellow flowers. At this time, June 24th, 88 blossoms were counted on a single plant; open border. 20 cts. each.
- 263 **OPUNTIA vulgaris** (Prickly Pear). ♦ Quite hardy. Flowers dull yellow. 25 cts. each.
- 264 **OXALIS acetosella** (Wood Sorrel). ☒ A beautiful Oxalis found growing in moss in shady, moist places. Flowers large, white, with purple veins. 10 cts. each, \$1.00 per doz. \$5.00 per 100.
- 265 **O. violacea** (Violet Wood Oxalis). ☒ Two to 6 inches high, from a scaly bulb. Flowers pink; fine dark foliage. 15 cts.



*Lilium tigrinum* fl. pl. (see page 33)

- 266 **PAPAVER nudicaule** (Iceland Poppy). ♦ A choice, hardy garden plant, with leaves lobed, forming little tufts at the ground; the showy flowers are borne on thread-like naked stems about a foot high. It delights in a sunny spot in the border or rock-garden. 15 cts. each; seed, 5 cts.
- 267 **P. orientale** (Oriental Poppy). ♦ Hardy border plants, with large, showy scarlet flowers with a dark center. The flowers are often 6 inches across. Plant in a well-drained soil in open sun. 25 cts.; seeds, 5 cts.
- 268 **PARDANTHUS Chinensis** (Blackberry Lily). ♦ A hardy perennial, well known in old gardens; a foot high or more, bearing rather large, orange, spotted red flowers, followed by the showy black seeds, resembling blackberries. 20 cts. each, \$1.50 per doz.
- 269 **PARNASSIA Caroliniana** (Grass of Parnassus). ♦ ♦ Six to 15 inches high. Flowers white, marked with greenish veins; showy. 15 cts. each, \$1.50 per doz.
- 270 **PENTSTEMON barbatus Torreyi**. ♦ A showy perennial, with scarlet flowers; choice. 25 cts. each.
- 271 **P. digitalis**. ♦ Tall perennial, 2 feet or more high, with rather showy white or tinted flowers in profusion. It is at home in a well-drained soil in some sunny spot. 20 cts. each.

## Herbaceous Peonies

Thrifty perennials, with very large, showy flowers in a great variety of colors. No class of plants is better adapted for general cultivation than this one, as they are not particular as to soil or position. They do exceedingly well in partial shade, will give grand results banked in front of shrubbery, along a driveway, mixed with other tall-growing plants, like phloxes, etc., or planted in masses by themselves. They are great feeders, so the bed or border for Peonies should be made deep and rich by spading in a quantity of well-decayed cow-manure 2 feet deep or more, mixing it thoroughly with the soil. The crowns should be planted not more than 2 inches beneath the surface of the soil. Each fall put a good covering of manure over the beds, which will be all the covering or mulching needed through the winter. For the greater perfection of bloom, they require an abundance of moisture, and some growers recommend liquid manure applied to the soil just before and during the blooming season which is the middle of May to July. When properly cared for, these Peonies will thrive twenty years or more.

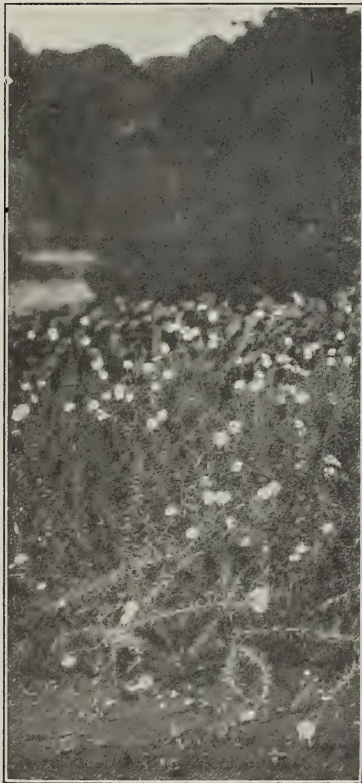


DOUBLE PEONIES ♦

- 272 **Abraham Lincoln.** Petals clean pink, infolding like roses; rose shaped petals outside; flowers 5 inches in diameter. 50 cts.
- 273 **Baron Rothschild.** Large and double; chrysanthemum center of creamy white, surrounded by large pink petals. 50 cts.
- 274 **Double Pink.** 50 cts.
- 275 **Double Dark Red.** 45 cts.
- 276 **Festiva alba.** Fine pure white. 50 cts.



*Lilium tigrinum* var. *splendens* (see page 33)



*Linum Austriacum* (see page 33)

## Phlox

- 277 **PHLOX decussata** (Hybrid Phlox). ♦ A class of hardy perennials that, within a few years, has come into great prominence. They grow from 1 to 3 feet high, have strong stems, and bear masses of showy, rainbow-tinted flowers. They are quite hardy. A good allowance of manure should be worked into the soil every year.
- 278 **Amor.** Carmine-rose; large flowers, with starry white centers. 25 cts.
- 279 **Aurora Boreale.** Salmon-rose, crimson eye, tall; a desirable sort. 25 cts.
- 280 **Ball of Fire.** Brilliant crimson, the brightest in color of all Phloxes in cultivation, and one of the most charming sorts. 25 cts.

- 281 **Coquelicot.** Fiery scarlet; unequaled color; dwarf. 25 cts.  
 282 **Concourse.** Rosy carmine; fire-colored center. 25 cts.  
 283 **Eclairer.** Deep carmine, rosy salmon center; dwarf. 25 cts.  
 284 **Independence.** Large and extra fine, pure white flower. 25 cts.  
 285 **Joan of Arc.** Large panicles of pure white; dwarf. 25 cts.  
 286 **Kramer, J. A.** Soft rosy pink, rayed with white. 25 cts.  
 287 **La Neige.** Pure white, fine large flowers; medium height. 25 cts.  
 288 **Le Pole Nord.** White, with very distinct crimson eye. Tall, and one of the choice late bloomers, forming large clumps. 25 cts.  
 289 **Lothair.** Brilliant salmon, cardinal eye. 25 cts.  
 290 **Miss Lingard.** An early sort, with pure white flowers and distinct lavender eye; tall cylindrical spikes. A constant bloomer. 25 cts.



*Lobelia cardinalis* (see page 34)

- 91 **Queen.** Pure white; compact habit and large, full truss. 25 cts.  
 292 **Star of Lyons.** White, rosy lilac eye; dwarf. 25 cts.  
 293 **Temple, J. T.** Carmine-rose; large bloom; dwarf. 25 cts.  
 294 **Fine Mixed Sorts.** 15 cts.; large clumps, by express, 25 cts. each, \$2.00 per doz.

#### OTHER VARIETIES OF PHLOX

- 295 **PHLOX amœna** (Lovely Phlox). ♦ One of the most charming little dwarf plants imaginable, growing only about 6 inches high, and forming a mat of evergreen foliage which is entirely covered with compact heads of bright pink flowers from April until June. A lovely spring-blooming plant. 20 cts. each, \$1.50 per doz.  
 296 **P. divaricata.** ♦ About 15 inches high. Flowers pale lilac or bluish. Grows in rocky woods. 10 cts. each, \$1.10 per doz.

---

See page one for explanation of signs before description of plants.



- 297 **Phlox maculata** (Wild Sweet William). ♦ One to 3 feet high, white or purple flowers. 10 cts. each, \$1.00 per doz. Seed, 5 cts.
- 298 **P. pilosa**. ♦ One foot. A plant of much merit and deserving a prominent place in the open border. Flowers purple; quite showy. 20 cts. each.

299 **P. subulata** (Ground, or Moss Pink). ♦ A creeping or tufted species, growing in broad mats on dry, rocky hills or sand-banks. In the summer it does quite well in the border and can be used for edging or among larger plants, where it soon covers the ground. 15 cts. each, \$1.25 per doz. \$6.00 per 100.

300 **P. subulata**, var. **alba**. ♦ A variety of the above, with pure white flowers. It is very desirable for covering a rocky or sandy place. 15 cts. each, \$1.25 per doz.

301 **P. reptans**. ♦ A low plant, with large, rose-purple flowers. 15 cts. each, \$1.10 per doz.

302 **PLATYCODON Mariesi**. ♦ Beautiful variety, with dark green foliage and large deep violet-blue flowers, 2 to 3 inches in diameter. Summer. Very choice. 1 foot. Clumps, 25 cts.; seed, 5 cts.



Mitchella repens (see page 35)



Mitella diphylla (see page 35)



Mertensia Virginica (see page 34)



Phlox decussata (see page 37)



Platycodon Mariesi (see page 39)

- 303 **PODOPHYLLUM peltatum** (May Apple, or Mandrake). ☒ A peculiar herb, with creeping root-stocks and fibrous roots. Grows a foot or more high, with large, round, seven-to-nine lobed leaves, peltate in the middle. Flowers nodding, white, 1 to 2 inches broad. May. 15 cts. each, \$1.25 per doz.
- 304 **POLYGALA paucifolia** (Fringed Polygale). ☒ A low-growing and interesting plant. May and June. Leaves of a delicate purple tint, and large, handsome, rose-purple flowers, beautifully fringed. Clumps, 25 cts. each, \$2.00 per doz.
- 305 **P. Senega** (Seneca Snakeroot). ☒ This plant has two or more stems from a thick root-stock. Grows 6 to 11 inches high, bearing a raceme or spike of small, white flowers. 15 cts. each, \$1.25 per doz.
- 306 **POLYGONATUM biflorum** (Solomon's Seal). ☒ A foot high; often seen in rich, shady places, and bearing in June several or many rather small, greenish flowers along the upper half of the stalk, followed by the black or blue berries which are quite conspicuous in autumn. Plant in moist shade; perfectly at home in the rock-garden. 15 cts. each, \$1.25 per doz. \$6.00 per 100.



307 *Polygonatum giganteum*. ☒ Larger and stronger than the above. Often 4 feet high. Give it a strong, rich soil. 25 cts. each.

311 *Platycodon Mariesi alba*. ◆ With white flowers. 25 cts. Seed, 5 cts.

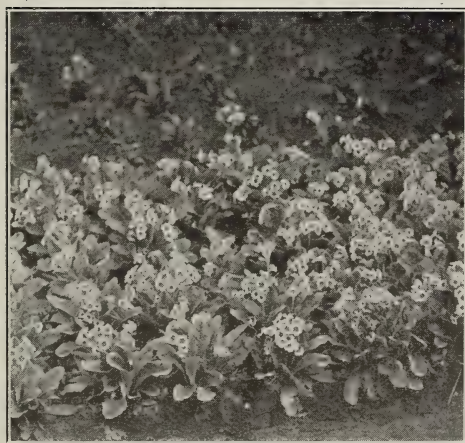
**PRIMULA** (Primrose). Charming little perennials, particularly adapted for rockeries or the well-drained border, either singly in masses or when planted with other early and low-growing plants, like pansies, forget-me-nots, dwarf phloxes, or iris. The colors are rich and varied, and have a delightful fragrance. They make a beautiful addition to the hardy garden.

312 *P. auricula* (Auricula). ◆ Foliage smooth, flowers quite large, in many variations of color, red, purple, yellow, sometimes with white or yellow eyes, and often with a band of gold or darker shade on the edge. Some protection should be given it in winter. 20 cts. each, \$1.50 per doz.

313 *P. Cachemiriana*. ◆ Leaves in tufts, powdered yellow; flowers rich purple, with yellow center, on stout stems. 20 cts. (See cut on page 42.)

314 *P. Japonica*. ◆ Twelve to 18 inches high.

A Primrose of vigorous growth, having several whorls of quite showy purple to white flowers along the upper part of the stalk. Early summer to July. Strong plants. 25 cts. each.



Primula Polyantha



Platycodon Mariesi alba

315 *P. Polyantha*. ◆ This is the common form of the hardy garden primrose, bearing its many flowered umbells on stems well above the clusters of leaves. Mixed sorts, mostly in garnet and yellow, good clumps. 20 cts. each, \$1.75 per doz. Seed, 5 cts.

316 *P. vulgaris* (English Primrose). ◆ Flowers pale yellow in early spring borne on single stems. A charming, hardy plant found wild in Britain. 25 cts. each, \$2.00 per doz.



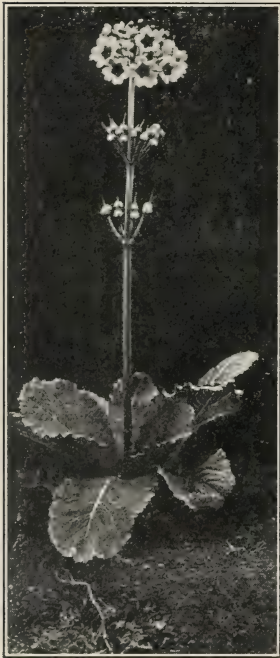
*Primula Cachemiriana* (see page 41)

317 **PYRETHRUM corymbosum.** ♦ A beautiful, hardy perennial, 1 to 3 feet high, with an abundance of large, white, daisy-like flowers, with yellow centers, in summer. Moist, sunny places. 20 cts. each.

318 **P. hybridum.** ♦ Popular flowers, deserving a place in every garden. The plants form broad clumps, with handsome, fern-like foliage. Flowers daisy-like in mode of growth; very deep pink to almost white. We offer it mixed in double and single forms. 25 cts. each; seed, 5 cts.

319 **P. uliginosum** (Great Ox-eye, or Giant Daisy). ♦ Two to 5 feet. Russia. One of the choicest. Forms a stout, upright bush, with light green foliage. In autumn it bears a profusion of the choicest, pure white flowers, with bright yellow centers. Two to 3 inches across. 20 cts. each.

320 **RANUNCULUS** (Double Buttercup). ♦ Double yellow; an old garden plant. 15 cts. each, \$1.25 per doz.



*Primula Japonica* (see page 41)

321 **RHEXIA Virginica** (Meadow Beauty). ♦ A low perennial, less than a foot high, with numerous bright purple flowers and yellow stamens through the summer. Plant in moist, sunny places, 3 inches apart. It forms large beds. 15 cts. each.

322 **RUDBECKIA lanceolata** (Golden Glow). ♦ A very showy plant, with very large, double yellow flowers. Forms fine clumps; blooms late in autumn. 25 cts.

**SABBATIA chloroides.** See Bog Plants.

323 **SANGUINARIA Canadensis** (Bloodroot). □ A low perennial, about 6 inches high, with pure white flowers an inch in diameter, in early spring. The large, leathery leaves appear later. Plant in rich, shady places or rock-garden. 15 cts. each, \$1.25 per doz. \$5.00 per 100.



*Primula vulgaris* (see page 41)





*Pyrethrum hybridum*

- 324 **SAXIFRAGA cordifolia.** ◆ From Siberia. Flowers rose-colored, in early spring; leaves rather large, quite near the ground; plant in a moist place in open sun. 25 cts. each.
- 325 **S. Virginiensis.** ☒ A low perennial, 4 to 9 inches high, with a cluster of pretty white flowers appearing in early spring. For rockeries. 10 cts. each, \$1.00 per doz. \$5.00 per 100.

---

See page one for explanation of signs before description of plants.



*Saxifraga Virginensis* (see page 43)

## SEDUM (Stonecrop)

A class of plants particularly adapted for carpeting very dry, sandy or rocky places in open sun. The taller varieties are quite useful in the border, being quite showy.

### LOW VARIETIES

326 **SEDUM acre.** ♦ A little, low, tufted perennial spreading on the ground. Flowers yellow; very pretty for rockwork or growing in front of the hardy border. 10 cts. each, \$1.00 per doz. \$5.00 per 100.



*Sanguinaria Canadensis* (see page 42)

327 **S. album.** From northern Asia. A low plant, 4 to 6 inches high, with linear leaves  $\frac{1}{2}$  inch long; flowers white, with red centers; useful for covering dry rocks and banks in open sun. 10 cts. each, \$1.00 per doz. \$5.00 per 100.



*Ranunculus* (Double Buttercups)  
(see page 42)



328 **Sedum Kamschaticum.**

◆ Four to 6 inches high, leaves rather large, running extensively, quickly covering the soil; flowers yellow, in late summer. 10 cts. each, \$1.00 per doz.; seed, 5 cts.

329 **S. reflexum.** ◆ Six to 10 inches high, with thick, linear green leaves and yellow flowers. A neat grower for dry, exposed rocks or edging the border. 10 cts. each, \$1.00 per doz.; \$5.00 per 100.

330 **S. sexangular.** ◆ Similar to *S. acre*, but the leaves and whole plant are smaller. Used for carpeting and covering dry, bare places. 10 cts. each, \$1.00 per doz. \$5.00 per 100.

331 **S. Sieboldii.** ◆ A pretty species 6 to 10 inches high; leaves roundish, in threes about the stalk, having a rosy tint in autumn; flowers are also rosy colored. It does quite well among rocks, and makes an exceedingly pretty pot plant or in vases where the branches may fall over the edge. 20 cts.

332 **S. stoloniferum.** ◆ (Purple Stonecrop). Leaves rather large, trailing; the pink or white flowers are quite showy; with red anthers in July and August. Dry, open places. 10 cts. each, \$1.00 per doz.; \$5.00 per 100.

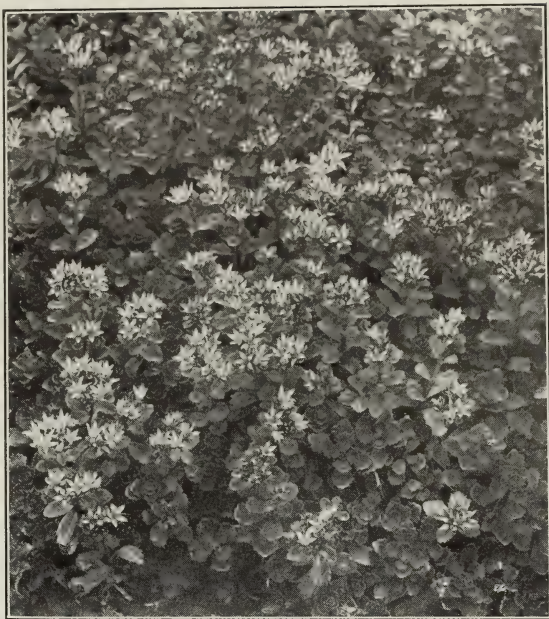
333 **S. stoloniferum coccineum.** ◆ A beautiful crimson-flowered form of the above. 10 cts. each, \$1.00 per doz.

334 **S. ternatum.** ◆ A low plant, with the leaves clustered at the top; flowers white. Rocks or open border. 10 cts. each, \$1.00 per doz.

**TALL VARIETIES**

These taller-growing Sedums will thrive in dry soils like the dwarf kinds and can be used as single specimens on old walls where it can get a foothold, or it does quite well in the open border with other flowers.

335 **Sedum Japonicum macrophyllum.** ◆ A strong grower, about a foot high, with large, flat heads of waxy white flowers and pink centers. 20 cts.



*Sedum stoloniferum*



*Sedum spectabile* (see page 46)

- 336 *Sedum Maximowiczii*. ♦ A foot high, with dark green, notched leaves, 2 inches long, the bright yellow flowers in flat heads at the top; forms good clumps. It likes a sunny spot where the soil is dry. 20 cts. each.
- 337 *S. spectabile*. ♦ A foot high, or more. It is the most beautiful of all the Sedums; has large, glaucous leaves and forms fine large clumps; the rosy purple flowers are borne in large, flat, open heads, commencing to bloom in August, and remaining in bloom for two months or more. This plant will stand extreme cold, heat, or wet, and will do quite well even in a shaded spot. 25 cts.
- 338 *S. telephoides*. ♦ A foot high with thick scalloped leaves, highly colored in autumn. Flowers pink in heads. 20 cts. each.



Shasta Daisy

339 **SEMPERVIVUM** (House leek). ♦ A class of plants with thick leaves, often tinted with pink or purple. Used for rockwork or edging in dry, open places. 15 cts. each, \$1.50 per doz.

340 **SHASTA DAISY**. ♦ A new Daisy, with large, white flowers and yellow center; finely cut foliage. 15 cts. each; seeds, 5 cts.

341 **SHORTIA galacifolia**. ♦ A rare and beautiful species, but recently introduced from the mountains of North Carolina. The leaves are evergreen, the petals, five in number, are pure white, and scalloped or notched on the edges; flower about an inch across. Plant in a rich, shady place. Flowers in early summer. Hardy. Clumps 25 cts. each, \$2.50 per doz.

342 **SIDELCIA malvæflora atropurpurea**. ♦ Two to 3 feet high, with large, open, purple flowers along the upper part of the stalk. Quite showy in the open border. 15 cts. each, \$1.50 per doz.

343 **SILENE alpestris** (Alpine Catchfly). ♦ A pretty little alpine, growing about 6 inches high, with quite large, white flowers; fine for rock-work. 20 cts. each, \$1.50 per doz.; seeds 5 cts.

344 **S. maritima** (Seaside Catchfly). ♦ A little trailing plant, with numerous white flowers. 15 cts. each.

345 **S. Pennsylvanicum** (Wild Pink). ♦ Low, 5 to 8 inches high. Flowers clustered, short-stalked, pink. June. Light, well-drained soil in open sun. 10 cts. each. \$1.00 per doz.; seeds, 5 cts.

- 346 **S. saxifraga**. ♦ An alpine, mossy species of low habit and quantities of small, white flowers. 15 cts. each.
- 347 **S. Shafta** (Autumn Catchfly). ♦ Six to 8 inches high; bush roundish in outline, covered from June to October with showy, rose-purple flowers. Plant in the sunny border. 10 cts. each; seeds, 5 cts.
- 348 **SMLACINA bifolia** (*Mainthemum convallaria*). ☒ Three or 4 inches high, with small white flowers in spring; fragrant. 10 cts. each.
- 349 **S. racemosa** (False Solomon's Seal). ☒ One to 2 feet. Flowers white, in terminal racemes. Found throughout New England in moist shades, usually on hill-sides. June and July. 15 cts. each, \$1.50 per doz.; \$7.00 per 100; seeds, 5 cts.
- 350 **SOLIDAGO** (Goldenrod). ♦ This is an attractive genus of plants, with a large number of variable species, some of which are very beautiful. They come into



flower a little before the asters and, with them, add much to the bloom in autumn. In mixed sorts, 10 cts. each, \$1.00 per doz., \$5.00 per 100.

- 351 **Solidago cæsia.** ★ A tall, yet slender Goldenrod, found in dry, shady places, with smooth, lanceolate leaves. Flowers in small clusters along the upper part of the stalk, bright yellow and quite showy in autumn. 15 cts. each, \$1.50 per doz.; seeds, 5 cts.



*Smilacina racemosa* (see page 46)

- 352 **S. Canadensis.** ♦ ★ A tall species, in open, sandy places; flowers small, but very numerous, in rather flat heads. One of the very finest and most prominent of all our Goldenrods. 15 cts. each, \$1.50 per doz.; seeds, 5 cts.
- 353 **S. nemoralis.** ♦ A low plant, in dry, open places, with very bright, yellow flowers. August. 15 cts. each, \$1.50 per doz., \$6.00 per 100; seeds, 5 cts.
- 354 **S. odora** (Sweet Goldenrod). ★ ♦ This species grows about 2 feet high. Leaves bright green having a sweet, aromatic taste and an odor like anise. Flowers of a darker yellow than in most species. Dry, shady places. 20 cts. each, \$1.50 per doz.; seeds, 5 cts.



*Spiraea filipendula*

- 355 **SPIRÆA lobata** (Queen of the Prairies). ♦ The flowers are quite handsome, of a deep peach-color, and produced in abundance in clusters at the ends of the branches. Very handsome and satisfactory to grow. Good clumps, 25 cts. each.
- 356 **S. filipendula**. ♦ A very beautiful plant, with finely cut leaves and large trusses of pure white flowers; 6 to 12 inches high. 25 cts. each.
- 357 **STACHYS lanata** (Wood Woundwort). ♦ A plant 1 to 1½ feet high, with white, showy, woolly leaves and small, purple flowers. Does well in the open border. 20 cts. each, \$1.50 per doz.
- 358 **STENANTHIUM robustum** (Mountain Feather Fleece). ♦ A plant often 5 feet high, with masses of pure white flowers in long panicles in August and September, turning to pink and purple. Of easy cultivation in the open border. 25 cts. each.
- 359 **STOKESIA cyanea** (Stokes' Aster). ♦ Twelve to 18 inches high. Flowers large, blue and quite showy. Blooms from August till late frost. Plant in a well-drained soil. 20 cts. each, \$1.50 per doz.; seeds, 5 cts.
- 360 **STREPTOPUS roseus** (Twisted Stalk). ▣ Six to 20 inches high. Flowers small, rose-purple. Grows in cool, damp woods. 15 cts. each, \$1.25 per doz.



A field of *Stokesia cyanea*



- 361 **STYLOPHORUM diphylum** (Celandine Poppy). ♦ A hardy perennial, forming good clumps; has dark green leaves, and large, showy yellow flowers in summer. Planted in the open border or among shrubs is very attractive. One to 2 feet high. Clumps, 25 cts. each.
- 362 **THALICTRUM anemonoides** (Rue Anemone). ☒ This plant grows about 9 inches high, from a cluster of thickened, tuberous roots. One of the earliest of our wood flowers. Often seen with anemones. Flowers white. At home in the rock-garden or a well-drained, shady corner. Plant 4 to 6 inches apart. 10 cts. each, \$1.00 per doz. \$5.00 per 100.

363 **T. dioicum**. ☒ One to 2 feet high. Found in shaded, rich hillsides in early spring. Flowers purplish. Plant in a shaded spot where the drainage is good. 15 cts. each. \$1.25 per doz.

364 **T. Cornuti** (Tall Meadow Rue). ♦ A stronger plant than Dioicum. Often 4 to 5 feet high. This plant delights in a wet, open place, often along brooks. Flowers white. July to September. It does very well in moist garden soil. 15 cts. each, \$1.25 per doz.

365 **TIARELLA cordifolia** (False Miterwort). ☒ About 10 inches high bearing a short raceme of pretty white flowers. Rich, moist, shady places. May or June. 15 cts. each, \$1.25 per doz. \$6.00 per 100.

366 **THERMOPSIS Caroliniana**. ♦ A tall plant, 2 to 3 feet high, with bright yellow, pea-shaped blossoms along the upper part of the stalk. Rich, sunny places in June. 20 cts.; seeds, 5 cts.

367 **THYMUS citrioidrus variegatus** (variegated thyme). ♦ A low creeping evergreen with small green leaves striped with yellow, quite fragrant, used for edging or rock-work. 15 cts. each, \$1.25 per doz.

368 **TRADESCANTIA Virginica** (Spiderwort). ♦ An old garden plant, well known for its long grass-like leaves and blue or violet flowers all summer. Plant in a moist, rich place, either in shade or sun. 15 cts. each, \$1.25 per doz.



Tiarella cordifolia

**TRILLIUM** (Three-leaved Night-shade). A class of low perennials, having a stout and simple stem from their tuber-like root, naked, and bearing at the top three ample leaves in a whorl and a terminal flower. They belong to the lily family, bloom early in spring, and are easily grown. They like a moist, shady situation.

370 **T. cernuum**. ☒ Is about a foot high, with nodding white flowers, tinted with purple. 10 cts. each, \$1.00 per doz. \$5.00 per 100.

371 **T. erectum**. ☒ Has broader, rhomboid leaves, with a dark purple flower. 10 cts. each, \$1.00 per doz. \$5.00 per 100.

372 **T. erectum album**. ☒ A variety with white or greenish white flowers. 15 cts. each, \$1.25 per doz. \$5.00 per 100.



A bed of 50,000 *Trillium grandiflorum*, with *Rhododendrons* for a background.





Group of Trilliums (see page 48)

1. *Trillium cernuum*  
2. *Trillium nivale*

3. *Trillium erythrocarpum*  
4. *Trillium erectum album*  
5. *Trillium recurvatum*

6. *Trillium stylosum*  
7. *Trillium grandiflorum*

- 373 ***Trillium erythrocarpum***. White flowers painted with purple at the base; delights in cold damp leaf-mold. 15 cts. each.
- 374 ***T. grandiflorum***. ☒ Probably the prettiest of the genus, and most generally cultivated. It grows 8 to 15 inches high, bearing a large, white flower, often 2 to 2½ inches in length and 2 inches wide, turning to lilac-color with age. 10 cts. each, \$1.00 per doz. \$5.00 per 100.
- 375 ***T. nivale***. ☒ A low kind, with pure white flowers. Four to 6 inches high. 15 cts. each, \$1.25 per doz.
- 376 ***T. recurvatum***. ☒ Leaves green, with white patches, flowers brown-purple. A most beautiful and easily grown Trillium. 15 cts. each, \$1.25 per doz., \$6.00 per 100.
- 377 ***T. sessile***. ☒ Four to 12 inches high. Flowers dark-purple. 20 cts. each, \$1.50 per doz. \$7.00 per 100.
- 378 ***T. sessile*, var. *Californicum***. ☒ From the Pacific coast. Large roots. 25 cts. each, \$2.00 per doz.
- 379 ***T. stylosum***. A southern species with white or pink flowers, in early spring. 20 cts. each.
- 380 **TUNICA *saxifraga***. ◆ About a foot high, spreading leaves, numerous; flowers small, but literally covering the plant; rosy white, pink or purple in color. Open border or rock-garden. 10 cts. each, \$1.00 per doz.; seeds, 5 cts.

*Trillium sessile*

- 381 **UVULARIA grandiflora** (Large Bellwort). ☒ About 15 inches high, forking above, bearing numerous membraneous leaves and yellowish drooping flowers. Frequently has more than one stalk from the same root. Blooms in early spring. 10 cts. each, \$1.00 per doz. \$5.00 per 100.
- 382 **U. perfoliata**. ☒ Smaller than the last, with leaves more clasping on the stalk. 10 cts. each, \$1.00 per doz. \$5.00 per 100.
- 383 **U. sessifolia**. ☒ Similar to the preceding, only the leaves are sessile instead of clasping. All these Uvularias are easily cultivated and quite pretty. 10 cts. each, \$1.00 per doz. \$5.00 per 100.
- 384 **VALERIANA officinalis** (Common Valerian), or Garden Heliotrope. ♦ Two to 4 feet high. A plant of old gardens, well known for the spicy fragrance of its small, numerous flowers in spring, which are white, pink or lavender colored and very fragrant. It delights in the open border in a rich soil, where it soon forms fine clumps. 20 cts. each.
- 385 **VERONICA alpina** (Hoary Speedwell). ♦ A low alpine plant of creeping habit; flowers rather small, blue or violet. 10 cts. each, \$1.00 per doz.
- 386 **V. gentianoides** (Gentian-leaved Speedwell). ♦ One to 2 feet. Leaves clustered at the base, carpeting the soil; pale blue flowers in a short raceme. It does quite well as a border plant or in shady places in rather moist soil. 15 cts. each, \$1.25 per doz.
- 387 **V. incana** (Hoary Speedwell). ♦ About a foot high with numerous, small, bright blue flowers in a raceme; quite showy and forms good clumps in a sunny place. The leaves are woolly, white and attractive. 20 cts. each, \$1.50 per doz.
- 388 **V. longifolia**. ♦ A strong-growing species 2 feet high, with numerous lilac-colored flowers in a short raceme. July to September. Flowers freely in any good soil. 20 cts. each, \$1.50 per doz.
- 389 **V. longifolia subsessilis**. ♦ A strong species, growing 2 feet or more, of good habit and the small, lustrous blue flowers from August to October make it one of the very choicest of our garden plants. It delights in a rich, moist place in the open border. 25 cts. each, \$2.00 per doz.
- 390 **V. spicata**. ♦ Rather slender, 2 feet high, bearing dense spikes of bright blue flowers. June to August. 15 cts. each, \$1.25 per doz.
- 391 **V. Virginica** (Great Virginian Speedwell). ♦ A plant of strong, stately growth. In a moist, rich soil, which is best suited to its growth, it often attains a height of 6 feet or more. The leaves are borne in whorls along the stalk, flowers in terminal racemes—white or pale blue. The plant, being tall and rather coarse-leaved, should be set back in bed. 25 cts. each, \$2.00 per doz.; seeds, 5 cts.
- 392 **VERNONIA noveboracensis** (Ironweed). ☒ Three to 5 feet. Vigorous-growing perennials, with very showy purple flowers in small heads in autumn. Very effective as single specimens or grown in clumps near water or very moist ground. 25 cts. each.



Veronica incana



393 **VINCA minor** (Common Periwinkle). ☒ ★ A most beautiful evergreen trailing plant with large blue flowers. Also known by name of Blue Myrtle. This plant is quite hardy and very desirable to plant in dry shade where it will cover barren places. 15 cts. each, \$1.25 per doz.; \$6.00 per 100.

394 **V. minor alba**. ☒ ★ A fine variety, with pure white flowers borne in profusion. 20 cts. each, \$1.75 per doz.

395 **V. minor variegata**. A variety with blue flowers and variegated leaves; a strong grower and quite hardy. 20 cts. each, \$1.75 per doz.

**VIOLA**. The violets are for the most part, among our first spring flowers. They furnish an abundance of bloom, a variety of colors, and are so easily grown as to be worthy of a place in every wild garden.

396 **V. Californica** (California Violet). ♦ A large, single, blue-flowered Violet, forming large clumps, very fragrant; needs a little protection in winter. It also makes a fine plant for window culture. 15 cts. each, \$1.25 per doz.

397 **V. Canadensis**. ☒ Is 1 to 2 feet high, with heart-shaped leaves and whitish flowers tinged with purple. A moist, shady situation is desirable for its cultivation. May to August. 15 cts. each, \$1.25 per doz.

398 **V. blanda** (Sweet White Violet). ♦ ♦ Flowers slightly fragrant.



*Veronica longifolia subsessilis* (see page 52)



*Viola cucullata*

Damp, open places in spring. 10 cts. each, \$1.00 per doz.

399 **V. canina**, var. *sylvestris* (Dog Violet). ☒ A pretty, many-flowered Violet, 6 inches high, blue in color, branching and forming little clumps. Moist, shady places. 10 cts. each, \$1.00 per doz.

400 **V. cucullata** (Common Blue Violet). ☒ A strong growing plant, from a thickened or tuberous root; stemless, each leaf and flower-stalk growing on a long stem from the root. Flowers deep or pale violet-blue or purple; single. Like nearly all our native Violets, it grows in damp places, mostly in shade. 10 cts. each, \$1.00 per doz. \$5.00 per 100.

401 **V. cornuta** (Horned Pansy). ♦ An old garden plant of much merit, with sweet scented bright lavender flowers in spring; quite hardy in wet or very moist, open places. 10 cts. each, \$1.00 per doz.



*Viola cornuta alba*

- 402 *Viola cornuta alba*. ♦ A pure white variety of good form; a great bloomer from spring through the season. 10 cts. each, \$1.00 per doz.
- 403 *V. odorata*. ♦ The common Sweet English Violet. Single, but very fragrant. 20 cts. each, \$1.50 per doz.



*Yucca filamentosa* (see page 55)

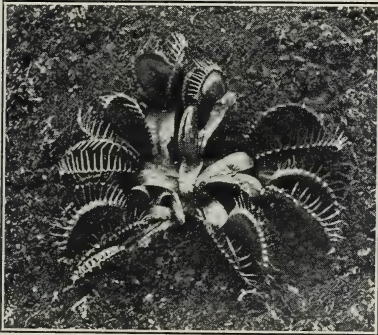


*Viola pedata* var. *bicolor*  
(see page 55)

See page one for explanation of signs before description of plants.



- 404 *Viola pubescens*. ☒ Six to 12 inches high. Flowers yellow, veined with purple. This little Violet is found throughout New England, in rather dry soils, in shade, in early summer. 10 cts. each, \$1.00 per doz.
- 405 *V. rotundifolia*. ☒ Low, 2 to 3 inches high. A yellow Violet, with large, round leaves, flat on the ground, growing on moist, mossy banks near mountain brooks. Early spring. 10 cts. each, \$1.00 per doz.
- 406 *V. pedata* (Bird's-foot Violet) ◆ Leaves all divided. Large, handsome, pale or deep purple or blue flowers in summer. Delights in a dry, sandy soil in open sun. Spring or early summer. One of the very best of our wild Violets and satisfactory to grow by reason of its great flower-bearing quality. Fine large clumps. 20 cts. each, \$1.50 per doz.
- 407 *V. pedata* var. *bicolor*. A variety with the two upper petals very much darker. 15 cts. each.
- 408 *V. ?*—◆ The little Violet found in old gardens, with bright yellow and purple flowers, sometimes called "Johnny-jump-ups." 10 cts. each, \$1.00 per doz.
- 409 *V. septentrionalis*. ◆ An albino, growing 6 to 10 inches high in early summer; a strong vigorous grower, with masses of well-developed, dark green leaves. The flowers are white, with purple in the

*Dionaea muscipula* (see page 57)*Sarracenia Drummondii* (see page 58)

throat, standing up well above the leaves (not unlike the Canada Violet color) and covering the plant with its masses of bloom. It does exceedingly well in the rich, moist border or partially shady nook; not fragrant; forms large clumps. 15 cts. each, \$1.50 per doz.

- 410 *YUCCA filamentosa* (Adam's Needle). ◆ The dark green leaves, 1 to 2 feet long, are clustered at the base, about an inch wide in the center, running to a sharp point, the edges splitting off into little hairs 1 to 4 inches long. The flowers are large, creamy white, borne along the stalk near the top; 3 to 6 feet high. It is an evergreen and looks well through the winter. Too heavy for the mail. Not prepaid, 35 cts. each.

## Bog Garden

There are some very interesting specimens which belong to the class of bog plants. The true lover of plants needs some of these sorts to make his collection complete. The Venus Fly-trap is in itself a curiosity. This little plant is so constructed as to catch

A colony of *Cyripedium spectabile* (see page 61)

flies when they alight on the modified leaf forms. *Cyripediums*, when seen growing as in the cut shown above are a thing of great beauty. The *Droseras* and *Sarracenias* are plants which are very attractive to the lover of plant curiosities. Any one who has a wet spot can have one of these gardens containing such plants. When planting such plants, it is well to cover the ground with *Sphagnum* moss—just a thin covering. This will protect the foliage from mud spattering on the leaves during a hard shower. It will also prevent too rapid evaporation of moisture.

*Cyripedium parviflorum* (see page 61)

- 411 **ACORUS Calamus** (Sweet Flag). Grows in low, wet places. Leaves light green, 1 to 3 feet long. The root-stock has an aromatic flavor well known to people of New England. Desirable for shallow lakes and wet places. 15 cts. each, \$1.50 per doz.
- 412 **CALLA palustris** (American Calla). Similar to the cultivated sort, only smaller; easily grown in the bog. 10 cts. each, \$1.00 per doz.
- 413 **CALTHA palustris** (Marsh Marigold). Six to 15 inches high. Flowers bright yellow in spring. A very showy plant in wet places, both in sun and shade. It can also be planted in brooks, water 2 to 4 inches deep; for massing, plant 1 foot apart. It can also be grown in pots for forcing. 10 cts. each, \$1.00 per doz.; \$6.00 per 100.

**CALOPOGON.** See Orchids.

**CYPRIPEDIUM parviflorum.** See Orchids.

**C. spectabile.** See Orchids.

- 414 **DROSERA filiformis** (Thread-leaved Sundew). A little bog plant, with long threadlike leaves, covered with short, red-colored hairs. Flowers rose-purple, along the upper part of the stem. Four to 8 inches high. Wet, sandy soils. 10 cts. each \$1.00 per doz.
- 415 **D. rotundifolia** (Round-leaved Sundew). Found in wet, sandy places near water, in *Sphagnum* moss, and in a bog. Leaves roundish, covered with red hairs. Flowers white. 10 cts. each, \$1.00 per doz.
- 416 **D. longifolia.** Similar to the above, only the leaves are narrower. Bog. 10 cts. each, \$1.00 per doz.





Sarracenia flava (see page 58)

417 **DIONÆA muscipula** (Venus Fly-Trap). A most wonderful plant. The flowers are small, white and quite pretty, but the wonder is centered in the lairy-edged, roundish leaves, which are so sensitive that they quickly close if touched on the inside. Insects are quite often caught and closely held until they die, when the leaf-trap again opens and is ready for more game. It is easily grown in wet or very damp sand, either in pots or in the open ground, in damp moss or bog. 15 cts. each, \$1.25 per doz.

**HABENARIA ciliaris**. See Orchids.

**H. blephariglottis**. See Orchids.

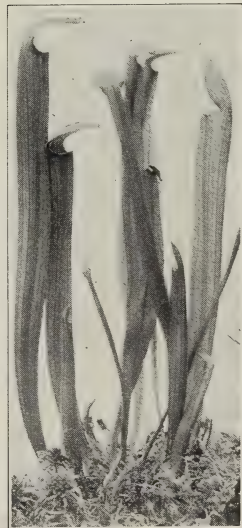
418 **HELONIAS bullata** (Stud-flower). A rare perennial, found in wet places southward with a few large, smooth leaves at the base. Flower-stalks 1 to 2 feet, with raceme of beautiful pink or purple flowers. Plant in a wet place or bog. 25 cts. each.

419 **IRIS Pseudacorus** (Yellow Iris). Quite large, bright yellow flowers on stems 2 feet high. 20 cts. each. \$2.00 per doz.; seeds, 5 cts.

420 **JUNCUS effusus** (Bog Rush). Stem round, dark green, 2 to 4 feet high, bearing near the top a cluster of small, inconspicuous flowers. Quite desirable for wet, marshy places, where it soon establishes itself, forming good clumps. 10 cts. each, \$1.00 per doz.

**LOBELIA cardinalis**. See Hardy Perennials.

421 **MENYANTHES trifoliata** (Buck Bean). A pretty little bog plant, growing in moss. Has large, pure white

Sarracenia rubra  
(see page 58)



Sarracenia variolaris

ing a single, deep purple flower an inch or more broad. Leaves pitcher-shaped, curved, ascending, 2 to 6 inches in length, greenish, with purple veins, or reddish purple. Plant in a wet place, keeping moss around the plant. The Sarracenias are all fine bog plants. 15 cts. each, \$1.25 per doz.

- 425 **S. flava** (Trumpet-Leaf). Flowers and leaves yellow, the former 4 to 5 inches wide, leaves 2 feet long. This is one of the best fly-catchers; often hundreds of insects are found in a single pitcher. This is an easy one to grow in the bog. 20 cts. each, \$1.50 per doz.
- 426 **S. Drummondii**. Leaves 2 feet long, beautifully variegated; flowers 3 inches wide. Give this some protection through the winter. 20 cts. each, \$2.00 per doz.
- 427 **S. psittacina** (Parrot-beaked Pitcher Plant). Quite small and rare. 20 cts. each, \$2.00 per doz.
- 428 **S. rubra**. (Red-flowered Trumpet-Leaf). Pitchers red-veined; flowers reddish purple. 20 cts. each, \$2.00 per doz.
- 429 **S. variolaris**. A smaller species from Georgia, with taller and more slender leaves. 20 cts. each, \$2.00 per doz.
- 430 **SCIRPUS atrovirens**. (Marsh Sedge). One to 3 feet high. Fine for moist or wet places. 10 cts. each, \$1.00 per doz.
- 431 **SYMPLOCARPUS fœtidus**. This is one of the earliest of the spring flowers. The covering for the yellow flowers is dull purple, showing above ground before the frost is gone. The large green leaves appear later and attain a height of 1 to 3 feet. 20 cts. each, \$1.50 per doz.
- 432 **TYPHA latifolia** (Cat-tail). A plant found in wet places, growing 2 to 4 feet high. Leaves long, grass-like. Flowers grow in a spike. Good for wet, marshy places or quite moist soil. For massing, plant 2 feet apart. 15 cts. each, \$1.50 per doz.
- 433 **VACCINIUM macrocarpum** (American Cranberry). The common cranberry of commerce, easily grown in the bog or any moist situation. Good clumps 15 cts. each, \$1.50 per doz., \$6.00 per 100.
- 434 **VERATRUM viride** (American White Hellebore). Thrifty plants, with large, broad, green leaves, nearly a foot long. It grows 2 to 4 feet high, bearing many small, yellow, or greenish flowers at the top. At home in a moist or wet, black peaty soil. 20 cts. each; seeds, 5 cts.

flowers, covered on the upper surface with frost-like beards in early spring. Fine for the bog garden. 10 cts. each, \$1.00 per doz.

- 422 **NESÆA verticillata**. A pretty little water shrub, found along the margins of lakes in shallow water or wet ground, with clusters of small, rose-purple flowers. Leaves are brightly colored in autumn. Forms large clumps. 20 cts. each, \$1.50 per doz.

**POGONIA ophioglossoides**. See Orchids.

- 423 **SABBATIA chloroides**. A foot high, with very showy rose-purple flowers 2 inches broad. It delights in a moist, peaty soil, is quite hardy and easy to grow. New plants are formed around the old stalks like the cardinal flower, making it a perennial. 25 cts. each, \$2.00 per doz.

- 424 **SARRACENIA purpurea** (Pitcher Plant). This plant usually sends up a single flower-stalk 6 to 18 inches high, bear-

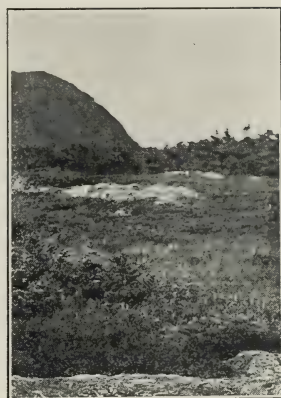
### Shrubs Desirable for a Wet Place

These can be planted where it is quite wet, or they will grow in any moist garden soil. Most of them are desirable for growing in masses. The following are



usually found growing this way: *Andromeda polifolia*,  
*Cassandra calyculata*, and *Ledum latifolium*

*Andromeda polifolia*, 1 ft.  
*Azalea viscosa*, 4 to 10 ft.  
*Cassandra calyculata*, 1 ft.  
*Cephalanthus occidentalis*, 4 ft.  
*Gaylussacia resinosa*, 2 ft.  
*Ilex verticillata*, 5 ft.  
*Kalmia angustifolia*, 1 ft.  
*Kalmia glauca*, 2 ft.  
*Ledum latifolium*, 1 ft.  
*Nemopanthes Canadensis*, 4 ft.  
*Pyrus arbutifolius*, 5 ft.  
*Rhodora Canadensis*, 2 ft.  
*Vaccinium stramineum*, 3 ft.  
*Vaccinium corymbosum*, 5 to 10 ft.



A glimpse of a mountain bog at an elevation of about 5,000 feet, bordered with balsams and spruces

## Aquatic Plants

Plants grown in water 2 to 3 feet below the surface; always below the frost-line.

- 435 **BRASENIA peltata** (Water Shield). An aquatic growing in 1 to 6 feet of water. Leaves entire, floating, 1 to 3 inches broad, greenish or purplish. Flowers small, dull purple, appearing on the water's surface. 10 cts. each, \$1.00 per doz.
- 436 **LIMNANTHEMUM lacunosum** (Floating Heart). A pretty little aquatic, with blotched leaves and white flowers all summer. Plant in water 2 to 5 feet deep. 10 cts. each, \$1.00 per doz.



*Calopogon pulchellus* (see page 61)

- 437 **NASTURTIUM officinale** (Hardy English Water Cress). A well-known hardy perennial aquatic, easily grown in any stream. Flowers white. 8 cts. each, 75 cts. per doz.
- 438 **NUPHAR advena** (Common Yellow Lily). Has large leaves and single yellow flowers through the summer. Found in still water, 2 to 5 feet deep. Easily grown and exceedingly ornamental and satisfactory. 25 cts. each, \$2.00 per doz.; by express, \$1.50.
- 439 **NYMPHÆA odorata** (Sweet-scented Water Lily). This plant is too generally known to need description. Its large, fragrant white flowers are well worth the trouble required in growing them. Where no pond or slow-flowing stream is near at hand the plant may be grown in a large tub partly filled with rich mud or clay, the roots planted in this and the tub filled with water. For planting in a lake, a stone can be tied to the root and thrown to the place where they are to be grown, or pressed into the mud with a stick. Plant in water 2 to 5 feet, or below frost. They are very easy to establish. 20 cts. each, \$1.50 per doz.
- 440 **PELTANDRA Virginica** (Water Arum). Leaves on long petioles, sometimes like a calla in outline, with greenish flowers, growing a foot or more out of the water. Plant in water, a foot deep in mud. 15 cts. each, \$1.25 per doz.
- 441 **PONTEDERIA cordata** (Pickerel Weed). Flowers blue; grows in water about a foot deep; quite often in sand, in ponds

or slow streams. Flowers small but numerous, raised 8 to 12 inches above the water. Common throughout New England. For massing, plant 18 inches apart. 25 cts. each, \$2.00 per doz.; by express, \$1.50 per doz.

## Hardy Orchids

The Orchids of New England, for the most part, are shade-loving plants, and delight in a soil well drained and largely composed of leaf-mold. While the common border plants are not particular as to soil they like the open sun and are exposed to the drying winds; but these little Orchids require altogether a different treatment, both in soil and position. We find them in the wild, usually in a soil composed largely of leaf-mold; the trees and rocks, the unevenness of the ground, low shrubs and ferns, all help to keep the air and soil cool and moist, and with but little circulation of the air. We add some bog-moss to the leaf-mold in making the bed for the smaller Orchids, raising the bed several inches to insure good drainage. Here *Aplectrum*, *Goodyeras*, *Liparis*, *Orchis spectabilis*, *Habenaria bracteata*, *H. Hookeri* and *Cypripedium acaule* will thrive. **A few of our native Orchids are really bog plants** and desire more moisture, like *Arethusa*, *Calopogon*, *Habenaria blephariglottis*, *H. dilatata*, *H. hyperborea*, *Cypripedium spectabile* and *Pogonia ophioglossoides*. Select a wet place where the surface is constantly saturated with water, building up a bed a little, and on top cover with moss 4 to 6 inches deep. Plant these Orchids in clean sphagnum. In this way we have had excellent success in growing them in shade.



*Cypripedium acaule* (see page 61)



442 **APLECTRUM hyemale** (Puttyroot). This plant sends up from a bulbous root late in summer a pointed green leaf, 2 to 6 inches long, which lasts through the winter, and in spring a stalk about a foot high bearing a raceme of large, greenish brown flowers. Rich, moist, shady places. 20 cts.

443 **CALOPOGON pulchellus**. Although this plant is more generally found in swamps and peat bogs, it also frequently grows in moist, sandy soil. It is a small bulb about the size of a large bean, which sends up in spring a long, grass-like leaf, and a stalk about a foot high, bearing in June and July two to six showy pink-purple flowers about an inch broad. 10 cts. each, \$1.00 per doz.

444 **CYPRIPEDIUM acule** (Lady's-Slipper; Moccasin Flower). This is often called the Red Lady's-Slipper, but the flower is rose-purple in color. The plant sends up two broadish green leaves from the base, and from between them comes a stalk about a foot high bearing a single large, showy flower. Plant in a well-drained soil, with some leaf-mold. This does quite well in pots. 20 cts. each, \$1.50 per doz.; extra-strong clumps, 30 cts. each, \$2.50 per doz. (See cut on page 60.)

445 **C. parviflorum** (Small Yellow Lady's-Slipper). This is one of the very best of the hardy Orchids for cultivation, growing about a foot high; stem leafy, bearing at the top one or two very showy yellow flowers; fragrant. It does exceedingly well in a rich, shaded spot where leaf-mold has been added, and should be left undisturbed for several years. It will also thrive in the bog-garden, if not too wet. May to July. 20 cts. each, \$1.50 per doz.

446 **C. pubescens** (Large Yellow Lady's-Slipper). Very much like *Parviflorum*, only the

flowers are larger. This should be planted in a rich bed in which leaf-mold should

be a part, in some moist, yet well-drained, shady spot. It should grow stronger for several years if left undisturbed. May and June. 20 cts. each, \$1.50 per doz.; (See illustration from photograph on page 61.)

447 **C. spectabile** (Showy Lady's-Slipper). The finest and most showy of all our Orchids. It grows about 2 feet high, bearing along the stalk several rather large, roundish leaves, and on top one or two quite large rose-purple or nearly white flowers. It is a bog-loving plant, yet does exceedingly well in a moist, and partly shaded bed of peat or leaf-mold. It is also a good pot plant for the cool greenhouse, or where the air is not too warm or dry. Nothing can be more charming than masses of this plant seen in a great cedar swamp, its natural home. We counted over 1,000 blossoms at one time of this plant in our bog-garden last season, with several plants bearing three



*Goodyera pubescens* (see page 62)



*Habenaria ciliaris* (see page 62)



*Cypripedium pubescens* (see page 61)

- flowers on a stalk and many with two flowers. 25 cts. each, \$2.50 per doz.; strong clumps, (too heavy to mail), 50 cts. each; XX \$1.00.
- 448 **GOODYERA pubescens** (Rattlesnake Plantain). 8 to 15 inches high; leaves clustered at the bottom, white, reticulated. Stem leaflets, about a foot high, bearing a short spike of white flowers. Plant in a shady place, with leaf-mold. It does quite well under evergreens, where there is good drainage; also in the rock-garden. 10 cts. each, \$1.00 per doz. \$5.00 per 100.
- 449 **G. Menziesii**. A plant larger than *Pubescens* and with leaves strongly marked with broad, white bands; very attractive. It does quite well in a sheltered bed of leaf-mold, and also in a cool greenhouse, planted in leaf-mold and moss. 25 cts. each, \$2.00 per doz.
- 450 **G. repens**. Flowers white, leaves smaller and markings not so bright. A sheltered leaf-mold bed is the proper place to plant. 15 cts. each, \$1.50 per doz.
- 451 **G. repens**, var. Smaller than *Repens*, and the fine, hair like markings of the leaf are quite distinct. Flowers white, 3 to 4 inches high. This is a bog-loving plant and does quite well planted in clean sphagnum, away from the water, but where it is constantly kept moist. 15 cts. each, \$1.50 per doz.
- 452 **HABENARIA blephariglottis** (White-Fringed Orchis). A rare and beautiful species found growing in sphagnum moss. 1 to 2 feet high, bearing at the top a spike of pure white fringed flowers. Rare. At home in the bog. 25 cts. each, \$2.00 per doz.
- 453 **H. bracteata**. Plant about 8 to 12 inches high, found in rich, moist shades, usually on mountain side; flowers greenish, small, several; leaf-mold soil. 15 cts. each, \$1.50 per doz.
- 454 **H. ciliaris** (Yellow Fringed Orchis). Growth similar to **H. blephariglottis**, but flowers are yellow and very fine. Takes readily to cultivation, and thrives nicely in moist garden soil or bog. 20 cts. each, \$1.50 per doz.
- 455 **H. dilatata**. Plant 1 foot high. Stalk leafy; flowers small, white, thickly covering 6 to 8 inches of upper part of stalk. Found in rich, moist places in high mountains or bogs northward. Plant in moss in wet places. 15 cts. each, \$1.50 per doz.
- 456 **H. hyperborea**. 1 foot. Greenish flowers along upper part of stalk, same location as *Dilatata*. 20 cts. each, \$1.50 per doz.



457 **Habenaria Hookeri** (Two-leaved Orchis). This plant has two large leaves growing flat on the ground, with a few small greenish flowers along the upper part of stalk. Found in well-drained leaf-mold, under evergreens. 20 cts. each, \$1.50 per doz.

458 **H. psycodes** (Purple Fringed Orchis). Grows about 1½ to 2 feet high, in wet or quite moist soil of muck or leaf-mold bearing a spike of very showy purple flowers at the top. 20 cts. each, \$1.50 per doz.

459 **LIPARIS liliifolia** (Twayblade). About 4 inches high, bearing a short raceme of purplish flowers. Plant in a well-drained soil; a shady bank is preferable. 15 cts. each, \$1.25 per doz.

460 **L. Læselii** (Green Twayblade). With greenish flowers. This plant delights in a wet situation just at the edge of water. 15 cts. each, \$1.25 per doz.

461 **ORCHIS spectabilis** (Showy Orchis). Leaves oblong, shiny, 4 to 5 inches long, near the ground. Stem 4 to 7 inches high, bearing a few pink, purple and white flowers. A choice little Orchid at home in rich, moist woods, usually near small mountain brooks; it likes a bed of leaf-mold. 15 cts. each, \$1.25 per doz.

462 **POGONIA ophioglossoides**. A little fibrous-rooted plant, found growing in sphagnum moss and wet places in leaf-mold. Flowers rose-colored or white. Stalk 4 to 10 inches high. 10 cts. each, \$1.00 per doz.

463 **SPIRANTHES cernua** (Ladies' Tresses). Grows 6 to 20 inches high. Leafy below, bearing at the summit a dense spike of white flowers. This

plant is usually found in rather moist, open pastures or grassy places and is benefited by a little mulching when planted in the border. 10 cts. each, \$1.00 per doz.



*Spiranthes cernua*

## Roses

In the following list of Roses only those are mentioned that are particularly desirable on account of their hardiness, easy culture and beautiful flowers. I offer large, flowering plants (too large for the mail). They should go by express or freight and are not prepaid.

464 **Anne de Diesbach**. Flowers large, crimson, fragrant. 35 cts.

465 **Baby Rambler** (Mme. Norbert Lavasseur). This new Rose very much resembles the well-known Crimson Rambler, but is dwarf in habit, growing only about 18 inches high, bearing good trusses of bright crimson flowers from spring until stopped by frost in autumn. Quite hardy. Strong plants, 35 cts.

466 **Baroness Rothschild**. Flowers large, light pink, deepening to rose, borne on long stems, and surrounded by fine clusters of dark green leaves. 40 cts.

467 **Crested Moss**. Deep pink buds, with mossy fringe and crested. A beauty. Fine plants. 50 cts.

468 **Fisher Holmes**. Deep, glowing crimson; large, full and of fine form. Very fragrant. 40 cts.

469 **General Jacqueminot**. This is probably the best known of all the Hybrid Perennials, and is without a rival in fragrance and richness of color. Crimson. 40 cts.

470 **Glorie Lyonnaise**. A beautiful Rose, with leather-like foliage. Flowers creamy white, shading to lemon at the center. Very double. 40 cts.

471 **La France**. A very popular Rose, large and beautiful, both in bud and expanded flower. Silvery rose in color, and deliciously fragrant. A great bloomer. 40 cts.

472 **La Reine**. A beautiful clear bright rose-color, large and full. Very hardy. A standard sort. 40 cts.

473 **Louis Van Houtte**. Rich crimson, heavily shaded with maroon. Medium size, double and well formed. High perfume. 40 cts.

474 **Madame Georges Bruant**. This new, everblooming Rose inherits the beautiful foliage and hardiness of *Rosa rugosa*. Flowers double, in clusters, pure white, very fragrant;



Margaret Dickson rose

- buds long and pointed. Blooms at intervals through the season; forms a stout, handsome bush. Hardy everywhere. 40 cts.
- 475 **Margaret Dickson.** A fine white hybrid of good form. Fragrant and quite hardy. 40 cts.
- 476 **Madame Plantier.** This grand variety stands at the head for general usefulness on account of its perfect hardiness and fine bushy form. It is largely planted in cemeteries and exposed positions. The flowers are pure white, and are borne in great abundance. 25 cts. each, \$2.00 per doz.
- 477 **Mrs. John Laing.** Soft pink, large and full. Very fragrant. A great bloomer and of first quality. 40 cts.
- 478 **Paul Neyron.** This is a Hardy Hybrid Perpetual, with very large, deep rose flowers. A strong grower, with very few thorns. Buds especially desirable. 40 cts.
- 479 **Rubiginosa** (English Sweetbrier). A very hardy Rose, 4 to 6 feet high, with shining leaves which have a refreshing fragrance, and many small, pink, single flowers. Fruit orange-crimson, quite showy. Fine for hedges. Field-grown, 25 cts. each, \$2.00 per doz.
- 480 **ROSA rugosa.** These Japan Roses are very hardy, rapid growers, attaining a height of 5 or 6 feet, rendering them available for impenetrable, ornamental hedges, for which purpose they are unexcelled. The foliage is rather thick in texture, and of the most glossy, luxuriant green. Flowers are large, single and most perfect in form, followed by large, bright red or golden apples.
- 481 **R. rugosa rubra.** Flowers very large, pink in color; fruit brilliant crimson. 25 cts.
- 482 **R. rugosa alba.** Lovely pearly white flowers and bright golden fruit. 30 cts.
- 483 **Soleil d'Or** (Golden Sun). This Rose, of recent introduction, is quite hardy and varying in color from gold and orange to reddish gold, much larger and finer than Persian Yellow. Strong plants, 40 cts.
- 484 **WICHURAIANA** (New Japan Creeping Rose). A low, trailing species, its stems creeping on the earth as closely as an ivy, and forming a dense mat of very dark green, lustrous foliage. It is a rapid grower. The flowers are rather small, pure white, with golden yellow stamens. It is perfectly hardy, and very desirable for creeping over walls or covering unsightly places. 25 cts. each, \$2.50 per doz. The following are its hybrids:
- 485 **South Orange Perfection.** Flowers double, white, in masses, soft pink at the tips. 35 cts.
- 486 **Manda's Triumph.** Fine glossy foliage; large clusters of double white flowers; sweet-scented. 35 cts.
- 487 **Universal Favorite.** Foliage shining; flowers double, bright rose, fragrant. 35 cts.
- 488 **Pink Roamer.** A vigorous grower, with bright foliage; the flowers are single pink, with white centers; very fragrant. 35 cts.
- 489 **Evergreen Gem.** Flowers large, creamy white, quite double. Leaves dark green. 35 cts.





Dorothy Perkins

### Climbing Roses

- 490 **Baltimore Belle.** White, very double flowers in large clusters. The buds are slightly tinged with pink. 40 cts.
- 491 **Crimson Rambler** (The Hardy Japan Climbing Rose). This Rose was introduced in 1893, and has proved a decided novelty. It is a vigorous grower, making in some cases shoots 15 feet long in a season. The flowers are small, but grow in large, glowing crimson bunches, measuring from 6 to 9 inches from base to tip; 300 blooms have been counted on one shoot. The flowers remain a long time in fine condition. Seems to be well adapted to the entire country; should be in every collection. 50 cts.
- 492 **Dorothy Perkins.** Resembling Crimson Rambler in mode of growth; the flowers are double and of a beautiful shell-pink color; quite hardy. 40 cts.
- 493 **Yellow Rambler.** (Aglaia). This, like Crimson Rambler, is a very vigorous climbing Rose, bearing its yellow flowers in clusters and proving hardy. Large plants, 50 cts.
- 494 **Pink Rambler.** A hybrid between *Rosa multiflora* and General Jacqueminot. Flowers double, deep pink. Fragrant. 40 cts.
- 495 **Setigera** (Wild Prairie Rose). This is a hardy climbing Rose, with good-sized, single pink flowers. 35 cts.

### Hardy Vines and Creepers

- 496 **AMPELOPSIS quinquefolia** (Virginia Creeper). A well-known climber, very hardy and greatly used for climbing on stone. Forms a beautiful green covering and in autumn is brilliantly colored. It can also be used to cover dry places on the soil, forming there great mats. 20 cts. each, \$1.50 per doz.
- 497 **APIOS tuberosa** (Wild Bean). A pretty tuberous-rooted climber, with clusters of rich purple flowers. 10 cts. each, \$1.00 per doz.
- 498 **CELASTRUS scandens** (Staff Tree; Bitter-sweet). A twining shrub, its principal attraction being in its twining habit and orange-colored fruit, which is pretty and very ornamental in autumn. 15 cts. each, \$1.25 per doz.
- 499 **CLEMATIS coccinea** (Scarlet Clematis). A pretty southern species, with large scarlet flowers. Hardy. 25 cts. each, \$2.00 per doz.



Clematis Jackmani

- 500 **Clematis Jackmani**. Flowers are very large, 4 to 6 inches in diameter, violet-purple and distinctly veined. A continual bloomer through the season. The standard sort. 50 cts.
- 501 **C. paniculata**. July to September. "One of the finest of hardy climbers, with handsome foliage. Of very vigorous and rapid growth, producing in late summer dense sheets of medium-sized, pure white flowers of the most pleasing fragrance. This is a new Japanese plant, perfectly hardy and finely adapted to use for any covering purpose."—J. W. MANNING. 35 cts.
- 502 **C. Virginiana** (Virgin's Bower). Although quite common in many localities, it is one of the prettiest, both on account of its clusters of numerous white flowers and its feathery-tailed fruit in autumn. Banks of brooks and streams, climbing over shrubs. 20 cts. each, \$1.50 per doz.
- 503 **LONICERA brachypoda**. A very hardy, thrifty vine, with large green leaves that stay on through the winter. Especially desirable for planting near the sea. Flowers white and yellow. One of the very best climbers. 25 cts. each, \$2.00 per doz.
- 504 **L. brachypoda aurea**. A variety of the preceding, with leaves beautifully striped with yellow. 25 cts. each, \$2.00 per doz.
- 505 **MENISPERMUM Canadense** (Canadian Moonseed). A pretty vine, with peltate leaves and small white flowers. Fruit black, looking like frost grapes. 25 cts. each, \$2.00 per doz.
- 506 **RUBUS hispidus** (Running Swamp Blackberry). 10 cts. each, \$1.00 per doz.
- 507 **R. Canadensis** (Low Blackberry; Dewberry). Common in dry, sandy fields; running extensively, the edible fruit of excellent quality, ripening in August. 15 cts. each, \$1.25 per doz.
- 508 **VACCINIUM macrocarpon** (Large, or American Cranberry). Try it in the bog. 10 cts. each, \$1.00 per doz.
- 509 **VITIS æstivalis** (Summer, or Pigeon Grape). A strong, tall, climbing vine with large leaves and small black berries, ripe in October. Southward. 25 cts. each, \$2.50 per doz.
- 510 **V. cordifolia** (Winter, or Frost Grape). A very strong, vigorous vine, climbing to the tops of tallest trees. Flowers in May or June. Very sweet-scented; berries small, blue or black, in good clusters, ripening after frost; rather sour. 25 cts. each, \$2.00 per doz.
- 511 **V. Labrusca** var. *alba* (Northern Fox Grape). Quite common in moist places near water. Blossoms in June. Berries are large, white in color, and of good flavor. Ripe in September or October. This is the edible grape of New England, and is improved by cultivation. 25 cts. each, \$2.00 per doz.





*Kalmia latifolia* (see page 72)

## Evergreen Shrubs and Trees

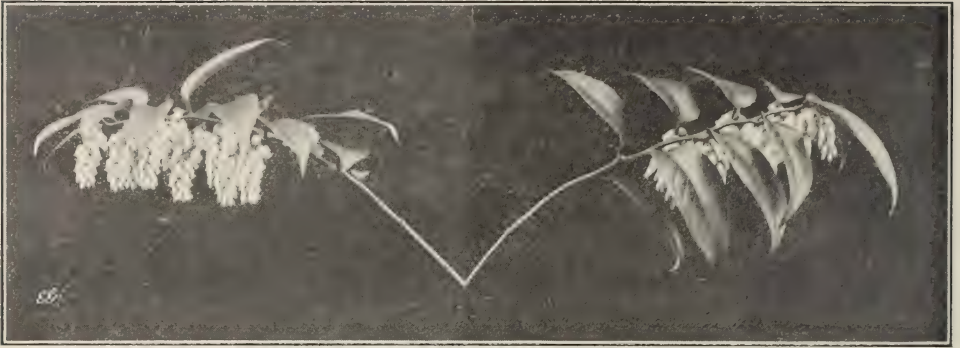
Shrubs and Trees are too large for the mail and should go by freight or express. We do not prepay charges on Shrubs and Trees.

**ABIES alba** (White Spruce). 2 to 4 feet, \$1.50 each.

512 **A. Canadensis** (Hemlock). A beautiful hardy evergreen, with graceful, drooping branches. Desirable for open, exposed places, growing often 50 feet high. It is also one of the very best for hedge-planting and stands almost any amount of trimming. 12 to 18 inches, 25 cts. each; \$2.00 per doz.; \$12.00 per 100. 1½ to 2 ft., 50 cts. each; \$5.00 per doz.; \$25.00 per 100.

513 **A. balsamea** (Balsam Fir). A tree with dark green leaves, a rapid grower, and well adapted for almost any place. It thrives in wet or boggy places, also on or near the tops of our higher New England mountains. 1 ft., 35 cts.

514 **Abies concolor** (White Silver Fir). This, according to Dr. C. S. Sargent, is found in its native habitat, California, Oregon, Southern Colorado, New Mexico, etc.; grows from 100 to 250 feet high, with a trunk 4 to 6 feet in diameter; withstands the heat and drought best of all the Firs; a rapid grower and quite desirable for cultivation in the eastern states; the leaves are long and showy. Plants about 3 feet high, \$3.50 each.



*Leucothoe catebaei* (see page 72)

- 515 **A. nigra** (Black Spruce). A dark evergreen tree, with short, stiff leaves. Can be grown in very wet ground. 4 feet. \$1.50 each.
- 516 **ANDROMEDA polifolia**. A beautiful little evergreen, which takes readily to cultivation, forming a compact mass of foliage 1 foot across and 10 or 12 inches high. Flowers bell or urn-shaped, pale pink or flesh-color in May. 25 cts. each, \$2.00 per doz., \$8.00 per 100.



*Rhododendron maximum* with landscape (see page 73)



- 517 **ARCTOSTAPHYLOS Uvaursi** (Bearberry). A low creeping evergreen with small roundish leaves and white flowers. It delights in a dry situation, and is desirable for covering dry banks or rocky places. 25 cts. each, \$2.00 per doz.

- 518 **CASSANDRA calyculata** (Leather-Leaf). A low, branching shrub, with nearly evergreen leaves, bearing in early spring leafy racemes of small white flowers. It grows about a foot high, and usually is found in masses in bogs or wet, open places; it will thrive in the garden. 25 cts. each, \$2.00 per doz., \$8.00 per 100.

- 519 **DAPHNE Cneorum**. A low shrub, bearing an abundance of small, dark, glossy, evergreen leaves. Along the branches, and from the ends of the branches are borne the little pink flowers in clusters, which are delightfully fragrant. It should have some protection in winter. It does exceedingly well planted in a partially shaded place among rocks. 2 yrs., 25 cts. each, \$2.50 per doz.; 3 yrs., 35 cts. each, \$3.50 per doz.
- 520 **EUONYMUS radicans**. An evergreen with rather small leaves; desirable for running either on the ground or on walls. 1 foot. Used for planting in front of large shrubs. 25 cts. each, \$2.00 per doz.
- 521 **E. radicans variegata** (Variegated Creeping Euonymus). An evergreen creeper with beautiful variegated white, pink and golden-striped leaves. Fine for edging. Very prominent in winter. 1 foot. 25 cts. each, \$2.00 per doz.



White Spruce in its mountain home (see page 68)

- 522 **JUNIPERUS communis** (Common, or Prostrate Juniper). A prostrate evergreen shrub, appearing as if the center had been pinched out and the growth had concentrated in the branches. Each one pushes outward and up a foot or more, forming a miniature tree in itself, the whole plant forming a beautiful shrub. Strong plants, 35 cts. \$3.00 per doz., \$25.00 per 100.

- 523 **J. communis, var. aurea** (Golden Prostrate Juniper). A variety with golden foliage the whole year; very choice, quite hardy. Strong, 50 cts. each; heavy, \$1.00 each.

- 524 **J. communis, var. Hibernica** (Irish Juniper). A tall shrub, often 30 feet high, with short glaucous green leaves; grows in the form of a column, often 5 or 6 feet



Daphne Cneorum



Juniperus Virginiana



Picea pungens var. Kosteriana (see page 72)

- high, and no more than 1 foot through in any part; quite hardy. Plants 2 feet high, 50 cts. each.
- 525 **Juniperus Virginiana** (Red Cedar). A beautiful shrub or tree, with small, pointed leaves. A slow grower, but very hardy, adapting itself to almost any situation, from the tops of the rocky cliff to the sandy plain or moist hillside. Color varies from light to dark green and dull slate. 2 feet, 35 cts. each.
- 526 **KALMIA angustifolia** (Sheep Laurel). A low, evergreen shrub, 1 to 2 feet high, with light green leaves and quantities of little saucer-shaped, crimson flowers in May and June. Of easy culture, forming little clumps. It can be grown in the bog. 25 cts. each, \$2.00 per doz.
- 527 **K. glauca** (Pale Laurel). About a foot high, with little narrow shining leaves and large, showy white to lilac-purple flowers. A pretty little shrub either for massing in border or in the bog-garden. Plant 1 foot apart. 25 cts. each, \$2.00 per doz.
- 528 **K. latifolia** (Calico Bush; Mountain Laurel). An evergreen shrub, growing luxuriantly along our mountain sides, forming large patches; or in single, round-topped specimens in moist, open fields, the dark, shining leaves giving a brightness to the landscape. In May and June the gorgeous coloring of the large rose or white flowers lends an enchantment to the picture that one will not soon forget. It is of easy culture in almost any situation. 1 to 1½ feet, 50 cts. each, \$4.00 per doz.; 1½ to 2 feet, \$1.00 each; 2 to 3 feet, \$1.50 each.





Irish Juniper (see page 69)

- 529 **LEDUM latifolium** (Labrador Tea). A dwarf evergreen, 1 to 2 feet high, with handsome heads of white flowers. Leaves with revolute margins, covered underneath with yellow wool. This is found in bogs, growing in sphagnum moss, and can be planted there, or in any garden soil somewhat moist. For clumping, plant about 8 inches apart. 25 cts. each, \$2.00 per doz.
- 530 **LEUCOTHOE Catesbæi**. A fine evergreen shrub, 2 to 4 feet high, with deep, glossy green foliage; flowers white, in showy spikes. Easily handled in a moist, shady place. 25 cts. each, \$2.00 per doz.
- 531 **PICEA excelsa** (Norway Spruce). A well-known evergreen, with long, drooping branches, 1 foot, 20 cts. each.
- 532 **P. excelsa Finidonesis**. With silvery white leaves. 1½ to 2 feet, XX, 75 cts. each.
- 533 **P. pungens** (Colorado Blue Spruce). A very hardy Spruce, with rather stiff branches. Foliage dense and varies in color from deep green to blue or silvery white. A very beautiful tree, sometimes found 150 feet high. 4 feet, \$3.00 each.
- 534 **Picea pungens glauca**. Fine selected blue. 4 to 5 feet, \$4.00 each.
- 535 **P. pungens, var. Kosteriana** (Koster's Blue, Grafted). Makes a fine specimen. 1 to 1½ feet, \$1.25 each; 2½ to 3 feet, \$5.00 each.
- 536 **PINUS Strobus** (White Pine). A tall, handsome tree, green all the year. A rapid grower, making a fine ornamental tree. 1 foot, \$1.00 per doz.; \$7.00 per 100. Plants 2 feet high, 25 cts. each.



Group of Retinospora (see page 73)

**RETINOSPORA** (Japan Cypress).

Evergreen tree, desirable for lawns well protected from winds. We get fine sprays and colors in this choice Cypress.

- 537 **R. plumosa aurea.** A variety of the above, with the leaves golden tinted. Very thrifty. 8 to 12 inches, 20 cts. each; \$1.50 per doz.

- 538 **RHODODENDRON punctatum.** A hardy species, flowering when but 2 or 3 feet high, bearing pretty rose-colored flowers spotted within. Small plants, 2 to 3 feet high, \$1.00 each.

- 539 **R. Catawbiense.** This is the very best of our native rhododendrons, being perfectly hardy in New England and bearing in June large clusters of lilac-purple flowers. It forms symmetrical bushes 4 to 6 feet high and for mass planting it has no equal. 1 to 1½ feet, 50 cts. each; Nursery grown clumps, 1½ to 2 feet, \$1.25 each; 2 to 3 feet, \$1.75 each.

- 540 **R. maximum** (Great Laurel). An evergreen shrub. 5 to 30 feet high, with dark green leaves 4 to 10 inches long. Flowers white, pink or purple, greenish in throat and spotted with yellow or red. Takes readily to cultivation. July. Nursery-grown, with a good ball of earth attached. 9 to 12 inches, 30 cts. each; 2 to 3 foot clumps, \$1.75 each; 3 to 3½ foot clumps, \$2.25 each. Holland grown maximum, 1½ feet, 75 cts. each; 2 feet, \$1.00 each; 2½ feet, \$1.25 each.



*Rhododendron punctatum*

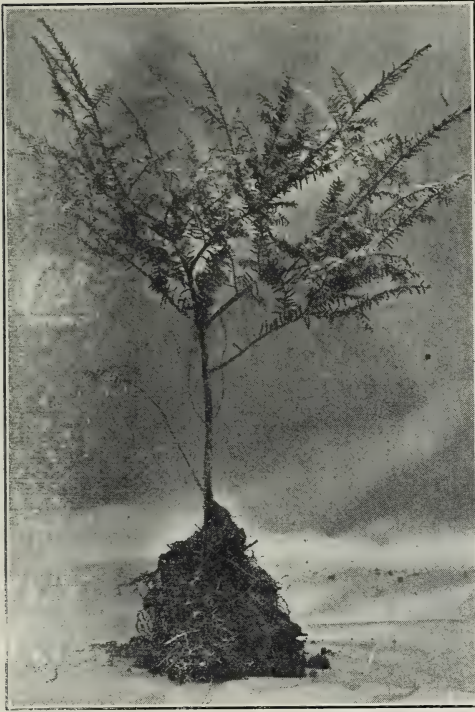
## Hybrid Rhododendrons

We have imported from Holland a few varieties of hardy hybrid Rhododendrons. These varieties we have selected from a large stock, and consider them the best for this climate. Each plant is a perfect specimen in itself. They have been given plenty of room and have formed broad dense heads. The flower clusters on these are larger than those found on our natives. Some clusters will measure 6 inches in diameter. All of our plants are of blooming size. They will stand from 18 to 24 inches; Price, \$1.25 each.

- 541 **Atrosanguineum**, (Rich blood red).  
 542 **Album grandiflorum** (Blush, changing to white).  
 543 **Boule de Nieve** (Pure white, very dwarf).  
 544 **Caractacus** (Deep crimson).  
 545 **Charles Dickens** (Dark red, spotted brown).  
 546 **Everstianum** (Rosy lilac).  
 547 **Old Port** (Plum color).  
 548 **Parson's Glorioso** (Rose white).  
 549 **Catawbiense grandiflorum**.



## Deciduous Shrubs and Trees



Taxus Canadensis

itself to almost any situation, the flowers varying from light pink to deep rose-color, mottled at the base inside. Hardy in New England. The leaves take on beautiful tints in autumn, which give a new charm to this class of plants. 12 to 18 inches. 50 cts. each.

555 **A. viscosa** (Sweet White Honeysuckle). Grows 4 to 10 feet high with white or slightly rose-tinged flowers; very fragrant. This shrub takes readily to cultivation, forming fine, large clumps. Nice plants with bloom buds, 1 to 1½ feet, 40 cts. each, \$3.00 per doz., \$20.00 per 100; 2 to 3 feet, bushy, 75 cts. each, \$6.00 per doz.

556 **BERBERIS purpurea** (Purple Barberry). A very choice variety, with deep purple foliage throughout the season. Fine for hedge-work. 25 cts. each, \$2.00 per doz.

557 **B. Thunbergii** (Thunberg's Japan Barberry.) A low bush, with shin-

Shrubs and trees are too large for the mail and should go by freight or express.

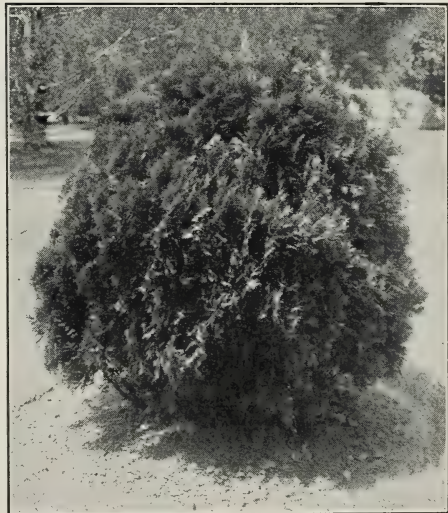
550 **AMELANCHIER Canadensis** (Shadbush). Often 30 feet high. One of the first to flower. Flowers numerous, white, in pretty racemes. 25 cts. each, \$2.00 per doz.

551 **AZALEA arborescens** (Smooth Azalea). Flowers large, pure white and fragrant. 1 to 1½ feet, 50 cts. each; 1½ to 2 feet, \$1.00 each.

552 **A. calendulacea** (Flame-colored Azalea). This shrub is a native of the southern states, growing from 3 to 10 feet high, bearing a profusion of beautiful orange-colored, lemon, or fiery red flowers. Hardy. 1 to 1½ feet, 40 cts. each, \$3.00 per doz.

553 **A. nudiflora** (Purple Azalea). This is one of the finest of our native shrubs, growing from 2 to 10 feet high, in dry woodlands and swamps, forming clumps. The tubular flowers are very showy, varying from almost white and flesh-color to pink or purple. 25 cts. each, \$2.00 per doz.; extra strong, 50 cts. each, \$4.00 per doz.; strong clumps, \$1.00 each.

554 **A. Vaseyi** (Rhododendron). But recently discovered on the mountains of North Carolina. It grows quite tall and seems to respond to cultivation readily, adapting



Thuja occidentalis globosa



*Taxus Canadensis*, transplanted

- ing foliage and showy flowers. Fruit deep crimson, persistent through the winter. Fine as single plants or for a low hedge. 25 cts. each, \$2.00 per doz., \$8.00 per 100; extra heavy, 50 cts. each, \$3.50 per doz. Can supply smaller stock for hedgework in quantity.
- 558 ***Berberis vulgaris*** (Common, or European Barberry). Handsome, upright shrubs, forming large clumps. Flowers handsome, yellow, in drooping racemes. One of the very best hedge plants. 25 cts. each, \$2.00 per doz.
- 559 ***CEANOTHUS Americanus*** (New Jersey Tea). A low, branching shrub, 1 to 2 feet high, bearing spreading panicles of white flowers. 20 cts. each, \$1.50 per doz.
- 560 ***CERCIS Canadensis*** (American Judas Tree). A small tree, with heart-shaped leaves, bearing its pink flowers in great profusion in early spring. 25 cts.
- 561 ***CLETHRA alnifolia*** (Sweet Pepper Bush). Flowers creamy white, very fragrant. Grows 3 to 5 feet high. 25 cts. each, \$2.00 per doz.
- 562 ***COMPTONIA asplenifolia*** (Sweet Fern). A low shrub, with sweet-scented foliage. 15 cts. each, \$1.25 per doz.
- CORNUS** (Dogwood).
- 563 ***C. alternifolia*** (Green Osier). A shrub-like tree, 8 to 20 feet high, with wide-spreading branches and a flat top. Flowers pale yellow or white; fruit deep blue. 25 cts. each, \$1.50 per doz.
- 564 ***C. circinata***. Five to 8 feet high, with large white flowers; fruit light blue. One of the prettiest in cultivation. Leaves larger than in any other species. 25 cts. each, \$2.00 per doz.





*Retinospora plumosa aurea* (see page 73)

- 565 **Cornus florida** (Flowering Dogwood.) A large shrub or tree, often 30 feet high. Flowers white. Very showy in flower and fruit. Fine plants. 25 cts. each, \$2.00 per doz.
- 566 **C. Mas** (Cornelian Cherry). Has quantities of yellow flowers in early spring, followed by brilliant crimson edible fruit. 1½ to 2 feet, 25 cts. each.
- 567 **C. paniculata**. Grows 4 to 12 feet high; bark gray. 25 cts. each.
- 568 **C. sericea** (Silky Cornel). A shrub 3 to 10 feet high, with purplish bark, white flowers and pale blue fruit. One of the latest to flower. 25 cts. each, \$2.00 per doz.
- 569 **C. stolonifera** (Red Osier). Handsome in winter on account of its bright reddish purple bark. 20 cts. each, \$1.50 per doz.
- 570 **C. Golden-leaved**. A hardy sort, with dark red branches and golden-marked leaves, forming fine symmetrical bushes. 25 cts. each.
- 571 **CORYLUS Americana** (Wild Hazel-nut). A shrub 3 to 6 feet high. Flowers in catkins in early spring. 20 cts. each, \$1.50 per doz.
- 572 **DIRCA palustris** (Moosewood; Leatherwood). Shrub 2 to 5 feet high. Flowers light yellow, preceding the leaves. 25 cts. each, \$2.00 per doz. XX, 50 cts. each.
- 573 **DIERVILLA trifida** (Bush Honeysuckle). A little low shrub, with pale yellow flowers and ovate-pointed leaves. Clumps, 25 cts. each, \$2.00 per doz.
- 574 **FORSYTHIA suspensa** (Weeping Golden Bell). A beautiful shrub, with drooping branches. Flowers yellow; quite showy. 25 cts. each, \$2.00 per doz.
- 575 **F. viridissima**. Flowers light yellow, in great abundance along the branches. 25 cts. each, \$2.00 per doz.
- 576 **GAYLUSSACIA frondosa** (Dangleberry). A handsome shrub about 3 feet high, with striped bark and rather small green leaves. The flowers are greenish white, borne on long stems, followed by the large, delicious blue berries. Easily grown in moist soils. 25 cts. each.
- 577 **G. resinosa** (Black Huckleberry). The common Huckleberry of our woods. Very sweet fruit. Grows about 2 feet high. 25 cts. each, \$2.00 per doz.
- 578 **HAMAMELIS Virginica** (Witch-Hazel). A tall shrub with oval or obovate leaves. It flowers in autumn about the time the leaves begin to fall and matures its fruit the next season. 25 cts. each, \$2.00 per doz.
- 579 **HYDRANGEA arborescens** (Wild Hydrangea). The earliest of this genus to flower. A vigorous shrub 4 feet high, with flat cymes of yellow-white flowers. 25 cts. each, \$2.00 per doz.



*Azalea calendulacea* (see page 74)

- 580 **Hydrangea radiata.** A thrifty shrub from the southern Allegheny mountains, with white flowers similar to the above. The leaves are large, dark green on the upper surface, and woolly white on the lower side. The beauty is disclosed with every breeze, by turning a leaf here and there, and showing the woolly white against the background of dark green. Hardy. Forms good clumps. 25 cts. each, \$2.00 per doz.
- 581 **H. grandiflora.** The showiest of autumn-blooming shrubs. Great heads of creamy white flowers turning to shades of red. It blooms late in the season, when most other shrubs are past blooming. 50 cts. each, \$4.00 per doz.; heavy, 75 cts. and \$1.00 each.
- 582 **HYPERICUM patulum** (Spreading St. John's Wort). Low, 6 to 10 inches, spreading; flowers large, yellow, quite showy. July. 20 cts. each.
- 583 **ILEX verticillaris** (Black Alder, or Winter Berry). A native shrub, bearing in autumn beautiful scarlet berries, which stay on until well into winter. 25 cts. each, \$2.00 per doz.; strong clumps, 50 cts. each, \$4.00 per doz.
- 584 **LAURUS Benzoin** (Spice Bush). Grows 6 to 15 inches high with large, oblong-ovate leaves; it forms fine bushy clumps, literally covered with small, spicy yellow flowers in early spring, followed by the rather large, red berries which cling to the twigs until quite late in the autumn. 25 cts. each, \$2.00 per doz.
- 585 **LIGUSTRUM vulgare** (Common Privet). Forms fine clumps. Flowers white, followed by black berries. 25 cts.
- 586 **LONICERA ciliata** (Fly Honeysuckle). Shrub 3 to 5 feet high. Flowers, greenish yellow. 20 cts. each, \$1.50 per doz.
- 587 **MYRICA cerifera** (Bayberry or Wax Myrtle). 3 to 5 feet high, forming good clumps. with rather small, deep green, shining leaves, having a rich fragrance. Takes readily to cultivation even when planted on the seashore. 25 cts. each, \$2.00 per doz.



A planting of rhododendrons in woods





*Azalea viscosa*, 2 years (see page 74)

- 588 **Myrica Gale** (Sweet Gale). Grows 4 feet high. The flowers come out before the leaves. Foliage bright green and fragrant. Does nicely near water. 25 cts. each, \$2.00 per doz.
- 589 **NEMOPANTHES Canadensis** (Mountain Holly). A medium-sized shrub, with bright red berries in autumn. 25 cts. each, \$2.00 per doz.; XX, 50 cts. each, \$4.00 per doz.
- 590 **PHILADELPHUS grandiflorus** (Large-flowering Syringa). A rapid-growing shrub. 25 cts.
- 591 **PYRUS arbutifolius**. A shrub with small, shining leaves, beautifully tinted in autumn. 25 cts. each.
- 592 **RHODORA Canadensis**. A low shrub, with showy rose-purple flowers, which precede the leaves in May. 25 cts. each, \$2.00 per doz.; heavy stock, 35 cts. each, \$3.00 per doz.
- 593 **RHUS aromatica** (Fragrant Sumac). A straggling bush, seldom 3 feet high. Flowers pale yellow, fruit red. 25 cts. each, \$2.00 per doz.
- 594 **R. copallina** (Dwarf Sumac). From 2 to 4 feet high. Leaves very highly colored in autumn. 25 cts. each, \$2.00 per doz.
- 595 **R. glabra** (Smooth Sumac). Branches smooth; leaves red in autumn. Forms a bush 10 to 12 feet high. 25 cts. each.
- 596 **R. typhina** (Common Staghorn Sumac). Mode of growth similar to *R. glabra*. The branches are covered with fine hairs. Leaves fine in autumn. 20 cts. each, \$1.50 per doz.
- 597 **R. typhina laciniata**. With finely cut leaves. 25 cts. each, \$2.00 per doz.
- 598 **RIBES Cynosbati** (Wild Gooseberry). Flowers greenish; berries quite large. 25 cts. each, \$2.00 per doz.
- 599 **R. prostratum** (Fetid Currant). Leaves showy in autumn. For rocky places. 20 cts. each.
- 600 **ROSA blanda** (Early Wild Rose). Grows 1 to 3 feet high. Flowers light rose-color. 25 cts. each, \$2.00 per doz., \$10 per 100.
- 601 **R. Carolina** (Swamp Rose). A native Rose, found in wet or moist places. From 4 to 10 feet high. 25 cts. each, \$2.00 per doz.
- 602 **R. lucida** (Dwarf Wild Rose). Seldom over 18 inches high. Flowers rose-color. 25 cts. each, \$2.00 per doz., \$10 per 100.
- 603 **R. nitida**. 18 inches high, with narrow, bright shining leaves and rose-colored flowers. 30 cts.
- 604 **RUBUS odoratus** (Flowering Raspberry). This shrub is a very pretty one in cultivation. Handsome, dark purple, clustered flowers. 25 cts. each, \$2.00 per doz.
- 605 **R. delicious** (Rocky Mountain Flowering Raspberry). A fine shrub, 3 to 4 feet high, with very large, white flowers. 25 cts. each, \$2.00 per doz.
- 606 **R. occidentalis** (Black Raspberry). The wild black Raspberry so well known to every one in New England. 20 cts. each, \$1.50 per doz.
- 607 **R. strigosus** (Red Raspberry). This is well known for its fruit in New England. 20 cts. each. \$1.50 per doz.
- 608 **R. villosus** (High Blackberry). The common high-bush Blackberry of New England. Fruit ripens in August and September. 3 to 6 feet. 25 cts. each, \$2.00 per doz.

609 **SAMBUCUS pubens** (Red-berried Elder).  
Flowers in broad cymes, white; fruit  
crimson, in large bunches, very showy.  
25 cts. each, \$2.00 per doz.

610 **S. Canadensis** (Common Elder). A very  
beautiful shrub, flowering at a time when  
most other shrubs are past their bloom.  
Flowers white. 25 cts. each, \$2.00 per doz.

**SPIRÆA** (Meadow Sweet).

611 **S. Anthony Waterer**. A low shrub, 1  
to 2 feet high; a great bloomer from  
early spring to late autumn. Flowers  
crimson; very hardy. 25 cts. each.

612 **S. opulifolia**. Pretty shrub; flat heads of  
white flowers. 25 cts. each, \$2.00 per doz.

613 **S. opulifolia aurea** (Golden Spirea). 25  
cts. each.

614 **S. salicifolia**. Flowers in a crowded  
panicle, white or flesh-colored. 2 or 3  
feet high. 15 cts. each, \$1.50 per doz.

615 **S. tomentosa** (Steeple Bush). Stems  
and lower surface of the leaves very  
woolly. Flowers crowded in a dense  
panicle, rose-color. 15 cts. each, \$1.50  
per doz.

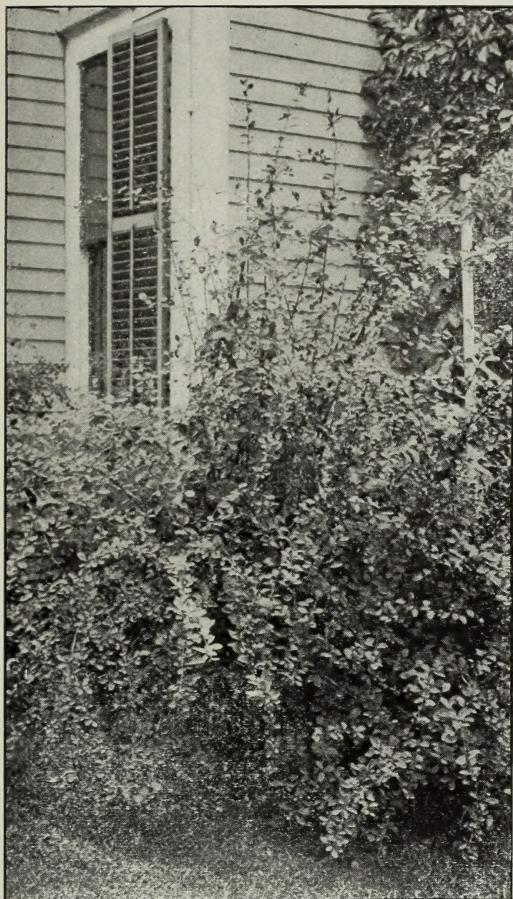


*Gaylussacia resinosa* in fruit (see page 76)



*Spiraea Van Houttei* (see page 80)





*Berberis purpurea* near the house (see page 74)

616 **Spiraea Thunbergi** (Thunberg's Spirea) In early spring the plant is literally covered with small white flowers. The foliage is light green, changing in autumn to the most beautiful shades, making it one of the most beautiful foliage plants in cultivation. 25 cts. each, \$2.00 per doz. XX, 50 cts. each.

617 **S. Van Houttei** (Van Houtte's Spirea). The leaves of this variety are oval and toothed at the end, rich green in color and, like the above, most beautiful in autumn tints. Flowers pure white, in clusters along the whole length of the branches. 25 cts. each, \$2.00 per doz.; heavy, 50 cts. each.

618 **SYMPHORICARPUS racemosus**, (Snowberry). A fine shrub 2 to 4 feet high of vigorous growth bearing small rose-colored flowers in June and July; followed by large pure white fruit, remaining into the winter. Will also thrive in deep shady places. 25 cts.

619 **S. vulgare** (Indian Currant, Coral Berry) 2 to 3 feet high, of graceful habit, bearing small pink flowers in August and September followed by the red coral-like berries which cover the

drooping branches and stay on well into the winter. 25 cts.

620 **SYRINGA Japonica** (Japan Lilac). A fine lawn tree, with glossy green leaves and large bunches of pure white flowers in June. Strong plants, 50 cts. each.

621 **S. vulgare**. A fine grower, well known in cultivation; flowers purple, quite fragrant. 25 cts. Large heavy clumps \$1.00 to \$1.50 each.

622 **VACCINIUM Pennsylvanicum** (Dwarf Blueberry). Six to 10 inches. Berries abundant, large and sweet, ripening early in July. Forms large patches in dry, exposed places. 20 cts. each, \$1.50 per doz.

623 **V. vacillans** (Low Blueberry). The Blueberry of our woods. From 1 to 2 feet high. Branches yellowish green. 25 cts. each, \$2.00 per doz.

624 **V. corymbosum** (Common, or Swamp Blueberry). Tall, 5 to 10 feet high. This yields the common Swamp Blueberry, so well known in our market, and is not hard to grow in moist garden soil. 25 cts. each, \$2.00 per doz.; heavy clumps, 50 cts. to 75 cts. each.

**VIBURNUM** (Arrowwood).

625 **V. acerifolium** (Maple-leaved Arrowwood). Grows 3 feet high; compact in habit. Flowers white; leaves highly colored in autumn. 25 cts. each, \$2.00 per doz.



- 626 **Viburnun cassinoides**. One of our handsomest northern shrubs. Grows 6 to 10 feet high, with broad flat cymes of yellowish flowers. Easily cultivated and blooms in great profusion. 25 cts. each, \$2.00 per doz.; heavy stock, 50 cts. each, \$4.00 per doz.
- 627 **V. lantanoides** (Hobble Bush). Grows 4 to 6 feet high. Leaves round, ovate, 4 to 5 inches wide, highly colored in autumn. Flowers in broad, sessile cymes. Very handsome. Delights in a moist, shady place. 25 cts. each.
- 628 **V. Lentago** (Sheepberry). Flowers creamy white, in broad, flat sessile cymes, 4 to 5 inches broad. A large shrub or tree, sometimes 30 feet high. 25 cts. each, \$2.00 per doz.; extra heavy, 50 cts. each, \$4.00 per doz.
- 629 **V. Opulus** (Cranberry Tree). Grows 5 to 10 feet high, with showy white flowers. Fruit bright red, remaining after the leaves are gone. 25 cts. each, \$2.00 per doz.
- 630 **V. Opulus sterilis** (Snowball). Well known in cultivation. 25 cts. each.
- 631 **V. pubescens** (Downy Arrowwood). A compact shrub, 2 to 3 feet high. Has rigid branches and ovate leaves, tapering to a point. Produces in great profusion flat cymes of white flowers. Quite hardy, and is a beautiful plant in cultivation. 25 cts. each, \$2.00 per doz.; clumps, 50 cts. each.
- 632 **V. tomentosum**. Eight to 10 feet. Flowers showy, in flat cymes, pure white. Leaves large, rich green. 25 cts. each.
- 633 **XANTHORRHIZA apiifolia** (Yellow Root). A low shrub, with dark-colored flowers; forms fine clumps. Especially desirable for planting under trees or for bordering walks or roadways. The orange coloring in autumn is very marked. 25 cts. each; \$2.00 per doz., \$10 per 100.

A border of *Xanthorrhiza apiifolia*



# Collections of Flowering Plants

We can make up collections of flowering plants suitable for almost any place where plants will grow. Open sun dry places, open sun moist places, moist shade, dry shade, hillside, brooks, lakes, rock-gardens, etc.

These collections are not sent with express or freight charges paid. Please give the position for which they are needed, that we may know what varieties to send. Also state whether low or tall-growing varieties are desired.

## No. 1—For Open Sun Culture, Moist Garden Soil

These plants are desirable for making up beds and borders.

100 in 20 varieties . . . . .	\$10.00
50 " 20 " . . . . .	5.00
25 " 10 " . . . . .	3.00
12 " 6 " . . . . .	1.50

## No. 2—For Dry Shady Places

Suitable for planting in dry woodlands. This includes Wild Asters, Goldenrods, etc., mostly those sorts that bloom in late summer.

100 in 10 varieties . . . . .	\$10.00
30 " 5 " . . . . .	5.00
25 " 5 " . . . . .	3.00

## No. 3—For Moist Shady Places

This collection contains a good list of flowers, easily grown.

100 in 25 varieties . . . . .	\$10.00
50 " 25 " . . . . .	5.00
25 " 10 " . . . . .	3.00

## No. 4—Low-Growing Plants for Rock-Work in Shade

50 in 10 varieties . . . . .	\$5.00
25 " 10 " . . . . .	3.00

## No. 5—For Border of a Lake, Brook, or Very Wet Ground

50 in 5 varieties . . . . .	\$5.00
25 " 5 " . . . . .	3.00

## CONTENTS

	PAGE
HARDY FERNS . . . . .	1-14
COLLECTIONS OF FERNS . . . . .	15-16
HARDY PERENNIALS . . . . .	17-55
BOG AND AQUATIC PLANTS . . . . .	55-60
ORCHIDS . . . . .	60-63
ROSES . . . . .	63-65
VINES AND CREEPERS . . . . .	65-66
EVERGREEN SHRUBS AND TREES . . . . .	67-72
HYBRID RHODODENDRONS . . . . .	72
DECIDUOUS SHRUBS AND TREES . . . . .	73-80

