

Historic, Archive Document

Do not assume content reflects current scientific knowledge, policies, or practices.

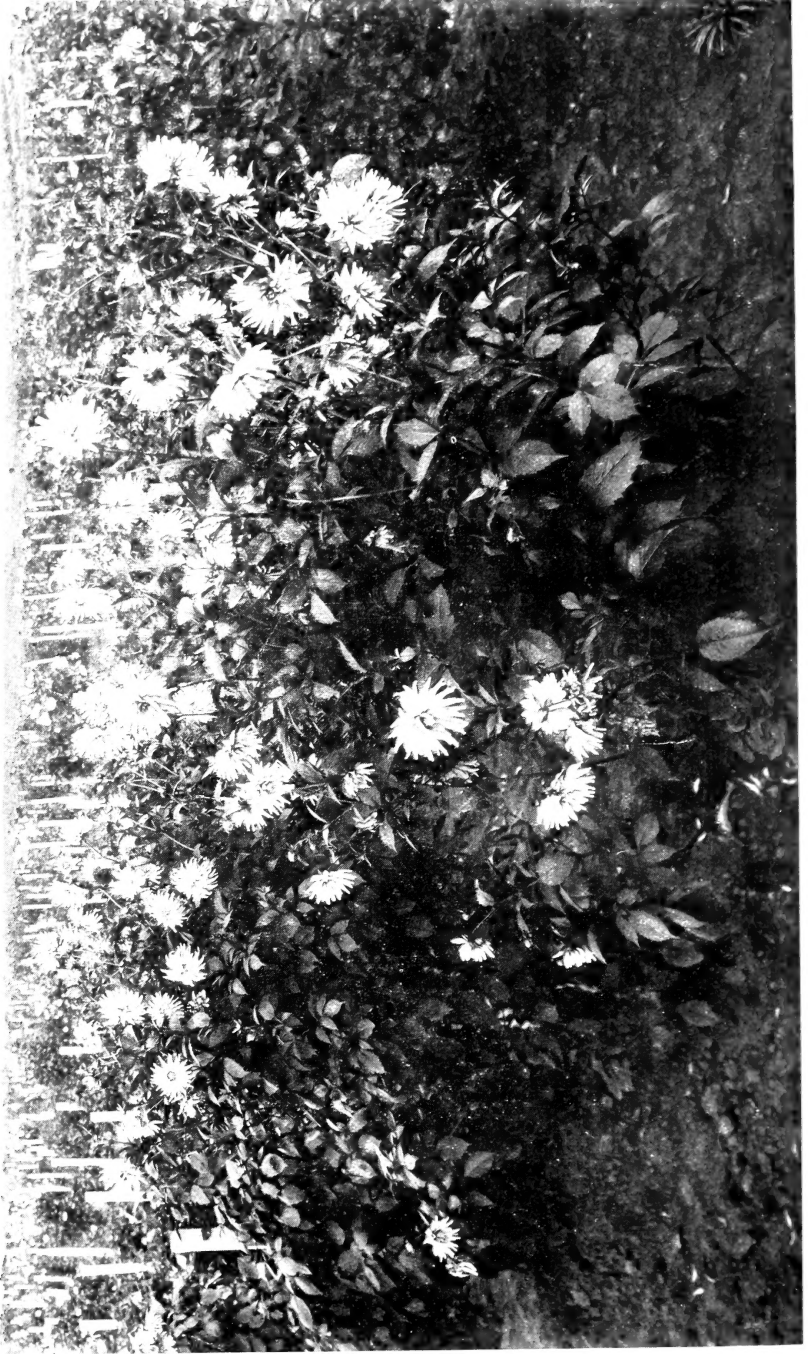
Gill Bros.
SEED Co.

**1913
CATALOG**

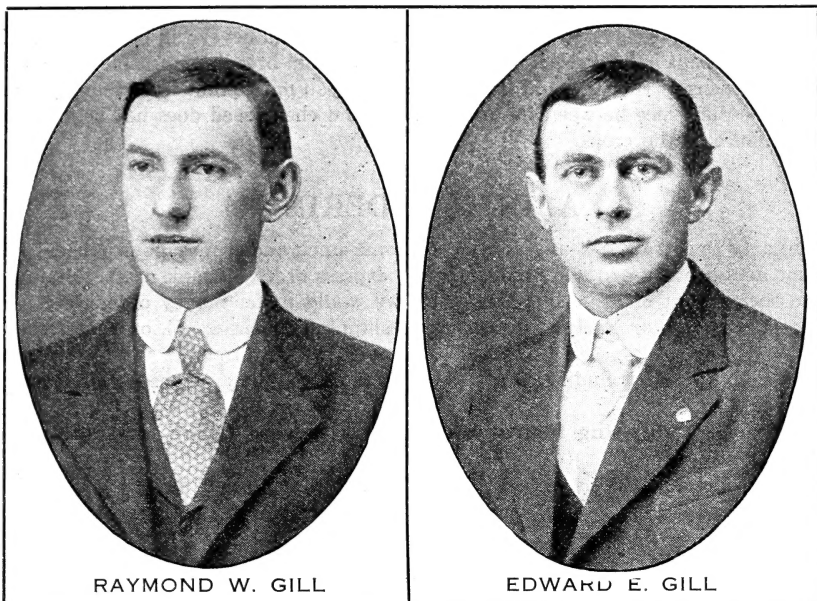


**OREGON GROWN
SEEDS
DAHLIAS
ROSES
PERENNIALS**

**PORTLAND
OREGON**



DAHLIA SHOW GARDENS AT GILL BROTHERS' FARM.



RAYMOND W. GILL

EDWARD E. GILL

Let Us Have a Little Talk with You.

Dear Customers and Readers:

Our third annual catalog awaits your consideration. We come to you again after a very encouraging year of business, having done ten times the business last season than we did the year before. From all over the Northwest enthusiastic praise is coming to us for our seeds, etc. We feel very grateful to our customers who have given us their business, this together with the kindness so many have shown in telling their friends about us has encouraged us to surpass our previous efforts.

More and more people are coming to realize that the best seeds are generally those grown in our own climate, since they are already adapted to our climatic conditions.

We are convinced that the Northwest will soon become one of the great seed growing sections of the country for in our cool western climate seeds mature slowly producing large, plump seed of great vitality and superior to that grown in warm sections.

Our catalog this year is more complete than ever before. Our vegetable and flower list has been revised, our Dahlia Collection is the largest on the Pacific Coast, our Rose list covers the very best varieties and in addition to these we have added a strong department of perennials, these will now be one of our special lines.

We do not believe in cataloging a long list of vegetables but by confining our efforts to producing the best types of a few good sorts we will be better able to serve you. Neither do we believe in introducing novelties of no real merit simply to get extra prices.

In the following pages those varieties of seed which are Oregon grown are indicated with a star.

We ask you to consider these conditions when buying seed of us:

1st. We are practical farmers, having had years of experience in growing vegetables for market and have always received top notch prices on our produce.

2nd. We grow most of our seeds as well as conduct trials of all kinds of vegetables and flowers. Therefore we very nearly know what we are selling and are able through actual trial to find out and offer to you the very best of new varieties.

3d. We are able to give western experience in planting and cultivation of most vegetables and flowers and are always glad to assist our customers all we can in this respect.

4th. We guarantee our seeds, bulbs and plants true to name and will be responsible to the amount of purchase price.

5th. We are not a cheap seed house and our aim is not and never will be to sell the cheapest seed. Good seed means careful selection and years of work in breeding up. This cannot be done without added expense. If you would produce the best you must plant from thoroughbred stock and after all the difference between the cost of good and cheap seed does not begin to compare with the difference in the crops.

ABOUT ORDERING

Order Early as there is a heavy demand on some stock and it may be exhausted. **Remittance must accompany order** by money order, express order or bank draft. Stamps will be accepted to the amount of \$1.00 but above this we would prefer money orders, etc. Prices in this catalog by **Express or Freight** do not cover shipping expenses. E. or F indicates express or freight.

All prices up to and including **One pound** include shipping expenses and for more only when indicated.

Be sure to give shipping instructions and write your name and address plainly on your order sheet.

Patrons will please notify us at once of any errors in filling orders as they will be gladly corrected by us.

OUR GUARANTEE

We guarantee all the seeds, plants and bulbs we send out to be true to name and will be responsible for the amount of purchase price only.

We use the utmost caution to send out seeds that are of good vitality, but do not guarantee them to germinate as weather conditions, and the time and manner of planting so affect germination that even seeds of the best vitality may fail. We are willing, however, to send you the germinating test upon any of the seeds we list.

VISITORS WELCOME

During the past season thousands of people visited our farm, over 5000 coming to see the Dahlia gardens. Our Dahlia gardens are the largest on the coast and are a sight that is not soon forgotten. Our roses and perennials, also our flower and vegetable trials are interesting to visitors. Take Montavilla car from Portland to 80th street and transfer to 89th on the Mt. Hood transfer car. Leave car here, go three blocks east and four north to farm.

OUR CATALOG

Is issued at considerable expense. If you should receive more than one copy we hope you hand it to a friend interested in our line.

VEGETABLE AND FLOWER PLANTS

NOTE.—Those wishing large quantities of plants please write for special prices.

Early Cabbage—Fall sown, wintered over plants, ready in March. Early Jersey Wakefield, Charleston Wakefield and Glory of Enkhuisen. Per doz., postpaid, 15c; \$1.00 per 100. Express or Freight, 60c per 100; \$4.00 per 1000.

Late Cabbage—Danish Ball Head, Glory of Enkhuisen, All Head Early. 15c per doz; 60c per 100, postpaid. Express or Freight, 35c per 100; \$3.00 per 1000. Ready June 1st to August.

Late Cauliflower—Veitch's Autumn Giant, Mammoth White, Early White French, ready June 20th. 20c per doz.; 75c per 100, postpaid. Express or Freight, 50c per 100; \$4.00 per 1000. Best Early and Dry Weather, ready June 15th to August 1st. 20c per doz.; 90c per 100, postpaid. Express or Freight, 70c per 100; \$5.00 per 1000.

Tomato Plants—Bonny's Best, Gill's Earliana, and Langdon's Earliana. 30c per doz., postpaid. Express or Freight, \$1.00 per 100.

Asters—Any variety offered. 20c per doz.; 75c per 100, postpaid.

Verbena, Petunia, Sweet William and Salvia—Same price as asters.

VEGETABLES

ASPARAGUS

Plant roots in fall or spring, in rows 3 ft. wide and 1 ft. in rows.

Barr's Mammoth—Very large stalks with close round heads. Purple-tinted stalks.
Pkt., 5c; oz., 15c; $\frac{1}{4}$ lb., 30c.

Conover's Colossal—The standard variety.
Pkt., 5c; oz., 10c; $\frac{1}{4}$ lb., 25c; lb., 60c.

Palmetto—Large, thick, green shoots.
Pkt., 5c; oz., 25c; $\frac{1}{4}$ lb., 25c; lb., 60c.

Columbian Mammoth White—This large stalked strain produces white stalks above the surface.
Pkt., 5c; oz., 15c; $\frac{1}{4}$ lb., 30c.

We offer one year roots of any of the above as follows: Postpaid, 25c per doz.; \$1.00 per 100. By E. or F., 20c doz.; 75c per 100; \$5.00 per 1000.

BEANS

Plant about May 1st for early beans, as soon as the ground becomes warm, in light loamy soil. Large seeded beans require warmer weather to germinate than small beans. Cover from $1\frac{1}{2}$ to 2 inches deep, according to weather conditions. Never cultivate or hoe beans when the foliage is damp from dew or rains, as it will produce rust.

***Gill's Reliable**—Twenty-five years ago our family received a few beans of a resident of Portland and it proved such a superior bean that we kept it for a family bean. The strong points in its favor are its exceptionally fine flavor, remarkable productiveness, extreme hardiness, and splendid appearance. It is a string bean but there are few if any beans that cook more tender. Pods large, round and straight. The seed is pure white making it a good winter shell bean. We do not know the original name of this bean but will call it Reliable until we find the correct title. For family, market or canning there are few beans superior. Our stock is limited. We hope our customers will give this bean a trial.

Price: Pkt., 10c; lb., 35c, postpaid. E. or F., lb., 25c.

Challenge Dwarf Black Wax—The earliest wax podded bean. Curved pods of medium size of clear waxy white. Cooks very tender and free from strings. A heavy yielder, which we can recommend.

Pkt., 10c; $\frac{1}{4}$ lb., 15c; lb., 30c. E. or F., lb., 20c.

***Burpee's Stringless Green Pod**—We consider this the best early bush bean we have ever tried. The pods are green, of good length, entirely stringless, tender and brittle and remain so until nearly ripe. This brown-seeded bean is both early and hardy and one of the richest flavored beans of all. It is well adapted to our climate and is a splendid market or garden bean. Per large pkt., 10c; $\frac{1}{4}$ lb., 15c; lb., 30c. E. or F., lb., 20c.

Burpee's White Wax—This bean is one of the finest appearing beans grown for market purposes. Its habit of growth is very upright and sturdy. The broad long pods are of a waxy lemon color and very free from rust. They will stand very early planting. The seed is pure white, making a fine shell-bean when ripe. Pkt., 10c; lb., 25c. E. or F., lb., 20c.

Burpee's New Kidney Wax—This new bean is superior to Wardell's Kidney Wax. The pods are six to eight inches long, solid and quite brittle if not allowed to become too old. The pods are a pretty lemon yellow color and the whole plant is remarkably vigorous, prolific and free from disease.

Pkt., 10c; lb., 30c. E. or F., lb., 20c.

Tennessee Green Pod—This bush bean proved so prolific of large, long, flat, tender pods of good flavor that we decided to add it to our list. It is the largest podded bush bean we have yet grown and is a very vigorous grower. It is a string bean of bright green color. For market and garden give it a trial.

Pkt., 10c; lb., 30c. E. or F., lb., 20c.

***Dwarf Horticultural or Cranberry**—A rich flavored early bush bean generally used as a green shell bean, vigorous and prolific. Seed and pod striped and blotched with red on white. This class of beans should be more grown as they are very rich flavored either green or dry for winter.

Pkt., 10c; lb., 30c. E. or F., lb., 20c.

Pole Beans

Kentucky Wonder Wax—This grand new pole bean is a wax podded Kentucky Wonder and many think it is of better flavor. We believe it is a more vigorous grower and will yield fully as heavy as the Kentucky Wonder. The pods are a light yellow, extra large, broad and long and cook very tender. We recommend this bean strongly. Comparatively early.

Pkt., 10c; lb., 30c. E. or F., lb., 20c.

***Kentucky Wonder**—This is the old standard and is no doubt the heaviest yielder of all beans. Often sold as Asparagus bean. A string bean with long green pods and light brown seeds. It cooks tender and is a good all-round bean. Large pkt., 10c; lb., 25c, postpaid. E. or F., lb., 15c.

POLE BEANS—Continued

Burger's Stringless Green Pod Pole or White Seeded Kentucky Wonder—Many consider this ahead of the Kentucky Wonder. Very prolific of extra long pods of dark green color. Seed are pure white. A fine bean for market or garden

Pkt., 10c; lb., 30c. E. or F., lb., 20c.

Shell Beans

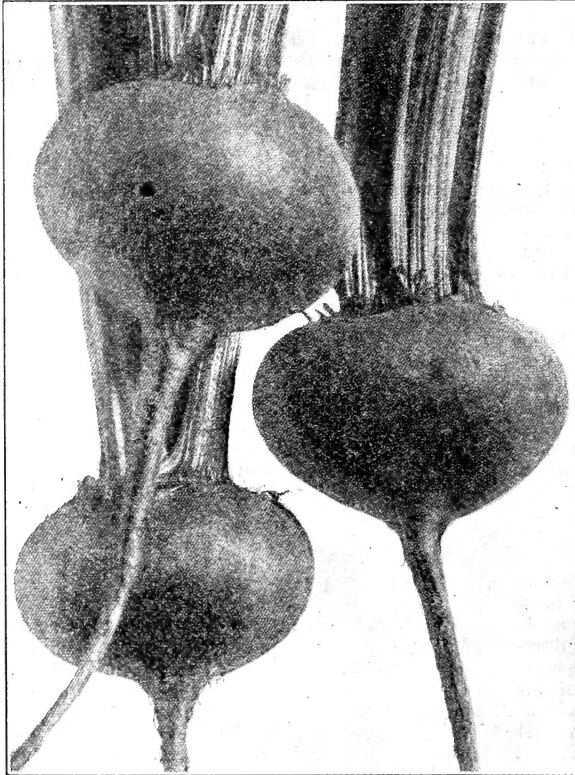
Oregon Marrow—We are able to offer a dry shell bean which has been grown in our climate for years, one that ripens even and early. Seed white.

Pkt., 10c; lb., 25c. E. or F., lb., 15c.

***Marshall's Pole Lima**—Those who are fond of a good lima or butter bean will find nothing better than this for our northwest climate. Last season this bean planted May 20th matured ripe seed before frost. The large, plump white beans are excellent shelled green or used as dry beans. We recommend this bean as it is early, hardy and prolific. This bean is fully acclimated as we have grown it for years. Our stock is somewhat limited. Postpaid, pkt., 10c; lb., 35c. E. or F., per lb., 25c.

BEETS

Plant in rows 3 ft. wide, with drill, April 1st to June 1st. Thin to 3 or 4 inches apart for table beets and 8 to 12 inches for mangels. For winter beets the later sowing is best.



CROSBY'S IMPROVED EGYPTIAN

***Early Model**—We consider this after several trials, to be the best all-round table beet for this section. Its extreme earliness, perfect uniform shape, and rich coloring throughout, make it the best market and garden beet. Entirely free from strings or core. We have grown it for market and they have given fine satisfaction. There is a big shortage on beet seed this year and prices are high. Our own grown seed.

Pkt., 10c; oz., 15c; $\frac{1}{4}$ lb., 50c; lb., \$1.60.

Detroit Dark Red—A fine beet for market or home garden. Roots of medium size, nearly round and very uniform, flesh blood red.

Pkt., 5c; oz., 15c; $\frac{1}{4}$ lb., 45c; lb., \$1.50.

Eclipse—A standard sort, very early, of globe shape, good quality, dark crimson, zoned pinkish white.

Pkt., 5c; oz., 15c; $\frac{1}{4}$ lb., 30c; lb., \$1.10.

Crosby Improved Egyptian—A standard sort, early, turnip shaped, of good color and quality.

Pkt., 5c; oz., 15c; $\frac{1}{4}$ lb., 30c; lb., \$1.10.

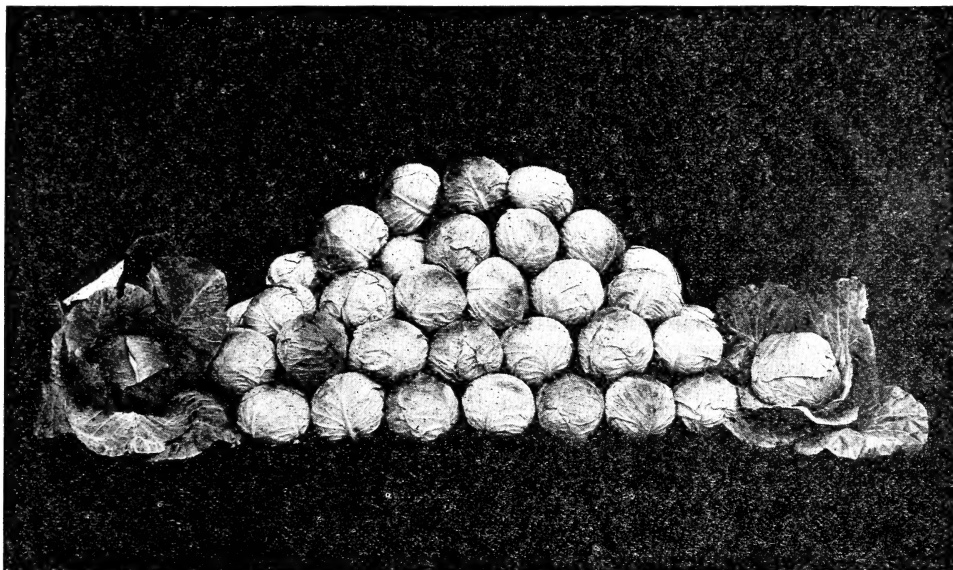
MANGEL BEETS

***Mammoth Prize Long Red**—The standard red sort, with roots often growing two feet long. Pkt., 5c; oz., 10c; $\frac{1}{4}$ lb., 15c; lb., 50c. E. or F., lb., 40c.

Golden Tankard—A smooth, yellow-fleshed mangel of large size, growing largely above ground, making it easy to harvest. A good yielder. Pkt., 5c; oz., 10c; $\frac{1}{4}$ lb., 15c; lb., 50c. E. or F., lb., 40c.

CABBAGE

Early varieties should be started in cold frame in January or February or sowed the fall previous. They can be grown in a hotbed but this is not so good as the plants become tender. The earliest cabbage can be grown by sowing seed in August or early September, then transplanting to the field in October. For late, plant seed in open ground May 1st, transplant June 15 for fall and July 1st to 20th for winter cabbage, in rows 3½ ft. apart, from 26 to 42 inches in the row, according to the richness of the soil and size of variety. Do not crowd them. They do best in a rich, loamy soil, with barnyard manure of any kind and applying 100 pounds of Utah land plaster to the acre.



DANISH BALL HEAD CABBAGE

Large Wakefield, or Charlston—Similar to Jersey Wakefield, but half again as large and 10 days later.

Postpaid, pkt., 5c; oz., 35c; ¼ lb., \$1.00.

Early Jersey Wakefield—We have a fine strain of this standard, best early cabbage, either for market or garden you will do well to try this strain of seed.

Pkt., 5c; oz., 35c; ¼ lb., 90c; lb., \$3.00.

Early Winnigstadt—Later than Jersey Wakefield, good either for summer or winter. Small pointed heads and very sweet.

Pkt., 5c; oz., 30c; ¼ lb., 75c.

***All Head Early**—A second early cabbage that is largely taking the place of the Flat Dutch, which is now considered among most growers as a back number. It is a sure header, flat in shape with light-green foliage. It is coming to the front as a kraut cabbage and for that purpose we highly recommend it, as the leaves are of fine texture and make fine kraut. It does not burst as easy as most cabbage from the rains.

Pkt., 5c; oz., 30c; ¼ lb., 90c; lb., \$3.60.

***Glory of Enkhuisen**—This splendid cabbage we recommend as the best for a summer or early fall market cabbage as it matures larger heads in hot weather than any sort we have tried. It can also be planted as a first early and will mature good large heads about the same season as Charleston Wakefield; the heads are quite deep, very tender and brittle and of the finest flavor. Even for a winter cabbage it heads fine and as a family cabbage it cannot be beaten. Our seed is from selected heads.

Pkt., 10c; oz., 35c; ¼ lb., 90c; lb., \$3.50.

***Danish Ball Head, or Hollander**—The best main crop cabbage. Hard as a rock and holds its color after cutting better than other cabbage. We have seen it lay for three weeks without turning yellow. This makes it a fine shipper and a fine retail cabbage. The market requires a small, hard-headed cabbage to bring the best sale and this variety meets this demand. It will mature heads in soil where other varieties fail. A cabbage sure to head if given half a show. Our strain is from selected heads. We have had many praises for our strain of this seed and those who grow for market should place their order with us. We grew a fine lot of this seed last summer.

Pkt., 10c; oz., 25c; ¼ lb., 80c; lb., \$3.00.

CABBAGE—Continued

Mammoth Rock Red—The best red cabbage, hard heading and large. Fine for cold salads.
Pkt., 5c; oz., 35c.

***Perfection Drumhead Savoy**—Curly, crinkled leaves, sweet and of fine texture.
Pkt., 5c; oz., 35c.

BRUSSELS SPROUTS

Matchless—A new variety of good quality. Grow some sprouts, they are fine towards spring.
Postpaid, pkt., 5c; oz., 25c.

CARROTS

Carrots may be planted from March to June. We prefer to plant from May 10 to 25, they will then miss many of the spring weeds and will stand through the dry season better, making a better quality of roots. Those who plant any quantity should use a good drill, as it lessens the work and gives a more even stand. As soon as they are up use a wheel hoe, following this with a harrow tooth cultivator. Those who have no wheel hoe can run a line of land plaster along the row as soon as the carrots show, then follow with a harrow tooth cultivator. The plaster will enable you to see the rows clearly as well as fertilize. Plant in rows 3 ft. wide.

***Early Model, or Chantenay**—We consider this the best of the table carrots. The roots are very smooth, stump-rooted and thick at the tops. The tenderest and sweetest carrot we ever grew. It will grow closer together in the rows and still mature more good-sized carrots than any other. In fact it is such a good yielder that many plant it for feeding purposes. It does not crack like some varieties. Decidedly the best carrot for market, either for sacking or bunching.

Pkt., 5c; oz., 15c; $\frac{1}{4}$ lb., 45c; lb., \$1.50.

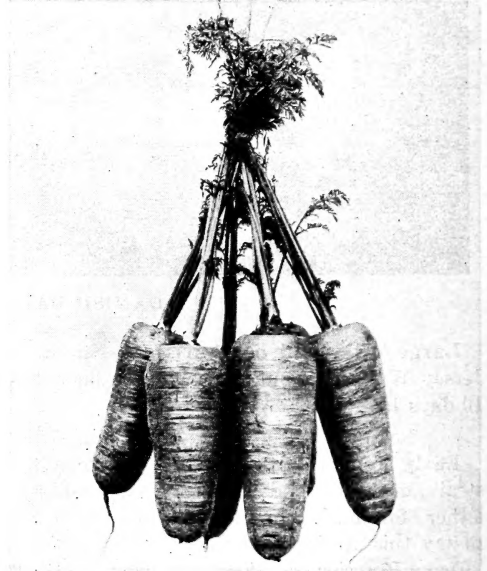
Danver's Half Long—The standard stock carrot, but we do not recommend it for table use as compared to the Chantenay. It is a heavy yielder and is largely planted. Our strain of it is extra good.

Pkt., 5c; oz., 15c; $\frac{1}{4}$ lb., 45c; lb., \$1.50.

Large White Belgian—Long-rooted white stock carrot, very heavy yielder. Postpaid, pkt., 5c; oz., 10c; $\frac{1}{4}$ lb., 30c; lb., \$1.00.

Improved Short White—Half long roots, smooth and heavy at the shoulder. Easy to harvest.

Pkt., 5c; oz., 15c; $\frac{1}{4}$ lb., 40c; lb., \$1.00.



CHANTENAY CARROT

CAULIFLOWER

For early Cauliflower the same culture as for early cabbage may be used. For late cauliflower, in the descriptions of the varieties offered, the time of planting seed and plants is given. Cauliflower does best in a rich loamy soil, not a cold, wet location. Plant 3 to 3½ feet in rows and 3½ feet between rows. As soon as the heads are large enough to soon be exposed to the light, tie or break the leaves carefully over the head to keep the light away from them.

Earliest of All—The earliest and best of the first early cauliflower. Extra heavy heads of the purest white color. A splendid cauliflower for early.

Pkt., 25c; $\frac{1}{4}$ oz., \$1.00; oz., \$3.00.

Select Early Snowball—A superior strain of this much planted early cauliflower.

Pkt., 20c; $\frac{1}{4}$ oz., \$1.00; oz., \$2.50.

CAULIFLOWER—Continued

Burpee's Best Early—This large, early cauliflower makes extra solid and perfect heads, very tender and brittle. We recommend this as the best cauliflower we have grown. For main crop the seed should be sown June 1st to 10th and transplanted July 20th to 25th. They will head during October. The seed is expensive, but will certainly pay you to plant. We have grown this variety for years with gratifying results.

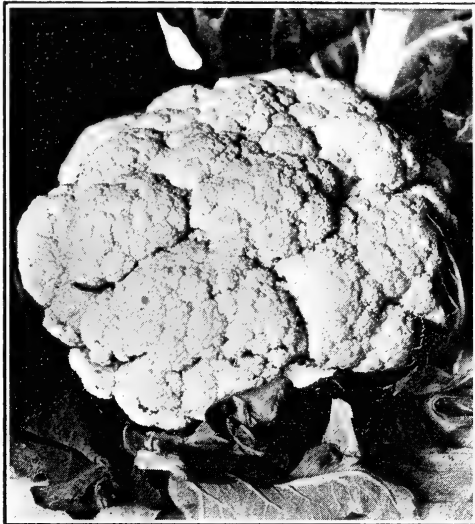
Pkt., 25c; $\frac{1}{4}$ oz., 85c; oz., \$3.00; $\frac{1}{4}$ lb., \$10.00.

Burpee's Dry Weather—This variety has exceptional merit in resisting dry weather and we find it the best for the first cauliflower as it withstands the dry weather. Similar to Best Early, but a little darker foliage. Can be planted for early spring or sow seed April 15th in open, transplant June 15th for early fall or September cauliflower.

Pkt., 25c; $\frac{1}{2}$ oz., \$1.75; oz., \$3.00.

Veitch's Autumn Giant—A hardy tall-growing cauliflower, making extra large white heads. The leaves are dark green and being extra long can easily be broken over the heads to protect them. For years we have grown acres of this cauliflower for the Portland market and it has always given good satisfaction. Stands handling and shipping better than Best Early or Dry Weather. Remarkably vigorous and thrifty. For late cauliflower, season of Oct., Nov. and Dec., sow seed in open bed May 1st, transplant July 1st to 15th.

Pkt., 10c; oz., 50c; $\frac{1}{4}$ lb., \$1.50.



Veitch's Autumn Giant Cauliflower

Mammoth White Broccoli—A late variety season December to February. Long, tapering, heavy ribbed leaves, inner leaves curling about the head. While considered a broccoli, it is really only a late cauliflower. Brings fancy prices, but the grower must take chances on freezing in the northern part of the state.

Pkt., 10c; oz., 50c; $\frac{1}{4}$ lb., \$1.25.

***Early Large White French Broccoli**—This variety planted in July heads the next spring in April and is largely sold in Portland as a cauliflower, which it really is, broccoli being the name applied to extra hardy cauliflowers.

Pkt., 5c; oz., 45c; $\frac{1}{4}$ lb., \$1.30.



CELERY

Golden Self-Blanching—The standard of the golden celeries and very popular everywhere. It is dwarf, compact in habit with thick, solid stalks which blanch a pretty waxy yellow. French grown seed of superior quality. Pkt., 10c; $\frac{1}{2}$ oz., 50c; oz., \$1.00.

Giant Pascal—Extra large growing sort for fall and winter use and planted very extensively. Blanching yellowish-white in color. Stalk tender and crisp.

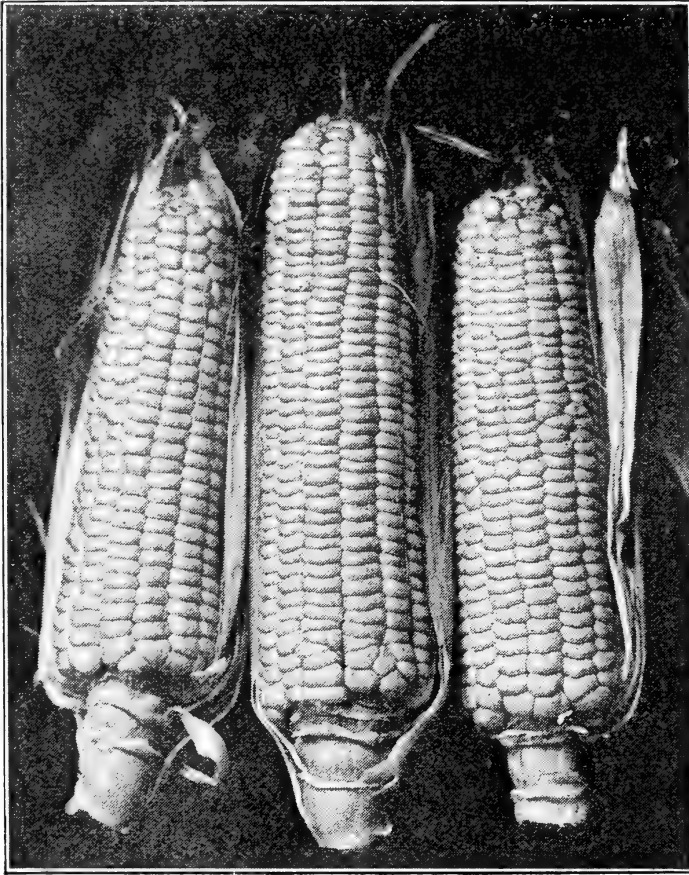
Pkt., 5c; oz., 25c; $\frac{1}{4}$ lb., 75c.

White Plume—We offer a good strain of this standard sort. Pkt., 5c; oz., 30c; $\frac{1}{4}$ lb., \$1.00.

SWEET CORN

The prices paid for first early corn pays the grower to take chance on early planting. For this planting use 4 or 5 seeds per hill, and cover one inch deep. Space hills 3 feet and rows $3\frac{1}{2}$ feet allowing two stalks to the hill, or as some prefer and we think this gives the best results, plant 20 inches between hills, and thin to one stalk, this gives all the stalks an even show. April 20 to May 1 is generally good season for early corn, of course, depending on the weather. May 15th to 25th is good for the later sorts, as they do not resist damp, cold weather so well as the early sorts.

Corn will not fill well unless the patch planted is blocked out; those planting small quantities should make the patch square, or nearly so. This will permit the pollen to blow down on the silk, fertilizing the ears. Early corn may be planted in succession up to June 25th.



GILL'S PORTLAND MARKET SWEET CORN

Gill's Portland Market—We are having a great run on this, the largest first early corn we believe there is in existence. Long before the corn planting season was over last spring we were sold out of this seed. This corn is the result of several years careful selection and breeding up from an 8 and 10-rowed corn, called the Oakview Market. The ears now run 12 to 16 rows and are often one foot in length. They are as large as many of the second early sorts, while those who grew corn from this seed last spring, in our vicinity, were the first to market true sweet corn. The stalks are very short and small to carry such large ears; in fact, some of our visitors

PORTLAND MARKET

The Earliest, Large-Eared Sweet Corn ever introduced.

Uniform, vigorous, prolific and hardy.

The result of years of careful selection at our farm.

remarked "that they were all ears." It matures very even, the husks are thin, making the mature ears easy to detect. On trial with a dozen "Earliest of All" corn this came out in the lead with marketable ears. You will make no mistake to plant this corn for early garden or market. Seed of selected ears, 2 oz. pkt., 10c; $\frac{1}{4}$ lb., 15c; lb., 30c. E. or F., lb., 20c.

Gill's Early Market—We consider this the earliest sweet corn in existence. It is an early selection from our popular Portland Market corn and is fully ten days earlier than that variety. Portland Market is among the very earliest and when you realize that this is still earlier you will understand the market

SWEET CORN—Continued

value of this corn. The ears are not so large as Portland Market but are of good size and well filled. "The early bird gets the worm" and you can get the money with this corn."

Pkt., 15c; lb., 35c. E. or F., lb. 25c.

***Howling Mob**—A large-eared, vigorous-growing, second early corn. Now considered to be the best corn for late use through this section. It can be planted in succession so as to have corn until frost. Stalks grown 5 to 7 feet produces 12 to 16 rowed ears and is of good flavor. Pkt., 10c; ¼ lb., 15c; lb., 30c. E. or F., lb., 20c; 10-lbs. or more, at 15c lb.

***Crosby's Early**—A standard corn in the East and as sweet as any white corn. Small, deep grains, set close together, 12 to 18 rows, stalks medium. Follows the first early corns. in season.

Pkt., 10c; ¼ lb., 15c; lb., 30c; E. or F., lb., 20c

Stowell's Evergreen—Standard late sort. Rather late for this climate. Often used for fodder. Pkt., 10c; lb., 25c. E. or F., lb., 15c.

***Golden Bantam**—This corn was the sensation of the corn market last summer and will be one of the best sellers next season. With-

out doubt the sweetest, prettiest and most delicious corn yet introduced. The ears are of medium size, set two and three to a stalk. The kernels are of a rich golden-yellow color, which, together with its thin skin makes it superior for table use. It is about two weeks later than Portland Market, but stands extra early planting. Whether for market or home garden you cannot afford to miss planting this splendid corn. Seed from ears selected at our farm last summer. For quality we think there is no corn superior, and on the market it took like wildfire. We have been making a careful selection on this corn and have succeeded in increasing its size. A good per cent of the ears will contain ten and twelve rows to the cob. Our home grown seed of this corn is unexcelled. Pkt., 10c; lb., 30c. E. or F., lb., 20c; 10 or more lbs., at lb. 15c.

Pop Corn

***White Rice**—The standard white sort.

***Red Rice**—Bright red grains of fine quality. Price of both sorts, pkt., 5c; ¼ lb., 10c; lb., 25c. E. or F., lb., 15c.

FIELD CORN

***Oregon Yellow Dent**—An Oregon grown acclimated sort that does well in the northwest. Large deep yellow grains.

Pkt., 10c; lb., 20c; E. or F., lb., 12c; 10 lbs., at 10c.

***Minnesota No. 13**—One of the earliest of all field corn and one well adapted to our Northwest conditions. Grains golden yellow, deep and heavily dented.

Pkt., 10c; lb., 20c; E. or F., lb., 12c; 10 lbs., at 10c lb.

Pride of the North—An early maturing corn with 12 to 16 rowed ears and deep yellow grains. Pkt., 10c; lb., 20c; E. or F., lb., 12c; 10 lbs., at 10c lb.

CUCUMBERS

Plant 4 feet each way in rich loamy soil, from April 15 to June 1, 8 to 10 seeds to hill; thin to three good vines. Cover seeds one inch deep and press firm.

Davis Perfect—This new cucumber is taking front rank for a garden or slicing cucumber. The most vigorous and thrifty grower we have tried. Produces a heavy yield of uniform, long, dark-green cucumbers. Holds its color good after marketing. Postpaid, pkt., 5c; oz., 15c; ¼ lb., 40c; lb., \$1.25.

Earliest of All—A type of White Spine cucumber that is among the very earliest.

Pkt., 5c; oz., 15c; ¼ lb., 40c; lb., \$1.25.

Improved Long Green—Extra long, large cucumbers; fine for slicing, pickling or for sweet pickles when ripe. A very vigorous and healthy grower. Postpaid, pkt., 5c; oz., 15c; ¼ lb., 40c; lb., \$1.25.

Emerald—An intensely dark green cucumber with very smooth skin. It positively will not turn yellow when picked. Even when ripe remains dark green. Flesh is crisp, white and tender. Fine for shipping. Postpaid, pkt., 5c; oz., 10c; ¼ lb., 30c; lb., \$1.00.



Snake Cucumbers—A great curiosity for fairs. Long cucumbers, 3 to 5 feet long, which curl like a snake. Pkt., 10c.

Boston Pickling—The most generally planted for pickles through this section. Medium sized and a vigorous grower. Postpaid, pkt., 5c; oz., 10c; ¼ lb., 30c; lb., \$1.00.

CUCUMBERS—Continued

Thorburn's Everbearing—A splendid pickling cucumber, very vigorous, bearing through a long season. Medium sized and very uniform. This ranks among the best of the pickling sorts. Pkt., 5c; oz., 10c; $\frac{1}{4}$ lb., 40c; lb., \$1.25, postpaid.

KALE

Culture, same as that of cabbage.

Tall Green, Scotch Curled—Tall and finely curled leaves. Pkt, 5c; oz, 15c; $\frac{1}{4}$ lb., 25c; lb, 75c.

Dwarf German—Finely curled, low growing. Pkt., 5c; oz., 15c; $\frac{1}{4}$ lb., 25c; lb., 75c.

***Thousand-Headed Kale**—Planted extensively for green feed during winter for stock. Our seed is grown from selected plants.

Pkt., 5c; oz., 10c; $\frac{1}{4}$ lb., 15c; lb., 50c.

Japanese Climbing—An exceptionally fine slicing cucumber, being very free from any bitter taste. Heavy yielder of large, long cucumbers.

Postpaid, pkt., 5c; oz., 15c; $\frac{1}{4}$ lb., 40c.

KOHL RABI

Early White Vienna—The best for table use. Kohl Rabi should be more grown, as it is a delicious vegetable, cooked like turnips. Transplanted like cabbage in July; rows $3\frac{1}{2}$ feet wide and 1 foot in rows. Pkt., 5c; oz., 25c

LEEK

Monstrous Carentan—Culture same as onions. Large size. The best.

Pkr., 5c; oz., 20c; $\frac{1}{4}$ lb., 50c.

LETTUCE

Can be planted most any time of the year. Give head varieties plenty of room. Cover one-half to one inch deep.

Head Lettuce

New York—The finest head lettuce for flavor, large heads of dark green color, extra tender and brittle. Produce mild heads even in the heat of summer. During the winter months this variety is shipped to our markets from California. While not early we recommend it for the garden or for main crop market lettuce. Don't leave this off your order if you are fond of good head lettuce. It is very slow to run to seed. We have many customers who are enthusiastic over this lettuce.

Pkt., 5c; oz., 20c; $\frac{1}{4}$ lb., 60c; lb., \$1.75.

Hanson—In our trials last summer of some thirty varieties of lettuce, New York and Hanson proved the best summer lettuce, heading solid, tender and sweet, even in the hot weather of last July. Too much can not be said in favor of this old standard.

Pkt., 5c; oz., 20c; $\frac{1}{4}$ lb., 60c; lb., \$1.75 postpaid.

Big Boston—One of the best head sorts for fall sowing as it is exceptionally hardy. Plants large, leaves broad, comparatively smooth, with wavy edge, hard and crisp; color bright, light green slightly tinged with reddish-brown.

Pkt., 5c; oz., 20c; $\frac{1}{4}$ lb., 60c; lb., \$2.00.

The Keene—In our trials the earliest head lettuce we had, forming compact heads of medium size which lasted well. A fine first spring head lettuce which we recommend.

Pkt., 5c; oz., 25c; $\frac{1}{4}$ lb., 75c; lb., \$2.00.

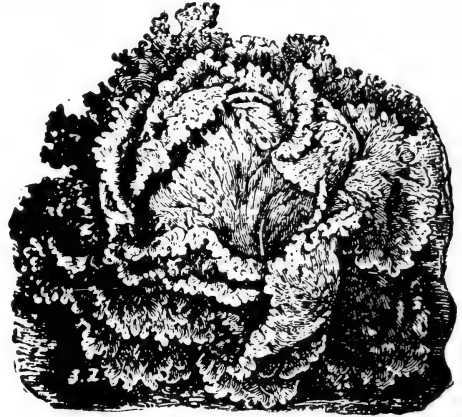
Loose Leaf Lettuce

Bon Ton—A very large, quick-growing, loose-leaf lettuce of the Simpson type; light green leaf, very broad and slightly wrinkled. We recommend this for family use.

Pkt., 5c; oz., 20c.

Tomhannock—A beautiful loose-leaf lettuce with a reddish-brown border to the edge of the leaf. A quick grower of very tender, sweet leaves, entirely free from bitterness. Can be eaten with relish in the patch.

Pkt., 5c; oz., 15c.



NEW YORK LETTUCE

Crisp as Ice—It was the most uniform head lettuce in our grounds. Heads compact of a bronze red color, maturing very even. A beautiful lettuce for the table and should become a good seller. Pkt., 5c; oz., 15c; $\frac{1}{4}$ lb., 60c.

California Cream Butter—A fine butter-head lettuce, rich in flavor, head large, fairly compact, outer leaves light green; heart a beautiful golden butter.

Pkt., 5c; oz., 15c; $\frac{1}{4}$ lb., 35c; lb., \$1.25, postpaid.

Grand Rapids—The standard hot-house lettuce, for forcing, also does fine in the open ground. Loose leaves of a light green color and fringed edges.

Pkt., 5c; oz., 15c; $\frac{1}{4}$ lb., 45c; lb., \$1.50.

COS LETTUCE.

Early White Self-Folding—Leaves yellowish white, crisp and tender; forms sugar loaf heads; bleaches better if tied.

Pkt., 5c; oz., 20c.

Musk Mellons

Melons require a light, loamy, rich soil in an early location. Plant 4 by 6 feet, giving more room for larger varieties. Use 8 or 10 seeds to the hill; cover 1 to 1½ inch deep. When the first leaves appear thin to two plants. Turn the vines with the row to permit cultivation.

Emerald Gem—Truly the gem of red-fleshed melons. The dark green fruit is of medium size, flattened at both ends. The flesh is thick, sweet and melting, with a rich spicy flavor. An early melon, well adapted to this section. The melon has few nettings, but our seed is saved from the more netted types, making them better for shipping.

Pkt., 5c; oz., 15c; ¼ lb., 40c; lb., \$1.50, postpaid.

Original Pineapple—We consider this the best of the green-fleshed melon for the northwest. The vines are very vigorous, producing a heavy yield of good-sized, heavily-netted melons, which are somewhat elongated in shape. The meat is thick, sweet and spicy flavored. This early melon should certainly be more planted.

Pkt., 10c; oz., 25c; ¼ lb., 45c; lb., \$1.50.

Extra Early Hackensack—Produces melons two weeks earlier than the well-known Hackensack; heavily netted, and has light green flesh of most delicious flavor; a splendid Cantaloupe melon. Large, fine form; grown for the home garden very extensively.

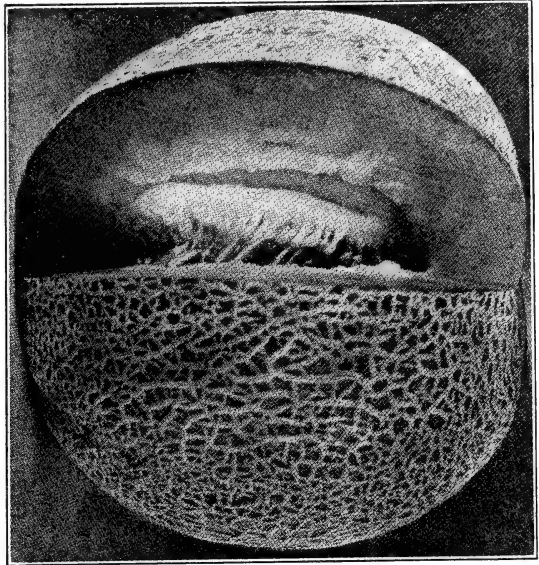
Pkt., 5c; oz., 15c; ¼ lb., 40c; lb., \$1.25.

Early Green Citron—The earliest of all musk melons and will ripen where no others will. Flesh whitish-green, but not as rich flavored as the later sorts. Pkt., 5c; oz. 20c.

Banana—Long fruit, fifteen to twenty inches, flesh salmon colored. A curiosity as well as being good to eat. Pkt., 5c; oz., 20c.

Netted Gem or Rocky Ford—The standard shipping melon, medium size, with small seed cavity; green meated, spicy and sweet. Will not ripen except in those localities well suited to melon culture.

Pkt., 5c; oz., 10c; ¼ lb., 30c; lb., \$1.00, postpaid.



EXTRA EARLY HACKENSACK

Livingston's Ohio Sugar—This grand new melon, while not early, will ripen in this section. The melon is of medium size, nearly round, grey-green in color, flesh thick, dark green, exceptionally sweet. Considered a good shipper. Claimed by Mr. Livingston to be the sweetest melon in existence.

Pkt., 5c; oz., 30c; ¼ lb., 75c.

WATER MELLONS

Plant 8 to 10 seeds in hills 6x6. Thin to 2 best vines. Turn vines with the row. Plant May 1st to 20th.

Kleckley Sweets—A medium early melon, 18 to 20 inches long and 8 to 10 inches thick; one of the sweetest of watermelons. Good for near market.

Pkt., 5c; oz., 10c; ¼ lb., 30c; lb., \$1.00.

Halbert Honey—Claimed to be superior to Kleckley sweets as it is more uniform, of darker color and more vigorous.

Pkt., 5c; oz., 10c; ¼ lb., 30c; lb., \$1.00.

Hungarian Honey—A small round, thinned melon with rich, red flesh. Extra early and sure to ripen even in the coolest season. Those who try it once will always have them in the garden for home use, they are so sweet.

Pkt., 5c; oz., 15c; ¼ lb., 40c; lb., \$1.25.

Preserving Citron—Red-seeded, oval fruits, used for preserves. Pkt., 5c; oz., 10c.

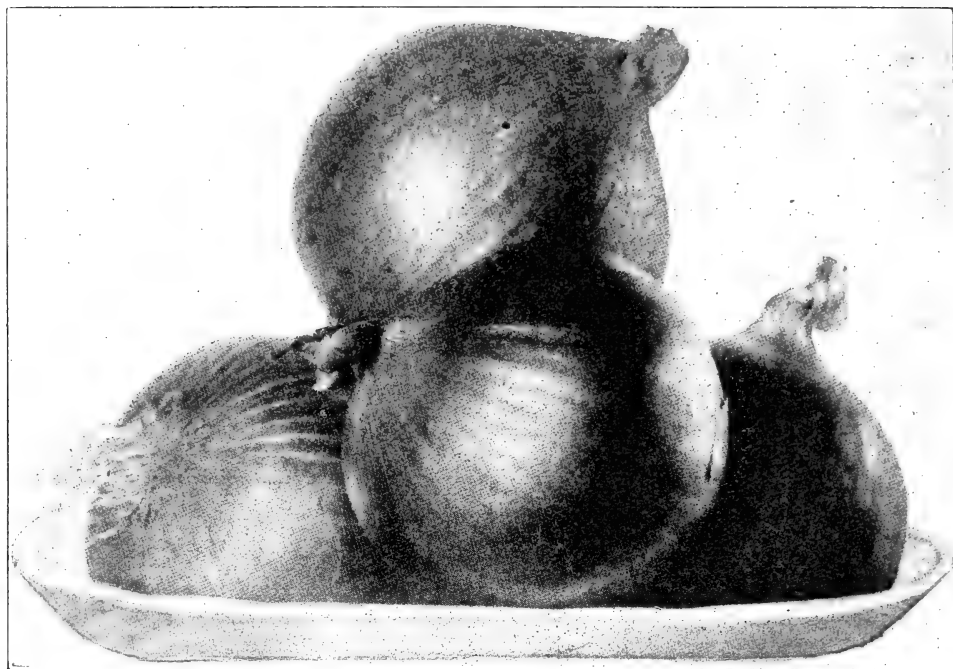
ONIONS

A rich loam is best, fertilized with well rotted manure at least one year old. Sow seed in February or March if the condition of the ground and the weather will permit. Sow with drill in rows 12 to 16 inches apart; cover half inch deep. Hoe with wheel hoe as soon as they are up, but do not more than scalp the surface, as onions do not stand deep cultivation. Thin them to about 8 plants to the foot. It requires about 4 lbs. of seed to the acre. Onions are peculiar in that they do well year after year on the same ground.

***Select Oregon Yellow Danvers**—This variety is largely planted through the northwest. The onions are large, half globe shape, with small necks; early and heavy yielders. We

handle a fine strain of this seed, which is grown for us by an onion specialist who has been growing fine onions for several years in Oregon. Onions are a crop where it is imperative

ONIONS—Continued



SOUTHPORT YELLOW GLOBE

that good seed be used and this will give the very best of results.

Pkt., 10c; oz., 20c; $\frac{1}{4}$ lb., 70c; lb., \$1.75.

Southport Yellow Globe—Medium sized, globe shaped, with smooth, glossy surface and deep rich yellow color. Onions mature even, are uniform and have small necks. Selected seed. Pkt., 5c; oz., 25c; $\frac{1}{4}$ lb., 75c; lb., \$2.25.

Oregon Yellow Danvers—This grade is used for growing onion sets.

Pkt., 5c; oz., 10c; $\frac{1}{4}$ lb., 25c; lb., 75c.

Large Red Wethersfield—The standard red sort, of large size, flattened onions of purplish red; very productive and good shippers. Pkt., 5c; oz., 20c; $\frac{1}{4}$ lb., 50c; lb., \$1.75, postpaid.

PARSNIPS

Culture same as carrots, except time of planting, which should be about May 1st.

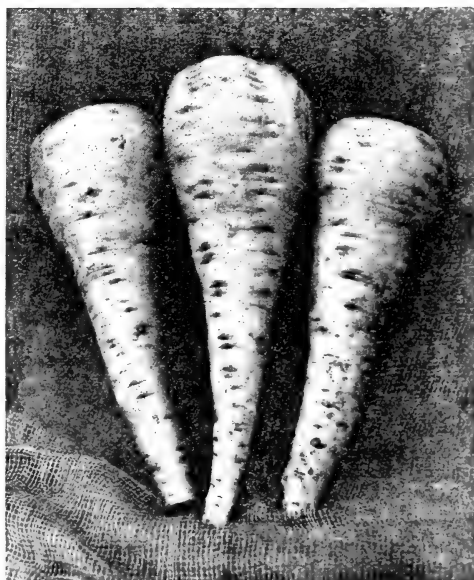
***Gill's Tender Heart**—This strain is developed from seed we received over twenty-five years ago from an old resident in Portland, which proved so far superior to any other that we never ran out of the seed, but have been selecting from the best from year to year. Unlike other parsnips the heart is tender, never tough; roots are smooth, hollow crown, thick and heavy at the top, tapering abruptly, making it easy to dig. We have the exclusive seed of this champion garden or market parsnip. Do not fail to try this parsnip, for it is unexcelled anywhere.

Pkt., 5c; oz., 15c; $\frac{1}{4}$ lb., 25c; lb., 75c, postpaid.

Parsley

***Dark Moss Curled**—Dark green mosslike leaves. One of the very best sorts.

Pkt., 5c; oz., 10c; $\frac{1}{4}$ lb., 30c; lb., \$1.00.



TENDER HEART PARSNIP

PEAS

Plant as early as the ground can be worked in the spring. Peas will not reach perfection if planted after May first, although they will make a fair crop. They should be well rooted before warm weather begins.

Early Morn

The Finest Early Pea to Date

***Early Morn**—This grand new pea is the earliest of the wrinkled peas; ahead of either Gradus or Thomas Laxton. The size of the pods is enormous for such an early pea, many pods containing eight to ten peas. This is an exceptionally heavy yielder and vigorous, growing three to four feet high. The coming money-maker in peas.

Imagine pods as large as Telephone peas and a few days ahead of Gradus. Those who planted this pea last year were surprised and are loud in their praise for it. The peas are dark green, large and of the finest flavor.

Pkt., 2oz., 10c; ¼ lb., 15c; lb., 40c; E or F, lb. 30c.

***Thomas Laxton**—An extra early wrinkled pea only three or four days later than Gradus. Pods square at the ends, dark green color. The sweetest of the first early peas and a very heavy producer. Vines grow two to three feet high. True seed.

Pkt., 10c; lb., 35c; E. or F., lb., 25c.

***American Wonder**—This old stand-by is too well known to need description. A dwarf early growing pea; very productive and sweet as sugar in flavor. True seed.

Pkt., 10c; lb., 30c, postpaid; E. or F., lb. 20c.

Alaska—A favorite for fall or early spring planting. Extra early smooth pea with small pods. Exceedingly hardy and stands very early planting.

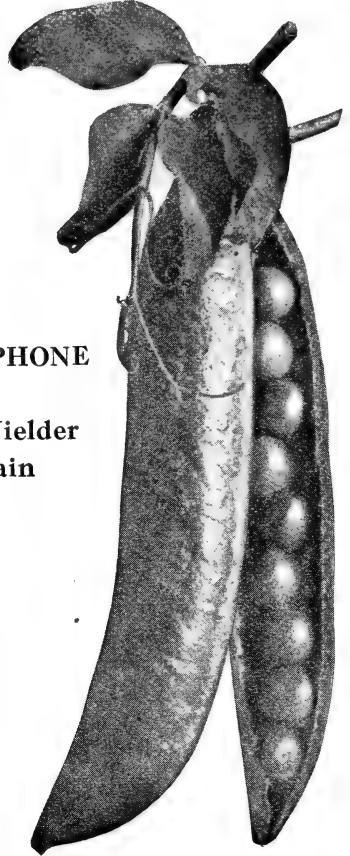
Pkt., 10c; lb., 30c, postpaid; E. or F., lb., 20c.

***Telephone**—The standard main crop pea; tall growing habit, vine, pod and peas of light green color and enormous yielder and one of the best sellers on the market.

The seed we offer is true Telephone and can be relied upon.

Pkt., 10c; lb., 30c, postpaid; E. or F., lb., 20c.

***Prize Winner**—This grand new pea makes the largest individual seed of any pea we ever saw. The pods are large, containing 8 to 10



TELEPHONE PEAS

Best Yielder
for Main
Crop

of these enormous peas, which are of the finest quality. Grows to medium height. This is well worthy of a trial, either for home or market. 2 oz pkt., 10c; lb., 40c, postpaid.

POTATOES

Plant early kinds as early as the ground will work. Late varieties May 20 to June 20. Rows 3½ feet wide, 20 inches in row. Cut to one or two eyes.

EARLY VARIETIES

***Early White Albino**—Among the very earliest, pure white tubers, slightly flattened, flesh white and fine grained. This potato will mature early enough to permit second crop of cabbage, cauliflower, ruta bagas, etc.

***Early Sunrise**—Long, white tubers of fine quality and a heavy yielder and is being largely planted instead of Early Rose.

***Early Rose**—The old favorite, true seed.

***Big Cropper**—This enormous yielder, while yet little known on this coast, we think will soon be a leader. Tubers pure white, somewhat flat and of good length. It is early; in season about the same as Early Rose or Sunrise. The most vigorous grower we have yet seen in an early potato. It is of good quality and cooks in good shape. Growers will make no mistake in planting this potato.

***American Wonder**—White tubers similar

in shape to the Burbank. Ripens about the same season as Early Rose.

LATE VARIETIES

***Snow**—We have grown this for two seasons and are well pleased with it. Nearly every potato grows perfect in shape, roundish, slightly flattened, with snow-white skin and flesh. Produces very few unsalable potatoes. Can be planted closer than the Burbank and still produce good sized tubers.

***Pride of Multnomah**—A new potato that is superior to the Burbank. A strong, vigorous grower producing perfect white potatoes of the Burbank shape.

***Burbank**—The standard sort.

***Garnet Chilli**—The standard shipping red potato.

PRICES ON POTATOES

By mail postpaid at 25c per lb.; 3 lbs. for 60c. For quantity please drop us a card.

PEPPERS

Start plants in hot beds or in pots in a warm room in March. Transplant in open ground May 10 to 20, rows $3\frac{1}{2}$ feet wide, 2 feet in rows.

Chinese Giant—The largest of the mild red peppers. One of the best for stuffing. A little later than Crimson Giant.

Pkt., 10c; $\frac{1}{2}$ oz., 35c; oz., 60c.

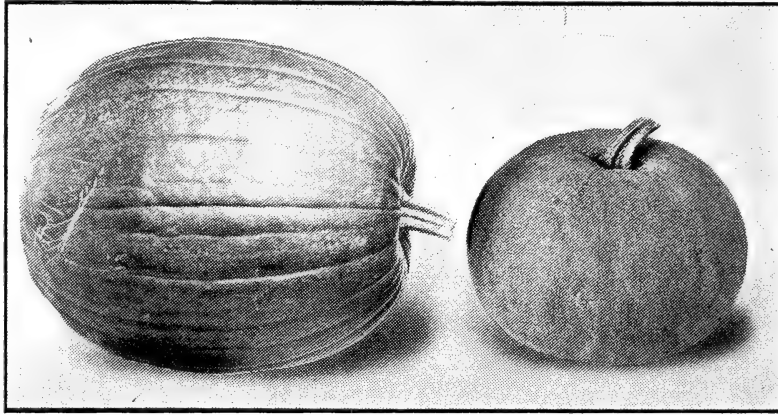
Golden Dawn—Golden-yellow pepper; mild and sweet. Per pkt., 5c; oz., 30c; $\frac{1}{4}$ lb., 85c.

***Crimson Giant**—Decidedly the best pepper for the Northwest. Extra large peppers,

three to four inches thick and five to six inches long; of beautiful crimson when ripe. Their large size make them fine for stuffing. It ranks among the earliest and most prolific. Similar to Chinese Giant. Our own grown seed.

Pkt., 10c; $\frac{1}{4}$ oz., 15c; $\frac{1}{2}$ oz., 30c; 1 oz., 55c; $\frac{1}{4}$ lb., \$1.50.

PUMPKINS



Connecticut Field

Winter Luxury Pie Pumpkin

Plant May 10 to 20 in rows 10 feet wide and 8 feet in the row; about 8 or 10 seed to the hill; thinning to two good plants. Turn vines with the row to permit cultivation. Use 200 lbs. Utah plaster to the acre, plowing it in.

***Winter Luxury Pie**—This is fast becoming the standard pie pumpkin wherever it becomes known. We were among the first to introduce this pumpkin to the Portland trade and have many customers who will refuse every other. Medium sized covered with heavy nettings, the flesh is thick, of rich yellow color and cooks fine grained without strings, and requires much less of eggs to make good pies than other kinds. A good keeper and very prolific. Our strain of seed produces fruit of rich, orange colored skin, while that usually offered is of lemon yellow type. We have also bred up the size of this pumpkin.

Pkt., 10c; oz., 15c; $\frac{1}{4}$ lb., 30c; lb., \$1.00, postpaid.

Thanksgiving, or Improved Large Cheese—Heavy, thick meated pumpkins with deep salmon flesh, cooks fine grained and sweet; excellent for pies. Rather flat fruit, flesh orange color. A heavy yielder and fine for stock.

Pkt., 5c; oz., 15c; $\frac{1}{4}$ lb., 40c; lb., \$1.25.

***Connecticut Field, or Jack O'Lantern**—The common field pumpkin grown for stock feeding and jack lanterns. Some prefer it for pies. Our seed is carefully selected for jack lantern shapes. Rich orange colored skin. Pkt., 5c; oz., 10c; $\frac{1}{4}$ lb., 20c; lb., 50c, postpaid; E. or F., lb., 40c.

RADISH

Can be sown most of the year around.

White Pearl—The best of the white radishes; roots five to seven inches long; of a beautiful pearly white color. Stands fine without going woody. Similar in shape to White Icicle, but superior in quality. Flesh tender, crisp and sweet.

Pkt., 5c; oz., 15c; $\frac{1}{4}$ lb., 30c; lb., 90c.

Early Scarlet Turnip, White Tipped—Turnip-shaped radishes, scarlet with white tips. A popular market radish sold by the vegetable men the year around. Excellent quality and extremely early.

Pkt., 5c; oz., 15c; $\frac{1}{4}$ lb., 25c; lb., 85c.

Crimson Giant—A crimson turnip-shaped radish that combines large size with extreme earliness. A splendid radish that does not go pithy very soon.

Pkt., 5c; oz., 15c; $\frac{1}{4}$ lb., 30c; lb., 90c.

Long Bright Scarlet, White Tipped—A beautiful radish; clear, bright scarlet, the roots of which grow about six inches long, are tipped white. This is a fine radish of good quality.

Pkt., 5c; oz., 15c; $\frac{1}{4}$ lb., 25c; lb., 80c.

Long Black Spanish—Long black winter radish. Sow in August.

Pkt., 5c; oz., 15c; $\frac{1}{4}$ lb., 25c; lb., 80c.

RADISH—Continued

Cincinnati Market—An excellent radish of scarlet color; five to seven inches long; skin very thin, flesh crisp, brittle and of good flavor.

Pkt., 5c; oz., 15c; $\frac{1}{4}$ lb., 25c; lb., 80c.

White Icicle—A splendid white radish of long shape and with mild flavor. This radish is a general favorite.

Pkt., 5c; oz., 15c; $\frac{1}{4}$ lb., 30c; lb., 90c.

Early Scarlet Turnip—A round red turnip radish of fine quality that does not go pithy so soon as many other early sorts.

Pkt., 5c; oz., 10c; $\frac{1}{4}$ lb., 20c; lb., 85c.

Scarlet China—Roots of bright scarlet color; fine quality. Sow in September for winter use.

Pkt., 5c; oz., 15c; $\frac{1}{4}$ lb., 25c; lb., 80c

Spinach

Sow in drills 16 to 20 inches apart; thin to 6 inches. For early spring use sow in the fall, or sow in early spring for later use.

Victoria—A good long standing sort, with large, thick, dark green leaves, slightly crumpled Good for market or garden.

Pkt., 5c; oz., 10c; $\frac{1}{4}$ lb., 15c; lb., 45c.

Savoy Leaved—An early sort generally used for fall sowing. Leaves crumpled. A hardy, rapid grower.

Pkt., 5c; oz., 10c; $\frac{1}{4}$ lb., 15c; lb., 45c.

Long Standing—Dark green, smooth leaves very long standing.

Pkt., 5c; oz., 10c; $\frac{1}{4}$ lb., 15c; lb., 45c.

Sunflower

***Mammoth Russian**—This is one of the heaviest yielders and produces extra large heads well filled with large plump seed.

Pkt., 5c; oz., 10c; $\frac{1}{4}$ lb., 15c; lb., 30c, post-paid; E. or F., lb., 20c.



WHITE PEARL RADISH

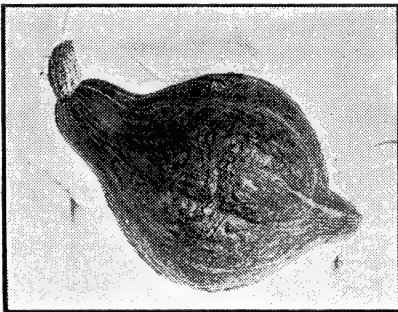
Salsify or Vegetable Oyster

Mammoth Sandwich Island—A good sort and most generally planted. Cultivate same as carrots.

Pkt., 5c; oz., 15c; $\frac{1}{4}$ lb., 40c; lb., \$1.25.

SQUASH

Plant from May 10th to 20th in hills 10 feet by 10 feet. 8 to 10 seeds to the hill. Thin to two strong vines. Sow 200 pounds of land plaster to the acre and plow in.



TRUE HUBBARD

Stickler's Summer Crookneck—Grows larger than the common sort. Fine for summer use.

Pkt., 5c; oz., 15c; $\frac{1}{4}$ lb., 30c.

Mammoth White Bush Scallop—Early; large, pure waxy white skin, somewhat flattened in shape.

Pkt., 5c; oz., 15c; $\frac{1}{4}$ lb., 30c.

Symes' Blue Hubbard—Of light bluish-green color. This new introduction of Mr. Gregory, the squash man, convinced us last season that it would yield heavier than the Hubbard and the quality is as good or better. Similar in shape to the Hubbard. The shell is very hard and will no doubt be a fine keeper.

Pkt., 10c; oz., 20c; $\frac{1}{4}$ lb., 50c; lb., \$1.50.

***Delicious**—Mr. Gregory's late introduction; we consider the finest grained, driest cooking and sweetest squash in cultivation. Of medium size, top shaped with greenish-black skin, flesh very thick, orange-colored with small seed cavity. Try this squash and be convinced that it is the best that grows. True seed of our own growing.

Pkt., 10c; oz., 15c; $\frac{1}{4}$ lb., 35c; lb., \$1.25.

***True Hubbard**—The standard squash, and while we do not consider it equal to the Delicious in flavor, it is a heavier yielder and is better known in the market. We have a true stock of seed, carefully selected for color, shape and quality.

Pkt., 5c; oz., 15c; $\frac{1}{4}$ lb., 40c; lb., \$1.25.

TOMATOES

Plant seed in box inside or in hotbed from February 15 to March 1. Transplant May 10 to 20, in rows 6 feet wide and 5 to 6 feet in rows. A light loamy soil well cultivated and fertilized is best.

Gill's Select Earliana—The earliest, smooth, first-class tomato, and will ripen a full crop in the northwest states. Fruit a bright red, very smooth, deep from stem to blossom end; very solid with few seeds and of fine flavor. Sets plenty of tomatoes that ripen in a short season. In selecting our stock seed in the season of 1910 we found one cluster of fruit which ripened even all over, not having any green color about the stem so common with this and many other varieties. Our seed is now all grown from this start, producing a more even colored Earliana than any yet offered. Pkt., 10c; oz., 75c.

Early Dwarf Quarter Century—Earliest of the dwarf or tree tomato type, and is claimed to be superior to Dwarf Champion. The fruit is bright red, solid and meaty, smooth and free from cracks. Pkt., 10c; oz., 40c; $\frac{1}{4}$ lb., \$1.25.

***Chalk's Early Jewel**—A reliable sort; while larger fruited than Bonny's Best, it is not quite so uniform in shape; a heavy yielder of good flavored fruit. Our seed is carefully selected. Pkt., 5c; oz., 40c; $\frac{1}{4}$ lb., \$1.10.

Dwarf Champion—Purplish pink tomato of the tree type. This is a standard second early. Pkt., 5c; oz., 35c; $\frac{1}{4}$ lb., \$1.00.

Langdon's Earliana—This is an exceptionally smooth strain and very early. We can recommend this very strongly. We have this in seed grown by ourselves and also seed direct from Mr. Langdon.

Pkt., 10c; oz., 45c— $\frac{1}{4}$ lb., \$1.25.

Bonny's Best Early—For those who wish to grow a really fine pack tomato for main crop this variety, combining earliness, being about ten days later than Earliana, with smooth bright colored fruit of uniform shape, can be strongly recommended. A very heavy yielder of good-sized fruit. It will easily bring a better price than any other early kind of the same season. Bonny's Best is the best commercial money maker for main crop of any tomato for the northwest.

Pkt., 10c; oz., 50c; $\frac{1}{4}$ lb., \$1.50.

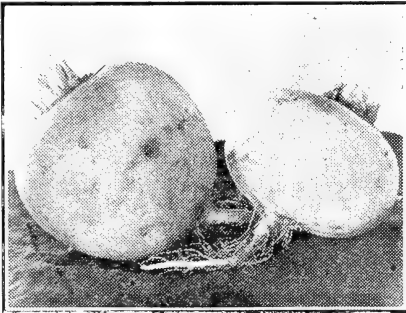
Livingstone's Favorite—One of the best, largest, perfect-shaped, bright-red tomatoes. Very solid meated, of extra fine flavor, with few seeds; a good shipper, makes it a worthy tomato for main crop, especially for canning.

Pkt., 5c; oz., 40c; $\frac{1}{4}$ lb., \$1.00.

***Yellow Pear**—Used for preserving, extra early and produces an abundance of yellow pear-shaped tomatoes. Pkt., 5c; oz., 40c.

TURNIP

Sow broadcast from Aug. 1 to 20th for late turnips.



PURPLE TOP WHITE GLOBE

White Egg—A quick-growing, egg-shaped, smooth, pure white variety with flesh very sweet, firm and mild. The best table turnip.

Pkt., 5c; oz., 10c; $\frac{1}{4}$ lb., 25c; lb., 75c.

Cow Horn—A large long rooted white turnip largely used for stock feeding.

Pkt., 5c; oz., 10c; $\frac{1}{4}$ lb., 20c; lb., 60c.

***Purple Top White Globe**—We consider this the best all round late turnip for fall and winter use. Its beautiful color, pure white with purple top, combined with its smooth globe shape and fine sweet flavor and its wonderful productiveness, puts this turnip in the front class for either market or home use. We have an unusually fine strain of this seed.

Pkt., 5c; oz., 10c; $\frac{1}{4}$ lb., 20c; lb., 50c.

Extra Early White Milan—Among the earliest; roots clear white, smooth, flat and good quality. The best for early planting in the spring or for late fall sowing.

Pkt., 5c; oz., 10c; $\frac{1}{4}$ lb., 30c; lb., \$1.00.

***Pomeranean White Globe**—A large globe shaped, smooth, white turnip. Good either for stock or table; resists the worms the best. One of the best keepers.

Pkt., 5c; oz., 10c; $\frac{1}{4}$ lb., 20c; lb., 50c.

Early Purple Top Strap Leaved—An early strap leaved, flat turnip much planted for early turnips. The flesh is white, fine grained and tender.

Pkt., 5c; oz., 10c; $\frac{1}{4}$ lb., 25c; lb., 75c.

Chickory

Large Rooted—Chickory does extra well in this climate and is considered by many as an excellent substitute for coffee. Plant like a carrot.

Pkt., 5c; oz., 15c.

Tobacco

Connecticut Seed Leaf—This is one of the earliest maturing sorts for our northwest climate.

Pkt., 5c; oz., 25c.

Vegetable Orange

Grow somewhat like a musk melon; small-sized, round-shaped, orange-colored fruit; fine for sweet pickles and preserves; yields heavy in this climate. Pkt. 5c.

RUTA BAGAS

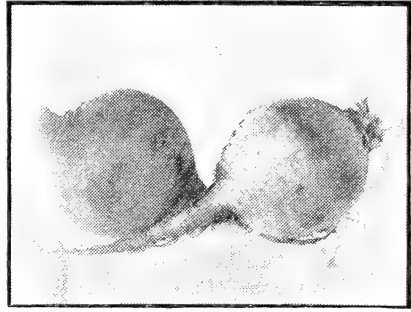
Sow in drills, 3 feet wide; thin to 6 inches apart. May be planted from June 15 to August 1. The later sowings make roots of the best quality.

***Improved Purple-Top Yellow**—We find this the best all-round Ruta Baga. Produces nice, smooth globe-shaped roots free from side roots. The best for table use and very rich and productive for stock feeding. It is early and will mature good roots, planted late in the season. Good seed from selected roots.

Pkt., 5c; oz., 15c; ¼ lb., 25c; lb., 75c.

Sweet Russian—One of the best white meated Ruta Bagas. A good yielder.

Pkt., 5c; oz., 10c; ¼ lb., 20c; lb., 60c.



MISCELLANEOUS

Caraway—Used in confectionery, cakes and bread. Pkt., 5c; oz., 10c; ¼ lb., 25c.

***Dill**—Used as a condiment and for flavoring cucumber pickles.

Pkt., 5c; oz., 10c; ¼ lb., 25c.

Flax—oz., 5c; lb., 25c.

Sugar Cane, Albaugh Early—An early maturing sort suited to our climate.

Oz., 5c; lb., 25c.

FLOWER SEEDS

Gill's Choice Asters

Wonderful progress has been made with Asters in recent years and today they are one of our very best cut flowers. No flower garden is really up-to-date without them. Plant seed in box inside or cold frame or hot bed for early flowers about February 15 to March 1, transplanting as soon as frost is over, or later sowings may be made for fall flowers. We list asters in three distinct classes.

Comet Asters

Comet Aster—These are the largest flowering sorts with long narrow petals, curving slightly back, those about the center curved and twisted. The flower is often five inches in diameter and carried on long stems. We offer fine seed of the following sorts:

Giant Crego Asters—One of the most desirable types of aster. Flowers large and fluffy averaging 4 to 6 inches in diameter and full to the center. Stems 20 to 30 inches long produced on strong vigorous plants. Fine for garden effect or cut flowers. We offer Crego Asters in **Shell Pink, Rose Pink, White Purple and Mixed**. Pkt., 10c.

Vicks Micado Aster—As large as the Crego Asters and about 10 days earlier. The petals are long, narrow, and curled and of a beautiful lavender pink color. Pkt., 10c.

IMPERIAL OR POMPON ASTERS.

These are quite dwarf, but bloom full of small, double compact flowers. The flowers are held upright on stiff stems. This class is very fine for bedding and are of easy culture.

Imperial Daybreak—Shell pink, fine. Pkt., 10c.

Imperial Purity—Pure spotless white. Pkt., 10c.

Imperial Rose—Light rose. Pkt., 10c.

Imperial Lavender—Very effective. Pkt., 10c.

Imperial Salmon—Very clear light salmon. Pkt., 10c.

BRANCHING ASTERS.

Tall plants of branching habit, bearing good-sized flowers, petals somewhat quilled and incurved. This type makes good stiff, long stems and stand handling best.

Lady Roosevelt—Large pink flowers with heavy incurving petals. A hardy vigorous sort with stems 20 to 30 inches long. Pkt., 10c.

Dreer's Superb Late Branching—Chrysanthemum like flowers five inches in diameter. Makes good long stems and blooms quite late. We recommend this type of asters. Offered in the following colors: Pure white, shell pink, deep rose, deep purple and lavender.

Crimson Late Upright—This is a flower of a color unusual in asters, being bright crimson. Very free blooming. Pkt., 10c.

Rose King—Long needle-like petals, rose color. Pkt., 10c.

Violet King—Same form, of violet lilac color. Pkt., 10c.

ASTERS—Continued

Gill's Fancy Mixed—This is a splendid mixture of about 20 reliable sorts and will contain nearly every color known in asters. There are few better mixtures on the market than this and it is sure to please.

Pkt., 10c; $\frac{1}{4}$ oz., 75c.

AGERATUM.

Beautiful annuals bearing flowers in dense clusters.

Mexicanum—Light blue, 20 inches high.

Pkt., 5c.

Dwarf White—8 inches high.

Pkt., 5c.

Mixed—Pkt. 5c.

ALYSSUM.

Sweet Alyssum—Hardy annual, blooming with white flowers in early spring. Trailing habit.

Pkt., 5c.

Little Gem—Of dwarf compact habit; about four inches high with white blossoms. The best sort for edgings.

Pkt., 5c; $\frac{1}{2}$ oz., 30c.

ANTIRRHINUM, SNAPDRAGON.

An old fashioned flower that has come back into popular favor again. For early flowering sow seed in the fall and then set out in the spring or the plants may be started in the spring.

Separate Colors as follows: **Giant White, Giant Scarlet, Giant Yellow, Giant Garnet, Giant Pink** at 10c per pkt.

Gill's Superior Mixed—This mixture contains a great variety of colors and will give good satisfaction.

Pkt., 5c.

BALSAM.

Hardy annuals growing one to two feet high. Plant inside or in hotbed in March, plant out after danger of frost is over.

Double White—Pure white.

Pkt., 10c.

Double Red—Dark red.

Pkt., 10c.

Mixed Double Tall—About two feet.

Pkt., 5c.

Bellis or Double English Daisy—A favorite perennial plant for bedding. Blooms early in the spring.

Double Mixed—All colors.

Pkt., 10c.

CALENDULA, POT MARIGOLD.

The old fashioned marigold, splendid for borders. A hardy annual that blooms from early to late.

Double Mixed—All the double sorts.

Pkt., 5c.

Orange King—Large double flowers of a dark orange red.

Pkt., 5c.

CALLIOPSIS

Showy annuals, of easy culture, blooming all summer. Sow in April where they are to bloom.

Crimson King—Crimson garnet.

Pkt., 5c.

Golden Wave—Golden yellow with brown centers.

Pkt., 5c.

Coronata—Large pure yellow flowers excellent for bedding.

Pkt., 5c.

Choice Mixed—All colors.

Pkt., 5c.

CARNATION.

Marguerite Mixed—All colors of this class.

Pkt., 5c.

Giant Marguerite—Giant flowers, two or three inches across.

Pkt., 10c.

CANTERBURY BELLS.

Sow seed in open during April, if the weather is dry, keep seed bed sprinkled or cover with paper until germinated. Transplant in July to permanent place.

These hardy perennials deserve to be more planted. We offer the following good sorts.

Cup and Saucer Mixed—The largest flowers borne in immense clusters.

Pkt., 10c.

Medium Single Mixed—Bell shaped flowers in various colors.

Pkt., 5c.

Medium Double Mixed—The double flowering bell flower.

Pkt., 10c.

CANDYTUFT.

Sown in the fall, will flower in early spring; sown in April will bloom in June. Hardy and easy of culture.

Empress—Finest white.

Pkt., 10c.

Crimson—Rich deep shade.

Pkt., 5c.

Lavender—Delicate rosy lavender.

Pkt., 10c.

Carmine—Bright carmine rose.

Pkt., 10c.

Mixed—Pkt., 5c.

CELOSIA PLUMOSA.

Thompson's Superb—Of pyramidal growth attaining a height of a little more than 2 feet, and producing graceful, feathery plumes of the most brilliant crimson. In sunlight the rich color of the flower spikes is beautifully contrasted with the bronze-colored foliage.

Pkt., 10c.

Thompsoni Magnifica—Similar to the preceding except in color, which vary in the most magnificent shades, ranging from the clearest yellow to the darkest blood-red.

Pkt., 15c.

Golden Plume—Bright, golden-yellow plumes.

Pkt., 10c.

CELOSIA CRISTATA.

(Cockscomb).

Free-blooming annuals, growing best in rather light soil, not too rich; make grand border plants and are attractive for pots. Seed can be sown under cover in early spring and planted out in May, or may be sown out of doors in May.

Empress—Combs of colossal proportions; they have been grown measuring 45 inches from tip to tip; rich crimson.

Pkt., 10c; $\frac{1}{4}$ oz., 50c.

CENTAUREA.

Royal Sweet Sultans—Beautiful, sweet-scented, artistic flowers, borne on long stems. Fine cut flowers. Sow early in the spring.

Finest Mixed—Pkt., 5c.

CORNFLOWERS, CENTAURIA CYANUS.

The common Bachelor's Button.

Single Mixed—All colors.

Pkt., 5c.

Double Mixed—Various colors.

Pkt., 5c.

COSMOS.

Hardy annuals which, planted after danger of frost in the open, will bloom in the late fall when flowers are scarce. Fine cut flowers.

Mammoth Perfection Cosmos—A strain of extra large flowers, offered in the following colors:

Crimson—Rich and deep.

Pkt., 10c.

Lady Lenox—Giant pink.

Pkt., 10c.

Pure White—Pkt., 10c.

COSMOS—Continued

Mixed—All colors. Pkt., 5c.
Extra Early Cosmos—Sown in April will bloom in July and August. Mixed colors. Pkt., 5c.

DELPHINUM.

Sow inside or in hotbed, plant out in May to permanent place about 2 feet apart in the row.

Gold Medal Hybrids—Shades of light blue. Pkt., 15c.
Belladonna—Turquoise blue. Pkt., 25c.
Finest Double Mixed—Great variety of colors. Pkt., 15c.

DIANTHUS, PINKS.

Biennials growing about a foot high. Fine for borders.

China Pinks—Mixed, double flowers. Pkt., 5c.

Diadem Pink—Beautiful double flowers; mixed, of various tints of lilac, crimson, purple, to very dark purple, with the outer edges fringed and nearly white. ¼ oz., 30c; pkt., 10c.

Salmon King—Brilliant salmon rose. Pkt., 10c.

Snowball—Large double white. Pkt., 5c.

Fireball—Blood red, good contrast to the above. Pkt., 5c.

Single Royal Pinks—Improved single Japanese. Pkt., 5c.

ESCHSCHOLTZIA.

(California Poppy)

Hardy annual, sow in open during April.

Single Mixed—All the colors. Pkt., 5c.

Double Mixed—All the colors. Pkt., 5c.

Alba—Pure white. Pkt., 5c.

Scarlet—Rich orange scarlet. Pkt., 10c.

Orange—Pure orange. Pkt., 5c.

GOURDS, ORNAMENTAL.

Culture, similar to cucumbers or musk melons.

Fine Mixed—Several sorts in mixture. Pkt., 5c.

GAILLARDIA, BLANKET FLOWER.

The following sorts are showy annuals flowering through the summer, fine for beds or borders.

Amblyodon—Rich blood-red, Pkt., 10c.

Double Mixed—All the colors. Pkt., 5c.

GODETIA.

Pretty free flowering annuals growing 18 inches high. They do best in rather poor soil.

Brilliant—Glowing carmine rose. Pkt., 5c.

Dutchness of Albany—Pure white. Pkt., 5c.

Gloriosa—Large, brilliant blood-red. Pkt., 10c.

Mixed—All the colors. Pkt., 5c.

GRASSES, ORNAMENTAL.

Cloud Grass—Airy and graceful annual, looks like a line of mist when in bloom. Pkt., 10c.

Purple Fountain Grass—Graceful, purple plumes and green foliage. An effective annual for borders. Pkt., 10c.

GYPSOPHLIA, BABY'S BREATH.

Elegans Alba—Fine annual with white blooms, fine for mixing with bouquets. Pkt., 5c.

HELIOTROPE.

Start indoors, plant out in May. Half hardy.

Lemoines Giant—Double the size of the old sorts. Pkt., 10c.

HOLLYHOCK.

This old-fashioned flower is taking front rank now for back-ground effects. A hardy perennial, blooming very little the first year.

Double Sorts—

Separate Colors—In orange, maroon, red, rose, salmon rose, white and yellow. Any color Pkt., 10c.

Choice Mixed—All colors. Pkt., 5c.

Allegheny Mixed—Double fringed blooms. Pkt., 5c.

Single Mixed—All colors. Pkt., 5c.

LARKSPUR ANNUAL.

Hardy annuals growing two or three feet high, splendid for beds or cutting.

Finest Double Mixed—All the colors. Pkt., 10c.

LOBELIA.

Desirable for pots, edges or hanging baskets.

Crystal Palace Compacta—Best dark blue. Pkt., 10c.

Prima Donna—Crimson maroon. Pkt., 10c.

White Gem—Snow white. Pkt., 10c.

Mixed Compacta Varieties—All colors. Pkt., 5c.

MARIGOLD.

Hardy annuals of easiest culture.

Dwarf French—Fine colors, mixed, very double; 1 foot. Pkt., 5c.

AFRICAN VARIETIES.

Pride of the Garden—Immense golden yellow flowers, densely double, compact plant 15 to 18 inches high. Pkt., 10c.

Large African Mixed—Double, orange and lemon. Pkt., 5c.

MIGNONETTE.

Keep up a succession of flowers by sowing in April and July.

Salmon Queen—Strong, robust habit, with fine spikes of salmon red flowers, intensely fragrant. Pkt., 10c.

Defiance—Extra large spikes 15 to 18 inches long, deliciously fragrant. Pkt., 10c.

Improved Red Victoria—Fine spikes of bright red. Pkt., 10c.

MORNING GLORY.

Climbing Mixed—All colors, 15 feet. Pkt., 5c.

Dwarf Mixed—All colors, 1 foot. Pkt., 5c.

MYOSOTES, FOR-GET-ME-NOTS.

Hardy perennials succeeding best in shady locations. Will bloom the first year if sown early.

Robusta Grandiflora—Large bright blue flowers. Pkt., 5c.

NASTURTIUMS.

Sow in April in rows, thin to 2 to 3 inches apart.

Dwarf Varieties.

- Bronze**—Bronze orange. Pkt., 5c; oz., 15c.
Golden King—Rich, golden yellow. Pkt., 5c; oz., 15c.
King Theodore—Crimson maroon, dark foliage. Pkt., 5c; oz., 15c.
Pearl—Creamy white. Pkt., 5c; oz., 15c.
King of Tom Thumbs—Dark scarlet, dark leaves. Pkt., 5c; oz., 15c.
Finest Mixed—All colors. Pkt., 5c; oz., 10c; ¼ lb., 30c; lb., 75c.

Tall Varieties.

- Crimson**—Rich and velvety. Pkt., 5c; oz., 15c.
King Theodore—Crimson maroon, dark foliage. Pkt., 5c; oz., 15c.
Orange—Pure orange. Pkt., 5c; oz., 15c.
Pearl—Creamy white. Pkt., 5c; oz., 15c.
Rose—Lovely shade of ruby rose. Pkt., 5c; oz., 15c.
Jupiter—Giant golden yellow. Pkt., 5c; oz., 15c.
Spitfire—Fiery scarlet. Pkt., 5c; oz., 15c.
Giant of Battles—Sulphur yellow blotched red. Pkt., 5c; oz., 15c.
Crown Prince of Prussia—Ruby garnet. Pkt., 5c; oz., 15c.
California Giants Mixed—All colors. Pkt., 5c; oz., 15c; ¼ lb., 25c; lb., 75c.
Ivy Leaved Tall Mixed—Pkt 5c; oz., 20c; ¼ lb., 50c.

NICOTINA, FLOWERING TOBACCO.

Finest Mixed—A splendid mixture of colors. Pkt., 10c.

PANSIES.

May be sowed early inside or planted in the open in April. Sown in July and August will make good plants for the next spring.

***Gill's Oregon Giant Pansies**—After careful tests we are convinced that this strain of pansies produces the largest flowers and the best variety of colors of any strain we know of. If you want the very best and largest pansies plant this mixture. While the seed is more expensive than the common sorts you will feel well repaid to plant it. Pkt., 25c.

***Gill's Giant Mixture**—Grown by ourselves from larger flowering sorts. This is a reliable mixture of many good colors. Pkt., 10c.

PETUNIA.

Defiance Largest Flowering—Flowers often five inches in diameter, fringed, with open throats. Colors varied and indescribable. For size and beauty, this is the best strain of petunias. Pkt., 15c.

PHLOX DRUMMONDI, ANNUAL PHLOX.

A beautiful annual that may be used for massing, beds, borders or pots. Sow in the open after danger of frost is over.

Select Large Flowering Varieties.

Large Flowering Mixed—Contains a great variety of colors and is sure to please. Pkt., 10c.

Separate Colors as follows: White, Shell Pink, Deep Rose, Bright Scarlet and Primrose. Pkt., 10c.

POPPIES.

May be sown in the fall or early spring. Poppies are easy culture and very effective flowers.

Single Sorts.

Tulip Poppy—This is one of the finest bedding poppies we have ever seen. It grows from 15 to 20 inches high and is simply a blaze of bright scarlet tulip shaped flowers. A splendid sort for bedding or massing. Pkt., 5c.

***Gill's Mixed Shirley**—All colors and hues. Pkt., 5c.

Danish Cross—Scarlet with white spot forming a cross. Pkt., 5c.

The Bride—Pure white. Pkt., 5c.

Admiral—White with band of scarlet around the top. Pkt., 5c.

Miss Sherwood—Satiny white, upper half chamois rose. Pkt., 5c.

Double Sorts.

Cardinal—Fringed flowers, cardinal red. Pkt., 5c.

Fairy Bush—Elegantly fringed, white tipped rose. Pkt., 5c.

Shell Pink—Soft sea shell pink. Pkt., 5c.

White Swan—Immense fringed flowers, white. Pkt., 5c.

Carnation Flowered—Double, fringed, mixed colors. Pkt., 5c.

Peony Flowered—Globular flowers like a peony. Pkt., 5c.

Perennial Poppies.

Iceland Poppies—Mixed colors. Pkt., 10c.

Oriental Poppies—Deep crimson, with black blotch. Pkt., 10c.

SALPIGLOSSIS.

Sow indoors for early, or can be sown outside after danger of frost. **Large flowering mixed.** Pkt., 10c.

SALVIA.

Sow indoors in March, plant out in May.

Splendens—Bright scarlet, 3 feet. Pkt., 5c.

Patens—Intense blue flowers. Pkt., 15c.

SCABIOSA OR MOURNING BRIDE.

Sow outside after danger of frost.

Large Flowering Mixed—Pkt., 5c.

Separate Colors—White, Crimson, Black-purple, Rose. Pkt., 10c.

SCARLET RUNNER BEANS.

A fine climber for porches or trellis. Pkt., 5c; ½ lb., 25c.

STOCKS.

A popular hardy annual fine for bedding or pot culture. May be started early inside or plant seed in the open after danger of frost is over. The varieties offered below will produce about 90% double flowers.

Improved Large Flowering Ten Week Stocks.

These are a superior large flowering strain. **Separate Colors** as follows: Blood Red, Light Blue, Pink, Purple, White and Yellow at 10c per pkt.

Large Flowering Mixed—A grand mixture of double flowered sorts. Pkt., 10c.

SENSATIVE PLANT, MIMOSA.

A curious annual, its leaves close when touched or if the stem is touched the whole leaf will fall. Can be grown in pots or in the open.
Pkt., 5c.

SUNFLOWER.

New Miniature Mixed—Numerous small flowers. Pkt., 10c.
Chrysanthemum Flowered—Double, rich golden yellow. Pkt., 5c.

SWEET PEAS

Sweet peas are today considered one of the leading flowers. Can be planted in trenches in November, covering lightly with soil or pulverized manure. This method will produce flowers in June. Spring sowings should be made as early in the spring as the ground can be worked, even February is not too early. The Spencer type is by far the best, being large, free blooming and more artistic.

SPENCER SWEET PEAS.

Asta Ohn Spencer—Charming soft lavender. Pkt., 10c.
Apple Blossom Spencer—Color of apple blossoms. Pkt., 10c.
Countess Spencer—Soft rose pink. Pkt., 10c.
Flora Norton Spencer—Rich lavender. Pkt., 10c.
***Helen Lewis**—Crimson orange, wings orange rose. Pkt., 10c.
King Edward Spencer—Deep crimine scarlet. Pkt., 10c.
***Marie Corelli**—Bright rosy carmine. Pkt., 10c.
***Othello Spencer**—Rich deep maroon. Pkt., 10c.
Primrose Spencer—Primrose yellow. Pkt., 10c.
***Senator Spencer**—Claret stripes on helio-tropic ground. Pkt., 10c.
Burpee's White Spencer—Waxy white of large size. Pkt., 10c.
***Gill's Progressive Mixture**—This Spencer mixture of our own raising will give the best possible results since the seed is acclimated. A general variety of colors are included in the proper proportion.
Pkt., 10c; oz., 25c; ¼ lb., 90c.

GRANDIFLORA SWEET PEAS.

Rose Du Barri—New shade in sweet peas being a lovely combination of carmine rose and orange. Unsurpassed in artificial light. Pkt., 10c; oz., 20c.
Dorothy Eckford—A grand pure white. Pkt., 5c; oz., 15c.
Helen Pierce—White veined and mottled bright blue. Pkt., 5c; oz., 15c.
Duke of Westminster—Clear purple, tinted violet.
King Edward VII—Bright crimson scarlet. Pkt., 5c; oz., 15c.
Queen Alexandra—An intense scarlet self coor. Pkt., 5c; oz., 15c.
Navy Blue—Large flowers of deep glowing violet purple. Pkt., 5c; oz., 15c.
***Gill's Rainbow Mixture**—We feel confident this grand mixture of our own growing, contains more shades than any mixture sold. For years we have been securing mixtures from different houses, and growing them together. It contains nearly half Spencer peas. Visitors who saw them in bloom said they had never seen so many colors in one mixture, nearly 100 different shades being in evidence. We have many fine reports from this seed.
Pkt. 5c; oz., 10c; ¼ lb., 25c; lb., 75c, postpaid.

SWEET WILLIAM.

This hardy perennial is one of the best cut flowers and is again coming to the front.

Separate Colors as follows in single sorts: White, Crimson, Maroon and Scarlet at 10c per pkt.

Single Mixed—All colors. Pkt., 5c.
Double Mixed—Quite a portion will come double. Pkt., 10c.

ZINNIAS.

An old fashioned flower, much improved which should be more planted. May be started early inside or planted outdoors in May.

Separate Colors as follows: Dark Scarlet, Flesh Pink, Orange, White and yellow. Each pkt., 10c.

Large Flowering Mixed—Dwarf plants producing large flowers of many colors. These flowers will last for 6 weeks after opening.
Pkt., 5c.

Double Fringed Mixed—A new type with fringed petals. Pkt., 10c.

VERBENAS.

We carry a fine strain of mammoth verbenas which have been improved and selected for years. Sow inside and set out in May or they may be sown outdoors in May and will bloom about August

Separate Colors as follows: Pink, Purple, Scarlet, White and Blue. Each 10c per pkt.

Mammoth Mixed—Large flowers, all the colors. Pkt., 10c.

VINCA.

Ornamental free flowering plants fine for bedding. Sown outdoors in May will bloom in August.

Mixed—Pkt., 5c,
Pure White—Pkt., 10c.

WALL FLOWERS.

Half hardy perennials blooming early in the Spring.

Single Mixed—All the colors. Pkt., 5c.
Double Mixed—A fine selection. Pkt., 10c.

Gill Bros. Dahlias

We now have the largest Dahlia Gardens in the west and are prepared to fill your orders with good strong bulbs (we send out no Dahlia plants), grown in our gardens and guaranteed true to name. Our experience with Dahlias has proven that our own acclimated bulbs will do much better than those from other localities. The Dahlia today is taking front rank for late summer and autumn flowers and their wonderful improvement of late years has fully justified their enthusiastic reception as the people's popular autumn flower. Dahlias are the biggest sensation in flowers of today and your flower garden will not be up-to-date without them. We issue a complete culture pamphlet on Dahlias which will be sent with every order or to any one free upon request. All prices on Dahlias are postpaid.

CULTURE.

Dahlia bulbs should be planted from April 20th to May 20th, according to the conditions of the soil and weather. The bulbs are shaped much like sweet potatoes, with eyes only near their junction with the old stalk and should be planted on about one-third slant, the eye or sprout nearest the surface. Plant about five inches deep, covering only about 2 inches, then fill after the sprout is above ground. As soon as the sprouts have made a few inches growth remove all but one of the strongest, cutting the others off below the surface. Be sure to give them plenty of room, especially if so situated that you cannot water them.

TEN REASONS WHY YOU SHOULD PLANT DAHLIAS.

1. The best decorative flower in existence and especially unequalled for table effects.
2. They are the showiest flowers in existence.
3. Free blooming plants that flower from July 1st till frost, when other flowers are scarce. We picked our last bouquet last season on December 1st.
4. You have more variations in color in the dahlia than any other flower.
5. They are easy to grow, requiring little trimming and spraying.
6. They last finely as a cut flower.
7. In the different varieties may be found the brightest tones and the softest hues and the most charming blends known in flowers.
8. Their brilliant colors, so contrasting, give the best effects by lamplight.
9. With so many classes you can have several different sorts of flowers all in one species.
10. They make fine hedge effects. Some plant them between roses and thus keep up a continuation of flowers through the whole season.

DAHLIA CLASSES.

We cover their classification in our pamphlet but a good idea may be obtained from our illustration of sample flowers in the cut shown on the inside of the back cover.

We guarantee our dahlias true to name, but sometimes accidents may occur, in which case we will send a new bulb the following season without expense to you.

GILL'S NOVELTY LIST OF DAHLIAS

The Cream of Late Introductions.

Aristed Gurtler—Cactus. Color mars orange, suffused with scarlet, composed of long, narrow petals slightly incurved. Each, 50c.

Ami Phillippe Goy—Cactus. Long, narrow incurved petals, ground color deep salmon red, suffused scarlet, deepening to blood-red on tips. We consider this a very promising Dahlia. Each, 75c.

Our bulbs are field grown with good eyes. **Dahlia orders** will be filled during March, April and May.

GILL'S DAHLIA COLLECTIONS.

Since it is impossible for us to gage the amount of sales upon any variety in advance we often have a surplus of Dahlias left in very good sorts. This enables us to make the remarkably low rates on collections given below. These bulbs will be labeled with their correct name and no two alike, chosen with regard to color, however they must be entirely our own selection.

No. 5—12 Cactus Dahlias good standard sorts \$1.50; 6 for 85c, postpaid.

No. 6—12 New Cactus Dahlias comprising late introductions, \$3.00; 6 at \$1.75, postpaid.

No. 7—12 Decorative Dahlias, \$1.25, postpaid; 6 for 70c, postpaid.

No. 8—12 Show Dahlias for \$1.25; 6 for 70c, postpaid.

No. 9—6 Single Dahlias postpaid for 75c.

No. 10—Mixed Dahlias, a general mixture containing all classes, 12 for \$1.25, postpaid.

GILL'S DANDY DAHLIA COLLECTION.

We offer in this collection a mixture of bulbs which are untagged but represent good Dahlias and for those who are not particular to have the names they will give fine satisfaction. These will be put up in advance and no selections other than our own can be permitted. Price for box of 12 good strong bulbs, \$1.00; 6 for 60c, postpaid.

Ami Barrilet—Single. This is the dark foliage Dahlias. The foliage is a purplish-black color throughout the whole plant, the flowers a rich garnet borne on a dwarf plant. This is something unusual and will command attention in any garden. Each, 50c.

Andrew Carnegie—Peony. A new Peony Dahlia of good size on upright stems, color a fine lively pink. Each, 75c.

DAHLIAS—Continued

Antoine Rivoire—Peony. Brilliant ox-blood-red with crimson shading. We are much pleased with this new sort and expect it to become a leader in this class. Each, 75c.

Bertha Van Suttner—Peony. One of the best Peony Dahlias yet introduced and created a sensation in our gardens. Color, salmon-pink shaded yellow, flowers very fluffy and artistic, often eight inches in diameter. Each, 75c.

Beloit—Decorative. Gigantic blooms of a rich purplish garnet, borne on extra long stiff stems. Plants strong and vigorous. Each, 75c.

Crystal—Cactus. A new English introduction of great merit. White in the center passing to silvery pink, with incurved petals. Each, \$1.50

Caesar—Peony. Canary yellow, beautiful fluffy flowers of extra large size. Each, 50c.

Delicatissima—Cactus. The most delicate colored Dahlia to date, color tender hydrangea-pink with lighter shadings. Each, 75c.

Dawn—Cactus. New English sort of distinct color being bright yellow at the base, gradually deepening to cerise, the tips again lightening to yellow. Flowers held upright on good stems. Each, \$1.50

D. M. Moore—Show. We consider this the best dark show Dahlia we have yet seen. Mammoth, perfect flowers of a deep velvet maroon. Each, 50c.

Dorothy Peacock—Show. A splendid Dahlia for cutting. Flowers a bright sea shell pink with lighter centers, borne on strong upright stems. Each, 75c.

Delice—Decorative. We consider this one of the prettiest pink Dahlias to date. Flowers borne on strong, erect stems and of a beautiful soft, yet lovely, glowing rose pink. Lasts extra well as a cut flower. Each, 50c.

Eckford Century—Single. Immense flowers pure white, spotted pink and penciled crimson, borne freely on good stems. Each, 75c.

Foxhunter—Cactus. A beautiful flower of bright scarlet petals, long, narrow and straight. Flowers of good size and free bloomer. Each, 50c.

Fernand Olivet—Cactus. Immense blooms borne freely, on stiff, wiry stems; brilliant maroon, with scarlet shading, the center almost black. Each, 75c.

Gondola—Cactus. Clear, rosy pink with long, narrow, incurved petal resembling a chrysanthemum in form. This is of the best pink Cactus we have yet seen. Each, 50c.

G. W. Childs—Cactus. While not new this is a splendid Dahlia. Deep garnet maroon with rich velvety appearance. Each, 50c.

Gaity—Decorative. One of the best variegated Dahlias, being a vivid scarlet heavily marked with pure white. Sure to catch the eye in any garden. Each, 35c.

Giant Edelweiss—Peony. The best white Peony Dahlia to date. The petals of this flower are more like the cactus class, however the center is open and of a brilliant golden yellow. Blooms are often eight inches across and borne very profusely on a vigorous plant of neat upright habit. We recommend this very strongly. Each, 50c.

Geisha—Peony. No garden is complete without one of these gigantic flowers; probably unequalled in size by any other Dahlia; we grew some last season nearly ten inches across. The center is yellow shading to variations of scarlet and gold, as the season advances they become clear yellow. The petals twist and curl giving it a graceful fluffy appearance. Each, 50c.

Jeanne Charmet—Large Decorative; pleasing shade of violet-rose on lighter ground. This flower, with its fluffy, graceful appearance, attracted much attention. Very free flowering and vigorous. Each, 50c.

Le Grand Manitou—Decorative. The best striped Decorative Dahlia to date; gigantic blooms, striped and spotted with deep, reddish violet on white ground color. Held well above foliage on long, stiff stems. Each, 50c.

Magnet—Peony. A grand new sort of good size. Color a beautiful rose suffused with white. Each, 75c

Mannheim—Peony. This new Dahlia is sure to come to the front. Salmon pink overlaid with a golden sheen. Each, 75c.

Meadow Gold—Decorative. Immense flowers, primrose yellow, tinged with delicate pink, borne on stiff upright stems. Late in the season the flowers are pure yellow. Exceptionally free blooming. Each, \$1.50

Modell—Cactus. A most effective flower, clear waxy yellow, with a delicate plum blush over the tips. Each, 50c.

Mrs. McMillian—Cactus. One of the freest bloomers in our field. Yellowish white at base, passing to purplish mauve, suffused with shade of pink in the body of the flower. Each, 50c.

Mrs. Henry Wirth—Cactus. A grand, free-blooming Dahlia; of rich geranium red, fine form, one of our best red Cactus. Each, 50c.

Mrs. Emberson—Cactus. A delicate light yellow shading to nearly white at tips, striped with fine lines of red. Perfect flowers borne on good stems. Each, 50c.

Mrs. H. Shoesmith—Cactus. We are convinced after trying several varieties of white Cactus Dahlias that this has the best form and color of any we have tested. Each, 50c.

Mme. Heine Furtado—Show. The best of the pure white show Dahlias. Its large flowers borne on strong upright stems, together with its freedom of blooms and lasting qualities makes this one of the best Dahlias for cut flowers. Each, 50c.

DAHLIAS—Continued

Nerthus—Cactus. One of the best of recent German introductions. The center of the flower is a rich, glowing, bronzy, orange yellow, passing to carmine rose at the tips. The flowers show to good advantage on upright stems.

Each, 75c.

Ouray—Decorative. Rich, deep velvety-maroon, free flowering, large, good form.

Each, 75c.

Papa Charmet—Decorative. Large flowers of rich, deep morocco-red with garnet shading. Strong upright stems showing the blooms to good advantage.

Each, 50c.

Ruby Grinsted—Cactus. Centers soft yellow gradually suffused until it becomes a rich shade of rosy fawn. Free blooming.

Each, 50c.

Rheinkonig—Cactus. Freest flowering of the white cactus sorts. Pure white of good form.

Each, 75c.

Rev. A. T. Bridge—Cactus. One of the finest cactus to date. A bright, clear yellow, tipped and suffused with a bright, deep rose pink, beautifully incurved.

Each, 75c.

Rheingau—Peony. Long pointed petals of showy, brilliant scarlet. Immense size.

Each, 75c

Spanish Century—Single. Large flowers of pure yellow penciled rich red.

Each, 50c.

T. G. Baker—Cactus. The best yellow cactus Dahlia we have seen. Large, well formed flowers on stiff stems.

Each, 50c.

Tressie—Cactus. Immense blooms, brilliant deep scarlet, petals slightly incurved, the center petals have a peculiar side twist that give it a very artistic effect. This is without doubt one of the best red Cactus to date.

Each, 75c.

Vater Rhein—Cactus. Flowers often 7 inches across, on long stems well above the foliage, petal broad, curled and twisted; yellow suffused with salmon rose. It is very recent introduction and one of the best.

Each, 75c.

Wodan—Cactus. Enormous blooms, often over 7 inches in diameter; semi-incurved, tubular petals, of delicate salmon rose color, shading to old gold in the center.

Each, 75c.

W. W. Rawson—Show. Large quilled flowers often 7 inches in diameter borne on erect stems. Color pure white, overlaid with a lavender blush.

Each, 50c.

Yellow Colosse—Decorative. Best yellow Decorative to date. Immense blooms of pure primrose yellow. Extra free flowering.

Each, 50c.

NEW DAHLIAS ORIGINATED BY GILL BROS.

Garnet Queen—Peony 1913. The first garnet colored Peony Dahlia. While the plants are rather dwarf they are simply loaded with graceful, artistic flowers held on good long stems. As a cut flower it has few equals. Its color is a deep, glossy garnet, a color that holds fine in the brightest sun. This is the first time this Dahlia has been cataloged and we own exclusive stock.

Each, \$1.50.

White Lily—Single 1913. There are few Dahlias in existence that will produce more blooms than this single variety. The petals are pure, waxy white, the center a bright golden yellow, giving to the whole flower a lily effect.

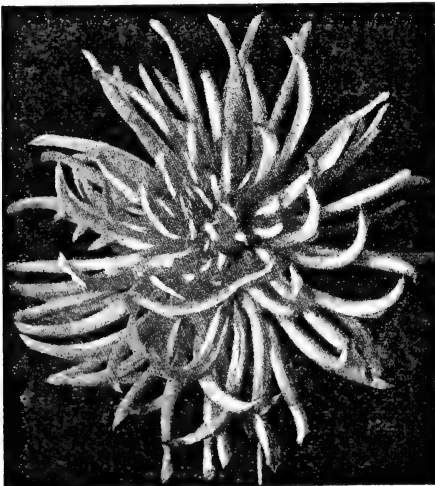
Each, 35c.

Oregon Beauty—Peony. This new peony-flowered Dahlia is the result of a seedling from William Agneau, probably crossed with Twentieth Century. A giant in size; often 8 inches in diameter, it combines with it rare color, which is a bright fiery scarlet, overlaid with a golden sheen, the most distinct form of any Dahlia yet introduced. The opening flower is like a full decorative bloom, of a deep fiery scarlet; when fully out the color is a shade lighter, a portion of the older petals curving towards the stem, the newer petals coming out nearly flat, giving it a peony form. With its gorgeous golden sheen overlaying the whole flower, its color the brightest scarlet we have yet seen, its enormous blooms held on long stems and produced freely by a vigorous plant, it is indeed a worthy Dahlia for any garden.

Each, \$1.00.

Spirit of the Golden West—Show 1912. A new show Dahlia; in color a deep saffron yellow, tipped and overlaid with the rich rosy red of the sunset. Flowers of good size, full and double and held boldly up on long, stiff stems. It will last a week as a cut flower. No description can give you an idea of the beauty of this Dahlia.

Each, 75c.



CACTUS DAHLIA TRESSIE

DAHLIAS—Continued

J. J. Johnson—Show 1912. One of the freest flowering Dahlias in our whole grounds. The flowers are a rich maroon occasionally marked with garnet, sometimes coming a carmine rose. The plant is dwarf and bushy and every flower is produced on extra long stems that lift them free above the foliage so that every flower shows. This is a splendid cut flower and fine also for massing. It is hardly a true type Show Dahlia, being about half way between the Decorative and Show type. Each, \$1.00.

Poppy King—New Decorative, with flowers which somewhat resemble a large double poppy and having a poppy scent. Well formed bushes, loaded with rich blood red blooms. Each, 40c.

Splendid—This is a single Dahlia similar to the Twentieth Century, but of a far richer color, being a deep rich crimson marked at tips with white. This attracted much attention in our grounds last summer. Each, 35c.

Multnomah—Grand new Decorative Dahlia. The center is clear yellow, shading to orange, tinted with rose. The petals are broad and curve to the stem, making a full globular flower. Makes a fine bushy plant loaded with these large blooms. One of the best of its color. Each, 50c.

Crazy Quilt—Decorative. One of the oddest Dahlias ever introduced. Hardly two flowers come alike; some are pure sulphur yellow, some yellow with white centers, others pure white, some white with yellow collar and again others white with yellow markings through each petal. Often borne in clusters, making the plant just a mass of bloom. Flowers medium size, held on long stems. Each, 35c.

Tillamook—A companion to that grand old Dahlia, Grand Duke Alexis, it differs in color, being a delicate blush, deepening at the tips to rose pink. Its pleasing color, combined with its large size and free blooming habit will make this a prize winner. Each, postpaid, 50c.

GILL'S GENERAL LIST OF DAHLIAS

ARRANGED IN CLASSES.

Note—In the following pages will be found a complete list of all the Dahlias offered in this catalog. Thousands visited our gardens last fall and so many orders were taken on several varieties that we were sold out and so do not offer them here. Again lack of space will not permit us cataloging our complete list, however, if there is any sort you desire not listed, send us a card and we may be able to supply you.

For those who wish Dahlias with good cut flower qualities, that is, good stems and lasting qualities, we have indicated such varieties in our general list by placing a * in front of each name.

GILL'S NEW AND STANDARD CACTUS DAHLIAS.

Aegir —Bright rich cardinal red, with twisted petals. Free blooming.	\$.25
* Amos Perry —A bright glowing fiery red, a free and early bloomer, large.	.25
Advance —An extra large Dahlia with long petals, light red.	.75
Alpha —Creamy white spotted and striped with reddish purple.	.25
* Amazone —A large free blooming Dahlia, amaranth red suffused purple.	.35
Amber Queen —New large rich amber suffused scarlet. Strong grower.	.50
Ami Phillippe Goy —New. For description see novelties.	.75
Aristed Gurtler —New. For description see novelties.	.50
Aschenbrodel —Base of petals gold passing to rose and lemon. Medium size.	.25
Aurora —Golden centers, passing to soft pink, tipped white.	.35
Autumn —Bright rosy scarlet, suffused with salmon, long tubular petals.	.25
* Berlichengen —Deep crimson carmine, shading to bright carmine tips, long stems.	.25
Bessie Mitchel —Apricot orange with reddish center, free bloomer.	.15
Blitz —Brilliant geranium lake, narrow petals, free blooming.	.15
Brautjungfer —Extremely double flowers of fine, delicate bluish pink.	.50
* Brittania —An unusual shade of salmon pink; large and attractive.	.25
* Capstan —Soft salmon red, tinted apricot at the base, good habit.	.15
Clara G. Stredwick —Shrimp pink, shading to salmon red.	.25
Cockatoo —Some flowers are white, others yellow, some part white and part yellow.	.35
Colada —New. A rich carmine-cerise, shading to crimson at the tips.	.75
Columbia —Vermillion tipped white, a very striking flower.	.25
Comet —Delicate lilac striped with Tyrian rose. Erect bushes.	.25
Cornicopia —Soft reddish salmon, large flowers with long narrow petals.	.15
* Country Girl —One of the best, golden yellow, suffused at points with salmon rose.	.25
* Countess of Lounsdale —One of the most satisfactory Dahlias, salmon pink and amber.	.25
Crystal —New. See novelties for description.	1.50
* Dawn —New. See novelties for description.	1.50
Delicatissima —New. See novelties for description.	.75
Desdemonia —New. Lovely light canary yellow, shading to white at the tips.	.50
Diavolo —Striped with yellow, white, rose, chocolate and maroon.	.50
Dornrorschen —New. Carmine to brilliant red, shading to delicate pink and white.	.50

CACTUS DAHLIAS—Continued

Dorothy—Dainty pinkish lavender, with sharply rolled petals.	.75
Dutchess of Hamilton—Light sulphur yellow, suffused light rose on outer petals.	.50
*Effective—Chamois rose with yellow center. Very free flowering.	.25
Elate—Delicate pinkish mauve shading to lighter center.	.50
Electric—New. Very distinct, flowers bright golden yellow with pure white tips.	2.00
Else—Butter-cup yellow shading to amber and Tyrian rose.	.15
Eturia—New. Base of petals yellow shading into orange with yellow tips.	.50
Exquisite—Orange scarlet with orange shading. Always a mass of blooms.	.25
Fairy—Fine, pure white, airy petals, gracefully incurved, free blooming.	.25
*Fernand Olivet—New. See novelties for description.	.75
Fireworks—Large flowers of golden yellow, striped oriental red.	.35
Flame—Neat, compact bushes, covered with brilliant orange scarlet flowers.	.25
Fleider—Large perfect flowers of soft lilac.	.50
*Flora—Pure white with large broad petals. A good white flower.	.25
Floradora—Early, simply a mass of bright blood-red flowers.	.15
Follele—Lemon yellow shading to crimson carmine at the tips, free blooming.	.25
Foxhunter—New. See novelties for description.	.50
*Gen. French—Terra-cotta flowers borne on good stems; extra fine.	.25
*Gen. Buller—Deep cardinal red, tipped with white, very showy.	.15
Genoveva—New. Pale canary yellow lightly tinted green.	.50
Goldland—New. Primrose yellow with good stems.	.35
Gondola—New. See novelties for description.	.50
Grenadier—Bright reddish old rose, dwarf erect plant, free flowering.	.15
G. W. Childs—See novelties for description.	.50
Harbor Light—Large flowers, vivid orange red overlaid with flame.	.25
Helene—Medium sized blooms, center creamy white passing to rose mauve.	.25
Helene Steinbach—New. Delicate shade of rosy-heliotrope. Very distinct.	.50
Hetty Dean—Free flowering Dahlia of lively amber, overlaid with orange.	.25
H. H. Thomas—New. English introduction. Deep Indian-red, long twisted petals.	1.50
H. J. Jones—Large flowers of light yellow slightly tinted pink. Very beautiful.	.35
Horn of Plenty—Deep carmine purple, petals long and twisted. Very free blooming.	.25
H. Shoesmith—Carmine red with long needle like petals, neat habit.	.25
H. W. Sillem—Brilliant cardinal red with deeper shadings.	.25
Ignea—One of the best scarlet cactus, fine habit, large flowers.	.50
Iolanthe—New. English sort, color coral-red tipped with gold.	1.50
J. H. Jackson—Brilliant crimson maroon, large and free flowering.	.25
Juliet—Magnificent rose, tinted pink, good form.	.35
Jupiter—Best striped Dahlia to date, pink, with yellow base, striped with crimson.	1.50
Johannesburg—New. English sort of monster size, color bright gold with golden sheen.	1.50
*Kriemhilde—Brilliant pink shading to white center.	.25
Libelle—Large well formed flowers of light purple.	.25
Loogaloo—Free flowering Dahlia of orange scarlet with carmine shadings.	.25
Lord Minto—New. Twisted, incurved petals of light salmon pink, lemon yellow center.	.75
*Lovely—Delicate violet rose with creamy shadings, very free.	.25
Lovely Ensford—A clear shade of golden amber, very attractive flower.	.35
Lurania—Beautiful chrysanthemum formed flowers, orange, terra-cotta and cinnamon.	.50
Mad. Henri Cayeux—Light rose pink, center shading to nearly white.	.75
Magnificent—A beautiful amber shaded Dahlia of fine form, large.	.25
Master Carl—Compact bush bearing large flowers of bright saffron yellow.	.35
Mauve Queen—New. Clear mauve flowers with incurved petals.	.50
Meteor—Delicate flesh color striped and spotted Tyrian rose.	.25
Micado—Deep rich red of large size, extra long narrow petals.	.25
Mme. Camille Pabst—Amber yellow suffused with salmon rose, incurved.	.25
*Modell—New. See novelties for description.	.50
*Mrs. De Luca—Golden yellow tipped with orange, one of the best.	.35
Mrs. Edward Mawley—Large, clear yellow flowers with long narrow petals.	\$.35
*Mrs. Emberson—New. See novelties for description.	.50
Mrs. Fernand Jeffries—New. One of the largest cactus, deep red, with curly twisted petals.	.75
Mrs. F. Grinstead—Large rich crimson and purple, graceful incurved sort.	.35
*Mrs. George Stevenson—Bright sparkling yellow with long petals, good cut flowers.	.25
*Mrs. Henry Wirth—New. See novelties for description.	.50
Mrs. H. J. Jones—Large scarlet marked with white, often pure scarlet.	.15
*Mrs. H. Shoesmith—Best white cactus. See novelties for description.	.50
Mrs. J. Harrison—Rich oriental red of good form. Good habit of growth.	.35
Mrs. J. K. Jewett—Orange scarlet; long narrow petals, incurved. Claw-like effect.	.35
Mrs. J. P. Mace—Delicate blush, almost white, large flowers.	.25
Mrs. McMillian—See novelties for description.	.50
Mrs. Winstanley—Long curly petals, soft scarlet with yellow base, free flowering.	.35
Nelson—Long, narrow, interlacing petals, deep crimson shaded magenta.	.50
*Nerthus—See Dahlia novelties for description.	.75
Othello—New, free flowering sort. Deepest crimson shaded maroon, large, early.	.50

CACTUS DAHLIAS—Continued

Octopus—Large light pink shading to creamy white center. 25
Phoenix—New. Large rich, deep carmine-red, petals often striped with cardinal. 75
Pink Beauty—Large pink sort of good form, with light pink center. 50
Pink Pearl—Mallow pink at the base, passing to white at tips. 25
Princess Ilse—Center delicate rose, suffused carmine, white on tips and edges. 15
Progenitor—Bright carmine petals divided like staghorn fern. 25
Quimbo—New English introduction, color dark crimson maroon, incurved form. 1.50
Reliable—Blending of yellow, brick-red and salmon. 25
***Rene Cayeux**—Rich geranium red, free flowering and early. 75
Rev. Arthur T. Bridge—New. See novelties for description. 75
Rheinkonig—New white cactus. See novelties for description. 75
***Roland Von Berlen**—Bright scarlet with long stems. 15
Rosa Starr—New. Large rose pink with interlacing petals. 50
Rother—Rich bright garnet, early and free flowering. 15
Ruby Grinsted—New. See novelties for description. 50
***Ruth Forbes**—Massive pink flowers, composed of large petals. 50
***Sequoia**—Deep saffron-yellow suffused with orange; incurved petals. 25
Sirius—Large well formed blooms, golden yellow striped with red. 25
S. M. Mossaffer Eddin—Rich analine red, flowers of many petals. 25
***Standard Bearer**—Rich fiery scarlet flowers on upright stems. 25
Strahlen Krone—Extra early sort of rich cardinal red. 25
***T. G. Baker**—Fine yellow. See Dahlia novelties for description. 50
The Pilot—Deep yellow overlaid with terra-cotta, fine petals. 25
***Thomas Parkin**—The best orange cactus Dahlia to date. Should be in every garden. 35
Tressie—New large red. See novelties for description. 75
Thuringia—Enormous flowers of orange scarlet borne on vigorous plants. 35
Thusnelda—Soft pink blended with yellow shades, very free. 25
***Uncle Tom**—Maroon almost black, one of the darkest cactus. 15
***Vater Rhein**—New. See novelties for description. 75
***Vesuve**—Fine rich geranium red with deeper shadings. 25
Volker—Extra free flowers yellow of medium size. 25
***Warjag**—Orange carmine tipped with bright carmine, good stems. 35
W. Hopkins—Oxblood red often marked with purple. 25
William Marshall—Gigantic blooms of rich orange with yellow center. 50
***Wodan**—Grand new sort. See novelties for description. 75
Wolfgang Von Goethe—New. Large flowers of rich apricot with carmine shadings. 50
W. T. Rogers—New dark variety of large size; velvety maroon. 75
***Wunderkind**—Canary yellow shading to white with flesh edges, early. 25
Zephyr—Distinct shade of rosy pink. 25

GILL'S DECORATIVE DAHLIAS.

Admiral Schley—Crimson garnet with white band through petals. 25
Beloit—New. See novelties for description. 75
***Black Beauty**—Large velvety maroon almost black, borne on erect stems. 15
Bronze Beauty—Bright coppery orange, very free flowering and early. 15
***Blue Oban**—Lavender blue of good size, very free flowering. 25
***Catherine Duer**—Deep, rich, glowing red; fine in artificial light. 15
Crazy Quilt—See list of Dahlias originated by Gill Bros. 35
Delice—Fine pink, see novelties for further description. 50
***Eloise**—White tinted flesh, marked with purplish garnet, often self colored. 25
Firerain—Free flowering, glowing cardinal red. 15
F. L. Bassett—Carmine purple, borne in clusters, a mass of bloom. 15
Gigantea—Large flowers. The only true cream colored Dahlia. 50
Gaiety—Best variegated sort. See novelties for further description. 35
***Jack Rose**—Brilliant crimson, fading at tips, fine for hedging. 25
***Jeanne Charmet**—Gigantic blooms of pinkish lilac; long stems. One of the best. 50
***Juno**—Reddish brown striped with crimson and maroon, extra fine. 25
La France—New. Mammoth flowers on long stem, rose pink like La France rose. 25
Le Grand Manitou—New large variegated. See novelties for further description. 50
Maid of Kent—Cherry red, tipped white, often solid red. 15
Mattie Serafin—Immense flowers, orange and buff, very free. 25
Meadow Gold—Grand new yellow. See novelties for description. 1.50
Mme. Amyard—Large full blooms on good stems, lavender pink. 35
Mme. Jeanne Chantre—Grand new sort, just out. Center white shading to rose. Large. 2.00
***Mme. Van Den Dale**—Large flowers on good stems. Beautiful soft shell pink. 25
Mrs. Chas. Turner—Blooms seven to nine inches across, bright canary yellow. 25
Mrs. J. G. Cassett—New giant sort; flowers deep rose pink on good stems. 50
Mrs. Roosevelt—Delicate silvery rose of giant size. 35
Mrs. Winters—Large pure white Decorative Dahlia. 25
Multnomah—New. See Dahlias originated by Gill Bros. 50

DECORATIVE DAHLIAS—Continued

Navajo—Rich velvety red, very dark, free flowering.....	\$.25
Oban—Mauve, shaded fawn, an unusual color, very free.....	.25
Olympia—Rose pink, striped with rich crimson.....	.25
*Orange King—A rich, fiery, orange scarlet, free flowering and early.....	.25
*Ouray—New. See list of novelties for description.....	.75
*Papa Charmet—New. See list of novelties for description.....	.50
*Perle De Lyon—Pure white of good size, petals serrated at the tips.....	.25
Poppy King—New. See list of Dahlias originated by Gill Bros.....	.50
Progress—Soft rosy lake, splashed and dotted with crimson.....	.25
Sacajewa—Orange shaded red, large and free flowering.....	.25
*Souvenir De Gustave Doazon—One of the largest Dahlias, light orange scarlet.....	.35
Sylvia—Pink with lighter center, good stems.....	.15
William Agneau—Large flowers, rich carmine, broad petals reversing to stem.....	.15
Yellow Colosse—See list of novelties for description.....	.50

GILL'S PEONY FLOWERED DAHLIAS.

*Andrew Carnegie—New. See list of novelties for description.....	.75
*Antoine Rivoire—New. See list of novelties.....	.75
Bertha Von Suttner—New. See list of novelties.....	.75
Caesar—New yellow sort. See list of novelties.....	.50
*Cleopatra—Rich oriental red marked with yellow. Very free.....	.25
Duke Henry—Dark crimson, fluffy, curling petals, large size.....	.50
*Garnet Queen—New. See list of Dahlias originated by Gill Bros.....	1.50
*Geisha—New. See list of novelties for description.....	.50
Giant Edelweiss—New white, see list of novelties.....	.50
*Germania—Brilliant strawberry red—a very fluffy, artistic flower.....	.50
Glory of Groenecken—Very large orange yellow.....	.50
King Leopold—Creamy yellow, shading to white, very free.....	.50
Magnet—New. See list of novelties.....	.75
*Mannheim—New. See list of novelties.....	.75
Miss Gladys Dawson—New, soft yellow and rose, very free.....	.75
Mme. Louise Perrier—Crimson-carmine, suffused white, yellow at base.....	.25
*Oregon Beauty—New. See list of Dahlias originated by Gill Bros.....	1.00
Philadelphia—Cactus Peony, reddish purple suffused with white.....	.50
P. W. Jansen—Rosy salmon, shaded with yellow, extra large.....	.50
Queen Emma—Hollyhock-pink, inner petals banded with gold.....	.35
Queen Wilhelmina—Large pure white petals of fluffy appearance.....	.35
Pheingau—Grand new sort, see novelty list.....	.75

GILL'S SHOW DAHLIAS.

*A. D. Livoni—Clearest shade of pink known in Dahlias, very free.....	.15
*Arebella—Light sulphur yellow shaded peach blossom.....	.25
Caleb Powers—New. Large flowers of delicate shell pink.....	.50
Colonist—Coral red, often with two petals in one.....	.25
D. M. Moore—New dark sort. See novelties for description.....	.75
*Dorothy Peacock—New. See list of novelties.....	.75
Dreer's White—The best pure white quilled Dahlia. Large size.....	.35
*Duchess of Cambridge—White, tipped solfernino-red.....	.15
*Emily—Lavender suffused with white, large and free.....	.25
Fascination—White suffused with lavender pink. Large flowers.....	.25
*Floranova—Deep purplish maroon, quilled petals.....	.15
*Frank Smith—Maroon almost black, often tipped and marked with white.....	.15
Grand Duke Alexis—White edged with lavender blush, large and quilled.....	.25
John Thorpe—Light shade of pink, free blooming.....	.15
*J. J. Johnson—New sort originated by Gill Bros, see list for description.....	1.00
*Kaiser Wilhelm—Large deep yellow tipped with cherry red.....	.25
Le Colosse—Immense flowers of watermelon red. Very showy.....	.50
Lottie Eckford—Beautiful white striped with purple.....	.25
*Lucy Fawcett—Large sulphur yellow, striped and spotted carmine-rose.....	.25
Margaret Bell—Sport of Lucy Fawcett showing solid carmine rose.....	.25
Miss Browning—Pure yellow, often with white tips.....	.15
Miss Dodd—Canary yellow with tint of deeper shade on outer petals.....	.15
Mme. Alfred Moreau—Perfect, large, pure mauve pink. Extra fine.....	.25
*Mme. Heine Furtado—Large perfect white. See list of novelties.....	.50
*Princess Victoria—Perfect blooms on long stems, pure canary yellow.....	.25
Red Hussar—Rich cardinal red, an old standard.....	.15
*Spirit of the Golden West—New. See list of Dahlias originated by Gill Bros.....	.75
*Susan—Delicate, soft, shell pink. Free flowering.....	.25
*Thomas White—Purple garnet, shaded black; very perfect blooms.....	.25

SHOW DAHLIAS—Continued

***Tillamook**—New pink quilled. See Dahlias originated by Gill Bros. 50
 ***W. W. Rawson**—See list of novelties for description. 50
 ***Yellow Bird**—Primrose-yellow with divided tips. 15

GILL'S SINGLE DAHLIAS.

NOTE—Many people are now planting this class instead of Cosmos as they give a much longer season of bloom. They will do better in shady places than the other classes.

Ami Barillet—See list of novelties for description. 50
Big Chief—Brilliant cherry-red edged velvety-maroon. 50
Blushing Maiden—Purple maroon marked and tipped with white. 35
 ***Cardinal Century**—Very large, bright cardinal red with round petals. 35
 ***Eckford Century**—New. See list of novelties. 75
Fringed Century—Bright rosy crimson with lighter marking. 25
 ***Gigantea Alba Century**—New. See list of novelties. 75
Gladys Century—Rosy crimson, edged rose pink, with white zone around center. 35
 ***Golden Century**—Golden yellow shaded amber, large and free. 75
 ***Jack**—Brilliant fiery scarlet, base overlaid with golden yellow. 25
Maroon Century—Rich velvety maroon with yellow disc. 25
Pink Century—Delicate soft pink with lighter marking; very pretty. 25
 ***Poppy Century**—New. Bright garnet with satiny sheen, maroon center. 75
 ***Rose Pink Century**—The largest and best deep pink; good stems. 35
Spanish Century—New. See list of novelties. 50
Twentieth Century—Rosy crimson shading to white at tips and base of petals. 25
 ***White Lily**—See Dahlias originated by Gill Bros. 35

GILL'S POMPON DAHLIAS.

Belle of Springfield—Smallest Dahlia grown, color brick red. 15
 ***Crimson Beauty**—Perfect little ball of brilliant crimson. 15
Elegant—Soft pink tipped deep pink. 10
 ***Improved Little Herman**—An improved Little Herman of brighter color. 15
 ***Little Herman**—Deep red tipped white. 10
 ***May Cliff**—Rich plum color. Makes good stems. 10
San Toy—White tipped with Tyrian rose. 10
Vivid—Rich bright scarlet, very perfect. 15
 ***White Aster**—Best white variety; fringed petals. 15

CANNAS.

Allemania—Dark salmon with golden marking, green foliage, 6 feet high.
Black Beauty—Grows 5 to 6 feet tall with foliage of rich glistening bronzy purple, shaded black. Fine for bedding purposes.
King Humbert—Large Flowers produced in giant trusses, a brilliant orange scarlet with red markings, foliage broad and massive, of a rich coppery bronze. 5 feet high.
Musafolia—Enormous plants with leaves often 5 feet long and 2 feet wide. Green foliage with bronze margin. This variety make no blooms.
New York—Bronze leaved, with very intense brilliant carmine flowers. 6 to 7 feet high.
Wyoming—Bronzy-purple foliage with immense spikes of massive orange flowers.

W. E. Cottrell—Pink, suffused orange, light green foliage with brownish edge.
 Prices on cannas, 15c each, \$1.25 per doz., postpaid.

GLADIOLUS.

America—Finest for cutting. Large flowers of a beautiful soft shell pink.
 Each, 10c; per doz., 90c, postpaid
Blue Jay—Rich, royal violet blue; a novel shade. Each, 10c; per doz., \$1.00, postpaid.
Sulphur King—The best yellow sort yet introduced. Each, 20c; per doz., \$2.00.
Brilliant—Bright scarlet with carmine and white throat. One of the best.
 Each, 10c; per doz., 75c.
International Mixture—This splendid mixture contains an endless variety of colors and will give the best of satisfaction. Each, 5c; per doz., 50c, postpaid; E. or F., per 100, \$3.00.

Miscellaneous Flowering Shrubs

Althea—Or Rose of Sharon. Tall hardy shrubs blooming from August to October. White and red. 2 year, each, 35c.
Hydrangea, Paniculata—Pyramidal panicles a long long, opening white and changing to rose. 2 year, each, 35c.
Hydrangea, Hills of Snow—Snow white of immense size. Blooming from June to September. 3 year, each, 50c.

Japanese Quince—Beautiful red flowers in early spring. Good strong plants. Each, 25c.
Lilac, Alphonse Lavalle—Double dark blue shading to violet. Large panicles. Strong 2 year, each, 60c.
Lilac, Madam Lemoine—A superb double flowering white sort. Each, 60c.
Lilac, Pres. Grevy—Large panicles of double blue. Each, 60c.

FLOWERING SHRUBS—Continued

Spirea, Anthony Waterer —30 Inches high, of spreading growth; color bright crimson. Each, 25c.	Snowball, Japanese —Completely covered during June with balls of snow white flowers. Each, 50c.
Spirea, Van Houttei —Grandest of all the white spireas, compact habit. Each, 25c.	Snowball, Common —The old fashioned snowball. Pure white flowers. Each, 35c.

PEONIES

Each—Postpaid.

Asa Grey —Petals salmon flesh, center light pink, flaked with carmine.	\$.60
Bunch of Perfume —Bright vivid rose color; very fragrant.75
Felix Crousse —Large, clear, brilliant ruby red; best red.60
Festivia Maxima —6 to 8 inches in diameter, snow white.50
Gigantia —Immense, clear pink, with silvery sheen.75
Golden Harvest —Guard petals pink, passing to yellow and rose.60
La Tulipe —Delicate rose, changing to white.50
Marie Lemoine —Delicate ivory white; massive late blooms.75

These are good, strong divisions, which will generally bloom the first year. Best to plant in the fall.

GILL'S NEW AND STANDARD ROSES

The roses we offer are good strong plants and have good fibre roots for starting. We do not handle stored bushes, our orders being filled right from our nursery. We guarantee them true to name and will replace or refund on any not coming so. We are not responsible for plants dying after being set out, since plants will be sent out in good condition and if they do not arrive so you should notify us at once.

Alliance Franco-Russe —T. Enormous yellow flowers suffused with rosy red.	\$0.25
Andre Gamon —H. T. Large, full, globular flowers of deep rose and carmine.35
Anna Muller —Baby rambler type. Cluster of brilliant rose flowers.25
Antoine Rivoire —H. T. Rosy flesh, on yellow ground with border of carmine. Large.25
Aurora —H. T. Clear bright pink, full and double to the center; fragrant.25
Avoca —H. T. Crimson scarlet, buds long and pointed. Strong grower.35
Baby Rambler —Large clusters of crimson flowers always in bloom.25
Baby Rambler, White —Same as the above but pure white flowers.25
Bessie Brown —H. T. Creamy-white flowers of immense size and great substance.25
Betty —H. T. Large flowers, fine long buds, coppery rose shaded golden yellow.35
Bridesmaid —T. The popular grand pink rose. Splendid buds.25
Bride —T. Grand white rose, fine buds.25
Capt. Hayward —H. P. Deep glowing crimson of largest size; sometimes call Red Druschki.35
Clara Watson —H. T. Pearly-white center, tinted with pale rosy peach.25
Col. R. S. Williamson —H. T. Large blooms, satiny-white with deep blush center.25
Conrad F. Myer —H. P. Large double flowers, bright vivid pink. Very strong grower.35
Crown Princess Cecile —H. T. New large rose with fine buds. Delicate silvery pink.50
Dean Hole —H. T. Intense salmon pink; long buds opening into mammoth flowers.35
Dr. Grill —T. Fine bud form, rose with coppery shadings.25
Dutchess of Wellington —H. T. New, intense saffron yellow later shading to coppery yellow.60
Etoile De Lyon —T. Fine yellow bedder.25
Florence Pemberton —H. T. Strong growing, perfect, large size, lively pink edged white.25
Francois Dubrieul —T. Vivid crimson with velvety shadings.25
Frau Karl Druschki —H. T. Snow white, large, full and perfect. Best white.25
Freidricksruh —T. New. Deep blood-red, large, full, well formed.50
Freiher Von Marschall —T. Fine long well shaped buds, of bright red. Large and full.25
F. R. Patzer —H. T. Creamy-buff, back of petals delicate pink, reflex light orange pink.50
Gen. Jacqueminot —H. T. The Jack rose. Bright red. Large double flowers.25
Glorie Lyonnaise —H. P. Large creamy white, good buds.25
Golden Gate —T. Shell pink, shading to creamy-flesh.25
Gruss An Teplitz —H. T. Bright hue of scarlet crimson. Strong grower.25
Harry Kirk —T. New. Large perfect flowers; deep sulphur-yellow shaded cream.50
Helen Good —T. Delicate yellow, suffused on edges with pink. Cochet type.25
Helen Gould —H. T. Rosy Crimson of fine form; large, perfect double.25
Henry Martin —Moss Rose. Light red, very vigorous grower.35
His Majesty —H. P. Dark deep crimson shaded deep vermilion.35
J. B. Clarke —H. T. Deep scarlet shaded blackish crimson, large and beautiful.35
Jules Finger —T. Long buds of rosy scarlet.25
Kaiserine A. Victoria —H. T. One of the best white roses; cream tinted.25
La Detroit —T. Shell-pink, shading to soft rose.25
Lady Battersea —One of the best bud roses. Cherry-crimson, lightly shaded orange.25
Lady Hillingdon —T. Long slender pointed buds of brilliant, deep, golden yellow.50
Laurent Carle —H. T. Brilliant velvety carmine, long buds on good stems.35
Lena —T. Glowing apricot suffused yellow, fine buds.35
Mad Carloine Testout —H. T. The Portland rose. Large, clear, bright, satiny pink.25

GILL'S NEW AND STANDARD ROSES—Continued

Mad. Constant Soupert—T. Dark golden-yellow, tinted peach-pink.....	.35
Mad. Jenny Gillemot—H. T. Long buds, deep saffron-yellow, opening canary yellow.....	.25
Mad. Jules Grolez—H. T. Clear deep rose, shaded yellow at the base, long pointed buds.....	.25
Mad. Maurice de Luze—H. T. New. Deep rose-pink with cochineal-carmine center.....	.50
Mad. Melanie Soupert—H. T. Golden-yellow, center orange yellow suffused with pink.....	.25
Mad. Segond Weber—Long buds, enormous blooms; color rosy salmon.....	.35
Magnafrano—H. T. Magnificent buds, large flowers, splendid crimson-scarlet.....	.35
Maman Cochet—T. Or pink Cochet. Popular grand pink rose, fine buds.....	.25
Marie Van Houtte—T. Pale yellow edged with rose.....	.25
Miss Kate Moulton—H. T. Soft shell-pink, with the reverse of the petals deeper.....	.25
Mlle. Helene Gambier—H. T. Orange yellow changing to coppery yellow.....	.25
Molly Sharman Crawford—T. Grand snow-white rose, extra large and good form.....	.35
Mrs. A. R. Waddell—H. T. One of the best new roses; long, pointed buds of deepest apricot.....	.50
Mrs. David Jardine—H. T. Bright silvery pink, shading to salmon pink.....	.35
Mrs. Harold Brocklebank—H. T. Creamy white, center buff, outer petals salmon rose.....	.35
Mrs. John Laing—H. P. Immense, full double flowers, bright silvery pink.....	.25
My Maryland—H. T. Color glowing, intense pink, large, full, fine buds.....	.35
Papa Gontier—T. Splendid buds, of beautiful carmine flushed crimson.....	.25
Paul Neyron—H. P. Gigantic blooms of deep shining rose.....	.25
Perle Von Godesburg—H. T. White with yellow center. Often called yellow Kaiserine.....	.25
Pres. Taft—H. T. Shining, intense deep pink, fine grower and good bloomer.....	.35
Prince Camille de Rohan—H. P. Deepest crimson, very dark.....	.25
Prince de Bulgarie—H. T. Color deep flesh with yellow and crimson shadings.....	.25
Princess Adelaide—Moss Rose. Deep blush, one of the best.....	.35
Rainbow—T. Carmine striped with crimson.....	.25
Rhea Reid—H. T. Flowers large and double, rich, dark velvety-red. Fine buds.....	.35
Richmond—H. T. Pure red scarlet, the best red bud rose to date.....	.25
Rogosia—Fragrant single flowers, glossy foliage; offered in crimson or white.....	.25
Safrano—T. Fine buds, apricot yellow with orange.....	.25
Souvenir de Catherine Guillot—T. Austrian copper flushed rose.....	.25
Souvenir de Pres. Carnot—H. T. Delicate fawn, shaded deeper in center. Splendid rose.....	.25
Souvenir de Pierre Notting—T. Yellow flushed light pink, fine buds.....	.25
Ulrich Brunner—H. P. Rich, glowing, scarlet crimson.....	.25
Viscountess of Folkstone—H. T. White suffused with fawn. Large flowers.....	.25
William Notting—H. T. Large full flowers, rosy-cerise, deeper center.....	.25
William Shean—H. T. Beautiful pink flowers of immense size.....	.35
William R. Smith—T. Blending of salmon pink, rose-pink and flesh tints.....	.25
White Maman Cochet—T. Creamy white tinted on outer petals with pink. Very popular.....	.25
White Malmaison—H. T. Large white, tinted with lemon.....	.25

NOTE—Letters after names stand for classes of roses as follows: T., tea roses. H. T., hybrid tea; H. P., hybrid perpetual. Prices on roses are all postpaid.

CLIMBING ROSES.

Blue Rambler—Opens pink changing to violet blue flowers; large trusses.....	.35
Climbing Caroline Testout—Flower same as Mme. Caroline Testout. Glowing pink.....	.50
“ Frau Karl Druschki—Flowers same as Frau Karl Druschki. Strong grower.....	.75
“ K. A. Victoria—White flowers same as the bush sort.....	.35
“ Killarney—Deep shell pink same as the Killarney rose.....	.35
“ Papa Gontier—Climbing sport of Papa Gontier, color rich red.....	.25
“ Queens Scarlet—Climbing form of the Queens Scarlet rose.....	.50
Crimson Rambler—Large cluster of crimson blossoms.....	.25
Dorothy Perkins—Shell pink flowers in large clusters.....	.25
Flower of Fairfield—Everblooming Crimson Rambler.....	.25
Gainsborough—White tinted fawn. Extra large double flowers.....	.35
Mamie—Delicate fawn with pink center. Large perfect buds and flowers.....	.35
Marechall Neil—The popular fragrant rose; deep golden yellow.....	.50
Reine Marie Henrietta—The old standard, deep cherry red.....	.25
Thousand Beauties—Opening white, flushed pink, changing to rosy carmine.....	.25

GILL'S HARDY PERENNIALS

NOTE—The perennials offered below are good strong plants and will, under proper care, bloom the first year. Prices are postpaid on all perennials.

Acanthus, Bear's Breech—Curious rosy white flowers in August and September. Each, 15c; per doz., \$1.25.	Anemone, Windflower—Grows 2 to 3 feet high, blooming from August to November. Fine for shady places. Offered in pink and white. Each, 20c; per doz., \$2.00.
Achillea, The Pearl—Hardy white flowered perennial. Each, 10c; per doz., \$1.00.	Anthemis—Daisy like golden-yellow blossoms fine for cutting. Each, 15c; per doz., \$1.25.
Anchusa, Dropmore Variety—Grows 5 feet, bearing abundance of gentian-blue flowers. Each, 20c; per doz., \$2.00.	

GILL'S HARDY PERENNIALS—Continued

AQUILEGIA COLUMBINE.

Veitches Long Spurred Hybrids—Fine mixed colors.

California Hybrids—Yellow and orange shades.

Helanae—Lovely shade of blue and pure white. The above at 20c each, \$2.00 per doz.

Asters, Hardy—Mixed colors.

Each, 15c; per doz., \$1.25.

Bocconia, or Plume Poppy—Spikes 2 to 3 feet high, of cream colored flowers.

Each, 20c; per doz., \$2.00.

Boltonia—4 to 6 feet; daisy-like flowers, July to September. In white or pink.

Each, 20c; per doz., \$2.00.

CAMPANULA BELL FLOWER.

Hare Bell—6 inches high, blue flowers.

Cup and Saucer—Very pretty, 4 feet, mixed.

Peach Bells—2 or 3 feet, blue.

Medium—The old fashioned bell flower, mixed. Any of the above at 15c each, \$1.50 doz.

Centaurea, Bachelor Button—At 20c each, \$2.00 per doz.

Carnation, Giant Marguerite—Mixed colors, large blooms. Each, 10c; per doz., \$1.00.

Coreopsis—Large bright yellow flowers.

Each, 20c; per doz., \$2.00.

Chrysanthemum, Mrs. Robinson—Good large white sort for out of doors. Each, 25c.

DELPHINIUMS.

Tall spikes of various shades of blue.

Gold Medal Hybrids—Light blue shades.

Grandiflora—Mixed shades of blue. Each of the above at 20c, or \$2.00 per doz.,

The King—Largest and best. Each, 25c.

Gaillardia—Daisy-like flowers banded with orange and red. Each, 20c; per doz., \$2.00.

Gaura—3 to 4 feet, rosy-white flowers, July to frost. Each, 15c; per doz., \$1.50.

Geum—Crimson flowers.

Each, 15c; per doz., \$1.50.

Gypsophila—Perennial Baby's Breath. 3 feet high. Each, 20c; per doz., \$2.00.

Helenium—Late, tall yellow flowers.

Each, 20c; per doz., \$2.00.

Helianthus, Perennial Sunflower—Large yellow flowers. Each, 20c; per doz., \$2.00.

Hemerocallis, Yellow Day Lilies—Lemon yellow flowers. Each, 20c; per doz., \$2.00.

Hollyhocks—Double mixed and single mixed. Each, 15c; per doz., \$1.50.

In Red, White, Pink and Yellow, double, at 20c each, \$2.00 per doz.,

Iris, German—Mixed colors.

Each, 25c; per doz., \$2.50.

Iris, Japanese—Assorted colors, strong clump, 50c each; \$5.00 per doz. divided clumps, 20c each, \$2.00 doz.

Lobelia, Cardinal—Intense red flowers.

Each, 20c; per doz., \$2.00.

Lupine—Spikes of blue, white and pink, mixed. Each, 20c; per doz., \$2.00.

Lychnis, Ragged Robin—Orange scarlet flowers. Each, 20c; per doz., \$2.00.

Lilium Aratum—Gold banded lily.

Each, 20c; per doz., \$2.00.

Lilium Candidum—Popular white garden lily. Each, 20c; per doz., \$2.00.

PANSIES.

Gill's Oregon Giants 40c doz., April delivery.

Gill's Giant Mixed, 25c doz., April delivery.

Peonies—See page 30.

PHLOX, HARDY.

Of very easy culture and should be more planted; do best planted during the fall, about November.

Athis—Deep, clear salmon; large panicles.

Coquelicot—Bright orange scarlet.

Huxley—Rich lavender.

Jeanne d'Arc—Pure white late sort.

Kossuth—Rich, deep purple.

Masculata—Very tall, bright reddish; almost purple.

Miss Lingard—Pearly white with faint pink eye; very early.

Niobe—Darkest of all Phlox; very fine.

Peachblow—Delicate peachblow pink.

R. P. Struthers—Clear cherry red, with salmon shades; red eye.

Price of any of the above phlox is 15c each, \$1.25 per dozen, postpaid.

Platycodon—Mixed colors. Blooms through the season. Each, 25c; per doz., \$2.50.

Poppy, Oriental—Orange scarlet blossoms.

Each, 20c; per doz., \$2.00.

Poppy, Iceland—Pretty early flowers, yellow and white. Each, 20c; per doz., \$2.00.

Primula Veris, English Primrose—Early blooming, orange, yellow and maroon.

Each, 20c; per doz., \$2.00.

Rudbeckia Golden Glow—Tall plants, yellow flowers. Each, 20c; per doz., \$2.00.

Rudbeckia Purpurea—Purple variety.

Each, 25c; per doz., \$2.50.

Shasta Daisy—Fine white sort.

Each, 20c; per doz., \$2.00.

Stokesia Cyanea—White and blue flowers.

Each, 20c; per doz., \$2.00.

Sweet Rockets—Grow 2 to 3 feet high; various colors. Fine for shady places.

Each, 15c; per doz., \$1.50.

Sweet Williams—Mixed single sorts.

Each, 15c; per doz., \$1.50.

Tritomi, Red Hot Poker Plant—Orange red spikes. Each, 25c; per doz., \$2.50.

Veronica, Speedwell—Light blue spikes.

Each, 20c; per doz., \$2.00.

Violets, Hardy—Single and double blue.

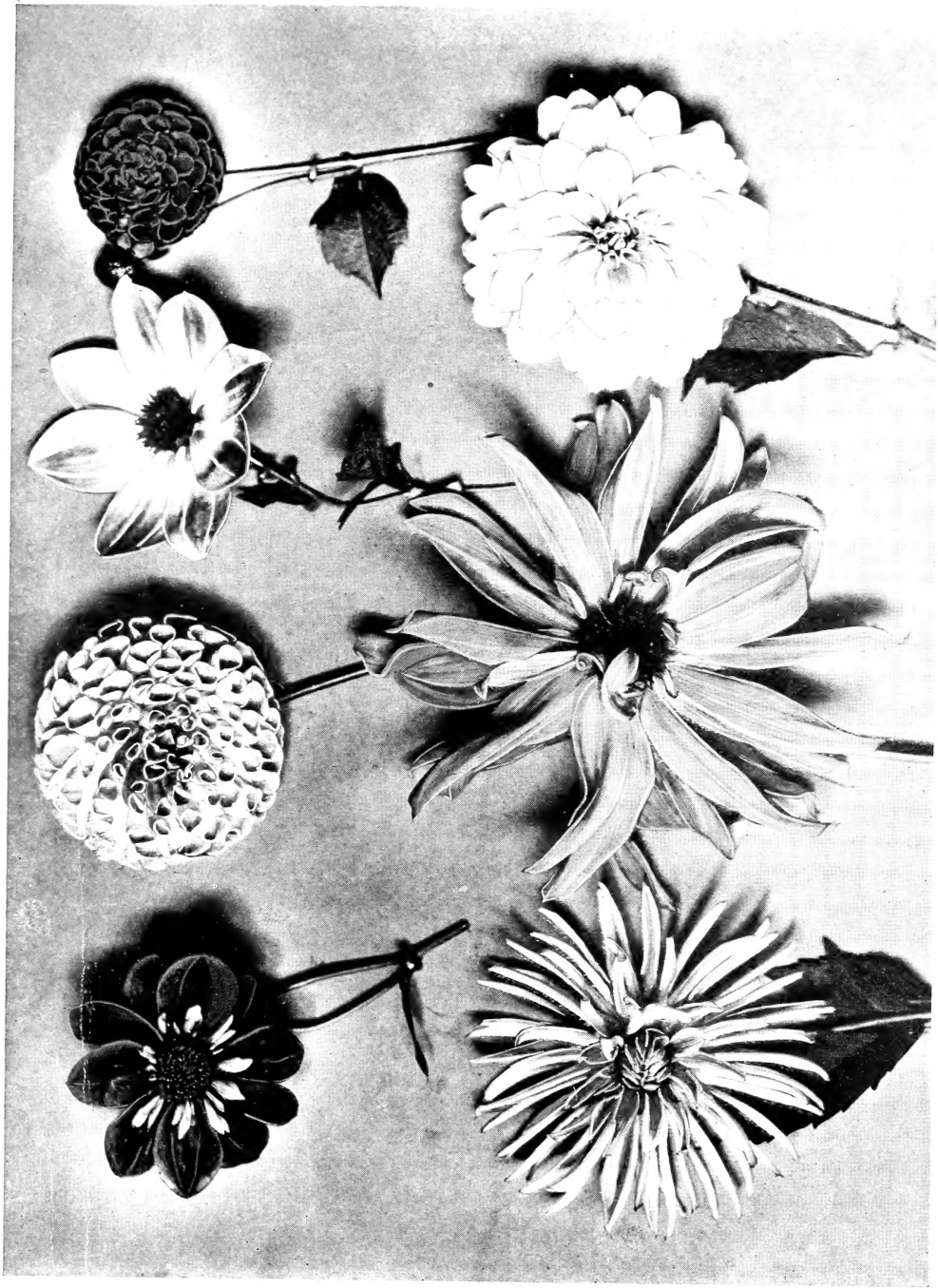
Each, 15c; per doz., \$1.50.

Wall Flowers—Single or double, mixed.

Each, 20c; per doz., \$2.00.

Yucca, Adams Needle—Spear-like evergreen foliage, large spikes 4 to 5 feet high, of waxy white, drooping flowers. Each, 50c.

DAHLIA BLOOMS SHOWING CLASSES



Pompon
Decorative

Single

Show
Peony

Colorette
Cactus

