

Historic, Archive Document

Do not assume content reflects current scientific knowledge, policies, or practices.



62-78
1915

Fairfax Roses

LIBRARY
RECEIVED
Department of Agriculture

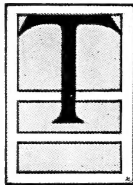
Gray, W. R. Oakton, Va.



MRS. AARON WARD

FAIRFAX ROSES

The Aristocrats of Rosedom



THE name of Fairfax—famous for two centuries as the home of exclusiveness—never has been used more appropriately to denote aristocratic refinement than when applied to the Roses of Fairfax County, Virginia. Every condition of soil and climate is so favorable that Fairfax Roses become truly superb.

My Rose nurseries are in the heart of the best Rose-growing section of the United States. The seasons are long and mild, yet cold enough to provide the essential "dormant period" in which the bushes may rest and gather energy. The growing period is so long that Fairfax Roses two years old are much larger and stronger than those of equal age grown farther north.

Bear in mind that my Roses are as hardy as need be—customers in Canada are using them with entire satisfaction. One reason for this is that they are grown right out in the open, with no protection. Plants grown under glass are liable to be "soft" and not hardy.

The vitality of the Rose plants you buy is another exceedingly important matter. Some unscrupulous growers will force Roses for blooms all winter, and then sell the exhausted plant in the spring. My Fairfax Roses are not that sort. My plants are all heavy, stocky and vigorous, grown on their own roots, except where noted.

My mailing-size plants are large. All are one-year old, from 3-inch pots, and most of them are ready to begin blooming at once. It is best, when possible, to have plants sent by express, as I can often send larger plants and put in extra plants free of charge,—which I do whenever possible.

Terms. Cash with order. Requests for credit must be refused, as they have to be looked up, which takes time, especially in the busy season, delaying packing, shipping, etc. In fairness to all of my customers I make this request.

Remit by post office money order payable at Oakton, Virginia, by express money order, draft or personal check. If currency is enclosed, the letter must be registered; otherwise I cannot be responsible for it. Please do not send stamps.

Guarantee. I guarantee all plants to reach the customer in good growing condition; if they do not I will replace them free, if notified immediately.

Shipments. Two- and three-year-old plants must go by express at customer's expense, but will be packed as light as possible. They will go at the special plant rate, which is about 20 per cent less than merchandise rate. Shipments should, when possible, go over only one express company's line, as otherwise the charge is likely to be greatly increased. If you can reach the lines of the Adams or Southern Companies, therefore, I can save you a good deal in express charges. However, a rule which went into effect in July, 1911, by order of the Interstate Commerce Commission, greatly reduces the charges where shipments must travel over two or more lines, and will save my customers considerable sums.

I pay postage on all plants by mail, and guarantee that everything sent out will reach you in perfect condition. Express shipments, of course, go at customer's expense.

Errors. I use every precaution to guard against errors, but in the press of business they sometimes will occur. I always wish to know of anything not satisfactory, so I may correct the error.

Always use order sheet, as it enables me to fill orders with despatch and accuracy.

No orders for plants received for less than 25 cents unless 10 cents be added to pay for packing.

I am only twelve miles from Washington, D. C., and have direct connection with all railroad lines leading from there.

When sending your order, if you will send the names of **a few of your friends who are plant-buyers**, I will send you something extra for your trouble. **I will send you many fine plants extra** if you will get your friends' orders and send them with yours, so that all may go by express to you.

Large Roses for Immediate Effect. I call special attention to the two-year-old plants offered, as they are very heavy, fine plants, and the prices are low. I keep them in cold houses during winter—entirely dormant, so they are in best condition for immediate blooming. They must be sent by express at purchaser's expense, unless the order be a small one, when I will send by mail if 5 cents per plant be added for postage.

Visitors Always Welcome. I am right at Oakton Station, on the Washington, Arlington and Falls Church Electric Road. Cars leave Washington every hour from Pennsylvania avenue and Twelfth street; Oakton is a twelve-mile ride.

I want to **make you** a customer this year if you are not already growing some of my plants. If you are, then you will still be interested in my attractive offerings. In either case, let me hear from you with an order—I will make every effort to merit your further patronage by supplying such plants as will produce thoroughly satisfactory results for you. I guarantee my own personal efforts in that direction. Should you desire any information about varieties of Roses best suited to your location, or advice as to caring for Roses after planting, write to me; I will be glad to help you grow the best Roses possible.

W. R. GRAY, Oakton, Virginia

HOW TO GROW ROSES

Time to Plant. The best time to plant Roses is in early spring. Two- and three-year-old plants should be set out as early as the soil can be prepared, even if severe frosts may follow; they usually will do better than if planted later. The mailing-size plants, however, should not be set out until after danger of frost is over. Except in the most northern states, Roses may be planted in the fall, and will start earlier and make a better growth than those set out in the spring; they should, however, have good protection during the first winter.

Planting and Summer Care. While Roses may be grown in any good garden soil, they flourish much better in a rather heavy clay loam than they do in a light or sandy soil. They should not be planted near large trees or in a shady location. Care in preparation of the soil is repaid abundantly in rapid growth, health of the plants, and profusion of bloom. The best soil for Roses is that taken from old pasture and mixed with well-rotted manure, in the proportion of one part of manure to four parts of soil. Dig the bed out to a depth of two feet or more, and fill it with the mixture of soil and manure, first providing for drainage with a layer of stones or tile, if drainage is needed. When possible, make the beds several days before planting, to allow the soil to settle. At the time of planting it should be an inch below the level of the land. Beds should be not wider than $3\frac{1}{2}$ feet, to allow hoeing and cutting of the flowers without stepping on the bed.

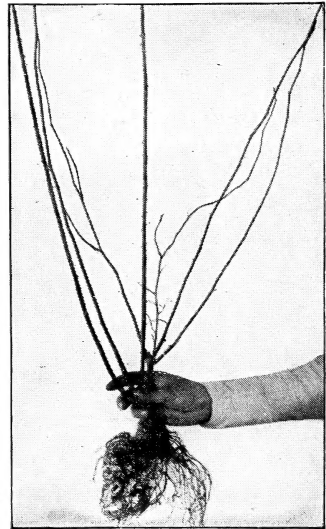
In planting, see that the soil is firm about the roots. Keep them well watered at first, and, if the plants are of the smaller sizes, shade them from the sun for a few days. Tea and Hybrid Tea Roses may be set 18 inches apart, and Hybrid Perpetuals 2 feet apart, with both 8 inches from the edges of the beds. The soil should be kept stirred with the hoe constantly—every week is not too often—and if this is done, watering will be unnecessary. If the soil is not very rich, fine-ground raw bone may be applied each year at the rate of five pounds to the square yard.

Pruning. Two- and three-year-old Rose bushes should be cut back within 6 or 8 inches of the ground as soon as they are planted; some growers practice pruning them to the third or fourth leaf-bud. The shoots should be watched and pruned as required during the growing season, care being taken to prevent long canes from outgrowing others and giving a straggly appearance to the bush. A good general rule is to cut back each shoot to half its length after it has bloomed. Climbing Roses require no pruning except to keep them within the desired bounds and to remove very old or dead wood.

Winter Protection. The purpose of winter protection is not so much to keep the wood from freezing as it is to prevent it from alternate freezing and thawing. In the latitude of Washington all that is necessary is to cover the bed with 3 or 4 inches of leaves or other mulch. Farther north it is well to cover the canes to a depth of 5 or 6 inches, and in exposed locations it is well to protect them with corn-stalks or evergreen boughs. Tea Roses may be wintered successfully by covering them with a foot of leaves which are held on by poultry netting or evergreen boughs. The most tender kind of Roses generally may be carried through the severest winters if the canes are brought together, cut at the height of a foot or two, and wrapped with long straw tied at frequent intervals. In dry soil the earth may be hilled up about the bushes and offer the protection necessary.

Herewith you will find money order for \$2, on receipt of which please send me the enclosed list of Roses. Formerly I have been a liberal patron of yours and always found perfect satisfaction; in fact, of all the florists I have dealt with in the past thirty years, your flowers have been the best.—R. L. W., Ramona, Cal.

I want to thank you for the nice plants which came safely by express a few days ago. I have bought plants from many places, but none more satisfactory than yours. It is a pleasure to deal with such a house.—Miss R. S., Lexington, N. C.



This is a specimen of the 2-year-old Rose bushes I supply. My 3-year size is much larger.



HARDY HYBRID TEA ROSES

These are by far the most valuable and popular of all the Roses. They bloom continuously throughout the summer and frequently until late in the fall, and are practically hardy in any climate. There are many varieties in all colors, shapes and sizes of bloom, and all have a delightful fragrance. The assortment that I offer is not so large as that of some growers, but I have tested all the varieties thoroughly, and have confined my list to those which are the most satisfactory in profusion and quality of bloom, foliage and habit of growth. I have discarded many varieties because I have others of the same class of greater merit. I believe this list embraces all of the worth-while sorts.

Any plants listed at 25 cts. each, \$2.50 per doz.; 30 cts. each, \$3 per doz.; 40 cts. each, \$4 per doz.; 50 cts. each, \$5 per doz.; 60 cts. each, \$6 per doz. Mailing-size plants are one year old, from 3-inch pots. All on their own roots except the three-year-old plants, which are budded plants.

American Beauty. Crimson. Largest, sweetest and best of all hardy Roses. It is a genuine, hardy, everblooming Rose. For immensity of size, rich color, exquisite form and delicious fragrance, it stands without an equal. It is a quick and bushy grower and a continuous bloomer, makes magnificent buds and large, deep, double flowers, and is valuable both for house and garden culture. Color a rich, rosy crimson, shaded and veined in the most charming fashion; very fragrant. Price, 15 cts.; larger size, 25 cts.; 2-year plants, 35 cts.

Antoine Rivoire. Pink. A vigorous grower, with fine-shaped buds and flowers;

color salmon-flesh in center, the edges of its petals shading to a creamy white, with a delicate pink tinge. Price, mailing size, 10 cts.; 2-year plants, 25 cts.

Bessie Brown. White. Flowers profusely in the open ground all through the summer. The color is pure white, sometimes faintly flushed pink; petals enormous and well shaped. Price, mailing size, 15 cts.; 2-year plants, 35 cts.

Betty. Yellow. Color a coppery rose, overspread with golden yellow. Its blooms are extremely large, fairly full and of glorious form. Vigorous, erect and free-branching habit; flowers all season and is deliciously perfumed. Price, mailing size, 15 cts.; 2-year plants, 35 cts.

Cardinal. Red. Can be recommended as better than Liberty, and, in the open ground, equal to Meteor. It is a strong, robust grower, with large and massive flowers, deliciously fragrant, full and double to the center. Of easy culture and extremely free flowering. Price, mailing size, 15 cts.; strong, 2-year plants, 40 cts.

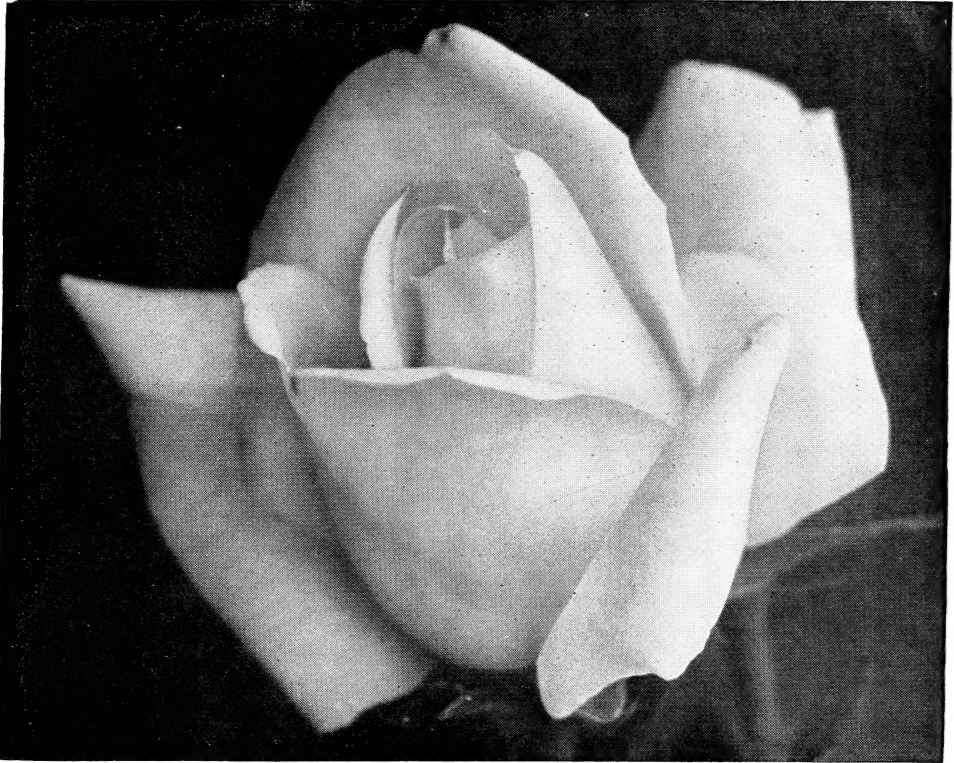
Clara Watson. Pink. The flowers are very graceful and are produced in remarkable profusion. The buds are beautiful, and are supported on long stems, making it desirable for cutting. The color is salmon pink, difficult to describe. Price, fine, mailing-size plants, 10 cts.; strong 2-year plants, 25 cts.; heavy 3-year plants on own roots, 50 cts.

Dean Hole. Pink. An intense salmon-pink, with bud of extraordinary length opening into a mammoth bloom of splendid substance. An English gold-medal Rose that ranks with the best. Price, 10 cts.; 2-year plants, 25 cts.

Duchess of Wellington. Yellow. The color at first is an intense saffron-yellow, stained with crimson, which, as the flowers develop, changes to a deep coppery yellow. The blooms resemble those of Killarney in shape, but have larger and finer petals. Delightfully fragrant and very free flowering. Price, one-year mailing size, 15 cts.; strong 2-year plants, 40 cts.; extra 3-year plants, 60 cts.



Cardinal Roses



Frau Karl Druschki. A great white Rose; deserves its popularity

Hardy Hybrid Tea Roses, continued

Frau Karl Druschki.

White. Called by some, "White American Beauty." Strictly speaking, this Rose does not belong in the Hybrid Tea class, as it is a pure Hybrid Perpetual. It is, however, such a constant and persistent bloomer that it will pass for a Hybrid Tea. The bud is long and pointed, of the finest form, often delicately marbled with carmine on the outer petals, opening to an enormous flower absolutely pure snow-white, unquestionably the whitest Rose known. The growth is exceedingly strong, vigorous and healthy. Price, mailing size, from 3-inch pots, 15 cts.; strong 2-year plants, 40 cts.; extra-heavy 3-year plants, 60 cts.; 4-year immense plants, 85 cts.

Etoile de France.

Red. This French variety is a most valuable addition to the Hardy Hybrid Tea bedding Roses and a fitting companion to such high-grade varieties as Killarney and La France. It is a strong, vigorous grower, with good dark foliage, and flowers which are full and double and as beautiful in the bud as in the full-blown flower, and borne on strong, upright shoots in the greatest profusion. In color it is distinct from all Roses in this class, being of a rich, velvety crimson with a vivid cerise-red center. Price, mailing size, 15 cts.; strong 2-year plants, 35 cts.; extra 3-year plants, 50 cts. See illustration on page 11.

existence. Of free-branching habit of growth, very vigorous and healthy. Every shoot produces a large, double, well-formed flower, which, combined with its fragrance and hardiness, makes this essentially one of the greatest red Roses for outdoor planting. The fragrance cannot be excelled by any Rose. Price, 1-year mailing size, 15 cts.; strong 2-year plants, 35 cts.

Gruss an Teplitz, or Virginia R.

Coxe. Red. Velvety crimson shading to brilliant scarlet. The flowers are cup-shaped, moderately full, coming somewhat in clusters, on long, stiff stems, and are borne freely and continuously. Its hardiness, beautiful foliage and great blooming qualities make this one of the greatest Roses for massing. Price, mailing size, 10 cts.; strong 2-year plants, 25 cts.

General McArthur.

Red. One of the brightest, vivid crimson-scarlet Roses in



Hardy Hybrid Tea Roses, continued

Helen Gambier. Yellow. Flowers deep orange-yellow, shading to coppery yellow and then to almost white on the outside row of petals. Fragrance as strong and penetrating as a Sweetbrier Rose. Very distinct and beautiful. Price, mailing size, 10 cts.; 2-year plants, 25 cts.

Jonkheer J. L. Mock. Pink. This is a giant Rose from Holland, and grows to great size, usually outstripping all the varieties around it. The flowers are big and round, of the general type of La France, and a bright pink faced with carmine. They are borne freely on long stems and are valuable as cut-flowers, the firm, heavy texture of the petals making them keep well. Also excellent for bedding. It is almost thornless. Price, 1-year mailing size, from 3-inch pots, 25 cts.; strong 2-year plants, 50 cts.; extra 3-year plants, 75 cts.

Kaiserin Augusta Victoria.

White. One of the most beautiful of all Roses for open-ground culture. It is a strong, healthy grower and as hardy as any of the Hybrid Perpetual Roses. Blooms steadily from early spring until severe frost; in fact, it is as free-blooming as any Tea Rose. Elegant, large, pointed buds and large, full-double flowers; color, delicate creamy white; deliciously fragrant. As a cut-flower it stands without

a peer. Price, strong mailing-size plants, 15 cts.; 2-year plants, 30 cts.; extra 3-year plants, 50 cts.

Killarney. Pink. A phenomenal Hybrid Tea Rose, especially as to the coloring, which is an exquisite shade of deep shell-pink. The flowers are enormous, the petals frequently measuring 2½ inches deep. Wonderfully strong, throwing up heavy shoots crowned with long, heavy buds. Free-flowering and perfectly hardy. Price, strong 1-year plants, by mail, 15 cts.; heavy 2-year plants, 30c.; extra-heavy 3-year plants, 60c.

White Killarney. This variety possesses all the good points of, and is identical in every way with, its parent, except in color, which is of a clear white. Its parent, Killarney, though introduced only ten years ago, has for several years been one of the most popular Roses. White Killarney has great freedom of bloom, beautiful form, and perfect hardiness, which, together with its purity of color, assures for it the same popularity. In naming a select list of leaders for general planting, I should certainly include White Killarney, because I know its merits so well. Price, strong mailing size, 15c.; 2-year plants, 35c.

La France. Pink. Accounts come from all quarters every year describing the great profusion of its bloom from June until frost, and extolling its fragrance and immense size. It is of superb form, and double as a Rose can be. It is famed for its delicate coloring—silvery rose shaded with pink. It has a satin sheen over all its petals. Entirely hardy. Price, mailing size, 15 cts.; strong 2-year plants, 30 cts.

White La France, or Augustine

Guinoisseau. Recommended to all, whether for outdoor culture or for pots in the house in winter. If you were to ask for six of the very finest Roses, I should be sure to include it in the six. It is identical with La France, except in color. It is pearly white, sometimes tinted with fawn. Price, mailing size, 15 cts.; strong 2-year plants, 30 cts.

Striped La France. Light pink. This variety combines all the good qualities of La France in growth, fragrance, shape of bud and flower; it is nicely striped, the markings being plain and distinct, the variegations being a beautiful bright rose on a satiny pink ground. Price, mailing size, 15 cts.; strong 2-year plants, 30 cts.



Kaiserin Augusta Victoria Rose. Bears beautiful blooms constantly



Hybrid Tea Roses, con.

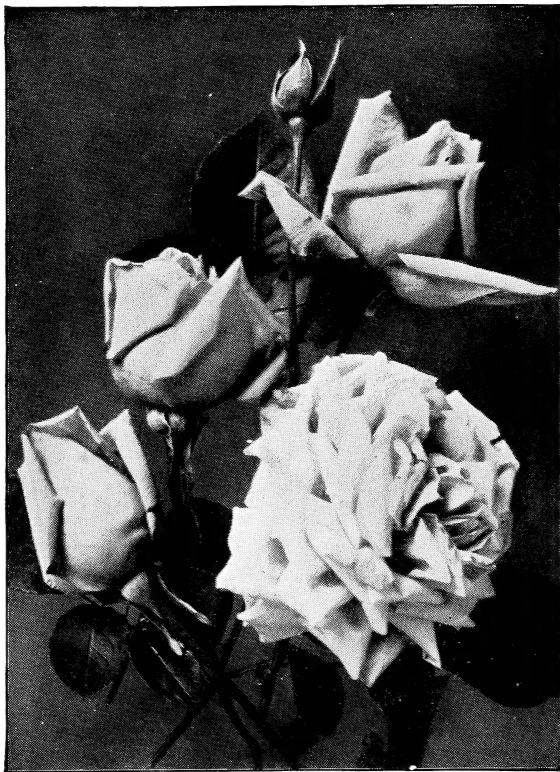
Red La France, or Duchess of Albany. Carmine. A fine Rose of unusual merit, one that will survive, with slight protection, the winters of any locality. It is identical in every respect with La France, except in color, which is a pretty red when in bud form, but when open it changes to a carmine. A fine bedder. Price, mailing size, 15 cts.; strong 2-year plants, 30 cts.

Lyon. Yellow. An offspring of Soleil d'Or. The form is full and globular, with large, broad petals of good texture. The flowers are remarkably rich in color; shrimp-pink at ends of petals, center coral-red or salmon-pink, shaded with chrome-yellow. It is very fragrant and, above all, a perpetual bloomer. Wherever shown in Europe it has been enthusiastically praised and given the highest awards. At Lyons it received the Prize of Honor, and at the National Rose Show held at Paris last summer, where eighty-eight leading varieties were submitted, Lyon scored the maximum one hundred points with the judges, and was the only one to receive the full number. This Rose cannot be grown on its own roots, and we supply budded plants only. It is somewhat subject to black-spot, a disease of the foliage, and may need spraying with bordeaux mixture. Price, strong 2-year plants, 65 cts.

Madam Constant Soupert.

Yellow. One of the most beautiful Roses in existence. Strong, robust, and bears great quantities of flowers. The buds are very long and pointed and of perfect form, on long, stiff stems, opening into large blooms of a splendid deep yellow, edged and feathered peach-pink; sometimes variable in color with less yellow. Price, 1-year mailing size, 15 cts.; strong 2-year plants, 40 cts. See illustration, page 13.

Madam Jennie Guillemot. Yellow. Buds long and pointed, deep saffron-yellow, opening canary with dark golden shadings; blooms large, petals immense, opens very freely; a fine, upright grower of branching habit; exquisite. Price, plants from 3-inch pots, 15 cts.; 2-year plants, 40 cts.



Pink La France. Wonderful in color shadings

Madame Jules Grolez. Red. Called by some "Red Kaiserin." One of the brightest and most pleasing Roses. A free-blooming variety, with large, bright, finely formed flowers. Color a distinct shade of cherry-red. Price, mailing size, 10 cts.; 2-year plants, 25 cts.

Magnafrano. Red. It is a strong, upright grower and a constant and profuse bloomer, with extra-large flowers; full, deep and double, and deliciously tea-scented. Bright, deep, shining rose. Price, strong mailing size, 15 cts.; fine 2-year plants, 35 cts. See page 12.

Miss Kate Moulton. Light pink. Habit robust, with heavy foliage. A grand Rose for outdoor culture. Price, mailing size, 15 cts., 2-year plants, 35 cts.

Mrs. Aaron Ward. A beautiful yellow Rose from France. Visitors to my Rose gardens go into raptures over this wonderful acquisition. The variety produces as many flowers as any. Blooms are very large, of exquisitely fine form, and are of a delicate Indian-yellow color, which shades lighter toward the edges as the

Our mailing-size plants are one year old, made from long, strong cuttings, and are grown in 3-inch pots. They will be mailed free, but it is much better to have them come by express with the soil on the roots.



Mrs. Aaron Ward. A beautiful yellow Rose from France

Hardy Hybrid Tea Roses, con.

flower opens. The demand for this Rose so far has exceeded the supply. Now, however, I have a large supply of sturdy, two-year bushes. Price, 1-year mailing size, 25 cts.; strong 2-year plants, 50 cts.

Mrs. A. R. Waddell. Yellow. A sturdy, vigorous-growing bush. The buds open a clean, rosy salmon deepening to scarlet; outside of petals a little lighter. Flowers large, splendidly formed. Price, strong mailing size, 15 cts.; heavy 2-year plants, 35 cts.

Mme. Caroline Testout. Pink.

Planted in the nursery rows with all the other good Roses, you can pick it out across a ten-acre field on account of its immense size and brilliant color. Probably no Rose stands higher in public estimation today than La France, but Mme. Caroline Testout is decidedly deeper and more brilliant in color and a larger flower, and is as good in other ways. Petals large, exquisitely edged and bordered with clear silver-rose. Color brilliant satiny rose. Price, strong mailing-size plants, 15 cts.; fine 2-year plants, 35 cts.; extra 3-year plants, 50 cts.; 4-year immense plants, 75 cts.

My Maryland.

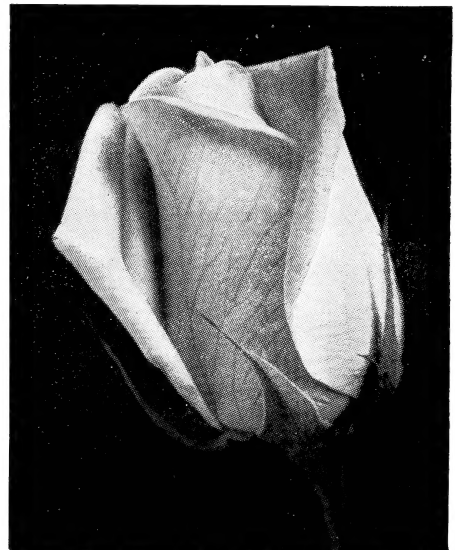
Pink. One of the finest of peach-pink Roses. The flowers are large and double, of perfect form, with a bright but tender peach-pink tint which becomes lighter and even more attractive as the flower expands. The plant makes a robust growth with many canes, and every shoot bears one or many of the perfect blooms which come throughout a long season. Grown originally for cut-flowers, it has proved perfectly hardy out-of-doors. Price, strong 1-year plants 15 cts.; 2-year plants, 35c.

Perle von Godesburg.

Yellow. This is a sport from Kaiserin, and is the same in every respect, except that it has quite a decided yellow shade, sometimes coming a good, clear yellow. Price, mailing size, 15 cts.; strong 2-year plants, 35 cts.

Prince de Bulgarie.

Yellow. Handsome, large and full buds; flowers splendidly formed. Outer petals light, rosy salmon-pink, inner petals somewhat lighter. Price, mailing-size plants, 3-inch pots, 15 cts.; 2-year plants, 30 cts.



My Maryland. Peach-pink; robust



Mme. Caroline Testout. Larger and more brilliant than La France

Hardy Hybrid Tea Roses, continued

Sunburst. Yellow. The new queen of the yellow Roses. For years I have been hoping for a perfect yellow Rose. Never before have I seen any to equal this. The color is orange-copper, golden orange and golden yellow, all intense shades and extremely brilliant. The bloom is full and double, and holds its color until the petals are ready to drop; the bud is long and pointed. It is preëminently a long-stemmed Rose. Price, 1-year plants from 3-inch pots, 30 cts.; strong 2-year plants, \$1.

Queen Beatrice. Pink. When the buds first open they are pleasing dark pink, gradually shading with peach to a glorious, silvery pink. The flowers are large and double, with a delicate fragrance. Price, mailing size, 15 cts.; strong 2-year plants, 35 cts.

Rhea Reid. Crimson. A magnificent garden Rose. "As large as American Beauty, as double as La France and as red as Richmond," is the way this beautiful Hybrid Tea Bush Rose has been described. The color is vivid scarlet-crimson, and the flowers are marvels of beauty; large, bold and of splendid substance. It has a strong, disease-resisting constitution, makes a rapid growth and throws up a profusion of canes from the roots and is always blooming. Price, 1-year mailing size, 15 cts.; strong 2-year plants, 35 cts.

Richmond. Red. This is among the most brilliant of scarlet-crimson Roses, and will always be included in the first half dozen most desirable red Roses. The bloom is moderately full, of graceful habit and borne on long, stiff stems. This variety is used in immense numbers as a cut-flower, and is of equal value in the garden. Price, 1-year mailing size, 15 cts.; strong 2-year plants, 35 cts.

Soleil d'Or (Golden Sun). A unique Rose, the first of a new race, both in habit of growth and color of flower. Very full, the expanded flowers large and globular, the center petals well incurved, forming a double flower. The fully expanded flower is a blending of reddish gold, orange-yellow, nasturtium-red and pink. Not a very free bloomer; foliage is somewhat subject to black-spot. Price, 2-year plants, 50 cts.; extra 3-year plants, 75 cts.



Radiance. Silvery pink; profuse; most desirable

Hardy Hybrid Tea Roses, continued

Radiance. Pink. John Cook of Baltimore has produced more good Roses than any other man in this country, but he never has given us a better Rose than Radiance. It is a continuous bloomer and an extremely vigorous grower, surpassing Wm. R. Smith in that respect. The blooms are very large; clear, silvery pink, somewhat resembling the grand new Rose, Jonkheer J. L. Mock, but lighter in color. This is a variety of the greatest importance. Price, mailing size, 20 cts.; extra-fine 2-year plants, 50 cts.

Souv. du President Carnot. White. Flowers exquisitely shaped, large, full and double, with shell-like petals. The buds are long and pointed. Color delicate rosy blush, shaded deeper at center, strong grower and free bloomer. Price, 1-yr. mailing size, 15c.; strong 2-year plants, 35c.

Triomphe de Pernet Pere. Red. Flowers extra large, broad, thick petals and long, tapering buds; delicious tea fragrance. Color, clear magenta-red, sometimes passing to bright crimson. Price, mailing size, 10 cts.; 2-year plants, 25 cts.

Wellesley. Pink. A seedling from Liberty crossed with Bridesmaid. Flowers extra large and full, of excellent substance and durability; color bright, clear rose-pink, reverse of petals silvery rose. Price, mailing size, 10 cts.; 2-year plants, 25 cts.

Winnie Davis. Pink. The color is apricot-pink, shading to a flesh-tint at the base of petals; buds oblong and well formed.

Vigorous and robust, free-blooming; foliage leathery, reddish green, glossy and large. For the Middle and Southern States Winnie Davis is second to none. Price, mailing size, 10 cts.; 2-year plants, 25 cts.

Wm. Shean. Pink. A fine grower; large, pointed flowers of Killarney-pink; full, free and perpetual; one of the very largest of Roses. Price, 15 cts.; 3-inch pots, 25 cts.; 2-year plants, 40 cts.

Wm. R. Smith. Light pink. New, hardy, everblooming Rose. Color deep ivory-white, overlaid with clear, bright pink. As hardy as Kaiserin Augusta Victoria, and a vigorous and rampant grower. I have a fine stock, and offer it at a reasonable price. Guaranteed to bloom this year. Price, 10 cts.; heavy mailing size, from 3-inch pots, 15 cts. each, \$1.50 per doz.; splendid, strong 2-year plants, 30 cts.; extra-fine 3-year plants, on their own roots, 50 cts.



TEA ROSES

This class of Roses is distinguished by a delicate tea fragrance and an absolutely everblooming habit. Most varieties are not so hardy as the Hybrid Tea class, but they may be carried through the winter even in the Northern States with careful protection, banking up with soil probably being the most satisfactory method. The Cochet varieties are nearly or quite as hardy as the Hybrids.

Price of all Tea Roses, except where noted: 1-year mailing size, 10 cts.; strong 2-year plants, 25 cts.

Pink Maman Cochet.

The queen of all pink garden Roses. Clear rich pink, changing to silvery rose. The buds are beautiful, large, full and firm and elegantly pointed; as they expand they show great depth and richness, sometimes measuring 2½ inches from base to tip. Small pot-plants, will, in the open ground, quickly make large, strong bushes, and produce on long, stiff stems, great numbers of perfect flowers. Perfectly hardy in all sections. Price, 2-year plants, 30c.

beautiful buds, fine for bouquets and decorative purposes. The color is deep rose, or bright rosy crimson.

Burbank. Pink. A hardy, everblooming Tea Rose. The color is cherry-crimson; the very deepest and brightest pink Rose in cultivation. Peculiarly adapted for outdoor planting or for blooming indoors.

White Maman

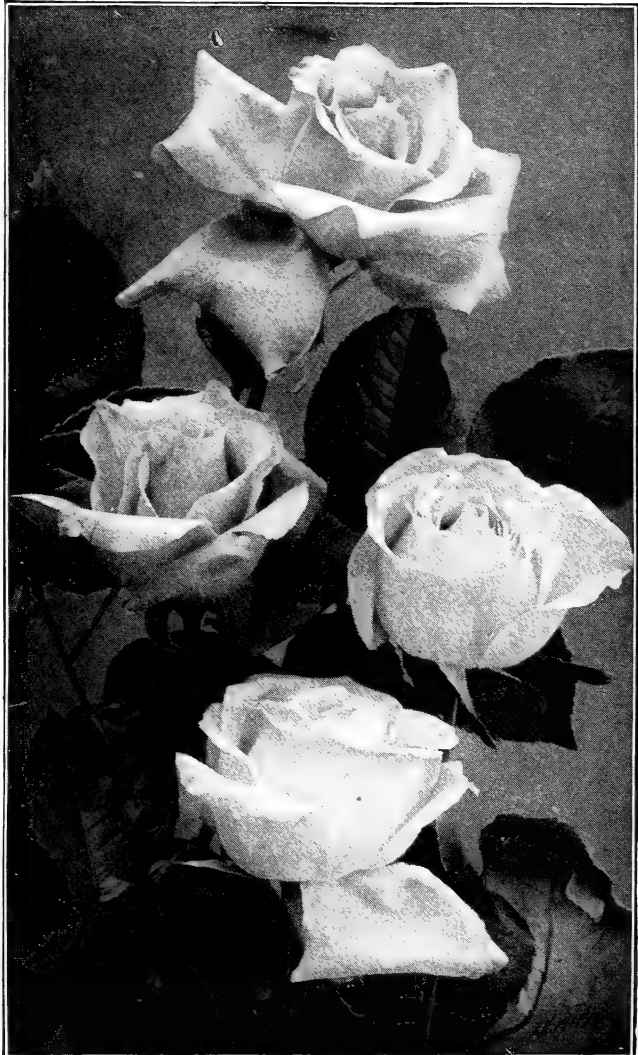
Cochet, or Priscilla.

A charming white Tea Rose. A child of that grandest of bedding or outdoor Roses, Maman Cochet; identical with that variety except in color. Hardy in Northern Ohio, with slight protection in winter. The flowers are enormous, remarkably round and full; white and delightfully tea-scented. Price, 2-year plants, 30 cts.

Golden Cochet, or Helen Good. This is the only true Cochet Rose known except the old, well-known Pink and White Cochets. The color is a delicate yellow, suffused with pink, each petal edged deeper, very chaste and beautiful. The color, with its immense size and exquisite form, makes it one of the greatest Tea Roses. Price, 2-year plants, 35 cts.

Blumenschmidt. Yellow. Deep golden yellow, of the richest and purest shade.

Bon Silene. Pink. A grand old Tea Rose. Large,



Golden Cochet. Delicate yellow, suffused with pink



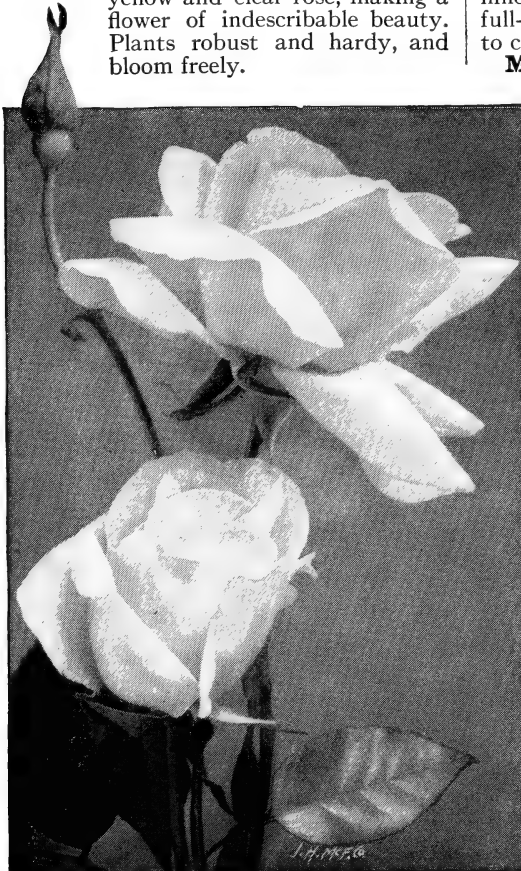
Tea Roses, continued

Coquette de Lyon. Yellow. One of the best garden Roses. It is unquestionably one of the finest canary-yellow Tea Roses in cultivation for open-ground culture.

Etoile de Lyon (Star of Lyon). Yellow. This magnificent Tea Rose is a rich golden yellow; a strong, healthy and vigorous grower, immense bloomer, bearing flowers and buds early and late. The flowers are very deep, rich and full, of excellent substance, and very sweet.

Freiherr von Marschall. Red. The flowers are large, beautifully shaped, double and full, borne in wonderful profusion all through the growing season. It is a bright red, one of the brightest red Tea Roses in existence. Price, mailing size, 3-inch pots, 15 cts.; heavy 2-year plants, 30 cts.

Golden Gate. A most magnificent Rose with large, full, finely formed flowers; buds long and beautiful. Color rich creamy white, exquisitely tinged with golden yellow and clear rose, making a flower of indescribable beauty. Plants robust and hardy, and bloom freely.



Pearl of the Garden. Big yellow blooms until fall

Helen Gould. Red. One of the most beautiful and satisfactory Roses for general planting ever introduced in America. The flowers are full and perfectly double, the buds beautifully made, long and pointed, the color of a ripe red watermelon. It is as hardy as La France.

Ivory. White. This exquisite new Rose resembles Golden Gate in form, but is pure ivory-white. It is an exceedingly free bloomer, sure to be covered with buds and flowers the whole season.

Madame de Vatry. Red. Big, clean buds of great beauty; fine flowers; rich crimson-scarlet.

Mad. Francisca Kruger. Yellow. A strikingly handsome Rose, one of the very best for open-ground culture. It is especially adapted to bedding or massing. Holds its foliage under all sorts of adverse conditions. Flowers deeply shaded coppery yellow. A strong and vigorous grower and a good and constant bloomer.

Marie Van Houtte. Yellow. Magnificent in the open ground. Extra-large, full-double flowers; canary-yellow, passing to creamy white, shaded rose.

Marigold. Yellow. Beautiful, with dark, feathery foliage; resembles Kaiserin in growth and bloom.

Marquise de Querhent. Yellow. Long-pointed buds; stiff, upright stems; color a beautiful China-rose, coppery salmon and golden yellow; extremely free bloomer.

Mrs. B. R. Cant. Red. A most beautiful and worthy variety, somewhat resembling the famous Papa Gontier. The plant is a very free grower and bloomer; the flowers are large, full and double; dark carmine shaded and flushed with lighter rose.

Papa Gontier. Red. A fine forcing Rose, also fine for field planting. We sell immense quantities of this variety. It has a good bud; open flower, semi-double; color, dark carmine, flushed crimson.

Pearl of the Gardens (Perle des Jardins). Yellow. A beautiful yellow Tea Rose. The one Tea Rose which you cannot possibly do without. It has absolutely no weak point. The color is faultless, whether the waxy petals show the rich cream-tint of cool weather or take richer golden shades which a warmer sun gives them. The form of the bud is rounded and luxuriant. Of vigorous growth; foliage abundant and handsome; delightful fragrance; fine for cutting. Price, mailing size, 15c.; 2-year plants, 35c.

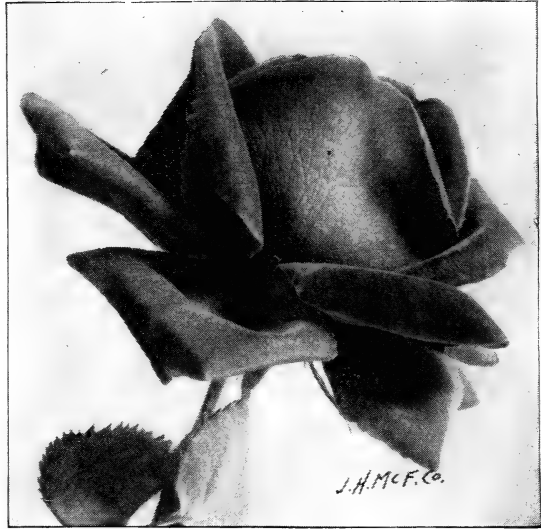


Tea Roses, continued

Princess Bonnie. Red. One of the brightest, sweetest, freest-blooming Roses in existence. The color is a rich, solid crimson, the inside being streaked with white. The odor is a delicate, very delicious tea scent.

Safrano. Yellow. A variety of great value, particularly for outdoor planting. It grows vigorously, and has the vitality necessary to produce a continuous crop of flowers from early summer until late in autumn; quite hardy. The color is bright apricot-yellow, changing to orange and fawn, sometimes tinted with rose. Very fragrant.

Souv. de Pierre Notting. Yellow. This beautiful Tea Rose is an introduction of one of the foremost firms of France, and has not been exceeded in merit by any Rose yet sent out from that country. Blooms very large, well filled and open easily; beautiful, elongated bud. Color apricot-yellow tinged with golden, mixed with orange-yellow, edge of petals shaded beautiful carmine-rose; open flower is full and double and of good substance; extremely free flowering.



Etoile de France (see page 3)



Baby Rambler. Blooms constantly

BABY ROSES

The first Rose of this class was the "Baby Rambler" introduced a few years ago. Its name came from the resemblance of the bloom to that of the Crimson Rambler, but as it is not a climber the name is misleading. All the varieties are perfectly hardy and are among the most free blooming of all Roses. Splendid for low hedges.

Baby Rambler. Red. A wonderful little Rose. It is equally fine for bedding or for growing in pots. The plants grow only about 18 inches tall, but bloom constantly. The flowers are small, bright red, in clusters similar to the popular Crimson Rambler. The plant is vigorous and hardy, and the foliage is apparently very free from the attacks of insects. Price, mailing size, 10 cts.; strong 2-year plants, 30 cts.

Catherine Zeimet. White. The flowers are pure in color and the fragrance is delightful. These are borne in the customary large trusses and are very showy; as desirable as the crimson Baby Rambler for potting or borders. Price, mailing size, 10 cts.; 2-year plants, 30 cts.

Two years ago you shipped me some of the largest, best, and most satisfactory Rose bushes I have ever received. Remembering this, I am enclosing another order which I trust will prove equally satisfactory.—R. E. F., West Point, Ga.



Baby Roses, continued

Jessie. Scarlet. The flowers in color are like those of Richmond Rose, and are borne in great clusters. This dwarf polyantha is ideal for use as a bedding plant. Price, mailing size, 15 cts.; strong 2-year plants, 35 cts.

Madam Cutbush. Pink. This dainty little variety blooms most profusely. In habit, form and size it is exactly like the red Baby Rambler, but the color is a beautiful, shining pink. Price, mailing size, 15 cts.; strong 2-year plants, 35 cts.

Orleans Rose.

Red with white center. Of all the Baby Ramblers introduced this is the best. It is a veritable bouquet of beautifully arranged flowers of deep geranium-red with a showy center of pure white. The color effect is striking. The plant grows rapidly and is one of the most desirable of its class. The blooms have a stiff, paper-like texture which makes them last for days. Price, mailing size, 15 cts.; strong 2-year plants, 40 cts.

CHINA ROSES

These are the Roses of our grandmother's days, but on account of their sterling qualities they are still popular and are worthy of planting in any garden. The range of color is considerable, and their absolute hardiness, ease of culture, fragrance and adaptability to adverse conditions make them popular and valuable varieties.

Price of these six kinds, mailing size, 10 cts.; strong 2-year plants, 25 cts. each

Champion of the World. Pink. It is quite hardy and possesses that delicious old-fashioned Rose fragrance so much sought after in an everblooming variety.

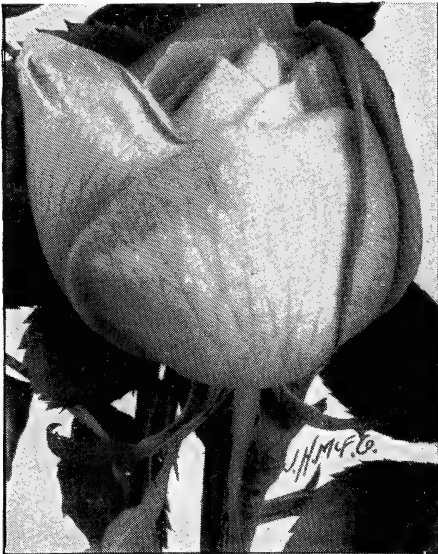
Clothilde Soupert. Pink. A strong, vigorous grower. The flowers are large, double and beautiful in form, in the style of the beautiful Rose, Ball of Snow. They are borne in sprays, and the color blends from a soft shell-pink to a pure, satiny white. Roses with both these colors are borne on the same plant at the same time. Unequaled in flowering qualities.

Duchesse de Brabant. Carmine. A bright China-rose, with coppery yellow center, ends of petals suffused with carmine. A charmingly beautiful combination of coloring, as each color blends nicely with the other. This variety ranks with the best and is a Rose of decided merit.

Hermosa. Pink. An old favorite. It is always in bloom and always beautiful; the flowers are cupped, finely formed and full; color, the most pleasing shade of pink, soft but deep.

Queen's Scarlet. Red. A grand old bedding variety. It can be planted anywhere; entirely hardy. Flowers large and fiery scarlet, a color seldom seen in Roses.

Souvenir de la Malmaison. Flesh. Blooms well in hot weather. Its rich, flesh-colored flowers are of large size, double to the center, and produced in abundance.



Magnafrano (see page 5)

I have never seen finer Roses than those you sent me. Wish I had made my whole order from you. Please keep my name for your annual catalogue.—T. L., TYLER, TEXAS.

The shipment of Roses which I ordered from you a fortnight ago came to hand in good time, and, except the fact that it was short by one plant, was very satisfactory indeed. I have bought Roses from half a dozen firms, but have not received more promising plants anywhere. In fact, I am so well pleased with them that I have decided to repeat the order, and four friends, having seen the plants, are asking me to order the same collection for them.—E. E. R., Walla Walla, Wash.

Box of Roses and plants received yesterday and they were in fine condition. I have been buying plants for the past 18 years and have purchased from north and west and I never had plants sent packed as well as those you sent me.—DR. E. M. K., Delta, Pa.



HYBRID PERPETUAL ROSES

The Roses of this class are perhaps the most valuable for permanent planting, since they are perfectly hardy, show the greatest size of flower and bush, and make the most vigorous growth. Although they are called Hybrid Perpetuals, they produce a great number of blooms in their season and then give only scattered blooms until fall, except in the case of a few varieties which have a second season of beauty near the end of the growing period. For those who desire to plant a Rose that will last a lifetime, the Hybrid Perpetual is recommended. As a rule they do not require winter protection, and once planted they increase in size for years with ordinary care.

Price, except where noted, strong mailing size, 10 cts.; larger size, 15 cts.; heavy 2-year plants, 30 cts.

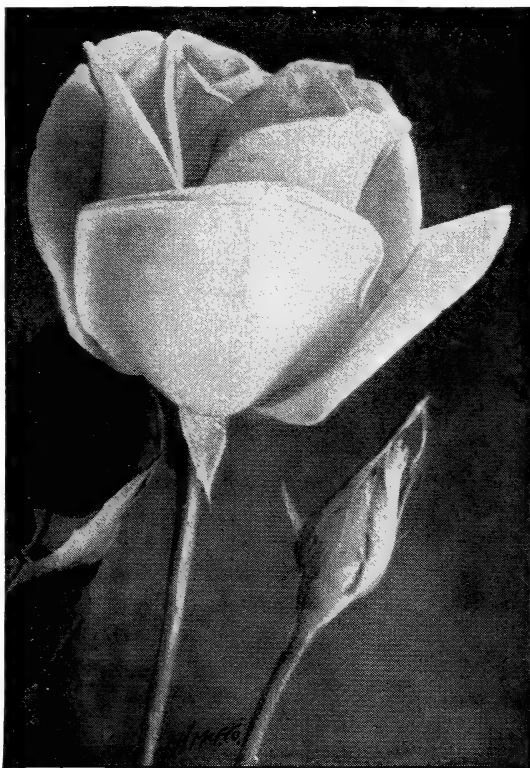
Anne de Diesbach (Glory of Paris). Rose-color. Long, pointed buds and large, finely-formed, compact flowers; very full and double, and delightfully sweet. A vigorous grower and a fine bloomer.

Black Prince. Crimson. Much sought after because of its splendid dark crimson flowers, which are shaded so deeply as to be almost black; cupped, large, full, fine shape. Very hardy. Price, 15 cts.; 3-inch pots, 25 cts.; 2-year plants, 40 cts.

Cheshunt Hybrid. Red. This Rose is growing in favor as it becomes known. A most beautiful deep rose or red.

Clio. Flesh. Two first-class certificates awarded by the Royal Horticultural Society. This variety is of very vigorous growth, and has large, handsome foliage. The flowers are flesh-color, shaded to the center with rosy pink. They are very large, of fine, globular form, and freely produced. A grand addition in the style of Baroness, and unquestionably the finest of all Roses for flowering in pots and forcing.

Conrad F. Meyer. Pink. Hybrid Rugosa Rose. A most valuable addition to the list of hardy, free-blooming Roses. It surpasses all others of the type in fullness of flowers. The color is beautiful, a pure silvery pink. It is of ironclad hardiness. Its beautiful foliage alone would recommend it as an ornamental shrub for the garden. For a flowering hedge it should eventually take front rank. The fragrance of the flowers is spicy and delightful. Price, strong mailing size, 3-inch pots, 15 cts.; heavy 2-year plants, 40 cts.; extra-heavy 3-year plants, 60 cts.



Mme. Constant Soupert (see page 5)

Countess of Roseberry. Pink. The color is satiny pink in the center and deepens on the outer petals to a bright rose. The feather-shading gives it the appearance of two distinct colors. Very free-flowering and a good grower. Price, extra-size 3-year plants, 50 cts.

Coquette des Alpes. White. A lovely, pure white Rose. Very full and free in flower; delicious fragrance.

Dinsmore. Scarlet. A vigorous, healthy Rose of dwarf, branching habit. The flowers are large, perfectly double, and of a dazzling scarlet-crimson color, and have the rich, spicy fragrance peculiar to the best Hybrid Tea Roses.

General Jacqueminot. Crimson. A rich, velvety crimson, changing to scarlet-crimson. A magnificent Rose, equally beautiful in the bud state or open. The best known of all Hybrid Perpetuals, and is without a rival in fragrance and richness of color. It is perfectly hardy in most situations.



J. B. Clarke. The largest Rose grown

Hybrid Perpetual Roses, continued

J. B. Clarke. Red. Without doubt the largest Rose ever grown. The growth is strong, upright and vigorous, making a large, handsome bush; the foliage is broad and stout, bronzy green in the young state, changing to dark green. Blooms are very large, 7½ inches in diameter by 5 inches deep, and beautifully formed; flowers full and long; strongly fragrant; color, intense scarlet, shaded crimson-maroon, dark and rich. Awarded gold medal of the National Rose Society. Dickson classes this Rose as a Hybrid Tea. I class it as a Hybrid Perpetual. Price, heavy mailing size, 20 cts.; 2-year plants, 50 cts., all on own roots. Extra-heavy 3-year budded plants, 65c.

Giant of Battles. Red. The very best rich red Rose; very large, double, full and sweet; excellent.

Gloire Lyonnaise. Yellow. The only yellow Hybrid Perpetual we have. It cannot be called deep yellow, but rather a pale shade of chamois or salmon-yellow, deepest at the center, sometimes passing to a rich creamy white, finely tinted orange and fawn.

Gloire de Margottin. Red. The flowers are very large and of symmetrical

form, somewhat globular, full and deliciously scented. Color, clear, dazzling red—one of the most brilliant Roses ever seen. Free bloomer and vigorous grower.

Henri Martin. Carmine. A magnificent Moss Rose. Extra large and perfectly double. Deep rosy carmine, shaded a bright crimson; mossy and fragrant.

Jubilee. Red. Awarded gold medal by the Massachusetts Horticultural Society, the only Rose to obtain the honor. Pure red in its deepest, shading to deep crim-



Hybrid Perpetual Roses, continued

son-red and velvety maroon-red in the depths of the petals. It fairly glows in its rich coloring, and has a rich, velvety finish of its own. It is a hardy everbloomer, and an acquisition to any collection of Roses.

Mad. Charles Wood. Crimson. Begins to bloom almost as soon as planted, and continues all through the season; the flowers are extra large, double, full and quite fragrant; color bright fiery scarlet, passing to fine rosy crimson, shaded with maroon. One of the best for general use.

Magna Charta. Red. A splendid Rose; extra large, full, very double flowers of fine form, and sweet; clear rosy red, beautifully flushed with violet-crimson; a sure and profuse bloomer; one of the hardest and best for general planting. Price, extra 3-year plants, 50 cts.

Margaret Dickson. White. The flower is of magnificent form, almost as large as Paul Neyron. The color is of pure waxy white; petals very large, well shaped and of great substance. They are prettily curled back or reflexed. The buds are large and globular, particularly handsome. It is a strong, vigorous grower, with fine foliage; a free bloomer. Price, strong mailing-size plants, 15 cts.; larger plants, 25 cts.; heavy 2-year plants, 40 cts.; extra-heavy 3-year plants, 65 cts.

Mrs. John Laing. Pink. A splendid, constant-blooming Hybrid Perpetual; perfectly hardy, with immense full and double flowers, borne in great profusion on long, stiff stems, and exceedingly sweet. The color is a clear, shining pink, exquisitely

shaded. Buds long and pointed. Price, extra-size 3-year plants, 50 cts.

Mme. Masson. Rose. This is one of the really superb Roses, and fully the equal of any variety in my collection. I think it one of the very finest Roses in existence for garden cultivation; it is entirely hardy, blooms nearly all the time, bearing in profusion numbers of large, full-double flowers of unusual beauty and wonderful fragrance; color clear, bright rose; distinct and charming. Price, 15 cts.; larger size, 20 cts.; 2-year plants, 40 cts.

Paul Neyron. Pink. I call special attention to this grand Rose. The flowers are immense; bright, shining pink, clear and beautiful; very double and full; finely scented; blooms the first season.

Prince Camille de Rohan. Crimson. A magnificent Rose, celebrated the world over for its large, handsome, fragrant flowers and the freedom with which they are produced. The color is a deep, rich, velvety crimson, passing to intense maroon shaded black; at a short distance they appear—really black.

Ulrich Brunner. Crimson. Flowers of immense size, of excellent, bright crimson, flamed with scarlet, and borne in great profusion; one of the best of its class. The blooms are highly fragrant, full and globular. Price, extra-size 3-year plants, 50 cts.

Vick's Caprice. Rose. The only hardy Rose that has any variegation. It is a vigorous grower, and bears large and fragrant flowers of bright rose, distinctly striped with a rich crimson. It is altogether a most unique and pretty variety.



Margaret Dickson. Wavy white petals curl gracefully



EVERBLOOMING CLIMBING ROSES

Climbing Clothilde Soupert.

White. In this climbing variety we have the vigorous constitution of Clothilde Soupert combined with the same wonderful freedom of bloom and extreme hardiness. This new variety, in a single season, even in small plants, will grow 15 to 25 feet, producing cluster after cluster of the finest-formed flowers. In form they are distinct, large, round and flat, with beautifully imbricated petals; perfectly full and double, and deliciously sweet. The color effect is magnificent—ivory-white, shading toward the center to silvery rose. Throughout the entire growing season it is literally loaded down with its large, handsome flowers. Price, strong mailing size, 3-inch pots, 10 cts.; heavy 2-year plants, 30 cts.

Climbing Crimson Baby Rambler
A magnificent hardy, everblooming Rose. This variety, introduced only recently, combines the wonderful everblooming

qualities of the Crimson Baby Rambler, with the climbing habit of the true Crimson Rambler. This makes it invaluable for use wherever a climbing Rose may be employed. Planted with taller-growing kinds, it prolongs their blooming season and removes their bareness of foliage near the ground. The flowers, of brilliant crimson, are borne in clusters throughout the summer; the foliage is glossy and thick, resisting the attacks of insect enemies. My stock of this great variety is limited. Price, mailing-size plants, 15 cts.; strong 2-year plants, 50 cts.

Climbing Killarney. Pink. An exact counterpart of Killarney, in every respect, except that it is a vigorous climber. This will prove a great garden Rose. Price, 3-inch pots, 10 cts.; 2-year plants, 30 cts.

Climbing Meteor. Velvety red. Grand new Rose, the acme of all red climbing Roses. It is a free, persistent bloomer, and will make a growth from 10 to 15 feet in a

season. We do not hesitate to place it at the head of the list of all Roses for summer blooming, as it will make a strong growth, and is literally loaded with flowers all the time. Price, strong plants, 3-inch pots, 15 cts.; fine 2-year plants, 35 cts.

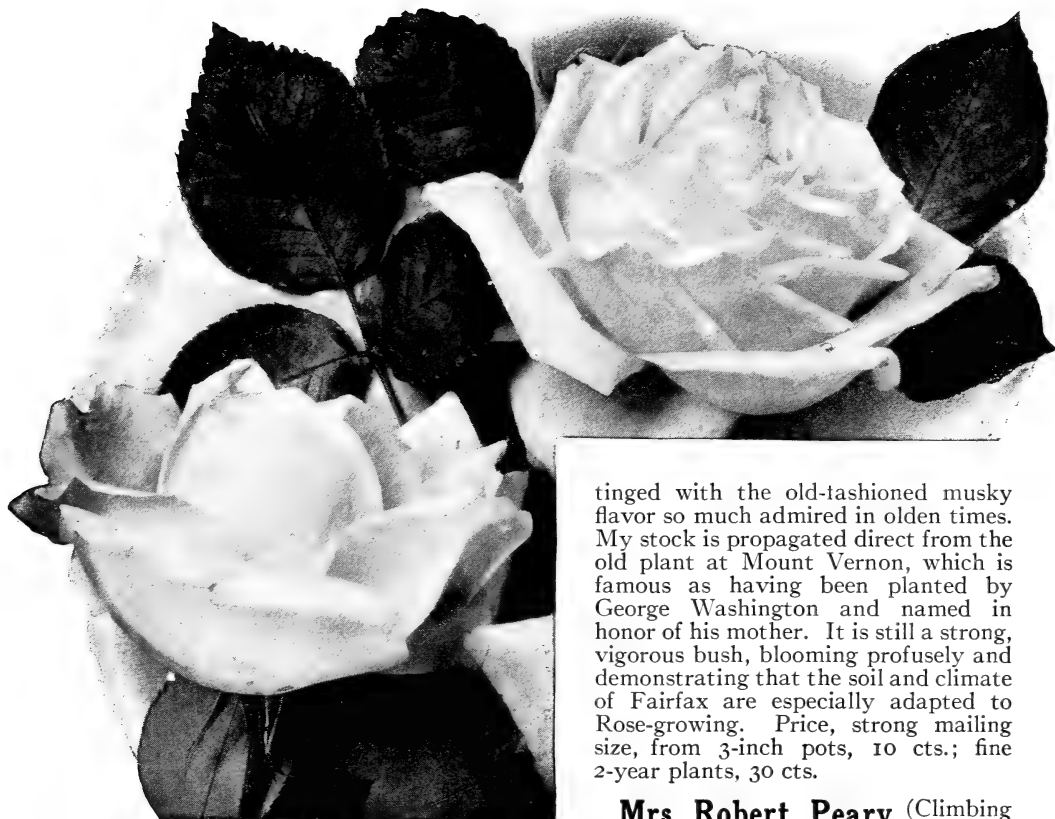
Climbing Paul Neyron. Pink. One of the very best of all climbing Roses. An extremely free and continuous bloomer, of very large size and fine pink color. Much more like La France than Paul Neyron in color, shape and blooming qualities. Would have been better named "Climbing La France." Price, strong mailing-size plants, 15 cts.; heavy 2-year plants, 30 cts.

Climbing Wootton. Scarlet. This superb new climbing Tea Rose is a prime favorite wherever it is introduced. The flowers are large, full, deep and double, and of a beautiful velvety red color; the perfume is unusually rich and elegant. Price, 10 cts.; 3-inch pots, 15 cts.; 2-year plants, 25 cts.

Empress of China (The Apple-Blossom Rose). Red. This is a hardy climber that possesses great merit. It is a strong, rampant grower, and a very free bloomer. Flowers of good size from pointed buds; soft red, turning lighter as it opens. It blooms from May to December in the open ground. Introduced from China. Price, strong mailing size, 10 cts.; 2-year plants, 25 cts.



Climbing Clothilde Soupert. Grows rapidly



Marechal Niel. World-renowned yellow Rose

Climbing Roses, continued

Gloire de Dijon. Amber. This magnificent Rose is always scarce and difficult to obtain true. The flowers are large, perfectly double and delightfully tea-scented; color rich, creamy amber, tinted with blush. One of the most beautiful Roses. Price, strong mailing-size plants, 15 cts.; 2-year plants, 40 cts.

Marechal Niel. Yellow. The world-renowned Rose. A beautiful, deep sulphur-yellow; very full, large and exceedingly fragrant. It has a climbing habit, and in a few years will attain a large size, yielding thousands of beautiful golden yellow flowers. Especially desirable in the South. Price, mailing size, from 3-inch pots, 10 cts.; fine 2-year plants that made 4 to 6 feet of growth last summer, 35 cts.

Mary Washington. White. Flowers are of medium size, pure white, sweet, perfectly double to the center, and borne in endless numbers in large clusters all summer. Vigorous and rapid grower. One plant of Mary Washington will produce more flowers and buds than a dozen ordinary Roses. Its fragrance is

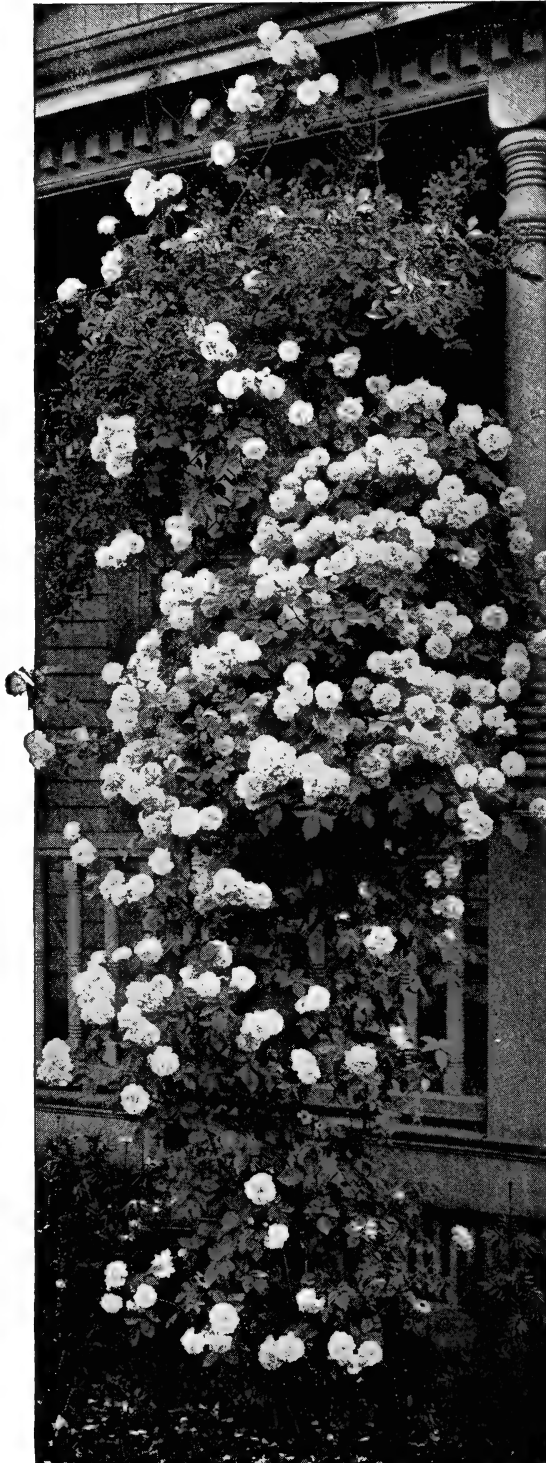
tinged with the old-fashioned musky flavor so much admired in olden times. My stock is propagated direct from the old plant at Mount Vernon, which is famous as having been planted by George Washington and named in honor of his mother. It is still a strong, vigorous bush, blooming profusely and demonstrating that the soil and climate of Fairfax are especially adapted to Rose-growing. Price, strong mailing size, from 3-inch pots, 10 cts.; fine 2-year plants, 30 cts.

Mrs. Robert Peary (Climbing Kaiserin)

White. This is, without doubt, the grandest of all white climbing Roses. It is the first and only white, hardy, everblooming climbing Rose, and, as such, fills a demand that has never before been supplied. Small plants bloom continually the first season, just as the parent, Kaiserin Augusta Victoria, does. The flowers are extra large, full, deep and double, and are produced on long, stiff stems like a forcing or cut-flower Rose. The buds are long and pointed, exquisitely modeled and gracefully finished. Both in bud and flower it is truly beautiful. Always a wonderfully vigorous grower and very hardy. Price, strong mailing-size plants, 10 cts.; fine 2-year plants, 30 cts.; extra-fine 3-year plants, 50 cts.

Reve d'Or (Golden Chain, or Climbing Safrano). Yellow. A beautiful pillar Rose. Color orange-yellow or deep saffron; good size, full and sweet. I have a fine stock of this Rose, and recommend it highly. Price, strong mailing size, from 3-inch pots, 10c.; fine 2-year plants, 25c.

White Microphylla. Flowers purest white, double, sweet. Price, mailing size, 10 cts.; strong 2-year plants, 25 cts.



Dorothy Perkins. Pink; blooms profusely

RAMBLER ROSES

While these do not bloom continuously, they are covered during their blooming season with a wealth of flowers of various shades. The sight of a large Rambler Rose in full bloom is one long to be remembered—a wealth of color shown by no other class of plant.

Aglala, or Yellow Rambler. The color is rare for a Rambler Rose. Planted with white varieties it makes a striking effect. Price, 10 cts.; 2-year plants, 25 cts.

Blue Rose ("Veilchenblau"). This violet-blue seedling from the Crimson Rambler was the sensation of Rosedom a few years ago. The flowers are borne in large clusters, like those of the Crimson Rambler, and have a brown-bluish shade that makes it a striking novelty. Price, mailing size, from 3-inch pots, 15 cts.; strong 2-year plants, 35 cts.

Crimson Rambler. Often grows 8 to 10 feet in a season. Magnificent in bush form, and for covering buildings, trellises, etc. Brightest crimson, undimmed to the end. The flowers are produced in great pyramidal panicles or trusses of thirty to forty blooms. Price, from 3-inch pots, 10 cts.; 2-year plants, 25 cts.; 3-year plants, heavy, 50 cts.

Dorothy Perkins. The flowers are clear shell-pink, with lovely, oddly wrinkled petals; buds pointed, well formed, borne in great clusters. A fine climber and a profuse bloomer; flowers very durable and the clusters are good for cutting. Price, strong mailing size, from 3-inch pots, 10 cts.; 2-year plants, fine, 30 cts. Extra 3-year plants, 50 cts.

Helene (Pink Rambler). A seedling from Crimson Rambler. Flowers larger than those of Crimson Rambler, nearly double, and borne in clusters of twenty to fifty. Color soft violet-rose. Price, 10 cts.; 2-year plants, 25 cts.

Hiawatha. Brilliant scarlet; bears large clusters of single flowers; bright and effective. Price, mailing size, from 3-inch pots, 15 cts.; strong 2-year plants, 30 cts.

Lady Gay. Flowers delicate cerise-pink, passing to soft white. The effect of the combination of soft white flowers, pink buds and green foliage is indeed charming. Price, 10 cts.; from 3-inch pots, 15 cts.; 2-year plants, 30 cts.



Rambler Roses, continued

Lyon Rambler. Bears immense trusses of from thirty to fifty flowers, in color a bright vivid pink, shaded with crimson and wonderfully attractive. Many consider it superior to Dorothy Perkins. Price, mailing size, 15 cts.; 2-year, 40 cts.

Philadelphia Crimson Rambler. This splendid new variety differs from the old Crimson Rambler in having a brighter, deeper and more intense color, and flowers that are perfectly double to the center; very durable and of excellent substance. It is a very profuse bloomer and a good, healthy grower, producing splendid clusters of perfectly double and intensely brilliant flowers, absolutely free from the faded appearance so frequently seen in flowers of the ordinary Crimson Rambler. Price, strong plants, 10 cts.; 3-inch pots, 15 cts.; 2-year plants, 25 cts.

Tausendschon. Truly called "Thousand Beauties." One of the really reliable novelties. It bears its flowers in immense

clusters; in color a soft pink when first opening, changing to a carmine-rose on the reverse as they expand. Price, 10 cts.; 3-inch pots, 15 cts.; 2-year plants, 25 cts.

Thalia (White Rambler). Charming Rose of the rambler type. It climbs rapidly, is entirely hardy and produces immense clusters of pure white. Price, 10 cts.; 2-year plants, 25 cts.

White Dorothy. Exquisitely beautiful, vigorous novelty. This Rose has all the merits of the famous pink Dorothy Perkins, of which it is an offspring. The flowers are remarkably pure white and are borne in clusters completely covering the plant and contrasting most beautifully with the brilliant green foliage. White Dorothy grows to perfection in heavy soil and frequently reaches a height of 30 feet in a single season. It is hardy everywhere without protection. Price, mailing size, 15 cts.; strong 2-year plants, 50 cts.

STANDARD, or TREE ROSES

This class includes Roses of many of the regular varieties grafted upon upright stems in tree form. For planting along walks or drives, for use among other and lower growing Roses, and as a background for low shrubs, herbaceous perennials, etc., these Tree Roses are certainly very desirable, and I recommend the following varieties highly.

Alfred Colomb. Price, 75 cts.

American Beauty. Price, \$1.

Countess of Roseberry. Price, 75 cts.

Frau Karl Druschki, or White American Beauty. Price, \$1.

J. B. Clarke. Price, \$1.

Killarney. Price, 75 cts.

Mad. Caroline Testout. Price, 75 cts.

Magna Charta. Price, 75 cts.

Mad. Jules Grolez. Price, 75c.

Mrs. B. R. Cant. Price, 75 cts.

Mrs. John Laing. Price, 75 cts.

Ulrich Brunner. Price, 75 cts.

Special Collections

To go by express at purchaser's expense. The selection of varieties to be left entirely to us, but we will put in only Everblooming or Monthly Roses—no Climbers. All guaranteed to bloom this year.

COLLECTION C. Twenty Roses, all different and all labeled, from 3-inch pots, by mail \$1.25; by express \$1.

COLLECTION D. One dozen 2-year plants, all different, all labeled, for \$2, by express.

Many high-priced Roses are included in these collections.



Standard, or Tree Roses



DAHLIAS

The Dahlia is the people's flower. It makes a more gorgeous, dazzling display than any other outdoor-grown flower. Immense bloom can be had from our improved varieties, which in size, beauty and style rival the finest house-grown, single-stem chrysanthemums. We have a magnificent collection of the best sorts grown.

The Dahlia is of the easiest possible culture. Plant in good soil in the full sunlight, and keep the ground well worked or mulched, and you will be repaid by showers of bloom. When the frost kills the tops, lift the roots and place in any cellar where they will not freeze. I offer strong, pot-grown plants that will bloom early and continuously, and be far more satisfactory than roots, which I do not sell.

Four New Giant Dahlias

For size, coloring, form and vigor of growth, these varieties are in a class by themselves.

Price, 25 cts. each; the four for 75 cts.

Cuban Giant. An immense, full-double, quilled Dahlia, 6 to 7 inches in diameter. Color dark, glowing crimson.

Pendant. A very large, bright crimson-maroon, with broad, overlapping petals.

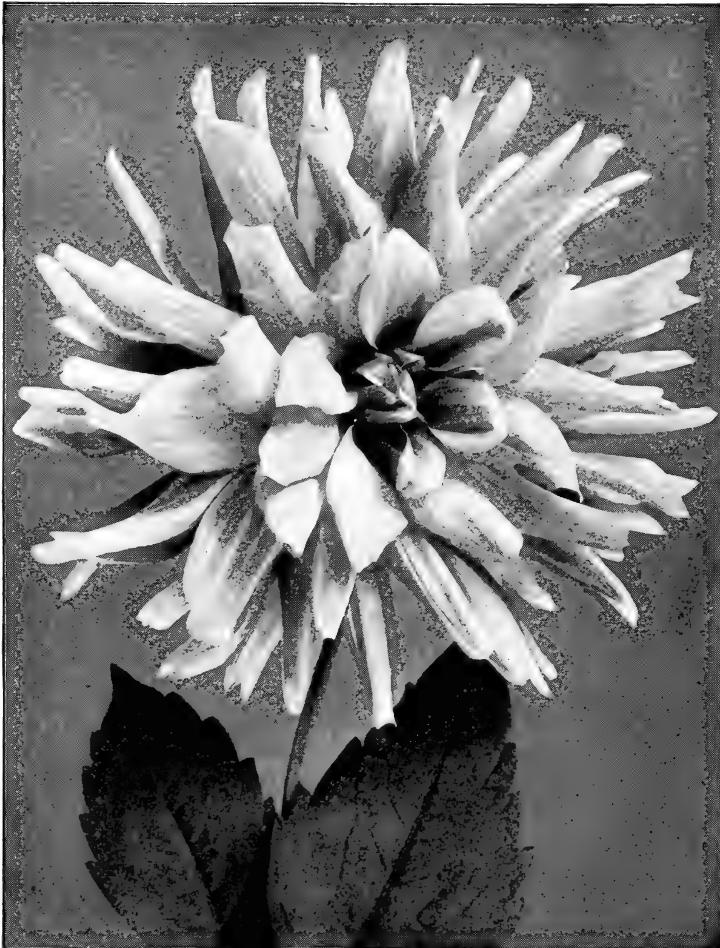
Mrs. Roosevelt. Even larger than Cuban Giant. Decorative form, full and double. Color a delicate shade of pink.

Souvenir de Gustave Douzon. A pure scarlet decorative variety of mammoth proportions; will produce flowers 6 to 9 inches across. Profuse-flowering.

Superb New Cactus Dahlias

Charm. Yellow at base of petals, then red, with heavy white tips at edges; long petals; blooms freely. Price, 15 cts.

Clara J. Stredwick. Long, narrow-pointed petals; flowers sometimes measuring 7 inches across. Salmon-flesh, shaded darker. Price, 15 cts.



Dahlia, Master Carl, averages 6 or 7 inches in diameter



New Cactus Dahlias, con.

Coronation. A brilliant crimson Dahlia of fine form. Price, 15 cts.

Floradora. Dark, velvety crimson; medium height, branching; an extremely early and profuse bloomer; plants continually covered with blooms. Best dark crimson for cutting. Price, 25 cts.

Harbor Light. Brilliant cochineal-red, with a stripe of reddish apricot through the center of each petal. Price, 25 cts.

Jealousy. The finest pure yellow Cactus Dahlia. Price, 15 cts.

Kriemhilde. Brilliant pink, gradually shading lighter to the center, which is at first a creamy white, changing to pure white. Produces its exquisite blooms freely and continuously on long stems; ideal for cutting. Price, 15 cts. See illustration, page 22.

Lauretta. Yellow ground, deeply edged rosy red; quite distinct in color; flowers of good size and fine habit. Price, 15 cts.

Master Carl. Perfect form and bright golden amber-color; immense petals of graceful curve. Price, 25 cts.

Minnie West. Yellow, passing to white at the tips; a large flower with long florets curved inward. 4 feet. Price, 15 cts.

Morning Glow. Deep golden primrose. Price, 25 cts.

Walthari. Flowers of good size, grace-



Cactus Dahlia, Jealousy

ful; light sulphur-yellow in center, shading to white at edges. Price, 15 cts.

Victor Von Scheffel. Fresh, delicate pink, shading to deep rose-pink; strong, vigorous grower; extremely profuse bloomer; flowers on erect stems. Price, 15 cts.

The thirteen by mail, \$2; by express, \$1.75

New Peony-Flowered Dahlias

Originated in Holland and promise to become very popular. Flowers 6 to 8 inches across; best compared to semi-double Peonies in general form. Flowers very freely; blooms borne on long stems; excellent material for cutting and garden decoration.

Germania. Brilliant strawberry-red; very fluffy and artistic flower, standing well above the foliage, producing a gay effect.

Glory of Baarn. Very large, loosely arranged flower of soft hortensia-rose-color.

Price, 25 cts. each; the set of four for 80 cts., postpaid

Queen Emma. A charming shade of mallow or hollyhock-pink, inner petals banded with gold.

Queen Wilhelmina. Immense, fluffy flower; pure white, with yellow center.

New Single Dahlias

Crimson Beauty. This Dahlia is a seedling of Twentieth Century. It is literally covered with immense, brilliant crimson flowers the entire season. Price, 10c.

Crimson Century. Deep, glowing crimson, shaded darker. Price, 10 cts.

President Viger. French Collarette Dahlia. Rich, deep blood-red, shading darker toward base of petals, with white

collar, occasionally suffused with rosy crimson. An extremely early and profuse bloomer. Price, 15 cts.

Twentieth Century. An intense rosy crimson, tipped with white, and having a white band around the disc. As the season advances they become lighter, until they are almost a pure white, suffused with soft pink. Price, 10 cts.

Fifteen Select Standard Cactus Dahlias

Ballet Girl. Soft red, tipped white; distinct. Price, 15 cts.

Blanche Keith. Rich canary-yellow; very large; long petals. Price, 15 cts.



Cactus Dahlia, Kriemhilde (see page 21)

Fifteen Select Cactus Dahlias, continued

Britannia. Deep salmon-flesh; very large, early and free. Price, 15 cts.

Brunhilde. Rich plum-color; loosely arranged, long petals; an exceptionally fine flower and very free. Price, 10 cts.

Countess of Lonsdale. A peculiar but pleasing blending of salmon-pink and amber; flowers freely under all conditions. Price, 15 cts.

Country Girl. New. Deep golden yellow, bright amber tips; the bold flowers appear very early and remain large right up until frost. Price, 15 cts.

Ernest Cheal. One of the best crimson Cactus Dahlias; free bloomer. Price, 10 cts.

Exquisite. Pure orange-scarlet, with salmon shading; truly lovely. Remarkably free-blooming. Price, 15 cts.

Galliard. The best scarlet-crimson Cactus Dahlia. Flowers large, of most perfect Cactus form. Price, 10 cts.

Keyne's White. A finely formed pure white Cactus Dahlia. Price, 15 cts.

Lyndhurst. One of the best bright scarlets; invaluable for cutting; large, perfectly full centers; long stems. Price, 10 cts.

Mary Service. Apricot, shaded orange, blending to purplish rose at the tips; a well-formed flower, and a free and continuous bloomer. Price, 15 cts.

Standard Bearer. Brightest scarlet. Plant dwarf, branching; profuse bloomer. Price, 10 cts.

Strahlen - Krone. Intense cardinal-red, rich and glowing, with long, twisted petals; early and profuse bloomer. Price, 10 cts.

Winsome. Flowers are very large; beautiful Cactus form, with twisted, in-curved petals, and borne on long, erect stems. Price, 10 cts.

One each of the above fifteen kinds by mail, \$1.60; by express, \$1.40



Fifteen Superb Double Quilled Dahlias

A. D. Livoni. Beautiful clear pink; of perfect form and very fine. Price, 10 cts.

Apple Blossom. A pretty variety, combining all shades found in apple blossoms. Price, 15 cts.

Black Diamond. Flowers immense; full, high, round center; rich, velvety maroon, almost jet-black; plant strong and vigorous; dark, glossy foliage. Early and free bloomer. Price, 15 cts.

Emily. Rosy lavender to white, suffused lavender; large, beautiful and striking. Price, 10 cts.

Ethel. Extremely large; pure yellow, tipped with white. Price, 15c.

George Smith. Fine, large, of perfect form; crimson. Price, 10 cts.

Golden Age. The largest and best yellow. Price, 10 cts.

Grand Duke Alexis. The petals are rolled up so that the edges overlap. Pure white, distinctly tinged delicate pink. Price, 15 cts. each, 25 cts. for 2.

Lady Maude Herbert. Pale yellow, shaded peach, tipped crimson. Price, 10 cts.

Lucy Fawcett. A very large, quilled bloom; sulphur-yellow, lightly striped and blotched carmine; sometimes clear yellow. Price, 15 cts.

Olympia. Flowers immense, measuring 6 to 7 inches across, with full, high center. Color deep rose-pink, striped and penciled with rich crimson. Price, 15 cts.

Queen Victoria. A quilled Dahlia,

One each of the above fifteen varieties by mail, \$1.60; by express, \$1.40



Grand Duke Alexis Dahlia

making a compact, round ball of the deep-est golden yellow. Price, 10 cts.

Souv. de Mme. Moreau. Magnificent pink; free bloomer; strong, vigorous habit. Price, 10 cts.

Storm King. Very free; pure white. Price, 10 cts.

White Swan. Splendid pure white; of good size and very free bloomer. Price, 10c.

Thirteen Choicest Decorative Dahlias

Catherine Duer. Flowers measure 6 to 7 inches in diameter; open out flat, showing no center. Petals broad and well formed; color beautiful, glowing red. A strong, robust grower. Price, 15 cts.

Clifford W. Bruton. The best yellow. Immense size, perfect form, finest canary-yellow. Tall, vigorous grower; free bloomer. Price, 15 cts.

Eloise. Medium to large, full and regular; ground-color blush-pink, shading to white; each petal margined deep, glowing crimson. Price, 10 cts.

Fire Rain. A very free-blooming, brilliant red Dahlia. Price, 15 cts.

Frank L. Bassett. Bright royal purple, shading to blue. The nearest approach to a blue Dahlia. Price, 10 cts.

Henry Patrick. A superb, large, pure white variety, borne on long, stiff stems. Price, 15 cts.

Henry Mitchell. Extra large; golden amber. Price, 15 cts.

Hohenzollern. Rich gold and bronzy orange-red. Price, 15 cts.

John Bragg. Will produce more blooms than any other variety grown; flowers large, dark red, almost black; grows 6 feet high. Price, 10 cts.

King of Cactus. Not a Cactus Dahlia, but belongs to the Decorative class. Color rich crimson, much like Catherine Duer. Price, 10 cts.

Matchless. Dwarf and branching, strong and vigorous. Flowers large; rich crimson, overlaid dark, velvety maroon; early and profuse bloomer. Price, 15 cts.

Nymphæa. Clear, light shrimp-pink, tinted lighter toward center. One of the best sorts. Price, 10 cts.

Striped Banner. Cardinal-red, striped white. Price, 10 cts.

One each of the above thirteen kinds by mail, \$1.50; by express, \$1.25



BEGONIAS

Argenteo-guttata. White. Price, 10 cts.
Corallina Lucerna. Large, bright red flowers. Price, 15 cts.
Foliosa. Delicate and graceful; pink flowers. Price, 10 cts.
McBethi. Fern-like foliage; white flowers. Price, 10 cts.

Metallica. Clear pink. Price, 10 cts.
Pres. Carnot. Coral-red. Price, 10 cts.
Rubra. Scarlet. Price, 10 cts.
Thurstoni. Smooth foliage; deep pink. Price, 10 cts.
Vernon. Good bedder; bright red. Price, 10 cts.

Rex Begonias

Feastii. Pink blooms. Price, 10 cts.
Lepoudsii. Strong grower. Price, 10c.
Louise Closson. Magnificent bronze, silver, rose and purple. Price, 15 cts.
Louise Erdody. Silvery foliage, growing spiral. Price, 15 cts.

Magnifica. Immense leaf, dark green and silver. Price, 10 cts.
Queen of Hanover. Soft velvety foliage. Price, 15 cts.
Speculata. Deep green foliage. Price, 10 cts.



Jean Viaud Geranium

GERANIUMS

New Double Geraniums

Alliance. Lilac-white. **Fleuve Blanc.** White.
Col. Thomas. Cardinal. **Jean Oberle.** Peach, shaded white.
Dagata. Rose-pink.
E. H. Trego. Scarlet.
 Price, 15 cts. each; one of each, 75 cts.

New Single Geraniums

Eugene Sue. Bright orange.
Juste Oliver. Carmine-red.
Lord Curzon. Fiery red. Price, 20 cts.
Nuit Poitevine. Rich scarlet. Price, 20 cts.
Princess Alex. Rose-pink.
Telegraph. Very large; red.
 Price, 15 cts. each, except where noted; one of each, 85 cts.

The Choicest Standard Geraniums

Price, 10 cts. each, 75 cts. per doz. Varieties marked (*), by express, \$5 per 100.

DOUBLE

***Alphonse Ricard.** Scarlet; best.
Beaute Poitevine. Light salmon.
Bruant. Vermilion.
 ***Francis Perkins.** Bright pink.
Jean Viaud. Rosy pink; large.
 ***Madam Buchner.** Pure white.
 ***Madam Jaulin.** Soft pink.
Montmart. Carmine-pink.
 ***S. A. Nutt.** Deep scarlet.

SINGLE

Granville. Light rose.
Jacquerie. Crimson.
Snowdrop. White.

IVY

Caesar Franc. Largest. Price, 15 cts.
Charles Turner. Deep pink. Price, 10 cts.
Garden's Glory. Bright scarlet. Price, 10 cts.
Joan of Arc. Snow-white. Price, 10 cts.
Raycroft's Surprise. Finest pink. Price, 15 cts.

SWEET-SCENTED

Price, 8 cts., except where noted
Skeleton-leaf Rose-scented.
Rose. **Nutmeg.**
Oak-leaved. **Balm.**
Lemon-scented.
Shrubland Pet.
Apple Geraniums. Price, 10 cts.

PELARGONIUMS

Herzog. Cherry-red. Price, 20 cts.
Capt. Raikes. Crimson. Price, 10 cts.
Mrs. Carnegie. This new variety is the most beautiful Pelargonium ever introduced. Really grand soft pink, shaded rose-white. Price, 25 cts.
Mrs. Robert Sandiford. Snow-white. Price, 15c.
Victor (Pansy Geranium). Cherry-red. Price, 10 cts.

Just a line to tell you how perfectly delighted I was with my order from you last spring. I purchased some twenty Roses of mailing size, and every one grew and bloomed last summer.—Miss L. L., Du Bois, Idaho.



CHRYSANTHEMUMS. Queen of the Autumn

In May or June, prepare boxes 4 or 5 inches deep, leaving ample cracks for drainage. Fill the box with a compost, three parts decomposed sod or garden soil and one part cow-manure, well rotted. Add one pint each of bone meal and wood-ashes to each bushel of compost and mix well. Plant young plants in two rows, 8 or 10 inches apart; train to single stem and stake. Place the box in sunny position; water as needed. Disbud, leaving but one to each plant, selecting the best specimen. Mulch with well-rotted manure. Keep plants growing vigorously. Toward frost, place in sunny window in cool room with night temperature of 45 degrees.

Three Extra-Early Chrysanthemums

Golden Glow. Beautifully incurved; bright, golden yellow; 5½ inches. September 1 to 10. Price, 25 cts.

Monrovia. A few days later; color

about the same; petals narrower. Price, 25 cts.

October Frost. Large, incurved; nearly white, tinged lemon-yellow. Price, 25 cts.

One each of the above three for 60 cts.

Nine Latest Introductions

Brutus. Orange and red; half-globular. Price, 15 cts.

Clementine Touse. The "Early Chadwick." Largest white for its date, October 12. Lasting; splendid stem and foliage. Price, 15 cts.

Dr. Enguehard. Awarded highest honors. True pink, without purple. Stem and foliage perfect; full-double; midseason; 6½ inches. Price, 15 cts.

Gen. Hutton. Yellow and orange. 4½ feet high; midseason. Price, 15 cts.

Mrs. W. B. Chamberlain. Pink; valuable for cutting. Price, 15 cts.

Sunburst. Petals deep yellow, shading paler at tips; enormous. Price, 25 cts.

White Bonaffon. Waxy white. Price, 15 cts.

William Duckham. Deep, dark, clear pink; flower 9 inches in diameter; long, stiff stems. November. Price, 15 cts.

Yellow Eaton. Bright yellow; stem strong enough to hold up the monster blooms. Price, 15 cts.

One each of these nine giant kinds, \$1.20

Varieties of Special Merit

Alice Byron. Purest white; clear, smooth florets.

F. J. Taggart. Perfectly double; light yellow. Fine exhibition variety.

Golden Wedding. Globular flowers; bold, majestic.

Lavender Queen. Outer petals reflexed, center erect; silvery lavender-pink.

Major Bonaffon. Clear yellow, full in center, 8 inches diameter; nearly as deep.

Marie Liger. Japanese. Extra large, pearl-pink, deepening to rosy lavender.

Ministre Olanesco (Bruant). French. Very large; rosy-violet, heavily plumed.

Mrs. Coombes. Enormous reflexed flower; broad petals; light rose.

Nellie Pockett. Great beauty. White, incurving and reflexing narrow petals.

Timothy Eaton. Pure white. A prize-winner.

Price, 10 cts. each. One each of the ten splendid kinds, 80 cts.

Col. D. Appleton. Golden yellow; 4 feet.

Cullingfordii. Reflexed; brilliant crimson, shaded scarlet.

Glory of the Pacific. Magnificent size and depth; clear pink.

Ivory. Pure white; globular.

Minerva. Large; yellow.

Mrs. Weeks. Incurving petals; purest white.

Mrs. H. Robinson. Best white. October 15 to November 1.

Murdock. Deep pink.

Mrs. O. P. Bassett. Canary-yellow; large, incurved, broad petals.

Pink Ivory. Pink sport from Ivory.

Polly Rose. Pure white; fine for pots.

Pullman. Large; incurved; yellow.

Robert Halliday. Japanese. Large; yellow; dwarf.

Price of the preceding thirteen varieties, 8 cts. each

Pompon Varieties, Perfectly Hardy

Bertha. Large; white; open center.

Boston. Golden bronze.

Fair Haven. Pearl-pink.

King Henry. Straw-white.

Lebanah. Pink.

Matilda. White.

Oban. Silvery pink.

Prince of Wales. Pure white; fine.

Success. Silvery rose.

Tisre. Medium size; pink.

Price, 8 cts. each



Palms and Other Decorative Plants

Dracaena indivisa. Graceful, rapid grower; palm-like. Price, from 3-inch pots, 25 cts.

Latania Borbonica (Chinese Fan Palm). Price, 3-inch, 25 cts.; 4-inch, by express, 50 cts.

Kentia Forsteriana. Graceful, bright green foliage. Price, 3-inch, 35 cts.; larger sizes, 50 cts. to \$1.

Ficus elastica (Rubber Tree). Thick, glossy foliage; free from insect pests. Price, strong plants, by mail, 35 cts.; by express, 25 cts.; extra size, 50 cts.

Kentia Belmoreana. Leaves deep green, fan-shaped; one of the hardiest Palms I know of. Price, strong young plants, 25 cts.; larger, by express, 35 cts., 50 cts., and \$1.

FERNS

Adiantum cuneatum (Maidenhair). Light, graceful fronds. Price, 10 cts.

Boston Fern. Graceful, drooping fronds, 2 to 5 feet, arching in every direction. Price, by mail, 10 and 15 cts.; by express, 25 cts., 50 cts. and \$1, according to size.

Nephrolepis elegantissima (Tarrytown Fern). New. Plumy leaves, compact habit, rather dwarf, growing only with very fine, wide leaves. Price, 15 cts.; larger sizes, by express, 50 cts., \$1 and \$1.50

Nephrolepis superbissima, or "Fluffy Ruffles Fern." (See illustration from photograph showing one of my average-sized plants.) The leaves are wonderfully "fluffed" and cut, curled and fluted. They are dark green and exceedingly handsome and the plant is of clean, vigorous growth.

The leaves are unusually stiff and rigid—note this in the illustration—enabling the plant to stand much rough handling. I feel that it can scarcely be recommended too highly. Price, strong young plants, 15 cts.; larger sizes, by express, 25 cts., 50 cts., 75 cts. and \$1.

One of the greatest Fern novelties of many years. This is an average plant from my collection.



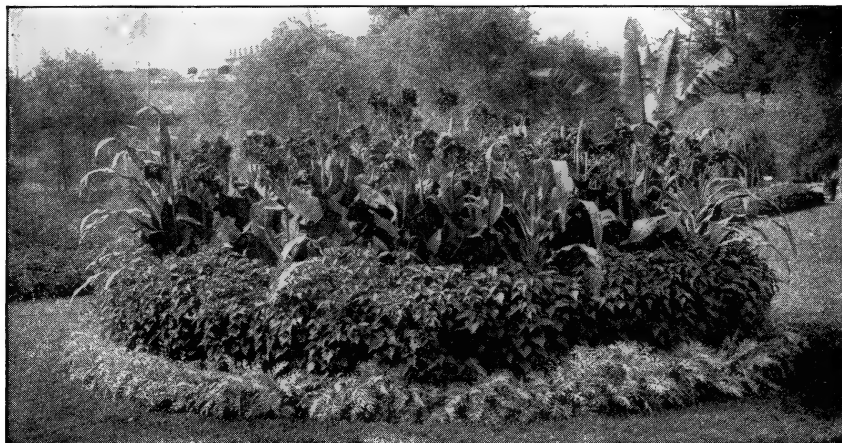
Fluffy Ruffles Fern (*Nephrolepis superbissima*)

Table Showing the Number of Plants Required to Fill a Circular Bed

In planting, begin on the outside row—where 6 inches apart, 3 inches from edge of bed; where 12 inches apart, 6 inches from edge of bed.

Diameter of bed	Plants 6 in. apart	Plants 12 in. apart	Plants 18 in. apart	Plants 24 in. apart	Diameter of bed	Plants 6 in. apart	Plants 12 in. apart	Plants 18 in. apart	Plants 24 in. apart
3 feet	28	7			10 feet	320	80	36	20
4 feet	48	12	6		12 feet	452	113	50	28
5 feet	80	20	8		14 feet	612	153	68	39
6 feet	112	28	13	7	16 feet	804	201	89	50
7 feet	152	38	17	9	18 feet	1,016	254	113	63
8 feet	200	50	23	12	20 feet	1,256	314	139	78
9 feet	256	64	28	16					

Square beds will take about the same number of plants as round beds. For an oval bed, add length and breadth and divide by 2. For example, an oval 7 feet long by 5 feet wide will require the same number of plants as a circular bed 6 feet in diameter.



CANNAS

These wonderful bedding plants give uniformly good results in all sections of the country. They succeed in any sunny position, in any kind of soil, but will repay liberal treatment. For best results spade the beds 2 feet deep, and incorporate in the soil a liberal amount of well-decayed manure of any kind. Water well at all times. The best effect is given by planting large masses of one color, setting the plants 18 inches apart. All of my plants are pot-grown, and are ready to bloom at once. The table on page 26 will show the number of plants required for beds of all sizes.

The Choicest Orchid-Flowering Varieties

Allemania. Enormous flowers; broad, golden border; scarlet and dark red. 5 to 6 feet tall. Price, 10 cts.

Austria. Large, bold, erect; deep golden, dotted carmine. 5 to 6 inches across. 5 to 6 feet tall. Price, 10 cts.

Louisiana. Strong, vigorous; vivid scarlet flowers, the largest and finest of their color. 7 feet tall. Price, 10 cts.

L. Patry. A bright rose-pink. The finest pink Canna grown. Price, 10 cts.

Mrs. Kate Gray. Massive foliage; flowers orange-scarlet, overlaid gold, 6 to 7 inches across. 6 to 7 feet tall. Price, 10 cts.

Pennsylvania. Flowers 6½ inches in diameter, in panicles; vermilion, overlaid with orange. 6 to 7 feet tall. Price, 10 cts.

Selected List of Good Cannas

Boffinger. Bright orange-scarlet; heavy truss. 4 feet. Price, 10 cts.

Buttercup. Buttercup-yellow; large flowers in open trusses. Price, 10 cts.

Childsii. Golden yellow, spotted red. Price, 10 cts.

Cinnabar. Red, edged yellow. 4½ feet. Price, 10 cts.

Edna Corcoran. Dazzling scarlet; profuse bloomer. Price, 10 cts.

E. G. Hill. Clear scarlet, marbled carmine; vigorous. Price, 10 cts.

Explorateur Crampbell. Light crimson, darker markings. 4½ feet. Price, 10 cts.

J. D. Eisele. Vermilion, overlaid orange. 4 feet. Price, 10 cts.

Jean Tissot. Intense brilliant vermilion, shaded orange. 5 feet. Price, 15 cts.

Mme. Crozy. Golden, edged bright scarlet. Price, 10 cts.

Richard Wallace. Canary-yellow; large flowers in well-branched, upright trusses. Price, 15 cts.

Robusta. A giant; immense tropical foliage. 8 feet. Small blooms. Price, 10 cts.

Secretaire Chabanne. Salmon. 4 feet. Price, 10 cts.

I grow thousands of Cannas for bedding, and offer strong, pot-grown plants that will give great satisfaction, at the following prices, to be shipped by express only:

Any of the five Orchid-flowering varieties—Allemania, Austria, Louisiana, Pennsylvania and Mrs. Kate Gray. \$1 per doz., \$6 per 100. Any other variety listed, 75 cts. per doz., \$5 per 100.



MISCELLANEOUS PLANTS

Aloysia citriodora (Lemon Verbena). For bouquets, etc. Price, 10 cts.

Asparagus Sprengeri. For ferneries and baskets. Price, 10 cts.

plumosus nanus. Leaves bright green and silky. Nice plants. Price, 10 cts.

Calla (The White Calla). Large, pure white flowers. Prices, 10 and 20 cts. each.

Cereus, Night-blooming. Flowers large, satiny white; outside petals tinged reddish brown; fragrant. Price, 15 cts.

Heliotrope. For bedding in summer or pot-plants in winter. Price, 10c. each.

Heliotrope, Czar. Deep purple; free; fragrant.

Florence Nightingale. Bright lavender; in good truss.

Madame de Blonay. Pure white.

Madame Bruant. Purple, white eye.

Picciola. Rosy violet, almost red; distinct white center in immense heads.

Hibiscus, Peachblow. Flowers double, 4 to 5 inches in diameter; rich clear pink, deep crimson center. Price, 10 cts.

rubra. Deep cherry-red; large and double. Price, 10 cts.

Hollyhock. One-year-old plants, ready to bloom; separate colors: red, white, yellow, pink. Price, 10 cts.

Hydrangea Otaksa. Flowers large; bright pink, tinted blue. Price, 10 cts.

Jasmine, Grand Duke. New. Double, creamy white flowers, deliciously perfumed. Price, 10 cts.

Lantana, Weeping. Graceful, drooping; grows rapidly; blooms continually. Flowers lilac or rosy pink. Price, strong plants, 10 cts.

Lemon, American Wonder, or Ponderosa. Flowers as large as tuberoses and as fragrant as orange-blossoms; fruit useful. Good young plants, price, 10 cts.; large 2-year-old plants, 25 cts.

Pansies, Royal Exhibition. Our own choicest strain, produced by a Pansy specialist. Price, strong plants, 5 cts. each, 50 cts. per doz.

Pontederia crassipes major (The Water Hyacinth). Flowers delicate lilac-rose, in trusses like the Hyacinth. Price, 10 cts.

Vinca major variegata. Trailing plant; leaves glossy green, margined creamy white; flowers blue. Price, 10 cts.

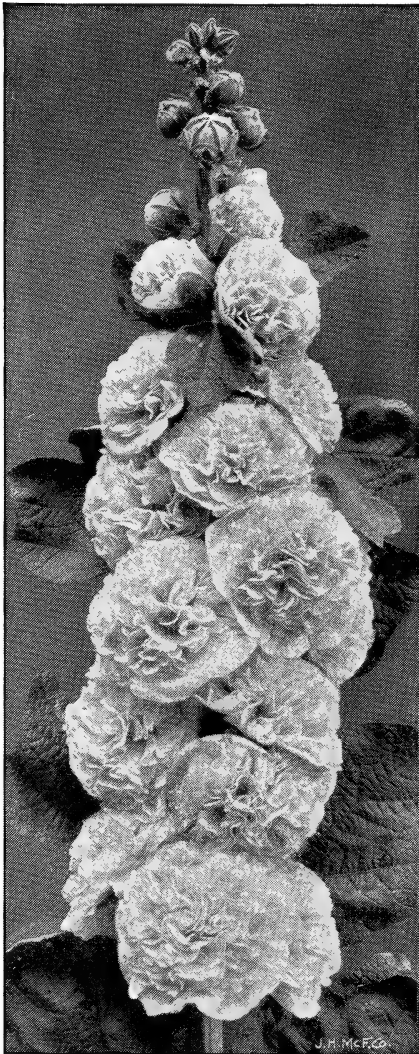
Violets, Marie Louise. Bold, fine flowers; fragrant, prolific. Dark blue, double. Price, 10 cts. each; 75 cts. per doz.

Princess of Wales. New. Grand single flowers, violet-blue; will not fade. Price, 10 cts. each, 75 cts. per doz.

Swanley White. Most free-flowering, fragrant, purest white. Price, 10 cts. each, 75 cts. per doz.

Wandering Jew. Leaves purple, scarlet and white. Price, 5 cts.

Yucca filamentosa (Spanish Bayonet). Creamy white, bell-shaped flowers on a tall stalk. Price, 2-year plants, by express, 25 cts.



Double Hollyhock



FLOWER SEEDS

ASTERS, New Giant Comet, Mixed.

Flowers frequently 4 inches across. Pkt. 10 cts., 3 pkts. for 25 cts.

New Japanese. Flowers 5 to 6 inches across; long petals, waved and curled; 14 inches high; produces a profusion of flowers, flesh-colored and rose. Mixed. Pkt. 10 cts.

Semple's New Branching. All colors mixed. Pkt. 10 cts.

Cosmos, New Early Blooming. Lovely, large flowers; pure white, pink and crimson. July to November. Pkt. 10 cts.

Hollyhocks. Finest double flowers. Pkt. 10 cts.

Marigolds. Strong; large flowers. Mixed. Pkt. 5 cts.

Mignonette. A quick-growing annual; delicate fragrance. Pkt. 5 cts.

NASTURTIUMS, Favorite Mixture of tall varieties. Brilliant colorings, including best varieties. Pkt. 5 cts., oz. 15 cts.

Mixed Tom Thumb. Wide range of flowers, beautiful colorings. Pkt. 5 cts., oz. 15 cts.

Pansies, Royal Prize. Large flowers, richest colorings, distinct markings. Pkt. 10 cts.

Portulaca. Finest double flowers; varied colors and markings.

Portulaca, Double Rose-flowered, Mixed. Pkt. 10 cts.

Finest Single, Mixed. Pkt. 5 cts.

Sunflowers, Many-flowered, Double. Handsome golden yellow flowers. Pkt. 5 cts.

Stock, Ten Weeks, Giant Perfection. A splendid race, 2½ feet high. Large spikes, perfectly double. All colors. Pkt. 10 cts.

Grandiflora Sweet Peas

Burpee's "Best Mixed" New Giant. Improved Eckford varieties and many choice varieties of other strains. Pkt. 5 cts.

Superb Sweet Peas of the "Spencer" Type

Because of such enormous size, of waved or fluted appearance, and charming blendings of harmonious colors, this new type can only be appropriately described as truly gigantic "Orchid-flowered." The flowers are not only of extremely large size, but are distinct in having the outer edges of the standard and wings beautifully crumpled or waved, the tissue being so full that there is not room for it to lie flatly expanded or smoothly rolled. The standard is broad and tall; the wings are broad, well spread and held erect by the keel. All colors mixed. Pkt. 10 cts.

SPRING BULBS

Caladium esculentum (Elephant's Ear).

Its broad, striking leaves often reach a length of 3 feet and a width of 2 feet. The growth is rapid. This bulb requires a rich soil, and if very large leaves are desired, water freely in dry seasons. It is effective for planting either as a specimen on the lawn, in masses in beds, or at the water's edge. The bulbs may be stored in dry sand in winter and kept from year to year. Price, by express, 10 cts.; extra-large bulbs, 15 cts. By mail, add 5 cts. per bulb for postage.

Gladiolus, Groff's Newest Hybrid. In grand mixture. Flowers extra large, perfect; splendid substance; red, scarlet, crimson, garnet, white, cream, yellow, rose, pink, salmon, orange, etc. Price, large blooming size, mixed colors, 5 cts. each, 50 cts. per doz.

Tuberose, New Double Pearl. Nearly twice as large as old variety. Very fragrant. Dry bulbs, 4 inches and upward in circumference; perfectly sound centers. Price, 3 cts. each, 25 cts. for 9, 30 cts. per doz., by express.



Gladiolus. Fine for cutting



BEDDING PLANTS

Coleus

A foliage plant with richly colored leaves in various tints of gold, bronze, green and crimson. Richly veined, blotched or margined, producing a brilliant display of color. Desirable for both pot-plants and for bedding out. I have ten of the finest varieties. Price, by mail, 5 cts. each, 50 cts. per doz. By express, \$3.50 per 100.

New Coleus, Doctor Ross. Enormous leaves, rich, dark velvety crimson, shaded and marbled with black; broad, creamy white and green wedge in center. Price, 10 cts. each, 25 cts. for 3.

Salvia splendens

(Flowering Sage)

One of the finest of blooming plants, being completely covered with long spikes of scarlet flowers, remaining in bloom until cut down by frost. Some of the finest beds in the White House grounds in Washington are of this plant. Kept sheared down to make it thick, it is a wonderful sight. Price, by mail, 8 cts. each, 60 cts. per doz. By express, \$4 per 100.



Salvia splendens

CLIMBING VINES

Clematis paniculata. Pure white, in panicles; fragrance delicious. August or early September. Price, 10 cts.; 2-year plants, by express, 25 cts.; by mail, 30 cts.

Best Hardy English. Plant deep in rich ground, partially shaded.

Jackmani. Immense flowers in masses; deep royal purple. Price, 2-year plants, 40 cts., postpaid.

Anderson Henryi. Extra large; creamy white. Price, 2-year plants, 40 cts.

Ampelopsis Veitchii (Boston, or Japanese Ivy). Dark green foliage, changing in autumn to brilliant crimson. Price, 10 cts.; 2-year, field-grown plants, 25 cts.

Ipomoea maxima. The great new Giant Moonflower. A wonderful grower and bloomer; splendid for covering porches, arbors, etc., where quick shade or shelter is wanted. The flowers are large—sometimes 6 or 7 inches across—pure white, handsome, and borne in great abundance. They open in the evening or on dark days, and are at their love-

liest during the night. Price, 10 cts.; 3-inch pots, 15 cts.

Hardy English Ivy. Hardy evergreen; dark, glossy leaves. Price, strong plants, 10 cts.

German, or Parlor Ivy (*Mikania scandens*). Suitable for baskets. Price, 5 cts.

Wistaria, American Blue (*Frutescens*). Blooms late; violet-purple, compact clusters; fragrant. Price, by mail, 15 cts.; 2-year plants, 35 cts.

Sinensis. Pendulous clusters, delicate violet-blue, richly perfumed. Price, strong plants, by mail, 25 cts.; 2-year plants, 50 cts.

Sinensis alba. Pure white. Price, by mail, 25 cts.; 2-year plants, 50 cts.

Sulpho Tobacco Soap

Perfectly safe; sure extermination to all insects. 3-oz. package, sufficient for one and one-half gallons solution. Price, postpaid, 13 cts.

8-oz. package, sufficient for four gallons of solution. Price, postpaid, 28 cts.



Hydrangea paniculata grandiflora. Always showy in August and September

HARDY SHRUBS

Althæa (Rose of Sharon). Blooms August to October.

alba plena. Double white, crimson center. Price, 25 cts.; 3-year plants, 50 cts.

Boule de Feu. Double red. Price, 25 cts.; 3-year plants, 50 cts.

Lady Stanley. Double pink. Price, 25 cts.; 3-year plants, 50 cts.

Azalea lutea (Calendulacea). Great Flame Azalea. A noble representative of the rich Carolina Mountain flora. The flowers are of the color of the finest red-lead, orange and bright gold, yellow and cream color. Price, strong plants, 12 to 18 inches, 40 cts. each; 2 feet, budded, ready to bloom, 75 cts.

California Privet. The best hedge plant. Foliage rich, dark green, remaining on the plant until midwinter. Forms a dense hedge. Price, strong plants, 18 inches, \$4 per 100, by express only.

Calycanthus floridus (Sweet, or Strawberry Shrub). Double, chocolate-colored, strawberry-scented flowers. Price, 2-year plants, by express, 25 cts.

Cydonia Japonica (Japan Quince). Dazzling scarlet. Price, 2-year plants, by express, 35 cts.

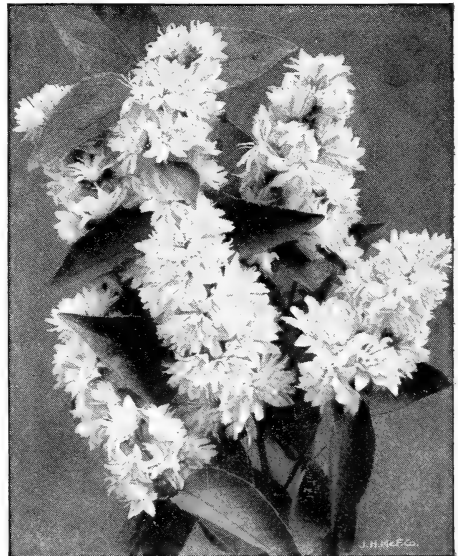
Deutzia. Spring or early summer; desirable for forcing.

Pride of Rochester. Tall; double; white. Price, 2-year plants, by express, 25 cts.; extra 3-year plants, 6 feet, 50 cts.

Forsythia suspensa (Weeping Golden Bell). Branches gracefully arching, covered with golden bells in early spring. Price, 25 cts.; extra 3-year plants, 50 cts.

Forsythia viridissima. Strong, erect; flowers yellow; early. Price, 25 cts.; 3-year plants, 50 cts.

Hydrangea arborescens grandiflora (Snowball Hydrangea). This hardy shrub has snow-white blossoms of large size, and flowers from early June until late in August. The flowers are borne in great profusion on long stems, and have a delicate, graceful appearance, while the long blooming season covers a period when other flowers are scarce. Price, 2-year plants, by express, 40 cts.



Deutzia, showy in June



Hardy Shrubs, continued

Hydrangea paniculata grandiflora.

One of the most popular hardy shrubs, and no collection of flowering shrubs is complete without it. It may be grown to any height or shape desired, and it never fails to produce large heads of choice white blossoms that remain beautiful for weeks. Price, mailing size, 10 cts.; 2-year field-grown plants, 25 cts.; 3-year plants, 50 cts.

Lilacs, Common (*Syringa vulgaris*). Common purple Lilac. Price, 2-year plants, by express, 35 cts.

Common White (*S. vulgaris alba*). Flowers white. Price, 2-year plants, by express, 35 cts.

Magnolia grandiflora. Handsome evergreen; immense white, fragrant flowers. Price, pot-grown plants, 12 to 18 inches high. 50 cts.

Philadelphus, Boule d'Argent (Silver Ball Mock Orange). Double white flowers in June. Price, 2-yr. plants, 40c.

coronarius (Garland Mock Orange). Fragrant and early. Price, heavy 2-year plants, 40 cts.

Rhododendron Catawbiense. The true Rhododendron Catawbiense of the Carolina mountains. The hardiest Rhododendron known. The finest of Rhododendrons for general use, withstanding exposure and extremes of temperature where other Rhododendrons fail. The trusses are bright red-purple, in marked contrast to the muddy purple of the semi-hardy, half-breed imported variety. Price, strong, nursery-grown, bushy plants, 12 inches high, 40 cts. each; 2 feet, budded, ready to bloom, 75 cts.

Silver Maple. Young and thrifty; three years from seed. Price, 8 to 10 feet, 40 cts. each, \$4 per doz., by express.

Spiraea, Anthony Waterer. A dwarf variety, which seldom exceeds 30 inches in height, and bears flat-topped clusters of crimson flowers in great profusion throughout the summer and fall. It is popular as a bedding shrub. Price, mailing size, 15 cts.; 2-year field-grown plants, 35 cts.; extra 3-year plants, 50 cts.

Van Houttei. Best of all the Spiraea in existence. Covered in June with clusters of white flowers. Every individual bloom resembles a miniature wild rose. The blossoms are so profuse that the entire bush is a sheet of white, and a group of them resembles a snowdrift. It produces more flowers than any other shrub. Van Houttei frequently is called "Bridal Wreath." Price, mailing size, 15 cts.; 2-year field-grown plants, 35 cts.; extra 3-year plants, 50 cts.

Viburnum plicatum (Japan Snowball). This shrub produces perfect balls of snow-white flowers in May. The foliage, and flowers are decidedly better than the old-fashioned Snowball. Price, 2-year field-grown plants, 35 cts.; extra 3-year plants, 50 cts.

Weigelas. Well-known shrubs, which are covered in July with graceful trumpet-shaped flowers.

Candida. Pure white flowers of large size, striking in any landscape.

Rosea. Dark pink flowers. This is the best known of the species. Price, either variety, mailing size, 15 cts., 2-year-old field-grown plants, 35 cts.



Spiraea Van Houttei. One of the best

Make remittances by Post Office Money Order, Express Money Order, Bank Draft or Registered Letter, and we will be responsible therefor, and will send full value, if lost. Personal checks will also be received. Do not send postage stamps, instead of money. Make all money orders, drafts and checks payable to W. R. Gray, Oakton, Va.

W. R. GRAY, Oakton, Virginia

Date _____ 191_____ When to Ship _____
(Be sure to fill out this line)

Forward by _____ Name of Express Co. _____
(State whether wanted by Mail or Express)

Name _____

Street, P. O. Box _____ Post Office _____
or Rural Delivery _____

Express Office _____ County _____ State _____
(If different from Post Office)

Amt. Enclosed

\$ _____

Please Leave Blank

Always write your Name, Post Office, County and State very plainly. By so doing you avoid the possibility of delay and mistakes in filling your orders.

Quantity	Name of Roses, Plants, Seeds or Bulbs Wanted	Size	Dollars	Cents
If more room is needed, continue order on back		Amount carried over		



Index

PAGE		PAGE	PAGE
Aloysia.....	28	Hollyhock.....	28, 29
Althæa.....	31	How to Grow Roses.....	1
Ampelopsis.....	30	Hyacinth, Water.....	28
Asparagus.....	28	Hydrangea.....	28, 31, 32
Asters.....	29	Ipomœa.....	30
Azalea.....	31	Ivy, Boston or Japanese.....	30
Bedding Plants.....	30	Ivy, English.....	30
Begonias.....	24	Ivy, German or Parlor.....	30
Caladium.....	29	Jasmine.....	28
Calla.....	28	Lantana.....	28
Calycanthus.....	31	Lemon.....	28
Cannas.....	27	Lilacs.....	32
Cereus, Night-blooming.....	28	Magnolia.....	32
Chrysanthemums.....	25	Maple, Silver.....	32
Clematis.....	30	Marigolds.....	29
Coleus.....	30	Mignonette.....	29
Cosmos.....	29	Mikania.....	30
Cydonia.....	31	Miscellaneous Plants.....	28
Dahlias.....	20-23	Mock Orange.....	32
Deutzias.....	31	Nasturtiums.....	29
Elephant Ear.....	29	No. of Plants for Circular Bed.....	26
Ferns.....	26	Palms and Other Decorative Plants.....	26
Flower Seeds.....	29	Pansies.....	28, 29
Forsythia.....	31	Philadelphus.....	32
Geraniums.....	24	Pontederia.....	28
Gladiolus.....	29	Portulaca.....	29
Golden Bell, Weeping.....	31	Privet, California.....	31
Heliotrope.....	28		
Hibiscus.....	28		
		Quince, Japan.....	31
		Rhododendron.....	32
		Rose of Sharon.....	31
		Roses.....	2-19
		Sage, Flowering.....	30
		Salvia.....	30
		Shrubs, Hardy.....	31, 32
		Snowball, Japan.....	32
		Soap, Sulpho Tobacco.....	30
		Spanish Bayonet.....	28
		Spiræa.....	32
		Spring Bulbs.....	29
		Stock.....	29
		Strawberry Shrub.....	31
		Sunflower.....	29
		Syringa.....	32
		Sweet Peas.....	29
		Sweet Shrub.....	31
		Tuberoses.....	29
		Verbena, Lemon.....	28
		Viburnum.....	32
		Vinca.....	28
		Vines, Climbing.....	30
		Violets.....	28
		Wandering Jew.....	28
		Wistaria.....	30
		Weigelas.....	32
		Yucca.....	28

Index to Roses

PAGE		PAGE	PAGE
Aglaiia.....	18	Golden Cochet.....	9
American Beauty.....	2	Golden Gate.....	10
Anne de Diesbach.....	13	Gruss an Teplitz.....	3
Antoine Rivoire.....	2	Helene.....	18
Augustine Guinoisseau.....	4	Helen Gambier.....	4
Baby Rambler.....	11	Helen Good.....	9
Bessie Brown.....	2	Helen Gould.....	10
Betty.....	2	Henri Martin.....	14
Black Prince.....	13	Hermosa.....	12
Blue Rose.....	18	Hiawatha.....	18
Blumenschmidt.....	9	Ivory.....	10
Bon Silene.....	9	Jessie.....	12
Burbank.....	9	Jonkheer J. L. Mock.....	4
Cardinal.....	2	Jubilee.....	14, 15
Catherine Zeimet.....	11	Kaiserin Augusta Victoria.....	4
Champion of the World.....	12	Killarney.....	4
Cheshunt Hybrid.....	13	Killarney, Climbing.....	16
J. B. Clarke.....	14	La France.....	4
Clara Watson.....	2	Lady Gay.....	18
Cleo.....	13	Lyon.....	5
Clothilde Soupert.....	12	Lyon Rambler.....	19
Clothilde Soupert, Climbing.....	16	Microphylla, White.....	17
Conrad F. Meyer.....	13	Madam Constant Soupert.....	5
Coquette des Alpes.....	13	Madam Cutbush.....	12
Coquette de Lyon.....	10	Madame de Vatry.....	10
Countess of Roseberry.....	13	Madame Jennie Guillemot.....	5
Crimson Baby Rambler, Climbing.....	16	Madame Jules Grolez.....	5
Crimson Rambler.....	18	Mad. Charles Wood.....	15
Dean Hole.....	2	Mad. Francisca Kruger.....	10
Dinsmore.....	13	Magna Charta.....	15
Dorothy Perkins.....	18	Magnafrano.....	5
Duchesse de Brabant.....	12	Maman Cochet, Pink.....	9
Duchess of Albany.....	5	Maman Cochet, White.....	9
Duchess of Wellington.....	2	Marechal Niel.....	17
Etoile de France.....	3	Margaret Dickson.....	15
Etoile de Lyon.....	10	Marie Van Houtte.....	10
Empress of China.....	16	Marigold.....	10
Frau Karl Druschki.....	3	Marquise de Querhœnt.....	10
Freiherr Von Marschall.....	10	Mary Washington.....	17
General Jacqueminot.....	13	Meteor, Climbing.....	16
General McArthur.....	3	Mrs. Aaron Ward.....	5, 6
Giant of Battles.....	14	Miss Kate Moulton.....	5
Gloire de Dijon.....	17	Mme. Caroline Testout.....	6
Gloire Lyonnaise.....	14	Mme. Masson.....	15
Gloire de Margottin.....	14	Mrs. A. R. Waddell.....	6
		Mrs. B. R. Cant.....	10
		Mrs. John Laing.....	15
		Mrs. Robert Peary.....	17
		My Maryland.....	6
		Orleans Rose.....	12
		Papa Gontier.....	10
		Paul Neyron.....	15
		Paul Neyron, Climbing.....	16
		Pearl of the Gardens.....	10
		Perle Von Godesburg.....	6
		Philadelphia Crimson Rambler.....	19
		Prince Camille de Rohan.....	15
		Prince de Bulgarie.....	6
		Princess Bonnie.....	11
		Priscilla.....	9
		Queen Beatrice.....	7
		Queen's Scarlet.....	12
		Radiance.....	8
		Red La France.....	5
		Reve d'Or.....	17
		Rhea Reid.....	7
		Richmond.....	7
		Safrano.....	11
		Soleil d'Or.....	7
		Souv. de Pierre Notting.....	11
		Souv. du President Carnot.....	8
		Souvenir de la Malmaison.....	12
		Standard, or Tree Roses.....	19
		Striped La France.....	4
		Sunburst.....	7
		Tausendschon.....	19
		Thalia.....	19
		Tree Roses.....	19
		Triomphe de Pernet Pere.....	8
		Ulrich Brunner.....	15
		Veilchenblau.....	18
		Vick's Caprice.....	15
		Virginia R. Cox.....	3
		Wellesley.....	8
		White Dorothy.....	19
		White Killarney.....	4
		White La France.....	4
		Winnie Davis.....	8
		Wm. R. Smith.....	8
		Wm. Shean.....	8
		Wootton, Climbing.....	16
		Yellow Rambler.....	18

Fairfax Roses



MY MARYLAND