

Historic, Archive Document

Do not assume content reflects current scientific knowledge, policies, or practices.

6267

W. H. Tracy Esq.

1913

LIBRARY,
U. S. Department of Agriculture,
Washington, D. C.

Annual CATALOGUE



J. Chas. McCullough

North East Corner
Second & Walnut Sts.
CINCINNATI, O.

OFFICE AND SEED CLEANING PLANT, FIFTH, LOCK & EGGLESTON AVE.

Phone, Canal 2603--Private Exchange.

CONNECTING ALL DEPARTMENTS.

TESTED



SEEDS

Suggestions

To Our

Customers

With each order write your **NAME, POST OFFICE, COUNTY** and **STATE** in full. When **Freight Office** is different from **Post Office**, give both.

Send money with order, by **P. O. Order, Registered Letter, Express Money Order, or Draft on Cincinnati or New York.**

Personal Checks.—*DO NOT SEND* personal checks, as we are obliged to pay for collecting same and will therefore have to deduct this charge from your order. Besides, orders are held until our banks report checks paid, thus causing needless delay.

OUR PRICES INCLUDE **POSTAGE** on all Vegetable and Flower Seeds by the packet, ounce and pound except Peas, Beans and Corn, when 10c. per pound must be added to the catalogue prices for postage.

Order Early—It will greatly facilitate shipments if orders are sent early. We aim to send all orders the day received, but during the busy season it is sometimes impossible—hence the advisability of ordering early.

Customers who buy at our counters, or wish to pay their own Express charges, may deduct ten cents per pound on all seeds bought by the pound, if quoted at prepaid rates.

All prices in this catalogue subject to change without notice.

Prepay Stations.—If there is no agent at your station, remit extra for the freight. If you neglect to do this we will ship to the nearest station where there is an agent.

Should you change your address, we will esteem it a favor if you will notify us, so we can forward our Catalogue with regularity; if you receive two Catalogues of the same kind, please hand one to some friend who has a garden.

Should an error occur, we desire to be promptly informed, and will take pleasure in making satisfactory corrections.

About Warranting Seeds.—We have often been asked if we "guarantee or warrant our Seeds." We beg to state plainly, we do not, for the reason that practical experience has assured us of the fact that crops may fail, no matter how fresh or pure the seed sown may be. We trust that our customers will fully realize that it is to our interest to send none but the best quality of seeds.

To secure success, however, it is necessary that the customer should do his part well, or our good seeds will be ruined. With the best of management and good seeds there will be an occasional unaccountable failure. The best of gardeners sometimes fail, and try again with the same seed with good results.

I, J. Chas. McCullough, give no warranty, expressed or implied, as to description, quality or productiveness or any other matter of any seeds, bulbs or plants, I, or We, send out and I, or We, will not be in any way responsible for the crop. If the purchaser does not accept the goods on these terms, they are at once to be returned and the amount paid will be refunded. If they are kept it will be taken as proof that they are satisfactory.

Respectfully,

J. Chas. McCullough, **SEEDSMAN,**

Salesroom and Retail Department:

North-East
Corner

Second & Walnut Sts.

CINCINNATI, O.

Office and Seed Cleaning Dept.

601-603-605 East Fifth Ave.

Fifth, Lock and Eggleston Ave.

PRIVATE EXCHANGE, LONG DISTANCE PHONE,

CANAL 2603.

Connecting all Departments.

Will H. Tracy

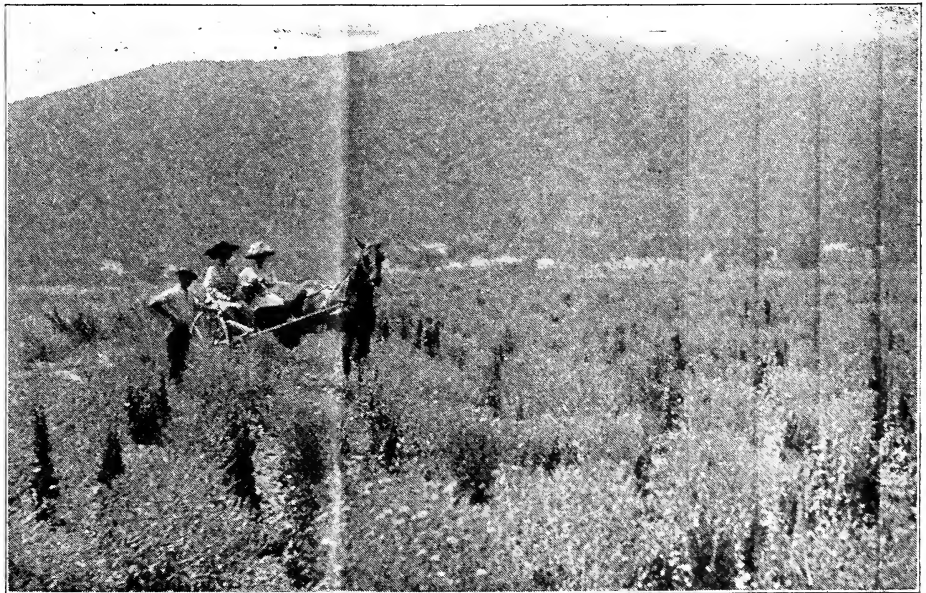
Views of Our Seed Ranch, near Santa Ynez, California

These views are reproduced from photographs, taken, on our Seed Ranch, located in one of the most fertile valleys of California, near Santa Ynez, where climate and soil are particularly adapted to growing the best strains of **Beans, Vegetable and Flower Seeds.**

Mr. H. T. McCullough has the management of this ranch, and all crops are grown under his personal supervision.

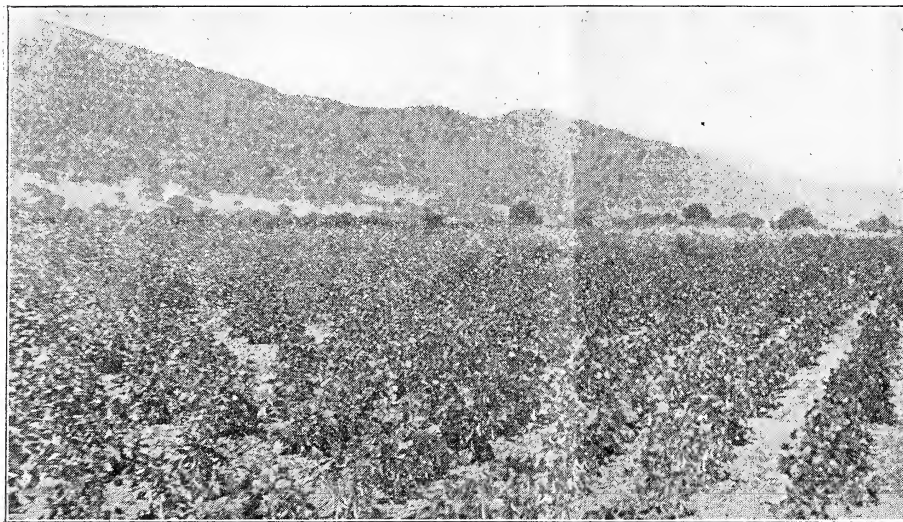


FIELD SHOWING CORN BEANS, BURPEE'S BUSH LIMA BEANS, AND DANVER'S HALF LONG CARROTS.

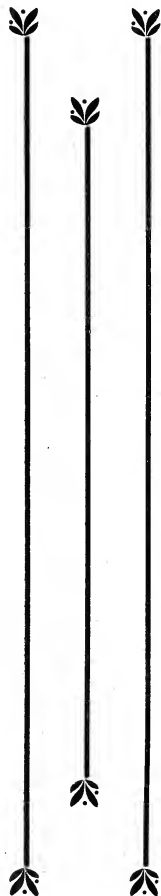
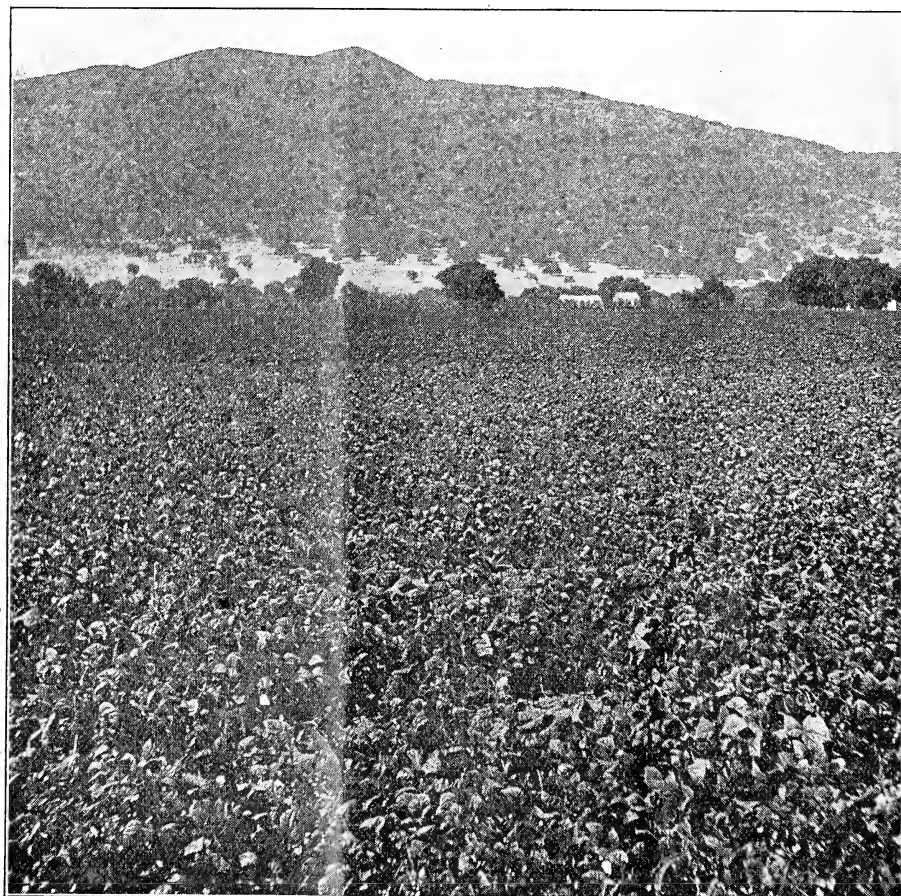


FIELD OF BLACK SEEDED SIMPSON LETTUCE SEED, READY TO HARVEST.

Views of Our Seed Ranch, near Santa Ynez, California



PART OF TRIAL GROUNDS, SHOWING GROWING CROPS OF PRIZE HEAD LETTUCE,
STRINGLESS GREEN POD BEANS, AND CINCINNATI MARKET RADISH.



KENTUCKY WONDER BEANS, GROWING ON OUR CALIFORNIA RANCH.



SPECIALTIES FOR 1913.

We include in this list some valuable introductions from other leading houses, some varieties of special value not mentioned in our general list; some new introductions, also a few of our own specialties.

SEEDS POST-PAID BY MAIL.

We will send by Mail, Postage Paid; any of the following list of Vegetable and Flower Seeds; EXCEPT Peas, Beans, Corn and Field Seeds; for these add 10 cts. per pound to pay postage.

ALL PACKETS, UNLESS OTHERWISE MENTIONED, 5 CENTS EACH.

BEAN—TENNESSEE GREEN POD.

This dwarf Snap Bean, although new to the seed trade, has for several years been grown in the South, and wherever known is freely spoken of in terms of highest praise. Vine prolific, foliage dark green, pods very long, flat, bright green and of most excellent quality. 15 cts. lb.; 25 cts. qt.

BEAN—BLACK VALENTINE.

This variety is very productive. Pods are extremely long, round and straight, and are quite attractive in appearance. The quality is also good, pods being decidedly tender. Suitable for both early and late planting, being extremely hardy. 15 cts. lb.; 25 cts. qt.

BEAN—BOUNTIFUL STRINGLESS.

Absolutely stringless. Extra early. Tender, large podded and a bountiful yielder. An improved Long Yellow Six Weeks Bean, being earlier, hardier and producing many more, better and larger pods. 15 cts. lb.; 25 cts. qt.

BEAN—EARLY ROUND-POD SIX WEEKS.

It is extra early, a vigorous grower and very productive. Compared with the Long Yellow Six Weeks Bean, it is more prolific, the pods are longer. 15 cts. lb.; 25 cts. qt.

BEAN—PENCIL POD WAX.

Pods are long, straight, round like a pencil, fleshy and of a bright yellow color. Tender, brittle and absolutely stringless, they are produced during a long season. Seed long, round, rather small, color black. 15 cts. lb.; 25 cts. qt.

BEAN—GOLDEN CARMINE POLE.

It is at least ten days earlier than the Horticultural, and the pods, which are stringless, are equally as large and more striking in appearance, as upon the approach of full size they become mottled, and streaked with an unusually bright carmine color on the golden yellow background. The pods are brittle, meaty and very tender, and remain so for a long time. 15 cts. lb.; 25 cts. qt.

BEAN—FORD'S MAMMOTH PODDED LIMA.

This is the result of twenty years' selection by a successful market gardener, and far surpasses in size and productiveness any other variety. Pods usually contain five to seven beans of most excellent quality. 20 cts. lb.; 30 cts. qt.

BEAN—LAZY WIFE POLE.

The pods are produced in great abundance and measure from 4 to 6 inches in length: they are broad, thick, very fleshy and entirely stringless. The pods retain their rich, tender and stringless qualities until nearly ripe, and are unsurpassed in all stages. Each pod contains 6 to 8 round, white beans, which make excellent winter shell beans. 15 cts. lb.; 25 cts. qt.

BEAN—KENTUCKY WONDER, OR OLD HOMESTEAD.

We can recommend this as one of the earliest and most satisfactory of all Green Podded Pole Beans, and unsurpassed for using in the green state. It is enormously productive; the long, silvery green pods hanging in great clusters from top to bottom of the pole. This is the best and most popular bean for the market gardener, the pods being so showy and produce so abundantly. We can supply the White, Black and Brown Seeded Ky. Wonder Beans. They are all good. 15 cts. lb.; 25 cts. qt.



Kentucky Wonder.

JMC SPECIALTIES—Continued.

BEET—EXTRA EARLY EGYPTIAN TURNIP.

Excellent for the first early crop. Very early, with very small tap-root, flesh dark red, hard, crisp and tender when young. 15 cts. oz.; 30 cts. $\frac{1}{4}$ lb.; \$1.00 lb.

BEET—DETROIT RED TURNIP.

Its small upright-growing tops, early maturing and the splendid shape and color of the roots make it popular with every one who plants it. Color of skin dark blood-red flesh, bright red, zoned with a lighter shade, very crisp, tender and sweet. 15 cts. oz.; 30 cts. $\frac{1}{4}$ lb.; \$1.00 lb.

BEET—SWISS CHARD OR SEA KALE.

This does not form edible roots like the regular garden beets. It is grown for the leaf stalks and these practically combine two kinds of vegetables. The young leaves, when cooked, are by some considered more delicious than Spinach 10 cts. oz.; 25 cts. $\frac{1}{4}$ lb.; 90 cts. lb.

MIXED BEETS.

This mixture will furnish your table with the very earliest beets, and continuous supply thereafter through the summer, fall and winter. 15 cts. oz.; 30 cts. $\frac{1}{4}$ lb.; \$1.00 lb.

CABBAGE—GLORY OF ENKHUIZEN.

One of the earliest with large solid heads, fine ribbed and first quality. The globe shaped outer leaves are very small, which admits of close planting. A money maker for market gardeners. 25 cts. oz.; 75 cts. $\frac{1}{4}$ lb.; \$2.50 lb.

CABBAGE EARLY—SPRING (THE EARLIEST FLAT HEADED VARIETY.)

It is of the type of the early "Allhead," resembling it in habit and growth, but is smaller and is nearly as early as the Wakefield. It is round in shape, slightly flattened, very solid, even before the cabbage attain their mature size. 20 cts. oz.; 50 cts. $\frac{1}{4}$ lb.; \$1.75 lb.

CABBAGE—LOUISVILLE EARLY DRUMHEAD.

Originated in this market and is now the principal market variety and can not be surpassed. Early heads of very large size and very solid, the best and surest heading for all purposes, and will stand the entire summer without bursting. 20 cts. oz.; 50 cts. $\frac{1}{4}$ lb.; \$1.75 lb.

CABBAGE—THE VOLGA.

It is remarkable for uniformity and solidity, the heads being of about equal size and weighing from 12 to 15 lbs. each. It is extremely hardy, remarkably quick-growing, maturing heads fully two weeks earlier than any of our late-growing kinds. The quality is very fine. 20 cts. oz.; 65 cts. $\frac{1}{4}$ lb.; \$2.00 lb.

CAULIFLOWER—DANISH GIANT or DRY WEATHER.

A large heavy sort, maturing soon after our Earliest Dwarf Erfurt. It is without exception the best and surest heading of all for summer use. 20 cts. pkt.; 80 cts. $\frac{1}{4}$ oz.; \$2.75 per oz.

CORN—GOLDEN BANTAM.

This new corn is very early, hardy and sweet. Grains, when dry, a deep yellow color. On our trial grounds it gave two good ears to the stalk. 15 cts. lb.; 25 cts. qt.

CORN—"PEEP O' DAY."

Earlier than any other; tender, sweet. The cob is white, kernels pearly white, ears delicate and dainty, exceptionally good for early market or home consumers. No market gardener can afford to be without Peep o' Day. It will prove a money-maker in any garden. 15 cts. lb.; 25 cts. qt.

CORN—WHITE MEXICAN.

White Mexican is a heavy yielding, early maturing Sweet Corn. It ranks in class with White Cob Cory and is a better yielder. Height, 4 feet; ear about $6\frac{1}{2}$ inches long; quality good. 15 cts. lb.; 25 cts. qt.

CORN—PREMO EARLY SWEET.

Premo can be planted fully as early as the Adams, for the young plants withstand slight frosts, while the other varieties are tender and the seeds will rot if planted before the soil becomes warm. The stalks grow about five feet high, and are very vigorous, generally bearing two well-developed ears to a stalk. 15 cts. lb.; 25 cts. qt.

CORN—WHITE EVERGREEN.

This valuable sugar Corn is a distinct improvement over the old Stowell's Evergreen. It produces handsome ears, well filled with deep grains of pure snowy whiteness, and of the most delicious sweetness. 15 cts. lb.; 25 cts. qt.

CORN—ZIG ZAG EVERGREEN.

This variety of Evergreen Sweet Corn is one of the best for private use, market gardeners and canners. It is of extra quality, very sweet and juicy in the green state. It ripens about the same time as Stowell's Evergreen, and is superior to that well-known variety in sweetness and flavor. 15 cts. lb.; 25 cts. qt.

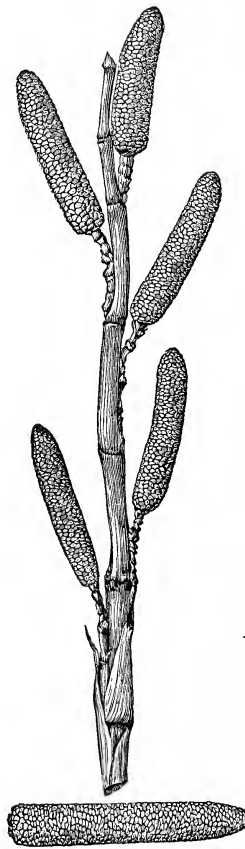
CORN—COUNTRY GENTLEMAN.

The ears are of good size and produced in great abundance, bearing three to four good ears to a stalk. The cob is very small, giving great depth to the kernels, which are of pearly whiteness. But the great merit of the Country Gentleman Corn is its delicious quality.

It is without doubt, the sweetest and most tender of all sweet corn, and at the same time with ears of good size. 15 cts. lb.; 25 cts. qt.

CORN—EARLY ADAMS or BURLINGTON

An excellent early field variety and often used for table. Ears about eight inches long, twelve or fourteen rowed; kernels white, rounded, somewhat deeper than broad and indented at the outer end which is whiter and less transparent than the inner. 10 cts. lb.; 15 cts. qt.



Country Gentleman.

Over Forty Years Personal Experience in the Seed Business and in it to Stay.

JMC SPECIALTIES—Continued.

CUCUMBER—DAVIS' PERFECT.

As is well known to many persons, Mr. Davis is the originator of the Davis Wax Bean, and Grand Rapids Lettuce. His perfect Cucumber is not only an ideal greenhouse variety, but a profitable one for truck gradeners to grow out-of-Doors. Color, dark glossy green. This cucumber is a very shy seeder. The few seeds in each one are so small and tender as to be hardly noticeable when eating. 15 cts. oz.; 40 cts. $\frac{1}{4}$ lb.; \$1.25 lb.

CUCUMBER—CINCINNATI PICKLE.

The fruit of this variety is of medium length, with large and prominent spines, and begins to set while the vines are quite young; color is a deep green, the ideal for a pickle. 10 cts. oz.; 30 cts. $\frac{1}{4}$ lb.; 90 cts. lb.

KALE—DWARF GREEN CURLED SCOTCH.

Grows about 12 inches in height and spreads, under good cultivation, to three feet in diameter. The leaves are bright green, beautifully curled and very tender. Allow to get a slight touch of frost before using. 10 cts. oz.; 25 cts. $\frac{1}{4}$ lb.; 65 cts. lb.

LETTUCE—COS OR ROMAINE.

Has no equal for quality. Forms long, conical heads, which, if tied up, blanch pure white and make solid heads as crisp as celery stalks. 15 cts. oz.; 35 cts. $\frac{1}{4}$ lb.; \$1.00 lb.

LETTUCE—SALAMANDER.

Large, solid heads, bright green in color, leaves thick smooth and tender, does not rapidly run to seed. One of the best of the head lettuce. 15 cts. oz.; 35 cts. $\frac{1}{4}$ lb. \$1.00 lb.

LETTUCE—IMMENSITY.

A gigantic variety, with an enormous solid head of the finest quality, even the outer leaves being tender. It is one of the slowest to run up to seed that we have ever seen, and maintains that crispness of texture and sweetness of flavor that will surely make it popular. 15 cts. oz.; 35 cts. $\frac{1}{4}$ lb.; \$1.00 lb.

MUSK MELON—PAUL ROSE

Cross between the Notted Gem and Miller's Cream, and combines in a remarkable degree the good qualities of both. The flesh is salmon colored, very deep and of fine melting character, with thin, tough rind, and small seed cavity. 10 cts. oz.; 25 cts. $\frac{1}{4}$ lb.; 85 cts. lb.

MUSK MELON—BURRELL'S GEM.

The originator says: "The new *Rocky Ford* Melon with *Golden Meat*." This describes the melon fully, as in appearance it looks just as the best types of green fleshed Gems, or Rocky Fords do. 10 cts. oz.; 25 cts. $\frac{1}{4}$ lb.; 85 cts. lb.

WATERMELON—TOM WATSON.

A large long melon with dark green rind and light crimson flesh of excellent quality. It is a splendid shipper and is being grown extensively in the South for Northern markets. 10 cts. oz.; 25 cts. $\frac{1}{4}$ lb.; 75 cts. lb.

WATERMELON—ALABAMA SWEET.

A first-class shipper and market melon. Large, long, dark green with still darker stripes. The meat is bright red, solid and very sweet. 10 cts. oz.; 25 cts. $\frac{1}{4}$ lb.; 60 cts. lb.

WATER-MELON—"ICEBERG" OR BLUE GEM.

The melons are uniformly large, of thick oval form, slightly depressed at the blossom end. The color is rich dark green with faint stripings of a lighter shade but the whole fruit is *much darker and richer in coloring than the Kolb Gem*. The rind is exceptionally strong, making it an excellent shipper. The flesh is entirely free from stringiness, and of sweet sugary flavor. 10 cts. oz.; 25 cts. $\frac{1}{4}$ lb.; 60 cts. lb.

WATERMELON—KLECKLEY'S SWEET OR MONTE CRISTO.

A splendid sort for new markets. Vine vigorous and productive, fruit of medium size, oval, color dark, mottled green in two shades, forming indistinct stripes. Flesh very bright, rich red, exceedingly sweet and tender 10 cts. oz.; 25 cts. $\frac{1}{4}$ lb.; 75cts. lb.

ONION—OHIO YELLOW GLOBE.

The finest shaped, best colored and largest cropper of any of the yellow onions, and entirely distinct from the old type Yellow Globe Danvers. 15 cts. oz.; 40 cts. $\frac{1}{4}$ lb.; \$1.35 lb.

ONION—AUSTRALIAN BROWN.

Is of medium size, wonderfully hard and solid, and most attractive for markets, both as to form and appearance. They are extremely early and never make any stiff necks or scallions. The color of the skin is a clear amber brown, in marked contrast to that of all other onions. 15 cts. oz.; 40 cts. $\frac{1}{4}$ lb.; \$1.25 lb.

PARSLEY—HAMBURG OR TURNIP ROOTED.

The roots of this variety are used largely for flavoring purposes; resemble small parsnips. Flesh white and of fine flavor. 15 cts. oz.; 30 cts. $\frac{1}{4}$ lb. 90 cts. lb.

PEA—PETIT POIS OR FRENCH CANNERS.

The real French Pea as imported. Vines grow 3 to 4 feet in height. The long, slim pods contain 8 to 10 small peas of tender delicate quality; vines vigorous; medium early and prolific. 15 cts. lb.; 25 cts. qt.

PREMIUM To every one who purchases SEEDS to the value of 25c or more we will present a large package of mixed Annual Flower Seeds, 100 varieties or more.

MC SPECIALTIES—Continued.

PEA—J. C. McC's EXTRA EARLY (PEDIGREE STOCK.)

Being grown in the far North and with the selection of the earliest and choicest vines, this strain has been so improved that it fully bears out our claim as the earliest, most prolific and even strain in existence, maturing so well together that sometimes a single picking will secure the entire crop. Vines, vigorous and hardy, 2 to 2½ feet high, bearing abundantly. Market gardeners, who can not afford to go over the rows several times for small quantities of pods, will do well to give this strain a trial. 15 cts. lb.; 30 cts. qt.

PEA—GRADUS (PROSPERITY.)

Extra early, very large pods. Table quality quite equal to Telephone. It is very hardy and can be planted as early as the smooth peas, bears heavy crops; the large peas retain their rich color after cooking and are deliciously sweet. Well worth a trial. 20 cts. lb.; 40 cts. qt.

TOMATO—CORELESS.

A late Red Tomato and the most perfect shaped variety yet produced. When bearing, the variety is immensely productive, yielding large clusters of four to seven fruits. A fine late sort for markets that like a red tomato, for the home garden and canners. 25 cts. oz.; 75 cts. ¼ lb.

TOMATO—JUNE PINK.

Similar in habit and shape to the famous Earliana, differs only in color which is pink instead of red. A most desirable sort where pink tomatoes are in favor. 25 cts. oz.; 75 cts. ¼ lb.

TOMATO—CHALK'S EARLY JEWEL.

A very fine sort, growing large, solid and smooth, color is of bright red similar to the Stone. It is very early, a little behind the Earliana, but producing about three times as much fruit and the most uniform and smoothest grown; good market variety. 25 cts. oz.; 70 cts. ¼ lb.

TOMATO—DWARF STONE.

Double the size of the Dwarf Champion and is the largest fruited upright growing variety. The color is deep red of a perfect thick, smooth shape, a good skin which is free from cracks at stem end, very solid, ripens evenly and of excellent quality. 25 cts. oz.; 70 cts. ¼ lb.

TOMATO—QUEEN CITY.

The best tomato for market, remarkably prolific; flesh thick and solid. This we consider our finest large fruited purple sort. The plants are of strong growth and most productive. The tomatoes are of large size, deep through, very smooth and regular, free from cracks, solidly meaty with small seed cells and of exceptionally fine flavor. 25 cts. oz.; 75 cts. ¼ lb.

FLOWER SEEDS.

WE DELIVER ALL SEEDS Offered on this Page POSTPAID TO ANY PART OF THE UNITED STATES.

SWEET PEAS.

New Giant Orchid-Flowering Sweet Peas.
COUNTESS SPENCER HYBRIDS.

The largest in size of all Sweet Peas, this distinct type is a wonderful new departure and embraces the most exquisite shades of pink, orange, salmon and rose. These new seedlings can only be appropriately described as Truly Gigantic "Orchid-flowered." Stems extra long, having three or four large flowers and during cold weather, when Sweet Peas are at their best, as many as six flowers on a single stem. Mixed Colors, 5 cts. pkt.; 25 cts. oz.; 75 cts. ¼ lb.; \$2.00 lb.

DOUBLE SWEET PEAS.

The flowers are extremely large, frequently measuring two inches across. They will not all come double, but if the plants are strong and luxuriant they usually produce from twenty to forty per cent of double blossoms.

Our mixture is composed of very choice sorts, representing a wide range of colors, 5 cts. pkt.; 15 cts. oz.; 50 cts. ¼ lb.; \$1.50 cts. lb.

J. C. McC's—Named varieties, finest mixed, 5 cts. pkt.; 15c. oz; 50 cts. ¼ lb.; \$1.50 lb. **Fine Mixed**, 5 cts. pkt.; 10 cts. oz.; 35 cts. ¼ lb.; \$1.25 lb.

NASTURTIUMS—Climbing or Tall Mixture.

PLANT THESE IN QUANTITY. THEY WILL REPAY THE TROUBLE.

No garden is complete without a few of the gorgeous colored Nasturtiums—the dwarf sorts for beds or borders—the climbing ones to cover fences, trellis, banks, stumps of trees, or any unsightly places. No flowers so well repay the cultivator's efforts, and none require so little to bring to perfection. Our mixture this year has been improved by the addition of several new and distinct colors. 5 cts. pkt.; 10 cts. oz.; 25 cts. ¼ lb.

NASTURTIUMS—Dwarf Mixture.

Made up in the same and careful manner as the climbing, and presenting an even more varied range of colors. They should be sown in large quantities in the beds and border. Nothing can give more satisfaction with so little trouble. 5 cts. pkt.; 10 cts. oz.; 25 cts. ¼ lb.

Variegated-leaved Queen of Tom Thumbs. New Brilliant orange-scarlet flowers, beautiful silver variegated leaves. 10 cts. pkt.



We own, and operate, one of the LARGEST and BEST EQUIPPED SEED CLEANING PLANTS in the World.



SPECIALTIES



We pay Postage on Flower and Garden Seeds, except where noted. Farm Seeds are sent by Express or Freight at Purchaser's Expense.

Emerald or City Park



Lawn Grass Seed

We have made the subject of lawns a study for many years and this mixture has been prepared and sold by us in all parts of the country, giving general satisfaction.

In making a lawn great care should be taken to use only the very best quality of lawn seed so as to produce a soft velvety, evergreen sod, that will withstand cutting and heat of summer and severe cold of Winter. It is not made of annual grasses for a quick show, or of the chaffy, light weight seed sold by some seedsmen at cheap prices. Our mixture is not surpassed by any of the celebrated brands in the country. A pound of our mixture will sow about 300 square feet. Quantity of seed required to sow an acre (43,650 square feet.) For new lawns, not less than 4 bu.; for renovating old lawns, from 2 to 3 bu. First quality, per lb., 30 cts.; 5 lbs. \$1.00; 1 bu.; (16 lbs.) \$3.00.

If to go by mail, add to the above prices 10 cts. per lb for postage.

OUR LAWN GRASS MIXTURE FOR SHADY SITUATIONS.

On nearly all lawns there are shaded, bare and unsightly spots on which the owners have difficulty in getting a stand of grass. For such places this mixture is adapted. It is composed of dwarf-growing grasses which are found naturally growing in such places. Should the ground have become "sour" or drainage defective, it is apt to be covered with moss. If such is the case, apply "Grub Killer" to sweeten it, after first removing the moss, then rake thoroughly and sow the seed at the rate of not less than 4 bushels per acre. Per lb, 30 cts.; 4 lbs. \$1.00; bu., (16 lbs.) \$3.50.

If to go by mail, add to the above prices 10 cts. per lb. for postage.

TERRACE MIXTURE.

A mixture of grasses with long interlacing, matting roots, that will bind steep embankments, gravelly or sandy slopes, etc., preventing washouts by rainstorms and covering with permanently green turf. Per lb., 30 cts.: 4 lbs., \$1.00; 1 bu. of 16 lbs., \$3.50. By mail 10 cts. per lb. extra.

GOLF LINK MIXTURE.

For the grounds in general. Per lb., 20 cts.: 5 lbs., 90 cts.; 1 bu. of 16 lbs., \$2.50. By mail, 10 cts. per lb. extra.

PUTTING-GREEN MIXTURE.

A mixture of extra fine grasses, that will make a close, firm, green and lasting turf, which will improve with trampling. Per lb., 30 cts.; 4 lbs. \$1.00; 1 bu. of 16 lbs., \$3.50. By mail, 10 cts. per lb. extra.

PACEY'S SHORT RYE GRASS.

A selection of Perennial Rye Grass, particularly well adapted for lawn and pasturage purposes, making a quick, leafy growth of fine texture. Sow early in spring at the rate of one to one and a half bushels per acre. Lb., 20 cts.; bu. (of 24 lbs.,) \$2.50.

CREeping BENT GRASS (AGROSTIS STOLONIFERA.)

Particularly valuable for lawns that are to be used as croquet and tennis grounds because it is benefitted more than hurt by trampling, and by its bright color adds to the beauty of the lawn. Lb. 25 cts.; 100 lbs., \$21.00.

RHODE ISLAND BENT GRASS (AGROSTIS CANINA.)

A valuable perennial for lawns and pasturage. Much like Red Top, though smaller. Thrives on light, dry soils as well as on rich, moist ones. For lawn purposes, if used alone, it should be sown at the rate of about forty pounds per acre; for pasture, if used alone, twenty-four pounds per acre. Lb., 25 cts., 100 lbs., \$19.00.

CRESTED DOGS-TAIL (Cynosurus cristatus.)

May be sown on lawns, forms a close turf, remaining green a long time; valuable for sheep pasture; succeeds on dry and hard gravelly soil. Height, 1 to 1½ feet. Sow 25 lbs. per acre (Bu. 21 lbs.) Lb. 40 cts.; 10 lbs. \$3.50.

SWEET CLOVER, OR BOKHARA, (White and Yellow Flowered.)

A variety of Clover that resembles Alfalfa both as to appearance and habit of growth when young. It grows much larger than Alfalfa. Is valuable in the bringing up old waste and worn-out soils, and thrives well even on extremely poor soil. If plowed under it adds humus and nitrogen to the soil, or if simply left to grow up and drop back for a few years the decaying stalks and roots will do wonders for the land. Sweet Clover will thrive on all classes of soil and will inoculate land otherwise too poor to establish Alfalfa.

Makes Good Hay.

The hay is cured very much like alfalfa, and if cut at the proper time (that is just before the plants bloom) makes a very nutritious hay which is equal to alfalfa hay in feeding value. Sown before April, two cuttings are obtained the first year. One crop of hay and a crop of seed, or two crops of hay are usually cut the second year. Fields vary from 2½ to 5 tons per acre. Sow at the rate of 10 to 25 lbs. per acre. Lb., 20 cts.; 100 lbs., \$15.00.

SPELTZ (EMMER.)

Introduced into this country from Russia, where its value as a cereal has long been esteemed. Very heavy crops of it have been reported from many sections of the country. It appears to do better than any other grain crop on poor, thin soil, and in the extremely dry seasons. It is eaten greedily by all kinds of stock, including poultry, and its feeding qualities are said to be excellent. Sow broadcast same as oats, using about 75 lbs. to acre. Lb., 10 cents.; 10 lbs., 50 cts.; bu. of 40 lbs., \$1.50.

A BEAUTIFUL LAWN

is the result of sowing under proper conditions our Emerald Lawn-Seed.

**TWO Layers
of Glass
Instead of
ONE.**



This new invention for expediting the growth of plants in cold-frames or hot-beds is revolutionizing the business throughout the country. Every grower should have the **SUNLIGHT DOUBLE GLASS SASH**. Giving the beds all the light all the time and keeping them warm at night, Sunlight Sash produce the earliest, strongest and best plants, and the resulting crops are the best on the market and the most profitable. Write to-day for catalog.
3 x 6 sash, painted 2 coats, no glass. Each \$2.75.

LIME NEST EGG.

This egg contains 75% Calcium Carbonate, a disinfectant that absorbs foul gases and is repulsive to lice and vermin. This egg is coated with a heat retaining solution and chills very slowly in damp and cold weather. Each egg is an exact duplicate of a real chicken egg. 5 cts. each; 50 cts. dozen.

Mehler's Handy Gardener

**Hoe, Rake, Weeder
& Cultivator In One**



An entirely distinct tool 5½ ins. wide with a special handle 4½ ft. long; entire weight 2 lbs.

Note the comfortable position and special arrangement of the five teeth, which allows cultivation closer to the plant than any other device, and at the same time on three sides at one stroke.

No hoe is needed where this tool is used; just the thing for working among flowers and young vegetable plants.

Send for descriptive circular

75 cts. each.

Alfalfa Meal

Is pure Alfalfa, ground to meal, buds, stalk and all. It is nature's most perfect gift to the breeder of poultry or live stock. Used in the mash.

Per lb., 5c; 6 lbs., 25c; 50 lbs., \$1.00; 100 lbs., \$1.90.

ELECTRIC LICE KILLING COMPOUND.

For killing all Insects on Poultry; Mites and all Vermin that invest the Hen House. A disinfectant Against all Microbe Diseases, Roup, Swell Head, Gapes, Limber Neck and Cholera. Small size pkg., 25c. Large bag, \$1.00.

**WIZARD PULVERIZED
SHEEP MANURE.**

Nothing equals it for general use on flower beds or for the vegetable garden. No other fertilizer produces such a marked and permanent effect upon lawns. No raking off required. It is clean to handle. Absolutely safe to use in any quantity or in any manner. For lawns use at the rate of from 300 to 500 pounds per acre. For pot plants use one part sheep manure to six parts of soil. For use in the vegetable garden spread over the surface and dig in. 10 cts. lb.; 25 cts. 5 lbs.; 50 cts. 15 lbs.; \$1.00 50 lbs.; \$1.75 per 100 lbs.

**SCALECIDE KILLS
SAN JOSE SCALE.**

"THE TREE SAVER"
"SCALECIDE" will positively destroy all soft-bodied sucking insects, of whatever nature, on all kinds of fruit, shade and ornamental trees with less labor and expense than any known effective remedy.

50 gallon barrels, 50c. per gallon,.....	\$25.00
30 " jacketed tins.....	15.00
10 " jacketed cans.....	6.00
5 " " ".....	3.25
One gallon cans.....	1.00

AMMONIATED LAWN LIME.

KILLS WEEDS. MAKES GRASS GROW.

Applied as a light top dressing to lawns, it kills all flat leaved weeds, such as DANDELION, DAISY, PLANTAIN, SORREL, CHICKWEED, MOSS, etc. in 48 hours, and without other fertilizer produces a wonderful, luxuriant, rich green growth of lawn grasses, which is distinctly noticeable 50 feet away.

The use of Ammoniated Lawn Lime supersedes hand weeding of lawns, putting greens, etc. It saves the grass from being pulled up and in many cases ruined. Grasses take a new, vigorous growth, avoiding probable trouble in future.

QUANTITIES: If very weedy, 1 lb. to 40 sq. ft.; 25 lbs. to 1000 q. ft. (20x50). Half to one-quarter amount if moderately weedy.

ABSOLUTELY GUARANTEED

MONEY REFUNDED IF NOT SATISFACTORY.

PRICES: 2 lbs. 25c.; 5 lbs. 50c.; 25 lbs. \$2.00; 50 lbs. \$3.50; 100 lbs. \$6.00.

It is absolutely guaranteed as represented if used as directed. If not satisfactory, we are to be notified within 30 days from date of invoice. Descriptive circular on request.

Second and third orders from users are common, and prove the worth of the article to the consumer. His neighbors also see the results and buy.

TESTED



RELIABLE

SELECTED FLOWER SEEDS

GENERAL LIST.



WE TAKE PLEASURE in presenting to you our revised Flower Seed List, embracing only the best and most popular varieties. Our Flower Seed trade has increased very rapidly the last few years, which is very gratifying to us, as it speaks well for the quality of the seed we send out. Look it over carefully and add at least one or two packets to your vegetable seed order. It will pay you well. We do not sell old seeds, neither do we mix old seeds with new—every seed is *new, fresh and clean*. Everything is arranged in alphabetical order. **Annuals** grow from the seed, bloom and perish in one season. **Biennials** generally bloom the first and second year and then die. **Perennials** bloom the second year and every year thereafter, some perishing after three or four years, others continue indefinitely. Some few Perennials, if started early, bloom the first year.

Full Cultural Directions on all Flower Seed Packets.

All Flower Seed Sent Free by Mail on Receipt of Price.

ORDER BY NUMBER, AND THUS AVOID WRITING THE NAME IN FULL.



Special Offer on Seeds in Packets Only.

7 Five cent Packets for 25 cents,

15 Five cent Packets for 50 cents,

40 Five cent Packets for \$1.00.

ABUTILON.		AMPELOPSIS VEITCHII.	
Half-hardy Perennial.		Hardy Perennial.	
1. Finest Mixed,	Pkt. 10c	15. Japanese Ivy,	Pkt. 5c
ABRONIA,		ANTIRRHINUM, (Snapdragon.)	
Half-hardy Annual.		Hardy Annual.	
2. Umbrellata,	5c	16. Tall Mixed,	5c
ADLUMIA CIRRHOSIA, (Allegheny Vine).		17. Dwarf Mixed—Extra Choice	5c
Hardy Annual.		AQUILEGIA, (Columbine.)	
3. Cirrhosia—Pale Pink,	5c	Hardy Perennials.	
ACROCLINIUM.		18. Mixed—Single,	5c
Half-hardy Annual.		19. Mixed—Double	5c
4. Roseum—Bright Rose	5c	ARISTOLOCHIA SIPHO.	
5. Album—White	5c	20. Dutchman's Pipe,	
AGERATUM.		5c	
Half-hardy.		ASTERS.	
6. Mexicanum—Blue,	5c	Annuals.	
7. Dwarf Tom Thumb—Blue,	5c	21. Victoria—Mixed colors,	10c
8. Dwarf—White,	5c	22. Comet—Finest mixed	10c
ALYSSUM.		23. Triumph—Deep scarlet,	15c
Hardy Annual.		24. Dwarf Chrysanthemum Flowered—Mixed	5c
9. Sweet—White,	5c	25. Betteridge's Prize—Quilled, Mixed, very double,	5c
10. Tom Thumb,	5c	26. Paeony Flowered Perfection—Finest Mixed	10c
AMMOBIUM ALATUM.		27. White—Exceedingly beautiful,	5c
Hardy Annual.		28. Crimson,	5c
11. White,	5c	29. Choicest Mixed—All varieties	5c
AMARANTHUS.		30. Simple's Branching—Mixed colors,	10c
Tender Annual.			
12. Tricolor—Joseph's Coat	5c		
13. Salicifolius—(The Fountain Plant). Very beautiful, one of the best,	5c		
14. Caudatus—(Love Lies Bleeding).	5c		

BALLOON VINE, (Cardiospermum).
Half-hardy Annual.

31. **Cardiospermum**—White. Pkt. 5c

BALSAM, (Lady's Slipper).
Annuals.

32. **White Perfection**—Fine pure white, double flowers. 10c
33. **Pink**—Very fine double. 5c
34. **Camellia-Flowered**—Very double and perfect in form, choice mixed, 10c
35. **Good Mixed**—Double, 5c

BELLIS PERENNIS, (Double Daisy).
Half-hardy Perennial.

36. **Double White**. 10c
37. **Double Finest Mixed**, 10c

BROWALLIA.
Half-hardy Annual.

38. **Fine Mixed**. 5c

CACALIA, (Tassel Flower).
Half-Hardy Annual.

39. **Coccinea**. 5c

CALCEOLARIA.

40. **Hybrida Grandiflora**—Tall mixed. The finest large flowering and most floriferous sorts, of the richest colors, 25c

CALENDULA, (Pot Marigold).
Annuals.

41. **Meteor**—Double, light orange striped, 5c
42. **Prince of Orange**—Dark orange striped, 5c

CAMPANULA OR CANTERBURY BELL.
Hardy Perennials.

43. **Single**—Finest mixed 5c
44. **Double**—Finest mixed, 5c

MARGUERITE CARNATIONS, (Dianthus Caryophyllus).



45. The popularity and usefulness of this variety has surpassed all expectations. They bloom in four months from time of sowing. If taken up and potted before frost they will continue to bloom during the winter. Finest mixed, 5 cts. pkt.

46. **Carnation Pinks** Double finest mixed. Saved from flowers of very fine quality only, 10 cts. pkt.

CANARY BIRD FLOWER, (Tropaeolum Peregrinum).
Half-hardy Annuals.

47. **Yellow**, 5 cts. pkt.

CALLIOPSIS OR COREOPSIS.



This genus is amongst the most showy, free-flowering hardy annuals.

48. **Finest Mixed Varieties** 30 cts. oz.; 5 cts. pkt.

CANNA.

- Half-hardy Perennial.
49. **Finest Mixed**—Producing different colored foliage. 4 to 8 feet. 5 cts. pkt.

50. **Crozy's Best Mixed**—From best named varieties 4 to 8 feet. 5 cts. pkt.

51. **Madam Crozy**—Large flowers, vermilion, bordered with yellow, green foliage, very free flowering, 5c

CANDYTUFT.
Hardy Annuals.

52. **Fragrant**—Pure white, 20 cts. oz.; 5c
53. **White Rocket**—Fine white large truss, 5c
54. **Crimson**. 20 cts. oz.; 5c
55. **Fine Mixed**, 20 cts. oz.; 5c

CENTRANTHUS.
Hardy Annuals.

56. **Very Pretty**, free-flowering plants, effective in beds, ribbons or as an edging. Fine mixed . 5c

CELOSIA, (Coxcomb).
Half-hardy Annuals.

57. **Christata Nana**—Choice mixture of newest dwarf crested varieties, 5c
58. **Glasgow Prize**—An improved Cockscomb, very large, dark crimson combs, 10c
59. **Pyramidalis**—A choice mixture of all the plumed and feathered sorts 10c
60. **Japonica**—(Japanese). Combs are almost as delicately cut as ruffled lace, 5c

CENTAUREA.
Half-hardy Perennial.

61. **Candidissima**—Large, smooth, silvery, cut leaf, . 10c
62. **Gymnocarpa**—A graceful, silvery fine-cut leaved variety, 10c
63. **Cyanus**—(Corn Flower). Hardy annual fine mixed, 20 cts. oz.: 5c

CHRYSANTHEMUM.

The hardy annuals are summer-flowering plants, good for pot culture, and quite distinct from the Indicum, which are perennial autumn-flowering varieties.

64. **Coronarum**—Double white, 5c
65. **Coronarum**—Double yellow, 5c
66. **Frutescens**—Paris Daisy or "Marguerite." The finest of the white "Daisies." 5c
67. **Eclipsae**—Pure golden yellow, with a bright purplish-scarlet ring, the disk being dark brown 5c
68. **Indicum Majus**—Choice mixed large flowering double varieties, half-hardy perennial 3 feet 10c
69. **Finest Mixed** 25 cts. oz.; 5c

Hints on the Culture of Flowers from Seed. Much annoyance and disappointment may be saved by giving close attention to the following: Avoid especially deep planting, over-watering, under-watering or sowing too thickly.

CYCLAMEN.

Charming bulbous-rooted plants, with beautiful foliage and rich colored orchid-like fragrant flowers; universal favorites for winter and spring blooming. If seed is sown early they make flowering bulbs in one season. They require sandy loam. Half-hardy perennial. 6 inches.

- 70. *Cyclamen Persicum*—Finest mixed, Pkt. 15c
- 71. *Cyclamen Persicum Giganteum*—Finest mixed, 25c

CINERARIA.

Perennials.

- 72. *Hybrid Grandiflora*—Prize, mixed, extra selected, unsurpassable in quality and beautiful brilliant colors, 25c
- 73. *Maritima*—(Dusty Miller). Large, silvery, deep cut foliage, 5c

CLARKIA.

- 74. *Finest Mixed*, 5c

COBEA SCANDENS.

A well known climber of quick growth, producing beautiful large bell-shaped flower.

- 75. *Purple*, 5c
- 76. *White*, 10c

COLLIINSIA.

Hardy Annual.

- 77. *Finest Mixed*, 40 cts. oz.; 5c



COSMOS HYBRIDUS.

Easily raised from seed, and bloom the first season.

- 78. *White Pearl*, 5c
- 79. *Mixed*, 5c

CLEMATIS.

A well known and rapid growing, free-flowering, ornamental climber. Flowers three or four inches across, of charming shades of blue, white, purple, etc.

- 80. *Finest Mixed*, 10c

CYPRESS VINE.

A most popular climbing plant, with delicate fern-like foliage, half-hardy annual.

- 81. *Scarlet* 25 cts. oz.; 5c
- 82. *White* 25 cts. oz.; 5c
- 83. *Rose* 25 cts. oz.; 5c
- 84. *Mixed* 25 cts. oz.; 5c

DAHLIA.

Half-hardy Perennial.

- 85. *Double Finest Mixed*, 10c
- 86. *Single Finest Mixed*, 5c

DIANTHUS, (Pinks).

Hardy Biennials.

- 87. *Chinensis fl pl*—(Chinese Pink). Finest double mixed, 5c
- 88. *Heddewigii, fl pl*—Finest double mixed, 5c
- 89. *Heddewigii, Single*—Finest Mixed, 5c
- 90. *Laciniatus, Single*—Finest mixed, very beautiful, deeply fringed, 5c
- 91. *Laciniatus, fl pl*—Flowers very large and deeply fringed, 5c

DATURA, (Sweet Nightingale).

- 92. *Flowers pure white*, 9 inches long and 5 or 6 inches wide at the top, 5c

DIGITALIS, (Foxglove).

Handsome border plants with a great variety of colors. Hardy biennial.

- 93. *Finest Mixed*, 50 cts. oz.; 5c

DELPHINIUM, (Perennial Larkspur).

- 94. *Delphinium Mixed*, 5c

EDELWEISS, (Gnaphalium Leontopodium).

- 95. *The famous and true "Edelweiss" of the Alps.* The flowers are of a downy texture, pure white and star-shaped, 10c

EUPHORBIA, (Mexican Fire Plant.)

Hardy Annual.

- 96. *Heterophylla*, 5c

ESCHSCHOLTZIA, (California Poppy).

Hardy Annual.

- 97. *California—Yellow*, 25 cts. oz.; 5c
- 98. *Finest Mixed*, 20 cts. oz.; 5c

FREESIA.

Flowers pure white with yellow throat, and exquisitely fragrant.

- 99. *Freesia Refracta Alba*, 10c

GAILLARDIA, Hardy Annual.

- 100. *Grandiflora*—Fine Mixed 5c
- 101. *Lorenziana*—Beautiful double flowers, fine for bouquets, 5c

GOMPHRENA.

- 102. *Bachelor's Button*, 5c

GERANIUM, (Pelargonium).

Started early will flower the first year from seed.

- 103. *Large Flowered*—Finest mixture, 10c

GILIA.

Hardy Annual.

- 104. *Mixed*, 5c

GOURDS, Ornamental.

Tender Annuals.

- 105. *Hercules Club*—Curious large variety, 5c
- 106. *Dipper*—A favorite variety, 5c
- 107. *Dish Cloth*—Very useful, 5c
- 108. *Nest Egg*—Resembling an egg in color, shape and size, 5c
- 109. *Orange*—Fruit resembles an orange, 5c
- 110. *Bottle*—Useful and ornamental 5c
- 111. *Fine Mixed*, 25 cts. oz.; 5c

GODETIA.

Hardy Annual.

- 112. *Lady Albemarle*—Intense carmine crimson, very beautiful, 5c
- 113. *The Bride*—White, with crimson, edge, 5c
- 114. *Fine Mixed*, 5c

HELIOTROPE, Half-hardy Perennial.

- 115. *Finest Varieties Mixed*, 5c

HELICHRYSUM, (Everlasting). Hardy Annual.

- 116. *Finest Mixed*, 5c

We are one of the Largest Recleaners of Seeds in the U. S. Our facilities unsurpassed.

HOLLYHOCK, (Althea.)

Hardy Perennial.

- 117. **Double White**—Flowers pure white, extra for florists 10c
- 118. **Choice Mixed**—From prize flowers 10c
- 119. **Fine Mixed** 75 cts. oz.; 5c

HONESTY. Hardy Biennial.

- 120. **Lunaria Biennis** 5c

HUMULUS JAPONICUS.

- 121. This new Japanese variety of Hop is a splendid annual climber 5c

HYACINTH BEAN.

A rapid growing plant, flowering freely in clusters, for covering arbors, trellises, etc.

- 122. **Dolichos Mixed**—10 feet 15 cts. oz.; 5c

Ice Plant, (Mesembryanthemum.)

Half-hardy Annual.

- 123. **Crystallinum** 5c

KENILWORTH IVY.

Hardy Perennial.

- 124. **Linaria Cymbalaria**—Lavender and purple 10c

LANTANA.

- 125. **Hybrida Mixed** 80 cts. oz.; 5c

LARKSPUR, (Annual Delphinium.)

Hardy Annuals.

- 126. **Dwarf Rocket** 50 cts. oz.; 5c
- 127. **Tall Rocket** 5c

LOBELIA. Half-hardy Annual.

- 128. **Crystal Palace**—Intense blue flowers, 1/2 foot 5c

LUPINS.

- 129. **Mixed Annual Varieties** 30 cts. oz.; 5c

LICHNIS. Hardy Perennials.

- 130. **Chalcedonia**—Fine border plant, scarlet 5c

MARIGOLD, (Tagetes.)

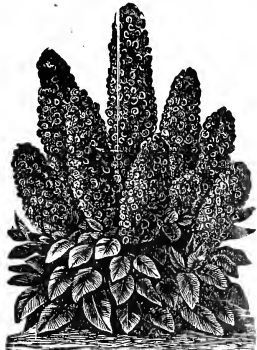
Half-hardy Annuals.

- 131. **African Lemon**—Large, double lemon flowers 5c
- 132. **African Orange**—Large, double orange flowers, 5c
- 133. **French Dwarf Mixed** 5c
- 134. **African El Dorado**—The colors run through all shades of yellow, from light primrose to the deepest orange 40 cts. oz.; 5c

MIGNONETTE.

(Reseda Odorata.)

- 135. **Miles' Hybrid Spiral**—Profuse bloomer, very fragrant. 25c oz.; 5c pkt.
- 136. **Golden Queen**—A very beautiful new variety, flowers bright, golden in color and very effective. 5 cts. pkt.
- 137. **Sweet**—15c oz.; 5c pkt.
- 138. **Machet**—The finest variety for pot culture, sweet scented red flowers. 75c oz.; 5c pkt.



MAURANDIA. Charming Half-Hardy

Perennial Climbers.

- 139. **White** 5c
- 140. **Rose** 5c
- 141. **Mixed** 5c

MIRABILIS, (Four O'clock's, Marvel of Peru.)

- 142. **Finest Mixed** 15 cts. oz.; 5c

MIMULUS MUSCHATUS, (Musk Plant.)

- 143. Fine for hanging baskets, etc. Small yellow flowers, fragrant foliage 5c

MIMOSA, (Sensitive Plant.) Half-hardy Annuals. 1 1/2 Ft.

- 144. **Pudica**—Sensitive plant 80 cts. oz.; 5c

MOMORDICA. Half-hardy Annuals.

- 145. **Balsamina**—Balsam apple 60 cts. oz.; 5c
- 146. **Charantia**—Balsam pear 60 cts. oz.; 5c

MOONFLOWER.

- 147. Flowers are pure white, large and fragrant 5c

MORNING GLORY, TALL, (Convolvulus Major.)

Half-hardy Annual.

- 148. **White** 5c
- 149. **Blue** 5c
- 150. **Finest Mixed** 15 cts. oz.; 5c
- 151. **New Japanese** 5c
- 152. **Dwarf Mixed** 25 cts. oz.; 5c

MYOSOTIS, (Forget-me-not.)

- 153. **Palustris**—Blue 5c

NASTURTIUM, DWARF,

(Tropaeolum Nanum.)

Half-hardy Annuals.

- 154. **Beauty**—Orange and vermilion. 15 cts. oz.; 5 cts. pkt.
- 155. **Crystal Palace Gem**—Sulphur, spotted with maroon. 15 cts. oz.; 5 cts. pkt.
- 156. **Pearl**—Nearly white. 15 cts. oz.; 5 cts. pkt.
- 157. **King Theodore**—Deep maroon. 15c oz.; 5c pkt.
- 158. **King of Tom Thumbs**—Scarlet, bluish green foliage. 15 cts. oz.; 5 cts. pkt.
- 159. **Finest Mixed**—10c oz.; 5c pkt.



NASTURTIUM, TALL. Hardy Annuals.

- 160. **Mixed** 10 cts. oz.; 5c
- 161. **Coccineum**—Scarlet 15 cts. oz.; 5c
- 162. **Orange**—Beautiful dark orange 15 cts. oz.; 5c
- 163. **Spotted**—Very pretty 15 cts. oz.; 5c
- 164. **Purple Violet** 15 cts. oz.; 5c

NICOTIANA. Half-hardy Annuals.

- 165. **Affinis**—White, very fragrant 5c

ONOTHERA, (Evening Primrose.) Hardy Perennial.

- 166. **Biennis**—True evening primrose, a beautiful and free flowering plant, with long spikes of bright yellow flowers 5c

OXALIS. Half-hardy Perennial.

- 167. **Finest Mixed** 5c

SPECIAL OFFER ON SEEDS IN PACKETS ONLY.

7 Five-Cent packets for 25 Cts. 15 Five-Cent packets for 50 Cts. 40 Five-Cent packets for \$1.00.

BY MAIL POST PAID.

PANSY.

This lovely flower a favorite with every one, is too well known to need any description. It will flower in the middle of summer if planted where it is somewhat shaded from the hot sun, and especially if furnished with a good supply of water, but in almost any situation will give fine flowers in spring.



PANSY.

Hardy Perennial.

- | | | |
|--|------|-----|
| 168. Bugnot, Cassier and Odier Strains —Superb mixture of unsurpassed quality, | Pkt. | 15c |
| 169. Cassier's Giant —The flowers of immense size, of good substance and fine form, while the plants are of neat, compact growth, | Pkt. | 15c |
| 170. Improved Giant Trimardeau —Greatly improved in the enormous size of flowers, fine form and increased varieties of colors. | Pkt. | 10c |
| 171. Odier or Blotched —Superb, large-eyed flowers of very good shape and beautifully blotched with rich and varied colors. | Pkt. | 10c |
| 172. J. C. McCullough's Mixture —Flowers very large and beautifully marked, plants neat and compact, | Pkt. | 20c |
| 173. King of the Blacks —Almost coal black, extra fine, | Pkt. | 5c |
| 174. Snow Queen —Delicate, satiny white, | Pkt. | 5c |
| 175. Yellow Giant Pure yellow, | Pkt. | 5c |
| 176. Choice Large Flowering —Mixed, splendid strain | Pkt. | 10c |
| 177. Fine Mixed —Large flowering, . . . 75 cts. oz.; | Pkt. | 5c |

PASSIFLORA, (Passion Flower)

- | | | |
|--|------|-----|
| 178. Coerulea —Blue and white flowers of remarkable beauty, | Pkt. | 10c |
|--|------|-----|

PETUNIA.

Half-Hardy Annuals.

- | | | |
|---|------|-----|
| 179. Nyctaginiflora —White fragrant | Pkt. | 5c |
| 180. Fine Mixed , | Pkt. | 5c |
| 181. Hybrida Grandiflora —Magnificent flowers of extra large size, beautifully fringed and variegated, extra choice, | Pkt. | 15c |
| 182. Double Fringed —A most beautiful variety, | Pkt. | 25c |

POPPY, (Papaver.)

Hardy Annuals.

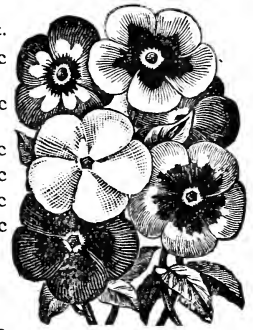
- | | | |
|---|------|----|
| 183. Carnation Flowered —Double mixed . . . 20c oz.; | Pkt. | 5c |
| 184. Paenony Flowered —Double mixed . . . 20c oz.; | Pkt. | 5c |
| 185. Shirley's —Fancy mixed, | Pkt. | 5c |
| 186. Mikado —Flowers pure white at the back, while the fringed edges are of brilliant scarlet, | Pkt. | 5c |
| 187. Umbrosum —Flowers of glowing vermillion, with a deep black spot on each petal, single, | Pkt. | 5c |
| 188. Ice-land —Mixed, Hardy Perennial | Pkt. | 5c |
| 189. Orientele —Superb scarlet flowers, often 6 inches across hardy perennial, | Pkt. | 5c |

FHLOX.

PHLOX DRUMMONDII.

Half-Hardy Annuals, 1½ to 2 ft. [Pkt.]

- | | | |
|---|------|-----|
| 190. Alba —Pure white, | Pkt. | 10c |
| 191. Alba Oculata —White with crimson eye, | Pkt. | 10c |
| 192. Splendens —Large bright scarlet, extra | Pkt. | 10c |
| 193. Fimbriata | Pkt. | 10c |
| 194. Star of Quedlinburg , | Pkt. | 10c |
| 195. Fine Mixed , . . . 50c oz.; | Pkt. | 5c |
| 196. Grandiflora —Finest mixed. An improved variety, with unusually large flowers of great substance | Pkt. | 10c |
| 197. Perennial —Fine mixed, | Pkt. | 10c |



PORTULACA, (Mexican Rose).

Hardy Annuals.

- | | | |
|--------------------------------------|------|-----|
| 198. Double —Mixed, | Pkt. | 10c |
| 199. Single —Mixed, | Pkt. | 5c |

Primula, (Chinese Primrose).

- | | | |
|---|------|------|
| 200. Sinensis —Double Mixed | Pkt. | 15c. |
| 201. Sinensis —Mixed, | Pkt. | 15c. |
| 202. Primula Obconica —Almost ever blooming, flowers white, tinged with lilac, | Pkt. | 10c |

PYRETHRUM, (Feverfew).

Annual.

- | | | |
|---|------|----|
| 203. Double Pure White —1½ ft. | Pkt. | 5c |
| 204. Golden Feather —Golden Foliage, one of the best bedding plants, 1 foot, | Pkt. | 5c |
| 205. Roseum —Persian insect powder plant half-hardy perennial | Pkt. | 5c |

RHODANTHE.

- | | | |
|-----------------------------|------|----|
| 206. Mixed | Pkt. | 5c |
|-----------------------------|------|----|

RICINUS, (Castor Oil Bean).

Half-hardy Annuals.

- | | | |
|---|------|----|
| 207. Finest Mixed , 15c oz.; | Pkt. | 5c |
| 208. Borboniensis Arboreus —A very large and handsome variety, 15 feet, 20c oz.; | Pkt. | 5c |

SALPIGLOSSIS. Half-hardy Annual.

- | | | |
|--|------|----|
| 209. Large Flowered —All colors, mixed, | Pkt. | 5c |
|--|------|----|

SALVIA.

- | | | |
|--|------|----|
| 210. Splendens —Scarlet, | Pkt. | 5c |
| 211. Coccinea —2 ft. Annual scarlet sage. | Pkt. | 5c |

SCARLET RUNNERS.

- | | | |
|---|------|----|
| 212. A beautiful ornamental climber, producing dazzling scarlet flowers and beans, it grows to a height of 10 feet, | Pkt. | 5c |
|---|------|----|

SCABIOSA.

- | | | |
|--|------|----|
| 213. Tall —Finest mixed, | Pkt. | 5c |
| 214. Dwarf —Finest mixed, | Pkt. | 5c |

SCHIZANTHUS, (Butterfly Flower).

Half hardy Annual.

- | | | |
|---|------|----|
| 215. Mixed Varieties , | Pkt. | 5c |
|---|------|----|

SILENE, (Catch Fly). Hardy Annual.

- | | | |
|---|------|----|
| 216. All Colors —Mixed | Pkt. | 5c |
|---|------|----|

SMILAX.

- | | | |
|---|------|-----|
| 217. Myrsiphyllum , | Pkt. | 5c |
| STOCK, (German Ten-Week). Half-hardy Annuals. | | |
| 218. Large Flowering —Dark blood red | Pkt. | 10c |
| 219. Large Flowering —White, | Pkt. | 10c |
| 220. Large Flowering —Mixed | Pkt. | 10c |
| 221. Snowflake , | Pkt. | 10c |
| 222. German Mixed | Pkt. | 5c |

SUNFLOWER, (Helianthus).

- | | | |
|---|------|----|
| 223. Minature —Golden yellow flowers | Pkt. | 5c |
| 224. Californicus —Orange, large, double extra, 7 ft. | Pkt. | 5c |
| 225. Giobosus Fistulosus —Large, yellow, finest of all double, 7 feet 20c oz.; | Pkt. | 5c |

SWEET PEAS.

Beautiful free flowering climbing plants, producing vast numbers of fragrant flowers, valuable for covering unsightly places, rough fences and trellis work. If the flowers are picked freely, they will be produced long in profusion, and of good size, hardy annuals.

SWEET PEAS. (Lathyrus Odoratus). Pkt.

Standard Named Varieties.

- 226. **Admiration**—A most delicate pinkish lavender. 5c
- 227. **Agnes Johnson**—Deep pink, shaded cream 5c
- 228. **Aurora**—Salmon on white 5c
- 229. **Blanche Burpee**—Pure white, very large 5c
- 230. **Blanche Ferry**—Pink and white; extra early 5c
- 231. **Countess of Lathom**—Creamy pink 5c
- 232. **Countess of Codagan**—New bright violet, wings sky blue 5c
- 233. **Cupid**—Dwarf white 5c
- 234. **Cupid**—Mixed 5c
- 235. **Dainty**—New, white with pink edge, unique 5c
- 236. **Dorothy Eckford**—This is the best of all the best white Sweet Peas 5c
- 237. **Emily Henderson**—Purest white, early 5c
- 238. **Golden Rose**—New, clear primrose yellow, flushed with rosy pink 5c
- 239. **Hon. F. Bouverie**—New, standard coral pink, wings slightly lighter 5c
- 240. **Hon. Mrs. E. Kenyon**—Large primrose 5c
- 241. **Janet Scott**—New, deep pink 5c
- 242. **Jeanie Gordon**—New, standards bright rose, shaded cream 5c
- 243. **King Edward VII**—This is the very best of the dark, rich, red sorts 5c
- 244. **Lady Grisel Hamilton**—Lavender, the best 5c
- 245. **Lottie Eckford**—White, edged with blue 5c
- 246. **Lord Roseberry**—New, rose-carmine, self color 5c
- 247. **Lottie Hutchins**—Flaked with pink on cream ground 5c
- 248. **Mrs. Walter Wright**—New, rose purple 5c
- 249. **Miss Wilmott**—A rich, deep orange pink, very large 5c
- 250. **Navy Blue**—Deep violet blue 5c
- 251. **Othello**—Deep maroon 5c
- 252. **Prima Donna**—Soft rose pink 5c
- 253. **Prince of Wales**—Fine bright rose, self-colored 5c
- 254. **Prince Edward of York**—New, scarlet and rose 5c
- 255. **Royal Rose**—Bright pink 5c
- 256. **Stella Morse**—Primrose, flushed with pink 5c

Price—Any of the above, 15 cts. oz.; 50 cts. ¼ lb.; \$1.50 lb. Any 6 pkts. 20 cts.; any 15 pkts. 50 cts.

DOUBLE SWEET PEAS.

- 257. Our mixture is composed of very choice sorts, representing a wide range of colors, 15 cts. oz.; 50 cts. ¼ lb.; \$1.50 lb. 5c
- 258. **J. C. McC's**—Named varieties, finest mixed, 15 cts. oz.; 50 cts. ¼ lb.; \$1.50 lb. 5c
- 259. **Fine Mixed**—10 cts; oz.; 35 cts. ¼ lb.; \$1.25 lb. 5c

NOTES.

- DON'T** expect Sweet Peas to thrive in a sunless location, nor in poor soil.
- DON'T** sow too shallow. Plant the seeds not less than two inches deep. Get in early.
- DON'T** use the same plot of ground for Sweet Peas two years in succession.
- DON'T** over feed. Bone meal in some form is the best fertilizer. Don't use fresh manure in the trenches.
- DON'T** gather the flowers grudgingly. The more flowers you cut the longer the vine will bloom

THE FAMILY GARDEN CAN BE BEAUTIFIED by planting a few of the annual flowers offered in this catalogue. A row of Sweet Peas, a bed of Nasturtiums, etc., will also furnish an abundance of flowers for decorating the table.

SWEET WILLIAM.

(*Dianthus Barbatus.*)
Hardy Perennials.

- 260. **Fine**—Single mixed 5c
- 261. **Finest**—Double mixed 10c

THUNBERGIA (Black-eyed Susan).

- 262. **Alata Alba**—White, with dark eye 5c
- 263. **Mixed**—All colors 5c

TORENIA.

- 264. **Bailloni**—Yellow, with brownish red throat 10c
- 265. **Fournier**—Velvety-blue 10c

VERBENA.
Half-hardy Perennials.

- 266. **Defiance**—Beautiful, deep scarlet 10c
- 267. **Italian Striped**—Mixed 10c
- 268. **Candidissima**—The best pure white 10c
- 269. **Choice Mixed**—Saved only from the most beautiful named flowers 10c
- 270. **Fine Mixed** 5c

VINCA (Madagascar Periwinkle).

- 271. **Fine Mixed** 5c

VIOLET (Viola Odorata).
Hardy Perennials.

- 272. **Odorata**—Sweet Violet, blue 10c
- 273. **The Czar**—Light Violet, very fragrant 10c

VIRGINIAN STOCK (Cheiranthus Maritimus).
Hardy Annuals.

- 274. **Red and White** 5c

VISCARIA, Rose of Heaven.
Annual.

- 275. **Finest Mixed** 5c

WALLFLOWER.
Half-hardy Perennials.

- 276. **Single Mixed**—All colors 5c
- 277. **Double Mixed**—All colors 10c

WHITLAVIA.
Hardy Annual.

- 278. **Mixed Varieties** 5c

XERANTHUMUM.
Hardy Annual.

- 279. **Double Sorts**—Finest mixed 5c

ZINNIA.
Hardy Annuals.

- 280. **Double Purple** 5c
- 281. **Double Scarlet** 5c
- 282. **Double White** 5c
- 283. **Double Mixed** 50 cts. oz.; 5c
- 284. **Dwarf Double Mixed** 10c

“WILD GARDEN” FLOWER SEEDS.

- 285. All lovers of flowers who are fond of novelties in the way of flower gardens, and cannot give much time in the way of cultivation, will find this mixture the desirable thing if sown en masse, as it will produce a continuous bloom of flowers of every hue, and you will have a mass of floriferous splendor that will last all summer; this mixture is composed of the most free and showy annuals, suitable for a wild garden of flowers . . . 25c oz.; 15c ½ oz.; 5c

SPECIAL NOTICE—We include a packet of “Wild Garden” Flower Seed with every order of Flower or Vegetable Seed in packets for 25 cts. or over.

WILD CUCUMBER VINE.

- 286. The quickest climber for arbors, trellis, fences, etc., known 5c

SELECT LIST OF TESTED VEGETABLE SEEDS.

We Catalogue all the Leading Varieties of Vegetable Seeds having Merit

Highest

Quality

..of..

FRESH

SEEDS.

GROWN

FROM

PURE

STOCKS.



SEEDS POSTPAID BY MAIL.

We will send by Mail, Postage Paid, any of the following list of Vegetable and Flower Seeds; **except** Peas, Beans, Corn and Field Seeds; for these add 10 cents per pound to pay postage.

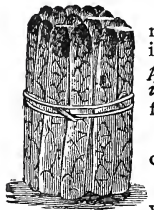
SPECIAL OFFER ON SEEDS IN PACKETS ONLY.

7 Five-Cent packets for 25 Cts. **15** Five-Cent packets for 50 Cts. **40** Five-Cent packets for \$1.00.

All packets, unless otherwise mentioned, 5 Cents each.

Market Gardeners or other large planters requiring larger quantities of Seeds than are here offered, are invited to write to us for special prices, particularly purchasers of Peas, Beans, Corn, Onion, Spinach, Cabbage and Turnip. In writing please state plainly whether you are a Market Gardener, Florist, Dealer in Seeds, etc.

ASPARAGUS, (Spargal, Ger.)



Sow in April in drills one inch deep and rows twelve inches apart, thin out to four inches in the row, when one year old *transplant in rows three feet apart and two feet in the row*. One ounce of seed will sow forty feet of row; 7000 roots will plant an acre.

Colossal—A large and rapid grower, 10 cts. oz.; 20 cts. $\frac{1}{4}$ lb.; 50 cts. lb.

Palmetto—An improved early variety, vigorous growth and large stocks, 10 cts. oz.; 20 cts. $\frac{1}{4}$ lb.; 60 cts. lb.

Asparagus Roots.

Colossal—Two-year old roots, \$0.75 per 100; \$6.00 per 1000.

Palmetto—Two-year old roots, \$1.00 per 100; \$7.00 per 1000.

BORECOLE or KALE, (Blætter Kohl, Ger.)

This may be sown in May and transplanted in the same way as cabbage. They make very tender and delicious greens in the Fall. Very hardy, easily grown, they deserve more general cultivation.

One ounce to one hundred yards of row.

Dwarf German Kale—Very hardy, a standard variety, 10 cts. oz.; 20 cts. $\frac{1}{4}$ lb.; 60 cts. lb.

Siberian—Sometimes called "Sprouts" and "German Greens." The plant is low but spreading and very hardy. 10 cts. oz.; 20 cts. $\frac{1}{4}$ lb.; 50 cts. lb.



Dwarf German Curled Kale.

Persons purchasing Seeds at our store, or who wish to pay their own express charges, may deduct 10 cents per pound for all Seeds bought by the pound, IF QUOTED AT PREPAID RATES.

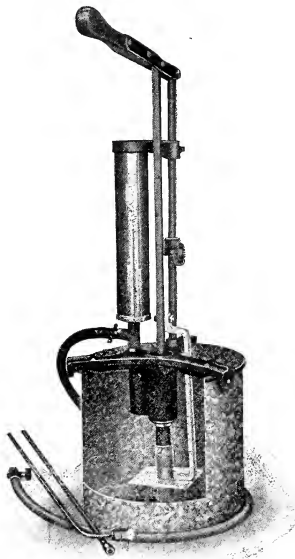
The Paragon Sprayer



Patented August 11, 1908. February 16, and March 2, 1909.

FOR SALE BY

J. CHAS. McCULLOUGH, Seedsman,
NORTH-EAST Second & Walnut Sts.
CORNER
CINCINNATI, OHIO.



No. 1 5 GALLONS
Net Price \$ 10.00

The
"PARAGON"

Sprayer
for
WHITE WASHING
Water Painting, Disinfecting,
Spraying Trees, Vines and
many other purposes.

No. 1 Sprayer
showing inside me-
chanical arrange-
ment.

EQUIPMENT.

With No. 1
5 ft. Extension Pipe
5 ft. 5 ply Hose
2 Spraying Nozzles



No. 3 12 GALLONS Net Price \$ 15.00

EQUIPMENT

7½ feet Extension Pipe 10 feet 5 ply Hose
2 Spraying Nozzles.

This machine is mounted on a strong steel frame and can easily be wheeled to any desired place.

No. 1 and 3 can be furnished with all brass pumps for \$ 4.00 additional.

All of the above Prices are strictly NET, F. O. B. C.



No.5 30 GALLONS Net Price \$ 25.00

EQUIPMENT

10 feet Extension Pipe

25 feet 5 ply Hose

1 Triple Spray Nozzle

1 Single Spray Nozzle

N. B. Pump on No. 5 machine is all brass.

Mainly for Nusery and Orchard use.

Cincinnati, O.

Its Advantages Over Other Machines

This machine is portable, durably constructed and so arranged as to be easily operated by one man. It can be brought in close proximity to the work, thereby eliminating the use of a long expensive hose. Our patented self cleaning strainer prevents the necessity of first straining the liquid to be sprayed.

This is a point that should not be overlooked, as straining liquid white wash in particular is a slow and disagreeable task. The spray nozzle has only a 1-32 inch outlet and spreads the liquid well, thereby covering a large surface with a small amount of liquid, making it a very economical sprayer. The spray will not clog as the strainer has very small openings through which the liquid must pass before entering pump. The strainer cannot clog because the agitator passes over openings in it with each stroke of pump, brushing off any dirt or grit that may have any tendency to choke it. The agitator also keeps the liquid thoroughly stirred while using sprayer.

This sprayer is not one of the dirty kind that deposits as much liquid on the floor as it does on the ceilings and walls, but with proper handling it does very neat and effective work. With it you can reach the most difficult corners that cannot be reached by brushes and

with the least possible amount of waste. By adding extra lengths of pipe you can reach any height you may desire to spray.

All parts of the machine are made of the best materials obtainable. The hose is of the very best quality. The reservoir is made of heavy galvanized iron. All essential fittings and valves are made of brass, making it very strong and durable. The pipes are black wrought iron of good quality. The body of pump is cast iron, well ribbed to prevent breakage. The screen is of heavy perforated brass and will last many years.

The pump frame can easily be removed from tank when it needs cleaning and by running water through machine after using, the entire machinery can be easily and thoroughly cleaned.

White Washing

We wish to call particular attention to the usefulness of this machine for white washing and water painting. White walls and ceilings produce much light and cleanliness. White-wash is also a very good disinfectant. This machine is just the thing for whitening or disinfecting factories, shops, cellars, attics, stables, slaughter houses, dairy buildings, poultry houses, engine rooms, breweries, fences, blind walls, etc. The price is so low that anyone can possess one.

Paragon Sprayers Do Not Clog.



WIZARD

TRADE BRAND MARK

MANURES

DRY, PULVERIZED, IN BAGS, CONVENIENT, CLEANLY
WILL MAKE YOUR

LAWN AND GARDEN
BRIGHT, **GREEN AND**
BEAUTIFUL

Wizard Brand Manures are manufactured by a direct heat process from selected raw material collected in the Union Stock Yards, Chicago, where 16,000,000 animals are handled every year.

Each kind of Manure, Sheep, Cattle and Hog, is prepared separately, DRIED, SCREENED, PULVERIZED or SHREDDED and packed in bags of 100 lbs. each, making a most convenient, cleanly and valuable natural fertilizer especially adapted to home use.

J. CHARLES McCULLOUGH

DISTRIBUTOR

GARDEN SEED BRANCH
N. E. Second and Walnut Sts.

601-605 East Fifth St., Cincinnati

"TO MAKE NATURE HUSTLE FOR YOU"



WIZARD
— BRAND —

makes the lawn bright, green and velvety, a thick heavy turf of strong healthy grasses. It is better in every way than rough stable manure for top-dressing, and brings no weeds, unsightly appearance and disagreeable odor. It is easily applied and does not have to be raked off.

APPLICATION Scatter broadcast on a day when there is little wind at the rate of from 60 to 100 pounds per 1000 square feet of lawn. In dry, hot weather it is best to wet down thoroughly after applying. Pleasing results are sure to follow.

WIZARD
— BRAND —

is nature's plant food and will work wonders in the flower garden because it supplies the worn out soil with just the elements taken away by last season's growing. **NITROGEN** that forces quick, healthy growth of stalk, stem and foliage; **PHOSPHORIC ACID** that gives color and tone and makes a profusion of rare and beautiful bloom; **POTASH** that strengthens the plant from root to blossom, and **HUMUS** to make the soil fertile and absorbent.

WIZARD
— BRAND —

in the vegetable garden is most practical and valuable, because garden soil becomes impoverished quickly and quality, size and flavor of all that it produces is sacrificed. Fresh, crisp garden dainties, home grown and gathered, are well worth the effort and small expense required to renew and fortify the soil with just the elements which give so much in return.

APPLICATION The same quantities recommended for the lawn may be used to advantage in the flower and vegetable garden. It is preferable to apply one-half of the manure over the surface and spade it under, then scatter the balance and rake it in thoroughly just before planting. Shrubs, perennials, vines, etc., may be treated to an application around the base and the soil raked and pulverized thoroughly. This treatment has proven so universally satisfactory and pleasing that it may be followed with every assurance of success.

BEANS, (Bohne, Ger.) Dwarf or Bush Varieties.

The Bean is a tender plant and, therefore, should not be planted until danger from frost is past and then may be planted with success throughout the entire summer in rotation. Sow in open ground, from the end of April to the first of August, in rows two feet apart and thin from six to eight inches in the row. *1 quart to 100 feet of drill, 2 bushels to the acre.*

Add 10 cents per pound, if sent by mail.

Burpee's Stringless Green Pod—It surpasses all others in crispness, tenderness and flavor, and is the most prolific bean grown. The pods are $4\frac{1}{4}$ to $5\frac{1}{2}$ inches long, nearly round, slightly curved and of the best quality. They remain long in edible condition and are never stringy. 15 cts. lb.; 25 cts. qt.



Henderson's Bush Lima—Grows in compact bush form, 15 to 18 inches high. It is at least two weeks earlier than any of the climbing Limas. 15 cts. lb.; 25 cts. qt.

Early Long Yellow Six Weeks—A fine string bean, very prolific. 10 cts. lb.; 20 cts. qt.

Horticultural Dwarf—Excellent quality as a shell bean, either green or dry. 15 cts. lb.; 25 cts. qt.

Improved Round Pod Red Valentine—Ten days earlier than ordinary Valentine. 15 cts. lb.; 25 cts. qt.

Early Red Valentine—Round, green pods, early and tender, good for string or pickling. 10 cts. lb.; 20 cts. qt.

Bountiful—Early, tender and fine flavor. 15 cts. lb.; 25 cts. qt.

Golden Wax—Round, golden, waxy pods, early, prolific, stringless. The finest wax bean. 15 cts. lb.; 25 cts. qt.

Black Wax—Round, wax pods, early, stringless, solid and tender. 15 cts. lb.; 25 cts. qt.

White Wax—An excellent snap bean, also fine for shelling. 15 cts. lb.; 25 cts. qt.

Refugee—Hardy, productive, flesh thick and tender, one of the best for pickling. 10 cts. lb.; 20 cts. qt.

Hodson Green Pod—Superior quality, round, green pods. 15 cts. lb.; 25 cts. qt.

White Marrow—A standard field variety, excellent for shelling. 10 cts. lb.; 20 cts. qt.

Navy—An old standard variety, good for winter use. 10 cts. lb.; 20 cts. qt.; \$1.00 peck.

White Kidney—An excellent shell bean, the best for Winter use. 10 cts. lb.; 20 cts. qt.; \$1.25 peck.

Red Kidney—Similar to the above, except in color. 10 cts. lb.; 20 cts. qt.; \$1.25 peck.

Turtle Soup Black—Used in making mock turtle soup. 15 cts. lb.; 25 cts. qt.; \$1.25 peck.

Wardwell's Kidney Wax—Vine vigorous, hardy and productive. The pods are large, smooth and showy, tender and stringless, excellent winter shelled sort. 15 cts. lb.; 25 cts. qt.

Davis Kidney Wax—Pods are long, straight, oval, clear, waxy white color, often growing to a length of seven to eight inches; when fit for use are stringless and of fine flavor. 15 cts. lb.; 25 cts. qt.

Burpee's Bush Lima—This is a bush form of the well known large white Lima bean; is very fixed in its bush character, growing to a uniform height of about 20 inches. 15 cts. lb.; 30 cts. qt.

Pencil Pod Wax—Pods long and thick, of a rich golden color and absolutely stringless. 15 cts. lb.; 25 cts. qt.

Currie's Rust Proof Wax—Absolutely rust-proof. Pods are thick with no approach whatever to stringiness. 15 cts. lb.; 25 cts. qt.

Giant Stringless Green Pod—It is positively stringless, and ripens earlier than the Valentine. The pods which are produced in abundance on the vines, are long and fleshy; perfectly round, meaty and finest quality. 15 cts. lb.; 25 cts. qt.

BEANS, (Pole or Runners).

They are more tender and require rather more care in culture than the Bush Beans and should be sown two weeks later. They succeed best in sandy loam, which should be liberally enriched with manure. Form hills from three to four feet apart; plant five or six beans in each hill, about two inches deep, leaving a space in the center for the pole. Limas will not grow until the weather and ground are warm; if planted early they are apt to rot in the ground. *One quart makes 100 to 200 hills, according to size of the beans; 10 to 12 quarts will plant an acre.*

Add 10 cents per pound, if sent by mail.

Large White Lima—A very popular variety, largely grown for market, 15 cts. lb.; 25 cts. qt.

Kentucky Wonder—A snap bean of wonderful growth, pods grow in clusters, are nearly a foot long, round and pulpy. This is the favorite corn bean in this section. 15 cts. lb.; 25 cts. qt.

Extra Early Jersey Lima—Of strong growth, maturing a good crop quite early. Pods usually contain three beans each. 15 cts. lb.; 30 cts. qt.

Extra Large Lima—The finest flavored of all shell beans. 15 cts. lb.; 25 cts. qt.

King of the Garden Lima—A vigorous grower, bearing profusely, the beans are large and of rich flavor. 15 cts. lb.; 25 cts. qt.

Dutch Case Knife—Early, productive, good for string or shell beans. 15 cts. lb.; 25 cts. qt.

Horticultural—(Wren's Egg or Speckled Cranberry)—Earliest and best shell bean, productive and tender. 15 cts. lb.; 25 cts. qt.

White Creaseback—A green pod bean, exceedingly productive, pods five to six inches long, perfectly round, with a crease in the back, stringless, very fleshy, early and of fine quality. 15 cts. lb.; 25 cts. qt.

Black Kentucky Wonder—Surpasses the old Kentucky Wonder in yield and quality. 15 cts. lb.; 25 cts. qt.

Cut Short or Corn Hill—An old and popular variety, much used for planting among corn, excellent as a green shell or dry bean. 15 cts. lb.; 25 cts. qt.

Scarlet Runner—Ornamental variety with bright scarlet flowers, also a good string bean. 20 cts. lb.; 40 cts. qt.

Lazy Wife's—The pods grow from four to six inches long, entirely stringless, and of a rich buttery flavor when cooked. The pods remain green and retain their tender, rich flavor until ripe, excellent shell bean for winter use. 15 cts. lb.; 25 cts. qt.

BEET, (Runkel Rube, Ger.)

Sow as early in spring as the ground can be worked, in light well-manured soil, in drills twelve inches apart, covering the seeds one inch deep and pressing the soil firmly over them. Thin out four inches apart for table beets, and eight to twelve inches for field beets, cultivate frequently. *One ounce to 80 feet of drill, five to six pounds to the acre.*

Table Varieties.

Edmand's Improved—Very fine turnip-shaped beet of round form, good size, dark red color and fine flavor. 15 cts. oz.; 35 cts. $\frac{1}{4}$ lb.; \$1.25 lb.

Early Eclipse—The best and most profitable very early variety of excellent form, dark color and tender quality. 15 cts. oz.; 30 cts. $\frac{1}{4}$ lb.; \$1.00 lb.

Egyptian—Extra early, flat turnip-shaped, deep red, tender and sweet. 15 cts. oz.; 30 cts. $\frac{1}{4}$ lb.; \$1.00 lb.

Early Bassano—Flat, turnip-shaped, light red. 10 cts. oz.; 25 cts. $\frac{1}{4}$ lb.; 90 cts. lb.

Dewing's Blood Turnip—Early, blood-red, good size, smooth and handsome. 15 cts. oz.; 35 cts. $\frac{1}{4}$ lb.; \$1.25 lb.

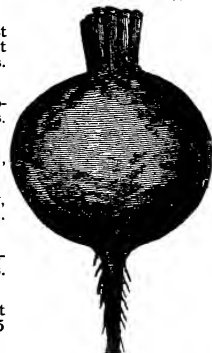
Early Blood Turnip—Early, dark-red, well-flavored, extra. 15 cts. oz.; 35 cts. $\frac{1}{4}$ lb.; \$1.25 lb.

Improved Long Blood—Excellent late sort, dark and smooth. 10 cts. oz.; 25 cts. $\frac{1}{4}$ lb.; 90 cts. lb.

Swiss Chard—Cultivated for its leaves only, the middle ribs of which are cooked like asparagus. 10 cts. oz.; 25 cts. $\frac{1}{4}$ lb.; 90 cts. lb.

Crosby's Egyptian—An improved strain of the Egyptian Beet in great repute in Boston market. Much thicker than the original, quite as early, better color and quality, and smoother. 15 cts. oz.; 35 cts. $\frac{1}{4}$ lb.; \$1.25 lb.

Norwood Blood Turnip—Of good marketable size, very uniform, round and smooth. 15 cts. oz.; 35 cts. $\frac{1}{4}$ lb.; \$1.25 lb.



SUGAR BEETS AND MANGEL WURZEL.

For Stock Feeding.

Lane's Improved Sugar Beet—Large, hardy and very productive, 10 cts. oz.; 15 cts. $\frac{1}{4}$ lb.; 40 cts. lb.

Silesian Sugar Beet—Attains a large size and is highly valued for feeding, 10 cts. oz.; 15 cts. $\frac{1}{4}$ lb.; 40 cts. lb.

Golden Tankard Mangel—Bright, yellow, large, handsome, heavy Cropper, splendid quality, 10 cts. oz.; 20 cts. $\frac{1}{4}$ lb.; 50c lb.

Mammoth Long Red Mangel—Very large and productive, 10 cts. oz.; 20 cts. $\frac{1}{4}$ lb.; 50 cts. lb.

(BROCCOLI, Spargel Kohl, Ger.)

Resembles cauliflower, but hardier. Sow in a hot bed in May, and transplant to a rich, mellow soil in early July. *One ounce to one hundred yards of row.*

Early White Cape—Heads medium, compact, creamy white, 25 cts. oz.; 90 cts. $\frac{1}{4}$ lb.

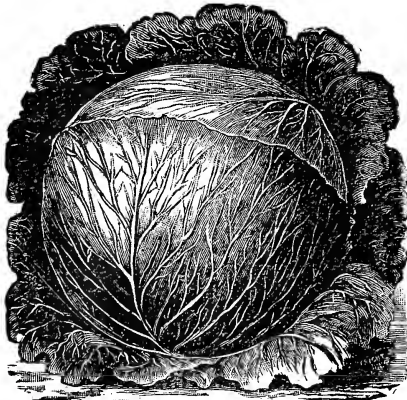
Early Purple Cape—Greenish-purple heads, hardy, good flavor. 25 cts. oz.; 90 cts. $\frac{1}{4}$ lb.

BRUSSELS SPROUTS, (Sprossen Kohl, Ger.)

This plant grows two or three feet high, and produces from the sides of the stalk numerous little sprouts one or two inches in diameter, resembling cabbage.

Dwarf Improved—A variety producing compact sprouts of excellent quality, 25 cts. oz.; 60 cts. $\frac{1}{4}$ lb.; \$1.75 lb.

CABBAGE, (Weisskopf Kohl, Ger.)



This vegetable requires a deep, rich, mellow soil, high manuring and good culture, in order to obtain fine solid heads. For early use sow seeds of the early kinds in the hot bed, or in a box in the house, the last of January or early in February and transplant them in the open ground in April, in rows two feet apart and 18 inches between the plants in the row; or sow a bed of seed outside as soon as the soil can be worked, if you do not care for real early cabbage. These may be transplanted in

about 4 weeks. For second early cabbage, sow in April and transplant in May. For late cabbage, sow in May and transplant in July, in rows three feet apart and two feet apart in the row. In transplanting cabbage or cauliflower, it is important that the plant is set down to the first leaf that the stem may not be injured in case of frost. *One ounce of seed produces 1,500 to 2,000 plants and sows an area of about 40 square feet.*

Louisville Early Drumhead—Originated in this market and is now the principal market variety and cannot be surpassed. Early heads of very large size and very solid, the best and surest heading for all purposes and will stand the entire summer without bursting. 20 cts. oz.; 50 cts. $\frac{1}{4}$ lb.; \$1.75 lb.

Danish or Hollander—Small size, solid heads, one of the best for shipping. 25 cts. oz.; 75 cts. $\frac{1}{4}$ lb.; \$2.50 lb.

Charleston Wakefield—Much larger than the OLD WAKEFIELD and only a few days later. Favorite for Gardeners. 20 cts. oz.; 50 cts. $\frac{1}{4}$ lb.; \$1.75 lb.

All Head Early—The earliest of all Cabbages, deep flat heads, remarkably solid in quality, tender, uniform in shape and size, compact growth. ALL HEAD is also valuable for a late Winter cabbage. 20 cts. oz.; 50 cts. $\frac{1}{4}$ lb.; \$1.75 lb.

Early Winingstadt—A very early variety, in size close to the Wakefield, heads large, decidedly conical, leaves bright green, heads solid and hard. 15 cts. oz.; 40 cts. $\frac{1}{4}$ lb.; \$1.40 lb.

CABBAGE, Continued.

Surehead—A large variety producing large, round, flattened heads. It is all head and always sure to head. 20 cts. oz.; 50 cts. $\frac{1}{4}$ lb.; \$1.75 lb.

Early Jersey Wakefield—The very best early variety, conical shape, solid, sure heading. 20 cts. oz.; 50 cts. $\frac{1}{4}$ lb.; \$1.75 lb.

Henderson's Early Summer—The best large early cabbage, globular shape, a popular variety amongst market gardeners. 20 cts. oz.; 50 cts. $\frac{1}{4}$ lb.; \$1.75 lb.

Early Dwarf York—Early and fine flavored. 15 cts. oz.; 50 cts. $\frac{1}{4}$ lb.; \$1.50 lb.

Early Large York—Early and much larger than the Dwarf York. 15 cts. oz.; 50 cts. $\frac{1}{4}$ lb.; \$1.50 lb.

All Seasons—Early variety, heads large and solid. 20 cts. oz.; 50 cts. $\frac{1}{4}$ lb.; \$1.75 lb.

Early Dwarf Flat Dutch—Heads solid, good flavor, an excellent variety. 15 cts. oz.; 50 cts. $\frac{1}{4}$ lb.; \$1.50 lb.

Premium Flat Dutch—(Select Stock.)—Heads large and very solid, they open white and crisp, are tender and well flavored; for the Winter market it has no equal. 15 cts. oz.; 50 cts. $\frac{1}{4}$ lb.; \$1.50 lb.

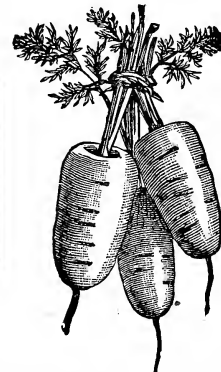
Fottler's Improved Brunswick—A rapid grower has large, solid heads, an excellent second early or late variety. 20 cts. oz.; 50 cts. $\frac{1}{4}$ lb.; \$1.75 lb.

Large Late Drumhead—Large, solid and tender, an excellent Winter cabbage. 15 cts. oz.; 50 cts. $\frac{1}{4}$ lb.; \$1.50 lb.

Red Dutch—The old standard variety for pickling. 20 cts. oz.; 60 cts. $\frac{1}{4}$ lb.; \$2.00 lb.

Improved Drumhead Savoy—The finest flavored Winter cabbage, large, round, solid heads. 20 cts. oz.; 50 cts. $\frac{1}{4}$ lb. \$1.75 lb.

CARROT, (Moehren Ger)



The carrot grows best in a light sandy loam, well manured and cultivated. Sow as early as the ground can be worked, in drills 10 inches apart for the small sorts and 14 inches apart for the larger kinds, thin out to 5 or 6 inches apart in the rows. *One ounce of seed will sow 150 feet of drill, 4 lbs. to the acre.*

Early French Foreing—The earliest variety grown, small, tender, fine quality. 15 cts. oz.; 40 cts. $\frac{1}{4}$ lb.; \$1.40 lb.

Early Scarlet Horn—An excellent table sort, fine color and flavor. 15 cts. oz.; 45 cts. $\frac{1}{4}$ lb.; \$1.50 lb.

Half Long Stump Rooted—A fine grained table variety, of fair size and good color. 15 cts. oz.; 45 cts. $\frac{1}{4}$ lb.; \$1.50 lb.

Danver's Half Long—The most desirable variety for the main crop, productive and keeps well. 15 cts. oz.; 45 cts. $\frac{1}{4}$ lb.; \$1.50 lb.

Chantenay—An early one-half long, stump-rooted variety of the best quality. 15 cts. oz.; 45 cts. $\frac{1}{4}$ lb.; \$1.50 lb.

Intermediate—The roots grow regular and smooth; good size and very productive. 15 cts. oz.; 45 cts. $\frac{1}{4}$ lb.; \$1.50 lb.

Improved Long Orange—Large, heavy copper and excellent keeper. 15 cts. oz.; 45 cts. $\frac{1}{4}$ lb.; \$1.50 lb.

Long Red Altringham—A standard variety, desirable for field culture. 10 cts. oz.; 30 cts. $\frac{1}{4}$ lb.; 90 cts. lb.

Large White Belgian—Large, long rooted variety, valuable for feeding stock. 10 cts. oz.; 25 cts. $\frac{1}{4}$ lb.; 75 cts. lb.

Guerrande or Oxheart—Extra fine quality, beautiful shape and very productive. Color, a rich orange. In length it is intermediate between the Danvers and Short Horn Carrot. 15 cts. oz.; 45 cts. $\frac{1}{4}$ lb.; \$1.50 lb.

Right Treatment Guaranteed. Give us a Trial.

CAULIFLOWER, (Blumenkohl, Ger.)

The culture of cauliflower is similar to cabbage. It delights in a rich, moist soil, and in dry seasons should be abundantly watered, especially when heading. Sow seeds in the hot bed in January or February, and transplant the plants two or three inches apart in boxes, until such time as they are safe to be planted in the open ground. Set the plants 2 feet by 18 inches apart. When heading tie the outside leaves loosely over the head to protect it from the sun.

One ounce gives 2000 plants.



Henderson's Early Snowball—A very early dwarf variety producing magnificent white heads of the finest quality. Its compact habit of growth renders it a peculiarly profitable variety for force under glass, and it does equally well for late planting. 20 cts. pkt.; 80 cts. ¼ oz.

Earliest Dwarf Erfurt—This is the choicest, heads of the largest size, snowy whiteness, compact and beautiful form. 20 cts. pkt.; 80 cts. ¼ oz.; \$2.75 oz.

Early Paris—A good standard variety. 20 cts. ¼ oz.; 60 cts. oz.

Le Normand—A large late variety, producing well formed heads. 20 cts. ¼ oz.; 60 cts. oz.

CELERY, (Sellerie, Ger.)

Sow in a hot bed in March, and as soon as the plants are three inches high, transplant into a temporary bed in the open air, 4 inches apart. The plants may remain here until the first of July, and then remove to the trenches. The trenches ought to be a foot wide and deep and 5 feet apart. Spread a layer of well rotted manure in the bottom of the trench and dig in. Set the plants in the bottom of the trench 6 or 8 inches apart. As they grow, cultivate with the hoe, and gradually earth them up, and by the end of September they will be blanched sufficiently for use. Never earth up while the plants are wet, and be careful not to let the soil get into the heart of the plant. Water carefully in dry weather. One ounce will produce about 4000 plants.

Giant Pascal—A superior keeping sort. The stalks are very large, thick, solid, crisp and of a rich nutty flavor. It blanches easily and retains its freshness a long time. 15 cts. oz.; 50 cts. ¼ lb.; \$1.50 lb.

Golden Self-Blanching—Close, compact perfectly solid, crisp, well-flavored and excellent keeper. 50 cts. oz.; \$1.50 ¼ lb.

Dwarf Golden Heart—Its handsome color, medium size, fine flavor and good keeping qualities render it the leading sort. 15 cts. oz.; 60 cts. ¼ lb.; \$1.50 lb.

White Plume—A crisp, solid variety, with a pleasant, nutty flavor, almost self-blanching, the stocks requiring very little earthing up. Very ornamental for the table. 20 cts. oz.; 60 cts. ¼ lb.; \$1.75 lb.

Giant White Solid—Fine, large size, tall and of stiff growth. 15 cts. oz.; 50 cts. ¼ lb.; \$1.50 lb.

Boston Market—Dwarf-branching habit, solid, crisp, well-flavored. 15 cts. oz.; 50 cts. ¼ lb.; \$1.50 lb.

Paris Golden Yellow—Close, compact growth, golden yellow color. The stock is solid and crisp and a good-keeper. 70 cts. oz.; \$2.50 ¼ lb.

Celeriac or Turnip Rooted—The round, solid roots of this variety are used for flavoring. 15 cts. oz.; 40 cts. ¼ lb.; \$1.25 lb.

Soup or Flavoring—50 cts. lb.

CORN SALAD, (Ackersalat, Ger.)

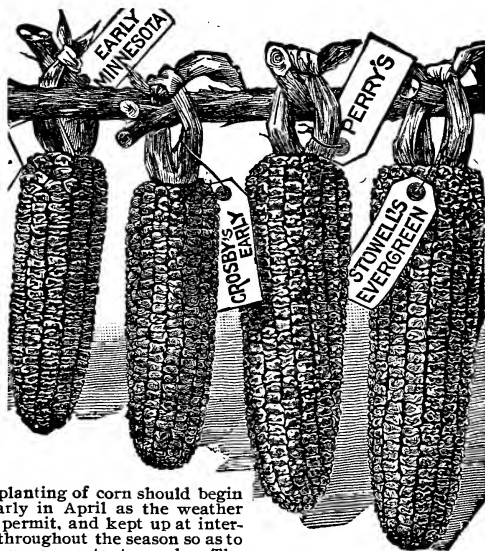
Used as a salad. Sow as early in spring as the ground can be worked, in drills 12 inches apart, and cover lightly. For winter and spring use, sow in September, and winter over in cold frames.

Large Seeded—The standard variety. 10 cts. oz.; 25 cts. ¼ lb.; 60 cts. lb.

Order Early.

Please order as soon after you get this Catalogue as possible, and then you will have your seeds at hand for planting when you want them, besides, if you want heavy seeds in large quantities, they can be sent by freight very cheaply.

CORN, Sweet, (Mais, Ger.)



The planting of corn should begin as early in April as the weather will permit, and kept up at intervals throughout the season so as to keep up a constant supply. The first planting should be made of the "extra early" sorts, and the last planting of the Improved Evergreen Sugar, and you will not fail to have a constant supply from the middle of June to the middle of October. One quart plants 200 to 300 hills, eight to ten quarts for an acre.

Add 10 cents per pound, if sent by mail.

Country Gentleman—The ears are of good size and produced in great abundance, bearing three to four good ears to a stock. Cob very small, kernels are of pearly whiteness and delicious quality. 15 cts. lb.; 25 cts. qt.

First of All—Almost a week earlier than the Cory and Dwarf, but of superior quality. 15 cts. lb.; 25 cts. qt.

Zig Zag Evergreen—This variety of Evergreen Sweet Corn is one of the best for private use, market gardeners and canners. It is of extra quality, very sweet and juicy in the green state. It ripens about same time as Stowell's Evergreen, and is superior to that well-known variety in sweetness and flavor. 15 cts. lb.; 25 cts. qt.

Extra Early Cory—Second earliest variety in cultivation, producing good sized ears, fine quality and productive. 15 cts. lb.; 25 cts. qt.

Extra Early Adams—An old standard white corn, ready for table sixty days after germination, not a sweet corn. 10 cts. lb.; 15 cts. qt.

Early Marblehead—Good early corn, medium size, prolific, week later than Cory. 15 cts. lb.; 25 cts. qt.

Early Minnesota—An early sort, of dwarf habit. 15 cts. lb.; 25 cts. qt.

Crosby's Early—One of the finest early sweet corns, productive and of excellent quality. 15 cts. lb.; 25 cts. qt.

Moore's Concord—A second early variety, larger than Crosby's, excellent quality. 15 cts. lb.; 25 cts. qt.

White Cory—Much the same as the Red Cory, with the great advantage of a white cob. 10 cts. lb.; 15 cts. qt.

Egyptian—A late sort, ripening with Stowell's, largely used for canning. 15 cts. lb.; 25 cts. qt.

Perry's Hybrid—Early and of large size, good for market. 15 cts. lb.; 25 cts. qt.

Stowell's Improved Evergreen—The standard late sort, large ears, remaining long green. 15 cts. lb.; 25 cts. qt.

Mammoth Sugar—Large, long, full ears, of excellent flavor. 15 cts. lb.; 25 cts. qt.

Adam's Early—Old standard sort. 10 cts. lb.; 15 cts. qt.

Black Mexican—Its merit is its sweetness. 15 cts. lb.; 25 cts. qt.

Shaker's Early—The kernels are large, of pearly whiteness and delicious flavor. It is a great favorite with market gardeners. 15 cts. lb.; 25 cts. qt.

SEED POP CORN.

White Pearl—Our common market variety. 10 cts. lb.; 20 cts. qt.
White Rice—A handsome variety, kernels long and pointed, very prolific. 10 cts. lb.; 20 cts. qt.

Queen's Golden—The stalks grow six feet high, and the large ears are produced in abundance, it pops perfectly white. 10c lb.; 20c. qt.

WE always have in stock a large supply of old corn for popping, and are prepared to fill all orders at market prices.

SWEET CORN FOR FODDER.

There is nothing better for green feed, or curing for winter, than sweet corn. Cattle highly relish it, and when fed on it, keep in fine condition and give an abundance of milk. Also excellent for soiling. Sow thickly in drills or broadcast at the rate of *two to three bushels per acre*. 10 cts. lb.; 50 cts. pk. Subject to market change.

CUCUMBERS, (Gurken, Ger.)

As soon as the weather becomes settled and warm, plant in hills from four to six feet apart each way, with eight or ten seeds in each hill, cover half an inch deep, smoothing the hill off with the hoe. Keep the soil well stirred, and when the plants are out of danger of insects, leave three or four plants to the hill. For pickles, plant from the first of June to the first of



August. The fruit should be gathered when large enough whether required for use or not, as, if left to ripen on the vines, it destroys their productiveness. *One ounce for 50 hills, 1 to 2 lbs. per acre.*

Japanese Climbing—Is strong, vigorous and prolific, fruit 10 to 12 inches long, of a dark green color, delicious flavor. The vines are proof against mildew, never suffering from wet weather or insects. 15 cts. oz.; 40 cts. $\frac{1}{4}$ lb.

Cool and Crisp—This variety is inclined to taper off at the stem end, and is generally a little pointed at the other end also; is the most desirable shape for pickles. 10 cts. oz.; 25 cts. $\frac{1}{4}$ lb. 80 cts. lb.

Extra Early Russian—The earliest, hardy, prolific, excellent for small pickles. 10 cts. oz.; 25 cts. $\frac{1}{4}$ lb. 80 cts. lb.

Early Cluster—A short prickly variety, bearing in clusters, very prolific. 10 cts. oz.; 25 cts. $\frac{1}{4}$ lb. 80 cts. lb.

Early Frame—Early, medium length, good for forcing. 10 cts. oz.; 25 cts. $\frac{1}{4}$ lb. 80 cts. lb.

Improved White Spine—Medium length, crisp, well flavored, prolific. One of the most popular varieties grown. 10 cts. oz.; 30 cts. $\frac{1}{4}$ lb. 90 cts. lb.

Improved Long Green—Very popular, late variety, dark green, crisp, tender and well flavored. 10 cts. oz.; 30 cts. $\frac{1}{4}$ lb. 90 cts. lb.

Jersey Pickling—The best variety for pickling, short straight, dark green, fine quality, great bearer. 10 cts. oz.; 30 cts. $\frac{1}{4}$ lb. 90 cts. lb.

Green Prolific—One of the best for pickles, very uniform in growth, extremely productive and its flavor makes it desirable also for a table variety. 10 cts. oz.; 30 cts. $\frac{1}{4}$ lb. 90 cts. lb.

Nichol's Medium Green—Early, good for forcing or pickles, dark green, crisp, very prolific, straight and smooth, in length between the White Spine and Long Green, a decided acquisition. 10 cts. oz.; 30 cts. $\frac{1}{4}$ lb. 90 cts. lb.

West India Gherkin—A small green pickling sort, used for pickling only. 15 cts. oz.; 50 cts. $\frac{1}{4}$ lb.

CRESS OR PEPPER GRASS, (Kresse, Ger.)

Well-known pungent salad, can be used alone or with lettuce. Requires to be sown thickly (curling very slightly), at frequent intervals to keep up a succession, as it soon runs to seed.

Extra Double Curled—Fine pungent flavor, extensively used as a salad. 10 cts. oz.; 20 cts. $\frac{1}{4}$ lb.; 50 cts. lb.

Water Cress—Hardy aquatic perennial, growing readily on the banks of streams or ponds. 35 cts. oz. \$1.00 $\frac{1}{4}$ lb.

ENDIVE, (Endivien, Ger.)

Sow in June or July, and transplant 8 or 10 inches apart in rows 15 inches apart. Used as a salad, and requires to be blanched by tying the leaves together at the top and placing boards to exclude the light. *One ounce of seed to 150 feet of drill.*

Green Curled—One of the best, dark green, finely curled, 15 cts. oz.; 45 cts. $\frac{1}{4}$ lb.; \$1.50 lb.

Mass Curled—Beautifully and densely curled, very ornamental. 15 cts. oz.; 45 cts. $\frac{1}{4}$ lb.; \$1.50 lb.

Batavian Broad-Leaved—A large summer variety, very productive. 15 cts. oz.; 40 cts. $\frac{1}{4}$ lb.; \$1.25 lb.

EGG PLANT, (Eierpflanze, Ger.)

Sow seeds in a hot-bed in March in the same manner as tomatoes. As they are very susceptible to cold they should not be transplanted to the open ground until the weather is quite warm. Set the plants two feet apart each way. *One ounce of seed will produce 1,000 plants.*

Long Purple—Early, deep purple, oblong, hardy, productive, excellent, color variable. 20 cts. oz.; 75 cts. $\frac{1}{4}$ lb.; \$2.50 lb.

New York Improved—One of the best, very large, fine quality. 80 cts. oz.; \$1.00 $\frac{1}{4}$ lb.

**New York Improved.****KOHL RABI, (Kohl-Rabi, Ger.)**

(TURNIP CABBAGE.)

When young and tender they are fine for table use, when matured they will keep well and are excellent for Winter feeding to stock. For early use sow in hot-bed, transplant and cultivate like early cabbage. For Winter use sow in the middle of June or first of July in rows 18 inches apart. *One ounce of seed for 1,500 plants.*

Early White Vienna—Flesh white and tender, 20 cts. oz.; 50 cts. $\frac{1}{4}$ lb.

Early Purple Vienna—An excellent sort, later than the white. 20 cts. oz.; 50 cts. $\frac{1}{4}$ lb.

LEEK, (Lauch, Ger.)

The Leek is generally considered superior to the Onion for soups, it is very hardy and easily cultivated. Sow in drills, a foot apart, in April, and transplant in July, in rows fifteen inches apart, and six inches from plant to plant. They should be set five inches deep, in rich, moist soil. *One ounce will produce about 1,000 plants.*

Large Rouen—One of the best, large and broad, of very mild, pleasant flavor. 15 cts. oz.; 40 cts. $\frac{1}{4}$ lb.; \$1.25 lb.

American Flag—Hardy, useful sort for general use. 15 cts. oz.; 40 cts. $\frac{1}{4}$ lb.; \$1.25 lb.

LETTUCE, (Lettich-Salat, Ger.)

It requires rich, moist soil, clean cultivating and plenty of water. This will give the quick growth on which depends its appearance, tenderness and flavor. Sow in a hot-bed in early Spring, as soon as the ground can be well worked, transplant in good rich ground, to rows 18 inches apart, and 8 to 10 inches in the rows. For a later supply, plant every two weeks from the middle of April until July, choosing varieties according to their heat resistance, and their tendency to remain in condition without seeding. *One ounce of seed for 2,500 plants.*



Cincinnati Market—The best forcing variety known and a favorite with all gardeners. Large pale green leaves, exceedingly crisp and tender and a shy seeder. 15 cts. oz.; 40 cts. $\frac{1}{4}$ lb.

Buttercup—New variety from Germany, tender and delicate flavor, early hard-heading, beautiful foliage, good either for summer or winter. 15 cts. oz.; 40 cts. $\frac{1}{4}$ lb.; \$1.00 lb.

Early Curled Silesian—Very early and well-known sort, 15 cts. oz.; 30 cts. $\frac{1}{4}$ lb.; 80 cts. lb.

Early Prize Head—Very large, crisp, tender, fine flavored, hardy, slow to seed. 15 cts. oz.; 30 cts. $\frac{1}{4}$ lb.; 80 cts. lb.

Black Seeded Simpson—Like the ordinary Curled Simpson, it does not properly form a head, but a compact mass of leaves and differs in being light colored, the leaves being almost white, stands the summer heat excellently, and attains a size nearly double that of Curled Simpson. 15 cts. oz.; 80 cts. $\frac{1}{4}$ lb.; 80 cts. lb.

Take care of this Catalogue, you will find it Valuable for Reference.

LETTUCE, Continued.

Deacon or Nonpariel—This is a fine market variety, crimped, curled and well-formed heads, withstands the heat of summer well. 15 cts. oz.; 35 cts. $\frac{1}{4}$ lb.; \$1.00 lb.

California Cream Butter—This variety forms round, solid heads of good size, medium early and one of the best summer sorts. 15 cts. oz.; 35 cts. $\frac{1}{4}$ lb.; \$1.00 lb.

Grand Rapids Forcing—It is of handsome appearance, a strong grower, and not apt to rot, and will keep from wilting longer while exposed for sale than any other sort. It matures two weeks earlier than Tennis Ball. 15 cts. oz.; 30 cts. $\frac{1}{4}$ lb.; 90 cts. lb.

Big Boston—This variety resembles the well-known Boston Market Lettuce, but produces heads almost double the size and matures a week later. 15 cts. oz.; 35 cts. $\frac{1}{4}$ lb.; 90 cts. lb.

Early Curled or White Seeded Simpson—Does not head, but forms a compact, close mass of leaves, excellent for forcing. 15 cts. oz.; 30 cts. $\frac{1}{4}$ lb.; 80 cts. lb.

Black Seeded Tennis Ball—Solid, dark green heads, very hardy, one of the best for out-door growing, crisp and tender. 15 cts. oz.; 30 cts. $\frac{1}{4}$ lb.; 80 cts. lb.

White Seeded Tennis Ball—A fine early sort, small heads, very hardy, valuable to grow in cold frames in winter. 15 cts. oz.; 30 cts. $\frac{1}{4}$ lb.; 80 cts. lb.

Boston Market—The best forcing head sort, very compact and is beautiful white and crisp. 15 cts. oz.; 35 cts. $\frac{1}{4}$ lb.; \$1.00 lb.

Improved Hanson—A splendid out-door lettuce, heads very close, solid and large, crisp, tender, sweet, green out-side, white within. 15 cts. oz.; 35 cts. $\frac{1}{4}$ lb.; \$1.00 lb.

Oak Leaved—Very distinct, excellent for summer use and for growing in the south, as it resists the greatest heat. 15 cts. oz.; 35 cts. $\frac{1}{4}$ lb.; \$1.00 lb.

Paris White Cos—The best of the Cos varieties, with long upright leaves, blanches readily when tied up. 15 cts. oz.; 30 cts. $\frac{1}{4}$ lb.; \$1.00 lb.

Philadelphia Butter or Early White Head—A thick-leaved, smooth lettuce, round dark green leaves, formed into a very solid, round head; stands a long time without running to seed. The inner leaves blanch a rich yellow; quality first class. 15 cts. oz.; 35 cts. $\frac{1}{4}$ lb.; \$1.00 lb.



Will give a succession of good lettuce throughout the season. A fine contrast to our Radish Mixture, when planted along side of it. 15 cts. oz. 30 cts. $\frac{1}{4}$ lb.; \$1.00 lb.

Denver Market—An early variety in head lettuce, either for forcing or open ground, it forms large solid heads of light green color and is very slow to go to seed. 15 cts. oz.; 30 cts. $\frac{1}{4}$ lb.; \$1.00 lb.

Lettuce Mixture—All sorts. It can not fail to please.

MELON, WATER, (Ger.) Wassermelone.

Water Melons require the same treatment and soil as described for the Musk Melon, but being more tender, should be given a southern exposure if possible. The hills should be eight feet apart. *One ounce for 30 hills, about 5 lbs. for an acre.*

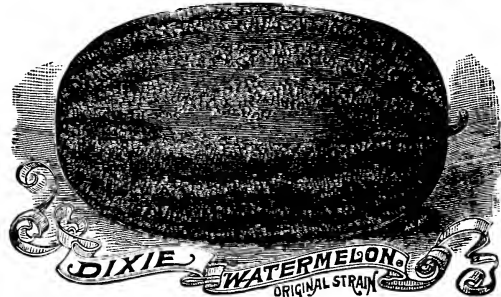
Triumph—Very prolific, early and of uniformly large size, and fine flavor. A good shipper. 10 cts. oz.; 20 cts. $\frac{1}{4}$ lb.; 60 cts. lb.

Florida Favorite—Of medium size, very prolific and unexcelled as a table variety. 10 cts. oz.; 25 cts. $\frac{1}{4}$ lb.; 70 cts. lb.

Black Spanish—Round, dark green, flesh scarlet, with delicious sweet flavor. 10 cts. oz.; 20 $\frac{1}{4}$ lb.; 60 cts. lb.

Cuban Queen—A very fine variety, growing to great size, flesh bright red, very solid and sweet. Enormously productive and an excellent keeper. 10 cts. oz.; 20 cts. $\frac{1}{4}$ lb.; 60 cts. lb.

Kolb's Gem—Light green, nearly round, averaging thirty to fifty pounds in weight, flesh bright red, rich and sweet, a good shipper. 10 cts. oz.; 20 cts. $\frac{1}{4}$ lb.; 60 cts. lb.



Dixie—Of excellent merits, recommended as *best shipping melon* grown, being even *larger, earlier and more productive* than the Kolb Gem. 10 cts. oz.; 20 cts. $\frac{1}{4}$ lb.; 60 cts. lb.

Gypsy or True Georgia Rattlesnake—Very large, long and smooth and distinctly striped, flesh bright scarlet, a favorite shipping melon in the south. 10 cts. oz.; 20 cts. $\frac{1}{4}$ lb.; 60 cts. lb.

Mammoth Ironclad—Of large size and great weight, flesh deep red and of delicious flavor. 10 cts. oz.; 20 cts. $\frac{1}{4}$ lb.; 60 cts. lb.

Mountain Sweet—Oblong, with dark green skin, flesh very solid and sweet. 10 cts. oz.; 20 cts. $\frac{1}{4}$ lb.; 60 cts. lb.

Phinney's Early—Productive, early and finely flavored, red flesh. 10 cts. oz.; 20 cts. $\frac{1}{4}$ lb.; 60 cts. lb.

Peerless or Ice Cream—Of medium size, thin rind, light green, flesh scarlet, solid to center and sweet. 10 cts. oz.; 20 cts. $\frac{1}{4}$ lb.; 60 cts. lb.

Pride of Georgia—Dark green, oval, a good shipper. If well-grown attains a large size. 10 cts. oz.; 25 cts. $\frac{1}{4}$ lb.; 70 cts. lb.

Seminole—It is of two distinct colors, gray and light green. Melons of both colors are often found on the same vine, and while of large size, it is very early, productive and of excellent quality. 10 cts. oz.; 25 cts. $\frac{1}{4}$ lb.; 70 cts. lb.

The Boss—A handsome, early, oblong variety, nearly the same thickness throughout, skin very dark, flesh deep scarlet, sugary and melting. 10 cts. oz.; 20 cts. $\frac{1}{4}$ lb.; 60 cts. lb.

True Dark Icing—Very solid, rind very thin, highly prized as a shipper. 10 cts. oz.; 20 cts. $\frac{1}{4}$ lb.; 60 cts. lb.

Light Icing—Solid, always of good flavor, and thin light green rind. 10 cts. oz.; 20 cts. $\frac{1}{4}$ lb.; 60 cts. lb.

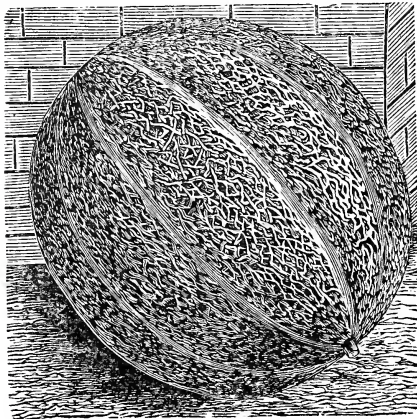
Citron—A round, handsome fruit of small size, used for making sweet meats and preserves, seeds red, flesh white. 10 cts. oz.; 25 cts. $\frac{1}{4}$ lb.; 70 cts. lb.

Sweetheart—Fruit large, oval, very heavy, uniformly mottled light and dark green, rind thin but firm, flesh bright red, firm, solid, but very tender, melting and sweet. 10 cts. oz.; 20 cts. $\frac{1}{4}$ lb.; 60 cts. lb.

MELON, MUSK, (Zucker Melone, Ger.)

A light rich soil is the most suitable for melons of all kinds. In very rich soil the hills should be six feet apart, in poor soil about five feet. Before planting the seed, mix about a peck of rotted manure with the soil in each hill. About the middle of May, plant the seeds half an inch deep, 6 or 8 in each hill. When the plants are well up, thin out, leaving 3 to a hill. *One ounce of seed to 60 hills, 2 to 3 pounds for an acre.*

Rocky Ford—This wonderful and delicious Melon has attracted more attention than ever before known in the history of the melon



trade and will soon be foremost in demand. It can not be excelled in flavor and is one of the best for shipping. No market gardener should be without it as it is sure to give satisfaction. As we only have a limited supply of this seed this season we would advise all to order early, so as not to be disappointed and thereby miss an opportunity of procuring a melon that recognizes no competition, but sells itself. It is round and of medium size, densely netted and thick meated. Will weigh an average one to one and one-half pounds each, making it one of the most desirable of melons for restaurant and hotel purposes. 10 cts. oz.; 25 cts. $\frac{1}{4}$ lb.; 85 cts. lb.

Tip Top—A yellow-fleshed melon of the very best quality. They are sweet, juicy, of finest flavor, eatable to the very rind. 10 cts. oz.; 25 cts. $\frac{1}{4}$ lb.; 90 cts. lb.

Delmonico—It is an oval melon of large size and deeply netted. The flesh is an orange color of the same fine quality as the Emerald Gem. 10 cts. oz.; 25 cts. $\frac{1}{4}$ lb.; 90 cts. lb.

Extra Early Hackensack—Fast becoming the most popular variety with market gardeners. Fruit large, round and netted. Flesh green and deliciously flavored. Very productive indeed and a good shipper. 10 cts. oz.; 25 cts. $\frac{1}{4}$ lb.; 90 cts. lb.

Emerald Gem—Of medium size, and a deep emerald green color. Flesh is a suffused salmon color, almost red; flavor is sweet and luscious. 15 cts. oz.; 35 cts. $\frac{1}{4}$ lb.; \$1.00 lb.

Acme—The gardener's favorite. Slightly oblong and netted. The flesh is light green and thick, and has a rich, sweet flavor. It is a distinct variety, and one of the best for marketing. 15 cts. oz.; 35 cts. $\frac{1}{4}$ lb.; \$1.00 lb.

Large Hackensack—Early, round, netted, deeply ribbed, flesh green, very sweet and highly flavored. 10 c. oz.; 25 c. $\frac{1}{4}$ lb.; 90c. lb.

Jenny Lind—A small, very early variety, round, netted, flesh light green, excellent flavor. 10 cts. oz.; 25 cts. $\frac{1}{4}$ lb.; 90 cts. lb.

Orange Christiana—Early, very productive, thick fleshed, melting, delicious. 10 cts. oz.; 25 cts. $\frac{1}{4}$ lb.; 75 cts. lb.

Improved Cantaloupe—Flesh light green, very prolific. 10 cts. oz.; 25 cts. $\frac{1}{4}$ lb.; 75 cts. lb.

Casaba or Large Persian—Green flesh, oblong form and large size. 10 cts. oz.; 25 cts. $\frac{1}{4}$ lb.; 75 cts. lb.

Montreal Market—Very large sort, nearly round, densely netted, deeply ribbed, green-fleshed, thick and of a delicious flavor, a great bearer and very popular. 15 cts. oz.; 35 cts. $\frac{1}{4}$ lb.; \$1.00 lb.

Netted Gem—Very early, small, coarsely netted, green flesh, fine flavored. 10 cts. oz.; 25 cts. $\frac{1}{4}$ lb.; 85 cts. lb.

MELON, MUSK, Continued.

Skillman's Netted—An early sort, roundish-oval, flesh deep green, sweet, richly perfumed, delicious flavor. 10 cts. oz.; 25 cts. $\frac{1}{4}$ lb.; 75 cts. lb.

Green Nutmeg—Very early, small, round, netted, green-fleshed sort, exceedingly sweet. 10 cts. oz.; 25 cts. $\frac{1}{4}$ lb.; 75 cts. lb.

Miller's Cream—A most delicious melon. The flesh is of a rich salmon color, very sweet and melting in quality and very thick. It is a strong grower and productive. 10 cts. oz.; 40 cts. $\frac{1}{4}$ lb.; \$1.20 lb.

MUSTARD, (Senf, Ger.)

Sow thickly in drills, eight or ten inches apart, in rich, loamy soil, covering the seeds half an inch deep. When young, the leaves are used in salad, and in a more advanced stage, as greens, in the same way as spinach. Sowing may be made from April to July.

White—The best for salads, the seeds are also used for mixing with pickles and for preserving cider. 10 cts. oz.; 15 cts. $\frac{1}{4}$ lb.; 80 cts. lb.

Brown—The mustard of commerce, more pungent than the White for this purpose. 10 cts. oz.; 15 cts. $\frac{1}{4}$ lb.; 80 cts. lb.

NASTURTIUM, (Nasturtium, Ger.)

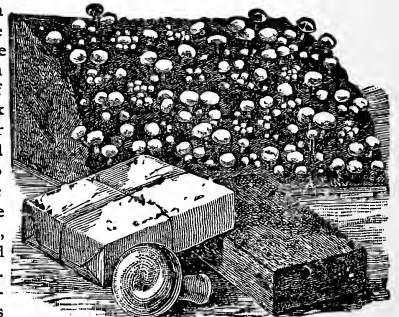
The young seed-pods are much esteemed for capers; making very delicate pickles. The plants are also highly ornamental, and are worthy of a place in the flower-garden for the sake of their brilliant flowers.

Tall Mixed—10 cts. oz.; 25 cts. $\frac{1}{4}$ lb.; 75 cts. lb.

Dwarf Mixed—10 cts. oz.; 25 cts. $\frac{1}{4}$ lb.; 75 cts. lb.

MUSHROOM SPAWN.

In preparing a mushroom bed, take three parts fresh stable manure, free from straw, and one part of good pasture soil. Mix thoroughly together and let it stand until the heat has sunk to about 90°. Make the bed from this mixture about four feet wide, eight inches deep, and any desired length. As soon as the temperature of the bed is about 70° or 80°, the spawn may be inserted in pieces about the size of a walnut, and six inches apart each way. When the spawn is diffused through the whole bed, which will be in about ten days from planting, cover with two inches of fine loam and press down firmly. Over this place a layer of straw about four inches thick. Do not water unless the surface gets extremely dry, and then only with water at a temperature of 80°. When gathering the crop, twist them off at the roots and do not use a knife. Cover the hole with soil to keep insects away from the root. Mushrooms can be grown in a great variety of situations; under the benches in a green house, a dark room, cellar, stable or elsewhere. *A pound of spawn will plant a space three feet by four*



English Mill Track Spawn—(in bricks). 15 cts. lb. (mail 25 cts. lb.) 10 lbs. \$1.00.

Treatise on Mushroom Culture—10 cts. each, postpaid.

Falconer's Mushroom Culture—Cloth. \$1.00 postpaid.

ONION, (Zwiebeln, Ger.)

A light, loamy soil suits the onion best, and it may be grown for many consecutive years on the same ground. Previous to sowing, the ground should be well manured and deeply plowed. Harrow and rake the surface smooth and even. As early in spring as possible, sow the seed in drills 14 inches apart and half an inch deep, rolling firmly over the seed. A cultivator may be used between the drills, being careful not to throw too much over the crop. Weed the drills very carefully and never allow the weeds to get ahead of the young plants. *One ounce to 100 feet of drill, 4 to 5 pounds per acre.*

Extra Early Red—A very early variety, of medium size, deep red, mild flavor, largely grown for sets. 15 cts. oz.; 40 cts. ¼ lb.

Large Red Wethersfield—Excellent flavor, grows large, hardy and keeps well. 15 cts. oz.; 40 cts. ¼ lb. \$1.25 lb.

Danver's Yellow Globe—Early, with very small neck, large size, fine quality and good keeper, the best for general crop. 15 cts. oz.; 40 cts. ¼ pound. \$1.25 lb.

Large Yellow Dutch—Favorite old variety, large, round and excellent keeper. 10 cts. oz.; 35 cts. ¼ lb. \$1.20 lb.

Prize Taker—The skin is a bright straw color, flesh white, very thick and of mild flavor. It is to-day one of the largest, handsomest and most profitable variety grown. 15 cts. oz.; 40 cts. ¼ lb.

White Portugal or Silver Skin—Early, mild flavored and excellent for first crop. 20 cts. oz.; 60 cts. ¼ lb.

White Globe—This variety yields abundantly, produces handsome, globe-shaped bulbs, the flesh is firm, fine grained of mild flavor. 20 ct. oz.; 60 cts. ¼ lb.

White Queen—Beautiful white skin, the earliest variety, most excellent flavor and a good keeper. 20 cts. oz.; 60 cts. ¼ lb.

Mammoth Silver King—One of the largest onions in cultivation, early, shape flat, but very thick, skin a silver white, flesh mild, delicate and of snowy whiteness, a handsome and very popular variety. 20 cts. oz.; 60 cts. ¼ lb.

ONION SETS.

Add 5 cents per pint and 10 cents per quart for Postage.

These are valuable for early use and where onions from seed can not be raised the first year. Plant near the surface in drills 12 inches apart and 4 inches in the rows.



Yellow Bottom Sets,	} 20 cts. qt. Price per peck and bushel on applica- tion.
Red Bottom Sets,	
White Bottom Sets,	
Top Sets,	
Potato Sets,	
White Multiplier Sets,	

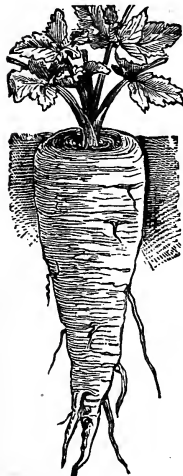
OKRA or GUMBO, (Ocker, Ger.)

The young, green seed-pods of this plant, are used in soups, or stewed and served like asparagus. The young pods can also be dried for winter use.

Improved Dwarf Green—This variety has long, slender pods, very early, productive, and only grows 14 inches high. 10 cts. oz.; 20 cts. ¼ lb.; 60 cts. lb.

White Velvet—The pods of this variety are round and smooth, and much larger than the common varieties, and are produced in great abundance. 10 cts. oz.; 20 cts. ¼ lb.; 60 cts. lb.

PARSLEY, (Petersilie, Ger.)



Parsley succeeds best in a rich, mellow soil. As the seeds germinate very slowly, three or four weeks elapsing sometimes before it makes its appearance, it should be sown early in spring. Sow thickly in rows a foot apart and half an inch deep. For winter use, protect in a frame or light cellar. *One ounce will sow 150 feet of drill.*

Double Curled—A fine dwarf variety, beautifully curled, excellent for garnishing. 15 cts. oz.; 35 cts. ¼ lb.; \$1.00 lb.

Champion Moss Curled—A very select stock, beautifully crimped and curled. 15 cts. oz.; 35 cts. ¼ lb.; \$1.00 lb.

Plain Leaved—Very strong flavor. 10 cts. oz.; 35 cts. ¼ lb.; \$1.00 lb.

PARSNIP, (Pastinake, Ger.)

Sow as early in the spring as the weather will admit, in drills 15 inches apart in the rows. Unlike carrots, they are improved by frost, and it is usual to take up in fall a certain quantity for winter use, leaving the rest in the ground until spring, to be dug up as required. *One ounce will sow 200 feet of drill, five pounds to an acre.*

Long Sugar—The best for general use. 10 cts. oz.; 20 cts. ¼ lb.; 60 cts. lb.

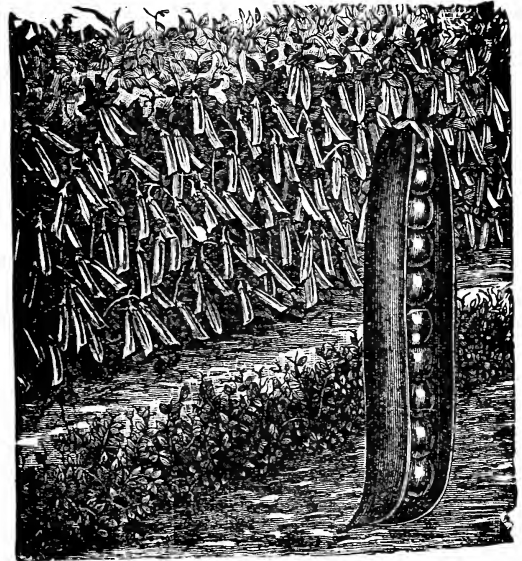
Hollow Crown—Good old sort. 10 cts. oz.; 20 cts. ¼ lb.; 60 cts. lb.

PEAS, (Erbsen, Ger.)

Peas come earlier to maturity in light, rich soil. For general crop a good dressing should be applied, and for the dwarf-growing kinds the soil can hardly be too rich. Plant the early varieties as soon as the ground can be worked, the others in succession from April to June. For private use they are generally sown in double or single rows, in drills, about two feet apart and three inches deep, for the dwarf varieties, three to four feet apart and four inches deep for the taller varieties. Those growing over two and a half feet in height should be bushed. *One ounce to 80 feet of drill, 1½ bushel for one acre.*

Add 10 cts. per pound, if sent by mail.

Wrinkled Varieties Marked*.



First and Best—My selected stock of this fine, standard variety is quite unsurpassed for earliness, productiveness, excellent flavor and size of pod, two feet high. 15 cts. lb.; 30 cts. qt.

Alaska—One of the earliest and most productive of the very early peas, distinct, two feet. 15 cts. lb.; 30 cts. qt.

Maud S—Have a limited supply from original stock. 15 cts. lb.; 30 cts. qt.

Philadelphia Extra Early—The well-known early variety, height two and a half feet. 15 cts. lb.; 25 cts. qt.

Improved Daniel O'Rourke—Very early, fine cropper, long pods, exquisite flavor, height two and a half feet. 15 cts. lb.; 25 cts. qt.

Early Kent or May—A favorite first early variety. 15 cts. lb.; 25 cts. qt.

Tom Thumb—An old and well-known dwarf sort, height ten inches. 15 cts. lb.; 30 cts. qt.

American Wonder—A remarkably fine, dwarf wrinkled variety, extra early, requires no bushing, very sweet marrow, height about one foot. 15 cts. lb.; 30 cts. qt.

McLean's Little Gem—An early green marrow of excellent quality and an abundant bearer, height one and one-half foot. 15 cts. lb.; 30 cts. qt.

Advancer—A finely flavored green wrinkled marrow, very productive and uniform, we can not recommend this sort too highly, height two and a quarter feet. 15 cts. lb.; 30 cts. qt.

Improved Champion of England—One of the best peas grown, unsurpassed in flavor, sweetness and general excellence. Our stock is maintained pure by careful selection, height five feet. 15 cts. lb.; 30 cts. qt.

Stratagem—The best late marrow pea grown, immense pods, splendid flavor, vigorous growth, very popular, height two and a half feet. 15 cts. lb.; 30 cts. qt.

Carter's Telephone—Green wrinkled, peculiar light shade of green, productive, pods unusually large size, elegant shape, slightly curved, well filled with peas, large size, good quality, height three and a half feet. 15 cts. lb.; 30 cts. qt.

Alderman—Vines grow about 5 ft. high. Peas of large size, unsurpassed in quality. 15 cts. lb.; 30 cts. qt.

Telegraph or Long Island Mammoth—A good main crop variety, producing strong growing vines with very large dark green pods. 15 cts. lb.; 30 cts. qt.

Black Eye Marrow—A good late sort for market, hardy, productive, excellent either as a field or table pea, height three feet. 15 cts. lb.; 25 cts. qt.

Our "Emerald Lawn Grass Seed" cannot be excelled.

Will make a good lawn first season from seed.

PEAS, Continued,

*** Carter's Daisy or Dwarf Telephone**—It grows about 18 inches high and is remarkable for its abundance of large, well-filled pods. It is a dwarf early form of the popular Telephone. It is of healthy, stocky growth, and requires no brush. 20 cts. lb.; 35 cts. qt.

*** Nott's Excelsior**—Remarkably hardy and productive one of the earliest of wrinkled peas. It is unsurpassed in size and quality. 20 cts. lb.; 35 cts. qt.

Large White Marrow—One of the best late sorts, very productive, good flavor, height five feet. 15 cts. pt.; 25 cts. qt.

*** Bliss' Everbearing**—Height, 18 inches, a continuous bearing wrinkled variety. The best for late planting. 15 cts. pt.; 30 cts. qt.

*** Thomas Laxton**—The introducers of this variety claim that in point of earliness, size of pod and table quality it excels any sort now in use. 20 cts. lb.; 40 cts. qt.

*** Carter's Premium Gem**—An improved Little Gem. Dwarf, prolific, fine flavored, large pods, excellent, either for market or home use, height one and one-half feet. 20 cts. lb.; 35 cts. qt.

Melting Sugar—An edible podded variety growing from four to five feet high; pods very large, four to five inches long, and one or more broad, each usually containing from five to eight large peas. Being edible podded, it should be used the same way as a wax bean; very sweet and tender. 20 cts. lb.; 35 cts. qt.

Pride of the Market—A strong growing variety, growing from 18 to 24 inches high, and is very productive. The pods are unusually large and the peas, when cooked, are of very superior quality. 15 cts. lb.; 30 cts. qt.

Canada Field—Mostly used as a field crop. 10 cts. lb.; 65 cts. pk. Subject to market change.

PEPPER, (Pfeffer, Ger.)

A light, warm loam is the best soil for peppers. Sow in March or April, in a hot-bed, and transplant when the weather is warm. They are quite tender, and will not bear frost. Set the plants fifteen inches apart, and two feet between the rows. One ounce for 1,500 plants.

Golden Dawn—A new variety, very handsome, golden yellow, sweet, mild, and very productive. 20 cts. oz.; 60 cts. $\frac{1}{4}$ lb.; \$2.00 lb.

Chinese Giant—Double the size of Ruby King. Flesh very mild and thick. Excellent sliced for salad. 35 cts. oz.; \$1.00 $\frac{1}{4}$ lb.

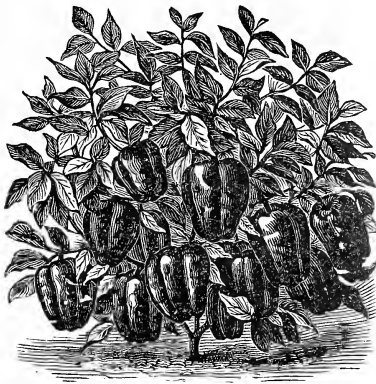
Red Chili—Small, cone-shaped, bright red, fiery. 25 cts. oz.; 75 cts. $\frac{1}{4}$ lb.

Large Bell or Bull Nose—Large, early bright red, mild. 20 cts. oz.; 60 cts. $\frac{1}{4}$ lb.; \$2.00 lb.

Sweet Mountain—A large early sort, mild and excellent, bright red. 25 cts. oz.; 75 cts. $\frac{1}{4}$ lb.

Long Red Cayenne—Long bright red, fiery. 20 cts. oz.; 60 cts. $\frac{1}{4}$ lb.; \$2.00 lb.

Ruby King—Beautiful, bright red, large fruit and mild, the best pepper for mangoes in cultivation. 25 cts. oz.; 75 cts. $\frac{1}{4}$ lb.; \$2.25 lb.



PUMPKIN, (Kuerbis, Ger.)

These are usually grown for stock feed, and are generally scattered at intervals in the hills while planting sweet corn. For making pumpkin pies the squashes are very much superior. One ounce to fifteen hills 3 to 4 pounds to an acre.

Large Cheese—Very superior, productive, fine grained, good flavor, cheese shaped. 10 cts. oz.; 20 cts. $\frac{1}{4}$ lb.; 50 cts. lb.

Cashaw—One of the largest and best, yellow solid, good keeper. 10 cts. oz.; 25 cts. $\frac{1}{4}$ lb.; 75 cts. lb.

Large Tours—Grows enormously large, round, flattened, skin salmon, flesh yellow, fine grained, good quality. 15 cts. oz.; 35 cts. $\frac{1}{4}$ lb.

Tennessee Sweet Potato—An excellent variety for pies, pear shaped, of medium size, flesh and skin creamy white, fine grained, very sweet and delicious. 10 cts. oz.; 25 cts. $\frac{1}{4}$ lb.; 75 cts. lb.

Kentucky Field—Good for cooking purposes or for feeding stock. 10 cts. oz.; 20 cts. $\frac{1}{4}$ lb.; 40 cts. lb.

Connecticut Field—The common yellow pumpkin. 10 cts. oz.; 20 cts. $\frac{1}{4}$ lb.; 40 cts. lb.

Mammoth—This is the Big Show Pumpkin, catalogued under the various aliases, "King of the Mammoths," "Jumbo," "True Potiron," "\$50 Prize," etc. Specimens have weighed over 200 pounds. Skin, salmon color; flesh, bright yellow. Keeps a long time. 15 cts. oz.; 35 cts. $\frac{1}{4}$ lb. \$1.25 lb.

RADISH, (Radies, Ger.)

All the varieties thrive best in a light, sandy loam. For early use sow in the hot-bed in February, giving plenty of ventilation, or outside in drills as soon as the soil can be got in order, covering the seed about half an inch deep. Sow every two weeks, from March to September, for a succession, they must grow rapidly to be crisp, mild and tender. One ounce sows 100 feet of drill, 8 to 10 pounds to an acre.

Cincinnati Market—Grows six to seven inches in length, straight, and smooth, flesh is exceedingly tender, crisp and delicious; never becomes hollow and pithy. Skin is very thin and has an attractive, glossy appearance. Undoubtedly the finest long red Radish for either the market or house gardener. 10 cts. oz.; 25 cts. $\frac{1}{4}$ lb.; 70 cts. lb.

White Icicle—The roots of this radish grow about 4 inches long, are of transparent whiteness, with short leaves, and make their growth very quickly. It is of most excellent flavor and equally desirable for home use and market gardeners. 10 cts. oz.; 25 cts. $\frac{1}{4}$ lb.; 75 cts. lb.

Early Scarlet Turnip—The standard early, short, quick-growing variety. 10 cts. oz.; 20 cts. $\frac{1}{4}$ lb.; 60 cts. lb.

Early White Turnip—Of mild flavor, excellent for summer use. 10 cts. oz.; 20 cts. $\frac{1}{4}$ lb.; 60 cts. lb.

Early Long Scarlet Short Top—The standard variety for market and private use. 10 cts. oz.; 20 cts. $\frac{1}{4}$ lb.; 60 cts. lb.

French Breakfast—Form oval, scarlet, tipped with white, quick growing, and excellent flavor. 10 cts. oz.; 20 cts. $\frac{1}{4}$ lb.; 60 cts. lb.

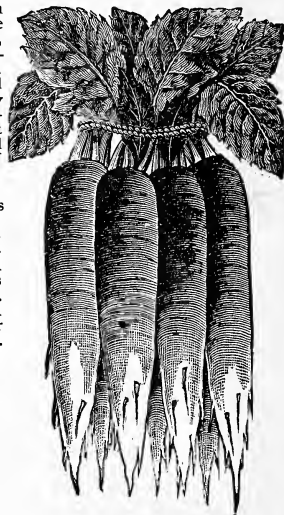
Golden Globe—This variety is very popular. It is of a quick growth, tender and brittle, of perfect globe shape. 10 cts. oz.; 25 cts. $\frac{1}{4}$ lb.; 60 cts. lb.

Chartier—Grows to a large size without losing its tenderness; scarlet, tipped with white, long crisp and tender. 10 cts. oz.; 20 cts. $\frac{1}{4}$ lb.; 50 cts. lb.

Giant White Stuttgart—A quick-growing early sort, largest size, flesh and skin pure white, fine quality; firm and brittle, never gets pithy. 10 cts. oz.; 20 cts. $\frac{1}{4}$ lb.; 50 cts. lb.

White Strasburg—A large, handsome, white variety, of excellent quality; early. 10 cts. oz.; 20 cts. $\frac{1}{4}$ lb.; 60 cts. lb.

Long White Naples—A handsome, long, clean, white radish, crisp and tender, good for summer use. 10 cts. oz.; 20 cts. $\frac{1}{4}$ lb.; 60 cts. pound.

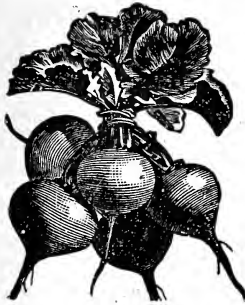


Poor Seed invariably causes loss and disappointment. The cheapest is never the best. The best is always the cheapest.

RADISH, Continued.

Brightest Long Scarlet—It is very early, maturing in 20 to 25 days, the flesh crisp and tender, excellent for home garden and particularly desirable for the market, as it sells quickly because of its fine color and form. 10 cts. oz.; 20 cts. ¼ lb.; 50 cts. lb.

Wood's Early Frame—Long scarlet radish, excellent for forcing. 10 cts. oz.; 20 cts. ¼ lb.; 60 cts. lb.



Golden Dresden—We recommend it alike for family garden and for market as one of the most valuable and quick growing radishes. Tops very scant and admit of close planting. It is perfectly round, smooth and very attractive, light golden brown skin. The flesh is crisp, white, juicy and of finest flavor. Market gardeners can grow this new radish in the garden or force it, and depend upon a remarkable perfect, early, uniform crop. 10 cts. oz.; 25 cts. ¼ lb.; 75 cts. lb.

Chinese Rose Winter—Popular winter sort, medium size, bright rose, excellent. 10c. oz.; 20c. ¼ lb.; 60c. lb.

Round Black Spanish—A winter variety, large, mild and firm, skin black, flesh white. 10 cts. oz.; 20 cts. ¼ lb.; 60 cts. lb.

Long Black Spanish—Same as above, except in shape. 10 cts. oz.; 20 cts. ¼ lb.; 60 cts. lb.

California Mammoth White—Grown extensively by Chinese in California, 8 to 12 inches long, 2 to 3 inches in diameter, white, solid, good flavor. 10 cts. oz.; 20 cts. ¼ lb.; 60 cts. lb.

Radish Mixture, all sorts—This is especially adapted to the wants of those having only a small garden, as it contains all of the leading varieties, and will give a succession of fine radishes. Try a package. It will please you. 10 cts. oz.; 20 cts. ¼ lb.; 50 cts. lb.

RHUBARB, (Rhabarber, Ger.)

A deep, rich soil is best for rhubarb, sow early in drills 18 inches apart and 1 inch deep, the spring following transplant, allowing each plant at least 2 feet square. *One ounce for about 800 plants.*

Linnaeus—Extra large, tender. 15 cts. oz.; 50 cts. ¼ lb.; \$1.50 lb.

SALSIFY, (Hafer-wurzel, Ger.)

Commonly called Vegetable Oyster. Used stewed, boiled or fried. When cooked has an oyster flavor. Sow early in drills 15 inches apart, cover the seed with fine soil, an inch and a half deep. *One ounce will sow 50 feet, seven pounds to an acre.*

Long White French—The standard variety. 10 cts. oz.; 25 cts. ¼ lb.; 60 cts. lb.

Mammoth Sandwich Island—This variety is of enormous size, twice as large as the ordinary sort, very tender and delicious. 15 cts. oz.; 35 cts. ¼ lb.; \$1.25 lb.

SPINACH, (Spinat, Ger.)



This is the best developed and most tender and succulent when grown in very rich soil. For summer use sow early in spring in drills 15 inches apart, and make sowings every two weeks. For spring use sow in September, and cover lightly in November with light litter. *One ounce to 100 feet of drill. Ten to twelve pounds per acre.*

Bloodsdale Savoy—Thick, succulent leaves, very productive and hardy. 15 cts. ¼ lb.; 35 cts. lb.

Round Thick Leaf—One of the best for early spring or fall sowing, leaves large, thick and succulent. 15 cts. ¼ lb.; 35 cts. lb.

Long Standing Thick Leaved—Does not run to seed so readily as the other. 15 cts. ¼ lb.; 35 cts. lb.

Prickly—Vigorous and hardy, good for winter. 15c ¼ lb.; 35c lb.

Special Prices given on Spinach in quantity.

ABOVE PRICES INCLUDE POSTAGE. Persons purchasing Seeds at our counters, or who wish to pay their own express charges, may deduct 10 cents per pound from all Seed bought by the pound, if quoted at prepaid rates.

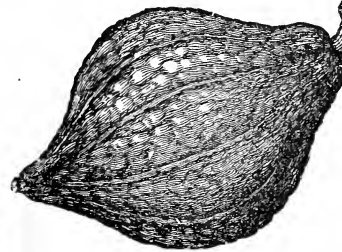
SQUASH, (Kuerbis, Ger.)

The squash is of tropical origin, and only succeeds well in a warm temperature, consequently the seeds should not be planted out until the ground is warm and mellow. The hills should be about six feet apart for winter varieties, and four feet for summer sorts. Plant a dozen seeds in each hill. Thin out the weakest vines, and when all danger from bugs is past, leave three vigorous vines to the hill. Cultivate well, and keep the ground clear of weeds. *One ounce of seed to about 40 hills, four to six pounds to the acre.*

Early White Bush or Patty Pan—A scalloped sort, best for early use. 10 cts. oz.; 25 cts. ¼ lb.; 80 cts. lb.

Summer Crook-Neck—The old standard sort; very early and productive. 10 cts. oz.; 25 cts. ¼ lb.; 80 cts. lb.

Mammoth Chili—Oblong, productive; profitable for stock feeding. 15 cts. oz.; 45 cts. ¼ lb.; \$1.25 lb.



American Turban—Excellent quality, flesh thick and sweet, superior fall sort. 10 cts. oz.; 25 cts. ¼ lb.; 80 cts. lb.

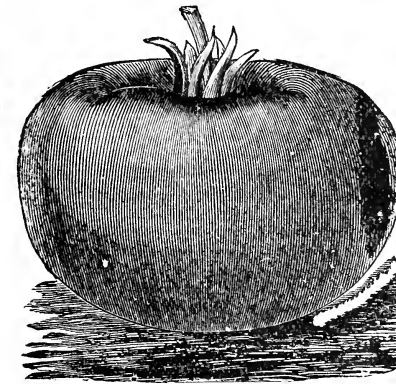
True Hubbard—A general favorite, hard, dark green shell, meat thick, dry and finely flavored. 10 cts. oz.; 25 cts. ¼ lb.; 80 cts. lb.

Boston Marrow—Good keeper and of excellent flavor, shell orange, quite hard, several weeks earlier than the Hubbard. 10c. oz.; 25c. ¼ lb.; 80c. lb.

Marblehead—Color light blue, splendid keeper, for sweetness, dryness and fine flavor quite unsurpassed. 10c. oz.; 25c. ¼ lb.; 80c. lb.

Vegetable Marrow—A favorite English sort. The fruit is from nine to eighteen inches in length, and four to six inches in diameter. Skin a greenish yellow; flesh, white, soft and of rich flavor. Plant 8 feet apart. 10 cts. oz.; 25 cts. ¼ lb.; 75 cts. lb.

TOMATO, (Liebesapfel, Ger.)



To obtain fruit very early, sow in the hot-bed in March. In about 5 weeks plants should be transplanted to another hot-bed, setting them 4 or 5 inches apart. Here they should remain, having all the air possible, until about the middle of May, when they may be put out in the ground. If not too early or too cold, a cold frame will answer for the first transplanting. Pinching off a portion

of the side branches, and stopping others just beyond where the fruit is formed, hastens the ripening. Very good plants can be grown in boxes in the house. *One ounce of seed will produce about 1500 plants.*

Buckeye State—The tomatoes are borne in immense clusters of four to eight fruits, and occasionally ten large fruits have been found on a single cluster. In solidity and meatiness it has no equal, while in luscious qualities none surpass it. The color is much the same as Beauty, but a darker and richer shade, and this, together with its very large size and clear-cut outlines, makes it very showy and striking. *One ounce will produce 100 plants. 20 cts. oz.; 70 cts. ¼ lb.; \$2.00 lb.*

Ponderosa—This monster tomato is all solid meat, being uniformly large, smooth, of dark rich crimson color, and a delicious sub-acid flavor. 25 cts. oz.; 80 cts. ¼ lb.

Earliana—An early sort of merit, said to be the earliest all tomatoes; it is of uniform size and brilliant red color, of good quality. 25 cts. oz.; 70 cts. ¼ lb.

Stone—An excellent shipping variety, quality the very best, fine for canning, fruit large, very smooth, and of bright scarlet color, flesh firm and solid. 20 cts. oz.; 60 cts. ¼ lb.; \$2.00 lb.

TOMATO, Continued.

Trucker's Favorite—It begins to ripen quite early and continues to bear profusely until frost; nothing exceeds it in productiveness; the fruit is large, solid, and smooth, beautiful reddish purple; presents a remarkably fine appearance, a good shipper. In fact, it will be found one of the most profitable tomatoes for main crop for the market gardener. 26 cts. oz.; 75 cts. ¼ lb.

Imperial—A sort introduced as very early and superior in size and quality to the Beauty. We have a stock of it carefully grown from seed secured from the originators, and while we find it a large, handsome purple tomato, it has not proved earlier or superior to our carefully tried and selected strain of Beauty, which it resembles. 20 cts. oz.; 60 cts. ¼ lb.; \$2.00 lb.

Dwarf Champion—This fine sort is quite distinct and very early. The foliage is dark and the stem stiff, so that the plants stand up well, even when loaded with fruit. The fruit is smooth, solid and excellent. 25 cts. oz.; 75 cts. ¼ lb.

Atlantic Prize—Vine medium size, with few leaves, very heavy, bearing the fruit low down on the stem and in enormous clusters, which ripen all together. Those whose trade demands that they have a large, smooth, good flavored, very early red fruit, will find this variety to be just what they want. 25 cts. oz.; 60 cts. ¼ lb.; \$2.00 lb.

Golden Queen—The best yellow, medium early, smooth, round, very productive, excellent quality. 20 cts. oz.; 60 cts. ¼ lb.; \$2.00 lb.

Livingston's Beauty—Color very glossy crimson, grows in clusters of four or five fruits, large and solid. 25 cts. oz.; 60 cts. ¼ lb.; \$2.00 lb.

Livingston's Favorite—Productive, good flavor, few seeds, flesh solid, smooth and handsome. 25 cts. oz.; 60 cts. ¼ lb.; \$2.00 lb.

Livingston's Perfection—Early, large, smooth and solid, blood red color. 20 cts. oz.; 60 cts. ¼ lb.; \$2.00 lb.

Early Acme—One of the earliest. The fruit is of medium size, perfectly smooth and regular in shape, color quite distinct, being a dark red, with a purplish tinge. 25 cts. oz.; 60 cts. ¼ lb.; \$2.00 lb.

Trophy—Fruit very large, solid and heavy, excellent for main crop. 25 cts. oz.; 60 cts. ¼ lb.; \$2.00 lb.

Cincinnati Purple—A valuable variety, especially adapted for canning and shipping. It is very large, color a dark purplish red, very productive and of rich flavor. 25 cts. oz.; 60 cts. ¼ lb.; \$2.00 lb.

Matchless—A large bright red tomato, which has become very popular in the East. The fruit is large, very smooth and symmetrical, ripening well to stem. 20 cts. oz.; 60 cts. ¼ lb.; \$2.00 lb.

Yellow Pear Shape—Fine for preserves or pickling. 25 cts. oz.; 75 cts. ¼ lb.; \$2.50 lb.

Cherry, Red and Yellow—For preserves and pickling. 25 cts. oz.; 75 cts. ¼ lb.; \$2.50 lb.

TOBACCO, (Taback, Ger.)

The seed should be sown as early as possible after the danger of frost is over. Cover very lightly, and when the plants are about six inches high, transplant in rows six feet apart each way.

Connecticut Seed Leaf—A long leaf, fine texture. 25 cts. oz.; 75 cts. ¼ lb.; \$2.75 lb.

Havana—Pure Cuban grown seed. 80 cts. oz.; 90 cts. ¼ lb.; \$3.25 lb.

White Burley—A variety largely grown for manufacture of fine cut and plug. 25 cts. oz.; 85 cts. ¼ lb.; \$3.00 lb.

TURNIP, (Rueben, Ger.)

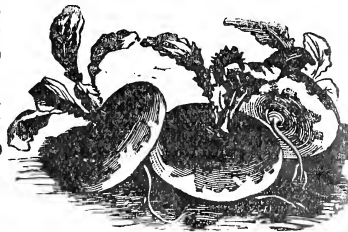
Turnips for early use may be sown as soon as the ground opens in Spring. For Fall and Winter use, sow the early sorts from July to the middle of August, the Ruta Bagas from June to the middle of July. They may be sown either broadcast or in drills. The best crops can be raised from drills, 18 inches apart, and the plants thinned to six inches asunder. *One ounce to 150 feet of drill, 1 pound per acre in drills.*

Early Purple Top Munich—The best extra early turnip, good quality. 10 cts. oz.; 25 cts. ¼ lb.; 60 cts. lb.

Purple Top Flat Strap Leaf—The popular early variety, excellent for market or private gardens. 10 cts. oz.; 20 cts. ¼ lb.; 60 cts. lb.

White Flat Strap Leaf—The best early white variety, for table or market use. 10 cts. oz.; 20 cts. ¼ lb.; 60 cts. lb.

Long White, or Cow Horn—Grows quickly, partly above ground; very productive; flesh white, fine grained and sweet, of excellent quality for family and market gardeners' use. 10 cts. oz.; 20 cts. ¼ lb.; 60 cts. lb.



Purple Top White Globe—An early variety very heavy crop per. 16 cts. oz.; 20 cts. ¼ lb.; 50 cts. lb.

Yellow Aberdeen—Very hardy and productive, fine form and excellent variety. 10 cts. oz.; 20 cts. ¼ lb.; 60 cts. lb.

Seven Top—Very hardy, is left standing in the ground during the winter in the Southern States, in the Spring yields abundant foliage for greens. 10 cts. oz.; 20 cts. ¼ lb.; 50 cts. lb.

White Egg—Early, egg shaped, white, fine and sweet. 10 cts. oz.; 20 cts. ¼ lb.; 50 cts. lb.

RUTA BAGA or SWEDISH TURNIP.

The Ruta Baga Turnip is extensively grown as a farm crop, the roots are close grained, very hard and will endure a considerable degree of cold without injury, excellent for the table in early spring.

Improved American Purple Top—A fine variety, grown both for table and for stock, flesh solid, fine quality, keeps well until Summer. 20 cts. ¼ lb.; 50 cts. lb.

Carter's Imperial—A purple top, yellow variety, productive, one of the best for field culture. 20 cts. ¼ lb.; 50 cts. lb.

White Sweet German—A white, globe-shaped variety, superior for table use, of excellent quality, good keeper. 10 cts. oz.; 20 cts. ¼ lb.; 50 cts. lb.

HERB SEEDS.

Sow early in April or May, in a sheltered, well-prepared spot in the open ground, either broadcast or in shallow drills about seven inches apart. Thin out the Plants thus raised, and keep clear from weeds. A few sweet aromatic and medicinal herbs are very valuable for flavoring soups, etc., and care should be taken to harvest them properly on a dry day, as they come into full blossom, then dry quickly and pack closely, entirely excluding the air.

	PER OZ.	PKT		PER OZ.	PKT
Anise, biennial	15c.	5c	Lavender, perennial, 2 ft.	20c.	5c
Balm, Sweet, perennial, 1 ft.	30c.	5c	Rosemary, perennial, 4 ft.	30c.	5c
Basil, Sweet, annual, 1 ft.	20c.	5c	Saffron, annual, 8 ft.	10c.	5c
Caraway, perennial, 2 ft.	10c.	5c	Sage, annual, 1 ft., 50c ¼ lb.	15c.	5c
Dill, biennial, 8 ft.	10c.	5c	Summer Savory, annual	15c.	5c
Fennel, Sweet, perennial, 6 ft.	10c.	5c	Sweet Marjoram, annual	20c.	5c
Horshound, perennial, 2 ft.	25c.	5c	Thyme, annual, 1 ft.	30c.	5c
Hyssop, perennial, 8 ft.	25c.	5c			

VEGETABLE PLANTS AND ROOTS.

As we grow these plants ourselves, they are always well packed and can be shipped fresh from beds on short notice.

PRICES DO NOT INCLUDE PREPAYMENT BY MAIL OR EXPRESS.

Asparagus Roots.		Pepper Plants.	
	per per	(READY JUNE 1ST.)	
	100 1000	per per	
Colossal—2yroid roots. \$	75 36 00	doz.	100
Palmetto " "	1 00 7 00	Large Bell or Bull Nose	25 \$150
		Ruby King	25 150
Early Cabbage Plants.		Rhubarb Roots.	
(READY ABOUT APRIL 1ST.)		(READY APRIL 1ST.)	
Early Jersey Wakefield	50 4 00		each. per
Louisville Drumhead	50 4 00	Single Eye	05 50
		Large Clumps	25 c each
Late Cabbage Plants.		Sweet Potato Plants.	
(READY IN JUNE.)		(READY EARLY IN JUNE.)	
Large Late Drumhead	30 2 50		per per
Premium Flat Dutch	30 2 50		100 1000
Cauliflower.		Tomato Plants.	
(READY MAY 1ST.)		(READY ABOUT MAY 1ST.)	
	per per		per per
	doz. 100.	Nansemond Yellow	30 2 50
Henderson's Snowball	\$ 25 \$150	Jersey Yellow	30 2 50
Early Dwarf Erfurt	25 1 50	Red Bermuda	35 3 00
		Southern Queen	35 3 00
Celery Plants.		Horse Radish Sets.	
(READY JUNE TO AUGUST.)		(READY ABOUT MAY 1ST.)	
	per per		Per Doz 15
	100 1000		Per Hund. 75
White Plume	50 3 50		Per Thousand \$8 00
Golden Heart	50 3 50		
Golden Self-Blanching	50 3 50		
Egg Plants.			
(READY IN JUNE.)			
	per per		
	doz. 100		
New York Improved	40 2 50		

We are Growers of Vegetable Plants and have them Fresh Every Day in the Season.

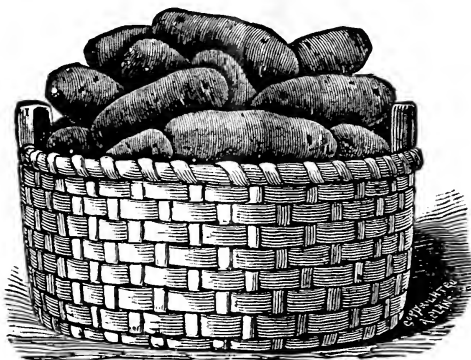
SELECTED SEED POTATOES, (Kartoffel, Ger.)

OUR Seed Potatoes are grown in the best northern districts and expressly for seed purposes. As prices are liable to vary, we shall be pleased to give quotations on application. Our supply has been secured from reliable growers, and include the following varieties.

Early Ohio—A seedling of the Early Rose, a week earlier, of excellent quality, tubers round and oblong in shape, flesh solid, cooks dry and mealy.

Early Rose—The leading variety for earliness and productiveness.

Early Six Weeks—Extra early, tubers oblong in shape, flesh solid, cooks dry and mealy.



Burbank's—A white-skinned, medium early variety, with few eyes, flesh fine grained and of excellent flavor, producing a large crop of marketable potatoes.

Chicago Market—Very popular, early, good quality and yields well.

White Star—Medium early, a very large cropper, fine floury texture and delicious flavor, being unexcelled by any other variety.

Beauty of Hebron—Remarkably productive, tubers oblong and of extra size, skin and flesh white, table properties good, and keeps well.

White Elephant—Late, large, enormously productive and of excellent flavor, splendid keeping qualities.

Irish Cobbler—This extra early variety is one of the very best. It matures in 7 to 8 weeks from planting. Tubers are of good size, nearly round, very heavy yielder, clean smooth white skin, of excellent quality. A great favorite for first early.

Bliss's Triumph—A round, reddish skinned variety, very early and productive.

Carman No. 1—Uniform shape and immense yielder. Its cooking qualities are of a high order.

SEED SWEET POTATOES.

Yellow and Red Jersey, Red Bermuda and Southern Queen—Write for prices. Ready for shipment about April 1st.

Seeds for the Farm.

By express or freight at buyer's expense. 10 cts. lb. extra if sent by Mail. The prices quoted are subject to change.

SEED CORN. (2 bu. Seamless Bags) 20 cts. each.

Clark County Champion—A white dent corn, extra early, good yielder. 40 cts. peck; \$1.40 bu.

Extra Early Huron Dent Corn—Earliest Dent Corn in the United States. C^c has a bright orange color, has good size stock and ear, small, red cob, long, deep grain, rank strong growth and wonderful productiveness. 40 cts. peck; \$1.40 bu.

Champion White Pearl—The best white dent corn in cultivation, will ripen in 90 to 100 days, ears of good size, enormously productive. 40 cts. peck; \$1.40 bu.

Improved Leaming Yellow—Ears of good size, cob red and small, a strong grower and very prolific, a standard variety. 40 cts. peck; \$1.40 bu.

Silver Mine—One of the best yielding White Dent Corns. Cylindrical shape, tapering a little at the tip end; 18 to 20 rows; kernels deep and cobs small. A fine shelling and high yielding variety. 40 cts. pk \$1.40 bu.

Iowa Gold Mine—Early yellow dent, ears are of good size and symmetrical, color a bright, golden yellow, grain is very deep, cob small and therefore dries out very quickly as soon as ripe. 40 cts. peck; \$1.40 bu.

Red Cob Ensilage—A southern type of large, white corn, with red cob, strong, leafy stocks, and short joints, a general favorite. 35 cts. peck; \$1.25 bu.

Ensilage Corn, White—35 cts. peck; \$1.25 bu.

Ensilage Corn, Sweet—There is nothing better for early fall green feed, or for curing for winter than sweet corn. It has the great merit of being so sweet and palatable that cattle eat every part of the stalks and leaves, and consequently, none is wasted. A favorite with dairy farmers. Also excellent for soiling. Can be planted as other corn or sown thickly in drills. 50 cts. peck.

CHOICE SEED OATS. (Burlap Bags, 2 to 4 bu. 10 cts. each.)

Red Rust-Proof—This is the standard oats of the Southern States, yielding large crops when all other sorts were destroyed by rust. It is a large, heavy, reddish looking berry, very prolific.

White, Black, also Mixed—Market price.

SEED WHEAT.

Longberry Red, Fultz, and other varieties—Market price.

SPRING WHEAT AND BARLEY.

Canada Spring, Northwestern Spring Wheat, Fall and Spring Barley—Market price.

BUCKWHEAT.

Japanese and Silver Hull—5 cts. lb.; \$1.50 bu.

Common Gray—5 cts. lb.; \$1.50 bu. Subject to market changes.

FIELD PEAS.

(2 Bushel Seamless Bags, 20 cts. each.)

Canada Field Peas—Valuable for Northern climates for cattle feeding, and when sown with oats are excellent hog feed. Used as feed for pigeons, etc., and for green soiling. 65 cts. peck.

SOUTHERN COW PEAS.

Saves Fertilizer Bills and Improves the Condition of Soils Wherever Sown. Also Makes a Splendid and Nutritious Green Forage or Hay Crop.

There is no surer or cheaper means of improving and increasing the productiveness of our soils than by sowing the Cow Pea. It makes an enormous growth, enabling the farmer to put plenty of nitrogenous vegetable matter into the soil at a small cost, and so very largely enables him to dispense with the use of nitrogenous fertilizers. The Cow Pea, to a greater extent than other leguminous crops, has the power to extract this costly nitrogen from the atmosphere and to store the same in the vines and roots so that if the crop is cut off, the land is still enriched and its condition improved. From 5 to 15 tons of green fodder per acre have been produced by the Cow Pea. To grow for hay they are most valuable, as they yield an immense quantity of feed of the best quality. For ensilage they are unsurpassed. Where it is desired to turn the whole crop under, as a soil improver, it is better to do so after the vines are partly dead. A good picking of the dried peas can be made before plowing under, if desired. Cow Peas can be sown in May or June, at the rate of one to one and a half bushel per acre.

Wonderful, Black Eye and Brown Eye—Produce largest crop of vines. 75 cts. peck.

Clay and Black—Best for combination crop vines and peas. 75 cts. peck.

Whippoorwill—Best for peas, recommended for "hogging down." 75 cts. peck.

SOJA BEAN.

The SOJA BEAN is fast taking the place of Clover in sections where the soil is not the most fertile, both for hay and fertilizing purposes.

Recommended as the best leguminous plant for soil restoring as it is adapted to ALL SOILS. It is a sure cropper. Unsurpassed for hay, claimed to be superior to Clover or Timothy. Plant in May, for it takes about ninety days to mature the hay and one hundred and twenty days to mature the seed. For hay sow about one bushel per acre either broadcast or drilled. Cut when in blossom. For seed sow in drills about twelve inches apart in the rows and have the rows about thirty inches apart. 75cts. peck.

SUNFLOWER.

Mammoth Russian—May be grown to great advantage in waste ground, from early spring to the latter part of July. An excellent and cheap food for fowls. Plant four quarts to acre. 10 cts. lb.; \$5.00 per 100 lbs.

BROOM CORN.

Improved Evergreen—The best for general cultivation, brush firm, of good length and bright green color. 10 cts. lb.

Dwarf—Grows from 3 to 4 feet high, with straight brush. 10 cts. lb.

California Golden—A strong growing variety much resembling the Evergreen, but longer brush, and a bright golden color when ripe. 10 cts. lb.

SORGHUM OR SUGAR CANE.

Orange Cane—A strong grower, much more juicy than any other variety, the stalk is heavier and a little earlier than the Amber. 5 cts. lb.

Amber Cane—This popular and well-known variety makes the finest quality of both sugar and syrup. 5 cts. lb.

Imphee or Red Top—An old standard sort, and undoubtedly one of the best that has ever been introduced. 5 cts. lb.

KAFFIR CORN.

A new variety of Sorghum, forming low, stocky and erect plants, producing from 2 to 4 heads of grain on each stalk, heads long and narrow, and filled with white grain which are greedily eaten by all farm animals, matures about the middle of October, resists drought like most Sorghums and furnishes excellent fodder, cultivate same as corn.

10 cts. lb.;

SPRING VETCHES, OR TARES.

(Vicia sativa).

A species of the pea grown extensively in England, and to a considerable extent in Canada, for stock. Culture same as Field Peas. Sow 1 1/2 bushels per acre. 10 cts. lb. Write for price per bushel.

SAND, WINTER OR HAIRY VETCHES.

(Vicia villosa).

A very hardy forage plant, growing well on soils so poor and sandy that they will produce but little clover. The plants when mature are about 40 inches high, and if cut for forage as soon as full grown and before setting seed, they will start up again and furnish even a larger crop than the first. Sow 1/2 bushels to the acre. 15 cts. lb. Write for price per bushel.

DWARF ESSEX RAPE.

A forage plant of highest value. It can be sown in April for an early crop, and for fall crop in July, August and September, and still later further south. It is sown broadcast 6 lbs. to the acre, but is better drilled, in which case 3 lbs. to the acre will suffice. In a few weeks from the time of sowing, sheep, hogs or cattle can be turned on it; all reports agree that they gain weight faster on this than any other fodder, as it can be sown after other crops are off; the gain in fodder is secured at a nominal cost. Stockmen, Dairymen and Farmers have proved its value. 10 cts. lb.; \$7.50 per 100 lbs.

PEACH PITS.

We have for years made the handling of peach pits a specialty, annually securing our stocks from districts entirely free from the yellows and are prepared to furnish the best. Prices furnished on application.

MOCKING BIRD FOOD.

For Thrushes, Mocking Birds, Black Birds, Nightingales and all soft billed birds. Directions for use on each package. 35 cts. per package.

MISCELLANEOUS, BIRD AND SUNDRY SEEDS.

Ten Cents per Pound Extra, if Sent by Mail.

Table with 2 columns: Seed Name and Price (PER LB.). Includes items like Black Locust, Honey Locust, Castor Beans, Canary Seed, Mixed Bird Seed, Caraway Seed, Coriander Seed, Celery Seed, Cotton Seed, Fennel Seed, Flax Seed, Hemp Seed, Lettuce Seed, Maw or Poppy Seed, Millet, German or Golden, Mustard Seed, Osage Orange, Pumpkin Seed, Rape Seed, Sunflower Seed, and Water Melon Seed.

Every One Should keep a copy of all orders. Should there be any mistake made, it will be known just what it is and may save unpleasantness.

Recleaned Grass and Clover Seeds.

THIS department has been our leading specialty for many years. While our **Sales and Retail Department** building is one of the largest, best equipped and most conveniently situated in the State, still we have added a **mammoth warehouse and cleaning department** containing over 125,000 square feet of floor space, which, with the addition of the best improved machinery, makes our capacity about ten times greater than before. **Our facilities can not be excelled.**

We now run by power 21 improved combined cleaners and separators, also power corn shellers, etc.

As the prices are constantly changing, quotations are subject to market fluctuations. Where customers are in need of large quantities, we will be pleased to quote lowest market prices. All orders with cash filled at the lowest market price on day of receipt.

2 bushel Burlap Bags, 10 cents each.

2 bushel Seamless Cotton Bags, 20 cents each.

10 cents per pound extra if sent by mail.

Emerald or City Park Lawn Grass Seed.

(See 3rd page of cover for full description.)



Kentucky Blue Grass.

This grass is almost universally known, and furnishes a moderate supply of pasture of the best quality. It varies in appearance and size according to soil, and in some parts of the country grows spontaneously. It stands drought very well, and if allowed to grow up in fall without grazing, makes a good winter pasture. *Sow in fall or spring at the rate of two to three bushels per acre.*

Fancy, 20 cts. lb.; \$1.50 to \$2.00 bu.

Write for special prices on large lots.

Meadow Fescue.

This thrives in all soils, excellent for permanent pasture, starts early and is very productive; grows two to three feet high, and does well in almost any soil; makes fair hay. *Sow in September or early in spring, at the rate of one to one and a half bushel per acre.*

Extra Fine, 35 cts. lb.;

Second Grade, 30 cts. lb.,

Perennial Rye Grass.

(Imported English Blue Grass).

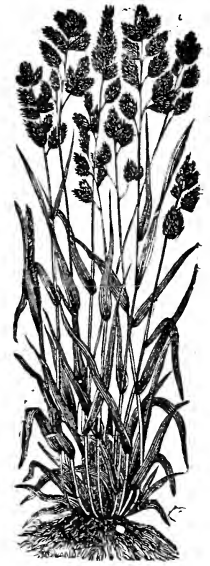
Is considered quite valuable, as it affords pasture quite early in the spring. The leaves are flat, long and glossy; the stalks rather short, seldom over 18 inches in length. The seeds are large, strong and make a vigorous young plant soon after sowing. The grass is quite variable in size and appearance. *Sow early in spring at the rate of one to one and a half bushel per acre.* 20 cts. lb.; \$2.50 bu.

Italian Rye Grass—An early rapid grower, producing large leaves and succulent food. It does best in moist soils. *Sow early in spring or fall about 25 lbs. per acre.* 15 cts. lb.

Sheep's Fescue—Grows naturally on light, dry, sandy soils and mountain pastures. It is considered quite valuable as a mixture with other grasses for permanent early spring pasture. 25 cts. lb.

Orchard Grass.

One of the very best grasses in cultivation, and rapidly coming in favor. If cut just at the coming into bloom (as it always should be) a good second crop will follow and sometimes even a third. Is recommended for sowing with red clover as they come into flower at the same time. Orchard Grass is one of the earliest grasses, yields immense crops, and makes the best of hay; it endures considerable shade, and is much used for sowing in orchards. *1½ to 2 bushels of seed will sow an acre.* 15 to 20 cts. lb.; \$1.50 to \$2.00 bu.



Red Top.

This perennial native grass produces rather late in the season a reddish purple, or greenish panicle of flowers. It thrives best on low land, where it cuts a good crop of rather light hay of fair quality. It is very suitable for pastures on low ground. *Sow in September or early spring at the rate of 1 to 2 bu. per acre.*



Prime, 10 cts. lb.; \$1.00 bu.

Choice, 15 cts. lb.; \$1.75 bu.

Fancy, 20 to 25 cts. lb.

Timothy—This grass stands at the head for meadows, particularly for hay that is to be baled for market, if cut at the proper time, which is, when in full bloom. I prefer to seed it in the fall—September—if it is seasonable, and if, by any reason, there is a partial failure, go over the ground in spring. *Sow one fourth to one-half bushel seed per acre.* Market price.

Sweet Vernal—Is very fragrant, especially when bruised. For a mixture with other grasses for pasture it is quite valuable, as it starts early in spring and grows until late in the fall. For hay its chief merit is its fragrant odor. It is a vegetable condiment rather than a grass of nutritive value. 25 cts. lb.

Bermuda Grass—A very valuable grass for the south, but will not endure frost. \$1.00 lb.

We are not only sellers, but one of the largest "cash" buyers in the State, of every variety of GRASS and FIELD SEEDS, Fancy Seed Grain, etc. Would be pleased to receive Samples of any Fancy Stock you may have to offer.

CLOVER SEED, Continued.

Scarlet or Crimson Clover—Scarlet Clover is an annual and should be sown in August, September or October. It germinates quickly, grows very rapidly through the fall and winter, blossoms about May 1st. This clover can be sown after crops have been removed from the ground. In this way it will prove of inestimable value in holding the valuable nitrates in the soil that are otherwise washed out of the bare ground, furnishes fall, winter and spring pasture and enriches and stores up plant food for the next crop. *Sow at the rate of ten or fifteen pounds per acre, covering with harrow or cultivator.* Nothing like it for sowing on ground after potatoes are harvested. 20 cts. lb.

Bokhara Clover—A large plant quite valuable for soil-ing, producing several crops in a season, its branches bear numerous white flowers, which are sweet and fragrant, excellent pasture for bees. 20 cts. lb.

If larger quantities of the above are wanted, write for Special Prices.

FERTILIZERS.

Our experience of thirty-five years in the business as manufacturers' agent of high grade fertilizers and our facilities for obtaining material of the first-class, enables us to offer the highest grade of goods to be found anywhere, and when we go into a neighborhood, all our customers are our reference after the first crop. The following goods are in great demand

GRAIN and GRASS GROWER.

(BONE PHOSPHATE)

ANALYSIS:

Ammonia	1 per cent.
Available Phos. Acid	8 percent.
Potash	2 per cent.

Bone Phosphate—For all grain crops, and especially good for spring crops and vegetables owing to its ammonia and potash. This grade is best adapted for wheat seeded on corn land, also for grass following wheat. 25 cts. 5 lbs.; \$1.75 100 lbs.; \$2.00 125 lb. bag; \$13.00 ½ ton; \$25.00 ton.

Land Plaster—Is adapted to a great variety of uses, and sales are largely increasing as its value becomes better known. If applied as a top-dressing for grass and clover crops in the spring, it greatly increases the growth and yield of same, in fact, its use is almost certain to insure a good stand of clover. If it is sprinkled in stables, poultry houses and on manure piles, it will prevent ammonia from vaporizing, thereby greatly increasing the value of farm manure. On account of its economical usefulness and effectiveness, it should be liberally used on every farm. \$1.40 200 pound bag; 600 lbs. or more, 60 cents per 100 lbs.

Canada Hardwood Unleached Ashes—Effectually destroys the moss and sweetens the ground. \$1.25 100 lbs., \$2.00 per barrel.

FERTILIZERS, Continued.

BONE MEAL (Lawn Fertilizer).

ANALYSIS:

Nitrogen	2.46 per cent.
Ammonia	3.00 per cent.
Total Phosphoric Acid	20.00 per cent.

To produce a rich, luxuriant and lasting growth of beautiful dark-green grass, use our lawn fertilizer. It is quick in action, its effect being seen immediately after the first rain. It acts energetically on the unfolding leaves, goes directly to the roots, stimulates them to activity and causes the grass to thicken. A firm growth follows, which remains green, luxuriant and velvety for the whole season. Stable manure is very un-sightly, gives an unpleasant odor, disfigures the lawn, and contains weeds and other foreign seeds. The fertilizer should be applied in winter or spring, and sown broadcast on a damp day or just before a rain. 40 cts. 10 lbs.; \$1.00 35 lbs.; \$1.25 50 lbs.; \$2.50 per bag of 125 lbs.

WIZARD PULVERIZED Sheep Manure.
BRAND

This product has attracted wide interest and is supplying an expensive demand among growers of all kinds—Florists, Landscape Architects, Public Park Systems, Gardeners and Private Home Owners.

Nothing equals it for general use on flower beds, or for the vegetable garden. No other fertilizer produces such a marked and permanent effect upon lawns. No raking off required. No seed of foul weeds in it. It is clean to handle. Absolutely safe to use in any quantity or in any manner. *For lawns use at the rate of from 300 to 500 pounds per acre. For pot plants use one part sheep manure to six parts of soil. For use in the vegetable garden spread over the surface and dig in.* Being soluble, it readily makes a good liquid manure (1 pound to 5 gallons of water per day can be safely used.) 10 cts. lb.; 25 cts. 5 lbs.; 50 cts. 15 lbs.; \$1.00 50 lbs.; \$1.75 100 lbs.

Pure Bone Meal—25 cts. 5 lbs.; 40 cts. 10 lbs.; \$1.00 30 lbs.; \$1.25 50 lbs.; \$2.00 100 lbs.

EXCELSIOR PLANT FOOD.

This is the most useful fertilizer for all kinds of plants raised in pots. It produces a rapid and vigorous growth and an abundance of flowers. Odorless, and takes the place of liquid manure. Drives insects out of the soil.

Packages containing food for 20 plants for three months, 15 cts; 3 for 40 cts; if by mail, add 8 cts. per package.

MOSS.

Sphagnum—For packing and growing orchids, etc. 10 cts. lb.; \$1.50 bale.

Green, Sheet—40 cts. bale.

EMERALD Lawn Grass Seed will give a fine sward in six weeks if sown in early spring. Price, \$3.00 per bu.

Stock and Poultry Supplies.

Rust's Egg Producer.



You can get plenty of eggs at all seasons by using Rust's Egg Producer. It makes fowls vigorous and healthy, shortens the moulting period, prevents and cures leg weakness, etc., and is just what is needed to make poultry keeping the most profitable operation on a farm. You can feed Rust's Egg Producer every day for two or three weeks, at a cost of one cent for each hen and get surprising results.

1 lb. box 25c. If by mail, add 16 cts. per lb. for postage.

Rust's

Havens' Climax Condition Powders.

No owner of Poultry or Stock should be without it.

13 oz. package 25 cts. If sent by mail 15 cts. extra for postage.

CHARCOAL.

Coarse Ground for large poultry and Granulated for young chicks and pigeons.

Charcoal in bulk, in three sizes fine, medium and coarse at the following prices: 11lb., 5c.; 6lbs. 25c.; 50lbs..\$1.25; 100lbs.\$2.25

BEEF SCRAPS

We recommend our grade as the best of the kind to be had on the market. A trial will convince you of their superiority. High Protein Beef Scraps. Per lb. 5c; 6lbs. 25c.; 50lbs. \$1.70; 100lbs. \$3.25

Rust's Havens' Roup Pills.

They are entirely free from everything harmful, and the best remedy ever discovered for Roup, Catarrh, Colds and Distemper.

25c per box of 48 pills.

Rust's Lice-Killing Powder

For dusting Fowls and Nests. 5 oz. box, 10c; 16 oz. box, 25c. The 25c size by mail 40c.

Meyer's Poultry Spice

For Poultry, specially prepared. 1/2 lb. pkg., 15c; 24 oz. pkg., 25c; 5 lb. pkg., 60c.

Meyer's Horse and Cattle Spice

For Horses, Cattle, Sheep and Pigs. 2 lb. pkg., 25c; 5 lb. pkg., 60c; 25 lb. pail, \$2.75.

Acme "Chick Seed"

Made from Wheat, Corn, Oats, Barley, Kaffir Corn, Cane Seed, Millots, Sunflower, Pearl Grit, Grain and Seed and Screenings.

The best mixture on the market for young chicks. 5c. lb.; 30c. 10 lbs.; \$1.35, 50 lbs.; \$2.25, 100 lbs.

International Poultry Food.

Absolutely pure and highly concentrated. One small feed of this has more medical effect than a very large one of many others. Each box contains about 100 feeds. 25c box.

International Stock Food.

Cures and prevents disease in horses, cattle, hogs, sheep, etc. Insures health and rapid growth for all young stock. A peculiar combination of medicinal ingredients makes this a superior and safe food for stock. 25c and 50c box.

A FEW HINTS ON ALFALFA. The presence of lime in some form, either in the soil or subsoil, seems to be essential. If it is known there is no lime in the soil, lime should be applied as a top dressing when the land is being plowed preparatory to sowing the seed. GOOD DRAINAGE IS NECESSARY, for an excess of surface water soon rots out the roots.

"BELL" GRAIN and SEED and SCREENINGS for POULTRY.

Best on the market for the price. 10 lbs. for 25 cts.; \$1.75 per 100 lb. bag.

Crushed Oyster Shells.

10 cts. 5 lbs.; 25 cts. 15 lbs.; 75 cts. 100 lbs.; \$3.25 for 500 lbs.

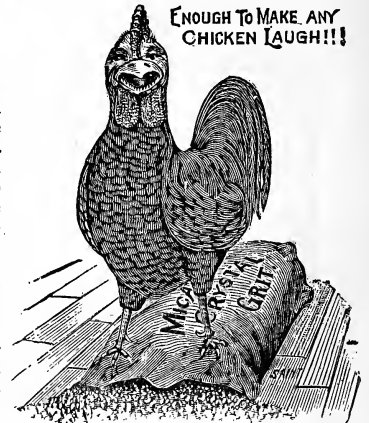
Pure Granulated Bone

For poultry and cattle. 5 cts. lb.; \$2.75 per 100lbs.

Mica-Crystal Grit.

For Poultry, Pigeons, Chickens, Ducks, Geese, Turkeys and Birds.

Many tests have been made to demonstrate the worth of Mica Crystal Grit, and in every instance, no matter how small the particles were remaining in the gizzard, they still retained their sharp cutting edges. The iron in Mica-Crystal Grit is practically all contained in the mica, and is in its purest and best form. The effect of the iron in toning up the physical condition of your poultry, and the high yellow color produced in the yolk of the egg, is, of itself alone, worth more than all the other grits combined. 10 cts. 5 lbs.; 75 cts. 100 lbs.



China Nest Eggs.

3c each; 25c per doz. If by mail, 20c per doz. extra.

Lump Rock Salt For Stock.

Does not create thirst. Stock will do 20 per cent. better wherever it is fed. Will go five times as far as common salt. 10 cts. 5 lbs.; \$1.00 100 lbs.; \$3.50 500 lbs.

Drinking Fountain For Poultry.

Can be filled easily. Water always clean. Chickens can not get drowned in it. 25c 1/2 gallon; 35c 1 gallon.

Sunflower Seed.

Good egg producer. 10 cts. lb.; \$5.00, 100 lbs.

Pigeon Peas.

For feeding pigeons. 65 cts. peck.

Cotton Seed Feed Meal.

The most economical article for feeding stock now known. Directions for feeding: Milch cows and fattening cattle, mix with other feed, beginning for each animal with one pint at a feed, increasing gradually for a week or ten days, to two quarts at each feed. Fattening hogs one quart. Horses one-half pint every other day. Sheep one-half pint. Price subject to change. \$1.80 per 100 lb. bag.

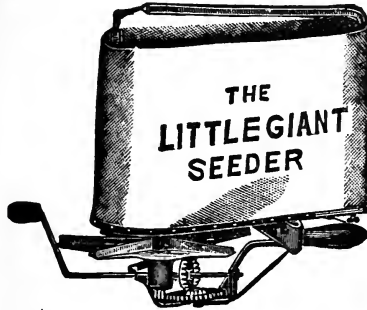
Linseed or Oil Cake Meal. (Old Process)

It is a great flesh former, milk and butter producer, and on fair test will prove to be an economical cattle food. Price subject to change. \$2.25 per 100 lb. bag.

SEED SOWERS AND SUNDRIES.

The Little Giant Broadcast Seed Sower.

For sowing wheat, oats, rye, rice, flax, grass seed, clover seed, etc., in fact, any kind of seed broadcast. No careful, economical farmer will continue to sow his seed by hand



(the old style) when he can get one of these machines at our reduced prices. They will save their cost almost daily in saving of seed, to say nothing about saving of time and more even distribution, which will have a great effect on the crop. It weighs but three pounds, is cheap and always in order. **Price, \$1.50.**

The Cyclone Seeder.

The Cyclone is a geared machine and works with a crank which seems to be the favorite; is strongly built of the best material. It has a 4-inch clear throat and cannot be choked, even with strawy oats. It will with proper care last a lifetime. **Price, \$1.40.**

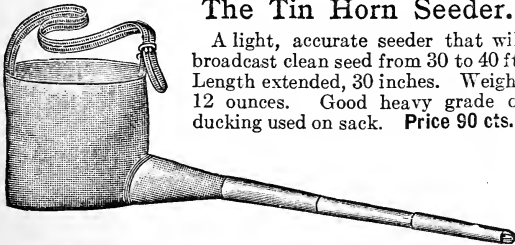


The Cahoon Seed Sower.

The difficulty in sowing is entirely overcome by the use of the Cahoon Broadcast Seed Sower which can be handled with ease by an entirely inexperienced person and will sow much more evenly than can be sown by hand. **Price, \$3.00.**

The Tin Horn Seeder.

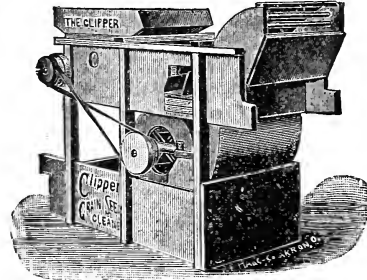
A light, accurate seeder that will broadcast clean seed from 30 to 40 ft. Length extended, 30 inches. Weight 12 ounces. Good heavy grade of ducking used on sack. **Price 90 cts.**



Fiddle Bow Seed Sower

Has been greatly improved, will sow all kind of grain and seed to your perfect satisfaction. **Price \$1.00.**

CLIPPER SEED AND GRAIN MILLS.



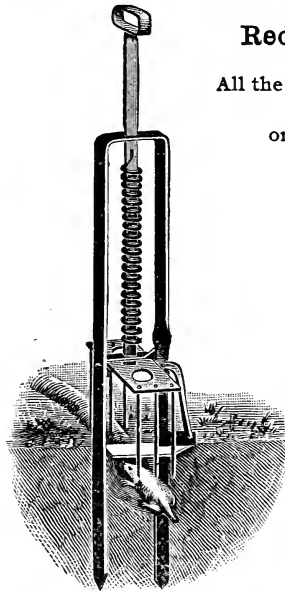
These mills are especially adapted for cleaning grain, clover and timothy seed. No. 1, for grain and clover, \$20.00. Descriptive circulars and prices for larger sizes for either hand or power, sent on application.

Reddick Mole Trap.

All the old traps boiled down to a better one at one-third the old price.

No
mole
can
pass
under
it
and
live.

Price, 50 cents.



Mosher Bag Holder.

..Best on the market..

With Stand
Price, \$3.50

THE DETROIT GRAIN BAG HOLDER.

SAVES MORE TIME,
MORE LABOR
AND
MORE MONEY

for the farmer in proportion to its cost than any implement ever invented for his use.

It has no hooks to tear the bag.

It is not necessary to remove it to sack down.

It is easily attached to the bag and will not get out of order.

It is perfect in its adjustment.

No one who handles grain can afford to be without it
PRICE, 25c each. \$2.50 dozen.

Come and see our establishment and be convinced that we are "Headquarters for seed."

ATOMIZERS, BELLOWS, SPRAYERS, Etc.

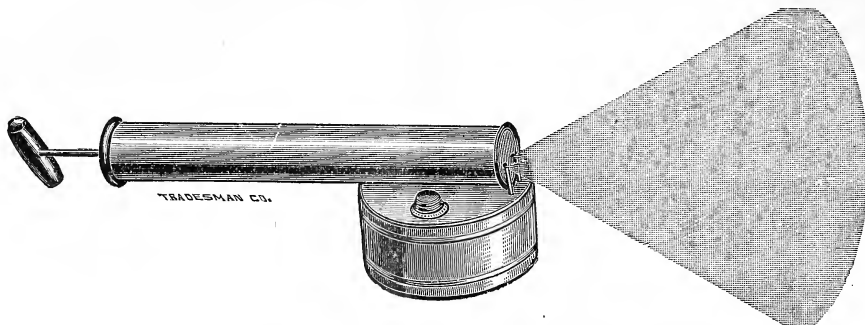
ACME ATOMIZER OR SPRAYER.

For Spraying Paris Green and Other Insecticides on Potato Vines, Shrubs, Small Trees, Tobacco, House Plants, Live Stock and Poultry.

A great labor saver on the farm and in every garden, barn, greenhouse, orchard and hennery. It will apply the finest possible spray on any object desired and exterminate any kind of insect life. Weighs only one pound; can hold one and one-half pints and will cover 750 hills of potatoes, and *Kills the Old Bugs*. Well and simply made, combined into the strongest possible shape, it cannot come apart, and easily cleans itself when turned upside down.

Prices: Heavy Tin, 40 cts. each; Heavy Tin with Galvanized Iron Reservoir, 50 cts. each.

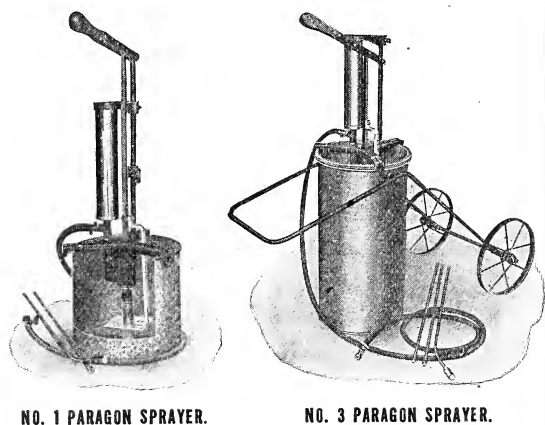
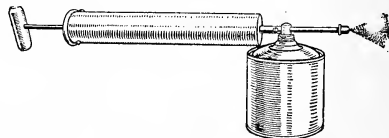
PERFECTION DOUBLE ATOMIZER.



Two large sprays, fine as fog, widely distributed, are produced at one blast. Without dripping it will apply any liquid insecticide or disinfectant to any tree, shrub, plant or animal and exterminate any insect pest. Not a drop of solution is wasted, all is produced as spray. Any boy can kill every bug in a field of potatoes and haul the water himself. **PRICE: HEAVY TIN WITH GALVANIZED IRON RESERVOIR, 60 CENTS EACH.**

RED STAR AIR SPRAYER.

Compressed air hand sprayer. Enables the operator to spray with one-half the labor the ordinary sprayer requires. Throws a fine mist and can be used to advantage in applying insecticides, etc. One quart size, each, 75 cts.



NO. 1 PARAGON SPRAYER.

NO. 3 PARAGON SPRAYER.

PARAGON Sprayer.

For White Washing, Water Painting, Disinfecting, Spraying Trees, Vines and many other purposes.

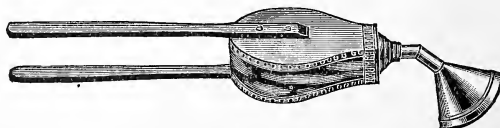
This sprayer is strongly constructed and can be easily operated by one man. The strainer cannot clog because the agitator passes over openings in it with each stroke of the pump, brushing off any dirt or grit that may have a tendency to choke it. The agitator also keeps the liquid thoroughly stirred while using sprayer. Suitable for spraying insecticides and fungicides on trees, shrubs and vines as well as the application of white-wash and cold water paints. The best white wash pump manufactured.

- No. 0. 3 gallons, 4 feet rubber hose, 3 feet extension pipe..... \$7.50
- No. 1. 5 gallons, with 5 feet rubber hose, 5 feet extension pipe and 2 spray nozzles..... \$10.00
- No. 3. 12 gallons, mounted on a two wheel steel frame, 10 feet of rubber hose, 7 1/2 feet extension pipe, 2 spray nozzles..... \$15.00
- No. 5. All brass, mounted on 50 gallon heavy oak barrel. This pump is fitted with extra large air chamber and will sustain a pressure of 300 lbs., and throws a uniform and continuous spray. Fitted with 25 feet rubber hose, 7 1/2 feet extension pipe, 1 spray nozzle, and triple spray nozzle..... \$25.00

DRY POWDER BLOWER.

The Acme Powder Gun is the simplest tool ever made for applying poison to growing crops. It is entirely independent of water or plaster. No poison is left about the field to kill stock. It requires no base of supplies; all you need to carry is a can of dry insecticide and the gun. Without stooping—the elbow does it—it applies any powdered poison on any plant in any desired quantity, any time of the day. The elbow may be detached if desired. This tool is well made of the best material, and is thoroughly guaranteed. The bellows' sides are painted a bright vermilion and the handles finished bright. The leather is a fine russet. We also furnish a spreader for distributing the blast. **Price, \$1.00.**

ACME POWDER GUN.



IF YOU WANT A GARDEN TO BE PROUD OF, SOW G.M.C. SEEDS.

J. CHAS. McCULLOUGH, Seedsman.

LAWN SUPPLIES.

Genuine Philadelphia Lawn Mower.

The Philadelphia Lawn Mower has stood the test for years, and is still acknowledged to be one of the best and a strictly **High Grade Mower**.

Style K—5 blades, 10-in. wheel, 6½-in. cylinder. Single Pinion, geared on both sides. The greatest diameter of cylinder with five blades, insures fine cut, and with its large driving wheels, is light running.

14-in. \$6.00; 16-in. \$6.75; 18-in. \$7.25; 20-in. \$8.00

Style C—4 blades. 8½-in. wheel, 5¼-in. cylinder. This style medium high wheel is to supply a demand for a mower, which has real merits, and is light running, durable and easy to handle.

14-in. \$5.00; 16-in. \$5.50; 18-in. \$6.25; 20-in. \$7.00

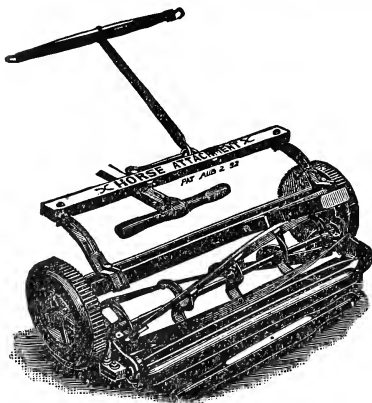
Style M—3 blades, 7-in. wheel, 5¼-in solid cylinder, with blades bolted on. This is the **original Philadelphia 1870** pattern mower, and for general purposes is very popular, adapted for rough as well as smooth lawns.

14-in. \$5.00; 16-in. \$5.50; 18-in. \$6.25; 20-in. \$7.00.

Style E—Width of cut, 21 inches. Has high, 10-in. driving wheel, 4 blades, cylinder 6½ inches. Unlike all other Mowers. the driving wheel and cylinder can be removed leaving a solid frame.

21-in. \$10.00,

The "Chief" Horse Lawn Mower.



Can
be
Operated
Readily
by
Hand.

30 inch cut.

10 inch Traction
Wheels.

This Mower is used in our principal parks and cemeteries. The draft with the horse is the same as when operated with handle. Positively no tipping up with rear of the Mower.

Price, complete \$17.00

We can also supply the Philadelphia Horse Lawn Mowers. Prices on application.

Grass Catcher.

Fits any Lawn Mower. Gathers all the grass. Leaves the lawn smooth and velvety. It can be adjusted to any machine in a moment. The Catcher is made of heavy Duck. In ordering give the size of mower on which you intend to use the catcher. 75c each.

SEEDS ARE DIFFERENT from other merchandise. The real value of seeds can only be known after months of labor. Seeds of real merit must be grown and sold by practical, trained seedsmen. Buy your seeds of a reliable seed house with a reputation back of it.

The New and Monarch Lawn Mowers.

The Best Lowest Grade Mowers wide. Constructed upon mechanical principles.

14-inch. \$2.50
16-inch. 3.00

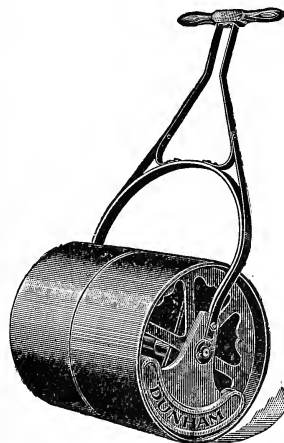
Lawn Rakes, Etc.

Wire, 30 teeth, one of the best. \$0.50
Gem Wire.45
Wooden, 20 teeth, strong and light.30
Scythes, Bush or Weed.90
Scythes, Crown Jewel, cast steel.90
Scythe Stones, flat.05
Scythe Snaths, the best.75
Grass Hooks. English, 40c. American.25
Hand Grass Shears.50

LAWN MOWER OIL.

This is a handy can filled with fine oil manufactured expressly for lawn mowers, bicycles, etc. 15 cts. per can.

DUNHAM LAWN ROLLER.



This Roller is made of iron, has high carbon steel, perfectly smooth, round axles, as used in automobile construction, and revolves in roller bearings at either end, making the draft at least 40 per cent lighter than other rollers. The weights on the handle keep handle at all times off the ground.

The great advantage of rolling lawns is apparent to all who have tried it.

Length and weight precisely as listed.

Rollers are smooth on face and aluminum finish, outer edges rounded to avoid cutting up the lawn.

No.	Diameter Inches	Length Inches	Sections	Weight Pounds	Prices
403	20	16	2	225	\$10.00
404	20	20	2	250	11.00

Horticultural Tools and Sundries.

Bag Holders, Mosher's best on market	each.	\$3.50
" " Detroit		25
Blue Grass Stripper , is well made and nicely painted, a man can strip 20 bushles of seed per day with it; weighs 4 pounds	1.50	
Dibbles for transplanting plants		50
Grass Trimmer —Fisk & Jay	1.25	
Hoes, Standard Socket Garden		40
" Ladies' Light Garden		30
" Onion, with two prongs		30
" Mehler's Handy	1.00	
Hyacinth Glasses, Single, assorted colors		15
" " Double, " "		25
Knives, Pruning 50 cts. to	1.50	
" Budding 50 cts. to	1.50	
Labels, For Pots 3 inch, per 100, 10 cts.; per 1000, \$0.90		
" " " 4 " " 15 cts.; " 1.00		
" " " 5 " " 20 cts.; " 1.10		
Mole Traps, Isbell		50
" " Reddick		50
Pruning Shears, Hand 50 cts. to	1.00	
Pruning Saws, Double Edge, 16 inch		60
" " " " 18 inch		75
Potato Hooks, 4 tine		50
Putty Bulbs, Used for setting glass with liquid putty	1.00	
Raffea, For tying plants per lb. 25 cts.		
Rakes, Steel Garden, 8 tooth		30
" " " 10 "		40
" " " 12 "		45
" " " 14 "		50
" Lawn, Wire, 30 tooth		50
Scythes, American		90
" " Weed or bush		90
Scythe Snaths		65
Scythe Stones, Flat, 5 cts.; Round		10
Seed Sowers, Fiddle Bow		1.10
" " Cyclone (crank sower)		1.40
" " Little Giant (crank sower)		1.50
" " Cahoon		3.00
" " Tin Horn90
Seed Tryers, Steel-pointed pocket, nickel-plated, with cap	1.00	
Seed Tryers, Large. For sampling Orchard Grass, Blue Grass, Coffee, etc.	1.50	

Sprinklers, Scollay's Standard Rubber	each	\$1.00
" " Small Size		50
Shears, Hand, Grass or Border		50
Shovels, Ames' Square point		1.10
" Hadwin, " "		85
" Boys " "		40
Spades, Ames' Steel Polished		1.20
" Hadwin, " "		85
" Boys, " "		40
Thistle or Dock Cutters ,	50c to	60
Trowels, Garden, English ,	50c to	60
" American,	10c to	25



CLEVES ANGLE TROWEL.

A NEW HANDY DIGGER.

This Trowel is one solid

piece of steel, shank and blade, 5 inch, 15c; (by mail, 25c).

HAZLETINE'S HAND WEEDER



For weeding Onions, Strawberries, etc. Price 25 cts. (by mail 30 cts.)



EXCELSIOR HAND WEEDER.

Excellent for use in flower gardens, price 15 (by mail 25c.)

STANDARD FLOWER POTS AND SAUCERS.

FLOWER POTS			SAUCERS		
	Each	Doz. Per 100		Each	Doz.
2 in.	\$.02	\$.15 \$.80	4 in.	\$.03	\$.25
3 "	.03	.25 1.25	5 "	.03	.30
4 "	.04	.30 2.00	6 "	.05	.40
5 "	.05	.40 3.00	7 "	.05	.50
6 "	.06	.60 4.50	8 "	.07	.70
7 "	.08	.90 7.00	9 "	.10	.90
8 "	.12	1.25 9.00	10 "	.12	1.00
9 "	.15	1.75 14.00	12 "	.15	1.50
10 "	.25	2.50			
12 "	.40	4.50			

American Plant and Tree Tub.

An excellent new tub, cheap, neat and durable. Made from Red Cedar, painted green.



No.	Diameter Inches	Depth Inches	Price
1	11 1/2	11 1/2	\$1.00
2	13 1/2	11 1/4	1.25
3	14 3/4	14	1.65
4	16	15	2.00
5	19	18	3.00

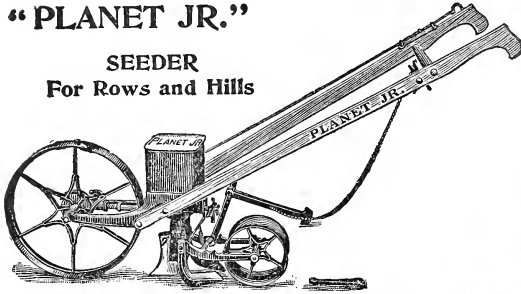
The new Planet, Jr., Hill Dropping Drill is the Most Complete Machine in its line ever offered.

"Planet Jr." Farm and Garden Tools.

Space will not permit our showing and describing all of the "Planet Jr." tools, but we will send a fully illustrated catalogue free for the asking to any who desire it. "Planet Jr." goods are standard machines; the best, and you can rely on getting bottom prices from us on any of the "Planet Jr." goods.

"PLANET JR."

**SEEDER
For Rows and Hills**

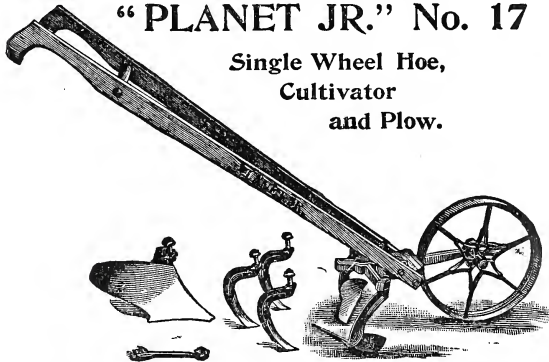


"Planet Jr." No. 3 Hill Dropping Seed Drill.

A seeder that does not drop in hills is fast becoming a thing of the past. Why? Because all crops that are to be grown from seed and thinned to a regular stand, should be planted in hills at just the distance apart the plants are desired. For in drilling, unless the seed is sown unnecessarily thick, there will not always be a plant at the proper spot, and the crop is therefore irregular. This machine not only sows in a continuous row, but also drops in hills, 4, 6, 8, 12, and 24 inches apart. We can heartily recommend it. Price, \$10.00.

"PLANET JR." No. 17

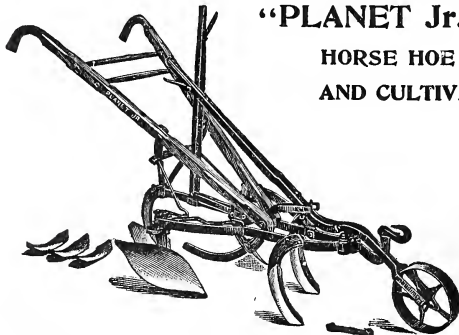
**Single Wheel Hoe,
Cultivator
and Plow.**



This Single Wheel Hoe has an 11 inch wheel with broad face, and a conveniently arranged and very valuable set of tools. It is very light, strong and easy running. Has adjustable handles and frame, and is the most perfect Wheel Hoe for market gardeners and private places. Frame changes in height; and the wheel to the other side of the frame, to allow of hoeing both sides of the row at one passage. Price, \$4.50.

"PLANET Jr." No. 8

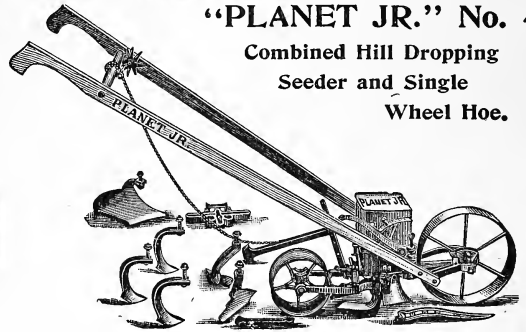
**HORSE HOE
AND CULTIVATOR.**



Probably no other cultivating machine is so widely known as the "Planet Jr." No. 8 Horse Hoe and Cultivator. It is so strongly built as to stand incredible strain, yet it is light and easily handled. Every part of the tool is perfected to make it valuable to the intelligent farmer, who knows the best is always the cheapest. Price, No. 8 Horse Hoe, \$8.50; No. 7 Horse Hoe, \$8.00; No. 9 Horse Hoe, \$7.25; No. 4 Horse Hoe, \$6.25.

"PLANET JR." No. 4

**Combined Hill Dropping
Seeder and Single
Wheel Hoe.**



This is exactly the same style of seeder as the No. 3 "Planet Jr." Hill Dropper. It is smaller in capacity, though still of good size, holding two quarts. It drops in hills the same as the No. 3, and in drills any thickness, handling the smallest paper of seeds perfectly. It is simple, durable and very light running. Thrown out of gear instantly and the flow of seed cut off, by simply raising the handles. The drill is detached and the tool frame substituted by removing but one bolt. It then becomes one of the most admirable Single Wheel Hoes of the "Planet Jr." family. Price, \$10.50. As a Drill, only \$8.50.

"PLANET JR." No. 12

**Double Wheel Hoe,
Cultivator
and Plow.**



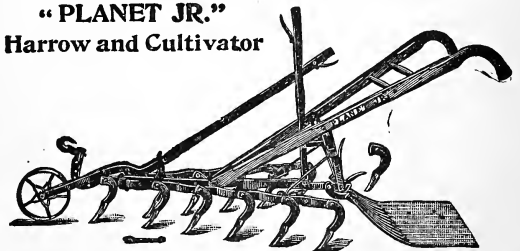
**Price Complete,
\$6.50**

This tool combines in itself the good points of its predecessors, with valuable new ideas. It has 11 inch wheels, which can be set at four different distances apart

the frame is malleable, with ample room for tool adjustment, and can be set at three different heights. The handles are adjustable, and the arch is of stiff steel, unusually high. The design of the frame is new, allowing the changes of the tools to be made without removal of the nuts from the standards. The machine has a large equipment, four pairs of tools in all, and the amount of work possible with this machine is almost incredible, covering the large range of wheel hoe work both in the garden and on the farm, and has our unqualified endorsement. Price complete, \$6.50.

"PLANET JR."

Harrow and Cultivator



This tool has rapidly grown into favor with farmers, market gardeners and strawberry growers. It has a high frame, and the chisel shaped teeth cut an inch wide, each. Hand levers regulate width and depth while in motion, and the pulverizer prepares the ground capably for the Seed Drill or for plant setting, and controls the depth of the rear teeth. It contracts to 12 inches and expands to 32 inches. Cultivates without throwing earth upon the plants, and the smooth, round throated teeth turn strawberry runners without injuring them. Price, plain, \$5.75; with wheel, \$7.00; complete, \$8.50

Quantity of Seed requisite to produce a given number of plants and sow an acre.

	Quantity per acre		Quantity per acre		Quantity per acre
Artichoke, 1 oz. to 500 plants	6 oz.	Corn, Sweet, 1/2 pint to 100 hills	8 qts.	Melon, Water, 4 oz. to 100 hills	3 to 4 lbs.
Asparagus, 1 oz. to 500 plants	1 lb.	Cress, 3/4 oz. to 100 ft. of drill	12 lbs.	Nasturtium, 2 oz. to 100 ft. of drill	15 "
Asparagus Roots	5000 to 7250	Cucumber, 1 oz. to 100 hills	1 to 2 "	Okra, 1 oz. to 100 ft. of drill	8 "
Barley	2 bu.	Egg Plant, 1 oz. to 2000 plants	4 oz.	Onion Seed, 1 oz. to 100 ft. of drill	4 to 5 "
Beans, dwarf, 1 pint to 100 ft. of drill	1 "	Endive, 1 oz. to 150 ft. of drill	5 lbs.	Onion Seed, for Sets	40 to 80 "
Beans, pole, 1 pint to 100 hills	1/2 "	Flax	1 to 1 1/2 bu.	Onion Sets, 1 quart to 40 ft. of drill	8 bu.
Beet, garden, 1 oz. to 100 ft. of drill	7 lbs.	Grass, Blue, Kentucky	1 1/2 to 3 "	Parsnip, 1 oz. to 200 ft. of drill	5 lbs.
Beet, Mangel, 1 oz. to 100 ft. of drill	5 "	Grass, Blue, English	1 1/2 to 2 "	Parsley, 1 oz. to 150 ft. of drill	3 "
Broccoli, 1 oz. to 3000 plants	3 oz.	Grass, Hungarian and Millet	1 "	Peas, garden, 1 pt. to 80 ft. of drill	2 to 3 bu.
Brussels Sprouts, 1 oz. to 3000 plants	3 "	Grass, Mixed Lawn	3 to 6 "	Peas, field	2 "
Buckwheat	1 bu.	Grass, Red Top, Fancy Clean	8 to 10 lbs.	Pepper, 1 oz. to 1500 plants	3 oz.
Cabbage, 1 oz. to 3000 plants	3 oz.	Grass, Timothy	3/4 bu.	Pumpkin, 1/2 quart to 100 hills	3 to 4 lbs.
Carrot, 1/2 oz. to 100 ft. of drill	4 lbs.	Grass, Orchard, Perennial Rye, Red Top and Wood Meadow	2 "	Radish, 1 oz. to 100 ft. of drill	8 to 10 "
Cauliflower, 1 oz. to 8000 plants	3 oz.	Hemp	1 1/2 "	Rye	1 1/2 bu.
Celery, 1 oz. to 5000 plants	4 "	Horse Radish Roots	10,000 to 15,000	Salsify, 2 oz. to 100 ft. of drill	7 lbs.
Chicory	4 lbs.	Kale, 1 oz. to 2000 plants	1/2 lb.	Spinach, 1 oz. to 100 ft. of drill	10 "
Clover, Alsike and White Dutch	6 "	Kohl Rabi, 1/2 oz. to 100 ft. of drill	4 lbs.	Summer Savory	3/4 "
Clover, Lucerne	20 to 30 "	Leek, 1/2 oz. to 100 ft. of drill	4 "	Sunflower	8 "
Clover, Crimson	10 to 15 "	Lettuce, 1/4 oz. to 100 ft. of drill	3 "	Squash, 4 oz. to 100 hills	4 "
Clover, Large Red and Medium	10 to 15 "	Melon, Musk, 1 oz. to 60 hills	2 to 3 "	Tomato, 1 oz. to 4500 plants	1 oz.
Corn, Pop [shelled]	2 qts.			Tobacco, 1 oz. to 5000 plants	2 "
				Turnip, 1 oz. to 150 ft. of drill	1 to 2 lbs.

Number of Plants or Trees to The Acre at Given Distances.

Dis. apart.	No. plants.	Dis. apart.	No. plants.	Dis. apart.	No. plants.
12 x 1 In.	522,720	30 x 16 In.	13,068	48 x 36 In.	8,680
12 x 8 "	174,240	30 x 20 "	10,454	48 x 48 "	2,728
12 x 12 "	43,560	30 x 24 "	8,712	60 x 36 "	2,901
16 x 1 "	392,040	30 x 30 "	6,970	60 x 48 "	2,178
18 x 1 "	348,480	36 x 3 "	58,080	60 x 60 "	407
18 x 8 "	116,160	36 x 12 "	14,520	8 x 1 Ft.	5,445
18 x 12 "	29,040	36 x 18 "	9,680	8 x 3 "	1,815
18 x 18 "	19,380	36 x 24 "	7,260	8 x 8 "	680
20 x 1 "	313,635	36 x 36 "	4,840	10 x 1 "	4,356
20 x 20 "	15,681	42 x 12 "	12,446	10 x 6 "	726
24 x 1 "	261,360	42 x 24 "	6,223	10 x 10 "	435
24 x 18 "	15,520	42 x 36 "	4,148	12 x 1 "	8,630
24 x 24 "	10,890	48 x 12 "	10,890	12 x 5 "	788
80 x 1 "	209,088	48 x 18 "	7,790	12 x 12 "	302
80 x 6 "	34,848	48 x 24 "	5,445	16 x 1 "	2,722
80 x 12 "	17,424	48 x 30 "	4,356	16 x 16 "	170

Weight of Various Articles.

	Per bush.		Per bush.		Per bush.
Apples	48 lbs.	Dried Peaches	28 lbs.	Red Top	14 lbs.
" dried	22 "	Flax Seed	56 "	Salt, coarse	50 "
Barley	48 "	Hemp Seed	44 "	Sweet Potatoes	56 "
Beans	60 "	Hungarian	48 "	Timothy Seed	45 "
Buckwheat	50 "	Millet	50 "	Turnips	58 "
Broom Corn	46 "	Oats	32 "	Wheat	60 "
Blue Grass, Kentucky	14 "	Onions	56 "	Flour, per bbl. net	196 "
" English	24 "	Orchard Grass	14 "	Salt, per bbl.	280 "
Bran	20 "	Osage Orange	33 "		
Canary Seed	60 "	Peach Pits	50 "		
Clover Seed	60 "	Peas, smooth	60 "		
Corn, shelled	56 "	" wrinkled	56 "		
" on ear	70 "	Perennial Rye	24 "		
Corn Meal	50 "	Potatoes	60 "		
Charcoal	22 "	Rape	50 "		
Cranberries	40 "	Rye	56 "		

WEIGHT PER CUBIC FOOT.

Hay, well settled	4 1/2 lbs.
Corn, on cob, in bin	22 "
" shelled, "	45 "
Wheat, in bin	48 "
Oats, "	25 1/4 "
Pot'toes "	88 1/2 "

Grain Bags
For Sale or Rent.

Write for Prices
and Terms.



We carry the
Largest Stocks and Greatest Variety
of any
House in Ohio.

WHEN TO SPRAY AND WHAT TO USE.

The following brief directions for the spraying of fruits and vegetables have been compiled as the result of several years' experimenting with different materials, and it is believed they can be followed without injury to the crops, and with profit to the owner. It will pay to spray all fruit plants in the spring with copper sulphate solution, and the second and third applications, as given, can generally be made with profit. Never spray with arsenites while the trees are in blossom, as the bees will be poisoned; they are necessary to fertilize the flowers.

PLANT	1st Application	2nd Application	3rd Application	4th Application	5th Application
Apple —(Canker worm, codling moth, bud moth, scab.)	Spray before buds start, using copper sulphate solution.	After the blossoms have formed, but before they open. Bordeaux and Paris green or Whale Oil Soap.* 10 days later repeat.	Within a week after blossoms have fallen, Bordeaux and Paris green, or Whale Oil Soap. 10 to 14 days later, weak copper sulphate solution.	10 to 14 days later, repeat.	10 to 14 days later, Bordeaux or weak copper sulphate.
Bean —(Anthracnose)	When blossoms appear, spray with Bordeaux.	10 days later repeat.	10 to 14 days later, weak copper sulphate solution.	Repeat last, if necessary.	Repeat, if necessary
Cabbage —(Worms, aphids.)	When worms first appear, Slug Shot, kerosene emulsion, or Paris green.	If worms or aphides are present, repeat if plants are not heading, using emulsion for aphids.	If aphides persist, use kerosene emulsion, if plants are not heading.	After heads form, use salt petre for worms, a teaspoonful to a gallon of water, emulsion for aphides.	Repeat, if necessary
Carnation —(Rust and other fungous diseases.)	When planted out, dip in Bordeaux.	7 to 12 days later, spray plants with Bordeaux.	Repeat at intervals of a week or 10 days until blossoms open.	While in bloom spray every week with the dilute copper sulphate solution.	Repeat, if necessary
Cherry —(Rot, aphid, curculio and slug.)	Before buds start, use copper sulphate solution. For aphid, kerosene emulsion.	When fruit has set, Bordeaux and Paris green.*	10 to 12 days later, if signs of rot appear, repeat.	10 to 12 days later, copper sulphate solution, weak.	Repeat, if necessary
Currant —(Worms, mildew.)	As soon as worms are seen, Paris green, Slug Shot or Hellebore.	If they reappear, repeat, adding Grape Dust, Bordeaux for mildew.†	If worms still trouble, pyrethrum or hellebore.†		
Gooseberry —(Mildew, worms.)	As leaves open, Bordeaux, Paris green, Slug Shot or Hellebore.	In 10 to 14 days repeat with both.	10 to 14 days later, sulphide of potassium on English varieties.	10 to 14 days later, repeat, if necessary.	If mildew persists after crop is gathered, Grape Dust or Bordeaux.
Grape —(Flea-beetle, fungous diseases.)	Before buds burst, copper sulphate solution and Paris green.	When first leaves are half grown, Grape Dust, Bordeaux or Paris green. Repeat at intervals	As soon as fruit has set, repeat.* of 10 to 14 days.	10 to 14 days later, Bordeaux mixture, if disease is present.	If necessary, very weak copper sulphate solution.
Nursery Stock —(Fungous diseases.)	When buds burst, Bordeaux.	Repeat at intervals	of 10 to 14 days.		
Peach, Apricot —(Leafcurl, curculio, mildew and rot.)	Before buds swell, copper sulphate solution.	As soon as fruit has set, Bordeaux and Paris green, or Whale Oil Soap.*	10 to 12 days later, repeat.	10 to 12 days later, repeat.	If rot persists, use very weak copper sulphate solution every 5 to 7 days.
Pear —(Leaf blight, scab, psylla and codling moth.)	Before buds start, copper sulphate solution.	Within a week after blossoms fall, Bordeaux and Paris green or Whale Oil Soap.	10 to 12 days later, repeat.	10 to 16 days later, Bordeaux.	10 to 16 days later, Bordeaux.†
Plum —(Black knot, rot and all fungous diseases, curculio.)	As buds start, copper sulphate solution. Cut out knot and burn	When fruit has set, Bordeaux and Paris green, or Whale Oil Soap.*	10 to 12 days later, repeat.	10 to 20 days later, Bordeaux.	Weak copper sulphate solution, as is necessary.
Potato —(Beetles, scab, blight.)	For scab, soak seed in corrosive sublimate solution (2 oz. in 16 gallons of water for 90 minutes.)	When beetles or their larvæ appear, Paris green or Slug Shot.	Repeat whenever necessary.	When blight of the leaves is accompanied by rot of the tubers, Bordeaux.	Repeat, if necessary.
Quince —(Leaf and fruit spot rot.)	Before buds start, copper sulphate solution.	When fruit has set, Bordeaux and Paris green, or Whale Oil Soap.*	10 to 12 days later, repeat.	10 to 20 days later, Bordeaux.	Bordeaux or copper sulphate solution, as is necessary.
Raspberry, Blackberry —(Anthracnose, rust.)	Cut out badly diseased canes. Spray with copper sulphate solution before growth starts.	When new canes are 1 foot high, spray with Bordeaux mixture.	10 to 14 days later, weak copper sulphate solution.	When crop is gathered, remove old canes, thin new ones and spray with Bordeaux mixture.	Special Notes.
Rose —(Mildew, black spot, red spider, aphid.)	Mildew: Keep heating pipes painted with equal parts lime and sulphur mixed with water to a paste.	Elack Spot: Spray plants once a week with weak copper sulphate.	Red Spider: Fir Tree Oil or kerosene emulsion to under side of foliage.	Aphis: Kerosene emulsion or Fir Tree Oil.	For Black Knot on cherries and plums, cut out and destroy by burning the diseased parts as soon as discovered.
Strawberry —(Rust)	Just before blossoms open, Bordeaux and Paris green.	When fruit has set, Bordeaux* or weak copper sulphate solution.	As soon as berries are harvested, Bordeaux (if to be kept longer.)	TO DESTROY SAN JOSE SCALE For Fall and Early Spring Spray (Dormant Period) USE Lime-Sulphur Solution or Scalecide	For Borers in trunk of tree, apply Whale Oil Soap with a brush. If Red Rust appears the entire stools affected should be cut out and burned.
Tobacco —(Worms.)	Paris green.	Spray at intervals.	If necessary, spray with weak copper sulphate solution.		Young Plants should be sprayed with Bordeaux mixture at the time of the first and third applications to bearing plants.
Tomato —(Rot and blight, worms.)	When first fruits have set, Bordeaux.	Repeat at intervals of 10 to 20 days, as necessary for blight.	Note —Use kerosene emulsion very weak.		
Violet —(Blight, red spider.)	When blight is first seen, weak copper sulphate. Kerosene emulsion for insects.	Repeat at intervals.			
Vines —Cucumber and Melon.	Slug Shot or Tobacco Dust.	Repeat at intervals.			

Explanation.—Whenever an asterisk [*] is used, it cautions against spraying with poisons while the plants are in blossom; a dagger [†] indicates that there is danger of making an application within 3 weeks of the time the fruit is to be used as food. While the number of applications recommended will be found desirable, in seasons when the fungi are less troublesome a smaller number may often suffice.

FORMULAS

BORDEAUX MIXTURE.

Copper sulphate, 4 lbs.; Quick lime, 4 lbs.; Paris green [for leaf eating insects], 4 oz.; Water [one barrel], 40-50 gals.
To prevent potato rot, 8 lbs. of copper sulphate is used instead of 4

KEROSENE EMULSION.

For sucking insects.
Kerosene (coal oil), 2 gals.; Rain water, 1 gal.; Soap ½ lb. To be diluted before use with 9 parts of water.

PARIS GREEN AND WATER.

For insects which eat foliage.
Paris green, 1 lb.; Lime [fresh], 1 lb.; Water 200 gals.

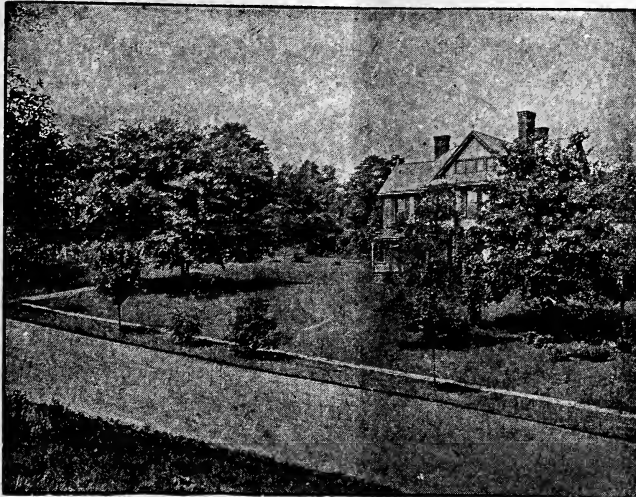
Our Celebrated EMERALD OR CITY PARK LAWN GRASS SEED.

THIS SEED IS EQUAL OR SUPERIOR TO ANY LAWN GRASS SEED OFFERED UNDER ANY NAME.

1/2 lb. 15 cts; 1 lb. 25 cts; 2 lbs. 50 cts; 5 lbs. \$1.00; 16 lbs. (1 bu.) \$3.00.

(5 cts. 1/2 lb. and 10 cts. per lb. extra, if sent by mail.)

THIS LAWN MADE FIRST YEAR FROM OUR SEED.



RESIDENCE OF J. CHAS McCULLOUGH.

Is composed exclusively of the very best varieties of grass, such as long experience has shown to be best adapted to produce a thick, heavy carpet-like lawn.

One of the greatest troubles in obtaining a good lawn is to get it free from weeds. These while not always in the seeds, but quite often in the ground, or come from the use of stable manure, are nevertheless always objectionable. Our customers can rely in buying Our Emerald Lawn Grass Seed, on its being the very best seed obtainable. For a new lawn, sow 4 to 5 bu. to the acre. For renovating sow 2 to 3 bu. to the acre.

Directions for First get the Lawn, the ground in shape and grade, drain it where necessary, and pulverize the soil, removing roots, stones etc., so as to have an even and smooth surface. To secure the best results, use our seed liberally 4 to 5 bu. per acre for new lawns being about the right quantity, (1 lb. to about 300 square feet). 2 to 3 bu. per acre for renovating.

Let the grass get a start of three or four inches before cutting as the growth is retarded by too early cutting. After this it should be cut with a lawn mower every ten days, and rolled whenever the ground is soft enough for the roller to make an impression.

GRUB KILLER

(An Insecticide)

During the summer large patches of lawns die out without apparent cause, and upon investigation find that it is caused by White Grubs killing the grass.

To remedy this evil, we offer "Grub Killer"

a combination of chemicals which destroys the grub worms and ants and prevents the growth of moss, also sweetens sour ground.

Apply broadcast at the rate of about 200 to 300 pounds per acre. Never use stable or vegetable manure as same is filled with eggs of the grubs.

10 lbs. 40 cts.; 35 lbs. \$1.00.
50 lbs. \$1.25; 100 lbs. \$2.00.

PERMANENT GRASS SEED FOR GOLF LINKS. We have always on hand all the valuable natural grasses of Europe and America and we are familiar with the habits and merits of each. We shall be glad to prescribe for whatever the requirements of the links may be, for poor land or rich, high and dry or low or wet. Golf Link Mixture—For the grounds in general, per bushel, \$2.50.

INDEX.

PAGE.	PAGE	PAGE	PAGE
Alfalfa..... 22	Flower Pots..... 29	Miscellaneous..... VIII	Seed Drills..... 30
Ashes, Canada, Hardwood..... 23	Flower Tubs..... 29	Mole Traps..... 25, 29	Seed Triers..... 29
Asparagus..... 26	Garden Seeds..... 8 to 18	Moss..... V, 23	Seeds, Flower..... VI, 1 to 6
Atomizers..... 25, 29	Garden Seed Drills..... 30	Melon, Musk..... V, 14	Seeds, Bird and Miscellaneous..... 20
Bag Holders..... 25, 29	Garden Tools..... 29, 30	Melon, Water..... V, 13	Seeds, Barn..... 19, 20
Bags..... 31	Garden Rakes..... 29	Mills Chipper..... 25	Seeds, Grass & Clover, VII,..... 21, 23
Beans..... III, 9, 20	German Millet..... 22	Mushroom Spawn..... 14	Seeds, Herb..... 18
Beet..... IV, 9, 20	Gladiolus..... 7	Novelties..... I to VIII	Seeds, Vegetable..... 8 to 18
Bellows, Powder..... 26	Grain and Seed and Screenings, 24	Oats..... 19	Seed, Lawn Grass 3d page cov. VII
Blue Grass..... 21	Grape Dust..... 27	Onion Seed..... V, 15	Sheep Manure..... VIII, 23
Blue Grass Stripper..... 29	Grass Catcher..... 28	Onion Sets..... 15	Shells, Crushed Oyster..... 24
Bone Meal..... 23, 24	Grass Hooks..... 28, 29	Oil, Lawn Mower..... 28	Shovels..... 29
Barley..... 19	Grass Seeds..... VII, 21, 22	Orchard Grass..... 21	Slug Shot..... 27
Broom Corn..... 20	Grass Shears..... 28	Paris Green..... 27	Soja Bean..... 20
Bulbs..... 7	Grub Killer..... 3d page cov.	Peas, Garden..... V, VI, 15, 16	Specialties..... 1 to VIII
Buckwheat..... 19	Guns, Powder..... 26	Peas, Cow and Field..... 19	Sorghum or Cane..... 20
Cabbage..... IV, 10	Hellebore..... 27	Peach Pits..... 20	Spades..... 29
Caladium Bulbs..... 7	Herbs..... 18	Planet, Jr., Tools..... 30	Squash..... 17
Canada Bulbs..... 7	Horticultural Tools..... 29	Plants, Vegetable..... 18	Suggestions to customers, 2d page cover.
Carrot..... 10	Hemp..... 20	Potatoes..... 19	Sprayers..... 28, 27
Cauliflower..... IV, II	Insecticides..... 27	Poultry Supplies..... 24	Supplies, Stock and Poultry..... 24
Cane Seed..... 20	Kale..... V, 8	Powder Guns..... 26	Sunflower..... 20, 24
Celery..... 11	Knives, Budding and Pruning..... 29	Pruning Shears..... 29	Sweet Clover..... VII
Chick Seed..... 24	Kaffir Corn..... 20	Pumpkin..... 16	Table of Weights..... 31
Clovers..... VII, 22, 23	Labels, Wood..... 29	Pumps, Spray..... 26, 27	Timothy..... 21
Corn, Field..... 19	Lawn Lime..... VIII	Radish..... 16, 17	Tobacco..... 18
Corn, Pop..... 11	Lawn Grass Seed, 3d page cov. VII	Rape, Dwarf Essex..... 20	Tomato..... VI, 17
Corn, Sweet..... IV, II, 12	Lawn Fertilizer..... 23	Raffa..... 29	Towels, Garden..... 7
Cotton Seed Feed Meal..... 24	Lawn Mowers..... 23	Rakes, all sorts..... 28, 29	Tuberose..... 29
Cow Peas..... 19	Lawn Rollers..... 23	Red Top..... 21	Turnip..... 18
Cucumber..... V, 12	Lawn Rollers..... 23	Rollers, Lawn..... 28	Vegetable Plants & Roots..... 18
Dahlia..... 7	Lawn Supplies..... 28	Rutabaga..... 18	Vegetable Seeds..... 8 to 18
Dibbles..... 29	Lettuce..... V, 12, 13	Salsify..... 17	Vetches..... 20
Fan Mills..... 25	Linseed Meal..... 24	Scalecide..... VIII, 27	Weeders, Hand..... 29
Farm Seeds..... 19, 20	Millet..... 22	Spinach..... 17	Wheat..... 19
Fertilizers..... VIII, 23		Splz..... VII	"When to Spray,".. Etc..... 32
Flower Seeds..... VI, 1 to 6		Seed Sowers, Broadcast..... 25, 29	
		Seed Ranch..... I, II	

OUR OFFICE AND SEED CLEANING PLANT.

*It is one of the Largest and Best Equipped
Seed Cleaning Plants in the World.*



**Our Plant Covers the entire Block bounded by
Fifth Ave. and Lock St., Eggleston Ave. and Zoo-Eden Park Ry.
(601, 603 and 605 EAST FIFTH AVENUE.)**

PRIVATE EXCHANGE LONG DISTANCE PHONE,
Connecting all Departments,

CANAL 2603.