

Historic, Archive Document

Do not assume content reflects current scientific knowledge, policies, or practices.

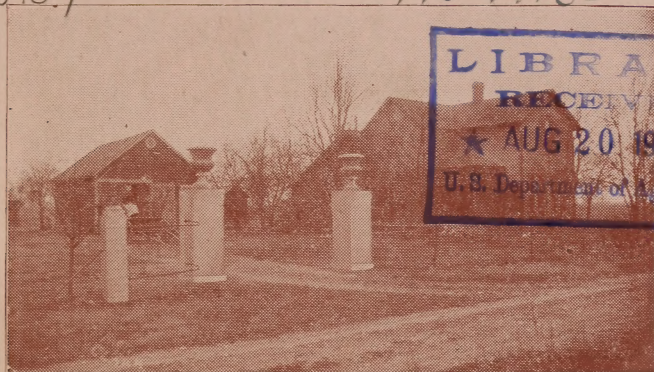
RETURN TO POMOLOGY
SECTION OF NOMENCLATURE.

APR 25 1916

62.67

1913-1916-

INDEXED.



LIBRARY
RECEIVED
★ AUG 20 1920 ★
U. S. Department of Agriculture.

CATALOG OF

Rail Road View

Small Fruit Nursery

W. L. MUSSELMAN, Proprietor

NEW CARLISLE, OHIO

Standard Varieties of Small Fruits



A Healthy Occupation.

Do you see this happy crowd of workers? Where is there a parent who is not interested in the welfare of the little ones and who is not attempting to aid them in every way? Let them be dressers of the vineyard, man's earliest and healthiest occupation. Nothing will benefit them more than plenty of outdoor exercise, working at this pleasant and profitable occupation. Start them to raising berries. This gives them an incite into nature, gives them plenty of fresh air and sunshine, develops them physically, mentally, morally and muscularly, and at the same time they are learning valuable lessons in economy and finance.

APR 25 1916

INDEXED.

1913--Announcement--1913

TO OUR CUSTOMERS

GREETING:

With pleasure we present to the Public our Annual Catalog for 1913.

Not a costly, or highly displayed catalog but one which will be of use to you in making the best selection of best varieties.

Our motto has been and will continue to be: "Honest Goods at Honest Prices," and the steady growth of our business with continual increase of satisfied customers, with our thirty years of experience, is sufficient guarantee of our claims to furnish a good grade of nursery stock at the lowest possible cost.

We appreciate the orders you have given us in the past and we will continue to try to please you, and assure you that each one of you will receive the same attention by mail as you would by calling personally at our nursery.

Awaiting your favors, which will receive our personal and prompt attention,

We are yours sincerely,

RAIL ROAD VIEW NURSERY,

W. L. MUSSELMAN, Prop.

New Carlisle, Ohio.

Reference: The First Nat'l Bank of New Carlisle, Ohio, Commercial Agencies, or any Business House of our place.

CERTIFICATE OF NURSERY INSPECTION

No. 27

Columbus, O., Aug. 19, 1912

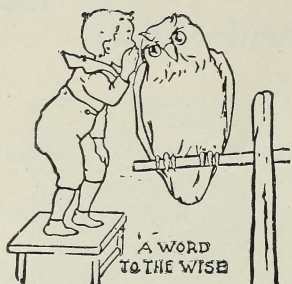
This is to Certify, That the nursery stock for sale by Railroad View Nursery, W. L. Musselman, of New Carlisle, County of Clarke, State of Ohio, has been inspected by a duly authorized inspector in compliance with Section 1111 of the General Code of Ohio, and has been found apparently free from dangerously injurious insects or plant diseases.

Valid until September 15, 1913, unless revoked.

Signed, THE OHIO STATE BOARD OF AGRICULTURE,

A. P. SANDLES, Secretary

N. E. SHAW, Chief Inspector



NOTICE !

PAYMENT. Send by Draft, Money Order or Registered Letter, at our risk. Orders booked if one-fourth the amount sent, balance before Plants are sent.

OUR GUARANTEE. While we exercise the greatest care to have our plants true to name, should a mistake occur in labeling we hold ourselves liable only for the amount paid for stock.

We send 50 at 100 rates, 500 at 1000 rates.

PLANTS BY EXPRESS are packed in baskets and light crates and delivered to depot free of charge—freight and express charges to be paid by the purchaser. The rates by express for nursery stock is 20 per cent reduction from 100 lbs. merchandise rates.

PLANTS BY MAIL. We sent plants by this method with good results. Small orders can be sent to distant points at less rates than by express. Plants quoted by the dozen are free of postage. By hundred add 20c for postage on strawberries.

SUBSTITUTION. Should we be out of any one variety wanted, please state if we shall return money or send some equally good or better variety.

LOCATION—We are located on Big Four R. R., Peoria Division. The Ohio Electric Railway Co. is one-half mile from our Nursery.

Our soil is well adapted to the growing of good plants.

TIME OF SHIPMENT. For Spring trade about April 1st. Fall trade about October 1st.

We are well prepared to take care of plants. They are placed in cold storage soon as dug, not allowed to be exposed to wind or air and packed in best possible manner.

Please order early.

Strawberries.

Field culture, row 3 1-2x15 in. on row. Those marked (P) have imperfect flowers, and must be planted alongside of perfect flowering kinds. Plant one row of staminate variety to every four rows of pistilate variety.

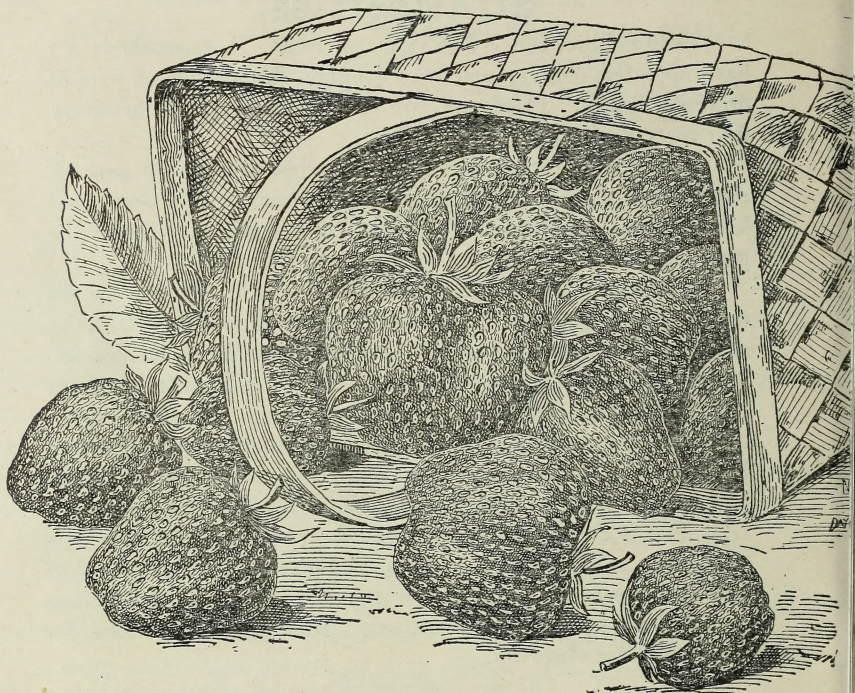
To grow the best grade of strawberries, first get the best varieties, then plant in a rich, moist soil. However, any good field soil will grow strawberries if they are well cultivated during the growing season.

If you are in doubt as to what are the best varieties for the soil in your section of country I will gladly give you such advise as will enable you to secure the best results. Write me describing the soil in which you wish to plant and I will recommend the best varieties for you to order.

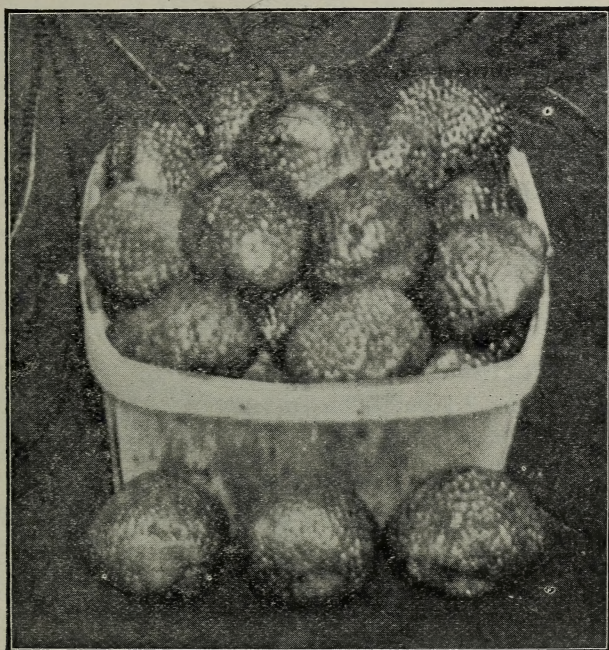
In ordering berries of any kind don't forget to include strawberries. For home use or the market strawberries invariably please, especially the standard varieties. No berry patch or small fruit farm is complete without a strawberry patch. No more luscious fruit grows or one that gives more general satisfaction. They are easy to set out and cultivate and any inexperienced person may make a success of a strawberry patch if our directions for cultivation are observed.

MARKET. Any city, town or village will afford a good market for them. It is surprising how many can be disposed of in a Rural District. But to be successful one must use care in gathering only first class well ripened fruit. This kind can only be depended on to sell well and is always profitable whether sold at home or shipped to the market.

I have no agents and pay no commission. By acting as my own agent I am able to save you the middleman's profit and can sell you plants as cheap as is consistent with the assurance that you are getting only the best. All I ask is that you write to me telling me what varieties you want and I will do the rest to your eminent satisfaction.



SENATOR DUNLAP. This wonderful productive variety originated in Illinois. A good strong grower. Should not be grown in thick matted rows to give best results. Berries and plants resemble Warfield berries, fair size and of dark red color. Highly flavored and of the best quality for canning or table use. It is well recommended as a good seller and shipper and is becoming the market berry. It is a favorite among the growers and the demand for plants is large. We want all our customers to give it a trial as a main field variety. Dozen 25c. 100, 50c. 1000, \$4.



GANDY.

This is the most widely known of all late berries and is the leading berry among the growers. Very few berries excel it as a fancy market berry. I grow more Gandy than any other one variety, finding them profitable and a good seller. Plants are a strong healthy grower and is inclined to be a shy bearer. Requires good rich soil to do its best. Berries large and handsome. It is a good seller owing to its fruiting late, and large size. As they bring good prices, growers can not afford to be without Gandy. Send me your orders early. Doz., 25c. 100, 50c. 1000, \$4.

HERITAGE PLANTS Very large vigorous grower, strong upright grower. Berries large to very large. Begins to ripe about mid-season, continues till late. Dark red color, but does not ripen as even as some varieties owing to productiveness and size. It is worthy of trial. Doz. 25c. 100, 60c. 1000, \$5.

GLEN MARY. Originated in Pennsylvania. Berries large and handsome, dark red color. A good market berry. Plant a strong vigorous grower, needs good cultivation and rich soil for it to do well. Some seasons it is inclined to rust and injure its crop of fruit. Doz. 25c. 100, 50c. 1000, \$4.

HAVERLAND (P) Very productive fruit, large size, light red color, long and pointed, good quality and a fair shipper. It is one among the most productive varieties we grow. Doz. 25c. 100, 50c. 1000, \$4.

KANSAS. (P) This new variety originated in the state from which it takes its name. Good strong grower, berries good size and firm, ripens medium to late. Doz. 30c. 100, 50c. 1000, \$3.50.

BEDER WOOD. This variety originated in Illinois, and is a good variety to fertilize other varieties with. It is early, a very strong grower, the fruit is fair size, and continues in bearing a long time. Doz. 20c. 100, 50c. 1000, \$3.50.

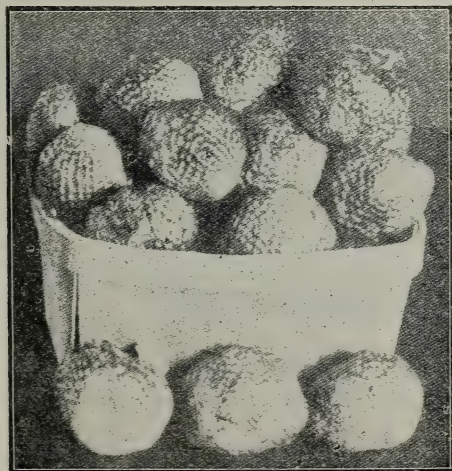
CRESENT. (P) This is an old reliable variety—will produce more fruit under careless cultivation than any other variety. Very productive, bright red, medium sized berries, well adapted to different kinds of soil on rich loam. Doz. 20c. 100 50c. 1000, \$3.50.

MICHALS EARLY. One among the earliest varieties grown. Medium sized berries, rather sour, light in color. Plant is a strong vigorous grower and healthy. Doz. 20c. 100, 50c. 1000, \$3.50.

JESSIE. An old variety of sharpless style. Very early, berries large size. A good fertilizer for early varieties. Doz. 25c. 100, 50c. 1000, \$4.

SAMPLE. (P) The Introducer says: "This new berry is large size and fine quality, quite firm, and continues long time in fruit. The berries are large to last. For the market man it is the best strawberry ever grown. Yields as many berries as Hav-erland, and averages as large as Bubach Late." Doz. 30c. 100 50c. \$1000, \$4.

WARFIELD. (P) Berry dark red color, firm, and medium size. Resembles old Wilson. One among the best for canning. Plants are small, but in productiveness, it is almost unsurpassed. Doz. 20c. 100, 50c. 1000, \$3.50.



UNCLE JIM. A vigorous and healthy grower. Does not set many plants which are very large size. Fruit is large to very large, fairly firm, irregular in shape. We think it is productive and a choice variety of the Big Standard Berries, ripens about the same time as Bubach. Doz. 25c. 100, 50c. 1000, \$4.00.

NICK OHMER. Plant a strong grower, makes fruit stems very large, which holds its fruit well. Sets fruit well. Midseason. Berry large and very attractive. Bright red color. A good shipper, very firm. Growers should give it a trial. Doz. 25c. 100, 50c. 1000, \$4.

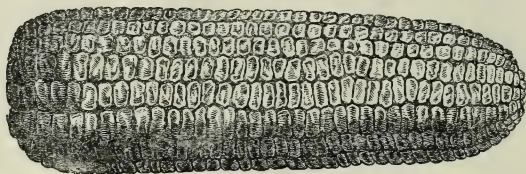
CHESAPEAKE. Originated in Maryland, medium to late in ripening. We have fruited it for 2 yrs. on our soil. We were much pleased with it. Large size and firm and a good seller on the market. Doz. 25c. 100, .60 1000, \$5.

AROMA. This is a good late strawberry, very popular in the West and South. A good strong healthy grower. Fruit very large gloss red, excellent quality and a ready seller on the market. Doz. 25c. 100, 50c. 1000, \$4.

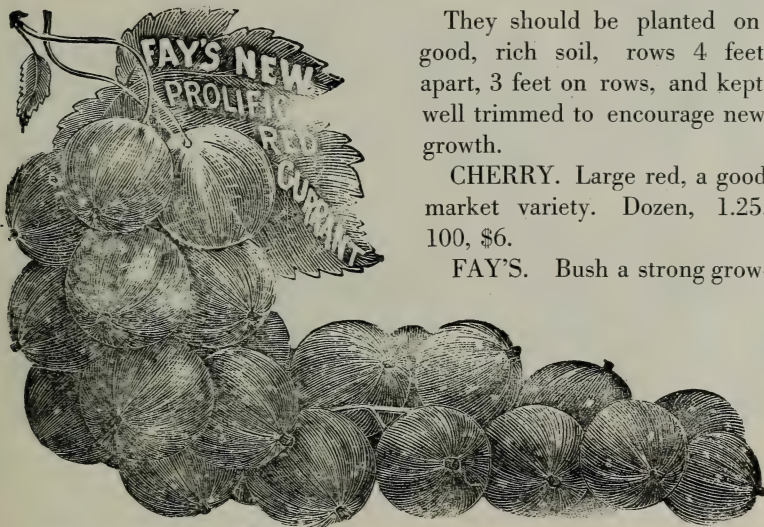
NORWOOD. Claimed to be one among the largest of strawberries. Originated in Norwood, Mass., color bright red and a good shipper. Doz. 30c. 100, 75c.

CLYDE. Strong grower and a heavy bearer, mid-season to late. Doz. 25c. 100, 50c.

SWEET CORN.



EARLY LEAMING. We have grown this variety for a number of years and on account of coming into maturity early is worthy of trial as you can begin to gather it before the later varieties are ripe and furnish you feed before the later varieties. We have planted it late in June after plowing old strawberry beds under and raised a fair crop. Should be planted on rich soil. Ears only medium size, deep grained small cob. We have only a limited supply which we quote to you in ear. 1 Peck (17 lbs.) for 55 cents.

CURRANTS--Two-Year Old.

They should be planted on good, rich soil, rows 4 feet apart, 3 feet on rows, and kept well trimmed to encourage new growth.

CHERRY. Large red, a good market variety. Dozen, 1.25. 100, \$6.

FAY'S. Bush a strong grow-

er and bearer, ripens early, large red color. A good market variety. Doz. \$1.25. 100, \$6.

RED DUTCH. Fruit medium size. Bush strong grower and productive. Doz. 1.25. 100. \$5.50.

One year old 75c a doz. post paid by mail.

GOOSEBERRIES--Two Years Old.

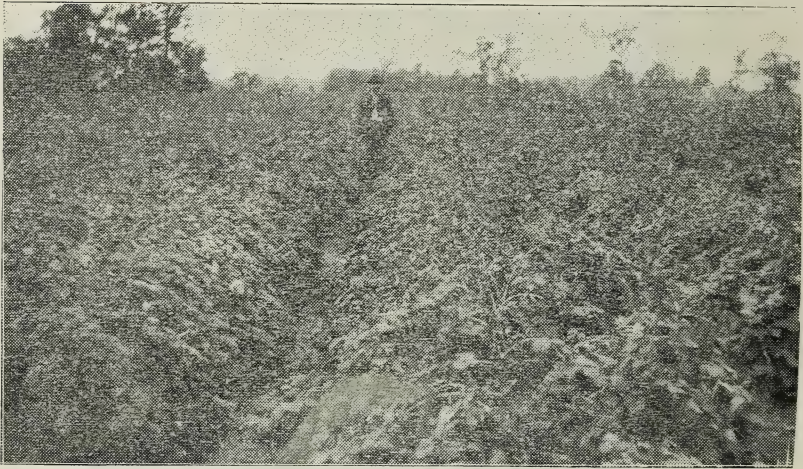
Culture same as Currants.

Gooseberries 10c each. 25 for \$2.25.

HOUGHTON. Profitable market berry, an old reliable variety to plant. Strong grower and a heavy bearer. 100, \$7.

DOWNING. Vigorous grower, fruit larger than Houghton. Valuable market berry. Color light green. 100, \$8.

PEARL. Hardy grower, fruit large and quality good.



RASPBERRIES.

The Raspberry is without question a most profitable fruit to grow. They require a small amount of labor and are always ready market at a good price.

Fruiting between the time of the strawberry which is in danger of late frosts, and the blackberry, which in so many seasons suffers because of dry weather, the raspberry is almost a sure crop.

No home or market garden can afford to be without a patch of them.

Our varieties are absolutely the best that can be had, and by buying from us, you will be taking advantage of our wide experience and thorough knowledge of raspberry culture.

Some varieties begin to ripen during strawberry season. Can be grown on soil that will grow good farm crops.

For field culture plant in rows six feet apart, three feet on row. Ground should be well pulverized, and care should be taken in planting to get the best results.

When plant is twelve inches high, pinch out the top. Cut out old canes after fruiting season.

To extend fruiting season one should plant early and late varieties.



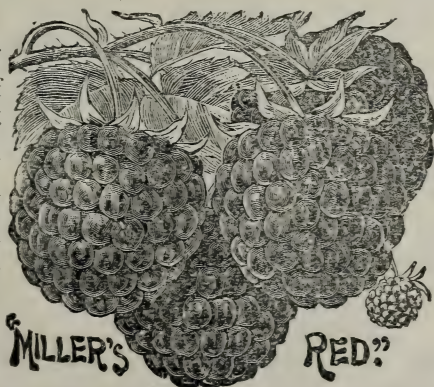
LOUDON.

(Red) This is an excellent red raspberry. Berries large bringing the highest prices. Strong grower
Dozen 50c. 100, \$1.50. 1000, \$16.

RUBY. Early red berry, very vigorous, hardy grower, prolific bearer of large size berries. Doz. 75c. 100, \$3.

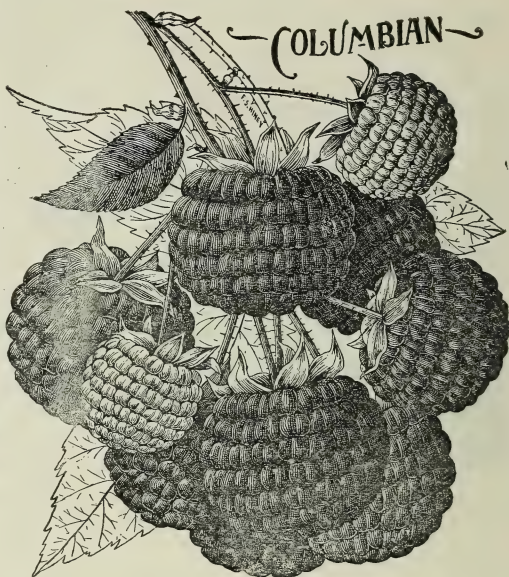
KING. (Red) Very early. Berries firm and attractive. Doz. 50c. 100, \$1.50.

MILLER. (Red)
Strong, vigorous grower
More stocky or of dwarf nature than some other red varieties. It is very productive and extremely hardy. Fruits early and fruit firm. Stands shipping well. Good quality and attractive color. Doz. 40c. 100, 90c. 1000, 8.



CUTHBERT, or QUEEN OF THE MARKET. (Red) One of the old standard varieties, is well known among small fruit growers to be among one of the best red varieties to plant for market. Season, medium to late. Doz. 40c. 100, 90c. 1000, 8.

COLUMBIAN
(Purple) It is a variety of the Shaffer type. It is very hardy and propagates from tips; fruit is very large and hangs on the bush well, oft-times will dry on bush if not picked off. Claimed to be the best canning berry retaining its raspberry flavor. A good purple berry for market or home use. Doz. 50c. 100, \$1.50.



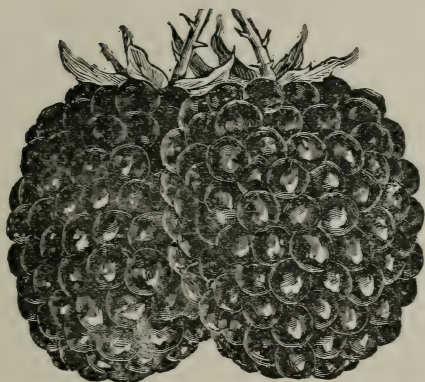
CUMBERLAND. (Cap) Claimed to be the very best of the Black Cap. This berry is making friends every season among berry growers. Of very large size, good quality, firm and handsome, vigorous and hardy grower. I have grown it for the last ten years and it would be the last one we should wish to discard. Doz. 50c. 100, \$1.25.

KANSAS. (Cap) This variety is well known and a favorite among the growers. Ripens after Palmer—berries as large as Gregg, of jet black color, firm and of the best quality. The plant is a strong grower, foliage is a dark green color. Resists cold and drought well. A good plant maker. Doz. 50c. 100, \$1.

CARDINAL. (Purple) (New) It is a very strong grower, canes very hardy and dark red color, but has few thorns. It propagates from tips. We are much pleased by its manner of growth. Claimed to be very productive. Berries large, dark red color; excellent quality for canning. Season, medium to late. Good berry for home use. Doz. 75c. 100, \$1.50

BLACKBERRIES.

Culture same as raspberries.



ELORADO. This variety is gaining friends among the growers and many agree that it is very hardy, does not winter kill. The fruit is larger than Snyder, and fine quality. Doz. 50c. 100, \$2.00. 1000, \$18.

EARLY HARVEST— Earliest blackberry in cultivation. Inclined to be a dwarf grower. Not hardy but needs winter protection. Fruit medium size and firm. Profitable on account of its earliness. Doz. 50c. 100, \$1.50. 1000, \$12.

SNYDER. A popular variety in the North on account of its earliness. Doz. 50c, 100, \$1.25. 1000, \$12.

STONE'S HARDY. This is a good variety where tender varieties winter kill. Strong grower, Berries medium size to large, good quality, ripens later than Snyder. Doz. 50c. 100, \$1.25. 1000, \$12.

RATHBURN. (New) This berry is claimed to be a cross between a blackberry and a dewberry—does not grow upright like many other varieties. Berries large and jet black color. Very attractive. Ripens early. Doz. 75c. 100, \$2.

GRAPES.

From olden times, the grape has been a favorite fruit. Nothing can take the place of it.

Any person owning a grape-vine or arbor has something that is not only fruitful, but ornamental as well as useful for its splendid shade. Persons owning a small or large piece of ground cannot afford to postpone the planting of some grape vines.

WORDON IMPROVED CONCORD. Earlier than the Concord. Good quality. Bunches and berries large. Doz. \$1.00. 100, \$5.

CONCORD. (Black) A very popular grape wherever grown. Bunches large and compact. Berries large and quality very good. Doz. \$1. 100, \$5.

NIAGARA. (White) Bunches very large and handsome. Ripens with Concord. Vine strong grower and productive. Doz. \$1.25. 100, \$5.

BRIGHTON. (Red) One among the best red varieties to plant. A good grower and productive. Bunches medium to large. Berries good size and quality very good. Doz. \$1.25. 100, \$5.00.

CALIFORNIA PRIVET.

Makes a beautiful attractive hedge fence along roadways and lawns and almost evergreen. One of the finest for hedgery purpose where it does not-winter kill; not entirely hardy in the north. Two year plants \$2 per hundred.

COLLECTION OFFER

In these collection offers, we are placing varieties that you may test them on your soil in a small way at a little price and you may get a variety that will be a money maker to you. To be sent by express not prepaid for \$1 per each collection. Order by No.

No. 1.

50 Dunlap, 25 Chesapeake, 50 N Ohmer, 50 Aroma, 50 Gandy.

No. 2.

50 Heritage, 50 Uncle Jim, 50 Sample, 50 Kansas, 35 Norwood.

No. 3.

50 Warfield, 50 Haverland, 50 Michals Early, 50 Bederwood, 25 Prolific.

No. 4.

100 Gandy, 100 Dunlap, 50 Warfield.

No. 5.

12 Cumberland, Raspberry, 12 Cardinal, 12 Plum Farmer.

No. 6.

4 Wordon Grape, 4 Niagra, 4 Concord, 4 Brighton.

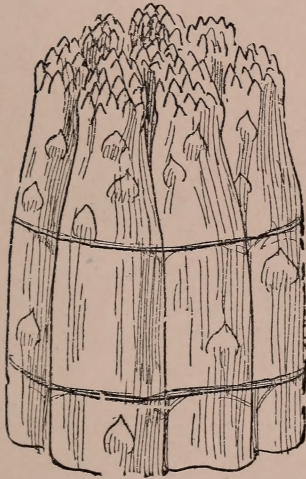
Send me two names of fruit growers and 19c to pay for package and postage, I will send you 2 doz. strawberry plants. Your own selection.

PIE PLANT.

Should be classed among early fruits of the garden. Good for pies, tarts, etc. Plant in rows, three feet apart.

LINNEUS. Strong, vigorous grower, large, early. Doz. \$1. 100, \$3. 1000, \$25.

DWARF JUNEBCRY. Good, strong grower, fruit large size, quality good. Doz. \$1.25. 100, \$6.



1000, \$5.00.

COLUMBIAN WHITE. A good variety to plant for home use or the market. 100, 75c. 1000, \$5.

PALMETTO. One of the old standard kinds. 75c 100. 1000, \$5.

ASPARAGUS.

Every housewife well knows the scarcity of things in the vegetable line when winter's snow has disappeared and the garden is being planted. Asparagus shoots up early in the spring and affords vegetable food long before garden fruits are ripe. When a bed is once set it is profitable for several years.

BARR'S MAMMOTH. Large, early, fast grower, a profitable variety to plant. Should be in every garden. Doz. 35c. 100, 75c.



PMUM FARMER. This is a new Black Cap variety. The plant is a strong vigorous grower and a heavy bearer of good sized berries. Season earlier than Cumberland. We think they are a good variety to plant as they are a productive and profitable berry.

We were much pleased with them last season and found them a profitable berry with us. Doz., 75c. 100, \$1.50.