

Historic, Archive Document

Do not assume content reflects current scientific knowledge, policies, or practices.

RECEIVED
JAN 26 1913

62.47

1913

Stark

Best Orchard Varieties

Short descriptions of tested, tried, proven kinds that should be planted both for family use and in commercial orchards



THE man who is planning an apple orchard the most important question is the selection of suitable varieties. No matter how small the planting may be, nothing but first-class sorts should be chosen. If the orchard is strictly for family use, high quality sorts should be planted, the kind that, when fruiting, will bear apples you would want to keep in your cellar for use during the winter.

You will, of course, want a few summer apples and a good fall apple. Select these with the same idea in view. Select apples of quality, and at the same time trees that bear regularly and abundantly. If planting for commercial purposes, the line is even more closely drawn. Very few varieties should be planted and then only kinds that bring best prices on the markets.

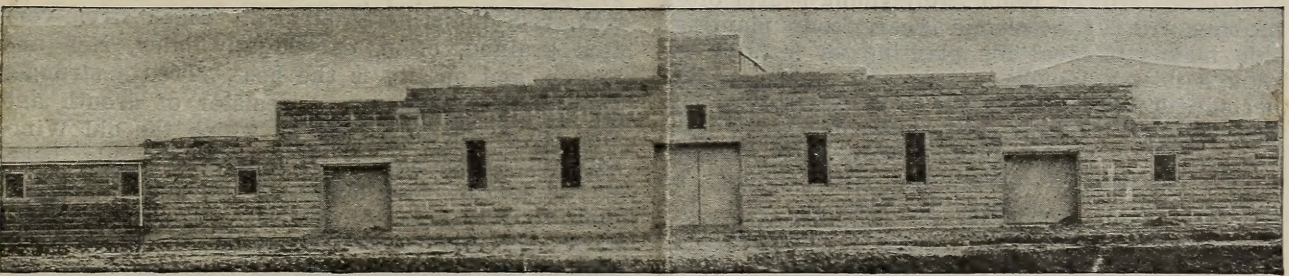
We are apple specialists, the largest growers in the world. Our great blocks this season are the admiration of everybody and we offer to the orchard planting public one of the finest lots of trees we have ever grown. You will find Stark one-year, 3 to 5 ft. apple the ideal foundation for an orchard, though we can furnish other sizes if desired. The experience of many years has taught us that the ideal tree for planting is the maiden (one-year) top with three-year-old roots and we thus grow them by the hundreds of thousands—charging no more for them than other nurserymen charge for ordinary one-year trees, with tender, brittle roots. Our great apple nurseries on the crest of the Ozarks in specially favored sections produce the finest trees and best root system, of any region in the United States. We challenge competition.

Stark Delicious, thoroughly described on accompanying circular, should be, by all means, the largest block of trees in your orchard. Here we name a few of the best additional sorts, together with description, and if you plant them there is not a chance for you to go wrong for every sort described will give a good account of itself, both in the orchard and in the court of last resort—the market. From the list described below, the average planter can find every apple he needs. Should you desire others you will find them priced on enclosed price list. We have arranged these sorts according to their ripening season—the earliest being described first, making it easy to select an orchard that will give you fruit during the entire season.

Liveland Raspberry (Lowland)—The best red early apple. Of widespread adaptability and deserving of the most extended planting. Succeeds south as well as far north, in the east and in the west. Surpassingly beautiful—clear waxen white, striped, shaded and marbled with crimson. Flesh white, often tinged pink next to the skin—very tender and rich. Tree hardy, healthy, vigorous and long lived; a late bloomer, resistant to blight, and bears extremely young. We consider it the very best early apple and recommend it with confidence. Plant an orchard of Liveland Raspberry and watch the dollars grow.

Wilson Red June—Of the Red June type, but better—far better, and much larger and handsomer. Comes in just as Red June goes out and always brings highest prices. In Arkansas and south Missouri they attain the size and wondrous beauty of Black Ben. Tree a young and heavy bearer, hardy, and should be planted largely along with Liveland Raspberry.

Duchess (Oldenburg)—A well-known, handsome Russian apple, streaked and shaded red, and a favorite because of its rich acidity and splendid cooking qualities. Tree hardy, vigorous,



ONE OF OUR SEVERAL IMMENSE PACKING HOUSES—THIS ONE IS 220 BY 290 FEET

and an abundant bearer—a natural dwarf and valuable as a filler.

Summer Champion—Of good quality and one of the most valuable summer market varieties; resembles a brilliant colored Ben Davis. Tree has remarkable vigor and bearing qualities and is hardy, with heat-and-drouth-resisting foliage.

Early Melon—One of the best dessert apples of its season and a splendid cooker. Large red, striped crimson. Tree hardy, productive, healthy. One of the really good summer varieties. A. H. Griesa, of Kansas, who discovered the variety, wrote us in 1898: "In season in August, and have kept them till December; is large, but not blown off by winds and does not drop in dry weather. Has more good qualities and in a higher degree than any other early apple I know."

Wealthy—A valuable variety that has slowly but surely made its way into the front ranks. No other apple more beautiful, and quality excellent; for those who prefer a sprightly acidity in an apple, it is the equal of Jonathan. Tree medium size, spreading, vigorous, young bearer, and great drouth resister; in our Colorado unirrigated orchards we found Wealthy and Duchess two of our most vigorous trees. Its extreme hardiness makes it valuable far north; in Montana one of the most valuable sorts. For both commercial and home orchards, we recommend it. In an orchard near Louisiana, Mo., Wealthy trees are bearing this season immense crops and the trees are in their prime, while Ben Davis trees planted at the same time are nearly all dead.

Jonathan—The well-known old favorite. Tree a young bearer, long-lived and productive. In the West Jonathan is the most popular of the older standard varieties and is planted largely both as a filler and as a permanent orchard tree. In Missouri, Kansas, Indiana, Ohio and other central western states, it is one of the great payers. In the southern states it is a late fall or early winter apple, but even these keep well in storage. Jonathan is a recognized money-maker and our faith in the variety is so strong that we grow them by the hundreds of thousands—we know that they never disappoint.

Stark King David (Trade-Mark)—The most beautiful apple grown. Medium to large, resembling Jonathan in shape, though larger; color a deep rich red with distinct stripings of darker red. Its striking appearance commands instant attention and top prices. The tree and foliage much resemble Jonathan, but more vigorous and hardy. A vigorous grower, remarkably young bearer often bearing fruit the second year from planting; this makes it ideal for planting as a filler, although it is a long-lived tree and makes a good permanent tree. When Mr. C. M. Stark first saw the original tree the fruit hung perfectly until October 22, while Jonathan were gathered five weeks earlier. However, the fruit should be picked earlier; if allowed to hang too long, the keeping quality is impaired, a fact that is true of most fruits. Better than Jonathan; the quick, sharp acid of Jonathan being toned down in Stark King David making a rich, exquisite flavor that as a western grower says, is like old wine.

Rome Beauty—An old favorite with an established reputation in all markets and always brings good prices because of its large size and great beauty. Uniform in size, smooth, shaded and striped bright red; tender, juicy, good and an ideal cooker—especially fine baked. Paddock and Whipple, in their great book, "Fruit Growing in Arid Regions," say: "Attains more nearly to perfection on a medium soil—land not too light, nor too heavy." Orchardists from New York to the Pacific Coast are wisely increasing their plantings of Rome Beauty. As an orchard tree it is all right; blooms late, and is one of the surest annual bearers.

We grow several improved strains of Rome Beauty. Ohio Bright Red Rome Beauty and Ohio Dark Red Rome Beauty come from selected trees in the orchards of U. T. Cox, the Rome Beauty King, of Ohio; Illinois Bright Red Rome Beauty comes from the great orchards of Sen. H. M. Dunlap of Illinois; Washington Red Rome Beauty from a tree in a Washington orchard that has attracted much attention. Trees propagated from these selected trees can be furnished if desired—see price list.

Grimes Golden—The most popular yellow apple, and year in and year out commands top prices. Rich, golden transparent yellow, delightfully fragrant, tender fleshed, juicy, spicy, rich. Dr. Warder, in his great work, "American Pomology," says: "Too good for aught else but dessert." Until the advent of Stark Delicious, Grimes Golden was looked upon as the ideal dessert apple. While the market prefers a red apple there will always be a market at good prices for this great sort.

York Imperial (Johnson's Fine Winter)—East, west and south is one of the best; not quite hardy far north. Crisp, firm, sub-acid; good, but not of highest quality. A splendid keeper in common cellar, but in storage sometimes scalds. In Virginia, West Virginia, Maryland, Pennsylvania, etc., is largely planted and many are exported, bringing fancy prices on English markets as Red Newtown. The fruit is rather bad shape for packing in boxes. Everything considered, however, it is satisfactory and profitable.

Stayman Winesap—Where an apple of the Winesap is wanted we urge orchardists to select Stayman Winesap to the exclusion of all others. We have tested this variety carefully, and have watched it come into popular favor and know it to be the best of the valuable Winesaps. A dark, rich, red, indistinctly striped. Flesh firm, very fine grained, crisp, exceedingly juicy, rich and tender, and quality is the best. Tree a stronger grower than Winesap, a resister of drouth and will thrive on thin soils on which the old Winesap would soon starve. It is a more regular bearer than Winesap, hangs longer, keeps as well and in quality is far superior. It will not fail to please or to pay handsomely. In the far West and in the apple sections of Virginia, West Virginia, Maryland, Pennsylvania, etc., it is being very largely planted. Stark Delicious, Stark King



A Block of Stark Bro's 1-Year Apple in the Ozark Country—Better Trees Were Never Grown

David and Stayman Winesap are ideal varieties for a commercial orchard.

Senator (Trade-Mark)—One of the most beautiful apples grown. Glorious rich pinkish red, with very prominent dots; very uniform in size and of desirable shape. Quality superb—an agreeable blending of acid and sweet with an intense apple flavor. Throughout the West it is fast becoming one of the great market varieties, especially in Montana, where it bids fair to take the place of McIntosh. Some of the handsomest samples of this variety came to us from Indiana. The Pecos Valley of New Mexico also grows them to perfection. In fact, it succeeds in apple-growing sections everywhere.

Black Ben (Trade-Mark)—Whenever an apple of the Ben Davis family is wanted Black Ben should be planted. It is in every way superior to any apple of the Ben Davis type. The tree growth is of the Ben Davis character, but even stronger, hardier, thriftier, is a better resister of drouth, its foliage is more vigorous, and it succeeds over a larger territory. Its fruit is one of the very handsomest of all apples; large, solid deep dark red (no stripes), and while no claim is made for its being in the high quality class of Stark Delicious, Stark King David, etc., it is really a good eating apple and is one the masses like. Its wonderful beauty makes it a profit-earner and a big one. Is always quoted at higher prices than Arkansas Black, Baldwin, etc., and along with Jonathan, Stayman Winesap. For fancy fruit-stand trade it is a prime favorite and a ready seller. The American people buy color in apples and Black Ben will command first attention anywhere. It is a splendid keeper, either

in a common cellar or cold storage, does not scald, and bruises, instead of rotting, dry up.

Winesap—This old, well-known, dark red, handsome apple is popular and profitable in favored western regions, and in the lower altitudes of the Appalachian Mountain country. Where an apple of the Winesap variety is wanted for high elevations or for Northern planting Stayman Winesap should be used; Winesap does not take on size in higher elevations. Where Winesap grows to perfection, it is one of the best.

Paragon Winesap—Of the Winesap type—resembling Mammoth Black Twig, but better in every way. Can be successfully grown in all Winesap regions. Paragon Winesap, Gilbert Winesap and Stayman Winesap are three splendid apples of the Winesap family. We consider Stayman best, but Paragon and Gilbert are wonderfully fine and are profitable.

Gilbert Winesap—Large, handsomely colored—just simply an improved Paragon, originating in Tennessee. A magnificent apple and should be planted along with Paragon and Stayman Winesap in all Winesap regions. Should be planted instead of the shy-bearing old Mammoth Black Twig. Of far greater value.

Newtown Pippin (Yellow Newtown)—Bright yellow with distinct pink blush; richly flavored, firm, crisp, good quality, and one of the very best keepers—one of the last apples on the market in late spring and early summer. A slow growing tree and usually a light bearer, but is valuable in western apple regions and in a few favored sections of the East and Southeast.

Ingram—Red, striped crimson, not so juicy or refreshing as Giant Jeniton, which bids fair to supersede both Ingram and old Jeniton. Ingram



Stayman Winesap—A Great Producer

often overbears, resulting in fruit of small size, unless severely thinned, and, while a fair apple, Giant Jeniton is superior, both for home use and for market. In the Ozark Mountain region Ingram is valuable.

Giant Jeniton (Trade-Mark)—A late bloomer and an unfailing cropper. Hardier, more vigorous, fruit much larger and foliage better than any apple of the Jeniton family. Fifty per cent larger than old Jeniton, and much better color—a better apple in every way. Thrives where Ingram grows—and further north.

Champion (Trade-Mark)—For sure and quick profits Champion has few equals—a market apple of great value. Color golden yellow, beautifully striped and shaded bright red; flesh firm, juicy, sub-acid, and encased in a strong skin, making it a good handler and a good shipper. Good quality, and as a keeper it is not surpassed by any apple. In tree it is hardy, thrifty, well shaped, has splendid tough foliage, and strong-growing, aphid-resistant roots. Bears at a very early age and for that reason is one of the best varieties for planting as a filler. We do not recommend it for the North or far East, believing it needs a longer season for perfect development. For these regions we recommend Stark Delicious, Stark King David, Senator, Black Ben, etc.

In the Pecos Valley of New Mexico is one of the greatest payers, far more valuable than Ark. Black and the shy-bearing M. B. Twig.

Pears



THE markets of the country are calling for pears. Hon. Parker Earle, the great fruit authority of New Mexico, says: "The orchard man is neglecting his opportunity. The marvelous prices which a few growers get for well grown and well handled pears, sometimes sent thousands of miles to the great markets, show the people's genuine hunger for this greatest delicacy. Where one man eats a really fine pear, there are a thousand who would like to and would willingly pay its high cost—but they cannot be had."

The pear tree thrives on many kinds of soil and will bear profitable crops on a shallow soil where most other trees would starve, but does its best on a loose, strong, clay loam. Be careful as to your varieties—plant only the best. We are describing a few of the sorts we know to be good—the ones we recommend. These are named according to season of ripening. There are others, and good ones. You will find additional sorts in price list.

Many sorts succeed perfectly when grown as dwarf, and many people with small grounds prefer a dwarf tree. We offer on dwarf stocks the varieties that we know to be successful. Price list quotes the full list. We grow largely and are in position to furnish in any quantity. Many pear growers are using dwarf pear trees as fillers in their standard pear orchards—a plan that we advocate.

Snyder—Deep, golden yellow, medium to large, buttery, rich and smooth, with a sweet, pleasant, satisfying flavor. Tree remarkably free from blight, vigorous, rapid in growth, a young bearer and very productive.

Bartlett—Rich golden yellow when ripe, often with a soft blush; large, thin-skinned, buttery and melting, with a rich, musky flavor. Tree a strong grower, bears young and abundantly, but requires careful cultivation to bring it up to its highest excellence. Probably more highly esteemed for canning and shipping than any other. Succeeds best as standard, but does well as dwarf. An old favorite and one that is making money for growers in all pear regions.

Lincoln (True Lincoln of Illinois—not Lincoln Coreless)—Clear, beautiful yellow, often with bright red cheek—as handsome as a pear can be; quality even better than Bartlett. A strong growing tree and remarkably free from blight. A large pear, delicious for eating fresh, and as a canner has no equal. The original tree, now over 75 years old, has never blighted or winter-killed; it is as hardy as an oak. Absolutely the best pear

of its season and one that will give much satisfaction both in the home orchard and when planted commercially. Be sure and get the genuine Lincoln; some propagated from other trees have been sold as Lincoln, but are of little value.

Flemish Beauty—Pale yellow, almost covered with light russet, becoming reddish brown when ripe. Large, beautiful, melting, sweet and rich. Tree is very hardy but needs sunny situations, or fruit will crack and scab. When perfect it is a superb pear. Magnificent in Montana and the Northwest.

Howell—A beautiful, large, pale waxen yellow pear the value of which is underestimated. Often carries a fine red cheek. Tree a free, upright grower, and a young, annual and abundant bearer.

Stark Seckel (Sugar Pear)—Riehl's select strain; small, yellowish brown, but of finest flavor; tree hardy and blight-resistant. This is the finest strain of Seckel, which has long been the standard of high quality among pears.

Comice—A sure and dependable money-saver for growers, and a variety that should be much more extensively planted. Succeeds perfectly in Massachusetts and other eastern states, as well as in the central and far western pear regions. Quality very fine—luscious and rich with a slight perfume; color yellow, faintly blushed crimson.

Riehl Best—Discovered by E. H. Riehl, of the Ill. Exp. Station; probably an old French variety of which the name has been lost. In quality, there is nothing better; fine grained, rich and juicy, free from grit, and entirely exempt from rotting at the core. Tree large, healthy, vigorous and free from blight; an annual bearer of immense crops and should be planted everywhere.

Anjou (Beurre de Anjou)—Large, handsome, greenish yellow, blushed dull red and touched with russet—one of the most delicious late fall pears—juicy, excellent; can be kept until the holidays. It succeeds everywhere, and is popular on all markets, where it always brings profitable prices. Is being planted largely in all pear regions, especially in the far west, where it ranks as one of the very best. Always dependable and always in demand.

Theodore Williams (Stella)—Named for the veteran horticulturist who originated it, the late Theodore Williams, of Nebraska. A seedling of Kieffer, but outclasses that well-known variety in hardiness, productiveness, early bearing and quality. Color yellowish green; flesh very sweet, juicy and finely flavored. Tree is extremely hardy—has stood 40 degrees below zero without injury, and came through the Nebraska blizzard of 1907 without an injured bud, while all buds of Kieffer were killed.

Kieffer—The pear for the millions east of the Rocky Mountains. Large, rich golden yellow, sometimes tinted red on sun-exposed side; quality only fair, though excellent for canning, while baked Kieffers are delicious. Has become the most profitable market variety on account of its good shipping and keeping qualities; its magnificent size and wonderful beauty make it an ever-ready seller. Tree one of the most resistant to

blight, very prolific and widely distributed throughout the country.

King Karl—A seedling of Clairgeau, which it resembles, but is more prolific and of better quality; very large, rich yellow, with red cheeks; flesh firm, juicy, melting and excellent quality. Fruit hangs well and keeps well. Tree is a strong grower, precocious bearer and almost free from blight.

Winter Nelis—Though not a handsome pear, it is one of the most delicious when properly ripened. Color greenish yellow, slightly russeted; flesh fine grained, buttery and aromatic. Tree very hardy and thrifty, but a straggling grower, though it bears regular crops and the fruit keeps well into the winter.

Cherry



CHERRY production is not in proportion to the demand. No other fruit is produced and put on the market at less expense. Has a wide range of adaptability—grown successfully in practically every state, except in the extreme south, and it will do well in the higher altitudes of those states. We describe below the best and most profitable sorts—both sour and sweet kinds; if other varieties wanted refer to price list.

Dyehouse—Larger, finer, better quality, smaller pit and a week earlier than Early Richmond. Upright growing, hardy tree, good quality—one of the very best of its season. A splendid market sort.

Early Richmond (Early May)—Size medium to small, clear, bright red and quite acid. One of the best known varieties, but not so desirable or profitable as the Montmorency group or as Dyehouse. From New York to Colorado 90 per cent of all cherries planted should be Montmorencies.

Montmorency King (Ordinaire)—Cannot be too highly recommended for its quality and quantity of fruit, hardiness and beauty of tree, and for its never-failing crops. Always dependable. Throughout Colorado, hundreds of the Stark strain of Montmorency have been planted for shipping, canning and preserving.

Montmorency Stark—This strain of Montmorency should be largely planted commercially—for profit it has no superior. Propagated from a select tree on our grounds which uniformly bears very large fruit, larger than any other Montmorency. Tree a stronger grower than King, and is our favorite of the Montmorency group. We also propagate three other strains of Montmorency—Monarch, from Iowa; Large, from New York; Sweet, from Missouri. See price list.

Bing—One of the greatest sweet varieties, originating in Oregon. One of the most delicious and on the Pacific Coast is considered the most profitable. Tree hardy and vigorous. Seems to succeed East better than most sweets.

Lambert—One of the largest of all cherries—almost jet black when ripe. Very popular in all sweet cherry regions. An enormous bearer.

Royal Ann (Napoleon)—A beautiful and delicious large, yellow, sweet cherry, with a most attractive bright red blush; very firm and juicy. A magnificent cherry of largest size. Hardest and best of the yellow or light colored sweet sorts, and very popular.

Suda Hardy—We consider Suda the best of the Morello type; surpasses English Morello and Wragg in yield, has better foliage and is a better grower.

Peach



IN SOIL requirements, the peach tree is not exacting; under unfavorable conditions and in neglected orchards, where weeds and briars run riot, peach still bear and are profitable.

Good care, thorough cultivation, intelligent pruning and up-to-date methods of culture will do for the peach what it does for all fruits—make a better tree, and it will yield larger crops, better fruit, with resulting better profits.

We describe herewith the pick of the list of varieties covering the entire season. In planting a peach orchard you won't go wrong if you use any variety we describe. We name them according to their ripening season. If other sorts are desired note price list enclosed.

Red Bird Cling—Creamy white, overspread with bright glowing red, extra large for an early peach and a remarkably good shipper; tree hardy, healthy. The man who grows these fine, handsome, showy, early peaches need not worry about a market. Not one-half enough good early sorts are grown to supply the demand.

Eureka—This great ironclad peach is absolutely the hardest, after fifteen years test. Bears so full, it needs thinning when Elberta all killed in bud. In 1912, 32 below zero killed all buds of all other sorts and all buds of common seedlings, yet every Eureka tree in our test orchard bloomed—only peach blossoms here in 1912. Good size, almost as large as Alton and Carman and a week to ten days earlier. Beautiful red cheek; better flavor than Carman, almost equal to Alton, firmer and better keeper and shipper, with far less brown rot than Carman,—in fact, is almost entirely free of rot. Plant Eureka, for year in and year out it will bear more fine peaches than any other variety.

Alton—A mammoth red-cheeked, white peach; earlier, handsomer, better quality than Carman; the very best—juicy, melting, with a rich satisfying flavor. One of the hardest in tree and bud; bears where all others fail. Has made good wherever planted, and when its value is fully known will stand among peaches as Stark Deli-

icious does among apples—at the very top. Originated in the vicinity of Alton, Ill., where it has for years given more crops and larger ones than any other variety. Plant Alton for large profits.

Crawford Early Improved—Large, strong, yellow, with bright red cheek, beautiful, and of splendid quality. This strain is far better than the old Crawford Early.

Stark Early Elberta—An Elberta in appearance, but better quality, that comes on the market ten days earlier than that famous old market king. For years peach growers have been trying to find a variety coming in ahead of Elberta so that all their Elbertas would not go on the market at the same time. This is just what Stark Early Elberta does—makes a longer Elberta season. An ideal shipper and keeps well. Original tree grew in our nurseries, first planted in Utah and is perfectly hardy. Planters should plant Stark Early Elberta largely; each season adds to its splendid record.

Stark Early Elberta ripe two weeks ahead of old Elberta. Because of superior quality and early ripening, it brought \$1.50; old Elberta in same orchard brought \$1.00.—A. N. Nesbitt, Humphreys Co., Tenn. Aug. 3, 1912.

Engle Mammoth—Large, attractive, high quality, one of the best canning peaches, and popular in Michigan. Strong grower, hardy, productive.

Capt. Ede—Similar to Elberta in color and quality, but tree is hardier, a stronger grower and more productive. The popularity of Elberta has kept Capt. Ede in the background. One of the best varieties from the standpoint of the commercial orchardist; has every good point—size, beauty, quality, a good shipper, keeps well.

Belle of Georgia—Greenish white, beautifully blushed, large, showy, good quality, sells well. Tree vigorous, hardy, a good bearer—a money maker. Variety one that should be planted largely.

Champion—Large to very large, creamy white with light blush. Its extreme hardness and splendid quality make it a general favorite. Of its type and season it has but one superior—Illinois. A favorite on the market, and during the last 20 years has steadily grown in favor. A good peach and a profitable one.

Elberta (Queen)—Large to very large, yellow, with beautiful blush; firm, a little coarse, but tender and good. While quality is not the highest, it has made more money for the orchardist than any other peach. Tree a rank, vigorous grower, healthy and fairly hardy—one of the most dependable. Lengthen your Elberta season by planting Stark Early Elberta.

Crawford Late Improved—Large, very handsome, a favorite in many peach regions; later, surer bearer, larger, finer quality and hardier than the old strain.


Illinois—A large to very large white peach beautifully marked with bright red. In quality and beauty excels the old favorite—Champion. Originated near North Alton, Ill., and is undoubtedly a Stark Heath-Washington cross, combining the many good points of its excellent parentage. Hardy, good tree, free from rot, good shipper,

ideal in quality. Illinois and Alton are the white-fleshed varieties that should be planted largely.

Stark Heath Cling—An unexcelled variety for canning and preserving and commands fancy prices on all markets; the finest of the Heath strain. Large, creamy white, red blush. Splendid quality; flesh rich, sweet and delicious.

Krummel October—The greatest late yellow peach. Larger, higher color, better quality, two weeks later than Salway, and a splendid keeper. Large, almost round, deep yellow with a dark carmine blush; firm, fine texture, free from bitterness. Tree strong grower and hardy.

Plum

EAR in and year out, notwithstanding unfavorable seasons and neglect, plum trees produce generously their magnificent fruit, yet no tree is more responsive to good care and up-to-date culture. In planting a commercial plum orchard, keep your plum trees about 20 feet apart each way. If planting just a few trees for home use, 12 to 15 feet apart is about the proper distance.

No other trees will fruit more abundantly. The market for the raw fruit is always good. Within the last decade a number of varieties have been introduced and have made good. They have almost revolutionized plum growing, and the sorts used largely by the plum orchardists of the country are such sorts as the ones we describe below. See price list for other varieties.

Early Gold (Shiro)—One of the grandest of all plums and a splendid sort to plant. A loaded tree of this golden yellow fruit is a glorious sight. Fruit sweet and delicious—a huge honeydrop. For home garden and for the market orchard, be sure Early Gold is on your list.

America—As beautiful as a plum can be, and a notable production of Mr. Burbank's. Magnificent, large, glossy, coral red and delicious in quality. Tree is wondrously prolific and of wide adaptability. Commercially and for home use, should be largely planted. America, Gold, Early Gold (Shiro) and Omaha are a quartet of the finest plums in existence.

Omaha—Large, coral red—one of the handsomest. Rich yellow flesh, firm, juicy, highly flavored, splendid quality. Tree one of the hardiest, most dependable. Originated by Theodore Williams, of Nebraska, who wrote us when we undertook its introduction: "There is no other plum in existence as cosmopolitan as Omaha. It fruits from Alberta (Canada) south to the Gulf;

it thrives in Vermont and has been tested west to the Pacific."

Gold (Trade-Mark)—The aristocrat of the plum family. Light, transparent golden yellow, almost wholly overspread with a beautiful blush that no painter has ever been able to match. This was the first great creation of the matchless Burbank and was his choice from among twenty million native, hybrid and cross-bred seedlings. If all other productions of this horticultural wizard should come to naught the fact that his knowledge made possible this golden, glorious fruit would insure his name a place among the immortals of horticulture. Has fruited in practically every state in the Union.

Red June—An early plum of great value. Named and introduced by us over twenty years ago. The most valuable true Jap introduced to date. Tree healthy, hardy, an unfailing cropper and remarkably free from rot. Succeeds everywhere; hardy far north, while in the south is one of the most profitable and dependable.

Abundance—A favorite everywhere. Large, brilliant cherry red; firm, sweet and excellent. A profitable sort and one that should be planted along with Red June in all plum orchards. An abundant bearer and year in and year out is one of the most profitable.

Wild Goose Improved—Bright red, very sweet and juicy when fully ripe. This strain has many points of superiority over old Wild Goose, fruit is larger, tree is healthier and is more prolific. One of the best.

Lombard—East of the Rockies it is one of the best Europeans; size medium, shape oval, quality splendid, color violet red. Tree hardy, vigorous and prolific.

Missouri Green Gage—A most delicious, greenish yellow plum, nearly twice as large as old Green Gage; tree a better bearer and a stronger grower. For preserving and canning it is without a peer.

Prunes

We grow largely of Italian (Fellenburg), German, French, York State, Hungarian (Pond's Sd'l'g) and ship many orchards of them to all prune regions. Growing prunes is a great industry in many sections and orchards are bringing big returns.

Quince

Van Deman (Trade-Mark)—Originated by Luther Burbank. A strong grower; the hardiest, surest; youngest bearer we know and succeeds farther north than any other variety. Will produce more large, fine-flavored, golden fruit than any other quince. Delicious for preserves, jellies or quince syrup. Ripens through a long season and keeps well.

Grapes



They are grape specialists; the largest growers in the United States. Our grape nurseries in the Lake Erie Grape Belt of Pennsylvania, the finest grape nursery soil in this country, produces annually millions of the kind of vines careful grape growers want. No man who owns a square foot of ground can afford to be without a grape vine. They grow with little care, and on hill or in valley, rich or poor soil, will thrive even if neglected and will produce in season beautiful health-giving fruit. Rocky hillsides, useless for any other purpose, will produce marvelous crops and will return great profits. We describe herewith some of the leading sorts only. For further sorts, see price list.

Stark Eclipse (Trade-Mark)—The earliest, most valuable and profitable black grape. Of the Concord type, but far superior. Sweet, highly flavored, handsome, compact bunch, that hangs well to the vine. Hardy, healthy and vigorous grower, with exceptional foliage. Originated with E. A. Rhiel, of the Illinois Experiment Station, and of all his valuable creations, is undoubtedly the best.

Campbell Early—Of the Concord type, but much earlier, larger, and of better quality when thoroughly mature. The vine is a strong, vigorous grower, hardy, with thick, healthy, mildew-resisting foliage and perfect self-fertilizing blossoms. Both bunch and berry are very large.

Moore Early—A black grape that in quality is similar to Concord, but considerably larger, and is a good shipper. Vine is healthy, hardy and succeeds over a wide range of territory, thriving wherever Concord will grow.

Lutie—Rich red—a good grape everywhere and a favorite in the New York grape belt; succeeds better South than nearly any other. While not as good quality as Brighton, it can be grown in many locations where Brighton will not stand.

Lucile—Dark red, fair quality; in vigor, hardness and productiveness is surpassed by none.

Brighton—A large, delicious, sweet red grape; vine thrifty and a strong grower, but should be planted with other sorts, such as Diamond, Sunrise, etc., for pollenization.

Diamond (Moore Diamond)—Delicate greenish white with a rich yellow tinge when fully ripe—one of the most satisfactory of its class and season.

Delaware—A small, light red, delicious grape; hardy in vine, but deficient in vigor, requiring rich soil, good care and high cultivation.

Worden—A thoroughly tested, dependable and valuable black grape. Commercially profitable, while for the family vineyard it should even be given preference over Concord.

King (Giant Concord)—Much larger than Concord, also more vigorous and prolific, and of much better quality. Color black; not subject to rot, ships well and is valuable.

Concord—This is the old well-known Concord, "the black grape for the millions." It is healthy, hardy, vigorous and productive and succeeds in localities where many other grapes fail.

Stark Delicious—From the experimental vineyards of E. A. Reihl, Illinois' greatest grape authority. Color light red, large bunch, medium berry; has proven hardy and dependable wherever tested. Mr. Riehl says that vineyardists have not planted more red grapes because there were really no high-quality red grapes until the advent of Stark Delicious.

Niagara—A hardy white grape that succeeds almost everywhere. Bunch is large and very handsome, and when fully ripe is melting and sweet, with an exquisite flavor.

Catawba—An old favorite red grape requiring favored situations and a warm season; in the North it ripens too late for proper maturity; not always dependable. Grown commercially in the Chautauqua grape belt of New York.

Crabs

Stark Florence (Little Lady Apple Crab)—Worth all others put together—the youngest and most prolific bearer; a dwarfish grower, and may be planted closely. When in full fruit, no tree more beautiful. Fruit striped and mottled crimson and yellow. Bears everywhere.

Small Fruits, Ornamentals



They are large growers of small fruit plants: Raspberry, Blackberry, Dewberry, Currant, Gooseberry—all leading varieties. No man with small grounds can afford to be without these luxuries. They grow with little care, and produce profusely, even under neglect. For list of varieties, see price list.

To meet the growing demand for shade trees, shrubs, hedge plants, roses, etc., we have largely increased our plantings, selecting from the vast list of known sorts the ones that experience and careful observation have shown us are best. Great blocks of Norway Maple, Silver-Leaf Maple, Carolina, Norway and Lombardy Poplar, American and European Sycamore, American Elm, Tulip Tree, Maiden Hair, English Linden, European and Cut-Leaf Weeping Birch and other grand shade trees.