

Historic, Archive Document

Do not assume content reflects current scientific knowledge, policies, or practices.

INDEXED. MAR 12 1915

SEASON 1912, 1913

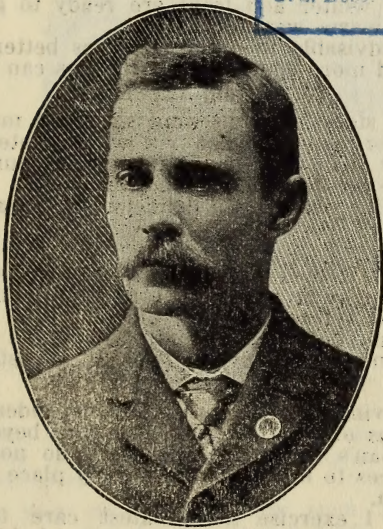
62.07

PRICE LIST

WEBSTER'S NURSERY

**Fruit and Ornamental Trees
Plants, Roses, Etc.**

LIBRARY
RECEIVED
★ AUG 18 1920 ★
U. S. Department of Agriculture.



C. H. WEBSTER

NURSERYMAN AND DEALER

MENA - - - - ARKANSAS

ANNOUNCEMENT

I take pleasure in presenting the Forty-First Annual Catalogue of Webster's Nursery. Fruit and Ornamental Trees, Small Fruit, Plants, Shrubbery, Roses, Etc.

Webster's Nursery was established at Centralia, Illinois, in the year 1866 by Jabez Webster, who still resides there. Trees have been shipped from this Nursery to nearly every state in the United States. C. H. Webster, having spent a lifetime in the business, is well versed in same, and has a reputation second to none.

I herein offer you a selection of Nursery Stock for home use or commercial planting of the varieties planted in this section. I wish to thank patrons who have favored me with their orders, and solicit a continuance of your business, and solicit a trial order from those with whom I have not dealt. The stock I offer is as good as the best, and prices will compare favorably with any reliable firm for quality of goods.

Planting Time—The time to plant Nursery Stock is in the falling of the leaves in the Autumn and until the buds start in the Spring. Fall planting is preferable as a rule, as roots form all winter and trees are ready to grow as soon as warm weather begins.

It is advisable to order early, as better selections and more complete assortments can be had.

Terms and Conditions.

Please state how you want shipment made—by freight or express; also via what route. Note carefully that your name, postoffice, county and state are written plainly on your order. My responsibility ceases with delivery to railway company.

Credit.

Cash on delivery of goods to city trade. Cash before shipment required from parties unknown to me, or reference with sufficient time for investigation before shipment. Make all money orders and drafts payable to C. H. Webster.

Guarantee.

The living of trees is largely dependent upon conditions of weather and after-care beyond the Nurseryman's control; therefore, I do not guarantee trees to live after leaving my place in good condition.

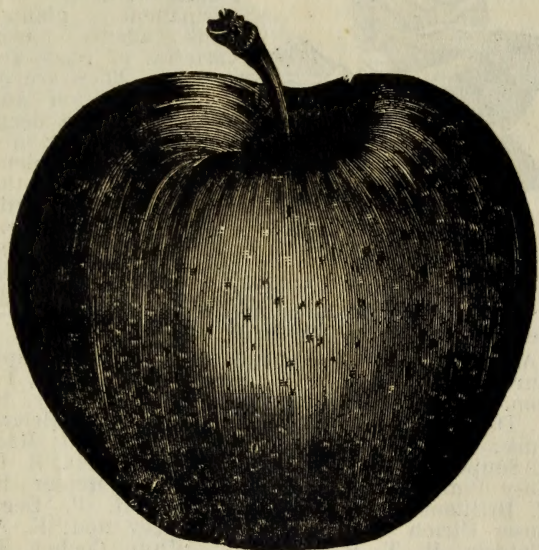
While I exercise the greatest care to keep varieties pure and true to name, and hold myself in readiness at all times to replace, on proper proof, all stock that may prove otherwise, or refund the amount paid, it is mutually agreed between the purchaser and myself that I shall not be liable for any amount greater than the original purchase price paid for trees. Sales are made with this understanding. Particular attention paid to large orders at lowest prices.

Respectfully,

C. H. WEBSTER,
Nurseryman and Dealer.

APPLE TREES

The first fruit, both in importance and general culture, is the apple. Its period extends nearly through the entire year. By planting judicious



selections of summer, autumn and winter varieties, a constant succession can be obtained of this indispensable fruit for family use.

There is no farm crop which, on the average, will produce one-fourth as much income per acre as will a good apple orchard.

	Each	10	100
One year old, 3 to 4 feet	15c	\$1.25	\$10.00
Two year old, 4 to 5 feet	20c	\$1.50	\$15.00

VARIETIES—Carolina Red June, Yellow Transparent, Grimes Golden, Jonathan, Winesap, Wagnor, Ben Davis, Gano, Rome Beauty, Stayman Winesap, Arkansas Black.

WINTER BANANA—Fruit large, perfect in form, golden yellow, beautifully shaded with bright crimson; flesh lemon yellow; fine grained and of highest quality. Productive, and a good keeper.

One year 3 to 4 foot trees, 25 cents each.
Ask for prices per 1,000.

APRICOT

MOORPARK—Very large, orange with a reddish cheek; flesh orange, sweet, juicy, with a fine flavor; the leading commercial variety now planted.

One Year, 3 to 4 feet, price 25c each.

PEACHES

In order to preserve the continued growth of the trees and the fine quality of the fruit, the trees should have the shoots and branches shortened every few years, so as to preserve a round, vigorous head with plenty of young wood, and the land kept in constant cultivation.

	Each	10	100	1000
June Buds, 2 to 3 feet whips	.08	.60	\$5.00	\$45
June Buds, 3 to 4 feet whips	.10	.75	6.50	55
One year, 4 to 5 feet	.15	1.25	10.00	85

Ask for prices per 1,000.

VARIETIES—Champion, Salway, Chairs Choice, Early Crawford, Capt. Ede, Beers Smock, Elberta, Crawford Late, Henrietta Cling.

CHERRIES

The Cherry is one of the finest and most delicate desert fruits. The period of its use may be prolonged by a proper selection of varieties. The trees thrive well on any soil which is well drained; high, rolling land is best. A money maker.

	Each	10	100
One year, 3 to 4 feet	25	\$2.25	\$18.00
Two year, 4 to 5 feet	35	3.00	20.00

VARIETIES—Early Richmond, Montmorency, Wragg, sour; Bing, Black Lambert, Royal Ann, sweet.

BING CHERRY—This is a grand new black Cherry. Sweet, very large; blackish purple, very solid, flavor of the highest quality. Tree upright, thrifty, hardy and productive. A fine shipping market variety.

Price of 1 year trees, 3 to 4 feet, 35c

PLUMS AND PRUNES

The Plum tree will grow freely on a greater variety of soil than any other fruit tree, and is a sure cropper on light as well as heavy soil. Plum and Prune trees do better when more than one variety are planted together, where there is a chance for cross-fertilization, and when so planted seldom fail to produce abundant crops.

	Each	10	100
One year 3 to 4 feet	20	\$1.50	\$10.00
Two year 4 to 5 feet	25	2.00	

Ask for prices per 1,000.

VARIETIES—Red June, Burbank, Blue Damson, Abundance, Wild Goose, German Prune.

PEARS

Pear Trees prefer a rich, heavy soil; still, on light soil made rich by the use of fertilizers, the fruit is of the best quality. The branches should be thinned out occasionally, especially when the trees are young.

Pick, when on gently lifting the fruit the stem will readily separate from the limb; place in a dark, cool room or cellar until fully matured.

	Each	10	100
One year, 3 to 4 feet	25	\$2.25	\$15.00

VARIETIES—Bartlett, Duchess, Keiffer, Howell, Anjou, Garber.

GRAPES

There is scarcely a yard so small, in country or town, that room for one to a dozen grape vines cannot be found. They do well trained up



the side of any building or along the fence, occupying little room and furnishing an abundance of healthiest fruit.

One year strong plants, 10c each, \$1.00 doz.
Ask for prices per 1,000.

VARIETIES—Concord, Moore's Early, Worden, Niagara White, Muscat, Tokay, Rose of Peru, Delaware.

Tokay, Muscat, Rose of Peru, 25c each

RHUBARB

LENNAUES—Large, early, tender and fine; the very best of all. Small divided plants, per dozen, 75c; per hundred, \$5.00.

SHADE TREES

In planting shade trees, dig holes four feet square and two feet deep, filling up within ten inches with rotten sod or good, fresh, black soil from under the sod; cut smooth with a sharp knife all broken and bruised roots; place trees in their natural position in the hole, cover with good, rich, mellow soil and pack down well with the foot as the dirt is thrown in. Stir the ground occasionally through the growing season.

Catalpa-Speciosa, 6-8 feet, each 25c; per 10, \$2.25

Catalpa, Bungeii, Weeping, 2-year heads, \$1 each.

Maple, Soft or Silver, 6-8 feet, each 25c; 10, \$2.25.

Maple, Norway or Sugar, 6-8 feet, each 50c.

Tulip Tree, 6-8 feet, each 35c.

Carolina Poplar, 6-8 feet, each 25c; per 10, \$2.00.

HARDY SHRUBS

Altheas, bush or tree form, 18-24 in. 25c

Deutzia, bush form, 18-24 in. 25c

Hydrangea P. G., bush, 25c; tree form 40c

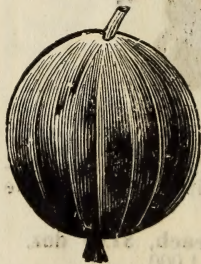
Spirea VanHoutte, 24-36 in. 25c

Amoor River, South, small leaves, Evergreen, per 100 \$7.00

Ibiota (hardy) graceful, leaves long and narrow, per 100, \$7.00

California Privet Hedge, 12 to 18 in., \$5.00 per 100.
Ask for prices by the thousand

SMALL FRUIT PLANTS



Gooseberries, each 15c; 10, \$1

Blackberries, 40c doz.

Raspberries, 40c doz.

Strawberries, 100, 75c; 1,000 \$2.50.

Varieties of Strawberries—
Aroma, Dunlap and Klondike.

ASPARAGUS

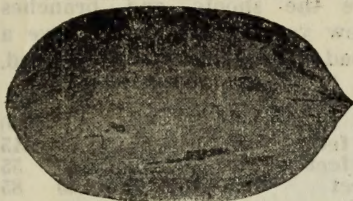
One hundred roots will supply a small family, and last for years. Set the plants 18 inches apart in the row, plant deep and fill in as the plants grow. Mulch heavy with well rotted stable manure. Leading varieties two year, 50c per doz., \$2 per hundred.

Ask for prices per 1,000.

NUT TREES

PECAN—Paper Shell.

The Pecan is destined to become the leading nut for home and orchard planting in this country. The Pecan is likely to do well where the Hickory thrives, as it belongs to the same family. Try a few of the



Paper Shell PECAN Nuts.

VARIETIES—Stuart, Taylor, Van Deman, Prices on application.

CHESTNUTS.

American Sweet Chestnuts. Small, sweet, fine flavor; fine for shade, and the crop gives good returns. Price 50c each.

ALMONDS.

The Almond will do well in the Ozarks. No one should be without a few trees. The following varieties are well recommended: I. X. L. and Ne Plus Ultra, 40c.

ENGLISH WALNUT.

No nut yields larger and more profitable returns than the Walnut. The tree is practically free from insect pests, and when once established requires little care. Ask for varieties and price.

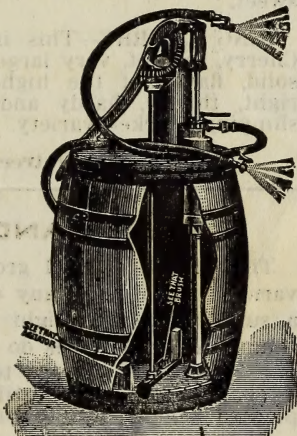
You've GOT to Spray

If You Want

GOOD FRUIT!

You can do thorough spraying ONLY with the most efficient pump and outfit. No other kind of Spraying is worth while; no other spray pump is worth bothering with. That's why you should buy the

Empire King Spraying Outfit



PRICE—With two leads of 10-foot hose and two nozzles, without tank, \$18.50.

Price of 50-gallon tank, \$4.00; 100-gallon, \$12.00.

Price includes the mounting of the pump, ready for use.

C. H. WEBSTER, AGENT - - MENA, ARK.

ROSES--HYBRID--PERPETUAL



This class of Roses is admirably suited for garden culture, for the formation of rose beds, hedges and permanent plantations where hardy varieties of roses are desired. They are of easy cultivation and luxuriant in a deep, rich soil. They are benefited by mulching in the fall of the year. Prune according to the habit of the growth, cutting back close all weak shoots and shorten-

ing the long canes to a convenient length. Strong field grown plants 25c each, \$2.50 per dozen.

VARIETIES—Alford Colomb, H.P. Crimson; Capt. Christy, Pink, H. P.; F. V. Marschall, Carmine, T.; Gen. Jacqueminot, Carmine, T.; His Majesty, H. T. Dark Crimson; John Hopper, H. P. Bright Pink; Mad. Chas. Wood, H. P. Cherry Red; Mad. C. Soupert, T. Deep Yellow; Magna Charta, H. P. Rosy Pink; Maman Cochet, T. Pink; Meteor, H. T. Brilliant Crimson; Paul Neron, H. P. Deep Rose; Ulrich Brunner, H. T. Cherry Red; K. A. Victoria, H. T. Pure White; White Cochet, T. White; Wm. R. Smith, H. T. Creamy White, (new); Crimson Rambler, Climber; Dorothy Perkins, Climber.

MAGNOLIA

Magnolia-Soulangiana Pink, perhaps the most popular of all Magnolias, being of vigorous growth, and blooming profusely even while quite small. The flowers are large, pink on the outside of petals and white inside.

PRICE 3 TO 4 FEET, \$1.00 EACH

