

## **Historic, Archive Document**

Do not assume content reflects current scientific knowledge, policies, or practices.



62 97

Field Investigations in Pomology

913

RECEIVED

FEB 7 1913

# WISCONSIN NURSERIES

Eleventh Annual Catalogue and Price List

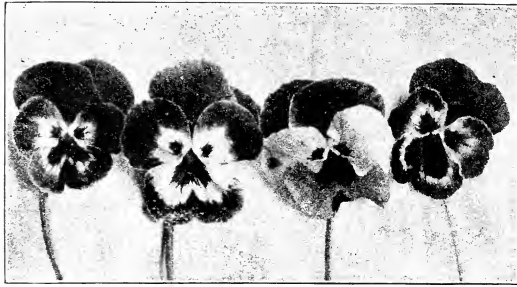


A YOUNG NURSERYMAN  
Train up the boy in the way he should go. Then when he gets bigger he'll help his daddy.

## FRUIT TREES

And General Nursery Stock

W. J. MOYLE, Prop.      UNION GROVE, WIS.



PANSIES FOR THOUGHT

## Announcement

**Kind Friend:** It is with pleasure we place in your hands our eleventh annual Catalogue. The season of 1912 was the most prosperous in our history and we take this opportunity to thank our customers for the liberal patronage extended the past year. And we assure you, as you will find by reading this catalogue, that our main aim is to supply the planter with everything for the orchard and garden at the least possible cost.

## Conditions and Terms

**Order at Once.**—Make sure of getting what you want by ordering early. If you are short of funds now, send one-third cash with order, and we will hold stock; and balance can be remitted later, before shipping season.

**Terms Cash,** or part cash with order; and balance as above stated. **The Prices** given in this Catalogue are for quantities named, but five will be sent at the ten rate, 50 at the 100 rate, 500 at the 1,000 rate.

**Shipping.** We make no charge for packing, boxing, etc., and all stock is delivered to forwarders in good order, properly labeled and correctly packed. Freight and express charges are in all cases paid by the purchaser.

**Special Low Express Rates** are granted by all express companies on shipments of plants, about 20 per cent less than merchandise rates.

**Complaints,** if any, must be made at once upon receipt of stock, and if just, will be cheerfully rectified.

We guarantee good stock, good packing, prompt shipment.

While we exercise the greatest care to have all stock genuine, we do not give any warranty, and in case of any error on our part it is mutually agreed that we shall not at any time be held responsible for a greater amount than the original price of goods.

When any variety is exhausted we reserve the right to substitute, or to put in a smaller grade of trees, unless otherwise stated in order.

**Reference.** State Bank, Union Grove, Wisconsin.

# WISCONSIN NURSERIES

Union Grove, Wisconsin

# A P P L E S

	Each	10	100
4 to 6 feet .....	20c	\$1.75	\$16.00
3 to 4 feet .....	15c	1.25	12.00

Those starred \* are the hardiest kinds.

## Summer Apples



\***Red Astrachan**—Large, beautiful deep crimson. Valuable for market.

\***Tetofsky**—Medium, yellow striped red, fine for eating.

**Golden Sweet**—Large, pale yellow, tender, sweet.

**Sops of Wine**—Medium, dark crimson, sweet.

\***Yellow Transparent**—Earliest and best; white, tender, juicy, sprightly, sub-acid.

\***Lievland Raspberry**—Russian origin; clear white, shaded crimson; most beautiful apple; flesh white, hardy, long lived. Ideal for home use. Fruit of fine quality.

\***Duchess of Oldenburg**—Good size, yellow, streaked red, juicy, rich, sub-acid, productive.

**Red June**—Medium, oblong, hardy and productive; deep red color; rich, spicy, sub-acid.

## Autumn Apples

**Autumn Strawberry**—Tender, juicy, productive.

**Alexander**—A large, beautiful red apple.

**Fall Orange**—Fruit large to very large, deep yellow and covered with small black dots; excellent quality. Tree a free grower and very productive.

**Fall Pippin**—Large, yellow, rich, aromatic.

\***Longfield**—A Russian variety and one of the best. Tree a strong grower and an early, abundant and annual bearer.

\***Patten's Greening**—Large, round, slightly flattened, yellowish green with bronze blush, sub-acid. Very hardy.

**St. Lawrence**—Large, streaked red and greenish yellow; fine quality. Tree hardy.

\***Wolf River**—Large, handsome; yellow shaded and striped red, juicy, pleasant spicy flavor

\***McMahon**—Large, round; almost white with faint blush; tree vigorous grower and hardy as a crab; bears young and abundantly.

\***Dudley, or North Star**—Originated in Maine. Tree thrifty, perfectly hardy; a good cropper. Fruit, size and appearance of Duchess, but more solid and richer flavor; a few weeks later than Duchess.

\***Wealthy**—Originated in Minnesota. Hardy, vigorous and very productive.

# Winter Apples

- Ben Davis**—Large, handsome, striped, valuable.
- Baldwin**—Large, bright red, crisp, juicy, rich.
- Grimes' Golden**—Good size, yellow, of highest quality, very productive.
- Golden Russet**—Medium, dull russet, crisp, juicy.
- Gano**—An improved Ben Davis, nearly covered with deep, dark red.
- Fameuse**—(Snow)—Medium, deep crimson, flesh white, of best quality.
- \*Hibernal**—Russian, large showy fruit, striped red.
- Hubbardston**—Large, red striped, tender, juicy.
- Jonathan**—Medium, red, extra quality.
- Mann**—Medium to large, yellow, mild, sub-acid.
- McIntosh**—Medium size, dark red, good quality, juicy, sub-acid.

**\*Northwestern Greening**—Hardy, yellow rich, of good size, extra long keeper.

**Northern Spy**—Large, striped, mild, sub-acid and tender, with a rich, delicious flavor.

**Salome**—Long keeper, annual bearer, medium and uniform size; good quality.

**\*Scott Winter**—Hardy and vigorous; bright red; crisp, spicy; and of a brisk acidity, long keeper.

**Seek - No - Further** — (Westfield)—Medium to large, round, striped with dull red, russet dots; fine grain, tender, rich and excellent.

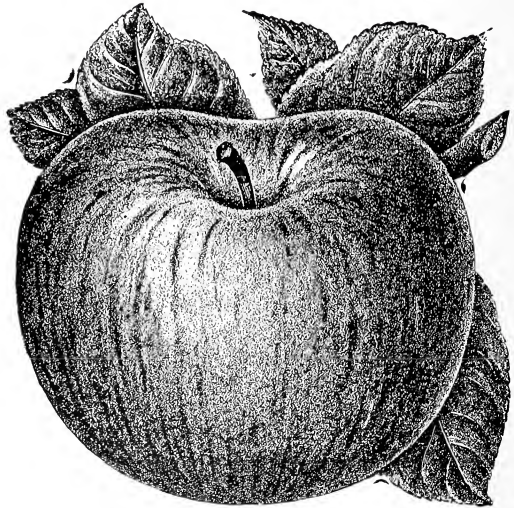
**\*Talman Sweet**—Medium, yellow and red, rich.

**Utter**—Large yellow and red; fine quality.

**Wagner**—Good size, deep red in the sun; flesh firm, sub-acid, excellent.

**Windsor**—Medium, oblate, slightly conical, light greenish yellow covered with marbled dull red and russet, fine grained, spicy, sub-acid. Very good.

We can also supply Yellow Bellflower, Delicious, Wismer, Pewaukee, Stark, Banana, Pound Sweet and Malinda. 3 to 4 ft. trees at 20c each; \$1.75 for 10.



WEALTHY, THE "KING OF" APPLES

	<b>CRAB APPLES</b>	Each	10	100
4 to 6 feet.....			20c	\$1.75
				\$16.00

Perfectly hardy, succeed everywhere, early and annual bearers.

**Hyslop**—Large, deep crimson; one of the most beautiful; very popular.

**Martha**—Beautiful, glossy, yellow, shaded bright red, good size; mild, clear, tart.

**Florence**—One of the best crabs to plant. It is early and red, good size plant. It is early and bears well. Fruit is large and of good quality. Originated in Minnesota. Tree is very hardy.

**\*Sweet Russet**—Large, roundish oblong, greenish yellow, mild, sweet.

**Transcendant**—Immensely productive, bright red, one of the most popular.

**Whitney**—One of the largest, glossy green, splashed carmine, firm, juicy, pleasant, great bearer.

# P E A R S

	Each	10	100
Standard, 4 to 6 feet .....	25c	\$2.25	\$20.00
Standard, 3 to 4 feet .....	20c	1.75	18.00
Dwarf, 3 to 4 feet .....	15c	1.20	10.00

Dwarfs, Duchess, Howell, Seckel, Tyson, Flemish Beauty.

**Bartlett**—Large, buttery, juicy, high flavored, great bearer; very popular.

**Clapp's Favorite**—Very large, yellow and red, with russet specks, melting, rich.

**Tyson**—Medium, melting, juicy, good.

**Duchesse**—Very large, buttery, rich, juicy, excellent. It succeeds to perfection, and is the most popular market variety as a dwarf.

**Howell**—Large, yellow, with red cheek, rich, sweet, melting, early bearer, productive.

**Flemish Beauty**—Large, juicy, rich; one of the hardiest and most popular.

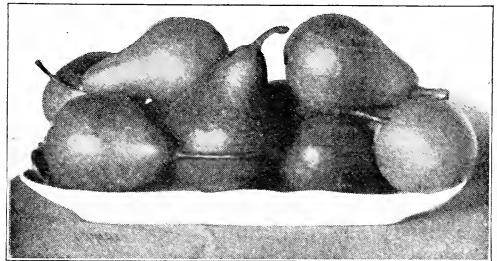
**Clairgeau**—Its large size, early bearing productiveness and great beauty make this one of the most valuable market sorts.

**Seckle**—Small, skin rich yellowish brown, when fully ripe, with deep brownish red cheek; flesh very fine grained, sweet, exceedingly juicy, melting, buttery, one of the richest and highest flavored pears known.

**Anjou**—Large, buttery, melting, rich vinous. The best late fall and early winter variety.

**Sheldon**—Medium size; yellow, with a richly shaded cheek; flesh a little coarse, melting, juicy, with a very brisk, vinous, highly perfumed flavor; of first quality. Tree vigorous, erect and handsome, hardy and productive.

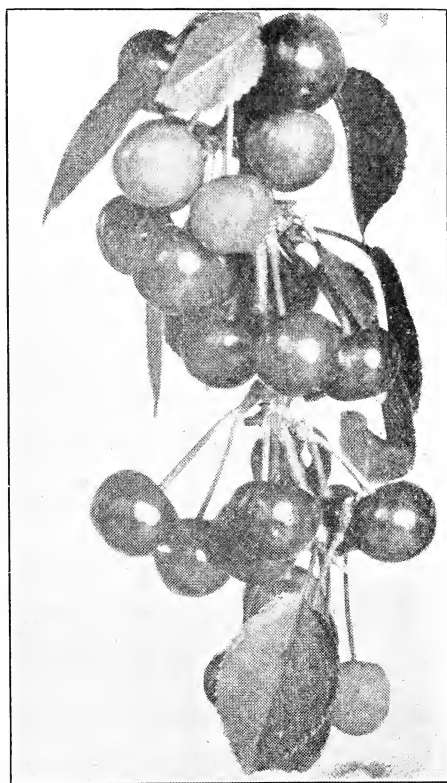
**Keiffer**—Its large size, handsome appearance and remarkable keeping and shipping qualities make it exceedingly profitable for market.



**HOWELL PEAR**  
A Hardy, Early and Abundant Bearer

# CHERRIES

	Each	10	100
4 to 6 feet .....	25c	\$2.25	\$20.00
3 to 4 feet .....	20c	1.75	17.00



**EARLY RICHMOND**  
The Best Cherry for the Home Orchard

**\*Early Richmond**—An early variety of extreme hardiness, bearing large annual crops of medium sized fruit, light to dark red, very juicy.

**English Morello**—Large, dark red, juicy, tree somewhat dwarf in growth.

**\*Napoleon**—Large, pale yellow or red; firm, juicy, sweet and productive.

**Oestheimer**—Large, heart shaped, nearly black when ripe; juicy and rich.

**Dyehouse**—A very early and sure bearer; ripens a week before Early Richmond.

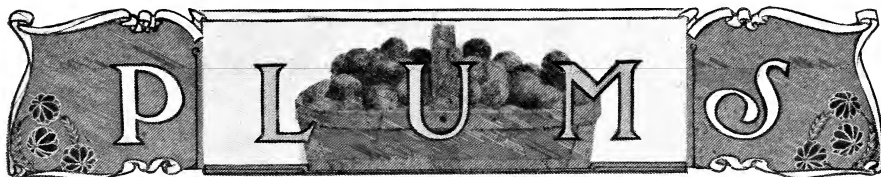
**\*Black Tartarian**—Very large, black, juicy, rich, excellent, productive.

**Dikeman**—From Northern Michigan. The original tree has attained large size and is still producing immense crops; fruit large, black, firm, of excellent quality; fine keeper and shipper; the latest of all sweet cherries.

**\*Montmorency**—Large, bright crimson, very juicy, strong, upright grower and one of the best late varieties.

**Elkhorn**—Very large; black; flesh firm, juicy and good. Tree vigorous, hardy and a great bearer. July.





	Each	10	100
4 to 6 feet .....	25c	\$2.25	\$20.00
3 to 4 feet .....	20c	1.75	17.00

- Bradshaw**—Large, dark red, flesh green, juicy, productive, fine for market.
- German Prune**—Large dark purple, good.
- Lombard**—Medium, violet red, juicy, good, hardy, and productive, the leading market variety.
- Moore's Arctic**—Small, purplish-black, juicy, sweet; immense bearer; one of the hardest in bud and bloom.
- Reine Claude**—(Bavey's Green Gage)—Very large, greenish, fine flavor.
- De Soto**—The fruit is of medium size, dappled red and yellow, ripening in September, and is firm, sweet and juicy. The tree is hardy and productive. Good for general planting and market purposes.
- Forest Garden**—The fruit is very large and round, purplish-red, mottled with yellow, juicy, sweet and rich. The tree is clean, healthy, vigorous and productive.
- Hammer**—Of large size, firm, juicy and delicious. Tree is a good strong grower.
- Hawkeye**—The tree is hardy, thrifty and an annual bearer. The fruit is large, light in color, mottled with red, of superior quality, very firm and an excellent shipper. It ripens in September.
- Rockford**—The fruit is reddish purple and of medium size. Quality good. Great bearer.
- Surprise**—The tree is a strong, upright grower, withstanding the most severe winters without injury. The fruit is large, deep red in color, and has good keeping qualities. The flesh is very firm and of an excellent flavor.
- Red June**—Recommended as "by all odds the best Japanese plum, ripening before Abundance." One of the vigorous, upright growers; productive; fair size, vermillion red, pleasant quality.

## Peaches

	Each	10	100
4 to 5 feet .....	20c	\$1.75	\$17.00

- Crawford's Early**—A magnificent large yellow peach of good quality. Early in September.
- Crawford's Late**—A superb, large yellow peach. One of the best. Last of September.
- Crosby**—One of the hardest, abundant bearer; medium size, bright yellow, fine quality. Middle of September.
- Champion**—A large, handsome early variety, creamy white with red cheek, sweet, rich and juicy. Hardy and productive. August.
- Elberta**—Large, yellow, with red cheek; flesh yellow, firm, juicy. Exceedingly prolific, sure bearer and hardy. The leading market variety. Follows Early Crawford.



# SMALL FRUITS

## Gooseberries

	Each	10	100
Houghton and Downing .....	10c	\$ .80	\$ 7.00
Chautauqua, Keepsake .....	25c	2.00	15.00

**Downing**—Large size, oval, greenish-white; plant very vigorous and hardy, with stiff, strong shoots; foliage heavy, covering the fruit from the sun, and resisting mildew; bears most abundantly and is profitable for market and home use.

**Houghton's Seedling**—A vigorous American sort; very productive; free from mildew. Fruit medium, roundish, smooth, of a pale red color; tender, sweet and of delicious flavor.

**Chautauqua**—One of the most prolific large gooseberries grown. Bush strong and vigorous, berries light yellow, free from spines and hair; veined and transparent; sweet and delicious.

**Keepsake**—One of the earliest and finest of the English varieties. Straw color, excellent flavor, and a large cropper. Foliage early and dense, giving protection to bloom and fruit.

Each 10 100  
Prices 10c 80c \$6.00

**Cherry** — Berries sometimes more than half an inch in diameter, bunches short, vigorous and productive.

**Fay's Prolific**—The leading market variety. Extra large stems and berries, uniform in size, easily picked, exceedingly productive.

**Perfection**—A grand currant, large berry of finest quality; two weeks later in ripening than Fay. Each 15c, \$1.25 per 10, \$12 per 100.

**White Grape**—Very large; yellowish white; sweet or very mild acid; excellent quality and valuable for the table. Productive.

**Black Victoria**—A strong, vigorous grower, making a neat bush of unailing productiveness; fruit of fine flavor and enormous size; the largest black in cultivation.

## Currants



FAY'S PROLIFIC  
The Best Red Currant

## Raspberries

	Each	10	100
Prices .....	10c	\$ .35	\$ 2.00

**Conrath**—A very reliable early sort, especially valuable for evaporating.

**Cumberland**—Bush perfectly hardy; very productive; fruit enormous; quality unsurpassed. The great firmness of the berry makes it a splendid shipper, ripens just after the Palmer and before the Gregg.

**Kansas**—Jet black, firm and delicious, as large or larger than Gregg. The hardiest black cap known, successfully withstanding the winters.

**Ohio**—A very strong growing hardy sort; fruit as large as Mammoth Cluster and more productive; valuable for market and much esteemed for drying.

**Palmer**—Medium size, firm and good; exceedingly prolific and very early.

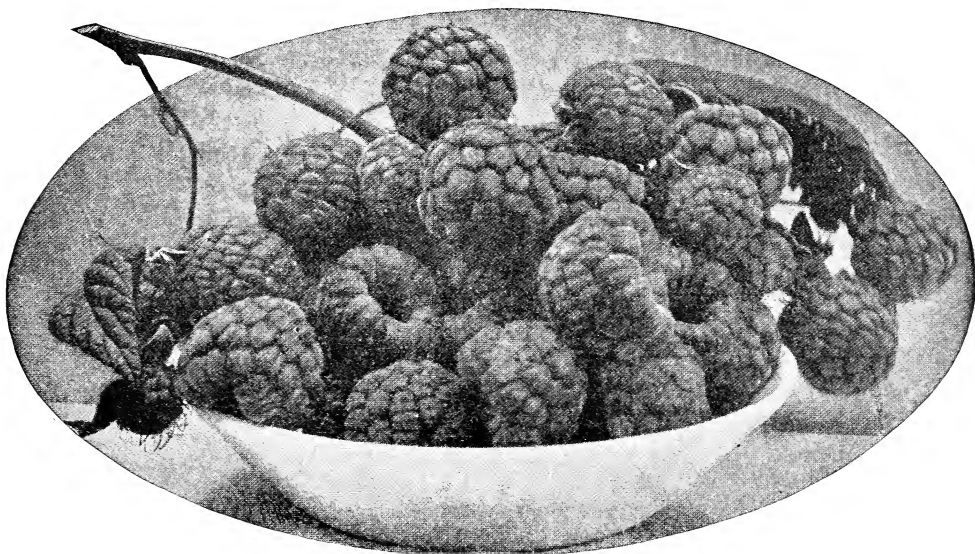
**Columbian**—A vigorous grower; canes often ten to fifteen feet in length and over an inch in diameter. Never suckers from the roots. Very hardy, enduring 28 degrees below zero. Fruit very large, dark red, bordering on purple; adheres firmly; rich, sprightly flavor.

**Cuthbert**—(Queen of the Market)—Large, conical; deep, rich crimson; firm; of excellent quality. A vigorous grower, entirely hardy, and immensely productive.

**Golden Queen**—Rich golden yellow. The flavor is of the highest quality, pronounced by some superior to Brinckle's Orange. In size equal to Cuthbert; immensely productive; a very strong grower and hardy enough even for extreme northern latitudes.

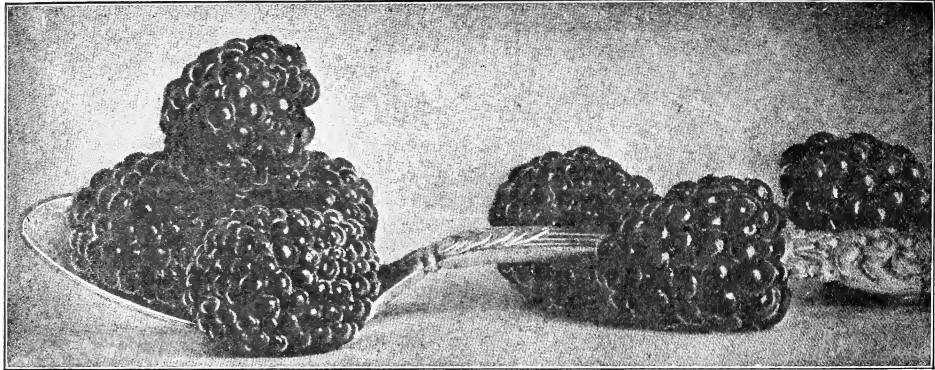
**Loudon**—Canes strong and hardy and wonderfully productive. Berries large, beautiful and of fine quality. Very desirable for home or market.

**Marlboro**—The best early red raspberry for the North. Hardy and productive.



LOUDON RED RASPBERRY. The Best for the Northwest

**St. Regis Everbearing Raspberry**—Plants of St. Regis planted in early April gave ripe berries on the 20th of June of the same year. For four weeks thereafter the yield was heavy and the canes continued to produce ripe fruit freely without intermission until the middle of October. Each 10c; per 10, 40c; per 100 \$3.50.



**ELDORADO BLACKBERRY**

The hardiest, most vigorous, and productive of all blackberries

## Blackberries

	Each	10	100
Prices .....	10c	\$ .35	\$ 2.00

**Ancient Briton**—Medium size; melting; without care. Bush hardy, and very prolific. One of the very best old sorts.

**Eldorado**—The vines are very vigorous and hardy, enduring the winters of the far northwest without injury, and their yield is enormous. Berries large, jet black, borne in large clusters and ripen well together; they are very sweet, melting and pleasing to the taste, have no hard core, and keep eight or ten days after picking with quality unimpaired.

**Mersereau**—A new berry of sterling qualities, which will doubtless become very popular as it becomes better known. Large size, good quality, hardy and productive.

**Snyder**—Extremely hardy; enormously productive; medium size; no hard, sour core; half as many thorns as Lawton or Kittatiny.

WELCOME, Wis., July 28, 1911.

Wisconsin Nurseries.

Dear Sir: I was so well pleased with the trial order I sent you this spring that I should like very much to have your catalogue of fall bulbs and roots. Please send it to me.

MRS. P. S. PETERSON.

Route 27, Box 25.

LETCHER, So. Dak., May 8, 1912.

W. J. Moyle, Union Grove, Wis.

Dear Sir: I write a line to tell you that the roses I ordered from you, which were shipped with other stock to Guy W. Crawford, were received in fine condition and that I am much pleased with them. I have planted them very carefully and fully expect them to live and blossom. Thanking you for your care in selecting and packing, I am,

Very truly yours,

H. E. MAYHEW.

## Strawberries

Bederwood, Lovett, Warfield, Dunlap, Steven's Late Champion, per 10, 20c; per 100, 50c; per 1,000, \$3.00.

Bismarck, McKinley, Splendid, per 10, 20c; per 100, 50c; per 1,000, \$3.50.

NOTICE:—To parties wishing plants sent by mail add 15 cents per hundred to cover cost of postage and packing. We can ship any distance by mail and plants will arrive in fine condition.

**Bederwood**—Medium size, roundish, regular form, moderately firm, very productive and of good quality. An early variety of strong vitality and profitable for near market.

**Bismarck**—Plant resembles Bubach, but more robust and stocky and a better yielder. Shape obtuse, conic, and are the heaviest, most solid berries ever produced; flavor good, season medium to late.

**Lovett**—A business berry, doing well on all soils, from heavy clay to light sand. Large, uniform, bright crimson, good quality. A variety of merit.

**Stevens' Late Champion**—A very late berry; berries are regular, even size and firm. Commands a big price when other varieties are running out.

**Splendid**—Large size, good quality, and very productive. Medium to late.

**McKinley**—Large in plant and berry; very productive and of highest quality. The best for home use.

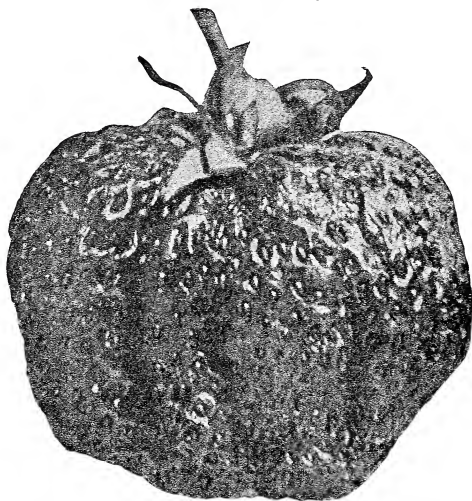
**Senator Dunlap**—Medium to large, conical, dark red, firm and of first quality, mid-season. A vigorous grower and usually makes too many plants for best results, unless growth is restricted. It is as productive as Warfield, berries are better colored and a third larger.

**Warfield**—Imp. Medium size, roundish conical, dark red, very firm and a good shipper. A leading market variety; perhaps more largely grown than any other.

**Americus**—The best ever-bearing strawberry. Every one should try a few of these. Each 10c; per 10, 50c.

**La Follette**—The best plant maker, most healthy, vigorous, productive, and the best seller of forty varieties grown by us the past eight years. The farmers berry, try it.

**Garden Roots**—Pie plant and Horseradish, each, 10c; 10, 80c; 100, \$5.00. Asparagus, 20c per 10; 50c per 100; \$4.50 per 1,000.



BISMARCK

A Grand Berry for the Home Market

PICKETTS, Wis, Aug. 14, 1912.

W. J. Moyle.

Dear Sir: I wish to set out a few Paeonies, etc., this fall; will you please send prices or catalogue of fall bulbs. Was well pleased with the apple trees, berry bushes and grape vines ordered of you this spring.

R. No. 28.

Yours truly,

DAVID PUGH.

## Hardy Grapes

	Each	10	100
One year, first class.....	10c	\$ .80	\$ 7.00

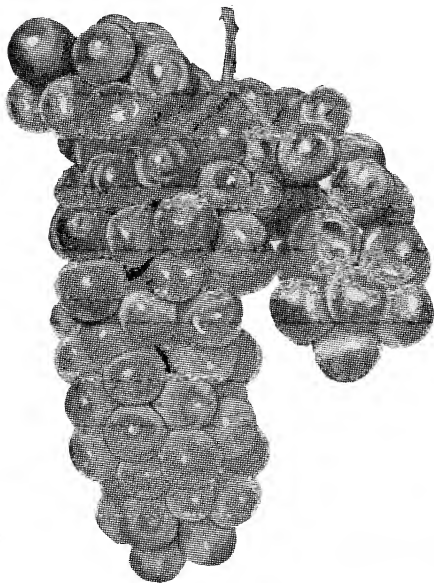
**Campbell's Early**—The berries are large, often an inch or more in diameter, glossy black with a purple bloom, sweet and juicy, with few seeds. They ripen from the 15th to the last of August. As a keeper and shipper this variety is unequalled by any other American grape, while as a dessert grape it is delicious.

**Concord**—The well known standard variety, succeeds wherever grapes will grow.

**Brighton**—Bunch large, well formed; berries above medium to large, round; excellent flavor and quality; one of the earliest in ripening.

**Delaware**—Bunches small, compact, shouldered; berries rather small, round, skin thin, light red; flesh very juicy, sweet, spicy and delicious.

**Lindley**—(Rogers' No. 9)—Berries medium to large, red; flesh tender, sweet and aromatic; ripens early.



MOORE'S EARLY

**Worden**—A splendid grape of the Concord type, larger, better quality and earlier. Vine vigorous; hardy and productive.

**Diamond**—The leading early white grape, ripening before Moore's Early. White with rich yellow tinge; juicy, few seeds, almost free from pulp, excellent quality; above medium size, adheres firmly to stem. Fine variety for both market and home garden.

**Moore's Early**—Bunch large, berry large round, with heavy bloom, vine exceedingly hardy. Its earliness makes it desirable for an early market. Its hardiness particularly adapts it to Canada and northern portions of the United States.

**Pocklington**—Bunch and berries large, when fully ripe a light golden yellow; juicy, tender, sweet, with little pulp. Vine thoroughly hardy, strong grower, free from mildew; productive. One of the most satisfactory white varieties.

Wisconsin Nurseries.

Gentlemen: Will you kindly send me one of your catalogs. I am so pleased with your goods. Have you any fall catalog of bulbs; if so, send me one. Can we buy paeonies and phlox from you now and transplant them? I am always boosting for your house.

R. F. D. 28.

BELOIT, Wis., Sept. 21, 1912.

Respectfully yours,

JULIA LUNN.

MADISON, Wis., May 5, 1912.  
Gentlemen: Was well satisfied with the apple trees; came in good condition.  
Respectfully, WM. P. WHALEN.



## Shade Trees

	Each	10	100
Soft Maple, 6 to 8 ft.....	\$.35	\$3.00	\$25.00
White Elm, 6 to 8 ft.....	.35	3.00	25.00
White Ash, 6 to 8 ft.....	.35	3.00	25.00
Linden, 6 to 8 ft.....	.35	3.00	25.00
Black Locust, 6 to 8 ft.....	.35	3.00	25.00
Catalpa, 6 to 8 ft.....	.35	3.00	25.00
Mountain Ash, 6 to 8 ft.....	.35	3.00	25.00
Poplar, Carolina, 6 to 8 ft.....	.35	3.00	25.00
Poplar, Lombardy, 6 to 8 ft.....	.35	3.00	25.00
Box Elder, 6 to 8 ft.....	.35	3.00	25.00
Horse Chestnut, 4 to 5 ft.....	.35	3.00	25.00
White Elm, 4 to 5 ft.....	.10	.80	6.00
Soft Maple, 4 to 5 ft.....	.10	.80	6.00
White Ash, 4 to 5 ft.....	.10	.80	6.00
Sugar Maple, 4 to 5 ft.....	.10	.80	6.00
Black Walnut, 4 to 5 ft.....	.25	2.00	15.00
Butternut, 4 to 5 ft.....	.25	2.00	15.00
Golden Willow, 4 to 5 ft.....	.25	2.00	15.00
Red Oak, 4 to 5 ft.....	.25	2.00	15.00
Norway Poplar, 4 to 5 ft.....	.25	2.00	15.00
Russian Mulberry, 4 to 5 ft.....	.25	2.00	15.00
Scarlet Thorn, 4 to 5 ft.....	.25	2.00	15.00
Japan Walnut, 4 to 5 ft.....	.25	2.00	15.00
Sycamore, 4 to 5 ft.....	.25	2.00	15.00
Tulip Tree, 4 to 5 ft.....	.25	2.00	15.00
Box Elder, 4 to 5 ft.....	.25	2.00	15.00

## WEeping TREES

Cut-leaf Birch, 5 to 6 ft.....	.75	5.00	—
Mountain Ash, 5 to 6 ft.....	1.00	8.00	—
Elm, Camperdown, 5 to 6 ft.....	1.00	8.00	—
Mulberry, Teas', 5 to 6 ft.....	.75	5.00	—
Willow, Kilmarnock, 5 to 6 ft.....	.75	5.00	—

Mr. Moyle.

MANITOWOC, Wis.

Dear Sir: Your stock I purchased gives good satisfaction. I shall remember you in the future. Every tree proves life and will grow. Give me large strong bushes. I will pay charges.

Truly,

F. A. HUEHUER.

ZUMBROTA, Minn., May 9, 1912.

Wisconsin Nurseries, Union Grove, Wis.

Sir: Find enclosed money order for \$4.00 in payment for my order No. 5263, which I received in good condition.

Respectfully,

PETER M. OLSON.

## Evergreens

	Each	10	100
Norway Spruce, transplanted, 1 foot....	\$.15	\$1.20	\$10.00
Arbor Vitae, transplanted, 1 foot....	.15	1.20	10.00
Red Cedar, transplanted, 1 foot....	.15	1.20	10.00
Scotch Pine, transplanted, 1 foot....	.15	1.20	10.00
Colorado Blue Spruce, transplanted, 1 ft.	.25	2.25	20.00
Norway Spruce Seedlings, 6 to 8 inches		.25	2.00
Arbor Vitae Seedlings, 6 to 8 inches		.25	2.00
Scotch Pine Seedlings, 6 to 8 inches		.25	2.00

## Hardy Shrubs

Prices	Each	10	100
	15c	\$1.40	\$12.50

All good bushes from 1 to 2½ feet.

**Varieties**—Purple Barberry, Deutzia, Golden Elder, Purple Fringe, Hydrangea, Spireas, Snow Ball, Weigela, Lilacs, Syringea, Variegated Dogwood, Flowering Currant, Japan Quince, Flowering Almond, Barberry Thunbergi, Tartarian Honeysuckle, Strawberry Tree.

**New Lilacs**—Chas. X. Lamark, Louis Van Houtte, Ludwig Spaeth, Madam Lamoine, each 25c; per 10, \$2.25.

## Climbing Vines

**Varieties**—Virginia Creeper, Trumpet Creeper, Scarlet Honeysuckle, Purple Wisteria. Each 15c; per 10, \$1.25; per 100, \$12.00.

## Clematis

**Varieties**—Jackmani, Henryii, Mme. Baron Veillard, Madam Ed. Andre, Coccinea, Paniculata. Each 25c; per 10, \$2.25.



COLORADO BLUE SPRUCE

Wisconsin Nurseries, Union Grove, Wis.

Plants arrived in fine shape and wish to thank you for sending such nice paeonies and other bulbs and trees at such a low price.

R. 2.

VIROQUA, Wis., April 27, 1912.

Respectfully,  
MRS. ARNT JOHNSON.

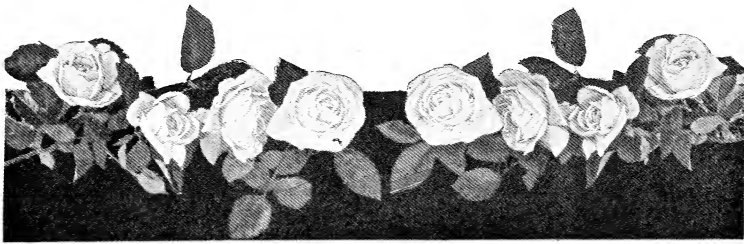
CASSION, Wis., April 1, 1912.

Mr. W. J. Moyle, Union Grove, Wis.

Dear Sir: The trees came this morning; will have them all planted by night. Thanking you for the promptness and care in shipping, I am, sincerely,

ALSON FELCH.





## Roses

Good strong field-grown bushes that will bloom nicely the first summer.

	Each	10	100
Prices .....	20c	\$1.75	\$16.00

**Alfred Colcomb**—Brilliant carmine-crimson; very large, full and globular shaped; very fragrant and a superb rose.

**Anne de Diesbach**—Beautiful shade of carmine; very large and fragrant; quite hardy and a good forcing rose.

**Baron de Bonstetten**—Rich, velvety maroon, large and full; a splendid sort.

**Frau Karl Druschki**—Very large, perfect form and snow white; a vigorous grower and a free bloomer.

**General Jacqueminot**—One of the most popular of the red roses; brilliant crimson, large and very effective, very fragrant and one of the hardiest.

**Magna Charta**—Extra large and full, bright rosy-pink; a profuse bloomer and very hardy.

**Madame Gabriel Luizet**—Rich, soft pink with deep flesh colored center; large, full and sweet.

**Mme. Charles Wood**—Very bright rich cherry-red; early; profuse bloomer.

**Marchioness of Londonderry**—Extra large, ivory white; free flowering, very vigorous and hardy, delightfully fragrant; one of the best white sorts.

**Margaret Dickson**—Beautiful form, white with pale flesh center; petals very large; fragrant.

**Marie Bauman**—Brilliant carmine-crimson, large, full and very fragrant; extra fine.

**Marshall P. Wilder**—Extra large, full deep red; a free bloomer and very handsome.

**Mrs. John Laing**—Soft pink, beautiful form, exceedingly fragrant and very free flowering.

**Mrs. R. G. Sharman-Crawford**—Deep, rosy pink, very double and full; vigorous and a free bloomer.

**Paul Neyron**—Said to be the largest rose in cultivation; bright, clear pink, very fragrant, hardy and a strong grower.

**Prince Camille de Rohan**—Very dark, velvety crimson, almost black, large and full; a beautiful sort.

**Moss Roses**—Blanche Moreau, Crimson Globe, Princess Adelaide, Blanche Roberts, Rosa Rugosa, red and white.

**Climbing Roses**—Crimson Rambler, Empress of China, Prairie Queen, Yellow Rambler, Baltimore Belle, Seven Sisters, Russell Cottage, Dorothy Perkins, Philadelphia Rambler.

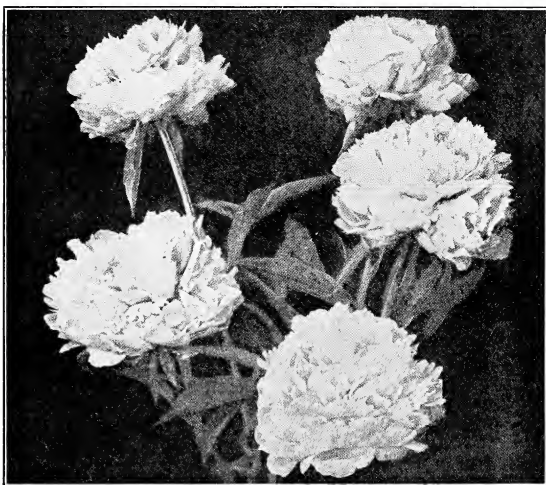
---

SCHLEISINGERVILLE, Wis., May 3, 1912.

Mr. W. J. Moyle.

Dear Sir: We received the trees and all the 1st of May, and am well satisfied.

Yours truly, ANDREW GANNS.



## Paeonies

We have a very fine collection of this noble flower, and invite your especial attention to our very low prices, on good strong roots of the following named sorts at 20c each; \$1.25 per 10; \$12.00 per 100.

**Medusa**—Purple, sweet scented, fine.

**Bramwell**—Soft, silvery pink, very fragrant.

**Humeii**—Very late, large varnished pink, sweet scented.

**Lucy Mallard**—Guard petals purple, center salmon pink, charming.

**Grandiflora Rubra**—Very late and large, blood red.

**Golden Harvest**—Fine yellow, blush guard petals.

**Rubra Triumphans**—Rich, glowing crimson.

**Barrelet**—Very large, late, blush pink.

**Brennis**—Brilliant, vivid scarlet.

**La Esperance**—Early, delicate pink, sweet scented.

**Victoria**—White cream scented.

The following varieties at 25c each; per 10, \$2.00; per 100, \$18.00.

**Superba Purpurea**—Dark purple, very double, one of the finest.

**Festiva Maxima**—The best white, charming.

Wisconsin Nurseries.

Gentlemen: We will send the \$2.00 for cherry trees and strawberry plants, which reached us in good condition. They look very nice and if they prove satisfactory you will be sure of our next order.

Yours truly,

C. HOGENSON.

OCONTO, Wis., April 29, 1911.

Dear Friends: I wrote you some time ago for some strawberry plants and as yet have not heard from you. I got some three years ago and was very much pleased with them, and if not too late in the season would you send me your catalogue or price list that I may order at once.

And Oblige,  
MRS. CHAS. QUIRT.

## Flowering Plants

Prices	Each	10	100
.....	10c	\$ .80	\$ 7.50

**Iris, German**—Mixed colors.

**Phlox**—Very fine, red, salmon, white.

**Pyrethrum**—Very hardy and pretty.

**English Violets**—Sweet scented.

**Bleeding Heart. Yucca. Lemon Lily. Golden Glow.**

## Dahlias

From over one hundred varieties we have selected the following as the best. Good strong roots, 10c each; or 20 assorted, \$1.00, our selection.

**Floradora**—Dark velvety crimson, fine form.

**Mrs. LaFollett**—A seedling of Burton. Strong grower, large lemon yellow blooms.

**A. D. Lavoni**—Soft pink, very full and double.

**Lottie Eckford**—White, striped with pink and red.

**Maid of Kent**—Rich crimson, tipped white, variable.

**Mrs. Dexter**—Rich salmon, very full.

**Purple Gem**—Immense flowers, dark rich purple.

**Queen Victoria**—Rich pure yellow, very large and full.

**Queen of Yellows**—Beautiful primrose yellow.

**Red Huzzar**—Rich cardinal red.

**Storm King**—Pure white, large, fine for cutting.

**Blue Oban**—The nearest to a blue dahlia yet produced.

**Catherine Duer**—Beautiful glowing red, fine for cutting.

**Clifford W. Burton**—Rich, clear yellow, very large.

**Mrs. Roosevelt**—Delicate pink, extra large and fine.

**May Loomis**—Perfect balls of lovely pink blooms.

**Mrs. Winters**—Pure snow white, extra good.

**Nymphaea**—Shrimp pink, shading to light center.

**Oban**—Mauve, with lavender shading.

**Paul Chisholm**—Coppery yellow, large and full.

**Sylvia**—Light pink, beautifully shaded.

**Wm. Agnew**—Dazzling scarlet, very large.

**Zulu**—Very dark maroon.

**Catherine**—Bright yellow, very double.

MADISON, Wis., April 20, 1911.

Dear Mr. Moyle: Will you send to my address at Lake Mills seven Wealthy apple trees and five Surprise plums. The trees I got from you five or six years ago are in fine shape and should do well this year.

Yours truly,

E. G. UPDIKE.

SUN PRAIRIE, Wis., May 16, 1911.

Wisconsin Nurseries, Union Grove, Wis.

Gentlemen: Enclosed find \$1.00 for strawberry plants which we received in perfect condition. We have set them out and they look beautiful. Next spring would be pleased to have a catalogue of your stock, as we intend to set out other fruits. Thanking you for your promptness in filling this order and also for more than full count, I remain,

Yours truly,

E. L. HARRIGAN.

## Gladioli

Fifteen choice named varieties, 10c each; per 10, 75c; per 100, (mixed, not named), \$2.00.

**America**—A splendid new *Gladiolus*. The color is a most beautiful soft pink, except slightly tinged lavender. A splendid bedding sort.

**Brenchleyensis**—This is an old standard sort, and one of the best for bedding where one shade of good scarlet is desired.

**Canary Bird**—A lemon yellow of good size and substance; one of the few satisfactory yellows.

**Columbia**—Flowers of immense size in color, salmon-red, spotted and slightly flaked chocolate to white in throat.

**Mrs. Francis King**—A new variety which excited great comment and admiration, both for size of flower and beauty. The color of the flower is a light scarlet, of a very pleasing shade, which attracts attention at once.

**Prinseps**—A grand large flower, color brilliant scarlet-crimson, blotched white on the lower petals.

**Shakespeare**—Another standard sort, excellent for cutting. White, slightly suffused rose.

**Augusta**—Pure white with blue anthers.

**Blanche**—Flowers large, pure white with faint marks.

**May**—White flaked rose, fine.

**Gertrude**—Bright lively pink, flecked and striped with shades of the same color, the petals lightening to the faintest blush in the throat; the markings on the lower petals are deep crimson running into a thin strip of pale lemon-yellow; plant vigorous and flowers large.

**Klondyke**—Strong, vigorous plant, blooming early; flowers round, well opened, of a clear primrose-yellow, with blotch of vivid crimson on three lower petals.

**Harvard**—The largest, and richest colored *Gladiolus* yet introduced. The color is a rich velvety maroon, slightly flushed dark scarlet; the flowers are truly gigantic; from 8 to 15 gigantic flowers and buds appear on one stem; 6 to 10 open flowers usually appear at the same time; flowers are open to their fullest size.

**Victory**—Color, delicate sulphur-yellow, lower petals shaded a deeper yellow.

**Golden West**—One of the best exhibition varieties on account of the variety of markings, the color being a clear orange scarlet, the lower petals striped and blotched with golden yellow faintly suffused with violet shadings.

---

MADISON, Wis., May 6, 1912.

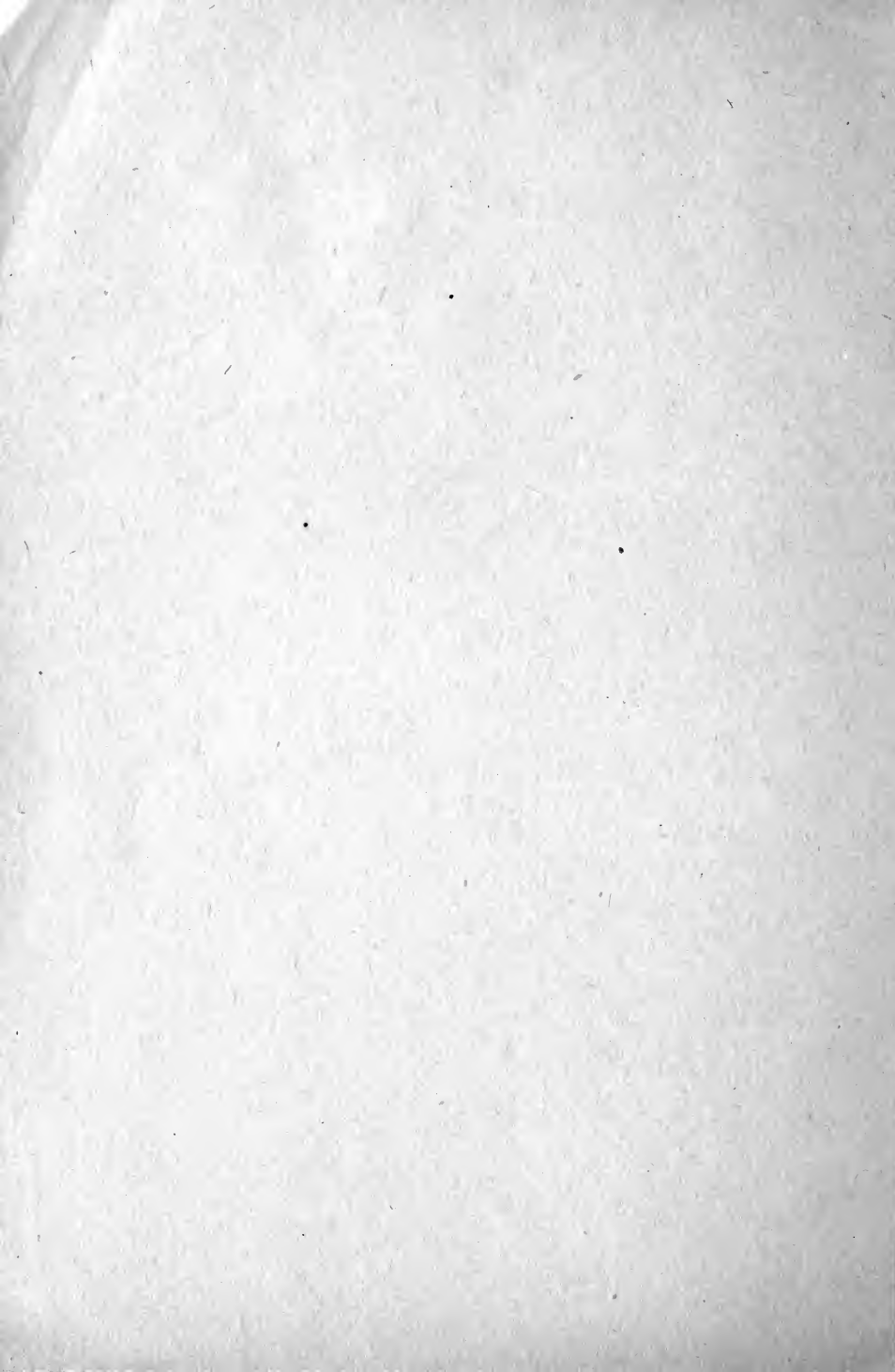
W. J. Moyle, Union Grove, Wis.

Dear Sir: The shrubs, plants and trees of order No. 4372 arrived today in very good condition. Everything looks hardy and healthy and I hope they will prove satisfactory. Thanking you, I remain,

Very truly yours,

FRANCIS C. KRANSHOPF.





# BARGAIN COLLECTIONS

## 10 Apple Trees \$1.00

We make a special offer to furnish ten nice little apple trees, 3 to 4 feet, for one dollar, our selection. However, we will allow you to suggest varieties you would like and if possible we will gladly send these sorts. We want every one to try one of our \$1.00 orchards as we know you will be more than pleased with the trees you get.

## 300 Strawberry Plants \$1.00

### The Farmer's Strawberry Bed

300 Strawberry plants, three different sorts, our selection, \$1.00. These plants will be freshly dug from our beds and will be sure to please. We will include in this collection two Americus Ever-bearing plants free for trial. If wanted by mail add 40c for postage and packing.

## 10 Paeonies \$1.00

A most beautiful collection of our choicest named sorts, our selection, at ten cents each. Don't fail to include this in your order as we will surprise you with the variety and quality of roots we send you.

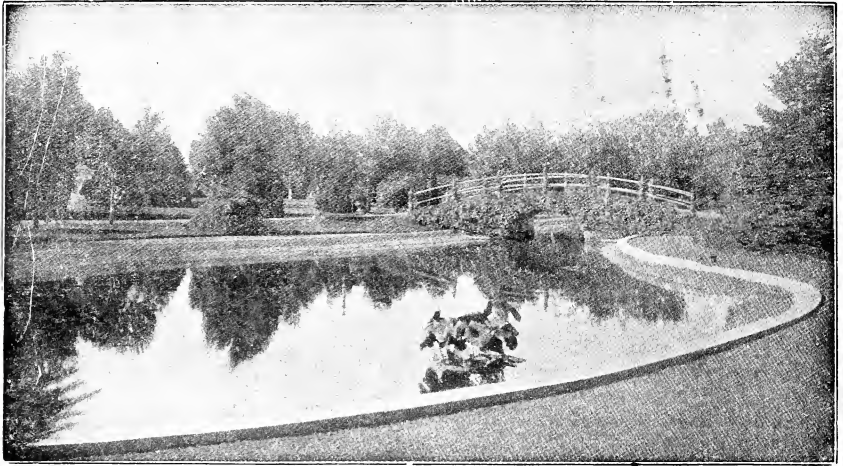
## SPECIAL FREE PREMIUM OFFER

In order to get our customers to try the following valuable novelties, we will include in every order of our customers, when requested:

FOR EVERY DOLLARS WORTH OF STOCK BOUGHT

one plant of either

St. Regis Raspberry or Americus Everbearing Strawberry  
or five La Follette Strawberry plants.



# LANDSCAPE WORK

---

---

Make home beautiful by properly planting your grounds with hardy trees and shrubs. If you are in need of advice or] would like any suggestions along this line, feel free to write us, as we will be glad to assist you in any way we can to suggest trees and shrubs best adapted for your locality and the proper arranging and planting of same.

---

---

**WISCONSIN NURSERIES**  
**UNION GROVE, WISCONSIN**



