

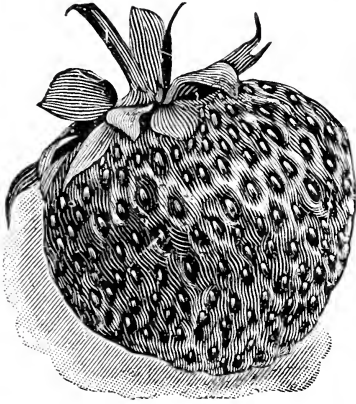
## **Historic, Archive Document**

Do not assume content reflects current scientific knowledge, policies, or practices.



62.41

**Price List 1914**



**Strawberry  
Plants . . .**

**ALLEN BROS.**

**PAW PAW, MICHIGAN**

## *Greeting*

We take this opportunity of thanking our many customers of the past for their liberal patronage and the many kind words of encouragement received from them.

It will be our constant study in the future, as it has been in the past, to try and give perfect satisfaction to our old, as well as new customers who entrust their orders to us, as our success, we feel confident, depends wholly on the satisfaction we may be able to give our patrons. Our prices are a little higher than formerly, owing to the drouth last summer, which has caused a shortage of plants all over the United States, but plenty of rains in September and October made us as nice plants (well rooted) as we ever saw. We do not claim that our plants are better than all other growers, but we do claim that we grow as good plants as can be grown anywhere and by comparison you will find our prices very reasonable.

Respectfully,

ALLEN BROS.

# INTRODUCTORY



STRAWBERRY PLANTS are all dug from new beds and the rows are taken up solid, all those poorly rooted are thrown out, the dead leaves and stems are picked off, roots straightened, and tied in bunches of 25. Thus the purchaser receives the strongest and best plants made during the season of growth. Those are worth much more than plants dug from the alleys.

**Set Northern Grown Plants.** They, as well as northern grown potatoes or garden seeds, are preferable to those grown in the south. They have more vigor, will make a better growth and produce more and earlier berries. The successful strawberry growers of the south send north for their plants, claiming it pays better to buy Michigan grown plants than to use those grown there, even though they have plenty.

**Order Early.** It is a mistake to put off ordering until late in the season, when some of the leading varieties are sold out. It is greatly to your advantage as well as ours, to place your order early. Every year we have returned lots of orders, so do not put off ordering too long.

**Terms.** Payment should accompany the order, at least one-fourth, when we will book your order, and balance can be sent before shipment. Money may be sent by bank draft, express money order, postoffice money order or registered letter at our risk.

**References.** Paw Paw Savings Bank, American Express agents or any business firm in Paw Paw or Bloomingdale.

**Location.** We are located at Glendale and ship plants both from Paw Paw and Bloomingdale, as it is most convenient to us.

**Shipment.** We are in 3½ hours ride from Chicago and connect with the M. C. R. R., P. M. R. R. and Fruit Belt Line. We commence to ship plants as soon in the spring as we can dig, usually in March for southern orders.

**By Express.** This is the method most commonly used to ship plants, and the safest. Although we send early in the season by freight a long distance, there is possibility of delay and consequent loss. Parties ordering stock shipped by freight will have to take the risk, as we can-

not be responsible for loss, if any, on stock shipped in this manner. It is to our interest, as well as the interest of our customers, to have stock reach purchaser in good condition, and we shall always endeavor to so pack and forward goods that they may prove satisfactory.

**Packing** is done in the best possible manner in crates and baskets, using plenty of moss for strawberry plants, making no charge for the work or package.

**Testimonials.** Please read them. We have room for only a few and select these from different parts of the country. You will see we give full address. Write them (enclosing stamp for reply). A great many catalogues give a long list of testimonials, but do not give addresses, so one could not reach them, and perhaps that is what they wish.

**We Exercise Care** that all our plants shall be true to name, and hold ourselves ready, upon proper proof, to refund money or replace any that prove untrue. It is mutually agreed that we shall not be liable for a greater sum than the amount paid out for stock.

**Substitution.** In ordering plants state whether we shall substitute some other variety in case the kind ordered should be exhausted. If no objections, we will substitute something of equal value, but always label true to name. We always aim to substitute sorts similar in quality and season, and always something listed at equal or higher rate.

**Very Important.** When strawberry plants are received, if your ground is not ready, or if the weather is dry and windy, do not plant out, but take them from the package, loosen the bunches and heel them in moist soil, firm the ground around the roots and, if dry, water and shade them from the sun, and they will commence to grow. When your ground is ready and the weather is favorable, plant out. Treated in this way scarcely a plant will fail to grow.



### CERTIFICATE OF NURSERY INSPECTION.

No. 1340.

This is to certify that I have examined the nursery stock of Allen Brothers of Paw Paw and find it apparently free from dangerous insects and dangerously contagious tree and plant diseases.

This certificate to be void after July 31, 1914.

L. R. TAFT,

State Inspector of Nurseries and Orchards.  
Agricultural College, Mich., Sept. 23, 1913.

# Strawberry Plants



## Fall Bearing

**Americus**—Is strongly staminate and berries are always perfect when frost does not interfere. Plants very strong, healthy and deep rooted. No variety could be more productive, yet with its heavy load fruit is medium to large in size, and what is still more remarkable is the fact that unless disbudded it will bear constantly from the time plants are well rooted, usually from May till November.

It is a free plant maker and the young runner plants begin to bear as soon as they begin to root. Fruit is firm, a bright red, holds up well in wet weather, good quality, fruit is protected from frost by heavy foliage. Has been tested thoroughly and seems to succeed over a wider range of country than any other variety. It is to be hoped that the moderate price at which this best of all varieties is offered will not discourage anyone from taking hold of it.

If the people who have purchased plants of us for the past 20 years could have come here and looked with their own eyes on our bed of Francis and Americus during the closing days of September and October this year, the demand for plants would be such that our entire stock of plants would be exhausted in a short time. You can just as well have strawberries in the fall as summer, and if you want to grow for market it is no trouble to get 25c per quart for them. No order is complete without at least 25 or more of these perpetual strawberries.

**Francis**—Strongly staminate, season May till frost, just as productive as Americus, but not quite as much of a plant maker. Fruit medium to large, firm, bright red, glossy, spring set plants of these and Americus will bear fruit from time they are set till fall unless buds are picked off.

### Prices of Francis and Americus.

25 plants.....	\$ 1 00	300 plants.....	7 00
50 plants.....	1 75	500 plants.....	11 00
100 plants.....	3 00	1000 plants.....	20 00
200 plants.....	5 00		

## Extra Early Varieties

**Johnson's Early**—A standard early variety. A good grower and cropper. Fruit of good size. In some seasons it is extra large, of good form and color. 100, 60c; 1000, \$3.00.

**August Luther**—Very early, good to large sized fruit, bright red color, firm and of good quality, very popular early market sort. 100, 60c; 1000, \$3.00.

**Bederwood**—Early, very strong yielder, continues a long time in bearing, fruit good size and firm as the Crescent, very strong staminate and a good fertilizer. 100, 60c; 1000, \$3.00.

**Excelsior**—Season extra early. This variety is now generally regarded as one of the best extra early berries. Berry dark red, of good size, a good shipper and will be popular in the South for sending to northern markets. 100, 50c; 1000, \$2.75.

**Michel's Early**—One of the earliest varieties grown, does better on light warm soil, on heavy soil it goes too much to vines, it blossoms early and late. For best results plant on warm, sandy soil, and do not allow them to set too heavy in the row. 100, 25c; 1000, \$1.00.

**St. Louis**—Very early; a strong grower with plenty of runners. Fruit is of good size for an early berry, round, red, firm, and good. The variety is new and an improvement on Early Michel, the fruit being of better size. It is finding many favorites. 100, 65c; 1000, \$3.50.

## Early Varieties

**Bisel**—Blossoms pistillate, plant healthy, vigorous grower, has long matted roots, which enable it to withstand severe droughts, fruit large, luscious and firm, seeds slightly embedded, color deep, glossy red with double calyx, very productive, season same as Crescent. 100, 60c; 1000, \$3.00.

**Ben Davis**—Very large, round to oblong, very productive, dark red berry, plants very healthy, never rusts and one of the very largest. We consider this worthy of trial by all who are interested in strawberry culture. The plants are good plant makers. The berry is very highly flavored and a firm good shipper. Perfect bloomer, season medium early. 100, 60c; 1000, \$3.75.

**Crescent**—This is a very prolific berry bearing profusely even under neglect. Fruit colors on all sides at once. A great cropper, early., 100, 60c; 1000, \$3.00.

**Cumberland**—Season medium early, berries as true as a top, light crimson and very large, one of the most beautiful berries and a great seller



for near market, mild, rich flavor. Many persons cannot eat a sour berry and well enjoy this. 100, 60c; 1000, \$3.50.

**Ernie**—Immensely productive of medium to large, dark, glossy berries of fine shape and good quality, rather a tough skin and firm texture, which makes it a leader for long distance shipping, and canning purposes, commences to ripen with second earliest and continues in bearing for long season. 100, 60c; 1000, \$3.50.

**Haverland**—Exceedingly productive. Fruit large and firm. One of the most popular of the well tested varieties. It will stand more frost than most any other variety, often bearing a large crop when others are killed. We can always depend on a large crop of Haverland, and the berry is large and very attractive. No berry will out-sell them, and no variety seems to do as well on any soil or in any location. The demand for Haverland plants is always large, which proves its popularity. 100, 60c; 1000, \$3.50.

**Highland**—For four consecutive seasons this variety was the most productive of 146 varieties tested on the grounds of the Ohio Experiment Station, and they thus describe it: "Fruit medium to large, bluntly conical, color bright scarlet, flesh red clear through, about as firm as Bubach, plants very large, strong and vigorous, flowers imperfect and quite resistant to cold. A quart maker of bright, handsome berries of very acceptable quality." Remember the above is the unbiased testimony of a disinterested expert, and not the highly colored praise of the introducer. 100 75c; 1000, \$5.00.

**Lovett**—Well known standard mid-season variety, a thrifty, healthy grower and productive of good sized, bright red berries, firm and of good quality. 100, 60c; 1000, \$3.50.

**Monitor**—Fruit large, round, bright red, moderately firm and of good quality, plants vigorous and healthy, very productive and reliable, fruiting early to late, a good home berry or valuable for near market. 100, 60c; 1000, \$3.25.

**Norwood**—One of Farmer's introductions, and is supposed to be a cross between Marshal and Corsican. The plants are unusually large, with broad, tall, light green foliage. It does not make many plants. The fruit is conic and regular in shape; color bright red, firm and good quality. The size is large to very large. 100, \$1.00; 1000, \$6.00.

**Pride of Michigan**—Baldwin's. Plants medium in size. Perfectly healthy. Shows great vitality, and drouth-resisting qualities, a good plant maker, and has good strong fruit stems, holding fruit well up from the ground. Fruit medium to large, of a dark, glossy red color. Roundish, conical and regular in form, and of good quality, reasonably firm and productive. Time of ripening medium early. 100, 75c; 1000, \$3.75.

**Pomcoke**—A seedling of the old Wilson, which it resembles in color, shape, firmness and productiveness, but of better quality and much larger in size. One of the best varieties not only for its beauty, adaptability to all soils, its foliage enduring the dry, hot weather, which quality, is rare with some varieties; its large size, its deep red color, its firmness, its high flavor, makes it one of the best for general planting. The plant is a strong, robust grower, with deep roots and lots of them, perfect blossoms, and an enormous yielder of large red berries. It ripens evenly, and is one of the best shippers yet introduced. Its season is medium early and is very highly spoken of by growers all over the country. 100, 60c; 1000, \$3.75.

**Splendid**—Plant healthy, luxuriant grower, sends out many runners and bears abundantly, fruit large and far above the average in quality and appearance, desirable for either market or home use. This variety has been tested by many berry experts all over the country, and has proved itself worthy of the name. 100, 60c; 1000, \$3.50.

**Tennessee Prolific**—Large, good color, productive, good shape, free from rust, ranks among the best in the strawberry list, a seedling of the Sharpless and Crescent, showing the parentage of both, fruit is handsome and as productive as the Haverland. 100, 60c; 1000, \$3.25.

**Warfield**—Not immensely large, but its great beauty, firmness, good flavor, productiveness and vigor, combined with fair size, makes it exceedingly popular, ripens with Crescent. Without doubt there is more of this variety grown each year than any other. Its popularity seems to be universal. It is a good plant maker. 100, 50c; 1000, \$2.50.

## Mid-Season Varieties

**Bismark**—Mid-seasons, a seedling of Bubach, nearly as large, vigorous grower, and a good cropper. 100, 60c 1000, \$3.25.

**Brandywine**—A variety which seems to find favor wherever tried. Very fine, an extra good shipper, berries large and slightly conical in form and hold their size to the last, ripen evenly, being of a bright crimson color and of good quality plant is a vigorous grower, season medium to late. 100, 60c; 1000, \$3.50.

**Barton's Eclipse**—Is a strong grower, handsome foliage, free from disease. Fruit of good form and color, large and productive. 100, 60c; 1000, \$3.25.

**Bubach**—Fruit large and handsome, roundish conical, bright scarlet, moderately firm, of fair quality. Plant a strong grower with large, healthy

foliage and very productive. Succeeds best on heavy soil. Desirable for home use or near market. Season early to medium. This is an old standby and is deservedly popular. In plant growth it is vigorous, but does not throw out the excess of runners. 100, 60c; 1000, \$3.75.

**Clyde**—Perfect, well known, very productive mid-season variety, fruit large, round, not very firm. 100, 75c; 1000, \$4.25.

**Dickey**—Another new variety from Massachusetts, where it is claimed to be one of the best medium to late varieties yet introduced. The foliage is rather light green but large and healthy. Fruit is of good size, colors well, and has no green tips, and is of a peculiar but favorite flavor. 100, 65c; 1000, \$4.00.

**Gibson**—Mid-season to late, fruit large and handsome, dark, glossy red color, red flesh, firm and of high quality. 100, 60c; 1000, \$3.50.

**Glen Mary**—Hardy, vigorous and very productive, berry large and very firm, had best be pollenized. 100, 60c; 1000, \$3.75.

**Helen Gould**—The plant is large and healthy and has never failed to produce a good crop. It sends out a moderate number of strong runners, about like Bubach. It has a pistillate blossom, and, like nearly all pistillates, it bears abundantly in wide matted rows.

The fruit is very large and holds up well to the end of the season. In color it is a beautiful glossy red, and the flesh is firm with a rich, delicious flavor that is seldom equaled. Season medium to late. 100, 60c; 1000, \$3.75.

**Kansas**—A good grower and bearer of good medium-sized bright red berries. Not a universal favorite; mid-season to late. 100, 40c; 1000, \$1.75.

**Kittie Rice**—Vigorous grower, healthy and productive; a fine canning berry, makes just about enough runners; fruit large, conical, regular in form, glossy and very beautiful. The flesh is red, firm and of good quality. 100, 60c; 1000, \$3.50.

**Klondike**—Fruit medium to large, mottled red color, fair quality, and quite productive. 100, 60c; 1000, \$3.50.

**Miller**—An extra large berry, bright red color and comes highly recommended. 100, 50c; 1000, \$2.50.

**Missouri**—Rather dark red, mid-season berry, very healthy, good plant maker, a splendid pollinizer. Not as desirable as some others. 100, 40c; 1000, \$1.50.

**Nick Ohmre**—A large, handsome, showy berry of extra high quality, demands good soil and high cultivation, late to medium. 100, 60c; 1000, \$3.50.

**New York**—Mid-season, fruit large, conical, deep red color, light red flesh, moderately firm, good quality. Plants large and healthy. 100, 60c; 1000, \$3.50.

**Pride of Michigan—Kellogg's.** Plants are extra heavy and long rooted, which makes them capable of withstanding a long and severe drouth, a point worthy of your consideration. Makes just about the right amount of plants for a good fruiting row. Fruit large to very large. Scarlet in color, with bright red cheeks, making it one of the handsomest berries on the market. Very firm and productive for such a large berry. Quality good. Time of ripening medium late. Does best on a rich, moist, loamy soil. If an extra large fancy berry is wanted, either for home use or market, try this one. 100, 75c; 1000, \$3.75.

**Seaford—A** good, strong grower and productive of large, dark red, good quality and attractive fruit, a good variety, mid-season. One of the good ones. 100, 60c; 1000, \$3.75.

**Sharpless—**Well known and popular, good size, light in color, requires rich soil. 100 60c; 1000, \$3.50.

**Senator Dunlap—**It is a very strong grower and a healthy plant, has a perfect blossom, is hardy, productive, of extra good quality, splendid keeper and is able to hold its own under neglected culture. No sign of rust. The plant is wonderfully productive and brings every berry to maturity. It resembles the Warfield in size, ripens at the same time and remains in bearing longer. It is most beautiful in color, has a slight neck and is easily picked. We have fruited this variety for several years and it has given the best of satisfaction. Were we to set but one variety, it would be Senator Dunlap. 100, 60c; 1000, \$3.00.

**Uncle Jim—**One of the finest and best of all the large berries, plants large and healthy, berries firm and productive, begins to ripen a long time before the Gandy, but lasts about as long. 100, 75c; 1000, \$4.00.

**Wolverton—**Strong, healthy grower, sends out many runners, productive, seems to be universally successful, splendid grower, remaining green, all summer, matures part of its crop before it is through blooming, fruit large, resembling Bubach, very firm, making it an excellent shipper, season medium. 100, 60c; 1000, \$3.50.

**Wm. Belt—**Among the large size berries none are more uniform in shape and size than this variety, except the first berries to ripen, which are usually cockscombed. It is also very firm and most excellent quality; color a beautiful glossy crimson. The fruit always brings the highest price in the market. The plant is a good, thrifty grower with strong roots and makes just enough plants for a good matted row without crowding. Its quality is fine and extra large size. Be sure and include this in your list. 100, 60c; 1000, \$3.50.

## Late Varieties

**Aroma**—Fruit very large, roundish conical, glossy red, of an excellent quality and very productive, plant is strong, stalky grower, fast growing in favor as a late berry, extensively grown in the West, where it originated. We can recommend it. 100, 60c; 1000, \$3.50.

**Enhance**—Late, fruit large, bright red, firm, good quality, plants tough, healthy and vigorous, a reliable cropper. 100, 60c; 1000, \$3.50.

**Enormous**—Late and productive, plant is a good grower, but makes only a moderate supply of runners, bloom is imperfect and should be fertilized with Brandywine or William Belt. It should be planted on heavy soil for best results. 100, 60c; 1000, \$3.50.

**Gandy**—This is one of the most reliable, large late berries that is grown. It is one of the old standard varieties that you can depend upon. The plant is a strong grower. The large, handsome appearance of the fruit always commands for it a large price in market. The fruit always grows large and is one of the best shipping varieties known. You can't afford to be without the Gandy whether it is for home or market use. 100, 60c; 1000, \$3.75.

**Greenville**—Season quite late, now in general cultivation and a favorite, berries very large, bright crimson and productive. 100, 60c; 1000, \$3.50.

**Jesse**—One of the old standard varieties, berry large, bright colored and of a good quality, firm and a good cropper, blossom perfect and a good fertilizer for imperfect varieties. 100, 60c; 1000, \$3.75.

**Marie**—Berries large, even in size, round as an orange and of the same dark, bright color as the Gandy, very productive. 100, 60c; 1000, \$3.50.

**Marshall**—(Mich. Exp. Station). The Marshall has established itself with the better growers as one of the best fancy berries, size, beauty and quality being its strong characteristics. It is not as productive as some other sorts, and it requires good soil and care, but when given proper culture there are few better kinds. 100, 75c; 1000, \$4.50.

**Nettie**—Fruit extra large, light red color, quite tart, plants large, healthy, very vigorous and productive. Owing to the fact that Nettie is extra late, it will always be a profitable market variety. Our stock is limited. 100, 60c; 1000, \$3.75.

**Parker Earle**—Well known, makes few plants, but of large and stocky growth, fruit large, wedge shape, blunt on the end, high color, good quality, immensely productive, season late. 100, 80c; 1000, \$5.00.

**Rough Rider**—Enormously productive, hardy and free from disease, berries very large, roundish, but somewhat flattened at the point, a seed-

ling of the Eureka, fertilized with the Gandy, color dark red like the Gandy, very late. 100, 60c; 1000, \$3.50.

**Ridgeway**—Plants large and stocky, makes large number of strong, healthy plants. Leaf large, broad, heavy and dark green, blossoms perfect, a good pollenizer for pistillate varieties, berry large, form nearly round, color crimson, firm and will stand shipping to distant market, quality good, will command good prices, season late. 100, 60c; 1000, \$3.50.

**Stevens' Late Champion**—In plant growth this variety resembles the Gandy, except that it has a heavier and shorter fruit stem and is a much better plant maker. Healthy, vigorous and long rooted, nearly an ideal plant, productive. Fruit large, dark red in color. Uniform in shape and size. Very high in quality, and exceedingly firm. This variety with us has proven to be fully as late in ripening as Gandy, and will prove a money maker for those who want a late berry. There is nothing better. 100, 60c; 1000, \$3.50.

**Sample**—Fine berry of very large size, long in bearing, quite late to ripen, crimson color clear through to the core, very firm for large berry, strong, vigorous and healthy foliage, originator says: "It will yield as much fruit as the Haverland and average large." Set Aroma with Sample and you will have an ideal combination. 100, 60c; 1000, \$3.50.



Monroe, Ore., April 4, 1913.

Allen Bros., Paw Paw, Mich.

Dear Sirs: Plants arrived all O. K. Have just finished putting them out.

Yours truly,

L. A. BARKER.

Birchwood, Wis., March 31, 1913.

Mr. Allen.

Dear Sir: Please send me your strawberry catalogue, or price list. Have you other nursery stock? If you have would like a catalogue. Thanking you in advance.

I got 1000 Senator Dunlap in 1911. I never saw such splendid plants, such a big bunch of roots on each plant. They grew fine and last year produced an abundance of beautiful berries. Will you have 2000 of Senator Dunlap plants to spare this spring, as nice as those we got two years ago? Am deciding to get about that many.

Yours very truly,

JOE GARBUTT.



---

## Strawberry Culture

**Soil**—Whether it is for market or for home use, the results obtained will in a general way depend on the conditions of the soil as to fertility and drainage. Any soil that will produce a good crop of corn or potatoes, if sufficiently drained (either naturally or artificially), will produce a good crop of strawberries. A heavy, sandy loam or a light clay loam is preferable for a strawberry patch; however, good results can be obtained upon the lighter soils, if sufficient care is taken to retain moisture. As the strawberry crop is of more value than the ordinary farm crop, more care should be taken that the soil is in proper condition and supplied with the necessary amount of plant food. After your ground is prepared thoroughly, it would be best to have it rolled or floated, so as to have an even surface.

**Planting**—Spring is the proper time for planting in the northern states. (While a good many plants are set in the fall, and with a reasonable amount of success, still the time for growing is not sufficiently long to allow the plants to produce a crop of berries the first year, and the extra expense of cultivation and care does not pay for the outlay). Set your plants just as early in the spring as possible, in April for the northern states and earlier, if possible, in southern. Avoid planting on a dry, windy day. When the plants are being set great care should be taken that the roots are not exposed. Keep the roots in a pail of water, if they are somewhat dry, and in planting see that the moist soil comes in contact with the roots. The distance to plant in the row depends somewhat on the variety and also upon the method of cultivation. For the matted row system, with varieties that do not make many runners, the distance may be 12 to 18 inches, but with such kinds as run freely and make a great many plants the distance may be increased to 20 or 24 inches. For hill culture some set the plants two feet each way, while others have their rows three feet apart and plants 12 to 15 inches in the row. Mark your rows three and one-half or four feet apart. We use for this a marker with four runners. Make it light with thin boards, so it can be drawn by a man, making the rows straight and marking very fast.

**Cultivation**—Cultivation should commence as soon after planting as possible and continue until fall once a week whenever it is in a suitable con-

dition, and hoe as often as necessary to keep the weeds down. As soon as the blossom stock is large enough to permit of its being done, it should be pinched off. Do not neglect this, if you wish a strong, vigorous growth. Do not let the plants mat too thickly. If they throw out too many runners, some of them should be removed. The plants should be three or four inches apart in the row. This is very essential in producing large crops of berries. The rows should be about 14 inches wide, and when you have secured this, keep off all runners and you will have an ideal fruit row.

Mulching—As soon as the ground is frozen so as to hold up a team and wagon it is best to mulch. This is not absolutely necessary, but it is a great advantage where straw or anything that can be used for mulch can be had, as it protects them from being hurt by hard freezing. In the spring rake between the rows, and it will help to retain moisture and keep the berries clean.



## Profits in Growing Strawberries

We believe there is no crop grown that can be as profitable as strawberries. Any one growing only one-half to five acres for market can easily realize \$100 to \$500 per acre clear profit per year. It depends a good deal on the individual. We can cite you to scores of growers that their strawberries net them \$200.00 and \$300.00 per acre. Large acreage cannot be handled so successfully. Strawberries are like any other crop, some years they are more profitable than others. The small grower, who lives near a good town of 500 to 5,000 inhabitants, can grow one to five acres easily with large profits to himself, to say nothing of the pleasure. Of course, if you have no love for the work, do not begin, but if you like outdoor work and plenty of it combined with business, plant strawberries and health, wealth and happiness will be yours.

---

Allentown, Pa., R. No. 3, Feb. 17, 1913.

Allen Bros., Paw Paw, Mich.

Dear Sir: I need a small order of Uncle Jim or Doonan strawberry plants this spring. Would you let me have your catalog? The Uncle Jim plants I got from you two years ago were the best selling strawberries I ever had.

Respectfully,

AMMON G. MILLER.



# Our Special Collections

Those desiring a few for home use will find the following collections very good, covering the season from early to late. Postage paid by us on these collections.

\$1.50 Collection—50 Michel's Early, 100 Senator Dunlap, 75 Gandy.

\$2.25 Collection—50 Michel's Early, 100 Senator Dunlap, 50 Bisel, 100 Steven's Late Champion.

\$2.75 Collection—150 August Luther, 100 Senator Dunlap, 100 Ridgeway, 100 Brandywine.

\$3.50 Collection—100 August Luther, 300 Senator Dunlap, 100 Stevens' Late Champion.

Better add 25 Americus for \$1.00 and have berries in the fall as well as summer.

Lucasville, Ohio, Feb. 24, 1913.

Allen Bros., Paw Paw, Mich.

Gentlemen: Please ship to my address 1500 (fifteen hundred) Senator Dunlap strawberries as ordered. I will send the balance of the money before shipping time. I have bought plants from you for the last 6 years and will nowhere else, as long as you give me the prompt attention you have in the past.

J. N. DESELLEM,  
Lucasville, O., R. No. 4, Box 67.

Wellington, Ohio, Feb. 4, 1913.

Gents: Please forward 1913 catalogue as I shall want quite a lot of plants this season. I have received catalogues from 4 or 5 different parties, but as your plants proved satisfactory to me, will give you another order this spring. My berry vines are going through this winter in fine shape, have them well mulched with clean wheat straw. I expect good returns for my labor.

Respectfully yours,  
J. L. COMSTOCK.

Kalamazoo, Mich., May 14, 1913.

Allen Bros., Paw Paw, Mich.

Gentlemen: The 5,000 Stevens' Late Champion strawberry plants arrived in prime condition. Please find check in payment for same.

Yours respectfully,  
C. S. BENDER.

Carlton, Mich., R. D. No. 2.

Allen Bros.

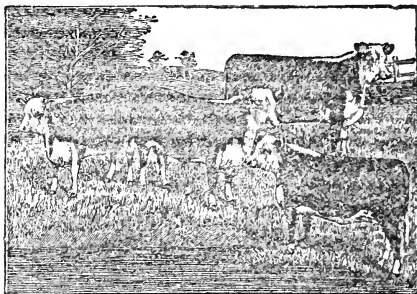
Dear Sir: We received plants all O. K. Many thanks.

J. H. FIELDS.

## Hereford Cattle for Profit.

Hereford cattle originated in the grazing districts of England, more especially in Herefordshire, from which they derive their name. This is considerably the oldest breed of all, having been recognized for over four hundred years.

As a grazer there is no breed of cattle which approaches the Hereford, and their ability to fatten on grass diet of their own gleaning is a char-



acteristic which appeals to all who are looking for the most economical method of producing beef.

Extremes of weather which will cause other cattle to seek shelter or shade does not deter the Hereford from eating his fill; and the contrast, after an unfavorable season, between the Hereford and other breeds is very marked.

The Hereford can be fattened at any age with equal rapidity. Whether baby beef or a more mature product is desired, the Hereford will satisfactorily meet all requirements. They naturally mature early, from twenty to thirty months being the time requisite to produce beef of from 1,300 to 1,800 pounds, which will top any market in the land.

The impressiveness of the Hereford sire when used on scrubs or native cattle is a quality which recommends itself to breeders of every section. There is no bull of any breed which approaches the Hereford in this respect; and to his ability to transmit his own good qualities is due his increasing popularity.

The Hereford color, coat and marking are all

---

ideal, and all are transmitted by the sire to his offspring, making a uniform bunch of animals which will instantly attract the buyer.

No hot-house pampering is required to fit the Hereford steer for market. There is nothing capricious about his appetite and all that is necessary is to give him a chance at the feed trough.

The Hereford bull is of a mild, even temperament, not in the least excitable or cross.

A good bull properly cared for will easily sire 100 calves per year. A good grade calf by a registered Hereford bull will easily bring \$5.00 a head more than the ordinary farm calf. The Michigan experimental station by test say they will bring \$10.00 more at 12 months old, which means that a Hereford bull earns \$500.00 per year more for any farmer or locality than an ordinary bull. The lesson is obvious.

These cattle have been tried and tested from Northern Canada to tropic Cuba, and have, in every case proved adaptable to climatic conditions and superior to other beef breeds as profitable meat-producers.

Seventy-five per cent of all prizes offered at the big Live Stock Expositions in the last five years, for feeder cattle (all breeds competing), have been won by Herefords.

Our herd of Hereford Cattle represents as good as the land affords and is comprised of individuals of choice selection and high breeding.

At the present time we have several head, both males and females, that are for sale. Your correspondence and patronage are solicited. Any party wishing to visit the farm and inspect our cattle and hogs will find a ready welcome.

---

Rockford, Mich., March 3rd, 1913.

Allen Bros., Paw Paw, Mich.

Bull calf received and we are more than pleased with him. He is a dandy. Have you any heifers for sale?

Yours,

J. A. WILLIAMSON.

---

Sparta, Mich., Feby. 10, 1913.

Allen Bros., Paw Paw, Mich.

Dear Sir: Bull received today and we are well pleased with him.

Yours truly,

WM. BROWN.

## Big Poland Chinas

Our herd of Poland Chinas is headed by **Big Wonder and Corrector, Jr.**, two boars of extra good quality and size.

The most of the females in our herd were sired by Happy Wilkes, a 1000-pound hog, and Jim Perfection, an 800-pound hog. We are confident we can please you if you want a hog with lots of size, bone, strength and a reasonable amount of quality—one that will fill the pork-barrel with the least amount of feed in the shortest time. Our herd comprises about 100 head and we can furnish you pairs and trios not akin. We would be pleased to have you come and see our stock or write us your wants.

Iron Mountain, Mich., May 29, 1913.

Allen Bros., Paw Paw Mich.

Dear Sir: Sow received and we are well pleased with her. Will want a male in the fall.

DICKINSON CO. INFIRMARY.

Per Wm. Pr ter, Secy.a

New Martinsville, W. Va., Nov. 6, 1913.

Allen Bros., Paw Paw, Mich.

Gentlemen: The Poland China pig I bought of you arrived all O. K. last Saturday, and to say the least it is surely a picture.

Every person who saw it coming from the express office wanted to engage a pig from it. So you see it will be like the Stephen's Lake Champion strawberries I got from you. Can always find a ready market at an advanced price for either.

With best wishes, I am,

Your friend,

FLOYD B. HUTCHINSON.

Cumber, Mich., June 2, 1913.

Allen Bros., Paw Paw, Mich.

Gentlemen:—Pigs you shipped me were received today. They stood the journey well and we are well satisfied with them.

Yours resp.,

FRANK WRIGHT.

Zion, Mich., May 2, 1913.

Allen Bros., Paw Paw, Mich.

Gentlemen:—Sow received today. Am more than pleased with her. Will want a male this fall.

WILLIAM GEORGE.

Gera, Mich., Nov. 19, 1913.

Allen Bros., Paw Paw.

Gentlemen: Received your pig O. K. and am pleased with it.

He is a fine hog, shows good breeding.

Yours truly,

HENRY OLDENBURG.

Kalkaska, Mich., April 20, 1913.

Allen Bros., Paw Paw.

Gents: Yours received. Sow came through O. K. and is a fine animal.

You may send invoice of strawberry plants any time. Have had cold backward spring here—think can set the plants though last of week or first of week after, say April 28 to 30th.

Yours respectfully,

C. M. PHELPS.

Please give me 3 days' notice of date of shipment.

C. M. P.

Havana, Cuba, April 24th, 1913.

Messrs. Allen Bros., Glendale, Mich.

Gentlemen: Your favor of the 18th inst. at hand and contents duly noted.

Plants received O. K. and have been transplanted already. I am sure they will do well, for they have plenty of roots and this is the beginning of our rainy season.

Yours truly,

P. D. DePOOL.

Amberly, Ontario, Can., May 14, 1913.

Allen Bros., Paw Paw, Mich.

Gentlemen: The plants you shipped me on May the 5th arrived yesterday. They are good plants and in good condition after being eight days on the road.

Yours truly,

GEO. JARDNER.

Dear Sir: The two baskets of plants (of 1500) came through in excellent shape and want to thank you for the fine selection.

Yours truly,

R. E. SIMMONS,  
Eagle River, Wis.

Childsdale, May 6, 1913.

Allen Bros.

Dear Sir: I received the strawberry plants in fine shape and am well satisfied with them.

Yours truly,

A. DYKMAN.

Hickory North Carolina, April 18, 1913.

Allen Bros.

Sirs: Plants received in good shape. They are fine plants. Our home grown plants are in bloom and have berries on as large as large peas.

Yours truly,

N. M. SHIREMAN.

Corry, Pa., Route 7, May 4, 1913.

Allen Bros.

Dear Sirs: My strawberry plants came all right and in fine condition. Was well pleased with them. If I ever want more I shall send to you for them.

Yours respectfully,

C. O. SCHERMERHORN.

Lucasville, Ohio, March 10, 1913.

Allen Bros., Paw Paw, Mich.

Dear Sir: Enclosed you will find my order for plants, which please ship to my address. I have dealt with you for several years. I will never deal with any other company. Your plants are always as recommended.

Wishing you success, I am

Yours truly,

JAMES W. GEE.

P. S.—Ship plants by express about April 7, 1913.

Waubay, S. D., April 26, 1913.

Messrs. Allen Bros., Paw Paw, Mich.

Plants received in fine shape. Thank you.

Yours,

C. NORTH.

Oklahoma City, March 28, 1913.

Allen Bros., Paw Paw, Mich.

Dear Sir: I received the strawberry plants the 26th of March. They were in fine condition. Your plants were packed in good shape and were as nice as I ever saw. Am well pleased with them. I thank you ever so much.

MRS. KATIE FROLICH.

R. No. 8, Box 94.

Ware, Mass., R. F. D. No. 2, April 22, 1913.

Messrs. Allen Bros., Paw Paw, Mich.

Dear Sirs: Received plants all O. K. and am perfectly satisfied with them. They are the most rooted plants that I ever saw. I have them all set out and they look fine. Will order more next spring.

Respectfully yours,

H. KING & SON.

Elnora, N. Y., April 29, 1913.

Allen Bros., Paw Paw, Mich.

Dear Sir: We received your plants in good order. We thank you for them. I am sorry I made a mistake with the money. I here enclose the dollar.

Yours truly,

STANLY KROSKY.

Allen Bros., Paw Paw, Mich.

Just to tell you that the strawberry plants come in fine shape, did not even wilt when put out. With many thanks, I remain,

Yours,

T. G. LETSINGER,

Columbia, Tenn.

R. R. 8.

Allen Bros.

Gents: Received the plants you sent me and they are all right. You made a good selection. Thanks.

P. KEEFE,

Fitchburg, Mass.

20 Lincoln St.

South Glastonbury, Conn., April 28, 1913.

Plants received in fine condition. Am very much pleased with them. Thank you for the Gibson's. I am,

Yours respectfully,

FREDERICK O. TURNER.

Cedar Rapids, Ia., April 30, 1913.

Allen Bros., Paw Paw, Mich.

Dear Sir: The plants arrived on time and in excellent condition. Thanking you for the present "Gibson." I am,

Yours respectfully,

J. D. LAURENCE.

Bath, N. Y., April 26, 1913.

Allen Bros., Paw Paw, Mich.

Dear Sir:-I received n y berry plants the 25th; I set them out the 26th but the best of all I never saw better plants grown than they was. Two of my neighbors helped set them out and they was so taken up with the plants I had to sell them some. I didn't know how to spare them, but as a neighbor I let them have some. You can place me on your books as a customer next year, and I am also much obliged for the extra count you sent me.

Yours truly,

L. ABBOTT.

West Terre Haute, Ind., May 20, 1913.

Allen Bros.

Kind Sir: I received my strawberry plants all O. K., and thank you very much for the samples. I remain,

Yours truly,

HARRY MOPPS.

Holt, Mo., April 24, 1913.

Allen Bros.

Gentlemen: I received strawberry plants this morning; found them O. K.; fine plants and in good condition. Thanking you for same, I remain,

Yours truly,

JAMES W. HENSON.

Fulton, Mo., Nov. 5, 1913.

Allen Bros., Paw Paw, Mich.

Dear Sirs: Received your plants in good condition and am well pleased with them, although we have had scarcely any rain since they were set out; very few have died.

Yours truly,

TURNER HOPPER.

Maple Ridge Farm, Holderness, N. H.,

May 16th, 1913.

Allen Brothers, Paw Paw, Mich.

Gentlemen: My order for strawberry plants has been filled splendidly. They arrived the 12th in perfect condition and I have trimmed and have them heeled in all ready for setting. Shall commence setting today, and ought to have a very satisfactory crop next year. The plants I bought of you in 1911 were a success. Did not lose scarcely a plant from those I ordered from you. Did lose many from another firm that I ordered from the same year—so this year I ordered from you only, as I am used to strawberries and gave both lots the same chance. Wishing you success, I am,

Sincerely yours,

ZELDA F. FELCH.

Pittsfield, Me., May 16, 1913.

Mr. Allen.

Dear Sir: Received plants yesterday all right. We thank you for your kind attention since you sent us your book, and we thank you very much for the plants you sent, the present you made us.

We have recommended your way of doing business to our neighbors that are going to put out plants next year.

ALANSON LIBBY.



---

West Plains, Mo., May 5th, 1913.

Messrs. Allen Bros., Paw Paw, Mich.

Dear Sirs: The strawberry plants arrived in fine shape and I have them all set out. And if I counted right they overran in count. That was different from the one that I ordered from Arkansas last year. Last year they fell short in count. Your plants were fine and in fine shape.

Yours respectfully,

E. O. BONTA.

---

Haitland, Me., R. F. D. 1, May 23, 1913.

Allen Bros.

Dear Sirs: The plants that you sent me arrived in fine condition. They were the best I ever saw. I am an agent for a well known Rochester firm too. The plants could not have been beaten at any price.

Yours truly,

H. A. ELLIOTT.

---

Breckenridge, S. Dak., May 7, 1913.

Allen Bros., Paw Paw, Mich.

Sirs: The strawberry plants arrived O. K. and came in fine shape besides I live 40 miles off railroad, which all plants wouldn't stand. Please send me your fall prices, as I am retailing some out too.

Respectfully,

O. A. LOOSE.

---

Columbus, Ind., Feb. 3, 1913.

Allen Bros., Paw Paw, Mich.

Gentlemen: I am thinking of setting a few strawberry plants in the spring, so I would be pleased to receive your price list for the season of 1913. I set some of your plants four years ago, and was very well satisfied with results. Hoping to receive your price booklet soon, I am,

Yours,

C. W. JONES.

---

Hillsboro, Ill., April 18, 1913.

Allen Bros., Paw Paw, Mich.

Gentlemen: The strawberry plants I ordered of you arrived all right and were surely a fine lot of plants. The weather was not suitable for setting on arrival so I heeled them in for a short time. I never saw such finely rooted plants. You will probably receive an order from a friend in a few days.

Yours truly,

CHAS. H. WITHERSPOON.

Number of plants Required to Set an Acre of  
Ground at a Given Distance

42-inch rows, set 15 inches apart in row,	9,953
48-inch rows, set 15 inches apart in row,	8,712
36-inch rows, set 18 inches apart in row,	9,080
42-inch rows, set 18 inches apart in row,	8,297
48-inch rows, set 18 inches apart in row,	7,260
36-inch rows, set 24 inches apart in row,	7,260
42-inch rows, set 24 inches apart in row,	6,223
48-inch rows, set 24 inches apart in row,	5,445
24-inch rows, set 30 inches apart in row,	8,712
30-inch rows, set 30 inches apart in row,	6,969
36-inch rows, set 30 inches apart in row,	5,308
42-inch rows, set 30 inches apart in row,	4,976
48-inch rows, set 30 inches apart in row,	4,356

## Price List of Strawberry Plants

Those marked "P" are pistillate and must be planted near perfect blooming varieties. If plants are to be shipped by mail, add 20c per 100 plants. 50 of a variety at 100 rates. 500 (not of several varieties) at 1000 rates...No orders for less than \$1.00 accepted.

	Price 100	Price 1000
Aroma (S) .....	\$.60	\$3.50
August Luther (S).....	.60	3.00
Bederwood (S).....	.60	3.00
Brandywine (S) .....	.60	3.50
Bubach (P) .....	.60	3.75
Bisel (P) .....	.60	3.00
Barton's Eclipse (P)....	.60	3.25
Ben Davis (S) .....	.60	3.75
Bismarck (S) .....	.60	3.25
Clyde (S) .....	.75	4.25
Crescent (P) .....	.60	3.00
Cumberland (S) .....	.60	3.50
Dickey (S) .....	.65	4.00
Enormous (P) .....	.60	3.50
Excelsior (S) .....	.50	2.75
Enhance (S) .....	.60	3.50
Ernie (S) .....	.60	3.50
Greenville (P) .....	.60	3.50
Gandy (S) .....	.60	3.75
Glen Mary (S) .....	.60	3.75
Gibson (S) .....	.60	3.50
Haverland (P) .....	.60	3.50
Highland (P) .....	.75	5.00
Helen Gould (P) .....	.60	3.75
Johnson's Early (S) .....	.60	3.00
Jessie (S) .....	.60	3.75

Kansas (P) .....	.40	1.75
Klondike (S) .....	.60	3.50
Kittie Rice (P) .....	.60	3.50
Lovett (S) .....	.60	3.50
Marshall (S) .....	.75	4.50
Missouri (S) .....	.40	1.50
Michel's Early (S) .....	.25	1.00
Monitor (S) .....	.60	3.25
	Price	Price
	100	1000
Miller (S) .....	\$.50	\$2.50
Marie (P) .....	.60	3.50
New York (S) .....	.60	3.50
Nick Ohmre (S) .....	.60	3.50
Nettie (P) .....	.60	3.75
Norwood (P) .....	1.00	6.00
Parker Earle (S) .....	.80	5.00
Pocomoke (S) .....	.60	3.75
Ridgeway (S) .....	.60	3.50
Rough Rider (S) .....	.60	3.50
Sample (P) .....	.60	3.50
Splendid (S) .....	.60	3.50
Seaford (P) .....	.60	3.75
Senator Dunlap (S) .....	.60	3.00
Sharpless (S) .....	.60	3.50
St. Louis (S) .....	.65	3.50
Stevens' Late Champion (S).....	.60	3.50
Pride of Michigan (S) (Baldwin's)..	.75	3.75
Pride of Michigan (S) (Kellogg's).	.75	3.75
Tennessee Prolific (S).....	.60	3.25
Uncle Jim (S) .....	.75	4.00
Warfield (P) .....	.50	2.50
William Belt (S) .....	.60	3.50
Wolverton (S) .....	.60	3.50

Strawberry plants are our specialty. Our plants are free from dangerous insects and contagious plant diseases, as per the state inspector's certificate. If you buy plants of us you will get first-class plants that are free from infection. Undoubtedly you can buy cheaper plants elsewhere, but you will get in addition to the plants diseases common to strawberry plants. We know our plants will please you, and we would be pleased to receive your patronage.



## Parcel Post

Parcel post rates do not apply to strawberry plants, but we can send 11 pounds of plants by mail at the old rates of 1c for 2 ounces, or 8c per pound, which will be much less, in some instances, than by express, and also cheaper on long distance than the regular parcel post rates.

We would recommend this way of shipment on small orders or on large orders for long distance. We charge the following rates for sending plants

---

by mail, in addition to the regular price of plants:

50 plants.....	\$ .10	600 plants.....	\$ .95
100 plants.....	.20	700 plants.....	1.10
200 plants.....	.36	800 plants.....	1.25
300 plants.....	.52	900 plants.....	1.35
400 plants.....	.65	1000 plants.....	1.45
500 plants.....	.80		

Remember and add the above rates to the order if you want your plants sent by mail, and this also applies to plants mailed before May 1st—after that plants will be heavier and will cost more.

Paw Paw Savings Bank, Paw Paw, Mich.

We unhesitatingly recommend Allen Bros. as experienced propagators of strawberry plants, perfectly responsible and reliable. We believe that any stock purchased of them will be found as represented.

Our business relations with them have been entirely satisfactory through the many years they have been dealing with us.

We take great pleasure in recommending them to any one desiring to purchase anything in their line.

Very respectfully yours,

J. W. FREE.

President Paw Paw Savings Bank.

---

People's State Bank, Bloomingdale, Mich.

We take pleasure in recommending to the business public Allen Brothers of Glendale, Michigan, who are extensive growers and shippers of strawberry plants, thoroughly reliable and upright in all business matters, by careful attention to the details of their business it has grown to large proportions, and we are sure that all orders will be filled to the satisfaction of every patron.

Respectfully yours,

MILAN D. WIGGINS, Pres.

