

## **Historic, Archive Document**

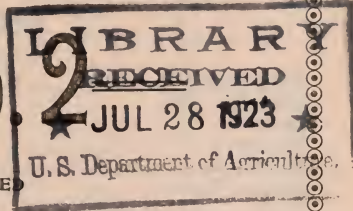
Do not assume content reflects current scientific knowledge, policies, or practices.



6209

# Surplus List

— No. 2



## MARCH 1 1914



The stock listed herein is approximately our surplus Fruit Trees, Grape Vines and Roses and all of this stock we have at our packing grounds ready for immediate delivery.

In addition to this list we have one of the best Ornamental Nurseries on the Pacific Coast and have in stock a fine surplus of the leading Deciduous Evergreen Trees, Shrubs, Climbing and Trailing, Bedding and Border Plants, also a fine stock of Palms, Bamboos, etc.

If you are in need of any of this stock we trust to receive a list of your probable wants and we will reply promptly, stating just what we can supply, giving grades and our very best prices.

Acceptance of orders sent us taken from this list is subject to the stock being unsold when the order is received.

Orders from unknown correspondents must be accompanied by remittance or satisfactory reference.

## Fancher Creek Nurseries Fresno, Cal.

GEO. C. ROEDING,  
President & Manager.

## APPLES

	6-8 ft.	4-6 ft.	3-4 ft.	2-3 ft.	1-2 ft.
Alexander .....	---	---	90	---	---
Arkansas Blk. ....	---	---	635	30	20
Baldwin .....	---	160	255	---	---
Bismarck .....	---	---	65	---	---
Delicious .....	500	600	400	80	20
Esopus Spitz .....	500	500	500	100	70
Gano .....	---	630	1425	60	10
Gravenstein .....	---	320	850	165	100
Grimes Golden Pippin....	---	---	80	110	100
Jonathan .....	400	810	820	210	---
King David .....	600	380	620	90	40
King of Tompkins Co....	---	10	65	20	---
Lady Apple .....	---	---	20	20	---
Lawver .....	---	---	150	220	110
McIntosh Red .....	270	675	90	45	30
Maiden's Blush .....	---	30	85	---	---
Mam. Blk. Twig .....	---	160	340	160	110
Marshall's Red .....	40	---	---	---	---
Missouri Pippin .....	380	600	110	120	---
Red Beitigheimer .....	---	30	60	---	---
R. I. Greening .....	---	---	285	5	30
Rome Beauty .....	180	---	800	310	160
Smith's Cider .....	500	650	45	40	30
Stayman Winesap .....	740	230	620	240	60
Winter Banana .....	---	85	100	---	---
Wh. W. Pearmain .....	2200	310	405	35	---
Winesap .....	---	170	380	110	---
Yellow Bellflower .....	980	410	395	255	---
Yellow Newton Pippin....	680	625	620	260	20

## PEARS

### On Pear Roots.

	6-8 ft.	4-6 ft.	3-4 ft.	2-3 ft.	1-2 ft.
B. S. Fox .....	---	---	190	---	---
Bartlett .....	---	---	3200	1400	3200
Bergamot .....	---	20	10	---	---
Beurre Hardy .....	---	---	150	---	---
Doyenne d'Ete .....	---	600	10	---	---
Doyenne D. Comice.....	500	570	450	50	---
Doyenne de Alencon .....	---	60	40	---	---
Flemish Beauty .....	---	8	110	---	---
Glou. Morceau .....	---	---	375	---	---
Le Conte .....	---	30	---	---	---
P. Barry .....	940	170	460	15	---
Seckel .....	---	---	40	---	---
Winter Nelis .....	---	---	100	---	---

### On Quince Roots.

	6-8 ft.	4-6 ft.	3-4 ft.	2-3 ft.	1-2 ft.
Beurre Clairgeau .....	---	165	160	---	---
Beurre Hardy .....	230	20	120	30	---
Doyenne du Comice .....	---	480	95	---	---
Easter Beurre .....	---	195	95	---	---
Glou. Morceau .....	---	---	90	30	---
Howell .....	140	280	15	---	---
P. Barry .....	115	390	90	120	---
Winter Nelis .....	---	375	135	---	---

## CHERRIES

### On Mazzard Roots.

	4-6 ft.	3-4 ft.	2-3 ft.	1-2 ft.
Belle d'Orleans .....	50	25	20	---
Bing .....	---	---	---	60
Blk. Tartarian .....	---	140	110	90
Burbank .....	10	15	---	---
Centennial .....	95	35	60	---
E. Pur. Guigne .....	---	---	15	---
E. Richmond .....	---	180	15	---
Eng. Morello .....	---	---	30	95
Gov. Wood .....	20	---	---	---
Lewelling .....	85	10	---	35
Lambert .....	---	---	---	80
May Duke .....	60	65	45	35
Nap. Bigarreau .....	---	---	15	---

### On Mahaleb Roots.

	4-6 ft.	3-4 ft.	2-3 ft.	1-2 ft.
Bing .....	---	---	15	---
Burbank .....	---	10	20	---
Early Richmond .....	---	---	70	---
Eng. Morello .....	---	---	5	20
Lambert .....	---	5	30	20
May Duke .....	60	60	30	30
Nap. Bigarreau .....	20	---	20	50

## PLUMS

### On Myrobolan Roots.

	6-8 ft.	4-6 ft.	3-4 ft.	2-3 ft.	1-2 ft.
Bartlett .....	---	---	35	45	---
Bavay Green Gage.....	---	5	235	35	---
Chalco .....	---	5	25	---	---
Cherry Plum .....	---	55	65	---	---
Clyman .....	---	415	185	45	80
Diamond .....	---	580	5	290	250
Early Golden Drop .....	---	10	70	---	50
Gaviota .....	---	---	40	---	40
Giant .....	---	400	390	210	270
Grand Duke .....	---	---	---	157	157
Ickworth Imperatrice .....	---	35	60	---	---
Jefferson .....	250	65	120	30	50
Kelsey Jap. ....	50	50	115	90	---
Peach .....	---	130	50	---	---
Red Egg .....	---	25	---	25	5
Sultan .....	---	---	90	---	5
Simon Plum .....	---	---	---	---	10
Washington .....	150	40	190	55	70
Wickson .....	50	---	25	---	---
Yellow Egg .....	---	---	10	135	270
Apex Plumcot .....	---	90	40	10	---

### On Peach Roots.

	6-8 ft.	4-6 ft.	3-4 ft.	2-3 ft.	1-2 ft.
Climax .....	---	65	---	80	---
Clyman .....	85	500	90	240	---
Giant .....	---	225	220	100	60
Grand Duke .....	---	30	25	330	120
Kelsey Jap .....	---	90	170	370	180
Wickson .....	---	570	725	530	510
Yellow Egg .....	---	---	---	100	160

## PRUNES

### On Almond Roots.

	6-8 ft.	4-6 ft.	3-4 ft.	2-3 ft.	1-2 ft.
Hungarian .....	---	30	---	80	10
Improved French .....	---	95	600	2200	1280

### On Peach Roots.

	6-8 ft.	4-6 ft.	3-4 ft.	2-3 ft.	1-2 ft.
Conquest .....	---	---	30	20	---
French .....	---	---	460	670	60
Hungarian .....	---	325	100	75	120
Improved French .....	---	725	510	520	530
Sugar .....	---	320	110	115	---
Tragedy .....	---	---	---	---	100

### On Apricot Roots.

	6-8 ft.	4-6 ft.	3-4 ft.	2-3 ft.	1-2 ft.
French .....	---	320	200	80	120

### On Myrobalan Roots.

	6-8 ft.	4-6 ft.	3-4 ft.	2-3 ft.	1-2 ft.
Conquest .....	---	5	---	20	---
Fellenberg .....	---	---	450	300	170
French .....	---	---	---	300	350
German .....	---	95	780	1200	600
Hungarian .....	---	---	---	290	400
Imp. Epineuse .....	---	95	115	30	540
Improved French .....	---	---	1200	920	1300
Silver Prune .....	345	345	45	235	280
Tragedy .....	---	---	---	---	200

## APRICOTS

### On Apricot Roots.

	4-6 ft.	3-4 ft.	2-3 ft.	1-2 ft.
Blenheim .....	200	1820	1200	600
Hemskirke .....	1400	300	620	90
Moorpark .....	---	---	35	10
Royal .....	---	1080	800	290
Tilton .....	355	530	600	---

### On Myrobalan Roots.

	4-6 ft.	3-4 ft.	2-3 ft.	1-2 ft.
Blenheim .....	1600	980	---	830
Hemskirke .....	---	270	290	150
Moorpark .....	---	260	465	---
Royal .....	600	700	600	200
Tilton .....	---	230	180	80

### On Peach Roots.

	4-6 ft.	3-4 ft.	2-3 ft.	1-2 ft.
Black Apricot .....	80	80	---	---
Blenheim .....	40	---	880	900
Hemskirke .....	900	1600	460	700
Large Early Montgamet....	20	290	---	---
Moorpark .....	---	750	200	140
Royal .....	125	---	755	1760
Routier's Peach .....	110	20	60	---
Smyrna .....	---	---	30	---
Tilton .....	820	1290	1460	180

## FLOWERING VARIETIES

	4-6 ft.	3-4 ft.	2-3 ft.	1-2 ft.
Pink Flowering .....	15	---	---	---
White Flowering .....	80	---	---	---

## QUINCES

### On Quince Roots.

	4-6 ft.	3-4 ft.	2-3 ft.	1-2 ft.
Champion .....	330	---	---	---
Rea's Mammoth .....	190	---	---	---
Pineapple .....	---	40	---	---
Smyrna .....	35	---	---	---

## PEACHES

### Flowering.

	4-6 ft.	3-4 ft.	2-3 ft.	1-2 ft.
Double Red Fringed .....	40	25	---	---
Double Rose .....	40	40	10	---
Double Red Flowered.....	5	20	---	---
Double White .....	55	45	30	---

### On Peach Roots.

	4-6 ft.	3-4 ft.	2-3 ft.	1-2 ft.
Admiral Dewey .....	50	35	---	40
Aus. Saucer .....	---	---	50	---
Bilyeu's Late .....	15	---	---	---
Blood Cling .....	---	---	50	30
Briggs R. May .....	---	---	90	---
Connet's S. Early .....	---	20	30	---
Crosby .....	---	140	35	100
Early Imperial .....	210	70	120	---
Elberta .....	655	1080	760	900
Foster .....	850	710	1000	540
Georges Late Cling .....	20	---	---	40
Greensboro .....	20	40	30	---
Hale's Early .....	---	115	530	130
Heath Cling .....	---	55	200	---
Late Crawford .....	190	370	340	560
Levis Cling .....	445	50	20	---
Levy Late .....	110	990	800	350
Lovell .....	1460	2300	850	600
McDevitt's Cling .....	350	890	1200	---
McKevitt's Cling .....	---	230	15	210
Morris White .....	---	10	160	170
Muir .....	1265	920	635	800
Oklahoma Beauty .....	---	---	10	---
Opulent .....	---	---	---	140
Phillip's Cling .....	600	90	1425	1200
Picquet's Late .....	---	155	---	---
Runyon's Orange Cling....	---	100	600	770
Salway .....	---	---	720	60
Seller's Orange Cling.....	75	---	710	370
Sims Cling .....	880	700	1200	820
Susquehanna .....	---	300	470	150
The Leader .....	---	---	30	10
Tuscan Cling .....	---	---	650	---
Wheatland .....	665	680	450	600
Yellow St. John .....	---	---	20	60

## NECTARINES

### On Peach Roots

	4-6 ft.	3-4 ft.	2-3 ft.	1-2 ft.
Advance .....	---	45	425	---
Humboldt .....	330	70	120	---
New White .....	20	710	790	590
Stanwick .....	---	520	720	900

## ALMONDS

### On Almond Roots.

	4-6 ft.	3-4 ft.	2-3 ft.	1-2 ft.
Drake's Seedling .....	1150	875	1300	....
Eureka .....	....	930	820	....
Harriot's S. ....	5	100	200	....
I. X. L. ....	510	....	915	....
Lanquedoc .....	70	60	260	....
Ne Plus Ultra .....	....	1435	1400	....
Nonpareil .....	....	....	1280	....
Peerless .....	985	1030	1420	....
The Jordan .....	....	....	600	....

### On Peach Roots.

	4-6 ft.	3-4 ft.	2-3 ft.	1-2 ft.
Drake's Seedling .....	380	900	240	....
I. X. L. ....	920	535	900	....
Ne Plus Ultra .....	670	1100	780	....
Nonpareil .....	1425	670	525	....
Peerless .....	400	800	600	....

### Flowering.

	4-6 ft.	3-4 ft.	2-3 ft.	1-2 ft.
Double White .....	210	150	110	....
Double Pink .....	75	130	100	....

## PECANS

### Seedlings.

	4-6 ft.	3-4 ft.	2-3 ft.	1-2 ft.
Seedlings .....	50	125	130	....

### Grafted Varieties.

Pabst .....	....	160	....	....
-------------	------	-----	------	------

## WALNUTS

### Seedlings.

	8-10 ft.	6-8 ft.	4-6 ft.	3-4 ft.
American Black .....	....	75	....	....
California Black .....	....	220	....	....
Placentia Perf. ....	160	....	....	....
Royal .....	15	....	20	10

### Grafted on California Black.

	10-12 ft.	8-10 ft.	6-8 ft.	4-6 ft.	3-4 ft.	2-3 ft.
A'Bijou .....	....	15	55	60	20	....
Chaberte .....	....	....	40	50	30	....
Concord .....	....	20	....	60	60	50
Cut-leaved .....	....	....	10	10	20	....
Franquette .....	500	500	1000	....	780	100
Mayette .....	200	400	500	....	600	550
Mayette Rouge .....	20	....	....	40	60	20
Neff's Pro. ....	20	35	30	55	70	....
Parisienne .....	50	120	250	280	....	....
Placentia Perfection .....	....	550	500	315	520	....
Paradox .....	60	260	245	290	85	....
Royal .....	....	....	70	65	40	....

## FIGS

### Smyrnas.

	4-5 ft.	3-4 ft.	2-3 ft.	1-2 ft.
Calimyrna .....	1400	380	700	1820
Kassaba .....	....	15	....	30
Bardajic .....	50	50	50	....



### Capri.

	4-5 ft.	3-4 ft.	2-3 ft.	1-2 ft.
Capri Magnissalis .....	60	25	....	....
Capri Milco .....	160	145	....	....
Roeding's Capri No. 1.....	1200	390	55	....
Roeding's Capri No. 2.....	120	45	....	....
Roeding's Capri No. 3.....	....	55	130	490

### Adriatics.

Boujasotte Penache.....	....	20	....	....
Brown Turkey .....	....	70	....	....
Mission .....	1500	1205	495	180
White Adriatic .....	680	1125	2000	1600
White Endich .....	110	140	60	....

## PERSIMMONS

	4-5 ft.	3-4 ft.	2-3 ft.	1-2 ft.
Dai-Dai-Maru .....	....	1½	....	....
Kobi .....	....	50	....	....
Mammoth Gosho .....	45	40	....	....
Yemon .....	20	....	20	15

## GRAPES

### NEW GRAPES.

Dattier de Beyrouth .....	3200
Sultanina Rosea .....	2000

### Foreign—Table—Rare.

Augulato .....	160
Foster Seedling .....	200
Dronkane .....	130
Ohanes d'Almeria .....	140
Olivette de Vendemian .....	100
Prune de Cazales .....	100
Piment .....	40
Trenthan Black .....	150

### General Collection—Shipping.

Black Cornichon .....	2400
Black Hamburg .....	3480
Emperor .....	5890
Malaga .....	6890

### Rare—Table and Shipping.

Black Morocco .....	400
Chasselas Ciotat .....	90
Chasselas Golden .....	3790
Purple Damascus .....	90
Rose of Peru .....	1890
Sabal Kanski .....	7½
Scuppernong, Wht. ....	24
Scuppernong, Blk. ....	24

### Wine Varieties.

Alicante Bouschet .....	800
Carignan .....	1740
Feher Zagors .....	3180
Grand Noir de la Calmette .....	1240
Grenache .....	3890
Petit Syrah .....	1200
Zinfandel .....	5270

### Raisin Varieties.

Muscat .....	2000
Panarita .....	200
Sultana .....	1075
Thompson's Seedless .....	1750
Zante Currant .....	170

### Resistant Varieties.

Aramon X Rupestris Ganzin, No. 1.....	4000
Mourvedre X Rupestris, 1202 .....	10000
Riparia X Cordifolia X Rupestris, 106.8.....	300
Riparia Glorie de Montpellier.....	4000
Riparia X Rupestris, 3306 .....	10000
Riparia X Rupestris, 3309 .....	6000
Riparia X Rupestris, 101-14 .....	10000
Rupestris St. George .....	10000



# Field Grown Roses

## Standard or Tree Roses.

15	Dean Hole	9	Krownprinzessin Cecelie
10	Dorothy Perkins	10	Lady Ashton
18	Farbinkonigin	10	Laurent Carle
18	Franz Deegan	10	Lieutenant Chaure
16	General Jacqueminot	10	Lyon
8	Heinrich Munch	17	Mad. Jule Grolez
9	Hugh Dickson	8	Mme. Aaron Ward
9	Konigin Carola	4	Prince de Bulgarie
	9		La France

## NEWEST IN ROSES

40	Erna Teschendorff (Dwarf Poly.)	Brilliant Carmine rosy red.
20	Farben-Konigin (H. T.)	Carmine-rose.
50	Heinrich Munch (H. P.)	Pink.
15	Konigin Corolla (H. T.)	Satiny rose.
50	Juliet (Hybrid Briar.)	Outside petals old gold; center red.
15	Laurent Carle (H. T.)	Brilliant velvety Carmine.
30	Leuchfeuer (Ben.)	Blood red color.
30	Lieutenant Chaure (H. T.)	Velvet crimson, shaded garnet.
30	Lady Ashtown (H. T.)	Pale rose, shading yellow.
65	Madam Jule Grolez (H. T.)	Satiny rose.
25	Rayon d'Or (H. B.)	Golden-yellow.
20	Sunburst (H. T.)	Orange-yellow.

## LATE INTRODUCTIONS

250	Clio (H. P.)	Flesh color, center shaded rosy pink.
30	Climbing Killarney (H. T.)	A sport of Pink Killarney.
15	Duchess of Wellington (H. T.)	Intense saffron.
40	Florence Edith Coulthwaite (H. T.)	Deep cream.
60	Flower of Fairfield (Poly.)	Crimson.
15	Geo. C. Waud (H. T.)	Glowing orange-vermillion.
100	Grace Molyneux (H. T.)	Creamy apricot, center flesh.
40	Harry Kirk (H. T.)	Color deep sulphur-yellow.
50	John Cuff (H. T.)	Deep carmine-pink; yellow at base of petals.
15	Joanna Wessenhoff (H. T.)	Sulphur-yellow, passing to light yellow.
50	Kronprinzessin Cecelie (H. T.)	Silvery pink, exquisite form.
30	Lady Alice Stanley (H. T.)	Deep coral rose, inside pale flesh.
145	Lady Ursula (H. T.)	Beautiful pink color.
20	Margaret (H. T.)	Delicate tint of soft pink.
40	Margaret Molyneux (H. T.)	Saffron-yellow, shaded bronzy-carmine.
15	Mrs. E. J. Holland (H. T.)	Deep salmon, rose shaded, light at edge of petals.
40	Mrs. Cutbush (Poly.)	Light pink tinted salmon.
35	Molly Sharman-Crawford (H. T.)	Flowers pure white.
30	Nita Weldon (H. T.)	Ivory white with faint blush on edge of petals.

- 10 Pharisaer (H. T.) Salmon pink, delicious odor.
- 50 Prince de Bulgarie (H. T.) Silvery flesh, golden-salmon center.
- 15 Theresa (H. T.) Orange-apricot, passing to pink with carmine shadings.
- 40 Walter Speed (H. T.) Deep lemon-yellow.

#### SCARCE VARIETIES.

- 60 Clara Watson (H. T.) Pearly white, center shaded pale peach.
- 15 Hugh Dickson, H. P.)
- 100 Dean Hole (T.) Silvery carmine, with salmon shadings.
- 35 Lady Battersea, or Red Kaiserin (H. T.) Beautiful cherry-crimson.
- 40 Mme. Vermoral (T.) Coppery yellow, center shaded red.
- 20 Peace (T.) Lemon-yellow.
- 120 Perle von Godesburg (H. T.) Deep yellow, merging to cream.
- 20 Rhea Reid (H. T.) Rose.
- 400 Mad. Abel Chatenay (H. T.) Carmine-rose.
- 75 Schneikopf (Poly.) Snow white.
- 100 White Killarney (H. T.) Color, pearly white.

#### GENERAL COLLECTION

- 180 Agrippina (Ben.) Deep crimson.
- 25 Alice Leroy (M.) Pink.
- 55 American Beauty (H. P.) Rosy-crimson.
- 50 Augustine Guinoisseau, or White La France (H. T.) Pearly white, tinted fawn.
- 100 Baby Rambler; "Mme. Norbert Levavasseur" (Poly.) Dwarf, bright crimson.
- 50 Banksia White (Ben.)
- 20 Baroness Rothschild (H. P.) Bright rose.
- 35 Beauty of Glazenwood (Misc.) Coppery-carmine.
- 50 Bessie Brown (H. T.) Creamy white.
- 30 Bridesmaid (T.) Clear, bright pink.
- 100 Cherokee, Double (Misc.) White.
- 30 Cherokee Single (Misc.) White.
- 15 Climbing Belle Siebrecht (H. T.) Imperial pink.
- 40 Climbing Bridesmaid. Bright pink.
- 60 Climbing Devoniensis (T.) White, center blush.
- 50 Climbing La France (H. T.) Silvery pink.
- 20 Climbing Meteor (H. T.) Deep crimson.
- 30 Cl. Capt. Christy (H. P.) Flesh.
- 25 Cl. Car. Testout (H. P.) Pink.
- 20 Cl. Mlle. C. Brunner (Poly.) Pink.
- 30 Cl. Perle des Jardins (T.) Canary-yellow.
- 110 Crimson Rambler (Poly.) Bright crimson.
- 40 Dr. William Gordon (H. P.) Exquisite pink petals, edged white.
- 40 Duch de Brabant (T.) Pink.
- 60 Duchess of Albany, or Red La France (H. T.) Deep pink.
- 20 Eliza Sauvage (T.) Pale yellow.
- 20 Empress of China (Misc.) Red.
- 15 Empereur du Maroc (H. P.) Velvety maroon.
- 20 Francisca Kruger (T.) Yellow.

- 40 Florence Pemberton (H. T.) Creamy white, suffused with pink.
- 20 Franz Deegan (H. T.) Deep orange-yellow, merging white.
- 20 Gloire de Dijon (T.) Buff-orange.
- 40 Gen. McArthur (H. T.) Fiery red.
- 40 Greville, or Seven Sisters (Pr.) Light pink.
- 80 Improved Rainbow (T.) Pink, striped crimson.
- 90 Jubilee (H. T.) Fiery maroon-crimson, often black.
- 40 Killarney (H. T.) Flesh, suffused pink.
- 10 Lamarque (N.) White, shaded sulphur-yellow center.
- 300 Mad. Jean Dupuy (T.) Golden-yellow.
- 15 Mme. Alfred Carriere (N.) White and yellow.
- 30 Mme. C. Testout (H. T.) Clear pink.
- 15 Mme. G. Luizet (H. P.) Clear coral-rose, shaded lavender.
- 20 Mad. Wagram (Climbing Paul Neyron). T.) Rosy pink.
- 200 Maman Cochet (T.) Pink.
- 30 Mlle. Cecile Brunner (Poly.) Pink.
- 40 Marchioness of Londonderry (H. P.) Ivory-white.
- 20 Medea (T.) Lemon-yellow.
- 50 Meteor (H. P.) Deep crimson.
- 20 Papa Gontier (T.) Brilliant carmine changing to rose and lilac.
- 30 Perle des Jardins (T.) Straw color.
- 15 Persian Yellow (Misc.) Deepest yellow.
- 90 Philadelphia Rambler (Poly.) Very deep crimson.
- 30 Pink Soupert (Poly.) Clear pink.
- 20 Prairie Queen (Pr.) Rosy red.
- 30 Prince Camille de Rohan, or La Rosier (H. P.) Dark crimson.
- 50 Reine Olga de Wurtemberg (H. T.) Rosy carmine.
- 100 Reine Marie Henriette (H. T.) Cherry-red.
- 280 Richmond (H. T.) Deep scarlet.
- 20 Rosalind Or (H. T.) Pure scarlet-pink.
- 30 Rubens (T.) White rose.
- 20 Rugosa Alba (Rug.) Pure white.
- 20 Rugosa Rubra (Rug.) Crimson.
- 20 Safrano (T.) Deep fawn.
- 30 Snowflake (T.) White.
- 10 Soleil d'Or (Misc.) Reddish gold, shaded nasturtium-red.
- 10 Souvenir de Malmaison (Bour.) Flesh edged blush.
- 20 Souvenir de Paul Neyron (T.) Creamy white, shaded rose.
- 10 Souvenir du President Carnot (H. T.) Rosy flesh, shaded deeper at center.
- 40 The Bride (T.) Pure white buds and flowers large and delightfully fragrant.
- 80 The Queen (T.) Pure white.
- 90 Ulrich Brunner (H. P.) Cherry-red.
- 20 Vis. Folkstone (H. T.) Flesh color, darker at center.
- 290 White Maman Cochet (T.) Pure white, sometimes suffused with pink.
- 10 White Bath (M.) White.
- 30 Xavier Olibo (H. P.) Violet crimson.

# ROEDING'S Practical Horticulture

Our initial number was published January 1st. The second issue, on "The Fig," is just off the press. We hope to make these bulletins of value to our many friends and patrons. If you have not already received them, give us your name and address and they will be mailed to you promptly as issued.

---

---

*Illustrated*  
**Price Catalogue**  
*For 1913-1914*

Now ready for mailing. Contains short descriptions of all varieties of stock we are growing, as well as our quotations.

If you desire a copy, advise us and it will be mailed promptly.