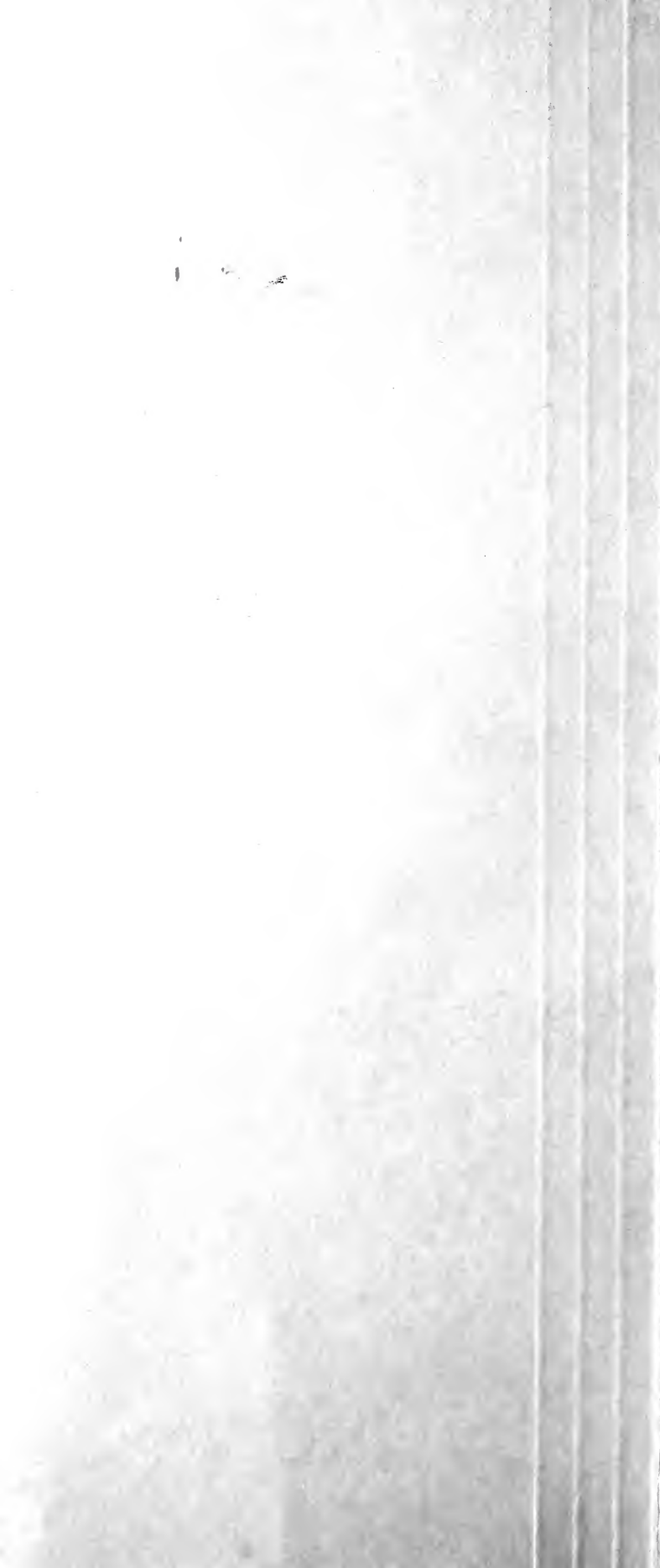


Historic, Archive Document

Do not assume content reflects current scientific knowledge, policies, or practices.



62-61

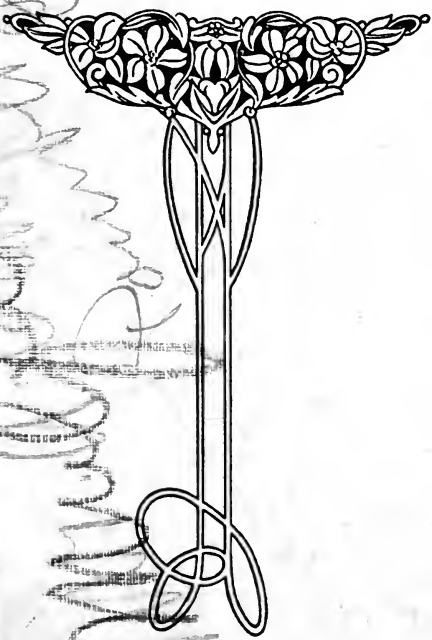
1914 RECEIVED

Department of Agriculture.

**FLO R I S T S '
 W H O L E S A L E
 C A T A L O G U E**

of

**PLANTS, CUTTINGS, BULBS
 and
 CHOICE FLOWER SEEDS**



ROMAN J. IRWIN

IMPORTER *and* JOBBER

71 WEST 23RD. ST., NEW YORK.

Introductory

A Square Deal To Everyone

MY twenty-four years of practical experience enables me to know where to get the best stock. I contract for all my plants with growers who specialize in different lines, because very few can grow everything well. I am in touch with the leading growers at all times and know who has the best at market prices, so it is an advantage for you to buy from me. My prices are always the same as the producer's. Try me and satisfy yourself. I represent the following firms:

A. N. PIERSON, Inc., Cromwell, Conn.
STORRS & HARRISON CO., Painesville, O.
GOOD & REESE CO., Springfield, O.
JACKSON & PERKINS CO., Newark, N. Y.
and SPECIALTY GROWERS.



TERMS: Sixty days net, 2% for cash in 10 days, 3% cash with order.

NEW ACCOUNTS: Cash with order, or satisfactory references.

C. O. D. ORDERS must be accompanied with a deposit.

DAMAGED PLANTS: Should a shipment reach you by express damaged, sign for it: "Received in damaged condition," and be sure to notify your express agent at once to inspect the plants. Then notify me immediately and I will collect from Express Company and make good to you. Do not return plants to me without first communicating.

CLAIMS: All claims must be made on receipt of goods, or they will not be entertained.

250 of anything listed are sold at 1000 rate, except where quoted otherwise.

While I exercise the greatest care to have all seeds pure and reliable, and all bulbs, plants and nursery stock true to name, I do not give any warranty, express or implied, and will not be in any way responsible for the crop. If the purchaser does not accept the goods on these terms and conditions, they must be returned at once, and the money that has been paid for same will be refunded.



Killarney Brilliant

NEW ROSES FOR 1914

Killarney Brilliant. A sport from Killarney, grown in the open ground in England. Killarney was introduced in 1898 and since then there have been so many sports that Killarney has developed into a type rather than a variety. Messrs. Alexander Dickson & Sons, the original introducers, are to be congratulated, sixteen years after the advent of Killarney, in giving us now this distinct novelty, which is undoubtedly the best of all varieties of this type. Killarney Brilliant has the same habit of growth and the same freedom of bloom as its parent, while the flower is twice as large, having 25 to 40 full-sized petals. It will be as useful for Summer blooming as for Winter forcing. The color is a very brilliant pink and varies like Killarney; in bright weather it is almost crimson and in dull weather it is as bright as Killarney at its best. The sale of Killarney Brilliant a year before its introduction has been larger than any other Rose ever sent out in this country.

Extract from *The American Florist*, March 22, 1913.—“**Rose Killarney Brilliant.** This new Rose is appropriately named, for a more brilliant pink could not be found. We have never heard any fault found with the color of the original Killarney when at its best, but there are times that Killarney comes to market looking somewhat pale. Killarney Brilliant is such a bright color that it could well afford to lose some and yet be equal to the average pink Rose. In stem and foliage it seems to possess the desired qualities and we shall note with interest its future history.”

Grafted Plants: 2¼-in., \$6.00 per doz., \$35.00 per 100, \$300.00 per 1000.

Own Root Plants: 2¼-in., \$30.00 per 100, \$250.00 per 1000.

Hadley. (*The Montgomery Co.*) Hadley is a development from a line of seedlings raised by Alex. Montgomery, Jr., the varieties used in this development being Liberty, General MacArthur and Richmond. In color it is a deep, velvety crimson, retaining its brilliancy at all seasons of the year. The variety is double and buds are well formed. The fragrance is excelled only by American Beauty. It is a strong, rapid grower, and the flowers are borne on long, stiff stems. It has proven itself under thorough trial to be an all-the-year-round forcing variety.

Grafted: 2¼-in., \$6.00 per doz., \$35.00 per 100, \$300.00 per 1000.

Own Root: 2¼-in., \$5.00 per doz., \$30.00 per 100, \$250.00 per 1000.

NEW ROSES FOR 1914—Continued

Mme. Edouard Herriot. (*Pernet-Ducher.*) This variety does not need a wide description. It is already known by having won at the International, in May, 1912, the *Daily Mail* Cup, also the Gold Medal at the National Rose Society on May 1, 1913. It is a hardy shrub with ample bronzy-green foliage, buds coral red shaded yellow at the base, mid-sized flower, not too full. A superb coral red in color, shades of yellow and rose de carthame, passing to shrimp red.

Willowmere. (*Pernet-Ducher.*) Vigorous shrub with strong branches, foliage clear green; long bud borne on a strong peduncle, coral-carmine red; very large flower, full, cup-shaped, of a rich shrimp red, shaded yellow in the center, with extremity of the petals carmine rose. Said to represent an advance on Lyon Rose.

Grafted: 2¼-in., 75c. ea., \$6.00 per doz., \$35.00 per 100, \$300.00 per 1000.

No Own Root plants of the two above-named varieties.

Prince E. C. d'Arenberg. A red Rose of great promise. This Rose has a lively clear color, not inclined to turn blue, and is especially lively under artificial light, holding its color as long as the flower lasts. The bud is heavy and pointed, developing into a beautiful, full flower of great size and finish. This variety produces no deformed buds and is a quick and continuous grower. The growth is heavy and free, with thick, leathery foliage, which is free from mildew or black-spot, and is one which anyone can grow in ordinary Killarney temperature.

Grafted Plants: \$5.00 per doz., \$30.00 per 100, \$250.00 per 1000.

Own Root Plants: \$5.00 per doz., \$30.00 per 100, \$250.00 per 1000.

25 of a variety at 100 rate; 250 of a variety at 1000 rate.

Milady. (*J. B. Clark* × *Richmond.*) The habit of growth is strong and sturdy and foliage excellent. The flower is large and double, and opens perfectly at all seasons of the year. In color it is similar to Richmond, although richer in color in the bud. In form of flower and fragrance it resembles Gen. Jacqueminot, and combines with this, excellent color, strong growth, great productiveness and wonderful keeping qualities, which strongly recommend the variety as an excellent forcing Rose.

Grafted: 2¼-in., \$2.25 per doz., \$17.50 per 100, \$150.00 per 1000.

Own Root: 2¼-in., \$1.50 per doz., \$12.00 per 100, \$100.00 per 1000.

Mrs. Chas. Russell. A strong-growing, free-flowering Rose. With one pinching makes stems four to five feet in length. The foliage is heavy and leathery, inclined to slightly curl on the older wood, is almost mildew-proof, and never drops the leaves. The bud is fully as large as American Beauty, but longer and pointed, and opens into a flower of unusual beauty. The color is a bright rose pink, deeper toward the center. Is a remarkable keeper and shipper.

Grafted: 2¼-in., \$2.25 per doz., \$17.50 per 100, \$150.00 per 1000.

Own Root: 2¼-in., \$1.50 per doz., \$12.00 per 100, \$100.00 per 1000.

Mrs. George Shawyer. Brilliant rose pink in color. Flowers large, well formed, fairly full; petals of good substance. Growth is tall and stiff, and carries heavy, leathery foliage. From the point of production and quality of bloom, this Rose is recognized as one of our best forcing Roses.

Grafted: 2¼-in., \$2.25 per doz., \$17.50 per 100, \$150.00 per 1000.

Own Root: 2¼-in., \$1.50 per doz., \$12.00 per 100, \$100.00 per 1000.

Irish Fire Flame. A new departure in Roses for Winter forcing. It is a single Rose with only five petals, and is the most striking and the best single Rose Messrs. Dickson & Sons have ever raised. It flowers profusely during the Winter months. The bud is an intense, fiery crimson at the top, shading at the base of the petals to a rich orange salmon. The open flower is bright salmon. It is of strong, vigorous growth, with dark green foliage, reverse of leaf deep bronze.

Grafted: 2¼-in., \$2.25 per doz., \$17.50 per 100, \$150.00 per 1000.

Own Root: 2¼-in., \$1.50 per doz., \$12.00 per 100, \$100.00 per 1000.

25 of a variety at 100 rate; 250 of a variety at 1000 rate.

NEW ROSES FOR 1914—Continued

Cecile Brunner. (*Ducher*, 1881.) This dainty little Polyantha Rose has been long securing the recognition which it deserves. The flowers are a bright rose color and produced in great profusion. It has much value for corsage bouquet work and is being sold under the names "Mignon" and "Sweetheart." Although a Polyantha, it is not so hardy as the class of Roses to which it belongs, and undoubtedly for this reason has remained for so many years in obscurity. With us it is better grafted than own root, but is a vigorous growing variety either on Manetti or its own roots.

Grafted: 2¼-in., \$2.25 per doz., \$17.50 per 100, \$150.00 per 1000.

Own Root: 2¼-in., \$1.50 per doz., \$12.00 per 100, \$100.00 per 1000.



Sample Grafted, 2¼-in.

GENERAL LIST OF ROSES

Sunburst. In color, orange copper or golden yellow. Very intense shades and brilliant in coloring. It is a strong-growing variety, and belongs in the class with big Roses. The foliage and stem are excellent. Owing to the fact that Sunburst has not been a general success grafted, we are offering the variety on its own roots only.

Own Root: 2¼-in., \$1.50 per doz., \$12.00 per 100, \$100.00 per 1000.

Killarney Queen. (*Budlong*.) As a fancy pink Rose for the Winter months, Killarney Queen stands in a class by itself. It is a cerise pink sport of Killarney, exceptionally strong in growth, with excellent foliage. The petals are larger than the petals of Killarney, and for high-grade bloom in the colder months Killarney Queen is without any equal.

GENERAL LIST OF ROSES—Continued

Double White Killarney. (*Budlong.*) It is a sport from the Waban strain of White Killarney, with increased petalage, and is pure white in color.

Mrs. Taft. (*Antoine Rivoire.*) The variety is a general favorite wherever grown. Its beautifully formed shell-pink blooms, backed by handsome, glossy foliage, make it very popular.

Mrs. Aaron Ward. A general favorite. As a bud, a rich yellow, which changes to an exquisite shade of pink as the flower opens.

Grafted: 2¼-in., \$1.50 per doz., \$12.50 per 100, \$120.00 per 1000.

Own Root: 2¼-in., \$1.00 per doz., \$7.50 per 100, \$60.00 per 1000.

25 of a variety at 100 rate; 250 of a variety at 1000 rate.

Lady Hillingdon. A very free-blooming variety and very distinct as to color. It might be called a deep copper yellow.

Killarney. The most popular forcing Rose that has ever been introduced and without doubt the most profitable Rose ever grown. It is too well known to need description.

White Killarney. (*Waban Strain.*) White Killarney has most successfully advertised itself. Like its parent, the Pink Killarney, it has become one of the most popular Roses grown today.

Jonkheer J. L. Mock. A large-flowered and very vigorous-growing variety. The color is deep pink or carmine.

Richmond. Clean and strong grower, free bloomer; fine-shaped buds borne on stiff stems; color bright, rich scarlet crimson.

Radiance. Radiance is very popular with the trade. Deep cerise pink in color. Strong in growth and a good producer. One of the finest Roses for outdoor growing.

Grafted: 2¼-in., \$1.50 per doz., \$12.50 per 100, \$120.00 per 1000.

Own Root: 2¼-in., \$1.00 per doz., \$7.50 per 100, \$60.00 per 1000.

My Maryland. As a Summer forcing Rose My Maryland reigns supreme. Clear pink in color. Pointed buds, combined with wonderful producing qualities, make this Rose deservedly popular.

Grafted: 2¼-in., \$1.50 per doz., \$12.50 per 100, \$120.00 per 1000.

Own Root: 2¼-in., \$1.50 per doz., \$10.00 per 100, \$90.00 per 1000.

25 of a variety at 100 rate; 250 of a variety at 1000 rate.

Bon Silene

Bride

Bridesmaid

Cardinal

Golden Gate

Ivory

Mrs. Pierpont Morgan

Kaiserin Augusta Victoria

Grafted: 2¼-in., \$1.50 per doz., \$12.50 per 100, \$120.00 per 1000.

Own Root: 2¼-in., \$1.00 per doz., \$7.50 per 100, \$60.00 per 1000.

QUANTITY PRICES

On all varieties listed at \$120.00 per 1000, I offer:

2500 plants at the price of \$110.00 per 1000.

5000 plants at the price of \$100.00 per 1000.

PRICES ON SIZES LARGER THAN 2¼-INCH

On all grafted Rose plants in sizes larger than 2¼-inch, which is the size on which prices are quoted, our prices are as follows:

3-in., \$1.00 per doz., \$5.00 per 100, \$40.00 per 1000 advance on prices quoted.

4-in., \$1.50 per doz., \$10.00 per 100, \$80.00 per 1000 advance on prices quoted.

On all varieties of Own Root catalogued at \$7.50 per 100, \$60.00 per 1000, in larger than 2¼-in. size our prices are as follows:

3-in., \$1.50 per doz., \$10.00 per 100, \$90.00 per 1000.

4-in., \$2.00 per doz., \$50.00 per 100, \$120.00 per 1000.

Be sure to specify when ordering whether you wish plants Grafted or on their Own Roots.

American Beauty. Clean, strong stock on their Own Roots; propagated from two-eye cuttings, according to prices below. 3 and 4-in. sizes are for delivery during April, May and June.

2½-in., \$1.50 per doz., \$8.00 per 100, \$75.00 per 1000.

3-in., \$2.00 per doz., \$12.00 per 100, \$100.00 per 1000.

4-in., \$2.50 per doz., \$20.00 per 100, \$150.00 per 1000.

25 of a variety at 100 rate; 250 of a variety at 1000 rate.

ROSES

For outside planting, to grow on, in all varieties, Hybrid Tea, Hybrid Perpetual and Climbers, 2¼ and 4-in. pots.

Baby Rambler
 Baby Tausendschon
 Mrs. W. H. Cutbush
 Kaiserin Aug. Victoria
 Excelsa, cl.
 Crimson Rambler
 Etoile de France
 Frau Karl Druschki
 Gruss an Teplitz
 La France
 Cochet White
 Cochet Pink
 Mrs. John Laing
 Paul Neyron
 Safrano
 Souv. de Wootton
 Tausendschon

Baby Orleans
 Baby Erna Teschendorf
 Helen Gould
 Killarney
 Clothilde Soupert
 Dorothy Perkins
 Etoile de Lyon
 General Jack
 General MacArthur
 Magna Charta
 Marechal Niel
 Meteor
 Pres. Taft
 Rhea Reid
 Souv. de Pierre Nutting
 Souv. de Pres. Carnot
 Ulrich Brunner

and all other varieties, with prices on application. Prices range from \$3.00 to \$4.50 per 100 for 2¼-in. and \$12.00 to \$15.00 for 4-in. on all above varieties.

GENERAL COLLECTION OF 2-YEAR-OLD DORMANT FIELD-GROWN ROSES, AMERICAN GROWN

HYBRID PERPETUAL

List and prices furnished on application. Cannot issue a list, as a great many varieties are sold out, on account of their being very scarce this year.

HYBRID TEA ROSES

Year-old, field-grown.

List furnished on application with prices.

FORCING ROSES

Strong two-year-old, American grown, forcing grade.

Place your order now for next Fall delivery; then you will get just what you want. These are low budded, much superior to Holland-grown stock, and will force the first year. The following varieties are most suitable for forcing. December, 1914, delivery.

Magna Charta
 Mad. Gabriel Louizet
 General Jack

Ulrich Brunner
 Paul Neyron
 Frau Karl Druschki

BABY RAMBLER TYPE, FORCING GRADE

Baby Rambler
 Baby Tausendschon

Erna Teschendorf
 Orleans

BEST CLIMBING VARIETIES FOR FORCING

Excelsa
 Crimson Ramblers
 Trier
 Flower of Fairfield

Dorothy Perkins
 Tausendschon
 Hiawatha
 Climbing American Beauty

Prices of all above Forcing Roses furnished on application.

CARNATION CUTTINGS

Enchantress Supreme. This sport of Enchantress was disseminated in 1913. The best new Carnation of recent years. Enchantress and the sports of this variety have been of the highest value to all Carnation growers. It is a light salmon pink, not only an attractive color but a color which endures exposure to the sun without bleaching. The calyx is longer than that of the parent variety and has shown no tendency to burst. There are less petals which insures better formed flowers. The growth is almost identical with that of the parent, making it a dependable variety and worthy of a place in every Carnation house.

Rooted Cuttings: \$1.00 per doz., \$6.00 per 100, \$50.00 per 1000.

Matchless. White. Winner of two gold medals. Do not fail to buy this variety. Superior in size to any white commercial variety; a continuous bloomer and very seldom bursts. I have seen it in bloom every month from December till Spring, and it is very well thought of by all local growers, and bought in quantity. \$12.00 per 100, \$100.00 per 1000.

Scarlet Champion. (*Dorner's.*) Very fine bright scarlet, of fine form and good stem. There is no doubt that this variety is worth planting by growers who want a new red. We all know Mr. Dorner's reputation for sending out commercial varieties that will make good. \$12.00 per 100, \$100.00 per 1000.

Princess Dagmar. (*Patten & Co.*) New crimson; the best variety in this color in sight. If you want a good crimson, you will make no mistake by trying same. \$12.00 per 100, \$100.00 per 1000.

Philadelphia. Pink. \$12.00 per 100, \$100.00 per 1000.

Eureka. Red. Any grower who wants a sure thing in red will profit by planting same. Color little brighter than Beacon and of same habit; flower trifle smaller, but very rarely splits. I consider Eureka as free flowering as any variety grown. Growers who bought it last year are very well pleased. \$3.50 per 100, \$30.00 per 1000.

	100	1000
Pink Delight	\$5.00	\$40.00
Gloriosa. Shell pink.....	4.00	35.00
Benora. Variegated.....	3.50	30.00
Beacon. Selected stock.....	3.50	30.00
Herald. New scarlet.....	6.00	50.00
Northport. Pink.....	6.00	50.00
Octoroon. Crimson.....	3.50	30.00
White Wonder. Selected stock.....	3.50	30.00

STANDARD VARIETIES

\$3.00 per 100, \$25.00 per 1000.

White Enchantress

White Winsor

Enchantress

Dorothy Gordon

Rosette. Pink

Winsor. Pink

Victory. Red

White Wonder

White Perfection

Rose Pink Enchantress

Mrs. C. W. Ward. Pink

May Day. Shell pink

Pink Lawson

Harlowarden. Crimson

250 or more of one variety at 1000 rate.

Write for special prices on large quantities.

FIELD-GROWN CARNATIONS

I am booking orders now for any of the above varieties at market prices.

Place your order with me as early as possible and I will guarantee you satisfaction, and ship from nearest point. I buy up only very best stock in the Summer. Being in touch with best growers all the time enables me to know where to get the best and healthiest plants.



Ivory Supreme

NEW COMMERCIAL CHRYSANTHEMUMS

New 'Mum Ivory Supreme. A seedling of Ivory; pure white, incurved, as large as Chrysolora, coming in flower one or two weeks earlier than Ivory, about the same time as Chrysolora commences to flower. A good, clean grower and stronger than Ivory. Best results obtained from crown bud. Height, if planted early, four feet; from late planting, three feet. It is an excellent shipper and a very good companion to Chrysolora. Fine for side benches. Delivery April and later.

Rooted Cuttings: \$8.00 per 100, \$75.00 per 1000.
25 or more at 100 rate, 250 or more at the 1000 rate.

NOVELTY CHRYSANTHEMUMS

Indian Summer (Bronze Chadwick). This variety is a sport from Golden Chadwick. The wonderfully beautiful effects which can be had by the proper setting will be recognized by those by whom floral art is understood, and it is to these men that a novelty of this sort will appeal. Being a sport of Chadwick, the habit and growth are identical. In color the groundwork is yellow, but into this is blended the terra cotta and salmon shades, with a tinge of bronze that gives to it a distinctiveness that insures popularity. It has been named in honor of the season of the year which brings Chrysanthemums to their glory.

Plants from 2¼-in. pots: 50c. ea., \$5.00 per doz., \$35.00 per 100.

Greystone. This new variety is a seedling from Brutus and Soleil d'Octobre, and is a most beautiful golden bronze in color, the specimen plant shown at the Museum of Natural History at New York being one of the original plants. This specimen carried one thousand blooms of large size, and in the opinion of experts was one of the finest specimens ever exhibited. Also a fine commercial variety.

Plants from 2¼-in. pots: 50c. ea., \$5.00 per doz., \$35.00 per 100.

Improved Golden Chadwick. (*Pollworth.*) The Chadwick family of Chrysanthemums are the highest type of the commercial varieties, and any sport of Chadwick that is an improvement will be welcomed. This new variety has its origin in the West. We have taken part of the stock and will distribute the variety the coming season. It is described as identical with the parent in all respects except form and color of the bloom. It is a perfectly formed flower and a deeper golden yellow in color.

Rooted Cuttings for March and later delivery: \$3.00 per doz., \$15.00 per 100, \$120.00 per 1000.

Plants from 2¼-in. pots: \$3.00 per doz., \$20.00 per 100.

Mary E. Meyer. (*E. D. Smith Co.*) One of last season's novelties that has shown itself to be a very fine commercial variety. It is a Japanese of medium size, very pure white in color and coming to perfection about November 1st. The growth is short jointed and foliage large and heavy. The plant grows from 3 to 4 feet tall. According to our results this variety is the finest commercial of recent years.

Rooted Cuttings for February and later: \$1.00 per doz., \$7.00 per 100, \$60.00 per 1000.

Plants from 2¼-in. pots: \$1.50 per doz., \$10.00 per 100, \$90.00 per 1000.

White Perfection. (*E. D. Smith Co.*) A novelty of last season; pure white in color. Large, rounded, incurved flower.

Rooted Cuttings: \$1.00 per doz., \$7.00 per 100, \$60.00 per 1000.

From 2¼-in.: \$1.50 per doz., \$10.00 per 100, \$90.00 per 1000.

ELMER D. SMITH CO.'S NOVELTIES FOR 1914 COMMERCIAL SORTS

Oconto. A white Japanese incurved of large size, with strong, rigid stem and perfect foliage, like Donatello. This will be a companion for Chrysolora, coming into perfection October 15th. Height, 4 feet; best bud August 30th. C. S. A. Certificate.

Plants from 2¼-in. pots: 50c. ea., \$4.00 per ten, \$35.00 per 100.

Smith's Ideal. A commercial white of exceptional merit, possessing those qualities which have made Major Bonnaffon so popular. Perfect incurved form from early or late buds; dwarf upright with strong, wiry stem. Like Bonnaffon, flowers are only medium in size and in perfection November 1st and later. 3 feet. Best bud August 30th. C. S. A. Certificate.

Plants from 2¼-in. pots: 50c. ea., \$4.00 per 10, \$35.00 per 100.

Garnet Gem. An unusual bright crimson seedling from Geo. W. Childs. In perfection Oct. 20th, and with us it does not burn like most varieties of this color. We consider this the best early red to date for the commercial grower. 3 feet. Best bud August 20th. C. S. A. Certificate.

Plants from 2¼-in. pots: 50c. ea., \$4.00 per 10, \$35.00 per 100.

Odessa. Late midseason commercial variety, maturing November 15th to 20th. Bright yellow seedling from Merza, but much freer in growth, and does not wilt like its parent. Best incurved form. We believe this will eclipse anything now in commerce as a late yellow. 5 feet. Best bud Sept. 5th. C. S. A. Certificate.

Plants from 2¼-in. pots, 50c. ea., \$4.00 per 10, \$35.00 per 100.

Alice Salomon. A fine, large, early white, incurved in form, resembling W. H. Chadwick. It is far better than Early Snow and a safe variety to plant in quantity. Comes to maturity October 10th.

Plants from 2¼-in. pots: \$1.50 per doz., \$10.00 per 100, \$90.00 per 1000.

Rooted Cuttings: \$7.00 per 100, \$60.00 per 1000.

Golden Salomon. A light yellow sport of the variety Alice Salomon.

Plants from 2¼-in. pots: 30c. ea., \$3.00 per doz., \$25.00 per 100.

Rooted Cuttings: \$3.00 per doz., \$20.00 per 100.

Chieftain. Deep, clear pink, incurved in type on the order of Major Bonnaffon. A very fine midseason pink variety and a good companion to Bonnaffon and Chas. Razer.

Plants from 2¼-in. pots: \$2.00 per doz., \$15.00 per 100.

Rooted Cuttings: \$2.00 per doz., \$12.00 per 100, \$100.00 per 1000.

Golden Robin. (*E. D. Smith Co.*) Described by the introducer as an Improved Golden Age, being easier of propagation and brighter in color. With us a very fine, medium-sized commercial, golden bronze in color, and making excellent stem and foliage.

Rooted Cuttings: \$1.00 per doz., \$7.00 per 100, \$60.00 per 1000.

From 2¼-in. pots: \$1.50 per doz., \$10.00 per 100, \$90.00 per 1000.

E. A. Seidewitz. (*Lotze.*) Seedling from Dr. Enguehard and Chadwick. Like Enguehard in form, but larger and deeper pink color; a fine, clean grower; was admired by all at the Baltimore Show. Fine Thanksgiving variety.

2¼-in. pots: \$2.50 per doz., \$15.00 per 100.

VARIETIES FOR POT PLANTS AND SIDE BENCHES

(Much better than Ivory)

The Caprice type are especially adapted for pot plants, being of dwarf habit and very free flowering. The following varieties represent the best of this type and a wide range of color.

Butler's Caprice. Deep pink	Purple Caprice. Purple
Kathleen Thompson. Crim- son	Source d'Or. Bright orange shaded gold
Lilac Caprice. Deep lilac	Yellow Caprice. Yellow
	White Caprice. White

Plants from 2¼-in. pots: \$1.50 per doz., \$10.00 per 100.
In assortment as desired.

VARIETIES RECOMMENDED FOR POTS

(Small specimens)

August Dasse	Cullingfordii	Mary E. Meyer
Brutus	Garza	Pink Ivory
Comoleta	Ivory	Pink Gem
	Yellow Ivory	

2¼-in. pots: \$4.00 per 100.

CHOICE COMMERCIAL VARIETIES

The following Rooted Cuttings, \$3.00 per 100, \$25.00 per 1000:

White Chadwick	Golden Chadwick
Chadwick Improved	Chadwick Supreme. Pink
Wm. Turner. White	Naomah. White
Ramapo. Yellow	Pockett's Crimson

CHOICE COMMERCIAL VARIETIES

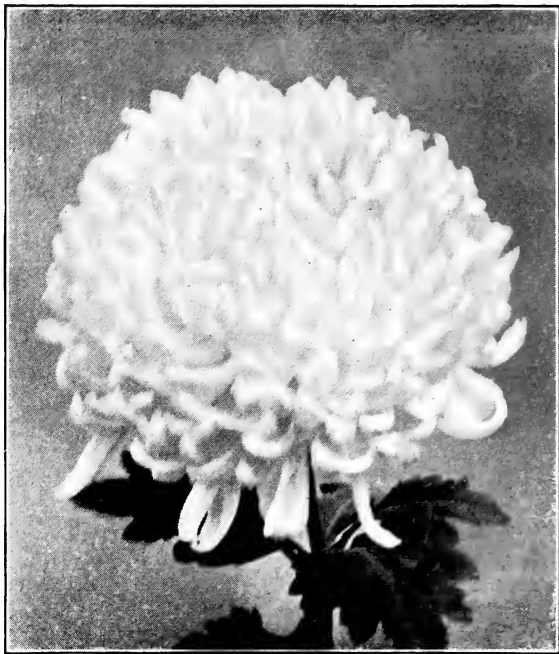
The following Rooted Cuttings, \$3.00 per 100, \$20.00 per 1000:

WHITE VARIETIES

Chas. Razer	White Bonaffon	Timothy Eaton
Early Snow	Jeanne Nonin	December Gem
Lynnwood Hall	Elise Papworth	White Helen Frick
	Beatrice May	

PINK VARIETIES

W. R. Brock	Pink Gem
Winter Cheer	Patty
Hirondale	Helen Frick
Jeanne Rosette	Wells' Late Pink



Chrysanthemum, Chas. Razer

CHOICE COMMERCIAL VARIETIES—Continued

YELLOW VARIETIES

Yellow Eaton
 Yellow Ivory
 Aug. Dasse
 Roman Gold

Nagoya
 Dolly Dimple
 Chrysolora
 Comoleta

Brutus
 Merry Jane
 Golden Eagle
 Golden Wedding

RED VARIETIES

Harvard

Intensity

Cullingfordii

GENERAL COLLECTION OF COMMERCIAL VARIETIES

The following Rooted Cuttings: \$2.00 per 100, \$17.50 per 1000.

WHITE VARIETIES

Ivory
 Smith's Advance
 Mrs. Jerome Jones
 Silver Wedding

Polly Rose
 White Maud Dean
 Alice Byron
 October Frost

YELLOW VARIETIES

Yellow Jerome Jones
 Golden Glow
 Yellow Polly Rose
 Robt. Halliday

Major Bonnafon (Selected)
 Yellow Touset
 Ostrich Plume
 Col. Appleton

PINK VARIETIES

Unaka
 Glory of the Pacific
 Dr. Enguehard

Amorita
 Rosiere
 Pacific Supreme
 Mayor Weaver

Pink Ivory
 Maud Dean
 Gloria

Varieties not listed, price on application.
 25 of one variety at 100 rate, 25 at 1000 rate.

POMPON CHRYSANTHEMUMS

BEST NEW COMMERCIAL VARIETIES

In the endeavor to place in the hands of the commercial cut flower growers varieties of Pompons with stems that will hold the flower erect, and combine with this necessary quality good colors and growing conditions, we will disseminate four seedlings raised by C. W. Johnson of Morgan Park, Ill.

Western Beauty. Deep rose pink in color; flower medium sized.

In growth medium, throwing straight stems, which hold the flowers erect. It will follow the variety Fairy Queen and comes as a welcome addition at a time when there are no pink Pompons. It blooms from Nov. 10th to 25th.

Golden Climax. On the order of Quinola, but with foliage that is hard and which will not be subject to mildew. Exhibited at Chicago under the name "Climax." Blooms Nov. 10th to 20th. Extra fine variety for commercial cutting.

Golden Harvest. A medium-sized variety of the button type. Deep golden yellow with a tinge of bronze; a color which, when finished, is similar to Souvenir d'Or when developed. Very pleasing and a color the market demands.

Golden West. A trifle larger than Baby but of similar foundation. Rather compact in growth but an excellent variety for pot plants. When bench grown will produce excellent sprays for cutting.

Plants of the 4 above varieties from 2¼-in. pots: 25c. ea., \$2.00 per 10, \$15.00 per 100.

NEW VARIETIES OF ELMER D. SMITH CO.

Lecta. Delicate pink with bright rose reverse, which gives the effective bright center in each bloom if cut a few days before fully developed. Dwarf habit, fine for pot plants. In season October 25th to Nov. 5th. C. S. A. Certificate.

Plants from 2¼-in. pots: 25c. ea., \$2.00 per 10.

Celco. Bright yellow, shading to orange; similar to color of Quinola, but the sprays are not so compact and are ready to cut two weeks earlier or about Nov. 1st, when dark yellow Pompons are scarce. Medium height. C. S. A. Certificate.

Plants from 2¼-in. pots: 25c. ea., \$2.00 per 10.

Nesco. Beautiful shade of old rose flowers, about the size of Iva, La Purite and Lodi. Medium height, maturing first week of November.

Plants from 2¼-in. pots: 25c. ea., \$2.00 per 10.

ANEMONE

Azelda. Light pink with a slight trace of lavender. Ray and disc floret same color, with the exception of the center of the cushion which is cream color. Single row of lavender ray florets; produces exquisite sprays suitable for any sort of artistic arrangement.

Plants from 2¼-in. pots: 25c. ea., \$2.00 per 10.

BEST STANDARD COMMERCIAL VARIETIES

The following Rooted Cuttings: \$2.00 per 100, \$17.50 per 1000.

Descriptions of most of the following varieties may be found, under Pompon Chrysanthemums, 2¼-in. pots.

Yellow Varieties: Overbrook, best early; Merstham Tints, best second early; Quinola, best late; Baby (yellow button).

Pink Varieties: Fairy Queen, Dawn, Lillian Doty.

White Varieties: Diana, James, Boone, Helen Newberry (best late), Baby Margaret (white Baby).

Bronze Varieties: Boston, best dark bronze; Allentown, Miss Julia, Souvenir d'Or.

Red Varieties: Lilla (one of the best), Rufus, Lyndhurst, Julia Lagravere.

ANEMONE POMPONS, Rooted Cuttings

The following: \$2.00 per 100, \$17.50 per 1000:

Garza, white, yellow center; Mikado, yellow, Garza type; Cob-rizzo, copperish-yellow center; Mary Colladay, lavender, pink Anemone center.



Pompon Chrysanthemum, Baby Margaret

POMPON CHRYSANTHEMUMS, 2¼-in. pots

As a class the Pompon varieties are hardy, but for quality of bloom they are greatly superior when grown under glass. We have selected the following list for the commercial production of cut flowers and pot plants:

2¼-in. pots: \$2.50 per doz., \$3.00 per 100, \$25.00 per 1000.

Acto. Very deep pink; large flowers. Midseason.

Allentown. Bronze yellow in color; medium-sized flowers. Midseason.

Alma. Large, deep pink flowers; tall growing. Late.

Baby. Clear bright yellow; very small button-shaped flowers. Very late.

Baby Margaret. A white sport of Baby, with flowers a trifle larger and coming a little earlier.

Diana. A very fine, pure white variety of large size. Late.

Fairy Queen. Clear pink in color, with nicely formed flowers of medium size. A very fine midseason variety.

Helen Newberry. Medium-sized flowers of pure white. One of the finest for cut sprays. Very late.

Iva. Very small flowers of deep bronze. Midseason.

Julia Lagravere. Deep red in color and very late. Best variety in its color.

Lilla. Very tall growing, but excellent for cut sprays. Deep red in color. Midseason.

Lillian Doty. Beautifully formed shell-pink flowers, produced in abundance on stems strong enough to hold the flowers erect. A color that will be generally useful.

Little Pet. Lavender pink in color; large flowered. Late.

Lula. White in color; medium-sized flowers. Late.

Lyndhurst. Small flowers; very deep red.

POMPON CHRYSANTHEMUM, 2¼-in. POTS—Continued

- Merstham Tints.** Very free flowering; golden yellow. Mid-season.
- Minta.** Very free flowering, shell-pink; medium-sized flowers. Midseason.
- Miss Julia.** A golden bronze; medium-sized flowers. Midseason.
- Nio.** Shading from shell pink to white; button type. Early.
- Overbrook.** Very free flowering; golden yellow; button type. Early.
- Queen of Whites.** Very similar to Lula, but a little earlier in blooming.
- Quinola.** Large flowers, golden yellow in color. Strong growing plant. Very fine for cutting in sprays. Late.
- Rufus.** Small flower; button type; reddish bronze in color. Mid-season.
- Souvenir d'Or.** A golden bronze, coming into bloom late. Makes very fine pot plants and is excellent for cutting for Thanksgiving. Plants tend to overbud in pots, which will be outgrown when planted.
3 of a variety at dozen rate, 25 of a variety at 100 rate, 250 of a variety at 1000 rate.

NEW SINGLE VARIETY

- Mensa.** Best pure white; strong growing; medium height. Exceptionally choice variety.
Plants from 2¼-in. pots: 75c. per doz., \$5.00 per 100, \$40.00 per 1000.

GENERAL COLLECTION OF SINGLE VARIETIES

YELLOW

- Emma L. Davis.** Splendid stiff-stemmed yellow. Most easily described by saying that it is a greatly improved Pretoria.
- Golden Star.** Rich yellow; bright orange disc. One of the best.
- Margaret Totty.** Deep golden yellow; very large flower; splendid stiff stems. One of the best yellow singles in cultivation.
- Mary Richardson.** Salmon yellow; one of the most distinct.
- Merstham Jewel.** Golden bronze, with yellow points and center.
- Josephine.** Best yellow in existence.

PINK

- Ladysmith.** Rich pink. Very free bloomer; dwarf habit.
- Mrs. E. D. Godfrey.** A lovely shade of light pink; very strong-growing variety.

RED

- Alexander Rowbottom.** Deep, bright crimson; very large flower.
- Ceddie Mason.** Deep crimson, with orange center.
- Miss Hilda Wells.** Beautiful Tuscan red, with a light yellow tinting at the base of the petals.
- Sylvia Slade.** Rosy garnet, with broad, pure white ring around the disc, as true as a Cineraria flower. The habit and freedom of flowering are superb.
Plants from 2-in. pots: 10c. ea., \$1.00 per doz., \$4.00 per 100, \$35.00 per 1000.
3 of a variety at dozen rate, 25 of a variety at 100 rate, 250 of a variety at 1000 rate.

FANCY VARIETIES

- King of Plumes.** Grand for cutting in bunches. Golden yellow, of shining texture; very full and double; petals shortening toward center and each petal deeply notched. One of the most beautiful.
- Miss Harvey.** Produces beautiful sprays like very fine lace; color white, delicately tinted pink. It is frilled and notched until it seems transparent. A late variety.
Plants from 2-in. pots: 10c. ea., \$1.00 per doz., \$4.00 per 100, \$35.00 per 1000.

POMPON ANEMONES

Garza. The well-known white variety; considered the best in its class.

Mary Colladay. Pink Anemone, resembling Garza in form.

Mikado. Yellow; double row of petals; Garza type.

Yellow Garza. Yellow sport of Garza.

Plants from 2-in. pots: 5c. ea., 50c. per doz., \$3.00 per 100, \$25.00 per 1000.

CHRYSANTHEMUMS—EXHIBITION VARIETIES

Annie E. Angus. Pure white in color and flowers very large. 20c. per plant, \$2.00 per doz.

Christy Mathewson. Pure white color and making large flowers. Growth tall.

Col. Appleton. An old favorite; yellow medium-sized bloom.

F. E. Nash. Light pink Japanese of large size.

F. S. Vallis. A very large yellow. Dwarf in growth.

Glenview. Semi-dwarf in growth and making large bloom. Deep bronze in color. It is a good variety for general growing.

Harry E. Converse. Petals crimson with golden-bronze reverse. Large bloom and excellent growth. 2¼-in., \$2.00 per doz., \$15.00 per 100.

Lady Hopetoun. Light pink in color. Flowers large and beautifully formed. Dwarf in habit.

anhattan. Delicate blush pink in color. Flower reflexed Mtype. Tall.

Mary Donellan. Very tall in growth. Large, incurved bloom; deep golden yellow in color.

Mary Mason. Rosy bronze, with lighter reverse. Dwarf.

M. Louiseau Rousseau. Very large, incurved pink. Tall.

Mrs. Clay Frick. Medium-sized bloom, but easy to grow. Medium dwarf.

Mrs. Gilbert Drabble. Pure white in color; of the largest exhibition size, with petals arranged in a whorl, making a most attractive bloom. 20c. ea., \$2.00 per doz.

Mrs. J. E. Dunne. A Japanese salmon terra cotta in color. Tall in growth.

Mrs. O. H. Kahn. Golden bronze; flower compact. Medium dwarf.

Mrs. J. C. Neil. Soft canary yellow. Easy to grow. Semi-dwarf. One of the best.

Mrs. H. Stevens. A large golden bronze; finely-formed flowers, which finish perfectly. Dwarf.

Naomah. Pure white in color. Large, well-formed, incurved bloom.

Pockett's Crimson. Crimson with gold tips to the petals. Excellent habit of growth and one of the best varieties.

Wm. Duckham. Light pink Japanese. Incurved bloom. Easy of culture. Medium dwarf.

Wm. Turner. Pure white in color; incurved type; very large bloom. One of the finest of the large-flowered Chrysanthemums, and a general favorite.

Wells' Late Pink. Clear, bright pink in color; easy of culture. Fine variety for general growing.

W. Woodmason. Very large bloom; red in color, but not bright enough to be called crimson. Clean growth. Dwarf habit.

Yellow Miller. Light yellow in color. Large bloom. Semi-dwarf. Prices of the above exhibition varieties, except where noted: 10c. ea., 75c. per doz., \$4.00 per 100.

Rooted Cuttings: \$3.00 per 100, \$25.00 per 1000.

3 of a variety at the dozen rate, 25 of a variety at the 100 rate, 250 of a variety at the 1000 rate.

HARDY EARLY-FLOWERING TYPE

The early-flowering type of the Chrysanthemum has been developed in recent years and has proven to be of great value for outdoor use. They are large flowered and mature their bloom early enough to avoid frost. They are hardy and a planting of this type insures a continuation from year to year and the pleasure of having fine Chrysanthemums out of doors.

The following brief list we have selected by test from a large number of varieties of this type. These have been selected on the basis of color and freedom of bloom. We are certain that these are the best of their type and that they will give satisfaction.

Comtesse de Cariel. A very free-flowering variety of dwarf habit. Terra cotta bronze in color.

Eden. Beautifully formed flowers, rose pink in color; medium height. One of the very choice varieties.

F. Bannister. Deep golden yellow in color. Flowers of medium size. Medium height.

Glory of Seven Oaks. Golden yellow in color and very free flowering. Makes an excellent pot plant and may be considered one of the finest varieties.

Goacher's Crimson. Very large flowers, bright crimson in color. Dwarf growth.

Holmes' White. Very early and very free flowering. Dwarf growth. Pure white.

L'Argentuillais. The best of the red varieties. Medium height in growth. It makes an excellent variety for cutting in sprays.

Leslie. Golden yellow in color. Very free flowering and very early.

Maduse. Flower rather loosely built. Terra cotta bronze in color. Tall.

Maxim. Reddish terra cotta in color. Flowers large. Tall.

Mignon. Flowers rosy pink in color; medium height. One of the very finest varieties; excellent for cut sprays.

Nina Blick. Very dwarf-growing and free-flowering variety. Golden bronze in color of bud, changing to yellow as flowers mature.

Normandie. The finest of the early-flowering type. Very delicate pink or white in color, varying under growing conditions. It is an excellent grower of medium height, and very fine for cutting in sprays.

Perle Chatillonnaise. Very free flowering; cream white in color.

Rosie. Deep, rich bronze in color; medium height.

Plants for Spring delivery from 2¼-in. pots: 60c. per doz., \$4.00 per 100.

3 of a variety at the dozen rate, 25 of a variety at 100 rate.

Send in your orders for 'Mums not listed in this catalogue and I will quote you special prices on large quantities

MISCELLANEOUS PLANTS

ANTIRRHINUM (or Snapdragon)

The use of Snapdragon has increased greatly during the past few years, and the improvement in the varieties has, in a measure, aided this valuable plant to reach its present popularity. The varieties offered by us are the best obtainable and certain to please. For an outdoor bedding plant, as well as for Winter flowering, Snapdragon is one of the most useful and profitable plants.

True Silver Pink **Pure White** **Yellow** **Red**
Plants from 2¼-in. pots: 60c. per doz., \$4.00 per 100, \$35.00 per 1000.
Rooted Cuttings of above: \$2.00 per 100, \$15.00 per 1000.

ASPARAGUS

Plumosus Nanus. My stock of this is well grown, from greenhouse-grown seed, which gives best results to cut from.

From 2¼-in. pots: \$3.00 per 100, \$25.00 per 1000.

From 3-in. pots: \$6.00 per 100, \$50.00 per 1000.

From 4-in. pots: \$10.00 per 100.

Sprengeri.

From 2¼-in. pots: \$3.50 per 100, \$30.00 per 1000.

From 3-in. pots: \$6.00 per 100, \$50.00 per 1000.

ASPARAGUS SEEDLINGS

Asparagus Plumosus Nanus from true greenhouse-grown seed.

Plumosus Nanus. \$1.25 per 100, \$10.00 per 1000.

Sprengeri. 75c. per 100, \$5.00 per 1000.

AZALEA INDICA

Place your order with me now or before July 15th and save yourself a lot of trouble which you are bound to have under the new inspection laws. I import my Azaleas from one of the best growers in Europe and your order can be filled in Belgium, shipped direct to you soon as they arrive in New York; duty and all other charges included at the following prices:

	Per 100
10-inch crown, your selection.....	\$34.00
10-12 " " " "	38.00
12-14 " " " "	50.00
14-16 " " " "	58.00
15-17 " " " "	68.00
16-18 " " " "	96.00
17-19 " " " "	115.00
18-20 " " " "	133.00
20-22 " " " "	200.00

The following are the best commercial varieties:

Apollo. Bright scarlet, free early forcer.

De Schryveriana. Similar to Vervæneana, flowers smaller but more free; late.

Empress of India. Salmon rose; a fine late variety.

Emperor of Brazil. Double soft rose, white margin; late.

Jean Peeters. Very brilliant dark red; double; early forcer.

John Llewelyn. Double soft rose, white margin; late.

Mme. Petrick. Double bright rose; very early.

Mme. Jos. Vervæne. Like Vervæneana, but the largest flowers existing.

Mme. Ernest Eckhaute. Double red; fine Christmas variety.

Mme. Romain de Smet. Pink, white border; the earliest forcer we have.

Mme. L. Van Houtte. Brilliant crimson; good early forcer.

Mme. Van der Cruysen. Crimson; semi-double; early.

Niobe. Double white; very fine early variety.

Professor Wolters. Best single rose; free bloomer; large flowering.

Pharalde Mathilde. Early double white. (White Vervæneana.)

Simon Mardner. Double, bright velvety rose; early.

Vervæneana. Double rosy salmon, white margin; early.



Begonia Florence Davenport

BEGONIAS

New Begonia Florence Davenport. A decided improvement on Cincinnati. All growers around Boston say so. It grows more compact, produces 75 per cent. more flowers than Cincinnati. that are a shade brighter and a little larger, can be handled much easier and needs very little tying; its foliage is smaller and leathery, not as brittle as Cincinnati. Order early before they are sold out, for May delivery. 2¹/₄-in., \$5.00 per doz., \$25.00 per 100, \$225.00 per 1000.

Gloire de Lorraine. For May and later delivery we offer strong, healthy plants, which have been repotted and made plants that will be fit to ship safely.

2¹/₂-in.: \$2.00 per doz., \$15.00 per 100, \$135.00 per 1000.

3-in.: \$3.50 per doz., \$25.00 per 100.

4-in.: (for July) \$4.50 per doz., \$35.00 per 100.

Glory of Cincinnati. Making less leaves than Lorraine, it is harder to propagate. The supply will be limited, and what we have will be ordered early. Only repotted plants shipped.

2¹/₄-in.: \$3.00 per doz., \$20.00 per 100, \$175.00 per 1000.

3-in.: \$4.00 per doz., \$30.00 per 100.

4-in. (for July): \$5.00 per doz., \$40.00 per 100.

Our Begonias will be shipped in paper pots.

Glory of Chatelaine (Everybody's Begonia). Easy to grow for any season, roots freely from cuttings same as Vernon; can be grown in pots with no trouble; flowers as large as Lorraine but will not drop its flowers as much, making a desirable house plant; also a fine plant for bedding. Color same as Lorraine. 2¹/₄-in. pots: \$6.00 per 100, \$50.00 per 1000.

Rex. In five varieties. 2¹/₂-in., \$4.00 per 100.

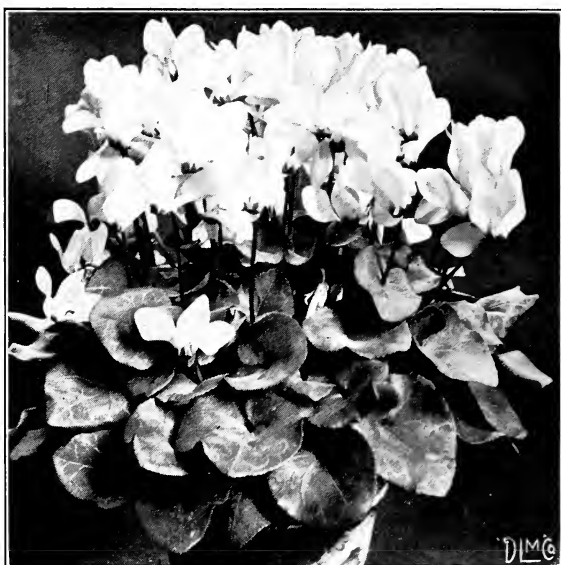
BOUVARDIA. For Winter flowering. Single white, pink and red. 2¹/₄-in. pots: \$4.00 per 100, \$35.00 per 1000. 250 at the 1000 rate.

CALCEOLARIAS. From very finest English strain. 2¹/₄-in. pots, \$7.00 per 100.

CANNAS. 3-in. pot plants. See under Bedding Plants.

CINERARIA Hybrida. Half dwarf; all colors. 2¹/₄-in., \$3.50 per 100; 3-in., \$5.00 per 100.

Stellata. 2¹/₄-in., \$3.50 per 100.



Cyclamen

CYCLAMEN SEEDLINGS. Ready now and until March. Giant flowering from very best strain obtainable; these are twice transplanted, and are sure of giving satisfaction; early planting will make best plants for next Christmas.

	100	1000
Bright Christmas Red	\$3.50	\$30.00
Bright Pink	3.50	30.00
White with Red Eye	3.50	30.00
Pure White	3.50	30.00
Salmon (Wonder of Wandsbek).....	4.50	40.00

250 or more at 1000 rate.

2½-in. (ready March to May): \$5.50 per 100, \$50.00 per 1000.

3-in. (ready May to July): \$8.00 per 100, \$75.00 per 1000.

4-in. (ready July to Sept.): \$15.00 per 100.

Wonder of Wansbek. 2¼-in., \$8.00 per 100; 3-in., \$12.00 per 100; 4-in., \$20.00 per 100.

DRACAENA Indivisa. 2-in., \$3.00 per 100; 3-in., \$5.00 per 100; 4-in., \$15.00 per 100; 5-in., \$25.00 per 100.

Terminalis. 2¼-in., \$10.00 per 100, \$90.00 per 1000.

FERNS

Teddy, Jr. 2¼-in., \$2.00 per doz., \$15.00 per 100.

Roosevelt. 2½-in., \$5.00 per 100, \$40.00 per 1000.

Whitmani Compacta. 2½-in., \$5.00 per 100, \$40.00 per 1000.

Boston. 2½-in., \$3.50 per 100, \$30.00 per 1000.

Scottii. 2½-in., \$5.00 per 100, \$45.00 per 1000.

Harrisii. 2½-in., \$8.00 per 100, \$75.00 per 1000.

W. K. Harris. 2½-in., \$8.00 per 100, \$75.00 per 1000.

Scholzeli. 2½-in., \$5.00 per 100, \$40.00 per 1000.

Elegantissima Improved. \$6.00 per 100, \$50.00 per 1000.

Compacta. \$6.00 per 100, \$50.00 per 1000.

Prices on large sizes of above on application.

FERN SEEDLINGS IN AND OUT OF FLATS

Will start shipping them June 1st. My flats contain 150 clumps in each flat; these clumps can be divided. I ship them out of flats if wanted. This insures them shipping safe and saves express charges.

1 Flat in 5 best varieties, \$2.00 per flat.

5 Flats in any varieties wanted, \$1.75 per flat.

10 Flats in any varieties wanted, \$1.60 per flat.

25 or more Flats in any varieties wanted, \$1.50 per flat.

FERNS FOR JARDINIERES

Well-grown Plants Ready for Use in All Varieties.

2¼-in.: \$3.00 per 100, \$27.50 per 1000.

3-in.: \$6.00 per 100.

4-in.: \$12.00 per 100.

FUCHSIAS. *Little Beauty*, *Lord Byron*, *Renan Tenner*, *White Beauty*. 5 best varieties, strong 2¼-in., \$4.00 per 100. Other varieties, 2-in., \$2.50 per 100.

GARDENIA Veitchii. Is one of the best paying greenhouse plants where handled successfully. Good plants are only a partial insurance of success. The stock I ship will be of the best quality and free from club root.

Plants from 2¼-in. pots: \$1.00 per doz., \$7.00 per 100, \$60.00 per 1000.

Plants from 3-in. pots: \$2.00 per doz., \$12.00 per 100, \$100.00 per 1000.



Jardiniere Ferns

HYDRANGEA

BEST FRENCH VARIETIES

Spring delivery, ready to plant out

Avalanche. White. 2¼-in., 75c. per doz., \$5.00 per 100.

Bouquet Rose. Rosy amber. 2¼-in., 85c. per doz., \$6.00 per 100.

E. G. Hill. Best pink. 2¼-in., \$2.50 per doz., \$25.00 per 100.

General de Vibray. Bright rose. 2¼-in., 85c. per doz., \$6.00 per 100.

La Lorraine. Bright pink. 2¼-in., 85c. per doz., \$6.00 per 100.

Mont Rose. Flesh rose. 2¼-in., 85c. per doz., \$6.00 per 100.

Mousseline. Best blue. 2¼-in., 85c. per doz., \$6.00 per 100.

Mme. E. Moullere. Best white. 2¼-in., 85c. per doz., \$6.00 per 100.

HYDRANGEA Arborescens Grandiflora Alba. One of the best varieties to force for Decoration Day. It is very hardy also.

Field Plants, for planting out, 8 to 10 in. high: \$4.50 per 100, \$40.00 per 1000.

Field Plants, Selected: \$1.25 per doz., \$8.00 per 100, \$75.00 per 1000.

Field Plants, Extra Select: \$1.50 per doz., \$10.00 per 100, \$90.00 per 1000.

Field Plants, Extra Heavy Select: \$2.50 per doz., \$17.50 per 100, \$150.00 per 1000.

Utaksa. 2¼-in., \$4.00 per 100.

Field Plants and 4 to 6-in. pot grown, ready in the Fall. Price on application.

IVY. Hardy English. 2-in., \$2.50 per 100; 2½-in., \$3.50 per 100.

German. Rooted Cuttings: 75c. per 100, \$7.00 per 1000. 2¼-in.: \$2.50 per 100, \$20.00 per 1000.

LANTANAS, Dwarf. See Bedding Plants.

LEMON VERBENAS. 2-in., \$2.50 per 100; 2½-in., \$4.00 per 100.

MOONVINES. 2-in., \$2.00 per 100, \$18.50 per 1000. 4-in., prices on application.

PALMS. I can furnish fine stock, all sizes, from the leading growers at market prices on application.

PELARGONIUMS. Mary Washington. 2-in., \$4.00 per 100. Fine assortment of other varieties. 2¼-in., \$8.50 per 100.

- PETUNIAS. Double.** 2-in., \$3.00 per 100, \$20.00 per 1000.
- PRIMULA Chinensis.** Grown from the finest strain of seed obtainable. Ready for delivery from June to September.
- Christmas Red.** 2¼-in., \$3.50 per 100, \$30.00 per 1000.
- Morning Dawn.** Shell-pink. 2¼-in., \$3.50 per 100, \$30.00 per 1000.
- La Duchesse.** Flesh color, white center. 2¼-in., \$3.50 per 100, \$30.00 per 1000.
- Rosea.** Bright pink. 2¼-in., \$3.50 per 100, \$30.00 per 1000.
- Other Colors.** 2¼-in., \$3.50 per 100, \$30.00 per 1000.
- All Colors Mixed.** 2¼-in., \$3.00 per 100, \$25.00 per 1000.
- PRIMULA Obconica Gigantea.** There are no better grown; will be ready June, July and August delivery. Bright red, rose, apple blossom and mixed colors. 2¼-in. pots, \$3.00 per 100, \$25.00 per 1000.
- Malacoides.** 2¼-in., \$3.50 per 100.



Poinsettia with Boston Fern

- POINSETTIAS.** Selected plants from 2¼-in. pots, \$7.00 per 100, \$60.00 per 1000. July and later delivery.
- Fine Stock. 2¼-in., \$6.00 per 100, \$50.00 per 1000.
- Stock Plants. Price on application.
- Double Poinsettias.** Heavy flowers with lighter foliage. Plants from 2¼-in. pots, \$1.50 per doz., \$10.00 per 100, \$90.00 per 1000.
- SMILAX.** The most valuable plants are those having heavy bulbs which have sufficient size to insure good, heavy strings. The plants I am offering will be held to allow maturing of these bulbs and are certain to give good results. Plants from 2¼-in. pots, \$3.50 per 100, \$30.00 per 1000.
- STEVIA.** For growing Stevia to cut in the late Fall and early Winter, we have found the dwarf variety the easiest to handle. Grown in the field or in large pots or boxes out of doors until September, it can be filled in after early Chrysanthemums and adds to the variety of bloom for cutting and be made profitable. Shipments of cuttings are unsatisfactory owing to their being small and soft wooded. Plants from 2¼-in. pots, 50c. per doz., \$2.50 per 100, \$20.00 per 1000.
- SWAINSONA Alba.** Very useful for funeral work and can be grown with slight expense. Plants from 2¼-in. pots, 75c. per doz., \$4.00 per 100.

BEDDING PLANTS

ABUTILON

Abutilon Savitzi. Variegated green and white. Excellent for edging. Plants from 2¼-in. pots, 50c. per doz., \$3.00 per 100.

ACHYRANTHES

Biemuëleri. Light red, shading darker red at edge of the foliage. Medium height.

Brilliantissima. Light red; very brilliant. Dwarf compact grower.

Formosa. Yellow in color; tall growth.

Lindenii. Clear, dark red foliage; tall growing plant.

Panache de Bailey. Dwarf yellow; duplicate in growth of Brilliantissima.

Rooted Cuttings: \$1.50 per 100, \$12.00 per 1000.

Out of 2¼-in. pots: \$3.00 per 100, \$25.00 per 1000.



Ageratum, Princess Paulin

AGERATUM

Blue Perfection. Semi-dwarf in growth; very deep blue in color.

Princess Pauline. A combination of blue and white in flower; growth medium.

Stella Gurney. Light blue in color; medium in growth.

Rooted Cuttings: 75c. per 100, \$7.00 per 1000.

Out of 2¼-in. pots: \$2.50 per 100, \$20.00 per 1000.

ALTERNANTHERA

Aurea Nana. The best yellow variety.

Brilliantissima. Broad leaf, red in color. Very bright.

Jewel. Bright colored and strong growing; red shading to crimson.

Paronychioides. A dwarf-growing variety. Red and crimson.

Versicolor. Olive, crimson and chocolate.

Rooted Cuttings: \$1.00 per 100, \$8.00 per 1000.

Plants from 2¼-in.: \$2.50 per 100, \$20.00 per 1000.



Canna, King Humbert

CANNAS

From 3-in. pots for Spring delivery.

The following at \$3.00 per 100, \$25.00 per 1000:

A. Bouvier	J. Tissot	Pres. Meyers
Egandale	Louisiana	Queen Charlotte
Flo. Vaughan	Mme. Crozy	Rubin
Fournier	Mlle. Berat	Rich. Wallace
Gladiator	Niagara	Souv. de A. Crozy
Hiawatha	Patria	Uncle Sam
J. D. Eisele	Pennsylvania	Mrs. Kate Gray
King Humbert.	\$5.00 per 100, \$45.00 per 1000.	
Rose Gigantea.	\$6.00 per 100, \$50.00 per 1000.	
Wm. Saunders.	\$5.00 per 100, \$45.00 per 1000.	
Improved Mont Blanc.	\$10.00 per 100.	

COLEUS

Alverston. Very dark red, tinged with crimson.

Beckwith's Gem. Center velvety maroon bordered with red; the edge green, changing to a creamy yellow at the point of the leaf.

Firebrand. Bright maroon.

Golden Queen. Standard yellow.

Lord Palmerston. Dark maroon.

Queen Victoria. Cardinal red, with distinct golden border.

Verschaffeltii. Standard crimson.

Rooted Cuttings: 75c. per 100, \$7.00 per 1000.

Out of 2¼-in. pots: \$2.50 per 100, \$20.00 per 1000.

Beauty of Lyon. A combination of yellow and red. Very beautiful bedding variety.

Duneira. A magnificent Coleus. A fine, showy bedder, standing the sun as well as Verschaffeltii. In color it is a combination of various shades of crimson.

Golden Bedder. Golden yellow; the old original, true to name.

Rooted Cuttings: \$1.00 per 100, \$8.00 per 1000.

Out of 2¼-in. pots: \$2.50 per 100, \$20.00 per 1000.



Coleus

COLEUS—Continued

FANCY VARIETIES

- Anna Pfister.** Very dwarf, compact-growing variety; yellow, tinged with crimson.
- Blizzard.** Deep maroon, edged with green.
- Brilliancy.** A combination of red and gold.
- Hurricane.** Light reddish center, mottled with maroon. Edge of leaf green.
- John Pfister.** Very dwarf, compact crimson.
- Messey.** Dwarf; pearl white and silver green.
- Neptune.** Green, with mottling of red.
- Prince Edward.** Reddish center, shading deep crimson. Edge of leaf green.
- Saboni.** Red, with faint edging of yellow.
 Rooted Cuttings: \$1.00 per 100, \$8.00 per 1000.
 Out of 2¼-in. pots: \$2.50 per 100, \$20.00 per 1000.
 Less than 250 of a variety will be charged at the 100 rate.

GERMAN IVY

For vase and window-box work.

- Rooted Cuttings: 75c. per 100, \$7.00 per 1000.
 Out of 2¼-in. pots: \$2.50 per 100, \$20.00 per 1000.

HELIOTROPE

- Centefleur.** Large-flowered type; very fine grower and makes fine show. Out of 2¼-in. pots: \$3.00 per 100, \$25.00 per 1000.
- La Duse.** Stocky in growth, making very heavy trusses of dark blue flowers. Out of 2¼-in. pots, \$4.00 per 100, \$35.00 per 1000. (We have discontinued selling Rooted Cuttings of Heliotrope.)

LANTANAS

- Crusalis.** Dwarf-growing yellow.
- Eole.** Yellow, shading to bright rose.
- Radiation.** Semi-dwarf; brilliant red with orange-yellow center.
- Reve Poitevine.** A semi-dwarf variety; rose-colored flowers with white center.
- Snow Queen.** A dwarf variety, with snow-white bloom.
- Ultima.** Pure golden yellow.
 Plants from 2¼-in. pots: 60c. per doz., \$4.00 per 100, \$35.00 per 1000.

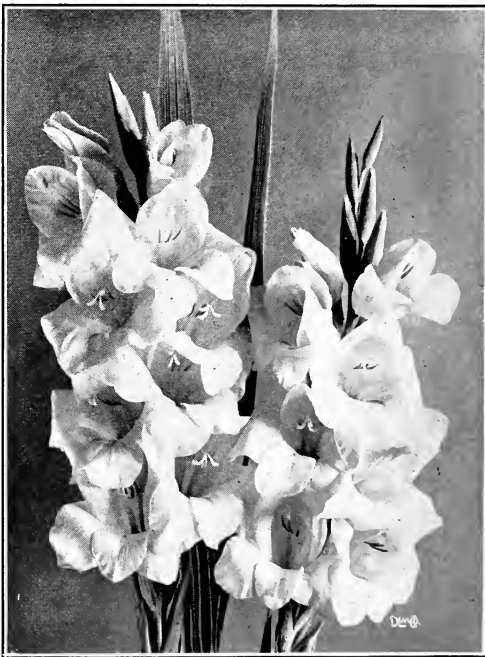
SALVIA. Scarlet Sage

- King of the Carpet.** Medium dwarf in growth; large flowered.
- Bonfire.** Medium in growth and very free flowering.
- Splendens.** Very tall in growth and very free flowering.
- Zurich.** Dwarf in growth, making very large, heavy trusses.
 Rooted Cuttings: 75c. per 100, \$7.00 per 1000.
 Plants from 2¼-in. pots: \$2.50 per 100, \$20.00 per 1000.
 25 of a variety at 100 rate; 250 of a variety at 1000 rate.

GLADIOLUS BULBS

My bulbs are grown by the largest grower in the country, and will surely give satisfaction.

	100	1000
America. Largest size bulbs. Large flower, flesh pink, beautiful	\$1.75	\$14.00
Augusta. Pure white, with blue anthers	2.50	20.00
Brenchleyensis. Vermilion scarlet	1.50	12.00
Mrs. Francis King. Light scarlet of pleasing shade	2.00	18.00
Mad. Monneret. Delicate rose	3.00	25.00
May. White, flaked rosy crimson	3.00	25.00
Shakespeare. White, large rosy blotch	6.00	50.00
Princeps. Color, rich crimson with broad white blotches across the lower petals	8.00	70.00
Peace. Beautiful white, best forcing white variety, with large spikes	10.00	90.00
Pink Augusta. Color a lovely soft pink. This variety is especially suitable for forcing under glass, for which purpose it is especially recommended	35c. per doz.	2.50 20.00



Gladiolus, America

MIXTURES UNDER SEPARATE COLORS G. GANDAVENSIS

These are very choice and absolutely true to color.

Extra White and Light Varieties. Mixed, all first-class, best-named sorts. \$2.50 per 100, \$20.00 per 1000.

White and Light Varieties. Mixed. Superb. \$2.00 per 100, \$15.00 per 1000.

Scarlet and Red. Extra fine scarlet and red. \$1.50 per 100, \$12.00 per 1000.

Pink. Fine pink and rose shades. \$2.00 per 100, \$15.00 per 1000.

Yellow and Orange. Best yellow colors. \$3.50 per 100, \$30.00 per 1000.

Striped and Variegated. Extra fine. \$2.50 per 100, \$20.00 per 1000.

Scarlet, White Throat. Extra fine, mixed. \$2.50 per 100, \$20.00 per 1000.

Popular Mixture. This is composed of good-sized bulbs, but not all strictly first size; good range of color. \$1.50 per 100, \$10.00 per 1000.

GLOXINIAS

My bulbs are grown by specialists in Europe, and are as good as can be bought.

Separate Colors. \$4.00 per 100, \$35.00 per 1000.

Mixed Colors. \$3.75 per 100, \$35.00 per 1000.

ISMENE

Ismene Calathina Grandiflora, \$7.50 per 100.

LILIES

Cold Storage Lilies. For all seasons of the year, the best money can buy; try them and convince yourself.

Lilium Giganteum.	{	7- 9. Packed 100 in a case.	\$8.50 per case.
		7- 9. Packed 300 in a case.	18.50 per case.
		9-10. Packed 50 in a case.	7.50 per case.

Lilium Speciosum Rubrum. 8-9. Packed 200 in a case. \$14.00 per case.

9-11. Packed 125 in a case. \$12.00 per case.



Lilium Giganteum

LILIES

For Fall delivery in all sizes.

Lilium Formosum and Giganteum, Multiflorum, Jamesii, Harrisii and Hardy Speciosum Lilies.

Try my bulbs, which are as good as money can buy, at market prices. Will be pleased to quote you on any quantity.

FRENCH AND DUTCH BULBS

I can furnish only on import orders if placed by July 1st. Your orders will be filled by best growers in Europe—filled just as you order them and shipped direct to you, at market prices. Send me your list and I will quote you.

SPRING BULBS

BEGONIAS

SINGLE TUBEROUS ROOTED, LARGE FLOWERING

Crimson	Rose	Salmon
Scarlet	Light Pink	Orange
Pure White	Yellow	Copper

And all Colors Mixed

Large Bulbs of above, 1¼-in. and upward: \$2.25 per 100, \$20.00 per 1000.

Mammoth Bulbs of above, 1½-in. and upward: \$2.75 per 100, \$25.00 per 1000.

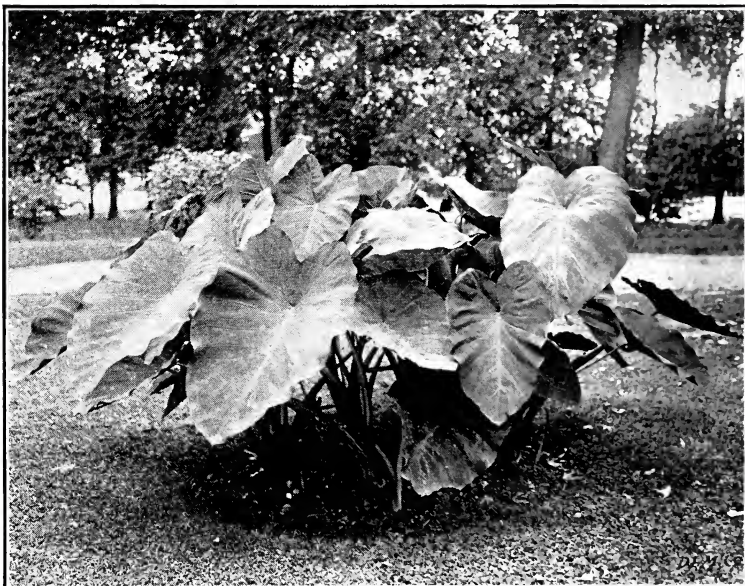
DOUBLE FLOWERING TUBEROUS ROOTED

Crimson	Pure White	Copper Bronze
Scarlet	Light Pink	Salmon
Rose	Yellow	Orange

And all Colors Mixed

Large Bulbs of above, 1¼-in. and upward: \$3.50 per 100, \$30.00 per 1000.

Mammoth Bulbs of above, 1½-in.: \$4.00 per 100, \$35.00 per 1000.



CALADIUM

CALADIUM ESCULENTUM (Elephant's Ear)

Bulbs measuring 6 to 8 in. in circumference, 200 in a case, 25c. per doz., \$2.25 per 100, \$20.00 per 1000.

Bulbs measuring 8 to 10 in. in circumference, 100 in a case, 50c. per doz., \$3.50 per 100, \$30.00 per 1000.

Bulbs measuring 10 to 12 in. in circumference, 75 in a case, 75c. per doz., \$5.50 per 100, \$50.00 per 1000.

Bulbs measuring 12 to 13 in. in circumference, 50 in a case, \$1.00 per doz., \$8.00 per 100, \$75.00 per 1000.

Monster Bulbs measuring 13 in. and upward in circumference, 25 in a case, \$1.50 per doz., \$12.00 per 100.

Full cases at 1000 rate.

FANCY-LEAVED CALADIUMS

A grand English collection containing twenty varieties personally selected by me from over one hundred sorts submitted by pressed leaves last Summer, from which I selected the cream. Extra fine bulbs in 20 varieties, \$2.25 per doz., \$15.00 per 100.

Brazilian Collection of 25 varieties, \$1.50 per doz., \$12.00 per 100.

Mixed Brazilian Varieties. \$1.25 per doz., \$10.00 per 100.

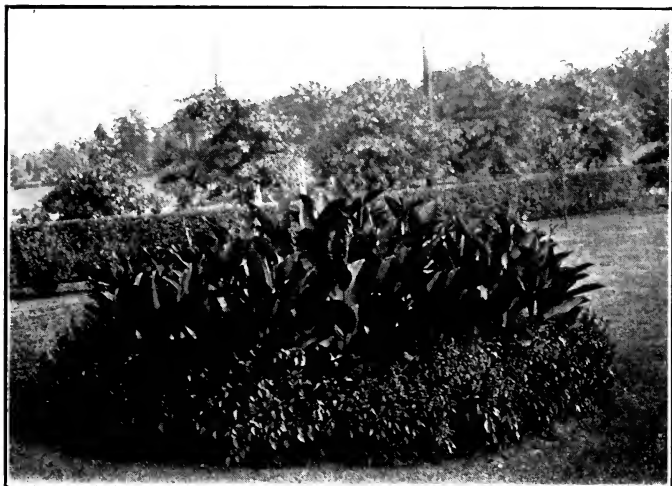
CINNAMON VINE

Large-size bulbs, 40c. per doz., \$2.25 per 100, \$20.00 per 1000.

CALLAS, SPOTTED LEAF

(*Richardia albo-maculata*)

Very free Summer-blooming variety. \$2.25 per 100, \$20.00 per 1000.



Canna Bed with Salvia

CANNA ROOTS

My Cannas are packed 250 in a case, divided 2 to 3 eyes, well packed, ready to ship by any express company direct. If wanted by freight they go at the buyer's risk.

250 are sold at 1000 rates.

RED FLOWERING WITH GREEN FOLIAGE CANNAS

- Louisiana.** 7 ft. Vivid scarlet. \$2.00 per 100, \$18.50 per 1000.
A. Bouvier. 5 ft. Dark crimson. \$2.00 per 100, \$18.50 per 1000.
Beaute Poltevine. 3½ ft. Dark crimson. \$2.75 per 100, \$25.00 per 1000.
Black Prince. 3½ ft. Dark velvety maroon. \$2.25 per 100, \$20.00 per 1000.
Chas. Henderson. 4 ft. Bright scarlet. \$2.00 per 100, \$18.50 per 1000.
Crimson Bedder. 3 ft. Intense scarlet. \$2.75 per 100, \$25.00 per 1000.
Duke of Marlboro. 4½ ft. Dark crimson. \$2.00 per 100, \$18.50 per 1000.
J. D. Eisele. 5 ft. Bright vermilion scarlet. \$2.75 per 100, \$25.00 per 1000.
Express. 2½ ft. Scarlet crimson. \$2.75 per 100, \$25.00 per 1000.
Pres. Cleveland. 3 ft. Rich orange scarlet. \$2.00 per 100, \$18.50 per 1000.
Pres. McKinley. 3 ft. Brilliant crimson. \$2.25 per 100, \$20.00 per 1000.
Pres. Meyer. 4 ft. Rich cherry crimson. \$2.25 per 100, \$20.00 per 1000.
Pillar of Fire. 7 ft. Bright crimson scarlet. \$2.25 per 100, \$20.00 per 1000.
Pennsylvania. 5 ft. Deep orange scarlet. \$2.00 per 100, \$18.50 per 1000.
Kate Gray. 6 ft. Orange scarlet. \$2.00 per 100, \$18.50 per 1000.

RED, GOLD-EDGED, SPOTTED AND YELLOW CANNAS

- Duke of York.** 5 ft. \$4.25 per 100, \$40.00 per 1000.
Gladiator. 4 ft. \$2.75 per 100, \$20.00 per 1000.
Jean Tissot. 5 ft. \$2.25 per 100, \$20.00 per 1000.
Mad. Crozy. 5½ ft. \$2.25 per 100, \$20.00 per 1000.
Queen Charlotte. 3½ ft. \$2.75 per 100, \$25.00 per 1000.
Souv. de A. Crozy. 4 ft. \$2.75 per 100, \$25.00 per 1000.
Florence Vaughan. 5 ft. \$2.00 per 100, \$18.50 per 1000.
Richard Wallace. 4½ ft. Best yellow. \$2.00 per 100, \$18.50 per 1000.

CANNAS—Continued

WHITE AND CREAM SHADES

Alsace. 3½ ft. Creamy white. \$2.00 per 100, \$18.50 per 1000.
Mont Blanc. 3½ ft. Best white. \$2.75 per 100, \$25.00 per 1000.

PINK FLOWERING CANNAS

L. Patry. 4½ ft. Delicate rose pink. \$2.25 per 100, \$20.00 per 1000.
Louise. 5 ft. \$2.25 per 100, \$20.00 per 1000.
Mlle. Berat. 4½ ft. \$2.00 per 100, \$18.50 per 1000.
Venus. 3½ ft. Best pink. \$2.75 per 100, \$25.00 per 1000.

BRONZE-LEAVED RED FLOWERING CANNAS

Brandywine. 4½ ft. \$2.75 per 100, \$25.00 per 1000.
David Harum. 3½ ft. \$2.25 per 100, \$20.00 per 1000.
Egandale. 4 ft. \$2.25 per 100, \$20.00 per 1000.
King Humbert. 5 ft. \$4.00 per 100, \$30.00 per 1000.
Leonard Vaughan. 4½ ft. \$3.75 per 100, \$25.00 per 1000.
Robusta. 7 to 8 ft. \$2.25 per 100, \$20.00 per 1000.
Shenandoah. 6 ft. \$2.25 per 100, \$20.00 per 1000.
Wyoming. 7 ft. Orange red. \$2.25 per 100, \$20.00 per 1000.

ORCHID FLOWERING WITH GREEN FOLIAGE

Allemania. 4½ ft. Scarlet and yellow. \$2.00 per 100, \$18.50 per 1000.
Austria. 5 ft. Canary yellow. \$2.00 per 100, \$18.50 per 1000.
Indiana. 3½ ft. Golden orange. \$2.00 per 100, \$18.50 per 1000.
Italia. 4½ ft. Red bordered yellow. \$2.00 per 100, \$17.50 per 1000.

NEWER CANNAS

Wm. Saunders. 4 ft. Scarlet, bronze foliage. \$4.75 per 100, \$45.00 per 1000.
Papa Nardy. 4½ ft. Rich currant red. \$3.75 per 100, \$35.00 per 1000.
Grand Chancellor Bulow. 3 ft. Deep crimson. \$2.25 per 100, \$20.00 per 1000.
Furst Bismarck. 4 ft. Rich crimson. \$2.25 per 100, \$20.00 per 1000.

CANNAS, 3-INCH, POT GROWN See Bedding Plants.

DAHLIA ROOTS

Best for florists' use in all commercial varieties. Cactus, Show and Pompons at market prices.

DIELYTRA SPECTABILIS

(Bleeding Heart)

Field-grown, 75c. per doz., \$8.00 per 100.



Dielytra Spectabilis



Asparagus Plumosus Nanus

Choice Flower Seed Specialties for Florists

I only carry in stock just what I catalogue; the very best strains of seed can be bought. Should you want anything else, I will gladly get what you want from the most reliable source in New York at market prices and send with your order.

ASPARAGUS Plumosus Nanus. True greenhouse-grown by A. N. Pierson, Inc. \$2.00 for 500 seeds, \$3.50 for 1000 seeds, \$16.25 for 5000 seeds, \$30.00 for 10,000 seeds.

Sprengeri. 40c. for 500 seeds, 75c. for 1000 seeds, \$3.25 for 5000 seeds, \$5.50 for 10,000 seeds.

BEGONIA Vernon. 25c. per tr. pkt., 50c. per 1-16 oz.

Erfordia. Pink. 30c. per tr. pkt.

Gracilis Luminosa. Flowers fiery dark scarlet; very large. 35c. per tr. pkt.

Gracilis Prima Donna. Pink. 35c. per tr. pkt.

Semperflorens Alba. 35c. per tr. pkt.

CALCEOLARIA Hybrida. Choicest mixed. 50c. per tr. pkt.

CINERARIA Hybrida Grandiflora. Dwarf hybrids. Mixture of splendid colors. 75c. per tr. pkt., 6 tr. pkts. for \$3.50.

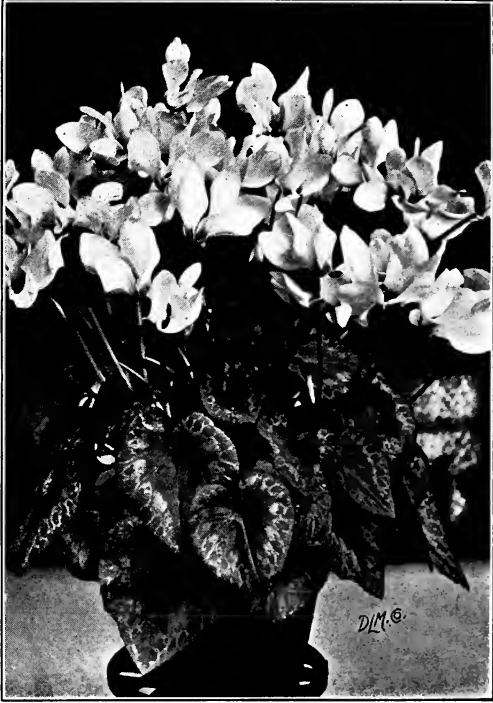
Semi-Dwarf Hybrids. In splendid colors. Mixed, 75c. per tr. pkt., 6 tr. pkts. for \$3.50.

Cineraria Stellata. Decorative, fine cut flower. 75c. per tr. pkt., 6 tr. pkts. for \$3.50.

Hybrida Plenissima. Extra double, fine mixed. 75c. per tr. pkt. 6 tr. pkts. for \$3.50.

CYCLAMEN, Giant Flowering. Best strain of seed obtainable. Grown for me by a Cyclamen specialist in Germany, and am selling seed to some of the best Cyclamen growers in this country.

	100 seeds	1000 seeds
Wonder of Wandsbek. (Best salmon).....	\$1.00	\$8.50
Christmas Red75	6.00
Light Pink75	6.00
Rose75	6.00
Pure White75	6.00
White with Pink Eye75	6.00
Crimson75	6.00



Cyclamen

MIGNONETTE. Giant Greenhouse Strain. Grown by a specialist. Seed is saved from the largest spikes. 50c. per tr. pkt., \$2.00 per ¼ oz., \$7.00 per oz.

Machet. Finest strain. 25c. per tr. pkt., 75c. per oz.

Allen's Defiance. 25c. per tr. pkt., 75c. per oz.

How to Grow Mignonette

Sow about 5 seeds in 2½-in. pots about Aug. 1st. Place in cool, well ventilated house. When seedlings show four leaves thin out to 2 or 3 plants and plant in solid bed 12 to 15 in. apart. Water carefully and shade house. Use very little water until plants are well established.

When plants are about 4 in. high, thin out to one plant and when they are 6 in. high pick out center so they will branch. Remove all laterals on flowering stem. Air is very essential; days, 55 to 60; nights, 42 to 46. Use good, rich soil and top dress well. If tied up like Carnations will give better results. Ventilators should be screened to keep out butterflies and caterpillars, or they will do lots of damage.

PANSIES

Giant Flowered, Prize Florist Mixture

This mixture we can recommend to any florist. It is home grown by Pansy specialists and contains only the Giant Pansies and richest colors of red, copper, bronze, also the most delicate rose and lilac shadings; also includes the newest and most attractive sorts. 50c. per tr. pkt., \$1.50 per ¼ oz., \$5.00 per oz.

PRIMULA CHINENSIS FIMBRIATA GRANDIFLORA

(As good strain as money can buy)

Defiance, Christmas Red.

La Duchesse. Flesh color, with white center.

Morning Dawn. Very large. **Blush Rose.**

Blood Red. Dark, velvety color.

Rosea, Bright Pink.

Blue Shades, Salmon, Pure White, and All Colors Mixed.

1 pkt., 200 seeds of any above, 75c.

1 pkt., 500 seeds of any above, \$1.75.

1 pkt., 1000 seeds of any above, \$3.00.

PRIMULA OBCONICA GIGANTEA

(The largest flowering type)

Kermesina Red, Rose, Apple-blossom, Lilac, and all colors mixed. Trade pkt., 500 seeds, 50c.

1 pkt., 1000 seeds of any above, 75c.

1 pkt., 5000 seeds of any above, \$3.25.

SALVIA Splendens (Scarlet Sage). 15c. per tr. pkt., \$1.50 per oz.

Bonfire (Clara Bedman). 25c. per tr. pkt., \$2.00 per oz.

Ball of Fire. 25c. per tr. pkt., \$3.50 per oz.

Zurich. 25c. per tr. pkt., \$6.00 per oz.

STOCKS. Double Large Flowering. Dwarf,

German Ten Weeks. Finest strain for pot cul-

ture; crimson, bright lilac, white, blood red,

canary yellow, light blue, bright rose, dark

blue, mixed.....

Tr. pkt.	¼ oz.	Oz.
\$0.25	\$0.75	\$2.50

Beauty of Nice. Flesh pink..... .25 .75 2.50

Beauty of Nice. White..... .25 .75 2.50

Beauty of Nice. Crimson..... .25 .75

Queen Alexandra. Delicate rosy lilac. ⅛ oz. 50c. .25 2.50

Giant Perfection. (Cut-and-Come-Again).

(White Princess Alice). Scarlet, dark blue,

light blue, pink. Each of above: ⅛ oz. 50c. .25 2.50

Giant Perfection. Mixed, all colors. ⅛ oz. 35c. .25 2.00

Snowflake. The earliest forcing. ⅛ oz. \$1.25 .50

VERBENA. Choice Florists' Mixture. This

mixture contains all the mammoth-flowering

sorts and finest colors, including the newest

varieties grown in Europe.....

.25	.50	1.50
-----	-----	------

Mammoth White...... .25 1.25

Purple...... .25 1.25

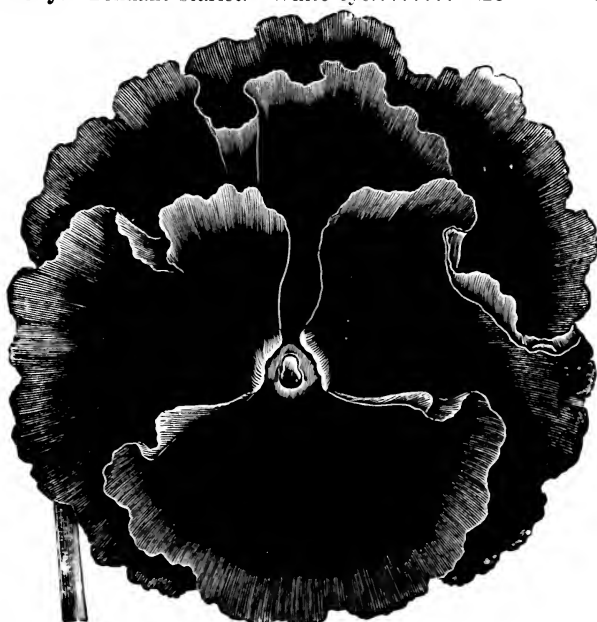
Rose and Carmine...... .25 1.25

Striped...... .25 1.25

Auricula-Flowered...... .25 1.25

Defiance. Scarlet..... .25 1.25

Firefly. Brilliant scarlet. White eye..... .25 1.25



Pansy



MAGIC HOSE

BEST HOSE MADE

I know there is no better hose made for the money and would be pleased to give you names of several large growers who are using it so you can satisfy yourself. It comes in reel lots of 500 feet; can be cut in any lengths to suit you, with any size couplings to fit your faucets.

WHAT SOME GROWERS SAY WHO HAVE USED MAGIC HOSE

A. N. Pierson, Inc., Cromwell, Conn.—“We are using Magic Hose exclusively.”

Lehr Bros., Brooklyn, Md. (Rose Growers).—“We find Magic Hose the best we ever bought. The 300 feet we bought from you 18 months ago is still in use.”

I can refer you to lots of others who use same.

½-in. size, any length at 15c. per ft.

⅝-in. size, any length at 16c. per ft.

¾-in. size, any length at 17c. per ft.

Couplings, 15c. per pair extra.

Special price on 250 ft. or more.

ORCHID PEAT (FRESH)

In bags containing 2 bbls each, \$3.00 per bag.

PLANT STAKES

Japanese Bamboo

4 to 5½ ft., 2000 in a bale, \$8.00 per bale.

5 ft., 2000 in a bale, \$8.00 per bale.

6 ft., 2000 in a bale, \$9.00 per bale.

7 ft., 1600 in a bale, \$10.00 per bale.

GREEN DYED JAPANESE BAMBOO

Fine for Lilies, etc.

1½ ft., 4000 in a bale, \$7.50 per bale.

2 ft., 4000 in a bale, \$12.00 per bale.

2½ ft., 4000 in a bale, \$14.00 per bale.

3 ft., 2000 in a bale, \$9.00 per bale.

4 ft., 2500 in a bale, \$15.00 per bale.

5 ft., 2000 in a bale, \$12.00 per bale.

Everything in Small Commercial
Plants and Cuttings

ROMAN J. IRWIN

Importer and Jobber

71 WEST 23d STREET
NEW YORK CITY



Seeds

Bulbs

Ferns

'Mums

Roses

Magic Hose

Cyclamen

Primroses

Carnations

Poinsettias

Begonias

Fern Flats

Cold Storage Lilies