

## **Historic, Archive Document**

Do not assume content reflects current scientific knowledge, policies, or practices.



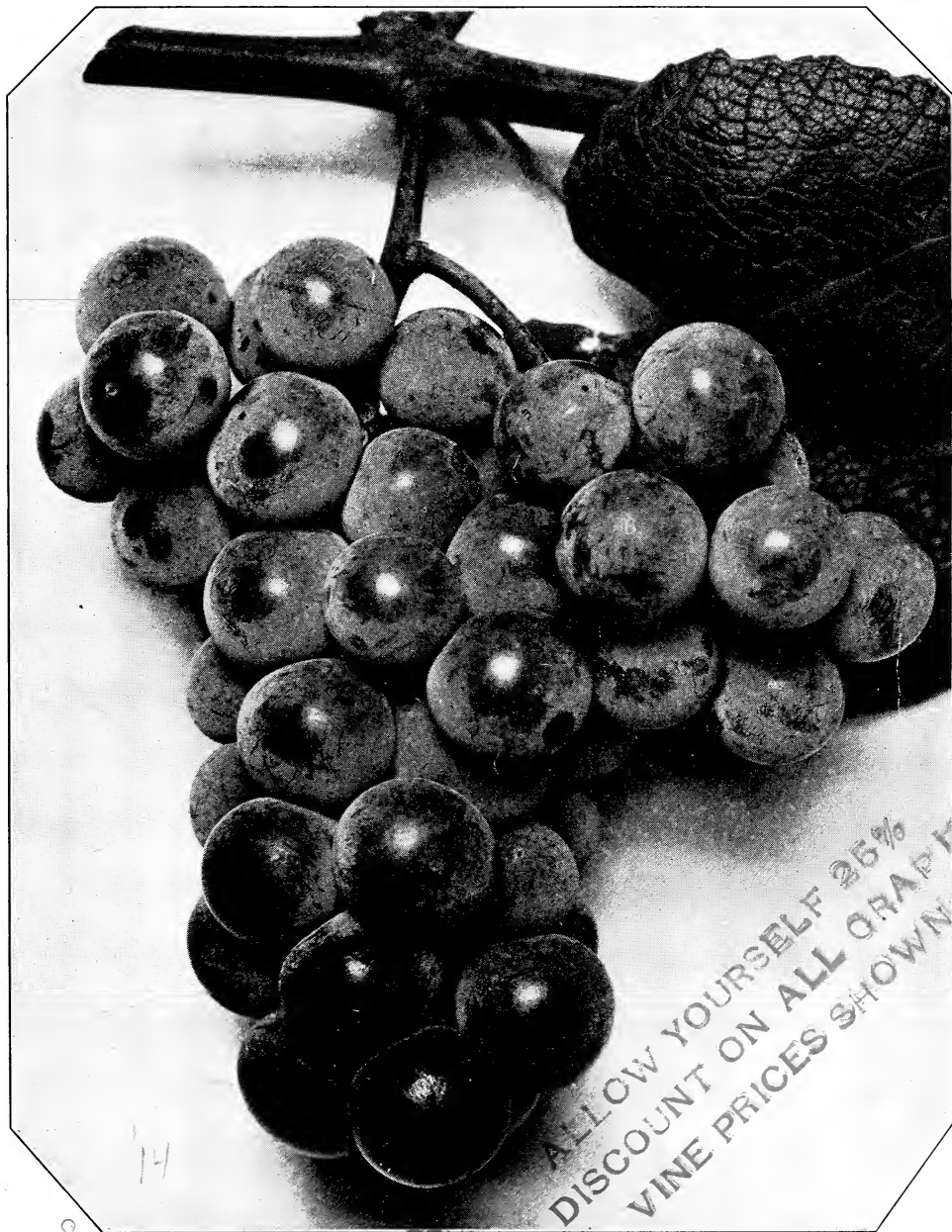
62.61

Specialists in

LIBRARY  
RECEIVED

# GRAPE VINES ★

ROSES, SHRUBS, TREES, PERENNIALS, ETC. Department of Agriculture



NEW GRAPE "FREDONIA"—See page 3

K.F. RYNALSKI SUCCESSOR TO

**T. S. HUBBARD COMPANY**

**FREDONIA • NEW YORK**

## GRAPE-VINES FOR HOME GARDENS

Among all the fruits that are grown in America there is not one that can be produced with so little effort as Grapes. The vines will grow almost anywhere; they require very little care; the plants occupy only a square foot or two of garden space; they may be planted beside a fence and the vines trained along it, if one does not have room for a trellis.

Frequently a shelter is needed for a back porch or a summer-house; here, again, Grape-vines will justify their use, for they not only give the desired protection from the rays of the sun, and a privacy that is always welcome, but in autumn will furnish an abundance of luscious fruit, thus giving a two-fold return to the fortunate owner.

Sixty-four years ago we established our nursery, and a careful investigation shows that we were the first nurserymen to specialize in the production of American Grape-vines. There are certain natural conditions of soil and climate on the south shore of Lake Erie, and in this section of New York State, which are peculiarly adapted to Grape growing. The result is that vines from our nursery have a wonderfully well developed root growth, while the tops on our one-year vines are almost as large as those on two-year plants from other sections. Our business extends to every state in the Union and to foreign countries, and we have achieved a national reputation for **accuracy in varieties, grading to the best standards, promptness in filling orders, and for the largest stock and best selected list of varieties in the country.**

## HOW TO ORDER

**Use the order sheet** in making out your orders. **Name and address** should be written very distinctly.

**Select as many varieties as you require** to make up the number wanted.

**Order early** to insure having the stock reserved before our assortment is broken.

**Club orders** are solicited; special prices will be given, based on total amount of orders.

**Terms cash with order**, if for immediate shipment. Orders booked in advance must be paid for before shipment is made.

**Remittances** should be made by post office or express money orders, or drafts on New York or Chicago. C. O. D. orders must be accompanied by one-fourth of the amount of the order.

**Shipping season** is from October 1 to June 1.

**Transportation is at purchaser's risk.** Our responsibility ceases when goods are delivered in good order to forwarding companies.

**Our nurseries are free from injurious insects and diseases.** A certificate of inspection will be attached to every shipment.



**GUARANTEE.** We guarantee our stock true to name and quality represented, with the express understanding and agreement that, should any not prove to name, we will refund the money paid or replace with others that are true, but we are not liable for damage other than herein named.



### WHEN AND HOW TO PLANT

**WHEN**—Grape-vines, Currants and Gooseberries can be planted in the fall, beginning October 1, until the ground freezes, and in the spring as soon as the ground is in proper condition to work. All small fruit plants, as Blackberries, Red and Black Raspberries, and Strawberries, succeed best when planted in early spring.

**HOW**—For Grape-vines, dig holes 12 to 15 inches wide, 15 inches deep and 8 feet apart. Loosen the earth in the bottom and throw in 2 to 3 inches of surface soil. Before planting, the tops of the plants should be cut back to within two or three buds of the previous year's growth and the roots to 6 to 8 inches in length. Spread the roots horizontally in the bottom of the hole in as near a natural position as possible; cover 2 to 3 inches with good surface soil and firm the earth thoroughly. Then fill the hole full, so that only the two buds will be above the ground.

How to plant other small fruits is told under their respective heads.

### PRUNING

In pruning Grapes it must be kept in mind that the fruit of the present year is borne on shoots of this year, which spring from canes of last year, or from the older wood. A good average yield for a Concord vine is fifteen pounds. In order to produce this amount, from forty to sixty clusters are required. Each shoot usually bears two or three clusters; therefore, twenty to thirty buds of the previous year's growth are left. Good pruning, then, consists of cutting out all the wood, excepting the canes or spurs sufficient to furnish the shoots for the desired number of clusters.

**The beginner should keep the following points in mind:**

1. Old wood never bears fruit again.
2. The wood which grows from the pruned vine will bear fruit this year and furnish the bearing shoots for next year's crop.
3. If no pruning is done, the vine will bear a dozen inferior clusters.
4. By pruning off nine-tenths of the wood and leaving only about thirty buds to the vine, the yield of high quality fruit will be increased.

### THE NEW GRAPE "FREDONIA"

Best early black Grape. Originated at the New York State Experiment Station. Has been thoroughly tested on the Station grounds, and in our own vineyards, where over 75 varieties are in fruiting.

The "Fredonia" has proven superior in every way to any other early black Grape.

#### DESCRIPTION

Flavor excellent, juicy, retaining its fine quality after it has become fully ripe. Large, compact clusters, covered with a heavy blue bloom.

Vigorous grower. Productive. Ripens early.

Price, each, 95c; 10 for \$8.50, Postpaid.



## NEW GRAPES FROM THE NEW YORK STATE EXPERIMENT STATION

Price, 2-year-old, Postpaid, 75c each;  
\$6.00 for 10.

**PORTLAND.** White. The earliest of all Grapes. Large bunch and berry; flesh sweet, juicy, and of fine flavor. A valuable early Grape for home gardens, and bids fair to hold first place as an early market variety.

**ONTARIO.** White. Follows Portland very closely in ripening. An excellent blending of acid and sugar, hence the taste is sprightly and yet sweet. Vine a strong, vigorous grower. Productive.

**URBANA.** A red Grape very closely approaching the best Vinifera varieties in that it is meaty and the skin is more or less adherent to the flesh. In color it is very similar to Flame Tokay, except that it is more glossy.

**SHERIDAN.** Black. Large in bunch and berry; compact. Skin not as tender as Concord and therefore a better shipper. Good quality. Ripens about with Concord, and if it proves adaptable to other soil and climatic conditions, it may prove a good rival of that old, standard sort for both garden and vineyard planting.

## GRAPES FOR YOUR GARDEN

Did you eat any Grapes last year? Did you buy them or pick them from your own vines? Anyhow, you know how delicious they were and, if you bought them, you probably wished you had some vines yourself. There is no reason why you can't grow Grapes. Small space is no drawback. The back yard, the front yard, or any place where there is earth enough to set a vine is large enough to grow Grapes. Make an arbor at the side or rear of the house to support the vines and add beauty to the grounds.

The Grape-vines we furnish are the strongest and best that can be grown, both in roots and canes, and come into bearing in the shortest time after planting.

The following selection of varieties is especially adapted to the home garden or vineyard planting, and includes some of the new and older kinds, ripening from early to late. Prices quoted after each description are for two-year-old, first-class roots; for prices on one-year-old vines, see page 7. For prices on larger quantities, see page 7.



*Portland Grapes*

## RECOMMENDED VARIETIES

5 Vines at the 10 Rate.

(One of a Kind if Desired)

By Mail, Postpaid, at Single and 10 Rates.

**AGAWAM** (Rogers' Hybrid No. 15). Red. Bunch usually loose, shouldered; berries large; skin thick, flesh pulpy, meaty; juicy, of a rich peculiar aromatic flavor; a good keeper. Vine strong, hardy and productive. 30c each; \$2.50 for 10.

**BRIGHTON.** Red. Bunch medium to large, compact, shouldered; berries medium, skin thin; flesh tender, sweet, with scarcely any pulp; quality best. Vine a vigorous grower, healthy, hardy and productive. One of the best Grapes for home use. 40c each; \$3.50 for 10.

**CAMPBELL'S EARLY.** Black. Bunch large, shouldered, moderately compact; berry large, covered with profuse light blue bloom; adheres strongly to stem; skin thick, tough and does not crack. 35c each; \$3.00 for 10.

**CATAWBA.** Dark red when fully ripe. Bunch large, moderately compact, shouldered; berries medium to large; skin thick, tough; rich vinous flavor; of best quality. Vine a good grower, hardy, with healthy foliage. 30c each; \$2.50 for 10.

**CONCORD.** Black. The most popular Grape in America, and deservedly so. Adapts itself to varying conditions and is grown with more or less profit in every Grape growing state in the Union. Bunch large, shouldered, compact; berries large, covered with a rich bloom; skin tender, but sufficiently firm to carry well to distant markets; flesh juicy, sweet. Vine a strong grower, very hardy, healthy and productive. 25c each; \$2.00 for 10.

**DELAWARE.** Red. Bunch small, compact, sometimes shouldered; berries small; skin thin, but firm; flesh juicy, very sweet and refreshing, of best quality. 40c each; \$3.50 for 10.

**DIAMOND.** White. Bunch large, compact, shouldered; berries large, round; skin thin, but tough; flesh very sweet and refreshing, of best tender, juicy, with but little pulp. 35c each; \$3.00 for 10.

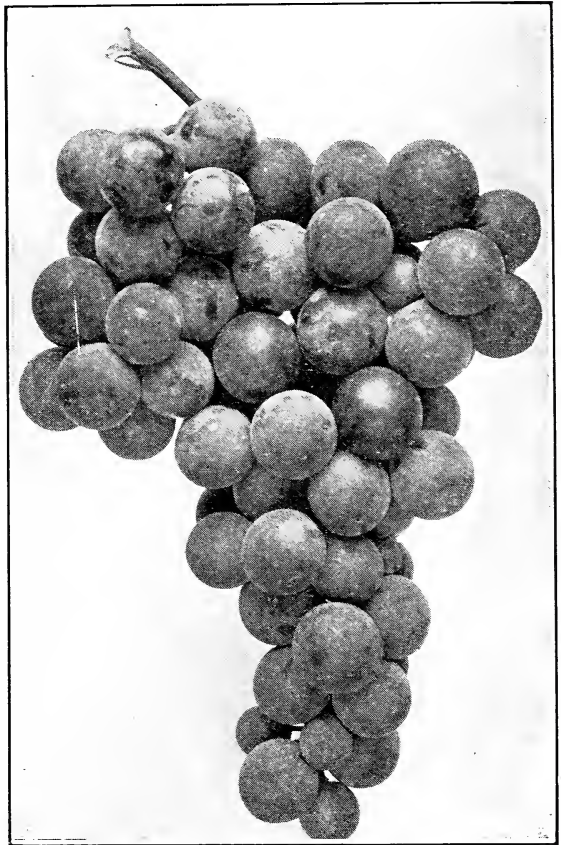
**LINDLEY.** (Roger's No. 9). Red. Bunch medium long, not usually shouldered; berries large; flesh tender, sweet, with high aromatic flavor, of best quality. Vine healthy. 40c each; \$3.50 for 10.

**LUCILE.** Red. Bunch and berry medium to large; skin thin, bright color. Good shipper; quality fair, foxy. Exceedingly productive. 35c each; \$3.00 for 10.

**MOORE'S EARLY.** Black. Bunch rarely shouldered. Vine a moderate grower, very healthy and hardy; foliage thick, leathery. Ripens early. 35c each; \$3.00 for 10.

**NIAGARA.** White. Bunch very large and handsome, often shouldered, compact; berries large, round; skin thin; has not much pulp; melting, sweet, with a flavor and aroma peculiarly its own. Vigorous and productive. 30c each; \$2.50 for 10.

**PORTLAND.** See page 4.



*Concord Grapes*

**WORDEN.** Black. Bunch large, compact; berries large; skin thin; good quality. Ripens a week earlier than Concord. 30c each; \$2.50 for 10.

## HALF A HUNDRED GOOD GRAPES

This list includes new and old varieties recommended for planting by amateurs or for special purposes where a large selection is wanted.

**BACCHUS.** Black. Bunch medium; berry small, round, juicy, sprightly. 40c each; \$3.50 for 10.

**BARRY.** Black. Bunch very large, compact, shouldered; berries large; flesh tender, sweet, good. Vine vigorous, hardy and healthy. 50c each; \$4.50 for 10.

**BETA.** Black. Bunch good size, compact, shouldered. Berry medium; skin thin and rather tough. Ripens early; fair quality; very hardy. Recommended for planting in the Northwestern States. 40c each; \$3.50 for 10.

**BRILLIANT.** Red. Bunch large, long, sometimes shouldered; berry medium to large; skin thin, tough. 50c each; \$4.50 for 10.

**CACO.** Red. A new Grape of high quality and luscious flavor. Vine vigorous and healthy. 75c each; \$6.50 for 10.

**CHAMPION.** Black. Bunch medium to large, compact; berries medium, skin thick; flesh sweet, juicy, somewhat pulpy, with foxy flavor. Early. 40c each; \$3.50 for 10.

Choosing vines and shrubs for your home is not the selection for a day—but rather for a lifetime. It is important to buy healthy, vigorous roots.

New Specialties  
Daphne Cneorum, Page 15  
Kolkwitzia Beautybush, Page 16  
Blackmore Strawberry, Page 11  
Viking Red Raspberry, Page 9



## HALF A HUNDRED GOOD GRAPES—Continued

**CHAMPAGNE.** New. Red. Bunch and berry large; sweet, juicy. A home Grape. Not a shipper. Exceedingly productive. Strong, healthy grower. 60c each; \$5.00 for 10.

**CLINTON.** Black. Bunch small to medium, compact, berries small; skin thin, but tough; flesh juicy, spicy, with little pulp, quite acid; used largely for wine. 40c each; \$3.50 for 10.

**EARLY DAISY.** Black. Bunch and berry medium size; skin tough; flesh solid; quality fair; slightly aromatic. 50c each; \$4.50 for 10.

**EATON.** Black. Large bunch and berry; very juicy. 50c each; \$4.50 for 10.

**ELVIRA.** White. Bunch and berry medium, very compact. Very productive; very hardy. Used principally for wine. 40c each; \$3.50 for 10.

**GAERTNER** (Roger's No. 14). Red. Bunch and berry medium to large; skin thin and of a beautiful bright red color; flesh sweet, rich, aromatic. 60c each; \$5.00 for 10.

**GOETHE** (Roger's No. 1). Bunch usually large, shouldered, compact; berries large, oval, yellowish green, tinged with red on one side, amber-colored when fully ripe; high aromatic flavor. 60c each; \$5.00 for 10.

**GOLDEN MUSCAT.** A golden yellow color when fully matured. Clusters large and compact. Very productive and vigorous. Quality is of the highest, the flavor suggesting that of its parent Muscat Hamburg. Requires a long growing season to arrive at its best. \$1.25 each.

**GREEN MOUNTAIN** (Winchell). White. Bunch medium to large, shouldered; berries medium, greenish white; skin thin, tough; pulp tender, sweet, with few seeds; very early. 50c each; \$4.50 for 10.

**HARTFORD.** Black. Bunch large, shouldered; berries large; flesh sweet, pulpy. Vine hardy, vigorous. 40c each; \$3.50 for 10.

**HERBERT** (Roger's No. 44). Black. Bunch and berry large; flesh sweet, rich and sprightly. 50c each; \$4.50 for 10.

**HUBBARD.** New. Black. Berries and bunch large; quality sweet and delicious, having that pleasant flavor approaching the European or Vinifera Grapes. 40c each; \$3.50 for 10.

**IONA.** Pale red. Bunch large, long, shouldered; rather loose; berries medium; skin thin, firm; flesh tender, with rich vinous flavor; of very best quality. 60c each; \$5.00 for 10.

**ISABELLA.** Black. Bunch large, shouldered, compact; berries large, oval, vigorous. Ripens late. 40c each; \$3.50 for 10.

**IVES.** Black. Bunch long, medium to large, compact; berries medium; skin thick and tough; flesh sweet, pulpy. 40c each; \$3.50 for 10.

**LUTIE.** Dark red. Bunch and berry medium to large; skin tough and thick; flesh pulpy, sweet and quite foxy; quality fair. 50c each; \$4.50 for 10.

**MARTHA.** White, sometimes turning pale yellow when fully ripe. Bunch medium, compact,

shouldered; berries medium; skin thin, tender; flesh very sweet. 50c each; \$4.50 for 10.

**MISSOURI RIESLING.** Greenish white, becoming pale red when fully ripe. Bunch medium, compact; berry medium; flesh tender, juicy, and sweet. 40c each; \$3.50 for 10.

**ONTARIO.** See page 4.

**POCKLINGTON.** Pale green, usually with tinge of golden yellow where exposed to the sun. Bunch large, very compact; berries very large; flesh juicy, sweet. 50c each; \$4.50 for 10.

**PORTLAND.** See page 4.

**REGAL.** Red. Attractive in appearance and quality. Compact clusters. 40c each; \$3.50 for 10.

**SALEM.** Dark red. Bunch large, compact, shouldered; berries large, round; skin thick and firm; flesh very sweet, tender with a rich aromatic flavor. Vine vigorous, hardy, healthy. A splendid keeper. 40c each; \$3.50 for 10.

**SHERIDAN.** See page 4.

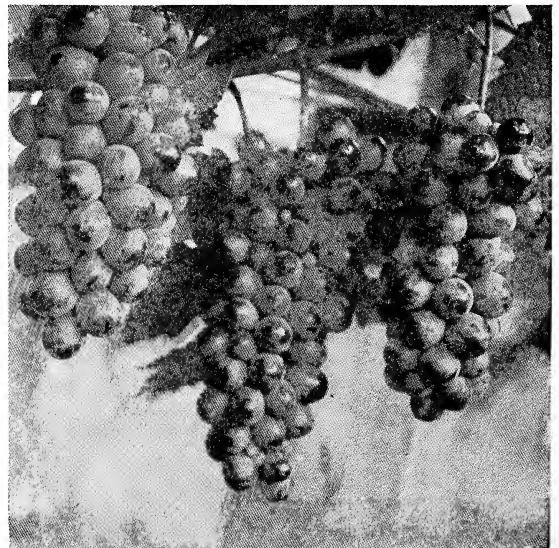
**URBANA.** See page 4.

**VERGENNES.** Red. Bunch medium to large, not often shouldered, compact; skin very thick and firm; flesh sweet, juicy; quality best. An excellent keeper. 40c each; \$3.50 for 10.

**WILDER** (Rogers' No. 4). Black. Bunch large, shouldered; berries large, skin thick and firm; flesh sweet, tender, with pleasant flavor, a good keeper. 50c each; \$4.50 for 10.

**WOODRUFF RED.** A red Grape. Bunch medium to large, short, compact; berry large; skin thick. Vigorous, hardy, healthy, productive. 50c each; \$4.50 for 10.

**WYOMING.** Red. Bunch small and compact; berries medium; flesh firm; flavor very agreeable. 50c each; \$4.50 for 10.



*Fredonia*



QUANTITY PRICE LIST OF GRAPE-VINES

TERMS—5 Vines at the 10 Rates; 50 Vines at the 100 Rates; 250 Vines at the 1000 Rates. By Mail Postpaid at Single and 10 Rates. Express or Freight Collect at 100 or 1000 Rates.

	Each	Two-Year No. 1			Each	One-Year No. 1		
		10	100	1000		10	100	1000
			<i>Express</i>			<i>Express</i>		
Agawam.....	\$0.30	\$2.50	\$12.00	\$65.00	\$0.20	\$1.50	\$8.00	\$45.00
Bacchus.....	.40	3.50	20.00		.20	1.80	12.00	
Barry.....	.50	4.50	25.00		.30	2.50	15.00	
Beta.....	.40	3.50	15.00		.20	1.80	10.00	
Brighton.....	.40	3.50	18.00		.25	2.00	12.00	
Brilliant.....	.50	4.50	20.00		.30	2.50	12.00	
Caco.....	.75	6.50	50.00		.50	4.50	30.00	
Campbell.....	.35	3.00	15.00		.20	1.50	10.00	
Catawba.....	.30	2.50	12.00	65.00	.20	1.50	8.00	45.00
Champagne.....	.60	5.00	30.00		.40	3.50	20.00	
Champion.....	.40	3.50	14.00		.20	1.50	9.00	
Clinton.....	.40	3.50	14.00		.20	1.50	9.00	
Concord.....	.25	2.00	9.00	50.00	.15	1.00	6.00	35.00
Delaware.....	.40	3.50	18.00	100.00	.25	2.20	12.00	65.00
Diamond.....	.35	3.00	15.00		.20	1.80	10.00	
Early Daisy.....	.50	4.50	25.00		.35	3.00	15.00	
Eaton.....	.50	4.50	20.00		.30	2.50	12.00	
Elvira.....	.40	3.50	18.00		.20	1.50	10.00	
Etta.....	.40	3.50	20.00		.25	2.00	12.00	
Fredonia.....	.95	8.50	50.00		.50	4.50	30.00	
Gaertner.....	.60	5.00	30.00		.40	3.50	20.00	
Goethe.....	.60	5.00	30.00		.40	3.50	20.00	
Golden Muscat.....	1.25							
Green Mountain.....	.50	4.50	20.00		.30	2.50	12.00	
Hartford.....	.40	3.50	20.00		.20	1.80	12.00	
Herbert.....	.50	4.50	20.00		.30	2.50	12.00	
Hubbard.....	.40	3.50	20.00		.25	2.00	12.00	
Iona.....	.60	5.00	30.00		.40	3.50	20.00	
Isabella.....	.40	3.50	18.00		.20	1.50	12.00	
Ives.....	.40	3.50	18.00		.20	1.50	10.00	
Lindley.....	.40	3.50	18.00		.20	1.50	10.00	
Lucile.....	.35	3.00	14.00		.25	2.00	9.00	
Lutie.....	.50	4.50	20.00		.30	2.50	12.00	
Martha.....	.50	4.50	20.00		.30	2.50	12.00	
Missouri Riesling.....	.40	3.50	18.00		.25	2.00	12.00	
Moore's Early.....	.35	3.00	15.00	90.00	.20	1.50	10.00	60.00
Moyer.....	.40	3.50	20.00		.20	1.50	10.00	
Niagara.....	.30	2.50	15.00	75.00	.20	1.50	10.00	50.00
Ontario.....	.75	6.00	40.00		.50	4.00	25.00	
Pocklington.....	.50	4.50	20.00		.30	2.50	12.00	
Portland.....	.75	6.00	40.00		.50	4.00	25.00	
Regal.....	.40	3.50	18.00		.25	2.00	12.00	
Salem.....	.40	3.50	15.00		.25	2.00	10.00	
Sheridan.....	.75	6.00	40.00		.50	4.00	25.00	
Urbana.....	.75	6.00			.50	4.00		
Vergennes.....	.40	3.50	18.00		.25	2.20	12.00	
Wilder.....	.50	4.50	25.00		.30	2.50	15.00	
Woodruff.....	.50	4.50	25.00		.35	3.00	18.00	
Worden.....	.30	2.50	12.00	75.00	.20	1.50	9.00	50.00
Wyoming.....	.50	4.50	25.00		.35	3.00	18.00	

GRAPE JAM

Heat Grape skins and pulp, by putting them in a crock placed in hot water for 30 minutes. Cool and rub through a colander, removing seeds by pressing pulp and skins through. For every 2 pounds of pulp allow 2¼ pounds of sugar. Simmer together until it is the consistency of thick jam. Pack into small jars.

GRAPE PIE

Remove pulps from Grapes and simmer until soft. Rub through a colander and add the skins to the strained pulp. Add sugar to taste—about a cupful to a pint of the Grape pulp. Pour into a deep pie plate lined with crust. Cover with an upper crust and cook until brown. A little grated orange peel may be added to the Grapes.

## Small Fruits

You should have a few Small Fruit plants, and you may select from the following lists with the feeling that they are Hubbard quality and that the Hubbard reputation is back of them.

### CURRANTS

Plant in rows 6 feet apart and 4 feet apart in the rows; if to be cultivated both ways, 5 feet apart each way. Before planting, the roots should be pruned as described for grape-vines (see page 3), and the same care should be taken to firm the earth around the roots. After planting, cut back the tops about half the previous year's growth. In market plantations, the bush form of growth is most profitable.

	Two-Year No. 1			One-Year No. 1		
	Each	10	100	Each	10	100
Cherry	\$0.25	\$2.00	\$12.00	\$0.16	\$1.20	\$8.00
Fay (Fay's Prolific)	.25	2.00	12.00	.16	1.20	8.00
London Red	.25	2.00	12.00	.16	1.20	8.00
Perfection	.35	3.00	20.00	.25	2.00	13.00
Red Cross	.25	2.00	12.00	.16	1.20	8.00
Victoria	.20	1.50	10.00	.15	1.00	7.00
Wilder	.25	2.00	12.00	.16	1.20	8.00
White Grape	.25	2.00	12.00	.16	1.20	8.00
White Imperial	.25	2.00	12.00	.16	1.20	8.00

By Parcel Post Prepaid at Single and 10 Rates. By Express, Collect, at the 100 Rate.

### RED CURRANTS

**CHERRY.** Bush vigorous, stocky, and compact. Clusters rather short, with short stems; fruit averages large; color bright red; thin-skinned, juicy, and fine flavored.

**FAY (Fay's Prolific).** Clusters medium to long, with rather long stems; berries large; juicy.

**LONDON (Market).** Bush vigorous, upright. Clusters short; fruit medium to large; color dark red, with sprightly acid flavor. Very productive.

**PERFECTION.** Bush vigorous, hardy and productive. Berries and clusters large; color bright red; rich, mild subacid; plenty of pulp, few seeds.

**RED CROSS.** Clusters long; berries medium to large, bright red; quality good. Productive and hardy.

**VICTORIA.** Strong, upright grower. Foliage pale bronze-green. Clusters above medium

length; berries bright red, with mild acid pulp. Very productive.

**WILDER.** Bush upright, vigorous. Clusters above medium length; berries large; bright red; excellent, with a mild subacid flavor. Ripens early and remains bright and firm until late. Because of exceedingly vigorous growth, great productiveness, high quality and remaining good so long after ripening, we recommend this as one of the best Reds. Is largely planted by the best fruit growers.

### WHITE CURRANTS

**WHITE GRAPE.** Bush vigorous, somewhat spreading, productive. Clusters long; berries averaging large; attractive color, mild flavor and good quality. A good table variety.

**WHITE IMPERIAL.** Bush vigorous and productive. Clusters large; berries large, sweet and delicious. The best White Currant.



Currents, Grapes, Raspberries and Strawberries are fine for preserving, as well as Table Use. Have plenty of Home Preserves for years from your own garden.

## GOOSEBERRIES

Every garden should have a few Gooseberry bushes, for the fruit is delicious in jams and jellies. Plant them the same as currants and give the same care.

**By Parcel Post Prepaid at Single and 10 Rates. By Express, Collect, at the 100 Rate. 5 at 10 Rates. 50 at 100 Rates.**

### Prices of Gooseberries

	<i>Two-Year No. 1</i>			<i>One-Year No. 1</i>		
	<i>Each</i>	<i>10</i>	<i>100</i>	<i>Each</i>	<i>10</i>	<i>100</i>
Chautauqua.....	\$0.35	\$3.00	\$25.00	\$0.25	\$2.00	\$15.00
Columbus.....	.35	3.00	25.00	.25	2.00	15.00
Downing.....	.25	2.00	15.00	.20	1.50	10.00
Pearl.....	.25	2.00	15.00	.20	1.50	10.00
Smith.....	.25	2.00	15.00	.20	1.50	10.00
Houghton.....	.25	2.00	15.00	.20	1.50	10.00
Josselyn.....	.35	3.00	25.00	.25	2.00	15.00
Poorman.....	.35	3.00	25.00	.25	2.00	15.00

### WHITE GOOSEBERRIES

**CHAUTAUQUA.** Berries large and smooth; flavor sweet and delightful. As a table sort, this variety is certainly at the top of the list.

**DOWNING.** Considered the best Gooseberry. Fruit medium to large; flesh soft, juicy, and tender; flavor just barely sour; quality good. Equally valuable for table use or for market.

**SMITH.** A very good table variety. Berries large; flesh firm and juicy; flavor sweet; bush hardy.

### RED GOOSEBERRIES

**HOUGHTON.** One of the old "stand-bys." Berries medium size, of fine quality and highly flavored. Every gardener should include some of the Houghton in his planting.

**JOSELYN (Red Jacket).** The leading red variety. Berries medium to large; flesh pulpy and juicy; flavor good. For canning or making jams and jellies, we recommend Josselyn.



*Downing Gooseberry*

**POORMAN.** A new variety. Robust grower; very productive. Berries larger than Houghton; fine quality.

## RASPBERRIES

Red Raspberries should be planted in rows 5 feet apart, with 3 feet between the plants. Black Raspberries 6 feet apart in the rows.

**By Mail Prepaid at Single and 10 Rates. By Express or Freight, Collect, at 100 or 1000 Rate.**

**COLUMBIAN.** Dark purple. Berries large and well formed; flesh firm, tender, sweet, of rich quality. 12c each; 90c for 10; \$5.00 per 100; \$30.00 per 1000.

**VIKING.** New Red Raspberry originated in Canada. Berries large; very productive; strong grower and hardy. Good quality for table and market. 15c each; \$1.20 for 10; \$8.00 per 100; \$60.00 per 1000.



*Viking Raspberry*



**RASPBERRIES**—*Continued*

**CUTHBERT.** Red. Berries large; flesh firm; flavor good; quality high. Bushes strong, vigorous, hardy and productive. 10c each; 60c for 10; \$4.00 per 100; \$28.00 per 1000.

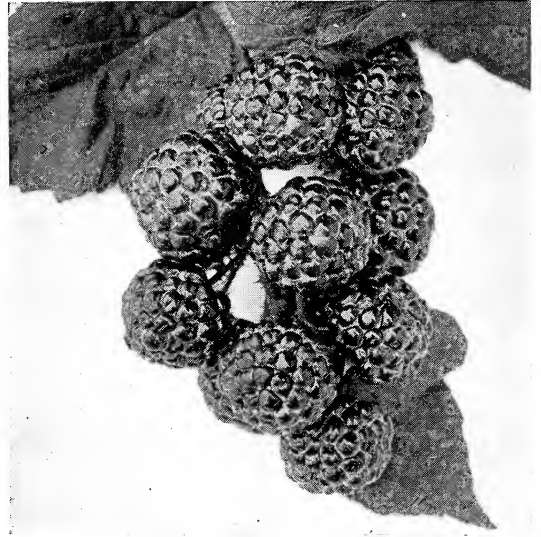
**EARLY JUNE.** A new Red Raspberry produced at the New York Experiment Station. Berries large; bright red; fine. Hardy and vigorous; yields heavily. 12c each; 90c for 10; \$6.00 per 100.

**GOLDEN QUEEN.** Yellow. A high quality berry of large size; flavor sweet and pleasing. 15c each; \$1.20 for 10; \$8.00 per 100.

**KANSAS.** Black. Berries large and firm; flavor good; quality excellent; ripens early. Very productive. 12c each; 60c for 10; \$3.50 per 100; \$25.00 per 1000.

**PLUM FARMER.** Black. The best of the Black-caps. Extra large; flesh firm but tender; flavor sweet and good. A valuable table and market berry. 12c each; 60c for 10; \$3.50 per 100; \$25.00 per 1000.

**ST. REGIS.** Red. Everbearing. Large; firm; quality high. Small and large growers find it a good sort for their purposes. 12c each; 90c for 10; \$6.00 per 100.

*Plum Farmer*

**LATHAM.** A new brilliant red berry; very attractive; good for both table and canning. Hardy and very productive. 12c each; 90c for 10; \$6.00 per 100.

**BLACKBERRIES**

Blackberries should be planted in rows 7 feet apart and 3 feet apart in the row. This will require about 2,100 plants to the acre. Cut out old wood as soon as the canes have done bearing, to give more vigor to the young canes.

12c each; 75c for 10, Postpaid. \$5.00 per 100; \$35.00 per 1000, by Express or Freight Collect.

*Eldorado Blackberries*

**ELDORADO.** Berries large; flavor sweet and good. Excellent for table or market.

**LUCRETIA DEWBERRY.** Fruit large, soft and high in quality. Flavor sweet and delicious. Very good for table use.

**MERSEREAU.** Medium to large; flavor sweet; flesh juicy; quality excellent.

**RATHBUN.** Berries large; flesh firm; flavor sweet; quality of the best; bush is hardy, vigorous and productive.

**SNYDER.** Popular on account of high quality and early ripening. Medium size; delightful flavor.

**ASPARAGUS**

Asparagus is the first vegetable to come in the spring, and is very popular with those who know its value. Plant in trenches 10 inches deep and 4½ feet apart. Place plants in the trench 12 to 15 inches apart, spreading roots out flat. Then cover with about 3 inches soil. Well rotted manure spread on top is very beneficial.

2-year Roots, \$1.25 for 50; \$2.00 per 100, Postpaid; \$12.00 per 1000, by Express Collect.

**BARR'S MAMMOTH.** The stalks are very large, frequently 1 inch in diameter, and retain their thickness up to the tip of the shoots.

**PALMETTO.** A very early variety of even, regular size and excellent quality.

**WASHINGTON.** A new rust-resistant, pedigreed Asparagus, and in size, vigor, tenderness and quality is not excelled.



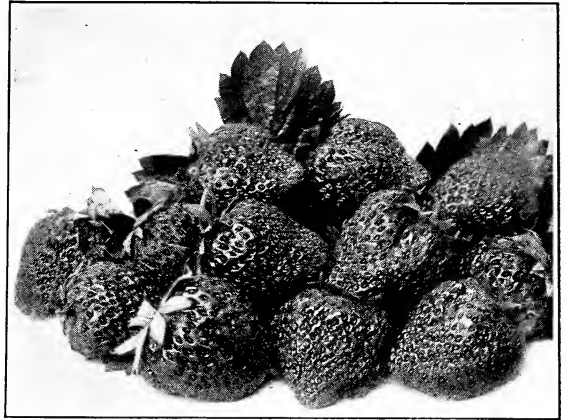
## STRAWBERRIES

For Spring Delivery Only.

Strawberries will do well on almost any well drained soil. In home gardens set the plants in rows 3 feet apart, with the plants 15 inches apart in the row. For field culture, the rows may be farther apart. In the following list all varieties marked "P" are perfect flowering. The other sorts should be planted close to those marked, so their blossoms may become pollenized from the perfect flowering kinds.

**\$1.00 for 50; \$1.50 per 100, Postpaid;  
\$8.00 per 1000, by Express, Collect.**

**BELT** (William Belt). P. Late. Berries are large to very large; shape conical and uniform. We have found Belt to be a most desirable sort, and strongly recommend it.



*Blackmore Strawberries*

**BLACKMORE.** A new variety originated at the U. S. Plant Field Station in Maryland. It was selected as the most satisfactory for preserving and superior to all known commercial varieties. Strong, vigorous grower and good plant maker. Berries bright red. Very productive. Price per 25, \$1.00; per 100, \$3.00, Postpaid.

**DUNLAP** (Senator Dunlap). P. Early to mid-season. Quality high; size large. The plant is perfectly healthy, sends out many runners, and is enormously productive. A money maker for market planting.

**GIBSON.** Large; well formed; juicy and delicious; from the outside to the heart the fruit is clear red. Handsome appearance and delicious taste make it a popular berry.

**GLEN MARY.** P. Midseason to late. Berries are large, well shaped and firm; the flavor and quality are unusually good. A very popular market berry.

**PREMIER.** P. The most popular early Strawberry of the day. The berries are very large, long pointed, light red in color and present a good appearance in the basket and in market. No other early Strawberry is anything near equal to it in productiveness.

## EVERBEARING STRAWBERRY

**MASTODON.** The most productive and profitable of all Everbearers. The berries are large and uniform during the season; delicious; sweet. \$2.00 for 50; \$3.50 per 100, Postpaid; \$25.00 per 1000, by Express.

*Don't fail to include in your order the "New Fredonia Grape" —the "Viking Red Raspberry" —the "New Blackmore Strawberry." Recent introductions of outstanding merit.*

## RHUBARB

**LINNAEUS.** Large; early; tender. The old reliable pie kind. 20c each; \$1.70 for 10, Postpaid; \$8.00 per 100, by Express Collect.



*Washington Asparagus*

## APPLES

### Plan to Plant Another Tree.

Apples are recognized as the most desirable fruit, because of the great variety of delicious flavors, nutritious qualities and values.

	Each	10	100
Standard varieties, 5 to 7 ft.....	\$0.75	\$6.00	\$45.00
4 to 5 ft.....	.60	5.00	35.00
Dwarf Apples. Varieties marked *.....	.90	7.50	55.00

Set Dwarf trees where yard and garden is small. They usually bear the second year and are productive.

All Trees Packed Free for Shipment by Express, Charges Collect.

### SUMMER APPLES

**EARLY HARVEST.** Pale yellow fruit of medium size and very good quality. A heavy bearer. Middle to end of August.

**RED ASTRACHAN.** Good sized, deep crimson fruit, covered with thick bloom. Flesh juicy and tender. An excellent early cooking Apple. Tree hardy, vigorous and bears young. July to August.

**SWEET BOUGH.** A fine summer Apple. Fruit large, pale green; flesh fine, tender, juicy, sweet and excellent flavored. Tree bears young and abundantly. August and early September.

**YELLOW TRANSPARENT.** A very fine early Apple of good quality. It is of good size, clear white, tinted with pale yellow, flavor slightly acid. Tree is hardy. Bears young, yielding large crops. July and August.

### AUTUMN APPLES

**\*DUCHESS OF OLDENBURG.** Ripens in succession, so that several pickings are required to secure the crop. August and September. The tree is highly valued because of its great hardness.

**MAIDEN BLUSH.** Large, beautiful blush cheek.

### WINTER APPLES

**\*BALDWIN.** The leading Apple in the commercial orchards. Fruit large, deep red, crisp, juicy, with thick skin that stands handling well; fine flavor, slightly subacid. An excellent shipper. Trees vigorous, long-lived and bear abundantly.

**CORTLAND.** A remarkably fine new Apple, equally good for cooking or dessert. It is luscious, juicy, with sprightly flavor that is delightful. Hardy, early and productive.

**\*DELICIOUS.** A truly delicious Apple, with a rich distinctive flavor. Conically shaped; large; beautifully striped with red and yellow. A good keeper and shipper; bears young and abundantly. Every orchard should contain a few of these trees.

**GREENING (R. I.).** Large, greenish yellow; tender, juicy, rich acid.

**JONATHAN.** Fruit medium size, brilliant red, highly and deliciously flavored, fine grained and juicy. Of excellent quality for either dessert or culinary use, and one of the most desirable for fancy trade.

**\*McINTOSH RED.** A splendid early winter Apple. Fruit bright red in color, with tender white flesh; very juicy and agreeably aromatic, subacid, becoming mild and nearly sweet when ripe. Tree vigorous and a reliable bearer.

**\*NORTHERN SPY.** The fruit is large and attractive, of bright red color; the flesh very juicy, crisp and tender. Fine flavor and high quality.

### QUINCES

No Finer Fruit for Jellies, Preserves and Canning.

2-year Trees, 85c each; \$7.50 for 10. Express, Collect.

**CHAMPION.** A beautiful large Quince of a golden yellow color. It bears abundantly quite late in season. Last of October.

**MEECH'S PROLIFIC.** Ripens earliest of all Quinces. Very large fruit of a yellowish color and unsurpassed quality.

**ORANGE.** The bright golden yellow fruit of this variety is considered one of the best for its quality. Ripens in October.

### APRICOT

(Moorpark)

The best all-around variety. Large, orange with red cheek. Ripens in Aug.

4-5 ft., each, 80c.





## PEACHES

The comparative ease with which Peach trees are cultivated, and their promise of early returns, make them a most profitable crop. Plant 15 feet apart each way.

5 at 10 Rates. 50 at 100 Rates. Packed Free for Shipment. Express Charges Collect.

	<i>Each</i>	10	100
4 to 5 ft., First-class..	\$0.45	\$3.50	\$30.00

	<i>Each</i>	10	100
3 to 4 ft., Medium..	\$0.40	\$3.00	\$25.00

**CHAMPION, W.** An early Peach of iron-clad hardness, remarkable for its size and quality. August 25.

**CROSBY.** The hardiest Peach known. Fruit of medium size, bright orange-yellow, splashed carmine. Very popular. Tree grows low and spreading. September 15.

**EARLY CRAWFORD.** A very large, yellow and red Peach of best quality; beautiful, popular and productive. Early September.

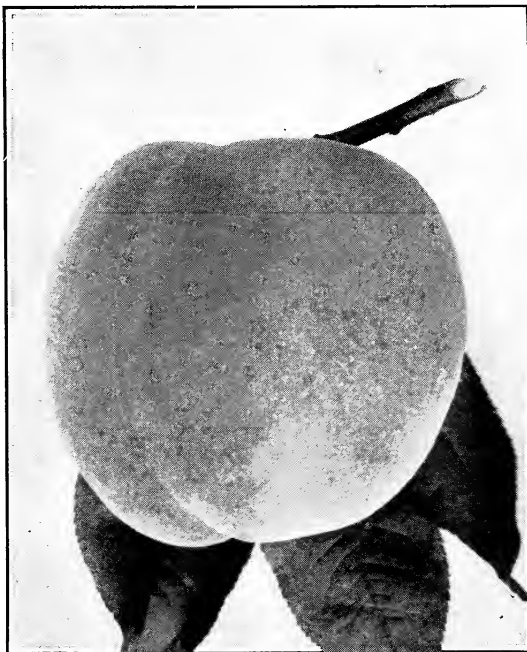
**ELBERTA.** The most popular Peach. It is hardy, a sure bearer, and very prolific. Fruit large; yellow with red cheek; flesh yellow, firm, juicy, and of high quality. A generally successful market Peach.

**HALE.** New. A remarkable Peach. Its fruit averages large, round, firm, and has less fuzz on skin; quality and beauty equals Elberta. Free. Early September.

**LATE CRAWFORD.** Similar to Early Crawford, but later and not as productive. Free. Late September.

**NIAGARA.** Like Elberta and of same size, but much better Peach in quality, less subject to leaf-curl and other diseases, hardier, and about a week later.

**ROCHESTER.** Skin thick and tough, which makes it a good shipper; color is light yellow to orange, blushed with dark red. Well adapted for both home use and market.



*Hale Peach—Fine for table use or preserving*

## PEARS

5 to 7 ft., 90c each; \$7.50 for 10; \$60.00 per 100.

**BARTLETT.** Large, beautiful fruit of excellent quality, yellow tinged with red, buttery and melting, rich musky flavor. Tree bears abundantly. Ripens in September.

**CLAPP'S FAVORITE.** A large, long, yellow Pear, tinted crimson and russet. Flesh fine grained, white, juicy and exceptionally tasty. The tree is hardy, and good grower. September.

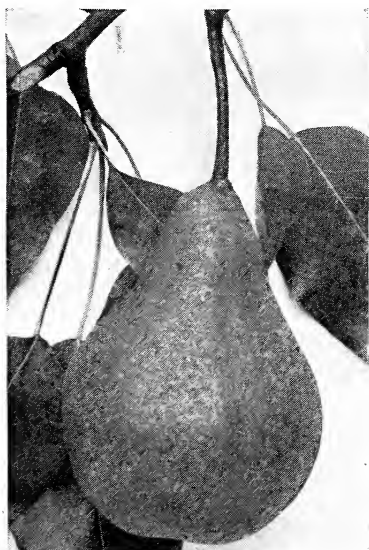
**FLEMISH BEAUTY.** An old variety that has long been highly esteemed. It is greenish yellow and brown, very juicy and sweet. Tree vigorous and productive. September, October.

**KIEFFER.** A handsome rich yellow Pear, tinged with red, somewhat russet. Valuable for canning. Immensely productive, bearing early. October.

**SECKEL.** One of the richest and finest varieties. Fruit small, yellowish russet with red cheek; flesh whitish and buttery, very juicy. September.

**SHELDON.** Large, round; skin greenish yellow covered with light russet; flesh very juicy, tasty flavor. October, November.

**WORDEN SECKEL.** Fruit is medium size, borne in clusters; skin yellow, tinged light red; flesh very juicy and buttery. Ripens late. Will keep in good condition until December. September.



*Seckel Pear*



## CHERRIES

Prices of 2-year-old Sweet Cherries: No. 1, 5 to 7 ft., 95c each; \$8.50 for 10; \$70 per 100. Express Charges, Collect.

**NAPOLEON.** Fruit very large; pale yellow and red; firm and sweet; profitable. July.

**SCHMIDT.** Very large; jet-black, very juicy, sweet and of fine flavor. An excellent shipper and very profitable. Tree is hardy and a strong, healthy grower.

**WINDSOR.** Fruit large, liver-colored; distinct; flesh firm and of fine quality. Hardy and prolific. A valuable late variety.



*Napoleon Cherries*

Prices of 2-year-old Sour Cherries: No. 1, 4 to 5 ft., 90c each; \$7.00 for 10; \$60.00 per 100.

**MONTMORENCY.** Large; light red; tender, subacid. One of the best. End of June.

**RICHMOND.** Medium size; red; quite acid. Hardy; healthy; very early and productive. The most popular sour Cherry. June.

## PLUMS

5 to 7 ft., 75c each; \$6.50 for 10; \$55.00 per 100.

**ABUNDANCE.** The chief asset, which has given the variety its great popularity, is its abundance of fruit. Fruit pinkish red, changing to a darker red, mottled with thin bloom. Tree bears early. August.

**BRADSHAW.** Large, attractive fruit, light purplish red, changing to dark reddish at maturity, which occurs in July. The trees grow large and well formed, bear regularly and heavily.

**BURBANK.** Handsomely colored dark red fruit over a yellow ground. It is a very desirable variety, bearing early in July.

**GERMAN PRUNE.** Large, dark blue fruit of rich and agreeable flavor. Excellent for drying and therefore commercially desirable. September.

**ITALIAN PRUNE.** Greenish red fruit, good for eating or culinary use. September.

**LOMBARD.** Probably the most widely planted in America. Fruit medium size, violet-red in color, having a good market value. August.



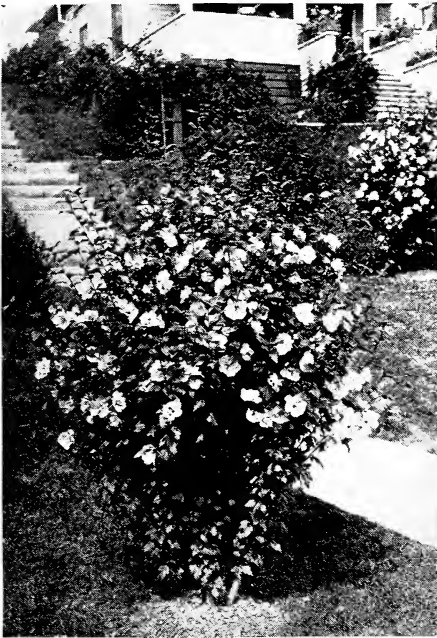
*Abundance*



## HARDY FLOWERING SHRUBS

We are offering a select list of the best Flowering Shrubs for lawn and foundation planting. These Shrubs are all hardy, and, when well planted around the porch and lawn, not only enhance the value of the home but prove the slogan, "It's not a home till it's planted."

All Shrubs are priced for express or freight shipment, charges collect. When only a small quantity of Shrubs are wanted, and the size and weight make it cheaper to send by parcel post, we will prepay the postage and collect the amount on delivery at destination.



*Althea—Rose-of-Sharon*

**ALMOND, FLOWERING.** An early, spring flowering shrub, gaily in full bloom before the leaves appear, with beautiful, double rose-pink flowers snuggling tight to the twigs. 2 to 3 ft., 85c each; \$7.50 for 10.

**ALTHEA, DOUBLE** (Rose-of-Sharon). Late in August and September, it bears a profusion of large, bright colored flowers. The dark green foliage is extra good and valuable for its beauty alone. **Red, White, Purple and Variegated.** 2 to 3 ft., 50c each; \$4.00 for 10.

**BARBERRY, JAPANESE** (*Berberis thunbergii*). No shrub in existence is so generally planted or more practical for all purposes where beautiful foliage effect is desired. It is dwarf growing, bushy and rounded in form, with small leaves densely covering the thorny twigs. Fine for hedges and as a foundation screen in front of porches. In the autumn the leaves turn to scarlet or bronze, and the slender branches droop with their load of bright red berries, which hang on until late winter. Our plants are well branched and strong rooted. 12 to 18 in., 25c each; \$2.00 for 10; \$10.00 per 100. 18 to 24 in., 30c each; \$2.50 for 10; \$15.00 per 100.

**BUDDLEIA** (Everblooming Butterflybush). This shrub has long, graceful stems which terminate in tapering panicles of beautiful lilac-colored flowers. The flower heads frequently are 10 inches long and contain hundreds of the miniature flowers. The foliage and blooms are exceedingly fragrant and attract myriads of butterflies. 2 to 3 ft., 40c each; \$3.00 for 10.

**BARBERRY, REDLEAVED JAPANESE.** A novelty among hardy flowering shrubs. Unlike the Japanese Barberry that fades with the advancing season, the Red-leaved Japanese variety grows more gorgeous throughout the fall, with its deepening oriental scarlet of branch, leaf and berry. A sunny exposure will bring out and retain its full red color. 2-year, 75c each; \$6.00 for 10.

**CALYCANTHUS FLORIDUS** (Allspice or Sweet Shrub). Distinguished by the rare and peculiar fragrance of the flowers and the wood. 18 to 24 in., 60c each; \$5.00 for 10.

**CORNUS ELEGANTISSIMA** (Silver Dogwood). 2 to 3 ft., 85c each.

**DAPHNE CNEORUM.** A very dwarf shrub, almost evergreen. Soft pink flowers appear profusely during April and May. Very fragrant. 10 to 12 in. size, \$1.50 each.

**DEUTZIA LEMOINEI.** Flowers pure white, borne in profusion on stout, upright branches. Habit dwarf. 18 to 24 in., 50c each; \$4.00 for 10.



*Daphne Cneorum*

## SHRUBS—Continued

**D., PRIDE OF ROCHESTER.** Produces large, double white flowers in June. The best of the Deutzias. Very vigorous grower and profuse bloomer. 2 to 3 ft., 50c each; \$4.00 for 10.

**FORSYTHIA SUSPENS.** These splendid old shrubs light up the garden with glinting masses of yellow very early in spring before the leaves appear. 2 to 3 ft., 50c each; \$4.00 for 10.

**HONEYSUCKLE, BUSH.** Bright colored flowers, followed by showy berries that remain until mid-winter. 2 to 3 ft., 55c each; \$4.50 for 10.

**HYDRANGEA ARBORESCENS** (Hills-of-Snow or Everblooming Hydrangea). A profusion of large, snow-white flowers turn green instead of bronze as do other Hydrangeas. Blooms from June till September. Strong, field-grown plants, 18 to 24 in., 40c each; \$3.50 for 10. 2 to 3 ft., 50c each; \$4.50 for 10; \$40.00 per 100.

**H. PANICULATA GRANDIFLORA.** Blooms profusely in August and September when few other shrubs are in bloom, producing the largest flower heads of any of the hardy shrubs. Covered with great pyramidal panicles, white on opening, assuming rose and bronze tints on the sunny side and drooping gracefully of their own weight. 18 to 24 in., 40c each; \$3.50 for 10. 2 to 3 ft., 50c each; \$4.50 for 10; \$40.00 per 100. Tree-shaped, 3 to 4 ft. size, \$1.25 each; 4 to 5 ft. size, \$1.50 each.

**H. OTAKSA.** A favorite Pink grown in pots for lawn decoration. 35c each.

**KERRIA JAPONICA** (Doubleflowering). Graceful, slender, drooping branches, covered with a wealth of rich, dark yellow flowers in June. 2 to 3 ft., 60c each; \$5.00 for 10.

**KERRIA** (Single). 60c each; \$5.00 for 10.

**KOLKOWITZIA AMABILIS** (Beautybush). A charming new shrub from China. Beautiful trumpet-shaped flowers appear in great profusion in June which cluster closely into cymes of about twenty-five. Flowers are pale pink with orange veins in throat. 2-year size, \$1.40 each.

**PHILADELPHUS CORONARIUS.** Mock-orange. The white flowers are borne very profusely and are similar to strawberry blossoms, but larger, with a rich creamy tinge imparted by golden stamens. 2 to 3 ft., 60c each; \$5.00 for 10.

**P. AUREUS** (Golden Syringa). A dense growing form, with clear, golden yellow foliage which retains its color well all summer. One of the best golden foliaged shrubs offered. 18 to 24 in., 85c each; \$7.50 for 10.

**P. VIRGINALIS.** A magnificent new variety. The flowers are the largest, handsomest, and most sweetly fragrant of any known variety, with longest blooming season. 2 to 3 ft., 65c each; \$6.00 for 10.

**PRIVET, CALIFORNIA** (*Ligustrum ovalifolium*). One of the best hedge plants. It is almost evergreen, of dense, compact habit, and useful in shaded places. To plant a single row, set 12 inches apart; for a double row, about 18 inches each way, and alternately. 15 to 18 in., 15c each; \$1.00 for 10; \$6.00 per 100. 18 to 24 in., 20c each; \$1.20 for 10; \$8.00 per 100.

**PRIVET VULGARE.** An old-time English garden type of informal habit. Very hardy. 18 to 24 in., 25c each; \$1.80 for 10; \$12.00 per 100.

**QUINCE, FLOWERING** (*Cydonia japonica*). In early spring its bright, scarlet flowers completely cover the branches before the leaves appear. 18 to 24 in., 60c each; \$5.00 for 10.

**RHODODENDRONS.** Hardy named varieties.

Pink, White, Purple. Size, 15 to 18 in., \$6.00 each.

**SPIRAEA.** Few shrubs lend themselves to every situation or condition as well as the Spiraeas. They are showy, free flowering shrubs of easiest culture, covering a considerable blooming period from spring to summer.

**S., ANTHONY WATERER.** A dwarf, compact growing shrub, with beautiful deep red blooms in broad, flat heads. A perpetual bloomer. July. 15 to 18 in., 45c each; \$3.50 for 10.



*Hardy shrubs make attractive and permanent foundation plantings*



## SHRUBS—Continued

*Philadelphus Virginalis*

**S. BILLIARDI.** A fine, showy shrub that bears its rose colored blooms nearly all summer. July to September. 2 to 3 ft., 60c each; \$5.00 for 10.

**S. PRUNIFOLIA** (Bridalwreath). Bears a profusion of beautiful double white flowers in May. Foliage scarlet in autumn. 2 to 3 ft., 55c each; \$4.50 for 10.

**S. THUNBERGI** (Thunberg's Spiraea). A Japanese species of small size, with numerous slender branches, somewhat drooping, forming a dense feathery bush. The narrow, linear, bright green leaves fade to orange and scarlet in autumn. Small white flowers in early May. 18 to 24 in., 50c each; \$4.00 for 10.

**S. VANHOUTTEI.** The finest of all Spiraeas and a most charming and beautiful shrub. It blooms so profusely that it resembles a fountain of white flowers in May and June. Makes an attractive hedge and is very beautiful for mass planting. 18 to 24 in., 25c each; \$2.00 for 10; \$15.00 per 100.

**SYMPHORICARPOS RACEMOSUS.** (Snow-berry). The small, rose-colored flowers in June and July are followed by clustered, milk-white fruits which remain into winter. 18 to 24 in., 50c each; \$4.00 for 10. 2 to 3 ft., 60c each; \$5.00 for 10.

**S. VULGARIS** (Indian Currant; Coralberry). A low growing, graceful shrub, whose small red fruits cluster in thick ropes along the weighted-

down stems. August. 18 to 24 in., 45c each; 2 to 3 ft., 60c each.

**SYRINGA, WHITE LILAC** (*Syringa vulgaris alba*). 2 to 3 ft., 60c each; \$5.00 for 10. 3 to 4 ft., 75c each; \$6.50 for 10.

**S., BLUE LILAC** (*S. vulgaris caerulea*). Bluish purple flowers in May. 2 to 3 ft., 60c each; \$5.00 for 10. 3 to 4 ft., 75c each; \$6.50 for 10.

**S., PERSIAN** (*S. persica*). A superb free flowering, purple species. Dwarf in habit, with slender branches and narrow leaves. 3 to 4 ft., 85c each.

**S., PRESIDENT GREVY.** In late May and early June this variety is covered with large trusses of double, deep blue flowers. One of the finest of the later introductions. 2 to 3 ft., \$1.00 each.

**VIBURNUM CARLESI.** A recent new shrub from Korea. Delicate, spice-scented, pink flowers in May and June. Very fragrant and last a long time. 2-year, 12 in. size, \$1.75 each.

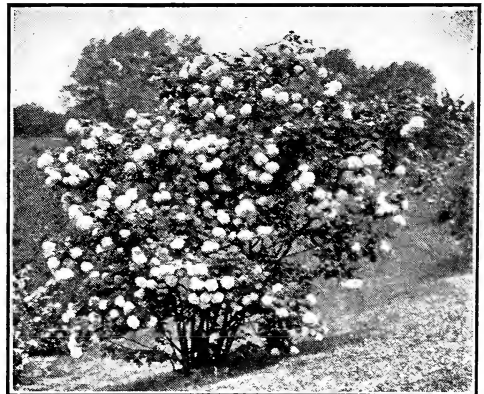
**V. PLICATUM** (Japan Snowball). A rare and exceedingly beautiful species. The pure white blooms are borne in large, globular heads that hang long on the bush. May, June. 18 to 24 in., 80c each; 2 to 3 ft., \$1.00 each.

**V. OPULUS** (Highbush Cranberry). A very decorative shrub, with white flowers in May, followed by beautiful, showy clusters of scarlet fruits. 18 to 24 in., 60c each; 2 to 3 ft., 85c each.

**V. OPULUS STERILE** (Common Snowball). The old-fashioned Snowball grows 6 to 8 feet high, and in May and June is covered with large, globular heads of pure white flowers. 18 to 24 in., 50c each; 2 to 3 ft., 75c each.

**WEIGELA, EVA RATHKE.** A charming, new Weigela with brilliant crimson flowers, of a beautiful clear shade. Midsummer. 18 to 24 in., 60c each; \$5.00 for 10.

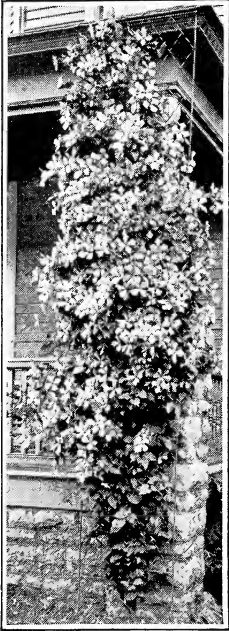
**W. ROSEA.** An old garden favorite. It has beautiful, large, rose-colored flowers. Distinctive and very hardy. 2 to 3 ft., 50c each; \$4.00 for 10.

*V. Plicatum*

## HARDY CLIMBING VINES

Vines always add grace and beauty. Valuable for covering brick or stone walls, for training on fences, on old trees, over porches and windows. In spring and summer the foliage is a mat of green leaves and turns to rich yellow, gold and bronze in autumn.

Postpaid at Single and Ten Rates.



*Clematis*

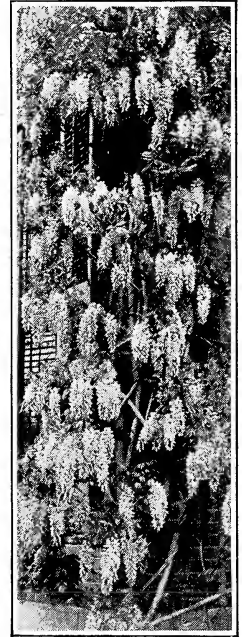
**CELASTRUS, SCANDENS** (Bittersweet). A popular vine for covering fences, trellises or walls. Handsome, glossy foliage and clusters of orange-crimson fruits retained all winter. 60c each; \$5.00 for 10.

**DUTCHMAN'S-PIPE** (*Aristolochia siphon*). Brownish, pipe-shaped flowers. Immense heart-shaped leaves furnish the most complete screening leafage of any trellis vine. 2-year roots, 90c each.

**AMPELOPSIS, VEITCHI** (Boston Ivy). A fine hardy climber for covering walls, as it clings firmly to the smoothest surface, covering it closely with overlapping foliage. 2-year roots, 50c each; \$4.50 for 10.

**CLEMATIS, JACKMANI**. Covered from July to October with dense foliage. Very popular because of its large purple flowers. 2-year plants, \$1.00 each; \$9.00 for 10.

**C. PANICULATA**. Sweet-scented Japan Clematis. The flowers are of medium size, very fragrant, pure white. 2-year plants, 40c each; \$3.50 for 10.



*Wisteria*

**HONEYSUCKLE, HALL'S JAPAN** (*Lonicera japonica halliana*). A strong, vigorous, almost evergreen sort, fragrant, pure white flowers, changing to yellow. 50c each; \$4.00 for 10.

**IVY, ENGLISH**. Large, glossy green foliage makes this climber most attractive. 40c each; \$3.50 for 10.

**POLYGONUM** (Silver Lacevine). A new quick

growing vine averaging 25 feet in a season. Blooms profusely late summer into fall; large foamy sprays in silvery white. 2-year-old, 80c each; \$7.50 for 10.

**WISTERIA, CHINESE PURPLE**. A beautiful climber of very rapid growth, producing long, pendulous clusters of pale blue flowers in June. 2-year plants, 75c each; \$6.00 for 10.

## NUT TREES

Packed free for shipment by express,  
charges collect

Nut trees not only will provide an abundance of healthful food but are ornamental as well.

	Height	Each
Butternut	4 to 6 ft.	\$1.25
Chestnut, Spanish	3 to 4 ft.	1.50
Filbert, English	4 to 5 ft.	1.25
Walnut, Japan	4 to 5 ft.	1.25
Walnut, English	3 to 4 ft.	1.50



*Walnuts*



# HARDY PERENNIAL PLANTS

## The Old-fashioned Hardy Garden.

Many of the old, familiar flowers that made grandmother's garden a fairy spot of colorful blooms are still dear to the heart of the home-maker.

Summer seems more real amid such surroundings, and the pleasure derived from their profusion of bloom, from spring through late summer, will amply repay the small initial cost of planting and the slight care they will require. Once planted, they are among the most satisfactory plants in the garden. Combine Perennials with shrubbery and the effect will be most pleasing.

Postpaid at Single and 10 Rates.



*Delphinium*

**COREOPSIS, LANCEOLATA GRANDIFLORA.** The flowers are of a rich golden yellow, of graceful form and invaluable for cutting. 15c each; \$1.20 for 10.

**DICENTRA** (Bleedingheart). Heart-shaped flowers in drooping racemes. 60c each; \$5.00 for 10.

**DIGITALIS** (Foxglove). An old but still popular flower. Its spikes of long, tubular blooms vary from purple to white and are very showy and impressive. Fine for cutting. June to August. 3 to 4 ft., 25c each; \$2.00 for 10.

**DELPHINIUM** (Larkspur). 20c each; \$1.80 for 10; \$13.00 per 100.

**D. BELLADONNA.** A magnificent sort, with large spikes of the most delicate turquoise blue.

**D. BELLAMOSA.** A dark blue variety.

**D. GOLD MEDAL HYBRIDS.** Grand assortment of colors in mixture. 25c each; \$2.50 for 10; \$15.00 per 100.

**GAILLARDIA** (Blanket Flower). Among the most attractive and effective of our hardy perennials. Bloom from June till autumn. 20c each; \$1.80 for 10.



*Gaillardia*

**ANEMONE JAPONICA** (Windflower). A late blooming variety, with tall, graceful stems and dainty wax-like flowers 2 inches in diameter. 20c each; \$1.80 for 10.

**BARBATUS** (Sweet-william). 20c each; \$1.80 for 10.

**CAMPANULA** (Bellflower). Of easy culture, thriving in either sunshine or shade. It grows 2 to 3 feet tall, and blooms in June and July or later. The drooping, bell-shaped flowers come in white and various colors. 20c each; \$1.80 for 10.

**CERASTIUM TOMENTOSUM** (Snow-in-summer). A low edging plant, silver foliage; early white flowers. 25c each; \$2.00 for 10.

**CHRYSANTHEMUMS.** These popular flowers come in all shades of white, red, yellow and pink. Easy to grow and succeed in many kinds of soil. 25c each; \$2.00 for 10.

**COLUMBINE** (Aquilegia). The peculiar shaped flowers, with long, slender spurs, are produced in great abundance on long, graceful stems, in a beautiful combination of colors of almost every shade. 20c each; \$1.80 for 10.

## HARDY PERENNIALS—Continued

**HOLLYHOCKS.** Double. A valuable old standby, especially useful for a background. 20c each; \$1.80 for 10.

**IRIS.** Germanica. 25c each; \$2.00 for 10.

**KAEMPFERI.** Beautiful Japanese Iris. 40c each; \$3.50 for 10.

**PEONIES.** For splendor. 50c each; \$4.50 for 10.

**YUCCA FILAMENTOSA.** 30c each; \$2.50 for 10.

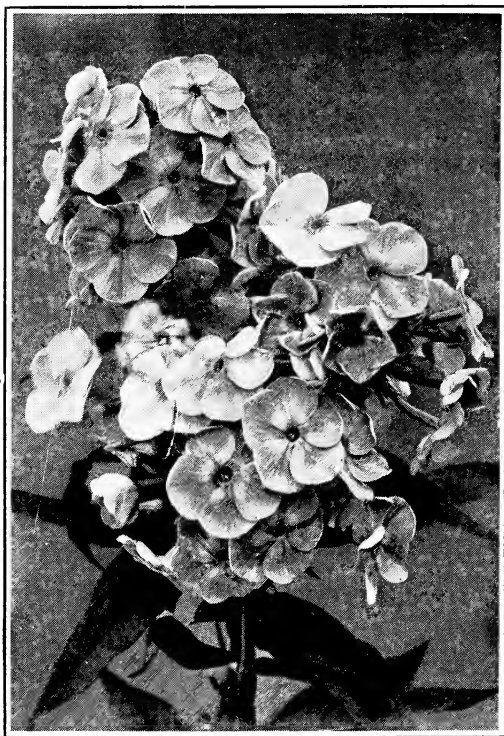
### HARDY PERENNIAL COLLECTION

One each of **Chrysanthemum, Columbine, Coreopsis, Cerastium, Delphinium, Gaillardia, Iris, Phlox, Yucca, Foxglove.**

Ten plants, Postpaid, only \$2.00

## HARDY PHLOX

Flowers That Will Make Your Garden Gay.



*Phlox B. Comte*

Perennial Phloxes can be used to advantage in the hardy border, in large groups on the lawn, or planted in front of shrubbery.

Postpaid at Each and 10 Rates.

**B. COMTE.** Blooms French purple or wine color, a rich and very pleasing color to the eye. 25c each; \$2.00 for 10.

**BEACON.** Compared with other modern reds, this variety has been outstanding through several seasons. Vivid cherry-red. 25c each; \$2.00 for 10.

**ELIZABETH CAMPBELL.** Salmon pink, dark crimson eye. This splendid variety is largely planted. 25c each; \$2.00 for 10.

**MISS LINGARD.** Bears the longest spikes of any Phlox, and blooms from the ground up. It is the earliest blooming of the Phloxes, with sweetly fragrant, waxy white flowers, having a lavender eye. 20c each; \$1.80 for 10.

**MRS. ETHEL PRITCHARD.** A beautiful self-shade of rose-mauve. One of the extra fine new sorts. 30c each; \$2.50 for 10.

**MRS. WM. JENKINS.** An early and free bloomer. One of the best tall varieties. Flowers pure white. 20c each; \$1.80 for 10.

**RHEINLANDER.** Salmon pink, intensified by a claret red eye. 20c each; \$1.80 for 10.

**RIJNSTROOM.** A lively Neyron shade of rose-pink. 20c each; \$1.80 for 10.

**WIDAR.** Light reddish violet, with large white center. 30c each; \$2.50 for 10.

“Should I demand that the nursery supplying my material guarantee that it live?”

“You will generally find that when a nursery guarantees their stock to live and grow there must be an extra charge to cover this, for nine times out of ten it is entirely the customer’s fault, due to improper planting and improper care, that the plants die. Such things as letting the roots dry out from leaving a day before planting, having fertilizer in direct contact with the roots, never watering during severe droughts, and planting in improper soil, are common causes for plants dying. You can’t blame the nursery for this.”—“*Better Homes and Gardens*,” October, 1928.



## ROSES

The varieties we offer are the best that can be selected in the Hybrid Perpetual class which, before the great development of the Hybrid Teas, was the most popular type for garden planting. This collection embraces as complete a range of colors as it is possible to bring together in such a number of plants, with freedom of flowering, perfect form, fragrance, hardiness and general excellence. In pruning Hybrid Perpetuals, cut away all weak growths, and if quality of bloom is desired, cut back the strong canes to within 8 to 9 inches of the ground; but if quantity of bloom for garden effect is desired, leave these canes from 2 to 3 feet high, according to their strength.

### HYBRID PERPETUALS

**Hardy Bush Roses. Old-fashioned June-blooming Varieties. Strong, 2-year, Field-grown Bushes. Price, except as noted, 80c each; \$7.50 per 10, Postpaid.**

**ALFRED COLOMB.** A very perfect blossom, strawberry red. Fragrant.

**AMERICAN BEAUTY.** The famous florists' Rose. Very large, full blooms, brilliant pink to red, delightfully fragrant, borne on long, stiff stems.

**CLIO.** Large, globular rose, sweetly fragrant; satiny flesh color with a pink center.

**FRAU KARL DRUSCHKI.** An immense, pure white perfectly double Rose. Plant robust, vigorous, and upright. The finest pure white Rose in this class. One of the "favorite dozen."

**GENERAL JACQUEMINOT.** Good old "General Jack" has marched to victory in many lands. His clear red blooms are just as bright today as seventy years ago.



*Marshall P. Wilder*



*American Beauty*

**MAGNA CHARTA.** Early blooming, bright rose pink.

**MARSHALL P. WILDER.** One of the most desirable in its class. Blooms bright crimson-scarlet, very large, full, globular, with a strong, penetrating fragrance.

**MARGARET DICKSON.** The fragrant, white blooms have flesh-colored centers, and are lovely when half open.

**PAUL NEYRON.** One of the best Roses for outdoor culture. It is probably the largest Rose in commerce, the flowers sometimes being 6 inches in diameter. The fragrant, clear pink blooms shade to rose, and are produced by a vigorous, hardy plant.

## HYBRID TEA OR EVERBLOOMING BUSH ROSES

This class of Roses is noted principally for its free and everblooming characteristics, and are commonly called "Monthly Roses." They bloom early and continuously throughout the summer. While they are not as hardy as the Hybrid Perpetuals, they can be successfully grown in cold climates if afforded winter protection.

Price, except as noted, 80c each; \$7.50 for 10, Postpaid.



*Mrs. Aaron Ward*

**RED RADIANCE.** One of the best all round garden Roses. A beautiful cerise red, fragrant, large, good bloomer.

**SOUVENIR de CLAUDIUS PERNET.** The most reliable and strongest yellow Rose ever introduced. Its color is a decided and unstained sunflower-yellow, even deeper toned at center, the matured flower gleaming as richly as when first unfolding. Its flower form is large and full, the buds long and pointed.

**TALISMAN.** The most astounding novelty in Roses produced in many a year. Its brilliant orange red buds open to a large, fragrant, high-pointed bloom of glowing golden yellow, stained with copper-red and orange-rose on the inside of the petal. \$1.40 each, postpaid.

**WILLOWMERE.** A robust garden rose with beautiful buds, large flowers; color rich shrimp pink.

**COLUMBIA.** The flowers are large, fully double, bright lively pink in color, fragrant, and borne until late fall.

**ESCARLATE.** Brilliant scarlet flower of medium size, profuse bloomer.

**GRUSS an TEPLITZ.** A profusion of beautiful, clear crimson-scarlet, fragrant flowers are borne from June until frost on a vigorous and shapely plant.

**KILLARNEY, PINK.** Blooms large, well-formed, on vigorous, free-flowering plants.

**LADY HILLINGDON.** Deep apricot yellow. Beautiful in bud and flower.

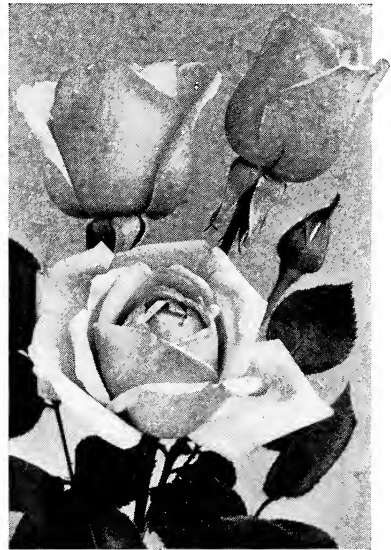
**LOS ANGELES.** Color a luminous flame-pink, toned coral, shaded translucent gold at base of petals. An upright, sturdy grower, bearing perfect, fragrant flowers on strong stems.

**MME. BUTTERFLY.** A symphony of white, bright pink, apricot and gold. The buds are a rich Indian red, yellow at base.

**MME. EDOUARD HERRIOT.** A glorious commingling of terra cotta, bronze, geranium red and dull copper; long pointed buds.

**MME. CAROLINE TESTOUT.** Blooms all summer on strong, vigorous plants. The large, rounded flowers are bright satiny rose, with darker center, and edges of petals bordered with soft carmine-pink.

**MRS. AARON WARD.** A most desirable and dependable Rose that will probably produce more flowers than any other yellow variety. Semi-double, cup-shaped, deep Indian yellow flowers; fragrant. Blooms until frost.



*Souvenir de Claudius Pernet*



**ROSES—Continued**

**HUGONIS.** A striking, attractive shrub with healthy clean foliage. In early May it is a shimmering mound of single gold flowers. 80c each, postpaid.

**RUGOSA ROSE**

**F. J. GROOTENDORST.** Rugosa foliage, remarkable for bloom and bush characters. Blooms in clusters, fairly double red flowers. Price each, 80c; \$7.50 per 10.

**HARDY CLIMBING ROSES**

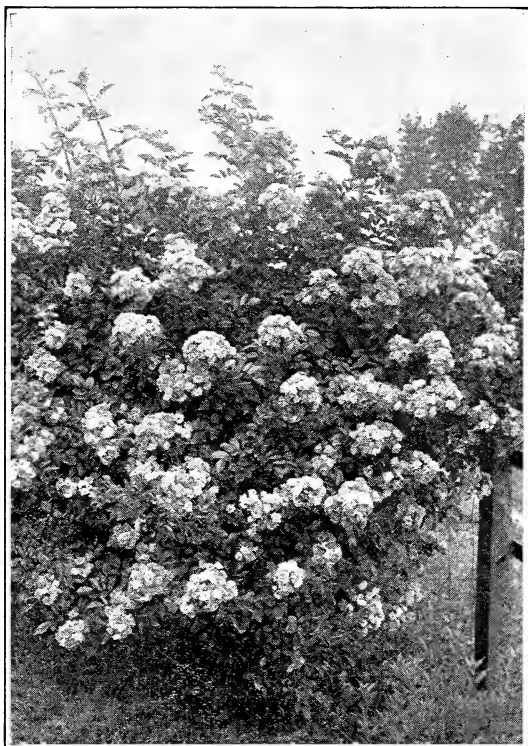
The Climbing Roses afford a burst of bloom and their attractive foliage is an object of beauty.

**CLIMBING AMERICAN BEAUTY.** As lovely, fragrant, and deep pink as the favorite bush form. It has perfect foliage, with strong climbing habit and flowers in great abundance. 80c each, \$7.50 for 10.

**CRIMSON RAMBLER.** The famous clustered climber. 80c each; \$7.50 for 10.

**DOROTHY PERKINS.** One of the most notable climbing Roses. The clear cherry-pink, slightly fragrant blooms are borne in great profusion and last a long time. Foliage glossy, bright green. 80c each; \$7.50 for 10.

**PRIMROSE.** New hardy yellow climber with double, canary-yellow flowers in great profusion. It is very new and everyone who has it is enthusiastic over its merits. \$1.25 each.



*Crimson Rambler*

**ROCK GARDEN PLANTS—Easy to Grow**

Everybody is Interested in Rock Gardens These Days.

The compactness is one of its charms and there is no end to the interesting combinations of rocks and plants.



Price each, 25c for 10; \$2.00 Postpaid; 5 at 10 Rates.

**ARABIS ALPINA** (Rockcress). Pure white flowers produced in dense masses. Splendid for border and rockery work. Blooms in May.

**AUBRIETIA** (False Wallcress). One of the daintiest and most delicately beautiful of all dwarf creeping plants. A gem for planting in crevices of rocks or wall. Color, white and blue. Blooms in spring.

**ALYSSUM** (Rock Madwort). Very popular, easy culture and free flowering. Yellow. Blooms all summer.

**VERONICA** (Speedwell).

**V. RUPESTRIS.** A fine rock plant growing 3 to 4 inches, deep green foliage, hidden in early June under a mass of bright blue flowers.

**SEDUM** (Stonecrop).

**S. ACRE.** A pretty species for rock work, well known and much used.

**S. SARMENTOSUM.** The best Sedum for filling seams between rocks in wall garden.

## EVERGREENS

Evergreens are the aristocrats of the home grounds. 'Tis true they have no flowers, but did you ever think, the blossoms are with us only a few days while the foliage is evident for months? There is no time of the year—spring, summer, fall or winter—that Evergreens are not pretty. Evergreens listed below are a few of the most desirable varieties for general landscape effects. Watering is necessary at planting time, then at regular intervals during the first summer except in a very wet season. Our Evergreens are dug with a ball of earth and wrapped in burlap. This should not be removed when the tree is set. Write us for prices on any variety or size not listed below. Packed for shipment by Express.



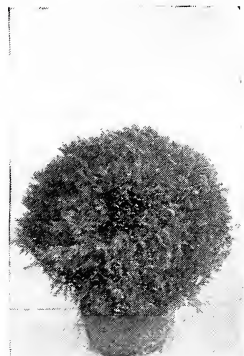
*Evergreens as an Entrance Planting*

**ARBORVITAE, AMERICAN.** A beautiful native evergreen; very hardy, and useful in landscape plantings. The evergreen hedge plant. 2 to 3 ft., \$3.00 each.

**A., PYRAMIDAL.** Narrow, pyramidal growth, very suitable for formal plantings, porch boxes, etc. Can be maintained at any size by trimming. 2 to 3 ft., \$4.25 each.

**A., GLOBE.** A dwarf, compact tree that grows in a perfect ball-like form 2 to 3 feet in diameter. Foliage bright green. Used in formal plantings, tube, etc. 12 to 15 in., \$2.50 each.

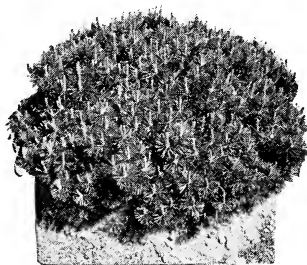
**BOX, TRUEDWARF** (*Buxus suffruticosa*). Familiar in old-fashioned gardens and used for edging. Endures much pruning. 8 to 10 in., 60¢ each; \$5.00 for 10; \$45.00 per 100.



*Globe Arborvitae*



*Pyramidal Arborvitae*



*Mugho Pine*

### SPECIAL OFFER

#### Five Favorite Evergreens for Lawn and Foundation Planting

	<i>Value</i>
Pyramidal Arborvitae - - - 2½ to 3 ft.	\$4.25
Ret. Plumosa Aurea - - 2 to 2½ ft.	4.00
Dwarf Swedish Juniper - - 1½ to 2 ft.	2.50
Pfizer's Juniper 2 to 2½ ft.	4.00
Golden Arborvitae - - - 1½ to 2 ft.	2.75
	<u>\$17.50</u>

By Express or Freight not Prepaid  
for \$15.75

**CYPRESS, PLUME** (*Retinospora plumosa*). An exceedingly handsome, acorn-shaped evergreen of medium tall growth, with light green feathery foliage. 2 to 2½ ft., \$4.00 each.

**FIR, DOUGLASI.** Bluish green leaves and handsome pyramidal growth. One of the most successful of American Firs for cultivation, withstanding heat and drought well. Makes a magnificent lawn specimen. 1½ to 2 ft., \$3.25 each.

**HEMLOCK, CAROLINA.** Reaches about 50 feet in cultivation. Unique in habit, with dark, dense, tufted foliage on sweeping, pendulous branches. Hardier and better adapted to trying city conditions than Canada Hemlock. 1½ to 2 ft., \$2.75 each.



**EVERGREENS—Continued**

**JUNIPER, IRISH.** A very attractive low evergreen, usually not over 3 to 4 feet high. Numerous branchlets well clothed with dark green foliage. Branches spreading or procumbent in nature, making it an excellent tree for rock work or dwarf planting. 1½ to 2 ft., \$3.50 each.

**J., TAMARIX SAVIN.** A spreading or procumbent evergreen, with erect stem, rarely over 3 feet high. A vigorous grower, forming a compact mat. Foliage bluish green. 1 to 1½ ft., \$3.00 each.

**J., PFITZER'S.** Low, broad pyramidal-shaped evergreen, with horizontal spreading branches. Beautiful lacy foliage, blue-green in color. One of the best dwarf forms. 1½ to 2 ft. spread, \$4.00 each.

**PINE, MUGHO.** Perhaps the most useful of the dwarf Pines for foundation planting. The growth is dense and low, seldom exceeding 4 feet. Specimens, 12 to 15 in., \$3.50 each.

**P., SCOTCH.** Spreading branches, becoming broad, round-topped and picturesque. Bark orange-red. 2 to 2½ ft., \$3.25 each.

**SPRUCE, COLORADO BLUE.** A wonderful ornamental with foliage of a silvery blue luster. Effective as a lawn specimen. 15 in., \$6.00 each.

**S., COLORADO GREEN.** Handsome tree of symmetrical habit with light-colored foliage. Very popular as a lawn tree. 2 to 2½ ft., \$4.00 each.

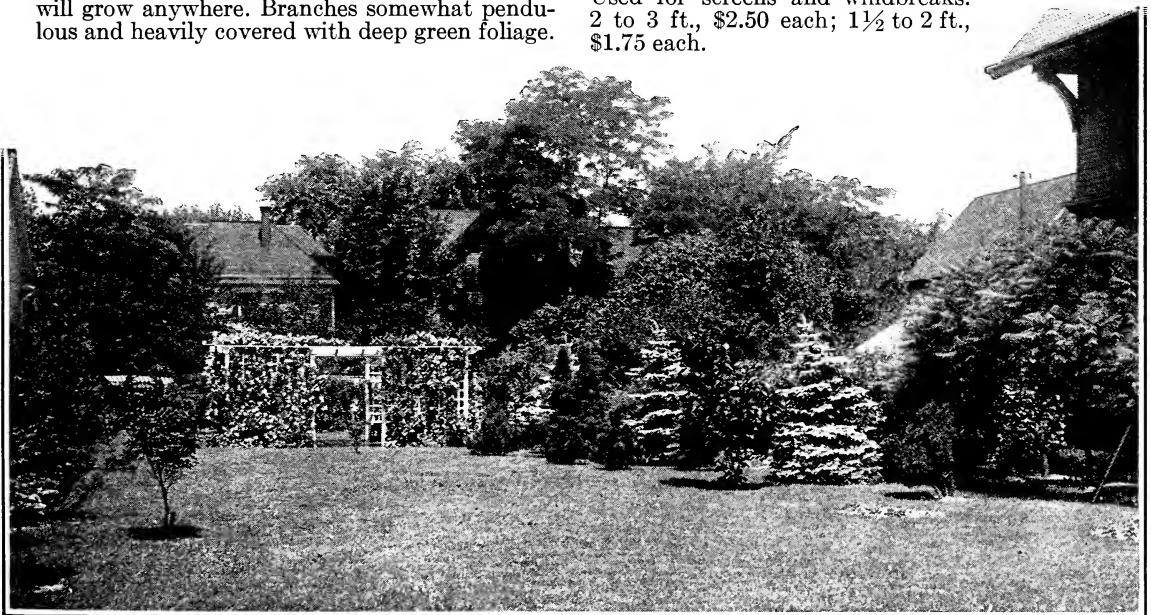
**S., KOSTER'S BLUE.** The most striking and beautiful of all evergreens. The silvery blue luster, perfection in form and symmetry make this tree extremely popular. All trees are grafted and rather scarce. 1½ to 2 ft., \$12.00 each.

**S., NORWAY.** A tall, graceful evergreen that will grow anywhere. Branches somewhat pendulous and heavily covered with deep green foliage.



*Colorado Blue Spruce*

Used for screens and windbreaks. 2 to 3 ft., \$2.50 each; 1½ to 2 ft., \$1.75 each.



*An Outdoor Living Room*





*Avenue of Maples*

**ORNAMENTAL TREES**

Packed for Shipment by Express.

		<i>Height</i>	<i>Each</i>
ASH,	European Mountain.....	6 to 8 ft.	\$1.75
BIRCH,	American White.....	6 to 8 ft.	2.25
BIRCH,	Cutleaf Weeping.....	6 to 8 ft.	3.00
CATALPA,	Bungei.....	5 to 6 ft.	1.75
CRAB,	Bechtel's Flowering.....	3 to 4 ft.	1.20
DOGWOOD,	Redflowering.....	2 to 3 ft.	3.75
	Whiteflowering.....	3 to 4 ft.	1.50
ELM,	American White.....	6 to 8 ft.	1.50
	American White.....	8 to 10 ft.	2.00



*Catalpa Bungei*

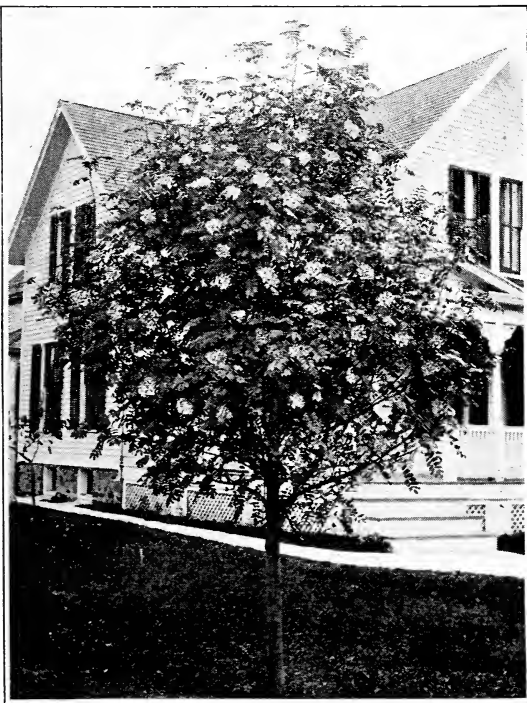


*Norway Maple*

**ORNAMENTAL TREES**

Packed for Shipment by Express

	<i>Height</i>	<i>Each</i>
HORSECHESTNUT .....	4 to 5 ft.	\$1.75
LINDEN, JUDAS TREE (Red Bud) .....	6 to 8 ft.	2.75
LOCUST, Honey .....	4 to 5 ft.	1.50
MAGNOLIA, MAPLE, Soulangeana .....	6 to 8 ft.	1.00
Japan Red-leaved .....	2 ft.	6.00
Norway .....	1 to 1½ ft.	5.00
Norway .....	6 to 8 ft.	2.50
Norway .....	8 to 10 ft.	3.75
Silver .....	6 to 8 ft.	1.35
Schwedler's Purpleleaf .....	6 to 8 ft.	3.50
Wier's Cutleaf Silver .....	6 to 8 ft.	1.75
MULBERRY, Tea's Weeping (2-year heads) .....	4 to 5 ft.	3.00
New American .....	4 to 5 ft.	1.50
Russian .....	5 to 6 ft.	1.00
OAK, Red .....	6 to 8 ft.	4.00
Pin .....	6 to 8 ft.	4.00
Flowering .....	3 to 4 ft.	.90
PEACH, Oriental, Sycamore, European .....	6 to 8 ft.	1.75
PLANE, Carolina .....	6 to 8 ft.	.50
POPLAR, Carolina .....	8 to 10 ft.	.60
Lombardy .....	6 to 8 ft.	.80
Lombardy .....	8 to 10 ft.	1.00
PLUM, Doubleflowering Pink .....	4 to 5 ft.	1.50
Purpleleaf (P. pissardi) .....	4 to 5 ft.	1.50
THORN, Paul's Scarlet Double .....	4 to 5 ft.	2.50
WILLOW, Wisconsin Weeping .....	6 to 8 ft.	1.00
WITCH HAZEL, Pussy (Salix caprea) French .....	\$6 for 10. 4 to 5 ft.	.75
.....	3 to 4 ft.	1.00



*Mountain Ash*



*Pin Oak*



# HUBBARD'S Cover Collection of Hardy Shrubs

One strong well rooted plant  
size 2 to 3 feet each of

Althea, Japanese Barberry, Bud-  
dleia, Deutzia, Forsythia, Phila-  
delphus Virginalis, Spirea,  
Anthony Waterer, Weigela,  
Snowberry, and Hydrangea  
Peegee, (*Tree shape 3 to 4 feet*).

A Retail Value of \$5.75

Entire Group (10 in all) Only \$4.70

*By Express. Charges not Prepaid.*



*Weigela Eva Rathke*

## Hubbard's Preferred Ten Everblooming Tea

### Roses

Columbia, Escarlate,  
Gruss an Teplitz,  
La France, Los Angeles,  
Marmon Crochet, Mme. Butterfly,  
Caroline Testout, Red Radiance,  
Souvenir de Claudius Pernet

*Strong field grown plants. Will  
bloom the first season*

All for only \$7.45

*Souvenir de  
Claudius  
Pernet*

## T.S. HUBBARD CO.

FREDONIA, N. Y.

Specialists in  
*Grape-Vines and High Grade  
Nursery Stock*

