

Historic, Archive Document

Do not assume content reflects current scientific knowledge, policies, or practices.

62.41

1914

INDEX

W. H. S. L.

INDEX

RECORDED
INDEX
AUG 1 1920
U. S. Department of Agriculture

ANNUAL CATALOG

OF

SMALL FRUIT PLANTS



Mayer's Plant Nursery
(THE BOHEMIAN NURSERYMAN)
MERRILL :: MICHIGAN

ANNUAL CATALOG

OF

INDEX

SMALL FRUIT PLANTS

and SEED POTATOES

INDEX

MAYER'S BERRY PLANTS PRODUCE

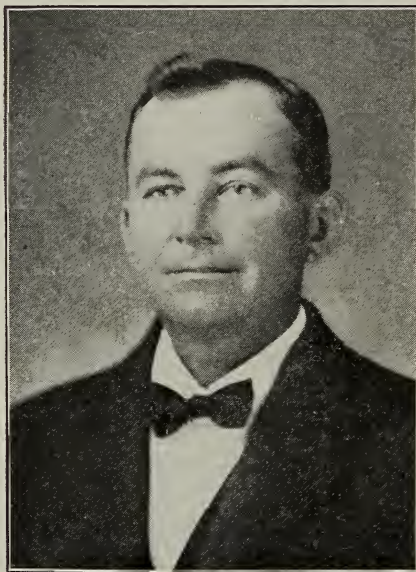
1 9 1 4

MAYER'S PLANT NURSERY

(BOHEMIAN NURSERYMAN)

MERRILL, MICHIGAN

MAYER'S PLANTS PRODUCE AND MAKE MONEY



M. MAYER, JR., Bohemian Nurseryman

TO MY CUSTOMERS AND FRIENDS

The growing of small fruit plants has almost been my life study, and my wide experience is shown to be appreciated by my many customers, kind words and kind regards from friends and customers make life worth living, and I trust in this catalog to show you a greater pleasure in buying from me than ever before. I am able to offer you, for the season of 1914, the best quality of small fruit plants that can be produced, as our weather conditions here in Saginaw valley were never better. My stock has grown vigorous and to full maturity, making assurance that you can not find better stock in the United States. I have used every effort, with my best judgment, and produced a quality which I offer in all confidence to you for 1914. With many thanks for your past favors, I remain,

Very truly yours,

M. MAYER, Jr.,

Bohemian Nurseryman.

MAYER'S PLANTS PRODUCE AND MAKE MONEY



My Home. Also two large plot houses where I grow thousands of all kinds of vegetable plants for home trade.

PROPAGATION PLANTS.

My stock is propagated to reach growth, health and vigor, and all varieties will produce abundant crops of fruit. Read sworn statements how each and every acre receives a dressing of my method and especially prepared stable manure just before planting selected plants from which is grown the stock I offer you.

PREPARING SOIL AND PLANTING.

I prefer sandy loam for all small fruit plants. Always have soil well-drained. Plow and work ground to a garden bed. Roll or float just before planting. Cultivate as soon as plants are set and always keep a dust mulch. Best fertilizer is good rotted stable manure; a green crop of any kind plowed under is good. Strawberry plants do best when planted 18 inches in rows and rows $3\frac{1}{2}$ feet apart. Keep all blossoms cut off new set strawberry plants first year. Red and black raspberry plants set three feet in the row and rows six feet apart.

DIGGING AND PACKING.

Digging begins in March and continues until May 10th. Plants are nicely trimmed ready for planting, tied 25 in a bunch and labeled true to name; packed in moss, and will reach destination in good growing condition. No charges for boxes, crates, baskets, or sacks. All varieties are nicely picked and carefully separated when more than one variety are ordered.

ORDERING AND SHIPPING.

Kindly remit cash with order, if possible; I will appreciate it. Orders will be booked without remittance, but same must be received before shipment is made. In looking up your reference it takes time, and in case of a list of 500, you can see why I appreciate cash with order. Always use order sheet inclosed and write your name, address, shipping point and varieties very plainly. All prices are F. O. B. Merrill, Mich. I have a close estimate of all varieties, and most important of all—ORDER EARLY, as plants are reserved when booked for you. I predict a shortage of plants in many locations in the United States on account of weather conditions.

MAYER'S PLANT NURSERY, MERRILL, MICH.



**Straw Mulch on Strawberries. Plants are protected while dormant.
A Scene at My Nursery.**

GUARANTEE.

I guarantee every plant to be first class and true to label. I guarantee safe delivery of your order and in good growing condition by Express or Mail (freight delivery shipments at purchaser's risk). All varieties are guaranteed true to name. If they prove untrue to name, upon receipt of proper proof your order will be refilled with double the amount of your original order. I positively stand by my product. After receiving your order and before planting same, if you are not satisfied I will refund money, but the order must be returned to me. These conditions are accepted as above stated and no others are binding by me.

REMITTANCE.

Make remittance payable to Mayer's Plant Nursery, or M. Mayer, Jr. Remittances can be sent by Postoffice Money Order, Bank Draft, or Express Order.

REFERENCE.

State Bank of Merrill, R. T. Maynard, cashier. Inclose stamped envelope for reply and you will never be disappointed. Also my many customers in most every state in the union.

TO HELP PAY TRANSPORTATION.

I make prices very low in order to partly offset transportation charges on all orders to every state in the union. My plants are best each year. I get thousands of testimonies, and from warmer states, telling how my northern-grown plants are better than the rest. I make money at my prices quoted in this catalog. Don't compare this little business book of mine with some big or over elaborated catalog, but be sure to compare my price and guarantee with any catalog you may receive. Every issue this copy will be in your favor; I don't believe in publishing testimonies, my space is limited and more valuable. I have them on file and they are yours for the asking. But I am interested in showing a few photos; every photo in this catalog was taken at my nursery by Mr. A. -- McBride, our photographer in Merrill, Mich., and are true scenes at my nursery. You are welcome to visit my nursery and I will show you many better scenes.

MAYER'S PLANTS PRODUCE AND MAKE MONEY



No. 1, Helen Davis. No. 2, Parson's Beauty. No. 3, Warfield. No. 4, Senator Dunlap.
No. 5, Early Michael. No. 6, S. L. Champion.

PHOTOS.

Six productive varieties, and how I grow them: (Length of roots from crown.) No. 1—Helen Davis, 9 inches; No. 2—Parson Beauty, 11½ inches; No. 3—Warfield, 8 inches; No. 4—Senator Dunlap, 12½ inches; No. 5—Michael's Early, 9¾ inches; No. 6—Stevens' Late Champion, 10 inches.

I hereby certify that the above photo was taken from actual specimens taken from my strawberry beds and that the said measurements were actually made from same.

(Signed) MICHAEL MAYER, JR.

STATE OF MICHIGAN, County of Saginaw—ss.

Subscribed and sworn to before me, a Notary Public, this 18th day of October, 1913.

(Signed) RAY T. MAYNARD,
Notary Public in and for Saginaw County, Mich.
My commission expires Oct. 5, 1916.

Work along lines of Horticulture, Plant Breeding and Improver of Seed Potatoes.



Senator Dunlap Variety in beautiful white sheet of blossom. My strain.

VARIETIES OF STRAWBERRIES.

Helen Davis. (P.) The plant is a strong, vigorous grower, and never shows any sign of disease; the runners just the right length to layer properly without crowding. Fruit stalks are large. The fruit is held up and is easily gathered. The fruit grows in clusters, some stems having as many as thirty berries on them, with as many as ten stalks to the plant. I have never seen a plant equal it. The fruit is large and attractive and holds up well in size throughout the season. Have picked berries from it as late as the fourth of July. It has a light crimson color which extends clear through and has a flavor which cannot be excelled.

The berry is sweet, and is a fine berry for canning. It is a heavy cropper, and will yield perfect berries, and is a strong pollenizer for imperfect varieties. It will go through hard frosts and bear a good crop of fruit. Give Helen Davis a trial, and I am sure you will be pleased.

Stevens' Late Champion. (P.) This late variety seems to do well wherever tested. Very large, good shipper, a heavy yielder. It ripens later than the Gandy.

Parsons' Beauty. (P.) Grown throughout the country on account of its productiveness.

? **Crescent.** (Imp.) Medium early; medium size.

Michel's Early. (Per.) Extra early. Healthy, rampant, many crowns; berries scarlet, rich.

Jessie. (P.) The Jessie is an exceedingly fancy berry.

Chipman. (P.) Where it is largely grown and has proved profitable.

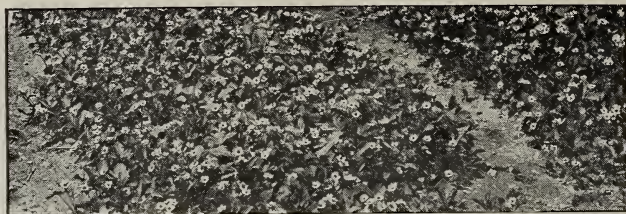
Klondike. (P.) Grown more extensively than in the southern states.

Bubach. (I.) Large, round fruit; mild flavor; heavy yielder.

Bismarck. (Per.) Firm, scarlet berries of unusual size.

Senator Dunlap. (P.) This is the best all-around berry before the American public today. It is a hardy plant, has a long flowering season, resists drought; dark red color; very productive. Mid-season to early. I sell more Senator Dunlap plants than any other variety in every state in the union.

MAYER'S PLANTS PRODUCE AND MAKE MONEY



The Famous Money-Making Warfield Variety. Just beginning to blossom.

Aroma. (P.) Originated by Mr. Cruse of Kansas. For several years this berry has been growing rapidly in favor, and is now the leading late variety throughout the country.

Gandy. (P.) Originated by Dr. Gandy of Pennsylvania, and today without exception is the most universally planted of any late season variety.

Oswego. (P.) It is enormously productive.

Brandywine. (P.) Red; great yielder of large, round, fine quality of berries.

Giant. (Per.) Largest vines of any berry grown. Productive bearer. Try one hundred Giants for a surprise.

Pineapple. (P.) A delicious variety, having the true sweet strawberry flavor.

Duncan. (Imp.) Midseason. It has a great deal of merit.

Bedarwood. (Per.) Unusually large roots, which go deep. Dry weather has little effect on them. Sure producer of large crops.

Pride of Michigan. (Per.) The variety is productive and the fruit is large.

Blizzard-Belt. (Per.) Variety sent out by the Gardner Nursery Co., of Iowa, with marks of merit and vigor.

Warfield. (I.) Bears picking daily. The berries are of good quality, dark color, medium size, firm. A very profitable berry for nearby or distant market.

Ridgeway. (Per.) Plants large and stocky. A good pollenizer for pistillate varieties.

Marie. (Imp.) Berries large, even in size, and dark color as the Gandy. Very productive.

Fendoll. (Imp.) It is a good strong grower, making plenty of plants with large foliage and long roots. The fruit is very large.

Sample. (I.) Large size and fine quality; continues a long time in fruit. For the market men it is the best strawberry ever grown. It will yield as many berries as the Haverland. Colors all over at once. There is not a weak spot in it.

MAYER'S PLANT NURSERY, MERRILL, MICH.



Winter Scene of my one-year-old Cuthberts in about
14 inches of snow.

Springdale Beauty. (Per.) The fruit is large, firm, and of high quality, resembling the Marie in appearance, and the two sorts make a good team.

August Luther. (Per.) Well-known standard early market variety; a vigorous, healthy grower, productive and reliable. Fruit good to large size.

Auto. (Per.) Unusually vigorous. Bears heavily even in dry weather. Large; excellent quality and flavor.

Corsican. (Per.) This is a favorite variety. The plants are large and good growers.

Climax. (Per.) Fruit large; red to the center; firm, handsome and of good quality.

Enhance. (Per.) Late. Fruit large, bright red, firm, good quality. Plants tough, healthy and vigorous.

2 **Glen Mary.** (P.) Dark, though in productiveness it seems to excel almost all varieties.

2 **Haverland.** (I.) Fruit large and fine. One of the most popular of the well-tested varieties.

Uncle Jim. (Per.) Late. One of the finest and best of all the large berries.

Wilson. (Per.) Good, all-around berry. A standard variety.

RASPBERRY PLANTS.

Cuthbert. Red raspberry. Very productive and hardy. I have a fine block of two-year plants, strictly No. 1. Price: 100, \$1.00; 500, \$3.75; 1000, \$6.50.

Cumberland, Grigg, Kansas. Black raspberries. Good stocky plants. Price: 100, \$1.50; 500, \$6.50; 1000, \$13.00.

CURRENTS.

Faf's Prolific, London Market, Victoria. Each, 15 cents; dozen, \$1.50.

BLACKBERRIES.

Eldorado, Snyder. Dozen, 80 cents; 100, \$1.75; 1000, \$15.00.

GRAPES.

Concord and Worden. Fine two-year vines. Each, 10 cents.

MAYER'S PLANTS PRODUCE AND MAKE MONEY

ASPARAGUS.

Palmetto. Large size. Fine quality. Each, 5 cents.

FRUIT TREES.

Each year I receive many inquiries for Apple, Pear, Plum and Peach trees. This year I have made arrangements whereby I can fill orders very satisfactorily with true-to-name No. 1 stock and guaranteed to reach you in good growing condition. I will personally inspect stock when entering your order at one of the most reliable Michigan nurseries. These prices are for No. 1 stock only and F. O. B. nursery. Write for special prices on orders of over one hundred trees.

Price for Apple, Pear and Plum. Two-year-old trees, No. 1; each, 40 cents; dozen, \$4.20; 100, \$30.00.

Price on Peach. One-year trees, No. 1; each, 25 cents; dozen, \$1.50; 100, \$18.00.

VARIETIES.

Summer Apples. Yellow Transparent, Red astrachan, Sweet Bough.

Autumn Apples. Duchess of Oldenberg, Golden Sweet.

Winter Apples. Baldwin, Jonathan, King, McIntosh Red, Northern Spy, Rhode Island Greening, Northwestern Greening, Stark, Winter Banana, Wagner.

Pears. Bartlett, Clapp's Favorite, Howell, Seckel, Kiffer.

Plums. Abundance, Lombard, Bradshaw, Burbank.

Peach. Kalamazoo, Engle's Mammoth, New Prolific, Elberta, Late Crawford, Hill's Chili, Gold Drop, Smock, Champion, Early Crawford, Salway, Crane's Early.

MELON SEEDS.

Rocky Ford Standard Muskmelon. Large pkt., 10 cents; ounce, 15 cents; pound, \$1.85.

Hart's Victory Cantaloupe. Large pkt., 10 cents; ounce, 15 cents; pound, \$1.85.

I am central Michigan distributor for above seed and carry a large stock of this year's seed and ship direct to you, via parcel post, to any address in the union at above price.

SEED POTATOES.

Early Varieties. Early Ohio, Early Petoskey, Peck's Early, Early Queen, German Early Rose, Pokomok.

Late Varieties. Carman No. 3, Late Petoskey.

All the above varieties represent choice, large stock.

Prices of Seed Potatoes. Per bushel, \$1.35; 5-bush. lots, per bushel, \$1.10; 10-bush. lots, per bushel, \$1.00. No order accepted for less than one bushel.

Quality of Seed. All my seed potatoes are grown on my nursery in specially prepared soil. Customers planting my seed are assured of vigorous, quick growth and abundant crops. Never in the history of my nursery have I had as good seed potatoes as this year, and hundreds of testimonial letters each year have been received telling of their superior quality, vigorous growth, abundant crops and early harvest.

MAYER'S PLANT NURSERY, MERRILL, MICH.

PRICE LIST.

On all varieties of Strawberry Plants grown by Mayer's Plant Nursery,
Bohemian Nurseryman.

Varieties marked (Imp.) are pistillate and must be planted near some perfect blooming varieties. Varieties marked (Per.) are perfect and can be planted by themselves. Prices are F. O. B. Merrill, Michigan. I advise that plants be shipped by express. By mail, add 20 cents per 100 plants.

Early Varieties—	Per 100	Per 500	Per 1000
August Luther (Per.).....	40c	\$1.25	\$2.00
Crescent (Imp.).....	40c	1.45	2.50
Michel's Early (Per.).....	40c	1.10	1.65
Jessie (Per.).....	40c	1.55	2.75
Beaderwood (Per.).....	40c	1.45	2.50
Warfield (Imp.).....	40c	1.25	2.25
Springdale Beauty (Per.).....	40c	1.45	2.50
Climax (Per.).....	40c	1.25	2.25
Blizzard Belt (Per.).....	40c	1.10	2.00
Helen Davis (Per.).....	50c	1.45	2.75
Midseason Varieties—			
Parson eBauty (Per.).....	40c	1.25	2.25
Chapman (Per.).....	40c	1.45	2.50
Osewago (Per.).....	40c	1.55	2.75
Klondike (Per.).....	40c	1.45	2.50
Bubach (Imp.).....	40c	1.55	2.75
Bismarck (Per.).....	40c	1.45	2.50
Senator Dunlap (Per.).....	40c	1.20	1.65
Giant (Per.).....	40c	1.45	2.50
Pineapple (Per.).....	40c	1.25	2.00
Duncan (Imp.).....	40c	1.55	2.75
Ridgeway (Per.).....	40c	1.55	2.75
Marie (Imp.).....	40c	1.25	2.00
Auto (Per.).....	40c	1.55	2.75
Corsican (Per.).....	40c	1.55	2.75
Glen Mary (Per.).....	40c	1.55	2.75
Haverland (Imp.).....	40c	1.55	2.75
Late Varieties—			
Gandy (Per.).....	40c	1.45	2.55
Aroma (Per.).....	50c	1.55	2.75
Steven's Late Champion (Per.).....	40c	1.45	2.25
Brandywine (Per.).....	40c	1.45	2.50
Pride of Michigan (Per.).....	40c	1.55	2.75
Fendall (Imp.).....	40c	1.45	2.50
Sample (Imp.).....	40c	1.45	2.50
Enhance (Per.).....	40c	1.55	2.75
Uncle Jim (Per.).....	40c	1.55	2.75
Wilson (Per.).....	40c	1.45	2.50

Positively no discount on 100, 500, 1000 plants. I will make special price on orders of 5000 plants or more. The above varieties are strong, well rooted and No. 1 stock.

I will be glad to advise on express charges or any matter that may be of value to your best interest. Don't lay this little business book away before sending me your order; talk to your neighbor, he may want to send with you. It is better for him, you and myself.

With best wishes, I surely await your order, and remain,

Yours very truly,

MAYER'S PLANT NURSERY,

Bohemian Nurseryman.

MAYER'S PLANTS PRODUCE AND MAKE MONEY



**Vigorous vines of my Seed Potatoes where selected stock
is sure to be found.**

LICENSES AND INSPECTION.

I carry licenses for selling nursery stock. Also, see certificate of nursery inspection, a copy of which is sent with every shipment for inspection.

CERTIFICATE OF NURSERY INSPECTION

No. 1333

This is to Certify, That I have examined the nursery stock of Michael Mayer, Jr., Merrill, Michigan, and find it apparently free from dangerous insects and dangerously contagious tree and plant diseases.

This certificate to be void after July 31, 1914.

L. B. TAFT,

State Inspector of Nurseries and Orchards

Agricultural College, Mich., Aug. 4, 1913

MAYER'S PLANT NURSERY, MERRILL, MICH.



Piles of manure after treatment, ready for top dressing, just before planting. By my method hundreds of loads each year are prepared and from 8 to 14 loads are used per acre.

DOES IT INTEREST YOU?

I hereby certify that I have fertilized by my method with especially prepared stable manure every acre planted to strawberries for nursery purposes in the spring of 1913.

MAYER'S PLANT NURSERY,
M. Mayer, Jr., Proprietor.

STATE OF MICHIGAN, County of Saginaw—ss.

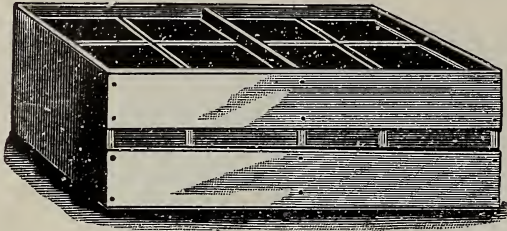
Subscribed and sworn to before me, a Notary Public, this 18th day of October, 1913.

(Signed) RAY T. MAYNARD,
Notary Public in and for Saginaw County, Mich.
My commission expires Oct. 5, 1916.



Fall Plowed Ground. Every Acre for Planting is Fall Plowed at Mayer's Plant Nursery.

Thirty-five Years' Experience in Manufacturing
makes us reliable headquarters for



BERRY CRATES

Six-basket Peach Crates

Climax Melon Baskets

Grape and Peach Baskets

Bushel and Half-Bushel Baskets

Four-Basket California Crates

SEND FOR ILLUSTRATED PRICE LIST

WELLS-HIGMAN COMPANY

ST. JOSEPH, MICHIGAN

Berry Crates

Berry Boxes

Bushel Baskets

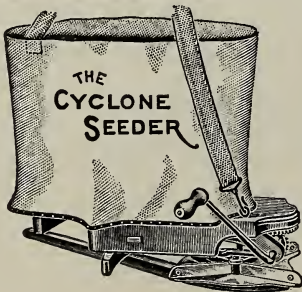
All Kinds of Fruit and Vegetable Packages
Baskets for Shipping Grapes and Peaches
BEST GOODS PRICES RIGHT

Goods Sent in the Flat or Made Up

Catalog Mailed Free on Application

—ADDRESS—

COLBY-HINKLEY CO., Benton Harbor, Mich.



The CYCLONE Hand Broadcast SEED SOWER

Has stood every test of more than forty years of exacting service. The materials used in its construction are of the best available. It will sow all varieties of Farm Seeds that can be sown broadcast, and with ease to the operator. **FIVE ACRES PER HOUR** is a fair average for the Cyclone. The Cyclone differs materially and very advantageously from all other sowers, in having a

PATENT NON-SOLDER, DOUBLE-FLANGE DISTRIBUTING WHEEL, A SLOPE FEED-BOARD AND OBLONG HOPPER,

which terminates in a metal edge on which oscillates a **Steel Feed Hopper**, which does not allow the seed to clog, but makes a positive **Force Feed**, and insures a uniform flow and even distribution of all farm seeds. The feed gauge can be adjusted closely for any kind of seed, and opened and closed instantly and automatically without disturbing the adjustment. Full directions accompany each machine. Every one warranted. Price, **\$1.50** each.

NOTE.—These goods are sold by the trade generally, and if you cannot secure them from your local dealer we will send you, upon receipt of above price, one Cyclone Seeder with latest improvements, by express, prepaid.

THE CYCLONE SEEDER CO., Manufacturers, Urbana, Indiana

Order Sheet

Please oblige us and use this sheet when you send us your order.

MAYER'S PLANT NURSERY, Merrill, Michigan.

Name	Amount Inclosed,	
Postoffice	P. O. Order,	\$
County	Express Order,	\$
State	Check, - -	\$
Express Office	Cash, - -	\$
Freight Station	Total, - -	\$

Forward about, Month **Day of month**

Do not write your letter on this sheet.

No. of Plants	VARIETY	PRICE	
.....
.....
.....
.....
.....
.....
.....
.....
.....
.....
.....
.....
.....
.....
.....
.....
.....
.....
.....

MAYER'S PLANTS PRODUCE AND MAKE MONEY



Improved Seed Potatoes growing on my nursery.

PRESS OF SMITH & STOELKER
Saginaw, W. S., Michigan

