

Historic, Archive Document

Do not assume content reflects current scientific knowledge, policies, or practices.

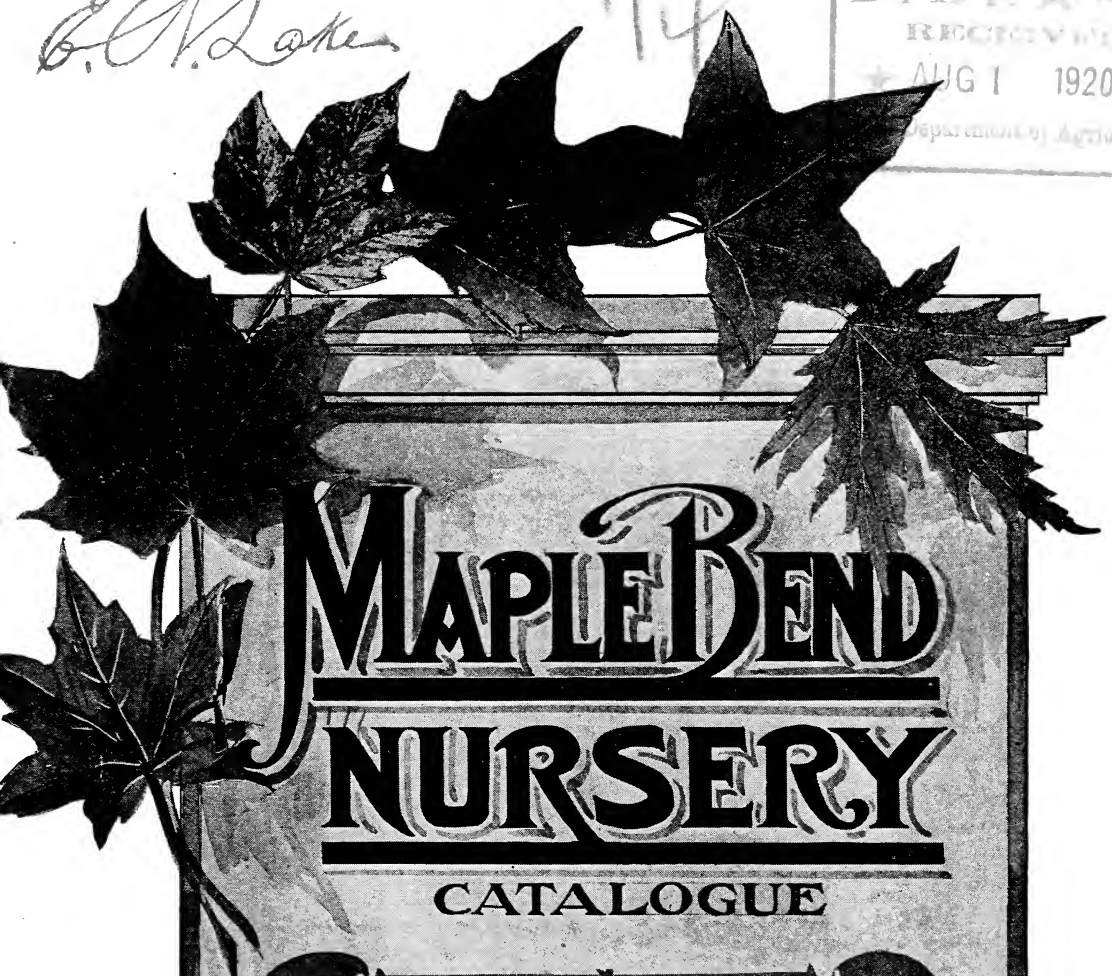
INDEXED

INDEXED

62.6
T. B. West

114

LIBRARY
RECEIVED
★ AUG 1 1920 ★
Department of Agriculture



MAPLE BEND NURSERY

CATALOGUE

FRUIT AND ORNAMENTAL
TREES, SHRUBS, GRAPE VINES,
SMALL FRUIT PLANTS, ETC.

T. B. WEST
PERRY, OHIO.
LAKE COUNTY

PERRY TELEPHONE
No. THIRTY ONE.



CONDITIONS OF SALE.



IN FILLING ORDERS from this list we reserve the right, in case we are out of a variety, to substitute another of equal merit when it can be done (always labeling with the correct name), unless the party ordering says, "no substituting," in which case we will fill the order, so far as we can, and return the balance.

All goods ordered from this list must be sent by express or freight, customers paying charges on receipt of goods.

All heavy trees in large amounts should be sent by freight, as charges are so much less, and our perfect packing admits of a long journey without injury to trees.

Always give full and explicit directions for shipping, as our responsibility ends on delivery of trees in good condition to the freight office.

We shall be pleased to quote prices to anyone desiring different sizes of stock in larger quantities than offered herein. In sending list state definitely the number of each variety and size wanted.

We guarantee all stock to be up to size and grade specified in list, to be in good condition and carefully packed; this guarantee holds good only when prompt notification on arrival of stock is sent us, stating plainly any errors or cause for complaint.

While we exercise the greatest diligence and care to have all our trees, etc., true to label, and hold ourselves in readiness, on proper proof, to replace all trees, etc., that may prove untrue to label free of charge or refund the amount paid, it is mutually understood and agreed to between the purchaser and ourselves, that the guarantee of genuineness shall in no case make us liable for any sum greater than that originally received for said trees, etc., that prove untrue.



TERMS—Cash with order unless otherwise agreed upon.

REMITTANCES should be made by P. O. Money Order, Registered Letter, Express Money Order or New York Draft.

Can ship on Lake Shore or Nickel Plate Railroads and American or National Express Companies from Perry, O.

On orders of \$10 and upwards everything may be selected at the 100 rate regardless of quantity taken.

Get your neighbors to club with you and take advantage of the above low rates.

In all cases 5 will be furnished at the 10 rate, and 50 at the 100 rate.

On orders amounting to \$100.00 and over 5 per cent may be deducted from the footings of the order.

Correspondence solicited where stock is wanted in larger quantities than here quoted.

HINTS ON TRANSPLANTING.

We cannot urge too strongly the necessity of protecting the roots of trees and plants from the sun and wind. The failure of trees to start a vigorous growth after transplanting is often caused by too much exposure of the roots to the air or a lack of sufficient moisture about the roots while out of the ground; yet a healthy tree may be taken fresh from the ground where it grew, kept in the best possible condition, and when properly transplanted die from some unknown cause. A feeble growth is usually caused by not having the ground in proper condition at the time of transplanting, or by a lack of after-cultivation.

When the trees are received open the bundles and "heel in" so that the mellow earth comes in contact with all the roots. If the ground has been properly prepared the holes need not be dug larger than is necessary to receive the roots in their natural position. If the trees are to be planted in sod land the holes should be four or five feet in diameter and eight or ten inches deeper than is necessary to plant the tree, filling up with well-worked surface soil.

Before planting cut away all broken and bruised pieces of roots with a sloping cut from the underside, and shorten in the branches to one-third of last season's growth. Work the fine soil in among the roots, and when well covered pack firmly. If the ground is dry use a bucketful of water to each tree. Fill the hole a little more than level full, leaving the surface loose. Never allow manure of any sort to come in contact with the roots.

Do not set the trees too deep; one or two inches deeper than they stood in the nursery row is deep enough.

DISTANCE FOR PLANTING.

Apples.....25 to 30 feet	Pears, standard.....18 to 20 feet
Peaches.....14 to 18 "	" dwarf.....10 "
Nectarines.....14 to 18 "	Apricots.....16 to 18 "
Cherries.....12 to 15 "	Plums.....10 to 12 "
Quinces.....8 to 10 "	Grapes.....6 to 8 "
Currants.....3 to 4 "	Gooseberries.....3 to 4 "
Raspberries.....2 by 6 "	Blackberries.....2 by 6 "
Strawberries.....1½ by 3½ "	Asparagus.....2 by 3½ "

NUMBER OF TREES, ETC., ON THE ACRE.

1x1 foot.....43560	.5x5 feet.....1742
2x2 feet.....10890	6x6 ".....1210
3x1 ".....14520	8x8 ".....680
3x2 ".....7260	10x10 ".....435
3x3 ".....4840	12x12 ".....302
4x1 ".....10890	15x15 ".....163
4x2 ".....5445	16x16 ".....170
4x3 ".....3630	18x18 ".....134
4x4 ".....2722	20x20 ".....108
5x2 ".....4356	25x25 ".....69
5x3 ".....2904	30x30 ".....48
5x4 ".....2178	33x20 ".....66

The number of plants required for an acre at any given distance apart may be ascertained by dividing the number of square feet in an acre (43,560) by the number of square feet given to each plant, which is found by multiplying the distance between the rows by the distance between the plants in the row. For example: Plum trees planted 10 feet apart each way gives each tree 100 square feet, or 435 trees per acre.

PERRY is situated 35 miles east of Cleveland, and 6 miles east of Painesville on the direct line of the Lake Shore & Michigan Southern and N. Y., C. & St. L. (Nickel Plate)

We will gladly price anything not found on this list, which probably we have in smaller quantities.

APPLE TREES—Continued

FALL APPLES

- Duchess of Oldenberg—Beautiful striped red over greenish yellow ground. One of the most valuable Russian varieties.
- Gravenstein—Large, striped, fine quality.
- Maiden Blush—Creamy yellow flushed with red. Good and productive.
- Pumpkin Sweet—Large, round, yellowish russet.
- Munson's Sweet—Large; fine flavored; productive.
- Rambo—A fine, red apple of excellent flavor.

WINTER APPLES

- Baldwin—A standard market apple. Large; deep red.
- Ben Davis—Large; handsome; brightly striped with red. Good keeper.
- Grimes' Golden—Medium to large; beautiful golden yellow; excellent quality; good keeper.
- Winter Banana—Fruit large and smooth; golden yellow with red cheek; subacid, of the highest quality. It is one of the best apples on the list.
- Delicious—One of the newer varieties which has been very successful wherever it has been tried; large, brilliant dark red of the best quality; splendid keeper. This is an apple with a great future.
- Stayman's Winesap—One of the finest apples grown; medium size; red on yellow ground; highly flavored. Season from November to April.
- King (Tompkins Co.)—Very large; red; very productive.
- Northern Spy—Large; striped. Tree vigorous and hardy. Best quality.
- Northwest Greening—Greenish yellow; good flavor; long keeper. One of the best winter sorts.
- R. I. Greening—One of the best known winter apples. Large; size; yellowish green. One of the best cooking apples.
- Wagner—Red; flesh white and tender; best quality.
- Wealthy—Color, rich red, of good quality. Tree bears young and abundantly. One of the best of the Russian varieties.
- Pewaukee—Medium to large; bright yellow flushed with red, and of the best quality. Tree very hardy and a good grower.
- Jonathan—Medium size; pale yellow heavily flushed with red. One of our very best apples.
- Hubbardson's Nonesuch—Large; handsome red. One of the best flavored apples. Very productive.
- York Imperial—Long esteemed for its productiveness and good quality of its fruit. Medium size; smooth; clear waxen yellow flushed with carmen. One of our very best apples.

OTHER WINTER APPLES

- Fallawater or Tulpehocken, Fameuse, Gano, Stark, Sutton Beauty, Talman Sweet, Mann, Paradise Winter Sweet, Roxbury Russett, Rome Beauty, Twenty Ounce, Domonie, Wolf River, McIntosh Red, Walbridge.
- Hyslop—Crab. Tree large; deep red fruit and hanging thickly in clusters. One of the very best.
- Transcendent—Crab. Fruit bright yellow striped with red. Immensely productive.
- Whitney—Crab. A good early variety; smooth and glossy, green striped with carmen. Tree hardy and vigorous.

DWARF APPLES

- | | | |
|--------------------|--------|---------|
| | Each | Per 10 |
| Dwarf Apples | \$0.35 | -\$3.00 |
- Dwarf apples are very desirable for planting, as they take up very little room and bear fruit at an early age, often the second or third year after planting.

CHERRY TREES

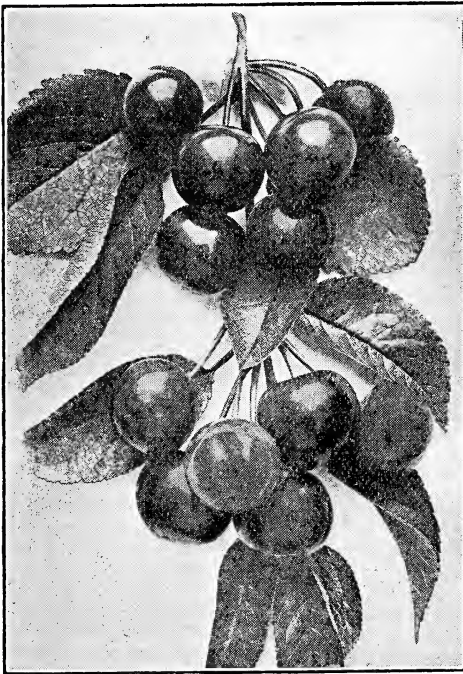
Cherry trees are one of the most profitable fruits grown. An acre of cherries well cared for, will pay as good returns as an acre of oranges in California. Planted from 16 to 20 feet apart. Early Richmond and Montmorency are the leading varieties in sour; Windsor, Gov. Wood and Black Tartarian in sweet.

We have known parties just planting along the roadside in place of the ordinary shadetrees to have rows that netted them from \$200.00 to \$400.00 a year. Making one of the most beautiful roadside trees that is grown.

Cherries will succeed on almost any well drained soil, but do best on soil of a sandy or gravelly nature.

	Each	Per 10	Per 100
Sweet, 5 to 6 feet.....	\$0.30	\$2.50	\$20.00
Sweet, 4 to 5 feet.....	.25	2.00	15.00
Sour, 4 to 5 feet.....	.25	2.00	20.00
Sour, 3 to 4 feet.....	.35	2.00	15.00

SWEET VARIETIES



MONTMORENCY CHERRIES

Allen—New variety; fine size and appearance; glossy crimson black; very prolific. Season, late July and early August.

Black Tartarian—Very large; purplish black; heavy cropper; fine, erect grower. Late June and early July.

Gov. Wood—One of the best light red cherries; large and delicious. June.

Rockport—Light red and amber; sweet and good. June and early July.

Windsor—Fine, large, liver colored cherry; flesh firm and good. Valuable for late market and home use. July.

Yellow Spanish—Large; pale yellow with light red cheek. Late June.

SOUR CHERRIES

Dyehouse—Bright red; very productive. Ripens one week earlier than Early Richmond.

Early Richmond—One of the most popular and valuable sour cherries; very prolific. The leading market variety. Late June.

Montmorency—Larger and finer than early Richmond. One of the finest of this class. Early July.

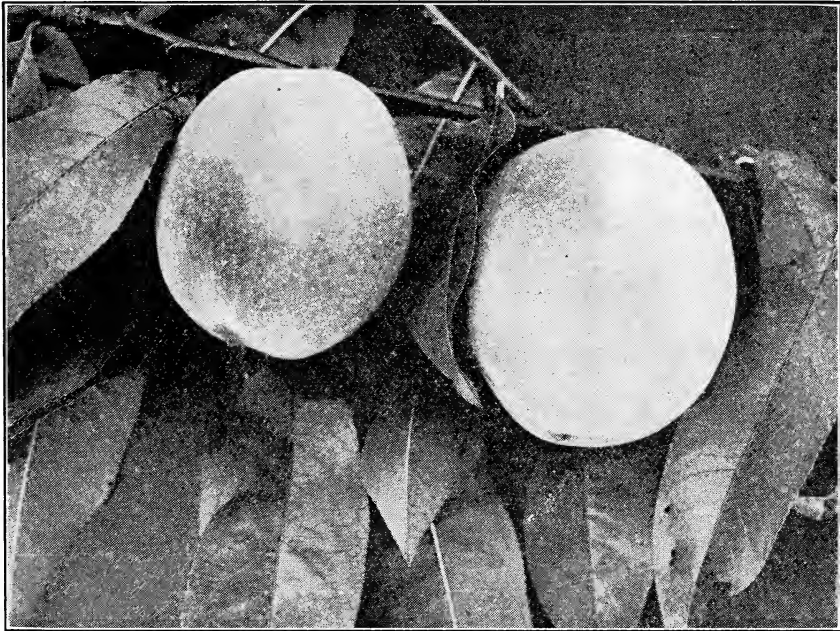
May Duke—Large; dark red. A superior and productive old sort. June.

Eng. Morello—Large; dark purplish red; very productive. First of August.

OTHER SOUR CHERRIES

Louis Phillippe
Reine Hortense

Empress Eugenia
Wragg



LEMON FREE

PEACH TREES

We consider ourselves very successful in growing Peach trees. Conditions of soil and climate at our location near the south shore of Lake Erie enable us to grow the most perfect and healthy trees. We have supplied for many years some of the largest and most successful Peach growers of the country with trees of our own growing and we point with pride to many orchards bearing fruit from our stock.

Peach trees need a warm, well drained soil and should be planted about 16 to 18 feet apart. Peach trees are one of our specialties, we grow and sell hundreds of thousands to the leading orchardists of Ohio, New York, Pennsylvania and Michigan. We have climate conditions that produce trees that are as near perfect as possible. Peach trees will begin to bear when 3 to 4 years of age.

	Each	Per 10	Per 100
4 to 6 feet.....	\$0.20	\$1.35	\$9.00
3 to 4 feet.....	.12	1.00	6.00
2 to 3 feet.....	.10	.75	5.00

All Peaches in this list are free stone, except otherwise noted.

EARLY VARIETIES

- Alexander—Very early; white flesh. Cling.
- Mt. Rose—White flesh; early; very productive; good.
- Carmen—Large; white blush; very good; hardy in tree and bud.
- Champion—White flesh; quality excellent. One of the best early.

PEACH TREES—Continued

- Yellow St. John**—Nearly as large as Crawford. One of the best early yellow.
- Early Crawford**—The standard early yellow peach.
- Foster**—Large; deep orange red; flesh yellow; excellent.
- Fitzgerald**—Fine, hardy, yellow variety. A little later than Early Crawford. Best quality.
- Slappy**—About ten days earlier than the Elberta, having much the same shape and appearance as that variety; good shipper and has been very popular in Catawba Island where it was first tried out in northern orchards.

MID-SEASON

- Captain Ede**—A large, yellow, free stone. A little earlier and said to be an improvement on the Elberta. A very good peach.
- Elberta**—Large; yellow. The leading market variety.
- New Prolific**—Choice, large, yellow peach; hardy and productive.
- Kalamazoo**—Large; golden yellow; crimson cheek; fine flavor and small pit.
- Old Mixon**—A large, handsome, free stone; white flesh.
- Crosby**—Of medium size; flesh yellow; good flavor, very productive.
- Matthews Beauty**—Skin golden yellow streaked with red; flesh yellow and firm. Best of quality and equal to the Elberta in market qualities. Ripens later.
- Stearns**—In size, equal to the Elberta, but superior to that sort and hardier. Tree strong, upright grower. Colors to a beautiful red with yellow flesh. Perfectly free.

LATE

- Banner**—Large; yellow with crimson cheek. Flesh firm; yellow, rich. Keeps and ships as well as any peach. Has been grown in Canada for fifteen or twenty years and found to produce good crops yearly when other varieties have failed. Season, October.
- Engle's Mammoth**—A very fine, large market sort, resembling Late Crawford, but more productive. One of the best peaches. Season, September.
- Chairs' Choice**—Largest size; deep yellow with red cheek. Ripening five days earlier than Smock.
- Marshall's Late**—Very large; deep yellow. Later than Smock, coming between Smock and Salway. One of our best market peaches.
- Niagara**—Large, yellow peach of the best quality and productiveness; ripening just after Elberta.
- Reeve's Favorite**—Large; round; red checked. Flesh yellow, fine flavor. A good hardy variety.
- Wheatland**—Large; roundish; yellow with crimson blush. Firm fleshed and shipping well. Ripening between Early and Late Crawford.
- Late Crawford**—One of the finest and most profitable peaches. Large size; yellow.
- Globe**—Large; round; golden yellow.
- Lemon Free**—Large; lemon shape and color. One of the most desirable peaches for canning.
- Beer's Smock**—The best late market sort. Large; yellow; good quality; very productive.
- Salway**—One of the latest yellow peaches. Very profitable.
- Stump of the World**—A beautiful red and white peach of good size and flavor.

PLUM TREES

Plum trees do best on a loam or clay soil and should be planted from 15 to 20 feet apart. Plums will begin to bear from 3 to 5 years from planting.

	Each	Per 10	Per 100
5 to 6 feet.....	\$0.35	\$3.00	\$25.00
4 to 5 feet.....	.30	2.50	20.00

Reine Claude—Large; round; green, marked with red in sun. One of the best.

Bradshaw—Very large; dark violet red. A valuable market sort.

Genii—Large; deep bluish purple; vigorous and hardy. A profitable, variety.

German Prune—Large; long; oval; purple with thick, blue bloom; flavor sweet; free stone.

Grand Duke—Late; valuable; large; red; free from rot.

Lombard—Medium to large; dark red. The leading market sort.

Shipper's Pride—Large; dark purple; sweet. Good shipper.

Shropshire Damson—The largest of the Damsons. Very productive and profitable.

Yellow Egg—Very large; yellow; egg shape.

JAPAN PLUMS

Abundance—Medium size; amber with markings of red; early and productive.

Burbank—Round; bright cherry red; good shipper; tree vigorous; very productive.

Red June—Large; early; deep red. One of the best Japan plums.

Wickson—Largest of Japan plums; color, bright cherry red; enormously productive.

PEAR TREES

Pear trees, like plums, like a loam or clay soil. Standard varieties should be planted 15 to 20 feet apart; Dwarf from 10 to 15 feet apart. Pear trees begin to bear from 3 to 5 years from planting.

	Each	Per 10	Per 100
Standard, 5 to 6 feet.....	\$0.35	\$3.00	\$25.00
Standard, 4 to 5 feet.....	.30	2.50	20.00
Kieffer, 5 to 6 feet.....			15.00
Dwarf, 4 to 5 feet.....	.25	2.00	15.00
Dwarf, 3 to 4 feet.....	.20	1.50	12.00

Seckel and Worden Seckel, 5 cents each higher.

SUMMER VARIETIES

Bartlett—A leading market variety. Large; yellow; of the best quality.

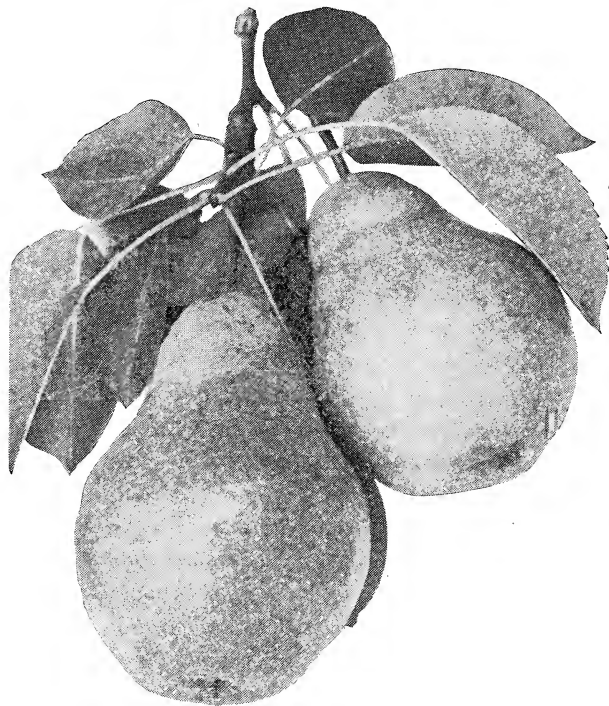
Clapp's Favorite—Large; yellow with bright red cheek. Earlier than Bartlett. Very productive.

Koonce—Medium size, sweet and high flavored.

Mary—One of the best early pears. Red cheek; best quality.

Wilder—Medium size; very early; good quality.

PEAR TREES—Continued



BARTLETT

AUTUMN VARIETIES

Anjou—Large, greenish pear; tree very productive; good dwarf or standard. One of the best fall pears.

Duchess (Angouleme)—Very large. We recommend it as one of the best for market and home use. Especially good as a dwarf.

Flemish Beauty—Large; productive; of luscious flavor. Early fall.

Howell—Bright color; fine size; excellent quality.

Louise Bonne (De Jersey)—Good quality and size; very productive.

Seckel—A delicious little pear. Always in demand for home use or market.

Sheldon—A large, round, russet pear. Fine quality.

Worden Seckel—Seedling of Seckel; as good a quality and larger size.

WINTER VARIETIES

Lawrence—Medium size; best quality. We think this is the best winter pear.

Kieffer—Large; of fine appearance; a very heavy, annual cropper.

MULBERRIES

	Each	Per 10
Russian	\$0.30	\$2.50
Downing and New American40	3.50

QUINCES

	Each	Per 10
Orange, Champion, 3 to 4 feet.....	\$0.30	\$2.50

CHESTNUTS

We have a new variety of Sweet Chestnut that we take pleasure and pride in offering to our customers—THE MERRIMAN. It is perfectly hardy and vigorous and very productive. Nuts measuring three inches in circumference and of the best quality. 75 cents each, \$5.00 per 10.

	Each	Per 10
American Sweet, 5 to 6 feet.....	\$0.35	\$2.50
American Sweet, 4 to 5 feet.....	.30	2.50
Spanish, 3 to 4 feet.....	.50	4.00

Small Fruits

GOOSEBERRIES

	Each	Per 10	Per 100
Houghton, 2 years.....	\$0.10	\$0.75	\$6.00
Houghton, 1 year.....	.08	.60	5.00
Downing, 2 years.....	.18	.85	8.00
Downing, 1 year.....	.08	.75	6.00
Smith's Improved, 2 years.....	.15	1.00	8.00
Smith's Improved, 1 year.....	.10	.80	7.00
Industry, 2 years.....	.15	1.25	11.00

GRAPE VINES

		One Year			Two Year	
Red	Each	Per 10	Per 100	Each	Per 10	Per 100
Brighton	\$0.05	\$0.40	\$3.50	\$0.08	\$0.60	\$5.00
Catawba05	.35	2.75	.08	.50	3.25
Delaware06	.50	3.75	.10	.75	5.50

Brighton—Bunches large; well formed; good flavor and quality; ripening with the Delaware.

Catawba—One of our standard table wine grapes; good size berries and good clusters. Requires a long season.

Delaware—A choice native grape; bunches and berries are small but compact; one of the best quality.

Black

	Each	Per 10	Per 100	Each	Per 10	Per 100
Concord	\$0.05	\$0.30	\$2.25	\$0.06	\$0.40	\$2.75
Moore's Early05	.40	3.25	.08	.60	4.00
Worden05	.40	3.25	.08	.60	4.25

Concord—The leading variety for market. Large, handsome clusters; large berries; good quality. One of the best known grapes.

Moore's Early—Clusters of medium size; berries large, round, black. One of our best early grapes.

Worden—Seedling of the Concord, but larger in bunch and berry and of superior flavor. About ten days earlier.

Campbell's Early—One of the newest varieties. Large, handsome and productive. One of the best early varieties.

GRAPE VINES—Continued

White

Niagara	\$0.05	\$0.40	\$3.25	\$0.08	\$0.60	\$4.00
Pocklinton10	.40	3.00	.20	.60	4.00

Write for prices by 1000 or more.

Niagara—The best of the white grapes. Clusters large and handsome; of excellent quality; hardy. Ripens with the Concord.

Pocklinton—Clusters and berries large; bright golden yellow; fairly hardy; productive. A little later than the Concord.



WILDER CURRANTS

CURRANTS

Currants should be set about four feet apart. Respond well to thorough cultivation, and will produce paying crops the second or third year from planting.

Fay's Prolific—The leading market variety. Extra large stems; berries as large as the cherry—much more productive. 8c each, 60c per 10, \$4.00 per 100.

CURRANTS—Continued

Perfection—A cross between Fays and White Grape, beautiful bright red, larger than the Fays. Holding size to the end of the bunch; easy to pick; a great producer. Said to be the best grower and the only small fruit ever awarded the Gold Medal by the Western New York Horticultural Society. Price \$1.25 per 10, \$10.00 per 100.

Victoria—An old standard market variety. Medium size berry; long bushes. Price same as Fays.

Wilder—One of the strongest growers and most productive. Bunch and berries very large—as large or larger than Fay's with longer cluster. 8c each, 60c per 10, 3.50 per 100.

WHITE

White Grape—Very large; yellowish white; of the best quality; 12c each, 60c per 10, \$4.00 per 100.

BLACK

Victoria—Strong, vigorous grower; fine flavor and largest size. Best of the blacks. 8c each, 60c per 10, \$5.00 per 100.

RASPBERRIES

Raspberries will do well on any good soil not too wet. Keep cultivated and free from weeds. Old canes should be cut as soon as done bearing. Plant in rows six feet apart, three feet apart in row.

Columbian—Very large, purplish red; of good flavor; enormously productive; strong grower. 30c per 10, \$2.00 per 100.

Haymaker—Of the Columbian type. Said to be the most productive raspberry introduced. Large size. A little later than Columbian. 30c per 10, \$2.00 per 100.

YELLOW

Golden Queen—The best of the yellow varieties; a seedling of the Cuthbert; canes hardy, of the strongest growth; productive. 30c per 10, \$2.25 per 100.

BLACK

Cumberland—The best of all the black caps. Fruit very large, the best quality, firm and handsome; canes healthy, hardy and very vigorous; 20c per 10, \$1.25 per 100, \$10.00 per 1000.

Gregg—The well-known, late, standard variety; very productive; large size; firm. 25c per 10, \$1.35 per 100, \$12.00 per 1000.

Kansas—Early variety. We consider it the most dependable variety known. Berries jet black and of the best quality; canes vigorous, free from diseases and hardy. 20c per 10, \$1.25 per 100, \$10.00 per 1000.

Plum Farmer—Large, black; said to be as large as the Cumberland and as productive and about the same season. Price \$1.35 per 100.

RED

Cuthbert—The leading market red variety. Large size; bright red; productive; canes vigorous and healthy. 20c per 10, \$1.25 per 100, \$10.00 per 1000.

Early King—Earlier than Cuthbert. Large; bright red; very productive; 20c per 10, \$1.25 per 100, \$10.00 per 1000.



MERSEREAU

BLACKBERRIES

Plant in rows 6 feet apart, 3 feet in rows. Our plants are all from root-cutting plants.

Blowers—Originated in the fruit belt of western New York. Has been thoroughly tested a number of years. Has proven to be perfectly hardy and very productive. Fruit of the finest quality. Has produced 2720 quarts on one-third of an acre. Large size; jet black and a good shipper. Price \$2.25 per 100, \$15.00 per 1000.

Early Harvest—One of the first to ripen; very productive, but sometimes winter kill in the north, 20c per 10, \$1.50 per 100, \$13.00 per 1000.

Eldorado—The best of all blackberries. Berries large, jet black, sweet and of excellent quality; enormously productive and perfectly hardy. 30c per 10, \$2.00 per 100, \$15.00 per 1000.

Mesereau—Strong grower. Claimed to be the hardiest blackberry, standing uninjured 20 degrees below zero. An enormous producer of extra large size berries of the best quality. Good shipper and keeper. 30c per 10, \$2.00 per 100, \$15.00 per 1000.

Snyder—An old standard variety; very hardy; berry good size, juicy and rich. 40c per 10, \$1.50 per 100, \$16.00 per 1000.

Taylor—Berries of fine flavor; large; canes vigorous, of ironclad hardiness; very prolific; ripens late. 20c per 10, \$1.35 per 100, \$12.00 per 1000.

DEWBERRY

Lucretia—One of the low-growing, trailing blackberries. Large berries; ripens early. 20c per 10, \$1.50 per 100.



STRAWBERRIES

(One of our specialties)
60c per 100; \$4.00 per 1000

Strawberries will succeed in any soil that is adapted to ordinary farm or garden crops. Soil should be thoroughly prepared to a good depth, well drained and enriched. For field culture, set in rows 3 or 3½ feet apart, 15 to 18 inches in rows; for garden, 15 inches apart each way, leaving pathway every third row. Our strawberries are taken from beds set especially to produce plants. Each variety kept by itself. Our soil is especially adapted to growing strong and healthy plants and we have been very successful in this line of our business.

Bubach (Imp.)—Very large; light red; productive.

Brandywine (Per.)—Very large; heart-shaped; dark red of the best quality; medium to late.

Clyde (Per.)—Large size; light red; extremely productive.

Glen Mary (Per.)—Fruit of large size; good color; firm and a good shipper.

Haverland (Imp.)—An old and very productive variety. Size, medium to large.

Jessie (Per.)—Very large; good berry. On some soils very productive.

Marshall (Per.)—Of regular form; dark; very large; best quality.

Nick Ohmer (Per.)—A beautiful, large berry of fine flavor.

Parson's Beauty (Per.)—Healthy, prolific, profitable variety for nearly all sections of Ohio.

Gandy (Per.)—One of the leading market sorts; color, bright crimson; uniform in size and shape; large size, firm; plants vigorous and healthy.

Highland (Per.)—Plants very large and strong; fruit large bright scarlet. The Ohio Experimental Station, in the report of 1907, says, "Has not failed to give very prolific crops." A very profitable kind.

Norwood (Per.)—Medium early; quality unsurpassed, and size unequalled; one of the largest berries; color bright red all the way through; firm and a good shipper; holds its size well through the season.

Ryckman (Per.)—Awarded highest prize at the Buffalo Exposition in 1901 and has been thoroughly tested since. One of the largest berries; ripens early; fine flavor; in the front rank of strictly big berries.

Sample (Imp.)—The leading market variety of today. Large size; good color; heavy cropper.

THE ROOSEVELT STRAWBERRY

It is a perfect flower, clean and vigorous growth, enormously productive and berries large size and we consider this the best thing we have ever had in the strawberry line and recommend it heartily to anyone desiring something nice in the strawberry line.

STRAWBERRIES—Continued



SAMPLE ONE-THIRD NATURAL SIZE

Senator Dunlap (Per.)—The great home and market berry of the present day. Rich in color; firm; high in quality; plant vigorous, healthy and prolific.—(Ohio Experimental Station).

Steven's Late Champion (Per.)—One of the new varieties; very productive, in fact one of the best of the late kinds.

Uncle Jim (Per.)—One of the newest varieties; very large; beautiful color; excellent quality. A very valuable berry.

Warfield (Imp.)—Medium size; dark red. One of the best for canning. Very productive.

Wm. Belt (Per.)—Large size; medium to late. One of the best berries.

Wolverton (Per.)—Large and fine. One of the most productive of the perfect flowering varieties.

These varieties in this list are tested on our ground, and we try to confine our list to those that are best for home use or market.

N. B.—Those marked (Per.) are perfect flowering or staminate; those marked (Imp.) are imperfect or pistillate.

GARDEN ROOTS—ASPARAGUS

Asparagus should be grown on warm, deep and rich soil. Planted in the row system in rows three feet apart and fifteen inches apart in the rows, depth four to eight inches. The standard varieties are Columbian White, Conover's Colossal, Palmetto. Price, 80c per 100, \$6.00 per 1000.

RHUBARB

60c per 10, \$5.00 per 100.

Ornamental Department

ROSES

Our stock of Hardy Roses is especially fine. Roses should be planted in good, rich soil where they will get plenty of sun.

Climbing Varieties—25c each; \$2.00 per 10.

Queen of the Prairie, Baltimore Belle, Seven Sisters,
Crimson Rambler, Yellow Rambler,
Dorothy Perkins.

The Crimson Rambler is universally acknowledged as the best climbing rose, ever produced.

Hybrid Perpetuals—25c each; \$2.00 per 10.

Anna de Diesbach—Bright rose color; very large and showy; glorious bloomer.

Duke of Edinburgh—Brilliant crimson, maroon shade; very fine.

Earl of Dufferin—Velvety crimson, shaded with maroon; a strong grower.

Eugene Furst—Velvety crimson, shaded with darker crimson. A first class rose in every way.

Mrs. J. H. Laing—One of the finest roses of its class. Color a soft, delicate pink; very fragrant; a continuous bloomer throughout the whole season.

Marshall P. Wilder—Bright, cherry red.

Magna Charta—A splendid sort; bright, clear pink.

Margaret Dickson—White, with pale flesh center; strong grower; very fragrant.

Paul Neyron—One of the largest roses grown. Rose color. One of the most popular varieties.

Frau Karl Druschki (New)—One of the best perpetual white roses grown; pure white, large perfect form; a clean, vigorous grower.

Baby Rambler—Dwarf, bushy and a very profuse bloomer; bright crimson color, continuing in bloom the season through.

General Jaqueminot—A rich crimson scarlet. Simply a mass of bloom when at its best.

Ulrich Brunner—Splendid, upright grower; bright, healthy foliage. One of the most abundant growers. A bright, cherry red.

Prince Camile de Rohan—One of the darkest roses, a dark, velvety crimson changing to intense maroon.

Harrison Yellow—One of the best, hardy yellow roses; vigorous grower; free bloomer.

Mad. Planteir—Not a perpetual bloomer, but one of the most beautiful white roses in cultivation; perfectly hardy; vigorous grower; profuse bloomer.

Baron De Bonstettin—A splendid shade of dark red. Blooms very freely. Fine shapely bush.

Clio—A blush white. Very free bloomer and a healthy grower. One of our most desirable roses.

Coquette Des Alps—Large and full. White sometimes shaded with pink. Very free bloomer.

Vicks Caprice—By far the best striped hardy Rose. Color a soft creamy pink, distinctly striped with carmine.

Tom Wood—One of the finest dark red Roses. Profuse bloomer, healthy, clean grower.

Imported Tree Rose—\$1.00 each.

MOSS ROSES

Price 35c each

Red Moss—Deep crimson, free bloomer, healthy, vigorous grower.

Per. White Moss—Vigorous grower, continual bloomer through summer season. Beautiful clear white.

Crested Moss—Beautiful Rose. Free bloomer. Healthy, clean grower.

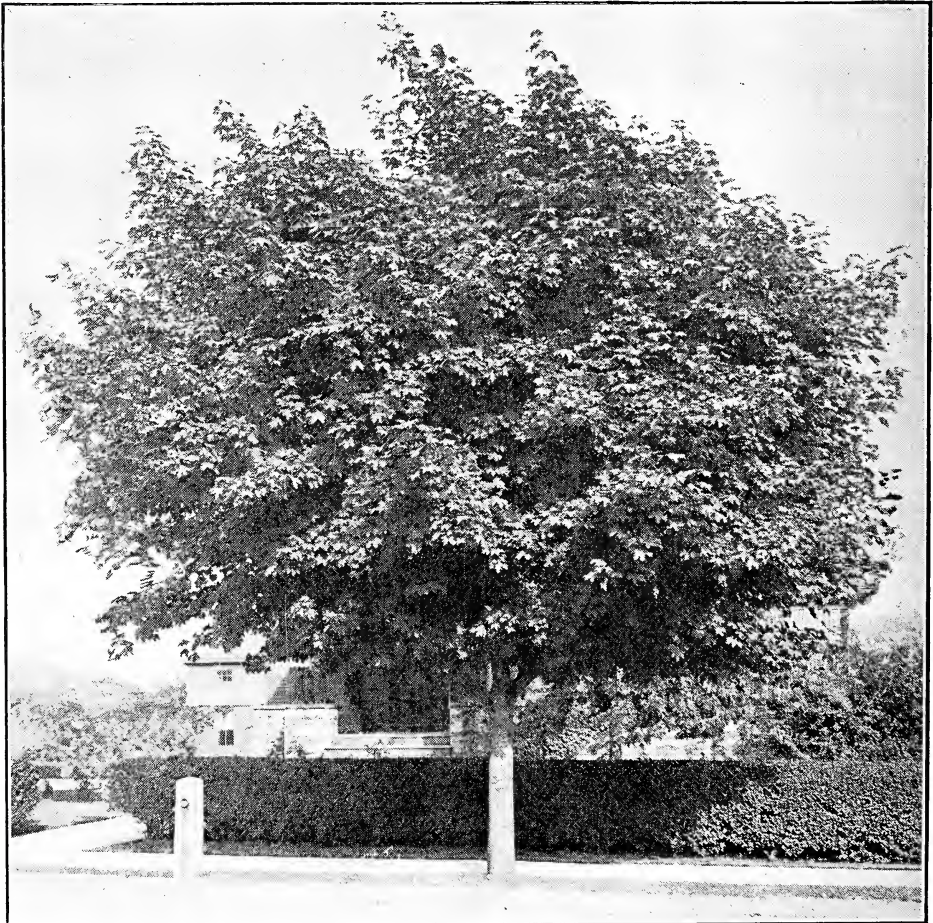
GLADIOLUS

We have an excellent lot of Gladiolus bulbs, mixed colors. These are one of the most beautiful and easy grown flowers that we have. This lot of mixed bulbs have some of the best varieties known at this time. Price 50c per dozen.

HEDGE PLANTS

For quick reference we designate separately such plants as are used for hedging purposes. These plants have been several times transplanted and are suitable for immediate planting.

	Each	Per 10	Per 100
Arbor Vitae, American, 18 to 24 inches.....	\$0.25	\$2.00	\$ 9.00
Arbor Vitae, American, 12 to 18 inches.....	.15	1.00	5.00
Norway Spruce, 12 to 18 inches.....		1.00	6.00
Norway Spruce, 8 to 12 inches.....		.80	4.00
Barberry, Purple Leaf, 18 to 24 inches.....		1.50	12.00
Barberry, Purple Leaf, 15 to 18 inches.....		1.25	10.00



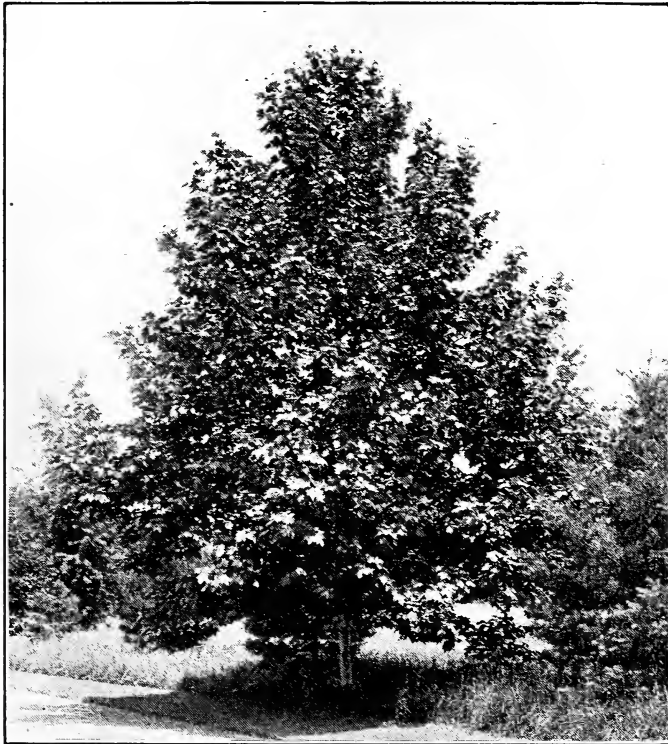
NORWAY MAPLE

HEDGE PLANTS—Continued

	Each	Per 10	Per 100
Barberry, Purple Leaf, 13 to 15 inches.....		1.00	7.00
Privet, California, 2 to 3 feet.....		.50	3.50
Privet, California, 18 to 24 inches.....		.35	2.50
Barberry Thunbergii, 10 to 15 inches.....		.60	5.00

Barberry Thunbergii, one of the most desirable hedge plants grown. Foliage of a glossy green, turning to a deep scarlet in the fall; also very desirable for massing.

The Purple Leaf Barberry and California Privet are used for ornamental hedges and can be sheared to any desirable shape, grow quickly and make a beautiful effect.



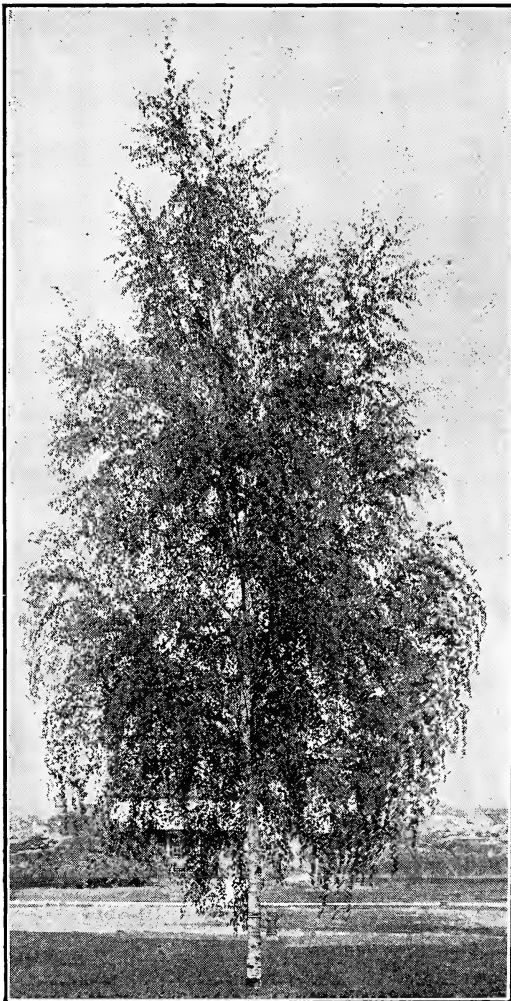
ORIENTAL PLANE

DECIDUOUS TREES

	Each	Per 10
Birch, Scotch, 10 to 12 feet.....	\$0.40	
Beech, Purple Leaved, 3 to 4 feet.....	.75	
Catalpa, Bungei, 6 to 8 feet.....	1.00	
Catalpa, Speciosa, 8 to 10 feet.....	.50	
Cornus, Florida, Red Flowering, 3 to 4 feet.....	1.00	
Elm, American, 8 to 10 feet.....	.35	3.00
Horse Chestnut, White Flowering, 6 to 7 feet.....	.75	
Linden, American, 6 to 8 feet.....	.60	
Linden, European, 8 to 10 feet.....	.75	
Maple, Silver Leaved, 10 to 12 feet.....	.50	4.00
Maple, Sugar or Rock, 6 to 8 feet.....	.60	

DECIDUOUS TREES—Continued

Maple, Weir's Cut Leaved, 8 to 10 feet.....	.75	
Maple, Norway, 6 to 8 feet.....	.65	
Magnolia, Acuminata, 3 to 4 feet.....	.50	
Mountain Ash, European, 5 to 8 feet.....	.40	
Mountain Ash, Oak Leaved, 4 to 6 feet.....	.40	
Poplar, Carolina, 10 to 12 feet.....	.50	3.00
Poplar, Lombardy, 10 to 12 feet.....	.50	4.00
Poplar, Aurea (golden), 6 to 8 feet.....	.50	
Salisbury, Maiden Hair, 4 to 5 feet.....	.60	
Thorns, Double White, Pink and Paul's.....	.50	
Tulip Tree, 8 to 10 feet.....	.75	
Oriental Plane, 8 to 10 feet.....	.75	



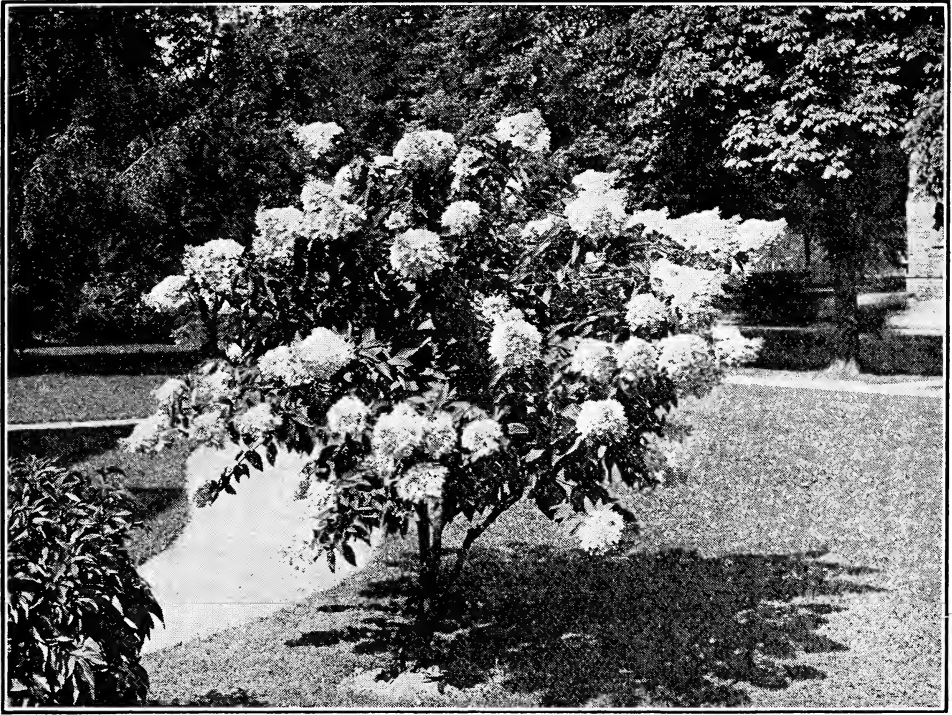
WEeping CUT-LEAF BIRCH

WEeping TREES

Birch, Cut Leaved, 8 to 10 feet.....	\$1.00
Camperdown, Elm, 2 years85
Mulberry, Tea's Weep- ing85
Kilmarnock, Willow...	.60
American Willow.....	.75
Mountain Ash, Weep- ing	1.00

PEONIES

Herbaceous Peonies are recognized now as a rival to the Rose and are quite as effective as the Rhododendron. In fact one of our most beautiful flowers in cultivation today. We have them in every color and shade. Some of the best varieties that are on the market today. Plant in deep rich soil, covering the bulbs about an inch below the surface. Will be much better the second year than the first and will continue to be good for years to come. Price 25c each; \$2.00 per 10; \$15.00 per 100.



HYDRANGEA PANICULATA

DECIDUOUS SHRUBS

Althea, (Rose of Sharon).....	\$0.30
Double Rose, Double Variegated, Double White, Double Purple, Double Striped, Variegated Leaf.	
Azeleas, in variety.....	.60
Fringe, White and Purple50



WEIGELIA

DECIDUOUS SHRUBS—Continued

Hydrangea, Paniculata Grandiflora.....	.25
Hydrangea, Tree Shape.....	.40
Lilac, White and Purple.....	.25
Syringia, Golden Leaved, Grandiflora.....	.25
Spirea, Anthony Waterer, Van Houttii, Billardi Ariaefolia or Golden Leaved, Reevesii25
Spirea are an indispensable class of medium sized shrubs of easy culture in all soils. They embrace a wide range of foliage, habit of growth, color of flowers and season of blooming.	
Snowball, American25
Snowball, Japan30
Wiegelia, Candida Van Houttii, Madam Conturiet, Amabilis (light pink), Nana Variegata25
Deutzia, Pride of Rochester (double pink), Crenata (single white)....	.25
Rhododendrons	1.50



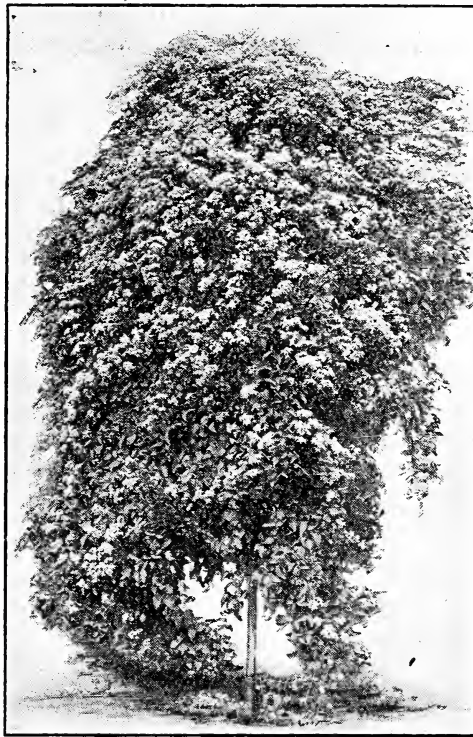
SCOTCH PINE

EVERGREENS

Arbor Vitae, American, 3 to 4 feet.....	\$0.40	\$3.50	\$25.00
Arbor Vitae, American, 2 to 3 feet.....	.35	3.00	20.00
Arbor Vitae, Pyramidalis, 2 to 3 feet.....	.50	4.00	
Juniper, Irish, 3 to 4 feet.....	.75		
Juniper, Irish, 2 to 3 feet.....	.60	5.00	
Fir, Balsam, 2 to 3 feet.....	.60	5.00	
Fir, Balsam, 18 to 24 inches.....	.50	3.50	
Pine, Austrian, 2 to 3 feet.....	.75	5.00	

EVERGREENS—Continued

	Each	Per 10	Per 100
Pine, Austrian, 18 to 24 inches.....	.40	3.00	
Pine, Scotch, 18 to 24 inches.....	.40	3.00	
Pine, Scotch, 2 to 3 feet.....	.50	4.00	
Pine, White, 2 to 3 feet.....	.50	4.00	
Pine, White, 3 to 4 feet.....	.75		
Spruce, Norway, 3 to 4 feet.....	.60	3.00	25.00
Spruce, Norway, 2 to 3 feet.....	.40	2.50	18.00
Spruce, Norway, 18 to 24 inches.....	.40	3.00	10.00
Spruce, Colorado Blue; extra fine; a new novelty; 18 to 24 inches	1.00		



CLEMATIS PANICULATA

CLIMBING VINES

Ampelopsis (Boston Ivy)	\$0.25
Clematis, Jackmani, Henryii60
Clematis, Paniculeta and Coccinea.....	.25
Honeysuckle, Hall's Japan25
Scarlet Trumpet25
Wisteria, Purple, Chinese25
Matrimony Vine25

TESTIMONIALS

T. B. West,
Perry, Ohio.

Ohio, April 12, 1913.

Dear Sir:

Received my stock and am very well pleased with it. The trees certainly are great. The currants and other stock are equally as good, and right through I believe, for a large order it is the best that I have ever received and in fact ever saw.

Yours truly,

GEO. M. BERG.

T. B. West,
Perry, Ohio.

Ohio, April 14, 1913.

Dear Sir:

Enclosed find P. O. order for trees I received Saturday. Will say that they are the finest trees I ever had or saw and am very well pleased with them.

In regard to the 171 apple, and 387 peach which I wrote you about, will say that I could not get ground ready for this season's planting, but you may expect my order for them next Spring.

Have bought trees from you now for several years and they have always proved good. Would advise anyone who wishes good stock and fair treatment to deal with you.

Yours, truly,

WM. C. HEISER.

Maple Bend Nursery,
Perry, Ohio.

Ohio, April 18, 1913.

Dear Sir:

The apple and peach trees arrived yesterday evening and they are probably the nicest lot of trees that I ever received. I finished planting them today and it was a delight to do it.

Yours truly,

C. P. SCHUMACHER.

T. B. West,
Perry, Ohio.

Ohio, April 21, 1913.

Dear Sir:

I received my order of fruit and shade trees. They are very fine indeed. In want to thank you for fair treatment and promptness in filling the order. Enclosed you will find check for payment in full.

Very sincerely yours,

DR. D. L. TRAVIS.

T. B. West,
Perry, Ohio.

Ohio, April 17, 1913.

Dear Sir:

Enclosed please find check in payment of my bill for nursery stock which arrived today in good condition.

Yours truly,

H. W. SCHMITKONS.

Mr. Schmitkons is one of the most successful apple growers of northern Ohio.

T. B. West,
Perry, Ohio.

Ohio, May 5, 1913.

Dear Sir:

We received our nursery stock all O. K. Everything is satisfactory. Rhubarb is especially fine.

Sincerely yours,

W. STEGGALL.

T. B. West,
Perry, Ohio.

Pennsylvania, May 9, 1913.

Dear Sir:

Enclosed find money order for Asparagus roots. The trees and roots received in fine shape.

Sincerely yours,

JOSEPH SHERIDAN.

PLEASE NOTICE

Being able to give personal attention to the propagating, grading and packing, we feel assured that all stock purchased of us will be delivered in the best possible condition, and will be found exactly as represented, as nearly as care and attention can make it.

Those wanting a large amount of stock should send list of what they want for special prices.

We aim to raise the best stock, graded to the highest standard, strongly grown, well rooted and thrifty.

We think a satisfied customer is the best advertising medium.

We do not believe in the policy of replacing stock which dies after transplanting from natural or other causes. Our experience in the past has proven that the practice of replacing free, has a tendency to encourage carelessness on the part of the planter and also to marring to some extent the friendly relationship that ought to exist between the nurseryman and the planter. The most scrupulous care is exercised in the handling of trees from the time of digging until packed for shipment. No chance for injury to stock before shipment is possible under our system. With proper care but very few of our trees fail to grow.

Our northern location is worthy of special mention. One of the great advantages so liberally bestowed upon us by nature is a lovely, cool and healthful climate; an atmosphere purified and tempered by the balmy breezes of Lake Erie, where fungus diseases are rarely found. The soil is a rich loam of wonderful fertility, very rich in nitrogen, and underlaid with a porous clay subsoil, eminently adapted to the production of hardy trees, etc. These facts no doubt to some extent account for the uncommon vigor of our trees and plants when afterwards transplanted. Our stock always ripens up thoroughly in the fall and goes into the winter without danger of being injured by severe frost. A comparison will prove that our stock has not the willowy and watery, soft growth of Southern or Western grown stock, which no doubt accounts in a measure for the large and increasing demand for our northern grown stock. The wood is firm and hard, the bodies strong, while the roots have strong forcing power. Such trees cannot fail to make good and profitable orchards.

AGRICULTURAL COMMISSION OF OHIO Bureau Nursery, Orchard and Bee Inspection

CERTIFICATE OF NURSERY INSPECTION

No. 136

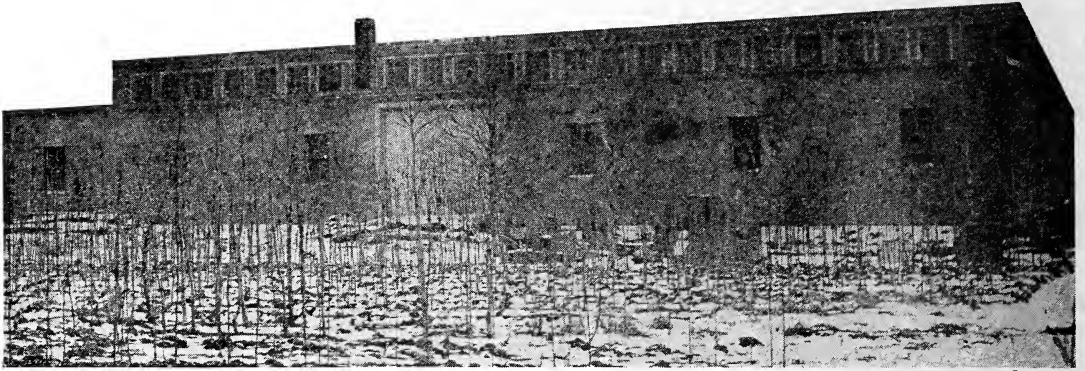
Columbus, Ohio, Sept. 15, 1913.

This is to certify, that the Nursery Stock for sale by T. B. WEST, of Perry, County of Lake, State of Ohio, consisting of General Nursery Stock, has been inspected by a duly authorized inspector, in compliance with Section 1124, page 314, Laws of Ohio, 1913, and has been found apparently free from dangerously injurious insects and plant diseases.

Valid until September 15, 1914.. Unless revoked.

A. P. SANDLES, President.

N. E. SHAW, Chief Inspector.



This shows one of our large frost-proof packing sheds with a capacity of holding from 50 to 75 car loads of trees.

Owing to an inexplicable and apparently unjust and uncalled for discrimination, the nurserymen and seedmen do not get the benefit of the new Parcel Post rates and regulations. Therefore we cannot give our customers the benefit of the privileges enjoyed by other lines of business under this new system.
