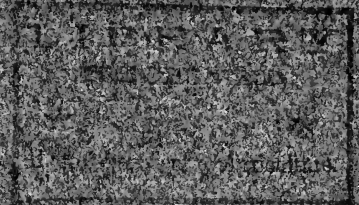


Historic, Archive Document

Do not assume content reflects current scientific knowledge, policies, or practices.



GENERAL CATALOGUE
1914



Orange County Nurseries

ESTABLISHED
1884

T. J. DWYER & CO.
CORNWALL
ORANGE COUNTY, N. Y.

A LARGE SAVING TO BUYERS

We wish to call your attention the fact that we make no charge for packing. This is a saving of at least 50 per cent. on a bill of goods. In many instances the packing cost amounts to more than the stock. We claim, and have been complimented on it, that we package goods in a great many instances far better than any other nursery in the world. This has been proved by our packing have been with us a number of years. Working at this particular line, and having thoroughly understand their business. Please take this item of packing into consideration when comparing our prices with those of others, who make a separate charge for this work.

GENERAL INSTRUCTIONS

OUR SHIPPING SEASON begins about March 1st, and continues for nine months.

ALL TREES, PLANTS AND VINES offered in this catalogue can be successfully planted in this climate.

CLAIMS—All claims must be made immediately upon receipt of goods, at which time they will be carefully considered and adjusted.

ACKNOWLEDGED ORDERS—We acknowledge all orders when received, and if you do not hear from us after a reasonable length of time, please duplicate your order, stating when and how much money you sent. Ladies please prefix Mrs. or Miss to your name as the case may warrant.

REMITTANCE—Please remember that remittances by certified check, money order, postal note and registered letter should be made to us at Cornwall, N. Y.

PAYMENTS—Unless otherwise agreed payments must be made in advance. Goods sent C. O. D. when one-third the amount is sent with the order.

Fifty, five hundred and one-half dozen of a variety will be furnished at the one hundred, one thousand and seven rates respectively.

OUR GUARANTEE—We exercise the best care to have all our trees, vines and plants true to label, and hold ourselves ready to make or prove to replace any stock that does not prove true to name, free of charge, or refund the amount paid for such stock.

SHIPPING—Plain and explicit directions should be given with every order, and give name in full, name of nursery, location and route for forwarding, also we will use our own judgment, but hold ourselves responsible for any damage, loss or delay, and our responsibility ceases, and we cannot be held accountable for loss or delay.

TERMS CASH—Orders from individuals sent must be accompanied by cash, or cashed check, or reference.

ORDERS—Please write your orders in order sheet that we have prepared and printed, and be very particular in giving name and address, instantly, and insure to facilitate execution and prevent error.

ORDER EARLY—Please send in your orders as early as you can, the earlier the better, in our orders in the winter we receive.

LOW EXPRESS RATES ON TREES, PLANTS—Express companies make orders and plants to any part of the country at a reduction of 20 per cent. from the regular

INSPECTION IN REGION

Our nurseries are inspected twice each year by the State Entomologist, and are free from insects and pests, but in order to insure our patrons that everything is perfect on a large scale, pests, etc., we will, on request, immediately send you a report on them.

We are pleased at all times to see our patrons, and are glad to have you call over. From our 25 years' experience with the different varieties of trees and plants, we can offer some valuable information as to the best time to plant. Live orders for this business you can spend the balance of the day at West Point, which is only 100 miles from Washington's Headquarters, which is 1/2 mile away, and about 100 miles from the city, 100 miles away. If you cannot visit or don't be satisfied that a visit is necessary, we may require. We will be glad to send you

INTRODUCTORY

WE take this occasion to thank our many friends and clients for their liberal patronage the past seasons, assuring all, that as in the past, we will in the future, send out the best stock, that high culture methods, liberal grading and careful packing can place upon the market.

January 1914

T. J. DWYER & CO.

LOCATION

OUR SPLENDID LOCATION makes our shipping facilities unsurpassed. Cornwall, N. Y., is situated on the west bank of the Hudson River, about fifty miles from New York city. Three railroads run through the place, the West Shore, Erie, and Ontario & Western. We connect with the New York Central & Hudson River Railroad at Newburgh, which is only four miles distant.

WE CAN SHIP BY FREIGHT with any of the railroads named above, and by the Central-Hudson Line of Boats to New York city, also with Albany and Kingston line of boats.

WE CAN FORWARD BY EXPRESS by the National, American, Adams and Wells-Fargo & Co. Express Companies.

OUR TELEGRAPH OFFICE is Cornwall-on-Hudson, N. Y., where all messages are transmitted to our office by telephone.

TELEPHONE—We have Local and Long Distance Telephone connections direct in our office at nursery headquarters. call is 197-J-1.

REFERENCE—As to our responsibility and good standing, we refer to the cashiers of the Cornwall Savings Bank, Cornwall, N. Y.; Highland National Bank, of Newburgh, N. Y.; post-

master at Cornwall, Cornwall-on-Hudson, N. Y., or any business firm of this place.

PARCEL POST—Many of our customers seem to have the idea that our goods can be sent by Parcel Post, such is not the case the rate of postage on our class of goods being one cent for each two ounces or eight cents per pound to all parts of the country and it is invariably cheaper, safer and quicker to send packages by express. We will be pleased to send such items as can be mailed by Parcel Post if customers will remit for postage at above rate.

Plants by Mail—Strawberries, Raspberries, Blackberries and Grapes can be sent by mail by the following postage rates, in addition to prices named:

Strawberries—5 cts. per 15; 20 cts. per 50; 40 cts. per 100.

Raspberries—20 cts. per 15; 40 cts. per 50; 60 cts. per 100.

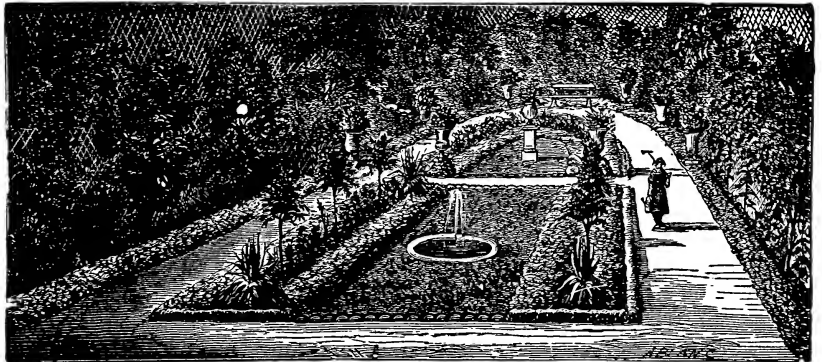
Grapes—25 cts. per 15; 50 cts. per 50; \$1.00 per 100.

Blackberries—25 cts. per 15; 40 cts. per 50; 60 cts. per 100.

OUR LANDSCAPE GARDENING

This branch of our business has grown so largely for the past years that we have been obliged to extend our acreage of all the ornamental nursery stock, in order to grow what

we need for this purpose. We have in stock at the present time a large and complete line of all the desirable Ornamental Trees, Plants and Vines needed for the beautifying of the home grounds. We wish to call your special attention to the prices we ask for this stock. All the Trees, Shrubs, Plants and Vines have been twice



transplanted, consequently they have a fine system of roots; they have been thoroughly and properly pruned for the best shape and effects. It will pay all who need this line of stock to make out their list and mail it to us for our estimate. If you contemplate planting largely either of Fruits or Ornamentals, please write to us naming what you want, then we will visit your place and furnish you with a figure for everything needed, furnished by us and planted by our practical experienced men. It should be borne in mind that the fact of adding stock to your lawn does not necessarily increase its beauty or value. The work must be properly done. It is the manner in which it is located and the judicious selection of Ornamental Stock that we get the many different effects desired. We have in our employ men who make a specialty of this line of our business, and we are sure it will be a financial saving to employ such men to locate stock on new or old country home grounds. If you contemplate doing any work in this line write us and we will gladly make arrangements to visit your place and serve you along these lines.

We respectfully request our patrons to consult us in reference to any landscape work which they may have under consideration.

Address, T. J. DWYER & CO.,

Cornwall, Orange Co., N. Y.

Suitable Distance of Trees, Etc. in Planting

Cherries, Sour	15x15	Gooseberries	5x5
Cherries, Sweet	25x25	Red Raspberries	6 ft. x 18 in
Standard Apples	30x30	Strawberries	
Dwarf Apples	10x10	For Field Culture	4ft. x 15 in.
Standard Pears	20x20	For Garden Culture	2½ ft. x 1 ft.
Dwarf Pears	10x10	Grapes	8x8
Peaches	15x15	Asparagus	4x1
Quince	15x15	Rhubarb	4x4
Apricot	15x15	Blackberries	7x3
Plums	20x20	Black Cap Raspberries	6x2
Currant	5x5		

Distance for Planting Hedge Plants

Am. Arbor Vitae Evergreen	12-15 in. apart	Dwarf Box for edging, Evergreen ..	4 in. apart
Norway Spruce Evergreen	12-15 in. apart	Spireas and Althea	2 feet apart
California Privet Deciduous, 10 inches apart in single row; 1 foot apart in double row.		Japan Quince	2 feet apart
		Barberry	2 feet apart
		Rosa Rugosa	15 inches apart

Number of Trees or Plants on an Acre of Various Distances

3x3	4,840	12x12	325
4x4	2,729	15x15	200
5x5	1,742	18x18	135
6x6	1,200	20x20	110
8x8	680	25x25	70
10x10	430	30x30	50

How to Care for Trees, Plants and Vines

It sometimes happens that purchasers are not ready to plant their trees, plants and vines as soon as received. When this is the case the stock should be "heeled" in the ground; this is done by making a trench, placing the roots in it, leaving the tree or plant in a slanting position, covering the roots carefully with soil and pressing the earth firmly about the roots with the use of the feet. Trees, plants and vines when properly "heeled" in these trenches, can be kept in good condition for several months while the stock is in a dormant condition.

Stock that is received in a Dry or Frozen Condition should also be placed deeply in these trenches, with the soil firmly pressed about the roots and two-thirds of the trunk and branches buried in the earth in this way. Twenty-four hours is the usual prescribed time to keep stock under this treatment, but three full days is none too long, and when dry or frozen stock is held over in this way for that length of time, it is quite a guarantee that it will come out in good vigorous order. When stock is excessively dry, water should be used about the roots, but in no other ways.

We Cannot Replace Stock Gratis

The success of trees and plants depends on the good treatment and management they receive after leaving our hands. We have no control over their planting and subsequent care, therefore cannot be held responsible for their future. Stock may be killed by excessive watering, or in cases of extreme drought from lack of moisture, by too deep or too shallow

planting, or by exposing its roots to the wind or sun for an injurious length of time. If the stock is not alive and in good condition when received, please advise us of the fact at once, bearing in mind that we always give our patrons the benefit of any doubt that may exist.

We Can Do Your Pruning and Spraying

We have in our employ at all times experienced men that we can send out to do pruning and spraying, both of your fruit trees and vines of all kinds, as well as your deciduous trees, shrubs and vines. This is very important work and should not be intrusted to the average gardener, but to men who have had practical experience and are skilled in this branch of horticulture. We are in a position at all times to furnish you with help of this kind. Please state what you wish to have done, then we can advise of the cost. We furnish all necessary tools for the performance of this work.

The best time to do this work is from December 1st to April 1st although it is frequently done during the Spring and Summer months. A few dollars spent on your fruits or shrubs in this way will put them in good condition for years. We have often by a few days' work (in pruning and spraying) put apparently worthless stock in first class shape for a number of years to come. Write us if your ornamentals or fruits needed attention in this respect.

Our Advantages

Our land contains all the mineral elements needed to produce the hardiest, healthiest and thriest trees, those which are the longest lived, and which will produce the best possible results for the planter. For these reasons we claim great advantages from our soil. This is a matter of the greatest importance to every planter. It pays to produce the best and that "only." It is one of the first laws of Nature, that in order to obtain the best, we must

have the best to produce from. A very important feature in connection with our trees is that grown upon our heavy, strong, rich, well-drained soil, they are healthier, longer-lived, less liable to injury from extreme cold, and more productive than when taken from a light soil and that being furnished with a more abundant supply of healthy, well-ripened and fibrous roots, they bear transplanting to a different soil and climate.

Points on Planting of all Nursery Stock

The following points should never be overlooked:

1st. **Preparation of the Soil**—Prepare a rich, deep bed of mellow soil, and have the land sufficiently drained to relieve the roots from standing water. To insure a fine growth, land should be in as good condition as is required for a crop of wheat, corn or potatoes.

2. **Pruning Before Planting**—Nearly all of the trees taken from the nursery require pruning before transplanting, to balance the loss of roots, occasioned by their removal. The tops should be shortened in by cutting off half the last season's growth of all the branches, but large branches should not be cut off close to the trunk, as it injures the vitality of the tree.

All broken or bruised roots should be cut off smoothly up to the sound wood, so as to hasten the emission of new roots and fibres.

3. **Planting**—Make the holes large enough to admit the roots without any cramming or bending, and deep enough to bring the tree to its natural depth. The fine surface soil should be used in covering the roots and this should be carefully worked among them. If the ground is dry, it is well to pour in some water when the hole is partially filled. See that the ground is firmly and solidly packed over all parts of the root by exerting the full weight of the planter upon it, so that there will be no

opportunity for dry air or frost to enter and destroy roots deprived of the full benefit of their natural protection. Omission to pack the earth solidly is a most frequent cause of failure in planting nursery stock. Fill the holes full enough to be even with the surrounding surface after the fresh earth settles. Always remove the label when planting. If this is left until the tree is grown, the connecting wire often cuts into and destroys the tree or branch to which it is attached. Never use manure in contact with roots. When planting dwarf trees set them low enough to cover the stock upon which they are budded, but not lower. Large standard trees should be staked and tied, so that the wind will not loosen the roots. This should be so done that the bands will not chafe the trees.

4th. **Mulching**—When trees or bushes are planted they should be mulched or covered with a layer of coarse manure or litter from three to six inches deep for a space of two feet more in diameter than the extent of the roots. This keeps the earth moist and of even temperature.

5th. **After Culture**—Grass should not be allowed to grow about young trees or plants. The ground should not be cultivated for a space of at least one foot outside the roots. If the ground is poor it should be enriched with surface applications of manure.

Spraying

In regard to this all important subject we would recommend our patrons to communicate with the Experiment Station in the state in which they live and get definite instructions about spraying for their particular locality, in bulletins published for the purpose.

The Strawberry

The strawberry is pre-eminently a home fruit because it is so easily grown, comes into bearing at one year or less from the time of planting and produces a large quantity of fruit that is much superior to that which may be found in the markets. All that is required for success is a deep, new rich soil, thorough cultivation, and a good supply of moisture at the time of ripening. The land should be made rich by plowing or spading, under a liberal dressing of manure, and be made fine and mellow before planting. For best and quick results add $\frac{1}{4}$ to $\frac{1}{2}$ per acre of any good fruit or vine fertilizer, and after being thoroughly worked into the surface soil, the plant should be set as early in the spring as the land will work up fine and mellow. After the bed or row has been established, all runners must be cut off as soon as started and the land be kept clean and cultivated up to the time the ground freezes in the fall. During the winter the bed should be covered with a light mulch of hay, straw or other material free from weed seeds, to prevent the alternation of freezing and thawing when the ground is not covered with snow. In the spring, after growth begins this covering should be drawn from the crowns of the plants into the space between the rows where it will serve as a mulch and protect the fruit from becoming covered with dirt during heavy rains. The varieties listed in this catalogue are found generally satisfactory in a wide range of territory. The insects or fungous growths that are seriously injurious to the strawberry may be largely overcome by thorough and clean cultivation.

Ground Layer Strawberry Plants

PRESIDENT (Pistillate) — Fruit stalks, thick and erect, carrying large clusters of beautiful berries, absolutely uniform in shape, almost round; flesh solid without any pithy core; color, rich crimson; exceedingly productive and produces fancy fruit to the end of the season.

Price, one dozen, 35 cts.; 100, \$1; 1,000, \$5.

OOM PAUL (Perfect Flowers)—Will stand shipment with any of the very large varieties and we believe better than most of them. Is of fine color and of good quality. Extra large berries always command fancy prices. Valuable for home or commercial purposes. Is free from rust.

Price, one dozen, 50 cts.; 100, \$1; 1,000, \$5.

NEW YORK (Perfect Flowers)—In productiveness it is hard to believe that it has an equal. Berries dark scarlet, changing to crimson when fully ripe, coloring all over at once; excellent in quality.

Price, per dozen, 35 cts.; 100, \$1; 1,000, \$5.

PARSONS (Perfect Flowers)—Fruit medium to large; color, a beautiful shade of light red; fine flavor. Ripens with the mid-season berries. Can be grown successfully for either home use or commercial purposes.

Price, per dozen, 30 cts.; 100, \$1; 1,000, \$5.

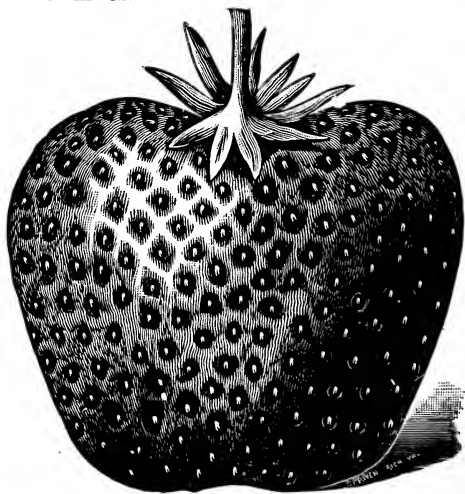
NICK OHMER (Perfect Flowers)—The fruit is of the very largest size, a giant among strawberries. Color dark glossy red, firm and of excellent flavor. This berry is highly spoken of by good authorities.

Should be in every garden where size, color and high quality are the first consideration. It ripens late in the season.

Price, per dozen, 30 cts.; 100, \$1; 1,000, \$5.

MARSHALL (Perfect Flowers)—It is beyond doubt one of the largest berries yet introduced; the plants are the rankest growers; away ahead of all others in this respect. In

shape conical very regular, each berry like the other; the color is a dark red crimson; the flesh is solid and dark red; flavor is the very finest. It is possible to ship this berry hundreds of miles.



MARSHALL.

It ripens with the early berries and continues in fruit until very late in the season. As to productiveness it will not yield as many berries as some varieties, but when measured in quarts it will be above the average. On account of its large, luxuriant foliage it will stand the severest drought and protect its flowers from late frosts.

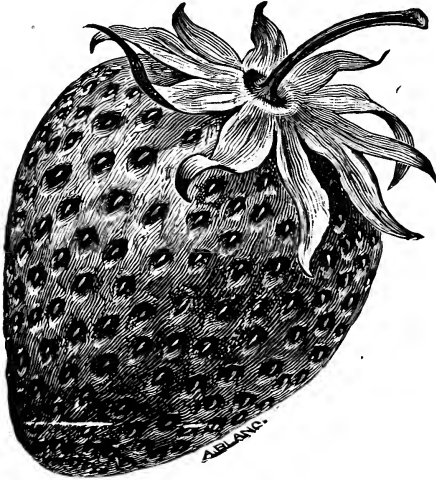
Price for strong layer plants, per dozen, 30 cts.; 100, \$1.00; 1,000, \$5.00.

BRANDYWINE (Perfect Flowers)—The berries are very large, handsome and attractive to the eye. The fruit is large and fine quality

firm and shapely, foliage of thriftiest. In general it is heart shape. Flesh red, firm and solid for so large a berry. Vines exceedingly prolific, continues a long time in fruit, a very profitable variety.

Price, per dozen, 30 cts.; 100, \$1.00; 1,000, \$5.00.

WM. BELT (Perfect Flowers)—The plant is very large, a most luxuriant grower and remarkably productive. Mid-season in ripening. Its size is very large. In form it is conical, rather long and quite uniform in shape. The color is a brilliant, glossy red. It ripens



WM. BELT.

all over without green tips. The quality is good, better than is usually found in large berries. A valuable variety for either home use or for market purposes.

Price, per dozen, 30 cts.; 100, \$1.00; 1,000 \$5.00.

GLEN MARY (Perfect Flowers)—It is productive of very large fruit of nearly round uniform shape. The color is light red. The flavor is very good. The last of the fruit is quite as large as the first that ripens. It is very productive, a valuable variety for a nearby market, or for home use where quality is the first consideration.

Price, per dozen, 30 cts.; 100, \$1.00; 1,000, \$5.00.

CHESAPEAKE—A superb berry by reason of its large size, uniformity, firmness and superior quality. One of the easiest varieties to pick. Though this variety does not set an immense amount of fruit, yet every blossom makes a berry and each berry may be termed "fancy." It ripens at practically the same time as the Gandy; starting three or four days earlier. The berries are all very large and beautiful, so regular in form and size as to suggest being cast from a mold. Of the very highest quality. Demands loamy fertile soil and high culture.

Price, per dozen, 35 cts.; 100, \$1.00; 1,000, \$5.00.

BUBACH (Pistillate)—Plants are strong, rampant, healthy growers, one of the best for market. The fruit is firm, of good flavor, dark rich color, and pleasing appearance. Season second early. It can stand the severest droughts, having very large foliage to protect its fruit. Its attractive appearance and large size make it a valuable berry for commercial purposes.

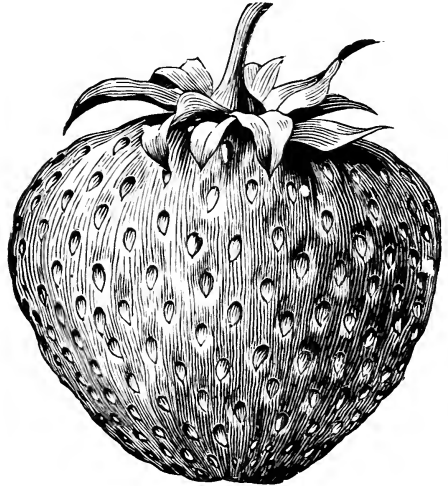
Price, per doz., 40 cts.; 100, \$1; 1,000, \$6.00.

SHARPELESS (Perfect)—The plant is exceedingly large and vigorous, quite free from rust or blight. It demands well enriched soil and is one that will bring the home grower fine fruit.

Price, per doz., 40 cts.; 100, \$1; 1,000, \$6.00.

LOVETT'S EARLY (Perfect)—Its color is dark red. One of the best shippers we have. It is a perfect flowering variety, prolific and a good market berry.

Price, dozen, 30 cts.; 100, \$1.00; 1,000, \$5.00.



GANDY.

GANDY (Perfect Flowers)—This superb late variety is second to none as a fine, handsome, beautiful, firm, fine flavored, late berry. The fruit always brings the highest market price. This is one of the most profitable berries to grow for a fancy market or for home use, where quality is the first consideration. The plant is a strong, compact grower; productive of large size, handsome, regular berries, which hold out large to the last picking.

Price, per dozen, 30 cts.; 100, \$1.00; 1,000, \$5.00.

DOWNING'S BRIDE (Perfect)—Medium to late. It attracted general attention and visitors placed liberal orders so as to be sure of getting it. The berries piled up and were so rich we felt the necessity of preparing for a big demand.

Per dozen, 40 cts.; 100 \$1.00; 1,000, \$6.00.

JESSIE (Perfect)—Very early productive, fruit very large, light crimson in color, firm and flavor of the best. One of the best varieties we have.

Per dozen, 30 cts.; 100, \$1.00; 1,000, \$5.00.

SAMPLE (Pistillate)—Plants good growers, fruit large, round and dark crimson in color and of good quality. It is productive and highly spoken of wherever fruited.

Per dozen, 30 cts.; 100, \$1.00; 1,000, \$5.00.

SENATOR DUNLAP (Perfect)—Fruit good size, regular form, beautifully bright red, glossy, firm, splendid keeper and shipper, excellent quality; one of the best for canning; ripens early and continues a long time.

Per dozen, 30 cts.; 100, \$1.00; 1,000, \$6.00.

EXCELSIOR (Perfect)—EARLY. A very vigorous grower. Requires a sandy loam soil. Berries quite tart, but rich; all the same size and hold up well throughout the season.

Per dozen, 30 cts.; 100, \$1.00; 1,000, \$6.00.

AUGUST LUTHER (Perfect) — EXTRA EARLY. It has bright, but rather dark red flesh, firm enough for shipping.

Per dozen, 30 cts.; 100, \$1.00; 1,000, \$6.00.

SCHOFIELD—Loved by everyone on account of its enormous size, bright red color, and rich aromatic flavor peculiar to itself. The plant is very large with an extra broad thick leaf. Early to late.

Per dozen, 30 cts.; 100, \$1.00; 1,000, \$5.00.

NOTE—We grow about all the different varieties of strawberries and any sorts wanted not listed above we can furnish at about the same prices.

SILVER COIN—Its salient points are its exquisite color, luscious flavor and great productivity. The berries are not only large but very nearly all of them are large, even those that ripen at the close of the season; and they are the most uniform in size and shape of any variety we have ever grown.

After the past season's fruiting of Silver Coin we can safely recommend it to our patrons as a first class berry in every respect, and one that has come to stay.

Per dozen, 50 cts.; 100, \$1.50; 1,000, \$8.00.

COMMONWEALTH—In the Commonwealth we have a berry as large as the largest—as productive as any of the large fruiting varieties, and as fine flavored and juicy and as dark colored as any strawberry grown. Very late.

Per dozen, 40 cts.; 100, \$1.00; 1,000, \$6.00.

ST. ANTOINE DE PADOUE (Perfect) —This large fruiting French ever-bearing strawberry possesses remarkable characteristics when grown under congenial conditions. The fruit is large and of a rich dark red color, handsome and uniform in shape, firm and of a delicious flavor.

Per dozen, 50 cts.; 100, \$1.50; 1,000, \$10.00.

Fall Bearing Strawberries

They are really a new thing in the strawberry world and have come to stay.

Under ordinary conditions they would bear a scattering crop of berries from June until November. Ordinary frosts have little effect on them.

In order to get the most paying results from them, we advise picking or pinching the blossoms off until within three weeks of the time when fruit is wanted. The rule is to stop pinching the blossoms about August 1st, then we may expect ripe fruit about the last week in August.

From 500 Fall bearing strawberry plants set out May 1st, there were picked on the 23rd of the following August—4 quarts of berries and they continued to yield until November 11, when the last 3 quarts were gathered. During the week of September 12 to 17th, there were gathered nearly 100 quarts.



Potting Strawberry Plants at Our Nursery.

A half dozen berry experts have been working over them since they were discovered ten or twelve years ago. Now for the first time the Fall Bearers are out of the freak class. Now is the time for all lovers of strawberries to go into this new discovery in earnest. It is a new industry. Every household that raises its own berries or has room for a berry patch can and should have fall bearers. The fall bearers are almost as easily grown as the "June only" kinds. The doubting ones will pay little attention to this new fruit and promising new industry. They will come trailing along in a few years when fall strawberries are common place and the big market profits have been reaped by others. Join the crowd and plant some Fall Bearers.

We have the following Fall-bearing varieties:

AMERICUS (Perfect) The plants are strong growers, hardy and make a good supply of young plants. The plants don't seem to be injured by fruiting in the Fall. The fruit is large, fine flavored and of an exceptional fine color. Price per 12, \$1.50; per 50, \$3.50; per 100, \$7.00.

SUPERB (Perfect)—The plants are good average sized ones, strong growers and stand the winter well. The fruit is large rounded, dark colored, glossy, attractive.

Price, per 12, \$1.50; per 50, \$3.50; per 100, \$7.00.

PRODUCTIVE (Pistillate)—The plants are large and bear a heavy crop of medium to large, fine colored fruit. The berries literally lay about the plants in heaps and piles. Must be planted with some perfect flowering sort before it will yield at all. Price, per dozen, \$1.50; per 50, \$3.50; per 100, \$7.00.

AUTUMN (Pistillate)—The free-est grower of all the fall bearing varieties and the plants yield enormously, but being a pistillate it must be planted with some other fall bearing variety having perfect flowers. The berries are nearly round of good size and very attractive.

Price, per 12, \$1.50; 50, \$3.50; 100, \$7.00.

Pot Grown Strawberry Plants

We have made a specialty of growing pot-grown Strawberry Plants for the past twenty-five years, at all times carefully observing the best means to grow and develop these plants, that they would give our patrons entire satisfaction. We are pleased to state we have successfully accomplished our purpose; evident from the fact that we are the largest growers of pot-grown Strawberry Plants in the United States. Our pot-grown plants are wintered in cold frames and can be removed with entire safety at any time our customers desire to have them shipped. We beg to advise our clients to set their plants as early as it is possible to work the soil. Please bear in mind you will get a heavy yield the coming summer, being one year over the ordinary layer plants, which is worth much more than the difference in first cost.

Our stock of potted plants is limited, and even now, as we go to press, we are quite well sold up. Send in your order now for shipment during the early spring and you will enjoy some nice, fresh, luxurious Strawberries from the plants during the coming summer.



Potted Plants Ready for Shipment.

Varieties and Prices of Pot Grown Strawberry Plants

	Per Doz.	Per 25.	Per 100		Per Doz.	Per 25.	Per 100
Nick Ohmer	60c	\$1.00	\$3.00	Chesapeake	60	1.00	3.00
Sample	60c	1.00	3.00	Gandy	50c	\$1.00	\$3.00
Lovett's Early	60c	1.00	3.00	Bubach	50c	1.00	3.00
Marshall	60c	1.00	3.00	St. Antoine de Padoue	\$1.00	2.00	6.00
Brandywine	60c	1.00	3.00	Sharpless	50c	1.00	3.00
President	75c	1.25	3.00	Parsons Early	60c	1.00	3.00
New York	60c	1.00	3.00	Oom Paul	75c	1.25	3.00
Wm. Belt	60c	1.00	3.00	Senator Dunlap	50c	1.00	3.00
Glen Mary	60c	1.00	3.00	Excelsior	50c	1.00	3.00
Silver Coin	1.00	1.75	5.00	August Luther	50c	1.00	3.00
Commonwealth	80c	1.50	4.00	Schofield	50c	1.00	3.00
Downing's Bride	75c	1.25	3.00	Jessie	50c	1.00	3.00

Raspberries

Red Raspberries

After preparing the ground the same as you would for strawberries, set the plants six feet apart between the rows and eighteen inches apart in the rows, thus making a continuous row of fruiting, which gives one-third more fruit than by the hill system. The fruit of the Red Raspberry should be gathered every day, for if allowed to remain long on the bushes, it decays quickly in moist weather. The pruning, training and care are practically the same as for the Blackberry, and clean cultivation or mulching rather more of a necessity.

ST. REGIS EVERBEARING The "early 'till late" Raspberry—Unlike any other Raspberry, the St. Regis yields a crop of fruit the season it is planted. Plants of it planted in early April gave ripe berries of June 20th of the same year. For four weeks thereafter the yield was heavy and the canes continued to produce ripe fruit freely without intermission, until the middle of October. The berries were large and beautiful, firm and full flavored to the very last.

Raspberries for four months! That's what you get when you plant St. Regis—the new everbearing variety. Moreover, they are not only raspberries, but raspberries of the very highest grade—in size, in brilliant crimson color, in firmness, in flavor.

Awarded the highest certificate of merit by the American Institute of New York.

Price, per 12, \$1.00; 100, \$3.50; 1,000, \$30.00.

PERFECTION—The berries are large, a bright crimson color, and of uniform size from beginning to finish of picking. They ripen about the middle of June, and bear until August.

Price, per dozen, 50 cts.; 100, \$2.00; 1,000, \$15.00.

THE LOUDON RASPBERRY—The fruit is very large, exceptionally firm, of fine, rich, attractive color, and of the best flavor. Plants per dozen, 30 cts.; 100, \$1.50; 1,000, \$10.00.

GOLDEN QUEEN RASPBERRY—Yellow variety. It is without doubt one of the best flavored fruits that has ever been tasted. The canes have never been harmed in the least during the winter months and they have always borne an immense quantity of fruit. Plants per dozen, 75 cts.; 100, \$4.00.

CUTHBERT—The best late hardy Red Raspberry, a variety that adapts itself to all conditions of soil and climates. The canes make a strong, vigorous growth and are exceedingly productive of large, late good flavored fruit, which holds its size to the end of the season. The berries are dark crimson in color and quite firm.

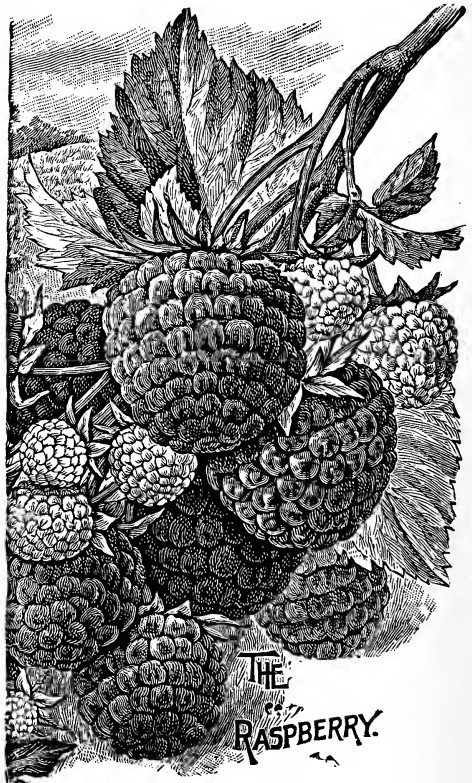
Price, per dozen, 30 cts.; 100, \$1.25; 1,000, \$10.00.

MILLER RED RASPBERRY—Berry is round in shape, color bright red; core very small, does not crumple, has rich, fruity flavor. The time of ripening is the very earliest.

Price, per dozen, 30 cts.; 100, \$1.25; 1,000, \$10.00.

MARLBORO—The canes of Marlboro are strong, hardy and productive; the fruit is as large as the Cuthbert, crimson in color, holds out large to the last picking and arrives in the market in good condition.

Price, per dozen, 30 cts.; 100, \$1.25; 1,000, \$10.00.



RUBY—It is perfectly hardy, throwing out strong, healthy canes which bear abundance of large crimson colored fruit, ripening a few days after the Cuthbert. The fruit holds out large to the last picking and arrives in the market in good condition.

Price, per dozen, 30 cts.; 100, \$1.25; 1,000, \$10.00.

THE KING—The earliest Red Raspberry. Large fruit, light crimson, quality excellent.

Per doz., 30 cts.; 100, \$1.25; 1,000, \$10.00.

NOTICE—We have on hand a large stock of selected, heavy fruiting canes of the above varieties which will bear the earliest possible moment after being planted. For any one in a hurry for fruit they are the best to plant.

Price for any of the above varieties except Golden Queen and St. Regis in large stock, per dozen, 50 cts.; per 100, \$2.00.

Cap Raspberries—Pink Varieties

COLUMBIAN (Pink Cap)—The Columbian is a vigorous grower, with large fruiting canes, fully as large as the Shaffer, which is the most rampant grower and prolific yielder we have yet seen. In quality it is an improvement on the Shaffer, being sweeter when ripe and of higher flavor.

Plants, 3 for 15 cts.; 12 for 50 cts.; 100 for \$2.50.

SHAFFER'S COLOSSAL (Pink Cap)—The canes are strong, hardy and productive of large, handsome fruit, the last of the berries even larger than the first. It is a valuable addition to the cap family and especially valuable for preserving.

Price, per dozen, 50 cts.; 100, \$2.50.

HERBERT—A 36 foot row of Herbert for 2 years produced at the rate of 205 bushels per acre. The fruit is crimson in color, holds out large to the last picking and arrives in the market in first-class condition.

Price, per dozen, \$1.00; per 100, \$6.00.

HAYMAKER—This variety has been thoroughly tested and has never failed to make a good record. The Haymaker is not so dark as Shaffer or Columbian and much larger and firmer than either of those varieties. Never crumbles and stands up well in shipping. The Haymaker has demonstrated its great merit in time of drought, having passed through several droughts unharmed. It certainly has four points of superiority, viz: Vigorous growth, hardiness, productiveness and quality.

After the past season's fruiting of the Haymaker at our nurseries, we can safely recommend it to our patrons. It certainly is a valuable acquisition to the Pink Cap family and should be in every garden.

Price, 12 for 50 cts.; 100 for \$4.00.

Cap Raspberries—Black Varieties

CUMBERLAND—The "Business Black Cap."—In hardiness and productiveness it is unexcelled by any other variety. In size the fruit is simply enormous, far surpassing any other sort.

The bush is exceedingly healthy and vigorous, throwing out stout stocky canes, well adapted for supporting their immense load of large, beautiful fruit. We advise our patrons to plant liberally of this variety.

Prices for strong, young tip plants, doz, 50 cts.; 100, \$2.00.

MILLS—A variety from New York State; of Gregg type, but earlier and hardier. Large, sweet and productive. Per doz., 40c.; 100, \$1.75.

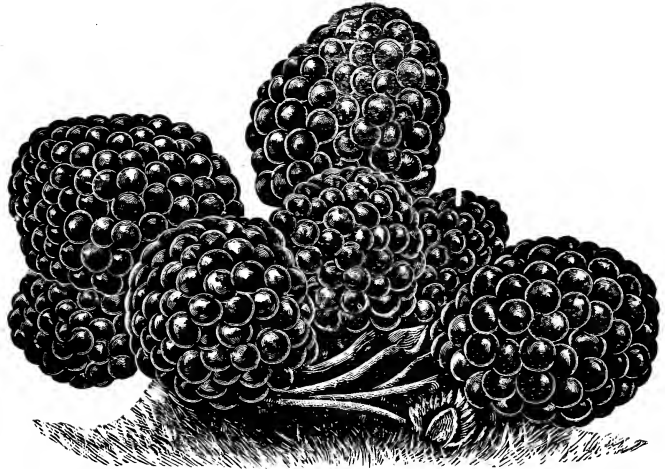
KANSAS—A most desirable Black Cap in every respect. The canes are magnificent, strong, vigorous growers, of ironclad hardiness, immensely productive of jet black fruit of large size, and are very attractive, hence a first-class market berry, as well as one of the best for family use. The Kansas ripens in mid-season, and the fruit is very firm. Price, per dozen, 40c.; 100, \$1.75.

OHIO—Ripens mid-season, between Souhegan and Gregg. The fruit is nearly as large as the Gregg. Very uniform in size and holds out large to the last picking. It is a splendid quality, firm, and a very excellent shipper.

Price, per dozen, 40 cts.; 100, \$1.75.

SOUHEGAN—Enormously prolific of jet black berries, and the best in quality of any blackcap; the very earliest to ripen.

Price, per dozen, 40 cts.; 100, \$1.75.



GREGG—Requires a good, strong soil to produce best results, and responds liberally to generous treatment.

Price, per dozen, 40 cts.; 100, \$1.75.

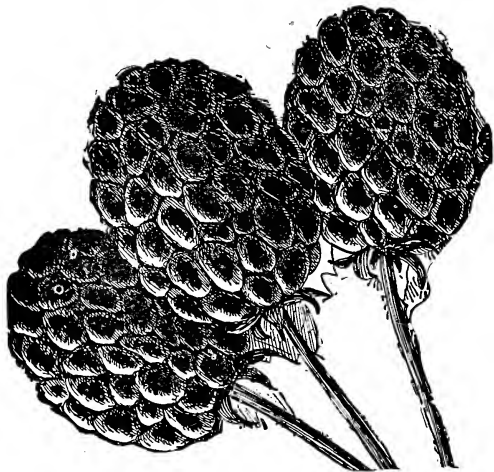
PALMER—Early and very productive; berries large, canes strong growers.

Price, per dozen, 40 cts.; 100, \$1.75.

Write for Special Prices of either Pink or Black Caps in lots of 1,000 and upwards.

Blackberries

Plant in fall or very early spring, in rows from 6 to 8 feet apart, or in hills, 4 to 6 feet, allowing a space of one square foot for each cane; and all suckers not desired for the next season's fruiting, must be treated as weeds. The critical time of growth is when the fruit is ripening, a large amount of moisture being needed to produce the best fruit; and to secure this the surface soil should be stirred once or twice each week or a mulch 2 to 3 inches thick be spread over the surface, to keep the canes upright; when loaded with fruit, they may be tied to stakes, or be supported by tying to wires stretched on each side of the rows, 12 to 15 inches apart. When grown in a strong soil, the canes, if made to branch by pinching, will be large enough to stand up without support. Under good cultivation the Blackberry is very little troubled by insects or fungous pests, but it will generally be best to spray the bushes before they start into growth, and again just before the blossoms open, with Bordeaux mixture for the leaf blight, rust and anthracnose, which are sometimes destructive in moist and warm weather, especially if the growth is rather weak.



BLOWER—A very large Blackberry of finest flavor and jet black color. The canes grow upright and are perfectly hardy. This variety is one of the most productive in cultivation, begins ripening in July and continues until September; always sells for the highest market price. It is exceptionally popular among New York growers. It is claimed that 27 Blower's berries filled a quart box and the yield was 50% larger than any other variety. If you do not have this valuable variety we hope you will try it.

Price, each 10c; per dozen, \$1.00; per 100, \$3.00; per 1,000, \$25.00.

MESERAU—This variety originated in western New York, where the mercury falls below Zero each winter. The plants have never yet been injured in the least during the winter months. It remains in bearing as late as September 1 to 10, the fruit selling for two or three cents higher per quart than other varieties. Its extreme hardiness, large size, great productiveness and delicious quality make it a valuable acquisition.

Price, doz., 50 cts.; 100, \$2.50.

ANCIENT BRITTON—One of the best varieties. Very vigorous, healthy and hardy, producing large fruit stems, laden with good size berries of fine quality that carry well and bring highest price in market.

Price, per doz., 40 cts.; 100, \$2.25; 1,000, \$20.

ERIE—It is the best hardy variety yet introduced. Very productive, foliage clean and healthy, free from rust; fruit large, about the size of Lawton; ripens early; valuable and profitable standard variety and largely grown for commercial purposes.

Price, per doz., 40 cts.; 100, \$2.25; 1,000 \$20.

RATHBURN—A Blackberry that proved to be entirely hardy, having withstood a temperature of fifteen degrees below zero uninjured. The berries are large with large pips and small seeds. They have no hard core, in fact, no core is perceived in eating; all is soft, sweet, luscious, with a high flavor.

Price for strong plants, doz., 50 cts.; 100, \$2.50.

LOVETT'S BEST BLACKBERRY—At the Orange County Nurseries we have found this variety to be a good grower. The fruit is very large, handsome and of excellent flavor.

Price, per doz., 40 cts.; 100, \$2.25; 1,000, \$20.

ELDORADO—In flavor it is one of the most delicious berries we have ever eaten. It has never winter killed or failed to produce a crop of the finest fruit, while it is of superior flavor and very large. The fruit has no hard core, and is jet black, in large clusters, ripening well together. Its keeping quality is unsurpassed.

Price, 12 for 50 cts.; 100, \$2.50, 1,000, \$22.50.

MINNEWASKI—A valuable variety for home use and grown largely and profitably for market by many fruit growers. Canes hardy, very productive, strong growing, free from disease; fruit large, early, of good quality.

Price, per doz., 40 cts.; 100, \$2.25; 1,000, \$20.

In addition to the above varieties, we have in stock in large quantities the following well known sorts which we confidently recommend to our customers.

Lawton, Taylor's prolific, Snyder, Wilson all hardy; Wilson Early, Early Harvest, not hardy in the North; good Southern sorts. Price for any of the preceding five varieties, doz., 40 cts.; 100, \$2.25; 1,000, \$20.

Prices quoted on quantities.

Currants

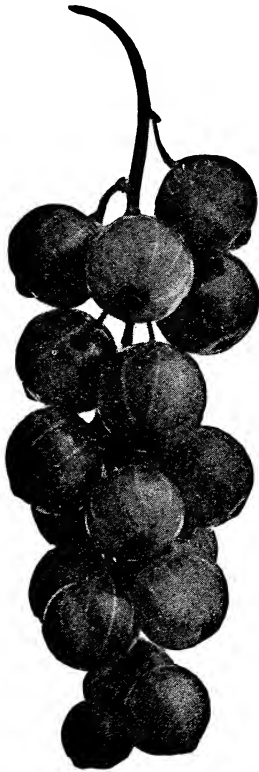
Vigorous young plants, one or two years old, should be planted in rich, rather moist soil, in hills 4 by 6 feet apart. Thorough and clean cultivation must be given and an annual dressing of two or three shovelfuls of good stable manure put about the bushes in the fall, or an equal value of some good fruit fertilizer be applied in the spring. The pruning needed consists of cutting out the old wood, that is more than three or four years old, in such a way as to give the bushes an upright form and produce a young and vigorous wood upon which only a large and fine fruit can be grown. During the time of ripening, much fruit will be saved from being spattered with soil if a mulch of 2 or 3 inches is put around under the bushes.

VICTORIA—Ripens ten to twelve days later than the cherry. Especially desirable for the home use, and also valuable as a market berry. One year, doz., 50 cts.; 100, \$3.50. Two year, doz., 60 cts.; 100, \$4.50.

PERFECTION.

A distinct and very superior variety; producing large, long clusters of large, bright sparkling red berries of mild, superior quality in great profusion. Awarded many prizes and medals. The editor of the old reliable American Agriculturist says: "In reality it is all its name indicates. It is simply the most beautiful and perfect Currant thus far introduced."

It has proved an unqualified success at our place and we are receiving flattering reports of it from all parts of the country. We do not hesitate to recommend it as the finest and best Currant upon the market. Perfection sold in open market the season just past at two to three cents per quart more than



the finest red Currants from the Hudson River district. It is an unqualified success.

Price, 2 year strong bushes, 12c, each; \$1.30 per dozen; \$11.00 per 100.

Price, selected bushes, 25c. each; doz., \$2.50.

WHITE GRAPE — Very large yellowish white; sweet or very mild acid; excellent quality and valuable for the table: the finest of the white sorts. Very productive and a most desirable Currant. One year, doz., 50 cts.; 100 \$3.50. Two year, doz., 60 cts.; 100, \$4.50.

LEE'S PROLIFIC (BLACK)—It is earlier than Black Nape, and of superior quality; larger, longer clusters, and even more productive than that prolific kind. One year, doz., 50 cts.; 100, \$3.50; two year, doz., 60 cts.; 100, \$4.50.

WILDER (President Wilder)—Bush upright, vigorous; clusters above medium length; berries large to a very large, bright red excellent with a mild sub-acid flavor. Ripens early and remains bright and firm until very late.

Price, one year plants, doz., 50 cts.; 100, \$3.50; two year plants, doz., 60 cts.; 100, \$4.50.

RED CROSS—The plant makes twice the growth of Cherry, and yields double the amount of fruit.

Two year plants, each 15 cts.; per doz., 75 cts.; 100, \$4.50.

FAY'S PROLIFIC—This has fully sustained the broad claims which were made for it by the disseminator upon its introduction; and it is decidedly one of the best red currants we have. It has been widely planted, and has given general satisfaction. This is a strong grower, wonderfully prolific, and comes into bearing early. Fruit large, bright red and of good flavor. Those who want a prolific red currant should plant this variety.

One year, per doz., 50 cts.; per 100, \$3.50; price, two years, per doz., 60 cts.; per 100, \$4.50.

CHERRY—This is the old established standard variety of red currant. Very prolific, of fine large bunches, of most beautiful crimson berries. A splendid variety for home use, and excellent as a market berry. One year, doz., 50 cts.; 100, \$3.50; two year, doz., 60 cts.; 100, \$4.50.

Write for special prices on any of the above varieties in large quantities.

SELECTED.

We have in stock 3 year old plants of any of the above mentioned varieties except Perfection that will bear a good crop of fruit the first season after being planted. Our stock of this grade is limited and we can offer them at the following prices while they last:

Each, 15 cts.; doz., \$1.50; 100, \$8.00.

Gooseberries

Gooseberries require the same treatment in planting, pruning and cultivation as recommended for the currant.

CHAUTAUQUA—Berries large, pale yellow, smooth, very sweet, and of exquisite flavor.

Plants one year, each, 20 cts.; per doz., \$1.50. Plants, two years, each, 30 cts.; per doz., \$2.50.

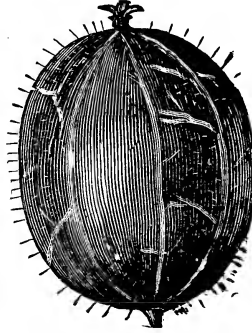
COLUMBUS—Fruit large, oval; skin greenish yellow, smooth, of the highest quality.

Price, two years plants, each 20 cts.; doz., \$2.00.

RED JACKET—Fruit of excellent quality. This berry seems to be of special value on account of its claim to be mildew proof.

Plants, one year, each 15 cts.; per doz., \$1.50. Plants, two years, each 20 cts.; per doz., \$2.00.

INDUSTRY—Of vigorous upright growth,



greatest cropper; more free from mildew than any of the English varieties; berries of the largest size, excellent flavor, both pleasant and rich; color, when fully ripe, dark red.

Price, one year, each 15 cts.; per doz., \$1.50; two years, each, 20 cts.; per doz., \$2.00.

DOWNING—Very popular, large, pale green, good quality.

One of the best varieties ever introduced.

Price, one year plants, per doz., \$1.25; price, two years plants, per doz., \$1.50.

Prices on quantities quoted on application.

Dewberry

LUCRETIA—Is the best variety in cultivation. Ripens a few days in advance of the blackberry, and is productive of large, fine flavored, luscious fruit without any core. Especially valuable for home consumption, where it will be highly appreciated for its large size,

beautiful color and superb flavor. It is also profitable as a market berry and is grown extensively for this purpose by many large fruit growers. Becoming more popular each year.

Price per doz., 30 cts.; 25, 50 cts.; 100, \$1.25; ,000, \$8.00.

Dwarf Juneberry

The fruit is twice the size of the Huckleberry, matures in June, is round, reddish purple at first, changing to bluish black when fully ripe. In flavor it is similar to the swamp huckleberry, which it resembles in appearance

also. It is rich, sub-acid, delicious, and is excellent for cooking. A very profuse bearer.

Plants, 15 cts. each; 2 for 25c.; 6 for 40 cts.; 12 for 75 cts.

Japanese Wineberry

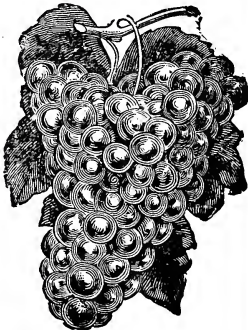
The canes are covered with purplish red hair. The fruit is borne in clusters, and each berry is at first tightly developed by a large calyx forming a sort of burr, which is covered with purplish red hair so thickly as to present

the appearance of moss rose buds. When the fruit matures, this bud pops open and displays the fruit. In color it is a bright red.

Price, 3 plants for 30 cts.; 6 plants for 60 cts.; 12 plants for \$1.20.

The Grape

It succeeds best in a very warm location and in rather poor soil, but if planted where it is close and moist, with but little light, air, and sunlight, it is sure to be attacked by mildews, rot and anthracnose. The conditions of success in growing the grape are a moderately vigorous growth of vine well spread out to the full sunlight and air, forcing the growth into a few canes, these bearing the



fruit the present season and those that are to bear the fruit the next season; all other parts of the vine being prevented from growing by pinching as soon as they have made one new leaf, after the last pinching thin the fruit so that the vines shall not be exhausted by overbearing. The best supports for the vines to run on is galvanized iron wire, as the tendrils of the vines will cling to this; it is less expensive and the vines require less tying to keep them in place than if trained to a wooden trellis.

MOORE'S DIAMOND—A prolific bearer, bunches large, handsome and compact, slightly shouldered; color delicate, greenish white.

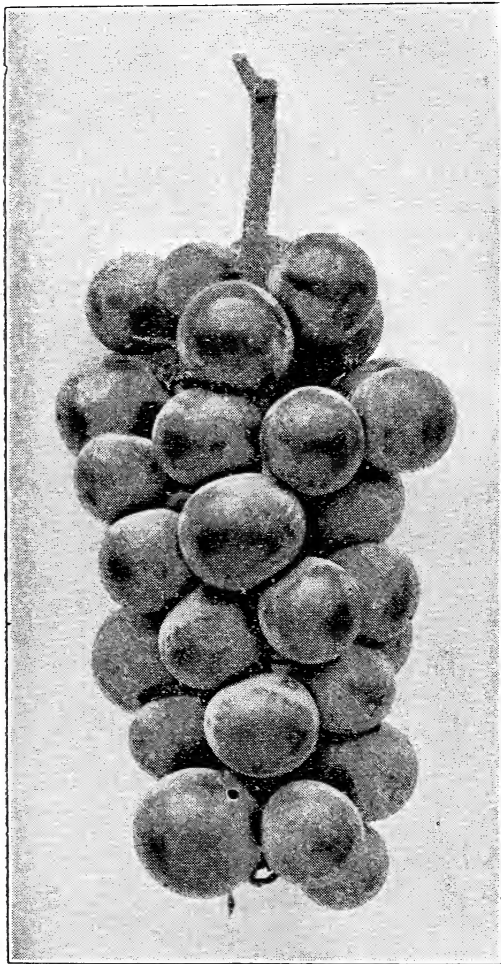
Price, one year, each 15 cts.; per doz., \$1.25. Price, two years, each 25 cts.; per doz., \$2.00.

EATON—The bunches are very large, compact and shouldered. The fruit is enormous, black and handsome in appearance.

Price, one year, each 20 cts.; per doz., \$1.75. Two years, each 25 cts.; per doz., \$2.50.

AGAWAM—Red, berries large, skin thick; flesh pulpy, meaty, juicy, rich.

Price, one year, each, 10 cts.; per doz., \$1.00; per hundred, \$6.00. Two years, each, 15 cts.; per doz., \$1.50; per hundred, \$7.00.



BRIGHTON—Red, berries medium, skin thin, flesh tender, sweet.

Price, one year, each, 10 cts.; per doz., \$1.00; per hundred, \$6.00. Two years, each, 15 cts.; per doz., \$1.50; per hundred, \$8.00.

CATAWBA—Dark red, berries large, rich flavor of best quality.

Price, one year, each, 10 cts.; per doz., \$1.00; per hundred, \$5.00. Two years, each, 15 cts.; per doz., \$1.50; per hundred, \$7.00.

CONCORD—Black early, berries large, flesh juicy, sweet.

Price, one year, each 10 cts.; per doz., \$1.00; per hundred, \$4.00. Two years, each 15 cts.; per doz., \$1.50; per hundred, \$5.00.

POCKLINGTON—Pale green, berries very large, flesh juicy, sweet with considerable pulp and foxy.

Price, one year, each, 10 cts.; per doz., \$1.00. Two years, each, 15 cts.; per doz., \$1.50.

WORDEN—Black, thick skin. It is superior to the Concord. It is better in quality, larger berry, ripens from five to ten days earlier.

Price, one year each, 10 cts.; per doz., \$1.00; per hundred, \$4.00. Two years, each, 15 cts.; per doz., \$1.50; per hundred, \$7.00.

EMPIRE STATE—White, bunch medium long, compact, berries medium, quality best.

Price, one year, each, 15 cts.; per dozen, \$1.50; per hundred, \$7.50. Two years, each, 20 cts.; per doz., \$2.00; per hundred, \$9.00.

CAMPBELL'S EARLY—Very productive of large, handsome clusters; of most exquisite flavor; the berries are round with a delightful bloom; color is black, the skin is thin, but firm.

Price, one year old vines, 15 cts.; doz., \$1.50. Price, two year old vines, 20 cts.; doz., \$2.00.

MOORE'S EARLY (Black)—Bunch not quite as large as Concord, but berries larger and very much like it in flavor and quality. Produces a heavy crop. Ripens very early and is nearly out of market before Concord is ripe, and hence brings a comparatively high price.

Price, one year, each, 10 cts.; doz., \$1.00; hundred, \$7.00. Two years, each, 15 cts.; doz., \$1.50; hundred, \$8.00.

DELAWARE—Red, bunch small, compact, berries small, skin thin but firm, flesh juicy, very sweet and refreshing, of best quality for both table and wine.

Price, one year each, 10 cts.; per doz., \$1.00; per hundred, \$6.00. Two years, each, 15 cts.; per doz., \$1.25; per hundred, \$7.00.

NIAGARA (White)—Bunch very large and handsome, berries large, round, skin thin, melting, sweet; ripens with Concord.

Price, one year, each, 10 cts.; per doz., \$1.00; per hundred, \$4.00. Two years, each, 15 cts.; per doz., \$1.50; per hundred, \$8.00.

LADY WASHINGTON (White)—Large, late and juicy.

Price, one year, each, 20 cts.; per doz., \$2.00. Two years, each, 25 cts.; per doz., \$2.50.

LADY—An early white grape, hardy and productive, excellent in flavor, very desirable for home use.

Price, one year, each, 20 cts.; per doz., \$2.00. Two years, each, 25 cts.; per doz., \$2.50.

WYOMING RED—The earliest good red grape we grow; bunch small, skin bright red, fruit sweet.

Price, one year, each, 10 cts.; per doz., \$1.00; per hundred, \$7.00. Two years, each, 15 cts.; per doz., \$1.50; per hundred, \$9.00.

WOODRUFF RED—A large, red handsome grape, flavor sprightly and pleasant.

Price, one year, each, 20 cts.; per doz., \$2.00. Two years each, 25 cts.; per doz., \$2.50.

WILDER—Ripens with Concord. Bunch and berry very large; vine vigorous and prolific. One of the best black varieties.

Price, one year old vines, each 10 cts.; doz., \$1.00. Two year old vines, each 15 cts.; doz., \$1.50.

EARLY OHIO—The bunches are large, compact and handsome, berries medium, and of a sprightly pleasant flavor.

Price, one year, each, 15 cts.; doz., \$1.50; hundred, \$10.00. Price, two years, each, 20 cts.; doz., \$2.00; hundred, \$15.00.

THE GREEN MOUNTAIN GRAPE—The berries of medium size; color greenish white; skin thin, and leaving no unpleasantness whatever in the mouth when eaten.

Price, one year, each, 25 cts.; doz., \$2.50. Price, two years, each, 35 cts.; doz., \$3.00.

BACCHUS—Black, bunch medium; berry small, round, juicy, sprightly. A seedling of Clinton, which it resembles but is of better quality. A valuable wine grape.

Price, for strong, two year old vines, each, 15c., doz., \$1.50; 100, \$5.00.

We have in stock some 3 years old selected vines that will bear a good crop of fruit the first season after being planted.

Price of above varieties in 3 year old stock, each, 35 cts.; doz., \$3.50.

Write for special low price on large quantities.

Fruit Trees

No matter how well the soil may be prepared, how fresh the trees may be when received, or how well they may have been prepared for planting, if the work of planting is not properly done they may fail to grow at all or grow so poorly as to give little satisfaction. Many failures in tree planting result from the slovenly and imperfect way in which the work is done and the nurserymen are too often blamed for the failures. In planting, the roots of all trees should have a fine mellow bed of good soil which should be pressed firmly into contact with every fibre, leaving no air spaces around any of them; and every one should be spread out in a natural position, so that no two shall touch each other. Immediately in contact with these roots good soil should be very firmly pressed so that new roots will be encouraged to start out at the earliest possible moment. After the fine soil to the depth of three or four inches is firmly pressed in place, that remaining is thrown loosely on top and not trodden at all, thus serving as a mulch.

Apple Trees

NOTE—If you are going to plant apples in a large way, send us a list of varieties and sizes wanted. We will gladly quote special prices.

Prices Subject to Change Without Notice.

No. 1, first class stock, 5 to 6 feet, $\frac{5}{8}$ to 11-16 in. caliper, each, 35 cts.; doz., \$4.00; per 100, \$22.00; $\frac{1}{2}$ to $\frac{5}{8}$ in. caliper, 4 to 5 feet, each 30

cts.; per doz., \$3.00; per 100, \$18.00. McIntosh Red in 100 lots 5c. per tree more in each grade.

We have extra selected heavy trees that are three and four years old. These large trees are desirable for those who are in a hurry for fruit, as they will come into bearing a short time after they are planted. Price, 50 cents each; \$5.00 per dozen.

Summer Varieties

EARLY HARVEST—Medium size; pale, yellow, early, mild, excellent, sub-acid.

SWEET BOUGH—Large, pale, yellow, sweet, productive; valuable for market; early.

YELLOW TRANSPARENT—Flesh melting, juicy and of excellent quality. Ripens early.

EARLY STRAWBERRY—Medium, roundish, handsomely striped with red, excellent, productive.

RED ASTRACHAN—Large, roundish, nearly covered with deep crimson; juicy, a free grower and a good bearer.

Autumn Varieties

ALEXANDER—Large, beautiful, red, medium quality, tree vigorous grower, very hardy.

FALL PIPPIN—Very large, yellow, roundish, splashed with red and orange, high flavor, prolific.

GRAVENSTEIN—Large, bright yellow, ish, splashed with red and orange, high flavor, favor, prolific.

FAMEUSE OR SNOW—Vigorous growth. Medium; deep crimson; tender; sub-acid; melting, delicious, very good; hardy; one of the best dessert apples. November to January.

RED BEITINGHEIMER—Very large, beautiful, superior quality, light yellow covered with red, purplish crimson when exposed to the sun. Trees are vigorous and healthy growers.

MAIDEN'S BLUSH—Medium to large, roundish; clear yellow with pink cheek, beautiful, excellent.

DUCHESS OF OLDENBURGH—Medium to large, of Russian origin, yellow striped with red, excellent flavor.

Winter Varieties

LADY SWEET—A beautiful little dessert apple, fruit flat, pale yellow, with a deep red cheek; juicy, rich and pleasant. The fruit sells for the highest prices in New York, Philadelphia and Boston.

LAWYER—Large, dark red, covered with small dots of beautiful appearance, promises valuable for market.

MANN—Fruit medium, to large, roundish, oblate, skin deep yellow when fully ripe, flesh white and juicy, mild, pleasant.

McINTOSH RED—Large roundish, skin mostly covered with bright red; flesh white, tender, subacid, sprightly, very good. Handsome; hardy, November to February.

JONATHAN—Medium size red and yellow, flesh tender juicy and rich, shoots light colored, slender and spreading; very productive. One of the best varieties either for table or market. One of the finest flavored winter apples we have. Season for fruit from November until April.

GRIMES' GOLDEN—An apple of the highest quality, equal to the best Newtown; medium to large size, yellow, productive.

NEWTOWN PIPPIN—One of the best apples as to quality. Tree light grower while young. Very juicy, crisp and highly delicious flavor.

RHODE ISLAND GREENING—Large, green, tender, juicy and rich, an abundant bearer; one of the most popular varieties for home use and market.

ROME BEAUTY—Moderate growth. Large yellow and red; tender; juicy, sprightly, subacid; good. Ripening December to May.

WINESAP—Medium, deep red, firm, crisp, rich, sub-acid, widely cultivated.

SPITZENBURG ESOPUS—Medium to large, deep red; flesh yellow, crisp, sub-acid, high flavored. November to April.

KING (Tompkins County)—Large, handsome, nearly red, productive, one of the best.

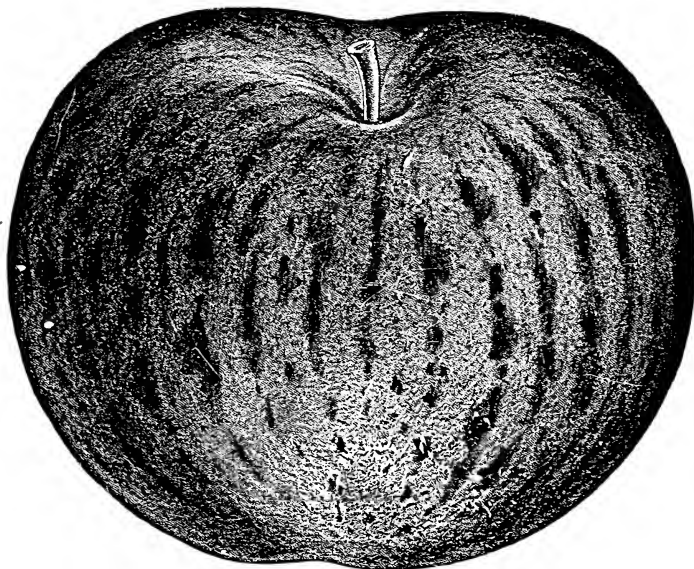
NORTHERN SPY—Tree very hardy, long lived, good bearer, handsome fruit and a good variety for market; fruit large, striped with purplish red.

RUSSET GOLDEN—Medium, clear golden, good bearer.

RUSSET ROXBURY—Medium to large, tender, sub-acid flavor, very popular on account of keeping qualities.

SMITH CIDER—Large, skin yellow, changing to red, flesh tender, juicy, crisp, fair flavor.

BALDWIN—Large, roundish, dark red, juicy, flavor sub-acid, crisp and juicy, very much esteemed. Trees grow erect and vigorous, bearing well.



THE BALDWIN.

BEN DAVIS—Large, bright red, flesh white, juicy, rich and spicy, subacid, of good quality, a popular, good keeper.

WEALTHY—Fruit medium size; skin nearly covered with dark red, and of an oily smoothness to the touch; flesh white, fine grained. Juicy, sub-acid, very good. Tree a free grower, productive. Season, December to February.

SUTTON BEAUTY—Fruit, medium to large, roundish, handsome; skin waxen yellow, striped with crimson; flesh whitish, tender, juicy, sub-acid; quality very good: keeps remarkably well. Tree a free, handsome grower and productive. One of the most valuable market varieties.

YORK IMPERIAL—Medium, whitish, shaded with crimson in the sun; firm, crisp, juicy, pleasant, mild, sub-acid. Tree moderately vigorous and productive. A popular variety. November to January.

FALLOWATER—Very large, greenish yellow, flesh fine grained, mild, sub-acid, tree vigorous.

YELLOW BELL FLOWER—Large, yellow, rich, sprightly, and of excellent flavor.

HUBBARDSTON NONESUCH—Large, yellow apple, striped with red, of fine flavor, a good bearer and a very valuable apple.

DOMINIE—Large, greenish, yellow, slightly striped with red, of fine flavor, a good bearer and a very valuable apple.

VERMONT BEAUTY—This apple has been thoroughly tested by the leading pomologists and horticulturists of the country and pronounced

ed to be a valuable acquisition to the Apple Family. In formation, appearance and general make-up the fruit has a combination of the desirable characteristics of the King of Tompkins County and Northern Spy. The color on one side is crimson, with a smooth, oily surface as if varnished, making it at once very

attractive; the other side is splashed with red and striped quite similar to the Northern Spy; flesh white; flavor sub-acid, rich, aromatic and pleasant. It ripens in early December and keeps well during January and February. It is a very desirable eating and cooking apple. No. 1, first class trees, 5 to 6 feet in height, 50c each.

Crab Apples

HYSLOP—Large, roundish, deep red with blue bloom, very pretty, flesh yellowish, excellent for cider and jelly. Popular, late.

LADY ELGIN—Similar to the Lady Apple in size and appearance; tender, juicy and good, an upright, vigorous grower, early and prolific bearer. September and October.

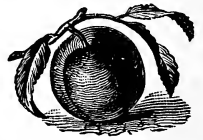
EXCELSIOR—Raised from seed of Wealthy, in Minnesota. Very hardy, productive, and one of the best flavored varieties. September. As large as Red Astrachan, more beautiful in appearance. Very valuable.

Above varieties, two years, 25 cents each; \$2.50 per dozen. Three years, 7 to 8 feet, 50c each; \$5.00 per dozen.

Dwarf Apples



Perhaps no other fruit is attracting so much attention at the present time as Dwarf Apples, especially for garden and yard planting. They can be planted 6 feet apart and do well. They begin to fruit the second or third year, and bear abundant crops. The fruit is just as large, same flavor, etc., as that born on the standard trees. The great advantage is the early



bearing of fruit. The trees never get over 6 or 8 feet high. Very profitable, bear 4 to 6 bushels per tree.

We can supply the following choice Dwarf kinds: Bismark, King, Baldwin, Hubbard's Nonesuch, Northern Spy, Wagoner, Wealthy,

McIntosh, Gravenstein, Duchesse, Red Astrachan, Maiden's Blush, York Imperial, Sutton's Beauty, Fallowater, Fameuse. Price, 3 ft. trees, 40 cts. each; \$4.50 per doz.; \$45.00 per 100. Try a dozen or more trees, and gather fruit from them in a very few years.

Pear Trees

Although the Pear is not so largely grown or highly prized as the Apple, it is distinctly a home fruit and is easily grown. The trees should be planted about 20 feet apart and succeed best in a rather heavy soil, but will do fairly well on any but a very thin soil. The trees grow in a regular pyramidal form and begin bearing earlier than the apple. The planting and care are the same as for the apple.

Standard Varieties and Prices

Prices Subject to Change Without Notice.

Prices for any varieties, except when noted, of standard Pear trees hereafter named: First class tree, 5 to 6 feet in height, $\frac{3}{4}$ inch in diameter, straight, clean, well branched trees, each, 30 cents; dozen, \$3.00. First class grade, 4 to 5 feet trees, each 25 cents; dozen, \$2.50.

Bartlett, Clapp's Favorite, first class, 5 to 6 feet, 40 cents each; \$4.00 per dozen.

Clapp's Favorite and Bartlett, first class, 4 to 5 feet, 30 cents each; \$3.00 per dozen.

We have a very nice stock of extra heavy trees, three years old. Very desirable trees for those who are anxious to get fruit as soon as possible after planting.

Price, each 50 cents; dozen, \$5.00.

Summer Varieties

Write for special prices of Pear Trees in 100 lots or more.

DOYENNE D'ETE—Small, nearly round, yellow, with red cheek, a good, juicy, sweet pear; tree vigorous and productive. One of the very earliest varieties.

WILDER—It is one of the earliest of all Pears to ripen, therefore it will sell at a fancy price at the fruit stands; there is no early pear to compare with it.

OSBANDS' SUMMER—Medium, yellow, with red cheek, half melting, mild and pleasant, fine flavor and excellent. Productive.

BARTLETT—Large, clear, yellow, juicy, buttery, excellent, thrifty, young, heavy and reliable bearer; too well known to need any lengthy description; one of the best fruits ever introduced.

LAWSON—One of the most beautiful when full ripe, a brilliant crimson, yellow ground; flesh is rich, juicy and pleasant.

CLAPP'S FAVORITE—Large, delicious, good grower, productive. Ripens in advance of Bartlett; rots unless picked early. Mid-summer.

Autumn Varieties

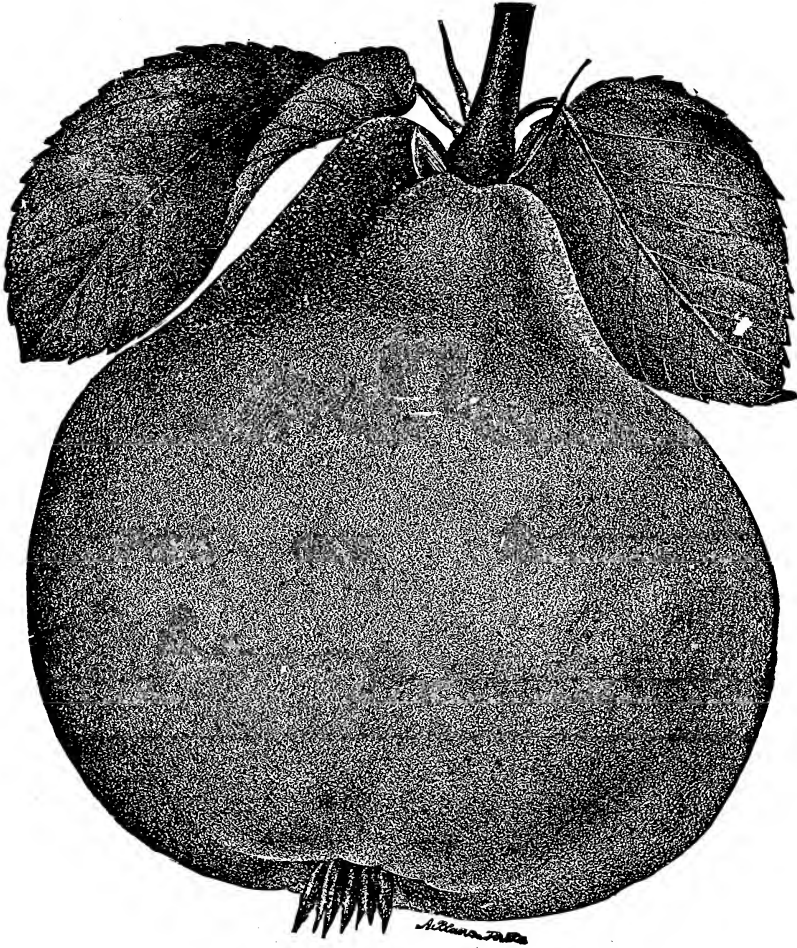
IDAHO—The trees are good, thrifty, young growers. Yellow or straw color, with a faint bluish or brownish red on the sunny side, thickly covered with fine brown dots, stem stout and rather long, core very small.

KIEFFER—Large, skin rich golden yellow, sprinkled thickly with small dots, and often tinted with red on one side; flesh slightly coarse, juicy and melting, with a pronounced quince flavor. Tree very vigorous, and an early and great yielder.

FLEMISH BEAUTY—A large, beautiful, sweet pear. Tree a good bearer.

VERMONT BEAUTY—Trees vigorous growers; early, abundant bearers; fruit medium in size, yellow with red cheek, rich, juicy and of best quality.

SHELDON—Medium size, greenish russet, melting and juicy, highly aromatic flavor. Should be largely planted.



SECKEL—One of the richest pears grown, usually very productive, fine grained, sweet and exceedingly juicy.

DUCHESS D'ANGOULEME—One of the largest of our pears, greenish yellow, spotted with russet, flavor good. Its large size and handsome appearance makes it valuable for the market.

HOWELL—Large, light waxen yellow, with a fine red cheek. An early and profuse bearer.

WORDEN SECKEL—It is a seedling of the old Seckel, which for many years has been conceded by promologists to be the standard of excellence. Equally as rich and inviting, while in size, color, form and appearance it is decidedly superior.

BUERRE BOSC—Large and russet yellow, flesh white, melting, juicy and sweet, productive. One of the best pears in cultivation, both for home use and commercial purposes.

First class, 3 to 4 feet, 50 cts. each; 4 to 5 feet, 75 cts. each.

Winter Varieties

BUERRE CLAIRGEAU—Very large, yellow and red, handsome and attractive, flesh yellowish, keeps sound a long time. Tree a good grower and abundant producer. A magnificent and valuable market fruit.

LAWRENCE—Medium, yellow, covered with round dots, somewhat buttery, with a rich flavor; should be in every orchard and garden; tree healthy, hardy and productive.

PRESIDENT DROUARD—A very good looking pear; of good flavor; the fruit is large and yellow, with red cheek.

WINTER NELIS—Medium size, green and russet, fine grained and when well ripened is one of the best. We have eaten this pear in March and considered it delicious. 4 to 5 feet trees, 50 cts. each; 5 to 6 feet trees, 75 cts. each.

BUERRE D'ANJOU—A large, handsome pear, greenish, sprinkled with russet, flesh white, buttery, with a high, rich flavor; very productive.

BAR SECKEL—A cross between the Bartlett and Seckel. Tree strong, upright grower; color of fruit pale green, flesh white, fine grained, very melting and juicy.

Dwarf Pear Trees

Plant 10 feet apart each way.

We have the following varieties in the Dwarf trees, and we would recommend them to all who are anxious to get fine, large fruit in a short time: Duchess, Bartlett, Buerre D'Anjou Clapps' Favorite, Kieffer, Seckel, Idaho, Lawrence, Clairgeau, L. B. De Jersey.



Prices of any of these varieties of No. 1 Dwarf Pear Trees, 25 cents; dozen, \$2.50; 100, \$16.00.

We have selected three and four year old trees at 50 cents each; \$5.00 per dozen.

Peach Trees



The Peach can only be profitably grown on high rather well drained land. While it may not be advisable to plant the Peach for profit on low land, the buds sometimes escape and a single good crop will repay the labor and care of growing and long years of waiting. Peach trees can not be expected to live very long in any sec-

tion of the country; the average life of the trees throughout the country is probably not more than 10 or 12 years. If trees are planted in very rich soil it is well to plant some trees to check a too rapid growth, especially while the trees are young, though when a crop of fruit has been set there is little danger of making the soil too rich.

tion of the country; the average life of the trees throughout the country is probably not more than 10 or 12 years. If trees are planted in very rich soil it is well to plant some trees to check a too rapid growth, especially while the trees are young, though when a crop of fruit has been set there is little danger of making the soil too rich.



Grades and Prices of Peach Trees

Following prices are subject to change without notice.

First class, 5 to 6 feet, each, 20 cents; per dozen, \$2.00.

Medium, 4 to 5 feet, each 15 cents; per dozen, \$1.50; per hundred, \$10.00.

Extra fine trees, selected and heavy $\frac{3}{4}$ inch caliper, each, 25 cents; per dozen, \$2.50.

ELBERTA—Large, yellow, with red cheek, juicy and of high quality, flesh yellow and melting. A very valuable sort. Ripens in September.

STUMP THE WORLD—Very large, skin white, with bright red cheek, flesh white, juicy and good. Last September.

STEPHEN'S RARERIPPE—Large, fruit resembles an enlarged Old Mixon Free, of the highest color, very productive and free from all disease. This is perhaps, all things considered, the best late white peach we have today. Ripens middle of September.

CHAIR'S CHOICE—A late yellow-fleshed variety; very beautiful and desirable; of largest size, deep yellow with red cheek; freestone, flesh firm and of best quality; desirable as a dessert fruit and for canning. Ripens in September.

OLD MIXON FREE—Uniformly large, white, covered with bright red; one of the best and most reliable. Last of August.

BEER SMOCK—Fruit medium to large, skin light orange yellow, mottled with red. Ripens last of September.

CROSBY—The fruit is of medium size, roundish in form, slightly flattened, bright orange yellow, beautiful appearance. It ripens September 15.

WONDERFUL—A new variety, color rich golden yellow, freestone of large size, wonderfully productive. Ripens last of September.

CRAWFORD'S LATE—Fruit of the largest size, skin of greenish yellow, with dull red

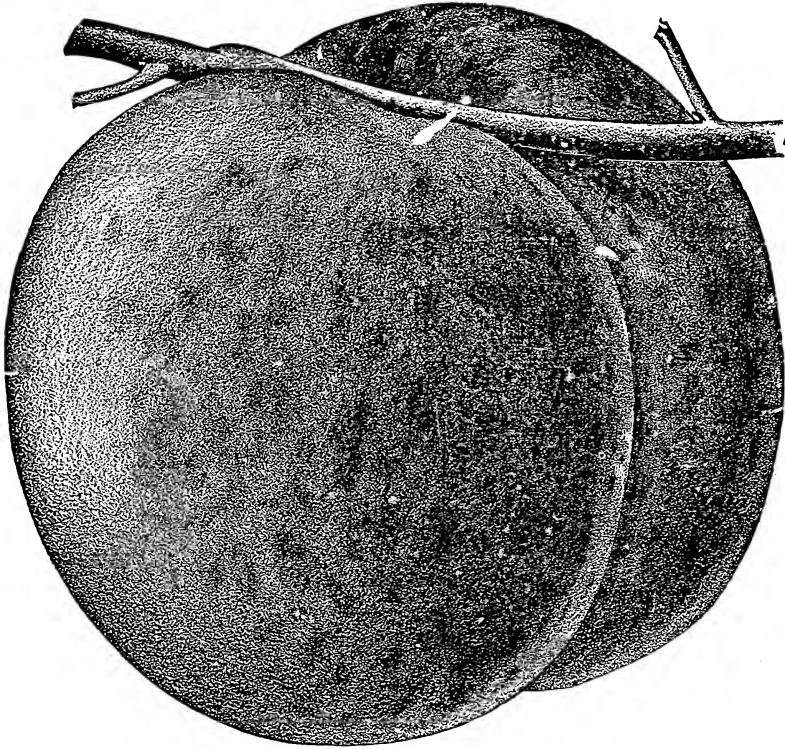
cheek, flesh yellow. One of the finest late sorts. Last of September.

SALWAY—Large, yellow, mottled with red cheek, a valuable late variety. Ripens October 15.

GLOBE—A very rapid grower and an enormous bearer. Fruit very large, flesh firm, juicy, yellow, shaded with crimson, very rich, luscious. September and October.

MOUNTAIN ROSE—One of the best and most reliable peaches, large, white, flesh white, sweet, productive. Early August.

CRAWFORD'S EARLY—Very beautiful, and one of the best yellow peaches for market purposes, fruit very large, oblong, skin yellow, with fine red cheek, flesh yellow, juicy sweet, and excellent; wonderfully productive. Last of August.



CHAMPION—Probably the best early white peach, all things considered. Trees hardy and productive, fruit very large, rich and luscious as good quality as any white peach we have in flavor, white, with red cheek. Ripens middle of August.

MORRIS WHITE—Medium; straw color; tinged with red; juicy and delicious, productive. Middle of September.

IRON MOUNTAIN—Size enormous, shape oblong, color pure white, sometimes have a

slight blush. It is as perfect a freestone as was ever grown. Season September 20 to October 10.

In addition to above varieties we can also furnish the following sorts at the same prices: Carman, Fitzgerald, Alexander, Foster, Greensboro, Triumph, Niagara, Sneed, Willett, Garfield, Wheatland and a number of others.

Any one wishing Peach Trees in lots of 300 and upward write for special low prices.

Apricot Trees

Price, 5 to 6 feet trees, each 35 cents; per dozen, \$3.50.

ACME—An early bearer of large and good fruit. Fruit yellow, with red cheek.

BREDA—Small, round, orange, flesh, juicy, rich and vinous; hardy and a good bearer. July to August.

EARLY GOLDEN—Small; pale orange; flesh orange, juicy and sweet. Tree hardy and productive. Beginning of July.

MOORPARK—Very large, orange, with reddish cheek, flesh orange, sweet, juicy, with a fine flavor; a very valuable variety. Beginning of August.

Quince Trees

Two or three Quince Trees in the home garden will be often a source of much satisfaction. They do best on good rich, heavy soil, underlaid with clay. On land of this character the trees seem to live longer and endure careless or indifferent cultivation. In order to obtain the best results from the Quince it is necessary that it have plenty of thorough cultivation and if planted on low land the ground should be drained so as to leave no standing water on it.

First class trees, 4 to 5 feet, each 50 cents; dozen, \$5.00; 100, \$40.00; 3 to 4 feet, each, 35 cents; per dozen, \$3.50; 100, \$30.00.

BOURGEOIS QUINCE—There is no other variety which grows so vigorously. The Bourgeois Quince bears at an early age, producing large crops of exceedingly large and handsome fruit, of a rich golden color. It keeps until mid-winter when desired, or it is ready to use at once on maturity.

MEECH'S PROLIFIC—A vigorous grower, and immensely productive, frequently bearing fruit when but two years of age, increasing in quantity yearly to such an extent as to require vigorous thinning to prevent injury to the tree from overbearing.

The fruit is large, lively orange color, of great beauty and delightful fragrance. Its cooking qualities are unsurpassed.

REA'S MAMMOTH—A superb fruit, much larger than Orange, but of the same form and color. Tree healthy, very thrifty grower, productive.

ORANGE—Large roundish, bright golden yellow, cooks tender and is of very excellent flavor. October.

CHAMPION—Fruit averages larger than Orange, more oval in shape, quality equally fine, and a longer keeper, a splendid quince. October and November.

Cherry Trees

The trees will live much longer if planted in turf land than if in cultivated garden soil and as they make very regular and shapely trees are well suited for growth upon the lawn or by the roadside. The amount of fertilizer needed is what is just sufficient to make a fairly vigorous growth, too rapid growth often resulting in the cracking of the trunk, and an early decay of the tree. The fruit should be gathered in dry weather and be picked with the stem attached so that it shall not be crushed or bruised, otherwise it will decay quickly after gathering.

Standard Varieties and Prices of Cherry Trees

Trees 5 to 6 feet each 35c.; dozen, \$3.50; 4 to 5 feet, 30c each; per dozen, \$3.00.

Write for special prices of either sweet or sour cherry trees in quantities.

We have in stock a nice lot of three year selected trees that will come into bearing two years after planting at 50c. each; per doz., \$5.00.

Heart and Bigarreau—Sweet

BLACK TARTARIAN—Very large, purplish black, half tender, flavor mild and pleasant. Ripens last of June and beginning of July. One of the most popular varieties in all parts of the country.

COE'S TRANSPARENT—Medium size, pale amber, red and mottled next the sun; tender, sweet and fine; one of the best. End of June.

GOV. WOOD—The finest of Dr. Kirtland's seedlings of Ohio. Clear, light red, tender, delicious. End of June.

NAPOLEON BIGARREAU—A magnificent cherry of the largest size, pale yellow, with a bright red cheek, flesh very firm, juicy and sweet; ripens late.

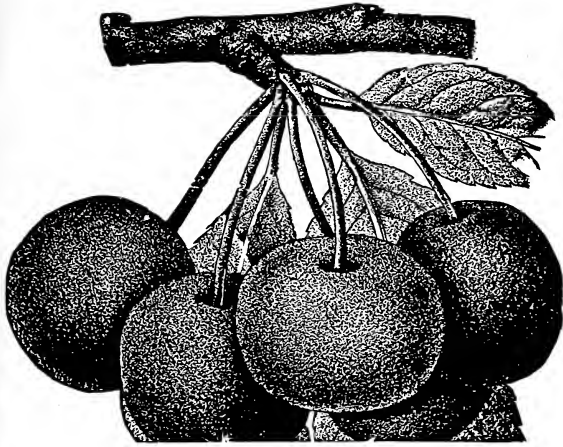
YELLOW SPANISH—Large, pale yellow, with a bright red cheek in the sun, flesh firm, juicy and delicious. End of June.

SCHMIDT'S BIGARREAU—Fruit of the largest size; in color a rich, glossy black. Tree a good grower and bears abundant crops.

BLACK EAGLE—Moderate growth. Large, black, tender, rich and juicy. Ripens first of July.

WINDSOR—The cherries are obtuse, heart shaped, dark purple or nearly black; sweet, flesh firm, fine in texture and of the best flavor. Tree hardy and exceedingly productive. A very valuable late variety for market and family use.

Duke and Morrelos



(Plant 15 feet apart each way.)

Prices for any of the varieties named below: Trees 3 to 4 feet, each, 25c.; dozen, \$2.50.

Heavy three year selected trees, each 50 cents; dozen, \$5.00.

EARLY RICHMOND—Medium size, dark red, melting, juicy, sprightly, acid flavor.

ENGLISH MORELLO—Medium to large, blackish red, rich, acid, juicy and good, very productive. Very late.

LARGE MONTMORENCY—A large, rich acid cherry; larger than Early Richmond, and fully ten days later.

LATE DUKE—Large, light red, late and fine.

MAY DUKE—Large, dark red, juicy and rich and an old excellent variety. Productive.

Plum Trees

Thorough cultivation or an abundance of plant food must be given, especially when the trees are heavily loaded with fruit. Thinning must be practiced to improve the size and quality of the fruit, and save the trees from being injured by overbearing. The fruit should be allowed to become very nearly ripe upon the tree before picking for the best quality though for canning purposes they are sometimes picked as soon as fully grown and well colored.

Standard Varieties and Prices of Japan and European Plums

Prices of any of the varieties named hereafter (all on Plum Stock). 5 to 6 feet trees, each, 35c.; dozen \$3.50; hundred, \$30.00; 4 to 5 feet trees each, 30c.; dozen, \$3.00; hundred, \$22.00.

We have in stock a nice lot of selected stocky trees that will come into bearing two years after planting, at 50 cents each; dozen, \$5.00.



ABUNDANCE.

ABUNDANCE—It is exceedingly hardy. Its propensity for early bearing is such that before it leaves the nursery row the limbs bend with the weight of fruit. The fruit is large, showy and of a beautiful amber shade. Ripens first of August.

CHABOT—Fruit large, skin pink, with many very fine gold dots; flesh yellow, very solid, rather acid, quality very good; cling. Ripens early in September.

BURBANK—The fruit is clear cherry red, with a thin lilac bloom. The flesh is a deep yellow color, very sweet, with a peculiar and agreeable flavor. Ripens last of August.

OCTOBER PURPLE—The fruit is round in form, color a reddish purple; flesh yellow; stone small and in quality superb. The tree is a strong, erect grower, forming a nice shapely head, similar to Abundance.

Its season of ripening is about the middle to the last of September.

HALE—One of the finest of the Japanese plums in quality, and remarkable for its vigor and productiveness. The plums are of the largest size of its class, bright orange yellow skin, mottled and nearly covered with vivid cherry red. Ripens about the middle of September.

RED JUNE—Tree a strong grower, productive as Abundance. Fruit medium to large, deep vermilion red with handsome bloom, very showy; flesh light lemon yellow, best in quality of any of the early varieties. Ripens last of July.

WICKSON—A remarkable handsome and very large deep maroon-red Plum of the Kelsey type. Long-cordate, or oblong pointed; flesh firm, deep amber yellow, clinging to the small pit. An excellent keeper. Cross of Burbank with Kelsey. Ripens middle of September.

SATSUMA—A purple fleshed plum from Japan, vigorous growth, with rank, dark green foliage; enormously productive of fruit; large and handsome. Pit but little larger than a cherry stone. Fruits at two or three years of age. One of the most valuable of Japan plums. Ripens first of September.

OGON—A handsome, very desirable Japanese plum. Large, nearly round; of a bright yellow with faint bloom; flesh firm, sweet, rich and dry. Excellent for canning. Last of July.

EUROPEAN VARIETIES

LOMBARD—Medium, round, oval, violet, red, juicy, pleasant and good; adheres to the

stone; productive. A valuable market variety. Ripens September.

SHIPPER'S PRIDE—Large, round, purple; very firm, excellent quality. Very productive. Ripens first to middle of September.

BRADSHAW—Early, dark violet red, juicy, sprightly. Tree vigorous, productive. Ripens August.

GER. PRUNE—Large, oval in shape, nearly two inches long; of good quality and much esteemed. Hangs on the tree and is firm, sweet and pleasant. Ripens September.

SHROPSHIRE DAMSON—The flesh is amber colored, juicy and sprightly. Commands a high price; it is enormously productive. One of the most profitable plums we have. Ripens October.

IMPERIAL GAGE—Rather large, oval, greenish; flesh juicy, rich, delicious, a good grower; ripens middle of August.

Nut Trees

Nut tree planting has become very popular of late and there is a brisk demand for the trees. They should be planted, pruned and cultivated much the same as we treat our fruit trees.

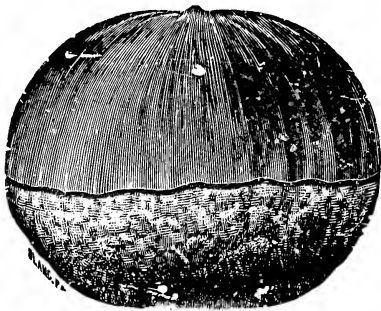
PARAGON—This variety has become very popular of late and to our knowledge is being planted quite extensively. The tree is a rapid, strong, vigorous grower and comes into bearing a short time after being planted. It is productive of large nuts; the flavor is very good.

Price, 2 years, 3 to 4 feet, each \$1.50; per dozen, \$15.00.

NUMBO—A hardy, productive variety of European origin, but seems well adapted to this climate. It ripens early, nuts are large and good quality.

Trees grafted, 3 to 4 feet, each, \$1.00; per dozen, \$10.00.

AMERICAN OR SWEET—The well known chestnut of the forest. In sweetness and delicacy of flavor, or as a shade tree, unsurpassed, 5 to 6 feet, 75 cents each, per dozen, \$7.50.



CHESTNUTS.

SPANISH CHESTNUT—A very hardy, productive nut and becoming more popular each year. 75 cents each; per dozen, \$7.50.

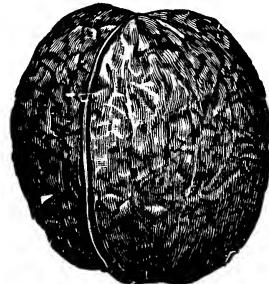
JAPAN GIANT CHESTNUT—The tree is decidedly ornamental, hardy and productive, of dwarf habit, bearing extremely young; nuts of enormous size.

Price, for 4 to 5 feet trees, each, 75 cents; dozen, \$7.50.

Varieties like the Paragon and Numbo chestnuts will come into bearing the second year after being planted. The fruit is very large and of the best quality.

ENGLISH WALNUTS—It is a profitable tree to plant, as it produces large crops of excellent nuts, and the large quantities of ripe nuts that are annually imported and sold here prove the estimation in which they are held for table. 75 cents each; \$7.50 per dozen.

ENGLISH FILBERT OR HAZEL NUT—Nut nearly round, rich and of excellent flavor. Admired by all for dessert. 50 cents each; \$5.00 per dozen.



WALNUTS.

JAPAN WALNUT (Sieboldiana)—A native of the mountains of Japan. An extremely hardy, vigorous grower, bears young; very productive. 50 cents each; \$7.50 per dozen.

JAPAN WALNUT (Cordofomis)—Differs from Sieboldiana in form. The nuts are broad, pointed and flattened. The Japan Walnuts are valuable for their fine fruit and shade. 75 cents each; \$7.50 per dozen.

Rhubarb

(Plant four feet apart each way.)

It is a very desirable vegetable and should be planted in every garden. It is easy of cultivation and a few plants will furnish the family, (and neighbors) with a healthful fruit

for pies and other purposes before the apple even shows its blossom.

VICTORIA AND MYATTS LINNAEUS — Each, 15 cents; per dozen, \$1.50, per 100 \$6.00.

Asparagus

The first vegetable of the Spring. This healthful fruit should be included in every well arranged garden. For best and early results it should be planted on a light soil, though it can be successfully grown in any good garden soil. When planting Asparagus set the roots 8 inches below the surface of the ground and 12 inches in the row, covering with 3 inches of soil at first and filling in the trenches as the plants grow. It is highly important that the Asparagus bed should not be neglected. Forking the beds in the early Spring should not be overlooked, as the early admission of sun and rain into the ground induces the plants to throw up shoots of a su-

er the bed with salt as soon as it is cleared and the manure forked in the soil in the Spring.

Our plants are extra large and we would be pleased to receive your order for any quantity you may be in need of.

We have a large stock of Asparagus and will be pleased to quote special prices on large quantities.

Price, one year old plants, dozen, 25 cents; 100, 75 cents; 1,000, \$5.00. Price for transplanted two year old plants, dozen, 30 cents; 25, 40 cents; 100, \$1.00; 1,000, \$7.00.

For Quick Results—We have in stock selected transplanted three-year-old plants of these varieties, desirable stock for those who are in a hurry to get Asparagus for their table use the second season after planting.

Price, per dozen, 60 cents; per 100, \$1.50; per 1,000, \$10.00.

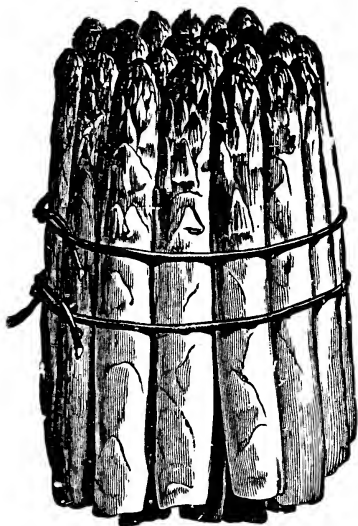
PALMETTO—This is the leading variety at the present day, more of it being planted than any other single sort. It is considerably larger than the Conover's, the old reliable standard variety for so many years, is fully as early and as productive, while the flavor is unsurpassed.

BARR'S MAMMOTH—Another valuable acquisition to the Asparagus family; a variety highly praised and well thought of wherever grown; nearly double the size and much more productive than Conover's. Ripens a few days in advance of the Palmetto.

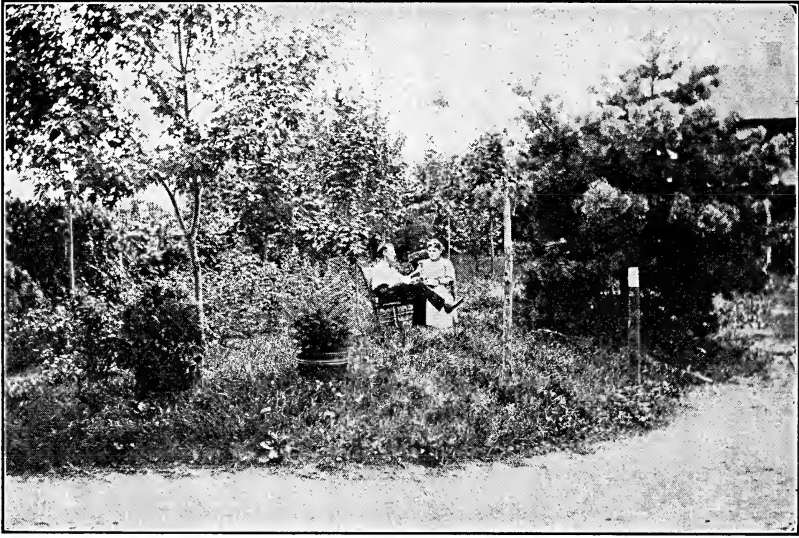
CONOVER'S COLOSSAL—There is no fruit or vegetable that has had a more uniform successful career than this old popular standard variety of Asparagus. It has stood the test of time in different localities and varied climatic conditions as favorably as anything in the plant production that has been introduced for the past twenty-five years. Many large growers use this variety almost exclusively. It is a reliable, adaptable sort, early; a good producer; of quick growth and superb in quality.

GIANT ARGENTEUIL—The finest and most profitable of all Asparagus. Stalks of mammoth size, bright and attractive; in quality sweet and tender. It yields immensely and is very early; it is a French variety and has proved a great money maker wherever planted.

COLUMBIAN MAMMOTH WHITE—In addition to the marvelous advantage of its white color, the Columbian Mammoth White Asparagus is even more robust and vigorous in habit, and throws larger shoots and fully as many of them, as the Conover's Colossal.



perior size. Keep the ground entirely free from weeds the entire season, as they take from the plants the strength required for their own growth. About the first of September the tops should be cut off and the bed cleared of weeds. When this work is finished cover the bed with 3 inches of coarse manure, which will not only enrich the soil but keep out the frost—very essential for early fruit. Asparagus is a very profitable crop for market. The net income is usually from \$100 to \$400 per acre. When once established it is good for a number of years. Although there is a difference of opinion among growers as to the benefit of salt, we have learned from practical experience if best results are to be expected cov-



Ornamental Department

Brief Suggestions to Planters

What to Plant In this and similar climates, where great extremes of temperature are experienced, it is necessary to employ only the most hardy ornamental trees and shrubs.

Impressed with the importance of this fact and in order that our customers may be spared much disappointment and expense, we have omitted from our catalogue, as far as possible, everything which is liable to suffer from severe cold.

We have also taken great pains to secure, both at home and abroad, all valuable hardy material so as to render our assortment of this class as complete as possible. An examination of the catalogue shows what an extensive variety of stock is offered, enabling the planter by a judicious use of the same to accomplish any desired result with perfectly hardy trees, shrubs and plants.

For the convenience of planters we have grouped the trees under the following heads: Trees remarkable for their flowers, Trees of drooping habit, Trees with variegated and colored foliage, Trees with cut or dissected foliage. The shrubs have been similarly arranged, and parties desiring to make selections for particular purposes will find this classification useful.

For Parks and Extensive Grounds. No difficulty can be experienced by anyone in making selections for this purpose. But we cannot impress too strongly upon planters the importance and value of flowering shrubs for effective masses and groups. There are many who imagine that the Rhododendron and Azalea are indispensable. This is a great error. In this latitude both Rhododendron and Azalea require prepared soil and protection, while hardy shrubs like the Weigela, Deutzia, Spiraea, Hardy Hydrangea, Japan Quince, Double-flowered Almond, Lilac, Viburnum, Althaea, Paeony, Phlox and Japan Anemone, when planted in masses, produce a magnificent effect, need no protection, and demand little skill or care in their management. What grand masses of bloom can be had throughout the season by a proper use of the various families! Then, the purple and variegated-leaved trees and shrubs may also be planted in such a manner as to afford a rich and striking contrast.

Groups of flowering trees form superb objects at the flowering season, and it is strange that planters do not employ them more.

Highly effective groups can be formed of trees and shrubs possessing bright-colored bark in winter.

For Lawns and Small Places. Whatever specimens are planted should be of the finest species, of moderate size, of graceful habit of growth and handsome foliage.

A pendulous tree or one with variegated foliage may be occasionally introduced, and will add to the beauty of the grounds. Depend mainly upon dwarf shrubs for small places, and in selecting aim at securing a succession of bloom. Dwarf evergreens are very useful.

BRIEF SUGGESTIONS TO PLANTERS—Continued.

When to Plant Deciduous Trees, Shrubs and Vines can be planted either in Spring or Fall. In localities where the Winters are very severe we recommend Spring planting. Spring is the best time for evergreens generally, but they may also be transplanted successfully in August and early in September if favorable weather prevails at planting time.

How to Plant Preparation of the Roots. Cut off smoothly all bruised or broken roots up to the sound wood. This prevents their decaying and hastens the emission of new roots and fibres.

Preparation of the Top. This consists in cutting back the top and side branches in such a way as to correspond with the more or less mutilated roots, as follows: Trees with branching heads should have the small branches cut clean out, and the larger ones, intended for the framework of the tree, cut back to within two or three buds of their base.

In cases where there is an abundant root and small top or few branches, the pruning need be very light, but where the roots are small and the top heavy, severe pruning will be necessary. These remarks are applicable to all deciduous Trees and Shrubs. Evergreens seldom require pruning, but *Arbor Vitae* and other Evergreens planted in hedge rows may be advantageously shorn immediately after planting.

Directions for planting, mulching, and after culture, (see page 4.)

Pruning Pruning, as practiced by some people, has the effect to render trees and shrubs unnatural and inelegant. Every tree, shrub and plant has a habit of growth peculiar to itself, and this very peculiarity is one of its beauties. If we prune all trees into regular shapes we destroy their identity. The pruning knife, therefore, should be used to assist nature, and handled with judgment and care; to lop off straggling branches, to thin the head of a tree which has become too dense, and to remove dead wood. Sometimes it becomes necessary to prune severely to keep a tree from attaining too great size.

Shearing may be practiced on hedges, but never on trees or shrubs.

Pruning Shrubs Many persons trim and shear them into regular shapes, imagining that regular outline adds to their effect and beauty. While symmetry and regularity of form are to be admired in a shrub, this quality should never be gained at the expense of health and natural grace.

Each shrub has peculiarities of habit and foliage, and we should aim to preserve them as far as possible. Judicious pruning to secure health and vigor is necessary, but trimming all kinds of shrubs into one form shows a lack of appreciation for natural beauty, to say the least.

Spiraeas, *Lilacs*, *Althaeas* and *Honeysuckles* may be trimmed during the Winter or early in Spring, but the branches should only be reduced enough to keep them in good shape. The old growth should be occasionally thinned out and the suckers and root sprouts removed when they appear. The best time, however, for pruning all shrubs is when they have done flowering. The *Hydrangea paniculata grandiflora* should be severely cut back and thinned early in Spring.

Pruning Evergreens Use the knife occasionally to thicken the growth and preserve the shape. This can be done in April or May, just before the trees start to grow.

Ornamental Trees In Four Classes

CLASS I.—A general Descriptive List of Deciduous Trees.

CLASS II.—A list of Deciduous Weeping or Drooping Trees, described in their respective places in the Catalogue.

CLASS III.—A list of Trees possessing remarkable characteristics of foliage, in three sections—Cut-leaved, Varigated and Colored, and described in their respective places in the Catalogue.

CLASS IV.—Coniferae or Evergreens.

In order that planters may be able to form an idea of the size which trees and shrubs attain at maturity, a point which should always be taken into consideration at the time of planting, so that the specimens may occupy the proper position, we have adopted letters to denote the proper classes, as follows:

A denotes trees which attain the largest size, 50 feet and upwards.

B denotes trees which attain the secondary size, 20 to 40 feet.

C denotes trees which attain the medium size, 9 to 15 feet.

D denotes trees and shrubs which attain only small size, 1 to 8 feet.

Our object in the above classification is to lessen the labor and difficulty, as far as possible, of making selections adapted to particular purposes.

Class. I--Ornamental Trees

(A)—**ACER, DACYCARPUM** (Silver Maple)—A handsome shade tree of rapid growth, with small foliage of glossy, green above and silvery appearance beneath. Tree very hardy and easily transplanted where immediate shade is required. Also a favorite street and park tree. 5 to 8 feet, 50 cents each; \$5.00 per dozen; 8 to 12 feet, \$1.25 each; \$10.00 per dozen.

(A)—**ACER SACCHARINUM** (Sugar Maple)—A well known native tree of elegant pyramidal form; valuable for the production of sugar and for its wood. Its fine form and foliage make it desirable as an ornamental and shade tree. 5 to 8 feet, 50 cents each; \$5.00 per dozen; 8 to 12 feet, \$1.25 each; \$10.00 per dozen.

(A)—**ACER, WIERRI LACINIATUM** (Wier's Cut Leaf Maple)—One of the handsomest trees grown, rapid growth, beautiful dissected foliage and drooping form. Makes a very ornamental tree. 5 to 8 feet, 50 cents each; \$5.00 per dozen; 8 to 12 feet, \$1.25 each; \$10.00 per dozen.

(A)—**ACER, PLATANOIDES** (Norway Maple)—A distinct foreign variety, with large, broad leaves of a deep, rich green. 5 to 8 feet, 75 cents each; \$7.50 per dozen; 8 to 12 feet, \$1.25 each; \$12.00 per dozen.

(B)—**PSEUDO PLATANUS** (Sycamore Maple)—From Europe. A handsome tree, of rapid, upright growth, with large foliage, and smooth, ash-gray colored bark. 6 to 8 ft., 75c. each; 8 to 10 ft., \$1.00; 10 to 12 ft., \$1.50 each.

(B)—**ACER, SHWEDLERRI** (Schwedler's Maple)—A beautiful tree with the young shoots and leaves of a bright purple or crimson color; changes to purplish green in the older leaves; one of the handsomest trees we have for lawn planting. 5 to 8 feet, \$1.00 each; \$9.00 per dozen; 8 to 12 feet, \$1.50 each; \$15.00 per dozen.

(B)—**ACER, RUBRUM** (Red or Scarlet Maple)—Leaves bright red in early Spring and changing in fall to bright scarlet. 5 to 7 feet, 75 cents; 8 to 12 feet, \$1.25.

(C)—**ACER, POLYMORPHUM** (Japan Maple)—The normal form of type, foliage small, five lobed and of a bright, cheerful green in spring and summer, changing to a dark crimson in autumn. 2 to 3 feet, \$1.50 each; selected specimens, \$2.00 each.

(D)—**ACER, ATROPURPUREUM** (Purple Leaved Japan Maple)—Foliage dark purple and finely cut. The hardiest of the Japan Maples, 2 to 3 feet, \$1.50 each; selected specimens, \$2.00 each.

(D)—**ACER, SANGUINEUM** (Blood Leaved Japan Maple)—Of dwarf habit, foliage serrated; blood red in June. 2 to 3 feet, \$1.50 each; selected specimens, \$2.00 each.

(D)—**ACER, ATROPURPUREUM DISSECTUM** (Cut Leaf Japan Maple)—One of the most striking of the Japanese varieties; dwarf and weeping. The leaves are rose color when young, changing to deep purple as they become older. They are delicately cut, giving them a fern like appearance. 2 to 3 feet, \$1.50 each; selected specimens, \$2.00 each.

(A)—**AESCULOUS, ALBA FLORA PLENO** (Double White Flowered Horse Chestnut)—A superb variety with double flowers in large panicles. 5 to 8 feet, 75 cents; \$7.50 per dozen; 8 to 12 feet, \$1.25 each; \$10.00 per dozen.



(B)—**AESCULOUS RUBICUNDA** (Red Flowering Chestnut)—Not so rapid a grower as the white; foliage of dark green, blooms later. A very showy tree. 5 to 8 feet, 75c each; \$7.50 per dozen; 8 to 12 feet, \$1.25 each; \$10.00 per dozen.

(A)—**BETULA PAPYRACEA** (Paper or Canoe Birch)—Native of America; forms a large tree; bark brilliant, white leaves large and handsome. 5 to 7 feet, \$1.00 each; 8 to 10 feet, \$1.25.

(B)—**BETULA POPULIFOLIA** (American White Birch)—An American specie of rapid growth, with triangular taper-pointer, smooth and glossy leaves. 5 to 7 feet, 75 cents each; 8 to 10 feet, \$1.00 each.

(C)—**BETULA NANA** (Dwarf Birch)—A bushy shrub, seldom attaining a height of more than 12 feet; branches numerous, small shapely crenated leaves, 4 to 5 feet, 75 cents; 6 to 8 feet, \$1.25.

(A)—**EUROPEAN WHITE WEEPING BIRCH**—A graceful tree, with silvery bark and slender branches. Quite erect when young, but after four or five years' growth assumes an elegant drooping habit, rendering the tree very effective in landscapes, \$1.00.

(A)—**PENDULA LACINIATA** (Cut-leaved Weeping Birch)—Its tall, slender, yet vigorous growth, graceful drooping branches, silvery white bark, and delicately cut foliage, present a combination of attractive characteristics rarely met with in a single tree. \$1.00.

(C)—**PENDULA YOUNGII** (Youngs' Weeping Birch)—When grafted on stems five or six feet high it forms a beautiful pendulous head, and its slender shoots droop gracefully to the ground. \$1.50.

(D)—**CATALPA BUNGEI** (Chinese Catalpa)—A curious dwarf tree that grows but 8 to 10 feet high and twice as broad. Top-grafted on tall stems, it is quite effective for lawn and terrace decoration as the tender and more expensive bay tree. 4 to 6 feet, \$1.00 each; 6 to 8 feet, \$1.50 each.

(B)—**CATALPA HYBRIDA JAPONICA** (Teas, Japan Catalpa)—Exceedingly rapid grower with spreading, irregular form and its large heart-shaped leaves, and clusters of white and purplish flowers in mid-summer and its long seed pods in autumn make it an attractive ornamental tree for the lawn. 5 to 8 feet, 75 cents; \$7.50 per dozen; 8 to 12 feet, \$1.25 each; \$10.00 per dozen.

(C)—**CRATAEGUS, COCCINEA FLORA PLENO** (Double Scarlet Thorn)—A tree of fine habit with rich luxuriant foliage; flowers unusually large, scarlet shade and very double. 4 to 5 feet, 50 cts. each; 5 to 6 feet, 75 cts. each.

(C)—**CRATAEGUS FLORE PLENO** (Double White Thorn)—A highly ornamental variety on account of both foliage and flowers. Makes a striking contrast when planted with the double scarlet. Has beautiful double white flowers, 4 to 5 feet, 50 cents each; 5 to 6 feet, 75 cents each.

(C)—**CRATAEGUS, GUMPPERI BICOLOR** (Gumper's Thorn)—Flowers white edged with rose. A charming variety. 4 to 5 feet, 50 cents each; 5 to 6 feet, 75 cents each.

(B)—**CERCIS, CANADENSIS** (American Judas Tree)—A very ornamental tree, with perfect heart-shaped leaves, covered with a profusion of delicate, reddish purple flowers, before the foliage appears, grown as single specimens, they are very attractive; 4 to 5 feet, 50 cents each; 5 to 6 feet, 75 cents each.

(B)—**CERCIS JAPONICA** (Japan Judas Tree)—Medium sized tree; foliage deep shining green and heart-shaped flowers larger than those of the American and a rich purple color. 4 to 5 feet, 50 cents; 5 to 6 feet, 75 cents each.

(B)—**CYTISSIS** (Laburnum or Golden Chain)—Native of Europe with smooth and shining foliage. The name Golden Chain alludes to the length of the drooping racemes of yellow flowers, which appear in June. 4 to 5 feet, 50 cents each; extra selected stock, 75 cents each.

(C)—**ACIDA VAR SEMPEHFLORENS PENDULA** (Ever-flowered Weeping Cherry)—A fine drooping variety that bears fruit and flowers all summer, \$1.00.

(B)—**AVIUM VAR, FLORA ALBO PLENO** (Large Double Flowered Cherry)—At the period of flowering in May, a remarkably beautiful and attractive tree. The flowers are so numerous as to conceal the branches, and present to the eye nothing but a mass of bloom, each flower resembling a miniature rose. A valuable variety. \$1.00.

(C)—**CAPRONIANA RANUNCULIFLORA** (Ranunculus-like Flowered Cherry)—An upright grower, producing large, double white flowers, resembling those of a Ranunculus. An important addition. Flowers several days later than the Double White. \$1.00.

(B)—**CORNUS FLORE RUBA** (New Red Flowering Dogwood)—Very handsome in flower and foliage. Like the common Dogwood, the leaves turn a magnificent crimson in autumn. Flowers of a bright rosy red color, shading to a lighter hue towards edge of petals. A choice small ornamental tree. 4 to 5 feet, \$1.25; 5 to 7 feet, \$1.75.

(C)—**CHIONANTHUS, VIRGINICA** (White Fringe)—A small native tree, with large, glossy leaves and drooping racemes of pure white flowers, having fringe-like petals; blooms in May. 40 cents each; \$4.00 per dozen.

(B)—**CORNUS FLORIDA** (The Common White Flowering Dogwood)—One of the best small sized trees for general planting. 4 to 5 feet, 50 cents; 5 to 7 feet, \$1.50.



(B)—**FAGUS, PURPUREA** (Purple Leaved Beech)—Makes an elegant medium-sized tree for the lawn, the foliage in the spring is a deep purple, changing to crimson, in the autumn, a dull purplish green, making a striking contrast with the green of the other trees. 5 to 8 feet, \$1.00 each; \$10.00 per dozen; 8 to 12 feet, \$1.50 each; \$15.00 per dozen.

(B)—**FAGUS, CUPREA** (Copper Beech)—A rapid growing tree, foliage copper color; much used for avenues and lawns. 5 to 8 feet, 75 cents each; \$7.50 per dozen; 8 to 12 feet, \$1.25 each; \$12.00 per dozen.

(B)—**FAGUS INCISA** (Cut Leaved Beech)—Fine erect, free-growing tree, with deeply cut foliage. Of rare beauty and excellence. 4 to 5 feet, \$1.00; 6 to 8 feet, \$1.50.

(A)—**PENDULA FAGUS** (Weeping Beech)—A remarkable vigorous, picturesque tree of large size. Its mode of growth is extremely curious. The trunk or stem is generally straight, with the branches tortuous and spreading; quite ungainly in appearance, divested of their leaves, but when covered with rich luxuriant foliage, of wonderful grace and beauty. \$1.50.

(B)—**FRAXINUS AMERICANA** (American White Ash)—A well known native tree. 5 to 7 feet, 75 cents each; 8 to 10 feet, \$1.25 each.

(B)—**FRAXINUS BOSCI** (Boc's Ash)—A scarce American variety with dark glossy foliage and brown wooly shoots; distinct and fine. 5 to 7 feet, 75 cents each; 8 to 10 feet, \$1.25 each.

(B)—**FRAXINUS EUROPEAN** (European Ash)—A lofty tree of rapid growth, with spreading head and gray dark, pinnate leaves and black buds. \$1.00.

(B)—**FRAXINUS PENDULA** (Weeping Ash)—The common, well known sort; one of the finest lawn and arbor trees. Covers a great space and grows rapidly. \$1.00.

(B)—**GYMNOCLADUS CANADENSIS** (Kentucky Coffee Tree)—A beautiful tree, with pinnate leaves, foliage a delicate bluish green; flowers in June, followed by very long seed pods; very desirable for lawn planting; thrives well on any soil. 4 to 5 feet, 75 cents each; selected stock, \$1.25.

(B)—**KOELREUTRIA PANICULATA** (Varnish Tree)—The Koelreutria is not as well known as it should be, as it fills a place in general landscape work occupied by few other trees. Leaves are pinnate, dark green and are so glossy that they appear to be varnished. Producing large pinnacles of showy yellow flowers in July. 4 to 5 feet, 75 cents each; 5 to 6 feet, \$1.25.

(A) — **LIRIODENDRON TULIPOFERA** (Tulip Tree)—A magnificent Native shade tree with broad, glossy fiddle shaped leaves of a light green color and beautiful tulip-like flowers, allied to the Magnolia. 5 to 8 feet, 75 cents each; \$7.50 per dozen; 8 to 12 feet, \$1.25 each; \$12.00 per dozen.

(B) — **LIQUIDAMBAR STYRACIFLUA** (Sweet Gum or Bilsted)—Of medium size and moderate growth, form round headed or tapering leaves resemble somewhat those of the maple, but are star-shaped and of a beautiful glossy green color in summer, turning to a deep purplish crimson in autumn; bark corky. 5 to 7 feet, \$1.00 each; 8 to 12 feet, \$1.50 each.

(A)—**LARIX EUROPEA** (European Larch)—An elegant, rapid growing pyramidal tree; valuable for timber; small branches drooping. 5 to 6 feet, \$1.25.

(B) — **LARIX EUROPEAN PENDULU** (Weeping European Larch)—One of the most picturesque weeping trees. The branches spread and droop irregularly, assuming curious forms. 5 to 6 feet, \$2.00 each.

(A)—**MAGNOLIA MACROPHYLLIA** (Great Leaved Magnolia)—This we consider one of the greatest lawn ornaments and should be planted on every well arranged lawn. The leaves are two feet in length and white beneath. Flowers when full bloom, 8 to 10 inches in diameter; appearing in June. Very rare, 8 to 10 feet, \$2.00 each; 10 to 12 feet, \$2.50 each.

(C)—**MAGNOLIA TRIPETELA** (Umbrella Tree)—A hardy, medium sized tree with immense leaves and large, white flowers; appearing in June, 8 to 10 feet, \$1.00 each; 10 to 12 feet, \$1.50 each.

(A)—**MAGNOLIA ACCUMINATI** (Cucumber Magnolia)—A tall, growing tree, leaves 6 to 9 inches long and bluish green, flowers yellow tinted with purple; fruit resembles a cucumber. 6 feet, 75 cents each; 6 to 8 feet, \$1.25 each.

(C)—**MAGNOLIA SPECIOSA** (Showy Flowered Magnolia)—Shrubby and branching while young, but becoming a fair-sized tree; flowers white and purple; foliage glossy and massive. The flowers remain on the tree longer than those of any other variety. 4 to 5 feet, \$1.25 each.

(C)—**MAGNOLIA SOULANGEANA** (Soulange's Magnolia)—Shrub-like in form, but becoming a fair sized tree; foliage large and glossy; flowers purple and white. 4 to 5 feet, \$1.00; 5 to 7 feet, \$1.50.

(B)—**MORUS DOWNING** (Downing Mulberry)—Everbearing; a fine ornamental tree; bears fine black fruit. Price, 5 to 6 feet, 50 cents each; 6 to 8 feet, 75 cents each.

(B)—**MORUS ALBA**—A native of China. Tree small and of slender, rapid growth. Fruit pinkish white. 4 to 5 feet, 50 cents each; 5 to 6 feet, 75 cents each.

(D)—**MORUS TARTARICA PENDULA** (Weeping Russian Mulberry)—Forms a perfect umbrella shaped head, with long, slender branches drooping to the ground, parallel to the stem; very hardy. One of the prettiest small weeping trees. \$1.25.

(C)—**WEeping EUROPEAN MOUNTAIN ASH**. A beautiful variety of rapid growth and decidedly pendulous and trailing habit. One of the most desirable lawn trees. 6 feet, \$1.25 each.

(B)—**PYRUS AUCUPARIA** (European Mountain Ash)—A fine, hardy tree, of medium size, erect stem and pinnate foliage covered from July until winter with large clusters of bright scarlet berries; very ornamental for the lawn. 5 to 8 feet, 75 cents each; \$7.50 per dozen; 8 to 12 feet, \$1.25 each; \$12.00 per dozen.

(A) — **PLANTANUS OCCIDENTALIS** (American Plane Tree)—A rapid growing tree, with large green leaves. It is a fine tree for street planting and makes a very pretty sight when it is shedding its bark. This characteristic makes it free from insect pests. 5 to 8 feet, 50 cents each; \$5.00 per dozen; 8 to 12 feet, \$1.00 each; \$10.00 per dozen.

(A)—**PLANTANUS ORIENTALIS** (Oriental Plane Tree)—Similar to Occidentalis, but leaves more deeply cut; extensively used for street and park planting. 5 to 8 feet, 50 cents each; \$5.00 per dozen; 8 to 12 feet, \$1.00 each; \$10.00 per dozen.

(A)—**POPULUS FASTIGIATA** (Lombardy Poplar)—A rapid growing tree, attaining a height of one hundred feet with spire-like outline; foliage deep green; very essential in landscape gardening to destroy the monotonous appearance caused by other trees. 5 to 8 feet, 40 cents each; \$5.00 per dozen; 8 to 12 feet, 75 cents each; \$8.00 per dozen.

(B)—**POPULUS BOLLENA** (Bollena Poplar)—Resembles Lombardy in its growth; foliage dark green above and silvery green underneath; one of the best silver leaved trees. 6 to 8 feet, 50 cents each; \$5.00 per dozen.

(B)—**POPULUS MONOLIFERA** (Carolina Poplar)—Most rapid growing tree of spreading habit, with deep green serrated foliage; especially adapted to large cities, where it makes very fast growth and resists gas and smoke. 5 to 8 feet, 40 cents each; \$5.00 per dozen; 8 to 12 feet, 75 cents each; \$8.00 per dozen.

(B)—**POPULUS AUREA** (Golden Poplar)—We consider this the most valuable of the Poplar family and would recommend it to those who want quick results, and have not the patience to wait for the development of the slower growing deciduous trees. 5 to 8 feet, 50 cents each; \$6.00 per dozen; 8 to 12 feet, \$1.00 each; \$10.00 per dozen.

(C)—**PTELEA, TRIFOLIATA** (Hop Tree)—A large shrub or small tree of rapid growth and shrubby habits; beautiful white flowers in June and hop-like seeds in autumn; very desirable for the lawn. 5 to 6 feet, 50 cents each; selected stock, 75 cents each.

(C)—**PRUNUS PADUS** (European Bird Cherry)—A rapid growing, beautiful tree, with glossy foliage and long bunches of white, fragrant flowers in May, succeeded by clusters of fruit-like black curants. 5 to 6 feet, \$1.00 each.

(C)—**PAYRUS MALUS PARKMANNI** (Flowering Crab)—Habit dwarf, a compact grower. Foliage dark green, remaining late on the tree. Flowers very double dark rose, and retain their color until they drop from the tree. A fine variety. 4 to 5 feet, 75 cents each.

(B)—**QUERCUS PALUSTRIS** (Pin Oak)—A tall growing tree, of drooping habit; foliage deep green, changing to scarlet yellow in autumn. A very desirable tree for street planting. 3 to 4 feet, 75 cents each; 4 to 5 feet, \$1.25 each.

(A)—**QUERCUS ALBA** (American White Oak)—One of the finest American trees, of large size and spreading branches; leaves lobed, pale green above and glaucous beneath. 5 to 7 feet, \$1.00 each; 8 to 12 feet, \$1.75 each.

(B)—**QUERCUS ROBUR** (English Oak)—The Royal Oak of England. 4 to 5 feet, 75 cents; 6 to 8 feet, \$1.50.

(B)—**ROBINIA PSEUDACASIA** (Yellow Locust)—A medium sized tree, possessing graceful foliage, with a beautiful tint of green and white flowers which grow in racemes. Price, 6 to 8 feet, 75 cents each; 8 to 10 feet, \$1.25 each.

(C)—**RHUS, COTINUS** (Purple Fringe)—A very curious tree, with masses of purplish flowers. When covered with dew, it resembles a cloud of smoke. It is sometimes called smoke tree. 3 to 4 feet, 50 cents each; 4 to 5 feet, 75 cents.

(B)—**SALIX, LAURIFOLIA** (Laurel Leaf Willow)—A medium sized tree of great merit, of rounded form, foliage deep green, resembling very much the handsome Broad Leaf

Laurel. It makes a strong and handsome hedge and very useful for hiding unsightly places. Can be kept pruned back to any size you may desire. 5 to 6 feet, 35 cents each; extra selected stock, 75 cents each.

(B)—**SALIX RAMULIS AURIES** (Golden Barked Willow)—A novel and distinct variety of the well known Babylonian Willow with bright golden bark in winter. 5 to 6 feet, 35 cents each; extra selected stock, 75 cents each.

(B)—**TILIA EUROPEA** (European Linden)—A variety of neat and compact habit; leaves are much larger than our native sorts. A fine tree for street planting. 5 to 8 feet, 75 cents each; \$6.00 per dozen; 8 to 12 feet, \$1.25 each; \$12.00 per dozen.

(B)—**TILIA, AMERICANA** (American Linden)—A native tree with large leaves and a profusion of yellow flowers in early summer, desirable for lawn or avenue. 5 to 8 feet, 75 cents each; \$7.50 per dozen; 8 to 12 feet, \$1.00 each; \$10.00 per dozen.

(C)—**SALIX PENDULA** (Kilmarnock Weeping Willow)—A variety of the Goat Willow or common Sallow. Grafted five to seven feet high upon the Comewell stock, it forms, without any trimming, an exceedingly graceful tree, with glossy foliage and perfect umbrella head, unique in form. Vigorous and thriving in all soils, it is probably more widely disseminated than any of the finer ornamental trees. 75c.

(B)—**SALIX WISCONSIN WEEPING**—Of drooping habit and hardier than Babylonia. Valuable on account of its ability to resist severe cold. 75 cents.

(A)—**SALISBURIA, ADIANTIFOLIA** (Maiden Hair Tree)—A tree from Japan, combining in its characteristics the Conifer and deciduous tree. The tree is of medium size, beautiful, fern-like foliage, resembling a maiden hair fern. Rare and elegant. 5 to 6 feet, 75 cents each; 6 to 7 feet, \$1.00 each.

(C)—**SOPHORA JAPONICA** (Pagoda Tree)—A beautiful hardy tree, well-known in Japan, but rare in this country. Hardy even in the Northern States, and easily grown. Compact habit; young wood, dark green, soft, delicate colored foliage. Flowers pea shaped, creamy white, in large panicles, appearing in great profusion in August when few hardy trees or shrubs are in bloom. 4 to 5 feet, 50 cents each; 5 to 6 feet, \$1.00 each.

(B)—**ULMUS CAMPESTRIS** (English Elm)—An erect, lofty tree, of rapid compact growth, with smaller and more regularly cut leaves than those of the American and darker colored bark. The branches project from the trunk almost at right angles, giving the tree a noble appearance. 5 to 7 feet, 75 cents each; 8 to 12 feet, \$1.25 each.

(B)—**ULMUS BELGICA**—A fine variety of large size, rapid growth, and fine spreading shape. Valuable for street planting. 5 to 7 feet, 75 cents each; 8 to 12 feet, \$1.25 each.

(C)—**ULMUS CAMPERDOWN PENDULA** (Camperdown Weeping Elm)—Grafted 5 to 7 feet high, this forms one of the most picturesque drooping trees. It is of rank growth, the

shoots often making a ziz-zag growth outward and downward of several feet in a single season. The leaves are large, dark green and glossy, and cover the tree with a luxuriant mass of verdure, \$1.00 each.

(B)—**VIRGILLA LUTEA (Yellow Wood)**—
One of the finest American trees. Of moderate

growth, broadly rounded head, foliage compact like that of the Robina, and a light green color, turning to a warm yellow in autumn; flowers pea shaped, white, sweet scented, appearing in June in great profusion, in long drooping racemes covering the trees. 5 to 7 feet, 50 cents each; 8 to 10 feet, \$1.00 each.

Class II.--A List of Deciduous Weeping or Drooping Trees

Described in their respective places in the catalogue.

For the purpose of enabling purchasers the more readily to make selections, we append the following list, comprising the most graceful drooping trees known:

ACER (Maple) dasycarpum, Wierii laciniatum.
BETULA (Birch) European, White Weeping.
BETULA (Birch) pendula laciniata.
BETULA (Birch) Youngii.
EVER FLOWERING WEEPING CHERRY.
FAGUS (Beech) pendula.

FRAXINUS (Ash) pendula.
MORUS (Mulberry) Tartarica pendula.
WEEPING EUROPEAN (Mountain Ash)
SALIX (Willow) Wisconsin pendula.
SALIX (Willow) Kilmarnock pendula.
ULMUS (Elm) Camperdown pendula.

Class III.--Trees Possessing Remarkable Characteristics of Foliage

Described in their respective places in the catalogue.

IN TWO SECTIONS.

Section I.—Cut-leaved Trees, Comprising those with Curiously Lobed or Serrated Foliage.

ACER (Maple) Wierii laciniatum.
ACER (Maple) polymorphum.
ACER (Maple) atropurpureum.
ACER (Maple) Dissectum Atropurpureum.

BETULA (Birch) Cut-leaf Weeping pendula laciniata.
PYRUS EUROPEAN (Mountain Ash) aucuparia.

Sec. II. Trees with Colored Foliage.

ACER (Maple) Schwedleri.
ACER (Maple) dissectum atropurpureum.

FAGUS (Beech) purpurea.
POPULUS (Golden Poplar).

FLOWERING TREES.

Named in the order in which they flower; embracing some of the choicest species.

MAY.

CHERRY, Double-flowered.
JUDAS TREE.

CHINESE MAGNOLIA, in variety.
CORNUS FLORIDA, white and red.
HORSE CHESTNUTS.
CRABS, flowering.

PEACH, double-flowering.
BIRD CHERRY.

JUNE.

MOUNTAIN ASH.
THORN, in variety.
LABURNUM.
WHITE FRINGE.

LOCUST, white.
VIRGILIA LUTEA.
CATALPA.

LINDENS, in variety.

JULY.

CHESTNUT, American.
KOELREUTERIA.

TREES WHICH PRODUCE ORNAMENTAL FRUIT SUCCEEDING THE FLOWERS.

CORNUS FLORIDA. Oval fruit in head.
CRATAEGUS. Scarlet and yellow fruit in September and October.

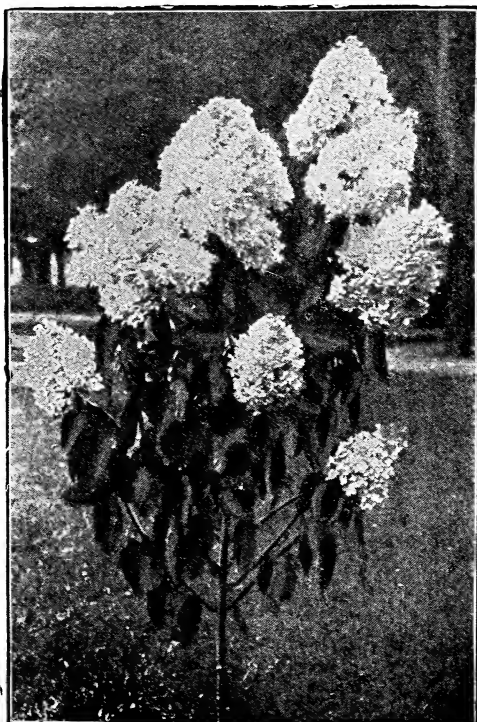
PYRUS SORBUS, (Mountain Ash). Scarlet fruit in September and October.

Class I.--Deciduous Shrubs

IN FOUR CLASSES: CLASS I.—Deciduous Shrubs. CLASS II.—Variegated-leaved Deciduous Shrubs. CLASS III.—Evergreen Shrubs. CLASS IV.—Climbing and Trailing Shrubs.

C denotes shrubs which attain 9 to 12 feet in height at maturity; D, 5 to 8 feet; E, 1 to 4 feet.

NOTICE—Our space being limited we are listing the Hardy Flowering Shrubs which are generally used and which give general satisfaction. We can supply, however, about all the different Hardy Shrubs under cultivation and should there be any not listed herein that you need we will gladly give you prices upon application to do so.



TREE HYDRANGEA.

(D)—**ARALIA SPINOSA** (Angelica Tree)—A small tree that gives sub-tropical effect to garden on account of its compound leaves, greenish or white flowers.

Price, 2 to 3 feet, 50 cents; 3 to 4 feet, 75c.

(D)—**ANDROMEDA FLORIBUNDA**—Flowers in the greatest profusion in large white panicles of delicate wax-like blossoms over dense dark masses of evergreen foliage. The flower spikes are formed in the fall, giving the plants the appearance of being in bloom all winter. A choice and very beautiful variety. It is used for the same purposes that rhododendrons are, and in connection with them, in the finest landscape work. \$1.50 each; extra size plants, each \$2.00.

(D)—**ANDROMEDA JAPONICA**—A superb species from Japan. Very similar to *Floribunda*, but with very smooth, glossy foliage; a more erect grower, but flowers instead of being erect are pendulous. \$1.50 each; selected plants, \$2.00 each.

(E)—**BARBERIS THUNBERGI** (Thunberg's Barberry)—A dwarf spreading species, with small white flowers in May, followed with an abundance of deep scarlet berries, which color they maintain all winter. The foliage in summer is of a beautiful shade of green, changing to a beautiful reddish yellow in autumn. Can be planted with good results singly or in clumps.

Price, 2 to 3 feet, 30 cents each; \$3.00 per dozen. Selected specimens, 75 cents each; \$7.50 per dozen.

(D)—**BARBERIS PURPUREA** (Purple Leaved Barberry)—A very desirable plant for the lawn. Foliage of violet purple color, very effective when contrasted with the lighter foliage of other plants.

Price, 2 to 3 feet, 30 cents each; \$3.00 per dozen. Selected specimens, 75 cents each; \$7.50 per dozen.

(D)—**BARBERIS VULGARIS** (European Barberry)—A handsome deciduous shrub, with yellow flowers in terminal drooping racemes in May or June, followed with orange scarlet fruit.

Price, 2 to 3 feet, 30 cents each; \$3.00 per dozen. Selected specimens, 75 cents each; \$7.50 per dozen.

(D)—**CYDONIA PYRUS JAPONICA** (Japan Quince)—Their large, brilliant blossoms are among the first in spring, and they appear in great profusion, covering every branch and twig. The foliage is of bright green and has a leathery appearance. When planted as a hedge it is very ornamental. Price 30 cents each; selected stock, 50 cents each.

(D)—**CORNUS MASCULA** (Cornelian Cherry)—A small tree, native of Europe, producing clusters of bright yellow flowers early in spring before the leaves appear, followed by red berries. Price, 50 cents each.

(D)—**CORNUS MASCULA VARIEGATA** (Variegated Cornelian Cherry)—The variegation of this variety is pure white. One of the prettiest variegated shrubs in cultivation. Price, 50 cents each.

(D)—**CORNUS SANGUINEA** (Red Barked Dogwood)—A strong growing shrub, with clusters of fine white flowers, and its blood red bark enlivens either summer or winter landscape. Can be used to good effect in grouping. Price each 30 cents. Selected stock, 50 cents.

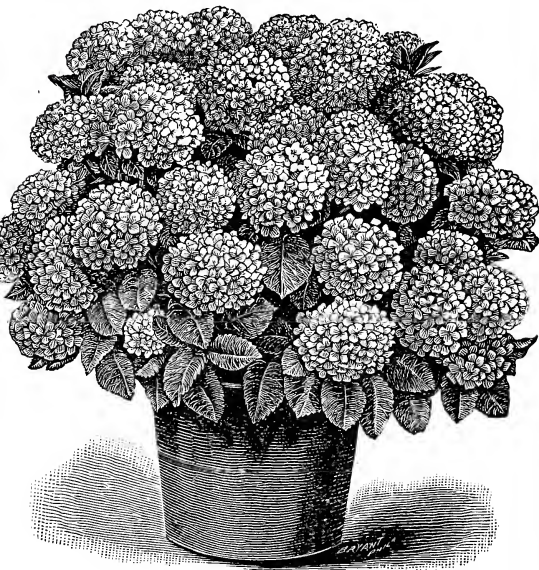
(D)—**CALYCANTHUS, FLORIDAS** (Sweet Shrub)—An interesting shrub, having a rare and peculiar fragrance of wood and flowers. Leaves soft, downy beneath. Flowers double and chocolate color, produced all along the branches. Price 30 cents. Selected stock, 50c

(C)—**CORYLUS ATROPURPUREA** (Purple Leaved Filbert)—A very conspicuous shrub, with large, dark purple leaves; very distinct. Price, 2 to 3 feet, 50 cents; 3 to 4 feet, 75 cents.

(D)—**CELTHA AINIFOLIA** (Sweet Pepper Bush)—A small shrub of dark green foliage, having a profusion of white flowers in mid-summer, followed by clusters of deep red berries. Very fragrant. 35 cents each. Selected stock, 50c.

DEUTZIA CRENATA, FLORA PLENO ROSEA (Double Pink Deutzia)—Exquisite flowers of double rosette shape, tinged with soft pink, 2 to 3 feet, 25 cents each; \$2.50 per dozen; 4 to 5 feet, 50 cents each; \$5.00 per dozen.

(D)—**DEUTZIA, PRIDE OF ROCHESTER**—The flowers are double, white, tinged outside with pink and open a week earlier than those of other sorts. 2 to 3 feet, 25 cts. each; \$2.50 per dozen; 4 to 5 feet, 50 cents each; \$5.00 per dozen.



HYDRANGEA P. G.

(E)—**DEUTZIA GRACILIS** (Dwarf Deutzia)—One of the best shrubs in our entire list. It forms a low, round bush, covered in early summer with the most graceful wreaths of pure white single flowers. 2 to 3 feet stocky plants, 50 cents each.

(D)—**DIERVILLA** (Weigela)—A shrub of erect habit while young, spreading and drooping with age. Flowers all shades of colors, from white to red; trumpet shaped. The Weigelas bloom in June after the lilacs are gone.

Price, 2 to 3 feet, 25 cents each; \$2.50 per dozen; 4 feet, each 50 cents; \$5.00 per dozen.

(D)—**DIERVILLA CANDIDA**—A new, valuable sort that bears large white flowers profusely in June and continues blooming sparingly until fall. 2 to 3 feet, 50 cents each; \$5.00 per dozen.

(E)—**DIERVILLA NANA VARIEGATA**—Dwarf with clearly defined variegations of green, yellow and pink in its leaves, flowers, delicate rose and pink. Effective and useful. One of the most ornamental variegated leaved shrubs. 2 to 3 feet, 25 cents each; 3 to 4 feet, 50 cents each.

(C)—**DEUTZIA CRENATA CANDISSIMA**—A new and handsome species, with very large double flowers, pure white. 2 to 3 feet, 25 cents each; \$2.50 per dozen; 4 to 5 feet, 50 cents each; \$5.00 per dozen.

(D)—**DIERVILLA ROSEA**—Bears beautiful rose colored flowers thickly in June. 2 to 3 feet, 25 cents each; \$2.50 per dozen; 4 to 5 feet, 50 cents each; \$5.00 per dozen.

(D)—**ELEAGNUS LONGPIPES** (Japan Oleaster)—Beautiful silvery foliage, laden with fruit; the bush is highly ornamental and the fact that the leaves remain fresh till late in the autumn gives it additional value.

Price, 2 to 3 feet, 50 cents each.

(C)—**EXOCHORDA GRANDIFLORA** (Pearl Bush)—A fine shrub, producing large white flowers in May; one of the finest shrubs of its season.

Price, 2 to 3 feet, 35 cents; 3 to 4 feet, 50c.

(D)—**FORSYTHIA SUSPENS**A (Weeping Golden Bell)—An almost evergreen shrub of sprawling habits, covered in spring before the leaves appear with handsome yellow flowers. Very conspicuous. Price, 30 cents each; selected stock, 75 cents each.

(D)—**FORSYTHIA VIRDISSIMA**—A fine hardy shrub. Leaves and bark deep green, flowers yellow very early in spring. Price, 30 cents each; selected plants, 75 cents each.

(C)—**HYDRANGEA, P. G.**—This is one of the showiest shrubs in cultivation. It bears a profusion of white flowers one foot in length, changing to pink in autumn from midsummer until destroyed by frost. At least six plants of this very valuable shrub should be in every yard. It can be used to accomplish many purposes on the lawn. It is very often employed for hedging purposes, for which it is an admirable plant, a magnificent sight to behold when in full bloom. Requires severe pruning early in spring. Price, 2 to 3 feet, 25 cents each; \$2.50 per dozen; 3 to 4 feet in height, for immediate effect, 40 cents each; \$4.00 per dozen.

(D)—**HYDRANGEA, QUERCIFOLIA** (Oak Leaved Hydrangea)—Large leaves lobed like those of the oak, and downy underneath. Fine, 50 cents each; selected specimens, 75 cents each.

(D)—**HYDRANGEA, ROSEA**—A red flowering variety of Thomas Hogg. 50 cents each; selected specimens, 75 cents each.

(D) — **HYDRANGEA ARBORESCENS GRANDIFLORA** (Snowball Hydrangea.) This magnificent, perfectly hardy American Shrub has snow-white blossoms of largest size. One of its most valuable characteristics is its coming into bloom just after the passing of all the early spring Shrubs, while its long flowering season, from early June until late August, makes it a valuable acquisition in any garden. Strong plants, 50 cents each; \$5.00 per dozen.

(C)—**HYDRANGEA, P. G. (Tree Form)**—Fine specimen plants, trained to tree shape with about 3 feet of straight stem and nice shaped heads. Should bloom profusely the first year. 75 cents each; \$7.50 per dozen; selected plants, \$1.00.

(C)—**HALESIA TETRAPTERIA (Silver Bell)**—A beautiful large shrub, with pretty white bell-shaped flowers in May; it is distinguished by its four winged fruit, which is from one to two inches long.

Prices, 2 to 3 feet, 35 cents; 3 to 4 feet, 75 cents.

(C)—**HIBISCUS (Althea or Rose of Sharon)**—The Altheas are fine growing and flowering shrubs. They are very desirable on account of coming into bloom late in the summer, when most other trees and shrubs are not in bloom. The beautiful colors of the different varieties contrast admirably with each other.

(C)—**HIBISCUS SYRIACUS BOULE DE FEU**—Strong growing plant, with large double flowers of a beautiful violet red color; blossoms late.

(C)—**HIBISCUS TOTUS ALBUS (White Flowering Althea)**—Single, pure white flowers; very fine.



SPIREA COLLOSA ALBA.

(C)—**HIBISCUS FLORE PLENO**—(Variegated Leaved Double Purple Flowering Althea.)

(C) — **HIBISCUS SYRIACUS JEANNE D'ARC**—Fine new variety. Pure white and very double flowers.

(C)—**HIBISCUS SYRIACUS LEOPOLDII**—Large blush pink, double flowers.

(C)—**HIBISCUS PURPUREA (Single Purple Althea)**—Common Rose of Sharon.



SWEET PEPPER BUSH.

Price for any variety of Althea enumerated above, 2 to 3 feet, 25 cents each; dozen, \$2.50; 4 to 5 feet, selected specimens, 50 cents each.

(D)—**HAMAMELIS JAPONICA (Japan Witch Hazel)**—A most beautiful shrub, with darker leaves and more elegant habit than the American type. It makes choice specimens of low, close growth, and is always attractive. The yellow flowers appear in curious shape just before winter sets in. Price, 2 to 3 feet, 50 cents each; 3 to 4 feet, 75 cents each.

(E)—**KERRIA, JAPONICA (Japan Chorchorus)**—A shrub with slender green branches and globular yellow flowers from July to October. Price 35 cents each.

(E)—**KALMIA LATIFOLIA (American or Mountain Laurel)**—A beautiful native evergreen shrub, with shining foliage and dense clusters of pink flowers in spring, requires same treating as the Rhododendron. Price, 2 to 3 feet, \$1.00 each; selected specimens, \$1.50 each.

(E)—**KALMIA AUGUSTIFOLIA**—Has narrower leaves and darker pink flowers, contrasts nicely with Latifolia. Price, 2 to 3 feet, \$1.00 each; selected specimens, \$1.50 each.

(D)—**LONICERA (Fragrantissima)**—Blooms very early in the spring, sometimes before the snow disappears. Very valuable for early bloom. Price, 30 cents each; \$3.00 per dozen.

(D)—**LONICERA TARTARICA (Red Tartarian)**—Pink flowers which contrast admirably with the foliage. 2 to 3 feet, 30 cts. each; \$3.00 per dozen.

(D)—**LONICERA ALBA (White Tartarian)**—Similar to the preceding, but has creamy white flowers, sometimes delicately marked with pink. Price, 30 cents each; \$3.00 per dozen.

(C) — **PHILADELPHUS, CORONARUS** (Mock Orange)—Strong growing, round habit, rich green foliage. Flowers pure white and very fragrant. Price, 2 to 3 feet plants, 30 cents each; \$3.00 per dozen. Selected specimens, 75 cents each; \$7.50 per dozen.

(C) — **PHILADELPHUS GRANDIFLORA** (Large Flowered Syringa)—Has very showy large flowers, slightly fragrant.

Price, 2 to 3 feet, 35 cents each. Selected specimens, 75 cents each.

(D)—**MAHONIA AQUIOLA** (Holly Leaved Mahonia)—A native specie of medium size with purplish, prickly leaves and showy bright yellow flowers in May, succeeded by bluish berries; its handsome deep green, glossy foliage and neat habit render it very popular for decorative planting. Prices, 2 to 3 feet, 35 cents; 3 to 4 feet, 50 cents.

(D)—**MAHONIA JAPONICA**—Large distinct. Price, 2 to 3 feet, 50 cents each; 3 to 4 feet, 75 cts.

(D) — **PRUNUS, JAPONICA FLORA ALBA PLENO** (Double White Almond)—Produces beautiful double white flowers in May. 2 to 3 feet, 30 cents; \$3.00 per dozen.

(D) — **PRUNUS, JAPONICA RUBRA PLENO** (Double Pink Almond)—Beautiful small shrub, bearing in the spring before the leaves appear, an abundance of small, double, rose-like flowers, closely set on twig. Prices, 2 to 3 feet, 30 cents each; \$3.00 per dozen.

(E)—**PHILADELPHUS FOLIS AURREIS** (Golden Leaved Syringa) A very pretty plant of medium size, of golden yellow foliage. It keeps its color the entire season. Valuable for creating pleasing and striking contrasts with other shrubs. Price, 2 to 3 feet, 50 cents each.

(C)—**PRUNUS, PISSARDI** (Purple Plum)—The finest purple leaved tree or shrub. The foliage when young is crimson, turning to deep purple in autumn, which color, it retains until the leaves fall in winter. Very desirable for contrasting. Transplants easily and is worthy of a place on every lawn. Price, 60 cents each; selected specimens, \$1.00 each.

(C)—**PERSICA ALBA PLENA** (Double White Flowered Peach)—Very ornamental, flowers pure white and double; superb. Perfectly hardy. Price 75 cents each.

(C)—**PERSICA ROSEA PLENA** (Double Rose Flowered Peach)—Flowers double, pale rose colored like small roses. Very pretty. Price 75 cents each.

(D)—**PYRUS AUGUSTOFOLIA** (Bethel's Double Flowering American Crab)—One of the most beautiful of the many fine varieties of flowering crabs. Tree of medium size, covered in early spring with large, double frag-

rant flowers of a delicate pink color. From a distance the flowers have the appearance of small roses. 75 cents each.

(D)—**RUDEBECKIA** (Golden Glow or Summer Chrysanthemum) A large, showy plant, attaining in good soil a height of 6 to 8 feet the same season planted. Flowers three and one-half inches in diameter, double, well formed, and of a deep golden yellow color, resembling yellow Chrysanthemums and borne on long stems which render them suitable for cutting. Plants bloom profusely from July until Sep-



tember. One of the best novelties in hardy flowering plants. Price, 25 cents; large clumps, 50 cents each.

(D)—**RIBES SANGUINEUM** (Crimson Flowering Currant)—Deep red flowers in early spring. 50 cents each.

(D)—**RIBES AUREUM** (Yellow Flowering Currant)—Shining, glaucous leaves, yellow flowers. 50 cents each.

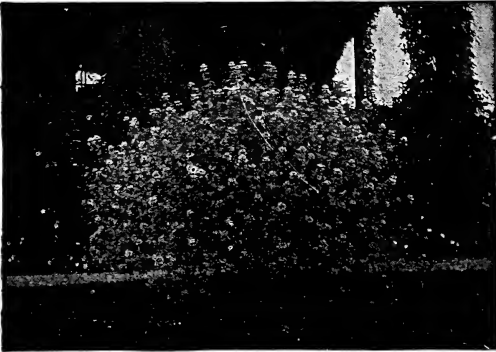
(C)—**RHODOTYPUS KERRIODES** (White Kerria)—Very ornamental shrub from Japan, with handsome foliage and large white flowers. Last of May, succeeded by numerous small black fruit. 30 cents each; selected specimens, 75 cents each.

(C)—**RHUS LACINIATA** (Cut Leaved Sumach)—A very striking plant, of moderate size, with deeply cut foliage resembling fern leaves; dark green above and glaucous beneath, and turning to a rich red in autumn, 50 cents each.

(C)—**RHUS GLABRA** (Smooth Sumach)—Very effective in autumn with its crimson seeds and foliage. 40 cents each.

(D)—**SPIREA VANHOUTII**—One of the most charming and beautiful of the Spireas. Habit graceful and drooping. Completely covered with panicles of pure white flowers. A handsome sight when in full bloom. 3 to 4 feet, 25 cents each; \$2.50 per dozen; selected specimens, 50 cents each; \$5.00 per dozen.

(E)—**SPIREA ANTHONY WATERER**—A fine new dwarf Spirea with dark crimson flowers, darker than Spirea Bumalda. One of the finest shrubs of recent years. 40 cts. each.



(D)—**SPIREA OPULIFOLIA AUREA**, (Golden Leaved)—An interesting variety of distinctly yellow foliage, flowers white. One of the most effective shrubs on the lawn. 3 to 4 feet, 25 cents each; \$2.50 per dozen; 4 to 5 feet, 50 cents each; \$5.00 per dozen.

(D)—**SPIREA BUMALDA**—A Japanese specie of dwarf habit and covered in mid-summer and autumn with bright rose colored flowers, 2 to 3 feet, 35 cents each; selected specimens, 50 cents.

(D)—**SPIREA THUNBERGII**—One of the most charming of all low growing shrubs. Foliage of fine feathery appearance, taking beautiful tints in autumn. One of the earliest and free-est bloomers, 2 to 3 feet, 30 cents each; \$3.00 per doz.; 3 to 4 feet, 50 cents each; \$5.00 per dozen.

(D)—**SPIREA COLLOSA ALBA** (Fortune's Dwarf White Spirea)—A bushy flowering variety of dwarf, bushy habit; keeps in flower all summer; a valuable small shrub, 2 to 3 feet, 30 cents each; selected specimens, 75 cents each.

(D)—**SPIREA REVEESI**—Covered in spring with clusters of pure white flowers. 3 to 4 feet, 25 cents each; \$2.50 per dozen; 4 to 5 feet, 50 cents each; \$5.00 per dozen.

(D)—**TAMARIX CHINSIS**—A vigorous upright grower with delicate foliage of lively green color; flowers rose colored in September.

Price, 2 to 3 feet, 35 cents; 3 to 4 feet, 40 cents each.

(D)—**VIBURNUM PLATICUM** (Japan Snow Ball)—A beautiful flowering shrub, the flower clusters, which are produced all over the bush, are spherical in form and of the purest white, with beautiful crimped, dark green foliage. Price, 2 to 3 feet plants. 40 cents each; \$4.00 per dozen.

SPIREA COLLOSA (Fortunes' Spirea)—Has large panicles of deep rosy blossoms; grows freely and blooms nearly all summer; fine, 40 cents each.

(D)—**SPIREA ROBUSTA**—A very superior variety of vigorous growth; flowers pure white, borne in clusters. Blooms in June and September. 2 to 3 feet, 35 cents each; 3 to 4 feet, 50 cents each.

(E)—**SPIREA CARYOPTERIS MASTCANTHUS** (Blue Spirea)—A neat, compact, new sort, with large fragrant, blue flower-clusters; young shoots spring freely and flower the first season. 1 to 2 feet, 30 cents each; 2 to 3 feet, 50 cents each.

(D)—**SPIREA PRUNIFOLIO, BRIDAL WREATH**—One of the earliest blooming kind. Flowers double white, 2 to 3 feet, 25 cents each; \$2.50 per dozen; 3 to 4 feet, 50 cents each; \$5.00 per dozen.

(C)—**SAMBUCUS AUREA** (Golden Elder)—Very desirable for contrasting. Foliage of a beautiful golden yellow, 20 cents each; \$2.00 per dozen; selected stock, 40 cents each.



SPIREA VAN HOUTII.

(D)—**TAMARIX AFRICANA**—Handsome foliage, upright habit; flowers in May.

Price, 2 to 3 feet, 35 cents; 3 to 4 feet, 40 cents each.

(C)—**SYRINGA, LILAC, ALBA GRANDIFLORA**—Very large, white flowers. 50 cents each.

(D)—**VIBURNUM CASSINOIDES**—Cymes of white flowers in June. Black berries in autumn. Handsome foliage. 2 to 3 feet, 50c each.

(C)—**VIBURNUM RUGOSUM** (Rough Leaved Viburnum.) Has larger and rougher leaves than Lantana, and terminal cymes of white flowers in May. Very ornamental in foliage and fruit. 2 to 3 feet, 35c each.

(C)—**VIBURNUM OPULUS** (Cranberry Tree)—The common name is from the fine red berries which follow its handsome, white midsummer flowers.

Price, 2 to 3 feet, 35 cents each; \$3.50 per dozen.



LILAC.

VIBURNUM OPULUS STERELIS (Guelder Rose)—The beautiful old sort so generally esteemed. 2 to 3 feet, 35 cents each; \$3.50 per dozen.

(C)—**SYRINGA ABEL CARRIERE**—Large double bluish flowers. Under side of pearl pinkish tinge. A choice new variety. 50 cents each.

(C)—**SYRINGA, ALBERT THE GOOD**—Extra fine large, dark purple flowers. 50 cents each.

(C)—**PERSIAN PURPLE LILAC**—Native of Persia. Leaves small dark green; flowers abundant, delicate and purple. 3 feet bushes, 75 cents.

(C)—**PERSIAN WHITE LILAC**—Same habit of growth as foregoing. Blossoms in long panicles, white tinged with purple. Bushes, 4 feet, \$1.00.

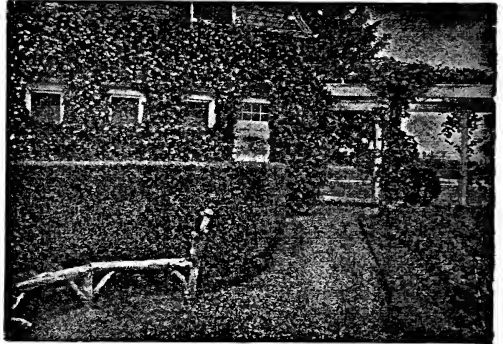
(D)—**WAXBERRY RACEMOSUS** (Snowberry.) A well-known shrub, with small pink flowers, and large white berries that hang on the plant through part of the winter. 2 to 3 feet, 35 cents each.

(D)—**WAXBERRY VULGARIS** (Red-Fruited or Indian Currant. Coral Berry.)—A shrub of very pretty habit. Foliage, flowers and fruit small; fruit purple; hangs all winter. 2 to 3 feet, 35 cents each.

California Privet

(D) (*Ligustrum Ovalifolium*.)

Hedge plants are used for two purposes, to serve as a boundary line that shall be more natural and ornamental than a stone wall or fence, and as a protection from animals and other trespassers; and if either of these is a necessity, a well kept hedge of California



Privet serves a very good purpose. It is a neat, compact shrub, that stands pruning perhaps quite as well as anything we have for hedging purposes.

Price, 15 to 18 inch plants, 75 cents per dozen; \$5.00 per hundred; 2 to 3 feet plants \$1.00 per dozen; \$6.50 per 100.

3 to 4 feet stocky plants, 15 cents each; \$1.25 per dozen; \$10.00 per hundred.

4 to 5 feet, large stocky plants that will make a hedge at once, 25 cents each; dozen, \$2.50; 100, \$14.00.

Rhododendrons

The most showy of all the flowering shrubs when in bloom and during the winter on account of its dark green leaves. The Rhododendron succeeds best in a rather moist, fibrous soil, but does well in almost any kind if it is made porous—not too dry—and if the plants are sheltered from the burning sun during the winter. While young, especially, pine bough or some other protection should be put around them to keep the leaves from burning and keep off the drying winds. The number of varieties offered is very large, but a comparatively small number of them are hardy in our northern climate. Our list is comprised of the best varieties for general planting.

ALBUM ELEGANS—Very large, white.

BRANDYANUM—Bright cherry.

CANDIDISSIMUM—Pure White.

EVERESTIANUM—Rosy lilac, crimped.

GIGANTEUM—Large, rosy, crimson.

GLORIOSUM, WATERERS—Large bluish.

CURIENUM—Dark rosy lilac, large.
DAISY RAND—Deep crimson.
CARACTACUS—Rich purplish crimson.
MAXIMUM ALBUM—Large White.
MICHAEL WATERER—Very beautiful, late crimson.
CHAS. BAGLEY—Cherry red, fine truss and habit.
PURPUREUM ELEGANS—Fine purple.
GRANDIFLORIUM—Rosy crimson.
J. R. TRUMPEY—Late, rosy crimson.
CHAS. DICKENS—Dark scarlet.
CHAS. SUMNER—Rose and light purple.
MRS. MILNER—Rich crimson, very fine.

Prices for any of the varieties heretofore named: 12 to 15 inches, \$1.00 each; \$10.00 per dozen; 15 to 18 inches, \$1.50 each; \$15.00 per dozen.

We can supply large native Rhododendrons that will run from 3 to 7 feet in height and are nicely branched in every respect. When planted in clumps at an entrance they make a most desirable effect and for a shady situation where one cannot grow grass or particularly make anything grow, they are just the thing to plant and hide away the bare ground. We can only furnish these in carload lots. If in need of Native Rhododendrons write us for prices.

Class II.--Flowering Shrubs with Variegated or Colored Foliage

Described in their respective places in the catalogue.

BERBERIS (Barberry), vulgaris var. purpurea.
CORNUS MASCULA (Dogwood).
CORNUS MAS. variegata.
CORYLUS (Filbert), atropurpurea.
DIERVILLA (Weigela), rosea var. nana fol. var.
EUONYMUS, radicans variegata.

HIBISCUS FLORE PLENO (Althaea).
KERRRIA, Japonica.
PHILADELPHUS (Syringa), foliis aureis.
PRUNUS (Plum), Pissardi.
SPIRAEA, opulifolia aurea.

FLOWERING SHRUBS.

Named in the order in which they flower, embracing some of the choicest species.

MAY.

MAHONIA.
FORSYTHIA, in variety.
JAPAN QUINCE, in variety.
PRUNUS PISSARDI.
ALMOND, dwarf double flowered.
SPIRAEA PRUNIFOLIA PLENO.
SPIRAEA THUNBERGII.
LILACS, in variety.
SPIRAEA VAN HOUTTEI.
HONEYSUCKLE TARTARIAN.
WISTARIA.

JUNE.

HALESIA TETRAPTERA.
DEUTZIA GRACILIS.
DEUTZIA LEMOINEI.
VIBURNUM OPULUS STERILLIS.
VIBURNUM PLICATUM.
WEIGELA, in variety.

SHRUBS WHICH PRODUCE ORNAMENTAL FRUIT SUCCEEDING THE FLOWERS.

BARBERRY. Scarlet and violet fruit in September.
CORNUS MAS. Fruit red, very large and showy in August.
ELAEAGNUS LONGIPES. Red fruit.
EUONYMUS. Red and white fruit.
LONICERA, in variety. Showy red and yellow fruit.
MAHONIA. Bluish berries in July.

CORNUS MASCULA.
HYDRANGEA, ARBORESCENS GRANDIFLORA ALBA.
SYRINGA, in variety.
RHODODENDRONS, in variety.
PAEONIES HERBACEOUS, in variety.
CLEMATIC JACKMANNI, and others.
ELDER.
DEUTZIA CRENATA FLORE PLENO.
DEUTZIA PRIDE OF ROCHESTER.

JULY.

SPIRAEA BILLARDII.
SPIRAEA ANTHONY WATERER.
SPIRAEA CALLOSA ALBA.
SPIREA CALLOSA.

AUGUST AND SEPTEMBER.

ALTHAEA, in variety.
HYDRANGEA PANICULATA GRANDIFLORA.
CLEMATIS PANICULATA.

WAXBERRY RACEMOSUS. White berries all winter.
WAXBERRY VULGARIS. Red fruit.
VIBURNUM CASSINOIDES. Black fruit.
VIBURNUM OPULUS. Red fruit. Very ornamental.
VIBURNUM RUGOSUM. Very showy fruit in September.

SHRUBS SUITABLE FOR PLANTING IN SHADY SITUATIONS.

BARBERRY, European and others.
 CLETHRA, alnifolia.
 CORNUS, Sanguinean.
 DEUTZIA, gracilis.
 DEUTZIA, Lemoinei.
 EUONYMUS, radicans.
 EUONYMUS, radicans, variegata.
 FORSYTHIA, viridissima.
 HONEYSUCKLE, fragrantissima.
 HONEYSUCKLE, Hall's Japan.

KALMIA, latifolia.
 MAHONIA, aquifolia.
 PRIVET.
 RHODODENDRON.
 RHUS.
 SYMPHORICARPUS, racemosus.
 SYMPHORICARPUS, vulgaris.
 VIBURNUM, cassinoides.
 VIBURNUM, opulus.
 VIBURNUM, opulus sterilis.

The Viburnums will not flower in shady places, but the growth is very luxuriant.

Class III.--Evergreen Shrubs

(D)—ANDROMEDA FLORIBUNDA.
 (D)—KALMIA-AMERICAN OR MOUNTAIN
 LAUREL.
 (D)—MAHONIA AQUIFOLIA.

(C)—RHODODENDRON.
 (C)—CALIFORNIA PRIVET, except last of
 March and early April.

Class IV.--Hardy Creeping, Trailing Vines

EUONYMOUS RADICANS. An evergreen vine; clings to walls after the manner of Ivy. Beautiful. 50c each.

EUONYMOUS VARIEGATA. A variety of the above with variegated leaves. 50c each.

Clematis (Virgin's Bower)

JACKMANNI—The pioneer of the large flower, improved Clematis, and with few, if



any equals, and no superiors. Vigorous, perpetual, very profuse and constant. Flowers

purple and large. Price, each 40 cents; dozen, \$4.00.

HENRYI—One of the best of the lanugionse type, and the best white clematis. Flowers occasionally during summer and early autumn. Price, 40 cents each.

PANICULTA—This is a recent Japanese introduction and one of the finest additions to our hardy climbers. It is a very strong, vigorous plant, growing rapidly and as easily grown as the honeysuckle. About the middle of August, when most other climbers have ceased blooming, this is just coming into perfection, and remains in bloom about a month; flowers pearly white. Strong, field grown plants, 40 cents each.

COCCINEA—Very handsome hardy climber bearing bell-shaped red flowers from June until frost. Strong field grown plants, 35 cents.

Ampelopsis (Woodbine)

AMPELOPSIS (Veitchii) (Boston Ivy)—Probably no climber has been so generally used the last few years. The leaves of this beautiful climber overlap one another closely, changing in the fall to the most beautiful tints, remaining so until they drop. It clings to wood, stone or brick, requiring no other support than a smooth surface, to which it clings with tenacity. The most unsightly buildings are made picturesque by its use. Many residences are covered with it, to which it lends an air of elegance.

Price, strong field grown plants 25 cents each; \$2.50 per dozen.

AMPELOPSIS QUINQUEFOLIA (American Ivy or Virginia Creeper)—Very well-known and appreciated; of luxurious, vigorous growth

and owing to its ivy-like tendrils, valuable for covering unsightly objects. Price, each 25 cents; per dozen, \$2.50.

AMPELOPSIS ROYLEI—From Japan. Resembles the American, but more vigorous; foliage larger, denser and highly colored in autumn. 25 cents each. \$2.50 per dozen.

Wistaria

WISTARIA SINENSIS (Chinese Blue)—The flowers are of a pale blue color, and are borne in pendulous racemes in May and June. Large plants, 50 cents.

WISTARIA SINENSIS ALBA (Chinese White)—Very like the Chinese Blue, except that the flowers are white and remain longer. Plants each 50 cents.

WISTARIA FLORE PLENO (Chinese Purple)—Blooms in the spring in short, dense clusters; flowers pale blue. Strong plants, 50 cents each.

Lonicera (Honeysuckle)

LONICERA HALLEANA (Hall's Japan)—An almost evergreen honey suckle of the greatest value, being entirely hardy, and of strong, vigorous growth. The flowers are exceedingly fragrant, of pure white, changing to yellow. Blooms from June to September.

LONICERA AUREA RETICULATA (Japan Gold-Veined)—A beautiful variety, of moderate growth. This variety is especially desirable on account of its beautiful winter foliage. So beautifully marked are they as to baffle description; flowers large and peach colored. Blooms in June and May.

LONICERA SEMPERVIRENS (Scarlet Trumpet)—A well-known, strong growing vine; continuous bloom; flowers scarlet, succeeded by red berries; suitable for stump and trellis.

LONICERA BELGICA (Monthly Fragrant or Dutch Honeysuckle)—Showy flowers of red and yellow, delightfully fragrant; continues to bloom a long time. Season June and July.

Strong plants of any of the above Honeysuckles, each 25 cents; dozen, \$2.50. Large 3-year-old transplanted plants, each 40 cents; dozen, \$3.50.

Miscellaneous Vines

AKEBIA QUINATA—A perfectly hardy fast growing Japanese vine, with magnificent foliage, producing flowers in large clusters of chocolate purple color; possessing a most delicious perfume unsurpassed for covering trellises and verandas, the foliage never being attacked by insects. 35 cents.

ACTINIDIA POLYGAMA—A climbing plant from Japan. The flowers are white with a purple center, and sometimes cover the whole vine. The fruit is round, edible, and has a fine flavor. 35 cents.

TECOMA RADICANS—(American Climbing Trumpet Vine)—A splendid hardy, climbing plant with large trumpet-shaped scarlet flowers in August. 35 cents.

TECOMA ASTROSANGUINEA (Dark Red or Purple Trumpet Flower)—A vigorous shrub with purplish crimson flowers. 35 cents.

ARISTOLCHIA SIPHO (Pipe Vine or Dutchman's Pipe)—Immense light green leaves, 8 to 12 inches in diameter, of beautiful color and so thick as to overlap each other. Curious, pipe-shaped, yellowish brown flowers. Of rapid growth. 40 cents each.

HEDERA HELIX (English Ivy)—The ivy, being an evergreen not very hardy and suffering from exposure to the winter sun, should be planted on the north side of buildings or walls. It is very effective in pots for inside decoration. Price 50 cents.

Fragrant Paeonies

The old-fashioned Paeony officinalis of our grandmothers' garden, while still popular because of their early flowering, have been eclipsed by the wonderful improved sorts introduced in recent years. They are the "Queen of Spring Flowers," and are well adapted for massing in beds, and particularly valuable for planting in groups throughout the perennial or shrubbery border, where their brilliant hues add attraction to all around. Their requirements are so simple—a good, rich deep soil, is not absolutely necessary, as they thrive almost equally as well in a partly shaded position, and a liberal supply of water during their growing season being sufficient to give an abundance and wealth of flowers, which rival the finest Roses in coloring and fragrance and produce during their flowering season a gorgeous effect not equalled by any other flower. They are perfectly hardy, are not troubled with insect pests or diseases of any kind, and once planted take care of themselves, increasing in beauty each year.

Standard Varieties Double Herbaceous Paeonies

AGNES MARIE KELWAY—Rose white guard petals, creamy white centre.

ACHILLE—A beautiful soft mauve rose, changing almost to pure white.

ALBA PLENA—A pure white.

ANDRIES LAURIES—A fine tyrian rose, late.

CANARY—Guard petals white, centre yellowish, changing to pure white.

DE JUSSIEU—Pale lilac rose with creamy white centre.

EDULIS SUPERBA—Soft mauve with lighter shadings.

FESTIVA ALBA—Popular white.

HUMEI—Rose pink.

LADY BRAMWELL—A beautiful silvery rose.

LAMARTINE—Solferino red with lighter to the centre.

NE-PLUS-ULTRA—Violet rose guard petals, centre mauve rose with lighter edges.

PAGANINI—Light solferino red with lighter centre.

POMPONIA—Rosy mauve guard petals primrose-yellow centre changing to creamy white.

QUEEN VICTORIA—A good early white.

RUBRA TRIUMPHANS—Rich carmine purple without prominent yellow stamens.

VICTORIA TRICOLORE—Guard petals delicate lilac rose, centre light salmon yellow.

WHITELEY—A fine early white.

ZOE CALOT—White suffused with delicate rose.

Price, any of the above standard sorts, 25 cents each; \$2.50 per doz.

Ornamental Grasses

These are among the finest of all hardy plants for bedding. All are exceedingly graceful, with large and plummy flower heads. If intermingled with the flowering shrubs these show off to a good advantage.

EULALIA ARUNDO DONAX VARIEGATOR—Foliage creamy white and green. 35 cents each.

EULALIA GRACILLIMA—The narrow green leaves have a conspicuous white midrib. 35 cents each.

EULALIA JAPONICA STRIATA—Green leaves striped with white. 30 cents each.

EULALIA JAPONICA ZEBRINA—In this the yellow strips run across the leaves. 30 cents each.

YUCCA FILAMENTOSA—Adam's Needle. Covered with bell shaped flowers forming a perfect pyramid. Valuable for rockwork. 30 cents each.

Class IV.--Evergreen Trees

We will ball and burlap, that is we will lift Evergreens with a ball of earth at the roots with the soil encased in burlap for the following prices: 15 to 18 in., 18 to 24 in., 1 to 2 ft., 2 ft., 2 to 3 ft., at 10c each. 3 to 4 ft., 4 to 5 ft., at 20c each. Please Note: The prices above quoted for balling and burlaping Evergreens are extra and additional to the prices listed in this catalogue.

Evergreen trees are indispensable in some features of ornamental planting. They are especially valuable for screens and wind-breaks, for a background against which to group trees with beautifully colored leaves or branches and for winter protection. We limit our list to the description of only the most beautiful and these succeed under a wide range of conditions and are most easily transplanted.

Evergreens may be transplanted at almost any season of the year, but great care needs to be taken that the roots do not become dry by exposure to sun and winds, and if possible a moist day should be selected.

PICEA NORDMANNIANA (Nordmann's Silver Fir)—Medium size, but of symmetrical form and majestic growth. Horizontal branches with large, massive, dark green foliage, glaucous, producing a rich and delicate effect. Price, 2 to 3 feet, \$2.50 each; 3 to 4 feet, \$3.50 each.

PICEA PUNGENS, GLAUCA KOSTRI (Colorado Blue Spruce)—One of the hardiest and beautiful of all the spruces, and is rapidly taking a prominent place among the evergreens. It is of compact habit, with an abundance of foliage of a very handsome bluish tint, retaining its color throughout the year. Very valuable for grouping purposes and should have a prominent place on every lawn. Without doubt the choicest of all the evergreen species.

Prices, 15 to 18 inches, \$1.00 each; 18 to 24 inches, \$1.50 each; 2 to 3 ft., \$2.50 each; 3 to 4 feet, \$5.00 each; 4 to 5 feet, \$7.00 each; selected specimens, \$10 each.

PICEA CONCOLOR (Concolor Spruce)—One of the hardiest and most beautiful evergreens. Tree of graceful stately habit. Large, broad silvery green foliage. A rare and exceedingly choice variety.

Price, 2 to 3 feet, \$2.00 each; 3 to 4 feet, \$3.00 each.

PICEA BALSAMEA (Balm of Gilead Fir)—Very hardy; foliage silvery underneath.

Price, 2 to 3 feet, 50 cents each; \$5.00 per dozen; 3 to 4 feet, 75 cents each; \$7.50 per dozen.

PICEA EXCELSA (Norway Spruce)—A popular variety. Makes a very dense, compact hedge. Very desirable for a firm hedge to take the place of a fence.

Prices for trees, 2 feet in height, 30 cents each; \$3.00 per dozen; \$20.00 per 100; 3 to 4 feet, 40 cents each; \$4.00 per dozen; \$30.00 per 100; 4 to 5 feet, 75 cents each; \$7.50 per doz.; \$50.00 per 100. Selected 5 to 6 feet trees for specimen planting, clumping and immediate effect, \$5.00 each.

PICEA ALBA (White Spruce)—Compact pyramidal form, of greater symmetry than that of the Norway Spruce. Very hardy.

Price, 2 to 3 feet, 50 cents each; \$5.00 per dozen; 3 to 4 feet, 75 cents each; \$7.50 per dozen.

PICEA CANADENSIS (Hemlock Spruce)—Very fine, graceful and ornamental, with fine, smooth, rich foliage, making a beautiful hedge, but not as strong a one as the Norway. It is especially graceful.

Price, 2 to 3 feet, 75 cents each; \$7.00 per dozen; 3 to 4 feet, \$1.00 each; \$10.00 per dozen. Selected, 5 to 6 feet, specimen trees, of handsome form, \$5.00 each.

PICEA INVERTA (Weeping Norway Spruce)—The most singular and useful weeping evergreen and one of the best for general use, and for producing fanciful effects. If allowed its entire freedom it assumes a great variety of forms, bending and drooping, or sprawling in grotesque shapes, no two specimens being alike. 2 to 3 feet, \$2.00 each; 3 to 4 feet, \$3.00 each.

Juniperus (Juniper)

JUNIPERUS HIBERNICA (Irish Juniper.)—Very erect and tapering in its growth, forming a column of deep green foliage. Very desirable for lawn planting. Its beauty and hardiness make it a general favorite. 2 to 3 feet, \$1.50 each.

JUNIPERUS ALBA VARIEGATA (Silver Variegated Juniper)—Variegated glaucous green and pure white foliage. Distinct and fine. 2 to 3 feet, \$1.50 each.

JUNIPERUS AUREA PROSTRATA (Golden Prostrate Juniper)—A beautiful dwarf trailing variety, bright golden foliage; very effective. Spreading habit. Hardy and fine. 2 to 3 feet, \$1.50 each; 3 to 4 feet, \$2.00 each.

JUNIPERUS SINENSIS (Chinese Juniper)—One of the most desirable, forming a handsome dense shrub, with branches somewhat pendulous and dark green foliage. 2 to 3 feet, \$1.50 each.

Retinospora (Japan Cypress)

RETINOSPORA PLUMOSO AUREA (Golden Retinospora)—That is a most interesting family of evergreens of dwarf habit and particularly suited to small places. The Golden Retinospora is one of the handsomest evergreens that can be planted on the lawn. 2 to 3 feet trees, \$1.25 each.

RETINOSPORA SQUARROSA—An exquisite Japanese form, with steel-colored foliage, which is very fine and feathery; it displays many shades of color during the season and is largely used and can be closely pruned into any shape, associated with all other dwarf evergreens. Price, 2 to 3 feet, \$1.25 each.

Thuja (The Arbor Vitaes)

THUJA, OCCIDENTALIS (American Arbor Vitae)—One of the most desirable evergreen hedge plants, of very attractive appearance. Although a fast grower, it can be kept trimmed to any height desired.

Price, 2 to 3 feet, 30 cents each; \$3.00 per dozen; \$22.00 per 100; 3 to 4 feet, 40 cents each; \$4.00 per dozen; \$30.00 per 100; 4 to 5 feet, 50 cents each; \$5.00 per dozen; \$40.00 per 100.



THUJA SIBERICA (Siberian Arbor Vitae)—Exceedingly hardy, of rather slow growth, conical in form, compact and symmetrical. 2 to 3 feet, 50 cents each; \$5.00 per dozen.

THUJA GLOBOSA (Globe Headed Arbor Vitae)—Very dense and dwarf, forming a round ball without any trimming or training, distinct, hardy and popular. 2 to 3 feet, \$1.25 each; \$10.00 per dozen.

THUJA HOVEYI (Hovey's Golden Arbor Vitae)—Of dwarf habit, globular form, dense growth, foliage of lively yellowish green, 2 to 3 feet, 75 cents each; \$7.50 per dozen.

THUJA ORIENTALIS AUREA (Geo. Peabody Arbor Vitae)—Very hardy, beautiful and showy of dwarf, compact habit, foliage of a rich, bright golden color. 2 to 3 feet, 75 cents each; \$7.50 per dozen.

Pinus (Pines)

PINUS, AUSTRIACA (Austrian Pine)—A very remarkably robust, hardy, spreading tree; leaves long, stiff and dark green; growth rapid; valuable for this country. 2 to 3 feet, 50 cents each; \$5.00 per dozen; 3 to 4 feet, 75 cents each; \$7.50 per dozen.

PINUS SYLVESTRIS (Scotch Pine) — A fine robust, rapid growing tree, with stout, erect shoots and silvery green foliage, 2 to 3 feet, 50 cents each; \$5.00 per dozen; 3 to 4 feet, 75 cents each; \$7.50 per dozen.

PINUS STROBUS (White Pine)—The most ornamental of all our native pines. Foliage light, delicate and silvery green. Flourishes in poorest of soils. 2 to 3 feet, each, 50 cents; per dozen, \$5.00; 3 to 4 feet, each, 75 cents; per dozen, \$7.50.

PINUS MUGHO (Dwarf Hugo Pine)—A very distinct species; foliage short, stiff and twisted and thickly distributed over the branches. Does not grow tall, but spreads over the ground.

Price, 1 to 2 feet, 50 cents each, \$5.00 per dozen.

The Baby Ramblers

CRIMSON OR BABY RAMBLER — It blooms in clusters and is very continuous. The time of blooming of the first umbel is not ended when the adjacent branches are ready to open with a considerable number of flowers so that the period of blooming is not interrupted until after severe frosts. We have no hesitation in saying that the bushes of the Baby Rambler are perfectly hardy and vigorous. The plants grow 24 to 30 inches high. This rose is especially valuable for culture in pots.

PINK BABY RAMBLER—Large clusters of brilliant rose flowers; the edges of the petals

are wavy, giving it a peculiarly graceful form.

WHITE BABY RAMBLER — Pure white flowers, showing the yellow stamens very prettily.

CERISE-PINK BABY RAMBLER—Identical in color to the beautiful Lady Gay Rambler; always in flower.

JESSIE—Bright cherry-red with white center.

Any of the above in strong 2 year old field grown dormant plants, 40c each; \$4.00 per doz. Set of five for \$1.75.

Hardy Hybrid Perpetual Roses

Rosa Damascena Hybrida.

More people appreciate the beauty and value of the Rose than of any other flower, but comparatively few succeed in growing it to its greatest perfection. It succeeds best in a deep rich soil, rather moist, and of somewhat a clayey nature.



the full depth, and every fall banking up

More persons fail in growing the rose, from not making the soil rich enough than from any other cause. Perhaps the best line of treatment is to spade the bed 18 to 24 inches deep, working in fine rotten cow manure and leaf mould to

against each plant with rich stable manure, for protection. In the spring, this manure should be spread on the surface of the bed and spaded in, and if the soil is not too thin and dry a good growth and an abundance of blossoms will result.



larger will be the flowers.

Pruning: In pruning, the work may be done either in fall or in March, the latter time being generally preferred for this work. The bushes should be so pruned as to obtain a limited number of as strong canes as possible, the stronger the

The Twelve "Best" Hardy Garden Roses

(HYBRID PERPETUALS.)

The twelve varieties listed below have been offered under this heading with a view of supplying the amateur, who is not familiar with the various varieties, and to whom a selection from the long list of Hybrid Perpetuals must necessarily prove confusing, as a collection which combines as varied a range of color as can be brought together in such a number of plants, with freedom of flowering, perfect form, fragrance, hardiness and general excellence.

The plants offered are of 3-year-old-stock, which will, under ordinary conditions, give a full crop of flowers this season; and while their main crop is produced in June, they frequently produce fine flowers throughout the summer and autumn. The cultural hints given on Page 44 should assist the amateur in getting the largest measure of success from these plants.

ANNA DE DIESBACH—Clear, bright carmine-pink, very large, full and finely shaped; fragrant and a free bloomer.

BARON DE BONSTETTEN—Velvety blackish crimson; very large, double, fragrant flowers; a strong grower.

BARONESS ROTHSCHILD—A superb Rose, of pale, satiny-rose, very large.

GLOIRE LYONNAISE—White, tinted with yellow; large, full and of good shape; very distinct and pleasing.

FRAU KARL DRUSCHKI—This is the ideal hardy white Rose; pure in color, perfect in form; strong grower and remarkably free-flowering; superb in every way.

PAUL NEYRON—Dark rose, of enormous size; perhaps the largest of all.

MRS. R. G. SHARMAN CRAWFORD—Deep rosy-pink, outer petals shaded with pale flesh. A beautiful rose in every respect.

GENERAL JACQUEMINOT—Brilliant, scarlet-crimson; an old favorite and one of the best known Roses in cultivation; does well everywhere.

MRS. JOHN LAING—Soft pink, of beautiful form; exceedingly fragrant and remarkably free-flowering; always does well and stands very close to top among fine Roses.

PRINCE CAMILLE DE ROHAN—Deep velvety crimson-maroon, shaded scarlet; a magnificent dark Rose.

CAPTAIN CHRISTY—Delicate, flesh-tinted white; a large, full flower; very free-flowering.

ULRICH BRUNNER—Bright cherry-red; flowers large and full; a good strong grower and always does well.

Extra strong three-year-old plants, 50 cents each.

Set of 12 "Best" Varieties for \$5.00.

Strong two-year-old plants, 35 cents each.

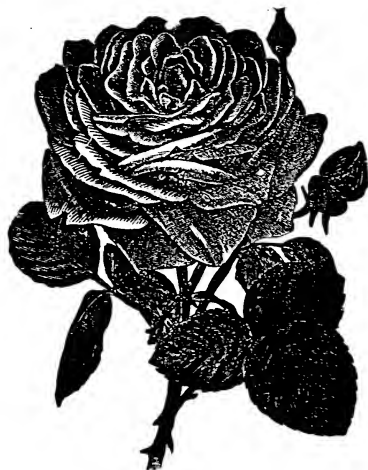
Set of 12 "Best" varieties, \$3.50.

Other Standard Varieties

Prices for any of the standard varieties hereafter named, two-year-old plants, 35 cents each; \$3.50 per dozen; three-year-old plants, each 40 cents; dozen, \$4.00.

AMERICAN BEAUTY—This is perhaps the grandest and best known Rose we have. It is a bushy grower, free bloomer; color a rich, rosy crimson, and beautifully veined.

COUQUETTE DES ALPS—Large, pure white flowers, sometimes tinged with pale bluish; very hardy and beautiful.



LA FRANCE—One of the most beautiful constant blooming Hybrid Perpetual Roses. The flowers and buds are of immense size and especially fine form; a lovely shade of peach bloom, changing to rose, delightfully fragrant.

MADAME PLANTIER—Not a Hybrid Perpetual Rose, but perfectly hardy. One of the best white roses and should be among every collection.

DINSMORE—One of the finest bloomers. Highly recommended for garden planting on account of its hardiness and vigorous growth. Flowers are large and double; color, rich scarlet, very fragrant.

MARGARET DICKSON—This is unquestionably the finest Hybrid Perpetual white rose yet introduced. Should be included in every collection.

MAGNA CHARTA—Large, full and globular bright pink flowers. Can be relied upon as a standard sort. Very fragrant.

JOHN HOPPER—Rosy crimson, back of the Petal lilac. Large and full and one of the best roses.

MABLE MORRISON—White, sometimes tinged with bluish; in the autumn the edges of the petals are often pink. In all, save color and substance of petals, this variety is identical with Baroness Rothschild. A very valuable rose.

EARL OF DUFFERIN—Velvety crimson, shaded with deep velvety maroon; very brilliant, large and full.

GLOIRE DE MARGOTTIN—Brilliant, dazzling scarlet; a fine flower.

HER MAJESTY—Clear, bright, satiny rose, petals most regularly arranged and rich, heavy foliage; a gem.

MARCHIONESS OF LONDONDERRY—Flowers of great size, measuring five inches across, perfectly formed and carried on stout stems. Color, ivory white; free flowering; highly perfumed.

MARSHAL P. WILDER—Flowers large, semiglobular, full, well formed; color cherry carmine.

LIBERTY—Very free-flowering, bright crimson scarlet, of strong, vigorous habit; an elegant bedder.

KILLARNEY—It is perfectly hardy in this latitude; in growth it is strong and robust and as free flowering as any rose we know, in color it is a sparkling, brilliant, imperial pink.

JUBILEE—It is the finest dark red hardy garden rose yet introduced.

CLIO—The flowers are flesh color, shaded to the centre with rosy pink, they are very large, of fine globular form, and freely produced.

ALFRED COLOMB—Bright, clear cherry-red, shaded with crimson; globular, full and very sweet.

ALFRED K. WILLIAMS—Carmine-red, shading deeper; a full imbricated flower.

CAMILLE BERNARDIN—Bright crimson, large, full and of fine form.

CAPTAIN HAYWARD—Bright, crimson-carmine; an entirely distinct shade of color, of perfect form and very sweet.

CHARLES LEFEBVRE—Bright crimson, shading darker in the centre; very double, of fine form.

DUKE OF EDINBURGH—Very bright vermilion; a large, full, perfect flower.

FRANCOIS MICHELON—Deep rose, reverse of petals silvery; large, full, globular form.

HUGH DICKSON—Brilliant, crimson, shaded scarlet; large, very fragrant and very free-flowering.

JEAN LIABAUD—Rich velvety crimson, shaded black.

LOUIS VANHOUTTE—Vivid velvety crimson; large, full and of fine form; one of the best.

Tea and Hybrid Roses

This class of Roses can be wintered safely. All that is necessary is to give them the same protection as the Hardy Hybrids.

Prices for the following list of Tea Roses, one year, strong plants, 25 cents each; \$2.50 per dozen; two year plants, 40 cents each; \$4.00 per dozen.

CLOTHILDE SOUPERT—Medium size; very double and beautifully imbricated like an Aster; produced in clusters, pearly white, with



rose like centers, a remarkably free and constant bloomer of easy culture. One of the most valuable roses of recent introduction.

METEOR—Rich, dark, velvety crimson, retaining its color well; a constant bloomer; healthy with no tendency to mildew.

BRIDE—A sport from Catherine Mermet. Pure white; large, fine form, very fragrant, free bloomer.

BRIDESMAID—A new sort, which has proved a valuable acquisition; it is a sport of Mermet and is similar to that admirable variety in every respect, save in color, it being a deeper and clearer pink.

KAISERIN AUGUSTA—An extra fine white variety, finely blended with cream color; very large; full and double, almost perfect in form and it continues beautiful even when fully expanded. Its fragrance is a combination of tea and magnolia, and is very delightful and distinct from that of any other variety. Beautiful glossy foliage; a vigorous grower and very free flowering; without doubt the freest blooming rose yet introduced.

MADAM COCHET—The queen of all pink garden roses. Magnificent, large, full and double flowers. Delightfully fragrant.

PERLE DES JARDINE—Clear yellow, free bloomer, very fragrant, one of the best of Teas.

MAD. CAROLINE TESTOUT—A charming new Hybrid Tea. Flowers large and double, very fragrant. Color bright and satiny pink, with rosy center. Excellent for bedding.

MME. WELCHE—Soft peachy-yellow, delicately suffused with soft rose; very desirable.

MRS. B. R. CANT—One of the best bedding Roses; a strong, vigorous grower and very free-flowering; large, full flowers, of rich, glowing carmine.

RICHMOND—A most valuable and well-known American variety of a rich, brilliant, crimson-scarlet; the flowers are not very full, but in bud form are beautiful, and remarkably free-flowering.

SOUVENIR DE PIERRE NOTTING—A beautiful canary-yellow, suffused with apricot in the centre; flowers of good size; a very pretty Rose.

SUNSET—A sport from Perle des Jardins, bearing flowers of similar form and substance, but of a deep rich apricot-yellow.

MARIE VAN HOUTTE—White, tinted with yellow, often edged with rose; large, full, of fine form and an abundant bloomer.

CATHERINE MERMET—Very large, long buds of exquisite form, of a beautiful soft rose-color.

Moss Roses

(*Rosa Centifolia Muscosa.*)

This is a favorite class of Roses on account of the beautiful buds which are invaluable for bouquets and cut flowers. We list only varieties that have been thoroughly tested and are especially recommended for best results. They require severe pruning.

BLANCHE MOREAU—Pure white. Constant bloomer.

CAPT. JOHN INGRAM—Purplish crimson.

COMMON MOSS—Pale rose, very beautiful buds. A great favorite.

COMTESSE DE MURINAIS—White, tinged with flesh.

CRESTED MOSS—Deep pink-colored buds, surrounded with a mossy fringe and crest. A fragrant, very beautiful rose.

GRACILIS—Deep-pink buds, surrounded with delicate fringe-like moss. The most beautiful of all the Moss Roses.

LANEII—Red, good foliage, not subject to mildew.

LITTLE GEM—A miniature Moss Rose; double crimson flowers, beautifully mossed.

MADAME MOREAU—Bud and flower clear shade of rose; fragrant and free bloomer.

PRINCESSE ADELAIDE—Pale rose, of medium size and good form.

WHITE BATH—White, sometimes tinged with flesh; attractive in bud and open flower. The best White Moss.

Price, strong two-year plants, 35 cents each; \$3.50 per dozen.

Standard or Tree Shaped Roses

The following nine choice varieties can be supplied in standard or tree-shaped form, on sturdy, hardy stems from 3½ to 4 feet high.

CAROLINE TESTOUT—Bright satiny-rose.

FRAU KARL DRUSCHKI—The ideal pure white hybrid-perpetual.

GRUSS AN TEPLITZ—Brilliant red hybrid-tea.

KAISERIN AUGUSTA VICTORIA—The most popular white hybrid-tea.

KILLARNEY—The popular pink hybrid-tea.

LA DETROIT—Very free rose-pink hybrid-tea.

LA FRANCE—The old favorite silvery-pink hybrid-tea.

MME. JULES GROLEZ—One of the best hybrid-teas; color rich china-rose.

ULRICH BRUNNER—A grand cherry-red hybrid-perpetual.

PRICE. Any of the above Tree Roses, \$1.25 each; \$12.00 per dozen. One each of the nine sorts for \$9.00.

Rambler Roses

PINK RAMBLER—Possesses the same valuable features found in the White Rambler, except in color of flower, which is a brilliant light carmine; perfectly hardy.



CRIMSON RAMBLER—This is only a remarkable and unlooked for novelty among Hardy Climbing Roses. It is a vigorous, rapid

grower, making shoots 10 to 20 feet in height in one season. For verandas, walls, pillars and fences it is a desirable plant.

YELLOW RAMBLER—This is the only hardy yellow climbing rose in cultivation. It is becoming as popular as its renowned relative, Crimson Rambler, with which it is identical, with the exception of the flowers, which are deep golden yellow.

WHITE RAMBLER—This is a splendid rose; distinct and valuable; the flowers are pure white and very fragrant; they are borne in clusters, and a well established plant in bloom makes a striking appearance.

BLUE RAMBLER—The sensational so-called blue Rose which has been so widely advertised by many growers; a strong, vigorous grower, with dark green, healthy foliage.

DOROTHY PERKINS. Soft shell-pink, flowing profusely in large clusters; very fragrant and lasting; a grand Rose in every way.

WHITE DOROTHY—Among Rambler Roses none has justly gained greater popularity than the beautiful pink Dorothy Perkins. The White Dorothy is a duplicate except in color, which is white, a decided acquisition to this class of Roses.

LADY GAY—A most desirable variety of remarkable, vigorous growth, with flowers of a delicate cerise-pink, passing to soft-tinted pink. The effect of a plant in full bloom with the combination of the soft pink flowers, cherry-pink buds, and the deep green of the foliage is indeed charming.

HIAWATHA—There is no other rose so brilliant as Hiawatha. It must be seen to be appreciated. Its flowers are about 1½ inches across and produced in long, pendulous sprays, with frequently from 40 to 50 flowers on a spray. In color it is brilliant, ruby-carmine with a clear white eye and a mass of golden stamens—a glowing combination of colors, which can be seen at a great distance, and which does not tire the eye as do masses of Crimson Ramblers. The plant is of strong, vigorous growth, with bright green, glossy foliage, which is retained until late in fall.

Prairie Roses (Rosa Rubiafoio)

QUEEN OF THE PRAIRIES—Bright, rosy red, frequently with white stripes; is fairly covered with flowers in early summer, and is one of the best climbers for any purpose.

SEVEN SISTERS—A small bush rose tinged with various shades of pink.

EMPRESS OF CHINA—The color is soft dark red, changing to lighter red or pink, like the color found in an apple blossom.

WHITE MARECHAL NIEL—It is the exact

Prices for any of the above described Ramblers, each 35 cents; dozen, \$3.50. Three years old, selected, strong plants, each, 50 cents; dozen, \$5.00.

CLIMBING AMERICAN BEAUTY—A new Rose of great merit. A cross between American Beauty and an unnamed seedling; color a rosy crimson, similar to its popular parent, and with the same exquisite fragrance, a quality rarely found in climbing Roses. The plant is of strong habit of growth, making shoots from ten to fifteen feet in one season, and as hardy as an oak. The flowers are from three to four inches in diameter, of fine form, and are produced in great profusion, not only in May and June, but there is a fair sprinkling of flowers throughout the growing season. Price, 2 year, No. 1 plants, 75 cents each.

counterpart in every respect of Marechal Niel, its parent, save the color of the flowers, which is pure white; totally distinct.

BALTIMORE BELLE—Pale blush, becoming nearly white; compact and fine; the blooms are produced in clusters; the growth, though rapid, is slender and graceful.

Prices for any of the varieties named above, two years plants, 25 cents each; dozen, \$2.50; three year old, selected bushes, 50 cents each; dozen, \$5.00.

Rosa Rugosa

They are rapid growers, of neat, uniform, compact and sturdy habit, attaining a height of 5 to 6 feet; perfectly hardy. The foliage exhibits a mass of dense, luxuriant, glossy green. The flowers are large and single; perfect form and color, produced continuously throughout the season and until late in the autumn, and as they mature are replaced by small, glossy golden and red Haws, they possess a character all their own and are of valuable assistance to the landscaper.

RUGOSA RUBRA—Japan variety. Flowers single, of a most beautiful bright rosy crim-

son, succeeded by large berries, of a rich, rosy red color, and are a great addition to the ornamental character of the plant.

AGNES CARMEN—A hybrid rugosa variety, with rich foliage and large deep crimson flowers.

RUGOSA ALBA—Species from Japan. Single pure white flowers, of five petals; highly scented; golden fruit.

Price for above. Two year plants, 25 cents each; selected three year old plants for immediate effect, 50 cents each.



is a library which, especially in this
 making use of the volume should be



and bears the reader without something be
 and a private reader for its appearance. 11

requires to be shown that other people have
 an interest to be served by it and the author's
 own pleasures or advantages is not alone con-
 sidered. The work of the late indefatigable
 Dr. Dwyer on Horticulture may be mentioned
 with the greatest respect as an ample treatise
 on everything relating to the subject. There
 is nothing of egotism (certainly not intention-
 ally) in the remark that his work sprung out
 of the author's known reflection and observa-
 tion and have often been jotted down on an
 evening or during a journey, as the result of
 a daily experience. It is very likely that a
 more finished book might have been produced
 by the use of frequent quotations from other
 works, this however was no part of the origi-
 nal plan. At the outset of his task it was
 the author's purpose to write a comprehensive
 book, it can be judged by the mere accidents
 of manner and composition.

The price is fifty cents. We will mail it
 free to all our customers who apply for it
 when they send their orders.

INDEX

<p>Andropogon 40-41 Apple Trees Standard 13-18 Crabs 13 Dwarf 13 Aspidistra 24 Asplenium 25 Aucubias 10 Certificates of Inspection Inside Back Cover Canebrake Laurel 46 Cherry Trees 22-23 Clematis 40 Conifers 43 Cordons and Shrub 33-35 Crowsfoot 14 Dwyer's Guide Inside Back Cover Elm Trees 12-14 Examination and Inspection Inside Front Cover General Information Inside Front Cover General Instructions Inside Front Cover Geoseberries 14 Grapes 15 Hardy Climbing and Trellising Vines 40 Introductory 3 Raspberry 14 Rankers (Hose-suckle) 41 Miscellaneous Gardening 3 Notation 3 Oak Trees 24 Ornamental Department 26-27 Trees 28-32</p>	<p>Ornamental Grasses 42 Pear Advantages 5 Pear Trees Standard 13-20 Dwarf 13 Pear Trees 20-21 Plum Trees 23-24 Potatoes 41-42 Pruning and Spraying 5 Quince Trees 22 Raspberries Red 10-11 Cane Plum 11 Cap Black 11 Rhodora 35 Rosea Hardy Hybrid Perpetual 24-25 Tea and Hybrid Tea 46 Ramblers 41-43 Baby Ramblers 44 Rugosa 42 Prarie 43 Tree Standard 37 Moss 37 Rhododendrons 33-39 Strawberries Fall Bearing 63 Dayer Rights 63 Pot Crown 9 Spraying 5 Twelve Best Hardy Garden Roses 44-45 Vines Miscellaneous 21 Wistaria 41 Wincherry Japanese 14</p>
--	---

STATE OF NEW YORK DEPARTMENT OF AGRICULTURE

CERTIFICATE OF INSPECTION OF ROBERT ATOK

That the above named livestock is the property of J. V. DWYER & CO. of Cornwall
 County of Otsego State of New York was duly examined in compliance with the pro-
 vision of section 36 of the Agricultural Law and was found to be apparently free
 from any contamination of infectious disease or disease of the San Jose scale or other
 injurious insect pest or parasite. This certificate expires September 1, 1914.

CALVIN J. HOSON
 Commissioner of Agriculture

This is given at Albany, N. Y., October 2, 1913.

