

## **Historic, Archive Document**

Do not assume content reflects current scientific knowledge, policies, or practices.



62.23

INDEXED

007-0  
LIBRARY  
JUL 21 1920  
U.S. Department of Agriculture

**PRICE LIST**

**Thomas' Pure-Bred Strawberry  
Plants, Spring 1914**

*W. W. THOMAS*  
*The Strawberry Plant Man*  
*Anna, Illinois*

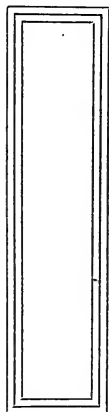
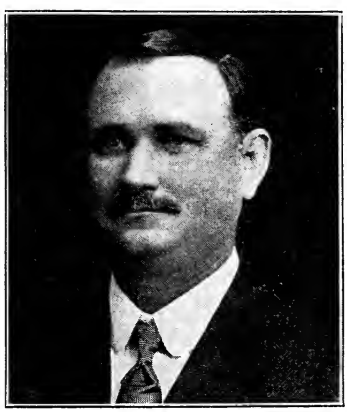
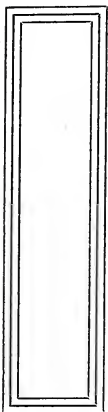
KIND FRIEND:

You are interested in strawberry growing and you are interested in getting the best out of it. Scientifically PURE-BRED PLANTS will start you right and will enable you to do this.

There is no denying that there are good and inferior grades of seeds and live stock. The intelligent thinking farmer does not attempt to deny it, neither will he attempt to deny that there are good and inferior grades of strawberry plants. Scientific breeding improves seeds and improves live stock and it has improved strawberry plants.

My PURE-BRED PLANTS are bred under the best known scientific method of breeding up the strawberry. It has been worked out through years of study and experience and has been thoroughly tested, and is an established success.

I have been breeding up the same strains of many varieties for years and they



**The Strawberry Plant Man**

have reached such a high state of perfection that they far excel all ordinary plants. I have in my test and breeding beds over 160 varieties, comprising all the new and leading sorts.

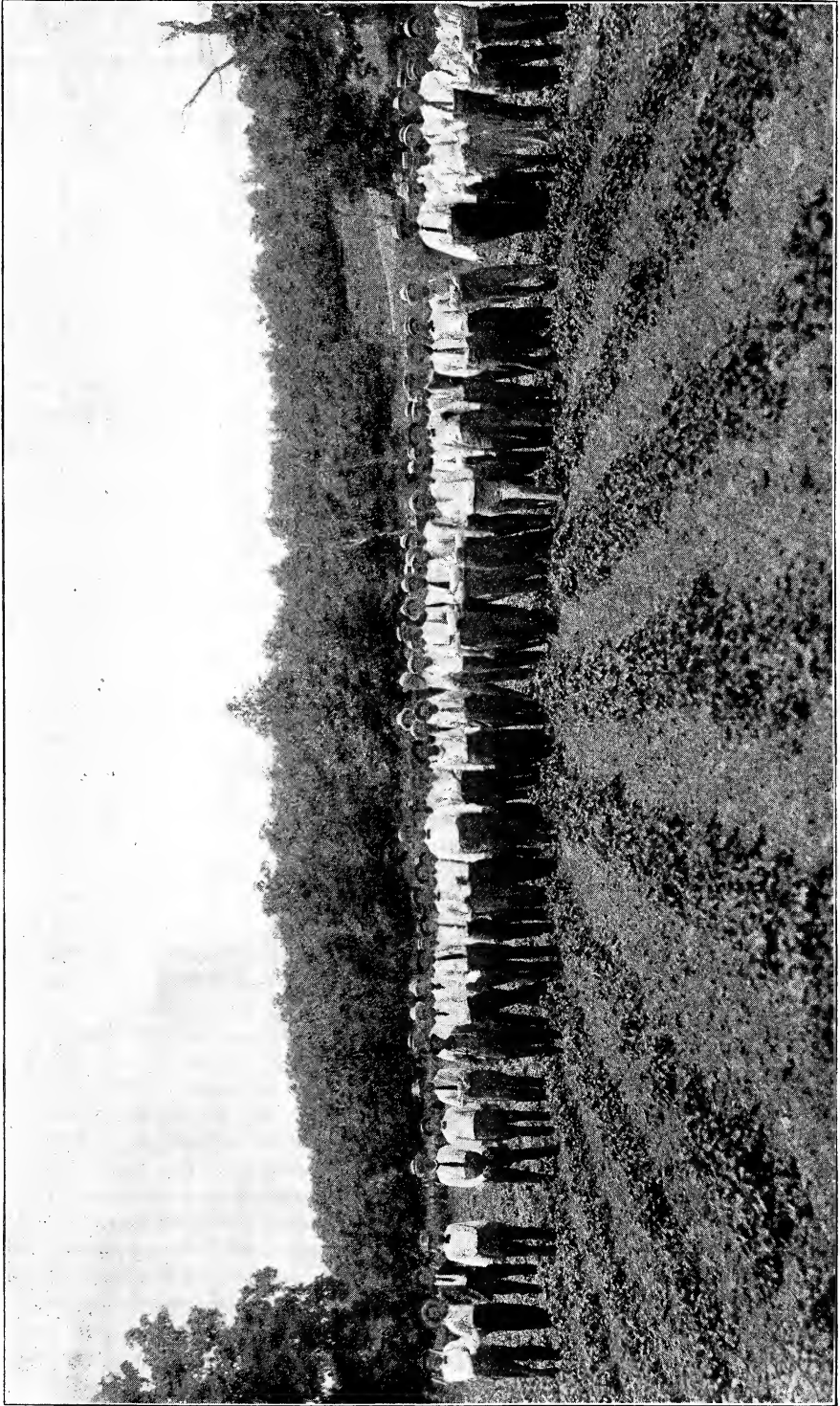
For the best results it is very important that you use the best plants you can obtain. My PURE-BRED plants will cost you no more than the ordinary plants on the market that are grown in any haphazard way and which are very often dug from old and run-out fields.

My new, thrifty, PURE-BRED PLANTS, dug from new fields, are the kind of plants you should use and are the kind that will increase your yield, improve the quality, put more money in your pocket, increase your bank account and make you happy and prosperous. They are planted in every state in the Union and in many foreign countries. I export them in large quantities.

Do not delay sending your order, but send in now, as orders are coming in very fast.

Yours truly,

W. W. THOMAS.



Officers and Members of Illinois State Horticultural Society on my Plant Farm—July 31, 1913

## The Thomas Way

PURE-BRED STRAWBERRY PLANTS are the result of years of experimenting and scientific breeding followed out along a method strictly adhered to that has bred up the strawberry to the highest known standard.

Years ago as a strawberry-plant grower I determined to produce the best strawberry plants grown and to do this I realized it was necessary to improve and breed up the strawberry. This I proceeded to do by methods I had long believed to be the correct ones for this purpose.

Forty-two years ago I was born on a strawberry farm, my father being one of the first strawberry growers in Southern Illinois, having commenced to grow them 50 years ago. During my boyhood days I saw the Old Wilson Albany give way to Chas. Downing and Sucker State, and these varieties were, in turn, succeeded by the Crescent. I heard the strawberry growers in those days talk of varieties running out and their constant wish for better strawberries.

When I embarked in the strawberry plant business, at the age of 18, my desire was to not only make a success in business, but to be able to give to my customers better strawberry plants than they could obtain elsewhere, and along this line I have worked. My practical knowledge of strawberries was great. I had picked strawberries as a bare-foot boy, had packed them ready for shipment, hauled them to the shipping point, loaded them in the cars. Had over-seen the fields when over one hundred pickers were employed. Planted, hoed and cultivated them, so that when I commenced to grow the plants in a commercial way I knew every phase of the business from a strawberry-grower's viewpoint. I had all this knowledge to assist me in arriving at a method whereby the strawberry could be improved and instead of a variety running out it could constantly be made better. The method then adopted and practiced through the many years has developed the PURE-BRED STRAWBERRY PLANT, which produces the strawberry in all its glory the height of perfection.

I have produced and developed PURE-BRED STRAWBERRY PLANTS, and PURE-BRED STRAWBERRY PLANTS have built my business and it has grown and flourished and developed into a great establishment.

## A Short Strawberry Plant Crop

I have been growing strawberry plants 24 years through good seasons and bad ones, wet and dry, hot and cool ones, but the past summer has been the most disastrous of any I have ever experienced, for long continued drought and excessive hot weather.

It cut the corn crop very short and burned up pastures in Kansas. It destroyed many strawberry fields in Missouri. The touch of its blighting hand was felt and the effect was seen in every state from the Atlantic to the Pacific. What it did to corn, hay and pasture in Kansas, it did in every state in the Union, and the price of these products are soaring. What it did to strawberries in Missouri it did to strawberries in Illinois, Tennessee, Michigan, Texas, and all other states east, west, north, south.

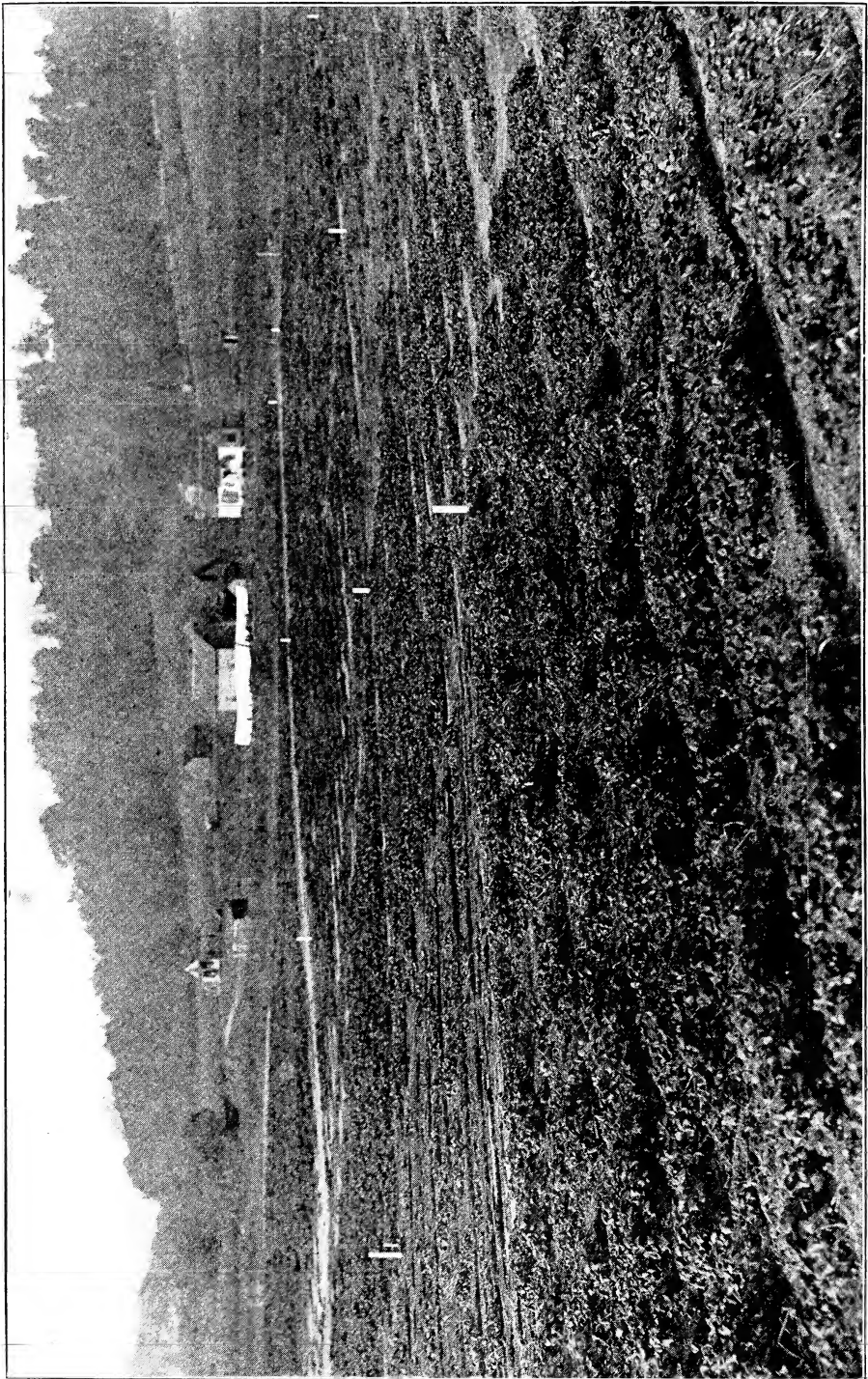
What does this mean to the strawberry grower? It means that those who have berries for next year's market will get enormous prices for their crop; it means also that there will not be enough plants to supply the demand and that the acreage planted this season will be the least in years. This all means big prices for the berries.

You, as a strawberry grower, should take advantage of this opportunity. You should plant early and be ready to share in your part of the increased earnings of strawberry growing which is sure to be the result of these conditions.

On September 12th we had a good rain and after that time the season was very favorable for plants to grow and they became thrifty, strong and vigorous. While I have a very short crop of plants, about 40 per cent of an average crop, what I do have will be fine—I believe the best I have ever grown.

I have had reports from every section of the country and I do not believe the plant growers have over 25 per cent of an average crop, taken all together. There are only a very few strawberry growers that will have plants of their own, many have lost all their plants and will have none for fruit or to plant.

**CATALOG**—I am not issuing a catalog this season, as the plant crop is very short and my plants will all be sold before the spring planting season is over. I am mailing this folder to all of my friends instead of the usual catalog. You will find the price list on the page 14. I have several thousand of my last season's catalogs on hand which I shall be pleased to mail to those who may wish one. Next season I will issue the best, largest and most instructive strawberry catalog ever printed. You will receive one in due time.



The Breeding Bed

## Breeding Strawberry Plants

This is an age of advancement. With a more thorough knowledge and understanding of the "science" of things, old theories, old practices are passing. We are living in a time when "all things have become new" and yet it is the method, the system which is new. The Creator's laws and principles remain immutable.

The Good Book's promise—"He that doeth shall know"—still holds and ever will hold good. As men devote themselves to the mastering of some one thing, they wrest success where others find only mediocre average.

This is just what I have been doing with strawberries. For twenty-four years I have been thinking, studying, experimenting with strawberries for the one purpose of perfecting, of growing, of breeding plants that would have qualities not found in the ordinary strawberry plant—qualities that would enable the plant to produce a fruit superior to the ordinary grown strawberry and in a profusion far in excess of the average crop.

The world today pays tribute to "wizard" Edison. What would we know of electricity had not Franklin first "bottled" it? In Independence Hall in Philadelphia is the little wooden stool with four glass caps on the legs, which he used in his first experiments. The principle of insulation has remained intact through the centuries, but methods, forms of use, results have advanced and progressed during the years.

Edison has largely applied his life energy along the one line of electricity. That almost greater "wizard," Burbank, has applied his energies along another line. Professor Holden, a man sought after by the Government, in demand by all the railroad interests of the great Central West, a man whose name is a by-word in every farm household, has made himself an enduring name simply because he devoted his entire thought, energy and purpose to the improving of seed corn. As a result of his scientific breeding and still more scientific testing of results, he has revolutionized the crop-bearing possibilities of every acre put into corn.

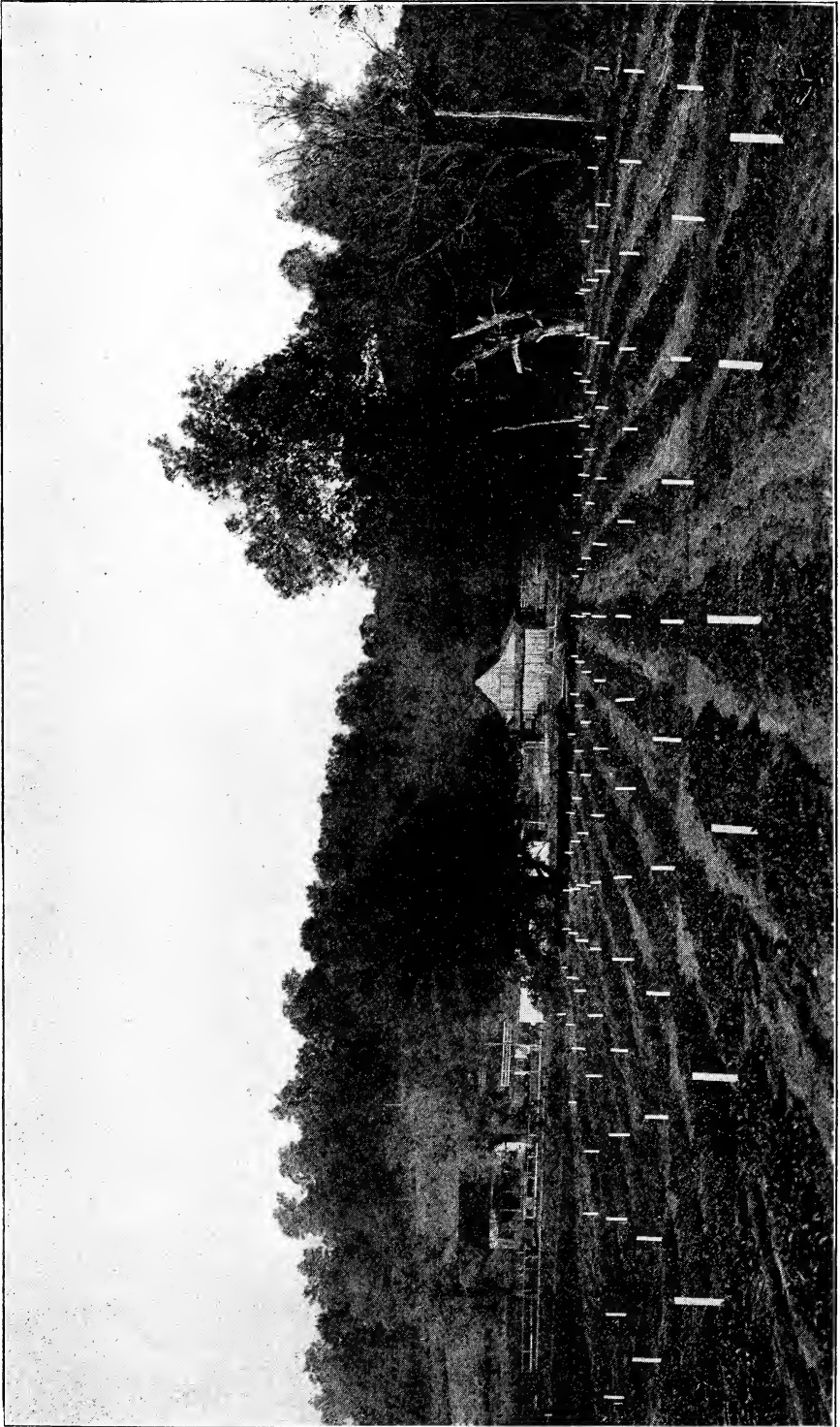
These three men are accomplishing wonders; each in a different line, but all three are world benefactors, and I say it without egotism, but with genuine pride and an exultant joy, that what they are doing in their respective lines of research and development, I, in my humble way, have been doing and still am doing in the producing of a constantly bred-up strawberry.

## The Breeding Bed

The breeding bed is where I grow plants one season to be used the next fall and spring to plant the fields from which I dig and ship plants. It is planted with plants from the previous breeding bed. The choicest plants are selected with great care for this purpose. Only those showing the most vigor and vitality are used. Before the plants in the breeding bed are dug to plant in the fields, the same careful selections are again made for next year's breeding bed. Thus a continuous improvement is going on all the time. I do not stop here. I also plant some of each variety from the breeding bed each year in test bed for testing the fruit and producing qualities of each variety.

The breeding beds are planted with the choice of all the plants in the preceding breeding bed. After an individualized plant-by-plant selection is made for this purpose, the remaining plants are used for planting the fields from which plants are sold. Plants from our breeding beds are planted each year for fruit-producing tests. The bearing qualities, vitality and stamina of each variety is closely watched. The untiring energy with which breeders have worked out and have brought about the great and wonderful improvements in corn and live stock is not one whit greater than I have put into Thomas Pure-Bred Strawberry Plants.

My plants are not only pure-bred, true to name and label, but are bred by the best known method of improving the fruit-producing quality of the plants and the betterment of the fruit. I have found that there are some plants which show a strong tendency towards betterment. When this is encouraged by my method, the improvement is rapid and great. It is true that some plants of the same varieties do not possess equal energy and fruit-producing qualities and gradually become degenerate. You often hear a grower make the remark that a certain variety is running out. It may be for him, but that very variety may be improved by proper breeding—improved not merely temporarily, but constantly.



Test Bed—160 Varieties



## A Natural Strawberry Climate

From the meager business of the early years of strawberry-plant growing my business has increased to require the plant production from 200 acres of a large farm of sandy loam in Dutch Creek Valley, just a few minutes' drive from Anna, and only a few miles from the Mississippi River. From my residence in Anna can be seen the hills of Missouri, as well as the highest point in the State of Illinois. These facts will make it easy for the reader to understand why, at Anna, the Illinois Central Railroad has the highest piece of trackage on its line between Chicago and New Orleans. And from the topmost point in Anna, where my residence is located, you can look in no direction but what can be seen hillsides and valleys on which and in which the strawberry flourishes as only a plant in its natural home can prosper.

With all the advantages enumerated there is not one more important than the fact that I offer you plants grown in an ideal climate—a strawberry climate. It is easy for anyone to know that plants so grown are sturdy and transplanting will not, nor does not in a noticeable measure, interfere with their growth, development or fruit production.

Anna is in a natural strawberry climate, and this fact emphasizes in an indisputable manner my claim to the production of unexcelled, unequalled plants.

It is just as natural for the best strawberry plants to grow in this location, as it is natural for the big trees to grow in California, the polar bears to inhabit the cold north, or for cotton to grow in the Sunny South.

My location, which is so favorable for the production of strawberry plants, has a great deal to do with their quality. This location has more favorable conditions for the production of strawberry plants of the highest quality than any location in the United States. The soil, climate and seasons are ideal for this purpose. My plants are sought after by growers from the Southern States because they have more vitality, more energy and better bearing qualities than those grown in the South. My plants have the needed rest and dormant season which Nature intended the strawberry plant should have and which is very essential to their bearing qualities. For these same reasons my plants are also in great demand in Southern California. These facts are supported by numerous testimonials which I receive from these sections. In these localities my plants produce crops that are a matter of wonderment to the growers. My plants also have many advantages over those grown in the far North, East or West, because of the climate, soil and other favored conditions of this locality that do not exist elsewhere. The black, heavy soil of the West, the extreme cold of the North, the unfavorable conditions of the East, are but few of the many things that make my plants superior to those grown in those sections.

## Strawberries for Profit

There are thousands of strawberry growers who recognize that industry as their vocation. It is to be proclaimed and can be proven that the professional berry grower is making more money today than any farmer who depends on the ordinary farm crop for his entire earnings. Acreage considered, the berry grower has the best of the argument from start to finish. The investment which produces a \$5,000 strawberry crop is but a small percent of the investment needed to produce \$5,000 worth of wheat, cotton, truck or citrus fruit.

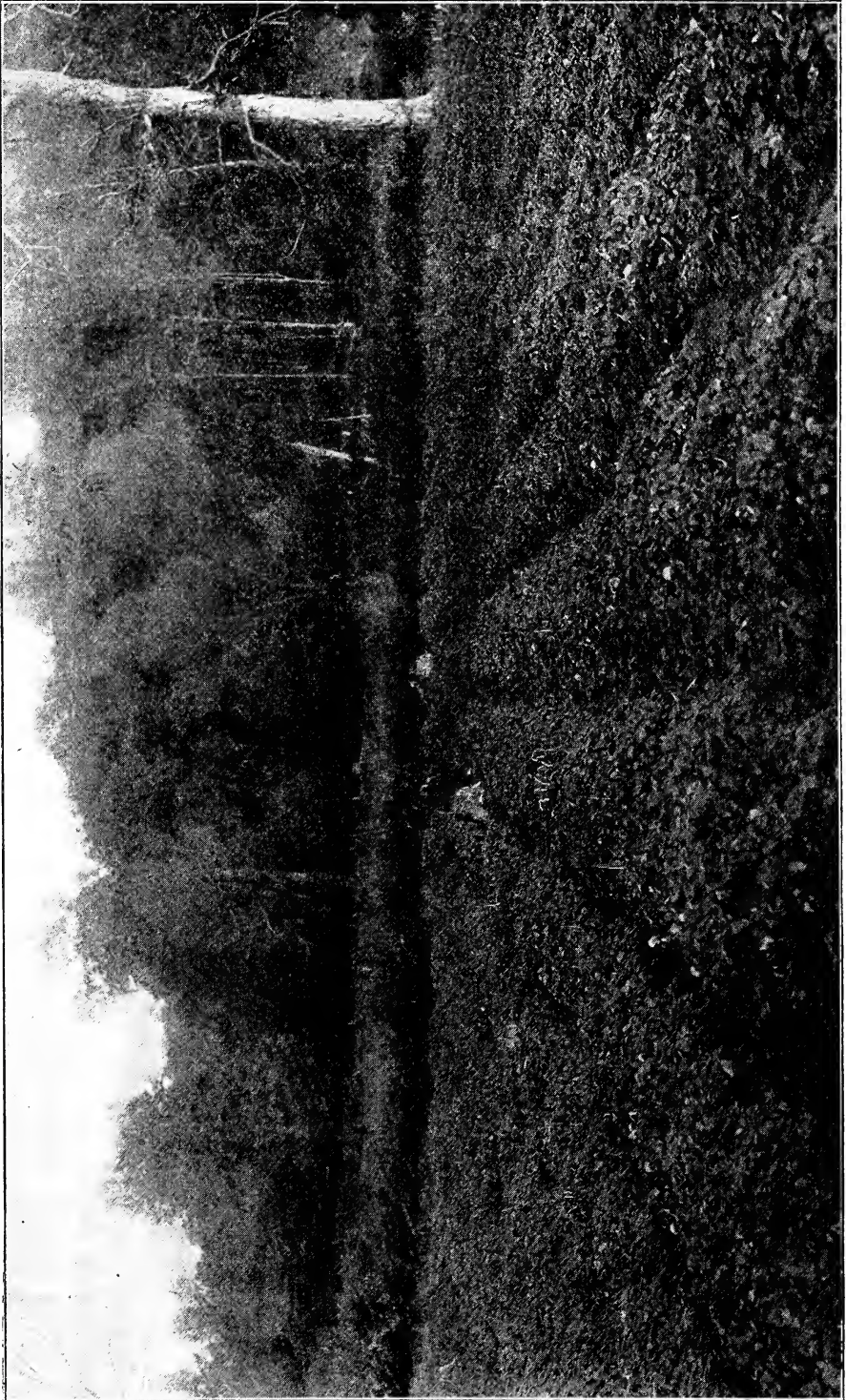
I want to help in the production of better strawberries. I want to help you. It should not be a question of your following ancestors' footsteps. Imitating former generations does not bring about new and improved conditions. This is not a censure for our ancestors. Had they had the opportunities that you and I have, their history would have been different. Think of the tremendous difference between our improved varieties of strawberries and the Hoveys Seedling (which was the first American variety), originated in 1834 or 1835. Lack of transportation facilities fifty years ago prevented growing strawberries in remote states and selling them in the great city markets.

If your profits are not what they should be, I can show you clearly the way to a more satisfactory result for the physical force spent by you in the production of your crop.

My ideas are not theoretical, they are founded on established facts. Are you interested in making that small farm or that large farm of yours a profit producer instead of just an expense-paying, make-a-living proposition? You should be. Your welfare and that of your family demand that your every effort should be well spent. An accumulated crop profit of a series of years is a pleasant thing to anticipate.

But without the individual profit there can be no accumulation.

There can be no individual profit without effort.



Field of Lady Cornelle Strawberry Plants—November 5, 1913

# LADY CORNEILLE

## The Wonderful New Strawberry from Louisiana BETTER THAN THE KLONDYKE

This wonderful new strawberry originated in Louisiana, and having more good qualities than ever before combined in any one berry, is destined to become the leading strawberry, and it is better than the Klondyke, and that is saying a great deal, but it is not saying too much, for it merits it.

There are so many good things to say about the Lady Corneille that it seems almost fattery to mention them all. The Klondyke for a long time has been the leading Southern strawberry, but the growers have been wishing for a better berry to take its place, one that would yield heavier, better quality and firmer. The Lady Corneille can and will do this and will be planted extensively just as fast as the growers can secure plants. I paid a big price for plants of this variety in order to have them to offer to my customers and I would advise all to place their orders as soon as possible to be sure of securing the plants.

I have about 1,000,000 plants from which to furnish my customers, so it will be necessary to order early, as I will not have enough to furnish all that will be wanted. The Klondyke was also originated in Louisiana about 15 or 20 miles from where the Lady Corneille was originated.

### The Plant

The Lady Corneille is the healthiest, thriftiest, best growing plant with clean foliage, absolutely free of rust or leaf spot; plants large, strong and robust. The plant is simply a beauty with glossy, rich green leaves, stands drought better than any other strawberry and thrives in both clay and loamy soil, makes runners freely and grows to perfection under both matted row or hill culture.

### The Fruit

Ripens same time as the Klondyke, but continues in bearing longer. The berries are supported on heavy, stocky fruit stems and every one matures in a perfect berry. The blooms are rich in pollen, calyx large and heavy and remains green, giving a beautiful appearance to the fruit. Berries large, rich, glossy red, slightly long, uniform in size and shape, with bright golden seeds which add to their beauty. Quality the best of all berries, having the true strawberry flavor, rich, sweet and delicious. The berries are very firm and the best shippers known, and will hold up much longer than the Klondyke. This one quality alone will make it very valuable to the growers who grow strawberries for market. It sells for 50c to \$1.00 per 24-pint crate more than the Klondyke, simply because it is a better berry, and this is what the best trade wants and is willing to pay for.

### Productiveness

This is another feature in which the Lady Corneille excels the Klondyke. They are considered from three to four times as productive. In the spring of 1912 the products of one average plant was sent me from Louisiana and there were 80 blooms and berries. It is not uncommon for 100 or more berries to be produced per plant.

### The Lady Corneille in the North

Unlike many varieties, the Lady Corneille grows equally as well in the North as in the South. With me in the spring of 1913 they bore continually from the earliest until July 10th and perhaps would have continued longer in bearing had it not been for the severe dry and hot weather. This long-bearing period of berries of such high quality is sure to make this the most valuable strawberry of any grown in the North for productiveness, quality, as a shipper and drought resister. The picture opposite shows their splendid growth during the past dry, hot summer and should recommend them as a drought resister.

Never before have so many good qualities been combined in one variety of strawberry. The Lady Corneille has the size, color, shape, appearance, firmness and productiveness and out ranks the Klondyke in each and every case. My northern-grown plants of the Lady Corneille will give you vigor and stamina and fruit-producing qualities not obtained in southern-grown plants. I believe all my customers will want some of this variety. I will not have enough plants to supply the demand, therefore, order at once to secure what you will want. I have already booked a great many orders.

**\$7.50 1000 LADY CORNEILLE \$7.50**

**W. W. THOMAS, The Strawberry Plant  
Man, Anna, Illinois**

Enclosed find remittance for \$7.50 for which send me by express 1000 Lady Corneille Strawberry Plants. Express charges to be paid by me.

Name .....

St. or R.F.D. .... P.O. ....

Date .. Exp. Office ..... State.....

**\$1.50 100 LADY CORNEILLE \$1.50**

**W. W. THOMAS, The Strawberry Plant  
Man, Anna, Illinois**

Enclosed find remittance for \$1.50 for which send me by mail, postpaid, 100 Lady Corneille Strawberry Plants.

Name .....

St. or R.F.D. .... P.O. ....

Date ..... State.....



Superb—November 5th

## Fall-Bearing Strawberries

You can have strawberries just as easily in the fall as in the spring by planting the Iowa and Superb strawberries, known as the fall-bearing varieties. These varieties will produce heavy crops in the fall, of as fine berries as any spring-ripening strawberries. Truly a luxury for home and profitable for market. Think of having all the berries you can use on your table during the months of September, October, and November and later, if not killed by freezing weather.

If you grow them to sell you can get your own price for strawberries at that season of the year and there is no strawberry known that is so prolific as those named above. They commence blooming early in the spring and the blooms should be kept removed until about the middle of August. By doing this you get a larger yield in the fall than you would if allowed to bear all summer. So prolific are they that the young plants that are formed in the summer will bear in the fall of the same year; in fact, the young plants will very often send up fruit stems before they become rooted. They are not a novelty nor an experiment, but are a success and you can have strawberries as well in the fall as in the spring—strawberries of good quality for your table every day during the late summer and fall; strawberries for Thanksgiving. Many who read this have no doubt heard of fall-bearing strawberries. Many have not. Remember, we are living in an age of rapid advancement that is giving us things that a few years ago we never thought of.

You should plant some of these, the latest thing in the strawberry world. You will have to do this in order to stay up with the crowd, and you want to do that. The IOWA and SUPERB are the leaders and are considered the most successful of all the fall-bearing strawberries, heavy bearers of splendid fruit of good quality and size, plants hardy and robust.

The accompanying picture of Superb was made on November 5th; the leaves were cut away so fruit and blooms would show. The cluster of Iowa on opposite page was photographed October 20th.



Iowa—October 20th

**\$1.50 25 Fall-Bearing \$1.50**

**W. W. THOMAS, The Strawberry Plant  
Man, Anna, Illinois**

Enclosed find remittance for \$1.50  
for which send me by mail, postpaid,  
25 Fall-Bearing Strawberry Plants.

Name .....

St. or R.F.D..... P.O.....

Date..... State .....

**\$5.00 100 Fall-Bearing \$5.00**

**W. W. THOMAS, The Strawberry Plant  
Man, Anna, Illinois**

Enclosed find remittance for \$5.00  
for which send me by mail, postpaid,  
100 Fall-Bearing Strawberry Plants.

Name .....

St. or R.F.D..... P.O.....

Date..... Exp. Office..... State.....



Asparagus Root

25c      **25 HORSERADISH SETS**      25c

The Wonderful New Maliner Kren Horseradish  
a Fancy Bohemian Variety

**W. W. THOMAS, The Strawberry Plant Man, Anna, Illinois**

Enclosed find remittance for 25c for which send me by mail,  
postpaid, 25 Maliner Kren Horseradish Sets.

Name.....

St. or R. F. D..... P. O.....

Date.....State.....

**65c**

**ASPARAGUS ROOTS**

**65c**

W. W. THOMAS, The Strawberry Plant Man, Anna, Illinois

Enclosed find remittance for 65c for which send me by mail, postpaid, 100  
Asparagus Roots.

Name.....

St. or R. F. D..... P. O.....

Date.....State.....

**Thomas' Pure-Bred Plants Are Best**

**\$3.00**

**ASPARAGUS ROOTS**

**\$3.00**

W. W. THOMAS, The Strawberry Plant Man, Anna, Illinois

Enclosed find remittance for \$3.00 for which send me by express, 1000 Asparagus  
Roots, Express Charges to be paid by me.

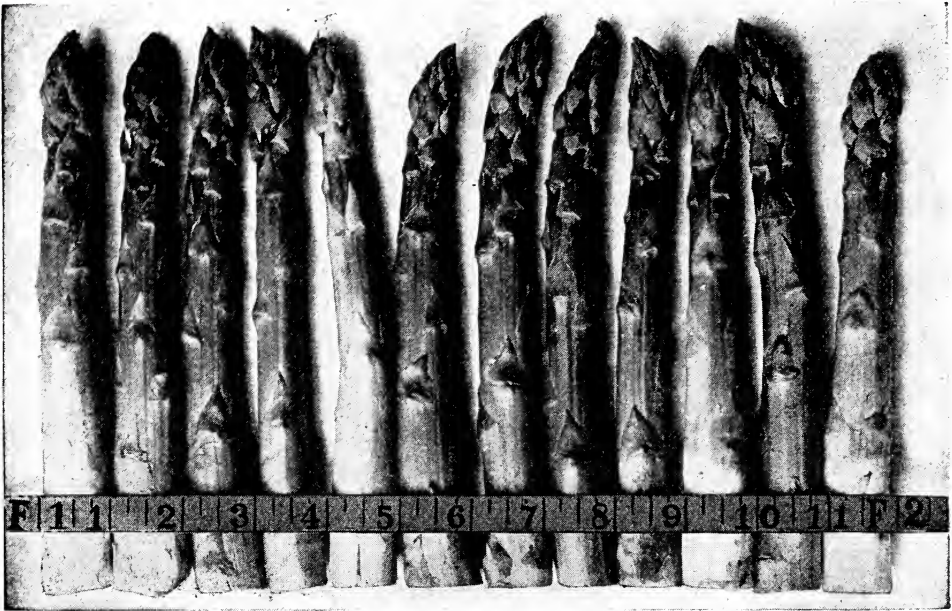
Name.....

St. or R. F. D..... P. O.....

Date.....Exp. Office.....State.....

**Thomas' Pure-Bred Plants Are Best**

## Asparagus



A Foot of Asparagus

## ASPARAGUS VERY PROFITABLE

In Great Demand in All Markets

HOW TO PLANT, CULTIVATE AND MARKET

Asparagus is grown for the tender young shoots which grow in great numbers from the roots early in the spring, and is considered by far the choicest of all early spring vegetables. It is in great demand in all markets, selling at very fancy prices, and is one of the most profitable crops grown. The demand for it is growing faster than the supply. Asparagus growing is still in its infancy. It is being planted only in a limited way and in but few localities. It would be more extensively grown if the proper way of planting, cultivating and marketing were generally known.

The land should be plowed thoroughly and deep and put in good condition with a harrows. Rows should be marked off with a two-horse plow, four feet apart, going twice in same furrow, making it as deep as possible. There will be several inches of loose soil in the bottom of the furrow, on which to place the plants, the crowns of which should be five or six inches below the level of the ground. The plants should be set from twelve to eighteen inches apart in the row. They should be covered with about one inch of soil when planted and as soon as they commence to grow, the dirt can be worked to them with cultivator until the ground is level. A field, when once established, will last for years.

Asparagus should be well fed with manure or commercial fertilizer, which can be applied at almost any season of the year. Manure is either spread on top of the row late in the fall and covered with a plow, thus leaving a ridge until spring, or is applied in a furrow close to the row, either in spring, summer or fall. This gets the manure close to the roots and is considered the best way to use either manure or commercial fertilizer. Stock peas can also be used to help in fertilizing and to keep the soil loose. They can be sowed broadcast when the cutting season is over.

Cutting for market commences one year after planting and as soon as the stalks are a few inches high.

The cutting should be very light the first year, nor should the season be long. The second year more may be cut, and the season may be longer. By the third year the asparagus field will have reached maturity, and the cutting should include every stalk that puts up, and may continue as long as the market will justify and the weather will permit. The shipping season of the well matured fields will last from six to eight weeks, sometimes longer. It is not advisable to continue cutting after the stalks commence to diminish in size or spindle.

Keep all stalks cut during the shipping season, even if some are too small to ship. The cutting should be done every day during the shipping season. The stalks are tied in bunches with tape or rubber bands, each bunch containing a handful of stalks. The stalks in the center of the bunch should be as large as those on the outside. After the stalks are bunched, with a knife cut the butts of the stalks smooth, leaving the bunch the proper length for the box.

For shipping they are packed in sectional boxes, each section holding one bunch, with twenty-four bunches to the box. When packed, the box and contents weigh about fifteen pounds.

There is always good profit in asparagus, but strictly fancy stalks always sell for the highest price. To get the best price, grow the best asparagus by liberal cultivation and fertilization, and pack it so that it will be attractive.

The varieties I offer are dependable ones—of high order and superior merit, and in advocating the growing of this popular spring vegetable I do so with a sincere feeling that the grower's well directed efforts will return to him a profit that can be compared with but few if any other vegetable.

## PRICE LIST

These prices are for plants delivered at Express or Freight office in Anna, or Jonesboro, Ill. No charges for packing or packages.

Real carefully "General Information" before making out order.

No order accepted for less than \$1.00 except special coupon offers. No less than 25 plants of a kind sold except the Iowa and Superb.

Express or freight charges to be paid by purchaser.

These prices are for one variety only; two or more varieties cannot be combined for reduction in price.

For mail shipments add at the rate of 20c per hundred plants to the price and they will be sent postpaid to any postoffice in the United States, Mexico, Cuba, Porto Rico. To Canada and other countries add 40c per 100.

### Strawberries

	25	100	500	1000	5000	10,000
Aroma (S).....	\$0.20	\$0.45	\$1.50	\$3.00	\$13.75	\$25.00
Brandywine (S).....	.20	.45	1.50	3.00	13.75	25.00
Bubach (P).....	.30	.75	2.50	5.00		
Chesapeake (S).....	.30	.75	2.50	5.00		
Crescent (P).....	.25	.60	2.00	4.00		
Excelsior (S).....	.20	.45	1.50	3.00	13.75	25.00
Gandy (S).....	.20	.45	1.50	3.00	13.75	25.00
Haverland (P).....	.25	.60	2.00	4.00		
Klondyke (S).....	.20	.45	1.50	3.00	13.75	25.00
Lady Corneille (S).....	.50	1.25	3.75	7.50		
Marshall (S).....	.30	.75	2.50	5.00		
Michels Early (S).....	.25	.60	2.00	4.00		
Missionary (S).....	.20	.45	1.50	3.00	13.75	25.00
Molinda (S).....	.30	.75	2.50	5.00		
Ozark (S).....	.25	.60	2.00	4.00		
Red Bird (S).....	.75	1.50	5.00	10.00		
Senator Dunlap (S).....	.20	.45	1.50	3.00	13.75	25.00
Stevens Late Champ (S).....	.30	.75	2.50	5.00		
Warfield (P).....	.25	.60	2.00	4.00		

### Fall-Bearing Strawberries

Iowa and Superb—12 plants, 75c; 25 plants, \$1.50; 100 plants, \$5.00, postpaid.

### Asparagus

French Giant Argentneil, Palmetto, Barrs Mammoth, Columbian Mammoth White—100 plants, 45c; 1,000 plants, \$3.00.

Linneaus Rhubarb Roots—100 plants, \$3.00; 1,000 plants, \$20.00.

Maliner Kren Horseradish Roots—100 plants, 75c; 1,000 plants, \$6.00.

**NOTICE**—There is no parcel post rate on plants. The postage rate is the same to every postoffice in the United States. It is 1 cent for every two ounces, or 8 cents per pound. We charge 20c per 100 plants extra for postage and packing for mail shipments.





# GENERAL INFORMATION

## LOCATION.

I am located in Southern Illinois, about thirty-six miles north of Cairo, and about 100 miles south of St. Louis. This location is in about the same latitude as Richmond and San Francisco.

## SHIPPING SEASON.

My regular shipping season commences October 1st. However, I am sometimes able to send out some plants in September. This, however, depends upon season and weather. I continue digging and shipping during the entire fall, winter and spring until May 1st or later. I am sometimes delayed a short time by freezing weather during the months of January and February, but usually able to ship any time during these months.

## PLANTS BY MAIL.

I make a specialty of sending plants in small quantities by mail. Those wishing to obtain a few of one or more sorts can order in this manner. See my price list for postpaid rates.

## EXPRESS RATES.

The classification on strawberry plants is such as to enable me to secure very low rates to all points, and as I pack very light in baskets or crates, the express charges are less than might be supposed. Seven baskets are usually billed out for 100 pounds. Crates vary in weight according to size.

## FREIGHT SHIPMENTS.

When cold weather sets in in November, I can ship plants all over the country safely by freight. The colder the weather, the better they will carry. I would advise those who want plants for early Spring to get them in November or December shipped by freight and heel them in until Spring, when they are ready as early as you wish to plant them.

## TERMS OF PAYMENT.

Cash with order unless otherwise especially agreed. Plants will be sent C. O. D. when one-third of the amount accompanies the order.

## REMITTANCES.

May be made by New York, Chicago or St. Louis Draft, Postoffice or Express Order or Registered Letter.

## ORDER EARLY.

Do not delay sending your order until you are ready to plant, but order plants as soon as you know you will want them.

## GUARANTEE OF GENUINENESS.

I exercise the greatest care to keep my plants pure and true to name, and hold myself in readiness to replace, on proof, all stock that may prove otherwise. But it is mutually agreed between the purchaser and myself that I shall not be liable for any amount greater than the original price of the goods.

## INSPECTION.

A certificate of inspection from the State Entomologist will be attached to each and every package of plants.

## NO CHARGE FOR PACKING OR PACKAGES.

I make no charge for packing or for packages, whether baskets or crates.

## ALWAYS WRITE YOUR NAME THE SAME.

Always write your name plainly and the same to your order and all letters.

## SPRING PLANTING SHOULD BE DONE EARLY.

When planting in the Spring plant just as early as possible. You will get better results.

REFERENCE—ANNA NATIONAL BANK.