

Historic, Archive Document

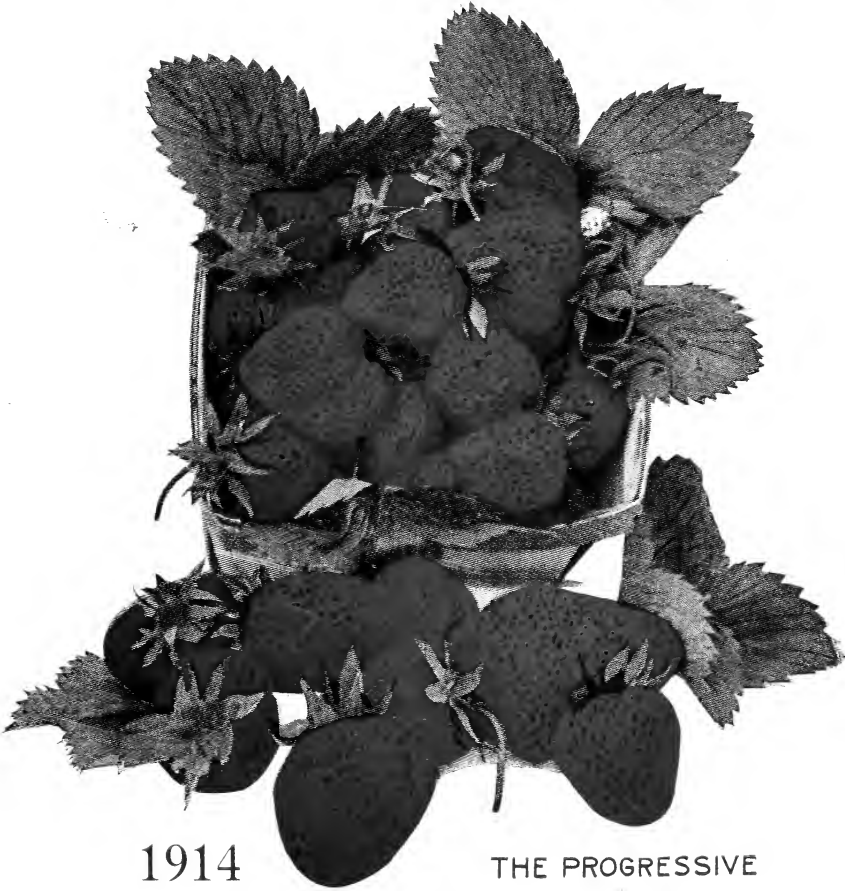
Do not assume content reflects current scientific knowledge, policies, or practices.

62,41

INDEXED

114

A. R. Weston & Company



1914

THE PROGRESSIVE

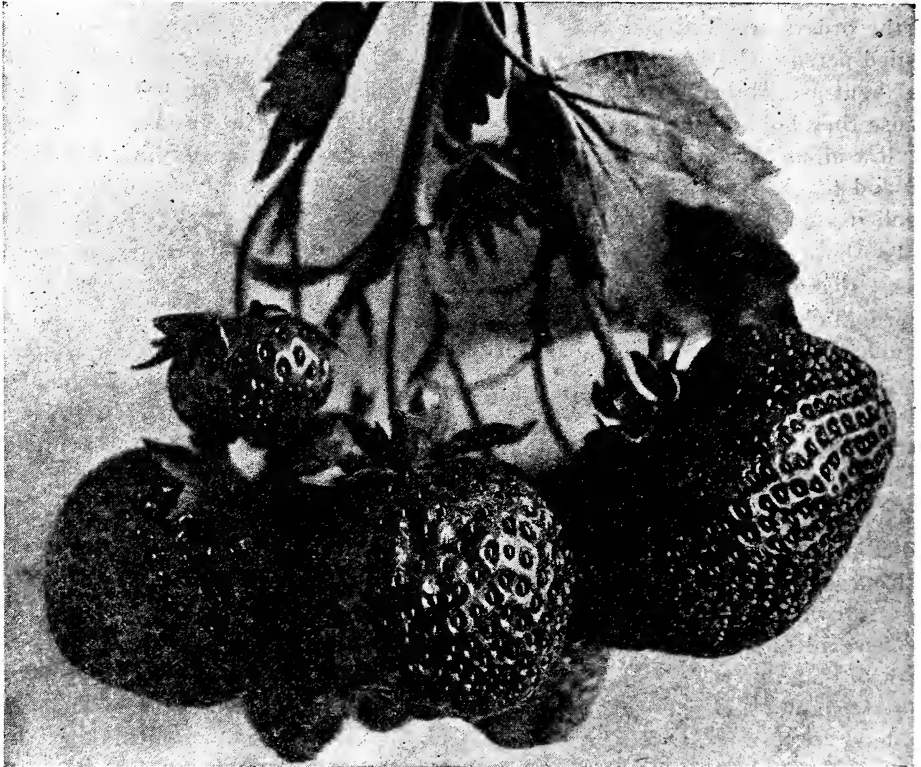
Bridgman, Mich.



Cluster of Eldorado Blackberries

Instructions to Purchasers

Our customers will find it much to their advantage to order early and to have their plants shipped early. **Those who order early will get what they want**, while late comers are frequently disappointed in finding that some varieties are sold out. **Early in the season plants are dormant and will stand digging and shipping much better than after growth has started.** Plants are also lighter and express charges are less.



Aroma.

If you cannot set the plants when they arrive, heel them in; that is, plant them a few inches apart in a temporary bed; they can be transplanted, with the earth adhering, with scarcely any damage. In this way the plants are at hand for permanent planting just when the grower wants them, and he can take advantage of every favorable circumstance. Plants heeled in early and transplanted later are much more valuable than those received late and at once planted in the permanent beds.

Our Terms are Cash

with order, but to those who so desire, and wish to place their orders very early, one-third the amount of the order may be sent and the balance by April 1st, or before the plants are shipped. Remittance may be made by draft on Chicago or New York, express or money orders, by registered letter, or your check will do.

Our Guarantee

We guarantee all plants shipped by us to be true to name and first-class in every respect, such as we would be willing to use for our planting, and also to reach you in good condition if sent by express before April 20th. However, if any of our plants should not prove true to name, upon proper proof we will cheerfully refund your money or refill the order for such varieties as prove untrue. But are not liable for further damages.



Gandy.

Express Shipments

This is the safest way to ship live plants, as it makes fast time with the least liability of delay. Sometimes when transferred to another company the charges seem rather high, but when the nature of the service is considered it is really the cheapest in the end.

All express companies now bill nursery stock at "General Special" rate, being a reduction of twenty per cent from the merchandise rate.

We have only the United States Express Company; however, we find little difficulty in reaching most of our customers by this company and its connections.

Freight Shipments

If plants are ordered shipped early, say before April 15th, they will usually reach their destination in good shape. The longer the distance the plants have to travel, the earlier they should be shipped. Cane plants will stand shipping four times as far as strawberry plants. In ordering plants shipped by freight, please remember that our responsibility ends on delivery of same to Railroad Company.

Our Shipping Season

We commence shipping Red Raspberry and Blackberry plants in the fall, about October 1st, all other cane plants about two weeks later, and continue until the



ground freezes, about November 10th to 15th. Do not ask us to ship Strawberry plants before October 10th, as they do not mature here in Michigan until late in the fall. We would suggest that you follow nature and set all strawberry plants in the early spring. The earlier the better. The season for spring shipments opens usually about March 15th to 25th, and continues until about May 10th to 15th. The location of our farm and the nature of our soil is such that we are usually all through filling our Southern orders before other nurserymen in Southern Michigan can ship a plant. We have a very large trade every spring from nurserymen and dealers in plants, also the Southern planters who truly appreciate this early service and are able to get strictly fresh dug plants very early in the season. We have no cellars or cold storage buildings or other buildings where plants are held over winter for the early spring shipments. And this is a point worthy the consideration of everyone who wishes his plants fresh dug and shipped very early in the spring.

Lost Orders

All orders are acknowledged by postal card same day as received, but should you not hear from us in a reasonable length of time after sending an order, please write, giving all the particulars—when forwarded, the amount of money sent, and in what form remittance was made—and enclose a duplicate of the order, giving name and address plainly and in full. Once in a great while an order is lost; but it more frequently occurs that the person ordering fails to give the full address. Therefore, no matter how lately or how often you have written, always give name, post-office, county and state in full, AND WRITE IT PLAIN, ESPECIALLY YOUR NAME.

Substitution

When ordering please state whether we may substitute or not in case the kinds wanted are exhausted. If order is received reasonably early, and we are out of some kind wanted, we will write you, allowing you to make the selection. But if order comes in late, with instructions to ship soon as possible, and we should be sold out of some varieties wanted, we then claim the right to substitute some kind of equal value unless order is marked "No substitution."

Claims

Errors and claims, if any, should be brought to our attention immediately after receipt of plants, for correction. Complaints offered after the plants have been in the hands of the purchaser 10 days cannot and will not be entertained, except where they should happen to prove untrue to name or label. Such an error, of course, could not always be detected until the plants bear fruit the following season.

Perfect and Imperfect Blossoms

Strawberry plants are divided into two general classes called perfect and imperfect, or staminate and pistillate. The perfect or staminate varieties have stamens, produce pollen, and fertilize not only their own blooms, but those of the other class. The imperfect or pistillate sorts, as a rule, have no stamens and produce no pollen, hence their blooms must be fertilized by staminate. However, as a matter of fact, many of the so-called imperfect varieties have a few stamens and are able to pollinize themselves to some extent, but not sufficiently to produce a full crop. In planting imperfect or pistillate kinds every fourth or fifth row should be set with two rows of some perfect or staminate variety. In our catalogue we mark the perfect sorts (Per.) and the imperfect (Imp.)



Packing

Packing will be done in the most thorough manner and with strict regard to the interests of the customer. We make no charge for baskets, crates, barrels, boxes, etc., or for delivery to transportation company, and we pack as lightly as is consistent with safe transportation.

Distance for Planting

- Grapes, rows 8 to 10 feet apart, 10 to 12 feet in the row.
- Currants and Gooseberries, 5 feet apart, 4 feet in the row.
- Raspberries, rows 5 to 6 feet apart, 3 to 4 feet in the row.
- Blackberries, rows 6½ feet apart, 3 feet in the row.
- Strawberries for the field, 3½ feet apart, 1½ feet in the row.
- Strawberries for the garden, 2 feet apart, 1 foot in the row.

Number of Plants Required to Set One Acre

1 by 1 foot.....	43,560	5 by 1 foot.....	8,712
2 by 1 foot.....	21,780	5 by 2 feet.....	4,356
2 by 2 feet.....	20,890	5 by 3 feet.....	2,904
3 by 1 foot.....	14,520	5 by 4 feet.....	2,178
3 by 2 feet.....	7,260	5 by 5 feet.....	1,742
3 by 3 feet.....	4,840	6 by 1 foot.....	7,260
4 by 1 foot.....	10,890	6 by 2 feet.....	3,630
4 by 2 feet.....	5,445	6 by 3 feet.....	2,420
4 by 3 feet.....	3,630	6 by 4 feet.....	1,815
4 by 4 feet.....	2,722		

Rule for determining number of plants required to plant one acre not mentioned in above table: Multiply the distance in feet between the rows by the distance the plants are apart in the rows, and the product will be the number of square feet for each plant or hill; which, divided into the number of square feet in an acre (43,560), will give the number of plants to the acre.

Protection

For the protection of our customers we have our plants inspected every fall by our state inspector, and a copy of our certificate of nursery inspection will accompany every shipment. Also all cane plants will be fumigated to meet the requirements of the different states.

For Hurry-Up Orders

Call up New Troy Central, line 22—5 rings, or use Western Union Telegraph.

References

Farmers and Merchants' Bank, Benton Harbor, Mich. Hon. Geo. W. Bridgman (present Circuit Judge of Berrien County), Benton Harbor, Mich. U. S. Express Agent, Postmaster, or any business man at Bridgman, where we have lived for 32 years.



Culture and Instructions in a Nutshell.

The few half-tone cuts shown in this catalogue are from photographs and are intended to show correctly the different varieties as they grow with us here in Michigan. We are asked many times each year which is the best fertilizer for the strawberry. We have tried nearly everything, and while we have received fairly good results from bone meal, wood ashes, nitrate of soda, and other commercial fertilizers, the most satisfactory results have been obtained by using liberal supplies of well rotted barnyard manure. And we feel safe in saying there is nothing better or even as good. Almost any soil that will grow a good crop of corn or potatoes will be found suitable for strawberries or bush fruits. The ground for setting fruit plants should be plowed deep and harrowed till all lumps are smashed and it is loose and level. Then roll or float just before setting. We use a common plank float, which you can make at very little expense. We use a hand marker (home-made) that marks three rows at once.

Setting Plants—Make holes with a spade by putting in ground five or six inches and pull toward you, then take out. Hold plant in hole with hand and close hole with foot and press firmly (with feet) on both sides. Be very particular and see that plant is set at just the same depth as it grew in its original bed.

This is the general way of planting strawberry plants and we recommend this method for raspberry and blackberry plants as well. Some plow a furrow and set cane plants in them, but unless soil is very moist there is danger of plants drying out.

Many new beginners write us each season asking what varieties of strawberries are considered the most profitable to grow for market, etc. Now, of course, much depends on the location and circumstances of which we are not familiar. When writing, give us some of the details. State what kind of soil you have, whether light sand, a sandy loam, a clay loam, or heavy clay. Is it well under-drained? Does it hold moisture well throughout the summer, or dry out easily? Is it level or hilly? If you will acquaint us with some of the conditions, we will try and answer your questions intelligently. If you have a good, progressive strawberry grower in your section, get his advice as to the most profitable varieties to grow, as he should be in a position to give you valuable advice along this line.

In planning your strawberry field, care should be taken to avoid frosty locations, such as very low land near marshes or lakes, also valley where there is no chance for circulation of air, as these localities are very liable to heavy frosts, when higher land or that more open to circulation would show very little, if any. A hard frost at blooming time often ruins the entire crop, hence the desirability of choosing a situation as much exempt as possible.

We recommend shallow cultivation as soon as plants are set out or at least within a day or two. This levels the ground and holds the moisture in the ground where it will do the most good, not allowing the moisture to get away by evaporation through the pores of the ground.

Do not cultivate too close to the plants, as you will disturb the roots.

Shallow cultivation should be kept up through the growing season.

Blossoms should be pinched off from all plants first season. This throws the strength into the roots and develops a strong, healthy plant that will give you a big crop of nice berries the following season. If you do not want a wide, matted row (and we would not recommend wide matted rows for best fruit) you should cut off all runners that start up till about July 1st. There will then be plenty coming on later and your parent plant will be strong and vigorous.

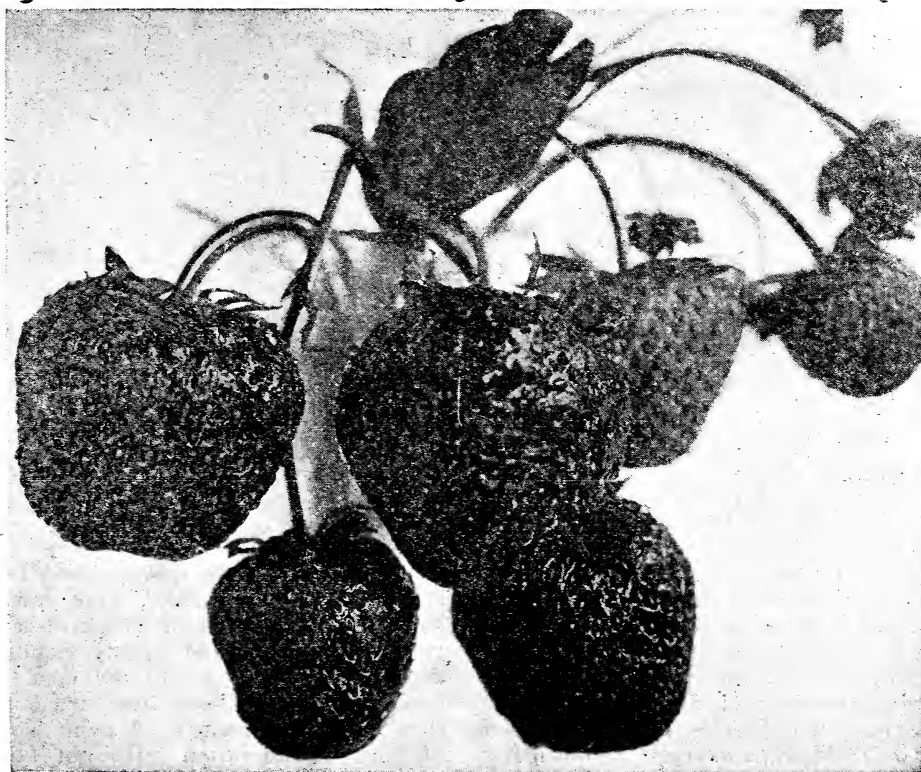
When ground is frozen in the fall, mulch the plants with wild hay, straw, corn fodder or most any coarse litter which you may have about the place will do. When danger of frost is over in the spring, rake off two-thirds of this mulch between the

A.R.WESTON & CO.

rows and leave until after fruit season is over. Then run over the bed with your mower, cutting the vines, weeds, grass, etc., and when perfectly dry set fire and burn the whole bed over, mulch and all. This will kill millions of weed seeds and insect pests, but will not injure the plants. Finally, for a last reminder, make the soil rich. Pulverize it thoroughly. Plant very early in the spring, the earlier the better the results will be. Shorten the roots to 4 or 5 inches. Do not expose plants to the air without wetting the roots. Set plants same depth as they grew in original bed. Press the soil down good and firm about the plant. Keep the surface stirred around the plant, but hoe shallow and often. Cultivate after every rain, and as many other times as seems necessary. Cultivate after every rain, and as many other times as seems necessary. In the North give winter protection.

Any further information will be cheerfully given on request in regard to description, soil, varieties, express and freight rates, and small fruit culture in general.

Don't be afraid to ask questions. We consider it a part of our business to answer all questions to the best of our ability, and to help you in every way we can. So let the questions come. It's a good way to get acquainted.



Bubach.

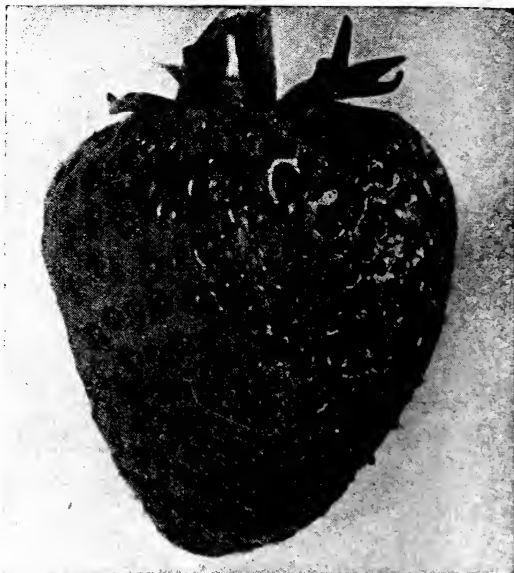
Strawberries

Varieties marked (Per.) are perfect flowering, and those marked (Imp.) are imperfect flowering, and for the best results should have two rows of some perfect flowering variety planted every fourth or fifth row with them.

AUGUST LUTHER (Per.) This is an old-time favorite for an early berry. We have watched this variety very closely during the past seven years, and believe it will give the best of satisfaction to those who want a good early berry. The plant is small and perfectly healthy, with very long roots, which enable it to withstand a long and severe drouth. Like Warfield and Dunlap, it shows remarkable vitality, is a free plant maker, and should be given plenty of room. Planted four feet one way by two and one-half the other would be about right for best results where soil is good, and a little closer in the row if soil is poor. Commences to ripen about with Excelsior, but matures its crop long before that variety. The fruit is medium in size, roundish conical, of a beautiful dark scarlet orange in color, **very firm**, and of good quality. **Very productive.**

AROMA (Per.) Plants large, very vigorous and perfectly healthy. Makes plants just right for a good fruiting row. The blossom is rich in pollen, a good fertilizer for Sample, Bubach and Enormous. Fruit large to very large, roundish, conical, smooth and perfect in form, of a beautiful bright glossy red in color, very firm, and of excellent quality. Will give splendid results on any soil that will grow a good crop of corn or potatoes. It is nearly as late as Gandy, of long season. **Three times as productive** and a sure cropper every year. During the past five years the demand for plants of this variety has been very heavy and we have never been able to grow plants enough to meet this demand. Last spring we planted heavily to Aroma on new land and believe we have plants sufficient to fill all orders which may come our way this season. We consider the Aroma, Sample and Stevens' Late the three best late berries that are grown here in Michigan, and reports from many other states show their popularity is not alone confined to Michigan.

BEDERWOOD (Per.) This is an old reliable standard early variety. One of the very best early kinds for market or home use. It is a splendid grower, making a large number of strong runners: roots abundant and extra long, making it one of the best for high, dry soils. Fruit of good size, light red in color, reasonably firm and of good quality. **It is the most productive of all the early varieties.** Commences to ripen soon after Excelsior and August Luther, and is of long season. Owing to its earliness and great productiveness it is used here in Michigan and largely throughout the

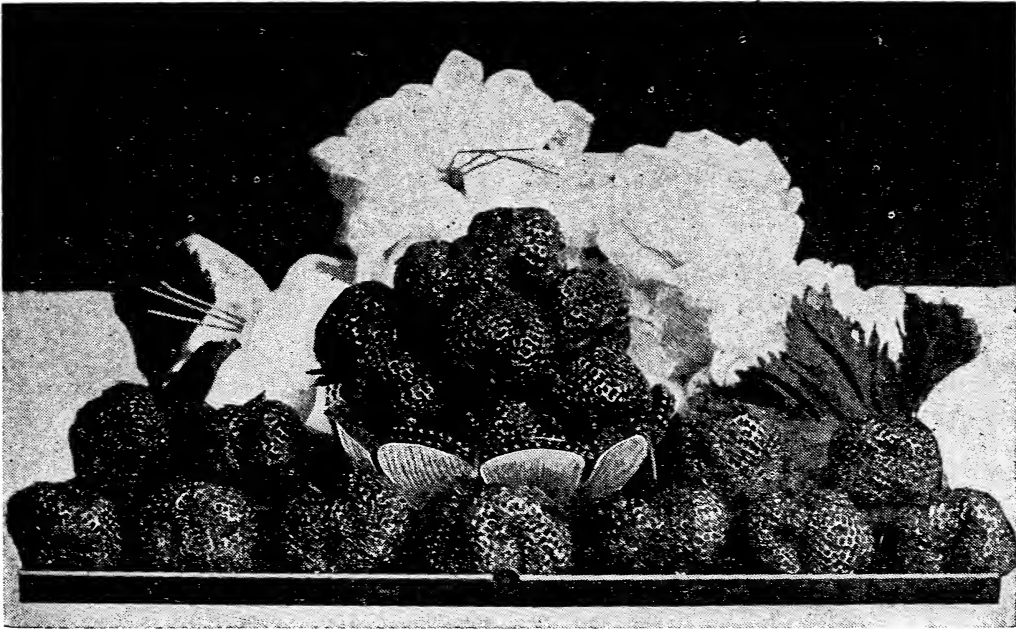


Bederwood.

Central States as the leading early berry, a regular money maker. One you can depend on for a good full crop every year. This grand old variety stands today far ahead of any of the new early kinds which we have ever tried (and they have been many). A point worthy of your consideration. Do not fail to include the Bederwood in your orders this season.

Everbearing or Fall Bearing Strawberries

We have been very slow in listing this class of berries, as several years ago we tried out quite a few varieties, and the results were very unsatisfactory. However, we kept on trying out, and experimenting with the different kinds as fast as they were introduced, realizing that it was possible and quite probable, that in the near future a fall-bearing strawberry would be found that would prove satisfactory in a commercial way and not as a mere novelty for the garden. During the past seven or eight years great improvements have been made, and many new kinds originated. Out of all this comes two varieties which we believe will prove satisfactory in a commercial way to those who plant them. They have been tried out over a wide range of

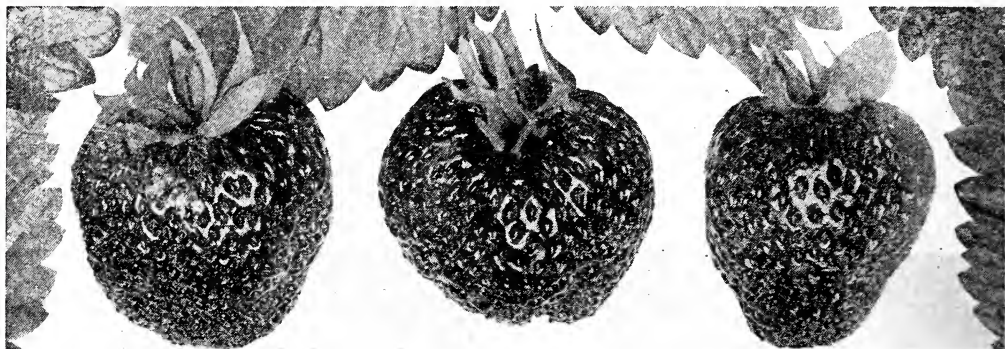


Progressive (Everbearer).

territory, and on nearly every kind of soil, and so far as we can learn from reports, observation and experience, these two kinds, Progressive and Superb, stand head and shoulders above all other kinds of everbearing strawberries. We especially want each and everyone to try one or both of these varieties this spring, and the more you plant of them the better satisfied you will be, as it is no uncommon thing to pick 25 to 30 crates of berries in the fall from 1,500 plants of Progressive set in the spring of the same year, as this variety bears an abundance of fruit on the new formed plants. Michigan strawberries sold on Chicago market during the month of October, 1913 for \$5 to \$6 per 16-quart crate. This leaves a good profit on the

Everbearing or Fall Bearing Strawberries—Continued

investment, besides having good wide fruiting rows left for the following season. 200 plants of Progressive will furnish a large family with fruit during the fall months, besides giving them a bountiful supply in the spring. So do not fail to include one or both of these varieties in your orders this spring.

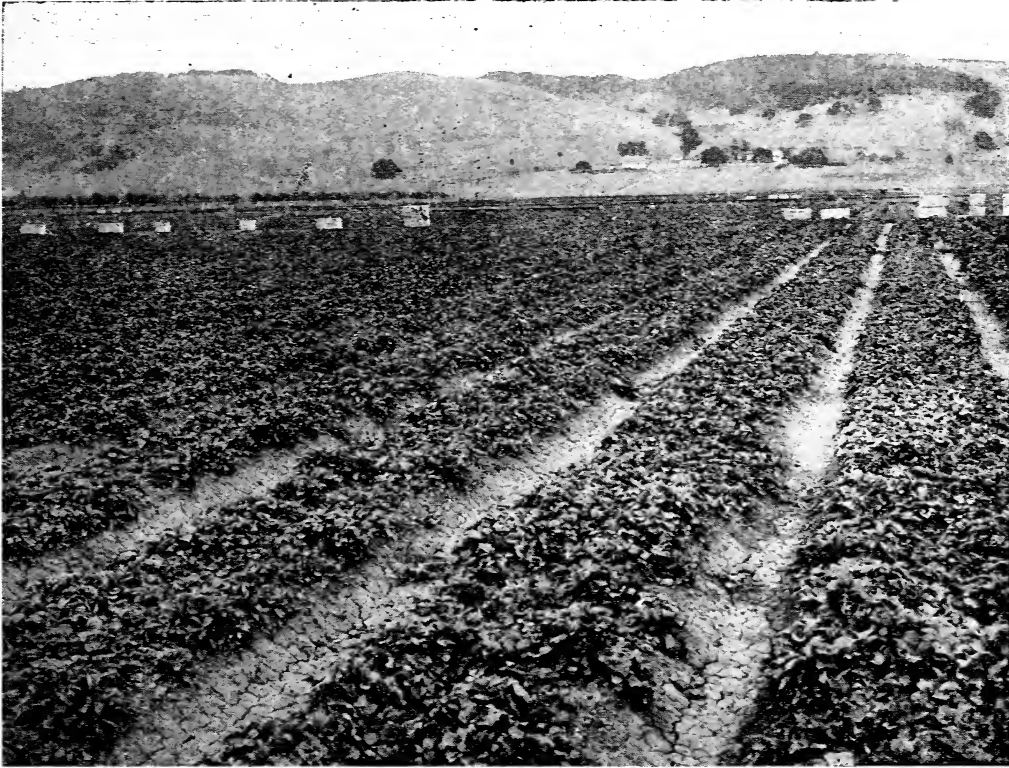


Superb.

PROGRESSIVE (Per.) This is a vigorous thrifty grower, making a matted row 2 to 3 feet wide; in fact, the best plant maker of all the everbearing kinds, and on rich soil plants should be set at least two feet apart in the row. The color of the foliage, manner and habit of growth somewhat resemble the Dunlap. Fruit is medium to large in size, of a beautiful dark glossy red. Flesh red, firm and of good quality. It will produce as many berries in June as Dunlap or Warfield and as it bears fruit on the new formed plants it will continue to produce berries all summer, even up to the time the ground freezes in the fall, but producing the most fruit during the latter part of September and up to about Nov. 1. Just think of it; two crops in one year, with the fall crop selling for more than three times as much per crate as the spring crop. And if the frost should get the blossoms in the spring the plants will immediately commence to produce other fruiting stems and will come right on with a good fair crop just as if nothing had happened. The frost cannot cheat you out of strawberries if you have the Progressive or Superb. You will never be sorry if you invest in either of these varieties.

SUPERB (Per.) This variety makes large, beautiful, vigorous and thrifty plants, and just the right amount for a good fruiting row. Fruit is large to very large, of a beautiful bright crimson color, running very even for size and shape; in fact, a crate of them looks like each berry had been run in the same mold. The berry is firm and of excellent quality. Plants of this variety set in the spring and blossoms kept cut off until about June 20 will produce an abundance of fruit in the fall and a few of the new formed plants will bear fruit, but not many of them. They will bear an immense crop in the spring and a good fair crop in the fall of the second year. If a large amount of fruit is wanted in the fall of the first year, set the plants eighteen inches apart in the row, with rows three feet apart, and keep them in hills. This variety is preferred by many growers on account of its large size, even shape and high quality. Most growers would prefer one quart of large, smooth, high-colored berries to two quarts of small ones, and we feel a good deal like this ourselves. This kind does not run down small toward the last picking, like most other varieties, but holds its size remarkably well throughout the entire season. The Superb will command a fancy price in any market, from the first picking to the last, and you will make no mistake in ordering this variety.

Standard Strawberries



A "Bubach" gold mine.

BISEL (Imp.) Was awarded first prize by the Marion County Horticultural Society three years in succession. The berry is large, luscious and firm; color a deep, glossy red with large calyx; ripens early and continues till late; very productive; uniform in size and shape. The plant is a vigorous, healthy grower, with long matted roots, enabling it to withstand heat and drouth. One of the best for family use or market. The Senator Dunlap or Pocomoke are good fertilizers for this variety.

BRANDYWINE (Per.) So well and favorably known that it scarcely needs a description. We have fruited it for nineteen years and are fully satisfied with it as the best in its class. It is one of

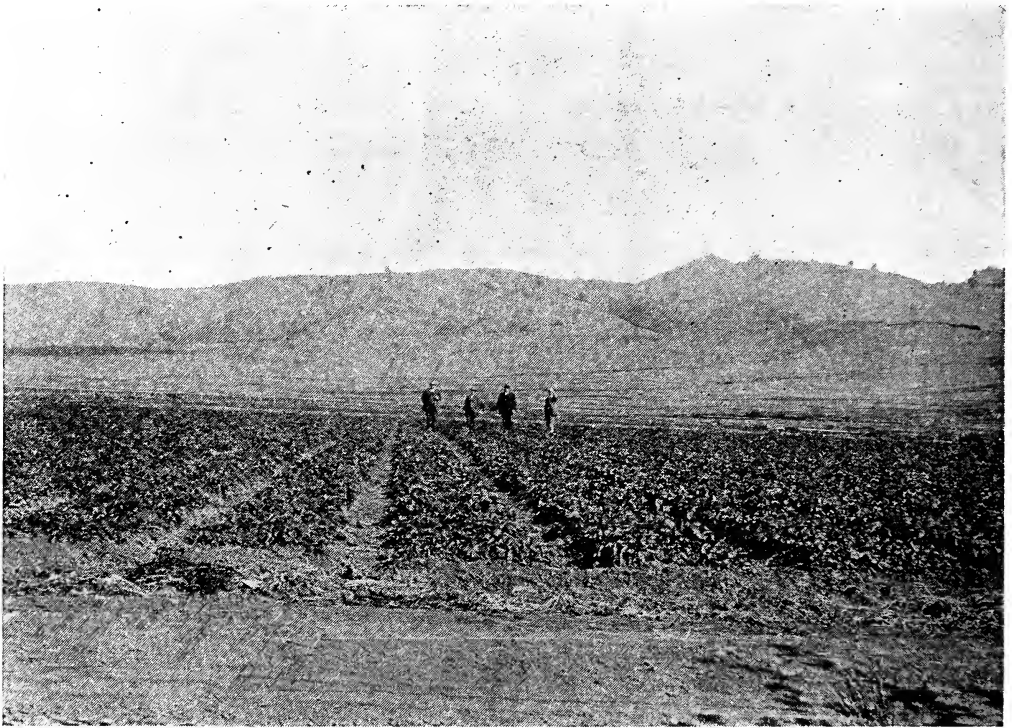
the strongest growers, with healthy foliage, fruit large and perfect in form, ripening evenly, a dark rich color, with large green calyx. Continues a long time in fruit and considered by many to excel for canning purposes, as it does for shipping. Rich in pollen and a good fertilizer for medium late imperfect flowering varieties. Season medium late. If you have never tried this grand, good old variety, then by all means do so this season.

BUBACH (Imp.) It is a well tried variety and a general favorite. We have raised it for a number of years, and it never has failed to do its share in giving us a bountiful supply of large, handsome berries. The foliage is healthy and

Standard Strawberries—Continued

a good grower, yielding plants enough for a profitable row. They are always in good demand, which goes to show they are appreciated by fruit growers generally. Here is another good old variety which has successfully stood the test of

FENDALL (Imp.) This berry was produced by Chas. E. Fendall of Maryland from seed of the Wm. Belt, which it resembles in appearance and flavor. It is a good, strong grower, making plenty of plants with large foliage and long



Gandy—A sturdy producer.

years, and stands today as one of the very best for nearby market or home use. The Brandywine, Pocomoke or the Uncle Jim will give good results as fertilizers.

CRESCENT (Imp.) This is an old reliable sort, often called the "lazy man's favorite," owing to its ability to take care of itself, and yet it is a variety not to be despised, as it always responds to fair treatment and **can be relied on for a crop when many other kinds fail.** It is especially adapted to sandy soil, as it is a great plant producer and on rich loam makes an over-crowded matted row. On such soils plants could be set farther apart in the row. We would advise as a fertilizer for this variety the Dunlap, Lovett's Early or Splendid.

roots. The fruit is very large with high quality. Reasonably firm and of good color. It has been known to yield 500 bushels per acre under very favorable conditions. Less than half this amount would be very profitable for regular field culture. It commences to ripen very early and has an unusually long season. Does best on a moist, loamy soil. This is probably the best new variety introduced during the past five years. You will make no mistake by including the Fendall in your order this spring.

GANDY (Per.) A well known and popular variety which seems to do well under all conditions unless it be on light sand. It is of very high quality, good color, and a standard for firmness, qualities which make it desirable for either

Standard Strawberries—Continued

a home or market variety. It holds its size well from first to last, and although not as productive as some, it is a profitable sort, coming in after the glut, and prolongs the season. Does best on strong, moist, loamy soil.



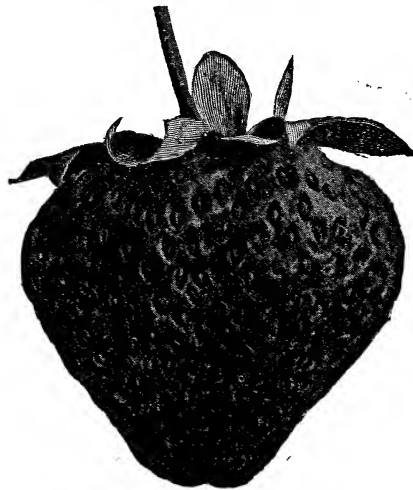
Glen Mary.

GLEN MARY (Per.) Vigorous, enormously productive, of large to very large, bright, deep red berries. Yellow seeds on surface; flesh very firm, light red clear to the center; sweet, rich and high flavored. A decidedly good berry in point of plant, yield, great size, bright color, firmness and good quality. Some of the largest are at times coxcombed, and others are somewhat irregular in shape; yet if all these be rejected for market the yield of perfect berries would be enormous. It may not do to depend on Glen Mary on very light, dry, sandy soil, but on all others it's a grand berry, either for home or for market. Those who have tested it longest plant it most. One of the very best, sure.

HAVERLAND (Imp.) A large, vigorous, healthy, open growing plant with long leaf stalks and fruit stems. A wonderful good plant maker and one of the most productive varieties in our list. Fruit medium to large in size, of a bright, glossy light red color, long, conical and very regular and uniform in size and shape; medium early, firm, and has that subacid flavor which makes it one of the most popular berries for table use. Does

remarkably well on a medium to light sandy soil and probably will stand a harder frost at blossoming time with less damage than any other variety. This great advantage of itself (many seasons) would mean a difference between a good crop and only a few light pickings, or none at all. In nearly all sections of the United States the Haverland is the old reliable, the one to be depended on for a good full crop every year, and good prices. For best results this variety should be mulched with straw in order to hold its immense load of fruit up from the dirt. You will make no mistake in planting heavy to this grand old reliable variety. Does best when fertilized with Senator Dunlap.

LOVETT (Per.) This has been before the public long enough to be thoroughly tested both North and South, East and West, and is one of the few that has been universally adopted. It is not only a first-class all around berry, but one of the best to do duty as a pollenizer. The plant is a strong, healthy grower, clean foliage, fruit medium in size, high, rich color, firm and productive. It is commonly paired with the Warfield and others of its season as a pollenizer. It is very reliable and will succeed in almost all soils and conditions.



Pocomoke.

POCOMOKE (Per.) A seedling of the old Wilson, which it resembles in color, shape, firmness and productiveness, but of better quality and much

Standard Strawberries—Continued

larger size. One of the best varieties not only for its enormous productiveness, but on account of its beauty, adaptability to all soils, its foliage enduring the dry, hot weather (which quality is rare with some varieties); **its large size, its deep red color, its firmness, its high flavor,** makes it one of the best for gen-

growing in habit, which admits of plenty of sun and air to perfectly ripen up the fruit. Plants are extra heavy and long rooted, which makes them capable of withstanding a long and severe drouth, a point worthy of your consideration. Makes just about the right amount of plants for a good fruiting row. Fruit



Senator Dunlap in Bloom.

eral planting. The plant is a strong, robust grower, with deep roots and lots of them, perfect blossoms and an **enormous yielder** of large red berries. It ripens evenly, and is one of the best shippers yet introduced. Its season is medium early and is very highly spoken of by growers all over the country, and we highly recommend it to all customers as one of the best all around varieties for the main crop.

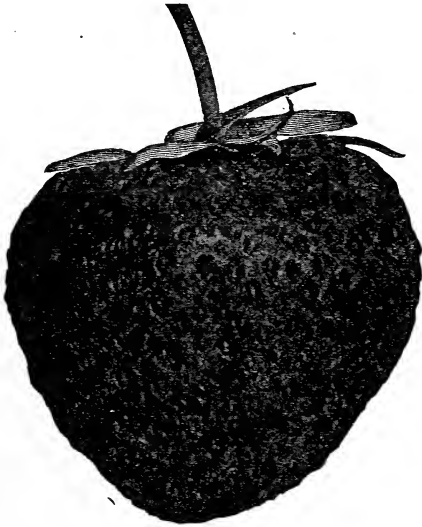
PRIDE OF MICHIGAN (Per.) (Kellogg's.) Plants large, with an abundance of foliage. Inclined to be open

large to very large. Scarlet in color, with bright red cheeks, making it one of the handsomest berries on the market. Very firm and productive for such a large berry. Quality good. Time of ripening medium late. Does best on a rich, moist, loamy soil. If an extra large fancy berry is wanted either for home use or market, try this one. It's a winner.

PRIDE OF MICHIGAN (Per.) (Baldwin's.) Plants medium in size. Perfectly healthy. Shows great vitality and drouth-resisting qualities, a good plant

Standard Strawberries—Continued

maker, and has good strong fruit stems, holding fruit well up from the ground. Fruit medium to large, of a dark, glossy red color. Roundish, conical and regular in form, and of good quality, reasonably firm and productive. Time of ripening medium early. This is a new variety just recently introduced by Mr. Baldwin, and we consider it worthy of trial.

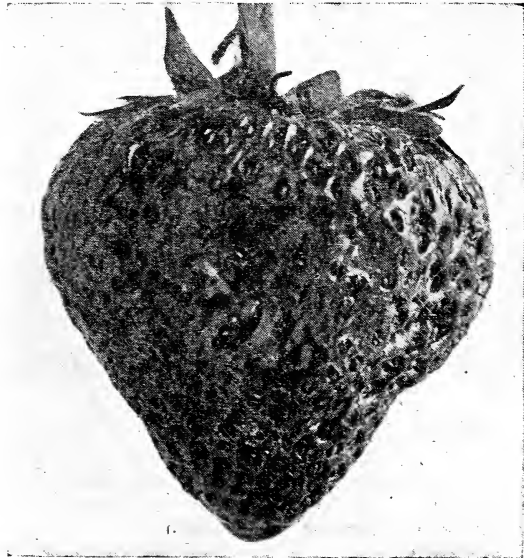


Sample.

SAMPLE (Imp.) Originated in Massachusetts about fourteen years ago. Plants large, vigorous, perfectly healthy. A stocky, robust grower. A good plant maker and is very productive of large, roundish, conical, bright glossy red berries, color extending clear to the center. Colors all over at once. Firm and of good quality. Ripens medium late and is of very long season. A splendid variety for canning or home use, as well as one of the very best late sorts for market. This is a variety we can depend on every season for large, late berries, and lots of them. For a number of years we have used Aroma or Brandywine to fertilize the Sample.

SENATOR DUNLAP (Per.) Plants medium in size, perfectly healthy, and very prolific. Long rooted and comes as near being drouth proof as any variety in our list. Makes plants freely and will do best if restricted to the hedge or half matted row. Fruit large, smooth, regular, and very attractive in form.

Very firm, and of a beautiful deep red color, extending well to center of berry. Of excellent quality. It commences to ripen medium early and is of long season. Crates up well with the Warfield, and, in fact, is one of the best (if not the best) fertilizer for the Warfield and Haverland. It does well everywhere and is especially good for beginners and lazy fruit growers, as they cannot fail with it on any kind of soil or by any mode of culture. We have tested this berry for years, and do not hesitate to recommend it as one of the very best medium early varieties. It stands today the leading market berry among all the fruit growers here in Michigan. Large strawberry growers in Michigan, Wisconsin, Illinois, Indiana and Ohio are planting heavy to Dunlap, often planting ten to twenty acres solid to this variety, which goes to show the confidence this berry has created since its introduction some eleven or twelve years ago. And our advice would be, plant the Dunlap. It will not disappoint you. Notice cut on front cover, which is reduced in size.



Stevens' Late Champion.

STEVENS' LATE CHAMPION (Per.) In plant growth this variety resembles the Gandy, except that it has a heavier and shorter fruit stem and is a much better plant maker. Healthy, vig-

Standard Strawberries—Continued

orous and long rooted, nearly an ideal plant, and three times as productive as Gandy. Fruit large. Dark red in color. Uniform in shape and size. Very high in quality, and exceedingly firm. This variety with us has proven to be fully as late in ripening as Gandy, and will prove a money maker for those who want a late berry. There is nothing better.

cultivation. Besides being a very vigorous grower and having a perfect blossom, it is exceedingly productive. No one need hesitate about planting it largely for either a near or distant market. It has been well tested and seems to succeed everywhere. A sure cropper for everybody; you make no mistake in planting it largely. It is rich in pollen



"Splendid" in name and productive qualities.

SPLENDID (Per.) Yes, yes; it is splendid. Plant of luxuriant growth and Crescent type, but more stocky, with fewer runners; bloom perfect. **Tremendously productive**, of medium to large, smooth, bright scarlet berries that are firm and good. **All who fruit call it "Splendid."** If there is a better and more reliable berry for rough-and-ready culture, on about every variety of soil, we would like to know it. Not a monstrous big family berry, but one that will "shell out" the bushels of fine shipping stock. It is as hardy and healthy as any in

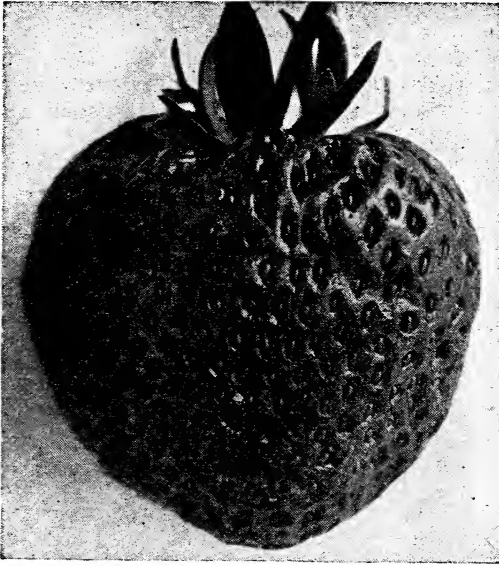
and medium early; a good fertilizer for Haverland, Warfield and other medium early pistillate varieties.

WARFIELD (Imp.) This is an old standard and profitable sort for market, and there is always a great demand for plants. It succeeds almost everywhere. As it is a good runner it rarely fails making a good row. Berries are medium size and very firm, color dark red. Many raise it almost exclusively with only some pollenizing sort with it. **Gives the best of satisfaction everywhere.** There is no question but what the Senator Dunlap is

Standard Strawberries—Continued

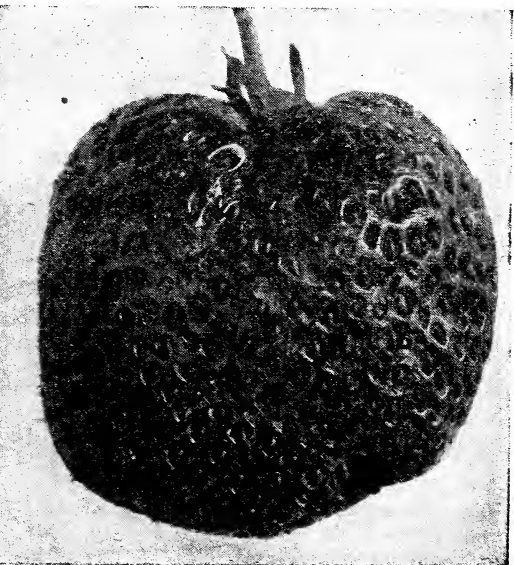
the best fertilizer for the Warfield, as they blossom and ripen at about the same time, and pack up nicely together in the same crate, thus avoiding the extra labor and care of keeping them separate at picking time.

choice medium late variety. One that will prove satisfactory in nearly every Northern state, and on most every kind of soil except light sand. We have fruited this variety for the past eight years with satisfactory results every time.



Wm. Belt.

WM. BELT (Per.) Originated in Southern Ohio. Among the large size berries none are more uniform in shape and size than this variety, except the first berries to ripen, which are usually coxcombed. It is also very firm and most excellent quality; color a beautiful, glossy crimson. The fruit always brings the highest price in the market. The plant is a good, thrifty grower with strong roots and makes just enough plants for a good, matted row without crowding. It is better in quality, larger in size, and is also more productive and a better grower than Bubach. It pays to put this variety on good soil and give good culture. See cut on back cover.



Gibson.

UNCLE JIM (Per.) Introduced by Messrs. Flansburg and Pierson of Michigan in 1902. Plants large, vigorous and healthy, long rooted and a good plant maker. Does best under the hedge row system. Very productive of large, fine, firm berries of good color and shape. Midseason to late. Here is another extra

to being an ideal berry. To those who are looking for a fancy market berry, with great productiveness back of it, try the Gibson. It's a winner.

Standard Strawberries—Continued

OHIO BOY (Per.) Originated in Ohio by A. A. Eppert, an expert strawberry grower of over forty years experience. A man who during all this time was trying to produce a berry of high quality, large in size, firm, and of excellent color, and very productive, has at last reached his ideal in the **Ohio Boy**. Mr. Eppert claims this berry is as near perfection as a strawberry can be produced. Plants show great vitality and are large with extra long roots, a regular drouth resister. As this variety is an unusually good plant maker, they should be planted a little farther apart, especially if soil is rich. Four by three feet would be about right. It will be to your interest, Mr. Strawberry Grower, to get a start with this wonderful new berry this spring. We have only about twenty thousand plants of this variety. But they are offered to you at wholesale prices as long as they last. In this variety we have what we all have been looking for—a berry of large size, very productive, firm, of high quality and color. It's a sure winner, so do not fail to include the **Ohio Boy** in your order.

KING EDWARD (Per.) This variety was originated a few years ago by the distinguished strawberry grower, D. J. Miller of Holmes County, Ohio, who says of it: "It's the finest berry on my place, and my careful and deliberate judgment is that it is the most beautiful and the grandest strawberry on the globe." This variety has received certificates of merit from horticultural societies, and is very highly spoken of by thousands of large and experimental growers all over the United States. Mr. Beede of Freemont, N. J., says the **King Edward** proved to be an extra good one for him. A vigorous, perfect plant, with large, fine colored and good flavored fruit. Mr. Bilderback of Millersburg, Ohio says the **King Edward** strawberry stands preeminent among the strawberry family. Mr. Sullivan of Cleveland states that "the **King Edward** in size and symmetry surpass any specimens of that delicious fruit which I have ever seen." Mr. Clark of Providence, R. I., states that the **King Edward** is the best of thirty varieties which he had growing in the field at the same time, and that it is the best all

around market berry that has come to his notice. And we could name hundreds of others who speak equally well of it. **The fruit is large, conical, regular, bright, glossy crimson, very attractive, flesh light in color, firm, fine grained, mild, sweet and good.** Commences to ripen about June 5th and lasts to about the 25th. Plants are perfectly healthy, very vigorous and extra well rooted. This is another extra good new variety we have to offer you this spring, and at such a low price that you cannot afford to do without it. This and the **Ohio Boy** are the two big 1914 winners.



St. Louis.

ST. LOUIS (Per.) This comparatively new variety is now widely known and valued as a money maker for the early market. The plant is a vigorous grower with a splendid root system, but should not be allowed to mat too thickly. The fruit is large, light bright red, nearly round, moderately firm and of good quality. The chief value of the **St. Louis** to the grower is its earliness, ripening the bulk of berries for the early market when prices are high, while it easily ranks among the largest in size of berry, and with the most productive varieties as a cropper. If you are looking for an early berry, try this one. It comes very highly recommended.



This photograph was sent us by our old customer, Mr. M. Wechsler, of Ubee, Ind. The plants were set in the spring of 1912, and the photo was taken Sept. 8, 1913. An immense amount of fruit was taken from these vines the past season, and yet they look to be in fine shape to produce another big crop in 1914. A good second crop can always be had, providing the plants received proper care the first year from setting, but if allowed to grow up to grass and weeds, the patch had better be plowed up and other crops put in. Mr. Wechsler is an oldtime berry grower and has been very successful along this line. His method of culture is to select a piece of ground where potatoes had been grown the year before, giving it a liberal dressing of well-rotted barnyard manure, plowing this under in the spring; then a top dressing of a good commercial fertilizer, working this in thoroughly; then, after a good rain, he sets the plants, always using the hardy Michigan-grown in preference to the home grown. Then with a weekly cultivation and hoeing, he has no trouble in getting a good stand of plants—drouth or no drouth. After the ground is frozen in the fall, he mulches the plants quite heavy with rye straw, and in the spring he uncovers lightly over the row, and then waits for the beautiful bloom and luscious berries to make their appearance. Mr. Wechsler also states that he is well pleased with the plants he bought from us last spring, and that they came through the drouth in fine shape.



The above photograph represents a strawberry patch owned by L. F. Batt, at Campbellsburg, Ind., and was selected by us to show what can be accomplished in growing small fruits where the dry-farming system is used. Mr. Batt ordered 5,000 strawberry plants (Dunlap and Haverland) from us April 18, 1913, and the plants were set April 25th. The photograph was taken Sept. 1st, just a little over four months from time of setting. During this time there was but one good soaking rain, and that came soon after the plants were set; after this there were only three light local showers, which disappeared with a half day's hot sun. This was the longest drouth known in Southern Indiana for many years. Mr. Batt has had twenty-five years of experience in growing strawberries and is today one of the most successful growers in the state. Mr. Batt states that to become a successful berry grower two things are very essential: Good, hardy, well-rooted plants and constant cultivation. The plants were hoed often and cultivated every week, and during July and August twice a week. The constant stirring of the soil forms a dust mulch which conserves the moisture and brings the plants through in pretty good shape. About five weeks later we had another letter from Mr. Batt, stating that the strawberry rows had nearly doubled in size, and that he expected a bumper crop the coming season.

Red Raspberry

Lands suitable to best raspberry production are not quite so abundant everywhere as are strawberry lands; however, in the northern section of our great Union—and it is here that raspberries thrive best—there is usually an abundance of good raspberry land all about the farm.

During the past six or seven years red raspberries have sold for very high prices in all markets, and we believe they will continue to bring high prices for a number of years to come. Now is the time to plant them. There has been a light demand for plants until the last five seasons, when the demand was much greater than the supply. Wide awake and up-to-date fruit growers are just commencing to wake up to the fact that there is big money in red raspberries, and by the way orders came in last season it shows they are going to try to turn some of this money coming their way. The Miller, E. King and Cuthbert are three of the best for general market purposes, while same can be said of Cumberland, Kansas and Gregg black caps. Very early orders will be necessary and appreciated.

The usual distance for planting Red Raspberries, if kept in hills as they should be, is three feet apart in the row, with rows five feet apart, requiring 2,904 plants per acre.



MILLER RED. This red raspberry originated in Sussex County, Delaware, and is very popular with fruit growers in that section, who have preferred to market the fruit rather than sell the plants. Berry nearly as large as Cuthbert, holding its size to the end of the season. It is round, bright red, does not fade, but will hold its color after shipment longer than any other red variety; core very small; does not crumble, making it the **firmest and best shipping**

berry in existence; has not the flat taste of some varieties, but a rich, fruity flavor entirely its own. To sum up, it possesses the following points of superiority as compared with other varieties: 1st—**Ripens with the very earliest.** 2d—**Productiveness equal to any.** 3d—**Has no equal as a shipper.** 4th—**Perfectly hardy.** 5th—**Quality and size unsurpassed.** 6th—**Attractive color.** A leader with us last season as well as all other fruit growers in this section.

Red Raspberries—Continued

CUTHBERT OR QUEEN OF THE MARKET. Introduced by J. T. Lovett of New Jersey in 1878 and still holds its own as the very best late red raspberry against all comers. Just think of it, 33 years in the race and still a winner. It does well in all parts of the country and on nearly all kinds of soil. It is a remarkably strong, hardy variety. Stands the Northern winds and the Southern suns equal to any. Berry very large, sometimes measuring two and a half inches around; conical, rich crimson, very handsome and so firm that they can be shipped a long distance by rail in good condition. Flavor is sweet, rich and luscious. Considered by many the leading market variety for main crop and there is no doubt but it is the best of all the red raspberries for family or table use.

EARLY KING. A good, clean, thrifty grower and apparently free from every known disease which the Red Raspberry family are heir to. Fruit is large, exceedingly firm, and of the brightest crimson color, which it holds until placed on the most distant market. Fair quality and very productive. It is also as hardy as any of the old standards. This new raspberry is worthy of trial by every lover of this fruit. We have a good supply of plants this spring and have reduced the price. It will pay you big to include the Early King in your order.

HAYMAKER. The Haymaker is a purple cap, not so dark as Columbian or Shaffer, and much larger and firmer than either of those varieties, never crumbles and stands up well for shipping. Sample crates have been shipped to distant points with entire satisfaction. It is a berry to grow for either home use or market. The originator has found it the **most profitable berry** ever raised for market, and has never yet been able to supply the local demand. So much of a favorite has the Haymaker become that local growers have said it ruined the sale of other varieties. Very popular as a canning berry.

Above is part of the introducer's description.

We did not have half enough plants last season of this variety to supply the demand, and this year again our supply is limited to 12 or 15 thousand plants, so get your order in early if you want them.

ST. REGIS. Everbearing red raspberry. This wonderful new red raspberry is certainly a leader in its class, producing an abundance of choice fruit from very early in the season until the ground freezes in the fall. The canes that bear fruit in the fall do not die out like ordinary kinds, but will produce an immense crop the following season, and the fruit during the summer and fall is produced on the tips and lateral branches near the tips of the new growth, and there will be plenty of berries and blossoms until freezing weather in the fall. The fruit resembles very closely the Miller's Red, both as to size, shape, color, firmness and quality. This of itself is sufficient to justify every fruit grower in planting large fields of this variety for commercial purposes. Red raspberries, as well as strawberries, during the summer and fall months, command exceptionally high prices and we advise you to try them.

COLUMBIAN. Purple Cap. This variety somewhat resembles the Shaffer in many ways. Remarkable for vigor and productiveness. It is hardy and propagates from the tips same as Haymaker and Black Caps. Fruit is large and somewhat conical in shape. Reasonably firm and will stand shipping as far as most of the black caps. Fruit is large, of good quality, having a distinct flavor of its own. Color a dark red, bordering on purple. Adheres well to the stem, and does not crumble in picking. During the past few years, the demand for Purple Caps for canning purposes and table use has increased to such an extent that they are taking the lead over the Black Caps in many of the markets. Our supply of plants of this variety, as well as the Haymaker, is limited to about 15,000 plants of each kind, so send in your orders early.

Red Raspberries—Continued

EATON. This is a new and very promising variety, originated in Indiana and quite extensively grown there as well as in Ohio and Michigan for market purposes. It was awarded a bronze medal at the Pan-American Exposition at Buffalo, N. Y., and a silver medal at the St. Louis World's Fair. The fruit is very large, of bright crimson color, very firm and of good quality. The bush is not a rampant grower but about like Loudon, the canes are well branched with

lots of fruiting surface and will outyield that variety two to one. It is very hardy, coming through our Michigan winters in fine shape.

The Eaton makes few sucker plants compared with other varieties, which is a benefit to the fruit grower, the greater energy going to produce the heavy yield of fruit.

We have never yet been able to supply the demand for this variety, so come early with your orders.

Black Cap Raspberries



These are all propagated from the tip.

The cap varieties for field culture should be placed in rows six feet apart with the plants four feet apart in the rows, requiring 1,815 plants per acre. In garden culture, plant four feet apart each way, requiring 2,722 plants per acre.

Generally speaking, black caps require a little heavier and a richer soil than the red raspberry. Plants are seldom sufficiently well rooted and matured so they can be shipped and planted in the fall with safety. And we advise all our customers, in the Northern states especially, to wait until spring before planting the black raspberry or strawberry, as then the plants are all well matured and dormant and will grow, giving satisfactory results.

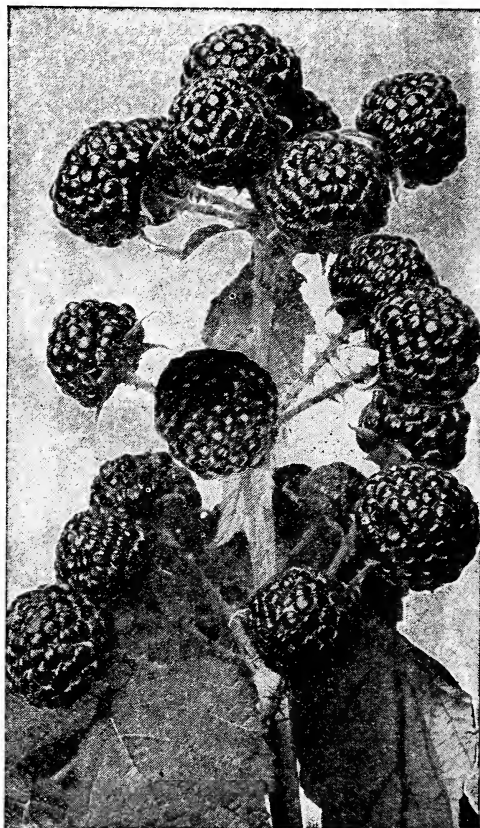
Black Cap Raspberries—Continued

KANSAS. The one best black cap of midseason. Next to Cumberland it is the heaviest grower and cropper of all; branches very freely, is hardy, productive of very large, glossy, jet black berries. Will give satisfaction everywhere.

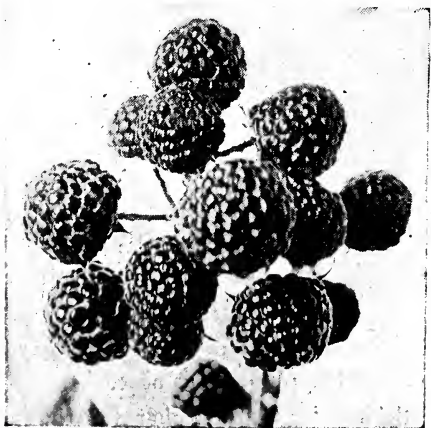
GREGG. This is the extra big late blue-black fellow. Heavy growing canes that branch out sparingly; not quite so hardy as Cumberland, productive of very large, firm black berries, covered with a deep bloom. Not so attractive as the jet black varieties, but size, late ripening and good quality makes it a favorite. There is always good money in late raspberries.

CUMBERLAND. This new black cap is a wonder in size and vigor in plant growth and is as hardy as any known variety. It has no disease of either cane or foliage, grows luxuriantly wherever planted, and is tremendously productive of extra large, coal black berries, not approached in size or beauty by any other known variety. Kansas and Gregg, remarkable for size as they are, are simply "not in it" with Cumberland, except that their season of ripening gives each a distinct place. Largest specimens of Cumberland elongated like a blackberry and the great rollicking fel-

low has about the same texture and high quality as that superb variety. Every family should have from a dozen to a hundred Cumberland bushes, while



Cumberland.



Gregg.

Money seeking market planters cannot possibly have too large a patch of this great money maker. Prices of plants are very low for such a grand new berry, and all can afford to pay the difference in price, as there is no question but what the Cumberland is the best all round black cap ever introduced.

EUREKA. This is a fine large extra early black cap. Ripens just ahead of Kansas. Fruit large, jet black and of good quality, firm and does not crumble in picking. A good, strong, thrifty grower and hardy, very productive. An exceptional good all around early berry. Do not fail to order a thousand or two this spring. There is always big money in the early raspberries.

lows seen in baskets or crates a little way off would easily be mistaken for blackberries. Cumberland's season for ripening just follows Kansas and its

Blackberries

Culture. The culture of these is about the same as the raspberry, but if the soil is not very rich, plants may be set 5 by 2 feet in the row; on rich soil 6½ by 3 feet. They should be topped about 2¼ feet from the ground for laterals. Do not let more than three canes grow to the hill. The last four seasons have proved to us that there is as much profit in blackberry culture as in any other branch of fruit growing. The culture of blackberries is not so general as the profits would justify, the demand being always good in the larger cities. Blackberry roots run down deep after moisture, hence they will prove satisfactory on a dry sandy soil or high rolling land.

ELDORADO. This is undoubtedly one of our finest blackberries. Its large size and delicious quality put it far in advance of other standard varieties. It is the hardiest blackberry in cultivation; have never known it to winter-kill, and it will stand the Northern climate uninjured. It is very productive, and has not failed to ripen a crop since its introduction, so we have confidence in recommending it as far superior to anything we know on the market. We are confirmed in this by endorsements of nearly all the agricultural experiment stations and the U. S. Department, Washington, D. C., which has tested the variety and reported as follows: "Sweet, rich and extra good. It is certainly far superior to the Snyder, and we have never tested anything to equal it." It has been cultivated 20 years, and, under careful tests at different experiment stations for years, has never winter-killed or failed to produce a full crop of the finest fruit. The vines are very vigorous and hardy, enduring the winters of the far Northwest without injury, and their yield is enormous. The berries are large, jet black, borne in large clusters, and ripen well together; they are very sweet, melting and pleasing to the taste, have no hard core, and keep for four or five days after picking with quality unimpaired. We have the largest and best lot of Eldorado plants this season which we have ever grown, but the demand for them seems to be increasing each year, so get your orders in very early, before April 1, if possible.

BLOWERS. Here is another large handsome blackberry from western New York. Fruit large to very large, a glossy black in color, firm and of very high quality. It is a very thrifty grower and if not topped and on rich soil will

grow canes 12 to 14 feet high. It is very hardy and productive, in fact unusually so. It has the longest fruiting season of any blackberry known, lasting from July until October, producing the bulk of its enormous crop in August and quantities in September. On account of the size of this berry, its firmness, productiveness, high quality, hardiness and long season makes it an ideal berry for home use or market. It's truly a good one and when making up your order for plants this spring do not forget to add a few hundred of the Blowers.



Eldorado

Lucretia Dewberry

Plant in rows five feet apart with plants three feet distant in the row.

NEW WAY OF GROWING DEWBERRIES WITHOUT STAKES.

It has always been supposed that extensive stakes were a necessity in growing a crop of dewberries. Experiments prove that as good or better dewberries may be grown by allowing the vines to grow in the natural way along the row, removing all new wood until after blooming time and then only allowing enough new vines to grow to provide for the next year's crop and at the same time shade the ripening fruit. Too much of the strength of the dewberry goes to the growth of new vines, which, if unchecked, cover the fruiting vines so completely as to smother the crop. This is the reason for stakes, an expensive plan to get the bearing wood up above the mass of growing new vines. It is much better to control this new growth by regular pruning semi-monthly during the early summer. Thus we turn this new growth into fruit and a few strong vines and grow our crop in its natural position, down among the dewy leaves unexposed to the strong rays of the summer sun.

Lucretia dewberries grown this way are the easiest of all the blackberries to grow; earliest to ripen. Less liable to winter-kill, larger and better than any other berry, of unequalled excellence, sweet and luscious throughout, of a very bright glossy black in color, and a berry you can depend on for fancy prices in any market.

In the North the Dewberry should be mulched for winter protection with wild hay, corn fodder, or other coarse stuff. This variety does well on a light sandy soil and is a money maker.

Grapes

The grape is a very satisfactory fruit to raise, as it can be put to so many different uses. It can be confined to a stake, bound to a trellis, trained over an arbor or to cover a large building, and under all conditions will yield its delicious fruit. No fruit will give better returns for close attention and kind care, and good returns can be had from soils that are unfit for any other crop. The side of a hill freely exposed to the sun and air is an ideal place for grape culture, whether the soil be sandy, clay or loamy.

The increased and still increasing demand for grape juice in our hospitals, etc., for a beverage has made the call for grape vines very heavy for the past two or three years. There is big money in growing grapes and many people are beginning to realize the fact. The market cannot be overstocked with this fruit.

They can quickly be made into juice for which there is a demand that always exceeds the supply and is something that will keep for years and years. Get a grape vineyard started this year, sure.

Grape vines will grow and do well in light sand or clay where it is hard to raise a crop of grain or other fruit.

CONCORD (Black). Decidedly the most popular grape in America and deservedly so. Bunch large shouldered, compact; berries large, covered with rich bloom; skin tender, but sufficiently firm to carry well to distant markets; flesh juicy, sweet, pulpy, tender; vine a strong

grower, very hardy, healthy and productive. For general cultivation the most reliable and profitable variety grown, truly a standard for productiveness and hardiness all over the United States, and we advise you to plant the Concord for main crop. It is the best.

Grapes—Continued

MOORE'S EARLY (Black). Bunch large, berry round, color black, with a heavy bloom; quality better than the Concord. Moore's Early has been ex-

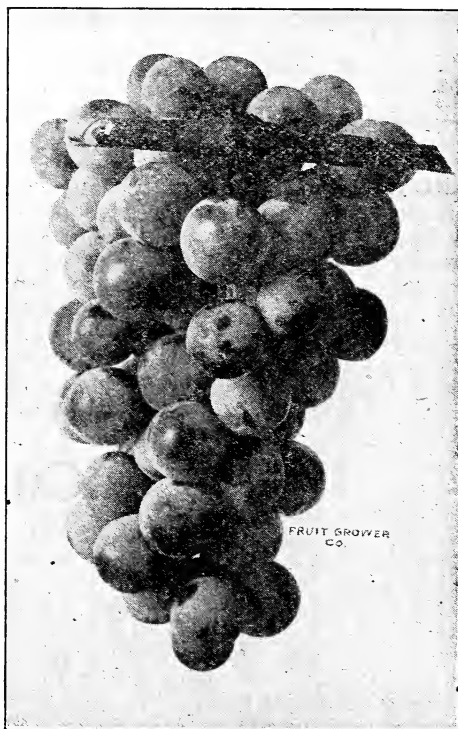


Concord.

posed to a temperature of more than 20 degrees below zero without injury, and it has been entirely exempt from mildew or disease. Its earliness makes it desirable for an early crop, and more particularly adapts it to New England and the northern portion of the United States. If you want an **extra good early grape** try this one. It will fill the bill. Ripens about 20 days before the Concord and commands a higher price on the market than any other grape of its season.

NIAGARA. This is the leading white grape throughout the country. Fruit is large and of fine quality. If you want a white grape we know of no other that equals Niagara. Occupies the same position among the white varieties as Concord among the black; most profitable market sort. Bunch and berries large, greenish white, changing to pale yellow when fully ripe; skin thin but tough. Everyone should have a few white grapes and the Niagara is the very best of all the white varieties.

LUCILE. This grape is a new one, and the very best of all the Red Grape family, either for home use or market. It will yield as much or more per acre than Concord, Niagara, or any other well known market variety. Perfectly hardy, and healthy as any Grape in existence. Ripens its wood fully under a heavy load of fruit and commences to ripen just after Moore's Early, which makes it a very valuable early grape. A grape coming in at this season always commands a high price. The clusters and berry are extra large, very compact, of very high quality and fine color. The Lucile is one of the very best for long distance shipping, its keeping qualities are excelled by none. In fact if left on the vines it will not drop off like many varieties, but if the season is long enough it will gradually dry up into raisins. This variety



Moore's Early.

has all of the good points and none of the poor ones. Positively the very best of all red grapes, and a big money maker for those who plant it.

Gooseberries

Plant in rows five feet apart and three feet apart in the row. Probably the best soil for the Gooseberry is a medium heavy loamy soil. However, they will prove very satisfactory on a rich sandy soil.



DOWNING. We had so many calls for Gooseberry plants last season that we have selected one variety, which, according to our judgment, is the best for general planting or the garden and home use. This variety is a pale yellowish green in color, large in size and of good quality. The bush is a thrifty grower and very productive. It is an American or native seedling, not an English sort.

The latter are very hard to grow successfully in this climate on account of weak foliage which is very susceptible to mildew. When this disease attacks the gooseberry it causes the foliage to drop before the berries are fully grown, and materially injure the crop.

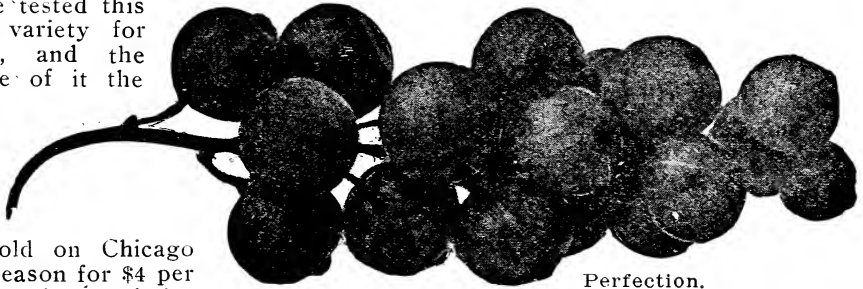
We have a good stock of thrifty, well matured plants that will prove satisfactory to everyone.

Currants

We wish to call your attention to the new currant, "Perfection." It was originated by C. G. Hooker, of New York state, by crossing the Fays Prolific with the White Grape Currant. It has the large size of the Fay with the extra good quality and vreat productiveness of the White Grape. The color is a beautiful bright red, and it is less acid and of better quality than any other re dcurrant in cultivation. Is perfectly healthy, and a vigorous grower, and, in fact, the best currant for home use or market purposes under cultivation today. In July, 1901, it was awarded the \$50 Barry gold medal by the Western New York Horticultural Society, after a trial of three years. It also received the highest award given any new fruit at the Pan-American Exposition, and it also received the only gold medal awarded to any currant at the St. Louis Exposition. It has also received a great many testimonials from the highest sources in this country. We show a natural size cluster of this fruit taken from a photograph made at the New York Experiment Station. While the price may seem high, take our word for it that it is actually worth the price and that you will never be sorry if you include the "Perfection" in your orders this spring.

Currants—Continued

We have tested this grand new variety for six seasons, and the more we see of it the better we like it, and it fully comes up to all that is said of it. Our



Perfection.

Perfection sold on Chicago market last season for \$4 per bushel, while other varieties of red currants sold for only \$3. This, then, is another proof that the Perfection is in a class by itself, and a money maker for those who plant it. We have sold a good many thousand plants during the past five years, and have not received even one complaint, a final proof that they are the best.

Rhubarb

LINNAEUS (Genuine). Here is another plant that is a great feeder, like Asparagus, and a deep, rich soil is indispensable to secure large, heavy stalks. This variety is tender, juicy, and not so sour as other kinds, making it the best for pies and table sauce. It is also valuable for canning. Comes in very early in the spring and sells well in all markets. Mulch heavy with stable manure each fall and fork under in the spring. Plant in rows four feet apart by three feet in the row.

Asparagus

Asparagus is a very popular early vegetable, coming as it does so very early in the spring before other vegetables are ready. It is really a luxury as well as being very profitable for market purposes. An acre or so will return a handsome profit every year after it is once well established, and will last nearly a lifetime if well taken care of. Select a piece of moist, rich, mellow soil and plow under all the well-rotted barnyard manure you can, plowing 8 or 9 inches deep. Then disk the ground thoroughly and finish up with the smoothing harrow. Plant in rows 3½ feet apart and 1 foot in the row about 5 inches deep. Give thorough and clean culture every year. About September 1st, mow off the tops, remove from the field and burn. Mulch each row in the fall with well-rotted barnyard manure. In the early spring remove the coarsest of the mulch and again hoe and cultivate the same as for other farm crops. Use plenty of manure every season, as asparagus is a great feeder and must have a rich soil to produce best results. It is also a lover of salt, and a top dressing of two or three hundred pounds per acre spread broadcast will be found very beneficial. We would advise our customers to plant good, thrifty, one-year-old roots, as they are more apt to grow and do well than those which are two or three years old. We have selected the Palmetto and the Conover's Colossal as the most valuable sorts for either home use or market. They are the earliest, largest and best quality of any kind we know of. We have a large stock of plants which was grown last season on a very rich soil, and they will run extra large and good. Make the wife and family happy by planting that asparagus bed this spring.





A.R. WESTON & CO.

Wholesale Prices

These prices are by express or freight not prepaid.

We can furnish you with any amount of small fruit plants you may need from one dollar's worth up, at strictly wholesale prices, direct from our propagating beds to you. No order booked for less than one dollar.

If Strawberry plants or Asparagus roots are ordered sent by mail, add 20 cents for 50, or 30 cents for each 100, for packing and postage. And for Grape, Red Raspberry and Blackberry 60 cents for 50, or \$1.00 for each 100. For Canadian orders the above postage must be doubled. Other kinds of plants not sent by mail.

Fifty plants of one variety at 100 rates, and 300 plants of one variety at 1,000 rates.

STRAWBERRY PLANTS					
August Luther (Per.).....	100	1,000			
Aroma (Per.)	\$0.40	\$ 2.00			
Bederwood (Per.)40	2.75			
Bisel (Imp.)40	2.00			
Brandywine (Per.)40	2.75			
Bubach (Per.)50	2.75			
Bubach (Per.)50	3.00			
Crescent (Imp.)40	2.00			
Fendall (Imp.)50	-----			
Gandy (Per.)40	2.75			
Glen Mary (Per.).....	.40	2.75			
Gibson (Per.)50	2.75			
Haverland (Imp.)40	2.75			
King Edward (Per.).....	.50	3.50			
Lovett's Early (Per.).....	.40	2.00			
Ohio Boy (Per.).....	.50	3.75			
Pocomoke (Per.).....	.40	2.75			
Pride of Michigan (Per.) (Baldwin)50	3.00			
Pride of Michigan (Per.) (Kellogg)50	3.50			
Senator Dunlap (Per.).....	.40	2.00			
Stevens' Late (Per.).....	.40	2.75			
Sample (Imp.)40	2.75			
Tennesse Prolific (Per.).....	.50	3.00			
STRAWBERRY PLANTS					
St. Louis (Per.).....	100	1,000			
Splendid (Per.)50	3.50			
Uncle Jim, or Dornan (Per.).....	.40	2.00			
Warfield (Imp.).....	.50	3.00			
Warfield (Imp.).....	.40	2.00			
Wm. Belt (Per.).....	.50	3.00			
Progressive (Per.) Doz., \$1	5.00	40.00			
Superb (Per.) Doz., 75c.....	3.50	25.00			
RASPBERRY PLANTS.					
Cuthbert, Red75	6.00			
Miller's Red75	7.00			
Early King, Red.....	.75	7.00			
Eaton, Red	2.00	-----			
Cumberland, Black90	7.50			
Gregg, Black90	8.00			
Kansas, Black90	7.00			
Eureka, Black90	8.00			
Haymaker, Purple	1.25	10.00			
Columbian, Purple	1.25	10.00			
St. Regis	3.00	25.00			
BLACKBERRY PLANTS.					
Eldorado (Extra Good).....	1.50	10.00			
Blowers	2.50	18.00			
Lucretia (Dewberry).....	1.00	8.00			
GRAPE VINES.					
Concord, 1 year, No. 1	12	25	100	1,000	
Concord, 1 year, No. 1	\$0.50	\$0.75	\$ 2.50	\$20.00	
Concord, 2 year, No. 165	1.00	3.00	27.00	
Moore's Early, No. 1.....	.75	1.00	3.75	35.00	
Moore's Early, 2 year, No. 1.....	.90	1.50	5.00	40.00	
Niagara, 1 year, No. 1.....	.75	1.00	3.50	-----	
Lucile (New), The Best Red Grape.....	1.50	2.50	8.50	-----	
CURRENTS.					
Perfection	1.75	3.00	10.00	-----	
Cherry	1.00	1.70	5.00	-----	
GOOSEBERRY.					
Downing	1.50	2.50	8.00	-----	
ASPARGUS ROOTS.					
Palmetto	-----	.25	.75	4.00	
Conover's Colossal	-----	.30	.80	5.00	
RHUBARB ROOTS.					
Linnaeus (Genuine)70	1.00	3.50	-----	



Table of Express Rates

The following table showing express rates per 100 lbs. on Strawberry Plants from Bridgman to points named will give you a fair idea as to what the express charges will be on your order. Of course, there is a big difference in the size of the plants; some varieties run very large, while others run small and medium. Four thousand five hundred medium size plants crated will average about 100 lbs.

Express rates on strawberry plants, per 100 lbs., to the following points:

Adrian, Mich.....	\$1.00	Alton, Ill.....	1.60
Charlevoix, Mich.....	1.40	Anna, Ill.....	1.80
Detroit, Mich.....	1.00	Centralia, Ill.....	1.60
Grand Rapids, Mich.....	.60	Farina, Ill.....	1.60
Lansing, Mich.....	1.00	Pekin, Ill.....	1.20
Thompsonville, Mich.....	1.20	Peoria, Ill.....	1.20
Albany, N. Y.....	2.15	West Salem, Ill.....	1.80
Lockport, N. Y.....	1.80	Exeter, Mo.....	2.50
New York City.....	1.90	Jefferson City, Mo.....	2.00
Rochester, N. Y.....	1.50	Joplin, Mo.....	2.00
Beaver Falls, Pa.....	1.80	Kansas City, Mo.....	1.90
Erie, Pa.....	1.75	Maryville, Mo.....	2.10
Harrisburg, Pa.....	1.75	St. Louis, Mo.....	1.50
Pittsburg, Pa.....	1.40	Davenport, Iowa.....	1.40
Washington, Pa.....	1.50	Cedar Rapids, Iowa.....	1.50
Still Pond, Md.....	2.50	Creston, Iowa.....	2.15
Annapolis, Md.....	1.75	Des Moines, Iowa.....	1.75
Cleveland, Ohio.....	1.20	Appleton, Wis.....	1.40
Columbus, Ohio.....	1.20	Beloit, Wis.....	1.00
Frankfort, Ohio.....	1.40	Baraboo, Wis.....	1.40
Sandusky, Ohio.....	1.40	Sparta, Wis.....	1.50
Vanatta, Ohio.....	1.40	Milwaukee, Wis.....	.80
Columbus, Ky.....	2.50	St. Paul, Minn.....	1.90
Lexington, Ky.....	1.80	Lincoln, Neb.....	2.50
Humboldt, Tenn.....	2.40	Topeka, Kans.....	2.50
Bluffton, Ind.....	.80	Austin, Tex.....	3.75
Borden, Ind.....	1.50	Cripple Creek, Colo.....	4.50
Crawfordsville, Ind.....	1.00	Loveland, Colo.....	5.10
Evansville, Ind.....	1.50	San Francisco, Cal.....	10.25
Indianapolis, Ind.....	1.00	Exeter, N. H.....	2.10
New Albany, Ind.....	1.20	Roxbury, Vt.....	2.25
Rockport, Ind.....	1.90	Wheeling, W. Va.....	1.40

Certificate of Nursery Inspection No. 1377

This is to Certify that I have examined the nursery stock of A. R. WESTON & CO., of Bridgman, and find it apparently free from dangerous insects and dangerously contagious tree and plant diseases.

This certificate to be void after July 31, 1914.

L. R. TAFT, State Inspector of Nurseries and Orchards,
Agricultural College, Michigan, Sept. 26, 1913.



Cluster of Kansas Raspberries



WM. BELT