

Historic, Archive Document

Do not assume content reflects current scientific knowledge, policies, or practices.

Price List

6241

1915



Strawberry P l a n t s



ALLEN BROS.
PAW PAW, MICHIGAN

Information for Purchasers

Our Strawberry Plants are all dug from new beds and rows are taken up solid, all those poorly rooted are thrown out, the dead leaves and stems are picked off, roots straightened, and tied in bunches of 25. Thus the purchaser receives the strongest and best plants made during the season of growth. Those are worth much more than plants dug from the alleys.

Set Northern Crown Plants. They, as well as northern grown potatoes or garden seeds, are preferable to those grown in the south. They have more vigor, will make a better growth and produce more and earlier berries. The successful strawberry growers of the south send north for their plants, claiming it pays better to buy Michigan grown plants than to use those grown there, even though they have plenty.

Order Early. It is a mistake to put off ordering until late in the season, when some of the leading varieties are sold out. It is greatly to your advantage as well as ours, to place your order early. Every year we have returned lots of orders, so do not put off ordering too long.

Terms. Payment should accompany the order, at least one-fourth, when we will book your order, and balance can be sent before shipment. Money may be sent by bank draft, express money order, postoffice money order or registered letter at our risk.

References. Paw Paw Savings Bank, American Express agents or any business firm in Paw Paw or Bloomingdale.

Location. We are located at Glendale and ship plants both from Paw Paw and Bloomingdale, as it is most convenient to us.

Shipment. We are in 3½ hours ride from Chicago and connect with the M. C. R. R., P. M. R. R. and Fruit Belt Line. We commence to ship plants as soon in the spring as we can dig, usually in March for southern orders.

By Express. This is the method most commonly used to ship plants, and the safest. Although we send early in the season by freight a long distance, there is possibility of delay and consequent loss. Parties ordering stock shipped by freight will have to take the risk, as we cannot be responsible for loss, if any, on stock shipped in this manner. It is to our interest, as well as the interest of our customers, to have stock reach purchaser in good condition, and we shall always endeavor to so pack and forward goods that they may prove satisfactory.

Packing is done in the best possible manner in crates and baskets, using plenty of moss for strawberry plants, making no charge for the work or package.

Testimonials. Please read them. We have room for only a few and select these from different parts of the country. You will see we give full address. Write them (enclosing stamp for reply). A great many catalogues give a long list of testimonials, but do not give addresses, so one could not reach them, and perhaps that is what they wish.

We Exercise Care that all our plants shall be true to name, and hold ourselves ready, upon proper proof, to refund money or replace any that prove untrue. It is mutually agreed that we shall not be liable for a greater sum than the amount paid out for stock.

Substitution. In ordering plants state whether we shall substitute some other variety in case the kind ordered should be exhausted. If no objections, we will substitute something of equal value, but always label true to name. We always aim to substitute sorts similar in quality and season, and always something listed at equal or higher rate.

Very Important. When strawberry plants are received, if your ground is not ready, or if the weather is dry and windy, do not plant out, but take them from the package, loosen the bunches and heel them in moist soil, firm the ground around the roots and, if dry, water and shade them from the sun, and they will commence to grow. When your ground is ready and the weather is favorable, plant out. Treated in this way scarcely a plant will fail to grow.

Introductory

We take this opportunity of thanking our many customers of the past for their liberal patronage and the many kind words of encouragement received from them.

It will be our constant study in the future, as it has been in the past, to try and give perfect satisfaction to our old, as well as new customers who entrust their orders to us, as our success, we feel confident, depends wholly on the satisfaction we may be able to give our patrons. We do not claim that our plants are better than all other growers, **but we do claim that we grow as good plants as can be grown anywhere** and by comparison you will find our prices very reasonable, quality considered.

Undoubtedly you can buy plants for less money than we are selling for, but when you take quality into consideration we think that our plants will make you more money than the plants that others are asking you less money for. It costs you no more to set and cultivate a **good plant**, one that has plenty of vitality, than a poor plant; and when you harvest your crop you will find the returns paid you big for paying a little more for good, strong, healthy plants like ours than to buy some plants at half our prices. We have every advantage for growing and handling plants cheaply and practice economy in every way that is practical to produce and put on the market good, healthy plants, and to the cost of same we have added a fair profit for ourselves and know if you buy plants for less money you are getting plants of poorer quality.

It is the custom of some growers of plants to use strong commercial fertilizers and push their plants so they look to be very nice, but when transplanted to common soil they do poorly, and bad results follow, as in buying a cow, if you bought one that had been fed under ordinary raising and feeding she would prove good, but if she had been fed the very richest foods and was used to that treatment, under ordinary conditions she would prove unsatisfactory.

Our soil is a rich sandy loam, well tilled where needed, using what is necessary of good stable manure produced on our own farms to keep our soil in good thrifty condition. We do not use commercial fertilizers, which we claim is far more to your advantage than plants grown on extremely rich ground, where they have used strong commercial fertilizers to push the plants, because the ordinary farmer and fruit grower have not those conditions and when plants are taken from soils that have been stimulated so highly and transplanted and subjected to the ordinary conditions they will not do as well, we believe, as though they had been grown on ordinary soil that is in a good state of fertility as ours is.

Respectfully,

ALLEN BROS.

Strawberry Culture

Soil—Whether it is for market or for home use, the results obtained will in a general way depend on the conditions of the soil as to fertility and drainage. Any soil that will produce a good crop of corn or potatoes, if sufficiently drained (either naturally or artificially), will produce a good crop of strawberries. A heavy, sandy loam or a light clay loam is preferable for a strawberry patch; however, good results can be obtained upon the lighter soils, if sufficient care is taken to retain moisture. As the strawberry crop is of more value than the ordinary farm crop, more care should be taken that the soil is in proper condition and supplied with the necessary amount of plant food. After your ground is prepared **thoroughly**, it would be best to have it rolled or floated, so as to have an even surface.

Planting—Spring is the proper time for planting in the northern states. (While a good many plants are set in the fall, and with a reasonable amount of success, still the time for growing is not sufficiently long to allow the plants to produce a crop of berries the first year, and the extra expense of cultivation and care does not pay for the outlay). Set your plants just as early in the spring as possible, in April for the northern states and earlier, if possible, in southern. Avoid planting on a dry, windy day. When the plants are being set great care should be taken that the roots are not exposed. Keep the roots in a pail of water, if they are somewhat dry, and in planting see that the moist soil comes in contact with the roots. The distance to plant in the row depends somewhat on the variety and also upon the method of cultivation. For the matted row system, with varieties that do not make many runners, the distance may be 12 to 18 inches, but with such kinds as run freely and make a great many plants the distance may be increased to 20 to 24 inches. For hill culture some set the plants two feet each way, while others have their rows three feet apart and plants 12 to 15 inches in the row. Mark your rows three and one-half or four feet apart. We use for this a marker with four runners. Make it light with thin boards, so it can be drawn by a man, making the rows straight and marking very fast.

Cultivation—Cultivation should commence as soon after planting as possible and continue until fall once a week whenever it is in a suitable condition, and hoe as often as necessary to keep the weeds down. As soon as the blossom stock is large enough to permit of its being done, it should be pinched off. Do not neglect this, if you wish a strong, vigorous growth. Do not let the plants mat too thickly. If they throw out too many runners, some of them should be removed. The plants should be three or four inches apart in the row. This is very essential in producing large crops of berries. The rows should be about 14 inches wide, and when you have secured this, keep off all runners and you will have an ideal fruit row.

Mulching—As soon as the ground is frozen so as to hold up a team and wagon it is best to mulch. This is not absolutely necessary, but it is a great advantage where straw or anything that can be used for mulch can be had, as it protects them from being hurt by hard freezing. In the spring rake between the rows, and it will help to retain moisture and keep the berries clean.

CERTIFICATE OF NURSERY INSPECTION

No. 1462.

This is to certify that I have examined the nursery stock of Allen Brothers of Paw Paw and find it apparently free from dangerous insects and dangerously contagious tree and plant diseases.

This certificate to be void after July 31, 1915.

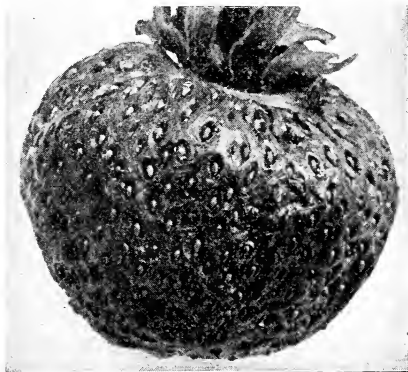
L. R. TAFT,

State Inspector of Nurseries and Orchards.
Agricultural College, Mich., Sept. 17, 1914.

Strawberry Plants

Fall Bearing

Americus—Is strongly staminate and berries are always perfect when frost does not interfere. Plants very strong, healthy and deep rooted. No variety could be more productive, yet with its heavy load fruit is medium to large in size, and



Americus

what is still more remarkable is the fact that unless disbudded it will bear constantly from time plants are well rooted, usually from May to November.

It is a free plant maker and the young runners begin to bear as soon as they begin to root. Fruit is firm, a bright red, holds up well in wet weather, good quality, fruit is protected from frost by heavy foliage. Has been tested thoroughly and seems to succeed over a wider range of country than any other variety. It is to be hoped that the moderate price at which this best of all varieties is offered will not discourage anyone from taking hold of it.

If the people who have purchased plants of us for the past 20 years could have come here and looked with their own eyes on our bed of Francis and Americus during the closing days of September and October this year, the demand for plants would be such that our entire stock of plants would be exhausted in a short time. You can just as well have strawberries in the fall as summer, and if you want to grow for market it is no trouble to get 25c per quart for them. No order is complete without at least 25 or more of these plants.

Francis—Strongly staminate, season May till frost, just as productive as Americus, but not quite as much of a plant maker. Fruit medium to large, firm, bright red, glossy spring set plants of these and Americus will bear fruit from time they are set till fall unless buds are picked off.

Prices of Francis and Americus.

25 plants.....	\$ 1 00	300 plants.....	\$ 7 00
50 plants.....	1 75	500 plants.....	11 00
100 plants.....	3 00	1000 plants.....	20 00
200 plants.....	5 00		



August Luther

Early Varieties

Johnson's Early—A standard early variety. A good grower and cropper. Fruit of good size. In some seasons it is extra large, of good form and color. 100, 60c; 1000, \$3.00.

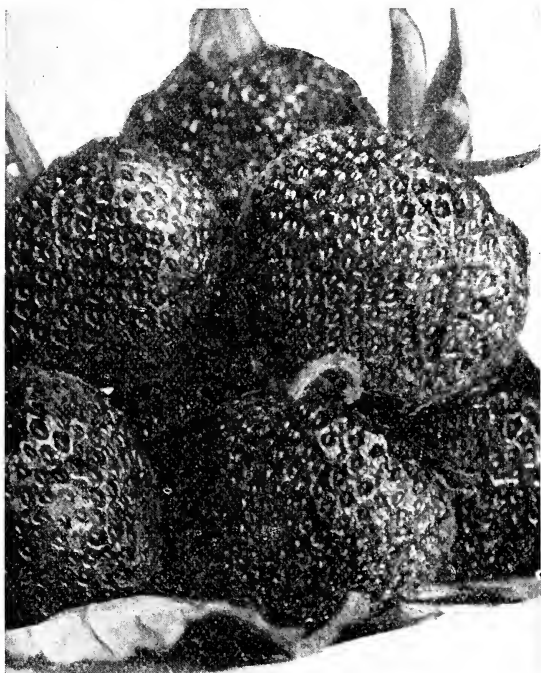
August Luther—Very early good to large sized fruit, bright red color, firm and good quality, very popular early market sort. Continues to bear until practically every berry reaches a good size. 100, 60c; 1000, \$3.00.

Bederwood—Early, very strong yielder continues a long time in bearing, fruit good size and firm as the Crescent, very strong staminate and a good fertilizer. 100, 60c; 1000, \$3.00.

Excelsior—Season extra early. This variety is now generally regarded as one of the best extra early berries. Berry dark red, of good size, a good shipper and will be popular in the South for sending to northern markets, 100, 50c; 1000, \$2.75.

Michel's Early—One of the earliest varieties grown, does better on light, warm soil, on heavy soil it goes too much to vines, it blossoms early and late. For best results plant on warm, sandy soil, and do not allow them to set too heavy in the row. 100, 25c; 1000, \$1.00.

St. Louis—Very early; a strong grower with plenty of runners. Fruit is of good size for an early berry, round, red, firm, and good. The variety is new and an improvement on Early Michel, the fruit being of better size. It is finding many favorites. 100, 65c; 1000, \$3.50.



St. Louis

Mid-season Varieties

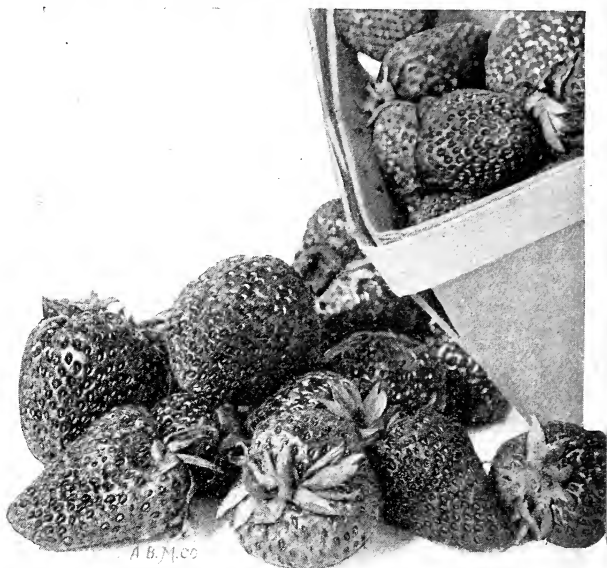
Bisel—Blossoms pistillate, plant healthy, vigorous grower, has long matted roots, which enable it to withstand severe droughts, fruit large, luscious and firm, seeds slightly embedded, color deep, glossy red with double calyx, very productive season same as Crescent. 100, 60c; 1000, \$3.00.

Ben Davis—Very large, round to oblong, very productive, dark red berry, plants very healthy, never rusts and one of the very largest. We consider this worthy of trial by all who are interested in strawberry culture. The plants are good plant makers. The berry is very highly flavored and a firm good shipper. Perfect bloomer, season medium early. 100, 60c; 1000, \$3.75.

Crescent—A very prolific berry bearing profusely even under neglect. Fruit colors on all sides at once. Great cropper, early. 100, 60c; 1000, \$3.00.

Cumberland—Season medium early, berries as true as a top, light crimson, very large, one of the most beautiful berries and a great seller for near market, mild, rich flavor. 100, 60c; 1000, \$3.50.

Ernie—Immensely productive of medium to large, dark, glossy berries of fine shape and good quality, rather a tough skin and firm texture, which makes it a leader for long distance shipping, and canning purposes, commences to ripen with second earliest and continues in bearing for long season. 100, 60c; 1000, \$3.50.



Haverland.

Haverland—Exceedingly productive. Fruit large and firm. One of the most popular of the well tested varieties. It will stand more frost than most any other variety, often bearing a large crop when others are killed. We can always depend on a large crop of Haverland, and the berry is large and very attractive. No berry will out-sell them, and no variety seems to do as well on any soil or in any location. Demand for Haverland plants is always large, which proves its popularity. You will not miss it by buying some Haverland. They are a good sure berry. Bought largely for main crop all over the country. We cannot say too much in their favor. Try them and you will agree with us. 100, 60c; 1000, \$3.50.

Highland—For four consecutive seasons this variety was the most productive of 146 varieties tested on the grounds of the Ohio Experiment Station, and they thus describe it: "Fruit medium to large, bluntly conical, color bright scarlet, flesh red clear through, about as firm as Bubach, plants very large, strong and vigorous, flowers imperfect and quite resistant to cold. A quart maker of bright, handsome berries of very acceptable quality." Remember the above is unbiased testimony of a disinterested expert, and not the highly colored phrase of the introducer. 100, 75c; 1000, \$5.00.

Lovett—Well known standard mid-season variety, a thrifty, healthy grower and productive of good sized, bright red berries, firm and of good quality. The Lovett is a good dependable berry in all soils and seasons. A good producer of large evenly shaped berries. An extra strong grower and brings paying crops everywhere. A fine commercial berry. The fruit is firm and conical shaped. 100, 60c; 1000, \$3.50.

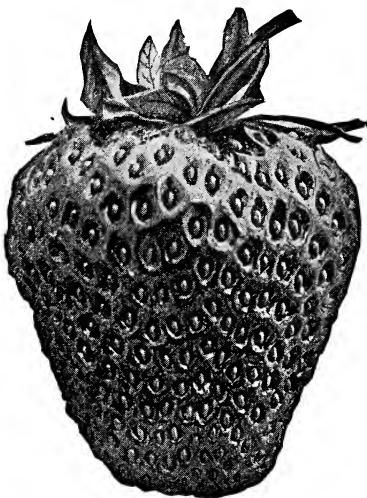


Pocomoke.

Monitor — Fruit large, round, bright red, moderately firm of good quality, plants vigorous and healthy, very productive, reliable, fruiting early to late, a good home berry or valuable for near market. 100, 60c; 1000, \$3.50.

Pocomoke—A seedling of the old Wilson, which it resembles in color, shape, firmness and productiveness, but of better quality and much larger in size. One of the best varieties not only for its enormous productiveness, but on account of its beauty, adaptability to all soils, its foliage enduring the dry, hot weather, which quality is rare with some varieties; **its large size, its deep red color, its firmness, its high flavor,** makes it one of the best for general planting. The plant is a strong, robust grower, with deep roots and lots of them, perfect blossoms, and an **enormous yielder** of large red berries. It ripens evenly, and is one of the best shippers yet introduced. Its season is medium early and is very highly spoken of by growers all over the country. 100, 60c; 1000, \$3.75.

Norwood—One of Farmer's introductions, and is supposed to be a cross between Marshal and Corsican. The plants are unusually large, with broad, tall, light green foliage. It does not make many plants. The fruit is conic and good regular in shape; color bright red, firm and good quality. The size is large to very large. 100, \$1.00; 1000, \$6.00.



Warfield

Pride of Michigan—**Baldwin's**. Plants medium in size. Perfectly healthy. Shows great vitality, and drought-resisting qualities, a good plant maker, and has good strong fruit stems, holding fruit well up from the ground. Fruit medium to large, of a dark, glossy red color. Roundish, conical and regular in form, and of good quality, reasonably firm and productive. Time of ripening medium early, 100, 75c; 1000, \$3.75.

Splendid—plant healthy, luxuriant grower, sends out many runners and bears abundantly, fruit large and far

above the average in quality and appearance, desirable for either market or home use. This variety has been tested by many berry experts all over the country, and has proven itself worthy of the name. 100, 60c; 1000, \$3.50.

Tennessee Prolific—Large, good color, productive, good shape, free from rust, ranks among the best in the strawberry list a seedling of the Sharpless and Crescent, showing the parentage of both, fruit is handsome and as productive as the Haverland. 100, 60c; 1000, \$3.25.

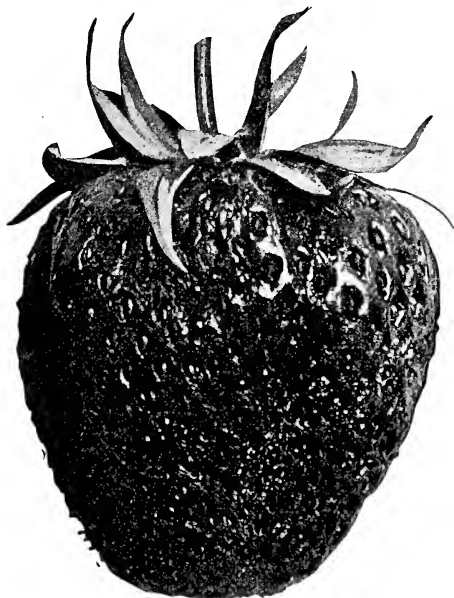
Warfield—Not immensely large, but its great beauty, firmness, good flavor, productiveness and vigor, combined with fair size, makes it exceedingly popular, ripens with Crescent. Without doubt there is more of this variety grown each year than any other. Its popularity seems to be universal. It is a good plant maker. 100, 50c; 1000, \$2.50.

Bismark—Mid-seasons, a seedling of Bubach, nearly as large, vigorous grower, and a good cropper. 100, 60c; 1000, \$3.25.

Brandywine—A variety which seems to find favor wherever tried. Very fine, an extra good shipper, berries large and slightly conical in form and hold their size to the last, ripen evenly, being of a bright crimson color and of good quality, plant is a vigorous grower, season medium to late. 100, 60c; 1000, \$3.50.

Barton's Eclipse—Is a strong grower, handsome foliage, free from disease. Fruit of good form and color, large and productive. 100, 60c; 1000, \$3.25.

Clyde—Perfect, well known, very productive mid-season variety, fruit large, round, not very firm. 100, 75c; 1000, \$4.25.

**Bubach**

Bubach—Fruit large and handsome, roundish conical, bright scarlet, moderately firm, of fair quality. Plant a strong grower with large, healthy foliage and very productive. Succeeds best on heavy soil. Desirable for home use or near market. Season early to medium. This is an old standby and is deservedly popular. In plant growth it is vigorous, but does not throw out the excess of runners. 100, 60c; 1000, \$3.75.

Dickey—Another new variety from Massachusetts, where it is claimed to be one of the best medium to late varieties yet introduced. The foliage is rather light green but large and healthy. Fruit is of good size, colors well, and has no green tips, and is of a peculiar but favorite flavor. 100, 65c; 1000, \$4.00.

Gibson—Mid-season to late, fruit large and handsome, dark, glossy red color, red flesh, firm and of high quality. 100, 60c; 1000, \$3.50.

Glen Mary—Hardy, vigorous and very productive, berry large and very firm, had best be pollenized. 100, 60c; 1000, \$3.75.

Helen Gould—The plant is large and healthy and has never failed to produce a good crop. It sends out a moderate number of strong runners, about like Bubach. It has a pistillate blossom, and, like nearly all pistillates, it bears abundantly in wide matted rows. The fruit is very large and holds up well to the end of the season. In color it is a beautiful glossy red, and the flesh is firm with a rich, delicious flavor that is seldom equaled. Season medium to late. 100, 60c; 1000, \$3.75.

Kansas—A good grower and bearer of good medium-sized bright red berries. Not a universal favorite; mid-season to late. 100, 40c; 1000, \$1.75.

Kittie Rice—Vigorous grower, healthy and productive; a fine canning berry, makes just about enough runners; fruit large, conical, regular in form, glossy and very beautiful. The flesh is red, firm and of good quality. 100, 60c; 1000, \$3.50.

Klondike—Fruit medium to large, mottled red color, fair quality, and quite productive. 100, 60c; 1000, \$3.50.

Miller—An extra large berry, bright red color and comes highly recommended. 100, 50c; 1000, \$2.50.

Missouri—Rather dark red, mid-season berry, very healthy, good plant maker, a splendid pollinizer. Not as desirable as some others. 100, 40c; 1000, \$1.50.

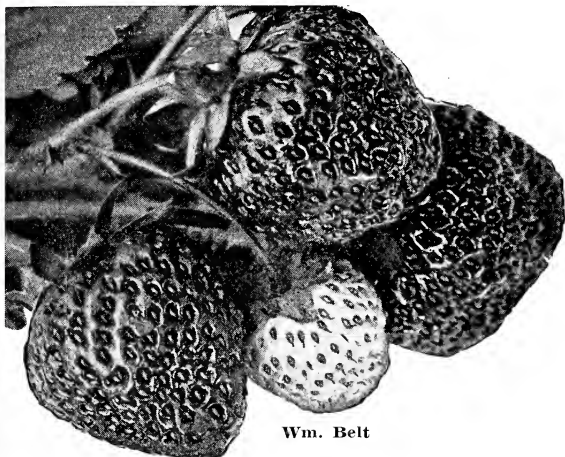
Nick Ohmre—A large, handsome, showy berry of extra high quality, demands good soil and high cultivation, late to medium. 100, 60c; 1000, \$3.50.

New York—Mid-season, fruit large, conical, deep red color, light red flesh, moderately firm, good quality. Plants large and healthy. 100, 60c; 1000, \$3.50.

Pride of Michigan—Kellogg's. Plants are extra heavy and long rooted, which makes them capable of withstanding a long and severe drouth, a point worthy of your consideration. Makes just about the right amount of plants for a good fruiting row. Fruit large to very large. Scarlet in color, with bright red cheeks, making it one of the handsomest berries on the market. Very firm and productive for such a large berry. Quality good. Time of ripening medium late. Does best on a rich, moist, loamy soil. If an extra large fancy berry is wanted, either for home use or market, try this one. 100, 75c; 1000, \$3.75.



**Senator
Dunlap**



Wm. Belt

Seaford—A good strong grower and productive of large, dark red, good quality and attractive fruit, a good variety, mid-season. One of the good ones. 100, 60c; 1000, \$3.75.

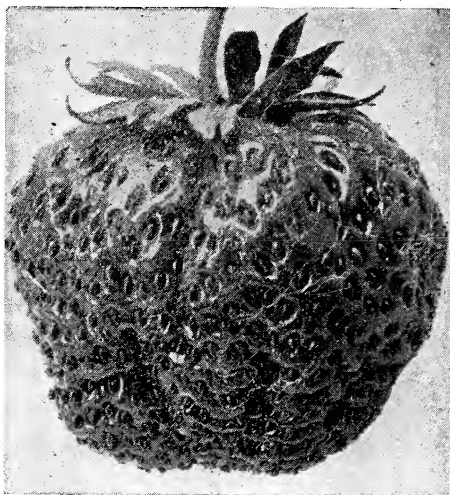
Sharpless—Well known, popular, good size, light in color, requires rich soil. 100, 60c; 1000, \$3.50.

Senator Dunlap—It is a very strong grower and a healthy plant has a perfect blossom, is hardy, productive, of extra good quality, splendid keeper and is able to hold its own under neglected culture. No sign of rust. The plant is wonderfully productive and brings every berry to maturity. It resembles the Warfield in size, ripens at the same time and remains in bearing longer. It is most beautiful in color, has a slight neck and is easily picked. We have fruited this variety for several years and it has given the best of satisfaction. Were we to set but one variety, it would be Senator Dunlap. 100, 60c; 1000, \$3.00.

Uncle Jim—One of the finest and best of all the large berries, plants large and healthy, berries firm; productive, begins to ripen a long time before Gandy, but lasts about as long. 100, 75c; 1000, \$4.

Wolverton—Strong, healthy grower, sends out many runners, productive, seems to be universally successful, splendid grower, remaining green all summer, matures part of its crop before it is through blooming, fruit large, resembles Bubach, very firm, making it an excellent shipper, season medium. 100, 60c; 1000, \$3.50.

Wm. Belt—Among the large size berries none are more uniform in shape and size than this variety, except the first berries to ripen, which are usually cockscombed. It is also very firm and most excellent quality; color a beautiful glossy crimson. The fruit always brings the highest price in the market. The plant is a good, thrifty grower with strong roots and makes just enough plants for a good matted row without crowding. Its quality is fine and extra large size. Be sure and include this in your list. 100, 60c; 1000, \$3.50.



Aroma

Late Varieties

Aroma—Fruit very large, roundish conical, glossy red, of an excellent quality and very productive, plant is strong, stalky grower, fast growing in favor as a late berry, extensively grown in the West, where it originated. We can recommend it. 100, 60c; 1000, \$3.50.

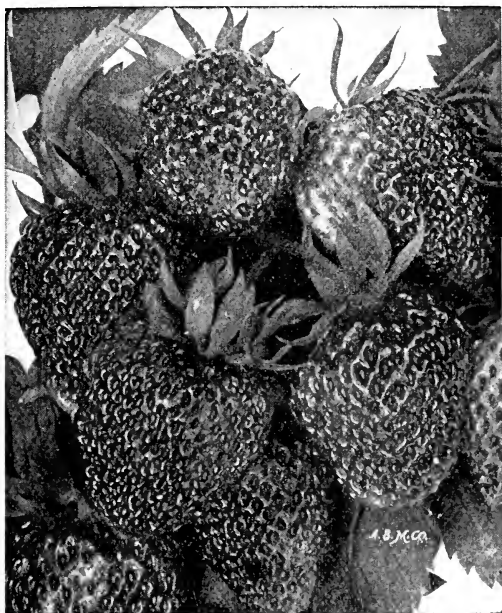
Enhance—Late, fruit large, bright red, firm, good quality, plants tough, healthy and vigorous, a reliable cropper. 100, 60c; 1000, \$3.50.

Enormous—Late and productive, plant is a good grower, but makes only a moderate supply of runners, bloom is imperfect and should be fertilized with Brandywine or William Belt. It should be planted on heavy soil for best results. 100, 60c; 1000, \$3.50.

Gandy—This is one of the most reliable, large late berries that is grown. It is one of the old standard varieties that you can depend upon. The plant is a strong grower. The large, handsome appearance of the fruit always commands for it a large price in market. The fruit always grows large and is one of the best shipping varieties known. You can't afford to be without the Gandy whether it be for home or market use. 100, 60c; 100, \$3.75.

Greenville—Season quite late, now in general cultivation and a favorite, berries very large, bright crimson and productive. 100, 60c; 1000, \$3.50.

Jesse—One of the old standard varieties, berry large, bright colored and of a good quality, firm and a good cropper, blossom perfect and a good fertilizer for imperfect varieties. 100, 60c; 1000, \$3.75.



Gandy

Marie—Berries large, even in size, round as an orange and of the same dark, bright color as the Gandy, very productive. 100, 60c; 1000, \$3.50.

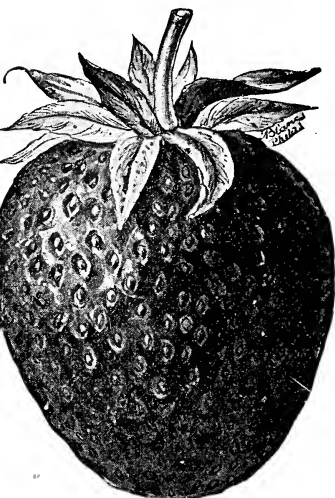
Marshall—(Mich. Exp. Station). The Marshall has established itself with the better growers as one of the best fancy berries, size, beauty and quality being its strong characteristics. It is not as productive as some other sorts, and it requires good soil and care, but when given proper culture there are few better kinds. 100, 75c; 1000, \$4.50.

Nettie—Fruit extra large, light red color, quite tart, plants large, healthy, very vigorous and productive. Owing to the fact that Nettie is extra late it will always be a profitable market variety. Our stock is limited. 100, 60c; 1000, \$3.75.

Parker Earle—Well known, makes few plants, but of large and stocky growth, fruit large, wedge shape, blunt on the end, high color, good quality, immensely productive, late. 100, 80c; 1000, \$5.00.

Rough Rider—Enormously productive, hardy and free from disease, berries very large, roundish, but somewhat flattened at the point, a seedling of the Eureka fertilized with Gandy, color dark red like the Gandy, very late. 100, 60c; 1000, \$3.50.

Ridgeway—Plants large and stocky, makes large number of strong, healthy plants. Leaf large, broad, heavy and dark green, blossoms perfect, a good pollenizer for pistillate varieties, berry large, form nearly round, color crimson, firm and will stand shipping to distant market, quality good, will command good prices, season late. 100, 60c; 1000, \$3.50.



Stevens' Late Champion

Stevens' Late Champion—In plant growth this variety resembles the Gandy, except that it has a heavier and shorter fruit stem and is a much better plant maker. Healthy, vigorous and long rooted, nearly an ideal plant, productive. Fruit large, dark red in color. Uniform in shape and size. Very high in quality, and exceedingly firm. This variety with us has proven to be fully as late in ripening as Gandy, and will prove a money maker for those who want a late berry. There is nothing better. 100, 60c; 1000, \$3.50.

Sample—Fine berry of very large size, long in bearing, quite late to ripen, crimson color

clear through to the core, very firm for large berry, strong, vigorous and healthy foliage, originator says: "It will yield as much fruit as the Haverland and average large." Set Aroma with Sample and you will have an ideal combination. 100, 60c; 1000, \$3.50.

Mixed Plants for a Good Crop

We have many "odds and ends" left over when packing, and always some when digging, that are good plants. They are of many varieties both (P) and (S), and are just the right mixture for a garden plot. We have found that many growers prefer a plot of mixed varieties, claiming that they have done better in many cases than straight kinds. Many times such plants will contain many of the newest and best varieties. Plants mixed in this way are always heavy croppers. Our price is very reasonable. 100, 60c; 1000, \$2.50.

Our Special Collections

Those desiring a few for home use will find the following collections very good, covering the season from early to late. Postage paid by us on these collections.

\$1.50 Collection—50 Michel's Early, 100 Senator Dunlap, 75 Gandy.

\$2.25 Collection—50 Michel's Early, 100 Senator Dunlap, 50 Bisel, 100 Stevens' Late Champion.

\$2.75 Collection—150 August Luther, 100 Senator Dunlap, 100 Ridgeway, 100 Brandywine.

\$3.50 Collection—100 August Luther, 300 Senator Dunlap, 100 Stevens' Late Champion.

Better add 25 Americus for \$1.00 and have berries in the fall as well as summer.

What Our Patrons Say

Chatham, N. Y., May 22, 1914.

Allen Brothers, Paw Paw, Michigan.

Gentlemen:—The 450 strawberry plants arrived in splendid condition. I placed the roots in water over night and planted them the next morning. They are doing well so far. I thank you very much for the excellent manner in which you filled the order and for such strong, healthy looking plants.

Yours,

NUMAN N. REYNOLDS.

Huntsville, Ohio, Jan. 17, 1914.

Allen Brothers, Paw Paw, Michigan.

Gentlemen:—Please send to my address catalog of strawberry plants. I was very much pleased with the plants I received two years ago, also with the quality of berries. Respectfully,

(Miss) CORA BOWERSOCK.

West Mansfield, Ohio, May 5, 1914.

Allen Brothers, Paw Paw, Michigan.

Gentlemen:—The strawberry plants arrived and I find them O. K. I am well pleased with them. Now the Americus plants are in bloom. Shall I pinch them back or let them fruit this season? Please let me know, and oblige

Yours respectfully,

J. R. MARSH.

New Springfield, Ohio, April 22, 1914.

Allen Brothers, Paw Paw, Michigan.

Gentlemen:—Plants have arrived in fine shape and I thank you for the selection you substituted. We have bought plants for the last twelve years and paid higher prices, but never received as nice plants as you have sent us. We are well pleased.

Yours for success,

CHARLES H. VAN ETTEN.

Plainville, Ill., April 22, 1914.

Allen Brothers, Paw Paw, Michigan.

Gentlemen:—I received the strawberry plants in good shape. They are all living and doing fine.

Yours respectfully,

A. J. HUNTER.

Elburn, Ill., April 19, 1914.

Allen Brothers, Paw Paw, Michigan.

Gentlemen:—Just a few words to let you know how fine your strawberry plants are doing. Every one growing; they were all fine plants.

Respectfully,

F. C. SMITH.

Jeffersonville, Ill., April 16, 1914.

Allen Brothers, Paw Paw, Michigan.

Gentlemen:—Received the strawberry plants in fine condition the 13th. Respectfully,

JOHNSON FARRIS.

Fuller's, N. Y., April 30, 1914.

Allen Brothers, Paw Paw, Michigan.

Gentlemen:—Plants arrived Tuesday in O. K. condition. Yours truly,

MRS. GEO. CHAMBERLAIN.

Oklahoma City, Okla., March 4, 1914.

Allen Brothers, Paw Paw, Michigan.

Gentlemen:—We received the strawberry plants yesterday and we are very well satisfied.

Yours truly,

MRS. KATIE FROLICH.

Glenwood, Minn., May 23, 1914.

Allen Brothers, Paw Paw, Michigan.

Gentlemen:—The strawberry plants arrived all right. Sincerely,

MRS. L. NEUMAN.

Milwaukee, Wis., May 5, 1914.

Allen Brothers, Paw Paw, Michigan.

Gentlemen:—The berry plants reached us Saturday in splendid shape. We are much pleased with their strong, healthy appearance and will let you know of our success, we hope. Thanking you for the prompt attention to my order, I am

Respectfully,

L. T. MARTIN,
769 ½ 38th St.

Hackettstown, N. J., April 25, 1914.

Allen Brothers, Paw Paw, Michigan.

Gentlemen:—Plants received are growing fine. Thanks for the Highlands. Yours truly,

L. C. VAN SYCKLE.

Patoka, Ind., May 12, 1914.

Allen Brothers, Paw Paw, Michigan.

Gentlemen:—Received the strawberry plants in good condition yesterday morning.

Yours sincerely,

J. H. STEWART.

Sinking Springs, Pa., April 28, 1914.

Allen Brothers, Paw Paw, Michigan.

Gentlemen:—Received strawberry plant in good condition. Am very well pleased. Thanks for your prompt attention. Yours truly,

HOWARD H. STAMM.

Corry, Pa., March 7, 1914.

Allen Brothers, Paw Paw, Michigan.

Gentlemen:—Please send me your catalog and prices on strawberry plants. Had some of your plants three or four years ago and they were very satisfactory. Yours truly,

L. R. TIFFANY.

Marshallton, Del., April 14, 1914.

Allen Brothers, Paw Paw, Michigan.

Gentlemen:—Received the plants O. K. and thank you for the free sample. Respectfully,

H. C. DERICKSON.

Rockton, Pa., April 25, 1914.

Allen Brothers, Paw Paw, Michigan.

Gentlemen:—Received the plants all O. K. Am well pleased with the fifty Norwood. I have never grown any of them and have been anxious to try them. Also thank you for the Jessie as a present.

Yours truly,

B. P. HONEY.

Raymond, Nebr., April 12, 1914.

Allen Brothers, Paw Paw, Michigan.

Gentlemen:—Received plants all right.

Very truly yours,

MILTON COMBS.

Provincetown, Mass., April 7, 1914.

Allen Brothers, Paw Paw, Michigan.

Gentlemen:—I received my vines and everything was O. K. Yours,

SAMUEL A. BENNETT.

Easton, Mass., April 27, 1914.

Allen Brothers, Paw Paw, Michigan.

Gentlemen:—The strawberry plants which you shipped April 18th arrived here the 25th in excellent condition. Please accept thanks for the fine plants received, careful marking and packing.

Yours truly,

OLIVIA S. STOCKER.

Mildred, Montana, April 13, 1914.

Allen Brothers, Paw Paw, Michigan.

Gentlemen:—I received my plants in fine shape. They are certainly fine looking plants. You may look for a larger order next year. Thanking you for the way they were packed, I remain

Yours respectfully,

FRED W. MORROW.

Nobob, Kentucky, April 11, 1914.

Allen Brothers, Paw Paw, Michigan.

Gentlemen:—I have received the strawberry plants in fine shape; am delighted with them. Will send you my next order.

Respectfully,

W. W. JONES.

Dant, Kentucky, Oct. 5, 1914.

Allen Brothers, Paw Paw, Michigan.

Gentlemen:—On receipt of this card please send me your catalog and state if you ship plants to Florida. I will locate somewhere in Lake County, Florida, by December. I will grow berries, and your plants proved better than I received from five other growers. If you will be prepared to ship me plants in December, I will be glad to hear from you. Yours truly,

J. W. RESCH.

Holland, Mich., May 5, 1914.

Allen Brothers, Paw Paw, Michigan.

Gentlemen:—We received the strawberries in good condition. Yours truly,

FRED VAN WIEREN.

Dixon, Missouri, April 15, 1914.

Allen Brothers, Paw Paw, Michigan.

Gentlemen:—Received the plants O. K. Best thanks for such fine plants; the finest I have seen in 25 years. I send you M. O. Please be so kind and send me late strawberry plants, as I sent your catalog to a friend, never thinking about ordering more plants. I don't know which late berries you carry. If you have Stevens' Late Champ., please send them; otherwise send as you think best.

Respectfully,

LOUIS LOEWENTHAL.

St. Joseph, Mo., April 9, 1914.

Allen Brothers, Paw Paw, Michigan.

Gentlemen:—Plants received the 7th in good shape. Thanks for the present. You will hear from me later. Yours truly,

R. R. No. 3, Box 83.

J. W. KATES,

Kalamazoo, Mich., April 25, 1914.

Allen Brothers, Paw Paw, Michigan.

Gentlemen:—Plants received yesterday in fine shape, never had any better. Thanking you for your promptness and for the extras, I remain

Sincerely,

J. B. BIRCHARD.

Lapper, Mich., May 12, 1914.

Allen Brothers, Paw Paw, Michigan.

Gentlemen:—Received strawberry plants in good condition and they are doing fine.

Yours truly,

G. C. HORTON.

Homer, Mich., April 25, 1914.

Allen Brothers, Paw Paw, Michigan.

Gentlemen:—Received the plants all O. K. today. Thanks for same. Also many thanks for the extra bunch as a present. The plants seem to be extra fine and fresh, and I don't intend to lose one of them. Yours truly,

C. W. HATCH.

Port Austin, Mich., May 12, 1914.

Allen Brothers, Paw Paw, Michigan.

Gentlemen:—The plants I bought of you reached me all O. K. and in fine shape, and in reply will say that they were the best plants I ever bought. Yours very truly,

JOHN DISCHER.

These Varieties Are Well Tested

For those that have not tested strawberries in their soils we will say that the following varieties have proven good over a large territory, and we think you will be well pleased with any or all of them if you have not tested varieties in your soil that have proven good.

Early—August Luther or St. Louis.

Medium—Pocomoke, Uncle Jim, Senator Dunlap, Warfield.

Late—Wm. Belt, Aroma, Sample, Stevens' Late Champion, Gandy.

Hereford Cattle for Profit

As a grazer there is no breed of cattle which approaches the Hereford, and their ability to fatten on grass diet of their own gleanings is a characteristic which appeals to all who are looking for the most economical method of producing beef.

Extremes of weather which will cause other cattle to seek shelter or shade does not deter the Hereford from eating his fill; and the contrast, after an unfavorable season, between the Hereford and other breeds is very marked.

The Hereford can be fattened at any age with equal rapidity. Whether baby beef or a more mature product is desired, the Hereford will satisfactorily meet all requirements. They naturally mature early, from twenty to thirty months being the time requisite to produce beef of from 1,300 to 1,800 pounds, which will top any market in the land.

The impressiveness of the Hereford sire when used on scrubs or native cattle is a quality which recommends itself to breeders of every section. There is no bull of any breed which approaches the Hereford in this respect; and to his ability to transmit his own good qualities is due his increasing popularity.

The Hereford color, coat and markings are all ideal, and are transmitted by the sire to his offspring, making a uniform bunch of animals which will instantly attract the buyer.

No hot-house pampering is required to fit the Hereford steer for market. There is nothing ca-



precious about his appetite and all that is necessary is to give him a chance at the feed trough.

The Hereford bull is of a mild, even temperament, not in the least excitable or cross.

A good bull properly cared for will easily sire 100 calves per year. A good grade calf by a registered Hereford bull will easily bring \$5.00 a head more than the ordinary farm calf. The Michigan experimental station by test say they will bring \$10.00 more at 12 months old, which means that a Hereford bull earns \$500.00 per year more for any farmer or locality than an ordinary bull.

These cattle have been tried and tested from Northern Canada to tropic Cuba, and have, in every case, proved adaptable to climatic conditions and superior to other beef breeds as profitable meat producers.

Seventy-five per cent of all prizes offered at the big Live Stock Expositions in the last five years, for feeder cattle (all breeds competing), have been won by Herefords.

Our herd of Hereford cattle represents as good as the land affords and is comprised of individuals of choice selection and high breeding.

We have represented in our herd the blood of such sires as Perfection Fairfax, Prime Lad 9th, Dale, Wabash and others. We have at the head of our herd a grandson of Prime Lad 9th, and also a grandson of Dale.

At the present time we have several head, both males and females, that are for sale. Your correspondence and patronage are solicited. Any party wishing to visit the farm and inspect our cattle and hogs will find a ready welcome.

Rockford, Mich., March 3rd, 1913.

Allen Bros., Paw Paw, Mich.

Bull calf received and we are more than pleased with him. He is a dandy. Have you any heifers for sale?

Yours,

J. A. WILLIAMSON.

Sparta, Mich., Feby. 10, 1913.

Allen Bros., Paw Paw, Mich.

Dear Sir:—Bull received today and we are well pleased with him.

Yours truly,

WM. BROWN.

Bangor, Mich., April 20th, 1913.

Allen Bros., Paw Paw, Mich.

Dear Sir:—My sow, "Queen," bought of you, farrowed April 10th—eight pigs, four boars and four sows. Say, but she is a queen—just as gentle as a lamb, even at and during farrowing. Please send me certificate of breeding of sire of her pigs.

Very truly,

W. D. LOVELAND.

Eckford, Mich., May 16th, 1914.

Allen Bros., Paw Paw, Mich.

Dear Sirs:—The calf arrived all O. K., and I am very much pleased with him. Thanking you, I am,

Yours respectfully,

ALBERT E. ADAMS.

Big Poland Chinas

Our herd of Poland Chinas is headed by **Big Wonder** and **Big Defender, Jr.**, two boars of extra good quality and size.

The most of the females in our herd were sired by Happy Wilkes, a 1000-pound hog, and Jim Perfection, an 800-pound hog. We are confident we can please you if you want a hog with lots of size, bone, strength and a reasonable amount of quality—one that will fill the pork barrel with the least amount of feed in the shortest time. Our herd comprises about 100 head and we can furnish you pairs and trios not akin. We would be pleased to have you come and see our stock or write us your wants.

The Poland-China Winnings

The record made by Poland-Chinas in the barrow winnings at the International Live Stock Exposition held annually in Chicago is not equalled by that of any other breed. This is the great barrow show of the country, in fact of the world. Poland-Chinas have always been prominent in the grand championship prizes where all breeds compete, and reached their climax in 1912, winning both the grand champion pen and grand champion barrow prizes. The grand champion carcass of the 1912 show was from a hog sired by a pure-bred Poland-China boar. The Poland-China is the only breed that has won the three grand champion prizes, grand champion carcass, grand champion pen of three and grand champion single barrow. The breed has won eight grand champion prizes in the last seven years at the International.

The grand champion barrow at the St. Louis World's Fair in 1904 was a pure-bred Poland China, and was pronounced one of the greatest barrows ever shown. The breed has demonstrated its ability to successfully compete against all breeds and in the strongest competitions in barrow exhibitions, thus emphasizing the fact that no breed responds so well to the best of feed and care. Just as it has been shown to be best adapted to the general farm conditions.

Comanche, Ia., June 4th, 1914.

Allen Bros., Paw Paw, Mich.

Dear Sirs:—This is a picture of S. Dunlap Strawberries in bloom, bought of you in 1911.

Yours truly,

M. EKLAND.

Malden, Mo., April 7th, 1914.

Allen Bros., Paw Paw, Mich.

I received plants today and they were fine. Thanks for the twenty-five Pocomoke extra.

Yours truly,

WM. ABSHOR.

Price List of Strawberry Plants

Those marked "P" are pistillate and must be planted near perfect blooming varieties. 50 of a variety at 100 rates. 500 (not of several varieties) at 1000 rates. No orders for less than \$1.00 accepted.

	Price 100	Price 1000
Aroma (S)	\$.60	\$3.50
August Luther (S)60	3.00
Bederwood (S)60	3.00
Brandywine (S)60	3.50
Bubach (P)60	3.75
Bisel (P)60	3.00
Barton's Eclipse (P)60	3.25
Ben Davis (S)60	3.75
Bismarck (S)60	3.25
Clyde (S)75	4.25
Crescent (P)60	3.00
Cumberland (S)60	3.50
Dickey (S)65	4.00
Enormous (P)60	3.50
Excelsior (S)50	2.75
Enhance (S)60	3.50
Ernie (S)60	3.50
Greenville (P)60	3.50
Gandy (S)60	3.75
Glen Mary (S)60	3.75
Gibson (S)60	3.50
Haverland (P)60	3.50
Highland (P)75	5.00
Helen Gould (P)60	3.75
Johnson's Early (S)60	3.00
Jessie (S)60	3.75
Kansas (P)40	1.75
Klondike (S)60	3.50
Kittie Rice (P)60	3.50
Lovett (S)60	3.50
Marshall (S)75	4.50
Missouri (S)40	1.50
Michel's Early (S)25	1.00
Monitor (S)60	3.25
Mixed Plants60	2.50
Miller (S)50	2.50
Marie (P)60	3.50
New York (S)60	3.50
Nick Ohmre (S)60	3.50
Nettie (P)60	3.75
Norwood (P)	1.00	6.00
Parker Earle (S)80	5.00
Pocomoke (S)60	3.75
Ridgeway (S)60	3.50
Rough Rider (S)60	3.50
Sample (P)60	3.50
Splendid (S)60	3.50
Seaford (P)60	3.75
Senator Dunlap (S)60	3.00
Sharpless (S)60	3.50
St. Louis (S)65	3.50

(Price List Continued on next page.)

STRAWBERRY PRICE LIST—Continued

Stevens' Late Champion (S)60	3.50
Pride of Michigan (S) (Baldwin's)75	3.75
Pride of Michigan (S) (Kellogg's)75	3.75
Tennessee Prolific (S)60	3.25
Uncle Jim (S)75	4.00
Warfield (P)50	2.50
William Belt (S)60	3.50
Wolverton (S)60	3.50

Strawberry plants are our specialty. Our plants are free from dangerous insects and contagious plant diseases, as per the state inspector's certificate. If you buy plants of us you will get first-class plants that are free from infection. Undoubtedly you can buy cheaper plants elsewhere, but you will get in addition to the plants diseases common to strawberry plants. We know our plants will please you, and we would be pleased to receive your patronage.

Parcel Post

We will send your plants by Parcel Post or Express as you desire. In either case you can pay postage or express at your end.

Number of Plants Required to Set an Acre of Strawberries

42-inch rows, set 15 inches apart in row,	9,953
48-inch rows, set 15 inches apart in row,	8,712
36-inch rows, set 18 inches apart in row,	9,080
42-inch rows, set 18 inches apart in row,	8,297
48-inch rows, set 18 inches apart in row,	7,260
36-inch rows, set 24 inches apart in row,	7,260
42-inch rows, set 24 inches apart in row,	6,223
48-inch rows, set 24 inches apart in row,	5,445
24-inch rows, set 30 inches apart in row,	8,712
30-inch rows, set 30 inches apart in row,	6,969
36-inch rows, set 30 inches apart in row,	5,308
42-inch rows, set 30 inches apart in row,	4,976
48-inch rows, set 30 inches apart in row,	4,356

Profits in Growing Strawberries

We believe there is no crop grown that can be as profitable as strawberries. Any one growing only one-half to five acres for market can easily realize \$100 to \$500 per acre clear profit per year. It depends a good deal on the individual. We can cite you to scores of growers that their strawberries net them \$200 and \$300 per acre. Large acreage cannot be handled so successfully. Strawberries are like any other crop, some years they are more profitable than others. The small grower, who lives near a good town of 500 to 5,000 inhabitants, can grow one to five acres easily with large profits to himself, to say nothing of the pleasure. Of course, if you have no love for the work, do not begin, but if you like outdoor work and plenty of it combined with business, plant strawberries and health, wealth and happiness will be yours.

REFERENCES

Paw Paw Savings Bank,
Paw Paw, Mich.

We unhesitatingly recommend Allen Bros. as experienced propagators of strawberry plants, perfectly responsible and reliable. We believe that any stock purchased of them will be found as represented.

Our business relations with them have been entirely satisfactory through the many years they have been dealing with us.

We take great pleasure in recommending them to any one desiring to purchase anything in their line.

Very respectfully yours,

J. W. FREE.

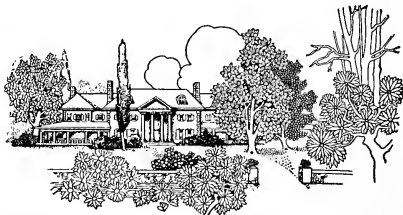
President Paw Paw Savings Bank.

People's State Bank,
Bloomington, Mich.

We take pleasure in recommending to the business public Allen Brothers of Glendale, Michigan, who are extensive growers and shippers of strawberry plants, thoroughly reliable and upright in all business matters, by careful attention to the details of their business it has grown to large proportions, and we are sure that all orders will be filled to the satisfaction of every patron.

Yours respectfully,

ELLIS SIMMONS, Cashier.



DO not fail to read about our Special Collection offers on page 14. It will surely be to your advantage.

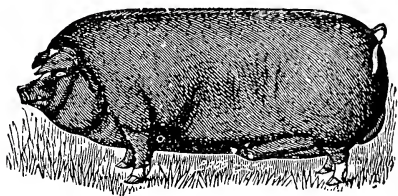
We have some exceptional values to offer you in strawberry plants covering the entire season.

THE fall bearing strawberry has come to stay—read about them on page 3 of this catalog.

Our fall bearers produce great quantities of fruit until late in the fall and will make you net big profits. Get started this spring.



Breeders of
Hereford Cattle
and
Poland China Hogs



ALLEN BROS.
PAW PAW, MICHIGAN