

## **Historic, Archive Document**

Do not assume content reflects current scientific knowledge, policies, or practices.

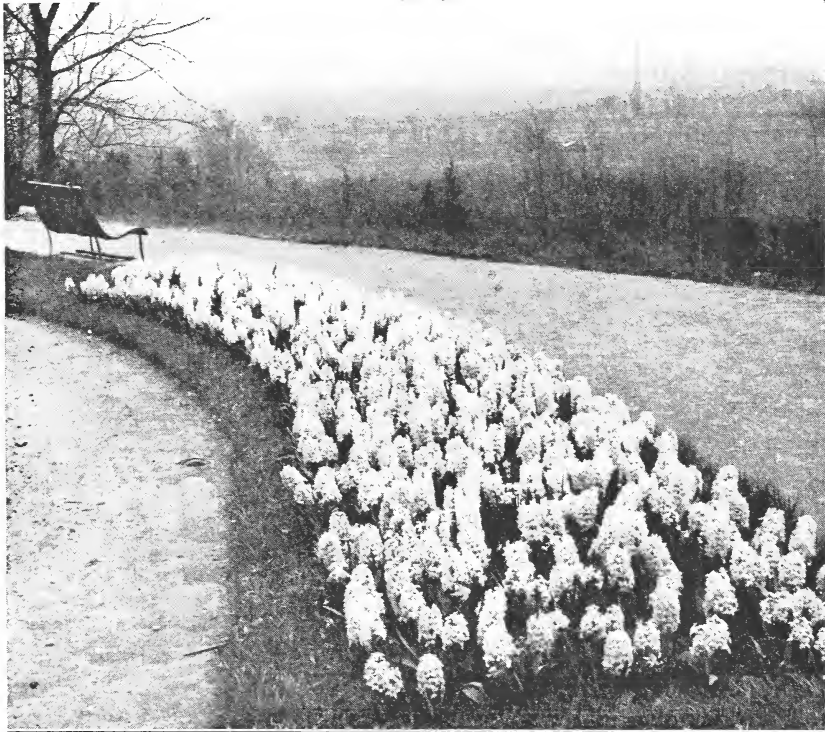


*W. J. Moyle*

1914

# WISCONSIN NURSERIES

Twelfth Annual Catalogue



Spring's Greeting

## FRUIT TREES

And General Nursery Stock

W. J. MOYLE, Prop.

UNION GROVE, WIS.



Plants For Everybody

## Announcement

To our many Friends:

We are glad to announce that never in the history of our business have we had such a favorable growing season, as the summer of 1913. We are well supplied with a splendid line of stock for this spring's business.

Our assortment is large; our prices are right; and as in the past, your orders will have our very best attention, so let them come.

## Conditions and Terms

**Order at Once.**—Make sure of getting what you want by ordering early. If you are short of funds now, send one-third cash with order, and we will hold stock; and balance can be remitted later, before shipping season.

**Terms Cash**, or part cash with order; and balance as above stated. **The Prices** given in this Catalogue are for quantities named, but five will be sent at the ten rate, 50 at the 100 rate, 500 at the 1,000 rate.

**Shipping.** We make no charge for packing, boxing, etc., and all stock is delivered to forwarders in good order, properly labeled and correctly packed. Freight and express charges are in all cases paid by the purchaser.

**Special Low Express Rates** are granted by all express companies on shipments of plants, about 20 per cent less than merchandise rates.

**Complaints**, if any, must be made at once upon receipt of stock, and if just, will be cheerfully rectified.

We guarantee good stock, good packing, prompt shipment.

While we exercise the greatest care to have all stock genuine, we do not give any warranty, and in case of any error on our part it is mutually agreed that we shall not at any time be held responsible for a greater amount than the original price of goods.

When any variety is exhausted we reserve the right to substitute, or to put in a smaller grade of trees, unless otherwise stated in order.

**Reference.** State Bank, Union Grove, Wisconsin.

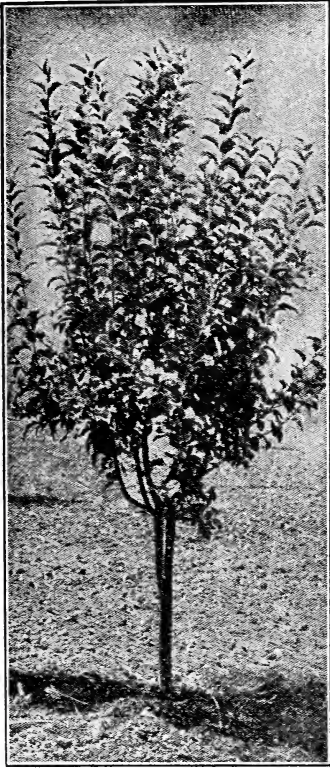
# WISCONSIN NURSERIES

## Union Grove, Wisconsin

# A P P L E S

	Each	10	100
4 to 6 feet.....	20c	\$1.75	\$16.00
3 to 4 feet.....	15c	1.25	12.00

Those starred \* are the hardiest kinds.



## Summer Apples

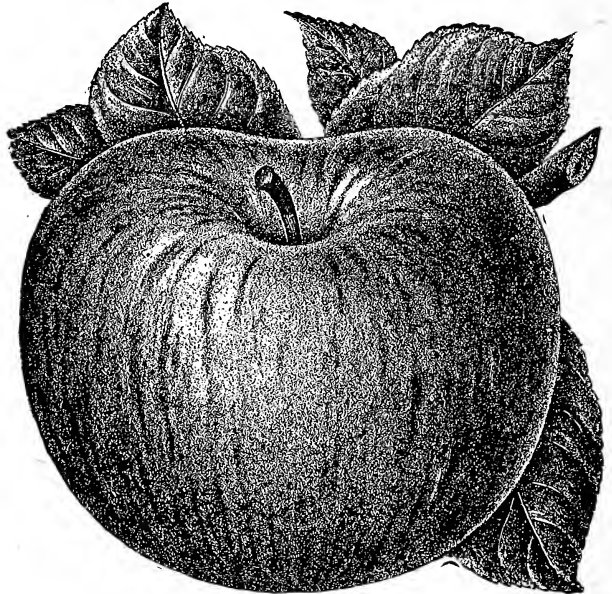
- ✓ \***Red Astrachan**—Large, beautiful deep crimson. Valuable for market.
- ✓ \***Tetofsky**—Medium, yellow striped red, fine for eating.
- ✓ **Golden Sweet**—Large, pale yellow, tender, sweet.
- ✓ **Sops of Wine**—Medium, dark crimson, sweet.
- ✓ \***Yellow Transparent**—Earliest and best; white, tender, juicy, sprightly, sub-acid.
- ✓ \***Lievlund Raspberry**—Russian origin; clear white, shaded crimson; most beautiful apple; flesh white, hardy, long lived. Ideal for home use. Fruit of fine quality.
- ✓ \***Duchess of Oldenburg**—Good size, yellow, streaked red, juicy, rich, sub-acid, productive.
- ✓ **Red June**—Medium, oblong, hardy and productive; deep red color; rich, spicy, sub-acid.

## Autumn Apples

- ✓ **Autumn Strawberry**—Tender, juicy, productive.
- ✓ **Alexander**—A large, beautiful red apple.
- ✓ **Fall Orange**—Fruit large to very large, deep yellow and covered with small black dots; excellent quality. Tree a free grower and very productive.
- ✓ \***Longfield**—A Russian variety and one of the best. Tree a strong grower and an early, abundant and annual bearer.
- ✓ \***Patten's Greening**—Large, round, slightly flattened, yellowish green with bronze blush, sub-acid. Very hardy.
- ✓ **St. Lawrence**—Large, streaked red and greenish yellow; fine quality. Tree hardy.
- ✓ \***Wolf River**—Large, handsome; yellow shaded and striped red, juicy, pleasant spicy flavor, very hardy.
- ✓ \***McMahon**—Large, round, almost white with faint blush; tree vigorous grower and hardy as a crab; bears young and abundantly.
- ✓ \***Dudley, or North Star**—Originated in Maine. Tree thrifty, perfectly hardy; a good cropper. Fruit, size and appearance of Duchess, but more solid and richer flavor; a few weeks later than Duchess.
- ✓ \***Wealthy**—Originated in Minnesota. Hardy, vigorous and very productive.

# Winter Apples

- ✓ **Ben Davis**—Large, handsome, striped, valuable.
- ✓ **Delicious**—Good size, fine quality. Tree good grower and hardy.
- ✓ **Grimes' Golden**—Good size, yellow, of highest quality, very productive.
- ✓ **Golden Russet**—Medium, dull russet, crisp, juicy.
- ✓ **Gano**—An improved Ben Davis, nearly covered with deep, dark red.
- ✓ **Fameuse**—(Snow)—Medium, deep crimson, flesh white, of best quality.
- ✓ **\*Hibernal**—Russian, large showy fruit, striped red.
- ✓ **Wismer**—A valuable apple much like Fameuse, with larger fruit, tree more hardy.
- ✓ **Jonathan**—Medium, red, extra quality.
- ✓ **Pewaukee**—A hardy winter apple, good grower and keeper.
- ✓ **McIntosh**—Medium size, dark red, good quality, juicy, sub-acid.
- ✓ **\*Northwestern Greening**—Hardy, yellow rich, of good size, extra long keeper.
- ✓ **Northern Spy**—Large, striped, mild, sub-acid and tender, with a rich, delicious flavor.
- ✓ **Salome**—Long keeper, annual bearer, medium and uniform size; good quality.
- ✓ **\*Scott Winter**—Hardy and vigorous; bright red; crisp, spicy; and of a brisk acidity, long keeper.
- ✓ **Seek - No - Further** — (Westfield)—Medium to large, round, striped with dull red, russet dots; fine grain, tender, rich and excellent.
- ✓ **\*Talman Sweet**—Medium, yellow, rich. Good keeper.



WEALTHY, THE KING OF APPLES.

- ✓ **Utter**—Large, yellow and red; fine quality.
  - ✓ **Malinda**—A fine hardy sweet apple; keeps all winter.
  - ✓ **Windsor**—Medium, oblate, slightly conical, light greenish yellow covered with marbled dull red and russet, fine grained, spicy, sub-acid. Very good.
- We can also supply Yellow Bellflower, Rome Beauty, Plum Cider, Banana and Pound Sweet. 3 to 4 ft. trees at 20c each; \$1.75 for 10.

	<b>CRAB APPLES</b>	Each	10	100
4 to 6 feet .....		20c	\$1.75	\$16.00

Perfectly hardy, succeed everywhere, early and annual bearers.

- ✓ **Hyslop**—Large, deep crimson; one of the most beautiful; very popular.
- ✓ **Martha**—Beautiful, glossy, yellow, shaded bright red, good size; mild, clear, tart.
- ✓ **Florence**—One of the best crabs to plant. It is early and red, good size plant. It is early and bears well. Fruit is large and of good quality. Originated in Minnesota. Tree is very hardy.
- ✓ **\*Sweet Russet**—Large, roundish oblong, greenish yellow, mild, sweet.
- ✓ **Transcendant**—Immensely productive, bright red, one of the most popular.
- ✓ **Whitney**—One of the largest, glossy green, splashed carmine, firm, juicy, pleasant, great bearer. Fine to eat out of hand.

# P E A R S

	Each	10	100
Standard, 4 to 6 feet .....	25c	\$2.25	\$20.00
Standard, 3 to 4 feet .....	20c	1.75	18.00
Dwarf, 3 to 4 feet .....	20c	1.75	18.00

Dwarfs, Duchess, Howell, Seckel, Tyson, Flemish Beauty.

✓ **Bartlett**—Large, buttery, juicy, high flavored, great bearer; very popular.

✓ **Clapp's Favorite**—Very large, yellow and red, with russet specks, melting, rich.

✓ **Tyson**—Medium, melting, juicy, good.

✓ **Duchesse**—Very large, buttery, rich, juicy, excellent. It succeeds to perfection, and is the most popular market variety as a dwarf.

✓ **Howell**—Large, yellow, with red cheek, rich, sweet, melting, early bearer, productive.

✓ **Flemish Beauty**—Large, juicy, rich; one of the hardiest and most popular.

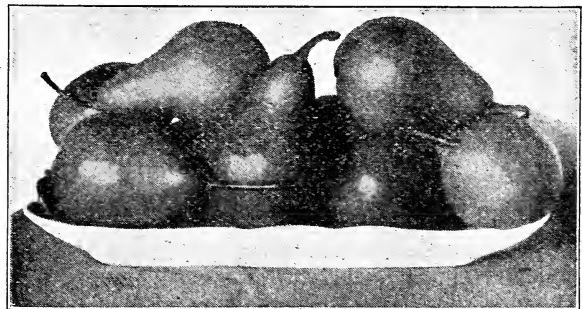
✓ **Clairgeau**—Its large size, early bearing, productiveness and great beauty make this one of the most valuable market sorts.

✓ **Seckel**—Small, skin rich yellowish brown, when fully ripe, with deep brownish red cheek; flesh very fine grained, sweet, exceedingly juicy, melting, buttery, one of the richest and highest flavored pears known.

✓ **Anjou**—Large, buttery, melting, rich vinous. The best late fall and early winter variety.

✓ **Sheldon**—Medium size; yellow, with a richly shaded cheek; flesh a little coarse, melting, juicy, with a very brisk, vinous, highly perfumed flavor; of first quality. Tree vigorous, erect and handsome, hardy and productive.

✓ **Keiffer**—Its large size, handsome appearance and remarkable keeping and shipping qualities make it exceedingly profitable for market.



**HOWELL PEAR.**  
A Hardy, Early and Abundant Bearer.

# C H E R R I E S

	Each	10	100
4 to 6 feet.....	25c	\$2.25	\$20.00
3 to 4 feet.....	20c	1.75	17.00



**EARLY RICHMOND.**  
The Best Cherry for the Home Orchard.

✓ **\*Early Richmond**—An early variety of extreme hardiness, bearing large annual crops of medium sized fruit, light to dark red, very juicy.

✓ **English Morello**—Large, dark red, juicy, tree somewhat dwarf in growth.

✓ **\*Napoleon**—Large, pale yellow or red; firm, juicy, sweet and productive.

✓ **Oestheimer**—Large, heart shaped, nearly black when ripe; juicy and rich.

✓ **Dyehouse**—A very early and sure bearer; ripens a week before Early Richmond.

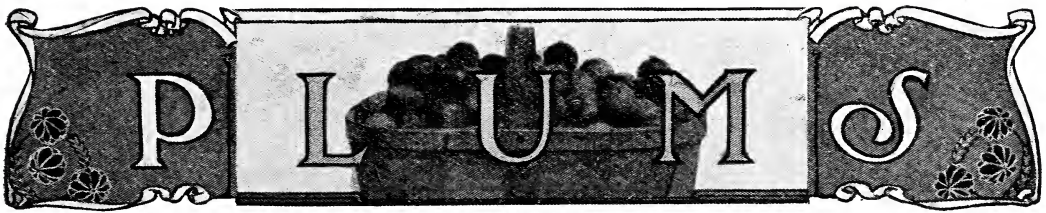
✓ **\*Black Tartarian**—Very large, black, juicy, rich, excellent, productive.

✓ **Dikeman**—From Northern Michigan. The original tree has attained large size and is still producing immense crops; fruit large, black, firm, of excellent quality; fine keeper and shipper; the latest of all sweet cherries.

✓ **\*Montmorency**—Large, bright crimson, very juicy, strong, upright grower and one of the best late varieties.

✓ **Elkhorn**—Very large; black; flesh firm, juicy and good. Tree vigorous, hardy and a great bearer. July.





	Each	10	100
4 to 6 feet.....	25c	\$2.25	\$20.00
3 to 4 feet.....	20c	1.75	17.00

- ✓ **Bradshaw**—Large, dark red, flesh green, juicy, productive, fine for market.
- ✓ **German Prune**—Large, dark purple, good.
- ✓ **Lombard**—Medium, violet red, juicy, good, hardy, and productive, the leading market variety.
- ✓ **Moore's Arctic**—Small, purplish-black, juicy, sweet; immense bearer; one of the hardiest in bud and bloom.
- ✓ **Reine Claude**—(Bavey's Green Gage)—Very large, greenish, fine flavor.
- ✓ **De Soto**—The fruit is of medium size, dappled red and yellow, ripening in September, and is firm, sweet and juicy. The tree is hardy and productive. Good for general planting and market purposes.
- ✓ **Forest Garden**—The fruit is very large and round, purplish-red, mottled with yellow, juicy, sweet and rich. The tree is clean, healthy, vigorous and productive.
- ✓ **Hammer**—Of large size, firm, juicy and delicious. Tree is a good strong grower.
- ✓ **Hawkeye**—The tree is hardy, thrifty and an annual bearer. The fruit is large, light in color, mottled with red, of superior quality, very firm and an excellent shipper. It ripens in September.
- ✓ **Rockford**—The fruit is reddish purple and of medium size. Quality good. Great bearer.
- ✓ **Surprise**—The tree is a strong, upright grower, withstanding the most severe winters without injury. The fruit is large, deep red in color, and has good keeping qualities. The flesh is very firm and of an excellent flavor.
- ✓ **Red June**—Recommended as "by all odds the best Japanese plum, ripening before Abundance." One of the vigorous, upright growers; productive; fair size, vermilion red, pleasant quality.

## Peaches

	Each	10	100
4 to 5 feet .....	20c	\$1.75	\$17.00

- ✓ **Crawford's Early**—A magnificent large yellow peach of good quality. Early in September.
- ✓ **Crawford's Late**—A superb, large yellow peach. One of the best. Last of September.
- ✓ **Crosby**—One of the hardiest, abundant bearer; medium size, bright yellow, fine quality. Middle of September.
- ✓ **Champion**—A large, handsome early variety, creamy white with red cheek, sweet, rich and juicy. Hardy and productive. August.
- ✓ **Elberta**—Large, yellow, with red cheek; flesh yellow, firm, juicy. Exceedingly prolific, sure bearer and hardy. The leading market variety. Follows Early Crawford.

# SMALL FRUITS

## Gooseberries

	Each	10	100
Houghton and Downing .....	10c	\$ .80	\$ 7.00
Chautauqua, Carrie .....	15c	1.25	10.00

✓ **Downing**—Large size, oval, greenish-white; plant very vigorous and hardy, with stiff, strong shoots; foliage heavy, covering the fruit from the sun, and resisting mildew; bears most abundantly and is profitable for market and home use.

✓ **Houghton's Seedling**—A vigorous American sort; very productive; free from mildew. Fruit medium, roundish, smooth, of a pale red color; tender, sweet and of delicious flavor.

✓ **Chautauqua**—One of the most prolific large gooseberries grown. Bush strong and vigorous, berries light yellow, free from spines and hair; veined and transparent; sweet and delicious.

✓ **Carrie**—Is extremely vigorous and healthy in foliage, and promises good. Of fine quality and the most productive of all. The berries hang in clusters like grapes on the branches.

## Currants

Each 10 100  
Prices 10c 80c \$6.00

✓ **Cherry** — Berries sometimes more than half an inch in diameter, bunches short, vigorous and productive.

✓ **Fay's Prolific**—The leading market variety. Extra large stems and berries, uniform in size, easily picked, exceedingly productive.

✓ **Perfection**—A grand currant, large berry of finest quality; two weeks later in ripening than Fay. Each 15c, \$1.25 per 10, \$12 per 100.

✓ **White Grape**—Very large; yellowish white; sweet or very mild acid; excellent quality and valuable for the table. Productive.

✓ **Black Victoria**—A strong, vigorous grower, making a neat bush of unflinching productiveness; fruit of fine flavor and enormous size; the largest black in cultivation.

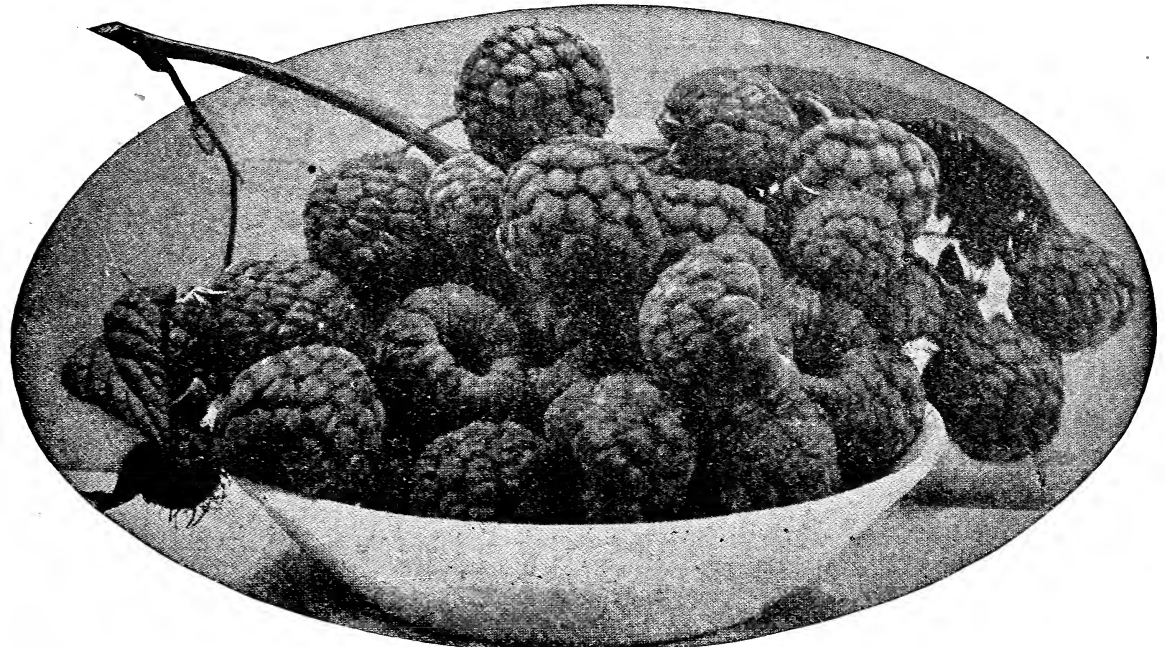


**FAY'S PROLIFIC.**  
The Best Red Currant.

# Raspberries

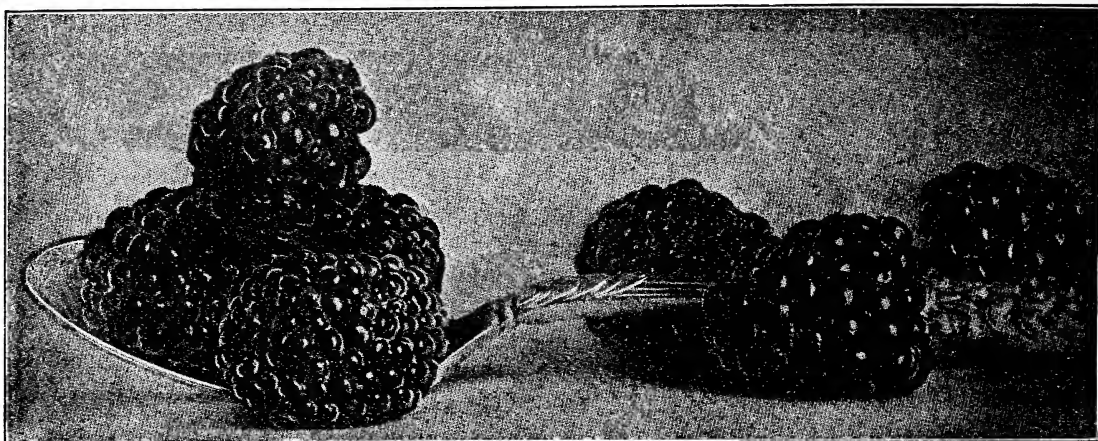
	Each	10	100
Prices .....	10c	\$ .35	\$ 2.00

- ✓ **Conrath**—A very reliable early sort, especially valuable for evaporating.
- ✓ **Cumberland**—Bush perfectly hardy; very productive; fruit enormous; quality unsurpassed. The great firmness of the berry makes it a splendid shipper, ripens just after the Palmer and before the Gregg.
- ✓ **Kansas**—Jet black, firm and delicious, as large or larger than Gregg. The hardiest black cap known, successfully withstanding the winters.
- ✓ **Columbian**—A vigorous grower; canes often ten to fifteen feet in length and over an inch in diameter. Never suckers from the roots. Very hardy, enduring 28 degrees below zero. Fruit very large, dark red, bordering on purple; adheres firmly; rich, sprightly flavor.
- ✓ **Cuthbert**—(Queen of the Market)—Large, conical; deep, rich crimson; firm; of excellent quality. A vigorous grower, entirely hardy, and immensely productive.
- ✓ **Golden Queen**—Rich golden yellow. The flavor is of the highest quality, pronounced by some superior to Brinckle's Orange. In size equal to Cuthbert; immensely productive; a very strong grower and hardy enough even for extreme northern latitudes.
- ✓ **Loudon**—Canes strong and hardy and wonderfully productive. Berries large, beautiful and of fine quality. Very desirable for home or market.
- ✓ **St. Regis Everbearing Raspberry**—Plants of St. Regis planted in early April gave ripe berries on the 20th of June of the same year. For four weeks thereafter the yield was heavy and the canes continued to produce ripe fruit freely without intermission until the middle of October. Each 10c; per 10, 50c; per 100, \$4.00



**CUTHBERT RED RASPBERRY.**  
The Most Productive.

# Blackberries



## ELDORADO BLACKBERRY.

The Hardest, Most Vigorous, and Productive of all Blackberries.

- |              |      |        |         |
|--------------|------|--------|---------|
|              | Each | 10     | 100     |
| Prices ..... | 10c  | \$ .35 | \$ 2.00 |
- ✓ **Ancient Briton**—Medium size; melting; without care. Bush hardy, and very prolific. One of the very best old sorts.
  - ✓ **Eldorado**—The vines are very vigorous and hardy, enduring the winters of the far northwest without injury, and their yield is enormous. Berries large, jet black, borne in large clusters and ripen well together; they are very sweet, melting and pleasing to the taste, have no hard core, and keep eight or ten days after picking with quality unimpaired.
  - ✓ **Mersereau**—A new berry of sterling qualities, which will doubtless become very popular as it becomes better known. Large size, good quality, hardy and productive.
  - ✓ **Snyder**—Extremely hardy; enormously productive; medium size; no hard, sour core; half as many thorns as Lawton or Kittatiny.

STILLWATER, Minn., April 30, 1913.

W. J. Moyle,

Dear Sir: Received the trees in good condition, thanking you for prompt shipment, I remain,

Yours truly,

PETER BROCHMAN.

State Fish Hatchery, BAYFIELD, Wis.

Mr. W. J. Moyle, Union Grove, Wis.

Dear Sir: The two bundles of trees, etc., at hand and I want you to know that I appreciate the way you packed them and the quality is O. K. so I will not be afraid to send to you in the future for stock.

Very truly yours,

May 6, 1913.

ROBT. L. RIPPLE, Supt.

GAGEN, Wis., Sept. 25, 1913.

Wisconsin Nurseries, Union Grove, Wis.

Gentlemen: Kindly send me one of your catalogues and price lists again. I bought some trees and plants of you last spring and I must say I am very well pleased with them, for every one of the trees and nearly all of the plants lived and are doing fine.

Yours truly,

F. H. PIEL.

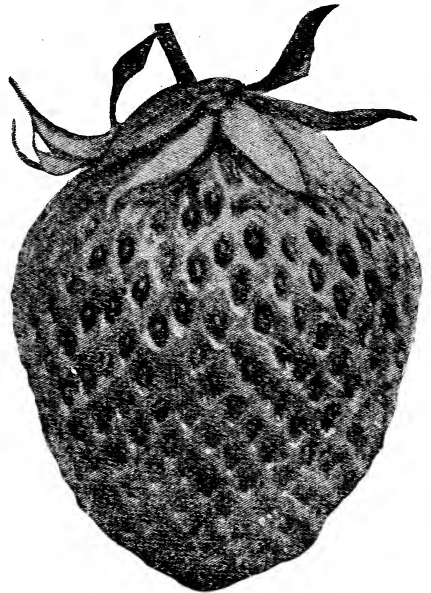
## Strawberries

La Follette, Warfield, Dunlap, Steven's Late Champion, per 10, 20c; per 100, 50c; per 1,000, \$3.00.

Bismarck, McKinley, Splendid, per 10, 20c; per 100, 50c; per 1,000, \$3.50.

NOTICE:—To parties wishing plants sent by mail add 20 cents per hundred to cover cost of postage and packing. We can ship any distance by mail and plants will arrive in fine condition.

- ✓ **La Follette**—The best plant maker, most healthy, vigorous, productive, and the best seller of forty varieties grown by us the past eight years. The farmer's berry; try it.
- ✓ **Bismarck**—Plant resembles Bubach, but more robust and stocky and a better yielder. Shape obtuse, conic, and are the heaviest, most solid berries ever produced; flavor good, season medium to late.
- ✓ **Warfield**—Imp. Medium size, roundish conical, dark red, very firm and a good shipper. A leading market variety.
- ✓ **Stevens' Late Champion**—A very late berry; berries are regular, even size and firm. Commands a big price when other varieties are running out.
- ✓ **Splendid**—Large size, good quality, and very productive. Medium to late.
- ✓ **McKinley**—Large in plant and berry; very productive and of highest quality. The best for home use.
- ✓ **Senator Dunlap**—Medium to large, conical, dark red, firm and of first quality, mid-season. A vigorous grower and usually makes too many plants for best results, unless growth is restricted. It is as productive as Warfield, berries are better colored and a third larger.



LA FOLLETTE.  
A Grand Berry for the Home Market.

## Everbearing Strawberries

- ✓ **Americus**—We think this the best; everybody should grow them.
- ✓ **Progressive**—Very popular and a good one; berries all summer.
- ✓ **Superb**—The best plant maker with lots of berries.  
Prices, per 10, 45c; per 100, \$4.00; per 1,000, \$30.00.
- ✓ **Garden Roots**—Pie plant and Horseradish, each, 10c; 10, 80c; 100, \$5.00.
- Asparagus, 20c per 10; 60c per 100; \$5.00 per 1,000.

COLMA, Wis., May 6, 1913.

Gentlemen: Received my order No. 5605, in fine condition, the 5th inst. Enclosed find \$2.20 balance due you.

Thanking you for the La Follette strawberry plants, I remain,  
Yours truly,

MRS. CLARA KNIGHT.

# Hardy Grapes

	Each	10	100
One year, first class.....	10c	\$ .80	\$ 7.00

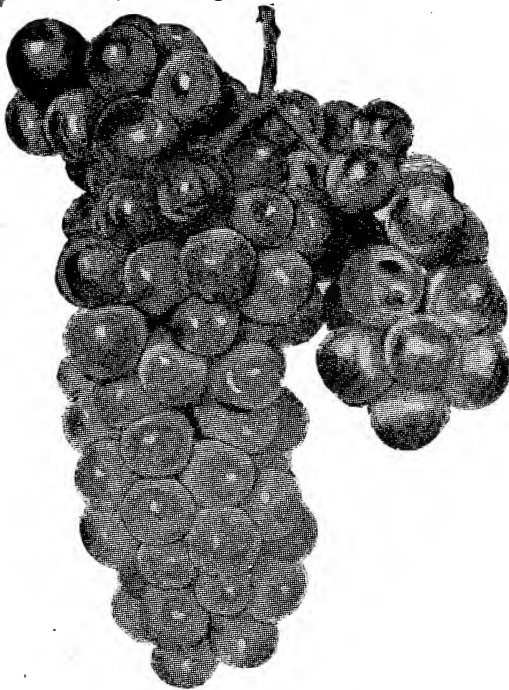
✓ **Campbell's Early**—The berries are large, often an inch or more in diameter, glossy black with a purple bloom, sweet and juicy, with few seeds. They ripen from the 15th to the last of August. As a keeper and shipper this variety is unequalled by any other American grape, while as a desert grape it is delicious.

✓ **Concord**—The well known standard variety, succeeds wherever grapes will grow.

✓ **Brighton**—Bunch large, well formed; berries above medium to large, round; excellent flavor and quality; one of the earliest in ripening.

✓ **Delaware**—Bunches small, compact, shouldered; berries rather small, round, skin thin, light red; flesh very juicy, sweet, spicy and delicious.

✓ **Lindley**—(Rogers' No. 9)—Berries medium to large, red; flesh tender, sweet and aromatic; ripens early.



MOORE'S EARLY.

✓ **Diamond**—The leading early white grape, ripening before Moore's Early. White with rich yellow tinge; juicy, few seeds, almost free from pulp, excellent quality; above medium size, adheres firmly to stem. Fine variety for both market and home garden.

✓ **Moore's Early**—Bunch large, berry large round, with heavy bloom, vine exceedingly hardy. Its earliness makes it desirable for an early market. Its hardiness particularly adapts it to Canada and northern portions of the United States.

✓ **Pocklington**—Bunch and berries large, when fully ripe a light golden yellow; juicy, tender, sweet, with little pulp. Vine thoroughly hardy, strong grower, free from mildew; productive. One of the most satisfactory white varieties.

✓ **Worden**—A splendid grape of the Concord type, larger, better quality and earlier. Vine vigorous; hardy and productive.

Hillcrest Fruit Farm, HOPKINS, Minn., April 14, 1913.

W. J. Moyle,

Dear Sir: Enclosed find order for 50 apple trees and 10 Fay's Prolific Currants. I bought 10 grape vines of you three years ago and this year took two second prizes at the Hennepin County Fair.

Yours respectfully,

C. R. COOK.

GREEN BAY, Wis., Sept. 22, 1913.

Mr. Moyle, Union Grove, Wis.

Dear Sir: One of your satisfied customers here in the city, Mr. Cleereman, has suggested that I write you asking for a copy of your catalogue. Thanking you in advance I remain,

Yours truly,

J. FRANK LEFEBVRE.



## Shade Trees

	Each	10	100
Norway Maple, 6 to 8 ft.....	\$ .35	\$3.00	\$25.00
Sugar Maple, 6 to 8 ft.....	.35	3.00	25.00
Soft Maple, 6 to 8 ft.....	.35	3.00	25.00
White Elm, 6 to 8 ft.....	.35	3.00	25.00
White Ash, 6 to 8 ft.....	.35	3.00	25.00
Linden, 6 to 8 ft.....	.35	3.00	25.00
Black Locust, 6 to 8 ft.....	.35	3.00	25.00
Catalpa, 6 to 8 ft.....	.35	3.00	25.00
Mountain Ash, 6 to 8 ft.....	.35	3.00	25.00
Poplar, Carolina, 6 to 8 ft.....	.35	3.00	25.00
Poplar, Lombardy, 6 to 8 ft.....	.35	3.00	25.00
Box Elder, 6 to 8 ft.....	.35	3.00	25.00
Horse Chestnut, 4 to 5 ft.....	.35	3.00	25.00
White Elm, 4 to 5 ft.....	.10	.80	6.00
Soft Maple, 4 to 5 ft.....	.10	.80	6.00
White Ash, 4 to 5 ft.....	.10	.80	6.00
Sugar Maple, 4 to 5 ft.....	.10	.80	6.00
Black Walnut, 4 to 5 ft.....	.25	2.00	15.00
Butternut, 4 to 5 ft.....	.25	2.00	15.00
Golden Willow, 4 to 5 ft.....	.25	2.00	15.00
Red Oak, 4 to 5 ft.....	.25	2.00	15.00
Norway Poplar, 4 to 5 ft.....	.25	2.00	15.00
Russian Mulberry, 4 to 5 ft.....	.25	2.00	15.00
Scarlet Thorn, 4 to 5 ft.....	.25	2.00	15.00
Sycamore, 4 to 5 ft.....	.25	3.00	15.00
Tulip Tree, 4 to 5 ft.....	.25	2.00	15.00
Box Elder, 4 to 5 ft.....	.25	2.00	15.00

## WEeping TREES

Cut-leaf Birch, 5 to 6 ft.....	.75	5.00	—
Mountain Ash, 5 to 6 ft.....	1.00	8.00	—
Elm, Camperdown, 5 to 6 ft.....	1.00	8.00	—
Mulberry, Teas', 5 to 6 ft.....	.75	5.00	—
Willow, Kilmarnock, 5 to 6 ft.....	.75	5.00	—

MISHICOTT, Wis., January 20, 1913.

Wisconsin Nurseries, Union Grove, Wis.

Gentlemen: Kindly mail me a copy of your 1913 catalogue, as I was more than pleased with order I received of you two years ago.

Yours truly, JAS. A. JOHANEK.

CEDAR GROVE, Wis., Jan. 29, 1913.

W. J. Moyle.

Dear Sir: I am more than pleased with shrubs and flowers received of you last spring. Kindly mail me a few extra catalogues as some of my neighbors wish to send for stock together with me.

Yours truly,  
FERDINAND MEENGs.

## Evergreens

	Each	10	100
Norway Spruce, transplanted, 1 foot...\$	.15	\$1.20	\$10.00
Arbor Vitae, transplanted, 1 foot....	.15	1.20	10.00
Scotch Pine, transplanted, 1 foot...	.15	1.20	10.00
Colorado Blue Spruce, transplanted, 1 ft.	.25	2.25	20.00
Norway Spruce Seedlings, 6 to 8 inches	.	.25	2.00
Arbor Vitae Seedlings, 6 to 8 inches		.25	2.00
Scotch Pine Seedlings, 6 to 8 inches		.25	2.00

## Climbing Vines

**Varieties**—Virginia Creeper, Trumpet Creeper, Scarlet Honeysuckle, Purple Wisteria. Each 15c; per 10, \$1.25; per 100, \$12.00.

### LARGE-FLOWERING CLEMATIS.

Price for strong two-year roots, 25 cents each; \$2.00 per dozen; \$15.00 per hundred.

**Duchess of Edinburgh**—This is without doubt the best of the double whites. Very free flowering, very fragrant.

**Jackmanii**—From four to six inches in diameter, intense violet-purple, with a rich velvety appearance and distinctly veined. The best.

**Bangholm Belle**—Flowers are large, six to nine inches in diameter. Pure white. One of the best.

**Ville de Lyon**—This beautiful Clematis is much sought after, but is very scarce. The color is a bright rosy-red, entirely distinct from any other sort. A grand variety.

**Gipsy Queen**—A unique shade in Clematis. A pretty lavender-pink, a fine contrast to the strong-colored sorts. Rapid in growth and slender, graceful habit.

**Sieboldii**—Lovely shade of lavender. Very beautiful; distinct.

**Paniculata**—Small white flowers late in the summer.



COLORADO BLUE SPRUCE.

LETCHER, S. D., April 20, 1913.

Wisconsin Nurseries, Union Grove, Wis.

Gentlemen: Last year I had 30 roses and some other plants from your Nurseries and was so well pleased with them that I want to try a few more this year.

Yours truly, H. E. MAYHEW.

RACINE, Wis., April 15, 1913.

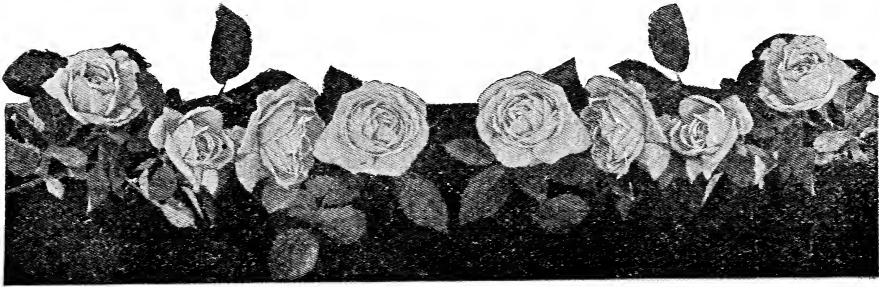
Wisconsin Nurseries, Union Grove, Wis.

Gentlemen: My neighbor, Mr. Fred Jonas, has recommended your Nurseries to me, therefor this order. He seems highly satisfied with your goods and I am hoping to say the same.

Yours very truly,

W. J. JANDL.





## Roses

Good strong field-grown bushes that will bloom nicely the first summer.

	Each	10	100
Prices .....	.20	\$1.75	\$16.00

**Alfred Colcomb**—Brilliant carmine-crimson; very large, full and globular shaped; very fragrant and a superb rose.

**Anne de Diesbach**—Beautiful shade of carmine; very large and fragrant; quite hardy and a good forcing rose.

**Baron de Bonstetten**—Rich, velvety maroon, large and full; a splendid sort.

**Frau Karl Druschki**—Very large, perfect form and snow white; a vigorous grower and a free bloomer.

**General Jacqueminot**—One of the most popular of the red roses; brilliant crimson, large and very effective, very fragrant and one of the hardiest.

**Magna Charta**—Extra large and full, bright rosy-pink; a profuse bloomer and very hardy.

**Madame Gabriel Luizet**—Rich, soft pink with deep flesh colored center; large, full and sweet.

**Mme. Charles Wood**—Very bright rich cherry-red; early; profuse bloomer.

**Marchioness of Londonderry**—Extra large, ivory white; free flowering, very vigorous and hardy, delightfully fragrant; one of the best white sorts.

**Margaret Dickson**—Beautiful form, white with pale flesh center; petals very large; fragrant.

**Marie Bauman**—Brilliant carmine-crimson, large, full and very fragrant; extra fine.

**Conrad Ferdinand Meyer**—Extra large, full deep pink; a free bloomer, very handsome, and extremely hardy.

**Mrs. John Laing**—Soft pink, beautiful form, exceedingly fragrant and very free flowering.

**Mrs. R. G. Sharman-Crawford**—Deep, rosy pink, very double and full; vigorous and a free bloomer.

**Paul Neyron**—Said to be the largest rose in cultivation; bright, clear pink, very fragrant, hardy and a strong grower.

**Prince Camille de Rohan**—Very dark, velvety crimson, almost black, large and full; a beautiful sort.

**Moss Roses**—Blanche Moreau, Crimson Globe, Princess Adelaide, Blanche Roberts, Rosa Rugosa, red and white.

**Climbing Roses**—Crimson Rambler, Empress of China, Prairie Queen, Yellow Rambler, Baltimore Belle, Seven Sisters, Russell Cottage, Dorothy Perkins, Philadelphia Rambler.

PLEASANT PRAIRIE, Wis., March 18, 1913.

Wisconsin Nurseries, Union Grove, Wis.

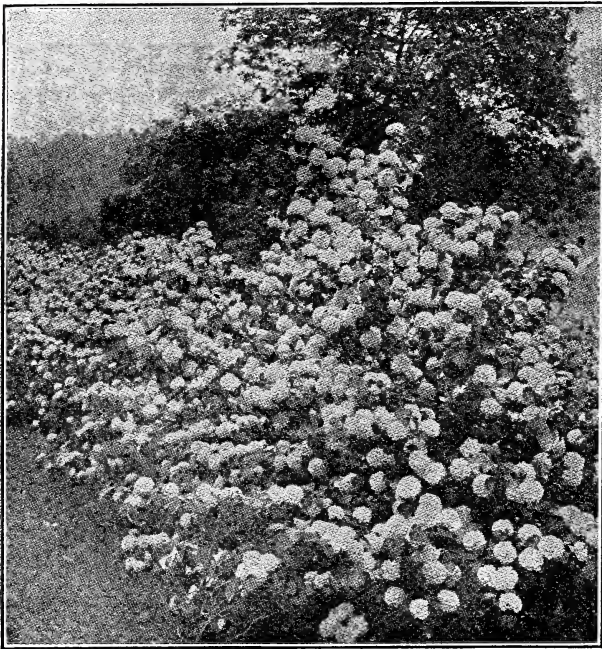
Dear Sirs: The nursery stock I received of you two years ago pleased me very much.

Yours truly, C. LINDBLOM.

# Hardy Ornamental Shrubs

All good bushes from 1 to 2½ feet, prices.....

Each	10	100
15c	\$1.40	\$12.50



COMMON SNOWBALL.

**Flowering Almond**—Pretty double pink flowers in early spring.

**Barberry Purple**—Wine colored foliage all summer and fall.

**Barberry Thunbergii**—Dwarf grower, bright red berries.

**Deutzia Gracilis**—Pure white fragrant flowers.

**Dogwood**—Red bark, pretty in winter.

**Flowering Currant**—Sweet scented blossoms in early spring.

**Golden Elder**—Yellow foliage, very attractive.

**Hardy Hydrangea**—Blooms late in fall.

**Lilac**—Common—Fragrant single lilac colored flowers.

**Lilac**—White—Pure waxy white.

**Lilac**—Chas the Xth—Enormous, purplish red blooms.

**Lilac**—Pres. Loubert—A fine double sort, color sky blue.

**Lilac**—Lamark—Double, color porcelain blue.

**Spirea Van Houttii**—Briday wreath—white flowers in May.

**Japan Quince**—Brilliant scarlet flowers in early spring.

**Snowball**—Large clusters of blossoms in June.

**Snowberry**—Pink flowers with red and white berries in the fall.

**Wiegelia**—Rosea—Pink flowers in June.

**Wiegelia**—Florabunda—Flowers dark crimson.

**Honey Suckle Tartarian**—Pink blossoms sweet-scented.

**Syringea**—(Mock Orange)—Flowers large, sweet and pure white.

CORLISS, Wis., March 13, 1913.

Gentlemen: The nursery stock I received from you last year is doing fine and I hope to give you a larger order next year.

Please send the trees the first part of April if convenient.

Yours truly,

JONATHAN PARSONS.

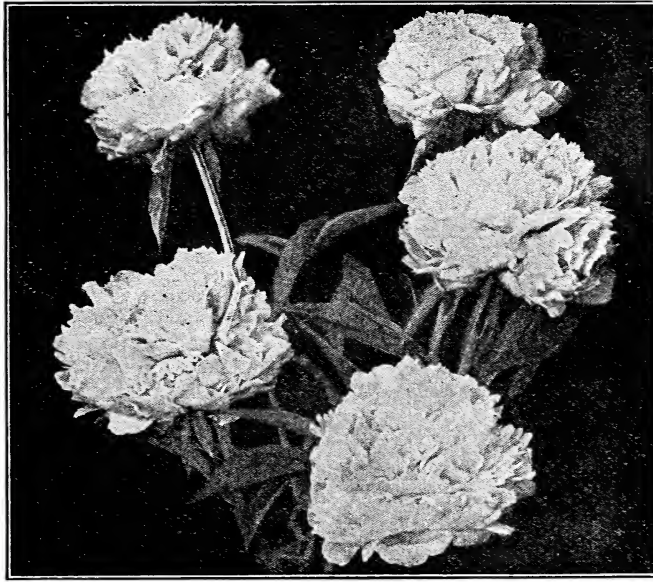
SOLDIERS GROVE, Wis., Feb. 24, 1913.

Wisconsin Nurseries, Union Grove, Wis.

Gentlemen: Will you please send me your catalogue, the trees I bought of you are all right as I only lost four out of 65.

I remain,

EMERSON COOK.



BARRELOT.

## Paeonies

We have a very fine collection of this noble flower, and invite your especial attention to our very low prices, on good strong roots of the following named sorts at 20c each; \$1.25 per 10; \$12.00 per 100.

**Medusa**—Purple, sweet scented, fine.

**Bramwell**—Soft, silvery pink, very fragrant.

**Humeii**—Very late, large varnished pink, sweet scented.

**Lucy Mallard**—Guard petals purple, center salmon pink, charming.

**Grandiflora Rubra**—Very late and large, blood red.

**Golden Harvest**—Fine yellow, blush guard petals.

**Rubra Triumphans**—Rich, glowing crimson.

**Barrelot**—Very large, late, bluish pink.

**Brennis**—Brilliant, vivid scarlet.

**La Esperance**—Early, delicate pink, sweet scented.

**Victoria**—White cream, scented.

The following varieties at 25c each; per 10, \$2.00; per 100, \$18.00.

**Superba Purpurea**—Dark purple, very double, one of the finest.

**Festiva Maxima**—The best white, charming.

W. J. Moyle, Union Grove, Wis.

WAUKEGAN, Ill., Oct. 11, 1913.

Dear Sir: I received my paeony roots and am very much pleased with them.

Respectfully MRS. PHIL DONEGAN.

HINDSBORO, Ill., March 13, 1913.

Wisconsin Nurseries, Union Grove, Wis.

Gentlemen: Inclosed find a small order, I have always found your stock just fine as they make the nicest growth of any I can get.

Ever so many thank MRS. M. L. DAVIS.

GREEN BAY, Wis., Oct. 2, 1913.

W. J. Moyle, Union Grove, Wis.

Dear Sir. The Paeonies I bought of you two years ago are very fine and the Roses I received of you last spring are doing nicely.

Kindly let me know if you have larger Catalpas than listed in your catalogue. The Catalpas you furnished me are now the pride of everybody.

Very truly yours,

FRANK CLEEREMANS.

## Gladioli

Extra choice named varieties, 10c each; per 10, 75c; per 100, \$6.00.

**America**—A splendid new Gladiolus. The color is a most beautiful soft pink, except slightly tinged lavender. A splendid bedding sort.

**Baron Hulot**—Rich deep indigo-blue. No collection is complete without this rare sort.

**Canary Bird**—A lemon yellow of good size and substance; one of the few satisfactory yellows.

**Columbia**—Flowers of immense size, in color, salmon-red, spotted and slightly flaked chocolate to white in throat.

**Mrs. Francis King**—A new variety which excited great comment and admiration, both for size of flower and beauty. The color of the flower is a light scarlet, of a very pleasing shade, which attracts attention at once.

**Prinseps**—A grand large flower, color brilliant scarlet-crimson, blotched white on the lower petals.

**Augusta**—Pure white with blue anthers.

**May**—White flaked rose, fine.

**Gertrude**—Bright lively pink, flecked and striped with shades of the same color, the petals lightening to the faintest blush in the throat; the markings on the lower petals are deep crimson running into a thin strip of pale lemon-yellow; plant vigorous and flowers large.

**Klondyke**—Strong, vigorous plant, blooming early; flowers round, well opened, of a clear primrose-yellow, with blotch of vivid crimson on three lower petals.

**Harvard**—The largest, and richest colored Gladiolus yet introduced. The color is a rich velvety maroon, slightly flushed dark scarlet; the flowers are truly gigantic; from 8 to 15 gigantic flowers and buds appear on one stem; 6 to 10 open flowers usually appear at the same time; flowers are open to their fullest size.

**Victory**—Color, delicate sulphur-yellow, lower petals shaded a deeper yellow.

**Golden West**—One of the best exhibition varieties on account of the variety of markings, the color being a clear orange scarlet, the lower petals striped and blotched with golden yellow faintly suffused with violet shadings.

SPARTA, Wis., May 9, 1913.

W. J. Moyle, Union Grove, Wis.

Dear Sir: My shipment of 50 trees reached me in good condition labeled as ordered and stock very satisfactory.

Yours truly,  
W. S. FREEMAN.



40,000 Apple Trees

## **Bargain Collections**

### **10 Apple Trees \$1.00**

We make a special offer to furnish ten nice little apple trees, 3 to 4 feet, for one dollar, our selection. However, we will allow you to suggest varieties you would like and if possible we will gladly send these sorts. We want every one to try one of our \$1.00 orchards as we know you will be more than pleased with the trees you get. Or we will send you ten 1-year trees, 18 to 24 inches, by mail; 25 cents must be added for postage and packing.

### **250 Strawberry Plants \$1.00**

#### **The Farmer's Strawberry Bed**

250 Strawberry plants, two different sorts, our selection, \$1.00. These plants will be freshly dug from our beds and will be sure to please. We will include in this collection five Americus Ever-bearing plants free for trial. If wanted by mail add 40c for postage and packing.

### **10 Gladiolus 50c**

**Special Offer:**—One each of America, Baron Hulot, Canary Bird, Columbia, Mrs. King, Prinseps, Augusta, Gertrude, Harvard and Golden West. We make this remarkable offer so that all of our friends can get acquainted with these beautiful varieties. If by mail add 20 cents for postage.



OPATA

## Prof. Hansen's New Plums

We have fruited these wonderful plums on our grounds and can truthfully say they are the most remarkable creations in fruits of the present day.

**Opata** is a cross between the Sand Cherry and the Gold Plum. Bears the second year, fine quality and as hardy as a willow.

**Sapa**—Much like an Ox-heart Cherry, dark flesh and juice. Fine quality; a fit companion for Opata.

Price, nice little trees 50 cents each.

P. S. We will give one of these trees free with every \$5.00 order if requested.

# WISCONSIN NURSERIES

## UNION GROVE, WISCONSIN