

## **Historic, Archive Document**

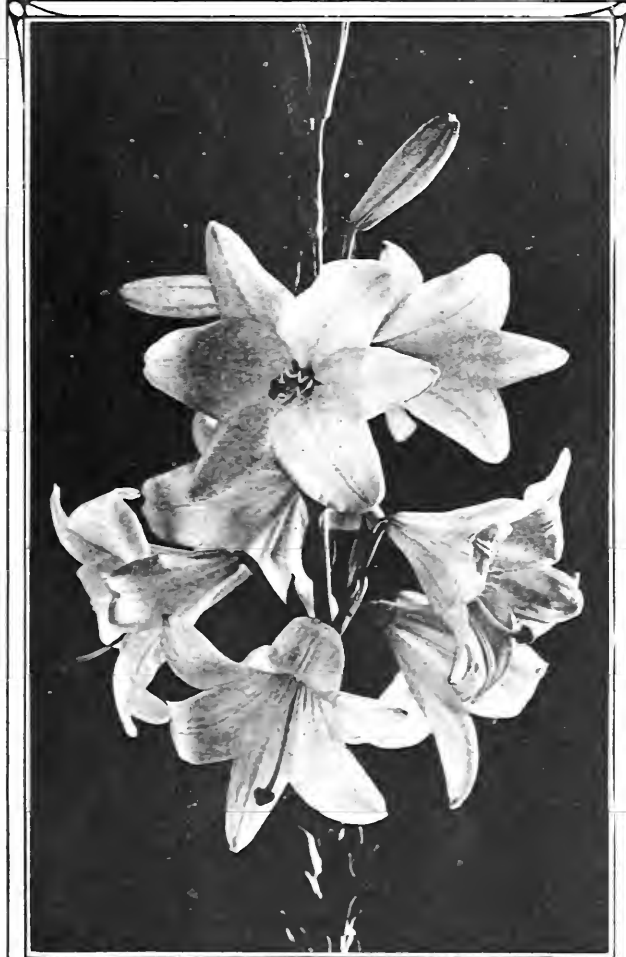
Do not assume content reflects current scientific knowledge, policies, or practices.



1223

# WINTERSON'S

# AUTUMN GARDEN GUIDE SEASON 1914

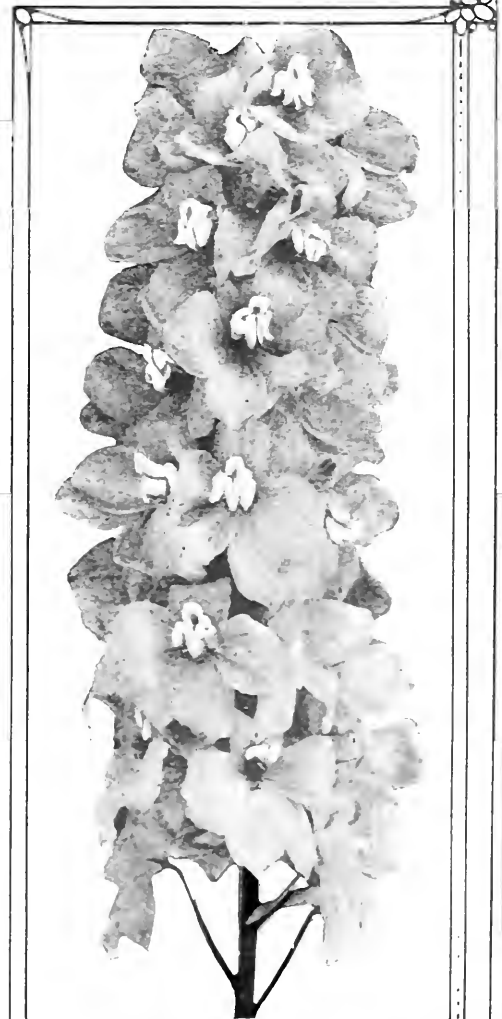


HARDY LILIUM CANDIDUM  
(or MADONNA LILY)

Hardy  
Delphinium  
"Larkspur"  
AND  
Hardy  
Lilium  
Candidum

Produce a Happy June  
Blooming Combination,  
Increasing in Value  
with Age

See Inside this Cover for  
Descriptions and Prices



HARDY DELPHINIUM  
"LARKSPUR"

**WINTERSON'S**  
166 N. WABASH AVE. (JUST NORTH OF  
RANDOLPH ST.)

**SEED STORE**  
CHICAGO, ILL.

# A Happy June Flowering Combination

## Hardy *Lilium Candidum* and Hardy Delphinium "Larkspur"

### Hardy *Lilium Candidum*

Bulbs Arrive in August

Sometimes called St. Joseph's, Madonna or Annunciation Lily

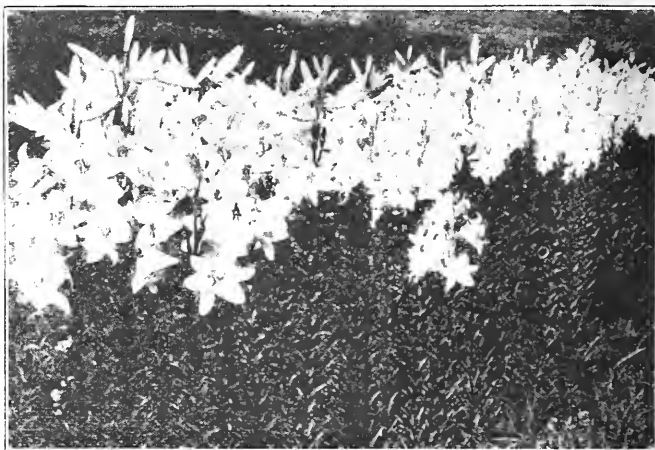
In some of the older gardens we find examples of the use of this grand Lily. Some of the original clumps blooming still and when all is considered, it is probably the most popular and satisfactory of all American garden Lilies. The Lily of old paintings and poetical myths, pure, waxy white flowers produced on straight stems bearing anywhere from ten to thirty blooms of good size and substance; delightfully fragrant; effective plantings are obtained by massing them in clumps or borders, and planted in combination with

### DELPHINIUM "LARKSPUR" (See Below)

the result is most striking and not excelled by any other hardy plants for general beauty in June. Our stocks are direct from northern France and of the true "THICK PETALED" type. To insure absolute success, plant the bulbs as early as possible—September preferred. Set bulbs about 6 inches deep and completely envelop with sand.

#### PRICES—ALL BLOOMING BULBS

	Each	Doz.	100
Select Sizes .....	\$0.10	\$0.85	\$ 6.50
Mammoth Sizes .....	.15	1.50	10.00
Jumbo Sizes .....	.40	4.50	.....



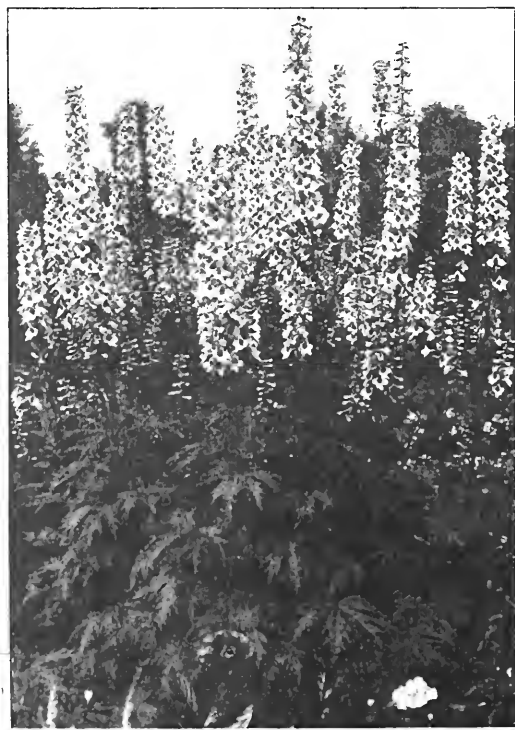
LILIUM CANDIDUM "MADONNA LILY"

### Hardy Delphinium-"Larkspur"

**Delphiniums.**—The glorious Delphinium, or perennial Larkspurs, form one of the most showy and interesting groups of hardy garden plants which we possess. We can readily say that few gardens seem complete without a group or two of these most graceful perennials, and we cannot easily find a substitute which embodies the same noble foliage, tall, graceful flower spikes, and exquisite shades of coloring which they possess. In many gardens there is a scarcity of blue flowers, and, this being the case, we can rely upon the Delphiniums to supply the deficiency in this direction.

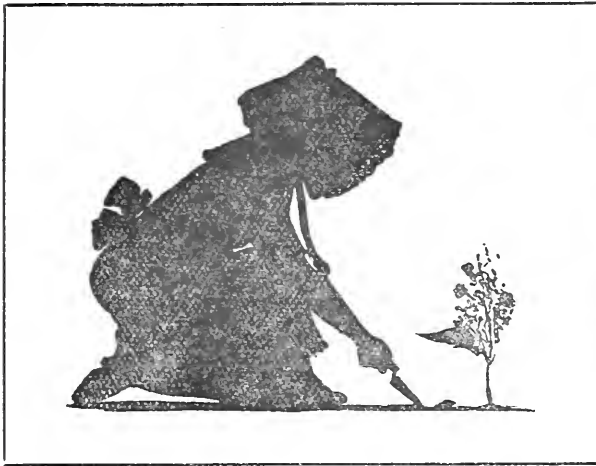
What blues they are! We find every shade of it, from the palest of sky-blues to the blue that is "lost in purple." Mauves, whites, violets, and other shades we have in plenty, but it is blue that is inseparably associated with perennial Larkspurs. As mentioned above, when this beautiful perennial is planted in conjunction with **HARDY LILIUM CANDIDUM** (see above), the combination when in bloom has to be seen to be really appreciated.

	Each	Doz.
<b>Belladonna.</b> Sky blue. Blooms from May to September .....	\$0.25	\$2.50
Extra size clumps .....	.50	5.00
The best sort to plant with <i>Lilium Candidum</i> .		
<b>Formosum.</b> The old favorite dark blue with white centre; 3 to 4 feet high. Very vigorous, free-flowering, and one of the best .....	.15	1.50
<b>Chinese.</b> Light blue. June to August.....	.15	1.50
<b>Chinese Album.</b> White. June to August....	.15	1.50
<b>Gold Medal Hybrids (Special).</b> Mixed. June to August .....	.25	2.50



HARDY DELPHINIUM "LARKSPUR"





## How to Send Money

(which should accompany the order). This may be made by Chicago or New York Draft, Postoffice Order, Express Order, or Registered Letter. Small amounts can be sent in clean postage stamps of low denominations.

## Free Delivery

We will deliver all purchases amounting to One Dollar and upwards free in Chicago and suburbs.

## Non-Warranty

Most of the failures with seeds, plants and bulbs are due to causes entirely beyond our control, such as unfavorable weather or soil conditions, too deep or too shallow planting, etc., which renders it impossible for us to guarantee success, and although we take all possible care to supply only such goods as will, under proper conditions, produce satisfactory results, we still give no warranty as to description, quality or productiveness of any of the seeds, plants or bulbs we send out, and will not be in any way responsible for the crop, and every order for articles named in this catalogue will be executed on these conditions only. It must, however, be plain to everyone who gives the matter the slightest thought, that it is to our best interests to send out only such stock as will not only grow, but prove true to name and description.

WINTERSON'S SEED STORE.

# WINTERSON'S "WORTH WHILE" QUALITY BULBS

The simple manner in which flowers are produced from bulbs should be an incentive for everyone to grow them, be it only a few pots of Polyanthus Narcissus, Hyacinths, etc., in the home or conservatory, or a bed or border of Tulips, Daffodils, Snowdrops, etc., out of doors. A good selection will furnish blooms throughout the winter months, while an assortment planted in the open in the autumn will produce their flowers in early spring when the rest of nature is asleep. Sound bulbs of good size are, of course, necessary for best results, and our "WORTH WHILE" quality, imported direct from the best sources in Europe, will insure success. We would also call attention to our special list of **HARDY GARDEN PLANTS AND FLOWERING AND ORNAMENTAL SHRUBS FOR AUTUMN PLANTING.**

Soliciting your esteemed commands,

Yours very truly,

## Winterson's Seed Store

E. F. WINTERSON CO., Props. (Not Inc.)

Long Distance Telephone  
6004 CENTRAL

Established 1895

John P. Degnan, Mgr.



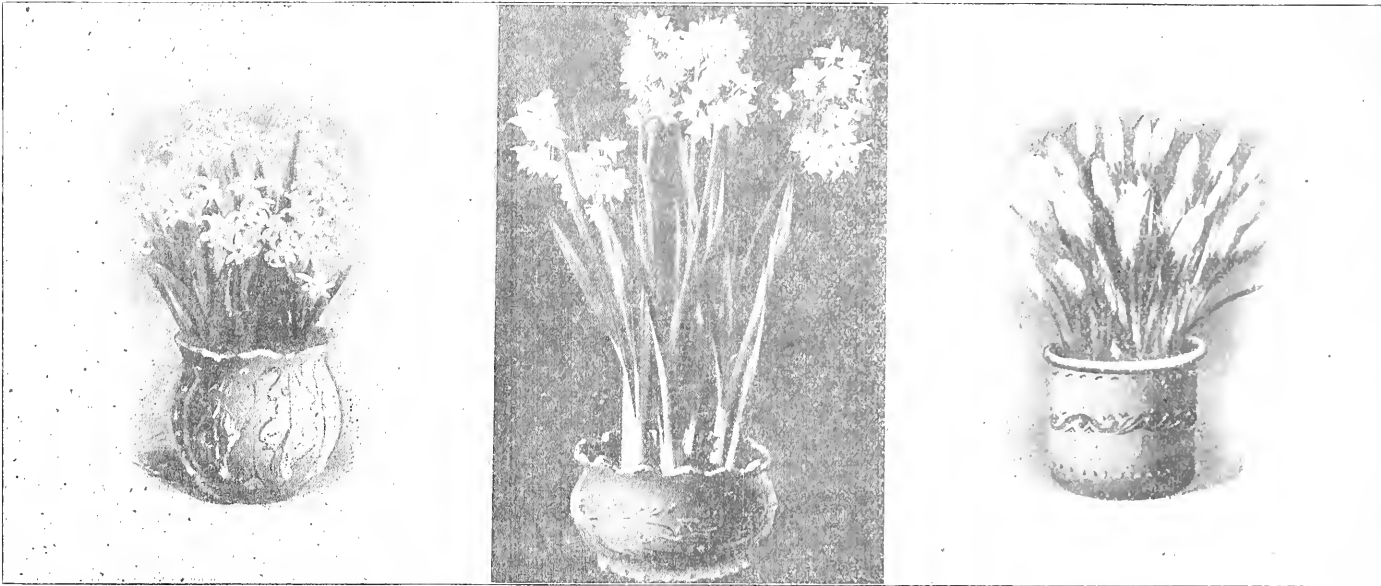
ALL  
CUT FLOWERS  
IN SEASON

## Cut Flowers, Memorial Designs, Flowering and Ornamental Plants

For the past 19 years we have been one of the largest handlers of cut flowers in the **GREAT CENTRAL CHICAGO CUT FLOWER MARKET** and with daily shipments from over **60 LARGE GROWERS** are prepared to furnish in quantity and at advantageous prices all cut flowers. Especially do we carry immense stocks for holidays, such as Easter, Decoration Day and Christmas.

Correspondence or a personal call solicited from parties interested in the above named lines.

# Flowers for Home Decoration Throughout the Winter Season



WHITE FRENCH ROMAN HYACINTHS  
GROWING IN WINTERSON'S  
FERTILIZED FIBRE  
(See Page 10)

GIANT PAPER WHITE  
GRANDIFLORA NARCISSUS  
GROWING IN WINTERSON'S  
FERTILIZED FIBRE  
(See Page 11)

MAJESTIC CROCUS  
GROWING IN WINTERSON'S  
FERTILIZED FIBRE  
(See Page 13)

## The Growth of Bulbs in Winterson's Fertilized Fibre, in China and Composition Vases or Bowls Without Drainage

### The Best and Most Charming Way of Growing Winter Flowering Bulbs in the Home, Schools, Etc.

The wonderful success that has been achieved in growing bulbs, such as Roman Hyacinths, Paper White Grandiflora Narcissus, Dutch Hyacinths, Tulips, Crocus, etc., in our special fibre, using vases without drainage, proves that it is not only a most charming and effective method of growing bulbs for those who have neither a large garden, the conveniences of greenhouses, or frames, or have difficulty in obtaining suitable soil, but that it is also one which we feel sure is being, and will be, much more extensively adopted in the future when it is fully realized what can be done in this way.

The advantage of this system is, that the vases can be placed anywhere about the house, in the drawing-room or dining-room, without fear of any mess from water or soil coming through the base of pots. The Fibre is perfectly odorless, and clean to handle. It is specially and carefully prepared by ourselves for this purpose and we strongly recommend all our customers to try a few various bulbs in this way if they have not yet done so.

#### CULTURAL DIRECTIONS

When growing bulbs in vases without drainage it is first necessary to water the fibre, then rub it through the hands until it is free from lumps. If the mixing is properly done the fibre will increase in bulk, and if taken in the hand and squeezed, little or no water should drop out. When potting, put a few pieces of charcoal in the bottom of the vase to absorb the impurities and keep the mixture sweet, then put in one to three inches of the compost according to the depth of the bowl. After placing the bulbs in position so that their tips reach to within half an inch of the rim, the spaces between and around the bulbs should be filled with the moistened fibre. It is not necessary or desirable to press it tightly, as the roots do not grow freely if it is pressed too firmly. Small bulbs, such as Scillas, Crocuses, Snowdrops, Jonquils, etc., should be planted fairly close together in order to produce the best effect. After planting, the bowls should be kept in a cool, airy cellar or room (not a confined closet) for from four to eight weeks (depending upon the variety), so that they may develop good root-growth which is very essential in order to get good results. The bowls should be examined once a week and a little water given when necessary, as the fibre must not be allowed to get dry or the flower buds become "blind." The surface should always look moist, but if too much water has been given, the bowl may be held carefully on its side so that the surplus water can drain away. As the growth increases more water will be required and as much light as possible to insure sturdy foliage. A succession of bloom may be had during the winter by taking into the house a few dishes at intervals of about two weeks.

PRICE, Winterson's Fertilized Bulb Fibre, 60c per peck, \$2.00 per bushel.



**Two Season-Covering Large Flowering Bedding and Forcing Tulips**

"Par Excellence"

Winterson's

"Brilliant Keizerskroon"

and

"Pride of Haarlem"

**Single Early Tulip Winterson's "Brilliant Keizerskroon"**

See "Photo" Illustration Opposite.

A bed of this most beautiful of early tulips, when in bloom, is certainly a dazzling sight. The combination of colors, **Brilliant Red and Dazzling Gold**, cannot be surpassed by any other variety. The flowers are of extra large size with very strong stems, which protect them against rain and wind storms; furthermore, on account of their general strong character, they make a perfect showing for a longer time than any other variety. We have received from a specialist in Holland an exceptionally fine stock of this tulip and offer them at the low prices as below:

Price, regular first size bulbs, each, 4c; dozen, 35c; per 100, \$2.00; per 1,000, \$16.00.

Price, "Mother" bulbs, extra fine, frequently producing two and more flowers to each bulb, each, 6c; dozen, 50c; per 100, \$3.00; per 1,000, \$25.00.

**LATE FLOWERING**

**Darwin Tulip—"Pride of Haarlem"**

See illustration below

While the Darwin Tulips are, as a class, all exceptionally beautiful, the variety "Pride of Haarlem" is one of the most effective, producing enormous flowers of a most striking vivid rose color shaded with a salmon flush. This grand variety is unsurpassed for groups because of its fine color and stately habit, particularly effective when planted in shrubbery borders—the foliage harmonizing most pleasantly with the vivid tones of the flower. Price, each, 5c; dozen, 50c; per 100, \$3.50; per 1,000, \$30.00.

See pages 6 and 7 for complete list of Darwin Tulips.



THE VIVID DARWIN TULIP, "PRIDE OF HAARLEM" BRIGHT ROSE WITH A SALMON FLUSH ONE-FIFTEENTH NATURAL SIZE. PANSIES AT THE BASE

For Complete List of DARWIN TULIPS See pages 6 and 7



**SINGLE LARGE FLOWERING TULIP  
"JOOST VAN VONDEL"  
A GRAND BEDDING SORT**

## SINGLE EARLY FLOWERING NAMED TULIPS THE BETTER VARIETIES

In no other flower has Dame Nature bestowed more brilliancy or variety of coloring than in the Tulip; and coming into bloom almost with the first blush of spring, when there is little else to gladden the eye, makes it the more refreshing and desirable.

Not only is the Tulip gorgeous in coloring, but its beautiful cup-like form is most exquisite and borne well above the handsome bright green, spear-like leaves.

**Nothing Will Afford More Satisfaction or Attract More Attention**

than a well arranged bed of Tulips or when sprinkled in the perennial border and amongst shrubbery, etc.

**CULTURE**—The Tulip is of the easiest culture. Plant bulbs in October or November in light well-stirred rich soil, about three inches below the surface and six inches apart. Covering with a few inches of straw or dead leaves before severe cold weather and removing same as soon as shoots appear in spring, will prove beneficial.

**DIFFERENCE IN BULBS**—There is much difference in the size of bulbs. A full size bulb planted in autumn will bloom the following spring, while smaller ones may not, hence the advantage of having bulbs judiciously selected, a point to which we give careful attention.

### Single Early Flowering Named Tulips

Single Varieties		Each	Per Doz.	Per 100	Per 1,000	Single Varieties		Each	Per Doz.	Per 100	Per 1,000
B 12	Admiral Reynerse. Bright rose pink, striped white; large	\$0.07	\$0.60	\$4.00	\$35.00	B 8	Mme. Frylink. Extra fine pink.	\$0.05	\$0.45	\$3.25	\$30.00
B 12	American Lac. Salmon-rose, tinged orange; extra.	.10	.85	6.00	50.00	A 7	Mon Tresor. Large yellow; fine sort	.04	.30	1.75	15.00
B 7	Artus. Brilliant red. F.	.03	.20	1.00	9.00	B 8	Opitr D'Or. Pure yellow.	.04	.30	1.75	15.00
B 7	Belle Alliance. Scarlet; very fine. F.	.04	.35	2.25	18.00	A 8	Pottebakker. Pure white. Best white. F.	.04	.30	2.25	20.00
A 8	Canary Bird. Pure golden yellow	.03	.25	1.25	10.00	A 8	Pottebakker. Scarlet. Bright scarlet. F.	.04	.35	2.00	16.00
B 10	Cardinal's Hat. Dark brown red	.03	.25	1.25	10.00	A 12	La Riente. Deep rose tipped with white	.06	.50	3.25	30.00
B 12	Cerise Gris De Lin. Lake shading to fawn and creamy white with yellow centre.	.10	.85	6.00	50.00	B 13	Pink Beauty. Bright rose-pink shading down to blush white; enormous flower.	.08	.75	5.00	45.00
B 9	Chrysolorn. Large golden yellow; best yellow for outdoors	.03	.20	1.00	9.00	B 12	Primrose Queen. Canary yellow, stained primrose.	.04	.35	2.25	20.00
B 6	Cottage Maid. White, edged with rose; extra fine, splendid for bedding. F.	.03	.25	1.25	10.00	A 12	Prince De Ligny. Golden yellow	.03	.30	1.75	15.00
A 7	Couleur Cardinal. Crimson scarlet, very brilliant.	.04	.35	2.35	23.00	A 10	Queen of the Whites. Excellent pure white.	.04	.35	2.25	20.00
B 7	Crimson King. Scarlet.	.03	.25	1.25	10.00	B 12	Snowflake. Snow white, of excellent shape	.04	.35	2.25	20.00
A 7	Cramoisi Brilliant. Bright vermilion	.04	.30	1.65	14.00	A 7	Purple Crown. Dark crimson red	.03	.25	1.25	11.00
B 9	Duchesse de Parma. Brownish red, yellow stripe; splendid bedder. F.	.03	.25	1.25	11.00	A 8	Pottebakker. Yellow	.04	.30	1.60	14.00
A 8	Duc Van Thol. White.	.03	.25	1.25	11.00	B 8	President Lincoln. Light violet	.04	.40	2.50	23.00
A 7	Duc Van Thol. Scarlet. For early blooming. F.	.04	.30	1.75	15.00	A 8	Prince of Austria. Orange vermilion	.04	.30	1.85	17.00
A 7	Dunart. Bright scarlet, splendid bedder	.04	.30	1.75	15.00	A 8	Prosperine. Rich carmine rose, tulip. F.	.04	.35	2.00	16.00
A 5	Duc de Berlin. Red and yellow, early	.04	.30	2.15	18.00	B 8	Queen Victoria. (La Reine.) Rosy white	.03	.15	1.00	8.00
B 8	Flamingo. Beautiful deep rose.	.06	.60	4.25	40.00	A 8	Reubrandt. Scarlet; extra flower	.04	.30	2.25	20.00
A 8	Gold Finch. Extra fine, pure yellow. F.	.03	.25	1.25	11.00	B 8	Rosa Mundi. Rose and white.	.03	.15	1.15	10.00
B 15	Golden Lion. Yellow and terra cotta	.10	.85	6.00	50.00	B 6	Rose Gris-de-Lin. Beautiful pink. A splendid sort.	.03	.15	1.00	9.00
A 15	Golden Queen. Beautiful yellow	.07	.60	3.35	32.00	B 7	Rose Lubaute. Deep pink.	.04	.35	2.50	22.50
A 15	Grace Darling. Large orange-scarlet with dark blue centre	.06	.50	3.25	30.00	B 8	Standard Silver. Red and white	.04	.35	2.25	20.00
B 10	Kelzerskroon. Red and gold; large and fine. A grand tulip. F.	.04	.35	2.00	16.00	B 7	Thomas Moore. Orange.	.03	.20	1.10	10.00
B 10	Kelzerskroon. "Mother" bulbs. (See opposite)	.06	.50	3.00	25.00	B 8	Van Vondel. Large; cherry-red and white; splendid. F.	.04	.35	2.25	18.00
B 8	La Reine. (Queen Victoria.) Rosy white. One of the best. F.	.03	.15	1.00	8.00	B 8	Van Vondel. Pure white; good forcer	.06	.50	3.25	30.00
B 8	La Reine. (Queen Victoria.) Mammoth bulbs	.04	.30	1.35	11.00	B 5	Vermilion Brilliant. Brilliant vermilion scarlet	.04	.40	2.50	22.50
						A 7	Wonverman. Dark violet.	.08	.75	5.00	45.00
						B 7	White Hawk. White extra.	.04	.35	2.25	20.00
						B 8	Yellow Prince. Golden yellow, sweet scented. Not good for outdoors. F.	.03	.20	1.10	11.00

PEONIES PLANTED IN SEPTEMBER-OCTOBER WILL GIVE BOUNTIFUL RESULTS NEXT SPRING



## WINTERSON'S TULIPS

### "Under Color" and Mixtures

#### SINGLE LARGE FLOWERING MIXED EARLY TULIPS TO COLOR

While the following varieties do not as a rule bloom at the same time, they nevertheless make a beautiful show. Named varieties as listed should be purchased where a fixed height and evenness of bloom is desired.

N. B.—We do not recommend double varieties in this connection.

	Each	Doz.	100	1,000
White Shades .....	\$0.03	\$0.20	\$1.10	\$9.00
Yellow and Orange Shades	.03	.20	1.10	9.00
Red and Scarlet Shades....	.03	.20	1.10	9.00
Rose and Pink Shades.....	.03	.20	1.10	9.00
Striped and Varie'd Shades	.03	.20	1.10	9.00
Violet and Purple.....	.03	.20	1.10	9.00

#### WINTERSON'S GRAND TULIP MIXTURES

Our Tulip mixtures contain a great variety of colors and will produce excellent flowers. They are not, of course, as desirable for bedding, where uniformity is desired, as the named or separate colors; however they give very fine results in this connection, and for cut flowers they are sure to give much pleasure. Desirable for planting in shrubby borders, etc. We import only first size bulbs.

##### SINGLE, EARLY BLOOMING

**Special Mixture** Made up of named sorts, proper proportions of bright colors, blooming together and of uniform height. Dozen, 20c; 100 for \$1.00; 1,000 for \$9.00.

**Fine Mixed** Per dozen, 15c; per 100, 75c; per 1,000, \$7.00.

##### DOUBLE, EARLY BLOOMING

**Superfine Mixed** This mixture comprises only the best bedding sorts in equal proportion and contains a splendid variety of showy colors. Per dozen, 20c; 100 for \$1.10; per 1,000, \$10.00.

**Fine Mixed** An excellent mixture for outdoor planting. Dozen, 15c; per 100, \$1.00; 1,000 for \$8.50.

## Double Early Large Flowering Named Tulips

Very desirable for bedding purposes. White, red and yellow sorts, of about the same height, planted in lines of three or four rows of each color, form with their large rose-like flowers, beds of surpassing grandeur. Those sorts, marked with an asterisk (\*), are the earlier kinds, which are not only valuable for bedders, but succeed admirably if forced in pots. Those not so marked are not recommended for pot culture. A's flower together, B's follow, etc.

B 7 *Alba Maxima* The finest double white. Each, 2c; per doz., 20c; per 100, \$1.25; per 1,000, \$11.00.

*Couronne des Roses* (Crown of Roses) Beautiful bright pink; good forcer. Each, 6c; per dozen, 50c; per 100, \$3.50; per 1,000, \$30.00.

B 8\* *Duke of York* Purple yellow edge. Each, 3c; per dozen, 25c; per 100, \$1.30; per 1,000, \$11.00.

A 8 *Gloria Solis* Brown and gold. Each, 4c; per dozen, 30c; per 100, \$1.60; per 1,000, \$14.00.

A 8\* *Imperator Rubrorum* Brilliant scarlet; fine for forcing and one of the grandest for bedding. Each, 4c; per dozen, 40c; per 100, \$2.50; per 1,000, \$22.00.

B 6\* *La Candeur* Pure white, used with *Rex Rubrorum* to form bedding designs; it makes a fine effect. Each, 4c; per dozen, 30c; per 100, \$1.35; per 1,000, \$12.00.

B 6 *Murillo* Light pink; very early; splendid for bedding and forcing. Each, 3c; per dozen, 20c; per 100, \$1.15; per 1,000, \$10.00.



DOUBLE EARLY TULIPS, MURILLO FOR BEDDING AND FORCING

#### DOUBLE EARLY TULIPS—(Continued)

B 6 *Murillo* Light pink; mammoth bulbs. Each, 4c; per dozen, 30c; per 100, \$1.35; per 1,000, \$12.00.

*Lord Roseberry* Delicate pink. Each, 4c; per dozen, 35c; per 100, \$2.25; per 1,000, \$20.00.

*Peony Gold* Red and gold. Each, 3c; per dozen, 30c; per 100, \$1.75; per 1,000, \$16.00.

B 7 *Rex Rubrorum* Bright scarlet. Each, 4c; per dozen, 35c; per 100, \$1.85; per 1,000, \$17.00.

B 5 *Rose Blanche* Pure white, very fine. Each, 3c; per dozen, 25c; per 100, \$1.35; per 1,000, \$12.00.

*Rubra Maxima* Dazzling scarlet, splendid bedder. Each, 3c; per dozen, 30c; per 100, \$1.75; per 1,000, \$16.00.

*Salvator Rosa* Deep rose, splendid. Each, 4c; per dozen, 35c; per 100, \$2.15; per 1,000, \$20.00.

*Titian* Scarlet, edged yellow. Each, 4c; per dozen, 30c; per 100, \$2.00; per 1,000, \$17.00.

A 7\* *Tournesol* Red and yellow. Each, 4c; per dozen, 40c; per 100, \$2.65; per 1,000, \$25.00.

A 7\* *Tournesol* Pure yellow, finest double yellow. Each, 4c; per dozen, 35c; per 100, \$2.15; per 1,000, \$20.00.

B *Vuurbaak* Extra fine scarlet. Each, 4c; per dozen, 35c; per 100, \$2.35; per 1,000, \$22.00.

*Yellow Rose* Fine yellow, fragrant. Each, 3c; per dozen, 25c; per 100, \$1.35; per 1,000, \$12.00.

A 13 *Couronne D'Or* Deep yellow, marked with orange red. Each, 4c; per dozen, 40c; per 100, \$2.60; per 1,000, \$24.00.

*Boule De Nieve* (Purity) Peony-like pure white large flower. Each, 7c; per dozen, 65c; per 100, \$4.25; per 1,000, \$40.00.

*Brimstone Beauty* Soft pale yellow, shaded apricot. Each, 7c; per dozen, 70c; per 100, \$4.75; per 1,000, \$45.00.



DARWIN TULIPS IN THE SHRUBBERY BORDER

# “Darwin’s” Tulips of Wondrous Beauty

We cannot too strongly recommend this class of Tulips for garden decoration in groups in the herbaceous border and amongst shrubs, etc.

Grown for cut flowers, they will prove highly valuable at a season when our gardens yield so little to decorate the home. They flower from the middle to the latter part of May, a time at which the blooming of early spring flowers is over and before summer roses, etc., have appeared. Growing to a height of a couple of feet or more, with perfectly colored flowers double the size of an ordinary Tulip. The Darwin deserves to be thoroughly interspersed along borders, etc.

## 30 Varieties, the “Cream” of Darwin Tulips They Increase in Size and Beauty as Time Goes On

- Baron de la Tonnaye** Vivid rose; one of the finest of its color; can be forced into blossom in February; height 26 inches. Each, 5c; per dozen, 50c; per 100, \$3.50; per 1,000, \$30.00.
- Bartigon** Carmine-crimson; extra fine; height 22 inches. Each, 8c; per dozen, 75c; per 100, \$5.00; per 1,000, \$40.00.
- Bleu Aimable** Bright violet-purple, shaded steel blue, inside dark violet-purple with a blue base. Very large and handsome. Height 26 inches. Each, 20c; per dozen, \$2.00; per 100, \$15.00.
- Clara Butt** Soft rose, extra fine; the most beautiful and finest of all Darwin Tulips; forces well. Each, 5c; per dozen, 50c; per 100, \$3.00; per 1,000, \$25.00.
- Dream** Beautiful soft uniform lilac; very large flower; height 26 inches. Each, 6c; per dozen, 60c; per 100, \$4.00; per 1,000, \$35.00.
- Europe** Fine scarlet, blue base, forces well; height 22 inches. Each, 5c; per dozen, 45c; per 100, \$3.00; per 1,000, \$25.00.
- Edmee** Vivid cherry rose, edged soft old rose, large flower of great beauty; height 25 inches. Each, 15c; per dozen, \$1.15; per 100, \$7.50.
- Flambeau** Brilliant rosy scarlet, with blue base; very showy; height 20 inches. Each, 5c; per dozen, 40c; per 100, \$3.00; per 1,000, \$25.00.
- Farncombe Sanders** Bright scarlet, a most excellent variety and extra for forcing; height 25 inches. Each, 10c; per dozen, 85c; per 100, \$6.00; per 1,000, \$50.00.
- Glow** Brilliant glowing vermilion, centre blue, margined white; height 24 inches. Each, 5c; per dozen, 50c; per 100, \$3.50; per 1,000, \$30.00.
- Gretchen (Marguerite)** Soft salmon-rose. Award of merit Amsterdam. A grand forcing variety. Height 24 inches. Each, 3c; per dozen, 30c; per 100, \$1.75; per 1,000, \$15.00.
- La Candeur** Pure white, large flower, forces well; height 24 inches. Each, 6c; per dozen, 60c; per 100, \$4.50; per 1,000, \$35.00.
- Leonardo da Vinci** Shining violet black; a grand tulip; height 25 inches. Each, 5c; per dozen, 50c; per 100, \$3.50; per 1,000, \$30.00.
- Madame Krelage** Soft lilac-rose, outside deep rose, white centre, large flower; extra; height 28 inches. Each, 6c; per dozen, 60c; per 100, \$4.00; per 1,000, \$34.00.
- May Queen** Soft lilac-rose, with white centre marked blue; very long and large flowers; a very handsome Darwin; height 26 inches. Each, 6c; per dozen, 45c; per 100, \$3.00; per 1,000, \$25.00.
- Mrs. Cleveland** Beautiful delicate flesh color; extra. Each, 6c; per dozen, 60c; per 100, \$4.00; per 1,000, \$35.00.
- Nauticus** Glowing dark cerise-rose, centre dark violet, shaded bronze; large and handsome; height 30 inches. Each, 5c; per dozen, 45c; per 100, \$3.00; per 1,000, \$25.00.
- Painted Lady** Creamy white-shaded lilac; height 27 inches. Each, 6c; per dozen, 60c; per 100, \$4.00; per 1,000, \$35.00.



# DARWIN TULIPS

Continued

To Secure the Best Effects Plant Five to Twenty-five Bulbs in a Group or Bed the Same as the Early Varieties

These Grand Tulips are Particularly Desirable for Planting in Perennial Plant or Shrubbery Borders



DARWIN TULIPS IN ALL THEIR GLORY, GERMAN IRIS IN BACKGROUND

## Darwin Tulips—Continued

**Pride of Haarlem** Bright rose, enormous flower, perpendicular, 4 1/2 inch high. Double. Each, 5c; per dozen, 50c; per 100, \$3.50; per 1,000, \$30.00.

**Prof. Rauwenhoff** Full cherry rose with heavy white and blue star at base. Flower of enormous size, height 28 inches. Each, 10c; per dozen, 55c; per 100, \$6.00; per 1,000, \$50.00.

**Psyche** Double, pink, inside shaded, silver rose with a pale blue and a very luminous, delicate shade. Height 28 inches. Each, 10c; per dozen, \$1.00; per 100, \$7.00; per 1,000, \$60.00.

**Queen of Brilliants** Bright rose, carmine, large showy flower of erect habit. Height 27 inches. Each, 10c; per dozen, 55c; per 100, \$6.00; per 1,000, \$50.00.

**Rev. H. Ewbank** Double, bell-shaped, red rose of 4 1/2 inch height. Each, 10c; per dozen, 55c; per 100, \$6.25; per 1,000, \$45.00.

**The Sultan** (Joseph Israels) Black award of merit. M. S. L. height 27 inches. Each, 4c; per dozen, 30c; per 100, \$1.75; per 1,000, \$15.00.

**Salmon King** Rich deep salmon-rose, shaded scarlet. Height 29 inches. Each, 5c; per dozen, 50c; per 100, \$3.00; per 1,000, \$25.00.

**Sieraad Van Flora** Double, red, with a white eye at center. Height 28 inches. Each, 6c; per dozen, 60c; per 100, \$4.00; per 1,000, \$35.00.

**Suzon** Single, buff-rose, showing a black eye, height of 28 inches. Height 28 inches. Each, 10c; per dozen, 55c; per 100, \$6.00; per 1,000, \$50.00.

**Wm. Copeland** Double, red, with a white eye at center. Height 28 inches. Each, 15c; per dozen, \$1.15; per 100, \$7.50.

**Whistler** Double, red, with a white eye at center. Height 28 inches. Each, 15c; per dozen, \$1.25; per 100, \$10.00; per 1,000, \$90.00.

**Wm. Pitt** Double, red, with a white eye at center. Height 28 inches. Each, 6c; per dozen, 60c; per 100, \$4.00; per 1,000, \$35.00.

**Zulu** Double, red, with a white eye at center. Height 28 inches. Each, 15c; per dozen, \$1.40; per 100, \$10.00.

**Winter's Special** Double, red, with a white eye at center. Height 28 inches. Each, 4c; per dozen, 35c; per 100, \$1.75; per 1,000, \$15.00.





MAY FLOWERING TULIPS

- Beauty of America** Pale yellow, changing to white, with red border. Each, 4c; per dozen, 30c; per 100, \$1.75; per 1,000, \$15.00.
- Bizards** Yellow ground, feathered crimson, purple or white. Each, 3c; per dozen, 20c; per 100, \$1.35; per 1,000, \$12.00.
- Bouton D'Or** The finest and deepest golden yellow Tulip, splendid for cutting. Flowers are a handsome globe shape. Each, 4c; per dozen, 30c; per 100, \$1.75; per 1,000, \$13.00.
- Bronze Queen** Golden bronze. Each, 8c; per dozen, 75c; per 100, \$5.00.
- Bybloems, Roses** White ground, shaded rose, tall, very showy. Each, 4c; per dozen, 25c; per 100, \$1.50; per 1,000, \$13.00.
- Bybloems, Violet** Tall and brilliantly variegated, white ground, flaked lilac purple. Each, 3c; per dozen, 25c; per 100, \$1.55; per 1,000, \$13.00.
- Caledonia** Beautiful globe shaped, flower of a bright orange-red color, very late. Each, 4c; per dozen, 30c; per 100, \$1.85; per 1,000, \$16.00.
- Ellen Willmott** Soft creamy yellow with delicious fragrance. Each, 10c; per dozen, 85c; per 1,000, \$6.00.
- Faery Queen** Rosy heliotrope, broadly margined yellow; very large and beautiful. Each, 6c; per dozen, 50c; per 100, \$3.50.
- Gesneriana Lutea** Beautiful yellow, tall growing. Each, 4c; per dozen, 35c; per 100, \$2.00; per 1,000, \$17.00.
- Golden Bronze** Bronzy yellow; exceptionally good. Each, 4c; per dozen, \$1.75; per 100, \$15.00.
- Golden Crown** Yellow, feathered red. Each, 3c; per dozen, 20c; per 100, \$1.25; per 1,000, \$10.00.

## May Flowering Tulips

For Planting in the Herbaceous Border, Amongst Shrubbery, Etc.

For brilliant and lasting displays these Tulips are unequalled, each individual bloom is a marvel of beauty; they grow much taller than the ordinary Tulip, averaging about two feet in height, and remain in fine condition very much longer than early sorts. Planted in the fall they bloom in May; the bulbs may be taken up and again planted or may be left in the ground to reappear the next year, as may be desired.

- Inglescombe Pink** A grand pink variety. Each, 5c; per dozen, 40c; per 100, \$2.25; per 1,000, \$20.00.
- Inglescombe Scarlet** Very brilliant scarlet, black base. Each, 5c; per dozen, 45c; per 100, \$3.25; per 1,000, \$30.00.
- Inglescombe Yellow** Large canary yellow of perfect form, glossy and very beautiful. Each, 5c; per dozen, 45c; per 100, \$3.75; per 1,000, \$35.00.
- Isabella** A beautiful variety, with large, handsome flowers borne on long stems, color primrose flushed rose, changing to a beautiful rose-carmine. Each, 4c; per dozen, 20c; per 100, \$1.35; per 1,000, \$12.00.
- La Candeur** White changing into rose, very beautiful. Each, 4c; per dozen, 35c; per 100, \$2.00; per 1,000, \$17.00.
- La Merveille** Extra large fragrant flower, color suffused orange; extra fine. Each, 4c; per dozen, 20c; per 100, \$1.35; per 1,000, \$12.00.
- Mammoth Scarlet** Flowers of enormous size, color of brightest scarlet. Each, 5c; per dozen, 45c; per 100, \$2.75; per 1,000, \$20.00.
- Moonlight** Sulphur yellow; extra large. Each, 3c; per dozen, \$1.25; per 100, \$10.00.
- Mrs. Moon** Large yellow; extra fine. Each, 10c; per dozen, 85c; per 100, \$6.00.
- Picotee or Maiden's Blush** A long-shaped flower; pure white, with beautifully recurved petals margined rose; borne on long graceful stems. Each, 4c; per dozen, 25c; per 100, \$1.40; per 1,000, \$12.50.
- Primrose Beauty** Soft primrose changing to white. Each, 6c; per doz., 50c; per 100, \$3.00.
- The Fawn** Light grayish rose changing to soft rosy white. Each, 6c; per dozen, 50c; per 100, \$3.50.
- True Scarlet Gesneriana (Spathulata Major)** The flowers are as large as coffee cups and borne on stout stems nearly 18 inches from the ground. The color is brilliant, crimson scarlet, with a large peacock-blue blotch in the center, and of very strong fragrance. Each, 4c; per dozen, 30c; per 100, \$1.85; per 1,000, \$16.00.
- Vitellina** Pale primrose passing off pure white. Each, 7c; per dozen, 65c; per 100, \$4.00.

### PARROT OR DRAGON TULIPS

- Admiral de Constantinople** Orange-scarlet marked with black. Each, 3c; per dozen, 25c; per 100, \$1.35; per 1,000, \$11.00.
- Cramoisi Brilliant** Brilliant carmine. Each, 3c; per dozen, 25c; per 100, \$1.35; per 1,000, \$11.00.
- Lutea Major** Clear yellow, feathered red and green. Each, 3c; per dozen, 25c; per 100, \$1.35; per 1,000, \$11.00.
- Markgraaf Van Baden** Yellow flamed scarlet. Each, 3c; per dozen, 25c; per 100, \$1.35; per 1,000, \$11.00.
- Gloriosa** Red and yellow. Each, 3c; per dozen, 25c; per 100, \$1.35; per 1,000, \$11.00.
- Perfecta** Yellow, spotted red. Each, 3c; per dozen, 25c; per 100, \$1.35; per 1,000, \$11.00.
- Superfine Mixed** Each, 3c; per dozen, 20c; per 100, \$1.25; per 1,000, \$10.00.

# Large Flowering Dutch Hyacinths

## EXHIBITION OR "TOP ROOT" DUTCH HYACINTHS

Through our large purchases in Holland we were able this year to secure a limited number of these "Mammoth Hyacinths," the stock of which has heretofore mainly been supplied to European horticulturists. They are absolutely the choicest Hyacinths produced in Holland. Early orders for these superior bulbs are advisable.

- General DeWet** Extra fine pink; free bloomer.
- Gertrude** Rosy pink, large truss.
- Enchantress** The finest of all light blues.
- Grand Maitre** Deep porcelain blue; extra bloomer.
- Lady Derby** Lovely shade of rose pink.
- General Vetter** Lovely blush white.
- L'Innocence** Pure white; extra.
- Queen of the Blues** Sky blue with silver sheen.
- Arentine Arendsen** Early, snow white.

Each, 20c; per doz., \$2.00; per 100, \$15.00.

## SELECTED NAMED DUTCH HYACINTHS Guaranteed Strictly First Size

Where distinct colors are desired there is nothing more elegant in Hyacinths than the best named varieties. As a general rule, the single flowering varieties will be found surer bloomers and more effective in display than the double sorts. Specially suited for growing in pots or glasses or for high class bedding, at a uniform price of 11 cents each; per dozen, \$1.15; per 100, \$8.00.

### SINGLE RED AND ROSE HYACINTHS

- Robert Steiger.** Deep crimson.
- Gertrude.** Rosy pink, large erect stalk.
- Lord Balfour.** Beautiful pink.
- Gigantea.** Rose and blush, large bells.
- Roi des Belges.** Very large, full spike, fine deep color.
- Lady Derby.** Delicate pink, extra.
- Moreno.** Bright pink, large bells and tall spikes.
- Rosa Maxima.** Delicate rose, extra.
- Garibaldi.** Rich, glossy crimson.
- L'Ornement Rose.** Soft flesh pink.
- Fabiola.** Pink, carmine stripe.

### SINGLE PURE AND CREAM WHITE HYACINTHS

- Baroness von Thuyl.** Snow white, large compact truss of many bells.
- Grandeur a Merville.** Finest blush white.
- La Grandesse.** Pure white.
- L'Innocence.** Pure white, large bells.
- Madame Vanderhoop.** Very fine; pure white; very large truss.
- Queen of England.** Pure white, fine spike.

### SINGLE LIGHT AND DARK BLUE HYACINTHS

- Grand Maitre.** Grand large spike, pure ultra-marine blue, shaded porcelain, strong grower.
- Baron von Thuyl.** Bright blue.
- King of the Blues.** Rich dark blue, large bells.
- Queen of the Blues.** Fine light blue, large bells.
- Potgeiter.** Light blue, extra fine.
- Johan.** Large light blue bells.
- Lord Balfour.** Dark purplish violet, the finest of this color.
- Grand Lilius.** Silvery porcelain and lavender.
- Pfenemann.** Dark porcelain, large bells.

### SINGLE YELLOW AND ORANGE

- Buff Beauty.** Buff yellow yellow, enormous truss.
- Yellow Hammer.** Golden yellow, beautiful spike.

### DOUBLE RED AND ROSE HYACINTHS

- Gladstone.** Pink, late.
- Bouquet Tendre.** Dark red.

### DOUBLE WHITE HYACINTHS

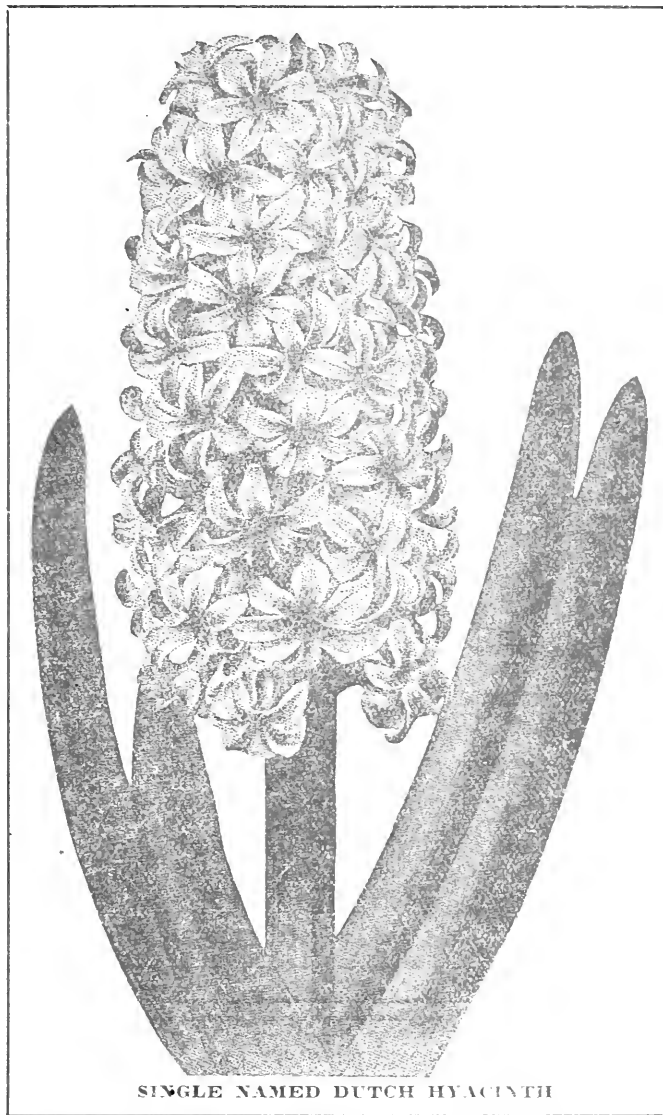
- La Tour d'Auvergne.** Pure white.
- La Virginite.** Rosy center.

### DOUBLE BLUE

- Blocksborg.** Bright blue.
- Garrick.** Clear blue, large spike, early.

### DOUBLE YELLOW

- Goethe.** Orange yellow.



SINGLE NAMED DUTCH HYACINTH

## WINTERSON'S "MIXED GRADE" DUTCH HYACINTHS

For Indoor Culture and Bedding. These Hyacinths are all large-sized, healthy bulbs, well adapted for outdoor planting. The colors being kept separate, the purchaser can make his selection of colors as his taste may dictate. The bulbs can also be forced for winter flowering or cutting.

**Single Mixed Varieties.** Pure white, blush white, rose, red, light blue, dark blue, yellow, mixed, all colors. Each, 5c; dozen, 50c; 100 for \$3.50.

**Double Mixed Varieties.** Pure white, blush white, rose, red, light blue, dark blue, yellow, mixed, all colors. Each, 5c; dozen, 50c; 100 for \$3.50.

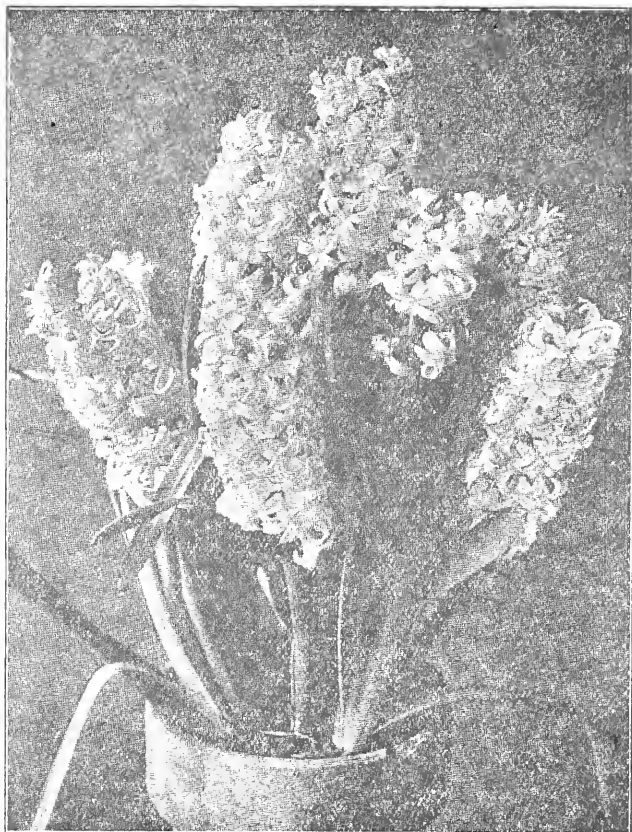
### WINTERSON'S "SPECIAL GRADE"

Forcing and Bedding Dutch Hyacinths. The bulbs under this heading are of a much larger size than those put in ordinary mixtures; in fact, most of these average as large as those often sent out as "First Size Named" by some dealers. They will produce grand spikes of blooms.

### PRICES FOR WINTERSON'S BEDDING AND FORCING HYACINTHS

	Single	Each	Doz.	100
Scarlet	.....	\$0.06	\$0.60	\$4.25
Rose	.....	.06	.60	4.25
Light Blue	.....	.06	.60	4.25
Blue, All Shades	.....	.06	.60	4.25
Blush White	.....	.06	.60	4.25
Pure White	.....	.06	.60	4.25
Special Mixed	.....	.06	.60	4.25





"DUTCH ROMAN," "MINIATURE," OR "PAN" HYACINTHS

## "Dutch Roman" or Miniature Hyacinths

### ALSO CALLED "PAN" AND POMPOM HYACINTHS

A very simple method of growing Hyacinths for winter flowering in the house is to start them in earthen pans, planting only one kind of Hyacinth in one pan, in order to have them all bloom at once, and to have them all the same shade. The varieties mentioned below are the best sorts for this mode of culture. By planting 10 or 12 of these "Pan Hyacinths" in a pan 8 or 9 inches in diameter the most satisfactory results will be obtained. They come into flower after the French Roman Hyacinths and are extremely fragrant.

These (so-called) Miniature Hyacinths can also be planted in the open ground with good results. While they do not, as a rule, produce as large flowers as those Hyacinths classed on page 9, they are, however, of sufficient size to make a good showing either for bedding or to grow for cut flowers.

### VARIETIES AND PRICES

- Gertrude** Fine pink.
  - Gigantea** Pale pink.
  - L'Innocence** Pure white, large spike.
  - La Grandesse** Pure white, extra large.
  - Grand Maitre** Bright blue.
  - Queen of the Blues** Porcelain blue, extra fine.
- Price of any of the above named varieties, each, 5c; per dozen, 45c; or \$2.75 per 100.

### GRAPE HYACINTHS

Excellent for naturalizing, planting in borders, etc. Blue, per doz., 15c; per 100, 75c; per 1,000, \$5.50. White, per doz., 20c; per 100, \$1.00; per 1,000, \$7.50.

## FRENCH ROMAN OR CHRISTMAS HYACINTHS

Make splendid plants for the window garden, grown in whatever device may be desirable. They should be treated in all respects like the other classes, only that they come into flower much earlier, and should, for first flowers, be brought in by the 15th of November; by so

doing they will give their flowers in perfection by Christmas.

The great beauty of this class of Hyacinths is their profusion of flowers, each bulb giving from three to six spikes, according to the size and strength of bulb. The flowers are smaller than those of the Dutch Hyacinths, but more graceful. Their bulbs being small, three can be put in a 3-inch pot. (Not hardy in the North.)

	Each	Doz.	100
Pure White Roman, Extra large bulbs...	\$0.06	\$0.60	\$4.50
Pure White Roman, Mammoth bulbs...	.08	.75	6.00
Single Light Rose.....	.05	.45	3.00
Single Dark Rose.....	.05	.45	3.00
Single Blue.....	.05	.45	3.00
White Italian, later than the French....	.05	.50	3.00

### GROWING HYACINTHS IN WATER

A very novel manner of cultivating Hyacinths is to grow them in water. We offer glasses especially made for this purpose, as per illustration opposite. The method of culture is as follows: Fill glass with ordinary water so that the bottom or root part of bulb is covered, then place in a cool, dark room or closet, leaving there until roots touch the bottom of glass. Afterward take to the light, when a light paper cone should be placed over the top for about two weeks in order to draw up the spike. It is usually necessary to replenish water weekly and a few small pieces of charcoal placed in the glass will tend to keep water sweetened.

NOTE.—The selected named Single Hyacinths are most suitable for growing in the above named manner.

Please order early, it will be to your advantage



FRENCH ROMAN HYACINTHS



DUTCH HYACINTH

Growing in Water

Polyanthus Narcissus can be grown in the same manner. (See page 11.)



**POLYANTHUS or "NOSEGAY"  
NARCISSUS**

Polyanthus Narcissus are amongst the earliest of flowering bulbous plants for house culture. They are easily grown, extremely decorative and useful for cut flowers as well, lasting a long time after being cut. Especially does this apply to the "Paper White" varieties. All of the Polyanthus sorts are exceedingly fragrant and may be grown in water and gravel in the same manner as one would grow the "Chinese Sacred Lily." See illustration on this page. By planting a succession of bulbs every ten days blooms can be had from early November until well along in February. (Polyanthus Narcissus are not hardy out of doors north of Washington, D. C.)

**GIANT "PAPER WHITE"  
NARCISSUS**

**Large Flowering**

An improved large-flowering form of the Paper White, possessing all the good qualities of that popular and easily-grown variety and which on account of its larger flowers, is now the principal forcing sort. A very early and profuse bloomer, extremely fragrant and can be had in flower at Christmas time. Does splendidly in water, like the Chinese Sacred Lily. (See cut opposite.) Each, 5c; 40c per dozen; \$2.50 per 100; \$20.00 per 1,000.

**Paper White Grandiflora** A very good strain of the "Grandiflora Type" and a big improvement over the common "Totus Albus." Each, 3c; 30c per dozen; \$1.50 per 100; \$13.00 per 1,000.

**DOUBLE ROMAN WHITE**

Also Known as "Double Sacred Lily"

This is one of the most beautiful and fragrant of all the Narcissus family. Can be grown in the same manner as the Chinese Sacred Lily. Produces abundantly of double flowers; white, shaded beautiful yellow, in large clusters, fragrant and lasting. Can be easily brought into bloom for Christmas. Each, 4c; per dozen, 35c.

**Grand Soleil D'Or** Yellow with deep orange cup. Each, 4c; per dozen, 40c.

**Grand Primo** Cup citron, perianth pure white. Each, 4c; per dozen, 40c.

**Grand Monarque** One of the finest of the polyantha section, and will give excellent results when grown in water. The bulbs are of large size, and throw up a profusion of large white flowers crowned with a lemon-yellow cup. Each, 4c; per dozen, 40c.

**GIANT GOLDEN SACRED LILY**

(Jonq. Rug)

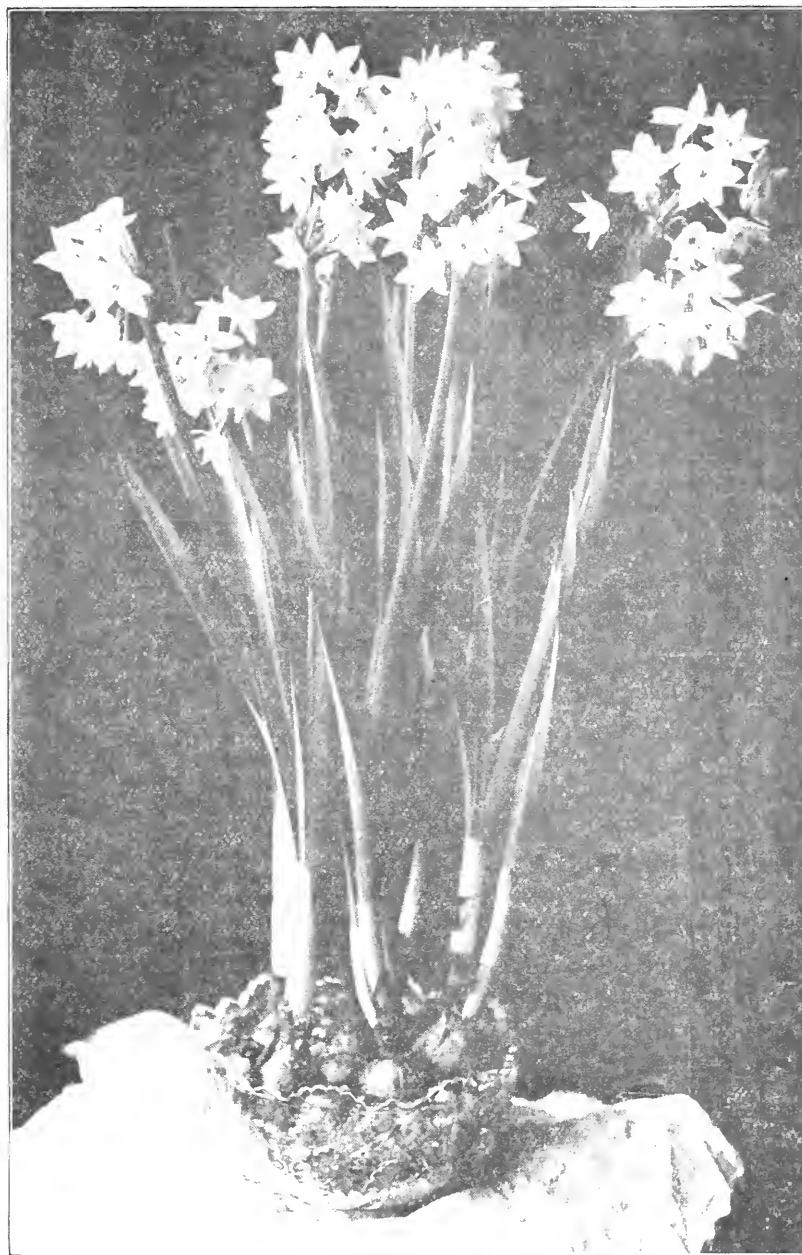
As easily grown as the Chinese Sacred Lily, and a most beautiful companion to that well-known and popular plant. Flower is of handsomest glowing yellow, and very fragrant. The bulbs of this Lily are small, and ought to be planted six or eight to a pan or lily bowl, in order to make a good show. 3c each; 7c for 3; 20c per dozen; per 100, \$1.15.

**Lily Bowls** For Chinese Sacred and Polyanthus Narcissus.

**Imitation Cut Glass** To hold 1 bulb, 20c each; for 2 bulbs, 25c each; for 3 bulbs, 35c each.

**Pebbles** For filling Lily Bowls, 10c per quart.

Lily Bowls and Pebbles cannot be sent by mail, but only by express or freight at customer's expense. No charge for packing.



GIANT PAPER WHITE GRANDIFLORA NARCISSUS GROWING IN WATER AND GRAVEL. THESE CAN ALSO BE CULTIVATED IN SOIL TO ADVANTAGE

**CHINESE SACRED LILY**

(Soy Sin Far, Joss Flower, or Flower of the Gods)

This is the "Narcissus Orientalis," and the variety grown by Chinamen for decorating their temples or Joss houses on their New Year's Day, which occurs in February. For the most part they are grown in water in fancy bowls, with just enough pebbles around them to keep them from toppling over. (See illustration.) They can also be grown in pots in soil, sand or moss. We annually import from China a large quantity of the finest quality bulbs, and if planted on arrival (about October 1st) they will flower by Christmas, and a succession of flowers can be had by making several plantings. The white and yellow flowers are borne in clusters and are highly scented.

Large Bulbs, 10c each; 3 for 25c; 80c per dozen. Original baskets, containing 30 bulbs, \$1.50.

If wanted by mail, add 3 cents per bulb for postage.

**Mammoth Bulbs.** These are of very large size and will give better results than smaller plantings. 15c each; 40c for 3; \$1.50 per dozen. If to go by mail, add 5c per bulb for postage.

**Jumbo Bulbs.** (Supply very limited.) These are the largest bulbs it is possible to obtain. Each, 30c; 3 for \$1.00.



DOUBLE DAFFODILS VON SION

## Hardy Narcissus or Daffodils

**Von Sion** The famous "old double yellow Daffodil." Rich golden yellow perianth and trumpet. Extra size bulbs. Each, 3c; 3 for 8c; per dozen, 30c; per 100, \$2.00; per 1,000, \$18.00.

**Mammoth Double-Nosed Bulbs.** These choice bulbs will produce two to three flowers each. Each, 5c; per dozen, 50c; per 100, \$3.25; per 1,000, \$30.00.

**Von Sion "Jumbo Bulbs."** Also known as "Top Roots." The largest and finest bulbs we can secure in Holland. Each, 6c; per dozen, 60c; per 100, \$4.00; per 1,000, \$35.00.

**Golden Spur** Extra large, bold, rich yellow flowers, foliage very broad and striking. Early and extremely free flowering. 3c each; 3 for 8c; 30c per dozen; \$2.00 per 100; per 1,000, \$18.00.

**Golden Spur** Mammoth bulbs. Extra quality. 4c each; 3 for 11c; per dozen, 40c; per 100, \$3.25; per 1,000, \$27.50.

**Emperor** A magnificent flower; perianth deep primrose; trumpet large, rich yellow. Should be largely grown in flower beds, borders or naturalized in grass.

**Mammoth Bulbs.** Each, 5c; 3 for 14c; per dozen, 50c; per 100, \$3.00; per 1,000, \$25.00.

**Select Bulbs.** Each, 4c; 3 for 10c; per dozen, 30c; per 100, \$1.85; per 1,000, \$17.00.

**Bicolor Victoria** Perianth creamy, trumpet rich yellow, delicately perfumed; excellent for pots.

**Select Bulbs.** Each, 4c; 3 for 10c; per dozen, 30c; per 100, \$1.85; per 1,000, \$17.00.

**Mammoth Bulbs.** Each, 5c; 3 for 15c; 40c per dozen; \$2.50 per 100; per 1,000, \$22.50.

**Empress** Perianth snow-white, trumpet rich yellow, serrated and flanged at the edges; large in outline and of rare beauty for cutting.

**Mammoth Bulbs.** Each, 5c; 3 for 14c; per dozen, 50c; per 100, \$3.00; per 1,000, \$25.00.

**Select Bulbs.** Each, 4c; 3 for 10c; per dozen, 35c; per 100, \$2.25; per 1,000, \$20.00.

**Mrs. Langtry** A remarkably beautiful variety, broad, white perianth and white cup, opening pale primrose. Each, 3c; 3 for 8c; per dozen, 25c; per 100, \$1.15; per 1,000, \$9.50.

**Poeticus** (Pheasant's Eye, or Poet's Narcissus.) Flowers large, snow-white, with beautiful cup suffused with bright orange-red; blooms in May; very fragrant. Each, 3c; 3 for 7c; 20c per dozen; 85c per 100; \$7.00 per 1,000.

**Shakespeare** Broad sulphur-yellow perianth and a large golden yellow trumpet. Each, 20c; per dozen, \$2.00; per 100, \$15.00.

**Wm. Goldring** Perianth pure white, trumpet canary yellow; very large. Each, 5c; per dozen, 40c; per 100, \$2.50.

**Katherine Spurrell** Petals snow-white and a delicate canary-colored crown. Each, 6c; per dozen, 60c; per 100, \$4.00.

**Mme. De Graff** Perianth pure white, trumpet very pale primrose, passing off pure white; extra. Each, 15c; per dozen, \$1.35; per 100, \$10.00.

**White Lady** Broad, pure white perianth and a bold frilled edge cup of pale citron, passing to white. Each, 15c; per dozen, \$1.35; per 100, \$10.00.

**Flora Wilson** Pure white perianth, yellow crown, deeply stained with orange-red; beautiful. Each, 6c; per dozen, 60c; per 100, \$4.00.

**Poeticus Ornatus** The most perfect form of the Poet's Narcissus. It is more symmetrical than the old Poeticus and blooms a month earlier; flowers large, pure white, cup margined with scarlet.

**Mammoth Bulbs.** Each, 4c; 3 for 11c; per dozen, 35c; per 100, \$1.25; per 1,000, \$10.00.

**Select Bulbs.** Each, 3c; 3 for 8c; per dozen, 25c; per 100, 90c; per 1,000, \$7.50.

**Princeps** Very early. Flowers large, perianth sulphur, an immense rich yellow trumpet. 3c each; 3 for 8c; 25c per dozen; \$1.15 per 100; per 1,000, \$9.50.

**Alba Plena Odorata** (Double Poet's Narcissus, or Gardenia Daffodil.) Double, pure white. Each, 3c; 3 for 7c; 20c per dozen; \$1.10 per 100; per 1,000, \$9.00.

**Orange Phoenix** (Eggs and Bacon.) Light citron, with orange center; an excellent flower for forcing. Each, 3c; 3 for 8c; 25c per dozen; \$1.35 per 100; \$12.50 per 1,000.

**Sulphur or Silver Phoenix** (Codlins and Cream.) Creamy white with pale sulphur center. Each, 4c; 3 for 11c; per dozen, 35c; per 100, \$1.75; \$15.00 per 1,000.

**Trumpet Major** Large flowers of a deep yellow. Each, 3c; per dozen, 25c; per 100, \$1.35; per 1,000, \$12.00.

**Incomparabilis Sir Watkin** Large trumpet, with gold cup. Each, 4c; per dozen, 30c; per 100, \$2.00; per 1,000, \$18.00.

**Incomparabilis Cynosure** Perianth primrose, changing to white, cup yellow stained orange. Each, 7c; per dozen, 20c; per 100, \$1.15; per 1,000, \$9.00.

### POETAZ (The Hardy, Cluster-Flowered Daffodils)

**Alsace** Petals pure white with yellow eye; when bursting into flower the eye is slightly reddish. Each, 10c; per dozen, \$1.00; per 100, \$7.00.

**Almira** King Edward VII. Snow white petals and a beautiful shaped cup, canary yellow bordered red. Each, 9c; per dozen, 85c; per 100, \$6.00.

**Aspasia** Petals pure white with yellow eye. Each, 7c; per dozen, 65c; per 100, \$4.00.

**Elvira** Pure white, yellow eye, long stemmed, large flower; Each, 7c; per dozen, 65c; per 100, \$4.00.

**Irene** Perianth silky sulphur-yellow changing to light yellow, large. Each, 9c; per dozen, 85c; per 100, \$6.00.

**Klondyke** Perianth yellow with deep golden yellow eye, trusses bring 6 to 7 flowers; an extra fine sort. Each, 25c; per dozen, \$2.75; per 100, \$20.00.

**Triumph** Pure white perianth with deep yellow eye; extra large. Each, 9c; per dozen, 90c; per 100, \$6.50.

### SWEET SCENTED JONQUILS

**Single Sweet Scented** (Narcissus Jonquilla.) Rich yellow; not as large a flower as the others, but most fragrant. Each, 2c; 3 for 5c; 15c per dozen; 95c per 100; \$7.00 per 1,000.

**Double Sweet Scented** Full double golden yellow. Each, 3c; 3 for 8c; 25c per dozen; \$1.75 per 100; \$18.00 per 1,000.



# Miscellaneous Bulbs

For House Culture and Naturalizing  
**AMARYLLIS**

**Johnsonii** The immense trumpet-shaped flowers, borne on strong, fleshy flower stems, and are of rich velvety crimson, each petal having a broad white stripe. Large bulbs, 30c each; 85c for 3. Mammoth bulbs, 40c each; \$1.00 for 3.

**ALLIUM**

**Neapolitanum** An excellent variety for winter flowering, pure white, with green stamens borne in large loose umbels. 6 for 12c; 20c per dozen; \$1.00 per 100; per 1,000, \$7.00.

**CALLA LILY**

A well-known plant of easy culture; the only particular attention it requires is constant watering, and as warm a room as can be conveniently given it.

**Aethiopica White Calla, or Lily of the Nile** Dry roots. Each, 15c; 3 for 40c; per dozen, \$1.25; per 100, \$10.00.

**Mammoth Bulbs.** 25c each; 3 for 60c; \$2.00 per dozen; per 100, \$15.00.

**Monster Roots.** Each, 40c; 3 for \$1.00.

**CHIONODOXA LUCILLAE**

(Glory of the Snow)

Hardy

Bright blue, with large, clear white center. Per dozen, 20c; per 100, \$1.25; per 1,000, \$10.00.



**CALLA AETHIOPICA**  
EXCELLENT FOR HOUSE CULTURE

## Winterson's Spring Flowering Crocus



**SPRING FLOWERING CROCUS IN THE LAWN**  
THEY DO NOT INTERFERE WITH THE GRASS IN ANY MANNER WHATSOEVER AND INCREASE WITH AGE

**THE BEAUTIFUL BLUE SCILLA SIBERICA AND SNOWDROPS CAN ALSO BE PLANTED IN THE LAWN TO ADVANTAGE. SEE PAGE 14**

One of the earliest of spring flowering bulbs, and should be planted liberally in every garden. In large groups Crocus are very striking, planted either in blocks or separate colors or as mixtures. They can also be planted in the lawn, scattered promiscuously, and the effect will be very striking. They can be left undisturbed for years and will ever increase in quantity of bloom. They do not interfere in any way with the lawn.

**(Holland's Prize)**

The most magnificent of Crocus, produces enormous blooms of a golden yellow. Excellent for house culture as well as outdoor blooming. Per dozen, 30c; per 100, \$1.65; per 1,000, \$14.00.

**Baron von Brunow** Dark blue. Per dozen, 20c; per 100, \$1.25; per 1,000, \$11.00.

**Mont Blanc** Pure white. Per dozen, 20c; per 100, \$1.25; per 1,000, \$11.00.

**Sir Walter Scott** White, blue-striped. Per dozen, 20c; per 100, \$1.25; per 1,000, \$11.00.

**Cloth of Gold** Yellow and brown. Per dozen, 20c; per 100, \$1.25; per 1,000, \$11.00.

**Pres. Lincoln** Beautiful blue. Per dozen, 20c; per 100, \$1.25; per 1,000, \$11.00.

**WINTERSON'S SPECIAL MIXTURE**  
(Giant Spring Flowering Crocus)

This mixture is made up from named sorts only, including Giant Yellow. The colors are properly proportioned. For planting outdoors in lawns, along borders, or amongst shrubbery this mixture cannot be excelled. 20c per dozen; \$1.25 per 100; \$11.00 per 1,000, by express at purchaser's expense.

**CROCUS—Mixed Varieties**

White. Per dozen, 15c; per 100, 75c; per 1,000, \$6.00.

Striped and variegated. Per dozen, 15c; per 100, 75c; per 1,000, \$6.00.

Blue. Per dozen, 15c; per 100, 75c; per 1,000, \$6.00.  
Large yellow. Per dozen, 15c; per 100, 75c; per 1,000, \$6.00.

Colors, all in splendid mixture. Per dozen, 15c; per 100, 75c; per 1,000, \$6.00.



# Miscellaneous Bulbs



**For House Culture and  
Naturalizing**



**GIANT**

**FREESIA REFRACTA ALBA**

Of all South African flowering bulbs, the Freesia is doubtless the best known and most esteemed. The gracefully branched, fragrant flowers are of long duration, and being freely produced, are profitable for commercial purposes and satisfactory to amateurs. If planted early they may be had in bloom by Christmas. Plant eight or ten bulbs in a 6-inch bulb-pan, covering them one inch. The peculiar habit, its delicious perfume and great value for cutting have made it immensely popular.

**Large Bulbs.** .15c per dozen; \$1.25 per 100; \$10.00 per 1,000.

**Mammoth Selected Bulbs.** .25c per dozen; \$1.75 per 100; \$15.00 per 1,000.

**Monster Bulbs.** 40c per dozen; \$2.50 per 100; \$20.00 per 1,000.

**THE GRAND NEW PURE WHITE FREESIA "PURITY"**

A grand acquisition to the Freesias. Flowers, which are a snowy white, of large size, are borne in great profusion on stems 2 to 2½ feet. Extra size bulbs, 4c each; 40c per dozen; \$3.00 per 100; \$25.00 per 1,000.

**IRIS, SPANISH**

(Iris Hispanica)  
Extra Size Bulbs

Perfectly hardy, and equally good for pot or garden culture. The flowers are of great beauty, having many different blendings of color, and if cut when in the bud state will last a long time in water. Mammoth bulbs.

**British Queen** Purest white.

**La Tendresse** Creamy white.

**Chrysolara** Yellow.

**King of the Blues** Sweet scented.

**Alex. Von Humboldt** Deep blue.

Any of the above, 3c each; per dozen, 20c; per 100, \$1.00; per 1,000, \$7.50.



**FREESIA REFRACTA ALBA**

**ORNITHOGALUM ARA-  
BICUM**

(Star of Bethlehem)

One of the most striking flowering bulbs. Its immense spike of pure white flowers is simply grand. Not hardy except in southern states. 5c each; 12c for 3; 30c per dozen; per 100, \$2.50.

**OXALIS**

Lovely little bulbous plants for hanging pots and baskets. The bulbs should be planted an inch deep, six or eight in a 5-inch pot. They need a sunny situation.

**Alba** White. Each, 3c; dozen, 25c; per 100, \$1.25.

**Bermuda Buttercup** Mammoth bulbs. Each, 3c; per dozen, 30c; per 100, \$2.00.

**Bowiei** Rosy crimson; fine flower. Each, 3c; per dozen, 25c; per 100, \$1.50.

**Lutea** Single yellow. Each, 2c; per dozen, 20c; per 100, \$1.25.

**Hirta Rosea** Rose. Each, 2c; per dozen, 20c; per 100, \$1.00.

**Mixed.** All colors. Per dozen, 15c; per 100, \$1.00.

**SNOWDROPS (Galanthus)**

The charming Snowdrop is the first of all flowers to herald the approach of spring. It can frequently be seen in bloom when the ground is white with snow.

**Elwes' Giant** An exceedingly large and beautiful single variety; flowers snow-white, with emerald-green tube. 15c per dozen; \$1.00 per 100; \$7.00 per 1,000.

**Double** Flowers perfectly double, pure white. 30c per dozen; \$2.00 per 100.

**SCILLA SIBIRICA**

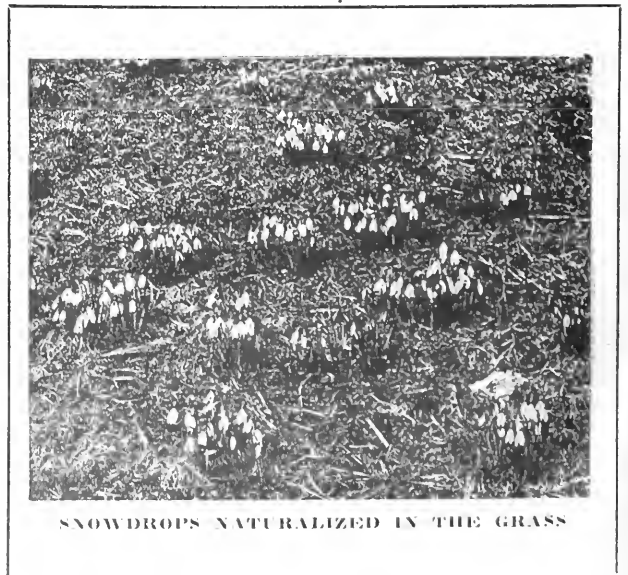
Splendid for planting as an edging, or for filling small beds, if planted sufficiently thick the effect is matchless and equally so grown in the border in groups of a dozen or a hundred. Flowers of a lovely ultra-marine blue.

**Jumbo Bulbs** 4c each; 10c for 3; 25c per dozen; \$1.50 per 100; \$3.50 for 250; \$12.00 for 1,000.

**Mammoth Bulbs** 2c each; 20c per dozen; \$1.25 per 100; \$3.00 for 250; \$10.00 per 1,000.



**HARDY SCILLA SIBIRICA**



**SNOWDROPS NATURALIZED IN THE GRASS**



# Hardy Garden Lilies

Lilies are most desirable for planting in the herbaceous border, because in this manner they receive the benefit of the shade of surrounding plants, which is so necessary for their welfare. Varieties listed are best planted in the autumn, however, sometimes the bulbs do not arrive from Europe until after ground is frozen, consequently soil should be covered meantime with six inches of leaves or manure, so the bulbs can be planted on arrival.

## HARDY LILY CANDIDUM

(Madonna or Annunciation)

### LILY True Thick Petaled Variety

(See Illustration on Front Cover)

The peerless white Lily, queen of the garden. Although old and common, this is still one of the finest single clear white flowers in cultivation and its rich perfume is very attractive. No garden, however small, should be without at least one plant of this beautiful variety. It should be planted in the fall. Height outdoors in the open usually three to four feet.

(Ready in August)

Select Bulbs. 10c each; 25c for 3; 85c per dozen; \$1.75 for 25; \$6.50 per 100; \$14.00 for 250.

Mammoth Bulbs. 15c each; 50c for 3; \$1.50 per dozen; \$10.00 per 100.

Jumbo Bulbs. 40c each; \$4.50 per dozen.

## TRUE BERMUDA EASTER LILY

(Lilium Harrisii) (Ready in August)

Mammoth white Trumpet Lily, with flowers 4 to 5 inches long, is the best of all Lilies for winter forcing and flowering.

Extra Size Bulbs, which should produce from 8 to 15 flowers, 25c each; 70c for 3; \$1.75 per dozen; \$3.25 for 25; \$12.00 per 100.

Not Hardy in the North

## SPECIOSUM MELPOMENE

A most beautiful variety. Flowers frosted white, spotted, clouded and bearded with pinkish crimson. Petals are recurved and widely bordered.

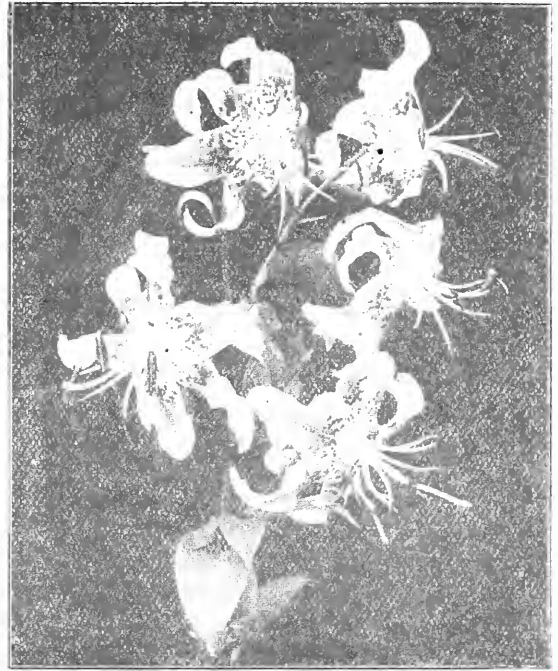
	Each	3	Doz.	25	100
First Size, 8-9 in.....	\$0.20	\$0.50	\$1.50	\$2.25	\$ 8.00
Mammoth, 9-11 in.....	.35	.95	1.85	3.25	12.00

## TENUIFOLIUM (Siberian Lily)

One of the very hardiest Lilies; flowers vivid, free flowering, blooming early in the spring. Each, 15c; per dozen, \$1.50.



LARGE FLOWERING — LILY OF THE VALLEY  
Produced from German Clumps



HARDY LILY  
LILIAM SPECIOSUM RUBRUM

NOTE.—We can supply all varieties of Lilies in commerce and at market prices. Our sources of supply for these bulbs cannot be excelled.

## TIGRINUM SPLENDENS (Improved Single Tiger Lily)

Very hardy native Lily; orange-red, spotted purple-black. Pretty and bears 8 to 20 flowers when well established. Each, 12c; per dozen, \$1.20; 25 for \$2.00; per 100, \$8.00.

## TIGRINUM FLORE PLENO

The well-known double Tiger Lily; grows from 4 to 6 feet high, and bears an immense number of bright orange flowers. Each, 12c; per dozen, \$1.25; 25 for \$2.25; per 100, \$9.00.

## LILIUM LONGIFLORIUM GIGANTEUM

(Japanese Easter Lilies)

Ready in October. Very like Lilium Harrisii and preferred by some to that variety.

Extra Size Bulbs, which should produce from 6 to 10 flowers, 15c each; 40c for 3; \$1.35 per dozen; \$2.50 for 25; \$9.00 for 100; \$20.00 for 250.

Mammoth Bulbs, which should produce up to 15 flowers on a stalk, 20c each; \$2.25 per dozen; \$5.00 for 25; per 100, \$18.00.

## HARDY FRAGRANT GARDEN LILIES. AURATUM—Gold Banded

The most delightful of all the Lily family. Flowers white, dotted crimson, with a clear golden band running through the center of each petal; very fragrant.

	Each	3	Doz.	25	100
First Size, 8-9 in.....	\$0.20	\$0.50	\$1.25	\$2.00	\$ 7.00
Mammoth, 9-11 in.....	.35	.95	1.75	3.25	12.00
Monster, 11-12 in.....	.50	1.35	2.50	4.50	16.00

## SPECIOSUM ALBUM—White

	Each	3	Doz.	25	100
First Size, 8-9 in.....	\$0.35	\$0.95	\$1.75	\$3.25	\$12.00
Mammoth, 9-11 in.....	.50	1.35	3.00	5.25	20.00
Monster, 11-12 in.....	.75	2.00	6.00	.....	.....

## SPECIOSUM RUBRUM—Crimson Banded

	Each	3	Doz.	25	100
First Size, 8-9 in.....	\$0.20	\$0.50	\$1.25	\$2.00	\$ 7.00
Mammoth, 9-11 in.....	.35	.95	1.75	3.25	12.00
Monster, 11-12 in.....	.50	1.35	2.75	5.25	20.00

## LILY OF THE VALLEY

Perfectly Hardy and Increases Yearly

Large Imported German Clumps. These mammoth German Clumps will give excellent results the first season and produce the large spikes and bells so frequently used in bride's bouquets. Each, 30c; per dozen, \$3.00.

Cold Storage Pips for Forcing. Finest imported quality. Not less than 50 pips at a time. Price, for 50, \$1.75; per 100, \$3.50.





AQUILEGIA, OR COLUMBINE

**ACHILLEA (Milfoil, or Yarrow)**

Achilleas are useful for the border wall garden or shrubbery, of easy culture and fine for cut flowers.

**Boule de Neige (Ball of Snow).** An improvement on The Pearl; the flowers are of more perfect form with fuller centres, which makes it appear purer in color. Each, 15c; per doz., \$1.50.

**ACONITUM****(Monkshood, or Helmet Flower)**

All the varieties offered form bushy clumps and grow about 4 feet high; invaluable for planting under trees or shady or semi-shady positions.

**Napellus.** Large, dark blue flowers, August to September.

25c each; \$2.50 per doz.; \$15.00 per 100.

**ANCHUSA (Sea Bugloss)**

**Italica, Dropmore Variety,** produces pretty gentian-blue flowers throughout the entire summer. One of the best blue perennials; grows 5 to 6 feet high. Each, 25c; per doz., \$2.50.

**ANTHEMIS (Marguerite)**

These hardy Marguerites are the most satisfactory summer flowering perennials, succeeding in the poorest soil, bloom during the entire summer; height, 15 inches.

**Tinctoria.** Of bushy habit, large, golden yellow flowers.

Each, 15c; per doz., \$1.50; \$10.00 per 100.

**ANEMONE JAPONICA (Japanese Windflower)**

Anemones are excellent for cutting, lasting in good condition for many days. The plants grow 2 to 3 feet high, are perfectly hardy if given the

# The Hardy Garden

## Winterson's Hardy Perennial Plants for Autumn Planting

**ANEMONE JAPONICA (Japanese Windflower)**—Continued protection of 2 or 3 inches of leaves or litter during the winter, and, while they respond freely to liberal feeding, they will succeed in any ordinary garden soil, increasing in beauty from year to year. They can be used in solid beds or borders or clumps planted through the hardy border, which they brighten up during the late fall months.

**Japonica Rubra.** Beautiful rosy-red; stamens bright yellow.

**Queen Charlotte.** Very large semi-double flowers of La France-pink, a color that is rare among hardy plants.

**Rosea Superba.** Flowers of medium size, of a delicate silvery-rose.

**Whirlwind.** Large semi-double pure white flowers; very free.

Price, each, 15c; per doz., \$1.50; \$10.00 per 100.

**AQUILEGIAS, or COLUMBINES**

The Columbines are one of the most elegant and beautiful of hardy plants, producing their graceful spurred flowers on stems rising 2 feet or more above the beautifully divided foliage, and are highly prized for cutting.

**Canadensis (Common American Columbine).** The native bright red and yellow variety, and one of the brightest.

**Chrysantha (Golden Columbine).** Bright yellow, long spurred flowers.

**Coerulea (Rocky Mountain Columbine).** Bright blue and white flower dwarf with thick foliage; flowers in April.

Price, each, 15c; per doz., \$1.50; \$10.00 per 100.

**ASCELPIAS (Butterfly Weed)**

**Tuberosa.** One of the showiest of our native perennials, about 2 feet high, and producing during July and August close, compact umbels of brilliant orange-colored flowers. Each, 15c; per doz., \$1.50; \$10.00 per 100.

**BLEEDING HEART (Dielytra)**

So called from its drooping heart-shaped flowers. Will thrive in any part of the hardy border. Good for forcing in pots and planting in shady places. Likes rich, sandy loam.

**Pink and White Heart-Shaped.** Each, 15c; per doz., \$1.50; \$10.00 per 100.

**BOCCONIA (Plume Poppy, or Tree Celandine)**

**Cordata.** Beautiful in foliage and flower, admirably adapted for planting in the shrubbery borders, centre of beds, and in bold groups in almost any position. It will grow in any soil or situation, attaining from 6 to 8 feet in height; flowers in terminal panicles, of a creamy-white color, during July and August. Each, 15c; per doz., \$1.50; \$10.00 per 100.

**BOLTONIA (False Chamomile)**

Among the showiest of our native hardy perennial plants, with large, single Aster-like flowers. The plant is in bloom during the summer and autumn months, and with its thousands of flowers open at one time produces a very showy effect.

**Latisquama.** Pink, slightly tinged with lavender; 4 to 6 feet.

**Asteroides.** Pure white; very effective; 5 to 7 feet.

Each, 15c; per doz., \$1.50; \$10.00 per 100.

**CAMPANULAS, or BELLFLOWERS**

Indispensable hardy garden flowers, of much variety of form, some being of tall and imposing habit, while others are dwarf, compact little plants suitable for edging, rockwork, etc. They like a good rich soil, and last much longer in bloom if planted in a half-shady place. The taller-growing kinds should be staked to prevent injury from high winds.

**Medium (Canterbury Bells).** Our stock has been grown from the very finest strain; blue, rose and white; 3 feet.

**Persicifolia (Peach Bells).** Blue, salver-shaped, flowers during June and July. 2 feet.

**Pyramidalis (Chimney Bell-flower).** The most conspicuous of

# The Hardy Garden

## Winterson's Hardy Perennial Plants for Autumn Planting

### CAMPANULAS, OR BELLFLOWERS—Continued

all Campanulas, forming a perfect pyramid 4 to 6 feet high, crowded with large salver-like blue flowers. Each, 25c; per doz., \$2.50.

Price, any of the above, except where noted, each, 15c; per doz., \$1.50; per 100, \$10.00.

### CENTAUREA (Hardheads, or Knapweed)

Of easy culture, delighting in an open, sunny position, producing a wealth of bloom, which not only makes a fine display in the border, but furnishes excellent material for cutting.

**Montana** (Perennial Corn Flower). Grows 2 feet high, bearing large violet-blue flowers from July to September.

Each, 15c; per doz., \$1.50.

### COREOPSIS

**Lanceolata grandiflora**. One of the most popular hardy plants. The flowers are a rich golden-yellow, of graceful form and invaluable for cutting; the main crop comes during the latter part of June, but it continues in bloom the entire summer and autumn. It succeeds everywhere.

Each, 15c; per doz., \$1.50.

### DAISY, SHASTA

"Alaska." A decided improvement on the original, very free-flowering, with blooms  $4\frac{1}{2}$  to 5 inches across, of pure glistening white. Each, 25c; per doz., \$2.50.

Mixed seedling, each, 15c; per doz., \$1.50.

### DELPHINIUM (Hardy Larkspur) (See Front Cover)

### GERMAN IRIS (Iris Germanica)

The German Iris are among the most desirable and easiest grown of our spring-flowering hardy plants, producing in May their showy flowers of exquisite coloring, combining the richest and most delicate tints. For best results plant in a well-drained, sunny position, barely covering the roots. Avoid fresh manure in preparing your border.

**Atropurpurea**. Rich royal purple.

**Florentina Alba**. Very free-flowering white.

**Honorabilis**. Standard golden-yellow, falls rich mahogany brown.

**Mrs. Neubronner**. The finest golden-yellow. 25c each; doz., \$2.50.

**Mme. Chereau**. Standards and falls pure white; daintily edged with light blue.

**Pallida Dalmatica**. One of the finest of the Germanica type, of strong, vigorous habit, growing in good soil 4 feet high, with exceptionally large, fragrant flowers, standards lavender, falls lavender shaded blue; exquisite in every way and fine for massing. 25c each; \$2.50 per doz.; \$20.00 per 100.

**Plumeri**. Standards rose-mauve, with metallic sheen, falls vinous-mauve.

Price, any of the above, except where noted, 15c each; \$1.50 per doz.; \$10.00 per 100. We can also supply 13 additional varieties, the complete set comprising all colors of the rainbow.

**Mixed German Iris**. All colors, 10c each; \$1.00 per doz.; \$6.00 per 100.

### HARDY GARDEN PINKS

Old favorites, bearing their sweet, clove-scented flowers in the greatest profusion during May and June. They are indispensable for the edge of the hardy border and for cutting; 1 foot.

**Diamond**. A fine extra early, fringed white.

**Excelsior**. Light rose-pink, shaded darker.

**Her Majesty**. Large flowers of purest white.

**Homer**. Rosy-red with dark centre.

**Juliette**. White, laced crimson.

**Snow**. A fine, pure white.

**Souv. de Salle**. Soft rosy red.

**White Reserve**. An ever-blooming pure white.

**William Hooper**. Deeply fringed white flowers with crimson-purple lacing.

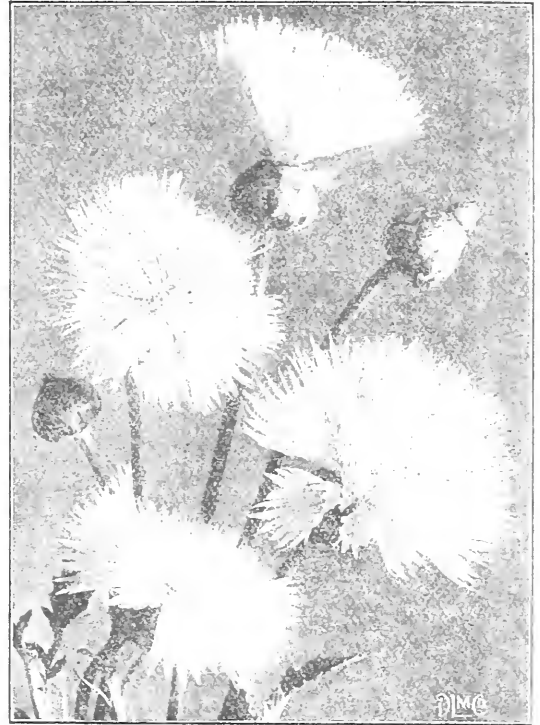
**Delicata**. A new self-colored variety, of a most delicate silvery-mauve, a shade peculiar to some of the orchids. Each, 25c.

**Elsie**. Bright rose, maroon centre.

**Gloriosa**. A new sort of a pleasing shade of lilac-mauve with deeply fringed flowers. 25c each.

Price, any of the above, except where noted, 15c each; \$1.50 per doz.

**Mixed Sorts**. A choice lot of seedlings, 10c each; \$1.00 per doz.; \$7.00 per 100.



CENTAUREA MONTANA

### FUNKIA (Plantain Lily)

The Plantain Lilies are among the easiest plants to manage; their broad, massive foliage make them attractive subjects for the border even when not in flower. They succeed equally well in sun or shade.

**Subcordata grandiflora**. Pure white, lily-shaped, fragrant flowers in August.

**Coerulea**. Blue, broad green leaves.

**Lanceolata**. Valuable by reason of its late-flowering, lilac flowers in September and October.

Price, each, 15c; per doz., \$1.50.

### CHOICE HARDY VERMONT FERNS

In 27 of the most beautiful varieties, many of which will succeed not only in a shaded situation, but in a sunny or half shaded situation as well.

Price, each, 20c; per doz., \$2.00; per 100, \$15.00.

### GAILLARDIA (Blanket Flower)

**Grandiflora**. One of the showiest hardy plants, growing about 2 feet high and succeeding in any soil in a sunny position; beginning to flower in June, they continue the entire season. The large flowers are of gorgeous coloring. The centre is dark red brown, while the petals are marked with rings of brilliant crimson, orange and vermilion, and often a combination of all in one flower; excellent for cutting. Each, 15c; per doz., \$1.50.

### GENTIANA

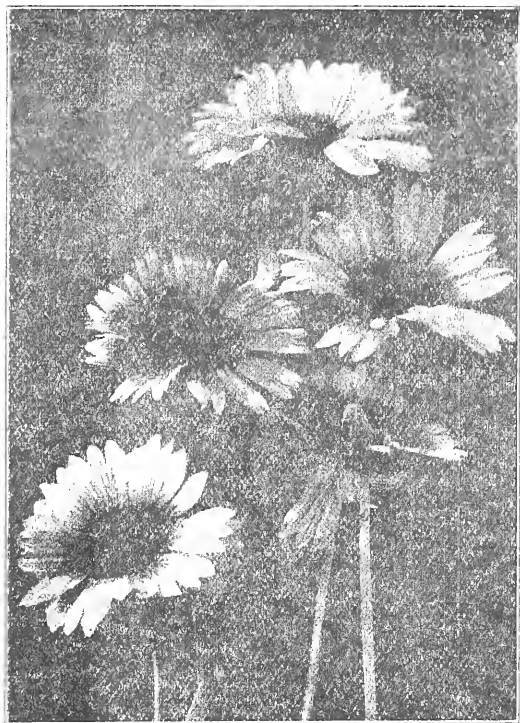
**Andrewsii** (Blue Gentian). A pretty native species, growing about 2 feet high; flowers fine blue; in autumn. Each, 25c; per doz., \$2.50.

### GYPSOPHILA (Baby's Breath)

The Gypsophilas will thrive in any soil in a sunny position, and on account of their gracefully arranged large panicles of minute flowers should be in every garden; the new variety, *Paniculata* Fl. Pl., if cut and dried, will retain its beauty for many months, furnishing most attractive decorative material in this shape.

(Continued on next page)





**GAILLARDIA GRANDIFLORA**  
(See Page 17)

#### GYP SOPHILA (Baby's Breath)—Continued

**Paniculata.** When in bloom during August and September it forms a symmetrical mass 2 to 3 feet in height, and as much through, of minute pure white flowers, forming a beautiful gauze-like appearance. When cut it is exquisite in combination with other flowers. Each, 15c; per doz., \$1.50.

**Paniculata Fl. Pl.** The pretty little double rosette-like flowers of this new variety, which are produced in much-branched panicles, 3 to 3½ feet high, are not only valuable for cutting—it can be cut and dried, retaining its beauty for months in this shape—but a most desirable addition to the hardy border. Each, 25c; per doz., \$2.50.

#### HEMEROCALLIS (Yellow Day Lily)

Popular hardy tuberous plants, belonging to the Lily family. They succeed everywhere, and should always be included in the border of old-fashioned hardy plants.

**Flava** (Yellow Day Lily). The best known variety, very fragrant, deep lemon-yellow flowers in June and July. Height, 2½ to 3 feet. Each, 15c; per doz., \$1.50.

#### HELIANTHUS (Hardy Sunflower)

The perennial Sunflowers are among the most effective hardy plants for large borders for planting among shrubbery, or as clumps on the lawn. They are remarkably free-flowering, will succeed in any soil, and are invaluable for decorative purposes, or as cut flowers during the summer and autumn.

**Multi-florus Fl. Pl.** (Double Hardy Sunflower). Large, double Dahlia-like golden-yellow flowers in great profusion during July and August; 4 feet. Each, 15c; per doz., \$1.50.

#### HOLLYHOCKS, Large Flowering

Spring planting recommended.

#### JAPANESE IRIS (Iris Kaempferi)

The improved forms of this beautiful flower have placed them in the same rank popularly as the Hardy Phloxes and Peonies. Coming into flower about the middle of June and continuing for five or six weeks, they fill in a period when flowers of this attractive type are particularly welcome. The collections offered below are direct from Japan and cannot be surpassed for variety, coloring and size of flowers.

Six petaled varieties in 20 choicest named sorts. Three petaled varieties in 20 choicest named sorts. Price, each of above, 25c; \$2.50 per doz.; \$15.00 per 100. Per set of 20 for \$1.00. Extra choice, mixed varieties, each, 15c; \$1.50 per doz.; \$10.00 per 100.

## The Hardy Garden

### Winterson's Hardy Perennial Plants for Autumn Planting

#### PLATYCODON

##### (Balloon Flower or Japanese Bellflower)

The Platycodons are closely allied to the Campanulas, and form neat, branched bushes of upright habit.

**Grandiflorum.** Deep blue cupped, star-shaped flowers.

**Album.** A white-flowered form of the above.

Each, 15c; per doz., \$1.50.

#### HARDY PHLOXES

We consider the following to be the best dozen standard sorts, each one of which is a strong grower, with immense panicles of large individual blooms, pure in color and strictly first-class in every way.

**Antoin Mercie.** Light ground color, one-half of each petal suffused bluish lilac.

**B. Comte.** Brilliant rich French purple.

**Bridesmaid.** Pure white, with large crimson-carmine eye.

**Geo. A. Stroblein.** Bright scarlet, with crimson-red eye. A large flower; color does not bleach in the sun.

**Henry Murger.** White, with crimson-carmine centre; a beautiful variety.

**Le Mahdi.** Deep reddish violet with deeper eye.

**Mme. Paul Dutrie.** Delicate lilac-rose in shade like a soft pink orchid; flowers very large, borne in immense panicles.

**Mrs. Jenkins.** The best white for massing; immense panicles; early and free bloomer.

**Pantheon.** Uniform bright carmine-rose throughout; very effective.

**R. P. Struthers.** Bright rosy-carmine, with claret-red eye.

**Selma.** A pretty, delicate, soft pale rose, with distinct red eye.

**Sibold.** An improvement on the popular scarlet "Coquelicot," brighter in color and a stronger grower.

Price, any of the above varieties, 20c each; \$2.00 per doz.; \$15.00 per 100.

#### PEONIES

(See Back Cover Page)

#### PYRETHRUM

**Hybridum Fl. Pl.** Too much cannot be said in favor of this grand hardy perennial, which will thrive in any good garden soil where there is good drainage and full exposure to the sun. The main season of blooming is in June, but if the old flower stems are removed they will give a fair sprinkling of flowers in the autumn. Splendid for cutting. We offer choice named sorts in Crimson, Pink and White, 35c each; \$3.50 per doz. One each of the three colors, \$1.00.

**Uliginosum** (Giant Daisy). Grows 4 to 5 feet high, and is covered with large white daisy-like flowers, 3 inches in diameter, from July to September. 15c each; \$1.50 per doz.; \$10.00 per 100.

#### PAPAVER ORIENTALE (Oriental Poppy)

These are the regal representatives of this popular genus, far surpassing in splendor of bloom all the annual and biennial kinds.

**Mahogany.** Dark crimson-maroon, shaded mahogany.

**Princess Victoria Louise.** Salmon-pink.

**Mrs. Perry.** Salmon-rose.

**Goliath.** Fiery scarlet.

**Triby.** Brilliant red.

25c each; \$2.50 per doz. Set of 5 varieties, \$1.00.

**Finest Mixed Varieties.** 15c each; \$1.50 per doz.; \$10.00 per 100.

#### RUDBECKIA (Golden Glow)

Indispensable plants for the hardy border; grow and thrive anywhere, giving a wealth of bloom, which are well suited for cutting.

**"Golden Glow."** We question if any one hardy perennial plant has ever met with greater popularity than this. It is a strong, robust grower, attaining a height of 5 to 6 feet, and produces masses of double golden yellow Cactus Dahlia-like flowers from July to September. 15c each; \$1.50 per doz.

#### STOKESIA (Cornflower Aster)

**Cyanea.** A beautiful native plant. Grows from 18 to 24 inches high, bearing freely from early in June until October its handsome lavender-blue Cornflower-like blossoms, which measure from 4 to 5 inches across. It is of the easiest culture, succeeding in any open, sunny position, and not only is it desirable as a single plant in the hardy border, but it can also be used with fine effect in masses of beds of any size.

**Cyanea alba.** Pure white variety of above.

Each, 15c; per doz., \$1.50.

#### SWEET WILLIAM (Dianthus Barbatus)

We offer a superb strain which we can supply either in a choice mixture or in the following separate colors, viz.: Newport pink, scarlet and white.

Each, 15c; per doz., \$1.50; per 100, \$10.00.

#### YUCCA (Adam's Needle)

**Filamentosa.** Among hardy ornamental foliage and flowering plants this can be classed at the head of the list. Its broad, sword-like foliage and tall, branched spikes of large, fragrant, drooping, creamy-white flowers during June and July make it an effective plant for all positions.

Each, 25c; per doz., \$2.50.

# Flowering and Ornamental Shrubs

## REASONS FOR FALL PLANTING

The season for planting of ornamental and flowering shrubs in the spring is invariably of such short duration that much intended work is necessarily omitted; in the fall there is an abundance of time to plan and plant, and the work can be done then much more satisfactorily. The once prevalent idea that fall planting of hardy shrubs is not advantageous has proved to be erroneous and, with the exception of evergreens, the list of sorts herein mentioned can be planted successfully in the autumn season after the leaves begin to fall. The various state experimental stations, as well as the U. S. Department of Agriculture, recommend fall planting of hardy kinds. Our 1915 GARDEN GUIDE will contain a complete list of shrubs for spring planting. Copy mailed free.

### BARBERRY (Thunberg's Japanese) (See Illustration Above)

**B. Thunbergii** (S) May. Will grow just about anywhere, and has handsome foliage of tiny, bright green, oval leaves, that turn the most brilliant shades of orange and red in the fall. The slender, graceful branches, which are protected by small thorns, are lined with little scarlet berries of great attractiveness, from early autumn well into the winter.

	Each	10	100
18 to 24 in.....	\$0.35	\$2.50	\$20.00
24 to 30 in.....	.50	4.00	30.00

**V. vulgaris** Common Barberry. (S) May. An erect, sturdy grower, with light green, prickly leaves. Clusters of golden yellow flowers, later dark red berries that last throughout the winter.

	Each	10
1½ to 2 ft.....	\$0.35	\$3.00
3 to 4 ft.....	.50	4.00

**var. purpurea** Purple Barberry. (S) May. Habit similar to the above. The foliage is dark purple throughout the season, and on this account is one of the very best shrubs for foliage contrast.

	Each	10
2 to 2½ ft.....	\$0.35	\$2.50
3 to 4 ft.....	.50	4.00
Specimens.....	75c to 1.00	

### CRAB (Bechtel's Double Flowering) (M)

Most beautiful of all the flowering Crabs; hardy. Trees of medium size are covered in early spring with large, beautiful double fragrant flowers of a delicate pink. This is the ideal lawn tree for a small yard. 3 to 4 ft., \$1.25; 4 to 5 ft., \$2.00 to \$5.00 each.

### CYDONIA JAPONICA (Japan Quince) (S)

A single shrub on the lawn is very attractive; brilliant crimson flowers, among the first in spring. Valuable for ornamental hedges. 1½ to 2 ft., each, 35c; 10, \$3.00. 2 to 3½ ft., each, 60c; 10, \$5.50. Specimens, each, \$1.00.

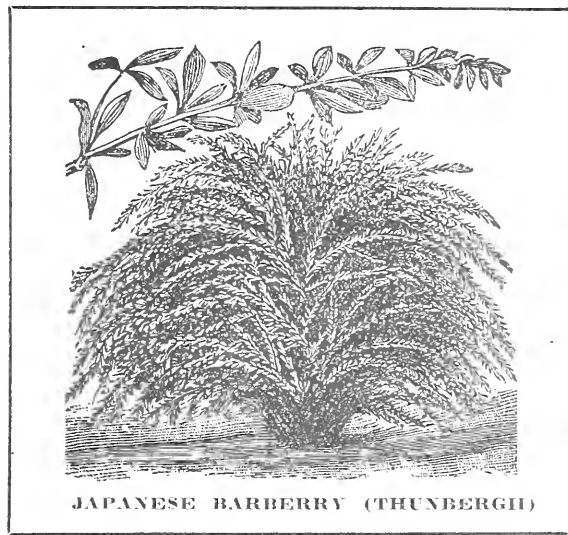
### DEUTZIAS (D)

Their hardihood, fine habit, luxuriant foliage and profusion of attractive flowers place them among the most beautiful and most popular of flowering shrubs at the present time. Flowers in June and through July and August.

**D. gracilis** Dwarf Deutzia. (D) May. An old-fashioned dense shrub; blooms in shaded as well as sunny places. Single, pure white flowers. 1 to 1½ ft., each, 25c; 10, \$2.00.

### CORNUS (The Dogwood)

Dogwoods thrive nearly as well in shaded places as in the open ground. While the bush forms are not remarkable for their flowers, they are especially valued for the brilliant coloring of the bark, which is very attractive in



JAPANESE BARBERRY (THUNBERGII)

the leafless months of winter. Particularly suited for mass planting.

**var. Siberica** Red Siberian Dogwood. (L) Umbels of white flowers in May. In winter the naked, bright red branches are conspicuous even at long distances. 2 to 3 ft., each, 35c; 10, \$3.00. 3 to 4 ft., each, 50c; 10, \$4.50. 5 to 6 ft., each, 75c.

### EUONYMUS (Spindle Tree) (Burning Bush) (M)

**E. elatus** A beautiful shrub having corky-winged branches and bright, shiny green leaves that turn brilliant red and scarlet in the fall. Extra fine as a specimen lawn shrub, as its high colors make it very attractive.

	Each	10
2 to 3 ft.....	\$0.75	\$7.00
3 to 4 ft.....	1.50	.....

### FORSYTHIA (Golden Bells)

Familiar hardy shrubs that burst into bloom as winter is leaving. The bright golden-yellow, star-like flowers wrap themselves along the naked branches in a wealth of bloom that is especially bright and cheerful at such an early season. The "Golden Bell" grows easily, and is ornamental in leaf as well as flower. It is useful for almost any purpose, but indispensable in groups and masses.

**Forsythia Fortunei** Fortune's Forsythia. (M) Erect branches and handsome broad, dark green leaves. 2 to 3 ft., bushy, each, 35c; 10, \$3.00. 3 to 4 ft., bushy, each, 50c; 10, \$4.50.

**F. suspensa** (M) Characterized by its graceful drooping habit. Frequently planted as an individual specimen as well as in masses and for covering arches and trellises. 2 to 3 ft., each, 35c; 10, \$3.50. 3 to 4 ft., each, 50c; 10, \$4.50.

### HYDRANGEA PANICULATA GRANDIFLORA. (Great-Panicled or Plumed Hydrangea) (M).

(See Illustration on page 20.)

Well known everywhere, with white flower heads as large and long as the name implies. White for a month or more, they turn to pink with age and last until frost. If the shrub is cut back to the ground every spring the panicles are sometimes a foot long. Exceptionally hardy and vigorous, therefore very much in use for grouping, ornamental hedging specimens, etc. If you have room for only one shrub, by all means plant Hydrangea Grandiflora.

	Each	10	100
2 to 3 ft., medium weight.....	\$0.35	\$3.00	\$20.00
2½ to 3 ft., bushy.....	.50	4.50	30.00
3½ to 4 ft., bushy.....	1.00	.....	.....

#### Tree Form.

4 to 5 ft.....	1.00	9.00	.....
----------------	------	------	-------

Plant Rudbeckia "Golden Glow" (see page 18) with the Hydrangea Paniculata Grandiflora. This combination makes a beautiful autumn show.





**HYDRANGEA PANICULATA GRANDIFLORA**  
(Giant-Panicle or Plumed Hydrangea)  
See Page 19 for Description and Prices

**HYDRANGEA "SNOWBALL"**

*Arborescens Grandiflora* (Snowball Hydrangea). Perfectly hardy American shrub with snow-white blossoms of largest size. It comes into bloom just after the passing of all the early spring shrubs, while its long flowering season, from early June until late August, makes it a valuable acquisition to any garden.

	Each	10
2 ft. ....	\$0.50	\$4.50
2½ ft., strong.....	.75	6.50

**LIGUSTRUM (Privet)**

*Amurensis* (Amoor Privet). (L) A very slender grower; the foliage is finer and of a lighter green than that of the California. A fine hedge plant.

Height	Each	Three	Doz.	100
12 to 18 in.....	\$0.20	\$0.50	\$1.80	\$10.00
2 to 3 ft.....	.30	.80	3.00	20.00
3 to 4 ft.....	.40	1.10	4.20	28.00
4 to 5 ft.....	.50	1.40	.....	.....

*Ibota*. (M) A valuable hardy Privet for the western and northern states. It is almost evergreen and grows freely in all soils. Compact and regular in form, and bears shearing to any extent. Flowers white and fragrant; leaves long and shiny. A charming shrub for hedges or specimens on the lawn.

Height	Each	Three	Doz.	100
12 to 15 in.....	\$0.15	\$0.40	\$1.50	\$10.00
18 to 24 in.....	.20	.50	1.80	12.00
2 to 3 ft.....	.30	.80	3.00	20.00
3 to 4 ft.....	.40	1.10	4.20	.....
4 ft., selected.....	.60	1.70	.....	.....

*Regelianum*. (M) This beautiful, graceful Privet is absolutely hardy and most desirable in every way. It is a dense shrub with stiff, twiggy, horizontal spreading branches, drooping at the ends. 2 to 3 ft., each, 20c; per 100, \$12.00. 4-ft. specimens, 75c and \$1.00.

*Vulgare*. (European Privet). (M) Very useful for hedges; can be clipped any shape. Grown as single specimens it produces panicles of white flowers in June. The foliage is of a lighter green than the other sorts. Its black berries remain on the bush all winter and are quite ornamental.

Height	Each	Three	Doz.	100
2 to 3 ft.....	\$0.20	\$0.50	\$1.80	\$12.00
3 to 4 ft.....	.30	.80	3.00	22.00
4 to 5 ft.....	.40	1.10	4.20	30.00

**FLOWERING AND ORNAMENTAL SHRUBS**  
**BUSH HONEYSUCKLE**  
(*Lonicera*)

A varied genus that includes vines and shrubs. The bush varieties are in demand for shrubbery groups and borders. They are hardy and grow easily. Their fragrant flowers are admired in spring, but another attraction is the brilliant fruit that follows in the summer and fall.

*Lonicera bella albida*. (M) Bears a profusion of white flowers, followed by scarlet fruits that hang on a long while and make a grand showing. Strong, rapid grower.

	Each	10
2 to 3 ft.....	\$0.35	\$3.00
4 to 5 ft.....	.50	4.00

*L. Tartarica* (*rubra*). Tartarian Honeysuckles. May. A useful old-fashioned shrub with slender upright branches. Small, fragrant, pink, crimson or bluish flowers, followed by attractive red or orange-yellow berries.

	Each	10
2 to 3 ft.....	\$0.35	\$3.00
3 to 4 ft.....	.50	3.50

*var. alba*. (S) White flowers alone distinguish it from the above.

	Each	10
2 to 3 ft.....	\$0.35	\$3.00
3 to 4 ft.....	.50	3.50

*var. grandiflora*. (S) Double pink flowers.

	Each	10
3 to 4 ft.....	\$0.50	\$4.50

**LILACS (True Syringa)**

*Charles X*. A strong, rapid-growing variety, with large, shining leaves; strusses large, of a reddish purple color. Strong bushes. 1½ to 2 ft., each, 40c; per 100, \$30.00; 2 to 3 ft., each, 50c; per 100, \$35.00; 3 to 4 ft., 75c.

*Persian Purple*. Small glossy leaves that do not mildew. Sweet scented flowers. 2½ to 3 ft., 50c; 3 to 4 ft., 65c.

*Rubra de Marley*. The old-fashioned purple Lilac. Strong bushes. 2 to 3 ft., each, 35c; per 100, \$25.00; 3 to 4 ft., each, 50c; per 100, \$35.00; 4 to 5 ft., 75c.

*Vulgaris*. (Common Lilac.) Bluish-purple flowers. A standard variety. Always good.

Height	Each	Three	Doz.	100
1 to 1½ ft.....	\$0.25	\$0.65	\$2.40	\$18.00
2 to 3 ft.....	.40	1.10	4.20	25.00
3 to 4 ft.....	.50	1.40	5.40	35.00

*Vulgaris Alba*. Similar to the above; flowers pure white.

	Each	10
3 to 4 ft.....	\$0.50	\$4.50

**MORUS (Mulberry)**

*Tartarica* (Russian). (20 to 25 ft.) Hardier in the Northwest than all others. 3 to 4 ft., each, 35c; per 100, \$25.00; 5 to 6 ft., 50c; 7 to 8-ft. specimens, \$1.25.

*Teas Weeping*. Tree 6 to 8 ft., \$2.50 to \$5.00 each.

**MOCK ORANGE (Philadelphus)**

A beautiful shrub of strong, vigorous habit that will grow almost anywhere, practically free from insect life.

*Coronarius* (Garland Mock Orange). (S) A vigorous, hardy old favorite of erect, compact habit; fragrant. Early white flowers.

	Each	10
2 to 3 ft.....	\$0.35	\$3.00
3 to 4 ft.....	.50	4.50

*Grandiflora* (M). Large Flowering Mock Orange. Forms a large spreading bush with graceful drooping branches. A strong grower, flowers slightly fragrant.

	Each	10
2 to 3 ft.....	\$0.35	\$3.00
3 to 4 ft.....	.50	4.50

## Flowering and Ornamental Shrubs

### RAMANAS, OR RUGOSA ROSES

These beautiful, hardy Roses bloom nearly the whole summer and are equally as attractive during the autumn and winter when covered with their large, brilliant red seedpods.

**Rugosa Alba** Crowded with clusters of single pure white flowers, foliage dark green and glossy. Strong 2-year dormant field plants. Each, 35c; 12 for \$3.00; 100 for \$20.00.

**Rugosa Rubra** Beautiful single red flowers throughout summer, followed by vivid scarlet seed vessels in the fall. Very free flowering and exceptionally hardy. Strong 2-year dormant field plants. Each, 35c; 12 for \$3.00; 100 for \$20.00.

### RIBES (Flowering Currant)

**R. aureum** Missouri Golden, or Buffalo Currant. (S) Bright green foliage beautifully tinted in the autumn; fragrant yellow flowers in May, followed by dark brown fruit. 4 to 5 ft., each, 50c; 10, \$4.00.

### SAMBUCUS (Elders)

Much in demand for the beautiful leaves. The flowers and fruits are also showy and attractive. Grows well anywhere; needs pruning to keep it in shape.

**Aurea (A)** (Golden-leaved.) The golden foliage of this makes it in much demand. It makes a showy appearance when planted in shrub beds. 2 to 3 ft., 35c; 3 to 4 ft., 50c; 5 to 6 ft., 75c.

### SNOWBALLS

**Japan Snowball (S)** (*Viburnum plicatum*.) Japanese variety of the old-fashioned Snowball is one of the most valuable of our hardy shrubs. It forms an erect, compact bush, 6 to 8 feet high. It blossoms in early June, when the plant is completely covered from the ground to the top of the branches with large balls of flowers as white as snow. 2 to 3 ft., 50c; 3 to 4 ft., 60c; 4 ft., select, 75c.

**Old-fashioned Snowball (M)** (*V. sterilis*.) 1½ to 2 ft., 35c; 2½ to 3 ft., 50c; 3 to 4 ft., 60c; 4 to 5-ft. specimens, \$1.00; tree form, with 3-ft. stem, each, \$1.00.

### SNOWBERRY

**Symphoricarpus Racemosus** This has been cultivated in gardens for its berried effect alone for nearly a century. An especial favorite in the old-fashioned garden. It is the best white-fruited shrub, its heavy clusters of milk-white berries remaining perfect until January. It is a fine shrub in summertime, 3 to 5 feet tall, with dainty pink flowers in graceful sprays in June. 3 ft., 35c; 3 to 4 ft., 50c.

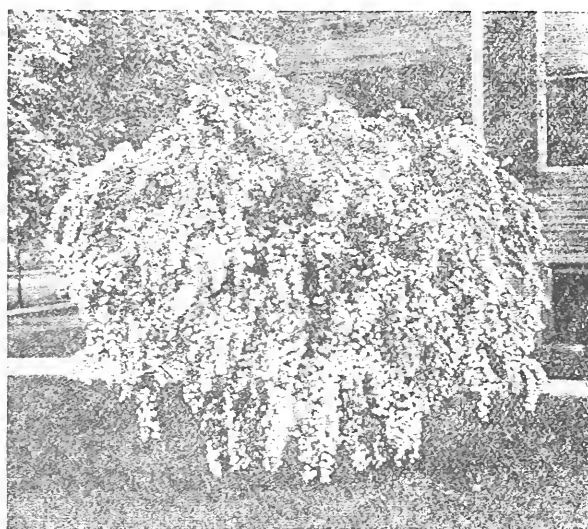
### TAMARIX (S)

Shrubs of strong but tender, upright growth; clothed in foliage as light and feathery as that of the asparagus.

**African** Handsome foliage, pink flowers; blooms in May. 3 ft., 35c; 4 ft., 50c.

### VIBURNUM

**Opulus Viburnum (M)**. High-Bush Cranberry. May. Spreading habit. Single white flowers borne in flat, imperfect clusters of red berries that cling to the leafless branches all winter. 18 to 24 inches, 25c; 2½ ft., bushy, 50c; 3 to 4 ft., specimens, 75c and \$1.00.



SPIRAEA VAN HOUTTEI, BRIDAL WREATH

### SPIRAEA (Meadow Sweet)

The Spiraeas are not only extremely beautiful when in flower, but also are extremely handsome when only in foliage. They are perfectly hardy, and the variety "Van Houttei" cannot be surpassed for lawn decoration.

**Anthony Waterer (S)** (Perpetual-blooming Red Spiraea.) A fine, hardy, perpetual-blooming shrub, very desirable for the lawn. Makes nice, round bushes, 3 feet high and wide; beginning to bloom almost as soon as planted; rose-red flowers in large, round clusters all over the bush. 1 to 1½ feet, bushy, 40c.

**Billardii (S)** Pink flowers; blooms nearly all summer. 2½ to 3 ft., bushy, each, 35c; 4 to 5 ft., 50c; 5 to 6 ft., specimens, 75c and \$1.00 each.

**Bumalda (S)** Light rose flowers. 1 ft., bushy, 35c; 2 ft., bushy, 50c.

**Callosa (S)** The flowers of this are red, and in large flat heads. It blooms the first week in July and continues for several weeks. 3 ft., 50c.

**Opulifolia** (Nine Bark). A strong growing shrub with white flowers. 3 to 4 ft., each, 50c.

**Sorbiflora (S)** A vigorous species, with leaves like those of the Mountain Ash, and long, elegant spikes of white flowers in July. 3 to 4 ft., 35c; specimens, 75c.

**Thunbergii (S)** One of the first bloomers; pure white flowers. 18 to 24 in., bushy, 35c.

**Van Houttei (S)** A splendid garden shrub, entirely hardy and one of the most beautiful of all; immense bloomers; pure snow-white flowers. 3 ft., bushy,

35c each; 3 to 4 ft., bushy, 50c each; 5 ft., specimens, \$1.00, \$1.50 and \$2.00 each.

### WEIGELIA (DIERVILLA)

These shrubs bloom after the lilacs, in June and July. They make a strong growth, erect when young, gradually spreading and drooping into most graceful shape with age. Their large flowers are of wide trumpet shape; colors from white to red, and borne in clusters thickly among the branches.

**Eva Rathke** A charming new Weigelia. Flowers brilliant crimson; flowering throughout the summer. This is the best of all Weigelias. 1 to 2 ft., 35c; 2 to 3 ft., 50c; 3 to 4 ft., 75c.

**Rosea** A beautiful shrub with rose-colored flowers in May and June. 2 to 3 ft., 35c; 3 to 4 ft., 60c; specimens, \$1.00 each.





ASPIDISTRA VARIEGATA  
(SO-CALLED "IRON PLANT")

### ASPIDISTRA VARIEGATA ("Iron Plant")

One of the most satisfactory of house plants on account of its extreme hardiness, commonly called the "Iron Plant," owing to the fact that it seldom dies, even though much neglected; furthermore, it continues to send up new leaves from the root.

Large plants, with about 10 leaves, 18 to 20 inches high, each, \$2.00. Specimen plants, \$3.00, \$4.00, \$5.00 each.

### UMBRELLA PLANT

A splendid aquatic plant throwing up stems 2 to 3 feet high, surmounted at the top with leaves. An excellent house plant, thriving in any good soil and always presenting a fresh, green, attractive appearance. 3-inch pots, each, 15c; 4-inch pots, each, 25c.

### NORFOLK ISLAND PINE (Araucaria Excelsa)

This beautiful house plant resembles the pine somewhat

# Decorative House Plants

## WHY WE CAN SUPPLY YOU TO ADVANTAGE

We grow decorative plants by the thousands mainly for the Florist trade and consequently are always able to select from our immense stocks plants of the highest quality—such as have been thoroughly hardened off in cool greenhouses and which will give the utmost satisfaction for house culture.

**Purchases of \$1 or more delivered free to any part of Chicago or suburbs.**

in appearance. Plants 12 inches high, each, \$1.50; 14 inches, \$2.00; 18 inches, \$2.50.

### RUBBER TREE (Ficus Elastica)

The large shining green leaves endure the dry air of a living room as well or better than any other plant. Plants 1 foot high, each, 60c; 18 inches high, each, \$1.00; 2 feet high, \$2.00.

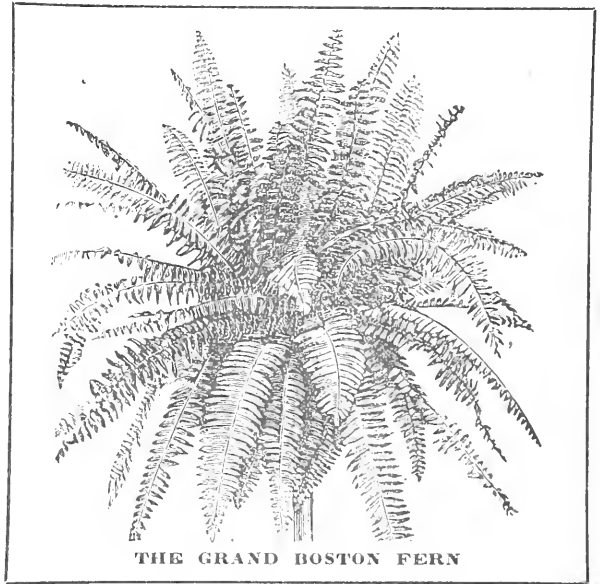
### THE BOSTON FERN (Nephrolepis Bostoniensis)

Thrives in all rooms, gas or furnace heat does not seem to injure it. Fronds are often six to seven feet long, a 5-inch plant increasing to 10-inch size in a year, besides making many offshoots. A good size plant contains from 20 to 40 fronds and the fresh ones continually coming out with new growth are very beautiful.

5-in. pots, bushy plants, each, 50c; 6-inch pots, bushy plants, each, 75c; 6-inch pots, extra large and full, each, \$1.00; 7-inch pots, extra fine plants, each, \$2.00; specimen plants, each, \$3.00 to \$8.00.

### KENTIA PALM

The most popular parlor palm we grow. Hardy and rugged under all kinds of treatment. Plants 10 inches high, each, 50c; 15 inches high, each, 75c; 2 feet high, \$2.00; specimens, \$3.00 to \$5.00 each.



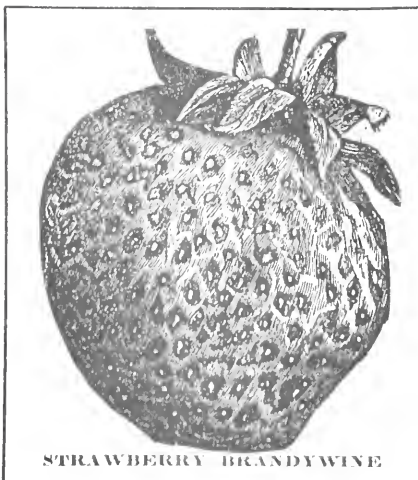
THE GRAND BOSTON FERN

### BOWKER'S PLANT FOOD

For stimulating and fertilizing Boston Ferns and other house plants. Complete directions free with each package.

Small size package, 15c; by mail, 20c.

Large size package, 25c; by mail, 40c.



STRAWBERRY BRANDYWINE

### POT GROWN STRAWBERRY PLANTS

#### For Autumn Planting

Price, pot-plants, 50c per dozen; \$2.00 for 50; \$3.50 per 100, by express.

#### Varieties

Brandywine. Gandy.  
Wm. Belt. Golden Gate.  
Barrymore. Early Ozark.  
Heritage. Early Ozark.

All of the above are perfect sorts and are particularly desirable for home gardens.

Pot-grown plants set out early this autumn will produce a good crop of berries next June.

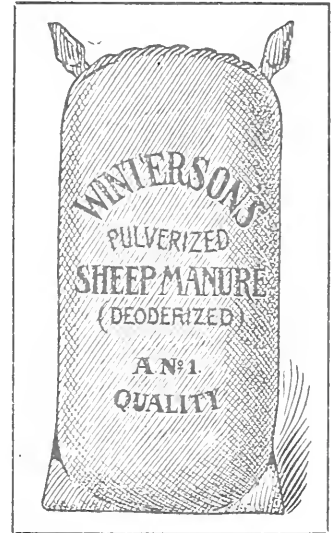
**Pure Culture** By a newly discovered process of selection and grafting, the spawn is scientifically propagated so that large, vigorous and fine flavored mushrooms are reproduced. Earlier, more productive and a marked improvement on wild spawn, either French or English. Brick (about 1¼ lbs.).

Price—Direct Bricks, inoculated direct from Pure Cultures. Brick, 25c; 5 bricks, \$1.00; 10 bricks, \$2.00; 25 bricks, \$4.25; 100 bricks, \$15.00.

Standard Bricks, inoculated from Direct Bricks. Brick, 20c; 5 bricks, \$1.00; 10 bricks, \$1.85; 25 bricks, \$3.75; 100 bricks, \$12.00.

Book of complete instructions, post-paid, for 35c.

# Garden Tools, Fertilizers, Insecticides, Etc.



## WINTERSON'S "HIGH GRADE" PULVERIZED SHEEP MANURE (Not to be compared with the "Common Run" Grade and which contains largely of straw and dirt)

Makes the richest, safest and quickest liquid manure. For use in liquid form. 5 lbs., 25c; 10 lbs., 40c; 25 lbs., 65c; 50 lbs., \$1.00; 100 lbs., \$1.75; 500 lbs., \$6.50; 1,000 lbs., \$12.00; ton, \$22.50.

### BOWKER'S PLANT FOOD

A first-class plant food. Small size package, 15c; by mail, 20c; large size package, 25c; by mail, 40c.

**Grafting Wax** Per ½ lb., 20c; 1 lb., 35c.

## "WINTERSON'S "COMBINATION" LAWN FERTILIZER

Is a fertilizer especially prepared for lawns. It possesses in the highest degree and concentrated form those constituents best calculated to nourish the grass, promote its luxuriant growth and produce the dark green color so greatly admired. 5 lbs., 25c; 10 lbs., 45c; 25 lbs., 90c; 50 lbs., \$1.60; 100 lbs., \$2.75. (Sow in the fall.)

### BONE MEAL

#### "Jack Rose" Brand

The Bone Meal That Produces Results

This brand of Bone Meal is prepared for us under our own formula and is guaranteed absolutely pure, with none of the gluten or other valuable ingredients removed.

Price, 5 lbs., 25c; 10 lbs., 50c; 25 lbs., 75c; 50 lbs., \$1.25; 100 lbs., \$2.25; 200 lbs., \$3.85; 500 lbs., \$9.50; 1,000 lbs., \$18.00; 2,000 lbs., \$35.00.

### SULPHO TOBACCO SOAP

One of the best insecticides for general use; easily prepared; should be used early in the season for outdoor plants, thus preventing attacks of insects, and for washing down house plants during the winter. Full directions with each package. Small package, 10c; large package, 20c.

### INSECT DESTROYERS

Liquid Insecticides cannot be sent by mail.

**Fir-Tree Oil Soap** For mealy bug, scale, red spider, black and green aphid, thrip, lice, worms and slugs. ½ lb., 25c; 2 lbs., 75c.

**Nico-Fume** Strips of paper strongly saturated with nicotine. These, when suspended and lighted, make one of the best and simplest methods of fumigating greenhouses. Price, 24 sheets, \$1.00; 144 sheets, \$4.50; 288 sheets, \$8.50.

**Nico-Fume** Fumigating compound for killing all kinds of insects on plants in greenhouses and frames. Pint, sufficient for 32,000 cubic feet of space, \$2.00; ¼ pint, sufficient for 8,000 cubic feet of space, 60c.

### BULB OR FERN PANS

	Each	Doz.	8-inch	Each	Doz.
5-inch	\$.06	\$0.60	8-inch	\$.12	\$1.25
6-inch	.07	.75	9-inch	.15	1.50
7-inch	.08	.85	10-inch	.25	2.00

**Potting Soil, Fertilized** Especially prepared. Suitable for all ordinary plants and bulbs; by express or freight at buyer's expense; ready for use. Pk., 35c; bu., \$1.00; bbl., \$2.00.

### FLOWER POTS

	Doz.	100	1,000
2-inch	\$.12	\$0.65	\$ 5.50
2½-inch	.15	.85	7.00
3-inch	.20	1.25	10.00
4-inch	.35	1.75	15.00
5-inch	.45	3.50	25.00
6-inch	.65	4.00	40.00
7-inch	1.00	7.00	.....
8-inch	1.40	10.00	.....
10-inch	.....	.....	each .25
12-inch	.....	.....	each .40

### IVY CUT-FLOWER BOXES

Height	Width	Length	Doz.	100
3½ inches	7 inches	21 inches	\$0.60	\$4.00
3½ inches	5 inches	24 inches	.55	3.75
4 inches	8 inches	24 inches	.70	5.00
5 inches	8 inches	28 inches	.85	6.00
5 inches	8 inches	36 inches	1.25	9.00

Please write for prices on supplies otherwise than mentioned.

### EARTHENWARE SAUCERS

	Doz.	100
3-inch	\$0.15	\$1.00
4-inch	.25	1.50
5-inch	.35	2.00
6-inch	.45	2.75
7-inch	.50	3.50
8-inch	.80	5.00
10-inch	.....	each .15
12-inch	.....	each .20

### LABELS—Wooden, for Pots

4-inch, painted	per 100, 15c; per 1,000, \$1.00
5-inch, painted	per 100, 20c; per 1,000, 1.50
6-inch, painted	per 100, 25c; per 1,000, 1.75
12-inch, painted	per 100, 75c; per 1,000, 6.50
3½-inch, wired, for trees	per 100, 20c; per 1,000, 1.50

### SPRINKLERS

**Scollay's Rubber** Indispensable for spraying house plants, floral work, etc. Large, \$1.00; by mail, \$1.10; medium, 75c; by mail, \$2c; small, 60c; by mail, 65c.



### WATERING POTS

**American** Heavy galvanized round can, two copper-faced noses, long spouts. 4-quart, \$1.75; 6-quart, \$2.00; 8-quart, \$2.25; 10-quart, \$2.50; 12-quart, \$2.75.

**French** Oval; otherwise same make as above. 6-quart, \$2.25; 8-quart, \$2.50; 10-quart, \$2.75; 12-quart, \$3.00.

### FLOWER TUBS, STANDARD GREEN

No.	Outside Top Diameter	Bottom	Depth	Price
C	10¾ in.	9½ in.	9 in.	\$0.65
D	11 in.	9 in.	11½ in.	.85
1	11½ in.	10 in.	11½ in.	1.00
2	13½ in.	10¼ in.	11¼ in.	1.25
3	14¾ in.	12½ in.	14 in.	1.65
4	16 in.	13½ in.	15 in.	2.00

Write for Prices on Larger Sizes.

These tubs are hardwood, with iron bands, and are very practical for floral plant decorations. Each tub has three iron feet and handles.

LEAF MOLD.	Per bbl.	\$1.80
PEAT for potting orchids, etc.	Per bbl.	\$2.50
POTTING SOIL, FERTILIZED, suitable for bulbs and all ordinary plants—peck.	35c; bu., \$1.00; bbl., \$2.00.	
SPHAGNUM MOSS.	Per large bale	\$2.00



## WINTERSON'S "HARDY EVERGREEN" LAWN GRASS

A Garden of  
Wondrous  
Beauty

In the Heart of  
Chicago

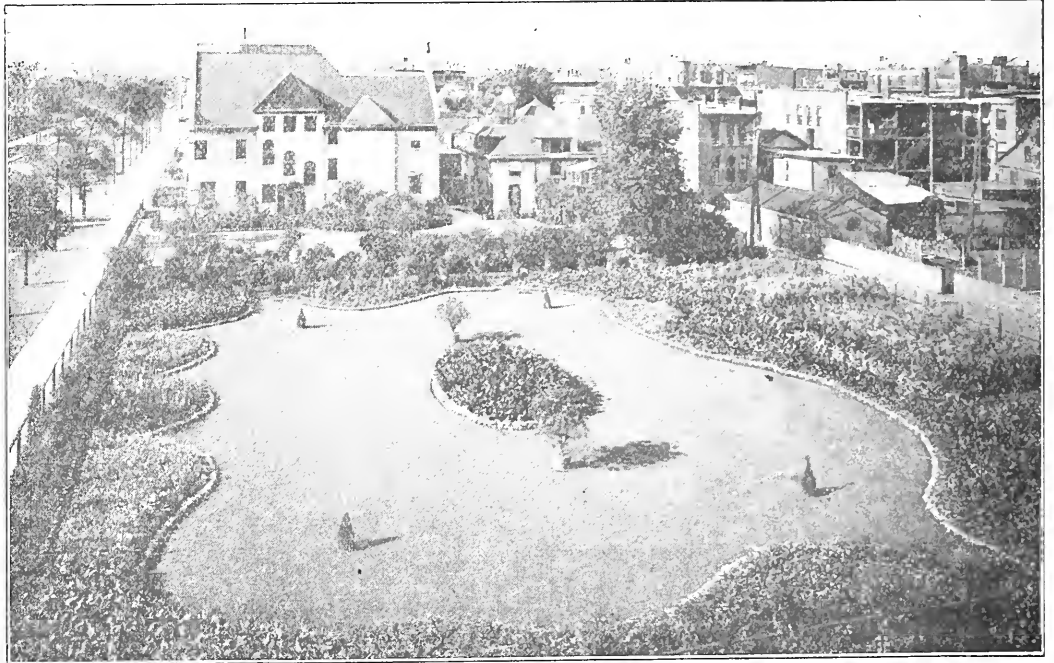
Occupying the space  
of half a city block

Schemed and Plant-  
ing Supervised by  
Mrs. C. F. GUNTHER

WINTERSON'S  
SEEDS

Plants and Bulbs

have helped to pro-  
duce the beautiful ef-  
fect shown in illus-  
tration opposite



HOME GROUNDS OF MR. AND MRS. C. F. GUNTHER, 3601 MICHIGAN AVE., CHICAGO, ILL.

If Your Lawn is "Burned Out" or in a Weakened Condition Sow

## "HARDY EVERGREEN" LAWN GRASS SEED

IN SEPTEMBER-OCTOBER

The Seed Will "Take Hold" During the Fall Season and Produce a Thick Sward  
in Early Spring. You Will Find it a Most Profitable Investment

The "Hardy Evergreen" Mixture contains all of the very best varieties of grasses suitable for making a Lawn beautiful in appearance, durable and lasting, and which will stand the frosts of winter and the hot sun of summer, showing a deep rich green at all seasons. The seed used is pure and heavy and especially cleaned. Our formula includes all the best grasses for the purpose, with an allowance of white clover. Sow at the rate of one pound to two hundred square feet.

PRICE, Per lb., 30c; 3 lbs., 85c; 5 lbs., \$1.25; 10 lbs., \$2.25; 15 lbs. (a legal bushel), \$3.00; 25 lbs., \$4.75; 50 lbs., \$9.25; 100 lbs., \$17.50.

### WINTERSON'S "SHADY PLACE" LAWN SEED

A Lawn Mixture for Shady Places and Sandy Soils

PRICES AS ABOVE

PAMPHLET: "HOW TO MAKE A GOOD LAWN" Free with all purchases of  
LAWN SEED

#### MISCELLANEOUS GRASSES

Re-cleaned seed of absolutely new crop and the best the market affords.

Kentucky Blue Grass, per lb., 25c; 5 lbs., \$1.00.

Red Top Grass, per lb., 35c; 5 lbs., \$1.50.

#### WHITE DUTCH CLOVER

Largely used for covering bare spots in lawns as well as for sowing with grass seed. (Our mixtures contain a liberal quantity of this.) Also used for sowing in damp situations.

Fancy quality, per lb., 50c.

Choice quality, per lb., 45c.

## WINTERSON'S SEED STORE

E. F. WINTERSON CO., Proprietors

CHICAGO, ILL.

166 North Wabash Ave., Just North of Randolph St.

# Large Flowering Sweet Scented Peonies

## The Very Much Improved "Piney" of Our Grandmother's Garden

Peonies are really too well known to need any commendation on our part. However, we might say if you have room for only one hardy plant in your garden, by all means choose the Peony. Hardy as an oak, free from insect life and as beautiful as roses. Furthermore, once planted they last a lifetime.

The following "selected" varieties are the "cream" of over one thousand sorts. We can, however, supply all standard kinds in commerce. Please write for prices on others.

**Festiva Maxima** Introduced by Mieliez, 1851. Rose type; early. This is not only the finest white in existence, but many regard it as the queen of all the Peonies. It combines enormous size with wondrous beauty; often seven to eight inches in diameter. Clear carmine spots on edge of center petals. For over sixty years it has held first rank, and is still the standard of perfection by which all other Peonies are judged. The most popular white Peony for cut flowers.

Price, each, 35c; per doz., \$3.50.  
Large roots, \$1.00 to \$2.50 each.

**Felix Crousse** Introduced by Crousse, 1881. Rose type; late midseason. Its large, globular flowers, solid and compactly built from edge to center, are a rich, even, brilliant, dazzling ruby-red. Exceptionally fiery, bright and effective. Both the color and size are startling. We place this in the front rank of all the red Peonies. As a general purpose red none better.

Price, each, 50c; per doz., \$5.75.  
Large roots, \$1.00 to \$2.50 each.

**Monsieur Jules Elie** (Crousse, 1888.) Bomb type; early midseason. Immense globular, very full flowers. Color an ideal glossy lilac-pink, shading to deeper rose at the base, the entire flower overlaid with a sheen of silver that fairly shimmers in the sunlight. Monsieur Jules Elie is claimed by many to be the largest of all Peony flowers. On young, vigorous plants we have had flowers eight and nine inches through. Each, 85c; per doz., \$10.00.

Large roots, \$2.00 to \$4.00 each.

**Duchesse De Nemours** (Calot, 1856.) Crown type; early, blooms several days after Festiva Maxima. Superb cup-shaped sulphur-white flowers with greenish reflex that lights up the entire flower; gradually changes to a pure snow white without spot or blemish. In growth it is entirely distinct, being upright and branching. Certainly a grand Peony. Fragrant. Each, 35c; per doz., \$4.00.

Large roots, \$1.00 to \$1.50 each.

**Rubra Superba (True)** (Richardson, 1871.) Rose type; very late. Magnificent, rich, brilliant, deep crimson, without stamens; very large, full and double; highly fragrant, and the best keeper of the whole family. Each, 75c; per doz., \$8.50. Large roots, \$1.50 to \$2.50 each.

**Eugene Verdier** (Calot, 1864.) Rose type; late. Very large, compact, double flowers. Color delicate Hydrangea-pink, outer guard petals lilac-white. Very erect, rather dwarf habit, with extra strong stems. Free bloomer; fragrant. Each, 50c; per doz., \$5.75.

Large roots, \$1.00 to \$2.50 each.



PEONY  
FESTIVA  
MAXIMA

**Octavie Demay** Very large, flat crown. Guards and center pale Hydrangea-pink, collar almost white. Fragrant. Very dwarf habit, free bloomer. An exceptionally choice variety. Each, 85c; per doz., \$10.00.

Large roots, \$1.50 to \$2.50 each.

**La Tulipe** Very large shell-formed bloom; delicate rose, fading to creamy white; center petals tipped with carmine; outside of guard petals striped with carmine. Late. Each, 50c.

Large roots, \$1.00 to \$2.50 each.

**Officinalis Rubra Plena** This is the old-fashioned red, the most brilliant of all red Peonies. Early and splendid cut flower. Each, 30c. Large roots, \$1.00 each.

### Peonies Under Color

	Each	Doz.	100
Red shades .....	\$0.25	\$2.50	\$17.50
Pink shades .....	.25	2.50	17.50
White shades .....	.25	2.50	17.50

### A Beautiful Hardy Companion Plant for the PEONY

#### Improved Hardy New Giant Flowering Marshmallows

See Illustration on Back Cover Page

#### Rich, Gorgeous and Hardy as a Rock

Ablaze with immense, brilliant flowers, the plants of New Giant Marshmallows are a sight to see. Huge blooms from eight to over ten inches in diameter in fiery crimson, rich blood-red, soft shell-pink and clear snowy white. Their great beauty is indescribable.

These plants can be highly recommended for all kinds of plantings. They appear to be equally at home in all positions, having the same vigor in dry or wet ground and are perfectly hardy. They grow from 5 to 8 feet high and are very floriferous, blooming from early in July until late in autumn.

#### Our Stock is Direct from the Introducers Three-Year-Old Roots

These big heavy roots will bring big returns next summer if planted out the coming autumn.

Pink or White, 75c each; per dozen, \$7.50.

Red, each, \$1.00; per dozen, \$10.00.



**"Make Your Garden Glad"**  
(Trade Mark)

**WINTERSON'S**

**Autumn**  
**GARDEN**  
**GUIDE**

**SEASON**

**Nineteen Hundred  
Fourteen**



FLOWER OF IMPROVED NEW GIANT-FLOWERING  
MARSHMALLOW. (ONE-THIRD NATURAL SIZE)  
SEE INSIDE THIS COVER PAGE FOR DESCRIPTION  
AND PRICES



LARGE FLOWERING RED PEONY  
FELIX CROUSSE  
SEE INSIDE THIS COVER PAGE FOR DESCRIPTION AND PRICES

*"To Have the  
Flowers That  
Bloom in the  
Spring"—*

*Plant Bulbs  
and Roots in  
the Autumn*

**WINTERSON'S  
SEED STORE**

E. F. WINTERSON CO. (NOT INC.)  
Proprietors

166 NORTH WABASH AVENUE  
(Just North of Randolph Street)

PHONE 6004 CENTRAL

**CHICAGO**