

## **Historic, Archive Document**

Do not assume content reflects current scientific knowledge, policies, or practices.



APR 15 1914

1914

LIBRARY  
REC'D  
AUG 20 1920  
U. S. Department of Agriculture  
INDEX

62.79

30<sup>TH</sup> ANNUAL CATALOG

# THE WHITING NURSERY COMPANY

*Growers of*

INDEX

GENERAL NURSERY STOCK  
HARDY VARIETIES

*Yankton, So. Dakota*

INDEX

INDEX



Home of George H. Whiting  
AT THE NURSERY

# EVERGREENS BURLAPPED IN DIRT



The accompanying cut from photo shows a load of our evergreens with roots burlapped in earth. This is merely to show our method of handling evergreens so that they are practically sure to grow. The ball of earth is cut out as nearly round as possible and the burlap is stitched tightly around it in such a way that every slack place is drawn perfectly tight, so that the dirt is held in exactly the same position that it was before the tree was taken up. In this way the tree can be handled and shipped almost any distance and planted without scarcely checking the growth at all. We have tried all of the different methods and find that there is no other way that will compare with this one. It is impossible to take trees up with ball of earth and place in boxes or baskets (without the cloth) and hold the earth intact. In the first place, it is next to impossible to cut out the ball of the exact size of the box or basket that is to receive it, and if you do, it will get broken up and loosened while in transit.

## ENTOMOLOGIST'S CERTIFICATE STATE OF SOUTH DAKOTA OFFICIAL CERTIFICATE OF INSPECTION

TO WHOM IT MAY CONCERN:

This is to certify that in accordance with an act of the Legislature approved March 8th, 1909, the nursery of the Whiting Nursery Co. located at Yankton, South Dakota was inspected on August 14, 15, 16, 1913, and the stock grown in said nursery found apparently free from San Jose Scale and all other dangerous insect or plant diseases.

This Certificate is to cover only stock grown in the above named nursery and becomes invalid twelve months after date. (SEAL) HARRY C. SEVERIN, State Entomologist.

No. 6.

Brookings, S. Dak., Sept. 23, 1913.

## SENDING ORDERS

Please use order sheet which you find in this book, carefully filling out all blank spaces which you find at the top, giving shipping directions and write your name VERY PLAINLY. Care in this way saves lots of trouble and annoyance both to yourself and us. We book orders at any time if one-fourth cash accompanies same; balance can be sent before shipment.

**FREE.** We make no charge for boxing, packing or drayage on retail orders except on ORDERS FOR CITY DELIVERY for Yankton or Soo City; on orders amounting to less than \$5.00 we must charge extra for delivery and payment must be made before delivery.

**PACKING.** Our facilities for packing are unsurpassed; we lay great stress on thorough packing, believing it to be the all-important step. Trees poorly packed are often worse than valueless when they reach the planter. Our stock is all packed under cover. Our packing sheds are reached from the storage cellars without going outside.

**NO SUBSTITUTING.** We send you the variety of tree or plant you order or return your money unless you advise otherwise. Please state if we will be allowed to put in other similar varieties in case we are out of the ones you order.

**SHIPPING LOCATION.** Our shipping facilities are good, being located on the Chicago Milwaukee & St. Paul, the Chicago & Northwestern and the Great Northern railways, and we have the American, the Wells-Fargo and the Great Northern Express Companies at this point.

**IMPORTANT.** Address all letters to the Whiting Nursery Co., Yankton, S. D., also make all drafts and money orders payable to the Whiting Nursery Co. Remember, we cannot accept private checks unless allowance is made for cost of exchange.

**REMEMBER** that prices listed herein are for the quantities specified. A less number than the amount quoted will be charged at the next higher rate. For example, 49 trees will be charged at the 10 rate and 99 trees at the 50 rate, etc. PLEASE SEND ORDERS EARLY.

# Testimonials

## INDEX

Dickinson, N. D., June 19, 1913.

The Whiting Nursery Co.,  
Yankton, S. D.

Dear Sirs:

I write at this time to express my thanks for the splendid Colorado Blue Spruce you sent me. I assure you I will recommend your house to all my friends as also to those needing spruces next spring.

My spruce kept on growing from the time it was set out, and now looks fine. If I had known that I were to have had such splendid results I would have ordered several other spruces, but will have to wait until next spring.

Many thanks.

Yours truly,

JOHN LEASK.

—o—

Santa Rosa, Calif.

Whiting Nursery Co.,  
Yankton, S. Dak.

Gentlemen:

The trees were well packed, and arrived in excellent condition. They are growing nicely. Thank you for promptness and care in filling this order.

Respectfully yours,

LUTHER BURBANK,

—o—

Canton, S. Dak., 12-23-13.

Whiting Nursery Co.,  
Yankton, S. Dak.

Gentlemen:

I have been buying nursery stock for the past 30 years, but it was not until I began buying in the state that I got the most satisfactory results. The fruit trees and shrubbery that I have from time to time received from you has always been true to name, strong and healthy, and has always given satisfaction. It gives me pleasure to recommend you as a reliable Nursery.

Yours very truly,

THOS. THURSON.

—o—

Aberdeen, S. Dak., Dec. 1st, 1913.

To Whom it May Concern:

This is to certify that I have done business with George H. Whiting and the Whiting Nursery Co., for a number of years, and I have always found them entirely satisfactory to do business with, and people who live up to their representations.

Respectfully,

ISAAC LINCOLN.

—o—

Oens, S. Dak., May 22nd, 1912.

Geo. H. Whiting,  
Yankton, S. Dak.

Dear Sir:—The Black Walnut, Box Elder and Russian Artemesia cuttings received all in good condition. Have them set out and think they are all very fine.

Yours truly,

W. A. La DUE.

The Whiting Nursery Co.,  
Yankton, S. D.

Gentlemen:

We received the trees in fine shape and were well pleased with them in looks, and the ground is in fine condition so they ought to do well. I did not expect the Evergreens, but expected instead the flowers for the 50 cents extra. But it is alright, and we are highly pleased.

Yours respectfully,

Mrs. T. DEADY.

—o—

The Whiting Nursery Co.,  
Yankton, S. D.

Dear Sirs:

I ordered 1,500 cuttings and seedlings from you in March in Mr. H. C. Miller's name (he got some of them). They grow fine. The Russian Artemesia and Russian Golden Willow are dandy, also the American White Elm, Box Elder and Carolina Poplar. All doing fine and just think of it 90 per cent of the whole bunch grow way out here on these prairies in Harding County. I am showing your Catalog to neighbors, and some of them want to get some of them from you next spring to set out, as they see how mine grow.

I want an assortment of orchard trees from you next spring. You see I planted a windbreak this year. If you have any Russian Artemesia cuttings that you think will grow yet, send 400 Russian Artemesia and 200 Russian Golden Willow by Parcel Post.

BERNARD GILBERTSON

—o—

Hardingrove, S. Dak.

The Whiting Nursery Co.,  
Yankton, S. D.

Dear Sirs:

The trees arrived in fine shape although they were at the post office a week before we got our mail. Thank you for sending them by post as ordered. I enclose the 61 cents for the balance due on the postage.

Yours truly,

Mrs. R. L. CHEENEY.

—o—

Howell, S. D.

The Whiting Nursery Co.,  
Yankton, S. D.

Gentlemen:

I received the bulbs. They were in fine shape and not dried in the least. They are doing fine.

Yours truly,

Mrs. JNO. ANDREWS.

—o—

Reliance, S. Dak., May 4th, 1912.

Whiting Nursery Co.,  
Yankton, S. Dak.

Gentlemen:—The 100 Carolina Poplars were received by me in first class condition.

Yours respectfully,

CHAS. F. McNEILL.

# Shipping Instructions

When packages weigh not more than 50 lbs. it is usually best to ship by express. On large packages it is much cheaper to send by freight and we always pack so that goods will go through in good shape unless there are unreasonable delays en route. If goods reach you in bad condition, let us know immediately, and if the fault is ours, we will correct it at once. If it is the fault of the carriers, we will take the matter up for you and try to get a fair adjustment of your claim. We are, in fact, always glad to hear from our customers in regard to condition of stock when received, whether it is satisfactory or not. Of course, it is always pleasing to us to get favorable reports, but write us anyway, as it gives us a chance to size up the situation so that we can give the best of service in the future.

**FREIGHT AND EXPRESS RATES**—Below we have attached freight and express rates from Yankton to some of the leading points which will assist you in determining which way you want your order shipped

**Approximate Express and Freight Rates per 100 Pounds on Nursery Stock.**

	Freight		Express
	Baled	Boxed	
<b>South Dakota</b>			
Sioux Falls .....	\$0.30	\$0.20	\$0.35
Aberdeen .....	.57	.38	.60
Pierre .....	.65	.44	.80
Huron .....	.45	.30	.40
Rapid City .....	1.14	.87	1.10
Hot Springs .....	1.35	1.00	1.40
Watertown .....	.60	.40	.60
Faulkton .....	.57	.38	.60
Philp. ....	1.04	.83	1.00
Belle Fourche .....	1.34	1.00	1.40
Newel. ....	1.31	.98	1.40
Brookings. ....	.53	.36	.50
Sisseton. ....	.73	.49	1.00
Flandreau. ....	.45	.30	.50
Lemmon. ....	1.16	.80	2.10
Morristown. ....	1.11	.78	1.10
Platte. ....	.35	.22	.35

<b>North Dakota</b>			
Oakes. ....	.68	.45	1.25
Fargo. ....	.97	.64	1.75
Grand Forks .....	1.13	.76	2.10
Minot. ....	1.48	1.03	2.75
Devil's Lake .....	1.26	.86	2.50
Williston. ....	1.48	1.03	2.90
Bismarck. ....	1.60	1.10	2.50
Edgeley. ....	.86	.56	1.40
Hettinger. ....	1.21	.87	2.10

<b>Montana</b>			
Glasgow. ....	1.64	1.16	3.00
Havre. ....	1.93	1.35	3.50
Helena. ....	2.25	1.58	3.90
Terry. ....	1.57	1.10	2.90
Butte. ....	2.25	1.58	3.90

	Freight		Express
	Baled	Boxed	
<b>Iowa</b>			
Sioux City .....	\$0.31	\$0.20	\$0.60
Hawarden. ....	.31	.20	.60
Cedar Rapids .....	.80	.47	1.40
Des Moines .....	.70	.47	1.20
Whiting. ....	.48	.35	1.10
Council Bluffs .....	.56	.57	1.00

<b>Minnesota</b>			
Minneapolis. ....	.71	.41	1.40
Duluth. ....	.91	.51	1.75
Fergus Falls .....	.95	.63	1.90
Winona. ....	.70	.41	1.50
Mankato. ....	.71	.41	1.40
Willmar. ....	.65	.41	1.40
Crookston. ....	1.10	.74	2.10
Pipestone. ....	.44	.29	1.00
Albert Lea .....	.71	.41	1.20
Worthington. ....	.54	.35	1.00

<b>Nebraska</b>			
Omaha. ....	.55	.36	1.40
Lincoln. ....	.71	.45	1.50
Laurel. ....	.59	.45	1.20
North Platte .....	1.20	.90	2.50
Gordon. ....	1.27	.99	2.50
Scotts Bluffs .....	1.60	1.15	3.40
Fairbury. ....	.81	.59	1.90
Oneill. ....	.94	.64	1.75

**POSTAL RATES ON NURSERY STOCK**

The Postal Rates on Nursery Stock according to the Parcel Law remains the same as formerly "one cent for each two ounces or fraction thereof regardless of distance"—except that we can now send packages weighing up to eleven pounds any distance. And 20 pounds within 100 miles from Yankton or Sioux City, our two shipping points. In most cases if your packages weigh over three pounds it is cheaper to send them by express unless it is a long distance or where there is no express office—for example a package weighing 10 pounds will cost 80c by Parcel Post and to any point within 100 miles the express rate would be much cheaper.

Murdo, S. Dakota, April 19th.

The Whiting Nursery Co.,  
Yankton, S. Dak.

Dears Sirs:

We received the trees in fine shape and have them planted and think they will all grow. Thanking you for the addition of 100 Ash seedlings, I remain

Yours truly,  
L. J. FARRELL.

# Hints on Handling, Planting and Care

**CARE WHEN RECEIVED**—When trees or plants are received from the nursery, give them your attention at once. Do not let them lie around and dry out, but plant at once or bury the roots in cool, moist earth in a shady place until ready to plant. By taking a few precautions at this time, you can make a success instead of a failure.

**DRIED UP TREES**—In case trees arrive a little dry from delay on railroad, as will sometimes occur, bury the trees, root and branch, in moist soil and in two or three days the whole lot will usually be found bright and fresh and in proper condition for setting.

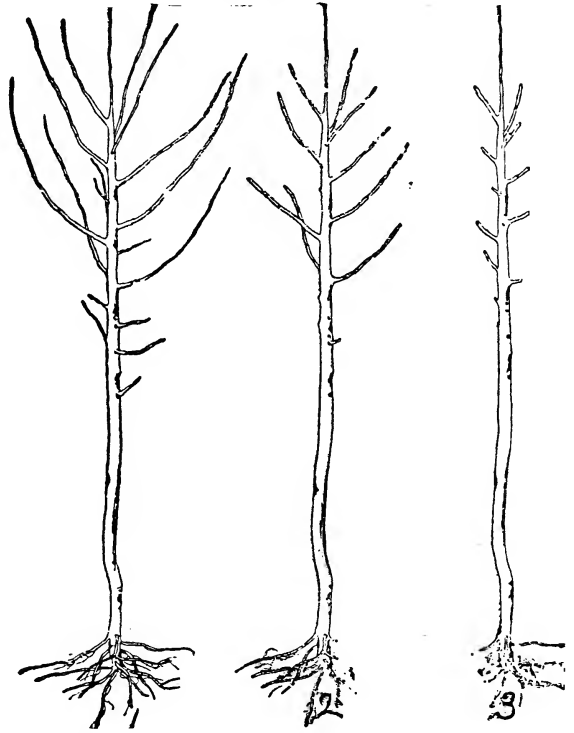
**Planting**—First see that the ground is thoroughly and deeply plowed and finely pulverized; then dig a hole large enough to receive the roots in a natural position without bending or cramping them, work the mellow earth well around and between the roots and firm it well—**this firming is important**. Unless the soil is well packed your losses will be heavy.

**PRUNING**—Before setting remove broken roots and branches and cut back all others to sound, live wood. About one half of the previous season's growth on all branches (except the leader), should be cut back. (See Fig. 2 of cut). This gives a well balanced tree in top and roots. Should the season be very dry, better results will be obtained if they are pruned closer, as in Fig. 3 of cut. Large street trees do best when trimmed to a pole or only short spurs left at the top. After-pruning should consist in pinching back or cutting out interfering or damaged limbs, aiming to form a symmetrical tree. When large limbs must be removed, wax or paint over the wound. June is a good time to prune as wounds then heal over very soon. In this section, all fruit trees should be branched low and pruned very little, that is, avoiding cutting large branches if possible. If the tree is kept in shape when young, severe pruning will never be necessary.

**AFTER CARE**—After the planting is done, see that the surface soil is kept well pulverized; the crust should be broken after every rain or watering as soon as the water soaks away and the ground is in good workable condition. If cultivation cannot be given, mulch thoroughly for a good distance from the tree.

You must take care of your trees after planting, especially the first year. If you do not, you cannot expect to succeed. How much corn would

you expect to raise if you did not cultivate any from planting time until fall? Still, this is what some expect of trees. If you do not intend to take care of your trees, better not plant any.



**RABBITS GIRDLING TREES**—The best preventative we know of is to use tree paint or cheap axle grease on trunks of trees. Axle grease is best applied by using an old glove on the right hand, rubbing up and down. We can also recommend our tree protector in the back part of catalog.

**SPRAYING**—Has become a real necessity to succeed in growing fruits, plants, etc. For spraying calendar and spray pumps see last pages of catalog.

## DISTANCE APART TO PLANT

The distances recommended here are for this section only. In other localities it may be advisable to change them.

	Ft. Apart	No required Per Acre
Apples and Crabs.....	20x24	90
Cherry and Plum.....	12x20	182
Currants and Gooseberries.....	4x8	1,360
Blackberries and Raspberries.....	3x8	1,810
Strawberries.....	1x4	10,888
Asparagus.....	1x4	10,888
Pie Plant.....	4x8	1,360
Deciduous trees or Evergreens for shelter belt.....	4x12	940

## NUMBER OF TREES PER ACRE At Various Distances

Feet Apart	No. Trees
1 1/2 x 3	9,680
2 1/2 x 4	7,260
3 x 3	4,840
3 x 4	3,630
4 x 4	2,722
3 x 5	2,004
3 x 6	2,420
4 x 5	2,160

Feet Apart	No. Trees
4x6	1,815
5x5	1,742
6x6	1,210
6x8	905
8x8	630
10x10	435
10x12	363
11x11	302
15x15	193
15x18	161
16x16	170
16x18	151
18x19	127
15x20	145
16x20	136
20x20	103
20x25	87
25x25	69
25x30	53
30x30	49

**RULE**—Multiply the distance between the rows by the distance the plants are apart in the rows, and the product will be the number of square feet for each plant or hill, by which divide the number of feet in one acre, (43,560), and it will give the number of plants or trees to the acre.

# INTRODUCTORY

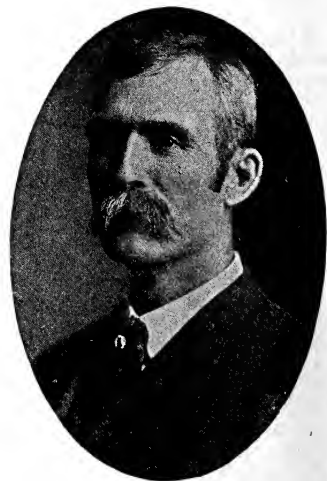
For the 30th time in my life in the Nursery business it is a very great pleasure to me to greet old and new customers through this medium, our annual catalog. I sometimes feel that I have grown old in the business, and that I would like to retire in a measure from the arduous duties connected with it, but when I hear from so many of my old customers with words of encouragement and praise for the stock I have sent out, and when I ride over the once bare and bleak prairies of the Dakotas and see the beautiful groves and productive orchards grown from the trees that I have sent out, then I realize that our ability as a Nursery Company is much greater than ever before to accomplish great things in the business, and I feel like pushing the work with renewed vigor.

I will say that our stock this year is exceptionally fine, and double in amount to that of any previous season. Our facilities and our corps of assistants are greatly improved so that we can surely please you, and we will be glad to hear from you one and all.

(Signed)

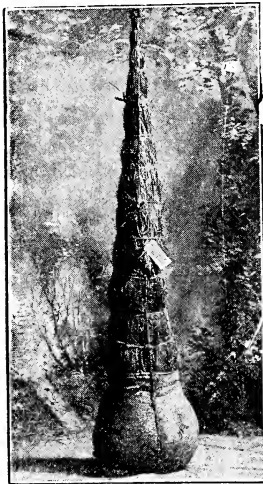
GEO. H. WHITING, Pres.

The Whiting Nursery Company.



GEO. H. WHITING

## GENERAL REMARKS



BALED FOR SHIPMENT

Cut shows method of packing bales; roots packed in wet straw and moss, incased in burlap and airtight paper, they cannot dry out; tops protected with coarse marsh hay.

Our shipping season for nursery stock usually begins about March 15th, or as soon as the weather is warm enough so that there will be no danger of freezing in transit. We have stock enough in our storage cellars so that we can fill orders at any time that the weather will permit of safe shipment, except such stock as evergreens, strawberry plants, some of the bulbs, and the very large sized shade trees that cannot easily be stored.

Tree seeds may be sent at any time in their season.

It is desired that you read this catalog over carefully and if there is anything else you wish to know, write us and we will take pleasure in trying to do you all the good we can.

**OUR SUPPLY**—If you want anything in our line that you do not find listed herein, ask us about it. We have many things that we do not have in sufficient quantities to pay for listing; in short, we can supply trees from the smallest, tiniest seedlings to almost the size of a saw-log, and will be pleased to figure with you on your needs, large or small. Will give the same careful attention to small orders that we do to carload lots.

**SELECTION**—In sending orders for stock, buyers are responsible for their own selections as to

hardness and adaptability of stock for their locality, as we do not recommend every variety that we have listed to be adapted to all parts of the country. We will not be responsible, but will give you the benefit of our experience if desired. It is mutually agreed that our goods are sold only under these conditions.

**VARIETIES**—Our list of varieties we believe to be wholly comprised of valuable sorts for the Northwest. If you are in doubt as to the adaptability of a variety for your section, write us. With our experience of thirty-three years in the Dakotas, we can surely assist you in making up your list of varieties.

**NO CREDIT**—Our business is strictly cash to all; no mail order business can be conducted in any other way. No matter what your standing may be, we cannot discriminate without being constantly in trouble. We must use everyone alike.

As to our responsibility will say, we cannot afford to do other than a straight business as we could not succeed if we did. We are pleased to refer you to any bank or business house in Yankton, to the Mercantile Agencies, or to any of our many thousand customers.

**REPLACING STOCK**—In regard to replacing stock that fails to grow will say that we do not do it unless it can be shown that we are at fault. No sane or fair minded person expects every tree or plant to grow under all conditions; and at the low prices at which we sell we cannot make good all losses. We are willing and anxious to right our own faults—but you must let us know within ten days after receipt of goods. We cannot stand good for losses caused by improper planting or care, live stock or weather conditions, or other things that are beyond our control. If our instructions are followed, losses will usually be very light.



# FRUIT DEPARTMENT

## Apples

**LOCATION OF ORCHARD**—While higher elevations are considered best on account of early and late frosts, don't forget that in the dry western localities we must guard against drouth. We must plant on land not too dry, with northerly slopes



and south wind-breaks, if practicable; then we must arrange in some way to conserve and utilize what moisture we have so that we will keep our trees alive and thrifty. Give the trees the full supply of moisture by cultivation and mulch, or better still, by cultivating during the growing season sufficient to keep down all vegetation and keep the ground mellow, and then mulch lightly around the tree at the beginning of the winter, continuing again with the cultivation the following summer. Repeat this for three or four years at least.

**WIND BREAKS**—It is not best to have too dense a wind-break around the orchard, but give a little air drainage. It is most important to have the shelter on the south and west sides. Do not plant wind-break trees too near the orchard to sap and shade the ground. It is quite necessary to have the circulation of air between the limbs of the tree and the ground.

**FORM FOR TREE**—There are advantages in both the low and the high-headed trees. The high-headed tree is easier to get around with a team without breaking or splitting the limbs, it is also more subject to being toppled over by the wind and to get sun-scalded than the low-headed tree. We are inclined to think that the low-headed tree is the better and longer lived, but would have the trunk or body high enough (about 3 ft.) to keep the limbs off the ground. Bear in mind that the trunk of a tree does not increase in length as it grows older, as some suppose. That is, a tree that has limbs two feet from the ground when planted, the same limbs will never be any higher.

Do not let the tree throw up water-sprouts continually from near the ground, thereby robbing the main tree. Avoid cutting large limbs as much as possible, but attend to shaping the tree while the limbs are small.

**DISTANCES APART**—We would plant apple trees 18 to 20 feet apart in the row, with the rows 24 to 30 feet apart.

**HOW OUR APPLE TREES ARE MADE**—We make the piece root graft, which is made with a 5 to 6 in. scion and a 2 to 3 in. root. We believe this to be the best tree that has yet been made and tested for the severe climate of the Northwest. By using a short root and a long scion in making the graft, and then planting them deep, we induce them to start roots from the scion, and thus usually after the second or third year the tree is practically on its own root, and if the scion is of a hardy variety, you have a hardy tree, which would not be the case if you had a tree that had been budded or grafted above the ground on a tender seedling. Apple seedlings are always of doubtful hardiness, therefore a budded tree cannot be relied upon.

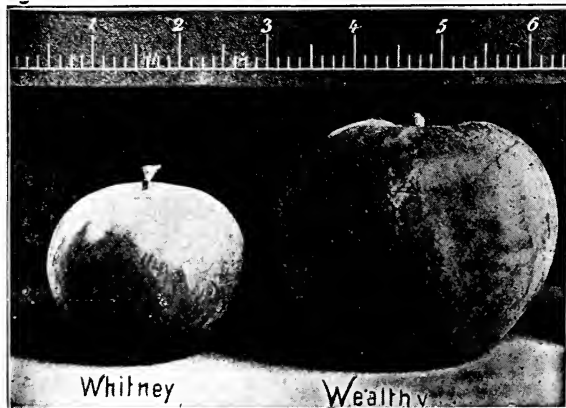
## Summer Apples

**CHARLAMOFF (Russian)**—In color of fruit resembles the Oldenberg, but oblong in form, of good size and quality; season a little later than Oldenberg and the tree about as hardy.

**DUCHESS OF OLDENBERG**—Large size, productive and very hardy; quite showy; very tart and a good cooker. Tree a very poor grower in the nursery. We have more small crooked trees of this variety than any other we propagate, but as it attains age it makes a fine, strong orchard tree. The fruit ripens the middle of August and is very perishable; however, the fruit is good for cooking from the time it is half grown which prolongs its season considerably.

**IOWA BEAUTY**—Originated by C. G. Patten. Fruit very similar to the Duchess, except that it is a little later. Tree is a better grower in nursery than Duchess, and is very hardy.

**YELLOW TRANSPARENT**—Of Russian origin; tree a good grower and very hardy. A young and abundant bearer; fruit, medium size, round and when fully ripe pale creamy yellow; flesh tender, juicy, sub-acid, aromatic. Season, August 1st to 15th.



### Fall Apples

**ANISEM (Russian)**—Tree fully as hardy as Wealthy, and free from blight. A strong grower, but not very straight. A good bearer, of medium size, fine flavored and bright red fruit. Season, late fall or early winter.

**EASTMAN**—One of C. G. Patten's productions of large size and excellent quality, somewhat resembling the Duchess in color and shape, but is larger and better quality for eating. Slightly tart. Tree a strong spreading grower and extremely hardy, a very promising sort. Season just before the Wealthy.

**HIBERNAL (Russian)**—Without doubt the hardiest of the well tested varieties. The tree is spreading in habit and is considerably hardier than the Oldenberg. A rather early and regular bearer, and productive. It seldom blights severely. The fruit is large, and color much like the Oldenberg; excellent for cooking and very good for table use when fully ripe. Season, October.

**LONGFIELD**—Origin Russia. Tree hardy, vigorous, spreading, pendulous growth; an early annual bearer. Fruit medium, roundish, conical, unequaled; surface smooth, polished, clear waxen yellow, with lively red blush; dots distinct, few, large, yellowish. Flesh very white, very tender and juicy, pleasant, brisk sub-acid; good. October and November.

**OKABENA**—Origin Minnesota. Season August to October. Vigorous, absolutely hardy, and an ideal orchard tree in every respect. Bears very young, and a good crop may be depended upon. Fruit medium to large; yellow, striped and splashed with carmine, which is heavy on sun-side; flesh yellowish-white, fine grained, crisp and juicy; flavor sprightly sub-acid; quality excellent. Ripens after Duchess and valuable in market on that account. A seedling of the Duchess and an excellent dessert apple.

**PATTEN'S GREENING**—Originated by C. G. Patten of Charles City, Ia., from seed of the Duchess. Not quite as hardy as the Duchess with us; fruit about the same size and shape, but greenish in color. A fair eating and excellent cooking apple. Tree is rather crooked in nursery, but makes a fine spreading orchard tree. A strong grower. Season, October to December.

**WEALTHY**—A seedling originated in Minnesota; very hardy; an abundant and early bearer; fruit large, dark crimson; flesh crisp, sub-acid, white tinged with red; good quality. Tree fine, upright grower, both in the nursery and orchard. Season, October to December.

**WOLF RIVER**—Tree quite hardy, strong grower and a moderate bearer. Fruit, greenish yellow, shaded with red, and very large; a great show apple; quality just medium. Season, early winter.

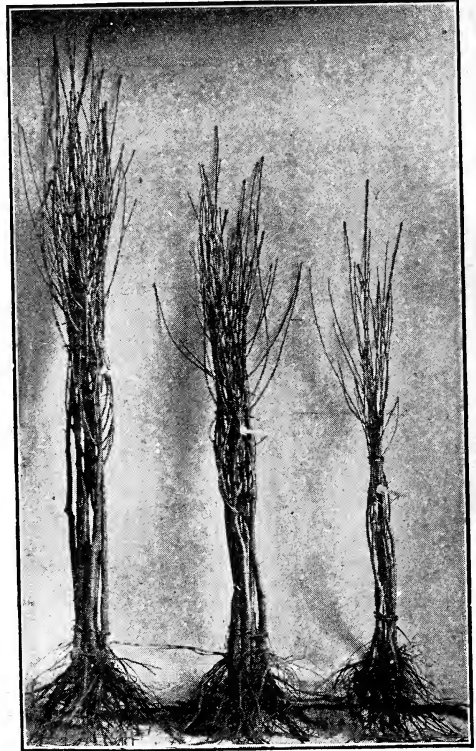
### Winter Apples

**BEN DAVIS**—A tree highly esteemed in the West. Fruit conically shaped, striped and of fair quality; juicy and sub-acid; very productive, moderately hardy here, but should not be planted much farther north. Season, December to February.

**DELICIOUS**—A remarkable variety introduced in the West several years ago where it is being largely planted and rapidly taking first rank both for commercial and home orchards. No new variety has ever so quickly gained popularity in so many different apple sections of our country. Fruit large, nearly covered with brilliant dark red, flesh fine grained, crisp and melting, juicy with a delightful aroma; of very highest quality. A splendid keeper and shipper. Tree one of the hardiest, a

vigorous grower, with good foliage. A regular annual bearer.

**GANO**—Originated in Missouri. Similar but superior to Ben Davis. It has all the good qualities in a higher degree, more brilliant coloring, runs



more even in size, and keeps fully as late. The tree is vigorous and moderately hardy; is a rapid grower; bears while young. Color bright red without stripes or blotches, and large and even in size. Season, February to March.

**IOWA BLUSH**—Medium in size; roundish, conical whitish yellow with delicate pink cheek; quality fine, tart. Tree a strong grower and quite hardy. Season, November to January.

**INGRAM**—A seedling of Janet. Tree more upright and a better grower. Fruit medium size, roundish, inclined to conical; smooth, yellow ground, striped, bright red, flesh greenish-yellow, delicate, tender, juicy, sub-acid. A late keeper. Winter.

**McINTOSH RED**—Origin, Ontario. Season, December and January. A choice variety of the Fame-use type. Tree vigorous with spreading head; a good annual bearer. Fruit above medium to large, highly perfumed; smooth polished yellow, almost covered with brilliant solid crimson, a beautiful fruit; flesh snow white, crisp, very tender, sprightly aromatic sub-acid; very good quality. Winter.

**MALINDA**—Tree quite hardy here. A medium grower; fruit of medium to large size, conically shaped; color greenish-yellow, sometimes slightly tinged with red; quality first class and an excellent keeper; highly recommended in Minnesota. A rather tardy but abundant bearer. Season, February to March.

**NORTHWESTERN GREENING**—Tree of Wisconsin origin; an extremely fine shaped, good growing tree in the nursery and orchard. Fruit large and greenish yellow; good quality. It is

**Winter Apples—Continued**

claimed to keep well until June. Tree is quite hardy but will not succeed as far north as the Wealthy; very promising.

**PEWAUKEE**—Seedling from the Duchess. Fruit medium to large, surface, bright yellow, partially covered with bright red; flesh yellowish white, juicy sub-acid with a rich, aromatic flavor. A strong grower; hardy. Season, December to March.

**PEERLESS**—Tree a very fine, straight, upright grower. Originated from seed of Duchess, planted by J. O. Miller near Fairbault, Minn. Fruit medium size, of a pleasing sub-acid flavor; color red on a yellow greenish ground; stem short and hangs on tree well; perfectly hardy here, but rather late in coming into bearing, but very productive when it comes into bearing.

**ROME BEAUTY**—Large, roundish, very slightly conical; mostly covered with bright red on pale yellow ground; flesh tender, not fine-grained, juicy, of good quality. Season early winter. The large size and beautiful appearance of this Ohio apple render it popular as an orchard variety.

**SALOME**—Tree a medium and rather upright grower; quite hardy; fruit medium size, roundish, conical, pale yellow, splashed with red and sprinkled with white dots; flesh tender, juicy, mild, sub-acid, first class. Season, January to June.

**WINESAP**—Origin, New Jersey. A valuable, old well-known variety. Season, December to May. One of the leading export apples. Fruit medium, roundish, skin moderately thick and very tough; dark yellow, almost entirely covered with dark red; flesh yellow, fine-grained, firm, rich, crisp, sprightly sub-acid; quality excellent. Tree moderately vigorous with rather open, irregular head. Very productive and an early bearer.

**WALBRIDGE**—Medium size, pale yellow shaded red; productive.

**Hybrid or Crab Apples**

**ALASKA**—A fine strong growing tree in nursery; makes a strong, spreading tree in orchard. Limb strong and well shouldered. Fruit large as Whitney and a much better keeper; season ten days later; yellowish green with red cheek. Very desirable for this locality.

**BRIAR'S SWEET**—Originated in Wisconsin. Season, August and September. Tree hardy and long lived; heavy annual bearer; as nearly blight proof as any of the crab family. Fruit medium size, roundish; color, yellow overspread with red.

**HYSLOP**—An old and well-known crab; a good grower and very hardy; fruit large size, deep crimson in color; flesh white, tinged with red; abundant bearer; sometimes blights. Season, September to December.

**SOULARD**—Tree quite hardy and a good sturdy grower, of the wild crab type. Fruit yellowish green, hardly as large as the Whitney but flattened in shape and of a quince flavor; desirable to have a few for cooking with other varieties; very productive and will keep all winter.

**SWEET RUSSET**—Tree a fairly good grower and of good form. Perfectly hardy; fruit large, round and conical, green russet with faint blush. Very rich and sweet, the best of its season for eating from the hand or for cooking. Season, August and September.

**TRANSCENDANT**—Origin, Russia. Season, September. Fruit medium to large; color brownish yellow with blush of carmine; flesh firm and crisp,

yellowish, fine-grained, very juicy, acid. Tree is a vigorous grower. Hardy. Subject to blight and should not be planted near other orchard trees.

**YELLOW SIBERIAN**—Small, round, golden yellow. Vigorous grower. Ripens in September.

**GEORGE H. WHITING SEEDLING**—A nice straight-growing tree about the size of the Whitney, only more round. Fruit waxy white, smooth and tart. One of the best crabs we have. Productiveness unexcelled.

**Prices—Apples and Crabs—All Varieties**

	Each	Per 5	Per 10	Per 50	Per 100
3 to 4 ft. . . .	\$0.20	\$0.90	\$1.50	\$ 6.00	\$10.00
4 to 5 ft. . . .	.30	1.25	2.00	8.50	16.50
4 1/2 to 6 ft. .	.40	1.75	3.25	12.00	22.00

**BARGAINS IN LARGE APPLE TREES**—In a few good varieties we have some nice trees running from 1 to 1 1/2 inches in caliper. These we are making a special low price on, if you can use any quantity of them. In the N. W. Greening 1 to 1 1/4 inch we are making the following price as long as the stock lasts: 50 cents each, \$2.00 for 5, \$3.50 for 10, \$15.00 for 50 and \$25.00 per hundred. WRITE FOR PRICES ON OTHER VARIETIES.

**NOTE**—On fruit trees, with an order for five trees, we will not supply more than two varieties; with an order of 10 trees not more than 4 varieties will be furnished; with an order for 100 trees not more than 10 varieties will be supplied; if any more varieties are desired, the purchaser must pay the next higher rate.

**Pears**

**BARTLET**—Large; skin lemon yellow with soft blush on sunny side. A very popular variety of best quality. Season, September.



Bartlet

**FLEMISH BEAUTY**—Large, juicy, rich. Hardest variety in our list.

**PRICES—PEARS**

	Each	Per 5	Per 10	Per 50	Per 100
3 to 4 ft. . . .	\$0.40	\$1.75	\$3.00	.....	.....
4 to 5 ft. . . .	.50	2.25	4.00	.....	.....

Wagner, S. Dak., April 18th.

Whiting Nursery Co.,  
Yankton, S. Dak.

Gentlemen:

Received your goods today, and am more than pleased. This won't be my last order. Your packing can't be beat.

Yours respectfully,

T. J. COLE.

## Plums

In a general way we recommend the planting of plum trees on native stocks. Although these have a tendency to sprout from the roots, they are safer in the North, and we will put them in for northern planters unless otherwise directed. For local-



ities south from here many prefer plum on Myrobolan or peach roots, which are nonsprouters. Please advise what kind of roots you prefer, otherwise we will use our own judgment. We recommend only the hardy native sorts here and north of here. Plums do best on a rich moist soil and we recommend clean culture.

**DE SOTO**—Tree is extremely hardy, a moderate grower. In fact, does not make a very large tree as it comes into bearing young and bears so heavily as to retard growth of tree. It is an annual bearer, and unless fruit is thinned is liable to overbear, making fruit small. Fruit good size and quality. Color a rich golden yellow when it begins to ripen, gradually turning red at full maturity, making it a showy plum in all stages of ripening. Ripens in August.

**HAWKEYE**—A strong growing, hardy and productive tree; fruit large size and one of the largest of the American plums. Color, yellow, almost entirely overspread with red, with a distinctive pur-

Velva, N. Dak., Oct. 23rd.

Geo. H. Whiting,

Yankton, S. Dak.

My Dear Sir:—I am enclosing herewith a photo of one of my plum trees that I purchased from you three years ago. This tree was so heavily loaded with fruit that I had to put in a couple of posts and tie the tree from one post to another, as the rope will show. We had also picked about three quarts of plums before the picture was taken, and beside the wind had blown a great many of them off. The plums on this tree were simply delicious; we saved some of the pits to plant and I would appreciate it very much if you will tell us how and when to plant them. This is not the only tree that produced fruit and lots of it this season.

Thanking you for the information I am asking, I am, Yours truly, (Signed) A. W. DITMER.

plish stripe around it. Ripens the latter part of August; quality fair.

**MINER**—Tree a very strong, vigorous grower; fruit large, deep red and of good quality; a valuable variety to raise in the south part of the state, but it cannot be recommended for Northern sections for the reason that it is not hardy enough and fruit ripens late. It is a rather poor self-fertilizer and should be planted near some other variety to make it real productive. Ripens 1st to 15th of September, which makes it very desirable for coming after other varieties are all out of the market. It finds ready sale at a good price.

**SURPRISE**—A strong-growing tree of the Miner family but much hardier than the Miner. Fruit large and red, excellent for dessert and market; flesh rich and sugary, a delicious flavor; very prolific and very promising for the Northwest.

**WOLF**—Tree is a very good grower, making a very fine orchard tree. Fruit about the size of the De Soto, sometimes 1½ in. or more in diameter; a perfect free-stone. The pit being small, clean and white and the flavor a sharp, sprightly, pleasant acid, making it very desirable for cooking in any form. A very profitable sort and extremely hardy. Ripens late in August.

### PRICES—PLUMS. (Common Sorts)

	Each	Per 5	Per 10	Per 50	Per 100
3 to 4 ft. . .	\$0.30	\$1.25	\$2.00	\$12.00	\$22.00
4 to 5 ft. . .	.40	1.75	3.25	13.50	26.00
5 to 7 ft. . .	.50	2.20	4.00	16.00	30.00



### PROF. HANSEN'S HYBRID PLUMS

**HANSKA**—This is a cross between a wild northwestern plum and Prunus Simoni; fruit about 1½ in. in diameter. The flat shape of this plum and its peculiar red color with its heavy blue bloom distinguishes it from all other hardy plums grown in the Northwest. Tree a very strong grower and very hardy. An early and profuse bearer; quality good.

**OPATA**—Another of Prof. Hansen's plums and is a cross between the Dakota Sand Cherry and a very large Hybrid Japanese Plum called the Gold Plum. Opata is a vigorous plum tree in habit with large glossy foliage, resembling the European plum leaves and like its friend Sapa is hardy as an oak. Bears almost invariably at two years old; the fruit is very large, measuring about 1 3-16 in. in diameter; in quality it is delicious, having the sprightliness of the Sand Cherry with the rich sweetness of the Gold Plum. Skin thin and free from acidity. Pit very small; season extremely early, just when you want plums. Color, dark purplish red with blue bloom, flesh green.

**Plums—Continued**

**SAPA**—This is a cross between the Western Sand Cherry and a large purple-fleshed Japanese Plum called Sultan. The fruit has the glossy dark purple skin and rich dark purple red flesh of its Japanese sire. One-year old trees sent out in the spring of 1908 fruited freely in 1909 and attracted great attention as a new departure in stone fruits for the prairie of the Northwest. Sapa took first prize as a seedling plum at the Minnesota State Fair, 1909.

As our stock is limited we will substitute other varieties of Prof. Hansen's plums, in case we are sold out on the above, unless instructed otherwise. Using our best judgment as to variety for your locality.

**PRICES—HANSEN'S HYBRID PLUMS**

	Each	Per 5	Per 10
3 to 4 ft.....	\$0.45	\$2.10	\$4.00
4 to 5 ft.....	.50	2.25	4.50

**Native Plum Seedlings**

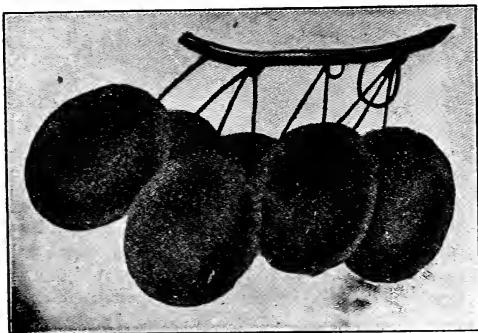
We have a nice lot of seedlings grown from pits of the named varieties, which are liable to produce fruit of fair quality, but of course cannot be depended upon like the budded and grafted trees. These trees, however, will be desirable for hedges and low shelter belts.

**PRICES—NATIVE PLUM SEEDLINGS**

	Each	Per 5	Per 10	Per 50	Per 100
2 to 3 ft...\$0.10	\$0.10	\$0.40	\$0.75	\$1.75	\$2.50
3 to 4 ft... .15	.15	.60	1.00	2.50	4.00
4 to 5 ft... .20	.20	.75	1.25	3.50	6.00

**Compass Cherry Plum**

This originated with H. Knudson of Springfield, Minn., and is believed to be a cross between the Western Sand Cherry and the Miner Plum. Its habits of growth are like the Miner while the leaf, twig and bark very much resemble the Sand Cherry. It is a fine grower and makes a very fine or-  
 chard tree. Fruit about an inch in diameter and is as much a plum as it is a cherry. The shape is oblong and slightly flattened. It has a flavor peculiar to itself, very palatable and rich. An immense and early bearer, if well pollenized; should be planted near other plum trees. Tree perfectly hardy as far north as Manitoba.



Branch of Compass Fruit

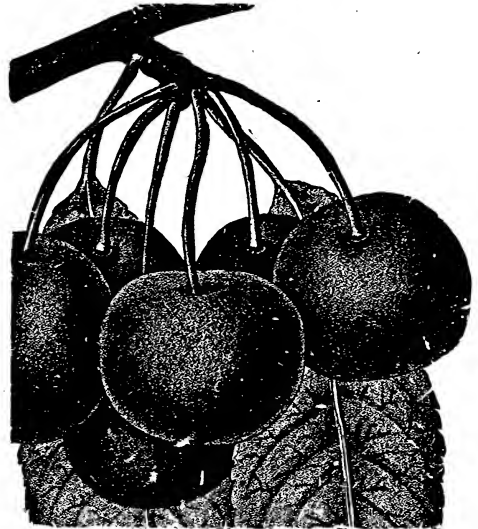
chard tree. Fruit about an inch in diameter and is as much a plum as it is a cherry. The shape is oblong and slightly flattened. It has a flavor peculiar to itself, very palatable and rich. An immense and early bearer, if well pollenized; should be planted near other plum trees. Tree perfectly hardy as far north as Manitoba.

**PRICES—COMPASS CHERRY**

	Each	Per 5	Per 10	Per 50	Per 100
3 to 4 ft...\$0.35	\$0.35	\$1.25	\$2.00	\$10.00	\$20.00
4 to 5 ft... .50	.50	1.75	3.00	.....	.....

**Cherries**

Cherries are well adapted to the dry climate and well drained soils of the West and should be more generally planted; they are a profitable crop to grow, but they will not do well with their feet in the water. Plant in rows 20 feet apart, with trees 12 to 14 feet apart in the row.



**EARLY RICHMOND**—An early, red acid Cherry, very valuable for cooking. Tree a free grower, hardy, healthy and very productive. It is the leading market variety for this section. Ripens in June.

**ENGLISH MORELLO**—Tree moderate grower, hardy; an early and great bearer; the most valuable of the late varieties. Fruit large, round; skin dark red, becoming nearly black when fully ripe; flesh dark red, tender, juicy and of a pleasant sub-acid flavor when fully ripe. Season, July and August.

**LARGE MONTMORENCY**—A large cherry of good quality, and is becoming very popular in many sections, but has not been tested long here. We have many hopes for it, however.

**PRICES—CHERRY**

	Each	Per 5	Per 10	Per 50	Per 100
3 to 4 ft...\$0.25	\$0.25	\$1.00	\$1.75	\$10.00	\$18.00
4 to 5 ft... .35	.35	1.50	2.75	12.00	22.00

**Buffalo Berry**

**BUFFALO BERRY** (*Shepherdia Argentea*) — A native shrub or tree, sometimes growing to a height of 15 feet or more; perfectly hardy anywhere in the Northwest; bears abundantly if properly fertilized; should be planted in groups containing both pistillates and staminate; fruit about the size and color of Red Dutch Currant, quite tart and juicy and makes delicious jelly. A very ornamental shrub and is also quite useful for hedges.

We are now prepared to furnish them in either sex desired. The Female only bears fruit; the male is of no account except as a pollinizer. Unless otherwise ordered, we put in about 5 female plants to each male plant.

**PRICES—BUFFALO BERRY**

	Each	Per 5	Per 10	Per 50	Per 100
1 to 2 ft...\$0.10	\$0.10	\$0.60	\$1.00	\$3.50	\$6.00
2 to 3 ft... .20	.20	.90	1.50	.....	.....
3 to 4 ft... .30	.30	1.25	2.00	.....	.....

**Dwarf Juneberry**

**DWARF JUNE BERRY** (Suscutan or Sugar-berry) — The fruit is borne in clusters, reddish purple in color, changing to bluish-black. In flavor it is mild, rich, sub-acid; excellent as a des-



Juneberry

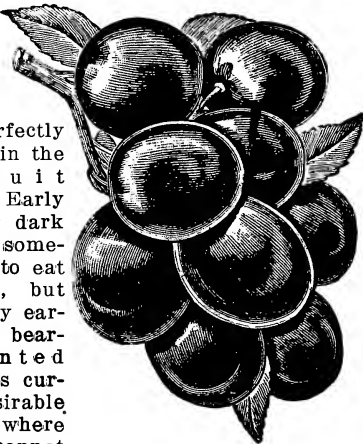
sert fruit or canned. It is extremely hardy. In habit it is similar to the Currant and bushes grow some larger. The blossoms are quite large and composed of white petals. A fine ornamental plant.

**PRICES—JUNE BERRY**

Each, ... \$0.25    Per 5 ... \$1.00    Per 10 ... \$1.75

**Wild Cherries**

**DWARF ROCKY MOUNTAIN OR SAND CHERRY** (*Prunus Pumilla*). A native of dwarfish habits, perfectly hardy anywhere in the Northwest. Fruit about the size of Early Richmond; color dark brown to black; somewhat astringent to eat from the hand, but cooks well. Very early and abundant bearer; can be planted about as close as currants. Very desirable in the Northwest where better cherries cannot be grown. Ripens in July and August when other cherries are gone.



**PRICES—SAND CHERRY**

	Each	Per 5	Per 10	Per 50	Per 100
6 to 12 ft.	\$.10	\$0.40	\$0.75	\$2.50	\$4.00
12 to 18 ft.	.15	.60	1.00	4.00	7.00

**CHOKO CHERRY** (*Prunus Virginiana*)—A native that is extremely hardy and a prolific bearer. The fruit, although rather small and astringent,

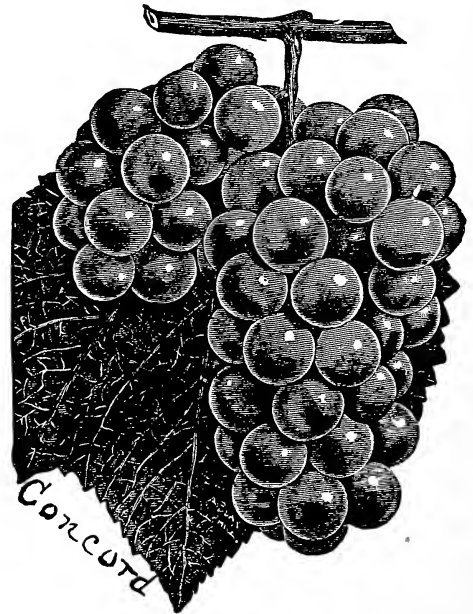
is valuable to grow where better varieties will not succeed.

**PRICES—CHOKO CHERRY**

	Each	Per 5	Per 10	Per 50	Per 100
3 to 4 ft.	\$.15	\$0.60	\$1.00	\$4.00	\$7.50
4 to 5 ft.	.20	.90	1.50	6.00	....
5 to 6 ft.	.30	1.25	2.25	....	....

**Grapes**

Plant in rows 8 to 12 ft. apart and 6 ft. apart in the row, on good well-drained soil; cultivate clean, and the second spring after planting set posts 5 feet high and 20 feet apart along the rows, on these stretch 3 or 4 smooth fence wires 18 inches apart. Select two of the strongest canes, cut to length of 4 feet (remove all other canes) and tie those two loosely, one each way on the lower wire, allowing the shoots to run up to the other wires. In the fall cut these laterals back to two or three buds, and continue this year after year, gradually increasing the bearing wood each year



as the vine gets larger. Prune in fall and lay down and cover with coarse litter; keep suckers pinched off during the summer.

**BETA**—This is supposed to be a cross between the Concord and the Minnesota wild grape. In size and flavor the fruit is about midway between these two varieties, while in hardiness it appears to be equal to the native wild variety, therefore making it very valuable for the far North where other varieties cannot be successfully grown.

**CONCORD**—A vigorous, hardy vine; berries large and black; skin thin, flesh juicy and sweet; ripens early in September; the leading market variety.

**MARTHA**—Bunches and berries of medium size, greenish-white, with a thin bloom; flesh tender, with a very little pulp; juicy, sweet and rich; hardy and productive; ripens with Concord.

**JANESVILLE**—A very hardy variety; it has borne right along with us without any winter protection. Bunch short, close and compact, berry

**Grapes—Continued**

medium size, black; quality fair when fully ripe. Very productive.

**PRICES—GRAPES**

	Each	Per 5	Per 10	Per 50	Per 100
Concord, 1 yr.	\$0.10	\$0.40	\$0.75	\$ 2.25	\$ 4.00
Concord, 2 yr.	.15	.60	1.00	3.50	6.00
Beta, 1 yr. ....	.30	1.25	2.25	10.00	19.00
Beta, 2 yr. ....	.40	1.75	3.00	.....	.....
Martha .....	.15	.60	1.00	3.50	6.00
Janesville ...	.20	.80	1.50	4.50	8.00

**Currants**

Plow deep and have the soil well pulverized before planting. We plant in rows 8 feet apart and 4 feet apart in the rows, giving clean culture, and manure well. Cut out old wood occasionally and keep the bush vigorous and healthy. The varieties listed here are all perfectly hardy, enduring well our coldest winters and driest summers.

The Currant is very easily grown and cared for. If the currant worm appears, dust with hellebore.

**WHITE GRAPE**—So far has proven the best bearer we have fruited here, bearing a full crop annually of large bunches and large sized fruit. Good grower.

**BLACK NAPLES**—A very rank, strong grower and very productive. Fruit large, black and of a musky flavor; adheres well to the bush; excellent for cooking.

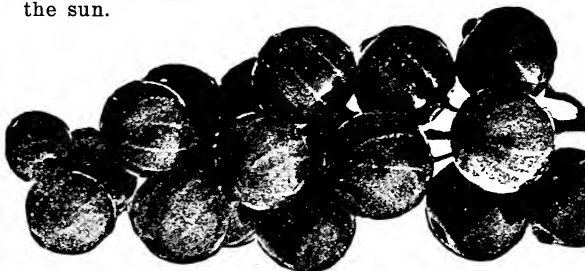
**CRANDALL**—A seedling of the Missouri River Wild currant, which it resembles very much, but it is much larger and much more prolific than the common wild strain.

**RED DUTCH**—A hardy, well-known standard variety; early, a prolific bearer and does well everywhere. It is, perhaps planted more extensively than any other variety.

**WHITE DUTCH**—Hardy, well known variety, similar to Red Dutch. Somewhat sweeter.

**NORTH STAR**—A very productive red variety. Bunches large, berries large, sweet and rich; a good market variety and excellent for jelly. A strong vigorous grower.

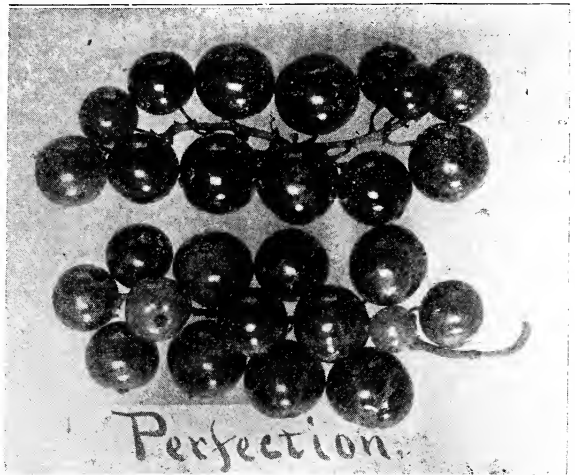
**VICTORIA**—Large, red; late; seems very well adapted to South Dakota, has produced excellent crops with us annually. It is a strong stocky grower; has heavy foliage which protects the fruit from the sun.



Victoria

**POMONA**—Fruit of good size and flavor; a bright red; has long stems and hangs in fine condition after repining; a good shipper. Bush bears early and very prolific.

**PERFECTION**—Berries are beautiful bright red and quite large. In quality it is said to be superior to anything in the market today; rich, mild, sub-acid flavor, with plenty of pulp and few seeds.



**PRICES—CURRANTS**

	Each	Per 5	Per 10	Per 50	Per 100
1 yr. No. 1..	\$0.15	\$0.50	\$0.75	\$2.00	\$3.75
2 yr. No. 1..	.20	.90	1.50	4.00	7.00

**Gooseberries**

Give same treatment and care as previously instructed for Currants. Gooseberries are very easily grown and should be planted by everyone.

**HOUGHTON**—A medium sized American variety; bears abundant and regular crops and never mildews; fruit smooth, red, tender and very good. Hardy nearly everywhere.

**CARRIE**—Introduced by Wyman Elliott of Minneapolis, Minn. A strong vigorous grower and wonderfully prolific; perfectly healthy and free from mildew; very hardy, fruit good size and of excellent quality. It is indeed a very promising variety. Try it.

**PRICES—HOUGHTON**

	Each	Per 5	Per 10	Per 50	Per 100
1 yr. No. 1..	\$0.15	\$0.60	\$1.00	\$3.50	\$6.00
2 yr. No. 1..	.25	1.00	1.75	4.50	8.00

**PRICES—CARRIE**

	Each	Per 5	Per 10	Per 50	Per 100
1 yr. No. 1..	\$0.25	\$1.00	\$1.50	\$5.00	\$9.00
2 yr. No. 1..	.40	1.50	2.50	7.00	12.00

Lucas ( S. Dak., May 19th.

Geo. H. Whiting,  
Yankton, S. Dak.

Dear Sir:

Received the order from you in fine shape. I think every plant will grow. They have been planted out just ten days, and the Gooseberries are beginning to leaf out.

Yours very truly,  
EDITH BAAR.

Newell, Iowa, April 22nd.

Whiting Nursery Co.,  
Yankton, S. Dak.  
Gentlemen:

Trees arrived in perfect condition, and were very fine. Many thanks.

Truly yours,  
T. W. MACKYRANG.

## Raspberries

Plant in rows eight feet apart and three feet apart in the rows; give clean culture; keep down all suckers and weeds. Lay down and cover with earth in fall; although this cover may not always be necessary to prevent winter killing, they will



produce enough more fruit to pay abundantly for the extra labor performed. Raspberries do better here if shaded slightly. They should not be planted too deep; it must be remembered that the new bud or shoot starts from the root and if planted more than three inches deep are liable not to get through the ground.

**KING**—Red; medium season, vigorous grower, fruit good quality; a good bearer for a long time, is becoming the leading market berry of Minnesota; firm and stands up well, especially fine flavored and very desirable both for home and market.

**TURNER**—Red, vigorous grower, early; fruit of excellent quality; a good bearer and very hardy, one of the best known varieties and correspondingly desirable; a reliable annual bearer, best home berry we have.

**GREGG (Black)**—The largest of the blackcaps; good quality; not quite so hardy as others named; should have winter protection to make it at all profitable in this vicinity. Season late.

**KANSAS (Black)**—A variety of worth. It ripens a few days before the Gregg, and is of large size. Canes quite thorny and covered with thick bluish bloom.

### PRICES—RASPBERRIES

Per 10...\$0.50 Per 25...\$0.90 Per 50...\$ 1.50  
Per 100... 2.75 Per 500... 8.00 Per 1000. 15.00

**SUNBEAM RASPBERRY**—This is one of Prof. N. E. Hansen's productions. It is a cross between the Schaffer's colossal and a Northern wild variety. It is extremely hardy, in fact, it 's the only red raspberry that is entirely hardy everywhere on the prairies of the Northwest, even up into Manitoba. Stands well without any winter protection whatever. The quality is very good, thereby making this pre-eminently the red raspberry for the prairie farmers of the Northwest. If you have had trouble in growing red raspberries, you should try this variety.

Each Per 10 Per 50 Per 100  
Sunbeam Raspberry, \$0.10 \$0.75 \$3.00 \$5.00

## Blackberries

Blackberries are a little uncertain in this climate on account of winter-killing some seasons, but when the season is right we have fine crops of luscious fruit, and we are inclined to think that they are going to pay better in the future. They do bet-



Snyder Blackberry

ter where they are sheltered by trees than they do on the open prairie. Give clean culture in summer and lay down and cover with earth in winter.

**STONE'S HARDY**—One of the lowest growing Blackberries; very hardy and productive.

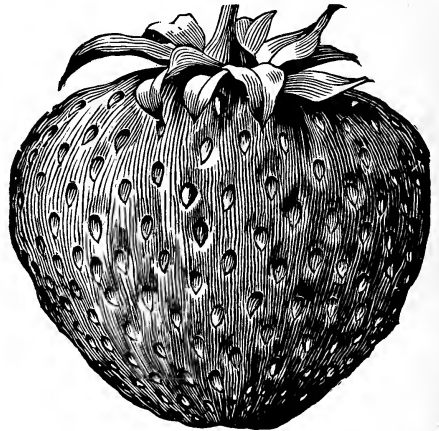
**SNYDER**—Very hardy; productive and well known; a desirable variety for the Northwest.

### PRICES—BLACKBERRIES

Per 10...\$0.50 Per 25...\$0.90 Per 50...\$ 1.50  
Per 100... 2.50 Per 500... 8.00 Per 1000. 15.00

## Strawberries

Plant in rows 4 feet apart, with plants 1 foot apart in the row. In planting, great care should be taken to get roots well down in the ground; but don't plant so deep that the crown of the plant will be covered with dirt by the rain; if you do, they



Senator Dunlap

will rot and die. Mulch late in the fall with hay or corn stalks to avoid foul seeds which are so numerous in straw.

Staminate varieties bear by themselves, but the pistillates require a staminate variety every third or fourth row to make them productive. Please bear

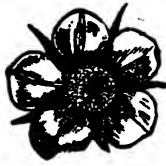


**Strawberries—Continued**

this in mind when making selections. Plant one row of staminate to every two or three rows of pistillates as they are more productive if properly fertilized.



Staminate



Pistillate



Right way to plant



Wrong way to plant

**BEDERWOOD (Staminate)**—Very popular and one of the heaviest fruiterers of the season; berries crimson, moderately firm, high quality; a splendid pollenizer; valuable for home use or near market.

**SENATOR DUNLAP (Staminate)**—It is equal to the Warfield in size and productivity, and is sweeter and better. It resembles the Warfield in color and shape. It is good either for home or for



**Senator Dunlap Strawberries**

market. The plant is very tough, hardy and an exceptionally strong grower; succeeds well in a very wide range of conditions, the most popular sort to-day. Be sure to include this variety in your list; it will pay you. We sometimes think it would be well if the farmer had only this one sort.

**S. DAK. No. 1 and S. Dak. No. 2. (Staminate)**—These seedlings were produced by Prof. N. E. Hansen of Brookings, S. Dak., and gives promise of being valuable for the busy farmer in the extreme

Northwest in trying localities. While the fruit is quite small, the quality is excellent, being similar to the native wild berry; they will stand severe winters without any covering.

**WARFIELD No. 2. (Pistillate)**—Plant a very vigorous grower, endures drouth well; it is very productive, good size and a good shipper, a deep showy red.

**NOTE.**—All strawberry plants will be trimmed of dead leaves, runners, etc., and neatly tied into bunches of 25 plants each. In ordering please govern yourself accordingly, and order a full bunch of each kind, as we will charge a higher rate when we have to break bunches.

**PRICES—STRAWBERRIES**

	25	50	100	500	1000
Not prepaid . . . . .	\$0.35	\$0.60	\$1.00	\$3.50	\$6.50
By mail postpaid..	.45	.75	1.25	....	....

**Garden Plants**



**Rhubarb or Pie Plant**

This deserves to be ranked among the best early fruits of the garden. It affords the earliest material for pies and tarts, continues long in use and is valuable for caning. Plant in rows 8 feet apart and 4 feet apart in row, in rich deeply plowed land. If you use coarse litter for fertilizer, place it on top of the soil and not in contact with the roots. A heavy mulch is beneficial and saves cultivation. Fertilize well.

**MAMMOTH** — A very large, early, desirable sort; tender and fine flavored.

Large 2-yr. old roots—Each, 15c; per 5, 60c; per 10, \$1.00; per 50, \$3.50; per 100, \$6.50.

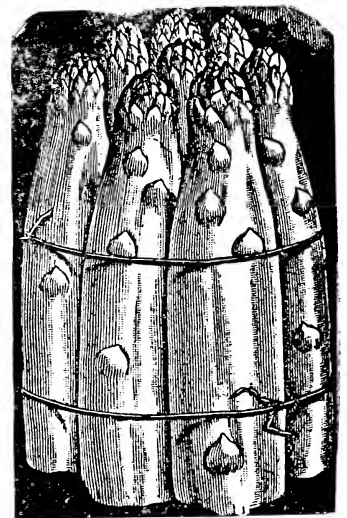
This is very easily raised and affords one of the earliest garden foods. Plant 2 to 4 feet apart in deep, rich soil, and give good heavy mulch or thorough cultivation. Manure the ground heavily; give an occasional dressing with salt. Begin cutting for use as soon as the young shoots are large enough in the spring. Continue the cutting every second or third day as long as the season lasts, then allow it to grow up unmolested for the balance of the summer and make a winter protection for the bed.

**CONOVER'S COLOSAL**—This is a very well known, valuable garden and market sort; a strong grower and very productive; the leading market sort.

**PALMETTO**—A newer variety; a strong vigorous grower; and of a good quality.

**PRICES—Asparagus**

	25	50	100	500	1000
Plants, 1 yr. strong,	\$0.30	\$0.50	\$0.90	\$2.00	\$3.50
Plants, 2 yr. strong,	.40	.75	1.25	3.00	5.60



**Asparagus**

**Horse Radish**

**PRICES—HORSE RADISH SETS**

Each . . . . .	\$0.10	Per 5 . . . . .	\$0.40
Per 10 . . . . .	\$0.75	Per 50 . . . . .	\$2.50
		Per 100 . . . . .	\$4.00

# FOREST DEPARTMENT

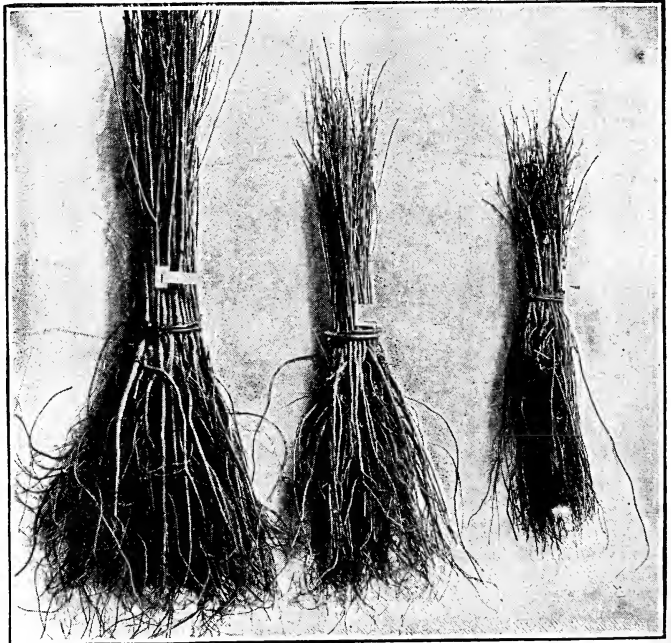


View of Block of 5,000,000 Green Ash Seedlings Growing on Grounds of the Whiting Nursery Co.

## Forest Seedlings

A great many sell forest seedlings classifying them as one year old or two years old, without stating size. This is very indefinite and generally unsatisfactory to the purchaser, as a one-year-old seedling might be anywhere from 1 inch up to 24 inches high, and a two-year-old anywhere from 4 inches up to six feet or more in height. The accompanying cut of one-year-old Elm seedlings shows the three grades, 6 to 12 in., 12 to 18 in., and 18 to 24 in. such as we usually make, and these trees will run as near to the height specified as it is possible for skilled men to grade without actually measuring every tree. We claim to have the largest forest seedling trade in the entire northwest.

The trees we list here are all nursery grown, with the exception of the Cottonwood, Diamond and Black Willow, which are mostly river pulled. All seedlings will be carefully counted and tied up neat, straight and tight. All of the smaller sizes under 2 to 3 feet, are put up in bunches of 100. Do not ask us to break bunches as we can-



Forest Tree Seedlings, 1 year

not do it without making an additional charge above the hundred rate.

Forest Seedlings—Continued

PRICES—SEEDLING

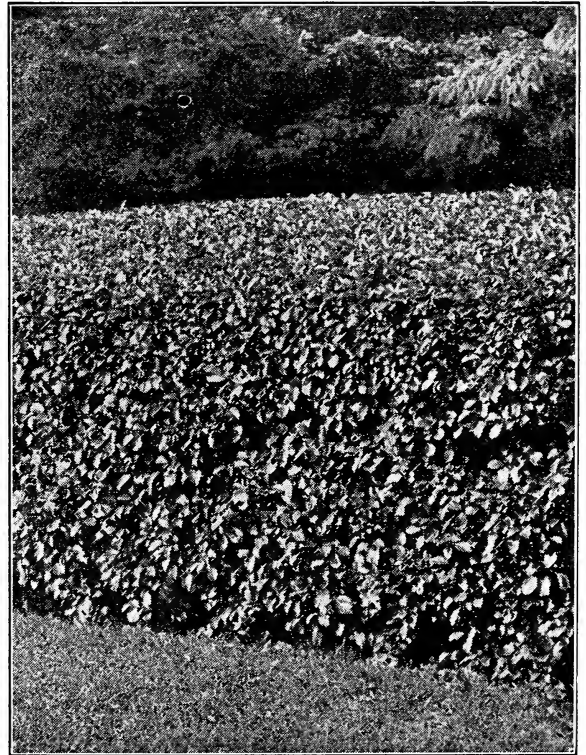
	100	500	1000
Ash, Green 6 to 12 in.....	\$0.30	\$ 1.10	\$ 2.00
Ash, Green 12 to 18 in.....	.50	2.00	3.75
Ash, Green 18 to 24 in.....	.90	4.00	7.00
Ash, Green 2 to 3 ft.....	1.25	5.50	10.00
Ash, Green 3 to 4 ft.....	2.53	10.00	18.00
Black Walnut 6 to 12 in....	1.00	4.00	.....
Black Walnut 12 to 18 in....	1.50	6.25	.....
Black Walnut 18 to 24 in....	2.00	8.00	.....
Box Elder 6 to 12 in.....	.35	1.20	2.25
Box Elder 12 to 18 in.....	.90	3.00	5.00
Birch, Am. White 6 to 12 in..	.60	2.50	4.50
Birch, Am. White 12 to 18...	1.00	4.50	8.00
Carolina Poplar 2 to 3 ft....	2.00	9.00	17.00
Carolina Poplar 3 to 4 ft....	3.00	11.00	20.00
Norway Poplar 2 to 3 ft....	2.00	9.00	17.90
Norway Poplar, 3 to 4 ft....	3.00	11.00	20.00
Catalpa Speciosa 6 to 12 in... .50	2.00	3.50	.....
Catalpa Speciosa 2 to 3 ft....	2.50	10.00	18.00
Cottonwood 12 to 18 inch....	.35	1.25	2.00
Cottonwood 18 to 24 in.....	.50	1.75	3.00
Cottonwood 2 to 3 ft.....	.70	2.00	3.75
Cottonwood 3 to 4 ft.....	1.00	4.50	7.00
Elm, White 6 to 12 in.....	.35	1.40	2.50
Elm, White 12 to 18 in.....	.60	2.50	4.50
Elm, White 18 to 24 in.....	1.10	5.00	9.00
Elm, White 2 to 3 ft.....	2.50	11.00	.....
Hackberry 6 to 12 in.....	.50	2.00	3.75
Hackberry 12 to 18 in.....	.75	3.00	.....
Hackberry 18 to 24 in.....	1.50	.....	.....
Oak, Burr 6 to 12 in.....	1.50	6.25	10.00
Oak, Burr 12 to 18 in.....	2.50	.....	.....
Oak, Burr 18 to 24 in.....	4.00	.....	.....
Wild Black Cherry 6 to 12 in..	.40	1.75	3.00
Wild Black Cherry 12 to 18 in.	.65	2.75	5.00
Wild Black Cherry 18 to 24 in.	1.00	4.25	8.00
Wild Black Cherry 2 to 3 ft..	1.75	7.50	.....
Wild Black Cherry 3 to 4 ft..	2.50	.....	.....
Willow, Black 12 to 18 in....	.55	2.00	3.50
Willow, Black 18 to 24 in....	.75	2.75	5.00
Willow, Diamond 12 to 18 in..	.55	2.00	3.50
Willow, Diamond 18 to 24 in..	.75	2.75	5.00
Willow Diamond 2 to 3 ft....	1.00	4.00	7.00
Willow, Com. Gld'n 2 to 3 ft.	2.00	8.00	15.00
Willow, Com. Gld'n 3 to 4 ft.	4.00	.....	.....
Willow, Russian Gld'n 2 to 3 ft.	2.00	8.00	15.00
Willow, Russian Gld'n 3 to 4 ft.	4.00	.....	.....
Willow, Laurel Lv'd 2 to 3 ft.	2.00	8.00	15.00
Willow, Laurel Lv'd 3 to 4 ft.	4.00	.....	.....
Willow, White 2 to 3 ft.....	2.00	8.00	.....
Willow, White 3 to 4 ft.....	3.50	.....	.....

Forest and Hedge Seedlings

Barberry, Thunbergii 18 to 24 in., per 100..	\$12.00
Honeysuckle, Pink, White and Discolor—	
12 to 18 inch.....	\$5.00 per 100 \$3.00 per 50
18 to 24 inch.....	8.00 per 100 4.50 per 50
Spirea Van Houti and Spirea Billardi—	
18 to 24 inch.....	\$6.00 per 100 \$3.50 per 50

For description of above hedge plants, see Shrub Department.

	100	500	1000
English Buckthorn 6 to 12 in.	\$3.00	\$12.00	.....
English Buckthorn 12 to 18 in.	5.00	22.00	.....
Locust, Honey 3 to 6 in.....	.60	2.25	.....
Locust, Honey 6 to 12 in....	.75	3.00	.....
Locust, Honey 12 to 18 in....	1.00	.....	.....
Russian Mulberry 12 to 18 in.	.75	3.00	5.00
Russian Mulberry 18 to 24 in.	1.25	.....	.....
Russian Olive 6 to 12 in.....	1.00	4.00	7.50
Russian Olive 12 to 18 in....	1.50	6.25	12.00
Russian Olive 18 to 24 in....	3.00	12.00	22.00
Russian Olive 2 to 3 ft.....	4.00	.....	.....
Russian Olive 3 to 4 ft.....	6.00	.....	.....



Buckthorn Hedge

Tree Seeds

	Per oz.	Per lb.
Ash, Green (soak well before planting)	\$0.10	\$0.50
Box Elder (soak well before planting)	.10	.50
Catalpa Speciosa .....	.20	1.00
Locust, Black (scald before planting)..	.20	1.00
Locust, Honey (scald before planting).	.20	1.00
Russian Olive .....	.20	1.00
Siberian Pea Tree .....	.35	4.00

White Elm and Soft Maple seeds ripen about the last of May and should be planted soon after ripe. Write for prices early in May. We can tell then about what the crop of seed will be.

The average number of seeds in a pound is about as follows: Green Ash, 15,000; Box Elder, 10,000; Catalpa, 30,000; White Elm, 60,000; Black Locust, 15,000; Honey Locust, 5,000; Soft Maple, 5,000; Siberian Pea Tree, 15,000.

Bowdle, S. Dak., May 28th.

Whiting Nursery Co.,  
Yankton, S. Dak.

Dear Sirs:

Replying to yours of the 27th will say the trees arrived after one week. I was surprised to find them in such a good order. (Being on road so long.) They were promptly planted, and appear to be growing all right. I note what you say in regards to cultivation, and will attend to that. I set out about seven acres all told in trees, cuttings and seeds. Will do more next year.

Yours very truly,

Wm. EDWARDS.

**Cuttings**

Cuttings will be cut about 8 or 9 inches in length and tied in bunches of 100 each with tops all one way. Keep cuttings buried in earth until ready for planting.

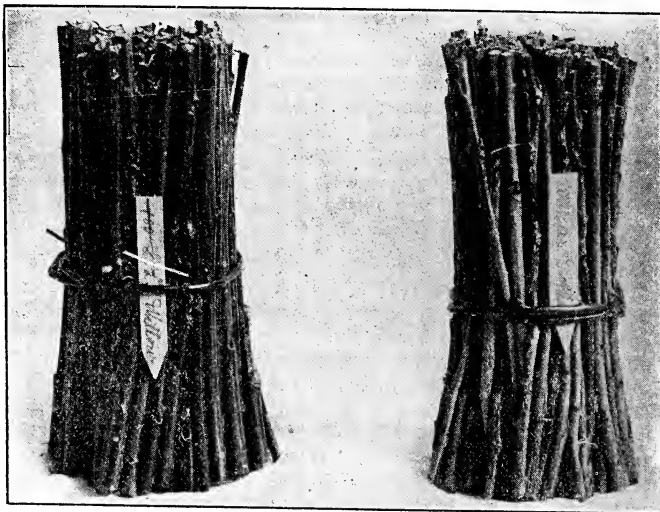
Cuttings should be planted so that not more than one or two buds are above ground, and the earth should be well firmed around the cuttings, especially at the bottom; this packing of earth is very important.

The Russian Artemesia makes an excellent low wind-break with other trees for a sort of under-growth. It does not grow to a height of more than six to eight feet, but it will usually do this in about two years from cuttings, with proper care.

**PRICES—CUTTINGS**

	100	500	1000
Cottonwood. . . . .	\$0.25	\$0.90	\$1.50
Poplar, Carolina . . . .	.40	1.50	2.50
Poplar Lombardy . . . .	.40	1.50	2.50
Poplar Norway . . . . .	.50	1.75	3.00
Poplar, Silver Leaved . .	.50	1.75	3.00
Russian Artemesia . . . .	.40	1.50	2.50
Tamarix Amurensis. . . .	.50	2.00	3.50
Willow, Diamond . . . . .	.25	1.00	1.75
Willow Russian Gld'n . . .	.25	1.00	1.75
Willow Common Gld'n . . .	.25	.90	1.50
Willow Laurel Leaf. . . . .	.25	1.00	1.75
Willow ural (for tying . .	.30	1.25	2.00
Willow Noble Weep'g . . .	.60	2.50	4.00
Willow Thurlow W'p'g . . .	.60	2.50	....
Willow Wis. Weeping . . .	.60	2.50	....
Willow White . . . . .	.25	1.00	1.75

Special prices given on larger quantities than listed.



# Bargains in Seedlings

## FARMERS' SPECIAL OFFER

Every farm in the Northwest should have a wind break and a wood lot. We are going to help you this year to start both, as we have an immense stock in both seedlings and shade trees.

For twenty-nine years we have been urging and encouraging the farmers of the Northwest to plant trees—to protect your other nursery stock and your farm buildings as well as making the farm more profitable by growing fence posts and wood.

Year by year our stock has been increased to supply the demand until this past year, we grew 15,000,000 seedlings. To enable you to plant and us to sell this large stock, we are making you some special offers.

### SEEDLING OFFER "A"

1000 Ash Seedlings, 6 to 12 inch	- - - - -	\$2.00
2000 Ash Seedlings, 6 to 12 inch	- - - - -	3.50
5000 Ash Seedlings, 6 to 12 inch	- - - - -	8.00

### SEEDLING OFFER "B"

1000 Ash Seedlings, 12 to 18 inch	- - - - -	\$ 3.50
2500 Ash Seedlings, 12 to 18 inch	- - - - -	8.00
5000 Ash Seedlings, 12 to 18 inch	- - - - -	15.00

## FREE OFFER

To any farmer ordering \$10.00 worth of general nursery stock, we will give absolutely free, 500 Ash Seedlings, 6 to 12 in. With an order for \$15.00 worth we will give 500 Ash Seedlings, 12 to 18 in. With a \$20.00 order, 1000 Ash Seedlings, 6 to 12 in. With a \$25.00 order, 1000 Ash Seedlings, 12 to 18 in.

# Deciduous Shade and Ornamental Trees



Row of Elm Shade Trees at the Nursery

In this department we have our usual large stock this season, and they are thrifty and well rooted, having been trimmed and kept in shape during the growing season, AND ARE TRANSPLANTED STOCK.

We are prepared to furnish them in large quantities, and parties having charge of parks, cemeteries, etc., will do well to confer with us before making their purchases. Will make special prices to parties desiring to purchase by the car load.

We will be pleased to furnish estimates and advice for parks, public squares, cemeteries and various public and private grounds, making a very reasonable charge for work of this kind, where we furnish the trees and plants for same.

**ASH GREEN (Fraxinas Viridas)**—This is the native Western Ash, and is rather smaller than the White Ash, but thrives better under Western conditions. An upright medium growing tree. Timber is very valuable, makes a fine, symmetrical, round headed tree, if planted singly with plenty of room. Very rugged, hardy and valuable, and the best tree for South Dakota planting.

Larger sizes in stock. Write for prices if you are interested.

**ASH—AMERICAN MOUNTAIN (Sorbus Sambucifolia)**—A native of the Black Hills. Similar to the European variety, but it is a little rounder headed and more stocky in growth. It bears fruit in great abundance. The fruit or berry of the Mountain Ash is of no value for food but is very handsome in appearance.

**PRICES—GREEN ASH**

	1	5	10	50	100
3 to 4 ft.....	\$0.15	\$0.60	\$ 1.00	\$ 2.25	\$ 4.00
4 to 5 ft.....	.25	.90	1.50	3.25	6.00
5 to 6 ft.....	.30	1.25	2.00	5.50	10.00
6 to 8 ft.....	.40	1.50	2.50	7.50	14.00
8 to 10 ft....	.50	2.25	4.00	12.00	22.00
10 to 12 ft....	.65	3.00	5.50	20.00	38.00
1½ to 2 in Cal.	.90	3.50	6.50	25.00	48.00
2½ to 3 in Cal	1.25	5.00	9.00	30.00	.....
3 to 4 in Cal...	2.00	8.00	15.00	45.00	.....

**PRICES—ASH, EUR. MT.**

	Each	Per 5	Per 10
4 to 5 ft.....	\$0.35	\$1.50	\$2.75
5 to 6 ft.....	.45	2.00	3.50
6 to 8 ft.....	.60	2.75	5.00
8 to 10 ft.....	1.00	4.50	8.00
10 to 12 ft.....	1.25	.....	.....
1½ to 2 in.....	1.75	.....	.....
2 to 2½ in.....	2.00	.....	.....

## Shade and Ornamental Trees—Continued

**ASH, OAK LEAVED MOUNTAIN (Sorbus Hybrida Quercifolia)**—A hardy tree of the pyramidal habit; height and breadth from 26 to 30 feet, leaf is deeply lobed similar to the leaf of the Burr Oak; a very fine lawn tree.

## PRICES—ASH, OAK L'VD MT.

	Each	Per 5	Per 10	Per 50	Per 100
5 to 6 ft. . . . .	\$0.75	\$3.25	\$6.00	.....	.....

**BIRCH, PAPER OR CANOE (Betula Papyrifera)**—A native of the Black Hills. It very much resembles the European variety, but has a larger leaf and is a stronger grower, and we think much more desirable for this section at least.

## PRICES—CANOE BIRCH

	Each	Per 5	Per 10	Per 50	Per 100
3 to 4 ft. . . . .	\$0.25	\$1.00	\$1.75	.....	.....
4 to 5 ft. . . . .	.35	1.50	2.50	.....	.....
5 to 6 ft. . . . .	.45	2.00	3.50	.....	.....

**BOX ELDER, ASH-LEAVED MAPLE (Acer Negundo)**—A native. It is in fact, indigenous to the entire West, from Texas to Manitoba. It is a rapid grower while young, makes a good shelter belt quickly; having dense foliage, it soon shades the ground so as to keep down all weeds and grass. If shade is the requisite, it is one of our best trees. The wood is quite valuable for lumber.

## PRICES—BOX ELDER

	1	5	10	50	100
3 to 4 ft. . . . .	\$0.15	\$0.60	\$1.00	\$ 1.75	\$ 3.00
4 to 5 ft. . . . .	.25	1.00	1.50	4.00	7.50
5 to 6 ft. . . . .	.30	1.25	2.00	6.50	12.00
6 to 8 ft. . . . .	.40	1.75	3.00	8.00	15.00
8 to 10 ft. . . . .	.50	2.25	4.00	12.00	22.00
1½ to 2 in. Caliper	.75	3.00	5.50	25.00	45.00
2 to 2½ in. Caliper	1.00	4.50	8.00	.....	.....
2½ to 3 in. Caliper	1.40	6.00	.....	.....	.....
3 to 4 in. Caliper	2.00	8.00	.....	.....	.....

We have larger sized Box Elders if desired.

**BUCKTHORN, English (Rhus Cathartica)**—This is, we believe the most valuable of all our deciduous trees for ornamental hedges, resisting well our cold dry winters. Hardy anywhere in the Dakotas. It is also a desirable tree for the lawn. It endures close pruning perfectly.

## PRICES—ENGLISH BUCKTHORN

	Each	Per 5	Per 10
4 to 5 ft. . . . .	\$0.35	\$1.50	\$2.75
5 to 6 ft. . . . .	.50	2.25	4.00
6 to 8 ft. . . . .	.60	2.50	.....

For prices on smaller sizes, see Hedge Seedlings.

**CATALPA, BUNGEII (Umbrella Catalpa)**—Grafted on stems 5 to 7 ft. high, it makes an umbrella-shaped top without pruning. Hardy as the Speciosa and flourishes in almost all soils. Leaves large, glossy, heart-shaped, deep green; lay like shingles on a roof, always making a symmetrical head. One of the most unique trees. Desirable for lawns, park and cemetery planting.

Grafted—6 to 8 ft. stems, \$1.25 each; 2 for \$2.25

**CATALPA, HARDY (Catalpa Speciosa)**—A hardy Western variety. A symmetrical upright grower, large heart-shaped leaf. It bears large tresses of very beautiful fragrant flowers. The timber is desirable and lasting. Makes valuable posts. It is not hardy much north of this latitude.

## PRICES—HARDY CATALPA

	1	5	10	50	100
3 to 4 ft. . . . .	\$0.20	\$0.60	\$1.00	\$ 2.50	\$ 4.50
4 to 5 ft. . . . .	.25	1.00	1.75	4.00	7.50
5 to 6 ft. . . . .	.35	1.50	2.50	6.50	12.00
6 to 8 ft. . . . .	.45	2.00	3.50	8.00	15.00
8 to 10 ft. . . . .	.60	2.50	4.00	12.00	22.00
1½ to 2 in. Caliper	.75	3.00	5.50	22.00	40.00
2 to 2½ in. Caliper	1.10	5.00	9.00	25.00	45.00
2½ to 3 in. Caliper	1.40	6.00	11.00	.....	.....
3 to 4 in. Caliper	1.75	7.50	14.00	.....	.....
4 to 5 in. Caliper	2.50	10.00	18.00	.....	.....

**CATALPA, JAPAN (Catalpa Japonica)**—This is a Japanese variety which makes a very beautiful ornamental and shade tree; a very profuse bloomer. Flower and seed pods are considerably smaller than those of the Speciosa. It is not considered quite so hardy as the Speciosa, though we know of some very fine specimens in South Dakota, that are doing well. It is quite desirable as a variety.

## PRICES—JAPAN CATALPA

	Each	Per 5	Per 10
4 to 5 ft. . . . .	\$0.30	\$1.25	.....
5 to 6 ft. . . . .	.40	1.75	\$3.00
6 to 8 ft. . . . .	.50	2.25	4.00
8 to 10 ft. . . . .	.75	3.00	5.50

**CHERRY, Wild Black (Prunus Serotina)**—Hardy, rapid grower; bears fruit abundantly when quite young. The wood ranks next to the Black Walnut in Commercial value; very desirable for timber. Makes a handsome lawn tree. Bears white blossoms in racemes in early spring, and ripens in abundant crop of fruit in August. Fruit about the size of a large pea; valuable for the birds and some culinary uses. A very desirable tree.

## PRICES—WILD BLK. CHERRY

	1	5	10	50	100
3 to 4 ft. . . . .	\$0.15	\$0.60	\$1.00	\$ 2.50	\$ 4.50
4 to 5 ft. . . . .	.25	1.00	1.75	4.50	7.50
5 to 6 ft. . . . .	.35	1.50	2.50	6.50	12.00
6 to 8 ft. . . . .	.50	2.25	4.00	9.00	16.00
8 to 10 ft. . . . .	.75	3.25	6.00	14.00	26.00
1½ to 2 in. Caliper	1.00	4.00	7.50	25.00	45.00
2 to 2½ in. Caliper	1.25	5.00	11.00	.....	.....
2½ to 3 in. Caliper	2.00	8.00	15.00	.....	.....

**CHERRY, PIN OR BIRD (Cerasus Scrotina)**—This is a very hardy American tree; a native of Iowa, Minnesota and Wisconsin, and also in the Black Hills. It is a strong and vigorous grower while young, grows to a height of 20 to 30 ft. Its profusion of white blossoms in early spring makes it a handsome lawn tree. The fruit is a bright red, about the size of a common red currant; very tart and grows singly. Ripens in July. Fine for jelly.

## PRICES—PIN CHERRY

	Each	Per 5	Per 10
3 to 4 ft. . . . .	\$0.25	\$1.00	\$1.75
4 to 5 ft. . . . .	.40	1.75	3.50

**CHESTNUT, HORSE, WHITE FLOWERING (Aesculus Hippocastanum)**—Of handsome, regular form, ultimately reaching a large size. In May it is covered with large spikes of beautiful white flowers dotted with red and yellow. A beautiful tree for park and lawn when planted singly. For avenue planting it cannot be surpassed.

## PRICES—HORSE CHESTNUT

	1	5	10	50	100
2 to 3 ft. . . . .	\$0.50	\$2.00	\$3.50	.....	.....
3 to 4 ft. . . . .	.75	3.00	5.50	.....	.....

**Shade and Ornamental Trees—Continued**

**COTTONWOOD (Populus Monilifera)**—One of our most rapid growing trees. The wood is soft and of rather poor quality, but it is hard to find another tree that will make more wood in twenty years than the Cottonwood. It is a heavy feeder and needs lots of moisture. It has received lots of kicks from all sources, but after all that, take the Cottonwood out of South Dakota and it would leave a mighty big gap. It is the lumber tree of the Missouri River.

**PRICES—COTTONWOOD**

	1	5	10	50	100
4 to 6 ft....	\$0.15	\$0.60	\$1.00	\$ 2.25	\$ 4.00
6 to 8 ft....	.20	.90	1.50	4.00	7.00
8 to 10 ft....	.30	1.25	2.25	7.00	12.50
10 to 12 ft....	.45	2.00	3.50	10.00	18.00



American White Elm

**ELM, AMERICAN WHITE (Ulmus Americana)**

—A native of South Dakota and the entire Northwest. One of our best trees for general planting as a shade or street tree; the best of the Elms; very hardy, endures cold well, drouth, wind and general neglect. Its wood is tough and valuable.

**PRICES—ELM AM. WHITE**

	1	5	10	50	100
3 to 4 ft....	\$0.20	\$0.75	\$1.25	\$ 3.25	\$ 6.00
4 to 5 ft....	.25	1.00	1.50	4.50	8.50
5 to 6 ft....	.30	1.25	2.00	7.25	14.00
6 to 8 ft....	.40	1.75	3.00	9.50	18.00
8 to 10 ft....	.60	2.50	4.50	15.00	28.00
1½ to 2 in. cal..	.90	4.00	7.50	26.00	50.00
2 to 2½ in. cal..	1.25	4.50	8.00	38.00	75.00
2½ to 3 in. cal..	1.50	6.25	12.00	45.00	85.00
3 to 4 in. cal....	2.50	12.50	24.00	.....	.....

**HACKBERRY (Celtis Occidentalis)**—A rugged hardy native tree, grows to good size, makes a fine shapely shade tree. Strong limbed and has hard

and durable wood. It is very valuable for timber, ornament and shade, and ought to be more generally and extensively grown, and it would be only that the seeds are scarce and hard to get, making propagation slow and expensive. We have a very good stock of them this year, and are able to make prices quite reasonable. Plant the Hackberry and you will like it.

**PRICES—HACKBERRY**

	Each	Per 5	Per 10
5 to 6 ft.....	\$0.35	\$1.50	\$2.75
6 to 8 ft.....	.45	2.00	3.50
8 to 10 ft.....	.60	2.50	4.50
1½ to 2 in. cal....	.90	4.00	7.50
2 to 2½ in. cal....	1.25	5.00	9.50
2½ to 3 in. cal....	1.50	6.25	12.00
3 to 4 in. cal.....	2.25	10.00	18.00

**IRONWOOD OR HOP HORNBEAN (Ostrya Virginiana)**

—A small tree with thin bark and tough hard wood, leaves ovate, taper pointed; fruit clusters resemble hops. A native in the gulches along the Missouri river and in the Black Hills. The tree is perfectly hardy in cold climate. It usually holds its leaves nearly all winter.

**PRICES—IRONWOOD**

8 to 10.....	\$1.00
10 to 12.....	1.50
	Each

**JUDAS TREE OR RED BUD (Circis Canadensis)**

—A medium sized tree with perfect heart shaped leaves. It derives its name of Red Bud from the profusion of delicate reddish-purple flowers with which it is covered in the early spring before foliage appears. A fine ornamental tree, moderately hardy here. Grows from 15 to 20 ft. in height. 6 to 8 ft. \$1.00 each.

**KENTUCKY COFFEE TREE (Gymnocladus Canadensis)**

—A medium sized tree with scaly bark. Very hard wood, large compound leaves and large seed pods similar to those of the Honey Locust; a handsome and valuable tree. It is found native in the extreme southeastern part of South Dakota. It is very hardy but of rather slow growth.

**PRICES—Ky. Coffee Tree**

	1	5	10	50	100
4 to 5 ft.....	\$0.40	\$1.75	\$3.50	\$15.00	.....
5 to 6 ft.....	.60	2.50	4.50	20.00	.....
6 to 8 ft.....	.75	3.25	6.00	.....	.....
8 to 10 ft.....	1.00	4.00	.....	.....	.....
1½ to 2 in. Caliper	1.25	.....	.....	.....	.....
2 to 2½ in. Caliper	1.50	6.25	.....	.....	.....

**LINDEN OR BASSWOOD, AMERICAN (Tilia Americana)**

—A handsome lawn or shade tree. It is a native along the Missouri River bluffs near here; grows quite rapidly in moist situations. The blossom is very fragrant and sweet; desirable especially to bee-keepers.

**PRICES—AM. LINDEN**

	Each	Per 5	Per 10
3 to 4 ft.....	\$0.30	\$1.40	\$2.50
4 to 5 ft.....	.40	1.75	3.00
5 to 6 ft.....	.50	2.25	4.00
6 to 8 ft.....	.75	3.25	6.00
4 to 5 in. cal.....	3.50	.....	.....
5 to 6 in. cal.....	5.00	.....	.....

**LOCUST, YELLOW OR BLACK (Robina Pseudacacia)**

—A valuable, rapid growing tree; bears racemes of sweet-scented white flowers, making it quite desirable for a lawn tree. It has a valuable and hard wood. We are inclined to think that

**Shade and Ornamental Trees—Continued**

there is no other tree that can be grown with equal profit for fence posts in this locality.

**PRICES—BLACK LOCUST**

	1	5	10	50	100
4 to 5 ft.....	\$0.20	\$0.75	\$1.25	\$ 3.00	\$ 5.50
5 to 6 ft.....	.30	1.25	2.25	5.00	9.00
6 to 8 ft.....	.45	2.00	3.50	7.00	12.00
8 to 10 ft.....	.60	2.75	5.00	9.50	18.00
1½ to 2in. Caliper	.80	3.75	7.00	....	....
2 to 2½ in. Caliper	1.00	4.50	8.00	....	....
2½ to 3in. Caliper	1.50	6.50	12.50	....	....
3 to 4 in. Caliper	2.25	10.00	18.00	....	....

2½ to 3 in. cal..	1.40	6.00	11.00	45.00	.....
3 to 4 in. cal....	2.00	8.00	15.00	.....	.....
4 to 5 in. cal....	3.00	12.00	22.00	.....	.....
5 to 6 in. cal....	5.00	20.00	.....	.....	.....

Write for prices on larger sized maples. We have them.

**LOCUST, HONEY (Geleditschia Triacanthos)—**

A hardy, vigorous rapid growing tree. Bears beautiful fragrant blossoms in spring, followed by large bean-like pods, containing seed very similar to small brown beans. Its wood is very hard and durable; its thorns are very large and strong. Does not sucker like the Black Locust.

**PRICES—HONEY LOCUST**

	1	5	10	50	100
3 to 4 ft.....	\$0.20	\$0.75	\$1.25	\$ 3.50	\$ 6.00
4 to 5 ft.....	.30	1.25	2.25	5.00	9.00
5 to 6 ft.....	.40	1.75	3.00	8.00	15.00
6 to 8 ft.....	.50	2.25	4.00	14.00	25.00
8 to 10 ft.....	.75	3.25	6.00	22.00	40.00
1½ to 2in. Caliper	.90	4.00	7.50	....	....
2 to 2½ in. Caliper	1.25	6.00	10.00	....	....
2½ to 3in. Caliper	1.50	6.50	....	....	....
3 to 4 in. Caliper	2.50	10.00	....	....	....
4 to 5 in. Caliper	3.50	15.00	....	....	....

**MAPLE, HARD OR SUGAR (Acer Saccharinum)—**

The Hard Maple is one of America's most beautiful and valuable shade and street trees. It is compact and uniform in shape and makes a dense shade. The foliage is a deep green during the summer, and this is followed by the beautiful red and yellow tints in the autumn. It is rather a slow grower in the West and for this reason has never come into general planting. It is a very valuable tree where it does well.

**PRICES—HARD MAPLE**

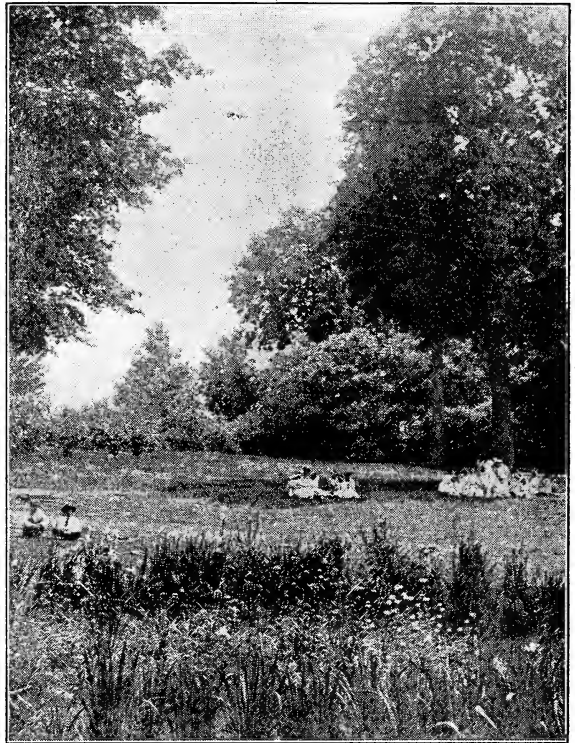
	Each	Per 5
3 to 4 ft.....	\$0.40	\$1.75
4 to 5 ft.....	.50	2.25
5 to 6 ft.....	.75	3.00
6 to 8 ft.....	1.00	....

**MAPLE, SOFT OR WHITE (Acer Dasycarpum)—**

A native on Western streams; quite hardy here after the first year. A very desirable tree if trimmed to keep down suckers and avoid forks which are liable to split. Its foliage is very beautiful. It does best where the soil and atmosphere are not too dry.

**PRICES—SOFT MAPLE**

	1	5	10	50	100
4 to 5 ft.....	\$0.25	\$1.00	\$1.75	\$ 4.50	\$ 8.50
5 to 6 ft.....	.30	1.25	2.25	6.50	12.50
6 to 8 ft.....	.40	1.75	3.00	8.00	15.00
8 to 10 ft.....	.50	2.25	4.00	12.50	24.00
1½ to 2 in. cal..	.75	3.00	5.50	25.00	45.00
2 to 2½ in. cal..	1.00	4.50	8.00	35.00	....



An Attractive Arrangement of Shrubs and Shade Trees

**MAPLE, WIER'S CUT LEAVED (Acer Dasycarpum Wierii)—**

A beautiful ornamental type of the Soft Maple with deeply cut leaves. Tree is upright in growth but branches have a drooping habit, making it a very desirable lawn tree. A rapid grower and quite hardy.

**PRICES—W. C. L. MAPLE**

	Each	Per 5
5 to 6 ft.....	\$0.50	\$2.25
6 to 8 ft.....	.65	3.00
8 to 10 ft.....	.90	....
1½ to 2 in. caliper.....	1.25	....
2 to 2½ in. caliper.....	1.75	....

**MULBERRY, RUSSIAN (Morus Tartarica)—**

Moderately hardy, inclined to be short-lived and somewhat scrubby. It has some value in raising fruit to feed birds to keep them away from other fruit, and the fruit has also value for culinary purposes, if mixed with fruit having considerable tart; but alone it is rather insipid. This is the only Mulberry that has been successfully grown in this locality.

**PRICES—RUSSIAN MULBERRY**

	1	5	10	50	100
4 to 5 ft.....	\$0.30	\$1.25	\$2.00	\$ 7.50	\$14.00
5 to 6 ft.....	.40	1.50	2.50	10.00	18.00
6 to 8 ft.....	.55	2.50	4.50	15.00	28.00
8 to 10 ft.....	.75	3.25	....	....	....
1½ to 2in. Caliper	1.00	4.00	....	....	....
2 to 2½ in. Caliper	1.50	....	....	....	....

Lebanon, S. Dak., May 7th, 1912.

Whiting Nursery Co.,  
Yankton, S. Dak.

Gentlemen:—I received the Honey Locust shipped on the 2nd inst. It is a fine tree and came in fine condition. If it does not live, it will be no fault of yours.

Respectfully yours,  
R. A. JACKSON.



Shade and Ornamental Trees—Continued

**O L I V E,  
R U S S I A N**  
(*Elaeagnus Angustifolia*) —

A very hardy and quite a rapid growing tree, with a silvery foliage; very striking appearance. Its ability to endure extreme cold and drouth makes it desirable for ornamenting lawns and for hedges. It has a small yellow blossom in early spring which is very fragrant indeed. Its fruit is of



Russian Olive

no food value to speak of, but hogs seem to be fond of it. It is a silvery color about the size of a common bean, about one-half of which is hard seed. The pulp is of a dry, sweetish nature, and is of no culinary use.

**PRICES—RUSSIAN OLIVE**

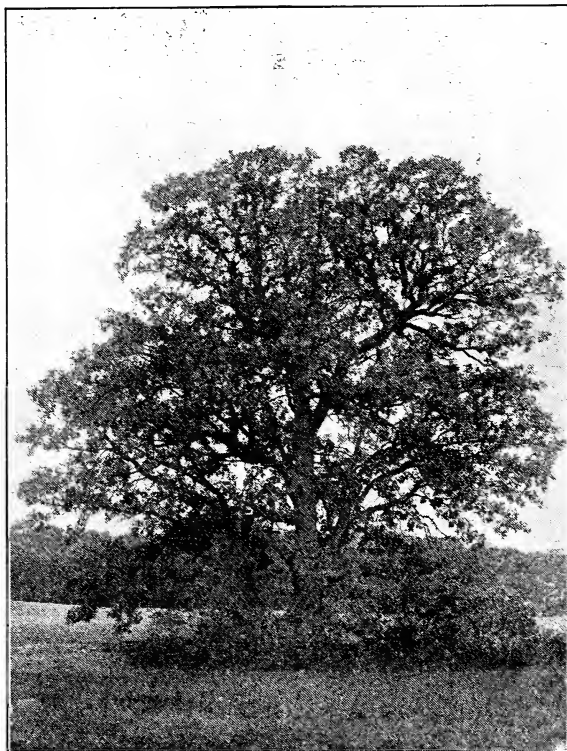
	1	5	10	50	100
3 to 4 ft.....	\$0.20	\$0.90	\$1.50	\$ 3.00	\$ 5.00
4 to 5 ft.....	.30	1.25	2.00	4.00	7.50
5 to 6 ft.....	.40	1.80	3.40	6.25	11.00
6 to 8 ft.....	.60	2.40	4.00	11.00	20.00
8 to 10 ft.....	.75	3.50	6.50	.....	.....
1½ to 2 in. Cal.	.90	4.00	7.50	.....	.....
2 to 3 in. Cal...	1.10	4.75	8.75	.....	.....
3 to 4 in. Cal...	1.50	.....	.....	.....	.....

**OAK, BURR (*Quercus Macrocarpa*)**—A native tree of spreading form. Foliage deeply lobed and the largest and most beautiful among the oak leaves. The oaks when they attain size, are among the most picturesque trees. The Burr Oak is rather slow in growth, but endures cold and

drouth well. It is long-lived, durable and desirable as a variety on the lawn or yard.

**PRICES—BURR OAK**

	Each	Per 5	Per 10
3 to 4 ft.....	\$0.40	\$1.75	\$ 3.00
4 to 5 ft.....	.55	2.50	4.50
5 to 6 ft.....	.70	3.25	6.00
6 to 8 ft.....	.85	4.00	7.50
8 to 10 ft.....	1.00	4.50	8.50
1½ to 2 in. Caliper..	1.25	6.00	11.00
2 to 2½ in. Caliper..	2.00	7.50	14.00
2½ to 3 in. Caliper..	2.50	.....	.....



Burr Oak

**OAK, RED (*Quercus Rubra*)**—A valuable timber tree in the Northern forests. Grows much faster than the Burr Oak. Makes a fine spreading tree, if grown in the open with plenty of room.

**PRICES—RED OAK.**

	1	5	10	50	100
3 to 4 ft.....	\$0.40	\$1.50	\$2.75	.....	.....
4 to 5 ft.....	.50	2.25	4.00	.....	.....

**POPLAR LOMBARDY (*Populus Fastigiata*)**—A rather rapid and very upright growing tree, with branches growing up very close to the body; leaf rather small for the Poplar family. Valuable in a collection for variety on account of its general appearance and habit of growth.

**PRICES—LOMBARDY POPLAR**

	1	5	10	50	100
4 to 5 ft.....	\$0.25	\$1.00	\$1.50	\$ 3.50	\$ 6.00
5 to 6 ft.....	.35	1.50	2.50	5.00	9.00
6 to 8 ft.....	.45	2.00	3.50	10.00	18.00
8 to 10 ft.....	.60	2.50	4.50	13.00	25.00
10 to 12 ft.....	.75	3.00	5.50	.....	.....
12 to 14 ft.....	1.00	4.00	.....	.....	.....

Kimbell, S. Dak., April 25th, 1911.

Gentlemen:—Received the Russian Olive seedlings in first class condition last evening and just finished planting them (in the rain) this afternoon. Am pleased to say that they are the finest Russian Olive seedlings I have ever planted and I believe they will make a dandy hedge. If your other shrubs and trees compare favorably with these, no one need go outside of the state to get the best goods at reasonable prices. Assuring you that we will remember your Nursery when in need of anything in your line, I am,

Yours truly,  
(Signed) FRED GRISWOLD.

Scottsbluff, Nebr., May 25th, 1912.

Dear Sirs:—Received the 50 Russian Olive 2-3 ft. in good condition. Am well pleased with the order.

Respectfully,  
CLAIR A. EVERETT.

**Shade and Ornamental Trees—Continued**

**POPLAR, CAROLINA (Populus Deltoides Carolinensis)**—A very rapid growing soft-wooded tree, resembling the Cottonwood somewhat, but has a larger leaf, and much thicker and more spreading top, denser and heavier foliage. It is being extensively planted in the cities and towns throughout



**Carolina Poplars**

the United States on account of its rapid growth, its symmetry and ability to endure gas and smoke. Perfectly hardy here. It is free from cotton which is so disagreeable in the Cottonwood.

**PRICES—CAROLINA POPLAR**

	1	5	10	50	100
3 to 4 ft.....	\$0.15	\$0.50	\$0.75	\$ 2.00	\$ 3.00
4 to 5 ft.....	.20	.75	1.25	3.00	5.00
5 to 6 ft.....	.25	1.00	1.50	4.00	7.00
6 to 8 ft.....	.30	1.25	2.00	5.00	9.00
8 to 10 ft.....	.40	1.50	2.50	8.50	16.00
10 to 12 ft.....	.60	2.50	4.50	15.00	28.00
2 to 2 1/2 in. cal.	.75	3.00	5.50	.....	.....

**POPLAR, NORWAY**—Quite a rapid growing tree of the Cottonwood type, not as good a grower as the Cottonwood. It is called by some the "Sudden Saw-log." We procured our original stock from near Waseca, Minnesota, in 1882, and we know it to be true to name. The tree is very similar in appearance and growth to the Carolina Poplar and inexperienced people cannot distinguish one from the other.

**PRICES—NORWAY POPLAR**

	1	5	10	50	100
3 to 4 ft.....	\$0.20	\$0.75	\$1.25	\$2.00	\$ 3.00
4 to 5 ft.....	.30	1.25	2.00	3.50	6.00
5 to 6 ft.....	.40	1.75	3.00	4.50	8.00
6 to 8 ft.....	.50	2.25	4.00	.....	.....
8 to 10 ft.....	.75	3.00	5.00	.....	.....

**POPLAR, SILVER LEAVED (Populus Alba)**—A vigorous hardy tree, of the Poplar family. Of rapid growth and spreading habits. The leaf resembles the Cottonwood in size and shape, but is more deeply lobed. Of a dark green on the upper side and a silvery white beneath. The tree appears to be entirely at home in South Dakota.

**PRICES—SIL. LVD. POPLAR**

	1	5	10	50	100
3 to 4 ft.....	\$0.20	\$0.90	\$1.50	\$4.50	\$ 8.00
4 to 5 ft.....	.30	1.25	2.00	5.50	10.00
5 to 6 ft.....	.40	1.75	3.00	7.00	12.50
6 to 8 ft.....	.50	3.25	4.00	.....	.....
8 to 10 ft.....	.75	3.00	5.50	.....	.....

**POPLAR, SIMONA**—This is a very rapid growing, hardy variety, which we secured from Manitoba; it promises to be very valuable in this locality and in the extreme North. Grows as rapidly as the Carolina but it is distinctly different in appearance; leaf somewhat resembles that of the Balm of Gilead; buds are waxy and fragrant.

**PRICES—SIMONA POPLAR**

	1	5	10	50	100
5 to 6 ft.....	\$0.50	\$2.25	\$4.00	.....	.....
6 to 8 ft.....	.60	2.75	5.00	.....	.....
8 to 10 ft.....	.75	.....	.....	.....	.....

**PEA TREE, SIBERIAN (Caragana Arborescens)**—An extremely hardy shrub or low tree, originally from Siberia. Is valuable for hedges or for an ornamental tree, especially in the northern part of the state of North Dakota; has a small sharp thorn. Its seeds are said to be valuable for poultry and culinary uses. Its leaves furnish a blue dye, and they resemble the leaves of the locust somewhat. It is now enjoying a real boom. This is what so many fake agents have represented to have sold to the farmers throughout the country and in most cases they have delivered the Osage Orange or some other cheap or worthless plant.

**PRICES—SIB. PEA TREE**

	1	5	10	50	100
3 to 4 ft.....	\$0.25	\$1.00	\$1.75	.....	.....
4 to 5 ft.....	.40	1.50	2.50	.....	.....
5 to 6 ft.....	.50	2.25	4.00	.....	.....
6 to 8 ft.....	.75	3.50	6.50	.....	.....
8 to 10 ft.....	1.00	4.50	8.00	.....	.....

**WALNUT, BLACK (Juglans Nigra)**—Valuable to grow for nuts and timber. It is quite hardy here. Succeeds best on a rich, deep moist soil like the bottom land. It grows a strong tap root and it is hard to transplant the trees of any size, unless they have been transplanted or root pruned when one year old. The one-year seedlings transplant quite successfully.

All of these that we offer have been transplanted and have good side roots.

**PRICES—BLACK WALNUT**

	1	5	10	50	100
3 to 4 ft.....	\$0.20	\$0.75	\$1.25	\$ 3.75	\$ 7.00
4 to 5 ft.....	.25	1.00	1.75	6.00	11.00
5 to 6 ft.....	.40	1.75	3.00	10.00	.....
6 to 8 ft.....	.50	2.25	4.00	.....	.....
8 to 10 ft.....	.75	3.25	6.00	.....	.....
1 1/2 to 2 in. Caliper	1.00	4.50	8.00	.....	.....
2 to 3 in. Caliper	1.50	6.50	12.00	.....	.....
3 to 4 in. Caliper	2.50	.....	.....	.....	.....

**WILLOW, DIAMOND (Salix Cordata Vestita)**—This is the variety that is used for posts. It is very desirable and lasting. It is a native along the Missouri River, where it thrives well. We think it will prove to be very profitable to grow for posts, if for no other purpose. The demand for it is increasing every year; does not grow to be very large, about 8 to 10 in. in diameter being its natural limit.

**PRICES—DIAMOND WILLOW**

	1	5	10	50	100
3 to 4 ft.....	\$0.20	\$0.75	\$1.25	\$ 2.00	\$ 3.50
4 to 5 ft.....	.25	1.00	1.50	3.00	5.50
5 to 6 ft.....	.35	1.50	2.50	6.00	10.00
6 to 8 ft.....	.45	2.00	3.50	10.00	18.00
8 to 10 ft.....	.60	2.50	4.50	.....	.....

**WILLOW, COMMON GOLDEN (Salix Alba Vitellana)**—Its beautiful golden colored bark makes it desirable for a variety. It is quite hardy and a

**Shade and Ornamental Trees—Continued**

good grower where it has plenty of moisture. All of the Willow, in fact, needs considerable moisture.

**PRICES—COM. GOL. WILLOW**

	1	5	10	50	100
4 to 5 ft.....	\$0.25	\$1.00	\$1.75	\$4.00	\$ 7.50
5 to 6 ft.....	.35	1.50	2.75	5.50	10.00
6 to 8 ft.....	.45	2.00	3.50	6.50	12.50

**WILLOW, Black (Salix Nigra)**—Sometimes called Gray Willow. This is a native along the streams in this vicinity. Of very rapid growth, wood very



**Willow Windbreak  
4 year old**

soft and not of any great value though the tree is in demand for low wet ground where quick results are desired.

**PRICES—BLACK WILLOW**

	1	5	10	50	100
3 to 4 ft.....	\$0.20	\$0.75	\$1.25	\$2.00	\$ 3.50
4 to 5 ft.....	.25	1.00	1.75	3.00	5.50

**WILLOW, RUSSIAN GOLDEN (Salix Aurea)**—Similar to Common Golden except that the bark is more of a reddish shade; it is fully as strong a grower and is more hardy and will stand as far north as Manitoba.

**PRICES—RUS. GOL. WILLOW**

	1	5	10	50	100
3 to 4 ft.....	\$0.20	\$0.75	\$1.25	\$2.25	\$4.00
4 to 6 ft.....	.30	1.25	2.00	3.25	6.00
6 to 8 ft.....	.45	2.00	3.50	5.00	9.00

**WILLOW, LAUREL LEAVED (Salix Laurafolia)**—Its fine growth and thick glossy leaves, which glisten in the sunshine, makes it very handsome. The wood is said to be more valuable than the White Willow.

**PRICES—LAUR. LEAV. WILLOW**

	1	5	10	50	100
3 to 4 ft.....	\$0.20	\$0.75	\$1.25	\$2.25	\$4.00
4 to 6 ft.....	.40	1.75	3.00	.....	.....
6 to 8 ft.....	.50	2.25	4.00	.....	.....
8 to 10 ft.....	.75	3.25	6.00	.....	.....

**WILLOW, WHITE (Salix Alba)**—Hardy, well known. It should be planted on low, wet, rich soil. It is very much benefitted by a heavy mulch of litter or manure; of little value on high dry land here.

**PRICES—WHITE WILLOW**

	1	5	10	50	100
4 to 6 ft.....	\$0.25	\$1.00	\$1.75	\$2.75	\$5.00
6 to 8 ft.....	.40	1.75	3.00	4.25	8.00

For Willow Cuttings, see Cutting Department on page 17.

Remember we can save you money on shade trees in car lots. Let us figure on them.

**Weeping Trees**

**ASH, WEEP-  
ING MOUNTAIN  
(Sorbus Aucu-  
paria pendula)**

—A strong grower and remarkable pendant; very striking; the most hardy weeper for the North. Each 75c; per five \$3.00.

**BIRCH, CUT-  
LEAF WEEP-  
ING (Betula Alba  
Pendula Lacina-  
ata)**—Erect, stately, a rapid grower and hardy, with long fine pendant branches and delicately cut leaves; the trunk is very white, and it is elegant for lawns and cemeteries.



**Cut Leaf Birch**

3 to 4 ft.....	\$1.00
4 to 5 ft.....	1.25
5 to 6 ft.....	2.00

**WILLOW, NIOBE WEEPING**—Imported by Prof. N. E. Hansen, who gave it the name. It is a golden barked willow of a decided weeping habit. It is extremely hardy and for this reason will, we think, be of especial value to the Northwest, where we are badly in need of a strictly hardy Weeping willow. It is a dandy.

Faulkton, S. Dak., April 27th, 1912.

Dear Sirs:

We got the trees and willows all in fine shape. Have them planted and had a good rain since. Your stock is the nicest I ever planted and I have more hopes in it than in anything I ever planted.

Yours truly,

**THEO. HUSS.**

**Weeping Trees—Continued**

**PRICES—NIOBA WEEPING WILLOW.**

	1	5	10	50	100
3 to 4 ft.....	\$0.30	\$1.25	\$2.00	\$ 7.50	\$14.00
4 to 5 ft.....	.40	1.75	3.00	9.00	17.00
5 to 6 ft.....	.50	2.25	4.00	12.00	.....
6 to 8 ft.....	.60	2.75	5.00	.....	.....
1½ to 2 in. cal..	1.00	4.00	.....	.....	.....
2 to 2½ in. cal..	1.25	5.00	.....	.....	.....

**NORTH STAR WEEPING WILLOW**—This is a very desirable variety, being perfectly hardy as far north as Manitoba. A strong rank grower, similar in habit of growth to the Nioba, and fully as hardy, but color of bark is decidedly different, being a brownish green. Very valuable for the Northwest.

**PRICES—NORTH STAR WEEPING WILLOW**

	Each	Per 5	Per 10
6 to 8 ft.....	\$0.75	\$3.00	\$5.50
8 to 10 ft.....	1.00	4.00	.....

**WILLOW, WISCONSIN WEEPING**—A rapid growing, moderately hardy tree. Very handsome and desirable for moist places.

**PRICES—WIS. WP. WILLOW**

	1	5	10	50	100
2 to 3 ft.....	\$0.20	\$0.75	\$1.50	\$6.00	\$11.00
3 to 4 ft.....	.25	1.00	1.75	7.50	14.00
4 to 5 ft.....	.35	1.50	2.75	.....	.....
5 to 6 ft.....	.50	2.00	3.50	.....	.....

**PENDATA WEEPING WILLOW**—Similar in growth to the Wisconsin Weeper, but is much more hardy in the North.

**PRICES—PENDATA WEEPING WILLOW**

	Each	Per 5
6 to 8 ft.....	\$0.60	\$2.50
8 to 10 ft.....	.75	3.00

**Bargains**

— on —

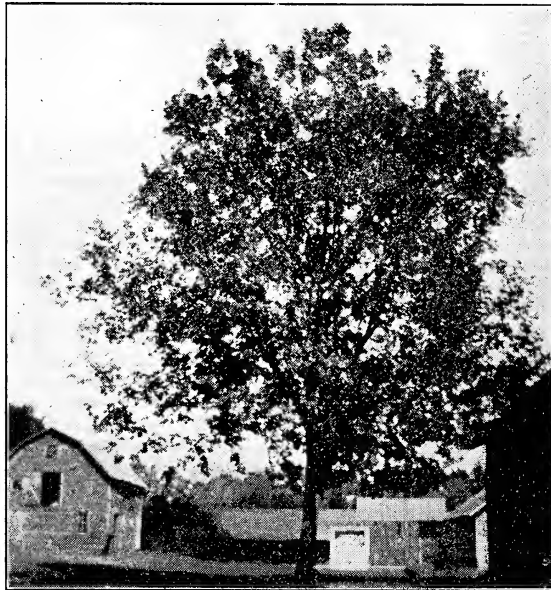
**Ash**

**Seedlings**

— on —

**Page**

**18**



The Ash Shade Tree

**Bargains**

— on —

**Ash**

**Shade Trees**

— on —

**Page**

**43**

**Apple Trees for Early Orders**

IF YOU MENTION THIS OFFER

Orders Must be Received Before March 15th, 1914, with Cash

- \$10.00 Order for Nursery Stock— 5 3-year-old trees.
- \$15.00 Order for Nursery Stock—10 3-year-old trees.
- \$20.00 Order for Nursery Stock—15 3-year-old trees.
- \$25.00 Order for Nursery Stock—20 3-year-old trees.
- \$50.00 Order for Nursery Stock—50 3-year-old trees.

Good trees of our selection for your location.

To get a premium your order must reach us on or before March 15th, 1914, with payment at 1914 catalog prices. You must also ask for your premium. To secure these premiums be sure and send enough money to pay in full for all stock ordered. Premiums will not be allowed if we are compelled to collect a balance no matter how small, for this requires as much bookkeeping, etc., as if the amount was large. If by mistake, too much money is sent, the excess will be returned.

# EVERGREENS



Black Hills Spruce      Colorado Spruce (Green type)      Colorado Spruce (Blue type)

Spruces Growing on Home Grounds of the Whiting Nursery Co.

**EVERGREENS**—Should be more generally planted in the Northwest, as there is nothing which gives a more cheerful appearance to a home, especially during the winter months, than Evergreens, either singly, in groups or rows; for shelter-belts around farm buildings or yard, a row or two will be found as effective as ten times as many deciduous trees. An erroneous opinion exists generally that Evergreens are hard to transplant successfully. This is not true however, as evergreens, if properly handled, should be as sure to live and grow as deciduous trees. If you will follow instructions, we can help you succeed. We have a very excellent stock in all sizes this year, and we want to encourage a more general planting of this very useful class of trees.

**CAUTION**—When the trees are received from the Nursery, don't open them or let the air get to the roots until you are ready to wet them and place them in moist earth immediately. Don't wet the foliage and leave them packed in that condition to heat and rot off.

**PLANTING**—It is very essential to pack the earth very solid about the roots and water well if the ground is very dry. Keep the surface soil perfectly mellow by cultivation or mulch heavily with old hay. Avoid bright straw, as it reflects the rays of the sun and burns the foliage. A little shade after planting is beneficial. This is especially true with the small ones.

The principal causes of failure are: First, the trees are dead when received from the nursery.

Second, they are improperly handled when they are received. You must absolutely prevent drying of roots and plant so trees will not move around after they are planted. Large trees should be staked.

The safest way to handle evergreens is to plant them with a ball of earth attached. For this we make an additional charge above the regular catalog price; see page 30 for description and prices for burlaping with ball of earth.

**NOTICE**—Our complete list in all sizes, especially the 6 to 12 in., 12 to 18 in., and 18 to 24 inches, which are just right for farmers to plant in quantity for shelter belts around farm buildings. There is nothing that will beat evergreens for this purpose.

All Evergreens listed here are transplanted except as noted. Prices hereto attached do not include balling in earth. For prices for ball in burlap see page 30.

## Junipers

**RED CEDAR** (*Juniperas Virginia*) — A very hardy, rugged native. It grows rapidly and responds well to good cultivation and care, but it will also hang on and live under the most adverse dry conditions. It will live on the highest, driest hills in our state when once established, although the growth in this case is slow. It can be sheared into almost any conceivable form. For a lasting, serviceable shelter belt for this section, it is hard to beat. Its recent tendency to blight and rust is causing some alarm. Don't plant too near the orchard,

**Evergreens—Continued**

as it will communicate rust to the leaves of the apple trees.

**PRICES—RED CEDAR**

	1	5	10	50	100
5 to 10 in. (Not transplanted)	\$0.15	\$0.50	\$0.90	\$3.50	\$6.00
12 to 18 in. (Not transplanted)	.20	.75	1.75	.....	.....
2 to 3 ft. (trans)	.60	2.75	.....	.....	.....
3 to 4 ft. "	.75	3.25	.....	.....	.....
4 to 5 ft. "	1.00	4.25	.....	.....	.....
6 to 8 ft. "	2.75	.....	.....	.....	.....
8 to 10 ft. "	3.50	.....	.....	.....	.....

**ARBOR VITAE, AMERICAN, OR WHITE CEDAR (Thuja Occidentalis)**—A very beautiful and desirable tree for lawns and hedges where the climate is congenial to it, but it does not thrive on the Western prairies, except in well sheltered localities. The bright sun and arid winds make it discolor badly.

**PRICE—ARBOR VITAE**

	1	5	10	50	100
3 to 4 ft.	\$0.75	\$3.50	\$6.00	\$22.00	.....
4 to 5 ft.	1.00	4.50	8.00	30.00	.....
5 to 6 ft.	1.25	5.50	10.00	.....	.....
6 to 8 ft.	2.00	.....	.....	.....	.....

**JUNIPER, TRAILING (Juniperas Communis)**—This is a native of the Black Hills; of spreading habit. In fact, it does not grow up in tree form, but after it gets up two or three feet high, lops over on the ground all around, and its growth only increases its breadth and circumference. The terminal branches are always inclined upward, therefore, if it is trimmed in a round form, it makes the most beautiful saucer shaped specimen for lawn use, imaginable.



Shelter Belt of Evergreens

**PRICES—TRAILING JUNIPER**

	Each
18 to 24 in. Broad.	\$1.00
2 to 3 ft. Broad.	1.50

**Pines**

**AUSTRIAN PINE (Pinus Austrica)**—Similar to the Scotch; a stocky rapid grower. Leaves long, stiff and dark green, and more erect than the Scotch; foliage sun-burns considerably when tree is small, but endures better as it gets larger. Rather handsome and fine formed. A much better and more lasting tree than the Scotch.

**PRICES—AUSTRIAN PINE**

	1	5	10	50	100
12 to 18 in.	\$0.25	\$1.00	\$1.75	.....	.....
18 to 24 in.	.35	1.50	2.75	.....	.....
2 to 3 ft.	.50	2.25	4.00	.....	.....
3 to 4 ft.	.60	2.75	5.00	\$22.50	.....
4 to 5 ft.	.80	3.75	7.00	30.00	.....
5 to 6 ft.	1.25	5.00	9.00	40.00	.....
6 to 8 ft.	2.00	7.50	14.00	.....	.....
8 to 10 ft.	3.50	15.00	.....	.....	.....
10 to 12 ft.	5.00	.....	.....	.....	.....



EVERGREEN HEDGE AND WIND BREAK AT WHITING'S NURSERY YANKTON S. D.

**JACK PINE (Pinus Banksiana)**—An unusually rapid grower, making two or three growths or joints each year, where other pines make but one. It is very hardy, and will do well on poor soils. In all it is a very desirable variety although not very ornamental. A very valuable tree in sandy, poor soils where nothing else will succeed.

**PRICES—JACK PINE**

	Each	Per 5	Per 10	Per 50
12 to 18 in.	\$0.25	\$1.00	\$1.75	\$8.00
18 to 24 in.	.40	1.75	3.00	.....
2 to 3 ft.	.55	2.50	.....	.....
3 to 4 ft.	.65	.....	.....	.....
4 to 5 ft.	.80	.....	.....	.....
5 to 6 ft.	1.00	.....	.....	.....
6 to 8 ft.	1.50	6.25	.....	.....
8 to 10 ft.	2.50	.....	.....	.....
10 to 12 ft.	4.50	.....	.....	.....

**MOUNTAIN PINE, DWARF (Pinus Montana)**—A dwarf variety for planting in lawns and cemeteries; hardy and handsome; very bright green foliage. It can hardly be called a tree, as it grows only to a height of a few feet and usually its breadth is as great or greater than its height. Fine for hedging.

	Each	Per 5	Per 10
6 to 12 in.	\$0.25	\$1.00	\$1.75
12 to 18 in.	.35	1.50	2.50

**PONDEROSA, WESTERN YELLOW OR BULL PINE (Pinus Ponderosa)**—A native of the Black Hills and the Rocky Mountains. A strong, stocky and rapid grower. There is probably no pine in existence that requires so little moisture or that will thrive so well on high, dry, exposed situations. At about the age when the Scotch Pine fails, the Ponderosa Pine begins to show its value. It is very hard to transplant the small trees from the woods, but nursery grown trees, (such as we offer) that have been transplanted at one year old, handle quite successfully.

	1	5	10	50	100
2 to 3 in. (Not transplanted)	\$0.10	\$0.20	\$0.35	\$1.75	\$3.00
3 to 6 in. (Not transplanted)	.15	.60	1.00	3.00	5.00
6 to 12 in. (trans.)	.25	1.00	1.50	.....	.....

**Evergreens - Continued**

12 to 18 in.	.25	1.10	2.00	.....	.....
2 to 3 ft	.50	2.25	4.00	.....	.....
3 to 4 ft	.65	2.75	5.00	.....	.....
5 to 6 ft	1.25	.....	.....	.....	.....
6 to 8 ft	2.00	9.00	17.50	.....	.....
8 to 10 ft	3.00	12.50	22.50	.....	.....
10 to 12 ft	5.00	22.00	40.00	.....	.....

**SCOTCH PINE (Pinus Sylvestrus)** — A well-known, hardy, rapid growing sort. Makes a good shelter belt, but it is not extremely handsome, though quite popular.

**PRICES—SCOTCH PINE**

	1	5	10	50	100
4 to 6 in.....	\$0.15	\$0.60	\$1.00	\$ 3.00	\$ 5.00
6 to 12 in.....	.25	1.00	1.75	.....	.....
12 to 18 in.....	.30	1.25	2.25	10.00	18.00
3 to 4 ft.....	.60	2.75	5.00	.....	.....
4 to 5 ft.....	.75	3.00	5.50	.....	.....
5 to 6 ft.....	1.25	5.00	9.00	.....	.....
6 to 8 ft.....	2.00	.....	.....	.....	.....
8 to 10 ft.....	4.50	.....	.....	.....	.....

**WHITE PINE (Pinus Strobus)**—This is the lumber pine of Wisconsin and Minnesota, rather slow of growth when young, but as it attains age, grows very rapidly. It has a soft delicate foliage, and is very graceful in appearance and very valuable where it succeeds well, but it is not quite at home on the open Western prairies.

**PRICES—WHITE PINE**

	Each	Per 5
2 to 3 ft.....	\$0.50	.....
4 to 5 ft.....	1.00	.....
5 to 6 ft.....	1.40	\$ 6.00
6 to 8 ft.....	2.50	10.00
8 to 10 ft.....	5.00	20.00

**Spruces**

The Spruces are among the most beautiful Evergreens for general planting on lawns and for hedges and screens, and are easily transplanted. They are close and compact in their habits of growth, therefore making handsome single specimens, and they also make fine close shelter belts, and fine for hedges.

**BLACK HILLS SPRUCE (Picea Alba)**—This is botanically the same as the American White, but having grown in the Black Hills for so many generations, it has changed to such an extent as to give it the appearance of being a different variety. It is a little slower in growth, more stocky and sturdy, the needles are larger, stiffer and of a darker color, and the tree is more compact than the Eastern White Spruce. It is admirably equipped for the Western prairies, easily transplanted and altogether it is very desirable for the general planter.

**PRICES—BLACK HILLS SPRUCE**

	1	5	10	50	100
6 to 12 in.....	\$0.25	\$1.00	\$1.75	\$ 5.50	\$10.00
12 to 18 in.....	.35	1.50	2.75	8.00	15.00
18 to 24 in.....	.50	2.25	4.00	16.00	30.00
2 to 3 ft.....	.75	3.25	6.00	25.00	.....
3 to 4 ft.....	1.25	.....	.....	.....	.....
5 to 6 ft.....	3.50	.....	.....	.....	.....

We have some very fine blue specimens of the Black Hills Spruce that we will sell for 50 per cent. higher than the above quoted prices if desired. That is, if an average green specimen costs 50 cents, a selected blue one will cost 75 cents.

**COLORADO BLUE SPRUCE (Picea Pungens)**—It is extremely hardy and endures well the sun and drying winds. Very compact and symmetrical in form. The needle is a little larger than that of the White Spruce and very sharp pointed, and varies in color from a delightful green to a deep blue. Only a portion of the seedlings are real blue, hence we have to charge a higher price for the blue specimens. They are very attractive and satisfactory.

**PRICES—BLUE SPECIMENS**

	1	5	10	50	100
	1	5	10	50	100
8 to 12 in....	\$0.60	\$2.50	\$4.50	.....	.....
12 to 18 in....	1.50	.....	.....	.....	.....
18 to 24 in....	2.50	.....	.....	.....	.....
2 to 3 ft.....	4.00	.....	.....	.....	.....

**PRICES—GREEN SPECIMENS**

	1	5	10	50	100
6 to 12 in....	\$0.25	\$0.90	\$1.50	\$6.00	\$11.00
12 to 18 in....	.40	1.75	.....	.....	.....
18 to 24 in....	.55	2.50	.....	.....	.....
2 to 3 ft.....	.75	.....	.....	.....	.....

**CONCOLOR SPRUCE (Abies Concolor)**—A very delicate and beautiful evergreen; a native of Colorado; a pyramidal, upright grower. It has a silvery green foliage different from any other evergreen we have. It is a rarity in this vicinity and quite hardy.

**PRICES—CONCOLOR SPRUCE**

	Each	Per 5
3 to 4 ft.....	\$1.25	\$ 6.00
4 to 5 ft.....	1.60	7.50
5 to 6 ft.....	2.50	10.00
6 to 8 ft.....	3.50	.....
8 to 10 ft.....	5.00	.....

**DOUGLAS SPRUCE (Pseudotsuga Douglasii)**—This is a very handsome, upright growing tree of symmetrical form; moderately hardy; valuable for variety. You should surely have one or more of these beautiful trees.

**PRICES—DOUGLAS SPRUCE**

	1	5	10	50	100
6 to 12 in....	\$0.25	\$1.00	\$1.75	.....	.....
12 to 18 in....	.35	1.50	2.75	.....	.....
18 to 24 in....	.50	2.25	4.00	.....	.....
2 to 3 ft.....	.75	3.00	.....	.....	.....

**WHITE SPRUCE, AMERICAN (Picea Alba)**—A very handsome variety of rather fast growth. A native from the Eastern states west into Minnesota, and it is very well known. Of straight, upright and symmetrical form. Very hardy and desirable.

**PRICES—WHITE SPRUCE**

	Each	Per 5	Per 10
12 to 18 in.....	\$0.30	\$ 1.25	.....
18 to 24 in.....	.40	1.75	.....
2 to 3 ft.....	.55	2.50	.....
3 to 4 ft.....	1.10	5.00	\$9.50
4 to 5 ft.....	1.40	6.00	.....
5 to 6 ft.....	2.25	10.00	.....

We have a good stock of large Evergreens, but we do not in general recommend planting those that are over six feet high unless at least a portion of the earth can be retained on the roots. If you wish larger sizes than listed, write for prices; we are prepared to handle them successfully. The larger ones should be balled and burlapped.

We deliver them to farmers who come right to the nursery, with dirt adhering to the roots. We also ship them burlapped in dirt to parties who are willing to pay the extra freight. Of course, this is more expensive but it gives results. If you are in-

**Evergreens—Continued**

interested in any of this kind, give us a chance to figure with you.

**EUROPEAN LARCH (Larix Decidua)**—A rapid growing deciduous Conifer resembling an Evergreen when in leaf, but it sheds its leaves in autumn. It is a very graceful lawn tree, but this is

about the Northwestern limit of its hardiness. The Larch must be planted very early in the spring before the leaves start.

**PRICES—EUROPEAN LARCH**

	Each
4 to 5 ft.....	\$1.00
5 to 6 ft.....	1.50
6 to 8 ft.....	2.00

**Our Method of Handling Evergreens With Ball of Earth Attached**

Various methods have been practiced to retain the soil around the roots of Evergreens to insure the safe transplanting of them. We have tried all sorts of methods, but the one we have found safest, cheapest and most effectual is to sew burlap tightly around the ball of earth that is taken up with them in such a way as to hold it intact. Trees taken up in this way can be planted without removing the burlap, which will soon rot away in the ground and does no harm. We make an additional charge for this, above catalogue prices. Prices given below are for balling only, and do not include the cost of the tree.

12 to 18 in high.....	\$0.10 each
18 to 24 in. high.....	.20 each
2 to 3 ft. high.....	.25 each
3 to 4 ft. high.....	.40 each
4 to 5 ft. high.....	.50 each
5 to 6 ft. high.....	.75 each
6 to 8 ft. high.....	1.25 each
8 to 10 ft. high.....	1.50 each
10 to 12 ft. high.....	2.00 each

Larger sizes in proportion. This is much cheaper and better than shipping them in boxes, tubs or baskets.

No person can take up an Evergreen with a ball of earth attached, place it in a basket or box without cover, and ship it by rail without loosening or displacing the earth.



Frozen Ball    Burlapped in Earth    Frozen Ball

**BARGAIN COLLECTION OF PLANTS**

**FOR 50c**

**How to Obtain Plants at Half Price**

We will send any one of the following plant collections, thus giving about double the money's worth in every collection. Plants and bulbs used in filling these collections are not the cheapest varieties by any means. Many times we have a surplus of novelties especially good varieties and these collections enable us to give our customers the benefit of our over-production.

**Please Notice Conditions.**

(1) Choice of varieties must be left to us, the purchaser simply mentioning the numbers of collections wanted.

(2) The prices of all collections are NET, except that we will send five collections for \$2.00. Thus we allow NO PREMIUMS ON COLLECTIONS.

- Set No. 1—2 Iris, 2 Hollyhocks, 2 Tiger Lillies
- Set No. 2—3 Dahlias, 3 Lichens Chalcidonia
- Set No. 3—2 Yaccas, 1 Peony
- Set No. 4—2 Tiger Lillies, 6 Dahlias
- Set No. 5—2 Phlox, 3 Iris
- Set No. 6—1 Hollyhock, 1 Peony, 1 Spirea
- Set No. 7—1 Lilac, 1 Honeysuckle, 1 Elder
- Set No. 8—1 Spirea, 4 Dahlias, 2 Iris
- Set No. 9—1 Elder, 2 Tiger Lillies, 2 Honeysuckles
- Set No. 10—2 Wild Grapes, 2 Cinnamon Vines

**THE WHITING NURSERY COMPANY**

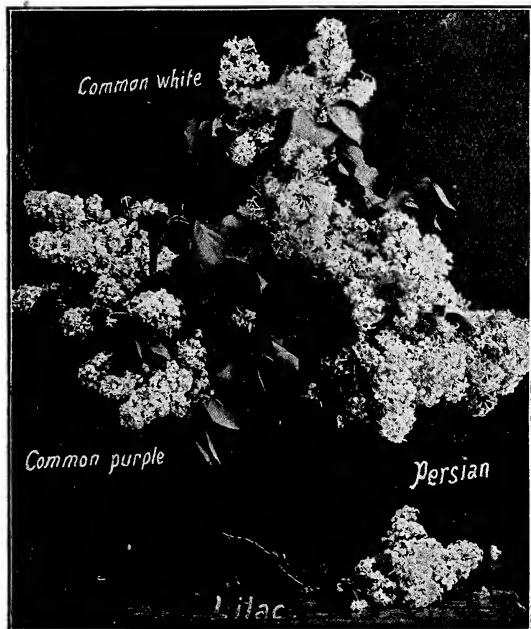
Yankton, South Dakota



# Flowers and Shrubbery

## Lilacs

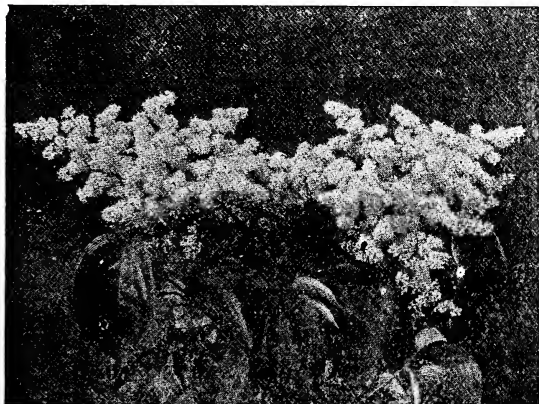
**COMMON PURPLE** (*Syringa Vulgaris*)—Similar to the White, except that the twigs are a little more slender and the bloom is a pinkish purple



color; a more profuse bloomer. Price, each, 2 to 3 ft., 20 cents; 3 to 4 ft., 30 cents.

**COMMON WHITE** (*Syringa Vulgaris Alba*)—Stocky, strong grower and exceedingly hardy. The bloom is in large white clusters and very fragrant. Thrives well nearly everywhere. 2 to 3 ft., 25 cents; 3 to 4 ft., 40 cents each. For Hedge sizes, see Hedge Department.

**CHINESE TREE** (*Syringa Pekinensis*)—A strong grower and quite hardy; sweet scented and



Flowers of the Tree Lilac

very desirable. Blooms in June. 2 to 3 ft., each, 40 cents; 3 to 4 ft., 75 cents; 6 to 8 ft., \$1.25.

**PURPLE PERSIAN LILAC** (*Syringa Persica*)—A native of Persia, not quite so hardy as the Common but a more rapid grower. The branches are long and slender, and is blooms in great profusion on the terminal branches. 2 to 3 ft., 25 cents; 3 to 4 ft., 35 cents.

**WHITE PERSIAN LILAC**—This variety is identical with the Purple Persian excepting that the color is white. 2 to 3 ft., 30 cents; 3 to 4 ft., 40 cents each.

**ROUEN LILAC** (*Syringa Rothomagensis*)—A distinct hybrid variety with slender, arching branches, bright green foliage and lilac purple flowers in showy broad panicles in mid-spring. One of the finest of lilacs. Grows from 8 to 10 ft. in height. Price, 2 to 3 ft., 50 cents.

## Upright Honeysuckle

**WHITE BUSH HONEYSUCKLE** (*Lonicera Tartarica Alba*)—A strong vigorous growing shrub, perfectly hardy; has a profusion of small white blossoms last of May, which are followed by bright, waxy red berries the size of a common currant, which ripen in the fall and hang on late, very handsome but not edible fruit. Price, each, 2 to 3 ft., 25 cents; 3 to 4 ft., 30 cents; 4 to 5 ft., 40 cents.

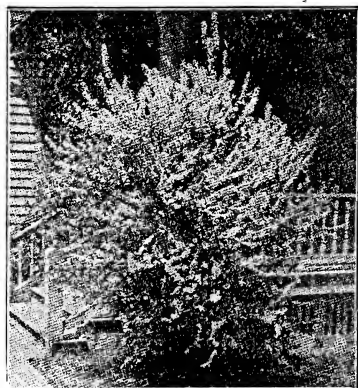
**PINK HONEYSUCKLE** (*Lonicera Tartarica Rosea*)—Similar to the White, except that it is not so strong and vigorous and not quite as good a bloomer; red berried. Price, each, 2 to 3 ft., 25 cents; 3 to 4 ft., 30 cents; 4 to 5 ft., 40 cents; 5 to 6 ft., 50 cents; 6 to 8 ft., 75 cents.

**DISCOLOR HONEYSUCKLE** (*Lonicera Tartarica Discolor*)—A hardy, strong grower and very profuse bloomer. Flowers are large, rose, pink and red. Berries are bright yellow, very showy. Price, each, 2 to 3 ft., 25 cents; 3 to 4 ft., 30 cents; 4 to 5 ft., 40 cents; 5 to 6 ft., 50 cents.

## Spirea

**ARGUTA**—A slender dwarf 3 to 5 ft. high with branches a snowy mass of clear white flowers in early May. 1 to 2 ft., 25 cts. each; 3 to 4 ft., 40 cts. each.

**BILLARDI**—(Pink)—Tall growing with plume like spikes of deep rose colored flowers. 2 to 3 ft., 25 cts. each; 3 to 4 ft., 35 cts. each.



Spirea Arguta

**BILLARDI** (White) or *Salicifolia*—This is almost identical with the Pink Billardi, except that the bloom is pure white. It is perfectly hardy, a good bloomer and very desirable. 2 to 3 ft., 25c. each; 3 to 4 ft., 35c. each.

## Spirea—Continued



Anthony Waterer

**ANTHONY WATERER**

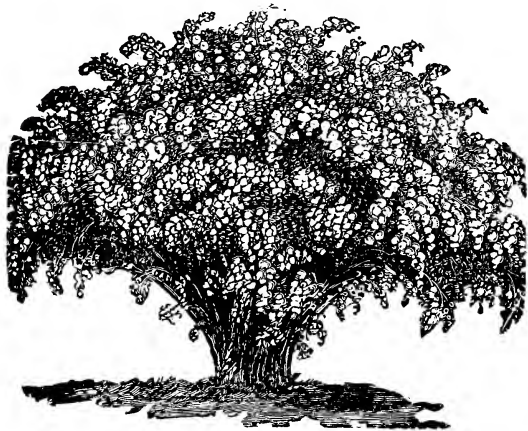
—A small dwarfish grower, 15 to 18 inches high, and is covered the entire season with large umbels of deep pink flowers. Quite hardy here and very desirable. Makes the most delicate ornamental hedge imaginable. 12 to 18 in., 25c. each.

**GOLDEN** — A rapid grower and perfectly hardy. Bears a profusion of bloom in small clusters. White with prominent brown specks; very handsome. 2 to 3 ft., each, 25c.; 3 to 4 ft., 35c. each; 4 to 5 ft., 50 cents.

**PRUNIFOLIA**—A very beautiful variety; flowers white and very double. A very profuse bloomer in May; foliage turns a very beautiful brown color in autumn; quite hardy here and desirable. 2 to 3 ft., 30c. each; 3 to 4 ft., 50c.

**SORBIFOLIA (Ash Leaved Spirea)**—A vigorous growing bush with large handsome foliage resembling that of the Mountain Ash. Long spikes of white flowers in July. A very desirable acquisition to the list. 2 to 3 ft., 30 cents each; 3 to 4 ft., 40 cents.

**VAN HOUTI**—The grandest of the Spireas; perfectly hardy, a strong grower and a profuse bloomer. Has a small delicate white blossom borne in clusters that almost entirely cover the bush about June 1st. Very handsome even when not in bloom.



Spirea Van Houti

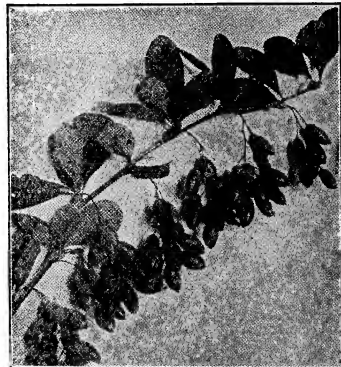
Price, each, 2 to 3 ft., 25 cents; 3 to 4 ft., 30 cents; 4 to 5 ft., 40 cents; large clumps, \$1.00 each; 18 to 24 in., hedge size, \$6.00 per 100.

Special prices on larger quantities of the above shrubs.

## Barberry

**BARBERRY, COMMON (Vulgaris)**—A handsome shrub with yellow flowers in May or June, followed by orange scarlet fruit. Green foliage. Each, 2 to 3 ft., 20 cents; 3 to 4 ft., 30 cents.

**BARBERRY JAPANESE (Berberis Thunbergii)**—A native of Japan. It is quite hardy here. Its low, very dense habit, attractive red fruit and scarlet fall coloring of leaves makes it very desirable for dwarf hedges and borders. 18 to 24 in., 25 cents each; 2 to 3 ft., 35 cents; for hedge sizes, see Seedling Department.



Japanese Barberry

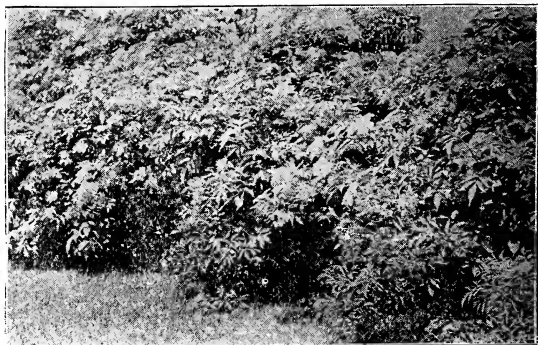
**BARBERRY, PURPLE LEAVED (Berberis Purpurea)**—An interesting variety of the Common Barberry. When planted in the full sunlight the leaves are of a deep purple color. Bears an edible fruit. Very desirable and easy to make live. 18 to 24 in., 25 cents each; 2 to 3 ft., 35 cents each; 3 to 4 ft., 50 cents.

## Dogwood

**DOGWOOD, RED OSIER (Cornus Stolonifera)**—A desirable and hardy strong growing native shrub; grows to a height of 10 to 12 ft. Its bright red bark and delicate foliage make it beautiful both summer and winter. It is covered with delicate clusters of white flowers in summer, followed by white waxy berries, which stay on till hard frost comes in the fall. Each, 2 to 3 ft., 20 cents; 3 to 4 ft., 30 cents; 4 to 5 ft., 40 cents.

**DOGWOOD, SIBERIAN (Cornus Siberica)**—This is very much like the native dogwood described above, but has a little larger leaf and a brighter red to the bark. It is very hardy, handsome and desirable. 2 to 3 ft., 30 cents each.

## Elder



Elder

A Portion of a Group of Shrubs which we Planted at the C. M. & St. P. Depot Grounds, Yankton, S. D.

**Elder—Continued**

**ELDER, VARIEGATED OR GOLDEN** (*Sambucus Variegata*)—A hardy, strong growing shrub of striking appearance, with light colored variegated foliage; snow white blossoms in clusters in



Branch of Golden Elder

early summer. This variety is sterile, however and does not produce fruit. Each, 2 to 3 ft., 25 cents; 3 to 4 ft., 35 cents; 4 to 6 ft., 50 cents.

**ELDER, BLACK** (*Sambucus Canadensis*)—This is a native of the Southeastern corner of the state and in the Black Hills. A strong grower, stalk has a large pith; has large flat clusters of fragrant flowers in the spring and small purplish black berries in autumn; very much relished by some for pies, jelly, etc. It is beautiful, hardy and desirable. 2 to 3 ft., each, 25 cents; 3 to 5 ft., each, 35 cents; 4 to 6 ft., 45 cents.

**ELDER, NEW CUT-LEAVED**—A variety with very handsome and striking foliage and would be worthy of cultivation for its foliage alone without any of its other strong points; quite productive. Each, 2 to 3 ft., 25 cents; 3 to 5 ft., 35 cents; 5 to 6 ft., 50 cents.

**ELDER, RED BERRIED**—A hardy and very handsome variety, very similar to the common black variety, except that it has clusters of handsome bright red berries which adhere well to the bush. A native of northern Wisconsin and Minnesota. Each, 2 to 3 ft., 25 cents.; 3 to 4 ft., 35 cents.

**Sumach**

**SUMACH** (*Rhus Trilobata*)—A low or medium sized shrub, native of this state. It is perfectly hardy and its clusters of small red fruit with its bright foliage in autumn make it quite desirable. Each, 2 to 3 ft., 20 cents; 3 to 4 ft., 30 cents.

**ARTEMESIA, RUSSIAN**—This is a strong and vigorous type of the shrub commonly known as "Old Man." It is larger and of more rapid growth, often making a growth of 6 feet from the cuttings the first year. Desirable for low hedges, for screens or windbreaks. It stands remarkably extreme

drough and cold, and stands shearing well. Each, 25 cents. For Cuttings, see Cutting Department.

**Syringa**

**SYRINGA, PHILADELPHUS, MOCK ORANGE, SINGLE**—A strong growing shrub with beautiful pure white sweet scented blooms; extremely hardy and desirable. 2 to 3 ft., each, 25 cents; 3 to 4 ft., each, 35 cents.

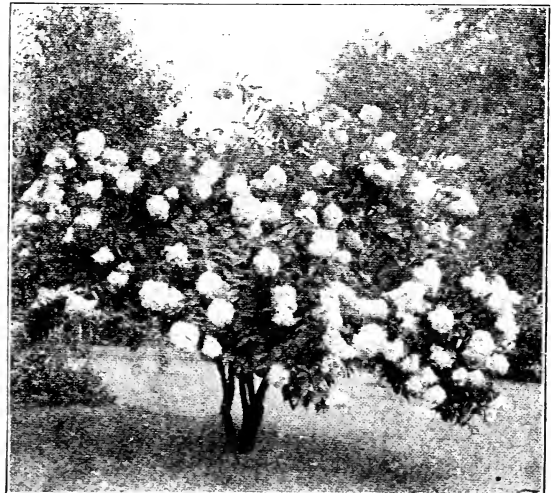
**SYRINGA, PHILADELPHUS, MOCK ORANGE, DOUBLE**—A dwarfish shrub, flowers smaller than the single variety, but very double and desirable; hardy. Each 12 to 18 in., 20 cts.; 18 to 24 in., 30 cts.; 2 to 3 ft., 40 cts.



Syringa

**CRANBERRY, HIGH BUSH** (*Viburnum Opulus*) A native shrub or small tree, resembling the common Snowball in leaf and growth of branches. The large flat clusters of white flowers in early spring, followed by bright red acid berries in the autumn makes it attractive all through the season. The fruit is also valuable for culinary uses; makes an excellent jelly. 2 to 3 ft. plants, 30 cents each; 3 to 4 ft., 40 cents each; heavy clumps, 4 to 6 ft., each \$1.

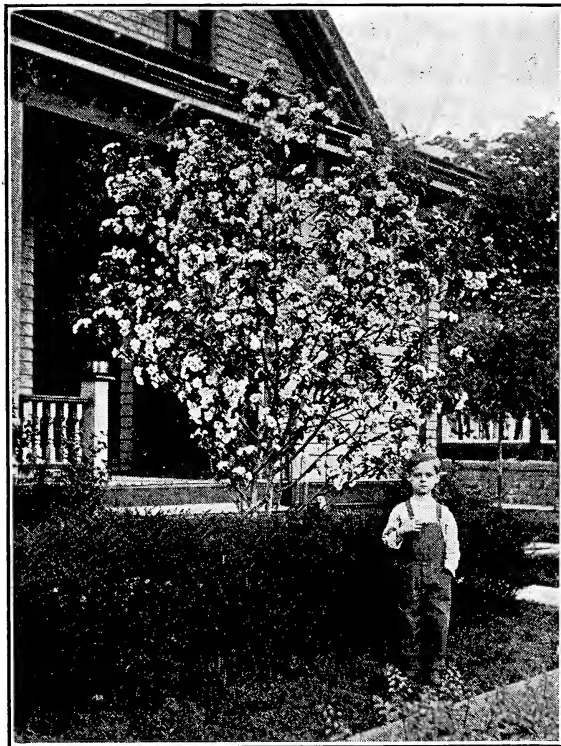
**SNOWBALL** (*Viburnum Sterillis*)—A hardy well known showy shrub. Attains a height of 8 to 10 feet. Produces its showy white flowers in



Snowball

large balls or masses in June. Each, 18 to 24 in., 25 cents; 2 to 3 ft., 35 cents.

**BECHTEL'S DOUBLE-FLOWERING CRAB (P. Angustifolia)**—A desirable hardy shrub. About the middle of May, the trees are covered with beautiful, double, pink, sweet-scented flowers, that at a



**Bechtel's Flowering Crab**

distance look like small roses. Tree is a moderate grower, hardy and of upright growth. One of the very best. Price, 2 to 3 ft., 25c; 3 to 4 ft., 35c.

**DOUBLE FLOWERING PLUM (Prunus Triloba)**—A very hardy desirable shrub of rather dwarf habit. Very early in spring, before the leaves appear, the whole tree is decked in a fleecy cloud of very large double, light pink flowers. Prices, 2 to 3 ft., each, 25 cents; 3 to 4 ft., each, 35 cents.



**Hydrangea**

**STRAWBERRY TREE OR AMERICAN WAHOO (Euonymus Atropurpurena)**—An extremely hardy and beautiful native; bears delicate, small purplish blossoms in a profusion



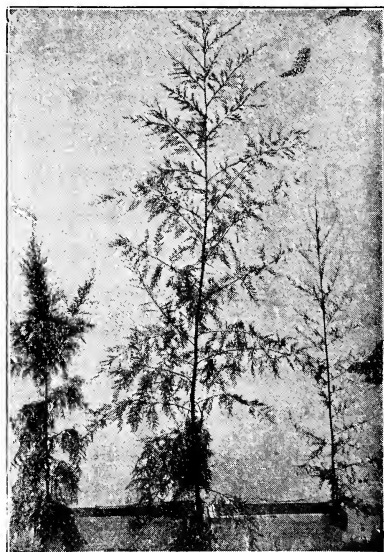
**Strawberry Tree Showing Fruit**

of clusters about June 1st, and is followed by three-cornered pink berries in the fall that ordinarily remain on all winter. Each, 18 to 24 in., 20 cents; 2 to 3 ft., 30 cents.

**TAMARIX AMUERENSIS**

—This is a very beautiful, hardy and rapid growing shrub. Its leaves very much resemble those of the Juniper or Cedar, except that it is deciduous.

It bears a very delicate pinkish white flower, and continues blooming all through the summer. Fine for hedging or screens. 3 to 5 ft., 35 cents. For Cuttings see Cutting Department.



**Tamarix**

**HYDRANGEA (Panicula Grandiflora)** — Large flowered Hydrangea, hardy. A fine shrub growing from 6 to 8 feet high. Flowers white in large pyramidal panicles, produced in August and September. Each, 2 to 3 ft., 25 cents.

**ALMOND, FLOWERING (Amygdalus Nana)**—A very hardy and good growing shrub. A small double flower, resembling a small rose; blooms in May or early part of June; a profuse bloomer. We have both the double white and the double pink. State color desired. Each 2 to 3 ft., 30 cts.

## Ornamental Climbing Vines

**BITTERSWEET** (*Celastrus Scandens*)—A hardy native climber; has yellow flowers in summer, followed by orange-colored berries in autumn, which open late in the fall and expose the showy red fruits or seeds, similar to those of the Wahoo. Very pretty and easily grown. Each, 25 cents; two for 40 cents.

### Clematis

**CLEMATIS** (*Coccinea*)—A very handsome hardy climber, bearing thick, bell-shaped flowers of a bright coral red color. Blooms with wonderful profusion from June till frost. Each, 35 cents; two for 60 cents.

**CLEMATIS** (*Flamuli*)—A very desirable climber. It is a rank grower and a profuse bloomer; flowers small, greenish-white; a hardy native. Each, 25 cents; two for 40 cents.

**CLEMATIS** (*Jackmanii*)—Large flower, 4 to 6 inch in diameter; intense violet purple with a rich velvety appearance. It blooms continually until cut by frost. A strong grower, but needs winter protection. Each, 35 cents; two for 60 cents.

**CLEMATIS** (*Paniculata*)—A sweet scented Japan Clematis; of very rapid growth. Unlike any other Clematis, it has a beautiful dense and glossy foliage, quickly covering trellises and arbors. The flowers are of medium size, pure white and of a most pleasing fragrance; borne in immense sheets in September, when very few other vines are in bloom. Each, 35 cents; two for 60 cents.

**CINNAMON VINES**—Pure leaves, dainty flowers, exquisite perfume. The Cinnamon Vine, from the Oriental land, is one of the most charming of climbers and will quickly surround your window or veranda with a wonderful profusion of vines covered with handsome, glossy, heart-shaped leaves and sweet scented flowers. Perfectly hardy, thriving everywhere and when once planted will grow for many years and be a source of constant delight. Each, 15 cents; two for 25 cents.

**GRAPE, NATIVE WILD** (Seedlings)—They are extremely hardy and will be valuable to grow for screens and bowers being a rank and rapid grower. Although its fruit is not of special value for eating, it makes a delicious jelly. Strong 2 yr. plants, each, 15 cents; two for 25 cents; ten for 75 cents.

**JASMINE**—An old favorite climber; a strong grower, very hardy, and a profuse bloomer. Purplish pink flowers; bush covered with fine bright red berries in the fall; fine for covering a fence along walk or driveway, or for covering steep banks. 2 yr. plants, 25 cents each; 2 for 40 cents. Small plants at \$6.00 per 100.

### Honeysuckles

**HONEYSUCKLE, HALL'S** (*Lonicera Halleana*)—One of the finest Honeysuckles grown; blooms from June till November; is almost evergreen and is one of the most fragrant. White changing to yellow. It is quite hardy here and promises to be very valuable. Each, 30 cents; two for 50 cents.

**HONEYSUCKLE** (*Black Hills Native*)—This is a moderate grower and a good climber. A profuse bloomer, color variegated, pink, white and red, very hardy, handsome and well worthy of cultivation. Strong 2 yr. plants, each, 30 cents; two for 50 cts.

**HONEYSUCKLE, TRUMPET** (*Lonicera Rubra*)—A very beautiful hardy climber with delicate trumpet shaped red flowers. Blooms constantly from



Trumpet Honeysuckle

early summer until hard frosts in fall; desirable. Each, 25 cents; two for 40 cents.

**IVY, AMERICAN, OR VIRGINIA CREEPER** (*Ampelopsis Quinquefolia*)—One of the most vigorous and hardy climbers; the foliage becomes a rich crimson in autumn; very desirable for walls, verandas, etc. Each, 25 cents; two for 40 cents.

**IVY, ENGLEMAN'S** (*Ampelopsis Englemanni*)—Has shorter joints and finer foliage than the American Ivy and clings to brick and stone walls better. A good, strong grower, and very hardy. It is considered by good authority to be the best for the Northwest. Strong plants, 30 cents; two for 50 cents.

**WISTARIA, PURPLE**—A most beautiful climber of rapid growth, producing pendulous clusters of fine purple flowers; quite hardy. Each, 30 cents; two for 50 cents.

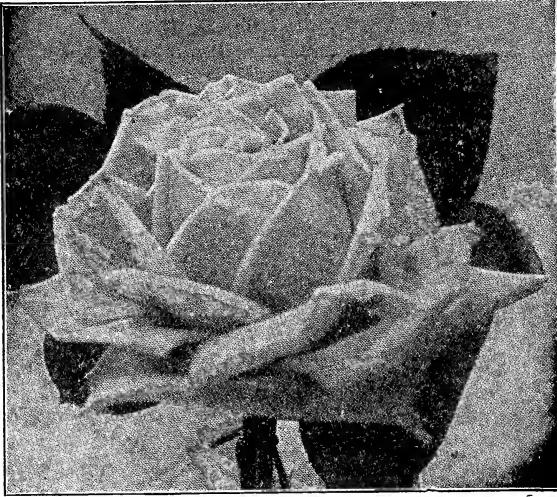
**GLADIOLUS**—The Gladiola are the most attractive of all the summer flowering bulbs and deserve a place in every garden, as they are sure to flower and do well with very little care. The flowers are of almost every desirable color. By cutting the spikes when two or three of the lower flowers are open and placing them in water, the entire spikes will open in the most beautiful manner. Set the bulbs 6 to 8 inches apart and about two inches deep. Plant from middle of April to first of June. **THE BULBS MUST BE TAKEN UP IN THE FALL BEFORE THE GROUND IS FROZEN AND KEPT IN A DRY COOL CELLAR.** All large strong bulbs.

We have these assorted colors which give best results for the general planter. Each, 5 cents; 5 for 15 cents; 10 for 25 cents; 50 for \$1.00; and 100 for \$1.75.

**TAKE NOTICE**—That our shrubs are all strong, stocky, out-door grown and should not be classed with the small, slender green-house plants offered by some at low prices. Will make special rate if several of one kind are taken.

## Roses

Think of having roses blooming at your very door, sending their fragrance to meet you the moment you cross the threshold, yielding enough flowers to fill every room in the house with ex-



quisite scent and loveliness from June until October! Would not such a garden appeal to you? You can have it for very little money.

We carry none but the very hardiest varieties and the finest and freest bloomers. Many varieties offered by Eastern Catalogs are too tender for the Northwest. Hot-house roses are almost worthless for outdoor planting—OURS ARE FIELD GROWN.

### HOW TO GROW ROSES

1. Get good, healthy plants—Dormant plants, field grown, are better than hot-house roses which are tender and apt to be infested with insects, fungus, etc. You can depend upon our Roses.
2. When to Plant—Plant as early in the spring as you can after the frost has gone out. The month of April and first of May is about right.
3. Wilted or Dried Plants—If the plants come in a wilted or dry condition, soak them, roots and tops, in blood warm water. This will do them good, even if not dried. Wet the roots well just as you plant them, so the earth will adhere. Firm the soil well around the roots.
4. Pruning—By all means cut off nearly all the tops, leaving 6 to 8 inches. Don't fail to do this; cut tops off before planting, not after. Cut off all but two or three stems. This is one of the most important things in planting roses.
5. Roses and Sunshine—They need all they can get. Do not like shade or low, wet soil.
6. In the Spring time cut off all decayed or injured parts.
7. Preparing Roses for Winter—There is nothing more important in Rose culture than caring for them in the winter in this cold Northwest. There are a number of methods:

First—Lay the plants down, putting on sod to hold them in place and cover up with loose soil and when frozen, cover over with mulching. Uncover in spring. This is a good method.

Second—Cut all bush roses to 6 to 8 inches from the ground—Burn up the brush and cover up the stubs with soil and mulching; uncover in spring.

### ROSE ENEMIES

Mildew—Use Bordeaux mixture and continue every ten days as long as disease continues.

Slugs—Use hellebore or Arsenate; apply every five or six days until destroyed.

Lice—Use Tobacco Infusion or Kerosene Emulsion; apply every five or six days till destroyed.

### June Roses

This collection comprises the common June blooming sorts. In our list will be found none but hardy sorts, most of which will stand our winters without protection, although winter protection will improve their blooming.

**MADAM PLANTIER**—A pure white rose recommended for lawn and cemetery planting; does not winter kill and is a strong, vigorous grower; an enormous bloomer. Each, 30 cents.

**PERSIAN YELLOW**—Hardy; flowers double and full, deep golden yellow in color; blooms freely in June; the finest hardy yellow rose grown. Each, 35 cents.

**ROSA RUGOSA, RUBRA**—Foliage shiny, bright green, very handsome; flowers deep rose, single, produced in clusters. Beautiful bright red berries in autumn. Very hardy and desirable. The Rugosa makes a fine border or hedge and we offer them in quantity for this purpose. Try them, they are very satisfactory. Each, 30 cents.

**ROSA RUGOSA, ALBA**—Same as above, except that bloom is a pure creamy white. Each, 30 cts. A collection of each of the above four varieties for \$1.00. Postage Extra.

### Hybrid Perpetuals

This desirable class of June Roses is supposed to bloom constantly from June till frost, but they do not always do so here. Much depends on the care and general conditions. We list only choice, hardy varieties.



American Beauty

**AMERICAN BEAUTY**—A strong, vigorous grower, a continuous bloomer, and the flowers are very large and of a deep rose color; delightfully fragrant; a general favorite though not very hardy. Each, 50 cents; two for 90 cents.

**H. P. Roses—Continued**

**PAUL NEYRON**—Flowers of immense size, color deep rose; very fresh and pretty; the plant is a strong, healthy grower with clear glossy foliage.



**Paul Neyron**

age; a most prolific bloomer. Blooms from June to October almost constantly. Each, 35 cents, two for 60 cents.

**GENERAL JACQUEMINOT**—Brilliant crimson not full, but very large and effective; a mass of bloom when at its best. Very fragrant and quite hardy. Each, 35 cents; two for 60 cents.

**ULRICH BRUNNER**—Splendid upright grower; with bright, healthy foliage. The flowers are good sized and of fine form with shell-shaped petals. One of the most abundant bloomers; color, cherry red. Each, 35 cents; two for 60 cents.

A collection of one of each of the above four varieties for \$1.25. Postage Extra.



**Baby Rambler**

**BABY RAMBLER** (Madam Lavavasseur)—An offspring of the famous Crimson Rambler. It does

not climb, however, but bushes nicely and also submits to pot culture. Will bloom continuously throughout the summer if planted out of doors; it usually blooms the first year after planting. Has same bright crimson color as the Crimson Rambler and blooms in clusters of 20 to 40 flowers at one time. A great novelty and a valuable acquisition; strong 2 yr. field grown plants at 40 cents each.

**Moss Roses**

The Moss Rose is as hardy as any of the June Roses and admired on account of their bright, healthy foliage and mossy-like covering of the buds; good bloomers and large.



**GLORY OF MOSSES**—Pale rose color; very large and flat in form; robust and vigorous; very handsome and desirable. Each, 25 cents.

**MOSS WHITE**—Pure white; blooms in clusters, vigorous grower and hardy; very handsome and remains in bloom a long time. Each, 25 cents.

**PRINCESS ADELAIDE**—Blush, becoming quite pale or white; very double and well formed; the most vigorous grower of all the Mosses. Each, 25 cents.

**HENRY MARTIN**—Of medium size; flowers large and rosy-red; well mossed and fragrant. Price, 25 cents each.

A collection of each of the above four varieties for 90 cents. Postage Extra.

**Creeping Roses**

The Japanese Creeping rose or Wichuriana, is one of the most beautiful and useful plants for cemetery or lawn planting. As hardy as an Oak and grows on any sandy hillside or other exposed places where but few plants succeed. Flourishes if allowed to trail over the ground in its natural

Red Lake, Minn., June 1st.

Whiting Nursery Co.,  
Yankton, S. Dak.

Gentlemen:—Am in receipt of the roses and asters; received same in good condition. Thanking you, I am,

Respectfully yours,  
MRS. O. GRAVELLE.

### Roses—Continued

position or may be trained to posts or trellises. Assorted at 50 cents each.

**MANDA'S TRIUMPH**—This is a grand variety. The flowers, which are pure white and very double are produced in clusters of from 10 to 20 on each cluster on small side shoots, literally covering the plant and standing well above the foliage. Each, 30 cents.

**PINK ROAMER**—A Hybrid of the Sweet Briar which it somewhat resembles in character of bloom, while the growth, which is very rampant, partakes more of the Wichurian type. The single flowers are over two inches in diameter, a bright, rich pink, with large silvery white center and orange red stamens. Each, 30 cents.

### Climbers and Ramblers

Nothing can give more satisfaction in roses than the climbers and ramblers, which can be trained on a porch or trellis in such a way as to hide unsightly objects. The climbing rose needs but one planting, while annuals require tenfold the care and training.

**DOROTHY PERKINS**—In general habit resembles the Crimson Rambler, but of a beautiful shell pink, full and double, of unusually large size for a



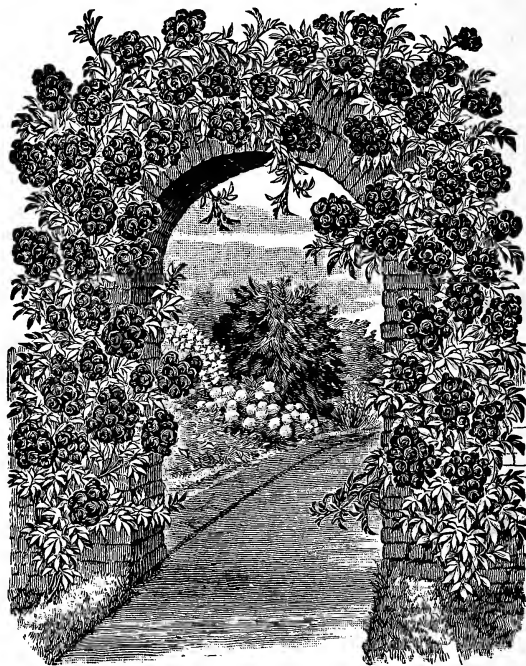
Dorothy Perkins Rose

cluster rose. The trusses are made up of from 30 to 40 or more flowers. It is a very strong grower and extremely hardy. A very valuable acquisition. Each, 25 cents.

**BALTIMORE BELLE**—Pale blush, shading to rose color; very double; flowers in beautiful clusters, the whole plant appearing a perfect mass of bloom. One of the best climbing roses, but must be protected in winter. Each, 25 cents.

**GREVILLE (or Seven Sisters)**—Blooms in large clusters with flowers varying from white to crimson; luxuriant dark green foliage. Perfectly hardy. Each, 25 cents.

**CRIMSON RAMBLER**—Perfectly hardy, wonderful free flowering, rich, glowing crimson. A color unheard of before in hardy climbing roses. The plant is a strong, rampant grower, making shoots 8 to 12 feet long in a season after the first year, or when well established. The flowers are



Crimson Rambler

produced in large trusses, pyramidal in shape, often 25 to 30 in a cluster, fairly covering the plants from the ground to the top with a mass of bright, glowing crimson. The color is simply superb, and is retained unfaded for an unusual length of time. Each, 30 cents.

**YELLOW RAMBLERS (Agalia)**—A new hardy yellow climbing rose, blooming after the same manner as the Crimson Rambler; flowers of medium size in immense clusters, often 35 to 40 flowers in a single cluster; very sweet scented. Color, a clear decided yellow, a color heretofore unknown in a climbing rose that is in any way hardy. It is a rampant grower. Each, 30 cents.

**WHITE RAMBLER**—Similar to the other Ramblers, but is pure, pearl white in color. Each, 30 cents.

**PRAIRIE QUEEN**—Clear, bright pink, sometimes with a white stripe; large, compact and globular, double and full; blooms in clusters. The best hardy climber in this climate. Each, 25 cents.

A collection of each of the above 7 for \$1.75.

**BLUE RAMBLER (Veilchenblu)**—A great novelty in its class. The flowers on first opening are purplish pink which turn to amethyst and finally to steely blue as they age. The yellow stamens are a sharp but pleasing contrast to the blue petals. A vigorous grower and free bloomer. You should certainly have one of these. Price, each, 75 cents.

Above Prices do not include Postage.



## Flowering Bulbs

These Perennials are very easily handled and very satisfactory for common busy people, much more so than annuals grown from seed, which must be planted every year. All in our list, except the Gladiolus. Dahlias and Cannas can be left in the ground over winter, and get better and more satisfactory as the years go by.

**BLEEDING HEART (*Dicentra Spectabilis*)**—A hardy perennial plant, producing long racemes of beautiful pink heart-shaped flowers, in May and June; an excellent border plant. Strong roots. Each, 30 cents; 2 for 50 cents.

**SEDUM SPECTABILIS**—Of upright growth, 15 to 18 inches in height. Foliage rounded, thick and rubbery. Crowned with massive flat cymes of light rose-colored flowers. Each, 25 cents; 5 for \$1.00.

## Cannas, the King of Bedders

These are tropical plants found in wet or boggy places, and require heat and abundant moisture to thrive well. They like full exposure to the sun, but a full supply of water about the roots. You are not likely to give them too much water. In the spring the plants should be started in pots or boxes in a warm room or conservatory, and bedded out when the weather becomes warm. If subjected to cold while starting, or if planted too early, the plants are liable to rot, even if kept rather dry about the roots.

### Canna Beds

We know of nothing more beautiful on a lawn or large garden than a Canna bed, if properly made up with Cannas suitable for this purpose. Very much of the beauty depends upon the arrangement of it, getting tall growing Cannas in the center and planting the dwarfier varieties as you approach the outer circle. Then too, much depends upon the varieties and getting the green foliage interspersed with the bronze. We have taken great pains in this matter and have arranged two superb beds that will give great satisfaction and be a thing of beauty all summer long. Even the most inexperienced should be able to plant from the plans in this catalog. Make the beds 6 to 8 inches higher in the center and slope down to edge. Give Cannas lots of water.

A bed of well-grown Cannas is a veritable bit of the tropics, with their wide arching leaves and stiff stalks of flaming flowers glowing like torches above their noble foliage. This effectiveness is not confined to only a few weeks display, but being exuberant in growth, a bed of Cannas soon becomes attractive after planting and each day thereafter adds to its beauty.

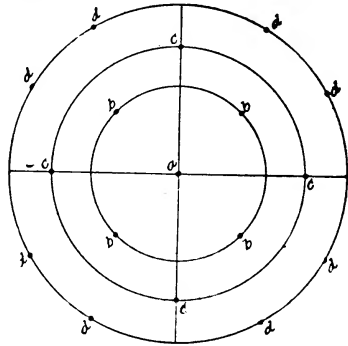
The most practical way to care for the roots over winter is to take up the clumps after the first killing frost, leaving some dirt adhere to the roots. Place them in a dry cellar where frost will not penetrate. Do not allow the roots to become too dry or the tubers will wither, but care should be taken that they are not too moist or they will mildew.

We have the following varieties:

- Austria Giant Orchid**—Flowered golden yellow.
- David Harum**—Bronze foliage, crimson flowers.
- Florence Vaughn**—Yellow, freely spotted red.
- Mrs. Kate Gray**—Orange-vermillion; very large.
- Paul Marquard**—Rich salmon-red; fine.
- Shenandoah**—Bronze foliage, flowers rose-pink.
- Wyoming**—Bronze foliage; beautiful orange colored flowers.

Price, 15 cents each.

**GRAND NEW CANNA KING HUMBERT**—This is the grandest of all Cannas, no other variety compares with it. The foliage is rich bronze or red of the most tropical growth. The flowers as large as the largest of the orchid flowering Cannas. Color is bright rich orange scarlet, striped with crimson. This variety is the best of all. 25 cents; \$2.50 per dozen.



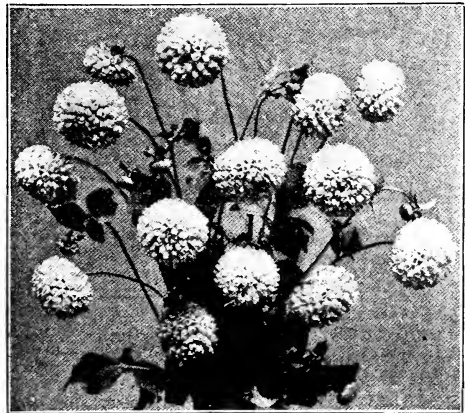
Plan of Canna Bed—6 feet Diameter

The above cut is a picture of a plan for a Canna bed. We will select the Cannas, using the tall varieties for the center and gradually decreasing until you have the small sizes for the outside rows. The bulbs will be marked according to the row in which you are to plant them.

A bed like the above plan, containing 17 bulbs, will cost you \$2.00. We can also furnish bulbs for a larger bed containing 35 bulbs for \$4.00.

## Dahlias

A very attractive flower, which blooms late in the summer. There are a great variety of sorts, of as many colors and forms of bloom. Dahlia roots must be taken up in the fall before the ground freezes and kept in a cool, dry cellar, away from frost, similar to potatoes. Plant out the bulbs single in the spring in rich, mellow soil. They are very desirable and easily grown; increase rapidly. We have, we believe, the largest and best stock of dahlias in the Northwest to offer this season, including some of the choicest varieties known, and can certainly please you in this class.



Dahlias

**STRAHLEN KRONE**—A very strong, stocky plant, an early and free bloomer. Flower very large and full; color, purplish pink on tips of petals, lighter inside; button center. A fine garden variety. Stem of medium length, very thick and

### Dahlias—Continued

strong. A very desirable sort—be sure to include this variety in your list. One of the most desirable for amateur growers. Each 15 cents; 2 for 25 cents.

**QUEEN OF YELLOW**—A very large, double bloom of a canary yellow with pinkish tinge on outside petals and an occasional bright red streak among them. A very strong grower, being often 4 to 5 feet high. Extra fine stem, often 10 to 15 inches in length, very fine for cut flowers; extremely large and hardy. Flowers sometimes so full that the petals touch on the back of the flower, forming a complete ball. Each, 15 cents; 2 for 25 cents.

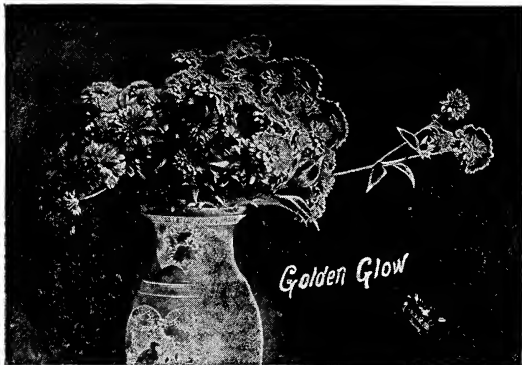
**FIRE RAIN**—A very bright, showy red with purplish tinge in center. A strong vigorous grower and very early. Long stems, making it very desirable as a cut flower. It is one of the most showy colored Dahlias in our list, showing off at a great distance. Each, 25 cents; two for 40 cents.

**RED HUSAR**—Of medium size, compact bloom of a brick red color. Very double with button center; stem rather short, but very desirable as a garden variety. Each, 15 cents; 2 for 25 cents.

**ZULU**—Strong growing bush; bloom medium size. A striking color, being a dark velvety wine color, sometimes almost black. Grows on a short stem in the forks of the branches. Not very desirable as a cut flower but an excellent garden sort. Each, 10 cents; 3 for 25 cents.

### Golden Glow

**GOLDEN GLOW** (*Rudbeckia*)—This American plant is winning great favor wherever introduced. A hardy perennial, growing 6 to 7 feet high and producing hundreds of bright, golden



Golden Glow

double flowers 2 to 3 inches in diameter, fine for cut flowers. When once established will produce an endless amount of bloom. Can be grown with very little care almost everywhere. Each, 15 cents; 2 for 25 cents.

### Hollyhocks

**HOLLYHOCKS**—These are a very desirable and well known class of flowers; we have them in assorted colors. Price, each, 10 cents; 5 for 40 cents; and 10 for 75 cents.

### Iris

These are a very desirable class of hardy, attractive border plants of the easiest culture. We have a variety of colors. The most important are as follows:



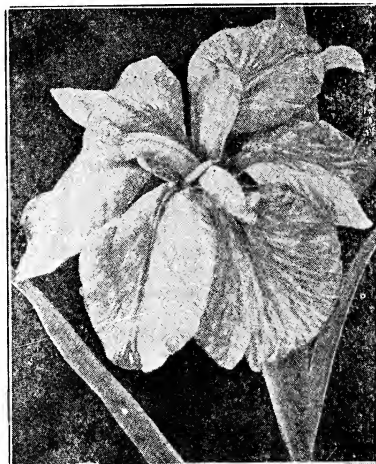
Iris

**COMMON BLUE**—This is a small growing German Iris; very short foliage and small flowers. Very desirable for small border plant. Each, 10 cents; per 10, 50 cents; per 100, \$3.50.

**SIBERIAN BLUE**—A choice blue Siberian variety. Clear blue flowers of exquisite beauty; long narrow leaves. Each, 20 cents; per 10, \$1.50.

**SIBERIAN WHITE**—Same as the Siberian Blue except that the bloom is a beautiful white. Each, 20 cents; per 10, \$1.50.

**LAVENDER**—This is one of the large flowered German type and of a beautiful lavender color. Each, 15 cents; 10 for 75 cents.



German Yellow Iris

**YELLOW**—A large beautiful flower of the German type. Each, 10 cents; per 10, 60 cents; per 100, \$4.00.

### Iris—Continued

**BRONZE**—A German Iris of the large flowered type, light bronze color; good grower. Each, 15 cents; per 10, 75 cents; per 100, \$5.00.

**MADAM SHEREAU**—White, elegantly frilled with violet; slightly fragrant; the tallest of all the Iris. Large blooms, very beautiful, one of the best. Each, 25 cents; per 10, \$2.00.

**FLORENTINA**—Sweet-scented, free flowering; white. Each, 20 cents; per 10, \$1.50.

**SNOW QUEEN**—Beautiful, new hardy variety; large snow-white flowers, carried on long stems; this variety is much out of the ordinary and quite an acquisition in our Northern climate; a very fine bloomer. Each, 25 cents; 5 for \$1.00.

**DELICATA**—Center petals, light lavender; outside petals white, delicately traced and edged with lavender. Each, 20 cents; per 5, 75 cents.

**SAMPSON**—Center petals a rich golden yellow; outside petals crimson veined with yellow; fine. Price, each, 20 cents; 5 for 75 cents.

We also have the following varieties:

**LORETUS,**

**BLUE BIRD,**

**QUEEN OF MAY,**

**BLACK HILLS BLUE,**

**PURPLE QUEEN.**

20 cents each; 10 for \$2.00

**MIXED**—Mostly bronze and yellow, large flowered German type at 10 cents each; 10 for 50 cents; 100 for \$3.50.

## Lillies

You should not miss this useful class which are so easily grown. One small bulb will soon increase to a large clump if left unmolested year after year.



Tiger Lily

**TIGER**—These desirable lilies will thrive best in a dry, rich soil, where water will not stand in the winter. After planting they require very little care and should not be disturbed for years, as estab-

lished plants bloom more freely than if taken up annually; entirely hardy and very easily grown. We have both the double and single flowering sorts. The single is the larger flower and we think more desirable than the double though some prefer the double. When ordering, state which is desired. Bulbs, each, 10 cents; 2 for 15 cents; 4 for 25 cents.

**HEMEROCALLIS FULVA (Day Lily)**—Blooms in August and September; height, three feet; color, yellow; a profusion of large blooms during the latter part of the summer. Gives color to clump of shrubbery. Each, 15 cents; 2 for 25 cents.

**LEMON**—Pure lemon color, earliest in bloom, very fragrant and absolutely hardy. Each, 15 cents; 2 for 25 cents.

## Peonies

**PEONIES, HERBACEOUS**—Where is the soul so hardened that has not admired the gorgeous Peony. Why have these most beautiful and fragrant of flowers been so long neglected, It certainly must be due to the fact that people are not acquainted with them. You need only to see them to fall in love with them. A noble flower, always beautiful, never failing to bloom. No disease affects them—they are hardy in the frozen North and will stand the heat of the burning Southland. Will grow and do well where pieplant will, or even harder. Just give them a deep, rich soil, plenty of barnyard manure, or better, manure from the hen-house and they will thank you, and in their beautiful, sweet gratitude will repay you one hundred fold. The Peony once planted will last many years.

**COMMON PINK**—A good sized pink flower; strong grower and very desirable. Each, 25 cents; 2 for 40 cents.

**COMMON RED**—A larger-sized bright red double flower; a strong grower and perfectly hardy. Each, 25 cents; 2 for 40 cents.

**COMMON WHITE**—This is an early unnamed variety, and for a real good thing at a low price, we have nothing that will beat it. It is strong and vigorous in growth. Large, double flowers of a light pink tint with usually an orange-colored center, all changing to nearly pure white after being open for a few days. We offer this at the low price of 25 cents; 2 for 40 cents.

**DARK CRIMSON**—The bloom is of medium size; semi-double; a dark crimson color with yellow stamens showing prominently in the center. Slightly scented. Season early. Price, each, 40 cents; 2 for 75 cents.

**DELACLI**—A very dark deep red, with very prominent yellow stamens. Large size. It is decidedly the most attractive one we have on the list. Price, each, 40 cents; 2 for 75 cents.

**FRAGRANS**—Medium to large sized bloom. Very double and conical in shape. Strongly rose-scented; very desirable. Price, strong roots, 40 cents each; 2 for 75 cents.

**HUMEL**—Blooms very large, often fully 6 inches in diameter; color is bright pink with white tips and somewhat streaked and variegated throughout. A perfect gem; very thick and double; slightly fragrant. Price, each, 40 cents; 2 for 75 cents.

### Peonies—Continued

**FESTIVIA MAXIMA**—Enormous; a very full, shell formed bloom, often 7 to 8 inches in diameter on strong  $3\frac{1}{2}$  ft. stems. Color, showy white shading to creamy white at base of petals with an occa-



**Festivia Maxima**

sional clear purple spot on edges of center petals. Undoubtedly the finest early white in existence. Each, 60 cents; 2 for \$1.00.

### Phloxes

These are a justly esteemed as the finest of herbaceous plants. They yield a profusion of bright showy bloom. The Phlox is a native of North America and is a very desirable family, very easily grown. We offer here a few of the most desirable of the many varieties. It will pay you to get one of each sort, and you will soon have a good stock as they increase rapidly.



**BRIGHT PINK**—A robust, strong growing variety with showy flowers; desirable. Each, 20 cents; 2 for 35 cents.

**ZOUAVE**—A very strong plant, bearing bright red blossoms. Each, 20 cents; 2 for 35 cents.

**R. P. STROUTHERS**—A tall variety; brilliant rosy red, with claret red eyes. Each, 15 cents; 5 for 60 cents.

**ECLAIREUR**—Bright, purplish rose, with light eye. Each, 15 cents; 5 for 60 cents.

**RICHARD WALLACE**—White with pink eye. Each, 15 cents; 5 for 60 cents.

**MISS LINGARD**—White, eye slightly touched with pink. Price, 15 cents each; 5 for 60 cents.

**CHAMPS ELYDUS**—Rich purplish crimson, with large, round head. Each, 15 cents; 5 for 60 cents.

**ASSORTED COLORS**—Unnamed, each, 15 cents; 2 for 25 cents.

### Lichnes Chalcidonica

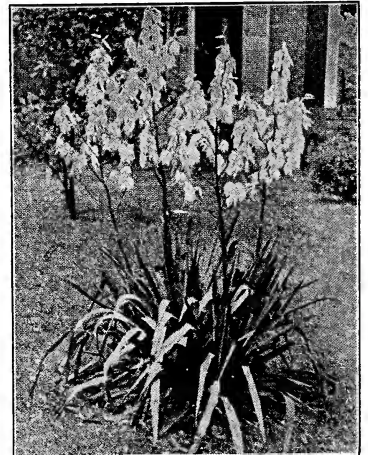
A hardy perennial, bearing fine clusters of deep red flowers on a stalk from 18 to 24 inches high. Bloom late in the summer. Very showy, valuable and easily grown. Each, 10 cents; per 5, 40 cents; per 10, 75 cents.

### Shasta Daisy

**SHASTA DAISY**—Probably the most popular new hardy plant, and is sure to become a favorite for cut flower purposes. This daisy is a production of Luther Burbank, and is the result of crossing our native field daisy with a choice European variety. The flowers are borne singly on stems about 12 inches long, and are clear, glistening white, from 3 to 4 inches in diameter. The plant blooms continually through the summer and fall, and is perfectly hardy without any protection. Price, 25 cents each; 2 for 40 cts.

### Yucca

**YUCCA (Filamentosa)**—This is an ornamental evergreen perennial plant, having a cluster of lance linear sword-shaped leaves which are regular, serrated and edged with slender threads, which hang down three or four inches. The flowers are produced during the months of June and July, and are borne on flower-scapes or terminal pinacles which attain a height of 5 or 6 feet.



**Yucca Filamentosa**

We have counted 247 flowers on one stalk on our grounds. They are cup-shaped, pendulous and about  $1\frac{1}{2}$  inches in diameter of a creamy white. It remains in bloom two or three weeks. Its foliage is of the richest green during the autumn and

**Yucca—Continued**

winter months. Entirely hardy here, although it is not claimed to go as far north as the native variety listed below. Each, 25 cents; 2 for 40 cents.

**YUCCA (Glauc)**—INDIAN SOAP PLANT—A native along the Missouri River bluffs. The description given above for the Filamentosa will apply quite well for this. The native however, is perfectly hardy in high, dry exposed localities. Its leaf is longer, narrower, thicker, stiffer and more pointed and more of a whitish shade of green and the blossom has more of a greenish tint. Each, 25 cents; 2 for 40 cents.

Anamoose, N. Dak., May 2nd, 1912.

Dear Sirs:—I received the Hydrangea and Dahlias today and in good order and thank you very much.

Yours very truly,  
MISS ANNA PEERBOOM.

**Tree Protectors**

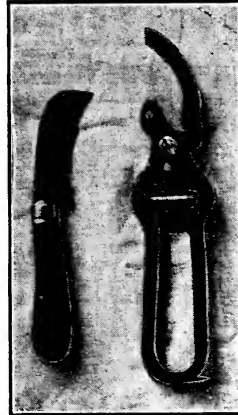
Same are made of veneer and are best and easiest applied of anything we ever used. Two men can wrap 1000 trees a day. They are 18 to 24 inches long, 9 to 12 inches wide and one-twelfth inch thick, and are to be fastened with small wire around the center and will last from three to five years. Dampen before using so that they will not crack.

Will protect your trees from rabbits, mice and borers; will also protect the stems from sun-scald, and can be left on during the summer and will not injure the tree. They are furnished tied in bundles of 100 each and are ready for use. Price, 2 cents each; \$1 per 100; 500, \$4; 1000, \$7.50.

**Pruners**

**Pruning Knives and Shears**

**CALIFORNIA PRUNING SHEAR**—This is one of the best shears made. Total length 9 inches. Indestructible steel spring. Will stand more rough usage and outlast any shear we have used. One pair is worth two pairs of the ordinary cheap ones. Price by mail, postpaid, 90 cents; not prepaid, 75 cents.



**PRUNING KNIFE** — A good, strong, durable knife. Strong, hooked blade, made to close like ordinary pocket knife. For trimming it is enough better than an ordinary knife to pay for itself in two days' work. Makes a smoother cut than

the shears. Price by mail, prepaid, 75 cents; not prepaid, 65 cents.

We have used Lang's Hand Weeder ever since 1885 and we believe it to be the best little weeder yet produced and would not be without it.



Each, 25 cts.; 2 for 45 cts.. Postage, 2 cts. extra.

**Shade Tree Specials**

We are making the following Special Prices on Shade Trees, suitable for Lawns, School House Grounds and Cemeteries. We want you to try our Shade Trees.

- Special No. 1—Ten Ash, . . . . . 8 to 10 ft., \$3.50
- Special No. 2—Ten Box Elder . . . . . 8 to 10 ft., 3.50
- Special No. 3—Ten Wild Black Cherry, 8 to 10-ft., 5.00

Regular Catalogue Price, \$14.00 for the Three Lots

**Special, \$12.00**

If you want Thirty of one variety, we will give you the same Special Price.

- Special No. 4—50 Hardy Catalpa, 1½ to 2-in. Cat., \$20.00
- Special No. 5—50 Soft Maple, . 1½ to 2-in. Cat., 22.00

**Whiting Nursery Co.**

**Yankton, S. D.**

# Special Offer to Our Patrons

---

**ORCHARD**—30 Apple trees, 5 Plum trees and 5 Cherry trees, 3 to 4 ft. . . \$5.00

No. 1 4 to 5 ft. trees, \$7.50; and 5 to 6 ft. trees, \$10.00

**FRUIT GARDEN**—100 Strawberry, 25 Raspberry, 5 Currants, 5 Gooseberry, 25 Blackberry, 5 Grapes, 100 Asparagus and 5

No. 2 Pieplant. . . . . \$5.00

**TWENTY-FIVE (25) ROSES, VINES and SHRUBS**—These Roses, Shrubs, Bulbs and Vines of our selection suitable for your

No. 3 locality. . . . . \$5.00  
13 of the above for \$3.00

**FORTY (40) HARDY FLOWERS**—This collection contains such varieties as Peonies, Phlox, Iris, Lilies, Yucca and Hollyhock.

No. 4 These plants can be set out and stay in the ground from year to year, growing larger and stronger each year, making them a source of pleasure with very little trouble. . . . . \$5.00

Half the above amount for \$3.00

**100 FEET OF HEDGE**—Almost everyone has a place for a few feet of hedge, either to screen the back yard, make a boundary line

No. 5 between themselves and their neighbors, or for ornamental purposes. We are sure you will be pleased if you order these hedge plants. Enough to plant 100 feet for. . . . . \$5.00

**TWENTY-FIVE (25) ORNAMENTAL TREES**—A choice assortment which we will select according to your location. Let us know

No. 6 if you wish them for windbreak, for ornamental purposes or to plant in parkings, and we will make you a good selection.

Will cheerfully use the varieties you desire if possible, providing we think them hardy in your locality. This choice collection of trees for. . . . . \$5.00

**EVERGREENS**—An assortment of choice varieties. Let us know if you

No. 7 want them for hedge, windbreak, grove or ornamental purposes and we will make you a fine collection for. . . . . \$5.00

---

After years of experience in growing evergreen, we know that we can make up a collection that will be suitable to your needs and for your location, providing you give us the privilege to use our judgment in this matter.

---

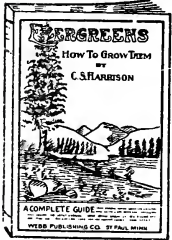
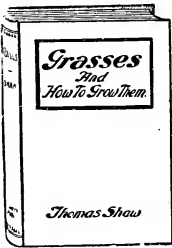
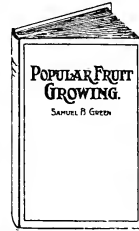
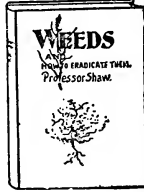
## FREE BOOKS

To anyone ordering one of the above collections, we will give a choice of any 25c book. To those ordering two collections, a choice of any 50c book. For three or more collections, any one of our \$1.00 books will be included. Books on page 45.

# Farm Books

See Our Special Free Book Offer Below

## WHITING'S SPECIAL PREMIUMS



**Popular Fruit Growing** We take pleasure in recommending this book to our friends desiring authentic information on practical fruit growing. This book was prepared by Prof. Samuel B. Green, who has devoted his entire life to this study. It covers all phases of fruit growing thoroughly, and explains every detail in language that is easily understood. You will find it an exceptionally valuable treatise on this subject. The author has specially crowded this book with plain every-day facts which, if applied, will save you much money throughout the course of a year. **Price, \$1.00**

**AMATEUR FRUIT GROWING** by Samuel B. Green, a practical guide to the growing of fruit for home use and the market, written with special reference to a cold climate. Illustrated. 134 pp., Price, 12 mo. cloth, \$0.50; paper, 25 cents.

**VEGETABLE GARDENING**, by Samuel B. Green, 10th edition. A manual on the growing of vegetables for home use and the market. Profusely illustrated. 252 pp., Price, 12 mo. cloth, \$1.00; paper, 50 cents.

**FARM WIND-BREAKS AND SHELTER BELTS** by Samuel B. Green. A manual of tree planting for wind-breaks and shelter with description of the most suitable trees hardy enough to stand Northwestern conditions. Practical cultural directions from seed to maturity. Illustrated. 69 pp., Price, paper, 25 cents.

**ELEMENTS OF AGRICULTURE**, by J. H. Sheppard and J. C. McDowell, a complete treatise on practical agriculture covering plant and animal breeding, thoroughly illustrated. A complete text-book adopted in public and agricultural schools throughout the Northwest. 12 mo. cloth, 100 pp., Price, \$1.00.

**GRASSES AND HOW TO GROW THEM**, by Thomas Shaw, covering name and character of all the principal grasses in America temporary and permanent pastures; methods in making hay, etc. Illustrated, 453 pp., Price, 12 mo. cloth, Price, \$1.50.

**WEEDS AND HOW TO ERADICATE THEM**, by Thomas Shaw, giving the names of the most troublesome weed pests east and west and successful methods of destroying them. Price, 16 mo. cloth, 210 pp., 50 cents; paper, 25 cents.

**THE GOLD MINE IN THE FRONT YARD**, by C. S. Harrison. A book about flowers, both for ornamentation and commercial culture, written with special reference to Northwestern conditions. Illustrated. 280 pp., Price, 12 mo. cloth \$1.00

**EVERGREENS AND HOW TO GROW THEM**, by C. S. Harrison. A complete guide to selection and growth of evergreens for pleasure and

profit, from seed and nursery, to wind-breaks, and hedges. Illustrated. Price, 12 mo. cloth, 100 pp., 50 cents; paper, 25 cents.

**STANDARD BLACKSMITHING, HORSESHOEING AND WAGON MAKING**, by J. G. Holmstrom, author of **MODERN BLACKSMITHING**, gives practical instructions by a successful blacksmith. The latest and most complete book on the subject published. Thoroughly illustrated. Price, 12 mo. cloth, \$1.00.

**FARM BLACKSMITHING**, a complete treatise on blacksmithing, by J. M. Drew, written for farmers who want a workshop where they can profitably spend stormy days. Illustrated, 100 pp., Price, 12 mo. cloth, 50 cents.

**THE COUNTRY KITCHEN**. Nine hundred tried and tested recipes suited to the country and contributed by readers of the Farmer. The most popular and practical cook book on the market. 154 pp., Price, 12 mo. cloth, 50 cents; paper, 25 cents.

**THE FARMER'S TANNING GUIDE**, by G. E. Stevens, gives all the quick ways of tanning in from ten minutes to six weeks. Also complete recipes for making your own solutions. Prepared especially for farmers. Price, paper, 25 cents.

**THE SILO**, by King. How to build wood, brick, stone, concrete, tile, etc. A thoroughly practical guide to silo builders and farmers. 75 cents.

**POULTRY MANUAL**, a reliable guide to successful poultry culture in all of its branches. 25 cents.

**EGG MONEY**, how to increase it. 128 page book of valuable information about the production and marketing of eggs for profit. 25c. **POULTRY HOUSES**, coops and equipments, 100 pages of the newest plans and directions for building. 25 cents.

**CHICKS**, Hatching and Rearing. 25 cents.

**SIMPLE POULTRY REMEDIES**, a valuable little doctor book for the poultry yard. 25c.

ALL GOODS MAILED POSTPAID AT THESE PRICES

## WHITING'S PREMIUM OFFER

SEE OPPOSITE PAGE

Whiting Nursery Co., Yankton, S. D.

# Why Your Vines, Trees, Vegetables and Flowers Should Be Sprayed

---

Practical fruit growers and different State Experiment Stations have demonstrated that wherever proper spraying methods are applied—there you will always find the plants bearing healthy, **perfect** fruit. Not only is the **quantity** of the crop increased wonderfully, but the **individual fruit** is healthier, larger and more palatable. It is the little, almost invisible, biting, chewing and sucking insects combined with fungous troubles, that prevent the tree from thriving. Each year the conditions grow rapidly **worse** and there is no use in “waiting for a good year.” There won’t be any—because there **can’t** until the root of the trouble is destroyed.

This same principal applies to flower and vegetable gardens as well. **Spraying** is the only **sure** way to reclaim the crops and to get the best results. All new stock, fresh from the nursery should be sprayed **regularly** to prevent infection by any local insect or fungous disease while the plant is yet weak from transferring and re-planting. This is a certain way to secure healthy-bearing plants.

## FREE—“SPRAYING FOR PROFIT”

Should you wish to **study** this matter and find out what is the trouble with your plants and how to most easily and successfully overcome the trouble we will take pleasure in sending you, without charge, a copy of our 64 page, illustrated book, entitled “Spraying for Profit,” provided you send us the **names** of **three** people who might be interested in our nursery stock.

Purchase a good reliable spray pump—of sufficient size to do the work—and you will find the results to be amazing if you have never sprayed before. Not only will you gain **individual benefit** by keeping **your own** plants free from disease, but you will be contributing your share towards blotting from your community the various plant diseases and insects to which it is subject.

On the next page are shown a few of the well known **Deming Sprayers**. We handle and use these pumps and know them to be first class. Complete Spray Pump Catalogue and prices will be sent on request.

## FOR ALL SPRAYING OPERATIONS

Deming Sprayers have all brass parts, and range in size from the small, brass, bucket pump to the large 3½ H. P. Gasoline Engine Driven outfit. The Bordeaux Nozzle is a Deming Patent. Should you not find what you want on this next page, write for Complete Spray Pump Catalogue. It’s sure to be **there**. Automatic Paddle Agitators are furnished with every Deming Cart and Barrel Spray Pump. Useful also to spray your barn and chicken house.

---

# THE WHITING NURSERY CO.

YANKTON, SOUTH DAKOTA

---

Deming Sprayers are used and recommended by Whiting Nursery Co.



# DEMING SPRAYERS

For All Spraying Operations

Deming Sprayers have all brass working parts, and range in size from the small brass bucket pumps to the large 3 H. P. Gasoline Engine Driven outfit. The Bordeaux Nozzle is a Deming Patent. Should you not find what you want on this page write for Complete Spray Pump Catalog. It's sure to be there. Automatic Paddle Agitators are furnished with every Deming Cart and Barrel Spray Pump.



FIG. 689

The "Perfect Success" for Garden and Greenhouse

Price, \$3.85

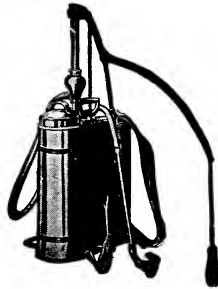


FIG. 675

The "Success" Knapsack for Garden and Vineyard

Price, \$13.50



FIG. 659

The "Success" for Garden, etc.

Price, \$3.50



FIG. 651

The "Gardeners' Choice" for Garden and Orchard

Price, \$15.50

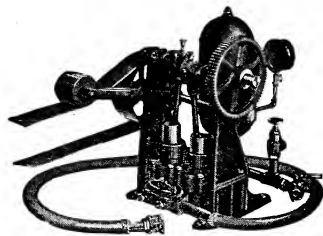


FIG. 761

For Operation by any Gasoline Engine

Price, \$250.00



FIG. 645

The "Century" for Orchard and Field. 12½ ft. Hose, no barrel

Price, \$13.15



FIG. 662

The "Universal Success" (Six Pumps in one) for Spraying, Whitewashing. Fire Protection, etc., etc.

Price, \$6.75



FIG. 632

The "Captain" medium price Orchard Sprayer. With 12½ ft. of hose, no barrel

Price, \$9.15

We keep a few on hand, and when not in stock pumps will be shipped direct from the factory at Salem, Ohio. Write for prices

**WHITING NURSERY COMPANY**  
YANKTON, SOUTH DAKOTA

# INDEX

	Page		Page
Bulbs, Flowering .....	31	Garden Plants—Rhubarb, Asparagus and	
Bleeding Heart .....	39	Horse Radish .....	15
Cannas .....	30	General remarks .....	6
Dahlias .....	39	Hints on handling Nursery stock .....	5
Golden Glow .....	40	Inspection Certificate .....	Inside first cover
Hollyhocks .....	40	Number of trees per acre .....	5
Iris .....	40	Orders .....	Inside first cover
Lichness .....	42	Order sheet .....	1-2
Lillies .....	41	Ornamental Climbing Vines .....	35
Phlox .....	42	Ornamental Shrub Department .....	31
Peonies .....	41	Almond—Flowering .....	34
Shasta Daisy .....	42	Barberries .....	32
Yucca .....	42	Dogwood .....	32
Distance Apart to Plant .....	5	Elder .....	32
Evergreen Department .....	27	Honeysuckle .....	31
Evergreens—Method of handling .....	30	Hydrangea .....	34
Evergreens—Planting .....	27	Lilacs .....	31
Evergreens—Price to burlap in earth .....	30	Snowball .....	33
Junipers .....	27	Spirea .....	31
Pines .....	28	Sumach .....	33
Spruces .....	29	Syrenga .....	33
Farm Books .....	45	Pruners .....	43
Forestry Department .....	16	Replacing Stock .....	4
Cuttings .....	18	Rose Department—	
Forest Seedlings .....	17	Roses—How to Grow .....	36
Hedge Seedlings .....	17	Roses—Climbers and Ramblers .....	38
Tree Seed .....	17	Creeping roses .....	37
Fruit Department .....	7	Hybrid Perpetual .....	36
Apples .....	7	June Roses .....	36
Apples—Crab .....	9	Moss Roses .....	37
Apples—Prices .....	9	Rose enemies .....	36
Blackberries .....	14	Selection of Nursery stock .....	6
Buffalo Berries .....	11	Shade and Ornamental Trees .....	19
Cherries .....	11	Shipping Instructions .....	4
Compass Cherry .....	11	Spraying Machines .....	47
Currants .....	13	Shipping Instructions .....	4
Gooseberries .....	13	Special Trial Offers .....	18-26-30-43-44
Grapes .....	12	Tree Protectors .....	43
Juneberries—Dwarf .....	12	Testimonials .....	3
Location of orchard and windbreaks .....	7	Weeping Trees .....	25
Pears .....	9	Weeder—Lang's Hand .....	43
Plums .....	10		
Plum Seedlings .....	11		
Raspberries .....	14		
Strawberries .....	14		
Wild or Sand Cherry .....	12		



A Block of Two Year Apple Trees on Our Grounds

## SPRAYING CALENDAR

	1st Application	2d Application	3d Application	4th Application
<b>APPLE</b> —For canker worm, codling moth, scab.	Spray before buds start, using copper sulphate solution.	After the blossoms have formed, but before they open. Bordeaux and Paris Green.	Within a week after blossoms have fallen. Bordeaux and Paris Green.	Ten to fourteen days later repeat.
<b>CHERRY</b> —For rot, aphid, curculio, and slug.  For red leaf or leaf spot on cherry.	Before buds start use copper sulphate solution. For aphid, kerosene emulsion. <b>Bordeaux</b>	When fruit has set. Bordeaux and Paris Green.  Just after petals fall, Bordeaux.	Ten to twelve days later, if signs of rot appear, repeat.  Two weeks later. Bordeaux.	Ten to twelve days later, copper sulphate solution, weak.  Repeat with Bordeaux every two weeks till August.
<b>CURRENT</b> — For worms, etc.	As soon as worms are seen, Paris Green.	If they reappear, repeat, adding Bordeaux for mildew.	If worms still trouble, use hellebore.	
<b>GOOSEBERRY</b> — For mildew, worms.	As leaves open. Bordeaux and Paris Green.	In ten to fourteen days repeat with both.	Ten to fourteen days later, sulphide of potassium.	Ten to fourteen days later, repeat, if necessary.
<b>PLUM</b> —Black knot, rot and all fungus diseases and curculio.	As buds start, copper sulphate solution. Cut out knot and burn.	When fruit has set. Bordeaux and Paris Green.	Ten to twelve days later, repeat.	Ten to twenty days later, Bordeaux.
<b>RASPBERRY and BLACKBERRY</b> — Anthracnose, rust.	Cut out badly diseased canes: spray with copper sulphate before growth starts.	When new canes are one foot high spray with Bordeaux mixture.	Ten to fourteen days later, weak sulphate solution.	When crop is gathered, remove old canes, thin new ones and spray with Bordeaux mixture.
<b>STRAWBERRY</b> — Rust.	Just before blossom opens, Bordeaux and Paris Green.	When fruit has set. Bordeaux or weak copper sulphate solution.	As soon as berries are harvested, Bordeaux, if to be kept longer.	

## FUNGICIDES

KEROSENE EMULSION	BORDEAUX MIXTURE	COPPER SULPHATE SOLUTION	PARIS GREEN & WATER
Kerosene coal oil.....2 Gals. Rain Water .....1 gal. Soap .....½ lb. To be diluted before use with nine parts of water, for sucking insects.	Copper Sulphate.....4 lbs. Quick Lime .....4 lbs. Paris Green for leaf eating insects.....4 ozs. Water, 1 bbl.....40-50 gals.	Copper Sulphate .....1 lb. Water .....25 gals. For use only before the buds open. It is ready for use as soon as dissolved in water.	Paris Green .....1 lb. Lime, fresh .....1 lb. Water .....200 gals. For insects which eat foliage.

Always strain ingredients used into the sprayer to avoid clogging sprayer

2 Acres of Dahlias  
in bloom on our grounds

WHITING NURSERY CO.  
YANKTON, SO. DAK.

