

## **Historic, Archive Document**

Do not assume content reflects current scientific knowledge, policies, or practices.



Bau

*621 #7  
Chickadee*

CATALOG OF  
**J. A. BAUER**  
**STRAWBERRY**  
**SPECIALIST**



**BUSINESS FOUNDED 1880**

Local and Long Distance Phones in Office, Residence and Packing House

**JUDSONIA, ARKANSAS**

---

## TO MY FRIENDS AND PATRONS, GREETINGS

Another year of life has passed away, and we again come before you with a new catalog asking for continuance of your business. To anyone whom this catalog may reach who has not given us business in the past, we wish to extend to you the invitation of becoming one of our customers. The growing of strawberry plants has been our life study; we have started at the bottom and built up the largest business of any plant grower in the Southwest. Of course, our patrons know how we have done this, but you, Mr. Fruit Grower, who has never used any of our plants, we wish to explain to you why. Our motto has always been, "To grow the very best plants that can be grown at a price that is fair and reasonable as could be made for first class stock." We always have been able to guarantee stock to be pure and true to name, unmixed, and to reach destination in good growing condition, and when they do not come in that style, we have always made same good. We have also always given good count; in fact, besides this, we put in an extra bunch with every thousand plants, or we intend to do so with every customer. We want our customers to get every plant paid for and a few more, and if you will read the list of testimonials in the back of this catalog, you will see that we have succeeded in pleasing hundreds and hundreds the United States over. Some of these men have used as much as a million of our plants, and still they come to buy our plants again. I have worked in this business until I have become an expert naming varieties. I can go into any man's field and tell him what varieties he has by looking at the plant. I have demonstrated this fact this summer in a place three hundred miles from my own farm. There were men in the bunch who did not believe I could tell, but when I went into the field with the owner and several others, I told the owner not to tell me the varieties, and see if I could not name over each as I came to them, and in seven varieties in the field I named each variety as he had it planted.

Of course, in any line of business to make success it must be studied, and the man who does not study his business cannot make a success this day and time. I feel that my patrons should have the best and worth of their money in every respect, and I feel that by knowing each variety as I do I am in a position to serve them better than if I did not know them. This past summer has been very trying on berry plants. From the middle of May until the 3d of August we did not have rain enough to make one good season, but since the 3d of August on we have had plenty of rain, and while the plant crop will not be in any way near as large as in the past through the country, yet in my field I will have one of the finest stocks ever grown, not in number of plants, but in large strong plants. I will have around 10,000,000 or more plants this season; would have had 15,000,000 with a fair season, but 10,000,000 plants is quite a good many, and I believe I will have plants to furnish my customers, but the way my business has grown in the past five or six years it will require 10,000,000 to furnish them. Now, if you have never tried any of my nardy Southern grown plants, I wish to say now is the time to get in on the ground floor and get results. I can furnish them at a price that is right, and, of course, can furnish plants that will furnish three times as much fruit as the ordinary plant. I can put my plants up against any plants grown in North, South, East or West, pedigreed or unpedigreed, and will say that they are far better than two-thirds of the plants you will buy over the country. I can assure you of that. There are many so-called plant growers in the country that use the plant business as a side issue; they sell a few plants and depend on the berry crop for money; they dig small alley plants and ship to you, and then pick fruit. We make the plants our business, and do not depend on the berry crop, for I have no berries to amount to anything at all. After shipping my plants, of course, I pick the fruit off of the plants I have left. With me it is berry plants first, and I dig up the whole row, giving you good, strong, healthy plants.

If you will read through this catalog the description of how I grow them with success you will decide to give me your order, and I certainly will see that you are treated right, and that you get a square deal in every respect, and you will never regret placing your order with me. Now, thanking my old patrons for their many past favors and the many good words they have spoken for me, and assuring one and all it will always be my aim to furnish the best stock that can be produced, and hoping to hear from you all again this year, I am,

Yours for business,

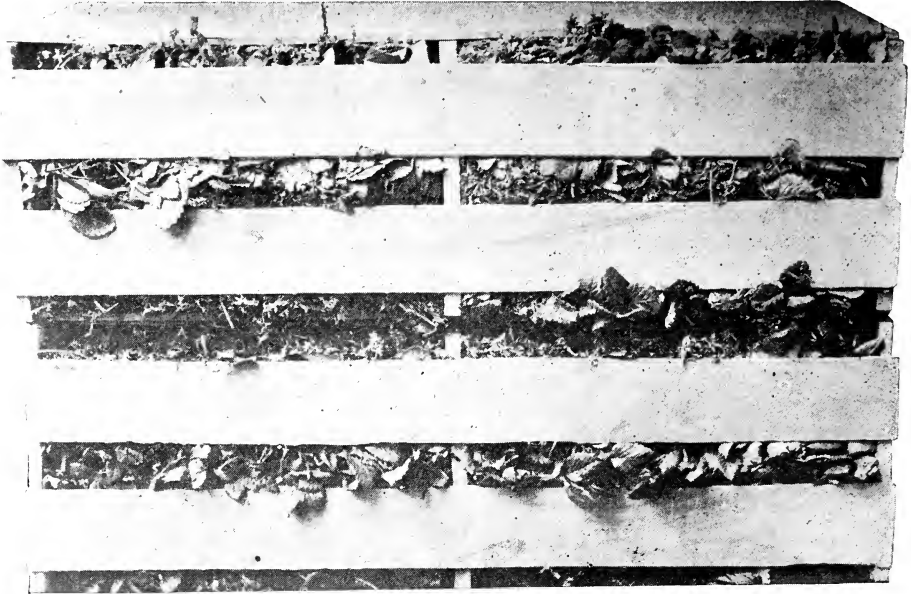
**J. A. BAUER.**

---





I am yours truly,  
J. A. BAUER.



Two crates of plants—1,000 in each crate—as we pack them.

## Introductory

**JUDSONIA AND WHERE LOCATED.** Judsonia is located 53 miles northwest of Little Rock, on the main line of St. L. I. M. & S. R. R., and at Judsonia we grow more strawberries than any town in the Southwest, and so far as we know, any town in the United States. In the year 1912 we shipped away from this place alone 341 carloads, besides many cars went out by express in a small way. The country around Judsonia is adapted to the growing of strawberries; that is, if anyone will give them the proper attention. I know that I grow the best line of plants that has ever been offered through any section of the United States, and all it would take to convince you would be to give them a trial.

**OUR PLANTS AS WE GROW THEM.** This year we have in the largest acreage of berry plants we have ever grown. Most of these plants are grown on new land, or practically new land; in fact, we have only one acre of plants that is on land that has been cleared over six years, and this land we have berries on that has been cleared over six years, has been built up by growing whippoorwill peas on it, and the land is just as good as when first cleared. In digging our plants we dig up the whole row; you get big, strong, healthy plants; and right here I wish to say that I make them healthy and strong by using 500 pounds of bone-meal to the acre when we set them out. Not being satisfied with this, about three weeks ago we placed 300 pounds more to the acre as a dressing. This cost us about \$14.00 per acre to fertilize these strawberries in this way, but we are trying to grow the best plants that can be grown, and to do this you must have your land in the highest state of cultivation. I am satisfied that we will ship out some of the finest plants



Our packing house. We are now building an addition which makes it twice as large as this.

this year that has ever been sold. We grow and sell more Klondike and Aroma than any other five varieties we grow. These are the two principal varieties grown in the South and Southwest; that is, by associations. We sometimes sell these varieties in million lots. We now have on file an inquiry wanting (5,000,000) five million Klondike for this spring setting, and will say right here if you want either of these varieties in large lots send us your list, and we will make you best prices we possibly can on large quantities.

**AS TO HOW WE PACK OUR PLANTS.** Most of our plants are packed in crates containing from one to two thousand plants to the crate, but we ship a great many in baskets during the cool fall and winter months, as they go through in good shape, and the express is much lighter than in crates. I guarantee these plants to reach you in good condition by express or parcel-post, if taken out of express office at once. If for any reason they reach you in bad condition, I ask that you get your express agent to make note on express receipt, "Bad shape when received."

**GUARANTEE AS TO PURITY OF STOCK.** We try our best to keep our stock true to name and unmixed, and we believe we make as good success in doing so as any grower in the United States, and if you buy any berry plants from us that prove not true to name or mixed with other varieties, on proof we will furnish you true plants to the amount of the ones not true free of charge, but in no instance will we be liable for more than amount so agreed.

nurseryman in the state, and by the middle of September we expect to build an addition to it, making it the largest of any grower in the state. We expect to fix it up in modern way in every respect. Will have acetylene lights and will have it

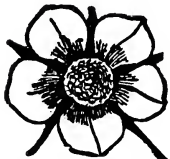
**OUR PACKING HOUSE.** We have one of the largest packing houses of any





fixed so we can pack plants at night as well as in day time. We will have stalls in the packing house with the name of each variety over the stall, and when plants are brought in they will be put in the stall bearing their name, and there will be no chance of getting them mixed, as each variety will be dug and put in the stall before another variety is started on. Therefore we think we are in a position to guarantee our plants pure and true to name, for we are prepared to keep them that way.

**AMOUNT OF MOSS WE USE IN A SEASON.** We have placed an order for a furniture carload of moss. This car is to contain 800 bales. It will require this amount of moss to pack plants we will ship this coming season, and probably more. This moss comes in bales like hay, and after we receive it we wet it well and tear it to pieces with our hands, making it all fine so it can be scattered between plants when packing, and this is then put in a large bin and allowed to take rains when they fall, so it will always be moist and ready for use. This kind of moss we use stays moist longer than any moss we have ever used. You can take a bunch when wet and throw it on the ground, and three weeks after you can turn this moss and it will be damp on the other side—this is in warm weather. We do not try to save money when it comes to buying moss to pack our plants.



Imperfect Bloom



Proper Setting



Perfect Bloom

**NUMBER OF PLANTS TO SET AN ACRE.** Below you will find the number of plants it will require to set an acre at different distances. This is for planting the single hedge row system, which system we use. In California and parts of Texas they plant in the double hedge system, and, of course, where they plant this way, people know how to set the plants; but will say right here it requires twice as many plants to set in the double hedge rows as it does in the single.

## Number of Plants to Acre to Set, and Different Widths

24 x 12 inches apart, 21,780	42 x 24 inches apart, 6,225.
24 x 24 inches apart, 10,890	48 x 12 inches apart, 10,890
36 x 12 inches apart, 14,520	48 x 18 inches apart, 7,260
36 x 24 inches apart, 7,260	48 x 24 inches apart, 5,445
36 x 30 inches apart, 5,800	48 x 30 inches apart, 4,400
36 x 36 inches apart, 4,840	48 x 36 inches apart, 3,630

This is for all plantings to be on the single hedge row system.

J. A. BAUER  
STRAWBERRY



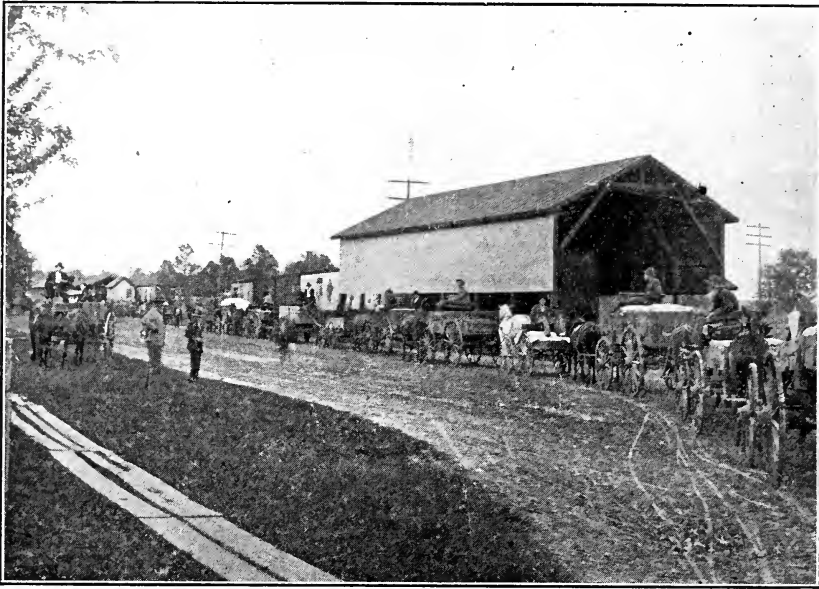
JUDSONIA, ARK.  
SPECIALIST



Express shipment ready for the train. We shipped three to four loads per day last spring for over six weeks.

**THE BEST WAY TO SHIP STRAWBERRY PLANTS.** We advise the shipping of strawberry plants by express, if wanted in large quantities, or quantities above at least 100 plants of different varieties, as it is the most safe way they can be packed and shipped, and besides we guarantee to get them to you in good condition in this way. We get 20 per cent off from regular merchandise rate. If you would have to pay the rate of \$3.00 per hundred on merchandise, we have to pay \$2.40 on plants the same distance. We are placing in our catalog a table of rates to different stations in the United States. You can probably come near locating your rate by this table, as you may be near one of these towns. If not, you can go to your express agent and get him to tell you the merchandise rate from your station to Judsonia, then deduct 20 per cent, and you will have the express rate you will have to pay on plants per hundred. We will have several towns from each state in our list with the exact plant rate attached.

**HOW WE GROW STRAWBERRIES.** This book may reach the hands of someone who has never had experience in growing strawberries. I wish to say that many think it a hard job to grow strawberries with success, but I have not found it this way, for it is with strawberries as with other crops—you need not set them out and let the weeds and grass grow up in them, not hoe and plow them, and then expect a crop the coming season, for you will be disappointed. Work is what it takes to make strawberries and big crops of them. This year I have worked my strawberries more than I have ever done before, but by so doing I have a better



Loading berries at Judsonia—341 cars shipped in 1912 alone.

stand than 99 per cent of the growers in the country, but of course it comes from my keeping everlastingly at it, and keeping the crust broken. I will tell you how I prepare my ground and how I set and work strawberries. While, of course, this may not work in your section if you live in the North, for growers in the North will have to prepare land in a different way from this. First, if I had new land—I had rather have new land for strawberries, clear and cut stumps out well, and after doing this, grub up small roots. Now, I would take my two-horse breaking plow in October or November, would take and break this land good and deep. I would then let it lay until it had taken four or five good freezes, and would then put my harrow on it and tear it up good, and let it freeze again. This would have a tendency to kill all white grub eggs in the soil. When early spring rolls around I would take my two-horse plow again and break this land crosswise; this is one of the main things—to get it broke up good; after this I would take a harrow and harrow both ways. I would then take a two-horse hay rake and rake the loose roots around over the field into piles and burn them. After doing this I would give it another good harrowing. Next I would get my plow and make my rows (single shovel plow). I make my rows three and one-half feet apart. Try to get them good and deep, and after making the rows I would put from three to four hundred pounds of bone-meal in the drill where I intended to set plants, after which I would take a one-horse turning plow and throw two furrows on this, one from each side of the row; then I would take a light (14) fourteen-tooth harrow and harrow down the ridge; then you are ready for setting plants. You may use a trowel or dibble, as I show in catalog, and you can set with success from three to five thousand plants per day in land that is well prepared. If you have not got new land, and wish to use old land, I would go about breaking land in the same way, but I would use heavier application of bone-meal than in the new land. After you have set out your plants about one week or ten days I would go over them with small harrow, the one I used





**I grow Whippoorwill peas on my land to build up and make it so I can grow big, strong plants.**

in harrowing ridges, and break crust in middles and keep it well side harrowed as the season advances. As the grass and weeds come I would take a hoe and keep them cleaned out and would continue this during the summer, and as the season advanced I would take a small plow and work them, but the only time I would use large plow would be in September. I then take a single shovel with a sweep and break out middles so they will have a water furrow, but in the summer season I work on the level, and I have always found this the best method when we have dry seasons like we have had the last two years. Keep drill well worked and hoe until September, and then if you will go through them, get out all the grass and weeds, you may then lay them by; you will not be troubled with grass and weeds any more during the season. This is my method for working first season, only I did not tell you how I set my plants. I set them from sixteen to eighteen inches in the row, using from 7,500 to 8,000 plants to the acre, using nothing but big, strong, healthy plants, as you can't expect to grow a good berry crop from weak plants. This is the way I would work berries the second year. After my berries are picked I would go through middle with single shovel plow breaking out the middle. I would then take turning plow and borrow off rows leaving them eight or ten inches wide; then I would take hoe, chop out plants, leaving them six or eight inches in the row; then I would take single shovel plow—same one used to break middles and dirt this up. What I mean by dirt is plowing next to berries and in same furrow where you harrowed them off, and by doing this the plants will grow so that you will not be able to tell whether it is young set patch or old one. After doing this I would work berries through the season same as the first year, hoeing and plowing as needed, keeping the grass and weeds out by hoeing them, and in fall lay them by just the same as the first year.





**DIFFERENT METHODS OF PLANTING STRAWBERRIES.** There are many different ways of planting and working strawberries. There is one way known as the single hedge system, which is the method I have given you, and there is a double hedge system used in the extreme Southwest and in California. I would advise all that have never tried other methods to plant in the single hedge row, as I believe it is the most successful way berries can be planted and worked. I believe by anyone following above advice on how to work and grow strawberries you can grow them with success, and if there are other points anyone wants to know, I would be glad to answer questions any time I have time; but, of course, during my busy shipping months I would not be able to give any time to your questions, but during my leisure months through the winter and a short time in the summer I will be able to answer any questions you may want to know, and hold myself in readiness to so do on request.

**IT ALWAYS PAYS TO PLANT GOOD PLANTS.** It may be possible you will receive catalogs besides mine, among them glowing things about the fine plants they have to offer, with a price ridiculously low, and you know as well as I do that at the high cost of living in this day and time that we are unable to grow and sell anything worth anything unless the price is much higher than in former years. Therefore I say to you now, do not be misled by some of these fakes that come along and ask for your business, just for the mere question of cheapness; they are the ones that will sell anything just to get the money; they do not figure on your business only for one year, and another year catch more suckers. We have this class of growers; they are in every line of business—mercantile business and every line—and you will find the man offering something for nothing, and just as sure as you find the man that buys this, you will find the man that suffers. So a word to the wise is sufficient. Pay a reasonable price and get plants guaranteed to be pure and true to name, guaranteed to reach you in good condition, and guaranteed to come from the best that can be raised. This is the kind of plants I offer; not just as good as someone else's, but the best you can find in the United States. The testimonials in my catalog will prove this without a doubt. I have hundreds of them besides these, and I know these men would not write and tell me this if it was not true. So with these words I leave it with you, hoping you will not buy from the Cheap John's, and do not be persuaded into buying cheap stuff.

---

Sheridan, Ark., Nov. 20, 1913.

J. A. Bauer, Judsonia, Ark.

Dear Sir: Your strawberry plants received in good order and wish to thank you for your prompt delivery of this order. Yours truly, F. K. M.

Macon, Ga., May 2, 1911.

J. A. Bauer, Judsonia, Ark.

Dear Sir: Received the 10,000 plants today—they look fine. Will advise you when to ship more.

Yours truly, H. F. L.

Corder, Mo., Nov. 6, 1913.

J. A. Bauer, Judsonia, Ark.

Dear Sir: Plants arrived all right and are very fine. Every one who sees them say they are the best they ever saw. Yours truly, H. L. C.

Ricardo, Tex., Nov. 2, 1913.

J. A. Bauer, Judsonia, Ark.

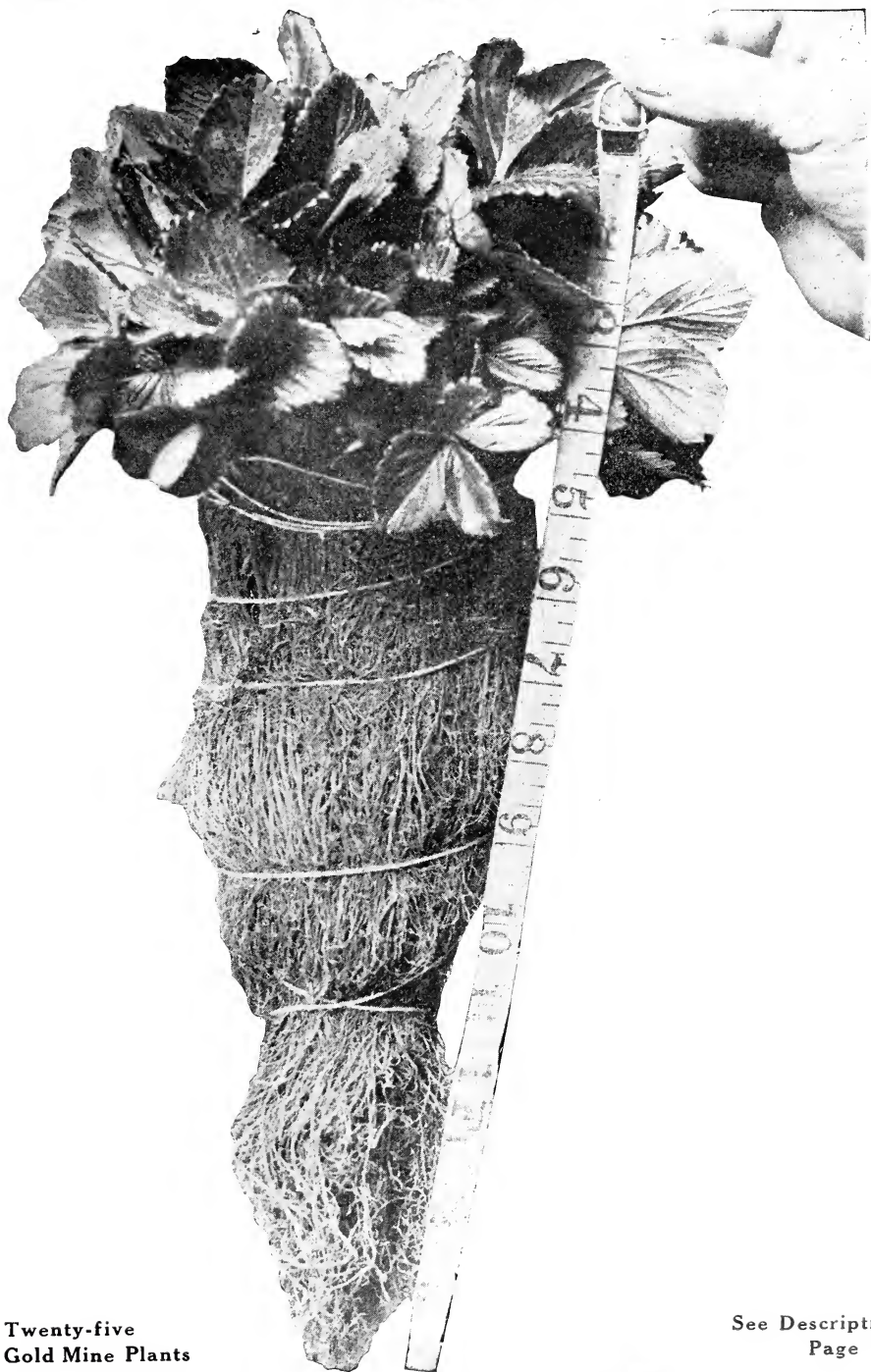
Dear Sir: Plants arrived in good shape, am well pleased with them.

Yours truly, C. P. H.

J. A. BAUER  
STRAWBERRY



JUDSONIA, ARK.  
SPECIALIST



Twenty-five  
Gold Mine Plants

See Description  
Page 13.

No better berry can be grown for second early than Gold Mine. Originated by me,  
Page Nine



## Description of Varieties



A Bauer plant of high fruiting quality. Ready for setting. Also the trowel we use for setting plants.

**DESCRIPTIONS OF VARIETIES.** In describing varieties I do so as each variety has done on my own farm, and while my description might not tally with some other grower's description, it will be because of the different locality and weather conditions.

**PROGRESSIVE PER.** One of the very best ever-bearing sorts we think that is out; in fact, this one and the Superb are the only ones we have found that fruits in the Southwest at all. All others fail to make good in any way. I have tested this variety with the Superb now, two or three years, and find them one of the best grown; in fact, as I said, they are the two best for the West or for the Southwest. This variety makes plenty of plants, and they grow off healthy and strong,





**The Aroma makes big crops of fine fruit.**

and don't show in the early season that they are of the ever-bearing type. This variety, while it bears a good crop all summer up to frost, will make a big yield in the spring season as well. Now, don't expect a big bumper crop out of season, as no berry will make it; they will have from one to two berries per vine on them from July 15th to frost each day if weather conditions are not dry; if they get burned out like they did awhile this summer, you can't expect fruit at once again after such a long drouth, but I had nice fruit in July, up to August 1st, with lots and lots of blooms, but the hot, long dry spell cut them off. Now they are coming again with a big crop of green fruit and blooms which will go fine this fall. These two varieties are here to stay. They will bear fruit all season, and you should be sure to try some of them in your order. I have spent over \$300 on testing out fall bearing sorts, and since I got these two kinds, feel as if I now have my money's worth at last. Berry is good color and is firm, and they have a good flavor. Don't fail to try some of each of these two sorts, as you'll not make any mistake.

**SUPERB. PER.** This berry is every bit as good as Progressive, if not better. I find them a fine, strong, dark green plant, and the berry is well colored, and in all they are fine. If you want fruit in the fall, be sure to try these two sorts. I have around 150,000 of them, and if you wish plants better hurry, as this small stock will not last with my large list of customers. Better try at least 1,000 of them, and be safe for a money crop.

J. A. BAUER  
STRAWBERRY

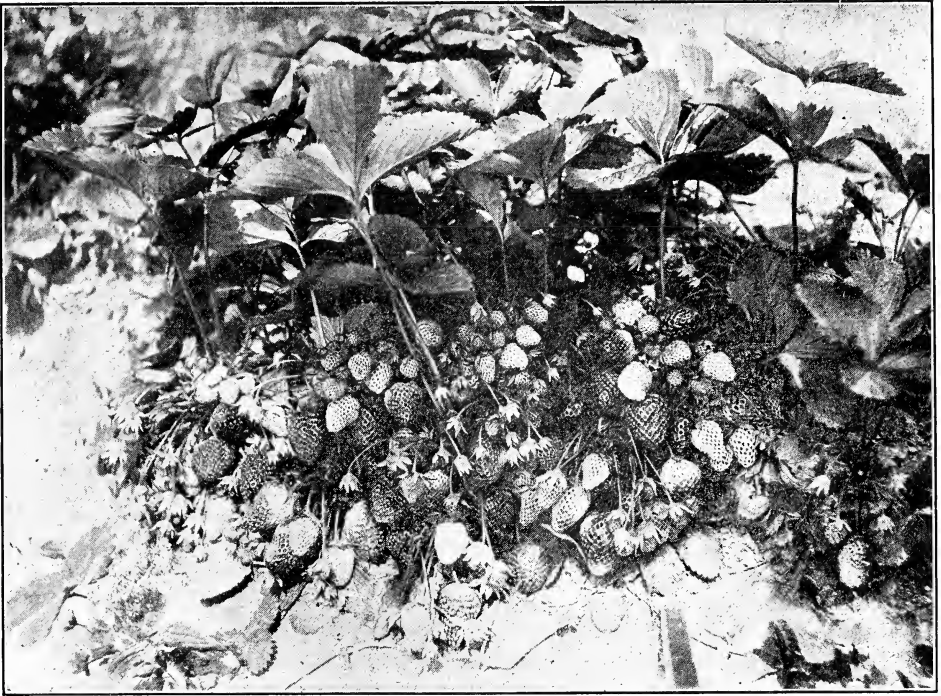


JUDSONIA, ARK.  
SPECIALIST



This is a bunch of improved Klondike. They make larger plants than the old Klondike.  
Page Twelve





**There is no berry more prolific than the Mellic. Try them. Imperfect.**

Several of the Eastern growers claim a man can make \$1,000 per acre from the fruit off of these two varieties, but I think this is overdoing the yield, and don't think they believe this at all. If they did they would not have any plants for sale at all, but would grow all for fruit; but it would not be hard to make \$500 profits from them, as you have the spring crop, and then all the summer and fall crop besides; and right now I want to say that if you want any of these plants, better order early, for I have thousands and thousands of customers who will order at once, when they get catalog, and if they do, it will take about all of these plants. As for price, will say that the price never will be low, as the demand is so great it never has been supplied, and I don't think ever will be, not for several years at least. I expect to place my prices as low as they can be made, and hope to have your order.

**GOLD MINE. PER.** This is my latest new berry. Just sent it out last spring. Never sold one plant to any nurserymen. Sold them to my patrons direct, so they could get them first of all, and will say that on most new berries the prices run most times around \$50 per 1,000 the first two years, but we cut this high price out. We sold them right last year, and will continue to do so this year again. This berry is truly a hummer; the best berry I had on my farm for long distance shipping. It is as large as St. Louis, ships well, good color, fine, big, strong plants; will make plants freely; no rust in sight on them at any time. They are what we call a mid-season berry, coming on with the Klondike, and I have had them grade



A bunch of progressive plants. None better grown.

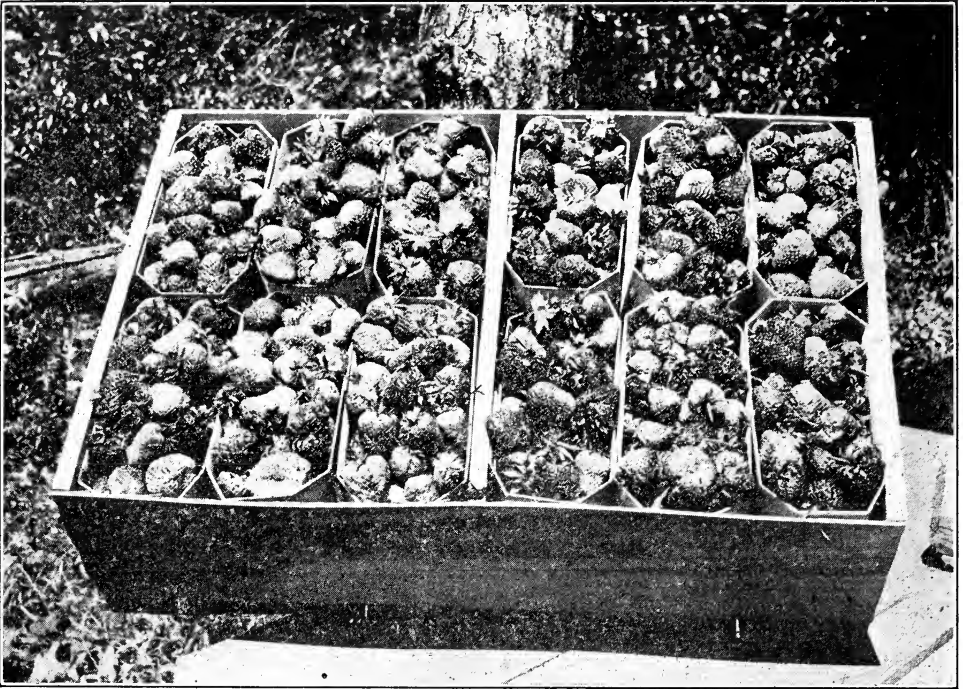




**Improved Klondike makes big crops. Don't fail to plant of them.**

with the Aroma several times. They will sell well, carry well and ship well, and in all no better berry will be found anywhere than the Gold Mine. My pickers this year said I picked more berries from my Gold Mine and St. Louis than from any other two kinds in my field, and that means something, for I have all the best kinds out. I won't have much over 50,000 plants of this variety to offer this season, so hurry in your order before it is too late.

**ST. LOUIS. PER.** The berry of all berries for early home markets and nearby markets. They will carry well for 150 miles. No good for long distance shipment at all. This berry has grown so in popularity that I haven't ever grown enough plants to supply the demand for them. Read what many say of them in the several pages of testimonials, in back part of catalog. Many won't have any other than the St. Louis, and many make marvelous yields and sell them for prices three and four times higher than other kinds sell at. I originated this grand berry, as well as the Gold Mine, and many others, and I am proud of these two kinds, the Gold Mine for a long shipper and the St. Louis for home markets and nearby towns. You'll never regret the day you plant St. Louis. I sold one man last year enough to set five acres of them in one block; he said his market demanded no other sort but them, and they outsold the others two to one, so all you want is a good price for your berries, and if you grow St. Louis, you'll get it. This berry makes very large, strong, well-rooted plants, in fact none are better rooted than they. This variety out-yields about any variety I have ever seen fruit, none excepted, early or



A crate of berries grown from plants we sold.

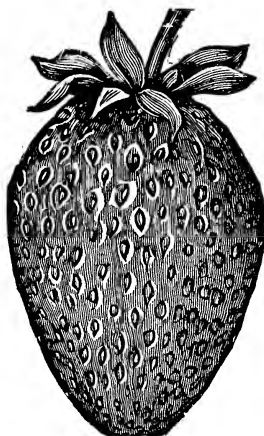
late. They will yield 400 crates per acre on fair land; on strong land they will yield 500 crates per acre and do it easy, and if you'll sell all the berries they make you will make the biggest crop and the biggest haul off of berries you ever made. This berry is of the finest flavor and is one of the very best to eat out of hand. Don't fail to give them a trial if you haven't already done so, and be one of the many hundreds who say they are of the very best grown. Season is just a few days after Excelsior, the earliest berry grown; sometimes they ripen with Excelsior, to the day.

**EVENING STAR. PER.** This is the best late berry grown today North, Southeast or West. I'll place it beside any of them and I have always found them much better than any other late berry. Read what many of my patrons say of them in their letters, and if you want the best late berry grown today, plant them. This variety makes big, strong plants and they stand the drouth well, better in fact than any other late berry I have ever grown. The berry is large to very large, of fine color, and it is a fine shipper. They are as large as Gandy or Aroma, and will sell for as much on any market. Big demand for them always; don't fail to plant them if you want the very best. I have grown Evening Star, berries that 10 berries would fill a quart well rounded, and they will ship to any market North, Southeast or West. I am with this berry as I am the St. Louis berry, they are my pets, as I cannot supply the demand for fruit or plants, on each of them,





Early Ozark.

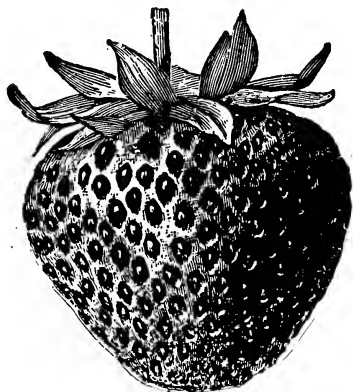


Mellie.

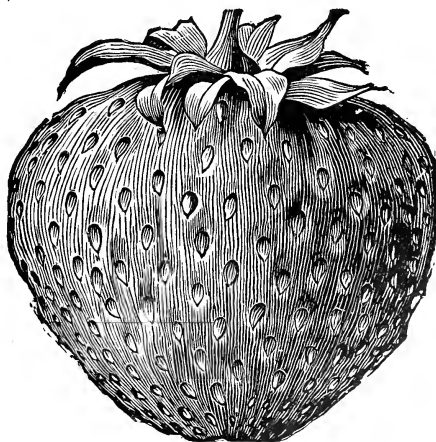
and don't expect to do so this year as well as in the past. Don't put off planting them, but get it in this order today if you want the best going. This berry is as late as the Gandy, and sometimes holds on longer than them.

When you plant our plants of quality, half of your battle is over, as you can't expect big crops of fruit from any kind but first-class plants.

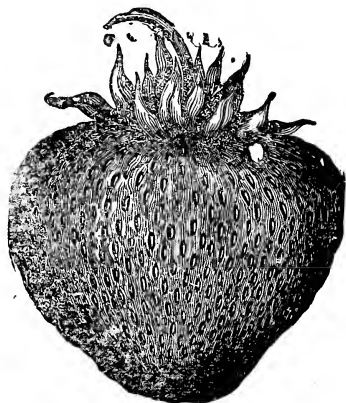
**EARLY OZARK. PER.** This variety for a few years seemed to fill a long felt want, but they are not as popular as when they first came out. The plant is as large as most any plant grows and they make large, healthy growth. The fruit is dark red in color; it is not the firmest berry with us, about what you would call medium firm. There is a big demand for the plants every year, but the Gold Mine will outshine it two to one when better known, and it is of the same season. I have a big stock of plants of this variety and hope I can fill the orders that come for them and that I will not have to send orders back, as I have had to do in the past.



Missionary.



Klondike.



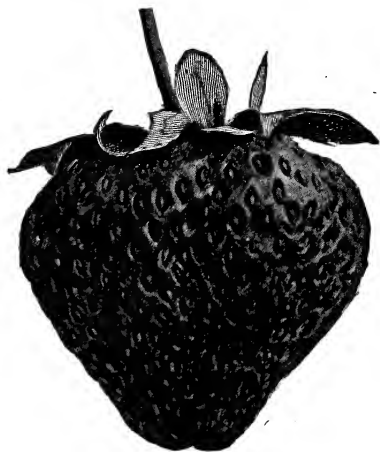
Gandy.



Evening Star.

**GANDY. PER.** In the Gandy we have an old standard variety, one that is well known the United States over. This berry is largely planted in the North and they make a success with them. I furnished them the past two years in 100,000 lots all over the world. I will have around 300,000 of them this season and hope to have your orders for them. Berry is large to very large, of good color, firm and a good shipper. Plant is a good grower and they are free from rust. Season is one of the very latest.

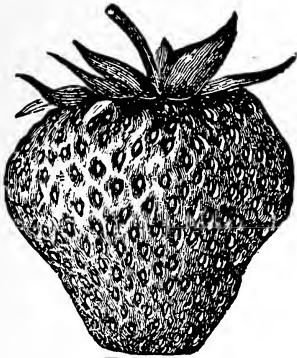
**SAMPLE. IMP.** This is another old variety, one that is planted all over the North, not much good in the South. I will not have a large stock of them for they died out very bad during the drouth in the early spring. What plants I have will be large and strong.



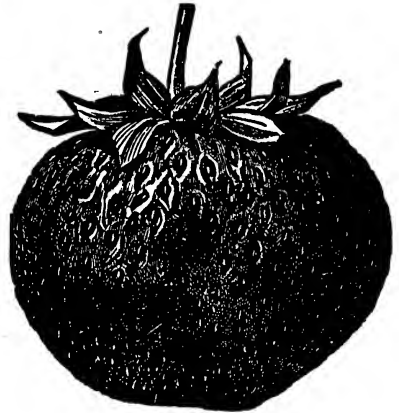
Climax.



Bubach.



Thompson.



Brandywine.

**STEPHEN'S LATE CHAMPION. PER.** I have a small stock of this variety which will be large, strong plants. Season late, with Gandy.

**CLIMAX. PER.** A good all around second early berry and one that is planted by many. They are very productive, good color and firm.

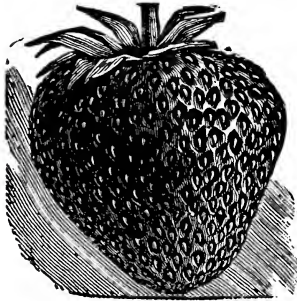
**THOMPSON. PER.** In this variety we have one that has stood many storms. It has been with us for a number of years, but is still with the front rank. This variety makes lots of good, strong plants, and they stand dry weather fine, in fact better than two-thirds of varieties grown. I think them a good berry for any one in the Southwest or South. Plants make a very good growth, berry is medium sized and firm with fine color. I have a good stock of them which I will be able to ship to my patrons. Season is second early.

**MELLIE. IMP.** A fairly new berry of note. It is a very productive berry, one that is as fine for shipping as any berry grown. Season is mid-season. Plants make freely and they have dark green foliage. Berries are of medium size, very productive, of dark red color, and very firm. In all I consider it a hummer. Don't fail to try some of them; they will stand the dry, hot summers fine, better than two-thirds of the varieties. I will not have so many plants of them so you had better hurry your order.

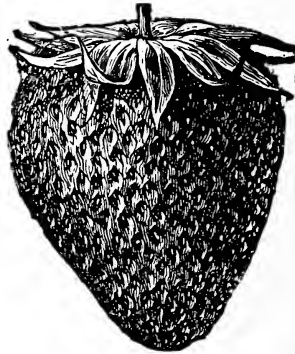
**BEEDERWOOD. PER.** An old standard variety for growers in the North. They make a good many strong, healthy plants and yield good crops of dark colored fruit. I think they are one of the best for the North and Northwest, in fact, they do well in this section, but not as well as a few of the other varieties grown here by all. Season is what we call second early.

**EXCELSIOR. PER.** In this variety we have the earliest berry grown, no question of that. They ripen a few days earlier than the St. Louis, just one or two years has St. Louis been as early as they, but they slipped up in the Excelsior once or twice in the past ten years. This variety will bloom during winter months in the South and out of the blooms some few will pull through the cold and ripen, which makes them the earliest berry on deck. Don't fail to plant some of them for your early table use. Berry is dark color and they are very firm. I have a nice stock of this variety and can fill in large orders and on large orders can make special prices.





**Bederwood.**



**Warfield.**

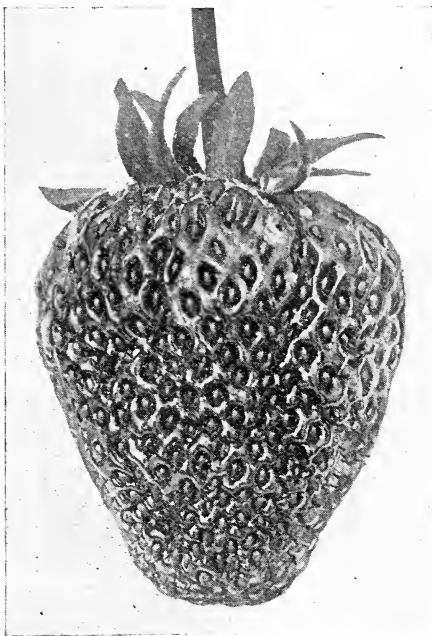
**CLARK'S SEEDLING. PER.** Here is a berry that comes from Oregon, and one that they stand by up there, but with me I would not give you 15c for it, as it will not stand hard drouths like we have at all. Out of 3,000 plants I set of this kind over 2,000 of them died after they had made young plants and had rooted. They just won't stand our hot summers. I guess from all accounts they do well in the Northwest. I haven't a very big stock of them, but they are good, large plants what I have. Season is among the mid-season varieties, from my reports; haven't fruited them myself.

**KLONDIKE. PER.** The business mid-season berry, one that is called for by millions of housewives. I grow this variety each year by the millions and I sell millions of them. I am in position this year to furnish each and every customer with just what he wants in this variety of as fine plants as he can get anywhere at any price. I have grown these plants with the greatest care. I haven't one plant but Klondike in my large field of them and I shall be glad to supply your wants in them. This berry is for the South and Southwest, no good North, so you'll take notice of this fact. There are more carloads of this berry reaching the Northern market than all other kinds of berries combined. The berry is firm, the plant stands hot weather fine, and it will pull through where others will die. Don't fail to plant the Klondike for the mid-season business berry.

**IMPROVED KLONDIKE. PER.** This variety came into this section from Tennessee a few years back, and we have found them a better bearer than the old Klondike. They look so much like the other one that you can hardly tell one from the other, in fact, it takes a specialist to do so every time, but they are different at best. This variety is more productive than the old Klondike, they also make a larger plant than the old Klondike, and in all I would grow this kind altogether if I just grew for fruit. I can furnish them in any amount wanted. Season is with the other Klondike, mid-season.

**DUNLAP. PER.** An old standby in the North, one that there is large calls for each year. We can furnish them in 100,000 lots. We want your orders. Season is mid-season to late. Berry dark colored, rather soft, but very productive.

**MISSIONARY. PER.** A new variety which does well in Florida and other Southern states. With me this year it made a complete failure, notwithstanding



**Aroma.**  
Enlarged One-half.

it had done fine before this spring. Berry is good color, firm and a good plant maker on average years, but this year they died very bad. Season is with the Klondike.

**HELEN DAVIS. PER.** A berry originated in the North; haven't fruited them yet, but it comes well recommended in every respect. I like the way they grow, no rust spots on the plants. I believe they are going to make a good berry in the Southwest. I will have around 50,000 of this variety, all big strong plants, and can fill your order.

**MICHEL, EARLY. PER.** An old standard and a variety originated at this place by Geo. Michel some twenty years ago, the first real berry sent out and a fine eating berry. Owing to softness they will not carry far, but for nearby markets and for home markets they are the best out. They ripen right with the St. Louis, or a few days later than Excelsior, which makes the second early. Plants make freely and they grow quick. I have around 100,000 plants of them only, so you had better get your order in early.

**BUBACH. IMP.** Here we have a good old standby, a berry that will yield some of the largest yields of any grown, the only thing that is against this grand old berry is it being rather soft for long distance shipment. The plants are of good color and they are large, strong plants, berries are large to very large. You'll make a mistake if you don't plant some of this grand old berry. Mid-season in ripening, continuing up to late.





A field of Klondike in bloom. This variety is grown largely in the South and Southwest by the large associations.

**AROMA. PER.** The business late berry of today. I have never yet found a late berry in such great demand. While I like the Evening Star better than this variety, yet I get more calls or sell more of these than I do the latter by four times. I sold over two million plants of them last spring and could have sold another million if I had had them. The word Aroma in strawberries is just like Elberta in peaches, the names sell them on any market. I have a big stock of them this year and will be able to sell in any amounts wanted; no order too large, we can handle it with the best of results. I want your orders. We'll give you big, strong plants, and if you want a big lot I ask that you write for special prices; we can make them to you on large lots. Don't fail to plant this variety if you wish to grow late berries to ship in car lots, as they are the one grown for the large markets on a large scale.

**PARKER EARLE. PER.** This berry is grown more in the hill country than any other variety grown. They stand the drouths well and make big crops, and if you want a good variety for hill growing this is the one. They do best in the extreme Southwest. I have a very good stock of them and will be able to furnish you fine, strong plants of them. Season is first late, about with Aroma, or ten days earlier than Gandy. Try them.

**WARFIELD. IMP.** An old variety, one that is grown largely in the Ozarks and one that we have never found a profitable berry to grow for a crop in this section. They make fine berries all right, but we have others that do better than they do. Plants make freely and berries are medium in size, very productive, but a



A corner of our Klondike fields. We have millions of them.

good shipper. Plant Dunlap with them to pollenize them.

There is no fruit which equals strawberries as a money-maker in a commercial plantation. They can be grown with success in every one of the United States. They thrive on a great variety of soils, and their ease of culture make them splendidly adapted to door yard planting. There is no farm home which cannot well afford a generous planting of strawberries for home use, and their commercial culture would afford a good income on many farms where the returns from other crops are small. Some strawberry growers have made as high as \$1,000.00 an acre from strawberries. Near every large city and fair sized town there are splendid opportunities for more people to engage in growing strawberries for market. Consumers never get tired of strawberries.

**BRANDYWINE. PER.** A berry that does well in Southern California and some sections in the North. We have grown them with success here years ago for fruit, but at this time we have several others that take their place as good fruiters in same season. Plants are large to very large, berry is of good color and firm, a good shipper, very firm. Season is first late. I haven't over 75,000 of them this year to offer.

Claremore, Okla., Nov. 11, 1914.

J. A. Bauer, Judsonia, Ark.

Dear Sir: Plants arrived and will say they are very fine; in fact, as fine as I have ever received.

Yours truly,

M. G. B.

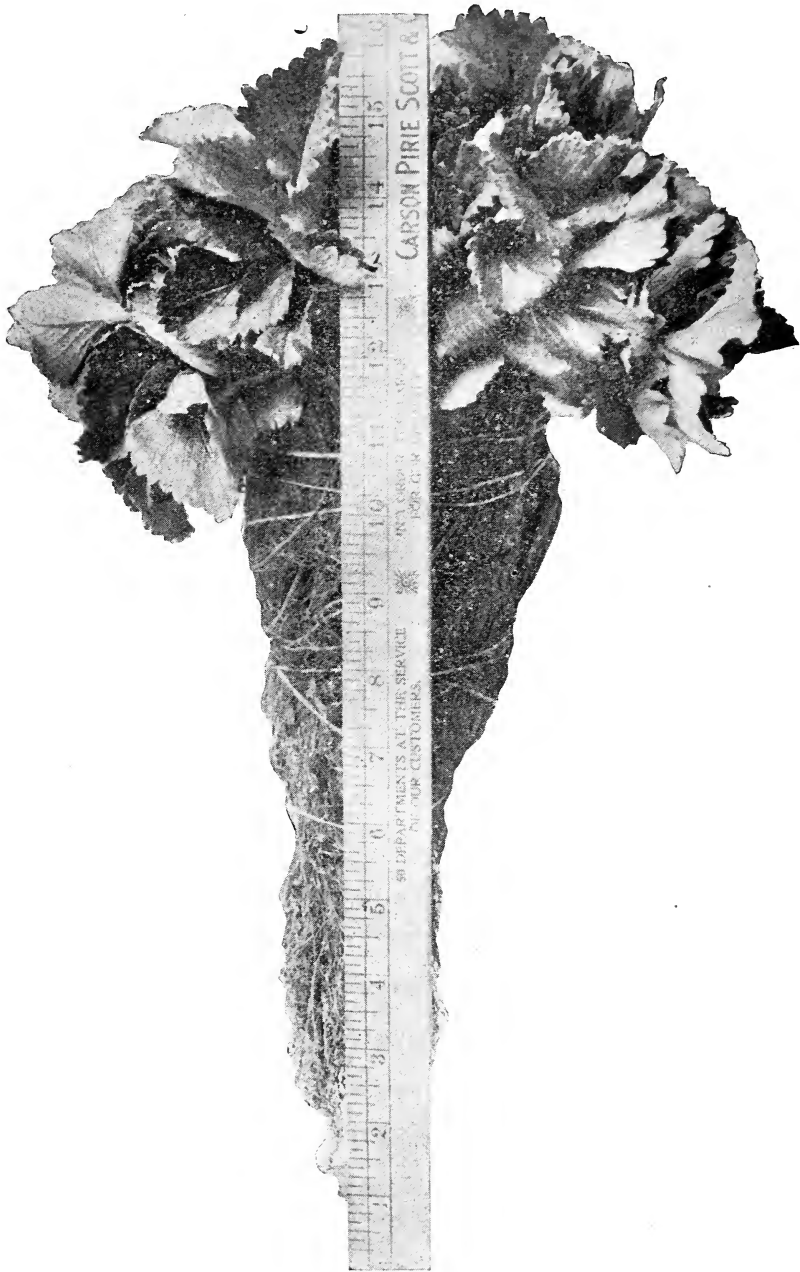
Donna, Tex., Nov. 28, 1914.

J. A. Bauer, Judsonia, Ark.

Dear Sir: Received the plants in good condition and they are fine.

Truly yours,

Fred I. C.



A bunch of our St. Louis. The finest early berry grown for home use and nearby markets. Originated by me.





## Price List of Plants in Lots from Twenty-Five of a Variety Up to One Thousand

In pricing plants they are priced in 25, 50 and 100 lots, to go by mail, I to pay the postage. In larger lots they come by express, you to pay express charges. Where you might order several hundred plants in hundred lots I'll use my best judgment as to the best way to ship. If I ship by express, I'll pay express charges. We do this sometimes when we know that we can get them through in better shape.

These prices take the place of all former prices made in past catalogues.

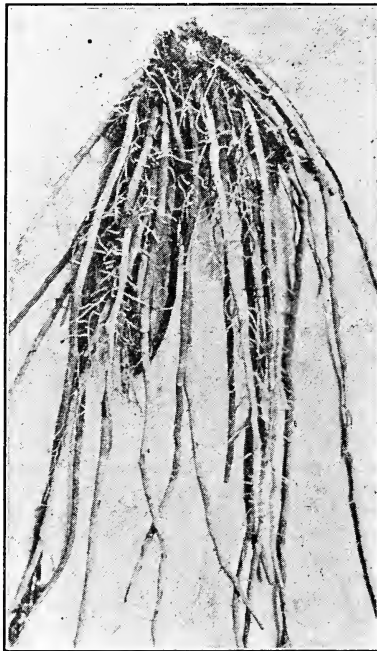
Variety.	By Mail Postpaid.			By Express Not Paid.		
	25	50	100	250	500	1,000
Progressive.	\$.075	\$1.35	\$2.25	\$5.75	\$10.50	\$20.00
SUPERB.	1.00	1.75	3.00	7.50	13.50	25.00
GOLD MINE.	.55	.90	1.50	2.75	5.25	10.00
ST. LOUIS	.45	.80	1.25	1.75	2.75	5.00
EVENING STAR	.45	.85	1.25	1.75	2.75	5.00
EARLY OZARK	.45	.85	1.25	1.75	2.75	5.00
GANDY	.40	.75	1.00	1.45	1.75	3.00
SAMPLE	.45	.85	1.25	1.75	2.75	5.00
STEPHEN'S Lt. Cham.	.45	.85	1.25	1.75	2.75	5.00
CLIMAX	.45	.85	1.25	1.75	2.75	4.00
THOMPSON	.40	.75	1.00	1.40	1.60	2.75
MELLIE	.40	.75	1.00	1.40	1.60	2.75
BEEDERWOOD	.40	.75	1.00	1.40	1.60	2.75
EXCELSIOR	.40	.75	1.00	1.40	1.60	2.75
CLARK'S SEEDLING	.65	1.00	1.75	2.75	4.75	8.00
KLONDIKE	.45	.75	1.00	1.40	1.60	2.75
IMPROVED KLONDIKE.	.55	.85	1.20	1.60	1.75	3.00
DUNLAP	.45	.75	1.00	1.40	1.60	2.75
MISSIONARY	.45	.75	1.00	1.40	1.60	2.75
HELEN DAVIS.	.60	.90	1.25	1.75	2.75	5.00
MICHEL EARLY.	.45	.75	1.00	1.40	2.75	2.75
PARKER EARLE.	.60	.90	1.35	1.85	2.85	5.25
WARFIELD.	.45	.75	1.00	1.40	1.60	2.75
BRANDYWINE.	.60	1.00	1.35	1.75	2.75	5.00
BUBACH.	.60	1.00	1.35	1.75	2.75	5.00
AROMA.	.45	.75	1.00	1.45	1.65	2.75

### NOTICE

You'll find in descriptions whether varieties of strawberries are perfect or imperfect. Imp. is for imperfect, and Per. for perfect blooms; the imperfect blooming sorts must have the perfect blooming sorts set at least every fourth row to make them pollenize, otherwise the imperfect blooms will not make anything but but-tens.

## Asparagus Roots and Plants

I have had a big demand the past three years for Asparagus Plants, and to furnish the demand I have grown fine roots for my fall and spring trade. A patch of Asparagus set next spring will yield big profits for 12 or 15 years. Many have sold as much as \$400 worth of Asparagus from one acre in one season. Make your land good and rich with barnyard manure and then set roots 2 by 3 feet, rows 3 feet apart and plants 2 feet in rows. Work and hoe, keeping down the grass the first summer and the next spring you have a big crop of Asparagus; not as good as it will get a year or so later, but with proper care you should cut from an acre \$200 worth a year from planting. You bunch 12 to bunch, as per cut, and ship or sell on home markets. Most times you get 10 to 15 cents per



An asparagus root ready for shipment.

bunch. There is nothing finer in the early spring than the Asparagus. It comes out real early and when you are hungry for some good vegetable and the garden hasn't yet got started you have your Asparagus to come on and it will furnish you good eating for over two months. Good ways of cooking are as follows: Cook like you would English Peas, seasoning to suit the taste and making a batter of milk and flour. They are good this way. Or you can cook this way: Boil them for fifteen minutes and then take out, place in frying pan with hot butter, fry until brown, first rolling them in flour to make them brown well. I like Asparagus both ways fine and can eat it any day in the year. If you wish to can it, you can do so by boiling as other fruits or vegetables and canning. You then can cook as I have mentioned above. I have three good varieties which I shall offer at a fair price.

**ASPARAGUS ROOTS—THESE ARE ALL TWO-YEAR-OLD ROOTS,  
GOOD STRONG ONES.**

Palmetto . . . . . \$0.60      \$1.00      \$1.25      \$1.75      \$2.75      \$5.00

**COLOMBIAN M. WHITE.**

**CONOVER'S COLOSSAL.**

All three varieties at same price. All are two year old and are first class roots, and will do to cut second spring after setting and if set in strong land this fall and winter will do to cut from next spring. I have around 300,000 of these roots growing and can ship promptly, after tops are killed down, which will be earlier than in November, so if your order comes in will hold until it is safe to ship.



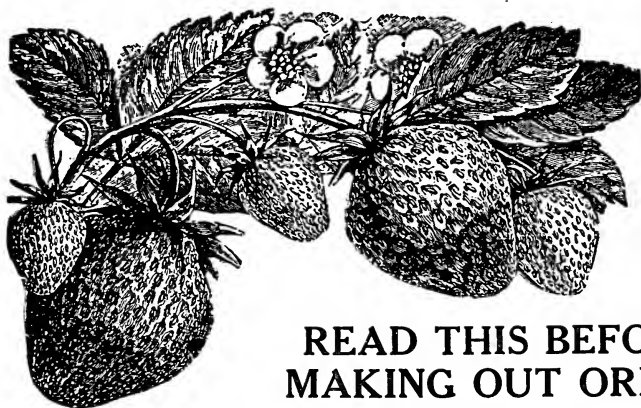
**Palmetto Asparagus.**

**HOW TO SEND MONEY.** Send your money when you can in postoffice money orders, express money orders, bank draft exchange check, or cashier's checks. We will have to charge you 15c on your personal check if you remit this way for collection; would rather have money orders, where you can get them. Make all drafts, money orders and checks payable to J. A. Bauer, and always write name and address plainly as many letters go astray each year owing to the fact that writing is not so people can read it. Be sure to always sign your name to your letters. We got several orders last winter and spring where parties sent money for plants but never sent any name, so we had to hold until they made a kick about their order.

**EARLY ORDERS.** I advise you to order early at the best, for the early bird gets the worm, and the early planter always gets just what he orders, while sometimes the late planter finds some kinds sold out. Be sure to place order early.

**TERMS.** All terms are cash with orders unless otherwise arranged. We will ship C. O. D. if half of purchase price is sent with order, the other half you can pay your express agent at your end of the line, with fee for returning money.

**WHEN WE START TO SHIP.** We will start shipment of plants after October 15th, and continue all winter and up to May 15th. From October 15th to April 15th, we guarantee safe arrival at your station if taken out of office at once; after that date they come at your risk.



## READ THIS BEFORE MAKING OUT ORDER

**DON'T** send me a big list of varieties for special prices and then order just a few plants of two or three kinds. I want to make you all the good prices I can, but I don't want you to price a big list and then take advantage of the good prices I made you on a big list and order a few of each variety.

**DON'T** ask for prices on 50,000 to 100,000 lots and then have the nerve after I make you a low price to send in an order for five or ten thousand plants; for if you do your money will be returned. It is with the strawberry business like every other commodity, the larger amount of plants you take the cheaper they can be made to you. By the time we pay our expense for running the farm, advertising, printing catalogs, moss bill, packing and delivering same at express office we do not make a very large profit, in fact, not as much as we are entitled to.

**DON'T** order less than 25 plants of one variety, or send order for less than \$1.00, for it will not be accepted.

**DON'T** leave plants in express office after arrival and expect us to make it good should they be damaged. We guarantee them to arrive in good condition, if taken out of express office at once on arrival.

**DON'T** get on the war path and write us a letter that will make our hair stand on end or turn gray in one night, but call our attention to the matter in a business-like way, and then if we fail to give a satisfactory deal, we then expect a different letter from you, but remember that we are all human and if we make a mistake it would be no more than you or any other man might do if he had the same business.

**DON'T** fail to get your ground in first class shape before setting, in fact, it would be a good idea to get your land in good shape before you order your plants, so when you received plants you could go right to work and set them out; a high state of cultivation for your land comes first in making a big crop of berries, next after your land comes first class plants, you cannot make big crop of berries unless you have a good quality of plants back of you.

**DON'T** miss a chance to say a good word for our plants if they please you, for every patron we get by one of our customers telling them of us we save money, and by this we are able to sell plants cheaper than we could if we had to advertise for each and every name; but two-thirds or at least one-half of the orders we get, we get through the words spoken by our customers.





**DON'T** buy a lot of cheap John plants, work and set them out, and expect big crops from them, for if you do you will be disappointed, for you could not expect them to make big crops of fruit when they have not got the plants back of them. For instance, if you were going into your crib to get seed corn, you certainly would pick out the large ears, with long, deep grains; you would shell nubs off of both ends of the ears, for if you take the nubs off the ends of the corn and planted it you would not expect a very large crop of corn, would you? Therefore, why do you expect to set a small, scrawny plant dug from the alley and expect a big crop from them like you would from big, strong, healthy plants.

**DON'T** forget that we guarantee our plants absolutely true to name, all to come from young beds, to be first class in every respect, to reach you in good condition, by express or mail, if taken from office at once. In case they fail to arrive in this condition, we hold ourselves in readiness on proof to make that part of order good, but will say that we are not liable for any greater amount than plants that may be dead or in bad order on arrival; if plants should die after being set out, we do not consider this our fault; our part of the deal is to get them to you in good condition at the start.

**DON'T** forget that we are the largest strawberry plant growers in the whole Southwest. The expenses for running our farm for the past two years has been \$15,000 per year, therefore, you see we spend lots of money to grow first class plants, the kind you need, and if you want to make big crops and make money, you should not fail to plant a patch of our berries this year.

**DON'T** forget we sold over 7,000,000 berry plants last season. We ship to all parts of the United States and Canada, and from the testimonials we have in our catalog, you know they gave complete satisfaction.

**DON'T** forget, Mr. Canadian customer, in no case do we guarantee plants to reach you in good condition. Any plants going to Canada go at the purchaser's risk. We positively do not take the risk, and if you order by mail, double the amount of postage we have in catalog, or in other words, if ordered by mail add 25c per hundred above price quoted.

**NOW** if after reading this catalog you feel you can place your order with us, and you feel that we have the very kind of plants you need, I certainly would be glad to have your order. I feel sure I can give you complete satisfaction in every respect, and that you will be well pleased when you receive plants as well as later, for the growing of strawberry plants has been my life study, and I will continue in the business as long as I live. I never had any desire to get rich out of the business, for if I had had this goal in mind, I would be greatly disappointed, for by the time our expenses are paid each year and we make our living out of our business, with other side expenses, there is very little profit left, but as stated we have never had any desire to get rich in the least, for we realize that a man cannot take any earthly treasures with him when he leaves this earth. If you decide after reading our book that we have just what you want, we assure you that we will do our best to please you and give you a square deal. Here's with best wishes for the coming year, and kind regards to all, I am,

Yours for better fruit,

**J. A. BAUER.**



This shows a view of one of our fields.

## What My Bank and Home People Say of My Reliability

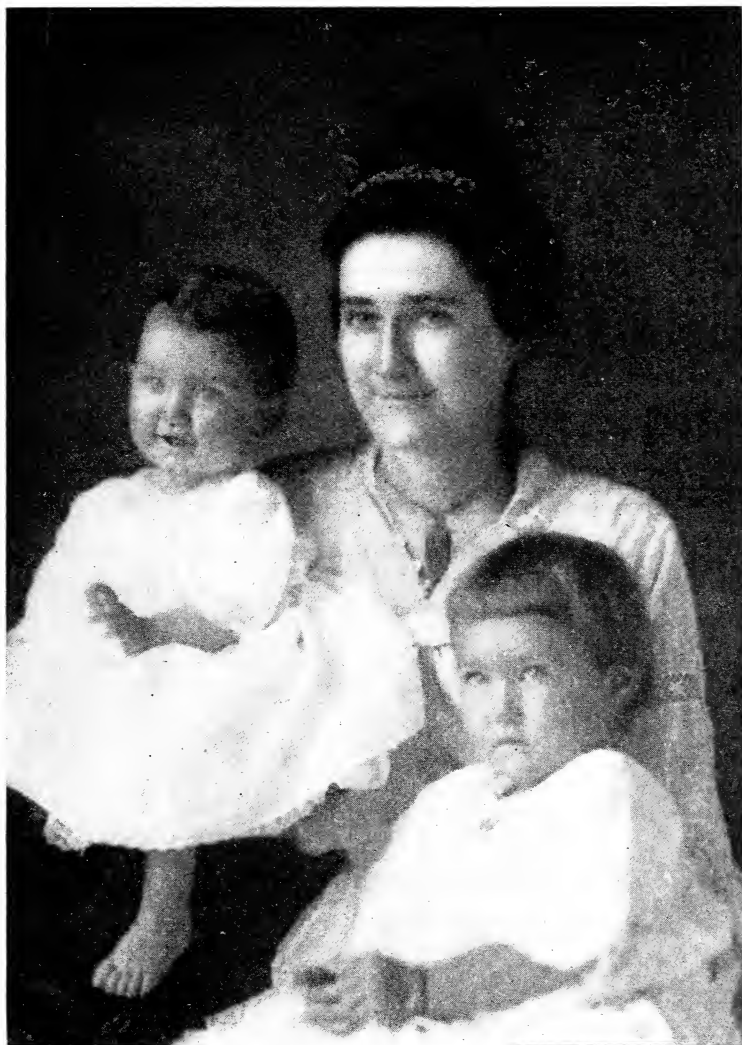
Most every one wants to know if they are sending their money to a reliable firm when they are ordering any kind of goods. I don't blame them for wanting to know this, as I am just like them. I want to know who gets my hard earned dollars, and I deal only with reliable firms, so I am giving you a few words said of me by home banks, of which I am a director. I am proud to know my friends can say such good things of me as to my honesty and of my square dealings, but this one word "Honesty," has ever been my first consideration in all my business dealings as well as any other dealings I have. I will also give you a letter from a nurseryman in St. Louis who has bought over 2,000,000 plants of me the past three years, and by his request I hold back his name. I do not print the names of these parties who write me these good letters for fear they would be bothered with too many letters asking questions, so I give you bank references, and all this good talk from my friends so you can be assured that I am reliable in every respect. Besides the above references I refer you to Bradstreet's and Dun's Commercial agencies.

You'll find in back of catalog over twelve pages filled with good words of praise for my plants; don't fail to read them if in doubt of the fine quality of my stock. They say the proof of a pudding is in the eating; if that is right, the proof of my plants being the best grown is in those twelve pages of good words, every one as written by a patron.

J. A. BAUER  
STRAWBERRY



JUDSONIA, ARK.  
SPECIALIST



My right and left-hand Bauer's. Having someone to help you goes a long ways toward success.





A field of berries grown at Humboldt, Kans., from my plants.

**IF IN DOUBT ABOUT OUR PLANTS  
READ A FEW OF THESE LETTERS.**

I print several pages of letters written me by pleased patrons, to show anyone who might be in doubt that my plants give the very best of satisfaction in every respect.

**THIS MAN USED CLOSE TO ONE  
MILLION OF MY PLANTS LAST  
SEASON—READ WHAT HE  
SAYS.**

St. Louis, Mo., June 2, 1914.

J. A. Bauer, Judsonia, Ark.

Dear Sir: I herewith enclose you check for \$110.50 to cover balance due you. Please accept congratulations for the dispatch in which you have executed my many orders. My strawberry dealings with you this spring runs up in the hundreds of thousands, in fact, about one million plants, and same has been very satisfactory. I have no hesitation in saying there is not another strawberry plant grower in the United States that could have handled my shipments as prompt as you have. With very best wishes, I am, Yours truly,

H. SHELBY M.

**GOOD WORDS SAID ABOUT MY  
PLANTS—FROM NORTH,  
SOUTH. EAST AND  
WEST.**

Thinks I am the right man to order plants from. You'll think so, too, when you see the quality of my plants.

Little Rock, Ark., Jan. 2, 1913.

J. A. Bauer, Judsonia, Ark.

Dear Sir: The plants are first class and are growing off fine. They were all fresh and strong and I think you are the right man to buy plants from.

Truly, etc.. C. D. W.

Rodassa, La., Jan. 1, 1913.

J. A. Bauer, Judsonia, Ark.

Dear Sir: The plants came through all O. K. and are the best all around plants I ever ordered and they have pleased me in every respect, and I shall place all my orders with you from now on.

E. J. E.

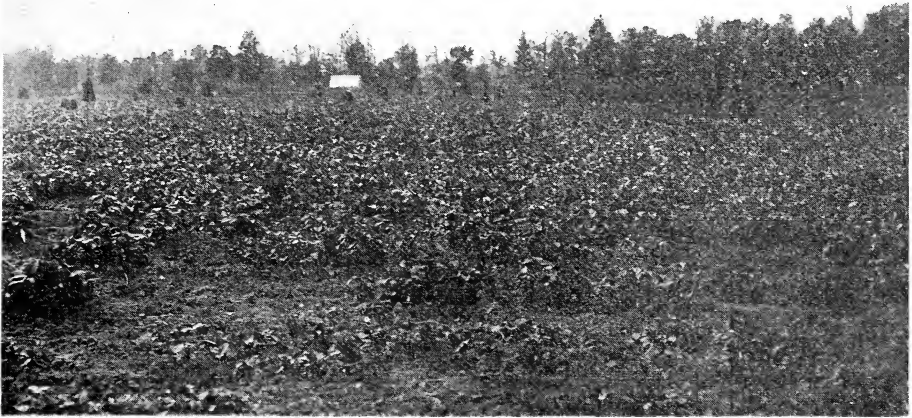
Pauls Valley, Okla., April 26, 1913.

J. A. Bauer, Judsonia, Ark.

Dear Sir: Plants to hand and am well pleased. Will want 4,000 more. It being late, can you furnish them?

I am yours,

J. W. W.



This is a block of progressive plants. They are as fine as silk.

Highland, Ark., April 12, 1913.

J. A. Bauer, Judsonia, Ark.

Dear Sir: I am enclosing you check to pay balance due. The 200,000 plants we have set are doing fine, and we'll use the other 100,000 soon as we can get our land in fix.

Yours very truly, B. J.

Houston, Tex., April 21, 1913.

J. A. Bauer, Judsonia, Ark.

Dear Sir: Kindly send me your book on Strawberries. I set some 12,000 of your plants for B. F. Johnson at Arcadia, two years ago, and they were such fine plants that now as I have a farm of my own, I wish some of them.

A. S. L., Rt. No. 2.

St. Louis, Mo., May 29, 1913.

J. A. Bauer, Judsonia, Ark.

Dear Sir: I am enclosing you check for balance due and wish to say our business dealings have been very pleasant to date. Last plants arrived today in fine condition.

Very truly yours, H. Shelby M.

WHERE WANTED, WE MAKE A  
SPECIAL EXPRESS PAID PRICE  
ON YOUR LIST OF WANTS.

Eldon, Ia., April 8, 1913.

J. A. Bauer, Judsonia, Ark.

Dear Sir: I received the plants today in fine condition and they are fine plants.

Truly yours, H. B. H.

Canadian, Okla., Feb. 14, 1913.

J. A. Bauer, Judsonia, Ark.

Dear Sir: A few years ago I bought some plants from you which were very fine and made some fine, large fruit, but the drought last summer got most of them and I will have to buy some more, so I come to you for them, knowing you grow the best kinds.

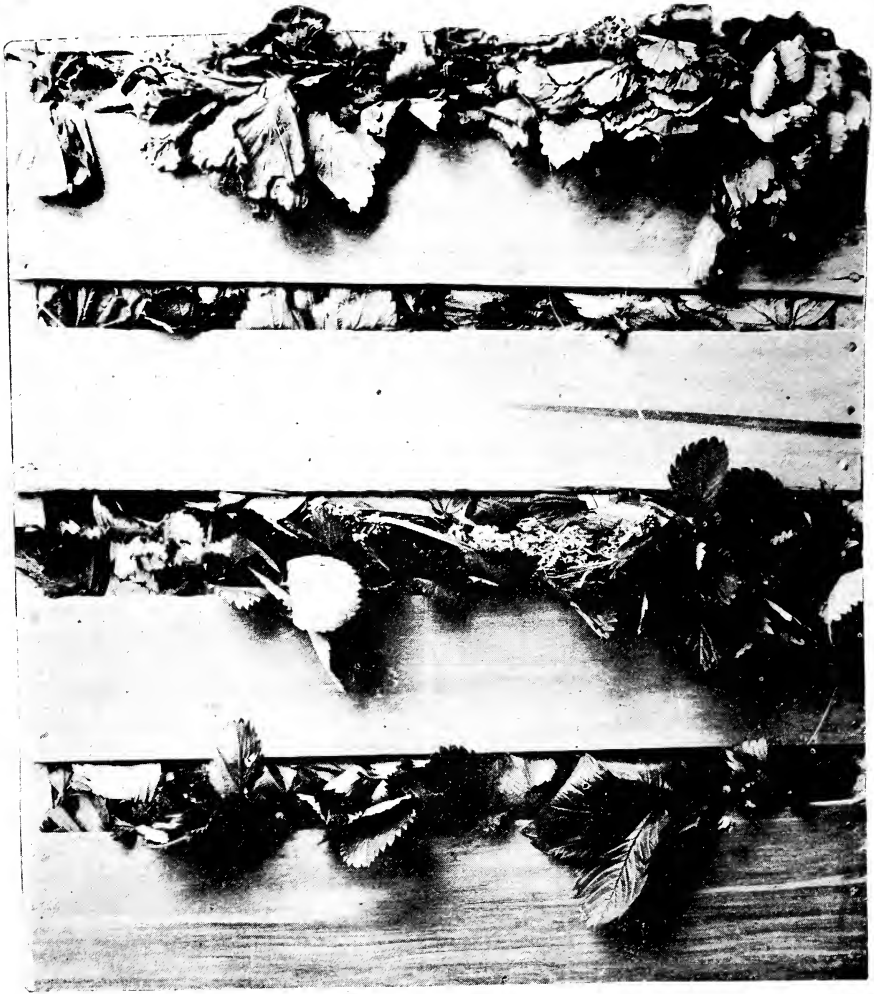
Yours truly, J. G. S.

Highland, Ark., Feb. 18, 1913.

J. A. Bauer, Judsonia, Ark.

Dear Sir: Your letter to hand and I have noted same and will say you may book us for 300,000 of your Klondike plants as per your quotation in this letter; will order as we can use them.

Yours very truly, B. J.



This shows two crates of plants—500 plants in crate—as we pack them.

**YIELDER WITH THIS MAN IN  
GEORGIA—IT IS WITHOUT  
A DOUBT A GREAT  
BERRY.**

Long Beach, Calif., April 3, 1913.  
J. A. Bauer, Judsonia, Ark.

Dear Sir: I wish to thank you for the nice plants I received today, in good shape. The express was not high. If I make a success, I will plant five acres more next spring.

I sent your catalogue to my friend and he will order, and I hope you send him as good plants as you did me.

Yours truly, J. H.

Perry, Okla., Feb. 16, 1914.  
J. A. Bauer, Judsonia, Ark.

Dear Sir: Enclosed find money order for \$12.40 for order of plants as per list enclosed. I bought your plants in 1912 and they all grew, and were fine plants.

Yours truly, Seb A.

Pittsburg, Tex., March 4, 1914.  
J. A. Bauer, Judsonia, Ark.

Dear Sir: I received the nice lot of plants, set them out last evening and we are getting a good rain tonight, and will say, am well pleased with them.

Yours truly, Ben H.





Another view of our berry field. I have over 50 acres just as fine as these.

**OUR PLANTS THE BEST FROM ALL  
EASTERN GROWERS.**

It's worth something to know that you get good stock, just as if you came right to my nursery. My prices may be a little higher than the cheap-John plant grower, but these letters tell why.

**READ WHAT SOME OF OUR CALI-  
FORNIA PATRONS SAY OF OUR  
PLANTS AND OUR TREAT-  
MENT.**

Los Angeles Co., Calif., Dec. 23, 1912.  
J. A. Bauer, Judsonia, Ark.

Dear Sir: The strawberry plants you sent to us arrived safely and I say my friends are well pleased and say they are fine plants, and I say they are fine plants also. The plants I ordered all cost me \$98, and I will want enough next year for 15 acres more. All my friends like your plants; they say that they are good plants.

Yours truly, K. Yokoyama.

Los Angeles Co., Calif., Feb. 24, 1913.  
J. A. Bauer, Judsonia, Ark.

Dear Sir: My friends tell me you have good strawberry plants and say the price, so I want you to send me 13,000 Improved Klondike, by express at once. They say your plants are very

fine and pure stock. Many times we buy plants that are not pure stock, so we must ask that you fill with pure stock. Yours truly, R. Sakamoto.

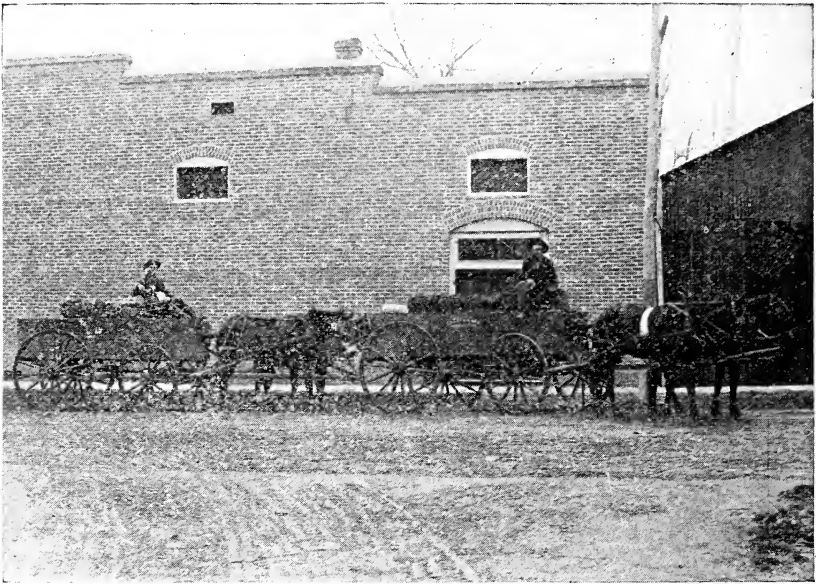
It is worth lots to you to know that you can get pure plants. If ours prove otherwise than pure we will make any mistake good.

Los Angeles Co., Calif., Nov. 20, 1912.  
J. A. Bauer, Judsonia, Ark.

Dear Sir: I am herewith handing you two orders for 58,000 Klondike plants with half of money to pay on them. Send balance C. O. D. My friends tell me you grow the best of all plants from Eastern growers and that they are pure and true to name, so I ask that you send me only this kind also.

Yours truly, K. Kasai.

I can't see why some plant growers will not give stock true to name, as you see they lose a customer every time they defraud a man. I can stand back of my stock, and I don't care to be the largest grower in the United States, but I want to know each and every customer gets value received for his money—and this I shall see you get while I sell plants, and I guess that's a lifetime job.



Two loads of our plants packed in baskets. These two loads contain 210,000 plants.

Los Angeles Co., Calif., Dec. 23, 1912.  
J. A. Bauer, Judsonia, Ark.

Dear Sir: I have heard from Mr. Muramoto that you grow the best strawberry plants of all Eastern growers, so I am sending you an order for \$140.25 for which send me 43,000 Klondike and 8,000 Gandy strawberry plants.

Yours truly, K. Kusumoto.

Los Angeles Co., Calif., Oct. 2, 1912.  
J. A. Bauer, Judsonia, Ark.

Dear Sir: M. Koshi, a Japanese, wants to buy some Klondike strawberry plants, and he wants to know if you'll guarantee them pure and true to name. He bought of another Eastern firm 20,000 last year, and they were no good. Let him know at once.

Yours truly, J. E. P.

Los Angeles Co., Calif., Dec. 30, 1912.  
J. A. Bauer, Judsonia, Ark.

Dear Sir: One of my friends tells me you have some of the best of strawberry plants and that you are now shipping, so please find money order, etc., for which send me 3,000 Klondike and 3,000 Aroma plants by Wells Fargo express.

S. Takeshita.

Los Angeles Co., Calif., Dec. 24, 1912.  
J. A. Bauer, Judsonia, Ark.

Dear Sir: I am sending an order for five of my friends totaling \$225.45, which please ship soon as you can do so, by Wells Fargo express. The plants I ordered last year for my friends were received in good condition and they were all well pleased with them in every respect. The plants were large and well rooted.

Yours truly, E. L. H.

Los Angeles Co., Calif., Oct. 25, 1912.  
J. A. Bauer, Judsonia, Ark.

Dear Sir: I will want 60,000 plants to set out next spring, if you'll guarantee them pure and true to name.

Truly, J. S. Fukumoto.

I guaranteed him the plants and I now have one more pleased patron in California.

Los Angeles Co., Calif., Sept. 17, 1912.  
J. A. Bauer, Judsonia, Ark.

Dear Sir: Have you as nice plants this year as last? If so, will want about 30,000 plants of you. The ones I bought of you last year were very fine.

Truly yours, K. Fukunaga.

I furnished this man in all over 200,000 plants, so you see he was well pleased again.





Planting berries on our Farms. The children shown in this photograph are used as droppers.

Los Angeles Co., Calif., Oct. 15, 1912.  
J. A. Bauer, Judsonia, Ark.

Dear Sir: I am enclosing you an order for 45,000 strawberry plants, after all my friends tell me you furnished them nice plants last year true to name, and if you do this with me I can say myself and friends will want over 200,000 of your plants next year.

Yours truly, S. Hirrano.

This same man above tells his friends of my plants when he receives them. A walking advertisement is our kind. Good count and first-class stock get that kind of patrons.

Los Angeles Co., Calif., Nov. 16, 1912.  
J. A. Bauer, Judsonia, Ark.

Dear Sir: I received your letter and am sending you my order as myself and all my friends have received nice, large, strong plants and pure stock from you, receiving the best of satisfaction.

Truly, S. Umeno.

Los Angeles Co., Calif., Feb. 3, 1913.  
J. A. Bauer, Judsonia, Ark.

Dear Sir: My friend, Mr. S. Hirrano, tells me you have very fine strawberry

plants and they are pure. Now I want good Klondike plants, of 10,000, so send them to me at once.

Truly, T. Morinni.

Los Angeles Co., Calif., Aug. 16, 1912.  
J. A. Bauer, Judsonia, Ark.

Dear Sir: The strawberry plants I got this spring were very fine and I wish some more now for next spring, so send me catalogue.

Truly, S. Onishi.

Atchison, Kan., April 19, 1913.  
J. A. Bauer, Judsonia, Ark.

Dear Sir: I have received the plants and they came through in first-class condition. Enclosed find the express money as you prepaid them for me. In all I am well pleased.

Respectfully, T. P. A.

Plant City, Fla., May 13, 1912.  
J. A. Bauer, Judsonia, Ark.

Dear Sir: I received the 250 Ozark plants all right and wish to say they are very fine plants.

Yours truly, U. G. H.





A view of our Klondike plants.

**ARE BETTER THAN THE SO-CALLED  
PEDIGREE PLANTS.**

Urbana, Ohio, March 2, 1913.

J. A. Bauer, Judsonia, Ark.

Dear Sir: I must say your plants are very fine. I have sold a lot of them to my neighbors and all say they are as fine as they have ever seen, even better than the so-called pedigree plants, as I have planted several hundred of them and yours are best.

J. E. H.

**THIS MAN PICKED \$740.00 WORTH  
OF BERRIES FROM ONE ACRE—  
IT PAYS TO PLANT GOOD  
PLANTS—I HAVE THEM.**

Ottawa, Kans., March 3, 1914.

J. A. Bauer, Judsonia, Ark.

Dear Sir: I enclose you order for \$12.45 for strawberry plants, and wish you to ship them about March 10th, owing to weather conditions.

I picked from one acre and sold \$740.00 worth of berries this year; most of them were Aroma and Dunlap. I am seventy years old and have grown berries for a number of years, but this is the best returns I have ever got from strawberries before. Your plants in the past have been very fine and I hope that these will do as well.

Respectfully,

Ed. B.

**OUR PLANTS BETTER THAN  
OTHERS AT TWICE THE PRICE  
—YOU NEED THIS KIND OF  
PLANTS—BETTER  
START RIGHT.**

Union City, Okla., Feb. 13, 1914.

J. A. Bauer, Judsonia, Ark.

Dear Sir: I received your catalogue yesterday and you must have a nice stock of plants, this year, and your prices are not half as high as they should be, considering the high quality of your plants. The plants I received from you the past two years were as fine as any one could expect for twice the price, in fact, I never have seen better plants. I am telling my friends of you and you'll receive several orders from this place. I am enclosing you my order for this spring, will tell you when to ship later. Yours truly, John W. W.

Farmington, Mo., May 7, 1912.

J. A. Bauer, Judsonia, Ark.

Dear Sir: I received today the bill of plants in good shape; they are a fine lot of plants.

J. E. K.

Fort Davis, Tex., Dec. 31, 1913.

J. A. Bauer, Judsonia, Ark.

Dear Sir: The strawberry plants arrived in fine condition. Thanks.

Yours truly,

W. K.



A Bauer plant showing it in bloom. Our plants bear big crops of fruit.

Manvel, Tex., Feb. 17, 1912.

J. A. Bauer, Judsonia, Ark.

Dear Sir: I am well pleased with the plants we have been receiving, and I herewith enclose another order for one of our members near Sandy Point, and I hope you can fill his order with the same good plants as you have ours.

Yours truly, M. J. B.

The above party ordered for his association and was well pleased. I shipped them over 200,000 plants in all.

Concord, Ill., May 12, 1912.

J. A. Bauer, Judsonia, Ark.

Dear Sir: Plants received all O. K. and are as fine plants as I have ever seen.

Wm. C. M.

Plainview, Ark., April 4, 1913.

J. A. Bauer, Judsonia, Ark.

Dear Sir: I received my strawberry plants on the 2d, and am well pleased with them; am putting them out today.

Truly,

A. T. R.



A view of our berry fields—a half-mile of strawberries.

Gardena, Calif., March 16, 1912.

J. A. Bauer, Judsonia, Ark.

My Dear Sir: I am much obliged to you for the fine berry plants I bought of you about a month ago. They were as fine as I have ever seen, so I am sending you another order for 5,000 more of the Klondike, like before, which I hope you can send at once.

K. F.

Moneta, Calif., Feb. 12, 1912.

J. A. Bauer, Judsonia, Ark.

Dear Sir: The plants which I ordered of you for Japanese came through in due time in good condition, and were satisfactory. The plants which you sent me also came through all right. Accept my thanks for good plants.

Ernest L. H.

Fairmount, Okla., April 10, 1913.

J. A. Bauer, Judsonia, Ark.

Dear Sir: I have received one of your catalogues from my neighbor who sent for it and he tells me he bought plants from you last spring, which were the finest he ever saw, and that every one lived. Yours truly,

L. J. G.

Danbury, Tex., April 11, 1913.

Mena, Ark., April 10, 1913.

J. A. Bauer, Judsonia, Ark.

Dear Sir: The plants I ordered from you with the rest of the growers here at this place arrived in good shape and were first-class plants.

Truly,

C. W. F.

Honesdale, Pa., June 29, 1912.

J. A. Bauer, Judsonia, Ark.

Dear Sir: The plants I got of you of the St. Louis variety have proven to be just as good as you said. My patch is just ten feet square, but I have picked to date 40 quarts of fine fruit. Many have asked me where I got such fine plants.

F. J. L.

Mammoth Springs, Ark., April 17, 1912.  
J. A. Bauer, Judsonia, Ark.

Dear Sir: I received the Cardinal plants today and wish to thank you for same. Every one buying plants of you here at this place reports that they are well pleased with your fine plants.

A. E. A.

In planting my plants you get the best that can be produced and they come to you in good condition.





**A bunch of small alley plants like some  
will sell you for first-class plants.  
It pays to plant plants of high  
fruiting quality. I  
have them.**

Ashdown, Ark., Feb. 15, 1913.

J. A. Bauer, Judsonia, Ark.

Dear Sir: Please ship me as soon as you can the within order. I bought plants of you a few years ago and I was so well pleased with them that I am paying you a better price than some other plant growers ask, for I know I'll get good stock from you, and I can't tell about the other party. Your plants were first class in every respect.

Yours truly,

Joe M. T.

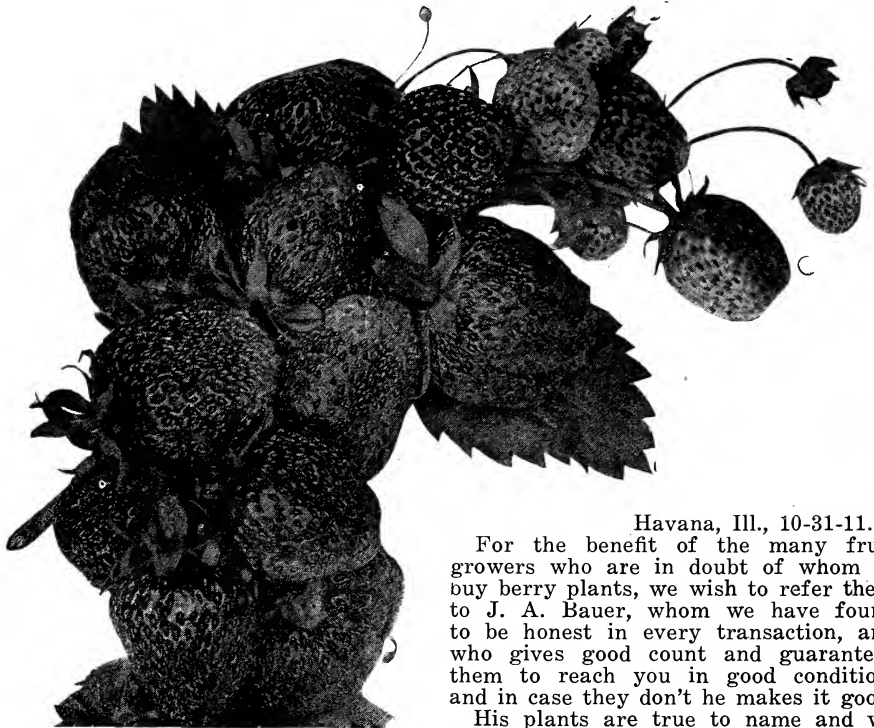
Los Angeles Co., Calif., Sept. 15, 1912.

J. A. Bauer, Judsonia, Ark.

Dear Sir: Being informed by my friend, Mr. Iseri, that your plants are the best of all Eastern-grown plants and are the most productive of all, I wish to order of you 30,000 plants. I can also get many orders from my friends, if your plants are as good as he says.

C. Morita.

NOTE—This man made three orders, all for over 200,000 plants.



Bunch of Dunlap, from photograph.

Kennebunkport, Me., Dec. 5, 1910.

J. A. Bauer, Judsonia, Ark.

Dear Sir: If you will remember a year ago last spring I bought 2,000 berry plants from you. They arrived in fine order, and I set them and lost perhaps twenty-five plants out of the 2,000. I cared for them up to berry time and nobody in this section ever saw such a patch of strawberries.

I sold my St. Louis berries for 20 cents per quart, while my competitors were selling four boxes for 25 cents. The St. Louis berry is all and more than you claimed for it—yes, even to the very last berry holding up in size without any small berries at all. I am well pleased with your fair, honest treatment and fine plants.

Yours for success, B. W. W.

Pasadena, Texas, Feb. 2, 1912.

J. A. Bauer, Judsonia, Ark.

Dear Sir: I am enclosing you an order for 6,000 berry plants, and I wish to say that in buying your plants I do so because I never overlook a change to give Bauer's, Judsonia, Ark., plants a good word.

R. E. P.

Havana, Ill., 10-31-11.

For the benefit of the many fruit growers who are in doubt of whom to buy berry plants, we wish to refer them to J. A. Bauer, whom we have found to be honest in every transaction, and who gives good count and guarantees them to reach you in good condition, and in case they don't he makes it good.

His plants are true to name and we feel you will deal with the most honest man in the plant business when you send your order to J. A. Bauer of Judsonia, Ark. We have used over 5,000 of his plants this fall, and have found them nice and good count. We can honestly recommend him to all parties in need of strawberry plants.

J. H. S. & Co.

Isn't this proof enough to show you our St. Louis is a winner? If not, how much do you want? It is the most productive early berry grown.

Springdale, Ark., Feb. 13, 1914.

J. A. Bauer, Judsonia, Ark.

Dear Sir: I wish your book on the growing of strawberries as I want to get some plants. I made a failure of growing them last year because I never bought good, strong plants, like you sell. Will try again.

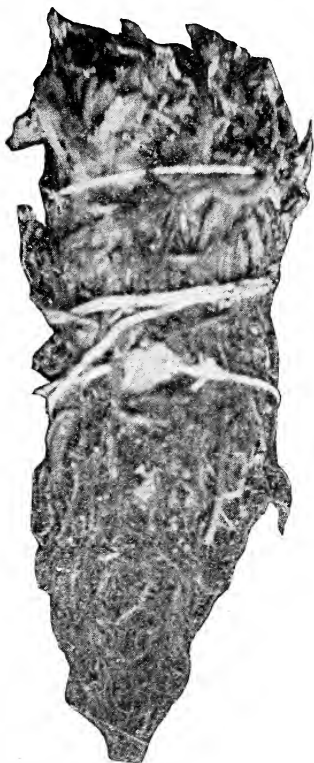
Respectfully, J. G. W. S.

Alvin, Tex., April 23, 1910.

J. A. Bauer, Judsonia, Ark.

Dear Sir: I am enclosing you order for 9,000 more Klondike. The other plants arrived all O. K. and are fine.

Wm. P.



A bunch of small week plants that came from the North. They were smothered out with mulch. Our plants don't need any mulch.

**OUR PLANTS WELL ROOTED: IN  
FACT THEY HAD NEVER SEEN  
SUCH ROOTED PLANTS.**

Sherman, Tex., Jan. 10th, 1911.

J. A. Bauer, Judsonia, Ark.

Dear Sir: I received plants all O. K., and they are growing nicely. They have the longest roots of any strawberry plants I ever saw.

S. A. G.

Idabel, Okla., Jan. 26, 1914.

J. A. Bauer, Judsonia, Ark.

Dear Sir: I am enclosing you my order and hope I'll make good on the berry deal. Will say that any one that can read your catalog and not have any desire to plant some strawberries is not worthy of living in your grand old state or anywhere else. It is the most tempting thing I ever read.

Yours truly, Jeff D. McL.

Bowling Green, Mo., Nov. 4, 1913.

J. A. Bauer, Judsonia, Ark.

Dear Sir: In the spring of 1912 I secured through one of my neighbors, a few plants of your Evening Star, and I now have a row in my garden of 150 plants in the hill system, some of these plants could not be covered with a half bushel. I want some more.

Very truly yours, T. C. P.

Compton, Calif., April 25, 1913.

J. A. Bauer, Judsonia, Ark.

Dear Sir: I often think of you as the man who furnished us such fine, strong plants, and I wish to thank you for the most beautiful of calendars, which arrived today. I have used many thousands of your plants, which have always been of the best grown.

Yours truly, K. L.





The Missionary is very productive.

Alvin, Tex., Feb. 10, 1914.

J. A. Bauer, Judsonia, Ark.

Dear Sir: I received the other plants in good condition and thank you for making the shortage good. If I ever need any more plants I will buy them of you and if I meet any one who wants plants will tell them you are square and honest. Yours truly,

C. W. C.

Logan, Mo., April 18, 1913.

J. A. Bauer, Judsonia, Ark.

Dear Sir: Received the two shipments of plants and find same all O. K. except the Aroma, which are 250 plants short. This is a nice bunch of plants.

Yours truly,

C. W. and C. R. L.

I sent them 500 Aroma plants, free to cover shortage.

Rockville, Mo., April 4, 1914.

J. A. Bauer, Judsonia, Ark.

Dear Sir: The strawberry plants arrived all right and are planted, and seem to be a good lot of plants. I find an error in the order, you'll remember I ordered 100 plants of three kinds, but you sent me 125 of each kind, and if you had been short any I would have expected you to make it good and if you'll advise me of what this 75 plants are worth I'll remit for same.

Yours truly,

J. W. R.

Sommerville, Tex., Dec. 21, 1914.

J. A. Bauer, Judsonia, Ark.

Dear Sir: The asparagus roots arrived all O. K. and am well pleased with them. Yours truly,

E. G. L.

**THIS MAN'S BERRIES YIELD AT THE RATE OF \$508.80 PER ACRE. IF YOU PLANT GOOD PLANTS AND THE RIGHT KINDS YOU'LL MAKE BIG YIELDS ALSO. THIS VARIETY WHICH DID THIS WAS THE ST. LOUIS AND IT WILL PAY YOU TO PLANT THEM.**

Hagers Grove, Mo., Dec. 2, 1913.

J. A. Bauer, Judsonia, Ark.

Dear Sir:—In the spring of 1912 I got 1,000 strawberry plants of you—500 Aroma and 500 St. Louis. I set these plants on about one-sixth of an acre of land, and this season gathered and sold \$84.80 worth of berries off of them, besides having plenty for home use and to can. I canned 57 quarts, which is equal to 114 quarts of raw berries. I got thirty 24-quart crates from the 500 St. Louis plants, and 7 crates from the Aroma, but the late drouth caught the Aroma, and cut the crop short. The St. Louis berry is a hummer and I am in the market for more of them.

Yours truly, A. L. McC.

Arcadia, Mo., Oct. 9, 1913.

J. A. Bauer, Judsonia, Ark.

Dear Sir: I bought some St. Louis strawberry plants from you about 18 months ago and will say they gave me the best crop of berries that I ever saw raised and in this drouthy season at that. Yours respectfully, H. W. T.

Chase City, Va., March 15, 1913.

J. A. Bauer, Judsonia, Ark.

Dear Sir: Will say that the St. Louis and Evening Star are the two best all around berries I have ever grown. The St. Louis is the finest home berry and home market of all earlies.

Truly yours, F. M. R.

Donna, Tex., Nov. 25, 1913.

J. A. Bauer, Judsonia, Ark.

Dear Sir: Please find money order for Klondike berry plants to reset. I bought three thousand of you before this and 99 per cent of them grew. I want these to reset some I bought from another party and they most all died.

Respectfully, N. B. V.

**IN REGARD TO ABOVE, IT SHOWS GOOD PLANTS ARE WHAT EVERYONE NEEDS, AND IF YOU WANT GOOD PLANTS AT A FAIR PRICE SEND FOR MINE.**

El Dorado, Ark., Dec. 16th, 1913.

Dear Sir: Some few weeks hence I bought of you 1,000 strawberry plants, and set them. I have carefully looked after them and in going over them to-day I find I have only lost two plants out of the whole 1,000. This is my third trial on berries, as I have tried cheap plants before and haven't got over five out of a 100 to grow of them, and I have always given former plantings the same attention I did your plants. It has proven to me that it pays to plant good plants as well as good fruit trees. And when I need more plants, will be sure to remember you. O. E. G.

Long Beach, Calif., April 7, 1914.

J. A. Bauer, Judsonia, Ark.

Dear Sir: I planted your strawberry plants last spring and they grew very fine, I am now picking my berries. A friend of mine came to my field today and asked me to write you for a catalogue for him, as he wants very much to plant some of your plants yet this spring. I told him you grew the best berry plants of any grower in the East.

Very truly yours, J. H.



**SAYS EVENING STAR IS THE BEST  
OF ALL LATE BERRIES.**

Fayetteville, Ark., March 9, 1914.

J. A. Bauer, Judsonia, Ark.

Dear Sir: I have grown berries the past eleven years, but will say that the Evening Star is, without a doubt, the best late berry I have ever grown. I had it and Aroma, side by side the past year and they lived much better than the Aroma. They stand dry weather about as good as the Klondike.

Yours truly, G. B. B.

Memphis, Tenn., April 2, 1913.

J. A. Bauer, Judsonia, Ark.

Dear Sir: I received the plants in fine shape and wish to thank you for your kindness in sending so promptly.

Truly, Mrs. Jas. F.

Asher, Okla., March 11, 1913.

J. A. Bauer, Judsonia, Ark.

Dear Sir. The strawberry plants we ordered from you a few days ago arrived last night in good shape. Everything there and looking nicely.

S. and McM.

Zinc, Ark., March 30, 1913.

J. A. Bauer, Judsonia, Ark.

Dear Sir: A few years ago I ordered some berry plants from you, which were fine, and I now wish some more, so please send catalogue.

Geo. C. M.

Thomas, Okla., April 24, 1913.

J. A. Bauer, Judsonia, Ark.

Dear Sir: Please send me 100 of your St. Louis plants. One of my neighbors bought of you and they were so nice is reason I am ordering.

Yours truly, Mrs. M. R.

Paducah, Ky., April 14, 1913.

J. A. Bauer, Judsonia, Ark.

Dear Sir: I received the strawberry plants in fine shape today, and am well pleased with them.

Yours truly, J. W. H.

Alvin, Tex., April 18, 1913.

J. A. Bauer, Judsonia, Ark.

Dear Sir: Your plants have been very satisfactory this season.

Truly, S. & R.

Warren, Ark., Nov. 18, 1913.

J. A. Bauer, Judsonia, Ark.

Dear Sir: I received the strawberry plants O. K. in good condition, many thanks.

Yours truly, J. W. R.

I am glad to know that even one of our patrons will thank us for the extra plants we sent them. I assured him it was no mistake, but good count, and I expect his order again.

Los Angeles Co., Calif., Nov. 28, 1913.

J. A. Bauer, Judsonia, Ark.

Dear Sir: I am ordering today 30,000 plants from you, inasmuch as your plants have given the best of satisfaction in this section of the country. They have done better than all Eastern grown plants.

Sincerely yours, U. Yamate.

Ponta, Tex., Oct. 11, 1913.

J. A. Bauer, Judsonia, Ark.

Dear Sir: The strawberry plants I ordered of you reached me in good order and are sure fine plants; in fact, the finest I ever saw. Many thanks for the extras you added. Will call on you again for more later on.

Yours truly, W. C. F.

**FURNISHED THIS MAN OVER 200,000  
KLONDIKE—HE IS WELL  
PLEASED.**

Francitas, Tex., Dec. 1, 1913.

J. A. Bauer, Judsonia, Ark.

Dear Sir: I wish to inform you that we were all well pleased with the plants we bought of you, they are all set and are doing well. In all we got over 200,000 Klondike plants. I am,

Yours very truly, W. S. H.



J. A. BAUER  
STRAWBERRY



JUDSONIA, ARK.  
SPECIALIST



Aroma when grown on new land as we grow them are also strong plants.  
We can furnish in large amounts.

Branson, Mo., April 9, 1914.

Dear Sir: I am dropping you a few lines to let you know that I received my plants in fine condition and that I think they are the finest plants I ever saw from any grower. Thanking you, I am,  
Yours truly, Mrs. Addie W.

Ingersoll, Okla., March 7, 1914.

J. A. Bauer, Judsonia, Ark.

Dear Sir: I received my strawberry plants in good shape and am well pleased with them. Many thanks for the good plants. Yours truly, J. C. B.

Troy, Kans., April 6, 1914.

J. A. Bauer, Judsonia, Ark.

Dear Sir: I received my plants on the 4th, and I am well pleased with them—they came through in good shape.

Mrs. Ora B.

Humboldt, Kans., April 6, 1914.

J. A. Bauer, Judsonia, Ark.

Dear Sir: I received my plants in good shape and they were fine, and count over run a good many plants. Must say, am very much pleased, and when I need more plants will get them of you and if my neighbors ever need plants I will be sure to tell them of your fine, strong plants.

Yours truly, M. W. T.

Hastings, Okla., April 7, 1914.

J. A. Bauer, Judsonia, Ark.

Dear Sir: I received shipment of berries and they were in the best of condition. Yours truly, E. B. M.

Cherokee, Kans., April 4, 1914.

J. A. Bauer, Judsonia, Ark.

Dear Sir: I received my plants yesterday evening in fine shape, and will say I am well pleased.

Yours truly, J. W. McC.

Atchison, Kans., April 12, 1914.

J. A. Bauer, Judsonia, Ark.

Dear Sir: I received the berry plants in very good shape and am well pleased with them and next spring when they bear I am going to report to you how well they do for me. Thanking you for the fine plants, I am,

Yours truly, H. L.

Ozark, Ark., April 16, 1913.

J. A. Bauer, Judsonia, Ark.

Dear Sir: I received my strawberry plants all right, and they all lived and are doing well.

Yours truly, W. W. S.

Sinking Springs, Penn., May 2, 1913.

J. A. Bauer, Judsonia, Ark.

Dear Sir: I received the plants in first class condition, and was well pleased with them, and when I put out my other patch I expect to use your plants, it will take about 20,000 plants for my next one.

Better plants no man can grow than these you sent me and I will always tell my friends of you.

Yours truly, John H. C.

Rio Hondo, Tex., Nov. 10, 1913.

J. A. Bauer, Judsonia, Ark.

Dear Sir: Please ship me at once 500 Klondike plants, for which I am enclosing money order. The shipment you made my neighbor has just arrived in fine condition and he is well pleased.

Yours, etc., K. C. S.

Durant, Okla., April 4, 1913.

J. A. Bauer, Judsonia, Ark.

Dear Sir: The strawberry plants I bought of you last spring are doing fine, and I wish to say that I am enclosing you money order for 1,000 Texas, which send at once.

Yours truly, S. H. S.



Early Ozark

**THIS MAN NEVER SAW FINER  
PLANTS THAN THE ONES HE  
GOT OF ME—YOU NEED  
THE SAME KIND.**

St. Charles, Mo., March 20, 1911.  
J. A. Bauer, Judsonia, Ark.

Dear Sir: The plants I ordered of you reached me in good order and are the finest I ever saw. Many thanks for the extras you added. Will sure call again.  
Yours truly, C. N.

**HIS FRIENDS SAY MY PLANTS ARE  
BEST OF ALL.**

Los Angeles Co., Calif., Jan. 20, 1914.  
J. A. Bauer, Judsonia, Ark.

Dear Sir: I have heard from my friends that you grow the best strawberry plants of all Eastern growers, so I send you an order. I hope all will be as good as my friends get.

Yours truly, T. Mausmote.

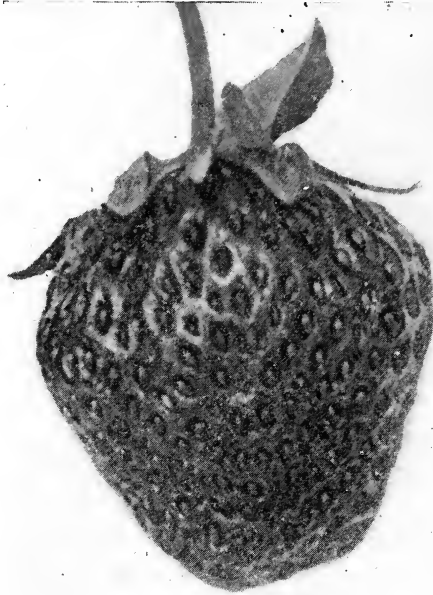
Bay City, Tex., Nov. 7, 1913.

J. A. Bauer, Judsonia, Ark.

Dear Sir: Last year I bought from you 100 St. Louis strawberry plants. They arrived in good condition and were the finest plants I ever received from a distance, being so well rooted. In early part of fall, owing to dry weather, I cut out fifty of these plants and put my whole attention on the other fifty, and when fall came I set out 1,100 fine plants of them. This spring they have surpassed every other berry on my place, being very large and so prolific. They began to bear the last week in March, and although I have gathered over 200 quarts off these plants, the plants are still filled with green berries and blooms. I have been growing berries for ten years, but this berry beats any kind I have ever tried. It is the top notch.

Yours truly, B. N. B.





Dunlap.

Skedee, Okla., Oct. 28, 1913.

J. A. Bauer, Judsonia, Ark.

Dear Sir: I would like a copy of your new catalogue as I wish to set out some plants. I bought plants of you two years ago which were very satisfactory in every respect.

Yours truly, J. M. V.

Harrisburg, Ark., April 15, 1914.

J. A. Bauer, Judsonia, Ark.

Dear Sir: The plants I ordered reached me in good shape, and I am well pleased, many thanks for the extra plants you added.

Truly yours, C. T.

Miller, Mo., April 12, 1914.

J. A. Bauer, Judsonia, Ark.

Dear Sir: The plants I ordered reached me in good order and are fine plants. Many thanks.

Yours truly, F. B. L.

Davisville, Tex., Oct. 16, 1913.

J. A. Bauer, Judsonia, Ark.

Dear Sir: The plants arrived all O. K. and are fine and am well pleased with them. They are the best that I ever saw grown.

Yours truly, J. H. C.

Seneca, Mo., March 6, 1914.

J. A. Bauer, Judsonia, Ark.

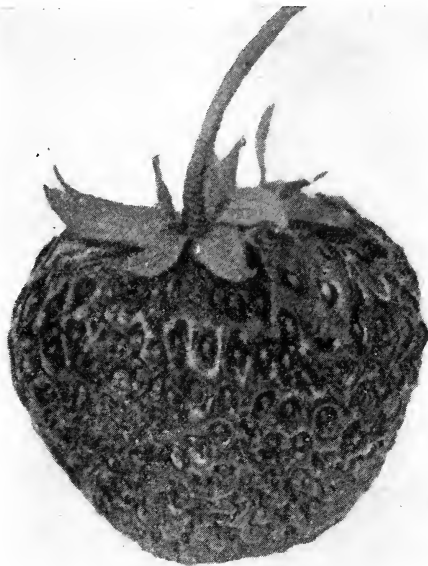
Dear Sir: I received my plants yesterday and find them nice plants, good count and I am well pleased with them in every respect. They opened up in good shape. Thank you for your prompt shipment. Yours truly, G. W. E.

Beaumont, Tex., Nov. 8, 1912.

J. A. Bauer, Judsonia, Ark.

Dear Sir: Your plants received in good condition. I will always remember you as a square-dealing nurseryman. Wishing you success, I am,

Truly yours, J. A. L.



**Excelsior.**

**BERRY WITH THIS MAN, NO  
OTHER EXCEPTED.**

Atlanta, Ga., Dec. 22, 1913.

J. A. Bauer, Judsonia, Ark.

Dear Sir: I want a good berry to ripen after the St. Louis, for a shipping berry or home market. The St. Louis was in a class all to itself with me, none excepted. I tried Helen Davis, Ozark, Thompson, and in fact, several other kinds, but my customers all wanted St. Louis, and with its great ability to withstand drouths, I think it the best berry of its season grown. If you have as good a late berry let me know what it is.

Yours truly, V. W. T.

Coyle, Okla., April 11, 1913.

J. A. Bauer, Judsonia, Ark.

Dear Sir: I received plants in fine condition; they are all growing fine.

Yours truly, M. N.

Asherton, Tex., April 4, 1913.

J. A. Bauer, Judsonia, Ark.

Dear Sir: I received the strawberry plants in good shape. Accept thanks for promptness. Yours truly,

Wm. W.

Council Grove, Kans., April 7, 1914.

J. A. Bauer, Judsonia, Ark.

Dear Sir: Plants arrived on morning of the 15th, in fine condition; congratulate you on your manner of packing. Respectfully,

H. C. F.

Connelsville, Mo., May 1, 1914.

J. A. Bauer, Judsonia, Ark.

Dear Sir: The box of plants arrived all right, they were fine plants, and am well pleased with them.

Yours, etc., G. R. M.



A Bauer plant in fruiting 360 berries on this one plant. Good plants make big crops.

Freeman, Mo., May 28, 1913.

J. A. Bauer, Judsonia, Ark.

Dear Sir: I received the plants all right, many thanks for the fine plants.

Jenks, Okla., June 1, 1913.

J. A. Bauer, Judsonia, Ark.

Dear Sir: Every one of my plants grew and are doing well.

Yours truly, W. W. Y.

Arroyo Grande, Calif., Dec. 22, 1914.

J. A. Bauer, Judsonia, Ark.

Dear Sir: Plants came all O. K., a fine lot. Am well pleased with them. They are doing fine. When I want more plants you'll get my order.

Sincerely, W. E. H.

Cleveland, Okla., Feb. 7, 1913.

J. A. Bauer, Judsonia, Ark.

Dear Sir: I have bought plants of you for my own setting and they were fine. I now ask that you send catalogue for my neighbor.

Yours resp., H. B. C.

Muskogee, Okla., April 10, 1912.

J. A. Bauer, Judsonia, Ark.

Dear Sir: I received the other shipment of plants yesterday in fine shape. I think they are the best I have ever bought. Thanking you for the favor, I am, Yours truly, W. O. C. H.

Los Angeles Co., Calif., Jan. 14, 1914.

J. A. Bauer, Judsonia, Ark.

Dear Sir: One of my friends tells me you grow the best of strawberry plants and as I am wanting a few thousand enclosed you'll find a money order for \$29.00 for which send me Improved Klondike. I find your plants have given all growers here good satisfaction.

Yours truly, B. G. S.

Los Angeles Co., Calif., Jan. 1, 1913.

J. A. Bauer, Judsonia, Ark.

Dear Sir: My friend, Mr. Umeno, tells me you have the best of strawberry plants, so I order today 7,000 plants of you. Thanking you to send me the best as you have sent him, I am,

Yours truly, T. Hayashi.





NEVER SAW FINER PLANTS IN  
HIS LIFE.

Many sell one kind of plants for another. Read what this man says:

Orange City, Ia., March 18, 1912.

J. A. Bauer, Judsonia, Ark.

Dear Sir: I just received the sample of plants you sent me to show me you grew first class plants, and I have never seen finer plants in my life. I am enclosing you draft for \$10.60 for 990 plants assorted, and if these plants show up in good shape and are as good as this sample you'll get lots of good orders from this section of the country.

Yours truly, J. F. DeY.

Muskogee, Okla., Jan. 1, 1913.

J. A. Bauer, Judsonia, Ark.

Dear Sir: I want several thousand of the Aroma plants, and as I have bought from you now for four years I will ask you if you still have the pure Aroma like you sold me four years ago, which were the pure and unmixed Aroma. Since then I have bought what was called Aroma, from three different plant growers, but they were not true to name, so I come again to you for some more pure stock. These plants I got of you were fine and well rooted, and kindly let me know if you can furnish me the same good quality plants.

Yours truly, T. D. S.

Cold Springs, Mo., April 9, 1914.

J. A. Bauer, Judsonia, Ark.

Dear Sir: Plants shipped to me reached me today, after agent let them lay in express office six days, it was all his fault, but they are in much better shape than I expected. I think nearly every one will grow. Thanking you for the extra plants and good count, I am,

Yours truly, Jas. O. A.

Compton, Calif., March 5, 1914.

J. A. Bauer, Judsonia, Ark.

Dear Sir: I received the berry plants a few days ago and will say they are the best I ever bought, and the express was only \$5.25 on them. You sent good count. Yours truly,

K. S.

Arcadia, Tex., Dec. 20, 1914.

J. A. Bauer, Judsonia, Ark.

Dear Sir: I just went over to the depot and got the two crates of plants, they came through in fine shape, and am well pleased. Yours truly,

G. N.

Muskogee, Okla., March 30, 1914.

J. A. Bauer, Judsonia, Ark.

Dear Sir: I received plants all O. K. and am well pleased with them in every respect. Your plants are very fine.

Truly yours, A. E.

Purdy, Mo., April 1, 1914.

J. A. Bauer, Judsonia, Ark.

Dear Sir: I received the plants all right and am well pleased with them.

Yours truly, J. A. G.

Greenwood, Del., April 11, 1914.

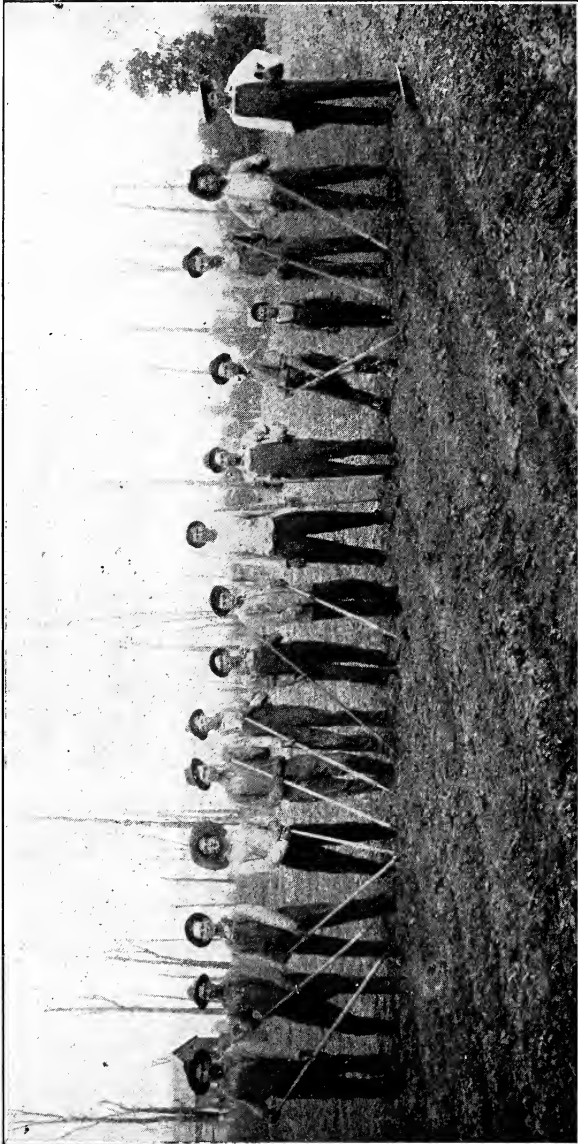
J. A. Bauer, Judsonia, Ark.

Dear Sir: I received the plants in good shape, all are fine, one box was broken open, but all, I think, will live. I will remember you next year.

The count was the very best, none of them but what over run their amount.

Yours truly, Geo. G. K.

This is what I call a good bunch of letters and all of them go to show that I have furnished them plants of quality, which I think is the kind you'll want.



Going over berries first time on the farm of J. A. Bauer, Judsonia, Ark. You can't make a success if you don't work your berries good.

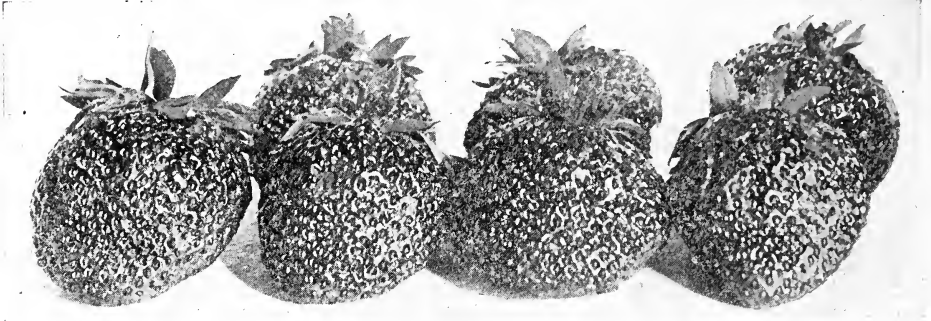


A field of asparagus one year old. We only offer two-year roots this season.

## We Dig Up the Whole Row of Plants

Wish to call your attention to the fact that when you buy plants of us that you get all the rows dug up; we just leave stand a plant every sixteen inches in the rows, you get the rest; we throw all small, weak plants out; we give you 27 plants in bunch; we give you 25 plants with every 1,000 plants you buy extra besides the two in each bunch you get; you take no chances on what you get of us; we give you the best count. There isn't any other plant grower in this state who digs up the whole rows; they all dig out the small alley plants and keep the good, strong plants for fruit. Our plants are worth three times as much as the kind they'll sell you and you'll say it when you see the difference in the crops they'll bear. If you were planting any other crop you would want good seed of whatever crop it was, so it is with the strawberry, it pays to get good plants. The day of the scrub hog, cow, or any kind of live stock is past; it has been set back by the full blood stock, and it should be, for there is no room for any scrub stock, as well as any scrub seeds or plants. Don't take chances, but plant the best plants from a man who has been growing them for thirty-four years and still at it.





Brandywine

## Fall Planting of Strawberries

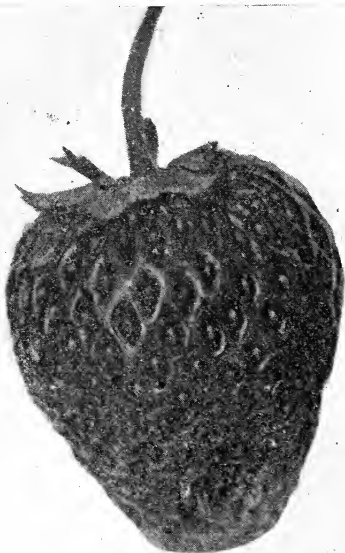
Fifteen years ago such a thing as planting berries in the fall was not known, but today we ship over two million plants each year in the fall. We ship all over the Southwest and South. We do not advise planting farther north than Missouri after November 5th, but if plants are set out good any time in October you can plant them with success in about every state in the Union. Any plants you set south of the Missouri line in the fall will make enough fruit to more than pay for the plants and working of them the coming spring, and they are much better prepared to make a good growth that season than a plant that is set in the spring and when a drouth comes along early it hasn't got rooted well enough to be able to stand drouths. The planting in the fall is here to stay. You take no risk at all by planting them in the fall, for millions and millions of plants are set now each fall, and they would not be set if it were not a success in every respect.

**JUST A WORD.** If you should receive two of my catalogs, please hand one copy to a friend who might want something in my line and oblige me.

---

## Fall Planting Varieties

No doubt you'll want to buy a thousand or more of the Progressive and Superb, the two best fall bearing sorts out; in fact, the only two that will bear in the Southwest in the summer and fall. We have tried them out here and find them not wanting. They bear with us and I think they will do so with you. We have only about 150,000 of them to offer, so hurry in your orders. We will hold and ship just when you want them to come out. Many charge over twice the prices we charge for the same plants. We will sell ours as long as they last at the prices as per catalog page. Don't fail to try them. They make good, big, strong plants and both stand drouth well, and so you'll be sure to get them to grow. Any part of the United States will produce them, in my opinion.



Helen Davis.

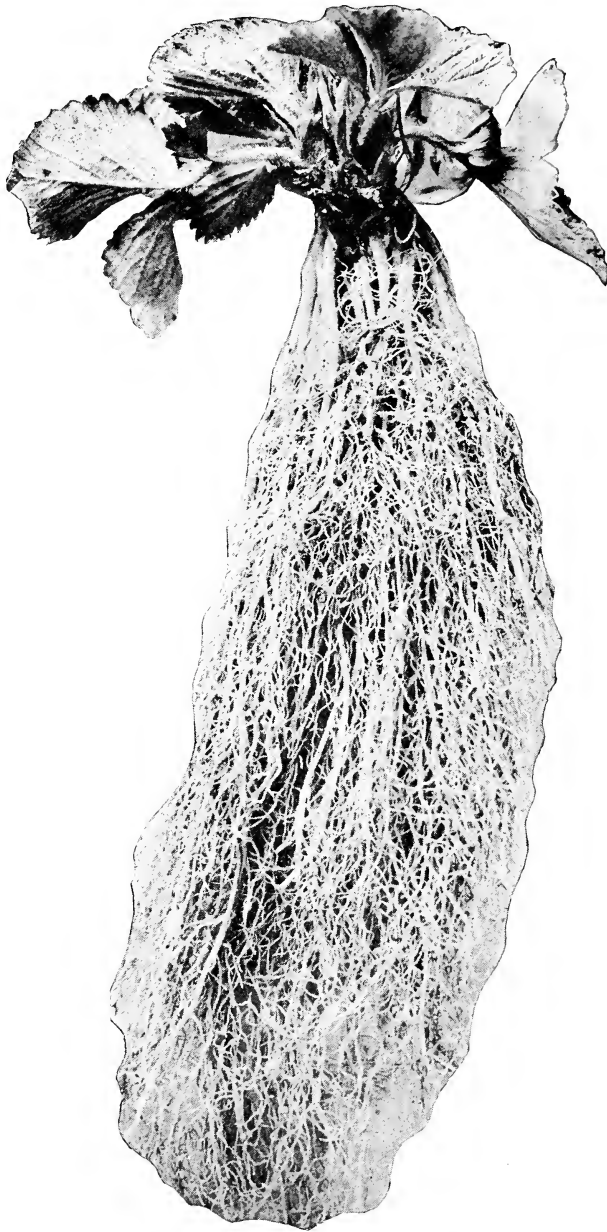
## Thirty-four Years of Success

Thirty-four years ago last spring my father founded our business, and we are still on deck, dealing out the best and choicest strawberry plants to our patrons that can be grown. In this thirty-four years we have had our ups and downs, but have at all times stayed by our motto, "A Square Deal to All," and have won out at last, for we are now the largest growers of choice strawberry plants in the whole Southwest, and we are the oldest in business of any in the United States, so this should count when you deal with anyone. Successful men in any line are the kind it pays to buy of. In this long time our business has grown in leaps and bounds. We are now selling millions of plants each year. We are prepared to handle large orders promptly and can ship as many as 200,000 plants a day in the busy season. In any line of business a man must be fixed to turn out the business or he doesn't need it. Many ask for business and when they get it can't turn it out. You'll find we can give you the service and give it promptly, as we are fixed to turn it out. You can rest assured when you place your order with us we will ship them right on time, if weather conditions are not out of line. We have no control of the weather and can't help any weather freaks. Try us just once and let us show you our ability to turn out the goods.

J. A. BAUER  
STRAWBERRY

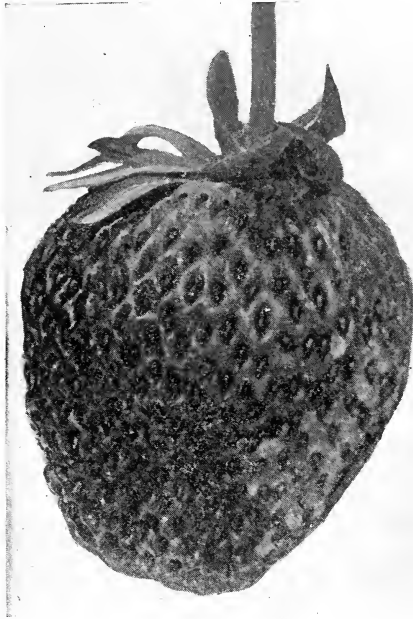


JUDSONIA, ARK.  
SPECIALIST



A Bauer plant of highest fruiting quality.

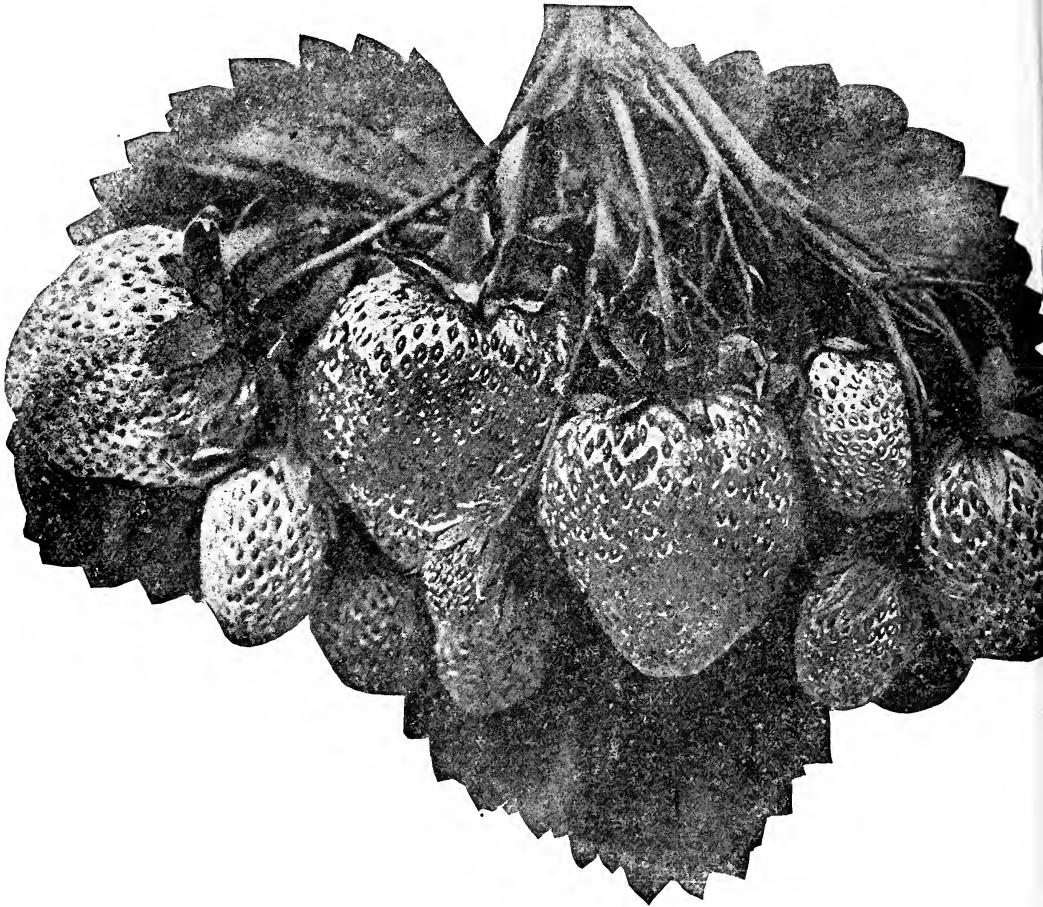




St. Louis.

## We Only Grow Strawberry Plants and Asparagus Roots

Many write us for prices on trees and seeds. We don't grow them, nor do we expect to grow them. Our hobby is the best strawberry plants grown. I wish to give you the names of good, reliable firms in the United States who can supply your wants in seeds and trees as well as other plants besides strawberry plants: Reichardt & Schulte, Houston, Tex., seeds; T. V. Munson & Son, Denison, Tex., general nursery line; Austin Nursery, Austin, Tex., general nursery line; Baker Bros., Fort Worth, Tex., general nursery line and flowers; Drumm Seed Co., Fort Worth, Tex., general nursery line and flowers; Texas Seed & Floral Company, Dallas, Tex., general seed and flowers; J. W. Vestal, Little Rock, Ark., flowers and seeds; Stark Bros., Louisiana, Mo., general nursery line. Any of these houses are reliable, and I think you'll get a square deal from any of them.



**Klondike**



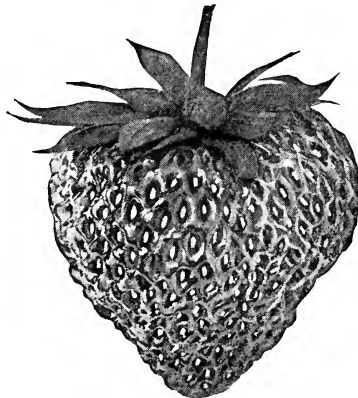
## Strawberries for Profit

Among all the small fruits, none are more profitable than the strawberry, the queen of all small fruits. There might have been a better fruit made, but the fact that there wasn't shows that the strawberry is in a line of its own. Strawberries can be grown in any state in the Union and will thrive under many conditions. Of course there are some localities where they do better than others, as some places they grow wild. They grow wild at this place in the pine woods and they are the very finest of berries. There are not many places in the United States where they grow wild. Strawberries can be grown with success in Canada, Cuba and Mexico, as well as this country. For best results with strawberries you must plant good, strong plants and take pains in getting your land in the highest state of cultivation, and when planted be sure to work well. You can't make a big crop of berries without you see after them. Well do I remember the first berries my father grew which were grown in the season of 1880, and he sold many of these berries at \$10.00 per crate in St. Louis, and since that time we have grown strawberries every year. We have made a success of the business and you can also if you follow our guide in planting and working out the berry proposition. I know that you can make good money growing berries if you only use good plants and follow my advice laid down in this book. You can make from \$200.00 per acre up to \$1,000.00 per acre, owing to location to markets and varieties you grow. Several have made \$1,000.00 per acre from berries and you can do likewise by having a good home market and by planting the right varieties and getting your land in the best of condition. Give an acre a trial with good plants and work it right and you'll be a berry grower ever after.



## The Plant Express Rates to Different Towns in the United States:

Town.	Rates.	Town.	Rates.
<b>ARKANSAS.</b>		<b>MISSISSIPPI.</b>	
Fort Smith.....	\$1.28	Jackson. . . . .	\$1.48
Gentry. . . . .	1.28	Hattiesburg. . . . .	1.60
Rogers. . . . .	1.28	Crystal Springs. . . . .	1.60
Mena. . . . .	1.46	Durant. . . . .	1.36
Wynne. . . . .	.72	<b>LOUISIANA.</b>	
Texarkana. . . . .	1.46	Monroe. . . . .	\$1.46
Jonesboro. . . . .	.72	Lake Charles. . . . .	1.96
Nashville. . . . .	1.80	Hammond. . . . .	1.96
Mammoth Springs. . . . .	.72	New Orleans. . . . .	1.96
Berryville. . . . .	1.28	<b>TEXAS.</b>	
Yellville. . . . .	1.60	Houston. . . . .	\$2.40
<b>MISSOURI.</b>		Austin. . . . .	2.40
St. Louis. . . . .	\$1.46	Pasadena. . . . .	2.40
Neosho. . . . .	1.46	Alvin. . . . .	2.40
Goodman. . . . .	1.46	Brownsville. . . . .	3.20
St. Joseph. . . . .	1.96	Bay City. . . . .	2.56
Kansas City. . . . .	1.96	Deepwater. . . . .	2.40
<b>ILLINOIS.</b>		<b>OKLAHOMA.</b>	
Quincy. . . . .	\$1.72	Crescent. . . . .	\$1.96
Springfield. . . . .	1.60	Guthrie. . . . .	1.96
Anna. . . . .	1.28	Oklahoma City. . . . .	1.96
Olney. . . . .	1.56	Muskogee. . . . .	1.46
Cobden. . . . .	1.28	Broken Arrow. . . . .	1.60
<b>TENNESSEE.</b>		Enid. . . . .	2.08
Memphis. . . . .	\$0.72	<b>CALIFORNIA.</b>	
Chattanooga. . . . .	1.72	Los Angeles. . . . .	\$6.63
Nashville. . . . .	1.60	Long Beach. . . . .	6.56
Dyersburg. . . . .	1.12	Gardena. . . . .	6.56
		Moneta. . . . .	6.56



Warfield





# Farmers & Merchants State Bank

AUTHORIZED CAPITAL, \$30,000.00

PAID UP CAPITAL \$15,000.00

W. F. Bauer  
Pres.  
W. H. L. Woodyard,  
Vice-Pres.  
R. G. Dickinson,  
Cashier.

Directors  
W. E. Forbes  
A. W. Henson  
Harry Hunsaker  
N. A. Waller  
J. A. Bauer  
L. Wert Wish  
J. C. Rhew  
R. E. Powell  
J. S. Eastland.

JUDSONIA, ARK., Aug. 22, 1913.

## TO THE PUBLIC:

This is to certify that J. A. Bauer is one of our most valued customers, and furthermore is one of our directors, and we have always found him honest and upright in all his business dealings, and wish to say to the public that we think Mr. Bauer will give each and every one a square deal and value received for every dollar sent him. We have known Mr. Bauer for a number of years, knew him when his business was not over 500,000 plants each year, and now he ships millions of plants to all parts of the United States.

FARMERS & MERCHANTS BANK,  
Per W. H. L. Woodyard, Vice-Pres.

---

## AS TO MY STANDING AT HOME

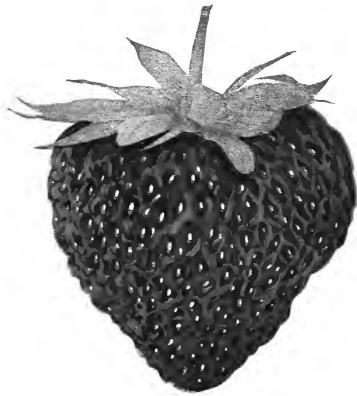
### TO WHOM IT MAY CONCERN:

We, the following business men of Judsonia, have known J. A. Bauer, the strawberry plant man, for years, and have always found him reliable and honest in every respect; we have always found his word as good as gold, and do not think that anyone will be taking any risk whatever in sending him orders for berry plants—large or small—for we think that you will get value received for every cent you send him. Mr. Bauer's business has grown until it is the largest of any plant grower in the Southwest.

WISH BROS., Hardware  
R. E. POWELL, General Merchant  
B. W. ANDREWS, Grocer  
L. M. CULPEPPER, Druggist  
B. F. RUDD, Blacksmith  
F. L. WELTON, Druggist  
FORBES BROS., HARDWARE  
CHAS. L. ELLIOTT, Express Agent  
JOHN WHITE, News Stand  
F. L. DeSHONG, Grocer  
J. F. DeSHONG, Real Estate  
E. U. WOODS, M.D.  
F. G. BRIGGS  
DR. JOHN S. EASTLAND.



**N**OW after you have gone through my catalog I would like to have your order if you want good plants and them at right prices. I have the goods and they are the best, and all I ask is a chance to show you the quality of my stock. You'll see by my many good letters that my stock gives the best of satisfaction.



I will at all times do my best to please each and every customer and I hope to be favored with your order.

Make all Money Orders and Checks payable to

**J. A. BAUER**

STRAWBERRY SPECIALIST

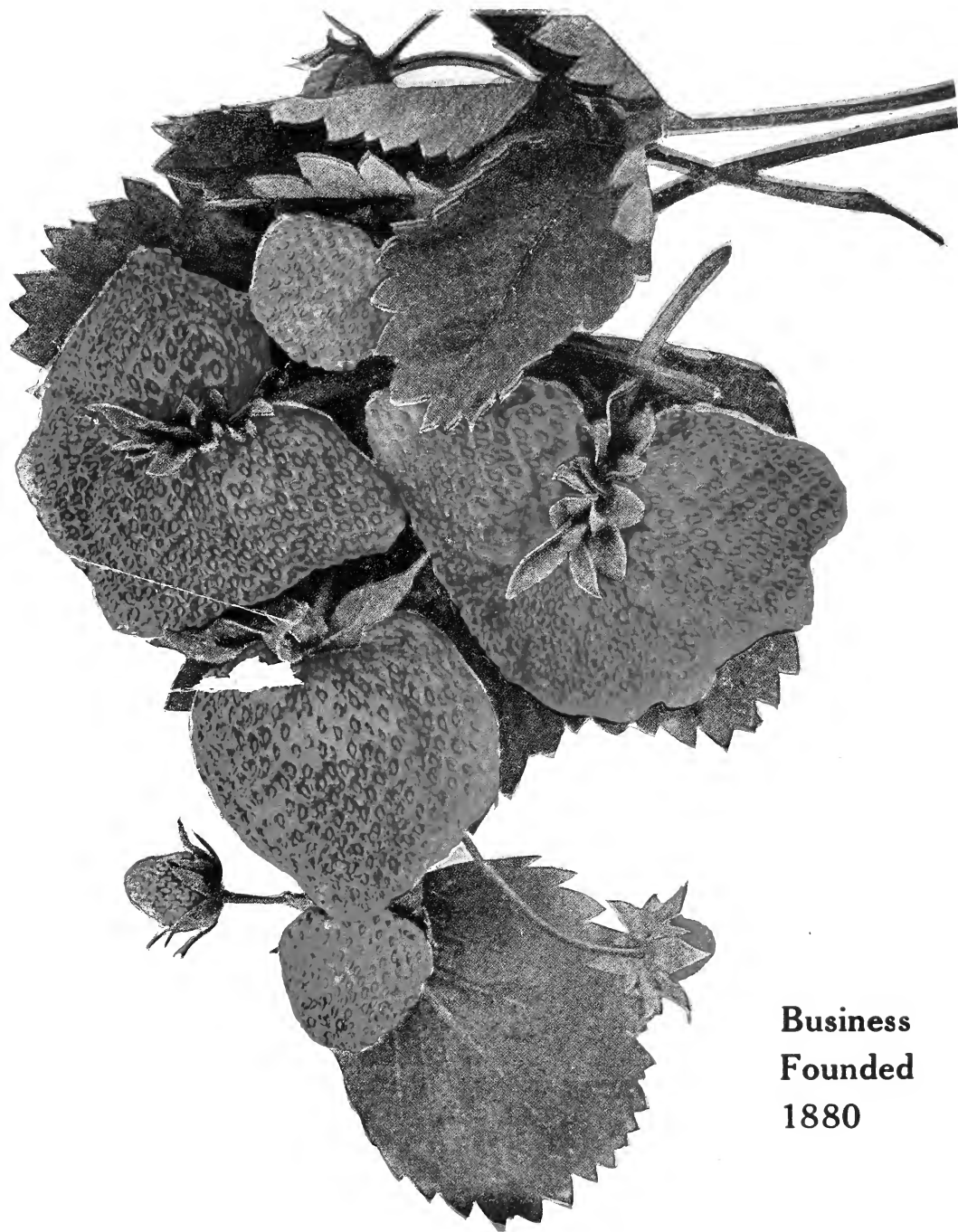
---

JUDSONIA, - ARKANSAS

# Catalog of Quality Strawberry Plants

---

---



**Business  
Founded  
1880**

---

---

**J. A. BAUER, STRAWBERRY SPECIALIST Judsonia, Arkansas**

R. M. Rigby Ptg. Co., Horticultural Printers, Kansas City, Mo.