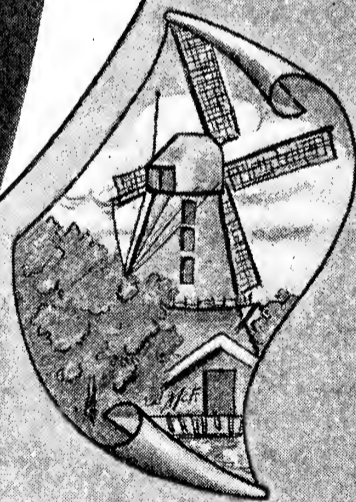
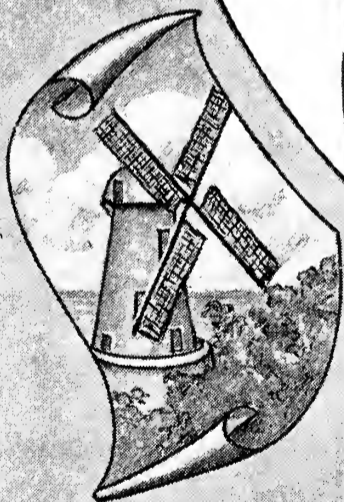


Historic, Archive Document

Do not assume content reflects current scientific knowledge, policies, or practices.



LIBRARY
A JUL 15 1904
U. S. Department of Agriculture



BOBBINK & ATKINS
RUTHERFORD, N. J.



Introduction

In presenting this, our Autumn Bulb Catalog, we wish to thank our customers for their liberal patronage, and take pleasure in soliciting its continuance, as with our up-to-date plant, consisting of 350 acres of nurseries and over 500,000 sq. ft. of greenhouses and storehouses, we are well fitted to execute orders promptly and well. We shall be pleased to forward our various other catalogs and literature as issued.

CORRESPONDENCE SOLICITED. We give every inquiry prompt attention, and ask that each inquiry be made as brief and clear as possible. We also correspond en Francais; Deutscher Briefwechsel; Hollandsche Correspondentie.

ORDER EARLY. It greatly facilitates shipment if orders are received early, and will save disappointments. Please write orders on Order Sheets accompanying Catalog.

IMPORTANT. Advise, when ordering, if you wish goods shipped by express or freight, giving best route for quick delivery. We will not warrant prompt delivery of goods shipped by freight. Write Name, Post Office, County and State, also Number of Street, as plainly as possible; also other information necessary to expedite shipment.

PRICES in this Catalog are f. o. b. Rutherford, N. J. Packing and local delivery charged at cost. This Catalog cancels all sales conditions and prices quoted in previous Catalogs.

TERMS. Cash, or satisfactory reference, must accompany all orders from unknown parties. A discount of 2 per cent allowed on orders accompanied by cash.

OUR RESPONSIBILITY. We endeavor to send to our patrons the highest-grade stock that it is possible for us to produce. We do not guarantee our products, or assume any responsibility after they leave our Nursery, as conditions always exist over which we have no control. It is understood, in case of error on our part, that we shall not be held responsible for a greater amount than the original price.

COMPLAINTS. All errors and omissions in the execution of orders will be satisfactorily adjusted, if we are notified immediately upon receipt of goods.

OUR LANDSCAPE DEPARTMENT. We are in a position to furnish expert men to superintend planting, also experienced planters. We shall be pleased to give estimates on plantings and making new gardens. We go everywhere for business, and plan and plant grounds and gardens everywhere.

HAVE YOUR PLANTS SHIPPED BY EXPRESS. They will reach you in better condition than by mail. Should you want them to come by mail, please inclose postage stamps to cover mailing. We cannot guarantee arrival in good condition other than by express.

HOW TO REACH OUR NURSERIES. Visitors invited. Our Nursery, consisting of three hundred acres, is located within eight miles of New York City. The automobile roads leading to our Nursery are exceptionally fine. Rutherford is the first and Carlton Hill the second station on the main line of the Erie railroad. Take the Hudson Tunnel at 33d St. or at Cortlandt St. Terminal—trains connect with the Erie railroad at Jersey City. The Carlton Hill station is only five minutes' walk to our Office and Nursery.

OUR SHIPPING FACILITIES. We are admirably located to ship to all parts of the country, being only eight miles from New York City. We can ship by Wells-Fargo Express and freight via Erie R. R. from Rutherford, or United States Express and freight via D. L. & W. R. R. from Passaic, and by Carlton Hill Express Co., which connects with all express companies, boat and railroad lines leaving New York City and Newark.

We advise shipping large orders in car-lots from Rutherford, as little or no delay occurs in shipping this way. Trusting again to be favored with your patronage, and promising our best efforts to give satisfaction.

BOBBINK & ATKINS, Rutherford, N. J.

HYACINTHS

How to Grow Them

In Pots.—For the culture of the Hyacinth in pots, it is of the greatest importance to have a good, light, rich soil; rich loam, decayed cow-manure and sand in equal proportions will suit them best. When potting, leave the top of the bulb level with the surface of the soil; 4- or 5-inch pots are the best size to use. After potting, place them on a bed of wet ashes or ordinary soil, and cover them to a depth of 5 or 6 inches. When well rooted, which will be in about six weeks, they may be removed indoors. The best time for planting is October and November.

In Beds and Borders.—The best time for planting these is October or November, in light, rich soil, which should be previously dug to a depth of 18 inches. The bulbs may be planted 6 inches apart and 5 inches deep. To protect the bulbs against severe weather, the beds or borders should have a slight covering of small litter, straw or hay, which should be removed about the end of March.

In Glasses.—Fill the glass with clear water so as to touch the base of the bulb, putting in a small piece of charcoal. After filling the glasses, they should be placed in a cool, dry, dark place for a month, till the roots reach about the bottom of the glass, when they may be brought to the light. Attention is required to keep a sufficient supply of water in the glass, and looking over the bulbs while growing, to brush off any decayed skin that may be on them. The water should be changed every two or three weeks.

Mixed Hyacinths in Separate Colors

BEST QUALITY, SUITABLE FOR FORCING OR BEDDING

Dark Red	Red	Blush-White	Dark Blue	Yellow
Rose or Pink	Pure White	Light Blue	Blue	White
Single, all colors separate, 60 cts. per doz., \$4 per 100, \$35 per 1,000				

Strictly First-Size Named Hyacinths

The superiority of First-Size Named Hyacinths for pot culture and growing in water is attested by the increased sales of the past few years. They will always produce large, full spikes, which will certainly give better satisfaction than the smaller blooms produced by the mixed grade.

Our Selection for Pots and Glasses

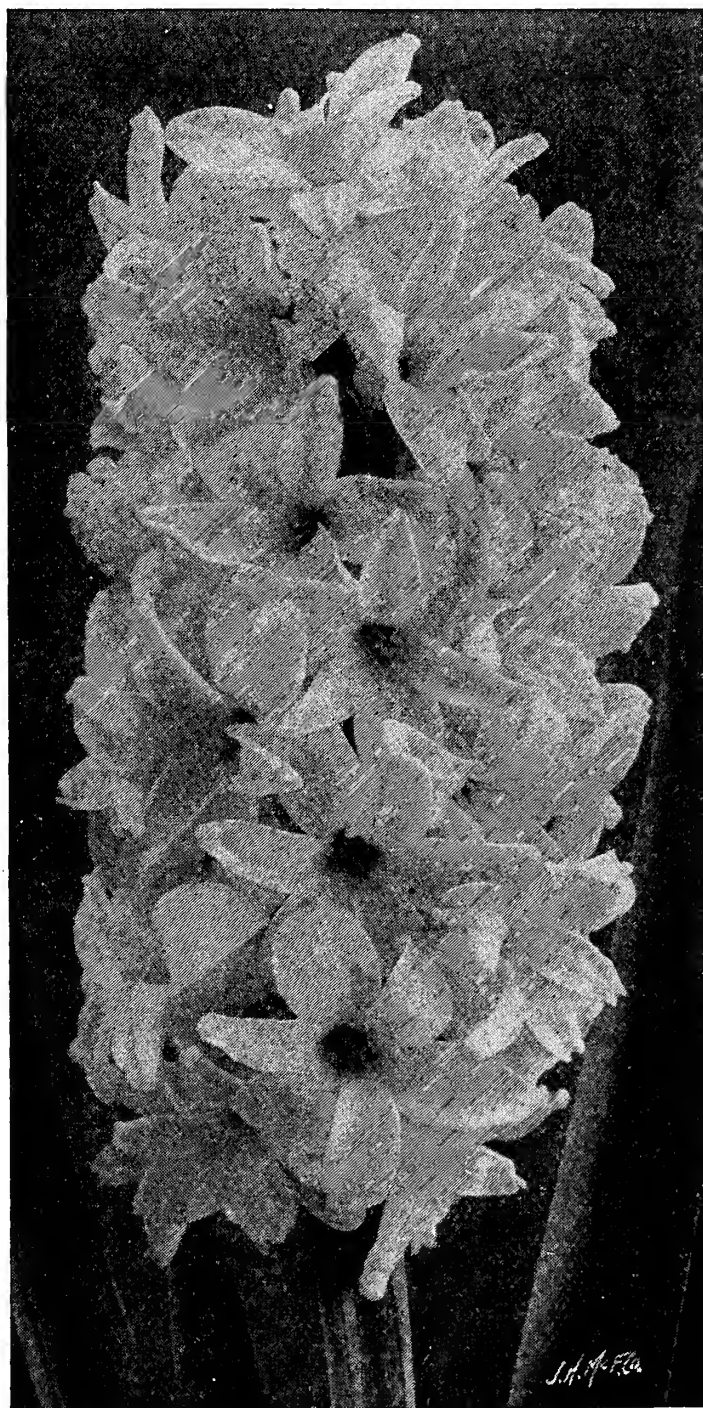
All the Extra-Selected First-Size Named Hyacinths, 10c. each, \$1 per doz., \$7 per 100, unless otherwise noted

SINGLE RED, ROSE AND PINK

- Baron Van Thuyll.** A beautiful delicate pink; fine spikes.
- Cardinal Wiseman.** Charming light rosy pink.
- Charles Dickens.** Fine rose, exquisite shade; large, handsome spike.
- Fabiola.** Delicate pink, striped carmine; fine bells and spike.
- General Pelissier.** Deep crimson-scarlet; compact spike.
- Gertrude.** Deep rose; large, compact truss. A splendid variety for bedding.
- Gigantea.** One of the best blush-pink varieties.
- Moreno.** Waxy pink; very large truss and bells; splendid variety for pot-culture.
- Norma.** Coral-pink. One of the best for early forcing.
- Robert Steiger.** Deep crimson; compact truss.
- Roi des Belges.** Dark red; excellent for bedding.

SINGLE WHITE AND BLUSH-WHITE

- Alba superbissima.** Pure white; fine truss.
- Albertine.** Pure white; an early forcing variety.
- Baroness Van Thuyll.** Pure white; excellent forcer and bedder.
- Grande Blanche.** Blush-white; large bells.
- Grandeur a Merveille.** Fine blush-white; large spikes.
- Grand Vedette.** Pure white; very early; large spikes.
- La Franchise.** Fine waxy white.
- La Grandesse.** Fine pure white.
- L'Innocence.** Pure white; extra-fine spike.
- Mme. Van der Hoop.** Pure white; large bells.
- Mina.** Pure, white; fine, large spikes.
- Voltaire.** Creamy white; large bells and fine truss.



Single Hyacinth

SINGLE BLUE, LAVENDER AND PURPLE HYACINTHS

Baron Van Thuyll. Rich purple; very large.
Blondin. Silvery blue, mottled with lilac.
Chas. Dickens. Pale blue, shaded darker.
Czar Peter. Light porcelain-blue; magnificent spike.
Grand Maitre. Deep porcelain-blue; very large spikes.
King of the Blues. Deep blue; large bells and splendid spikes.
La Peyrouse. Light porcelain-blue.
Pieneman. Porcelain-blue; large spike.
Queen of the Blues. Sky-blue; fine bells.
Regulus. Azure-blue; large bells.

SINGLE YELLOW

Ida. Beautiful pure yellow; fine spike.
King of the Yellows. Pure deep yellow.
Obelisque. Rich deep yellow.
Yellow Hammer. Golden yellow; very showy.
 12 cts. each, \$1.25 per doz.

Select Second-Size Named Hyacinths

Are somewhat smaller than the Select First-Size bulbs, but are fine flowering stock and well adapted for pot culture and where bedding grades are desired.

Single, 8 cts. each, 75 cts. per doz. Double, 10 cts. each, \$1 per doz.

DOUBLE RED AND ROSE

Bouquet Tendre. Dark carmine-red.
Lord Wellington. Fine pink; large bells and truss.
Noble par Merite. Deep rosy pink; extra double.

DOUBLE WHITE AND BLUSH-WHITE

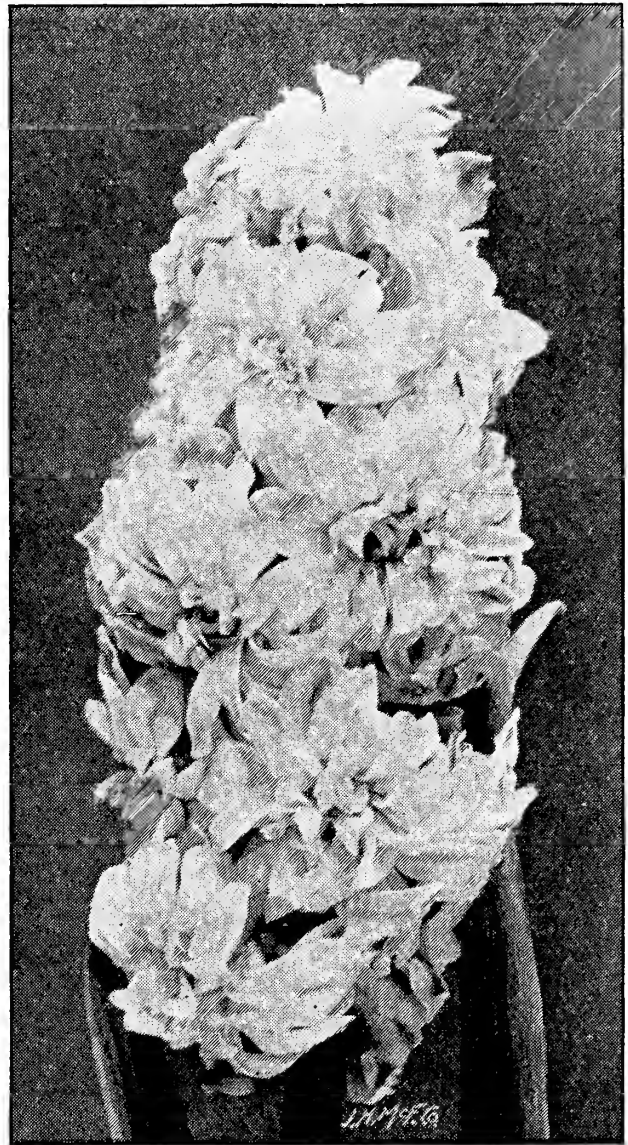
Bouquet Royal. Pure white; very double.
Isabella. Double; blush-white; very fine.
La Tour d'Auvergne. Early; pure white.

DOUBLE BLUE, LAVENDER AND PURPLE

Blocksberg. Porcelain-blue; very large spike.
Charles Dickens. Lilac-blue; early.
Garrick. Deep blue; very large spike.
General Antinck. Porcelain-blue; black center.
Rembrandt. Light blue; large truss; compact spikes.

DOUBLE YELLOW

Goethe. Light yellow; fine truss.
Jaune Supreme. Deep yellow.

*Double Hyacinth***French Roman Hyacinths**

These are the earliest of all Hyacinths. If planted in September and October, they will bloom from the middle of November till Christmas. Plant three bulbs in a 5-inch pot. Fine for house or conservatory.

Early White. Pure white. Selected bulbs, 60 cts. per doz., \$4 per 100; extra-selected bulbs, 75 cts. per doz., \$6 per 100.

Early White Italian or Parisian. A little later in flowering than Romans; much larger spikes.

Early Dark Rose. Semi-double; deep pink.

Early Light Rose. Double beautiful pale rose.

Early Rose. Light blue.

Except where noted, 60 cts. per doz., \$4 per 100

Dutch Roman Hyacinths

These bloom about six weeks later than the early French Romans. Very effective for growing in pots, pans or boxes indoors; also suitable for outdoors.

Single White

Single Blush-White

Single Pink or Rose

Single Dark Red

Single Light Blue

Single Dark Blue

Price, 5 cts. each, 50 cts. per doz., \$3 per 100

*Roman Hyacinths*

TULIPS

The Tulip is one of the most useful of the spring-flowering bulbs. No flower of the early part of the year is brighter than the Tulip. Their beauty of form and brilliancy of coloring are unequaled. They are invaluable either for growing in pots, beds and borders, or for massing in front of shrubbery.

We have given special attention to importing only the finest selection, and, more than that, only the soundest and finest bulbs in every way, so that our patrons may have that same confidence in these bulbs as is shown in our home-grown nursery products.

The figures following the names indicate the height in inches.

Treatment the same as Hyacinths. Plant three bulbs in a 5-inch pot

Early Single Tulips

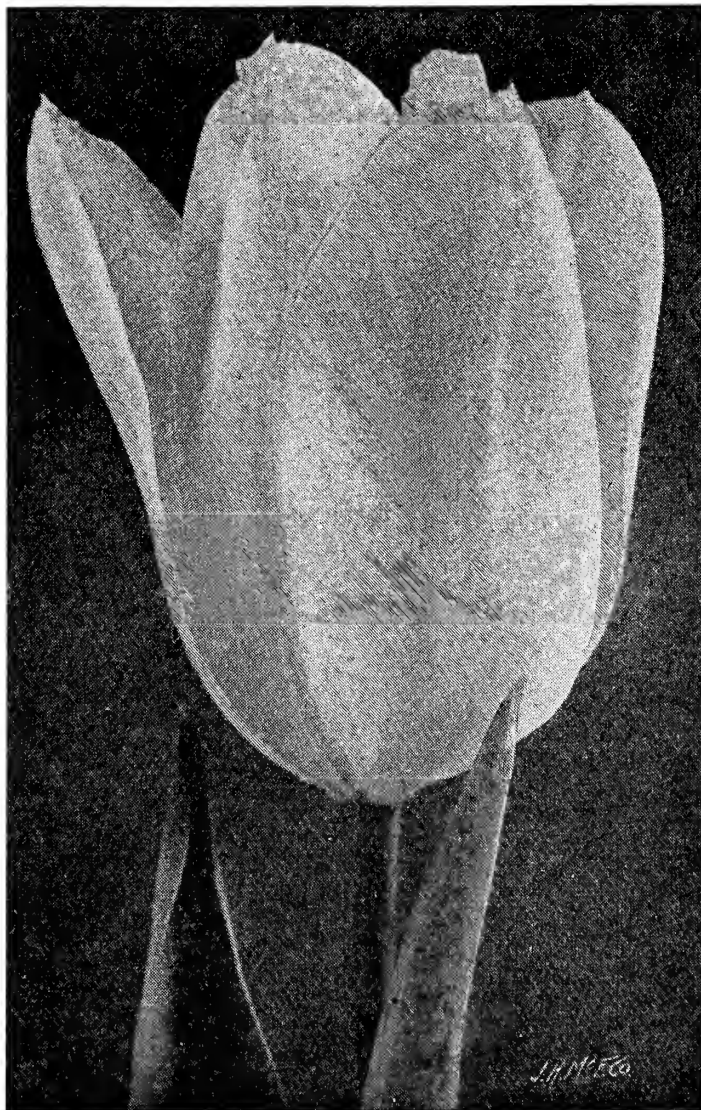
FOR FORCING AND BEDDING

Six of a kind at doz. rate, '25 at 100 rate

Artus. 10. Brilliant deep scarlet; a splendid bedder.....	Doz. 100	\$0 20	\$1 25
Belle Alliance. 10. Bright crimson-scarlet; fine for forcing or bedding.....	30	2 00	
Chrysolora. 12. The finest golden yellow bedding Tulip.....	25	1 50	
Cottage Maid. 12. White bordered pink; very pretty.....	25	1 50	
Couleur Cardinal. 12. Brilliant crimson; splendid bedder.....	35	2 25	
Cramoisi Brillant. 12. Vermilion-scarlet; of large size; fine for bedding and forcing.....	30	1 65	
Crimson King. 10. Crimson-scarlet; yellow at base.....	25	1 50	
Duc Van Thol, Rose. 8.....	30	1 75	
Duc Van Thol, White. 8.....	25	1 50	
Duchesse de Parma. 8. Orange-scarlet with yellow edge.....	25	1 50	
Flamingo. 12. Rich, brilliant pink on a white ground.....	50	3 50	
Goldfinch. 12. Golden yellow.....	25	1 50	
Joost Van Vondel, Red. 12. Deep cherry-red, feathered white through center of each petal.....	30	2 00	
Joost Van Vondel, White. 12. Pure white; large flower of fine form.....	40	2 75	
Keizerkroon. 15. Bright red, margined golden yellow.....	30	1 75	
Le Matelas. 12. Deep pink, yellow at base; very large.....	50	4 00	
La Reine (Queen Victoria). 12. Pure white. Fine for bedding or forcing.....	20	1 25	
Pink Beauty. 12. Deep pink, outer petals flushed snowy white.....	65	4 50	
Pottebakker, Scarlet. 12. Bright scarlet; very large, fine flower.....	30	2 00	
Pottebakker, White. 12. Pure white; large, showy flower; excellent forcer and bedder.....	30	2 00	
Pottebakker, Yellow. 12. Bright yellow; a favorite for both forcing and bedding..	30	1 75	
Prince of Austria. 14. Orange-scarlet; a striking color; sweet-scented.....	30	2 00	
Princess Marianne. 10. Rosy white; fine bedder.....	25	1 50	
Proserpine. 12. Carmine-rose; fine form..	40	2 75	
Rose Gris-de-Lin. 10. Rose, shaded blush-white; fine for forcing and bedding .	20	1 25	
Rose Luisante. 10. Deep rose; extra fine and showy; large, perfect flower.....	35	2 50	
Thomas Moore. 13. Bright orange-scarlet; sweet-scented.....	25	1 50	
Vermilion Brilliant. 10. Rich vermilion-scarlet	40	2 50	
White Hawk. 12. Pure white; fine for bedding or forcing; robust habit.....	30	2 00	
Wouverman. 10. Dark violet; very distinct.....	50	3 50	
Yellow Prince. 10. Bright yellow; sweet-scented; excellent for bedding and forcing.....	25	1 50	
Extra-Fine Mixed, all colors, assorted....			
		\$9 per 1,000..	20 1 00

Single May-Flowering or Cottage Garden Tulips

Bizarres. 24. Finest mixed. Yellow, feathered or striped crimson, purple or white.....	Doz. 100	\$0 25	\$1 50
Bybloems. 24. Finest mixed. White, striped crimson and scarlet.....	25	1 50	
Gesneriana lutea. 24. Rich orange-red; very effective.....	50	3 00	
Gesneriana spathulata major. 28. Brilliant scarlet, with blue-black center. An excellent bedding Tulip.....	30	1 75	
Inglescombe Pink. 20. Rose-pink.....	35	2 50	
Inglescombe Scarlet. 18. Brilliant scarlet	45	3 00	
Inglescombe Yellow. 20. Immense, globular yellow flowers.....	60	4 50	
Mrs. Moon. 24. The largest and finest of all late yellow Tulips. Flowers rich yellow; sweet-scented.....	65	5 00	
Parisian Yellow. 24. Large; pure yellow; fine shape; of special value for cutting..	30	2 00	
Picotee (Maiden's Blush). 22. White, penciled and margined with bright pink.	30	1 75	



Joost Van Vondel White Tulip



Couronne d'Or Double Tulip

Double Tulips

Couronne d'Or (Crown of Gold). 12. Doz.	100	
Rich golden yellow.....	\$0 35	\$2 50
Duke of York. 12. Dark rose, bordered with white.....	25	1 50
Gloria Solis. 12. Deep crimson, with yellow edge.....	25	1 50
Imperator Rubrorum. 12. Bright scarlet, yellow base.....	35	2 50
La Candeur. 10. Pure white; an excellent bedder.....	25	1 50
Lord Beaconsfield. 10. Rich, rosy pink..	50	3 00
Murillo. 10. Blush-white, shaded with rose.....	25	1 50
Salvator Rosa. 12. Deep rose, flamed with white.....	35	2 25
Toreador. 10. Reddish orange, with a yellow border.....	75	6 00
Tournesol. 10. Bright scarlet, edged yellow; fine for forcing.....	35	2 25
Tournesol Yellow. 10. Bright yellow, shaded orange.....	35	2 25
Yellow Rose. 10. Bright golden yellow; late flowering; fragrant.....	25	1 50
Double, Fine Mixed. All colors, assorted.		
	\$9 per 1,000..	1 25

DOUBLE LATE TULIPS

Extra-Fine Mixture. 25 cts. per doz., \$1.25 per 100, \$9 per 1,000.

May-Flowering or Darwin Tulips

These brilliant-colored, late-flowering Tulips have been popular in European old-fashioned borders and gardens for a century or more. The difference between these early-day varieties and the present time is marked, to a large degree, by the more brilliant colors and greater number of varieties, as of late years the hybridizer has created flowers of delicately graceful form and shades of color. They require little or no care when planted in old-fashioned flower borders or gardens, remaining in the same position from year to year. The average height is from 2 to 3 feet. Planting should be done in October, mulching with light litter for winter.

MAY-FLOWERING TULIPS, continued

Baron de la Tonnaye. 26. Vivid rose, Doz.	100	
shading to blush-pink.....	\$0 40	\$3 00
Bartigon. 22. Crimson, with a white base.	60	4 00
Clara Butt. 20. Soft salmon-rose; very large.....	65	4 00
Glow. 23. Scarlet, blue base; edged white.	60	4 00
Gretchen. 24. Soft salmon-rose; globular.	50	3 50
Harry Veitch. 24. Deep scarlet, white center.....	65	4 00
Kate Greenaway. 24. White, shaded lilac; very late.....	50	3 00
King Harold. 24. Mahogany-red.....	60	4 00
Loveliness. 21. Bright rose, margined salmon.....	50	3 00
Madame Krelage. 28. Soft lilac-rose, broadly margined blush-pink.....	50	3 50
May Queen. 25. Bright, soft rose.....	50	3 00
Mr. Farncombe Sanders. 26. Rich orange-scarlet, with a clear white base...	75	5 00
Mrs. Potter Palmer. 24. Violet-purple..	60	4 00
Nora Ware. 22. Silvery lilac, shaded white	50	3 50
Ouida. 28. Crimson-scarlet.....	60	4 00
Philippe de Commines. 24. Dark mahogany.....	60	4 00
Pride of Haarlem. 26. Deep salmon-rose, shaded scarlet.....	65	4 00
Rev. A. Ewbank. 20. Bright heliotrope-lilac, lightly bordered.....	75	5 00
The Sultan. 25. Glossy maroon.....	50	3 50
White Queen. 24. Soft white, tinged rose.	60	4 00
William Pitt. 26. Brilliant carmine, shaded darker toward the center.....	60	4 00
Darwin Tulips, Assorted. \$12 per 1,000..	25	1 50

Parrot Tulips

Constantinople. Red, tipped orange.
Cramoisi Brillant. Fine carmine-red.
Lutea major. Yellow, feathered red and green.
Markgraaf. Yellow, striped scarlet and green.
Perfecta. Yellow, striped scarlet.
 25 cts. per doz., \$1.50 per 100, \$10 per 1,000



Darwin Tulip



Narcissus Poeticus Naturalized

DAFFODILS and NARCISSI

All Daffodils and Narcissi are hardy, with the exception of the Polyanthus group, these requiring a covering of litter over winter. For indoor growing, Narcissi require the same treatment as hyacinths. Plant three bulbs in a 5-inch pot.

The naturalization of bulbs, although having been sadly neglected, is receiving a great amount of attention now in this country, and the improvement in landscape effects can scarcely be over-estimated.

After the planting, absolutely no care is necessary, except where the grass is frequently cut, in which case the planting should be renewed every two years.

In the beds, woods, and even in groups on a lawn, Crocuses, Snowdrops, Daffodils and Narcissi give a wonderfully satisfying effect, and increase in number and loveliness each succeeding year.



Von Sion Daffodil

Double Daffodils

Von Sion. Double; flowers golden yellow, large and of fine form. This variety is used in enormous quantities for forcing; excellent for bedding.

Extra-selected, Double-nose Bulbs. Each bulb will produce two or three flowers.	Doz. 100	1,000	
	\$0 50	\$3 00	\$25 00
Select Single-nose Bulbs.	30	2 00	18 00
Alba plena odorata. Pure white, sweet-scented.	20	1 25	10 00
Incomparable. Yellow, with orange center.	20	1 50	10 00
Orange Phoenix. White, with orange center.	25	1 50	12 00
Silver Phoenix. Creamy white, sulphur center.	35	2 25	20 00

Large Trumpet Narcissi

Emperor. A magnificent flower, trumpet clear, golden yellow; perianth deep primrose.	Doz. 40	100	1,000	
	\$0 40	\$2 75	\$22 00	
Empress. Perianth snow-white, trumpet rich golden yellow.	40	2 75	22 00	
Golden Spur. Immense golden trumpet; reflexed.	40	2 75	22 00	
Henry Irving. A noble flower of rich golden yellow; trumpet large and wide and recurved.	40	2 75	20 00	

TO HAVE A GARDEN FULL OF FLOWERS IN SPRING, PLANT BULBS IN THE FALL



Medium Trumpet Narcissus

LARGE TRUMPET NARCISSI, continued

Maximus. Trumpet deep golden yellow. Excellent for cutting.....	Doz.	100	1,000
		\$0 50	\$3 00 \$28 00
Princeps. One of the most popular; perianth sulphur-white; trumpet rich yellow. For forcing it is superior in every way, and a fine variety for naturalizing....	25	1 25	10 00
Trumpet Major. A large and shapely flower of a rich, deep golden yellow. Excellent for forcing, bedding or naturalizing.	25	1 50	12 00

Medium Trumpet Narcissi

Barrii Conspicuous. Large, broad, spreading perianth; soft yellow; crown yellow, conspicuously edged with orange-scarlet.....	Doz.	100	
		\$0 20	\$1 25
Cynosure. Large, showy flower; primrose-white perianth, with orange-scarlet crown.	20	1 25	
Figaro. A large and well-formed flower, with lemon-yellow perianth and orange cup.....	20	1 25	
Incomparabilis. Yellow, with orange cup; very free-flowering and splendid for planting in grass; excellent for cutting...	20	1 25	
Stella alba. White perianth and yellow crown; fine for naturalizing.....	20	1 00	
Narcissi, assorted, all varieties.....		\$7.50 per 1,000..	15 1 00

Poeticus (The Poet's Narcissus)

Burbidgei. Flowers pure white, cup edged orange-red.....	Doz.	100	1,000
		\$0 20	\$1 25 \$10 00
Poeticus (Pheasant's Eye). White, with orange cup.....	15	85	7 00
Poeticus ornatus. Flowers large; pure white, cup margined with scarlet.....	20	1 00	9 00

Polyanthus Narcissi

These are not hardy and require a covering over winter. Plant three bulbs in a 5-inch pot.

Paper-White Grandiflora. The popular White Narcissi from France. If planted in September, will bloom in December.	Doz.	100	
Large mammoth bulbs.....		\$0 40	\$2 25
Large selected bulbs.....	25	1 75	

CHINESE SACRED LILY

(Orientale New Year's Lily)

These can be grown in water in fancy shallow bowls, with just enough pebbles around them to keep them from toppling over. The white-and-yellow flowers are borne in clusters, and are sweetly scented. Large bulbs, 10 cts. each, 3 for 25 cts., 90 cts. per doz. Original baskets of 30 bulbs, \$2.

JONQUILS

Campernelle. Large, deep yellow flowers; fine for cutting..	Doz.	100	1,000
		\$0 20	\$1 00 \$7 00
Campernelle Rugulosus. An improved Jonquil; handsome flower; color pure yellow; very fragrant.	20	1 50	12 00
Single Jonquil. Rich yellow; very fragrant and free-flowering.	15	85	7 00
Double Jonquil. Double, deep golden yellow, sweetly scented flowers.....	25	1 75	15 00

CROCUS

This is one of the earliest spring flowers, and one of the easiest to grow; it will thrive in any soil and situation. Crocuses should be planted 2 to 3 inches apart, from September till December. For growing in pots treat same as hyacinths, but plunge the pots only about 3 inches deep. Plant 7 to 10 bulbs in a 5-inch pot.

Named Large-Flowering

Cloth of Gold. Golden yellow, shaded and veined brown.			
King of the Blues. Deep purplish blue.			
Madam Mina. White, striped lavender.			
Mammoth Yellow. Golden yellow; very free-flowering.			
Mont Blanc. Large; pure white.			
Purpurea grandiflora. Large; purple.			
Sir Walter Scott. White, striped lilac.			
		15 cts. per doz.,	85 cts. per 100, \$7.50 per 1,000

Mixed Crocus

ALL BLOOMING-SIZE BULBS

Large White.....	} Doz.	100	1,000	
Large Blue or Purple.....				
Large Striped or Variegated..		\$0 10	\$0 50	\$4 00
Large Yellow.....				
Large, all Colors, Mixed.....				



Crocus Naturalized

Miscellaneous Roots and Bulbs

Allium Neapolitanum

Large heads of pure white, star-shaped flowers. 15 cts. per doz., \$1 per 100.

Amaryllis

Probably the most magnificent and gorgeous bulbous plant known. Their immense flowers, richness of coloring and habit are simply incomparable.

	Each	Doz.
Vittata. Empress varieties.....	\$0 50	\$5 00
Belladonna major	25	2 50
Formosissima	15	1 50
Hybrids , from selected strain.....	50	5 00
Johnsonii	35	3 50

Anemone

	Doz.	100
Double Poppy Anemone , all colors as-sorted.....	\$0 25	\$1 50
Single Anemone , all colors assorted.....	20	1 00

Calla Lily (Richardia)

Æthiopica (White Calla, or Lily of the Nile). Nothing is easier of culture than this popular Calla. It requires good, rich loam; indispensable for edging ponds or bog-gardens. Large roots, 15 cts. each, \$1.50 per doz.; mammoth roots, 25 cts. each, \$2.50 per doz.

Albo-maculata (Spotted-leaf Calla). This variety has dark green leaves, with numerous white spots; pure white flowers, with black center. 15 cts. each, \$1.50 per doz.

Elliottiana. Flowers large, rich, clear golden yellow; 4 to 5 inches across; foliage dark green, with a number of white spots. 25 cts. each, \$2.50 per doz.

Chionodoxa (Glory-of-the-Snow)

Luciliæ (Glory-of-the-Snow). Flowers light porcelain-blue, with white center. Excellent for naturalizing. 15 cts. per doz., \$1 per 100, \$8 per 1,000.

Sardensis. Flowers large; gentian-blue, with white center. 20 cts. per doz., \$1.25 per 100, \$10 per 1,000.

Colchicum autumnale

(Autumn-Flowering Crocus)

Produces its light purple, crocus-like flowers in fall, leaves appearing the following spring. 50 cts. per doz., \$3.50 per 100.

Crown Imperials

Fritillaria meleagris varieties. 35c. per doz., \$2.50 per 100.

Freesias

Very free-blooming, bulbous plants for house-culture; flowers in clusters, pure white, very fragrant.

Refracta alba. Mammoth bulbs, 50 cts. per doz., \$1.75 per 100, \$15 per 1,000.

Purity. The largest white-flowering Freesia, fine for forcing and cutting. Extra-large-size bulbs, 50 cts. per doz., \$2.50 per 100, \$20 per 1,000.

Grape Hyacinths (Muscari)

A pretty spring-flowering bulb, well adapted for edging and naturalizing.

Botryoides. Bright blue. 15 cts. per doz., 75 cts. per 100, \$6 per 1,000.

Botryoides album. White. 20 cts. per doz., \$1 per 100, \$8 per 1,000.

Monstrosum (Feathered Hyacinth). A graceful variety with purple flowers. 25 cts. per doz., \$1.25 per 100, \$10 per 1,000.

Gladioli

The Bride. Flowers pure white. 25 cts. per doz., \$1.50 per 100.

Blushing Bride. Flowers ivory-white, with crimson flakes. 25 cts. per doz., \$1.50 per 100.

Iris

Anglica (English Iris). Large, handsome flowers, with rich purple, blue and lilac colors; grows 18 to 24 inches high. Perfectly hardy.

Mixed Colors.....\$12 per 1,000..\$0 25 \$1 50

Mont Blanc. A handsome pure white variety..... 35 2 00

Hispanica (Spanish Iris). Flowers when cut in bud-state last for one week in bloom.

Mixed Colors.....\$5 per 1,000.. 12 75

In Four Separate Colors..... \$7.50 per 1,000.. 15 1 00

Susiana (The Mourning Iris). A remarkable species with immense flowers; blush-color, tinted with brown and covered with a network of black lines..... 20 cts. each.. 2 00

Germanica (German Iris).

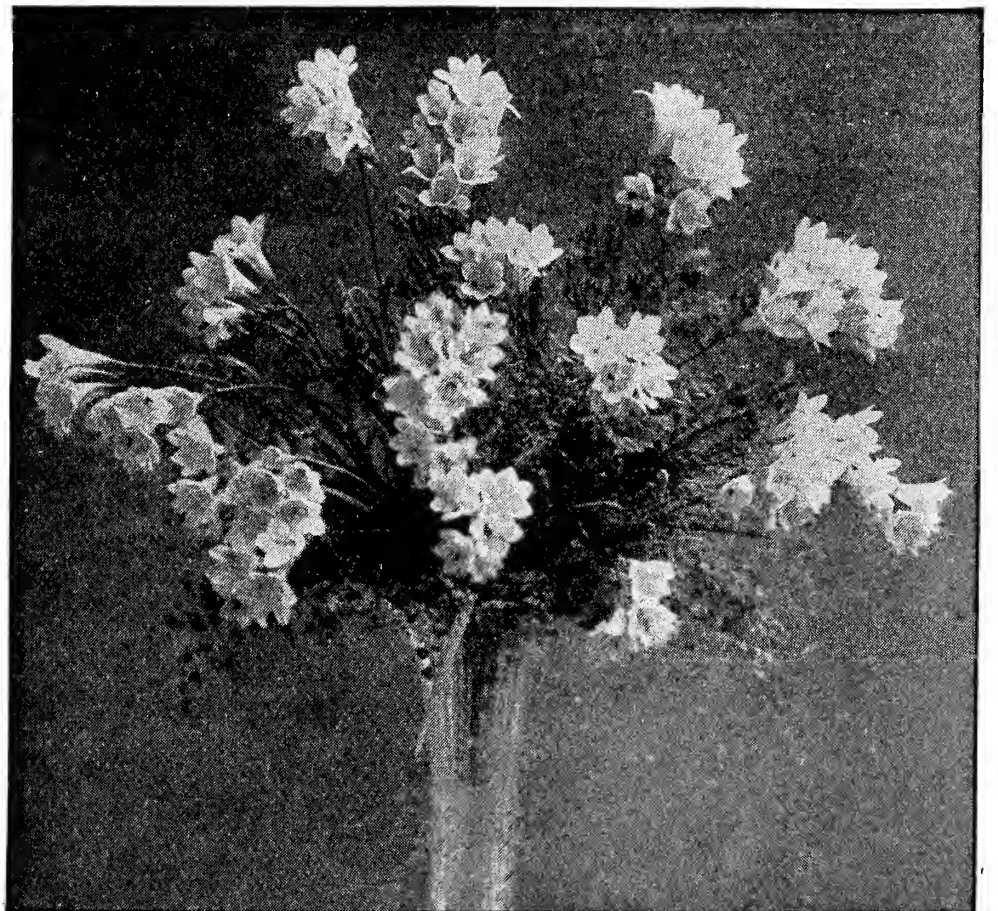
Named Varieties..... 1 50 10 00

Mixed Varieties..... 1 00 6 00

Kaempferi (Japan Iris).

Named Varieties..... 2 00 15 00

Mixed Colors..... 1 00 6 00



Freesia, Purity

Ixias

(African Corn Lily)

A winter-flowering bulb with graceful spikes of flowers. All colors, assorted. 12 cts. per doz., 75 cts. per 100.

Ornithogalum

Arabicum (Star of Bethlehem). Flowers white, with black center, having a distinct aromatic perfume. 40 cts. per doz., \$2.50 per 100.

Ranunculus

Among dwarf flowers these are unrivaled, having bright and attractive colors of crimson, white, yellow, purple and black.

French Mixed and **Persian Mixed**. 15 cts. per doz., \$1 per 100.

Scillas

A very attractive spring-flowering bulb. Excellent for massing and planting with *Chionodoxa*.

Campanulata. Produces spikes of bell-shaped flowers, in blue, white, and rose. 25 cts. per doz., \$1.50 per 100, \$10 per 1,000.

Nutans (Bluebells). A fine bulb for naturalizing in shady places, producing spikes of blue flowers 1 foot high. 25 cts. per doz., \$1.50 per 100, \$10 per 1,000.

Sibirica. Of dwarf habit, with sprays of exquisite rich blue flowers. 25 cts. per doz., \$1.25 per 100, \$9 per 1,000.



Lilium candidum



Spirea, Gladstone

Snowdrops (Galanthus)

The hardiest of all bulbs, which can frequently be seen pushing its way through the snow in early spring.

Elwesii Giant. Largest of all varieties; flowers snow-white. 25 cts. per doz., \$1 per 100, \$7.50 per 1,000.

Single White. 15 cts. per doz., 90 cts. per 100, \$6.50 per 1,000.

Double Pure White. 25 cts. per doz., \$1.50 per 100, \$12 per 1,000.

Sparaxis

The bulbs are not hardy, but do exceptionally well when grown in the conservatory or house in pots or in coldframes, and flower during the winter and spring.

Assorted Colors. 25 cts. per doz., \$1 per 100.

Spirea

Gladstone. A new variety of *Spirea Japonica*, with extra-large spikes of pure white flowers produced in great abundance; free-flowering. 25 cts. each, \$1.50 per doz., \$12 per 100.

New Pink Spirea, Peach Blossom. A grand new introduction; flower of clear pink; excellent for forcing and fine for the garden. 25 cts. each, \$2 per doz.

New Pink Spirea, Queen Alexandra. Of the same habit as Gladstone; flowering about two weeks later; color rose-pink. A splendid garden plant. 25 cts. each, \$2 per doz.

FORCING LILIES

Lilium candidum (St. Joseph's Lily)

Old-fashioned, white garden Lily, suitable for forcing as well as outdoor planting. Imported French Selected Stock. Price, 15 cts. each, \$1.50 per doz., \$10 per 100.

Lilium longiflorum (Japan-Grown)

	Each	Doz.	100
Mammoth bulbs, 9 to 10 in. in circumference.....	\$0 20	\$2 00	\$15 00
Extra-selected bulbs, 7 to 9 inches in circumference.....	15	1 25	10 00
First-size, 6 to 8 inches in circumference.....	10	1 00	6 00

POT-GROWN STRAWBERRY PLANTS

The real luscious flavor of the Strawberry is tasted only when the fruit is gathered ripe from the garden straight to the table. For shipping, the berries are picked before they are ripe, and so that refreshing taste is lost.

Pot-grown plants set out this summer will produce a full crop of fruit next June. We shall have these plants ready in and after the latter part of July, and they can be supplied as late as October. It is better, however, to procure the plants in August or September, as earlier plantings develop larger and more vigorous plants, and will produce a greater crop of fruit next year. So prolific do they bear that from a few plants enough fresh fruit can be gathered daily to supply a family. The ease with which they can be grown should be an incentive for everyone with a little garden space to grow his own Strawberries.

Strawberry blossoms are either perfect or imperfect. It is necessary to plant perfect varieties near imperfect varieties, in proportion of one to four; that is, one row of perfect-flowering varieties to four rows of imperfect-flowering varieties.

Plants should be planted 10 inches apart in the rows, and the rows 18 to 24 inches apart.

Autumn-Bearing Strawberries

We can highly recommend all the following varieties which we have tried out last year, as they have proved to be successful.

Americus. A good grower, bearing medium-sized, bright red berries in autumn. \$1.25 per doz., \$8 per 100.

Autumn. This variety produces an abundance of large, dark red berries. \$1 per doz., \$6 per 100.

Francis. Berries medium to large, rather long, of a glossy red and good quality. \$2 per doz., \$12 per 100.

Pan-American. It fruits well on the current year's young plants as well as on the old ones; the first berries ripen on the old plants, while the young plants are in bloom. \$1 per doz., \$6 per 100.

Progressive. The berries are rich and sweet; of medium size. \$2 per doz., \$12 per 100.

Superb. Large; rich, dark red. \$1 per doz., \$5 per 100.

GENERAL LIST OF STRAWBERRY PLANTS

Those marked Per. are perfect-flowering; those marked Imp. are imperfect-flowering

Abington. Per. Midseason. Similar to Bubach; a strong grower and very productive.....	Doz.	100	
		\$0 60	\$4 00
Auto. Per. Midseason. A variety of high quality. One of the best dessert varieties.....		50	3 50
Bederwood. Per. Early. One of the large-fruited varieties, with uniform-shaped berries.....		50	3 50
Bismarck. Per. Midseason. Dark red..		50	3 50
Brandywine. Per. Late. Large and juicy.		50	3 50
Bubach. Imp. Midseason. Bright red; fine flavor.....		50	3 50
Climax. Per. Early. Excellent flavor and color.....		50	3 50
Chesapeake. Per. A fine-flavored, dark red Strawberry.....		60	4 00
Clyde. Per. Early. Large-sized fruit; of good quality.....		60	4 00
Commonwealth. Per. Late. Very fine; matures a week later than Sample.....		60	4 00
Early Jersey Giant. New hybrid Strawberry. Berries very large; brilliant crimson, with pointed tips; colors all over at once and has a rich, wild Strawberry flavor.....	1 00		6 00
Early Ozark. Per. Early. One of the earliest varieties; large and firm.....		60	4 00
Excelsior. Per. Early. Very productive.		50	3 50
Fairfield. Per. Extra early. Choice and productive.....		60	4 00
Fendall. Per. Early. Berries perfect in shape; good color.....		60	4 00
Gandy. Per. Late. One of the best....		50	3 50
Glen Mary. Per. Late. Large size.....		50	3 50
Great Ruby. Imp. Midseason to late. A variety of fine quality; berries of uniform shape.....		60	4 00
Haverland. Imp. Early. Very productive.		50	3 50
Kevitt's Wonder. Per. Midseason. The berries are very long and oval-shaped...		60	4 00
Mark Hanna. Per. Midseason. Excellent variety with large fruit.....		50	3 50
Marshall. Per. Early. Fine, large berries of bright red.....		50	3 50
McKinley. Per. Midseason. Rich crimson berries; firm and of fine quality...		50	3 50
Mead. Per. Midseason. Very productive		60	4 00
Michel's Early. Per. Early. Medium berries; robust grower.....		50	3 50
New Home. Per. Late. Fine, large berries		50	3 50

New York. Per. Midseason. Crimson-scarlet; of excellent flavor.....	Doz.	100	
		\$0 60	\$4 00
Nick Ohmer. Per. Midseason. Giant Strawberry.....		50	3 50
Norwood. Per. Midseason. This variety is noted for producing large, fine fruit.....		60	4 00
President. Imp. Late. Large fruit....		60	4 00
Sample. Imp. Midseason. Fine color; very productive.....		60	4 00
Senator Dunlap. Per. Midseason. A splendid keeper.....		60	4 00
Sharpless. Per. Midseason. Large, crimson berries; splendid quality.....		50	3 50
Silver Coin. Per. Midseason. Similar to Gandy; berries large and of fine flavor		60	4 00
Stephen's Late Champion. Per. Late. Fine-flavored berry.....		50	3 50
Success. Per. Early. Bright scarlet; flavor always fine, mild, rich and sweet.		60	4 00
Uncle Jim. Per. Midseason to late. Extra-large fruit.....		60	4 00
Wm. Belt. Per. Midseason. The fruit is rather long, regular in outline; bright red.....		50	3 50



Nick Ohmer Strawberry

IRIS

No flower has the same beautiful markings, subtle blending of color, and delicate tints as the Iris. A plant with such a diversity of habit, color and shape of flower is in itself a floral world—a wonderful world of beauty where the evasive colors and hues are ever changing with the light.

The delicate, fairy-like petals are so thin as to be almost transparent, suggestive of things beyond this world.

Iris Germanica (German Iris; Fleur-de-Lis)

This section is the earliest-flowering and has perhaps the widest range of color from pure white to deep claret-red. They have a delicate fragrance peculiar only to themselves, and in structure they are truly wonderful, surpassing the orchid.

They should be planted in a well-drained, sunny location, just covering the rhizomes.

New German Iris

In the descriptions "S" represents standards, or upper petals; "F," falls, or lower petals

Berchta. S, olive-yellow; F, violet-blue bordered with reddish brown;

Fro. S, golden yellow, edged olive-yellow; F, chestnut-brown, bordered yellow.

Gajus. S, light yellow; F, crimson, reticulated white and yellow, with a clear yellow edge; a particularly handsome Iris.

King. A cross between *Iris pallida Dalmatica* and Maori King. S, yellow; F, velvety dark brown, with a wide border of golden yellow.

Lohengrin. One of the most vigorous of the German Iris, petals 2 inches across; S and F, deep violet-mauve.

Mithras. S, light yellow; F, violet, shaded with claret and bordered yellow.

Nibelungen. Flowers large; S, olive-green, suffused with yellow; F, deep purple-violet, edged pale yellow.

Pallida foliis variegatis. This new variety has beautiful, variegated foliage, which is green with broad bands of creamy yellow, every leaf being well marked. Flowers soft, pale lavender-blue. 2 feet. May, June. 50 cts. each, \$5 per doz.

Pfauenauge (Syn., Peacock's-eye). S, olive-yellow; F, brownish blue, with a golden yellow border. \$1 each.

Princess Victoria Louise. S, light sulphur-yellow; F, rich violet-red, edged creamy white.

Rhein Nixe. A very strong and robust grower; S, pure white; F, deep violet-blue, with a white edge.

Thora. S, light blue; F, deep violet-blue; very free-flowering.

Trautlieb. S, clear, soft rose; F, rose, slightly suffused white toward the center.

Wyomissing. S, creamy white, suffused soft rose; F, deep rose, shading to a pale rose border. \$1 each.

50 cts. each, \$5 per doz, except where noted. A collection of one each of the above, with the exception of Wyomissing, \$5.

Intermediate Iris

NEW HYBRIDS

The following new varieties are crosses between *Iris Germanica* and *Iris pumila*. They flower earlier than the German Iris. The foliage is dwarf, and the flower-stems are 18 inches high.

Fritjof. S, lavender; F, purple, shaded lavender.

Gerda. S, creamy yellow; F, deep creamy yellow, veined golden yellow.

Halfdan. Light creamy yellow; large flowers.

Helge. Citron-yellow, with pearl-colored center.

Ingeborg. Flowers large; pure white.

Ivorine. Flowers very large; S and F, creamy white.

Walhalla. S, lavender; F, wine-red.

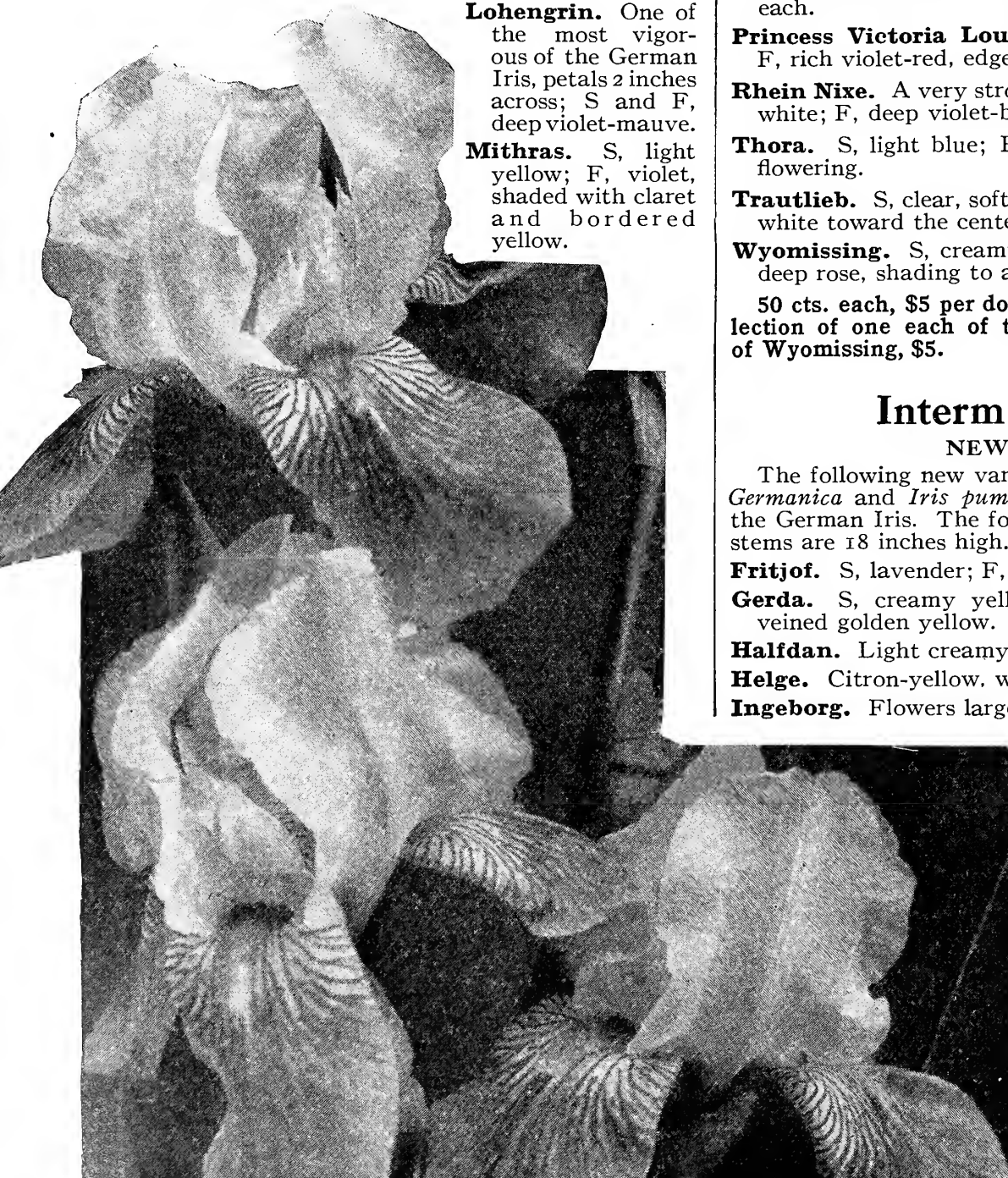
25c. each, \$2.50 per doz.
One each of the seven varieties, \$1.25.

Iris Pumila Hybrids

Floribunda. A very conspicuous and free-flowering variety. S, creamy yellow; F, a little darker, greenish veined.

Schneekuppe. S, pure white; F, white center veined greenish yellow.

25 cts. each, \$2.50 per doz.



German Iris (*Iris Germanica*)

Choice German Iris

Fairy. White, bordered and suffused blue.
Foster's Yellow. S and F, creamy yellow.
Her Majesty. S, rosy pink; F, pink, veined crimson.
Jacquesiana. (Syn., Conscience and Lord Roseberry.)
 S, coppery bronze; F, velvety crimson.
Kharput. S, violet-blue; F, velvety, dark blue.
Khediye. Soft lavender.
Lord Seymour. S, white, veined lilac; F, white, veined
 lilac-blue.
Macrantha. S, light blue; F, velvety violet-blue.

Mad. Pacquette. S and F, bright rosy claret.
Magnifica. S, olive-yellow, shaded red; F, dark red,
 overlaid brown.
Mars. S, light yellow; F, yellow, veined and spotted
 violet and red.
Pallida Dalmatica. S, clear lavender-blue; F, deep
 lavender; very large; a superb variety.
Perfection. S, light blue; F, velvety violet, almost
 black, with orange beard.
Viola. S, rosy lilac; F, deep violet-blue.

25 cts. each, \$2.50 per doz. A collection of one each of the above, \$2.50

General List of German Iris

15 cts. each, \$1.50 per doz., \$10 per 100

Admiral Togo. S, white, faintly tinted lavender; F, lightly frilled, purple; very tall.
Ada. S, lavender on upper half, yellow on lower half; F, white, edged and veined lilac.
Agamemnon. S, pale lavender, flecked and veined blue; F, white, flecked and slightly veined blue on border.
Agnes. S, white, frilled and shaded lilac; F, white, lilac at the base.
Arnols. S, rosy bronze; F, velvety purple.
Atropurpurea. S, rich claret-purple; F, purple; very handsome.
Aurea. Deep golden yellow; large flowers on a tall stem.
Bridesmaid. S, pale lavender; F, white, reticulated lavender.
Brooklyn. S, lavender, yellow at base; F, blue-veined, brown at base.
Calypso. S, pale lavender; F, white, strongly veined blue.
Canary-Bird. S, yellow; F, crimson-purple.
Celeste. S, lavender; F, deep lavender; large and free-flowering.
Chalcedonica. S, mauve; F, purple.
Charles Dickens. S, blue; F, dark blue, suffused and veined dark violet.
Cytherii. S, dark lavender; F, rich blue; dwarf; late.
Darius. S, rich canary-yellow; F, lilac, margined white, rich golden yellow beard; very distinct.
Donna Maria. S, white; F, white, shaded lilac.
Dr. Bernice. S, coppery bronze; F, velvety crimson.
Du Bois du Milan. S, lavender; F, crimson-purple, reticulated white.
Edina. S, lavender; F, dark blue, striped at base.
Fairy Queen. S, pale lavender; F, tipped violet.
Flavescens. A delicate shade of pale yellow.
Florentina alba. White, slightly tinged lavender; very early.
Garrick. S, pale blue; F, deep violet-blue.
Gen. Grant. S, chocolate; F, purple, veined white.
Gold Bound. S, yellow; F, purple, tipped old-gold.
Gracchus. S, pale yellow; F, yellow, suffused red.
Gypsy Queen. S, bronze; F, deep purple, reticulated at the base.
Hector. S, delicate yellow; F, deep purple.
Herant. S, bright blue; F, much deeper in color.
Hokanum. S, coppery bronze; F, velvety crimson, veined white at base.
Ignatia. S and F, mauve.
Innocenza. S and F, ivory-white, with a rich golden crest.
La Tendre. S, light lavender; F, light blue, strongly veined violet.

L'Africaine. S, rosy purple; F, purple, striped white.
Leopold. S, bronze; F, purple, veined white at base.
Lizzie. S, golden yellow; F, dark bronze-crimson, yellow and white striped at base.
Lurida. Mahogany-red.
Maori King. S, golden yellow; F, deep velvety crimson; very dwarf.
Mme. Chereau. White, elegantly frilled azure-blue; very beautiful.
Monhassan. S, yellow; F, brown, with a yellow edge.
Mrs. H. Darwin. S, snow-white; F, white, slightly reticulated violet at base.
Mrs. Gladstone. S, white; F, tipped dark purple and white-striped.
Mrs. Neubronner. Very deep golden yellow, darker than Aurea.
Mrs. Reuthe. S, white, suffused and marked blue; F, white, edged soft blue.
Oroya. S, deep lavender; F, purple, penciled white and mauve.
Ossian. S, pale yellow; F, reddish violet.
Othello. S, deep rich blue; F, dark velvety purple.
Pallida speciosa. S, dark lavender, shaded lighter; F, shaded light purple.
Pauline. S, lavender; F, slightly darker.
Pecutum. S, white; F, frilled light blue.
Penelope. S, white; F, white, delicately veined reddish violet.
Plumeri. S and F, deep coppery red; early and free.
President Thiers. S, mauve; F, purple, base striped brown and white.
Queen of May. S, rosy lavender; F, darker.



Planting of German Iris

GENERAL LIST OF GERMAN IRIS, continued

Queen Victoria. S, yellow, sometimes tinted bronze; F, crimson, striped yellow and white.
Rutherford. Delicate sky-blue.
Sappho. S, yellow, flushed lavender; F, straw, tipped and reticulated violet-purple.
Schiller. S, golden yellow; F, velvety crimson.
Sir Walter Scott. S, yellow; F, yellow, veined rich crimson-scarlet.

Sir Robert Peel. S, pale blue; F, darker.
Spectabilis. S and F, deep purple; very free-flowering, early.
Stenophylla. S, pale lilac; F, deeper.
Striata. S, pure yellow; F, white, veined dark brown with yellow border.
Surprise. S and F, rosy lilac.
Virgin. S, white, tinged lavender; F, deep purple.

15 cts. each, \$1.50 per doz., \$10 per 100

Iris Kaempferi · Japanese Iris

As signified by the name, this section of Iris is truly oriental in effect, embracing wonderful colors, vivid yet harmonious. All the glory and brightness of the sun tints seem to have been absorbed by these floral gems, and displayed in the most fascinating combinations.

The general color effect is more solid than that of the German Iris, and the individual flowers are much larger, measuring sometimes 6 to 8 inches across, so that the landscape effect of a mass of these can be imagined.

These also prefer a good, well-drained soil, but must be watered in dry seasons. Their flowering season immediately follows the German Iris, and they are at the zenith of their glory in late July to early August.

25 cts. each, \$2 per doz.

Double Japanese Irises

Antelope. White ground, flaked purple.
Beauty. Pure white; dwarf.
Blue Flag. Indigo-blue; yellow at the base.
Chameleon. Purple, flaked and blotched white.
Crystal. Pale violet, veined white; white center.
Dinah. Reddish purple, flaked white.
Eclipse. Deep purple, overlaid red.
Frate. Silvery white, veined and shaded lilac.
Gold Bound. Large; pure white, yellow center.
Mount Hood. Light blue, shaded darker toward center.
Mr. Fell. Grayish white, veined blue, yellow center.
Orion. White, overlaid and bordered maroon.
Princess Clothilde. White, veined pink, dark blue center.
Pyramid. Light blue, with paler center.
Robert Craig. Grayish white, veined violet-blue.
Templeton. Violet-blue, flaked reddish pink.
T. S. Ware. Reddish violet, veined white.
Victor. White, veined violet-blue, with purple center.

Single Japanese Irises

Anna Christ. Pale lavender, veined darker.
Apollo. Pure white, with reddish pink center.
Conadi. Grayish white, veined dark blue.
Helen von Siebold. Reddish violet, veined white.
Neptune. Violet, overlaid dark blue.
Norane. White, veined and striped blue.
Plum. White, overlaid blue, veined violet.
Porcelain Scepter. White, suffused blue, center pink.
Quakeress. Ash-gray, overlaid blue.
Topaz. Reddish amaranth.
Tortoise. Large; purplish blue.
Venus. Large; white.
Victor. White, veined violet-blue, darkening toward the center.

Various Irises

Unless where noted, 15 cts. each, \$1.50 per doz., \$10 per 100

Cristata (Crested Iris). A beautiful, dwarf, native species, with handsome, light-colored flowers and short, thick green foliage. 6 inches. May.
Foetidissima variegata. A most beautiful variety, with silver-variegated leaves, and pale lilac flowers; prefers a moist situation. 3 feet. July, Aug. 25 cts. each, \$2.50 per doz.
Ochroleuca gigantea. Distinct variety; strong foliage; pale yellow flowers. 3 feet. May. 25 cts. each, \$2.50 per doz.
Pseudacorus (Water Flag, or Bearded Flag). Yellow, shaded orange; semi-aquatic. 3 feet. May, June.
Pumila cyanea. Rich purple, with dark shadings. 4 to 8 inches. May.
 —**eburnea.** White, with cream-white shadings. Dwarf in growth.
 —**florida.** Lemon-yellow, with dark yellow shadings; a brilliant effect.
 —**formosa.** Dark violet, with light violet shadings. A splendid edging plant.
Sibirica. Purplish blue. 2 to 3 feet. May, June.
 —**alba.** White, veined pale lilac. Fine for contrast with the blue variety. 2 feet. May, June.
 —**orientalis.** Violet-blue; very free-flowering. 3 to 4 feet. May, June.
 —**Snow Queen.** Flowers large, snow-white, carried on strong stems; free-flowering. 2 to 3 feet. June.
Tectorum. A beautiful species from Japan, where it is grown on the thatched roof of the cottages. The flowers are of a rich blue, flattened in form as the *Iris Kaempferi*.
Versicolor. Bright purple. Splendid for cut-flowers. 2 feet. May, June.
Virginica. Summer-flowering variety; violet-blue, variegated with yellow and white; purple-veined. 1½ feet. May-July.



Japanese Iris

THE PEONY

The Peony of today represents the result of untiring efforts of many enthusiastic lovers of this flower. In its early history, the Chinese associated it with their religion, and it was respected with awe and admiration. It is small wonder then that we all love the glorious modern Peony.

It has been gradually improved in every way—size, shape and fragrance—and is now accorded its rightful place as the “King of Flowers.” The coloring is wonderful in its peculiar softness and faint tinges, and combined with the size and exquisite fragrance in some varieties the Peony is the most regal beauty of the garden. For cutting, it has all that can be desired, one flower being in itself a bouquet.

Planting. Although very hardy and easily grown, the Peony prefers a good, deep soil in a rather moist yet sunny location.

The result of good soil can be seen in the quality and size of the blooms. Plant the roots so that the eyes are about 2 or 3 inches under the surface.

They should be planted in fall after the leaves have dried off. In watering, keep the buds dry and so prevent their rotting. Cut seed-pods off after flowering.

If in a very cold section, roots should have a light covering of loose straw or hay for the first winter, after which no protection should be needed. Heavy mulching of manure or covering of any kind in winter is often the cause of Peonies not blooming.

For large exhibition flowers, all side buds should be pinched off.

Herbaceous (Chinese) Peonies

Price, except where noted, 35 cts. each, \$3.50 per doz.; clumps 50 cts. to \$2 each, according to size and variety

Agida. Dark red.

Alice Crousse. Beautiful soft rose; rose-scented. 50c. each, \$5 per doz.

Anemoneflora rubra. Deep crimson.

Beaute de Francaise. Pink, tipped blush-white.

Caroline Allain. Clear rose, center flesh and salmon.

Charlemagne. Lilac-white, with slight blush center; fragrant. 50 cts. each, \$5 per doz.

Comte de Neipperg. Bright amaranth carmine. 75c. each, \$7.50 per doz.

Comte de Paris. Lilac-pink, salmon-yellow center. 50 cts. each, \$5 per doz.

Couronne d'Or. Pure white, with yellow center, tipped carmine. 75 cts. each, \$7.50 per doz.

Delecourt Verhille. Lilac, white center flecked crimson. 75 cts. each, \$7.50 per doz.

Duc de Cazes. Dark pink, silvery collar; fragrant. 50 cts. each, \$5 per doz.

Duchesse de Nemours. Clear violet, lilac center. 75 cts. each, \$7.50 per doz.

Duc de Wellington. Pure white with sulphur-white center. 50 cts. each, \$5 per doz.

Edulis superba. Bright mauve-pink.

Eugene Verdier. Pale pink, center pale pink flecked crimson. \$1 each, \$10 per doz.

Faust. Medium size; guard petals pale pink fading to white, sulphur-yellow center.

Festiva. Very full; ivory-white with a few carmine spots in center.

Festiva maxima. Enormous, double; pure white, center usually flecked with carmine. 50 cts. each, \$5 per doz.

General Bertrand. Uniform solferino-red, center slightly tipped silver. 50 cts. each, \$5 per doz.

George Washington. Large, loose, semi-rose type; dark crimson. \$1.50 each, \$15 per doz.

Golden Harvest. Guard petals pale lilac-rose, center creamy white; fragrant. 50 cts. each, \$5 per doz.

Humei. Large, compact; cherry-pink, silver tips.

Isabelle Karlitsky. Full-double; deep pink.

Insignis. Violet-rose, center clear pink. 50 cts. each, \$5 per doz.

Jeanne d'Arc. Soft pink and sulphur-white, with brilliant pink center. 50 cts. each, \$5 per doz.

Leonis. Soft flesh-color. 75 cts. each, \$7.50 per doz.

L'Indispensable. Lilac-white, shading to pale violet-rose in center. \$1 each, \$10 per doz.

Louis Van Houtte. Bright violaceous red.

Mad. Breon. White with shell-pink guard petals. 50 cts. each, \$5 per doz.

Marie. Light violet-rose with silver tips. 75 cts. each, \$7.50 per doz.

Marie Lemoine. Pure white with creamy white center tipped carmine. 75 cts. each, \$7.50 per doz.

Meissonier. Brilliant purple-red. 75 cts. each, \$7.50 per doz.

Mme. Calot. Pinkish white tinged with flesh. 50 cts. each, \$5 per doz.

Mme. Rousseau. Pure white, center lilac-white. \$1.50 each, \$15 per doz.

Mme. de Verneville. Sulphur-white with rosy white center. 75 cts. each, \$7.50 per doz.

Modeste Guerin. Bright rose-pink with purplish cast in center. 75 cts. each, \$7.50 per doz.

Ne Plus Ultra. Pure mauve-pink, tipped silver. 75c. each, \$7.50 per doz.

Prolifera tricolor. Flesh-white to sulphur-yellow. 50 cts. each, \$5 per doz.

Princess Galitzin. Lilac-rose with creamy white center. 50 cts. each, \$5 per doz.

Purpurea superba. Deep carmine-rose. 50 cts. each, \$5 per doz.

Rosea elegans. Pale lilac-rose, creamy white center. 50 cts. each, \$5 per doz.

Rose d'Amour. Soft flesh-pink. 75 cts. each, \$7.50 per doz.

Rubens. Dark crimson. 50 cts. each, \$5 per doz.

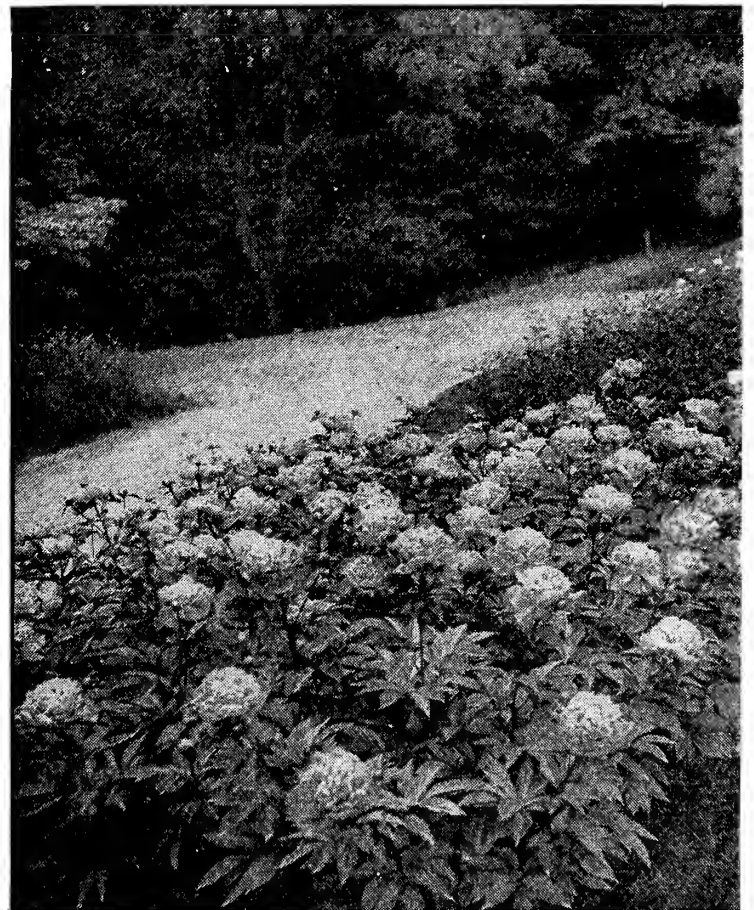
Rubra triumphans. Dark purplish crimson.

Solfatere. Pure white, fading to sulphur-white. 75 cts. each, \$7.50 per doz.

Souvenir de L'Exposition Universelle. Violet-rose, tipped silver. 75 cts. each, \$7.50 per doz.

Victor Lemoine. Dark crimson. 50c. each, \$5 per doz.

Zoe Calot. Soft pink, shaded lilac. 50c. ea., \$5 per doz.



Planting of Herbaceous Peonies

*Paeonia arborea*

PÆONIA ARBOREA

TREE PEONIES

The Tree Peony is really one of the finest plants available for the garden or the conservatory. It is quite hardy, and does well under the simplest treatment. It flourishes in the most astonishing manner, bearing blossoms from 6 to 8 inches across, which will increase every year in beauty and size. They are a grand addition to the garden, as they do not die down to the ground like the herbaceous sorts, but make fine bushes 3 to 4 feet in height, being covered in the spring with elegant flowers. The proper time to plant these is during the months of September and October.

Two-year-old, named varieties, purchaser's selection, \$1.25 each, \$12 per doz.; 3-year-old, \$1.50 each, \$15 per doz.

Comtesse de Tuber. Bright salmon.
Elizabeth. Large; bright salmon-pink.
Grand Duc de Bade. Fine, clear violet.
Souvenir de Ducher. Fine, dark violet.
Van Houttei. Deep carmine-pink.

Single Peonies

Albiflora. Pure white; golden stamens. 75 cts. each.
Vesure. Dark brilliant red. 75 cts. each.

Paeonia officinalis

This type is the old-fashioned early variety, coming into bloom several weeks earlier than the other herbaceous sorts; 2 to 3 feet. May, June.

alba fl. pl. Large, double, white flowers, and the earliest white Peony. 50 cts. each, \$5 per doz.

rosea fl. pl. Large, double, pink flowers; the earliest pink one to bloom. 35 cts. each, \$3.50 per doz.

rubra fl. pl. The darkest variety ever introduced of this early-flowering type. It is a rich, dark crimson. Strong, flowering roots, 25 cts. and 50 cts. each, \$2.50 and \$5 per doz.

tenuifolia. Rich crimson; single. 35 cts. each, \$3.50 per doz.

—fl. pl. Double flowers of brilliant crimson; fine feathery foliage; early. 35 cts. each, \$3.50 per doz.

All the Hardy Perennials will grow and bloom better if planted in the fall, and in many cases a whole year in their blooming time may be saved.

PACHYSANDRA

terminalis. Trailing plant; glossy green foliage and small spikes of flowers; 6 to 8 inches. May, June. 15 cts. each, \$1.50 per doz., \$10 per 100.

PAPAVER · Poppy

The Perennial Poppies are among the most brilliant of hardy flowers; the graceful, brightly colored, cup-shaped flowers are borne on long stems. The large-flowering, or Oriental Poppies, are also the most showy plants for a garden and should be planted early. 2 to 3 feet. May, June.

Oriental Poppies

Except where noted, 25 cts. each, \$2.50 per doz.

Brightness. A bright orange-scarlet variety.

Duke of Teck. Brilliant crimson-scarlet, black center.

Grand Mogul. Blood-crimson flowers of immense size.

Lightness. A variety of Princess Victoria Louise, with larger flowers and a white blotch on the back of the petals.

Mahogany. Deep mahogany-black. The darkest variety in cultivation; very distinct and handsome.

Marie Studholme. A delicate shade of salmon, with a silver sheen; quite distinct.

orientale (Oriental Poppy). Deep scarlet, purple center. 15 cts. each, \$1.50 per doz.

Princess Ena. The flowers are tulip-shaped, of a rich salmon-pink.

Prince of Orange. Bright orange-scarlet, borne on long, stiff stems.

Princess Victoria Louise. Soft salmon-rose, shading to blush-rose.

Royal Scarlet. Brilliant scarlet, with black blotches at the base of the petals; gorgeously brilliant.



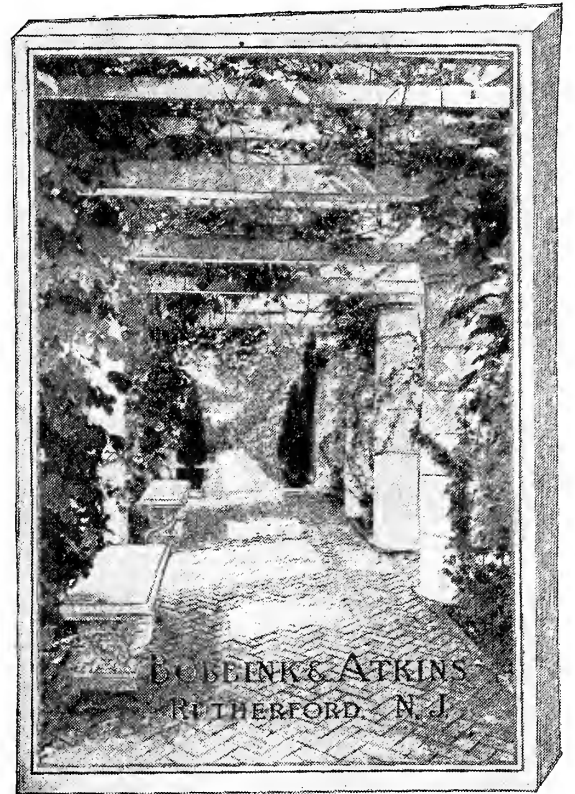
Oriental Poppies

Our Illustrated General Catalog

This Autumn Bulb Catalog is merely an addition to our General Catalog which, to be appreciated, must be seen and read. In compiling this book (for it is more than a catalog) we have used every effort to make every part explicit and correct in nomenclature, and with reference to planting and cultural directions.

It is simply arranged, with a very complete index, including common names, and embodies the finest collections of plants and trees grown in this country. The descriptions are, in almost every case, taken from personal trial and observation, in order to be accurate, while the many illustrations will serve to help in selecting desirable varieties and to give an idea of the wide scope of our growing business.

If you are at all interested in horticulture, you should not be without this helpful book. It is given on request.



Evergreens and Conifers

We feel a personal pride in offering the most complete collection of hardy evergreens in the country, including many plants not seen elsewhere.

It is only after many years of constant additions and trials that this reliable selection has been assembled, and if you will come and inspect them you will pardon our natural pride in so fine a result.

These evergreens are periodically transplanted and shaped, and are given every care and attention to make them worthy of their fine reputation.

They are carefully dug with a good ball of earth which is securely burlaped, and every possible risk in transplanting is thus eliminated.



Specimen Evergreens on Lawn

Rhododendrons and Flowering Evergreens



Rhododendron Catawbiense

This section is one of the most interesting, as many of the plants enumerated therein are natives of this country, and, further than this, it is the combining link between the Deciduous Flowering Plants and Evergreens.

In the Rhododendrons we have the broad, deep green leaves throughout winter, and the glorious mass of flowers in summer. For landscape effect, or even in small planting schemes, they are indispensable.

The importance of this class of shrubs is being recognized and proved in American landscape architecture more and more, and for this reason we have gradually worked up a collection superior in quality and completeness to any ever before offered.

More than this, we wish particularly to emphasize the fact that our Rhododendrons are home-grown, and those who know will realize the great importance of this.

Although it is stated there are many more varieties in Europe, we still have the satisfaction of knowing that those varieties we offer are as good as, and in many cases even superior to, the former, and are absolutely hardy.

We have taken great trouble to make this section of our catalog accurate in every respect, eliminating all varieties that, after severe testing, do not survive in good condition, and collecting the necessary data from our fields of home-grown Rhododendrons.

You will find many other uncommon and interesting plants in this same class, and can see them growing in our Nursery.

Deciduous Ornamental Shade Trees

While we grow thousands of the more common street trees, we have used extra precaution in trying out the various lawn trees, and after years of experience have succeeded in getting together a wonderful collection of all classes of trees not offered elsewhere.

More than this, we are able in our extensive Nurseries to afford each variety the soil best suited to its perfect development in root and branch, also to give plenty of room and every care, such as transplanting and pruning, to produce a perfect specimen.

We wish especially to draw your attention to our magnificent blocks of real American Shade Trees, such as Maples, Lindens, Horse-Chestnuts, etc., in all sizes and in prime condition for transplanting, straight in stem, and sturdy in limb.

It is impossible to illustrate every one of these trees in our catalog, but if you will visit our Nurseries, we shall be pleased to show you the original specimens.



Avenue of Lindens and Oriental Planes in our Nurseries



Planting of Flowering Shrubs

Deciduous Flowering Shrubs

Our collection of shrubs is carefully selected and very complete. Flowering Shrubs are absolutely necessary for landscape effects, and as our interests are naturally bound up in the beautifying of landscapes, we grow great masses of the most desirable kinds, and also give much attention to the rarer varieties for botanical collections.

Special mention should be made of the Azaleas—Mollis, Pontica, and Rustica fl. pl. The wonderful profusion of flowers and the vivid colors place these at the head for floral effects. Realizing their great need and usefulness, we have bent our energies to securing and working up a collection of the finest varieties, such as we know cannot be equaled in this country.

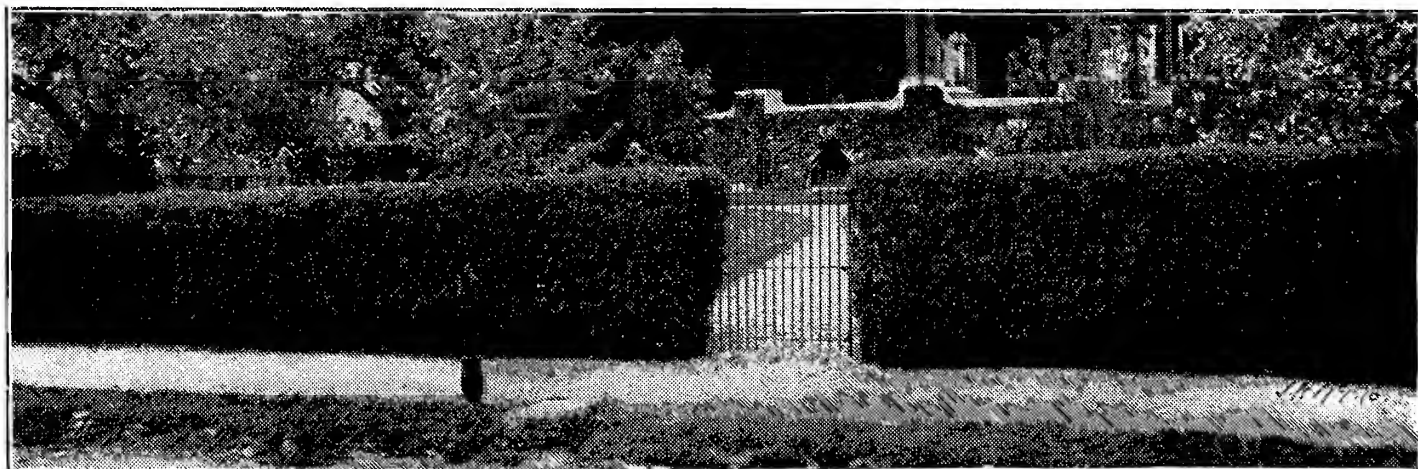
Hedge Plants

We grow acres of the California Privet and Berberis for hedging purposes, but these are not the only hedge plants by any means.

The shrubs and evergreens listed under this section of our general catalog have been selected as those having every desirable quality answering this purpose.

For instance, in the Evergreens the Hemlock and Retinospora, etc., are of dense growth, and are amenable to clipping, so that a hedge of this sort is useful and ornamental throughout the year.

Then again in the flowering shrubs recommended, the floral effect, as well as being a barrier or a divisional line, can be worked in the garden scheme, and give far more lasting satisfaction than a fence.



Hedge of California Privet

*Part of Our Formal Rose-Garden*

Roses

The most important fact concerning our Roses is that they are home-grown—budded low down on selected stock, which is also grown right here in our Nurseries, so eliminating all risk of drying out when transplanted. We have found, after years of experience, that growing Roses here at home is the only reliable and satisfactory method of handling them, as imported stock is decidedly inferior in every way.

This is also true of our Standard or Tree Roses. By growing vigorous, hardy stems, and using healthy buds, as we do, there can be no failure. These facts explain the fine, thrifty condition of our Roses; and, again, we have an ideal location and soil for Roses, thus perfecting our qualifications as Rose-growers.

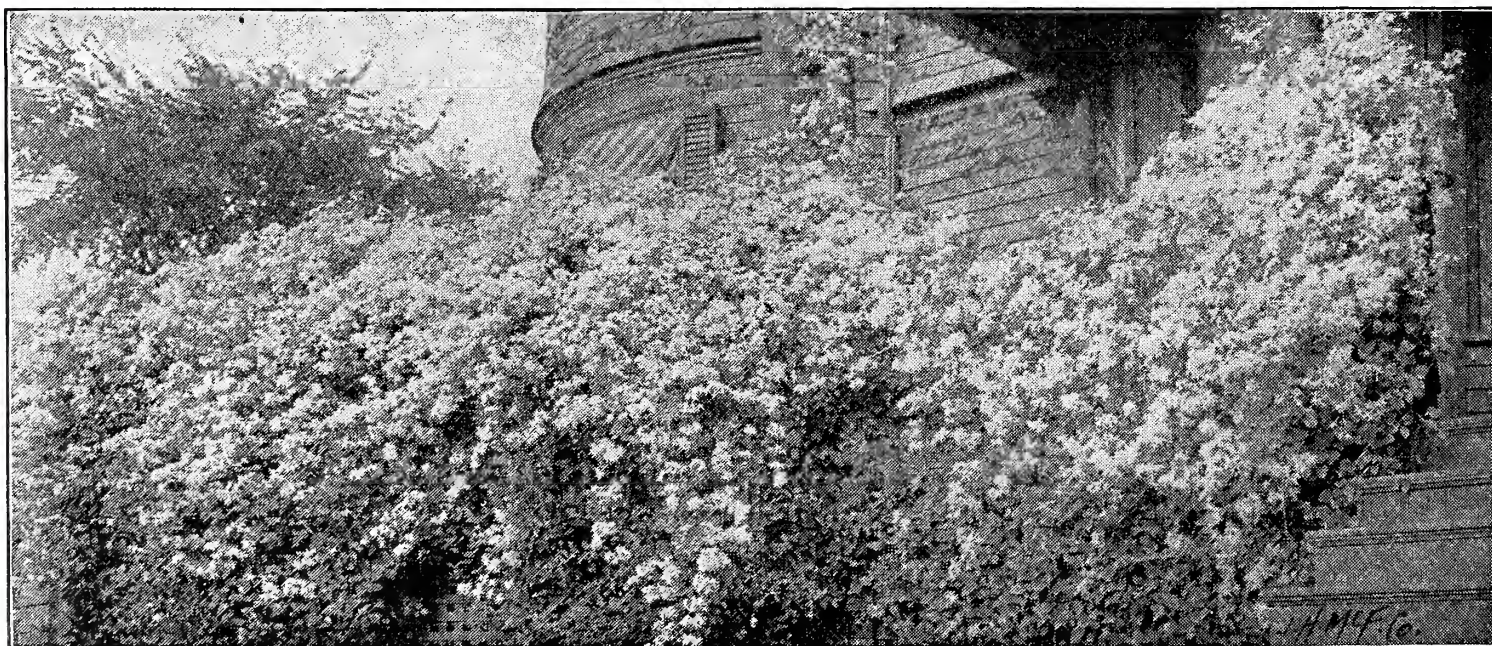
Having so many natural advantages, we have made Roses and their culture a special study, and have succeeded in amassing a wonderful collection of both new and old varieties. These can be seen and compared in our Formal Rose-Garden which, all through the summer, is a wonderful sight. This garden contains over 5,000 Roses in 300 different varieties.

We also have Pot-grown Roses, both in standard and bush forms, that can be planted out at any time.

Hardy Vines

Our collection of Vines and Climbers embodies those varieties that will grow in exceptional places, as well as the well-known kinds, such as Boston Ivy, Clematis, etc.

One of the most satisfactory Vines for pergola or veranda is the Wistaria. The long, graceful panicles of flowers give a sense of refinement and rest wherever seen. Some of the older plants that we have in tubs have been a mass of bloom this past year, and make such a growth as to cover a large area in one season. All these Vines and Climbers can be planted at any time, as we grow them in the fields and in pots.

*Clematis paniculata*



Hardy Herbaceous Perennials

OLD-FASHIONED FLOWERS

The flower-garden is probably the favorite spot in any planting scheme; when we think of the continuous display of flowers throughout the whole season from early spring until hard frost, it is natural that these hardy flowers have the preëminence.

By studying our General Catalog, you will become convinced that such a collection as ours is rarely met with. You would gain still more satisfaction by inspecting our Nurseries, and seeing the acres devoted entirely to Herbaceous Perennials.

Not only do we continually add new varieties, but some of the oldest, almost forgotten, that are worthy of merit, find a place in our living herbarium. You will find the novelties separated from the general collection, and among these **Our New Hybrid Giant-flowering Marshmallow** stands out.

This introduction is absolutely without precedent, and improves every year. The wonderful flowers often measure 10 to 12 inches across and, combined with the luxuriant foliage and bright color, the tropical effect is complete.

The plants grow 6 to 8 feet high and are satisfied with almost any position, but give best results when given a moist location. They bloom continuously from the end of July until frost.

Fruit Trees and Bushes

Although not generally known, our Fruit Department has become an important part of our business, carrying, as we do, the finest varieties in all kinds of fruits.

Further than this, we have an unrivaled collection of dwarf and trained trees in all forms and different sizes, including bearing age; also greenhouse Grape-Vines in many varieties.



Dwarf Apple

*House of Araucarias*

Greenhouse and Decorative Plants

Our Greenhouses and Storehouses now cover several acres, in which we grow a first-class assortment of Decorative and Flowering Plants for house and conservatory. Our Palms are especially meritorious, and you will find many plants of great interest in this department at all times of the year.

If you will consider our wonderful facilities, you will agree that we are well able to maintain our high standard in this respect.

Bay Trees were our first specialty, and since that time have grown to be to an indispensable part of our business. We have specimens of all sizes in various shapes, all in perfect condition.

*Asparagus plumosus*

HUMUS

FOR FERTILIZING LAWNS, GOLF-GREENS, GARDENS, SHRUBS, FERNS OR POTTED PLANTS

Pure decayed vegetable matter, 94 per cent plant-food, five times as rich as stable manure, and lasts ten times as long in the soil. Clean and pleasant to handle. Apply on lawns during the winter and early spring. Supplied by the bag or carload. Once used, it will never be discarded.

Send \$5 for a 300-pound trial order of Prepared Humus, with instructions for use

ABSOLUTELY ODORLESS
RETAINS THE MOISTURE IN THE SOIL

Greens and lawns examined, and formulas furnished for treatment, with estimate of lowest cost.



Plant Tubs and Boxes

We discovered years ago that a neatly painted tub, or even a square box, gave a plant a far better appearance than when it was set in a pot. The danger of breakage—an ever-present worry when pots are used—is entirely absent when tubs or boxes are used.

Two important factors have helped to make this branch of our business a success. The first is the skilful workmen who make every box or tub just as good as it can be made.

The second factor is the wood that is used. Nearly everyone supposed that dampness caused wood to decay, and it does—at least most woods rot out when they are wet all the time. But right here in the United States we have a wood that is not seriously affected by water—a wood that will last longer than iron when submerged, and which stands wet soils and damp weather better than any other timber known. This wood is the “Bald Cypress,” which grows in the southern swamps from Maryland to the Gulf.

Cypress does not warp or twist, shrink or swell, and can be painted without using a “filler,” owing to the natural oil in the wood. We tested many woods before deciding on cypress, but we are convinced that it is the most desirable of all for our purpose. We do not use the entire trunk of the tree—only the center, or “heart-wood” goes into the tubs and boxes that come from our shop. This heart-wood is close-grained, which tends to keep out moisture and makes it the “wood everlasting.”

Our standard patterns include round and octagon tubs, and plain and paneled boxes in mission, Spanish and art-craft finish, but our workmen can produce any pattern desired, and make the box or tub fit the general design of the house or special place for which it is required.

Plant Tubs. No one will dispute the statement that a tub or box is more artistic than a clay pot. The coloring can be made to harmonize with the foliage of the plants, or with the painting of the house or veranda. We can make a light, portable tub, with stand if desired for indoor use; or a heavy, massive tub for the lawn or garden. Many of the shapes and sizes of tubs we manufacture are carried in stock, but it is almost impossible for us to carry a full line; consequently, it is necessary for persons desiring tubs to place orders early, that they may be given prompt service.

Window-Boxes. A window-box will give you a place to grow flowers, even though your ground-space is limited, or you live in a city apartment-house. Our standard boxes are plain or paneled, but we can build them to meet your requirements and finish them with paint or covered to look like white sandstone. For special sizes we will give prices on request.

Garden Furniture and Rustic Work

Is there anything more inviting than a rustic bench under a vine-covered summer-house?

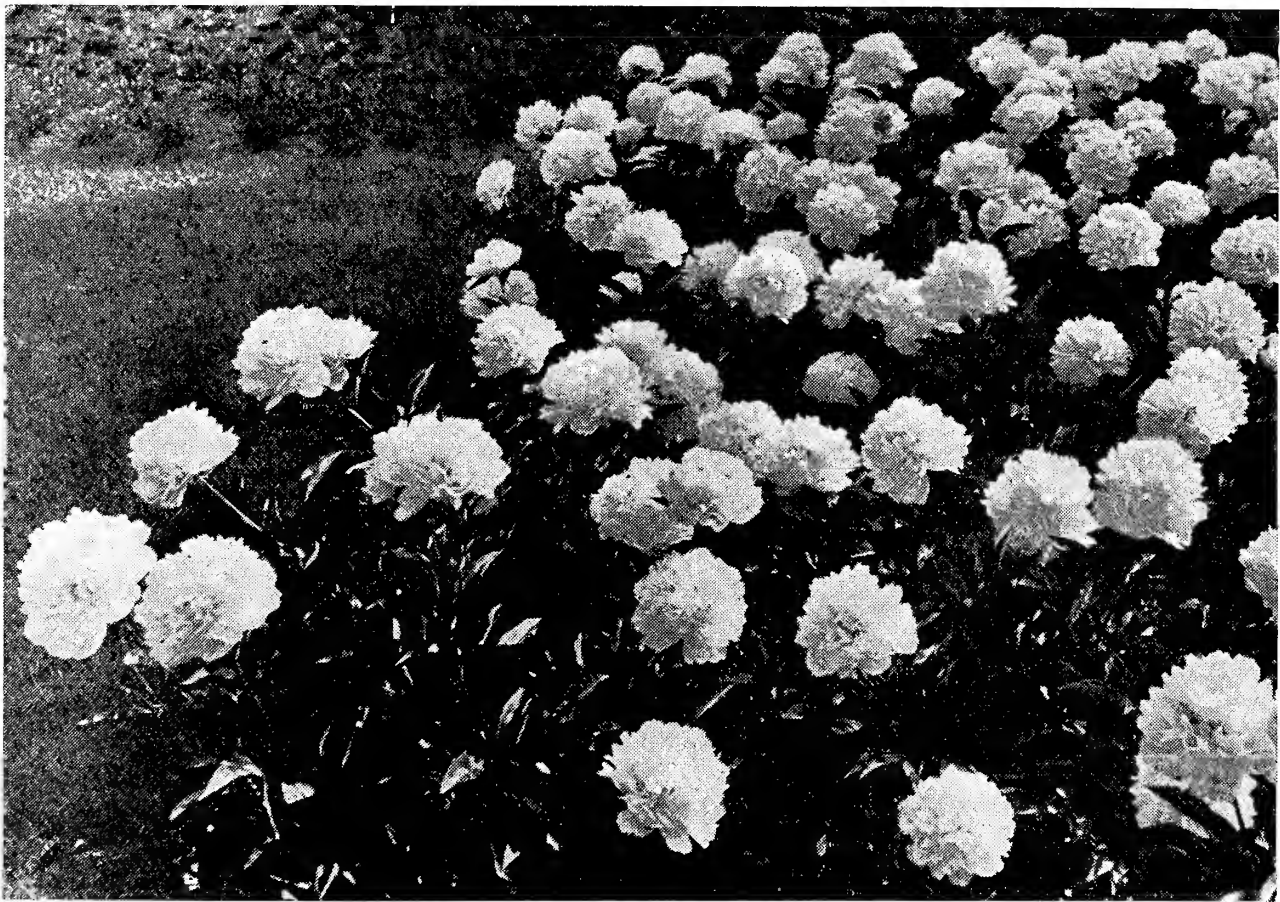
Suitable furniture gives a touch of the picturesque to a garden. We have plans for settees and rustic seats that can be changed to fit any particular spot in your grounds. We also make plans for pergolas and rose arbors, and erect the structures, if desired.

In conclusion, we most cordially invite you to come to our Nurseries and inspect these various collections, as seeing is far more satisfactory than description. No matter when you come, there is always something interesting, and we are pleased at all times to give any information required on matters of horticulture.

Rutherford is the first stop from New York City on the Erie Main Line. Our Nurseries are then a few minutes from the depot.



BORDER OF JAPANESE IRIS



GROUPING OF PEONIES IN AN OLD-FASHIONED GARDEN

BOBBINK & ATKINS

Nurserymen, Florists
and Planters

RUTHERFORD, N. J.