

Historic, Archive Document

Do not assume content reflects current scientific knowledge, policies, or practices.

INDEXED.

FEB 6 - 1915

GRIFFING'S SPRING 1915

SPECIAL PLANTERS LIST



RECEIVED

★ FEB 2 1915 ★

answered



Pecan Avenue on One of Our Nursery Plantations

THIS IS NOT OUR CATALOG

We have a 48 Page Descriptive Catalog
profusely Illustrated in Natural
Colors, that will be sent to
those interested on
application.

GRIFFING BROTHERS

NURSERYMEN

(TREE AND PLANT GROWERS)

PORT ARTHUR, TEXAS

Branch Nurseries at

Nona, Texas

San Benito, Texas

McAllen, Texas

The Satsuma Orange

May be Successfully Grown Throughout
North Florida, South Georgia and
Coast Sections of South Carolina.



The cold wave in Florida of November 20th has proven beyond question of doubt the hardiness of the Satsuma, it withstanding temperature entirely uninjured that killed the common varieties of round oranges back to the ground.

The Satsuma Orange tree budded on *Citrus Trifoliata* root is the hardiest known variety of edible citrus fruit; the tree is thornless, of drooping, spreading growth, and bears when very young.

Three-Year-Old Groves Are Producing Enormous Crops of Appetizing Fruit



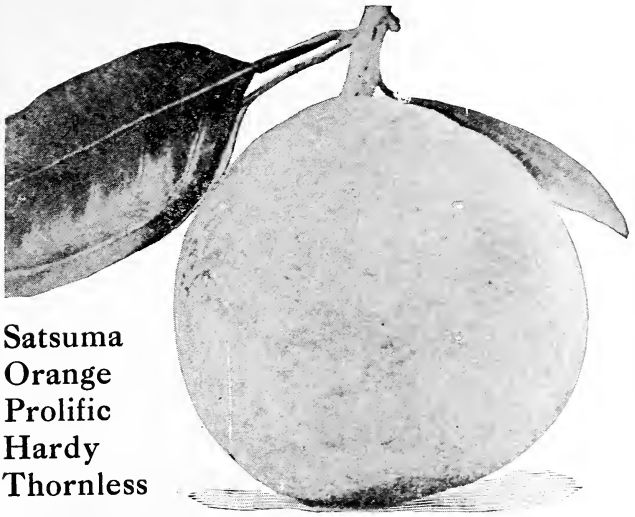
Satsuma Orange Grove, Budded on *Citrus Trifoliata* Roots

The fruit is medium size, of rich, reddish orange color, very attractive, entirely seedless, fine quality, and of a peculiar pleasant appetizing flavor, calling for more to satisfy the consumer.

They are frequently called Kid Glove Oranges, on account of the loose, tender, rind or skin and loosely adhering segments, enabling one to remove the rind and separate the segments or plugs and eat the fruit without the aid of a knife, and without soiling the fingers or the most delicate gloves. This feature makes it the ideal orange for the fruit stand and the fruit vendor; an orange that may easily be eaten out of hand while walking along the street, riding in street cars, on ferries, etc. It is also an ideal orange for banquets and informal receptions, as they can be served whole and eaten with more comfort and in a more dignified and cleanly manner than any fruit grown.

The Satsuma ripens in October, the earliest good ripe orange on the market, when the fruit brings the highest price of the season. When once there are enough Satsuma oranges produced for them to be known by the millions of the fruit-consuming masses, of which not one in ten thousand now knows of the existence of such a fruit, they are destined to become the most popular fruit grown, surpassing the famous Indian River Orange of Florida, or the Seedless Navel of California.

The limited crop of this wonderful orange produced in the vicinity of Mobile, Alabama, this year, was snapped up at prices ranging from \$2.50 to \$4.00 per box, while Florida oranges of the old round varieties were selling at ridiculously low prices.



**Satsuma
Orange
Prolific
Hardy
Thornless**

The Satsuma cannot be successfully grown in Central and South Florida or in California, leaving only a limited area along the Gulf Coast, to produce this, the most valuable of all oranges.

Trees should be planted fifteen to twenty feet apart. At 15 feet it requires 196 trees per acre; at 20 feet apart 108 trees per acre. Satsumas when planted between Pecans give quick returns and permanency to the planting. Ask for Planting Plans for best arrangement of trees.



An Acre of Five-Year-Old Combination Satsuma Orange and Pecan Grove is Worth One Thousand Dollars

The returns from the fruit producing a revenue equal to the interest on a much greater amount; the fruit off some groves selling for from \$700.00 to \$1,000.00 per acre per year.

Standard Round Sweet Orange

Boone's Early
Dugat
La. Sweet

Med. Sweet
Parson Brown
Pineapple

Tangerine
Valencia Late
Wash. Navel

Grapefruit or Pomelo

Budded on Citrus Trifoliata.

Duncan
Florida Common

Marsh Seedless
Pernambuco

Triumph

Prices of Orange and Grapefruit Trees Trees Budded on Citrus Trifoliata Root.

Approximate Top growth.	Caliper.	By mail				
		Each.	Each.	10	100	1000
E— 2-3 ft.	5-16 to $\frac{3}{8}$ in.	50c	45c	\$3.80	\$34.00	\$300.00
F— 3-4 ft.	$\frac{3}{8}$ to $\frac{1}{2}$ in.	60c	55c	4.50	40.00	370.00
G— 4-5 ft.	$\frac{1}{2}$ to $\frac{5}{8}$ in.		65c	5.50	50.00	450.00
H— 5-7 ft.	$\frac{5}{8}$ to $\frac{3}{4}$ in.		75c	6.50	60.00	
H— 5-7 ft.	$\frac{5}{8}$ to $\frac{3}{4}$ in.		75c	6.50	60.00	

Kumquats

Budded on Citrus Trifoliata roots. In our list of Kumquats we have added the new large round variety Neiwa, of which we have a very fine stock of trees for this season's delivery.

Varieties of Kumquats—Marumi, Nagami, Neiwa.

Prices of Kumquat Trees

		By mail			
		ea.	Ea.	10	100
C— 1 to $1\frac{1}{2}$ ft.	Light.....	43c	40c	\$3.50	\$30.00
D— $1\frac{1}{2}$ to 2 ft.	Small.....	53c	50c	4.50	40.00
E— 2 to 3 ft.	Large, bushy.....	75c	70c	6.00	50.00
F— 3 to 4 ft.	Extra arge. bushy.....		\$1.00	.00	70.00

Paper Shell Pecans

The long-headed business man or farmer of eight to twelve years ago, who planted a grove of paper-shell pecans and cared for it, has had the pleasure of refusing \$1,000.00 or more per acre for his grove, because it produces a revenue many times in excess of legal interest on this amount.

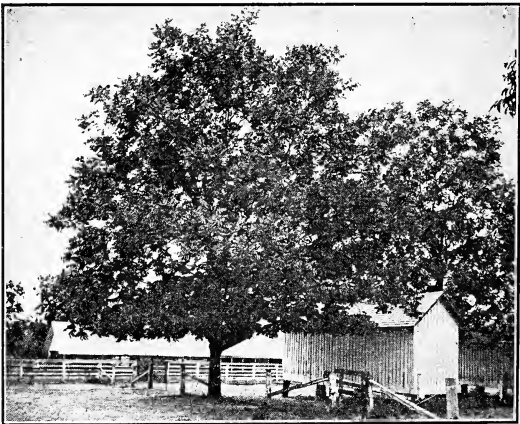
Utilize the Waste Space



Pecans Along the Roadside

Pecan trees planted along the roadside, avenues, drives, fence lines and around barns and outbuildings, will not only add a distinctiveness and character to your farm, but will in a few years yield a revenue in nuts sufficient to pay your taxes, pay for insurance on your buildings and keep buildings and fences painted and in repair besides a liberal amount for Christmas sundries.

All for the cost of a few trees and the keeping of the waste spaces cleaned and in order as they should be on well-kept farms.



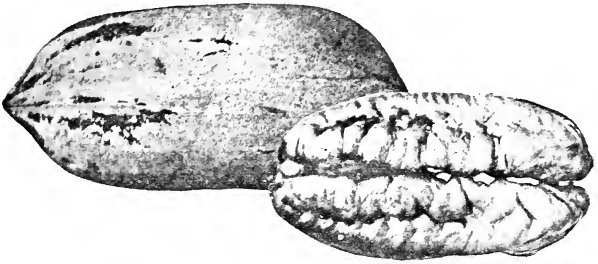
Pecans Around the Out-buildings

Big Z Pecan Special New Variety

In the Big Z Pecan we have a nut of the largest type weighing 36 to 40 nuts to the pound, a prolific and early bearer, a variety that is surely destined to revolutionize the Pecan Industry. Why grow small pecans that sell for 15 to 20 cents per pound, when a Big Z tree will occupy no more space, and produce more pounds of pecans per tree that will sell for \$1.00 per pound.

Big Z Pecans—Continued.

We have arranged with the owner of the parent tree for a limited number of scions and can offer a few hundred Big Z pecan trees at the following special prices.



Special Prices Big Z Pecan Trees.

Approximate top growth.		By mail			
		Each.	Each.	10	100
E— 2 to 3 ft.	Light	\$1.85	\$1.80	\$17.00	\$150.00
F— 3 to 4 ft.	Medium	2.00	1.90	18.00	160.00
G— 4 to 5 ft.	Standard		2.00	19.00	170.00

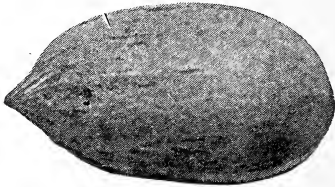
Order immediately before supply is exhausted.



Original Big Z Pecan Tree

The Best Standard Varieties Large Paper Shell Pecans

The necessity of diversification of the farm crops of the South is causing thousands of the best farmers to plant pecans as the safest and best diversification known. The trees live to a great age producing the most valuable food product known. An acre of large soft shelled pecans will produce as much food value as ten acres devoted to stock farming or producing any other food crop known. The present season has demonstrated to the farmer beyond question of doubt the wisdom of producing something to eat. Why not plant and grow the best and most productive and valuable food product?

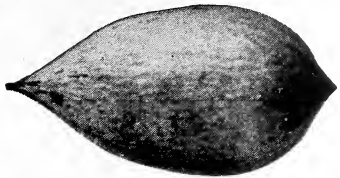


Bradley Pecan

Bears young. Many eight year trees produced over thirty pounds each. Parent tree two hundred thirty two pounds this year.

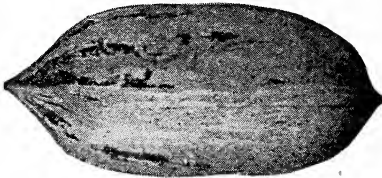
Curtis Pecan

The finest cracking and best eating nut grown. Trees bear young and abundantly. What it lacks in size is made up in quality.



President Pecan

In size, prolificness, quality and early bearing the President combines more good points than any standard variety grown.



Schley Pecan

Shell very thin, cracking quality and flavor exceptionally good, considered by many the best nut grown. Trees moderately prolific.



Stuart Pecan

Trees strong, upright growth. Commences bearing young. Its large size, attractiveness and full plump kernels make it a popular variety.



OTHER VARIETIES OF STANDARD PAPER-SHELL PECANS.

Every variety listed is good, you cannot make a mistake in planting any one of them.

Delmas	Moneymaker	Teche
Daisy	Pabst	Van Deman
Frotcher	Success	

BED ROCK WAR-TIME PRICES. Standard Varieties of Pecan Trees.

Approximate top growth.		By mail				
		Each.	Each.	10	100	
E— 2 to 3 ft.	light	75c	70c	\$6.50	\$60.00	\$530.00
F— 3 to 4 ft.	medium		85c	7.50	65.00	600.00
G— 4 to 5 ft.	standard		\$1.00	9.00	80.00	750.00
H— 5 to 7 ft.	large		1.25	11.50	110.00	

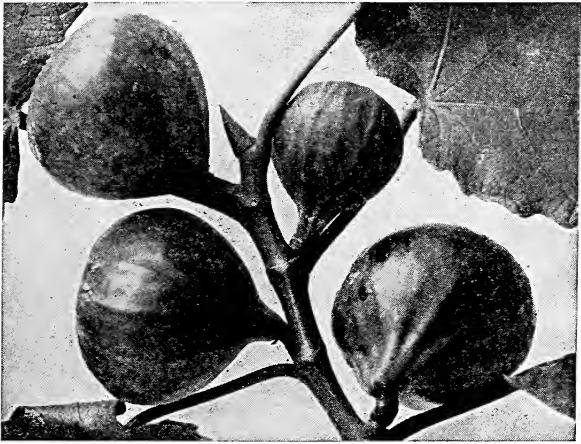
The Fig

THE OLDEST AND BEST OF THE WORLD'S FRUITS.

A fruit for the home or for the market, either in the fresh state, canned, preserved or dried.

As a fresh or green fruit the Fig is unsurpassed, either in deliciousness or healthfulness. Every home should have sufficient trees to supply the family and some to sell throughout the summer.

Canned or preserved figs are easily put up and can be enjoyed by the family throughout the year and also find a ready sale either in the local or open market. An acre of figs three or four years old will, if properly grown, harvested and marketed, produce from \$400.00 to \$500.00 per year. If interested in planting a commercial fig orchard write for our Service Bulletin No. 11, "The Fig as a Home Fruit and a Staple Farm Crop."



Celestial Fig

VARIETIES OF FIGS.

BROWN TURKEY. The best quality and most abundant producer of any fig grown. Bears on well-grown one-year canes the first year from planting.

BRUNSWICK. Very large, purple fig, the largest fig grown. Usually bears fruit first year after planting.

CELESTIAL. The hardiest and most sturdy fig tree grown. The favorite variety for canning and preserving. The great home fig of the cotton belt.

GREEN ISCHIA. Large, pale green, pulp crimson, rich and tender. Bears on one-year cane.

MAGNOLIA. The variety so largely planted in Texas and South West Louisiana for shipping and canning. Usually bears some fruit first year after planting.

Prices For Fig Trees.

Size.	Height.		By mail				
			each.	Each.	10	100	1000
D—	1½ to 2 ft.	Light	17c	15c	\$1.20	\$10.00	\$ 90.00
E—	2 to 3 ft.	Medium	23c	20c	1.50	13.00	110.00
F—	3 to 4 ft.	Standard		25c	2.00	17.00	150.00

Modern Methods of Home Canning Makes the Fig a Staple Crop on Every Farm

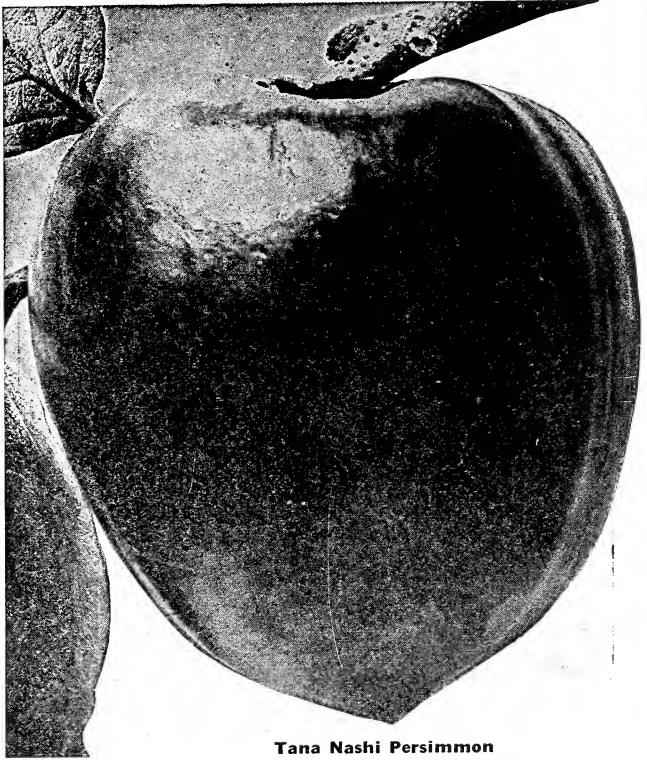


A canning outfit sufficient to can the figs from an acre planting. Costs less than \$50.00 and can be used for canning other fruits, syrup, vegetables and meats throughout the year.

Mammoth Japanese Persimmons

A MOST DELICIOUS FRUIT FOR HOME AND MARKET THAT MAY BE ENJOYED FROM SEPTEMBER UNTIL CHRISTMAS.

A high-priced fruit on every market where known. Shipments have been successfully made to England. A fruit even more productive than apples or peaches, that is more delicious and sells for better prices. Because their name is Persimmon do not confuse them with the little puckery wild persimmon you may know. Our large descriptive catalog illustrates them in natural color and tells you of their value. Ten or a dozen trees if not an orchard should be planted by every home owner or farmer.



Tana Nashi Persimmon

VARIETIES OF MAMMOTH JAPAN PERSIMMONS.

Costata	Okame	Yeddo Ichi
Dia Dia Maru	Triumph	Yemon
Hacheya	Tana Nashi	Zengi
Hyakume	Tsuru	

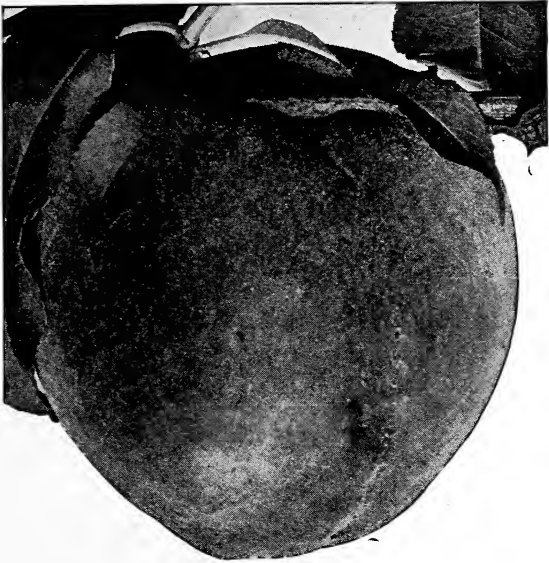
Price.		By mail				
Size.	Height.	each.	Each.	10	100	1000
F—	3 to 4 ft.	Medium	25c	\$1.80	\$15.00	\$130.00
G—	4 to 5 ft.	Standard	30c	2.20	18.00	160.00
H—	5 to 7 ft.	Large	40c	3.00	25.00	200.00

Peaches

THE MOST POPULAR SUMMER FRUIT GROWN.

More money has been made growing peaches for both home and distant markets with less outlay of capital than any fruit grown. Peaches are easy to grow. In fact easier than most fruits, and can be profitably produced if planted on well drained fertile land in almost any section of the South. Trees are cheap and cultivation simple and easy. Profitable returns may be expected second year after planting.

Peaches *Continued.*



Mayflower Peach

Varieties of Peaches

May Flower	May Peaches. Sneed	Triumph
Arp Beauty Greensboro	June Peaches. Imperial Waddell	Stanley St. Johns
Belle of Georgia Carman	July Peaches. Chinese Cling Elberta	Fla. Gem Hiley
Florida Crawford	August Peaches. Nix Late	
Heath Cling	September Peaches. Powers September	
Gibbon's October	October Peach.	

Prices of Standard Varieties Peaches.

Size.	Height.		By mail				
			each	Each	10	100	1000
D—1½	to 2 ft.	Small14c	12c	\$1.00	\$8.00	\$60.00
E—	2 to 3 ft.	Light17c	15c	1.20	9.00	70.00
F—	3 to 4 ft.	Medium23c	20c	1.50	11.00	90.00

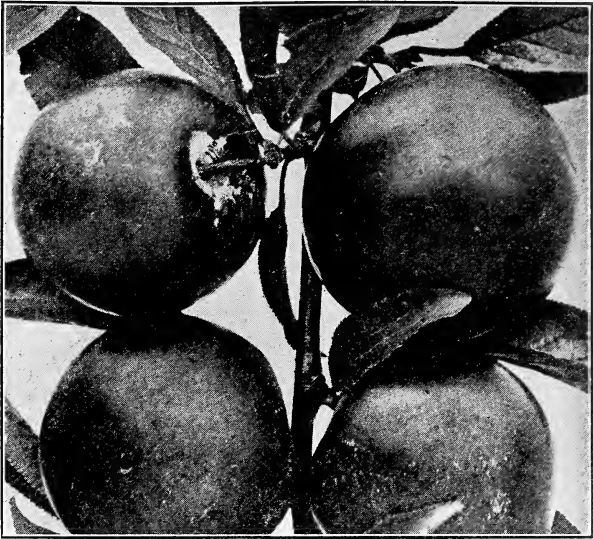


Plums

Every year thousands of crates of plums are shipped from California, Colorado and other states into the Southern States, even to the small towns and country stores and sold at big prices. These plums are grown on land valued much higher than our Southern land, and which is irrigated at a cost of \$6 to \$10 per acre. Regardless of the land valuation, high cost of production and express charges on a two thousand mile shipment, the fruit is grown and sold to us at a large profit. The lands of the Southern States will grow as large crops of plums and at as low production cost as any part of the world.

Plant Plums in Poultry Yard

The clean packed ground and high percentage of nitrogen in the chicken manure seem to be just what the trees require. The trees give right amount of shade during summer and admit sunlight during winter.



Stumpe or Howe Plum

The Best Standard Varieties of Plums

- ABUNDANCE.** Very large, prolific, ripe in June.
BURBANK. Very large. Ripe last of June.
EXCELSIOR. Medium size, purple. Ripe in May.
MCCARTNEY. Large yellow. Ripe early June.
RED JUNE. Large, very prolific, ripe in June.
STUMPE. Red, one of the best. Ripe in May.
WICKSON. Large dark red. Ripe in July.

Prices of Standard Varieties.

D—1½ to 2 ft.	17c	15c	\$1.20	\$10.00
E—2 to 3 ft.	22c	18c	1.50	12.00
G—4 to 5 ft. Standard		30c	2.50	20.00
H—5 to 7 ft. Large		40c	3.00	25.00



Pears

What Potatoes are to the Farmer Pears Should be to the Fruit Grower

A staple, reliable crop. Pears of the blight-resisting varieties are the easiest grown and most reliable fruit known. There is always a demand for pears, yielding the grower many times the cost of production.

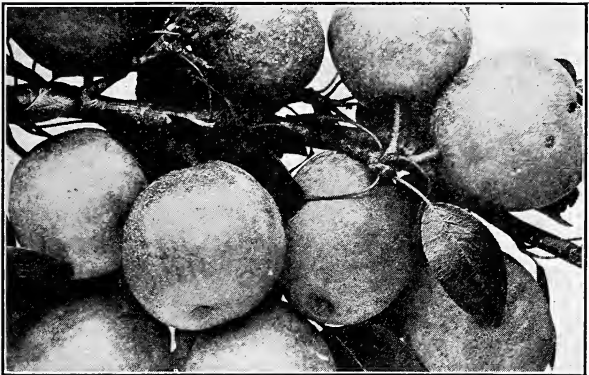
Griffing's Special Pear, The New Dixie

A new variety originated in Southern Georgia, of marked vitality and wonderfully prolific. The pear that we believe will revolutionize Southern pear-growing. Blight-resisting, good quality, large size.

Prices Dixie Pear

Size.	Height.		By mail each	Each.	10	100
F—	3 to 4 ft.	Medium	40c	35c	\$3.00	\$25.00
G—	4 to 5 ft.	Standard		40c	3.50	30.00

You need have no fear of blight if you plant Dixie Pears.



Fruiting Branch of Dixie Pear Showing How Tree Is Loaded Every Year.

Standard Varieties Pears

The standard varieties of pears we offer include both the Blight-resisting and other well known sorts.

Blight Resisting Varieties.

Cincinnati	Sand
Magnolia	Suwannee

Other Well Known Varieties.

Bartlett	Garber	LeConte
Early Harvest	Kieffer	

Prices of Blight-Resisting and Standard Varieties Pears.

Size.	Height.		By mail each	Each.	10	100	1000
F—	3 to 4 ft.	Medium	30c	25c	\$2.00	\$16.00	\$140.00
G—	4 to 5 ft.	Standard		30c	2.50	20.00	160.00

Apples

THE DAY APPLE. An apple adapted to the Gulf Coast, South Georgia and North and West Florida. A variety that will extend the apple-growing belt farther South than heretofore considered possible to produce apples.

The Day Apple received third prize and bronze medal at St. Louis Exposition (1904) along with 2,800 varieties from all parts of the world. This apple originated in Simpson County, Mississippi; is a medium to large size, red striped on one side.

MASON APPLE. Original tree has borne thirteen successive crops in South Texas without failure. Fine flavor, rich, juicy, melting. Ripe in July.

Special Prices Day and Mason Apple Trees.

Size.	Height		By mail each	Each.	10	100
F—	3 to 4 ft.	Medium	40c	35c	\$3.00	\$25.00
G—	4 to 5 ft.	Standard		40c	3.50	30.00
H—	5 to 7 ft.	Large		50c	4.00	35.00

STANDARD VARIETIES APPLES BEST ADAPTED FOR SOUTHERN PLANTING.

Arkansas Black	Maiden Blush	Red June
Ben Davis	Jenning's Florida	Rome Beauty
Horse	Red Astrachan	Shockley
	Transcendant Crab Apple.	

Prices Standard Varieties Apple Trees.

Size.	Height.		By mail each	Each.	10	100
F—	3 to 4 ft.	Medium	23c	20c	\$1.50	\$12.00
G—	4 to 5 ft.	Standard		25c	2.00	16.00

Mulberries

To make a success raising hogs or poultry a constant food supply is required. The hardest season of the year to have a plenty of hog and poultry food is in April, May and June. The Mulberry fills this gap. A twenty-five to fifty-tree Mulberry orchard will furnish an abundance of the best possible food for thirty to forty pigs or from 150 to 200 head of chickens, for three months in spring and early summer. Trees are cheap and soon make a fine grove or orchard.

MERRITT. Large black, very prolific, early, ripe in April continuing into May.

HICKS EVERBEARING. Medium black, prolific. Ripe from May 10th to July 10th.

OTHER GOOD VARIETIES. Black English, Downing, Russian, Stubbs, etc.

Prices of Mulberry Trees.

Size.	Height.		Each.	10	100
G—	4 to 5 ft.	Standard	25c	2.00	15.00
H—	5 to 7 ft.	Large	30c	2.50	18.00



Merritt Mulberry



Grapes

No home or farm is complete or in keeping with the modern, progressive times without a Grape Trellis, Vineyard, or Grape Arbor. Grapes are among the most easily produced of all fruits. They bear young and abundantly. Vines are cheap and easy to grow into bearing size.

Pure Healthful Wines, also the Great National Drink, Grape Juice, is easily made at home at a small cost. There is always a good market for both the early bunch Grapes as well as the later ripening Arbor or Muscadine grapes.

BUNCH OR TRELLIS GRAPES should be planted about 10 feet apart.

BRIGHTON. Large red. Ripe June.

CHAMPION. Large black. Ripe June 10th.

CLINTON. Large bunches. Black. Ripe late June.

CONCORD. Blue black. Large. Ripe early July.

DELAWARE. Small, pink, compact bunch. Ripe July.

ELVIRA. Medium, pale green. Ripe June.

NIAGARA. Large white. Ripe June.

SALEM. Large red. Ripe last May.

Grapes—Continued.

ARBOR OR MUSCADINE GRAPES should be planted about 20 feet apart and trained on arbor.

EDEN. Large black, bears in bunches. Ripe late July.

FLOWERS. Large purple clusters. Ripe September.

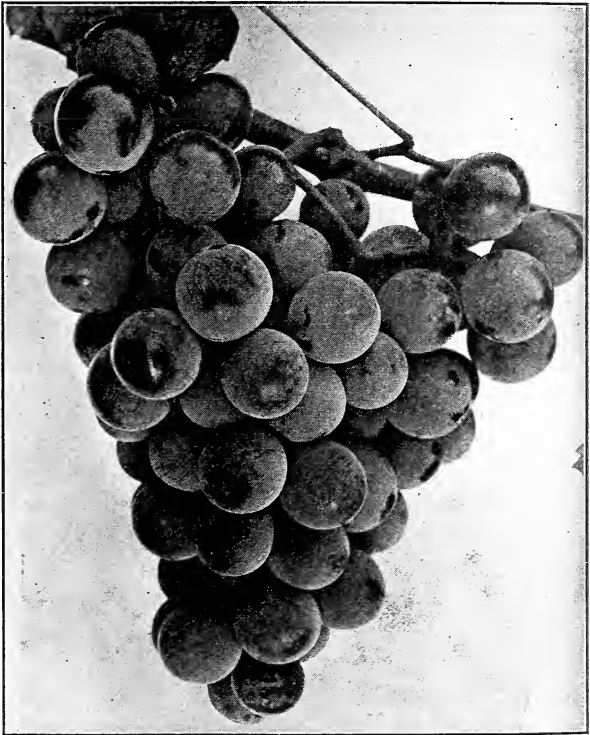
JAMES. Very large black berry. Ripe September.

SCUPPERNONG. Large light bronze. Ripe August.

THOMAS. Medium, reddish purple, very prolific, fine flavor. Ripe early August.

Prices of Both Trellis and Arbor Grapes.

Age and size.	Each by			
	mail.	Each	10	100
D— 1 year. Medium	17c	15c	\$1.20	\$ 9.00
G— 2 year. Large	23c	20c	1.60	12.00



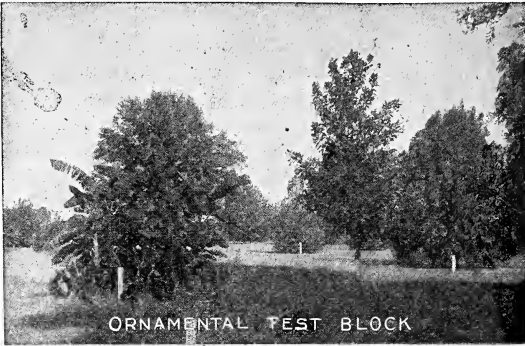
Niagara Grape



Griffing's 1915 Catalog

Profusely Illustrated in Natural Colors and describing over a thousand of the best varieties of Fruits, Nuts, Trees, Shrubbery, Palms and Roses. Adapted for Southern Planting. Will be sent on request to all interested in fruits or nut growing, better farms or better homes.

Shade Ornamental Trees and Shrubbery

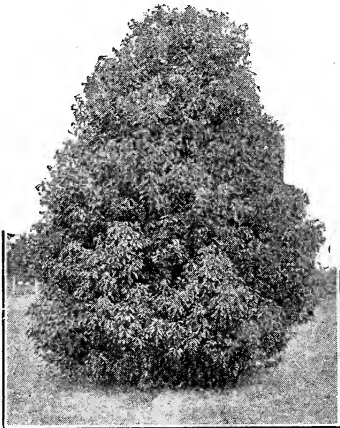


ORNAMENTAL TEST BLOCK

It will surprise you to know how pretty and attractive you can make your home by spending a few dollars for trees and shrubs. They are cheap and anyone can grow them. Too many people have "houses," few have "homes," for it takes shrubs and trees properly arranged to make an attractive "home."

Most people want to beautify their home but don't now how. We can send you a bulletin which teaches you to arrange the trees and shrubbery properly, tells you where, when and how to plant. Write for Bulletin No. 36.

By planting a few dollars worth of trees many people make their homes so attractive that the valuation is increased 25 to 35 per cent. The investment of a few dollars worth of our trees and shrubs will pay 1000 per cent on the investment. Why put it off?



Camphor Tree for the Lawn

Broad Leaved Evergreen Trees

All trees in this list have their beautiful green leaves the year around. Some have beautiful flowers, some attractive fruit. Planted on your grounds they make a beautiful green setting for your home, and you will always be proud to say to your friends, "this is my home," if your yard is planted with any or all of these.

ASH EVERGREEN. Rapid growing, drouth-resisting, always has glossy green appearance. Should be planted everywhere in South.

Prices.

Size.	Height.		Each.	10	100
G—	4 to 5 ft.	Medium\$.45	\$4.00	\$35.00
H—	5 to 7 ft.	Large60	5.00	45.00

CAMPHOR. Best shade tree for lawn or street. Rapid growing, symmetrical, with dense green foliage. Attains 60 feet in height. Spread of 70 feet. Should be planted everywhere in South. Best tree for windbreak.

Price of Camphor Trees.

Size.	Height.	Grade.	Each by			
			mail.	Each.	10	
F—	3 to 4 ft.	Medium	55c	\$0.50	\$4.00	\$35.00
G—	4 to 5 ft.	Large		0.75	6.50	60.00
H—	5 to 7 ft.	Extra large		1.25	10.00	90.00
K—	7 to 9 ft.	Very heavy spec.		2.00	17.50	

EUCALYPTUS. Most rapid growing shade tree known. Evergreen and good as windbreak for grove or home. Four varieties.

Rostrata—Attains 200 feet.

Rudis—Large and drouth resisting.

Robusta—Good for street tree.

Terticornis—Very hardy.

Price of Eucalyptus, Pot Grown and Balled Only.

Size.	Height.	Grade.	Each by			
			mail.	Each.	10	
D—	1½ to 2 ft.	Small	24c	20c	\$1.80	\$15.00
E—	2 to 3 ft.	Light	35c	30c	2.50	22.00
F—	3 to 4 ft.	Medium		40c	3.50	30.00

HOLLY (Ilex Opaca). Plant this tree for Holiday decoration. Evergreen with bright red berries all winter. One of the best for front yard planting.

Size.	Height.	Grade.	Each by			
			mail.	Each.	10	
E—	2 to 3 ft.	Medium	56c	\$0.50	\$4.50	
F—	3 to 4 ft.	Large		0.65	6.00	
G—	4 to 5 ft.	Extra		1.00	8.00	

MAGNOLIA (Grandiflora). Queen of flowering evergreens. Beautiful green leaves, with white flowers in spring. Best tree for home decoration. Good grower and very hardy.

Size.	Height.	Grade.	Each by			
			mail.	Each.	10	
E—	2 to 3 ft.	Light	58c	\$0.50	\$4.50	\$40.00
F—	3 to 4 ft.	Medium		0.75	6.50	60.00
G—	4 to 5 ft.	Heavy		1.00	9.00	80.00
H—	5 to 7 ft.	Extra large		1.25	10.00	90.00
K—	7 to 9 ft.	Extra special		2.00	18.00	



Deciduous Shade Trees

Although these trees lose their leaves and are bare for a short time every year, they are none the less beautiful. The most beautiful flowering trees are deciduous, and when you want beautiful blooms in the spring, with attractive foliage all summer and fall, make your selection from this list.

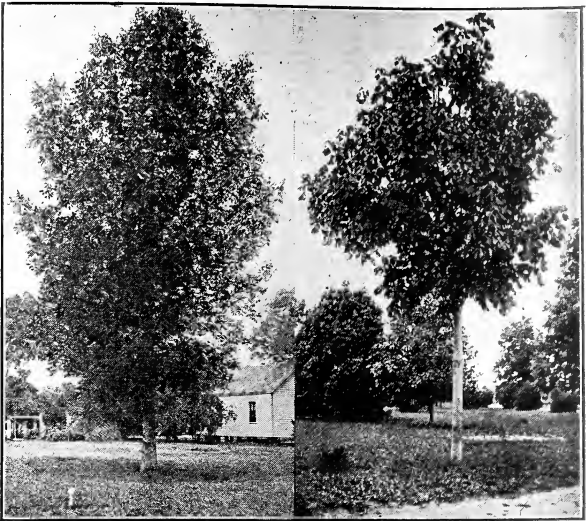
All trees listed are perfectly hardy in the South.

Prices for Deciduous Shade Trees Unless Otherwise Noted.

Size.	Height.	Grade.	Each by			
			mail.	Each.	10	
F—	3 to 4 ft.	Small	40c	\$0.35	\$3.00	\$25.00
G—	4 to 5 ft.	Medium	50c	0.45	4.00	35.00
H—	5 to 7 ft.	Large		0.60	5.00	45.00
K—	7 to 9 ft.	Extra large		0.75	6.00	55.00
M—	9 to 12 ft.	Extra specimen		1.00	8.50	75.00



Pecan Among the Handsomest of Deciduous Shade Trees



Green Ash

Japan Varnish Tree

ASH GREEN. Quick growing, sturdy and hardy.

BOX-ELDER. Attractive bloomer, good for home grounds.

COTTONWOOD. Rapid grower, good foliage. Grows anywhere. See prices on Sycamore.

JAPANESE VARNISH. Beautiful flowers in spring. Good for lawn.

LOCUST, BLACK. Thrifty growth. Shade tree for home grounds.

POPLAR, CAROLINA. Rapid grower, good for shade. See Sycamore prices.

POPLAR, LOMBARDY. Tall, symmetrical, shaft-like tree. Rapid growth. See Sycamore prices.

SOAP TREE. Small tree, good for lawn.

SYCAMORE. Choice avenue and shade tree, vigorous.

Prices of Sycamore, Cottonwood, Lombardy and Carolina Poplar only.

NOTE: For prices of other deciduous shade trees see page 14

Size.	Height.	Grade.	Each.	10	100
G—	4 to 5 ft.	Medium\$0.35	\$3.00	\$25.00
H—	5 to 7 ft.	Large0.50	4.00	35.00
K—	7 to 9 ft.	Extra large0.75	6.50	60.00
M—	9 to 12 ft.	Heavy specimen1.00	9.00	75.00

Extra heavy specimens, 12 to 15 feet, at \$2.00 to \$4.00.

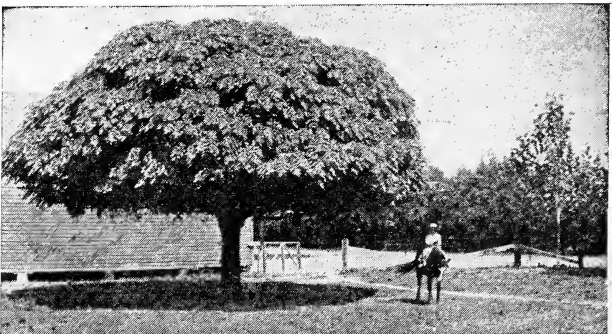
SWEET-GUM. Good for ornamental shade. Wonderful color in autumn.

SALT CEDAR. Low growing, good for lawn effect.

TEXAS UMBRELLA. Resembles an immense umbrella, sub-variety of Umbrella China. Wonderful dense shade for summer.

Prices Texas Umbrella Trees only.

Size.	Height and age.	Each.	10	100
G—	4 to 5 ft. 1-yr. whips 40c	\$3.50	\$30.00
H—	5 to 7 ft. 1-yr. medium head\$0.50	4.50	40.00
Texas Umbrella. 2-yr. well headed				
G—	4 to 5 ft. Light branched 0.60	5.00	45.00
H—	5 to 7 ft. 2-yr. medium branched 0.75	6.50	55.00

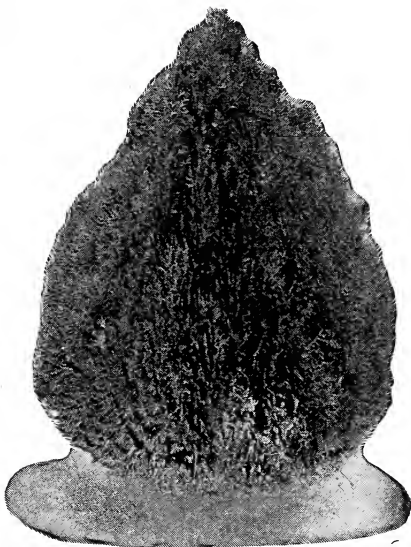


Texas Umbrella Tree

Hardy Coniferous Evergreen Trees



You should plant a few of these in front of your house, they will change the appearance completely, adding a homelike effect. Plant them at the base of a porch or at the corners of a building. They are the most inexpensive class of plants you can use for landscape effect. All are evergreen.



Dwarf Golden Arborvitae

ARBORVITAE.

CHINESE OR ORIENTAL. Pale green, upright thrifty growth. Desirable for hedges, windbreaks or specimens. Will grow anywhere; easy to transplant.

	Each	10	100	1000
E— 2 to 3 ft.	30c	\$2.50	\$18.00	\$120.00
F— 3 to 4 ft.	35c	3.00	25.00	180.00
G— 4 to 5 ft.	45c	4.00	30.00	200.00

DWARF GOLDEN ARBORVITAE. Low dwarf habit, with beautiful golden foliage. These are the cheapest and best we can buy for lawn planting.

GLOBE ARBORVITAE. Good for lawn planting, globe-headed. Always green and easy to grow.

Price Dwarf Golden and Golden Arborvitae only.

Size.	Height.	Each.	10
D—	1½ to 2 ft. Light	\$0.50	\$4.50
E—	2 to 3 ft. Medium	0.70	6.00
F—	3 to 4 ft. Large	1.00	9.00

Balled with own dirt double price.

If Balled They Won't Know They Have Been Moved.

COMPACT ARBORVITAE. Splendid for hedge screens and massing. Good for lawn.

ELEGANT ARBORVITAE. Tall and slender, good for lawn.

PYRAMIDAL. Grows in pyramidal shape. Very striking if planted at corner of walks or in front of porch with other evergreens. Compact and beautiful foliage.

Prices for Compact, Elegant, Pyramidal Arborvitae, only.

Size.	Height.	Each	10
E—	2 to 3 ft. Medium	\$0.45	\$4.00
F—	3 to 4 ft. Large	0.75	6.50
G—	4 to 5 ft. Large	1.00	9.00
H—	5 to 7 ft. Extra	1.60	14.00

Balled with own earth double price.

ROSEDALE ARBORVITAE. Handsome plume-like foliage, making attractive border or walk planting. Good for grouping.

GOLDEN ARBORVITAE. Wonderful golden foliage all year around. Graceful symmetrical appearance.

Prices for Rosedale and Golden Arborvitae.

Size.	Height.	Each.	10
E—	2 to 3 ft. Medium	\$0.60	\$5.00
F—	3 to 4 ft. Large	0.80	7.00
G—	4 to 5 ft. Large specimen	1.50	12.50

RETINISPORA PLUMOSA. A dwarf, dense bush with attractive, golden, variegated foliage.

Prices of Retinispora Plumosa, only.

Size.	Height.	By mail each.	Each.	10
D—	1½ to 2 ft. Small	40c	30c	\$2.70
E—	2 to 3 ft. Medium		40c	3.50
F—	3 to 4 ft. Large		50c	4.50

JAPAN CEDAR. A very rapid growth, tall, graceful forest tree; the most valuable timber tree in Japan. Perfectly adapted to Texas and Louisiana, making beautiful majestic street and shade trees.

RED CEDAR. Native quick grower, withstands any conditions. Good for windbreak or screen.

Size.	Height.	Each.	10
F—	3 to 4 ft. Large	\$0.50	\$4.50
G—	4 to 5 ft. Extra	\$0.75	7.00
H—	5 to 7 ft. Extra specimen	1.55	

Evergreen Foliage and Flowering Shrubs

All are good for lawn planting, singly or in groups.



Abelia Grandiflora as a Specimen

ABELIA. Beautiful, purple and green foliage with masses of white starlike bloom. Hardy and desirable everywhere.

BOUGAINVILLEA. Purple flower, perpetual bloomer.

CAPE JESSAMINE. Bears white flowers intermittently.

JASMINUMS. Profusion of bloom during summer.

The following varieties represent the best.

GRAND DUKE. White flower, bush growth, blooms profusely.

GRACILLIMUM. White flowers Can be used as a vine.

HUMILE. Yellow flowers . Italian Jasmine, large shrub.

MAID OF ORLEANS. White flowers, very fragrant, constant.

SAMBAC. White, intensely fragrant. Arabian Jasmine.

JAPAN TEA. Good for lawn planting. White flowers in fall and winter.

OLEANDER. Free flowering, quick growing shrub. Colors white and pink.

POINSETTIA. Valued for wonderful scarlet flowers. If injured by cold sprouts up quickly.

Prices of Evergreen, Foliage and Flowering Shrubs.

Size.	Height.		Each by			
			mail.	Each.	10	100
B—	8 to 12 inches.	Light	23c	20c	\$1.80	\$15.00
C—	12 to 18 inches.	Light	30c	25c	2.25	20.00
D—	18 to 24 inches.	Small	45c	40c	3.50	30.00
E—	2 to 3 ft.	Medium		60c	5.50	45.00

Deciduous Flowering Shrubs

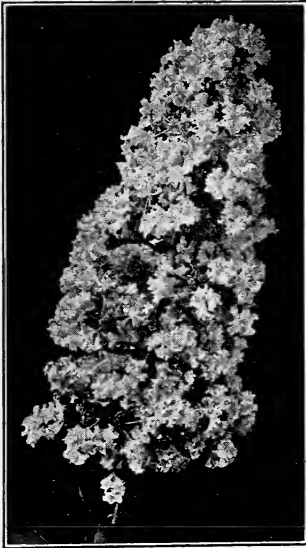
Prices Deciduous Flowering Shrubs.

Size.	Height.		Each by			
			mail.	Each.	10	100
C—	12 to 18 inches.	Light	22c	\$0.20	\$1.70	\$15.00
D—	18 to 24 inches.	Small	28c	0.25	2.00	18.00
E—	2 to 3 ft.	Medium	38c	0.35	3.00	25.00
F—	3 to 4 ft.	Large		0.45	4.00	35.00
G—	4 to 5 ft.	Large specimen		0.60	5.50	50.00
H—	5 to 7 ft.	Extra large specimen.		1.00	8.50	75.00

In sizes F, G and H we have only the Crape Myrtle.

CRAPE MYRTLE. Grows anywhere, produces clusters of flowers all summer. Colors—White, pink, crimson and purple. Best shrub for lawn.

DEUTZIA. Good for border and hedges, also for massing.



Crimson Crape Myrtle

D. GRACILIS. White flowers.
D. PRIDE OF ROCHESTER. Pink flowers.

POMEGRANATES, FLOWERING. Best flowering shrub in the South. Very free bloomer, rapid grower. Varieties we offer are:

DOUBLE WHITE, DOUBLE RED, DWARF DOUBLE RED, VARIEGATED.

SPIREA. The nicest flowering shrub we can plant. Blooms in April and May. Three or four plants will change the aspect of your entire lawn. Varieties: **S. VAN HOUTE**, white; **S. BILLARDI**, pink; **S. DOUGLASSI**, pink.

WEIGELIA. Very showy flowering shrub. Best for lawn planting.

Cannas

For our lawn and flower bed Cannas should be used more extensively. They give a tropical effect and color to our flower bed or border.

Choice New and Orchid Varieties.

Price 20c each, \$1.75 per 10; \$15.00 per 100. Choice large bulbs.

- ALLAMANIA.** Orange red-orchid.
- BRILLIANT.** Yellow and red orchid.
- GLADIFLORA.** Carmine rose, gold edges, new.
- HALLEY'S COMET.** Blazing scarlet, throat yellow, orchid.
- HUNGERIA.** Paul Neyron pink, orchid, new.
- IMPERIAL MOUNT BLANC.** White, medium flowers.
- KING HUMBERT.** Scarlet, bronze foliage, orchid.
- KATE E. DEEMER.** Oriole yellow, red throat, orchid, new.
- MRS. CARL KELSEY.** Orange scarlet, striped yellow, orchid.
- MISS MARGARET MUHEL.** Cerise pink, orchid, new, fine.
- MRS. ALFRED CONRAD.** Salmon pink, orchid, new, fine.
- MINNEHAHA.** Peach bloom pink, orchid, new.
- PRINCE WEID.** Blood red, new, orchid.
- ROSEA GIGANTEA.** Rich rose, new, orchid.
- SHENANDOAH.** Reddish-pink, bronze foliage, orchid.
- UNCLE SAM.** Orange scarlet, new, orchid.
- WM. SANDERS.** Deep crimson, new, orchid.
- WENTZER'S METEOR.** Brilliant scarlet, new.

Old Standard Varieties.

Prices 50c per 10; \$4.00 per 100 for choice, large bulbs.

- ALBA ROSEA.** Creamy white, small flowers.
- BLACK PRINCE.** Vivid crimson medium flowers.
- MAJESTIC.** Carmine, red, small flowers.
- MOONLIGHT.** White, medium flowers.
- MUSIFOLIA.** Very large foliage, small red flowers.
- KING OF BRONZES.** Bronze foliage, small red flowers.

Ferns

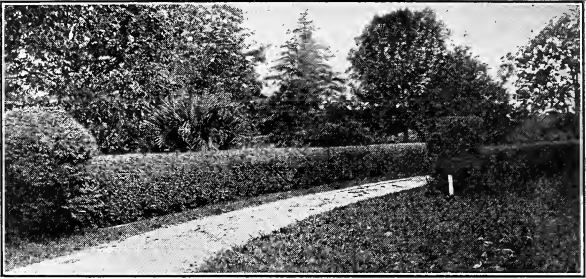
For jardinières, flower pots, window boxes.

- ASPARAGUS PLUMOSUS.** Trailing fern, fine feathery.
- ASPARAGUS SPRENGERI.** Trailing fern, rapid growth.
- BOSTON.** Well known old variety.
- ROOSVELTI.** New desirable variety.
- LACE FERN.** Strong grower, with lace-like leaves.
- OSTRICH PLUME FERN.** Beautiful crested variety.

Price of Ferns.

	By mail each.	Each	10
Small size, 2½ inch pots	20c	15c	\$1.25
Medium size, 4 inch pots	30c	25c	2.00
Standard size, 5 inch pots		50c	4.00

Hedge Plants



Amoor River Privet Hedge

HEDGE PLANTS.—A hedge is cheaper than a fence, and more easily kept up. Plant privet inside of fence, after four months take away fence. Hedge plants for 100 ft. of yd. cost as low as \$5.00. All plants are quick growing.

CAMPHOR. For the Gulf Coast section there is no better evergreen hedge or border tree than the camphor. Holds foliage close to ground, and can be trimmed into any desired shape.

Price Camphor Trees, Hedge Sizes.

	10	100	1000
C—1 to 1½ ft.	\$1.20	\$10.00	\$ 80.00
D—1½ to 2 ft.	1.50	12.00	100.00
E— 2 to 3 ft.	2.00	18.00	150.00

AMOOR RIVER PRIVET. The best and most popular hedge grown.

CALIFORNIA PRIVET. Nearly evergreen, quick grower.

PRICES AMOOR RIVER AND CALIFORNIA PRIVET

	By mail				
	Ea.	Ea.	10	100	1000
D—18 to 24 inch. Medium 1 yr.	15c	12c	\$1.00	\$5.00	\$35.00
E—2 to 3 ft. Heavy 1 yr.	18c	15c	1.25	6.50	45.00
F—3 to 4 ft. Medium 2 yr.		20c	1.50	9.00	55.00

Bamboo and Ornamental Grasses

The varieties of Bamboo and Ornamental Grasses we offer are hardy throughout the South. They are desirable for borders, windbreaks as well as for individual planting, lending a warm tropical effect to the grounds or yard.

Price.	By mail				
	Ea.	Ea.	10	100	1000
Sets or single canes	20c	15c	\$1.20	\$5.00	\$35.00
Small clumps 4 to 6 canes	35c	30c	3.00	4.00	
Medium clumps 6 to 12 canes	45c	35c			
Large clumps 12 to 20 canes		50c			

BAMBOO ARGENTEA. Japanese; attains 40 feet in height.

B. FALCATA. Height 6 to 10 feet; fine leaves, very desirable.

B. ARUNDINARIA METAKE. Large leaves, grows 6 to 10 feet.

B. VERTICILATA. Desirable variety for windbreak; height 20 to 30 feet.

PAMPAS GRASS. The grandest of all plume grasses. Plumes 2½ to 3 feet long, grows 12 to 15 feet high. As a border makes an impenetrable wall.

LEMON GRASS. Variegated ornamental grass with pleasant odor, desirable for clumps or screens.

EULALIA GRASS. Small ornamental grass for clumps or borders.

E. Univittata. Dark solid green leaves; very attractive.

E. Variegata. Variegated, white striping lengthwise of leaves.

E. Zebrina. Variegated, white or golden stripes across leaves.



Pampas Grass (Gynerum Argentum)
A most desirable boundary hedge plant

Palms



The varieties we offer here, are hardy and may be grown where temperature does not drop below 18 Fahrenheit for long periods at a time.

WASHINGTONIA PALMS. The famous Fan Palms of California.

W. Robusta. Upright vigorous growth. Dark green foliage.

W. Filifera. Rapid spreading growth, more hardy, light green foliage.

PHOENIX OR DATE PALMS. Graceful, large growing, pinnate leaved.

P. Canariensis or Canary Island Date Palm. Rapid growth and grandest palm grown.

P. DACTYLIFERA OR COMMERCIAL DATE PALM. Large upright growth.

Prices Washingtonia and Phoenix Palms.

	Each	10	100
B—8 to 12 inches	\$.30	\$ 2.50	\$ 20.00
C—12 to 18 inches, 2 yr., commencing to show character leaves50	4.00	35.00
D—18 to 24 inches, 2 yr., well characterized....	.90	8.00	75.00
E—2 to 3 feet, 2 to 3 in. diameter	1.75	16.00	135.00
F—3 to 4 feet, 3 to 4 in. diameter	2.50	20.00	165.00
G—4 to 5 feet, 4 to 5 in. diameter	3.25	28.00	225.00
H—5 to 7 feet, 5 to 7 in. diameter	4.50	36.00	280.00
K—7 to 9 feet, 7 to 9 in. diameter	6.00	50.00	400.00
M—8 to 10 feet, 9 to 12 in. diameter	10.00	75.00	600.00
N—Very large, 12 to 18 in. diameter	15.00	110.00	
P—Extra large, 18 to 24 in. diameter	20.00		

Some of sizes E and F and all of sizes larger are field grown and will be defoliated and taken up with a ball of earth burlaped and crated.

LIMITED QUANTITY Washingtonia Robusta and Phoenix Canariensis. Specimens established in boxes. Size G, \$4.00; H, \$8.00; K, \$12.00 each. These can be handled in full foliage.

AUSTRALIAN COCOANUT PALM (Cocos Australis). Small, graceful, slender, pinnate leaves. Price: B, 50c; C, 75c; D, \$1.50 each.

WINDMILL PALM (Chamaerops Excelsa). Dwarf growing hardy fan palm. Price: B, 50c; C, 75c; D, \$1.25 each.



Vines and Creepers

Prices all Varieties Except as Noted.

Size. Length.	By mail		
	Ea.	Ea.	10
B-C—8-12 inch, small	28c	25c	\$2.00
D-E—18-24 inch, medium	40c	35c	3.00

Vines planted at a base of a porch completely change the appearance of the house. Many houses are covered with vines the year around and are noted for their beauty. Make your house look different from your neighbors' by planting vines.

BLEEDING HEART VINE. Rapid growing, crimson flowers.

HONEYSUCKLES. Evergreen vine with yellow and white flowers. Varieties Golden Netted; Hall's Japanese.

IVY. Oldest and most historic climbing vine.

ENGLISH. Evergreen, clings close to surface of house.

VIRGINIA CREEPER. Attractive evergreen climber.

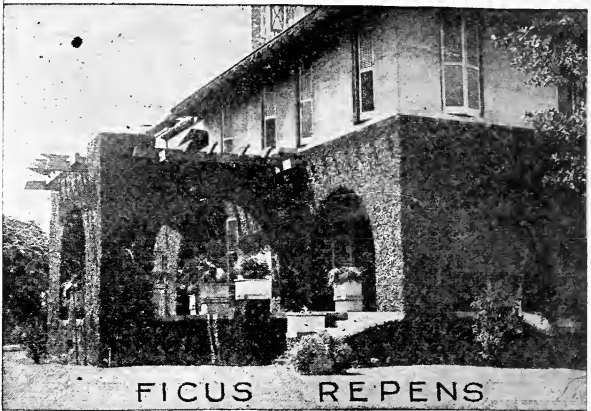
JASMINES. Most famous scented vines of the South. We offer them in 4 varieties.

CAROLINA YELLOW. Graceful rapid growing, yellow flowers in spring.

GRACEFUL JASMINE. Best for arbor, white flowers.

STAR JASMINE. Rapid grower, white flowers in spring.

Vines and Creepers *Continued.*



JAPAN PAPER FLOWER (Bougainvillea). A desirable climber with brilliant pinkish purple bracts presenting a most gorgeous display of color almost constantly. Price, C— 25c each, \$2.25 per 10; D— 40c each, \$3.50 per 10; E—60c each.

CLIMBING RUBBER. Best creeper known—very tenacious, rapid grower. Prices, B and C sizes, 25c each.

MOUNTAIN OR MEXICAN ROSE. Rapid growing vine producing pink flowers summer and fall.

WISTARIA. Deciduous rapid grower, purple blossoms in spring and summer.

Roses



Anyone can grow roses; some fail because they don't start with strong, field grown bushes. Tender pot plants grown indoors will not give good results. We fill all orders with strong Field Grown bushes such as will give satisfaction in your yard or garden. In many cases we can make a better selection of varieties for any particular locality than our patrons and will make careful selection when it is left to us. If out of particular size and variety ordered we send nearest we have unless instructed not to substitute. Varieties vary greatly in character of growth. Some bushes of a given size or age may be much smaller than others. Remember that some of the finest roses are of small growth bush.

Prices for Field Rose Bushes.

Size	Description	By mail			
		Ea.	Ea.	10	100
Size C—1 yr.	Strong	28c	25c	\$2.00	\$18.00
Size D—2 yr.	Large	40c	35c	3.00	25.00

ANTOINE REVOIRE (H. T.). Vigorous rosy flesh color.

BENGALE NOBINAND (Beng.). Velvety reddish purple.

BLUMENSCHMIDT (H. P.). Pure yellow, edge light pink.

BRIDE (T.). Free blooming, superb pure white and large.

BURBANK (Bour.). Cherry rose free bloomer, strong grower.

Roses *Continued.*

- BRIDESMAID (T.).** Beautiful pink, well shaped buds.
- CLIMBING METEOR (Cl. T.).** Velvety red or crimson.
- CLIMBING CAROLINE TESTOUT (Cl. T.).** Very brilliant pink.
- CLIMBING DEVONIENSIS (Cl. T.).** White, delicate pink center.
- DUCHESS DE BRABRANT (T.).** Beautiful shell pink.
- ETOIL DE LYON (T.).** Deep yellow, very double.
- FRAU KARL DRUSCHKI (H. P.).** Beautiful crimson color.
- JAMES SPRUNT (Cl. Beng.).** Rich crimson, very full.
- J. B. CLARKE (H. P.).** Intense scarlet, changing crimson.
- MARIE VON HOUTE (T.).** White, tinged with pink.
- MARECHAL NEIL (H. N.).** Deep yellow, large and full.
- MAMAN COCHET (T.).** Flesh pink, base of petal yellow.
- MINNIE FRANCIS (T.).** Red, shaded with velvety crimson.
- MRS. DUDLEY CROSS (H. T.).** Beautiful creamy white.
- MRS. BENJ. R. CANT (T.).** Deep rose color.
- MRS. A. R. WADDELL (H. T.).** Salmon changing to rosy scarlet.
- MAD. DE WATTVILLE (T.).** Creamy white, tinged pink.
- PAUL NEYRON (H. P.).** Immense size, deep rosy red.
- PAPA GONTIER (T.).** An excellent rose, cherry red.
- PERLE DES JARDINES (T.).** Yellow, large full buds
- PERNET PERE (H. T.).** Fine clear crimson red.
- WILLIAM NOTTING (H. T.).** Bright rosy-cerise.
- WINNIE DAVIS (T.).** Apricot pink shading flesh pink.
- WHITE MAMAN COCHET (H. T.).** White, slightly tinged pink.



Suggestions About Ordering

And Terms of Sale

Read Carefully Before Ordering.

NO AGENTS. We employ no agents, and have no connection with any other Nurseries, but many Nurserymen and Dealers buy and sell our trees. We are responsible only to those buying direct from us.

CLUB ORDERS. Neighbors often club together and save both in cost of trees and express charges. If you would like to get up a club order, write for further information.

PRICES in this list, except prices by mail, are for goods packed and delivered to forwarders, purchaser assuming all cost and risk of transportation.

TERMS OF PAYMENT. Cash with order or before shipment of goods.

WE DO NOT CARE TO SHIP C. O. D., and will not unless 25 per cent of amount accompanies order.

REMITTANCES should be made by bank draft, express or postoffice money order or registered letter.

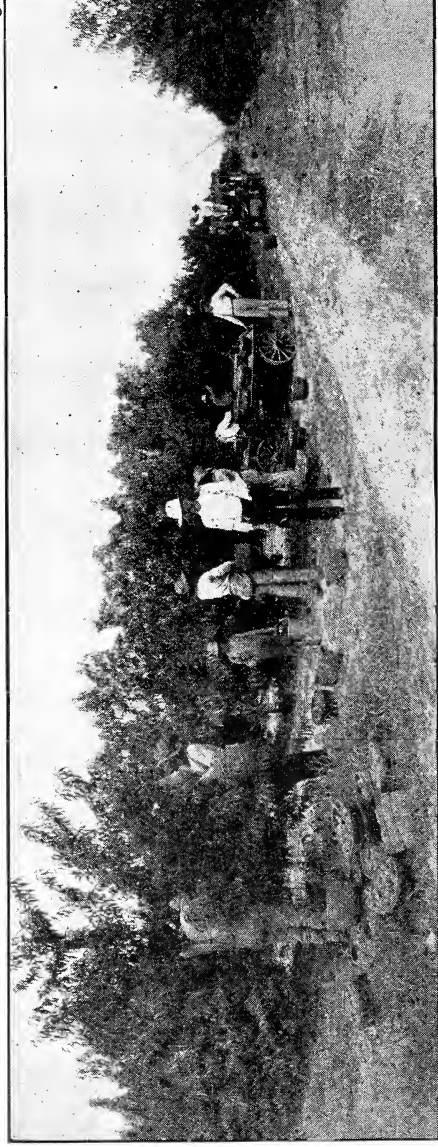
MINIMUM ORDERS at prices and terms of this catalog. We do not care to fill orders for less amount than \$1.00.

GUARANTEE. We exercise all possible care to have all stock well rooted, well grown, healthy, true to name, properly packed, and shipped according to instructions. It is, however, mutually agreed between the purchaser and ourselves that our liability under the foregoing is limited in amount to the original price received. No guarantee expressed or implied that trees will live or grow.

SUBSTITUTION. We desire to follow our customers' wishes in this respect, and have found that they usually wish us to substitute to the best of our judgment, in case we are out of any varieties or sizes ordered. We therefore substitute when necessary, unless instructed to the contrary.

SELECTION OF VARIETIES suited to your locality is of first importance, and can often be more advantageously done by us than by purchaser. We will gladly aid our patrons in their selections and upon request furnish information as to adaptability and desirability of varieties.

*Plant
Griffing's
Trees
and
Reap
Bountiful
Annual
Harvests*



*Orange
Pecan
Peach
Fig
Plum
Persimmon
and other
Trees*

PEACH HARVEST FROM TREES GROWN BY GRIFFING BROTHERS

*Tree
Growers*

GRIFFING BROTHERS

JACKSONVILLE, FLA.
MACCLENNY, FLA.
SEBRING, FLA.

GRAND BAY, ALA.
PORT ARTHUR, TEXAS
SAN BENITO, TEXAS