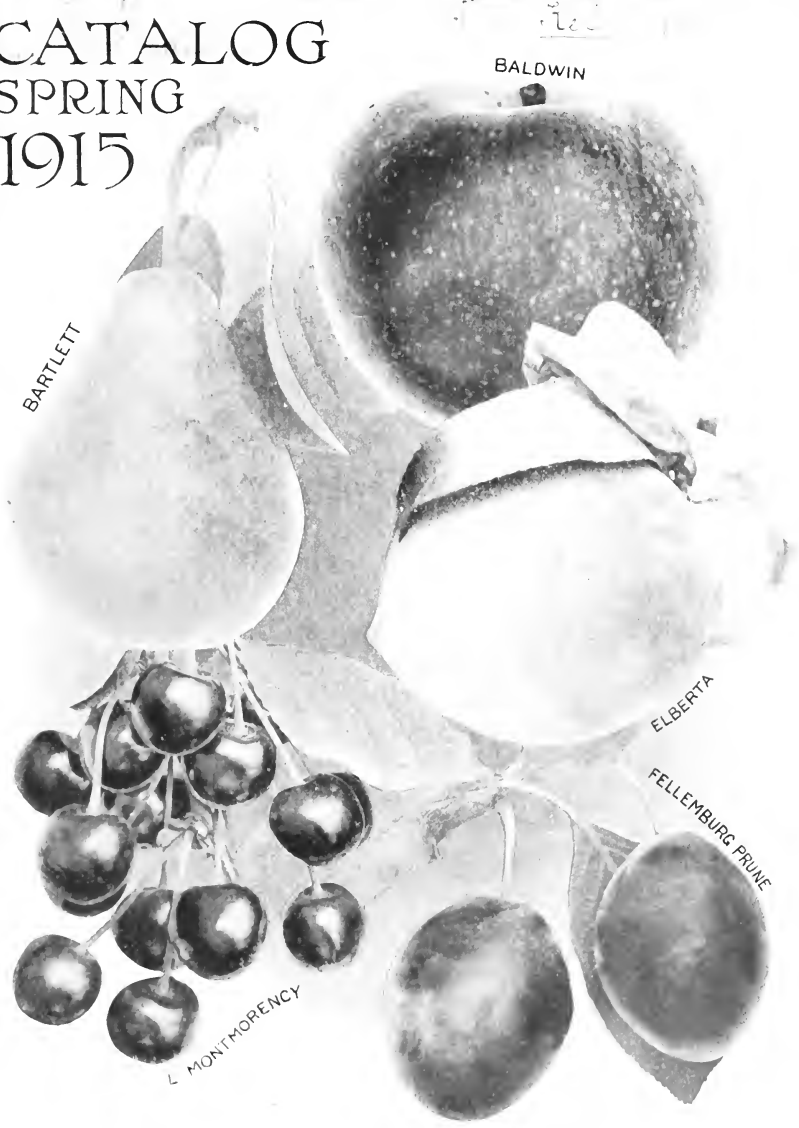


## **Historic, Archive Document**

Do not assume content reflects current scientific knowledge, policies, or practices.



# CATALOG SPRING 1915



Kelly Bros. Wholesale Nurseries  
DANSVILLE, N.Y.



The above is a photograph of some of our men budding a large block of cherry trees. Budding is one of the most important operations in the nursery and requires skilled workmen.

## INDEX

	Page		Page
Introduction.....	1	Special Bargains in Fruit Trees.....	27
References.....	1	Quince Trees.....	28
Our Stock, Equipment, etc.....	2	New Wayne Co. Orange Quince.....	29
Our Broad Guarantee.....	3	Apricots.....	30
Certificate of Inspection.....	3	Nut Trees.....	30
Grading and Service.....	3	<b>SMALL FRUITS.....</b>	<b>31-38</b>
How to Order.....	4	Grapes.....	31-32
Rates, Terms and Discount.....	4	Blackberries.....	33
Packing and Shipping.....	4	Raspberries.....	34-35
Methods of Planting.....	5-6	Strawberries.....	36
Distances for Planting.....	6	Currants.....	37
Number of Trees per Acre.....	6	Gooseberries.....	38
Planting of Fruit Orchards.....	7	Garden Roots.....	38
<b>FRUIT DEPARTMENT.....</b>	<b>8-30</b>	<b>ORNAMENTAL DEPARTMENT.....</b>	<b>39-51</b>
Standard Apple Trees.....	8-13	Shade Trees.....	39-41
Crab Apples.....	14	Hardy Climbing Vines.....	41
Bearing Size Apple Trees.....	14	Evergreen Trees and Shrubs.....	42-43
Dwarf Apple Trees.....	14	Hedges.....	43-44
Peach Trees.....	15-17	Flowering Shrubs.....	45-47
Pear Trees.....	18-20	Roses.....	48-51
Dwarf Pear Trees.....	21	Kelly's Special Collections.....	52-53
Cherry Trees.....	22-24	Testimonials.....	54-56
Plum Trees.....	25-26		

**Our nursery stock has the reputation of being the BEST that can be grown, and it is our aim to keep it up to the standard in every way. THE BEST IS ALWAYS THE CHEAPEST. It is not what you pay, but what you get, that makes the bargain. Every purchase will prove to you the value of buying stock from us.**

# SPRING OF 1915

## Thirty-fifth Anniversary Greetings To Our Patrons and Friends

We take great pleasure in presenting this revised edition of our Wholesale Catalog and to all our patrons and friends we send our kindest greetings and wish you a happy and prosperous New Year.

The past season's business has been the best we have ever had, more than double any previous one, and we believe it is due to the hearty co-operation of our customers and ourselves, each having confidence in the other, in the fact that our interests are mutual.

The most gratifying part has been not only in the amount of business we were able to do, but also in the many letters we received from our customers each day saying so many kind words to us in regard to the high quality and good root system of our stock, our prompt service, careful packing and the good condition in which the stock was received; and in sending us hundreds of names and addresses of their friends who they thought would be interested in planting Fruit trees, Ornamentals, Shrubs, Vines and Roses.

This evidence of good will on the part of our patrons proves that our life's efforts have not been in vain; that is, in producing good stock, keeping the varieties pure and True to Name, and delivering it direct from our nurseries to the planter at the lowest possible price. Letters have been received from nearly every state in the Union, and **not one of them have been solicited.** We invite prospective customers to write any person whose name is signed to a testimonial in our Catalog in regard to the quality of our stock and our method of doing business.

In this revised Catalog we undertake to give a fair and honest description of all Fruit trees, Shrubs, Vines and Roses we have to offer, and have not knowingly exaggerated on any particular variety of which we might have a large stock. What we want to do is to give our customers the varieties they want and the kinds that will do well in their section and be profitable to them.

The past season has been a good growing one and we have an exceptionally fine stock of Apple, Peach, Pear, Plum and Cherry trees, and other stock listed in our Catalog to offer for Spring. No man, woman, or even child need hesitate to send their orders to us as their orders will receive just as good treatment as if they visited our nurseries personally. We have certain strict rules of business that we live up to, and every person in our employ understands them thoroughly. First: We never substitute varieties. Second: If we do not have what you order, we write and tell you so. We always find our customers appreciate this fact.

In our experience and observation in life, we have long since come to the conclusion that there is but one way to conduct business and be ultimately successful, and that is with honesty. We believe the most valuable legacy that one can leave to his heirs when he passes from this mortal world should be not the amount of money he has accumulated, but rather his good reputation and the just treatment given his fellowmen.

During the past season many of our customers and prospective customers have visited our nurseries and were much pleased to find our nursery plant and equipment equal if not superior to what we represented it to be. To others who intend planting this Spring we cordially invite you also to visit us, see our stock and talk with us personally. If, however, this is not convenient, send us your orders and we assure you they will have the benefit of our 35 years of practical experience.

### ***Our References***

As to our responsibility and reliability we would ask our prospective customers to inquire of Dun's and Bradstreet's Commercial Agencies; Merchants & Farmers' National Bank, Dansville, N. Y.; The Citizens Bank of Dansville, N. Y., or any person whose letter appears in this catalog.

### ***An Expression from Our Home People***

We, the undersigned, wish to say that we have known the Kelly Brothers for several years and have watched the steady increase in their business, until today they are one of the largest growers of fruit trees in Dansville.

We believe their success is due to their thorough knowledge of the business and their square dealing with their customers, and it is with pleasure that we recommend them to the planter and fruit grower.

WM. KRAMER, Pres. of Merchants & Farmers' National Bank  
J. M. EDWARDS, Cashier of Merchants & Farmers' National Bank  
F. A. OWEN, Pres. F. A. Owen Publishing Co.

All of Dansville, N. Y.

# We Employ no Agents This Catalog is our only Salesman

We could not afford to sell our stock as cheaply as we do if we employed agents whose salaries and commissions often add 50% to 60% to the cost of stock. This catalog is our only representative and in buying from it you save the agent's or middleman's large profit. It is not our policy, and we believe it is a waste of your time and ours, for us to explain the methods and practices of some other nurserymen; but we do ask you to not believe the story of the agent who says our trees cannot be first class when we offer them at such low figures. Rather should you be guided by the following taken from the Government Department of Agriculture, Bulletin No. 113:

*"If the farmer makes his purchase direct from the nurseryman, he will save the expense of the middleman or agent and is less liable to the mistakes and injuries that may occur through repeated handling."*



## **Established for Thirty-five Years**

In 1880 we started in the nursery business and each succeeding year our business has steadily grown larger. We began growing fruit trees on a small scale, gradually increasing our plantings until now we have one of the largest nurseries in the country. In the development of our business our watchword has always been the "best at the lowest possible price." We have always tried to serve our customers so well as to merit their entire confidence and commendation, and we have only to refer to our thousands of satisfied patrons throughout the United States and Canada to prove that we have succeeded in our endeavor. We know that it pays to produce good stock and believe that poor stock, or stock not true to name, is dear at any price—in fact, worthless, even as a gift. We have no agents and for this reason you can buy trees of us at a great saving as the agent's expenses and commission often add from 50% to 60% to the cost of stock.

## **Our Stock**

Our stock is the finest and best that can be grown. It is all high grade, well-rooted, mature and healthy. No San Jose Scale or Peach Yellows has ever been found in our nurseries. We plant only the most select imported seedlings. These we plant in soil particularly adapted to the successful raising of nursery stock. Step by step, through the various stages of cultivation and propagation, we exercise the greatest care, with the result that when the trees are mature, we have the finest and best that can be produced.

If you want stock that is true to name, the only place to buy it is from the nurseryman who grows it, and not from dealers and agents who buy their stock here and there. It is self-evident that trees handled three or four times are often exposed to unfavorable conditions and thus injured. After trees have passed through so many hands, who knows what the varieties are? Our nurseries are regularly inspected by a New York State Inspector and a Certificate of Inspection has been issued to us. A copy of this certificate is attached to every order shipped by us.

## **Our Equipment**

We have gradually increased our equipment until today we believe no nursery in the country has better facilities for handling orders whether they be large or small. All of our employees are experienced and competent, many of them having been with us for years, thus grasping our ideas of how things should be done. They understand our business principles thoroughly, and one point we especially impress upon their minds is that we never allow any substitution of varieties in filling orders. If we do not have what our customers call for, we tell them so plainly, and we find that invariably a customer appreciates our straightforwardness. He realizes that no nursery firm can grow all varieties and have them at all times when orders are being continually filled for so many people all over the United States and Canada.

## **Our Personal Supervision**

Each department from the planting, propagating and maturing of the trees, to the selling through our catalog, is in direct charge of a member of our firm, thus doubly insuring that the best attention will be given in every branch of our business. Messrs. James A. Kelly and William F. Kelly, the senior members of the firm, have had thirty-five years of practical experience in growing nursery stock, and when placing your orders with us you have the excellent opportunity of profiting by their experience and getting trees of the highest quality.

# Important to Tree Buyers---Be Sure to Read this Page

## **Our Broad Guarantee to Customers**

Our guarantee is, we believe, the broadest and most liberal of any nurseryman in the country. Our guarantee means something to you, because it is backed by a firm with an established reputation, a firm that is established permanently. We guarantee our stock to reach our customers in good condition. We guarantee that all trees and plants purchased from us shall be TRUE to NAME as labelled. FOR ANY STOCK WHICH DOES NOT PROVE TRUE TO NAME AND AS REPRESENTED BY US, AND AS BOUGHT BY YOU, WE ARE TO MAKE GOOD YOUR LOSS OR DAMAGE BY REASON THEREOF AT ANY TIME WITHIN TEN YEARS OF THE DATE OF PURCHASE. IN EVENT WE CANNOT AGREE, WE ARE EACH TO APPOINT ONE ARBITER WHO SHALL CHOOSE THE THIRD AND THE AWARD OF A MAJORITY SHALL BE BINDING ON BOTH PARTIES. If there is any mistake on our part in regard to the stock you purchase from us we want you to tell us about it, and we will adjust the matter to your entire satisfaction. Our interest in the stock we send you does not cease when it leaves our hands. We believe our satisfied customers are our best advertisements.

No. 128

STATE OF NEW YORK

## DEPARTMENT OF AGRICULTURE

### **Certificate of Inspection of Nursery Stock**

This is to certify that the stock in the nursery of Kelly Bros., of Dansville, County of Livingston, State of New York, was duly examined in compliance with the provisions of Section 305 of the Agricultural Law, and was found to be apparently free from any contagious or infectious disease or diseases, or the San Jose scale, or other dangerously injurious insect pest or pests. This certificate expires September 1, 1915.

Dated, Albany, N. Y., Sept. 4, 1914.

CALVIN J. HUSON, Commissioner of Agriculture.

## **Our Prices of Nursery Stock**

It hardly seems necessary to say anything about the prices printed in this catalog, but there are so many poor trees, trees not true to name—trees with poor root system—and affected in one way or another, being offered for sale by agents and unreliable firms, that we feel compelled to ask our customers to consider quality and to remember that we sell nothing but the best. When one considers the permanent nature of the planting of nursery stock, whether it be fruit trees in a small home orchard, or whether it be on a large commercial scale, the first thought should be to select trees that are **reliable** and of a sturdy character with a good root system which can only be produced by being grown on good soil and receiving frequent cultivation and proper care; and, secondly, to get trees which are backed by a firm of a recognized standard and **responsibility**, and one that is established **permanently**. Trees procured from such a source are worth more to the planter than the trees he might purchase at a slightly smaller initial cost, but which are lacking in the guarantee of genuineness. When buying of us you do this, getting trees that are strong, sturdy, clean-cut and **healthy**, and you get them at the lowest price at which trees of such high character can be sold.

## **Grading**

We guarantee every tree to be up to the grade specified, or better. Many times trees are sold by height only. This, we believe to be very misleading as we have seen trees which belonged to the second or third grade, (if graded by size or caliper) sold for first grade, as they had the required height. We grade and sell our trees both by height and caliper, and believe this to be the only way that gives entire satisfaction to the planter.

## **Our Service to Our Customers**

If there is anything in our catalog that is not clear to any of our readers, or if there is any information wanted in connection with the selection of varieties suitable for your locality, or the planting or care of trees, do not hesitate to write us for it will be a pleasure for us to advise you fully and frankly.

## **Order Early**

As our orders are shipped in the rotation they are received, and as we cannot delay orders received first for orders coming later on, we advise the placing of orders early. If for any special reason it is necessary that an order be shipped on a specified date, make a note on the order and we will comply with the request if possible.

## **Our Shipping Season**

We pack and ship all winter to Southern states; our regular Spring packing and shipping season usually opens here about the first of March, and continues well into the month of May. The planting season is not regulated by any particular month or day, nor by the state of vegetation where the planting is to be done, but by the condition of the trees to be planted. Hence, trees can be sent with safety from Dansville, N. Y., to localities several degrees south, even if they do not arrive until the ordinary transplanting season in that locality is passed.

## **How to Order**

Make out your order carefully on the Order Sheet enclosed in this catalog. Write the varieties plainly and set down the prices accurately. Specify clearly the grade and sizes of the trees desired. Indicate plainly how you want the stock shipped, whether by freight, express or mail. If by freight or express, give the name of your railroad station, also your own post office address. When specific instructions are not given we will use our own judgment.

## **How to Remit**

Remittances should be made by Post Office Money Order, Express Money Order, Draft on New York Bank or Registered Letter. We disclaim all responsibility unless remittances are made as above directed.

## **Rates**

We allow ten rates on lots of five or more of a kind such as five apples or five plums, and hundred rates on fifty or more. It does not matter of what varieties the lots are composed. If your order amounts to \$25.00 or more, you may select everything at the lowest rates quoted both for fruit and ornamental stock.

## **Terms**

Cash with order except in large orders when satisfactory reference is given, and then the order must be accompanied by one-fourth cash, and shipment will be made C. O. D. For the benefit of customers who order early, but who do not care to spare all of the money when order is sent, would say, we will accept early orders accompanied by one-third cash and reserve the stock for you. Balance of the amount to be sent when stock is ordered shipped.

## **Special Discount**

We will allow a special discount of 8% on all cash orders amounting to \$4.00 and up that are received on or before March twentieth; after that date, 3% discount on cash orders of \$4.00 and up.

## **Boxing and Packing Free**

We box and pack all orders without charge. All orders are put up in boxes or bales which are lined with heavy paper and packed with moist excelsior to guard against stock drying out. This is expensive, but good packing pays—pays customers, pays us. We guarantee the arrival of stock in good condition.

## **Freight and Express Rates**

Do not be influenced by the story of the agent who says that the freight or express on your order will bring our price up as high as his. If you will consult your railroad agent you will find that the freight rates from Dansville to points east of the Mississippi, range from 20 to 40 cents per 100 pounds. First class trees will average about one pound each. Therefore, at the highest rate, 40 cents for 100 pounds, it means that you pay less than one-half cent per tree for freight. Nursery stock is carried by all express companies at a discount of twenty per cent from regular rates.

Misrepresentation of the cost of getting stock from us by freight or express is sometimes made by others. Remember, if you bought your stock delivered, or freight prepaid, the freight would be included in the purchase price. The cash discounts which we allow will, in many cases, more than cover your freight or express charges.

## **Size of Parcel Post Packages**

Shipments by Parcel Post cannot be larger than 72 inches including the length and circumference of the package. Weight must not exceed 50 pounds within the First and Second Zones—that is within a radius of 150 miles of the shipping point; elsewhere, not more than 20 pounds can be sent by Parcel Post.





**DIGGING TREES BY HORSE POWER IN OUR NURSERY**

In this way we secure all the fine, fibrous roots which are most essential to a first class tree. This method of digging trees we have found to be far superior to digging by spades or by steam power. In the former method it is impossible to get good roots and in digging by steam the tops and bodies of trees are often injured by the digger jumping out of the ground if a stone or other obstruction is encountered. On account of the great power used it is impossible to stop the digger instantly and right the machine and thus injury to the trees results. In digging with horses they are muzzled so that it is impossible for them to injure the trees in any way.

## Advice to Planters

**Preparation of the Soil**—Prepare a rich, deep bed of mellow soil, and have the land sufficiently drained to relieve the roots from standing water. To insure a fine growth land should be in as good condition as is required for a crop of wheat, corn or potatoes.

**Preparation of Trees or Other Stock**—We use great care in digging and packing, but the loss of some small roots and fibers is unavoidable. If stock is properly prepared before it is planted, no permanent injury will result from this, but the preservation of the natural balance between top and roots renders a vigorous cutting back of the former absolutely necessary in most cases. And, therefore, prune off broken ends of roots, if any, (a smooth cut root granulates or makes ready to extend sooner than one broken off), cut back the tops to the extent of about one-half the previous season's growth, taking care at all times to prune in such a manner as will tend to develop a well-formed head, sufficiently open to admit air and light freely. Evergreen and other ornamental trees, the beauty of which depends on preserving their natural form, should be pruned very little. Hence, great pains should be taken in planting and caring for these. If not ready to plant when the stock arrives, unpack it carefully, soak the roots thoroughly in water and heave in the earth by placing the roots in a trench and covering them with mellow earth, well packed.

**Planting**—Make the holes large enough to admit the roots without any cramping or bending, and deep enough to allow the tree to stand one inch lower than it originally stood in the nursery row. The fine surface soil should be used in covering the roots, and this should be carefully worked among them. If the ground is dry it is well to pour in some water when the hole is partially filled. See that the ground is firmly and solidly packed over all parts of the roots by exerting the full weight of the planter upon it, so that there will be no opportunity for dry air or frost to enter and destroy roots deprived of the full benefit of their natural protection. Omission to pack the earth solidly is a most frequent cause of failure in planting nursery stock. Fill the holes full enough to be even with the surrounding surface after the fresh earth settles. Always remove the label when planting. If this is left until the tree is grown, the connecting wire often cuts into and destroys the tree or branch to which it may be attached. When planting dwarf trees set them low enough to cover the stock upon which they are budded, three or four inches.

## Advice to Planters (Continued)

**Dynamiting Holes for Planting**—Many planters have had good success in dynamiting holes for fruit trees, but this method must only be used by persons who thoroughly understand the handling of explosives, and must not be attempted by amateurs. First place the charge about 18 inches deep in the earth—a third or half a stick will be enough. This will loosen and heave the soil but not throw it out. You will find the effects of dynamiting compared with digging only will be noticable for years in the growth of the trees, especially in clay soil.

**Mulching**—When trees or bushes are planted they should be mulched or covered with a layer of fine compost from one to three inches deep for a space of about two feet outward from the tree or plant. This being worked thoroughly in the soil fertilizes the same and holds moisture.

**After-Culture**—Grass should not be allowed to grow about young trees or plants. The ground should be cultivated for a space of at least two feet outside the roots. If the ground is poor it should be enriched with surface applications of manure. Pruning should be varied according to the condition of the tree and the purpose of the planter. It should be done regularly every spring before the buds swell any. In this way the removal of any large branches will be avoided.

## A Table Showing the Number of Trees or Plants to the Acre by the Square System

Distance	No. of Trees	Distance	No. of Trees	Distance	No. of Trees
1 foot apart each way	43,560	9 feet apart each way	537	17 feet apart each way	150
2 feet " " " "	10,890	10 " " " "	435	18 " " " "	134
3 " " " "	4,840	11 " " " "	360	19 " " " "	120
4 " " " "	2,722	12 " " " "	305	20 " " " "	108
5 " " " "	1,745	13 " " " "	257	25 " " " "	69
6 " " " "	1,210	14 " " " "	222	30 " " " "	48
7 " " " "	888	15 " " " "	193	35 " " " "	35
8 " " " "	680	16 " " " "	170	40 " " " "	27

**Rule.**—Multiply the distance in feet between the rows by the distance the plants are apart in the rows and the product will be the number of square feet for each plant or hill; which divided into the number of feet in an acre (43,560), will give the number of trees to an acre.

## Distances for Planting

Standard Apples	40 feet apart each way
Standard Pears and Strong Growing Cherries	20 " " " "
Duke and Morello Cherries	18 " " " "
Standard Plums, Peaches, Apricots and Nectarines	16 to 18 " " " "
Dwarf Pears, Dwarf Apples and Quinces	10 to 12 " " " "
Grapes	rows of 10 to 16 feet apart; 7 to 16 ft. in rows
Currants and Gooseberries	4 feet apart
Raspberries and Blackberries	3 to 4 feet by 5 to 7 feet
Strawberries, for field culture	1 by 3 to 3½ feet
Strawberries, for garden culture	1 to 2 feet apart
Asparagus in beds	1 by 1½ feet
Asparagus in fields	1 by 3 feet

## Spraying

In regard to spraying for fungus diseases and insects in fruit orchards we would suggest to the fruit grower and farmer that they obtain their information from the Agricultural Departments and Experimental Stations of their respective states, as on account of the various formulas on the market we think they are in a better position than ourselves to give this important information. However, we can recommend for the different kinds of aphid and leaf-sucking insects on small fruits trees, plants and vines, the use of Larkins Tobacco Soap. It is very effective in destroying them and at the same time there is no danger of injury to the foliage even of the most tender house plants. To prepare the solution take one pound of the soap to eight gallons of water. Immerse the branches in the liquid freely. With the hand rub it thoroughly into the leaves on the underside where the insects usually accumulate in greatest numbers.

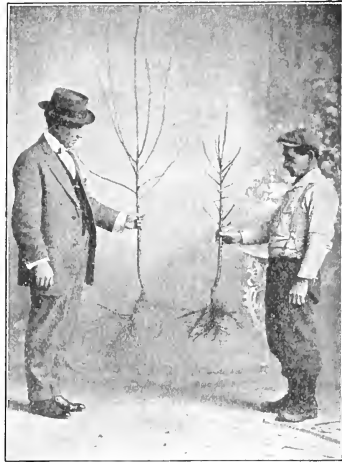
Advice to Planters (Concluded)

## The Planting of Fruit Orchards

We have had frequent inquiries from our customers and prospective ones as to the best plan for the setting out of fruit orchards, and we always recommend planting by the square system—a diagram of which we give below. The advantages of this system are its simple form, the trees are uniform in line and they can be cultivated two different ways, thus securing nearly all the cultivation necessary by horse power.

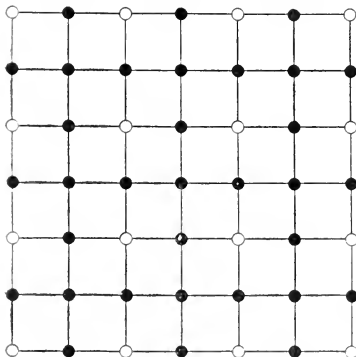
We advise the setting of permanent apple trees forty feet apart each way, as the diagram shows. Peach or Cherry trees could be used as fillers 20 feet apart each way. This plan gives the farmer or fruit grower some returns from his orchard three or four years after it is planted. Then in fifteen or twenty years, when the Peach and Cherry trees have outlived their usefulness, they can be removed, leaving to the Apple trees the entire space. According to this plan it takes about twice as many fillers as it does permanent trees for an acre.

Under no circumstances do we advise planters to mix Pear or Quince with Apple trees. They should be kept as far apart from the Apple as possible for the reason that they are sometimes susceptible to blight, and this is carried to the Apple trees by insects. Should the Pears or Quince be affected by blight—which they are some seasons—the cultivation needed for same would be different than for Apples. As soon as



**TWO YEAR APPLE**

The one represents a two year apple tree untrimmed; the other, a tree with both head and roots, correctly trimmed for planting.



**DIAGRAM OF SQUARE PLAN**

In the above diagram the circles represent the Permanent trees planted 40 feet apart each way; the black dots represent Fillers planted 20 feet apart each way.

blight appears, cultivation of Pear or Quince orchards should cease, at least, for that season. This is done to prevent them from making any further new growth, as the blight is carried by the insects from the affected branches to the newer growth which is more easily penetrated by the bills and claws of the insects. The blight cannot spread itself. We strongly urge that during the blighting season there should be no attempt to cut off blighted limbs, as very often they are not cut off below the affected part, the sap oozes from the cut, and the insects are able to do more damage than if the blighted branches remained on the trees. The following spring they could be removed below the affected parts with safety.

### The Pollinizing of Varieties

Many varieties will not bear well when planted alone or in large blocks. This is because they require the pollinizing from blossoms of other varieties. Inasmuch as all varieties benefit by cross pollination, it is a good thing to plant four or five rows of one variety, and then four or five rows of another, and so on.

# Apple Trees



IT IS an established fact that of all fruits the apple is the most important. It has been rightly called the "King of Fruits." Unlike other fruits its period of ripening extends nearly throughout the year, and by judicious selection of varieties, an almost constant succession may be obtained. It is not a luxury, but a staple article of food, and the demand for good apples is increasing faster than the supply. Experienced and successful farmers and orchardists agree that there is more money in growing apples than in any other fruit, and that the orchard is the farm's greatest asset. If there is any kind of trees that we specialize in growing, it is the apple. We use the very best quality of imported French Apple Seedlings to propagate our apples on. We believe this to be of utmost importance in order that the trees may have a good foundation, be free from all disease and insure a healthy and permanent growth. We have discarded all varieties not profitable to the planter, and recommend the following varieties, giving a brief description of each.

## Wholesale Prices of all Varieties of Apple Trees

				EACH	TEN	HUNDRED
Largest Size	2 Year	6 to 7 feet	3/4 and up	XXX	.20	\$1.50
Medium Size	2 Year	5 to 6 feet	5/8 to 3/4	XX	.15	1.20
Smaller Size	2 Year	4 to 5 Feet	1/2 to 5/8	X	.10	.90
Largest Size	1 Year	3 1/2 to 6 Feet		XXX	.15	1.20

8% Discount on all Cash Orders amounting to \$4.00 and up received on or before March 20th. After that date 3% Discount on all Cash Orders of \$4.00 and up.

### Summer Varieties

**Early Harvest**—(Yellow Harvest.) Medium to large; pale yellow; beautiful; fine flavor. Tree moderate, erect grower, good bearer; excellent variety for both orchard and garden. Ripens in August.

**Yellow Transparent**—Tree upright, and a very early and abundant bearer. Fruit of good size; skin clear white, turning to a pale yellow; flavor acid and very good. Ripens from ten days to two weeks earlier than Early Harvest. One of the most popular market varieties. Ripens in August.

**Red Astrachan**—Tree hardy and good bearer. Fruit very handsome, large, round, nearly covered with deep crimson, overspread with thick bloom; juicy and good, though rather acid; one of the best of the summer varieties for cooking. The fruit usually sells for a good price in local market. Ripens in August.

**Sweet Bough**—Large, pale yellow; sweet, tender and juicy. Tree a compact grower and abundant bearer. August.

### Autumn Varieties

**Alexander**—An excellent apple for culinary use. Fruit large, firm, crisp, tender, juicy, mild sub-acid. Skin smooth, glossy, pale yellow to "orange yellow" entirely overspread with lively red stripes. Tree large, vigorous and hardy. Season September to November.

**Duchess of Odenburg**—Vigorous growth; Russian; large; striped; tender, juicy, sub-acid; good; regular and abundant bearer. One of the hardiest kinds known. Ripens in Sept.

**Fall Pippin**—Very large; yellow, tender, juicy and rich. Tree a vigorous, free grower and fine bearer. An excellent baking apple. Ripens in October.

**Fameuse**—(Snow Apple.) Hardy, medium size; deep crimson; flesh is snowy white, tender, melting and delicious. Tree vigorous with dark wood; one of the finest dessert fruits, and valuable for market. Ripens in Nov.



TWO YEAR OLD APPLE TREES

XXX	XX	X
6 to 7 Feet	5 to 6 Feet	4 to 5 Feet
3/4 and up	5/8 to 3/4	1/2 to 5/8

Note the Abundance of Fine Fibrous Roots

DEALING DIRECT WITH THE GROWER IS THE SURE WAY TO GET THE BEST STOCK AND SAVE MONEY



The Old Reliable Baldwin in Bearing

**Maiden's Blush**—Of uniformly large size, smooth, round, beautifully flushed with red on creamy yellow ground; flesh tender, of pleasant but not high flavor. A good market sort because of its attractiveness and the tree's heavy crops. Ripens in September.

**Pound Sweet** (Pumpkin Sweet)—A very large, round, yellow russet apple, very sweet and rich. Tree a vigorous, rapid, upright grower; valuable. Oct. and Nov.

**Wealthy**—This beautiful, moderate sized, brilliant red apple is of fine quality, one of the best of its season; it is a relatively good keeper and owing to the hardness of the tree, its adaptability to cold climates, and early bearing habits, it can be profitably planted as a filler. Season Oct. to Jan.

**Gravenstein**—This is a large, handsome apple streaked and splashed with red over a strong yellow. The flesh is yellowish, firm, fine, crisp, tender, juicy and sub-acid. In quality it ranks very good to best. Sept. to Nov.

### Winter Varieties

**Baldwin**—What the Bartlett pear is to pears the Baldwin is to apples for the Eastern and Middle States. No variety yields larger crops or bears shipment better, or is more attractive in color, size and shape than the Baldwin. It is esteemed as an eating apple, and for cooking. For a commercial orchard it can be relied upon. Large, bright red, crisp, juicy and rich; tree vigorous, upright and productive. In New England, New York, Ontario and Michigan, this is one of the most popular and profitable sorts for table or market. Keeps until April.

**Ben Davis**—A popular apple in Southern New York, Pennsylvania and Ohio. Fruit is medium to large, of a bright, deep red color, or red striped over clear yellow. Has a thin, tough skin. The flesh is whitish, firm, juicy and sub-acid. It is one of the best keeping apples on the market today, lasting in cold storage until June or July.

**“You'll Never Regret Planting Kelly Trees”**



## Winter Apples (Continued)

**Northern Spy**—This variety ranks about third in commercial importance with the fruit growers of Pennsylvania, New York and Ohio, being surpassed by Baldwin and R. I. Greening. Fruit is large and very attractive, being of bright red color with a delicious bloom; flesh is very juicy, crisp, tender and excellent for dessert or culinary uses. Its fine reputation brings high prices in the market and the fruit is always in demand. The fruit is ready for use in November or December; keeps well in cold storage until April, or if more carefully handled, until May.

**Stark**—Fruit fair, smooth, uniform and attractive. Large striped, mild, sub-acid. Valuable as a keeper. A good variety for the commercial orchard because the tree is thrifty, hardy, healthy, a reliable cropper and very productive. Jan. to May.

**Grimes' Golden**—Vigorous grower; large; golden yellow; juicy, sprightly sub-acid; very good. Keeps until April.

**Gano**—Similar but superior to Ben Davis. It has all the good qualities in a higher degree, more brilliant coloring, runs more even in size, and keeps fully as late. The tree is vigorous and hardy; is a rapid grower; bears while young. Color bright red without stripes or blotches, and large and even in size. Keeps until March.

**Jonathan**—A beautiful red apple, highly flavored and of excellent quality, being tender, juicy, spicy, and rich—a splendid family sort and highly profitable for market. Tree long-lived, productive, and an early bearer. Nov. to Apr.

**King**—(King of Tompkins Co.) One of the largest red winter apples. It is of extraordinary size, beautiful in color, attractive, and always brings the highest market price. Its size, beauty and good flavor make it in great demand. Nov. to March.

**McIntosh Red**—Medium size, nearly covered with dark red. Flesh white, fine, very tender, juicy and refreshing with attractive quince-like flavor. A good annual bearer. A very hardy variety, fruit of which is very attractive in appearance, of deep red color, good size, the flesh very tender and delicious. It is especially desirable for fancy trade. It comes into bearing young, yielding large crops of good fruit almost annually.

**Pewaukee**—Tree spreading, round topped and vigorous. Fruit large, yellowish green, striped and shaded with dull red, overlaid with

a bluish bloom. Flesh yellowish, rather coarse grained, firm, juicy; flavor sub-acid. Keeps until March.

**Mammoth Black Twig**—The tree is a strong grower, a regular and abundant bearer. A good winter apple. Deep red; sub-acid, very high flavored. Keeps until late Spring.

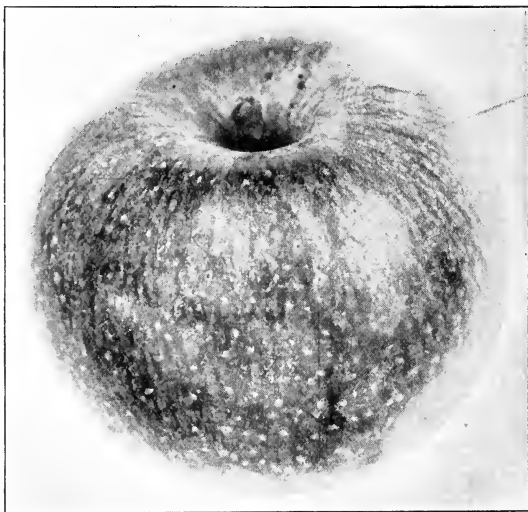
**Northwestern Greening**—Tree a splendid, vigorous grower, quite hardy. Fruit large to very large; green, becoming yellowish green when ripe; flesh yellow, fine grained and firm; flavor a good sub-acid; very smooth and attractive; should be given plenty of room in the orchard to secure large, even fruit. Keeps until March.

**Spitzenburg**—(Esopus.) Medium to large; deep red, high flavored; valuable for commercial purposes. November to April.

**Tolman Sweet**—Medium, pale yellow, slightly tinged with red; firm, rich and very sweet; the most valuable baking apple; vigorous, hardy and productive. Keeps until April.

**York Imperial**—This is a fine, hardy, large red, winter apple. It succeeds over a wide range of country. It comes into bearing at four years from planting, bears regularly and heavily. The foliage and fruit are remarkably free from scab. The fruit is of medium size, skin yellow and almost wholly covered with two shades of red, the darker one disposed in distinct stripes. Good shipper, bringing highest prices.

**Hubbardston** (Nonesuch)—Free growth; large striped red and yellow; tender, juicy, rich, slightly sub-acid; very good. Keeps until January.



Northern Spy Apple

ONE ORDER IS ALL WE ASK. OUR GOODS WILL TAKE CARE OF THE FUTURE



# Direct from Grower to Planter



## Winter Apples (Continued)

**Paragon**—Late keeper, large of good color and quality, very productive. Dec. to May.

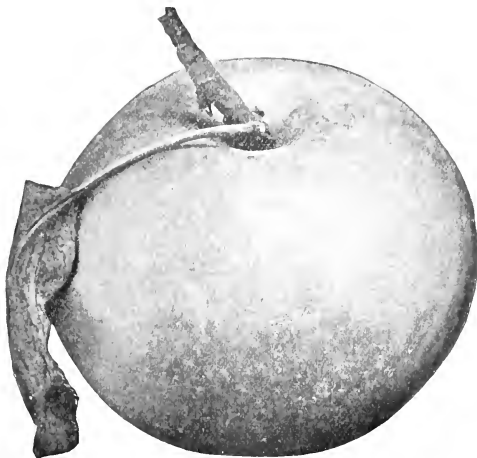
**Wagener**—Red Winter Apple.) Wagener is one of the most beautiful winter apples ever grown. It is of the highest quality, the flesh being crisp, tender and aromatic. We know of no apple possessing greater beauty or of finer quality than the Wagener. It succeeds well East and West. Dec. to May.

**Rhode Island Greening**—This large and superior winter apple is famous over a large extent of country, and is more highly prized for cooking and eating than any other variety. It is a good keeper but will keep better if picked early. This Greening is a beautiful yellow color when ripe, and is a most abundant yielder. March to April.

**Stayman's Wine Sap**—Tree vigorous, hardy, spreading. An early bearer and very productive; fruit medium size, round, approaching conic; skin smooth, greenish yellow, splashed and striped with red and purple; flesh yellow, firm, tender, juicy, rich, sub-acid, aromatic, quality best. Splendid late keeper.

**Wolf River**—Fruit is very large, some specimens weighing 27 ounces, flattened, conical, highly colored. An excellent cooking apple. Sept. to Dec.

**Smokehouse**—A very pleasant flavored dessert apple. Tree a vigorous grower; healthy,



**Rhode Island Greening**

hardy and reliable cropper. Fruit of medium to large, uniform size and shape. Color yellow or greenish, mottled with rather dark red, sometimes deepening to a solid bright red. Oct. to Mar.

**Seek-No-Further**—Medium to large; dull red color; flesh crisp, tender and juicy. November to February.

**Yellow Belleflower**—Season, winter. A hardy apple of large size, a beautiful golden color, often with red blush; conical in shape.



Block of 250,000 Apple Trees Growing in Our Nurseries

OUR APPLE TREES ARE EXCEPTIONAL VALUES AT THE PRICES QUOTED

Winter Apples (Continued)

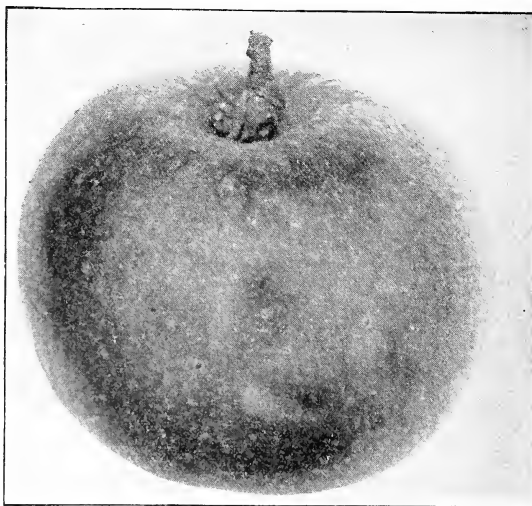
**Golden Russet**—Vigorous growth; medium; russet; crisp, juicy, mild sub-acid; hardy; very good; long keeper. Nov. to Apr.

**Twenty Ounce**—Very large, yellow striped, red, fine quality apple; good keeper. Tree vigorous grower, productive. Oct. to Jan.

**Rambo**—Medium, flat streaked red and yellow; very tender, juicy and fine flavored. Tree an upright grower, hardy and productive. Oct. to Dec.

**Rome Beauty**—Keeps in good condition till May and June. Large, round, mottled and striped in different shades of red; flavor and quality away above the average; appearance and size are its valuable points; always sells and always brings good prices. With an established reputation due to real merit, Rome Beauty is a variety Eastern orchardists should plant largely. Good grower, blooms late, bears heavily every year, is adapted to a wide range of soils, elevations and conditions. In Ohio, Pennsylvania, New York and West Virginia will make more money than some of the sorts which are now a large part of the total number of trees in commercial orchards. Reliability, due to being frost-proof, strong-growing and sure bearing make it a favorite with the grower. Fine quality for use and for handling make it popular with consumers and dealers. When packed in boxes shows up splendidly.

**Sutton Beauty**—Medium to large; roundish; handsome, waxen yellow, striped crimson; flesh tender, juicy, sub-acid; good quality; keeps well. The tree is a free grower and very productive. Keeps until February.



Rome Beauty Apple

**Winter Banana**—An excellent variety, which has stood the severest tests. Tree is hardy and will succeed in very cold climates; its wonderful productiveness will bring quicker and larger returns than any other apple in the orchard. The fruit has a richness of flavor that cannot be described. Flesh golden yellow, fine grained, firm and juicy. Keeps until January

**Bismarck**—An attractive apple, making a record for hardiness and fruiting at a very early age; the fruit is of large size, specimens have been grown weighing nearly two pounds each; fruit golden yellow splashed with red; flesh tender.

TREES HEALTHY AND STRONG

The Kelly Brothers have been growing trees for 27 years and all that time they have grown the stock they offered for sale, and they have been so determined to put out nothing but the best trees, healthy and strong, true to name and free from San Jose scale, that they have succeeded in establishing a reputation for honesty and square dealing all over the United States among the firms and individuals they have dealt with.

Their trees are grown in the Genesee valley, the best locality in the world for raising nursery stock, they have a large frost-proof brick packing house, and they will give the closest attention to orders whether large or small. They believe this of benefit to both fruit-grower and themselves, and it is quite certain if testimonials as to their reliability and promptness of attention to orders are required they can be secured from every business man and every reputable citizen in Dansville.

The Kelly Brothers offer the best trees that can be grown, they are true to name, and a fair price has been put on them so that a purchaser will know when he makes a purchase that he will get what he wants and at a moderate price.—*Dansville Express*, Sept. 26, 1912.





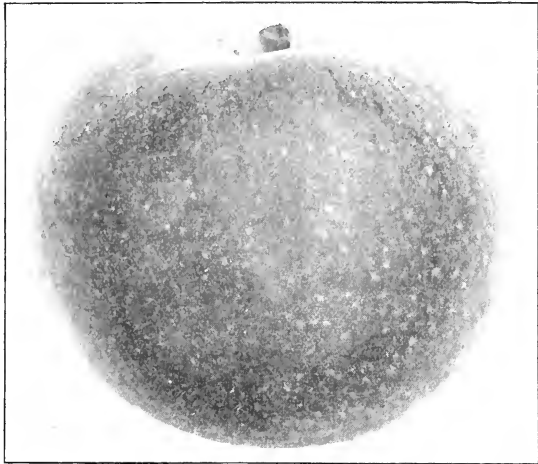
# Direct from Grower to Planter



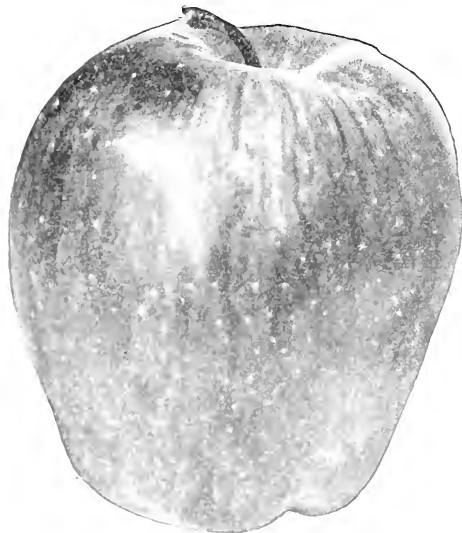
## Winter Apples—(Con.)

**Old Winesap**—Winter. Fine keeper; medium size, oblong, smooth, and a fine dark red; flesh yellow, crisp, tender, very juicy, aromatic, firm and good. Tree a strong grower, root-growth exceptionally strong; it comes into bearing early and is remarkable for its regular and abundant crops. One of the very best sorts for lower elevations anywhere south of Pennsylvania, from tide-water to 1,000 feet in Maryland, and to corresponding elevations south of Maryland. One of the sorts you must not overlook for these sections. When grown properly and packed in an attractive manner, it brings the highest prices in the fancy market.

**Fallwater**—Very large, yellow with dull red cheek, juicy, crisp, pleasant, sub-acid, very productive. Dec. to Apr.



Baldwin Apple



Delicious Apple

**Delicious**—A remarkable variety introduced in the West several years ago where it is being largely planted and rapidly taking first rank both for commercial and home orchards. No new variety has ever so quickly gained popularity in so many different apple sections of our country. Fruit large, nearly covered with brilliant dark red, flesh fine grained, crisp and melting, juicy with a delightful aroma; of very highest quality. A splendid keeper and shipper. Tree one of the hardiest, a vigorous grower, with good foliage. A regular annual bearer.

Massachusetts Agricultural College,  
Amherst, Mass., Sept. 15, 1891.  
Tully Bros., Danvers, N. Y.

Gentlemen:—I have just received from you a box of Delicious apples, which you give. It is my first time this is the only case where I had to look at them at all, and it is surprising that a man has had the enterprise and honesty enough to do it. I certainly want to congratulate you and hope it will result in your getting lots of trade. Yours very truly,

F. C. STILES,  
Professor, Mass. Agricultural College.

MIDDLEMEN ADD TO THE COST BUT NOT TO THE QUALITY OF NURSERY STOCK



# Crab Apples

Besides producing much sought after fruit the Crab Apple tree is excellent for ornamental purposes. It will grow in any kind of soil and will bear every year. The Crab Apple is a prime favorite with the housewife for jellies and preserves. Many people prefer it to any other fruit for that purpose. We have the following varieties and offer them at the same price as the standard apples.

**Transcendent**—The best of all Crab-apples; good size, skin yellow striped with red—fine for preserves and jellies. Tree vigorous grower. Ripens in September.

**Whitney**—Large, averaging 1½ to 2 inches in diameter; skin smooth, glossy green, striped,

splashed with carmine; flesh firm, juicy and rich. Vigorous, handsome.

**Hystop**—Almost as large as Early Strawberry Apple; deep crimson; very popular on account of its large size, beauty and hardiness. Keeps well into the Winter.

## Bearing Size Apple Trees

In addition to the sizes of Apples on which we have quoted, we have a few thousand large size bearing trees of the following varieties:

Baldwin, Wealthy, King, Winter Banana, Northern Spy, R. I. Greening, Wolf River, Pewaukee, Gano, N. W. Greening, York Imperial.

### Wholesale Prices of all Varieties of Bearing Size Apple Trees

Extra Size	3 Year	7 to 8 Feet	1 to 1½ inch	XXXX	each 20c
------------	--------	-------------	--------------	------	-------------

## Dwarf Apple Trees

The dwarf Apple trees come into bearing much earlier than the Standard trees. Their low, broad heads are within reach so that the fruit can be easily picked. These trees take up so little room that they can be planted in the garden, or even on the lawn, and with care will bear good crops within three or four years. The fruit is of extra high quality. Dwarf trees are secured by propagating on French Imported Paradise stock. The dwarf trees seem to put their strength into the fruit instead of the wood. We have the following list of best varieties of Dwarf Apples to offer:

Yellow Transparent, McIntosh Red, Delicious, Fameuse, Red Astrachan, Stayman's Winesap, Duchess of Oldenburg, Northern Spy, Grimes Golden and Maiden Blush.



Delicious Dwarf Apple

### Wholesale Prices of all Varieties of Dwarf Apple Trees

					EACH	TEN	HUNDRED
Largest Size	2 Year	4 to 5 feet	¾ and up	XXX	.40	\$3.50	\$30.00
Medium Size	2 Year	3 to 4 feet	½ to ¾	XX	.30	2.50	20.00

# Direct from Grower to Planter

## Peach Trees



FOR MANY YEARS it was the popular opinion that peaches would thrive in only certain sections of the country. We know better now. With one or two exceptions it has been shown that this fruit can be grown at a good profit in every state in the Union. Peaches can be grown on any soil that will produce the average yield of farm crops and are especially adapted to the lighter soils. Careful cultivation and intelligent pruning will work wonders in the production of peaches. If properly cared for, the trees are sure to bring in a handsome return on your investment. As in other fruits it is imperative, however, that your trees are of the best stock. It is very important that wood growth on peach trees is well ripened and that they have a good and sufficient quantity of fibrous roots, so they will withstand the hot sun and drought that may occur after planting. We have a very good stock of hardy trees, with well ripened wood and an excellent root system, and we make the lowest possible price consistent with the quality of the stock.

### Wholesale Prices of all Varieties of Peach Trees

					EACH	TEN	HUNDRED
Largest Size	1 Year	4½ to 6 feet	and up	XXX	.15	\$1.25	\$10.00
Medium Size	1 Year	3½ to 5 feet	to	XX	.12	1.00	8.00
Smaller Size	1 Year	2½ to 4 feet	to	X	.10	.75	5.00

8% Discount on all Cash Orders amounting to \$4.00 and up received on or before March 20th. After that date 3% Discount on all Cash Orders of \$4.00 and up.

**Beers' Smock**—Medium to large, round; creamy-white with dark red blush; flesh yellow. tender and rich; good quality; a good commercial peach

**Garman**—Middle to end of July. Fruit large and broad, oval shaped, yellowish white; flesh creamy white with red tinge, flavor spicy and good. Especially suited to low, wet land, where other sorts will not thrive. Very hardy, and productive every year. A good shipper; quite satisfactory in commercial orchards. Freestone.

**Salway**—Large; deep yellow, red cheek. Flesh yellow, juicy. Oct.

**Gold Drop**—Large, good quality, hardy; a profitable market sort; follows Late Crawford.

**Greensboro**—Large, beautifully colored, bright red over yellow; flesh white; good quality, good commercial sort. July.

**Niagara**—Large, yellow and red; fine quality; as good as Crawford and a more dependable bearer. Very extensively grown in Western New York. Follows Early Crawford.

**Yellow St. John**—A desirable peach for home use and profitable for market; orange-yellow, with dark, rich red on sun-exposed side; quality good. Tree strong and vigorous. One week earlier than Early Crawford.



BLOCK OF ONE YEAR PEACH TREES

Picture taken in our nursery July, 1913. Trees have about 3 months to grow before they are mature



## Peaches (Continued)

**Chair's Choice**—Deep yellow, red cheek; firm; a few days earlier than Smock.

**Crawford's Early**—A large, yellow peach of splendid quality; strong grower and prolific fruiter. No other variety has been so extensively planted.

**Crawford's Late**—Superb yellow peach of large size and excellent quality; great bearer. One of the finest late varieties.

**Elberta**—Unsurpassed as a valuable, large, beautiful peach of good quality. The best orchard variety. Valuable for planting in garden.

Elberta is hardier in bud than many varieties, therefore a uniform cropper. Fruit is large, yellow, with red cheek, juicy and high flavored, flesh yellow; freestone. Season medium early, following quick upon Early Crawford.

**Crosby**—This is considered the best variety introduced for years, and is being extensively planted through New England where hardiness is essential. Tree low and spreading. Fruit of medium size, roundish slightly flattened, with a distinct seam on the blossom end. Not so acid as most yellow peaches.

**Champion**—First of August. Fruit large, creamy white, with red cheek; sweet, juicy, very high quality, and splendid. Good shipper. Its fault, if anything, is that it is too tender. Hardy and productive. Free.

**Foster**—This variety originated near Boston, Mass., and its popularity has spread over many States. The tree is productive. The fruit is large deep red, especially on the sunny side. The flesh is yellow and very rich and juicy. It has a sub-acid flavor which is very agreeable. It ripens in September and is freestone.



Elberta

**Fitzgerald**—Originated in Canada. Fully equal to Crawford's Early in size, quality and color, with a much smaller pit; a very early bearer, often when two years from bud; extra hardy succeeding in Canada and in Michigan perfectly; fruit large, brilliant yellow with red cheek; highest quality; ripens after Crawford's Early. Freestone.

**Hill's Chili**—Hardy, vigorous and productive; of a medium size; oval, with a slight suture; deep yellow, shaded with dark red; flesh deep yellow, red at the stone; freestone.



Early Crawford Peaches

# Direct from Grower to Planter

Peaches—(Continued)



A Picture of One of Our Fine Blocks of Peach Trees

**Hiley**—Large white with high color on sunny side; long keeper and good shipper. Freestone, hardy in fruit bud.

**Kalamazoo**—Large yellow, with mottled blush; sweet and mild; very productive; a good commercial sort.

**Early Rivers**—Large light straw color, with delicate pink cheek; flesh juicy and melting, with very rich flavor. Early August.

**Wager**—Medium, yellow, good quality. Tree hardy and productive. A profitable late variety. Last of Sept.

**Belle of Georgia**—First half of August. Fruit very large and most attractive in color and shape, with a light red cheek; flesh white, firm, delicious—in all ways the quality is fine. Trees grow quick in shapely form and are very strong. Hardy, prolific. Free.

**Triumph**—Earliest yellow-flesh peach, with good eating and shipping qualities, sure and abundant bearer; strong, vigorous grower. First of Aug.

**Stump** (or Stump the World)—Very large, roundish. The skin is white with a bright red cheek. The flesh is white, juicy and good. The tree is vigorous and productive. Ripens near the end of September and is freestone.

**Engle's Mammoth**—Fruit large; skin yellow, red cheek; flesh yellow, sweet, juicy; stone small; freestone.

**Mountain Rose**—Medium to large; roundish; whitish, nearly covered with a pretty red; flesh white, juicy, sweet and somewhat vinous. Vigorous and productive. First of Aug.

**Wonderful**—Not unlike Smock in appearance. Freestone; large, globular; rich golden yellow, partly covered with red; flesh yellow, rich, firm and high-flavored. Productive. Last of Sept.

**Reeves Favorite**—This is a hardy and productive variety. The flesh is deep yellow and very juicy and melting. The fruit is a great favorite in all parts of the country and makes a ready sale on the market. This is a freestone variety.

**Ray**—Of good size and has a most attractive red blush of delicate shade. Flesh white, firm and of most excellent quality. Keeps well. A good shipper of fine appearance even after much handling. Trees strong growers, shapely and symmetrical. Old peach orchardists would be surprised to see how quickly they attain good size. A regular bearer of big crops. Ripens Aug. 10th to 25th.

## IMPORTANT TO HAVE GOOD ROOT SYSTEM

If there is any one class of fruit trees that receives special attention at Kelly Brothers' Nurseries, it is Peach trees. We exercise the greatest care to have our varieties strictly true to name and by our method of cultivation we get a moderate healthy limb growth and with our climate here get a shorter tree but much more hardy, prepared to withstand the severe weather of the winter.

No matter where you buy Peach trees you cannot get better ones than you will get from Kelly Brothers. We wish every customer or interested person would come to our nursery, and see our clean, healthy, beautiful trees. We have never been troubled with Peach Yellows or San Jose scale in this vicinity.

We wish to impress upon our customers the importance of getting Peach trees with sufficient root system to start with. This is one of the most important points to be considered in planting a Peach Orchard. We do not recommend the planting of large Peach trees. Greater success has been attained by the fruit grower in planting medium or small sized trees.

READ WHAT PROF. F. C. SEARS SAYS ON PAGE 13 OF OUR BROAD GUARANTEE.

# Pear Trees

**T**HE value of this fruit is just beginning to be appreciated and its cultivation is extending. Compared with apples, there are few really fine pears on the market. If growers would specialize in this fruit they would be well repaid for their efforts, as high prices are always obtainable for choice pears. Our pears are all budded on imported French stock which gives them the finest root system. We recommend the following varieties:

## Wholesale Prices of all Varieties of Pear Trees

				EACH	TEN	HUNDRED	
Largest Size	2 Year	6 to 7 Feet	¾ and up	XXX	.23	\$2.20	\$18.00
Medium Size	2 Year	5 to 6 Feet	⅝ to ¾	XX	.20	1.75	15.00
Smaller Size	2 Year	4 to 5 Feet	½ to ⅝	X	.15	1.25	10.00
Largest Size	1 Year	3½ to 6 Feet		XXX	.20	1.75	15.00

3% Discount on all Cash Orders amounting to \$4.00 and up received on or before March 20th. After that date 3% Discount on Cash Orders of \$4.00 and up.

**Bartlett**—Rich golden-yellow when ripe, often with a soft blush; large, thin-skinned; buttery and melting, with a rich musky flavor. Tree a strong grower, bears young and abundantly, but requires careful cultivation to bring it up to its highest excellence. Probably more highly esteemed for canning and shipping than any other. Succeeds best as standard, but does well as dwarf. An old favorite. When planting orchards of standard Bartlett, it is recommended that dwarf Bartlett or dwarf Anjou be used for fillers, since it greatly increases the profit. In planting dwarf pears, they should be set into the ground deeper than the standard trees, the union should be 4 to 5 inches below the surface.

**Clapp's Favorite**—Large fine; pale lemon-yellow, with brown dots; fine texture, melting, buttery, juicy, with a rich, sweet, delicate, vinous flavor. Tree hardy and very productive. Thrives where other varieties fail.

**Wilder**—Medium to small, greenish yellow with a brownish red cheek; melting, sweet and very pleasant; vigorous grower; good bearer.

**Howell**—Above medium, roundish, pyriform; pale yellow, with mostly a bright red cheek and russet dots; flesh whitish, melting, juicy, with brisk, vinous flavor. Sept. and Oct.

**Anjou**—This is one of the best known, most popular and profitable late pear. The tree is a vigorous grower, hardy and prolific. The pears are of large size, green in color, but often yellowing when thor-

oughly ripe. They are very juicy and luscious and of the best quality. For late fall and very early winter use, we have no better variety. Oct. to Jan.

**Duchess D' Angouleme**—A most dependable cropper, often fruiting the first season after planting. Fruit large, frequently weighing a pound. A dull greenish yellow, spotted russet, flesh white, rich and good quality. An all around profitable market pear. Oct. and Nov.

**Sheldon**—A large, round, russet and red pear of very rich fine quality, melting, and delicious. Tree vigorous, bears well. Oct.

**Vermont Beauty**—Of medium size, roundish, yellow, heavily shaded with carmine; flesh exceedingly fine, sweet and juicy. The tree makes a strong, healthy growth and bears good crops. October.

**Seckel**—A beautiful and delicious little Pear that is the standard of excellence in its class. One of the richest and highest flavored Pears known, always in demand for desserts and lunches and better known than any Pear of its class. The tree makes a somewhat slow but stout and erect growth. Sept. and Oct.

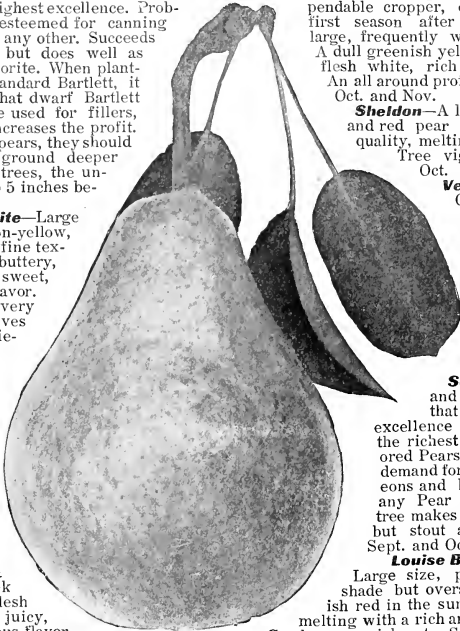
**Louise Bonne de Jersey**—Large size, pale green in the shade but overspread with brownish red in the sun; very juicy and melting with a rich and excellent flavor. Good commercial sort. Sept. to Oct.

Richview, Ill., Nov. 21, 1914

Kelly Bros., Dansville, N. Y.

Gentlemen: I received the 500 Kleffer Pears, 2 Year, XXX, ordered from you. Trees were fine. You will hear from us again when we are in need of trees.

Respectfully yours,  
C. P. COOPER & SONS

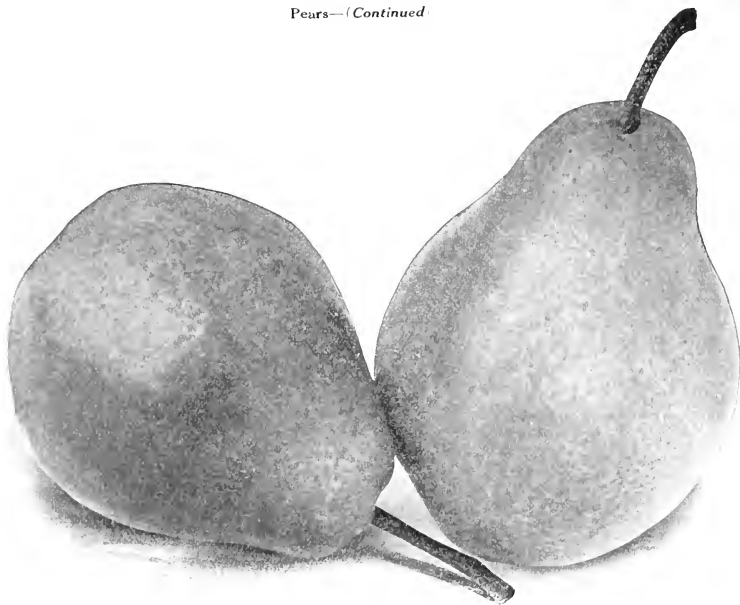


Bartlett

A CAREFUL STUDY OF OUR NURSERY STOCK AND PRICES WILL INTEREST YOU

# Direct from Grower to Planter

Pears—(Continued)



Clapp's Favorite Pear

**Worden-Seckel**—This beautiful and delicious pear attracted wide attention when introduced recently. In quality it is rated very high. In size it is much larger than Seckel. It is shaped like Bartlett but is not as large. A tree of this beautiful pear is an object of beauty on the home ground when laden with beautiful specimens. Oct.

**Flemish Beauty**—This fine old pear is still one of the hardiest and most generally successful over a wide range of country, producing good crops annually of large, handsome fruit that is exceptionally good in quality. Sept and Oct.

**Carber**—One of the Japan Hybrids; larger than Kieffer; hardy, productive, early bearer; excellent for canning. September and October.

Kelly Bros., Dansville, N. Y.

Gentlemen:—I received your shipment of the 9th inst in good order. If we are able to make the trees keep pace with the quality when received we shall take pleasure in having Kelly shade about our summer home, and hope to gather fruit equal to the apparent quality of the trees. Thanking you for your promptness in filling the order, I am

Very truly yours,

WILLARD A. WINN.

Worcester, Mass., April 28, 1913

Kelly Bros., Dansville, N. Y.

Gentlemen:—I have received trees all O. K. When I opened the nicely packed box and pulled out the fine bundles of trees I wished I could shake hands with you people. If my farmer neighbors ask me where I got the nice trees from, I will tell them from the five Kellys at Dansville, Livingston Co.

Yours sincerely,

A. GOEPFERICH.

Maspeth, N. Y., Nov. 30, 1913

NOTE SPECIAL PRICES ON SMALLER SIZE TREES ON PAGE 27

**Pears—(Continued)**

**Kieffer**—Large to very large, skin yellow, with a light vermilion cheek; flesh brittle, very juicy, with a marked musky aroma; good quality. It is unfortunate that the merits of this fruit have been underestimated from the haste in which it is hurried to market in an immature condition, and often before it has attained the proper size. When allowed to hang upon the trees until the beginning of October, and then carefully ripened in a cool, dark room, there are few Pears which are more attractive. Combines extreme juiciness with a sprightly subacid flavor and the peculiar aroma of Bartlett. Fruit should be thinned. 90 per cent Kieffer and 10 per cent Le Conte should always be the arrangement, on account of pollenizing.

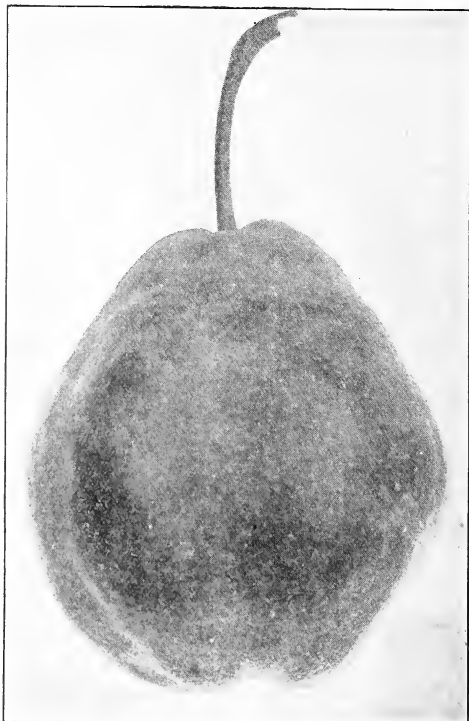
**Lawrence**—Trees healthy, hardy and very productive. Fruit large; skin yellow, covered with brown spots. Flesh whitish, rich, buttery, and aromatic. One of the quality pears that has great merit for commercial orchards.

**Le Conte**—Undoubtedly another hybrid from the Chinese Sand Pear. Large, pyriform; smooth, pale yellow, quality good, juicy and pleasant. Tree remarkably vigorous, healthy and free from blight. A prolific bearer and profitable. Oct.

Siddonsburg, Pa., Oct. 8, 1913  
Kelly Bros., Dansville, N. Y.

I thank you for the trees I got last spring. I am very well pleased with them. They made a fine growth. Hereafter you may expect all of my orders. With best wishes, I am

Yours very truly,  
W. H. KOHLER.



**Kieffer Pear**

**THE BEST**

West Coxsackie, N. Y., April 30, 1913  
Kelly Bros., Dansville, N. Y.

Gentlemen:—I received the trees O. K. I am very much pleased with them. They are the best I ever bought. When in need of more trees you will hear from me again, I assure you. Thanking you for your promptness in filling my order and the excellent trees you sent, I remain,

Yours truly,  
EDWIN COLLIER.

**STURDY TREES**

Solon, Ohio, April 22, 1913  
Kelly Bros., Dansville, N. Y.

Gentlemen:— Trees have arrived and I have planted them. Though a long time on the road, they were in tip-top condition and are fine, sturdy looking trees. Thanking you for your prompt attention and wishing you a successful season, I am,

Very cordially yours,  
JOHN HUDDILSTON.

**WELL PACKED**

Kelly Bros., Dansville, N. Y.

Gentlemen:—Trees arrived yesterday in excellent condition. I am more than pleased with them. They are fine. I thank you for the splendid way in which they were packed and shipped.

Very truly,  
GEO. W. KELLY.

Hanford, Calif., March 21, 1913



# Dwarf Pear Trees

The cultivation of Dwarf Pears is very profitable. The trees are low-headed and the fruit is easily handled and comes into bearing usually the second or third year. Pears are dwarfed by budding on Quince stock, and the trees should be planted three inches below the union. All varieties of Pear do not give good results as dwarfs. We recommend the following varieties to be good growers and bearers, and to give the best satisfaction as dwarfs:

**Bartlett, Kieffer, Clapp's Favorite, Beurre d' Anjou, Duchess d' Angouleme, Louise Bonne de Jersey, and Seckel.** (For description of these varieties see Standard Pears.)

**DWARF SECKEL**



## Wholesale Prices of all Varieties of Dwarf Pear Trees

					EACH	TEN	HUNDRED
Largest Size	2 Year	4 to 5 feet	3/4 and up	XXX	.18	\$1.65	\$15.00
Medium Size	2 Year	3 to 4 feet	5/8 to 3/4	XX	.15	1.15	11.00
Smaller Size	2 Year	2 1/2 to 3 Feet	1/2 to 5/8	X	.12	1.00	9.00

*8% Discount on all Cash Orders amounting to \$4.00 and up received on or before March 20th. After that date, 3% Discount on all Cash Orders of \$4.00 and up.*

**TO OTHER FRUIT GROWERS:**

I went up to Dansville Oct. 20, 1912 with the intention of staying to see my trees dug and shipped. After a couple of days of looking around, I decided to place my order of some 6000 trees with Kelly Brothers as they had the varieties I wanted and large blocks to select from. Most of all they would begin at once on my order. The trees came in time to plant in the fall and they were most carefully packed. I am also satisfied that my varieties are true to name as I know the standard varieties I use by their characteristics.

Downington, Pa., Jan. 4, 1913.

CHARLES G. CRAWFORD, Horticulturist.

Kelly Bros., Dansville, N. Y.  
Gentlemen:—

Pawtauket, R. I., Sept. 22, 1914.

I thank you for the Fall catalog just received. I bought a number of various kinds of fruit trees from you last Spring. I told you when I ordered them that I was getting some from a competitor. Both were received in due time and although price was the same and supposed to be the same kind of stock, yours was far superior. Yours were strong, healthy, vigorous trees, carefully packed. The others were not to be compared with yours. I do not think a single tree or shrub of yours failed; everyone shows a healthy and good growth. I now want to order some more from you and herewith send you a list. I will want some more Peach Trees, but presume I had better have them sent next Spring.

Sincerely yours,

WALKER MILLER.

**NOT ALL ARE GROWERS WHO MAKE THE CLAIM. WE ARE GROWERS.**

# Cherry Trees



A Bearing Orchard of Large Montmorency in Full Bloom



IN THESE days of apparent specialized fruit growing cherries seem to have been neglected. Yet it is safe to say that no fruit will find a more ready market or bring in a larger return on the money invested. The fact that cherry trees can be used for ornamental as well as productive purposes greatly increases their possibilities on the market. Any well-drained soil will be found to be adapted to the sturdy growth of cherry trees. Our cherries are all budded on imported French stocks and these form a fibrous root which reduces considerably the loss in planting. We believe that no fruit will bring greater profits, as the cherry will bear a fair crop two or three years after planting and requires very little care and attention. We have a good assortment of varieties but would especially recommend the Large Montmorency for commercial planting as it bears enormous crops and the canning factories pay a higher price for it than they do for any other sour variety.

## Wholesale Prices of all Varieties of Cherry Trees

### SOUR CHERRIES

					EACH	TEN	HUNDRED
Largest Size	2 Year	5 to 7 feet	$\frac{3}{4}$ and up	XXX	.25	\$2.25	\$21.00
Medium Size	2 Year	4½ to 6 feet	$\frac{5}{8}$ to $\frac{3}{4}$	XX	.20	1.90	17.00
Smaller Size	2 Year	4 to 5 Feet	$\frac{1}{2}$ to $\frac{5}{8}$	X	.15	1.30	11.00
Largest Size	1 Year	3 feet & Up		XXX	.20	1.90	17.00

### SWEET CHERRIES

					EACH	TEN	HUNDRED
Largest Size	2 Year	6 to 7 Feet	$\frac{3}{4}$ and up	XXX	.28	\$2.50	\$24.00
Medium Size	2 Year	5 to 6 Feet	$\frac{5}{8}$ to $\frac{3}{4}$	XX	.23	2.25	20.00
Smaller Size	2 Year	4 to 5 Feet	$\frac{1}{2}$ to $\frac{5}{8}$	X	.20	1.75	14.00
Largest Size	1 Year	3½ to 6 Feet		XXX	.25	2.25	21.00

8% Discount on all Cash Orders amounting to \$4.00 and up received on or before March 20th. After that date 3% Discount on all Cash Orders of \$4.00 and up.

### Sweet Cherries

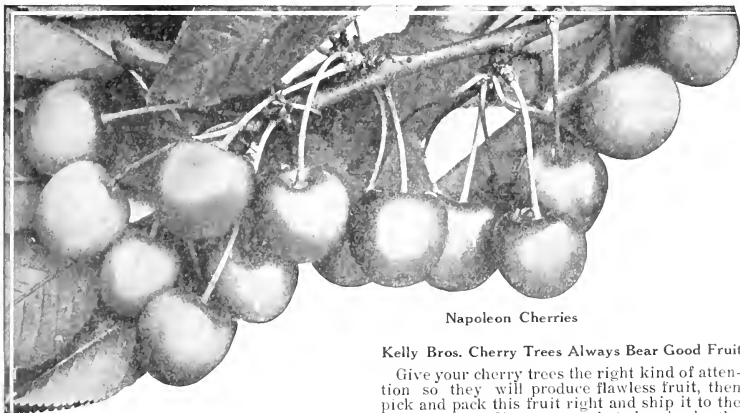
**Lambert**—One of the largest of all Cherries. It is purple-red; firm and rich. Every year sees an enormous crop, and the tree not only grows well, but is a proof against insect and fungous attacks. The finest of shippers.

**Black Tartarian**—Very large; bright purplish black; half tender; juicy, very rich. Tree a remarkably vigorous and erect grower, and an immense bearer. One of the most popular varieties in all parts of the country. June.

**"You'll Never Regret Planting Kelly Trees"**

# Direct from Grower to Planter

Cherries—Continued



Napoleon Cherries

## Kelly Bros. Cherry Trees Always Bear Good Fruit

Give your cherry trees the right kind of attention so they will produce flawless fruit, then pick and pack this fruit right and ship it to the big markets. You can market cherries by the car load better than in less quantity. From 30 to 50 trees will produce a car load of fruit. Do not hesitate to plant the trees because you fear there will be no market for them; the market is waiting and will be very willing as soon as you have the cherries. The people who are used to the little inferior fruit never stop looking when they see cherries of improved varieties. Proper cultivation has a good deal to do with making the trees produce the finest fruit.

**Bing**—One of the most delicious Sweet Cherries grown. Tree very hardy and vigorous with heavy foliage. It succeeds in the East better than most sweet varieties. Fruit is large, dark brown or black and very fine quality. Bing is a good shipper and should be planted with Lambert for commercial purposes.

**Yellow Spanish**—A pale yellow cherry with bright red cheek in the sun. It is one of the best, most beautiful and popular of all of the light colored cherries; vigorous and productive.

**Windsor**—Tree upright, vigorous and a rapid grower; fruit large, roundish, oblong; very firm and juicy; flesh pinkish and sometimes streaked; quality very good; a productive bearer; has attracted attention owing to its large size and dark color; almost black. July.

**Schmidt's Biggareau**—The fruit is of very large size, of a deep mahogany color. The flesh is dark, tender, very juicy, with a fine rich flavor. Fruit grows in clusters. It is an excellent shipper. July.

**Governor Wood**—Large, heart-shaped; light yellow, marbled light red, juicy, sweet and rich. Tree vigorous, productive; forms a round head. An old variety that is still a favorite in many regions.

**Napoleon or Royal Ann**—A beautiful cherry of large size; pale yellow with bright red cheek; flesh firm, juicy and sweet; one of the best for market and canning.

### THE FINEST EVER PURCHASED

Brattleboro, Vt., April 30, 1913  
Kelly Bros., Dansville, N. Y.

Gentlemen:—Trees arrived and much to my surprise were in fine condition. While I have purchased over two thousand trees, your trees are the finest I have ever had. They have the appearance of being very thrifty now.

Your very truly,

H. R. BROWN.



XXX XX X  
Note the Excellent Root System of Our Different Grades of Cherry Trees

BUY KELLY TREES OF QUALITY AT LOW PRICES

Cherries—(Continued)

SOUR CHERRIES

**Early Richmond**—One of the most valuable and popular cherries unsurpassed for cooking purposes. It is the good old variety that yields such marvelous crops in the gardens. The most hardy of all varieties, uninjured by the coldest winters. Tree slender in growth, with a roundish spreading head, exceedingly productive. Ripens through June. The cherry tree bears almost every year, and is an easy fruiter.

**May Duke**—This is one of the good old standbys which has been so popular for many years in the past, both in the East and West, where it has been largely planted and where it has rewarded the planter by large crops of profitable fruit. The color of this cherry gradually changes from a bright red to nearly black when fully ripe. The flesh is red, becoming dark purple later; is very juicy and melting, rich, acid and of superior quality. It must remain on the tree until fully ripe in order to develop its best character. Season very early. The tree is very hardy and adapted to all localities.

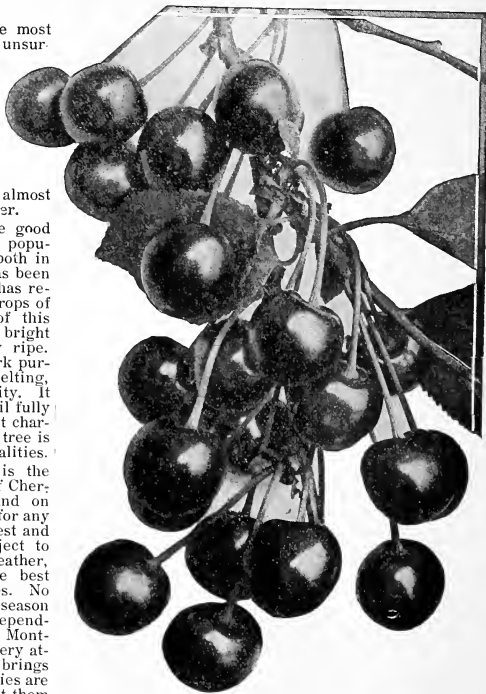
**Large Montmorency**—This is the best of all the sour varieties of Cherries. There is a greater demand on the market for this Cherry than for any other. The trees are the cleanest and best growers and are less subject to disease, less affected by wet weather, and are the best bearers of the best fruit of all other sour varieties. No matter how unfavorable the season may be, Montmorency can be depended upon for a full crop. The Montmorency is a good shipper, very attractive looking and always brings good prices. The canning factories are always calling for them and want them by the hundreds of tons. The fruit is good-sized, fine flavored and bright clear red. The flesh is of fine quality and sub-acid. Fruit ripens 10 days after Early Richmond.

**Dyehouse**—A hardy and valuable cherry. Unquestionably the earliest cherry, ten days earlier than Richmond, fine quality, its early bearing remarkable as its great hardiness. Has the appearance of being covered with a scarlet cloth such is the abundance of the fruit. Has the smallest pit of any cherry known; a splendid keeper and free from knots. For tarts, pies and especially for canning, it has no superiors among cherries. June.

**Ostheim**—Large; skin red, dark at maturity; flesh liver-colored; tender, juicy, almost sweet; very good; hardy.

**Wragg**—Large, roundish, heart-shaped dark crimson and when fully ripe, black or nearly so; flesh and juice light crimson, firm and good, very productive; one of the hardiest and is usually a sure cropper.

**English Moretto**—Fruit large elongated; almost blackish red when fully ripe; very rich, acid; juicy and good. A splendid pie cherry.



Large Montmorency Cherries

Tree very hardy somewhat smaller than other sorts but exceedingly productive. This fruit is in great demand by the fruit-juice manufacturers. July.

**Olivet**—A tree of this variety should be in every garden. The fruit is very large, has a shining deep red color; tender, mild sub-acid flavor. Ripens in June.

Never Saw Better Cherry Trees

Brockport, N. Y., April 28, 1913  
Kelly Bros., Dansville, N. Y.

Gentlemen:—I received the cherry trees. They surely are fine. I never saw better trees in my life. Furthermore, I thank you very much for the nut trees and extra cherry trees. Next year I hope to give you a larger order.

Yours truly,

EDWARD R. BOOTH.

NOTE OUR SPECIAL DISCOUNT ON ORDERS RECEIVED BEFORE MARCH 20



# Direct from Grower to Planter



## Plum Trees



NO OTHER fruit tree, unless it is the cherry, will produce more abundantly than a plum tree. Although they will yield crop after crop despite neglect, plum trees will readily show the result of care and modern methods of fruit growing. The commercial side of plum production has received much attention in late years but the supply still falls far short of the demand. In general, plum trees thrive best in a sandy or clayey soil. A distance of 16 to 18 feet apart is considered the best for plum trees with the distance increased to 20 feet where a wagon spraying outfit is used. Many varieties of plums produce so abundantly that the best results will be obtainable only by careful thinning. If allowed to grow naturally the trees will be weakened and the quality of the fruit will be inferior. We can recommend to the planter the following varieties.

### Wholesale Prices of all Varieties of Plum Trees

					EACH	TEN	HUNDRED
Largest Size	2 Year	6 to 7 Feet	3/4 and up	XXX	.25	\$2.00	\$18.00
Medium Size	2 Year	5 to 6 Feet	2/3 to 3/4	XX	.20	1.75	14.00
Smaller Size	2 Year	4 to 5 Feet	1/2 to 2/3	X	.15	1.25	9.00
Largest Size	1 Year	3 1/2 to 6 Feet		XXX	.20	1.75	14.00

8% Discount on all Cash Orders amounting to \$4.00 and up received on or before March 20th. After that date 3% Discount on all Cash Orders of \$4.00 and up.

### EUROPEAN PLUMS

**Bradshaw**—A very large and fine early plum, dark violet red, juicy and good. Trees erect and vigorous; very productive; valuable for market. The quality is excellent, and it is destined to become one of the most popular of all plums for canning, while its attractive color, good quality and shipping properties will cause it to be sought for as a market variety. It ripens ten days to two weeks later than Abundance.

**Fellembury Prune**—Dark purple with a dark blue bloom; size medium; oval, pointed and tapering. Flesh juicy and delicious; fine for drying. In the West it is grown by the thousands of acres and shipped by the trainload to all markets of the world.

**Geuil**—Very large, bluish purple; flesh yellowish green, sweet. Tree hardy and rapid grower.

**German Prune**—A valuable Plum for dessert, but most esteemed for market and drying or preserving. Fruit long, oval, purple with a thick bloom; flesh firm, sweet and pleasant, separating freely from the stone; moderate growth. A great favorite. A sure market for all you have to sell at very profitable prices.

**Lombard**—Medium to large, roundish, oval, dark red, flesh yellow, juicy and pleasant flavor; hardy popular, nearly always producing a crop, a valuable commercial sort. August.

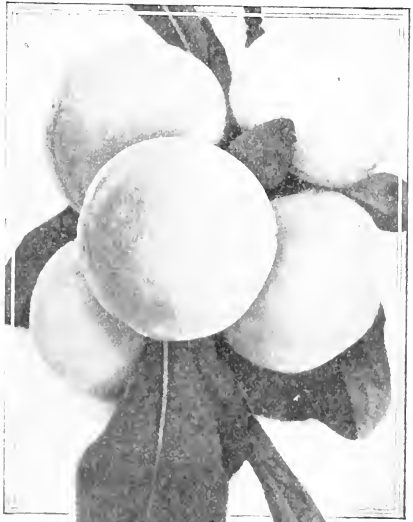
**Monarch**—Very large brilliant; bluish purple; flesh, pale golden green; juicy, abundant bearer and begins fruiting young. Free from rot; excellent for market. September.

**Shipper's Pride**—Large and handsome, dark purple; quality fine, juicy and sweet; excellent for canning. September.

**Shropshire Damson**—Large, amber color, juicy and sprightly; most desirable of the Damson class; productive and not liable to rot; good commercial sort. Sept.

**Imperial Gage**—Rather large; oval;

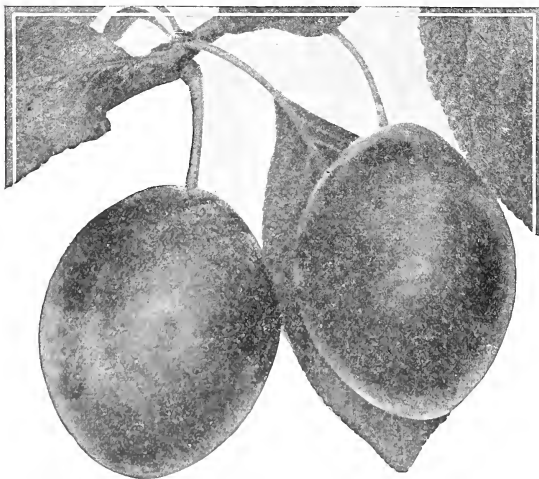
greenish; flesh juicy, rich and delicious, parts from the stone. Tree a vigorous grower; very productive and one of the best plums. Middle of August.



Shropshire Damson

READ WHAT PROF. F. C. SEARS SAYS ON PAGE 13 OF OUR BROAD GUARANTEE.

## Plums (Continued)



German Prune

### European Plums (Continued)

**Reine Claude**—Large, pale yellow, marked with red, excellent and of fine quality; good bearer; valuable for commercial purposes. Middle of September.

**York State Prune** is one of the largest, best in quality and most productive of all plums or plums. Size large; color dark blue, covered with purple blush; flesh yellow and delicious; freestone, ripening the last week in September. It originated in Dansville, N. Y.

### JAPANESE PLUMS

**Abundance**—Fruit large, showy, beautiful. Amber, turning to a rich, bright cherry color, with a decided white bloom, and highly perfumed. Flesh light yellow, exceedingly juicy and tender, of a delicious sweetness impossible to describe. Stone small and parts readily from flesh. For canning it is of greatest excellence. Its season is very early, ripening in advance of other plums, thus adding to its special value.

**Burbank**—When properly thinned, the fruit is very large, nearly round and bright, deep red; flesh a deep yellow, very sweet, meaty and quite firm, keeping and shipping finely. Tree hardy and vigorous, but sprawling in growth; needs close pruning; enormously productive. Burbank orchards have been very profitable up to date.

**Red June**—The best Japan plum, ripening before Abundance. Medium to large; deep vermilion-red, with handsome bloom; flesh light lemon-yellow, firm; moderately juicy; fine quality. Tree upright, spreading, vigorous and hardy; productive.

**Satsuma**—Large, globular, with sharp point. Color purple and red with bloom; flesh firm, juicy, dark red or blood color, fine quality; pit very small.

**Wickson**—A sturdy, upright grower; fruit remarkably handsome, deep, maroon-red, covered with white bloom; stone small; flesh fine texture, firm, sugary and delicious; excellent keeper and shipper.

**October Purple**—Originated by Burbank, who regarded it as one of the best introduced. Fruits on the old wood and frequently measures seven inches in circumference. Tree a strong, erect, grower, forming a shapely head.

**Shiro**—Medium size, yellow, and very sweet. The best quality of any of the Japan Plums. We have fruited it in Nursery rows and can recommend it highly for garden planting. Sept.

**Sultan**—A large, handsome Plum of purplish-crimson color; excellent for cooking and preserving. Keeps long and ships well.

**Climax**—Very large; deep, rich red; fine flavor; one of the earliest to ripen. Mr. Burbank regards this as one of his most valuable productions.

### PLUM ON PEACH

In addition to the preceding list of European and Japanese Plums on French Imported Myrobalan Plum Roots we have some varieties of Plums budded on Peach Roots. A great many planters and fruit growers in the South and West prefer them to Plum Roots. The trees which we have to offer are:

German Prune, Italian Prune, Fellemburg Prune, and York State Prune.

### Wholesale Prices of Plum on Peach

	2 Year	EACH	TEN	HUNDRED
6 to 7 Ft.	$\frac{3}{8}$ and up	.20	\$1.60	\$14.00
5 to 6 Ft.	$\frac{5}{8}$ to $\frac{3}{4}$	.15	1.20	10.00
4 to 5 Ft.	$\frac{1}{2}$ to $\frac{5}{8}$	.11	.90	7.00
3½ to 6 Ft.	1 Year	.15	1.20	10.00

Taylorsville, Pa., April 17, 1913.

Kelly Bros., Dansville, N. Y.

Gentlemen:—The trees you sent me are at hand. They were in fine condition. They were also the finest trees I ever bought and I have bought something like 2000. I do not see how you can grow such trees and sell them at that price. When I want trees again you will get my order.

With best wishes, I am,

Very truly yours,

EDWIN JOHNSON.

**WE GUARANTEE THAT OUR STOCK WILL REACH YOU IN GOOD CONDITION**



# Special Bargains in Fruit Trees

Many planters prefer to plant the smaller size trees as it reduces the cost of their investment, hence we are offering on this page Special Bargains in lots of 100 each. The fruit trees we offer are our regular Standard Best X Grade trees described in the preceding pages. We do not sell less than 100. You may if you wish select 100 Apples, choosing five varieties of Apples, to make the total 100. This same plan applies to the Peach, Pear, Plum and Cherry which appear below.

## Apples

### Price of all Varieties of Apple Trees

Bargain Size	2 Year	4 to 5 Feet	½ to ⅝	X	HUNDRED \$6.50
Alexander	Hubbardston	Pewaukee	Tolman Sweet	Wealthy	
Baldwin	King	R. I. Greening	Winter Banana	Wagener	
Ben Davis	McIntosh Red	Red Astrachan	York Imperial	Wolf River	
Duchess of Old.	Northern Spy	Sutton Beauty	Stayman's Winesap	Stark	
Fall Pippin	N. W. Greening	Gano	Pound Sweet	Delicious	
Early Harvest	Grimes Golden	Rome Beauty	Old Winesap	Yellow Transparent	

## Peaches

### Price of all Varieties of Peach Trees

Bargain Size	1 Year	2½ to 4 Feet	⅔ to ⅞	X	HUNDRED \$4.50
Beers Smock	Crawford Late	Fitzgerald	Niagara	Wager	
Carman	Chair's Choice	Foster	Wonderful	Hill's Chili	
Champion	Crosby	Yellow St. John	Hiley	Elberta	
Crawford Early	Belle of Georgia	Mountain Rose	Engles Mammoth	Kalamazoo	

## Cherries

### Price of all Varieties of Cherry Trees

Bargain Size	Sour Cherry	2 Year	4 to 5 Feet	½ to ⅝	X	HUNDRED \$10.50
Bargain Size	Sweet Cherry	2 Year	4 to 5 Feet	½ to ⅝	X	HUNDRED \$13.50
Dychouse	Montmorency		Bing		Napoleon	
Early Richmond	Ostheim		Black Tartarian		Schmid's Big.	
English Morello	Olivet		Gov. Wood		Windsor	
May Duke	Wragg		Lambert		Yellow Spanish	

## Pears

### Price of all Varieties of Pear Trees

Bargain Size	2 Year	4 to 5 Feet	½ to ⅝	X	HUNDRED \$9.50
Bourre d' Anjou	Clapp's Favorite		Flemish Beauty		Lawrence
Bartlett	Duchess		Kieffer		Wilder Early

## Plums

### Price of all Varieties of Plum Trees

Bargain Size	2 Year	4 to 5 Feet	½ to ⅝	X	HUNDRED \$8.50
Abundance	German Prune	Monarch	Shrop. Damson		Satsuma
Burbank	Fellemburg	Moore's Arctic	Shiro		Wickson
Bradshaw	Imperial Gage	Pond's Seedling	York State Prune		Red June
Climax	Lombard				

8% Discount on all Cash Orders amounting to \$4.00 and up received on or before March 20th. After that date, 3% Discount on all Cash Orders of \$4.00 and up.

BUY OF US AND CUT OUT MIDDLEMEN'S PROFIT—IT IS A BIG SAVING

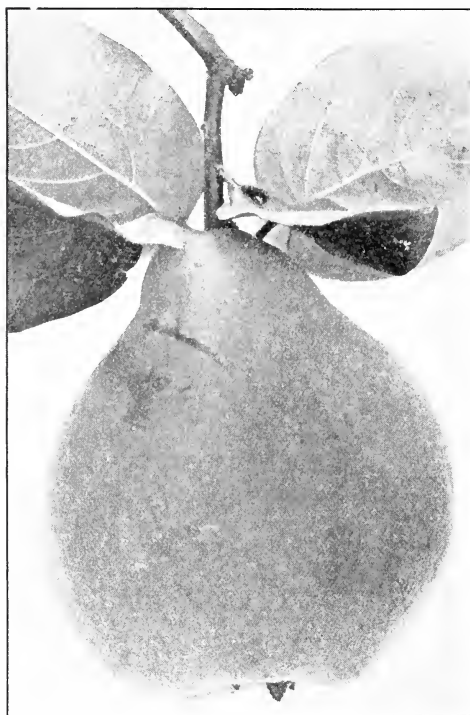
# Quince Trees

Its pre-eminence as a fruit for jellies and preserves makes the Quince a profitable tree for the fruit grower, farmer or any one having even a small garden. The Quince tree does not take much room on account of its dwarfish character. Any kind of good, rich soil will give good results. It can be grown in bush or tree form. Hardly any family's fruit supply for the winter is complete without the Quince. We recommend the following varieties:

## Wholesale Prices of all Varieties of Quince Trees

					EACH	TEN	HUNDRED
Largest Size	2 Year	4 to 5 Feet	$\frac{9}{16}$ and up	XXX	.28	\$2.00	\$17.00
Medium Size	2 Year	3 to 4 Feet	$\frac{7}{16}$ to $\frac{9}{16}$	XX	.18	1.75	14.00
Smaller Size	2 Year	2 to 3 Feet	$\frac{5}{16}$ to $\frac{7}{16}$	X	.14	1.25	11.00
Largest Size	1 Year	3 Feet & Up	$\frac{9}{16}$ to $\frac{7}{16}$	XXX	.18	1.75	14.00

8% Discount on all Cash Orders amounting to \$4.00 and up received on or before March 20th. After that date 3% Discount on all Cash Orders of \$4.00 and up.



Orange Quince

**Champion**—Fruit very large, fair and handsome. Tree very handsome, surpassing other varieties in this respect, bears abundantly while young; flesh cooks as tender as an apple and without hard spots and cores; flavor delicate, imparting an exquisite quince taste and odor to any fruit with which it is cooked. One of the most valuable.

**Orange**—Popular, extensively cultivated, reliable and satisfactory. The name was given in an attempt to do justice to its most delicious flavor. Roundish, bright golden yellow, very large, fine grained, fine quality. Best for cooking. Firm, will stand handling and shipping.

**Rea's Mammoth**—Large, rich golden yellow; flesh cooks as tender as the apple and without hard spots or cores, flavor delicate, imparting an exquisite quince taste and odor to any fruit with which it is cooked. Sure to ripen even in northern latitude. Very hardy and productive. We regard it the best of all quinces. October.

**Bourgeat**—Bears at an early age, producing large crops of exceedingly large and handsome fruit, of a rich golden color. While it ripens soon after the Orange it keeps until midwinter, or it is ready to use at once on maturity. It has proved to be free from leaf blight, the leaves keeping green until killed by frost.

**Meech's Prolific**—The most prolific of all known varieties; ripens between the Orange and the Champion. Bears very early, usually a full crop at three years; quality unsurpassed and size large.

"You'll Never Regret Planting Kelly Trees"




**Direct from Grower to Planter**


# Wayne County Orange Quince



**Bearing Orchard of Wayne County Orange Quince on Farm of Mr. Fred Grover, Pultneyville, Wayne Co., N. Y., from which we secured our scions for propagating the Wayne Co. Orange Quince. Mr. James Kelly, Senior Member of our Firm in the foreground.**

A few years ago it came to our attention that the Orange Quince, as generally grown by nurserymen, was not the very best strain of Orange Quince; in fact, it was inferior in many ways to what it should be with reference to flavor, productiveness and size. We at once began to look around to locate some good strain of the real old-fashioned Orange Quince. We had heard of the Orange Quince orchard of Mr. Fred Grover, Pultneyville, Wayne Co., N. Y. (near Williamson), which is located in the heart of one of the greatest fruit belts in the United States. After thorough personal investigation, covering a period of three successive years, each of which saw enormous crops of this luscious golden yellow fruit, we decided we had found the very best Quince. Mr. Grover told us that he had lived on this same farm for over thirty years, and that every year, without exception, this orchard had yielded an enormous crop. In fact it is the most productive of all Quinces.

We then made arrangements with Mr. Grover to secure scions from this orchard. These scions were taken from this orchard by us personally, and we now offer Quince trees propagated in our nurseries from this magnificent strain. The Wayne County Orange Quince is very large, fine-grained, almost round in shape, and of bright golden yellow color. It is from a third to one-half larger than any other Quince we have ever seen. Being very firm it will stand handling and shipping. It is of such delicious flavor that we could not attempt to do justice to its high quality by a mere catalog description. Ripens from September first to fifteenth. As the size, appearance and quality is so much better than that of the ordinary Quinces, Mr. Grover has always had a great demand for his crop, and has always sold his Quinces at a figure far higher than the ruling market price. The tree itself is very thrifty and bears at an early age. Mrs. Grover says she remembers the trees bearing when they were very small; in fact, this variety has fruited in our nurseries at one and two years old. With all sincerity we can recommend this variety for commercial purposes, or for home use. You will make no mistake in planting this most productive, highest quality Quince. Be sure to get the *genuine* Wayne County Orange Quince direct from Kelly Bros., the introducers. Each tree has attached our Trade Mark label. On one side of the label is printed: "Wayne County Orange Quince;" on the reverse side, "Kelly Bros., Dansville, N. Y."

## Wholesale Prices of Wayne Co. Orange Quince

				EACH	TEN	HUNDRED	
Largest Size	2 Year	4 to 5 feet	and up	XXX	.45	\$4.00	\$30.00
Medium Size	2 Year	3 to 4 feet	to	XX	.40	3.00	25.00
Smaller Size	2 Year	2 to 3 feet	to	X	.35	2.50	20.00
Largest Size	1 Year	3 feet & Up	to	XXX	.40	3.00	25.00

# Apricots

This is a rich, delicious fruit, coming between Cherries and Peaches. It is very much like the Peach in outward appearance but like the Plum in quality and texture. The Apricot ripens about a month or more before the best early peaches come in, which explains the reason for the great demand and prevailing high prices. It should be planted in deep, rich soil; and care should be taken to know that the sub-soil as well as the top-soil is dry.

Aside from its value as a fresh fruit, the Apricot has a fixed place on the list of fruits for canning and drying, for which purposes vast quantities are used every year. There is always a market for Apricots and the planter should have no fear of over-production. Our stock of Apricots for this season is exceptionally fine and we make a very attractive price on them.

## Wholesale Prices of all Varieties of Apricot Trees

			EACH	TEN	HUNDRED
1 Year	3 to 4 feet	XXX	.20	\$1.80	\$15.00
1 Year	2 to 3 feet	XX	.16	1.50	12.00

*8% Discount on all Cash Orders amounting to \$4.00 and up received on or before March 20. After that date, 3% Discount on all Cash Orders of \$4.00 and up.*

**Alexis**—Very hardy; an abundant bearer; yellow, with red cheek; large; slightly acid, rich and luscious.

**Budd**—Medium to large; light orange with blush on sunny side; flesh sweet, juicy with flavor of the peach; hardy and productive.

**Harris**—A hardy English sort. Medium size; oblong orange; good quality; very early. The best variety for Eastern culture.

**Alexander**—Fruit yellow, flecked with red, very beautiful and delicious. July.

**Moorpark**—One of the largest, orange with red cheek; firm, juicy, with a rich flavor; very productive. August.

**Gibb**—Tree hardy, grows symmetrical, productive. Fruit medium yellowish, sub-acid, juicy and rich. The best early variety ripening soon after strawberries.

# Nut Trees

The necessity for the importation of large quantities of nuts each year has awakened American agriculturists to the possibilities in producing nuts. Oftentimes the trees will thrive on soil not adapted to profitable fruit growing.

**Black Walnut**—This species is a common and stately forest tree in the middle and western states; grows from forty to sixty feet high; has an open, spreading head and is rapid in growth; produces large crops of nuts with rough hard shell containing rich, oily kernels of fine flavor. Trees 5 to 6 ft., 50c each. 4 to 5 ft., 35c each, \$3.00 per 10.

**American Sweet Chestnut**—This is the well-known native variety with which nearly everyone is familiar. It is a stately tree, attaining great height when mature. It is beautifully symmetrical and when in blossom is as handsome as a tree can be. It bears a nut of good quality and seldom fails to produce a good crop. Aside from their crop value, all the Chestnuts are specially desirable for shade purposes and

for ornamental planting. Trees 4 to 5 ft. in height, 35c each, \$3.00 per ten.

**English Walnut**—A fine, lofty-growing tree, with handsome, spreading head; produces large crops of thin-shelled, delicious nuts which are always in demand at good prices. Trees 3 to 4 ft., 50c each, 10 for \$1.00. 4 to 6 ft., 70c each.

**Chestnut, Spanish**—A handsome round headed tree, producing abundantly, very large nuts that find a ready market at good prices. Price of Spanish Chestnut trees, 4 to 5 ft., 50c each, 10 for \$3.00.

**Butternut**—A fine native tree producing a large longish nut, which is prized for its sweet, oily, nutritious kernel. Price of Butternut trees, 4 to 5 ft., 35c each, 10 for \$3.00.

### BEST TREES EVER PLANTED

Cold Spring Dairy Farm, Kirkville, N. Y., Nov. 5, 1913

Kelly Bros., Dansville, N. Y.

My Dear Sirs:—The box of trees has arrived and I am more than pleased with them. Will say they are the nicest lot of trees that I have ever planted. I thank you most heartily for your careful selection of the trees.

Respectfully yours,  
OLIVER G. GRIDLEY.

**THERE IS A REASON FOR OUR LOW PRICES—WE SAVE YOU THE MIDDLE-MAN'S PROFIT**



## Grapes

Because of their adaptability to any place where there is a bit of soil, grapes are often a source of considerable profit. In fact, some fruit growers say that if you can plant only one fruit, let that be grapes. They require little care and as a rule will produce most abundantly. Rocky hillsides on which no other fruit would thrive, will produce wonderful crops of grapes and show profits that will overshadow any other part of the farm. Good grapes command high prices and will find a ready market in any locality. We have the following varieties in our stock:

### Wholesale Prices of Grapes 2 Year No. 1 Vines

	EACH	TEN	HUNDRED
2 Year	.10	.90	\$6.00

8% Discount on all Cash Orders amounting to \$4.00 and up received on or before March 20th. After that date 3% Discount on all Cash Orders of \$4.00 and up.

**Brighton**—A large, delicious, sweet red Grape; vine thrifty and a strong grower; flesh sweet, tender and very juicy. Best of all large red Grapes.

**Campbell's Early**—Black, with purple bloom; bunch and berries large. Juicy, with rich, sweet flavor; almost seedless. Hardy and of vigorous growth. Fruit hangs on vines sound and perfect for ten weeks or more after ripening.

**Agawam**—Good red variety; flesh tender and juicy, good bearer. Ripens with Concord.

**Martha**—Bunches and berries of medium size, greenish white, with a thin bloom; flesh tender, with very little pulp, juicy, sweet and rich, hardy and productive. Ripens with Concord.

**Diamond White**—The leading early white grape, ripening before Moore's Early. White, with rich yellow tinge; juicy, few seeds, almost free from pulp, excellent quality; above medium size, adheres firmly to stem. Vine like Concord in growth, hardness and foliage.

**Salem** (Roger's No. 53)—A strong, vigorous vine; berries large, Catawba color; thin skin, free from hard pulp; sweet and sprightly; ripens first of September.

**Catawba**—Dark red when fully ripe. Bunch large, berries medium to large, skin thick, tough; flesh somewhat

pulpy, with rich vinous flavor, of best quality for both table and wine.

**Champion**—This is an extra early black grape. Bunch medium to large and compact. Berries adhering to the stem better than many other varieties. Skin thick, flesh sweet, juicy pulpy and good flavor. Vine a rank, vigorous grower. Perfectly hardy and very productive.

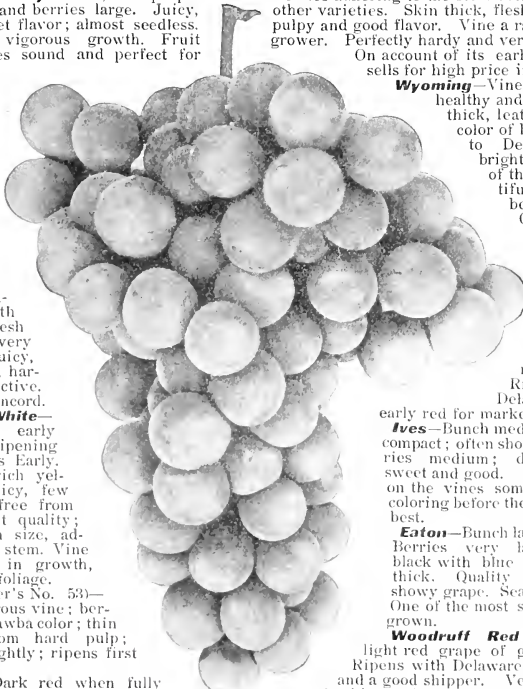
On account of its earliness always sells for high price in any market.

**Wyoming**—Vines very hardy, healthy and robust, with thick, leathery foliage; color of berry similar to Delaware, but brighter, being one of the most beautiful of the amber or red Grapes, and in size nearly double that of the Delaware. Flesh tender, juicy, sweet, with a strong native aroma. Ripens before Delaware. Best early red for market.

**Ives**—Bunch medium to large, compact; often shouldered, berries medium; dark purple, sweet and good. Should hang on the vines some time after coloring before they are at their best.

**Eaton**—Bunch large, compact. Berries very large, nearly black with blue bloom. Skin thick. Quality good. Large showy grape. Season medium. One of the most showy grapes grown.

**Woodruff Red**—Handsome light red grape of good quality. Ripens with Delaware, keeps long and a good shipper. Very hardy and healthy, and a good cropper. One of the best red market grapes.



Concord

**"You'll Never Regret Planting Kelly Trees"**

**Grapes (Continued)**

**Concord**—The well-known black grape. Can always be depended on to fruit heavily. Succeeds over a large extent of country. Popular for market.

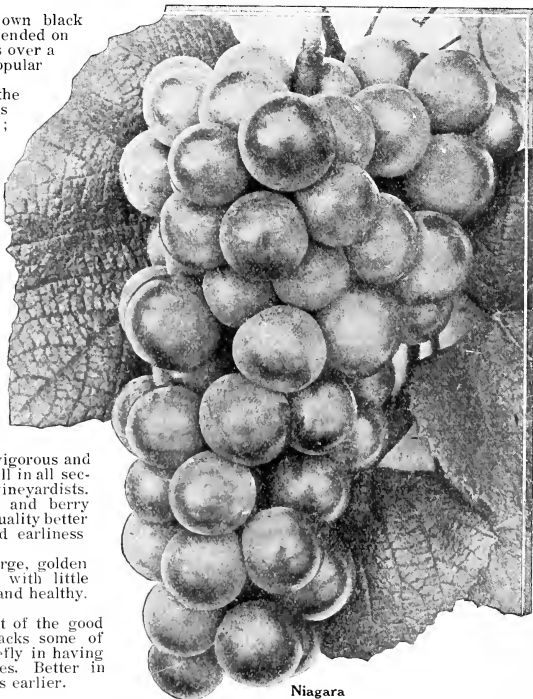
**Delaware**—One of the finest Grapes. Bunches small, compact, shouldered; berries rather small, round; skin thin, light red; flesh juicy, with an exceedingly sweet and delicious flavor.

**Niagara White**—Popular everywhere. Bunch very large and handsome, often shouldered, compact; berries large, round; skin thin, tough, does not crack and carries well; has not much pulp when fully ripe, melting, sweet, with a flavor and aroma peculiarly its own, and agreeable to most tastes; ripens with Concord, sometimes a little earlier. Vine very vigorous and productive, succeeding well in all sections. Largely planted by vineyardists.

**Moore's Early**—Bunch and berry large, with a blue bloom; quality better than Concord. Its size and earliness render it desirable.

**Pocklington**—Berries large, golden yellow; sweet and tender with little pulp. Thoroughly hardy and healthy. Ripens after Concord.

**Worden**—Possesses most of the good qualities of Concord and lacks some of the bad ones. Differs chiefly in having larger berries and bunches. Better in quality and five to ten days earlier.



**Niagara**

**AN IMPORTANT QUESTION**

In the last annual report of Secretary Wilson, of the U. S. Department of Agriculture, are these significant words:

*"The consumer pays a dollar for food; the farmer gets less than fifty cents for it. Who gets the rest?"*

**WELL PLEASED**

Putney, Vt., Apr. 21, 1913

Dear Sirs:—The nursery stock which I bought of you arrived in good condition and I am much pleased with it.

Yours very truly,  
GEO. H. GASSETT.

East Stroudsburg, Pa., Apr. 22, 1913  
Kelly Bros., Dansville, N. Y.

Gentlemen:—We received the trees in first class shape and are very much pleased with their looks. You certainly will get my future orders.

Sincerely yours,  
E. D. BEARDSLEE.

**CUT OUT THE MIDDLEMEN IN BUYING NURSERY STOCK. SAVE THE BIG MIDDLE PROFIT YOURSELF**

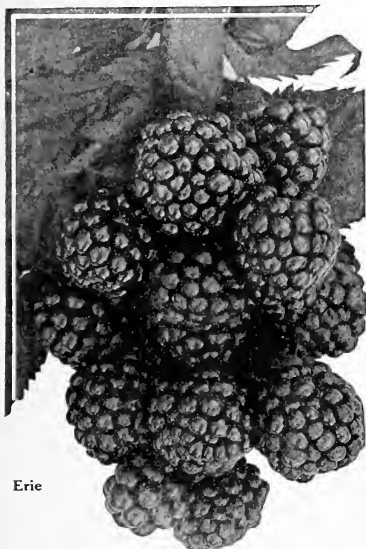
# Blackberries

Fruit growers as a rule regard the blackberry as the most profitable of the several varieties of berries. Blackberries thrive best on fertile loam, although clay and sandy soils also produce good results. The rows should be about six feet apart with each plant approximately two feet apart in the row. We have selected the following varieties as the best.

## Wholesale Prices of all Varieties of Blackberries

Strong well rooted plants	EACH	TEN	HUNDRED	THOUSAND
	.08	.50	\$2.00	\$17.50

**8% Discount on all Cash Orders amounting to \$4.00 and up received on or before March 20th.**  
**After that date 3% Discount on all Cash Orders of \$4.00 and up.**



Erie

**Erie**—Fruit very large, excellent quality. There is no other berry that rivals it in combining hardness, large size, earliness and productiveness.

Sciotsville, Ohio, April 11, 1913.

Kelly Bros., Dansville, N. Y.

Gentlemen: Your trees shipped April 3rd, reached me April 8th all O. K. Trees suited me to a "T." Will give you my orders in the future and do everything I can to induce others to deal with your firm.

Yours very truly,

DAVID PYLE.

**Snyder**—Abundant bearer; berries of medium size; fruit ripens early and is sweet and juicy. Canes very hardy even in extremely cold climates. You won't go wrong in planting this variety, as it will be found most satisfactory both as a home and market berry.

**Blower**—An upright, mammoth grower; very hardy and enormously productive; large, glossy, firm and luscious berry, extra good everywhere. Fruit may be picked continuously from July to October, ripening in great quantities in August and in abundance in September. Berries very large and of good quality.

**Rathbun**—A strong, erect grower with strong stem, branching freely; will root from tip of branches like a raspberry. Hardy, having endured twenty degrees below zero and produced a good crop. Forms a neat, compact bush, four to five feet high, producing its immense fruit abundantly. Fruit is sweet and luscious without hard core, of extra high flavor, jet black, small seeds, firm enough to ship and handle well. Very large size.

**Wilson's Early**—Very large size, oblong oval, black, quite firm, rich, sweet and good; ripens early and matures its fruit rapidly; retains its color well after picking.

**Eldorado**—The hardest and sweetest blackberry. Very vigorous and hardy. Berries are very large, jet black, borne in large clusters and ripen well together; are very sweet, melting, pleasing to the taste, have no hard core, and keep eight to ten days.

**Lawton**—The well-known market variety. Large, oval, black, juicy, sweet.

**Mersereau**—Remarkably strong grower, upright, producing stout, stocky canes. An enormous producer of extra-size berries, which are brilliant black and retain color; extra quality sweet, rich and melting, without core. Ripens very early.

**Taylor**—Berries of fine flavor, larger than Snyder. Canes of vigorous growth, iron clad hardness and wonderfully prolific. Ripens late.

### Best Trees Ever Planted

Cold Spring Dairy Farm, Kirkville, N. Y.,  
Nov. 5, 1913.

Kelly Bros. Dansville, N. Y.

My Dear Sirs:—The box of trees has arrived and I am more than pleased with them. Will say they are the nicest lot of trees that I have ever planted. I thank you most heartily for your careful selection of the trees.

Respectfully yours,

OLIVER G. GRIDLEY.

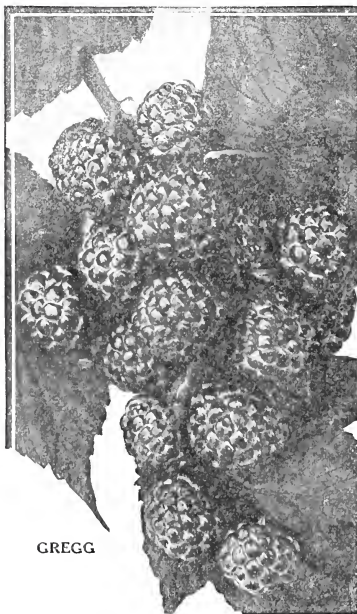
# Raspberries

A ready market can always be found for raspberries. When well cared for they are sure to return a good profit. A patch of raspberries should be renewed about once in five years, as by that time the quality of the berries deteriorates and the fruit becomes small. The plants should be well manured and cultivated at frequent intervals. We offer the following varieties of

## Black Raspberries

Wholesale Prices of Strong, Healthy Plants

TEN	TWENTY-FIVE	HUNDRED	THOUSAND
.35	.65	\$1.50	\$13.50



GREGG

**Diamond** (Black)—Has shown itself to be one of the most popular black Raspberries. It is sweeter than most varieties, more pulpy, and contains fewer seeds; at the same time it is firm and an A No. 1 shipper. It is a grand berry for drying, the dried berries being a jet black and containing all the richness, fine flavor and sweetness of the fresh fruit. The berries are large and the quality is good.

**Cumberland** (Black)—The largest of all Blackcaps. A healthy, vigorous grower throwing up stout, stocky well branched canes that produce immense crops of magnificent berries. Fruit very large, firm, quality good; keeps and ships as well as any of the blacks. It is a profitable market variety.

**Gregg** (Black)—Of great size, of fine quality; very productive and hardy. It takes the same position among Blackcaps as Cuthbert among the red sorts. No one can afford to be without it.

**Ohio** (Black)—A standard early berry. Very productive. Fills up quarts very fast, and is easy to pick. Fine quality; very hardy.

**Conrath** (Early Black)—In Conrath we have united vigor, hardiness, large size and productiveness; qualities that will give it a foremost rank.

Elsberry, Mo., Nov. 13, 1914.

Kelly Bros. Wholesale Nurseries,  
Dansville, N. Y.

Dear Sirs:—I received your trees and raspberry plants a few days ago. I was much pleased with the trees and plants. They had excellent roots and I see no reason why they can't live. You were very generous indeed with your complimentary trees. I never dreamed of your sending so many extras.

I expect to order some peach and apple trees, perhaps next year. If you have any special catalog of the kind, I should like to receive a copy.

Several of my neighbors have asked me about my trees and say they are going to give you an order too.

Respectfully,  
JNO. M. SMITH.

101 Ruhamah Ave., Syracuse, N. Y.,  
Nov. 12th, 1914.

Kelly Bros., Dansville, N. Y.  
Gentlemen:—Please find enclosed money order for \$10 for trees and bushes. They are all in good condition. Thanking you for same, I am,  
Yours in haste,  
WM. E. HOLSTOCK.

**Plum Farmer** (Black)—This very large and productive black raspberry has been thoroughly tested in western New York where it is a great favorite for market or home use. It is covered with a grayish bloom, like the bloom on a grape, which makes it very attractive in appearance. It ripens very early and quickly. The fruit is enormously large.

**Kansas** (Black)—One of the best of the early ripening Blackcaps; the berries are large and showy. Canes are of strong growth, very hardy and prolific, with tough, healthy, clean foliage.

NOT WHAT WE CLAIM, BUT WHAT WE ACTUALLY DO, COUNTS



# Direct from Grower to Planter



## Red Raspberries



CUTHBERT

### Wholesale Prices of Strong, Healthy Plants

TEN	TWENTY-FIVE	HUNDRED	THOUSAND
.35	.65	\$1.50	\$13.50

**Cuthbert** (Red)—Medium to large; crimson; hardy and prolific. The most reliable sort. Fine for market or garden. Succeeds well over a large range of territory both north and south. Sufficiently firm so that the fruit ships well and of such good quality as to make it one of the best for home use.

**Loudon** (Red)—The Loudon New Red Raspberry ripens with the earliest and hangs late. It is as hardy as the Turner, and is of superior quality. Very productive and a good shipper.

**King** (Red)—Pronounced the best early red raspberry by many of the leading horticulturist. Plant a strong grower, very hardy and productive. Berry is firm, a good shipper; large size; beautiful bright scarlet color; ripens with the earliest.

**Marlboro** (Red)—A very profitable, early market variety with large, light crimson fruits, of good size and flavor. The crop covers a period of four or five weeks in ripening.

**St. Regis** (Everbearing)—A new acquisition to the Red Raspberry family. Fruit commences to ripen with the earliest and continues on young canes until October. Color bright crimson. Large size. Flesh firm and meaty. Good shipper. Very prolific. Every grower should test it. Price 50c for 10; \$1.00 for 25; \$2.50 per 100; \$20.00 per 1000.

**Ruby** (Red)—Seedling of the Marlboro, originated at Marlboro, N. Y., has fruited for seven years. Ripens with the earliest, continues a long season. Fruit large, bright red, exceedingly firm, excellent quality. Strong grower, large hardy canes.

## Purple and Yellow Raspberries

### Wholesale Prices of Strong, Healthy Plants

TEN	TWENTY-FIVE	HUNDRED	THOUSAND
.35	.65	\$1.50	\$13.50

**Columbian Purple**—A strong grower, unexcelled for productiveness and desirable for canning. Fruit very large, purplish color, rather soft; rich, sprightly flavor.

**Golden Queen** (Yellow)—Very large, hardy, vigorous and productive. No garden should be without it. It is a seedling of the Cuthbert. Canes hardy, of strongest growth. Should be in every home garden.

Kelly Bros. Nursery, Dansville, N. Y.

Hampton, Mass., Nov. 29, 1914.

Dear Sirs:—Your express box of stock as ordered duly received, and contents inspected. They are O. K. Thank you for the extras.

Yours very truly,

E. NORTON DAVIS.

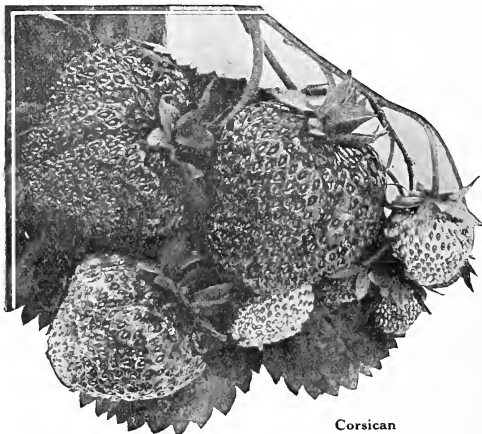
# Strawberries

Being practically the first fruit of its kind on the market, strawberries are ready sellers and can be grown at a good profit. They will thrive in any good garden soil. Plants should be set one foot apart in the row, with the rows two feet apart. Beds should be renewed every third year, as it has been found that more than two crops of a planting are not profitable.

## Wholesale Prices on All Varieties of Strawberries

Except Fall Bearing	TWENTY-FIVE	HUNDRED
	.30	\$1.00

NOTE—Strawberry plants are always shipped by express separate from balance of order. About May 1st.



Corsican

**Corsican**—It is a great strawberry; it is the biggest berry; it is the brightest and best in color; it is a great yielder and producer; and the foliage is exceedingly vigorous and leathery resisting fungus, drought, weed and even neglect of cultivation.

**Brandywine**—A good market berry; medium to large; dark scarlet, firm and somewhat acid; a good bearer and does well in clay soil.

**Senator Dunlap**—A sturdy plant and heavy cropper of best quality berries, with clean, healthy foliage which has no tendency to rust. The berries are very large, roundish conical, regular with slight neck. In color, they are glossy crimson, with the meat firm and solid, deep crimson throughout and good in quality.

**Wilson**—The best berry for canning. This is an old well thought of variety that has always given satisfaction. One of the very best berries for flavor and quality. We recommend this variety to you.

**Jessie**—Especially valuable for garden. Large, firm and solid; excellent quality; productive.

**Marshall**—Very large, dark crimson; firm and of excellent quality; plant vigorous and productive; one of the best varieties for home use or market.

**Sample**—Late, of large size and yields enormous quantities of high quality bright red berries. Standard shipping variety.

**Haverland**—Exceedingly productive; fruit large and very fine; one of the most popular and well tested varieties; withstands drouth better than most kinds; color light, season early. Considered throughout the United States as a money-maker in almost any climate.

**Michel's Early**—One of the earliest varieties grown. The plant is a very robust grower, strong and healthy; one of the best of the early fertilizers, as it blossoms early and late. Fruit is of medium size and good quality.

## Fall Bearing Strawberries

	TWENTY-FIVE	HUNDRED
Prices	\$1.50	\$5.00

**Productive**—This is the strongest growing plant of all the Fall-bearing Strawberries. It is a seedling of the Autumn and Pan-American. The plants are very large and heavy-rooted, producing a phenomenal crop of medium to large fruits. The young plants are produced in good quantities. This variety has very prominent seeds, is very firm and a good shipper.

**Superb**—The plants of Superb are of good, average size, are strong growers and stand the winters best of all kinds tested. The fruit is very large, roundish, dark-colored, glossy, attractive and smooth. It has the finest flavor.

### OUR NURSERIES ABSOLUTELY FREE FROM SAN JOSE SCALE

It is an established fact that San Jose Scale has never been found in our nurseries. We have here three resident New York State Inspectors who look after our stock from seedling to freight car, and not once, has this worst of insect pests made its appearance in our nurseries. We welcome the visits of the inspectors, because we know this helps to keep our stock free from disease. Ours is the only nursery center of any importance in the United States that is absolutely free from San Jose Scale.

IN PLACING ORDERS WITH US YOU PLACE CONFIDENCE WHICH WE TRY TO MERIT



# Direct from Grower to Planter.

## Currants

No other bush fruit ripens as early as the currant. It is hardy and will produce heavily. Careful cultivation will practically double production. It is best to plant the bushes in rows about 4 feet apart. The ground should be kept free of weeds and the bushes carefully pruned each spring. The following varieties have been found to be the best for commercial purposes:

### Wholesale Prices of all Varieties of Currants

(Except Where Otherwise Noted)

	EACH	TEN	HUNDRED	THOUSAND
2 Year Strong Bushes	.10	.75	\$5.50	\$50.00

8% Discount on all Cash Orders amounting to \$4.00 and up received on or before March 20th. After that date 3% Discount on all Cash Orders of \$4.00 and up.



Wilder

**Fay's Prolific (Red)**—A cross between Cherry and Victoria. Of large size, fine flavor, and claimed to be twice as prolific as the Cherry. Highly commended by those who have seen or had experience with it.

**Cherry (Red)**—Fruit of very large size and very tart; plant vigorous, but not as productive as some of the other varieties.

**Perfection**—Large; red; fine. It is one of the most productive currants known, and quality superior to anything on the market. The flavor is rich, mild, sub-acid, with plenty of pulp and few seeds. 2 yr., 15c each, \$1.25 per 10, \$11.00 per 100.

**White Grape**—Very large; yellowish white, sweet or very mild, acid; excellent quality and valuable for the table. The finest of the white sorts.

**Black Champion**—Bush vigorous, and productive; fruit averages above medium; pulp nearly sweet, mild-flavored. A desirable variety for general culture.

**Wilder**—A remarkable new variety both for table and market; strong grower, enormously productive; bunch and berry very large; bright red and of highest sub-acid quality, making it unequalled for the table, cooking or market.

**Red Cross**—A strong growing variety. Cluster long; berry medium to large, bright red; quality good to best. It is exceedingly productive, and the currants are of large size. Further than this, the fruit is far sweeter than ordinary currants.

So. Hatfield, Pa., May 3, 1913

Kelly Bros., Dansville, N. Y.

Gentlemen:—I received my trees yesterday and they were in fine condition. I want to say that I am more than pleased with them. I think they are the finest lot of trees I ever received from any nursery. Yours very truly,

W. CHESTER ANGLE.

Marion, In., April 18, 1913

Kelly Bros., Dansville, N. Y.

Dear Sirs:—Your order of peach trees received. They were in fine shape. Thanks for extras. I sent an order to another firm some time before. I did yours and have not received the goods—it pays to find out who is prompt.

L. W. ALT.

Natick, Mass., Apr. 26, 1913

Kelly Bros., Dansville, N. Y.

Gentlemen:—The trees arrived today and they are good ones and have splendid roots. You will hear from me again when I want more trees.

Yours truly,  
J. W. WHEELER.

WE ARE AS EAGER TO GIVE YOU GOOD VALUE AS YOU ARE TO RECEIVE IT.

# Gooseberries

The gooseberry is gaining in popularity every year. It has been found to be very profitable in the home market and grows readily in any good soil. The plants bear abundantly and require little care. We have the following standard varieties:

**Downing**—Largest and best of all native American varieties. This valuable variety originated with Charles Downing, greatest of all pomologists. The value of Downing lies in its large size, fine quality, beautiful appearance, vigorous growth, and freedom from mildew. Enormously productive.

**Industry**—An English variety, producing exceedingly large fruit of dark red color and delicious quality. Highly recommended both in this country and in Europe.

**Houghton**—A medium sized American variety, which bears abundant and regular crops, and never mildews; fruit smooth, red, tender and very good; valuable.

**Red Jacket**—An American Seedling of large size; smooth, prolific and hardy, of best quality. A wonderful cropper.



Downing Gooseberry

## Wholesale Prices for Gooseberries 2 Year Strong Bushes

EACH	TEN	HUNDRED
.20	\$1.50	\$13.00

# Garden Roots

## RHUBARB (Pie Plant)

Rhubarb is the earliest available material in the Spring for fresh pies and sauce. Every family should have a few Rhubarb roots for there is nothing in the fruit or vegetable line that is so beneficial to the human system in the Spring months. Set plants 12 to 18 inches apart in rows.

**Linnaeus**—Large, early, tender and fine. **Early Scarlet**—Rather small, early and good.

Prices, strong 2 year plants, 10c each; 60c per 10; \$5.00 per 100

## ASPARAGUS

**Conover's Colossal**—A standard variety of large size, tender and excellent quality. This variety is known everywhere. You will get good satisfaction out of a bed of asparagus.

**Palmetto**—A very early variety, even, regular size and of excellent quality. It has been tested both north and south and has proven entirely satisfactory.

Prices, strong, healthy plants, 20c per 10; \$1.25 per 100; \$7.50 per 1000

## HORSE RADISH

Will stand a great deal of hardship and exist in soil year after year. Plant in deep, rich, cool soil. The yield will vary according to the soil and treatment.

Price, strong sets, 25 cents per 10, \$1.25 per 100, \$7.00 per 1000

OUR BUSINESS PLATFORM CONTAINS BUT ONE PLANK—A SQUARE DEAL FOR EVERYONE



Rhubarb Roots



Asparagus Roots

# Ornamental Department



WELL-KEPT grounds, which necessarily include fine shade trees, ornamental, flowering shrubs, vines and roses, are naturally a great source of pleasure to a property owner. They also greatly enhance the value of property. A relatively small amount invested in ornamentals will bring a big return should you wish to dispose of your property. Nor does it require a big outlay of money to make your property beautiful by such ornamentation. The trees and shrubs, etc., of course should not be planted haphazardly. If you do not know just how to go about the matter you can easily obtain competent advice. We take the same care with our ornamental stock that we do with our fruit stock. That means that it is the best.

## Shade Trees



Carolina Poplar

**American Linden**—A stately tree, growing 60 to 80 feet tall, with large, shining cordate leaves. Valuable for its beautiful white wood. Its flowers appear in July. Price, 6 to 8 feet, 60c each. 10 for \$5.00.

**Magnolia Soulangeana**—One of the hardiest and finest Magnolia. Its blossoms are from 3 to 5 inches across, cup-shaped, white and rosy violet, opening before its leaves, which are massive and glossy. They are strong bushy trees, 3 feet or more in height. Price, \$1.50 each with roots balled and burlapped.

Kelly Bros., Dansville, N. Y.

Gentlemen:—The Poplar Trees you sent pleased me very much and I think they have sold more as a neighbor wants some. They were fine specimens. I like good-sized, well-formed and straight stock, and the trees you sent just suited me. Yours very truly, A. G. ASHFOLK.

A GUARANTEE IS A GUARANTEE WITH US. TRY US AND SEE FOR YOURSELF

**Poplar Carolina**—A very rapid growing soft-wooded tree, resembling the Cottonwood somewhat, but has a larger leaf and much thicker and more spreading top, denser and heavier foliage. It is being extensively planted in the cities and towns throughout the United States on account of its rapid growth, its symmetry and ability to endure gas and smoke. Perfectly hardy. It is free from cotton which is so disagreeable in the Cottonwood. Our Carolina Poplars are extra fine, all 2 years old. Price, 8 to 10 ft., 20c each; \$1.50 per 10; \$12.00 per 100. 10 to 12 ft., 25c each; \$2.00 per 10; \$15.00 per 100.

**Purple-Leaved Beech**—Beautiful purple-leaved foliage tree. Deep purple in spring changing to crimson and again to dull green in fall. One of the most effective lawn trees we have. Price, 3 to 4 feet, 75c each, 10 for \$6.00.

**American Elm**—The most admired of all American trees. It is very attractive in any suitable location, is entirely hardy and easily transplanted. There are more Elm trees planted along our streets than any other one variety. This is on account of its dense green foliage, which spreads out from overhead, covering a suitable space of ground in proportion to the size of the tree, which makes it the finest shade tree in the world. Price, 8 to 10 ft., 60c each. 10 for \$5.00.

**Poplar Lombardy**—A tall spire-like tree, used for screens and formal planting. It is fast-growing, distinctly ornamental and beautiful. Price, 8 to 10 feet, 40c each. \$3.00 per 10.

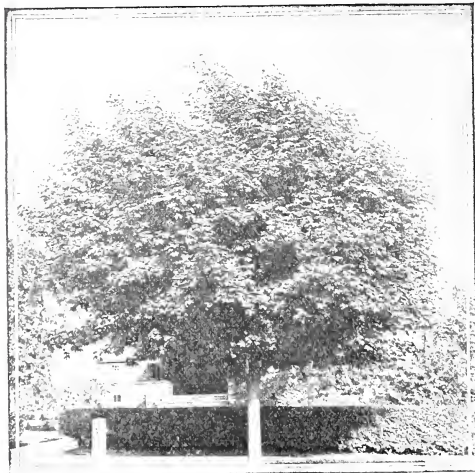
**Mountain Ash**—A handsome small tree with pinnate foliage and loaded in late summer with big clusters of bright red berries. Price, 6 to 8 feet, 50c each. \$4.00 for 10.

**Tulip Tree** (Whitewood)—One of the grandest of our native trees, of tall, pyramidal habit, with broad, glossy, fiddle-shaped leaves and beautiful, tulip-like flowers; allied to the Magnolia. Price, 8 to 10 ft., 75c each. 10 for \$6.00.

**Tea's Weeping Mulberry**—The most graceful and hardy weeping tree in existence. Forms a perfect shaped head, with long, slender, willowy branches, drooping to the ground. Price, 6 to 8 feet, \$1.00 each.

Route 9, Fulton, N. Y., Dec 8, 1914.

Shade Trees (Continued)



Norway Maple

**Norway Maple**—The most beautiful of all shade trees. Perfect in form with deep green foliage. It is a vigorous grower, free from disease, and holds its color until late in the fall. Growth is fast. Branches and foliage are thick and compact. For lining the sides of lanes and roads, to protect the house from sun and weather, for shade, for beauty and satisfaction, it cannot be excelled. We have an extra fine stock of good straight trees to offer. Price, 8 to 10 feet, 70c each; \$6.00 per 10. 10 to 12 feet, 85c each; \$7.50 per 10.

**Silver-Leaved Maple**—Foliage bright green above, silvery underneath. Growth is faster than that of any other maple. Form of growth spreading. Grows very large. Price, 8 to 10 feet, 60c each; 10 for \$5.00.

**Bechtel's Flowering Crab**—Makes a medium sized tree; perfectly hardy, succeeds well in all soils not extremely wet. When in bloom appears to be covered with delicate pink, perfectly double small roses of delicious fragrance. The only sweet-scented Double Crab. Price, 3 to 4 feet, 75c each.

**Catalpa Bungei** (Umbrella Catalpa)—Grafted on stems six to eight feet high, it makes an umbrella-shaped top without pruning. Perfectly hardy, and flourishes in almost all soils and climates. Leaves large, glossy, heart-shaped, deep green, lying like shingles on a roof; always making a symmetrical head. One of the most unique trees; desirable for lawn, park and cemetery planting. Price, 6 to 8 feet, 90c each; \$8.00 for 10. 8 to 10 feet, \$1.00 each; \$9.00 for 10.

**Catalpa Speciosa**—One of the most rapid growers. Valuable for timber, fence posts, railroad ties, etc., possessing wonderful durability. Large, heart-shaped, downy leaves, and compound panicles of white flowers, tinged with violet and dotted with purple and yellow. Very ornamental and useful. Price, 6 to 8 feet, 40c each; \$3.00 per 10. 8 to 10 feet, 50c each; \$4.00 per 10.

**Horse Chestnut, White Flowering**—The well-known European species; very handsome; has magnificent spikes of white flowers. As a lawn tree or for the street it has no superior. Price, 5 to 6 feet, 50c each; \$4.00 for 10.

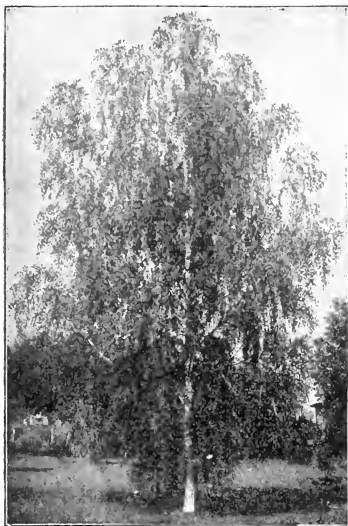


Catalpa Bungei (Umbrella Catalpa)

YOU WILL DO YOUR FRIENDS A SERVICE BY TELLING THEM ABOUT OUR VALUES



## Shade Trees (Continued)



Cut-Leaved Weeping Birch

**Cut-Leaved Weeping Birch**—One of the most elegant of all weeping or pendulous trees. Its tall, slender, yet vigorous growth, graceful drooping habit, silvery white bark and delicately cut foliage presents a combination of attractive characteristics rarely met with in a single tree. Price, 5 to 6 feet, 60c each; 10 for \$5.00. 6 to 8 feet, 80c each; 10 for \$7.00.

**Oriental Plane**—Leaves heart-shaped at base, deeply cut. Is among our tallest trees, growing rapidly into massive proportions. Hardy and free from disease. It does well in cities and near the seashore and is not affected by insects. Price, 8 to 10 feet, 75c each, \$6.00 for 10.

**Camperdown Weeping Elm** (Grafted) —Its vigorous irregular branches, which have a uniform weeping habit, overlap so regularly that a compact, roof-like head is formed. Leaves are large, glossy, dark green. A strong, vigorous grower. The finest weeping elm and one of the best weeping trees. Price, 6 to 7 feet, \$1.50 each.

**Ash-Leaved Maple** (Box Elder) — A fine, rapid-growing variety, with handsome, light green foliage and spreading head; very hardy; desirable for street planting and succeeds in many sections where other varieties do not thrive. Price, 6 to 8 feet, 50c each; 10 for \$4.00.

**Wier's Cut-leaved Maple** (*Acer saccharinum Wieri*)—A beautiful form, with deeply cleft and divided leaves; branches pendulous, often sweeping the ground. Price, 5 to 6 feet, 60c each; \$5.00 for 10.

## Hardy Climbing Vines

**Chinese Purple Wistaria**—A very beautiful popular species, with racemes of pale lilac flowers borne in great profusion in May. An exceedingly graceful climber for training on porches or arbors. The stems grow quite large, climb high and twine tightly. Their growth is very rapid. Price, 35c each, \$3.00 for 10.

**Chinese White Wistaria**—In all respects similar to the species, except in color of the flowers, which are white and borne in great profusion, making a splendid show. Makes a very pretty contrast to the species with its blue flowers. Price, 35c each, \$3.00 for 10.

**Chinese Matrimony Vine**—Vigorous and hardy climber, flowers bright purple, succeeded by scarlet berries nearly one inch long. Excellent for trellises. 25c each, \$2.00 per 10.

**Annelopsis Veitchii** (Boston Ivy)—For covering buildings of brick and stone; clings tightly to the smoothest surface. Bright green leaves, changing to brilliant colorings in fall. 35c each, \$3.00 per 10.

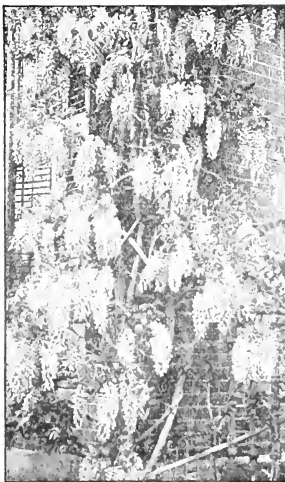
**Clematis Henryii**—Single; the finest white Clematis; very large, fine flowers; grows rapidly; blooms freely during summer and autumn. 35c each, \$3.00 per 10.

**Clematis Jackmanni**—Single. Very large; deep purple; forms a perfect mass of the richest bloom. 35c each, \$3.00 per 10.

**Clematis Paniculata**—Sweet-scented Japan Clematis!—The flowers are of medium size, fragrant, pure white, borne in immense sheets in September, when very few other vines are in bloom. Price, 25c each, \$2.00 for 10.

**Dutchman's Pipe** (Birtworth)—Large, heart-shaped leaves and quaint, pipe-shaped green flowers. Price, 50c each.

**Hall's Japan Honeysuckle**—Flowers white, bloom from July until winter. Fine climber. 25c each.



Chinese Purple Wistaria

# Evergreen Trees and Shrubs



1. White Fir      2. Norway Spruce      3. American Arbor Vitae      4. Balsam Fir  
5. Colorado Blue Spruce      6. Nordman's Fir

**American Arbor Vitae**—Much used for hedges, screens, singly on lawns, and in tubs for porches, etc. It is a handsome little tree, and if allowed to grow naturally will be quite tall and pyramid-shaped. Can be trimmed and kept in any form and height. In the summer the foliage is bright green above, yellowish beneath, and when winter comes this changes to the richest tones of brown and bronze. Price, 18 to 24 inches, 25c each; \$2.00 for 10. 2 to 3 feet, 35c each; \$3.00 for 10.

**Norway Spruce**—A lofty, elegant tree of perfect pyramidal habit, remarkably elegant and rich. As it gets age has fine, graceful, pendulous branches. It is exceedingly picturesque and beautiful. Very popular, and should be largely planted. One of the best evergreens for hedges. Price, 2 to 3 ft., 35c each; \$3.00 for 10. 3 to 4 ft., 45c each; \$4.00 for 10.

**Balsam Fir** (American Silver)—A very regular symmetrical tree, assuming the conical form. Leaves dark green above, silvery beneath. Price, 2 to 3 ft., 60c each; \$5.00 for 10.

**Irish Juniper**—Junipers are handsome evergreens. Always neat and clean. This variety grows exceptionally slim and column-like. The branches grow almost straight, up, and a 7 or 8 foot tree will not be more than a foot and a half thick. Price, 2 to 3 ft., 60c each. \$5.00 per 10.

**Nordman's Fir**—A symmetrical and imposing tree. The warm green of the young shoots contrasts finely with the rich, deep color of the old foliage—the best of the Silver Firs. Price, 2 to 3 feet, \$1.25 each. \$10.00 per 10.

**Colorado Blue Spruce**—Foliage blue and sage—that distinctive color which is so rare in the East. Tree usually has a symmetrically shaped narrow-pointed or rounding top; is hardy and quick growing. Price, 3 to 4 ft., \$2.00 each. \$18.00 per 10.

**Colorado Green Spruce**—It is extremely hardy and endures well the sun and drying winds. Very compact and symmetrical. Color a beautiful green which it retains throughout the entire year. Price, 3 to 4 ft., \$1.50 each.

**Koster's Select Blue Spruce** (Grafted)—The finest of all blue evergreens, selection from the Colorado Blue, of extra fine color and compact free growth. Very dense on branch ends like all spruces and has regular slim branches, all growing to the same length in the same form. Price, 2 to 3 ft., \$3.00 each.

**White Fir** (Concolor)—A picturesque Colorado species. Long leathery leaves, with glaucous tinge when young, becoming pale green with age. Branches arranged in horizontal whorls. A grand tree making splendid specimens. Price, 2 to 3 ft., \$1.25 each; \$10.00 for 10.

Kelly Bros., Dansville, N. Y.

Gentlemen:—The trees arrived in excellent condition. We are much pleased with them.

Very truly yours,

E. R. CHILDS.

Great Neck, N. Y., Nov. 15, 1914.

YOUR FIRST ORDER WILL CONVINCING YOU OF OUR UNPARALLELED VALUES



# Direct from Grower to Planter



## Evergreen Trees and Shrubs—(Continued)

**Boxwood**—This old-fashioned variety is a native of England where it has been grown for centuries. Its neat, dense, waxy foliage has secured many admirers. They are well adapted to small places and can be used with splendid effect as shrubs for the lawn. For decorative purposes both summer and winter. Price, 18 to 24 inches, \$1.25 each.

**Austrian Pine**—A rapid growing species from the mountains of the Austrian Empire. It has very stout branches, with long, rigid bluish green foliage, and presents a massive appearance in contrast with other conifers. It is very hardy, not specially particular in regard to soils, and valuable for windbreaks, etc. Price, 2 to 3 feet, 60c each, \$5.00 for 10.

**Scotch Pine**—A rapid-growing, very hardy evergreen, especially adapted for windbreaks and grouping. It is a native of central and northern Europe, forming large trees with pleasing glaucous green foliage. Although quite ornamental when young, this species is more picturesque than beautiful with age. Price, 2 to 3 feet, 50c each, \$4.00 for 10.

**Note**—To the right we give a cut showing the way the roots of our evergreens are balled with earth and tied with burlap, ready for shipment. The cost for this will be 10c per tree extra. Customers will be amply repaid for the extra charge as in shipping this way the root fibers are better protected and will reach destination in good growing condition.



Evergreens Ready for Shipment

Camillus, N. Y., Nov. 13, 1914.

Kelly Bros., Dansville, N. Y.

Gentlemen:—I received my order of trees and shrubs and I wish to say that I have bought a great many shrubs and fruit trees, also ornamental trees to set out on my farm, but the trees that I received from you are the nicest and the best rooted that I have ever bought, also the shrubs—they can't be beat. You will certainly have my orders in the future, also a good word from me to all my friends who are going to set trees or shrubs. I also want to thank you for the extras.

Yours sincerely,

R. F. D. 1

GEO. M. PIERCE.

## Hedges



Althea Hedge

**Double Althea**—(Rose of Sharon)—Unsurpassed by any hardy shrub for freedom of bloom. From midsummer until frost, when few other shrubs are in bloom, the Althea blossoms freely. Grows 4 to 6 feet tall. They have rich foliage and bear large flowers. Very hardy. Of the easiest culture, and are beautiful for hedges. We have the following varieties to offer. Price, 2 to 3 feet, 25c each. 19 for \$2.00.

**Jeanne d' Arc**—Pure double white; very full, and superior to any double white known.

**Duchesse de Brabant**—Dark Rose, large double flowers.

**Boule de Feu**—Very double, deep red.

**Purpurea Flore Pleno**—Double purple.

**Ardens**—Double violet.

**Lucy**—Purplish red variegated leaved.



## Hedges—(Continued)

**California Privet**—A vigorous-growing variety, of fine habit, thick, glossy, nearly evergreen leaves. Of all ornamental hedge-plants this is the most highly prized. If cut to the ground one or two years after planting, it makes a very thick hedge right from the bottom, sending up many strong shoots. The leaves are a rich green, and will remain on the plants up to Christmas, and if they are a little sheltered they will keep green almost all winter.

Strong Plants 18 to 24 in.

EACH	TEN	HUNDRED
.05	.45	\$4.00

Strong Plants 2 to 3 feet

EACH	TEN	HUNDRED
.08	.70	\$6.00

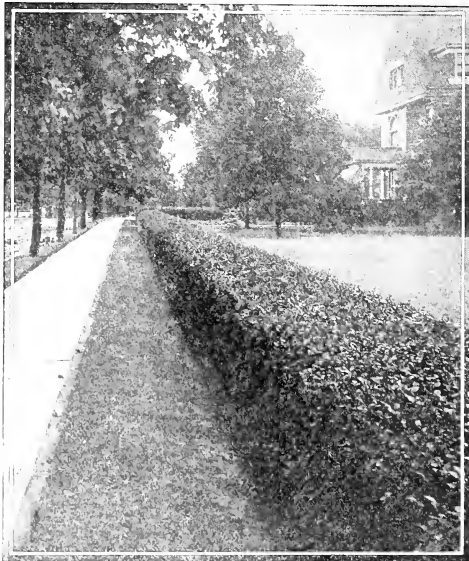
**Japan Quince**—Excellent as a single lawn plant or for ornamental hedge. Grows very compactly, will submit to any amount of pruning while the brilliant and showy scarlet flowers make it exceedingly attractive.

Strong Plants 18 to 24 in.

EACH	TEN	HUNDRED
.30	\$2.50	\$20.00

**Honey Locust**—Very hardy, and the cheapest and best for defensive hedges. 12 to 18 in., \$4.00 per 100.

**Barberry Thunbergii**—A shrub of marked excellence on account of its bright green foliage, which changes to brilliant colors in the fall, and its bright scarlet berries, which are very conspicuous throughout the winter. Their habit is dwarf and regular spreading. Grows well in the shade and extensively used in landscape work. Is very hardy, has never been known to winter-kill. It bears the shears well and makes a dense hedge. Strong Plants 12 to 18 inches, 15c each; \$1.35 per 10, \$12.00 per 100. Strong Plants 18 to 24 inches, 20c each; \$1.75 per ten, \$15.00 per 100.



California Privet Hedge



Hedge of Barberry Thunbergii





Direct from Grower to Planter



# Flowering Shrubs

Prices on all Flowering Shrubs

(Except as Noted)

Largest Size	2 Year, Strong Bushes	EACH	TEN
		.30	\$2.50

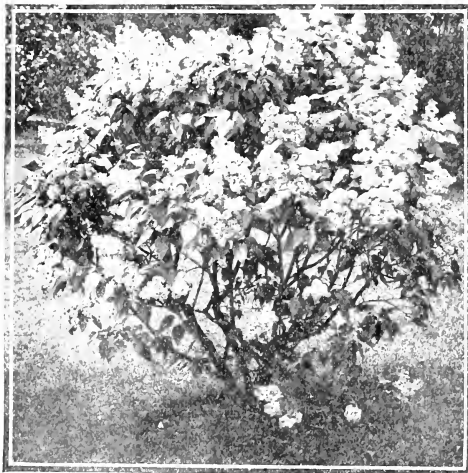
**Lilacs**—These beautiful shrubs should be planted at every home. The most desirable varieties we give a description of below.

**Common White Lilac**—(*Syringa Vulgaris Alba*) Stocky strong grower and exceedingly hardy. The bloom is in large white clusters and very fragrant. Thrives well in all localities.

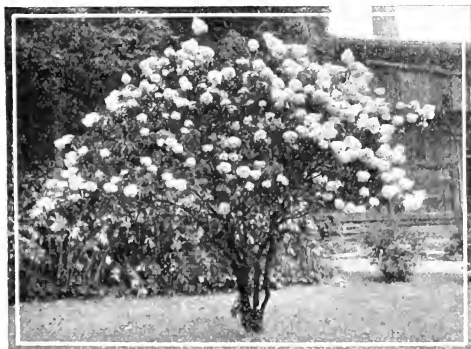
**Common Purple Lilac**—(*Syringa Vulgaris*). Similar to white except that the twigs are a little more slender and the bloom is a pinkish-purple color; a most profuse bloomer.

**Snowball** (*Viburnum*)—A well known favorite shrub, with globular clusters of white flowers, blooming the latter part of May. This good old early and sure-flowering shrub is planted perhaps more extensively than any other. It is found in nearly every collection in the gardens and lawn. We have a fine lot of strong plants.

**White Fringe**—A popular and much admired shrub of moderate growth and rounded form with large dark green glossy leaves, and drooping panicles of beautiful white fringe-like flowers.



Lilac Bush



Hydrangea P. G.

thrive in various soils, and when fully exposed to the sun as well as in partial shade. The profusion of bloom of this new Hydrangea is very unusual.

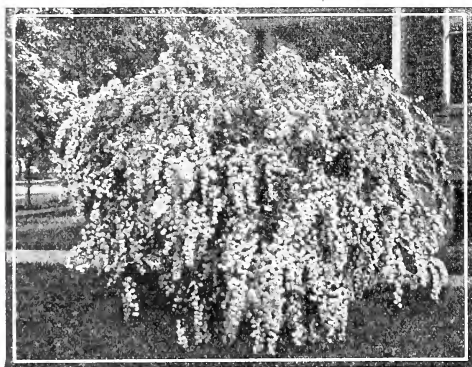
TO US ONE PLEASED CUSTOMER IS WORTH A WHOLE SHIPLOAD OF DISSATISFIED ONES

**Hydrangea Paniculata Grandiflora**—A grand and showy shrub which gives a splendid effect in a border or bed, singly or massed. The colors of the flowers change as the season advances. In spring they are the pink and white of youth, while by the time autumn comes they have reached the bronze of old age. Flowers in large clusters. Commence to flower in July and remain until November.

**Hydrangea P. G. Tree Form**—Same as bush, but grown in tree form with single stem, very desirable. 50c each, \$1.00 per 10.

**Hydrangea Snowball Everblooming**—This new Hydrangea is the most beautiful hardy flowering shrub introduced in recent years. The plant is very graceful with large trusses of beautifully formed flowers of dazzling whiteness, rendering this a plant of peerless beauty. It seems to

Flowering Shrubs (Continued)



*Spiraea Van Houttei* in Full Bloom

**Golden Glow or Cone Flower**—Among the most valuable hardy plants, growing from 1½ to 7 feet in height, producing showy golden yellow flowers. Very free flowering. Useful for cut flowers.

**Golden-Leaved Syringa (Aurea)**—A very pretty plant of medium size, with golden yellow foliage. It retains its color the entire season and is valuable for creating pleasing and striking contrasts with both green and purple-leaved shrubs.

**Syringa (Lemoinei Erectus)**—A charming variety of upright growth. Flowers small, yellowish white, fragrant, more clustered than the older sorts, completely covering the bush.

**Forsythia (F. viridissima)**—A fine hardy shrub. Leaves and bark deep green. Flowers deep yellow, very early in spring.

**Deutzia, Pride of Rochester**—A new variety. Blooms in May. Double, white tinted with rose on the edge. It excels in size of flowers, profuse bloom and vigorous growth.

**Deutzia Double-flowering (D. Crenata flore pleno)**—Flowers double, white, tinged with rose. One of the most desirable flowering shrubs in cultivation.

**Deutzia Gracilis (Slender Branched Deutzia)**—A dwarf variety well adapted to planting in cemetery lots and small lawns. It blossoms in June and the flowers are white. It flowers often in winter when the temperature is low. First to flower.



*Deutzia, Pride of Rochester*

**Spiraea Van Houttei**—Finest of the Spiraeas giving a most graceful appearance even when out of bloom. The flowers are pure white and borne in dense clusters along the whole length of the branches, often weighing them to the ground. One of the finest ornamental shrubs that we offer. Excellent as a single lawn plant, or for grouping with other shrubs; also a fine hedge plant.

**Spiraea Callosa Rosea**—Has large panicles of deep rosy blossoms; grows freely; blooms nearly all summer.

**Spiraea Prunifolia**—A very beautiful variety, flowers white and double. A very profuse bloomer in May. Foliage turns a very beautiful brown color in Autumn. Hardy and desirable.

**Spiraea Anthony Waterer (Dwarf Crimson Spiraea)**—A most beautiful variety of Bumalda. In habit of growth it is the same as its parent. The flowers are

crimson in the bud and when first open, fading afterwards to a deep pink. It blooms about the close of June, and, if the flowers are cut off as fast as they commence to decay, there will be a continuance of them throughout the season, to some extent. It is useful for edging, planting in masses, or as a single specimen where a low, bushy shrub is required.

**Weigelia Candida**—The very best of all the white-flowering Weigelas. Flowers pure white and produced in great profusion in June; continues to bloom during the entire summer.

**Weigelia D. Eva Rathke**—Fine variety. Rich, deep, scarlet blossoms which follow a week after most other varieties.

**Weigelia Rosea Nana Variegata (Dwarf)**—Leaves margined creamy white. Flowers pink.

KEEP THIS BOOK HANDY AND STUDY ITS VALUES ON EVERY NEED THAT ARISES



## Flowering Shrubs (Continued)



Everblooming Butterfly Bush

**New Everblooming Butterfly Bush** (*Buddleya Variabilis Magnifica*)—Several years ago this was imported from Europe. The name BUTTERFLY BUSH was applied to it because it seems to attract butterflies in large numbers, not alone the common little yellow species of butterfly, but also the large and gorgeously colored butterflies that swarm about it as though vying with it in brilliancy of color. This shrub from a young plant set out either in the Spring or Fall, will mature to full size the first Summer, producing a handsome bush, which the first year often attains a height of four feet. It produces long, graceful stems, which terminate in tapering panicles of beautiful lilac-covered flowers that are of miniature size and borne by the hundreds on a flower head which is frequently ten inches long. A single plant the first season will throw out as many as fifty flower spikes, which increase greatly in number during succeeding years. It generally commences to flower in June and continues each season until severe frosts nip it. The foliage and blooms are exceedingly fine. The shrub is rather semi-herbaceous, by which we mean in some latitudes it will die down to the ground and while perfectly hardy, we recommend covering the roots with manure, leaves or other suitable material as winter approaches, as this will produce a heavy growth the following season. This shrub is very desirable as an individual specimen in the lawn and garden, or placed promiscuously in the shrubbery border. **SPECIAL MERITS:** 1st, Very hardy; 2d, Blooms the first season; 3d, Flowers from early summer till frost; 4th, Rich, striking color; 5th, Splendid for cutting—very free flowering; 6th, Will thrive anywhere. We have to offer a fine lot of extra stocky field plants about two feet high.

## HERBACEOUS PEONIES

A noble flower, almost rivaling the Rose in brilliancy of color and perfection of bloom. The first point in its favor is hardiness. In the severest climate the plants require no other protection than that which they afford themselves. Freedom from all diseases and insects are important arguments in favor of their cultivation. Each succeeding year adds to their size and beauty. No other flower is so well adapted for large, showy bouquets. The Peony may be planted either singly on the lawn or in borders. It flowers early in June. Our collection has been made with great care and includes the best and most distinct varieties.

**Duchess de Nemours**—Large and full—the most nearly pure white.

**Queen Victoria**—The broad guard petals are a pretty blush-white; center white slightly edged pink.

**Festiva Maxima**—About the largest and undoubtedly the most popular Peony of them all. High built flowers borne on long stiff stems; the purest white, inner petals slightly tipped carmine.

**Rubra Triumphans**—Early. A satiny-finished, intensely rich crimson. Sweetly fragrant.

**Louis Van Houtte**—Large blooms, very double, bright crimson.

**Eugene Verdier**—An excellent cutting sort, with broad full flowers without noticeable guard petals. White, evenly suffused shell-pink.

**Souvenir de l'Exposition Universelle**—Clear rose color. Fragrant.

**Agida**—Violet rose, very fine flowers.

**Rose d'Amour** (Calot)—Soft flesh pink, very fresh color, extra large bloom.



Festiva Maxima Peony

# Roses



HERE is perhaps no plant or flower so generally cultivated today as the Rose. Its wonderful beauty and fragrance make it the most popular of flowers. For extensive grounds, small lawns, porch trellis or hedges Roses are used with charming effects. Many persons think it difficult to grow Roses, but such is not the case; good soil and a little care will insure fine hardy plants and beautiful blossoms. We have an exceptionally fine lot of Roses to offer this season, all No. 1, hardy field grown, two year old bushes; budded and on their own roots.

## Difference in Class of Roses

Although not generally understood, it is well known by Rose Specialists that Roses come under two classes, Hybrid Perpetual and Hybrid Tea. The Hybrid Tea or everbloomer, blooms the entire summer. The Hybrid Perpetual while it blooms profusely during its season, is not a continual bloomer. (In the description of varieties of Roses the abbreviation H. P. denotes Hybrid Perpetual and H. T. Hybrid Tea.)

## Planting and Care of Roses

Roses should be planted in good rich soil. Dig the hole deep enough so that it can be set in the ground about two inches below where it was budded. That will prevent suckers from growing up from the natural root. Do not trim the root off too severely, but cut the tops off about eight inches above the top of the ground. Pack good rich soil thoroughly around the roots being careful not to let any compost come in contact with the roots. Keep the top of the earth thoroughly worked around the bushes the entire season. Each following Spring they should be pruned ten or twelve inches. Always use a pruning shears as a knife has a tendency of loosening them from the earth.

Prices, all varieties 2 yr. Strong Bushes  
(Except Where Otherwise Noted)

EACH	TEN	HUNDRED
30c	\$2.50	\$23.00

**Frau Karl Druschki** (Sometimes called Snow Queen) (H. P.)—A wonderful rose—fine, large, free-flowering, hardy, white. Extraordinarily strong-growing, branching freely. Foliage large, of heavy texture, but the glory is in its flowers which are immense, and produced with great freedom during the whole season—hundreds of magnificent blooms, full, very deep, and double, and of splendid substance. Petals broad, long and saucer-shaped. Buds egg-shaped long and pointed. Pure, snow-white, without a tinge of yellow, pink or any other color. This great rose is listed by some as Hybrid Tea as it possesses some of that strain.

**General Jacqueminot** (H. P.)—The leading rose. Deep, brilliant shaded crimson, with large petals, globular with high center. A well-known favorite—one of the best and planted by all who plant roses.

**LaFrance** (H. T.)—This is probably the most popular rose in cultivation. Both buds and flowers are of lovely form and grand size exceedingly sweet. Color fine peach-blossom, elegantly clouded with rosy flesh. Begins to bloom while very small, and continues bearing until stopped by freezing weather.

**Gruss an Teplitz** (H. T.)—The color is brightest scarlet, shading to deep, rich, velvety crimson. It is very fragrant, the freest grower and most profuse bloomer. The mass of color produced is wonderful, and the foliage is extremely beautiful, all the younger growth being a bronzy plum-color. A queen among scarlet bedders.



Frau Karl Druschki

OUR STOCK IS CAREFULLY PACKED TO REACH YOU IN PERFECT CONDITION



# Direct from Grower to Planter



Roses (Continued)

**Killarney** (H. T.)—A vigorous growing Hybrid Tea of recent introduction, with so many good points in its favor that it has become a standard variety. Its long pointed buds, excellent substance and delicious odor recommend it to every lover of the rose. Color flesh pink, shaded with white and suffused pale pink.

**American Beauty** (H. P.)—Flowers very large of beautiful form and very double. Color a deep rich rose. Fragrance delightful, resembling La France or the old-fashioned Damask Rose; each shoot produces a bud.

**Alfred Colomb** (H. P.)—Brilliant crimson. Large, full and of fine globular form. Extremely fragrant. Foliage large and handsome. A good rose for general cultivation.

**Anna de Diesbach** (H. P.)—One of the old varieties introduced in 1858. Color is a beautiful shade of carmine-pink. Flowers are extra large, full and very sweet. A rose that every one should have.

**Margaret Dickson** (H. P.)—A magnificent rose, white, with pale flesh. Extra large flower, of splendid form and substance, with waxy shell-like petals fragrant and pleasing. A vigorous and free-flowering variety, with handsome, large, dark green foliage.

**Paul Neyron** (H. P.)—The largest Rose. This reliable and well known H. P. Rose, sometimes called the "Pcony Rose" still leads all others of its color and class. Color clear pink. Added to its other qualities, it is entirely hardy, also very fragrant. Has fine, erect habit, is a strong grower, beautiful, large, smooth, glossy foliage.



Killarney Rose

**Mrs. John Laing** (H. P.)—A splendid free-flowering, sweetly fragrant rose of beautiful form. Color, clear, bright, shining, silvery pink, exquisitely shaded. Immense flowers, full and double, borne in great profusion on long stiff canes. Uncoubtedly one of the best bedding varieties yet introduced.

**Magna Charta** (H. P.)—Extra large, full flowers, very double; of fine form and sweet. Color clear rosy red, beautifully flushed with violet crimson. A sure and profuse bloomer; one of the hardiest and best for general planting. Large light green foliage. Flowers very fragrant.

**Marshall P. Wilder** (H. P.)—One of the best dark red Hybrid Perpetuals. The flowers are large and perfect in form, on good lengths of stems, making them very desirable for cut flowers. Color, bright cherry red, changing to crimson. Very fragrant. It continues to bloom profusely long after the other Hybrid Perpetuals are out of flower.

**Princesse Camille de Rohan** (H. P.)—This is a magnificent rose, celebrated the world over for its large, handsome, fragrant flowers and the freedom with which they are produced. The color is a deep, rich velvety crimson passing to intense maroon.

**Coquette des Alps** (H. P.)—White, slightly shaded with carmine. Strong grower and a great favorite. This variety is very valuable. It continues to give a profusion of blossoms for weeks after general varieties have finished.

**Baron de Bonstetten** (H. P.)—Rich, velvety maroon, large and full—a splendid sort.

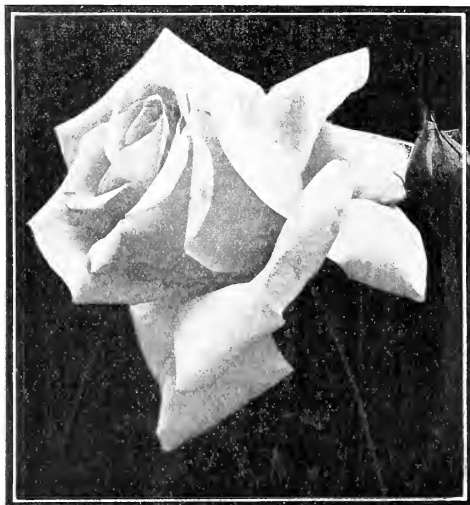


Paul Neyron

WE MAKE FIRM FRIENDS OF OUR CUSTOMERS BECAUSE WE DO AS WE

AGREE

## Roses (Continued)



Clio Rose

### DWARF POLYANTHA OR EVERBLOOMING BABY ROSES

This type has been in existence only a few years, but so much were they needed and so admirably do they meet the need, there is no class of Roses today being so widely planted nor so high in general estimation. They are such splendid, hardy, showy, compact bedders; they keep their color so well and continue in full bloom through such a remarkably long season, there is no end to the uses to which they may be put. They are excellent for hedges and for bordering paths where a continuous bloom is desired. We offer only the following best varieties.

**Crimson Baby Rambler**—This is the original dwarf baby rambler. One of the best hardy bedding roses in existence. The plants are vigorous and grow from 18 to 24 inches. The foliage is dark glossy green and is remarkably free from insects and fungus. The flowers are borne in clusters of 20, 30 or more—in every way resembling the blossoms of the climbing crimson rambler. It blooms outdoors from May to November and indoors the year around.

**Pink Baby Rambler**—The showiest and prettiest of the pink "Baby" roses. This charming and dainty little variety is of beautifully rounded habit and is a huge bouquet of brilliant bloom. The color is irresistible.

**White Baby Rambler**—As delicately tinted and as full of clusters as any Polyantha Rose. Its pure white flowers are perfectly double, and bloom with the unceasing freedom of the reds and pinks of this class.

**Clio** (H. P.)—Flowers very large, color flesh, shaded in center to rosy-pink. Its perfect hardiness, vigorous growth and freedom of bloom make it most valuable for planting in the Rose garden. It is of large size, exquisite color and delicious fragrance and its flowers at perfection are as large as peonies.

**Hugh Dickson** (H. P.)—Intense crimson, shaded scarlet; very large, full and magnificent form. Awarded the Gold Medal of the National Rose Society of England. Finest rose of its color.

**Madame Plantier** (H. P.)—Pure white, above medium size; full. Produced in great abundance early in the season. Foliage rather small, seven leaflets. One of the best white roses for hedges and for massing in groups. Specially recommended for cemetery planting.

**Madame Gabriel Luizet** (H. P.)—Rose pink, distinct, very large, cupped-shaped; somewhat fragrant. One of the choicest.

**Persian Yellow**—An old favorite, and still one of the best yellow Roses for the yard. Deep golden yellow, semi-double; blooms freely in June.

### HARDY TREE ROSES

The Tree Roses are grafted on hardy Rose stalks four to five feet high, and when in full bloom are objects of beauty, making handsome plants for the lawn or Rose border. In this shape we offer only the Hybrid Perpetual and hardy classes. We have them in white, the different shades of pink, red and crimson. Fine, strong trees that will bloom nicely the first year.

EACH TEN

Prices on all varieties of Tree Roses 60c \$5.00



Tree Rose

WE SAVE YOU MONEY—WE GIVE YOU HIGH GRADE TREES. LET US PROVE IT.

# Direct from Grower to Planter

Roses (Continued)

## ROSES ON THEIR OWN ROOTS

We have the following three varieties to offer of Hybrid Tea or Everblooming Roses on their own roots:

**Pink Maman Cochet** (H. T.)—This superb rose is well known as a queen among Roses—one of the best and most beautiful varieties ever grown, and quite hardy. The flowers are of enormous size, very full and of great depth and substance, borne on long strong stems, just right for making bouquets. Color, rich coral-pink, elegantly shaded with rosy crimson. Has broad, thick, shell-like petals and makes superb long-pointed buds. Immense bloomer, and flowers the whole season. Deliciously sweet and a hardy, vigorous grower.

**White Maman Cochet** (H. T.)—A splendid Rose. Has all the good qualities of Maman Cochet. Like some other white roses, this variety especially in the autumn, shows pink markings on the outside petals when the flower is in bud. When open the blooms are pure white and entrancingly lovely, large, fragrant, hardy and freely produced.

**William R. Smith** (H. T.)—A vigorous grower, excellent in quality, bountiful in bloom. It will thrive abundantly in almost any location. The flowers are large, full and double, most exquisite in form, and the petals are so firm they look like wax, softly curled. Color cream with flesh tint tips, buff yellow base, and the center and heart of long stems. Fragrance delightful. Blooms profusely.

Prices on Above 3 Varieties 2 Yr. Strong Bushes,

Each	Ten	HUNDRED
40c	\$3.00	\$28.00



Beautiful Maman Cochet

## HARDY EVERBLOOMING CLIMBING ROSES

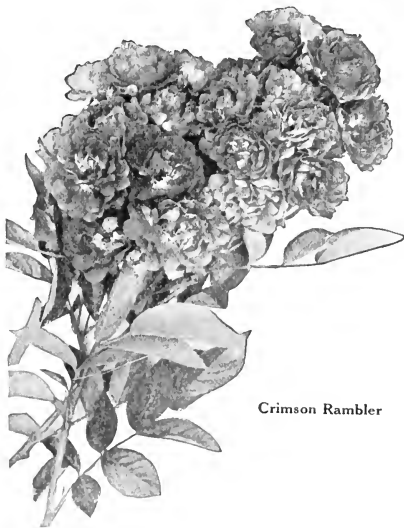
**Crimson Rambler**—The best known and most popular of all the climbing roses. A rapid grower making sometimes 8 to 10 feet in a season. Flowers are borne in clusters of 15 to 25 perfectly shaped blossoms of a rich glowing crimson. When in full bloom the vine appears to be a perfect mat of rich red flowers—perfectly hardy everywhere.

**Dorothy Perkins** (Pink)—This is one of the new rambler types. Has the same strong habit of growth as the Crimson. Flowers are borne in large clusters of 25 to 30 and are a beautiful shell pink. The individual flower is larger than the Crimson Rambler. A valuable acquisition to the Climbing Roses.

**Dorothy Perkins** (White)—A white flowered form of Dorothy Perkins, very free of bloom and especially valuable because of the rarity of good white Climbing Roses.

**Yellow Rambler** (Goldfinch) — Light canary shade; clusters smaller, individual flowers larger than Crimson.

**Climbing American Beauty** — The latest triumph in American Rose growing—the true Climbing American Beauty in all its promise and glory. The same as American Beauty practically. Large flowers, each produced on separate stems, vivid rosy-crimson in color, with delicious fragrance.



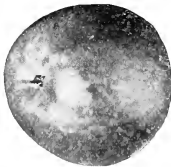
Crimson Rambler

WE AIM TO GIVE YOU IN EVERY PURCHASE THE BEST YOUR MONEY CAN BUY

# Kelly's Bargains in Special Collections

## Kelly's Apple Collection No. 1

10 6 to 7 ft., XXX grade Apple Trees \$1.25



- 1 Delicious
- 1 Yellow Trans.
- 2 Baldwin
- 2 Northern Spy
- 2 Winter Banana
- 2 R. I. Greening

Special Price \$1.25. Regular Price \$1.50

## Kelly's Std. Pear Collection No. 6

10 4 to 5 ft., X grade Std. Pear Trees \$1.05

2 Clapp's Favorite

- 2 Bartlett
- 2 Seckel
- 2 Anjou
- 2 Kieffer

Special Price \$1.05 Regular Price \$1.25

## Kelly's Peach Collection No. 7

10 4½ to 6 ft., XXX grade Peach Trees \$1.00



- 3 Elberta
- 2 Champion
- 2 Carman
- 1 Belle of Georgia
- 1 Early Crawford
- 1 Late Crawford

Special Price \$1.00 Regular Price \$1.25

## Kelly's Apple Collection No. 2

10 5 to 6 ft., XX grade Apple Trees 98c

2 McIntosh Red

- 2 Baldwin
- 1 Rome Beauty
- 2 Northern Spy
- 1 Delicious
- 2 Winter Banana

Special Price 98c Regular Price \$1.20

## Kelly's Apple Collection No. 3

10 4 to 5 ft., X grade Apple Trees 70c

- 1 Delicious
- 1 Yellow Transparent
- 1 Stayman's Winesap
- 2 Baldwin
- 2 Northern Spy
- 2 Winter Banana
- 1 R. I. Greening

Special Price 70c Regular Price 90c

## Kelly's Peach Collection No. 8

10 3½ to 5 ft., XX grade Peach Trees 80c

- 1 Belle of Georgia
- 1 Late Crawford
- 2 Champion
- 3 Elberta
- 2 Carman
- 1 Early Crawford

Special Price 80c Regular Price \$1.00

## Kelly's Std. Pear Collection No. 4

10 6 to 7 ft., XXX grade Standard Pear \$1.90



- 2 Bartlett
- 2 Clapp's Favorite
- 2 Anjou
- 1 Flemish Beauty
- 2 Kieffer
- 1 Seckel

Special Price \$1.90 Regular Price \$2.20

## Kelly's Peach Collection No. 9

10 2½ to 4 ft., X grade Peach Trees 55c

2 Yellow St. John

- 3 Elberta
- 2 Champion
- 2 Carman
- 1 Hiley

Special Price 55c Regular Price 75c

## Kelly's Std. Pear Collection No. 5

10 5 to 6 ft., XX grade Std. Pear Trees \$1.50

- 2 Anjou
- 2 Bartlett
- 2 Clapp's Favorite
- 2 Kieffer
- 1 Seckel
- 1 Duchess D. A.

Special Price \$1.50 Regular Price \$1.75

## Kelly's Currant Collection No. 10

10 Strong 2 Year Bushes for 60c

- 3 Wilder (red)
- 2 Black Champion
- 2 Red Cross
- 2 White Grape
- 1 Perfection Red

Special Price 60c Regular Price 75c





# Direct from Grower to Planter



## Kelly's Bargains in Special Collections (Continued)

### Kelly's Plum Collection No. 11

10 6 to 7 ft., XXX grade Plum Trees \$1.80



- 2 Fellemburg Prune
- 2 Burbank
- 2 Abundance
- 1 Lombard
- 1 Reine Claude
- 1 Geuil
- 1 Bradshaw

Special Price \$1.80 Regular Price \$2.00

### Kelly's Sweet Cherry Collection No. 16

10 6 to 7 ft., XXX grade Sweet Cherry Trees \$2.30

- 2 Black Tartarian
- 2 Windsor
- 1 Lambert
- 2 Napoleon
- 2 Bing
- 1 Gov. Wood

Special Price \$2.30 Regular Price \$2.50

### Kelly's Sweet Cherry Collection No. 17

10 5 to 6 ft., XX grade Sweet Cherry Trees \$2.00

- 2 Bing
- 2 Black Tartarian
- 1 Lambert
- 2 Windsor
- 2 Napoleon
- 1 Gov. Wood

Special Price \$2.00 Regular Price \$2.25

### Kelly's Plum Collection No. 12

10 5 to 6 ft., XX grade Plum Trees \$1.55

- 1 Reine Claude
- 1 Lombard
- 2 Burbank
- 1 Shrop. Damson
- 1 Bradshaw
- 2 York State Prune
- 2 Abundance

Special Price \$1.55 Regular Price \$1.75

### Kelly's Rose Collection No. 18

10 2 Year Strong Rose Bushes \$2.25



- 1 American Beauty
- 1 Paul Neyron
- 1 White Cochet
- 2 Frau Karl Druschki
- 1 Pink Killarney
- 1 Gen. Jacqueminot
- 1 Hugh Dickson
- 2 Crimson Rambler

Special Price \$2.25 Regular Price \$2.50

### Kelly's Plum Collection No. 13

10 4 to 5 ft., X grade Plum Trees \$1.00

- 2 Fellemburg Prune
- 2 Abundance
- 1 Lombard
- 2 Burbank
- 1 Red June
- 1 Shipper's Pride
- 1 Shrop. Damson

Special Price \$1.00 Regular Price \$1.25

### Kelly's Rose Collection No. 19

10 2 Year Strong Rose Bushes \$2.25

- 1 Pink Cochet
- 1 American Beauty
- 1 Mrs. John Laing
- 2 Crimson Rambler
- 1 Hugh Dickson
- 1 Frau Karl Druschki
- 2 Paul Neyron
- 1 Persian Yellow

Special Price \$2.25 Regular Price \$2.50

### Kelly's Sour Cherry Collection No. 14

10 5 to 7 ft., XXX grade Sour Cherry Trees \$2.00



- 3 Large Montmorency
- 2 Early Richmond
- 2 English Morello
- 1 May Duke
- 1 Ostheime
- 1 Olivet

Special Price \$2.00 Regular Price \$2.25

### Kelly's Grape Collection No. 20

10 2 Year No. 1 Strong Grape Vines 75c



- 3 Concord, Black
- 3 Niagara, White
- 2 Catawba, Red
- 1 Campbell's Early, Black
- 1 Delaware, Red

Special Price 75c Regular Price 90c

### Kelly's Sour Cherry Collection No. 15

10 4½ to 6 ft., XX grade Sour Cherry Trees \$1.70

- 2 Olivet
- 2 English Morello
- 3 Large Montmorency
- 2 Ostheime
- 1 Early Richmond

Special Price \$1.70 Regular Price \$1.90



# Read What Some of Our Customers Say

Here are only a **very** few of the **many** unsolicited letters we have received from our customers testifying as to the quality of our stock, prompt attention in filling orders, and fair dealing. Read them:

Millbrook, N. Y., Nov. 8, 1914.  
Kelly Bros., Dansville, N. Y.

Gentlemen:—I hasten to enclose check paying bill for trees and want to thank you for the complimentary trees and to express my appreciation of the reasonable price. Knowing the excellent quality of your trees from having seen them in the nursery and observing the care you take with them, I am anxious to see more of our Dutchess County people buy them. During the winter the members of our co-operative will see what can be done toward ordering in quantities.

Very sincerely yours,  
C. C. MITCHELL.

Wilton, N. H., May 2, 1914.  
Kelly Bros., Dansville, N. Y.

Dear Sirs:—Our trees came in good condition. They were surely packed in a thorough way. We are much pleased with the quality of your stock and I shall be only too glad to recommend you to my friends, or to any one inquiring for nursery stock. Thanks for extra trees.

Yours very truly,  
ELMER B. PARKER.

Orleans, Mass., Nov. 5, 1914.  
Kelly Bros., Dansville, N. Y.

Dear Sirs:—The rose bushes and shrubs were received and were in fine condition. We were highly pleased with the bushes and wish to thank you for those thrifty and beautiful trees. We have had several people to see those rose bushes we received from you last year and they were greatly surprised at their beauty. We have had plenty of bloom from the same and recommend them to others.

Yours very truly,  
MRS. WM. M. HIGGINS.

Beacon, N. Y., Nov. 9th, 1914.  
Kelly Bros., Dansville, N. Y.

Dear Sirs:—Trees came in good shape and when I came to unpack them and examine them closely I was very much pleased with the stock. Please accept my thanks for the same. Enclosed find an order for more trees for myself and a couple of others to whom you have sent catalogs.

Yours very truly,  
ERNEST A. MACOMBER.

3652 Liston Ave., Riverside, Cincinnati, O.  
11-16-14.

Kelly Bros. Nurseries, Dansville, N. Y.

Gentlemen:—I received my trees a few days ago and have them all planted. They arrived in fine condition and they certainly are fine stock, and I am more than satisfied with them. I certainly thank you very much for the extra four you sent me. Everyone who sees them say they are fine trees, and I think within the next year you will find some orders arriving at your nurseries from this locality, and as for myself, I always will have a good word for you people and you will certainly receive my future orders for what I may need.

Respectfully yours,  
JOS. M. KELLER.

Dowagiac, Mich., Nov. 12, 1914.  
Kelly Bros., Dansville, N. Y.

Dear Sirs:—The trees ordered of you came through in fine shape; am well pleased with every tree sent. Thank you for the extra trees. Will remember you when I want nursery stock again and will speak a good word for you among my neighbors.

Yours respectfully,  
BYRON L. TICE,  
R. F. D. 8, Box 59.

E. Syracuse, N. Y., Nov. 7th, 1914.  
Kelly Bros., Dansville, N. Y.

Gentlemen:—The apple trees you recently shipped me arrived in fine condition. I thank you very much for the "gift" trees. They are the best stock I have ever bought and I assure you that whenever the opportunity presents itself I shall speak a good word in your behalf.

Yours truly,  
SHERMAN G. POWLESLAND.

Samaria, Mich., May 12, 1914.  
Kelly Bros., Dansville, N. Y.

Gentlemen:—I received the trees all right. I bought trees of four different people and yours were the nicest of any of them.

Yours truly,  
T. BELL.

Brighton, Ont., Can., May 17, 1914.  
Messrs. Kelly Bros., Dansville, N. Y.

Gentlemen:—The trees arrived in excellent condition and are all that you in your catalog claim for them. You certainly will secure more orders from this district the coming spring.

Yours truly,  
JAS. A. FINDLAY.

Saginaw, Mich., Nov. 14, 1914.  
Kelly Bros., Dansville, N. Y.

Gentlemen:—Enclosed please find check to pay for trees sent to my Vassar orchard. They were certainly very nice trees and I appreciate the great care you take in selecting stock and packing the same. I thank you for the complimentary trees and will give them a good place in the orchard.

Yours truly,  
MILLARD PERRY.

R. F. D. 3, Ephrata, Pa., Nov. 13, 1914.  
Kelly Bros., Dansville, N. Y.

Gentlemen:—I received the trees in good shape. They were loaded on the wagon from the car on the 12th and were all planted at 2 o'clock today the 13th. They were well rooted and am well pleased with them. Thanks for the compliments I found. I will remember you.

Yours truly,  
DANIEL B. STANFFER.

Cabool, Mo., 11-24-1914.  
Kelly Bros., Dansville, N. Y.

Dear Sirs:—We are enclosing check for \$36.89, to cover our invoice. Fruit trees showed up mighty nice.

Yours truly,  
THE GRAVES COMMISSION CO.



# Direct from Grower to Planter



## Read What Some of Our Customers Say (Continued)

Winthrop, N. Y., Nov. 15, 1914.  
Kelly Bros., Dansville, N. Y.

Dear Sirs:—I received my trees and have them all in the ground. They were better looking trees than some I paid 50 cents for delivered. Everyone who sees them thinks they are fine trees. Thanking you for the extras,

I remain, Yours truly,  
HOMER A. PHIPPIN.

Jeffersontown, Ky., Apr. 16, 1914.  
Kelly Bros., Dansville, N. Y.

Gentlemen:—Trees received and they were in good shape. They looked as if they had just been packed. They are a fine lot of trees—fine roots and elegant tops and bodes. I have bought a lot of trees from nurserymen but Kelly Bros. lay it over all others. I will send you another order in the fall or next spring. Thanking you for good count and the extra bunch you give me, and wishing the Kelly Bros. success for the year 1914, I am,

Yours respectfully,  
A. L. MILLER.

Westerly, R. I., Nov. 12, 1914.  
Kelly Bros., Dansville, N. Y.

Gentlemen:—The trees reached me safely. Those I bought of you two years ago have made as good growth as any trees I have ever set. I have bought and set over one thousand trees in my life and paid a much higher price than I paid you.

Yours truly,  
I. M. BROWNING.

Port Monmouth, N. J., Dec. 7, 1914.  
Kelly Bros., Dansville, N. Y.

Gentlemen:—I received my trees on the 15th of November and they were fine. Thank you very much for the extra trees which I appreciated very much. There were two farmers here when I opened the box and they both thought they were fine. One of them said he would send you an order for one or two hundred next spring.

Yours very truly,  
WILLIAM H. WILLETT.

1127 West Main St., Waterbury, Conn.,  
Nov. 7, 1914.

Kelly Bros. Nursery, Dansville, N. Y.

Gentlemen:—The trees and vines ordered by me arrived by Adams Express yesterday. I am greatly pleased with the same, as all are in fine condition, of good root and well shaped. The trees which you sent as a favor are indeed appreciated as they are of the best variety and in healthy condition. If at any time we can reciprocate and be of assistance to you we will gladly co-operate.

Yours sincerely,  
EDWARD J. KELLY.

Chautauqua, N. Y., Nov. 6, 1914.  
Kelly Bros., Dansville, N. Y.

Gentlemen:—I have the stock you shipped me by express and all set but the apple trees which will be done early tomorrow morning, as I leave tomorrow. I want to compliment you on the fine stock you sent me and I also want to thank you for the apple complimentary you sent me. They certainly are fine trees.

Very truly yours,  
O. G. FRANKS.

Consecon, Ont., Canada, Nov. 28, 1914.  
Kelly Bros., Nurserymen, Dansville, N. Y.

Gentlemen:—Received my order of trees on Nov. 25th. Am well pleased with the order, in fact I think it is the best order that I have ever received and I have been setting out trees for the last 10 years. You can expect another order in the Spring.

Yours truly,  
CHARLES L. JONES.

Sanborn, N. Y., Apr. 29, 1914.  
Kelly Bros., Dansville, N. Y.

Gentlemen:—Received your nursery stock today in good order. Am very much pleased with it. The trees are the best I ever bought. I do not see how you can grow such trees and sell them at that price. Furthermore, I thank you very much for the extra apple trees. When I want trees again you will get my order.

Sincerely yours,  
G. L. WENDT.

Lexington, Ky., Nov. 18, 1914.  
Kelly Bros., Dansville, N. Y.

Gentlemen:—The trees came in due time, and I am very much pleased with them, indeed, I think they are the best I have seen in quite a while. With thanks for the extras, and wishing you the success you deserve, I am,

Yours very truly,  
L. C. PRICE.

Pearl River, N. Y., Nov. 9th, 1914.  
Kelly Bros., Dansville, N. Y.

Gentlemen:—Received trees I ordered from you in good condition and also wish to thank you for the three Baldwin Apples you sent me. They are the finest lot of nursery trees I ever received and I am very much pleased with them.

Yours very truly,  
CHAS. E. SCHAFER.

Newfound, W. Va., Apr. 13, 1914.  
Kelly Bros., Dansville, N. Y.

Gentlemen:—The Club order containing more than 500 trees purchased from you and shipped March 25th arrived at our R. R. station in good condition April 8th and were hauled and delivered on the 10th and 11th. Everyone well pleased. The first class trees in the order are the finest and largest trees ever brought to this county.

Yours very truly,  
(REV.) G. B. GOODE.

Dalton, Pa., 11-3-14.  
Kelly Bros., Dansville, N. Y.

Gentlemen:—Received the shipment of apple trees all O. K. They are a credit to any nurseryman; and I must say your shipping clerk is on his job. Please send catalog, also accept my thanks for the complimentary trees and oblige,

DR. E. A. FULLER.

Tuskegee Institute, Ala., Nov. 17, 1914.  
The Kelly Bros., Dansville, N. Y.

Gentlemen:—We take pleasure in advising you that the trees which you were good enough to send us as a contribution to our work, have been received in good condition. These will be used to the best possible advantage, and we wish to again thank you for your gift.

Yours truly,  
BOOKER T. WASHINGTON, Principal.

**Read What Some of Our Customers Say (Continued)**

Sterling, Ill., Apr. 20, 1914.

Kelly Bros., Dansville, N. Y.  
 Gentlemen:—I received trees which, by the way, were packed better and neater than any I ever obtained elsewhere. When ordering I neglected to state that I expected to use trees as specimens on lawn, but on opening package I found that every one was practically perfect, with unusually strong roots. I am more than pleased with shipment.

Truly yours,  
 L. A. BITTORF.

Ellicott City, Md., Oct. 13, 1914.

Kelly Bros., Dansville, N. Y.  
 Gentlemen:—I am sending you an order today for apple, peach, pear and plum trees. Enclosed please find check for same. I received 12 peach trees, 6 quinces, 25 cherries and 12 grape vines from you last spring and all are living. I am very well pleased with them.

Yours very truly,  
 HENRY DAMM, JR.

Napanoch, N. Y., Nov. 25, 1914.

Kelly Bros., Dansville, N. Y.  
 Dear Sirs:—The fruit trees I ordered from you arrived all in excellent condition. All who saw them crated said that they never had seen trees put up in such fine shape before. If at any time I know of anyone who wants to invest in fruit trees, etc., I will gladly refer them to you. Hoping that you have the best of success in the future, and thanking you for your trouble and especially for your compliments, I remain,

Very truly yours,  
 GEO. J. HEINRICH.

4238 So. Francisco Ave., Chicago, Ill.,  
 Nov. 24, 1914.

Kelly Bros., Dansville, N. Y.  
 Gentlemen:—I received the trees and they are beauties, much better than I expected and you certainly did better than you bargained. I also received a very pleasant surprise in those apple trees and everyone that has seen them think they are perfect. I thank you very much for them.

Yours very truly,  
 P. O. MALLEY.

628 Washington St., Reading, Pa., Nov. 26, '14.

Kelly Bros., Dansville, N. Y.  
 Gentlemen:—The trees were received last Friday and were planted yesterday. Allow me to heartily thank you for the exceptionally fine and healthy looking trees sent me, and also for the complimentary trees. I am 49 years old. I don't know how old you are, but if I live to see the first crop, you will receive a sample box, prepaid. This sample order certainly merits future orders. Most respectfully,

F. H. BROBST.

Jeffersontown, Ky., Dec. 8, 1914.

Kelly Bros., Dansville, N. Y.  
 Gentlemen:—Received the box of trees all O. K. and in A No. 1 condition as to quality and age. None better could be expected and I certainly do appreciate the extra ones you sent me. Will speak for Kelly Bros. whenever I can do so. Wishing you a Merry Christmas and a Prosperous New Year, I remain,

Yours very truly,  
 G. W. MILLER.

Brocton, N. Y., Apr. 6, 1914.

Kelly Bros., Dansville, N. Y.  
 Gentlemen:—Box of fruit trees received in good shape. They are certainly fine stock, nicely packed, and are in every way up to your advertising claims. In the future I shall give you my orders. Very truly yours,

STEWART DEAN.

Brooklyn, N. Y., 483 Bedford Ave.,  
 Oct. 17, 1914.

Kelly Bros., Dansville, N. Y.  
 Gentlemen:—Please send to S. T. Austin, Passaic, N. J., care of Passaic Metal Ware Co., one Montmorency Cherry Tree; *the best you have*, for fall planting. This tree is to replace one that I accidentally broke. The 410 trees that you sent me for my place in Maine are in fine condition. I set them all last June and out of the 410 trees I only lost one and that was killed by fire.

Yours truly,  
 L. W. AUSTIN.

Lovells, Mich., Apr. 13, 1914.

Kelly Bros. Nurseries, Dansville, N. Y.

Gentlemen:—Today I received the trees I ordered from you. They are far better trees than I have been buying of other nurserymen. Kelly Bros. are O. K.

Yours truly,  
 CHAS. W. MILLER.

Huntington, L. I., Nov. 27, 1914.

Kelly Bros., Dansville, N. Y.

Dear Sirs:—I am greatly pleased with the stock you sent me and wish to thank you for the trees you sent gratis. In the Spring I will order about 75 more Carolina Poplars. Thanking you for your courtesy, I remain,

Very respectfully yours,  
 L. A. HAWLOWETZ.

Reading, Pa., Nov. 19, 1914.

Kelly Bros., Dansville, N. Y.

Gentlemen:—My fruit trees and vines arrived in good condition. I certainly must thank you for all of the trees were very fine. I am well pleased, and have them all planted. I will have another order for spring.

Yours very truly,  
 HENRY C. FLEISHER.

1270 Albany St., Utica, N. Y., Dec. 1, 1914.

Kelly Bros., Dansville, N. Y.

Dear Sirs:—Received the plants and trees in good condition. I am well pleased with them and wish to thank you for the extra plants and the prompt attention given my letter. I will have an order for you early in the Spring. Thanking you again for your kind attention, I remain,

Yours truly,  
 J. H. DEVINS.

Riverdale, Md., 12-7-14.

Kelly Bros., Dansville, N. Y.

Sirs:—Kindly send me your catalog and price list of nursery stock. I only lost 2 Delicious and 1 Wagener out of the 50 Delicious and 30 Wagener apple trees I bought of you last spring, and it was an extremely dry season; this, with the fact that the trees were set a month too late (May 5 to 9) speak well for the vitality of your stock.

Very truly yours,  
 A. L. WILLHOIT.



## Monmouth County Agricultural Fair Association

DIPLOMA

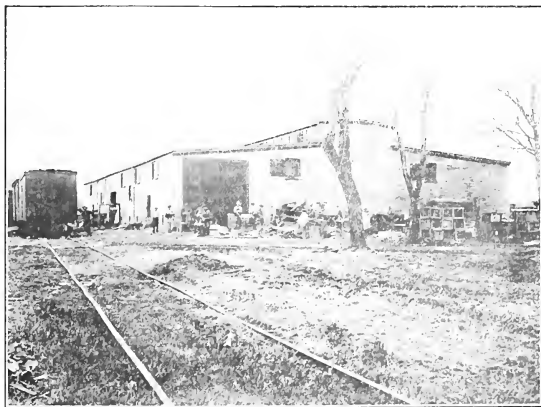
Presented to Kelly Bros. Wholesale Nurseries Danville, N. J.  
 For Best Display of Fruit Trees Exhibited at Red Bank, N. J.



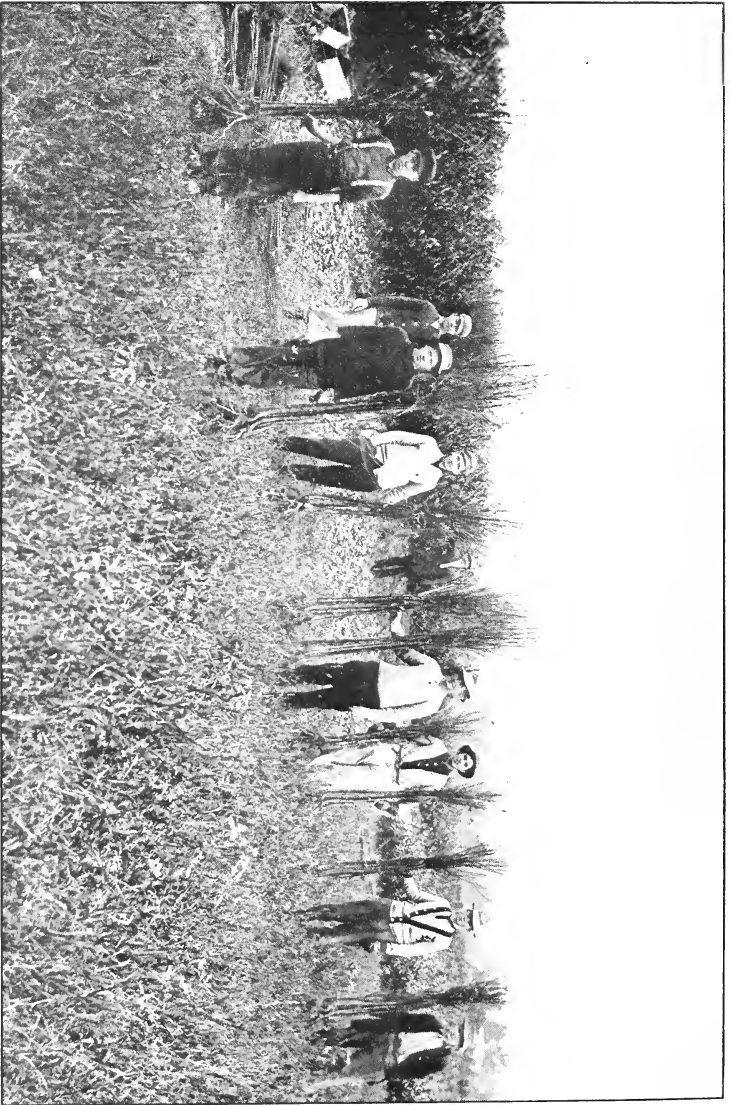
*Given at*

*Danville*

The above Diploma was awarded to Kelly Bros. Wholesale Nurseries by the Monmouth Co. Agricultural Association of New Jersey for the finest and best specimens of Fruit Trees exhibited at Red Bank, N. J., Sept. 3d and 4th, 1914.



This is a picture of our large, modern, up-to-date, frost-proof packing house where all of our trees are carefully graded, packed and placed on board of cars. You will notice that we have a private switch right to our packing house so there is no excuse for our trees and plants to be exposed before they leave our hands, and will always carry safely through to destination with our careful method of packing.



Picture taken at one of our Nurseries Farms showing the kind of trees we grow. Our men are getting out a few trees for an order requiring early shipment. Note the sturdy appearance of the trees with their excellent root system and well-balanced tops.