

Historic, Archive Document

Do not assume content reflects current scientific knowledge, policies, or practices.

62.39



RECEIVED

APR 18 1916 ☆

From the Department of Systematic Botany

1915 SPRING PRICE LIST

American-Born

EVERGREEN
AND
DECIDUOUS

Trees

FOREST, SHADE AND ORNAMENTAL

the Best for America

Little Tree Farms of America

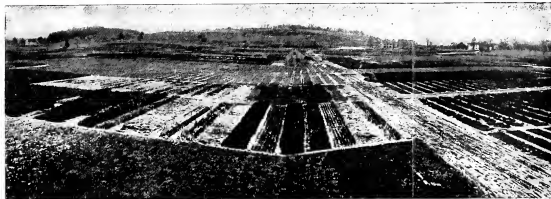
BIRTHPLACE OF THE LITTLE TREES THAT LIVE

Nurseries of

American Forestry Company

15 Beacon Street - Boston, Mass.

One reason the trees we grow at Little Tree Farms are hardy is that they are grown and wintered in the open, unprotected as shown here



EVERGREEN TREES GROWING ON Little Tree Farms of America



DECIDUOUS TREES GROWING ON Little Tree Farms of America

It is a Good Plan to Buy **YOUR** Little Trees where Nurserymen, Landscape Architects and Foresters buy **THEIRS**

The American Forestry Company's Engineering, Contracting and Supply Department are favorably known to many of you because you have employed them and know their merits. On the basis of merit we desire a larger trade. Write us regarding your tree, arboricultural or forestry problems and let us help solve them. That is our business. We can help you and it is a pleasure to do so. We request your inquiries and orders.

The most important branch of our Supply Department is our nurseries, the famous **Little Tree Farms of America**. As the name indicates, these nurseries are comprised of large farms on which are grown little trees — millions upon millions of them — all raised from seed. The **Little Tree Farms** are only 9 years old, but they have been a distinct success from the start. The evidence of this is in that today they are the largest nurseries of little Evergreen and Deciduous trees on the continent and have several thousand customers throughout the United States, many of whom order annually. Others have purchased trees from us for several seasons and very many tell their friends to buy of us.

This company began raising little trees because in its engineering and contracting work it was unable to obtain desirable planting material at suitable prices. We are now raising an annual crop of many million trees. By scientific management and this large production our costs are reduced to the minimum. When you buy of us you get the benefit of this economical production plus a thoroughly efficient service.

The trees offered herewith are all hardy, well-rooted, well-proportioned, stocky and vigorous. We ship them to you absolutely fresh.



Little Tree Farms of America

THE GREAT FARMS OF LITTLE TREES OF LARGE VALUES AND SMALL PRICES

at South Framingham (near Boston)

Owned and Operated by

American Forestry Company

15 BEACON ST., BOSTON, MASS.



ONE OF OUR SPLENDID WHITE PINES
Hundreds of thousands of these are growing at
Little Tree Farms

TREES SHIPPED TO ALL PARTS OF THE UNITED STATES AND CANADA



MAXIMUM QUALITY
MINIMUM PRICE
MOST EFFICIENT SERVICE

Means **Little Tree Farms**
of America



THE GREAT FARMS OF LITTLE TREES OF LARGE VALUES AND SMALL PRICES

INFORMATION TO CUSTOMERS

RAILROADS. Boston & Albany, main line, New York Central (Lessee).

New York, New Haven & Hartford.
Boston & Maine (via short branch).

EXPRESSES. Adams, American, and Connecting Agencies.

U. S. MAILS. Parcel Post.

DELIVERIES. Free to freights, expresses, and mails by auto truck, thus insuring the greatest promptness.

TELEGRAPH. Western Union Telegraph & Cable Company.

CODES. Western Union; Nurserymen's Telegraphic.
A B C (5th edition).
Our Cable Address: "Amforestro," Boston.

PLEASE ORDER EARLY — so that we can satisfy you with good, prompt service (not rush work). The shipping season is limited. Orders must be filled in succession as received; justice requires this.

SHIPPING SEASONS.

In Spring: From middle of March to about June 1. The planting season is determined NOT by the state of vegetation where the planting is to be done BUT by the condition of the trees to be planted. So long as they are dormant they may safely be transplanted. It is safe to ship plants to Southern localities later than would be supposed, because vegetation in Massachusetts is dormant later than farther south.

In Fall: August and September for Evergreens. About October 1 for Hardwoods. Shipping continues until the ground freezes.

PLEASE GIVE SHIPPING INSTRUCTIONS:

Kindly state:

1. Address for marking the shipment.
 2. Address for mail.
 3. Shall we forward by freight? express? parcel post
 4. Approximate time when shipment shall be made.
- In the absence of instructions, we shall use our best judgment. Our responsibility, of course, ceases upon delivery to the transportation company.

TRANSPORTATION COSTS are paid by the customer.

We advise the use of quick transportation modes. The low special express rate on trees, plants, and seeds is 25 per cent less than on regular merchandise; express companies occasionally overlook this. The new Parcel Post regulations permit much more extensive use of the mails than has been possible up to this time.

WARRANTY AND REPLACEMENT. We use the greatest care in following instructions, and our intention is invariably to send out only first-class plants and seeds, true to label, well packed, and in good condition, addressed as directed and delivered to such transporting company as directed. Here our responsibility ceases. We gladly rectify errors or claims if made upon receipt of goods, but cannot be liable for more than the purchase price. The prices are not made to cover a possible second shipment. They are the lowest statement of value of one shipment of first-class trees. It is humanly impossible to guarantee the growth of plants, since so many causes, known and unknown, can injure or kill them. If exposure or drought, poor planting, bad weather, accident, or other causes kill plants bought of us, we cannot in fairness be held responsible. Claim for delay en route should be taken up with the transporting company. We cannot replace the plants without cost.

WE GUARANTEE TO SUPPLY FINE PLANTS,



DUG
PACKED
SHIPPED

FRESH

WE SHIP trees: Dug upon order (not celloared or "healed in" stock). Handled with the care due to young trees.

Bundled in convenient sizes of 25, 50, or 100 plants, and usually a few more for good measure. The bundles are carefully tied, and the gradings are according to our Price Lists. To avoid confusion, we ask our customers kindly to follow these gradings in ordering.

Packed at once in the moist air of a thoroughly modern packing cellar, and packed right, according to species, time of year, and distance. Delivered promptly to the transportation company.

WE IMPORT NOTHING, thereby avoiding unacclimated, devitalized, dried, or moldy stock, and the insect and fungoid infection usually attaching to imported stock.

INSPECTION CERTIFICATES of the United States Department of Agriculture and the State of Massachusetts Entomological Department accompany each shipment and assure healthy, clean stock.

RATES. We sell 500 or more trees of the same size and species at the thousand rate; between 50 and 500 at the hundred rate; less than 50 at the ten rate.

WRITE FOR SPECIAL QUOTATIONS in large quantities.

TERMS OF PAYMENT.

Cash with order, except by special arrangement. Please send check or draft on New York or Boston banks, post office or express money order, or cash in registered mail. C. O. D. deliveries, please enclose 50 per cent of amount of bill with order.



**Little Tree Farms of America — Nurseries of
AMERICAN FORESTRY COMPANY
15 BEACON STREET, BOSTON, MASS.**



A CHARGE FOR PACKING MATERIAL IS MADE AT ACTUAL COST

AMERICAN-born, AMERICAN-grown Trees the Best For AMERICAN Landscapes, AMERICAN Forests

THE AMERICAN FORESTRY COMPANY

T

since its organization, has been in close touch with the ever-increasing demand for AMERICAN-born, AMERICAN-grown trees —

free from disease and insect pests, and so vigorous as to resist them far better than foreign varieties can possibly do in this climate; adapted to AMERICAN conditions; in keeping with AMERICAN landscapes; satisfying AMERICAN needs.



WHY AMERICANS ARE BECOMING MORE AND MORE INTERESTED IN AMERICAN TREES

More attention is being paid to arboriculture, forestry and kindred subjects by educational institutions than ever before.

The various popular publications now issued that are devoted entirely to these topics have done great good. Many more articles on trees and all that pertains to them are appearing in American newspapers and magazines in general than ever before.

Foresters and statesmen have issued many vigorous warnings that the available supply of timber in this country is nearly exhausted. The recent death of one of the world's greatest multimillionaires has made public the fact that his immense fortune was acquired in a large measure through timberlands.

But the most important reasons are the far greater interest in out-door life and the remarkable increase of country homes and estates. And where is there a landowner who does not desire trees to beautify his home and grounds, whether they are large or small? Property without trees and shrubs has a barren and desolate appearance. Even a few trees add greatly to the landscape beauty of an estate. We cater not only to the landowners who use large quantities of trees, but also to those who can only use them in limited quantities.

Many landowners realize that shade and ornamental trees on an estate are not only a source of pleasure, but also that they greatly increase property values.

The United States Department of Agriculture is urging (in these days when the call "Back to the land!" is ringing in our ears) that the owners of farms in this country emulate the farm owners of Europe. There, 20 per cent of the farms are planted in trees for both wood-crop production and field-crop production.

It is not to be wondered at that there is today an esthetic appreciation of American trees for American landscapes and American forests such as there never was in the previous history of America. The American Forestry Company is true to its name in having just the trees discriminating American landowners have desired, and now demand.

WHY OUR TREES KEEP ON LIVING AND THRIVING

The beautiful trees growing at Little Tree Farms of America are eminently fitted to live long and thrive naturally.

These sturdy young American plants have succeeded.

Under any reasonable conditions whatsoever, they will keep right on succeeding.

NATURE WAS ASKED

how such trees should be grown.

The following is Nature's answer, and our strict adherence was and always will be paid to her requirements and demands:

1. By acting in accordance with the essential natural principles of seed origin — the one foundation of real tree success.

All our seeds are collected either by our own men or other men we can trust.

2. By constant scientific care of the plants while in the seedling beds.

3. By proper cultivation without shade or protection after the plants have been in the seedling beds one year and without the use of chemical fertilizers.

Chemical fertilizers stimulate to a lanky growth, and make the plants soft and succulent.

4. By proper transplanting and thorough care.

We transplant by our own tested methods, at correct intervals.

We keep our trees absolutely free from weeds, insect pests, and diseases.

Our plants are never exposed to the contagion of imported diseases, for we import nothing.

5. By keeping the plants growing right up to the shipping time, —

digging them FRESH,
packing them FRESH,
and shipping them FRESH

to YOU — just when you want them!

We do not cellar any stock.

A FIGHT IN BEHALF OF ALL AMERICAN OWNERS OF TREES

One of the recent news occurrences of great moment to those who have to do with trees is the condemnation by the United States Government of European pines of the group with five needles in the cluster, of which White Pine (*Pinus strobus*) is, of course, the most important species. This is in line with the fight the American Forestry Company, through the persistent work of its scientific head, Theodore F. Borst, F. E. (Cornell University), waged even before this company had its own nurseries.

The fight is for an adequate northern production of pest-free, hardy, well-grown native trees of all kinds suited for American conditions.

SHOP EARLY

This surely holds in the nursery business. Your trees should be reserved now for delivery when needed in the Spring,

— Because —

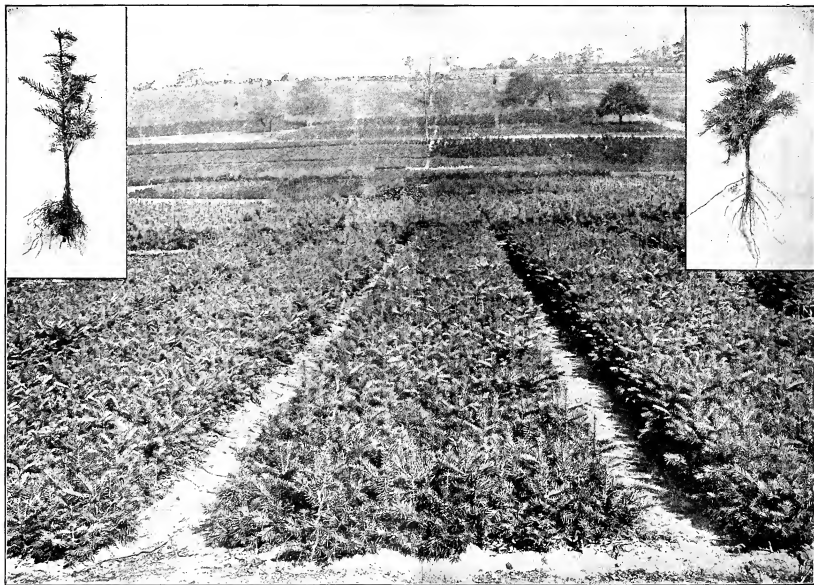
The crop available is limited
The best trees are reserved first
The shipping period is short
All orders cannot be shipped "at once"
EARLY ORDERS must be given preference

Please reserve your plants now

PROF. CHARLES S. SERGENY OF HARVARD UNIVERSITY, HEAD OF AMERICA'S GREATEST ARBORETUM, SAYS:
"The sylvan sargent of America owes that rare and peculiar charm that distinguishes it from all other parts of the world to the wide-spreading, dark green crowns of the White Pine"

INDEX — LITTLE EVERGREEN AND DECIDUOUS TREES

DECIDUOUS	Page	EVERGREEN	Page
Ashes — True Eastern White, Western Green	19	Arborvitae, White Cedar	10
Balm of Gilead	20	Cedars — Red, White	5 and 10
Barberries — Common, Japanese	18	Cypress, Bald	10
Basswood	21	Firs — Balsam, Concolor or Silver	4 and 5
Beech, Blue	19	Junipers — Chinese, Dwarf or Ground, Savin (Red Cedar)	5
Birches — Paper or Canoe, Sweet of Cherry, White, Yellow	18 and 19	Larches — European, Japanese	5
Butternut	20	Pines — Austrian, Bank's, Corsican, Dwarf Mughus, Japanese Red, Lumber, Lodgepole, Norway, Pitch, Red, Scotch, Silver or Western White	7, 8 and 9
Chestnut, Horse	18	PINE, WHITE	9, 11, 12, 13, 14, 15, 16 and 17
Dogwood, Gray	19	Spruces — Black, Black Hills, Colorado Blue, Douglas (Rocky Mountain), Engelmann, Norway, Red, White	5, 6, 7, 9 and 10
Elder, Box	18	Yews — Japanese, Spreading	10
Elm, American	21	Information for Customers	2
Hazelnut	19	American-Born, American-Grown Trees for American Landscapes and American Forests	3
Hickories — Pignut, Shagbark, Big Shellbark	19 and 20	Tax Exemptions for Tree Planters	22
Hornbeams — European, Hop	19 and 20	Suggestions for Tree Planting	22
Lindens — American, European, Large-leaved European	21	The Work of the American Forestry Company	23
Locusts — Black, Honey	19 and 21		
Maples — Box Elder, Norway, Red, Silver, Sugar, Sycamore	18		
Oaks — Black, Bur, Pin, Red, Scarlet, Shingle, Swamp White, White	20 and 21		
Poplars — Balm of Gilead, Carolina, Lombardy, Norway	20		
Privet, Regell's	20		
Walnuts — Black, White	20		
Willow, European Osier	21		



ABIES CONCOLOR (SILVER OR CONCOLOR FIR) IN SEEDLING BEDS GROWING AT Little Tree Farms

We now have an unusually fine lot of hardy, well-colored stock of these beautiful blue and shapely firs. They grow densely and adapt themselves to many soils and exposures. In the upper right hand corner of the picture is shown a three-year old seedling; at the left a transplanted tree of about the same age. See prices on next page, column one.

CONIFEROUS TREES (Evergreens)

	Prices in Lots of		
	10	100	1,000
ABIES BALSAMEA, Mill.	Balsam Fir		
Transplanted..... 3 to 5 in.	\$1.00	\$4.00	\$30.00
Transplanted..... 1 to 3 in.		2.00	
Seedling..... 3 to 6 in.		1.50	10.00

	Silver or Concolor Fir (Colorado Seed)		
	10	100	1,000
ABIES CONCOLOR, Lindl. & Gord.	Fir (Colorado Seed)		
Transplanted..... 1 to 1½ ft.	\$3.00	\$16.00	\$145.00
Transplanted..... 8 to 12 in.	2.50	12.00	100.00
Transplanted..... 4 to 8 in.		6.00	50.00
Seedling..... 6 to 12 in.		2.50	20.00
Seedling..... 3 to 6 in.		1.50	12.00

See Illustration on Page 4

JUNIPERUS CHINENSIS PROCUMBENS	
Transplanted..... 12 to 18 in.	\$7.00

	Dwarf or Ground Juniper	
	10	1,000
JUNIPERUS COMMUNIS, Linn.	Juniper	
Seedling..... 6 to 10 in.	\$1.50	\$7.00 \$60.00
Seedling..... 3 to 6 in.		4.00 30.00
Seedling..... 2 to 4 in.		3.00 20.00

	Juniper: Savin: Red Cedar	
	10	1,000
JUNIPERUS VIRGINIANA, Linn.	Juniper: Savin: Red Cedar	



ONE OF OUR STURDY LITTLE JUNIPERS

	European Larch		
	10	100	1,000
LARIX EUROPEA, D. C.	European Larch		
Twice Transplanted... 4 to 5 ft.	\$6.00	\$30.00	\$250.00
Twice Transplanted... 3 to 4 ft.		5.00	25.00 215.00
Twice Transplanted... 2 to 3 ft.		4.00	20.00 175.00
Transplanted..... 1½ to 2 ft.		1.30	6.50

For color, symmetry and architectural suggestiveness of line no ornamental tree is superior to the **Juniper**. All of our Junipers are grown from seed gathered by our own men from mature, vigorous trees in the neighborhood of our nursery. They are especially hardy, and in great demand. Our prices are lower than for several years.

	Prices in Lots of		
	10	100	1,000
LARIX LEPTOLEPSIS, Gord.	Japanese Larch		
Seedling..... 1 to 1½ ft.	\$1.00	\$5.00	\$40.00
Seedling..... 8 to 12 in.		3.00	25.00

	White Spruce (Maine Seed)	
	10	1,000
PICEA ALBA, Link.	White Spruce (Maine Seed)	
Twice Transplanted... 1 to 1½ ft.	\$3.50	\$17.00
Twice Transplanted... 8 to 12 in.	2.00	10.00 \$85.00
Twice Transplanted... 4 to 8 in.	1.50	7.00 60.00
Transplanted..... 1 to 1½ ft.	1.75	8.00 70.00
Transplanted..... 8 to 12 in.	1.00	4.50 35.00
Transplanted..... 4 to 8 in.		4.00 30.00
Seedling..... 8 to 12 in.		2.50 18.00
Seedling..... 6 to 8 in.		2.00 13.50
Seedling..... 3 to 6 in.		1.00 5.00

See Illustration on Page 10

	Black Hills Spruce		
	10	100	1,000
PICEA ALBA, Link.	Black Hills Spruce		
Transplanted..... 8 to 12 in.	\$1.50	\$6.00	\$50.00
Transplanted..... 5 to 8 in.	1.00	4.50	35.00
Transplanted..... 3 to 6 in.		3.00	20.00



HOW OUR RED CEDARS GROW AMID THE ICE AND SNOW

	Engelmann Spruce		
	10	100	1,000
PICEA ENGELMANNI, Englm.	Engelmann Spruce		
Twice Transplanted... 8 to 12 in.	\$2.50	\$12.00	\$100.00
Twice Transplanted... 4 to 8 in.	1.50	7.00	60.00
Transplanted..... 6 to 12 in.	1.25	6.00	50.00
Transplanted..... 3 to 6 in.		3.00	20.00
Seedling..... 2 to 5 in.		1.25	9.00

USE WHITE PINE FOR UNDERPLANTING IN SHADY PLACES IN YOUR WOODLANDS OR ELSEWHERE



NORWAY SPRUCE AS IT GROWS AT Little Tree Farms

PICEA EXCELSA, L. K.

		Prices in Lots of		
		10	100	1,000
Norway Spruce				
Twice Transplanted	2 to 3 ft.	\$3.00	\$14.00	\$120.00
Twice Transplanted	1½ to 2 ft.	2.00	9.00	77.00
Twice Transplanted	1 to 1½ ft.	1.25	6.00	50.00
Twice Transplanted	8 to 12 in.	1.00	4.00	30.00
Twice Transplanted	4 to 8 in.		3.00	20.00
Transplanted	1½ to 2 ft.	1.25	6.00	50.00
Transplanted	1 to 1½ ft.	1.00	4.00	30.00
Transplanted	8 to 12 in.		2.50	20.00
Transplanted	4 to 8 in.		1.75	12.00
Seedling	4 to 8 in.		1.00	5.00
Seedling	2 to 4 in.			3.50

Norway Spruce, the spruce of Europe, is grown everywhere there for a multitude of purposes. The wood is valuable and has many uses. In America it is largely used for screens, windbreaks, and shelter belts. Its compactness makes it particularly desirable for both high screens and sheared low hedges. It is extremely hardy and can be planted in the shade. It is a very rapid grower. Profitable crops of Christmas trees are grown from it, to be sold with or without the roots. Recently extensive Norway Spruce

forests have been planted to meet the coming tremendous demand for paper pulp. Many private owners as well as nurserymen who visited our Little Tree Farms in Autumn, 1914, placed their orders then for many thousands of these trees to set out this spring. Our prices are particularly low for the transplanted stock we have on hand at present.

Prices in Lots of
10 100 1,000

PICEA MARIANA, Mill.

		Black Spruce	
Transplanted	12 to 16 in.	\$1.00	\$5.00 \$40.00
Transplanted	8 to 12 in.		4.00 30.00
Transplanted	4 to 8 in.		2.75 20.00

Colorado Blue Spruce is a very popular ornamental tree, and its striking symmetry and peculiar pleasing color make a very strong appeal where especial effects are desired. It is the bluest of the white or blue spruces. It is highly valued as an ornamental specimen and gives a rare tint in color combinations. It furnishes a strong contrast with the darker evergreens. It is one of the hardiest of all the spruces.

The species reaches perfect development in the Rocky Mountains of Colorado, where our seeds are collected from blue trees. Our trees are sold "nursery run"; none of the bluest ones have been selected out. We have probably the largest supply of these stocky plants in the country, and so make extremely low prices for such splendid trees. Our transplants have bushy, dense tops and strong, fibrous roots.



FIVE-YEAR OLD TRANSPLANTED COLORADO BLUE SPRUCE FROM Little Tree Farms

See Illustration on Page 7—Rows of Transplanted Colorado Blue Spruce

PICEA PUNGENS, Engl. (Nursery Run)

Colorado Blue Spruce

Twice Transplanted	18 to 22 in.	\$5.00	\$25.00	\$200.00
Twice Transplanted	1 to 1½ ft.	3.00	15.00	120.00
Twice Transplanted	8 to 12 in.	2.00	10.00	80.00
Twice Transplanted	4 to 8 in.	1.00	5.00	40.00
Transplanted	8 to 12 in.	1.50	6.50	55.00
Transplanted	4 to 8 in.		3.25	25.00
Seedling	4 to 6 in.		1.50	9.00
Seedling	2 to 4 in.			6.00

USE WHITE PINE FOR CUT-OVER LANDS; FOR SANDY SOILS AND OTHER BARE, UNPRODUCTIVE, UNSIGHTLY PLACES; FOR WORN-OUT PASTURES; FOR LANDS USELESS FOR OTHER PURPOSES

Prices in Lots of
10 100 1,000
Red Spruce

PICEA RUBENS, Sarg.

Twice Transplanted...	8 to 12 in.	\$1.25	\$6.00	
Twice Transplanted...	4 to 8 in.	1.00	4.50	\$35.00
Transplanted.....	13 to 2 ft.	1.25	6.00	50.00
Transplanted.....	1 to 1½ ft.	1.00	4.50	35.00
Transplanted.....	8 to 12 in.		3.00	25.00
Transplanted.....	4 to 8 in.		2.25	17.50

Ask for Illustration N6

PINUS AUSTRIACA, Hoss.

		Austrian Pine		
Transplanted.....	4 to 8 in.	\$1.00	\$4.00	
Transplanted.....	3 to 6 in.		2.50	20.00
Seedling.....	6 to 10 in.		1.50	10.00
Seedling.....	4 to 8 in.		1.00	6.00

Austrian Pine is a tree that does well both along the coast and inland. For ornamental planting it is used in groups and for specimen trees. The heavy plumes of its spreading branches are particularly effective.

Our Austrian Pines have heavy stems, fine tops and roots, and are full of vigor.

Prices in Lots of
10 100 1,000
Japanese Red Pine

PINUS DENSIFLORA, Siebold

Transplanted.....	4 to 8 in.	\$1.00	\$4.00	\$30.00
Seedling.....	8 to 12 in.		3.00	20.00
Seedling.....	4 to 8 in.		2.00	12.00

IF YOU DO NOT FIND WHAT YOU WANT IN THIS PRICE LIST WRITE US YOUR SPECIFIC NEEDS. WE GROW MANY TREES AND SHRUBS THAT WE DO NOT LIST



ROWS OF FOUR-YEAR OLD TRANSPLANTED COLORADO BLUE SPRUCES AT Little Tree Farms of America
 (See opposite page for Description and Prices)

**USE WHITE PINE FOR SCREENS, BORDERS, AVENUE PLANTING, AND OTHERWISE BEAUTIFYING AN ESTATE
 USE IT FOR A RAPID GROWTH THAT QUICKLY INCREASES THE VALUES OF COUNTRY BUILDING SITES**



A Glimpse at a Plantation of Bank's Pine, averaging 23 feet high, 10 years after being set out by Mr. Borst, Forest Engineer of the American Forestry Company.

For
Very
Quick
Effects
Plant
**BANK'S
PINE**
"The
Poplar
of
the
Ever-
greens"

		Prices in Lots of		
		10	100	1,000
PINUS DIVARICATA, DuMont		Bank's Pine		
Twice Transplanted	5 to 6 ft.	\$2.50	\$12.00	\$100.00
Twice Transplanted	4 to 5 ft.	2.00	9.00	80.00
Twice Transplanted	3 to 4 ft.	1.50	7.50	65.00
Twice Transplanted	2 to 3 ft.	1.35	6.50	55.00

Bank's Pine, known also as the "sudden sawlog," is especially recommended for immediate effects. It is the hardiest native evergreen tree in America. It thrives on the poorest, driest soils and in the most exposed places. It is an admirable nurse tree for slower-growing evergreens. Here are really large young trees at truly little prices.

		Prices in Lots of		
		10	100	1,000
PINUS FLEXILIS, James		Lumber Pine		
Transplanted	6 to 10 in.	\$1.00	\$4.50	
Transplanted	3 to 6 in.		3.50	\$25.00
Seedling	6 to 10 in.		2.50	17.50
Seedling	3 to 7 in.		1.75	10.00
Seedling	2 to 4 in.			6.00

		Prices in Lots of		
		10	100	1,000
PINUS LARICIO, Poir		Corsican Pine		
Seedling	6 to 10 in.	\$0.75	\$2.00	\$15.00
Seedling	3 to 6 in.		1.25	8.00
PINUS MONTICOLA, Dougl.		Silver or Western White Pine		
Transplanted	3 to 6 in.	\$0.75	\$4.00	\$35.00
Seedling	2 to 4 in.		1.50	10.00
PINUS MUGHUS, Scop.		Dwarf Mughus Pine		
Transplanted	3 to 6 in.	\$1.00	\$5.00	\$40.00
Seedling	4 to 8 in.		2.00	15.00
PINUS MURRAYANA, "Oreg. Com."		Lodgepole Pine		
Seedling	6 to 10 in.	\$0.75	\$4.00	\$30.00
Seedling	4 to 6 in.		2.00	12.00
PINUS RESINOSA, Ait.		Red or Norway Pine		
Transplanted	8 to 12 in.	\$1.00	\$5.00	\$40.00
Transplanted	4 to 8 in.		2.50	17.00
Seedling	9 to 12 in.		2.50	16.00
Seedling	6 to 9 in.		2.00	12.00
Seedling	4 to 8 in.		1.60	10.00
Seedling	3 to 6 in.		1.25	8.00

The Red or Norway Pine (*Pinus resinosa*) is one of the most valuable native trees for general planting. It grows faster than the White Pine and makes a fine combination with this tree.

It withstands salt air and spray as few other trees do. It grows where grass and other agricultural crops are not profitable. It is picturesque even on poor soils, and on richer soils it has a vigorous and superb growth of long, deep green needles. The wood of this species is valuable and is being more appreciated every year.

Its comparative freedom from insect and fungous enemies is a very valuable characteristic of the Red Pine.

There has been a very limited supply of this species for several years, and substitution of other kinds has been known. Our Red Pines are GUARANTEED TRUE RESINOSA. Although Red Pine seed is high, these plants are extremely cheap, and nurserymen who visit our nurseries are glad to buy them at sight. The trees we have at present are wonderfully well rooted and developed.



LITTLE RED PINE FROM
Little Tree Farms

USE WHITE PINE FOR PLEASURE AND CONVENIENCE IN A LITTLE TREE GARDEN, TRANSPLANTING TO YOUR GROUNDS AS NEEDED. (Send for Literature.)



A PLANTATION OF RED OR NORWAY PINES MADE BY THE AMERICAN FORESTRY COMPANY

	Prices in Lots of			
	10	100	1,000	Pitch Pine
PINUS RIGIDA, Mill.				
Twice Transplanted... 3 to 4 ft.	\$4.00	\$20.00		
Twice Transplanted... 2 to 3 ft.	2.50	12.00		
Twice Transplanted... 1½ to 2 ft.	1.60	8.00		
Transplanted... 1 to 1½ ft.	1.00	4.00	\$30.00	
Transplanted... 8 to 12 in.		2.50	17.00	
Transplanted... 4 to 8 in.		1.75	10.00	
Seedling... 8 to 12 in.		1.00	5.00	

This Pine thrives on our coast and sand plains, and is often desirable in bare, wind-swept places.

	White Pine			
	PINUS STROBUS, Linn.			
Twice Transplanted 3 to 4 ft.	\$7.00	\$32.50	\$290.00	
Twice Transplanted 2 to 3 ft.	4.00	19.00	165.00	
Twice Transplanted... 1½ to 2 ft.	2.00	10.00	80.00	
Twice Transplanted... 1 to 1½ ft.	1.50	8.00	60.00	
Twice Transplanted... 8 to 12 in.	1.00	5.00	40.00	
Transplanted... 3 to 3½ ft.	2.50	12.00	100.00	
Transplanted... 2 to 3 ft.	2.00	9.00	80.00	
Transplanted... 1½ to 2 ft.	1.50	7.00	50.00	
Transplanted... 1 to 1½ ft.	.75	3.50	25.00	
Transplanted... 8 to 12 in.		2.25	15.00	
Transplanted... 4 to 8 in.		1.25	8.00	
Seedling... 8 to 12 in.		1.25	7.00	
Seedling... 4 to 8 in.			4.00	

(See Pages 11, 12, 13, 14, 15, 16 and 17 for desirable characteristics and proper uses of this splendid tree)

	Prices in Lots of			
	10	100	1,000	Scotch Pine
PINUS SYLVESTRIS, A.				
Twice Transplanted 5 to 6 ft.	\$5.50	\$27.50	\$225.00	
Twice Transplanted 4 to 5 ft.	4.50	22.00	190.00	
Twice Transplanted... 3 to 4 ft.	3.00	15.00	125.00	
Twice Transplanted... 2½ to 3 ft.	2.00	10.00	80.00	
Transplanted... 3 to 4 ft.	2.50	12.00		
Transplanted... 4 to 8 in.		1.75	12.00	
Seedling... 6 to 10 in.		1.50	10.00	
Seedling... 3 to 6 in.			6.00	

Scotch Pine is used extensively for windbreaks and shelterbelts, especially where severe winds prevail. Its ability to thrive in situations where the atmosphere is exceedingly dry particularly adapts it to the prairie States. It adapts itself to many soils and sites, but should not be planted in the shade. Ask for Illustration N-12, which shows our five-year-old transplants.

	Douglas Spruce			
	syn., DOUGLASII, Carr. (Rocky Mountain Seed)			
Twice Transplanted... 12 to 16 in.	\$3.50	\$17.50		
Twice Transplanted... 8 to 12 in.	2.00	10.00		
Twice Transplanted... 4 to 8 in.	1.50	7.00		
Transplanted... 8 to 12 in.	1.00	4.00	\$30.00	
Transplanted... 4 to 8 in.		2.00	15.00	
Seedling... 8 to 12 in.		1.50	12.00	
Seedling... 6 to 10 in.		1.25	8.00	
Seedling... 3 to 6 in.			5.00	



A WINDBREAK OF DOUGLAS SPRUCE. IT IS BEAUTIFUL AS WELL AS USEFUL. SEE DESCRIPTION ON NEXT PAGE

Douglas Spruce is one of the most majestic trees of North America, and although one of the fastest growing evergreens, is long lived and attains a large size. In gracefulness it resembles the Hemlock. The wood is valuable. It is taking rank as the chief spruce for ornamental and forestry planting in the East. It is uncommonly hardy, succeeding on dry, slaty and sandy soils and in direct exposure to fierce winds and to salt spray. Our plants are well topped, well rooted and straight. Those who visit our nurseries order them at sight. Ask for Illustration N-14, which shows a three-year-old Seedling.

Prices in Lots of
10 100 1,000

TAXODIUM DISTICHUM, Rich.

Bald Cypress

Transplanted.....	1½ to 2 ft.	\$3.00	\$15.00
Transplanted.....	1 to 1½ ft.	2.50	12.00

TAXUS CUSPIDATA BREVIFOLIA

Japanese Yew

Transplanted... 18 to 24 in.	\$2.50	\$22.50	\$200.00
Transplanted... 12 to 18 in.	1.80	17.50	150.00
Transplanted... 9 to 12 in.	1.25	11.50	100.00
Transplanted... 6 to 9 in.	.80	6.00	50.00

TAXUS REPANDENS

EACH

Transplanted... 8 to 12 in. \$0.65

Prices in Lots of
10 100 1,000
Spreading Yew
 \$4.00 \$35.00

THUJA OCCIDENTALIS, Linn.

Arborvitae: Cedar

Twice Transplanted... 2 to 3 ft.	\$6.00	\$30.00	\$250.00
Twice Transplanted... 1½ to 2 ft.	4.00	20.00	150.00
Twice Transplanted... 1 to 1½ ft.	3.00	15.00	
Twice Transplanted... 8 to 12 in.	2.00	10.00	90.00
Transplanted..... 8 to 12 in.	1.00	5.00	40.00
Transplanted..... 4 to 8 in.		3.75	30.00
Seedling..... 8 to 12 in.		2.50	17.50
Seedling..... 4 to 8 in.		1.50	9.00
Seedling..... 2 to 4 in.			6.00

The **American Arborvitae** (White Cedar) is much used for hedges and screens as well as for single specimens. It is hardy, transplants easily, and grows rapidly, soon forming a very dense growth. It makes a highly ornamental screen for dividing the lawn from other parts of the estate. It grows well on lands too wet for most trees.

WE GROW OTHER EVERGREEN AND DECIDUOUS TREES BESIDES THOSE LISTED IN THIS PRICE LIST



WHITE SPRUCE is a rapid grower of a pyramidal shape and much admired for its silvery green, refreshing foliage. It is very hardy, adapting itself to both wet and dry soils and perfectly withstanding salt air exposure and snow and ice pressure. It is thus a very much used tree for planting near the sea, and also for windbreaks, screens, groves and specimen trees. The wood is valuable both for lumber and for paper pulp. Our trees are grown from seed from the Maine coast, where the species reaches fine development. For prices on this species refer to page 5.



IMPROVE YOUR LAND VALUES BY PLANTING WHITE PINES

Not only is White Pine a choice esthetic tree, but its **esthetic** importance adds distinctly to its great **commercial** value. Real estate men and other investors appreciate this fully.

White Pine is a rapid grower. Here is a plantation of little White Pines that were **only a foot high** when the American Forestry Company set them out on Mr. Paul Butler's pine farm near Nashua, N. H., **only six years** before this picture was taken. **The soil was sandy, barren and exhausted.** The illustration shows a perfect crop, eight or nine feet high, covering many acres. We planted a quarter of a million trees here with the success shown.

Such results are to be had by **THE RIGHT USE OF THE RIGHT MATERIAL.**

White Pine is the tree of first importance for general forest planting in northern and eastern states.

White Pine soon gives a good cover for a shooting preserve, and a new grove of White Pine laid out with pleasant avenues and drives is a source of interest and pleasure from the very start, and becomes in a few years a most desirable feature of a country home. Hotels, sanitariums, hospitals, private and public camps of a religious, educational, sporting or recreational nature are often located in Pine groves. They like them and want more of them.

**THERE IS A QUICK AND GOOD PROFIT IN A GROVE
OF WHITE PINE.**

Use White Pine for Windbreaks and Snowbreaks. Use White Pine to Keep Out the Annoying, Destructive and Unhealthy Dust. Use White Pine to Abate the Noise Nuisance. Use White Pine to Beautify Country Roadsides

Finely Branched, Splendidly Rooted

Twice-Transplanted

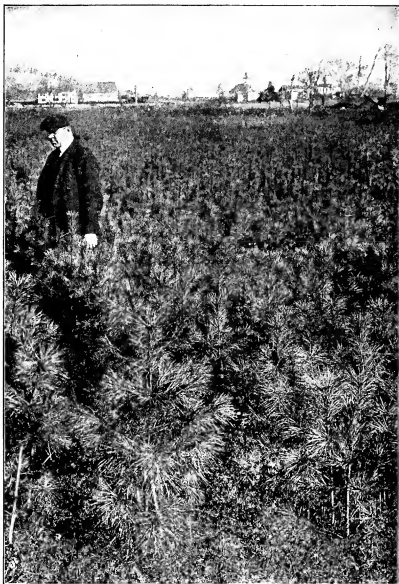
White Pines

At Prices Far Lower than You
Would Expect to Pay

The quality of **Little Tree Farms** stock is recognized as pre-eminent by thousands of American nurserymen, foresters and landscape architects. Many have visited this nursery and pronounced the stock as good as or better than ever they had seen. The Massachusetts Horticultural Society, for instance, awarded us its special prize for excellence in growing little trees. On nothing are the experts more enthusiastic than on our White Pines, especially our twice-transplanted stock.



A FIELD OF OUR FINE TWICE-TRANSPLANTED WHITE PINES →



BUSHY—STOCKY—HARDY
VIGOROUS—WELL-ROOTED

TWICE- TRANSPLANTED WHITE PINES

UNPRECEDENTED PRICES
(because of our production
by the million)

For VERY SUPERIOR STOCK

3 to 4 In Lo
FEET 1000, c

2 to 3 In Lo
FEET 1000, c

1½ to 2 In Lo
FEET 1000, c

1 to 1½ In Lo
FEET 1000, c



Now Just Compare the Prices on These Twice-Transplanted

White Pines

With Any Other Prices You
Have Ever Known

As these pictures show we surely have great quantities of fine stock. All the trees illustrated on these two pages are twice-transplanted White Pine. Transplanting produces general stockiness and an abundance of fibrous roots.

Trees that have been transplanted are more enduring and make much faster growth than those that have not.

For quick results use our twice-transplanted White Pines. This is splendid stock and assures a successful planting. The labor cost for planting poor trees is just as high as for planting good trees. When you plant inferior stock it is natural that your percentage of loss will be heavy, and you not only lose the cash price of your trees but you also lose the money paid out for labor to plant them. But your greatest loss is your disappointment in having your trees die. **IT IS ECONOMY TO BUY GOOD STOCK.**



29c In Lots of **32¹/₂c** 10 Trees
100, each for \$7.00

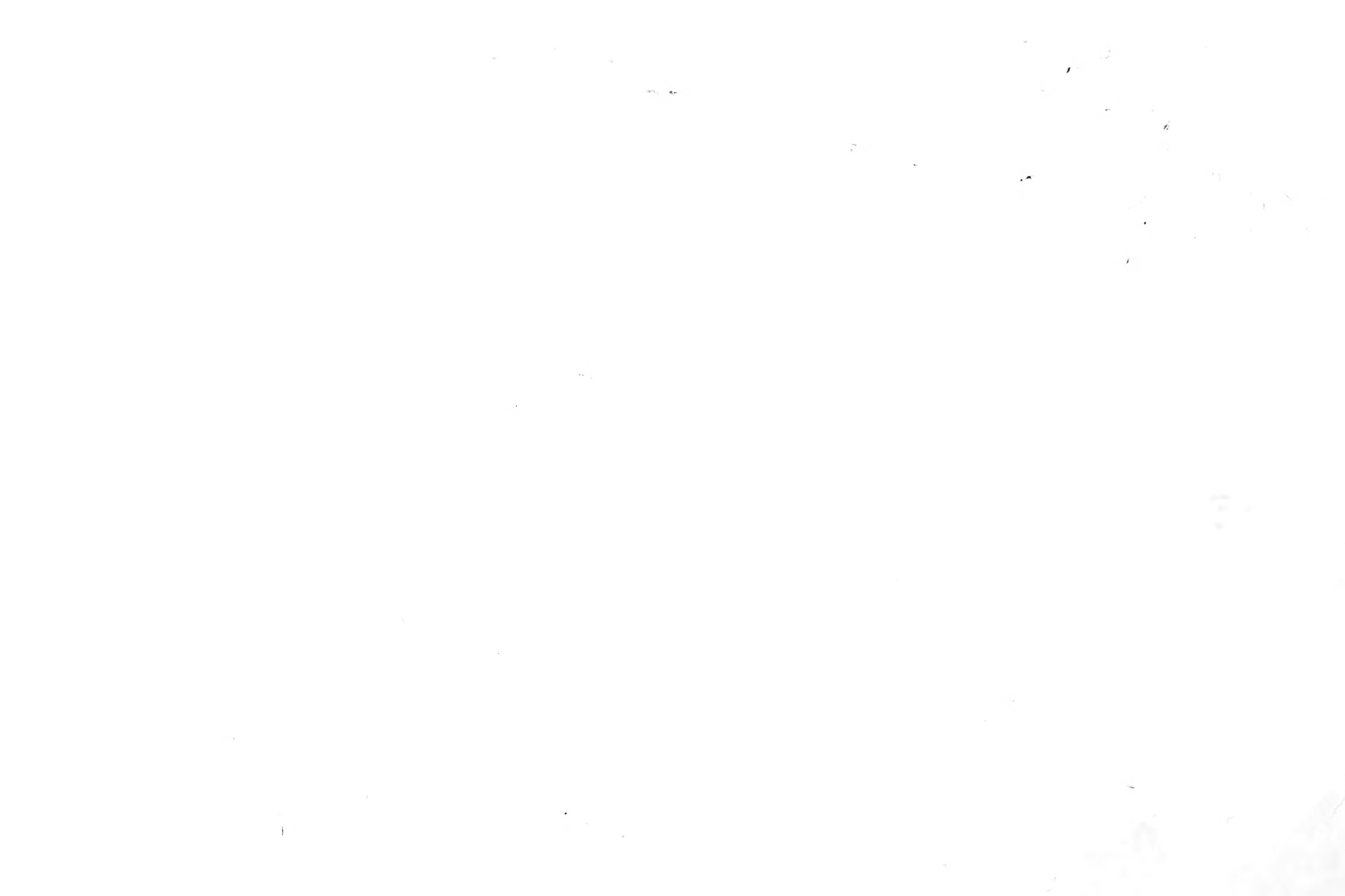
16¹/₂c In Lots of **19c** 10 Trees
100, each for \$4.00

8c In Lots of **10c** 10 Trees
100, each for \$2.00

6c In Lots of **8c** 10 Trees
100, each for \$1.50

OUR WHITE PINES

← AS THEY GROW IN ENDLESS QUANTITY AT Little Tree Farms



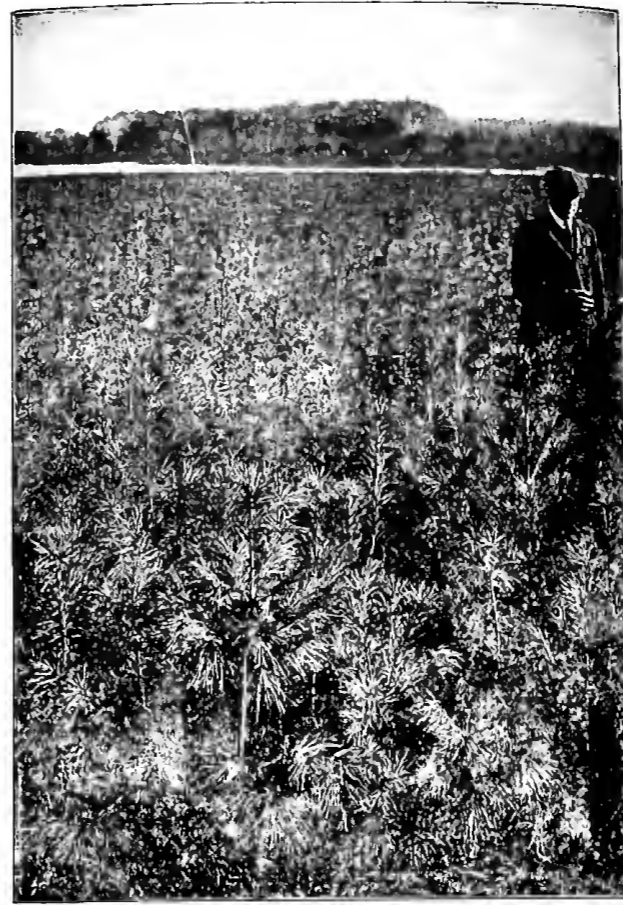
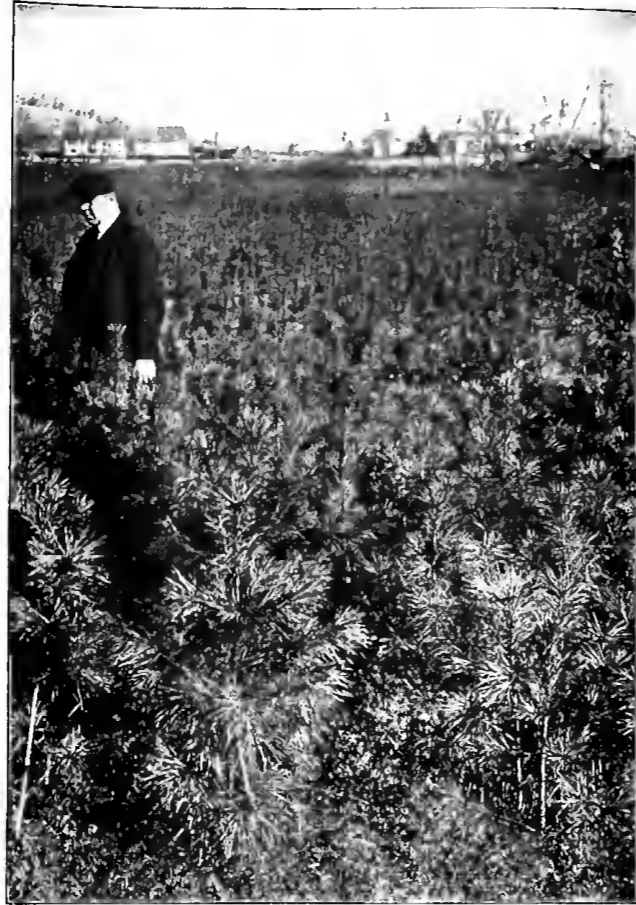
Finely Branched, Splendidly Rooted
Twice-Transplanted

White Pines

At Prices Far Lower than You
 Would Expect to Pay

The quality of **Little Tree Farms** stock is recognized as pre-
 eminent by thousands of American nurserymen, foresters and
 landscape architects. Many have visited this nursery and
 pronounced the stock as good as or better than ever they had
 seen. The Massachusetts Horticultural Society, for instance,
 awarded us its special prize for excellence in growing little trees.

On nothing are the experts more enthusiastic than on our
 White Pines, especially our twice-transplanted stock.



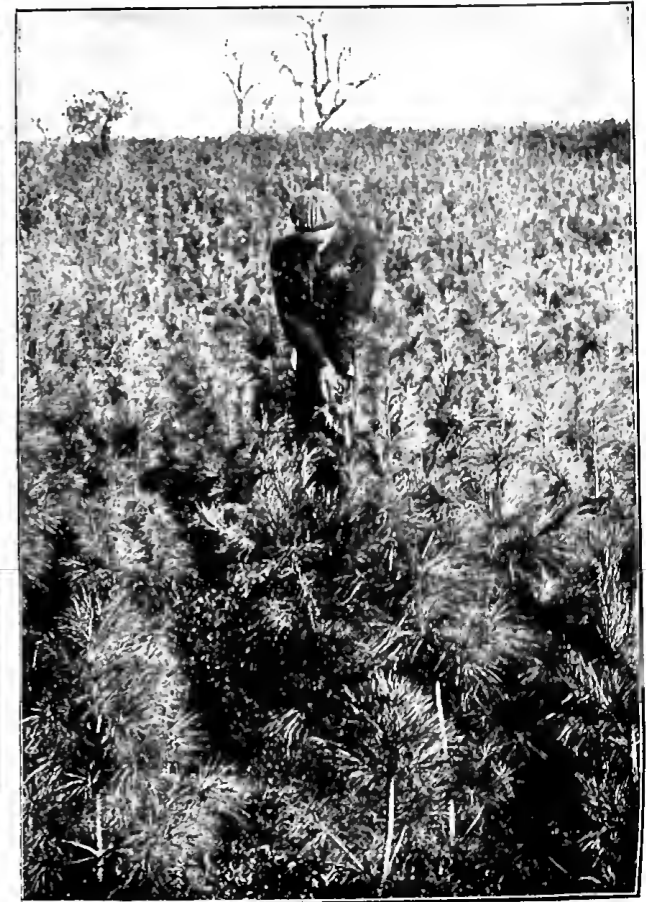
Now Just Compare the Prices on These
Twice-Transplanted

White Pines

With Any Other Prices You
 Have Ever Known

As these pictures show we surely have great quantities of fine stock. All
 the trees illustrated on these two pages are twice-transplanted White Pine.
 Transplanting produces general stockiness and an abundance of fibrous roots.
 Trees that have been transplanted are more enduring and make much faster
 growth than those that have not.

For quick results use our twice-transplanted White Pines. This is splendid
 stock and assures successful planting. The labor cost for planting poor trees
 is just as high as for planting good trees. When you plant inferior stock it is
 natural that your percentage of loss will be heavy, and you not only lose the
 cash price of your trees but you also lose the money paid out for labor to plant
 them. But your greatest loss is your disappointment in having your trees die.
IT IS ECONOMY TO BUY GOOD STOCK.



TWICE- TRANSPLANTED WHITE PINES UNPRECEDENTED PRICES (because of our production by the million) For VERY SUPERIOR STOCK	3 to 4 FEET	In Lots of 1000, each	29c	In Lots of 100, each	32¹/₂c	10 Trees for \$7.00
	2 to 3 FEET	In Lots of 1000, each	16¹/₂c	In Lots of 100, each	19c	10 Trees for \$4.00
	1½ to 2 FEET	In Lots of 1000, each	8c	In Lots of 100, each	10c	10 Trees for \$2.00
	1 to 1½ FEET	In Lots of 1000, each	6c	In Lots of 100, each	8c	10 Trees for \$1.50

A FIELD OF OUR FINE TWICE-TRANSPLANTED WHITE PINES →

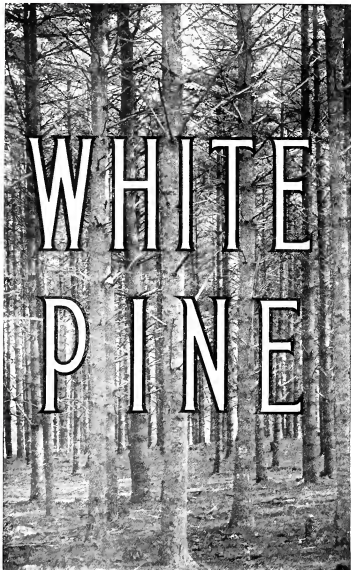
FOR SUCCESS PLANT OUR WHITE PINES

← AS THEY GROW IN ENDLESS QUANTITY AT **Little Tree Farms**

For Your Planting This Spring, USE

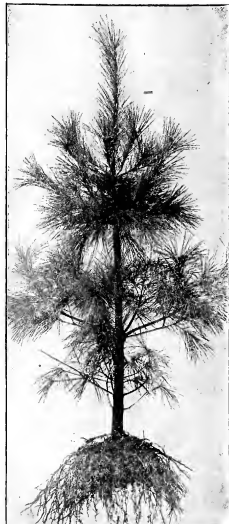
America's Greatest Tree

"The Very Foundation of Ornamental and
Commercial Tree Planting"



WHITE PINE

At
Prices
Lower
(Because of the
vastly larger
production)
**THAN
WERE
EVER
MADE
BEFORE**



**TWICE-TRANSPLANTED WELL-ROOTED
WHITE PINE**
Nowhere so many of these as at
Little Errr Farms

GOVERNMENT TESTIMONY

U. S. FOREST SERVICE Bulletin prepared by E. H. Frothingham, Forest Examiner, says:

"Of all the trees of eastern North America, **WHITE PINE** best combines the qualities of

**UTILITY
RAPID GROWTH
HEAVY YIELD, and
EASE OF MANAGEMENT"**

"THE ARISTOCRAT OF THE EVERGREENS"

L. H. BAILEY'S "Cyclopedia of American Horticulture" says:
"For grace and elegance, nothing better than our five-needled silver-lined White Pine can be imagined."

The tree here shown is one of our two to three foot grade twice-transplanted White Pines. Note how finely branched, straight-stemmed, and well-rooted it is. We have hundreds of thousands of these and also of the three to four foot size; and millions of the smaller sizes.

While We Grow Many Millions of Other Good American Evergreen and Deciduous Trees Annually, We Raise More White Pine Than Any Other Tree. Why? Because We Believe in White Pine More Than in Any Other Tree, and Also Because of the Ever-Increasing Demand. Read These Pages and You Will See That There are Many Good Reasons for This

Ornamentativeness and Usefulness; Production and Protection
Combine in WHITE PINE as in No Other Tree

USE WHITE PINE
for Shelter Belts, Windbreaks, Snowbreaks, Dust-
breaks, Noisebreaks, Screens and Tall Hedges

Protect your Homes, Cattle Barns and Sheds, Orchards, Gardens, Crops and Fields with White Pine. The U. S. For-
estry Service recommends it as the best tree for windbreaks in the Eastern States, north of the thirty-ninth parallel.

WHITE PINE IS THE PINE OF ADAPTABILITY

No other tree is so easily adapted to so many different conditions of soil and site. It does well on clay and loam, and
also on light, dry, sandy soils. It thrives on sand barrens and other bare lands; on worn-out pastures, deserted
farms—lands useless for other purposes. It is a good tree for long and short rotations. It grows in northern, eastern,
western and southern exposures. It stands direct sunshine and also considerable shading,—is in fact semi-shade-
enduring. It is therefore good for underplanting in shady places, and it likewise endures brush crowding. It stands
exposure, being wind-firm. Its branches are so formed as to withstand snow and ice pressure.

WHITE PINE IS THE TREE FOR MANY PLACES.

WHITE PINE GROWS RAPIDLY
TRANSPLANTS EASILY VIGOROUSLY



A FEW OF OUR ONCE-TRANSPLANTED WHITE PINES AS THEY LOOK WHILE
GROWING at Little Tree Farms

JUST LOOK
at these prices

FOR

Once-Transplanted
Stocky White Pines

3 to 3½ ft.

In lots of 1,000, each, **10c**

In lots of 100, each, **12c**

10 Trees for **\$2.50**

2 to 3 ft.

In lots of 1,000, each, **8c**

In lots of 100, each, **9c**

10 Trees for **\$2.00**

1½ to 2 ft.

In lots of 1,000, each, **5c**

In lots of 100, each, **7c**

10 Trees for **\$1.50**

1 to 1½ ft.

In lots of 1,000, each, **2½c**

In lots of 100, each, **3½c**

10 Trees for **75c**

8 to 12 in.

In lots of 1,000, each, **1½c**

In lots of 100, each, **2¼c**

4 to 8 in.

In lots of 1,000, each, **¾c**

In lots of 100, each, **1¼c**

Of Course These Trees are Not as Finely Proportioned, Bushy and Well Rooted as the Twice-Transplanted Stock, but
They are Very Good. This Class of Stock for Large Areas, and the Smaller Trees for Commercial Plantations, are Very
Desirable, When Good Trees at Very Low Prices are the Essential Requirements. → Don't Miss the Prices on Pages 12 and 13.

WHITE PINE IS "THE STANDARD TREE OF COMMERCE"



A CROP OF YOUNG WHITE PINE TIMBER WHICH WE "THINNED" TO THE OWNER'S PROFIT, AT THE SAME TIME INCREASING THE RATE OF GROWTH AND THE QUALITY OF THE STANDING TIMBER

White Pine is America's greatest COMMERCIAL tree

Of great value in many ways. Will grow on poor lands. Buy waste land; plant it to White Pine. It will pay you.

The authorities Fernow and Spalding say in a U.S. Government Bulletin: "There is no wood in the United States, perhaps in the world, of which there is a greater quantity used, nor which is put to a greater variety of uses than that of White Pine."

AND ITS USE WOULD BE STILL GREATER, BUT THE DEMAND EXCEEDS THE SUPPLY

The U. S. Forest Service Bulletin "Uses of Commercial Woods of the United States" (Hall and Maxwell) says: "The cost of the wood now excludes it from uses wherein its former cheapness placed it. THE HIGHEST GRADE OF WHITE PINE DOES NOT DIFFER MUCH IN COST FROM BLACK WALNUT OR MAHOGANY, though cheap grades may be had. A table of clear White Pine would not fall much, if any, below the cost of one of Oak."

White Pine has an especially large volume of body-wood. It grows dense and thus "cleans itself" free of old dead limbs comparatively well. This is conducive to lumber that is straight-grained and free from knots.

White Pine can be thinned more severely than other trees, and so needs very infrequent thinning. The material from the thinnings finds a ready market if handled properly. There's no bother with sawing to special specifications in marketing White Pine!

There is always a ready market — always a nearby market — for WHITE PINE, THE TREE OF MANY USES.

WHITE PINE IS "THE ARISTOCRAT OF THE EVERGREENS"



A PLEASURE FOREST WHICH WE DEVELOPED FOR ONE OF OUR CLIENTS, MAINTAINING THE UTMOST NATURALNESS AND VARIETY OF BEAUTY WITHOUT SACRIFICING TOO MUCH OF THE PROFIT

White Pine is America's greatest ORNAMENTAL tree

It is the ideal species

1. For lawn or park or garden or grove.
2. For borders, where its substantial effect is most desirable.
- 3, 4. For backgrounds to the landscape picture, and for otherwise beautifying an estate.
- 5, 6. For planting singly and in groups to transform barren hillsides and other bare, unproductive, unsightly spots.
7. For planting along avenues.
8. For planting on a country roadside or an estate driveway.
- 9, 10. For its ornamental value in either pure or mixed stands.
- 11, 12. For its extraordinary play of color, and its lively contrast with the more somber evergreens.
13. As the foundation on which to build up naturalistic landscape plans, because White Pine fits into and fills out a landscape as no other tree does.
14. As a base in a planting of various evergreens.
15. As the most effective evergreen to use in contrast with birches or spruce and firs.
16. As a tree that gives great pleasure when growing in little tree gardens, awaiting transplanting to larger areas.
17. As the American tree that has been the most planted and admired throughout the world.

Have you a grove of White Pines with its dense borders, and the tall cathedral-like effects that make such a sublime appeal after you reach the inner sanctuaries of "God's first temples"? Have you enjoyed the pleasure afforded by its carpet of needles, a softness into which the feet sink with a glad luxury such as was never to be had with the finest Brussels? Not only are you wealthy, but you feel so to an extent undreamed of by the man whose wealth is only in stocks and bonds.

BROAD-LEAVED TREES (Deciduous)

AND SOME SHRUBS, ETC.

We annually grow large quantities of these trees in many varieties

	Prices in Lots of				Prices in Lots of		
	10	100	1,000		10	100	1,000
ACER DASYCARPUM, Ehr.							
Twice Transplanted, caliper 2 to 3 in.	14	to 16 ft.	\$16.00				
Twice Transplanted, caliper 2 to 3 in.	12	to 14 ft.	12.50				
Twice Transplanted, caliper 1 to 2 in.	10	to 12 ft.	10.00				
Twice Transplanted, caliper 1 to 2 in.	6	to 8 ft.	6.00				
Transplanted	4	to 5 ft.	3.00	\$14.00			
Transplanted	3	to 4 ft.	2.00	10.00			
Transplanted	2	to 3 ft.	1.25	6.00	\$50.00		
Transplanted	1½	to 2 ft.	3.50	25.00			
Transplanted	1	to 1½ ft.	2.50	17.00			
Seedling	1	to 1½ ft.	1.50	10.00			
Seedling	8	to 12 in.	1.00	6.00			
ACER NEGUNDO, Linn.							
Twice Transplanted	10	to 12 ft.	\$5.00	\$25.00			
Twice Transplanted	8	to 10 ft.	3.00	15.00			
Transplanted	9	to 11 ft.	2.50	12.00			
Transplanted	7	to 9 ft.	2.00	10.00			
Transplanted	5	to 7 ft.	1.75	8.00			
Transplanted	4	to 5 ft.	1.25	5.50	\$45.60		
Transplanted	3	to 4 ft.	1.00	4.00	30.00		
Transplanted	2	to 3 ft.	2.75	20.00			
ACER PLATANOIDES, Linn.							
Twice Transplanted	2	to 3 ft.	\$2.00				
Twice Transplanted	1½	to 2 ft.	1.50				
Twice Transplanted	1	to 1½ ft.	1.25				
Transplanted	4	to 6 ft.	1.75				
Transplanted	3	to 4 ft.	1.40	\$6.50			
Transplanted	2	to 3 ft.	1.00	5.00	\$40.00		
Transplanted	1	to 2 ft.	3.00	25.00			
Seedling	2	to 3 ft.	2.00	20.00			
Seedling	1½	to 2 ft.	3.00	12.00			
Seedling	1	to 1½ ft.	1.50	8.00			
ACER PSEUDO-PLATANUS, Linn.							
Transplanted	3	to 4 ft.	\$1.75				
Transplanted	2	to 3 ft.	1.00	\$5.00			
Transplanted	1	to 2 ft.	3.00				
Transplanted	8	to 12 in.	2.25				
ACER RUBRUM, Linn.							
Twice Transplanted	3	to 5 ft.	\$3.00	\$15.00	\$130.00		
Twice Transplanted	1½	to 3 ft.	2.50	12.00	100.00		
Transplanted	5	to 6 ft.	3.00	15.00	130.00		
Transplanted	4	to 5 ft.	2.75	13.00	110.00		
Transplanted	3	to 4 ft.	2.00	9.50	85.00		
Transplanted	2	to 3 ft.	1.25	6.00	50.00		
Transplanted	1	to 2 ft.	3.50	30.00			
Seedling	2	to 3 ft.	1.00	4.00			
Seedling	1½	to 2 ft.	2.00	3.00			
Seedling	1	to 1½ ft.	2.00	15.00			
Seedling	8	to 12 in.	1.50	9.00			
ACER SACCHARUM, Marsh.							
Transplanted	4	to 5 ft.	\$2.75	\$13.50	\$125.00		
Transplanted	3	to 4 ft.	2.00	10.00	90.00		
Transplanted	2	to 3 ft.	1.65	8.00	70.00		
Transplanted	1	to 2 ft.	1.25	6.00	50.00		
Seedling	2	to 3 ft.	3.50	25.00			
Seedling	1½	to 2 ft.	2.50	18.00			
Seedling	1	to 1½ ft.	1.75	12.00			
Seedling	8	to 12 in.	1.50	8.00			
Seedling	4	to 8 in.	1.00	4.50			
<p>The Sugar or Rock Maple is one of the most popular avenue trees, and is also much used for shade in lawns and parks. Maple sugar is principally made from this tree. It is remarkably free from the attacks of destructive insects. Our Sugar Maples are extremely hardy and are grown from seed collected by our own men in our region. We find this elegant tree to be one of the most popular of the hardwoods.</p>							
AESCULUS GLABRA, Willd.							
Twice Transplanted	6	to 12 in.	\$1.00	\$5.00			
Transplanted	1½	to 2 ft.	1.25	6.00			
Transplanted	1	to 1½ ft.	1.00	4.50			
Transplanted	8	to 12 in.	3.00				
Seedling	1	to 2 ft.	2.00				
Seedling	8	to 12 in.	1.00				
BERBERIS THUNBERGII							
Seedling	6	to 10 in.	\$4.50	\$35.00			
Seedling	4	to 8 in.	3.00	20.00			
BERBERIS VULGARIS							
Seedling	1	to 1½ ft.	\$3.00	\$20.00			
Seedling	8	to 12 in.	2.00	14.00			
Seedling	4	to 8 in.	1.25	7.50			
BETULA ALBA, Linn.							
Twice Transplanted	6	to 8 ft.	\$4.00				
Seedling	1½	to 2 ft.	\$3.00	\$25.00			
Seedling	1	to 1½ ft.	2.00	15.00			
Seedling	6	to 12 in.	1.25	8.00			
BETULA LENTA, Linn.							
Twice Transplanted	2	to 3 ft.	\$3.50				
Twice Transplanted	1½	to 2 ft.	2.50	\$12.00			
Transplanted	3	to 4 ft.	3.00				
Seedling	1	to 1½ ft.	3.00	\$22.50			
Seedling	6	to 12 in.	2.50	17.50			
BETULA LUTEA, Michx.							
Twice Transplanted	4	to 6 ft.	\$6.00	\$30.00			
Twice Transplanted	2	to 4 ft.	5.00	25.00			
Twice Transplanted	1½	to 2 ft.	3.50	18.00			
Transplanted	3	to 5 ft.	3.00	15.00			
Transplanted	2	to 3 ft.	2.00	10.00			
Transplanted	1½	to 2 ft.	1.75	8.00			
Seedling	1½	to 2 ft.	3.50	\$30.00			
Seedling	1	to 1½ ft.	3.00	22.50			
Seedling	6	to 12 in.	2.25	17.00			

The Soil of Our Nursery is a Productive Sandy Loam, Well Drained and Excellently Adapted to Most Plants. In Addition,

Prices in Lots of
10 100 1,000

BETULA Papyrifera, Marsh.

Paper or Canoe Birch

Transplanted.....	4 to 5 ft.	\$5.00	\$25.00	
Transplanted.....	3 to 4 ft.	4.00	20.00	\$180.00
Transplanted.....	2 to 3 ft.	3.25	16.00	145.00
Transplanted.....	1½ to 2 ft.	2.50		
Seedling.....	1½ to 2 ft.	1.60	8.00	
Seedling.....	1 to 1½ ft.	1.20	5.50	45.00

CARPINUS BETULUS, Linn.

European Hornbeam

Seedling.....	6 to 12 in.	\$2.00	\$14.00
Seedling.....	3 to 6 in.	1.25	8.00

CARPINUS CAROLINIANA, Walt.

Blue Beech

Transplanted.....	2 to 2½ ft.	\$2.00	
Transplanted.....	1½ to 2 ft.	1.50	
Seedling.....	6 to 12 in.	\$3.50	\$25.00
Seedling.....	3 to 6 in.	2.00	14.00

CORNUS PANICULATA

Gray Dogwood

Seedling.....	2½ to 3 ft.	\$3.00	\$15.00	\$125.00
Seedling.....	1½ to 2 ft.	2.00	10.00	80.00
Seedling.....	1 to 1½ ft.	1.50	7.50	60.00
Seedling.....	6 to 12 in.	1.00	5.00	40.00

CORYLUS AMERICANA

Hazelnut

Seedling.....	1½ to 2 ft.	\$1.00	\$5.00
Seedling.....	1 to 1½ ft.		3.00
Seedling.....	6 to 12 in.		2.50

FRAXINUS AMERICANA, Linn.

True Eastern White Ash

Prices in Lots of
10 100 1,000

THREE TIMES TRANSPLANTED

8 to 10 ft.....	\$5.00
6 to 8 ft.....	4.00
5 to 6 ft.....	3.00

TWICE TRANSPLANTED

5 to 7 ft.....	3.00	\$15.00	\$140.00
4 to 5 ft.....	2.00	10.00	90.00
3 to 4 ft.....	1.60	8.00	70.00

TRANSPLANTED

5 to 6 ft.....	1.60	8.00
4 to 5 ft.....	1.40	7.00
3 to 4 ft.....	1.20	6.00
2 to 3 ft.....	1.00	4.50
1 to 2 ft.....	3.00	22.50

SEEDLINGS

3 to 4 ft.....	2.50	20.00
2 to 3 ft.....	2.00	15.00
1½ to 2 ft.....	1.75	12.00
1 to 1½ ft.....	1.25	8.00

The true American White Ash (*Fraxinus Americana*) is one of the most important and valuable trees of the country. It thrives on lands too wet for most species and also does remarkably well on drier lands. It should not, however, be planted

in the shade. For timber, shade and street planting it is highly valued. It is of remarkably rapid growth, and is practically immune from insects.

Forest owners are actively planting this species because of its many desirable qualities and the scarcity and high price of its wood. Our plants are straight, heavy stemmed, vigorous, clean and uniformly well rooted.

Prices in Lots of
10 100 1,000

FRAXINUS LANCEOLATA, Borkh.

Western Green Ash

Twice Transplanted...	4 to 6 ft.	\$2.50	\$12.00
Twice Transplanted...	3 to 4 ft.	2.00	
Twice Transplanted...	2 to 3 ft.	1.60	8.00
Transplanted.....	5 to 7 ft.	1.60	8.00
Transplanted.....	2 to 3 ft.	1.00	4.50
Transplanted.....	1½ to 2 ft.		3.50
Seedling.....	3 to 4 ft.	2.75	22.50
Seedling.....	2 to 3 ft.	2.25	

GLEDITSIA TRIACANTHOS, Linn.

Honey Locust

Twice Transplanted...	2 to 4 ft.	\$2.00	\$10.00
Twice Transplanted...	1½ to 2 ft.	1.50	
Transplanted.....	1 to 1½ ft.	1.00	4.00
Seedling.....	2 to 3 ft.		3.00
Seedling.....	1½ to 2 ft.		2.00
Seedling.....	1 to 1½ ft.		1.50
Seedling.....	8 to 12 in.		1.00

HICORIA GLABRA, Britt.

Pignut (Hickory)

Twice Transplanted...	8 to 12 in.	\$1.85	\$9.00
Seedling.....	8 to 12 in.		50
Seedling.....	4 to 8 in.		.00



OUR WHITE ASH MAKES A HANDSOME, VIGOROUS TREE FOR THE STREET

Portions of the Nursery Supply Other Types of Soil, So We Raise Each Species Under Most Desirable Conditions

		Prices in Lots of		
		10	100	1,000
HICORIA LACINOSA, Sarg.				
Big Shellbark				
Seedling.....	2 to 3 ft.	\$1.00	\$5.00	
Seedling.....	1½ to 2 ft.		4.00	
Seedling.....	1 to 1½ ft.		3.25	

		Prices in Lots of		
		10	100	1,000
HICORIA OVATA, Britt.				
Shellbark: Shag-bark Hickory				
Twice Transplanted...	1 to 1½ ft.	\$4.25		
Twice Transplanted...	8 to 12 in.	3.50		
Transplanted.....	8 to 12 in.	2.00	\$10.00	
Transplanted.....	4 to 8 in.	1.25	6.00	
Seedling.....	1 to 1½ ft.		4.00	

		Prices in Lots of		
		10	100	1,000
JUGLANS CINEREA, Linn.				
Butternut: White Walnut				
Transplanted.....	4 to 5 ft.	\$4.00	\$20.00	
Transplanted.....	3 to 4 ft.	3.00	14.00	
Transplanted.....	2 to 3 ft.	2.00	10.00	

		Prices in Lots of		
		10	100	1,000
JUGLANS NIGRA, Linn.				
Black Walnut				
Transplanted.....	1 to 1½ ft.	\$1.00		
Seedling.....	1 to 1½ ft.		\$2.00	
Seedling.....	8 to 12 in.		1.50	

		Prices in Lots of		
		10	100	1,000
LIGUSTRUM REGELIANUM				
Regel's Privet				
Transplanted.....	1 to 1½ ft.	\$10.00	\$80.00	
Transplanted.....	8 to 12 in.	7.50	60.00	

		Prices in Lots of		
		10	100	1,000
OSTRYA VIRGINIANA, K. Koch.				
Hornbeam				
Twice Transplanted...	2 to 3 ft.	\$4.00		
Transplanted.....	5 to 7 ft.	5.00	25.00	
Transplanted.....	3 to 5 ft.	3.50	18.00	
Transplanted.....	2 to 3 ft.	2.50	12.00	
Transplanted.....	1½ to 2 ft.	1.80	9.00	
Seedling.....	1 to 1½ ft.		4.00	\$30.00
Seedling.....	6 to 12 in.		2.50	18.00

		Prices in Lots of		
		10	100	1,000
POPULUS BALSAMIFERA, Linn.				
Balm of Gilead				
Cuttings.....	About 1 ft. long			\$6.00

		Prices in Lots of		
		10	100	1,000
POPULUS DELTOIDES, Marsh.				
Carolina Poplar				
Cuttings.....	About 1 ft. long			6.00

		Prices in Lots of		
		10	100	1,000
POPULUS DILATATA, Linn.				
Lombardy Poplar				
Cuttings.....	About 1 ft. long			6.00

		Prices in Lots of		
		10	100	1,000
POPULUS GIGANTEA				
Norway Poplar				
Cuttings.....	About 1 ft. long			6.00

		Prices in Lots of		
		10	100	1,000
QUERCUS ALBA, Linn.				
White Oak				
Twice Transplanted...	1½ to 2 ft.	\$5.00		
Twice Transplanted...	1 to 1½ ft.	4.00		
Transplanted.....	2 to 3 ft.	3.50	\$18.00	\$155.00
Transplanted.....	1 to 2 ft.	2.25	11.00	90.00
Transplanted.....	8 to 12 in.	1.50	7.00	
Seedling.....	2 to 3 ft.	1.00	5.00	40.00
Seedling.....	1 to 2 ft.		3.50	25.00
Seedling.....	8 to 12 in.		2.00	18.00

		Prices in Lots of		
		10	100	1,000
QUERCUS BICOLOR, Willd.				
Swamp White Oak				
Twice Transplanted...	3 to 4 ft.	\$6.00		
Transplanted.....	3 to 4 ft.	3.50	\$18.00	
Transplanted.....	2 to 3 ft.	2.75	14.00	
Transplanted.....	1 to 2 ft.	2.25	11.00	\$100.00
Seedling.....	2 to 3 ft.	1.00	5.50	
Seedling.....	1½ to 2 ft.		4.00	35.00
Seedling.....	1 to 1½ ft.		3.00	25.00
Seedling.....	6 to 10 in.		2.00	15.00

		Prices in Lots of		
		10	100	1,000
QUERCUS COCCINEA, Muench.				
Scarlet Oak				
Seedling.....	2 to 2½ ft.	\$2.00	\$10.00	
Seedling.....	1½ to 2 ft.	1.40	7.00	\$60.00
Seedling.....	1 to 1½ ft.	1.00	5.00	40.00

		Prices in Lots of		
		10	100	1,000
QUERCUS IMBRICARIA, Michx.				
Shingle Oak				
Twice Transplanted...	2 to 3 ft.	\$3.00		
Twice Transplanted...	1 to 2 ft.	2.25		

		Prices in Lots of		
		10	100	1,000
QUERCUS MACROCARPA, Michx.				
Bur Oak				
Transplanted.....	4 to 6 ft.	\$3.00	\$15.00	
Transplanted.....	3 to 4 ft.	2.00	10.00	
Transplanted.....	2 to 3 ft.	1.50	7.00	
Transplanted.....	1 to 2 ft.	1.25	6.00	

		Prices in Lots of		
		10	100	1,000
QUERCUS PALUSTRIS, Muench.				
Pin Oak				
Twice Transplanted...	7 to 9 ft.	\$10.00	\$50.00	
Twice Transplanted...	5 to 7 ft.	8.00	40.00	\$350.00
Twice Transplanted...	4 to 5 ft.	6.50	32.50	290.00
Twice Transplanted...	3 to 4 ft.	5.00	25.00	220.00
Transplanted.....	6 to 9 ft.	6.50	32.50	
Transplanted.....	5 to 7 ft.	5.00	25.00	225.00
Transplanted.....	4 to 5 ft.	4.00	20.00	170.00
Transplanted.....	3 to 4 ft.	2.50	12.00	100.00
Transplanted.....	2 to 3 ft.	1.75	8.50	70.00
Transplanted.....	1 to 2 ft.	1.40	7.00	60.00

It is not necessary to cut our **Pin Oaks** back when set out as they have ample room to support the tops. It costs more to grow such strong, fibrous roots as these, and yet our prices are very low because of our large supply. **Pin Oak** is in distinct favor as a lawn and avenue tree. It is a rapid grower, has a magnificent shape and endures well under many conditions. Its foliage is delicate and is vividly colored in the fall. Our stock is especially thrifty, clean and straight.

		Prices in Lots of		
		10	100	1,000
QUERCUS RUBRA, Linn.				
Red Oak				
Twice Transplanted...	3 to 4 ft.	\$3.50		
Transplanted.....	5 to 6 ft.	3.00	\$15.00	\$115.00
Transplanted.....	4 to 5 ft.	2.00	10.00	90.00
Transplanted.....	3 to 4 ft.	1.50	7.50	62.00
Transplanted.....	2 to 3 ft.	1.00	5.00	40.00
Transplanted.....	1 to 2 ft.		3.50	25.00
Seedling.....	3 to 4 ft.		3.50	22.50
Seedling.....	2 to 3 ft.		2.50	17.50
Seedling.....	1½ to 2 ft.		1.75	12.00
Seedling.....	8 to 12 in.		1.00	5.00

Our **Red Oaks** are unusually fine. We sell this tree of many merits at the very lowest price because we grow it in quantity. This is becoming the most popular oak for ornamental as well as commercial planting. Its rapid growth and thoroughly satisfactory development, as well as its beauty and its large volume of sound, valuable wood make it so. It has a wide natural range, growing successfully on the dry, sandy land of Cape Cod and Long Island, while on richer, moister lands it reaches a height of

seventy to ninety feet and a diameter of three or four feet. Ask for Illustration N-18.

**Prices in Lots of
10 100 1,000**

QUERCUS VELUTINA, Lamb.

Black Oak

Transplanted.....	4 to 5 ft.	\$3.50	\$17.00	
Transplanted.....	3 to 4 ft.	2.50	12.00	
Transplanted.....	2 to 3 ft.	1.50	7.50	
Transplanted.....	1 to 2 ft.	1.00	5.00	\$45.00

RHAMNUS CATHARTICA, L.

Common Buckthorn

Twice Transplanted...	3 to 4 ft.	\$4.00		
Transplanted.....	2 to 3 ft.	2.50		
Transplanted.....	1 to 2 ft.	1.60	\$8.00	
Transplanted.....	8 to 12 in.	1.00	4.50	
Seedling.....	1 to 2 ft.		4.00	
Seedling.....	8 to 12 in.		2.50	
Seedling.....	3 to 6 in.		1.50	\$10.00

ROBINIA PSEUDACACIA, Linn.

Black Locust

Seedling.....	2 to 3 ft.	\$2.50	\$16.00	
Seedling.....	1 to 2 ft.	1.50	8.00	

SALIX VIMINALIS

**European Osier
Willow**

Heavy-rooted Plants...	3 to 5 ft.	\$2.00	\$10.00	\$60.00
Heavy-rooted Plants...	2 to 3 ft.	1.50	7.00	40.00
Cuttings.....	About 1 ft. long		1.00	3.00
Withes.....	per 100 lbs.,	\$2.00	per 1000 lbs.,	10.00

TILIA AMERICANA, Linn.

Basswood

Twice Transplanted...	2 to 3 ft.	\$3.50		
Transplanted.....	5 to 7 ft.	5.00		
Transplanted.....	4 to 6 ft.	4.00		
Transplanted.....	3 to 5 ft.	3.00		
Transplanted.....	2 to 3 ft.	2.00		
Transplanted.....	8 to 12 in.	1.25	\$6.00	
Transplanted.....	4 to 8 in.		4.00	
Seedling.....	1 to 2 ft.	1.00	5.00	40.00
Seedling.....	6 to 12 in.		3.00	20.00

TILIA GRANDIFOLIA, Ehrh.

Twice Transplanted...	4 to 5 ft.	\$4.00		
Twice Transplanted...	3 to 4 ft.	3.00		
Twice Transplanted...	2 to 3 ft.	2.00		
Transplanted.....	4 to 6 ft.	1.60	\$8.00	
Transplanted.....	2 to 4 ft.	1.00	5.00	
Transplanted.....	1 to 2 ft.		3.50	
Transplanted.....	8 to 12 in.		2.25	

TILIA PARVIFOLIA, Ehrh.

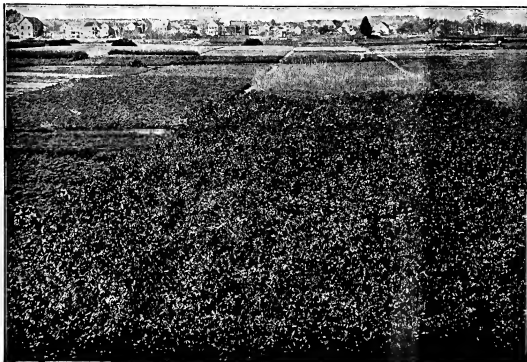
European Linden

Twice Transplanted...	5 to 6 ft.	\$3.60	\$18.00	\$140.00
Twice Transplanted...	4 to 5 ft.	3.00	15.00	120.00
Twice Transplanted...	3 to 4 ft.	2.50	12.00	100.00
Twice Transplanted...	2 to 3 ft.	1.60	8.00	75.00
Transplanted.....	5 to 7 ft.	2.50	12.00	100.00
Transplanted.....	4 to 5 ft.	2.00	10.00	90.00
Transplanted.....	2 to 3 ft.	1.25	6.00	50.00
Transplanted.....	1½ to 2 ft.	1.00	4.50	35.00
Transplanted.....	1 to 1½ ft.		3.75	27.50
Transplanted.....	8 to 12 in.		3.00	20.00
Seedling.....	1½ to 2 ft.		2.50	
Seedling.....	1 to 1½ ft.		2.00	14.00
Seedling.....	8 to 12 in.		1.50	10.00

ULMUS AMERICANA, Linn.

American Elm

Twice Transplanted...	5 to 6 ft.	\$3.60	\$18.00	
Twice Transplanted...	3 to 5 ft.	2.80	14.00	\$125.00
Twice Transplanted...	3 to 4 ft.	2.50	12.00	100.00
Twice Transplanted...	2 to 3 ft.	1.80	9.00	75.00
Twice Transplanted...	1½ to 2 ft.	1.40	7.00	
Transplanted.....	2 to 3 ft.	1.00	4.00	
Transplanted.....	1½ to 2 ft.		2.50	18.00
Transplanted.....	1 to 1½ ft.		2.00	14.00
Transplanted.....	8 to 12 in.		1.50	9.00



We Raise
DECIDUOUS
TREES
IN QUANTITY
on our
Little Tree Farms

TAX EXEMPTIONS FOR TREE PLANTERS

BRIEFED FROM STATE STATUTES

MASSACHUSETTS

Plantations — not less than 2000 trees to the acre, upon land which does not exceed \$10.00 per acre — exempt from taxation for ten years after trees have grown two feet.

NEW HAMPSHIRE

Land planted — at least 1200 to the acre, tax rebated.

First ten years, 90 per cent.

Second ten years, 80 per cent.

Third ten years, 50 per cent.

CONNECTICUT

Taxed annually on the *land alone*, rate not to exceed 10 mills, plus a yield tax of 10 per cent on value when cut.

VERMONT

Tax exempt for ten years.

MAINE

Not less than 640 to the acre after three years may be tax exempt for twenty years.

Several Other States Have Similar Exemption Laws

RHODE ISLAND

Land not worth more than \$25.00 an acre, planted not less than 500 to the acre, tax exempt for fifteen years.

NEW YORK

Not less than 800 to the acre, tax exempt for thirty-five years. A 50 per cent reduction for thirty-five years for underplanting existing forest and brush lands with not less than 300 trees. Waste, denuded, or wild forest lands 5 acres or more, assessed at not over \$5.00 per acre which is forested under agreement with the Conservation Commission, taxed for thirty-five years on land alone at a valuation not to exceed that at the beginning of the period.

PENNSYLVANIA

Lands used exclusively for growing trees and classified as auxiliary forest reserves rated for taxation at not in excess of \$1.00 per acre. Timber subject to 10 per cent yield tax when harvested.

SUGGESTIONS FOR TREE PLANTING

ORDER EARLY, PLANT PROMPTLY AND SUCCEED

THE PROPER TIME TO PLANT

In **spring** — as soon as the snow has gone and the frost is out of the ground; hardwoods and larches as early as possible, before the buds begin to start; evergreens immediately after these.

In **fall** — the latter part of August and all September for most evergreens. October and November are desirable months for transplanting deciduous trees.

USUAL DISTANCES BETWEEN PLANTS FOR FOREST PURPOSES

White Pine — 4 x 4 ft., 5 x 5 ft., 6 x 6 ft.
Scotch Pine — 2 x 3 ft., 3 x 3 ft., 4 x 4 ft.
Red Spruce — 3 x 3 ft., 4 x 4 ft., 5 x 5 ft.
Balsam Fir — 4 x 4 ft., 5 x 5 ft.
European Larch — 4 x 4 ft., 5 x 5 ft., 4 x 6 ft.
Red Oak — 3 x 3 ft., 4 x 4 ft., 4 x 5 ft.
White Ash — 4 x 4 ft., 5 x 5 ft., 6 x 6 ft.
Chesnut — 5 x 5 ft., 4 x 6 ft.
Birch — 3 x 4 ft., 4 x 4 ft.
Black Locust — 3 x 4 ft., 4 x 4 ft., 3 x 6 ft.

NUMBER OF PLANTS ON AN ACRE AT VARIOUS DISTANCES

Feet	Plants	Feet	Plants
2 x 2	10,800	7 x 7	889
2½ x 2½	5,967	8 x 8	681
3 x 3	4,800	9 x 9	538
4 x 4	2,723	10 x 10	436
5 x 5	1,743	11 x 11	360
6 x 6	1,429	12 x 12	302
5 x 7	1,245	15 x 15	194
5 x 8	1,069	16 x 16	171
6 x 6	1,210	18 x 18	135
6 x 7	1,038	20 x 20	109

WHAT PLANTS TO USE

While fine seedlings are perfectly suitable for planting under favorable conditions, it should be borne in mind that transplanted stock always has more endurance. (Seedlings are plants raised from seed and remaining in the beds where they are sown. Transplants are plants which have been taken from the seed bed and replanted in the nursery one or more times.) Transplanting produces general stockiness and an abundance of fibrous roots. It is a false economy to set seedlings in places or for purposes where transplanted stock should be used. Transplants are able to withstand far more adverse conditions of soil and weather, and to make a faster growth than seedlings. We would urgently recommend transplanted stock for all rough, stony, brushy, or especially dry and exposed land, and in general for the quickest and most noticeable results. Amateur planters, especially, are advised to use transplanted trees.

CARE OF PLANTS ON ARRIVAL

Upon receipt of the plants, take them from the boxes, open the bundles and immerse the roots in water. Then spread the plants in thin layers, and heel them into the ground at an angle of 30 to 40 degrees, leaning the tops of the plants toward the south, and cover the roots with about 6 inches of moist soil. The best place for such heeling-in is in a cool, shady spot, such as the north side of buildings. The plants must be protected from the drying winds, and the roots never exposed to direct sun or wind. If plants arrive frozen, or in freezing weather, put the boxes in a cool but frost-proof cellar or shed, and leave them until thoroughly thawed. If the plants should arrive somewhat heeled, it is best to plant them immediately, or, if that is impossible, to heel them in, not too closely, in a cool cellar, taking pains to give them extra air. It is important not to wet the roots too much when heeled-in in a damp cellar, as they will decay if too wet.

HOW TO PLANT

Before planting, the roots should be thoroughly soused in a "puddle" made of rich, fine earth or black muck and water, mixed to the consistency of ordinary paint. The plants should be carried to the field either in a bucket containing puddle or water, or in a basket with burlap or some such covering to protect the roots previously puddled. Any very long, superfluous roots should be cut off with a sharp knife or cleaver. In the case of small hardwood seedlings, with a strong tap-root, cut the tap-root back to a length of 8 or 10 inches, making a downward slanting cut. There must be no exposure of the roots to the sun or drying wind, before setting, as plants are almost surely killed in this way; this is especially true of evergreens. Remember, plants are alive, and they will die if proper conditions are not given them. In setting the trees, two men work together, one carrying the plants and setting them, the other making the holes. The best all-around digging tool is the double-edged cutting hoe, or mattock. While one man makes the hole, the second man (or boy) places the plant in the hole with the roots straight down and spreading in a natural position. The best well-broken or "fined" soil must then be packed so solidly about the roots as to be air-tight. The plant should generally be set about ¼ to 1 inch deeper than it was originally in the nursery, to allow for the settling of the ground; after setting, it should be just as deep as it was in the nursery. Greatest care must be taken not to set small plants too deep, especially in heavy soils. The roots can hardly be packed too firmly. Setting plants early in the Spring, when the ground is still moist and the air cool, insures against such a costly and impracticable proceeding as watering after planting.

CARE AFTER PLANTING

A well-set plantation requires very little after-care. Cattle must be kept out at least for some years, if not entirely, and of course the plantation must be protected from fire. If the planting be sufficiently close, no pruning will be required. But in case some plants dying leave space enough for adjoining trees to grow "limby," the latter should be pruned after about ten years, dead and superfluous limbs being cut near to the trunk. This is best done in the fall, when the sap, running sluggishly, will cover wounds without much bleeding.



WHITE PINE IN YOUNG MATURITY IN THE COOL FOREST, SHOWING CART-PATH SYSTEM AS LAID OUT BY US, GIVING ACCESSIBILITY FOR PLEASURE DRIVING AS WELL AS LOG AND WOOD TEAMING

LET OUR FORESTERS AND MEN IMPROVE YOUR WOODLANDS FOR BETTER, BIGGER AND QUICKER RESULTS

Engineering Department **THEODORE F. BORST, F. E.,**
Consulting Forest Engineer

Professional services on a per diem, percentage, or annual fee basis, in:
COMMERCIAL FORESTRY
 Examinations, reports, cost estimates.
 Working plans and supervision for management of tree crops for timber, pulp, etc. Marking for conservative lumbering, thinnings, etc.
 Surveys and maps, timber estimates, valuations for investment or claims.
 Planting plans for reforestation, for wood crops, water-shed protection.

LANDSCAPE FORESTRY
 Plans and supervision for development of country estates, forest parks, pleasure woodlands, and fish and game preserves.
 Marking trees for thinnings and improvement cuttings.
 Laying out vistas, roads, trails, fire-guards, etc.

Planting plans and lists, for ornamental and protective purposes, wind-breaks, screens, hedges, etc.

CARE OF TREES
 Examination and advice regarding unthrifty, diseased, or injured trees.
 Supervision or instructions for pruning, filling cavities, bolting and strengthening limbs, soil enrichment and draining, and the use of sprays.

Contracting Department **CHARLES C. BRAY,**
Forestry Superintendent
 Skilled foremen and experienced workmen, with equipment, supplied on a contract basis or at cost plus a percentage.
 Logging, thinnings, improvement cuttings, general work on timberlands and game preserves.

Building of lumber camps, bridges, roads, paths, and trails, fire-guards and game enclosures.

Reforestation, for timber, pulp, railroad and mining supplies, etc.
 Ornamental tree planting, windbreaks, screens, hedges, etc.
 Moving large trees. Spraying, pruning, filling cavities, soil enriching, high tree work for Park Commissions, etc.

Supply Department

The famous **Little Tree Farms of America**, at South Framingham, near Boston, owned and operated by the American Forestry Company, furnish:
LITTLE TREES

For commercial and pleasure forest planting. For shade, ornamental, street and "underwood" planting. Nut trees. Trees for screens, windbreaks and hedges. Food plants for game and birds.

FOREST TREE SEEDS
 Seeds of evergreen and deciduous trees, of American and foreign origin, collected, cleaned and forwarded promptly from this country and abroad.
 Send for our seed list.

TOOLS AND EQUIPMENT
 Special instruments, tools and equipment used in nursery work, forestry and arboriculture are imported and supplied. The best quality and design insured.
 Write for prices, giving your exact requirements.

Our Home Office **RALPH L. KELLY,**
General Manager

Will do all in its power to give the fullest satisfaction in regard to all inquiries and orders. Please address all communications to

AMERICAN FORESTRY COMPANY, 15 Beacon Street, Boston, Mass.

Build Up

AMERICAN

Landscapes-
Plant

AMERICAN

Forests-
with the

AMERICAN

FORESTRY
COMPANY'S

AMERICAN

Trees-
They are

AMERICAN

BORN
as well as

AMERICAN

GROWN
on the

Little Tree Farms
of America