

## **Historic, Archive Document**

Do not assume content reflects current scientific knowledge, policies, or practices.



62.47  
W. H. Litson

Lit.

INDEXED

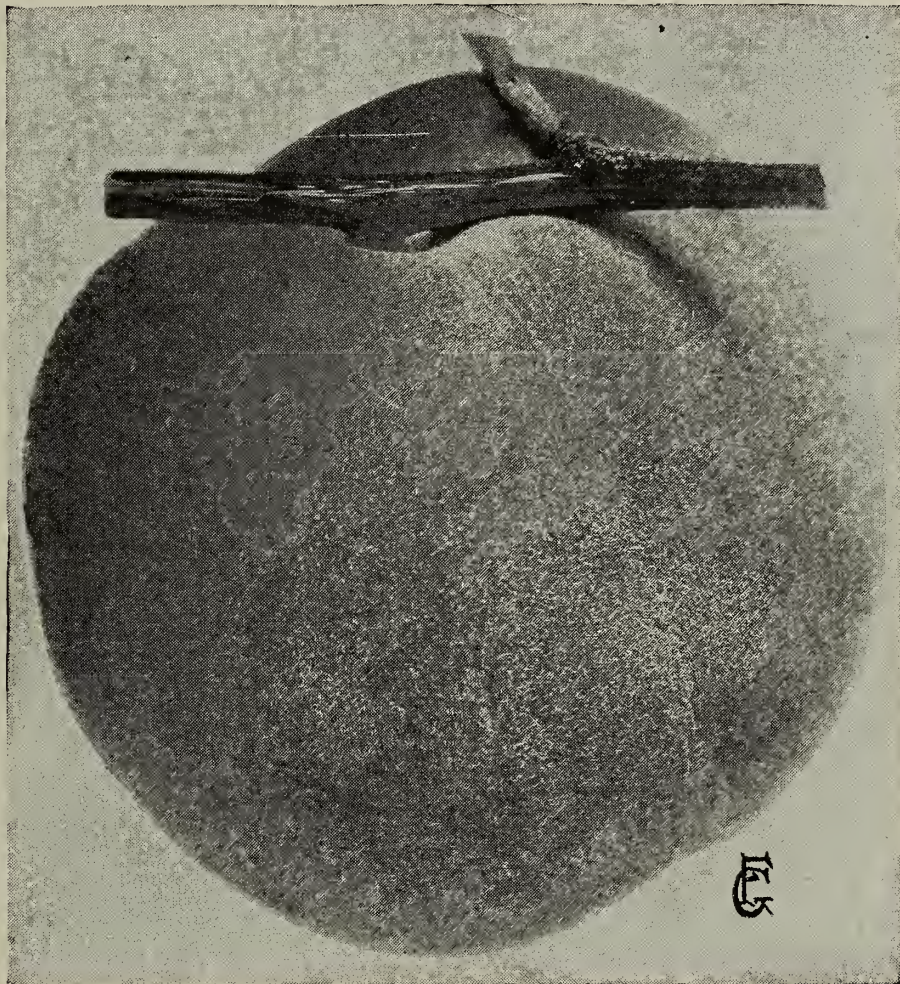
FEB 1 1915

LITSON  
REC'D  
JUL 21 1911  
O. B. D. ...

INDEXED

# CATALOGUE OF THE LITSON NURSERY

ESTABLISHED 1889



INDEXED

W. H. LITSON, *Proprietor*

Packing House and Office on West Walnut Street  
Five Blocks West of Electric Light Plant

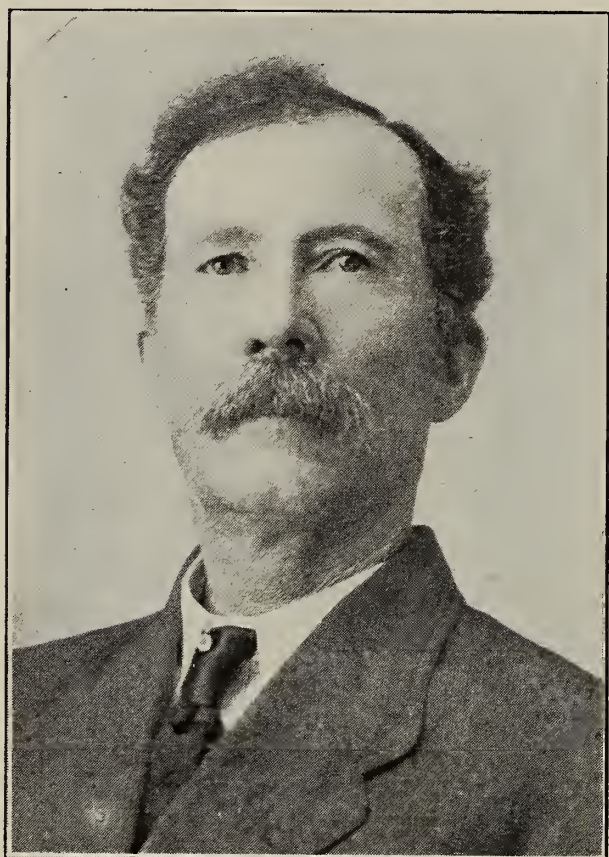
NEVADA,

MISSOURI



## Our Representative Will Not Annoy You

**O**UR REPRESENTATIVE, which is this Catalog, taps at your door in a very modest and unassuming manner. If you have not time to receive him the moment of the day he calls, he will wait unobtrusively for an hour of leisure. We have no desire that you should purchase



W. H. LITSON  
The Man Behind the Trees.

anything that you do not need, but if we can be of any service to you it will be a pleasure to wait upon you.

We are positive that whoever buys our trees and plants will get back in money, health or pleasure, many times as much as he pays out. Indeed, as the years roll on and age increases, it is a pleasure to consider how many hundred homes we

have brightened and increased in actual money value by the products of our nurseries. How unlike the traffic of the tobaccoist or the distiller of liquors is the growing of trees and flowering plants. One tends to degrade—the other to elevate and nourish.

We grow and have for sale all the leading kinds and varieties of standard fruit trees, vines and plants, such as apple, pear, peach, plum, cherry, crab, apricot and quince, grape, raspberry, blackberry, strawberry, gooseberry and currants, evergreens, roses, ornamental shrubbery shade trees, weeping ornamental trees, bulbs and tubers, rhubarb and asparagus. Cabbage, tomato and sweet potato plants in season.

We also grow and have for sale all of the most promising new kinds of fruit trees and plants.

Being sole owner of the nursery and having no other conflicting business, we give our entire attention to the management. We superintend our grafting and budding in person—use nothing but first-class healthy roots, and cut well-matured scions and buds from healthy, young, bearing fruit trees, as much as possible, and can furnish budded, grafted, whole or piece roots, worked on tap root seedlings—no side roots used in grafting.

Now is the time to plant. Just one word more and we are done. If you are planning to plant, do not delay. Delays are dangerous. Now is the accepted time. A year lost in the growth of your plants and trees is an unnecessary loss.

Should you favor us with your order, we pledge our honor that we will serve you well. We are here to see that no patron is neglected.

Call on or drop us a card, and make your wants known.

Nursery on West Walnut Street, five blocks west of electric light plant.

Correspondence invited. Address

**W. H. LITSON,**  
**Nevada, Missouri**

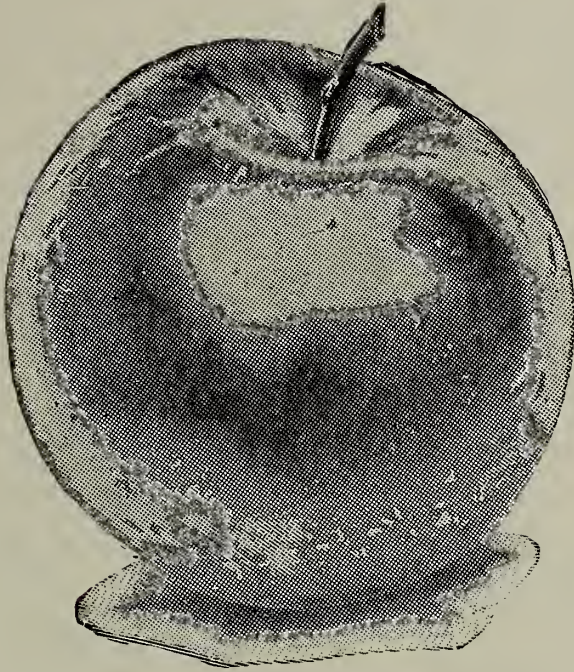


# THE LITSON NURSERY, NEVADA, MISSOURI

## Apple Trees

### Standard Varieties

**Summer**—Early Harvest, Red June, C. E. White, Early Pennock, Red Astrachan,



Sweet June, Golden Sweet, Summer Queen, Duchess of Oldenberg, Yellow Transparent, Benoni.

**Fall**—Maiden Blush, Lowell, Rambo, Fulton, Domine, Pa. Red Streak, Bailey Sweet, Snow.

**Winter**—Ben Davis, Wine Sap, Rome Beauty, Willow Twig, G. G. Pippin, Jonathan, Minkler, Janett, Huntsman, Tallman Sweet, Romanstem, Ramsdell Sweet, Little Romanite, M. B. Twig, Gano, York Imperial, Ark. Black, Wolf River, Ingram, Payne's Late Keeper.

**Crabs**—Transcendant, Soulard, Hyslop, Whitney No. 20.

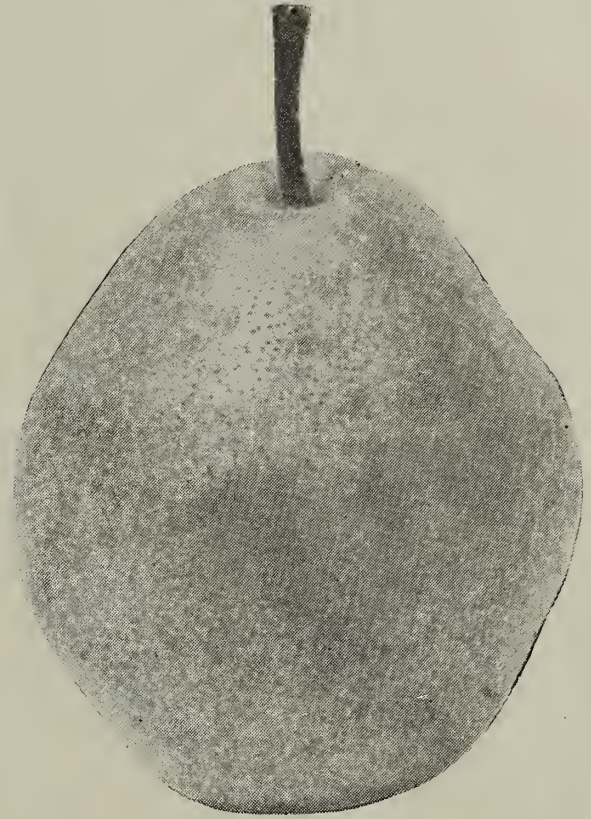
## Cherries

Early Richmond, May Duke, English Morello, Large Montmorenci, Late Richmond, Dyehouse.

## Pears

Standard and Dwarfs, Leading Varieties

Ripening in the order named: Clapp's Favorite, Howell, Lincoln, Vicar of Wake-



field, Bartlett, Duchess D'Angouleme, F. Beauty, Kieffer, Seckle, Buffum.

## Apricots

Early Golden, Moorepark, Russian, Budd, Alexis, Gibb.

## Quince

Angers, Orange, Missouri Mammoth, Champion, Meeches.

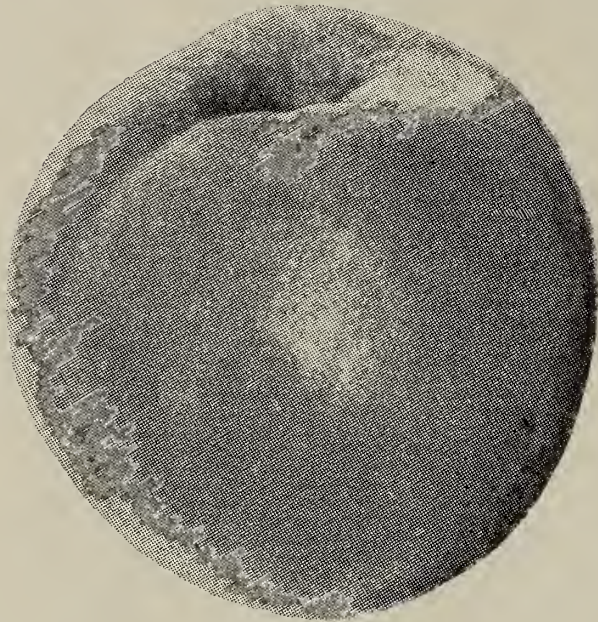




## Peaches

### Leading Varieties

Named in the order of ripening: Sneed, Greensboro, Fitzgerald, Alexander, Arkansas Traveler, Early Rivers, Capt. Ede, Carman, Mt. Rose, Crosby, O. M. Free,



Elberta, Triumph, Early Crawford, Susquehanna, Stump, Wonderful, O. M. Cling, Smock, Chine's Cling, Heath's Cling, Champion, Globe, Late Crawford, Lemon Cling, Foster, Salwa, Piquett's Late.

## Grape Vines

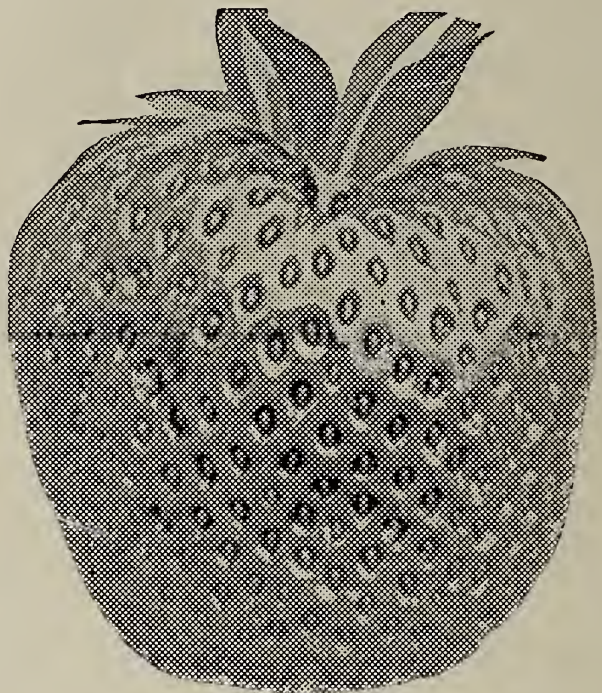


Brighton, red; Concord, black; Martha, white; Moore's Early, black; Niagara,

white; Worden, black. We have other varieties than the above in small quantities.

## Strawberries

I grow my strawberry plants especially for the plants, not for the fruit alone. I plant each variety separate and dig with forked hoes so as not to injure the roots; therefore you get nice, large, well-



rooted plants—whereas if you buy from farmers and small fruit growers (those who grow for fruit alone), you get only the small plants from the end of the runners.

**Varieties**—Aroma (S), Bubach (P), Crescent (P), Gandy (S), Sen. Dunlap (S), Warfield (P), Tennessee Prolific (S).

Those varieties marked with an S are the staminate or perfect flowered varieties.

Those marked P are the pistillate or imperfect flowered variety.

For further explanation, see page 16 of my hand book, "How to Plant and Grow Fruit."



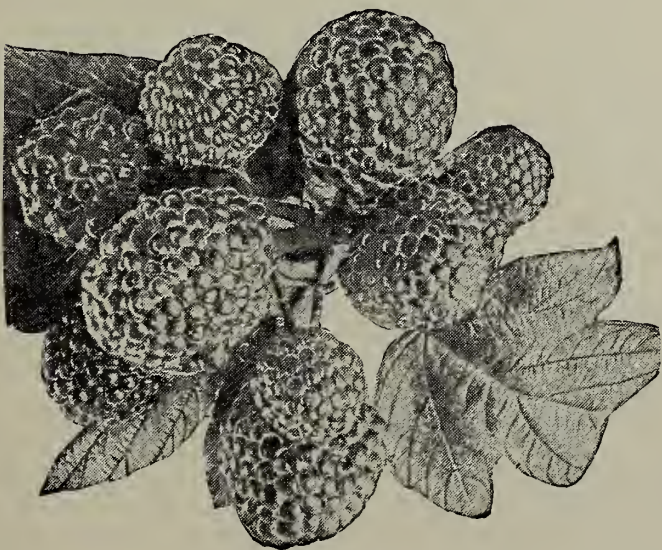


### Blackberries

Early King, Early Harvest, Mercereau, Blowers, Kittatinny, Erie.

### Raspberries

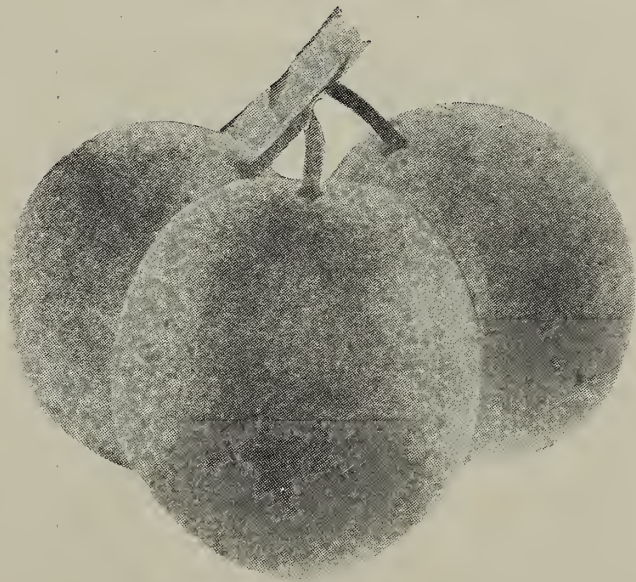
**Black Caps**—Souhegan, early; Ohio, mid-season; Kansas, early; Gregg, late.



**Red Varieties**—Cuthbert, Miller's Red, Turner, Loudon, Cardinal, Early King, Haymaker.

### Plums

Standard Varieties



Wild Goose, Miner, Burbank, Abundance, Wickson, Red June, Blue Damsion, Lombard, German Prune.

**Gooseberries** — Houghton, Downing, Smith's Improved.

**Currants**—Cherry, White Dutch, Red Dutch, Fay's Prolific.

**Rhubarb, or Pie Plant**—Myatt's Linneus, very large and tender.

**Asparagus**—Conover's Colossal, Palmetto.



## Ornamental Department

**Shade Trees**—Soft Maple, Hard Maple, Box Elder, Ash, Elm, R. Mulberry, White Birch, Catalpa, Sweet Chestnut, Linn, Balm of Gilead, Carolina Poplar, Lombardy Poplar, Tulip Tree.

**Evergreens**—Red Cedar, Norway Spruce, Scotch Pine, Arbor Vitae, Irish Juniper, White Pine, Austrian Pine, Hemlock Fir, Balsam Fir.

**Weeping Ornamental Trees**—Cut Leaf Weeping Birch, Weeping Willow, Wisconsin Weeping Willow, T's Weeping Mulberry, Weeping Elm.

**Shrubs**—Hydrangea, Purple Fringe, Althea, Purple Lilac, Snowball, Spirea, Persian Lilac, Wegelia, Deutzia, Caly-

anthus, Wegelia Va., Flowering Almond, Japonica, Bridal Wreath, Syrin-

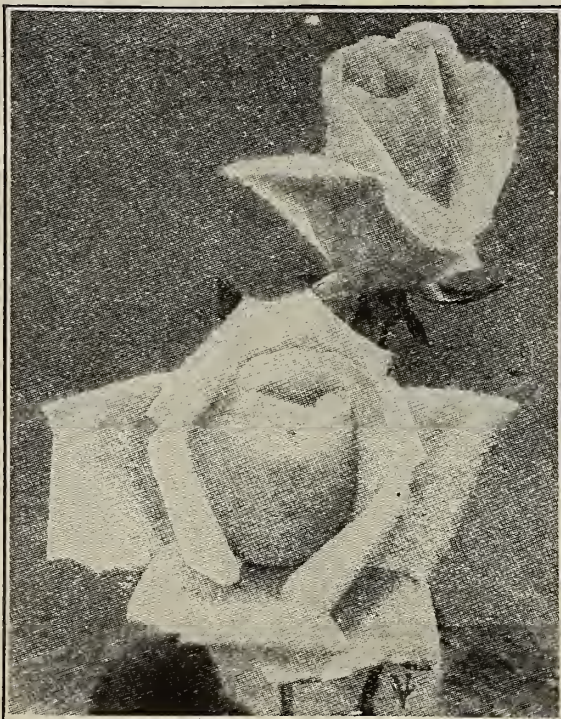


Hydrangea

ga, Barberry, purple leaves, Bechtel's Double Flowering Crab.

## Roses

Croquette de Alps, white; Croquette des Blanches, white; Gen. Washington, red; Mrs. J. H. Laing, pink; Paul Ney-



Coquette de Alps

ron, large pink; Black Prince, dark crimson; Margaret Dickson, white; La France, satin pink; Burbank, red; Glorie

Lyonnaise, cream yellow; Clio, blush; Magna Charta, bright pink; John Hopper, red; Mrs. Degraw, pink; Gen Jacqueminot, red; American Beauty, pink; Kaiserin Augusta Victoria, cream white; Baby Rambler.

**Climbing Roses**—White Dorothy Perkins, Mary Washington, white; Dorothy Perkins, bright pink; Baltimore Belle, blush; Yellow Rambler, Crimson Rambler; Seven Sisters, blush; Prairie Queen, pink; Empress of China, bright pink; Blue Rose.

**Climbers**—Virginia Creeper, Scar Honeysuckle, Wistaria, Trumpet Flower, W. Honeysuckle, Frag. Honeysuckle.

**Moss Roses**—Princess Adelaide, pale; Salet, light; Gracilic, deep pink; Blanca Moreau, pure white; Henry Martin, fine, clear rose.

**Bulbs and Tubers**—Bleeding Heart, Dahlias, mixed; Lilies, tiger; Peonias, light pink and red; Peonies, white; Tuberoses; Lilies, white, Tulips, mixed.



# THE LITSON NURSERY, NEVADA, MISSOURI

---

## Distances for Planting

### FRUIT TREES

Apples, plant 30 feet apart, 50 to acre.

Pears, standard, and Cherries, plant 20 feet apart, 108 to acre.

Plums, Peaches and Apricots, plant 16 feet apart, 170 to acre.

Pears (Dwarf) and Quinces, plant 12 feet apart, 300 to acre

### SMALL FRUIT PLANTS

Grapes, rows 8 feet apart, plants 8 feet apart, 680 to acre.

Currants, Gooseberries, rows 4 feet apart, plants 4 feet apart, 2,725 to acre.

Raspberries, Blackberries, rows 7 feet apart, plants 3 feet apart, 2,070 to acre.

Strawberries, rows 3½ feet apart, plants 1¼ feet apart, 10,000 to acre.

Asparagus, rows 5 feet apart, plants 2 feet apart, 4,386 to acre.

Rhubarb, rows 4 feet apart, plants 4 feet apart, 2,725 to acre.

## Weight of Trees and Plants Packed

Fruit trees, 4 to 6 feet, weigh about 100 pounds to 100 trees.

Fruit trees, 3 to 4 feet, weigh about 25 to 50 pounds to 100 trees.

Grape Vines, Currants, Gooseberries and Blackberries weigh 10 to 25 pounds per 100

Raspberries, about 5 to 10 pounds per 100 plants.

Strawberries, about 20 to 25 pounds per 1,000 plants.

## Terms and Conditions

**REMITTANCES**—Postoffice or Express Money Order, Registered Letter or Bank Draft are the best ways to remit. Any sum less than \$1.00 can be paid in two-cent stamps. In ordering, always give plainly postoffice address, and express or freight station, being very careful to give the State.

Fifty trees will be furnished at hundred rates, five hundred at thousand rates. We have other varieties in small quantities, which will be priced on application.

**TERMS OF PAYMENTS**—Cash or satisfactory security before shipment of stock. All orders to be sent by express, C. O. D., must be accompanied by **one-half the amount in cash.**

We deliver all goods free of drayage to railroad or express office, after which our responsibility ceases.

All claims for errors or deductions must be made immediately upon receipt of goods.

**SHIPPING FACILITIES**—We ship over the Missouri Pacific and Missouri, Kansas & Texas railroads, and American and Wells Fargo express companies, and make close connections with nearly all other lines.

Nursery on West Walnut street, five blocks west of electric light plant.

Address,

W. H. LITSON, Nevada, Missouri.



## THE LITSON NURSERY, NEVADA, MISSOURI



The above is a photo of my new packing house. While it is not as large as the wholesale nursery packing houses, it is plenty large enough for any retail nursery. My trees are dug with a three-horse digger (getting all the roots); then they are hauled directly to the packing house, not allowing the roots exposed to the wind and sun over twenty to thirty minutes. There the trees are trenched in the ground inside.

When shipping time comes, the trees are packed in boxes or straw and burlap—indoors and never exposed to the weather.

With the above improvements I am as able to grow, pack and ship nursery stock as any modern, up-to-date nursery in the state.

### Our Guarantee of Genuineness

**W**HILE WE EXERCISE THE GREATEST DILIGENCE and care to have all our trees, etc., true to label, and hold ourselves in readiness, on proper proof, to replace all trees, etc., that may prove untrue to label, free of charge, or refund the amount paid it is mutually understood and agreed between the purchaser and ourselves, that our guarantee of genuineness shall in no case make us liable for any sum greater than originally received for said trees, etc., that prove untrue.