

Historic, Archive Document

Do not assume content reflects current scientific knowledge, policies, or practices.

62.57

1915

NOVELTIES & SPECIALTIES



W. A. MANDA, INC.

South Orange, N. J.

also
Plainfield, N. J.



EUROPEAN BRANCH

St. Albans, Herts, England

Terms Upon Which We Do Business

ALL correspondence pertaining to the business should be addressed to the firm and not to any of the employees.

All accounts are rendered monthly. Our patrons are requested to remit by checks, express or post office money-orders, or currency in registered letters. We will not be responsible for money sent in unregistered letters. From unknown correspondents either a remittance or reference is required with each order.

We send goods C. O. D. when the order is accompanied by a remittance of at least 25 per cent. of its total value. This guarantees acceptance of goods upon arrival at destination.

We do not guarantee delivery or safe carriage of goods. After the goods are delivered to the Transportation Company in good condition and receipted for by them, our responsibility ceases, as they are beyond our control, and become the property of the purchaser.

Packing. All packing is charged for at cost.

Complaints. Any complaints arising should be made within 3 days after receipt of the goods, otherwise they cannot be considered.

Early orders. Orders are solicited at as early a date as possible, that we may have ample time for their execution. Please write plainly name, post office, express office and any other necessary information as to the best method of forwarding; express is recommended.

Non-Warranty. Most of the failures with seeds, plants and bulbs are due to causes entirely beyond our control, such as unfavorable weather and soil conditions, too deep or too shallow planting, etc., which render it impossible for us to guarantee success. Although we take all possible care to supply only such stock as will, under proper conditions, produce satisfactory results, we still give no warranty as to description, quality or productiveness of any of the seeds, plants or bulbs we send out, and will not be in any way responsible for the crop or results, also if stock is exhausted when orders are filled, and every order will only be accepted on these conditions.

Orders placed and accepted cannot be cancelled except with our consent.

Visit Our Nurseries

The nurseries are situated on the D., L. & W. R. R., adjoining the depot of South Orange. There are 83 trains daily, so visitors will only have a few minutes to wait, trains being so frequent. There are also electric cars from Newark to South Orange Depot, connecting with the Pennsylvania R. R. and Jersey Central R. R. every ten minutes. Also from Orange to South Orange, connecting with the Erie R. R. Taking it all in all, it is the most accessible nursery in the country.

Novelties for 1915



DAHLIA, MRS. ALFRED I. DUPONT (Manda) (One-half Natural Size)—One of the most extraordinary varieties in cultivation. Extra good in habit, beginning to flower very early in the season and continuing until frost. The foliage is luxuriant and the stems are strong and upright, two feet in length, supporting an extraordinary large flower, perfectly double, chrysanthemum like. The color is of the brightest ruby red, showing scarlet under artificial light. This variety has received several certificates and also the first prize as the best decorative Dahlia at the New York Horticultural Society Dahlia Exposition, Bronx Botanical Gardens.

This beautiful Dahlia is named, by permission, in honor of one of the most liberal patrons of Horticulture.

Novelties for 1915

New Dahlias.

The following set of six varieties and additional special one which will not be disseminated until 1915, forms a collection of the finest Dahlias ever raised. The result of special crosses bringing in new types and blood into these flowers. Their free growing habit, extra fine and healthy foliage and extra freeness in producing innumerable flowers, long stout stems, holding the flowers well upright so that they can be cut with stems of two feet or more. Their wonderful lasting quality and the extraordinary size of the flower, solid texture as well as the beautiful colors, making these the finest set of fancy and decorative Dahlias that have ever been sent out.

This was well proven, not only by the great admiration of every one who has seen these Dahlias, either at South Orange or when exhibited at the various exhibitions throughout the country, but they have received the highest prizes whenever exhibited against competition with all the best Dahlias in cultivation, which proves them superior to any other Dahlias grown at present.

At the New Jersey Horticultural Society Dahlia Exhibition we received for these Dahlias in competition, eleven first prizes and eleven first class certificates.

From the Morris County Florists' & Gardeners' Society, a certificate.

From Oyster Bay, a medal.

From the Horticultural Society of New York, two certificates and special mention.

From Newport Horticultural Society, three certificates and medal.

From the New York Florist Club, four certificates.

The committee also visited our nursery and were greatly impressed with all the qualities which we claim for these plants.

We are ready for distributing the bulbs from February on, and strong, young plants in three-inch pots in May and June.

PRICES OF BULBS: For any of the 6 varieties, each.....\$1.50
For the collection of 6 varieties, one of each..... 8.50

The special Albert Manda, of which a limited number only can be disposed of this year, the general dissemination will not take place until the following year at \$3.00 each.

Taking the set of seven Dahlias, one of each for.....\$10.00
YOUNG PLANTS in 3-inch pots for delivery in May and June, each..... 1.00
Set of six varieties, one of each 5.50
Set of seven, including special Albert Manda..... 7.50

We beg to advise to order in sets at these greatly reduced prices.

DAHLIA, MRS. MINNIE BURGESS—Strong upright grower, with fine dark foliage producing extraordinary amount (110 flowers open at one time, being counted on one plant) very large bright scarlet flowers in the shape of the D. Juaresi, one of its parents. The best and most floriferous scarlet variety in cultivation that should be in every collection either as a plant or exhibition flower.

DAHLIA, SOUTH ORANGE SURPRISE (Manda)—This variety forms quickly an extraordinary large bush with fair stems and quantity of well-formed flowers of good size, varying in color from the purest white, through all the shades of yellow, orange, bronze, or having two or three of these colors combined in the one flower. Indispensable in any collection. It is very interesting to watch its development, and to see quite often three flowers on one stem, each entirely distinct and different in color.

DAHLIA JOSEF MANDA (Manda)—Strong, free grower with ample foliage, and heavy stems supporting large perfectly double flowers closely formed of broad petals of the brightest red color. Grand for exhibition as well as useful variety for the garden.

DAHLIA VERONICA MANDA (Manda)—Extremely dwarf grower, and one of the most profuse flowering Dahlias in cultivation, growing only to two or three feet in height, producing a carpet of flowers of medium size formed like a Water-lily, and a beautiful lemon color, shaded with rose at the tips. As a cut flower it lasts for two weeks. A grand plant for any purpose.

Novelties for 1915

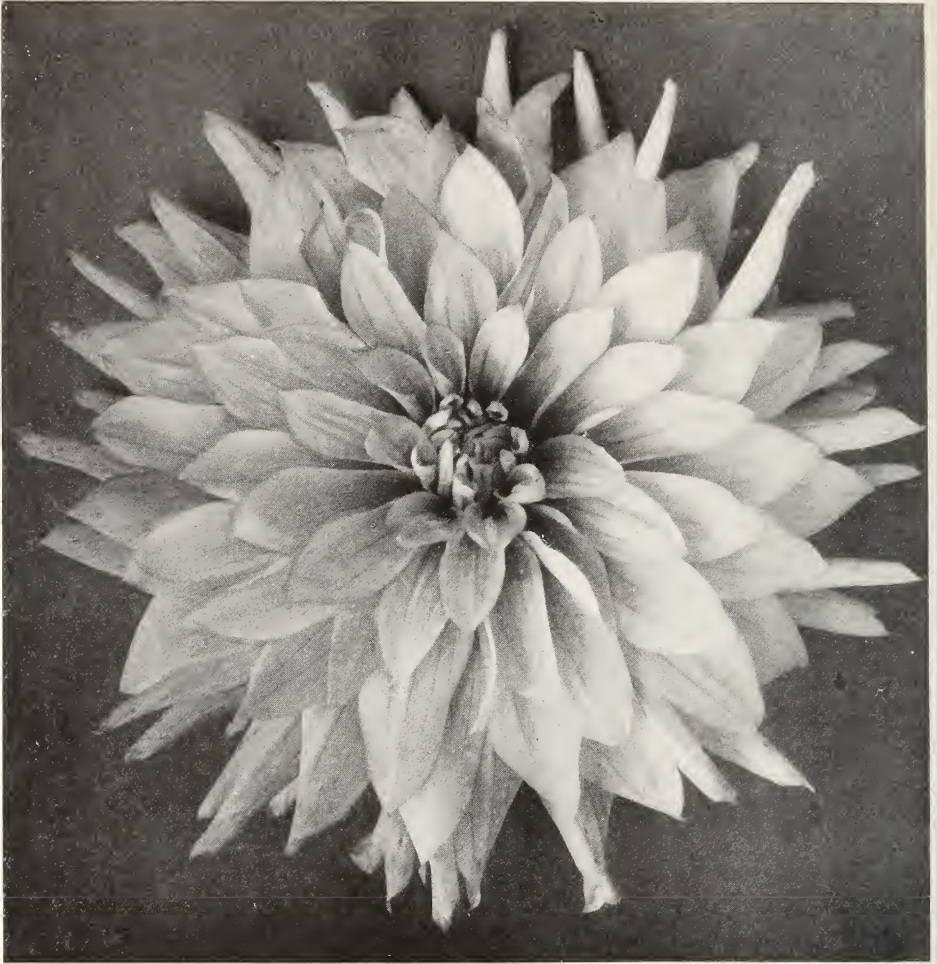


Gertrude Manda (Manda) (Natural Size)

DAHLIA GERTRUDE MANDA (Manda)—Very free grower, sending out long graceful stems with medium size most beautifully formed flowers, of the grandest peach-blow shade of color imaginable, and one of the finest for cut-flower purposes or for garden decoration. Lasting long time on a plant or when cut.

**Be sure and order a set or two of these
MOST BEAUTIFUL 7 NEW DAHLIAS
Also other Novelties from this Catalogue**

Novelties for 1915



Albert Manda (Manda) (Less than One-half Natural Size)

DAHLIA ALBERT MANDA (Manda)—At the urgent request of a great many people seeing this Dahlia, we will be obliged to send out a limited number of roots and plants this year, although the full dissemination will not be until a year later.

This is the largest flowering Dahlia in cultivation with fine light green ample foliage, very stout stems which terminate into extraordinary flowers nearly a foot in diameter with beautiful shades of lemon, white and pink. The color varying according to the season, exposure and situation. It is one of the most extraordinary Dahlias ever raised and a forerunner of a new race.

Price of this variety **\$3.00** per bulb or **\$2.25** per potted plant.

	Price
Set of 7 varieties, including the above bulbs.....	\$10.00
Set of 7 varieties, including the above green plants.....	7.50

Novelties for 1915.

ANTHURIUM ANDREANUM HYBRIDS (Manda)—After twenty years of hybridizing I have now over twenty fine named varieties, varying from richest red to the purest white. One of the easiest growing and free flowering plants in cultivation. The flowers are most durable, lasting three months on the plant and one month when cut. Price of flowering size plants, our selection, \$1.00 each; 6 plants in 6 named vars, for \$9.00; 12 plants in 12 rare varieties for \$25.00.

ANTHERICUM COMMOSUM—The type from which *A. Mandaiantum* was raised. Compact plant with bright green leathery foliage and long streamers with young plants, making an ideal plant in green color what *A. Mandaiantum* does in variegated. Price, 25c. each; \$2.50 per dozen.

ASPARAGUS RETROFLEXUS—Fine addition to this useful class of green decorative plants, upright growth of very light green foliage, making a fine plant or useful cut greens for artistic decoration. Strong plants at 50c. each; \$5.00 per dozen.

GERANIUM, EVERBLOOMING SCARLET (Manda)—One of the grandest varieties as a bedder or for winter flowering under glass. Plant free growing, producing innumerable large trusses of flowers. The individual flowers are bright scarlet red, as large as a silver dollar and last well. Price, 2½-inch pots, 25c. each; \$2.50 per dozen; \$18.00 per 100. Strong specimens in 4-inch pots at 50c. each; \$5.00 per dozen.

SELAGINELLA MANDAIANA (Manda)—One of the surprises that came with an Orchid importation. Extraordinary quick grower, forming a fine compact plant of drooping habit. Excellent plant for any purpose, especially for baskets or edges of greenhouse benches or flower boxes. Not only the beauty of the plants is to be recommended, but the extreme hardiness of the plant, as it is the most durable and easiest growing *Selaginella* in cultivation. Strong plants, 50c. each; \$5.00 per dozen.

TEN NEW TRADESCANTIAS of great interest and usefulness. Collection of 10 varieties, one of each, \$2.50.

TRADESCANTIA LAEKENENSIS—White, green and pink foliage. 25c. each.

TRADESCANTIA FLUMINENSIS—Green, small foliage, white flower. 25c. each.

TRADESCANTIA THURINGIA—Green and white foliage. 25c. each.

TRADESCANTIA SOUTH ORANGE GOLDEN (Manda)—Bright golden yellow foliage. 25c. each.

TRADESCANTIA AUREO-STRIATA—Foliage green with yellow stripe. 25c. each.

TRADESCANTIA VERSICOLOR—Beautiful green, white, red and pink. 25c. each.

TRADESCANTIA HYPOPHAEA—Upright, red stems and foliage. 25c. each.

TRADESCANTIA LANCEOLATA—Foliage large, green and downy. 25c. each.

TRADESCANTIA BENGALENSIS—Foliage small, red, fleshy, flowers blue. 35c. each.

TRADESCANTIA DRACAENOIDES—*Dracaena*-like, forming strong streamers. 50c. each.

SALVIA GOLDEN DWARF (Manda)—Beautiful dwarf-growing plant, making fine compact globular mounds of bright golden foliage superior to Golden Bedder *Coleus*. Price: 25c. each; \$2.50 per dozen; \$18.00 per 100.

CALCEOLARIA STEWARTII—This is a hybrid between the greenhouse varieties and the shrubby kinds. Flowers are golden yellow and come in immense trusses. It is indispensable as a pot plant, and is very fine as a bedding plant in half shady situations, where it makes a perpetual show of brightest golden color. Price: 3-inch pots, 50c.; \$5.00 per dozen.

CHRYSANTHEMUM, EARLY FROST (Dorner)—A cross between Golden Glow and October Frost. Height, 3 feet. Pure white with an incurve petal, perfect form and full to the center. Has the Golden Glow habit to set early buds which develop into perfect blooms. One of the earliest varieties. 50c. each, \$5.00 per dozen.

CHRYSANTHEMUM, WHITE CHIEFTAIN—One of the finest white incurved *Chrysanthemums*, and a sport from the celebrated *Chieftain*. One of the finest late-flowering *Chrysanthemums*. 50c. each; \$5.00 per dozen.

CARNATION ALICE (Fisher)—Another of the "Peter Fisher's Sterling varieties," which he describes, viz.: Color, a beautiful shade of clear blush pink, without a trace of salmon; exactly midway between 'Gloriosa' and 'Enchantress.' The blooms average from 3 to 3½ inches; the habit of the plant leaves nothing to be desired. Well-balanced plant. Comes into flower early; is a persistent and enormous bloomer all through the fall and winter months. The most productive carnation I have offered to date."

CARNATION GOOD CHEER (Dorner)—Color, deep pink, darker than "Gloriosa"; stems extra long and stiff, flower 3 to 3½ inches in size. It has good keeping qualities, and is an early and continuous bloomer. As a producer it has exceptional merit.

We can recommend all our Novelties,

CARNATION PINK SENSATION (Dorner)—Flower extremely large, averaging 4 to 4½ inches, full and deep. Keeping qualities better than ordinary. The color is a well-defined pink, somewhat lighter than "Gloriosa." The growth is stocky, has a heavier foliage than ordinary and throws long stems.

Price	Rooted Cuttings.	From 2¼-in. Pots.
Per dozen	\$2.50	\$3.00
Per hundred	16.00	20.00

NEW ROSE WICHURAIANA HYBRID "PEACH BLOW" (Manda)—This is one of the grandest pink varieties ever raised. It is exceedingly floriferous, flowers borne in great upright clusters, double of a beautiful peach blow color, and keep for a long time. Price: 2½-inch pot, 75c. each; \$7.50 per dozen. Two-year-old plants, \$2.00 each; \$20.00 per dozen.

ROSA WICHURAIANA ARGENTEA (Manda)—The foliage is of a beautiful silver and pink variegation, especially in the new growth, giving the plant a decidedly novel and unique appearance. The habit of growth and the flowers are like the Memorial Rose, which is its parent. Price: 2½-inch pot, 50c. each; \$5.00 per dozen. Two-year old plants, \$1.50 each; \$15.00 per dozen.

ROSE PANAMA (Cook)—Fine seedling from Drusshki, with large flowers composed of broad petals of most delicate pink shade. \$1.00 each; \$10.00 per dozen.

ROSE HOOSIER BEAUTY (Dorner)—Color, a rich, velvety crimson, with deeper shadings. It is as fragrant as "Richmond," has more petals and better keeping qualities. It naturally throws two and three-foot stems. The glowing color, sweet scent, well-shaped buds, full flower, long-keeping qualities, clean, healthy habit and freedom in growth, and production of bloom have been declared wonderful. \$1.00 each; \$10.00 per dozen.

ROSE MRS. ANDREW CARNEGIE—Color purest possible white. Flowers very large, exquisitely shaped, and high pointed center. Delightfully fragrant, in which respect it eclipses Frau Karl Druschki. \$1.50 each; \$15.00 per dozen.

EUONYMUS ROSMARINIFOLIUS—Perfectly hardy evergreen foliage, shrub growing 2 feet in height. The foliage is narrow, green in summer, turning bright scarlet and keeping so all winter. Grand plant for edging of shrubs, borders and beds of Rhododendrons, or like plants. Price: Good plants, 25c. each; \$2.50 per dozen. Limited number of strong 3 year old plants. Price, 50c. each; per dozen, \$5.00

SALVIA GREGGII—Native plant of great beauty. Hardy in most parts of the United States. Grows 2 to 3 feet in height. The plant is literally covered with crimson flowers of good size. Great acquisition to our hardy plants. Price, each, 25c.; per dozen, \$2.50.

YUCCA FLACCIDA AURO-STRIATA (Manda)—Perfectly hardy plant, as showy as a Pandanus, forming a plant 2 feet high with long leathery foliage, beautifully striped with golden stripes. Flowers large lily-like on stems 4 to 6 feet high. Grand evergreen hardy plant. Each, \$1.00; per dozen, \$10.00.

OPHIPOGON JAPONICA (Japanese Lily of the Valley)—A perfectly hardy evergreen plant, with fine leathery foliage growing about six inches in height, and thriving well under trees where grass will not grow, and, therefore, a grand acquisition for that purpose, and a rival of the Pachysandra terminalis. 15c. each; \$1.50 per dozen; \$12.00 per 100.

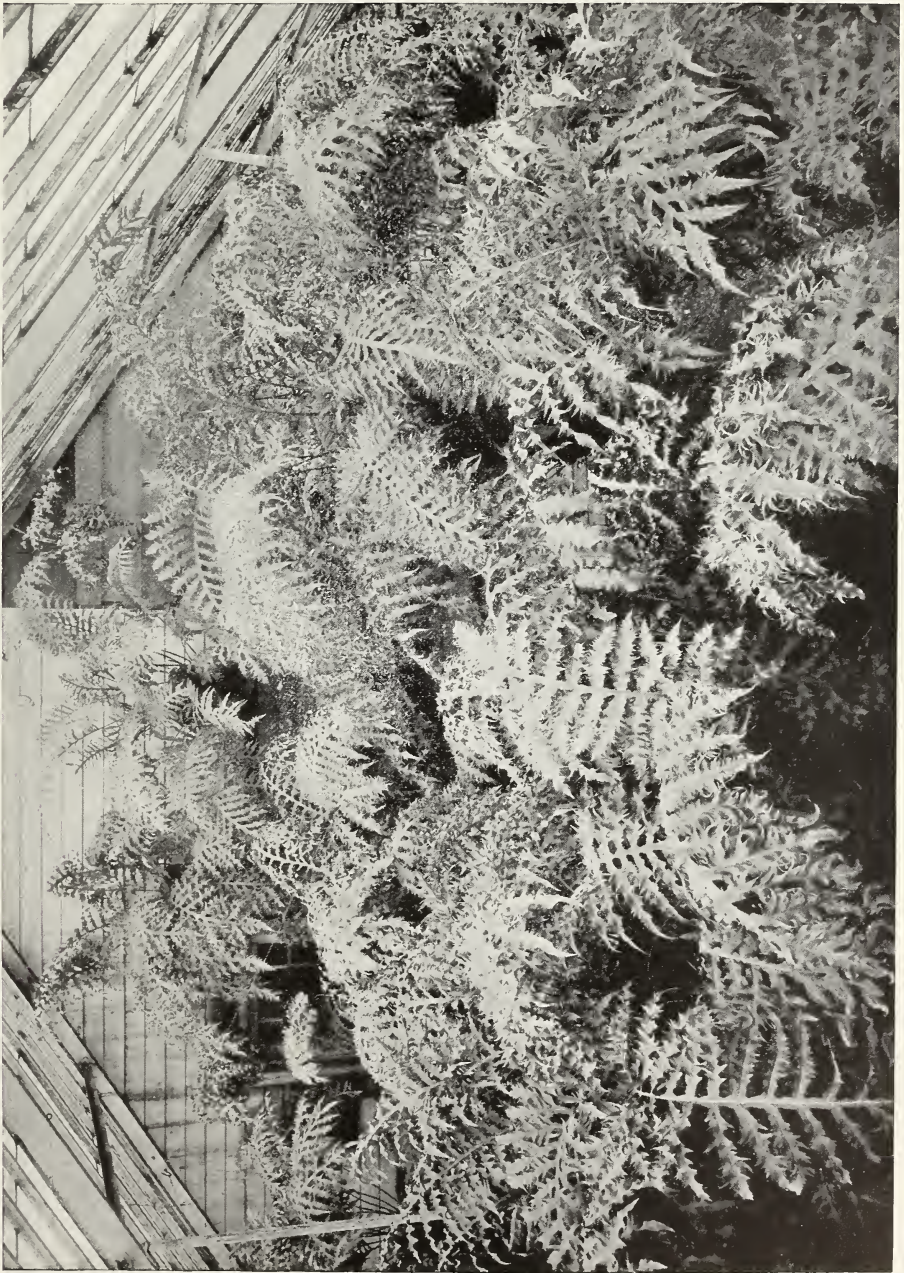
HARDY CACTI

The following ten varieties of Cacti have proven quite hardy and will make a grand addition to rockwork or small borders:

	Price each
CACTUS MISSOURIENSIS —New small-growing plant.....	\$0.50
ECHINOCACTUS SIMPSONI —Large head, short spines, pink flowers.....	1.00
ECHINOCACTUS SIMPSONI —Perpetual Snow (new) with woolly crowns.....	1.00
ECHINOCACTUS VIRIDIFLORUS —Neat growing plant for rockwork.....	.75
OPUNTIA ARENARIA —Small-growing species.....	.50
OPUNTIA CAMANCHICA —Very spiny and showy.....	.50
OPUNTIA MESACANTHA —Good compact-growing species.....	.50
OPUNTIA PHAEACANTHA MAJOR —Large grower.....	.50
OPUNTIA POLYACANTHA —Quantity of white spines.....	.50
OPUNTIA POLYACANTHA ALBISPINA —White-spined, fine variety.....	.50

	Price each
LEWISIA COTYLEDON (New) —Large golden and crimson flowers formed like a rose	\$0.50
LEWISIA HOWELLII (New) —Rare plant with large satiny rose flowers.....	.50
LEWISIA TWEEDII (New) —Flowers large of salmon-pink color.....	.50
OENOTHERA OVATA (New) —Neat plant, large bright yellow flowers.....	.50
PAPAPER ALTAICUM —A constant bloomer, producing quantity of beautiful flowers larger than P. nudicaule, of a pretty salmon-red color.....	.25

Novelties of Former Years



House of Polypodium Mardaianum at South Orange, N. J.

The winner of more prizes than any Novelty ever introduced

Meritorious Novelties of Former Years at Greatly Reduced Prices

Polypodium Mandaianum (*Manda*)

Among the multitude of plants which I have introduced during my career, there is none that has impressed me as much as the Polypodium which we are offering now.

It is a plant that has grown in favor from year to year, and in its years of propagation developing new beauty and an additional quality as plant or cut green for decoration.

Great admiration of the plant is shown by every one who has had the fortune to see this wonderful plant growing or exhibited. It has carried everything before it, and stands to-day as the First Novelty not only in America, but with the whole horticultural world.

The plant is very free-growing and makes beautiful specimens in all sizes, from 5-inch pots up to large specimens in 20-inch tubs.

It is also a basket plant. A plant fastened on a piece of bark or cork will surpass in beauty and elegance any stag-horn fern.

Planted on any old stump or tree fern trunk, it will soon make a head that will rival any tree fern in cultivation, and equally useful when planted on the wall of the greenhouse, where it will attach itself and make a dense covering of choice beautiful glaucous foliage.

Not only as a plant, but also in a cut state, it is most valuable for fine decoration, being, perhaps, the most lasting green in existence, for I had fronds keep fresh eight weeks in water, which is remarkable, and I, therefore, cannot too strongly recommend this plant for any purpose desired.

Different from anything in cultivation, and strongly reminds one of the classic Acanthus of the Greeks. These beautiful fronds in the hands of a floral artist will fill a long-felt want.

	Price
Good plant, 4-inch pot or pan, each.....	\$1.00
Strong plant, 5-inch pot or pan, each.....	1.50
Strong plant, 6-inch pot or pan, each.....	2.50
Extra strong plant, 8-inch pot or pan, each.....	4.50
Extra large specimen, each.....	\$10.00 to \$50.00

Also plants on blocks or baskets or on tree fern stems, prices and sizes on application.

(FROM "GARDENING ILLUSTRATED," LONDON, JULY 27, 1912)

A Fine Greenhouse Fern (*Polypodium Mandaianum*)

"This fern, which was given a first-class certificate at Holland Park Show, comes to us from America. Specimens of it were shown by Mr. W. A. Manda, South Orange, N. J., at the International at Chelsea, but I believe it was not placed before the committee on that occasion. It, however, at that time attracted a good deal of attention as a very beautiful fern, which, from its bold habit, high ornamental qualities, and the lasting nature of its stout, leathery fronds, was likely to prove of considerable value for decoration.

AS EXHIBITED BY W. A. MANDA AT NATIONAL FLOWER SHOW, CHICAGO

The sensational plant of the First National Flower Show, where it captured the first prize, a **Silver Medal**, as the **Best New Fern** not in commerce, and also the **Grand Gold Medal** for the **best plant** not yet an article of commerce, with the group as per above illustrations. Mr. John Thorpe, the veteran plantsman, states in the Christmas number of "Florists' Exchange" as follows: "I will say that the most valuable plant, the most progressive plant, the plant which has gained the gold medal, is Polypodium Mandaianum, and I have no hesitation in saying there will be as many forms of it as in the case of Nephrolepis exaltata. Fortunately all the Polypodium family are good keepers under adverse circumstances. They will live where palms will not. For temporary decorations with cut flowers the polypodium will last as long as any of the asparagus. None of the polypodium are an exception to this rule. From a decorative standpoint the configuration of the plant, its adaptability, it is equal to any plant ever introduced."

FROM "THE JOURNAL OF HORTICULTURE AND HOME FARMER,"
LONDON, ENGLAND, MAY 30, 1912.

"The exhibit of foliage plants by W. A. Manda, the American exhibitor from South Orange, U. S. A., deserves mention, particularly for his fern Polypodium Mandaianum, with fronds 5 feet long and 20 inches broad, the pinnae finely cut. This was shown upon wood rafts, and also towering above the stem of a tree fern. The fronds, when cut, remain fresh for several weeks.



Nephrolepis Tuberosa Plumosa (Manda)

***Nephrolepis Tuberosa Plumosa* (Manda)**

This beautiful fern is quite distinct from all of the other varieties of the Boston Fern in so much that it has been raised from the Japan species *N. Tuberosa*, which type is much hardier than the *Exaltata*.

The fronds are long and narrow; the pinnules beautiful plumose which are of light color, giving the fronds a beautiful effect on account of the two distinct shades as well as its graceful waviness, and will be found a great and distinct addition to collection ferns. Fine plants, in 3-inch pots, 50c. each; \$5.00 per dozen. Specimens, \$1.00 to \$3.00 each.

***Nephrolepis* "M. P. Mills" (Harris)**

This is one of the gems of this large family of ferns. In aspect like a miniature *Whittmanii*, but of wiry growth that does not break and one of the most durable of the plumose type.

Award of Merit from the Horticultural Society of London. 2½-inch pots, 25c. each; \$2.50 per dozen. 4 and 5-inch pots, \$1.00 each.

Cyrtomium Rochfordii

A crested Holly Fern having large broad pinnae which is much finer divided and more ornamental. This plant needs only a cool temperature. Fine plants. 25c. each; \$2.50 per dozen.

Polystichum Varium

Introduced by me from South Africa. One of the hardiest and most useful ferns in cultivation, growing to medium size with rather broad pinnate fronds which are of a beautiful red color when the fronds are young. Strong plants, 50c. each; \$5.00 per dozen. Larger specimens, \$1.00 to \$3.00 each.

Pteris Parkeri

Resembles *Pteris major* somewhat in form, but the fronds are slightly serrated. They are, however, much larger, more massive in appearance and of a very leathery texture. Strong plants, 75c. each; \$7.50 per dozen.



Anthericum Mandaianum (*Manda*)

This grand plant is one of the most beautiful in cultivation forming a dense compact plant with leaves from 4 to 6 inches in length of a beautiful dark green color, with a bright yellow middle like a miniature Pandanus Veitchii.

The plant throws out long flowering stems at the axis, at the end of which new plants form which root rapidly in the air, making it well-adapted for a hanging basket plant or edging where vines are desired. Plants in 2 and 3-inch pots can be used for the center of fern dishes or similar work. It is very durable, does only require a cool greenhouse to grow same, and it is a very useful plant for the house and can be used in window-boxes on the piazza or out of doors.

Fine plants, 2-inch pots, each.....	\$0.25	Fine plants, 5-inch pots, each.....	1.00
Fine plants, 3-inch pots, each.....	.50	Fine plants, 6-inch pots, each.....	1.50
Fine plants, 4-inch pots, each.....	.75	Specimen plants	2.00 to 5.00

Every one should grow this plant.



BEGONIA, CHRISTMAS RED (Manda)—A seedling from Semperflorens and Mrs. Wm. S. Kimball, of close, compact habit with bright glossy foliage; profusion of bright-red flowers, being at its best from Christmas until Easter, but flowering all year 'round. Price, **35c.** each; **\$3.50** per dozen.

BEGONIA, MRS. WM. S. KIMBALL (Manda)—A grand greenhouse flowering variety of upright growth and produces beautiful shell-pink flowers from Christmas until after Easter. Nice plants. Price, **35c.** each; **\$3.50** per dozen.

FOURCROYA WATSONII—A remarkable plant with long thick leaves, beautifully colored with broad stripes of which yellow and red stripes on bright green ground; a rare plant. Price on application.

DRACAENA KELLERIANA (Keller)—Improvement on *D. godseffiana*, being of a more compact growth and better colored foliage. Price, **\$1.00** each.

DRACAENA ROTHIANA—Not a new but rare plant of which great merit of extreme hardiness has only now been discovered. As the plate shows, it is of a compact growth with thick leathery foliage, green with narrow white margin. One of the best decorative plants for home, greenhouse or out-of-doors in the summer. Price, strong plants, **\$1.00** each; **\$10.00** per dozen. Extra large, **\$2.50** each.

NEW ANTIARRHINUM NÉLROSE—A beautiful, silvery pink variety of this popular flower. Is continuously in bloom. Requires no disbudding and is the best pink variety for bedding outdoors. Blooms continuously all winter in the greenhouse. Price **25c.** per plant; **\$2.50** per dozen.

New Asparagus "Cut and Come Again"

ASPARAGUS ELONGATUS (Manda)—Few years ago I had distributed few plants, but now have propagated sufficient quantity for general distribution. An upright grower, sends out stems up to 8 ft. in height, terminating in a broad head of fine, dark green fluffy foliage, as seen by the engraving. This is most useful for cut green foliage, especially as it can be cut with straight stems 5 to 6 ft. long. Price, **25c.** each; **\$2.50** per dozen; **\$18.00** per 100.

ROSE DAZZLING RED (Manda)—New Wichuraiana Rose. Finally I have succeeded in raising a strictly Wichuraiana Rose with flowers superior both in color, size and durability to the well-known Crimson Rambler; the foliage is bright and glossy, almost evergreen; very strong and rapid grower, while the flowers are produced in great profusion and are of large size and of a beautiful ruby red color that does not fade. Prices: 50c. each; \$5.00 per dozen. Two-year-old plants, \$2.50 each; \$25.00 per dozen.

ROSE BRIDAL WREATH (Manda)—An addition to the beautiful climbing rose, a cross between the Wichuraiana X Multiflora section with good foliage, strong growth and exceedingly floriferous, producing innumerable semi-double white flowers which almost cover the foliage. Excellent variety for any use which I can recommend. Price: 50c. each; \$5.00 per dozen. Extra large two-year-old plants, \$2.00 each; \$20.00 per dozen.

ROSE FRANCIS SCOTT KEY (Cooke)—Very vigorous, free grower, naturally producing stems that are two to three feet long. Every shoot produces a flower. The flowers are as large as the "American Beauty" and well formed. The color is a clear red. It flowers just as freely as "Radiance"; a decided acquisition. 75c. each; \$7.50 per dozen.

ROSE "OPHELIA"—Color clear, bright salmon, often deepening toward golden pink; wonderfully fragrant, with long pointed buds and stiff stems. Large, handsome foliage, showing that it is a wonderfully free bloomer and grower. 75c. each; \$7.50 per dozen.

ROSE PRINCE E. C. DE ARENBERG—This rose has a lively, clear color, scarlet, with deeper shadings, not inclined to turn blue, and is especially lively under artificial light, holding its color as long as the flower lasts. 75c. each; \$7.50 per dozen.

ROSE KILLARNEY BRILLIANT—Has the same habit of growth and freedom of bloom as its parent; color very brilliant pink, which in dull weather shades to almost crimson. 75c. each; \$7.50 per dozen.

ROSE HADLEY—Deep, velvety crimson, retaining its brilliancy all seasons of the year; strong, rigid growth and flowers borne on long, stiff stems; has proved itself on trial to be a first-class variety. 75c. each; \$7.50 per dozen.

ROSE MADAME EDOUARD HERRIOT (Syn. Daily Mail Rose)—Color of this rose is a gorgeous combination of reddish terra-cotta and bronze, with flame shadings; almost impossible to describe. Artists have raved over this variety. \$1.00 each; \$10.00 per dozen.

RUDBECKIA MANDAIANA (Manda) (*R. subtomentosa* x *R. Californica*)—A beautiful plant with the habit of *R. subtomentosa*, growing 4 ft. or more in height, and producing in August and September a mass of large flowers, the rays being of rich gold color artistically twisted, giving the flower a unique appearance which is heightened by the pure yellow disc so unusual in the Rudbeckias. Price, 35c. each; \$3.50 per dozen.

RUDBECKIA CALIFORNICA MAXIMA (Manda)—A seedling of extraordinary size, both as a plant or flower. The plant attains from 7 to 10 ft. in height and is covered with a mass of bright yellow flowers from August to November. The flowers are from 4 to 5 inches in diameter, of a rich yellow color with high yellow cone. A fine acquisition where high plants are required. Price, 25c. each; \$2.50 per dozen.

HIBISCUS RESPLENDENS (Manda) (*H. moschentos* x *H. militaris*)—Grand plant of stately habit 5 to 8 ft. high with spear-shaped leaves, and producing in succession from August to November large quantities of perfectly formed flowers 3 inches across of beautiful bright, soft pink with rich red coloring in the tube, which gives the flower a bright and distinct appearance. Price, 35c. each; \$3.50 per dozen.

HYDRANGEA ARBORESCENS GRANDIFLORA—Perfectly hardy shrub of American origin and one suited best to our climate. The flowers produced in large trusses are snow white and are in their glory from June until August when there are few shrubs in flower. A plant that should be in every garden. Strong plants, 35c. each; \$3.50 per dozen.

HIBISCUS HYBRIDS, MALLOW MARVELS (Manda's Strain)—Wonderful array of large flowers, white to pink and scarlet. Strong plants, 35c. each; \$3.50 per dozen.

LILIUM MYRIOPHYLEUM—Large white, suffused with pink and yellow. \$1.50 each.

LILIUM SARGENTIAE—Large greenish white, shaded purple outside. \$1.50 each.

LILIUM TENUIFOLIUM (Golden Gleam)—Golden yellow. 75c. each; \$7.50 per dozen.

DAHLIA CALIFORNIA (Manda)—A decorative and distinct variety with the habit of *Imperialis*. Large flower of rose color, lasting. Price, 50c. each; \$5.00 per dozen.

DAHLIA J. THOMPSON—A decorative variety of great substance. Free flowering, producing very large, bright red flowers. Price, 50c. each; \$5.00 per dozen.

EUONYMUS ARBORESCENS (Manda) (Seedling from *E. radicans*)—One of the finest evergreen shrubs or vines in existence. The foliage is much larger than that of *E. radicans*, and being evergreen keeps in perfect condition all winter. It is very free-growing, climbing to a height of over 20 feet or a bush 3 to 4 feet high. The scarlet fruit is also very showy, remaining on plant for a long time. Price, one year old, 35c. each; three years old, 50c. each; \$5.00 per dozen.

BUDDLEIA VARIABILIS VEITCHIANA—Most desirable summer-flowering shrubs. Flowers violet-mauve, borne on spikes 12 to 15 inches. 35c. each; \$3.50 per dozen.

BUDDLEIA VARIABILIS MAGNIFICA—Similar to above, but of a deeper violet rose. 50c. each; \$5.00 per dozen.

BUDDLEIA VARIABILIS SUPERBA (New)—Larger flowers than above, of a pinkish lilac color. Strong plants, 75c. each; \$7.50 per dozen.

BUDDLEIA ASIATICA—Free flowering species, producing large sprays of white fragrant flowers, fine for forcing. 50c. each; \$5.00 per dozen.

Manda's Golden Privet



Manda's Golden Privet

Almost an evergreen. This shrub is of such sterling merit that we must mention it here. The growth is free, bushy and compact. The closely set green leaves are heavily margined with golden yellow, covering the greater part of them. The color holds remarkably well during the season. It does not bleach or burn in the hot sun, and is the only yellow foliage shrub which holds its perfect coloring in the fall. We do not hesitate to say that this is the finest colored foliage shrub in cultivation. It is perfectly hardy and can be used for any purpose desired, such as an isolated specimen or planted in close proximity to Red Japan Maples; this plant offsets and gives additional color and value to both. It produces a unique effect when planted as a hedge and can be kept to any size, either high or low. Silver medal awarded by the Massachusetts Horticultural Society, and numerous certificates wherever exhibited.

Young plants, 2 in pot, 15c. each; \$1.50 per dozen; \$10.00 per 100; 1-year-old plants, 25c. each; \$2.50 per dozen; \$20.00 per 100; 2-year-old plants, 35c. each; \$3.50 per dozen; \$50.00 per 100; 3-year-old plants, \$1.00 each; \$10.00 per dozen; 4-year-old plants, specimens, \$1.50 each; \$15.00 per dozen.

Boxwood

One of the most beautiful of evergreen foliage plants which can be used in various ways to decorate the grounds or as a specimen in pots or tubs. We have the largest stock of Boxwood in the country. Plants of all sizes, from three inches in height to large specimens centuries old, ten to fifteen feet high and as much in diameter. We have them in all shapes, pyramids, bush form, globular forms, standards, and some odd-looking specimens, beside thousands of dwarf Boxwood for edging flower beds and formal gardens. We have acres of Boxwood for you to select from and give prices on the following small sizes, and will be pleased to quote on the large specimens or quantity of ordinary sizes.

	Price Each
Dwarf Boxwood, for edging. 3 to 5 inches high.....	\$.05
Tree Boxwood, for larger edgings. 1 foot high.....	.35
Tree Boxwood, for larger edgings. 1½ feet high.....	.60
Bush form, natural-shaped plants. 2½ feet high.....	2.00
Bush form, natural-shaped plants. 3 feet high.....	3.00
Bush form, natural-shaped plants. 4 feet high.....	6.00
Bush form, natural-shaped plants. 5 feet high.....	9.00
Pyramids, well-formed plants. 2½ feet high.....	1.75
Pyramids, well-formed plants. 3 feet high.....	3.00
Pyramids, well-formed plants. 4 feet high.....	6.00
Pyramids, well-formed plants. 5 feet high.....	9.00
Pyramids, well-formed plants. 6 feet high.....	12.00
Standards, fine specimen. 1 foot across head.....	1.50
Standards, fine specimen. 1½ feet across head.....	2.50
Standards, fine specimen. 2 feet across head.....	4.50
Standards, fine specimen. 3 feet across head.....	9.00
Standards, fine specimen. 3½ feet across head.....	12.00

Larger sizes, also special large lots to plant an entire Boxwood or formal garden, prices on application. Plants and estimates furnished for laying out box gardens, etc. Come and see our Boxwood arranged in all the styles and covering several acres of ground at South Orange, and including all the different varieties in cultivation, suited to any purpose desired.

Boxwood is a very slow grower, and large specimens on grounds gives the place age and tone that cannot be duplicated by any other plant.

Deciduous Trees

This class embraces species growing 10 to over 100 feet in height, and furnishes ample material for street and avenue planting, as well as for parks and home grounds, where, with their large, spreading branches, they give restful shade in summer. The various shapes and hues of the foliage, together with the profusion of flowers produced by many varieties, give a characteristic and imposing effect to the grounds.

We have trees from 6 to 20 feet in height. We will be pleased to furnish a collection of 6 foliage or 6 flowering trees for \$5.00.

Evergreen Foliage and Flowering Shrubs

A most desirable class of plants, with massive generally glossy foliage, which is ever-green through the winter, the foliage changing in many varieties to beautiful bronze purple and crimson hues, besides the fine and attractive flowers which are produced in spring and early summer, and on that account should be planted in every garden, including such varieties as the Rhododrons, Azaleas, Boxwood, etc.

We will be pleased to select 6 strong plants in variety, our selection, for \$5.00; 12 strong plants, our selection, in variety, for \$10.00.

Deciduous Flowering and Foliage Shrubs

This class is represented by a very large class of shrubs growing from 2 to 10 feet in height. Producing a wealth of beautiful flowers at the different seasons, or a mantle of bright-colored foliage, making an attractive mass from early spring to late fall. Indispensable for every garden, however small.

We have over 200 varieties of choice flowering shrubs and would be pleased to make you up a selection of the very best at \$1.50 for 6; \$3.00 per dozen; with proportionate prices for larger specimens.

Hardy Vines and Creepers

On account of the habit of this class of plants, they are indispensable for covering posts, trellises, trees, stumps, walls, rocks or banks; also for screens on piazzas. Besides the luxuriant foliage, they all have showy flowers, which add to their desirability for above purposes. Strong plants, \$1.75 for 6; \$3.50 per dozen.

Palms

In the whole vegetable kingdom there is no family of plants so graceful, attractive, and one that deserves to be so generally cultivated, as palms. Most kinds are invaluable for decorative purposes and house culture. We have omitted to price any of the varieties, as the prices are governed by the size of the plant, and vary from 50c. to \$10.00 each, according to size and kinds, of which we would be pleased to give particulars on application.

Selected fine large showy plant for \$1.00; or 6 fine plants in 6 varieties for \$5.00.

We have the finest stock that swept the boards of all principal prizes: Chicago, Boston and London.

Ferns

This class of plants so strongly in favor with the public at the present time and, therefore, we carry a very large stock of all the leading varieties of ferns, including some large specimens, and also some grand specimens of Tree Ferns, prices and sizes of which we will be pleased to give on application.

We shall be pleased to furnish the intending purchaser with a fine collection of 6 ferns in six varieties, nice plants, for \$1.25, or 12 ferns in 12 varieties for \$2.50.

Also collection of *Selaginella* and Mosses. We will be pleased to supply 6 plants in 6 varieties for 50c.

For Novelties, see front pages. Our Ferns are the Champion Winners.

Cacti and Succulents

These quaint and curious plants, while not generally grown, have a great many admirers, and to anyone making a collection we will be pleased to furnish a full list of such kinds as we grow or can furnish.

If you wish to begin a collection, we will be pleased to furnish you with 6 plants in 6 varieties for \$2.50, or 12 plants in twelve varieties for \$4.50, our selection.

Furnishing and Building of New Conservatories and Greenhouses

This is one of our specialties, being better equipped than any other firm in the United States for that purpose. We would, therefore, advise parties that contemplate the building of any new conservatories or greenhouses, to correspond with us, as we may be able to give them some useful advice regarding the proper construction of the buildings that would be practical for plant-growing.

When ready to furnish a conservatory or greenhouse of any kind with Palms, Fern Trees, Ferns, Foliage or Flowering Plants, Orchids, Gardenias, Roses, Carnations or Chrysanthemums, please communicate with us, and we will make you a specification and estimate and furnish plants that will give you a satisfactory result at a very moderate cost.

Exchanges and Purchases

Notwithstanding that our collection of plants of all classes is very large, we are always ready to hear or enter into correspondence with parties for either any new or rare plants for sale or exchange for other stock. We will trade liberally with anyone having overgrown large species or new useful horticultural plants or having accumulated a large stock of every-day greenhouse or garden plants who wish to dispose of or exchange for some choice or rare varieties to add to their collection. We would also be pleased to enter into correspondence with any gentleman intending to travel in countries that have not been much explored, where there would be a chance for discovering and adding some new and rare species of plants. In each case we would thank the intending correspondent to state everything plainly and give full details and information so as to enable us to act decisively and promptly.

On receiving such information, it should be preferably addressed to the main office, South Orange, N. J., U. S. A.

All Fertilizers supplied. Sheep Manure, \$2.00 per bag. Insecticides and Horticultural Requisites supplied at standard prices.

Conifers or Evergreen Resinous Trees

One of the greatest classes of vegetation for outdoor ornamentation. From the loftiest trees, three hundred or more feet in height, to low prostrate shrubs rising barely a foot above the ground. These we consider as the most useful and most ornamental of our hardy trees, and which should be in every garden, either small or large. They can be used as isolated specimens for groups, hedges, windbreaks or shelters.

We have a grand stock of nearly two hundred varieties, in all sizes, from one foot to twenty feet in height, and would be pleased to send a special list of sizes and prices to intending purchasers.

- ABIES CONCOLOR (Silver Fir of Colorado)—One of the finest American evergreens.
- ABIES CONCOLOR VIOLACEA (FIR)—Bluer form of above.
- ABIES CANADENSIS (Hemlock Spruce)—Medium-sized tree, dark foliage.
- ABIES NORDMANNIANA (Nordman Fir)—Majestic, symmetrical form, dark green.
- BIOTA NANA AUREA—Dwarf with flat golden branches.
- BIOTA ORIENTALIS—Taller than above, with lace-like foliage.
- JUNIPERUS CHINENSIS ALBO SPICA—Pyramidal, dark blue with white tips.
- JUNIPERUS CHINENSIS AUREA—Golden form of above.
- JUNIPERUS COMMUNIS HIBERNICA (Irish Juniper)—Erect, dense outline.
- JUNIPERUS VIRGINIANA (Red Cedar)—Varies much in habit and color of foliage.
- JUNIPERUS VIRGINIANA GLAUCA—Compact, conical habit with glaucous foliage.
- JUNIPERUS PFITZERIANA—Robust growth, dark green foliage, new.
- JUNIPERUS JAPONICA AUREA—Dwarf plant with golden foliage.
- JUNIPERUS SABINA—Dark green, dwarf.
- JUNIPERUS PROCUMBENS—Dwarf, creeping variety, bluish color.
- LARIX EUROPAEA (European Larch)—Tall growing pyramidal tree, drooping branches.
- PICEA ALBA (White Spruce)—Medium height, pyramidal, foliage silvery gray.
- PICEA ALCOCKIANA—Tall, dense habit, foliage pale green, glaucous underneath.
- PICEA EXCELSA (Norway Spruce)—Rapid, lofty growth, pyramidal form, most popular.
- PICEA EXCELSA PENDULA—Pendulous var. of the Norway Spruce.
- PICEA ORIENTALIS—Handsome, tall and compact, graceful habit, dark slender foliage.
- PICEA POLITA—Distinct Japanese species. Erect and rigid habit, sharply pointed leaves
- PICEA PUNGENS GLAUCA (Colorado Blue Spruce)—Lofty, pyramidal growth of rich blue color, one of the finest and hardiest conifers.
- PICEA PUNGENS GLAUCA KOSTERII—Variety of the above. Finest blue color.
- PINUS AUSTRIACA (Austrian Pine)—Rapid growing tree; long, stiff, dark green needles.
- PINUS MUGHO—Upright, spreading, small pine. General form of a bush.
- PINUS STROBUS (White Pine)—Most ornamental native pine; foliage light green.
- PINUS SYLVESTRIS (Scotch Pine)—Tall growing tree, stout, erect shoots, silvery green.
- RETINOSPORA FILIFERA—Forms a wide cone, with delicate thread-like filaments.
- RETINOSPORA FILIFERA AUREA—Golden form of above, of dwarf growth.
- RETINOSPORA PISIFERA—Large growing, pyramidal tree from Japan, green feathery.
- RETINOSPORA PISIFERA AUREA—Golden form of the above.
- RETINOSPORA PLUMOSA—Small growing pyramidal tree, feathery clear green foliage.
- RETINOSPORA PLUMOSA AUREA—Golden variety of the above.
- RETINOSPORA PLUMOSA SULPHUREA—Compact form, sulphur yellow color.
- RETINOSPORA OBTUSA—Distinct, dark green of dwarf growth.
- RETINOSPORA OBTUSA NANA—A curious, Japanese tree; dwarf, irregular growth.
- RETINOSPORA OBTUSA GRACILIS—Upright growth, slender and graceful, light green.
- RETINOSPORA OBTUSA LUTEA NOVA—Upright growth. The best yellow evergreen.
- RETINOSPORA SQUARROSA VEITCHII—Beautiful silvery foliage. Extensively used.
- TAXUS BACCATA (English Yew)—Large bush or tree, densely branched, dark green.
- TAXUS HIBERNICA (Irish Yew)—Erect, resembling a dark green pillar.
- TAXUS CUSPIDATA—Dwarf, dark green, beautiful form.
- TAXUS BREVIFOLIA—Similar to above, but of more upright growth.
- THUYA OCCIDENTALIS (Arbor Vitae)—Native tree of medium height. Valuable for screens and hedges.
- THUYA OCCIDENTALIS GEO. PEABODY—Golden form of above.
- THUYA OCCIDENTALIS COMPACTA—Dwarf compact, deep green foliage.
- THUYA OCCIDENTALIS PYRAMIDALIS—Upright, compact like the Irish juniper.
- THUYA ORIENTALIS—Upright, compact, with lace like foliage.
- THUYA ORIENTALIS COMPACTA—Very dwarf form of above.

Dwarf growing Evergreens, our selection:

1½-2 feet.....	\$1.50 each
2½-3 feet.....	2.25 each
3½-4 feet.....	3.75 each
4½-5 feet.....	5.00 each
5½-6 feet.....	7.50 each

Larger or selected specimens up to 20 feet high, price on application.

Tall growing tall Evergreens, such as Spruce and Pine, etc., our selection:

2-3 feet.....	\$1.00 each
3-4 feet.....	1.75 each
5-6 feet.....	3.50 each
7-8 feet.....	5.00 each

Larger or selected specimens, price on application.

Visit Our Nursery and See Our Grand Stock of Conifers.



Specimen Blue Spruce (*Picea pungens glauca*)
Price, \$2.00 to \$200.00, according to size.

We have the largest stock of specimens

Hardy Roses

Strong two year old plants

ROSES, HYBRID PERPETUAL, 50c. EACH.

ALFRED COLOMB—Bright crimson.
ANNA DE DIESBACH—Rosy pink.
BARONNESS DE ROTHSCILD—Light rose.
CAPTAIN CHRISTY—Soft rose.
FRAU KARL DRUSCHKI—White.
GENERAL JACQUEMINOT—Scarlet crimson.
GLOIRE DE MARGOTTIN—Dark red.
JOHN HOPPER—Pink.

MAD. GABRIELLE LUZET—Rose.
MABEL MORRISON—White.
MARGARETH DICKSON—White.
MAGNA CHARTA—Bright pink.
MRS. JOHN LAING—Soft lilac rose.
PAUL NEYRON—Dark rose, large.
PRINCE CAMILLE DE ROHAN—Crimson.
ULRICH BRUNNER—Reddish cerise.
VICTOR VERDIER—Deep rose carmine.

TEA AND HYBRID TEA ROSES, 50c. EACH.

AMERICAN BEAUTY—Bright crimson.
BELLE LYONNAISE—Deep yellow, changing to salmon.
BOUQUET D'OR—Deep yellow.
GLOIRE DE DYON—Fawn with salmon.
KAISERIN AUGUSTA VICTORIA—Creamy white.
LA FRANCE—Pink, very floriferous.
MAD. CAROLINE TESTOUT—Dark pink.
KILLARNEY—Bright pink, fine.
KILLARNEY—White, variety of above.
SOUV. DE LA MALMAISON—Flesh color.
ETOILE DE FRANCE—Bright red.
GRUSS AN TEPLITZ—Very red.
SAFRANO—Orange yellow.
PERLE DES JARDINS—Yellow, fine.
JONKHEER J. L. MOCK—Bright red.

LADY HILLINGDON—Orange yellow.
GENERAL MACARTHUR—Scarlet red.
LYON ROSE—Salmon pink, rare.
MAD. RAVARY—Splendid orange yellow.
LE PROGRESS—Bright yellow.
GUSTAVE REGIS—Canary yellow.
PERLE OF GODESBERG—Golden yellow.
GEORGE C. WARD—Bright red.
SUNBURST—Very fine deep yellow.
MRS. AARON WARD—Yellow with pink.
MELODY—Yellow, fine, new.
HADLEY—Brightest red, fragrant.
MRS. GEO. SHAWYER—Delicate pink.
MRS. CHAS. RUSSELL—Pink American beauty, very lasting.
MY LADY—Seedling from Richmond.

CLIMBING ROSES, 50c. EACH; LARGER SPECIMENS \$1.00 TO \$1.50 EACH.

AMERICAN PILLAR—Single 3 to 4 inches across, pink, with white eye.
TAUSENDSCHOEN—Pink, changing to carmine, in trusses of 10 to 15 flowers.
WHITE DOROTHY PERKINS—White, variety of the pink D. P.
PINK DOROTHY PERKINS—Soft-shell pink, lasting.
CRIMSON RAMBLER—Large clusters, crimson.
MULTIFLORA—Single, white, very profuse.
DAWSON—Pink, single, large.
DAYBREAK—Single, light flesh-colored.

DEBUTANTE—Soft pink, vigorous trailing.
DR. VAN FLEET—Single white, flat trusses.
EXCELSA—Bright crimson.
FARQUHAR—Fine bright pink.
HIAWATHA—Deep crimson, shaded white at base.
LADY GAY—Delicate cherry pink.
SILVER MOON—Largest single white.
ROSA WICHURAIANA (Memorial Rose)—Single white.
LADY GODIVA—Soft, pale pink, like Dorothy Perkins in growth.

HYBRID WICHURAIANA ROSES OF MY OWN RAISING AND INTRODUCTION, 50c. EACH; LARGER SPECIMENS \$1.00 TO \$1.50 EACH.

CRIMSON ROAMER—Deep crimson, single.
EVERGREEN GEM—Yellow buff.
GARDENIA—Light yellow, the best.
GLADYS TALBOT—Dwarf, double pink.
IMPROVED UNIVERSAL FAVORITE—Larger and deeper in color than the type.
WHITE STAR—Pure white, single.
JERSEY BEAUTY—Light yellow, single.

MANDA'S TRIUMPH—Pure white, best of its color.
PINK PEARL—Soft pearl pink, fine.
PINK ROAMER—Crimson, white center.
SOUTH ORANGE PERFECTION—Pink.
UNIVERSAL FAVORITE—Deep pink, very floriferous.

VARIOUS ROSES, 50c. EACH.

HERMOSA—Pink, very floriferous.
PERSIAN YELLOW—Deep yellow.
SOLEIL D'OR—Copper yellow, fine.
HARRISON YELLOW—Bright yellow.
MAD. NORB. LEVASSEUR (Baby Rambler)—Red, flowers continuously.
CATHERINE ZEIMET—Pure white.

ANNIE MULLER—Bright pink.
BABY DOROTHY (Maman Levasseur)—Shell pink.
RAYON D'OR—Bright yellow, shaded orange.
CLOTHILDE SOUPERT—Very floriferous, light pink.

Extra strong pot-grown, three and four year old plants, 75c. to \$1.00 each.
Standard Roses, best varieties, fine plants, \$1.00 to \$1.50 each.
Roses for greenhouse purpose, special quotation given.

Chrysanthemums

SHOW CHRYSANTHEMUMS, 18 FINEST VARIETIES, 15c. EACH.

CHIEFTAIN—Finest incurved pink.
 MISS CLARA BANGHART—Strong chestnut red.
 COLONEL APPLETON—Fine yellow.
 DR. ENGUEHARD—Late pink.
 F. T. VALLIS—Largest yellow.
 GLORY OF THE PACIFIC—Fine early pink dwarf.
 LYNWOOD HALL—Pure white incurved.
 MAJOR BONNAFFON—Fine yellow.

MRS. GILBERT DRABBLE—On early bud.
 NAGOYA—Late, yellow, very good.
 OCTOBER FROST—Large early white.
 ONUNDA—Creamy white, largest variety.
 POCKETT'S CRIMSON—Crimson with gold.
 POLLY ROSE—Fine commercial variety.
 POCKETT'S SURPRISE—Late crimson.
 RAMAPO—Seedling of Col. Appleton.
 WILLIAM TURNER—Purest white, large.
 YELLOW EATON—Large yellow, fine.

CHRYSANTHEMUMS, HARDY POMPONS, 18 BEST KINDS, 15c. EACH.

DONALD—Light pink, very fine grower.
 DORIS—Pure bronze, one of the best.
 GOLDEN WEST—Yellow, double.
 GOLDEN CLIMAX—Orange yellow.
 INEZ—Scarlet bronze, very brilliant.
 LILIAN DOTY—Finest pink.
 BABY—Smallest yellow, a favorite.
 BRADSHAW—Silver pink, large flowers.
 BABY MARGARET—Pure white.

JULIA LAGRAVERE—Crimson maroon.
 ROSE TREVENNA—Rose color.
 QUEEN OF THE WHITES—Creamy white.
 ZENOBIA—Pure yellow.
 WILLIS—Yellow, fine flower.
 ST. CROUTES—Deep copper bronze.
 JULIA—Deep reddish color.
 ACTO—Bright rose, dahlia-like petals.
 AILEEN—Deep lilac pink.

Carnations

CARNATIONS, 12 BEST VARIETIES, \$8.00 PER 100.

MATCHLESS—Fine pure white.
 ENCHANTRESS SUPREME—Salmon pink.
 WINDSOR—Light shrimp pink.
 PHILADELPHIA—Rose pink, fine flower.
 WHITE WONDER—Large pure white.
 GORGEOUS—Large, bright-glowing pink.

PRINCESS DAGMAR—Large, deep crimson.
 BEACON—Large scarlet, fine flower.
 BENORA—White-penciled bright red.
 WHITE PERFECTION—Fine, free white.
 CHAMPION—Very fine scarlet.
 MRS. C. W. WARD—Very large, deep pink.

CATALOGUES AND SPECIAL LISTS

Besides this book, we have the following either ready or in course of publication and will be pleased to mail to anyone applying.

Our Native Plants	List of Rare Orchids
Landscape Book (Ornamentation of Grounds)	List of New Imported Orchids from Tropics
List of Collection Palms and Cycads	List of Roses
List of Specimen Palms and Cycads	List of Boxwoods
List of Cyripediums	List of Evergreens
	List of any Specialty

BETTER WAY THAN CATALOGUES

Visit our nurseries at South Orange, where you will find the largest collection of plants of any establishment in America. Write, telephone or telegraph, and our Mr. Manda will meet you and conduct you about the nurseries and greenhouses. The nurseries are located right at the South Orange Depot of the D., L. & W. R. R. Eighty-four trains daily to and from Hoboken, or by trolley from Newark, N. J., only fourteen miles from New York City Hall.

Come, See and Be Convinced

Bulbs for Spring Planting

DAHLIAS

Best Kinds Only.

Best 6 Dahlias Cactus at 25c. Each.

Countess of Lonsdale. Deep Salmon Red.
Kriemhilda. Pink white Center.
Alexander. Dark Crimson, Flaked Maroon.
Ella Kramer. Rose Pink.
Floradora. Beautiful Blood Red.
Prince of the Yellows. Soft Yellow, fine.

Best 6 Dahlias Decorative at 25c. Each.

Delice. Pink, suffused with Lavender.
Souv. de Gustave Douzon. Orange Scarlet.
J. Thompson. Fine free flowering Red.
Perle de Lyon. Pure White, variety.
California. Deep Rose, fine.
Gaiety. Red and White striped.

Best 6 Dahlias Single at 25c. Each.

Blanche. Pale Yellow, tipped Pink.
Elinor. Lemon Yellow, tipped lighter shade
of crushed Strawberry.
Glowing Gem. Rich Deep Crimson.
Rose Pink Century. Beautiful Rose Pink.
The Bride. Gigantic Pure White.
Twentieth Century. White at base and tips.

Best 6 Dahlias Paenoy Flowered at 25c. Each.

Geisha. Brilliant Scarlet and Gold.
Queen Wilhelmina. Best Pure White.
Germania. Crimson, Shaded Yellow.
Admiration. Rosy Crimson, Veined Yellow.
Solfatara. Carmine Red, Yellow Band.
Priscilla. Orange Scarlet.

Best 6 Dahlias. Show and Fancy at 25c. Each.

A. D. Livoni. Soft Pink, extra fine.
Cuban Giant. Dark Crimson.
Fascination. Rose Pink.
Norma. Bright Orange.
Storm King. Pure Snow White.
Rosebud. Edged Rose Pink.

CANNAS

Cannas, 12 Best Varieties, at 15c. Each.

Burbank. Yellow, Large Flower.
Buttercup. Bright Buttercup Yellow.
Chas. Henderson. Bright Crimson.
Eagandale. Bronze fol. Red Flowers.
Florence Vaughan. Yellow, Red Markings.
Italia. Orange Scarlet, Broad Golden Yellow
Border.
King Humbert. Orange Scarlet, Red Mark-
ings.
Madame Crozy. Scarlet, Golden-edged.
Martha Washington. Fine Pink Variety.
Mrs. Kate Gray. Red, Tall Growing.
Queen Charlotte. Red, Band of Yellow.
Crimson Bedder. Intense Scarlet.

GLADIOLAS

Gladiolas, Finest 12 Varieties

	Each
America. Large Flower, Flesh Pink.	\$0.05
Mrs. Frank Pendleton. Salmon Pink with Brilliant Blood Red Blotches.	.30
Mrs. Francis King. Light Scarlet Flame, fine.	.05
Peace. White, Pale Lilac Shading.	.15
Panama. Largest Pink Variety.	.15
Canary Bird. Yellow, Fine Flower.	.08
Augusta. Pure white.	.05
Princes. Rich Crimson, White Blotches on Lower Petals.	.06
Fascinator. Salmon Pink, Tinted with Flames of Carmine.	.15
Niagara. Cream to Canary Yellow.	.12
Sulphur King. Fine Yellow.	.15
Baron Hulot. Blue, Finely Marked.	.05

Gladiolus Mixtures.

Manda's Choice White and Light Varieties,
Mixed, 40c. per dozen, \$2.75 per 100.
Manda's Choice Striped and Variegated
Varieties, Mixed, 50c. per dozen, \$3.50
per 100.
Manda's Choice Red and Scarlet Varieties,
Mixed, 40c. per dozen, \$2.25 per 100.
Manda's Choice Yellow, Salmon and Orange
Colored Varieties, Mixed, 50c. per dozen,
\$3.50 per 100.
Manda's Choice Blue Hybrids, Mixed, 60c.
per dozen, \$4.00 per 100.
Manda's Choice "Childsii," Named and Hy-
brids, Mixed, 40c. per dozen, \$2.50 per 100.
Manda's Choice "Groff Type," Named and
Hybrids, Mixed, 40c. per dozen, \$3.00 per
100.
Manda's Choice Lemoines Hybrids, Mixed.
30c. per dozen, \$1.50 per 100.

Begonia, Tuberous Rooted.

Double Varieties, Mixed, Fine Strain, 20c.
each, \$2.00 per dozen, \$15.00 per 100.
Double Varieties, Fine Mixed, 15c. each,
\$1.50 per dozen, \$12.00 per 100.
Caladium esculentum (Elephant's Ear),
15c. each, \$1.50 per dozen.
Gloxinia, 20c. each, \$2.00 per dozen.
Hyacinthus candicans, 7c. each, 75c. per
dozen.
Tuberose, Double Dwarf, 5c. each, 50c. per
dozen, \$4.00 per 100.

LILIES

Lilium.

Auratum (The Golden-banded Lily of
Japan, 20c. each, \$2.00 per dozen, \$15.00
per 100.
Longiflorum, Fine White, 15c. each, \$1.50
per dozen, \$12.00 per 100.
Speciosum, Fine Pink Variety, 20c. each,
\$2.00 per dozen, \$15.00 per 100.
Speciosum album, Beautiful White Form,
20c. each, \$2.00 per dozen, \$15.00 per 100.
Speciosum rubrum Flowers Deep Rose, 20c.
each, \$2.00 per dozen, \$15.00 per 100.
Tigrinum splendens, 12c. each, \$1.25 per
dozen, \$9.00 per 100.
Henryii, Hardy, best described as a Yel-
low speciosum, 75c. each, \$8.00 per dozen.

Other Bulbs and Varieties, Prices on Application.

New Dahlias Described on First Pages Should be in Every Garden.

Hardy Herbaceous Plants

This is and has been our specialty for over 20 years and we can furnish field-grown stock which should not be compared with the small starved pot-grown stock.

Everybody should grow a collection of these plants which are very useful for cutting purposes from early spring until late in the fall.

ALL STRONG FIELD-GROWN PLANTS

Achillea millefolia rubra.....	\$0.15	Hibiscus moscheutos.....	.25
Achillea millefolia. "Cerise Queen".....	.20	Iberis sempervirens superba.....	.25
Achillea serrata plena. "The Pearl".....	.15	Iris aurea.....	.25
Achillea tomentosa.....	.15	Iris Germanica, in 25 vars.....	.15
Aegopodium podagraria variegata.....	.25	Iris Kaempferii, in 50 vars.....	.25
Agrostemna coronaria.....	.15	Iris ochroleuca.....	.35
Ajuga reptans.....	.15	Iris Sibirica alba.....	.25
Althaea rosea. Double.....	.15	Iris Sibirica sanguinea.....	.15
Althaea rosea. Single.....	.15	Lathyrus latifolius.....	.35
Anemone Japonica.....	.15	Leucanthemum Nipponicum.....	.25
Anemone Japonica alba.....	.15	Liatris spicata.....	.15
Anemone Japonica rosea.....	.15	Linum perenne.....	.15
Anemone Japonica Whirlwind.....	.15	Lobelia Cardinalis.....	.15
Aquilegia hybrids.....	.15	Lychnis Chalcedonica.....	.15
Armeria maritima.....	.15	Lychnis Chalcedonica fl. pl.....	.25
Arrhenatherum vulbosum.....	.25	Lychnis Haageana hybrida.....	.15
Arundo Donax variegata.....	.25	Lythrum roseum superbum.....	.15
Asclepias tuberosa.....	.15	Monarda didyma.....	.15
Aster. Many varieties.....	.15	Monarda hybrida carminea.....	.15
Baptisia australis.....	.25	Monarda hybrida lilacina.....	.15
Boltonia asteroides.....	.15	Monarda fistulosa.....	.15
Boltonia latisquama.....	.15	Oenothera fruticosa.....	.15
Campanula (Harebell) Carpatica.....	.15	Pachysandra terminalis.....	.15
Campanula persicifolia.....	.15	Paeonies herbaceous.....	.25
Campanula persicifolia alba.....	.15	Paeonies. Pink.....	.35
Campanula rapunculoides.....	.15	Paeonies. Pink and white.....	.35
Cassia Marylandica.....	.25	Paeonies. Red.....	.35
Cerastium tomentosum.....	.15	Paeonies. White.....	.35
Chrysanthemum, Hardy, 20 varieties.....	.15	Papaver bracteatum.....	.25
Convallaria majalis. Clump.....	.25	Papaver involucreatum.....	.25
Coreopsis delphinifolia.....	.20	Papaver nudicaule.....	.15
Coreopsis Harvest Moon.....	.15	Papaver Orientale.....	.25
Coreopsis lanceolata.....	.15	Pentstemon barbatus.....	.15
Coreopsis rosea.....	.15	Phalaris arundinacea fol. var.....	.15
Delphinium formosum.....	.25	Phlox amoena.....	.15
Delphinium Hybrid.....	.25	Phlox divaricata.....	.25
Delphinium Sinense.....	.15	Phlox paniculata, in 20 varieties.....	.25
Dianthus barbatus.....	.15	Phlox paniculata. "The Pearl".....	.25
Dianthus plumaris albus.....	.15	Phlox subulata.....	.15
Dianthus plumaris plenus.....	.15	Phlox subulata atropurpurea.....	.15
Dianthus superbus.....	.25	Physiostegia Virginica.....	.15
Dicentra eximae.....	.15	Platycodon grandiflora.....	.25
Dicentra spectabilis.....	.15	Plumbago Larpendtae.....	.25
Dictamnus Fraxinella.....	.15	Polemonium coeruleum.....	.15
Digitalis purpurea.....	.15	Polygonum cuspidatum crispulum.....	.25
Doronicum plantagineum.....	.25	Polygonum Sachalinense.....	.25
Echinacea purpurea.....	.25	Primula veris.....	.15
Echinacea purpurea hybrid.....	.35	Pyrethrum roseum.....	.25
Eryngium amethystinum.....	.25	Pyrethrum uliginosum.....	.15
Eulalia Japonica fol. var.....	.25	Rudbeckia Californica maxima.....	.35
Eulalia Japonica Zebrina.....	.25	Rudbeckia fulgida.....	.15
Eulalia univittata (gracilis).....	.25	Rudbeckia (Golden Glow).....	.15
Euonymus radicans.....	.15	Rudbeckia Mandaiana.....	.35
Euonymus radicans fol. var.....	.15	Rudbeckia maxima.....	.25
Eupatorium coelestinum.....	.15	Rudbeckia speciosa.....	.15
Euphorbia corollata.....	.25	Rudbeckia subtomentosa.....	.15
Festuca glauca.....	.25	Sedum album.....	.15
Funkia cordata.....	.15	Sedum carneum.....	.15
Funkia grandiflora.....	.25	Sedum Lydium.....	.15
Funkia Fortunei.....	.25	Sedum oppositifolium.....	.15
Funkia lanceolata.....	.15	Sedum Spectabile.....	.15
Funkia undulata variegata.....	.15	Sedum Spectabile rubrum.....	.25
Gaillardia grandiflora hybrida.....	.15	Sedum spurium splendens.....	.15
Glechoma hederacea variegata.....	.15	Scabiosa caucasica.....	.25
Gypsophila paniculata.....	.15	Spiraea aruncus.....	.25
Gypsophila paniculata fl. pl.....	.25	Spiraea astilboides.....	.15
Helianthemum autumnale superbum.....	.15	Spiraea filipendula plena.....	.25
Helianthus Maximilianus.....	.15	Spiraea Japonica.....	.15
Helianthus mollis grandiflorus.....	.15	Spiraea Japonica grandiflora.....	.15
Helianthus multiflorus.....	.15	Spiraea palmata rubra.....	.25
Helianthus multiflorus plenus.....	.15	Spiraea ulmaria plena.....	.15
Helianthus orgyalis.....	.25	Statice latifolia.....	.15
Helioopsis Pitcherianus.....	.15	Stenanthium robustum.....	.35
Hemerocallis Dumortierii.....	.15	Stokesia cyanea.....	.15
Hemerocallis flava.....	.15	Thymus serpyllum.....	.15
Hemerocallis fulva.....	.15	Tradescantia Virginica.....	.15
Hemerocallis grammifolius.....	.15	Veronica longifolia subsessilis.....	.25
Hemerocallis Kwanso fl. pl.....	.15	Veronica rupestris.....	.15
Hemerocallis rutilans.....	.15	Veronica spicata.....	.15
Hemerocallis Thunbergii.....	.15	Vinca minor.....	.15
Hibiscus resplendens.....	.35	Viola cornuta. Mrs. G. Vermig.....	.25
Hibiscus Mallow Marvels.....	.35	Yucca filamentosa.....	.25
		Yucca filamentosa maxima.....	.50

Hundred of other varieties in stock.

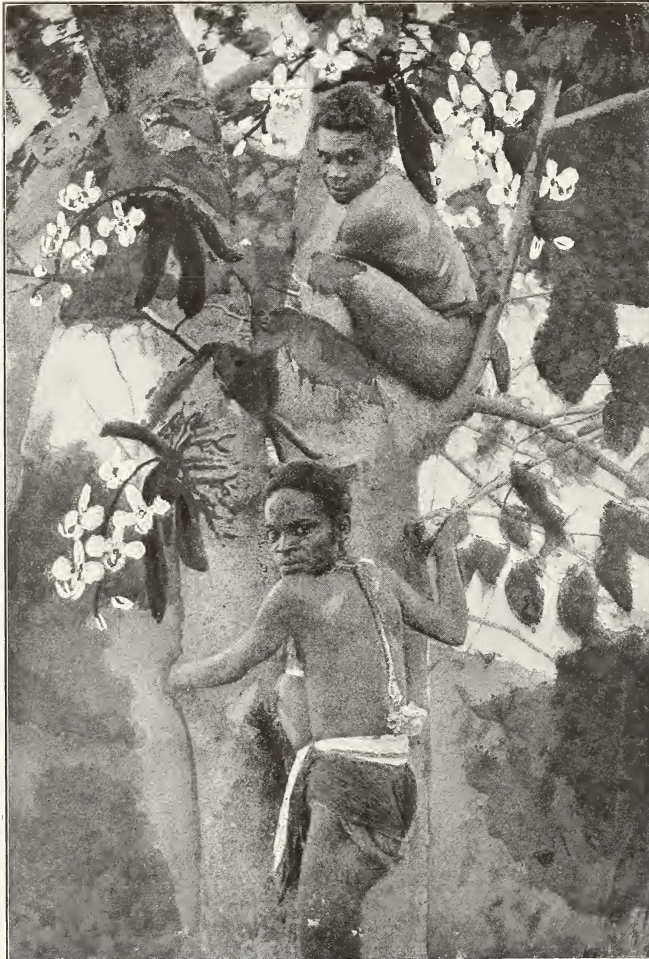
Old Fashioned Gardens Designed and Planted.

Imported Orchids

We expect during the year large importations of the following leading kinds of Orchids beside many others of which we would be pleased to give full particulars to any one interested on application. The following prices are for first-class stock in good healthy condition.

Cattleya Trianae, C. Mossiae, C. Percivaliana, C. Harrisoniae, C. Skinnerii, Dendrobium			
		Formosum giganteum, Oncidium, Rogersii.	
		Each	Per Doz.
Nice plants.....	5 to 7	Bulbs, \$0.75	\$7.50
Strong plants.....	8 " 11	" 1.50	15.00
Extra fine plants.....	12 " 15	" 2.50	25.00
Cattleya labiata, C. Gigas, C. Gigas Sanderiana, C. Schroederae, C. Mendellii, Laelia Pur-			
		purata, Dendrobium Wardianum.	
		Each	Per Doz.
Nice plants.....	5 to 7	Bulbs, \$1.25	\$12.00
Strong plants.....	7 " 9	" 2.50	25.00
Extra fine plants.....	9 " 12	" 3.50	35.00
Cattleya Warnerii, C. Aurea, C. Dowiana, C. Chrysotoxa.			
		Each	Per Doz.
Nice plants.....	5 to 6	Bulbs, \$3.50	\$35.00
Strong plants.....	7 " 9	" 5.00	50.00
Cattleya Speciosissima, C. Gaskelliana, Laelia Ferrinii.			
		Each	Per Doz.
Nice plants.....	5 to 7	Bulbs, \$1.00	\$10.00
Strong plants.....	7 " 9	" 1.75	17.00
Extra fine plants.....	9 " 12	" 2.75	27.00

Case lots of any of the above varieties, special low prices on application.



For
 Imported
 Established
 Varieties
 Species
 Hybrids
 Rare
 Specimens
 Cut
 Flowers
 Material
 Baskets
 Anything
 Everything
 Pertaining
 to
 Orchids
 Send to
W. A. Manda

Native Filipinos Collecting Phalaenopsis

Orchids

We have, as we have always had, the leading collection of Orchids in the country and can supply any variety besides a few which we enumerate below, all of which we can highly recommend as profitable to grow. Fine strong plants ready to flower.

CATTLEYA	Each
Gaskelliana. Rosy lilac, free grower.....	\$2.00
Gigas. Rich, rosy, yellow eyes.....	3.00
Gigas Sanderiana. Rich crimson, yellow eyes.....	3.50
Harrisoniae. Lilac, easy-growing plant.....	1.50
Intermedia. Rosy lilac, free-flowering species.....	2.00
Labiata (vera). Rosy pink and crimson lip.....	2.00
Mendellii. White and rose, summer flowering.....	2.00
Mossiae. Rose to crimson red, and yellow.....	2.00
Percivaliana. Rose to crimson, winter flowering.....	2.00
Schroderae. Soft lilac, yellow throat.....	2.50
Speciosissima. Large, pink to crimson.....	2.00
Trianae. Lilac rose to crimson, the best.....	2.00
CYPRIPEDIUM	Each
Ashburtoniae. Reddish brown and white.....	\$1.50
barbatum. White and deep purple.....	1.00
Boxallii. Yellowish green shaded purple, brown.....	2.00
Cardinale. White and rich crimson, choice.....	1.50
Harrisianum. Flowering several times a year.....	1.50
insigne. Free-growing and popular variety.....	1.00
Leeanum. Sepal white dotted with pink.....	2.00
Sedenii candidulum. Soft rose, floriferous.....	1.50
villosum. Shiny surface, as if varnished.....	2.00
hybrids in choice variety and great beauty.....	2.00
DENDROBIUM	Each
Formosum giganteum. White waxy flower, large.....	\$2.00
nobile. Free grower, white and pink flowers.....	1.00
phalaenopsis Schroderae. Large rose flowers.....	2.00
thyrseiflorum. Bunches of white and yellow flowers.....	3.00
Wardianum. Large white flowers, tipped with pink.....	2.00
LAELIA	Each
albida. White, with lilac lip.....	\$1.00
anceps. Rose to rich crimson, free grower.....	1.00
anceps alba. Rare white variety of the former.....	3.00
Arnoldiana. Rose, flowers in autumn.....	2.50
autumnalis. Rich rose, large flowers.....	1.50
purpurata. Large white, crimson lip, grand.....	2.50
ODONTOGLOSSUM	Each
citrosimum. Drooping spikes, white flowers.....	\$2.00
crispum. White-spotted, the best cool Orchid.....	2.00
grande (Baby Orchid). Large, yellow, red, brown.....	2.00
Rossii majus. Free grower, white and brown flowers.....	1.00
ONCIDIUM	Each
crispum. Fine rich brown and yellow.....	\$2.00
Ornithorynchum. Covered with lilac, sweet flowers.....	1.50
Papilio (Butterfly Orchid). Large yellow and red.....	2.00
splendidum. Large yellow and brown flowers.....	2.00
tigrinum. Large yellow, sweet-scented species.....	2.00
varicosum Rogersii. Grand variety of the former.....	2.00
VANDA	Each
coerulea. Beautiful blue flowers, fine.....	\$3.00
suavis. Large lilac and crimson flowers.....	3.50
tricolor. Fine brown and purple flowers.....	3.50
VARIOUS ORCHIDS	Each
Calanthe Veitchii. Rich pink flowers on long stems.....	\$1.00
Calanthe vestita. Arching spikes of white flowers.....	1.00
Coelogyne cristata. Fine, winter flowering.....	1.00
Coelogyne cristata, alba. White, useful, free grower.....	1.50
Cymbidium giganteum. Green and brown flowers.....	2.00
Cymbidium Lowii. Pea-green flowers on long spikes.....	2.00
Dendrochilum glumaceum. Spikes of white flowers.....	2.00
Epidendrum vitellinum majus. Rich orange red.....	1.00
Lycaste Skinnerii. Light to deep rose, useful plant.....	2.00
Phalaenopsis amabilis. Long stems, white flowers.....	3.50
Phalaenopsis grandiflora. Large white flowers.....	3.50
Phalaenopsis Schilleriana. Spikes of lilac flowers.....	4.00
Other varieties or specimen plants, prices on application.	
Best quality of Peat for Orchids.....	Per bbl. \$2.50
Best quality of Sphagnum Moss.....	2.50
Best quality Moss or Peat, picked ready for use.....	4.50

Manda's round Orchid Baskets, all sizes made to order and special prices on application.

Fruits

We have taken great care in selecting the varieties, offering only such as we know to be the very best, fine in quality and prolific. All plants that will stand the extreme changes in temperature which we have in this climate.

APPLES—We carry in stock only such varieties as have been thoroughly tested, and which possess real merit. They do well planted on any good ground, and with little care give very satisfactory results. All the best varieties at **50c.** each.

PEARS—Pears can be grown in almost any good soil with little care. They generally give very satisfactory results. Any variety at **50c.** each.

CHERRIES—The best results can be obtained by planting on moderately rich light loam or sandy soil. Any variety at **50c.** each.

PEACHES—Plant in light, rich soil. The ground should be kept free from grass or weeds. An occasional top dressing of wood ashes or slaked lime will be advantageous. Any of the best varieties at **25c.** each.

QUINCES—They require a deep, rich soil. Should be manured with thoroughly rotted manure. A little coarse salt or lime sprinkled around the trees is beneficial in keeping away insects. Price, **50c.** each.

PLUMS—They do best planted in rich, heavy loam, well-drained. Care must be taken as the fruit forms to keep from the attacks of the curculio. Any commercial variety at **50c.** each.

GRAPES—Grapes will flourish and bear abundantly in almost any good, dry soil, especially if the vines are trained on trellises. Best varieties at **25c.** each.

GREENHOUSE GRAPES—For growing under glass in hot or cold vineries. One-year-old plants, **\$2.50** each. Strong two-year-old vines fruiting canes, **\$5.00** each.

CURRENTS—Plant in good soil and keep well-worked and manured. There are very few fruits that will so thoroughly repay as this for good and proper treatment. Best varieties, **\$1.50** per dozen; **\$12.00** per 100.

GOOSEBERRIES—They do best planted in good, rich ground, kept well-worked and free from grass and weeds. Cut out the old wood as soon as it begins to decline and shorten all the young shoots to keep the bushes in shape. Price: **25c.** each; **\$2.50** per dozen.

BLACKBERRIES—Plant in good soil in rows five feet apart, and plants three or four feet apart in the row. Soon after fruiting season or early spring, cut out all the dead wood. A good top dressing of stable manure applied annually will be conducive to large crops. Keep the ground well-worked and clean. Best kinds, **50c.** per dozen; **\$3.00** per 100.

RASPBERRIES—Plant in rows about five feet apart and three feet between the plants. They like good, rich soil, with plenty of manure worked into it annually. Immediately after the fruiting season or early in the spring, cut out the old wood which bore the last crop of fruit. Best kinds, **50c.** per dozen; **\$3.00** per 100.

STRAWBERRIES—Ready in August and September. Pot plants, **\$3.50** per 100. Special prices given on large quantities.

Seeds

This important department has our careful attention, knowing the necessity of pure, good and true seed. Instead of giving showy and highly colored packets, we will endeavor to put all that unnecessary expense into the seed, the article that the customer wishes to procure. It should never be the question with the buyer, "How cheap can I buy my seeds?" but "Where can I procure the very best of seeds?" A penny saved in the first instance may bring not only failure and disappointment, but labor wasted and a whole season lost. Yet a great deal depends on the season, soil and attention given to the crops, and, therefore, we wish to draw our customers' attention to the usual disclaimer: That while we exercise the greatest care in having all seeds pure, true and good, our seeds are sold without any warranty, expressed or implied, and without any responsibility in respect to crop. If our seeds are not accepted on these terms, they must be returned at once.

Special list of such will be mailed on application, or, to save time, will fill your order with strictly first-class seeds at the price of any reliable dealer.

GRASS AND CLOVER SEEDS

We have made a careful study of the best composition of grasses to make a permanent and beautiful lawn and are selling **Manda's Universal Lawn Seed Mixture** at **\$4.50** per bushel. This mixture is as good as any and better than many and invariably gives good results. Current prices of any variety on application.

Anything not in this Catalogue, supplied at Reasonable Price.

Landscape Gardening

This is a very important subject, and one that should not be neglected or overlooked, especially when building up a new place.

It means that, with a **good plan**, you can lay out your place to all the advantages it commands naturally, besides making the developing features where the location is disadvantageous. **The roads and walks** should be laid out, not only to be practical, but also to be in harmony with everything adjacent.

The Landscape Architect should be consulted regarding the proper site for the house, roads, etc., as they should be finished before the grading, thus avoiding unnecessary labor and cost.

As we combine both **theoretical and practical knowledge**, our patrons will find it greatly to their advantage to place the improvement of their grounds in our hands, as they will profit by our large experience in the economical and practical treatment of the work.

Next to the plants the most important thing is the **specifications**, that is, the selection of the kind of stock to be used for the ornamentation of same, and it is especially here where the value of a practical landscape gardener is felt. While a good many people without practical knowledge can draw acceptable plans, yet it is only the practical man that can make the selection of the stock, knowing its habit, its ultimate height and development, also the adaptability of the soil, climate, etc., as no two places can be treated alike.

If the residence is intended to be occupied during a certain season, then such plants as predominate at that season should be used. If, on the other hand, the house is an all-year residence, then the effect and plants that are used should be such as to give a continued attractiveness all through the season.

We make a **specialty and carry in stock** all plants for this kind of work, and being practical men, thoroughly acquainted with the habits, height, color, different growths and flowering periods of these plants, we are in a position to intelligently make plantings where an immediate effect is produced and the future not marred.

There is nothing more unsightly than a mass of planting done haphazard, where, instead of a plant being placed in a position to help or harmonize with others, they are jammed together irrespective of their growth, color or height.

We would be pleased to hear from parties contemplating any improvements on their places, be they new or old, and will **furnish advice, submit plans and specifications** for same, carrying out and completing the work in a satisfactory manner, thus avoiding costly and irreparable mistakes that would be committed without proper advice.

We **recommend first-class Gardeners or Superintendents** to take charge of your grounds and **greenhouses**, practical and trustworthy men that we know personally; if in need of any, write us with particulars.

Plans, estimate and specifications given for any extensive planting, either pleasure grounds, fruit gardens, vegetable gardens, rose gardens, hardy old-fashioned gardens, or formal gardens. Our experience and knowledge is at your service.

Press Notices

THE following are a few of the thousands of Press Notices received during the last thirty years.

FROM "THE REPUBLICAN"

The Floral King

Most of us know that Rothschild is the king in money circles; that the Vanderbilts are railroad monarchs; that the Astors are property peers; that Wanamaker is the highest type of merchant; that Depew is the greatest wit and orator in this land. Every niche allotted to fame of one kind or another has some special person fitted to adorn it. There can be but one leader in every trade, profession or vocation. And so it is that W. A. Manda, of the Universal Nurseries, of South Orange, N. J., by his perfect scientific skill; by his patient, ceaseless study; by a faithful, enduring effort to keep always advancing his investigations, has become recognized as the "Floral King." Mr. Manda is undoubtedly the most progressive and successful propagator of plants, shrubs and floral treasures of any expert botanist of the times. He is like Edison, the wizard of the electrical world, constantly springing delightful surprises by the wonderful things he accomplishes in bringing new and novel effects from floriculture and botanical subjects. And the grandest result is that Mr. Manda's work has brought no end of fascinating and enduring specimens to the market as well as to the rich man's conservatories. Mr. Manda is the highest authority on the true culture of flowers, shrubs, vines, roses, etc., of the age. But it does not prove costly for anyone to learn all about the outcome of his rare and wonderful powers with transforming plant-life into novelties and new colors, forms and beauties in the floral world. He makes all these rare features so cheap that anyone who loves flowers can have in their yards some entirely new plant or shrub, or the old-fashioned ones so improved that they are scarcely recognized, or will be the admiration of the neighbors. It is only necessary to send to the Universal Nurseries, at South Orange, N. J., and a catalogue describing all these lovely plants, flowers, vines or shrubs will be mailed, and then the finest array in the country can be selected from in either seeds, plants, bulbs, etc.

FROM "BOSTON TRAVELER," JUNE 26, 1886 (29 YEARS AGO)

A Wild Garden

Where a Modest Phase of Horticulture Has Found a Home

The introduction of a wild garden in the Botanic Garden at Cambridge by the superintendent, Mr. W. A. Manda, in an area of three-fourths of an acre, on a rising hillock, has proved a most marked success, and the labor bestowed has also produced a most charming effect. The flowers are arranged in masses. One of these, the Pentstemon, is like a foxglove, etc.

FROM "THE DAILY CHRONICLE," LONDON, ENGLAND, MAY 23, 1912

"One of the most striking points in the judging was the numerous successes won by Mr. W. A. Manda, of South Orange, N. J., who brought over collections of palms, as big as beautiful, and a number of other things calculated to appeal chiefly, perhaps, to men with deep pockets and women with ambitions. No more effective designs in greenery have been staged in this country than those created at Chelsea by this go-ahead American."

The real taste of Superiority is shown in open competitions in which I have taken in the last twenty-five years thousands of prizes, consisting of Cups, Medals, Diplomas, Certificates and Money Prizes.

In six of the leading horticultural events of the world, I achieved the following:

- The International Horticultural Exhibition in Hamburg, Germany, in 1897, 14 prizes.
- The First International Exhibition in Chicago, Ill., 1908, 65 prizes.
- The Second International Exhibition in Boston, Mass., in 1911, 89 prizes.
- The Great Royal International Horticultural Exhibition in London, in 1912, 24 prizes.
- The Great Third International Horticultural Exhibition in New York, Grand Challenge Cup, three Silver Cups, four Gold Medals, fifteen Silver Medals, five Bronze Medals.
- One thousand one hundred and fifty-six dollars in cash. A world's record—97 prizes.
- Great International Exhibition in Ghent, Belgium, 30 Medals.

This in competition with the whole world which needs no further comment.